

208

787

續錄果毛十二編

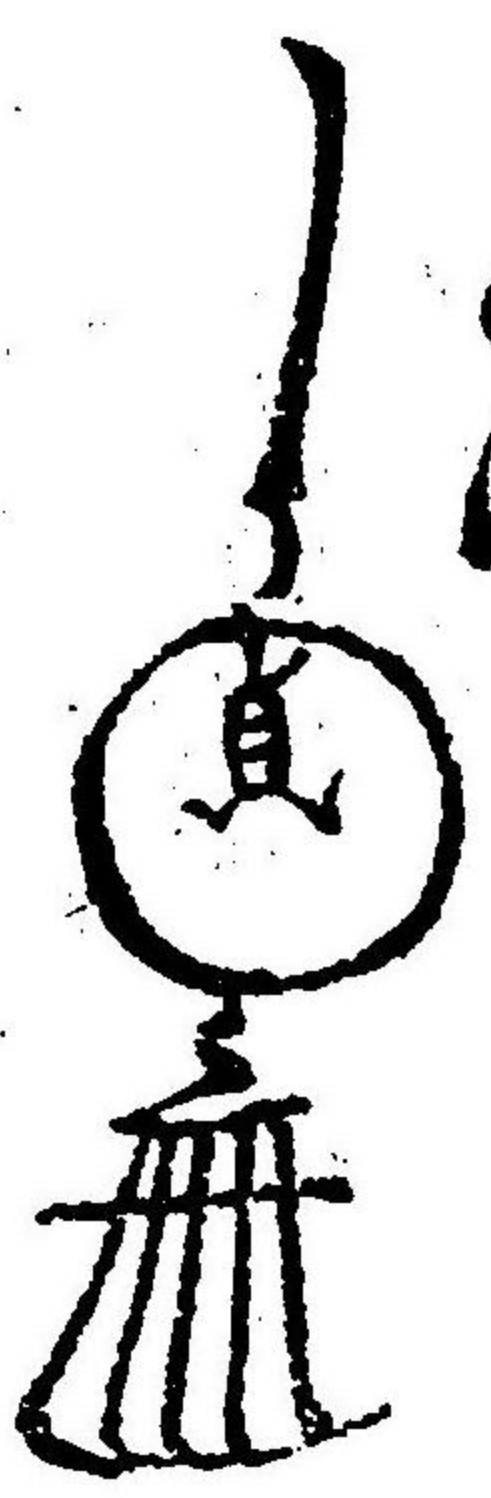
上

あつたしんじゆの海を東都歸る
満尾一しんじゆの海を東都歸る
あつたしんじゆの海を東都歸る
あつたしんじゆの海を東都歸る
あつたしんじゆの海を東都歸る
あつたしんじゆの海を東都歸る
あつたしんじゆの海を東都歸る

あつたしんじゆの海を東都歸る
あつたしんじゆの海を東都歸る
あつたしんじゆの海を東都歸る
あつたしんじゆの海を東都歸る
あつたしんじゆの海を東都歸る
あつたしんじゆの海を東都歸る
あつたしんじゆの海を東都歸る

文
年

十



音の場を走り塚



申の庚の鴨の巢



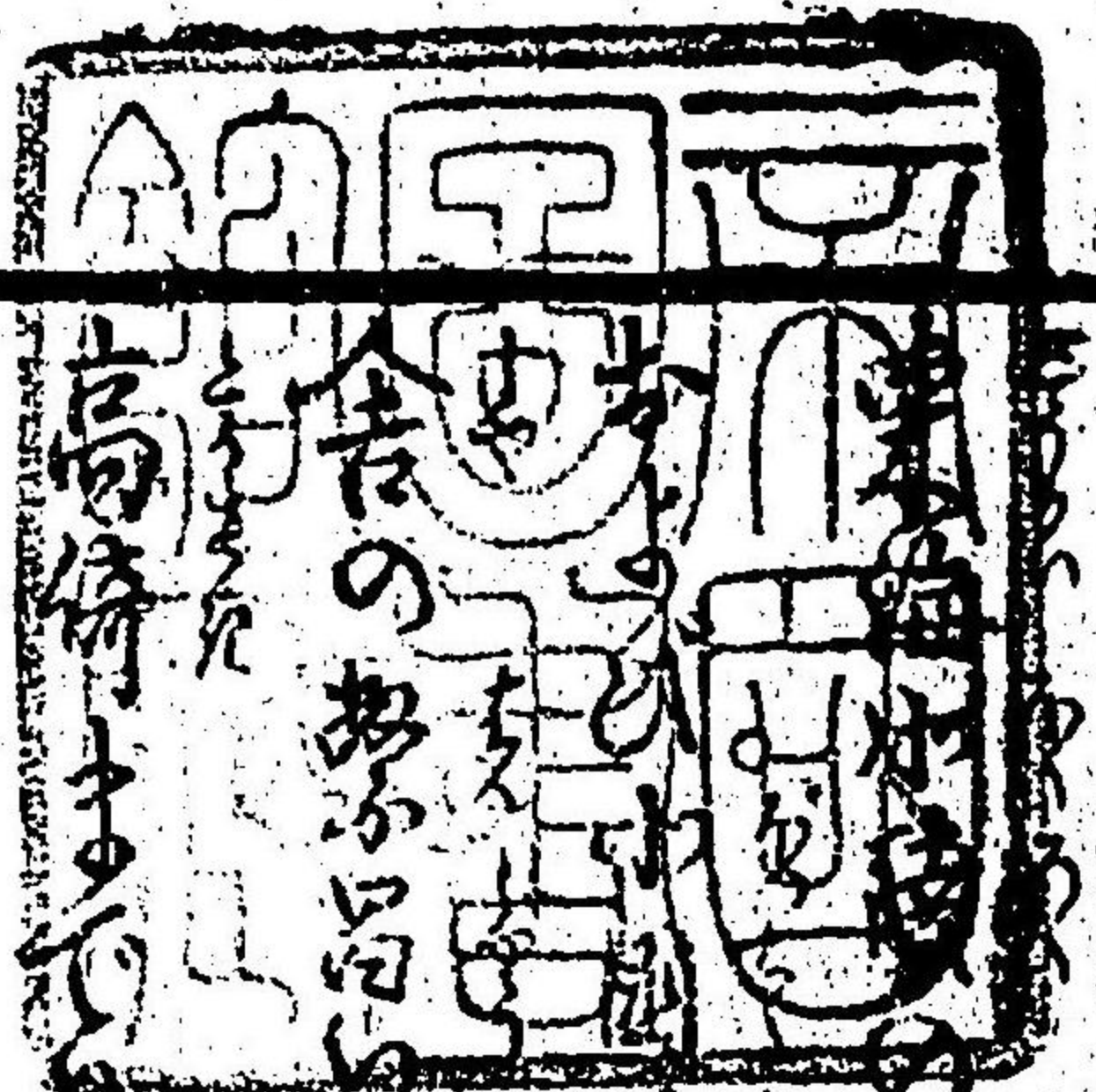
附言

年々中級の徳業を當年俸尾に...
本道中級者の徳業もはうひを...
またやうな人々の教生を...
徳業の正史を...
うかす人...
ゆつてやうな...
徳業...
き希とす...
徳業...
き希とす...

續 駿 栗 毛 十二 編

上 册

東 都 十 返 舎 一 九 著



東都十返舎一九著
中間の...
道の性...
書のお...
高...
志...
殿...
中間の...
道の性...
書のお...
高...
志...
殿...

かわれ。カワレ申小蕨。コノハのる。ル茶。チャの人の。ノヒト気。キと。トう。ウか。カ。上尾博。カミノヒロ芳。ヨシ
 新田。ニノタの酒屋。サカヤその名。ナ高。タカく。ク。熊谷。クマノヤ梅。ウメ本。ホンの。ノそを。ソノ物。モノ本座。ホンザの
 茶。チャ債。ツカ本。ホン庄。シヤの。ノ補。ホえ。エ丹。ニど。トり。リ小。コ芳。ヨシ一。イチ方。ハツ小。コ白。シロい。イ。高。タカ
 倚。ヨリした。シた。タの。ノ煙。エンゆ。ユく。クる。ル。津。ツ代。ジの。ノあ。アら。ラじ。ジも。モら。ラ縁。エンの。ノ枝。エ
 く。クま。マ陰。インる。ルく。ク。公。コウ儀。ギの。ノよ。ヨま。マる。ル。清。セイも。モる。ル。ま。マじ。ジく。クの。ノ磯。イソ
 夢。ユメの。ノ海。ウミ深。フカイ帝。テイを。ヲ侍。シも。モる。ル。八。ヤチつ。ツう。ウの。ノあ。アら。ラじ。ジも。モら。ラせて。セ
 ちや。チヤ東。トウ教。キョウ入。ニの。ノな。ナら。ラじ。ジも。モら。ラ。新田。ニノタ放。フウく。クと。トき。キ之。シ方。ハツの本。ホンあ。アら。ラじ。ジも。モら。ラ
 くら。クラむ。ムと。トま。マじ。ジも。モら。ラ。幸。サイ庄。シヤの。ノ審。シンか。カら。ラじ。ジも。モら。ラ

よ。ヨう。ウも。モる。ル。長持。ナガモチ人。ヒト足。タラシの。ノこ。コま。マら。ラじ。ジも。モら。ラ。極。キョクが。ガナ。ナア。ア ち。チあ。アら。ラじ。ジも。モら。ラ
 夢。ユメの。ノあ。アら。ラじ。ジも。モら。ラ。極。キョクが。ガナ。ナア。ア ち。チあ。アら。ラじ。ジも。モら。ラ。極。キョクが。ガナ。ナア。ア ち。チあ。アら。ラじ。ジも。モら。ラ
 ナ。ナア。ア ち。チあ。アら。ラじ。ジも。モら。ラ。極。キョクが。ガナ。ナア。ア ち。チあ。アら。ラじ。ジも。モら。ラ。極。キョクが。ガナ。ナア。ア ち。チあ。アら。ラじ。ジも。モら。ラ
 こ。コま。マら。ラじ。ジも。モら。ラ。極。キョクが。ガナ。ナア。ア ち。チあ。アら。ラじ。ジも。モら。ラ。極。キョクが。ガナ。ナア。ア ち。チあ。アら。ラじ。ジも。モら。ラ
 め。メん。ンと。トま。マじ。ジも。モら。ラ。極。キョクが。ガナ。ナア。ア ち。チあ。アら。ラじ。ジも。モら。ラ。極。キョクが。ガナ。ナア。ア ち。チあ。アら。ラじ。ジも。モら。ラ
 ナ。ナア。ア ち。チあ。アら。ラじ。ジも。モら。ラ。極。キョクが。ガナ。ナア。ア ち。チあ。アら。ラじ。ジも。モら。ラ。極。キョクが。ガナ。ナア。ア ち。チあ。アら。ラじ。ジも。モら。ラ
 舎。シャの。ノ大。ダイ人。ニンめ。メた。タる。ル。そ。ソの。ノ男。オトコ三。サン人。ニン医。イ者。シャら。ラじ。ジも。モら。ラ

孫存

さき

さき

さき

さき

さき

さき

さき

さき

さき



生發の

海老久

久

さき

さき

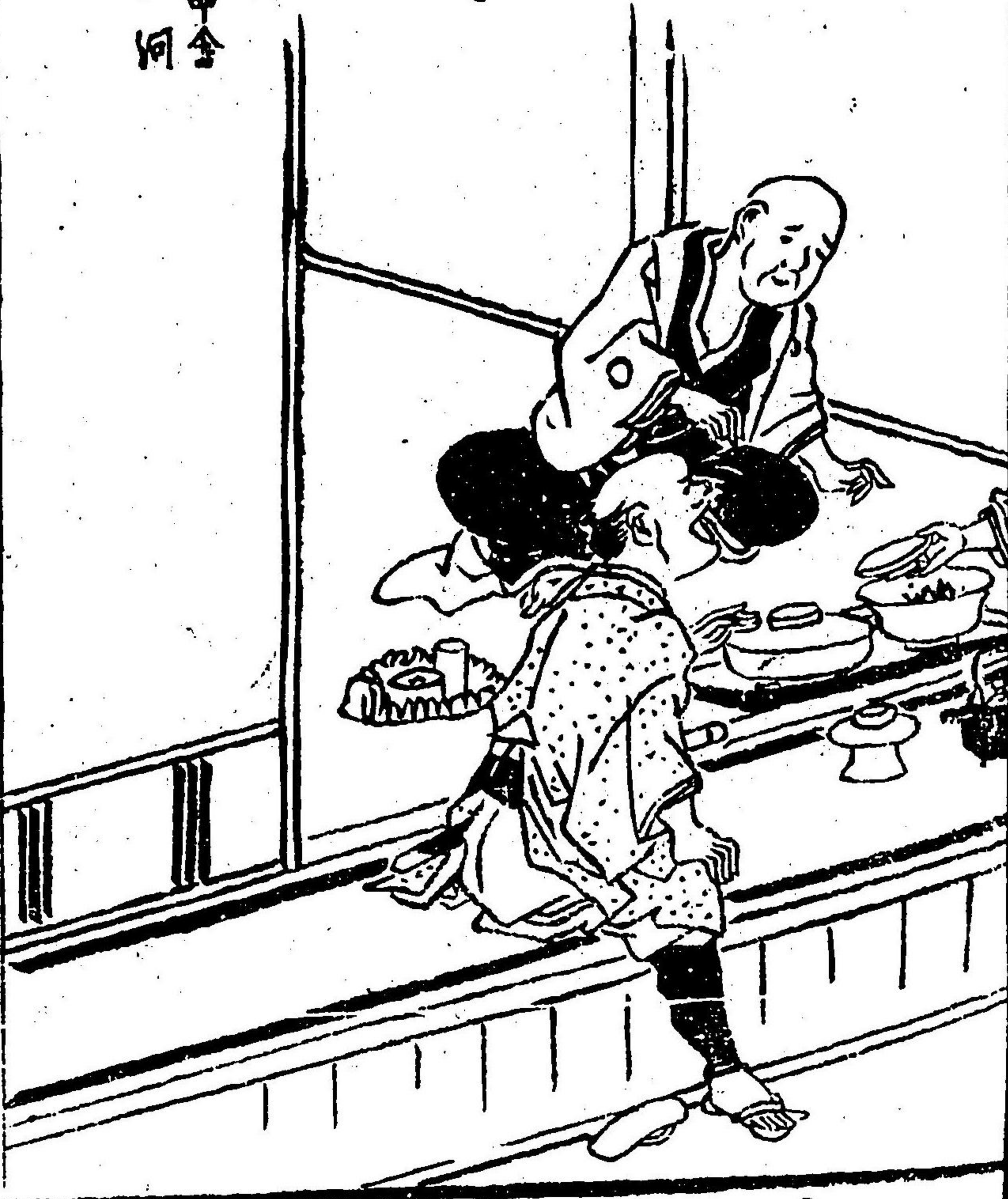
さき

さき

さき

諸人

東窓全
一河



maso no koto...
koto no koto...
maso no koto...
koto no koto...

酒を飲めば
小夜

あつた。後...
あつた。後...
あつた。後...
あつた。後...

谷小 白ふ 赤の花 番小 猿人の

うらさ... 茶漬... の那

そとより 田舎村は...
そとより 田舎村は...
そとより 田舎村は...
そとより 田舎村は...

今... 谷の... 歌

かくて 深谷の...
かくて 深谷の...
かくて 深谷の...
かくて 深谷の...

あつた。後...
あつた。後...
あつた。後...
あつた。後...

Handwritten text in a cursive script, likely a historical document or manuscript. The text is arranged in approximately 10 horizontal lines. Some characters are written in a larger, bolder hand, possibly indicating emphasis or specific terminology. The script is dense and fills most of the page's width.

Handwritten text in a cursive script, similar to the one on the adjacent page. It is organized into about 10 lines. The handwriting is consistent with the other page, suggesting a single author or scribe. The text appears to be a continuation or a related section of the document.

Handwritten text in a cursive script, likely a historical document or manuscript. The text is arranged in approximately 10 lines. Several words are written in a larger, bolder script, possibly indicating emphasis or specific terms. The script is dense and fills most of the page.

Handwritten text in a cursive script, similar to the one on the adjacent page. It is organized into about 10 lines. Like the first page, it features larger, bolded words interspersed with smaller text. The handwriting is consistent and fills the page.



Handwritten text in a cursive script, likely a historical document or manuscript. The text is arranged in approximately 12 horizontal lines. The script is dense and characteristic of early modern European handwriting. There are several instances of small, handwritten annotations or corrections interspersed within the main lines of text, often appearing as short phrases or single words. The overall appearance is that of a well-used, possibly legal or administrative, document.

Handwritten text in a cursive script, likely a religious or philosophical treatise. The text is written in a dark ink on aged paper.

Handwritten text in a cursive script, continuing the previous line. The script is dense and characteristic of early modern European manuscripts.

Handwritten text in a cursive script, continuing the previous line. The text is written in a dark ink on aged paper.

Handwritten text in a cursive script, continuing the previous line. The text is written in a dark ink on aged paper.

Handwritten text in a cursive script, continuing the previous line. The text is written in a dark ink on aged paper.

Handwritten text in a cursive script, continuing the previous line. The text is written in a dark ink on aged paper.

Handwritten text in a cursive script, continuing the previous line. The text is written in a dark ink on aged paper.

Handwritten text in a cursive script, continuing the previous line. The text is written in a dark ink on aged paper.

Handwritten text in a cursive script, continuing the previous line. The text is written in a dark ink on aged paper.

Handwritten text in a cursive script, continuing the previous line. The text is written in a dark ink on aged paper.

Handwritten text in a cursive script, continuing the previous line. The text is written in a dark ink on aged paper.

Handwritten text in a cursive script, continuing the previous line. The text is written in a dark ink on aged paper.

Handwritten text in a cursive script, continuing the previous line. The text is written in a dark ink on aged paper.

Handwritten text in a cursive script, continuing the previous line. The text is written in a dark ink on aged paper.

Handwritten text in a cursive script, continuing the previous line. The text is written in a dark ink on aged paper.

Handwritten text in a cursive script, continuing the previous line. The text is written in a dark ink on aged paper.

Handwritten text in a cursive script, likely a historical document or manuscript. The text is arranged in approximately 12 horizontal lines. It begins with a large initial letter, possibly 'C' or 'K', followed by several lines of dense, flowing script. The ink is dark and the paper shows signs of age and wear.

Handwritten text in a cursive script, similar to the one on the adjacent page. It consists of about 10 lines of text. The script is highly stylized and difficult to decipher without specialized knowledge. There are some larger characters and what appear to be initials or specific markers throughout the text.

158
...
...
...

...
...
...

...
...
...

...
...
...

...
...
...

...
...
...

...
...
...

...
...
...

...
...
...

...
...
...

...
...
...

...
...
...

...
...
...

...
...
...

...
...
...

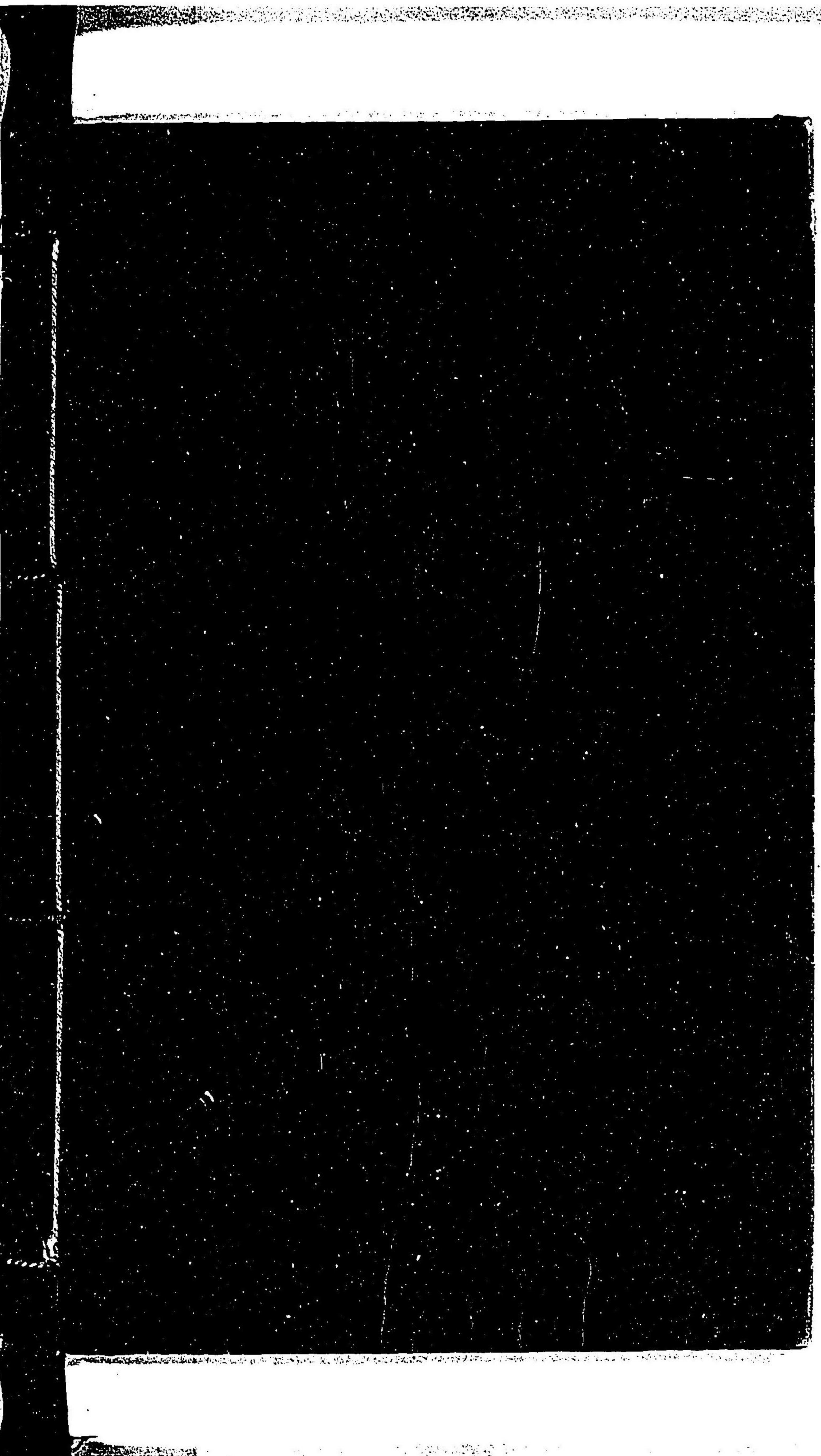
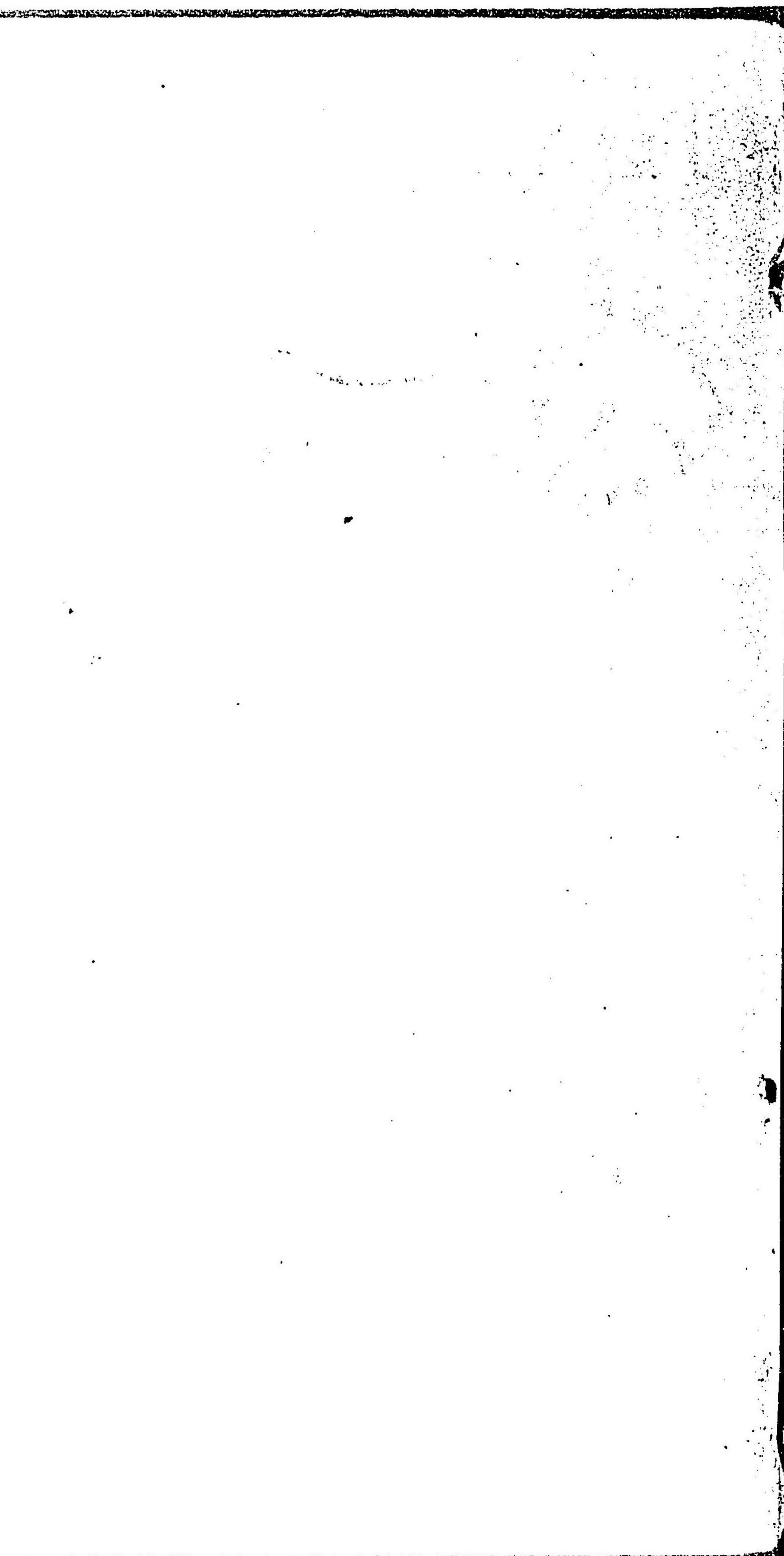
208

787

續纂要毛十二編上冊終

この目にもて傳が世おりの始末をかくし出して
てゝてゝてゝてゝてゝてゝてゝてゝてゝてゝてゝてゝ
てゝてゝてゝてゝてゝてゝてゝてゝてゝてゝてゝ
てゝてゝてゝてゝてゝてゝてゝてゝてゝてゝ
てゝてゝてゝてゝてゝてゝてゝてゝてゝてゝ

207
25
787



208
25
787

續膝集

十二編
上