

SOUVENIR OF

Hotel Ormond, Ormond on the Halifax



DAYTONA AND DAYTONA BEACH FLORIDA.

Daytona Beach



© C. T. & Co.

Fla

917.5921

5719

The Heart of Sunnyland

Daytona, Seabreeze-Daytona Beach, Ormond and Port Orange

Go where you will, to the famed Rockies of the middle west, to the Canadian playgrounds, to the charms of New England, to the Pacific Coast, from Vancouver to San Diego, and you will find only the limited appeal of either a winter or a summer playground, but in the Halifax community, consisting of Daytona, Seabreeze-Daytona Beach, Ormond and Port Orange, you will find them all in abundance. The charm of the semi-Tropics has made this community the winter recreation ground of the American people. The same charm and appeal is making it the summer playground.

Rare indeed is there a community which combines the necessary requisites for both summer and winter recreation as this community. Daytona, Seabreeze-Daytona Beach, Ormond and Ormond Beach and Port Orange, the incorporated cities which comprise this favored community, stretching along the banks of the beautiful Halifax River, and touching majestic Atlantic, occupy an enviable position among the resorts of the world. They combine all those things which make for ideal home life during the summer and winter.

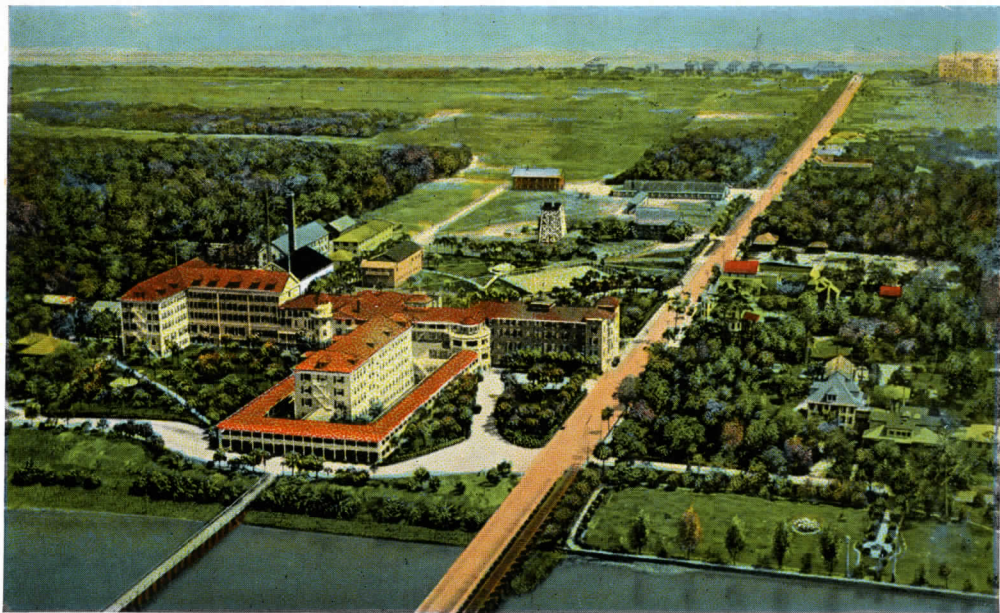


VIEW ACROSS THE HALIFAX RIVER.

While all of these stand pre-eminent, perhaps the most prominent is that of its equable climate and its wonderful beach. For twelve months in the year the people of the Halifax Country live most comfortably and enjoy the advantages denied to less favored communities. It is generally recognized that the beach, on which borders Daytona Beach, Seabreeze and Ormond, is the most remarkable beach in the world. With its wonderful thirty mile stretch, 500 feet wide during low tide, it offers recreation facilities, the equal of which cannot be found anywhere. On this beach, the speed records of the world have been made, and it was here that the remarkable record of three miles in less than one minute was accomplished.

Daytona and the Halifax Country are easily reached from any point in the North, the Seaboard Air Line, Atlantic Coast Line, Southern and Georgia & Southern Railways, as well as the Clyde and Merchants & Miners Steamship Lines, making quick connections at Jacksonville with the Florida East Coast Railway.

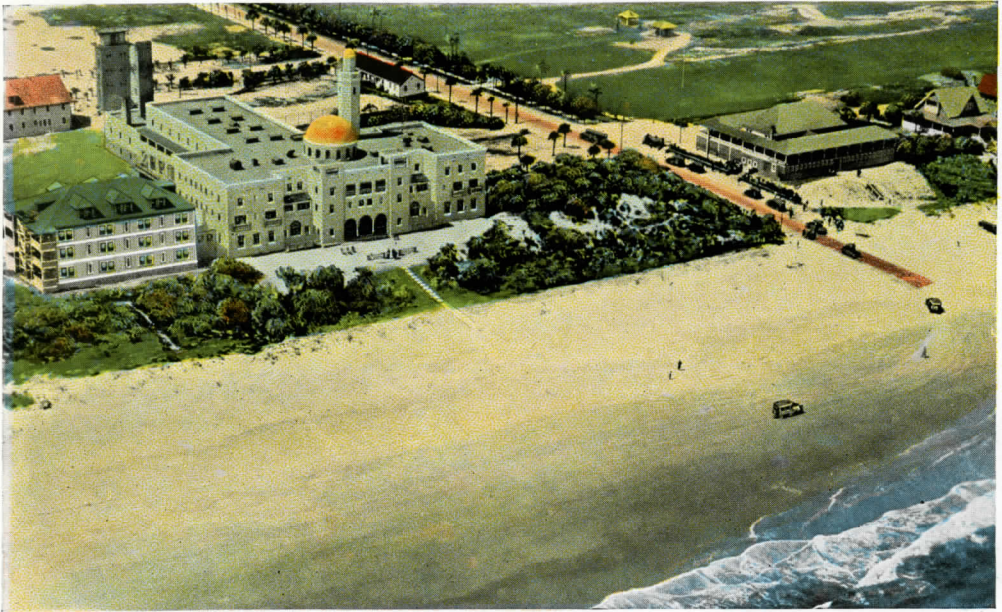
The Main trunk of the Dixie Highway also passes through Daytona, which is the pivotal point on the Florida East Coast and the only point between Jacksonville and West Palm Beach from which the interior and west coast can be reached by highway. Daytona is within a day's drive of every important point in the state.



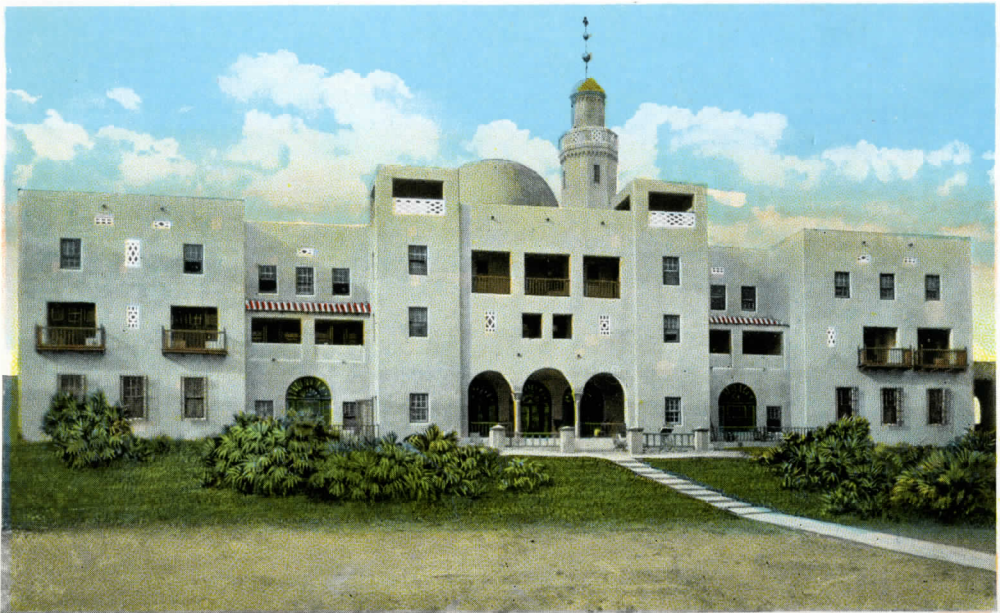
AIRPLANE VIEW OF ORMOND BEACH AND ATLANTIC OCEAN, HOTEL ORMOND IN FOREGROUND.



PALM WALK FROM HOTEL ORMOND TO BEACH, ORMOND BEACH.



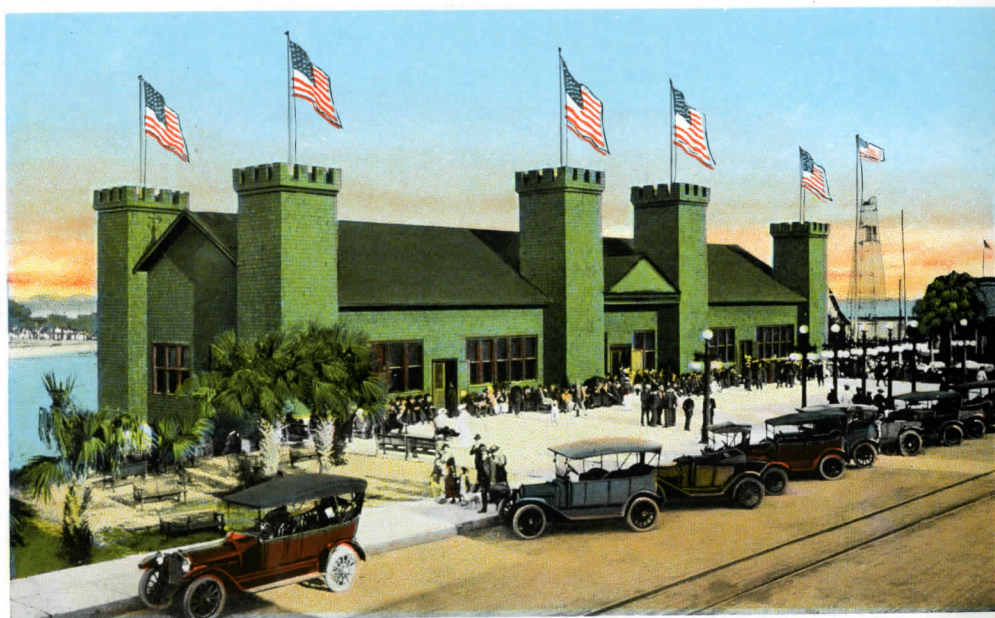
BIRD'S EYE VIEW OF HOTEL COQUINA AND ATLANTIC WATER-FRONT, ORMOND BEACH.



HOTEL COQUINA ON THE ATLANTIC OCEAN, ORMOND BEACH.



CASINO BURGUYNE AND BUSINESS SECTION, BEACH STREET, DAYTONA.



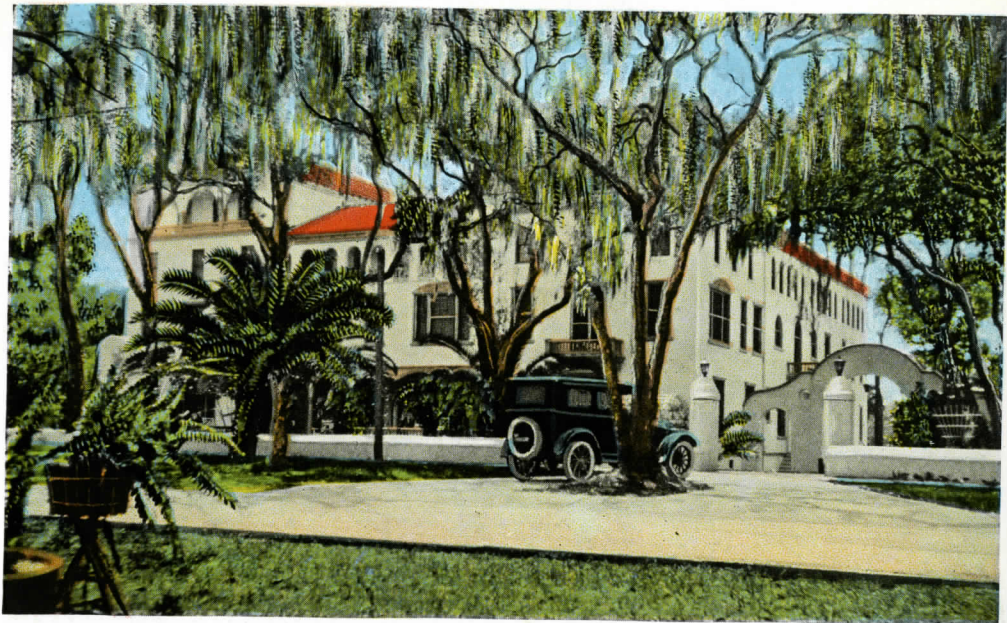
THE CASINO BURGUYNE, DAYTONA.



ELKS HOME, DAYTONA.



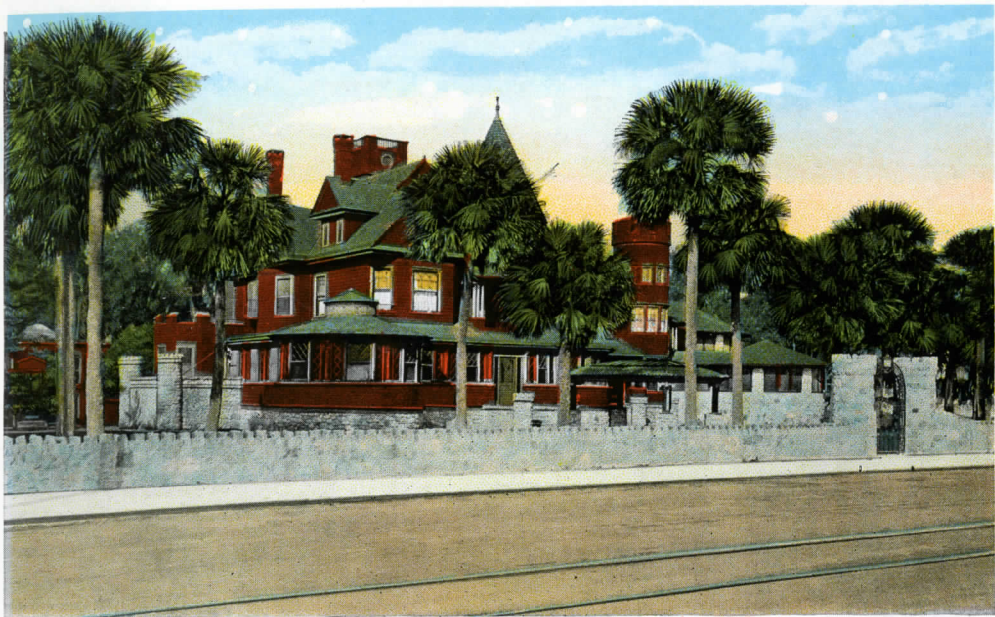
PALMETTO CLUB, DAYTONA.



ARROYO GARDENS ON RIDGEWOOD AVENUE, DAYTONA.



PARTIAL VIEW OF THE OSCEOLA—GRAMATAN HOTEL, DAYTONA.



THE BURGOYNE MANSION, DAYTONA.



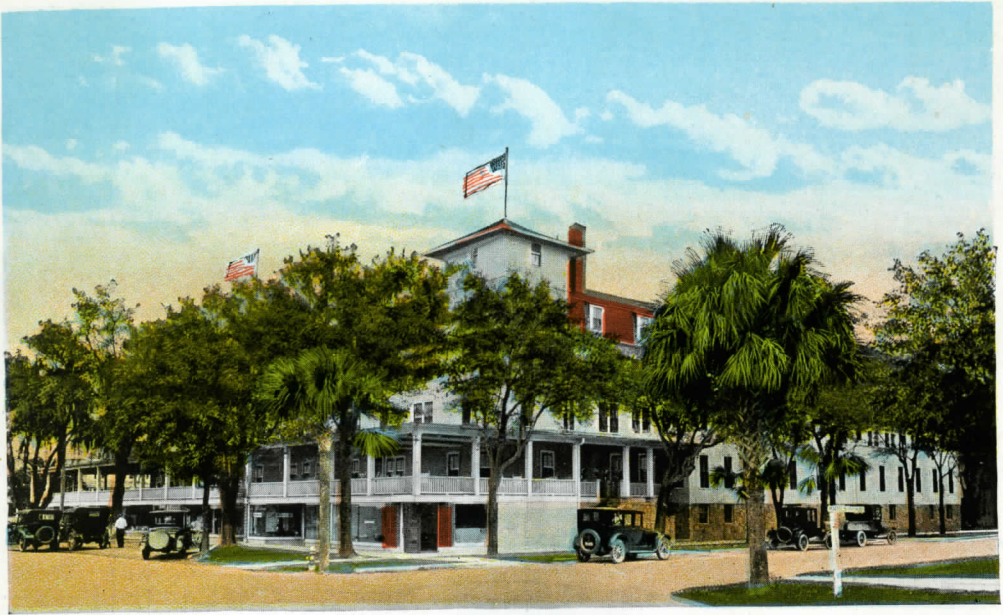
SNYDER'S BUNGALOWS, DAYTONA.



RIDGEWOOD HOTEL, DAYTONA.



PRINCE GEORGE HOTEL, DAYTONA.



THE WILLIAMS HOTEL, DAYTONA.



THE GABLES, DAYTONA.



IVY LANE, DAYTONA.



RIDGEWOOD AVENUE, DAYTONA.



PALMETTO STREET, DAYTONA.



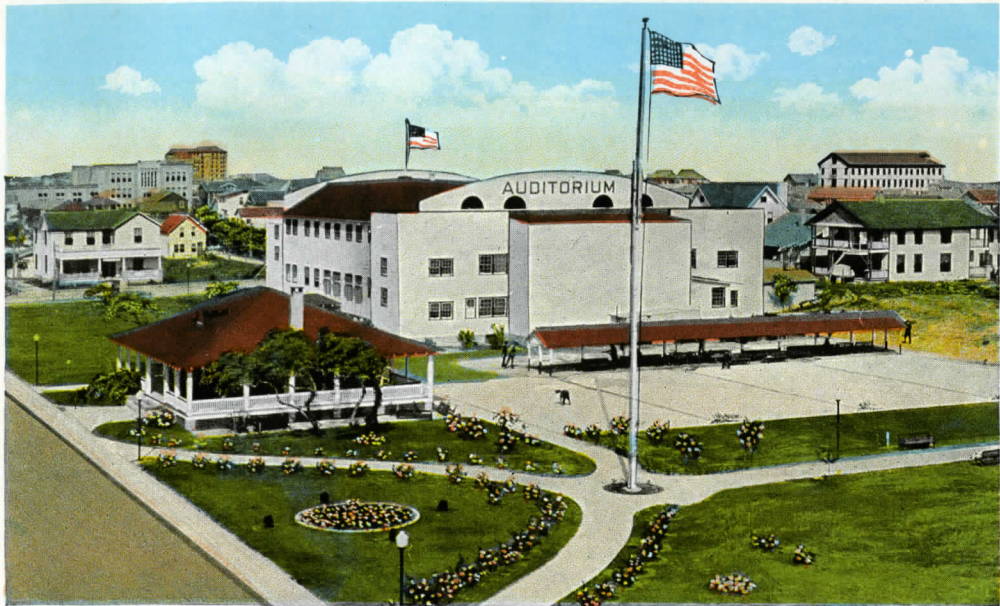
A RESTFUL SPOT ON THE HALIFAX RIVER, DAYTONA.



THE CLARENDON HOTEL AND TENNIS COURTS, SEABREEZE.



CLARENDON HOTEL, ON THE ATLANTIC OCEAN, SEABREEZE.



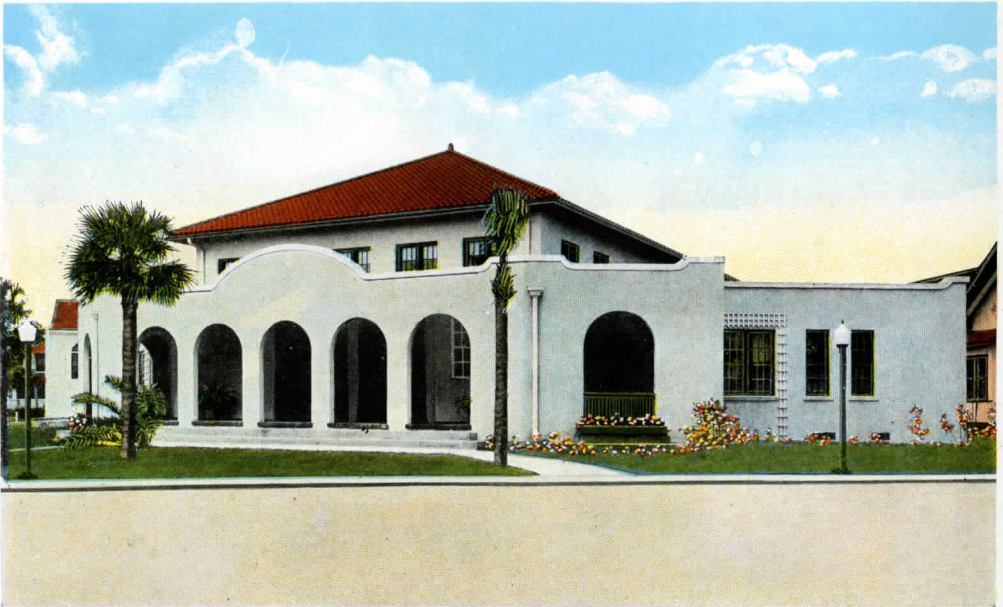
AUDITORIUM AND TOURISTS' HEADQUARTERS, DAYTONA BEACH.



ATLANTIC AVENUE, DAYTONA BEACH.



WINTER HOME OF JOHN D. ROCKEFELLER, ORMOND BEACH.



PENINSULA CLUB, DAYTONA BEACH.



WINTER BATHING AT DAYTONA BEACH.



THE SURF AND BEACH, SHOWING CLARENDON HOTEL, SEABREEZE.



OCEAN BOULEVARD, SEABREEZE.



FAMOUS BIG TREE, DAYTONA. THE LARGEST OAK TREE IN THE STATE.



Dayton and
New Smyrna Beach