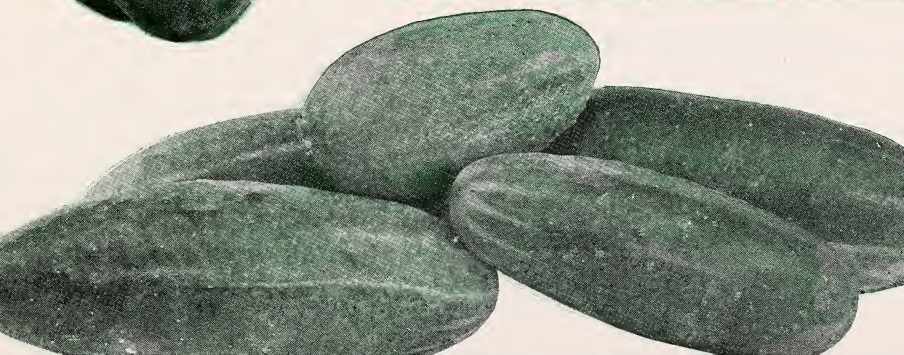


Historic, archived document

Do not assume content reflects current scientific knowledge, policies, or practices.

62.33



Tops in Quality!

LIBRARY
RECORD
★ AUG 12 1954 ★
U. S. Department of Agriculture

Grecksley
**SUMMER
AND
FALL
1954
ANNUAL**

STECKLER

Seed Company

512 GRAVIER STREET
NEW ORLEANS 3, LA.



Easter Lily

BULBS FOR SPRING

All Bulbs Are Top Size—Best Quality
Finest Grown

CALLA LILIES—Highly decorative pot-plants with large, showy funnel-shaped flowers.

Aethiopia—Best pearl-white Calla Lily for amateurs. It is easily grown, and blooms most prolifically. Strong roots. Each 35c; 6 for \$1.85; 12 for \$3.50 postpaid.

Elliotiana—Extremely showy, with large, lustrous, golden yellow flowers. Each 35c; 6 for \$1.85; 12 for \$3.50, postpaid.

Arum Pictum (Black Calla)—Same as white and odorless. Each 85c, postpaid.

Richardia Rehmanii Superba (Pink Calla)—Large flowered, tall, light pink. Each 45c, postpaid.

CHINESE SACRED LILY (Joss Flower or Flower of the Gods)—The flowers are white with a yellow cup in the center and very fragrant. Each 15c; 6 for 80c; 12 for \$1.50.

CREOLE EASTER LILY—This majestic and charming Lily is a product of Louisiana, and is the finest of all Easter Lillies. It is a strong grower, with extra-heavy stems and attractive, dark green foliage. Bulbs may be planted during the months of October, November and December. Bulbs: Each 35c; 6 for \$1.85; 12 for \$3.50. Mammoth bulbs: Each 60c; 6 for \$3.00; 12 for \$5.50.

LILIUM REGALE—Free blooming, trumpet shaped, delicately scented white blossoms, tinted with pink. Each 45c; 6 for \$2.25.

LILIUM CANDIDUM (Madonna Lily)—Popular old fashioned lilies with waxy white petals and heavy yellow stamens. Prefer sandy soil and sunny location. Each 35c; 6 for \$2.00; 12 for \$3.50.

LILIUM SPECIOSUM RUBRUM—Hardy perfect lily, deep rose with brilliant bordeaux specks and shadings. Blooms June and July. Each 45c.

AMARYLLIS (Giant-Flowered)—New Hybrids. This giant flowered strain is a mixture of colors ranging from the darkest red through striped and light shades. Each 45c; 12 for \$4.50, postpaid.

AMARYLLIS (Giant Super Deluxe)

Pure White	\$3.50 each
Dark Red	2.25 each
Salmon	2.25 each
Rose	2.25 each

ANEMONES—Poppy flowered. Spring flowering with large beautiful blooms. Roots should be soaked over night in lukewarm water before planting. Plants prefer partial shade. 6 for 60c; 12 for \$1.00; 100 for \$5.25, postpaid.

ST. BRIDGID—Giant semidouble flowering mixed. 6 for 60c; 12 for \$1.00; 100 for \$5.25, postpaid.

CHIONODOXA LUCILEA—(Glory of the Snow)—Clear blue flower with white center, excellent for rockeries, blooms in early spring. Doz., 50c; 100 for \$2.50, postpaid.

OXALIS—Mixed. Small plants with clover-like foliage and single blooms. Mixed. 6 for 45c; 12 for 75c; 100 for \$3.50, postpaid.

BERMUDA BUTTERCUP—Yellow. 6 for 45c; 12 for 75c; 100 for \$3.50, postpaid.

SCILLAS—Blue, White, and Rose—Small bell-shaped blooms on long spikes. Plant prefers sunny location and well drained soil. 6 for 50c; 12 for 90c.

RANUNCULUS—Dwarf spring flowers deserving more extensive use. The blooms are fully double and appear in many bright colors and combinations. Mixed—All colors! Each 11c; 6 for 55c; 12 for \$1.00; 100 for \$6.50.

SNOWFLAKES—Everybody knows the Snowflakes, with their little white bells coming through the snow very early in the spring. Attractive if planted with Scilla. Height five inches. 6 12 100

Pure White	\$.60	\$1.00	\$6.50
------------------	--------	--------	--------

FREESIAS—Beautiful clusters of fragrant white flowers, popular for pot culture, flowering in winter and spring. Readily forced. Plant four to six in a pot giving plenty of water and cool location. 6 12 100

Purity Refracta—Pure white.....	\$.50	\$.80	\$4.50
Rainbow Mixed—Lovely mixture.....	.40	.65	3.75

GRAPE HYACINTHS—Charming dwarf plants producing hyacinth-like heads of droopy bell-shaped flowers. Do well in any garden soil with proper drainage.

Heavenly Blue—Largest and finest blue. 6 for 40c; 12 for 60c; 100 for \$3.00, postpaid.

Ixias—Small plants with clusters of single star shaped. In mixed colors. 6 for 35c; 12 for 60c; 100 for \$3.00, postpaid.



Dutch Iris

PLANT IN THE FALL



Hyacinth

HYACINTHS—

Culture. Hyacinth bulbs do best in a rich, light, sandy loam with proper drainage. We advise against the use of fresh manure. November and December are our most successful planting months. For outdoor planting, set bulbs 6 to 8 inches apart each way. Cover with 4 inches of soil. Hyacinths are also fine for growing indoors during the winter in pots or pans or in special glasses filled with water.

Dutch Hyacinths

	Postpaid		
	Each	6	12
LaVictorie—Bright red	\$.30	\$1.50	\$2.50
Gertrude—Rosy Pink30	1.50	2.50
King of the Blues—Light blue30	1.50	2.50
L'Innocence—White30	1.50	2.50
Sir William Mansfield—Purple.....	.30	1.50	2.50
City of Haarlem—Canary Yellow.....	.30	1.50	2.50

Roman Hyacinths

	Postpaid		
	Each	6	12
White—Pure white	\$.30	\$1.50	\$2.50
Rose—Light rose30	1.50	2.50
Blue—Lovely blue30	1.50	2.50

IRIS—There is no trick to growing Iris. They do extremely well in any location, and do well in any garden soil.



Paper Whites Narcissus

Dutch Iris

	Postpaid		Not Pre- paid	100
	3	6		
Wedgewood—Earliest blue	\$.35	\$.55	\$.85	\$5.75
White Excelsior—Pure White.....	.35	.55	.85	5.75
Yellow Queen—Best of all Yellows.....	.35	.55	.85	5.75
Imperator—Brilliant blue, extra early..	.35	.55	.85	5.75
Blue Horizon—Lovely blue, similar to above35	.55	.85	5.75
Golden Harvest—Rich golden yellow....	.40	.75	1.25	6.00
H. C. Van Vliet—Violet blue, orange blotch35	.55	.85	5.75
Panamint—White with yellow falls.....	.35	.65	1.00	5.85
White Superior—White, sulphur yellow blotch35	.65	1.00	5.85

JONQUILS—Highly prized for their delightful fragrance. Splendidly adapted for planting borders and for naturalizing.

	Postpaid			
	1	6	12	100
Single—Sweet scented rich yellow.....	\$.12	\$.55	\$.85	\$5.75
Double—Rich yellow fragrant.....	.12	.65	1.10	6.25

Daffodils

	Postpaid		Not pre- paid	100
	1	6		
Aerolite—Primrose perianth, rich full yellow trumpets	\$.15	\$.75	\$1.25	\$ 7.50
King Alfred—Golden yellow perianth and trumpet fringed.....	.20	1.00	1.65	10.50
Beersheba—Best white trumpet variety35	1.90	3.75	20.00
Mrs. E. H. Krelage—Known as the White King Alfred.....	.25	1.35	2.25	12.00
Carlton—Large yellow Narcissus, enormous cup with frilled edges.....	.15	.85	1.50	8.00
Golden Harvest—Narcissus trumpet, extra early, deep golden yellow.....	.25	1.35	2.25	12.00

Narcissus (Indoor or outdoor blooming)

Paper Whites—Pure white, fragrant beautifully formed flowers.....	.15	.80	1.35	7.50
Grand Soleil d'Or—Yellow paper white15	.70	1.10	6.00

DARWIN TULIPS

Culture. In the South, Tulips should not be planted until November or December, when the weather and soil are more uniformly cool. Plant 5 to 6 inches deep, 6 inches apart. Use bonemeal as a fertilizer.

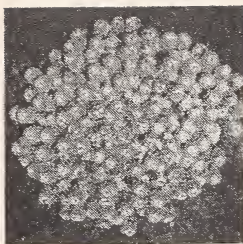
Darwin Tulips

	Postpaid		Not Pre- paid	100
	3	6		
Blue Amiable—Bright violet purple shaded steel blue, large.....	\$.40	\$.70	\$1.00	\$6.50
Clara Butt—Salmon rosy pink.....	.40	.70	1.00	6.50
Farncombe Sanders—Fiery Rose scarlet with white center.....	.40	.70	1.00	6.50
Pride of Haarlem—Bright Rose, suffused with purple, large.....	.40	.70	1.00	6.50
Wm. Pitt—Glowing salmon scarlet.....	.40	.70	1.00	6.50
Yellow Giant—Deepest yellow.....	.40	.70	1.00	6.50
Zwanenburg—Pure white45	.75	1.25	7.75
Queen of th Night—Purple-black.....	.50	.80	1.25	6.50
Darwin Mixed—Large blooms, superb mixture40	.70	1.00	6.25

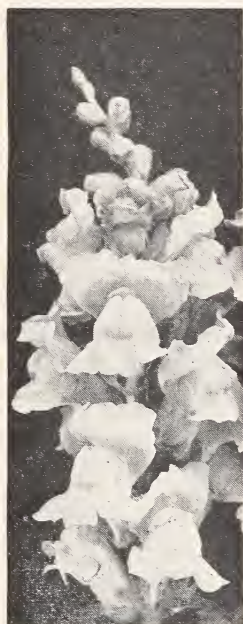
Daffodils



Plant Now for BEAUTIFUL



Alyssum, Royal Carpet



Antirrhinum, Rust Resistant California Giant Mixture



Calendula, Chrysantha

Flower seeds are something that everyone is interested in because hidden within their tiny coats are the qualities which, after they sprout, and grow, and flower, reveal colorings and characteristics almost unbelievable.

There is no excuse for your not having some flowers around your house when it just takes a few packets of seed, sunshine and rain to have them in all their beauty.

Our seeds are tested and sent to you in big full-measure packets. The instructions are on every packet for planting each kind of seed.

ALYSSUM (Madwort)—Splendid little annual for edging and bedding. Sow July-November. Height 6 to 9 inches.

Little Gem—Dwarf, compact grower thickly covered with small white flowers. Pkt. 10c; oz. \$1.50.

Violet Queen—Similar to Little Gem, but carries an abundance of delicate, lilac-colored blooms. Pkt. 10c; ½ oz. 85c.

Royal Carpet—New rich violet purple, compact and spreading. Pkt. 25c; ¼ oz. \$1.75.

Saxatile Compactum (Gold Dust). Golden yellow, grows to about 12 inches. Pkt. 10c; ¼ oz. 85c.

ANTIRRHINUM (Snapdragon)—For exquisite beauty few flowers equal the modern Snapdragons. They make glorious massed beds and borders, and are extremely well adapted for cutting. Sow August-November. Height 2 to 3 feet.

Crimson King—Rich crimson, semi-tall sort. Very good for bedding. Pkt. 25c; ¼ oz. \$1.25.

Canary Bird—A very fine variety of giant yellow blooms. Pkt. 25c; ¼ oz. \$1.25.

Loveliness—Rose pink, giant flowered. Pkt. 25c; ¼ oz. \$1.25.

Snowflake—Pure snow-white blooms. Tall, large flowering. Pkt. 25c; ¼ oz. \$1.25.

Rust Resistant California Giant Mixture—This mixture of rust proof Snapdragons is the best all around type, equally fine for borders or for cutting. Pkt. 25c; ¼ oz. 75c.

AQUILEGIA (Columbine)—Long-spurred Hybrid Mixed. Few perennials rival the Aquilegia with their odd-shape flowers. Prefer partly shaded location. Sow during October-November. Height 2½ feet. Pkt. 25c.

ARMERIA (Thrift, Sea Pink)—Dwarf-growing perennials with grassy leaves and a tufted habit of growth. The flowers are borne in globular heads during March to May, and the plants are suitable for edgings to borders. Pkt. 15c.

BALSAM (Lady-Slipper)—Greatly improved strain, with large, waxy, camellia-like blooms in soft and brilliant shades and combinations. Sow the seed during July and August in a well-drained soil. Delight in a sunny location. Height 2 feet.

Mixed—Improved. Camellia-flowered. Very double and beautiful colors. Pkt. 10c; oz. \$1.60.

Bush Flora Alba—Pure white flowers, used for bouquets. Pkt. 25c.

BELL OF IRELAND (Irish Green Bell flowers). Graceful 2 ft. branching stems are so surrounded by 2 in. flowers there is little room for leaves. The bell shaped calyx of the flower is green and delicately veined containing the white corolla. Both curious and beautiful. Planted Jan. to May. Pkg. 35c; ½ oz. \$3.00.

CALENDULA—One of our most desirable fall flowers. They are of easy culture, very prolific bloomers, and produce a splendid effect in beds and massed borders. Highly prized as cut flowers. Sow August-October. Height 1 to 1½ feet.

Radio—Distinct from any other Calendula. The petals are large and double flowers instead of being flat, forming almost a globe shaped flower. It is rich golden orange in color, blooms freely. Pkt. 10c; oz. \$1.15.

The Ball—It has fine stems, immense double flowers of brilliant glistening orange. Great favorite. Pkt. 10c; oz. \$1.15.

Orange King—Outer petals are slightly imbricated, while those of the center are curved like those of a peony. Color glowing orange. Pkt. 10c; oz. \$1.15.

Sensation—Vigorous growth, flowers borne on stout stems, blooms are flat, brilliant orange with a scarlet sheen and full yellow center. Pkt. 10c; oz. \$1.15.

Lemon Ball—Sulphur yellow, double blooming. Pkt. 10c; oz. \$1.15.

Chrysantha—Large double buttercup yellow flowers, flowers incurved, extremely popular. Pkt. 10c; oz. \$1.15.

Orange Shaggy—New orange colored Calendula, grows 18 inches high. Pkt. 10c; oz. \$1.15.

COREOPSIS LANCEOLATA—Large flowered, golden yellow, splendid cut flowers. Pkt. 10c; oz. \$1.25.

FLOWERS THIS FALL

CANDYTUFT—These delightful annuals may be grown with splendid success in fall. They furnish your beds and borders with masses of colors, and are highly prized for cutting. Sow September-November. Height 1 foot.

Coronaria—Hyacinth flowered white. A very fine variety. Pkt. 10c; oz. \$1.35.

Umbellata—White. Pkt. 10c; oz. \$1.35.

Umbellata—Pink. Pkt. 10c; oz. \$1.35.

Umbellata—Crimson. Pkt. 10c; oz. \$1.35.

Umbellata—Rose Cardinal. Pkt. 10c; oz. \$1.35.

Umbellata—Purple. Pkt. 10c; oz. \$1.35.

Mixed All Colors—Pkt. 10c; oz. \$1.35.



Candytuft, Umbellata

CANTERBURY BELLS—These old-fashioned favorites are much admired for their beautiful, large, bell-shaped flowers in shades of white, rose, and blue. Very showy in mixed borders. Sow during October-November. Height 2 feet. **Single Annual Mixed**—Pkt. 15c.

CARNATION—Few flowers surpass in beauty of form or delicious fragrance the richly hued Carnation. Easily grown from seed, and will produce fine, large blooms if planted in good, rich, well-cultivated soil. Sow during October-November. Height 15 inches.

Dianthus Caryophyllus Margaritae Robustus—Fl. pl. Semi High Double Margaret Carnation. Dwarfish habit. Pkt. 10c; oz. \$2.75.

COSMOS—Delightful annuals with ornamental, feathery, fresh green foliage and large, artistic flowers produced freely throughout the season. Effective as a background for borders and excellent for cutting. Sow during August and September. Height 4 feet.

Bipinnata Hybrida—Mixed. A very showy annual similar in shape to the Bright Eye Daisy or Coreopsis, but taller and more brilliant in color. Pkt. 10c; oz. \$1.50.

Early Double—Forms a perfect bush, bearing attractive double flowers of good size on long stems, making a wonderful cut flower. Pkt. 20c.

Early Klondyke Orange Flare—Long stemmed bright orange blooms. Early and long blooming. Pkt. 10c; oz. \$1.50.

Sensation Finest Mixed—Mammoth size flowers, 4 to 5 inches in diameter, with broad, heavy fluted petals carried on very long strong stems. Pkt. 10c; oz. \$1.50.

Sensation Radiance (new)—A striking new color combination never before seen in Sensation Cosmos. Deep rose petals overlaid with large well defined zone of rich crimson. Pkt. 10c; oz. \$1.65.

Fiesta—Makes a compact 2½ ft. plant with a riot of blooms all summer, blooms are semi-double and ruffled. A very desirous cutflower for the house. Pkt. 25c.

CYNOGLOSSUM (Amabile)—Also called the "Chinese Forget-Me-Not." A splendid annual of upright bushy growth, producing small single flowers resembling very much a Forget-Me-Not in shape and color.

Blue—A lively plant producing sprays of brilliant blue Forget-Me-Not-like flowers. Grows easily and blooms for a long season. 18 to 24 inches high. Pkt. 10c; oz. \$1.00.

Pink—Similar to above, but bearing lovely pink blossoms. Sold Out.

CORNFLOWER (Ragged Robin)—Old fashioned garden favorite. Show to best advantages when massed. **Double Mixed**—Pkt. 10c; oz. 90c.

BELLIS PERENNIS—Finest double mixed variety; 4 inches high. October till January. Pkt. 25c.

DAISY SHASTA (Alaska)—Highly improved strain with very large and broad overlapping petals of the purest white color. Pkt. 10c; ½ oz. \$1.00.

DIANTHUS or PINKS—This group embraces some of our most beautiful and best-loved flowers for bedding and borders. They are unsurpassed for striking colors and profuse blooming. The fragrant, often delicately fringed flowers are of fine velvety texture. Do best in a sunny location. Sow July-November. Height 1 foot.

Chinensis—Chinese Pink. Single. A beautiful class of annuals of various colors which flower very profusely in early Spring and Summer. Pkt. 10c; oz. \$1.15.

Heddewiggii—Japan Pink. Double. This is the most showy of any of the annual pinks. The flowers are very large and of brilliant colors. Pkt. 10c; oz. \$1.50.

GAILLARDIA (Blanket Flower)—Mixed. Planted in early spring and will continue to bloom from early summer to November, excellent for beds, borders or for cutting. Pkt. 10c; oz. \$1.35.

GLOBE AMARANTH (Bachelor's Button)—A distinct and showy everlasting flower with pretty, small, clover-like blossoms in purplish red, pink, and white shades. Splendid for massing in beds and borders. Sow July and August. Height 2 feet. Pkt. 10c; oz. \$1.35.



Canterbury Bells



Dianthus or Pinks

MANY NEW AND SPECIAL VARIETIES



Larkspur, Giant Imperial

GYPSOPHILA (Baby's Breath)—Easy to grow annuals of extremely delicate and fairy-like growth. Greatly admired for their myriads of small, dainty, star-shaped blooms, forming a charming misty effect. Fine bed and border plants, and indispensable for combining with other cut-flowers. Sow during September, October and November. Height 1½ feet.

White—Pure white. Pkt. 10c; oz. \$1.00.

Pink—A very soft pink. Pkt. 20c.

HOLLYHOCK—Unequaled as a background for other flowers, planting among shrubbery, or against houses, fences, or the like. Sow during October-November. Height 5 to 7 feet. Mixed Annual. Pkt. 10c; oz. \$1.50.

LARKSPURS (Annual Delphiniums)—With their finely cut foliage and tall, graceful, floral spikes of double blossoms. Larkspurs provide beautiful, stately backgrounds for mixed borders, and are also wonderful for planting in large, solid beds. Thrive well in almost any well-drained soil but prefer a sunny location. Sow during October-November for early spring blooming.

Double flowered (Height 3½ feet)

White—Double showy white flowers, borne on long stems. Pkt. 10c; oz. \$1.35.

Dark Blue—Annual, long erect spikes of dark blue, beautiful blossoms. Pkt. 10c; oz. \$1.35.

Bright Carmine—Long erect spikes of fiery carmine flowers, very lovely and effective. Pkt. 10c; oz. \$1.35.

Rose King—Very attractive spikes in pink blooms. Pkt. 10c; oz. \$1.35.

Miss California—Rich deep pink on salmon ground, very long stems and exceptionally long row of flowers. Pkt. 15c.

Giant Imperial—Mixed colors; very showy. Pkt. 10c; oz. \$1.35.

LOBELIA (Erinum)—Lobelia. A very graceful plant with white and blue flowers. Half foot. October till March. Pkt. 25c; ½ oz. \$1.50.

LUPINS—Few flowers give such a glorious display in the garden as Lupins. They are very prolific bloomers and carry graceful, long-stemmed, pea-shaped flower-spikes in delightful shades of white, rose, and blue. Sow September, October and November. Height 1½ feet.

Mixed—Free flowering, easily grown annual. Pkt. 10c; oz. \$1.35.

White—Same as above, pure white flowers. Pkt. 10c; oz. \$1.35.

Blue—Same as above but blue flowers. Pkt. 10c; oz. \$1.35.

Roseus—Rose colored flowers, long stems. Pkt. 15c; oz. \$1.50.

MARIGOLD—These well-known, hardy, free flowering annuals enjoy a well-deserved popularity. The African group averages 3 feet in height and has uniformly large, densely double flowers in yellow and orange shades. The French type is dwarf in growth, more bushy, and with striped flowers in yellow and bronze shades. Both are excellent for beds and borders and bloom profusely. Sow July to October.

Tagetes Erecta—African or Tall Growing Marigold. Very showy annual for borders with bright yellow flowers. Two and a half feet high. Pkt. 10c; oz. \$1.50.

Tagetes Patula—French or Dwarf Marigold. Covered with yellow and brown flowers. One and a half feet high. Pkt. 10c; oz. \$1.50.

Dixie Sunshine—Large ball-shaped flowers composed of dozens of tiny five petaled florets, gracefully interlocking, daintily fringed in effect. Brilliant golden yellow. Pkt. 15c.

Tall African All Double Yellow—Exactly the same as the Tall African Marigold in size, but a lovely yellow color. Pkt. 10c; oz. \$1.50.

Tall African All Double Orange—Exactly like the tall African Marigold in size, deep orange. Pkt. 10c; oz. \$1.50.

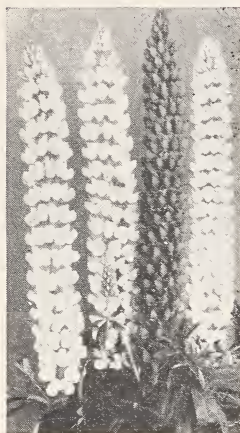
Guinea Gold—A distinct type growing 2 to 2½ feet tall, brilliant orange flushed with gold, on early blooming sort, loosely ruffled flowers. Pkt. 10c; oz. \$1.50.

Yellow Supreme—Fluffy well rounded blooms with frilled petals of rich lemon yellow. Is practically free from that objectionable Marigold odor. Pkt. 15c; oz. \$2.00.

Gigantea Sunset Giants—Large flowers, are loosely formed, full centered, with broad heavy petals. Sunset Giants is a mixture ranging from deep orange through golden orange, deep golden yellow, light yellow, lemon yellow and a delightful new shade of primrose. Pkt. 15c; oz. \$1.75.

Crown of Gold—A gold medal winner for 1937. First known Marigold with odorless foliage. Flower centers are of short curled quilled petals with a collar of flat guard petals on outside. Color is orange; flowers double. Pkt. 10c.

Glitters—A new chrysanthemum flowered African Marigold—grows about 2½ to 3 ft., bright lemon yellow blooms. Pkt. 25c.



Lupins



Marigold, Gigantea
Sunset Giants

WE SPECIALIZE IN SEEDS

NASTURTIUM—Unequaled for easy culture, brilliancy of blooms, and general excellence. Sow during months of September and October.

Dwarf Mixed—Blossoms red, yellow and salmon, used with leaves as salad. Seed pods while young and succulent picked and used as capers. Pkt. 10c; oz. 45c; ¼ lb. \$1.25; lb. \$4.00.

Tall Mixed—Same as above, makes an excellent screen for unsightly places. Pkt. 10c; oz. 45c; ¼ lb. \$1.25; lb. \$4.00.

Golden Gleam—A double sweet scented Nasturtium, golden yellow blooms with stiff, long stems. This is a distinct and new variety of Nasturtiums and being offered for the first time. Pkt. 10c; oz. 45c; ¼ lb. \$1.25.

Double Gleam Hybrids—A wide assortment of colors, sweet scented foliage fresh green. Pkt. 10c; oz. 45c; ¼ lb. \$1.25.

Double Scarlet Gleam—Flowers are fiery orange scarlet and almost three inches across and are uniformly well formed. Pkt. 10c; oz. 45c; ¼ lb. \$1.25.

MATRICARIA (Fever Few)—Double white. A perennial bearing small double white flowers, good for cutting. Pkt. 10c; ½ oz. \$1.25.

NEMOPHILA INSIGNIS—Blue. Makes a very effective front row to bed or border, also popular for pots. December to April. Pkt. 10c; oz. \$1.10.

GIANT PANSY—The exquisite beauty of the Pansies is well known to every lover of flowers. They are dwarf, compact growers with large, conspicuous blooms of velvety texture in an unusual, striking range of colors and combinations.

Large Trimardeau—Mixed. The flowers are well formed, generally three-spotted, quite distinct; the plants grow compact. October to March. Pkt. 25c.

Roggli's Gt.—Mixed. A very early variety of finest and rarest flowers and coloring. Very large blooms and is planted from October to March; grows about 8 inches high. Pkt. 50c.

PETUNIA—For freedom of bloom, variety of color and effectiveness, these annuals have no equal. Extremely hardy, unaffected by heat, drought, or rain. Planted extensively for bedding, bordering and give an excellent display in porch and window boxes. Sow from July to October. Height 1 to 2 feet.

Comanche—Deep torch red blooms, slightly fringed, a little deeper in color than Fire Chief. Price \$1.00 pkg.

Dainty Lady—Single Fringed. An entirely new color in Petunias. A delicate golden yellow color. Plants are compact, semi-dwarf and free. Pkt. 75c.

Hybrida—Mixed. Plants are of spreading habit; about 1 foot high. Pkt. 15c; oz. \$2.75.

Rosy Morn—A very pleasing clear pink with a broad white throat. A splendid sort for porch boxes, pots and beds. Grows 1 foot. Pkt. 25c.

Giants of California—Mixed. Very large flower and colors embrace every conceivable shade. Pkt. 35c.

Theodosia—Enormous single ruffled flowers of a beautiful shade of rose pink, with golden yellow veined center. Very popular. Pkt. 35c.

Rose of Heaven—Rich, brilliant and effective rose color. Pkt. 25c.

Balcony—Mixed. Single large flowering, makes an effective display over a long season. Pkt. 25c; ¼ oz. \$1.00.

Purple—One of the best rich velvety purple Petunias. Free blooming and compact. Pkt. 25c; oz. \$3.00.

Fire Chief—Brilliant scarlet red. Plants dwarf and compact with long blooming season. Pkt. 50c.

PHLOX—These marvelous annuals flourish in all their glory throughout the late summer and fall. Particularly attractive in massed beds. Sow July to October.

Perennial Mixed—A mixture from a celebrated collection. Seeds slow in germination. Pkt. 25c.

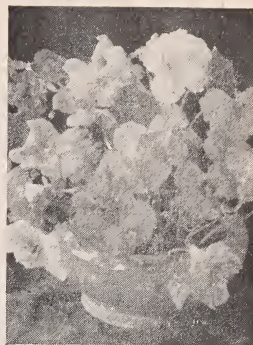
Drummondii Grandiflora Alba—Pure white, some with purple or violet eyes. Pkt. 25c; ¼ oz. \$1.50.

Drummondii—Mixed. Their various colors and length of flowering, with easy culture, make them a favorite with everyone. One foot high. April. Pkt. 25c; ¼ oz. \$1.25.

Fiery Scarlet—Easy culture and a favorite. One foot high. Pkt. 25c; ¼ oz. \$1.50.

Flesh Pink—Same as above, but a beautiful shade of pink. Pkt. 25c; ¼ oz. \$1.50.

Star Mixed—Dwarf-habit, attractive star shaped flowers; a novel variety. Pkt. 25c.



Nasturtiums, Golden Gleam



Pansies, Raggli's



Petunia, Fire Chief

WRITE FOR PRICES ON QUANTITY LOTS.

SALVIA AND SWEET PEAS



California Poppy



Salvia, Bonfire



Spring Flowering Cuthbertson

PYRETHRUM (Golden Feather)—Ornamental, golden-leaved annuals for borders and edging. Dwarf bushy growers, with finely cut foliage. Sow August to November. Height 1 foot. Pkt. 15c; ½ oz. 85c.

POPPY—Especially desirable for massing in beds.
Sweet Briar—Pink, very showy, double blossoms; annual, 2 to 3 feet high. Pkt. 10c; ½ oz. 70c.
Flanders—Very showy. Single red blossoms; annual, 2 to 3 feet high. Pkt. 10c; oz. \$1.00.
Shirley—Single Mixed. The range of colors extending from pure white through the most delicate shades of pale pink, rose and carmine to crimson, white edged, shaded and striped. Pkt. 10c; oz. \$1.00.
Double Shirley Mixed—Mixed. A very fine mixture of white, pink and old rose shades, desirable. Pkt. 10c; oz. \$1.00.
California Poppy—Single. A very free flowering plant, good for masses. Does not transplant well. One foot high. Yellow color. Pkt. 10c; oz. \$1.50.

SALVIA (Scarlet Sage)—Well known decorative bedding plants. Can be grown as an annual as it flowers freely from seed the first year. Two to three feet high. February to April. Pkt. 25c; ¼ oz. \$1.50.

Bonfire—Dazzling scarlet. Dwarf, compact grower. Height 1½ feet. Pkt. 25c.

Harbinger—The finest and most striking of all bedding Salvias. The plants are symmetrical, dwarf, and compact. Pkt. 25c.

Blue Beard, Blue Bedder—Wonderful, clear, dark blue flowers on long, wiry stems. Plant compact. Pkt. 25c.

SOLANUM (Jerusalem Cherry)—Ornamental plant with attractive berries. Useful pot plant for winter decorations. November to February. Pkt. 15c.

STOCKS—By virtue of their delightful fragrance, brilliancy and diversity of colors, profusion and duration of blooms, Stocks deserve a place in every garden. Particularly showy massed in beds. Sow September to November for early spring blooming.

Large-Flowering Ten Weeks—Fine dwarf compact growers. Height 1 foot. Mixed Colors—Pkt. 10c; ¼ oz. 75c.

Double Giant Imperial Bismarck—Early-flowering Stocks of branching habit. Fine cut-flowers. Height 2 feet.

Canary Yellow, Old Rose, Fiery Red, Silvery Lilac—Pkt. 15c; ¼ oz. 95c. Mixed Colors—Pkt. 15c; ¼ oz. 95c.

SWEET PEAS—The range of color, combined with the exquisite beauty of form of the flowers and the gracefulness of the long stems, makes this the most popular of our annual flowers.

Early-Flowering Spencer—These magnificent Sweet Peas are ideal for late fall and winter blooming in the Lower South. Plant during August, September, and October.

	Pkt.	Oz.	¼ lb.	Lb.
Mrs. Hoover—Rich indigo blue.....	\$.10	\$.50	\$1.50	\$5.50
Helen Hayes—Golden Scarlet.....	.10	.50	1.50	5.50
Harmony—Mauve Lavender10	.50	1.50	5.50
Snowstorm—Pure White10	.50	1.50	5.50
Oriental—Cream10	.50	1.50	5.50
Josie—Rose Pink10	.50	1.50	5.50
Vivian—Rose10	.50	1.50	5.50
Red Cross—Dazzling Scarlet.....	.10	.50	1.50	5.50
Shirley Temple (New)—Delightful Soft Rose Pink10	.50	1.50	5.50
Spencer's Extra Christmas Flowering Mixed10	.40	1.25	4.00

SPRING FLOWERING CUTHBERTSON—Hardy, vigorous growers, seldom winter-killed in the South. Sow during October and November and they will commence blooming in March.

	Pkt.	Oz.	¼ lb.	Lb.
Janet—Glistening White	\$.10	\$.40	\$1.25	\$4.00
Helen—Blush Pink10	.40	1.25	4.00
Billy—Scarlet10	.40	1.25	4.00
Katie—Bright Cream Pink.....	.10	.40	1.25	4.00
Flora—Rose Cerise10	.40	1.25	4.00
Spring Flowering Cuthbertson—Unsurpassed for richness and brilliancy10	.35	1.00	3.50

DESCRIPTIVE CATALOG ON REQUEST.

THE BEST IN ZINNIAS

DWARF SWEET PEA MIXTURE—A dwarf grower with large, waved flowers. Very popular bedder. Height 1 foot. Pkt. 10c.

SWEET WILLIAM (Dianthus Barbatus)—Free-flowering, hardy biennial for early spring blooming. Sweetly fragrant. Sow September to November. Height 1½ feet. Annual Mixed—Pkt. 10c; oz. \$1.65.

TORONIA FOURNIERI—Lovely blue flowers with three large spots of darkest blue and a bright yellow throat. Blooms during summer and fall and makes fine beds and borders. Pkt. 35c.

TITHONIA—Torch—Early, bright orange scarlet with gold center. Plants compact about 3 ft. Pkt. 15c.

VIOLA CORNUTA (Tufted Pansies)—Mixed Colors. Produces beautiful, pansy-like blossoms. Ideal for edging or for planting in rock-gardens. Sow August to November. Height 6 inches. Pkt. 25c.

MAMMOTH VERBENAS—Free-flowering, graceful annuals of spreading growth, with glorious, large, umbrella-shaped trusses. Sow July to October. Height 1 ft.

White—Pure white verbenas of more or less fragrance. One and a half feet high. Pkt. 10c.

Hybrida—Hybridized Verbena. Their long flowering and great diversity of color makes them valuable for every garden however small. All colors mixed. One and a half feet high. Pkt. 10c; oz. \$2.75.

Scarlet—Brilliant scarlet-red flowers of great size, flowers freely during summer. Pkt. 10c.

QUEEN ANNE'S LACE—Hardy annual, large, loosely formed terminal clusters of tiny white flowers, used for cutting. Pkt. 10c; ½ oz. 60c.

VINCA—Free-flowering bedding plants of sturdy, bushy growth, with luxuriant, dark green, glossy leaves and large, single, round, five-petaled flowers in pink and white shades. Sow July to August. Height 2 feet.

Pure White—Pkt. 25c.

Rosea—Rose Pink—Pkt. 25c.

Mixed—Pkt. 25c.

ZINNIAS—Zinnias today claim a prominent place among the preferred annual garden flowers. For fall blooming, sow during July, August and September. In 6 to 7 weeks the plants will begin to bloom; the flowers increase in size and beauty of color as the plants mature. They delight in a sunny location provided with rich soil and abundant moisture.

Blaze Zinnia—All America Winner. Profusion of brilliant mandarin-red flowers changing to fiery orange-scarlet, fluffy, quilled petals, and double. Pkt. 35c.

Giant Dahlia-flowered—Resemble the decorative dahlia because of their unusual depth, open and graceful growth, and curled petals.

Canary Bird—Primrose-yellow.

Crimson Monarch—Crimson-red.

Dream—Distinct deep lavender.

Exquisite—Light rose, darker center.

Oriole—Bright orange and gold.

Polar Bear—Large, pure white.

Prices on above: Pkt. 10c; ½ oz. 75c; oz. \$1.35.

Mixed—A very fine Dahlia-like flower, double, of finest blooms. Pkt. 10c; ½ oz. 70c; oz. \$1.25.

Lilliput Zinnias—Elegant, small-flowering type with attractive, round, almost globular-shaped blooms resembling the pompon dahlias. Very prolific bloomer.

Canary—Yellow.

Scarlet Gem—Deep scarlet.

Pink—Deep flesh pink.

White Gem—Pure white.

Prices on above: Pkt. 10c; ½ oz. 75c; oz. \$1.35.

Pastel Mix—Pkt. 10c; ½ oz. 75c.

Fantasy Finest Mixed—Delicate lacy petaled flowers, rounded medium sized with a wide range of beautiful colors, a really beautiful variety. Pkt. 10c; ½ oz. \$1.10.

Fantasy Star Dust—Flowers of medium size, shaggy petaled, color is a rich deep golden yellow, free flowering, early blooming. Pkt. 15c.

Peppermint Stick—New, with a wide range of colors, a good cut and come again Zinnia. Pkt. 15c.

Persian Carpet—Like tiny dahlias with pointed petals, dwarf in habit and begins to bloom early. Pkt. 25c.



Zinnia, Peppermint Stick

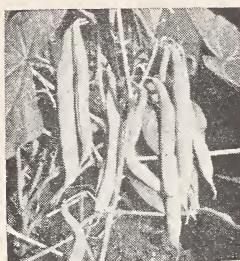


Zinnia, Persian Carpet



Inoculate Sweet Peas with Nitragin . . . 15c Garden size will inoculate 1 ounce.

RELIABLE SEEDS—TOPS IN QUALITY



Tendergreen



Henderson Baby Lima

Garden Guard

A non-poisonous Rotenone Dust for killing many sucking and chewing insects. Excellent for controlling Mexican Bean Beetles.

1 lb. can 60c; 4 lb. bag \$1.40, postpaid.



BEANS

String, Wax, Kidney
1 bu. each.....\$.55

GARDEN SIZE

Garden Peas and Beans, Sweet Peas and Lupines

Enough for 6 lbs. seed. Retail Price 15c each.

GARDEN BEANS

Culture. Plant up to Sept. 20th. Sow 1/2 to 2 inches deep, 3 to 4 inches apart, in rows 2 1/2 to 3 feet apart. Cultivate often until plants bloom. Picking often insures longer bearing. Two pounds will plant 100 feet of row, 60 lbs. (bushel) to the acre.

DWARF OR BUSH GREEN PODDED

Height of bush 15 to 25 inches. All varieties marketed as green beans except Red Kidney which are left to mature.

(10c packets)	Postpaid			Not Prepaid	
	1/2 lb.	Lb.	5 lbs.	Peck	Bu.
Black Valentine (old type).....	\$.30	\$.50	\$2.35	\$3.60	\$12.00
Asgrow Black Val. Stringless....	.35	.65	2.50	4.15	16.00
Burpee Stringless30	.50	2.35	3.85	14.50
Giant Stringless30	.55	2.40	4.05	15.50
Bountiful35	.60	2.50	4.35	16.40
Tendergreen35	.60	2.50	4.45	17.00
Streamliner35	.65	2.60	5.00	18.60
Contender35	.65	2.65	5.00	18.50
Logan35	.65	2.65	5.40	19.75
Top Crop35	.65	2.60	5.00	18.50
Tender Best40	.70	2.80	5.75	21.50

BEANS FOR DRYING

(10c packets)	Postpaid			Not Prepaid	
	1/2 lb.	Lb.	5 lbs.	Peck	Bu.
Red Kidney35	.65	2.50	4.95	18.00

BUSH WAX BEANS

(10c packets)	Postpaid			Not Prepaid	
	1/2 lb.	Lb.	5 lbs.	Peck	Bu.
Davis Stringless White35	.65	2.55	4.80	17.50
Pencil Pod35	.60	2.50	4.45	17.00
Surecrop35	.60	2.50	4.45	17.00
Improved Golden Wax.....	.35	.65	2.55	4.35	16.40

BUSH LIMA BEANS

(10c packets)	Postpaid			Not Prepaid	
	1/2 lb.	Lb.	5 lbs.	Peck	Bu.
Fordhook (Baby)35	.65	2.55	4.95	
Henderson Baby Lima30	.50	2.35	3.90	14.75
New Calico Bush or Jackson Wonder30	.50	2.35	3.90	14.75
Burpee Imp. Bush35	.65	2.60	4.95	18.40
Fordhook 24235	.65	2.50	4.80	17.25
Cangreen30	.55	2.25	3.85	14.60

SNAP BEANS—POLE OR RUNNING

(10c packets)	Postpaid			Not Prepaid	
	1/2 lb.	Lb.	5 lbs.	Peck	Bu.
Ideal Market35	.60	2.50	4.75	17.25
Improved Ky. Wonder or Old Homestead30	.55	2.25	4.05	15.50
Striped Creaseback35	.60	2.50	4.80	17.50
Blue Lake35	.65	2.60	4.95	18.00
Canner-Freezer35	.65	2.60	5.00	18.50
McCaslan Pole30	.55	2.40	4.05	15.80
Kentucky Wonder Stringless....	.35	.65	2.70	5.50	20.10
Yard Long70	1.00			

POLE LIMA BEANS

(10c packets)	Postpaid			Not Prepaid	
	1/2 lb.	Lb.	5 lbs.	Peck	Bu.
Carolina or Sewee30	.50	2.25	3.70	13.75
Southern Willow Leaved.....	.35	.60	2.50	4.95	18.00
Spotted Butter or Florida Pole..	.35	.60	2.35	3.85	14.40
Large White Pole Lima.....	.35	.65	2.60	4.95	18.00

KENTUCKY WONDER POLE WAX

(10c packets)	Postpaid			Not Prepaid	
	1/2 lb.	Lb.	5 lbs.	Peck	Bu.
Kentucky Wonder Pole Wax....	.45	.70	3.00	5.90	

WINDSOR BEANS

English—Long variety. Edible condition 75 days. Plant two beans every 6 inches and 2 1/2 feet between rows. Strong upright grower and withstands low temperature. Planted during October and November. Ready to pick during April and May. English—Pkt. 10c; lb. 65c; 5 lbs. \$2.50; peck \$4.05; bushel \$16.80.

Write for Prices in Quantity Lots—State Quantity Wanted

SEEDS THAT GROW

GARDEN BEETS

Culture. Planted from July to October. Rows 18 to 24 inches apart. Rich sandy loam is preferable, but well fertilized soil will produce fine beets. One ounce to 50 feet of row, 5 to 6 pounds per acre.

(10c packets)	Oz.	Postpaid		
		¼ lb.	Lb.	5 lbs.
Chicago Early Blood Turnip.....	.25	\$.60	\$1.75	\$7.75
Crosby Early Egyptian.....	.25	.60	1.75	7.75
Detroit Dark Red.....	.25	.60	1.75	7.75
Early Wonder25	.60	1.75	7.75
Fireball25	.60	1.75	7.75
Eclipse25	.60	1.75	7.75
Swiss Chard (Lucullus).....	.25	.60	1.75	7.75

STOCK BEETS

(10c packets)	Oz.	Postpaid		
		¼ lb.	Lb.	5 lbs.
Long Red Mangel.....	.15	\$.40	\$1.10	\$ 5.00
Klein Wanzleben15	.40	1.10	5.00

BROCCOLI

(10c packets)	Oz.	Postpaid		
		¼ lb.	Lb.	5 lbs.
Italian Green Sprouting Calabrese.....	.30	\$.90	\$3.00	
De Cicco50	1.25	4.00	

CABBAGE

Culture. Plantings begin in July and continue all through the fall months for a winter crop. When plants are 4 to 6 inches high transplant. Set the early varieties 18 inches apart in rows 2½ to 3 feet apart and the late varieties 2 feet apart in 3½ to 4 foot rows. 1 ounce of seed will produce 1,500 plants; ½ pound to the acre.

(10c packets)	Oz.	Postpaid		
		¼ lb.	Lb.	5 lbs.
All Head Early.....	.40	\$1.00	\$3.00	\$14.50
Chinese Chihli30	.80	2.50	12.00
Copenhagen Market40	1.00	3.00	14.50
Large Late Flat Dutch40	1.00	3.00	14.50
Early Drumhead Savoy.....	.50	1.05	3.25	15.00
Danish Ballhead Short Stem.....	.40	1.05	3.25	15.00
Mammoth Red Rock.....	.60	1.50	4.25	20.75
Early Jersey Wakefield40	1.00	3.00	14.25
Golden Acre40	1.00	3.00	14.25
Chas. Wakefield40	1.00	3.00	14.25
Steins Early Flat Dutch.....	.40	1.00	3.00	14.50
Glory of Enkhuizen.....	.40	1.05	3.25	15.00
Wis. All Season (Yellows Resistant)....	.60	1.40	3.75	18.25
Marion Market (Resistant Copen.).....	.60	1.40	3.75	18.25
Wisconsin Hollander No. 8.....	.60	1.50	4.00	18.25
Ferry's Round Dutch.....	.40	1.05	3.25	15.25

FROSTPROOF CABBAGE PLANTS

These are strong, open field-grown plants. We ship millions of these frostproof plants direct from our growing stations year after year to satisfied and loyal customers. If you have not tried them, plan to do so this year.

Be sure to mention shipping date on your order. We will ship as near that date as weather at growing station permits. Shipments start about November 1. No order filled for less than 100 plants of the same variety.

Varieties: Charleston Wakefield, Copenhagen Market, Steins Early Flat Dutch.

Postpaid Prices

100 plants.....	75c	500 plants.....	\$2.50
1,000 plants.....	\$4.00		

Write for quantity delivered prices.

COLLARDS

Culture. Planted during July to September. An old standby for the South. One ounce will sow 200 feet of row; 6 ounces per acre.

(10c packets)	Oz.	Postpaid		
		¼ lb.	Lb.	5 lbs.
Georgia or Southern.....	.20	\$.50	\$1.25	\$ 5.75
Cabbage Collards20	.50	1.25	5.75
Louisiana Sweet25	.60	1.50	6.75

Write for Prices in Quantity Lots—State Quantity Wanted



Detroit Dark Red



Golden Acre



Early Drumhead Savoy

YOUR COMPLETE GUIDE

Steckler Has the Best

BRUSSELS SPROUTS

Culture. Planted July to September. 5 ounces per acre.

	Oz.	1/4 lb.	Lb.	5 lbs.
(15c packets)			Postpaid	
Brussels Sprouts	\$.60	\$ 1.25	\$ 4.25	\$ 21.25

CARROTS

Culture. Plant during July, August and September. Ground should be well broken, prepared and rich to allow the plant to penetrate. One ounce will sow 100 feet of row, 3 to 4 pounds per acre.

	Oz.	1/4 lb.	Lb.	5 lbs.
(10c packets)			Postpaid	
Danvers	\$.35	\$.75	\$ 1.95	\$ 8.90
Earl Half Long Chantenay	.35	.75	1.95	8.90
Oxheart	.35	.75	1.95	8.90
Imperator	.35	.75	1.95	8.90
Improved Long Orange	.35	.75	1.95	8.90
Large White Belgian	.35	.75	1.95	8.90

CRESS

	Oz.	1/4 lb.	Lb.	5 lbs.
(10c packets)			Postpaid	
Broad Leaved	\$.30	\$.75	\$ 2.50	
Water Cress	Pkg. 15c .65	2.25	7.00	

EGG PLANT

Planted June to August.

	Oz.	1/4 lb.	Lb.	5 lbs.
(15c packets)			Postpaid	
Black Beauty	\$.90	\$ 2.50	\$ 8.00	
Large Purple or New Orleans Market	.90	2.50	8.00	
Improved New York Spineless	.90	2.50	8.00	
Florida High Bush	.90	2.50	8.00	
Fort Myers	.90	2.50	8.00	
Creole (Genuine)	.95	2.60	9.00	

CARDON

	Oz.	1/4 lb.	Lb.	5 lbs.
(20c packets)			Postpaid	
Cardoon	\$.60	\$ 1.50	\$ 4.50	

CHICORY

	Oz.	1/4 lb.	Lb.	5 lbs.
(15c packets)			Postpaid	
Chicory or Witlof	\$.50	\$ 1.10	\$ 3.50	

ENDIVE

Planted September and October.

	Oz.	1/4 lb.	Lb.	5 lbs.
(10c packets)			Postpaid	
Italian Ribbed (Pancalier)	\$.25	\$.60	\$ 1.85	\$ 8.50
Full Heart Batavian	.25	.60	1.85	8.50

CUCUMBERS

Planted July to August.

	Oz.	1/4 lb.	Lb.	5 lbs.
(10c packets)			Postpaid	
Davis Perfect	\$.25	\$.60	\$ 1.85	\$ 8.75
Early Fortune	.25	.60	1.85	8.75
Early White Spine	.25	.65	2.00	9.00
Japanese Climbing	.30	.75	2.25	10.75
Improved Long Green	.30	.75	2.25	10.75
West India Gherkin	.30	.75	2.25	10.75
Staysgreen	.25	.65	2.00	9.00
Snow or Heinz Pickling	.25	.65	2.00	9.00
Clark's Special	.25	.65	2.00	9.00
Straight Eight	.30	.75	2.25	10.75
A & C	.30	.75	2.25	10.75
Cubit	.35	.90	3.00	14.50
Palmetto	.45	1.00	3.25	15.00
Marketeer	.35	.80	2.50	12.00

CAULIFLOWER

Culture. Planted July, August and September. Requires rich soil and an abundance of moisture. Cultivated same as cabbage. Heads must be protected from sun to get the white head. One ounce will produce 2,000 plants; 1/2 pound per acre.

	Oz.	1/4 lb.	Lb.	5 lbs.
(25c packets)			Postpaid	
Early Italian Giant	\$ 1.95	\$ 6.00	\$ 15.00	
Late Italian Giant	1.95	6.00	15.00	
Large Algiers			Sold Out	
Early Snowball "X"	2.50	7.65	24.50	

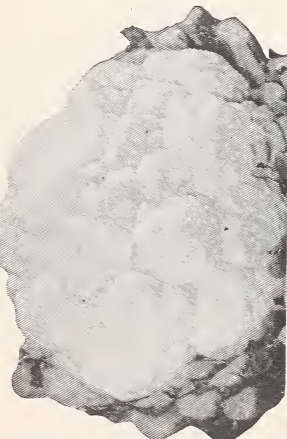
Descriptive Catalog on Request



Improved Long Orange



Improved Long Green



Early Snowball

GROW STECKLER SEEDS

"The South's Best" Seeds

CORN SALAD

Culture. Planted during August and September. A hardy winter salad. 2 ounces will plant 100 feet of drill.

	Oz.	1/4 lb.	Lb.	5 lbs.
(10c packets)			Postpaid	
Corn Salad40	\$1.25	\$4.00	

CELERY

Planted June to September.

	Oz.	1/4 lb.	Lb.	5 lbs.
(15c packets)			Postpaid	
Celeriac, Turnip Rooted.....	.70	\$2.10	\$7.00	
Giant Pascal70	2.10	7.00	
Golden Self Blanching.....	.80	2.25	8.00	
Golden Plume85	2.50	9.00	
White Plume80	2.25	8.00	

CHERVIL

Planted October and November.

	Oz.	1/4 lb.	Lb.	5 lbs.
(10c packets)			Postpaid	
Chervil50	\$1.00		

FENNEL

Planted October and November.

	Oz.	1/4 lb.	Lb.	5 lbs.
(10c packets)			Postpaid	
Florence Fennel35	\$.75	\$2.50	

KALE OR BORECOLE

Planted August and September.

	Oz.	1/4 lb.	Lb.	5 lbs.
(10c packets)			Postpaid	
Dwarf Siberian30	\$.60	\$1.50	

KOHLRABI

Planted August and September.

	Oz.	1/4 lb.	Lb.	5 lbs.
(10c packets)			Postpaid	
Early White Vienna.....	.35	\$1.00	\$3.50	

LEEK

Planted October and November.

	Oz.	1/4 lb.	Lb.	5 lbs.
(20c packets)			Postpaid	
Large London Flag.....	.50	\$1.35	\$4.00	\$19.50
Giant Musselburgh50	1.35	4.00	19.50

LETTUCE

Culture. Planted from September throughout the fall. Requires rich soil, plenty of moisture. When leaves are 2 to 3 inches long, transplant in rows 15 to 18 inches apart and 8 to 10 inches apart in the row. One ounce will sow 150 feet, 2 to 3 pounds per acre.

	Oz.	1/4 lb.	Lb.	5 lbs.
(10c packets)			Postpaid	
Great Lakes50	\$1.50	\$4.75	\$23.75
Grand Rapids30	.60	2.25	10.75
Iceberg30	.65	2.50	12.00
Hubbard's Market30	.65	2.25	10.75
Bibb35	.80	2.75	13.50
Paris White Cos.....	.30	.70	2.25	10.75
New York Wonderful40	1.00	3.50	17.00
Big Boston30	.65	2.25	10.75
Chicken25	.60	1.75	8.00
White Boston25	.65	2.50	12.00
Florida Iceberg40	1.00	3.50	17.00

MUSTARD

Planted September to December.

	Oz.	1/4 lb.	Lb.	5 lbs.
(10c packets)			Postpaid	
Chinese Broadleaf15	\$.40	\$1.00	\$ 4.50
Southern Curled15	.40	1.00	4.50
Florida Broad Leaf.....	.15	.40	1.00	4.50
Tendergreen15	.40	1.00	4.50

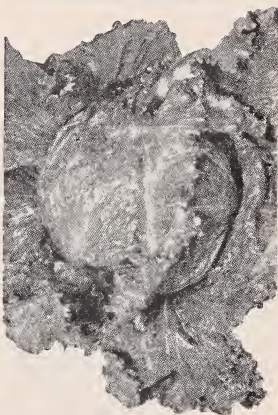
OKRA

Planted July and August.

	Oz.	1/4 lb.	Lb.	5 lbs.
(10c packets)			Postpaid	
Dwarf Green Prolific.....	.20	\$.45	\$1.25	\$ 5.00
French Market Dwarf Prolific.....	.20	.45	1.25	5.00
Tall Growing20	.45	1.25	5.00
White Velvet20	.45	1.25	5.00
Louisiana Green Velvet.....	.20	.45	1.25	5.00



Golden Plume



Great Lakes



Louisiana Green Velvet

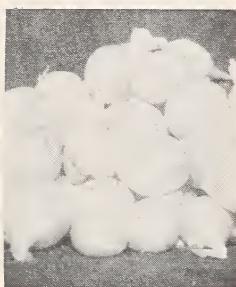
Write for Prices in Quantity Lots—State Quantity Wanted

FOR EATING PLEASURE

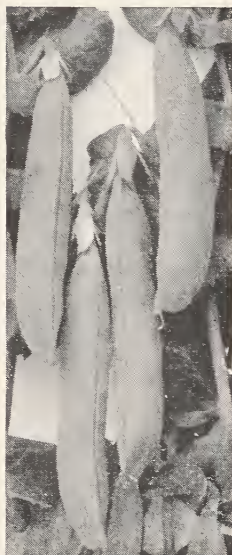
"The South's Best" Seeds



Riverside Sweet Spanish
Yellow



White Silverskin



Mammoth Podded Extra
Early



California Wonder

ONIONS

(10c packets)	Oz.	1/4 lb.	Lb.	5 lbs.
Crystal Wax (Teneriffe Grown).....	\$.50	\$1.15	\$3.75	\$18.25
Yellow Bermuda (Teneriffe Grown)...	.50	1.15	3.75	18.25
Danvers Yellow Globe.....	.60	1.50	4.00	
Red Creole45	1.10	3.60	17.50
Certified Red Creole.....	.60	1.50	4.25	21.00
Red Wethersfield55	1.40	4.00	22.00
Yellow Prizetaker55	1.50	5.00	24.50
Riverside Sweet Spanish Yellow.....	.55	1.50	5.00	24.50
White Silverskin55	1.50	4.50	22.00
Evergreen Bunching50	1.40	4.00	

BERMUDA ONION PLANTS

Sturdy, healthy plants ready to ship about November 1st. Grow onions this easy way. You can get much earlier crop of fully matured onions, or early green onions. Yellow Bermuda and Crystal Wax only.

Write for prices.

ONION SETS

		Postpaid	
		Lb.	3 lbs.
Red Wethersfield	\$.40	\$1.00	
White Silverskin40	1.00	
Yellow Danvers40	1.00	

Write for prices on larger quantities.

PARSLEY

Planted August to October.

(10c packets)	Oz.	1/4 lb.	Lb.	5 lbs.
Hamburg Curled (Turnip Rooted).....	\$.25	\$.55	\$1.50	\$ 6.75
Double Curled25	.55	1.50	6.75
Plain Leaved25	.55	1.50	6.75

PARSNIPS

Planted September to November.

(10c packets)	Oz.	1/4 lb.	Lb.	5 lbs.
Hollow Crown or Sugar.....	\$.25	\$.55	\$1.50	

GARDEN PEAS

Culture. Planted from August to December. Sow in double rows and the vines will support each other. Rows should be 2 1/2 to 4 feet apart, and seed planted 1 1/2 to 2 inches deep, 6 to 8 inches apart. One pound will plant 500 feet of row; 1 1/2 bu. per acre.

Wrinkled Varieties

(10c packets)	Postpaid			Not Prepaid	
	1/2 lb.	Lb.	5 lbs.	Peck	Bu.
American Wonder	\$.30	\$.50	\$2.25	\$4.00	\$15.00
Thos. Laxton30	.50	2.10	3.60	13.25
Carters Imp. Tall Telephone....	.30	.50	2.10	3.60	13.25
Gradus or Prosperity30	.50	2.10	3.60	13.25
Little Marvel30	.50	2.25	3.70	13.80
Laxtonian30	.50	2.25	3.75	13.85
Laxton Progress30	.50	2.25	3.80	14.00

Smooth Varieties

Early Alaska30	.50	1.75	2.75	10.00
Early Washington30	.50	2.25	4.00	15.00
Extra Early First and Best.....	.30	.50	2.25	4.00	15.00
Mammoth Melting Sugar.....	.30	.55	2.35	5.00	
Large White Marrowfat.....	.30	.50	2.25	4.00	15.00
Creole30	.60	2.15	3.50	13.25
Mammoth Podded Extra Early..	.35	.60	2.45	4.00	15.00

PEPPERS

Planted July and August.

(10c packets)	Oz.	1/4 lb.	Lb.	5 lbs.
Chinese Giant	\$.75	\$2.35	\$8.00	
Tabasco (Hot)75	2.00	7.00	
Long Red Cayenne (Hot).....	.55	1.50	5.00	
Ruby Giant50	1.60	5.50	
World Beater50	1.60	5.50	
Ruby King60	1.85	6.00	
California Wonder (Haven), Pkt. 20c.,	.80	2.50	7.50	
Florida Giant, Pkt. 20c.....	.70	2.10	7.50	
Perfection60	1.80	6.00	
Oakview Wonder, Pkt. 20c.....	.75	2.50	9.00	

Descriptive Catalog on Request

PLANT A FALL GARDEN

RADISHES

Plant in August and September.

(10c packets)	Oz.	1/4 lb.	Postpaid Lb.	5 lbs.
Bright Scarlet or Three Quarter Long20	.55	\$1.25	\$ 5.75
Chinese Rose20	.55	1.25	5.75
Sparkler White Tip20	.55	1.25	5.75
Crimson Giant Turnip.....	.20	.55	1.25	5.75
Early Deep Scarlet Turnip.....	.20	.55	1.25	5.75
Early Long Scarlet Short Top Imp.....	.20	.55	1.25	5.75
French Breakfast20	.55	1.25	5.75
White Icicle20	.55	1.25	5.75
Long Black Spanish.....	.20	.55	1.25	5.75
Cincinnati Market20	.55	1.25	5.75
Scarlet Globe20	.55	1.25	5.75



Scarlet Globe

ROQUETTE OR ROCKET SALAD

(10c packets)	Oz.	1/4 lb.	Postpaid Lb.	5 lbs.
Roquette50	\$1.50	\$4.00	

WHITE SHALLOTS

Planted August to March. For home consumption and Northern markets. About 6 bushels per acre in 4-foot rows.

The quantity to be expected from an acre, if planted in field culture, 4-foot rows, would be from 50 to 60 barrels, but if planted, as is done near New Orleans, in 2-foot rows, 100 to 125 barrels, if planted in August and September. If planted later, they do not multiply so well.

White Shallots	Postpaid Lb.	3 lbs.	Not Prepaid 10 lbs.
	.50	\$1.35	\$4.00

Write for prices on larger quantities.

SALISFY OR OYSTER PLANT

Planted July to November.

(10c packets)	Oz.	1/4 lb.	Postpaid Lb.	5 lbs.
Sandwich Island50	\$1.35	\$4.00	



Icicle Radishes

SPINACH

Culture. Planted from September to March in rows 16 to 20 inches apart, covering seed one inch deep. When leaves are 1 inch wide, thin to 6 to 8 inches apart in the row. Requires rich soil and cool weather. One ounce will sow 100 feet of row; 8 to 10 pounds per acre.

(5c packets)	Oz.	1/4 lb.	Lb.	Postpaid		
				5 lbs.	10 lbs.	30 lbs.
Broad Leaved Flanders.....	.10	.30	.75	\$3.00	\$3.65	\$30.00
New Zealand15	.45	1.10	5.25	9.00	
Nobel Giant Leaved.....	.10	.30	.75	3.00	3.65	30.00
Bloomsdale Savoy10	.30	.75	3.00	3.65	30.00
Old Dominion10	.30	.75	3.00	3.65	30.00
Viroflay10	.30	.75	3.00	3.65	30.00



Bloomsdale Savoy

SORREL

Planted September to December.

(20c packets)	Oz.	1/4 lb.	Postpaid Lb.	5 lbs.
Broad Leaved60	\$1.65		

SQUASH

Planted August to November.

(10c packets)	Oz.	1/4 lb.	Lb.	Postpaid	
				5 lbs.	7.75
Early White Bush or Patty Pan20	.60	\$1.65	\$ 7.75	
Long Yellow or Summer Crookneck....	.20	.60	1.65		
Cocozelle or Italian Green Striped.....	.20	.50	1.65	7.75	
Zucchini20	.60	1.65	7.75	
Giant Summer Straight Neck.....	.20	.60	1.65	7.75	
Table Queen (Acorn)20	.60	1.65	7.75	
Uconn.20	.60	1.65	7.75	



Giant Summer Straight Neck

TOMATO DUST

Insecticide and Fungicide controls blight, hornworm, fruit worm and flea beetle. General dust for flowers and vegetables.

Pound 75c

CAN THE SURPLUS

TOMATOES

Culture. Planted during July and August. Soil should be well broken and fertilized. Rows should be 4 to 5 feet apart and the plants set about 3 feet apart in the row or 2 feet if staked. One ounce will produce 1,500 plants, 4 to 6 ounces will furnish sufficient plants for an acre.

(15c packets)	Oz.	Postpaid		5 lbs.
		1/4 lb.	Lb.	
Louisiana Red	\$.65	\$2.00	\$7.00	
Grothen's Globe75	2.10	7.50	
Ponderosa80	2.60	9.50	
Louisiana All Season.....	.85	2.50	9.00	
Sparks Earliana85	1.85	6.50	
Jefferson80	2.40	8.50	
Louisiana Pink75	2.25	7.80	
Red Oxheart	1.00	3.50	13.25	
Break O Day75	2.25	7.50	
New Pritchard75	2.25	7.50	
Erimmer	1.00	3.25	12.00	
Louisiana Gulf States.....	.95	2.50	8.50	
Louisiana Dixie80	2.25	8.00	
Rutgers Certified55	1.65	5.50	
Dwarf Champion80	2.25	8.00	
Certified Marglobe65	2.00	7.00	
Red Pear Shaped80	2.50		
Yellow Pear Shaped.....	.80	2.50		

TURNIPS

Culture. Sow from July to October for fall and winter, in rows 18 inches apart. Plants should be thinned to 4 to 5 inches apart. Can also be sown broadcast. One ounce will sow 200 feet of row; 2 pounds per acre, or if broadcast 4 to 5 pounds per acre.

(10c packets)	Oz.	Postpaid		5 lbs.
		1/4 lb.	Lb.	
Amber Globe	\$.15	\$.40	\$1.00	\$ 4.50
Early Purple Top Strap Leaf.....	.15	.40	1.00	4.50
Extra Early Purple Top Milan.....	.15	.40	1.00	4.50
Extra Early White Egg.....	.15	.40	1.00	4.50
Improved Purple Top Rutabaga.....	.15	.40	1.00	4.50
Long Cow Horn.....	.15	.40	1.00	4.50
Purple Top White Globe.....	.15	.40	1.00	4.50
Purple Top Yellow Aberdeen.....	.15	.40	1.00	4.50
Seven Top15	.40	1.00	4.50
Shogoin15	.40	1.00	4.50
Early White Flat Dutch.....	.15	.40	1.00	4.50
Purple Top White Globe, Market Gardener's Strain.....	.20	.50	1.25	5.75

An excellent assortment of early, medium and late turnips

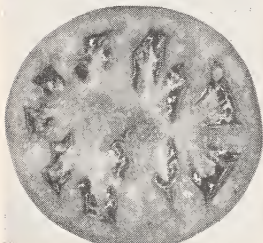
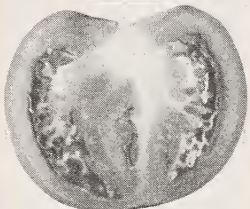
1. Extra Early White Egg.
2. Purple Top Strap Leaf.
3. Purple Top Rutabaga.
4. Purple Top Globe.
5. Early White Flat Dutch.
6. Japanese Shogoin.
7. Seven Top.

7 Varieties—one ounce each 60¢

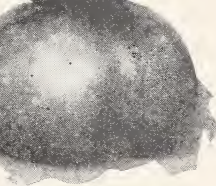
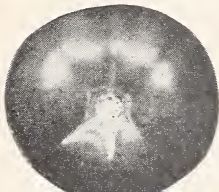
CURE YOUR OWN MEATS AT HOME USE

MORTON'S SUGAR CURE—7 1/2 lb. Can.....	\$1.15
Postpaid	\$1.95
MORTON'S SAUSAGE SEASONING—10 oz. Can.....	1.00
Postpaid	\$1.25
MORTON'S TENDER QUICK—2 lb. Can.....	1.10
Postpaid	\$1.40
MORTON'S MEAT PUMP—Postpaid.....	2.10
MORTON'S POULTRY SEASONING—3 oz.....	.90

Descriptive Catalog on Request



Livingston Globe



Certified Marglobe



Extra Early Purple Top Milan

FIELD SEEDS

for Cash and Feeding Crops---

for Soil Improvement



NITRAGIN
on
ALFALFA
The wonderful nodules enrich the soil and insure a big crop.

NOTICE

On account of unsettled market conditions on field seeds, we have not priced any large quantities. Write us for prices. We are large handlers of Vetch, Rye, Grass and Austrian Winter Peas. In fact, field seeds of all kinds. We can save you money.

INOCULATOR PRICES
When Ordering, Always Specify Name of Seed

NITRAGIN
The Original Legume Inoculator

Alfalfa, All Clovers

Size	Retail
1 bu. each.....	\$.55
100 lbs. each.....	.75

Vetch, Austrian Peas, Canadian Peas, Beans

1 1/2 bu. each.....	\$.50
---------------------	--------

Lespedeza

Large (Inoculates up to 100 lbs. seed).....	\$.55
---	--------

PERSIAN CLOVER—A very valuable clover for the South. Furnishes splendid grazing for cattle from December until June, and yields 2 to 3 tons of rich nutritious hay per acre, which can be easily cut and cures very quickly. Is a splendid soil builder. Sow 6 to 8 pounds per acre from September to November, and cover lightly. Reseeds itself even when closely grazed. Makes an upright growth 2 to 3 feet high. Will stand wetter lands than most clovers. Seed should be inoculated with **NITRAGIN**. See page 10. Price: Lb. 95c; 5 lbs. \$4.00 postpaid. Write for prices on larger quantities.

SWEET CLOVER OR MELILOTUS—Also known as Bokhara Clover. As a land-builder it has few equals. It is fine for raising bees and to build up your poor land. Sow 12 pounds per acre in February planting. Lb. 55c; 5 lbs. \$2.10, postpaid.

YELLOW BLOSSOM SWEET CLOVER—The Yellow Blossom type is very similar to that of the White Blossom. For those who wish to use Sweet Clover for pasture, hay and bee purposes, we would advise the use of the Yellow Blossom type. Lb. 40c; 5 lbs. \$1.35, postpaid. Write for prices on larger quantities.

HAIRY PERUVIAN ALFALFA—Tall, vigorous growing and will live as long as any type where the winters are not too cold and where there is summer moisture. Gives you more cuttings than any other type and after each cutting it recovers rapidly. Sow during September and October in thoroughly prepared, well drained soil, broadcast or in drills at the rate of 15 to 20 pounds per acre. Seed should be inoculated with **NITRAGIN**. Prices: Lb. 80c; 5 lbs. \$3.75, postpaid. Write for prices on larger quantities.

RED CLOVER—Sow in the fall or spring. 12 to 15 lbs. to the acre. Largely used in combination with other grasses and clovers for permanent pastures. Prices: Lb. 95c; 5 lbs. \$4.15, postpaid. Write for prices on larger quantities.

WHITE DUTCH CLOVER—This clover does well in the Central South. Most all permanent lawn and pasture mixtures should have some White Clover. By itself it makes good grazing for cattle and sheep. Lb. \$1.10, 5 lbs. \$5.00, postpaid. Write for prices on larger quantities.

ALTA FESCUE—It is a perennial grass growing 2 1/2 to 3 ft. Grows practically the year round in favorable seasons. Adapted to nearly all soils in the South. Sown from Sept. to Dec., and again in Feb. and March, fall sowing, however, is recommended. Sow at the rate of 10 to 15 pounds per acre. Lb. 55c; 5 lbs., \$2.00, postpaid.

FANCY BERMUDA—Most valuable grass for the South. Grows on all kinds of soil, heaviest clay to lightest sand, and furnishes abundant pasturage. It withstands drought and scorching summer sun. Sow 5 to 10 pounds per acre (2 pounds per 1,000 sq. ft. for lawns), March 1 to September 1 in lower South. Seed will not germinate in cold ground. 20 to 30 days to germinate. Lb. 90c; 5 lbs. \$4.00, postpaid.

HULLED BERMUDA—Germinates in a week with proper moisture conditions, almost as quick as Rye Grass. Lb. \$1.15; 5 lbs. \$5.15, postpaid.

CARPET GRASS—Carpet Grass is one of the most valuable pasture grasses for the lower South. It grows on poor sandy soils better than Bermuda and does well on most any soil with a fair amount of moisture. Lb. 90c; 5 lbs. \$3.75 postpaid.

FIELD RYE (Abruzzi)—Lb. 40c; 5 lbs. \$1.75, postpaid.

WHEAT (Red May)—Lb. 40c; 5 lbs. \$1.75, postpaid.

CALIF. BUR CLOVER—The South's greatest cover crop and soil building legume. Lb. 65c; 5 lbs. \$2.80, postpaid. Write for prices on larger quantities.

BARLEY (Bearded)—Lb. 40c; 5 lbs. \$1.75, postpaid. Write for quantity prices.

OATS (Red Rust Proof)—Peck 80c; bu. \$2.35, not prepaied. Write for prices on larger quantities.

RAPE (Dwarf Essex)—Lb. 45c; 5 lbs. \$2.00, postpaid. Write for quantity prices.

WINTER LAWN GRASS SEED

for Beautiful Southern Lawns



Lawn of Winter Grass

stands repeated mowing on lawn or golf green. Sow 10 lbs. per 1,000 sq. ft. (50x20 ft.) for lawns; 50 lbs. per acre for pastures. Prices: Fancy Seed for Lawns—Lb. 45c; 5 lbs. \$1.45, postpaid. Not prepaid—10 lbs. \$1.75; 25 lbs. \$4.30; 100 lbs. \$15.00. Prices: For Grazing—Lb. 45c; 5 lbs. \$1.35, postpaid. Not prepaid—10 lbs. \$1.70; 25 lbs. \$4.10; 100 lbs. \$14.25.

ITALIAN RYE GRASS AMERICAN GROWN

The winter grass for all the South. Superior to foreign grown Italian and English Rye Grass seed. Our fancy seed is heavier and more plump, full of vitality, quick to start and strong in growth. It is a fast-growing annual grass with long flat leaves, growing in tufts if left uncut. It is valuable to dairymen for winter and spring grazing, but its great use is for winter and spring lawns.

Scratch seed in Bermuda sod for green lawn until the Bermuda comes out again in summer. By itself it makes a delightful green lawn, in sun or shade, all fall, winter and spring. If



AUSTRIAN WINTER PEAS

DOUBLES YOUR CORN and COTTON YIELDS

Rapidly climbing to the top as the leading soil-builder and winter crop throughout the entire South, because of its large, heavy growth on practically all soils and its ability to resist winter freezes. Matures two weeks ahead of Vetch and makes a splendid temporary pasture in late winter. Furnishes grazing for your livestock, and decays rapidly when plowed under.

Sow Austrian Winter Peas during September and October, in drills, at the rate of 30 pounds per acre and cover 2 inches. May also be sown broadcast and disked in. Sowing the seed broadcast in cotton middles and straddling the rows with a two-horse cultivator with the disk hillers or plows is a very good method of covering. Lb. 45c; 5 lbs. 90c, postpaid. Not prepaid: 10 lbs. \$1.05; 25 lbs. \$2.35; 100 lbs. \$7.45.

HAIRY VETCH

An Outstanding and Reliable Soil Builder

Poor soil can soon be made rich with it. Planted combined with small grain, such as Oats and Rye or seeded alone makes splendid winter and spring pasturage. Stands severe winters without injury, grows on practically all types of soil. Vetch is usually turned under in early April. A good crop is equivalent to 250 pounds or more of Nitrate of Soda and valuable humus is put into the soil. Planted September to December, sow 20 to 25 pounds per acre alone, 15 pounds with small grain. Inoculate with NITRAGIN C. Lb. 45c; 5 lbs. \$1.60, postpaid. Not prepaid: 10 lbs. \$2.00; 25 lbs. \$4.50; 100 lbs. \$15.75.

COMMON VETCH

Common Vetch prefers sandy loam, well drained, but will produce a good crop on most any other soil where water does not stand. When planted alone it requires 30 to 40 lbs. to the acre, half that quantity is sufficient when sown with small grain. Seed should be inoculated with Nitragin. Lb. 45c; 5 lbs. \$1.35, postpaid. Not prepaid, 10 lbs. \$1.10; 25 lbs. \$2.50; 100 lbs. \$8.95.

Prices on Larger Quantities on Request

We handle
Singletry
and
Dixie Wonder Peas,
Lupins, Camellia
and Alber Oats
and many other
varieties of
Field Seed.
Prices on request.

PLANT FRUIT TREES

Grape Vines, Budded Fruit and Nut Trees

Orders taken for December, January and February delivery. Recommend shipments by express.

FINE APPLES—Apples are fast increasing in favor here in the South and every home orchard should have several varieties for a full season's supply.

Early Red Bird, Early Harvest, and Delicious—3 to 4 ft. \$1.25 each. Not prepaid.

APRICOT—Fruit of the Apricot is similar in shape to the Peach, except that it is not downy and is almost perfectly smooth. 3 to 4 ft. \$1.25 each. Not prepaid.

CHERRY—Well known favorite—Montmorency. 3 to 4 ft. \$1.50 each. Not prepaid.

FIGS—Plant figs where they will not be disturbed and in rich soil heavily manured.

Brunswick or Madonna—3 to 4 ft. \$1.50 each. Not prepaid.

Celeste—3 to 4 ft. \$1.50 each. Not prepaid.

Japanese or Violet—3 to 4 ft. \$1.50 each. Not prepaid.

MULBERRIES—They form economic food for poultry and swine and to keep birds away from other fruit. 4 to 5 ft. \$1.75 each. Not prepaid.

ORANGE TREES—In planting an orange grove, it is poor business to plant cheap trees. Orange trees to prove vigorous and prolific should have large, well formed root systems and strong, clean, healthy tops one or two years old. Our trees are grown on loose sandy loam lands, which permits the root systems to develop properly.

Louisiana Sweet, Washington Navel, Mandarin, Satsuma and Duncan Grape Fruits. 24 to 30 in. \$1.75 each. Not prepaid.

KUMQUATS—The smallest of the citrus fruits. 18 to 24 in. \$1.50 each. Not prepaid.

PEACHES—The most popular fruit trees planted in the South and by far the most satisfactory and easiest grown. No orchard is complete without several popular peaches. Belle of Georgia, Chinese Cling, Elberta, J. H. Hale, Mayflower, 4 to 5 ft. \$1.25. Not prepaid.

PEARS—Favorites of any home orchard where a variety of fruits is desired. From the small sugar, juicy varieties to the large hard-cooking kind, our soils are adapted to their culture. The "Pineapple" variety is practically blight proof and is well adapted for growing in blight regions. Leconte, Bartlett, Kieffer's, Pineapple or Sand Pears and Orient—4 to 5 ft. \$1.25 each. Not prepaid.

PERSIMMONS (Tane-Nashi) (Japanese)—Large, smooth, conical, orange to bright red and of highest quality. Vigorous and productive. 3 to 4 ft. \$1.50 each. Not prepaid.

PLUMS—Wide choice in following varieties: Abundance, Burbank and Red June—4 to 5 ft. \$1.25 each. Not prepaid.

PECANS—In deep alluvial soils 70 feet apart each way, requiring 9 trees to an acre. In sandy, poor soils, 50 feet apart each way, requiring 17 trees to an acre. Our trees are very fine and true to kind and variety.

A Real Money Crop

Stuart, Van Deman, Success, Frotscher's Eggshell, Schley

Size	Not Prepaid	Each
4 to 5 feet.....		\$2.00
5 to 6 feet.....		2.50
6 to 7 feet.....		3.00
9 to 10 feet.....		4.00

FINEST GRAPES—FOR ALL PURPOSES—White Niagara, Moore's Early, Concord and Lutie—90c each; \$9.75 per dozen. Not prepaid.

STECKLER'S STRAWBERRY PLANTS

Ready October 10th

Missionary, Klondyke, Aroma, Lady Thompson

No. of plants	25	50	100	1000
Prepaid	\$.85	\$1.25	\$2.00	\$12.00
Not Prepaid				

Everbearing Progressive

Prepaid	\$1.10	\$1.85	\$3.25	\$18.00
Not Prepaid				



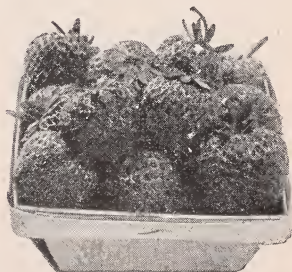
Delicious



Elberta Peach



Bartlett Pears



Strawberry

INSECTICIDES YOU NEED

ARSENATE OF LEAD—Kills leaf-eating insects. Sticks to foliage. Quick action. Harmless to plants. **Lb. 80c; 4 lbs. \$2.00, postpaid.**

BOTANO DELUXE GARDEN DUST—For general garden use against many insects and diseases. Dusting is preferred by many, particularly on vegetables. One of the safest multi-purpose dusts that can be used. 10-oz. size is Dual Purpose package which also serves as a handy garden duster. 8-oz. Duster **\$1.00. 2-lb. Refill \$2.00.**

BLACK LEAF "40"—A 40 per cent Nicotine solution for destroying aphids, thrip, plant lice and sucking insects, also kills poultry lice. One ounce makes six gallons spray. **1 oz. 45c; 5 oz. \$1.30; lb. \$2.92; 2 lbs. \$5.10; 5 lbs. \$8.03; 10 lbs. \$15.33, postpaid.**



BORDEAUX MIXTURE—A standard dry powdered fungicide for many diseases of orchard and garden plants. **Lb. 65c; 4 lbs. \$1.55, postpaid.**

BUG-GETA BAIT—Multi-purpose Bait for use against slugs, cutworms, sowbugs, and grasshoppers. Just sprinkle it on the ground. **12 oz. 60c; 2 lbs. \$1.10; 5 lbs. \$2.30, postpaid. Not prepaid; 25 lbs. \$7.95.**

LAWN-A-GEN—An excellent soil fumigant for controlling Nematodes and other soil parasites. 1 gallon treats 2,500 square feet. **4 oz. 75c; pt. \$2.10; qt. \$3.40; gallon \$9.50, postpaid.**



CYANOGAS—This gas producing powder will kill ants, rats, moles, etc. **4 oz. can 55c; lb. can \$1.35; 5 lb. can \$4.75, postpaid.**

DOGZOFF—Protects your plants from dogs, rats, moles, mice, rabbits, etc. Not harmful to plant life. Simply spray on plants. No mixing. **3 oz. bottle 80c postpaid. 11 oz. Dispenser \$2.25.**

VOLCK OIL AND FLORIDA VOLCK

For many years the favorite spray of gardeners, use on Camellias, Azaleas and Citrus Fruits for scale and red spider.

Volck Oil	Florida Volck
4 oz. \$.40	Pint \$.80
16 oz. .80	Qt. 1.35
32 oz. 1.35	Gal. 3.35
1 gal 3.35	5 gal. 9.50

Not prepaid only on 5 gal. price.



DRY LIME-SULPHUR (Powder)—For dormant spraying of fruit and shade trees against San Jose and oyster-shell scale, peach-leaf curl, and brown rot of peaches. **Postpaid: Lb. 75c; 5 lbs. \$2.90.**

CHLORDANE (Synkler 50-W)—A dry, wettable powder. Controls Ants, Chinch Bugs, Grasshoppers, Japanese Beetles, Male Crickets, Roaches, Ticks and Wire Worms. **1/2 lb. can \$1.60; 1 lb. can \$2.60, postpaid.**

IMPROVED ISOTOX—Long lasting insect control with Isotox Garden Spray—Kills insects fast and keeps them off plants for weeks. Kills aphids, leafhoppers, sod webworm, thrip, caterpillars, red bugs, roaches, ticks, ants and other insect pests. **4 oz. \$1.05; 8 oz. \$1.80; pint \$3.10.**



EVERGREEN SPRAY—A non-poisonous spray for sucking insects like lice, aphids and thrips. Needs no soap and leaves no poisonous residue. **Oz. 35c; 6 oz. \$1.15; 16 oz. \$2.45; qt. \$4.25.**

FERMATE—A new organic fungicide which has shown outstanding results by controlling most fungus diseases. **1/2 lb. 90c; 3 lbs. \$3.00, postpaid.**

FISH OIL SOAP—Destroys lice and other sucking insects on plants, trees, ferns, etc. Excellent for mixing with Black Leaf "40." **Lb. 50c, postpaid.**

RED ARROW—A concentrated insecticide. Will efficiently control aphids, beetles, caterpillars, as well as other sucking and chewing insects. Non-poisonous. **Oz. 35c; 4 oz. \$1.00; pt. \$2.85; qt. \$5.50; gal. \$19.00, postpaid.**

SABADILLA DUST (20% Sabadilla)—Controls many hard-to-kill insects like Stink Bug, Squash Bug, Mexican Bean Beetle, etc. Non-poisonous when used as directed. **Lb. 70c; 5 lbs. \$3.25, postpaid.**

SNAROL—A scientifically prepared meal for the control of cutworms, slugs, snails, earwigs, sow bugs and grasshoppers. Harmless to plants. **1 lb. 60c; 2 1/2 lbs. \$1.25; 6 lbs. \$2.60, postpaid.**

VAPOTONE—The new organic insecticide that has given such spectacular results against Red Spider, Aphid and many other insects. Write for free leaflet. **4 oz. \$1.00; pint, \$2.90; 95/100 gallon \$12.75, postpaid.**

WETTABLE DUSTING SULPHUR—May be used as a dust or spray. Effective against red spiders and fungus diseases such as mildew, rust and black spots. **2 lb. can 80c.**

TOBACCO DUST—Kills aphids and flea beetles. Extra-fine quality. Contains one per cent nicotine. **2 lbs. 40c; 10 lbs. \$1.40, postpaid. Not prepaid: 50 lbs. \$2.50; 100 lbs. \$4.50.**

ACME DURADUST #50

A finely divided, wettable powder containing 50% technical DDT. Has many uses in control of insects in the garden, on fruit trees and in outbuildings. Kills both sucking and chewing insects on foliage, houseflies and mosquitoes by walt treatment. Most economical form to buy DDT.

1 lb. \$1.00; 4 lbs. \$2.25, postpaid.

DUPONT FRUIT TREE SPRAY—Highly effective against many insects and fungus diseases attacking fruit trees. **1 lb. \$1.35, postpaid.**

TREE TANGLEFOOT—Applied to trees, keeps ants and caterpillars from crawling up; a sure cure for most insect troubles on all kinds of trees. **5 oz. \$1.00; lb. \$1.65, postpaid.**

GRAFTING WAX—A specially prepared wax to be used for pruning and grafting purposes. **1/4 lb. 45c; 1/2 lb. 65c; lb. 90c, postpaid.**

PRUNING PAINT—A specially prepared paint for treating wounds left by pruning or accidents on trees and shrubs. **Pint 60c; qt. 90c; gallon \$2.60, postpaid.**

FRUITONE

The Hormone Spray. Prevents premature drop of flowers, fruit and leaves. **2/5 oz. 25c; 2 oz. \$1.00; 12 oz. \$5.00, postpaid.**

TRANSPLANTONE

Invigorates roots and reduces loss in transplanting seedlings, rose bushes, plants, shrubs and trees. Specially recommended, when transplanting out of season. **1/2 oz. 25c; 3 oz. \$1.00; 1 lb. \$4.00, postpaid.**

FERTILIZERS AND PLANT FOODS

PRICES ON FERTILIZERS ARE F. O. B. NEW ORLEANS EXCEPT WHERE NOTED

VIGORO

Complete plant food

VIGORO—A complete plant food. Recommended highly for lawns, gardens, flowers, shrubbery and trees. Clean, odorless, and easy to apply.

Prices—Vigoro for Flowering Plants, Shrubs and Trees: 5 lbs., 55c; 10 lbs., 95c; 25 lbs., \$1.70; 100 lbs., \$4.85. Special Camelia and Azalea Vigoro: 5 lbs., 58c; 25 lbs. \$1.90; 100 lbs. \$5.75.

VERTA GREEN

This is the new complete balanced fertilizer, made by Armour. It is highly recommended for lawns, flowers, shrubs and vegetables. Use 2 to 4 lbs. per 100 sq. ft. Clean, odorless and easy to apply. 5 lbs. 55c; 10 lbs. 95c; 25 lbs. \$1.70; 100 lbs. \$4.85. F.O.B. New Orleans.

ARMOUR'S CAMELIA AND AZALEA FERTILIZER—10 lbs. \$1.10; 25 lbs. \$2.00; 100 lbs. \$5.50.

RELIANCE AZALEA FERTILIZER—Azaleas, Camelias and Gardenias—recommended highly. Beautifully illustrated cultural booklet with each order. 5 lbs. 55c; 10 lbs. 90c; 25 lbs. \$1.70; 100 lbs. \$4.75. F.O.B. New Orleans.

PEAT MOSS—You, too, can have a beautiful lawn and garden. Use Peat Moss, nature's finest soil conditioner. This miracle maker of humus puts millions of tiny sponges to work, providing soft, loose, fertile soil that allows air circulation and the penetration of the sun's rays. It stores plant food that would otherwise be washed away and wasted. Cub Bale \$3.25; Large Bale \$4.50; Jumbo Bale \$5.50.

ALUMINUM SULPHATE—Used to change your soil to acid reaction and broadcast over surface at rate of 1 to 2 pounds to each square yard of ground. Use Aluminum Sulphate for your Azaleas to make them beautiful. Lb. pkg., 10c; 25 lbs., \$1.50; 50 lbs. \$2.25; 100 lbs. \$4.00.

GARDEN SPRAYERS & POWDER DUSTERS

MISTY FOG—Designed for large scale application of Fly Oil, Insecticides, Fungicides, etc. The curved syphon tube permits sprayer to operate in almost vertical position. Capacity 1 quart. 95c, postpaid.

HUDSON BUGWIZER—Sturdily constructed compressed air sprayer. 2½ gal. Galv. tank, 10 in. pump, 3 ft. discharge equipment. Funnel top with a cam lock. A great value at a favorable price. No. 220—\$7.87, postpaid.

HUDSON ADMIRAL DUSTER

The Admiral Duster will effectively handle only insecticide dust, and apply in any quantity desired. Particularly effective with higher priced dusts such as Rotenone, Derris Root, Pyrethrum, etc. \$2.75, postpaid.

CRITIC—Continuous. Particularly adapted for use with preparations which corrode or destroy metal. Tank made of glass, holds 24 ounces. Equipped with adjustable brass nozzle. \$2.35, postpaid.

FINE RAW BONE MEAL—One of the best animal fertilizers known to plant life. Lb., 15c; 10 lbs., \$1.10, not postpaid.

NITRATE OF SODA—Provides nitrogen in a form that is immediately available to plants. For forcing vegetables, flowers, fruits, etc. Use with care; 500 lbs. per acre. For liquid fertilizer, use one ounce to a gallon of water. Lb. 10c; 10 lbs. 65c; 25 lbs. \$1.50; 100 lbs. \$4.00.

HY-GRO—Analysis: 13-26-13. Soluble Plant food and starter solution. 2 lbs. \$1.75; 5 lbs. \$3.05, postpaid; not postpaid 10 lbs. \$4.65.

HYPONEX—Food, Drink, and Medicine for Plant Life—With Hyponex, plants grow luxuriantly and develop sturdy growth regardless of the poorness of the soil. No greenhouse, small or large, should ignore the extra results which can be obtained by use of Hyponex. 10c; 25c; 1 lb. can \$1.00; 10 lbs. \$8.00.

SHEEP MANURE—Wizzard brand is pure sheep manure, absolutely weedless. Apply 500 to 1,000 pounds per acre. 5 lbs. 65c; 10 lbs. 90c; 25 lbs. \$1.40; 50 lbs. \$2.50.

PLANTABBS—Concentrated, Complete, Balanced Plant Food Tablets—Now contain Vitamin B1 in proper, effective, measured amount. Postpaid, 30 tablets, 25c; 75 for 50c; 200 for \$1.00; 1,000 for \$3.50.

TRIOGENT—3 WAY ROSE FOOD—Sensational results and sturdier plants. 5 lb. bag \$1.30, postpaid; 10 lb. bag \$2.00, postpaid.

MANGANESE SULPHATE—1 lb. 15c; 10 lbs. \$1.00, not postpaid.

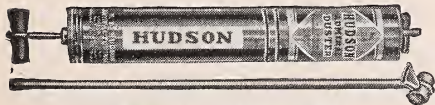
SULPHATE OF IRON (Copperas)—1 lb. 30c; 5 lbs. \$1.10; 10 lbs. \$2.25.

SERVALL—Two grades, coarse and fine. Mulch instead of cultivate. Save labor, save watering, save money. Makes dry sandy soil hold water and fertilizer like a sponge, loosens tough clay soil. Does not burn. Use Servall—sturdier plants—more flowers. 100-lb. bale \$2.00; 3 bales \$5.70.

MERCURY CONTINUOUS—An inexpensive, continuous hand sprayer for the garden or house. Holds one full quart. Complete with adjustable brass nozzle. \$1.90, postpaid.

CARDINAL—Continuous, heavy galvanized tank holds 3 quarts. Sturdily constructed with large filler opening. Length 18 inches. Adjustable brass nozzle develops any type spray from finest fog to solid stream. \$2.90, postpaid.

HUDSON FAVORITE—Finest lightweight home sprayer. A strongly constructed galvanized compressed air sprayer of smaller size (capacity 1¾ gallons). The open top makes filling and cleaning easy. Complete with extension and all brass fog nozzle. Adapted for any type of spray. Galvanized. \$10.94, postpaid.



A FEW OF OUR GARDEN SUPPLIES

Descriptive Catalog on Request

A complete kit for testing contents of nitrogen, phosphate, potash, and acidity of the soil. This is a valuable aid for the farmer and home-gardener. Home Model (makes 20 tests), \$2.98. Club Model (makes 50 tests), \$5.89; Horticultural Model (makes 150 tests), \$14.95; Deluxe Model (makes 600 tests), \$29.95, postpaid.



NATIONAL NEZBY WEAR GLOVES

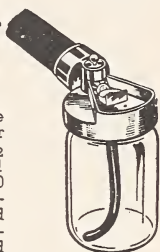
Economical, durable and dirtproof all leather garden gloves. Soft as kid. Washable. Sizes 6, 7, 8, 9 and 10. \$1.75 per pair, postpaid.



Use GREEN THUMB Gloves in the garden
 Sizes—Small and Medium
 \$1.00 per pair

INSECTICIDES . . . FUNGICIDES GARD-N-GUN

A sturdy, inexpensive small size sprayer. Jar holds enough to make 1½ gals. of any spray. Has 1 universal jet; cleans in 30 seconds; guaranteed. Instead of pistol grip and trigger, has simple Touchomatic control; flips on and off. Price, \$2.95.



1/16" x 4" - 5" - 6" - 8"

WOODEN—For pots, painted.
 100 1000 100 1000
 5-in.\$.65 \$4.65 8-in.\$.90 \$7.60
 6-in.75 5.15

ALUMINUM WEATHERPROOF TAGS—Will not rust or corrode. 25 for 85c; 50 for \$1.50; 100 for \$2.75.

RAFFIA—Its principal use is for tying vines, flowers, asparagus and celery bunches and for grafting. Natural color is a light straw. 1 lb. 60c; 5 lbs. \$2.50, postpaid.

PEERLESS GLAZING POINT—The most durable, reliable and cheapest in the market. Made of steel wire, two points, they never bend in the middle when driven or work out by wear. Sold in boxes of 1,000 which will glaze 50 lights of glass. \$1.50 per 1,000, postpaid.

WISS SHEARS

Postpaid

No. 609—Hy-Power pruners.....\$2.85
 No. 908—Hy-Power pruners..... 3.00
 No. 808—Draw cut 4.75

GRASS SHEARS

No. 5600—12-in., Narrow blade.....\$2.60
 No. 700—12-in., Quick trim..... 2.05

ROOTONE

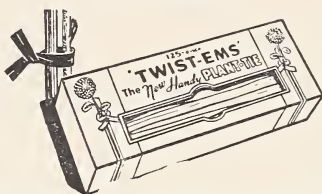
Reg. U. S. Pat. Off.

Rootone is a root-forming stimulant. When applied to cuttings, seeds or bulbs it promotes root forming in much shorter time and minimizes the loss due to slow rooting or sprouting. ¼ oz. 25c; 2 oz. \$1.00; 1 lb. \$5.00, postpaid.



DUPLEX PRUNING SAW 18".....\$2.75
 CALIF. CURVED SAW 2.75

TWIST-EMS



The new handy plant-tie. Simply put around stem and support, twist and it is tied. Box of 100—8 inch, 25c. Box of 200—4 inch, 25c, postpaid.



**NEW!
 DIFFERENT!**

Weatherized

TRAINETTES

A strong and easy to use trellis for Sweet Peas and other light climbing vines. Height 5 feet. 6 foot length 65c; 8 feet 85c; 15 feet \$1.25, postpaid.

Place **HOTKAPS** — patented paper hot-houses — over seeds or plants. Complete protection from destructive **FROSTS, STORMS AND INSECTS**. Ripen crops 3 weeks earlier; increase yield 18% to 51%. Maintain perfect mulch. Millions used by successful growers every season. Easy to set. 25 **HOTKAPS** for 95c. 250 for \$5.90, setter free; 1,000 for \$18.35; 100 for \$3.15.

RAIN cant harm



INSECTS cant touch



Germaco

HOTKAPS

Here today...for your garden

KRILIUM

Soil Conditioner. Conditions soil in the garden, for new lawns, for shrubs or planting boxes. 5 lbs. will treat about 100 sq. ft. 3 inches deep, or 600 ft. 1/2 inch deep. 1 lb. postpaid \$1.55; 5 lbs. \$4.95, postpaid \$5.35.



BEAUTIFUL CALIFORNIA PLANTUBS MADE OF REDWOOD

For utility and beauty in any garden, impregnated with linseed oil to preserve natural beauty of wood. Rounded top and bottom edges to prevent splintering. Made of well seasoned California redwood. Bound with brass bands. Ventilation under tub.



No. 1—12 in. \$4.00 ea. No. 3—16 in. \$5.60 ea.
No. 2—14 in. 4.85 ea. No. 4—18 in. 6.00 ea.
No. 5—21 in. \$7.75 ea.

NEW RED SPIDER REMEDY ARAMITE 15-W

Best control for these pests.
4 lbs. \$3.05

FOLIUM (Balanced Plant Food)

A concentrated water soluble plant food which can be applied with Monsanto's Foliator, which is made of plastic, attaches between water faucet and garden hose. 1 lb. can with Foliator \$2.10; 5 lb. can with Foliator \$5.40, postpaid. At store, 1 lb. can with Foliator \$1.89; 5 lb. can with Foliator \$4.98.

TERRA-LITE (Vermiculite Plant Aid)

Aids in creating a dependable reservoir of plant root moisture; air-conditions the ground; fluffs stiff soil to prevent cooking, packing and hardening; tends to reduce need for watering and cultivation; provides a satisfactory medium for cuttings, seedlings and transplantings. Ideal for storing bulbs, particularly dahlias and for vegetable winter storage. Postpaid, 4-quart pkg. 60c; 1/2-bu. bag \$1.25. Not postpaid, 4-gal. pkg. 40c; 1/2-bu. bag 89c; 2 bu. bag \$1.85; 3-bu. bag \$2.25.

CRAG HERBICIDE—1

Especially recommended for strawberries. As soon as you spray or sprinkle the solution on the ground it becomes a chemical that kills germinating seeds and seedlings that are starting to sprout in the upper soil layer. For this reason, it will not kill established weeds and should be used on newly cultivated soil. It will not injure plants with deep root systems. Postpaid, 4-oz. can \$1.75; not postpaid, 4 ozs. \$1.50.

"AIRWRAP" AIRLAYERING

Everything necessary for easy, inexpensive aird layering plant propagation. Ideal for beginner, hobbyist and home gardener. Contains patented Airwrap coated plastic material, plant ties and genuine sphagnum moss as well as detailed illustrated instructions anyone can follow. Price \$1.95 each.

"EVERLAST" PLANT LABELS

The Everlast Double Foil Aluminum Plant Label outlasts all other tags. Markable with any ordinary pencil, and provides a permanent weatherproof record for plants.

Package of 24 labels.....45c
Package of 50 labels.....75c
Postpaid.

TRYSAL "60" AUTOMATIC WATER TIMER

Automatically shuts off water. No watching or forgetting. Attaches to faucet and hose. Price \$5.95.

NEW SLOW-SOLUBLE TRACE ELEMENTS

DU PONT Ferro FTE

This is a new, scientific (FTE Pkg.) development—a special compound which puts essential trace materials back into deficient soils—safely and with minimum labor. It contains iron, manganese, copper, zinc, boron and molybdenum. Nontoxic. 1 lb. size treats 400 sq. ft. of garden area.

1 lb. \$1.27; 5 lbs. \$3.40,
postpaid.

6% CHLORDANE DUST

For dusting in gardens and on lawns to control ants, cut-worms, chinch bugs, chiggers, earwigs, slugs, snails, sowbugs, sod webworms, wireworms, white grubs, root infesting maggots and many others. In the home for cockroaches, silverfish, carpet beetles, crickets, etc.

1 lb. 75c; 4 lbs. \$1.70
Postpaid

BLACK LEAF 50% MALATHION SPRAY

A new spray for mites. Controls European red mites, two-spotted mites, pacific mites, clover mites, aphids, psylla, and white flies on apples, pears, peaches, plums, and other fruits, vegetables, and ornamentals.

1 oz. 55c; 5 ozs. \$1.45,
postpaid.

ROSES

"For Those Who Want the Best"

All Varieties

Grafted, \$1.25 each; 6 for \$6.25, postpaid.

STECKLER'S EVERBLOOMING BUSH ROSES

All two-year field grown vigorous plants

Set out roses early in a well prepared bed. The soil must be well drained and well fertilized. Apply fertilizer to the top of the soil. Plant early for best results. Vigoro is the perfect rose fertilizer.

BUSH VARIETIES

WHITE HARDY GARDEN ROSES

CALEDONIA—(H. T.) Long pointed white buds, double, an exquisite rose.

KAISERIN AUGUSTA VICTORIA—(H. T.) Pure white, with shadings of primrose-yellow.

WHITE AMERICAN BEAUTY—Large double white.

PINK HARDY GARDEN ROSES

THE DOCTOR—Bud very large, long pointed flower $4\frac{1}{2}$ inches across, high center, lasting, moderate fragrance, rose-pink.

RADIANCE—(H. T.) Brilliant rose-pink buds, opening in well-formed shining flowers with lighter tints on the reverse of the petals; globular in shape and very fragrant. The plant makes splendid growth, has wonderful blooming qualities.

COLUMBIA—Beautiful long buds, full flowers of glistening rose pink, disease resistant.

EDITOR McFARLAND—Shapely buds and double, brilliant pink blooms, profuse bloomer.

YELLOW HARDY GARDEN ROSES

GOLDEN DAWN—(T.) Pale, lemon-yellow, deepening in the center of its perfectly formed fragrant flower. Moderate growth and bloom. One of the hardiest and most beautiful Tea Roses; best in autumn.

SUNBURST—The color is orange-copper or golden-orange and golden-yellow; edge of petals lighter, all intense shades, extremely brilliant in effect. It is the yellowest of all Roses in the everblooming class.

MRS. PIERRE S. DuPONT—(H. T.) The double bloomers are a rich golden-yellow with deeper shaded centers.

YELLOW TALISMAN—Strong, tall, free branching bush, has long, tight slender buds and always perfect. Chrome yellow in color.

TRI-COLORED ROSES (Bush)

PRESIDENT HOOVER—(H.T.) The rose of wonderful colors. It is remarkable for its vigorous growth and beautiful colorings. A blend of orange and pink, varying in tone from coppery-orange and pink, to glowing orange-yellow at the base of the petals, suffused with vivid rose pink.

TALISMAN—It is a combination of shadings of gold, apricot, yellow, deep pink and old rose. The bud is long, well formed and develops into full double flowers. The plant is a strong grower, with glossy green foliage and free flowering.

EDITH N. PERKINS—Two-toned, orange-buff inside the petals and a rich salmon or coppery-pink outside. Long buds, well-shaped.



Pink Radiance

RED HARDY GARDEN ROSES

AMERICAN BEAUTY—(H. T.) Color a lovely shade of clear, red-crimson velvet; very fragrant.

ETOILE DE HOLLANDE—(H. T.) Bright crimson, fiery-red center cup-shaped. Free in bloom.

POINSETTIA—Color is a dazzling scarlet shading to deeper red. Originator claims it never turns purple. Undoubtedly a fine red rose.

RED RADIANCE—(H. T.) An even bitter Rose than its parent, Radiance, in habit, bearing big, globular flowers of deep rose-red on strong, individual canes which are freely produced all summer until frost.

AMI QUINARD—Lovely deep, rich velvety crimson-maroon, blooms medium size, fragrant and lasting, free bloomer.

HARDY CLIMBING ROSES

CL. AMERICAN BEAUTY—(H. W.) Red. A hardy disease-resistant variety; vigorous growth and great freedom of bloom.

CL. ROSLYN—(N.) Yellow. This is the old standby yellow rose in the South, where it is hardy; indeed it will bloom in any garden. Immense deep golden-yellow flowers with the deepest, richest tea fragrance of all roses.

PAUL'S SCARLET CLIMBER—(H. W.) Vivid scarlet, shaded crimson, makes a brilliant display for a long period of time in the garden. A wonderful climbing rose.

CL. RED RADIANCE—(Cl. H. T.) Exactly like the bush variety of the same name except that it is of climbing habit.

CL. PINK RADIANCE—One of the finest climbers in a good pink.

CL. TALISMAN—Same as the bush variety, strong growing and free blooming.

CL. BLAZE. Marvelous hardy everblooming scarlet red rose. Blooms from early spring until late autumn.

The OUTSTANDING ROSES OF ALL TIME

All AARS Winners

PATENTED ROSES

BUSH

MIRANDY—Deep rich red; fragrant, produces freely on strong, upright stems. One to be added to your rose collection. Price \$2.25.

PEACE—One of the most appealing roses ever introduced. Coppery pink in bud form but when open fully rose is of the softest yellow with pink edging Price \$2.50.

NOCTURNE—Cardinal red, long, perfect buds, pleasing fragrance, blooms over a long season. Price \$2.00.

CHARLOTTE ARMSTRONG—Deep cerise; beautiful for cutting; long stems. Price \$2.25.

TIFFANY—AARS for 1955 (Hybrid Tea). Phlox pink with an alluring scent and lasting quality. Price \$3.00.

FORTY-NINER—Bi-color, yellow outside and bright red within. Fragrant. Price \$2.50.

LOWELL THOMAS—Lemon blooms, lasts very well, upright grower with lovely fragrance. Price \$2.00.

ROSETONE

Insures the success of your roses. Soak roots of bushes in Rosetone before planting. Water your established rose bushes for better growth.

1½-oz. packet 25c; 3-oz. package \$1.00.



Beautiful roses need Ortho Rose Dust—Multipurpose rose dust to save time and give results. Contains Rotenone, Pyrethrum, DDT, Fermate and Sulphur. Controls nearly all flower and garden pests.

8 oz. duster \$1.00; 1 lb. refill \$1.25.

NEW YORKER—A red rose that stays red, upright growing and long blooming. Price \$2.00.

MOJAVE—One of the finest orange colored roses yet introduced, typical of a desert sunset-glowing orange shot with flame-like tones of scarlet and vermilion. Price \$2.75.

HELEN TRAUDEL—It is a blend of warm pink and apricot with a bright undertone which makes the color sparkle. Long, exquisite buds. Price \$2.50.

CHRYSLER—Lively glowing crimson, with an abundance of rich perfume, beautiful in bud and open flower. Price \$2.50.

QUEEN ELIZABETH—AARS for 1955—Grandiflora. Glowing pure pink. Blooms will frequently occur singly on long almost thornless stems, even those occurring in clusters have long enough stems for cut flower use. Price \$3.00.

CLIMBERS

CL. PEACE—Palest yellow flushed pink—like the bush Peace Rose, but a wonderful climbing plant. Will make a showplace of your garden. \$2.25 each.

Add 25c Per Bush for Postage on All Patented Roses.



GROW
BETTER
ROSES

Spray with TRI-GEN—the Rose Garden Spray Treatment for the control of many insects and fungus pests. Also an effective stimulant which tends to promote healthy plant growth. Four sizes—\$2.35 \$6.00; \$9.00 and \$30.00.

T R I - O G E N

Patents Pending

ROSES AND BULBS

"The South's Best"



STECKLER

*Seed
Company*
INC.

512 GRAVIER STREET
NEW ORLEANS 3, LA.

