

Historic, Archive Document

Do not assume content reflects current scientific knowledge, policies, or practices.

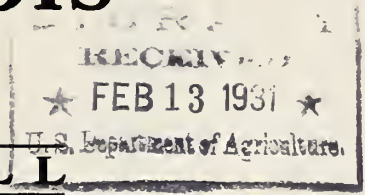
INDEXED

ALPHA NURSERY

H. G. WIRT, Proprietor

ALPHA, ILLINOIS

6293



SPRING 1931 FALL



The trees are Elms, the shrubbery is Bridal Wreath, Barberry, Honeysuckle, Hydrangia and Snowberry, with a few Evergreens on the lawn

40 Acres of Evergreens,
Shrubs, Fruit Trees
Small Fruits,
Plants and
Bulbs



39 Years of Good
Honest Service

Wirt's Quality Nursery Stock will save you money

Vegetable Seed Trials

PLANTING HINTS

IT'S PLANTING TIME!

March 20 to June 1 is the time to plant in the spring. So send in your orders early, we ship out the orders in rotation as they are received. Nursery stock is different from other products as it takes one to six and eight years to produce a salable plant, and when the year's supply is gone, that is all there is, there is no more. Don't wait until too late to get your order in.

September 15 to November 10 is the time to plant in the Fall. Most all the shrubs, shade trees, fruit trees and evergreens can be planted in the fall. The hardy perennials should be planted in September and early October.

During the summer months June, July and August is a good time to visit the Nursery. You then can see the shrubs, plants and perennials in bloom. Select what you like; the plants will be marked for you and then shipped at the proper time in the fall.



Planting and Pruning Shrubs

The ground should be spaded deeply before planting, if the shrubs are to be set in beds the beds should be spaded, do not set the plants in the sod. Dig a generous size hole with perpendicular sides. Put the good soil at one side so that it can be used around the roots, loosen up the soil in the bottom of the hole. Set the Shrubs about two inches deeper than they grew in the Nursery, spread the roots out naturally and work soil over and around them, keep putting in good soil until the hole is nearly full, then tramp the soil firmly around the shrub, then put on one or two buckets of water; after the water settles fill up the hole with loose soil which should not be tramped.

Most of the taller growing shrubs should be set 3 to 4 feet apart and should be used at corners and background for smaller shrubs. The lower growing shrubs should be set 2 to 3 feet apart, and are used in front of large shrubs, foundation planting and at entrances of smaller homes. Shrubbery should be set 2½ to 3 feet from buildings, and about 3 feet from walks or drives. My catalog gives you the height each shrub grows which should help you select the right shrub for the right place.

PRUNING. Here is a general rule. Shrubs blooming before July 1st should be trimmed after they bloom, that is, Bridal Wreath, Golden Belle, etc. Shrubs that bloom after July 1st should be trimmed early in the spring, latter part of March or early April. In trimming cut out most of the old wood and shorten back the new growth; this makes a bushy plant and the foliage bright and clean, also larger and better flowers. Spirea Van Houttei or Bridal Wreath grows tall and open at the base. This shrub should be trimmed after it blooms and can be cut back within 12 inches of the ground; cutting a little off the top does not do it much good as the shrub is still open at the base.



How to Care for Evergreens

Few people realize the time it takes to grow an Evergreen tree in the Nursery. Trees with well developed roots and tops, take from 8 to 12 years to grow. At that time they are from 1 to 3 feet in height, depending upon the varieties. Such trees make a very rapid growth when planted on your grounds, as they have the proper fibrous root system.

Soil: Evergreens are suited to nearly all soil conditions if the soil contains plant food and is drained.

Water: Very few Evergreens die from too much water. Those that fail to grow from lack of water probably account for the greatest number of failures. The thing to bear in mind, see that roots are kept moist, not soaked. Late in the fall, before the ground freezes, soak the soil around each tree thoroughly. Cultivation, and a light mulch, saves the moisture.



Trimming: This should be done during March, so the trees have a chance to heal before winter. Pruning should be done carefully and with reason.

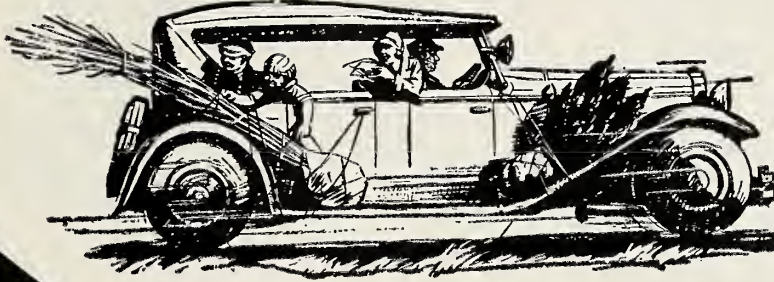
SAVE 10c ON EVERY DOLLAR BY ORDERING EARLY

I allow a 10% discount on cash orders sent before **MARCH 15**.
Why not take advantage of this saving? It also helps me by not having all the orders pile up right at the planting time.

Come Visit the Nursery

Hard Road Route 80 is now complete from Alpha to Galesburg and passes within 2 blocks of the Nursery. This gives our customers from the South a good hard road right to the Nursery. The Road East to Galva, which is Route 83, is also complete. There is a 7 mile gap between Alpha and Moline on Route 80 but is oiled and in very good shape. Why not take advantage of these good roads and drive to the Nursery, select your Trees and Plants and take them home with you. The Nursery is open Sundays

during the planting seasons of April and May in the spring and September and October in the fall. During these months you can get your order filled and take it home with you. During the summer months the Nursery is always open, come and look around and see the things growing. I am just 16 miles north of Galesburg, 25 miles south of Moline, 18 miles west of Galva and 18 miles east of Aledo.



I GUARANTEE

my stock to be true to name. Should any items prove untrue, I will replace them.

But shall not at any time be held responsible for any amount greater than the original price.



I REPLACE

stock that dies at one-half price, if a list is sent me within four months after the shipment is made. I do not, however, replace Evergreens or Seed.



GALESBURG BRANCH STORE

I will again have my branch store at Galesburg, 38 Public Square—same as the past two years.

To those that do not care to come to the Nursery or send for plants, this branch store makes it very convenient for them. The Nursery stock is delivered fresh each day by truck to the store.



PAY WHEN ORDER IS RECEIVED

You can send in your order; we will ship at the proper time. You then can pay the postman or express agent when you receive the shipment.

Save 10%

by ordering early

I like to have your order early as I have more time to write the tags and get your order in shape to be filled. When you have your order all figured up just take off 10%. Send me the difference.

**This offer is good until
March 15 only
with cash orders**

I GUARANTEE SATISFACTION OR YOUR MONEY BACK

If you receive any trees or plants from me that are unsatisfactory, just wrap them up and send them back at our expense. I will refund your money or replace the stock as you wish. You take no chances in buying from me.



PARCEL POST

I can send packages up to 50 lbs. and which are not more than 84 in. in length and girth by mail. This is a cheap and quick way for small packages going a few hundred miles. Large fruit trees, shade trees, evergreens, etc., cannot go by mail. Don't forget to include postage if not postpaid.



EXPRESS

All large orders, such as trees, large shrubs, large orders of berry plants should go by Express. It is cheaper than mail, and much quicker than freight. Nursery stock will not stand delay in transit.



PHONE IN YOUR ORDER

There is a phone in the office; call us and give us your order and it will go right out.



Here is a load of Parcel Post and some of the men that get out your orders. There are four loads of mail every day besides the Express and freight shipments.

WIRT'S EVERGREENS

Evergreens are just the thing for foundation planting and general landscape work. They give color during the winter that cannot be obtained with any other shrubs or trees, and make a splendid contrast in the summer. We offer tall, medium and low growing evergreens. But all evergreens can be kept trimmed to any desired height. Trimming should be done during summer.

Medium size evergreens are best to plant. Trees running from 1 to 3½ ft. They cost less and are much easier to handle without loss.

Trees that are marked Balled should go by Express.

give all year beauty



Arbor Vitae

ARBOR VITAE AMERICAN

(*Thuja occidentalis*)

10 to 12 in. not balled
35c ea.; \$3.50 per 12

Each

- 1 to 1½ ft. balled \$1.00
- 2 to 2½ ft. balled \$2.00
- 3 to 3½ ft. balled \$3.00
- 4 to 4½ ft. balled \$4.00

This Arbor Vitae is very hardy, and dependable in almost any situation. Stands trimming well and for this reason is widely used for hedges. It grows bushy at the bottom and tapering toward the top, thus making an excellent evergreen for entrance and corner planting. Foliage is very soft and flexible and of fine deep green color.



American Arbor Vitae

ARBOR VITAE PYRAMIDAL

(*Thuja pyramidalis*)

- 1½ to 2 feet, not balled, \$1.25 each
- 2½ to 3 feet, balled, \$2.25 each

Of dense, compact growth, narrow and pyramidal in form. Deep rich green color, uniform habit and hardness to withstand conditions here in northern states. It reaches a height of 8 to 10 feet, and usually measures not more than 2 feet in diameter at the base. This is one of many popular pyramidal evergreens.

ARBOR VITAE GLOBE

(*Thuja globosa*)

- 14 to 16 in., balled, \$2.00 each

Without doubt, one of the best globe formed arborvitaes. It maintains the natural globe shape, without trimming, and under good conditions will reach 2½ feet in height and diameter. It is especially fine for low borders, for foundation groups, for tubs, or for urns.

PINE MUGHO.

(*Pinus Mughus*)

- 10 to 16 in. balled, \$1.50 each
- 1 to 1½ ft., balled, \$2.25 each

This is the genuine true dwarf Pine. Many stemmed, compact with good green color. It never grows over 2½ feet tall, and 3 to 5 feet in diameter, by annual shearing can be kept any desired size. An excellent evergreen, where one of dwarf habit is wanted.

JUNIPER RED CEDAR

(*Juniperus Virginiana*)

- 18 to 24 in. balled \$1.50 each
- 2½ to 3 ft., balled, \$3.25 each

This is one of the oldest, most popular and best known Evergreens. Grows in a compact pyramidal form, stands shearing well, and can be made into many shapes. An excellent, tall Evergreen.



Mugo Pine

JUNIPER SPINY GREEK

(*Juniperus excelsa stricta*)

Each

- 12 to 16 in., balled, \$1.50
- 16 to 18 in., balled, \$2.00

This beautiful variety forms a tall, dense, narrow, conical head, tapering gradually from the ground to a sharp terminal point, and is of fine glaucous color. The growth is slow, so that the tree is well adapted for foundation planting, rock gardens, or places where small or dwarf evergreens are required.



Spiny Greek

JUNIPER ANDORRA

(*Juniperus comm. dep. plumosa*)

- 16 to 18 in., balled, \$2.00 each
- 18 to 24 in., balled, \$3.25 each

This Juniper has proven a most satisfactory low growing tree. It never burns out, and throughout the year carries a most attractive color. As soon as the frost comes in the fall, it takes on an unusually attractive rich purple bronze color, not the brownish cast sometimes found in Red Cedar. The spring and summer color is a rich bright green. It seldom raises its branches over 18 inches off the ground. It is still quite rare in nurseries and stocks are limited.

JUNIPER PFITZER

(*Juniperus Pfitzeriana*)

- 16 to 18 in., balled, \$2.00 each
- 1½ to 2 feet, balled, \$3.00

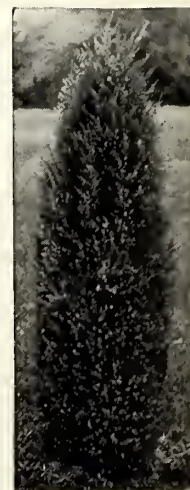
This tree ranks as one of our most important Evergreens of today. It is a Juniper that thrives under many conditions. It succeeds in exposed locations, in full sun, also in shady protected places. Its foliage is of an attractive greenish blue. If left alone it forms an attractive low, broad, irregular form, but by staking up one of the leaders it takes the pyramidal form. An excellent foundation or group Evergreen.

JUNIPER SWEDISH

(*Juniperus Comm. Suecica*)

- 2½ to 3 feet, balled, \$3.25 each

One of the old familiar Evergreens. Very formal in outline, foliage glaucous green. Grows 5 to 6 feet in height, and not over 1½ feet in diameter. An excellent short, slim growing Juniper.



Juniper Swedish

Wirt's Evergreens are reasonable in Price



JUNIPER SAVIN
(*Juniperus sabina*)

Each
12 to 18 in. balled \$2.10
1½ to 2 ft. balled \$3.00

A low many branched Evergreen, sometimes growing 4 feet high. Its branches are spreading and dense. Planted 4 to 6 feet apart forms an excellent border to larger evergreens in the background. It is desirable as a low in foundation groups. It does well in smoky atmospheres.

Savin Juniper

JUNIPER WAUKEGAN
(*Juniperus horiz.*
Douglassi)

6 to 10 in. not balled 75c each
2 to 3½ ft. balled \$3.00 each

An interesting creeping Juniper. Very low and compact. Soft blue in spring and summer, changing to rich purple color late in fall. It grows close to the ground, not over 6 to 8 inches high, spreading out 4 to 5 feet, excellent for rock gardens or ground cover.



Juniper Chinese

JUNIPER CHINESE
(*Juniperus chinensis*)

2½ to 3 feet, balled \$3.00 each

This Juniper forms a distinct, narrow pyramid shape. The foliage is remarkably decorative. This tree offers to planters in colder climates, the extreme narrow growing form of Evergreen, so much desired. Grows from 10 to 12 feet, but can be sheared at any height.

Special Spruce

COLORADO BLUE
(*Picea pungens glauca*)

2 to 3 ft. B. \$7.00 each

This is one of the Blue Spruces. It is hardy, healthy, and a beautiful tree. The rich blue color enhances the value of the Colorado Blue Spruce for single trees or for group plantings.

KOSTERS BLUE
1½ to 2 ft. B. \$12.00 ea.

This is the genuine Blue Spruce. These trees are grafted, so as to hold their true blue color. These trees are very scarce, and our supply is very limited.



Koster's Spruce



Norway Spruce

SPRUCE NORWAY
(*Bicea Excelsa*)

12-18 in. not balled 40c each
18-24 in. not balled 75c each
1½ to 2 ft. balled \$1.25 each
2 to 2½ ft. balled \$2.25 each
3 to 3½ ft. balled \$3.00 each
4 to 4½ ft. balled \$5.00 each

This is the original Xmas tree, and is highly appreciated because of its rapid growth, its thriftiness, and heavy masses of deep green foliage. Norway Spruce is a tall, picturesque and hardy tree, and well adapted to a wide range of plantings. Can readily be pruned to any desired height.

SPRUCE WHITE
(*Picea Canadensis*)

1½ to 2 ft. balled \$1.50 each
2 to 2½ ft. balled \$2.00 each
3 to 4 ft. balled \$3.00 each

This tree is thoroughly hardy, free growing, not particular about soil. A compact and upright grower of longevity. Light green foliage, slightly tinged with blue. An excellent tree for all purposes. Can be sheared and kept to any desired height.

HEMLOCK (*Tsuga canadensis*)

12 to 18 in. balled \$1.75 each
2 to 2½ feet balled \$3.00 each

The regular conical form, tapering evenly from a broad base, to a long straight and thrifty shoot. It grows thriftily and is of a dark green color, very dense, and shears well. The Hemlock will remain small for many years, if sheared, so that it can be recommended for foundations, groups and small yards. Hemlock likes a rather moist, cool shaded place.

A Special Offer that is a Bargain

WHITE PINE

3 to 4 ft. balled \$2.00 each

A strong rapid growing evergreen, with abundant silvery green foliage, in long swaying clumps of soft needles. Excellent tree for backgrounds of Rock Gardens, shrub borders and screens.

PLANTING BALLED EVERGREENS



First—Dig a hole considerably larger than the balled tree.

Second—Set the tree into the hole a few inches deeper than it grew in the nursery.

Third—Fill the hole about half full of good soil (only).

Fourth—Cut the burlap in which the ball is wrapped and turn back.

Fifth—Put two or three buckets of water to each tree. When settled, fill the hole with soil. A little mulch of leaves is good.

Don't let your Evergreen set around. Plant as soon as received. They won't stand exposure to the sun.

PLANT WIRT'S TREES

for shade and beauty

The spreading growth of shade trees will create much comfort for your home. Your property will increase in value by the pleasant surroundings.

HARD MAPLE Spreading top, very dense shade. One of the very best trees for lawns or street.

10 to 12 ft. trees \$3.00 each; 8 to 10 ft. trees \$2.00 each;
6 to 8 ft. trees \$1.50 each

NORWAY MAPLE This tree is very much like the above, but is a little faster in growth.

8 to 10 ft. trees \$2.50 each; 10 to 12 ft. trees \$3.50 each

MOUNTAIN ASH Hardy tree—dense regular head, beautiful fern-like foliage. The tree is covered with clusters of bright red berries from July until winter. A very pretty tree for the lawn.

5 to 6 ft. 85c each

POPLAR LOMBARDI This is the tree much used in landscape work as background grows tall and slim.

12 to 16 ft. trees \$1.50 each; 10 to 12 ft. trees \$1.25 each;
8 to 10 ft. trees \$1.00 each

ELM AM. WHITE This is a splendid tree for street or lawn. It is fast growing and will give a lot of shade.

10 to 12 ft. trees \$2.00 each; 8 to 10 ft. trees \$1.25 each;
6 to 8 ft. trees \$1.00 each

MOLINE ELM A new tree, much like the white Elm, but grows more erect, hardy and long lived.

8 to 10 ft. trees \$3.00 each

GREEN ASH Grows 30 to 40 feet. A valuable street or shade tree, thrives over a wide territory. Valuable on the Farm.

5 to 6 ft. trees 75c each

LINDEN A stately tree with large shining leaves, spreading in growth.

5 to 6 ft. trees \$1.00 each

CATALPA BUNGEII. (Umbrella Tree).

Crafted on stems 4 to 6 feet high. It makes a perfect umbrella shape top without trimming. One of the best ornamental trees.

5 to 6 ft. 3 yr. trees \$2.50; 5 to 6 ft. trees 2 yr. \$1.50
5 to 5½ ft. trees 2 yr. \$1.00 each.

RED LEAVED MAPLE (Schwedlers)

This is the much admired Maple with the red leaves in the spring and again in the fall. Its growth is very much like the Hard Maple. Our trees are straight whips.

7 to 8 ft. trees \$3.00 each

BIRCH CUT LEAVED WEEPING

A tall slender weeping tree, with white bark. Very popular as a lawn tree. The bark on my trees has not turned white, but will with age.

8 to 10 ft. trees \$2.50 each

MULBERRY TEAS WEEPING

Forms a perfect weeping head, slender branched, drooping to the ground. A splendid ornamental tree.

5 to 6 ft. trees \$3.00 each

GLOBE HEAD LOCUST

A new globe head tree budded on black locust; strong and hardy; grows in a compact round head; does not split and break like some globe head tree. This is an excellent tree for lawn or street.

5 to 6 ft. trees \$2.50 each

CHINESE ELM

This is a new type of Elm, very fast growing, making an excellent shade tree. The limbs are much more graceful than the White Elm, thus not making such a large tree.

5 to 6 ft. trees \$1.15 each

PUSSY WILLOW A small shrub-like tree, which is quick growing, has furry catkins in the spring which make it very attractive and desirable.

4 to 5 ft. trees 75c each

AILANTHUS (Tree of Heaven) Very rapid growing trees with Palm like leaves often 4 ft long. Thrives in city lots exposed to gas and smoke.

4 to 6 ft. trees 50c each



Elm



Hard Maple



Lombardy

CARE OF TREES
In planting trees they should be set several inches deeper than they grow in the nursery. Dig the hole large enough so the roots will not be crowded, set the tree, then fill the hole half full of good soil (no manure, then put on 2 or 3 buckets of water. When settled fill up the hole with soil.

INSECTS. Borers are the worst pest of shade trees. To prevent this wash the tree in early spring, mid-summer and early fall with a suds from soft soap or fish oil scap from the ground to the branches. Do this and save your shade trees. About 35 per cent of the trees that die are caused from borers.



Globe Locust



Birch



Catalpa Bungei



Weeping Mulberry

BUY DIRECT FROM THE GROWER



plant a
HOME ORCHARD
this Spring!

Wirt's Apples

STURDY TREES 50^c each

Are easy to grow. They thrive in almost every climate and soil. The Apple is the King of Fruits. Never were all conditions more favorable for the person who would plant an acreage of fruit for market purposes. A few acres of fruit with reasonable good care will bring a larger cash income than anything one can grow.

State Size and Variety

Express Size	Each	5 trees	10 trees	25 trees
4-6 ft., 2 yr.	\$.50	\$2.35	\$4.50	\$11.00

SUMMER VARIETIES

- *EARLY HARVEST**
Medium, to large, roundish, bright straw color, flesh white, good quality. July.
- RED JUNE**
Medium, oblong, hardy, and productive; deep red color; flesh white, tender, rich and sub-acid. August.
- *YELLOW TRANSPARENT**
Medium, yellow, good quality, productive, early bearer. July.

AUTUMN VARIETIES

- DUCHESS OF OLDENBURG**
Large size, roundish, streaked with red and yellow, flesh white, juicy, acid. September.
- *FAMUESE (SNOW)**
Medium, deep crimson, flesh snowy white, tender. Tree slow crooked grower. October and November.
- GOLDEN SWEET**
Fruit large, pale yellow; flesh tender, sweet and rich; hardy and a good grower. August and September.
- WEALTHY**
Large, roundish, smooth, nearly covered with dark red; flesh white, fine, juicy, sub-acid; quality very good; good grower and productive. October.

WINTER VARIETIES

- *DELICIOUS**
Fruit large, nearly covered with brilliant dark red, flesh fine grained, crisp and melting, juicy, with a delightful aroma; of very highest quality. December to February.
- *GRIMES GOLDEN**
Medium golden yellow, with white dots, crisp, tender and juicy, excellent; tree vigorous, hardy and productive. November to January.
- *JONATHAN**
Medium, nearly covered with brilliant stripes of lively red; very showy, juicy, excellent; trees spreading and slender; bears early. November to February.
- ROMAN STEM**
Medium size, yellow, of good quality, very productive; tree a slow grower when young.
- GOLDEN WINESAP**
One of the newer varieties, yellow with slight red blush, juicy; flavor of the Jonathan and meateness of the Winesap. Good size, good keeper. December to March.
- *STAYMAN'S WINESAP**
Fruit large, striped, nearly covered with red; flesh greenish yellow, very juicy and aromatic; very good; a strong, spreading grower; a good, early bearer; the best of our late winter apples, January to May.

WINESAP
Medium, roundish, deep red, firm, crisp, juicy; excellent quality, moderate grower and good bearer; succeeds well throughout the West. December to May.

DOMINE
This is a very popular old time early winter variety. The tree is vigorous spreading habit, quite productive. Fruit of medium size, yellowish white streaked with yellow and red in sun. Flesh greenish white, very tender, rich sub acid, very good. October to December. Tree early bearer.

ROME BEAUTY
Large, yellow shaded red, tender, juicy, sub acid. A leader in many apple districts. October to December.

PEWAUKEE

Fruit medium to large, round, skin bright yellow. Striped with light and dark red, flesh white, breaking half tender, juicy, good, small core. This is one of the old varieties. January to May.

***SEEDLESS**

A new apple from New Mexico, good keeper, this apple does not have seeds or core, the bloom is different from other apples. December to February.

NORTHERN SPY

Tree rapid upright grower and late bloomer. Fruit large, and roundish, skin thin, smooth, greenish covered with light and dark stripes of purplish red. Flesh fine grained tender, with a peculiarly fresh and delicious flavor. A fine old variety. December to June.

Sturdy Trees **Crab Apples 50^c each**
4 to 6 feet

TRANSCENDANT

Large golden yellow with blush; flesh firm, crisp, yellowish; fine grained, very juicy and acid. Popular for jelly and preserves. Trees grow rapidly and irregular; great bearer.

WHITNEY

Fruit very large, yellow striped with red; flesh yellow, very juicy and fine grained, flavor rich and almost sweet. August.

Dwarf Apples

Set trees 8 to 10 feet apart.

These trees are very productive, usually start bearing very young. Excellent for yard or small garden planting.

I have only three varieties.

YELLOW TRANSPARENT. Summer.

GRIMES GOLDEN
The good yellow early winter apple.

DELICIOUS Winter.

4-6 ft. trees, 75c each; 3 for \$2.00

One of our customers told us his Dwarf Yellow Transparent had 18 large apples the second year.

Apricots 50^c each

2 yr. 3-4 ft. trees

The apricot is a very welcome fruit, ripening between the cherry and peach; it requires the same treatment as the plum; good bearer; fruit, light orange, flecked with red. Flesh tender, juicy. Sweet and good.

SUPERB

A hardy seedling from Kansas. The best flavored, most productive hardy apricot yet produced. Medium size, light salmon color.

PEACHES 50^c each

A fresh ripe home grown Peach is mighty good. Peaches picked off your own trees, good and ripe sure hit the spot. Peaches will grow over a large season with very little care, they come into bearing very young, two years after planting they should bear.



Elberta

State Varieties and Sizes Wanted

Quality Trees	Each	5 trees	10 trees	25 trees
Express size 5-6 ft.	\$.50	\$2.00	\$3.75	\$8.00
Mail size 3-4 ft.	.30	1.40	2.50	5.50
Postage	.07	.15	.25	Express

ELBERTA

The great American market peach; produces big, profitable crops. Fruit large, bright, attractive, yellow with crimson shading; flesh firm and of good quality. Will ripen perfectly when picked green. One of the best for home or market use. Free stone. September.

EARLY ELBERTA

Smaller than Elberta, fruit yellow; of very good quality. Tree hardy and good bearer. Ripens about ten days earlier than Elberta.

GOLDEN

Good size, golden yellow inside and out, of very good quality. Tree very hardy and a good bearer. Has proven to be a good variety here. September 10 to 15.

J. H. HALE

Of large size, ripens earlier than Elberta, and is of good quality. Color, golden yellow inside and out, with a red cheek. Ripens in September.

CHAMPION

Fruit large, delicious, sweet, juicy; skin creamy white, with red cheek, handsome, hardy and productive, and a good shipper; adhering slightly to the stone. White flesh. August 15th.

CROSBY

Free-stone, medium size, bright yellow, streaked with carmine; annual bearer, hardy, September 15th.

WILSON

Fruit large, yellow with large blush. Flesh yellow and juicy. Ripens ten days earlier than Champion. Originated in Mercer County. Supply limited.

ALEXANDER

Medium size almost solid red in color; flesh white and juicy. July.

CHERRIES 75^c each

State Varieties Wanted

Quality Trees	Size
	4-6 ft.
Each	75c
5 trees	\$3.60
10 trees	\$7.00
25 trees	\$16.00



Early Richmond

EARLY RICHMOND

This is the early popular cherry that is planted so much. Medium red, hardy, immensely productive, ripens the last of June.

MONTMORENCY

The large, late, dark red cherry. This cherry has become very popular on account of size. It is very meaty—ripens about 10 days later than the Richmond.

MAY DUKE

Large, red, juicy, rich—not as sour as many cherries. Tree strong, upright grower. June.

DYEHOUSE

A very early and sure bearer; ripens a week before the Richmond.

Wirt's Pears 75^c each

State Varieties Wanted

Quality Trees	Size	Each	5 trees	10 trees	25 trees
	5-6 ft.	75c	\$3.60	\$7.00	\$16.00

BARTLETT

Large size, rich, yellow color, with a blush; very juicy and highly flavored; good to eat from the tree. This is the variety that is sold at fruit stands.

KIEFFER

The best late pear—does not ripen on the tree. Pick them before frost and lay them away. Heavy and sure bearer; good for canning.

DUCHESS

The largest of the eating pears, flesh white, very juicy, and excellent flavor. October.

SECKLE

The small, sweet pear. Surely fine to eat from the tree. The tree is a slow grower, but very hardy. September.

THE NEW Douglas Pear

Here is a blight-free pear—in which is combined the best qualities and habits of all leading varieties—with the drawbacks of none. It bears even more profusely than the Kieffer. It begins to bear at an earlier age than any other pear on earth. It ranks with the best in shape, size and coloring. In flavor it excels others.

5-6 ft. trees
\$1.00
each

NUT TREES

WALNUT (American Black) 5-6 ft. trees, \$1.10 each

The large oily nuts are borne in heavy crops. A native tree of large size and majestic form. Valuable for timber.

WALNUT (Japan Sieboldi) 5-6 ft. trees, \$1.50 each

Perfectly hardy Rapid grower. Handsome form. Bears young and abundantly. Nuts produced in clusters

PECANS 5-6 ft. trees, \$2.15 each

A hardy strain suitable for northern Illinois. Nuts of medium size and very productive.

CHESTNUT (American Sweet) 5-6 ft. trees, \$1.10 each

A valuable native tree, both useful and ornamental. Nuts sweet and of delicate flavor.

HAZELNUT (Filbert) 2-3 ft. plants, 75c each

Easiest of culture. Grows 6 to 8 ft. Hardy, profitable and satisfactory nuts to grow. Succeeding in all kinds of soil.

PLUMS 65^c each

Quality Trees	Each	5 trees	10 trees	25 trees
Exp. size 4-5 ft.	\$.65	\$3.15	\$6.20	\$14.00
Mail size 3-4 ft.	.45	2.00	4.75	
Postage	.07	.18	.25	Express

State Varieties Wanted

BLUE DAMSON

Enormously productive. Fruit small size, about an inch long; skin purple, covered with thick blue bloom; flesh melting and juicy, rather tart, separates partially from the stone. September.

GREEN GAGE

Medium sized yellow free-stone, of extra good quality; tree a slow, dwarfish grower. August.

WILD GOOSE

Hardy, native, deep red with purplish bloom; flesh yellow, juicy and sweet; rapid grower; early and abundant bearer. July and August.

RED JUNE

A vigorous, hardy, upright, spreading tree; as productive as Abundance. Fruit medium to large, deep vermilion red, with handsome bloom; very showy, flesh light lemon color, slightly sub-acid, of good and pleasant quality; pit small. Early.

PRUNE ITALIAN

Large purplish black; flesh greenish yellow, sweet and good quality. Tree very productive. September.

Hansen Hybrid Plums 50^c each

Express size 4-5 ft.	Each	3 trees	6 trees
Mail size 3-4 ft.	\$.50	\$1.25	\$2.00
Postage	.30	.80	1.50
	.07	.15	.25

New plums introduced by Professor Hansen, of the South Dakota Experiment Station, at Brookings, who has originated many new fruits, which are of great value and importance to all sections of the country. One important feature of these Hybrid Plums, is their good quality, extreme hardiness, prolificness and early bearing.

HANSKA

Cross between native Plum and Apricot Plum of China, fruit splendid for eating out of the hand, and when cooked, retains the apricot flavor, fruit about one and one-half inches in diameter, red in color, flesh firm, yellow, good quality. Begins to bear the second year. Hardy.

SAPA

Fruit dark purple, thin skin, red purple flesh. Very fine for eating and cooking, fine flavor and very prolific bearer. Fruit borne in clusters around the stem; trees three years old have borne as high as one and one-half bushels. Hardy.

OPATA

Dark purplish red. Flesh green, flavor spicy, rich and sweet. Tree vigorous and hardy. A very productive and early bearer. Ripens in July.

DEWBERRIES

Size	12 Plants	25 Plants	50 Plants	100 Plants
2 yr. No. 1	\$.75	\$1.40	\$2.20	\$4.00
Postage	.08	.12	.18	.25

LUCRETIA

A trailing blackberry, much larger and juicier than blackberries. Dewberries are fine for planting on hillsides or banks that wash—they will hold the soil.

BLACKBERRIES

Size	12 Plants	25 Plants	50 Plants	100 Plants
2yr. No. 1	\$.75	\$1.40	\$2.20	\$4.00
Postage	.08	.12	.18	.25

ELDORADO

Very productive and hardy; extra fine quality; sweet flavor, without core; fruit very large, jet black. We think this is the best of blackberries.

WIRT'S CHOICE GRAPES are easy to grow.



Grapes in Nursery



Right Way

Wrong Way

PLANTING
Grapes should be planted about 8 feet apart. Make the soil mellow and plant the vines 10 to 12 inches deep in holes large enough to admit roots without curling them, pressing soil about roots.

Cut vines back to within three or four buds of the roots.

Postage, 1 to 3 plants, 8c.; 4 to 6, 12c.; 6 to 10 15c.

CONCORD

Black, the most popular grape in America; bunches and berries are large, hardy, healthy and productive.

2 yr. plants, 15c each; \$1.20 per 10; \$10.00 per 100

MOORE'S EARLY

Black, bunches medium size and very compact; berries large and of excellent quality; ripens ten days before Concord which makes it very desirable for market; very hardy, well suited for the North; one of the best.

2 yr. plants, 25c each; \$2.00 per 10

CAMPBELL'S EARLY

A strong grower, an abundant bearer; bunches and berries very large, glossy black; ripens with the Moore's Early, but will hang on the vines until frost.

2 yr. plants, 30c each; \$2.50 per 10

AGAWAM

Red or maroon color; berries large, of rich, peculiar aromatic flavor; ripens a week later than Concord; vine a strong rank grower.

2 yr. plants, 25c each; \$2.00 per 10

CATAWBA

Bunches of good size, fruit when ripe is copper color with a sweet rich musky flavor; a fine wine grape.

2 yr. plants, 25c each; \$2.00 per 10

MOORE'S DIAMOND

White, bunches and berries large; flesh tender, juicy; hardy, productive, early; fine quality.

2 yr. plants, 25c each; \$2.00 per 10

SEND IN YOUR ORDER EARLY AND SAVE 10%

SETTING STRAWBERRIES



Too Deep



Too Shallow



Just Right

fore setting. Strawberries need lots of cultivation the first year. The patch should be covered lightly with straw or leaves after the ground is frozen hard, generally about December. Rake off the covering into the space between the rows about April 1st.

We sell only new plants. They never have had a berry, so you get the very best, as three crops is about the life of a strawberry bed.

Wirt's Quality Home Grown Plants

Strawberries

\$1.00 per 100

CARE OF STRAWBERRIES

Set strawberries 12 to 16 in. in the rows, the rows 4 feet apart. Set them just as deep as they were in the nursery, the roots spread out fan shaped and straight down. Cut off all the dead leaves, blossoms, and just leave one to three green leaves. The plant wilts too much with all the foliage left on, and many plants cannot overcome this so wilt and die. Trim your plants be-

Varieties	12 plants	25 plants	50 plants	100 plants	200 plants	300 plants	500 plants	1000 Plants
Premier	\$.25	\$.35	\$.60	\$1.00	\$1.90	\$2.85	\$4.50	\$6.00
Sen. Dunlap	.25	.35	.60	1.00	1.90	2.85	4.50	6.00
Gibson	.25	.40	.70	1.25	2.25	3.30	5.00	8.00
Aroma	.25	.40	.70	1.25	2.35	3.30	5.00	8.00
Mastodon	.50	1.00	2.00	2.50	4.75			
Postage	.07	.09	.10	.12	.15	.20	By Express	



Dunlap

PREMIER

An extra early variety, heavy bearer. Berries are long and slim, good early market or home berry. About 10 days ahead of Dunlap.

Early Variety

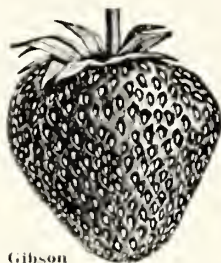
SENATOR DUNLAP

This is the best known variety in the U. S. It bears well in all localities, producing big crops and big berries; very hardy; rich dark red color. Good plant producer, making wide heavy rows.

Mid-season Variety

GIBSON

Large berries of evenly colored, glossy dark red; firm with rich flavor. Stands shipping or hauling well—reaching market in the best of condition. Even in size to the end of the season. Gibson plants have the reputation among growers of producing more berries in one picking than most of varieties will throughout the season.



Gibson



Mastodon

Everbearing Variety

MASTODON

The elephant of strawberries, and bears lots of big berries from summer until frost. Plants set in April had ripe berries July 11th, and the first week in August 160 quarts every five days per acre, and in September 576 quarts per acre every five days. The late berries sure bring the price. This is the newest and best everbearer on the market today. Try a few of the plants. Supply limited. Order early.

Late Variety

AROMA

A standard late variety—starts ripening when the other varieties are gone. The berries are medium to large, dark red and fine; will stand lots of rough handling.

GOOSEBERRIES

State Variety Wanted

Variety	Size	Each	3 Plants	6 Plants	12 Plants
Josselyn	2 year	\$.35	\$1.00	\$1.80	\$3.50
Pearl	2 year	.25	.65	1.25	2.40
Parcel Post		.10	.15	.20	.30

JOSSLYN

Large sized, smooth, prolific and hardy, of best quality. The freest from mildew, both in leaf and fruit. A wonderful cropper, with bright, clean, healthy foliage.

PEARL

One of the large varieties. Very hardy, but moderately productive

CURRANTS

State Variety Wanted

Variety	Size	Each	6 plants	12 plants
Perfection	2 year	\$.25	\$1.40	\$2.75
Diploma	2 year	.25	1.40	2.75
White	2 year	.20	1.10	2.00
Parcel Post		.10	.20	.30

PERFECTION

A wonderful currant, very large size, bright red; less acid than any other large currant.

DIPLOMA

A new variety of light red color. Fruit very juicy, good size and very productive. Very desirable for jelly.

WHITE

One of the best white currants. Bunches long and large; good quality.

DRIVE TO THE NURSERY IN THE SPRING

WIRT'S HOME GROWN PLANTS

RASPBERRIES 50^c per 12

Raspberries are easy to grow with a little care. Every garden should have a few varieties. There is a great demand for the fruit, never enough to supply the demand.

Raspberries are tied 25 to the bunch, the top canes are left 6 to 10 inches long, for the sole purpose of tying them in bunches, and after planting this cane generally dies, and the plant starts from the crown or root. In planting spread the roots out good, cover the crown from 2 to 2½ inches with soil. Do not put manure next to the roots. Cultivate good the first year, then mulch heavy along the row.



Cumberland

State Varieties Wanted

Variety	12 plants	25 plants	50 plants	100 plants	1000 plants
Cumberland	\$.60	\$1.00	\$1.90	\$3.50	\$25.00
St. Regis Red	.50	1.00	1.90	3.50	25.00
Columbia Purple	1.00	1.80	3.25	6.00	
Latham Red	.75	1.40	2.60	5.00	30.00
Parcel Post	.08	.12	.18	.25	Express

Quality Plants—Fresh Dug

CUMBERLAND

One of the largest black raspberries known; its immense size, firmness and great productiveness entitles it to first consideration. Unusually strong grower, throwing up stout, stocky canes; perfectly hardy. The most valuable profitable raspberry grown for home or market use. Fruits for long season.

LATHAM

This is one of the leading varieties of the Reds. The fruit is large and solid, does not mush up or break apart. The plants are almost disease proof. Try a few of this variety, you will like them. A coming new red variety.

PURPLE COLUMBIA

Deep purplish red, highly flavored, extra strong canes, wonderfully productive; berries very large. There is nothing finer grown in the line of fruit than this variety for table use, canning, etc. This variety does not sprout.

ST. REGIS (Everbearer Raspberry)

Very early, fruit large and extra quality, good stocky grower and hardy. It is very much like the Louden except it makes a fall crop of the new ones. Red variety. (Sprouts).

ASPARAGUS



Conovers

Variety	Size	12	25	50	100
Conovers	2 year	\$.30	\$.55	\$1.00	\$2.00
Parcel Post		.10	.18	.25	.35

CONOVERS

An old standard variety of large size, tender, and of excellent quality.

PLANTING ASPARAGUS

Asparagus should be planted at least 2 feet apart, dig the hole a foot deep and make a small mound in the center of the hole; set the asparagus plant over this mound then cover the plant with about three inches of soil and as the plant grows continue pulling in the soil until it is level with the top of the ground. You should have by this time 6 or 8 inches of soil over the plant. In the fall mulch the bed with 2 to 3 inches of cattle manure, and in early Spring work this manure into the ground. Plant asparagus deep, and do not put manure next to the roots. Also select a dry place. Asparagus will not live in wet soil.

PIE PLANT



Linnaeus

Variety	Size	3 Roots	12 Roots	25 Roots	50 Roots
Linnaeus	2 year	\$.25	\$1.00	\$2.00	\$3.80
Parcel Post		.10	.15	.20	.35

LINNAEUS

Large, early, tender and fine; the old reliable pie kind.

SAVE 25 to 50% ON YOUR ORDERS

Strong 2 yr. plants **Wirt's Hardy Vines 35¢ each**

HONEYSUCKLE (Scarlet Trumpet)

One of the handsomest in cultivation; coral flowers; very vigorous and hardy; blooming all summer.

TRUMPET VINE (Tecoma Radicans)

Handsome, dark green foliage and showy clusters of orange and scarlet flowers during the summer.

SILVER LACE VINE

A strong vigorous vine attaining a height of over 25 feet, it has all summer and fall a great mass of foamy sprays of white flowers which turn rose colored as they begin to fade, and the combination of the white and rose make a very pretty picture.
2 year plants, 75¢ each

BITTERSWEET

A native vine that is especially ornamental in fall and winter, with brilliant orange and scarlet fruit.

CHINESE MATRIMONY VINE

A strong, hardy climbing vine. Bright, rosy-purple flowers, followed by brilliant scarlet berries.

WISTERIA (Purple)

One of the finest climbers, of rapid growth, and perfectly hardy, with long, pendulous clusters of bluish purple. Flowers in June.

ENGLEMAN'S IVY

It is one of the finest ivies we have. The brilliant coloring of the leaves in autumn, together with perfect hardiness, makes it a valuable climber for covering brick or stone walls. Where hardiness is necessary, the Engleman will be found much superior to Boston ivy.

AMERICAN IVY

The well known native vine with five parted leaves, that change to rich crimson in autumn; berries blue black; very rapid grower and perfectly hardy.

BOSTON IVY

Should be planted on the North side of the building, clings to brick, stucco or stone.

2 yr. plants 50¢ each; 3 for \$1.40

Postage on all Vines on this page, 6¢ for 1 to 3 plants; 8¢ for 3 to 6 plants.

C L E M A T I S

JACKMANNI

The well known purple flowering clematis. Flowers 1 to 6 inches across.

2 yr. Field Grown plants 75¢ each

HENRYII

The large white flowering clematis.

2 yr. Field Grown plants 75¢ each

MME. EDW. ANDRE

A robust plant blooming freely. Violet red flower 3 to 4 inches across.

2 yr. Field Grown plants 75¢ each

PANICULATA

The small flowering sweet scented white clematis. One of the most vigorous and beautiful climbers.

2 yr. Field Grown plants 50¢ each

HEDGE and SCREEN PLANTS



Bridal Wreath Hedge

**increase
the
value
of
your
home**



Barberry Hedge

SPIREA VAN HOUTTEI (Bridal Wreath)

Fined for tall hedges or screens. Has abundance of small white flowers early in the summer.

State Size Wanted

Size	Each	3 plants	6 plants	10 plants	100 plants
3-4 feet	\$.40	\$1.00	\$1.90	\$3.50	\$30.00
2-3 feet	.30	.75	1.50	2.00	18.00
Postage	.10	.15	.25	.35	Express
12 18 in. size	.10	\$1.00 per 12 plants		\$8.00 per 100	
Postage	.07	.10		.35	

PLANTING

Privet—Dig trench twelve inches deep or more and set the plants four to six inches deeper than they stood in the nursery row, or deep enough so the lower branches will be four to six inches under the ground. Such deep planting will make a compact hedge down to the ground line, but if the plants are set shallow there will always be undesirable open spaces at the base of the hedge. Some planters set *Privet* in a double row, eight to ten inches apart each way, which makes a very dense hedge. Cut *Privet* back to four inches after planted to promote thick new growth at lower part of plant. Trim often during the summer. Start the first year.

BARBERRY (Thunberg's or Japanese)

The finest of all the Barberries, grows in compact form, spiny stems, foliage fine and dense, changing to brilliant red in fall, the clusters of red berries hanging on all winter. Much used for hedge and borders. Considered by many to be the most valuable foreign shrub grown. This Barberry is recommended by the Government. It does not have the wheat rust.

State Size Wanted

Size	Each	3 plants	6 plants	10 plants	100 plants
18-24 in.	\$.35	\$1.00	\$1.80	\$3.00	\$25.00
12-18 in.	.25	.70	1.40	2.25	17.50
Postage	.08	.12	.18	.35	Express
10-16 in. size	.10	\$1.00 per 12 plants		\$8.00 per 100	
Postage	.07	.10		.35	

YOU RUN NO RISK IN BUYING FROM ME

PLANT A HEDGE THIS SPRING



Amoor River Privet

makes a fine, hardy hedge

\$8.00
per 100

AMOOR RIVER PRIVET

This is the hardy type of privet so much used for hedges. Has glossy green foliage which hangs on very late in the fall. This variety of Privet can be trimmed at any time into any shape. Plant Amoor Privet no matter where you live, it will increase the value of your place.

State Size Wanted

	Size	Each	12 Plants	25 Plants	50 Plants	100 Plants	200 Plants
HARDY PRIVET PLANTS	12 to 16 in.	10c	\$1.00	\$2.00	\$4.00	\$ 8.00	\$15.00
	16 to 18 in.	15c	1.65	3.20	6.25	12.00	24.00
	18-24 in. 3 year heavy plants	20c	2.00	4.00	7.50	15.00	
	Postage	7c	12c	18c	27c	(By Express only)	

NEW FLOWERING SHRUBS

French Lilac 75c each



The following are some of the best varieties of the French Lilacs. They are more dwarf than the common varieties; the blooms are larger and of better color, they also bloom much younger. These Lilacs are grafted on Privet or Ash and do not sprout. They should be planted 3 or 4 inches deeper than they grew in the Nursery. Every home should have a few of these Lilacs.

President Grevy—A beautiful shade of blue, large double flowers.

Charles X—Single purplish Red, strong rapid grower. 18-24 in. plants 75c each

Ludwig Spaeth—Single dark Red. One of the best of the reds. A little more dwarf than the others. 18-24 in. plants 75c each

Mme. Lemoine—Pure double White. The best of the whites. 18-24 in. plants 75c each

Flowering Crabs \$1.00 each



The Flowering Crabs are among the best of the spring flowering ornamentals. They are small trees, and their blooms range from almost red to light pink, fine for a shrubby border or lawn.

Hopa—Grows 15-20 ft. A beautiful pyramidal growing tree with attractive foliage. Entirely covered with rose colored flowers in April and May. Fruit red inside and out, hanging on until late autumn.

Cathay (Chinese Apple)—Grows 10-15 feet. Hardy, round topped dwarfish tree. In bloom it is a huge bouquet of large white flowers 2½ in. in diameter, semi-double in April and May. Bright yellow with orange fruit. One-half inch in diameter. 4-5 ft. trees \$1.00 each

Bechtels—A beautiful double pink flowering crab with very fragrant flowers; blooms in June. 2-3 ft. trees \$1.00 each

Purple Leafed Plums

The Purple Plums are becoming very much in demand, as they are very showy with their purple foliage throughout the summer. The trees are small, compact in growth, and are suitable for the lawn or shrubby border. A few of these trees placed about your home will add greatly to your planting.

Minnesota Plum—Grows 8 to 10 ft. A hardy, purple leaved ornamental tree with rich purple red foliage all summer. 4-5 ft. trees \$1.00 each

Newport Plum—Grows 10 to 15 ft. Hardy, upright grower. Foliage reddish purple with striking bright red tips. 3 to 4 ft. trees \$1.00 each

Beauty Bush

Kolkwitzia—Grows 5 to 6 feet. This is a brand new shrub, and very hardy. A lovely, graceful shrub, finer than any weigelia ever offered and covered early in May with the utmost profusion of bloom. The individual flowers are rather small, lipped something like a fox glove, clear pink with brownish spots and veins. The tiny rose colored buds are hooded with fuzzy jackets which remain to decorate the seed pods. It is a lovely thing all season. 18-24 in. plants 90c each

WIRT'S HARDY SHRUBS MAKE THE HOME ATTRACTIVE

In the adornment of the home grounds, hardy shrubbery has come to be recognized as indispensable, and it is a pleasure to be able to offer the quality of stock which will be found listed on the following pages. Its uses are many and varied. To set about the foundations of the house, to grow as hedges, to divide properties, or as screens to hide unsightly objects, to supplement the planting of evergreens or shade trees, shrubbery has its distinctive place. The proper planting of shrubbery about the home adds to its value many times the amount expended.



Althea (Rose of Sharon)

2 to 3 ft. Plants

50c each

3 for \$1.40—6 for \$2.70

⚡

ALTHEA. (Rose of Sharon)
Grows 3 to 4 feet
Blooms in Aug. and Sept.
Erect and open in growth.
One of the few shrubs to bloom in late summer. Foliage dull green, a very showy shrub while in bloom. Flowers in colors of red, white, pink and purple. Specify color wanted.



Barberry

18 to 24 in. Plants

35c each

3 for \$1.00—6 for \$1.90

⚡

BARBERRY-JAPANESE
(Thunbergii)
Grows 3 to 4 feet
Yellow bloom
Valuable as a hedge plant or massing for fall or winter effect. It is densely covered with red berries in the winter, and the foliage in early winter is superb. Will grow well in shade. See page 9 for hedge size.



Almond

2 to 3 ft. Plants

50c each

3 for \$1.40—6 for \$2.70

⚡

ALMONDS. (Pink or White)
Grows 3 to 4 feet
Blooms in May

Very attractive in the spring, when it is covered with showy double Rose like flowers, good for foundation or shrubbery border. Specify color wanted.



New Red Barberry

75c each

It is only once in a life-time that a really outstanding novelty in a Hardy shrub is introduced. In the *New Red Barberry* we have such a Plant.

It is much like the green leaved Japanese Barberry, but the foliage of the new Barberry is a *Rich Lustrous Bronzy Red*, and unlike many red leaved shrubs, it gets more brilliant as the season advances—in the fall changes to a vivid Orange, with red berries. Add a few of

these plants to your planting. They put on the finishing touch. They are brighter in color when planted in full exposure of the sun.

Good 2 year plants. 18-24 in. tall, 75c each; 3 for \$2.00.
12-15 in. plants. 50c each; 3 for \$1.40.



Arrowwood

2 to 3 ft. Plants

60c each

3 for \$1.70—6 for \$3.00

12-18 in. Plants 35c each

⚡

ARROWWOOD
Grows 8 to 10 feet
Blooms White

A good tall shrub with very attractive foliage. In the fall the leaves turn all of the autumn colors. The shrubs are of an upright bushy growth, single white flowers in May, followed by bluish black fruit.

Box Barberry

A low growing type of Barberry, very hardy. Its foliage is so round and dense, and growth so compact, that it bears a striking resemblance to Boxwood. Its density allows close trimming, and with very little trimming perfect globes and pyramids can be easily formed. It is one of the best plants for a very low compact hedge. Can be kept 8 to 14 inches high.

2 yr. 9 to 12 in. 35c each; \$3.00 per 10

3 yr. 15 to 18 in. 65c each; \$6.00 per 10

WIRT'S HARDY SHRUBS



Golden Belle (Forsythia)

3 ft. Plants
50c each
3 for \$1.40—6 for \$2.70

✠
GOLDEN BELLE.
UPRIGHT. (Forsythia).
Grows 4 to 6 feet
Flowers yellow
Yellow bell-shaped flowers,
very early in the spring be-
fore the leaves come out.
Spreading in growth, deep
green foliage.



Hydrangias Sturdy Plants **50c each**

✠
HYDRANGIA A. G.
(Hills of Snow).
Grows 3 to 4 feet
Blooms white
This is the popular summer
blooming Hydrangia, starts
blooming in July and con-
tinues until frost. The round
white flowers are borne on
long stems, the white chang-
ing to green. A splendid foundation
shrub.
12 to 18 in. plants
50c each; 3 for \$1.40
10 to 14 in. plants
35c each; 3 for \$1.00

Hills of Snow

75c each

✠
HYDRANGIA PEE GEE
Grows 4 to 5 ft.
Pink blooms

This is the Hydrangia that
has the large cone-shaped
flowers, white in August turn-
ing pink later in the fall.
Blooms can be cut for winter
bouquets. This shrub likes
good soil and a good sunny
place. One of the best shrubs
for all planting.

3 to 3½ ft. plants
75c each; 3 for \$2.00
18 to 24 in. plants
50c each; 3 for \$1.40
12 to 14 in. plants
35c each; 3 for \$1.00



Hydrangia—Pee Gee



Dogwood

2 to 3 ft. Plants
50c each
3 for \$1.40—6 for \$2.70
12-18 in. Plants 30c

✠
DOGWOOD RED. (Siberica).
Grows 6 to 8 ft. Red Bark
This dogwood has the bright
red branches. White flowers
in the summer followed by
berries. A very popular and
attractive tall shrub.

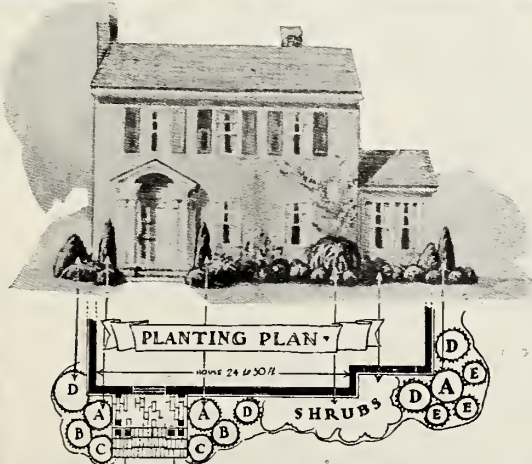
DOGWOOD YELLOW. Grows 4 to 6 feet. Yellow bark.
This shrub has yellow branches. Blooms white followed
by berries. This shrub grows close to the ground, leaving no open
spaces and is very good when placed in front of the red
variety making a beautiful contrast.

DOGWOOD SILVERBLOTCHED. Grows 6 to 7 ft.
This Dogwood is very attractive as the green leaves are
edged with silver, the bark is a very bright red. Good upright
bushy grower. 2-3 ft. plants only, 75c each; 3 for \$2.00.

KERRIA WHITE

Grows 4 to 6 ft. White Blooms. An upright growing shrub with
a light green foliage, the leaves are crinkled somewhat like
Hazelnut. Single white flowers in June followed by black ber-
ries. A good hardy shrub.

Strong 2 to 3 ft. plants 50c each; 3 for \$1.40



PLAN No. 1

This is a splendid arrangement of Evergreens and Shrubs in
a foundation planting and will give you lots of bloom and color
during the whole year. You cannot go wrong in selecting this
planting if it is suitable to your home. The plants are all good
size and will make a nice show this year.

Plan No.	Quantity	Variety	Price
A	3	Arbor Vitea Pyr., 3 ft.	\$ 9.00
B	2	Juniper Savin, 2 ft.	4.20
C	2	Mugho Pine, 1½ ft.	4.50
D	4	Spruce White, 2½ ft.	8.40
E	3	Arbor Vitea Globe, 14 in.	6.00

My Special Price	Shrubs	Price
2	Spirea V. H.	\$.80
2	Hydrangia Pee Gee	1.50
1	Tamarix	.50
3	Spirea Froebeli	1.40

\$30.00

Catalog Price.....\$35.90

WIRT'S HARDY SHRUBS**Deutzia**

2 to 3 ft. Plants

50c each

3 for \$1.40—5 for \$2.70

12-18 in. Plants 25c each

::

DEUTZIA,

(Pride of Rochester)

Grows 3 to 5 feet

White flowers

A useful shrub with sweet scented, double white flowers, in loose clusters. Rough dark green foliage. Blooms in May. A very useful foundation shrub.

**Bridal Wreath**

2 to 3 ft. Plants

30c each

4 for \$1.00

::

SPIREA VAN HOUTTEI

(Bridal Wreath)

Grows 4 to 6 feet

Blooms white

This is the most popular shrub we sell, as it will grow in any soil and any location. The bush is just covered with small white flowers in May. (See page 12 for other sizes.)

3 to 4 ft. plants

10c each; 3 for \$1.00

2 to 3 ft. plants

30c each; 4 for \$1.00**Elder**

2 to 3 ft. Plants

50c each

3 for \$1.40—6 for \$2.70

12-18 in. Plants 30c each

::

ELDER GOLDEN

Grows 6 to 8 feet

Golden foliage

A variety of the European Elder, with large, bright yellow foliage all summer. Flowers in large white flat showy clusters. A good shrub for contrast planting among other shrubs.



The above is a planting of Spirea Van Houttei and Barberry, which make a very showy setting. These plants are very hardy and will thrive in almost any soil and location.

**Lilac**

3 ft. Plants

50c each

3 for \$1.40

::

LILAC (Common Purple)

Grows 6 to 8 feet

Lav. purple flowers

This is the old fashioned purple lilac with the sweet scented flowers in May.

We can furnish 1 to 5 ft. blooming size in Purple Lilac for \$1.00 each.

LILAC WHITE (Common). Grows 6-8 ft. Same as above except white flowers. 3 ft plants only.

JOSIKAEA (Hungarian Lilac). Stout erect growth, dark shining leaves, and purple flowers in June.
3-4 ft. plants, 50c each; 3 for \$1.10

VILLOSA—Dwarf growth. Broad leaved. Pinkish lilac. Flowers in long loose panicles. Fine low-growing lilac.
3-4 ft. plants, 50c each; 3 for \$1.10



Rugosa

Eskimo Beauties

HYBRID RUGOSA ROSES

Eskimo Beauties grow, thrive, and bloom anywhere. They are the ideal cold-climate roses. The plants are on their own roots—grown from cuttings—no tender top to die back, no foreign roots to sucker; root and top are the same variety.

A RED ROSE (Hansa Eskimo)

grows 4-6 ft.

This rose is very fine for shrubbery planting as it is very hardy, no pruning, no spraying, no covering, it blooms all summer with large double fragrant dark red flowers. The foliage is dark green and heavy.

18-24 in. plants, 60c each

A PINK ROSE (Belle Poitevine)

This rose is the same as above except the flowers are bright pink.

18-24 in. plants, 60c each

WE GIVE 10% DISCOUNT FOR EARLY ORDERS

WIRT'S HARDY SHRUBS



Syringa

3 ft. Plants

50c each

3 for \$1.40

✽

SYRINGA MOCK ORANGE

Grows 6 to 8 feet
White blooms

This is the old fashioned tall growing sweet scented syringa, that blooms in early June. A very popular shrub for tall screens.

SYRINGA LEMOINEL. Grows 3 to 4 feet. White flowers.
An upright growing plant, with large pure white flowers. A fine shrub for foundation and general shrub planting.

Everblooming Syringa

VIRGINAL Grows 6 to 7 feet
This is a new variety of the sweet scented syringa. This variety has beautiful, fragrant semi-double flowers all summer, beginning in May. You should add one of these new shrubs to your garden.
18-24 in. plants, 50c each



Pink Spirea

12 to 18 in. Plants

50c each

3 for \$1.40

10-12 in. Plants 35c each

✽

SPIREA FROBELLIA

Grows 3 to 3½ ft.
Pink blooms

This is a very popular dwarf Spirea, very seldom obtaining a height of 3½ feet. One of the few good low shrubs for foundation or for the low front row of shrub groups. Foliage dark green, which turns a beautiful bronze color in the fall. It blooms all summer with flat rose crimson blooms.

beautiful bronze color in the fall. It blooms all summer with flat rose crimson blooms.

12 to 18 in. plants
50c each; 3 for \$1.40

Heavy
18 to 24 in. plants
60c each; 3 for \$1.70

SPIREA ANTHONY WATERER

Grows 2½ to 3 feet. Pink blooms.

This shrub is very much like the above, although its foliage does not turn in the fall, and the flowers are a little darker in color. It also is a little lower in growth.

12 to 18 in. plants, 50c each; 3 for \$1.40



Snowberry

2 to 3 ft. Plants

40c each

3 for \$1.00

12-18 in. Plants 25c each

✽

SNOWBERRY WHITE

Grows 3 to 4 feet
White berries

This is a very popular medium height shrub. Bears large clusters of large waxy white berries, well into the winter. Very showy.

SNOWBERRY RED. (Coralberry)

This variety has small red berries on large clusters. Foliage is dark green, and holds well into the winter. The plant has a drooping effect in the winter, which is caused by the weight of the berries. A very good shrub for shade or damp places; will also do well in the sun.



Spirea Thunbergii

2 to 3 ft. Plants

50c each

3 for \$1.40

12-18 in. size 30c each

✽

SPIREA THUNBERGII

Grows 3 to 4 feet

A very fine low growing shrub. Covered with very small white blooms early in May. The foliage is very finely cut and is very heavy, which makes it unusually attractive all summer. You can't go wrong in planting this shrub. It needs sun and good soil.

AMOR PRIVET

Grows 5 to 6 feet. The Hedge Plant

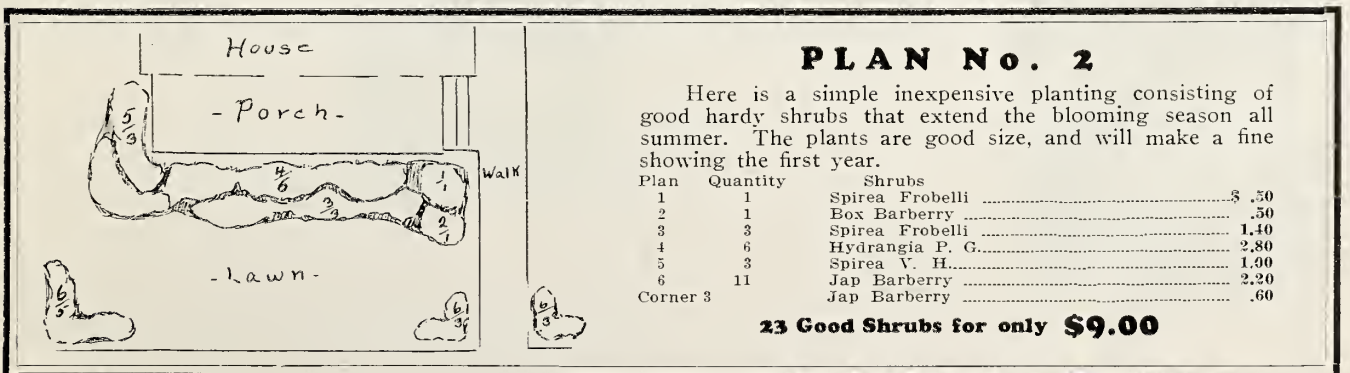
This is the popular hedge plant, very hardy and easy to grow. Can be sheared to any height or shape. See page 13 for hedge sizes.
2 to 3 ft. Heavy plants for replacing in hedges, 25c each

PLAN No. 2

Here is a simple inexpensive planting consisting of good hardy shrubs that extend the blooming season all summer. The plants are good size, and will make a fine showing the first year.

Plan	Quantity	Shrubs	
1	1	Spirea Frobella	\$.50
2	1	Box Barberry	.50
3	3	Spirea Frobella	1.40
4	6	Hydrangia P. G.	2.80
5	3	Spirea V. H.	1.00
6	11	Jap Barberry	2.20
Corner 3		Jap Barberry	.60

23 Good Shrubs for only \$9.00



WIRT'S HARDY SHRUBS**Honeysuckle**

2 to 3 ft. Plants

50c each

3 for \$1.40

⌘

HONEYSUCKLE MORROWI

Grows 5 to 6 feet
Creamy white flowers
Bush rather spreading in
growth, flowers are small
creamy white, followed by
black berries. A good tall
shrub 3 ft. plants

50c each; 3 for \$1.40

**HONEYSUCKLE
TARTARIAN**

Grows 6 to 8 feet. Pink flowers.
An upright grower, with dark green foliage. Pink flowers
in June, followed by red berries. A good tall shrub for back-
ground or screen. 3 ft. plants. 50c each; 3 for \$1.40

**Weigelia**

2 to 3 ft. Plants

50c each

⌘

WEIGELIA ROSEA

Grows 3 to 5 feet
Pink blooms
I think this is the best of
the Weigelias, as it has heavy
deep green foliage. Pink flow-
ers in June and a few all sum-
mer. A fine medium growing
shrub.

2 to 3 ft. plants
50c each; 3 for \$1.40**WEIGELIA EVA RATHKE**

Grows 4 to 6 feet. Crimson blooms
This shrub has deep green foliage, the flowers are red,
trumpet-shaped.
18 to 21 in. plants, 50c each; 3 for \$1.40

QUINCE JAPAN Grows 3 to 4 feet. Rose scarlet blooms.

A very good shrub which is very little used. It blooms very early
in the spring with rose scarlet flowers. The foliage is dark and very
shiny. Some years it bears small Quinces 2 to 3 in. in diameter.

18 in. plants, 50c each; 3 for \$1.40

**Sumac**

3 ft. Plants

50c each

3 for \$1.40

⌘

SUMAC CUT LEAF

Grows 6 to 8 feet
Bright red leaves
This shrub has long fern-
like leaves, which turn bright
red in the fall, which makes it
most attractive. It is very ir-
regular in growth, as it is
sometimes called staghorn
Sumac.

**Cranb'ry Highbush**

18 to 24 in. Plants

50c each

3 for \$1.40—6 for \$2.70

⌘

CRANBERRY Highbush

Grows 6 to 8 feet
Scarlet Berries
Upright in growth with
smooth, light gray branches
and broad, rough leaves, lus-
trous green changing to rich
copper in the fall. Flat heads
of white flowers 3 to 4 inches
across in June. The clusters
of fruit begin to color by the
end of July and remain on
the branches and keep their
scarlet color until the follow-
ing spring.

**Snowball**

18 to 24 in. Plants

60c each

3 for \$1.70

⌘

SNOWBALL COMMON

Grows 6 to 8 feet
White blooms
This is the old fashioned
snowball, that will grow al-
most everywhere. Flowers in
May with large white balls.

**Tamarix**

3-4 ft. Plants

50c each

3 for \$1.40

18-24 in. Plants, 35c each

⌘

AFRICANA

Grows 6 to 8 feet
Pink blooms
The Tamarix are becoming
very popular. This variety
has green feathery foliage and
soft sprays of pink flowers in
July and August.

TAMARIX AMURENSIS. Grows 5 to 6 feet. Pink flowers.
This variety has bluish green feathery foliage, also pinkish
red flowers. Don't neglect to add Tamarix to your planting, as
it is very showy and entirely different from any other shrub.

PLANTING INSTRUCTIONS GO WITH EVERY PLANT

CARE OF ROSES

The growing of roses is very simple, the planting and trimming is the main thing.

Roses should be planted 3 to 4 inches deeper than they grow in the nursery, get them down well into the ground. Fill the hole about half full of soil then put at least one bucket of water to each plant, after the water settles fill up the hole with soil; as a fertilizer a little well rotted cattle manure can be used on top the ground. After the rose is planted cut the plant back within 4 inches of the ground. For winter cut the plants back within 6 inches of the ground and cover the plant completely with leaves or straw. In early spring remove the covering and cultivate and lightly fertilize, and you will have roses every year.

ROSES
are easy to grow

STURDY
TWO YEAR
PLANTS **60^c** each

MY ROSES ARE WAXED
All the roses that I sell are Waxed, that is the tops are covered with paraffine, which keeps the tops from turning black and dying to the ground which is much the habit of roses. This wax will push off when the plant grows. Just an added protection from us to you.



Gruss an Teplitz

Size	Each	3 Plants	5 Plants	10 Plants
Sturdy 2 yr.	\$.60	\$1.75	\$2.85	\$5.50
Postage	.08	.12	.18	.25

Hybrid Perpetual Roses

**EVERBLOOMING
AMERICAN BEAUTY**

Red. Large flowers.

A profuse bloomer, with very large, deep pink to carmine, cerise flowers, that are delightfully fragrant. Borne on long, stiff stems, heavily clothed with foliage.

GENERAL JACQUEMINOT

Scarlet crimson

The Jack Rose, a long time favorite. The fragrant, perfect formed blossoms come early, are brilliant scarlet crimson, and are borne on long, strong stems, by a vigorous plant.

PAUL NEYRON. Clear Pink

One of the best hybrid perpetuals for out door culture, and probably the largest rose in commerce, the flowers sometimes being 6 inches in diameter. Fragrant, clear pink blooms, shading to rose, produced by a vigorous hardy plant.

FRAU KARL DRUSCHKI

White. Large flowers

An immense pure white, perfectly double rose. Abundantly produced in June and if kept growing, continues blooming all summer. An extremely popular rose, having second place in the "favorite dozen" roses. Plant robust, vigorous and upright grower.

GEO. DICKSON Dark Velvety Crimson

This is a rose of splendid form. Good bloomer and flowers are very large.

Tea Roses

EVERBLOOMING

These Roses are highly fragrant and send out many flowers. They need a little winter protection.

ETOILE de FRANCE. Crimson

A decidedly dependable rose, with long, pointed buds, flowers very fragrant, large, cupped, velvety crimson, with vivid cerise center. Vigorous bushy habit, continuous bloomer.

GRUSS an TEPLITZ. Crimson

An extremely useful and dependable variety, succeeding well all over the United States. A profusion of beautiful, clear crimson scarlet fragrant flowers, borne from June until frost. A vigorous and shapely plant.

PINK RADIANCE. Silvery Pink

Vigorous upright bushy plants bear a continuous supply of very large, light silvery pink to salmon pink flowers on long, strong stems.

RED RADIANCE. Deep Red

Vigorous, upright bushy plant, bearing a continuous supply of very large, beautiful deep red globular flowers.

SOUV. CLAUDIUS PERNET

Yellow

A beautiful, pure sunflower yellow, deeper in the center. The large, long pointed buds open to full double fragrant flowers. Large, glossy, disease resistant foliage. Plant of vigorous, upright habit. One of the best yellow roses.

COLUMBIA. Pink.

An unusually good American rose. The flowers are large, fully double, bright lovely pink, shading darker at maturity, fragrant and borne until late fall. A strong grower.

LOS ANGELES

Flame pink, shaded gold

One of the most notable American garden roses. Its color is a luminous flame pink, toned coral, shaded translucent gold at base of petals. An upright, sturdy grower, bearing perfect fragrant flowers on strong stems.

LADY HILLINGTON. Yellow

Buds long pointed, blooms double, of peculiar and pleasing deep apricot yellow, free bloomer, a fine rose.

MME. CAROLINE TESTOUT

Satiny Pink

The streets of Portland are bordered with thousands of these roses, because the beautiful blooms are borne abundantly all summer, on strong, vigorous plants. The large rounded flowers are bright satiny rose, with darker center.



Columbia



Claudius Pernet



Frau Karl Druschki

New Multi-colored Roses

We are offering a few of the new roses. These roses have shadings of several colors which make them stand out from other single colored roses. Try a few of these newer kinds.

GOLDEN EMBLEM Golden Yellow
A most dependable yellow rose. Shows a large perfect shaped golden yellow bloom. Foliage leathery. An abundant bloomer. \$1.00 each

WILLOWMERE Rich Shrimp Pink
The long pointed coral red buds develop into large double flowers of a rich shrimp pink shaded yellow in the center. A vigorous upright grower. \$1.00 each

SENSATION Scarlet Crimson
Large, very double scarlet crimson flowers. Long pointed buds, very heavy; heavy bloomer. \$1.00 each

TALISMAN Yellow copper red.
One of the new roses. A wonderful combination of shadings of gold, apricot yellow, deep pink or old rose. The bud is long, perfect formed. The plant is strong, vigorous grower and heavy bloomer. 2 year plants, \$1.25 each



Plant More CLIMBING ROSES

STRONG
TWO YEAR
PLANTS **50^c** each

Quality Roses	Each	3 plants	5 plants	10 plants
	\$.50	\$1.45	\$2.35	\$4.50
Postage	.08	.12	.18	.25

Hardy Climbing Roses need only a foothold, and the long trails will twine and cling to any little trellis assistance and spread charming clusters over yards of wall space.

Climbing roses bloom the second year. They bloom on the wood that is one year old, so don't trim off last year's growth. They like a sunny place, and good rich soil. Spray with Black Leaf 40 for the rose bugs and lice. Black Leaf 40—1 oz. 35 cents. Cannot Mail.

Climbing Roses

EXCELSA. Blood Red

An intense crimson, with the edges of the petals a little lighter. Produced in immense clusters, very similar to Crimson Rambler, but much superior in color and in glossy, disease resistant foliage.

AMERICAN BEAUTY CLIMBING. Rich Carmine.

The moderately fragrant rich carmine, 3 to 4 inch flowers are produced in great abundance. It will succeed in almost any situation, and after becoming established, makes a very vigorous growth.

CRIMSON RAMBLER. Crimson

An extremely popular Rose, great masses of crimson semi-double flowers are borne by the vigorous plant. Desirable pillar and porch plant, but foliage gets rusty in late summer.

DR. VAN FLEET. Deep Pink

Probably the best climbing rose in cultivation. Perfect formed long pointed deep pink buds on long stems with several in a cluster—expanding to about 4 inches. It is a vigorous grower, with abundant dark green glossy disease resistant foliage, that is a delight to the eye all summer.

PAUL'S SCARLET CLIMBER. Scarlet

Winner of gold medal as best new climbing Rose, at National Rose Society's Exhibition. Flowers are scarlet, shaded crimson; large, semi-double. Corresponds with Cl. Am. Beauty, Dr. Van Fleet, etc., as to size, shape and habit. Blooms very long, holding a flower after many June bloomers have dropped their petals; a wonderful Rose for trellis or pergola use.

WHITE DOROTHY PERKINS. White

A sport of Dorothy Perkins, and closely resembles it in every way except its immense clusters of pure white flowers, a most valuable climber.

DOROTHY PERKINS. Pink

One of America's notable climbing Roses, clear pink, slightly fragrant flowers, borne in great profusion, and lasting a long time. The plant makes a very strong growth, as much as 20 ft. in a season. Foliage is glossy, bright green, and persists into cold weather.

GARDENIA. Yellow

Has evenly golden yellow buds, that open with a shade of white when fully expanded, has attractive glossy dark green disease resistant foliage. One of the most dependable yellow climbing Roses.

A HEDGE TYPE ROSE

F. J. GROOTENDORST (A baby rambler Rugosa Rose)

This rose has rugosa foliage, compactly bushing, moderate growth, but revealing its baby rambler cross in form, color which is double crimson in clusters. This is an excellent rose to be used as a shrub, but more especially rose hedges. If you always wanted a rose hedge, here is the plant to buy.

2 yr. No. 1 plants, 60c each; \$5.00 for 10 plants



Excelsa

MY ROSES ARE WAXED

All the roses that I sell are waxed, that is the tops are dipped in paraffine. This wax covering keeps the tops from turning black and dying, which is much the habit of roses. This wax will push off when the plant grows. Just an added protection from us to you.

Shortneck Baby Roses

60c each

A distinct and charming class of roses, low growing, seldom exceeding 15 inches in height, and all summer produce an abundance of clusters of small perfectly formed flowers. Not climbers.

BABY DOROTHY. Bright Pink

Coral pink, double flowers, borne in large clusters from June until late fall.

CRIMSON BABY. Crimson

Bright crimson blooms, borne in splendid trusses on long strong stems. It is a very vigorous grower of bushy habit.

GRUSS an AUCHIN. Yellow

An unusually good light colored rose. The flowers are very large, for this class, they are delicate flesh pink overlaid with yellow, foliage large leathery dark green, good cut flower, and indispensable sort.

GOLDEN SALMON. Bright Orange

This is a new Baby rose which we have tried for the past two years and now have put on the market. It is a bright orange color, very heavy bloomer all summer. Try it, you will like it.

Eskimo Beauties

'The kind that grow where no others will'

Can be used same as shrubs. Grows 3 to 4 feet

Once planted, they are permanent; no pruning, no spraying, no suckering nor anything else is needed—just a little manure spaded in and the ground stirred. They bloom all summer. No winter covering needed.

Big 2 yr. plants 60c each

BELLE PORTEVINE. (An Eskimo Beauty)

The blooms are large and full, the petals gracefully in-curved. Bright, clear, lively pink

HANSA. (An Eskimo Beauty)

Handsome in bud and bloom. Both are large, very full and double. The color is rich, maroon-red.

WIRT'S HARDY PERENNIALS

Hardy perennials or old-fashioned hardy garden flowers are among the most useful and beautiful of ornamental plants. They are usually a little hard to transplant but when once started, they are very hardy and will live from year to year, each season producing a wonderful mass of beautiful blooms. You will find them especially fine for borders, for foundation plantings; along paths and to cover unsightly places in one's yard. If you plant hardy perennials, your worries should cease for they come up every spring from the roots without further bother of planting.

ALL PERENNIALS ARE SENT POSTPAID

HARDY DELPHINIUM (Larkspur)

There is no family of perennials more in the public mind today than Delphiniums. They are the cream of all perennials. Their blooming season covers nearly the entire summer. The flower stalks reach the height of 6 feet and come in a great array of colors.

BELLADONNA

One of the older sorts with large spikes of delicate Turquoise Blue. Free and continuous bloomer from June until frost.

Strong 2 year plants, 25c each; 3 for 70c

BELLAMOSA

A very Dark Blue variety, very striking in connection with the lighter blue of the Belladonna. Continuous bloomer.

Strong 2 year plants, 25c each; 3 for 70c

WREXHAM HOLLYHOCK STRAIN

This is one of the highly developed strain of Delphiniums. We have had growing in the Nursery bloom spikes over 6 feet tall. The distinguishing feature of this strain is the great size of the florets, and their peculiar arrangement along the stem. Very much like the Hollyhock. The colors run from dark blue to light and a few of the pink shade are also found. Colors cannot be guaranteed.

Strong 2 year plants. Mixed only, 35c each; 3 for \$1.00

ENGLISH HYBRIDS (Blackmore and Langdon Strain)

This strain contains many doubles and semi-doubles. The plant attains great height with very long flower spike. Among this strain will be found the much prized shade of pink and white along with full range of the blue shades.

Strong 2 year plants. Mixed colors, 35c each; 3 for \$1.00

CHINESE BLUE (Dwarf Strain)

This is sometimes called Butterfly Delphinium. Has finely cut foliage. Very free bloomer. This type is shorter and slender in growth about 15 to 20 inches.

Strong 2 year plants, 25c each; 3 for 70c

CHINESE WHITE

Same as the above but the flowers are white.

Strong 2 year plants, 25c each; 3 for 70c



Delphinium

Blanket Flower

Gaillardia

Blooms all summer with long stems. Excellent for cutting, and has beautiful colorings. Center reddish brown, the petals are marked with rings of crimson and orange.

20c each; 3 for 50c

::

Baby Breath

Gypsophila

Will thrive any place. When in bloom has an abundance of minute white flowers. One of the best to mix with other flowers in bouquets. Can be dried for winter use.

25c each; 3 for 60c

::

Chinese Lantern Plant

Physalis

Produces bright orange scarlet lantern-like fruits. Very fine for winter bouquets. Grows 2 ft.

20c each; 3 for 50c

::

Balloon Flower

Platycodon

Grows 2 ft. tall, with blue flowers which resemble small balloons about 1½ inches in diameter.

25c each; 3 for 70c

Painted Daisies

Pyrethrum

MIXED. Light shades 25c each; 3 for 70c

Very hardy, blooms at intervals throughout the summer. Fine for cutting.

::

Live For Ever

Sedum

SPECTABILIS

Broad, bright green foliage, with immense heads of rose colored flowers. Very showy. Fine for border planting.

25c each

::

Great Sea Lavender

Statice

LATIFOLIA

A valuable plant for border or rockery. Leaves have a leathery appearance, with purplish blue minute flowers on a tall stem. Can be dried and makes wonderful winter bouquets.

25c each; 3 for 70c

::

Hardy Pansies

Viola

MIXED

One of the best all round perennials. Blooms from June until snow. We have picked Pansies after a snow storm. Not the common annual Pansy.

20c each; 3 for 50c

HARDY FLOWERS COME UP EACH YEAR

WIRT'S HARDY PERENNIALS

ALL PERENNIALS ARE SENT POSTPAID



Shasta Daisy

Shasta Daisy**ALASKA**

An improved hardy white daisy. flowers snow white with yellow center. Excellent for cutting.

20c each; 3 for 55c

Sweet Wivelsfield

An entirely distinct novel hardy Dianthus known as Sweet Wivelsfield. The blooms are nearly three times as large as those of Sweet William. The colors come in hundreds of shades including reds, purple with black, whites, pinks, in fact so many colors one cannot name them. Excellent plants for perennial or rock garden. 3 in. pot plants, 30c each; 3 for 85c.

Coreopsis**Tickseed****LANCEOLAT GRANDIFLORA**

One of the beautiful yellow daisies. Fine for cutting. Blooms all summer.

20c each; 3 for 50c



Coreopsis

Perennial Sweet Pea**Lathyrus Latifolius**

Flowers large and full. Blooms almost all summer. Your choice of colors, red or pink.

20c each; 2 for 35c

::

Red Hot Poker**Tritoma**

Rush like foliage, smooth flower stalk a yard long with a single fiery cone at the top. Brilliant scarlet. July to Sept. A wonderful autumn cut flower.

25c each; 3 for 70c



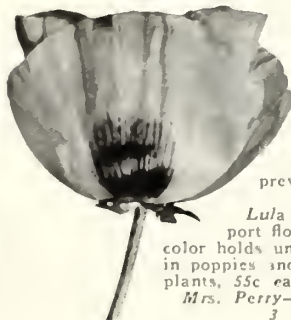
Tritoma

::

Snow in Summer

Silver white foliage all summer. Small white flowers, grows about 3 inches, fine for rockery or ground cover.

25c each; 3 for 70c

**Oriental Poppy****Papaver**

Strong 2 yr. plants

Wirt's Orange—Brilliant "Oriental Poppy" with immense, flaming flowers of orange scarlet, supreme color blotches among the prevailing greens of early spring.

3 for 70c; 25c each

Lula A. Neeley—Strong stems support flowers of brilliant Oxblood Red; color holds until the last. An unusual color in poppies and much in demand. 3½-in. pot plants, 55c each; 3 for \$1.50.

Mrs. Perry—Beautiful salmon-rose.

3 for \$1.00; 35c each

Butterfly Bush**Summer Lilac**

Makes a bush 3 to 4 feet tall, but freezes to the ground during winter. The bush is just covered with long racemes of Lilac-like flowers. Blooms in July and August. Very attractive.

30c each; 3 for 80c

::

Canterbury Bells**Campanula**

Grows 2 feet tall, blooms in June and July. Separate colors, white, blue and rose.

25c each; 3 for 70c

::

Asters**Hardy Asters**

Excellent fall blooming flower.

ARTIS. Sky blue, grows 3 ft. 30c each.

CLIMAX. White, grows 3½ ft. 30c each.

ST. EGYN. Dark blue, foliage good all summer. Grows 4 ft. 30c each; 3 for 75c.

::

Bleeding Heart

One of the old fashioned early spring flowering plants, bearing numerous rosy red heart shaped flowers until June.

50c each; 3 for \$1.40

ARTEMISIA**Silver King**

This Artemisia is one of such rare beauty it is hard to describe it. Its bright silver colored stems and foliage makes a fine contrast with other foliage and blooming plants. The foliage does not wilt or shatter when cut, and after hardening off can be kept for a long time. The plant grows about three feet and the branches are thickly covered with bright silver foliage.

35c each; 3 for \$1.00

When done blooming cut the tops off of hardy flowers. Don't cover until ground is frozen hard.

WIRT'S HARDY PERENNIALS

ALL PERENNIALS ARE SENT POSTPAID

Hardy Chrysanthemums

These are the last flowers to bloom in the fall, and come in a host of colors. 25c each; 3 for 60c

- AUTUMN GLOW** Rosy crimson.
- EVA** Rosy pink.
- INDIAN** Brownish red.
- LITTLE BOB** Bronze button.
- SNOWCLAD** Pure white.
- YELLOW QUEEN** Golden Yellow.

Adam's Needle

Yucca

Broad, sword-like, evergreen foliage. Fine plants for lawn or rockery work. Tall spikes of white flowers in June. 2 year plants 20c each

Columbine

Aquilegia

ROCKY MOUNTAIN

Bright blue and white, long spurred. 25c each; 3 for 70c

CANADENSIS

Native, bright red and yellow. 20c each; 3 for 50c

CHRYSANTHA

Bright yellow, long spurred flowers. 25c each; 3 for 70c

WIRT'S LONG SPURRED HYBRIDS

All colors, pink, lavender, blue, white and red. 25c each; 3 for 70c

Foxglove (Digitalis)

A grand display of thimble shaped flowers in immense spikes during July and August. Grows about 3 ft. My plants are extra fine this year. Rose color only.

25c each; 3 for 70c



Foxglove

Hardy Carnations

WIRT'S RED

Flowers medium size, borne on tall stems in great abundance; dark red color. About 90% of the blooms are double, very fragrant. Strong 2 yr. plants, 20c each; 3 for 55c

CRIMSON KING

The best large flowering Carnation, foliage dark olive green. The stout stems support flowers of rich crimson in great profusion. The blooms are delightfully clove scented. Blooms from June to frost. 3 in. pot plants, 35c each; 3 for \$1.00

Hardy Outdoor Ferns

Do not bury Ferns too deep. Plant just deep enough so they are well covered. Put on top of them some moss, leaves, decayed manure or mulch. If you will observe Ferns in the northern woods you will find they grow and thrive in swamps with very little soil to support them.

Strong 3 year roots, 25c each

WIRT'S CHOICE PEONIES

STRONG 3 YEAR ROOTS

The most popular of hardy plants. The flowers are very large and attractive; hardy as an oak; once planted they will take care of themselves. The following list are all good, double flowering varieties.



Festiva Maxima

FESTIVA MAXIMA White

Immense blooms, double, pure white, delicate tinge of cream in center and usually a few small flakes of crimson. The most popular peony grown. In great demand for cut bloom. An ideal white.

60c each

ALEXANDER DUMAS

Crown type—Brilliant pink, good for cut flower purposes. Very early. 50c each

MONS. JULES ELIE

Bomb type. Early mid-season. Bloom Glossy Lilac Pink. This we think is one of the finest Paeonies grown. It resembles a large Chrysanthemum and one of the largest of all Paeonies. A top notcher. \$1.15 each

Extra Fine Red Peonies

OFFICINALIS RUBRA

Large, globular bloom; brilliant crimson; this is the early flowering red peony so common to the old time gardens; much used on memorial day when other peonies bloom too late.

75c each

FELIX CROUSE

Late, large round heads perfectly double; deep crimson, marked with cardinal at base of petals.

75c each

MEISSONIER

Red Bomb type Mid-season. Very brilliant. Crimson, full double flowers on very stiff stems.

75c each

RUBRA SUPERBA

Brilliant dark crimson. Very late.

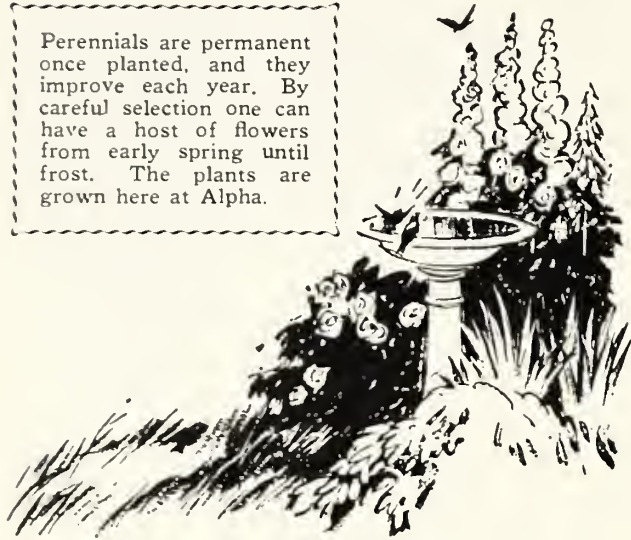
75c each

SAVE 25 to 50% ON YOUR PLANTS

WIRT'S HARDY PERENNIALS

ALL PERENNIALS ARE SENT POSTPAID

Perennials are permanent once planted, and they improve each year. By careful selection one can have a host of flowers from early spring until frost. The plants are grown here at Alpha.



Hardy Lilies

Hardy Lilies are one of the most beautiful garden flowers that have been neglected. Planted in the spring 6 to 8 inch deep, they will bloom the same season and with a little covering they will come up again each year.

AURATUM—(Gold Banded Japan Lily)

This variety has ever been a great favorite. The flower heads are large, with broad petals gracefully recurved. White, thickly studded crimson-maroon, with a wide gold band down the center of each petal. Improves with age, and produces a vast amount of bloom.

35c each; 3 for \$1.00

ELEGANS

This is a hardy and easily outdoor grown Lily. Produces a beautiful orange scarlet bloom. Remains in bloom over a period of about two weeks. Plant in Spring.

25c each; 3 for 70c

REGAL LILY

Single. New variety from western China. Hardy in all localities. Flowers are ivory-white striped on the outside with pink and splashed with canary-yellow at the base of the petals. Delightfully perfumed. Stem 3 to 5 feet.

35c each; 3 for \$1.00

SPECIOSUM RUBRUM

White spotted with rays of rosy red. Most satisfactory of all the Lilies. Mammoth size bulbs. Should be planted in the late Fall or early Spring. If planted in Spring, will bloom the same season.

35c each; 3 for \$1.00

TIGER

This is a bright rosy red Lily covered with black tiger like spots. Grows 1 to 5 feet and blooms in August. Stands heat well and is a beautiful Lily to plant among the other shrubbery. Plant in Spring.

20c each; 3 for 60c; \$1.75 per 10

LEMON LILY

Flowers clear yellow. Fragrant, free bloomer; very showy.

20c each; 3 for 50c; \$1.50 per 12

Wirt's Hardy Phlox

25c each

STURDY 2 YEAR PLANTS

Among hardy herbaceous plants, none are more showy or more easily grown than the Phlox. They are very desirable planted in groups. Individual clumps throughout perennial beds make a very satisfactory display, while mass planting of one color make the most effective showing.

They produce magnificent trusses of flowers, commencing to bloom in July, and lasting for weeks, making them always favorites of the garden. Their flowers have a very agreeable odor, and are produced in abundance. The plants are perfectly hardy and will grow year after year with but little care. I recommend frequent cultivation, however, as they quickly respond to it, producing much larger trusses, and larger and more beautiful individual flowers. Simply keep the ground clear of weeds and well hoed. They will grow and do well in any soil; but prefer a good rich well drained loam. They may be planted in the Fall during August, September and October; and in the Spring during April, May and until the plants are too far advanced in June. In planting be sure that the crown of the root, that is, the part where the new shoots start, is two inches below the surface of the ground.

State Varieties Wanted

Size	Each	3 plants	6 plants	12 plants
Strong 2-yr. Plants	\$.25	\$.70	\$1.35	\$2.50

The following is a splendid assortment of colors. They are two year plants and will bloom the first year.

BEACON Cherry red, crimson center.**BRIDESMAID** White, carmine center.

FERNAND CORTEZ

Deep crimson, shaded bronze. This is one of our best and most popular varieties.

MRS. CHAS. DORR Light rosy lavender.**PROF. VIRCHOW** Carmine overlaid orange scarlet.**RHEINLANDER** Bright salmon pink, claret center.**R. P. STRUTHERS** Light cherry red, shaded crimson.**RYNSTROM** Rosy pink with salmon shades.**MISS LINGARD** Pure white early.**MRS. JENKINS** A vigorous growing pure white.**THOR** Deep salmon crimson.**VON HOCHBERG** Rich deep crimson.**W. C. EGAN** Delicate blue pink, rosy center.**WM. RAMSEY** Very deep reddish purple.

Hardy Phlox Planting

One Customer Said His Rubrum Lily Grew Five Feet and Had 25 Blooms the First Season

W I R T ' S H A R D Y I R I S



IRIS are much used in solid rows or evenly spaced groups along the backyard walls, in front of shrubby groups, and in narrow spaces along the foundation. We have a large assortment of varieties, many very new. The plants are strong, well rooted.

German Iris

The early flowering Iris, blooming in May and June.

AMBASSADEUR

One of the finest of Bronze type. Vigorous grower, stems often 3 feet. The standards are bronze combining yellow, the falls violet red with orange beard.

55c each; 3 for \$1.50

CAPRICE

Flowers large and rounded, rich rosy-lilac with falls a little darker.

15c each; 3 for 40c; 6 for 75c

CECILE MINTURN

Uniform soft catalyca rose. Standard ruffles.

45c each; 3 for \$1.25

ELDORADO

One of the newer Bronzes. Standards yellowish bronze. Falls violet purple.

15c each; 3 for 40c; 6 for 75c

HGNORABILIS

Standards rich golden with rich mahogany brown falls.

20c each

LORD OF JUNE

Standards lavender purple. Falls rich violet purple. A magnificent variety of gigantic size.

55c each; 3 for \$1.50

LORELY

Standards shaded with yellow. Falls ultra marine blue.

15c each; 3 for 40c

MADAM CHEREAU

White, elegantly frilled with blue, very fragrant. A very charming sort.

15c each; 3 for 40c

MOTHER OF PEARL

A light soft lavender with a lustrous texture displaying the iridescent colors of mother of pearl.

45c each

OPERA

A rich violet red toned bicolor. A very unusual color.

75c each

PROSPER LAUGIER

Standards bronze-red. Falls ruby purple.

20c each; 3 for 55c

QUEEN OF MAY

Old rose. Very near pink flowers are borne on very tall stems.

25c each; 3 for 70c

QUAKER LADY

Smoky lavender shading to deep blue.

15c each; 3 for 40c

W. J. FRYER

Ruffled standards are of glistening old gold and the falls are of maroon with a violet center and a narrow yellow edging.

35c each; 3 for \$1.00

DWARF BLUE

The variety grows 6 to 8 inches tall, the flowers are almost a dark purple, splendid for edging flower beds or walks.

10c each; \$1.00 per 12

GERTRUDE

Clear blue. The flowers are borne on tall stems, 2 to 2½ feet tall, three to four flowers to the stem. The foliage grows 1 to 1½ feet tall.

10c each; \$1.00 per 12

AUREA

Canary. Yellow. Bloom a little later than the two above. The flower stems are 2 to 3 feet tall. Plant a very free bloomer.

15c each; \$1.50 per 12

PARSIENSIS

Deep purple. Grows same as above. The flowers are very large and very lasting.

10c each; \$1.00 per 12

FLORENTINA ALBA

Purple white. Flowers are very large: borne on stem 2 to 2½ feet tall; one of the best of the white.

10c each; \$1.00 per 12

Siberian Iris

A very showy and prolific type of slender, compact habit, with narrow, grassy foliage and 2 to 3 ft. upright stems. Blooms after the German Iris.

SNOW QUEEN

Ivory white blooms borne on 3 ft. stems.

15c each; 3 for 40c

BOY BLUE

Bright blue.

15c each; 3 for 40c

Beautiful Japanese Iris

STRONG
ROOTS

35^c
each

\$1.00
for 3

This is the last of the Iris to bloom. Their season runs well into July. They are excellent for the rock garden and pools. The flowers are generally rather flat and wide, often measuring 10 to 12 inches across. The colorings are very rich.

GEKKA-NO-NAMI (Waves under moonlight)

Earliest to bloom. Glistening white with creamy white stigmas.

ISO-NO-NAMI (Shallow waves)

One of the largest flowered, and latest to bloom. Flower somewhat double. Soft blue with soft silvery veins.

KOKO-NO-IRO (Purple and Gold)

Very large double flowers, often 10 inches across, early and free bloomer. Rich royal purple petals with yellow center.

MAHOGANY

Large double flowers, around the latest to bloom. Color dark red.

UCHIU (Universe)

A beautiful six pedal flower. This variety covers the longest blooming season. Standards white tipped blue. Falls blue with golden center, white halo.

WIRT'S CANNAS 15^c each

3 Roots 6 Roots 12 Roots 25 Roots
40c 75c \$1.40 \$2.50

I PAY THE POSTAGE ON ALL BULBS

Cannas are one of the finest of all season bedding plants. A wide range of colors in flowers and foliage. They serve to conceal the ground or make a background. They like plenty of sun and rich soil, with plenty of water.

My Cannas are grown here at the Nursery, and are good, large, plump roots. All are dwarf varieties. Cannas should be planted 4 to 5 in. deep in good soil. Plant them 2 feet apart.

APRICOT

(4 ft.) Broadly compact trusses, freely productive. Rich apricot color. A rich, dainty and most attractive Cannas. Green leaves.

MADAM CROZY

Grows 3½ ft. Vermillion scarlet, edged with bright golden yellow.

KING HUMBERT

(4½ ft.) One of the best Bronze leaved varieties. Distinct heart-shaped leaves, shaded with purple madder brown. Immense orchid flowered trusses of velvety scarlet. Many plants of this variety come with yellow and scarlet flowers on the same plant, which is quite a novelty.

YELLOW KING HUMBERT

(4 ft.) A very popular green leaved variety. Flowers very large. Golden yellow spotted with bright red.

THE PRESIDENT

(4 ft.) A green leaved variety, which ranks among the best. The flowers are immense and round. Firm, of a cherry pure scarlet.

SHENANDOAH

(3½ ft.) A bluish green variety, which grows very compact. Flowers large pale pink with satin sheen. Very fine.

WYOMING

(5 ft.) A very showy variety. The foliage is a rich purpleish bronze, the flowers bright orange, slightly tinted with salmon.

WIRT'S CHOICE GLADIOLUS

Set bulbs 2 to 4 inches deep and 2 inches apart in the drills, single rows 12 inches, and double rows 18 inches apart. Beds do well planted 4 to 6 inches apart each way.

Grand Garden Mixture of Gladiolus

Special for 50 bulbs. \$1.00 postpaid

This mixture of Glads is the biggest bargain I have in the Catalog. Many of the varieties that go into this mixture would cost \$1.00 for 12 bulbs. The bulbs are Big No. 1 size and will bloom this year.

RED COLLECTION GLADS

We have grouped together the good red varieties running from light red to almost black.

60c per 12; \$2.75 per 50

LAVENDER AND WHITE COLLECTION

This collection contains purple, lavender, and white, with lavender markings, also pure whites.

60c per 12; \$2.75 per 50

SUNSET COLLECTION

Contains yellows, pinks with dark markings. An assortment of real varieties.

60c per 12; \$2.75 per 50

WIRT'S DAHLIAS 25^c each

3 for 60c 6 for \$1.10 12 for \$2.10 (except as noted)

Dahlias are the most beautiful of fall flowers. Their immense size and wonderful colors make them very showy and attractive. Dahlias like the sun and lots of water. Plant the tuber about 6 in. deep, eyes or sprouts up. I pay the postage.

Cactus Dahlias

COUNTESS OF LONSDALE

Delicate apricot toward the edge of the petals. 35c each; 3 for \$1.00

GENESTA

Rich orange bronze.

KRELMHILDE

Shed pink shading to white at center.

MARION THOMPSON

Pure lemon yellow, very large.

EARL OF PEMBROKE

Clear purple. A wonderful showy variety.

Decorative Dahlias

DELICE Glowing rose pink.

GOLDEN SUN

Golden yellow, lighter at center.

JACK ROSE

Brilliant crimson red.

Show Dahlias

DREER'S WHITE Pure white.

ORA DOW Purple, tipped white.

PEARL HILDA Pink.

BON TON Deep garnet red.

DAHLIA CULTURE

Dahlias should be planted after May 10th and about 6 inches deep and 3 feet apart in well drained soil. They seem to do best on poor soil, as in rich soil they make a big growth and have lots of buds but the buds never turn into flowers so do not use fertilizer or plant in rich soil.

DAHLIAS DO BEST WITHOUT FERTILIZER

ROCK PLANTS AND PLANTING

Everybody is making rock gardens these days. Even the small lot has some place where a tiny rock garden may be tucked away. There is no end to the interesting combinations of rocks and plants. Pygmy mountains, Lilliputian valleys can be built of rugged rocks with a trickle of water losing itself into a mirror pool.

LOCATION. A spot in full light and air, away from shade trees is best. Any slope or depression can be used.

PLANNING. Make your garden a reproduction of nature. Don't get it too formal or the effect will be lost. Proportion is the main thing. One cannot get rocks to make a mountain or have room to make a lake, but make your mountain of rocks and valleys of flowers to correspond to the size of your pool.

ROCKS. The best rocks to use are between the round type and the flat type. Save the flat rocks for walks and steps. Too many small rocks make the garden unnatural, and are hard to keep in place.

SOILS. Use sod or leaf mold mixed with equal parts of garden soil with a little sand. Very little manure should be used, as most rock plants will not do well in heavy soil.

CONSTRUCTION. Have the soil prepared in advance. Grade any good existing soil to the proper mound, then cover the mound with at least 12 inches of the mixed soil. Then lay the rocks, lower ones first. Choose and place rocks so there is more plant surface than rock in the finished effect. The main thing is to anchor each rock firmly as the rains will not wash your garden away. Also see that plants are set in such position that rains will not take the soil away from them. Do not use cement if possible to get the rocks solid without it.

We are listing below plants that are well adapted for Rock Gardens. There are many plants among our Perennials that are also fine for rock gardens. The low growing evergreens should be used, also tall shrubs and evergreens for background.

ARABIS ALPINE (Rockcress). White flowers and foliage; May. 6 inches. *25c each.*

CHEIRANTHUS ALLINOI (Sib. Wallflowers). Fiery orange foliage; June to Aug. 12 in. *25c each.*

FUNKIA LANCIFOLIA (Plantain lily). Narrow green leaves, blue flowers; Aug., Sept. 18 in. *25c each.*

HELIANthemum (Rock or Sun Rose). Evergreen perennial, golden yellow; July and Sept. 10 in. *35c each.*

IBERIS SEMP. (Hardy Candytuft). Dwarf green foliage covered with sheet of white; May, June. 8 in. *25c each.*

NEPETA MUSSINI (Ground Ivy). A dwarf rock plant producing masses of beautiful shades of lavender all summer. 12 in. *35c ea.*

SEDAM ACRE (Stone crop). Dwarf rock plant with bright yellow blooms; July. 4 in. *25c each.*

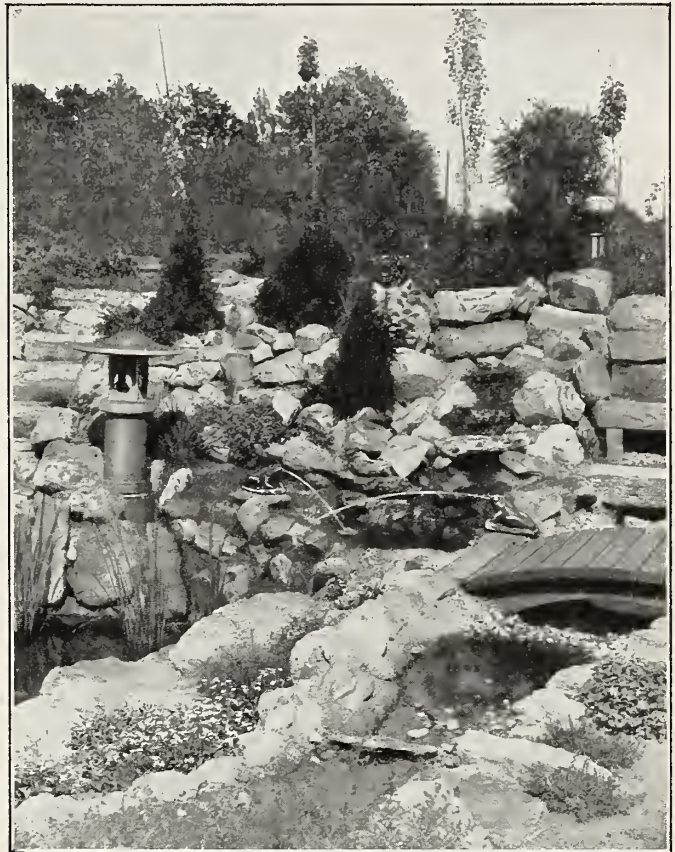
SEDAM ALBUM (Stone Crop). Dwarf spreading thick waxy round foliage, white flowers; July, Aug. 4 in. *25c each.*

SEDUM LYD GLAUCUM. Bronze foliage, pink flowers; July. 3 in. *30c each.*

SEDUM BRILLIANT. Heavy thick light green foliage, dark pink flowers. 14 in. *25c each.*

THYMUS VUL (Thyme). Purplish lilac flowers, foliage fragrant; June, July. 6 in. *25c each.*

VIOLA FRYS (Sweet violet). An old English violet; very fragrant blooms, deep purple; May. 6 in. *25c each.*



ALYSUM HARDY (Basket of Gold). Produces masses of golden flowers very early. 8 in. *25c each.*

FORGET-ME-NOT. Dwarf spreading plant with small blue flowers in great masses; likes moist location; May, June. 6 in. *25c*

PERENNIALS SUITABLE FOR THE ROCKERY

Listed on Pages 21 to 25

Columbine	Painted Daisy	Snow in Summer
Hardy Carnation	Gaillardia	Hardy Pansies
Balloon Flower	Coreopsis	Phlox

EVERGREENS SUITABLE FOR THE ROCKERY

Listed on pages 4 and 5

Savin Juniper	Swedish Juniper
Globe Arbor Vitea	Mugho Pine
Andora Juniper	Spiny Greek Juniper

WATER LILIES

Interest in water gardens is growing rapidly. The principal feature of interest in the pool is that it can be made to fit small or large grounds, will furnish a home for fish, water lilies, bog plants, and it has both beauty and strangeness to attract all.

WE ARE OFFERING A GOOD ASSORTMENT OF HARDY WATER LILIES

Not ready for Delivery until after May 1st

ODORATA GIGANTEA (White)—Very large pure white, and very fragrant. A free bloomer. An extra good low priced variety. *85c*

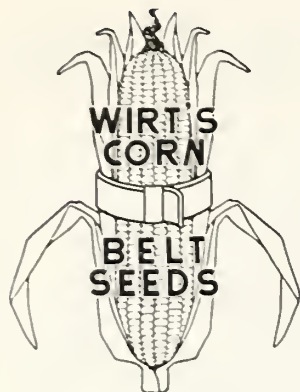
HELEN FOWLER (Pink)—Good pink with lighter center, flowers borne well above the water. It is especially adapted to pool or tub culture. Very fragrant and free bloomer. Medium size. *\$1.75*

JAMES BRYDON (Red)—This is a very fine hardy lily, free bloomer and rapid grower. Flowers measure 5 to 6 in. across. Color rich rose crimson. An early bloomer and you can count on it being in bloom every day. *\$4.00 each.*

PAUL HARIOT (Changeable colors)—A free bloomer, light yellow delicately shade copper red. Flower large and cup shaped. *\$4.00*

WATER LILY CULTURE

Water lilies in small pools seem to do better if planted in boxes about 12 in. square and 8 to 10 inches deep with the boxes set a few inches off the bottom of the pool. Use about $\frac{1}{2}$ sod, $\frac{1}{4}$ rotten cattle manure, $\frac{1}{4}$ garden soil. Plant the root, then set the box in the pool and cover the soil with an inch of nice sand. Water should be at least 12 in. over the Box.



Seed Department

Wirt's High Grade Corn Belt Seeds

All the varieties of vegetable seed listed are those of known merit, the good old standby varieties that every gardener knows. The seed is of high germination and all fresh 1930 crop, and will rank as high as any vegetable seed grown. We have had many pleasing reports of the success of our gardening customers. All our Packets are 5c. Bulk prices are listed on Page 30 and are very reasonable.

ALL MY SEEDS ARE SENT POSTPAID

ALL PACKETS 5c

(Bulk prices see Page 30)

ALL PACKETS 5c

BEANS

DWARF, WAX OR BUTTERED

Sow in rows 2 to 3 feet apart, plant about 8 inches apart in the rows. Cover about 2 inches. One pound of seed will sow 100 feet of row; one bushel (60 lbs.), to the acre.

Wirt's Rust-proof Golden Wax—The pods are exceedingly handsome, being of large size, very thick, and unusually fleshy. The quality is tender, brittle and entirely without strings or fibers at all stages until maturity, while the color is rich golden-yellow. There is no strain of Golden Wax that will excel the stock we offer.

DWARF GREEN PODDED VARIETIES

These varieties are very rich in flavor and slightly hardier. Sow in rows 2 to 3 feet apart. Plant about 8 inches apart in the rows. Cover about 2 inches. One pound of seed will sow 100 feet of row; one bushel will sow an acre.

Burpee's Stringless Green Pod—Plant grows from 12 to 15 inches high, very erect and productive. Pods round and about 5 inches long, absolutely stringless and very tender.

Giant Stringless Green Pod—From its introduction it has been a favorite. Pods about 5 inches long, dark in color, very brittle and absolutely stringless.

POLE BEANS

Pole Beans require more care than Bush Beans, but bear for a longer period and are generally more productive. Plant hills 2 to 3 feet apart and 3 or 4 beans in every hill. One-half pound to 100 feet of row 30 pounds to the acre.

Famous Kentucky Wonder or Old Homestead—Very early and enormously productive, the long green pods hanging in clusters from top to bottom of pole; entirely stringless. Pods of a silvery green color.

LIMA BEANS

Henderson's Bush Lima (Baby Lima)—One of the smaller-seeded sorts but the most prolific of all the Bush Limas. Somewhat earlier than the other varieties and bears all the time.

Fordhook Bush Lima—This newest and best Bush Lima represents the highest achievement in bean breeding and we offer our patrons, in our Improved Strain of Fordhooks, a Bush Lima that has attained the acme of perfection, surpassing any other strain or type on the market. It is the best possible Bush Lima Bean, possessing every quality so long known and esteemed in the older pole varieties, and can be grown as early as any Snap Bean.

BEETS

TABLE VARIETIES

Rich soil is very important in growing table Beets. Plant the seed as early as possible and dig young. Do not allow them to become overgrown.

Detroit Dark Red—Very early, medium size, globe-shaped; dark red skin.

Early Blood Turnip Beet—Our standard variety with bright red flesh. It is a good keeper.

CELERY

White Plume—Matures in 100 days. Unlike most varieties, this one does not require to be earthed up, but if only loosely tied, and a few handfuls of earth brought close around the base of the leaves to keep them close together, all the inner leaves or thin stalks will turn white and crisp.



CABBAGE

Early Jersey Wakefield—The best first early, oblong sort. Heads are conical, very hard and solid, and of excellent quality. Most gardeners depend upon it for the bulk of their extra crop, and its hardiness to resist cold and other unfavorable conditions insures the most satisfactory results.

Mammoth Prize Late Flat Dutch—Prize Flat Dutch is comparatively free from a disposition to burst, and is one of the most reliable winter keepers.

True Genuine Danish Ballhead—This celebrated Cabbage is now recognized the world over as the hardest headed, longest keeper, best shipping and biggest money maker of all winter varieties.

Large Late Drumhead—It makes a large, round, firm head, uniform in shape and color, which seldom bursts or rots. It is a standard sort for winter keeping and sells readily in the winter and spring markets. One of the most profitable varieties to grow, and will give unbounded satisfaction.



CARROTS

New Early Chautauay—A very fine variety for bunching. This is a very choice strain, producing thick roots of the finest quality. Will average three inches in diameter at the shoulder, gently tapering throughout the broad stump-root, and measuring five inches in length. Flesh tender, fine grained, free from hard core, and of a deep golden orange. An excellent variety to grow for winter use, as they can be harvested easily and are immensely productive.

Guerande or Oxheart—A good variety on soils too hard and stiff for the longer-growing sorts. The root is short, very thick and has a small tap root; flesh is a bright orange color, fine grained and sweet flavor.

CUCUMBER

Chicago Pickling—Small variety used extensively for pickling; prolific.

Long Green—One of the earliest long green varieties, fruit 10 to 12 inches long, and of a rich dark green color; fine for shipping; also a good pickling variety when young.

Arlington White Spine—An old timer and a good one.



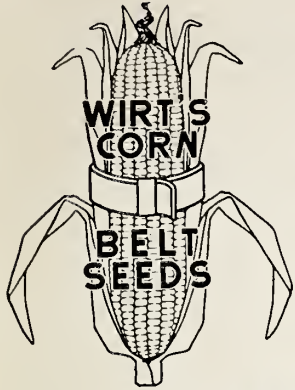
LETTUCE

Simpson's Early Curled—A very extensively used early loose-leaved, or clustering variety. The leaves are light green in color, slightly frilled and much blistered, crisp, sweet and tender. The sort is especially adapted for sowing thickly and cutting when the plants are young.

Black Seeded Simpson—One of the best for sowing outdoors where an exceedingly tender leaf is desired and for those markets which demand a very large loose clustering sort. This curly and thin-leaved, bunching variety is uniformly attractive and remains of excellent quality a very long time.

May King—Produces round, solid head about six inches in diameter with leaves smooth and folded close. Plants are of quick growth and quality all that can be desired—probably best of smooth-leaved early kinds; very rich and fine, good shipper and also valuable for home use.

We guarantee our seeds and plants to be just as represented. If they prove otherwise, we will refill the order free of charge, or return your money, but it must be understood we do not guarantee the crop, thereby, in common with all reliable seedsmen, we give no Warranty, Express or Implied, as to Purity, Description, Quality, Productiveness or other matter of any Seeds, Bulbs or Plants we send out, and we will not be in any way responsible for the crop. If the purchaser does not accept the goods on these terms, they are at once to be returned.—Alpha Nursery.



Wirt's High Grade Corn Belt Seeds

ALL MY SEEDS ARE SENT POSTPAID

ALL PACKETS 5c

(Bulk prices see Page 30)

ALL PACKETS 5c



MUSKMELONS

Hearts of Gold—The best early salmon flesh melon and a wonderful money maker. Just the right size to cut in halves and serve alone or with ice cream. Flesh is deep orange, extremely thick, fine grained and as sweet as honey. Always free from stringiness—closely netted—very solid—almost blight proof. We never have enough of this seed to go around, so order early please.

Extra Early Hackensack—(65 days). Fruits round and flattened at the end. Very heavily netted and irregularly ribbed. One of the best early green-meated sorts. Melons weigh 4 to 10 pounds.

Improved Rocky Ford—(70 days). Does well in most any locality. Very productive, medium early. Flesh is green and very sweet. Vines are very vigorous. One of the best for home use.

ONIONS

Prizetaker—A very satisfactory onion to grow for seed planting. Much larger than Globe Danvers under ordinary conditions. Will mature in 130 to 140 days.

Southport Red Globe—Just the right size to command highest market price. Darker skin and better keeper than any other strain of Southport. Excellent keeper.

PARSLEY

Moss Curley—Standard variety; curled leaves; finest quality.

PARSNIPS

Hollow Crown—Rich, very sweet flavor, immensely productive, ready for use in 80 to 85 days. Roots are smooth, in good soil 15 inches long by 3 inches across the shoulder; tender and sugary.

PEAS

Alaska—Very desirable pea for market, dark green pods, and good shipper.

American Wonder—The earliest wrinkled pea. Vine 10 to 12 inches high. Very prolific; excellent flavor. Recommended for family use.

Little Gem—An early dwarf pea for market and family use. Pods large and crowded with 6 to 9 peas. A little dwarf pea for canners.

Little Marvel—Vines grow very even, about 15 inches high, bearing good sized pods, frequently in pairs. Good seller on all markets.

POP-CORN

Australian Hulless—Also known in some sections as Japanese Rice, Tom Thumb or Bumble Bee Popcorn. The Australian Hulless is a dwarf-growing corn, a heavy yielder of attractive ears, peculiar in form, being nearly as thick as long.

PUMPKINS

Big Tom—A greatly improved strain of Yankee or Connecticut Field Pumpkin which has been selected for many years to secure the most uniform type. Not only are the pumpkins larger and smoother, but the yield is nearly double that of the old variety. We recommend it to our customers as the very best type of cornfield pumpkin.

RADISHES

White Icicle—Radishes measuring from 4 to 5 inches long and one-half to three-fourths inch thick. Earlier than any other long white radish, pure white, almost transparent, very tender.

Long Scarlet—Tops rather small; roots long and tapering; an intense bright scarlet; very crisp and tender. When grown rapidly is free from pungent taste. Ready for use in 25 to 28 days.

French Breakfast—Matures in 22 days. A handsome radish, scarlet, with the end and the root white. Quite tender.

Vick's Scarlet Globe—One of the best for forcing or for early outdoor sowing. Perfect in shape and color. Roots are oval or olive-shaped, deep scarlet in color, mild, crisp and tender flesh. Small tops. They are ready for market in 20 to 25 days after sowing.

SALSIFY OR VEGETABLE OYSTERS

Mammoth Sandwich Island—Improved type, producing roots of extra large size, superior quality, delicate flavor.

SPINACH

Bloomsdale or Savoy Leaf—An early variety and one of the best varieties to plant in the Autumn for early Spring use. Narrow pointed deep green leaves which are slightly curled.

SQUASH

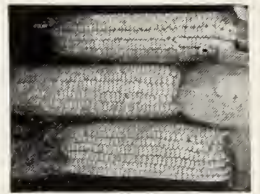
Hubbard—This is the well known Winter Squash now grown so largely throughout the country. Vines of strong running growth; fruits large, olive shape, with dark green skin and very rich flesh. An excellent keeper.

SWEET OR SUGAR CORN

Golden Bantam—It is not only the sweetest, but also one of the hardiest, and what it lacks in size is more than made up by its other qualities. The ears are from six to seven inches long, eight rowed, filled with broad, sweet golden yellow kernels of a delightful flavor. It may be planted with perfect safety from ten days to two weeks earlier than the Sweet Corns. The dry seed is quite solid and is not apt to rot as that of the softer kinds.

Stowell's Evergreen—This is one of the most popular of all varieties. Although not an early sort, it is without exception the best for table use of the entire lot. Some may have tried it, but did not have pure stock as no variety degenerates so quickly unless the grower is exceedingly careful.

Country Gentleman—The ears average 9 inches in length and are borne from two to five and sometimes six on each stalk. The cob is small and very closely packed from tip to butt with slender, pure white kernels of the finest quality. If you try this variety you will like it.

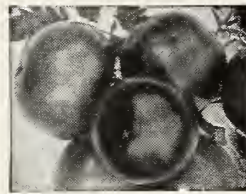


TURNIPS

Purple Top White Globe—One of the handsomest and most salable turnips. Desirable for either home or market. Flesh pure white, fine grain; of excellent flavor. Splendid keeper. Ready market in this section.

TOMATOES

Our seed is selected from tomatoes that have been grown and selected for seed only. Sow the seed in March and April in hotbed or in pot in a sunny exposure in the house. If stock plants are desired they may be transplanted into a cold frame or green house when 2 or 3 inches high. When 5 or 6 inches high and when the ground has become warm, transplant into the open.



Earliana—Very popular extra early sort. Plants are of compact growth and yield well. Fruit solid, fine quality, and bright red. Ready for market in 90 days.

New Stone—This variety has obtained immense popularity with market gardeners, southern growers, canners and home growers everywhere. Its solidity and carrying qualities are remarkable. Its color is a desirable red, its shape is excellent; perfectly smooth.

Ponderosa—Exceptionally large in size. It must have rich soil to be a success, but fruits are very large, purplish pink in color, solid, meaty and very sweet.

WATERMELONS

Tom Watson—Matures in 85 days. The South's most popular, big, sweet watermelon, dark green in color. Melons are long, average large size, splendid shippers and one of the best table quality melons on the market. Our stock is grown for us with great care on a large plantation where no other melons are planted.

Ice Cream or Peerless—Whiteseeded; of unquestionable quality; very early; medium size, thin rind, flesh bright scarlet. Rind too thin for shipping, but it is the great home market melon. Few, if any, sorts surpass it in melting, delicious quality.

A TRIAL ORDER IS ALL THAT IS ASKED

Prices on Vegetable Seeds in Bulk

	Quantity	½ oz.	Oz.	¼ lb.	½ lb.	Lb.
Beans—All varieties	\$	\$	\$.12	\$.20	\$.35
Beets15	.40
Cabbage25	.45	.85
Carrots17	.30	.55
Celery15	.25	.85
Cucumbers15	.30	.55	1.00
Lettuce15	.35	.55
Muskmelons10	.30	.55	1.00
Onions15	.25	.65
Parsley15	.35
Parsnips15	.35	.65
Peas15	.25	.35
Pop Corn12	.20	.35
Pumpkin10	.25	.40	.70
Radishes15	.35	.55	.90
Salsify10	.20	.60
Spinach10	.25	.35
Squash15	.40	.75
Sweet Corn10	.20	.30
Tomatoes15	.30	.70	1.30
Turnip10	.25	.35	.65
Watermelons10	.25	.45	.80

All vegetable seeds are 5 cents per packet

WIRT'S SHADY LAWN GRASS—This seed is blended especially to build up a lawn where shade is to be considered. This seed is for sowing under trees and shady places where the ordinary seed does not succeed well.

55c per lb. 3 lbs. \$1.60 10 lbs. \$5.00 postpaid

Wirt's High Grade Lawn Grass Seed

In making a beautiful lawn lies largely in the preparation before the seed is sown. If there is grading to be done the top soil should be removed to a depth of 6 to 8 inches and placed to one side so that when the grade is complete this soil can be replaced. If this is not possible, after the grade is complete have 6 to 8 inches of good black soil hauled in to finish the grade.

This soil should be raked until it is in fine condition and level. Sow the seed early in the spring, then lightly rake it, then it should be thoroughly rolled. This presses the seed into the soil; also makes a solid seed bed. The lawn should be watered often so that it is moist at all times until the seed is through. No one kind of grass will make a lawn, as some grasses make a luxuriant growth in the spring, others in the summer and some in the fall. My mixture contains a big percent of Blue Grass, with enough other grasses that grow quickly to shade the ground so the blue grass can get through, as it takes about 21 days for blue grass to come up, it is therefore necessary to have other grasses to shade the ground and to hold the moisture until this grass is through.

WIRT'S LAWN GRASS—This is a good grade of lawn grass seed which contains over 60 per cent Kentucky blue grass seed, and is not to be compared with the cheap package seed.

50c per lb. 3 lbs. \$1.45 10 lbs. \$4.75 postpaid

QUANTITY OF SEED TO USE—1 lb. to 400 square feet of lawn or double this amount if a quick lawn is wanted.

ALPHA GREENHOUSE

ALPHA, ILLINOIS

A complete line of Bedding Stock and Vegetable Plants**GERANIUMS**

All colors, four inch pots, 25c each.

PETUNIAS

DIENIERS BEST LARGE FLOWERED, 15c ea.

PETUNIAS

Rosy Morn and Balcony Mixed. 10c or 3 for 25c.

VERBENAS, AGERATUM, SWEET ALYSSUM, CARNATIONS, DUSTY MILLER, SHIZANTHUS, DIANTHUS SWEET WIVELSFIELD, from 2¼-in. pots, 10c each; 3 for 25c.

PANSIES Extra large, transplanted, in bloom.
50c per 12

ASTERS

Choice Plants, 35c per 12.

TUBE ROSES

Dwf. Excelsior Pearl, 50c per 12.

MADERIA VINES

Fast clean climber, 75c per 12.

DROOPING VINES

VINCA, ENGLISH IVY AND SPRINGERII FERN, 4-in. 25c each; 3-in. 15c each.

TOMATOES AND CABBAGE

All kinds, 2 doz. for 25c; Special prices on quantities.

PEPPERS, EGGPLANTS, CAULIFLOWER

20c per 12.

BERMUDA ONION PLANTS, 25c per 100.

**Space does not permit us to list everything.
A trip to the greenhouse will repay you.**

DRIVE TO THE NURSERY IN THE SPRING

WIRT'S CHOICE FLOWER SEEDS are sent postpaid

Asters—Asters are flowers of wondrous beauty. They are easy to grow. They are hardy and will withstand light frosts. Seed can be sown outdoors as soon as the ground is warm and dry. Asters are being continually improved. The varieties below are beautiful. Every one is worthy of a place in your garden.

Queen of the Market—Very early. Branching habit. Double flowers, stems 12 to 15 inches long. Fine for cut flowers. Mixed colors. Packet, 10 cts.

Giant Comet—Mid-season, 18 to 24 inches high. The handsomest Aster of its type. Long twisted petals. Produces an abundance of large, beautiful flowers. Mixed colors. Packet, 10 cts.

Late Branching—Very beautiful. Grow 2 to 3 feet high. Large deep double blossoms on long stems. Colored, mixed. Packet, 10 cts.

Sweet Alyssum—A dainty white flower. Delicate fragrance. Excellent for borders and beds and to use in small bouquets. It is a standard variety. Nearly everyone loves this refined little flower. There is a place in every garden for it. Packet, 10 cts.

Balsam (Lady's Slipper)—A very showy annual. Easy to grow. Brilliant double rose-like flowers often two inches across. Blooms July to October. Do best in a rich loam and should have ample moisture. Make beautiful table decorations. Flowers are borne thickly on an erect bushy plant that grows 15 to 20 in. tall. Packet, 10 cts.

Marigold—The Marigolds are old favorite, free-flowering annuals of easy culture. They light the garden with a glitter of yellow far into the frosts of Autumn. The African varieties produce large, self-colored blossoms on tall plants. The French are much smaller but the markings are very attractive.

Double Dwarf, African—Mixed (Pride of the Garden), 15 inches, golden yellow flowers; dwarf habit. Packet, 10 cts.

Dwarf French Double Sorts—Mixed. Packet, 10 cts.

Phlox Drummondii—The showiest and most easily raised of all annuals. All the tints of the rainbow are represented with all possible variations of stripes. Veins and eyes of contrasting shades. We know of nothing which produces such a continuous supply of the most attractive flowers and a wonderful range of colors. 12 inches high. Mixed. Packet, 10 cts.

Antirrhinum or Snapdragon—Snapdragons are a favorite with most everyone. Their beautiful colors and fragrance are wonderfully pleasing. They are easily grown and are fine for cut flowers as well as a good bedding plant. Mixed. Packet, 10 cts.

Cosmos—Glory of the Fall garden. Tall feathery, green stalks and daisy-like flowers in all shades of lavender, pink and red. Ours is the early-blooming strain, that blooms from mid-summer on. Mammoth Giant Mixed. All colors. Packet, 10 cts.

Helichrysum (Strawflower)—Everlasting Hardy annual 1½ feet. Flowers are round, flat, but thick, very full of short, stiff, incurved petals surrounding a depressed center. Their chief value is for winter use in baskets and vases, dried, cut with long stems when about a third opened. Suspend bunch (heads down) in a cool, dry place until thoroughly dried. Mixed. Packet, 10 cts.

Larkspur—Giant Hyacinth Flowered. 3 feet. Derives its name from the striking resemblance of the flowers to a double Hyacinth. Mixed colors. Packet, 10 cts.

Sweet Peas—SUPREME SPENCERS

King White—Large flowering. Glistening purity of the whiteness and the perfect finish of the flower make this one of the best. Truly gigantic; very free bloomer. Packet, 10 cts.; oz., 25 cts.

Blue Monarch—Dark blue. A splendid new dark blue of large size and free bloomer. Very rich in color. Packet, 10 cts.; oz., 30 cts.

King Edward—Deep rich crimson; a strong and beautiful color. Does not fade. Packet, 10 cts. oz., 30 cts.

Hercules—Deep pink. A magnificent soft rose-pink frequently measures 2½ inches in diameter. Packet, 10 cts.; oz., 30 cts.

Spencer Mixed—All varieties. Pac't, 10 cts.; oz., 30 cts.; ¼ lb., 90 cts.

Lantana—Shrubby plants with Verbena-like flowers in shades of white, red and yellow. Packet, 10 cts.

Portulaca or Moss Rose—A beautiful hardy annual, unsurpassed in brilliancy by any other annual in cultivation. Plants are low-growing and creep along the ground. Thrive well in almost any location, even in a dry sunny place among stones, and can withstand the hottest summer weather. They like the full sunlight. Mixed. Packet, 10 cts.

Nasturtiums—They do just as well on poor soil as on rich soil. In fact, they prefer a thin, rocky, clay soil. The climbing or trailing varieties are just the thing to cover a fence, stump or trellis. The dwarf varieties make a good border plant. All varieties are fine for cut flowers. Keep them picked. Dwarf Nasturtiums, Mixed. Packet, 10 cts.

Tall or Climbing Varieties, Mixed. Packet, 10 cts.

Pansies—Miracle Mixed—Our super mixture contains all the finest types of all strains, latest novelties, including ruffled flowers and many of the new Sunburst Pansies; smoky rims, henna shades, with fine long stems. Here is something different in the Pansy world. Packet, 20 cts. each; 2 for 35 cts.

Petunias—Few plants equal the Petunias for freedom of handsome, sweet scented flowers in their delicate and gorgeous colors throughout the whole summer.

SINGLE SMALL FLOWERING PETUNIAS

Rosy Morn—Soft rose-pink with white throat; very dainty and very popular. Packet, 15 cts.; 2 for 25 cts.

LARGE SINGLE FLOWERING PETUNIAS

Balcony Blue—Rich, velvety—indigo blue. Packet, 20 cts.

Mixed Large Single—Packet, 15 cts.

Salvia—America or Globe of Fire—Continuous blooming, uniform in habit of growth, which makes it particularly valuable for bedding or planting in lines. Packet, 25 cts.

Verbena—A very popular garden annual. For beds and borders, and window boxes. Particularly fine as an undergrowth for tall plants.

Choice Mixed. All colors. Packet, 10 cts.; 3 for 25 cts.

ZINNIAS • 10 cents per packet

These most attractive flowers are very popular. Remarkable for profusion and duration of flowers. A wonderful range of color. Old rose, dainty cream, brilliant yellow, striking red, deep purple, and other lovely colors. Very easy to grow. Our new varieties far surpass the old kinds.

Mixed Giant-Flowering Show Zinnias—Huge flowers on long stems. Bright and pleasing colors. Produces remarkable effects. Be sure to have this attraction in your garden. Pkt. 10c.

DAHLIA FLOWER VARIETIES

Buttercup—A deep creamy yellow. Pkt. 10c.
Dream—A fine deep lavender, turning to purple, a new shade. Pkt. 10c

Meteor—A rich glowing deep red. Pkt. 10c.
Salmon Rose—A rose salmon color. Very select. Pkt. 10c.

ZINNIA LILLIPUT

These small flowered Zinnias are very popular as a cut flower. The flowers are small and perfectly formed.
Scarlet Gem—A rich bright scarlet. Pkt. 10c.
Golden Gem—A bright golden color. Pkt. 10c.
Polar Bear—Fine white. Pkt. 10c.

Scabiosa or Mourning Bride—This old-time annual, which is once more decidedly in favor, is here offered in mixed colors. Wonderful cut flowers, not so commonly used as some. Extra Choice Mixed—Best large flowers. Packet, 10 cts.

SEEDS OF HARDY PERENNIAL FLOWERS

AQUILEGIA OR COLUMBINE—An early blooming plant. Flowers well above foliage with long, graceful stems. Suitable for bedding or for cut flowers. Mixed Varieties, 10c pkt.

BABY'S BREATH or GYPSOPHILA—The fine cut, white blossoms are beautiful while fresh, or when dried as everlasting are indispensable in winter bouquets. Pkt. 10c.

CAMPANULA—(Canterbury Bells). The well known "Cup and Saucer" plant. Pink, blue and lavender bells, half as large as a teacup. Mixed colors. Pkt. 10c.

DAISIES, SHASTA, White. The well known large-flowering white Daisy, which was introduced from California. Pkt. 10c.

COREOPSIS Laneolata—A yellow daisy-shaped flower. This plant, with Gaillardia, are the two perennials that best stand hot, sunny locations. Pkt. 10c.

GAILLARDIA—(Blanket Flower). A very useful perennial for the hot, sunny locations. Color a blending of orange-yellow and various shades of red. Very useful as a cut flower, as it blooms all summer. Pkt. 10c.

PYRETHRUM roseum—(Painted Daisy). One of the newer perennials, but already so popular that some growers are making a specialty of it. The blossom is daisy-shaped and

comes in all the colors of pink, white and rose. Always in bloom at Decoration Day, and combines beautifully with Peonies. You can't have too many. Mixed colors. Pkt. 10c.

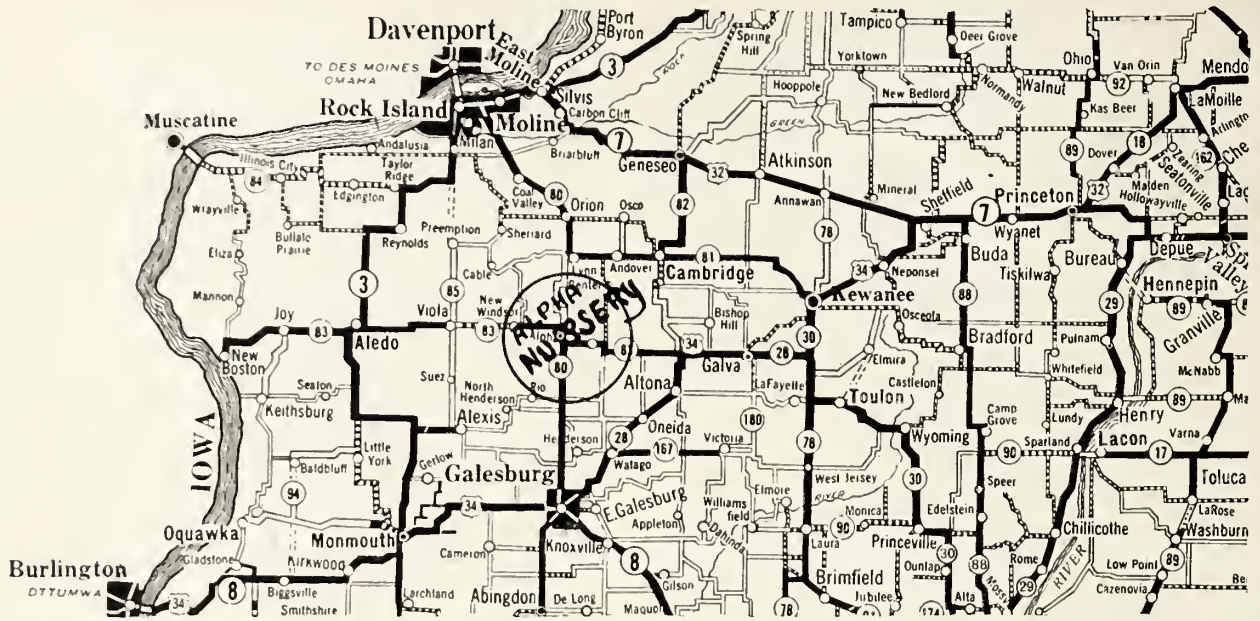
DELPHINIUM (Belladonna)—Pale blue, hardy larkspur. One of the most popular hardy perennials; blooms twice during the summer. On spikes 3 to 4 feet tall. Pkt. 10c.
DELPHINIUM (Bellamosum)—Like the above, except it is a dark deep blue with white center. Pkt. 10c.

LATHYRUS or PERENNIAL SWEET PEA—A sturdy and rapid growing vine, which is covered all through the late summer with masses of Sweet Pea-shaped flowers in white, pink or rose. Mixed colors. Pkt. 10c.

VIOLA—(Tufted Pansy). This is the Pansy with small blossoms that self-sows among your shrubbery, and is sometimes called "Heartease". Mixed colors. Pkt. 10c.

HOW TO REACH OUR NURSERY

Visitors are always welcome. We are conveniently located as Hard Road No. 80 passes within 2 blocks of the Nursery. Come and select your own plants. We are open Sundays during April and May.



USE
VIGORO
PLANT
FOOD

Order
Enough
Vigoro for
Everything
You Grow.

BONE MEAL

For Roses, Shrubs and Lawns. No danger of burning the plants. Use 2 to 3 lbs. to each plant when setting.

5 lb. bag 35c
Postage 10c

VIGORO

Complete plant food

For Lawns, Gardens, Trees and Flowers.

100 lb. Bag \$5.00 by Express
50 lb. Bag \$3.00 by Express
25 lb. Bag \$1.75 by Express
5 lb. Pkg. 50c Postage 10c
12 oz. Pkg. 10c Postage 5c

SHEEP MANURE

This is a fertilizer that helps build up your soil. Use as a top dressing, 6 to 10 lbs. to 100 sq. ft.

50 lb. bags \$2.35 by Express
25 lb. bags \$1.20 by Express
10 lb. bags 65c Postage 16c
5 lb. bags 35c Postage 10c

ALPHA NURSERY

ALPHA, ILLINOIS