

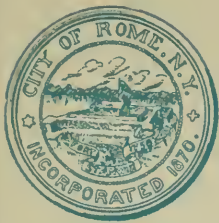
F
129
.R82N7



Class _____

Book _____

COPYRIGHT DEPOSIT



SOUVENIR
OF
ROME,
N.Y.

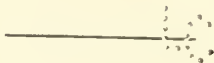




A SOUVENIR OF ROME, N. Y.

PUBLISHED BY
WM. E. NINDE

1894



Copyright, 1894
BY
WM. E. NINDE
ROME, N. Y.



55728-21

R2277





VIEWS ON N. WASHINGTON ST.



LOOKING NORTH

LOOKING SOUTH



FROM THE AMERICAN CORNER



FIRST M.E. CHURCH.



ZION EPISCOPAL CHURCH.



Central N. Y. Institution for the Deaf and Dumb



N. WASHINGTON ST.



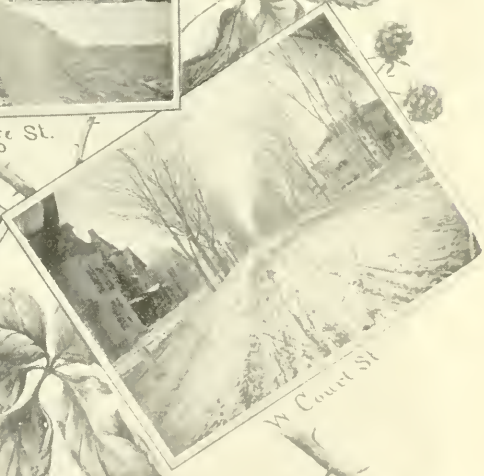
W. EMBARGE ST.



N. George St.



Garden St.



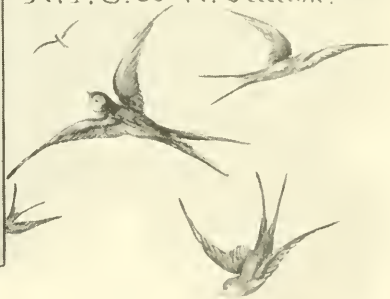
W. Court St.



N.Y.O. & W. Station.



N.Y.C. & H.R.R. Station.





STATE CUSTODIAL ASYLUM
AND
OLD TOLL GATE.





Birth-place of Albert Barnes



City Hospital



Cemetery and Kingsley Memorial Chapel



The Mohawk, from Floyd Avenue



Selden & Van Wagenen's Planing Mill



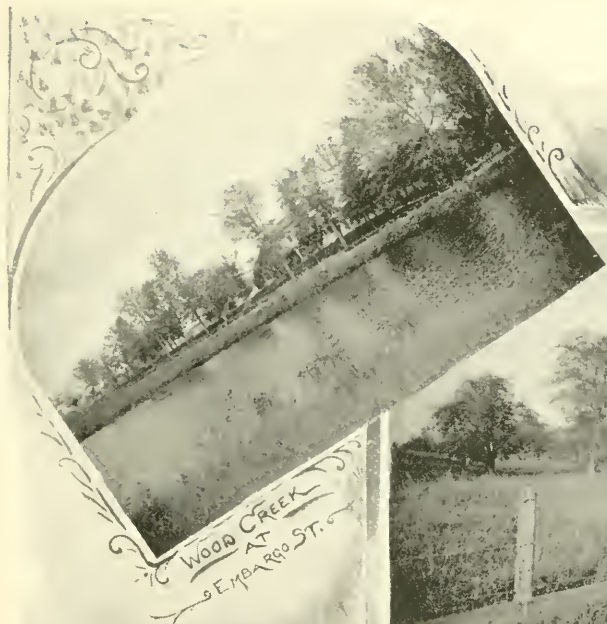
County Buildings (unfinished)



No. 2 Fire Engine House



East Liberty Street



WOOD CREEK
AT
EMBARCADO ST.



ORCHARD & W. TWO



FITCH GEAR WORKS.



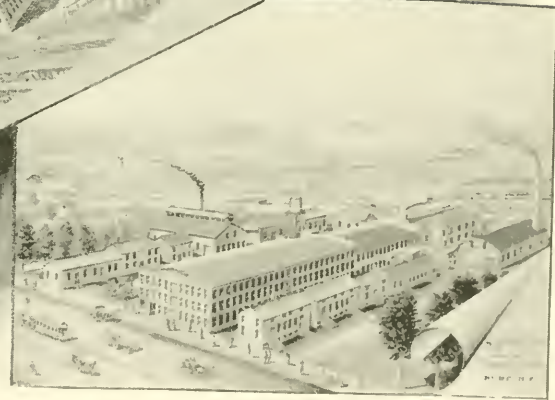
PELL GEAR WORKS.

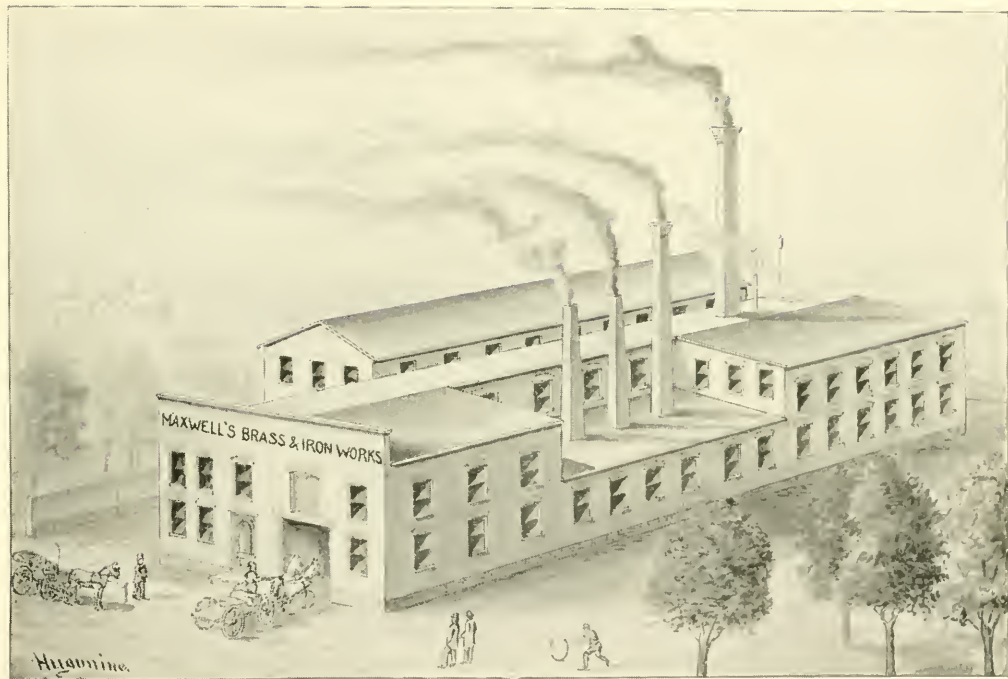


Pomeroy Brass & Copper Mill



ROME LOCOMOTIVE & MACHINE WORKS.





Hammond.



FORT STANWIX CANNING FACTORY.



PENFIELD'S SOAP WORKS.

ARPENTER & DYETT'S
COT & CHAIR FACTORY



WILLIAMS' KNITTING MILLS.



JESSE WILLIAMS.
THE INVENTOR.



THE DRY HOUSE AND PORTION OF FOUNDATION
OF THE FIRST CO-OPERATIVE CHEESE FACTORY IN
THE WORLD.



OLD ARSENAL HOUSE.



CITY LIBRARY. (THE JEFFERSON)



ACADEMY.



JAY ST. SCHOOL.



L. BERTIE ST SCHOOL





CITY HALL
FROM DRAWING

COURT HOUSE & JAIL





ST. MARY'S CHURCH.



ST. PETER'S CHURCH.



BALFOUR GIBBS

19

1888



Arlington Block



Slawson Hall



Clermont Block



*View North on Lexington Street
from North Street*



BANKS.

WASHINGTON ST. OPERA HOUSE.





OLD CANAL AT
S. JAMES ST



ERIE CANAL
SIXTY MILE LEVEL



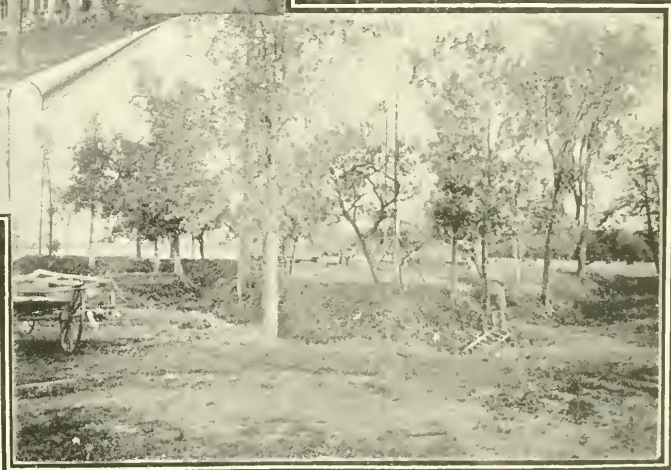
BLACK RIVER CANAL
FIFTH LOCK



J. M. Brainerd's Studio



⇒ SITE OF FORT STANWIX. ⇐



⇒ SITE OF FORT BULL. ⇐



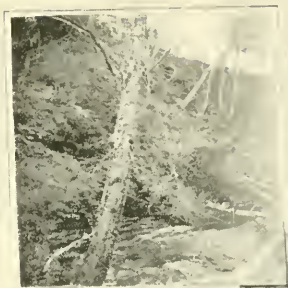
LOOKING WEST

LOOKING EAST



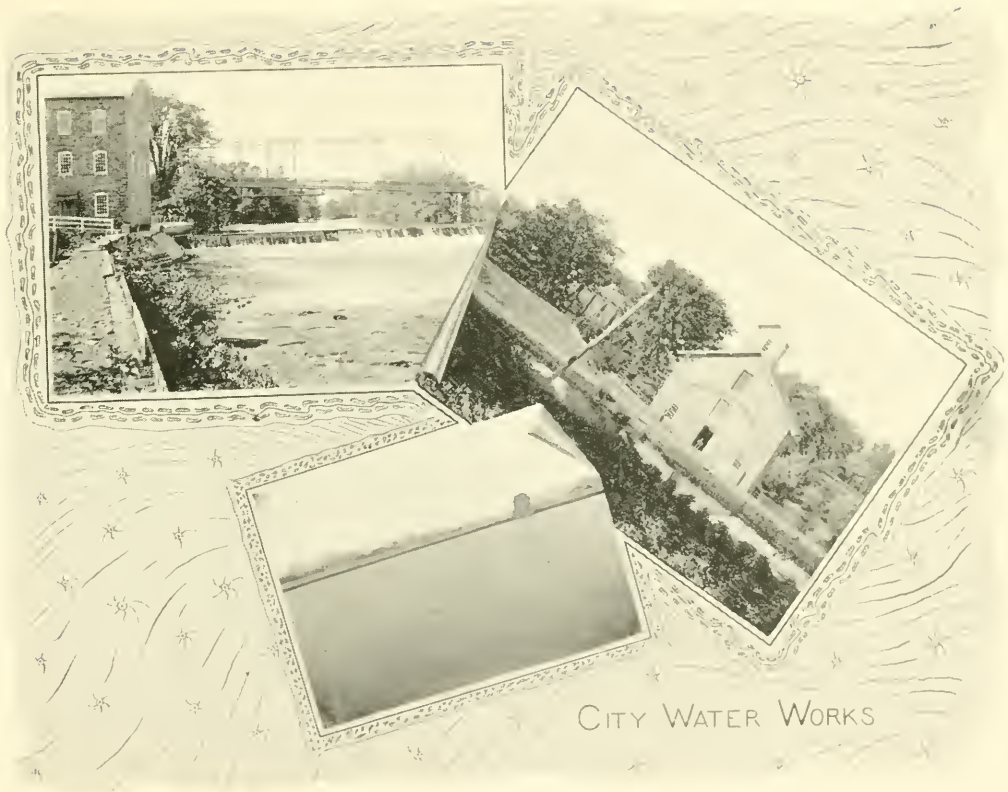
FROM THE AMERICAN CORNER.

VIEW AT THE TALISADES.
HOLAWA RIVER.





W Washington St.

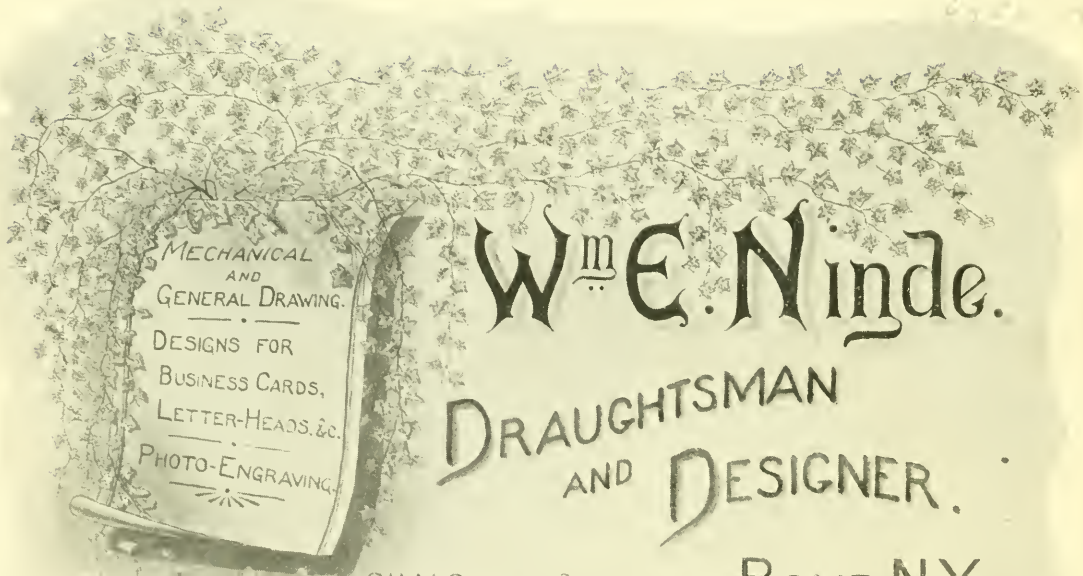


CITY WATER WORKS



THE BLOOMFIELD BEACH
ESTATE.

290
87



MECHANICAL
AND
GENERAL DRAWING.
DESIGNS FOR
BUSINESS CARDS,
LETTER-HEADS, &c.
PHOTO-ENGRAVING.

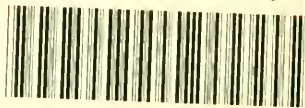
W^mE. Ninde.

DRAUGHTSMAN
AND DESIGNER.

311 N. George St.

ROME, N.Y.

LIBRARY OF CONGRESS



0 014 224 311 8

