

Historic, archived document

Do not assume content reflects current scientific knowledge, policies, or practices.

MALONEY'S

62.61

50^{TH.}

Anniversary

NURSERY

BOOK

1934



MALONEY BROS. NURSERY CO., INC., Dansville, N. Y.

Shrubs Beautiful with Flowers

Our 50th Anniversary



Lilac

A HALF century ago, our father Thomas Maloney began growing nursery stock and conceived the idea of selling nursery stock by mail, at one small profit instead of two or three; thereby dispensing with the wasteful overhead of the common agency method. It costs Maloney's as much and more to grow stock now than it did in 1884, but with the catalog we cut the cost of marketing and eliminate unnecessary expense, resulting in a big saving to our customers.

The soundness of this theory has been proven by the tremendous growth of our business. We now have over 400 acres of nursery, and are the largest mail order nursery in New York State.

Every year over 70% of our orders come from customers, who have bought from us year after year. This can mean but one thing—People, who buy from us at mail-order money-saving prices, are satisfied with Maloney quality stock and service. Our customers extend to practically every state in the Union.

We prepay shipping costs and guarantee our stock (see page 7). Our prices always reflect the economies of selling by mail; the most simple direct method of distribution known.

Whether you buy a thousand trees or a single shrub, you cannot go wrong buying from us. A trial order is all we ask—our stock will do the rest.

GOLDEN ANNIVERSARY SHRUB COLLECTION No. 1

One of each illustrated on pages 2 and 3.

All 2 year, 2-3 feet, which will bloom this summer.

10 for \$3.65



Barberry Thunbergi



Cornus Stolonifera



Spirea Anthony Waterer

No
Bargain
Circular
This
Spring
See Page 26



Japan Quince

Bright with Berries

IN growing the shrubs listed on these pages we have chosen the hardiest; selected the most beautiful, and the kinds that we feel you cannot help but admire. We dig this stock in such a way that you are assured of its growing when transplanted. All shrubs will bloom first summer. If your selection includes 10 shrubs of one variety or different varieties you may enjoy 10 rate.

ALMOND (*Amygadalus*)—Beautiful double pink flowers, resembling roses, snuggling tight to the twigs. May. **1½-2 ft. 40c; 2-3 ft. 50c; 3-4 ft. 60c.**
See illustration page 4.

ALTHEA (*Rose of Sharon*)—Very desirable, for they bloom in August and September when we have so little color. Double blossoms resembling roses. Pink, Purple, Red, White. **2-3 ft. 40c.**

ARALIA PENTAPHYLLA—Long, slender, gracefully arching branches. Greenish-white flowers in long umbels. Valuable for its intense green foliage. **2-3 ft. 35c, 10 for \$3.00.**

BARBERRY, BOX (*Berberis Thunbergi Minor*)—For description see page 8.
9 to 12 in. 30c each; \$2.70 per 10
12 to 15 in. 40c each; 3.50 per 10
See page 8 for quantity price.

BARBERRY, RED-LEAVED—(*Berberis Thunbergi Atropurpurea*)—Similar to Barberry Thunbergi but the foliage of this new variety is of a rich, lustrous bronzy red. It becomes more brilliant and gorgeous throughout the summer and in the fall its foliage changes to vivid orange, scarlet and red shades. Scarlet berries remain on the plant the entire winter. All that is required to develop its brilliant coloring at all seasons is that it be planted in full exposure to the sun.
12 to 15 in. 45c each; \$3.50 per 10
18 to 24 in. 50c each; 4.00 per 10
See illustration page 3.

BARBERRY THUNBERGI (*Berberis Thunbergi*)—Dwarf habit, very graceful and its foliage turns to a beautiful red in the fall. Red berries remaining during winter.
18 to 24 in. 40c each; \$3.50 per 10
2 to 3 ft. 45c each; 4.00 per 10
See illustration page 2.
See page 8 for quantity price.

BUDDLEIA (*Butterfly Bush*)—Beautiful spikes of lilac colored flowers from July until frost. The delightful perfume attracts butterflies. **1½-2 ft. 35c, 10 for \$3.00; 2-3 ft. 40c ea., 10 for \$3.50.**
See illustration page 4.



New Red-Leaved Japanese Barberry



Weigela
Eva Rathke



Deutzia
Pride of Rochester

N.R.A. SPECIAL COLLECTION No. 2

One of each shrub illustrated on page 2.
All 2 year 2-3 feet, which will bloom this summer.
5 for \$1.75

NEW DEAL COLLECTION No. 3

One of each shrub illustrated on this page.
All 2 year 2-3 feet, which will bloom this summer.
5 for \$2.00



Kolkwitzia Amabilis



Forsythia



Philadelphus coronarius



Honeysuckle, Pink



Snowberry



Weigela,
Variegated



Almond



Hydrangea, A. G.

Why You Should Plant Maloney Shrubs

YOUR home is part of you; your lawn is part of your home. Both should be in keeping with yourself. It is not difficult to buy shrubs now for you will find all the newer and the best of the older varieties listed in our catalog this Spring at low prices all can afford. Maloney's offer you fresh, healthy shrubs that will thrive—our guarantee of 50 years growing experience is behind them; moreover, our name is back of each and every sale. Our future depends upon the quality of our stock and service rendered you.

Maloney Bros., Dansville, N. Y.

Gentlemen:—Just a few words to tell you how satisfied we are with the flowering shrubs received from you in May. They arrived in fine condition and now, only about five weeks since planting, are in flower. Will you please send one of your catalogues to my neighbor, Mrs. Thomas Strain? We hope to have another order for you next Spring. Thank you.

Very truly yours, HELEN A. LAMB

Easthampton, Mass., June 20, 1933

CALLICARPA PURPUREA (Beautyberry)—A pretty shrub from 1 to 4 feet high. It blooms profusely during August clusters of pink flowers, these followed by berry bunches colored a light violet. **2-3 ft. 35c; 10 for \$3.00.**

CALYCANTHUS—Foliage rich, glossy green; flowers chocolate color, having a peculiarly agreeable odor. August. **2-3 ft. 50c.**

CLETHRA ALNIFOLIA (Sweet Pepper Bush)—A much desired plant because of the delightful fragrance in August and September. The spikes of creamy white flowers are 3-6 inches long. Blossoms every season without fail. **4-5 feet. 2-3 ft. 45c.**

CYDONIA JAPONICA (Japan Quince)—The dazzling scarlet flowers completely cover the bush early in the spring. The blossoms are followed by small, quince-shaped fruits which are fragrant. **3-4 feet. 2-3 ft. 45c.** See illustration page 2.

CORNUS STOLONIFERA (Red Twig Dogwood)—White flowers followed by white berries. In winter branches are

blood red. **6-8 feet. 1½-2 ft. 30c; 10 for \$2.50; 2-3 ft. 35c; 10 for \$3.00.** See illustration page 2.

DEUTZIA

CRENATA—In May is fairly covered with very showy double-white flowers, edged slightly with rose. **5-6 feet. 2-3 ft. 35c; 10 for \$3.00; 3-4 ft. 45c; 10 for \$4.00.** See illustration page 5.

GRACILIS—This dwarf growing bushy shrub with drooping branches wreathed with pure white flowers in May is excellent for edging. **2 feet. 18-24 in. 40c.**

LEMOINEI—Medium large pure white flowers borne in cone-shaped heads. **May. 4 feet. 1½-2 ft. 40c.**

PRIDE OF ROCHESTER—Double white flowers with rose-purple on outside. Grows bushy and slowly. Blooms freely during May. **6-8 feet. 2-3 ft. 35c; 10 for \$3.00; 3-4 ft. 45c; 10 for \$4.00.** See illustration page 3.

ELDER, AUREA (Golden Elder)—The attractive golden yellow foliage contrasts beautifully with the other shrubs. White flowers in flat topped cymes. Grows 10-15 feet; stands trimming very well. **2-3 ft. 35c each; 10 for \$3.00.**

EXOCHADA GRANDIFLORA (Pearl Bush)—The white buds are globular and pearl-like. The flowers are produced in six to ten flowered racemes. The fruit is a dry, three-winged capsule which hangs for a year. **April. 8-10 feet. 2-3 ft. 40c each.**

FORSYTHIA

These are especially desirable because of their golden yellow blossoms early in the Spring before the leaves appear. **April. 8-10 feet.**

FORTUNEI (Erect)—The tallest and most slender growing. **2-3 ft. 40c each; 10 for \$3.50. 3-4 ft. 50c each; 10 for \$4.50.**

INTERMEDIA (Arching)—Earliest blooming; broadest bushing. **2-3 ft. 40c each; 10 for \$3.50. 3-4 ft. 50c each; 10 for \$4.50.**

SUSPENSIA (Weeping)—Slender, limply drooping branches strung with bright rosettes of yellow bloom and shiny leaves. **2-3 ft. 40c each; 10 for \$3.50.**

VIRIDISSIMA (Green Stem)—Upright growth, flowers darker yellow having a greenish tinge; blooms little later than Suspensa. **2-3 ft. 40c each; 10 for \$3.50.**

FRINGE, PURPLE (Smoke Tree)—Large clusters of round leaves, overhung in mid-summer by mist-like clouds of tiny light lavender flowers. **15 feet. 1½-2 ft. 45c; 2-3 ft. 55c.**

ECONOMY SHRUB COLLECTION No. 4

One of each shrub illustrated on this page 2 year 2-3 feet, which will bloom this summer.

8 for \$2.75



Tamarix



Buddleia

1934

GET ACQUAINTED

BARGAIN OFFER

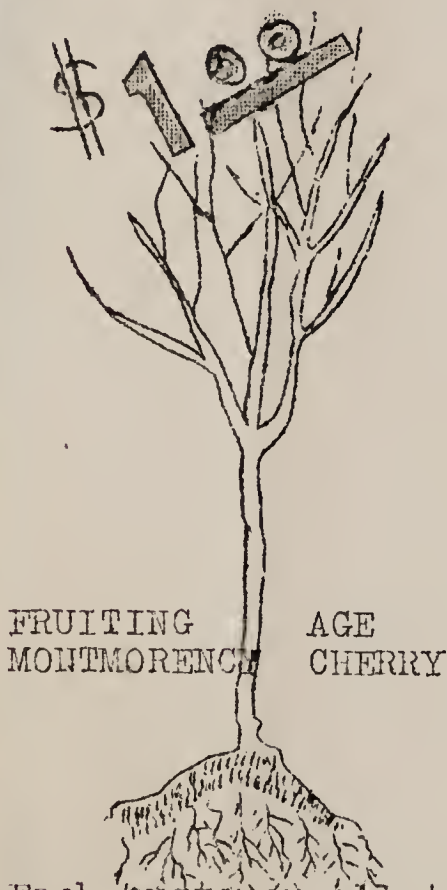
1 FRUITING AGE CHERRY TREE

FOR

\$ 2 50 VALUE

30,000 of these trees sold by us at Buffalo, N.Y. in 3 days.

One year after planting you will be able to pick the fruit from this National pie cherry tree.



FREE

3 HARDY PERENNIALS

- | | |
|---------------------|--------------|
| 1 Chrysanthemum | 1 Gaillardia |
| Illustrated page 19 | Page 19 |
| 1 Delphinium | |
| page 21 | |

To receive these beautiful hardy garden flowers absolutely free, you simply mail your order for \$2.50 or more on or before March 1st.

Each customer allotted not more than 5 trees.

This offer is in addition to our generous discounts described on page 7. Bear in mind that Maloneys are able to save you money by paying shipping costs on orders of \$2.50 or more.



Return this sheet with your order so that you may receive your FREE PERENNIALS.

MALONEY BROS. NURS. CO.
DANVILLE N.Y.



...we refund
...answer any of your
...your business—once we get it,

HONEYSUCKLE—LONICERA

The Honeysuckle have small attractive flowers, followed by showy berries much enjoyed by the birds. Grow 6-12 feet and are very desirable for screening.

GRANDIFLORA ROSEA (Pink)—The tallest bush and largest flowers. Very noticeable rose-pink 2-3 ft. 35c each; 10 for \$3.00. 3-4 ft. 50c each; 10 for \$4.50.

See illustration page 4.

KOROLKOWI (Blue Leaf)—Choice new variety. Light coral-pink flowers in small panicles are delightfully harmonious with the dainty blue-green foliage. Habit of growth as Spiraea Van Houttei. 2-3 ft. 50c each.

MORROWI—White flowers in May and June, followed by blood-red berries. Wide spreading growth. 2-3 ft. 35c each; 10 for \$3.00. 3-4 ft. 50c each; 10 for \$4.50.

TATARICA ALBA—Flowers bluish-white. Bush hardy and dense. 1½-2 ft. 30c each; 10 for \$2.50. 2-3 ft. 35c each; 10 for \$3.00.

TATARICA RUBRA—Light red flowers followed by scarlet berries. 2-3 ft. 35c each; 10 for \$3.00. 3-4 ft. 50c each; 10 for \$4.50.

HAMAMELIS VIRGINIANA (Witch Hazel)—Unusual because of period of bloom. The yellow flowers open in late October or November. Curiously the small tree has flowers and unripe fruits at the same time inasmuch as it takes a year to ripen the fruit. Foliage turns gold and orange. 15 to 20 feet. 2-3 ft. 60c each.

HYDRANGEA

ARBORESCENS GRANDIFOLIA (Hills of Snow)—Large clusters of snow-white flowers in June. The heart-shaped leaves are also very attractive. Should be cut back to the crown each Spring. 3-5 feet. 1½-2 ft. 30c each; 10 for \$2.50. 2-3 ft. 40c each; 10 for \$3.50.

See illustration page 4.

PANICULATA GRANDIFLORA (Pee Gee)—The large spikes are first greenish-white, then pure white, later changing to bronze pink. If picked just as they turn a bronze pink and taken indoors they will dry and make attractive winter bouquets. 4-5 feet. 2-3 ft. 45c each; 10 for \$4.00. 3-4 ft. 55c each; 10 for \$5.00. Note effective planting front cover page.

PEE GEE TREE FORM—Like the above except in tree form. 2½-3½ ft. 70c each.

KERRIA JAPONICA—Double, globe-shaped yellow flowers nearly all summer. Very attractive. 4-5 feet 2-3 ft. 50c each; 10 for \$4.50.

KOLKWTZIA AMABILIS (Beauty Bush)—An exceedingly handsome ornamental shrub which has come to us from the wilderness of China and Central Asia. The foliage and habit are attractive even when the bush is out of flower and it is perfectly hardy. It grows 4 to 6 feet high when matured erect and twiggly producing long arching branches covered in spring with clusters of small tubular flowers of the honeysuckle type borne in such profusion that the bush is one cloud of delicate pink. 18-24 in. 50c each. 2-3 ft. 60c each.

See illustration page 3.

LILAC, PURPLE—The much desired favorite which perfumes the whole neighborhood. 2-3 ft. 50c each; 10 for \$4.50. See illustration page 2.

LILAC, WHITE—Like the above except color. 2-3 ft. 55c each; 10 for \$5.00.

FRENCH LILACS 70c each; 10 for \$6.50

Careful selection has been made from the world-renowned Highland Park Collection, Rochester, N. Y. Every home ground should have at least one of these sweet-scented flowers.

S=Single D=Double

CHARLES X (S)—Large rather loose, reddish-purple panicles.

EDITH CAVELL (D)—Magnificent clusters cream white.

JACQUES CALLOT (S)—Large silvery lavender blossoms.

MARIE LEGRAYE (S)—Fragrant pure white.

PAUL HARIOT (D)—Dark red-violet with silvery reverse.

RONSDARD (S)—Early, bluish-lilac with whitish center.

PHILADELPHUS (Mock Orange)

AUREUS (Golden Syringa)—Dwarf, compact habit with bright golden leaves that are most attractive. White blossoms. Very good for low border shrub. 3-4 feet. 1½-2 ft. 50c each; 10 for \$4.50.

CORONARIUS—Waxy white, fragrant flowers; the foliage large, oval in shape and deep green. Valuable for cut flowers. 6-8 feet. 2-3 ft. 40c each; 10 for \$3.50. 3-4 ft. 50c each; 10 for \$4.50. See illustration page 4.

GRANDIFLORA—White blossoms are large and very attractive. 7-8 feet. June. 2-3 ft. 40c each; 10 for \$3.50.

LEMOINEI—Good, compact upright habit. White blossom sweetly-scented. Good for foundation planting. 4-5 feet. 1½-2 ft. 40c each; 10 for \$3.50. 2-3 ft. 50c each; 10 for \$4.50.

MONT BLANC—Large, white, very fragrant flowers. Medium dwarf. 1½-2 ft. 50c each; 10 for \$4.50.

VIRGINAL—A magnificent new variety. Moderately tall, with good foliage and compact habit. The flowers are the largest, most beautiful and most sweetly fragrant of any variety. 1½-2 ft. 40c each; 10 for \$3.50. 2-3 ft. 50c each; 10 for \$4.50.

SORBARIA SORBIFOLIA (Ash Leaf Spiraea)—Arching branches and fresh green leaves. Pure white flowers profusely produced in June and July. 2-3 ft. 50c each.

SPIRAEA

ANTHONY WATERER—A dwarf variety of great beauty. Its broad flat heads of red flowers continue in profusion all summer. 3 feet. 15-18 in. 35c each; 10 for \$3.00. 1½-2 ft. 40c; 10 for \$3.50. See illustration page 2.

BILLIARDI—During July every branch and twig is tipped with a spike of beautiful blood-red flowers 4 to 6 inches in length. 4-5 feet. 1½-2 ft. 30c each; 10 for \$2.50. 2-3 ft. 35c each; 10 for \$3.00. 3-4 ft. 45c each; 10 for \$4.00. See illustration page 6.

CALLOSA ALBA—Large flat clusters of white flowers. Dwarf. 2-3 feet. 1½-2 ft. 40c each; 10 for \$3.50.

CALLOSA ROSEA—Has large panicles rose-colored flowers. Blooms nearly all summer. Grows 4-6 feet. 1½-2 ft. 30c each; 10 for \$2.50. 2-3 ft. 35c each; 10 for \$3.00. 3-4 ft. 45c each; 10 for \$4.00.

DOUGLASSI—Spikes of beautiful deep rose flowers in July. 5-7 feet. 1½-2 ft. 30c each; 10 for \$2.50. 2-3 ft. 35c each; 10 for \$3.00. 3-4 ft. 45c each; 10 for \$4.00.

FROEBELI—Light reddish pink corymb. July-August. 3 feet. 1½-2 ft. 35c each; 10 for \$3.00.



Deutzia Lemoinei



Spiraea Van Houttei

BEAUTY BUILDER SHRUB COLLECTION No. 5

Two of each illustrated on this page, and
2 Spiraea Billiardi on page 6
2 year 2-3 feet, which will bloom this summer

8 for \$2.48



Viburnum Opulus

If you wish shrubs by parcel post add 5c each extra



Spiraea Billiardi

SPIRAEA—Cont.

- OPULIFOLIA**—The heavy white flower umbels in June, make the branches droop; old flower heads turn to dark red, making a striking variety of colors at different stages of maturity. 8-10 feet. **2-3 ft. 40c each; 10 for \$3.50.**
- PRUNIFOLIA** (Bridal Wreath)—Plum foliage, in autumn turns to brilliant red. Blooms early, small white flowers. 4-5 feet. **2-3 ft. 45c each; 10 for \$4.00. 3-4 ft. 55c each; 10 for \$5.00.**
- THUNBERGI**—Feathery foliage, which is a peculiar but pleasing shade of yellowish green, changes in autumn to bright red and orange. 3-5 feet. **2-3 ft. 40c each; 10 for \$3.50.**
- TRICHOCARPA** (Korean)—This splendid new shrub is enthusiastically acclaimed the finest spiraea yet discovered, covered with large rounded clusters of snowy white flowers marked with darker eyes. Blooms about two weeks later than the popular Spiraea Van Houttei. It retains its beautiful glossy green foliage late into the autumn. 4-6 feet. **1½-2 ft. 35c each; 10 for \$3.00. 2-3 ft. 50c each; 10 for \$4.50.**
- VAN HOUTTEI**—America's outstanding shrub; a complete fountain of pure white bloom in May and June. Its gracefully arching slender branches and maiden's hair foliage of dark green color continues from spring to fall. **1½-2 ft. 15c each; 10 for \$1.25. 2-3 ft. 20c each; 10 for \$1.60. 3-4 ft. 35c each; 10 for \$3.00.** See illustration page 5.

STEPHANANDRA—Branches angular, zigzagged, deep lobed foliage, colors to purplish red; and paniced racemes of white flowers in June. Grows 3-4 feet. **40c each; 2-3 ft. 50c each.**

SYMPHORICARPOS

- RACEMOSUS** (Snowberry)—Very ornamental. Small, pink flowers followed by large, waxy white berries, which remain during winter. June and July. 4-5 feet. **2-3 ft. 35c each; 10 for \$3.00. 3-4 ft. 50c each; 10 for \$4.50.** See illustration page 4.
- VULGARIS** (Coralberry)—Vigorous, quick growing shrub; fruit red. Rose colored flowers in June and July. 4-5 feet. **2-3 ft. 35c each; 10 for \$3.00. 3-4 ft. 50c each; 10 for \$4.00.**

PLICATUM (Japan Snowball)—Erect, compact, growing 6 to 8 feet. Purple tinted leaves with white ovoid corymbs in June. **2-3 ft. 65c each; 3-4 ft. 75c each.**

TOMENTOSUM—Single flowered form of Japan Snowball. Red fruits changing to blue-black. **2-3 ft. 55c each; 10 for \$5.00.**

WEIGELA

CANDIDA—The flowers are of the purest white, blooming in June, and all summer. 5-7 feet. **2-3 ft. 50c each; 10 for \$4.50.**

EVA RATHKE—Showy, bright red flowers borne freely during the summer. 5-7 feet. **1½-2 ft. 45c; 10 for \$4.00. 2-3 ft. 60c each; 10 for \$5.00.** See illustration page 3.

FLORIBUNDA—Flowers dark crimson, with white stamens somewhat like Fuchsia flowers. Blooms in the spring and in the fall. 5-7 feet. **1½-2 ft. 40c each; 10 for \$3.50. 2-3 ft. 50c each; 10 for \$4.50.**

PURPUREA—Flowers a beautiful pink; foliage red. 5-7 feet. **2-3 ft. 55c each.**

ROSEA (Diervilla Rosea)—One of the most charming shrubs in cultivation; the flowers are large and of deep rosy color, and are borne in great profusion. July. 5-7 feet. **1½ to 2 ft. 15c each; 10 for \$1.25. 2-3 ft. 20c each; 10 for \$1.50. 3-4 ft. 35c each; 10 for \$3.00.**

ROSEA NANA VARIEGATED—One of the best dwarf shrubs. Silvery variegated leaves, flowers nearly white. 4-5 feet. **18-24 in. 40c each; 10 for \$3.50. 2-3 ft. 50c each; 10 for \$4.50.** See illustration page 4.

TAMARIX, AFRICANA—The pink flowers, filmy foliage and gracefulness make them one of the most desirable shrubs for background or interplanting. Grows in poor, dry soil. Blooms early. 4-5 feet. **2-3 ft. 45c. 3-4 ft. 55c.** See illustration page 4.

VIBURNUM

DENTATUM (Arrowwood)—Bright green, heart-shaped leaves turning to purple and red. May and June flowers of creamy white, in umbel-like cymes. The fruits which follow in October are bluish-black. 8-12 feet. **2-3 ft. 40c each; 10 for \$3.50.**

LANTANA (Wayfaring Tree)—Beautiful wrinkled, Lantana-like leaves; white flowers in May and June. Fruits color unequally from crimson to black, causing a most charming combination of colors throughout the summer. 10-15 feet. **2-3 ft. 50c each; 10 for \$4.50.**

OPULUS (Bush Cranberry)—Handsome, dense, brilliant green foliage; a rich setting for large bunches of crimson berries which persist on otherwise bare branches throughout winter. The flowers are in dense cymes about four inches across, pure white. 8-10 feet. **2-3 ft. 55c each; 10 for \$5.00.** See illustration page 5.

OPULUS STERILIS (Common Snowball)—The common snowball which helps out so bravely for Decoration Day, with its lovely white bloom. 2-3 ft. **40c each; 10 for \$3.50.**

Height at maturity stated after each variety.

Shrubs for Foundation Planting

- | | |
|-----------------------|--------------------------|
| Barberries | Philadelphus, Mont Blanc |
| Callicarpa Purpurea | Spiraea Anthony Waterer |
| Clethra Alnifolia | Spiraea Prunifolia |
| Deutzia Gracilis | Spiraea Thunbergi |
| Deutzia Lemoinei | Spiraea Trichocarpa |
| Hydrangeas | Spiraea Van Houttei |
| Kolkwitzia Amabilis | Stephanandra Flexuosa |
| Philadelphus Aurea | Symphoricarpos |
| Philadelphus Lemoinei | Weigelas |

Shrubs with Berries

- | | |
|---------------------|----------------|
| Barberry | Honeysuckles |
| Callicarpa Purpurea | Symphoricarpos |
| | Viburnums |

Shrubs for Corners and Backgrounds

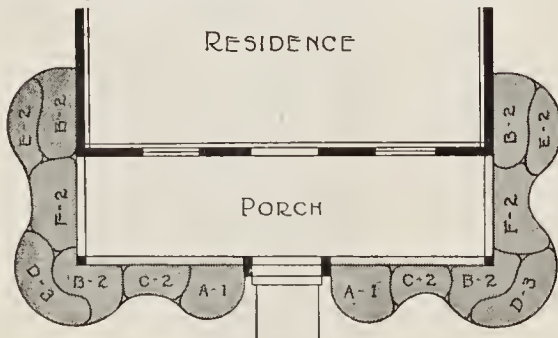
- | | |
|----------------------|----------------------|
| Aralia | Forsythias |
| Cornus | Honeysuckles |
| Deutzia P. of R. | Hamamelis Virginiana |
| Elder Aurea | Lilacs |
| Exochada Grandiflora | Viburnums (Tall) |

Shrubs for Shady Locations

- | | |
|------------|---------------------|
| Barberry | Honeysuckles |
| Cornus | Hydrangeas |
| Deutzias | Lilacs |
| Forsythias | Philadelphus |
| Hamamelis | Spiraea Van Houttei |
| | Symphoricarpos |

MALONEY'S DISTINCTIVE FOUNDATION SHRUB COLLECTION

When planting this collection of rare varieties you will have a planting entirely different than that of your friends.

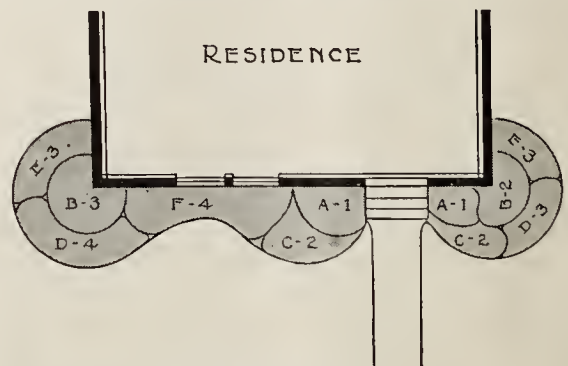


COLLECTION No. 6

- | | | | |
|------------------------|---|----------------------|---|
| A Kolkwitzia Amabilis | 2 | D Philadelphus Aurea | 6 |
| B Callicarpa Purpurea | 8 | E Kerria Japonica | 4 |
| C Spiraea Callosa Alba | 4 | F Clethra Alnifolia | 4 |

28 Shrubs all 2 yr. 2-3 ft. \$10.50

MALONEY'S MODERN FOUNDATION PLANTING Especially Attractive



Collection No. 7

- | | | | |
|-------------------------|---|---------------------------|---|
| A Honeysuckle Korolkowi | 2 | D Red-Leaf Barberry | 7 |
| B Hydrangea P. G. | 5 | E Spiraea Trichocarpa | 6 |
| C Deutzia Gracilis | 4 | F Philadelphus Mont Blanc | 4 |

All 2 yr. 2-3 ft. \$10.75



Maloney's Pay Shipping Costs

WE Prepay Shipping Costs on orders of \$2.50 or more received during the entire Spring season of 1934 to all points in the following states: Connecticut, Delaware, District of Columbia, Illinois, Indiana, Maine, Maryland, Massachusetts, Michigan, New Hampshire, New Jersey, New York, Ohio, Pennsylvania, Rhode Island, Vermont, Virginia, West Virginia:

To the following states we will reimburse you for one-half shipping cost: Kentucky, Missouri, North Carolina, Wisconsin.

It is to your advantage to build your order to \$2.50 for then you will know the exact cost of stock delivered. If you are not home when expressman delivers your order, he will return shipment to express office and mail you a card. If you will call your express agent and advise when you will be home, your shipment will be delivered free of charge.

MALONEY'S SENSATIONAL MONEY SAVING OFFERS

10% OF YOUR ORDER ADDED FREE

Write your order. Then, if it totals \$2.50 or more, add additional stock to the value of 10% of your order. These will be included free. This applies only to cash orders, and they must be mailed on or before March 25th.

OR 5% CASH DISCOUNT

Or, instead, you may deduct 5% (on orders of \$2.50 or more, on or before March 25th—2% Discount after March 25th) Cash Discount. Most people take the 10% offer.

Terms: Cash with order is required. On orders over \$10.00 we will ship C.O.D. providing twenty-five per cent of the total amount is sent with order. If the order goes by express you pay the balance to your Express Agent upon delivery of stock; if by freight, you pay the balance to your bank where you will find bill of lading, which you will present to your freight agent, who will deliver shipment to you. On C.O.D. freight shipments, kindly advise name of your bank.

How to Remit: By personal check, express money order, post office money order, bank draft or cash in a registered letter. Please do not send stamps.

Size of Orders: Orders less than \$1.00: Send an additional 10c on all orders less than \$1.00 to cover packing cost.

Use Order Blank: Use order blank to simplify ordering.

Order Early: Ordering early enables us to assemble your order while supply is unbroken and set it aside for shipment at the proper time.

FREE PLANTING DIRECTIONS WITH EVERY ORDER

In order that you may have success with your plantings, we will send with your order a booklet that tells you how to plant. Even though you never have done any planting, this booklet "Correct Planting Methods" makes it easy and the results sure.

This free booklet is just an added service we wish to render our patrons.



MALONEY'S—A GOOD PLACE TO BUY

We guarantee to deliver stock in good condition, up to grade and specifications.

If your order arrives in damaged condition, report fully to carrier and to us. Also, report immediately any errors, and we will correct promptly or refund your money.

Non-Warranty: No human caution could be more exacting than ours. While we hold ourselves in readiness on proper proof to replace free all trees, etc. that may prove untrue to label or refund the price paid, we give no further warranty.

Inspection: Our nurseries are inspected yearly by a duly authorized state inspector and a copy of our certificate received from the Department of Agriculture and Markets, Albany, N. Y., accompanies each shipment.

Shipping Season: We ship orders so as to reach our customers at very best time for planting in their localities. If you desire shipment to arrive at a special date, please so state on order blank.



Maloney's Vines and Hedges



California Privet Hedge

ORNAMENTAL VINES provide shade and act as screens; the foliage is restful and the flowers beautiful.

Strong Two Year Vines—If by Parcel Post 3c Each Extra

The types which cling to wood, stone, brick or stucco are designated by a star (*), the rest twine or need support.

AKEBIA QUINATA—A hardy, fast growing vine with magnificent foliage. Chocolate-purple flowers in large clusters possessing a delicious perfume. **50c each.**

BIGNONIA RADICANS (Trumpet Flower)—The orange-scarlet, trumpet-shaped flowers cluster at tip of branches. Will climb to great height on trunks of trees. One of the best. **40c each.**

BITTERSWEET (Celastrus)—Greatly admired because of the orange-crimson fruits which are used for winter decoration. Leaves are glossy green. **50c each.**

CLEMATIS, JACKMANNI—Flowers large, rich, velvety violet-purple, produced in masses forming a cloud of bloom. **75c each.**

CLEMATIS, PANICULATA—Rapid grower, covering trellises and arbors with handsome, clean glossy foliage. The flowers are of medium size, fragrant, pure white, borne in immense sheets in September, when very few other vines are in bloom. **45c each.**

DUTCHMAN'S PIPE—Very desirable for it grows vigorously in sun or shade. The large heart-shaped leaves are an important feature for they furnish the most complete screening leafage. The brownish flowers resemble a miniature pipe. **75c each.**

***EUONYMUS RADICANS VEGETUS** (Evergreen Bittersweet)—Hardy, of quite shrubby character, its rounded leaves close-covering, glossy evergreen throughout most of winter; showily spangled with orange-red berries. **65c each.**

***IVY, BOSTON** (Ampelopsis Veitchi)—Fine for covering walls, as it clings firmly to the smoothest surface, covering it closely with overlapping foliage, giving the appearance of being shingled with green leaves. **50c each.**

***IVY, ENGLISH** (Evergreen)—Rich waxy green foliage with lighter veins. Clings to stone walls; should be planted in sheltered position. May also be potted for growing indoors. **50c each.**

HONEYSUCKLE, HALL'S JAPAN—An almost evergreen honeysuckle of great value, hardy and of strong growth. The flowers are fragrant, of a pure white, changing to yellow. **40c each.**

HONEYSUCKLE, SCARLET TRUMPET—The bright scarlet trumpet-shaped flowers are most attractive; also have very good foliage. **45c each.**

MATRIMONY VINE—Small, purplish flowers followed by scarlet berries nearly an inch long. Will flourish everywhere and used for bank retainer. **40c each.**

SILVER LACE VINE—A new introduction. Will climb gracefully up a trellis, over a tree trunk, a wall, a porch or arch. It will rapidly grow 20 feet or more, with green foliage lightly bronzed at the tips. A well-grown specimen is a cloud of lacy, misty white, shot with tints of cream and pale rose of most exquisite effect. **75c each.**

WISTERIA, PURPLE—The substantial leaves are fern-like in long fronds. The magnificent flowers appear in May or June, as dense drooping racemes a foot or more long of pea-like florets. These are a magnificent spectacle, drooping from the eaves on porch or pergola, or from the canopied top of shrub-trained specimens. **75c each.**

WISTERIA, WHITE—Like the above except color. **65c each.**

HEDGES: Nothing else is quite as satisfactory or as reasonably priced. They are decorative the year around.

BARBERRY THUNBERGI—A pretty plant of dwarf habit from Japan. Very graceful and its foliage turns to a beautiful red in the fall. 2 year, strong plants, well branched. Plant 18 inches apart.
18 to 24 in. \$ 8.75 per 25; \$22.50 per 100; \$190.00 per 1000
2 to 3 ft. 10.00 per 25; 30.00 per 100; 250.00 per 1000

BARBERRY, BOX (Berberis Thunbergi Minor)—Foliage round and dense and growth so evenly compact, it bears a striking resemblance to Boxwood. Slower and lower growing than Thunbergi, its density allows closer trimming; so that—again like Boxwood—sheared specimens may be trained into perfect globes or pyramids, as well as the cropped hedge.
9 to 12 in. \$2.70 per 10; \$20.00 per 100
12 to 15 in. 3.50 per 10; 25.00 per 100

PRIVET, AMOOR RIVER—Hardy. Of similar form to the California type, not so lustrous, but safest for cold climates. 2 year, strong plants, well branched.
18 to 24 in. \$1.50 per 10; \$ 9.50 per 100; \$75.00 per 1000
2 to 3 ft. 1.75 per 10; 12.00 per 100; 95.00 per 1000

PRIVET, CALIFORNIA—Of all ornamental hedge plants this is the most highly prized. The leaves are a rich green and will remain on the plants up to Christmas, and if they are a little sheltered they will keep green almost all winter.
18 to 24 in. \$1.25 per 10; \$7.00 per 100; \$55.00 per 1000
2 to 3 ft. 1.50 per 10; 9.00 per 100; 75.00 per 1000

PRIVET, REGEL'S—A strong, very hardy type with dark and shiny leaves. The numerous branches are stiff, twiggy and horizontally spreading, gracefully drooping at the ends. Makes a naturally wide, dense bush adaptable to foundation plantings.
18 to 24 in. \$2.50 per 10; \$20.00 per 100
2 to 3 ft. 3.25 per 10; 30.00 per 100
Plant Privet 1 foot apart in double rows, and rows 1 foot apart alternated.



Silver Lace Vine

Maloney's Pay Shipping Costs • See Page 7



Maloney's Expert Landscaping Service for Satisfaction, Economy and Attractive Grounds



No Actual Landscape Charge

Let us aid you in your problem of planting the right thing in the right place. True, if a person wishes only a few shrubs or evergreens to fill in, they can be easily selected, but if you are going to add considerably to your present planting or make a new planting, one should be assisted by professional advice. This service applies to the small planting as well as to the large estate, and just as much care will be taken in making the plan.

Experienced Architects Reduce Cost

In this department we are employing landscape architects, who are familiar with the habits of varieties, who know the positions required for the different kinds, and who have an extensive knowledge of trees and plants. We are forced to make a small charge for their service, but because they usually recommend fewer plants than you yourself would select, they reduce your total expenditure while giving you more attractive grounds. Again, on large grounds, by having a plan you can divide the expenditure by planting part of the grounds each year, building to a beautiful finished work of art.



After Planting



Before Planting

HOW TO SAVE COST OF PLAN

No actual charge for Landscape plans. Kindly send the information requested and our Landscape Department will draw you a complete plan showing what varieties to use and where to plant them. For this plan we will make a charge according to the scale listed below:

\$20.00 to \$35.00, charge \$2.00; \$35.00 to \$75.00, charge \$3.00; \$75.00 to \$150.00, charge \$4.00.
State the amount you wish to spend. Write for price on plans \$150.00 up.

You may deduct cost of plan when ordering it in compliance with charge in rate schedule above.

Necessary Information

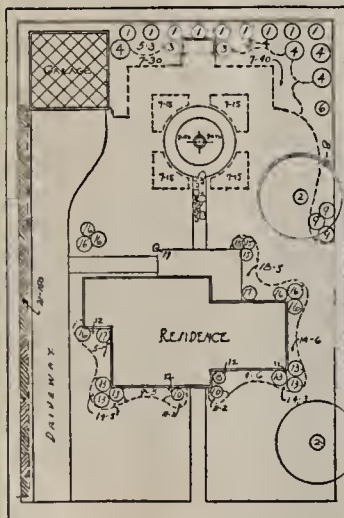
The accuracy of our plan depends upon the information you give us, so be complete and exact.

Dimensions of Property. Dimensions of Buildings (show ground floor plan on sketch and give complete dimensions)—Distance of Buildings from Property Lines (locate in respect to Front, Back and Side Lines) Cost of House, Style of Architecture—locate all entrances locate walks and drives and give width; locate porch and basement windows; (indicate Coal and Laundry Windows); show number of steps; locate existing trees and shrubs of any description; indicate any terraces or sloping ground; give directions of the compass; indicate objectionable features to be screened; indicate views to be retained; send any available photographs. Do you want a vegetable and fruit garden? do you want a Hardy Flower Garden? You don't have to make an architect's drawing to exact scale. Just a rough sketch will do, but be sure it contains all the information requested above. We will supply a complete scale drawing as indicated in the lower left hand corner of this page. We strongly recommend that you use this service.

Write or phone us. Consultation and personal supervision by our landscape architects can be arranged for large estates, parks, schools, cemeteries, subdivisions and public buildings anywhere.



Maloney Landscape Plan
For the Residence of
John Nicholas
Detroit, Mich.



- | NO. | PLANTING LIST | QU. |
|-----|------------------------|-----|
| 1 | Lombardy Poplar | 1 |
| 2 | American Elm | 2 |
| 3 | Flowering Almond | 2 |
| 4 | Persephone Tree-trunk | 1 |
| 5 | Shrubbery | 10 |
| 6 | Tortuosus Honey-suckle | 1 |
| 7 | Hardy Ferns in variety | 20 |
| 8 | Moravian Honey-suckle | 1 |
| 9 | Regals privet | 4 |
| 10 | American Arborvitae | 2 |
| 11 | Juniperus Millarii | 4 |
| 12 | Basilia Ivy | 4 |
| 13 | Cypripis. comosa | 6 |
| 14 | Japan Barbary | 4 |
| 15 | Box-wood Japanese | 3 |
| 16 | Spirea Van Houttei | 7 |
| 17 | Hedera. raiata | 2 |
| 18 | Spirea Thunbergii | 6 |
| 19 | Wisteria | 1 |
| 21 | Amor Bar. privet | 150 |

Note.—The first number in each group refers to lot, the second indicates quantity required.

Maloney Bros
Nursery Co. Inc.



BEAUTIFUL

MALONEY'S evergreens are started in our green-houses. After being properly matured they are planted in the field under our propagator's supervision. They are regularly transplanted, trimmed and worked to insure you long fibrous roots and luxurious color. Our many different types and forms offer appropriate varieties for any planting. See transplanting instructions next page.



Arbor Vitae, American—A beautiful tree much used for hedges, screens, foundation planting and singly on lawn. Can be trimmed and kept in any form or height.
18 to 24 in. \$1.48 each
2 to 2½ ft. 1.68 each
2½ to 3 ft. 2.28 each
3 to 3½ ft. 2.98 each

Write for special prices on larger sizes.

Arbor Vitae Elegantissima—Covered in spring with bright yellow foliage which becomes yellowish green in summer and a most attractive dark golden bronze in winter.
15 to 18 in. \$1.48 each

Arbor Vitae, Globosa—Forms a dense, low globe; handsome shade of green.
15 to 18 in. \$1.28 each
18 to 21 in. 1.98 each

Arbor Vitae, Pyramidal—A valuable upright evergreen of dense, compact habit. Foliage light green.
15 to 18 in. \$.98 each
18 to 24 in. 1.38 each
2 to 2½ ft. 1.78 each
3 to 3½ ft. 3.28 each

Arbor Vitae, Tom Thumb—Small and compact. Very desirable for planting in evergreen groups.

15 to 18 in. \$1.28 each
18 to 21 in. 1.98 each

Juniper Depressa Plumosa—Excellent ground cover. Good green in summer and during the fall and winter months unusual reddish purple.
15 to 18 in. \$1.68 each
18 to 24 in. 1.98 each

Juniper, Irish—Decided column form which immediately attracts attention. Foliage is a glaucous green used for formal work, especially in contrast with other plants. It is very slender in habit of growth and needs no shearing.
15 to 18 in. \$.98 each
18 to 24 in. 1.38 each

2 to 2½ ft. 1.98 each
2½ to 3 ft. 2.78 each
3 to 3½ ft. 3.48 each

Juniper, Spiny Greek—Peculiar, blue-green shade. Dwarf, very dense, cone-shaped; slow growing and useful in foundation plantings.
15 to 18 in. \$1.78 each

Juniper, Pfitzers—Of the spreading type this is perhaps the most popular. Foliage a grayish green, slightly drooping and branches are horizontally spreading. It thrives where others fail.

15 to 18 in. \$1.48 each
18 to 24 in. 2.38 each

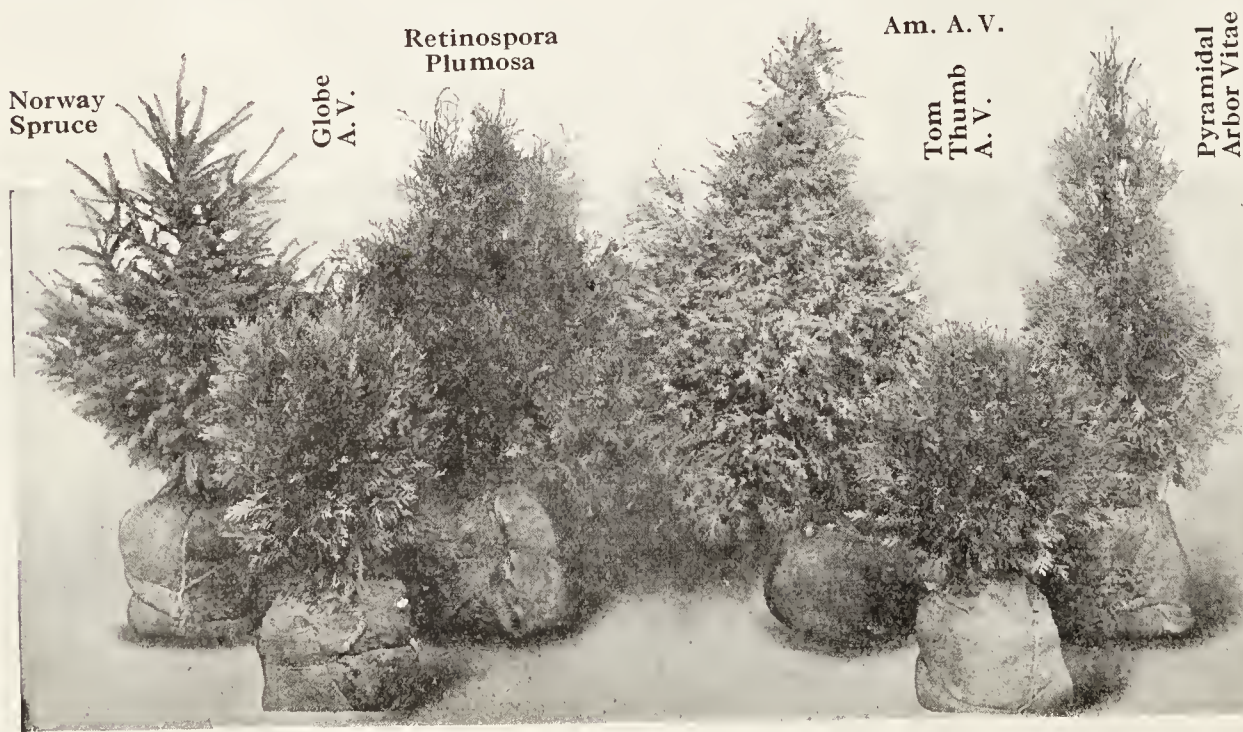
EVERGREENS are expensive to pack and ship because of their bulkiness, but Maloney's pay shipping charges on Evergreens the same as on all other stock.

JUNIOR EVERGREENS

6 FOR

\$1.98

- 1 Pyramidal Arbor Vitae
 - 2 Irish Juniper
 - 1 Savin Juniper
 - 1 Pfitzers Juniper
 - 1 Globosa Arbor Vitae
- 8-10 inches—ALL POSTPAID



Norway Spruce

Globe A.V.

Retinospora Plumosa

Am. A.V.

Tom Thumb A.V.

Pyramidal Arbor Vitae

Utica, N. Y.
Gentlemen:

I bought the smaller sizes of evergreens two years ago and saved money. You should see them now. They are large and beautiful.

Yours truly,
GEORGE GROSS



EVERGREENS

ARISTOCRATS OF THE LAWN

Juniper, Savin—Handsome moss green foliage; adapted to use as a filler in Evergreen groups, or as a dwarf ground cover.

15 to 18 in.....\$1.48 each
18 to 24 in.....2.38 each

Pine, Austrian—Broadbased, heavily needled, massive; darkest and richest green of the Pines. Quite densely and evenly branched. Withstands city smoke better than any other Evergreen.

2 to 2½ ft.....\$2.78 each
2½ to 3 ft.....3.48 each

Pine, Mugho—The only genuine Dwarf Pine. Leaves short, stiff and formal. Does not grow tall, but spreads out, generally assuming a globular form; very dense. Popular in the foreground of foundation.

12 to 15 in.....\$1.68 each

Pine, Scotch—A very rapid grower. The branches strong. Foliage is a bluish green.

18 to 24 in.....\$1.98 each
2 to 2½ ft.....2.28 each
2½ to 3 ft.....2.78 each

Write for special prices on larger sizes.

Retinospora Plumosa (Plumed Cypress)—This is one of the best pyramidal varieties. Foliage a grayish green, very finely cut and has a feathery appearance.

18 to 24 in.....\$1.68 each

Spruce, Colorado Blue—This is hardy, healthy and very beautiful. Its foliage is a steel blue.

18 to 24 in.....\$3.98 each
2 to 2½ ft.....4.98 each
2½ to 3 ft.....7.48 each



Pine, Mugho



Colorado Blue Spruce

Spruce, Colorado Green—The origin of the famous Blue Spruce. A vigorous grower and hardy, making fine specimens in a broad based, sharply defined pyramidal form; foliage rigidly angular with sharp needles very densely set. Light green color.

18 to 24 in.....\$1.78 each
2 to 2½ ft.....2.28 each
2½ to 3 ft.....2.98 each

Write for special prices on larger sizes.

Spruce, Norway—Most common Spruce seen; largely used for Christmas trees; a large pyramidal tree suitable for screens or wind-breaks or group planting.

18 to 24 in.....\$1.28 each
2 to 2½ ft.....1.78 each
2½ to 3 ft.....2.28 each

Write for special prices on larger sizes.

Taxus Cuspidata—The beautiful Japanese yew which we all admire with its beautiful red berries in the fall. Upright spreading branches; dull green needles.

15 to 18 in.....\$2.98 each

BOXWOOD

Tree Bush Form—Slow-growing, suitable for window-boxes, or as specimens.

12 to 15 in.....\$1.48 each

How to Plant



You admire evergreens; now with these low prices you can enjoy your own.

Free 48 page booklet "Correct Planting Methods" with each order.

Cleveland, Ohio
Gentlemen:

My evergreens arrived today in wonderful condition. They were beautiful specimens. You may expect my next year's order.

Sincerely,
JOHN SEWARD





ANNUAL FLOWER SEEDS

Large size packets, price 9c postage paid

By selling you through the mail, we are able to give you more seeds and more flowers for less money.

ASTERS

Asters are valuable for cutting. Will give you flowers the entire season.

Branching Asters, Mixed Colors. Pkt. 9c.

CALENDULA

The old-fashioned English "Marygold"; one of the best and showiest free-flowering hardy annuals, growing in any good garden soil. They are very effective in beds or in mixed borders, where they bloom from early summer until frost.

Mixed Colors—All double varieties. Pkt. 9c.

CANDYTUFT

A very easily grown low annual that is a universal favorite for massing in beds. Successive sowings should be made in the spring and during the summer while the last sowing in autumn will produce flowers early in the spring. One foot high.

Mixed Colors. Pkt. 9c.

CARNATION

Their delicious fragrance and richness of colors make them very desirable in every garden.

Mixed Colors. Pkt. 9c.

COSMOS

These are among the most popular and easily grown annuals, making a wonderful display in beds and borders, furnishing an abundance of cut blooms in the fall when other flowers are scarce. Sow the seed early.

Early Flowering Giant—Flowers large with large overlapping petals, and on long graceful stems. **Mixed. Pkt. 9c.**

New Double Crested—Flowers are double-crested, having double centers with a row of petals around the base. **Mixed. Pkt. 9c.**

BACHELOR BUTTONS

The flowers are double, of good clear colors and with long graceful stems for cutting.

Mixed colors. Pkt. 9c.

LARKSPUR ANNUAL

Well known garden flower. Fine to plant with perennials since a wider range of color is obtainable in seed.

Annual—Mixed shades of blue and pink. Pkt. 9c.

MARIGOLD

The African and French Varieties are old favorites because of their free flowering. The African are solid color and dwarf French are fancy striped.

Tall African—Mixed shades of yellow. Pkt. 9c.

Dwarf French—Mixed shades of yellow. Pkt. 9c.

NASTURTIUMS

Extremely popular because they grow rapidly and bloom within a few weeks. The color being so vividly bright and cheery make them a fine addition to any garden.

Dwarf Mixed—Produce enormous flowers on long stems. **Pkt. 9c.**

Golden Gleam—Remarkable, new, double, fragrant, yellow. Plant is bushy and flowers large. Semi-double, masses of flowers all summer. **Pkt. 9c.**

Tall Mixed—The best tall or climbing variety. **Pkt. 9c.**

PANSY

Magnificent Mixture—They are, without exception, the most gorgeous Pansies we have ever seen. They are of immense size and of a thick velvety texture, and the range of colors includes many of the deep red and brown shades. **Pkt. 9c.**

PORTULACA

Often called "Sun Plant" or "Moss Rose" as it loves a warm sunny place in the garden. Very effective when sown around in front of flower-beds or along walks, or when used as carpet-bedding in the rose garden. The plants run freely but grow only a few inches high and are covered with innumerable bright-colored flowers all summer from seed sown outdoors in the spring. **Mixed. Pkt. 9c.**

POPPY

Shirley—Many of the flowers are ruffled and semi-double and they are in all shades of pink, salmon, rose and scarlet. 2 feet high. **Pkt. 9c.**

PETUNIAS

Few annual plants equal in effectiveness the Petunia for growing in beds and borders or in windows or porch boxes. They commence flowering early and continue a sheet of bloom until frost.

Striped and Blotched—Mixed colors and various designs. **Pkt. 9c.**

ANNUAL PHLOX

Annual Phlox—What garden is complete without the vivid colors of annual phlox. Flowers continuously throughout the entire summer. **Mixed colors. Pkt. 9c.**

Star Phlox—Mixed colors. **Pkt. 9c.**

SCABIOSA (Mourning Bride)

It is very easily and quickly grown, blossoms very freely during the summer and fall.

Mixed Colors. Double Pkt. 9c.

STOCK

Double—One of the most beautiful of flowers, bright colors of every hue, borne on spikes. Fine for cut flowers. A splendid mixture of all the colors. **Pkt. 9c.**

SWEET PEA

Plant where there will be uninterrupted sunlight, in as good soil as possible. Seed should be sown before the first of April if weather will permit, about 6 inches down in the trench, and covered with an inch of firmly pressed soil. Thin out to 2 to 4 inches apart.

EARLY FLOWERING SWEET PEAS

Spencer Mixture—This is a wonderful blend displaying a wide range of colors and shades. **Pkt. 9c.**



Marigold

SUMMER FLOWERING SWEET PEAS

Summer Flowering Mixed—A great many varieties and colors grown as a high grade mixture. **Pkt. 9c.**

SNAPDRAGON

Immense flowers on long stems. A magnificent mixture including almost every conceivable color. **Pkt. 9c.**

VERBENA

Of all the flowers Verbena seems to be the most consistent bloomer and produces such rare colors that it is a delight to all flower growers—easily grown. By all means put this seed in your garden.

Mixed Colors, containing all shades of red, pink, blue and yellow. Pkt. 9c.

ZINNIAS

Every planting should include Zinnias. There is no other easily grown annual flower that will make such a brilliant display from July until frost. They can be sown in rows, in beds or among the perennials to fill in the unsightly bare gaps left by the early flowering perennials or bulbs. They don't need to be transplanted. Just sow the seed where you want the flowers. All they need is plenty of sunlight, good soil.

Mixed Colors of the giant Colossal Zinnia. Pkt. 9c.



Petunias



VEGETABLE SEEDS

Vegetables rapidly lose their finest delicacy of flavor after picking. Unless you have tasted vegetables served on your table a few hours after picking, you do not know how delicious they can be. In your garden this season plant a few of the popular varieties listed here. They are the same high quality that we sell to commercial growers and farmers who know quality. You'll enjoy these immensely. Cut table cost by growing your own vegetables from Maloney's reliable seed.

All seed shipped postpaid. Order early. Write for special price on quantity lot.

BEANS

Beans are easy to grow—valuable for Home Garden
Plant rows 2 ft. apart, seed 2 in. apart

Price of all Beans: Pkt. 7c; ½ lb. 25c; 1 lb. 35c

GREEN PODDED BUSH BEANS

Stringless Green Pod—Very prolific, highest quality, stringless.

WAX OR BUTTER BEANS

Golden Wax—Clear light yellow, stringless of good quality.

Black Wax—Golden yellow, very prolific, seeds black.

LIMA BEAN

Bush Lima—Small, early and prolific.

BEETS

A few rows in the garden will furnish Beets continuously throughout the season.

Plant rows 18 inches apart; thin to a stand of 4 inches apart.

Detroit Dark Red—Smooth, blood red, tender. **Pkt. 5c, ¼ lb. 40c; 1 lb. \$1.25.**

CARROTS

Carrots are one of the most healthful vegetables grown. Plant rows 15 inches apart; thin in rows to 3 inches apart. A packet will sow 60 ft. of row.

Price of all varieties: Pkt. 5c; ¼ lb. 50c; 1 lb. \$1.50

Chantenay—The most popular carrot for general use; grows 6 to 7 inches long. The color is deep orange and fine grained.

Danvers Half Long—Most popular of all carrots, 6 to 7 inches long.

Long Orange—The roots are an immense yielder.

CUCUMBERS

Do not fail to have a bed of cucumbers for salads or for pickling. A fine crop may easily be grown.

Pkt. 5c; ¼ lb. 35c; 1 lb. \$1.00

Early Cluster—Fine for pickling or for slicing. 5 to 6 inches long.

Boston Pickling. Splendid pickling sort, 6 to 7 inches long.

EGG PLANT

New York Purple—Plant this seed early indoors or in a hot bed so that plants can be transplanted into the open ground when weather permits. **Pkt. 5c; ½ oz. 30c; 1 oz. 50c.**

LETTUCE

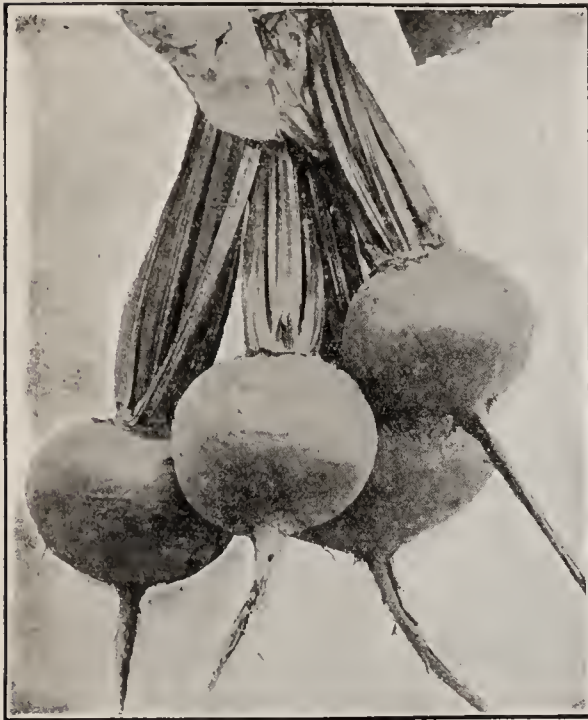
Easily grown; making successive sowings and using the lettuce as it is thinned, you can keep a supply throughout the season. Plant in rows one foot apart, thin out plants ten inches apart in rows. A packet will sow about 30 feet of row; an ounce 250 feet.

Price all varieties: Pkt. 5c; ¼ lb. 45c; 1 lb. \$1.30

Big Boston—Forms large compact heads and is one of the most popular varieties. Big Boston is one of the best varieties for late crop, as it heads well in cold weather and is not injured by slight freezing.

Early Curled Simpson—Forms a bunch of very much curled leaves of light green earlier than head lettuce.

New York ("Wonderful," "Iceberg")—Forms compact white heads as large as a small cabbage. The leaves are deep green, crinkled, very large. The heads are round or oblong, very large, compact, and almost perfectly white inside.



Detroit Dark Red Beet

CABBAGE

Danish Ball Head—One of the most popular of all cabbages. **Pkt. 5c; 1 oz. 30c; 4 ozs. 85c.**

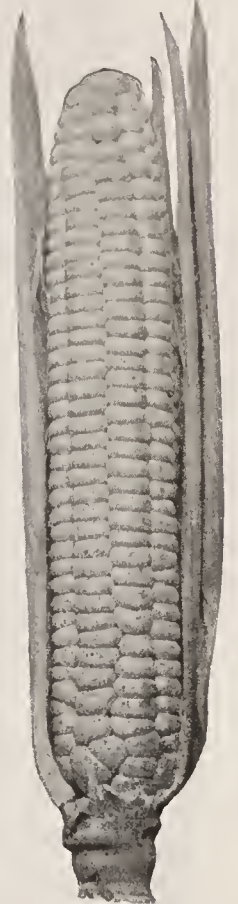
SWEET CORN

Pollen fertilizes better when two or more rows are planted side by side. One packet will plant 40 hills; ½ lb. 200 hills; 4 ft. rows, hills 1 ft. apart.

Price of all varieties of Corn: Pkt. 7c; ½ lb. 25c; 1 lb. 40c

Stowell's Evergreen—Best of the white corn, standard variety. 105 days.

Golden Bantam—(65 days). Kernels a rich golden yellow; flavor deliciously rich and pleasing—most popular sweet corn.



Golden Bantam Corn



Golden Wax Bean



Chantenay Carrot

Maloney's pay shipping costs, offer attractive discounts and give FREE with each order a 48 page booklet on planting—See page 7.



VEGETABLE SEEDS—Cont.

ONION SEED

To raise good onions from seed, soil must be rich and mellow. Sow seed early in rows 15 inches apart.

Yellow Globe Danvers—The most popular yellow onion for home garden. Our selection. **Pkt. 5c; ¼ lb. 50c; 1 lb. \$1.70.**

PARSNIPS

Hollow Crown—Long, smooth and straight, and of fine quality. **Pkt. 5c; ¼ lb. 35c; ½ lb. 50c.**

PARSLEY

Moss Curled—Very finely curled leaves. **Pkt. 5c; ¼ lb. 30c; ½ lb. 55c.**

PEAS

Peas are tender, delicious. Sow plenty of Peas. 1 lb. will sow 100 ft. of drill.

Price of all Peas: Pkt. 7c; ½ lb. 25c; 1 lb. 40c

Alaska—One of the earliest kinds. Small pods.

Premium Gem—One of the best home garden varieties, wrinkled, medium.

Telephone—Very prolific.

PEPPER

Ruby King—Plant this seed early indoors or in a hot bed so that plants can be transplanted into the open ground when weather permits. **Pkt. 5c; ½ oz. 20c; 1 oz. 35c.**

PUMPKIN

Small Sugar—Small deep yellow, ribbed and flattened at the ends. **Pkt. 5c; ¼ lb. 25c; ½ lb. 40c.**

RADISHES

Radishes are easy to grow and very appetizing. Sow in rows 12 inches apart and thin the plants to 2 inches apart. A packet will sow 20 feet of row.

Price of all Radishes: Pkt. 5c; ¼ lb. 30c; 1 lb. 80c

French Breakfast—Excellent for home garden, oblong with scarlet top and white bottom.

Early Scarlet Globe—Large roundish oval; brilliant red; flesh white, solid, crisp and mild.

Icicle—Remains crisp and sprightly an extremely long time; most excellent flavor and transparent whiteness.

SWISS CHARD

This is excellent for greens and should be in every garden. **Pkt. 5c; ¼ lb. 30c; ½ lb. 45c.**

TOMATOES

Sow seed in hot beds early, during late March. Set plants in garden 2½ ft. apart. A packet will produce about 150 plants.

Price of all varieties except Ponderosa: Pkt. 5c; ½ oz. 25c; 1 oz. 40c

Chalks Jewel—Large smooth fruit of a rich scarlet red. Slices well.

Earliana—Remarkable for its earliness, large size, uniform shape, solid fruit, attractive red color and productiveness. Leading high quality, early market variety.

Ponderosa—Large size, very solid with few seeds; a beautiful crimson. **Pkt. 5c; ½ oz. 50c; 1 oz. 80c.**

SPINACH

Spinach is an excellent health builder. Sow in drills 12 to 14 inches apart. 1 oz. will sow 100 ft. of drill.

Bloomsdale—Standard variety plants upright and compact of large size. **Pkt. 5c; ¼ lb. 25c; 1 lb. 60c.**

TURNIP

Here is an important nutritious vegetable that should be in every garden. **Pkt. 5c; ½ lb. 40c; 1 lb. 60c**

Purple Top White Globe—Best for table use, fine grained and very tender.
Rutabaga or Swede—American Purple Top.

Gentlemen:

Your seed is wonderful. I have had better results with your flower and vegetable seeds than any I ever planted.

Respectfully yours,

MRS. JOHN BASSETT

South Bend, Ind.

LAWN GRASS SEED

We can furnish several famous brands of lawn grass seed mixtures. Do not confuse our prices with those of Companies offering inferior mixtures containing large quantities of field grass, which are low in cost. Field grasses grow very rapidly but are coarse in texture and last only a short time. We offer the finest seeds at a most reasonable price, which will insure you of a beautiful velvet lawn if the instructions sent with each lot of seed are carefully followed.

Pioneer Brand—Here is an excellent rapid growing mixture, which will produce an excellent lawn. This mixture contains a large quantity of Kentucky blue grass seed. **Per lb. 22c; 5 lbs. \$1.05; 10 lbs. or more 20c per lb.**

Golf Park—This is the finest brand that we can supply and contains only the highest quality grasses suitable to produce a velvet lawn of par excellence. **Per lb. 55c; 5 lbs. \$2.50; 10 lbs. or more 47c per lb.**

Shady Spot—This mixture is composed of grasses which thrive in semi-shady places. It is the ideal mixture to use in spots partially hidden from the sun. **Per lb. 50c; 5 lbs. \$2.25; 10 lbs. or more 40c per lb.**

We also supply special lawn seed for sandy soil and bent grass mixtures. Prices and information on request.



Telephone Peas



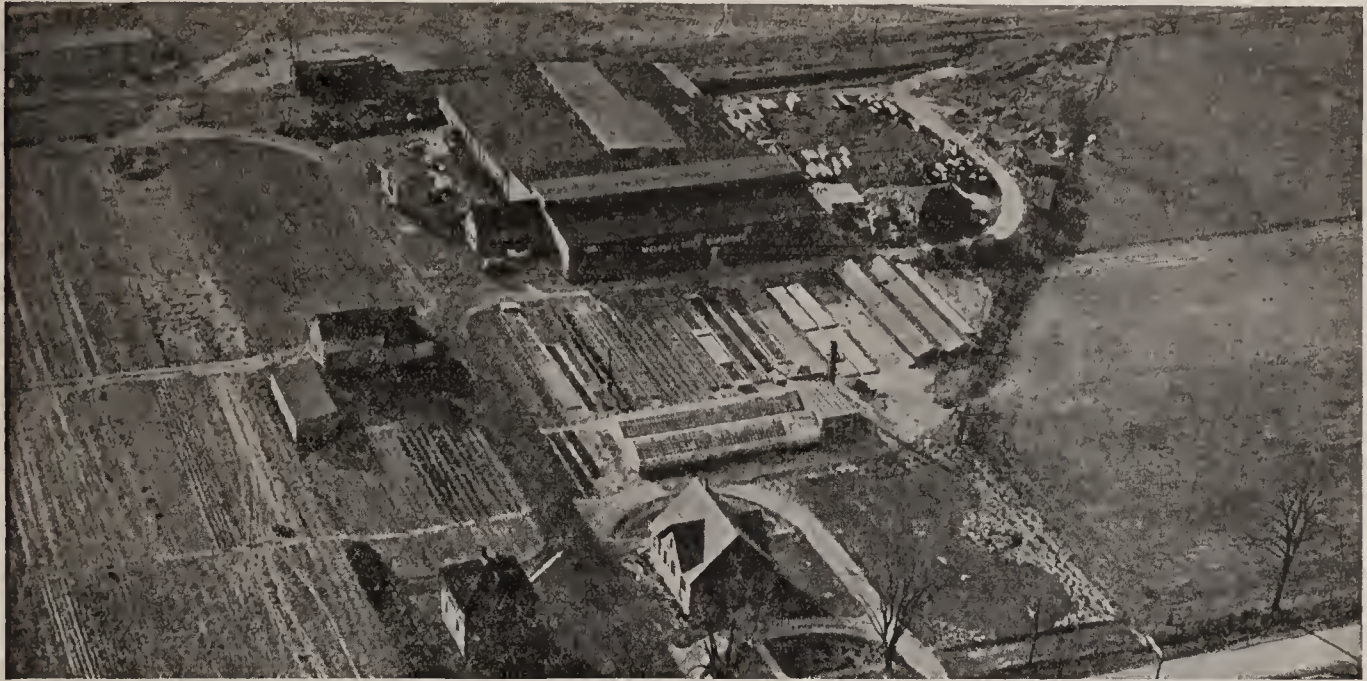
Early Scarlet Globe Radish



Earliana Tomato



Big Boston Lettuce



Aerial View of Our Office, Greenhouses, Packing House and Perennial Fields.

OUR 50th ANNIVERSARY

MALONEY QUALITY IS GROWN INTO MALONEY STOCK

I can take two watches, one in each hand, and not be able to tell the one with a gold filled case and only two or three jewels from the other which has a solid gold case and 23 jewels. But a watch maker could tell them apart the minute he saw them.

That's just the way it is with Nursery Stock. You could take two shrubs or fruit trees and hold them up, and you couldn't tell which one was the better, which one would grow the fastest, which one would shape up best. But I could tell you at a glance.

That's why I have always maintained that the grower of Nursery Stock should be responsible for what he sells. He knows. You do not. And that's why I advise everyone who plants nursery stock to buy it direct from a reliable nursery firm which grows its own stock.

We are not the only concern of this kind in the country. But we have been in business for 50 years. We have, by recognizing our responsibility to the consumer, built up a direct from the Nursery to consumer business that requires year after year 400 acres of nursery to supply.

Let me tell you a little about ourselves and why with the aid of the climatic and soil condition here in Dansville we are able to actually grow quality into Maloney Stock.



A. E. MALONEY
President and
Propagating Supervisor

My father, Thomas Maloney who started the business in 1884, was an expert nursery grower and a good business man. As soon as my brother and I were out of school, he set us to work in his nursery and we grew up in and with the business. Later I became head of the office and Albert E. Maloney became head of production—so much for our experience and knowledge of the business. The above facts are vital to you and our experience and knowledge are at your service if you want the finest kind of nursery stock.

We do not claim to be the best nurserymen or the only wise nurserymen in the country. But we do claim that Dansville soil

Worcester, Mass.

Gentlemen:

I do not doubt but that you receive many letters from satisfied customers. However, I would like to express my appreciation for the fine stock you sent me last Spring.

I receive many catalogs, and have dealt with a great number of nursery firms, but no firm has ever given me as fine stock, and with your excellent packing system they arrived in wonderful condition.

Your soil and climatic conditions are all you claim for producing healthy, vigorous trees. I expect to make a large planting next Spring and you will certainly get my order.

W. N. SMITH



W. J. MALONEY
Your Corresponding
Secretary

and climate produces the finest root systems—and the root system is the heart of every shrub or tree you plant. Our experience in propagation and budding, our expert supervision in digging (we use a power digger to keep all the root uninjured) our extreme care in sorting and shipping, all these things plus Dansville soil and climate enable us to furnish as fine, if not the finest, nursery stock any one can buy.

Now just let me wind up with one more idea—we can and do grow fine nursery stock. But just as no two watches are ever just alike, so no two trees or shrubs are identical. We, the growers, know which ones are better. And as we know this and recognize our responsibility, we send out the best and only the best of our stock to the men and women, who order from us by mail.

And speaking of ordering by mail, I do wish that all our customers could visit our Nursery office and packing houses here in Dansville. The picture at the top of this page gives you an idea of our office and packing grounds. Dansville is located 50 miles South of Rochester and 70 miles North of Elmira on Route 36-A.

WILLIAM J. MALONEY,
Your Corresponding Secretary.

DECIDUOUS TREES



Thorn

When you order a tree or plant you must have confidence in the grower. Our long experience and thousands of customers is our best and only real advertisement. Our ornamental trees are as advertised—straight trunks, shapely tops and thrifty roots. The trees are expertly grown, carefully dug and packed. We are proud of every piece of stock we own, and are proud to ship it to you. No other method, than from grower direct to consumer, has ever proven more satisfactory. You inevitably save when you buy from Maloney.

- CRAB, NIEDZWETZKYANA**—Purplish foliage, the wood and bark also tinged with red. Extra large flowers deep pink, the edible fruits purple.
 3 to 4 ft. \$.85 each
 4 to 5 ft. 1.15 each
- CRAB, PRUNIFOLIA**—Large white flowers. Fruit red, yellow and green. Very attractive.
 3 to 4 ft. \$.85 each
 4 to 5 ft. 1.15 each
- CRAB, SPECTABILIS**—Pink, fragrant, semi-double. Fruit pale yellow. Grows rather large.
 4 to 5 ft. \$.85 each
 5 to 6 ft. 1.15 each
- ELM, AMERICAN**—A natural spreading and drooping tree of our own American meadows and forests. Is entirely hardy and easily transplanted.
 8 to 10 ft. \$1.65 each; 10 for \$13.50
 10 to 12 ft. 2.25 each; 10 for \$20.00
- Write for special price for larger sizes.
- ELM, CHINESE**—A new introduction from China. This variety is a very rapid grower. Known to have reached a height of 20 feet six years after planting an 8 to 10 ft. tree. Resembles the popular Norway Maple in shape. Good foliage, more dense than other elms. Exceptionally adapted for street and shade planting where quick results are desired. Grows 75 feet high.
 4 to 5 ft. \$1.00 each
 5 to 6 ft. 1.25 each
 6 to 8 ft. 1.75 each
- HORSE CHESTNUT, WHITE FLOWERING**—Very handsome; has magnificent spikes of white flowers.
 5 to 6 ft. \$1.95 each
- JUDAS TREE (Red Bud)**—A small growing tree of irregular form, with heart-shaped leaves. It is covered with delicate pink blossoms early in spring before the leaves appear, a charming association among the tender greens and bronzes of young foliage.
 4 to 5 ft. \$1.25 each
- KOELRENTHERIA PANICULATA (Varnish Tree)**—Very showy in July when spangled with foot-long clusters of golden yellow flowers. In autumn foliage is crimson and gold.
 2 to 3 ft. \$.85 each
- LOCUST, BLACK**—A native tree of large size and rapid growth. The flowers in long white racemes, very fragrant. Valuable for timber.
 6 to 8 ft. \$1.25 each
 8 to 10 ft. 1.75 each
- MAGNOLIA GLAUCA (Sweet Bay)**—When planted in moist soil this makes a handsome tree 30 to 40 feet high but in the drier lawns is much smaller. Its broad leaves are glossy, laurel-like, almost evergreen. In June, its large, waxy white flowercup is lovely and exquisitely fragrant.
 2 to 3 ft. \$3.00 each
- MAGNOLIA, SOULANGEANA**—Cup-shaped white and rosy violet blossoms are 3-5 inches across and open before leaves appear.
 2 to 3 ft. \$6.00 each
- MAPLE, ASHLEAVED (Box Elder)**—Fine, rapid grower, handsome light green foliage and spreading head.
 6 to 8 ft. \$.85 each
 8 to 10 ft. 1.25 each
 10 to 12 ft. 1.55 each

- BIRCH, CUT-LEAVED WEEPING**—Its tall slender, yet vigorous growth, graceful branches, silvery white bark and delicately cut foliage present a combination of attractive characteristics rarely met with in a single tree.
 6 to 8 ft. \$1.55 each
- CATALPA BUNGEI (Umbrella Catalpa)**—Makes an umbrella-shaped top without pruning. Flourishes in almost all soils. Leaves large, glossy, heart-shaped.
 5 to 6 ft. \$1.35 each; 2 for \$2.50
 6 to 7 ft. 1.60 each; 2 for 3.00
- See illustration page 17.
- CATALPA SPECIOSA**—Rapid grower. Large, heart-shaped downy leaves, and compound panicles of white flowers. Very fragrant.
 6 to 8 ft. \$.95 each
 8 to 10 ft. 1.25 each
- CHERRY, KANZAN FLOWERING**—One of the famous flowering cherries which attract so much admiration in Washington, D. C. Beautiful glossy pink flowers in great profusion before the leaves appear. Of delightful fragrance.
 4 to 5 ft. \$1.95 each
 3 to 4 ft. 1.75 each
- CORNUS FLORIDA (White Flowering Dogwood)**—Flowers white, 3 to 3½ inches in diameter, produced in spring before leaves appear; very abundant, showy and durable. Foliage grayish green, glossy and handsome; in the autumn turning to deep red.
 3 to 4 ft. \$1.35 each
- CORNUS FLORIDA RUBRA (Red Flowering Dogwood)**—Magnetic beauty in the spring, with its profusion of pink and light red flowers. Foliage unusually brilliant in the fall.
 B. & B.
 2 to 3 ft. \$1.95 each
- CRAB, ATROSANGUINEA**—The buds are purplish red, and the entire flower tinged purple. Fruit reddish yellow.
 3 to 4 ft. \$.85 each
 4 to 5 ft. 1.15 each
- CRAB, BECHTEL**—Large double pink, rose-like flowers, round buds and great profusion of bloom year after year.
 2 to 3 ft. \$.85 each
 3 to 4 ft. 1.15 each

- MAPLE, JAPAN RED-LEAVED**—The early and mid-summer aspect is vivid blood-red, which dulls to a bronzy purple-red towards fall. Rounded, dwarf tree seldom attaining a height of over 10 feet.
 2½ to 3 ft. \$5.00 each
- MAPLE, NORWAY**—A large handsome tree, with broad, deep green, shining foliage. Very desirable for street, park or lawns. Makes the roundest head; is colored the deepest coolest green; and furnishes the densest shade of the entire list of good trees. Very hardy; slow grower.
 6 to 8 ft. \$2.00 each; 10 for \$17.50
 8 to 10 ft. 2.50 each; 10 for 22.50
 10 to 12 ft. 3.25 each; 10 for 30.00

Write for special price for larger sizes.

- MAPLE, SILVER-LEAVED OR SOFT**—Foliage bright green above and silvery underneath. An exceedingly rapid grower, makes a large tree.
 6 to 8 ft. \$.75 each; 10 for \$ 6.50
 8 to 10 ft.95 each; 10 for 8.50
 10 to 12 ft. 1.50 each; 10 for 12.50
- MAPLE, SCHWEDLER**—Reddish purple foliage in early Spring, changing to deep bronze in Fall.
 6 to 8 ft. \$2.75 each
- MAPLE, SUGAR OR ROCK**—Is considered slow grower, but long lived.
 6 to 8 ft. \$2.00 each
- MOUNTAIN ASH, EUROPEAN**—A very beautiful tree for ornamental planting. In the early Fall it bears clusters of bright red berries.
 6 to 8 ft. \$.95 each
 8 to 10 ft. 1.35 each
- MULBERRY, RUSSIAN**—Very hardy, vigorous grower, very productive, fruit black, delicious and of medium size.
 4 to 6 ft. \$.98 each
- MULBERRY, TEA'S WEEPING**—The most graceful and hardy weeping tree. Forms a perfect shaped head, with long, slender willowy branches drooping to the ground.
 5 ft. 2 year heads \$2.75 each
- OAK, RED**—The young shoots and leaf stems are red, the foliage purplish-crimson in Autumn. Unusual large leaf and growth rapid. A most beautiful tree. 80-100 ft.
 4 to 6 ft. \$2.50 each
 6 to 8 ft. 2.95 each
- ORIENTAL PLANE**—A hardy, rapid growing tree. Beautiful dense foliage
 4 to 6 ft. \$1.25 each
- POPLAR, CAROLINA**—The most rapid grower among shade trees, frequently growing eight feet during one season and thus making fine shade in two or three years. Will grow in any kind of soil.
 6 to 8 ft. \$.60 each; 10 for \$5.00
 8 to 10 ft.75 each; 10 for 6.50
 10 to 12 ft.98 each; 10 for 8.50
- POPLAR, LOMBARDY**—Well known for its tall, spire-like form. Where it is desired to make a boundary line, or where there is an entrance to a driveway these trees are very effective. Transplant safely.
 6 to 8 ft. \$.70 each; 10 for \$6.00
 8 to 10 ft.89 each; 10 for 7.50
 10 to 12 ft. 1.10 each; 10 for 9.00



Flowering Cherry

PRUNUS OTHELLO—Beautiful deep purple leaves. Fruit which ripens early is deep crimson. Prune heavily in early Spring to induce long growth, which is more attractively colored.
 4 to 5 ft. \$.75 each
 5 to 6 ft.98 each

PRUNUS PISSARDI (Purple-Leaved)—Leaves are a lustrous crimson, changing to dark purple, and retain this beautiful tint until they drop late in the autumn; no other purple-leaved tree retains its color like this. Flowers small, white, single, covering the tree.
 4 to 5 ft. \$.85 each
 5 to 6 ft. 1.15 each

PRUNUS TRILOBA (Double Flowering Plum)—Flowers double, delicate pink.
 3 to 4 ft. \$.75 each

RUSSIAN OLIVE—Bark dark green, foliage rich, silver color, willow shape; flowers deep golden and very fragrant, followed by ornamental olive fruits. 20 to 30 feet.
 18 to 24 in. \$.45 each
 2 to 3 ft.55 each



Catalpa Bungei

THORN, COCCINEA—Single white flowers followed by scarlet fruits. A fine small tree of densely branching growth. 20-25 ft.
 3 to 4 ft. \$1.75 each

THORN, PAUL'S DOUBLE SCARLET—Flowers deep crimson scarlet, very double. One of the most attractive small trees for solitary specimens. Showy in fruit as well as bloom.
 4 to 5 ft. \$1.75 each

TULIP TREE (Whitewood)—Tall pyramidal habit, with broad, glossy, fiddle-shaped leaves and beautiful, tulip-like flowers. Leaf color is clean, rather bluish-green shade which in fall turns brightest yellow. Flowers are 1½ to 2 inches long, light greenish yellow marked at inside base with orange; May or June.
 4 to 5 ft. \$.75 each
 5 to 6 ft.98 each

WILLOW, BABYLONICA—Well known weeping variety; forms a large round-headed, graceful tree; is quite desirable.
 6 to 8 ft. \$1.15 each
 8 to 10 ft. 1.50 each

WILLOW, CAPREA (Pussy Willow)—Quick growing tree, useful for tall background or screen purposes, with fur-like catkins along its branches early in the spring.
 4 ft. \$.85 each

WILLOW, GOLDEN—Especially desirable on account of its golden colored bark with light green leaves. A splendid grower.
 4 to 6 ft. \$.80 each
 6 to 8 ft.90 each



Bechtel's Crab



Mountain Ash

Maloney Bros.
Gentlemen:

Port Murray, N. J.

The trees I ordered arrived in the best of condition due to your experience in packing and they are the finest trees I ever saw. I appreciate the way you do business. Whenever in need of more trees or shrubbery you can rest assured you will receive my order.

Yours very truly,
HOMER E. RUSH



Norway Maple

**ORDER
NOW
WHILE
PRICES
ARE
LOW**



Prunus Pissardi

HARDY PERENNIALS

from Maloney's will bloom the first season. The reason for this is because they are larger and stronger plants than the average perennial. We have found that by taking them from our greenhouse a bit earlier, they root more quickly and put on added growth and make larger flowers. By actual comparison Maloney's perennials are one-third larger.

For best effect Perennials should be planted in groups of three or more of a variety. Plants preceded by a * are rock plants but large enough to be grown on the margin of the hardy border, as well as in the Rock Garden. You have the privilege of mixing varieties when prices are the same.

Price of Perennials (except as noted) **3 for 60c; 12 for \$2.25; 25 for \$4.50.** All Perennials Postpaid to your door.

ACHILLEA

Millefolium Roseum—Rosy pink flowers in dense heads on stems 18 inches high. July to October.

Ptarmica, The Pearl—Pure white double flowers all summer. Prized for cutting. 2½ ft.

***Tomentosa**—Bright yellow flowers. Excellent for rockeries. 6-8 inches.

Agrostemma Coronaria—Bright rosy crimson, silvery foliage 2½-3 feet. June-July.

***Alyssum Saxatile Compactum**—Broad masses of bright yellow flowers in early spring. 1 foot.

ANCHUSA

Dropmore—Tall spikes of beautiful blue flowers in June and intermittently all summer. 4-5 feet.

AQUILEGIA

Chrysantha—Beautiful golden yellow.

***Coerulea**—Lovely blue flowers with long spurs.

Scott Elliott Long, Spurred Hybrid—The flowers are very large and of distinct shades of blues, lavenders, mauves, whites, creams, pinks, reds, yellows, etc. Many of the colors are entirely new.

Snow Queen—The best long-spurred pure white.

***Arabis Alpina**—Pure white flowers produced in dense masses.

***Arenaria Montana**—Close tufts, profusely covered with small, silvery white flowers quite early in the season. The flowers in May resemble small white, upturned morning glories.

***Armeria Lauchiana**—The bright rosy red flowers are borne in globular heads from May-June. 3-6 inches.

Artemisia Silver King—A striking white-leaved contrast plant. A beautiful mist for setting off bouquets and floral combinations. The entire color effect bright frosted silver. 3 feet.

Asphodelus Luteus—Tall spikes of bright yellow, very fragrant flowers. Swordlike foliage.

***Campanula Carpatica** (Bellflower)—Compact tufts, flowers held erect on wiry stems. June-October. Clear blue, white.

Carnations—Dozens of double and single flowers on long stems. Lovely for cutting. Pink, red, white, yellow. June-July.

CENTAUREA

Dealbata—Large and striking, rose-pink thistle-like flowers. June-July. 2 ft.

Macrocephala—Large thistle-like, golden yellow flowers. July-August. 3½ ft.

Montana—Large violet-blue flowers. July-September. 2 ft.

***Cerastium Tomentosum**—Silvery white foliage and an abundance of snow-white flowers in May.

***Cheiranthus Allioni**—Dazzling fiery orange flowers on stems a foot high. Very profuse bloomer. Spring and early summer.

CHRYSANTHEMUM

Our best Fall flowering plants.

Price of all Chrysanthemums **3 for 75c; 12 for \$2.85; 25 for \$5.75**

Bronze Button—Large heads of tiny button-like, bronze colored flowers.

Brune Poitevine—Large, loose in structure, and very abundant. Deep velvety reddish-bronze with golden reverse.

Excelsior—Brilliant golden yellow. Very prolific.

Firelight—Red tipped with copper. Very showy.

Indian—Coppery-red, very hardy, late flowering.

Nellie Kleris—Clear pink. Petals incurved.

Travisia—Large, pure white. Early.

White Dot—Pure white pompon flowers. Tall.

Chrysanthemum Maximum (Shasta Daisy)—Pure glistening white bloom 4 to 5 inches across. Very free flowering all summer and fall. 2 feet.

Coreopsis Grandiflora—Large bright yellow flowers excellent for cutting all summer.

***Myosotidiflora**—Clusters of charming blue flowers resembling forget-me-nots. May and June. 12 inches.

ANEMONE—Sept.-Oct.

Price of all Anemones **3 for 75c;**

12 for \$2.85; 25 for \$5.75

Queen Charlotte—Beautiful semi-double pink flowers, broad and perfectly formed. 2-3 feet.

Rubra—Beautiful rosy red, stamens bright yellow. 2 feet.

Whirlwind—Excellent. Double white.

Anthemis Tinctoria—Handsome, finely cut foliage and large golden yellow flowers all summer. Succeeds in poorest soil.

ASTER—October

Erica—A beautiful clear pink; large, semi-double.

Joan Vaughan—Large, semi-double flowers of deepest blue.

***Aubrietia Eyri**—A tufted plant with rosy lilac flowers and evergreen foliage. April to July.

Baptisia Australis—Dark blue, pea shaped flowers on top of spikes. 2 feet high. June.

Boltonia Latisquama—Pink, slightly tinged with lavender, similar to asters. 4-6 feet. July to October.

Bupthalmum Salicifolium—Large, rich golden yellow flowers through the summer. Heart-shaped leaves. 2 feet.

***Calamintha Alpina**—A very graceful little rock plant with rich purple flowers. 6 inches.

***Callirhoe Involucrata**—Trailing plant with finely divided foliage and large saucer-shaped flowers of bright rosy crimson with white center. All summer and fall.

CAMPANULA (Canterbury Bells)

Calycanthema (Cup and Saucer)—Pyramidal in growth and profusely covered with large, bell-shaped flowers. Blue, pink, white. May and June.

Medium (Single)—Same habit of Calycanthema but does not have the saucer. Blue, White.



Physalis Francheti
Chinese Lantern



Shasta Daisy
(Chrysanthemum maximum)



Coreopsis



Iris



- Dianthus Barbatus** (Sweet William)—This charming old favorite should be in every garden; Pink, red, white.
- ***Dianthus Deltoides**—Beautiful prostrate plant with narrow leaves and abundance of small crimson flowers. June-July.
- ***Dianthus Deltoides Brilliant**—Similar to above with glowing crimson flowers.
- Dianthus Latifolius** (Everblooming Sweet William)—Brilliant fiery crimson flowers all season.
- Dianthus Plumarius** (Garden Pinks)—Rose-pink and white fragrant flowers on long spikes. Glaucous green foliage. Cut off flowers when they fade and you will have continuous bloom.
- Dicentra Spectabilis** (Bleeding Heart)—Long racemes of graceful heart-shaped pink flowers. Early spring. **40c each; 3 for \$1.00.**

DELPHINIUM (Larkspur)

- One of our best plants for the hardy border. By cutting off faded flowers you will have a second blooming. Every garden should have at least three plants.
- Belladonna**—Numerous spikes of light sky blue.
- Formosum**—Rich blue tinged purple with white eye.
- Gold Medal Hybrids**—Colors vary from palest blue to deep indigo blue and royal purple with many intermediary pastel tones of mauve, pink and lavender blendings. Florets and stalks very large.
- Wrexham Hollyhocks Strain**—Grows three to four feet and florets are very large in shade of blue, white and pink combination. Considered the best on the market. **3 for 75c; 12 for \$2.85; 25 for \$5.75.**

DIGITALIS (Foxglove)

- For stately and picturesque beauty it is not to be surpassed. The flower heads are over 3 feet long, crowded with big, bell-shaped blossoms. Purple, white, rose-pink, mixed.
- Erigeron Speciosus**—Large, handsome blue flowers, violet tinted and yellow centers. June-July. Fine for cutting.
- ***Erinus Alpinus Roseus**—Pretty rosettes of foliage and racemes of rosy purple flowers. 4 inches. May-June.
- ***Erysimum Pulchellum**—Fragrant sulphur yellow flowers. 6 inches.
- Gaillardia** (Blanket Flower)—Considered one of the most beautiful and desirable plants because it blooms from June until frost. Yellow with red center. Fine for cutting.
- Geum**—Lady Stratheden—Rich golden yellow, excellent for cutting. May-July.
- Geum**—Mrs. Bradshaw—Beautiful large, double fiery red flowers nearly all summer.
- Gypsophila Paniculata**—Dense spreading bush, numerous tiny flowers in light feathery panicles. July-August. An old-fashioned favorite.
- ***Gypsophila Repens**—A beautiful trailing plant with clouds of small, white and pink flowers. July-August.
- ***Helianthemum Mutabile**—Low-growing evergreen plant forming broad clumps which are hidden by a mass of rose-white and yellow flowers. July-September.
- Heliopsis Pitcheriana**—Beautiful deep golden yellow flowers about two inches in diameter. 3 feet. July-August.
- ***Heuchera Sanguinea**—Brilliant coral red flowers on stems 12-18 inches high. Very free flowering. June-September.



Chrysanthemum

- Hibiscus**—Immense single hollyhock-like blossoms. Freely produced during the summer. 3-4 feet high. Pink, red, white, yellow.
- Hollyhocks, Double**—Stately, majestic hardy plants 6-8 feet high. Colossal spikes of bloom produce showy effects. Pink, red, white, yellow.

IRIS—GERMAN

- One of the finest of our hardy plants. Grows in all soils.
- S = Standard F = Falls
- Ambassadeur**—(S) Smoky velvety purple. (F) Velvety purple maroon. 48 inches.
- Ballerine**—(S) Light blue-violet, waved at margin (F) A deeper shade. Sweet scented. 36 inches.
- Gold Imperial**—The best golden yellow.
- Morning Splendor**—(S) Petunia violet. (F) Rich raisin purple, orange beard. Tall, large flowers. Excellent.
- Queen of May**—(S) Lilac. (F) Purplish lilac or rose. Very sweetly scented, very large, bright and free flowering. The most charming.
- Asia**—(S) Pale silvery lavender deepening at the base to golden yellow. (F) Pale reddish purple, lighter at edges.
- George Yeld**—(S) Bright apricot. (F) Brilliant rose-crimson, edged buff. New combination.

JAPANESE IRIS

- Dream**—Large, single white delicately veined. Standards rich reddish violet with white edges.
- Lathyrus** (Perennial Pea)—Trailing plants suitable for growing on arches, pergolas, trellises or trailing over rough banks. Excellent for cutting. Pink, red, white.
- Lavandula Vera**—The true sweet lavender delightfully fragrant blue flowers. July-August. 18 inches.
- Liatris Pycnostachya** (Blazing Star)—Long narrow spikes of rich purple flowers. 4 feet high. July-August. Extremely beautiful as well as odd.
- ***Linum Perenne**—Beautiful pale blue flowers on slender, graceful stems. Attractive in bloom and foliage.
- Lobelia Cardinalis** (Cardinal Flower)—Rich, fiery cardinal flowers, often producing 4-6 spikes 24-30 inches long. Ideal for waterside.
- Lupine**—Beautiful long spikes of pea-shaped flowers about a foot long on stems 3 feet high. Blue, pink, white, yellow. June.
- Lychnis Chalcedonica**—Heads of vivid scarlet flowers blooming a long time. One of the showiest plants for hardy border. 3 feet. July-September.
- Monarda Didyma**—Brilliant crimson-scarlet flowers are produced freely. June-August.
- Myostis Alpestris** (Forget-Me-Not)—This beautiful rich dark blue border plant comes into bloom with the early spring bulbs and continues to bloom through June.
- Oenothera Youngi**—Large leaved with firm, shiny foliage. Numerous bright lemon-yellow flowers on stems about 24 inches tall. June-August.
- Pachysandra** (Japanese Spurge)—Trailing plants 6-8 inches high, forming broad mats of bright glossy green foliage. A ground cover, which will grow in all shady situations where grass will not grow. **12 for \$2.25; 25 for \$4.50; 100 for \$16.00.**
- Papaver Orientale** (Oriental Poppy)—Tremendous cup-shaped blooms of brightest crimson-scarlet, with large, purplish black blotches at base of petals. 3-3½ feet. May-June. **3 for 75c; 12 for \$2.85; 25 for \$5.75.**
- Papaver, Mrs. Perry**—Orange-apricot with faint lilac suffusion. **3 for 75c; 12 for \$2.85; 25 for \$5.75.**

- ***Papaver Nudicaule** (Iceland Poppy)—Tufts of bright green, fernlike foliage, from which spring throughout the entire season, a profusion of slender, leafless stems, one foot high, each graced with charming cup-shaped yellow, orange, white or pink flowers.
- Pentstemon**—Very showy, growing from 2-4 feet high. Are rather bushy and have very long, slender spikes which bear many trumpet-shaped flowers resembling Foxglove. Mixed shades.
- ***Phlox Subulata**—Pretty moss-like, evergreen foliage, which is hidden by the rose-pink blossoms during April and May. Thrives in hot, dry places and blooms profusely.



Gaillardia



Digitalis—Foxglove



Papaver—Orientale

Maloney Bros., Bareville, Pa.
Dansville, N. Y.

Gentlemen:
Just a few lines to express my appreciation of the way you handled my order. It could not have been received at a more suitable time and the plants are excellent.
Thanking you, I am

Yours truly,
E. G. KIEHL

HARDY PERENNIALS—Continued



Campanula (Canterbury Bells)



Maloney's perennials include the old-fashioned hardy flowers and many of the newer varieties. They bloom from May until freezing weather, year after year. The varieties we list have been chosen by our propagator, who has consulted Horticultural Authorities, and traveled extensively. He has chosen the hardiest plants known, and those having genuine beauty and ease of culture.



Aquilegia—Columbine



Anemone

PHLOX

Price of all Phlox 3 for 75c; 12 for \$2.85; 25 for \$5.75

- Antonin Mercier**—A delicate light blue; free flowering and medium height.
- Eclairer**—Brilliant rosy magenta, white eye.
- Enchantress**—Bright salmon-pink with dark eye. Rich green, glossy foliage.
- Fuerbrand (New)**—Brilliant orange-scarlet, almost vermilion. Flowers very freely and blooms produced in quantity throughout the season.
- Miss Lingard**—Pearly white flowers with delicate pink eye, producing two or three crops a season. Best early white known.
- Mrs. Scholten (New)**—Dark salmon-pink in enormous pyramidal spikes.
- Von Lassburg**—Splendid pure white, very large trusses. Medium early.
- Physalis Francheti (Chinese Lantern)**—Produce freely bright orange-scarlet, lantern-like fruits, which when cut, make beautiful bouquets.
- Physostegia Virginica**—Forms large clumps 3-4 feet high, bearing long spikes of delicate pink flowers. July-August.
- Platycodon**—Large, showy flowers on 20 inch spikes, produced all summer. Deep blue, white.
- *Potentilla Nepalensis, Miss Willmott**—Improved salmon-pink. Very free flowering. Mid-summer.

PRIMULA (Primrose)

- *Auricula Alpina, Giant Hybrids**—Rosettes of thick leaves, sometimes farinosa or mealy. Flower stalks 6-8 inches high, bearing heads of bloom of various colors, exceedingly fragrant. Every Rock Garden should have a few of these.
- *Cortusoides**—Soft wrinkled heart-shaped leaves. Flowers in early summer, deep rose. 10 inch.
- *Veris Hybrids**—Various shades of lilac, purple and violet as well as a wide range of buff, orange, salmon and rich reds.
- Pyrethrum**—Attractive fernlike foliage, daisy shaped flowers in shades of red, pink, white. Excellent for cut flowers.
- Rudbeckia Purpurea**—Most attractive purple flowers with a very large, brown, cone-shaped center 3 feet. July-October.
- Salvia Azurea**—Pretty sky-blue flowers in great profusion. August-September. 3-4 feet.

SEDUM

- *Acre**—Green foliage, bright yellow flowers. Prostrate and slow growing. 2 inches. May-July.
- *Spurium Coccineum**—Beautiful rosy crimson flowers. July-August. 6 inches. Fast spreading, excellent for sandy banks.
- Spectabile**—Broad, light green foliage and immense beads of handsome, showy rose-colored flowers. Indispensable for late fall blooming plant. 18 inches.

- *Statice Latifolia**—Immense heads of purplish blue, minute flowers. July-August.
- Stokesia Cyanea Coerulea**—Beautiful light-blue flowers profusely produced in late summer. Excellent for cutting.
- Thermopsis Caroliniana**—Yellow pea-like flowers produced in racemes six to twelve inches long. July-August.
- Tritoma Uvaria Grandiflora**—Drooping, tubular flowers in dense spikes on long, naked stems, well above the foliage. Rich red changing to salmon-pink. 3-4 feet.
- *Tunica Saxifraga**—Tufted plant with light pink flowers all summer. 6 inches.
- *Valeriana Coccinea**—Old rose flowers in umbels on 12 inch stems just above the rich green foliage. June-October.
- *Verbena Venosa**—Purplish blue flowers always plentiful. A creeping plant in bloom all summer.
- *Veronica Repens**—A carpeting plant with light blue flowers. 1-2 inches. May-June.
- Veronica Spicata**—Long spikes of beautiful violet-blue flowers all summer 24 inches.
- *Vinca Minor**—A trailing evergreen plant, used extensively for carpeting the ground under shrubs or trees or on graves, where it is too shady for grass. 12 for \$2.25; 25 for \$4.50; 100 for \$15.00.
- *Viola**—The Perennial Pansy—If the faded blossoms are kept picked they continue to bloom profusely from May to October. Pale blue, Golden Yellow, Rich Apricot, Pure White, Jersey Gem.
- *Viola, Mixed**—Many shades and markings.
- *Yucca Filamentosa**—Broad swordlike, evergreen foliage and immense branching spikes of drooping, creamy white flowers, rising to a height of 6 feet.

PEONIES 3-5 eyes

- Albert Crousse, 8.6**—Beautiful salmon-pink, large, fragrant. Late. 35c each.
- Felix Crousse, 8.4**—Very brilliant red. Large bomb shape. Fragrant. Mid-season. 50c each.
- Festiva Maxima, 9.3**—Paper white, crimson marking in center. Very large, very tall. Early. 35c each.
- Livingstone, 8.1**—Large old-rose pink. Late. Mammoth flowers. 40c each.
- Marie Jacquin, 8.3**—Semi-double, cup-shaped, white, borne in great profusion. Mid-season. 45c each.
- Model of Perfection, 8.8**—Enormous double light violet-rose blossoms with shades of flesh pink, marbled and veined with bright rose, silver tipped. Late. 40c each.
- President Taft, 8.7**—Light pink, center flecked crimson. Strong virgous grower, profuse bloomer. Mid-season. 50c each.
- Sarah Bernhardt, 9.0**—Compact, semi-rose type. Uniform mauve-rose, silver tip. Erect, free blooming. Late. 50c each.
- All Colors Mixed**—A selection of our leading varieties. Where special color is not desired, these will be most suitable. 30c each; 4 for \$1.00.



Wrexham Delphinium

MALONEY'S PAY SHIPPING COSTS—See Page 7

ROSES

Maloney's Preferred Ten For 1934

The Most Choice Hybrid Tea Ever-blooming Roses in the United States are offered on these two pages.

73¢ Each

FIVE FOR \$3.45

All 2 Year No. 1 Heavy Field Grown Bushes

These Beautiful Everblooming Hybrid Tea Roses
Will Bloom from June until Autumn
It Costs Less to Order Roses by Mail

Our fresh stock will grow. We guarantee it to arrive in A No. 1 condition. Save yourself money by not having to replace your plants another year. Buy direct from the grower.

Never before have the latest and choicest varieties been offered at such outstandingly low prices. Every plant shipped is Maloney's famous top quality.

AMERICA—Well-shaped, rose-pink flowers on long stems.

AROMA—Beautifully formed blooms of brilliant scarlet. Fragrant.

EDEL—Large, very double white blooms with sweet fragrance. Beautiful.

E. G. HILL—Great massive blooms of deep maroon, velvety on inside and glistening outside, very perfumed.



E. G. Hill



President H. Hoover



America



Hollywood

**MALONEY'S 1934
PREFERRED TEN
Collection No. 9**

\$6.75

1 Each illustrated on these two pages.



Mevrouw G. A. Van Rossem

73c VARIETIES—Continued

HOLLYWOOD—Fragrant, medium size, dark rose-red, veined darker. Extremely beautiful.

LUCILE RAND—Extra large, glistening rose-pink flowers with yellow shadings.

MARGARET MCGREDDY—Large, double, brilliant red petals with tinge of yellow at base. Very profuse bloomer.

MEVROUW G. A. VAN ROSSEM—New. Vivid orange and apricot huds. Flowers brownish yellow, shaded apricot-pink.

PRESIDENT H. HOOVER—"President Hoover" is a glorious rose, wonderfully free in the easy manner in which it grows and charming in its color arrangement, which is a splendid combination of cerise, pink, flame, scarlet and yellow. The flower is large and the bud beautifully pointed. The petals are broad and thick, retaining this characteristic days after the flowers are open.

TALISMAN—The most vividly colored rose ever introduced. No illustration can do it justice. Beautiful combination shadings of gold, apricot, deep pink and old rose. Unlike most roses, the colors deepen as the rose opens.

Gentlemen;

Scotia, N. Y.

Last Spring I bought ten rose bushes from you. I just want to tell you how pleased I am. Every one lived; all blossomed abundantly and were still blooming in November. My roses are the admiration of the neighborhood. You may expect several orders from myself and friends next Spring.

MRS. F. H. ROGERS



Talisman



Aroma



Lucile Rand



Edel



Margaret McGredy



ROSES

59¢



Etoile De Hollande



Radiance Pink



Mrs. E. P. Thom

Only 59c for any Rose listed on this and upper half of next page. These varieties have been chosen from our Rose test gardens as the finest in the old and many new everblooming Hybrid Tea Roses.

If you wish Roses sent parcel post please include 5c each extra.

All 2 Year No. 1 Heavy Field Grown Bushes

Shipping Cost Paid—Plus money-saving offers. See page 7.

BRIARCLIFF—A beautiful bright clear rose-pink with high-pointed center. Very fragrant.

CHAS. K. DOUGLAS—Flaming scarlet flushed with velvety crimson. Blooms profusely.

DAME EDITH HELEN—Excellent shape, double, glowing pink. Fragrant and vigorous grower.

ETOILE DE FRANCE—Large, double blooms of rich velvety crimson.

ETOILE DE HOLLANDE—Flowers of the finest velvety crimson. Very fragrant, profuse bloomer.



Rev. F. Page Roberts

COLLECTION No. 10

AMERICA'S BEST ROSE BUY

One of each rose illustrated on this page, and John Russell, Mrs. Henry Bowles illustrated on next page.

10 Two Year No. 1 Heavy Bushes
Only \$5.48

ROSE LOVERS OFFER COLLECTION No. 11

- 1 Etoile De Hollande
- 1 Radiance Pink
- 1 Mrs. E. P. Thom
- 1 Etoile De France
- 1 Killarney White

5 Heavy 2 Year No. 1 Bushes
Only \$2.80

A booklet entitled "Correct Planting Methods" will be included with each shipment. Please read pages 35-38 inclusive carefully and follow instructions. Preserve booklet so you can protect your roses for winter.

Buffalo, N. Y.

Gentlemen;

Naturally I expected my rose bushes bought from catalog pages offering best of old and new varieties at low prices to be good, but when they bloomed, they far exceeded my expectations. They are wonderful—much nicer roses than my neighbors have, who paid considerable higher prices from other Nurseries.

MRS. JOHN FERGUSON



Killarney White



Etoile De France



Lady Margaret Stewart



Souvenir De Georges Pernet



John Russell

GOLDEN EMBLEM—Rich yellow, carmine streaks on outer petals. Very attractive.

GRUSS AN TEPLITZ—Dark velvety scarlet, medium size, very free bloomer. One of the first and last to bloom.

HENRY FORD—Long, deep yellow bud, very fragrant. A wonderfully free bloomer. One of the best of the later introductions.

JOHN RUSSELL—Large, double, vivid red with velvet cardinal shadings. Extremely beautiful.

JULIAN POTEN—A fine clear yellow of vigorous, erect habit with very shapely flowers of good yellow.

K. A. VICTORIA—Popular snowy double white with pale yellow center.

KILLARNEY, PINK—Bright sparkling, double pink, prolific bloomer, buds extremely long.

KILLARNEY, WHITE—Large, snowy white, double.

MME. ED. HERRIOT—A beautiful combination of terra-cotta, bronze, geranium-red and dull copper. Long pointed buds of coral-red and yellow. Strong upright grower.

MRS. A. R. BARRACLOUGH—Large, beautiful pink, yellow at base of petals. Color brightens with age. Very profuse bloomer, extra fragrant.

MRS. E. P. THOM—Deep golden yellow, which does not fade. Far superior to Claudius Pernet. Splendid bud and flower large.

MRS. HENRY BOWLES—Well formed, lasting pink shaded salmon. The flower is perfect with fine, firm center, prolific bloomer.

MRS. HENRY MORSE—High centered blooms of bright pink with silvery shadings.

RADIANCE, PINK—Beautiful blending of carmine-rose with shades of opal and copper. One of the very best all-around rose.



Mrs. Henry Bowles

LADY MARGARET STEWART—Bright golden yellow, stained orange; comparatively new and extremely beautiful.

LOS ANGELES—Double, luminous coral-pink toned gold at base. Flowers large and continuous.

MME. BUTTERFLY—The buds are a rich Indian red, yellow at base. A beautiful combination of cream, pink, apricot and gold.

RADIANCE, RED—A glowing crimson sport of Radiance.

REV. F. PAGE ROBERTS—Golden-yellow stained copper on outside. The copper-red buds extra long.

SOUV. DE GEO. PERNET—A beautiful succession of reds: from orient to cochineal to carmine; all made brilliant by a golden sheen. Extremely beautiful. Should be in every garden.

WILHELM KORDES—Vivid salmon pink shades orange and yellow. Very profuse bloomer, foliage reddish.

BUY FRESH STOCK

Any plant or tree in this catalog is designed by nature to live outdoors the entire winter until late Spring. Maloney's do not allow any of their stock to be sold from buildings where the temperature is anywhere from 70° to 80°. This is too warm for plants or trees. It lays the foundation for roots drying out, or the plant may even die. Maloney's plants and trees are kept in natural condition and are freshly dug just before shipment. Maloney's stock grows and costs you no more.

MALONEY'S AGAIN "ON THE AIR"

For several years Maloney Bros. have given you advice on your planting problems over the radio. This service will continue this year. Watch your newspaper for "Nursery Talk" about the second week in February, continuing through March.

2nd Size Everblooming Roses

SOME OF our customers are interested in a lower priced rose than our heavy 2 year bushes—to meet this demand we offer a lighter size of 2 year field grown of all varieties illustrated on page 24.

37c each postpaid
Four for \$1.35

MOST OUTSTANDING NEW ROSE NOVELTIES

BLAZE

A marvelous, hardy, everblooming scarlet-red Rose, combining the bloom and growth of Paul's Scarlet Climber with the everblooming character of Teplitz. Very vigorous. Seldom out of bloom. Can be pruned very low for bedding; medium for shrub use; or trained as a climber. **\$2.00 each.**



New Climbing Rose—Blaze

MARY HART

A most unique sport of Talisman. Bud is maroon-red, opening to large, well-formed blooms of deep, velvety blood-red, with an overglow of amber, but the most remarkable feature is the total absence of yellow. A tremendous producer. **\$1.50 each.**



Mary Hart

SOUVENIR

Another golden sport of Talisman. A rose of great beauty, with all of the splendid qualities of Talisman. A clear yellow which does not fade. The bush is an erect and a vigorous grower, making Souvenir an outstanding yellow garden rose. **\$1.25 each.**



Souvenir

All roses are root pruned ready for planting. Before planting, cut top back one-half. This will assure an abundance of bloom.



CLIMBING ROSES

Two Year Strong Plants

45c each; 5 for \$2.15

A few climbing roses should be seen around every home, for smartness and beauty, or as a cover for unattractive walls and corners.

- AVIATEUR BLERHOT**—Buds orange, pink and apricot; flowers double.
- CLIMBING AMERICAN BEAUTY**—Rich carmine pink, large flowers borne singly or in three.
- DOROTHY PERKINS**—Beautiful shell pink, double, large.
- EMILY GRAY**—Large golden yellow buds which do not fade.
- EXCELSA**—Brilliant crimson scarlet of great beauty.
- PAUL'S SCARLET CLIMBER**—Vivid scarlet, good size, semi-double freely produced in clusters.
- ROSIERE**—Persistently deep, glowing pink.
- SEVEN SISTERS**—Red to blush pink.
- DR. W. VAN FLEET**—Exquisite pale pink on fine long stems.
- VEILCHENBLAU**—Double flowers of light lilac, shading light purple and blue.
- WHITE DOROTHY**—Duplicate of Dorothy Perkins except color.



Paul's Scarlet Climber

Maloney's Pay Shipping Costs
SEE PAGE 7

HYBRID PERPETUAL ROSES

2 Year Strong No. 1 Bushes 55c; 5 for \$2.50

The so-called "June Roses" so beautiful with their extra large, fragrant blossoms. Will thrive in extreme climates, where other varieties fail. Everyone has blossomed in nursery row.

- EUGENE FURST**—Very dark crimson-red. Fragrant, full.
- FRAU KARL DRUSCHKI**—Very lasting, large, snow white blossoms. Buds are long and extremely beautiful. Have a very long blossoming period.
- GEORGE ARENDS**—Large, clear pink blooms, very fragrant.
- J. B. CLARK**—Large double, full, deep scarlet. Very vigorous.
- MARSHALL P. WILDER**—Fragrant, double, good shape, bright scarlet crimson.
- MRS. J. H. LAING**—Well formed, double, soft pink with satin cast.

POLYANTHUS OR BABY RAMBLERS (Everblooming)

Price, Two Year Strong Plants
59c each; 10 for \$5.50

Called the "Baby Ramblers" because of their very short close growth, attaining a height not over 24 inches. The flowers are borne in clusters of twenty or more. Bloom constantly from May to November. Excellent for beds, edging for shrub border or for hedges.

- CHATILLON ROSE**—Lasting, semi-double flower of light salmon pink.
- FRAU DR. ERRETH**—Deep golden yellow, very double, large.
- IDEAL**—Beautiful dark scarlet. An abundant bloomer.

No Bargain Circular This Year

The last big planting of nursery stock in the United States was dug in the Spring of 1933. Owing to the shortage this year we will not issue a cut rate bargain sheet at the end of season. Protect yourself by ordering early.



Polyanthus



J. B. Clark



Mrs. John Laing



FRUIT DEPARTMENT



GROW YOUR OWN FRUIT

You will never know the highest satisfaction of fruit until you eat it freshly picked, fully ripened and out of your own yard. The home orchard is coming back into popularity; more and more people are beginning to realize the value and convenience of the home orchard. Then, too people are discovering that a few fruit trees in the back yard furnish as much shade and are equally as attractive as the ordinary ornamental tree.

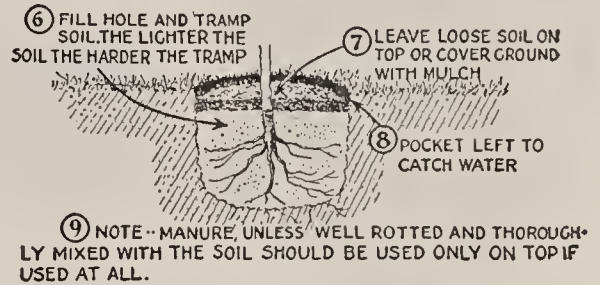
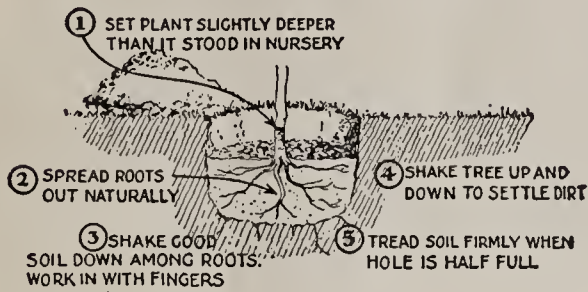
When only a few trees are planted very little of your time is required for the after-care. All that is necessary is a pail of water during the dry periods and that the ground is kept loose for a radius of two feet.

Why not save money by growing your own fruit for canning and table use? Five to ten trees will give you sufficient fruit for yourself and friends.

QUOTATIONS

To large orchard planters we will make special quotations. Write direct to our office. Maloneys are one of the largest fruit tree concerns in the business, situated in the leading nursery center of the country. Many firms in other parts of the United States have trees grown here. The soil is especially suited for young trees, insuring a good root system and trees of large caliper. If you have not already tried Maloney's trees, why not see for yourself what beautiful healthy stock we are able to grow. We should be pleased to have you visit our nurseries, and assure you, it will be well worth your while.

HOW TO PLANT AND HOW TO PRUNE



In pruning Fruit Trees, cut the side branches to 6-8 inch stubs and do not leave more than five to a tree. See that these are distributed around the trunk. One year trees are simply headed to whatever height they are wanted.

NOTE—Always keep the roots covered. Dig hole large enough to receive plant without bending roots. Break up subsoil when it is very hard.

PROPER SPACING FOR FRUITS

Variety	Age of Bearing	Distance Apart	Number Per Acre
Apples, Standard	3 to 6 years	35 x 35 ft.	35
Apples, Dwarf	2 years	10 x 10 ft.	435
Apricots	3 years	15 x 15 ft.	193
Asparagus (Field)	2 years	4 ft. x 18 in.	7,260
Asparagus (Garden)		2 x 1 ft.	21,780
Blackberries	1 year	8 x 6 ft.	907
Cherries (Sours)	3 to 4 years	15 x 15 ft.	193
Cherries (Sweets)	3 to 4 years	20 x 20 ft.	108
Currants	2 years	4 x 4 ft.	2,722
Gooseberries	2 years	4 x 4 ft.	2,722
Grapes	2 years	8 x 8 ft.	680
Horse Radish	1 year	3 x 1 ft.	14,520
Peaches	2 years	15 x 15 ft.	193
Pears, Standard	3 to 4 years	20 x 20 ft.	108
Pears, Dwarf	2 years	10 x 10 ft.	435
Plums	3 to 4 years	20 x 20 ft.	108
Quinces	4 to 5 years	10 x 10 ft.	435
Raspberries	1 year	6 x 4 ft.	1,815
Rhubarb	1 year	4 x 3 ft.	3,630
Sage	1 year	3 x 3 ft.	4,840
Strawberries (Field)	1 year	4 x 1 ft.	10,890
Strawberries (Garden)		2 x 1 ft.	21,780

PLANTING AND AFTER-CARE OF BERRIES

Prepare your ground as you would for your vegetables, open rows with small horse plow, and space plants two and a half to three and a half feet apart. The rows should be five feet or wider. Plant about four to five inches deep, and cut off tops three inches above the ground.

As they grow older do not allow too many canes to develop, rather just a few strong canes. Pinch out the tops of these, when the tips are soft. Should you prefer to train on wires or stakes, thin out the plants to four canes and allow tops to develop naturally.

The brambles are perennials whose old wood dies after producing one crop. This wood should be removed as soon as through fruiting. These plants have no particular insect enemies.

We suggest that you feed young trees to promote health and vigor. Nitrate of Soda, Sulphate of Ammonia, Bone Meal, Manures, or similar soil builders applied in moderation often spell the difference between success and failure. Strong, vigorous trees can stand unfavorable weather conditions, frost and even disease. Good soil means early maturity and heavy yields.



GRAPES

Homemade grape juice is healthful and refreshing. Grape jelly is a delicacy. Room can always be found in a garden for a few vines, which will furnish you grapes from July to November.

All vines are heavy 2 year No. 1.

Grapes can be sent PARCEL POST, POSTPAID for 5c each extra.

AGAWAM (Red)—Bunch large, shouldered; berry large, reddish brown, tender, vinous and of excellent flavor. Vigorous grower and one of the best. **30c each; \$2.25 per 10; \$14.00 per 100.**

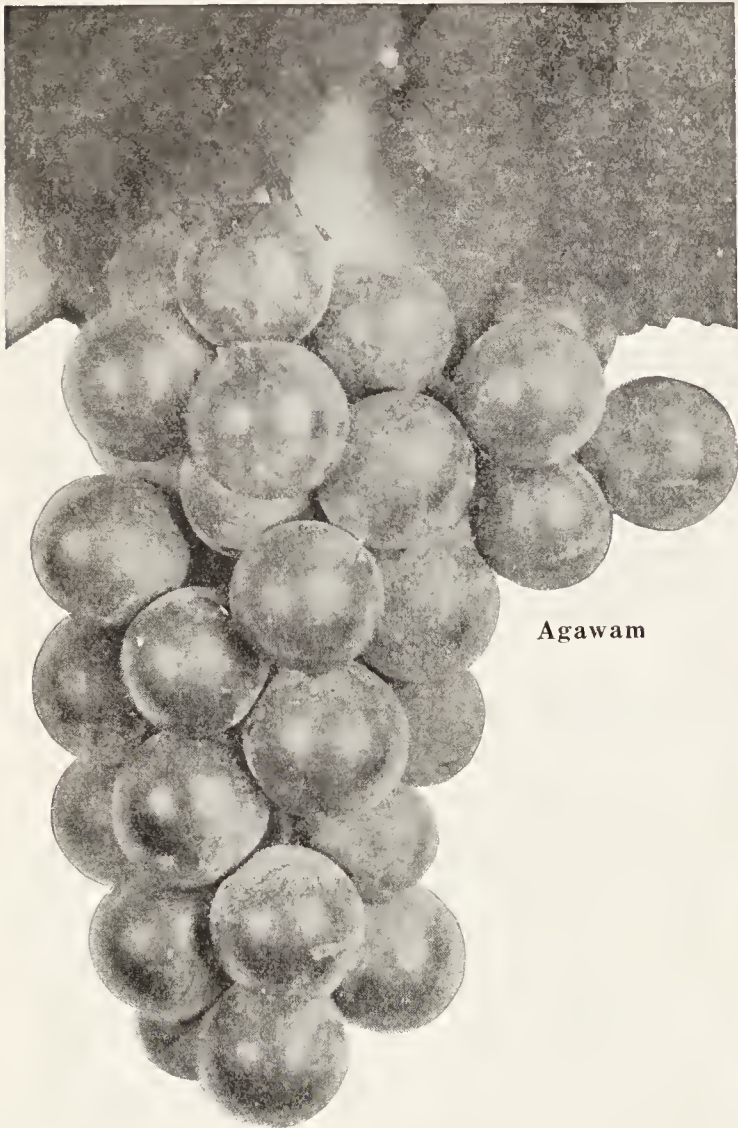
BRIGHTON (Red)—Bunch large, shouldered; berries medium to large, round, dark red, tender, very little pulp, juicy, slightly aromatic and very good. Ripens early. **30c each; \$2.25 per 10; \$14.00 per 100.**

CACO (Red)—A new amber red variety of the highest quality. The flavor is distinctive, sweet and delightful. Vine vigorous and bears very early. **45c each; \$3.50 per 10; \$32.50 per 100.** See illustration on back cover page.

CATAWBA (Red)—Bunches large and loose; berries large, of coppery red color, becoming purplish when well ripened; vinous rich. An excellent table and wine grape. **30c each; \$2.25 per 10; \$14.00 per 100.**

CONCORD (Black)—This is the best general grape. Bunches large and compact; berries large, round, almost black, covered with bloom; pulp juicy and sweet. Vine very hardy and equally productive. Should be in every garden. **25c each; \$1.75 per 10; \$10.00 per 100. 1 year \$8.00 per 100.**

DELAWARE (Red)—The bunches are small, compact and sometimes shouldered; berries are small with thin but firm skin; flesh juicy, very sweet and refreshing, of the best quality for table use and wine. **35c each; \$2.75 per 10; \$17.50 per 100.**



Agawam

MOORE'S EARLY (Black)—A large, purplish-black berry, sweet and of good quality, ripening about ten days earlier than Concord. Vine vigorous and hardy. Very desirable as an early Grape. **30c each; \$2.25 per 10; \$14.00 per 100.**

NIAGARA (White)—Occupies the same position among the white varieties as Concord among the black. Bunch and berries large, greenish white, changing to pale yellow when fully ripe. Skin thin but tough. **30c each; \$2.25 per 10; \$14.00 per 100.**

PORTLAND (White)—Ripens earlier than any known grape. Berries are very large and have a beautiful yellowish color. Quality is excellent. Vines are extremely hardy and productive. **35c each; \$2.75 per 10; \$20.00 per 100.**

WORDEN (Black)—Seedling of the Concord, resembles it in appearance and flavor, but the berries are larger, ripens several days earlier. **30c each; \$2.25 per 10; \$14.00 per 100.**



Concord

HOME GARDEN COLLECTION No. 12

A selection everyone should have in their garden.

- | | |
|------------|-----------|
| 1 Delaware | 2 Concord |
| 1 Agawam | 1 Caco |
| 1 Niagara | |

All strong, 2 year plants \$1.35

VIGORO AND PEAT MOSS

We strongly urge our customers to use VIGORO and PEAT MOSS for fertilizing and mulching. To those who are interested we will quote upon request.



CURRANTS

Those listed are just suited for your jam. Your husband will appreciate your judgment and economy in choosing these bushes.

PRICE OF ALL VARIETIES, extra size, two year bushes: **3 for 90c; 10 for \$2.50; 100 for \$15.00.**

PARCEL POST—Currants can be sent by parcel post, postpaid for 5c per bush extra.

LONDON MARKET—Bush vigorous, upright, fruit medium to large, color dark red, with sprightly acid flavor; very productive.

RED CROSS—Cluster long; berry medium to large, bright red; quality good to best. It is exceedingly productive, unusually sweet.

WHITE GRAPE—Berries large to very large, averaging large; of very attractive color, mild flavor and good quality.

WILDER—Bush upright, vigorous; clusters above medium length; berries large to very large; bright red; excellent with a mild sub-acid flavor. Ripens early and remains bright and firm until very late.

ASPARAGUS

100 roots will provide a 6 weeks supply for an average family.

WASHINGTON (Pedigreed)—An excellent rust resistant variety. Stalks are large dark green

GOOSEBERRIES

Price: Two Year Bushes **30c each; \$2.00 for 10.**

DOWNING—Fine quality, vigorous growth and free from mildew. Large, green

JOSELYN—Marvelously productive. Large size dark red

with a heavy purple overtone. Every garden should have an asparagus bed for it is the first vegetable in the spring. Doctors advise eating fresh fruit and vegetables for health so start with asparagus. **Strong roots: 25 for 85c; 50 for \$1.35; 100 for \$2.25; 1000 for \$13.00.**

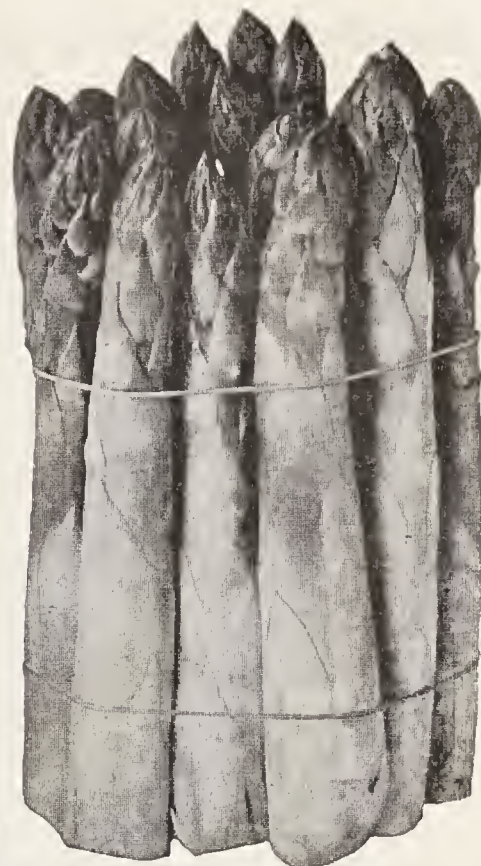
RHUBARB

Makes excellent pies, fresh sauce and cordial. No garden is complete without this plant.

CHAMPAGNE—Excels all in size, flavor and delicate tenderness. 2 year roots. **3 for 75c; 10 for \$1.75; 50 for \$6.50.**

HORSERADISH

An excellent entree for meats; also used when preserving pickles. Hardy roots. Plant in deep rich soil. 2 year strong roots. **10 for \$1.00; 50 for \$4.00.**



Washington Asparagus

Maloney's Pay Shipping Costs • See Page 7

We will not issue a cut-rate Bargain Circular this Spring. See page 26.

CHOICE STRAWBERRIES

For garden culture set plants in rows two feet apart, with plants one foot apart in the rows. **Price Postpaid, 25 for 95c; 100 for \$1.75; 1000 for \$12.00.**

BIG JOE (Perfect)—Late. Fruit firm, large size, good flavor, no green tips, productive.

PREMIER—Perfect flowered. It is smooth and large; its color the commanding glossy red which sells on sight. Early.

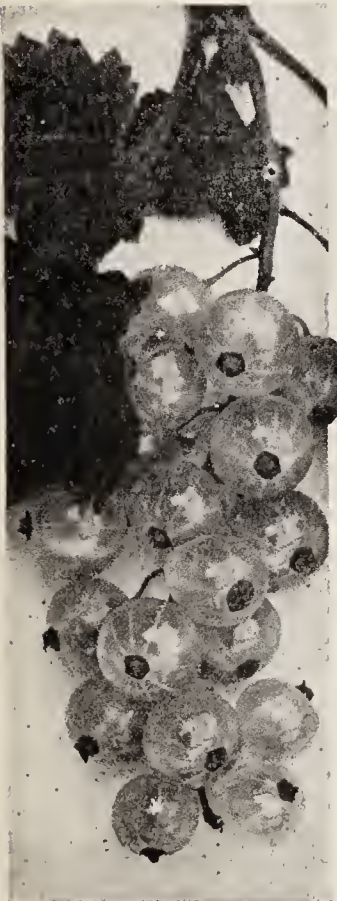
HOWARD 17 (Perfect)—Early to late. Noted for its long fruiting season. Fruit large.

FALL OR EVERBEARING

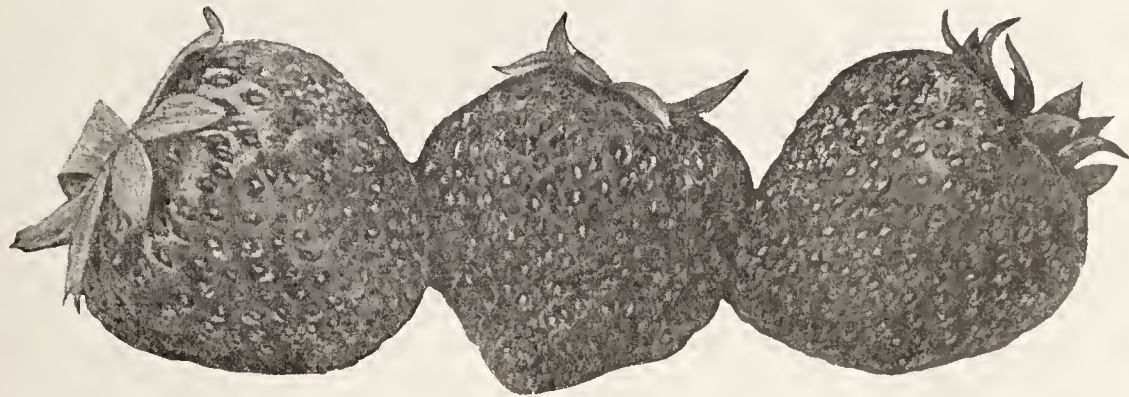
NEW YORK (Perfect)—Mid-season. Fruit extremely large, well colored. Good mid-season variety.

MASTODON—The fruit is of very large size and has a good waxy appearance. Produces an abundance of fruit continuing throughout the summer and fall.

25 for \$1.25; 100 for \$2.95; 1000 for \$17.50. Postpaid.



White Grape Currant



Mastodon

Include Asparagus, Rhubarb, Horse Radish and Strawberries in your garden this year.



RASPBERRIES AND BLACKBERRIES

Invest in a sure thing; why take chances with your money when you can plant an acre of Raspberries, 2,400 plants, 3 feet apart and get big returns second year, and from \$600 to \$1000 per acre thereafter. Berries require little care, and only reasonably good soil. Berries are no gamble—you can't lose.

RASPBERRIES

CHIEF (New)—Berries are dark red, good size, extra firm and hold up a long time after picking. Yields 15 to 30 per cent more than other Raspberries. Withstands dry, hot weather better than other varieties, and has never been known to suffer winter injury. Stand long distance shipping. Ten to twelve days earlier than Latham. **25 for \$2.00; 100 for \$4.50; 500 for \$16.00; 1000 for \$30.00.**

COLUMBIAN (Purple)—Very large, somewhat conical, dark red, rich juicy, of exceptional quality; seed small, bears large crops. Valuable for table and canning fruits from middle of July to August. **25 for \$2.25; 100 for \$5.50; 500 for \$20.00; 1000 for \$37.50.**

CUMBERLAND (Black)—Largest black Raspberry known; berries glossy, firm and unsurpassed in quality; perfectly hardy and very productive. A splendid shipper. **25 for \$1.75; 100 for \$4.00; 500 for \$13.75; 1000 for \$26.50.**

CUTHBERT (Red)—Large, conical; deep rich crimson, firm and of excellent quality; vigorous and produces fine crops. **25 for \$1.75; 100 for \$4.00; 500 for \$13.75; 1000 for \$26.50.**

LATHAM—A superb success in quality, production and profits. It has been truthfully said that Latham leaves nothing to be desired in a Red Raspberry. Latham berries are mammoth, dark red, of uniform size, and present a beautiful sight on the bushes and in boxes. Never fail to bring \$1.00 or more per crate above the price of other varieties. Fruit clings to stems several days after fully ripe. You cannot believe, until you see for yourself what tremendous loads of fruit Latham bears! Extremely hardy and Mosaic free. **25 for \$2.00; 100 for \$4.25; 500 for \$16.00; 1000 for \$30.00.** See illustration on back cover page.

NEW LOGAN (Black)—Of Ohio origin, this new blackcap is gaining much favor among berry growers. Its quality and productiveness are excellent, probably equal to Cumberland, but its paramount value lies in the week or more earlier cropping season. **25 for \$2.00; 100 for \$4.25; 500 for \$16.00; 1000 for \$30.00.**

PLUM FARMER (Black)—The most profitable early market variety; maturing the entire crop in a very short period. The berries are very large, thick-meat; firm, attractive. **25 for \$1.75; 100 for \$4.00; 500 for \$13.75; 1000 for \$26.50.**

ST. REGIS (Red) (Everbearing)—One of the best; will produce berries the first year in the fall, a full crop the following spring and again in the fall. The



Cuthbert Red Raspberry

berries are bright crimson, very large. Every garden should have at least a few bushes for you can supply the table with delicious fruit spring and September. **25 for \$1.75; 100 for \$4.00; 500 for \$13.75; 1000 for \$26.50.**

BLACKBERRIES

BLOWERS—Very large, finest flavor, and jet black. Canes grow upright, perfectly hardy. One of the most productive, starting to ripen in July and continues late. Bring the highest market price. Rooted cuttings. **25 for \$2.00; 100 for \$5.50; 500 for \$20.00; 1000 for \$37.50.**

ELDORADO—Largest hardy Blackberry. Free from rust. Berries large, jet black, borne in large clusters and ripen well together; they are very sweet, melting, have no hard core and keep for eight or ten days after picking with quality unimpaired. Rooted cuttings. **25 for \$2.00; 100 for \$5.50; 500 for \$20.00; 1000 for \$37.50.**

DEWBERRIES

LUCRETIA—It equals any of the tall growing sorts. Perfectly hardy and remarkably productive, with large, showy flowers. The fruit, which ripens early is often 1½ inches long by 1 inch in diameter, soft, sweet and luscious. **25 for \$2.00; 100 for \$5.50.**

Gentlemen:

Your article in Spring Catalog 1932 on "Big Profits in Raspberries" has made me real money so far.

Next year I hope to double my profits. The stock was wonderful, and you can bet when I'm in the market for more stock Maloney Bros. will get my order. Sincerely, H. M. DENHAM, Binghamton, N. Y.



Blowers Blackberry



Plum Farmer Black Raspberry



PEACHES

The Peach is the quickest yielding of the fruit trees, many times bearing the second year after transplanting. These qualities combined with a ready market make peach growing exceptionally profitable.

Prices of All Varieties of Peach Trees

	Height	Each	10	100
Large 1 year	4 to 5 ft.	55c	\$4.50	\$32.50
Medium 1 year	3 to 4 ft.	50c	4.00	27.50
Small 1 year	2 to 3 ft.	45c	3.50	22.50

PARCEL POST—First-class 2 ft. small size trees sent parcel post, postage prepaid, for **38c each; 10 for \$2.80.**

NOTE: Our prices are PREPAID—See page 7.

BELLE OF GEORGIA—Large, creamy-white with a beautiful crimson cheek; firm with an excellent flavor. August. Free.

CARMAN—Beautiful, round, medium size. Creamy-white with deep blush, skin very tough, flesh tender and juicy. The best white peach. August. Free.

CHAIR'S CHOICE—Large, yellow; flesh very firm, great bearer. October. Free.

CHAMPION—Skin creamy-white with red blush; large with delicious flavor, very juicy. August. Free.

EARLY CRAWFORD—Rich red splashed and mottled with darker red and golden yellow. Tree very productive. Early September. Free.

EARLY ELBERTA—Ten days earlier than Elberta; rounder and of better quality. Early September. Free.

ECLIPSE—Dark red, yellow fleshed. Fruit oval, fine grained. July. Free.

ELBERTA—Large, oval, yellow with red cheek; flesh yellow, firm, juicy, of high quality. Exceedingly prolific, sure bearer and hardy. The leading peach in all sections. Early September. Free.

FITZGERALD—Large, bright yellow suffused with red; flesh deep yellow, good quality. September. Free.

GOLDEN JUBILEE—A large early yellow peach of the Elberta type. Ripens three weeks earlier than Elberta. The skin is yellow blushed with red; flesh yellow, juicy, tender, sweet. Free.

GREENSBORO—Greenish-white, shaded with dark red. Flesh white, juicy, good. Late July. Free.

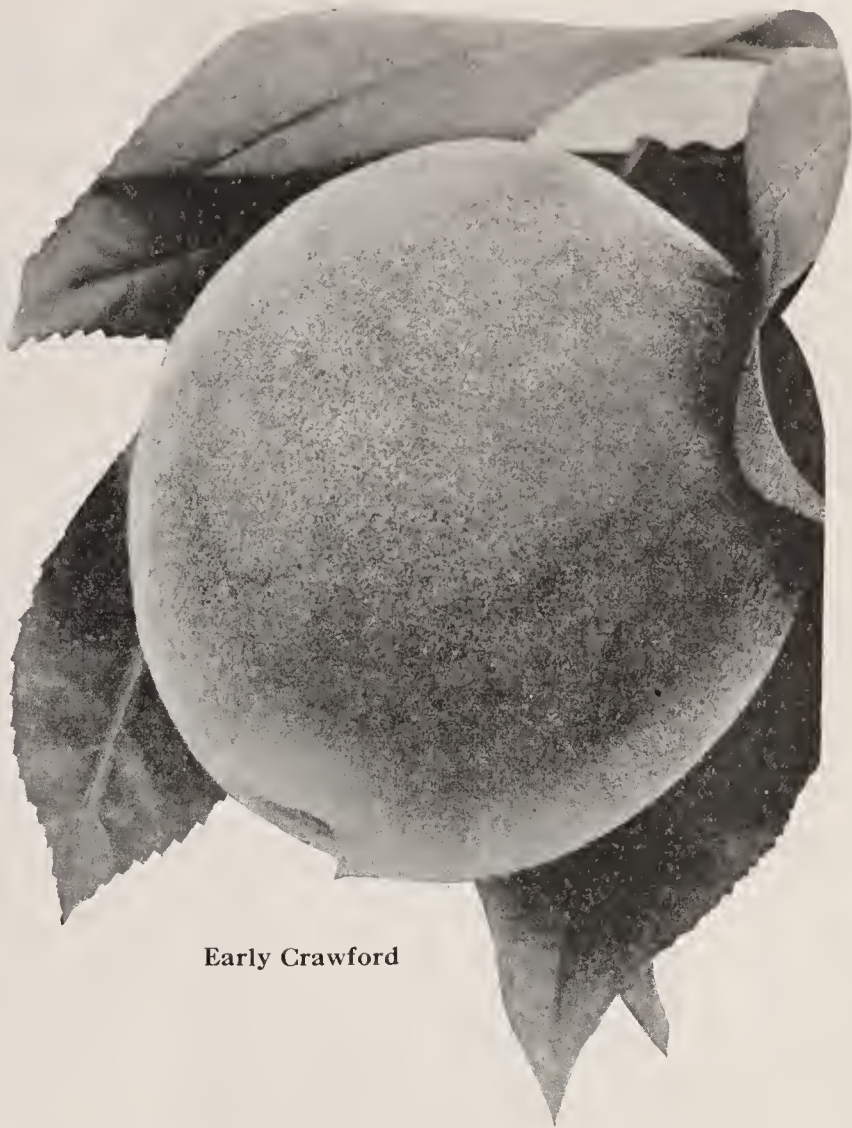
HEATH CLING—Fruit very large, skin creamy-white. Clingstone. Middle of September.

HILEY—Large, red cheek, white flesh, heavy bearer. July. Free.

J. H. HALE—A beautiful golden yellow, with deep carmine blush; practically free from fuzz. A good shipper and one of the most popular varieties. Late August. Free.

LATE CRAWFORD—Large, yellow with dull red cheek; flesh yellow. Late Sept. Free.

MIKADO—Large, oval, yellow with a broad light red blush. Flesh yellow with a faint red tinge. Two weeks earlier than Elberta. Free.



Early Crawford

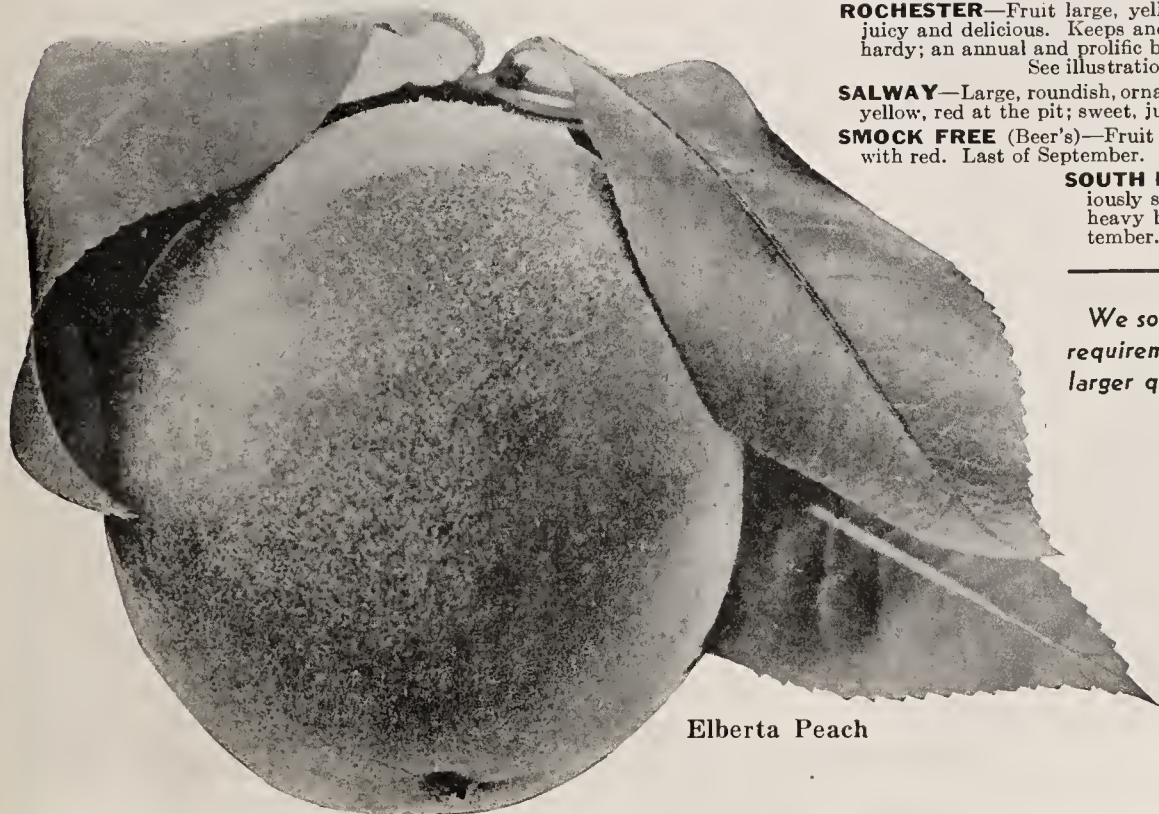
ROCHESTER—Fruit large, yellow with an attractive red blush, sweet, juicy and delicious. Keeps and ships well. Tree is strong growing and hardy; an annual and prolific bearer. August. Free.

See illustration on back cover page.

SALWAY—Large, roundish, ornate, yellow with a crimson cheek; flesh deep yellow, red at the pit; sweet, juicy. October. Free.

SMOCK FREE (Beer's)—Fruit large; oval, skin orange-yellow, mottled with red. Last of September. Free.

SOUTH HAVEN—Flesh yellow, juicy and deliciously sweet; exterior yellow with red cheek. A heavy bearer; in fact an excellent peach. September. Free. See illustration on page 39.



Elberta Peach

We solicit commercial fruit growers' list of requirements for special quotation when larger quantities are desired than offered.

FAMOUS PEACH COLLECTION No. 13

- 1 Crawford's Early
- 1 Mikado
- 1 J. H. Hale
- 1 Elberta

Four large size trees

Special Price

\$1.98



PEARS

Pears grow well on any good soil, and by growing your own you have the fresh fruit for table and canning. We solicit commercial fruit growers' list of requirements for special quotation where larger quantities are desired than offered.

PRICES OF STANDARD PEAR TREES

	Age	Height	Each	10	100
Large	2 yr.	5-7 ft.	\$.70	\$6.00	\$37.50
Medium	2 yr.	4-5 ft.	.60	5.00	32.50
Small	2 yr.	3-4 ft.	.55	4.00	27.50
Large	1 yr.	3-5 ft.	.70	6.00	37.50

PARCEL POST—First class 3 foot trees sent by parcel post prepaid for 45c each, 10 for \$3.50.

RATES—Less than 10 at each rate; ten to fifty at ten rate; fifty or more at hundred rate.

NOTE—MALONEY'S PAY SHIPPING COSTS—PLUS BIG DISCOUNTS. SEE PAGE 7.

BARTLETT—No pear of the same season equals the Bartlett in flavor, either for eating or canning. Has first place in all markets and brings top prices. Fruit large and yellow, fine grained, buttery and juicy, sweet, rich flavor. Tree grows very rapidly and bears young and heavily. September.

See illustration page 39.

BEURRE D'ANJOU—Large greenish, yellow fruit tinged with dull red and russet; flesh white, buttery, fine grained and richly flavored. Looks and keeps well until mid-winter. October.

BEURRE BOSCH—A large russet pear with long neck; melting, high flavored and delicious. Bears well September to October.

BEURRE CLAIRGEAU—Its large size and beautiful cheek; its excellent shipping and keeping qualities, all combine to make this a profitable variety. Flesh yellowish and melting. November to January.

CLAPP'S FAVORITE—Very large, long, yellow tinted with crimson and russet. Flesh is fine grained and white, juicy and exceptionally tasty. About ten days earlier than Bartlett. August.

DUCHESS D'ANGOULEME—Strong grower, productive, not subject to blight. Fruit large, light green patched with russet, melting, juicy, sweet and good. October and November.

FLEMISH BEAUTY—Large, light yellow with patches of brownish-red; rich sugary flavor. Tree is hardy, productive and early bearer. September-October.

KIEFFER—Fruit large, uniform, golden yellow with bright cheek, very fine; flavor moderately sweet. Excellent for canning. October-January.

LAWRENCE—Medium, yellow with brown dots, melting, pleasant, aromatic. Unsurpassed as an early winter pear. November-December.

LECONTE—Tree distinctively upright; fruit medium to large; skin yellow. Ripens ahead of Kieffer and is used as a pollinizer for Kieffer.

SECKEL—Small yellowish russet with red cheek. Flesh whitish, buttery, very juicy, melting rich, spicy. Excellent for preserving. September-October.

SHELDON—One of the most delicious eating pears. Should be in every home garden. Fruit large, creamy sweet and aromatic; skin yellow or greenish-russet. October.

WINTER NELIS—Skin yellowish-green dotted with gray russet, covered with russet patches and streaks; flesh yellowish-white fine grain, juicy rich, very good. December.

PRICES OF QUINCE AND APRICOT TREES

	Age	Height	Each	10	100
Large	2 yr.	4-5 ft.	\$.70	\$6.50	\$40.00
Medium	2 yr.	3-4 ft.	.60	5.50	35.00

QUINCE

Orange—Fruit large, golden yellow, fine quality. It rarely fails to produce a crop. Good for home use and market. October.

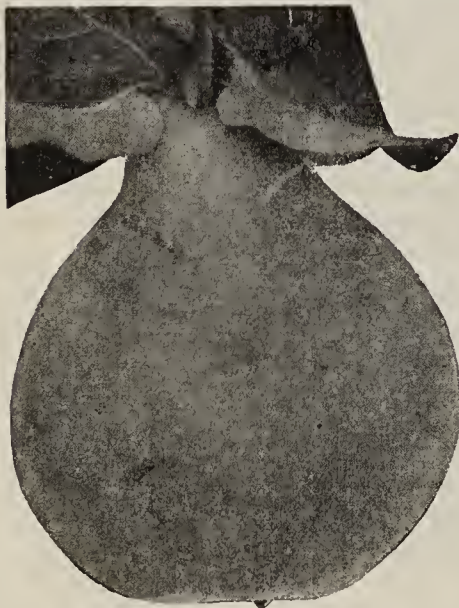
APRICOT

Harris—Medium size, yellow with red cheek, juicy, hardy. July.

Moorpark—One of the largest. Orange red cheek, firm juicy productive. August.

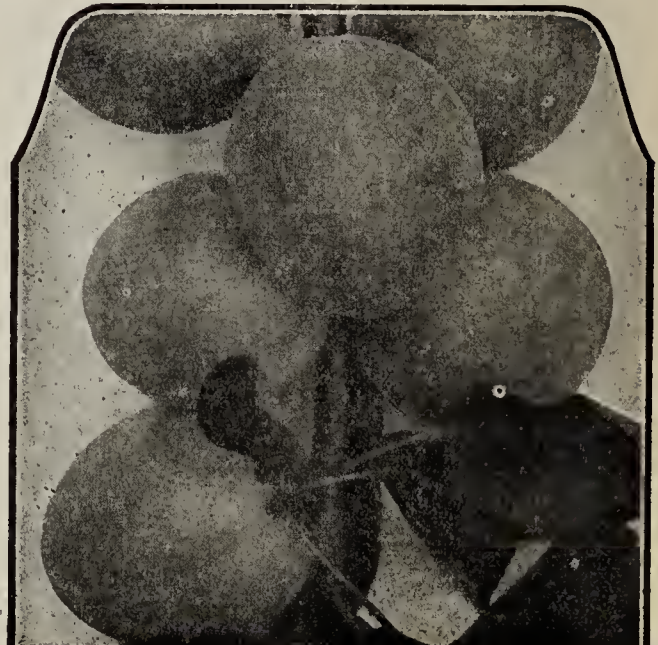
PEAR AND QUINCE COLLECTION No. 14

- | | | |
|---------------|-----------------|--|
| 1 Beurre Bosc | 1 Seckel | } Four large size trees
SPECIAL PRICE \$2.35 |
| 1 Bartlett | 1 Orange Quince | |

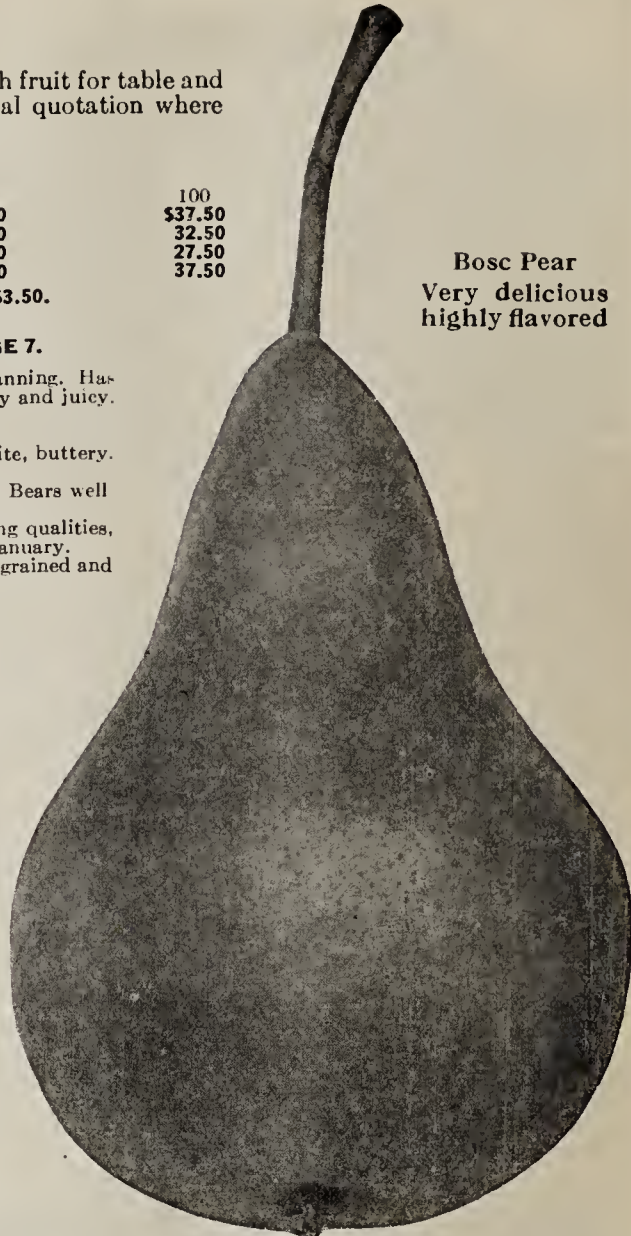


Orange Quince

MALONEY'S trees are grown on upland soil, insuring healthy, vigorous stock. Dansville has been known for years as the Nursery center of the United States. This simply means that our soil is the best. Maloney's expert cultivation plus the best soil in the country gives you the best tree that can be grown.



Harris Apricot



Bosc Pear
Very delicious
highly flavored



FRUITING AGE TREES

These trees will fruit in two years. They are extra large; in fact many have fruited in the nursery row. Maloney fruiting age trees have been transplanted once and scientifically treated to insure you fruit on your table only one year after planting—think of it! Usually it takes an ordinary tree from four to six years to fruit. We only have a limited amount of these trees at these exceptionally low prices. Order your trees for your rear lawn or garden now.

PLANTING INSTRUCTIONS

Prune off bruised ends of roots, if any, make a smooth cut; dig hole deep enough so that the tree will be buried one inch above where it was budded on the root, or one inch above the collar—soak roots in the water one-half hour, place trees in hole, fill in one-fourth, tread well; another one-fourth, tread well, the third one-fourth, tread well; then finish filling and tread firmly so that when the tree is set it would require a strong man to pull it out.

Elmira, N. Y.

Gentlemen:

My fruiting age trees arrived in excellent condition. They are the finest fruit trees I have ever seen. I really don't see how you can sell such beautiful trees for such a low price and pay shipping cost too.

Sincerely,

LEONARD BLUM

Price of Fruiting Age Trees

Each \$2.50; 5 for \$11.25;
10 for \$20.00

Standard Apple (8-9 ft.)

Baldwin
Cortland
Delicious
Early McIntosh
Golden Russet
Pumpkin Sweet
Red Gravenstein
Sweet Delicious
Transcendent Crab
Wealthy
William's Favorite
Winter Banana
Yellow Transparent

Dwarf Apple (6-7 ft.)

Baldwin	Sweet Delicious
Cortland	Sweet Bough
Delicious	

Peach (6-7 ft.)

Early Crawford	Fitzgerald
Belle of Georgia	Rochester
Elberta	South Haven

Dwarf Pear (6-7 ft.)

Clapp's Favorite	Seckel
------------------	--------

Plum (8-9 ft.)

Abundance	Shrop. Damson
Bradshaw	Lombard
German Prune	Yellow Egg

Standard Pear (8-9 ft.)

Bartlett	Clapp's Favorite
Beurre Bosc	Sheldon

Average Fruiting Age Tree

Sour Cherry (7-8 ft.)

Montmorency

Sweet Cherry (8-9 ft.)

Black Tartarian	Napoleon
Gov. Wood	Seneca

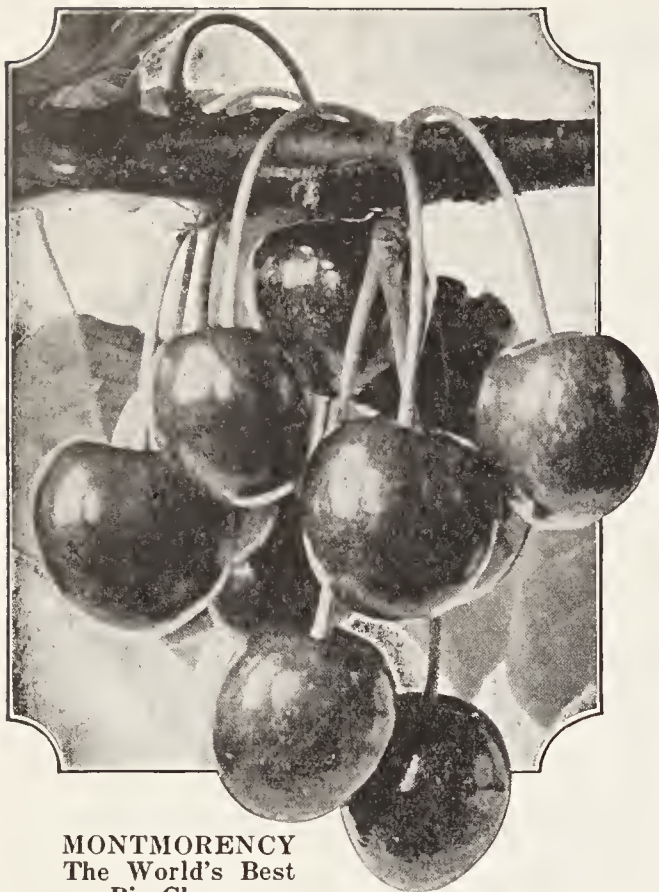


One of our Fruiting Age Trees a year after planting

Yes, Maloney's pay shipping costs even on these large trees.
See page 7.



CHERRIES



MONTMORENCY
The World's Best
Pie Cherry

Your backyard orchard is not complete without sweet and sour cherry trees. They are good for pies; the fresh fruit luscious, and cherry wine for those, who enjoy a light beverage, is very good.

You, who are contemplating moving from the city to the farm, bear in mind that cherries are mighty good property. Prices are coming back, and that means big money for someone. Maloney's sell to such large planters as: Fruit Growers Union Co-op., Sturgeon Bay, Wis.

B. J. Case, Sodus, N. Y.

Michigan Cherry Growers Union, Traverse City, Mich.

Gentlemen:

The Montmorency cherry trees I bought from you three years ago bore fruit this summer. We canned what we will need for a year and sold enough to pay for the trees twice over. At last I have found how to make my garden pay.

Wishing you continued success, I remain

Grand Rapids, Mich.

BEN CRITTENDEN.

PRICES SWEET CHERRY TREES Budded on Mahaleb Roots

	Age	Height	Each	10	100
Large	2 yr.	5-7 ft.	\$.70	\$6.50	\$37.50
Medium	2 yr.	4-5 ft.	.60	5.50	33.50
Small	2 yr.	3-4 ft.	.50	4.00	27.50
Large	1 yr.	3-5 ft.	.70	6.50	37.50

PARCEL POST—First class 3 foot trees sent by parcel post prepaid for 45c each, 10 for \$3.50.

RATES—Less than ten at each rate, ten to fifty at ten rate; fifty or more at hundred rate

SWEET CHERRY ON MAZZARD ROOTS 10c EACH HIGHER.

NOTE—MALONEY'S PAY SHIPPING COSTS PLUS BIG DISCOUNTS. SEE PAGE 7.

BING—Very large, dark brown almost black; flesh solid, sweet, rich and delicious. One of the most profitable. July.

BLACK TARTARIAN—Produces immense crops of purplish black fruits which are rich and juicy. June.

See illustration page 39.

GOVERNOR WOOD—Very large, rich; light yellow with red cheek; juicy and sweet. One of the best light cherry. Late June.

LAMBERT—Large, jet black when fully ripe. Flesh firm, rich and juicy. Tree rugged, strong grower, hardy and enormous bearer. Late July.

NAPOLEON—Leads in the firm fleshed sweet cherry. It takes its place by virtue of the large size, handsome appearance, and high quality of the fruit. The flavor is rich and sweet, which with the abundant juice and firm crackling flesh, makes this a most delicious and refreshing cherry for dessert. Tree is an upright grower and a heavy bearer. June.

See illustration page 39.

SCHMIDT'S BIGGARREAU—Fruit of immense size; rich, deep black; flesh dark, tender, very juicy, with a fine flavor. Bears abundantly. Excellent for table use. July.

SENECA—Ripens the first week of June. Fruit large, skin thin, tender; purplish black, indistinctly mottled; flesh tender, spicy flavor.

WINDSOR—Fruit large, liver-colored, flesh remarkably firm and of good quality. A valuable late variety for market and family use. Middle of July.

YELLOW SPANISH—Bears abundantly and regularly and comes into bearing young. Fruit large, pale yellow with red cheek; firm, juicy and excellent. Late June.

PRICES SOUR CHERRY TREES

	Age	Height	Each	10	100
Large	2 yr.	5-7 ft.	\$.65	\$6.00	\$35.00
Medium	2 yr.	4-5 ft.	.55	5.00	30.00
Small	2 yr.	3-4 ft.	.45	3.50	25.00
Large	1 yr.	3-4 ft.	.65	6.00	35.00

PARCEL POST—First class 3 foot trees sent parcel post, prepaid for 40c each, 10 for \$3.00.
SOUR CHERRY ON MAZZARD ROOTS 10c EACH HIGHER.

EARLY RICHMOND—One of the most popular of the acid cherries. Cannot be surpassed for hardiness or for cooking purposes. Fruit is medium size, round and dark red. A wonderful bearer. June.

ENGLISH MORELLO—Medium size of very dark red color, sometimes nearly black. Very acid in flavor, the flesh is of good quality and it makes a fine canner. Tree is a small grower with light limbs and trunk. July.

MONTMORENCY—Best of all sour varieties and enjoys a greater demand. Trees are clean growers and are less subject to disease, less affected by wet weather and are the most productive bearers of all sour Cherry varieties. Can always be depended upon for a full crop regardless of unfavorable season. It is attractive, brings a good price and is a fine shipper. Fruit is of good size and fine flavor and a bright clear, shining red in color. Flesh of fine quality and sub-acid. Quite extensively used for wine. Early July.

See illustration on back cover page.



BING—Excellent for sauce and canning

POPULAR CHERRY COLLECTION No. 15

1 Bing 1 Governor Wood
 2 Montmorency
Four Large size 5-7 ft. trees
Special Price \$2.20

We solicit commercial growers' list of requirements for Special quotations. We ask those, who are interested, to come and inspect our beautiful trees. All other fruit trees are scarce and higher this year. Cherry trees will be scarce and higher next year. Now is a good time to buy cherry trees.



PLUMS

Maloney's plum trees, like our other fruit trees have fine roots, good size, and bear quickly and heavily.

PRICES OF PLUM TREES (Except as Noted)

	Age	Height	Each	10	100
Large	2 yr.	5-7 ft.	\$.70	\$6.50	\$42.50
Medium	2 yr.	4-5 ft.	.65	5.50	35.00
Small	2 yr.	3-4 ft.	.60	4.50	27.50
Large	1 yr.	3-5 ft.	.70	6.50	42.50

PARCEL POST—First class 3 foot trees sent by parcel post prepaid for 45c each, 10 for \$3.50.

RATES—Less than 10 at each rate; ten to fifty at ten rate; fifty or more at hundred rate.

NOTE—MALONEY'S PAY SHIPPING COSTS—PLUS BIG DISCOUNTS. SEE PAGE 7.

(European Varieties)

BRADSHAW—Trees grow large and well formed; bear regularly and heavily. Fruit large, light purplish red changing to dark reddish at maturity. August.

FELLENBURG PRUNE—Large, oval, purple, juicy and delicious; parts from the stone; fine for drying. September. Each and ten rate as other Plums. 100 rate \$7.50 per hundred higher.

GERMAN PRUNE—Large, dark blue, showing a dense bloom when ripe; rich and agreeable flavor. September. Each and ten rate as other Plums. 100 rate \$7.50 per hundred higher.

GRAND DUKE—Large, reddish purple; firm meaty flesh; flesh golden yellow, juicy. Late September.

IMPERIAL GAGE—Large, oval, greenish, juicy, rich and delicious; parts from the stone. Very productive. Middle of August.

LOMBARD—Probably the most widely planted; medium size, violet-red, hardy and productive. August.

See illustration on back cover page.

MALONEY PRUNE—Dark blue, flesh yellow and delicious. Tree splendid grower, extremely hardy. Comes into bearing early. September. Each and ten rate as other Plums. 100 rate \$7.50 per hundred higher.

MONARCH—Very large, roundish oval; dark purplish blue; Freestone, excellent, abundant bearer. October.

REINE CLAUDE—Large, yellow, marked with red, excellent quality. September.

SATSUMA—Flesh dark purplish-red, juicy, tender with an almond-like flavor. Midseason.

SHROPSHIRE DAMSON—Enormously productive. Fruit oval, dark purple. Excellent quality. October.

YELLOW EGG—Large, golden-yellow egg shaped, sweet and mild; excellent for cooking. September.

YORK STATE PRUNE—Large size, dark blue; delicious. One of the largest. August. Each and ten rate as other Plums. 100 rate \$7.50 per hundred higher.

(Japanese Varieties)

ABUNDANCE—Large and beautiful; amber turning to a rich, bright cherry; flesh light yellow, juicy, tender, sweet, exceedingly productive. August.

BURBANK—Large and beautiful; clear cherry red; an abundant bearer; valuable market variety. August.

RED JUNE—Mottled garnet-red overlaid with thin but very distinct and delicate bloom; flesh light lemon-yellow, firm. August.

WICKSON—Fruit large, long heart-shaped, deep maroon-red covered with white bloom, flesh firm, meaty, yellow, rich and aromatic. September.

MONEY SAVING COLLECTION No. 16

- 1 Bradshaw
- 1 Yellow Egg
- 2 year Large size
- 1 York State Prune
- 1 Moorpark Apricot
- 1 year Large size

Special Price \$2.45



Bradshaw Plums



Black Walnut

WALNUT, ENGLISH—A fine lofty growing tree, with handsome spreading head; produces large crops of thin-shelled delicious nuts. Will grow successfully in Northern States. 4-5 ft. \$1.75 each; 10 for \$15.00. 5-6 ft. \$2.00 each; 10 for \$17.50.



English Filbert

NUT TREES

For shade, ornament and profitable dividends nut trees should not be overlooked for planting on the farm. Very little of your farm land would have to be devoted to them. They will grow into excellent timber, yield big returns in nuts, and are beautiful around the home.

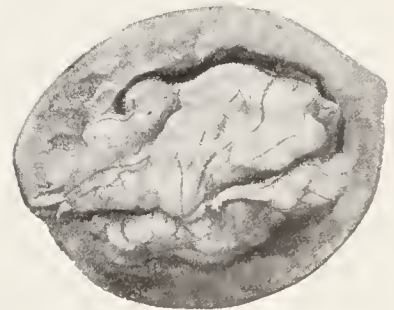
BUTTERNUT—Produces large, handsome, elongated nuts with rich, sweet oily kernels. Tree grows rapidly and yields large crops in a few years. 4-6 ft. \$1.00; 6-8 ft. \$1.40.

FILBERT, ENGLISH (Hazelnut)—A low growing bushy tree, producing abundant crops of roundish, tender nuts of fine flavor. Will grow in any location and on almost every kind of soil. 2-3 ft. 90c; 3-4 ft. \$1.15.

WALNUT, BLACK—Bears heavy crops of large, round nuts of excellent quality. Tree rapid grower, attaining large size and majestic form with fern-like foliage. Valuable for timber. 5-6 ft. \$1.20 each; 10 for \$11.00. 6-8 ft. \$1.40 each; 10 for \$12.50.



Butternut

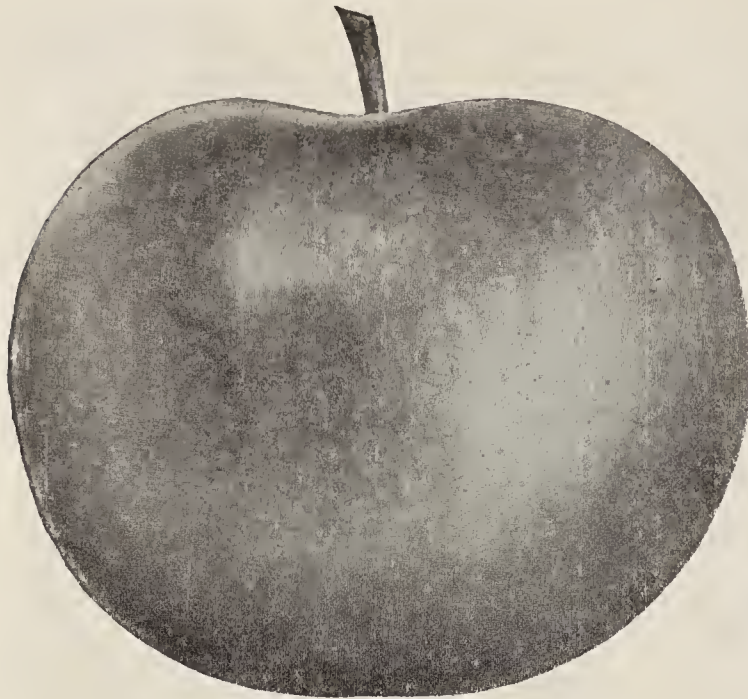


English Walnut

Maloney's pay shipping costs and offer big discounts. See page 7.



APPLES



R. I. Greening

APPLE (Summer Varieties)

- EARLY HARVEST**—Pale yellow, excellent flavor. Very desirable for home use. Late July.
- *EARLY McINTOSH**—Size of fruit about same as McIntosh and equal to it in flavor. One of the best summer varieties. July.
- RED ASTRACHAN**—Good size, deep crimson covered with thick bloom. Flesh juicy and tender making it an excellent cooking apple. Tree very hardy, vigorous and bears young. July-August.
- SWEET BOUGH**—A fine apple for baking or to eat out of hand. Baked whole and served with cream it is delicious. Large, pale yellow, tender and sweet. August.
- WILLIAM'S EARLY RED**—Beautiful bright red of agreeable flavor; suitable for dessert or culinary purposes. Flesh sometimes tinged with red. August.
- YELLOW TRANSPARENT**—Good size, clear white tinted with pale yellow; slightly acid. Bears young, yielding large crops. July-August.

(Autumn Varieties)

- DUCHESS OF OLDENBURG**—Medium size; red striped; juicy. August.
- FALL PIPPIN**—Very large, yellow, tender, juicy and rich. Pleasant, aromatic flavor. September.
- MAIDEN BLUSH**—Beautiful pale lemon-yellow with crimson cheek. The flesh is white and good in quality. September.
- POUND SWEET**—Very large, round yellowish russet; very sweet and rich. Tree vigorous and rapid grower. October.
- *RED GRAVENSTEIN**—A solid dark red sport of Gravenstein. Good size, excellent quality and unexcelled for culinary use. September-November.

(Winter Varieties)

- *BALDWIN**—The most popular winter apple for shipping and the heaviest bearer. Tree grows rapidly and its fruit is large, round with red and yellow skin. Flesh yellowish tart and very juicy. November-April.
 - BEN DAVIS**—Comes into bearing at an early age, bearing annually and abundantly. Fruit is large, red striped. December-March.
 - *CORTLAND**—A beautiful red apple, larger than McIntosh and matures a month later. Excellent quality, keeps late in winter and fine shipper. November-February.
- See illustration page 39.
- *DELICIOUS**—Large, almost covered with a beautiful, brilliant dark red, blending to golden yellow at blossom end. Quality is unsurpassed and incomparable. Flavor sweet and slightly acid. Flesh is fine grained, crisp, juicy, melting, delicious. A splendid keeper and shipper. November to April.
 - FAMEUSE (Snow Apple)**—Medium size, deep crimson, flesh white. Delicious. October-December.
 - GANO**—An attractive red. Comes into bearing young and is an excellent cropper, bearing regularly and abundantly. December-March.
 - GILLFLOWER (Black)**—An old dessert apple; tree a good vigorous grower and a reliable cropper. October-February.
 - GOLDEN RUSSET**—Medium size, clear golden russet with slight blush; juicy, high flav. red. November-April.
 - GRIMES GOLDEN**—Medium size, golden yellow, tender, rich and slightly sub-acid. Popular early winter variety. November-April.
 - HENDRICK SWEET**—An attractive red. Excellent for dessert or other culinary uses. November-April.

We all love the deliciously refreshed feeling we get from eating an apple. No matter if it is in pie, baked or freshly picked they always taste good; and are very healthful. Maloney's grow super apple trees that bear earlier, larger fruit and make a more substantial tree. Why not plant a few trees in your backyard this year and save money. Maloney's supply many of the largest orchard planters in the United States:

Wyoming County Fruit Growers Association, Tunkhannock, Pa.
Massachusetts Farm Bureau, Waltham, Mass.

A. B. Burrell, Supt., Plant Pathology, State College of Agriculture, Ithaca, N. Y.

We solicit commercial fruit growers' list of requirements for special quotation where larger quantities are desired than ordered.

PRICES OF STANDARD APPLE TREES INSPECTED

	Age	Height	Each	10	100
Large	2 yr.	5-7 ft.	\$.70	\$6.50	\$40.00
Medium	2 yr.	4-5 ft.	.60	5.50	35.00
Small	2 yr.	3-4 ft.	.55	4.00	30.00
Large	1 yr.	3-5 ft.	.70	6.50	40.00

PARCEL POST—First class 3 foot trees sent by parcel post prepaid for 45c each, 10 for \$3.50.

PRICES OF ALL CERTIFIED STANDARD APPLE TREES

(For varieties see *)

	Age	Height	Each	10	100
Large	2 yr.	5-7 ft.	\$.75	\$7.00	\$45.00
Large	1 yr.	3-5 ft.	.75	7.00	45.00

NOTE—MALONEY'S PAY SHIPPING COSTS—PLUS BIG DISCOUNTS. SEE PAGE 7.

Maloney Apples are all certified or inspected for trueness to name by Dr. J. K. Shaw, Massachusetts Fruit Growers' Association, Amherst, Mass. All varieties certified can also be had in inspected trees.



Delicious, Red



(Winter Varieties—Cont.)

- JONATHAN**—Fruit red, highly flavored. Tree productive and early bearer. November-January.
- KING**—Fruit bright red, large and uniform; flesh yellow, crisp and juicy. Keeps well. October-February.
- *MCINTOSH, RED**—An exceedingly valuable, hardy, attractive apple; good size, nearly covered with red. Flesh white, fine tender, juicy and refreshing. Tree hardy, vigorous, a good annual bearer; comes into fruiting early, yielding large crops. October-January.
- NEWTON PIPPIN**—Large, yellow, delicious flavor. November-May.
- *NORTHERN SPY**—Large, very attractive, bright red, flesh juicy, rich, crisp, tender. Tree healthy, strong grower, rugged. Fruit always in demand. December-March.
- N. W. GREENING**—Greenish yellow sometimes faintly marked with red. Fruit large and good flavor. Tree thrifty and very hardy. October-April.
- OPALESCENT**—Fruit large, yellow, mildly sub-acid. November-February.
- *RED SPY**—A splendid bright red Spy without stripes or splashes. Highly recommended by New York State Fruit Testing Association. December-March.
- *R. I. GREENING**—Large, flesh yellowish, firm, fine grained, crisp, tender, juicy; slightly sub-acid. Best cooking apple. Keeps until April. Ripens in December.
- ROME BEAUTY**—Large, round, mottled and striped red. Flavor and quality excellent. December-March.
- SMOKEHOUSE**—Yellow mottled with dark red. October-March.
- *STAYMAN'S WINESAP**—Fruit rich dark red striped with yellow and green. Flesh firm and fine grained; exceedingly juicy and tasty. Bears young and annually. December to April.
- SWEET DELICIOUS**—Fruit resembles Delicious in shape; deep yellow, lightly colored with a solid dark red. Flesh yellow, firm, tender and juicy. November-January.
- TOLMAN SWEET**—Medium size, light yellow, firm, fine grained and very sweet. Keeps well. November-April.
- TWENTY OUNCE**—Very large, yellow striped red; fine quality, good keeper. October-January.
- WAGENER**—Is an apple of superior excellence. Beautiful bright red with contrasting pale yellow. Fine texture, high flavor, excellent quality. October-February.
- *WEALTHY**—Particularly valuable for cold climates. Large, roundish, skin smooth, oily, covered with a dark red. Flesh white, tender, juicy. October-January.

See illustration on back cover page.

- WINTER BANANA**—Large, deep yellow striped with red; tender and delicious with distinctive banana perfume and flavor. Vigorous grower, heavy bearer. November-January.
- YORK IMPERIAL**—Smooth, blushed and striped with red. Flesh is yellow, tender and mildly acid. November-February.

BEST HARDY CRAB APPLES

- HYSLOP**—Fruit large, very brilliantly colored dark red, overspread with thick blue bloom. October.
- WHITNEY**—Has a smooth glossy skin; green striped splashed with carmine. Flesh firm, juicy and rich. August.

1934 THRIFT COLLECTION No. 17

- 1 R. I. Greening 1 Delicious } Four 2 year 5-7 ft. trees
1 Baldwin 1 McIntosh } **Special Price \$2.45**



McIntosh



Baldwin

NEW VARIETIES OF MERIT RECOMMENDED BY FRUIT TESTING ASSOCIATION

Limited Supply—Order Early

	Age	Height	Each	10	100
Large	2 yr.	5-7 ft.	\$.80	\$7.50	\$45.00
Medium	2 yr.	4-5 ft.	.70	6.50	40.00
Small	2 yr.	3-4 ft.	.60	5.00	35.00
Large	1 yr.	3-5 ft.	.80	7.50	45.00

GALLIA BEAUTY—Identical with the well-known Rome Beauty, except that it takes on a solid red color long before maturity and thus makes it more attractive.

MACOUN—Red-skinned, white fleshed, richly flavored. Trees bear regularly and heavily. One to two months later than McIntosh.

MEDINA—Resembles Delicious but is much larger and is more attractive on account of the golden yellow ground color.

MILTON—Fruit attractive pinkish-red; flesh white, tender, crisp, juicy, and of McIntosh flavor and aroma. Ripens month later than Early McIntosh.

RED ROME—All the fine qualities of Rome Beauty, except solid red without stripes. Tree stronger grower. December to March.

PRICES ON BLAXTAYMAN AND RICHARED APPLE TREES

Age	Height	Each	10	100
2 yr.	5-7 ft.	\$1.00	\$8.00	\$50.00
2 yr.	4-5 ft.	.90	7.50	45.00
2 yr.	3-4 ft.	.85	7.00	40.00
1 yr.	3-5 ft.	.90	7.50	45.00

BLAXTAYMAN—A beautiful solid red without stripes. Does not crack at the stem; crisp and juicy. Has a finer texture and a thicker skin than the regular Staymans and will not scald in storage.

RICHARED—A "Super Delicious." This marvelous new variety has all the splendid qualities of the common Delicious—the same distinctive shape and famous flavor. Solid lustrous red, without stripes.



DWARF FRUIT TREES

In the dwarf fruit tree you have larger fruit than the regular standard tree and a smaller tree. The dwarfs are all low-growing and low-branched, enabling you to pick the fruit from the ground, and these are suited especially for yard and garden. Maloney's dwarf trees are three years old; many of which have *already borne fruit* in our nursery. These trees cannot be bettered for your rear lawn, as they furnish you with easily accessible, delicious fruit, and also make excellent ornaments for the yard. Plant 15 ft. apart.

Gentlemen:

Last Spring (1932) we ordered a dwarf Apple tree. This Spring it was filled with blossoms, a delightful surprise to us indeed.

We thought you might be glad of this information for next year's advertising. Later on the dwarf pear tree was filled with pears. We surely are well pleased with Maloney stock.

Yours very truly,

FLORENCE H. BARBER, North Haven, Conn.



Dwarf McIntosh Apple (two years after planting) Best Early Winter Variety—High Quality

PRICES OF DWARF FRUIT TREES

	Age	Height	Each	10	50
Large	3 yr.	4-5 ft.	\$.75	\$7.00	\$25.00
Medium	3 yr.	3-4 ft.	.65	6.00	20.00

PARCEL POST—First class 2-3 ft. trees sent parcel post, prepaid for 60c each, 10 for \$5.50.

Note: Maloney's Pay Shipping Costs Plus Big Discounts. See Page 7.

DWARF APPLE

Baldwin	Grimes Golden	Red Astrachan	Stayman's Winesap
Cortland	Hendrick Sweet	Red Gravenstein	Transcendent Crab
Delicious	King	Red Spy	Wagener
Duchess	McIntosh	R. I. Greening	Wealthy
Ea. McIntosh	Northern Spy	Rome Beauty	W. Banana
Ea. Harvest	Pound Sweet	Rox Russett	Yellow Transparent
	Rambo	Sweet Delicious	

DWARF PEAR

Bartlett	Clapp's Favorite
Beurre d'Anjou	Seckel

DWARF TREE COLLECTION No. 18

4 three year 4 to 5 ft. trees for \$2.65

Early McIntosh (Summer)	Northern Spy (Late Winter)
McIntosh (Early Winter)	Bartlett (Summer)
An Excellent Combination	



NORTHERN SPY
Best Late Winter Variety—No Apple of Similar Flavor



CLAPP'S FAVORITE
Still the Best Eating Summer Pear



BLACK TARTARIAN—The best dark Oxheart



CORTLAND—An extremely popular variety—splendid keeper



NAPOLEON
The best light Oxheart

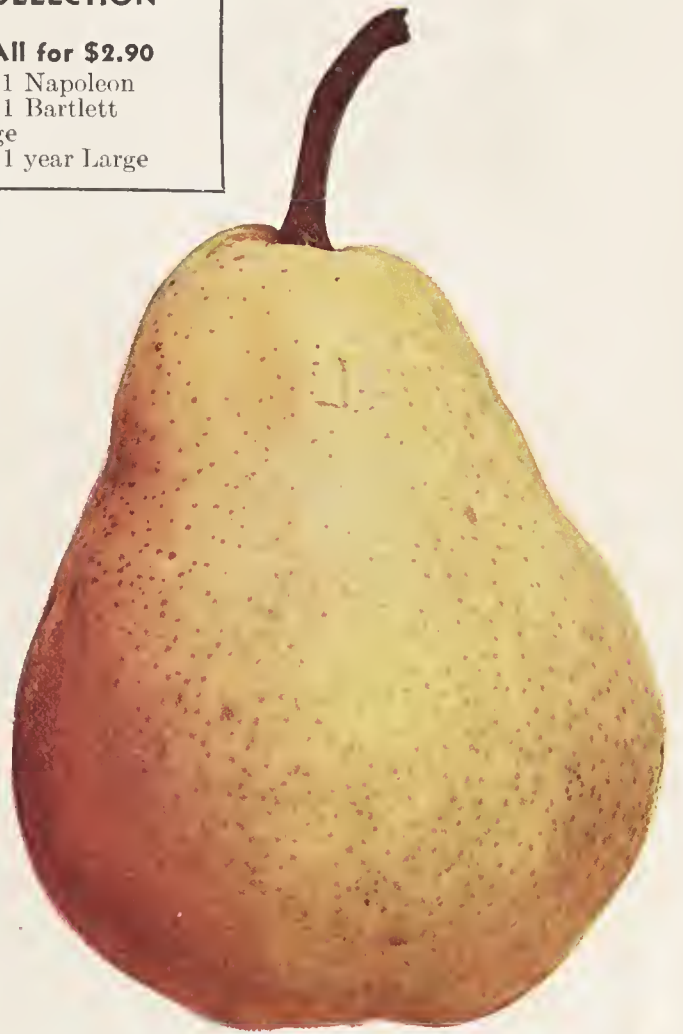
**MODERN GARDEN COLLECTION
No. 19**

5 Trees as illustrated—All for \$2.90

- | | |
|-------------------|--------------|
| 1 Cortland | 1 Napoleon |
| 1 Black Tartarian | 1 Bartlett |
| All 2 year Large | |
| 1 Rochester | 1 year Large |



SOUTH HAVEN—A new introduction of exceptional merit



BARTLETT—Unexcelled for eating or canning



Montmorency
Cherry



Wealthy Apple



Lombard Plum



Raspberry
Latham

ECONOMY GARDEN COLLECTION No. 20

**30 Trees and Plants as illustrated
—All for \$4.35**

- 1 Wealthy 1 Montmorency
- 1 Lombard—All 2 year Large
- 1 Rochester—1 year Large
- 1 Caco 25 Latham—All 2 year No. 1



Rochester Peach



Caco Grape

MALONEY BROS. NURSERY CO., Inc., Dansville, N. Y.