

Historic, archived document

Do not assume content reflects current scientific knowledge, policies, or practices.

A BOOK OF A
THOUSAND BARGAINS

McGREGOR'S YEAR BOOK

for 1936

McGregor's All Star Rose Collection

The 5 varieties in
1 yr. Plants for..... **79c**

The 5 varieties in 2 year
Pot Plants **\$1.59**
for.....

The 5 varieties
in 3 yr. Field
Plants for
\$2.85

(See Page 6)

TALISMAN
37c

RADIANCE
21c

MD. BUTTERFLY
21c

CRUSADER
22c

★ FEB 3 1936 ★
U. S. Department of Agriculture

REV. F. PAGE ROBERTS
24c

THE McGREGOR BROS. CO. — Springfield, Ohio

This Catalogue

MCGREGOR'S YEAR BOOK

with its wide variety of
Roses-Plants-Seeds etc.
 Presents to you one of the Greatest Garden
 catalogues of the Year

Our Guarantee

It will not be necessary for customers to ask that we insure packages of plants against loss, as we guarantee all Shrubs, Plants, Bulbs, and Seeds that we send out to points within the United States to reach purchaser in good condition, when forwarded by mail or express. After goods are delivered to purchaser in growing condition our responsibility ends.

Something for
 every
 Garden
 Everything
 for
 some
 Gardens

For a period covering more than sixty years, we have offered and furnished to the mail order buyers in this country, Roses and all kinds of floral and nursery stock. Our policy, long ago established, is to give the flower lovers of America a complete assortment of the finest stock that can be grown, together with the best possible service, and supplied at manufacturers' and growers' prices. We have established a clientele of which any concern may have reason to be proud, and we are taking this opportunity to express our appreciation of this successful existence which many thousands of customers have brought about. It is with a natural pride therefore, that we present to you our

new Year Book, which we believe is a catalogue prepared to introduce the garden spirit within the minimum expense. It is truly

A BARGAIN CATALOG.

In brief this book is a floricultural department store at your door, offering everything in the plant, bulb and seed line. Our guarantee is an asset with us and a safeguard to you, giving absolute security to all mail order buyers, and we believe therefore, that this catalogue, which we hope will be found pleasing and helpful, is entitled to the consideration of all buyers.

Cordially yours,

THE MCGREGOR BROTHERS CO.

Important Information to Buyers

Cash with order—Please send sufficient money to cover your entire order, Post office M. O., Express M. O., Checks or stamps in good condition for smaller amounts. Please keep a copy of your order. **Always remember** to write your complete address on every order. Prices in this catalog cancel all previous prices. **Seed orders, Fruits and Water Plant Collections** are mailed separately from plant orders. **If you wish orders held for later date, please give instructions.**
FREE OFFER. If you send us an order amounting to \$1.00 from a friend who is not now a customer of ours, we will send you any one of the beautiful Roses on the cover of this catalog free. For a \$2.50 friend's order, any 3 Roses; for a \$5.00 friend's order, all 5 Roses free. Always send friend's order on a separate sheet from your own.

Special Premiums

Our terms being cash with the order, enables us to give additional plants, bulbs, and seeds on orders amounting to \$1.00 or more, as follows: On \$1.00 worth of goods bought at single Plant, Bulb or Packet prices, select plants, bulbs or seeds to the value of 20c extra. On a \$2.00 order select 40c extra. On a \$3.00 order select 60c extra. On a \$5.00 order select to the value of \$1.00 extra. On \$6.00 select \$1.20 extra, etc. Large orders, premiums in proportion.

Please Include Postage and Packing Charges for All Mail and Parcel Post Shipments. Postage Table Below.

READ POSTAGE TABLE CAREFULLY—It is always much better to have plants shipped by express. However, if more convenient to receive plants by parcel post, then please add a sufficient amount to cover postage and insurance according to table below. The amounts of postage shown below are to be added for each dollar or a part of a dollar's worth of goods ordered. If you live in Illinois add 8c for postage and insurance for each dollar's worth ordered; if you live in Alabama add 9c; if in Nebraska add 10c for every dollar's worth ordered. It is always advisable to have plants of the larger sizes shipped by express if possible. Seeds in packets posted free. Remember that our premium offer more than offsets postage and delivery charges.



Provide the Advantages of a Greenhouse at Your Door

Alabama 9c	Georgia 9c	Maryland 9c	New Hampshire... 10c	Pennsylvania 8c	Washington 15c
Arizona 10c	Idaho 14c	Massachusetts ... 10c	New Jersey..... 9c	Rhode Island.... 10c	West Virginia... 8c
Arkansas 9c	Illinois 8c	Michigan 8c	New Mexico..... 12c	South Carolina... 9c	Wisconsin 9c
California 15c	Indiana 8c	Minnesota 10c	New York..... 9c	South Dakota... 10c	Wyoming 12c
Colorado 10c	Iowa 9c	Mississippi 10c	North Carolina... 8c	Tennessee 8c	Canada 15c
Connecticut 9c	Kansas 10c	Missouri 9c	North Dakota... 10c	Texas 10c	Mexico 15c
Delaware 9c	Kentucky 8c	Montana 12c	Ohio 8c	Utah 14c	
Dist. Columbia... 9c	Louisiana 10c	Nebraska 10c	Oklahoma 10c	Vermont 10c	
Florida 10c	Maine 10c	Nevada 14c	Oregon 15c	Virginia 8c	

(2) THE MCGREGOR BROS. CO. - - Springfield, OHIO, U. S. A.

For Extra Large 3 Yr. Budded Roses
(See Page 8)

MCGREGOR'S Monthly Blooming Cut Flower GARDEN ROSES

Alexander Hill Gray 20c

STRAW YELLOW. (Monthly blooming). The best and largest pure yellow Tea Rose. Blooms very large. 1 yr. 20c, 3 for 57c, doz. \$1.92; 2 yr. 39c, 3 for \$1.12.

Antoine Rivoire 22c

VARIEGATED. (Monthly blooming). Rosy-flesh on yellow ground with border of carmine. Fragrant. 1 yr. 22c (1c sale, 2 for 23c); 2 yr. 39c, 3 for \$1.12.

Blumen-schmidt 18c

CITRON YELLOW. (Monthly blooming). Pure citron-yellow, edged rose. Splendid bedding sort. A rose that is admired by all. 18c ea., 3 for 52c, doz. \$1.73. 2 yr. 38c ea. 3 for \$1.08.



Salmon Rose, Dixie, 21c

Dixie 21c

SALMON—Lovely salmon-pink, cupped flowers which are very double. Very fragrant, and have beautiful texture and form. Flowers produced very freely. 1 yr. 21c, 3 for 60c, doz. \$2.02; 2 yr. 38c, 3 for \$1.08.



Gen. McArthur, Crimson-red
Gen. McArthur 26c

CRIMSON (Monthly blooming.) As fragrant as a Rose can be. The bud is the richest crimson-scarlet and the flower retains this perfect coloring until it drops its petals. Delightful fragrance. 1 yr. 26c, 3 for 74c; 2 yr., 49c, 3 for \$1.40.



Sensational Rose, Alex. Hill Gray, 20c

Briarcliff 24c

PINK (Monthly blooming). This new variety will be found in every cut flower store. The color is a wonderfully shaded pink. The blooms are of perfect form, large, full, long and pointed. The most popular of all roses for weddings. 1 yr. 24c, 3 for 68c; 2 yr. 45c, 3 for \$1.28.

Clothilde Soupert 22c

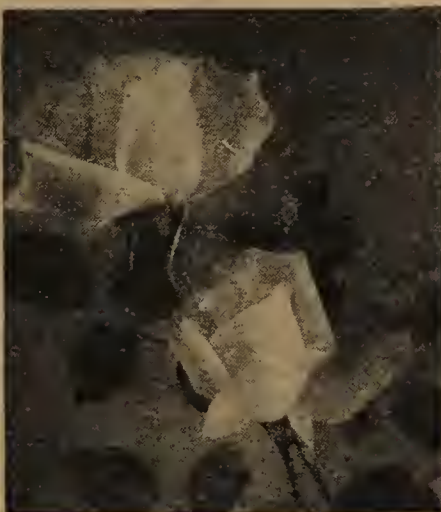
SHELL PINK (Monthly blooming). An old favorite particularly adapted to hedge planting. Shell pink, shaded silvery-rose; unusually fragrant. 1 yr. 22c, 3 for 63c; 2 yr. 47c, 3 for \$1.34.

Eugene E. Marlitt 20c

BRIGHT CARMINE—(Monthly blooming). A strong grower with extra large flowers. Very double; tea scented. Bright carmine with scarlet tones. 1 yr. 20c, 3 for 57c, doz., \$1.92; 2 yr. 39c, 3 for \$1.12.



Eugene E. Marlitt Rose, 20c



Popular Briarcliff Rose, 24c

F. R. Patzer 21c

CREAMY BUFF (Monthly blooming.) A wonderful variety producing exquisite creamy-buff blossoms, back of petals delicate warm pink. It has many good points of merit. 1 yr. 21c, 3 for 60c, doz. \$2.02; 2 yr. 40c, 3 for \$1.14.



F. R. Patzer, 21c



Grand Golden Ophelia, 23c

Golden Ophelia 23c

(Monthly Blooming) A delicate tint of salmon-flesh with golden yellow suffusions. Flowers on long, stiff stems. 1 yr. 23c, 3 for 65c, doz. \$2.20; 2 yr. 44c, 3 for \$1.26.

Duchess of Wellington 21c

SAFFRON YELLOW. (Monthly blooming). Showy; most continuous bloomer. Intense saffron yellow stained deep crimson. 1 yr. 21c, 3 for 60c, doz. \$2.02; 2 yr. 44c, 3 for \$1.26.

Francis Scott Key 20c

CRIMSON SCARLET. (Monthly blooming). Produces intensely black grained crimson-scarlet blooms on strong shoots. Vigorous and free branching. 1 yr. 20c, 3 for 57c; 2 yr. 41c, 3 for \$1.18.

The Roses offered in 2 year size on this page and pages 4, 5, and 6 are Roses grown and shipped from four inch pots on own roots. They are not quite as heavy as field stock, but in many sections of the country, particularly in the south will grow better than budded stock.



Duchess of Wellington Saffron Yellow, 21c



Red Rose Gruss An Teplitz
Gruss An Teplitz 20c

(Monthly blooming)—Rich scarlet shading to crimson. Very fragrant. 1 yr. 20c, 3 for 57c; 2 yr. 39c, 3 for \$1.12.

Monthly Blooming Roses



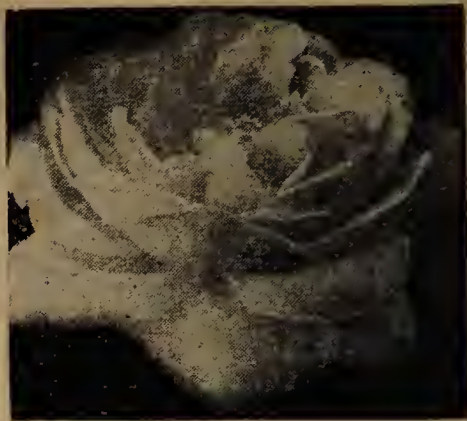
Beautiful cut flower Rose, Killarney 25c

Kaiserine A. Victoria 14c

CREAMY WHITE. (Monthly blooming). The flowers are a delicate creamy-white and are produced on long stiff stems. 1 yr. 14c each, 3 for 40c, doz. \$1.34; 2 yr. 33c ea., 3 for 94c.

Kitchener of Khartum 18c

SCARLET—(Monthly blooming)—Flowers intense scarlet; its huge petals have a velvety sheen. Delicately perfumed. The most beautiful red rose grown. 1 yr. 18c, 3 for 52c, doz. \$1.73; 2 yr. 39c, 3 for \$1.12.



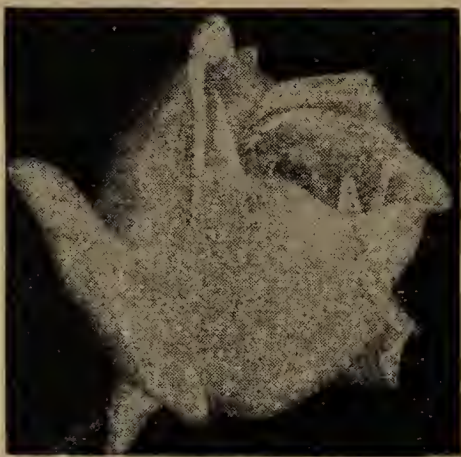
Mad. J. Guillemont, Yellow, 19c

Mad. J. Guillemont 19c

SAFFRON YELLOW—(Monthly blooming)—One of the most beautiful Roses grown, especially the bud or semi-expanded form. Color deep saffron-yellow, opening canary with dark golden shadings; blooms large. 1-yr. 19c ea., 3 for 54c, doz. \$1.82; 2 yr. 39c, 3 for \$1.12.

Mme. Melanie Soupert 24c

SALMON YELLOW—(Monthly Blooming)—Golden yellow, shaded to orange yellow at base of petals, beautifully flushed with orange pink. Fine, long pointed buds. 1-yr. 24c, 3 for 68c, doz. \$2.30. 2 yr. 45c, 3 for \$1.28.



Flesh-pink, Lady Ursula, 14c

Killarney 25c

PINK—(Monthly Blooming.) Deep brilliant and sparkling shell-pink, a most exquisite shade. Queen of Irish Roses. 1 yr. 25c, 2 for 48c. 2 yr. 48c.



Fragrant La France 24c

LaFrance 24c

PINK—(Monthly Blooming)—World famous Rose La France. Exquisite soft pink shaded silvery-rose. Unusually fragrant. 1-yr. 24c ea., 3 for 68c, doz. \$2.30; 2-yr. 46c ea., 3 for \$1.32.

Lady Plymouth 24c

IVORY—(Monthly blooming.) Delicate ivory-cream petals faintly flushed, difficult to describe. Tea perfumed. 1-yr. plants, 24c ea., 3 for 68c, doz. \$2.30; 2 yr. 45c, 3 for \$1.28.

Lady Ursula 14c

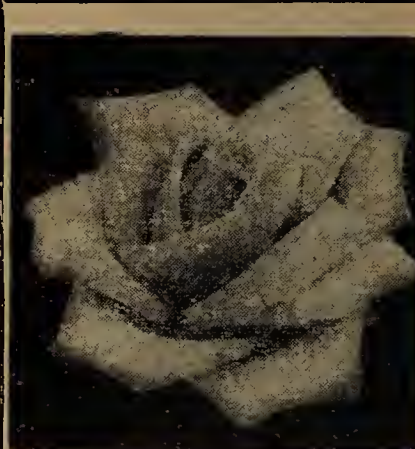
FLESH PINK—(Monthly blooming). A Rose of vigorous growth; free blooming during entire summer and autumn. Color, a delightful tone of flesh-pink. Tea-scented. 1 yr. 14c each, 3 for 40c, 6 for 76c, doz. \$1.34. 2 yr. 35c ea., 3 for \$1.00.

Lady Hillingdon 21c

DEEP YELLOW. (Monthly blooming). A deep shade of yellow which does not fade easily. Everybody can grow it and have it in quantity. 1 yr. 21c, 3 for 60c, doz. \$2.02; 2 yr. 40c, 3 for \$1.14.



Mme. Melanie Soupert, Salmon-Yellow. 24c



La Champagne 20c

La Champagne 20c

CHAMOIS. (Monthly blooming). Bright chamois shading to yellow. Strong, robust habit. Distinct variety. 1 yr. 20c, 3 for 57c, doz. \$1.92; 2 yr. 39c, 3 for \$1.12.



Lady Hillingdon—Yellow 21c, 40c



Grand Rose, Marechal Niel. 23c

Marechal Niel 23c

GOLDEN YELLOW—(Monthly blooming). The fame of this superb yellow Rose, with its large, deep, golden-yellow, fragrant flowers, is world wide. A grand indoor Rose for the North, and an outdoor rose for the South. 1 yr. plants 23c ea., 3 for 65c, doz. \$2.20. 2 yr. 44c, 3 for \$1.26.



Marvelous Cutflower Rose Lady Plymouth, 24c

4 COCHET ROSES 67c

All Monthly Blooming

RED—Buds long and pointed, warm rose-crimson in color. Delightfully fragrant and free flowering. 1 yr. 22c, 3 for 63c; 2 yr. 38c, 3 for \$1.08.

WHITE—Snow white flowers, sometimes faintly tinged pale blush. The best white rose for the garden. 1 yr. 18c, 3 for 52c; 2 yr. 38c, 3 for \$1.08.

PINK—Buds beautifully formed. Large rich pink double flowers, when open. Vigorous grower. 1 yr. 19c, 3 for 54c; 2 yr. 38c, 3 for \$1.08.

YELLOW—One of the finest yellow roses grown. Flowers deep and full, and very fragrant. 1 yr. 24c, 3 for 68c; 2 yr. 43c, 3 for \$1.23.

SPECIAL OFFER—One each of 4 Cochet Roses in 1 yr. size for 67c. The 4 in 2 yr. size for \$1.27.



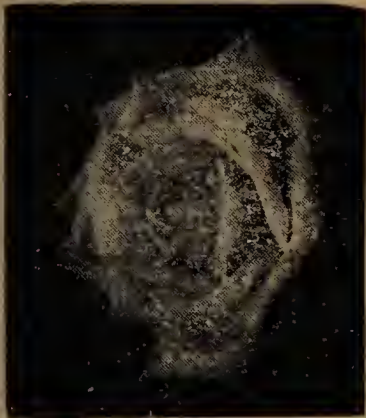
24c

Each

Yellow Cochet Rose. Well known. 24c

(4) Mrs. F. S., Ill.: "I will send another order soon. I have been a satisfied customer for 30 years."

Monthly Blooming Roses



Mme. F. Krueger, 17c ea.

Mme. F. Krueger 17c

COPPERY YELLOW

(Monthly blooming). The striking color of this handsome Rose places it at once in the front. Creamy yellow, blush shading. 17c ea., 3 for 48c; doz., \$1.63., 2 yr. 37c, 3 for \$1.05.

President Hoover 29c

GERISE PINK

(Monthly blooming). A dazzling color combination of cerise light pink, flame, scarlet and yellow. Delightfully fragrant. Exceptionally free flowering. Beautiful long pointed buds. Highly recommended as a cut-flower rose. 1 yr. 29c, 3 for 83c, doz., \$2.78, 2 yr. 58c, 3 for \$1.66.



President Hoover, 29c



Mrs. Aaron Ward. Deep Golden Orange, 25c

Mrs. Aaron Ward 25c

SALMON-YELLOW

(Monthly blooming). One of the most delightful Roses in a coloring that catches the eye at once—deep golden-orange, shading to creamy-yellow at edge of petals; the buds are cupped and very deep. Sweetly scented. 1 yr. 25c, 3 for 72c; 2 yr. 48c, 3 for \$1.37.



Popular Bedding Rose, Red Radiance, 21c

Red Radiance 21c

CRIMSON

(Monthly blooming). This marvelous rose is of a splendid, even shade of vivid crimson. One of the best hardy outdoor roses of the cut-flower type. Tea scented. 1 yr. 21c, 3 for 60c; doz. \$2.02; 2 yr. 40c; 3 for \$1.14.

Templar 22c

BRIGHT RED

(Monthly Blooming)—A most gorgeous and brilliant double rose. Flowers are of the most intense clear crimson-scarlet. Vigorous, handsome foliage. Sweetly scented. 1 yr. 22c, 3 for 63c, doz., \$2.10; 2 yr. 42c, 3 for \$1.20.



Deep Pink Rose, Pres. Taft, 20c



Safrano, Apricot, 18c

President Taft 20c

(Monthly blooming.) Shining, intense deep pink flowers. Vigorous grower. 1-yr., 20c ea., 3 for 57c; 2 yr. 40c, 3 for \$1.14.

Safrano 18c

APRICOT

(Monthly Blooming) Flowers bright apricot-yellow changing to orange and fawn, frequently tinted with rose, a most pleasing shade, unsurpassed by any existing variety. 18c ea.; 3 for 52c; 2-yr., 38c ea.; 3 for \$1.08.

Tobacco Dust

Dust on plants for green and black aphids, beetles and other insects. 18c lb.; 5 lbs., 65c.

Ophelia 25c

SALMON FLESH—

(Monthly Blooming) Flowers are salmon flesh shaded with rose. Beautiful pointed buds on long stiff stems. Delicately fragrant. Constant blooming variety, fragrant. 1 yr., 25c, 3 for 72c, doz., \$2.40. 2 yr. 42c, 3 for \$1.20.



Salmon-Flesh, Ophelia, 25c



Popular Sunburst Rose, 21c

Sunburst 21c

ORANGE COPPER

(Monthly blooming)—Orange copper and golden-yellow flowers. Constant bloomer, fragrant. It has all the good points of merit. 1 yr. 21c, 3 for 60c; 2 yr. 40c, 3 for \$1.14.

SPECIAL

Send us an order amounting to 75c from this page and we will include one beautiful Sunburst Rose (1 yr.) free with your order.

Wellesley 14c

BRILLIANT PINK

(Monthly Blooming)—One of the best garden roses grown. A brilliant pink with dark green foliage. Vigorous grower. 14c ea., 3 for 40c, doz., \$1.34. 2 yr. 33c ea., 3 for 94c.

White Killarney 24c

PURE WHITE

(Monthly blooming)—Most exquisite White Rose grown. Free blooming. Flowers of delightful fragrance and immense size. 1 yr. 24c, 3 for 68c; 2 yr. 46c, 3 for \$1.32.

TESTIMONIAL

My first memory of an order from you was one my mother got in 1883—a collection of Roses. They were such lovely ones and we have ordered at times ever since, now we are ready for the fourth generation to begin ordering. Mrs. E. R. Sides, Cotton Plant, Ark.



Pure White Rose, White Killarney, 24c



Brilliant Pink Rose, Wellesley, 14c



**Dark Red
Fragrant Rose,
Marshall P. Wilder
24c and 46c**

1936 Cover Collection of Monthly Blooming Roses 79c

TALISMAN—The peerless cut-flower rose with exceptional coloring. Bright yellow, gold and pink. 1 yr. 37c, 3 for \$1.05; 2 yr. 59c, 3 for \$1.70; 3 yr. 76c.

CRUSADER—Rich, velvety maroon, very double. Free flowering. 1 yr. 22c, 3 for 63c; 2 yr. 42c, 3 for \$1.20; 3 yr. 67c ea., 3 for \$1.90.

REV. F. PAGE ROBERTS—Color, orange yellow, lighter at edges of petals. Sensational; an excellent garden Rose. 1 yr. 24c, 3 for 68c; 2 yr. 45c, 3 for \$1.28; 3 yr. 70c each, 3 for \$2.00.

RADIANCE—(Pink American Beauty)—A lovely rose-pink in color. Fragrant. 1 yr. 21c, 3 for 60c; 2 yr. 41c, 3 for \$1.18; 3 yr. 69c each.

MME. BUTTERFLY—A variegation of bright pink, apricot and gold. Unsurpassed. 1 yr. 21c, 3 for 60c; 2 yr. 40c, 3 for \$1.14; 3 yr. 68c each.

SPECIAL—The complete collection of 5 in 1 yr. 79c; 5 in 2 yr. \$1.59; The 5 in 3 yr. \$2.85.



**22c
Each**

New Rosa Rouletti

A new, miniature rose bush for the rock garden or for edging. Grows about 8 inches tall, of bushy growth and hardy. Blooms throughout the summer. Flowers rose-pink, double and about an inch in diameter. 22c ea., 3 for 83c. 2 yr. 42c, 3 for \$1.20.

The New Golden Yellow Moss Rose

The first yellow Moss Rose ever produced. The pinkish buds with their moss-like covering open a rich golden buff, fully double, and very fragrant. The old-fashioned Moss Rose of our grandmother's day is becoming extinct. You will surely want one of these Moss Roses to complete your Rose Garden. Limited supply, so hurry. Nice 3-yr. plants. \$1.35 each.



New Golden Moss Rose, \$1.35

Hardy Fragrant June Roses

CONRAD F. MEYER—Bright pink blooms large and double. Penetrating fragrance. 20c, 3 for 58c; 2 yr. 45c, 3 for \$1.30.

GLOIRE DE LYONNAISE—Pale chamois passing to creamy-white. 18c, 3 for 52c; 2 yr. 36c, 3 for \$1.04.

J. B. CLARK—(Hedge Rose) Blooms large, intense scarlet shaded maroon. 21c ea., 3 for 60c; 2 yr. 47c, 3 for \$1.34.

MAGNA CHARTA—Rosy-red flushed with velvety crimson. Wonderfully fragrant. 25c, 3 for 72c; 2 yr. 50c, 3 for \$1.43.

MARSHALL P. WILDER—Flowers dark red; fragrant; delightfully perfumed; strong sturdy grower. 24c, 3 for 68c; 2 yr. 46c.

PAUL NEYRON—Produces the largest of Roses. Color, clear pink. 21c ea., 3 for 60c; 2 yr. 51c, 3 for \$1.46.

VICK'S CAPRICE—Flowers satiny-pink striped with carmine. Popular. 1 yr. 20c, 3 for 57c; 2 yr. 40c, 3 for \$1.14.

SPECIAL OFFER. Red, white, pink and yellow June Rose Coll.—W. P. Wilder, Druschki, Paul Neyron, and Gloire Lyonnaise, all 4 in 1 yr. size, 82c; all 4 in 2 yr. size, \$1.59.

The Golden Rose from China

HUGONIS—Hardy yellow bush rose first to bloom in the spring. Every branch of the previous years' growth becomes lined on all sides to the very tip with closely set, wide open flowers, like dainty yellow hollyhocks. 1 yr. 27c, 3 for 77c; 2 yr. 50c, 3 for \$1.43.



Frau
Karl
Druschki
Rose, 28c

The Favorite June Rose Frau Karl Druschki 28c

GRAND IN FRAGRANCE, FOLIAGE AND FLOWER WHITE (Hardy) Splendid buds and immense flowers. A vigorous grower and abundant bloomer. The most beautiful snow-white hardy perpetual Rose grown in almost every garden. Price, 1-yr. plants, 28c ea., 3 for 74c; 2 yr. plants, 44c, 3 for \$1.26.

Sunny South Rose Collection

ROSES THAT BLOOM AND BLOOM ALL SUMMER

5 for 72c

Monthly Blooming Climbers—Roses that bloom and bloom all summer. Cl. Pink Cochet, pink. Cl. Red Radiance, red. Cl. Gruss An Teplitz, scarlet, Cl. Lady Ash-town, pink, Cl. Mrs. Aaron Ward, coppery-yellow. Coll. of all 5 in 1 yr. 72c. Coll. of all 5 in 2 yr. \$1.49.



Cluster Flowering Hardy Bush or Baby Roses

This is a class or type of Roses very popular for bedding purposes. Shapely, compact, bushy plants about eighteen inches high, producing immense clusters of flowers in great profusion throughout the summer and up until frost. They are quite hardy.

BABY DOLL—Fragrant flowers. Golden yellow tipped cerise. 20c, 3 for 57c; 2 yr. 42c ea.

GRUSS AN AACHEN—Yellowish-rose shaded salmon-pink. 22c, 3 for 63c; 2 yr. 44c.

GLORIA MUNDI—Brilliant orange-scarlet flowers. 25c ea., 3 for 72c; 2 yr. 46c.

ORLEANS—Cerise with white center. Very showy. 1 yr. 21c, 3 for 60c; 2 yr. 42c.

MISS EDITH CAVEL (Bright Crimson)—Showiest of Baby roses. Flowers rich, bright crimson with white eye. 23c, 3 for 62c; 2 yr. 48c.

SPECIAL OFFER—One each Gloria Mundi, Baby Doll and Orleans. 1 yr. plants for 59c; one each 2 yr. \$1.19.



Baby Rose, Baby Doll, 20c

(6) "I have received flowers from you for twenty years, all in good shape." Mrs. D. C. Orange, Oakville, Ky.

Hardy Red Climbing Roses

MME. GREGOIRE STAECHELIN THE SPANISH BEAUTY (New) Unmatched in color, deep maroon paling to carmine. Fragrant blooms excellent for cutting. 24c each, 3 for 69c, 2 yr. 49c each.

BESS LOVETT—Gorgeous flowers clear, bright red, double, cupped, highly fragrant. Vigorous. 1 yr. 18c, 3 for 52c; 2 yr. 35c, 3 for \$1.00.

CLIMBING AMERICAN BEAUTY—Flowers soft, glowing red, exquisite fragrance. Foliage bright, glossy green. 1 yr. 20c, 3 for 57c; 2 yr. 39c, 3 for \$1.13; 3 yr. 55c ea.

RED DOROTHY PERKINS (Hardy June Blooming) Intense crimson-maroon with tips of the petals tinted scarlet. Large and double. Popular. 1 yr. 18c ea., 3 for 52c, doz. \$1.73; 2 yr. 38c, 3 for \$1.08, 12 for \$3.65.



Hardy Marechal Niel, A Grand Rose in growth, color and fragrance. 20c.

Hardy Marechal Niel 20c

(Gardenia)—There is an unlimited demand for this wonderful Rose. Produces a mass of fragrant flowers, deep yellow buds becoming lighter when fully matured. Free blooming. 1 yr. 20c, 3 for 57c; 2 yr. 39c, 3 for \$1.13; 3 yr. 58c.



Climbing American Beauty

No better Hardy climbing Rose is to be found. The most widely planted rose of the Hardy climbing family.

Hardy Yellow Climbing Roses

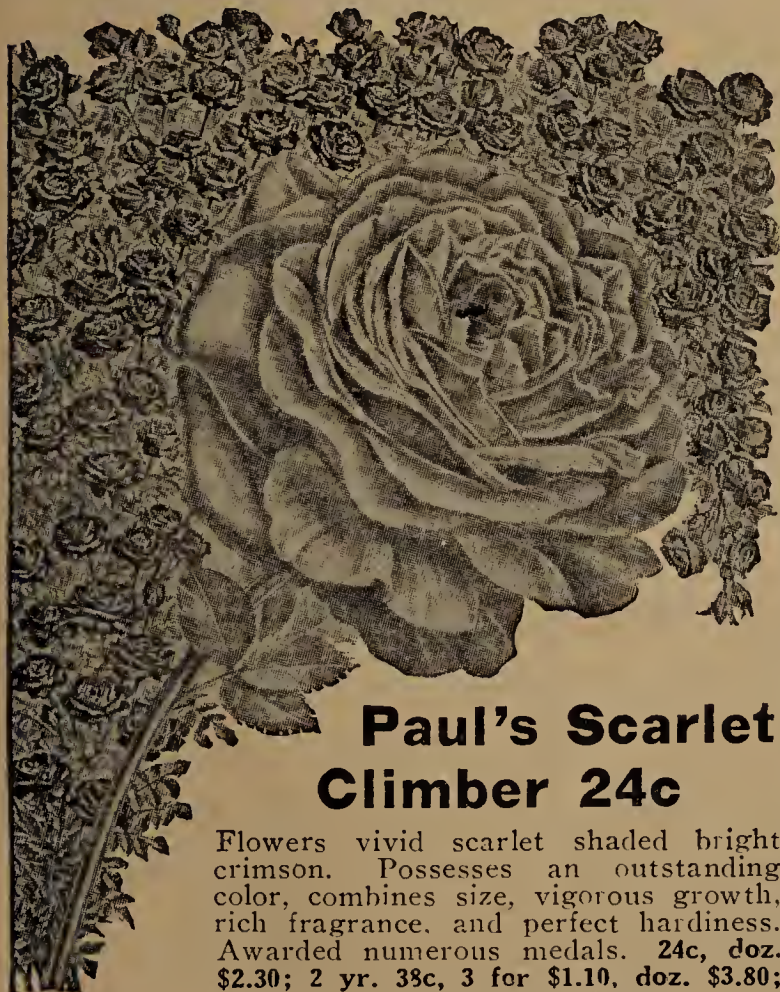
JACOTTE-ORANGE SALMON (Hardy climbing June blooming.) Light salmon orange with golden yellow shadings at the base of petals. 1 yr. 20c, 3 for 57c; 2 yr. 44c, 3 for \$1.26.

SHOWER OF GOLD—A greatly improved yellow rambler. Handsome flowers deep golden yellow with orange shadings. Beautiful metallic foliage. 1 yr. 21c, 3 for 60c; 2 yr. 39c, 3 for \$1.13.

CLIMBING PRIMROSE—(New). In this new rose we have a real hardy yellow rambler, strong, vigorous growing. Beautiful light primrose yellow flower, free flowering, good foliage. 25c, 3 for 72c, doz. \$2.40; 2 yr. size, 48c, 3 for \$1.39.



Hardy Blue Rose, 20c



Paul's Scarlet Climber 24c

Flowers vivid scarlet shaded bright crimson. Possesses an outstanding color, combines size, vigorous growth, rich fragrance, and perfect hardiness. Awarded numerous medals. 24c, doz. \$2.30; 2 yr. 38c, 3 for \$1.10, doz. \$3.80; 3 yr. 65c, 3 for \$1.88, doz. \$5.90.

SENSATIONAL BLUE RAMBLER (Veilchenblau) Clusters of semi-double blossoms of medium size, which are reddish pink on opening and turn steel blue, don't fail to have one. The only blue rose ever produced. 1 yr. 20c ea., 3 for 57c; 2-yr. 37c each.

Hardy Climbing Everblooming Roses

CL. PINK RADIANCE—Wonderful climber. Large flowers, clear blush-pink. 24c, 3 for 68c; 2 yr. 48c, 3 for \$1.37.

CL. RED RADIANCE—Exceptionally fine. Disease resistant. Blooms cerise-red. 26c, 3 for 74c; 2 yr. 52c, 3 for \$1.48.

CL. MRS. AARON WARD—Rich golden, suffused with pink. Fine. 25c, 3 for 72c; 2 yr. 50c, 3 for \$1.43.

CL. WHITE COCHET—Exquisite huge white flowers. 21c, 3 for 60c; 2 yr. 42c, 3 for \$1.20.

CL. PINK COCHET—Pink flowers. Delicious fragrance. 22c, 3 for 63c; 2 yr. 44c, 3 for \$1.26.

CL. SUNBURST—Intense yellow, large flowers. Beautiful. 27c, 3 for 77c; 2 yr. 54c, 3 for \$1.56.

CL. LADY ASHTOWN—Immense soft rose-colored flowers. 23c, 3 for 65c; 2 yr. 46c, 3 for \$1.32.



Hardy Climbing Shower of Gold, 21c

Hardy Climbing Pink Roses

DR. VAN FLEET—Delicate flesh pink deepening to rosy flesh. Delicately perfumed. 1 yr. 20c, 3 for 57c.; 2 yr. 39c, 3 for \$1.13.

MARY WALLAGE—Flowers often exceed four inches in diameter; bright, clear rose-pink with salmon base. Glossy foliage. 1 yr. 16c ea., 3 for 46c; 2 yr. 36c, 3 for \$1.04.

CHAPLIN'S PINK CLIMBER—Called "Pink Paul's Scarlet." Brilliant clear pure pink. Extremely vigorous, free flowering. 22c each, 3 for 60c; 2 yr. 46c each.

ROSARY (Hardy June blooming.) Cerise-pink in color, decidedly sweet in fragrance, and unusually attractive. A porch Rose without equal. 1 yr. 20c ea., 3 for 57c, 12 for \$1.92; 2 yr. 36c, 3 for \$1.03.

Climbing Rainbow Rose Coll.

5 Climbing Roses, all colors, Red, White, Pink, Yellow & Blue, Cl. Amer. Beauty, Mary Lovett, Rosary, Shower of Gold and Blue Rambler. All 5—1 yr. for 89c—all 5—2 yr. \$1.93.

Hardy White Climbing Roses

MARY LOVETT—Large, full flowers, snow white, delightfully sweet-scented. Vigorous grower. Blooms in summer and autumn. 1 yr. 18c, 3 for 52c; 2 yr. 37c, 3 for \$1.07.

SILVER MOON—Clear, silvery white. Flowers beautifully cupped. Center filled with bright yellow stamens, delicately fragrant. 1 yr. 19c, 3 for 54c; 2 yr. 39c, 3 for \$1.13; 3 yr. 55c.



Hardy Alida Lovett 19c

An exceptional hardy climber. Don't fail to plant it. Buds and flowers large; color bright shell pink with shadings of rich sulphur. 1 yr. 19c, 3 for 54c; 2 yr. 37c, 3 for \$1.07.

Extra Large Three Year Old Roses

HARDY WITH PROTECTION—WILL BLOOM ALL SEASON.



Illustration shows the vigor of bushes and size of flowers that may be secured the first year from large 3-year Roses.

ON THIS PAGE we have grouped together 12 of the finest Garden Roses. A collection of Monthly Blooming Roses, rapidly taking the foremost rank, combining free flowering habit with rich and varied colors and hardiness. All are 3 yr. budded Roses.

These roses are the best that it is possible to produce; they are field grown budded plants. If ordered before April 15th, will be shipped in dormant condition by mail or express. If ordered after April 15th, must be shipped by express with full ball of earth.

Mme. Alexander Dreux 78c

ORANGE COPPER (Monthly Blooming)—A model flower of exquisite beauty. Constant blooming fragrant flowers of immense size. Fine, long pointed bud and long stems extraordinarily vigorous and healthy. Beautiful orange-copper, golden-orange and golden-yellow. Outstanding. 78c ea., 3 for \$2.23.

Joanna Hill 76c

INDIAN YELLOW (Monthly Blooming). Heavy lemon-yellow buds which develop into beautiful flowers with deep Indian yellow centers. Long strong stems particularly desirable for cut-flower use. Foliage, heavy. A magnificent new variety. 76c ea., 3 for \$2.17.

Golden Dawn 79c

ORANGE YELLOW. The ideal yellow garden Rose. The ovid lemon-yellow bud is heavily splashed with crimson and develops into a well-formed, sweetly scented, large, double sunflower—yellow flower that recalls the old favorite Marechal Niel. Vigorous and free flowering. (Monthly Blooming.) 79c, 3 for \$2.20.

Betty Uprichard 70c

SALMON PINK (Monthly Blooming)—The best of the two-toned pink roses. Buds carmine-colored opening to salmon, tinged orange. Very fragrant. 70c ea., 3 for \$2.00.

Dame Edith Helen 70c

BRILLIANT PINK (Monthly Blooming)—A lovely clear, pink Rose, unusually sweet scented. Immense flowers. Petals curl back. Fine for cutting. Marvelous. 70c ea., 3 for \$2.00.

Edel 64c

PUREST WHITE (Monthly Blooming.) Pure white flowers with faintest ivory shading at base. Vigorous grower, very free-blooming. Delightfully fragrant. Rich, glossy-green foliage. 64c each, 3 for \$1.82.

SPECIAL OFFER—Any three of the Wonderful Garden Roses that we have grouped on this page in 3 yr. budded plants for \$1.84; any six above roses for \$3.72; all twelve for \$6.30. No better roses to be had anywhere. All highly recommended.

(8) No charges are made for boxes or packing on express shipments. Purchaser simply pays expressage.

E. G. Hill 76c

SCARLET (Monthly Blooming)—Dazzling scarlet shaded deep velvety red. Will not fade as the flower develops. The largest Rose of this character yet introduced. The bud is perfect and the open flower a marvel. Produces long stems naturally. The foliage is luxuriant and of good color. 76c ea., 3 for \$2.17.

Etoile de Hollande 70c

DEEPEST RED (Monthly Blooming)—A fine red rose with no faults. Brilliant crimson-red. Sweet scented. Flowers very large. Buds are long pointed, large, and perfectly shaped. A remarkable rose. 70c ea., 3 for \$2.00.

Mme. Butterfly 69c

APRICOT SHADED GOLD (Monthly Blooming). A harmony of bright pink, apricot and gold. Flowers, double. Buds, beautiful shade of Indian-red, yellow at base. 69c each, 3 for \$1.97.

President Herbert Hoover 78c

PINK-SCARLET-YELLOW (Monthly Blooming)—A dazzling combination of cerise pink, flame, scarlet and yellow. Delightfully fragrant. Exceptionally free flowering. 78c, 3 for \$2.23.

Red Radiance 66c

VIVID CRIMSON (Monthly Blooming)—A splendid shade of vivid crimson. Strong, vigorous grower; remarkable bloomer. Probably the finest of the cut-flower type, retaining its vividness long after being cut. Unexcelled as a garden Rose because of its hardiness everywhere and freedom of bloom. 66c ea., 3 for \$1.88.

Souv. de Claudius Pernet 70c

SUNFLOWER YELLOW (Monthly Blooming)—Vigorous grower, brilliant green foliage. Exquisitely shaped buds. Flowers large of striking sunflower yellow; deeper in center. Charming. 70c ea., 3 for \$2.00.

Bargains in McGregor's Decorative Ferns



Deep Green Fronds

Wannamaker. 29c, 46c & 59c.

The Ever Popular Wannamaker Fern

THE EVER POPULAR Wannamaker Fern 29c

(Nephrolepis J. Wannamaker). A new Fern of wonderful beauty. Long tapering crinkled fronds. A very airy and graceful Fern, and very durable in the house. Rapid grower, distinct from other ferns. The graceful pluminess and charm of this variety through its characteristic features of shape, size and growth give it a superior value. Nice plants 29c each, 3 for 84c. Larger sizes 46c and 59c each.

Ostrich Plume Fern 26c FEATHERY FOLIAGE

(Neph. Whitmanii). One which everyone can succeed in growing. Healthy vigorous grower, fronds often attain a width of twelve inches. Each frond possessing such elegance as to be compared to a beautiful ostrich plume. Nice plants 26c ea., 3 for 74c. Stronger plants 37c, 3 for \$1.05. Larger size 50c ea.



Ostrich Plume Fern, 26c

Worm Exterminator

A powder that will positively destroy all worms in the soil of potted plants or garden. Sprinkle a little powder on top of soil; water in. 25c per package; 40c per lb.

THE WORLD FAMOUS BOSTON FERN 24c

MOST POPULAR HOUSE PLANT GROWN

This Fern is one of the best known varieties grown, and in the long years of its cultivation has proven worthy of a place in every home. Considered the most valuable house plant to be had. It is of easy culture and a very rapid grower, producing fronds of unusual length, frequently measuring six to eight feet in length. Nice plants, 24c each; (1c sale, 2 for 25c.) Larger size 38c ea., 3 for \$1.08. Largest size 52c each, 3 for \$1.45.



The World Famous Boston Fern, 24c

If it is impossible for you to receive Express shipments, it will be necessary for you to please include **double** postage per dollar, for larger size Ferns, according to Postage rates given on page 2.



Bush Boston Fern, 23c, 38c, 52c

Plumy Baby's Breath Fern 25c

DAINTIEST OF FERNS

Handsome variety of the Elegantissima type, with fine "Ostrich plume" foliage. Compact, very easy grower, will thrive under all ordinary conditions. A plant of beauty and perfection. Nice young plants, 25c ea., 3 for 72c. Stronger plants 40c, 3 for \$1.14. Larger plants 50c.



The Grand Roosevelt Fern, 23c

Fluffy Ruffles Fern 31c

(Neph. Superbissima). Dark green foliage, Dense grower. Compact and irregular shaped fronds, which give it the name of "Fluffy Ruffles". Nice plants 31c ea., 3 for 88c. Larger sizes 44c and 57c each.



Fluffy Ruffles Fern, 31c, 44c and 57c ea.

Bush Boston Fern 23c

DWARF AND COMPACT

(Neph. Scottii.) A compact growing sport of the original Boston Fern. Produces more fronds, making much bushier plant. First-class. Nice plants 23c ea., 3 for 65c. Larger plants 38c and 52c ea.

SPECIAL OFFER—One each of the three ferns Boston, Baby's Breath & Gold Medal Fern for 69c. The 3 in larger size for \$1.10. The 3 in. largest size, \$1.44.

Roosevelt Fern 23c

BROAD FRONDS

The Grand Roosevelt Fern has had the most phenomenal sale of any decorative plant grown. Fronds broad and heavy, often measuring 6 inches or more across and five or six feet long. The divided pinnae or miniature fronds which are gracefully arranged, keep growing constantly, overlapping each other and showing two shades of green. Nice plants 23c ea., 3 for 65c; Larger plants 38c and 49c.

The Original Sword Fern 26c

Upright in growth—with deep olive green fronds—not as drooping as the Boston which developed from this variety. An excellent pot plant and adapted to all the general uses of the family. 26c ea., 3 for 74c, doz. \$2.50.



The Original Sword Fern, 26c

The Gold Medal Fern 28c

SCHOLZEII—An ideal plumed fern with beautiful crested fronds. The variety is distinct being of compact growth and the fronds dense, firm and rigid. The foliage is of good color and the variety is vigorous growing and one of the best of the decorative fern family. Produces a bushy and handsome plant, and is highly recommended. Nice plants 28c each, 3 for 80c. Larger sizes 44c and 57c each.

Fern-dish Ferns

Ornamental Ferns, our selection of varieties; kinds most suitable for fern dishes, for table decoration. 5 for 69c.



The Gold Medal Fern (Scholzeii), 28c

McGregor's Rainbow Rose Collection



Salmon Queen—Lovely Copper and Gold

**All
TEN
ROSES**
on this page
for **\$1.00**

To offer our customers a list of bedding roses that bloom and bloom all summer is our object in making up the selected list on this page. No words of praise can adequately convey the extreme beauty of these 10 Roses. The superb vigor, the healthy and abundant growth and foliage, the profusion of bloom, the exquisite coloring and beautiful formation of the flower of these selected roses, place them at once without rivals. The roses in this collection belong to the summer blooming class or those commonly known as monthly bloomers. An unparalleled collection, representing all the colors known in Roses, red, dark pink, light pink, salmon, yellow, cream and white, with all the shades and color combinations to be found in these novelties. All first class varieties. A collection of superior merit. Will live through the winter with protection. All 1 yr. plants—all labeled. All 10 for \$1.00. (10-2yr. size, \$2.59)



Lady Alice Stanley—Beautiful Pink



Melody—Beautiful Buttercup Yellow



Roselandia—Large Golden Yellow



Matchless—Wonderful Red Rose



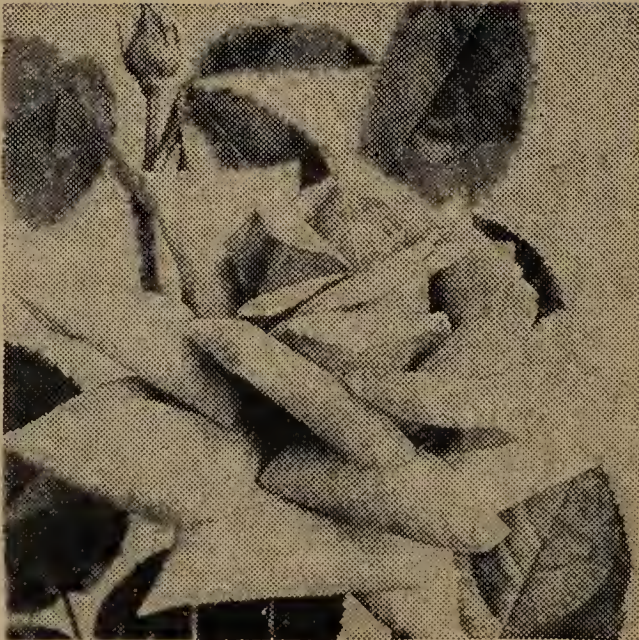
White Ophelia—Purest White



Queen of Fragrance—Deep Rose-pink



National Emblem—Rich Velvety Red



Columbia—Wonderful Silvery-Pink



Hoesier Beauty—Dazzling Red

(10) Rainbow Coll. above, 10 Roses, 2 year size (by mail without soil or by express with soil) for \$2.59.

Highly Prized Decorative House Plants



Golden Striped Snake Plant, 41c

Golden Striped Snake Plant 41c

(*Sansevieria Zeylanica Laurenti*)—This variety in addition to having green variegations, has a band of creamy-white on the outer edges of the long sword-like leaves, distinctive. Strong plants, 41c ea., 3 for \$1.18; larger plants, 59c ea. By express, 89c and \$1.35 ea.



Variegated Palm (Phrynium) Variegated Palm 42c

(*Phrynium Variegatum*) Tuberous rooted. The leaves are bright green, beautifully variegated with white and rich cream. Canna like foliage, drooping habit, displaying full beauty of form and variegation. A limited supply ready for delivery March 1st. Nice plants, 42c each.

Rubber Plant 75c

(*Ficus Elastica*)—Known all over the country as the Rubber Plant. Glossy green, thick, leathery leaves. Can stand excessive heat and dryness. 75c ea., larger \$1.25 by express only.



The well known Rubber Plant, 75c (*Ficus Elastica*)

Snake Plant 21c

(*Sansevieria Zeylanica*)—Erect, sword-like thick, fleshy dark green leaves, with clouded bars of white. Will go for months without water. 21c, 3 for 60c; larger plants, 27c, 55c and selected plants by express 75c each.



Snake Plant, 21c

Pandanus Veitchii 98c THE SAW TOOTH PALM

One of the most attractive plants. Leaves light green, beautifully marked with broad stripes and bands of pure white, gracefully curved. Strong plants 98c by express only.



Pandanus Veitchii, (The Saw Tooth Palm) 98c each

Maranta 44c

(*Masangeana*)—A novelty. Leaves oval shaped, four inches long, with spots of chocolate-maroon over a beautiful shade of pea-green. Small white flowers. Rare. 44c ea.



Maranta—Beautiful Foliage, 44c

Ostrich Plume Palm 74c

(*Phoenix Roebelini*)—Graceful, curving leaves with very narrow, dark green pinnae, giving it a lightness and airiness unsurpassed. Spreading in habit. 74c ea. by express. Larger size \$1.25.



Ostrich Plume Palm, 74c, \$1.25

Variegated Leaved Rubber Plant

(*Ficus Elastica Variegata*). A handsome variety, having green leaves with large irregular, greenish-yellow or creamy blotches. Admired by all. Large plants 98c ea. by express only.



Variegated Leaved Rubber Plant, 98c

Kentia Palm 88c

Kentia Belmoreana—Represents the best of the Palm family. It has the grace and lightness of the Cocos, but robust in growth and heavy in foliage. 88c each, by express.



Leopard Plant. (*Farfugium*), 42c

Leopard Plant 42c

(*Farfugium Grande*)—An ornamental house plant. Produces leaves, sometimes 10 to 12 inches across, marked with creamy white and yellow spots. 42c ea.



Moss Fern, 21c

Moss Fern 21c

(*Selaginella Emilliana*)—Upright growing Moss with numerous feathery stems. Grows 10 to 12 inches high. Fine as a fern for dishes or as a pot plant. Has no equal for its type. 21c, 3 for 60c.



Popular Maiden Hair Fern, 22c

Maiden Hair Fern 22c

(*Adiantum Venosum*)—An exceedingly beautiful foliated dark green house plant, very popular. The fronds of this lovely variety, are much used in cut-flower work. 22c, 3 for 63c, doz. \$2.10.



Kentia Belmoreana, 88c

McGregor's Flowering-Fancy Leaved Begonias

BEGONIAS are the most beautiful and satisfactory flowers that we offer for house culture and bedding. They grow easily, making handsome, showy plants, bloom constantly, and their pretty, wax-like flowers and glossy bright colored leaves are always greatly admired.



Mammoth Leaved King of Rex Begonias.

Special —3 different varieties of richly colored Rex Begonias, 75c.

Mammoth Leaved Rex Begonia 29c

The most wonderful Begonia in the world. Mammoth leaves of rich metallic lustre, and colors blending from brightest green to beautiful plum hues. Flowers blush-pink. 29c ea., 3 for 83c. Larger plants 45c ea., 3 for \$1.30.

New Flowering Begonia Elegance

This beautiful Begonia is of bushy habit, medium tall and very free flowering. The individual flowers are large, white with a vivid edging of crimson making a most striking color combination. Their rich color is a most effective contrast with the dark green foliage. Makes an ideal pot plant and is equally adaptable for outdoor bedding. 26c, 3 for 69c.



New Flowering Begonia Elegance, 26c



The Popular Speculata Begonia, 37c.

Speculata Begonia

This variety is of the Rex type the leaves being in the form of grape leaves. Color is a bright green, with a background of chocolate; veins of a light pea-green, the whole leaf spotted with silver. In bloom it is magnificent, the panicles, composed of great numbers of individual white blooms, are lifted high and spray-like quite clear of the foliage. 37c, 3 for 98c.

Begonia Carmanii 29c

A new Begonia of dense globular growth, medium size leaves of a beautiful glossy deep carmine color. Flowers of good size—beautiful clear pink. 29c each, 3 for 83c; larger plants 65c each.



Coralline Lucerne Begonia, 29c.

Coralline Lucerne 29c

Flowers are borne in immense clusters, almost hiding the plant. Color bright coral-red, changing to delicate pink. Nice plants, 29c ea., 3 for 83c. Stronger plants, 39c each. Larger plants, 50c.



Begonia Rosea Picta, 27c.

Spiral Leaved Begonia 60c

The striking peculiarity of this Begonia is the formation of its spiral-like leaves; large and of a metallic lustre. a rare Begonia. Stock very limited. 60c.

Begonia Rosea Picta 27c

One of the finest Begonias in cultivation. Its dark, glossy green leaves, combined with its free-flowering habit, make it one of the very best plants for house or conservatory decoration. Produces an abundance of bloom in clusters of bright pink. 27c ea., 3 for 77c, 6 for \$1.46, 12 for \$2.59.



Tree Begonia Argentea Guttata, 27c.

Tree Begonia Argentea Guttata 27c

Grows 3 to 4 feet tall. Purple-bronze leaves, oblong in shape with silver markings; white flowers. 27c ea., 3 for 77c; 6 for \$1.46. Larger plants, 50c each; 3 for \$1.43.

Rex Begonia Louise Closson 36c

One of the richest and most beautiful of the Rex family. The coloring is simply magnificent, center of leaf deep maroon with broad band of silvery rose, edged bronze, giving the whole leaf a purplish tint. The oddest color of all the Rex. Price, 36c, 3 for 98c.



Rex Begonia Louise Closson, 36c.

Everblooming Begonia McBethii 27c

The most attractive of all flowering Begonias. Beautiful green foliage, pure white waxy flowers produced in great profusion. Very easily grown and a splendid house plant. 27c ea., 3 for 77c, 6 for \$1.46.



Everblooming Begonia McBethii

Gracilis Luminosa Begonia 22c

Foliage rich, glossy green, shaded deep bronze; flowers flaming scarlet. The most popular of the house plants. 22c each; 3 for 63c; 6 for \$1.19; 12 for \$2.10.



Everblooming Gracilis Luminosa, 22c.

McGregor's Flowering-Fancy Leaved Begonias



Begonia Rubra, 29c

Free Flowering Begonia Rubra 29c

Its dark, glossy-green leaves, combined with its free-flowering habit, makes it one of the very best plants for house or conservatory decoration. The flowers are scarlet-rose color. 29c ea., 3 for 83c.



Flowering Beg. Pres. Carnot, 27c

President Carnot 27c

A strong growing variety with large foliage, upper side deep green, under side purplish-red. Blooms beautiful coral-red in large pendent panicles. 27c each, 3 for 77c.

Hardy Begonia Evansiana 21c

Perfectly hardy grower, and profuse bloomer, with beautiful foliage. Ideal plant for shady places. Clusters of flowers of a beautiful pink color by the hundreds. Re-establishes itself in the spring without being taken up. Bulb has dormant stage in the winter. Bulbs 21c each, 3 for 60c.



Hardy Begonia Evansiana, 21c

Crinkled Leaved Beefsteak Begonia 44c

A new and valuable variety distinctly different from any other sort. Beautifully arranged, magnificent crinkled, crested and curled, glazed, reddish olive green foliage, topped by clusters of flesh pink flowers. Really the finest and most beautiful Begonia we have. 44c each, 3 for \$1.22.



Crinkled Beefsteak Begonia, 44c

Star Begonia 60c

The leaf is very large, deeply cut and star shaped averaging a foot or more in diameter in well grown plants; foliage is rich green with reddish markings; surface velvety. In bloom it is magnificent. The great number of individual pink blooms are lifted high and spray-like clear of foliage. One of the best for winter bloom, besides being ornamental in foliage. Limited supply. 60c each, 3 for \$1.70.



Thurstonii Begonia, 29c

Thurstonii 29c

A large growing plant and a perpetual bloomer. Flowers rosy pink, in clusters, leaves large, like polished jade, of an emerald green color; dull blood red underneath. Always in flower. 29c each, 3 for 83c.

Begonia Marguerite

This beautiful variety is noted for its richly colored foliage and attractive flowers. The leaves are bronzy-green, red beneath, and large trusses of rose colored flowers are freely produced. Grows 1½ to 2 feet high. 21c, 3 for 57c.



Begonia Marguerite, 21c

Prima Donna Begonia 26c

Foliage green, shaded bronze; flowers light pink, changing to dark pink. 26c ea., 3 for 74c.



Mme. De Lesseps, 27c

Mme. De Lesseps 27c

The leaves are of silki texture, beautifully spotted with silver. A very strong, free-growing variety, that will succeed with any ordinary care. 27c, 3 for 77c.

Begonia Venus 34c

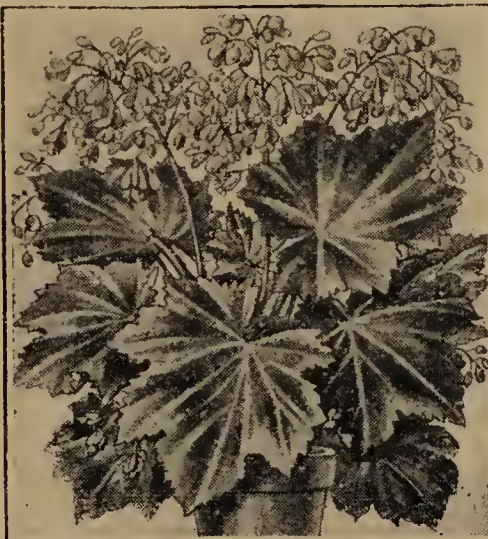
A new and distinctly "different" Begonia. Its dark, glossy, bronze green, deeply cut leaves combined with its free-flowering habit, make it one of the most attractive plants that can be grown. Blooms the year around. 34c, 3 for 92c.



Beefsteak Begonia, 29c

Beefsteak Begonia 29c

(Feastii)—Spreading habit, circular leaves of heavy texture, red beneath, above a glossy olive-green, oil-like cast. Dainty coral-red flowers. 29c ea., 3 for 83c. Larger plants 45c ea., 3 for \$1.28.



New Begonia Venus, 34c

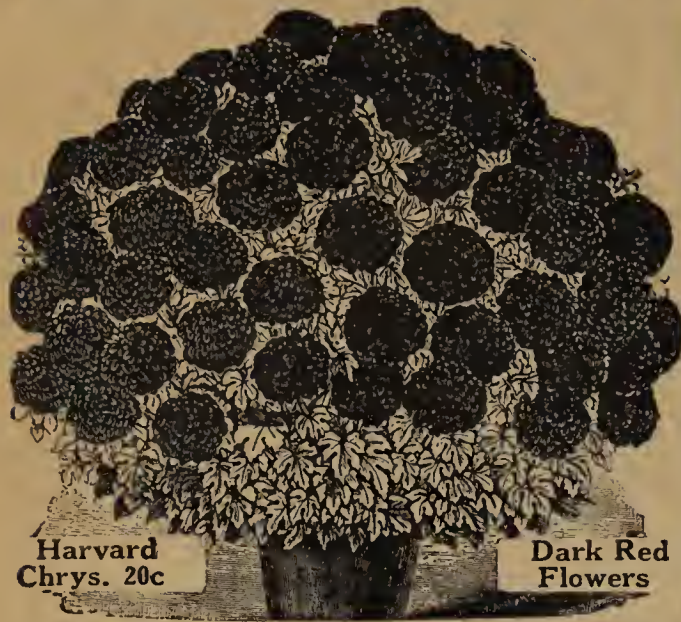
Tuberous Begonias 32c Double and Single

These are among the very handsomest of our summer-blooming plants, flowering throughout the season in any nook or corner in complete shade. Nothing can exceed the brilliancy of their colors, the delicacy of their tints, the richness of their waxy flowers, the gorgeousness of their effect in masses, or their graceful appearance in beds or borders. On the approach of cold weather they should be taken up, and the bulbs stored away in a warm place until the spring, when they may be started in pots before planting in the garden. We offer double and single flowering bulbs in five colors: White, Salmon, Pink, Yellow and Crimson. 32c ea., 3 for 92c, 6 for \$1.76.



Double Fringed Tuberous Rooted Begonias

Giant Flowering Chrysanthemums



Harvard Chrys. 20c

Dark Red Flowers

Harvard 20c

(Late)—The double, dark scarlet flowers are of immense size; globe-shaped. Beautiful foliage. Fine for cut-flowers. 20c ea., 3 for 58c, doz. \$2.00.

Gold Lode 20c

(2) (Early) — Fine large bright yellow globular flowers on strong stems. A vigorous grower. 20c ea., 3 for 58c, doz., \$2.00.

White Perfection

(1)—(Late). Gorgeous ball type flowers, pearl white tinged faint pink. Easily grown. Tall growing and vigorous. 17c, 3 for 49c.



Unaka Deep pink 18c

Louis Boehmer

(Ostrich Plume). Most beautiful shade of lavender-pink shaded with silver-pink. Late variety. 22c, 3 for 63c.

Sun Glow 16c

(3) (Early)—One of the best early Chrysanthemums. Lovely large bright yellow flowers. Grows about 3½ feet high. 16c ea., 3 for 46c, doz. \$1.54.

Pink Enchantress 17c

(4)—(Early). An early pink of vigorous growth. Large blooms of a very pleasing shade of pale pink. 17c ea., 3 for 49c, doz. \$1.65.

Testimonial — "The Chrysanthemums I received from you last year were the most beautiful I have ever seen for home grown." M. C. Hawes, Alta Vista, Kans.

Unaka 18c

(Early)—Magnificent, deep pink flowers of ball type. Wonderful cut-flower variety. 18c each, 3 for 52c, doz. \$1.80.

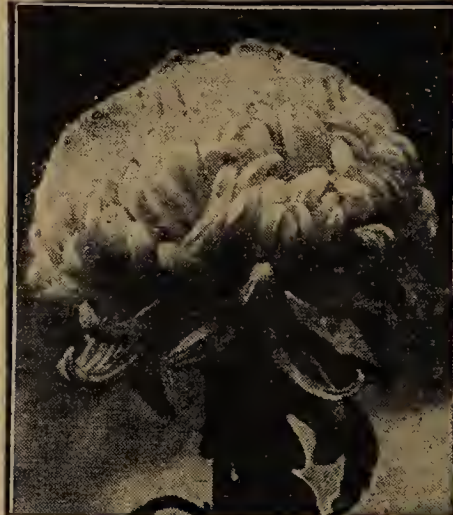
CHRYSOLORA—(Early). The best yellow for early October. Fine incurved flowers. Tall growing. Luxuriant foliage. Rich golden yellow. 16c, 3 for 46c.

Smith's Enchantress 20c

(Early)—Large flowers bright, rose pink. Blooms 6 inches in diameter. Always in demand. 20c ea., 3 for 58c, doz. \$2.00.



Smith's Enchantress Rose-pink



Chrysolora, Rich Golden Yellow

Chrysanthemum Cover Coll.

SPRINGFIELD — Beautiful bronze, pink shadings. Center petals incurved. 24c ea.

JUST RITE—Satiny lavender pink flowers. Vigorous grower. 20c ea.

PATTIE—Soft pink fluffy flowers reflexed variety. 22c ea.

GOLDEN GLORY—Globular flowers, of a beautiful golden yellow. 18c each.

INDIANOLA—Immense bronze shaded gold. Incurved variety. 22c ea.

GLADYS PEARSON—Upper petals apricot, reverse petals buff. 19c ea.

SPECIAL OFFER—Your choice of any 5 for 59c, or all for \$1.00

LIBERTY BELL — Beautiful incurved salmon-pink flowers. 21c ea.

CELESTRA—Globular flowers of a shining golden yellow. 18c ea.

L'AFRICAINE — Large reflexed petals of a beautiful mahogany red. 21c ea.

OCONTO — Exquisite pure white large flowers. 18c ea.

LIBERTY BELL — Beautiful incurved salmon-pink flowers. 21c ea.

LIBERTY BELL — Beautiful incurved salmon-pink flowers. 21c ea.

New Pink Chrysanthemum Asternum

A new variety of hardy Chrysanthemum, making an unusually large bushy growth. Produces lovely pink flowers in great profusion from mid-summer to frost. Excellent for rockeries or borders. A valuable addition for your garden. 24c ea., 3 for 70c, dozen \$2.35.

Anemone Flw. Chrysanthemums

SUSANNE MILLER—The guard petals are clear yellow with shadings of pinkish bronze, and the cushion or center-florets are bronze tinted yellow. 23c ea., 3 for 66c.

NORMA—A large flowering show anemone. Guard petals a delicate pink, with bronze yellow cushion. 22c ea., 3 for 63c.

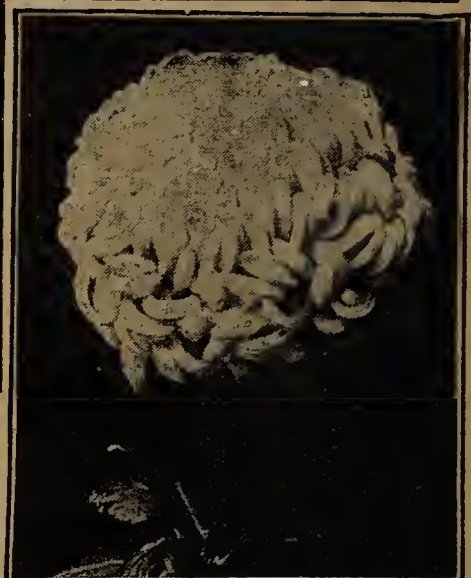
OHIO STATE (Late)—Very large variety. New. Deep yellow. Cushion and guard petals light yellow. 22c ea., 3 for 63c.



Wonderful Ostrich Plume Mum, Louis Boehmer 22c



Quaker Maid, White
Quaker Maid 19c
(Mid-season) — Purest white flowers six inches across. Hgt. 4½ feet. Excellent. 19c ea., 3 for 55c, doz. \$1.90.



New Pink Chrys. Lustre, 17c
Lustre 17c

(New Early)—Highly recommended as an early lavender pink. Flowers about five inches across. 17c ea., 3 for 49c, doz. \$1.65.



Hilda Bergen, Rich Bronze

Hilda Bergen 23c

(New Early)—Rich, deep mahogany bronze, every bud a perfect flower. Splendid foliage. 23c ea., 3 for 66c, doz. \$2.30.



Monrovia Deep Orange-Yellow

Monrovia 13c

(Early) — Deep orange-yellow. Massive flowers, incurved, excellent. Easily grown. Splendid stems and foliage. 13c each, 2 for 25c.



New Pink Chrysanthemum, Asternum, 24c



Anemone Flowered Chrysanthemum. Susanne Miller, 23c

Bargains in Hardy Chrysanthemums



Hardy Button Chry. Bo-Peep, 18c

Hardy Pompon and Button Chrysanthemums

BO-PEEP — (Button Chrys.) — Beautiful variety. Intense yellow. Tiny button-like flowers. Nothing brighter or clearer among the yellows. 18c ea. (1c sale, 2 for 19c). Doz. \$1.70.

IRENE — Button type; pure white. Makes a beautiful contrast with the yellow variety. Early. 19c ea., 3 for 54c, doz. \$1.82.



Large Flw. Mum, Mimico, 18c



Early Hardy Mum, Aladdin, 22c

Large Flowering Hardy Chrysanthemums

ALADDIN—(Earliest of all)—Sensational new variety. Large full flowers. Bronze-gold overlaid with apricot and rose. Especially adapted for bedding. Very showy. 22c ea., 3 for 63c, doz., \$2.10.

AUTUMN GLOW—Coppery bronze-red tinge. A strong vigorous grower, fine healthy foliage. Stems of good length. 18c ea., 3 for 52c, doz. \$1.73.

CAPTAIN COOK—Color a lovely shade of rose-pink, free from lavender tints. A splendid grower. 20c ea., 3 for 58c, doz., \$1.92.

RED DOTY—Brilliant, rich dark red. A wonderful flower, strikingly beautiful in color. 20c ea., 3 for 56c, doz. \$1.92.

NORINE—A gorgeous clear yellow. The flowers are of massive size, petals recurved and drooping. Very attractive. 20c ea., 3 for 58c, doz., \$1.92.

CHRISTMAS GOLD—Great clusters of golden blooms. Flowers are very lasting. Beautiful. 20c ea., 3 for 58c, doz., \$1.92.

EXCELSA—Deep yellow. Flowers borne in charming clusters. Full and solid and has nice foliage. Unexcelled. 17c ea. (1c sale, 2 for 18c) doz., \$1.63.



Hardy Pompon Chrys. Golden Climax, 17c

GOLDEN CLIMAX—Deep yellow of perfect form. Magnificent flowers borne on strong stiff stems; a remarkably vigorous grower. 17c ea., 3 for 48c, doz. \$1.63.

MRS. HARRISON—Gigantic light lavender, a marvelously beautiful shade; in perfect form and finish. Keeping qualities excellent. 18c ea. (1c sale, 2 for 19c.) Doz., \$1.73.

VARSITY—Deep, golden yellow. Small button-like flowers in abundance that last well when cut. Finest variety. 18c ea., (1c sale, 2 for 19c), doz., \$1.73.



Large Flw. Hardy Red Doty, Chrysanthemum, 20c

Single Hardy Chrysanthemums

IZOLA—Reddish bronze. Equally desirable grown in sprays or single stems. Very distinctive and artistic. Carries these attractive flowers erect on long, stiff stems. Comes in bloom about November 10. 19c ea., 3 for 54c., doz. \$1.82.

MAPLE LEAF—A striking variety, hard to describe. The slightly curled ray florets are a reddish bronze, and the feathery cushioned center is a gold color tipped red. A distinct new variety and fine as a cutflower. 23c ea., 3 for 66c, doz., \$2.30.



Large Flw. Hardy Mum Captain Cook, 29c

FIREBIRD—Exquisite reddish bronze flowers. Showy and dependable. An elegant grower of a pleasing color. 20c ea. (1c sale, 2 for 21c), doz. \$1.92.

GODFREY—A pure white variety. Fine when mixed with colors in a bouquet. Free flowering. 18c, 3 for 52c.

MIMICO—Gigantic light lavender, a marvelously beautiful shade; perfect form. Keeping qualities excellent. 18c ea. (1c sale, 2 for 19c), doz. \$1.73.

MRS. WAITS—Beautiful. Rosy-lavender double flowers. A fine fall flower. 18c, 3 for 52c.



Large Flw. Hardy Mum, Autumn Glow, 18c

PINK BUCKINGHAM — A charming clear pink. Very popular and attractive. Universally planted. 20c. (1c sale, 2 for 21c).
PINK DOTY—Beautiful shell pink large double flowers. Very productive with strong, upright growth. 20c ea., 3 for 56c, doz. \$1.92.



Large Flw. Hardy Mum, Christmas Gold, 20c

UVALDA—The earliest white. Sometimes shows a pink tendency when first opening, but becomes pure white when fully developed. 18c ea. (1c sale, 2 for 19c).

WHITE DOTY—The snowy white flowers are produced in great profusion. Have good keeping qualities when cut. Long strong stems, 20c ea., 3 for 56c; 6 for \$1.08, doz., \$1.92.

Korean Chrysanthemum 21c

COREANUM—(Single type)—Grows 2 to 4 feet high. Flowers are large, white petals slightly tinted pink, with golden center. 21c ea., 3 for 59c, doz., \$2.02.



New Single Flowering Korean Chrysanthemum, 21c

Save Money
Take advantage of our After Season Sale
— Surprise Offer —
 A wonderful coll. of plants, all different; ready for shipment May 20th (see page 47) **63c**

House and Garden Plants at Bargain Prices

GENERAL LIST of House and Garden plants on pages 16 to 29, inclusive. We illustrate and describe a variety of House, Garden and Greenhouse plants that represent the most popular plants in this classification. Many of the present day house plants were favorites with our grand-parents. Practically all are easy to grow, without special requirements as to soil or care and will do well under ordinary treatment although responding generously to increased care and cultivation. Consult our complete Index on page 47.

Variegated Abutilon 25c FLOWERING MAPLE

(Savitzii)—Leaves beautifully formed, deep green in center, with pure white border. Flowers burnt orange. 25c, 3 for 72c, doz. \$2.40.

Abutilon—Flowering Maples

RED—Continuous bloomer, flowers red, veined with crimson. Green foliage. 22c each, 3 for 63c, doz. \$2.10.

WHITE—Large bell shaped flowers of snowy white, always a mass of bloom. Green foliage. 20c each, 3 for 57c, doz. \$1.92.

YELLOW—Bright golden-yellow flowers; green foliage. Free flowering. 22c each, 3 for 63c, doz. \$2.10.



Abutilon, Savitzii, Variegated 25c

Bishop's Cap 14c

(Achania Malvaviscus) — Striking vivid red bell shaped paper-like flowers. Grow to large size in time, always blooming freely. 14c each, 3 for 40c (1c sale, 2 for 15c).



Vivid Red Flowers

Bishop's Cap. (Achania Malvaviscus) 14c

Achyranthes

Red or Green, foliage plant used for bedding, lettering or for the border; often seen in parks. The red variety is a perfect blaze at a distance, while the green forms a contrast with the red. 3 for 24c; 6 for 45c; 12 for 80c; 25 for \$1.50.



Blue Browallia 21c

Browallia 21c

(Speciosa Major)—Beautiful free flowering pot or border plant. Its marine blue flowers are especially attractive. 21c, 3 for 60c.



Angel's Trumpet 31c

Angel's Trumpet 31c

(Brugmansia) — Large showy, tropical leaves and pure white trumpet shaped blooms fragrant as a jasmine. 31c, 3 for 88c. Larger 48c.



Brazilian Plume Plant

Brazilian Plume Plant

(Justicia Sanguinea)—Beautiful Salmon-pink, plume-like flowers. Beautiful reddish brown foliage. Suitable for pot culture or bedding. 24c, 3 for 68c.

(Justicia Velutina) — Bright rose-pink flowers, and deep green foliage, heavy in texture, and velvety. 25c ea., 3 for 72c.



Agathea. (Blue Daisy)

Agathea 26c

BLUE DAISY

The flowers are daisy-shaped, of a delicate light blue, with a yellow disc. It blooms in great profusion from November to April. 26c each, 3 for 74c.

Asparagus Sprengerii 21c

FEATHER FERN

Glossy green feathery foliage. Popular for cut-flower work. Adapted for hanging baskets, etc. 21c ea., 3 for 60c. Larger size, 41c ea., 3 for \$1.18.



Ageratum Frazerii, 21c

Ageratum Frazerii 21c

Suitable for bedding, or as pot plants. Beautiful blue flowers in greatest profusion. 21c, (1c Sale, 2 for 22c), doz. \$2.02.



Asparagus Plumosus, 22c

Asparagus Plumosus 22c

(Asparagus Plumosus) — A plant of delicate beauty. Its bright green foliage is extremely fine and plume-like. 22c, 3 for 60c; Larger plants 40c, 3 for \$1.14.



Beloperone Guttata (Curious Air Plant) 19c



Asparagus Sprengerii (Feather Fern), 21c

GIANT FLOWERING

CANNAS

A
Blaze
of Glowing
Color

AMBASSADOR (Bronze foliage, 4 ft.)—Brilliant large cherry-red flowers. Splendid bedder. 23c ea., 2 for 35c, 6 for 97c, doz. \$1.87.

APRICOT (Green foliage, 5 ft.)—Buff-yellow base overspread with salmon-pink. Fine for cut flowers. 22c ea., 2 for 33c, 6 for 94c, doz. \$1.77.

BEAUTE POITEVINE (Green foliage, 4 ft.)—As long seasoned as any Canna grown. Dark crimson

blooms. 22c, 2 for 33c, 6 for 94c, doz. \$1.77.

EUREKA (Green foliage, 4 ft.)—Finest white. 22c ea., 2 for 33c, 6 for 94c, doz. \$1.77.

FIREFLAME (Green foliage, 4 ft.)—Flowers rich flaming scarlet. Well rounded, 6 to 7 inches across when open. 23c, 2 for 35c, 6 for 97c, doz. \$1.87.

MME. CROZY (Green foliage, 3½ ft.)—Vermilion-scarlet, bordered golden yellow. 19c ea., 2 for 28c, 6 for 70c, doz. \$1.35.

GLADIATOR (5 feet)—Flowers yellow, spotted with red, fine green foliage, large heads of firm, well-made flowers. 22c ea., 2 for 33c, 6 for 94c, doz. \$1.77.

GLADIOFLORA (Green foliage, 3½ ft.)—Flowers, like large Gladiolus. Crimson, changing to carmine-rose, with an uneven edge of gold to each petal. 22c ea., 2 for 33c, 6 for 94c, doz. \$1.77.

HUNGARIA (Green foliage, 4 ft.)—Pink flowers. 26c ea., 2 for 39c, 6 for \$1.08, doz. \$2.05.

KING HUMBERT (Bronze foliage, 4 ft.)—Orange scarlet, red markings. 23c ea., 2 for 35c, 6 for 97c, doz. \$1.87.

RICHARD WALLACE (Green foliage, 4 ft.)—Largest and finest pure yellow. 22c ea., 2 for 33c, 6 for 94c, doz. \$1.77.

THE PRESIDENT (Green foliage, 4 ft.)—Immense scarlet. 22c ea., 2 for 33c, 6 for 94c, doz. \$1.77.

YELLOW KING HUMBERT (Green foliage, 4 ft.)—Yellow speckled scarlet. 23c ea., 2 for 35c, 6 for 97c, doz. \$1.87.



19c
each

Vermilion-Scarlet,
Bordered Yellow

Beautifully Mottled Canna Mme. Crozy, 19c



Coleus Christmas Gem, 20c

Coleus Christmas Gem 20c

Immense leaves, bright carmine shading to maroon, margin yellow and green, growing from eight to twelve inches long with rich velvety lustre. 20c ea., 3 for 57c.

Baby Tears 24c

(Irish Moss) (Helxine)—Compact, dense growing plant with miniature leaves, forming a mass of moss-like foliage of partially creeping tendency. 24c. Larger Plants 39c, (1c sale, 2 for 25c).



Baby Tears (Irish Moss), 24c

Coleus Trailing Queen 16c

Excellent for vases and plant boxes, leaves fiery crimson surrounded with deep maroon. 16c, 2 for 28c (1c sale, 2 for 17c).



Trailing Queen, Coleus, 16c ea.

Blue Lily of the Nile 29c

(Agapanthus Umbellatus)—Bright evergreen foliage spreading three to four feet and surmounted with spikes of bright blue flowers. 29c, 3 for 83c.

Christmas Cactus 25c

SCARLET BLOOMS

Long drooping flowers, borne in great profusion. Stems branching and hanging in bunches. Blooms freely. 25c, 3 for 72c.—Larger 67c, 3 for \$1.91 (1c sale, 2 for 26c).



Christmas Cactus

Copper Plant 20c

(Acalypha Tricolor) — A beautiful plant with large and highly colored leaves, bright red marked with blotches of crimson-bronze. Produces flowers like the flower spikes of Acalypha Sanderii. This Acalypha is really a bedding plant, as highly and richly colored as crotons. 20c, 3 for 57c, larger 38c, 3 for \$1.08.



Copper Plant 20c

White Jasmine 23c

Maid of Orleans — Good sized double flower, blooming profusely all summer, shining pale-green foliage. Much easier to handle than other Jasmynes and more desirable. 23c each, 3 for 63c.

Star of Rich Red and Yellow Coleus



A Popular Design

Wonderfully Effective

Star Coleus Bed \$1.59

Star Bed 5 ft. in diameter, 8 Dark Red Coleus for center, 17 Yellow Coleus for border. (25 plants in all).

Fancy Bedding Coleus 11c ea.

11c ea., 3 for 31c, 6 for 59c, 12 for \$1.06, 25 for \$2.00, 50 for \$3.88, 100 for \$7.50.

BECKWITH GEM—Dark maroon, edged golden yellow.

EMPRESS OF INDIA—Maroon edged yellow.

FIRE BRAND—Brilliant scarlet, very showy.

NERO—Darkest Coleus grown, nearly black.

RAGGED CARPET—Leaves light green splashed bronze.

QUEEN OF THE WEST—Green streaked with maroon.

SENSATION—Crimson-maroon center light red.

SETTING SUN—Crimson with brightest golden edge.

VERSCHAFFELTI—Maroon center, spotted yellow.

YELLOW BIRD—Color golden-yellow.

Foundation Border Plant Variegated

(Aegopodium) Largely used around foundations of house and buildings. Foliage strongly variegated with cream and yellow. Spreads rapidly. 22c, 3 for 63c, doz. \$2.00.



COPYRIGHTED - PETERBOROUGH - BAUS - CO.

Grape Ivy 24c

(Vitis Rhombifolia) — A grand new Ivy for house culture—a graceful trailing vine with rich dark, glossy green trifoliate leaves. Highly recommended. Excellent for interior decoration. 24c, 3 for 68c, doz. \$2.20. Large plants 49c, 3 for \$1.40, 6 for \$2.65.



Grape Ivy (Vitis) 24c, 49c



Highly Colored Cineraria

An excellent pot plant. Flowers are large and of the richest shades of blue, purple, white, pink and crimson. Mixed varieties. 24c ea., 3 for 68c, doz., \$2.30.

Brazilian Cigar Plant

Libonia (New)—A conservatory or house plant with long tubular, drooping, scarlet flowers. A most floriferous plant. New and attractive. 42c ea., 3 for \$1.20.

Trailing Dusty Miller

A trailing form of the well known silvery white foliage Dusty Miller, will be widely used for porch boxes and vases, etc. Highly recommended. 19c ea., 3 for 49c, doz., \$1.89.

Improved Highly Colored Cineraria, 24c

Beautiful Shaking Fern 26c

(*Pteris Tremula*)—Foliage very graceful. The slightest movement of the air shakes the leaves. 26c, 3 for 74c.



Shaking Fern, 26c



Bougainvillea Crimson Lake, 31c

Crassula No. 24—17c

TETRAGONA—Upright, resembling miniature pine trees. Excellent for dish gardens or individual pots. 17c, 3 for 48c, 6 for 92c.

Echeveria No. 14—17c

SECUNDA GLAUCA—Grows like the Hen and Chickens in rosettes. Color soft gray-green. Most popular of all succulents. 17c, 3 for 48c.



Crassula Tetragona



Echeveria Secunda Glauca

Comet Flower 28c

CRIMSON SPIKES

(*Acalypha Sanderii*)—Leaves are dark green, from the axil of each of which springs a long, drooping spike of glowing crimson-scarlet, nearly an inch in diameter and from 18 to 24 inches long, very velvety in texture. 28c (1c sale, 2 for 29c).



Comet Flower, 28c



Fancy Leaved Crotons 30c

Highly colored, fancy leaved. Ideal for house or porch decoration. Easily cared for. Multi-colored foliage, spotted, splashed and blotched, a handsome conservatory plant. 30c, 3 for 85c. Larger 44c each.

Cigar Plant 21c

Very Odd. (*Cuphea*)—Scarlet, pendulous flowers: neat, compact habit. Always in bloom, grows bushy, about fifteen inches high, makes an elegant appearance for baskets, pot plants or bedding. 21c ea., 3 for 55c; doz., \$1.90 (1c sale, 2 for 22c).



21c Each Cigar Plant (Cuphea) 21c

Chinese Paper Plant

(*BOUGAINVILLEA*)

CRIMSON LAKE—Magnificent clusters of paper-like bells, exquisite shade of crimson, unequalled. 31c, 3 for 88c.

SANDERIANA—Brilliant lavender-pink blossoms of strong and rapid growth. A beautiful climber in the South. 19c; 3 for 54c.



Bougainvillea Sanderiana, 19c



Crown of Thorns

(*Euphorbia Splendens*)—A plant grown more for its curiosity than beauty. The stems are thick, twining and covered with sharp spines. The leaves are bright green and it has an abundance of beautiful coral-pink flowers. 23c, (1c sale 2 for 24c). Larger plants 38c and 57c each.

Giant Flowering Cyclamen 28c

Cyclamen Persicum, or Persian Violet, is one of our prettiest blooming plants. Blossoms freely and remains a long time in flower. Mixed colors only. 28c, 3 for 80c.



Cyclamen, or Persian Violet, 28c



Cl. Firecracker Plant, 22c

Cl. Firecracker Plant 22c

(*Manettia Bicolor*)—Easily trained. Can be grown in the house or garden. Flowers scarlet, shading into flame, tipped with bright golden-yellow. 22c, 3 for 63c.

Dusty Miller 17c

(*Silvery Foliage*)—Beautiful, silvery gray foliage, deeply cut. Fine for edging beds of Geraniums, Cannas or Salvias; forms a good contrast to the bright colors in the garden. Height 12 to 15 inches; may be kept clipped to desired height. 17c ea., 3 for 48c, doz., \$1.63 (1c sale, 2 for 18c).



Silver Leaved Dusty Miller, 17c

Giant Flowering FUCHSIAS

One of the most charming and desirable house plants grown. The flower is very showy in its pleasing combination, the sepals and corolla of the bloom in most varieties being distinctly different in color. The Fuchsia is of easy culture and will thrive well in the temperature of the living room.



Fuchsia, Irwin's Giant Pink, 20c

IRWIN'S GIANT PINK—Gigantic flowers of a beautiful salmon pink. The best Fuchsia yet introduced. 20c, 3 for 57c.

TENOR—Sepals red, with double corolla of rich dark purple. 18c ea., 3 for 52c.

MAD. VAN DER STRASS—Corolla double white with red sepals. 17c ea., 3 for 48c.

ERNEST RENAN—Sepals white, and corolla reddish-blue. 15c ea., 3 for 42c.

SPECIAL FUCHSIA OFFER—One each of any of 4 fuchsias above for 70c.

BLACK PRINCE—Brilliant carmine pink, 19c ea., 3 for 54c, doz. \$1.82.

LORD BYRON—Single blooms red and violet. 21c ea., 3 for 60c, doz. \$2.02.

MCGREGOR'S MAMMOTH PURPLE—Grandest of all tall growing, enormous flowers, sepals bright scarlet, purple corollas, very double. 23c, 3 for 65c, doz. \$2.20.

SPECIOSA—Flowers rosy carmine. 17c ea., 3 for 48c, doz., \$1.63 (1c sale, 2 for 18c).

TRAILING QUEEN—Wine-red flowers. 18c ea., (1c sale, 2 for 18c) doz., \$1.73.

WHITE GIANT (Gloire des Marches)—Brilliant deep scarlet. Corolla double, pure white. 17c ea., 3 for 48c, doz., \$1.63 (1c sale 2 for 18c).



Little Beauty Fuchsia, 23c

Little Beauty Fuchsia 23c

Fine dwarf, compact growing Fuchsia. Free blooming and is seldom without flowers. The sepals are carmine, and the corolla deep lilac. The flowers droop beautifully and are large and elegantly shaped and of good substance. 23c, 3 for 65c.

Silk Oak Tree 19c

(*Grevillea Robusta*)—A magnificent plant for decorative purposes; of rapid, easy growth. The young leaves are light brown, the tips being covered with a soft down resembling raw silk hence the name "Silk Oak." 19c ea., 3 for 54c, doz., \$1.82. (1c sale 2 for 20c.)



Grevillea (Silk-Oak)



Heliotrope Royal Fragrance

Heliotrope

ROYAL FRAGRANCE

New, rich, deep violet-blue, marvelously fragrant. 19c, 3 for 54c, doz. \$1.82.

Feverfew 22c

Little Gem—The great value of the Feverfew is for cut flowers during the summer. Flowers large, of perfect form, pure white. 22c ea., 3 for 63c.



Little Gem Feverfew, 22c



Tender Hen and Chickens

Tender Hen and Chickens 19c

Tiny rosettes of soft gray-green formed in abundance around the main plant, giving it the name "Hen and Chickens." (Not hardy.) 19c ea., 3 for 54c. (Hardy Hen and Chickens, page 36.)



Beautiful Plumed, Fountain Grass

Fountain Grass 22c

(*Pennisetum*)—Dwarf plummy grass. Long, graceful, purplish plumes, 22c, (1c sale, 2 for 23c) 3 for 63c.

Fountain of Gold 29c

GOLDEN SPRAYS

(*Genista Canariensis*). The drooping branches are covered with delicate sage-green foliage, and every twig tipped with a long raceme of exquisite pea-shaped blossoms of a pure canary color, almost hiding the foliage. 29c each (1c sale, 2 for 30c).

HOYA

(*CARNOSA*)—Wax Plant—Strong climber, curious wax-like flowers, excellent house plant, grows freely without direct light. 29c ea., 3 for 82c.

Weeping Fire-cracker Plant 19c

CORAL RED FLOWERS

(*Russelia Elegantissima*)—Semi-trailing especially adapted for hanging baskets, vases, etc., of drooping habit, covered with brilliant coral-red flowers. 19c, 3 for 54c.



Fragrant Erlangea, 19c

Fragrant Erlangea 19c

Dainty mauve flowers. The foliage is as delightfully scented as the Sweet-scented Geraniums. We are pricing them very low this season. 19c each, 3 for 54c; \$1.82 doz.

1c SALE
Read pages
Carefully
for One
Cent Sale
Items.



29c
Each

Fountain of Gold
29c ea.

Giant Hibiscus

ORANGE Aurantiaca—Beautiful double orange colored flowers. 20c ea., 3 for 57c, larger plants 50c.
CRIMSON Grandiflora—Rich scarlet-crimson; wonderful in size. 18c ea., 3 for 52c, larger plants 50c.
VERMILION Miniatus Semiplena—Bright vermilion-scarlet flowers. 19c ea., 3 for 54c, larger 49c.
VIOLET TINTED—Subviolaceous—Flowers enormous size, tinted violet. 19c ea. (1c sale, 2 for 20c).
PEACHBLOW—Flowers double; rich clear pink. 21c, 3 for 60c larger plants 51c each.
YELLOW Collierii—Flowers buff-yellow, with crimson-scarlet base. 20c, 3 for 57c, larger plants 50c.
SCARLET Weddingii—Flowers of large size, vivid crimson-scarlet color can be seen from a long distance like a flaming torch. 19c ea., 3 for 54c, larger 50c (1c sale, 2 for 20c).
BARGAIN OFFER—One each of any 4 colors in 1 yr. size for 66c. Any 4 in large size \$1.66.



Pink Hibiscus Peachblow, 21c



21c

Impatiens (Pink Beauty) 21c

Impatiens 21c

(Sultan's Balsam)

SALMON QUEEN—Flowers handsome shade of salmon, tinged with pink. 18c, 3 for 52c, doz., \$1.73.

PINK BEAUTY—Clear rose-pink flowers. An unusual, attractive house plant. 21c, 3 for 60c, 6 for \$1.13, doz. \$2.02.

HOLSTII—Brilliant vermilion flowers. Showy. Very free bloomer. 20c, 3 for 57c, doz. \$1.92.

Ivy

Conglomerata

A new hardy Ivy of most attractive foliage formation. Leaves slightly crinkled and closely overlapping each other. Distinctive pot plants or for outside planting. Hardy. Very attractive. 37c ea., 3 for \$1.00.



Dwarf Holly 36c

(*Malphigia Cocigera*)—One of the most attractive pot plants. Dainty, holly-like leaves, finely cut, pinkish flower, followed by red berries. 36c each.



Kalanchoe Flammea

(No. 19)—Attractive succulent plant with green foliage tinted red, orange flowers. 19c ea., 3 for 54c.

Echeveria Weinbergii

(No. 15)—Waxy leaves forming a perfect rosette. Color light green, overcast with iridescent sheen. 19c each.

Parlor Ivy 17c

RAPID CLIMBER

(*Senecio Scandens*)—A strong growing climbing vine with bright green foliage. Especially suitable for indoor wall vases. 17c (1c sale, 2 for 18c).

Jewel Flower 24c

CACTUS LIKE PLANT

A curious succulent branching plant without leaves, resembling a Cactus producing singular flowers, star shaped, dark brown spotted with yellow. 24c, 3 for 68c, doz., \$2.30.



Jewel Flower, *Stephelia*, 24c



Cup and Saucer Vine (*Cobaea*) 18c

Cup and Saucer Vine 18c (COBAEA)

Best of our tender climbing plants, fine for porch boxes. 30 to 50 feet in a single season. Clings to any rough surface. Lavender flowers. 18c, 3 for 52c.



Crassula Monticola

(No. 3)—Very attractive succulent, upright bushy little plants. Light green heart-shaped leaves. 20c each, 3 for 57c.

Kalanchoe 31c

(*Globulifera Coccinea*)—A new pot plant of great merit. The brilliant scarlet flowers are in evidence from Christmas until May. Frequently the plant blooms the second time. 31c ea., 3 for 88c, doz. \$2.93.



Kalanchoe *Coccinea*, 31c

New Variegated Ivy 26c

(*Haeggenberger*)—Most outstanding and striking new vine in years. The cream variegation on foliage really predominates. Highly recommended. 26c ea., 3 for 74c.



New Variegated Ivy, 26c.

Choice Large Flowering Porch Hydrangeas



32c

Each

Giant Hydrangea, Blue Bell 32c

RADIANT—Beautiful deep pink. Foliage rich green, unusually good. Flowers of great keeping qualities. 29c ea., 3 for 83c, doz. \$2.78.

GOLIATH—This is the darkest red Hydrangea grown. Flowers are unusually showy. 28c ea., 3 for 80c, doz. \$2.69.

BLUE BELL—A new variety, strong, vigorous grower producing large leaves and immense flowers of lavender pink changing to blue. Best of all. 32c. 3 for 89c.

TROPHEE—Rose pink. A well known sort blooming early and freely. Grown in a large pot or tub attracts attention. 27c ea., 3 for 77c, doz. \$2.59.

BOUQUET ROSE—Pleasing shade of baby pink. Trusses of immense size. The plant grows vigorously. Handsome foliage. 28c ea., 3 for 80c.

AVALANCHE—Giant pure white blooms. This variety, a general favorite, has won many medals at flower shows. Very free flowering. 27c ea., 3 for 77c, doz., \$2.59.

**Perpetual
Blooming**

LANTANAS

The Everblooming Bedding Plant

MICHAEL SCHMIDT—Brilliant yellow, passing into vermilion. 18c, 3 for 52c, doz. \$1.73.
ALBA PERFECTA—Pure white, compact habit. 15c, 3 for 42c, doz. \$1.43.
AURORA—Clear pink. 16c, 3 for 46c, doz. \$1.54.
JACOB SCHULZ—Beautiful dark red, good rich color. 17c, 3 for 48c, doz. \$1.63.
TETHYS—New beautiful lemon yellow. Nothing like it. 18c, 3 for 52c, doz. \$1.73.
SOUTHERN—Dwarf grower, large flowers, outer florets salmon-pink shaded to pale yellow in the center. 20c, 3 for 57c, doz. \$1.92.
GOLDEN QUEEN—Dwarf grower. Beautiful deep golden yellow. 20c ea., 3 for 57c, doz. \$1.92.
RADIATION—Strong grower, outer florets deep wine red shading to pale yellow in center. 17c ea., 3 for 48c, doz. \$1.63.
SPECIAL—1 each of any 4 Perpetual Blooming Lantanas for 63c.



Bedding Lantana Michael Schmidt, 18c



Lobelia Sapphire

BLUE FLOWERS—Beautiful trailing plant, unusually large sapphire-blue flowers with a pretty white eye. Showy and of distinctly trailing habit. 18c (1c sale, 2 for 19c), 3 for 52c, doz. \$1.80.



Flowering Oxalis

Elegant foliage and pretty flowers. blooms quickly after planting. Makes a very showy bed or border. **29c**
DIEPPI WHITE—Pure white.
DIEPPI ROSE—Fine rosy pink. 29c per dozen; \$1.97 per 100.

Wonder Lemon 24c

FRAGRANT BLOSSOMS—Has fruit in all stages of development, from the size of a pea up to the ripe fruit. Dark green foliage and pure waxy flowers which closely resemble orange blossoms. Richly fragrant. 24c, 3 for 68c, large plants 48c ea. Extra large plants 75c by express.



American Wonder Lemon, 24c



Night Blooming Jasmine, 21c

Night Blooming Jasmine 21c

(Cestrum Parqui) — Well known, highly prized plant. Foliage deep green; richly fragrant; blooms at night. 21c, 3 for 60c. Larger plants 50c.



Lettering Plant. (Alternantheras), 10c each.

Lettering Plant

(Alternantheras) — Beautiful dwarf plants. Adapted for edgings to flower beds or ribbon lines. Two varieties—Crimson foliaged; and yellow and green variegated foliage. These are the plants used in parks and cemeteries for lettering in beds. 10c each; 3 for 25c; 12 for 80c; 25 for \$1.50; 50 for \$2.75.

Blue Moonvine 18c

(Ipomoea Learii) — The flowers are trumpet shaped, of a rich blue, with five purple rays. 18c each, 3 for 52c, doz., \$1.73.



Giant White Moonvine, 18c

Giant White Moonvine 18c

(Ipomoea Maxima) — Blooms produced in such wonderful profusion that they completely cover the vine with a veil of glistening white. Fine for porch and lattice shading. 18c, 3 for 52c (1c sale, 2 for 19c.)



Lemon Verbena, 19c

Lemon Verbena 19c

(Fragrant Foliage)—This plant has the most fragrant foliage of any plant grown. The leaves are delightfully lemon-scented. White flowers. 19c ea., 2 for 31c.

Fragrant Oleanders

PINK ROSEA—An old favorite; flowers pink, double and sweet. 19c ea. (1c sale, 2 for 20c.) Larger 48c.
WHITE—(Lilian Henderson)—Double white flowers. 19c ea. (1c sale, 2 for 20c.) Large size 48c each.
YELLOW—(Lutea) —

Flowers double; golden yellow. 22c each. Larger 48c ea.
VARIEGATA—Variegated foliage pink flowers. 20c ea., 3 for 57c. Larger 48c.
SPECIAL OFFER — 1 each of yellow, white and pink for 49c.

Double Nasturtium 17c

(Golden Glean)—Sensational novelty, double golden yellow flowers, 2 to 3 inches across. Delightfully fragrant. 17c ea., 3 for 48c, doz., \$1.63. (1c sale, 2 for 18c.) (See illustration page 41.)

Peperomia 18c

(Green leaf)—Ornamental house plant produces round, leathery foliage, rich green in color and very glossy in appearance. 18c ea., 3 for 52c, doz., \$1.73.



Dwarf Fruiting Orange 24c

BRIGHT COLORED FRUIT—"Fruits freely, easy to grow beautiful waxy blossoms, delightfully fragrant." Dwarf free flowering variety, suitable for pot culture. NOTICE, Orange plants and lemon plants cannot be shipped into Ala., Ariz., Calif., Fla., Ga., Miss., S. C., and Tex. 24c, 3 for 68c, large plants 50c, 3 for \$1.45; Extra large plants 75c each, by express.



Fragrant Pink Oleander, 19c

Gorgeous Pansy Geraniums

(PELARGONIUMS)



Pelargonium Mrs. Loyal, 35c

EASTER GREETING—Fiery amaranth-red. Gorgeous in coloring. Each of the five petals being marked with a large dark brown or black spot in the center, the spot being bordered with scarlet, daintily penciled with crimson. 38c, 3 for \$1.08.

LUCY BECKER—Grand Novelty, sport of Easter Greeting, and is like it in everything but color, which is rosy-pink. Free blooming. 35c, 3 for \$1.00.

MRS. LAYAL—The coloring and markings of the flowers are most extraordinary—light pink, white, dark purple, black, etc., rivaling the Pansy in uniqueness of flower. 35c, 3 for \$1.00. (1c sale, 2 for 36c.)

SPRINGTIME—Makes a wonderful pot plant in a short time. In color an unusual shade of salmon-pink, distinctively marked. 36c ea., 3 for \$1.03.



Pelargonium, Easter Greeting, 38c

Baby Primrose 25c

(*Primula Malacoides*)—A dainty Primula. Flowers pale mauve, produced tier upon tier to a height of about two feet. 25c ea., 3 for 72c.

Dragon Palm

(*Dracena Massangeana*)—A beautiful variegated broad leaved Dracena with broad green foliage and broad golden yellow band through each leaf center. Boldly decorative. \$1.25 each (express only).

Ground Creeper

(*Pachysandra*)—Ever-green ground covering plant. Grows in shade or sun, forming a dense mat of thick, green foliage. Small light colored flowers. 21c ea., 3 for 60c, doz., \$2.02.



Ground Creeper (*Pachysandra*)

Philodendron

(Queen Ann's Window Vine) — Popular house plant of trailing habit, pear shaped leaves, variegated gold and white. 26c, 3 for 74c. Larger 38c.



Philodendron (Queen Ann's Window Vine) 26c

Viola

JERSEY GEM—Hardy. Rich violet fragrant pansy-like flowers. 16c, 3 for 40c.



McGregor's Giant Pansies

McGregor's Giant Pansies

Our Giant Flowering Pansies are of wonderful form, richest coloring, marvelous in size. There is no flower more admired than the Pansy. The combination of colors embraces striped, spotted, bordered and fringed; in rainbow colors, with rich velvety textures. 6 for 25c, dozen, 45c. 100 for \$2.10.



Olea Fragrans SWEET OLIVE

The Olea Fragrans is a fragrant house plant, similar to Camellia, and bears small clusters of delicate white flowers in great profusion during the fall and winter. Almost a continuous bloomer. Highly odoriferous both in foliage and flowers. Nice plants. 48c each, 3 for \$1.37. Larger plants \$1.25 each, by express.

Sky-Blue Plumbago

Excellent bedding and pot plants, flowering freely. The potted plants may be kept in a light cellar in winter, during which time they should be watered sparingly. 23c, 3 for 65c.

22c

Each



Parrot's Feather, 22c

Parrot's Feather

Drooping water plant for aquariums; can be grown in pots if soil is kept saturated. Feathery foliage. 22c, 3 for 63c.



Poinsettia

(Mexican Fire Plant) — Flowers are a most brilliant red; very showy. Well known as a Christmas flower. Does well anywhere, as a house plant. 29c, 3 for 83c.



Philippine Lily

(New) Flowers, purest white. 2 to 3 ft. Hardy, very fragrant; lovely. 26c ea., 3 for 72c.



Portulacaria Afra No. 22

One of the best succulents grown. Leaves waxy and heart shaped. 18c ea., 3 for 52c.



(Blue) Passion Flower, 23c

Passion Flower

(*Passiflora*)—The passion flower is a tender, trailing or climbing house plant, producing flowers in various shades of blue. The peculiar structure of the flower has long been of great interest, and many curious stories have been woven about it. 23c ea., 3 for 65c.



Sky Blue Plumbago, 23c



Mammoth Flowering Double Petunias, 20c

McGregor's Mammoth Flowering Double Petunias 20c

For ease of culture, gorgeous effect, dependability and a continuation of bloom, double petunias are classed as one of the most popular annuals of today. The large handsome double velvety flowers are produced in great profusion throughout the entire summer; effectively used in vases, window and porch boxes as well as for bedding and border planting. We offer these double petunias in mixed colors only at a bargain price of 20c ea., 3 for 57c, 6 for \$1.08, doz. \$1.92.

Single Giant Bedding Petunias 13c

BLUE BIRD—(New) Deep violet blue flowers, produced in the greatest profusion. A fine variety, admired by all. 13c ea., 3 for 37c; 6 for 70c, doz. \$1.25.

CELESTIAL ROSE—A new dwarf and compact variety, having deep rose colored flowers. Fine and attractive for bedding. 12c ea., 3 for 34c, 6 for 65c, doz. \$1.15.



Giant Ruffled Single Petunias

Giant Ruffled Single Petunias 12c

(Blooms all Summer)—Unsurpassed for massing in beds and border planting, also fine for basket, vase and window boxes. Bloom early and continue until frost. Plants in mixed colors. 12c ea., 3 for 34c, 6 for 65c, doz. \$1.15.

Holt's Sage, 19c

(Used for Seasoning)—Perennial, widely cultivated for its leaves. Used for flavoring and seasoning of soups and stews or for dressings, ranks ahead of parsley. Everyone should have a few plants of sage in the garden. 19c—(1c sale, 2 for 20c).

Leopard or Mottled Hardy Ivy 17c

(Hedera) A beautifully mottled leaved Ivy—similar to the Hardy English Ivy in growth with leaves a trifle smaller in size, and attractively marked with creamy white variegations. 17c ea., 3 for 48c, doz. \$1.63. (1c sale—2 for 18c.)



Leopard or Mottled
Hardy Ivy, 17c

Sedum Treleasei 19c

(No. 20.)—Color light green with pink tints. Leaves fleshy and round. One of the most popular of the succulent plants. 19c, 3 for 54c, 6 for \$1.03, doz. \$1.82.



Sedum
Trelisei

Sempervivium Haworthii

(No. 1)—Light, silver-green and iridescent leaves, forming a rosette. 17c, 3 for 48c, doz. \$1.63.



Sempervivium
Haworthii

Water Plants For Pools Aquariums, etc. 5 for 75c

A collection of water plants, such as White Water Lily, Water Poppy, Yellow Water Iris, Cat-tail, Calamus, Parrot's Feather, Water Hyacinth, Umbrella Plant, Arrowhead, Oxygenating plants, etc. Coll. of 5 including White Water Lily, our selection, for 90c. (Coll. of 5 not including Water Lily, our selection, for 75c). Coll. of 7 including Water Lily \$1.35. (Coll. of 7 not including Water Lily 95c). (Orders for these collections are sent separately from plant orders.)



Attractive Water Plants

Royal Purple Plant 21c

(Strobilanthes Dyeranus). Strikingly beautiful, glistening reddish purple, iridescent leaves. Surpasses the finest Coleus or Begonia in the brilliant and exquisite coloring of the leaves. 21c, 3 for 60c, doz. \$2.02.

Primula Obconica 28c

Magnificent clusters of flowers arranged in whorls set high above the rich velvety foliage. Deep **CRIMSON**—Beautiful deep crimson flowers. 27c ea., 3 for 77c. **Caerulean Blue**—A novel variety, deep purple-blue flowers. 28c ea., 3 for 80c.



Primula Obconica. Caerulean Blue, 28c



Japanese Rubber Plant, 26c

Japanese Rubber Plant 26c

CRASSULA
(Tree Echeveria.) Leaves bright green, thick and waxy-like. Excellent for window or table. Requires little care. Leaves withstand the dry air of the home. 26c, (1c sale, 2 for 27c).



Royal Purple Plant, 21c



Resurrection Plant, 16c

Resurrection Plant 16c

This novelty is a ball of tightly folded leaflets, dried and apparently dead. When saturated in water, the plants "come to life," in a great, loose, expanded rosette. 16c, 3 for 46c, doz. \$1.54.

Elephant's Ear 20c

MAMMOTH LEAVES

(Caladium Esculentum)—Growth is rapid. Watering will help develop large leaves. Bulbs can be stored in dry sand in winter. 20c ea., 3 for 57c; larger bulbs, 35c ea., 3 for \$1.01.

1c **SALE**
Read pages
Carefully
for One
Cent Sales.



Beautiful, new and large flowering White Dahlia Graf Zeppelin, 30c

McGREGOR'S GIANT DAHLIAS

The World's Best at
Bargain Prices
Tubers and Pot Plants

Tubers can be shipped at once—Plants, March 1st

Edward Thomas Bedford 30c

DEEP PURPLE—(F. Dec.) This reliable dahlia produces mammoth flowers on the best of stems. Bushes are strong, uniformly vigorous. Tubers 30c ea.

Elkridge 40c

PURE WHITE—(Semi-Cactus) Bears an abundance of fine pure white flowers, is vigorous, reliable and a good root-maker. Tubers 40c ea.

Franklin D. Roosevelt 48c

SPECTRUM RED (Inf. Dec.) A new spectrum red. Bright and glowing. One of the most perfect in habit of growth. Very showy in the garden. Tubers 80c each. Plants 48c each.

Gladys Sherwood 45c

GIANT WHITE (Colossal Cactus)—Marvelous blooms over 10 inches in diameter. Snow white. Profuse blooming. Tubers 85c each. Plants 45c ea.

Graf Zeppelin 30c

PURE WHITE (F. Dec.) Giant, pure white, deep flower with broad waxy petals. Fine for garden and exhibition purposes, growing taller than any other variety. Stems erect and very long. Plants 30c ea. Roots 60c ea.

10 Hardy Flowering Perennials For \$1.00

AN EXTRAORDINARY OFFER of hardy garden plants (strictly our selection) suited for rockeries, borders, banks, terraces, edgings and cemetery planting. Beginning in April and lasting until Autumn, a constant changing variety of flowers. Valuable for cut flowers. Live from year to year. The popular flowers of our grandmothers' gardens; one of our best bargains.

Jean Trimbee 49c

VIOLET PURPLE (Semi-Cactus.) Rich violet purple. Large. In a class by itself for beauty of form. Bloom has a high full center. Not unusual to see five fine flowers on one bush at a time. Tubers 95c each. Plants 49c each.

Jersey's Beauty 24c

DEEP PINK (Decorative.) Deep pink. This famous old cut-flower variety has been and still will be universally grown for many years. Very free flowering. Tubers 40c each. Plants 24c each.

Jersey's Glory 28c

YELLOW ORANGE—(F. Dec.) Extremely vigorous and uniform, very free. An excellent decorative garden variety. Early bloomer. Tubers 28c ea.

Jersey's Master- piece 42c

BRILLIANT ORANGE (Formal Dec.) Brilliant Orange. One of the most reliable of the decorative type. A general favorite. Tubers 42c ea.

Jersey's Sovereign

BURNT ORANGE (F. Dec.) Burnt orange shading to yellow. An excellent decorative garden variety. Early bloomer. A worthy addition to any collection. Plants 30c ea. Roots 60c ea.

Fort Monmouth 38c

DARK RED (Inf. Dec.) The predominating color is rich claret with brightness unusual in darker tones. Flowers large; long stiff stems. Tubers 38c each.

Kathleen Norris

LIGHT PINK (Dec.) Immense graceful flower, measuring 7 to 10 inches. Delicate rose-pink color. Plants 50c ea. Tubers 86c.

10 Hardy Flowering Shrubs For \$1.00

AN AMAZING OFFER. A collection of 10 popular hardy flowering shrubs such as are generally planted around our homes; the assortment, (strictly our selection) includes varieties suited to every purpose. All colors; a succession of flowers; a most extraordinary offer—Don't fail to take advantage of it. Shipped by express or mail. (If wanted by mail, add 20c postage.)

Margaret W. Wilson

PALE PINK (Dec.)—Opalescent pink. The upper side of the petals is a pure waxy white, while the reverse of the petals is so colored as to reflect a pink tone on the whole flower. Extra large and free blooms—Much admired. Tubers 32c ea.

Meta Scammel 26c

AMARANTH PINK (Inf. Dec.) Deep pink. Fine form. The petals are unusually long curled and waved beautifully. Bushes make strong growth. Tubers 48c each. Plants 26c each.



Grand free flowering brilliant Red Dahlia Paul Revere, 40c

Paul Revere 40c

PERFECT RED—(F. Decorative) Is one of the most beautiful and perfect of red dahlias. Large and fine stemmed. Tubers 40c ea.

Prince of Persia 48c

SCARLET RED (Inf. Dec.) Glowing scarlet red. Many prize this variety highly for the immense size of the flower. Sometimes 12 in. across. Tubers 65c each. Plants 48c each.

Queen of the Garden Beautiful 28c

CREAM YELLOW (F. Dec.) A strong growing variety, free blooming, with enormous flowers of cream yellow. 8 to 10 inches in diameter. A grand garden variety. Tubers 49c, 3 for \$1.44. Plants 28c ea.

Saladini 37c

ORANGE (Dec.)—Beautiful apricot orange evenly suffused carnelian red. Extremely vigorous and uniform. Tubers 37c each.

All Color and Type Collection 94c

RED—Shades of scarlet, maroon, etc.....\$0.22 each
YELLOW—Shades of yellow, changing from dark to light..... .22 each
PINK—Light and dark pink..... .22 each
WHITE—Pure white..... .22 each
PURPLE—Striking contrast with red and pink..... .22 each
LAVENDER—Lovely light and deep shades..... .22 each
VARIEGATED—Fancy varieties..... .22 each
One of each. Seven tubers in all. For only 94c.

Entire Collection of 7 Dahlias—94c

Asbury Park 42c

DEEP CORAL—(F. Dec.) Very large long, strong stems. Exceptional color of deep coral, or between flesh ochre and Japan Rose. Tubers 42c ea.

Buckeye Bride 47c

SOFT SALMON (Formal Dec.) A lovely geranium pink shading to soft salmon. Very free flowering held correctly on the stem of unusual length. The blooms keep well when cut. Tubers 75c each. Plants 47c each.

Buckeye Flame 26c

SCARLET ORANGE (I. Dec.) Beautiful scarlet orange with overcast of silver in the center. Extremely vigorous and uniform. Flowers are eight to eleven inches across. Plants 26c ea. Roots 48c each.

City of Trenton 42c

BRONZE COPPER—(F. Dec.) A very fine flower of bronzy copper and strawberry tints. Vigorous grower; long straight stems. Tubers 42c ea.

Countess of Lonsdale 29c

SALMON PINK—Iridescent shades of salmon-pink and amber. A lovely flower of great richness and appeal. Splendid type of cactus dahlia. Tubers 29c ea.

Dorothy Stone 28c

DEEP ROSE (Formal Dec.) Beautiful bright, deep rose pink. Flowers are of unusual size, 7 to 10 inches across. Tubers 85c each. Plants 28c each.

Dr. J. H. Carmen 39c

TYRIAN ROSE—(F. Dec.) Beautiful shade of deep rose which will grow as large as eleven inches. Large, strong bushes. Tubers 39c ea.

Dwight Morrow 54c

RICH RED (Formal Dec.) Deep rich red. Considered the most desirable of all red Dahlias. A vigorous grower greatly admired either in the garden or show room. Massive blooms. Tubers \$1.10 each. Plants 54c each.

McGregor's Garden Dahlia Collection \$1.49

The **GREATEST BARGAIN** ever offered in Dahlias. Six Best Dahlias in cultivation.
JANE COWL (Inf. Dec.) Huge Golden Bronze.....Tubers 42c; Plants 24c
MRS. I. D. VERE WARNER (F. Dec.) Rosaline purple.....Tubers 32c; Plants 22c
MONMOUTH CHAMPION (F. Dec.) Rich Orange Scarlet.....Tubers 49c; Plants 27c
AVALON (F. Dec.) Clear Canary Yellow.....Tubers 42c; Plants 27c
JUDGE MAREAN (F. Dec.) Red Orange-yellow; fine.....Tubers 56c; Plants 27c
HELEN IVINS (F. Dec.) Lavender—Pink; excellent.....Tubers 48c; Plants 28c

The Coll. of 6 in Tubers for \$1.97—The Coll. of 6 in Plants for \$1.49

Entire Coll. of 6 Dahlia Plants—\$1.49



Canary Bird, Campfire and Bronze Giant, Snapdragon Spikes. (One-fifth natural size.)

Rust Proof Giant Snapdragons

ANTIRRHINUMS—You can now have continuous blooming Snapdragons for your yard and cutflowers for the house, all summer.
CANARY BIRD—Beautiful yellow spikes. 18c ea., 3 for 52c. doz., \$1.65.
LOVELINESS—Brilliant flaming pink. 17c. (1c sale, 2 for 18c), doz., \$1.60.
CAMPFIRE—Lovely dark red flowers. 16c ea., 3 for 46c, doz., \$1.50.
BRONZE GIANT—Exquisite bronze. 17c ea., 3 for 48c, doz., \$1.60.
ALASKA—Pure white variety. 16c. (1c sale, 2 for 17c), doz., \$1.25.
BARGAIN OFFER—One each of above five colors, for 63c.

Vase Palm

(*Dracaena In-divisa*). A superb decorative plant with slender, drooping leaves. Often called the "Fountain Plant." Very graceful in habit; beautiful green foliage with delicate stripings of yellow and red. The favorite center plant for vase. 17c, 3 for 48c. Larger plants, 42c.



Vase Palm, 17c



St. Bernard's Lily, 24c (2 for 25c)

St. Bernard's Lily 24c

(*Anthericum*) Handsome pot and vase plant. Dark foliage with broad bands of white. White flower spikes. Propagated by divisions. Water freely when in flower. Nice plants. 24c. (1c sale, 2 for 25c.)

Bedding Salvias

BLUE SALVIA—A new color; rich bluish purple. 18c, 3 for 52c, doz., \$1.73.
WHITE SALVIA—Flowers creamy white; unusual. 17c, 3 for 48c, doz., \$1.63.
RED (Hyacinth Flowered)—Long, double spikes of rich, fiery scarlet. 19c, 3 for 54c, doz., \$1.82.



Red Flowering Salvia

Bargain Offer

One each of Red, white and Blue flowering Salvias for 47c.

SPECIAL—If you send us an order amounting to \$1.00 from this page, we will give you one beautiful African Violet, free.



Cemetery or Porch Vases

Vase Collections

COLLECTION A—Flowering and vining plants such as Geraniums, Ferns, Petunias, Dracenas, Vincas, Wandering Jew, etc. A collection of 10 plants our selection.....79c

COLLECTION B—A larger collection of 18 plants of above assortment\$1.39



Strawberry Geranium, 21c each



Trailing Vinca, 14c

Trailing Vinca

(*Variegated Periwinkle*)—14c
 A beautiful variegated trailing vine admirably adapted for hanging baskets and vases. The leaves are a glossy green, broadly margined, a creamy-white; flowers blue. 14c, 3 for 40c. Large plants, 29c ea.



Japanese Smoke Plant (Pilea)

Japanese Smoke Plant 18c

(*Pilea Muscosa*)—Beautiful, graceful copper colored foliage plant covered with small flowers which burst when watered, giving effect of a smoky vapor coming from bursting of flowers. 18c, 3 for 52c, doz., \$1.73.

African Violet 29c

(*Saintpaulia Ionantha*)—One of the most popular of all pot plants of today. The general type of growth is similar to the Cyclamen, leaves soft and hairy, the plant producing flowers of a beautiful blue and similar in appearance to our well known violets. 29c, 3 for 83c.

Scarlet Plume 21c

POT PLANT

(*Euphorbia Jacquiflora*)—An old favorite producing long, graceful sprays of bright orange-scarlet flowers. An excellent subject for the window or conservatory. 21c, 3 for 60c, doz., \$2.02.



Scarlet Plume (Euphorbia) 21c



African Violet (Saintpaulia Ionantha), 29c



Chinese Velvet Plant, 31c

Mammoth Flowering Verbenas Striking Colors

Most useful and popular plant for bedding out, affording constant bloom and a variety of colors and markings. The simplest culture and management. Preference seems to be for mixed beds of Verbenas; we offer them in endless variety unnamed. 16c ea., 3 for 46c, 6 for 86c.

Chinese Velvet Plant 31c

(*Gynura Aurantiaca*)—One of the handsomest of all the ornamental foliage plants. Leaves heavy, rich purple. Upright branching plant, stems and leaves covered with fine glistening, purple hairs, producing a soft, velvety texture. 31c ea., 3 for 88c. Larger plants 48c.

Leopard Ivy 19c

MOTTLED FOLIAGE—Small leaved, variegated hardy Ivy—similar to the English Ivy, excepting foliage being beautifully mottled. 19c ea., 3 for 54c. (1c sale, 2 for 20c.)



Mammoth Flowering Verbenas



Double Violet Lady Campbell, 24c

Double Violet 24c

LADY CAMPBELL

Double purple, similar to Marie Louise in growth and shape of flower. Good for cut-flower planting. Large, fine flowers, very fragrant. 24c ea., 3 for 68c, doz., \$2.30.



Weeping Lantana, 15c

Weeping Lantana 15c

Graceful, drooping habit, grows rapidly and blooms continually summer and winter, clusters of flowers of lilac or rosy-pink. 15c, (1c sale 2 for 16c).



Pink Wax Plant, 21c

Wax Plant 21c

(*Mesembry anthemum*)—Suitable for rock work, hanging baskets; pot plant. Bushy growth; frosted wax-like appearance. Beautiful pink flowers. 21c, 3 for 60c.

Kalanchoe Tubifolia No. 6

Long, tubular leaves. Dark green speckled brown, giving snake-like appearance. 19c ea., 3 for 54c, 6 for \$1.03.



Water Hyacinth, 21c

Water Hyacinth

(Lilac Rose Flowers)—21c Forms a lovely rosette of curious, shining green leaves and spikes of the most exquisite flowers imaginable. A valuable water plant. Fine for aquariums, dishes, pools, etc. 21c ea., 3 for 60c, doz., \$2.10.



Princess of Wales Violet

Princess of Wales Violet 21c

This variety is far ahead of any other single violet known. Flowers a true violet blue color that does not fade. The richest and most delicious fragrance. 21c ea., 3 for 60c (1c sale, 2 for 22c).



Umbrella Plant

An ornamental plant, handsome as a Palm. Widely known as a house plant, grown either in soil or water. Indispensable for aquariums or pools. 20c ea., (1c sale, 2 for 21c).



Wandering Jew, Multi-Colored

Wandering Jew

(*Tradescantia Multi-Color*)—Foliage most beautifully variegated. Useful for porch boxes, or trailing pot plant. 17c ea. (1c sale, 2 for 18c).

Green Leaf 15c

(Wandering Jew)

Green and white foliage. For hanging baskets, porch boxes, etc. 15c ea., 3 for 42c.

Watermelon Begonia 26c

(*Peperomia Variegata*)—Leaves distinctly variegated white and green, thick and waxy-like and have the appearance of frosted silver. 26c, 3 for 74c.

Trailing Velvet Plant 19c

(Carmine Flowers) (*Ruellia*)—Beautiful plant for pots, cases and baskets. Low, compact bushy growth, inclined to droop or trail. Showy velvety foliage, carmine flowers. 19c each, (1c sale, 2 for 20c).



Watermelon Begonia, 26c



Sedum Pachyphyllum 18c (No. 21.) **Fle sh y** leaves. Light green overcast with bluish-white. 18c ea., 3 for 52c.



Kleinia No. 13 (*Ficoides*) Long blue pencil shaped leaves of fleshy texture. Beautiful in Japanese Gardens. 17c ea., 3 for 49c.



Sedum Stahli (No. 4.) Bulb shaped leaves, having appearance of bronze berries. 18c.



Trailing Velvet Plant, 19c

19c EACH
Showy Carmine Flowers

New, Rare, Odd and Interesting House Plants



42c
EACH

Very
Fragrant

Cape Jasmine or Gardenia 42c

Cape Jasmine or Gardenia 42c

An old favorite of the South and now equally favored by the North. The rose-shaped flowers are pure white, measuring two and a half inches. They are very waxy in appearance and delightfully fragrant. Very attractive decorative plant and the flowers extremely fashionable for corsages. 42c ea., 3 for \$1.20.

Aloe Variegata 37c

(Tiger Aloe) A most interesting and valuable plant, making beautiful specimens. Very fleshy. Markings white and green alternating. Upright growth. Very attractive house plant. 37c ea., 3 for \$1.05.



Aloe Variegata 37c



Bird of Paradise 21c

Bird of Paradise 21c

(Poinciana Gilliesi)—An attractive pot plant. Flowers are rich golden yellow, while the incurving stamens and pistils are bright crimson. 21c ea., 3 for 60c.



Cactus No. 1, 26c ea.



Cactus No. 2
25c ea.



Cactus No. 3, 26c ea.

These
3 Cactus
for 72c



Silver Fern 28c

Silver Fern 28c

Finest house plant grown. Extremely showy. The fronds are light green with a band of silver markings through the center. Very distinct. One of the finest of its kind for decorative purposes. 28c, 3 for 80c, doz. \$2.69.



California Redwood Burl. 84c

California Redwood Burl 84c

An interesting and exceedingly beautiful novelty from California's Redwood Forest. Burls are dormant. Sends out feathery light green shoots resembling Ferns. Growth will start when placed in a shallow bowl of water. Never let burl dry out and do not put directly in hot sun. 84c, 3 for \$2.44.

McGregor's Plant Food

An odorless concentrated soluble fertilizer, recommended for ferns, house plants, etc. in sifting top cans. 35c.

Japanese Camellia \$1.59

(Japonica)—Leaves glossy green, flowers of exquisite beauty and waxy texture, from pure white to crimson. Requires shade and moisture throughout the hot season. Needs a moderate, uniform temperature. When set with flower buds care must be taken in watering. When left too dry the buds will drop. \$1.59 ea., 3 for \$4.55. Bv express only.



Beautiful Japanese Camellia, \$1.59 each

Marvelous Collection of 8 Cactus \$1.89

Cactus soil should be kept on the dry side. Sprinkle once a week; water heavily once a month in winter; twice a month in summer. Soil: Sandy loam, 3 parts, coarse sand and small amount of lime.

One each of the six Cactus illustrated for \$1.40. A wonderful collection of 8 varieties of Cactus, all different (our selection of varieties) for \$1.89.

Chinese Evergreen or Lucky Plant 31c

The Chinese Evergreen or Lucky plant is no exception to the rule. This interesting novelty can be grown easily in water or soil. Small pink flowers. Distinctive green foliage. 31c ea., 3 for 88c.



Chinese Evergreen or Lucky Plant 31c

DISTINCTLY DIFFERENT House and Garden Plants



Lady Slipper or Cypripedium, 44c

Lady Slippers 44c

CYPRIPEDIUM—The finest and most showy of our outdoor hardy orchids. Thrives in a moist, peaty soil in shade or partial shade and the flowers are extremely interesting on account of their odd shape and uncommon color and markings. Flowers are rose purple in color. 44c ea., 3 for \$1.26.

PREMIUMS

Remember that our Premium Offer more than offsets postage and packing charges. Please be good enough to include postage on your order, per postage table on page 2.



Variegated Parlor Ivy

Variegated Parlor Ivy 21c

(*Glechoma Hederacea*)—The foliage of this charming novelty is bright green, marked with pure white, and has a refreshing fragrance similar to mint. Popular for house use. 21c ea., 3 for 60c.



Hardy Fern, 28c ea., 6 varieties, \$1.50

Tricolor Foliage Plant 24c

(*Pedilanthus*)—A very pretty and most popular narrow-leaved foliage plant. Can be used very successfully as an indoor plant or for bedding and edging purposes in the summer. In winter months the light green leaves produce a pinkish border. 24c ea., 3 for 68c.

SPECIAL ATTENTION

When sending orders besides your own—from friends or neighbors—please be sure to have these separate orders written on separate sheets. This will save time in our office in copying—and help in making more prompt deliveries.



Tricolor Foliage Plant, 24c

Daphne Cneorum 74c ea.

(*Garland Flower*) — Beautiful, low-growing evergreen shrub, suitable for many purposes in the garden. Foliage glossy, dark green. Flowers lovely shade of rose-pink, borne profusely in May and again in September, exquisitely fragrant. 74c ea., 3 for \$2.10.



Pink Flowering Daphne, 74c

Arrowhead 24c

(*Nephtytis*) — Large green, arrow-shaped. Requires considerable moisture. Can be grown in just a bowl of water or can be grown in soil indoors as a foliage plant with good results. 24c ea., 3 for 68c.



Arrowhead, 24c

Hardy Ferns for Shady Places 28c

These graceful and universally popular plants are of easy culture and afford a wide range of possibilities. A shady nook, where the soil is moist and the drainage good, will prove an ideal location, especially if a liberal amount of leaf mold or woods earth is available; and better still if rocks and stumps may unite in breaking the monotony of the ground's surface. Ferns require little attention and amply repay in genuine pleasure. Strong root clumps of mixed varieties. 28c, 2 for 53c, 3 for 80c, 6 for \$1.50, 12 for \$2.69.



Strawberry Guava.

Strawberry Guava, 32c

Strawberry Guava 32c

Flowers pure white, delightfully fragrant. Fruit large, of reddish color, and of sweet and spicy flavor. A luscious tropical fruit and a charming house plant. 32c each, 3 for 90c.

Tigridia 27c

(*Shell-flower of Mexico*)—Colorful orange yellow flowers, beautifully spotted are produced in profusion for a period of two or three months. They are very effective when massed or planted with Gladiolus. 27c ea., 3 for 77c, doz., \$2.59.



(Mexican Shell Flower) Tigridia, 27c

YUCCA 32c

(*Green leaved*) Spanish Dagger or Thread Palm). Its broad sword-like foliage and tall branched spikes of fragrant drooping creamy white flowers make it an effective hardy plant for all positions. 32c ea., 3 for 90c.

(*Variegata*)—Very similar in growth and flowers to Green leaved variety, except foliage being golden striped. 36c, 3 for \$1.00. Large plants 75c ea.



Yucca or Thread Palm, 32c

Geranium and Carnation Bargains

World's Finest Double GERANIUMS Any 6 for 92c

ENCHANTRESS FIAT—New peachblossom pink, shaded to deep rose pink in center of large double floret. 27c ea., 3 for 77c, doz., \$2.59.

ALPHONSE RICARD—Brilliant orange red Florets of huge size. 21c ea., 3 for 60c, doz. \$2.02.

BEAUTE POITEVINE—A beautiful variety. Apricot with white eye. 20c ea., 3 for 57c, doz. \$1.92.

IRVINGTON BEAUTY—Rosy salmon-pink blossoms. A constant bloomer. 22c ea., 3 for 63c, doz. \$2.10.

PINK BEAUTY—Lovely light pink. Handsome velvety foliage. Exceptionally good. 21c each, 3 for 60c, 6 for \$1.13, doz., \$2.02.

MME. BUCHNER—Purest white flowers with very large florets. 19c each, 3 for 54c, doz. \$1.82.

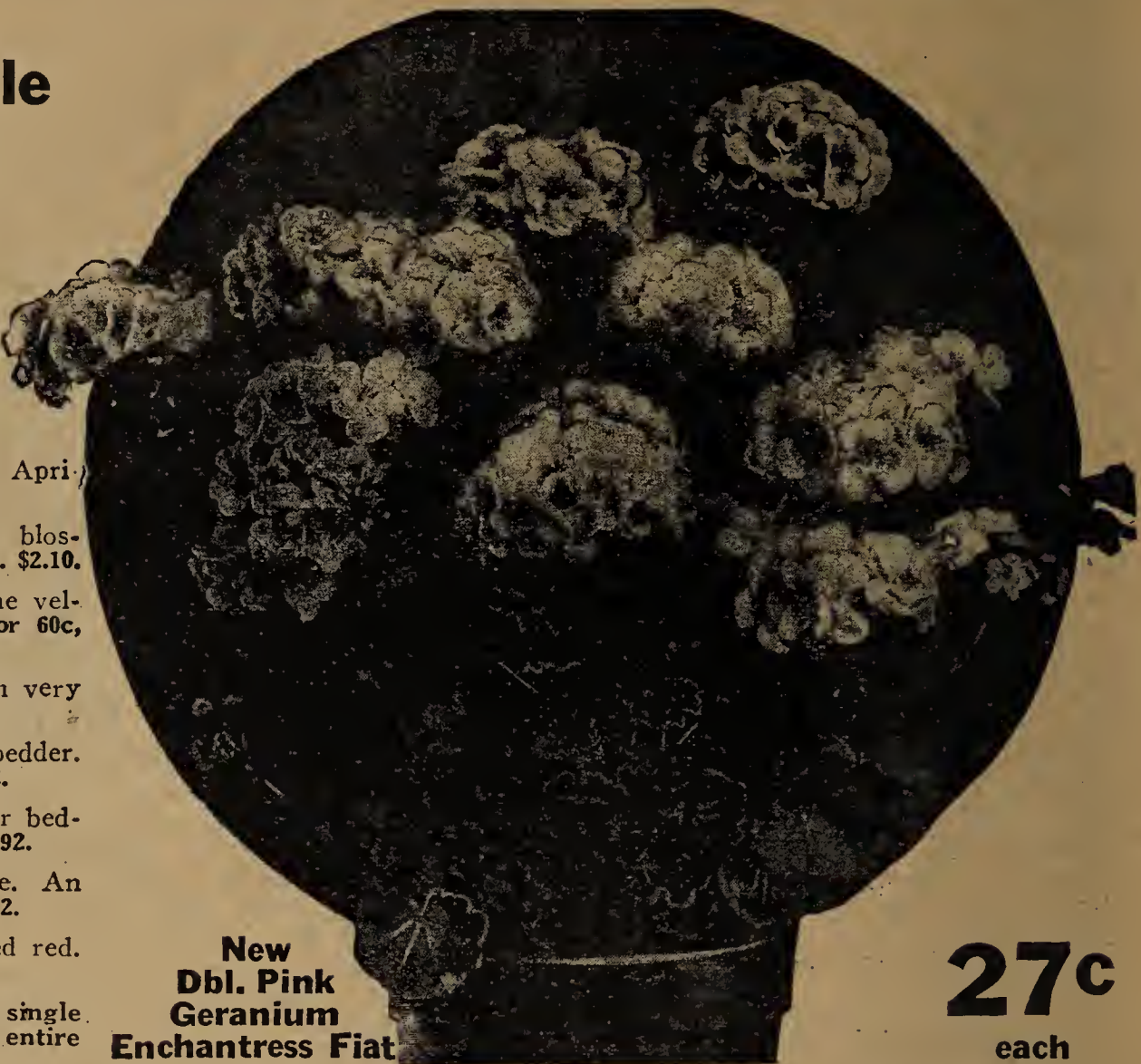
MISSOURI—Rich red. Exceptionally fine bedder. Producing mass of color. 21c, 3 for 60c, doz. \$2.02.

PINK BARNEY—Double bright pink. Fine for bedding. One of the best. 20c ea., 3 for 57c, doz. \$1.92.

RADIO RED—Bright scarlet. Very attractive. An addition to any collection. 20c, 3 for 57c, doz. \$1.92.

VIOLET BEAUTY—Rich velvety violet tinged red. Distinctive. 25c ea., 3 for 72c, doz. \$2.40.

SPECIAL—Your choice any one Geranium at single price, or any 6 Geraniums above for 92c. The entire collection of 10 for \$1.42.



New
Dbl. Pink
Geranium
Enchantress Fiat

27c
each

The Wonder Flower 28c Crimson King Carnation

(Hardy) Blooms All Summer—Everybody has asked for a Carnation that would live out in the garden during the winter. Here is the best hardy, large flowering carnation ever introduced. Foliage dark olive-green. This plant will stand the Canadian winter in the yard. The stout stems support flowers in great profusion. It blooms all summer long, never a day that you cannot cut blossoms. The color is a rich crimson. The fragrance is delicious. Price for plants to bloom this summer. 28c, 3 for 80c, doz. \$2.69.

Double Fringed—Sweet Scented Hardy Garden Pinks

GLADYS GANFIELD—Large fringed pink, tinted lavender, crimson center. Wonderful for cutting. 18c ea., 3 for 52c, doz. \$1.73.

HER MAJESTY—New double white; plant of strong growth, unusually free blooming. 18c ea., 3 for 52c, doz. \$1.73.

ABBOTSFORD—Rose-red, dark center; of strong growth, unusually free blooming. 17c ea., 3 for 48c, doz. \$1.63.

SPRINGFIELD—Light lavender-pink, finely formed flowers, sweet scented. Very popular. 19c ea., 3 for 54c, doz. \$1.82.

SPECIAL OFFER—1 each of above 4 Hardy Garden Pinks for 63c.

New Double Hardy Grenadine Carnations

A very important introduction in Hardy Carnations. Large, long stemmed, deliciously clove-scented blooms. Splendid for bedding and for cut-flowers. Extremely free flowering and will grow well anywhere.

BLACK KNIGHT—The double deep velvety maroon blooms are very effective. 24c each, 3 for 68c, doz. \$2.30.

BRILLIANT ROSE—Brilliant shade of rose-pink. Choice variety. 24c each, 3 for 68c, doz. \$2.30.

GLISTENING WHITE—Shining snow-white. Abundant bloomer. 22c each, 3 for 63c, doz. \$2.10.

GOLDEN YELLOW—A selected composition of precious varieties of indescribable beauty in yellow colorings. 24c each, 3 for 68c, doz. \$2.30.

SPECIAL OFFER—1 each of above 4 Grenadine Carnations for 62c.



Hardy Grenadine Carnation—
Brilliant Rose—24c



Velvety crimson hardy Carnation, Crimson King, 28c



Beautiful double flowering pink Bedding Geranium—Fiat 20c

McGregor's Large Flowering Double Geraniums

FIAT—Flowers are an intense salmon pink. A good grower and always in demand. 20c, 3 for 57c, doz. \$1.92.
JEAN OBERLE—Peach pink shading to almost pure white at edge of petals. Abundant bloomer. 18c, 3 for 52c, doz. \$1.73.
MADAM LANDRY—Flowers soft salmon pink. A strong grower. Blooms very double. Highly recommended. 19c, 3 for 54c, doz. \$1.82.
MRS. LAWRENCE—The popular "Salmon" Geranium. Soft salmon rose; flowers of immense size; free blooming and bushy. 26c; 3 for 74c.
S. A. NUTT—A most unusual shade for a Geranium, rich crimson-maroon with extra good foliage making a novelty and a great favorite. Giant flower heads finely formed and constant blooming. 19c ea., 3 for 54c.
ANNA BROWN—Rich red flowers. Exceedingly popular as a bedder. Profuse bloomer. Strong grower. 24c, 3 for 68c, doz. \$2.30.
MME. RECAMIER—Double snow-white. Large florets. Strong and vigorous. Finest bedder we have. 20c, 3 for 57c, doz. \$1.92.
MARQUIS DE CASTELAINE—Beautiful shade of rosy scarlet. One of the best new sorts. 19c, 3 for 54c, doz. \$1.82.



Ger. Mrs. Pollock 29c
Fancy Single Geraniums
MRS. POLLOCK—Golden Tricolor foliage, flowers orange red. 29c, 3 for 83c, doz. \$2.78.

Bronze Bedder
 Foliage yellowish green with a broad zone of a deep chestnut brown, scarlet blossoms. 25c, 3 for 72c.



Ger. Oak Leaf 19c
GER. OAK LEAF
 Deep green, oak shaped leaves with chocolate center; strongly scented walnut. Flowers bright pink. 19c, 3 for 54c.

Sweet Scented Geraniums

The scented and cut leaved geraniums embrace those which are grown chiefly for their foliage, although all varieties are of good flowering qualities, also of easy Culture. Require a fairly heavy soil rather than too light or too rich.



Ger. Skeleton Leaved 17c
SKELETON LEAVED GERANIUM—Deeply cut foliage, strong growing, rose scented. One of the best. 17c each, 3 for 48c.

NUTMEG
 Light green leaves with fine cut edges. Nutmeg fragrance. Pinkish flowers; red stripe. 19c, 3 for 54c.
CUT-LEAF ROSE—(Dr. Livingston.) Strongly rose scented foliage. The most popular of all the sweet-scented Geraniums. 16c, 3 for 46c.



Ger. Happy Thought

BALM

A variety with rather soft thick leaves, particularly good grower with foliage strongly lemon scented. Flowers light lilac. An old variety but a good one. 18c ea., 3 for 52c.



Balm Geranium, 18c

Silver-Leaved S. A. Nutt

Foliage distinctly edged with white. Strong growing; flowers large, in fine trusses, free bloomer. Brilliant crimson-scarlet. 26c ea.; 3 for 74c.



Ger. Silver Leaved S. A. Nutt 26c



variegated Leaved Sweet Scented Geranium, Lady Plymouth, 25c

SWEET SCENTED GERANIUM LADY PLYMOUTH—Very similar to cut-leaf rose variety in fragrance (rose scented), but the deeply cut green foliage has beautiful white margin. Pink flowers. 25c, 3 for 72c.



New Cactus Geranium 33c

(Poinsettia Geranium)—Unique and strikingly beautiful. Blooms curled and twisted similar to the Cactus Dahlia. Flowers scarlet crimson. 33c ea.; 3 for 88c.

Tri-Color Geranium 27c

HAPPY THOUGHT—A Tricolor Geranium with a very dark green foliage, having a light creamy, almost white edge and a white center. Flowers bright scarlet. A rapid grower, and a free bloomer. 27c ea., 3 for 77c.

New Apple Scented Geranium 24c

Scented Geranium. Velvety texture to the leaf and very fragrant. 24c, 3 for 68c.



Apple Scented Geranium, 24c

Trailing Ivy Geraniums

CAESAR FRANC—Magnificent shade of soft rich crimson, soft rose at the base of petals. 25c ea., 3 for 72c.
ALLIANCE—Delicate lilac-white, upper petals feathered and blotched crimson-rose. 22c ea., 3 for 63c.
SOUV. CHAS. TURNER—Deep bright pink, upper petals feathered maroon. 21c ea., 3 for 60c.



Ivy Geranium Caesar Franc, 25c

Summer Flowering Bulbs



Fancy Leaved Caladiums, 42c
Fancy Leaved Caladium 42c

Multi Colored Foliage—Ornamental, gorgeous colorings. Especially valuable for indoor and outdoor culture. Charming conservatory plant. 42c, 3 for \$1.20, doz., \$4.04.

Red Spider Lily 32c

Brick red flowers appear in fall, rising from the ground 10 inches high, bearing 4 or 5 flowers, with six petals each an inch long. 32c, 3 for 90c, doz., \$3.07.



Red Spider Lily, 32c

Giant Amaryllis Hybrids 48c

Wonderful Colors—These flowering plants are produced from crossings of the finest named varieties. Flowers vary from pure white to deepest crimson with beautiful combinations in stripes and variegation. 48c, 3 for \$1.37, doz., \$4.60.



Gloxinias, Mixed, 29c



Amaryllis Hybrids, 48c



Milk and Wine Lily (Crinum) 29c
Milk and Wine Lily 29c

Unusual house plant. Usually two flower stalks from each bulb, bearing a cluster of fragrant, lily-like flowers. White, banded wine-red. 29c, 3 for 83c, doz., \$2.78. Larger bulbs, 42c ea., 3 for \$1.20.

Gloxinias 29c

Hand-some, round, hairy leaves, and quantities of flowers in many shades. Mixed colors only. Plants 29c ea., Bulbs 49c ea.



Giant White Calla, 18c

White Calla 18c

Very bushy, having doubly as many leaves and flowers as the old White Calla. The blooms are of snowy whiteness. 18c ea., 3 for 52c; doz., \$1.73. Creamy White Flowers, 18c ea.



Mammoth Lily of the Valley

Mammoth Lily-of-the-Valley

MAMMOTH 12c
FLOWERING—

Exquisite little, hardy plant of which one never tires. Will thrive in any soil and do well in shady places where many other plants fail. Delightfully scented little white bells. 12c ea., 3 for 34c, 6 for 65c.



Mexican Scarlet Lily, 32c
Scarlet Mexican Lily 32c

(Amaryllis Formoissima)—Flowers dark velvety scarlet, shading to maroon, having a satiny white stripe in center of each petal. 32c each; 3 for 81c.



Double Tuberose
Tuberoses 10c
FRAGRANT DOUBLE
—Attain a height of 2 feet. Double flowers, glistening white, deliciously fragrant. 10c ea., 3 for 25c.



Angel's Lily (Ismene) 38c

Angel's Lily 38c
WHITE FLOWERS — (Ismene) — Summer and winter flowering. Produces giant Amaryllis-like pure white fragrant blossoms. 38c ea., 3 for \$1.08.



42c
each

Yellow Calla (Elliottiana) 42c

Yellow Calla 42c

(Elliottiana)—The flowers are a rich, deep, orange yellow which last a long time. Blooms large, leaves are spotted with white. Easily grown, prefers a rich soil. 42c ea., 3 for \$1.20, doz., \$4.00.

Hyacinthus Candicans 21c

Flowers white in handsome, pendulous bells arranged on pyramidal spikes. A strong bulb will give from thirty to fifty flowers. 21c ea., 3 for 60c.

Fragrant Regal Lily 24c

Flowers snow-white, tinted blush with shades of canary yellow. Blooms July and August; may be forced as a house plant. Perfectly hardy. 24c ea., 3 for 68c, doz., \$2.30. (1c sale, 2 for 25c.) Larger bulbs 38c.



Fragrant Regal Lily, 24c, 38c.

HARDY CLIMBING Plants & Vines

Read all pages carefully for our 1c Sale **Bargains** Offered throughout this Catalogue



Large Flowering Clematis

RED CLEMATIS MD. ED. ANDRE—A standard red Clematis. Largest size. 73c ea., 3 for \$2.09.

WHITE CLEMATIS HENRYII—Large, creamy-white flowers, strong growing. 72c ea., 3 for \$2.07.

BLUE CLEMATIS JACKMANII—The best known variety, large velvety violet-purple flowers. 74c ea., 3 for \$2.10.

Hardy White Wistaria 30c

A profusion of pure white, strongly scented flowers in large clusters. 30c, 3 for 85c; large budded plants 98c ea.

Ornamental Bittersweet Vine 26c

(*Celastrus Scandens*)—This vigorous vine produces rich orange berries that are fine for winter decoration. 26c ea., 3 for 74c, doz. \$2.50.

Blue & White Large Flw. Clematis

Kudzu Vine 23c

An exceedingly hardy rapid grower. Flowers are rich purple. 1 yr. plants 23c ea., 3 for 65c. Larger 35c ea.



Rapid Climbing Kudzu Vine



Popular Purple Wistaria, 32c
Wistaria 32c

Hardy Purple — Vigorous vine, rich violet-blue flowers. Very fragrant. 1-yr. plants 32c, 3 for 90c; large budded plants 98c.

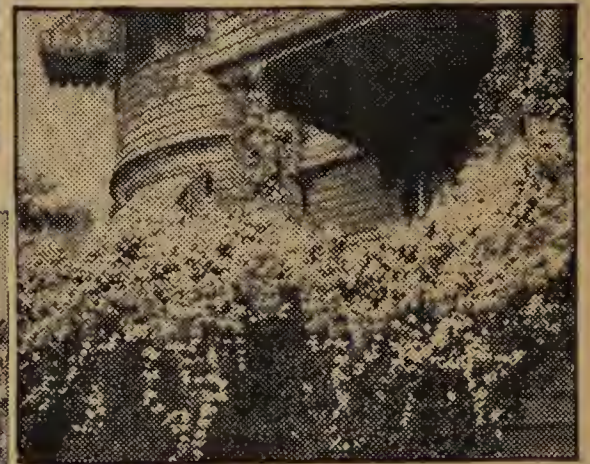


Bittersweet Vine, 26c



Hardy English Ivy
Hardy English Ivy 18c

(*Hedera Helix*)—Beautifully foliaged dark evergreen vine for shady locations. 18c ea., (1c sale 2 for 19c); larger plants 35c.



Popular Clematis Paniculata, 23c

Clematis Paniculata 23c

Most satisfactory climbing flowering plant, strong, rapid growth, cheerful green foliage. Creamy flowers in great profusion, very fragrant. 23c, 3 for 65c; Larger plants 50c.

CLIMBING Hydrangea 38c

(*Schizopragama*)—Strong vigorous vine, often growing 30 feet. Bright round leaves, flowers similar to hydrangeas. Thrives best in a shady location. 38c ea., 3 for \$1.08.

Boston Ivy 18c

Most popular hardy climbing plant for brick or stone walls, buildings, etc. Clings to smoothest surfaces. Strong plants 18c ea., 3 for 52c, doz., \$1.73; (1c sale 2 for 19c). Larger 35c.



Climbing Vine (Boston Ivy), 18c

Sweet Scented Honeysuckles

SCARLET TRUMPET—Coral or red colored flowers. Very showy. 22c, 3 for 63c.

EVERGREEN—Purplish evergreen foliage. Flowers white changing yellow, sweetly scented. 21c, 3 for 60c. (1c sale 2 for 22c).

GOLDEN LEAVED—White flowers, leaves beautifully netted yellow. 18c, 3 for 52c. (1c sale 2 for 19c).



Scarlet Honeysuckle, 22c



Mountain Rose, 23c

Mountain Rose 23c

(*Antigonon*) — Beautiful rose-colored flowers in racemes 2 ft. long. Resembles roses at a distance. Rapid grower; best in the south. 23c each.



Hardy Climbing Sweet Peas

PINK BEAUTY — Bright pink, quite popular. 19c each.
CRIMSON KING — Crimson-red flowers. 22c each.
WHITE PEARL — Pure white. Blooms entire summer. 21c each, 3 for 60c.
SPECIAL OFFER—One each of above Sweet Peas. 57c.

McGregor's Hardy Garden Perennials



Hardy Alyssum Saxatile, 18c

Hardy Alyssum GOLDENTUFT

(Saxatile Compactum)—18c
An excellent perennial. Masses of bright yellow flowers. Useful as a border and rockery plant. 18c ea., (1c sale, 2 for 19c).

Anthemis 20c

KELWAYI

(Golden Marguerite) — Golden yellow daisy-like flowers, excellent for cutting. Bloom all summer. 20c ea., (1c sale, 2 for 21c).



Alaska Shasta Daisy, 18c

Shasta Daisy 18c

ALASKA—Flowers pure white with gold centers. Fine cut foliage. 18c ea., (1c sale, 2 for 19c).

Hesperis 19c

SWEET ROCKET

Spikes of showy white lilac and purple flowers, very fragrant. 19c ea., 3 for 54c (1c sale, 2 for 20c).



Cup and Saucer Campanula (Calycanthema), 27c

HARDY PERENNIALS are those plants which die down in winter but start again in the spring from the roots, lasting many years and flowering every year. Never before have they been so popular. Beginning in April and lasting until autumn this family of plants produces a constant changing variety of flowers. Perennials are useful for many purposes; rockeries, borders, banks, terraces, edging and cemetery planting, and are valuable for cut flowers for the home.

Centaurea Montana, 20c

(Violet Blue Cornflower)—Beautiful border plant. 2 ft. flowers large violet blue. July to Sept. 20c ea., 3 for 57c.



Achillea, The Pearl, 19c

Achillea, Pearl 19c

(Cemetery Plant) — Flowers pure white, double, in large sprays, fine for cemetery. 19c ea., 3 for 54c.

Golden Glow 23c

RUDBECKIA

A hardy perennial growing 8 ft. high. Exquisite double blossoms of brightest golden color as large as Cactus Dahlias. 23c each, (1c sale, 2 for 24c).



Golden Glow (Rudbeckia)

Bleeding Heart 22c

(Dielytra Spectabilis)—Graceful drooping sprays of heart shaped pink and white combination flowers. An old fashioned garden favorite, and one of the most charming hardy perennials of easy cultivation. 22c each, 3 for 63c, doz. \$2.10; larger plants 48c ea.



Bleeding Heart (Dielytra), 22c

Plumy Bleeding Heart

A more dwarf variety than the older sort. Perfectly hardy, pink flowers, very desirable. 25c, 2 for 49c.

Chinese Bell Flower (Platycodon)

WHITE SHOWY FLOWERS—clear white, veined dark blue. 22c, 3 for 63c, doz., \$1.95.
BLUE—Rich brilliant blue. 23c, 3 for 65c, doz., \$1.98.

Cardinal Flower

LONG SPIKES. 27c, 3 for 77c, doz., \$2.40.

Lobelia (Cardinalis) — Rich, fiery cardinal flowers, 10 to 18 spikes 24 to 30 inches long. Most attractive. 27c each; 3 for 77c; doz., \$2.40.

Sweet Lavender

(Statice Latifolia)—Leathery leaves, purplish blue flowers on stems, 6 to 12 inches, July and August. Fine for pot plants and rock garden. 23c, 3 for 63c; 12 for \$1.98.

Campanula 27c

(Calycanthema) (Cup and Saucer)—The best and possibly the most widely cultivated variety of all. Your choice of Blue, Rose and White. 27c ea., 3 for 77c, doz., \$2.59.



Artemisia, Silver King, 20c

Artemisia 20c

SILVER KING

A hardy plant of rare and indescribable beauty; bright finely cut silvery foliage. When cut the foliage can be carried dry indefinitely. 20c each, 3 for 57c.

Aquilegia 20c

(Long Spurred Columbines)—A fine strain in mixed colors, covering shades of pink, lavender, white, yellow and red. A long time favorite. Fine for cutting. 20c each, 3 for 57c, doz., \$1.92.



Long Spurred Aquilegia, 20c

Geum 17c

(Coccineum) — Mrs. Bradshaw. Attractive double fiery-red blooms. 17c ea., 3 for 48c.

(Lady Stratheden) — New. Rich golden yellow flowers. 17c.



Cut-flower Coreopsis

Coreopsis 20c

(Lanceolata Grandiflora)—Showy perennial with light green, finely cut foliage, and flowers on long, wiry stems, in all shades of yellow, red and brown. 20c ea. (1c sale, 2 for 21c).

Blackberry Lily 24c

SPOTTED FLOWERS

(Belemcada Iridacea)—Has shining, black roundish seeds which give it the name of "Blackberry Lily," also called the "Leopard Flower." Orange, spotted red flowers. 24c, 3 for 68c, doz., \$2.30.



Blackberry Lily, 24c

(34) **MERTENSIA** (Blue Bell)—Beautiful early spring plant. Lt. blue flowers, fading to clear pink. 27c ea.

BARGAINS — Hardy PERENNIALS



Flag Iris-Fleur-de-Lis

Abbreviations: S—Standards, meaning upper petals.
F—Falls or lower petals.

LADY JANE—F. Sky blue. S. Lovely lavender. 17c ea. (1c sale, 2 for 18c).
LORELI—S. Light yellow. F. Ultramarine, bordered cream. 17c ea., (1c sale, 2 for 18c).
MME. CHEREAU—S. and F. clear blue. Beautiful. 16c ea., (1c sale, 2 for 17c).
PALLIDA DALMATICA—S. Silvery lavender; F. lavender with rosy tinge. 17c ea. (1c sale, 2 for 18c).

VIOLACEA GRANDIFLORA—S. Rich blue. F. violet blue. 24c ea.
MRS. NEUBONNER—Dark golden yellow. An unusual shade. 18c ea., (1c sale, 2 for 19c).
JACQUESIANA—Falls velvety reddish violet. 17c ea.



Gypsophila 42c BRISTOL FAIRY—

Flowers double, snow white, two or three times the size of *Paniculata*. Fine sprays from June until frost. 42c ea., 3 for \$1.13, doz., \$3.90.

Flag Iris, Lady Jane, 17c
QUEEN MARY—S. Sky blue. F. lavender blue. 16c ea. (1c sale, 2 for 17c).
SHEKINAH—F. Pale yellow. S. Amber. 17c ea., (1c sale, 2 for 18c).
WALHALA—S. lavender blue; F. violet purple. 17c (1c sale, 2 for 18c).



Dbl. English Daisy (Bellis), 19c



(*Funkia Variegata*) Hardy. 18 to 24 inches, blooms June to Sept., purple flowers. 26c, 3 for 74c, (1c sale 2 for 27c).

All-Color Iris Bed 68c

A bed of 8 wonderful varieties, white to dark purple. 8 plants (our selection), 68c; extra large bed, 25 plants \$1.62.

Variegated Day Lily 26c



Coral Bells (Heuchera)

Fairy Flowers or Coral Bells 24c

(*Heuchera Sanguinea*) — Blooms June to September. Flowers bright crimson, free flowering. Foliage similar to that of a Geranium. 24c each, 3 for 68c.

Daisy, Dbl. English 19c

(*Bellis Perennis*) — Charming perennial of dwarf, compact growth, growing about 6 in. high.
Red-dbl. Flowers 19c
Pink-dbl. Flowers. 19c
White-dbl. Flowers. 19c
19c ea., 3 for 54c, doz. \$1.82.



Rudbeckia (Cone Flower), 20c

Rudbeckia 20c

PURPLE CONE FLOWER — (*Purpurea*) — Flowers reddish purple, large cone-shaped brown center. 20c ea., 3 for 57c.

African Daisy, 23c

(*Gerbera Jamesoni*) — This Daisy from the Transvaal has been extensively featured by the florists as a cut flower. Single daisy-like flowers varying in color from blush white and salmon pink to brilliant scarlet which we can supply only in mixture. 23c; 3 for 65c.



African Daisy (Gerbera)

Double Hollyhocks 21c

The old-fashioned Hollyhocks, still hold a prominent place in American gardens. The double flowers on tall, stately stalks resemble Roses at a distance and come in separate colors of Crimson, Yellow, White, Pink and Maroon. Any variety 21c ea., 3 for 60c, doz., \$2.02.



Dbl. Hollyhocks

Gypsophila 23c

BABY'S BREATH — (*Paniculata F. Plena*)—3 to 3½ feet. Pure white single flowers. 23c ea., 3 for 63c, doz., \$2.20.

Digitalis, Foxglove 20c

Striking bell shaped blooms. Grow 2 to 3 ft. high. Choice perennial, white rose, pink, yellow and purple flowers. No plant more worthy of a place in every garden than the showy Foxglove. 20c ea., 3 for 57c, doz., \$1.92.



Digitalis, Foxglove, 20c

Hardy Japanese Anemones

WHIRLWIND — Blooms from August until frost. Large silvery white blooms, 27c ea.
HUPEHENSIS — 12 to 14 inches high. Blooms in August until late autumn. Mauve-rose. 25c ea.
JAPONICA — Beautiful shades of pink with large open flowers. Blooms from September to mid-November. 23c ea.

Delphiniums 28c

WREXHAM HYBRIDS—The newest and most improved strain strong vigorous growth, flowers of largest size on immense spikes from palest lavender to the richest blue. 28c ea., 3 for 80c, 6 for \$1.50, doz. \$2.69.

GOLD MEDAL HYBRIDS—Flowers of huge size in both single and double forms. Colors range from palest blue to deep blue and royal purple. 26c ea., 3 for 74c, doz., \$2.50.

BELLADONNA HYBRIDS—Light blue shades predominate in these hybrids. 26c ea., 3 for 74c, doz., \$2.50.



Delphinium Gold Medal Hybrids

Blue Forget-Me-Not 20c

(*Myosotis*)—Should be placed in a shady, moist location. Hardy if given slight protection through winter. Of comparatively dwarf growth. Flowers light blue. 20c ea. (1c sale, 2 for 21c).

VIOLAS 18c Tufted Pansy

Hardy Pansies that bloom from May until October. Splendid for border or garden. Colors, yellow, white and blue, mixed. Price, 18c each; 3 for 40c; 12 for \$1.00.



Blue Forget-Me-Not, 20c

HARDY PERENNIALS

Large Flowering Showy Peonies

BUNKER HILL—Bright, wine red. 63c ea., 2 for 95c
FESTIVA MAXIMA—Early. Pure white carmine touched center. 42c ea., 2 for 63c.
GOLDEN HARVEST—Flowers creamy-pink. Delicate fragrance. Mid-season. 39c ea., 2 for 59c.
LA TULIP—Midseason. Blush white, red markings. 47c ea., 2 for 61c.
L'ECLANTANTE—Midseason. Double brilliant crimson flowers. 44c ea., 2 for 66c.
LOUIS VAN HOUTTE—Dazzling red, silver tipped. Midseason. Fragrant. 47c ea., 2 for 61c.
MARIE STUART—Midseason. Delicate lavender. 52c ea., 2 for 78c.
MESSONIER—Brilliant crimson flowers. 38c ea., 2 for 57c.
MONS JULES ELIE—Midseason. Mauve pink. 47c ea., 2 for 61c.
MARGUERITE GERARD—Delicate pink. Midseason. 39c ea., 2 for 59c.
MME. DE VATRY—Sulphur-white, striped carmine. Large. Midseason. 39c ea., 2 for 59c.



Large Flowering Peonies, Marguerite Gerard, (1/8 Size)

Achillea 24c

Filipendulina (Fern leaved Yarrow) Dense heads; showy golden yellow flowers. 24c ea., 3 for 68c.

Rock Cress 23c

(Arabis) fl. pl. Most desirable of early spring flowering plants. Lovely double white blooms. 23c ea., 3 for 65c.

Sea Pink 27c

(Armeria) Attractive dwarf plants. Bright green foliage; rosy-red blooms. 27c ea., 3 for 77c.

Leopard's Bane 26c

(Doronicum)—A splendid plant singly or in mass. Large bright yellow daisy-like flowers. 26c ea., 3 for 74c.

Evergreen Bittersweet 28c

Euonymus Kewensis—Grows close to ground. Valuable for shady place or rock garden. One of the best for ground covering. 28c ea., 3 for 80c.



Oriental Poppies

Hardy Oriental Poppies 23c

RED—Fiery scarlet with deep blotch at the base of petals. Flowers five inches in diameter. 23c ea., 3 for 65c.
PINK (Mrs. Perry)—Apricot pink, conspicuously blotched crimson. 27c ea., 3 for 77c.

PHILOMELE—Midseason. Anemone type. Cream colored, violet-rose tints. 37c ea., 2 for 56c.

PRINCESS BEATRICE—Sea-shell pink. Midseason. 44c ea., 2 for 66c.

QUEEN VICTORIA—Large, deep pink. 41c ea., 2 for 62c.

SPECIAL OFFER—For those who do not care for the most expensive fancy named Peonies, we offer red, white and pink varieties, 4 for 62c.



Scotch Heather

Scotch Heather

Calluna Vulgaris—79c
 Low and compact, densely covered with minute green leaves. Pink flowers in great profusion. 79c ea., 3 for \$2.26.



Alpine Poppy

Alpine Poppy 19c

(Alpinum) Charming miniature poppy producing showy flowers in pastel shades of pink, yellow, apricot, orange and white. Mixed 19c ea., 3 for 54c.



Lemon Lily

Lemon Lily 23c

Hemerocallis Flava
 Narrow, grass-like foliage. Bright clear yellow lily-shaped flowers. Very fragrant. 23c ea., 3 for 65c.



Chinese Lantern Plant, 21c

Linum 20c

Scarlet Flax (Ruborum)—Desirable perennial; fine foliage. Scarlet-crimson flowers. 20c ea., 3 for 57c.

Alpinum—Airy, delicate blue flowers, on graceful arching stems. Excellent. 21c ea., 3 for 60c.

New Double Pyrethrum

ORIENTAL DAISIES

Double Carmine, 33c
 Beautiful pink flowers, extremely free blooming. 33c ea., 3 for 94c, doz., \$3.17.

Physalis

CHINESE LANTERN PLANT

Grows from 1 to 2 ft. high. Produces balloon-like husks, which turn bright red when ripe, and resemble Chinese lanterns. 21c ea., 3 for 60c.

Hardy Primrose

POLYANTHUS

(Veris Hybrids) Flower spikes are from 6 to 8 inches long. The individual flowers are large and are of purest white, yellow, orange and crimson. 25c ea., 3 for 72c.



Brilliant Scarlet Flax, 20c



New Double (Pyrethrum), 33c



Gaillardia Grandiflora

Gaillardia Grandiflora

BLANKET FLOWER

Grows 24 inches high, plant in sun or shade. Blooms June to November. Flowers brownish red. 20c ea., (1c sale, 2 for 21c).



Hardy Hen and Chickens

Hardy Hen and Chickens

SEMPERVIIVUM
 Leaves forming perfect rosettes and used effectively for edging or rockeries. Three distinct varieties. 17c ea., 3 for 48c.



Giant Hardy Primrose (Mixed Colors)

(36) "Considering your prices, there is no reason why one should not have pretty plants." Mrs. B., Miss.

BARGAINS—Hardy PERENNIALS



Hardy Pink Tunica, 23c

Tunica Saxifraga 23c

Pretty tufted plant with light pink flowers. Useful for the rockery. 23c.

Hardy Garden Phlox

B. COMPTE—Brilliant French purple. 21c ea., 3 for 60c.

BRIDESMAID—Pure white, carmine center. 20c ea., 3 for 57c.

COUQUELICOT—Brightest of reds. Fine. 21c ea., 3 for 60c, doz. \$2.02.

ECLAIREUR—Beautiful clear rose. Magnificent. 21c ea., 3 for 60c.

ETHEL PRITCHARD—Delightful French-mauve color. 20c ea., 3 for 57c.

FERDINAND CORTEZ—Strong grower, brilliant coppery-red flowers. 20c ea., 3 for 57c.

FIREBRAND—Brilliant orange-scarlet. 21c ea., 3 for 60c.

LA VOGUE—Mauve, carmine eye; large. 20c ea., 3 for 57c.

SPECIAL OFFER—6 Hardy Phlox of our selection, 62c.

MISS LINGARD—Favorite white; early; first class. 23c ea., 3 for 65c.

MRS. CHAS. DORR—Beautiful lavender. Favorite. 19c ea., 3 for 54c.

MRS. JENKINS—Pure white flowers. Free bloomer. 20c ea., 3 for 54c.

PAINTED LADY—Silver pink, salmon tints, red eye. 20c ea., 3 for 54c.

RIVERTON JEWEL—Salmon pink; dark crimson eye. Handsome. 20c ea., 3 for 57c.

R. P. STRUTHERS—Rosy-carmine with a claret-red eye. 22c; 3 for 60c; doz. \$2.00.

SEBOLDII—Orange-scarlet, crimson center. 20c ea., 3 for 57c.

THOR—Deep salmon-pink, overlaid with scarlet glow. Small red eye. 21c ea., 3 for 60c.



Hardy Phlox, Bridesmaid and Sebaldii, 20c each

Rose-Campion 22c

(*Agrostemma Coronaria*)

Strong, growing plant; showy flowers; bright rosy crimson, which are produced during June and July. 2½ to 3 ft. 22c each; 3 for 63c; per dozen, \$1.95.



False Dragonhead (Physostegia) 20c

False Dragon-head 20c

(*Physostegia Virginica*)—Long spikes of pink heather like flowers. Brilliant in coloring. 20c, 3 for 57c, doz. \$1.92.

Phlox Subulata

(Vivid)—Bright pink with red eye. 30c, 3 for 82c. (Alba)—(White)—Pure white flowers. 26c, 3 for 79c.

Veronica 20c

Bright blue flowers on long spikes all summer and fall. 20c, 3 for 57c.

Hardy Everblooming Sweet Williams 19c

DIANTHUS BARBATUS

Any variety, 19c ea., 3 for 54c, doz. \$1.82.

SCARLET BEAUTY—Bright scarlet flowers, remarkable coloring.

PINK BEAUTY—Beautiful salmon pink flowers.

GIANT WHITE—Large flowers, pure white, effective as Phlox.

KING OF MAROONS—Dazzling velvety maroon flowers.



Pink & Scarlet Sweet Williams, 19c each.



Moss Pink, (Phlox Subulata), 22c

Moss Pink 22c

(*Phlox Subulata*)—Early spring flowering, evergreen foliage. Flowers bright rose. 22c ea., 3 for 63c, doz., \$2.20.

Hardy Garden Verbena

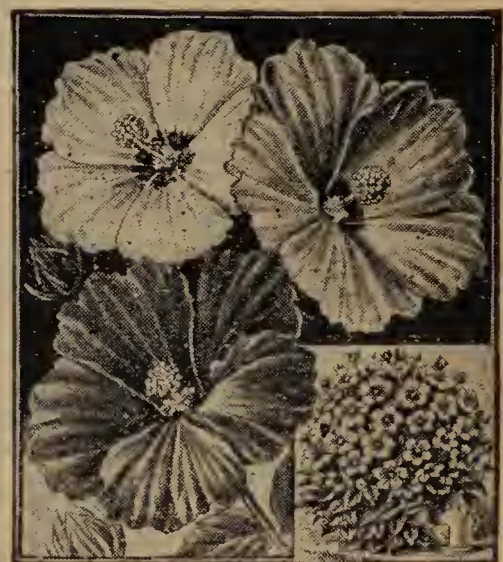
Here is a hardy Verbena. Much like the bedding variety slightly different foliage, purplish heliotrope flowers. Strong growing, free flowering. 22c each (1c sale, 2 for 23c).

Hardy Bush Plumbago 24c

Lady Larpent—Grows compact, and from July until severe frost is covered with lovely, rich violet-blue flowers. 24c (1c sale, 2 for 25c).



Hardy Bush Plumbago, 24c



Hardy Hibiscus (Mallows)

Giant Hibiscus, Mallows

WHITE—Tall, free-flowering, color white, deep crimson center. 20c, 3 for 57c, doz., \$1.92.

PINK—Flower, clear even pink. 21c, 3 for 60c, doz., \$2.02.

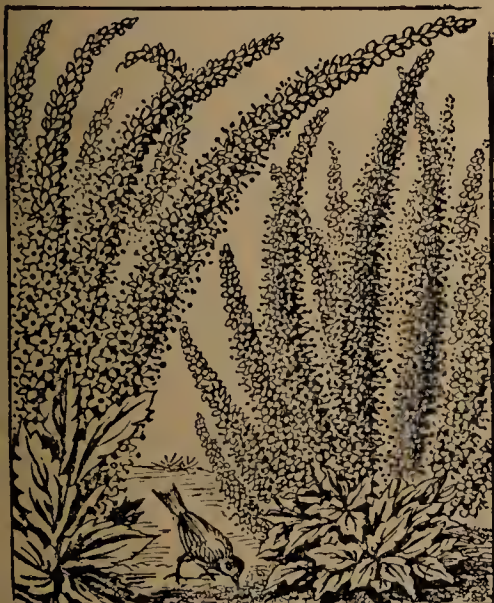
CRIMSON—New and distinct. Immense striking deep crimson flowers. 23c, 3 for 65c, doz., \$2.20.

Red Hot Poker Plant 26c

(*Tritoma Pfitzerii*)—A native of Africa. The tall spikes of showy flaming, orange-red flowers give the plant the name of Red Hot Poker. Blooms from July to October. 26c, 3 for 74c. Larger size, 40c each.



Tritoma (Red Hot Poker), 26c



Japanese Speedwell or Blue Flowering Veronica, 20c



Hardy Blue Salvia, 20c

Hardy Blue Salvia 20c

(*Farinacea*)—Striking blue flowers, a welcome addition to any border. 20c, 3 for 57c, doz. \$1.92.



Sedum Spectabile, 21c

Live Forever 21c

(*Sedum Spectabile*)—Showiest Stonecrop. Grows anywhere. Pink flowers produced abundantly in flat clusters. Leaves thick and leathery. 21c, (1c sale, 2 for 22c).

First-Class Hardy Flowering Shrubs

All shrubs on pages 38, 39, & 40 are shipped, and should be shipped in dormant condition. They remain in this condition or state, until along in May. Therefore, they should be purchased before May 15th. If purchased after that date, orders will be held for fall delivery and sent after the first frost.

White Flowering Almond 24c

(*Prunus Sinensis Albalena*)—Same as pink variety in growth and habit, but bearing white flowers. They should be planted together to give a showy effect. 24c, 3 for 68c. Larger plants 69c



Pink Flowering Almond 26c

Flowering Almond 26c

PINK (*Prunus Sinensis*)—One of the first shrubs to bloom in the spring, gaily in full bloom before the leaves appear, with beautiful double flowers of rose color, snuggling tight to the twigs. Very showy. 26c, 3 for 68c. Larger plants 69c ea., 3 for \$1.89.



Abelia Grandiflora 19c

Abelia Grandiflora 19c

One of the most beautiful shrubs in cultivation. The graceful arching stems are clothed with dark, glossy leaves which are evergreen in the South and slowly deciduous in the North. Flowers are light pink. 19c ea., 3 for 54c. Larger size 42c.

Attractive Red Twigged Dogwood 22c

An upright growing shrub with blood-red branches; flowers white. Bark intensely colored. 22c, 3 for 63c. Larger plants 48c, (by exp. only).



Althea Pink Perfection 34c ea.

Altheas 34c

(Rose of Sharon) — Althea Boule de Feu—Double red. Althea Jean de Arc—Pure white. Lady Alice Stanley—Double salmon. Pink Perfection—Deep pink. Althea Cerulean Blue — Double blue. Any variety 34c, 3 for 97c. Larger 50c by express.

Yellow Twigged Dogwood 23c

Yellow branches, very effective. 23c, 3 for 65c. Large plants 48c (by ex. only).



Double Yellow Kerria 44c

Double Kerria 44c

Japonica (Globe Flower or Japanese Rose)—One of the choice shrubs. Flowers are showy yellow. Perfectly hardy. Attractive. Field plants 44c, 3 for \$1.26.

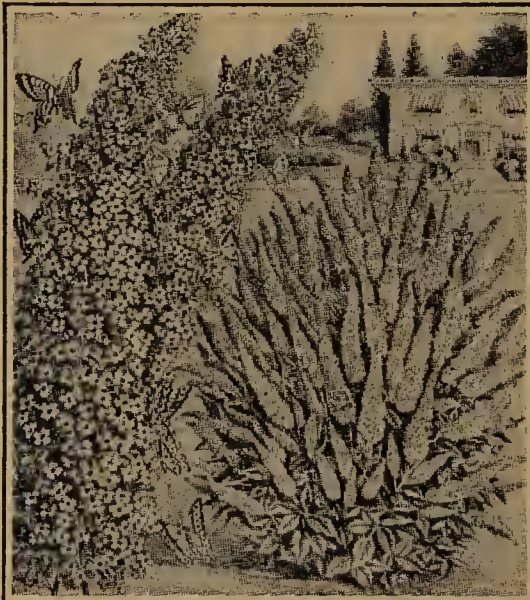
Oak Leaved Hydrangea

(*Quercifolia*)

Distinct novelty. Spreading branches; large, dark green, deeply lobed leaves. Flowers in large panicles of creamy white. Nice plants. 36c, 3 for \$1.03, doz., \$3.46. Large plants 68c (by exp. only).

New Butterfly Bush 24c

(*Buddleia Ille de France*)—Long graceful flower spikes, 6 to 9 inches long, of a brilliant, rosy, violet-purple. Very fragrant. Grows 3 to 4 ft. high. Superior to old varieties. 24c ea., 3 for 68c. Larger plants 38c.



Butterfly Bush Ille de France, 24c

Butterfly Bush 21c

Buddleia Varibilis (Summer Lilac)—Blossoms all summer, dying down in the winter. Produces long, graceful stems which terminate in tapering panicles of beautiful lilac-colored flowers. 21c ea., 3 for 60c; larger 32c ea.

Yellow Butterfly Bush 36c

(*Buddleia*)—Similar in appearance of foliage and growth to other Buddleias, but leaves larger in size and of soft texture. Flowers soft yellow. 36c ea., 3 for \$1.00.

Red Leaved Barberry 19c

(*Berberis Thunbergi Atropurpurea*)—Easily grown shrub, of medium height, with distinctly red foliage, the heat of the summer even intensifying its brilliancy. Scarlet berries throughout the winter. 2 1/4 in. pot plants 19c ea., 3 for 54c; 12 for \$1.82. Field plants 25c ea., 3 for 72c, doz., \$2.40. Larger field plants 35c and 50c ea. by express.



Evergreen Cotoneaster 24c

Evergreen Cotoneaster 24c

(*Horizontalis*) — Handsome evergreen shrub of unusual merit for planting with shrubbery or in rock gardens. Will grow in any well-drained soil, either in partial shade or full sun. Flowers are white, in small clusters, and are followed by bright red fruit. 24c ea., 3 for 68c; larger 60c ea.



Red Leaved Barberry 19c



Rose-purple Desmodium 29c

Desmodium 29c

(*Lespedeza*). Gracefully arching, 2-4 ft. Rose-purple flowers. 29c ea., 3 for 83c. Larger plants 48c, 3 for \$1.25.



Oak Leaf Hydrangea 36c

Flowering Crab 74c

BECHTEL'S (*Malus Bechteli*) — Medium sized tree with spreading or ascending branches forming a wide head. Flowers large and very double, attractive, of a delicate pink, or blush color, and very fragrant. Hardy, succeeds well in all soils. A most remarkable shrub, and worthy of a place in any garden. 74c, 3 for \$2.00 by express.



Bechtel's Crab 74c

Flowering Shrubs

Baby Evergreens
Watch Them Grow
Five Different Varieties for 89c
 (MAIL ORDER COLLECTION.) For those who desire to be grow, plant Evergreens in small sizes and enjoy watching them grow, no greater value will be found anywhere. This collection must be our selection of varieties. Nice plants, 9 to 12 inches. 5 for 89c (2 coll. for \$1.75).



Japan Quince Scarlet fl., 34c
Japan Quince 34c

(*Cydonia Japonica*)—Probably the showiest of its family, producing in the early spring brilliant scarlet or orange-scarlet flowers in clusters all over the plant and making it one of the most dazzling sights imaginable. An excellent specimen shrub and of unusual value for hedges. 34c ea., 3 for 97c. Larger size 59c each by express.

Cork Bark 60c

(Cork Bark. *Euonymus Alatus*.) An attractive ornamental shrub 6 to 8 feet. The flowers appear in May and June. In autumn the foliage changes to a fine rose color. 60c ea., 3 for \$1.70 by express only.

Purple Persian Lilac 27c

Compared to Common Lilacs these varieties run to larger panicles, fuller and more compact panicles. Flowers purple. Strong plants, 27c ea., 3 for \$1.05.



Pink Bush Honeysuckle 23c

Bush Honeysuckles 23c

White *Lonicera Morrowii*—Produce an abundance of pure white flowers, followed by red berries in the fall.

Lonicera Grandiflora Rosea—Similar in growth to white variety *Morrowii*, excepting flowers, being a bright pink. Either variety 23c, 3 for 65c; larger size 49c ea. by express.



Red Flowering Dogwood \$1.45

(*Cornus Florida Rubra*)—Luxurious foliage, glaucous underneath; beautiful rose-red flowers (not the red twigged shrub). Rare. (Stock limited). \$1.45 each, 3 for \$4.00. Larger plants \$2.25 each by express.

Common Snowball

(*Viburnum Opulus Sterile*)—Grows 4 to 8 feet. Flowers in spring. A grand hardy shrub with handsome double white flowers. 26c ea., 3 for 74c; larger 49c; Extra large 72c ea. by express.



Common Snowball 26c



Pussy Willow 24c

Pussy Willow 24c

(*Salix Caprae*)—Beautiful shrub; grows easily, handsome in flower. 24c ea., 3 for 68c.

Crepe Myrtle 23c

Free flowering shrub, handsome foliage. Hardy in Southern sections. Separate colors. RED, WHITE and PINK. 23c ea., 3 for 65c; larger plants 36c each.



Mahonia (Oregon Holly) 58c

Mahonia

(*Aquifolium* or *Oregon Holly*)—Handsome shrub, green, spiny toothed leaves. Showy bright yellow flowers in May, succeeded by bluish berries. 58c ea., 3 for \$1.50.

Hydrangea Arborescens

(Hills of Snow) 4 to 8 feet. Flowers large of pure white. Blooms through early June until August. 22c, 3 for 63c; 38c ea., 3 for \$1.10. Larger plants 49c by express.

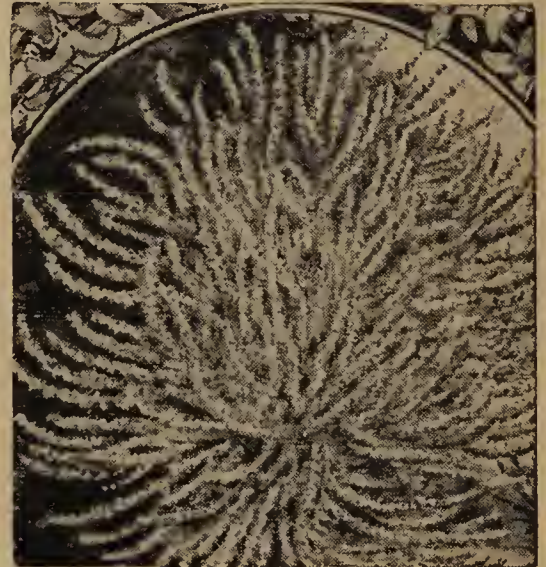
Forsythia

Golden Bells 22c

(*Viridissima*)—The most rampant, straggly variety of all and should be planted where it can have room to develop. Flowers bright yellow. One of the first shrubs to bloom in the spring. 22c, 3 for 63c; larger 37c; extra large 49c ea. by express.

FORTUNEI

Similar to the variety *Suspensa*, but of more vigorous, upright growth. Branches arching with large leaves. Flowers golden yellow often twisted. 24c, 3 for 65c; larger 37c; extra large 49c ea. by express.



Popular Golden Bells 22c

Philadelphus Virginal 30c

DOUBLE MOCK ORANGE—Large double-crested, sweet-scented flowers. Wonderful for hedges. 30c ea., 3 for 85c; larger plants 40c ea., and extra large plants 59c by express.



Philadelphus Virginal 30c

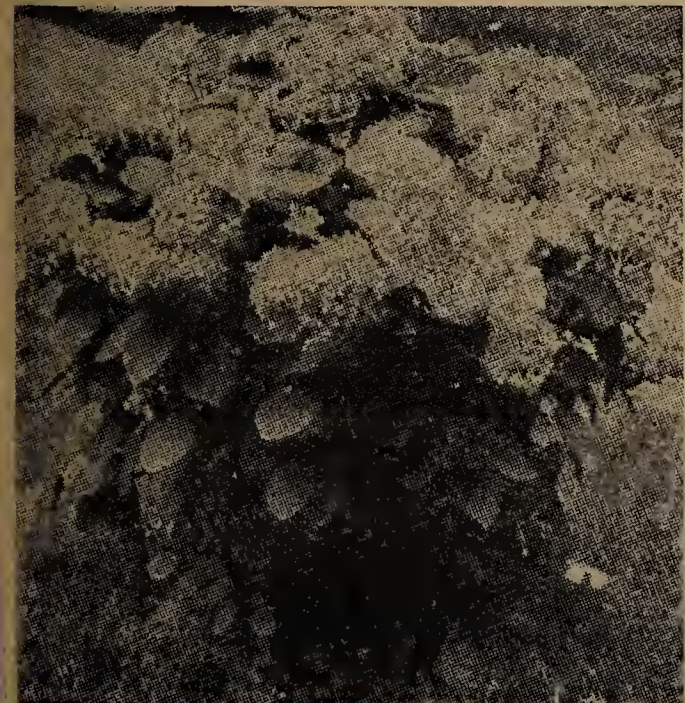


Pink Deutzias Rosea 24c

Dbl. Deutzias

DEUTZIA CRENATA ROSEA PLENA—Flowers pink, one of best flowering shrubs. 24c ea., 3 for 68c; larger plants 39c; extra large 50c by express.

DEUTZIA PRIDE OF ROCHESTER—Large white flowers. Grand shrub. 22c, 3 for 63c; larger plants 39c; extra large 50c by express.



Hydrangea Arborescens (Hills of Snow) 22c

First-Class Hardy Flowering Shrubs



Sweet Scented Shrub, 32c

Sweet Scented Shrub 32c

(*Calycanthus Floridus*)—(Grows 5 to 8 feet.) Flowers in spring. An old favorite and well known for its strawberry-scented flowers. Of a mahogany-brown color. Perfectly hardy. 32c ea., 3 for 90c, Larger 48c.



Popular White Snowberry, 30c Snowberry 30c

3 to 5 feet tall; slender branches. Flowers pure white or pinkish, white berries in clusters. 30c ea., 3 for 85c. Larger 40c, extra large 59c ea., by express.



Smoke Bush, 55c and 70c ea.

World Famous Bridal Wreath Spirea Van Houtte 24c

BRIDAL WREATH. (The most popular shrub in America) —Bridal Wreath is the most desirable shrub grown. Will grow anywhere, standing much abuse as to location and soil conditions. Should be given plenty of room and allowed to develop properly. If trimmed at all it should be done immediately after the spring flowering time. Flowers white in clusters, resembling a bridal bouquet. 24c ea., 3 for 69c; 2 yr. 37c ea. Larger plants 70c ea., by express.



New Beauty Bush, 19c

New Beauty Bush

(*Kolkwitzia*) 6 to 8 feet, a new shrub from China. A shrub with all the good points a plant can have, wonderful growth, graceful branches, glorious flowers of deep pink stained yellow and hardy everywhere. Related to the Abelias, the new plant exceeds them in beauty. Highly recommended. 19c, 3 for 54c. Larger sizes 38c each and 58c each by express.

Hydrangea Paniculata 26c

Cone Shaped Flowers

—Grows 4 to 8 feet, perfectly hardy, flowers white, borne on immense pyramidal panicles. Commences flowering in July, continues until November when flowers turn a deep pink. 26c ea., 3 for 74c; Larger plants 59c ea. by express.



Hydrangea Paniculata, 26c

SNOW GARLAND SPIREA THUNBERGII — An unusual shrub; slender arching branches, pure white flowers. 24c ea.; 3 for 65c; Larger plants 48c ea.



Pink flw. Tamarix Africana, 32c

Tamarix Africana 32c

A handsome shrub of strong growth; fine feathery foliage. Delicate pink flowers. Will grow anywhere; fine for background of shrubs. 32c ea., 3 for 90c; larger 49c ea.

Weigela Rosea

(*Diervilla Florida*) — A 26c showy free flowering shrub, with numerous spreading branches. Flowers rose-colored are produced in great profusion. Admirably adapted to small lawns, or gardens, nice plants. 26c ea., 3 for 74c. Larger size 38c and extra large size 58c ea., by express.

Smoke Bush Purple Fringe

Large shrub — bushy growth—attractive foliage—clusters of pale purple flowers in loose panicles of smoky aspect. First class. 55c ea., 3 for \$1.57. Larger, 70c ea., by exp.

Golden Flowering Weigela

(*Diervilla Sessilifolia*)—Yellow flowers borne freely on long spreading branches. 32c, 3 for 90c; Larger 39c; ea., extra large 59c ea., by express.

Variegated Weigela 24c

(Yellow Striped Foliage) —Pink flowers. Similar to other Weigelas excepting foliage yellow and green variegation. 24c, 3 for 65c; Larger 40c and extra large size 58c ea. by express.



Variegated Weigela, 24c

Crimson Weigela 28c

EVA RATHKE

The most distinct and attractive variety. Flowers deep crimson produced in great profusion, nice plants, 28c ea., 3 for 80c. Larger size, 48c ea. Extra large size 59c ea., by express.



Japanese Snowball, 35c

Japanese Snowball 35c

(*Viburnum Tomentosum Plicatum*) —Five to eight feet high, flowering in June with large double white blooms, a shrub of much merit. Foliage of deepest green. 35c ea., 3 for \$1.00; larger 49c and extra large 75c ea., by express.

Purple Lilac 40c

Best known. Purple flowers, fragrant. 40c ea., 3 for \$1.00; larger plants 65c ea. by express.

White Lilac 40c

Same as purple variety, but with white flowers. 40c ea., 3 for \$1.00; larger plants 65c ea., by express.



Spirea Anthony Waterer, 26c

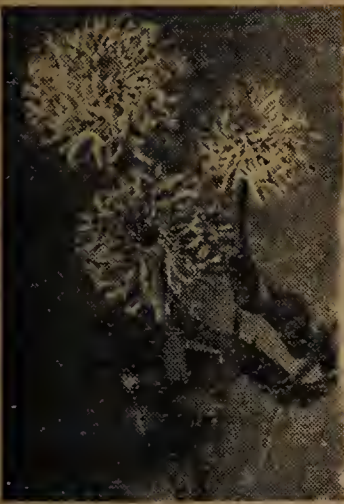
Spirea Anthony Waterer 26c

(Red Everblooming Spirea)—A summer blooming spirea of rather dwarf growth; bushy in habit. Pink, woolly flowers borne in flat, erect clusters late in the season. 26c ea., 3 for 74c; larger plants 37c ea., 3 for \$1.07; extra large plants 49c ea. by express.



Crimson Weigela Eva Rathke, 28c

Seed Novelties of Recent Introduction



New Zinnia Fantasy

FINEST MIXED—The most fascinating Zinnia introduced in many years. The Shaggy ray-like petals give a delicate, refined appearance. Colors include shades of reds, yellow, and orange as well as pastel pinks and cream. Pkt. 25c.

New Zinnia Fantasy, 25c



New Double Ipomoea

ROSE MARIE—An early free flowering double, deep rose-colored Ipomoea. The double flowers give the appearance of being open, even after the other Ipomoeas in the garden have closed for the day. Really the first double Ipomoea ever offered. Pkt. 30c.

New Double Ipomoea, 30c



Double Nasturtiums

GLORIOUS GLEAM HYBRIDS MIXED—These new hybrids comprise all shades of salmon, yellow, cream, red and maroon. The delicately sweet scented, well formed flowers have much longer stems for cutflowers, and the foliage is larger and deeper green. Pkt. 25c.

New Double Nasturtiums

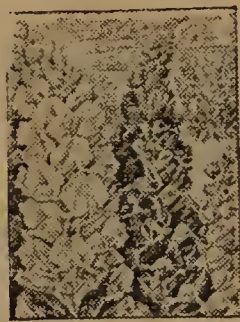
Cutflower, Bedding and Border Plants From Seed



Sweet Alyssum 8c

(Little Gem)—A low spreading plant, with white sweet scented flowers; often called Carpet of Snow. Best of all varieties. Most popular of all edging plants. Pkt., 8c; 3 pkts., 20c.

Alyssum, 8c



Antirrhinums 10c

SNAPDRAGON (Giant Flowered Mixed)—A mixture of the newest tall varieties, including all shades available. Pkt., 10c.
RUST PROOF STRAIN, MIXED—An excellent mixture of all the leading colors. New and dependable. Pkt. 25c.

Antirrhinums



Asters 15c

(Crego's Mixed)—(Wilt Resistant) Immense, fluffy flowers, 5 inches in diameter. Immune to the wilting disease. Pkt. 15c.

GOLDEN SHEAF—The deepest yellow aster yet offered and the only one that is wilt resistant. Pkt. 25c.

Crego's Aster, 15c

Annual Candytuft



(Mixed Varieties)—Including all colors known in Candytuft. Plants are covered with blossoms and are of the easiest culture. While useful for cutting, they are mainly grown for their bright effect in the garden. Pkt. 8c.

Annual Candytuft, 8c

Cockscomb (GELOSIA CRISTATA)



(Glasgow Prize)—Universally found in old-fashioned gardens. The crimson flower heads strongly resemble a cock's comb. The plant, rather stiff in form, has rather coarse foliage. Pkt. 10c.

Cockscomb, 10c

Calendulas 10c



(Pot Marigold)—A favorite annual; rather coarse foliage and an abundance of flowers. Valuable for use as cutflowers. Range of colors, creamy-white, yellow to deep orange. Mixed. Pkt. 10c.

Calendulas Pkt. 10c



Double Clarkia 10c

A fine annual for masses of color in the garden. Double flower somewhat resembling Carnations, in white, pink, purple and orange-scarlet. Adapted for porch boxes. Mixed. Pkt., 10c.

Dbl. Clarkias



Coleus 15c

(McGregor's Rainbow Mixture)—Effectively used for bedding and borders. Leaves velvety in texture, toothed and frilled, comprise all the reds, with many shades of green and yellow. Pkt. 15c.

Coleus, 15c



Cosmos 18c

(Double Mixed)—The artistic flowers which come in white, pink and red last long when cut. Pkt. 18c.

ORANGE FLARE—Single, bright vivid orange flowers. New and distinctly different. Pkt. 18c.

Double Cosmos

Giant Dahlias 20c



(Extra Choice Mixed)—One of the showiest of all late blooming plants. Remarkably large flowers from seed the first summer. An old garden favorite. Pkt. 20c.

Giant Dahlias

Dusty Miller 8c



SILVER-LEAVED (Centaurea Gymnocarpa)—A well known bedding and border plant, silvery gray foliage. Pkt. 8c; 3 pkts., 20c.

Dusty Miller, 8c

McGregor's 10c Flower Garden

One of the most interesting collections we offer. A great big packet of dozens of varieties of Flower Seeds. Large pkt. 10c.



10c Flower Garden.



Gladiolus 10c

Seed should be sown early in the spring; small bulbs will be formed the first year. Flowers range in color from creamy-white, yellow, salmon, to bright red and crimson. Mixed. Pkt. 10c.

Mixed Gladiolus, 10c



Ornamental Gourds 8c

Tender annual with ornamental foliage. strange hard-shelled fruit. The small gourds make excellent toys for children, while the larger varieties are often used for dippers, etc. Mixed. Pkt. 8c.

Ornamental Gourds, 8c



Helichrysum (STRAW-FLOWER)

(Mixed Varieties)

—All the leading colors in Helichrysums. An ever popular flower for winter bouquets. Pkt. 10c; 3 pkts. 25c.

Helichrysum, 10c

All seed forwarded separately from plants. Please allow time for receipt of complete order.

Cutflower, Bedding and Border Plants From Seed



Globe Amaranth 8c

BACHELOR'S BUTTON (Everlasting)—Flowers are perfect globe-shaped, very double, and come in white, pink, purple, orange and variegated. Very good bloomers. Mixed, 8c pkt.

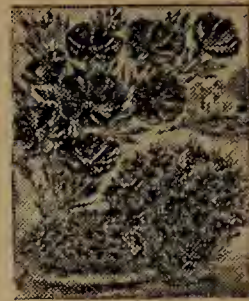
Globe Amaranth Pkt. 8c



Bedding Lantanas 10c

A well known plant. Used for bedding, border plant, in porch boxes or vases. Constant bloomer. Flowers yellow, orange, rose, crimson and white. Mixed. Pkt. 10c.

Bedding Lantanas



Linum 10c

(Scarlet Flax) (*Grandiflorum Rubrum*)—Slowly and effective bedding plant. Fine foliage, brilliant scarlet-crimson flowers on delicate stems. Blooms continuously until frost. Pkt. 10c.

Scarlet Flax Pkt. 10c

Annual Larkspur 10c

(Double Tall Mixed)—An old fashioned favorite, universally grown. Produce tall spikes of double flowers in all shades of pink, rosy-red, blue, purple, as well as white. Pkt. 10c.



Larkspur, Pkt. 10c

Marigolds GIANT PRINCE OF ORANGE

A new variety among the old garden favorite. Large double ball-shaped flowers of a rich golden orange. Pkt. 12c. **NEW GUINEA GOLD**—Free flowering, bears loosely ruffled, carnation flowered blooms of a beautiful gold color. Marigold odor almost entirely lacking. Pkt. 12c.



Giant Marigold Pkt. 12c

Nasturtiums 8c

One of the most popular and widely planted annuals. The dwarf sorts are effective for border planting, while the tall sorts are effectively used in window boxes. We offer either Dwarf or Tall Mixed. Pkt. 8c.



Nasturtiums



Moonflower 15c

HEAVENLY BLUE Improved—A rapid growing vine for porch use, fences, etc., grows from ten to twenty feet high. The improved large, rich, sky blue flowers are produced in abundance. Pkt. 15c.

Moonflower



Morning Glories 8c

(Japanese Mixed)—A well known tender climber, which needs little description. Flowers range from snowy white to black purple, being spotted, marbled, striped, flaked and splashed. Pkt. 8c.

Morning Glories



Petunias

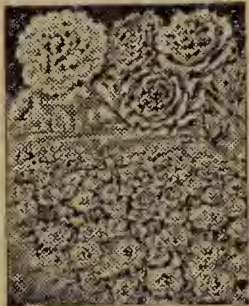
(Single Bedding Mixed)—Petunias require little care and grow profusely all summer. Blooming Petunias are seen in almost every yard and garden. Pkt. 12c.

Carnation Flowered Semi-Double Mixed—Beautiful semi-double flowers in shades of pink, crimson, lilac and white. Pkt. 20c.

Bedding Petunia

Portulaca 10c

SUN PLANT—Charming annual, growing only four to six inches high. Double flowers resembling miniature roses, in all colors. Will not bloom unless planted in sunny position. Double mixed. Pkt. 10c.



Dbl. Portulaca Pkt. 10c

Giant Pansies 25c

(McGregor's Extra Choice Mixed)—In this mixture we have secured best named and largest flowering varieties, including all the rare and exquisite colors known in Pansies. Pkt. 25c.



Pansies. Pkt. 25c.

Double Annual Poppies 8c

(Double Carnation Flowered)—Double fringed flowers. Colors white and many shades of pink, old rose and crimson. Mixed. Pkt. 8c.



Poppies, 8c



Scabiosa 10c

PINCUSHION FLOWER—A popular annual, easily grown from seed. Flowers, cherry, rose, lilac, lavender, blue and white. Strongly resemble a pincushion, and last well when cut. Double mixed. Pkt. 10c.

Scabiosa Pkt. 10c



Schizanthus 10c

BUTTERFLY FLOWER—Daintiest flowers, pink, lavender, amber and white. Mixed varieties. Delicate fern-like foliage. Easily grown. Pkt. 10c.

Schizanthus, 10c



Sweet Peas 10c

(Spencer's Mixed)—Every imaginable shade of pink, red, yellow, blue, lavender, crimson, orange and scarlet will be found in this wonderful mixture of large flowered Sweet Peas. Pkt. 10c.

Sweet Peas

Scarlet Salvia 10c

SPLENDENS—Large, scarlet flower spikes; the old favorite. Highly valued for beds, borders and window boxes. Pkt. 10c.



Salvia, 10c

Salpiglossis 10c

VELVET FLOWER—Mixed Erect, large velvety funnel shaped flowers in many rich colors, beautifully marbled and penciled. Many of the darker varieties show gold veins in the throat. Showy bedding or border plant. Pkt. 10c.



Salpiglossis, 10c

Verbenas 10c

(McGregor's Mammoth Mixture)—Splendid annual, suitable for bedding. The flowers are borne in large trusses three inches in diameter, and come in shades of pink, crimson, blue and white. Pkt. 10c.



Verbenas, 10c



Stocks 10c

Dbl. Tall Mixed—The sturdy flower spikes covered with rosette blossoms in soft colors combining shades of pink, rose, blue, mauve and white are delightfully fragrant. Pkt. 10c.

Stocks, 10c



Sweet Violets 15c

(Viola Odorata Blue)—Easily raised from seed. Sweet scented. Beautiful deep blue. Fine for bedding or house plant. Has always held a prominent place in every garden. Pkt. 15c.

Violets, 15c



Giant Zinnias Pkt. 10c

Zinnias

GIANT EXHIBITION—Mammoth flowers, measuring from 4 to 6 inches across, in all the leading colors known in Zinnias. Mixed Pkt. 10c.

BUTTON OR POM-PON—Tiny double flowers. Useful in table bouquets. All shades. Mixed Pkt. 10c.



Giant Cineraria

The Cineraria is a very showy, late winter, or early spring blooming house plant. The handsome flowers are produced in large spreading clusters in crimson, blue and purple. **Pkt. 20c.**



Kochia, or Summer Cypress

Kochia

BURNING BUSH—Popular as a hedge and often used as summer evergreens to fit in with blooming plants. In the fall, the entire bush turns to a brilliant crimson. Not hardy. **Pkt. 8c. 3 pkts. for 20c.**



Single Everblooming Begonia Single Begonia 20c

Makes a splendid flower bed in partly shaded place. Also valuable house plants in winter. Colors—pink, red and white. **Mixed, Pkt. 20c.**

Cyclamen 20c

(Finest Mixed)—One of the most popular of all the winter blooming plants. Handsome mottled foliage; very free flowering. Flowers pink, white, rose, crimson and purple. **Pkt. 20c.**



Flowering Cyclamen, Pkt. 20c



Mixed Ferns, 20c



Jerusalem Cherry, 10c

Fern Seed 20c

(Mixed Varieties)—All leading varieties predominate. The powder-fine seed should be mixed with sand before planting. **Pkt. 20c.**

Jerusalem Cherry 10c

(Solanum)—Fine house plant, bearing great profusion of bright scarlet berries. A Christmas plant. **Pkt. 10c.**

Bird of Paradise 10c

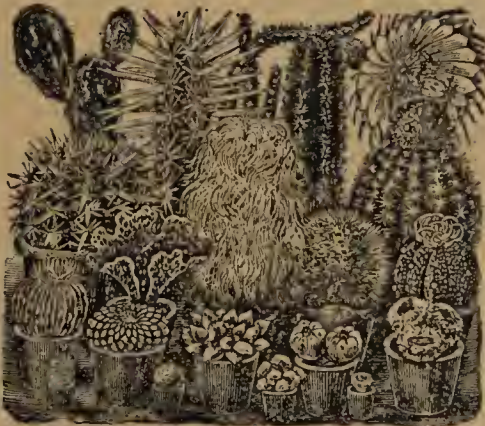
(Poinciana)—The golden yellow blossoms are produced in trusses. The incurving stamens and pistils are of crimson. **Pkt. 10c.** (See illustration page 28.)



McGregor's Gloxinias. Pkt. 25c.

Gloxinia 25c

(Fine Mixed)—Large, drooping foliage, velvety in texture. Richly colored flowers in shades of pink, crimson, purple, white and spotted. **Pkt. 25c.**



Wonderful Flowering Cactus Cactus Seed 25c

A large family of interesting and peculiar plants. A great variety of strange forms and manner of growth. **Mixed. Pkt. 25c.**



Grevillea (Silk-Oak)

Grevillea 10c

(Silk Oak)—Decorative plant, with beautiful fully-cut foliage, rivaling a rare Fern. Of rapid, easy growth. **Pkt. 10c.**



Double Geranium, Pkt. 12c

Geranium 12c

(Double and Single Mixed)—Flowers are borne in large trusses, the single florets measuring 2 inches across. Used as a pot plant or for bedding purposes. **Pkt. 12c.**

Double Fuchsia 25c

Highly prized house plant, easily raised from seed. Double flowers. Extra fine mixed. **Pkt. 25c.**



Large Flowering Double Fuchsia Pkt. 15c.



Sensitive Plant 10c

Mimosa Pudica—Curious annual; the leaves instantly close up when touched. A neat plant for either pot or garden culture. **Pkt. 10c.**



Heliotrope

(Giant Mixed)—Flowers vanilla-scented; very free blooming; the colors range from white through violet and blue. Effectively used as cut flowers. Old garden favorites. **Pkt. 10c.**

New Marigold Dixie Sunshine

Sensationally new and fascinating, large brilliant yellow ball shaped flowers composed of dozens of tiny five petaled florets gracefully interlocking, daintly fringed in effect. Resembles a huge Chrysanthemum. Very faintly scented with the usual marigold odor. **Pkt. 15c.**



Polyantha Baby Rose, Pkt. 15c

Baby Rose Seed 15c

(Polyantha)—Beautiful little roses borne in many flower clusters of double, semi-double and single flowers. **Pkt. 15c.**

Aster, California Sunshine

MIXED—Most beautiful aster. The flowers are composed of a single row of loosely placed outer petals which contrast with the unique yellow quill-like center disc. Long strong stems. **Pkt. 20c.**

Smilax 10c

Glossy, deep green foliage; fine for vases and baskets. Soak the seed twenty-four hours before sowing. **Pkt. 10c.**



Glossy Green, Climbing Smilax



Hardy Oriental Poppies

Oriental Poppies 10c

HARDY ICELAND
Blooms the first year from seed. Green, fern-like foliage. Bright yellow flowers. Pkt. 10c.
ORIENTAL MIXED
—A fine mixture embracing all the shades in poppies. Pkt. 10c.



Hardy Grenadine Carnations Carnations 15c

(HARDY GRENADINE)—Grow from fifteen to twenty inches high. Good range of colors, delicately clove scented. Mixed. Pkt. 15c.



Hardy Hibiscus (Mallows) Hardy Hibiscus MALLOWS

Giant Mixed—A shrub-like plant with large foliage requiring considerable space. Immense flowers in red, white and pink. Pkt. 10c.



Tritoma or Torch Lily, Pkt. 10c

Tritoma 10c

TORCH LILY OR RED HOT POKER PLANT.—The flower spikes are of gigantic size, the color is a rich orange-scarlet, shading to salmon-rose on edge. Grows 2 to 4 feet high.—Pkt. 10c.



Pyrethrum, 20c

ORIENTAL DAISY

Pyrethrum 20c
Finest double flowers of pink, crimson and white. Mixed. Pkt. 20c.



Forget-Me-Not

Myosotis 10c

(FORGET-ME-NOT)—Lovely little flowers in pink, blue and white. Mixed. Pkt. 10c.



Hardy Garden Lupinus Lupinus 10c

The pea-like flowers are borne in spikes a foot or more in length. Flowers come in white, pink, rose, and blue. A fine perennial. Mixed. Pkt. 10c.



Shasta Daisy, 10c

Shasta Daisy ALASKA

Pure white flowers, when fully expanded four in. in diameter. A perennial of great value. Pkt. 10c.



(Gypsophila)

Baby's Breath

(Gypsophila Paniculata)
Tiny misty-white blooms on stiff, wiry stems. Fine for mixing with other flowers in bouquets. Pkt. 10c.



Hardy Climbing Sweet Peas

Lathyrus 15c

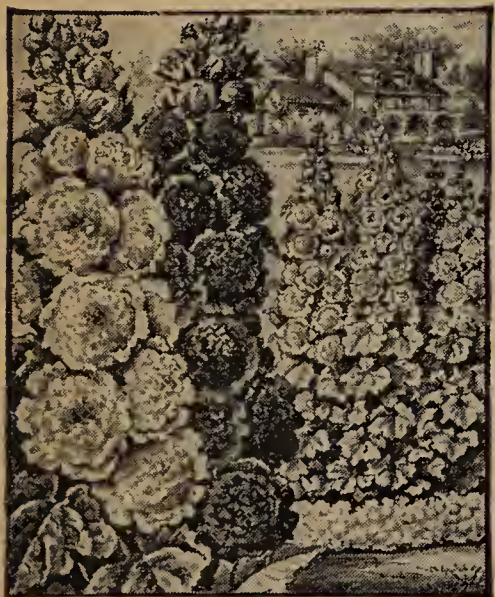
HARDY CLIMBING SWEET PEAS—Vigorous vine growing from ten to twenty feet; fine for covering fences or other unsightly objects. Flowers pink, white and crimson. Mixed, Pkt. 15c.

Aquilegia 10c

(Dbl. Hybrids)—The long spurred flowers are of delicate and graceful form, in many colors. Pkt. 10c.

Delphinium 15c

HARDY LARKSPUR (Gold Medal Hybrids)—No plant better known than the Delphinium; practically in every yard. Long flower spikes, two to three feet long, come in many shades of blue. Pkt. 15c.



Double Hardy Hollyhocks

Double Hollyhocks

(MIXED)—This mixture includes all colors known in double Hollyhocks. Pkt. 10c.

Dianthus 10c Campanula

(DOUBLE MIXED)—Commonly called Sweet Clove, or Hardy Garden Pinks. Valuable for edging. Fringed fragrant flowers. Pkt. 10c.

(Calycanthema)—The well known cup-and-saucer Canterbury Bell. White, pink and blue flowers. Mixed. Pkt. 10c.



Dbl. Dianthus



Campanula



Hardy Phlox, Mixed Varieties

Phlox 10c

HARDY MIXED

The flowers are borne in huge panicles on stems varying from one to three feet in height. Many beautiful shades of pink, rose, magenta, violet, crimson and white are found in the mixture we offer. Pkt. 10c.



Sweet William Dbl. Mixed. Pkt. 10c

Sweet William 10c

(Double Mixed)—Well known in all old fashioned gardens. Pink, scarlet and white, fragrant flowers in large clusters. Pkt. 10c.

Hardy Pink Tunica 10c

Tufted hardy perennial plant growing but a few inches high, bearing numerous elegant pink flowers. Fine for the rock garden. Pkt. 10c.



Pink Tunica



Delphinium Gold Medal Hybrids

Hardy Hedge Plants

Evergreen and Flowering



IBOLIUM PRIVET—Characteristics of California Privet with hardiness of Iboia. Foliage evergreen. 85c doz. \$6.00 per 100 by mail; 2 yr. \$1.25 doz. \$8.50 per 100 by express.

NEW CRIMSON LEAVED BARBERRY—12 for \$1.82, 25 for \$3.50, 100 for \$13.50 by mail; 1 yr. fld. grown 25c, doz. \$2.00, 25 for \$3.75, 50 for \$7.25; 2 yr. fld. grown 35c, doz. \$3.00, 25 for \$5.00, 50 for \$10.50 by express.

GREEN LEAVED JAPAN BARBERRY—(Berberis Thunbergii) Leaves light green, the berries scarlet. Hardy. 15c ea., 3 for 42c, 6 for 80c, 12 for \$1.43; 2 yr. 22c, 3 for 63c, 6 for \$1.19, 12 for \$2.10 by express.

FLOWERING ALTHEA HEDGE—(Rose of Sharon) (12 to 15 inch Plants), (Hardy as oaks) Fall blooming. Assorted colors. 5 for 25c, 10 for 49c, 25 for \$1.23; 50 for \$2.30, 100 for \$4.10.

Bargains in Fruits

Everbearing Strawberries



MASTODON—Most valuable strawberry to date. Fruits all summer. Delicious berries, largest known. Easily grown. \$1.00 per dozen, 25 for \$1.50, 50 for \$2.50, per 100, \$4.00.

Early and Late Strawberries

AROMA (Late) Large, glossy red.

BIG JOE (Late)—Exceptional size. Delicious.

PREMIER (B) (Early)—Large, red berries.

SEN. DUNLAP (Early)—Large, bright red.

PRICE—Any variety plants. 75c per doz., 25 for \$1.25, 50 for \$1.75, 100 for \$2.25.

Raspberries

6 for 60c; \$1.00 per doz.; 50 for \$3.00.

BLACK DIAMOND—Best Black grown.

ST. REGIS—Berries bright crimson.

Blackberries

6 for 65c; \$1.25 doz.; 50 for \$3.00.

Rhubarb

3 for 50c, doz., \$1.80, per 100, \$8.00.

QUEEN—Strong grower; extra large stalks. 20c, 3 for 50c, doz., \$1.80, per 100, \$8.00.

Asparagus

90c doz.; \$2.50 per 100.

WASHINGTON RUST PROOF, CONOVER'S COLOSSAL, 60c doz.; \$2.25 per 100.

Grapes

Black, juicy and sweet.

BLACK OR PURPLE GRAPES CONCORD—Large, sweet, rich, flavor.

CATAWBA—Large, sweet, rich, flavor.

BRIGHTON—Large. Excellent flavor. Any variety, 1 yr. vines 25c ea., \$2.25 per doz., 2 yr. vines 40c ea., \$3.75 per doz.

McGregor's Fancy Gladiolus

Red, White & Blue GLADIOLUS TRIO, 3 for 24c

AFLAME—Flame red. Strikingly beautiful. 9c each, 3 for 26c.

SNOWFLAKE—Snow white flowers. The best white variety. 9c each, 3 for 26c.

AVE MARIA—Giant flowers. Lavender-blue blotched. 9c each, 3 for 26c. One each above 3 varieties, 3 for 24c.

24c ea.



Boxwood

Dwarf Ornamental Boxwood 24c

Fine plants for bordering, ornamental or decorative work. Foliage deepest green, very effective. Nice plants, about 6 to 8 inches high, 24c ea.; 3 for 59c; 6 for \$1.08; per doz., \$1.92. Selected plants, 50c; 75c; \$1.00; \$1.50; \$2.00; and \$3.00 each.

Notice
We carry Evergreens of all kinds and sizes. Please write for prices.

Blue Spruce

MORHEIM—The aristocrat of the Evergreen family; the best blue foliated variety known. Retains its true blue color longer than any other variety. A wonderful ornamental tree. Perfection in form and symmetry, and hardy characteristics make it adaptable to nearly all climates. Selected bushy plants about 15 inches high. \$2.50 each. (Must be shipped by express with ball of earth.)



True Blue Spruce \$2.50

Gorgeous Red Leaved Japanese Maple \$1.25

These trees are of dwarf habit, graceful, and make excellent specimens or can be clumped like shrubbery. The foliage is of the deepest blood red. Gorgeous when planted in combination with Evergreens or other green foliage plants. Fine plants (with ball of earth by express) \$1.25 each.



Gorgeous Red Leaved Japanese Maple \$1.25 each.



Apricot pink Gladiolus Picardy, 19c

RAINBOW GLADIOLUS COLL.—One each extra fine varieties, 72c.

BETTY NUTHALL—Coral with yellow throat. 7c ea., 3 for 20c, per doz. 70c.

MRS. P. W. SISSON—Soft, salmon-pink. Ruffled. 7c ea., 3 for 20c, per doz. 70c.

MINUET—Orchid. Best lavender. Large flowers. 10c ea., 3 for 29c, per doz. \$1.00.

ALBATROSS—Very large, pure white. 8c ea., 3 for 23c, per dozen 85c.

PICARDY—Apricot pink. Ruffled, immense flowers. 19c ea., 3 for 54c, doz. \$1.82.

RED PHIPPS—New fine red. Large flowers. 15c ea., 3 for 40c, per dozen \$1.50.

MORMORA—Smoky Mauve. Large first class. 14c ea., 3 for 39c, dozen \$1.40.

MIXED ORCHID GLADIOLUS 48c PER DOZ. The new and fancy orchid flowering Gladiolus in this mixture comprise numerous ruffled varieties and choicest mixed sorts, ranging from the delicate pinks through to the crimson and wonderful yellow, tan, mauve, lavender and purple shades. Price 5c ea.; 3 for 14c; 6 for 27c; 12 for 48c; 25 for 88c; 100 for \$3.50.

MAMMOTH BULBS—Large, selected bulbs, well worth their extra cost. 7c ea.; 3 for 19c; 6 for 39c; 12 for 79c; 25 for \$1.45; 100 for \$5.70.

Gladiolus Collection

LAVENDER—A grand collection of 6 lavender Gladiolus all named, 6 for 54c.

Gladiolus Collection

ALL COLORS—An exceptional collection of 10 Gladiolus—(colors separated) 2 yellow, 2 orange, 2 red, 1 white, 2 pink, 1 cream—10 for 40c.

PROTECT EVERGREENS



"DOGZOFF"
Copyright 1933

If bothered with dogs, cats or rabbits, "Dogzoff" is the spray you need. A most efficient animal repellent; one spraying will last three to four weeks.

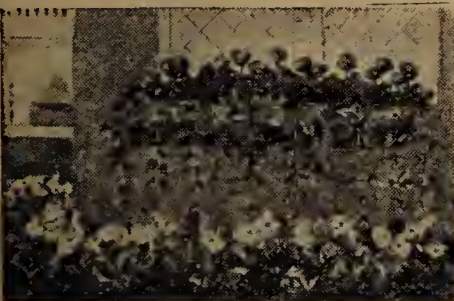
Not poisonous to plants; will not injure animals. 70c prepaid.



Extra Special 10 Bridal Wreath \$1.00

(SPIREA 2 to 3 ft.) (If this coll. is wanted by mail—add 20c extra)

10 Bridal Wreath—larger plants 3 to 4 ft., \$2.00—10 Extra large 4 to 5 ft., \$3.00
 Fifty Thousand Plants of this outstanding Ornamental Shrub offered to our customers at less than half price as long as they last.
 NOTICE—The Larger sizes of Spirea or Bridal Wreath must be shipped by Express, as plants are too heavy to go by mail.



Porch Box Collection 82c

Twelve plants, all different—our selection from following list: Salvias, Dracena, Ivy, Wandering Jew, Ostrich Fern, Boston Fern, Vincas, Ivy Geraniums, Coleus, Petunias, Begonias, Verbenas, Geraniums, Cannas, Asparagus, Sprengerii, Russelia, Hibiscus, etc. 82c.

Surprise Offer After-Season Sale—63c

As a result of our propagations that must tax the capacity of our greenhouses, we generally have surplus of all kinds of plants, and rather than carry this stock over, we will hold a clearance sale beginning May 20th, and make up surprise collections of miscellaneous plants. In this collection we give several dollars worth of plants, for the amazing low price of 63c a collection. 3 coll. for \$1.79; 6 collections for \$3.59. All these collections must be strictly our selection. Orders accepted any time for May 20th delivery.

Complete Index of McGregor's Year Book for 1936

Page	Page	Page	Page
Abelia	38	Campanula	34-44
Abutilon	16	Candytuft	41
Acalypha	17-18	Cannas	17
Achania	16	Cardinal Flower	34
Achillea	34-36	Carnations	30-44
Achyranthus	16	Celastrus Scandens	33
Aegopodium	17	Cemetery Plant	34
African Daisy	35	Centaurea	34-41
African Violet	26	Cestrum Parqui	21
Agapanthus	17	Chinese Bell Flower	34
Agathea	16	Chinese Evergreen	28
Ageratum	16-18	Chinese Lantern Plant	36
Agrostemma	37	Chinese Paper Plant	18
Almonds—Flowering	38	Chinese Velvet Plant	27
Aloe—Variegated	29	Christmas Cactus	17
Alternantheras	21	Chrysanthemums	14-15
Altheas	38-45	Cigar Plant	18
Alyssum	34-41	Cineraria	18-43
Amaryllis	32	Clarkia	41
Anemones	35	Clematis	33
Angels Trumpet	16	Cobaea	20
Anthemium	34	Cockscomb	41
Anthericum	26	Coleus	17-41
Antigonon	33	Columbines	34
Antirrhinums	26-41	Comet Flower	18
Aquilegia	34-44	Copper Plant	17
Arrowhead	29	Coral Bells	35
Artemesia	34	Coreopsis	34
Asparagus	45	Cork Bark	39
Asters	41-43	Cornus	39
Baby's Breath	35-44	Cosmos	41
Baby Rose	43	Cotoneaster	38
Baby Tears	17	Crassula	18-20-23-27
Bachelor's Button	42	Crepe Myrtle	39
Barberry	45	Crotons	18
Begonias	12-13-43	Crown of Thorns	18
Beauty Bush	40	Cuphea	18
Bellis Perennis	35	Cup & Saucer Vine	20
Beloperone	16	Cyclamen	18-43
Berberis Thunbergii	38	Cydonia Japonica	39
Bird of Paradise	28-43	Cyperus	27
Bishops Cap	16	Cyrtipedium	29
Bittersweet	33-36	Dahlias	24-25-41
Blackberries	45	Daisies (Shasta)	34-44
Blackberry Lily	34	Daisy (Dbl. English)	35
Bleeding Heart	34	Daphne	29
Blue Daisy	16	Dianthus	35-44
Blue Lily of the Nile	17	Desmodium	38
Border Plant	17	Deutzias	39
Boston Ivy	33	Dianthus	37-44
Bougainvilleas	18	Didiscus	16
Brazilian Plume Plant	16	Dielytra	34
Browallia	16	Digitalis	35
Brugmansia	16	Dogwood	39
Buddia	38	Dracaena	22-26
Burl-Calif. Redwood	28	Dusty Miller	18-41
Burning Bush	43	Dwarf Cherry	29
Butterfly Bush	38	Dwarf Holly	20
Butterfly Flower	42	Echeverias	18-20
Cactus	28-43	Elephant's Ear	23
Calendulas	41	Erlangea	19
Caladiums	23-32	Euonymous	39
Callas	32	Euphorbia	18-26
Calycanthus Floridus	40	False Dragonhead	37
Camellia	28	Farfugium	11
		Ferns	9-11-16-18-28-43
		Ferns (Hardy)	29
		Feverfew	19
		Ficus	11
		Firecracker Plant	18-19
		Flowering Crab	38
		Flowering Maples	16
		Forget-Me-Not	35-44
		Forsythia	39
		Foxglove	35
		Fountain of Gold	19
		Fountain Grass	19
		Fruits	45
		Fuchsia	19-43
		Gaillardia	26-36
		Gardenia	28
		Garland Flower	29
		Genista	19
		Geraniums	30-31-43
		Gerbera	35
		Gcum	34
		Gladiolus	41-45
		Glechoma	29
		Globe Amaranth	42
		Gloxinia	32-43
		Golden Bells	39
		Golden Glow	34
		Golden Marguerite	34
		Gourds	41
		Grapes	45
		Grape Ivy	17
		Grevillia	19-43
		Ground Creeper	22
		Gynura	27
		Gypsophila	35-44
		Hedera Helix	33
		Helichrysum	41
		Heliotrope	19-43
		Helxine	17
		Hemerocallis	36
		Hen & Chickens	19-36
		Heuchera	35
		Hesperis	34
		Hibiscus	20-37-44
		Holly	39
		Hollyhocks	35-44
		Holt's Sage	23
		Honeysuckles	33-39
		Hop Plant	16
		Hoya	19
		Hyacinthus Candicans	32
		Hydrangeas	20-38-39-40
		Hydrangca, Climbing	33
		Impatiens	20
		Ipomoea	21-41
		Iris	35
		Irish Moss	17
		Ivies	20-29-33
		Japanese Maple	45
		Japanese Rubber Plant	23
		Japanese Smoke Plant	26
		Japan Quince	39
		Jasmine	21
		Jerusalem Cherry	43
		Kalanchoe	20-27
		Kerria	38
		Kochia	43
		Kolkwitzia	40
		Kudzu Vine	33
		Lady Slipper	29
		Lantanas	21-42
		Larkspur	42
		Larkspur (Hardy)	44
		Lathyrus	44
		Lemon	21
		Lemon Verbena	21
		Leopard Bane	36
		Leopard Ivy	27
		Leopard Plant	11
		Lespedeza	38
		Lettering Plant	21
		Lilacs	39-40
		Lilies	22-26-32-35-36
		Lily of the Valley	32
		Linum	36-42
		Live Forever	37
		Lobelia	21-34
		Mahonia	39
		Malphigia Cocigera	20
		Malus	38
		Manettia	18
		Maranta	11
		Marigolds	42-43
		Mertensia	34
		Mesembryanthemum	27
		Mexican Fire Plant	22
		Mimosa Pudica	43
		Moonflower	21-42
		Morning Glory	42
		Moss Pink	37
		Mountain Rose	33
		Myosotis	35-44
		McGregor's Flower Garden	41
		Nasturtiums	21-41-42
		Oleanders	21
		Orange	21
		Oxalis	21
		Pachsyandra	22
		Palms	11-22
		Pandanus Veitchii	11
		Pansies	22-42
		Pansy Geranium	22
		Parrot's Feather	22
		Passiflora	22
		Passion Flower	22
		Pedilanthus	29
		Pelargoniums	22
		Peonies	36
		Pennisctum	19
		Peperomia	21-27
		Perennials	34-35-36-37-45
		Periwinkle	26
		Petunias	23-42
		Philadelphus	39
		Philodendron	22
		Phlox (Hardy)	37-44
		Phlox Subulata	37
		Phrynium Variegatum	11
		Physalis	36
		Physostegia	37
		Pilea	26
		Pincushion Flower	42
		Plant Food	28-29
		Platycodon	34
		Plumbago	22-37
		Poinciana	28-43
		Poinsettia	22
		Polyantha	43
		Poppy (Annual)	42
		Poppy (Oriental)	36-44
		Poppy (Alpine)	36
		Portulaca	42
		Portulacaria Afra	22
		Primroses	22-23
		Privet	45
		Prunus	38
		Pteris Tremula	18
		Purple Cone Flower	35
		Purple Fringe	40
		Pussy Willow	39
		Pyrethrum	44
		Queen Anne's Window Vine	22
		Raspberries	45
		Red Hot Poker	37-44
		Red Leaved Barberry	38-45
		Resurrection Plant	23
		Rhubarb	45
		Rock Cress	36
		Roses	3-4-5-6-7-8-10
		Rose Champion	37
		Rose of Sharon	38
		Royal Purple Plant	23
		Rubber Plant	11
		Rudbeckia	34-35
		Ruellia	27
		Russelia	19
		Saintpaulia	26
		Salix Caprae	39
		Salvias	26-37-43
		Sansevieria	11
		Saxifraga	26
		Saxatile Compactum	34
		Scabiosa	42
		Schizanthus	42
		Scarlet Flax	36-42
		Scarlet Plum Plant	26
		Sea Pink	36
		Sedums	23-27-37
		Selaginella Emilliana	11
		Sempervivium	23-36
		Sensitive Plant	43
		Shasta Daisy	34-44
		Silk Oak	19-43
		Smilax	43
		Smoke Bush	40
		Snake Plant	11
		Snadragons	26-41
		Snowball	39-40
		Snowberry	40
		Solanum	43
		Spireas	40
		Spruce	45
		Statice	34
		Stim-U-Plant	17
		Strawberries	45
		Strawberry Geranium	26
		Strawberry Guava	29
		Strawflower	41
		Strobilanthus	23
		Sultans Balsam	20
		Summer Cypress	43
		Sun Plant	42
		Surinam	29
		Sweet Lavender	34
		Sweet Peas	42
		Sweet Peas (Hardy)	33-44
		Sweet Rocket	34
		Sweet Scented Shrub	40
		Sweet William	37-44
		Tamarix Africana	40
		Tiger Aloe	28
		Tigridia	29
		Tobacco Dust	22
		Trailing Velvet Plant	27
		Tradescantia	27
		Tri-color Foliage Plant	29
		Tritoma	37-44
		Tuberose	32
		Tufted Pansies	35
		Tunica	37-44
		Umbrella Plant	27
		Vase Collections	26
		Vase Palm	26
		Verbena	27
		Verbena (Hardy)	37
		Veronica	37
		Viburnum	39-40
		Vinca	26
		Viola	22-35
		Violets	27
		Vitus Rhombifolia	17
		Wandering Jew	27
		Water Hyacinth	27
		Watermelon Begonia	27
		Water Plants	23
		Wax Plant	27
		Weeping Lantana	27
		Weigelas	40
		Wistarias	33
		Worm Exterminator	18



McGREGOR'S
GIANT EXHIBITION
CHRYSANTHEMUMS

All on this page

10 FOR \$1.00

Or your choice of 5 for 59c

ALL LARGE FLOWERING

U.S. Pat. 1,472,147

SPRINGFIELD
24c

LIBERTY BELL
21c

OCONTO
18c

GLADYS PEARSON
19c

GOLDEN GLORY
18c

AFRICANE
21c

INDIANOLA
22c

ST RITE
20c

CELESTA
18c

PATTIE
22c

THE McGREGOR BROS. CO. — Springfield, Ohio