

中國植物照片集

1

中國科學院植物研究所編纂

中国植物照片集編纂說明

一年来，在全国大跃进形势的推动下，各地植物研究机关，产业部門和高等院校都曾来信，向中国科学院植物研究所提出印制中国植物照片的要求，以利研究工作的需要。为了滿足各方这一迫切的需要，决定編印“中国植物照片集”。現就主要内容，作如下說明：

一、中国植物照片集第一批共二巨册，約計七千种，系由中国科学院植物研究所搜藏的大量照片中选出的，包括裸子植物与被子植物，其中大部为模式标本，也有一些是正确鑑定的标本。

二、本集編排次序，系按恩格洛 (Engler) 分类系統排列。

三、每幀照片下面，附有学名、产地、采集人和采集号碼，以便查对印証，但也有少数照片缺少产地或号碼；所列的种，都只有拉丁学名，而缺少中名；所引产地，也有許多較小地名只有外文拼音，本应一一查对添入，但如此做法，工作量太大，势必延迟付印日期，故只得暫缺，留待以后增補。

四、所有学名，在編纂过程中已經加以釐訂，但錯誤仍所不免，各方如有发现，請随时予以指正，以便再版时加以改正。

五、在初校时发现少数照片次序顛倒的情形，如再改排，費时太多，故在本集后面附加科、屬的学名索引，以便检閱。

中国科学院植物研究所

1959年3月

中国植物照片集科屬的拉丁学名索引(第一集)

拉丁学名	頁数	拉丁学名	頁数
Abies	6	Aristolochia	155
Abrus	718	Aristolochiaceae	155
Acacia	709	Artabotrys	346
Achyranthes	187	Artocarpus	99
Aconitum	226	Aruncus	513
Acroglochin	180	Asarum	158
Actaea	232	Asteropyrum	238
Acinodophne	352	Astilbe	442
Adenantha	711	Astragalus	722
Adonis	232	Aspidocarya	316
Aerva	187	Atriplex	181
Agrimonia	512	Atylosia	731
Agriophyllum	180	Axyris	181
Aizoaceae	192	Balania	163
Akebia	289	Balanophora	163
Albizzia	711	Balanophoraceae	163
Alchemilla	512	Barbavea	418
Allaeanthus	99	Basella	194
Allmania	188	Basellaceae	194
Alnus	54	Bassia	181
Alphonsea	345	Batrachium	239
Alseodaphne	356	Bauhinia	691
Alternanthera	188	Bessia	239
Altingia	499	Beilschmiedia	356
Alysicarpus	718	Berberidaceae	295
Alyssum	416	Berberis	295
Amarantaceae	187	Berteroa	418
Amaranthus	188	Betula	55
Amblytropis	719	Betulaceae	54
Amelanchier	512	Bifaria	142
Amentotaxus	2	Boehmeria	112
Amphicarpaea	721	Boerhaavia	192
Anemone	232	Bowringia	731
Anona	346	Brasenia	224
Anonaceae	345	Brassica	418
Aphananthe	88	Braya	419
Apios	721	Bretschneidera	435
Aquilegia	238	Bretschneideraceae	435
Arabidopsis	416	Broussonetia	100
Arabis	416	Bryophyllum	436
Arceuthobium	142	Bucklandia	501
Arenaria	194	Buckleya	140
Argemone	392	Bunias	419

拉丁学名	頁数	拉丁学名	頁数
Butea	732	Chlorantus	30
Caesalpinia	696	Chorispora	423
Caesalpinioideae	691	Chrysosplenium	441,442
Cajanus	732	Cicer	742
Calathodes	239	Cimicifuga	240
Callianthemum	239	Cinnamomum	361
Calophaca	732	Circaeaster	241
Calpidia	192	Cladrastis	742
Caltha	240	Clematis	241
Calycanthaceae	345	Cleome	415
Campylotropis	733	Clitoria	743
Caravalia	736	Cocculus	316
Cannabis	100	Cochlearia	423
Cansjera	139	Cochlianthus	744
Capparidaceae	412	Codariocalyx	744
Capparis	412	Coluria	514
Caragana	737	Colutea	744
Cardamine	420	Comarum	515
Cardaminopsis	422	Connaraceae	690
Cardiandra	444	Connarus	690
Carpinus	57	Coptis	261
Caryophyllaceae	194	Corispermum	183
Cassia	700	Corydalis	392
Castanea	62	Corylopsis	501
Castanopsis	62	Corylus	60
Catenaria	742	Cotoneaster	515
Caulophyllum	305	Crassula	436
Celosia	189	Crassulaceae	436
Celtis	88	Crataegus	529
Cephalotaxaceae	5	Crataeva	415
Cephalotaxus	5	Crotalaria	745
Cerastium	201	Cruciferae	416
Ceratophyllaceae	225	Cryptocarya	366
Ceratophyllum	225	Cryptomeria	18
Cercidiphyllaceae	226	Cudrania	101
Cercidiphyllum	226	Cunninghamia	18
Cercis	702	Cupressaceae	19
Chaenomeles	513	Cupressus	20
Chamabainia	115	Cyathula	190
Chamaecyparis	19	Cycadaceae	1
Champereia	139	Cycadales	1
Cheiranthus	422	Cyclea	317
Chelidonium	392	Cydonia	531
Chenopodiaceae	180	Dalbergia	750
Chenopodium	181	Debregeasia	115
Chimonanthus	345	Decaisnea	290
Chloranthaceae	30	Deeringia	191

拉丁学名	页数	拉丁学名	页数
Deinante	444	Eucommiaceae	512
Delphinium	262	Euptelea	225
Dendrolobium	752	Eurotia	184
Derris	752	Euryale	224
Descurainia	424	Eustigma	507
Desmanthus	715	Eutrema	427
Desmodium	753	Exochorda	536
Desmos	347	Fagaceae	62
Deutzia	444	Fagus	68
Dianthus	202	Fatoua	101
Dichotomanthes	531	Fibraurea	318
Dichroa	454	Ficus	102
Dicranostigma	405	Filipendula	538
Diphylleia	305	Fissistigma	347
Diploclisia	318	Fokienia	20
Dipoma	424	Fordia	763
Disanthus	504	Fortunearia	508
Distylium	504	Flemingia	762
Docynia	532	Fragaria	538
Dolichos	759	Fumaria	406
Dontostemon	424	Galactia	763
Draba	424	Geissaspis	764
Drosera	435	Geum	539
Droseraceae	435	Ginkgo	1
Dryas	532	Ginkgoaceae	1
Drymaria	203	Girardinia	119
Duchesnea	532	Gironniera	83
Dumasia	760	Glauucidium	269
Dunbaria	761	Glaucium	406
Dysosma	306	Gleditsia	703
Elatostema	116	Glinus	192
Elytranthe	142	Glycine	764
Engelhardtia	51	Glycyrrhiza	765
Entada	716	Glyptostrobus	19
Eomecon	405	Gnetaceae	25
Ephedra	24	Gnetum	25
Ephedraceae	24	Goldbachcia	427
Epimedium	306	Gomphrena	191
Eranthis	269	Gonothalamus	349
Friobotrya	533	Gonostegia	119
Eriosema	761	Gueldenstaedtia	719
Erysimum	425	Gymnotheca	26
Erythrina	761	Gynandropsis	415
Erythralum	137	Gypsophila	203
Erythrophloeum	703	Halerpestes	270
Euchresta	762	Halimodendron	767
Eucommia	512	Hamamelidaceae	499

拉丁学名	頁数	拉丁学名	頁数
Hamamelis	508	Lespedeza	783
Hedyosmum	32	Leucaena	716
Hedysarum	767	Libocedrus	23
Helicia	135	Lindera	367
Helleborus	270	Liquidambar	508
Henslowia	146	Lithocarpus	69
Hernandia	391	Litsea	374
Hernandiaceae	391	Loranthaceae	142
Hesperis	427	Loranthus	150, 143
Heydria	23	Loropetalum	509
Holboellia	290	Lotus	787
Houttuynia	26	Lourea	788
Tumulus	109	Loxostemon	428
Hydrangea	454	Lychnis	204
Hylomecon	405	Lysidice	706
Hypecoum	407	Maackia	788
Hyphear	143	Machilus	380
Illicium	324	Macleaya	407
Illigera	391	Macrosolen	149
Indigofera	768	Manglietia	330
Isopyrum	270	Magnolia	331
Itea	465	Magnoliaceae	324
Jeffersonia	308	Mahonia	309
Juglandaceae	51	Maingaya	509
Juglans	51	Malaisia	110
Juniperus	21	Malcolmia	429
Kadsura	329	Malus	540
Kalanchoe	436	Maoutia	122
Kalidium	185	Meconopsis	408
Kerria	539	Medicago	790
Keteleeria	9	Megadenia	430
Kingdonia	271	Melandryum	205
Kochia	185	Melilotus	791
Koenigia	165	Memorialis	122
Korthalsella	143	Menispermaceae	316
Kummerowia	783	Menispermum	139
Laportea	120	Meratia	345
Lardizabalaceae	289	Mezoneurum	706
Larix	10	Michelia	336
Lathyrus	783	Milium	349
Lauraceae	352	Millettia	792
Lecanthus	121	Mimosa	717
Leguminosae	691	Mimosoideae	709
Leontice	308	Mitella	443
Lepidium	428	Mitrastemon	162
Leptopyrum	271	Moehringia	210
Lepyrodiclis	203	Mollugo	193

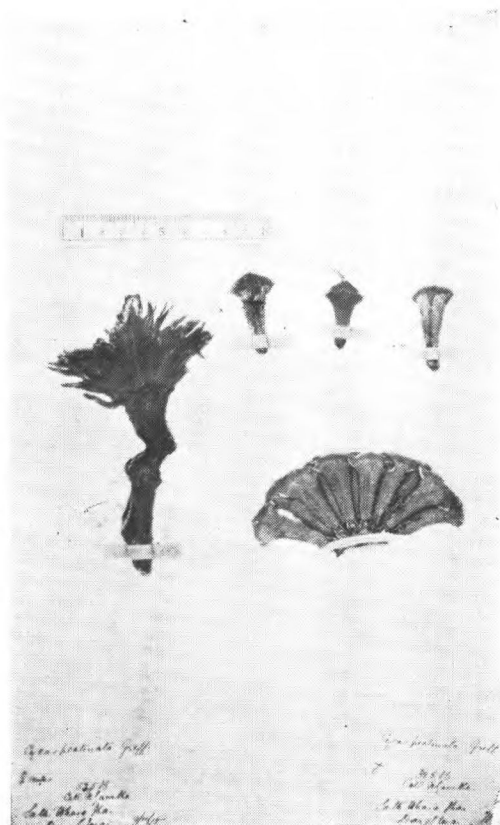
拉丁学名	頁数	拉丁学名	頁数
Moraceae	99	Pegaeophyton	432
Morus	110	Pellionia	123
Myrica	50	Peltophorum	707
Myricaceae	50	Pentactina	546
Nandina	314	Penthorum	437
Nanocnide	122	Peperomia	26
Naravelia	271	Pericampylus	319
Nasturtium	430	Phaseolus	801
Neillia	543	Philadelphus	468
Neocinnamomum	383	Phoebe	389
Neolitsea	385	Photinia	547
Neomartinella	431	Phyllodium	802
Nepenthaceae	435	Physocarpus	558
Nepenthes	435	Phytolacca	192
Neslia	432	Phytolaccaceae	192
Nothaphoebe	389	Picea	11
Nuphar	224	Pilea	125
Nyctaginaceae	191	Pileostegia	471
Nymphaea	225	Pinaceae	6
Nymphaeaceae	224	Pinus	14
Olacaceae	137	Piper	27
Olax	138	Piperaceae	26
Opilia	139	Piptanthus	802
Opiliaceae	139	Pisonia	191
Orecnide	123	Pithecolobium	717
Ormosia	796	Pittosporaceae	494
Orostachys	437	Pittosporum	494
Orychophragmus	432	Platycarya	52
Osteomeles	546	Podocarpus	3
Ostrya	61	Podocarpaceae	3
Ostryopsis	61	Podophyllum	314
Osyris	141	Polyalthia	350
Oxygraphis	271	Polycarpaea	210
Oxytropis	799	Polycarpon	211
Pachyrhizus	801	Polygonaceae	165
Paeonia	272	Polygonum	165
Papaver	411	Polyosma	471
Papaveraceae	392	Pongamia	803
Papilionatae	718	Populus	32
Parabaena	319	Portulaca	193
Paraquilegia	273	Portulacaceae	193
Parietaria	123	Potaninia	558
Parnassia	443	Potentilla	558
Parochetus	801	Pourthiaea	568
Parrotiopsis	509	Pouzolzia	132
Parrya	432	Prinsepia	568
Pasania	73	Proteaceae	135

拉丁学名	頁数	拉丁学名	頁数
Prunus	569	Sargentodoxa	292
Psammosilene	211	Saruma	162
Pseudolarix	16	Sassafras	391
Pseudostellaria	211	Saururaceae	26
Pseudotsuga	17	Saururus	26
Psophocarpus	803	Saxifraga	475
Pterocarpus	804	Saxifragaceae	442
Pterocarya	53	Sceptrocnide	133
Pteroceltis	94	Schisandra	340
Pterolobium	707	Schizophragma	493
Pteroloma	804	Schoepfia	138
Ptilotrichum	433	Scurrula	150
Pueraria	804	Sedum	438
Pulsatilla	273	Semiaquilegia	278
Pycnarrhena	319	Sesbania	807
Pycnospora	806	Sesuvium	193
Pygeum	595	Shuteria	808
Pyracantha	595	Sibbaldia	658
Pyrularia	141	Sibiraea	659
Quercus	78	Silene	212
Rafflesiaceae	162	Sinocrassula	443
Ranunculaceae	226	Sinofranchetia	292
Ranunculus	274	Sinomenium	320
Ranzania	315	Sinowilsonia	510
Raphanus	433	Sisymbrium	433
Raphiolepis	597	Smithia	808
Rheum	177	Solms-Laubachia	434
Rhodoleia	510	Sophora	809
Rhodotypos	599	Sorbaria	660
Rhoiptelea	99	Sorbus	661
Rhoipteleaceae	99	Spatholobus	812
Phynchosia	806	Spenceria	675
Ribes	472	Spergula	217
Roemeria	412	Spergularia	217
Rosa	600	Spiraea	675
Rosaceae	512	Stauntonia	292
Rubus	620	Stellaria	217
Rumex	178	Stephanandra	688
Sagina	212	Stephania	320
Salicaceae	32	Stixis	415
Salicornia	185	Stranvaesia	689
Salix	33	Streblus	112
Salsola	186	Suaeda	186
Sanguisorba	657	Swainsona	813
Santalaceae	140	Sycopsis	510
Santaloides	691	Taiwania	19
Saraca	708	Tamarindus	709

拉丁学名	页数	拉丁学名	页数
Taxaceae	2	Trifolium	815
Taxillus	151	Trochodendraceae	225
Taxodiaceae	18	Trochodendron	226
Taxotrophis	112	Trollius	288
Taxus	2	Tsuga	17
Tephrosia	813	Turritis	435
Tetracentron	344	Ulmaceae	88
Tetragonia	193	Ulmus	95
Tetrathyrium	511	Uraria	816
Thalictrum	279	Urophysa	289
Thesium	141	Urtica	133
Thermopsis	814	Urticaceae	112
Thlaspi	434	Uvaria	351
Thuja	23	Vaccaria	223
Tinomiscium	323	Vicia	817
Tinospora	323	Villebrunea	135
Torreya	2	Viscum	152
Torularia	434	Waldsteinia	690
Trema	94	Zelkova	98

1. 苏铁科 Cycadaceae

苏铁属 *Cycas* L.



Cycas pectinata Griff.
Gamble 325B.



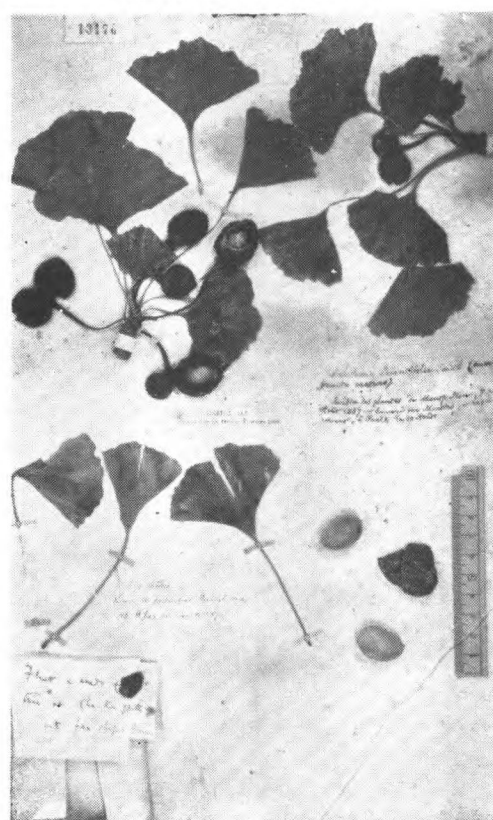
Cycas revoluta Thunb.
Thunberg (Upsala) 日本南部

2. 银杏科 Ginkgoaceae

银杏属 *Ginkgo* L.



Cycas taiwaniana Carruth.
S. Sasaki 无号, Pinan-tai-kei, Taito, 台湾



Ginkgo biloba Linn.
James 无号

3. 紫杉科 Taxaceae

穗花杉屬 *Amentotaxus* Pilger



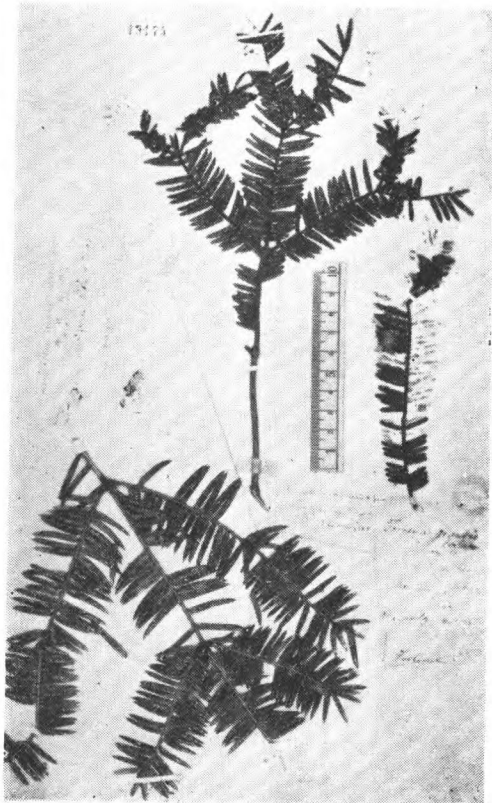
Amentotaxus argotaenia (Hance) Pilger
C. Ford 无号, Tai-mo mountain.

紫杉屬 *Taxus* L.

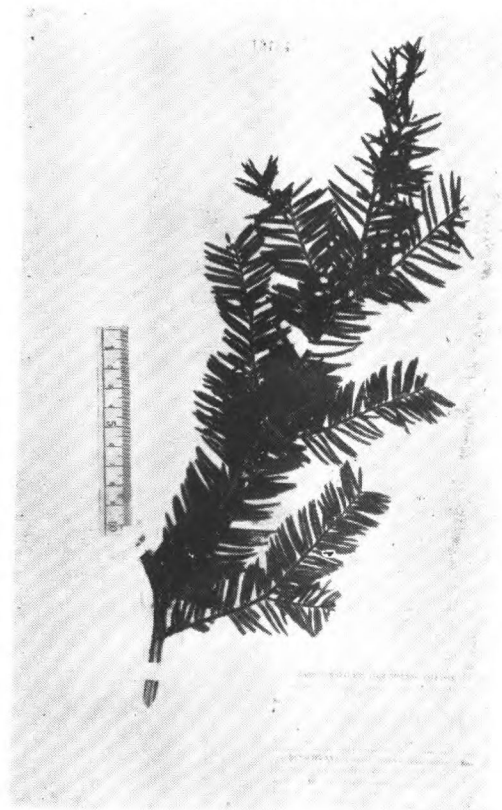


Taxus chinensis (Pilg.) Rehd.
Wils. (Veitch) 479, 624, 湖北西部

榧屬 *Torreya* Arnott

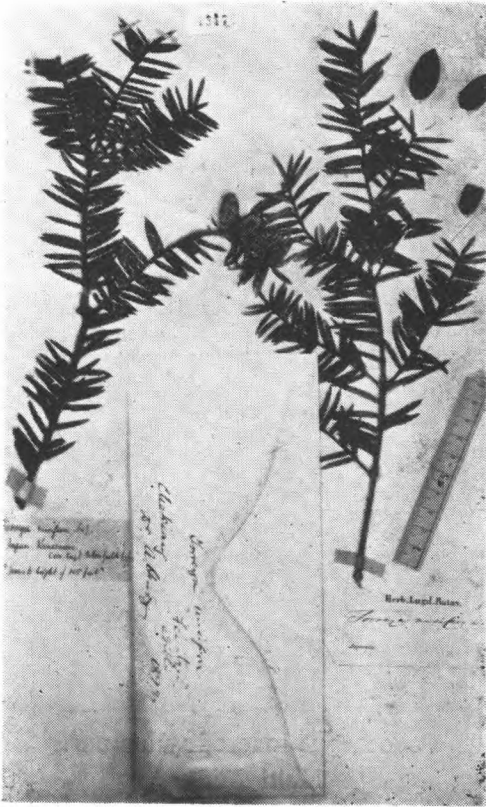
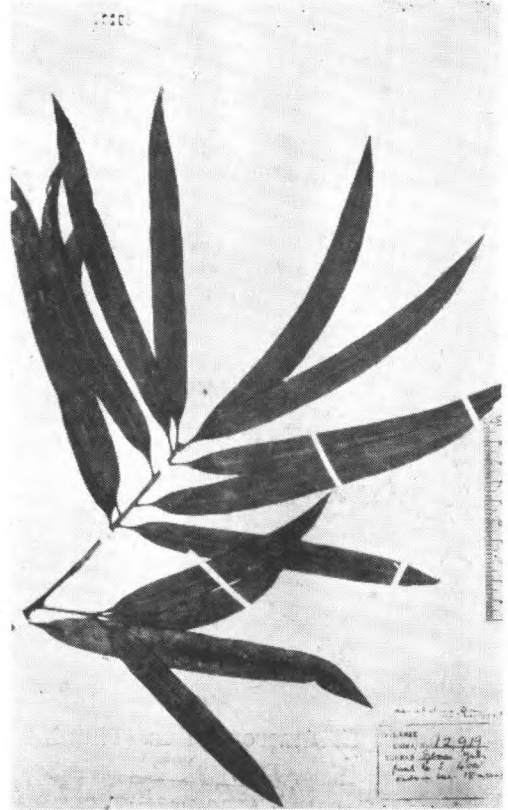
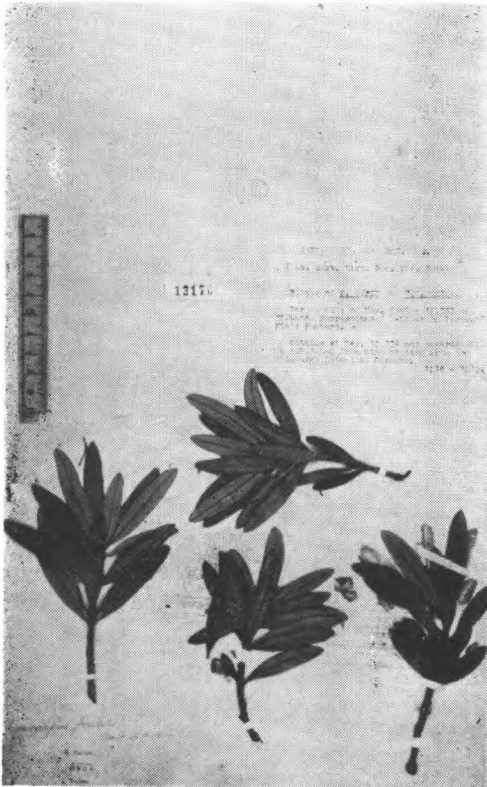
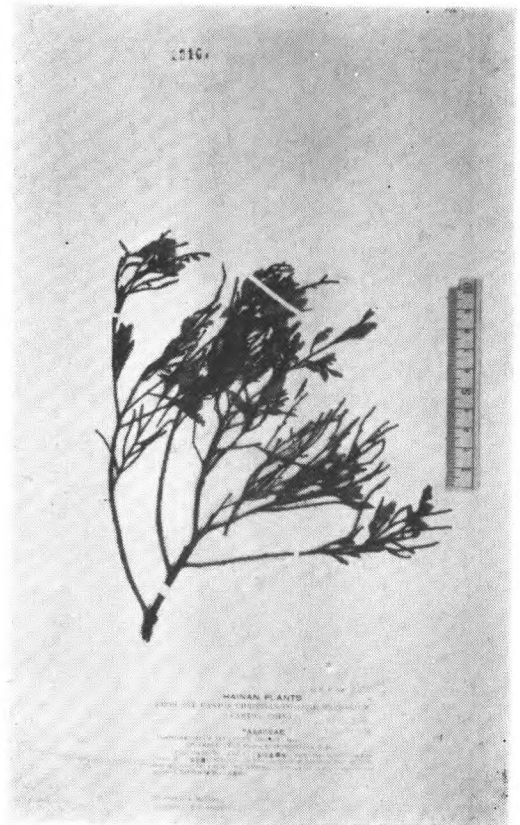


Taxus Wallichiana Zucc.
H.-M. 2602. 四川 (北部盐源)



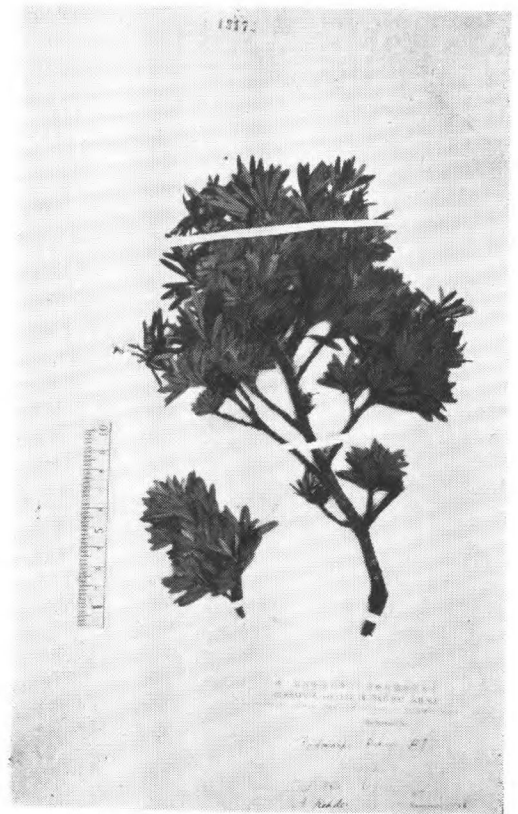
Torreya grandis Fortune
Fortune 无号 · (type.) 浙江

4. 罗汉松科 Podocarpaceae

罗汉松属 *Podocarpus* L'Herit.*Torreya nucifera* Sieb. et Zucc. 日本*Podocarpus formosensis* Dummer
Henry 1357. 云南*Podocarpus Forrestii* Craib et W. W.
Smith
Forrest 6852. (topotype) 云南大理东部*Podocarpus javanicus* (Burm. f.) Merr.
Meclure 8705. 海南五指岭



Podocarpus macrophyllus (Thunb.)
Don
Savatier 1200. 日本



Podocarpus macrophyllus var.
Maki Endl.
C. L. Tso 1477. 江苏



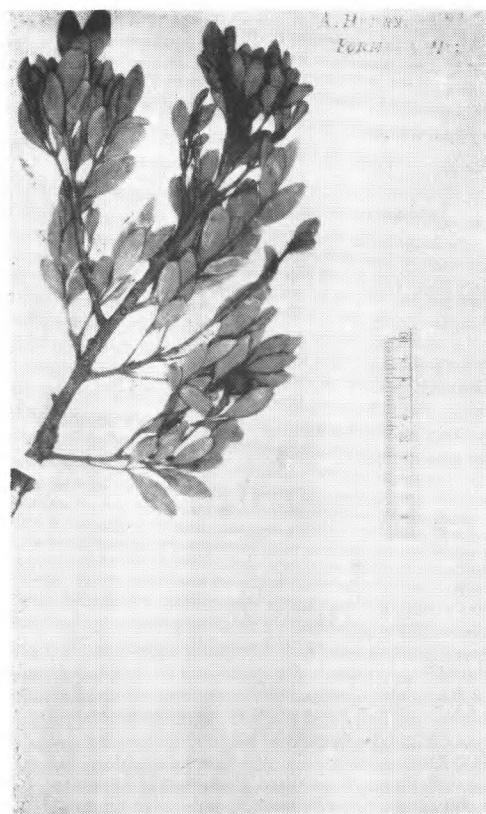
Podocarpus Nagi Zoll. et Morit.
Maximowicz 无号, 日本



Podocarpus Nakaii Hayata
Wils. 9937. 台湾



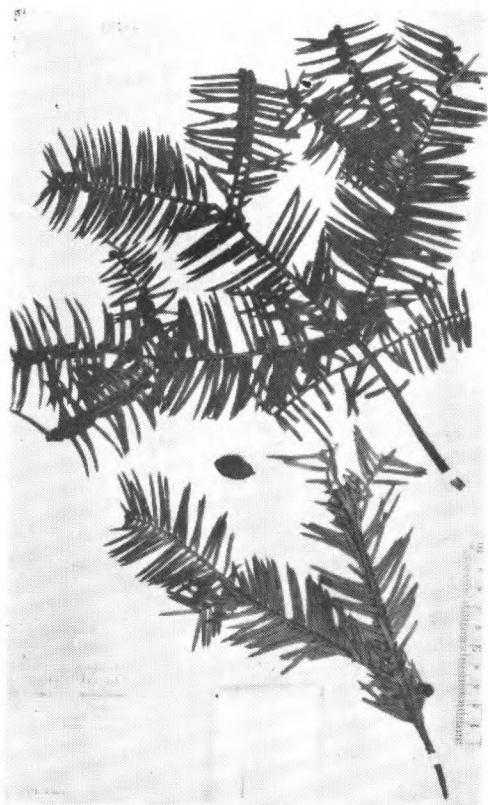
Podocarpus nankoensis Hayata
Wils. 11109. 台湾



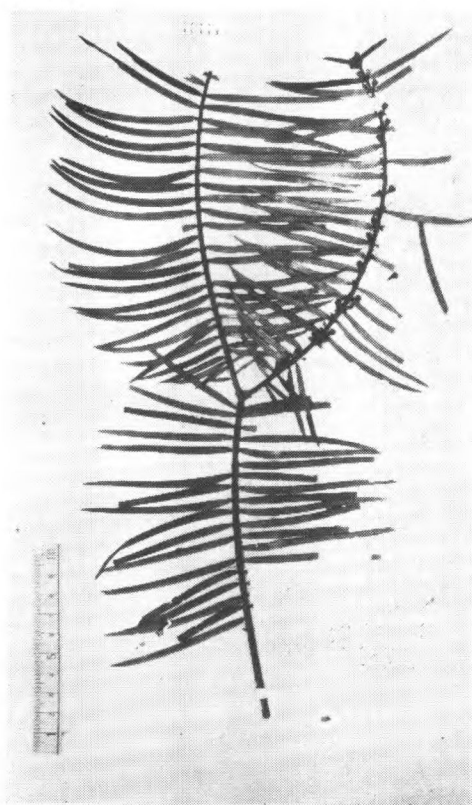
Podocarpus neriifolius D. Don
Henry 12919.

5. 粗榧科 Cephalotaxaceae

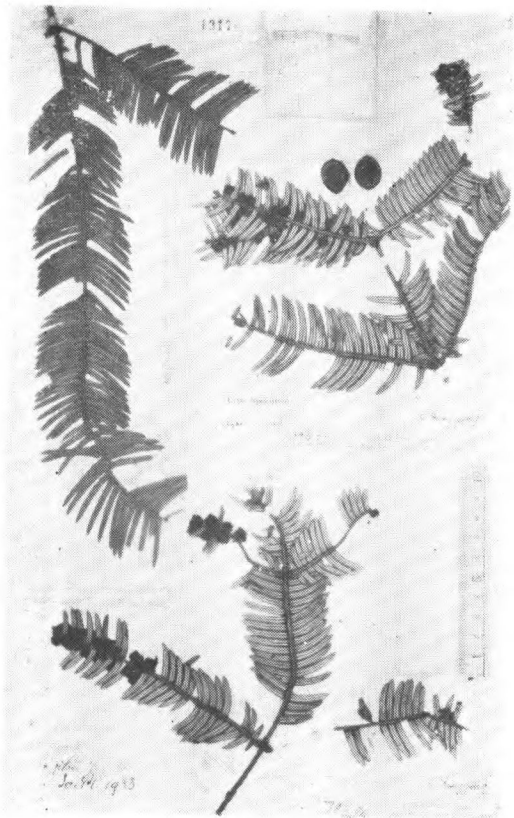
粗榧屬 *Cephalotaxus* S. et Z.



Cephalotaxus Harringtonia var.
sinensis (Rehd. & Wils.) Rehd.
Wils. 267 湖北西部兴山



Cephalotaxus Fortunei Hook.
Fortune 无号 (type), N. of Shany-See,



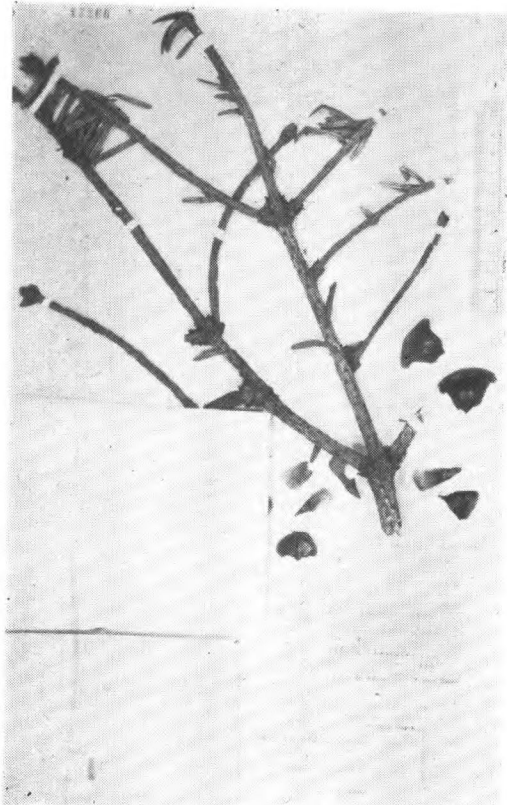
Cephalotaxus Oliveri Masters
Henry 7832 (type) 湖北襄阳



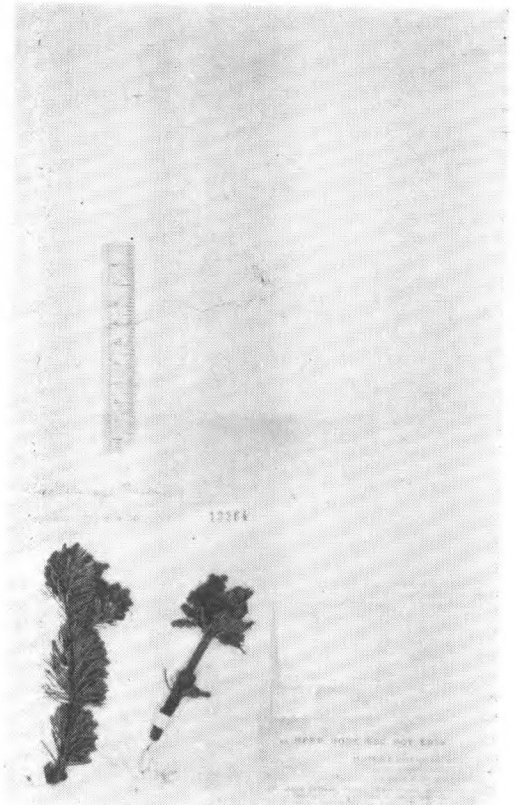
Cephalotaxus Oliveri Masters
Henry 7479 (type) 湖北襄阳

6. 松科 Pinaceae

冷杉屬 *Abies* Dietr.



Abies chiensiensis Van Tiegh.
Wils. 647. 湖北房县



Abies Delavayi Fr.
Forrest 4606. 云南大理苍山



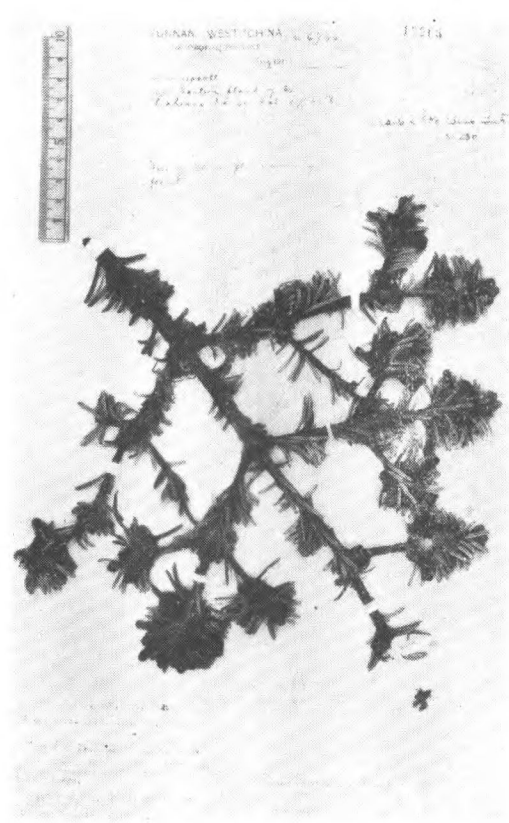
Abies Ernesti Rehd.
Wils. 2090 (type) 打箭炉灯炮山



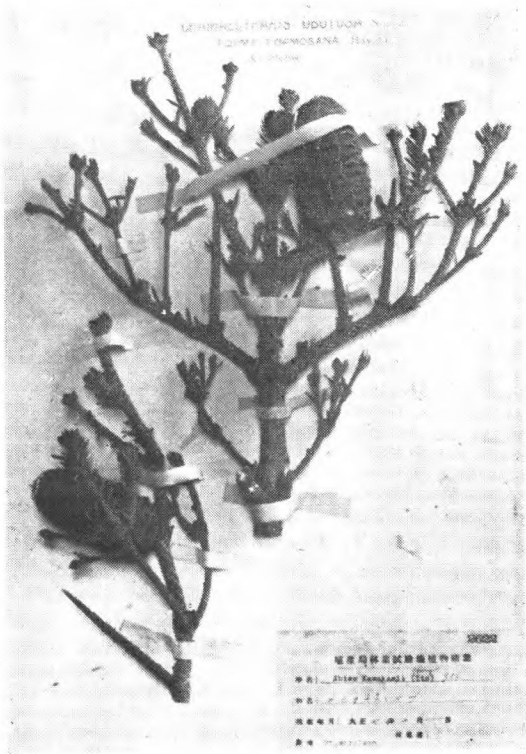
Abies Faberi (Masters) Craib
Faber 984 (type) 四川峨眉



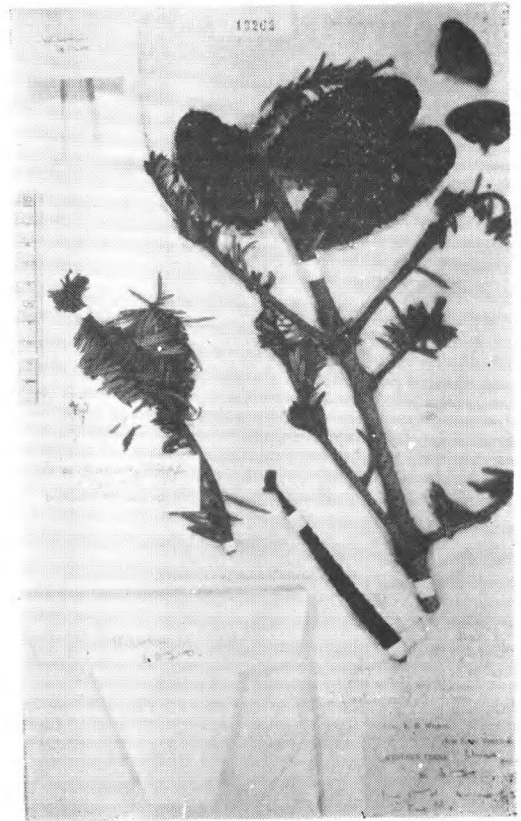
Abies Faxoniana R. & W.
Wils. 4060. (cotype) 松潘东北部



Abies Forrestii Craib ex Coltman
Roovers.
Forr. 6744. (type.) 云南丽江东坡



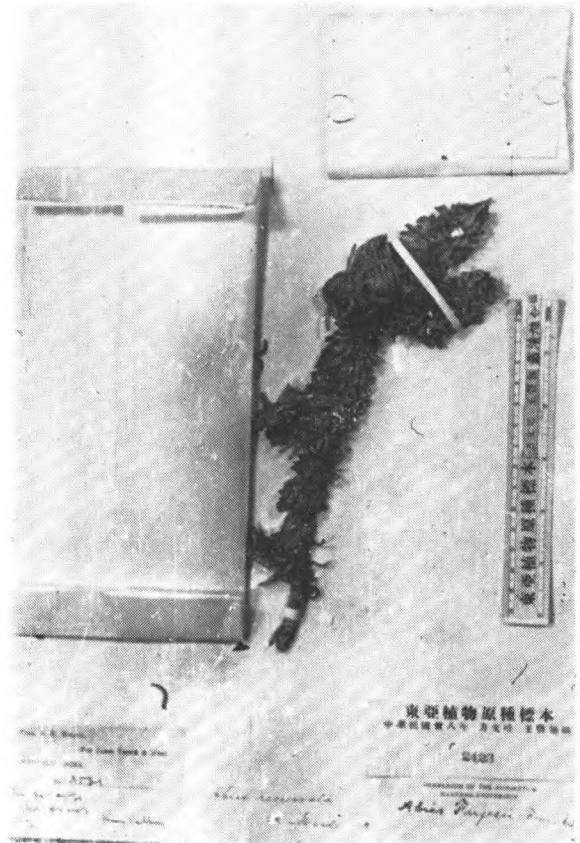
Abies kawakamii (Hay.) Ito
R. Kanehira et S. Sasaki
Mt. Morrison, 台湾



Abies mollis Stapf
Wils (Veitch) 3020. 清溪县飞越岭



Abies nephrolepis (Trautv.) Max.
Komarov 83. 吉林



Abies recurvata Masters
Wilson 3021. (type) 四川茂县至松潘之間

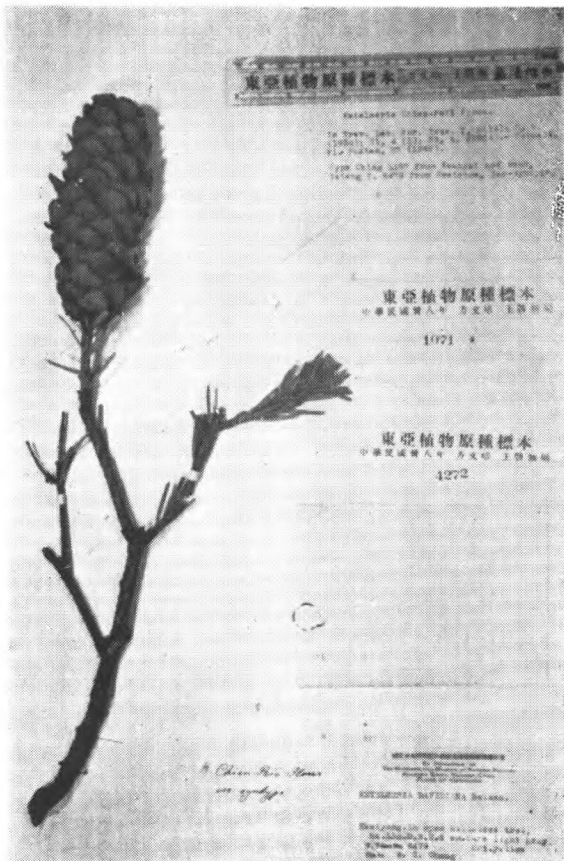


Abies squamata Mast.
Wils. (Veitch) 3079. (type) 打箭炉西北



Abies sutchuensis (Fr.) Rehd. et Wils.
Wm. Purdom 823

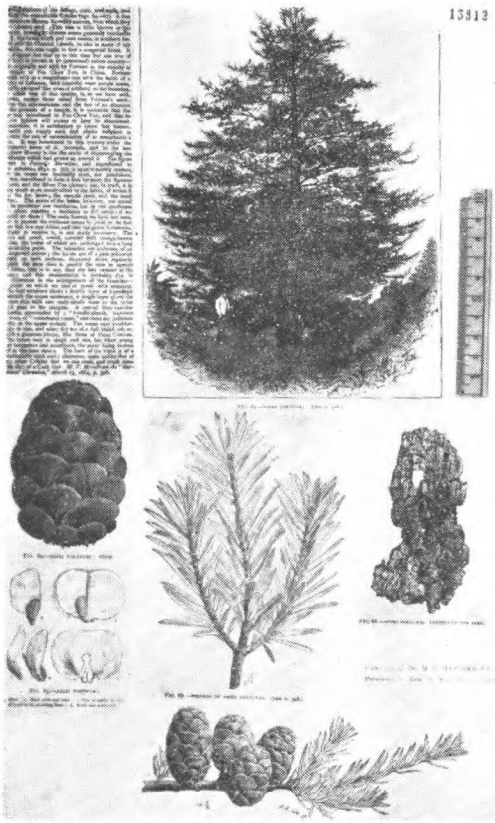
油杉屬 *Keteleeria* Carr.



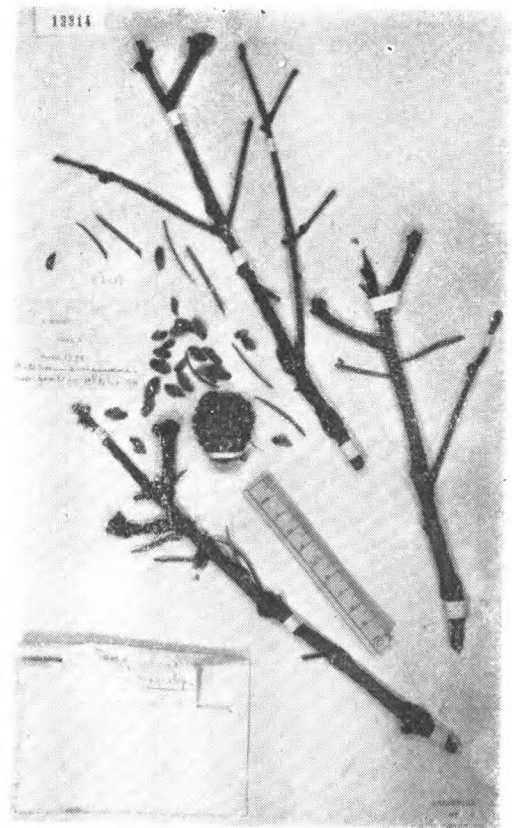
Keteleeria Chien-Pei Flous.
Tsiang Y. 8479, (Isotype) 貴州



Keteleeria Davidiana (Fr.) Beissner
Henry 3276. 四川南沱



Keteleeria Fortunei (Murray) Carr.
Hance 17878, (type) 福州

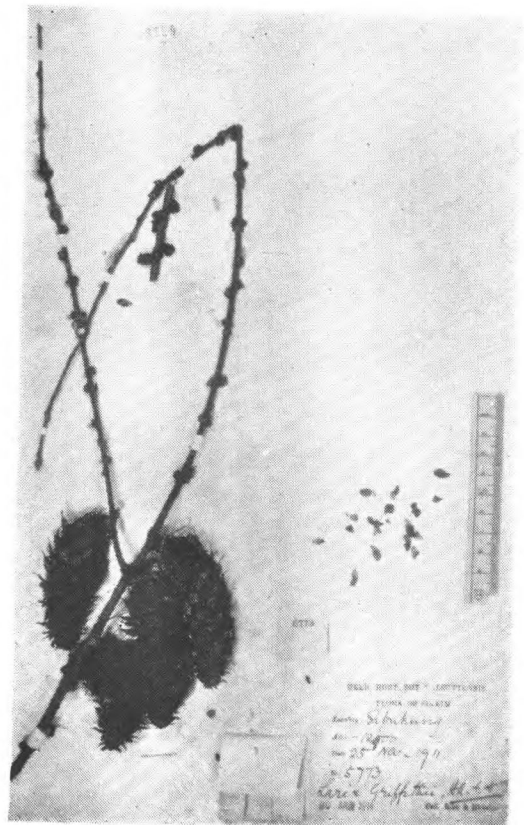


Keteleeria Evelyniana Mast.
Henry 11815. (Type.) 云南元江

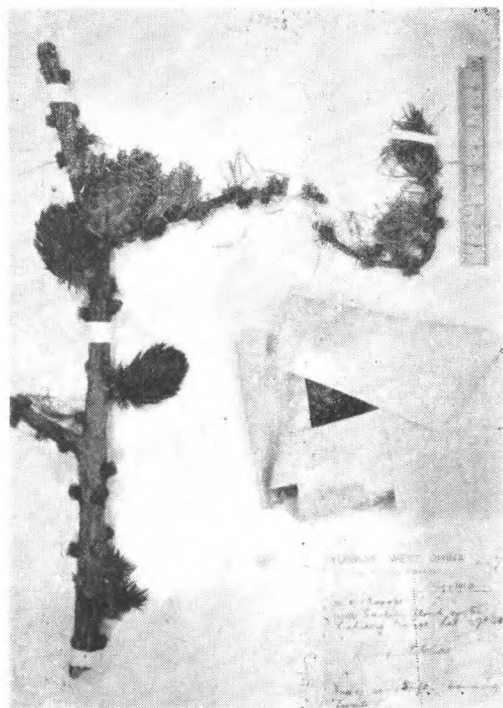
落叶松属 *Larix* Miller



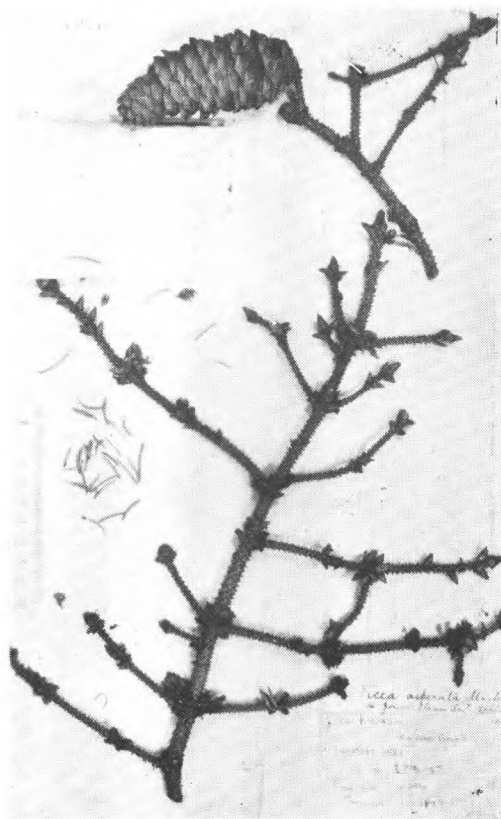
Larix Gmelini (Rupr.) Ledeb. ex Gold
Ostenf. et Syrad. var. Principis-Ruprechtii (Mayr.) Rehd. & Wils.
Wils. 10508. 朝鮮



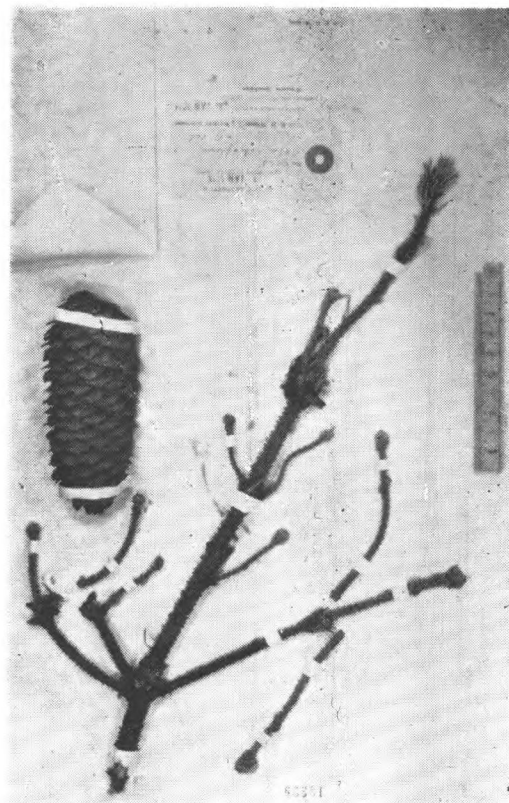
Larix Griffithiana Hort. ex Carriere
Ribu et Rhomov 5773. Sikkim.

云杉屬 *Picea* Dietr.

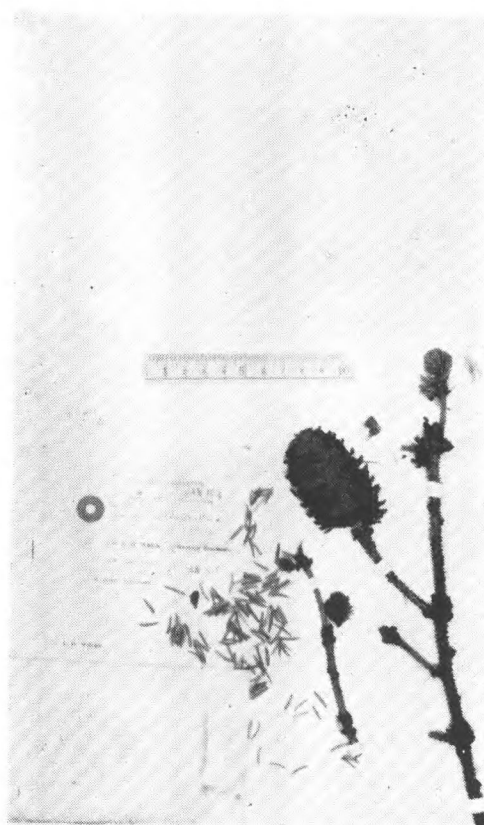
Larix Potanini Batal.
Forr. 6745. 云南丽江



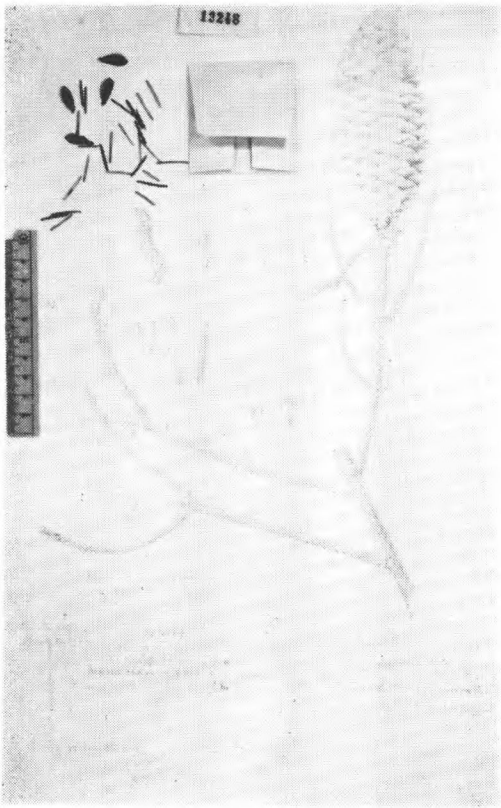
Picea asperata Masters
Wils. (Veitch) 3025 (type) 四川



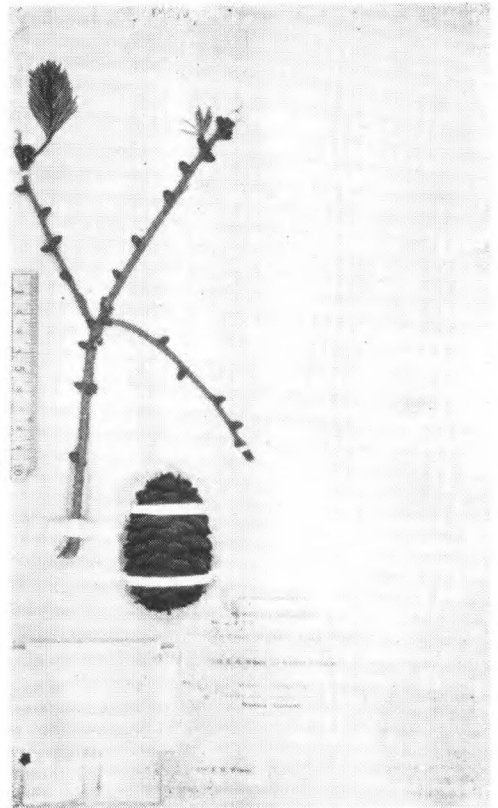
Picea retroflexa Mast.
Wills. 2065. 西康打箭炉



Picea Balfouriana Rehd. et Wils.
Wils. 2055. 四川



Picea brachytyla (Fr.) Pritz.
Delavay 4129 (type). 云南



Picea brachytyla Pritz.
Wils. 2073



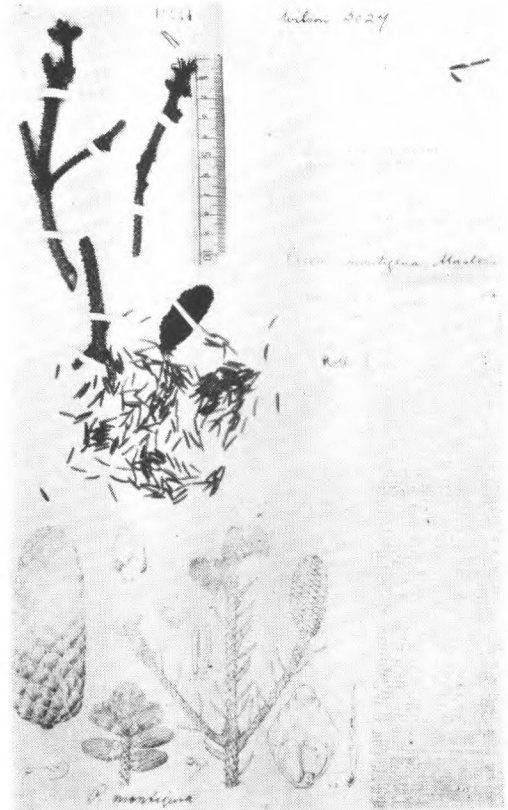
Picea gemmata Rehd. & Wils.
Wils. 2067. (holotype) 西康打箭炉



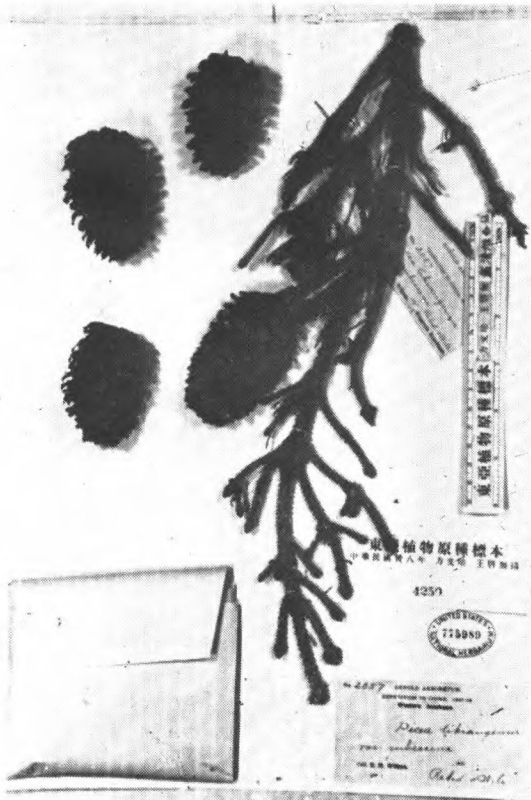
Picea heterolepis Rehder & Wilson
Wils. 3027 (type.) 四川茂县



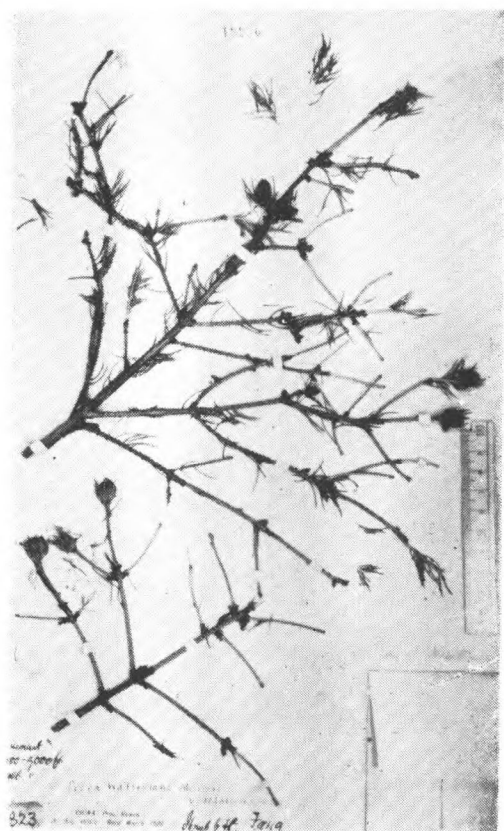
Picea hirtella Rehder & Wilson
Wilson 2084 (cotype.) 四川



Picea montigena Mast.
Wils. 3027 (type.) 西康打箭炉



Picea likiangensis Pritz *var. rubescens*
Rehd. & Wils.
Wilson 2057 cotype? Szechuan. = *Picea*
likiangensis (Franch.) Pritzel



Picea neveitchii Mast.
Henry 6823 (type) 湖北西部房县

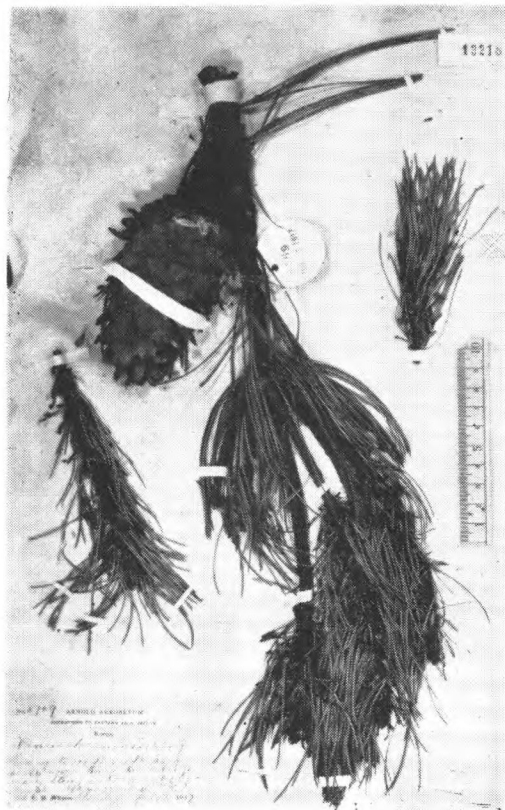
松屬 *Pinus L.*



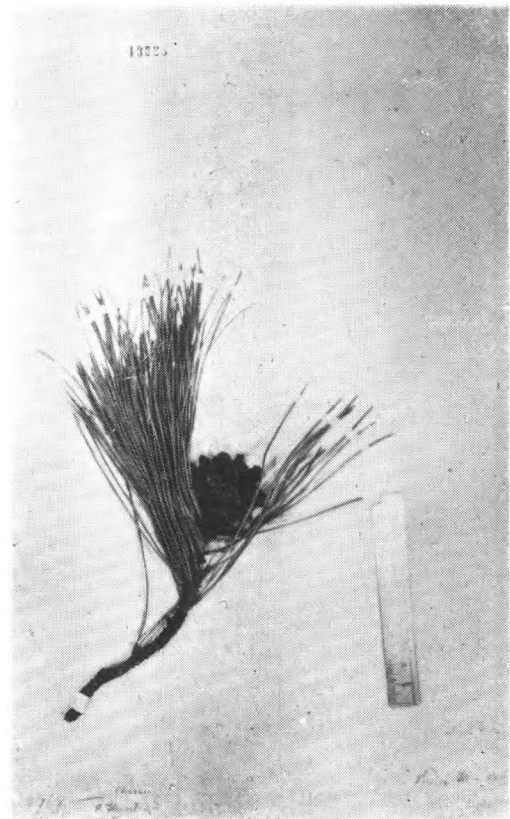
Pinus densiflora Sieb. & Zucc.
Faurie 201. 朝鮮



Pinus formosana Hayata
B. Hayata 无号 Randai, 台湾



Pinus koraiensis S. et Z.
Wils. 8769. 朝鮮



Pinus Massoniana Lamb.
Faber 1769. 浙江天台



Pinus Wangii var. *kwangtungensis*
Cheng & Law
Maclure 9333.



Pinus pumila Regel
Wils. 9042. 朝鮮雪山



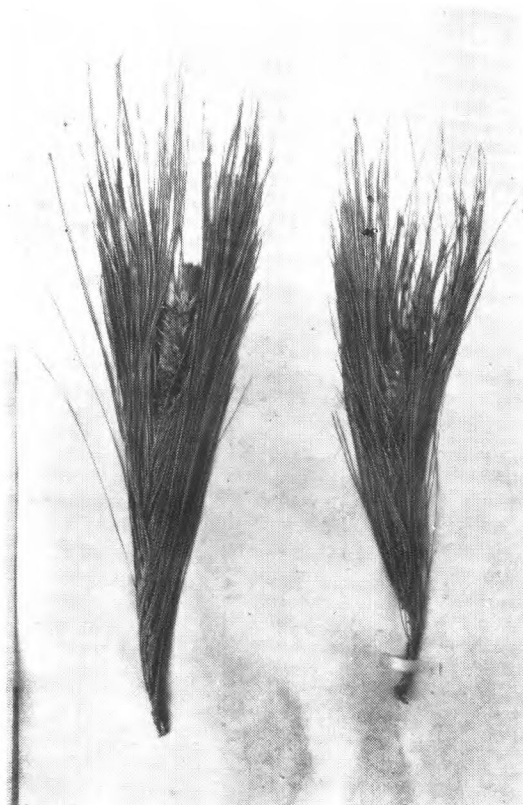
Pinus tabulaeformis Carr.
Henry 6909 (type) 湖北房县



Pinus densata Master.
Wilson 1500. 茂功、小金河谷



Pinus taiwanensis Hay.
T. Kawakami et U. Mori 7142. (iso-
type)



Pinus Thunbergii P. Parl.
Liu 57. 北京西山臥佛寺



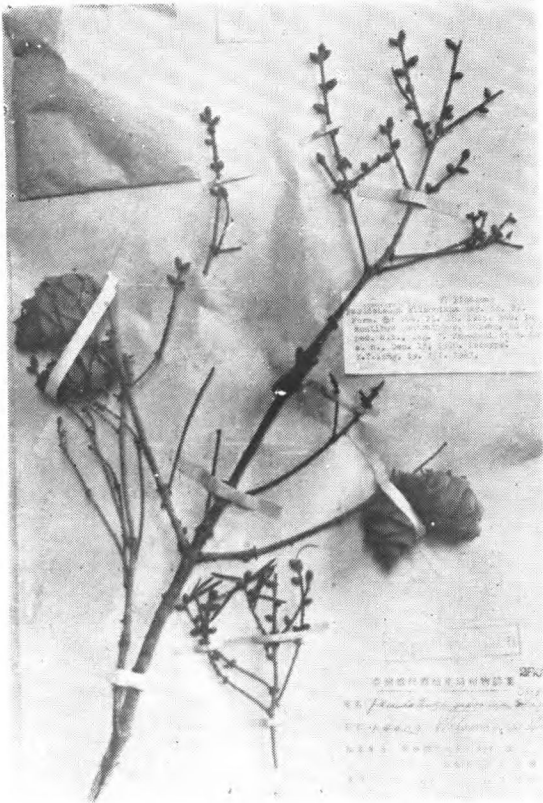
Pinus yunnanensis Fr.
Wils. 1396.

金錢松屬 *Pseudolarix* Gord.



Pseudolarix amabilis (Nelson) Rehder
Fortune 1907 中国

黄杉屬 *Pseudotsuga* Carr.

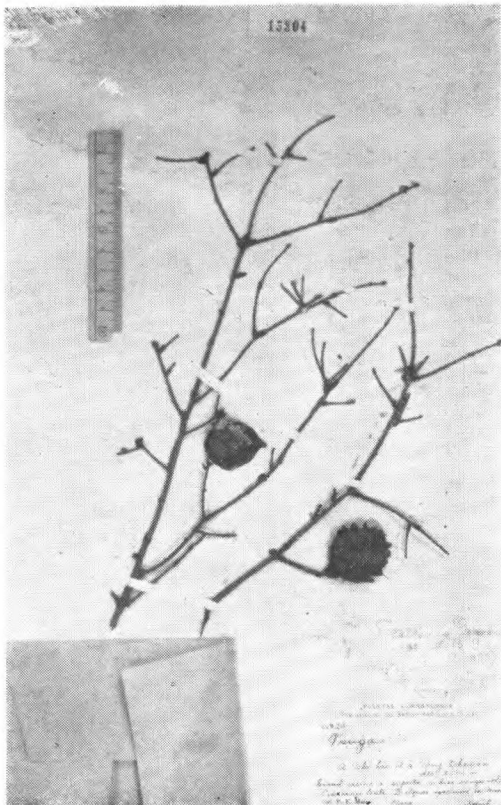


Pseudotsuga wilsoniana Hay.
U. Mori 无号 (isotype.) Montibus
Centralibus, 台湾

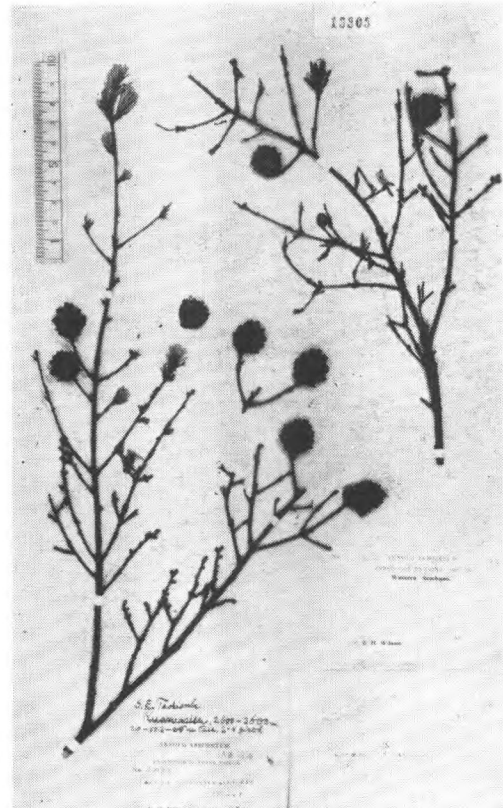


Pseudotsuga wilsoniana Hayata
Wils. 10324 (topotype.) 台湾

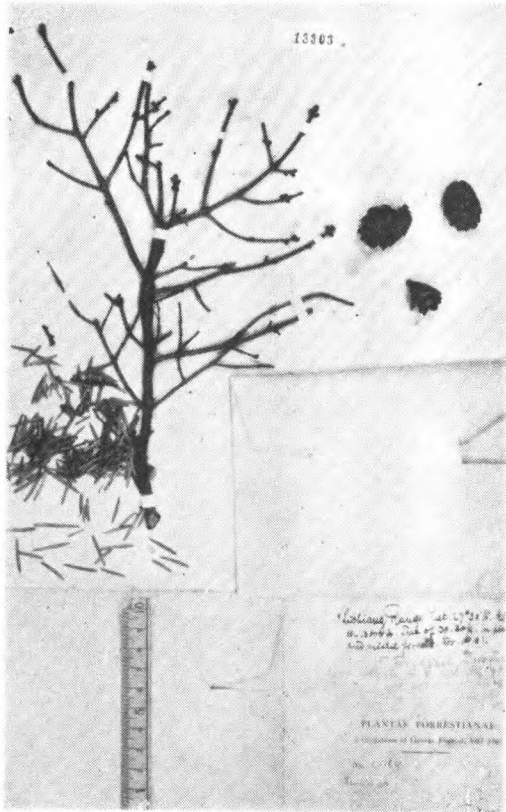
铁杉屬 *Tsuga* Carr.



Tsuga chinensis (Fr.) Pritzl
Maire 20 (type of *T. calcarea* Downie).
Mimonto arides calcaires a Tche-hay.



Tsuga yunnanensis Mast.
Wilson 2098 四川西部



Tsuga Forrestii Down.
Forrest 17169 四川西部



Tsuga yunnanensis Mast.
Forr. 6747. (cotype of *T. dura* Downie).
云南丽江东坡

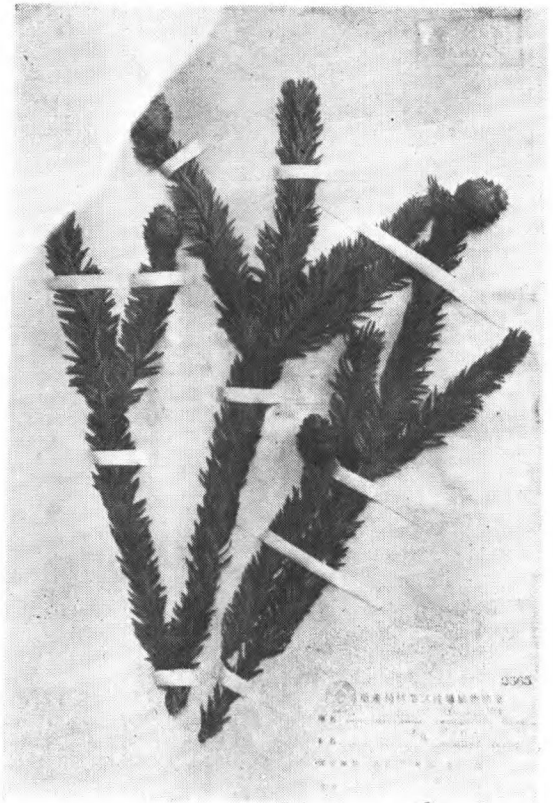
7. 杉 科 Taxodiaceae

孔雀杉屬 *Cryptomeria* Don



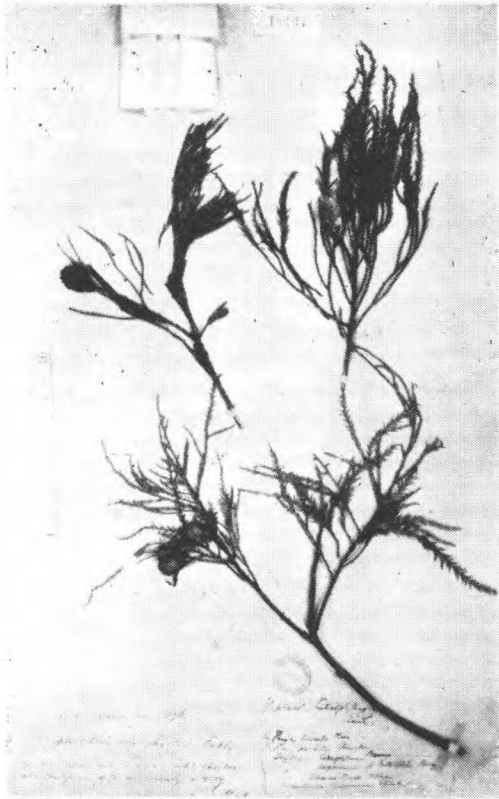
Cryptomeria japonica D. Don
E. Maire (Holotype of *C. Mairei* photo
& merotype)

杉 屬 *Cunninghamia* R. Br.



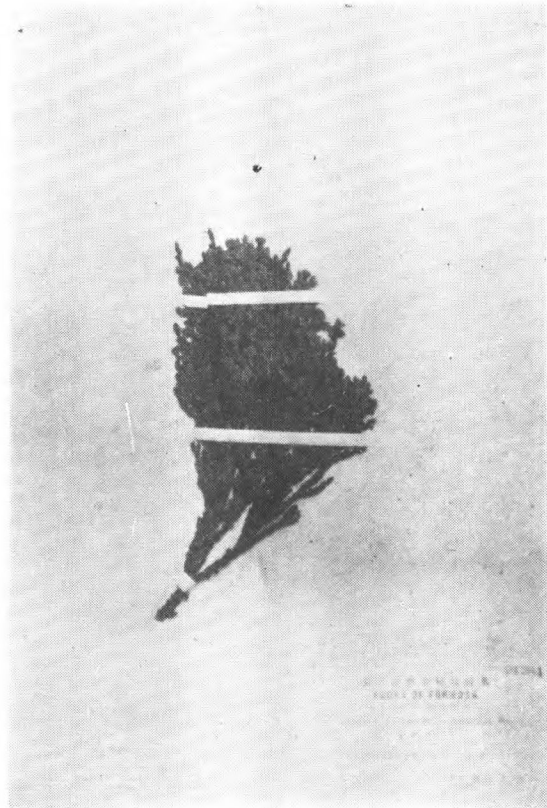
Cunninghamia Konishii Hay.
S. Sasaki 无号 Taihei, 台湾

水松屬 *Glyptostrobus* Endl.



Glyptostrobus pensilis K. Koch
Hance 5276. 广东

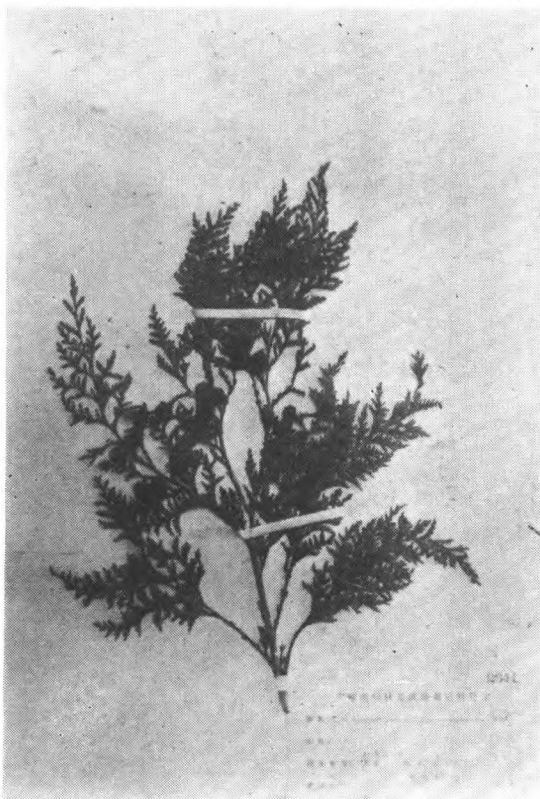
台湾杉屬 *Taiwania* Hay.



Taiwania cryptomerioides Hay.
S. Sasaki 无号 (topotype) Arisan,
台湾

8. 柏 科 *Cupressaceae*

花 柏 屬 *Chamaecyparis* Spach



Chamaecyparis formosensis Matsum.
S. Sasaki 无号, Arisan, 台湾

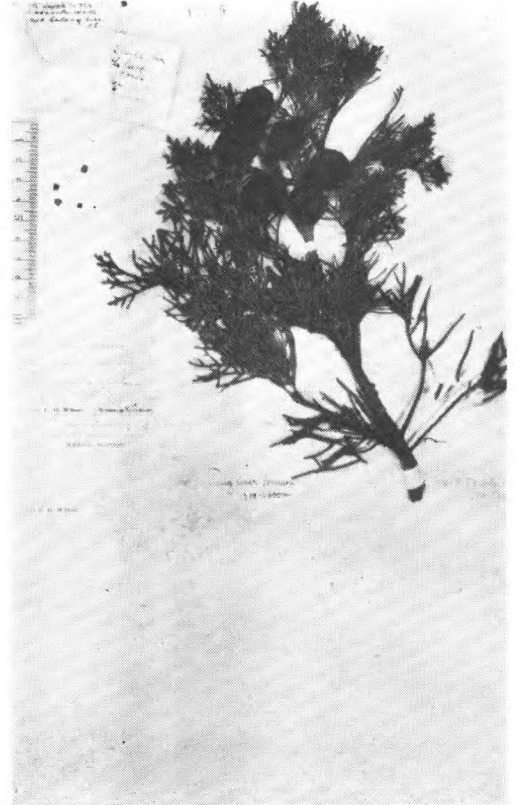


Chamaecyparis obtusa S. et Z.
Wils. 7516. 日本

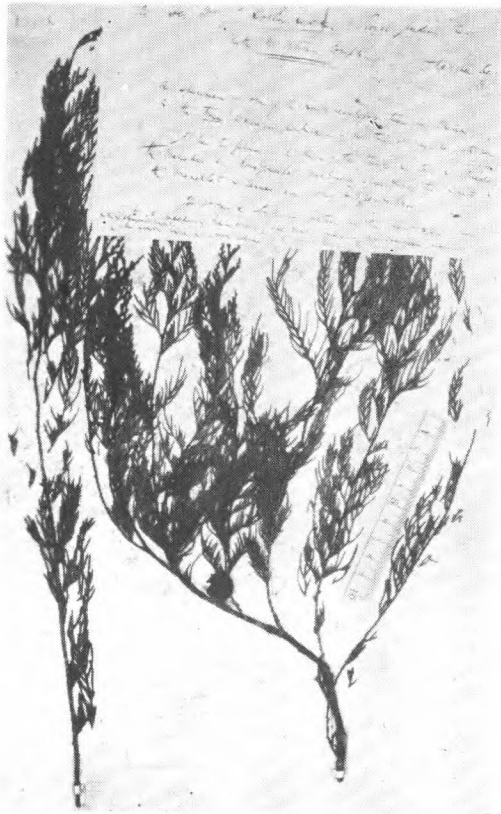
柏 屬 *Cupressus* L.



Chamaecyparis pisifera S. et Z.
Wils. 7758.



Cupressus Duclouxiana Hickel.
Wils. 2106. 四川



Cupressus funebris Endl.
Fortune 无号 (type)

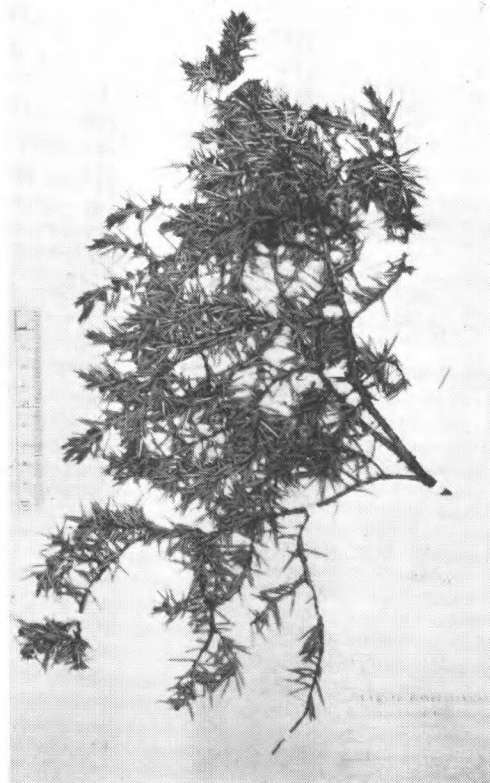
建柏屬 *Fokienia* Henry et Thomas.



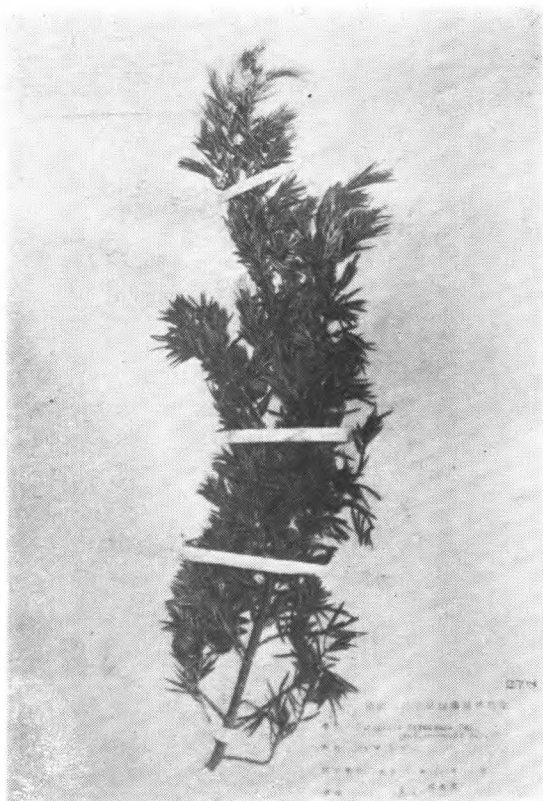
Fokienia Hodginonii (Dunn) Henry & Thomas.
Herb. Hongkong 3305 (type.) 福建

檜 屬 *Juniperus*. L.

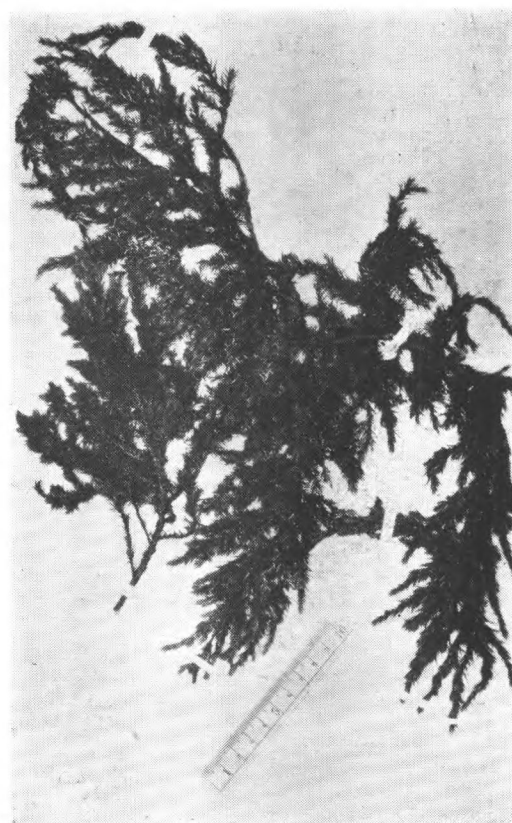
Juniperus convallium Rehd. et Wils.
Wils. 3010 (cotype) 四川



Juniperus formosana Hayata
Forrest 13770. 云南



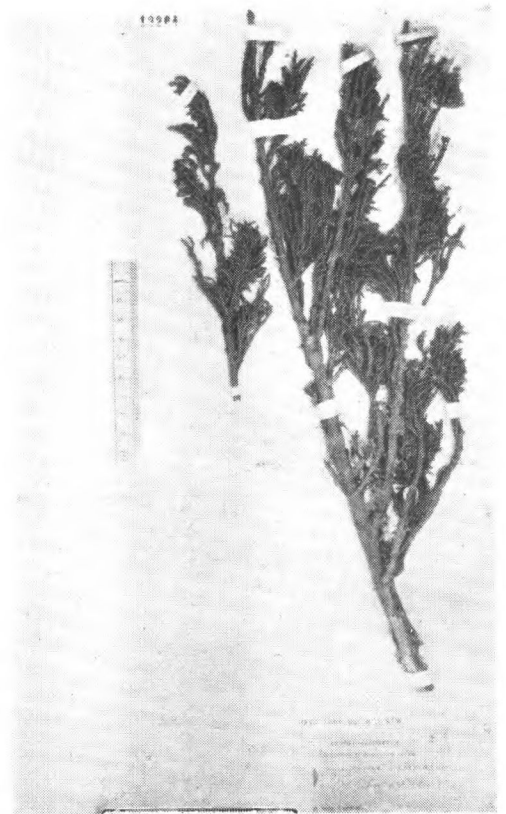
Juniperus formosana Hay. var. *concolor*
Hay.
S. Sasaki 无号 (isotype.) Busegan-
Sheisui, 台湾



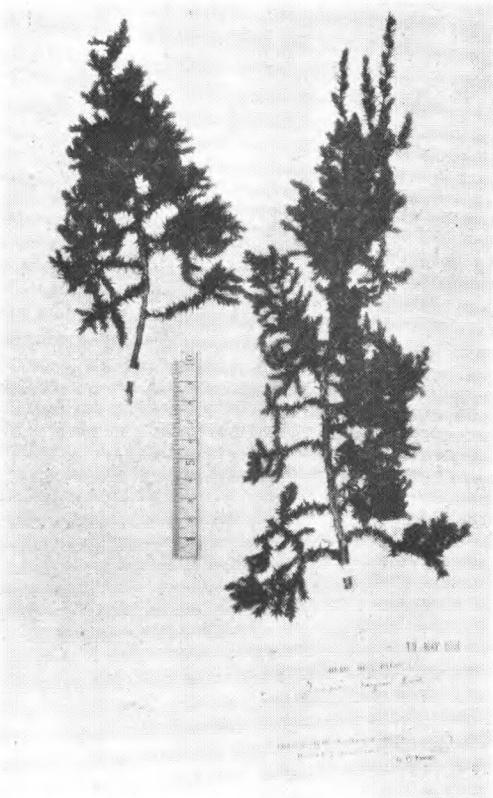
Juniperus Lemeana Lévl. & Blin.
Cavalerie 3922. 貴州安順



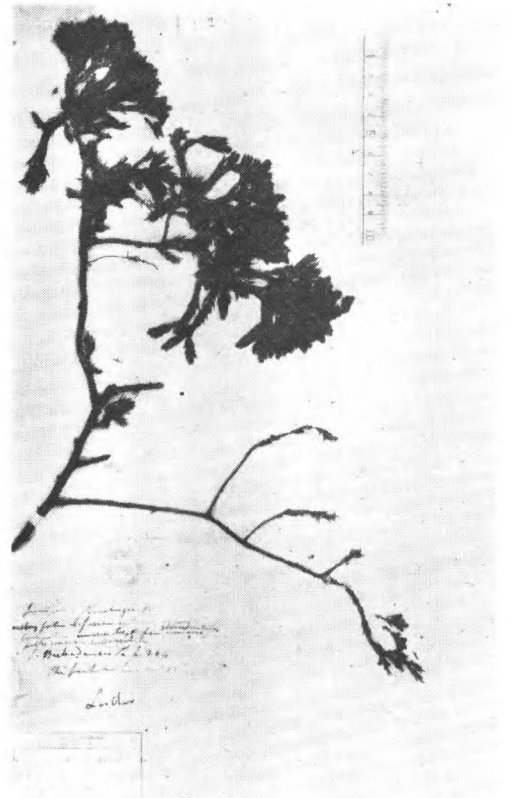
Juniperus rigida S. et Z.
Hooker (isotype) 日本



Juniperus saltuaria R. et W.
Wm. Purdom 甘肃 Paling-shan.

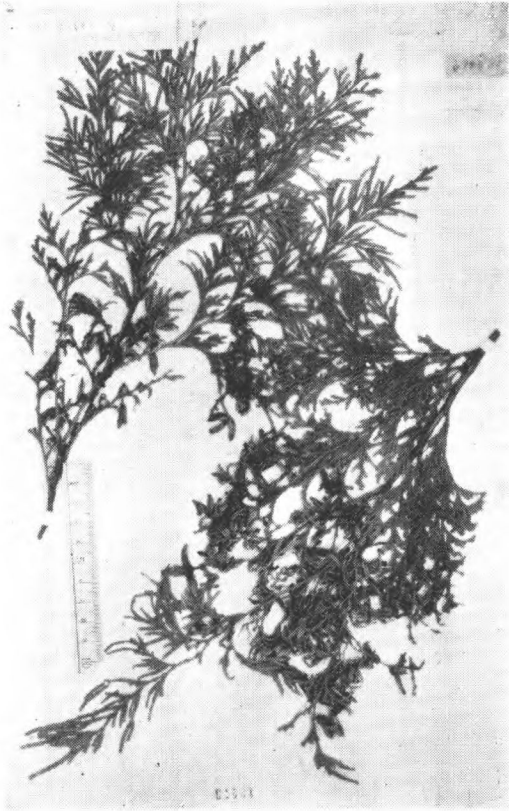


Juniperus squamata Buch.-Ham. var.
Fargesii R. et W.
Farges 153 (type.) 四川城口



Juniperus Thunbergii Hk. & Arn.
Ex Herb. Hookerianum

肖楠屬 *Heyderia* Koch
(*Libocedrus* non Endl.)



Heydelia macrolepis (Kurz) Li
A. Henry 11566A



Heyderia formosana (Florin.) Li
Wils. 1096. 台灣

崖柏屬 *Thuja* L.



Thuja koreana Wils.
Wils. 9138.



Thuja Standishii Gord.
Maximowicz 日本

9. 麻黄科 Ephedraceae

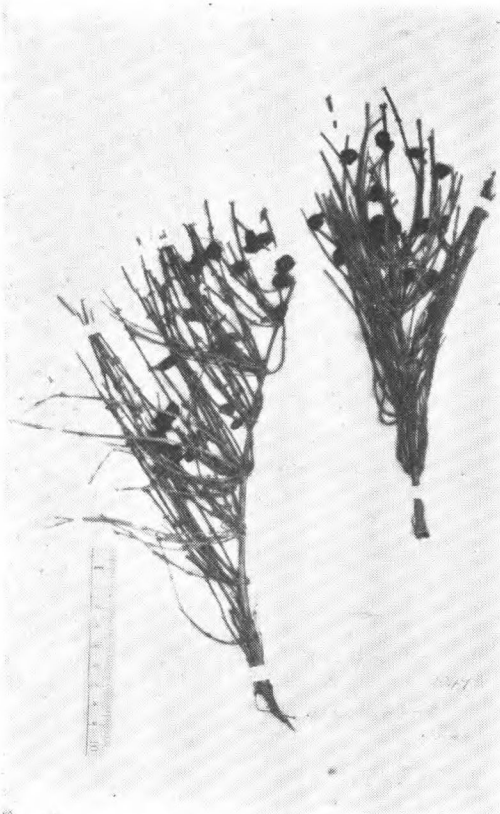
麻黄属 *Ephedra* L.



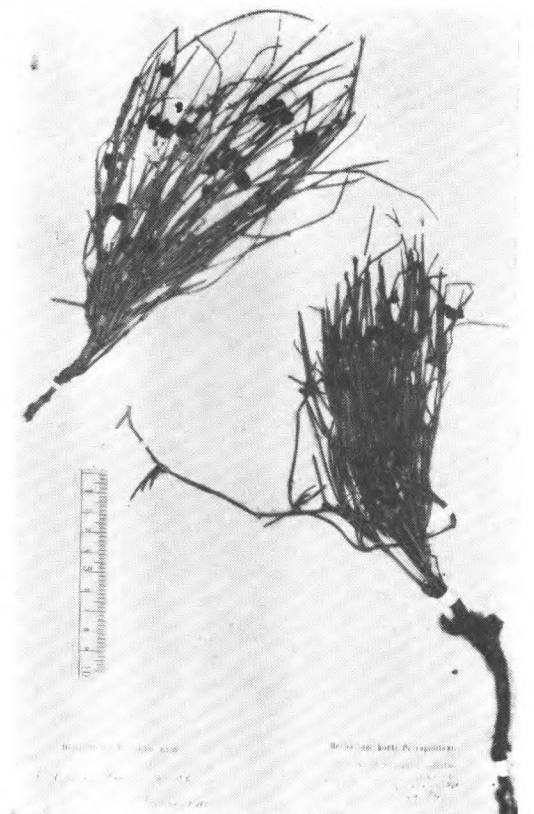
Thuja sutchuensis Fr.
Farges 无号 四川城口



Ephedra equisetina Bge.
David 2647. 热河

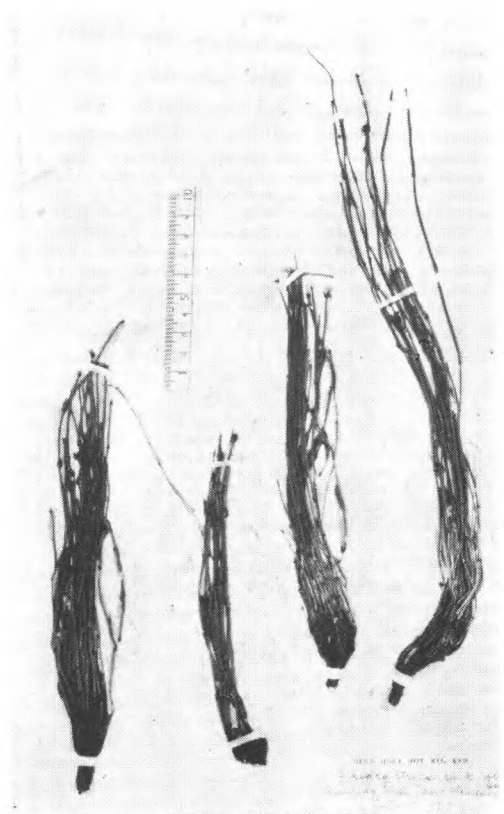


Ephedra Gerardiana Wall.
Forr. 10493.

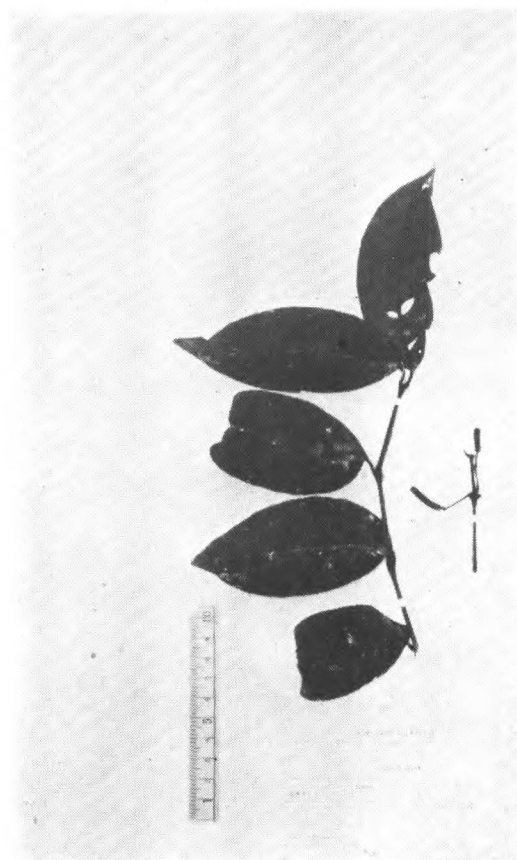


Ephedra intermedia Schrenk. & Mey.
Hosie 1910.

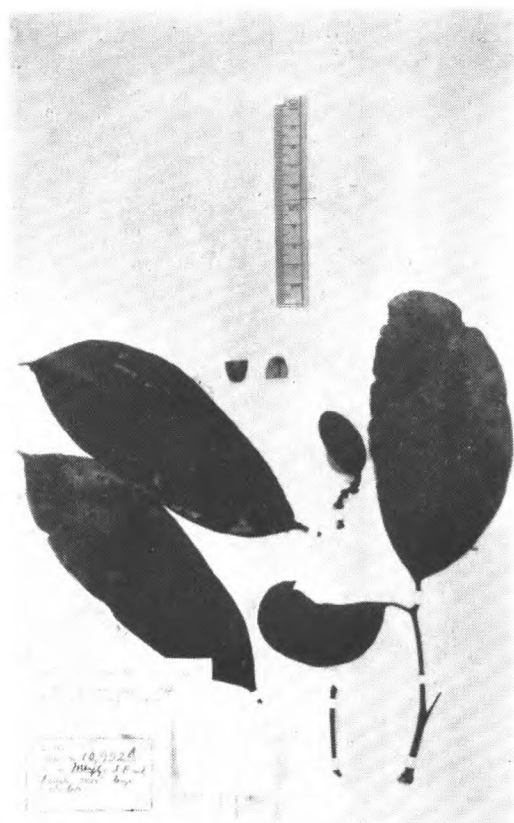
10. 倪藤科 Gnetaceae

倪藤屬 *Gnetum* L.

Ephedra sinica Stapf
Ex Herb. hort, bot, reg. Kew



Gnetum indicum (Lour.) Merr.
McClure 8978. 海南那大

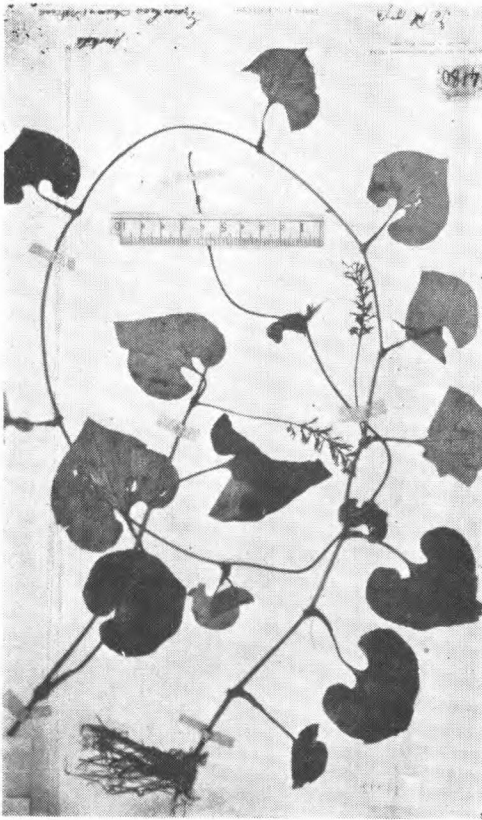


Gnetum montanum Markgraf
A. Henry 10952 A. 云南蒙自



Gnetum scandens Roxb.
Champion 无号, 香港
ex Herb. Hookerianum

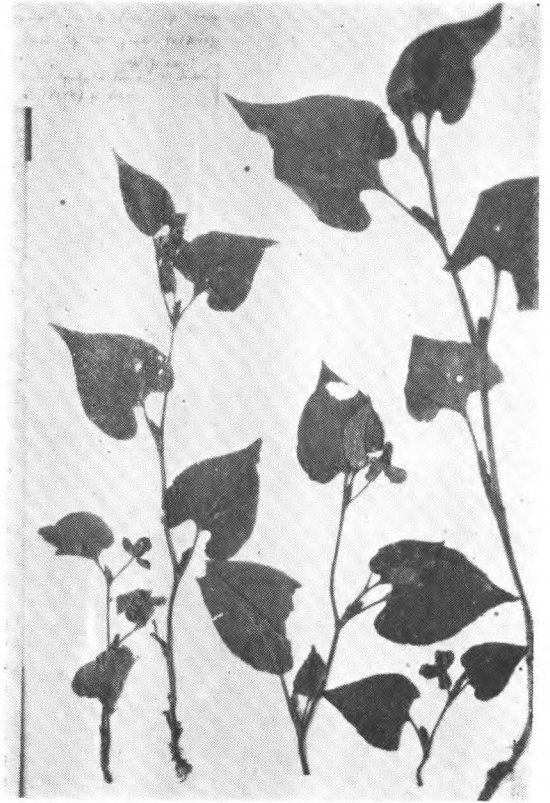
12. 三白草科 Saururaceae

狗笠耳屬 *Gymnotheca* Decaisne.

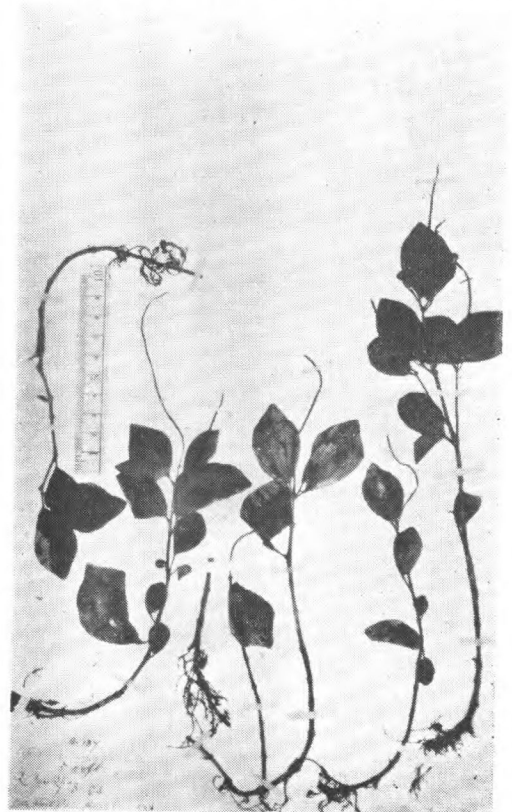
Gymnotheca chinensis Decne,
Henry 4180. 湖北宜昌

三白草屬 *Saururus* L.

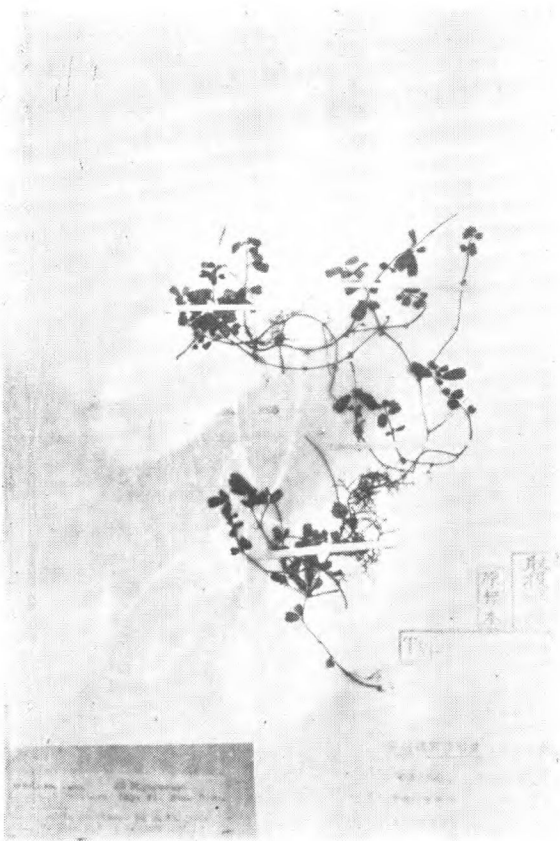
Saururus chinensis (Lour.) Baill.
Hance 10720. 江苏黄埔

蕺草屬 *Houttuynia* Thbg.

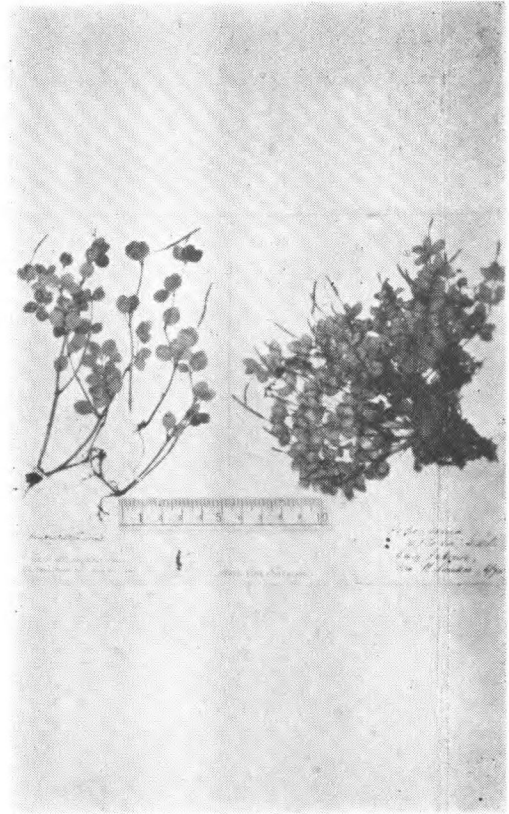
Houttuynia cordata Thbg.
Thbg. (type.) 日本

13. 胡椒科 *Piperaceae*豆瓣綠屬 *Peperomia* Ruiz. et Pavon.

Peperomia dindygulensis Miq.
C. Ford 137. 罗浮山

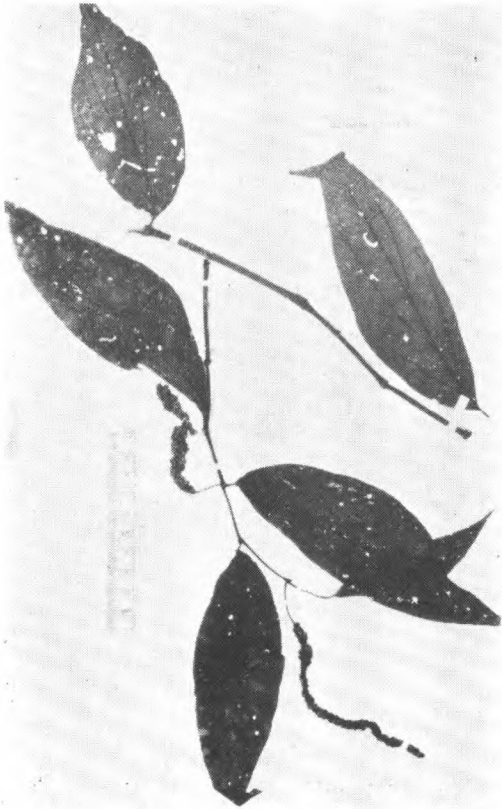


Peperomia Nakaharai Hay.
Kawakami et U. Mori 1997 (syntype).
in monte Morrison.

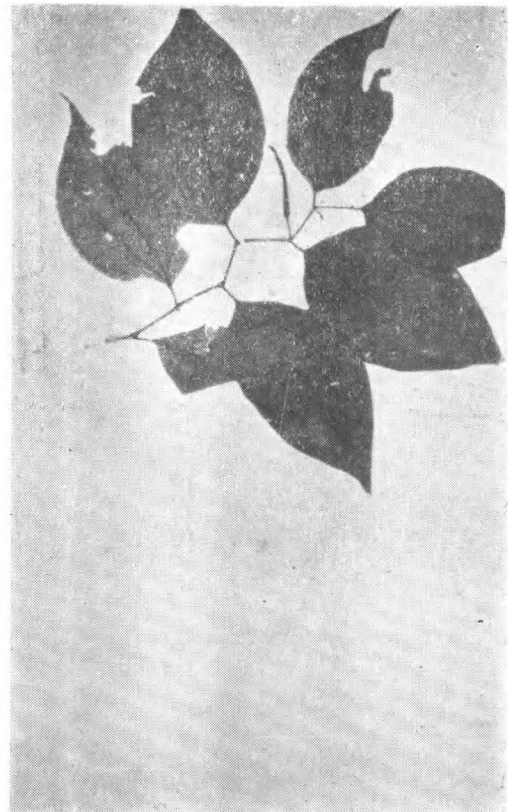


Peperomia reflexa (L. f.) A. Dietr.
Swinhoe. 厦門 E. Faber 1. 四川峨眉

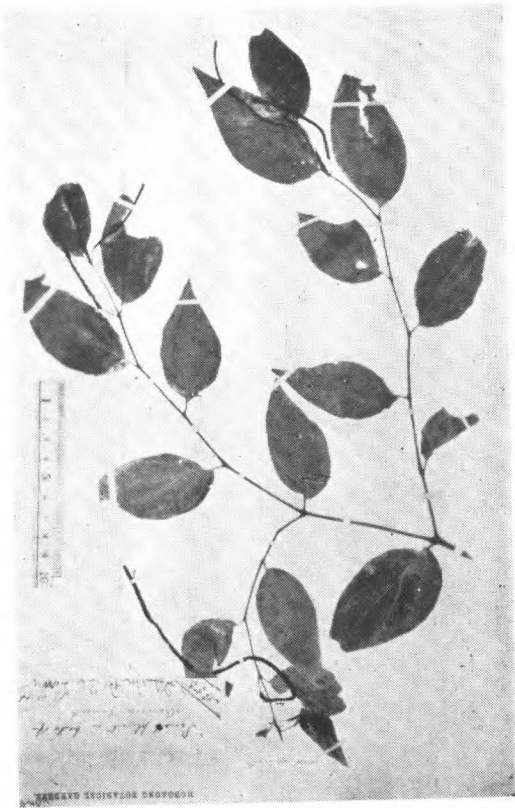
胡椒屬 *Piper* L.



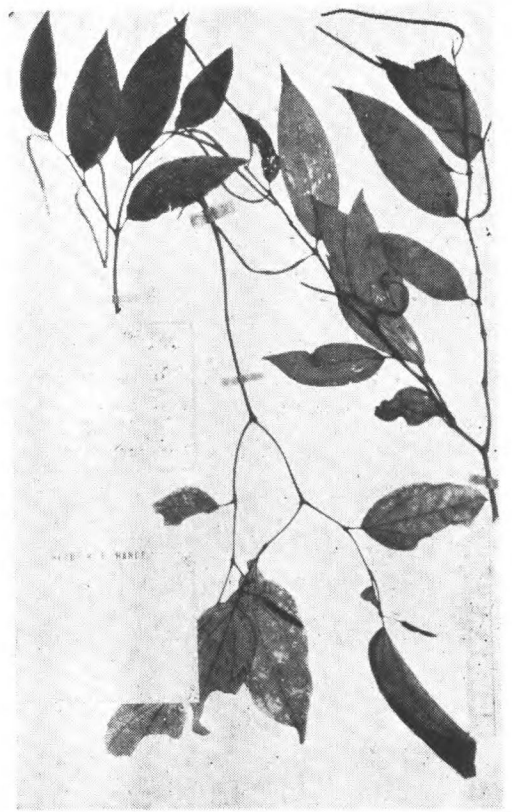
Piper boehmeriaefolium Wall.
McClure 8741. 海南五指岭



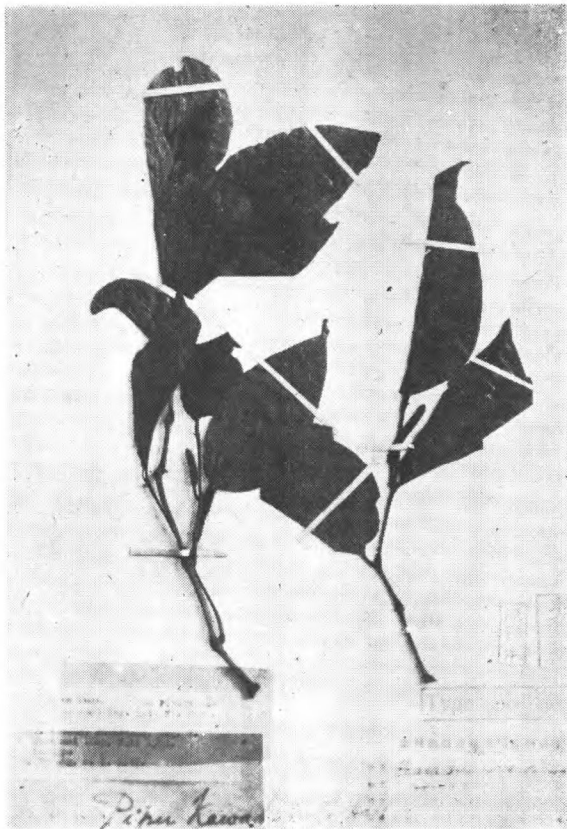
Piper chinense Miq.
Millett. (type) 中国



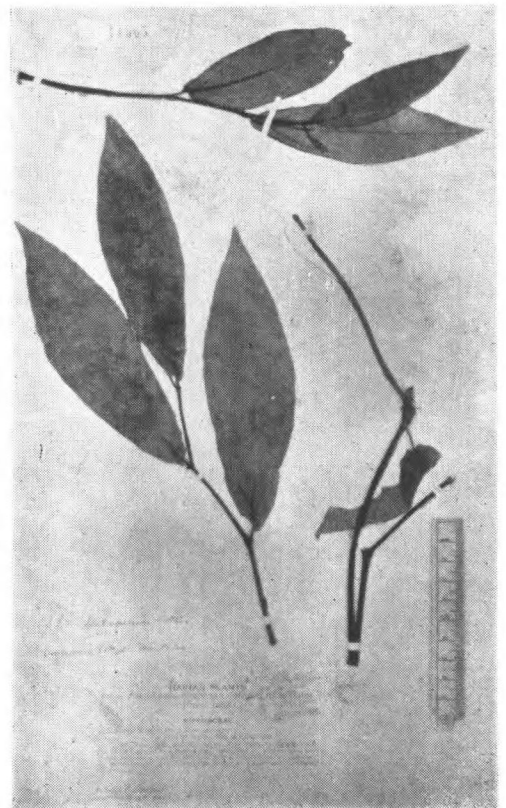
Piper hainanense Hemsl.
B. C. Henry 53. (syntype) 海南



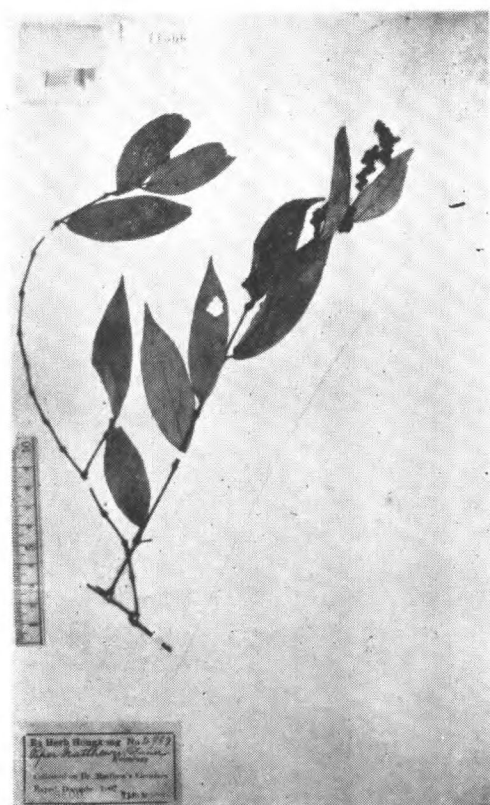
Piper Hancei Max.
Sampson 13030. (cotype) 广东



Piper Kawakamii Hay.
T. Kawakami 1645. (isotype.)



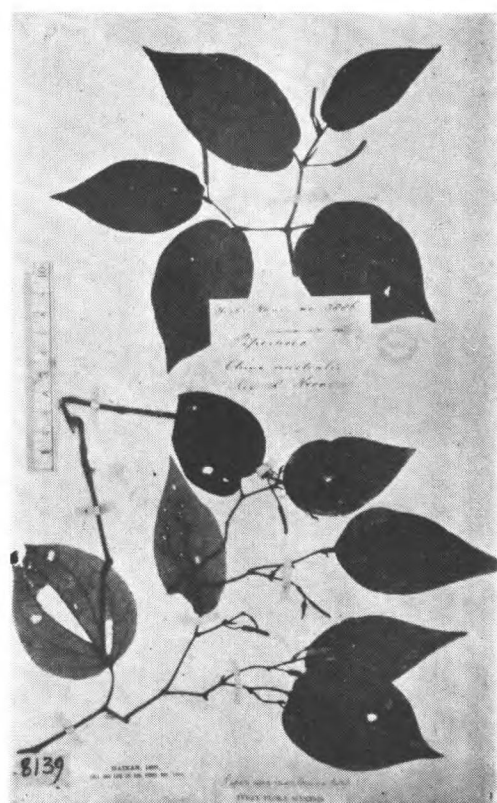
Piper laetispicum DC.
McClure 8282. (cotype) 海南五指岭



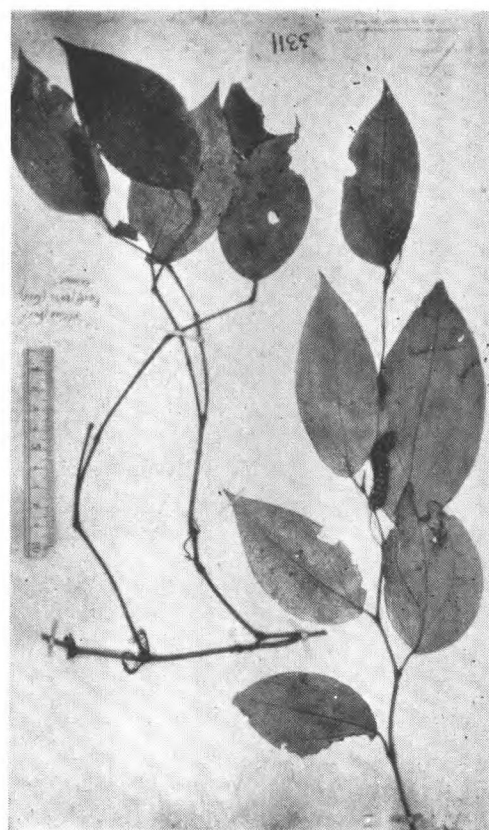
Piper Mathewii Dunn
Mathew (Hgkg. herb. 4987.) (type.) 广州



Piper puberulum (Bth.) Max.
Ford 141. 貴州



Piper sarmentosum Roxb.
Hance 3886. 华南 Henry 8139. 海南



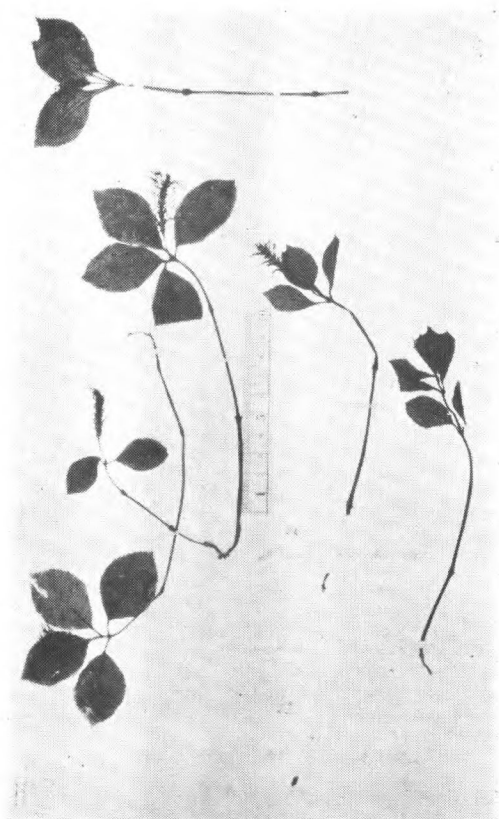
Piper Wallichii (Miq.) H.-M. var. hupehense (C.D.C.) H.-M.
Henry 3311. (type) 湖北宜昌

14. 金粟兰科 *Chloranthaceae*

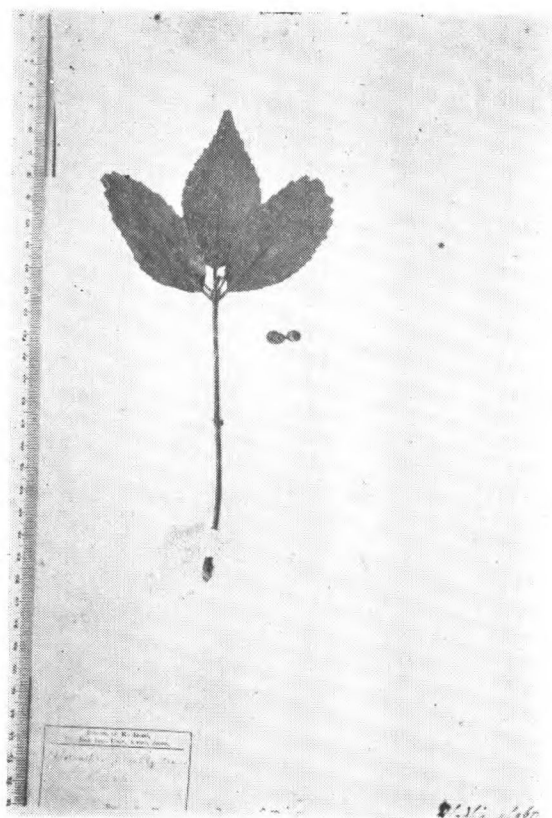
金粟兰属 *Chloranthus Sw.*



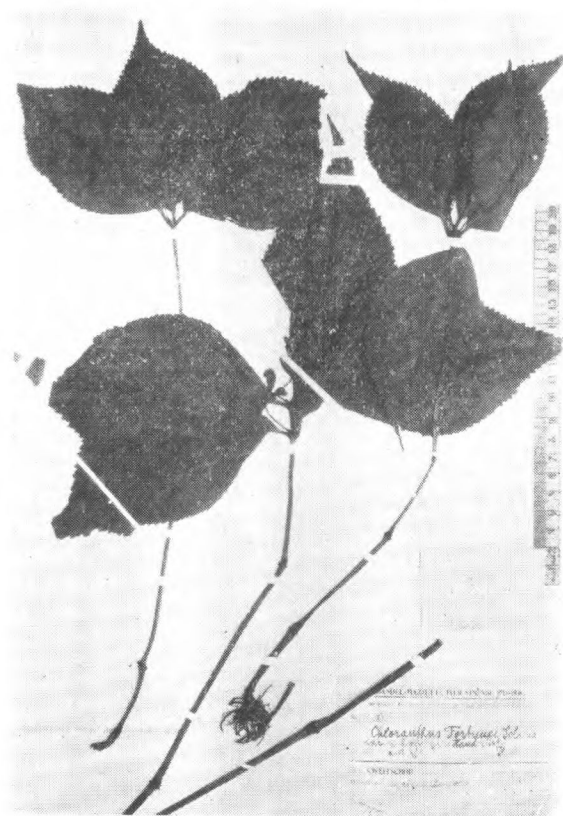
Chloranthus angustifolius *Oliver*
Henry 1195. (type) 湖北宜昌



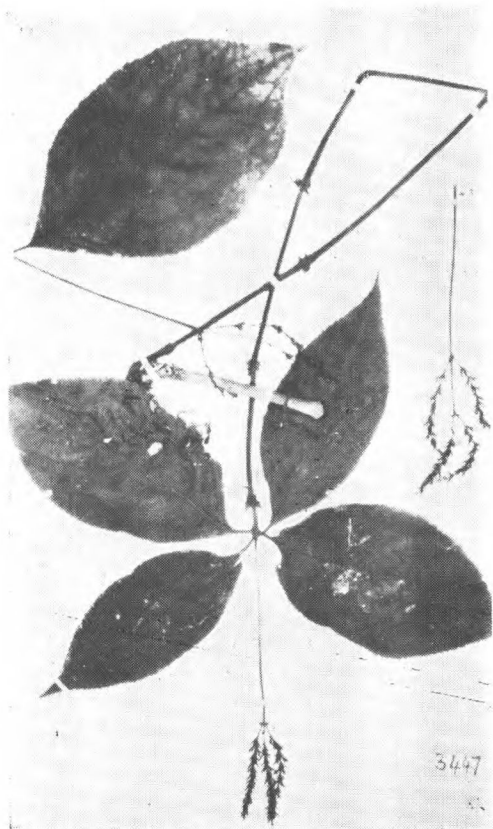
Chloranthus Fortunei *Solms.*
Fortune 22. (type) 中国 Carles 17 安徽
太湖 E. Faber. 江西九江



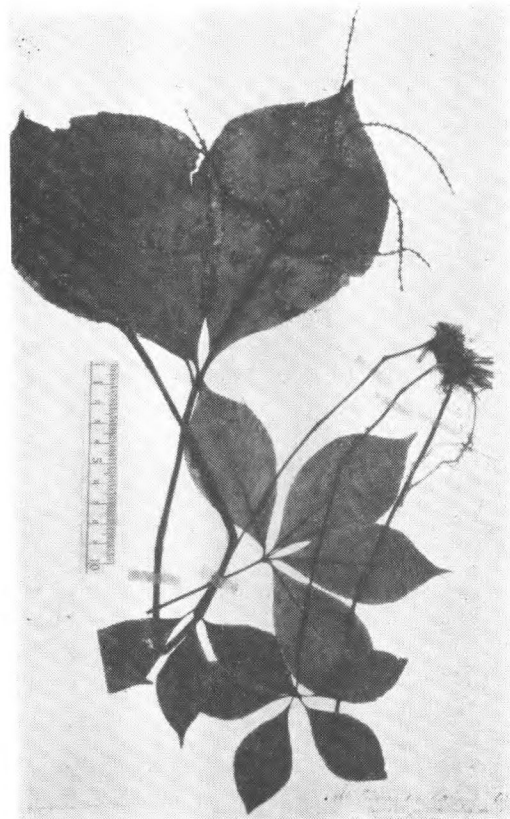
Chloranthus glaber (*Thbg.*) *Makino*
Thbg (type) 日本



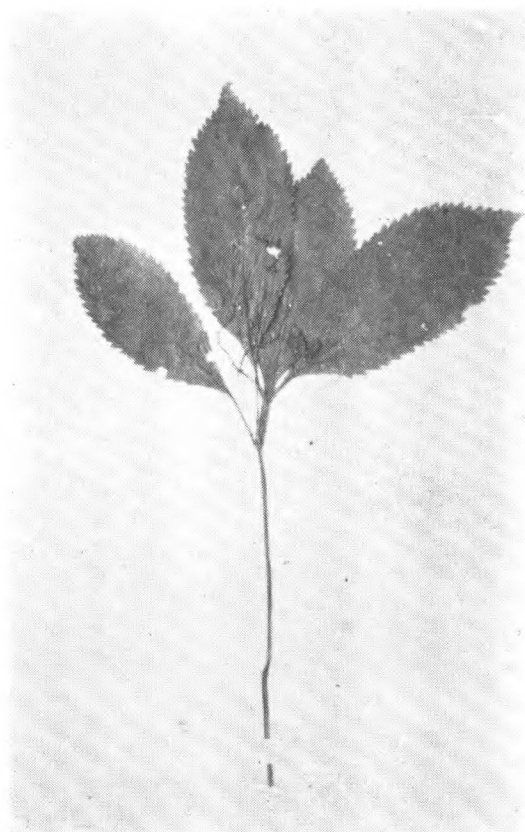
Chloranthus holostegius (*H.-M.*) *Pei*
et San
H.-M. 10286. (type) 贵州黄草壩



Chloranthus Henryi Hemsley
Henry 3447. 湖北宜昌



Chloranthus Oldhamii Solms.
Oldnam 466 (type.) 台湾凌水



Chloranthus serratus (Thbg.) Roem. et
Schultes
Thbg. 日本



Chloranthus spicatus (Thbg.) Mak.
Thbg. (type) 日本

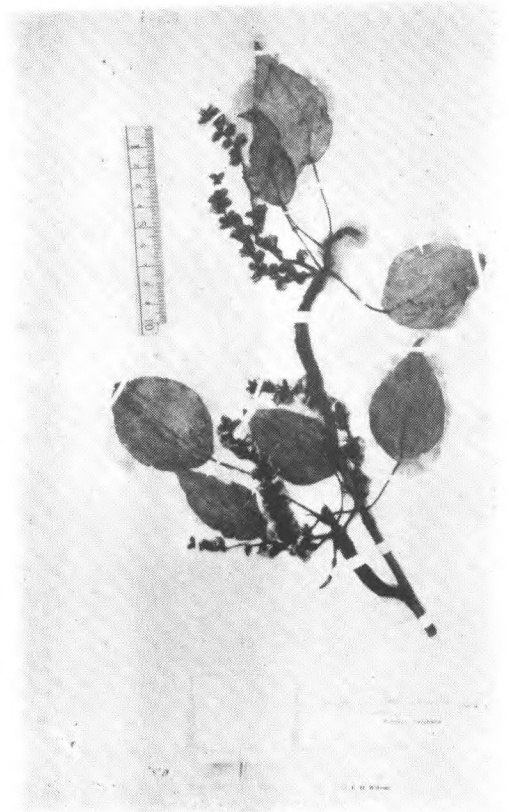
雪香兰屬 *Hedyosmum Sw.*



Hedyosmum orientale Merr. et Chun
McClure 9414. 海南五指岭

15. 楊柳科 *Salicaceae*

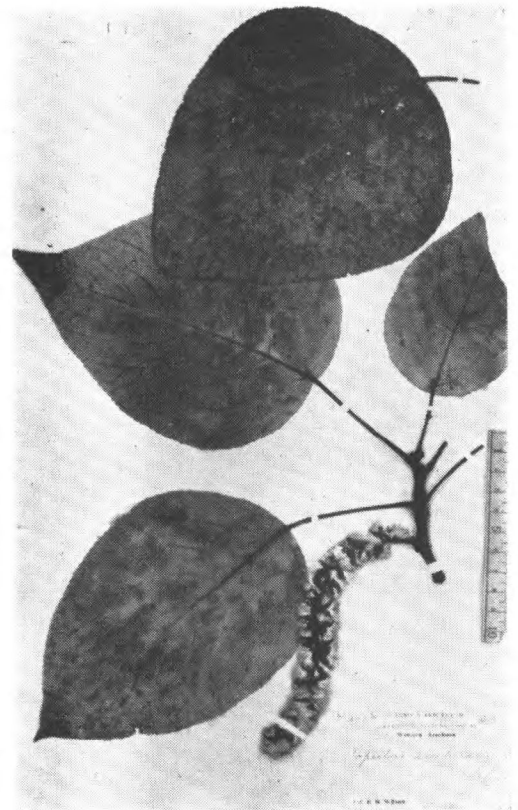
楊屬 *Populus L.*



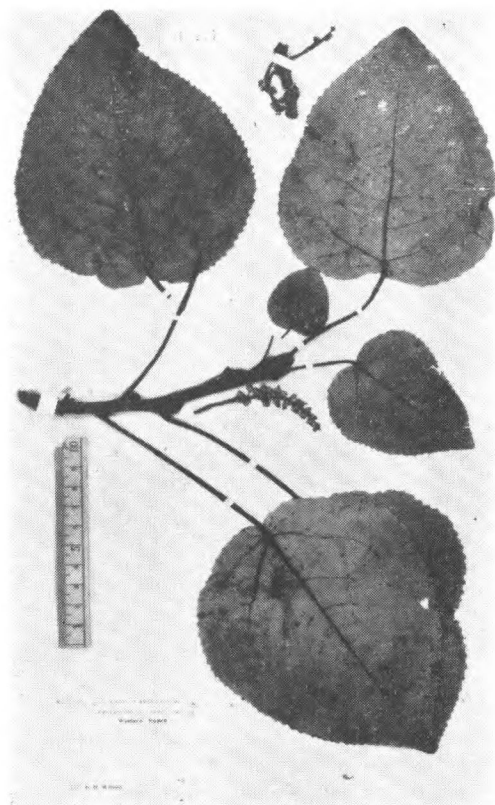
Populus cathayana Rehd.
Wils. 2164 (isotype.) 四川茂功



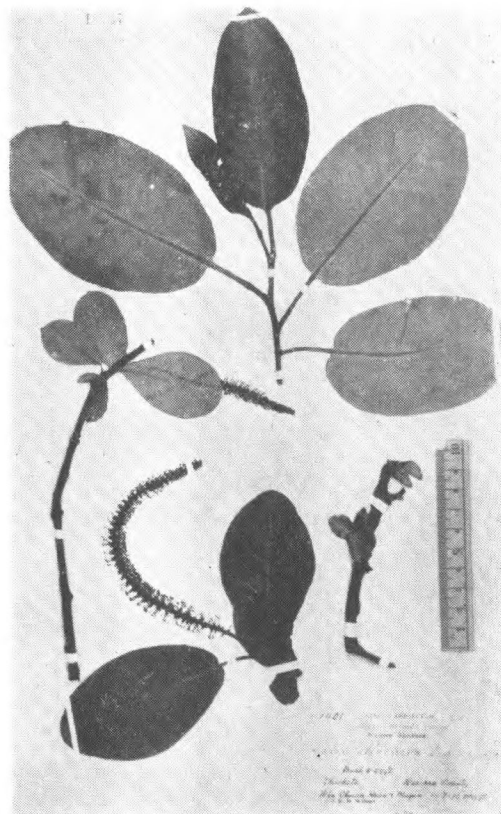
Populus lasiocarpa Oliv.
Henry 5423A. (type.) 湖北建始



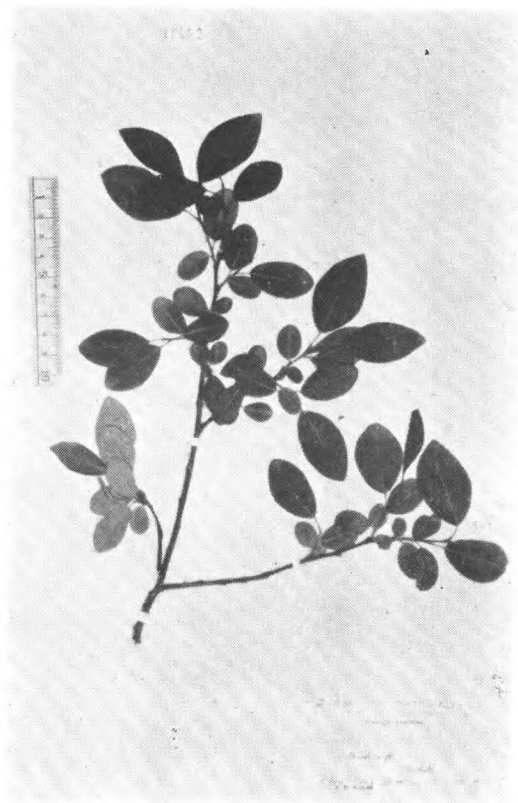
Populus szechuanica C. Schneider
Wils. 2163 (type.) 四川灌县

柳屬 *Salix* L.

Populus Wilsonii Schneider
Wils. 706a (type.) 湖北西部



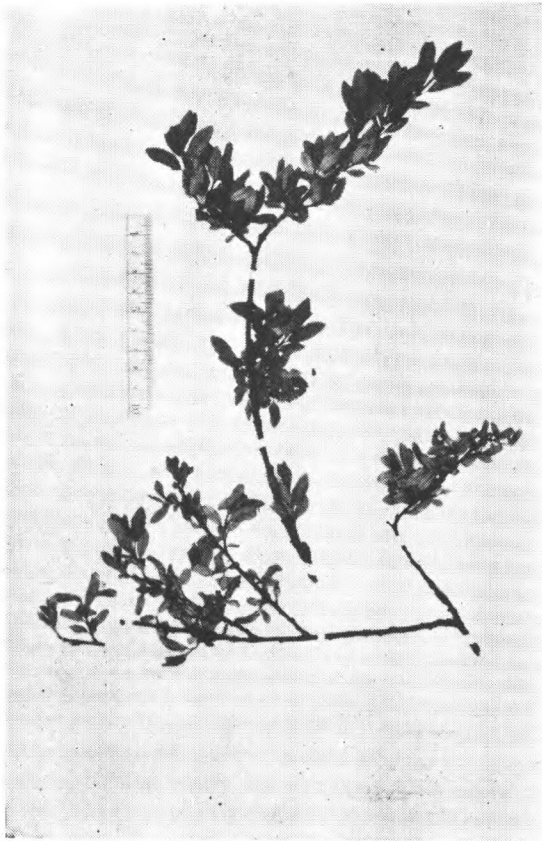
Salix allochroa Schneider
Wils. 1410, (type.) 四川穆坪



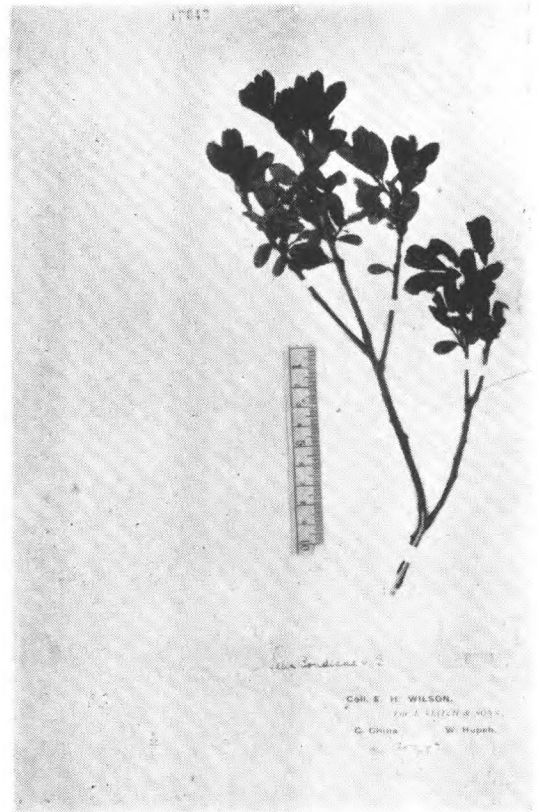
Salix amphibola Schneider
Wils. 2124 (type.) 四川九鼎山



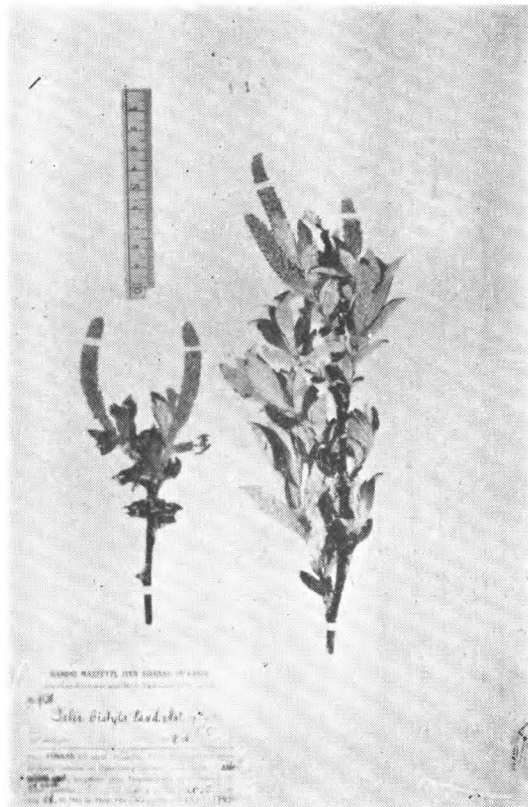
Salix araeostachya Schneider
Henry 9338A 云南蒙自



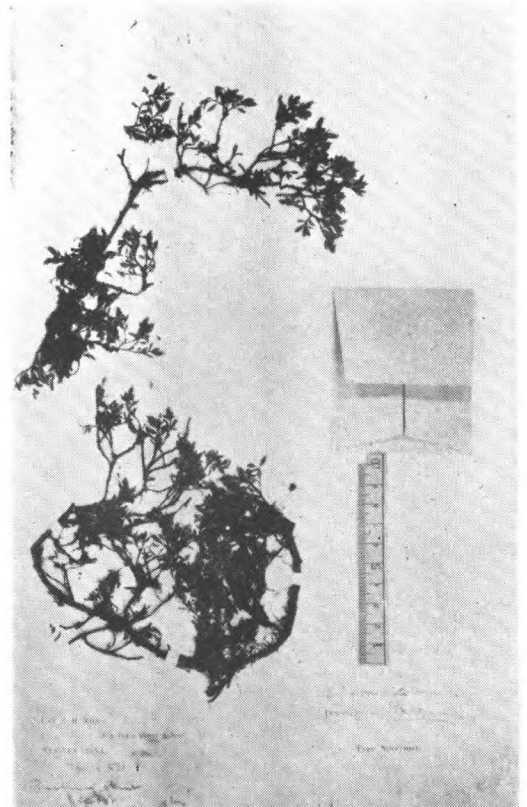
Salix atopantha Schneider
Wils. 2134 (type.) 四川灌县牛头山顶



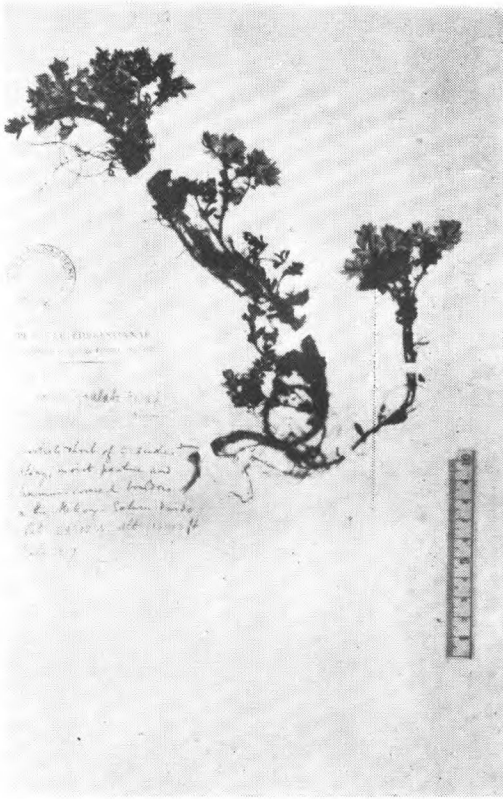
Salix Biondiana Seemen
Wils. (Veitch) 2045 (cotype.) 湖北房县



Salix bistyla H.-M.
H.-M. 9138 (isotype.) 云南



Salix brachista Schneider
Wils. 4511. (holotype.) 四川清溪县



Salix calyculata Hook. f.
Forr. 14219 云南澜——萨



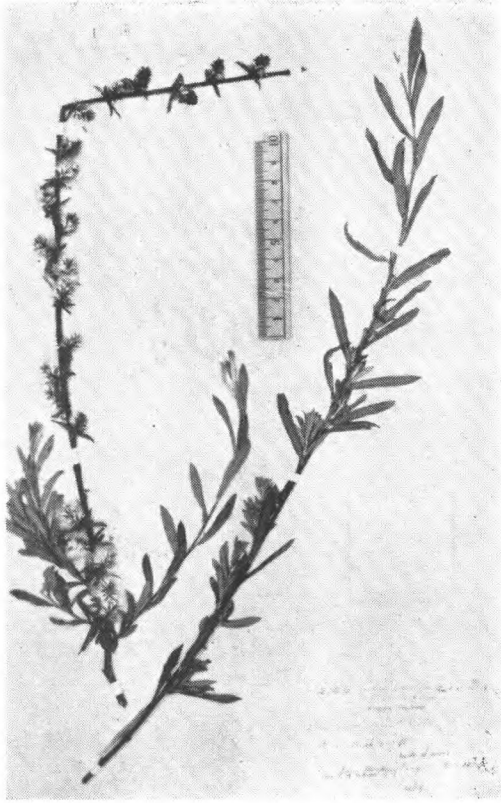
Salix cantoniensis Hance.
Sampson ex herb. Hance 13757
(isotype.) 广东



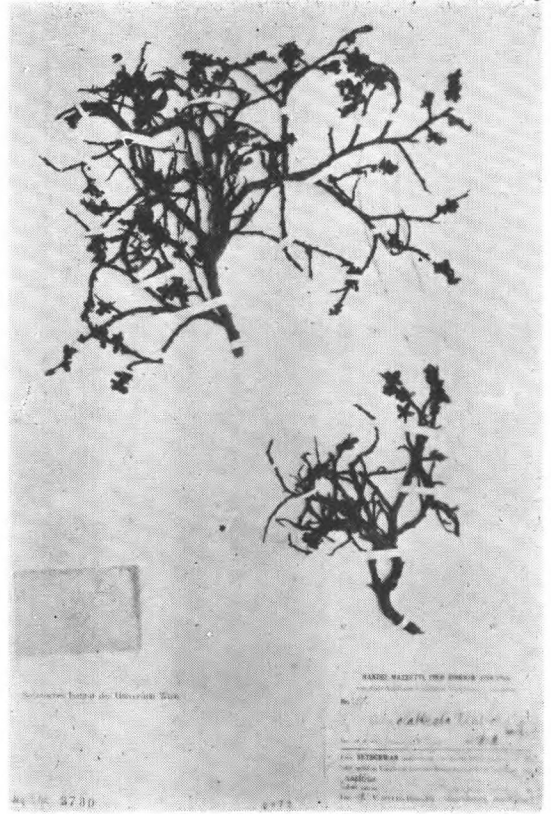
Salix cavaleriei Lévl.
Cavalerie 4623 云南



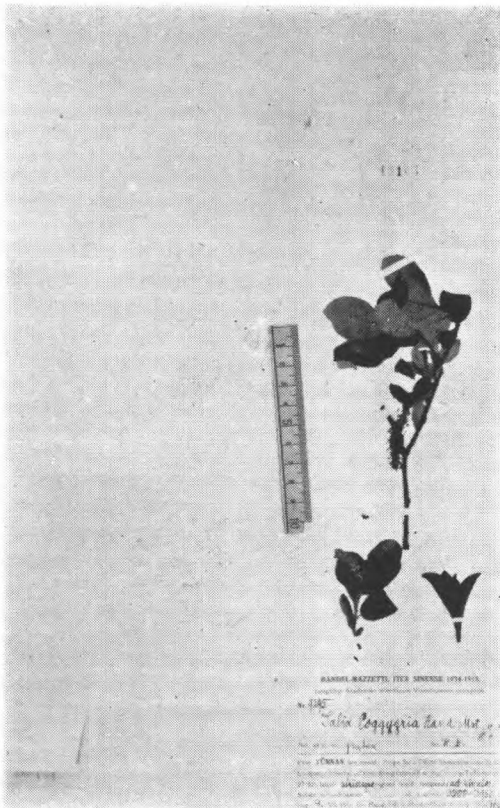
Salix characta Schneider
F. N. Meyer. 1160 (type.) 山西五台山



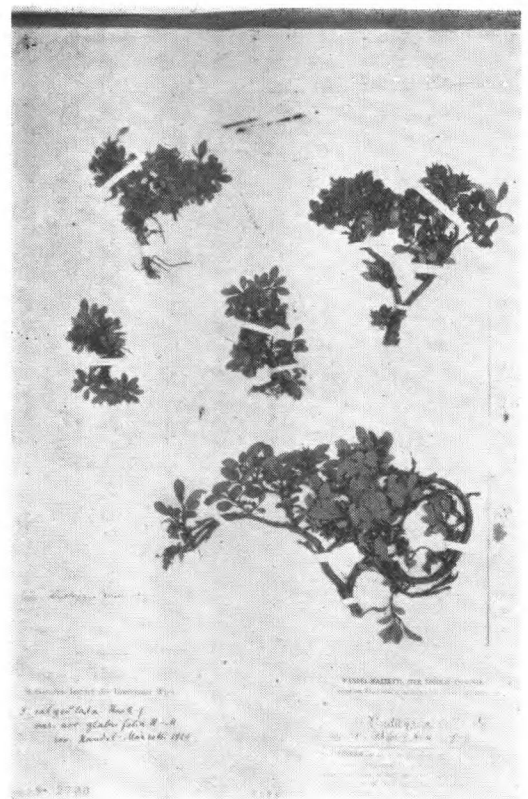
Salix cheilophila Schneider
Wils. 2146 (type.) 西康茂功厅



Salix clathrata H.-M.
H.-M. 2375 (type.) 西康盐源



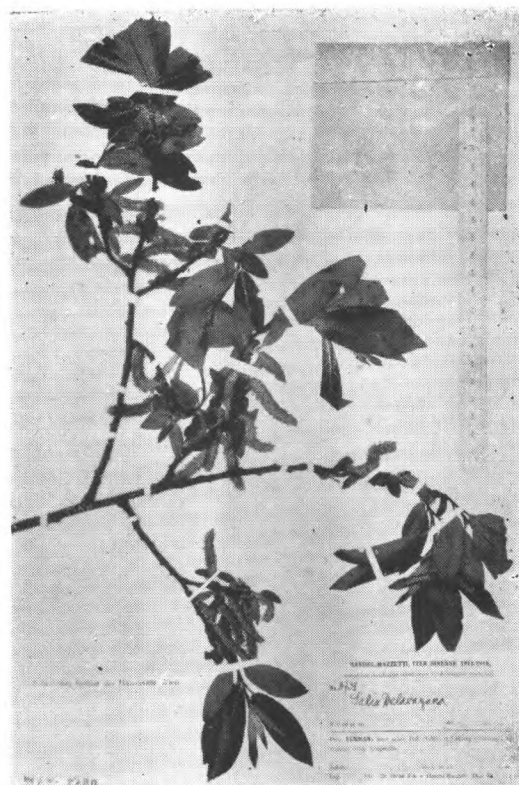
Salix coggygia H.-M.
H.-M. 9295 (type.) 云南怒江



Salix crenata Hao
H.-M. 3921 (type of *S. calyculata*
var *glabrifolia*) 云南丽江



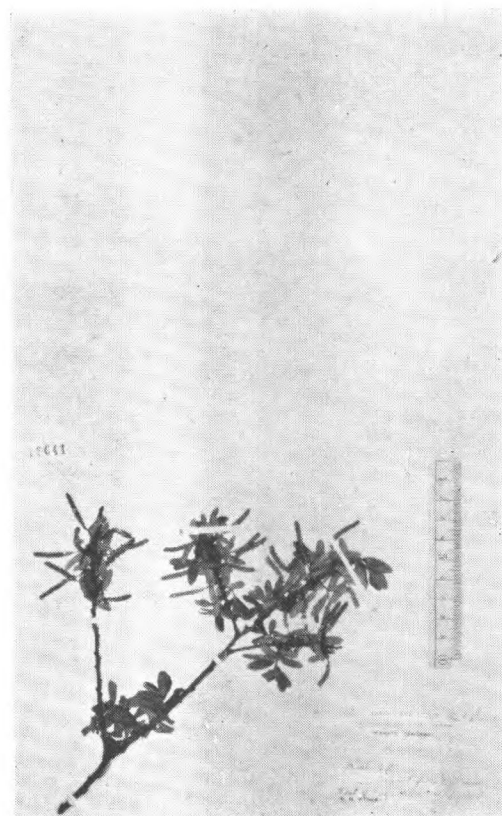
Salix cupularis Rehd. var
lasiogyne Rehd.
Purdom 547 (type.) 陕西太白山



Salix Delavayana H.-H.
H.-M. 8738 (type.) 云南大丽



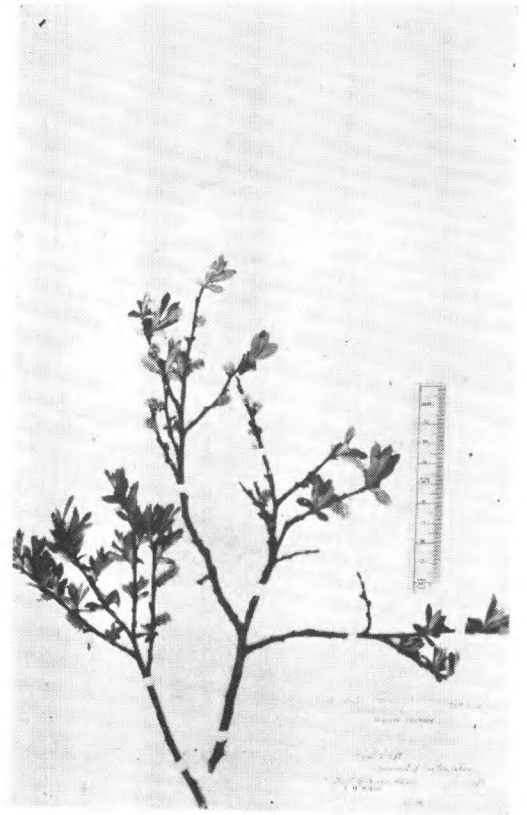
Salix dictyoneura Seem.
H.-M. 12993 湖南



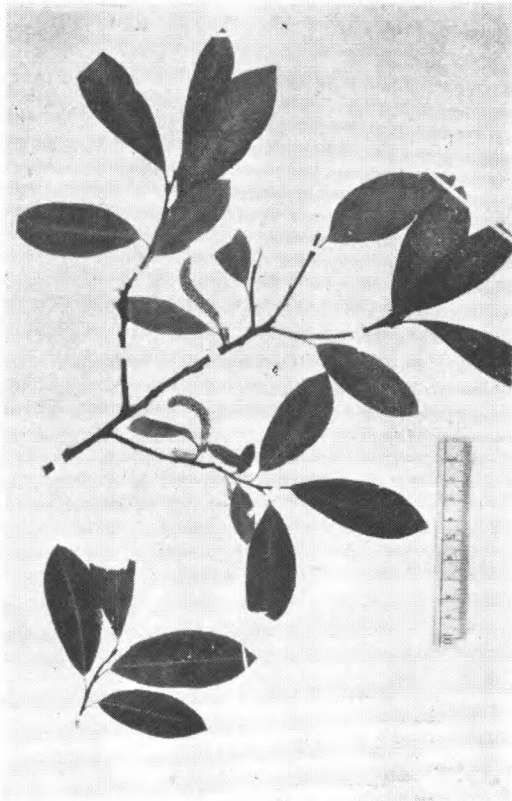
Salix dissa Schneider
Wils. 2160 (iso-paratype, iso-topotype.)
四川灌县牛头山顶



Salix Doii Hay.
T. Doi 号无, (isotype.) 台湾 Rinkihō.



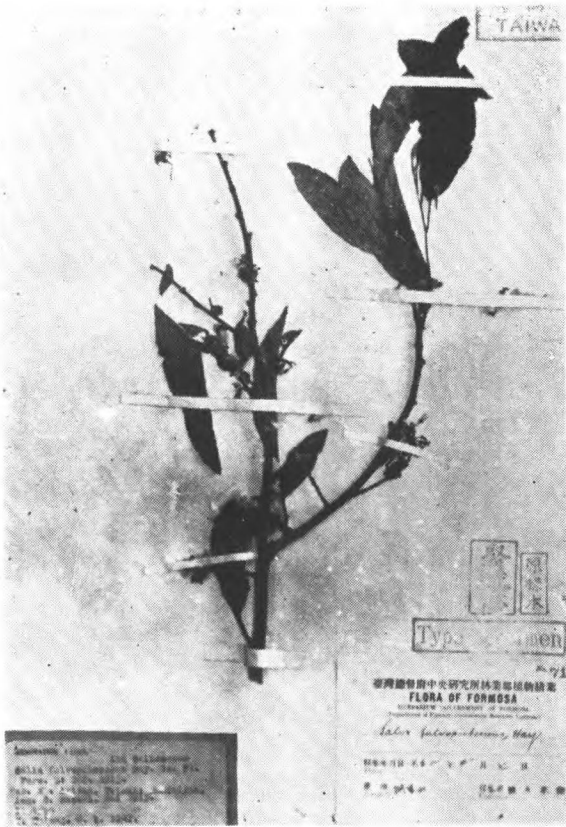
Salix dolia Schneider
Wils. 2133 (type.) 四川灌县牛头山



Salix Ernestii Schneider
Wils. 2159 (isoparatype.) 西康瓦山



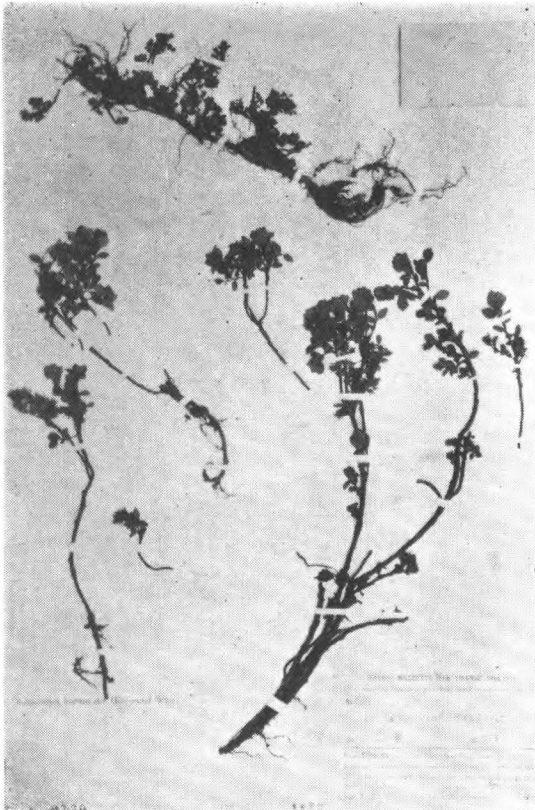
Salix Fargesii Burkill
Henry 5678 (type.) 四川巫山县



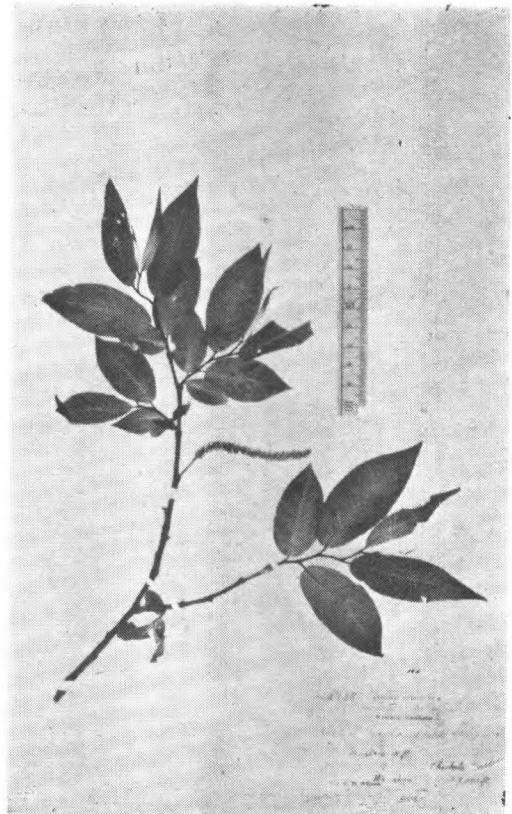
Salix fulvopubescens Hay.
S. Sasaki 无号, (isotype.) 台湾阿里山



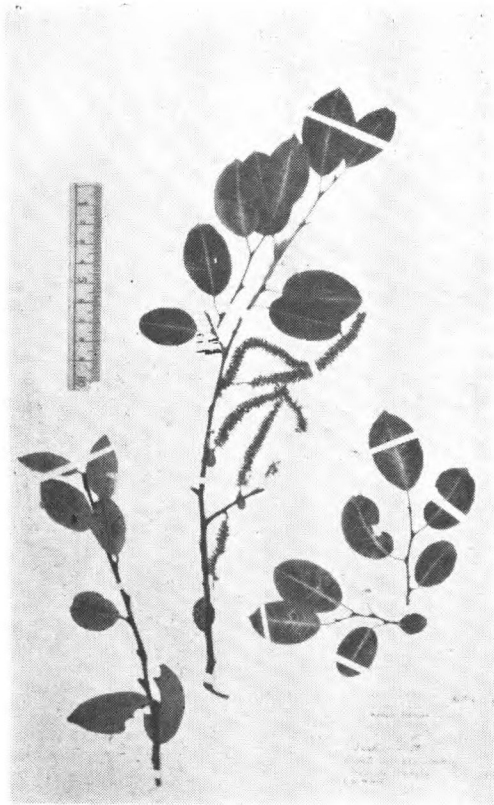
Salix heterochroma V. Seemen
Henry 5843 (type of *Salix Henryi* Burkill) 湖北建始



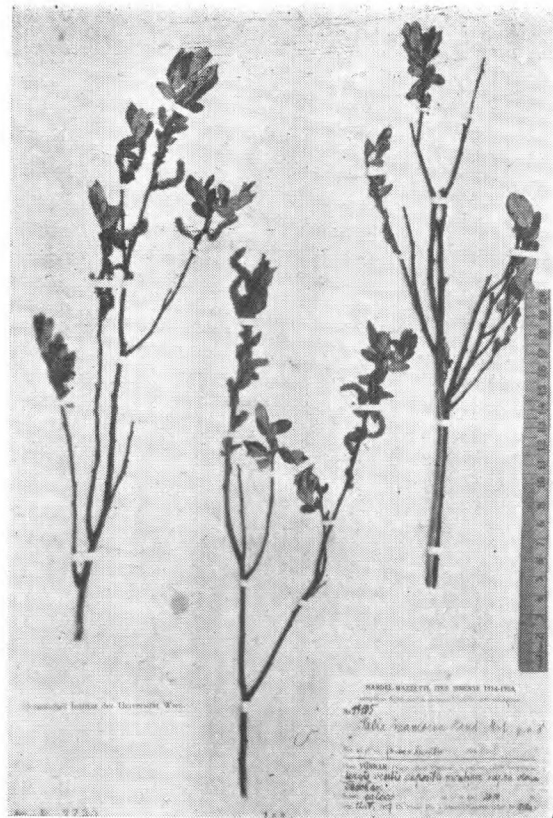
Salix hirticaulis H.-M.
H.-M. 9294 (type.) 云南怒江



Salix hylonoma Schneider
Wils. 2133 (type.) 四川龙山



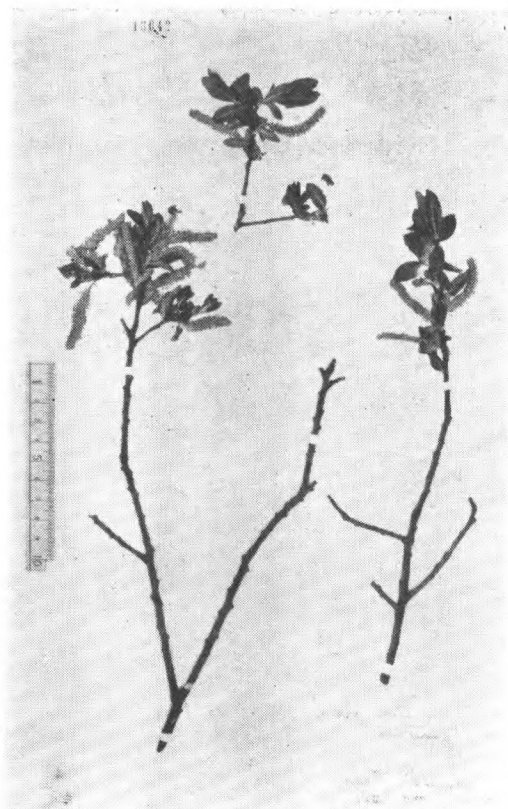
Salix hypoleuca Seemen
Wils. 1418a (type.) 四川汶川县



Salix inamoena H.-M.
H.-M. 11105 (syntype.) 云南昆明大哨



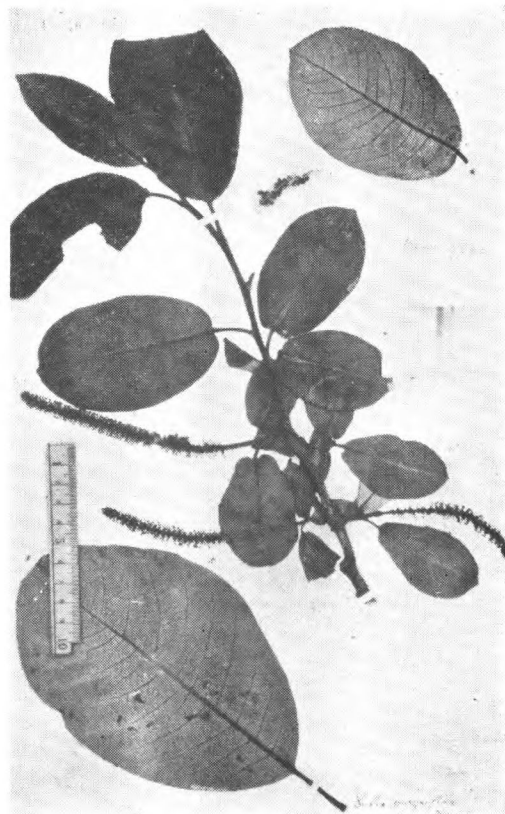
Salix isochroma Schneider
Wils. (Veitch) 4524 (Cotype.) 四川瓦山



Salix luctuosa Lévl.
Wils. 1429 (type of *S. dyscrita*
Schneider) 四川清溪县大相岭



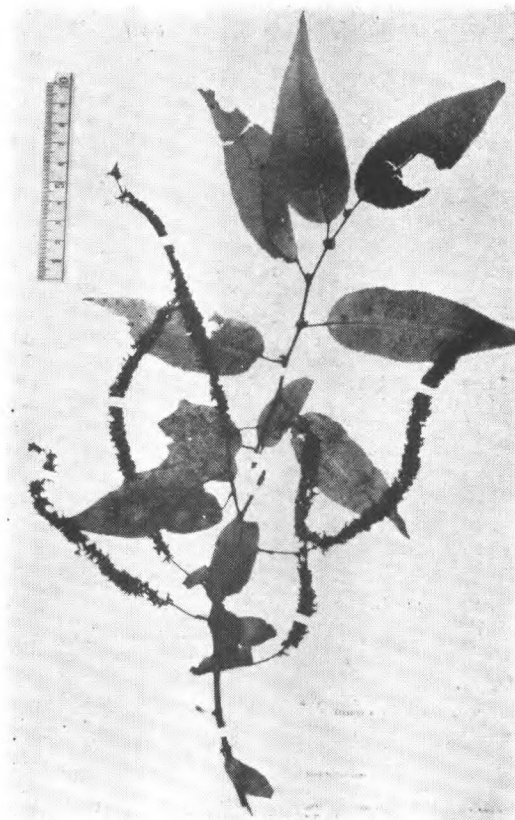
Salix macroblasta Schneider
 Wils. 4354 (type,) 4356 (isoparatype.)
 四川灌县



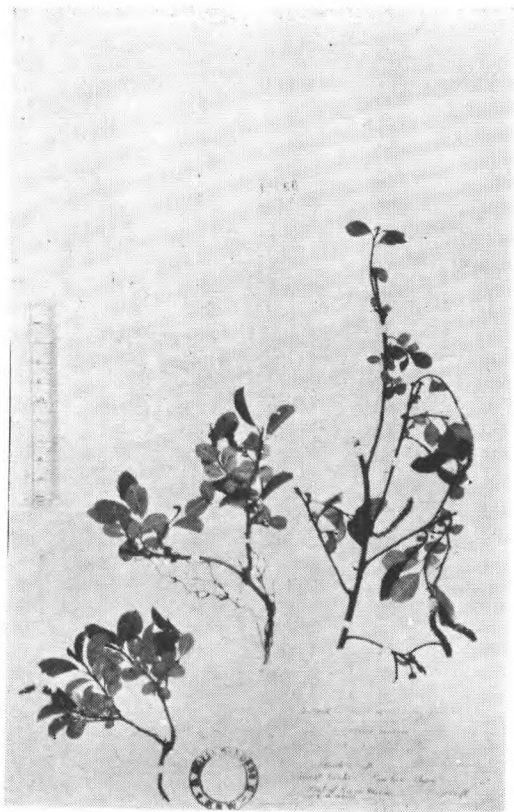
Salix magnifica Hemsl.
 Wils. (Veitch) 4526 (type.) 西康穆坪



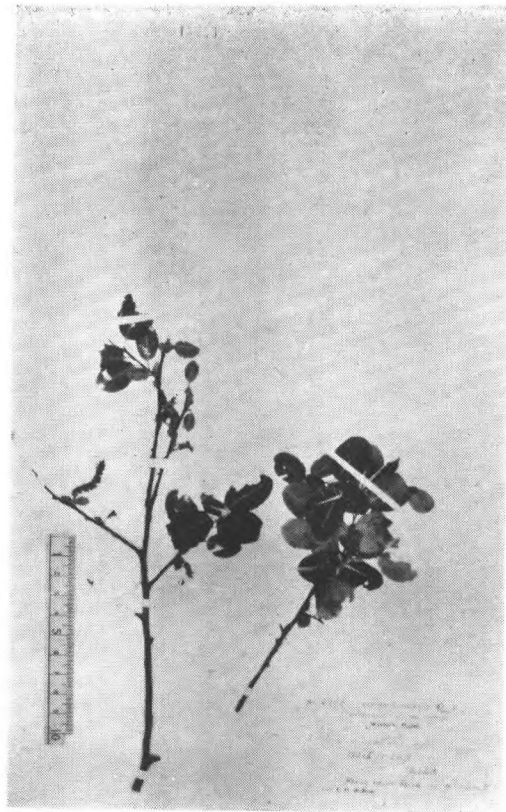
Salix Matsudana Koidz.
 Purdom 65



Salix Maximoviczii Kom.
 Komarov 472 (isotype.) 朝鮮



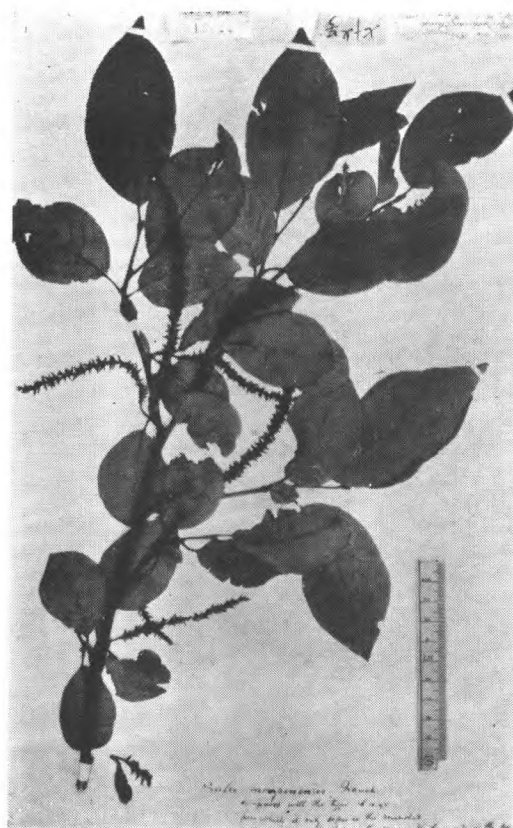
Salix microphyta Fr.
Wils. 2142 四川灌县



Salix mictotricha Schneider
Wils. 2118 (type.) 湖北兴山县



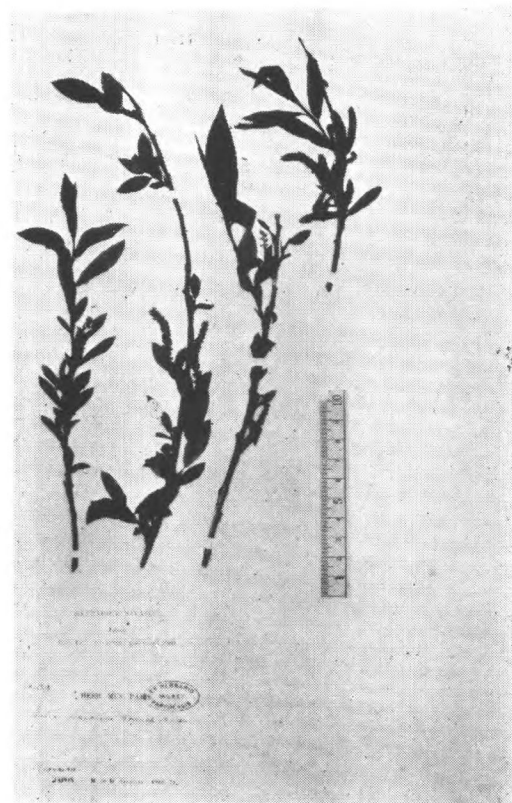
Salix Mori Hay.
U. Mori 无号, (isotype.) 台湾



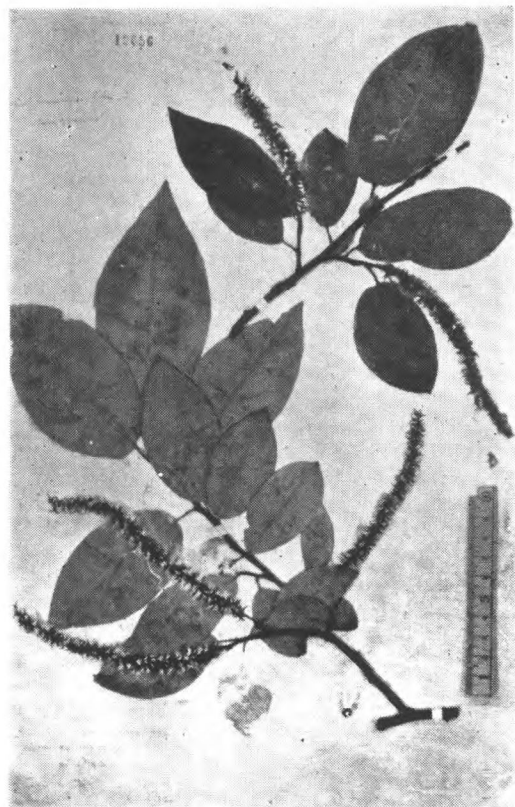
Salix moupinensis Franch.
Henry 77 (type.) 四川巫山



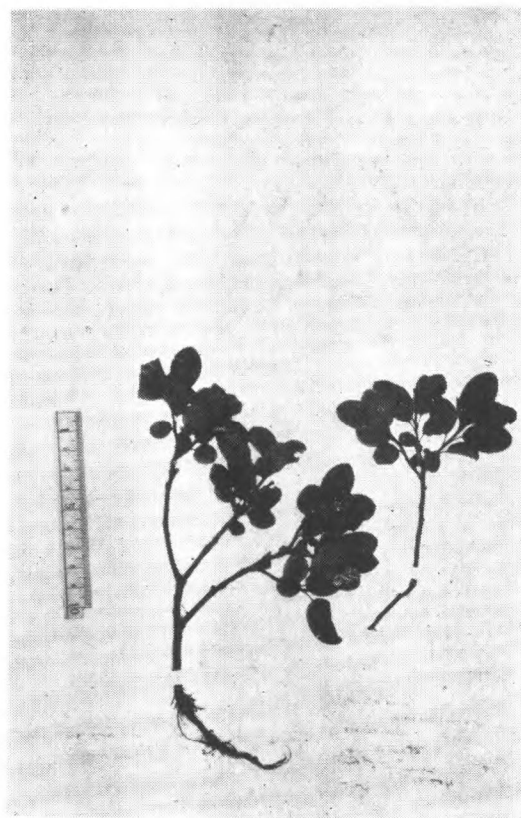
Salix myrtillacea Anderss.
E. Pratt 835 (type.) 西康打箭炉



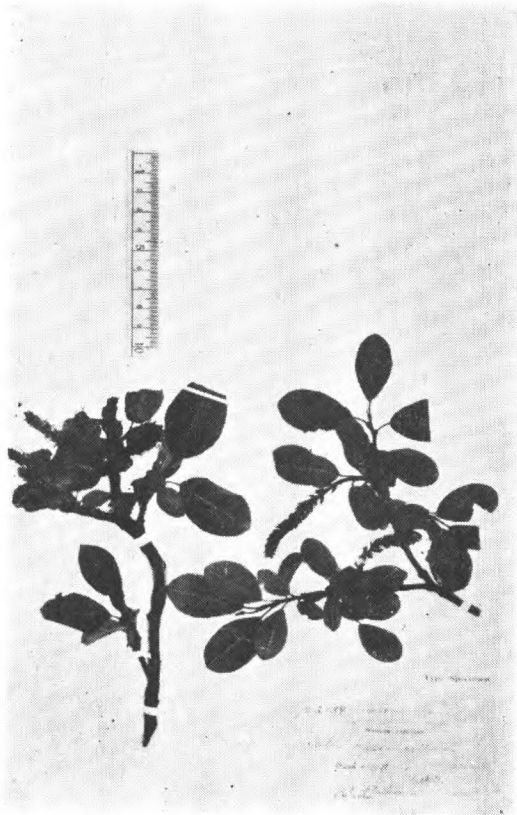
Salix nipponica Franch et Savat.
Savatier 1139. 日本



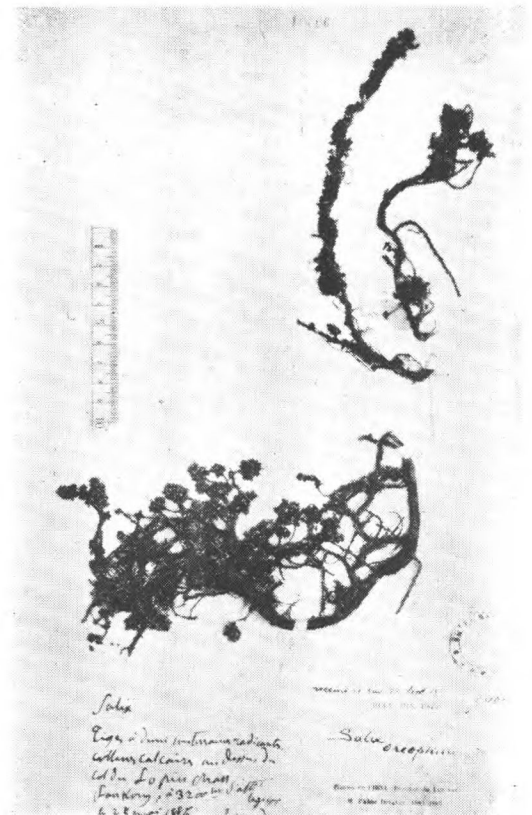
Salix omeiensis Schneider
Wils. 5193 (cotype.) 四川峨眉山



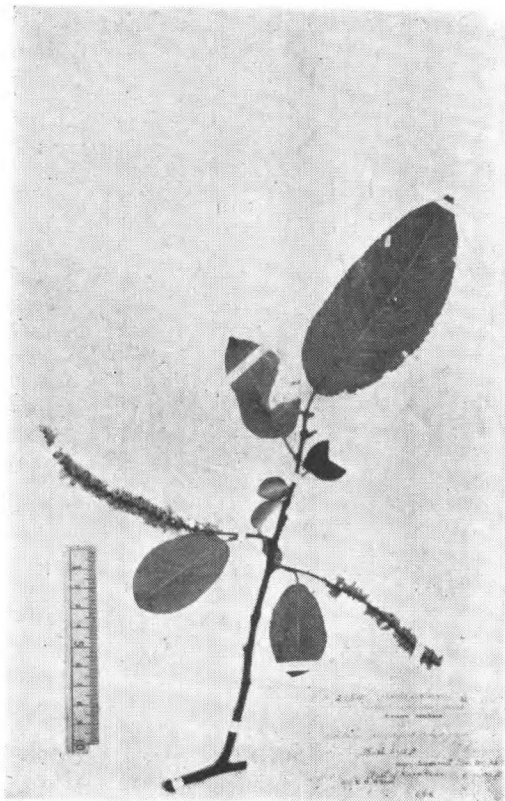
Salix oreinoma Schneider
Wils. 4575 (type.) 西康打箭炉



Salix opsimantha Schneider
Wils. 2139 (type.) 四川打箭炉



Salix oreophila Hook. f.
Delavay 2069 (type.)



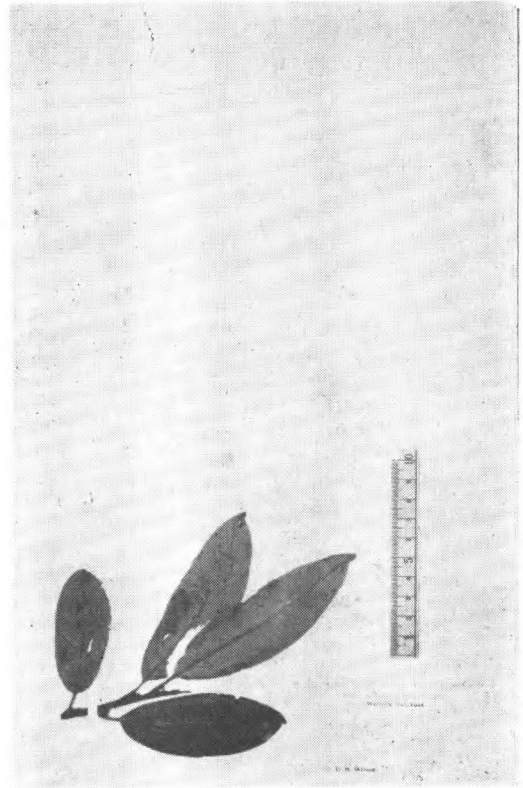
Salix orgyrophegga Schneider
Wils. 2154 (type.) 四川灌县牛头山



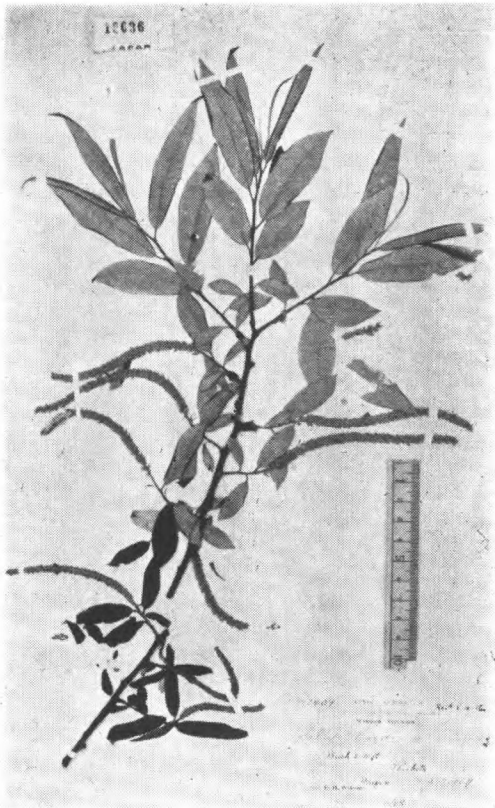
Salix oritrepha Schneider
Wils. 4525 (type.) 西康打箭炉



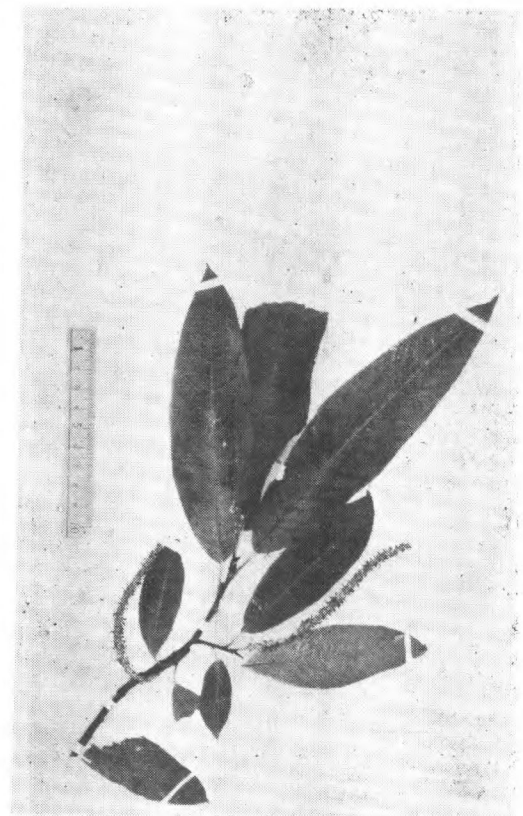
Salix paraplesia Schneider
Wils. 4518 (type.) 西康打箭炉



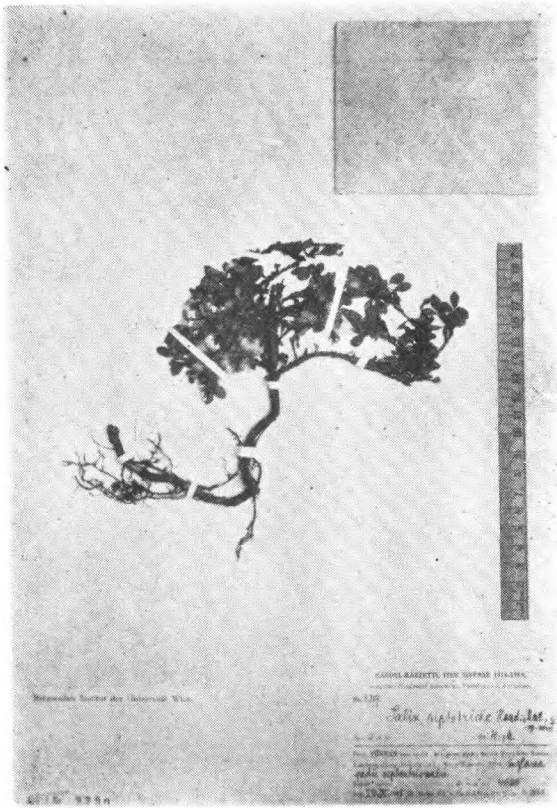
Salix pella Schneider
Wils. 4350 (type.) 四川灌县



Salix phanera Schneider
Wils. 1409 (type.) 西康穆坪



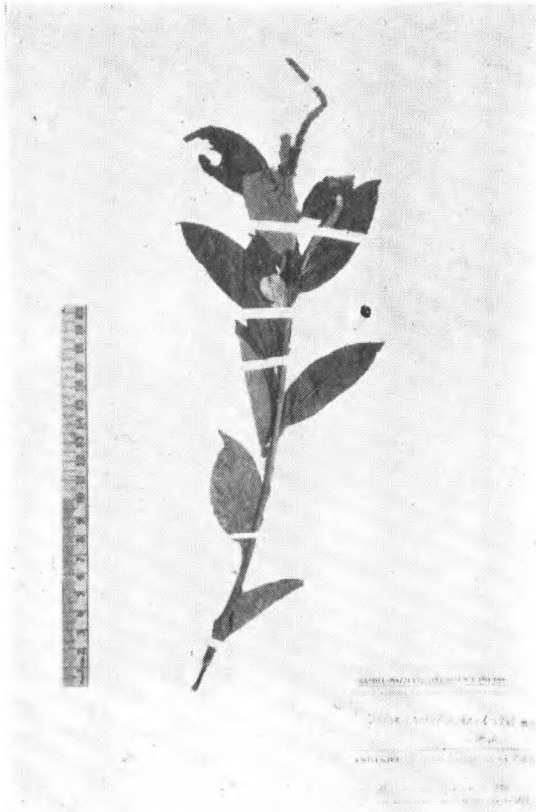
Salix phanera Schneider
Wils. 2155 (type.) 四川灌县



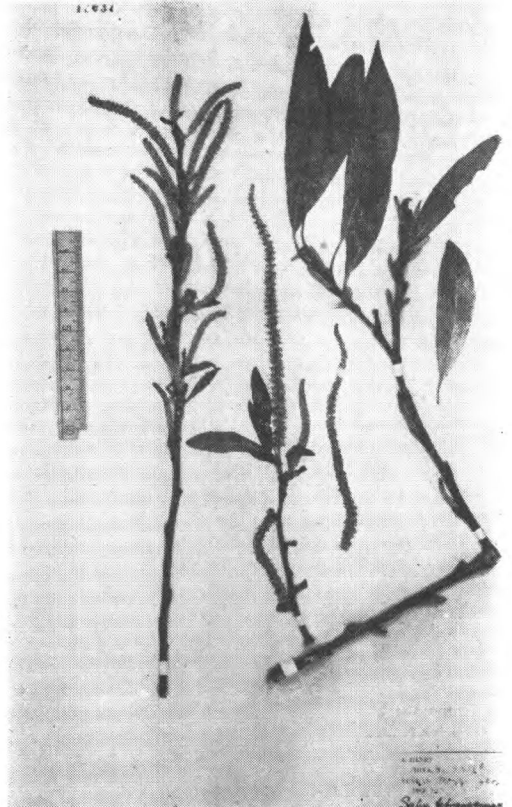
Salix piptotricha H.-M.
H.-M. 8377 (holtype.) 云南澜沧江、怒江



Salix polyclona Schneider
Wils. 2116 (type.) 湖北房县



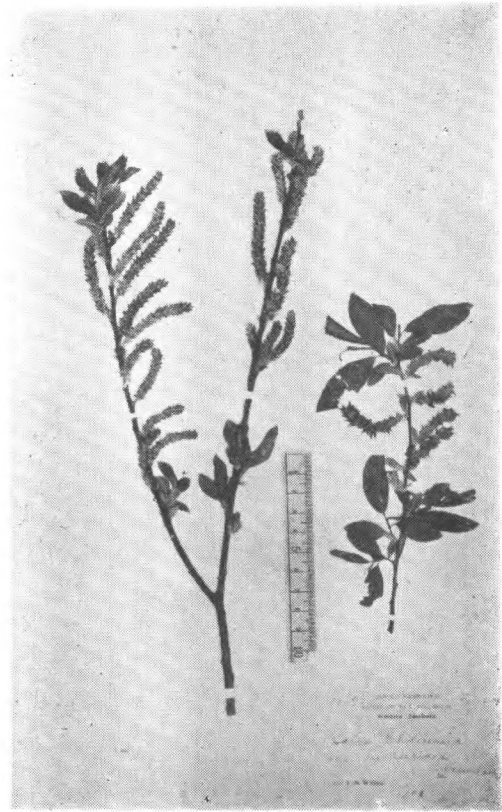
Salix praticola H.-M.
H.-M. 10586 (type.) 贵州



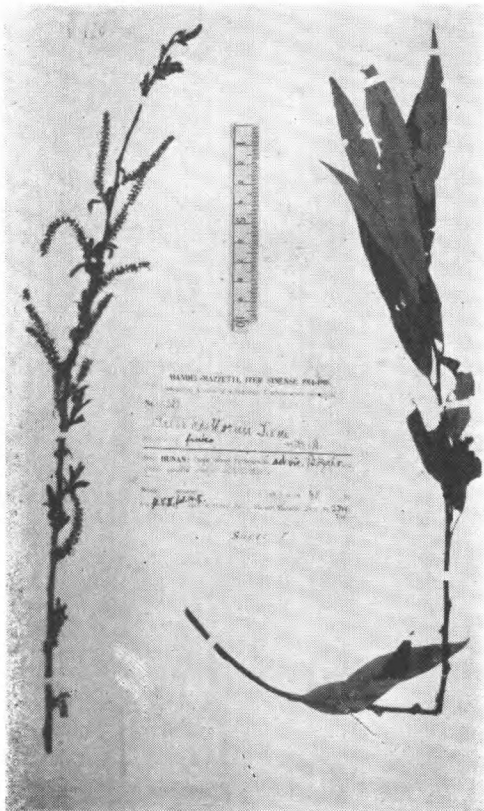
Salix psilostigma Andersson
Henry 9338B 云南蒙自



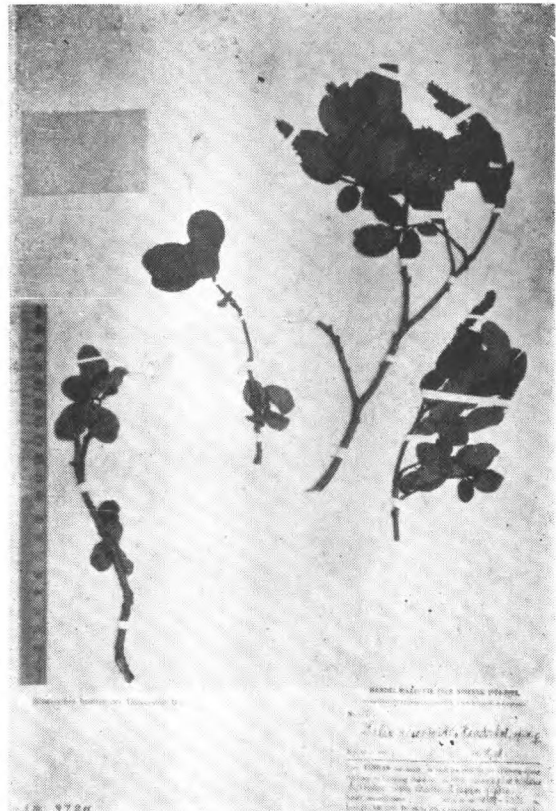
Salix radinostachya Schneider
H.-M. 8954 云南菖蒲桶



Salix Rehderiana Schneider var.
brevisericea Schneider
Wils. 1329 (type.) 四川清溪县大相岭



Salix Rosthornii Seem.
H.-M. 11597 湖南



Salix resectoides H.-M.
H.-M. 9722 (type.) 云南



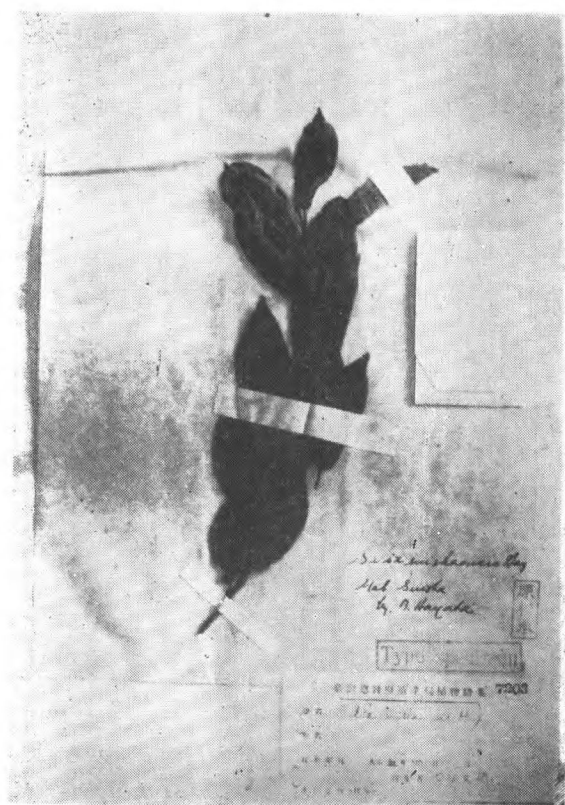
Salix salwinensis H.-M. ex Enander
H.-M. 8956 (type.) 云南



Salix Souliei V. Seemen
Wils. 2143 (type.) 四川打箭炉



Salix spodiophylla H.-M.
H.-M. 7309 (type.) 云南永宁



Salix suishaensis Hay.
B. Hay 无号 Sudisha, (isotype.)