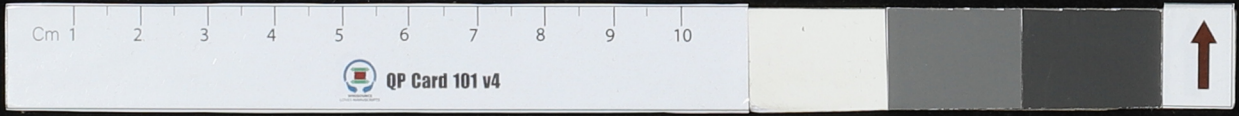


Handwritten text in Khmer script on a palm leaf fragment, showing approximately 10 lines of text.

Handwritten text in Khmer script on a palm leaf fragment, showing approximately 10 lines of text.

Handwritten text in Khmer script on a palm leaf fragment, showing approximately 10 lines of text.

Handwritten text in Khmer script on a palm leaf fragment, showing approximately 10 lines of text.

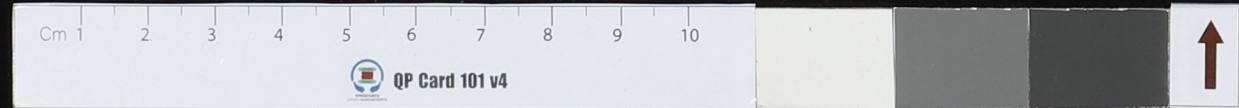


Handwritten text in an ancient script, likely Pāli, on a palm leaf fragment. The text is arranged in a single line across the width of the leaf.

Handwritten text in an ancient script, likely Pāli, on a palm leaf fragment. The text is arranged in a single line across the width of the leaf.

Handwritten text in an ancient script, likely Pāli, on a palm leaf fragment. The text is arranged in a single line across the width of the leaf.

Handwritten text in an ancient script, likely Pāli, on a palm leaf fragment. The text is arranged in a single line across the width of the leaf.



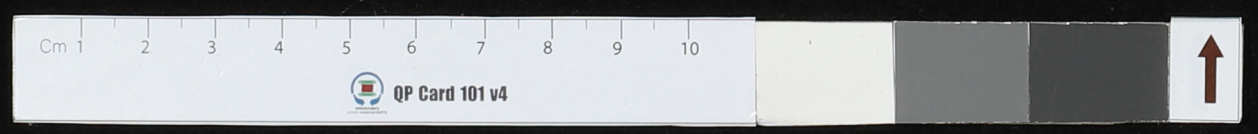
QP Card 101 v4

၈၂
...
...
...
...
...

...
...
...
...
...

...
...
...
...
...

...
...
...
...
...

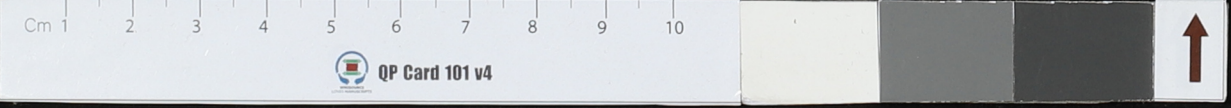


Handwritten text on the left side of the top palm-leaf fragment, starting with a small character 'လ'.

Handwritten text on the right side of the top palm-leaf fragment.

Handwritten text on the left side of the bottom palm-leaf fragment.

Handwritten text on the right side of the bottom palm-leaf fragment.

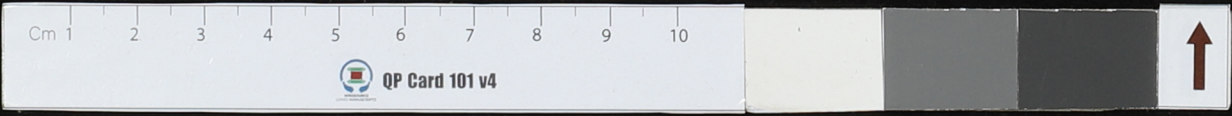


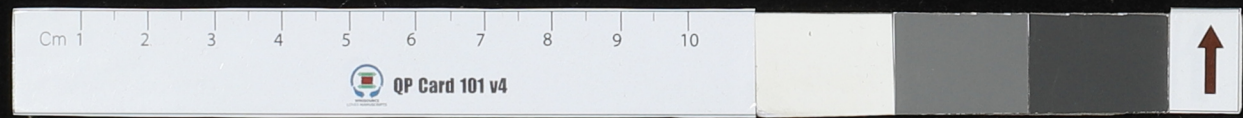
Handwritten text on a palm leaf fragment, likely in an ancient script. The text is arranged in a single line across the length of the leaf.

Handwritten text on a palm leaf fragment, continuing the script from the previous fragment. It features similar characters and spacing.

Handwritten text on a palm leaf fragment, showing a continuation of the script. The characters are finely etched into the surface of the leaf.

Handwritten text on a palm leaf fragment, the final part of the script shown in this image. The text is clearly legible despite the natural texture of the leaf.







59.19.5.1954

27.
Pisasti Ki Gusti
Ngurah Pagatapan


WM ID 001 0006

