

ACADEMY ARCHITECTURE

1898¹



1858. *Olivia*, Enamel, ALEXANDER FISHER, Artist.

HARRISON AND SONS,
PRINTERS IN ORDINARY TO HER MAJESTY,
ST. MARTIN'S LANE, LONDON.



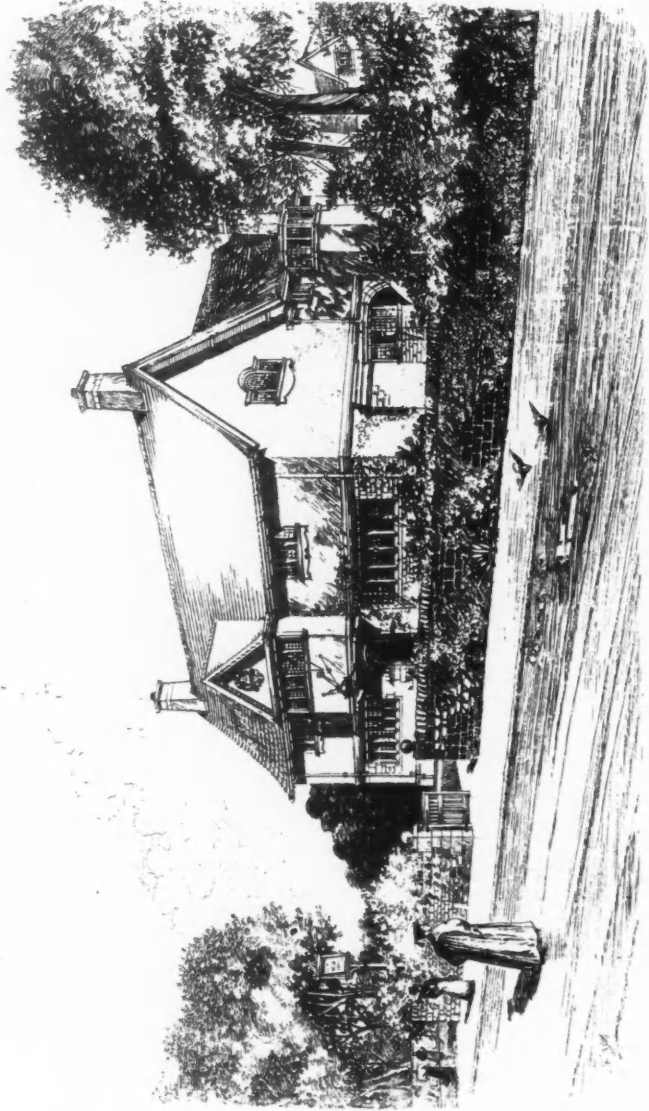
1728. *Public Library, Shoreditch*, HENRY T. HARE, A.R.I.B.A., Architect.
(For Plans, see p. 8.)



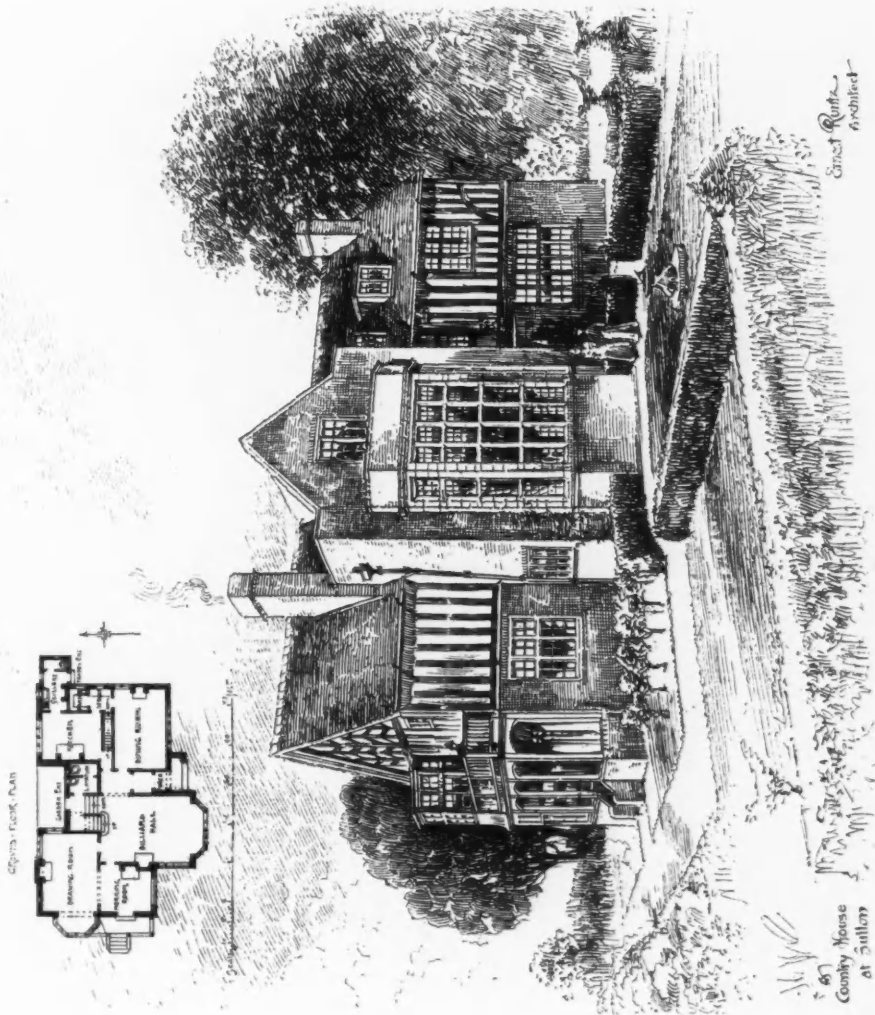
1631. *New Town Hall and Law Courts, Cardiff, LANCHESTER, STEWART, AND RICKARDS, Architects.*



1861. *Tarn Moor, Hindhead, Haslemere, Arnold S. TAYLER, A.R.I.B.A., Architect.*
(For Plans, see p. 8.)



1725. *The Old White House, Oxford, HENRY T. HARE, A.R.I.B.A., Architect.*
(For Plans, see p. 9.)

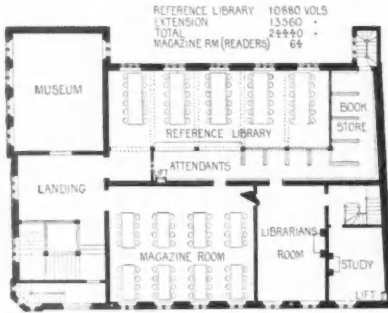


1612. A Country House at Sutton, ERNEST RUNTZ, Architect

Ernest Runtz,
Architect

Country House
at Sutton

FREE LIBRARY, SHOREDITCH.
HENRY T. HARE A.R.I.B.A. ARCH.^{CT}

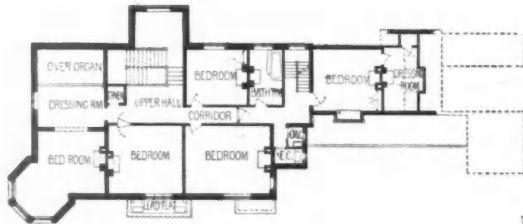


FIRST FLOOR PLAN



GROUND FLOOR PLAN

TARN MOOR, HIND HEAD.
ARNOLD S TAYLER A.R.I.B.A. ARCH.^{CT}

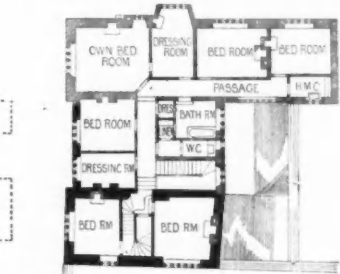


FIRST FLOOR PLAN



GROUND FLOOR PLAN

THE COURT HOUSE, BROADWAY



FIRST FLOOR PLAN

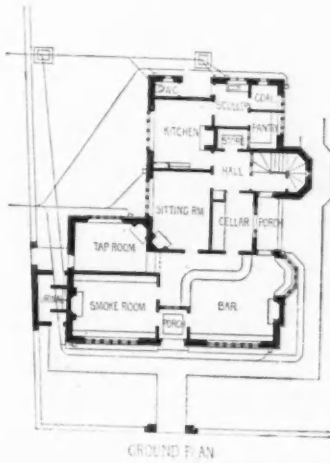
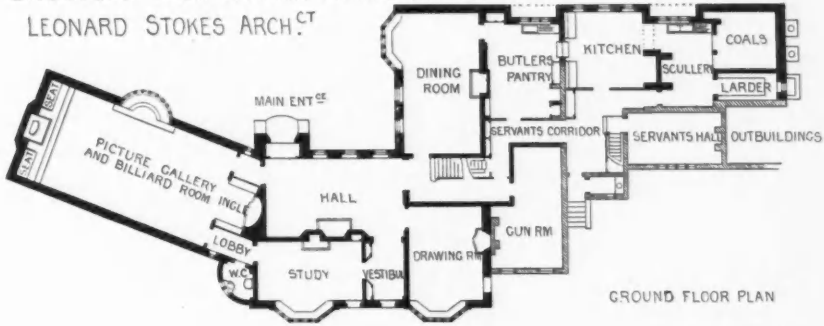
GARDEN



GROUND FLOOR PLAN

E. GUY DAWBER AND WHITWELL ARCH.^{CT'S}

SHOOTERS HILL HOUSE. PANGBOURNE.
LEONARD STOKES ARCH.^{CT}



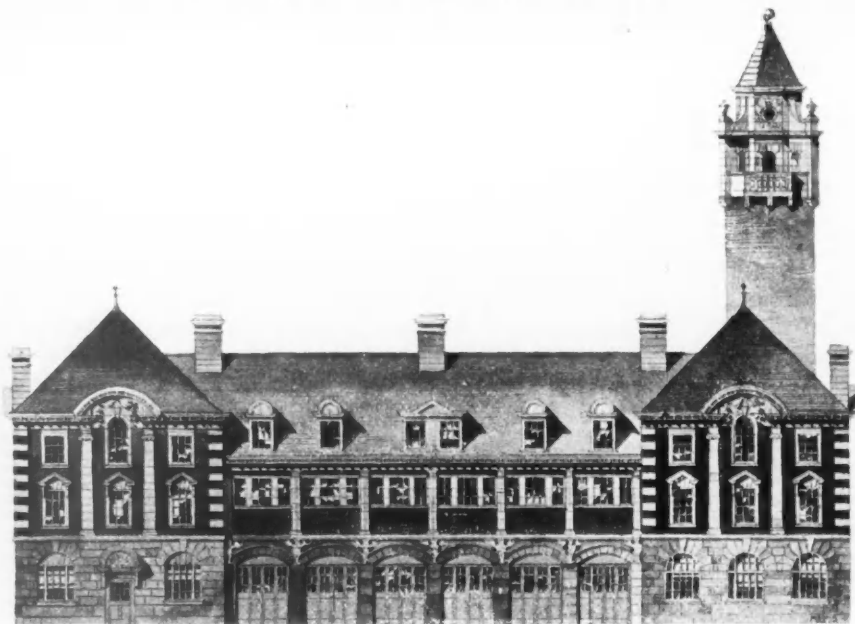
THE OLD WHITE HOUSE, OXFORD.
HENRY T. HARE A.R.I.B.A. ARCH.^{CT}



1718. *Shooter's Hill House, Pangbourne, Garden Front, LEONARD STOKES, Architect.*
(For Plans, see p. 9.)



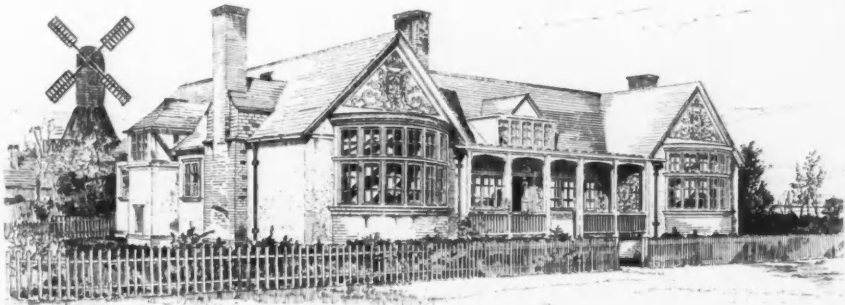
1724. *Shooter's Hill House, Pangbourne, the Picture Gallery*, LEONARD STOKES, Architect.



1748. *Design for Fire-Engine Station, Bootle, M. STARMER HACK, A.R.I.B.A., Architect.*



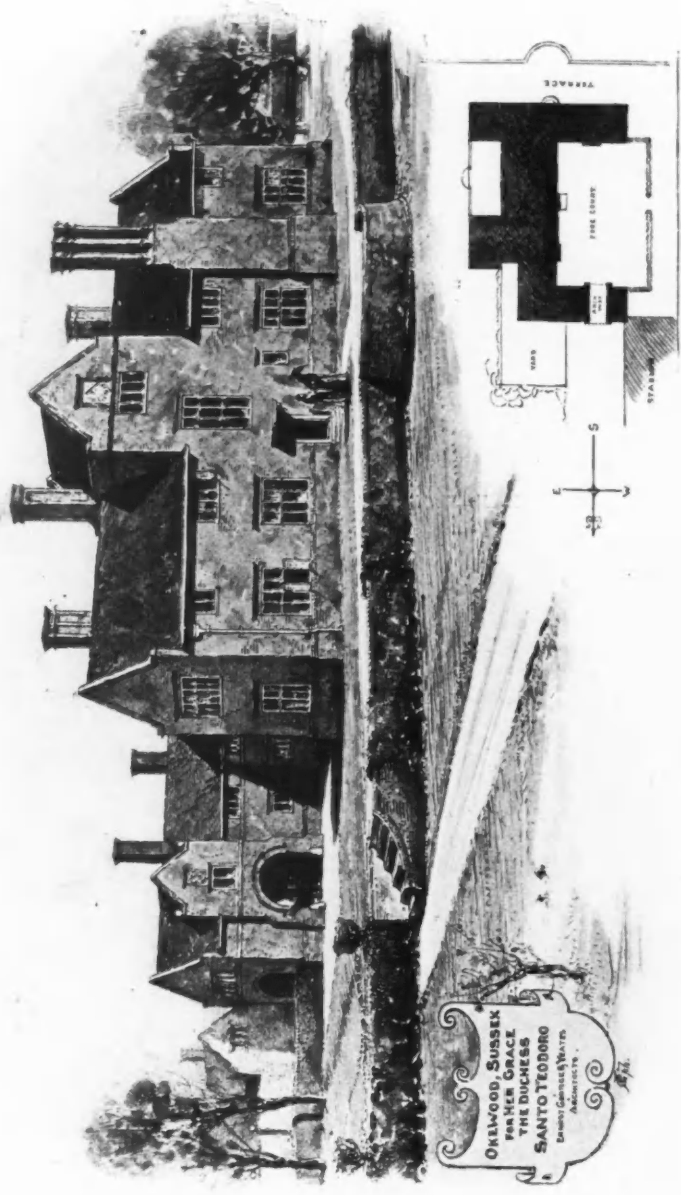
1677. *The Court House, Broadway, Worcestershire, E. GUY DAWBER AND WHITWELL, Architects.*
(For Plans, see p. 8.)



1611. *New Club House for the London Scottish Golf Club*, HERBERT O. CRESSWELL, F.R.I.B.A., Architect.
(For Plans, see p. 33.)



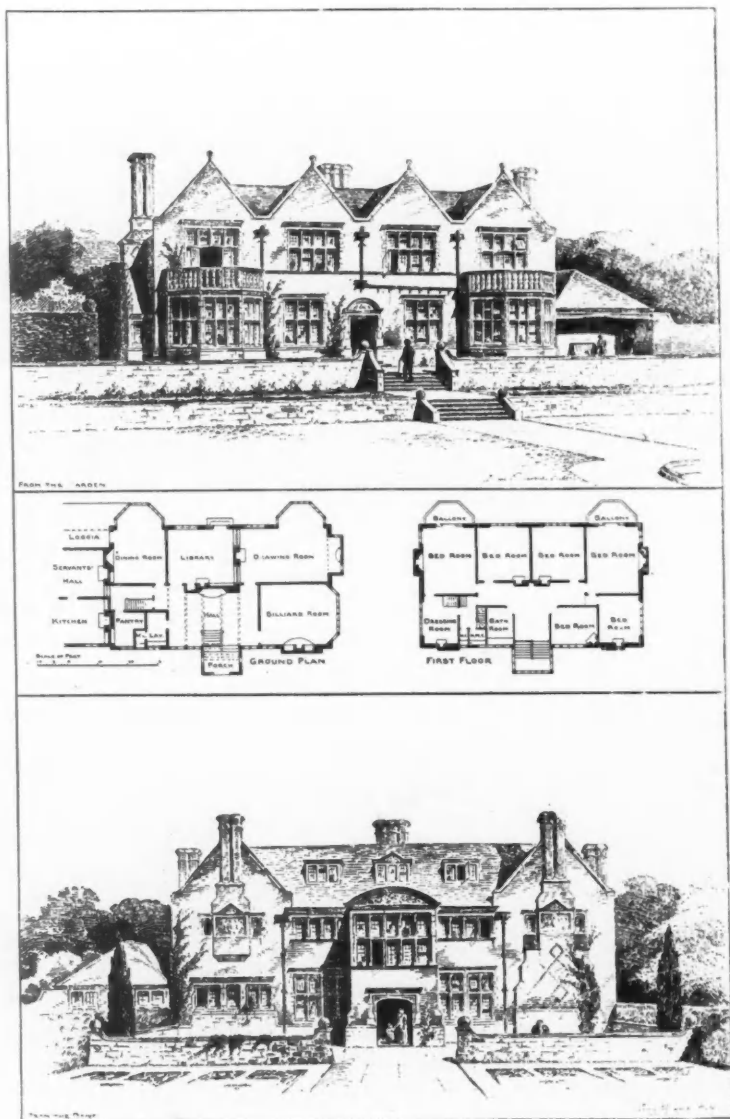
1628. *A Golf Club House*, H. INIGO TRIGGS, Architect.
(For Plans, see p. 32.)



1609. Okewood, Sussex, ERNEST GEORGE AND YEATES, Architects.



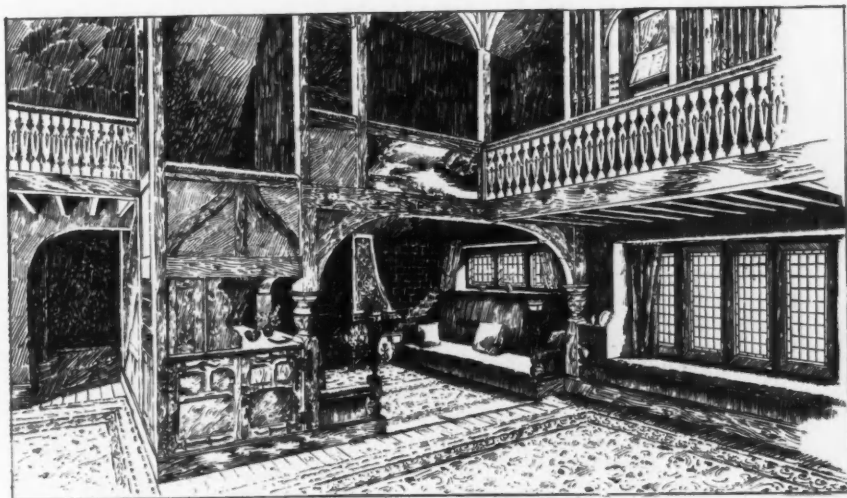
1608. The Library, North Myms, Heris, ERNEST GEORGE AND YEATES, Architects.



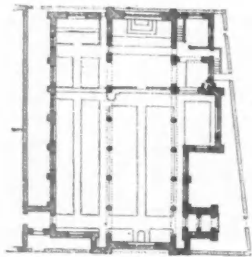
1695. *Houghton Grange, near Huntingdon*, JAMES RANSOME, A.R.I.B.A., Architect.



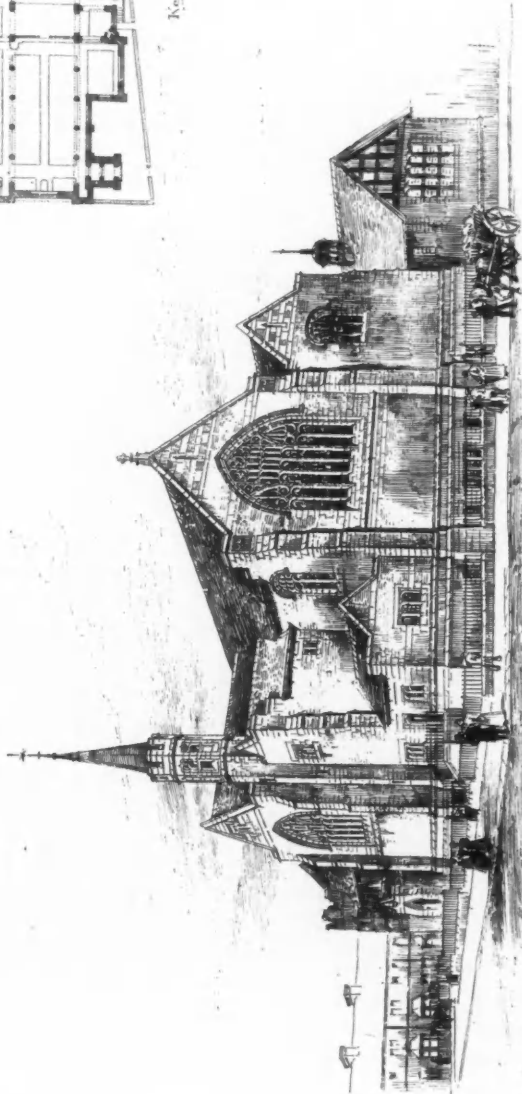
1620. *Gallery and Bull Room, Yorkshire, CLARK AND MOSCROP, Architects.*



Room in a House at Marple, BARRY PARKER AND RAYMOND UNWIN, Architects.

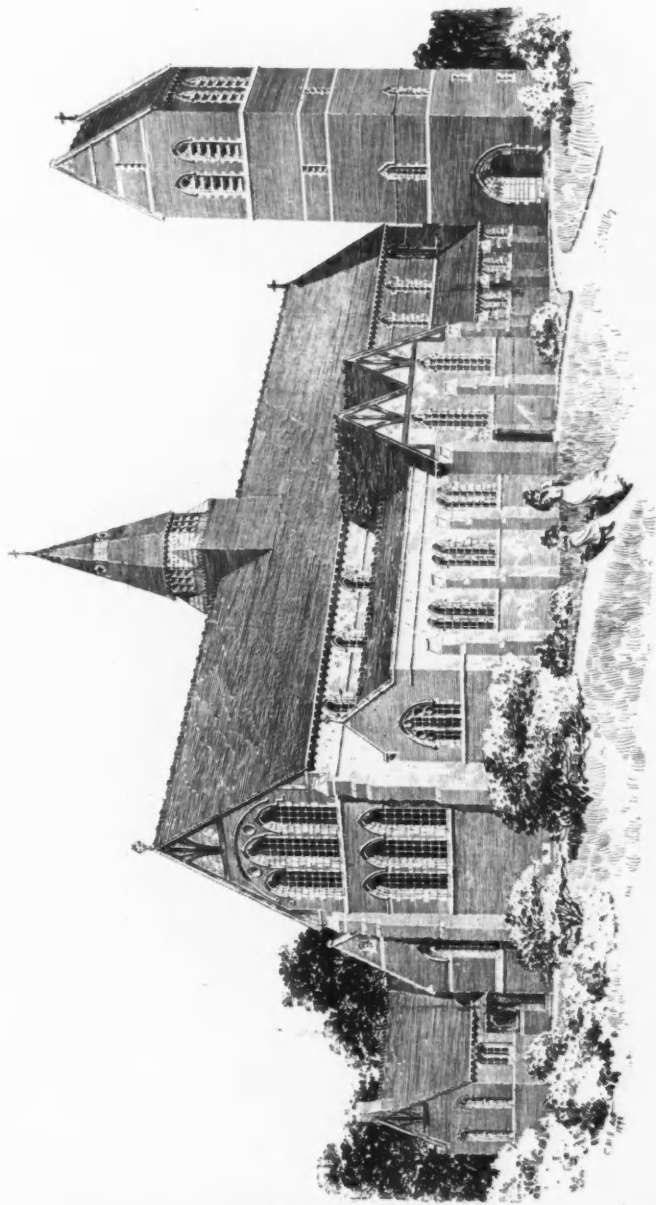


Key Plan

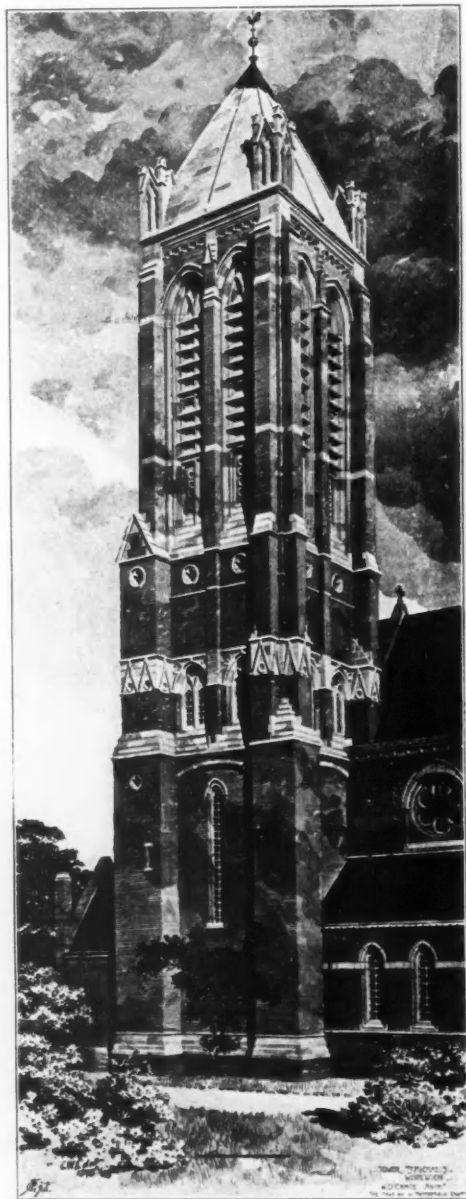


Ch. St. Luke's Church

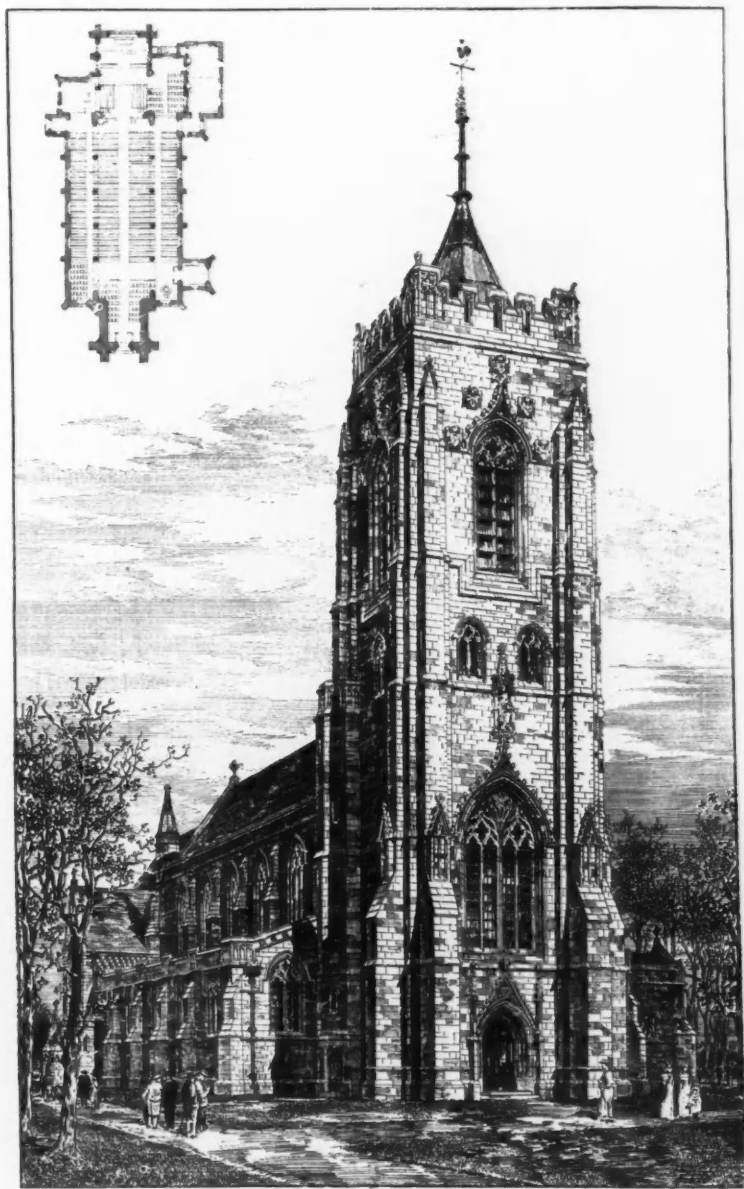
1803. New Church, St. Luke's Parish, Darlington, CLARK AND MOSCROP, Architects.



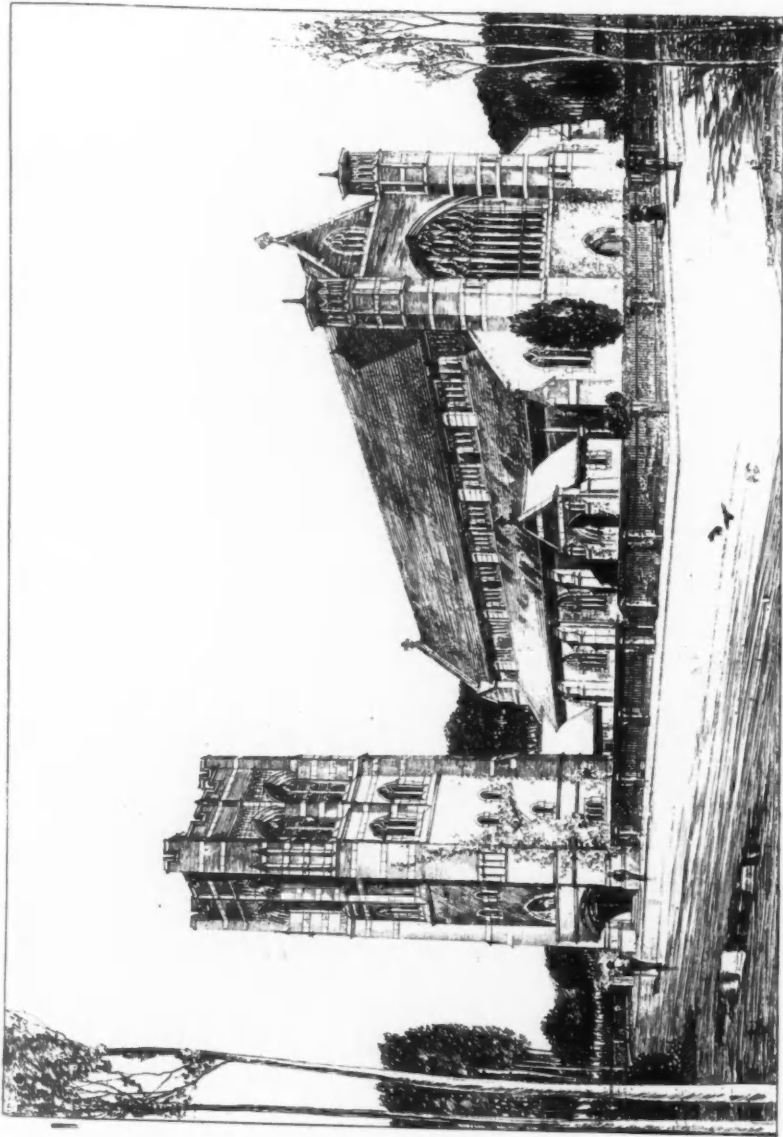
1716. *St. Luke's, Enfield, North East View, JAMES BROOKS AND SON, Architects.*



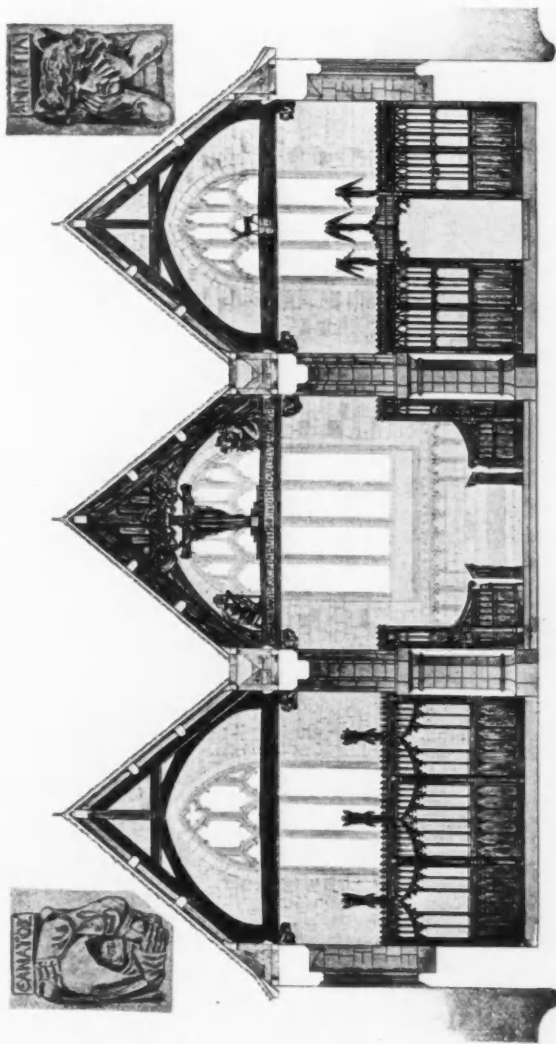
1706. *Tower, St. Michael's, Woolwich, W. D. CARÖE, M.A., Architect.*
The Nave by W. BUTTERFIELD, Esq.



1719. *Tower of St. Mark's Church, Harrogate, J. OLDRID SCOTT, F.R.I.B.A., Architect.*



1802. *New Church of St. Michael, Southfields, S.W., EDWARD W. MOUNTFORD, F.R.I.B.A., Architect.*



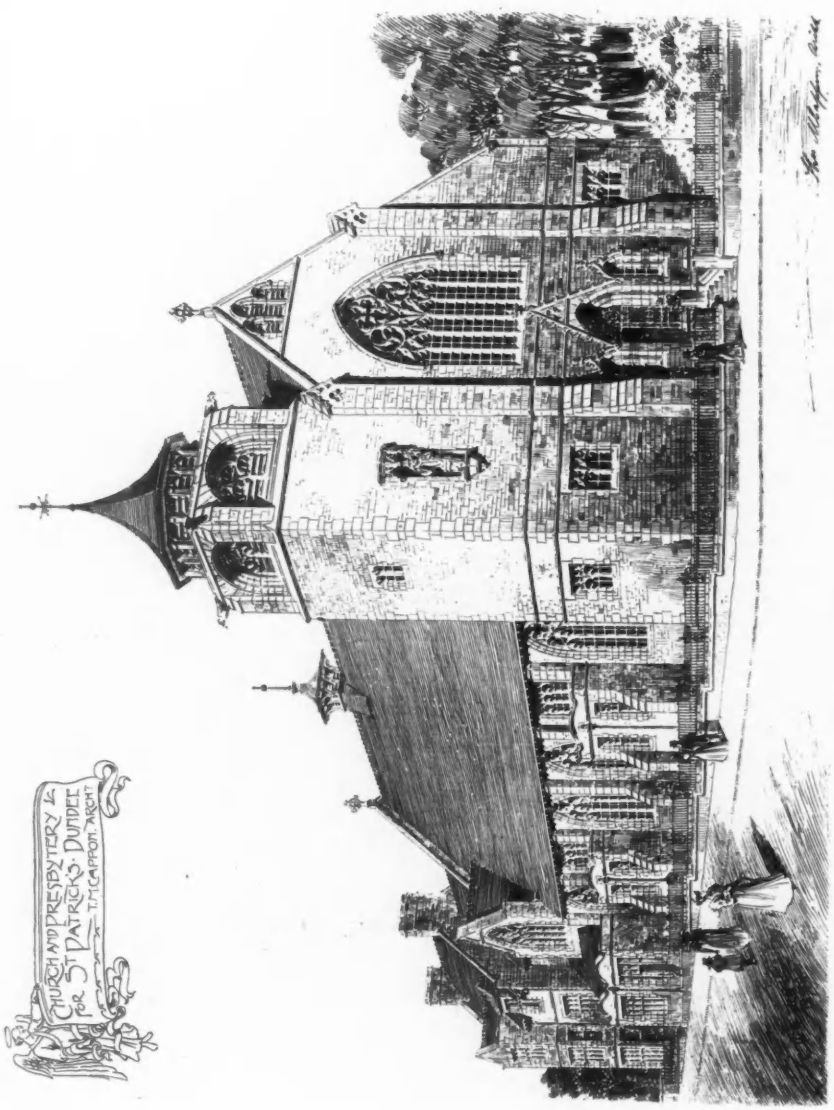
1737. New Roof and Screens, Church of St. Peter, Shornell, Isle of Wight, PERCY G. STONE, F.R.I.B.A., Architect.



1668. *Design for a Country Church on a Hill*, EDWIN F. REYNOLDS, Architect.

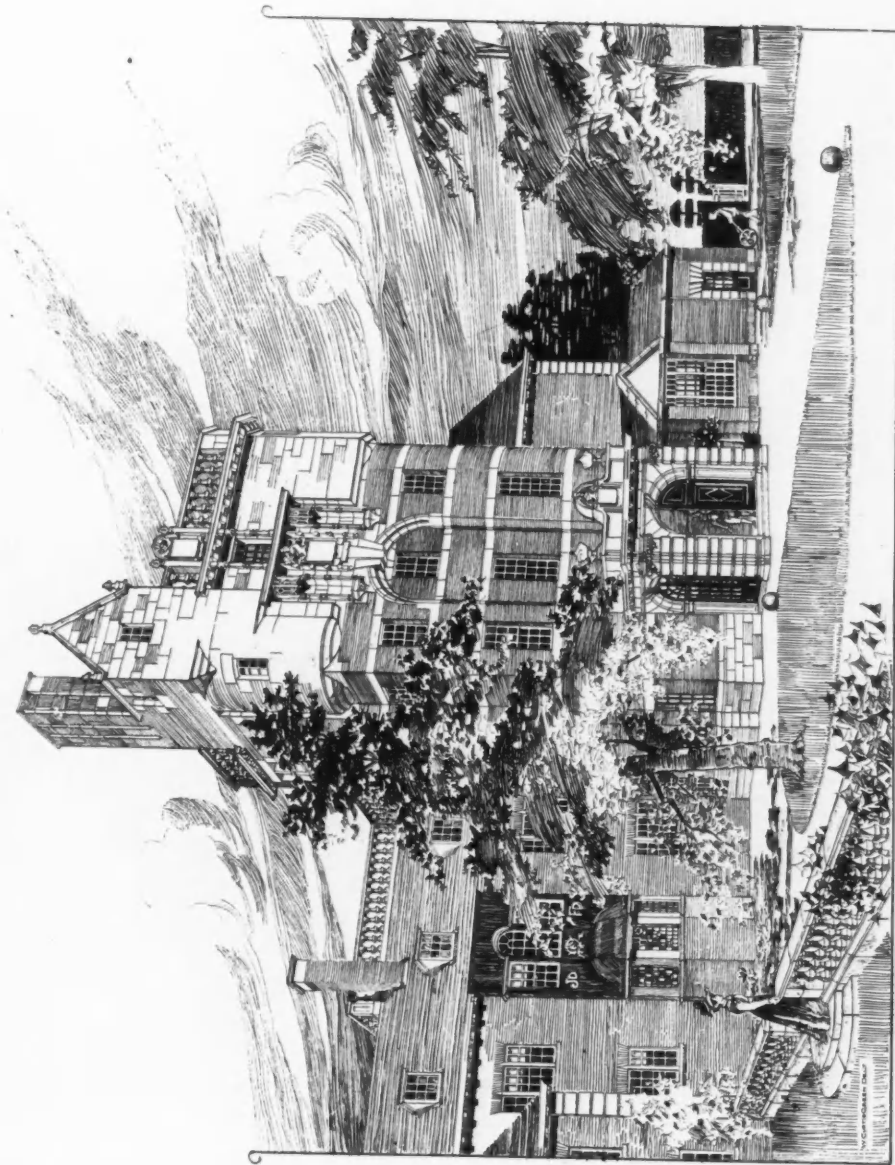


1713. *Proposed New Church at Bedford, C. E. MALLOWS AND GROCOCK, Architects.*



CHURCH AND PRESBYTERY FOR ST. PATRICK'S, DUNELM.
T. M. CAPTON, ARCHT.

1709. Church and Presbytery for St. Patrick's, Dunelm, T. MARTIN CAPTON, F.S.A.Scot., Architect.



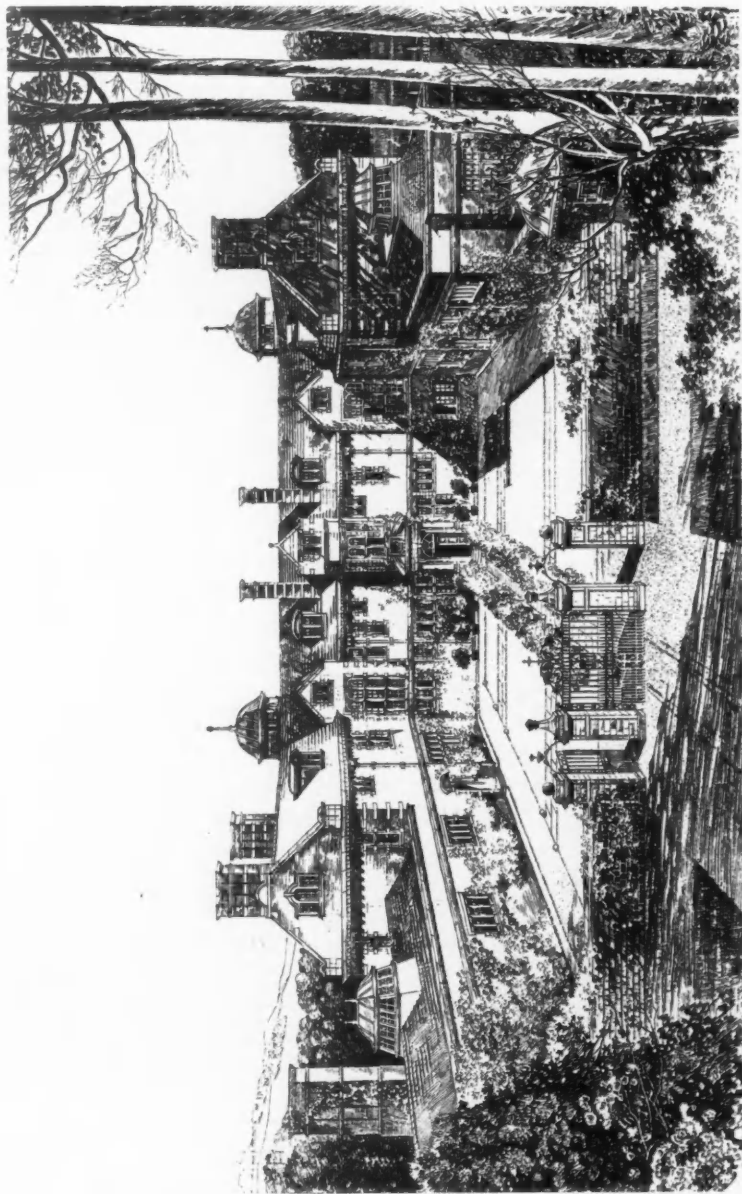
1768. House at Pangbourne, Entrance Tower, JOHN BELCHER, F.R.I.B.A., Architect.



1731. *Proposed House at Little Switzerland, Douglas, Isle of Man, M. H. BAILLIE SCOTT, Architect.*



1619. - Residence at Edwalton, Garden and Entrance Fronts, BREWILL AND BAILY, Architects.

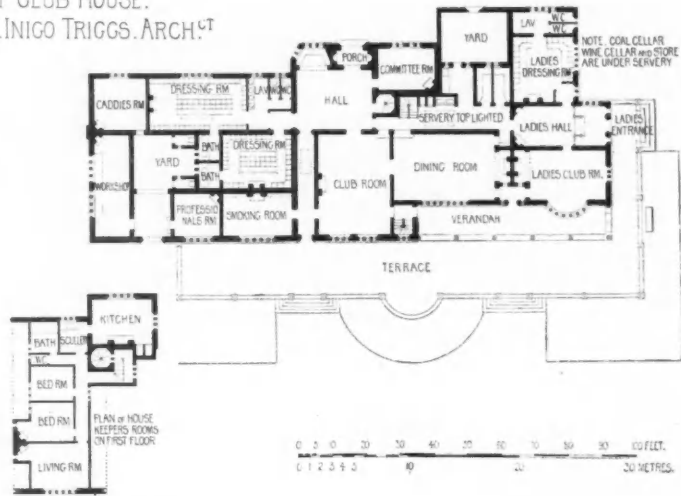


1767. *Hillton House, Hampshire, Courtyard or Entrance Front, ASTON WEBB, F.S.A., Architect.*
(For Plan, see p. 32.)

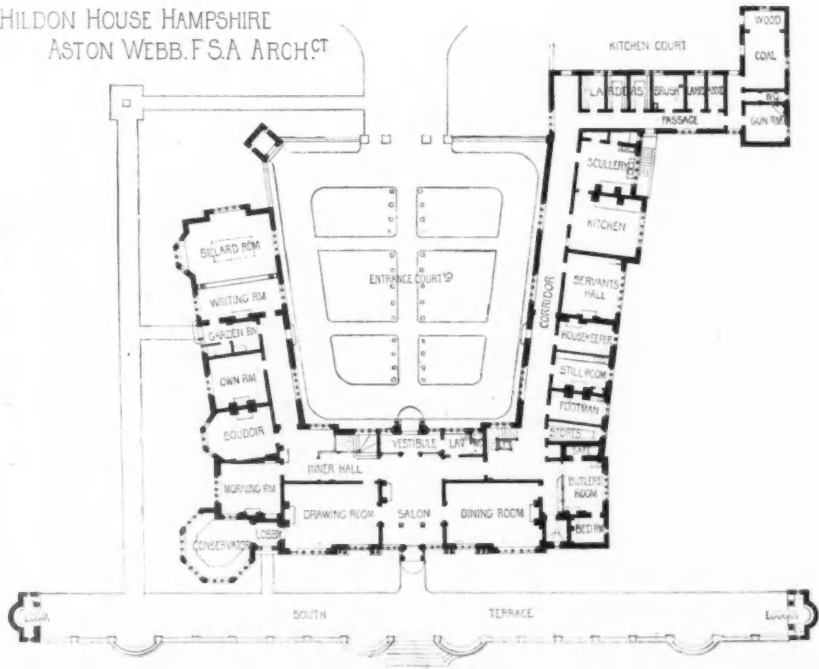


1767. *Hildon House, Hampshire, South or Garden Front, ASTON WEBB, F.S.A., Architect.*
(For Plan, see p. 32.)

A GOLF CLUB HOUSE.
H. INIGO TRIGGS, ARCH.^t



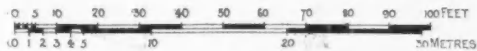
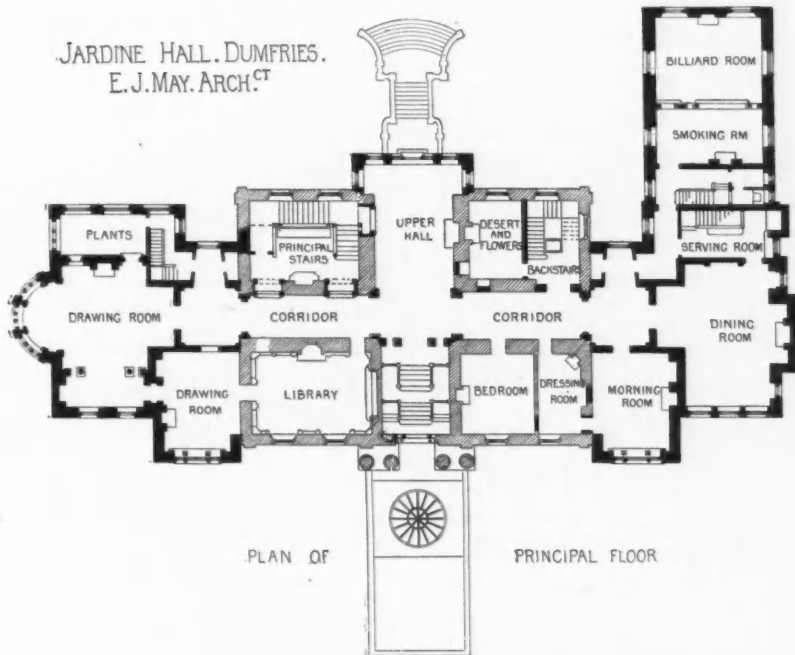
HILDON HOUSE HAMPSHIRE
ASTON WEBB, F.S.A. ARCH.^t



LONDON SCOTTISH GOLF CLUB. WIMBLEDON COMMON
H.O. CRESSWELL, F.R.I.B.A. ARCH.^{CT}



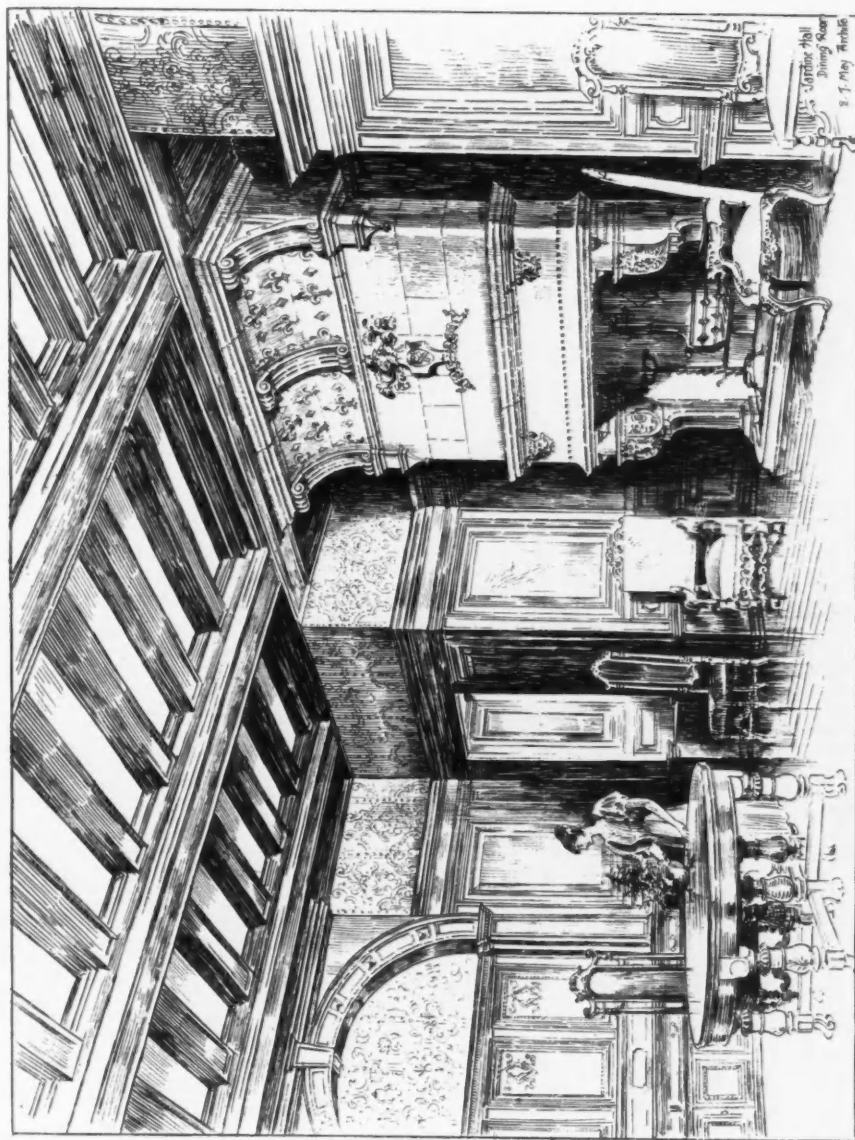
JARDINE HALL, DUMFRIES.
E. J. MAY, ARCH.^{CT}



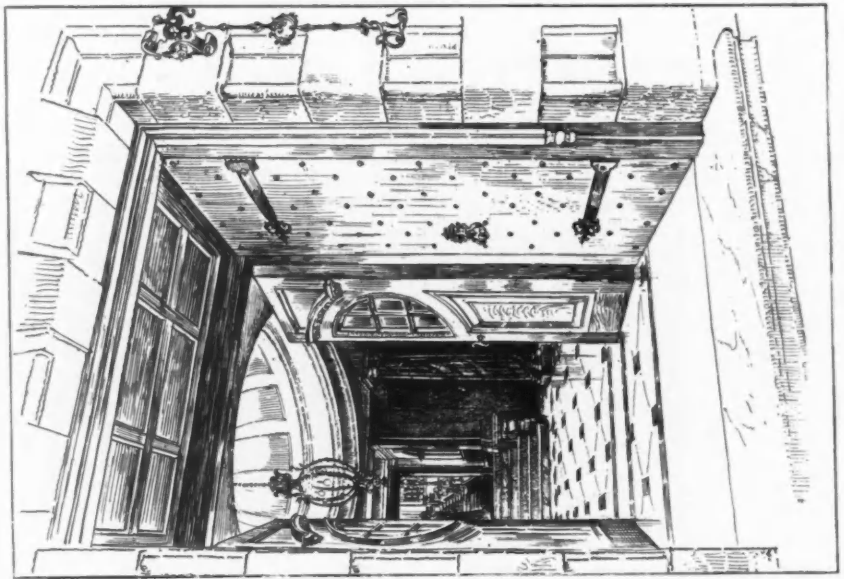
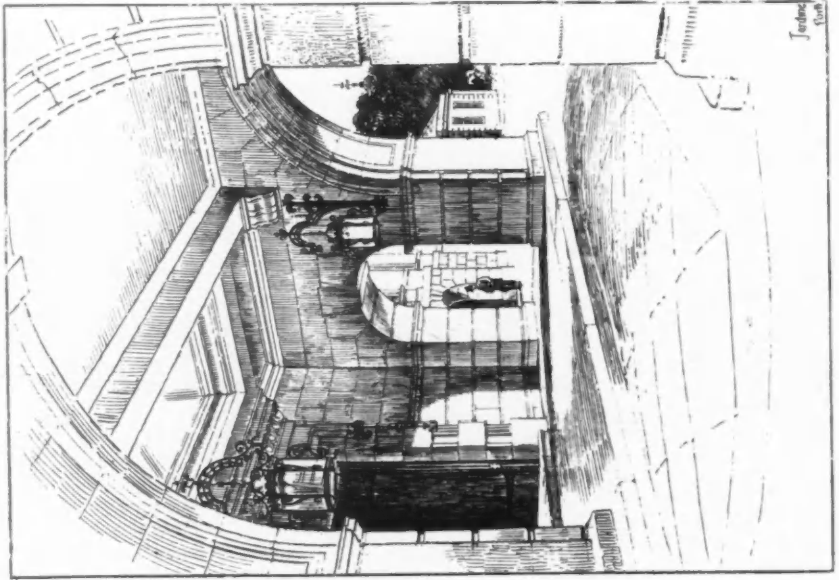


Jordene Hall, N. S.
 Colchester, 1898,
 as altered
 by J. J. May

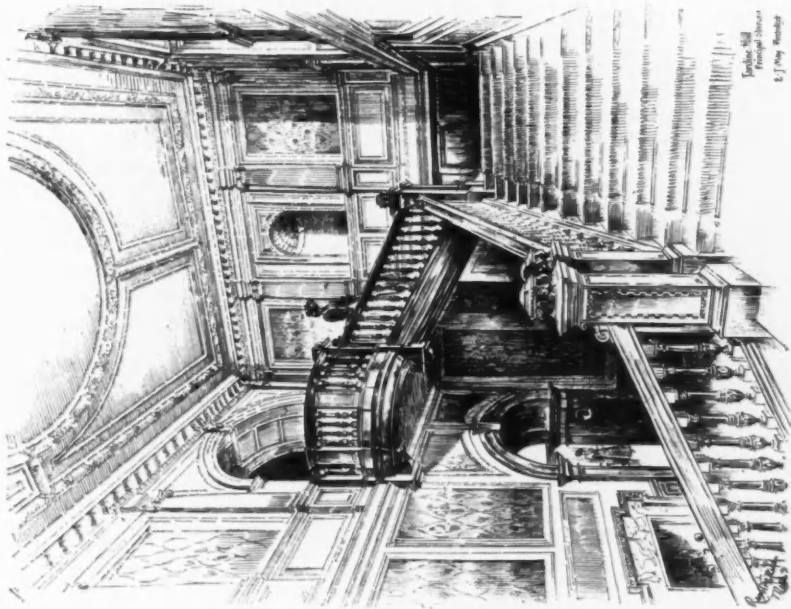
1614. *Jacotine Hall, Dumfriesshire, Additions and Alterations, EDWARD J. MAY, Architect.*
 (For Plan, see p. 33.)



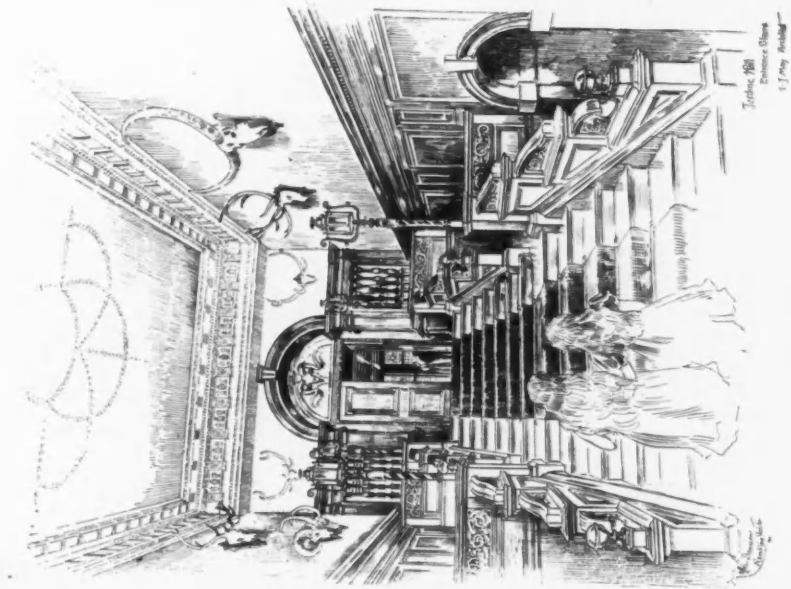
1614. *Jardine Hall, Dunfriesshire, EDWARD J. MAY, Architect.*



1614. *Jardine Hall, Dumfriesshire, Entrance Vestibule and Porte Cochère, EDWARD J. MAY, Architect.*



Jardine Hall
Principal staircase
E. J. May, Architect



Jardine Hall
Principal staircase
E. J. May, Architect

1614. Jardine Hall, Dumfrieshire, EDWARD J. MAY, Architect.



1662. *Main Staircase, The Ross, Hamilton, N.B., ALEX. CULLEN, I.A., Architect.*



1752. *House at Pangbourne, Entrance Hall, JOHN BELCHER, F.R.I.B.A., Architect.*



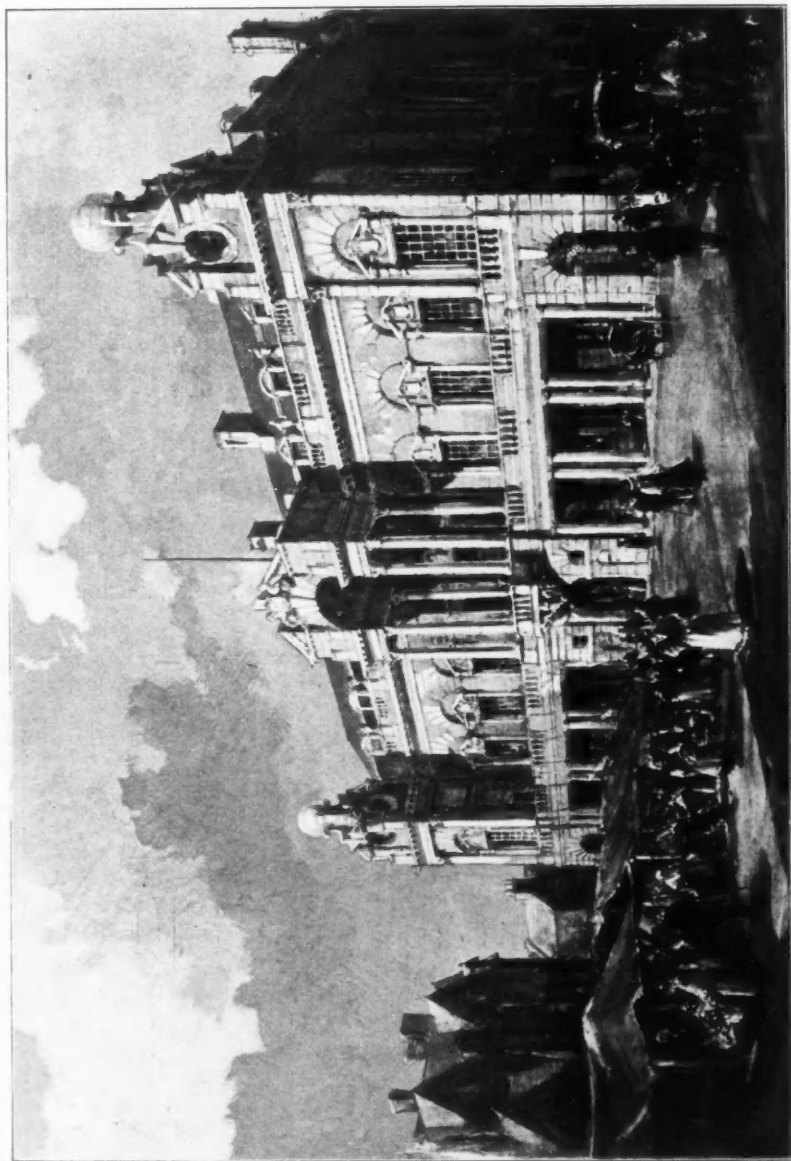
1675, 1676. *House, Middleton, Lancashire*, EDGAR WOOD, A.R.I.B.A., Architect.



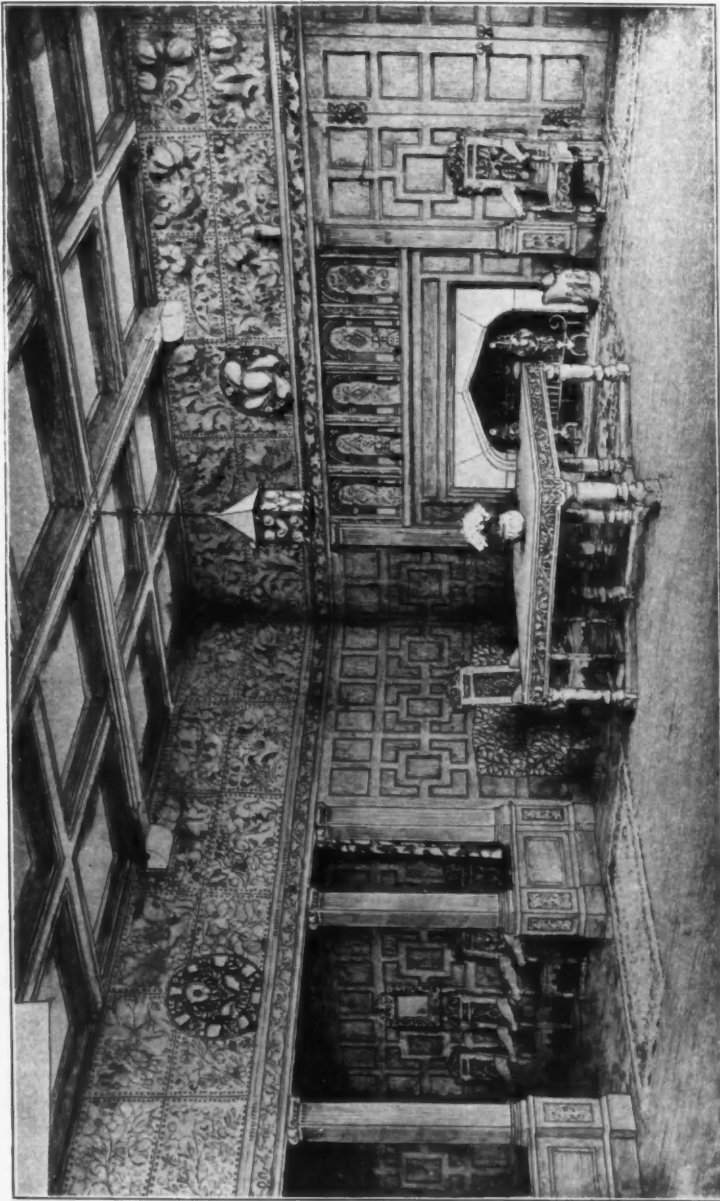
1792. *Friendship Inn, Rochdale*, EDGAR WOOD, A.R.I.B.A., Architect.



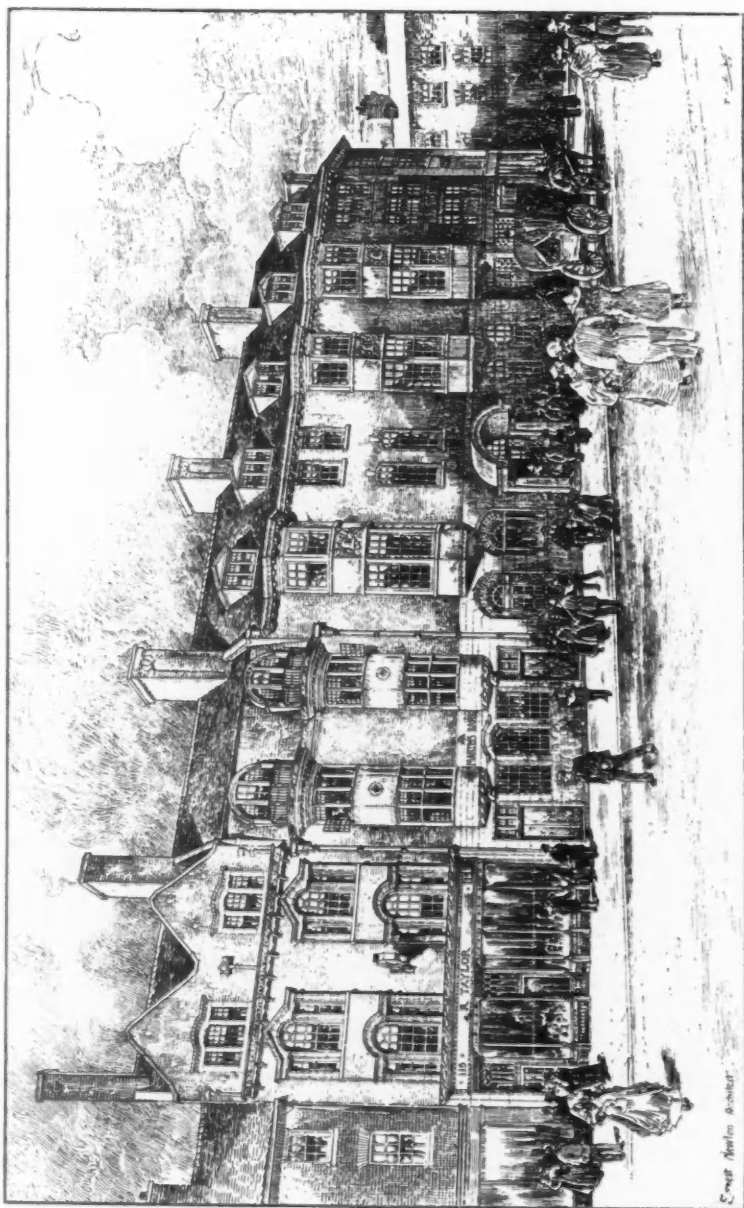
1765. *Houses and Shop, Middleton, Lancashire*, EDGAR WOOD, A.R.I.B.A., Architect.



1734. *New Guildhall, Cambridge, JOHN BELCHER, F.R.I.B.A., Architect.*

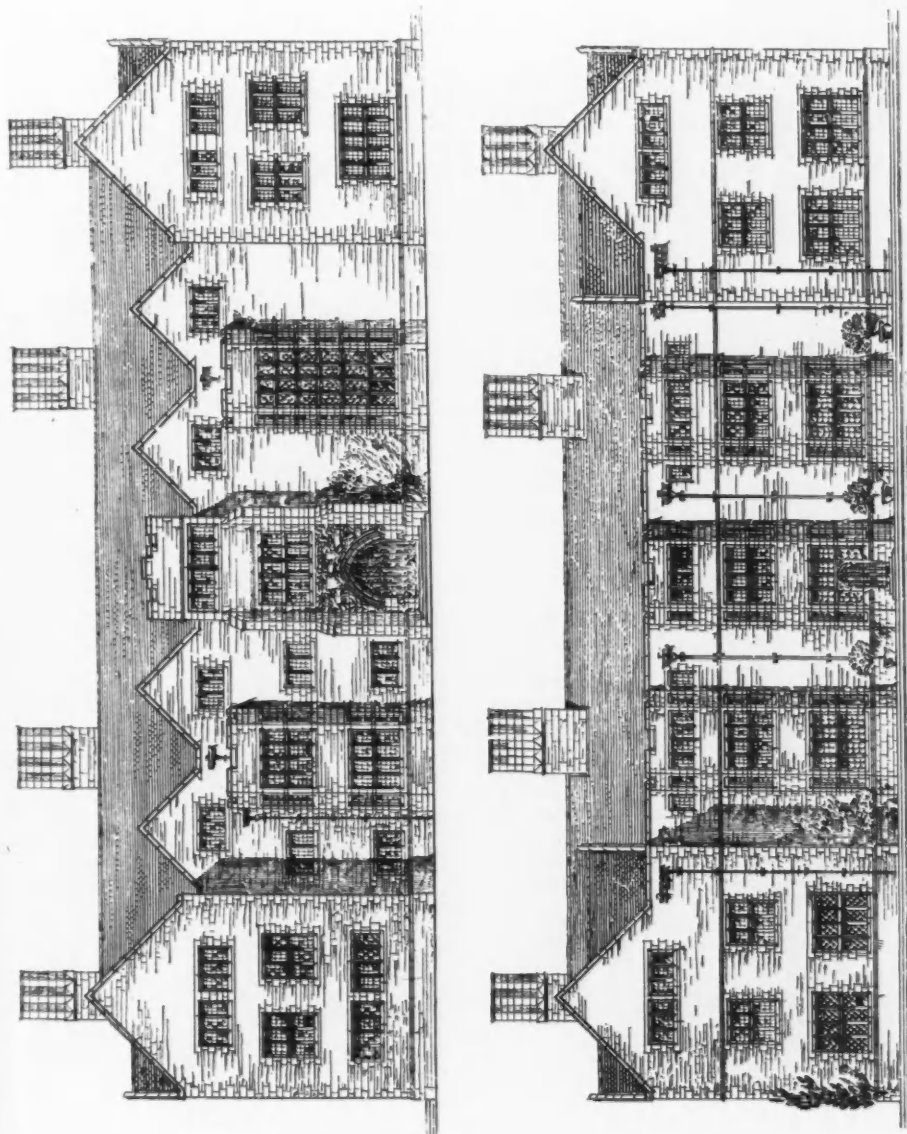


1798. *Dining Room at the Palace, Darmstadt, M. H. BAILLIE SCOTT, Architect.*

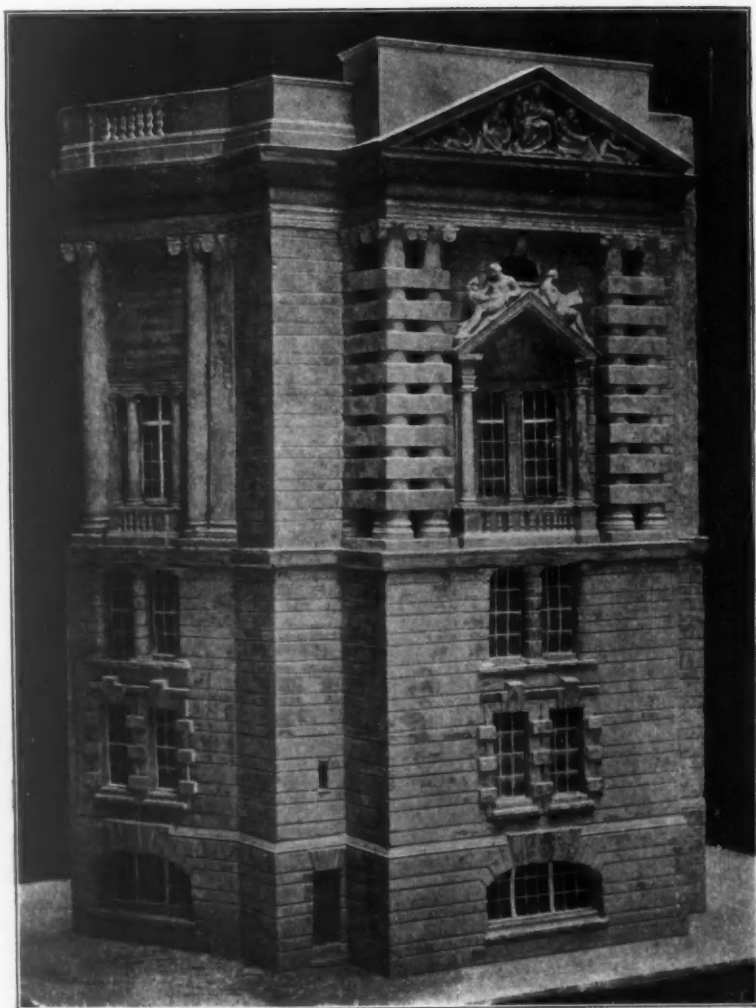


1638. *Buildings at Bronley, Kent, ERNEST NEWTON, Architect.*

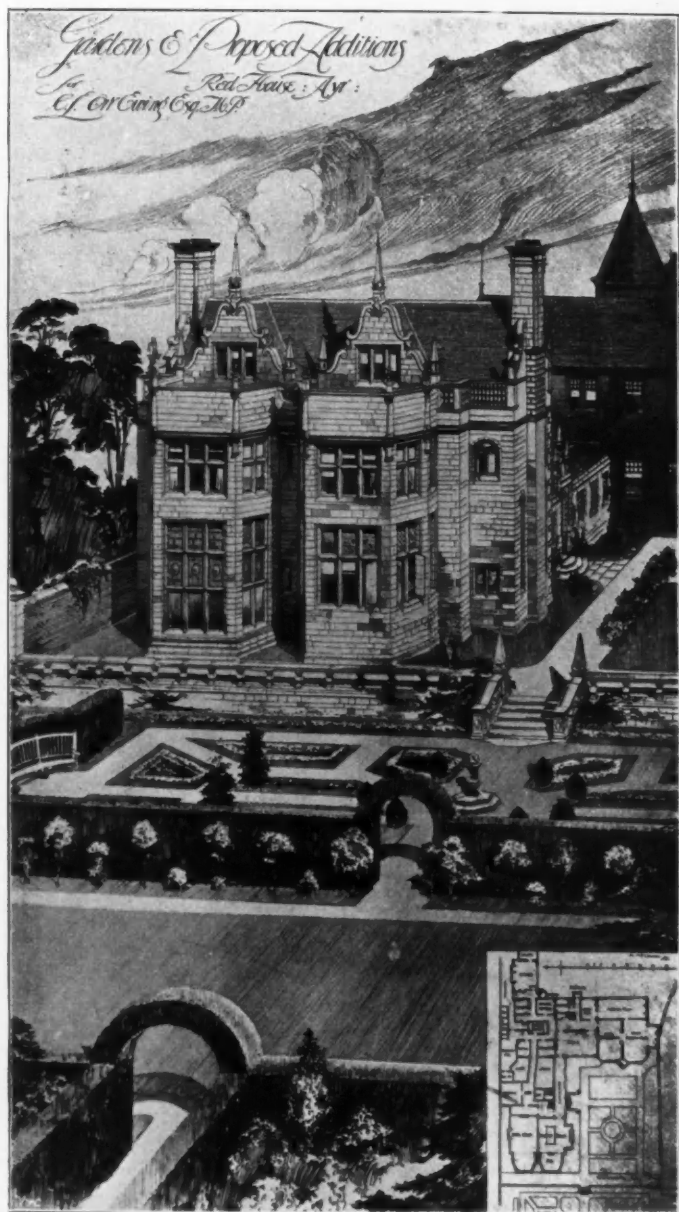
Ernest Newton architect.



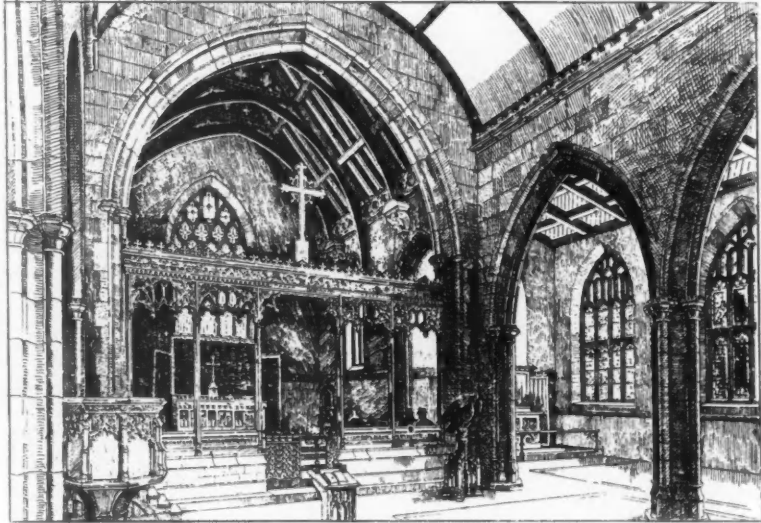
1656. *Design for a Country House, Entrance and Garden Elevations*, GERALD C. HORSLEY, Architect.
(For Plan, see p. 55.)



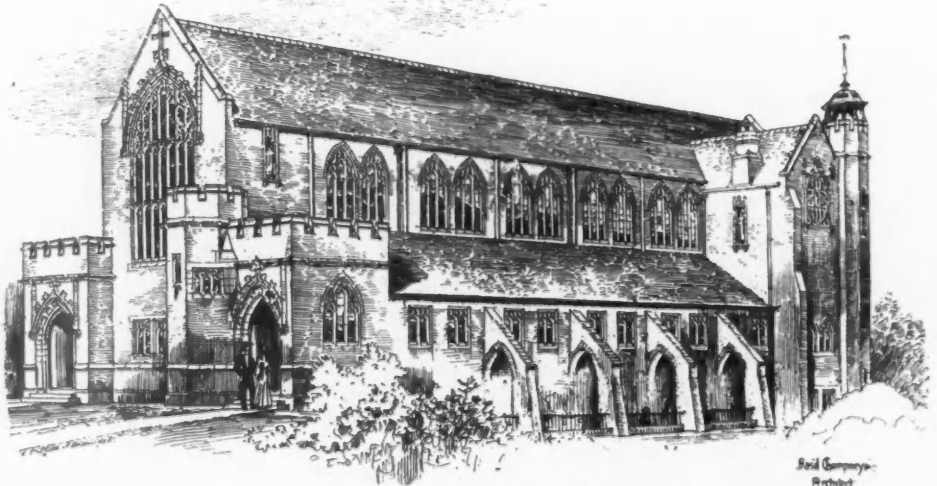
1804. *Sketch Model, South-west Angle of New Museum and Technical School, Liverpool,*
EDWARD W. MOUNTFORD, F.R.I.B.A., Architect.



1692. Garden and Proposed Additions to Red House, Ayr; JAMES A. MORRIS, F.R.I.B.A., Architect.



Church of St. Michael and All Angels, Yeovil, J. NICHOLSON JOHNSTON, A.R.I.B.A., Architect.
(For Exterior View, see Vol. VIII, p. 7.)



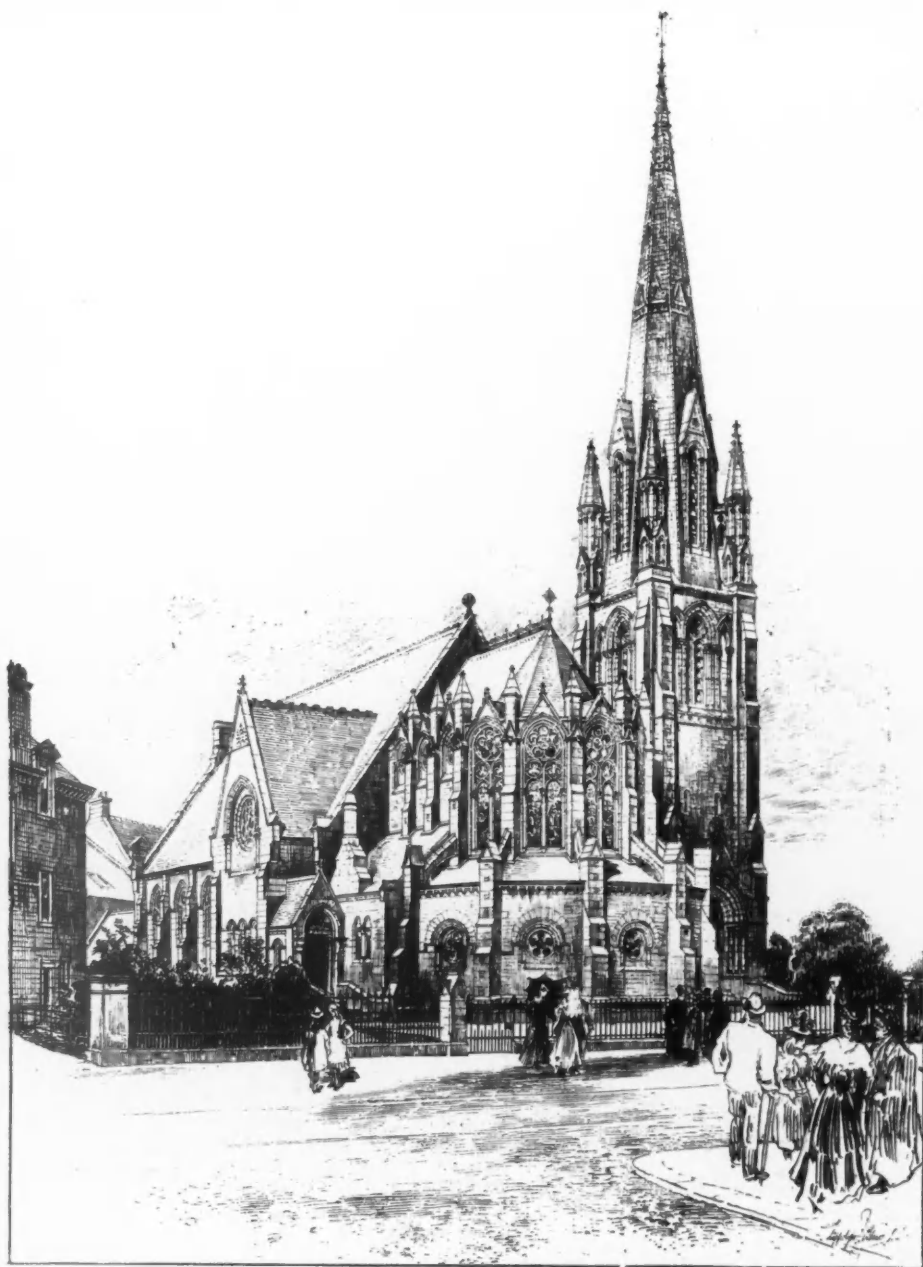
1655. *St. Luke's Chapel, West Hampstead, BASIL CHAMPNEYS, B.A., Architect.*

THE ROYAL SCOTTISH ACADEMY EXHIBITION

1898



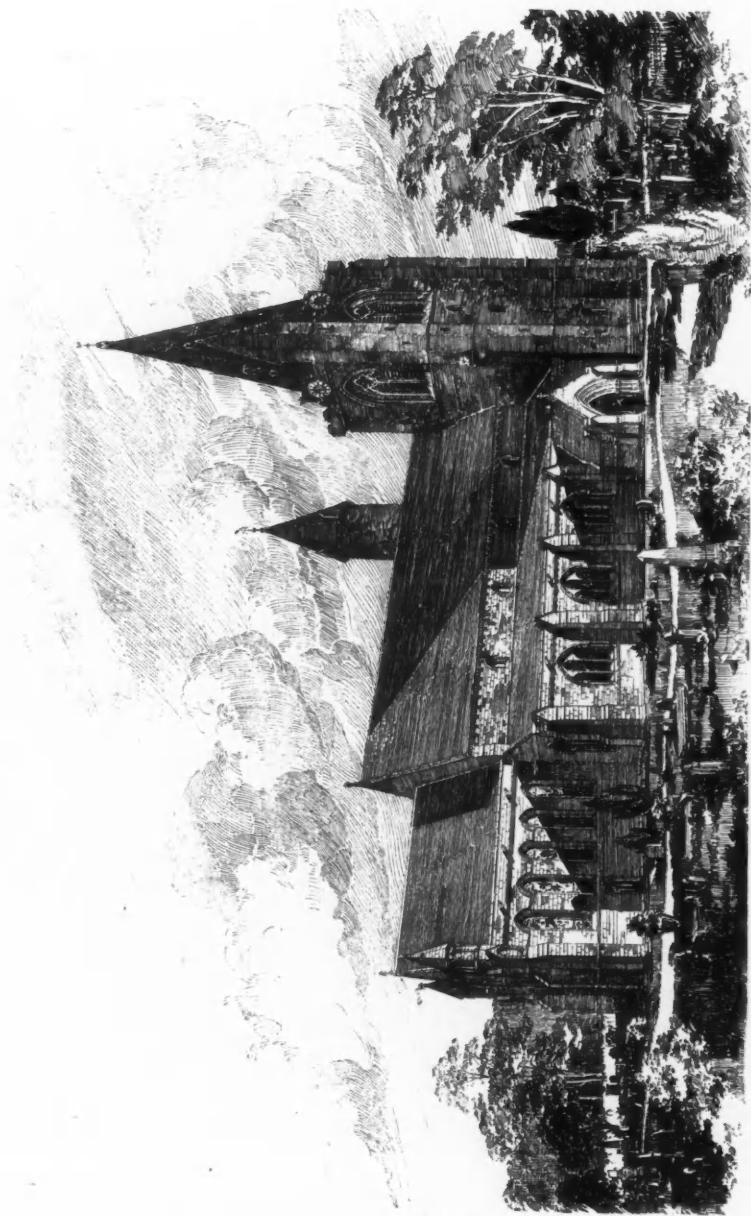
543. *Competitive Design for Enlargement of Central School, Lerwick, J. A. CARFRAE, Architect.*
(For Plans, see p. 54.)



574. *Christ Church, Morningside*, HIPPOLYTE J. BLANC, R.S.A., Architect.



570. *Lady Stair's House, Lawnmarket, as restored for the Earl of Rosebery,*
GEORGE SHAW AITKEN, Architect.
(For Plan, see p. 54.)

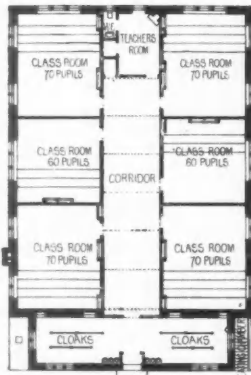


586. *Proposed Restoration of Brechin Cathedral, View from the North-East, JOHN HONEYMAN, R.S.A., AND KEPPIE, Architects.*

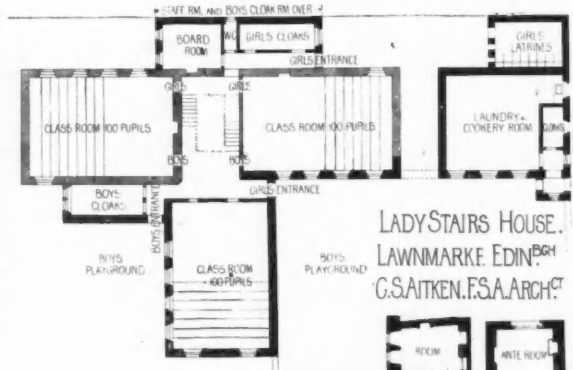


578. *Edinburgh Boys' Brigade, New Home, Fountainbridge, FRANK W. SIMON, Architect.*
(For Plans, see p. 61.)

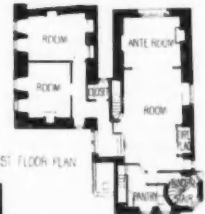
KIRKCALDY BOARD SCHOOL.
W. WILLIAMSON, JUN^R. ARCH^T



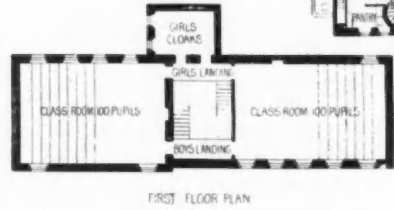
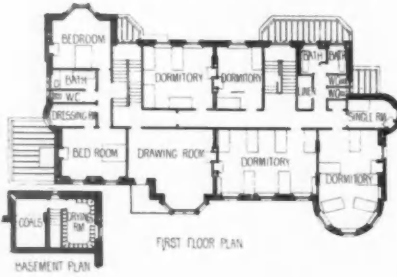
ENLARGEMENT OF CENTRAL SCHOOL, LERWICK.
J. A. CARFRAE, ARCH^T



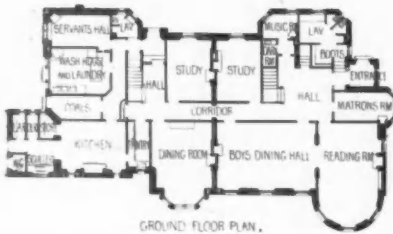
LADY STAIRS HOUSE,
LAWNMARK, EDIN^{BURGH}.
G. S. AITKEN, F.S.A. ARCH^T

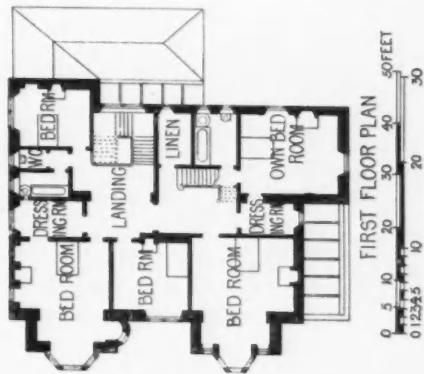
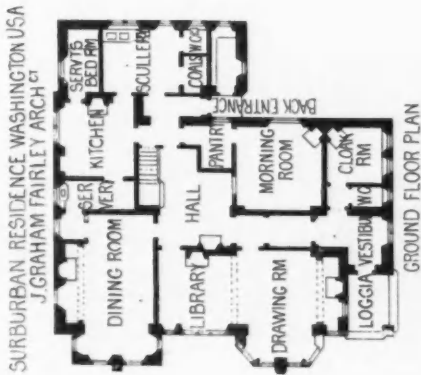
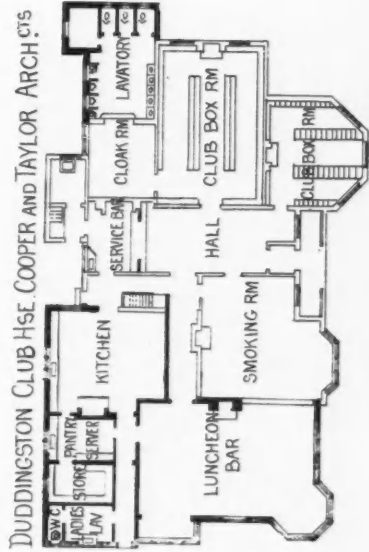
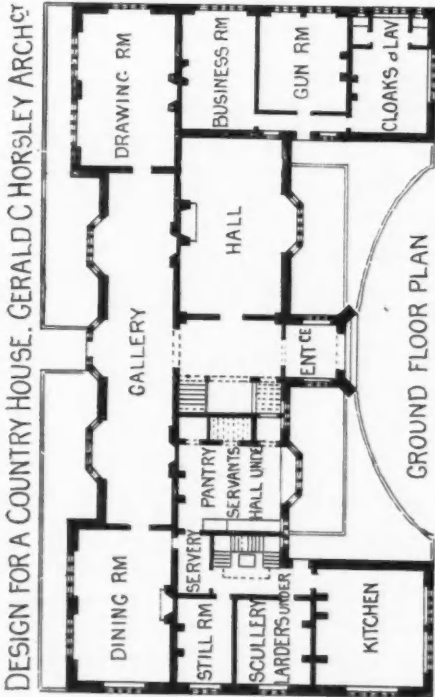


SCHOOL HOUSES AT INVERLEITH.
ALEX N. PATERSON, M.A. ARCH^T



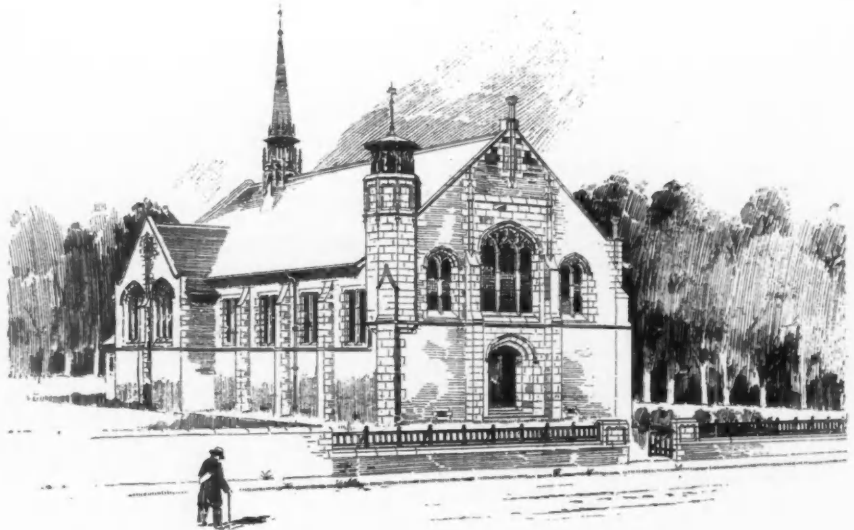
MILLHILLS, CRIEFF.
J. M. HENRY, ARCH^T



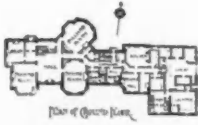




585. *Millhills House, Perthshire, Additions and Alterations, J. MACINTYRE HENRY, Architect.*
(For Plans, see p. 54.)



587. *Proposed Free Church, Thornton, Fifeshire, WM. WILLIAMSON, JUNR., Architect.*



ECCLES, BERWICKSHIRE,
for JAMES L. CRAIG, ESQUIRE.



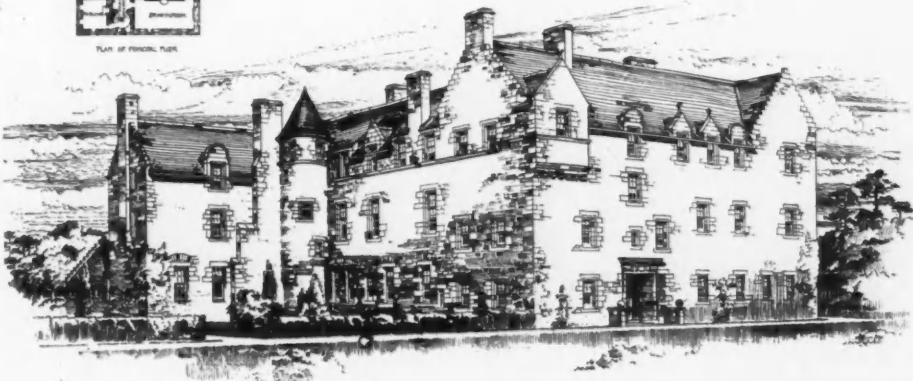
By Messrs Leadbetter & Fairley, Architects,
17 Young Street, Edinburgh.

THE SOUTH FRONT.

577. Eccles, Berwickshire, LEADBETTER AND FAIRLEY, Architects.

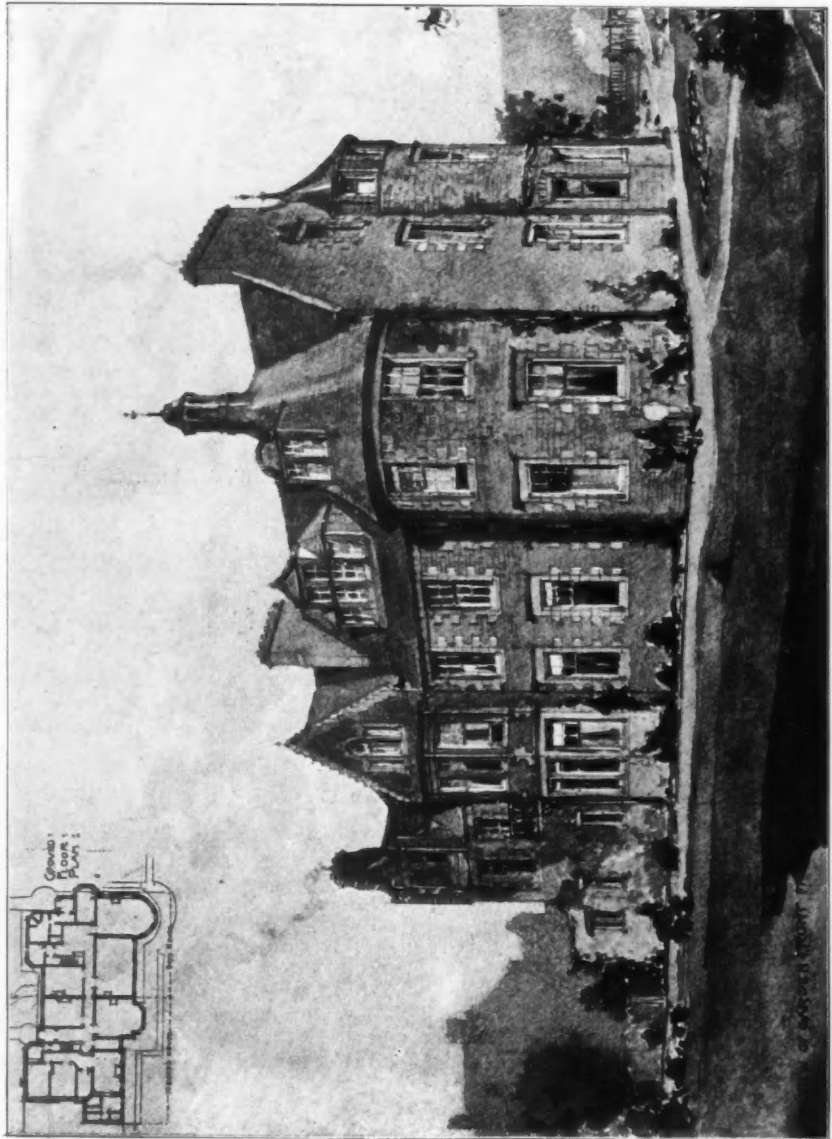


PROPOSED ADDITIONS
TO AN OLD SCOTS MANSION.

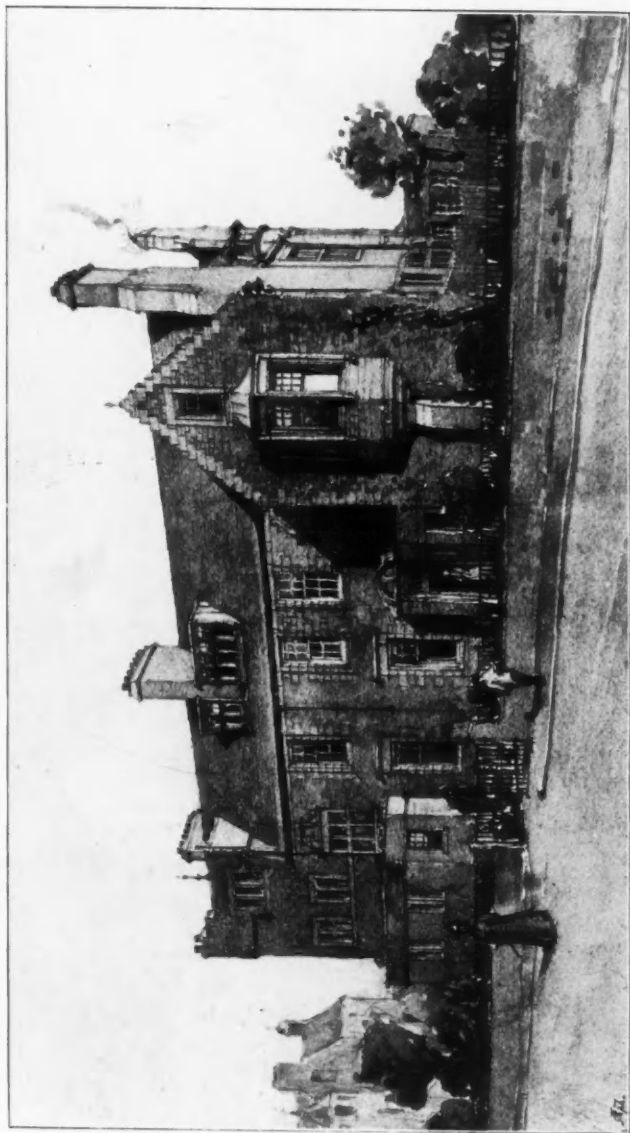


By Messrs Leadbetter & Fairley, Architects,
17 Young Street, Edinburgh.

573. Proposed Additions to an Old Scots Mansion, LEADBETTER AND FAIRLEY, Architects.



563. House, Inverleith Place, for the Edinburgh Academy Boarding House Co., Ltd., Garden Front,
ALEXANDER N. PATERSON, M.A., Architect.
(For Plans, see p. 54.)



563. *House, Inverleith Place, for the Edinburgh Academy Boarding House Co., Ltd., Entrance Front,*
ALEXANDER N. PATERSON, M.A., Architect.

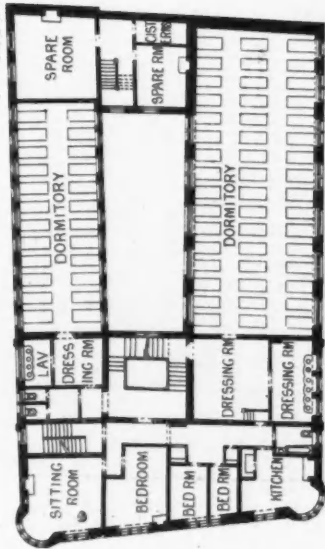
(For Plans, see p. 54.)

(For Plans, see p. 54.)

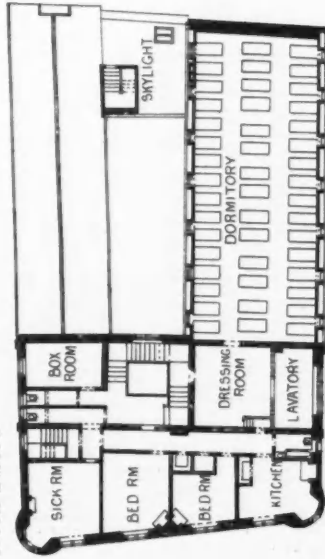


594. *Villa, North Berwick, T. DUNCAN RHIND, A.R.I.B.A., Architect.*

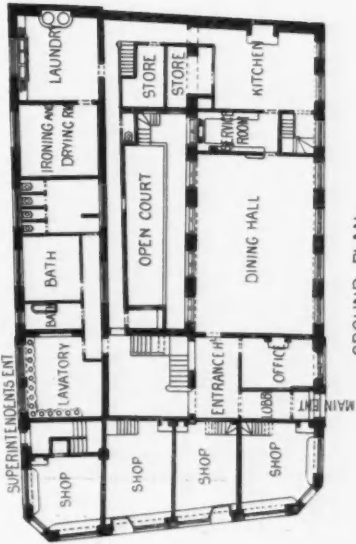
EDINBURGH INDUSTRIAL BRIGADE NEW HOME.
FRANK W. SIMON, ARCHT.



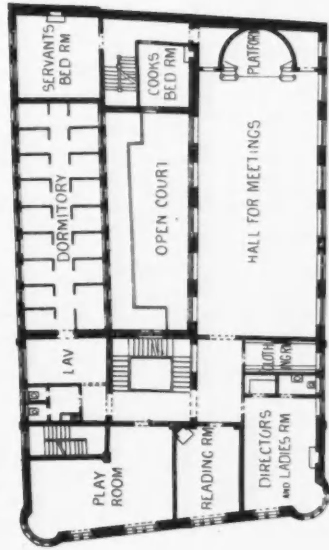
SECOND FLOOR PLAN



ATTIC FLOOR PLAN

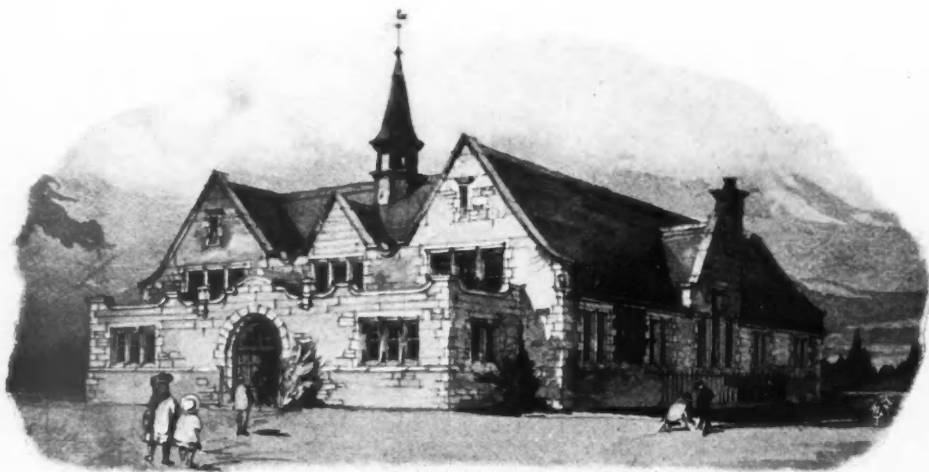


GROUND PLAN



FIRST FLOOR PLAN



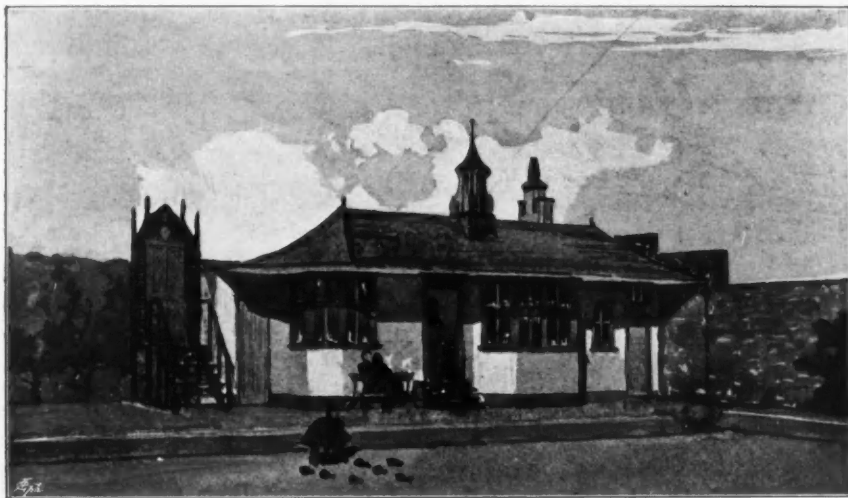


555. *Competition for Kirkcaldy Burgh School Board, Accepted Design, WM. WILLIAMSON, JUNR., Architect.*
(For Plan, see p. 54.)

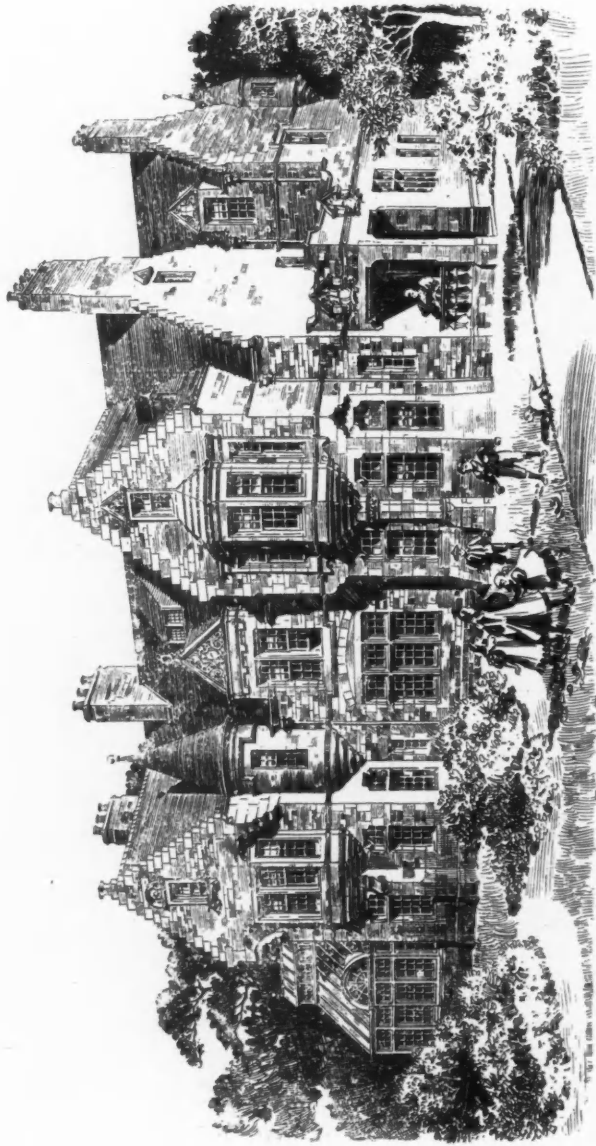


588. *Duddingston Golf Club House, Extension for the Insurance and Banking Golf Club, COOPER AND TAYLOR, Architects.*
(For Plan, see p. 55.)

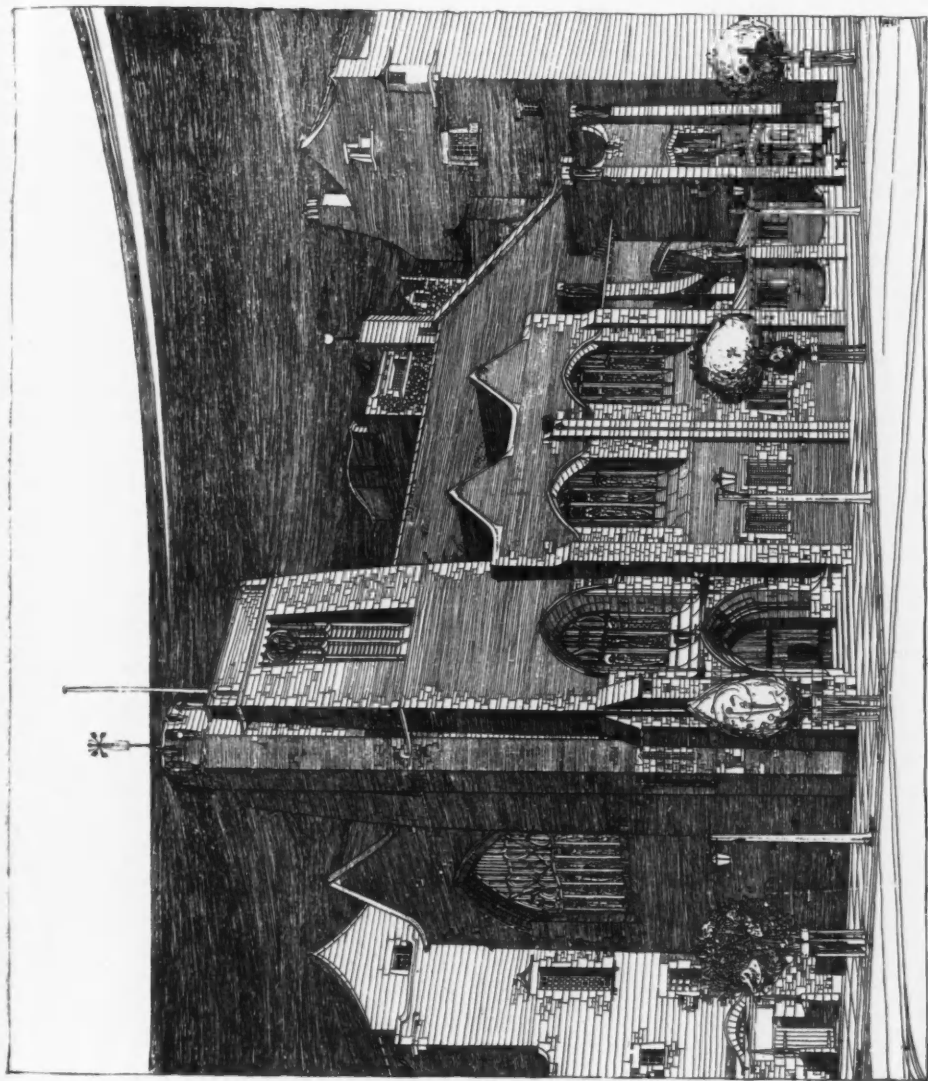
THE GLASGOW INSTITUTE OF THE FINE ARTS
EXHIBITION 1898



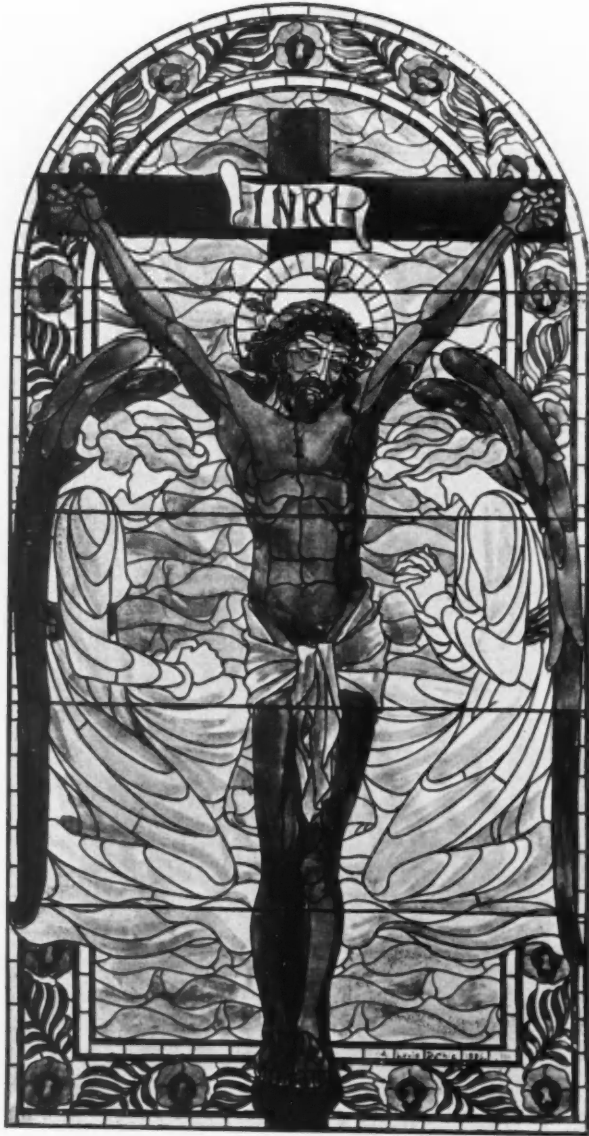
237. *A Bowling Club House*, GEORGE S. HILL, A.R.I.B.A., Architect.
(For Plan, see p. 89.)



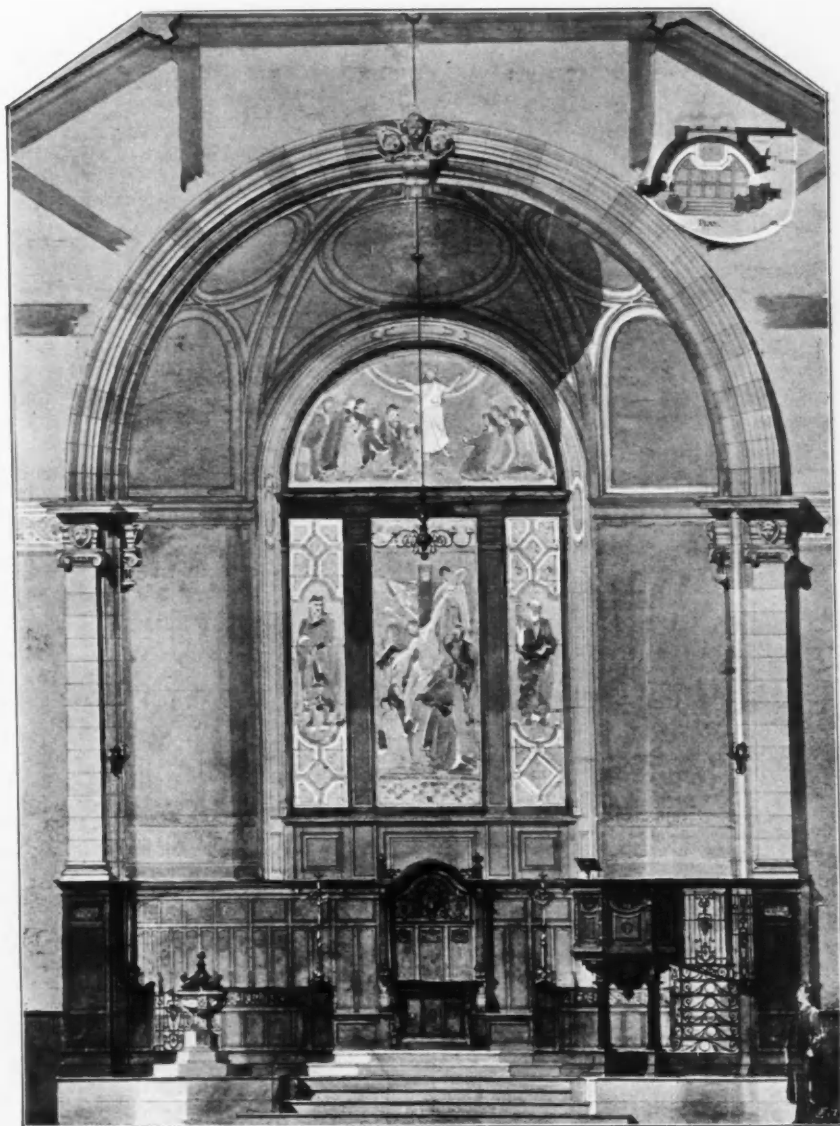
317. *Suburban Residence, Washington, U.S.A., J. GRAHAM FAIRLEY, F.R.I.B.A., Architect.*
(For Plans, see p. 55.)



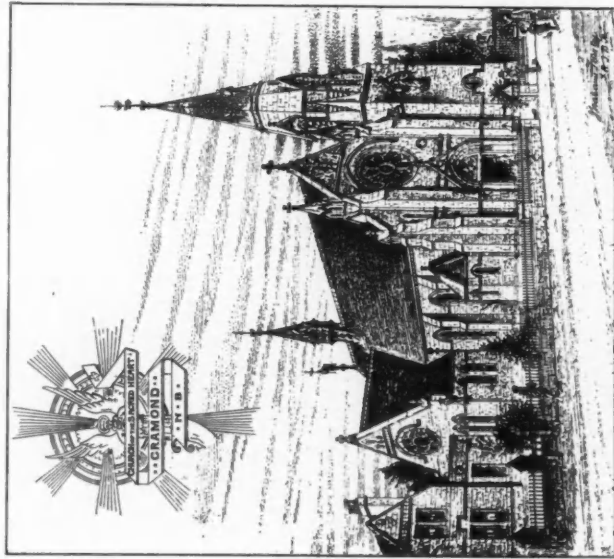
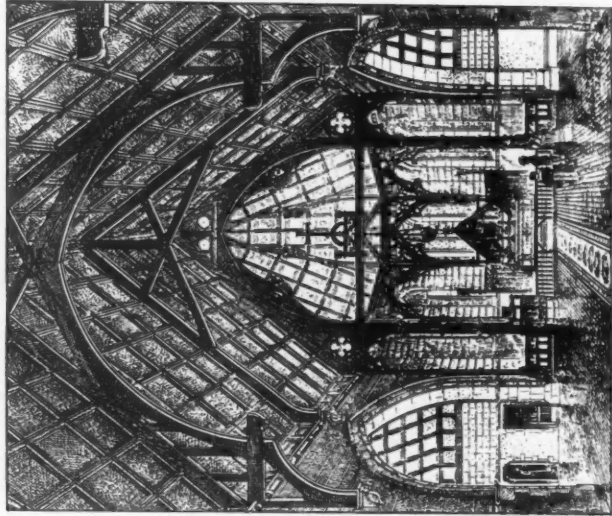
250. *St. Matthew's Free Church, Glasgow, JOHN HONEYMAN AND KEMPIE, Architects.*



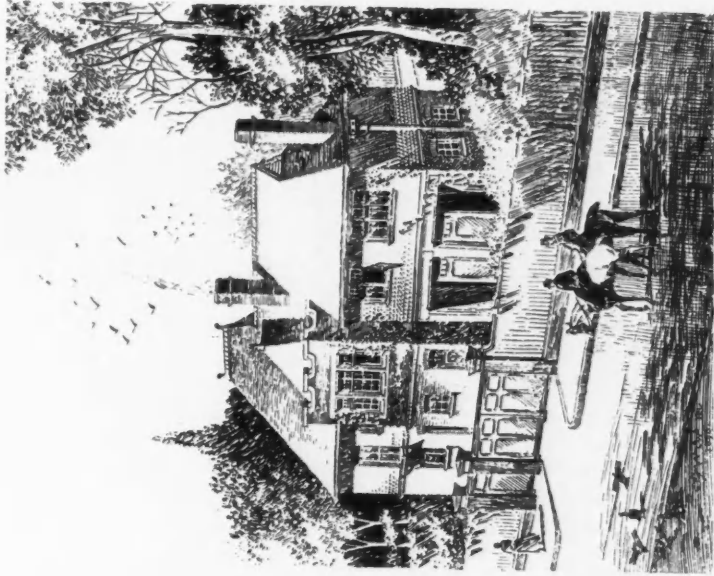
351. *The Crucifixion (Design for Stained Glass)*, ARTHUR & LOUIS DUTHIE, Artist.



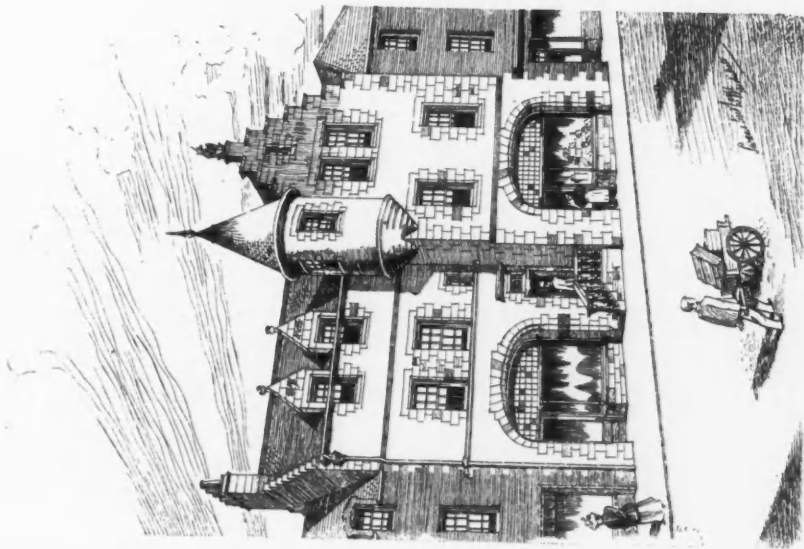
293. *Lesmahagow Parish Church, Detail of New Aisle*, ALEXANDER N. PATERSON, M.A., Architect.



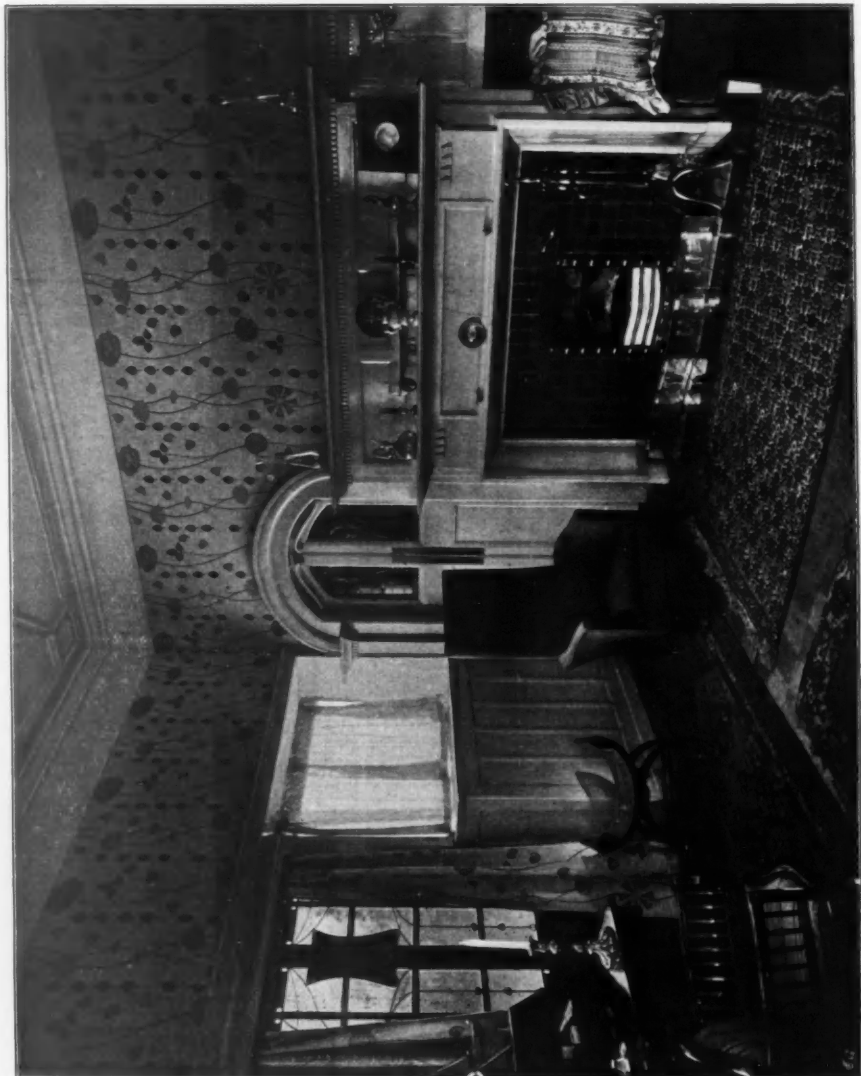
374. *Church of the Sacred Heart, Cramona, Edinburgh, Selected Design, J. GRAHAM FAIRLEY, F.R.I.B.A., Architect.*



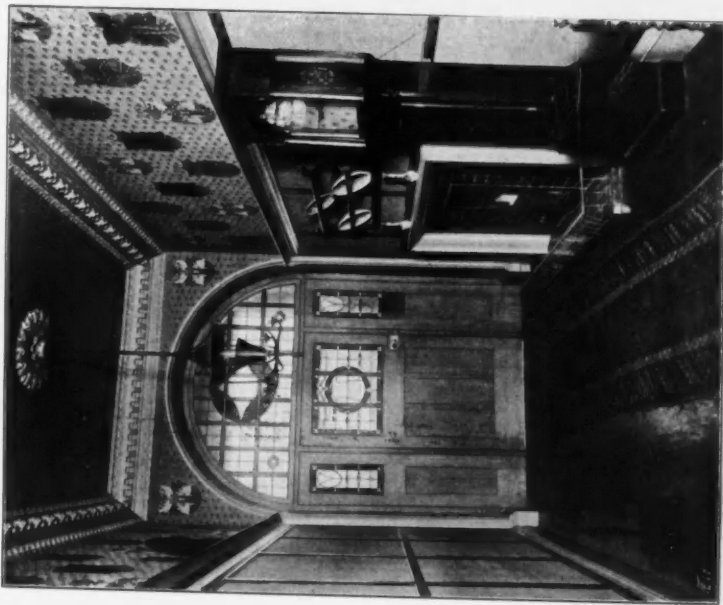
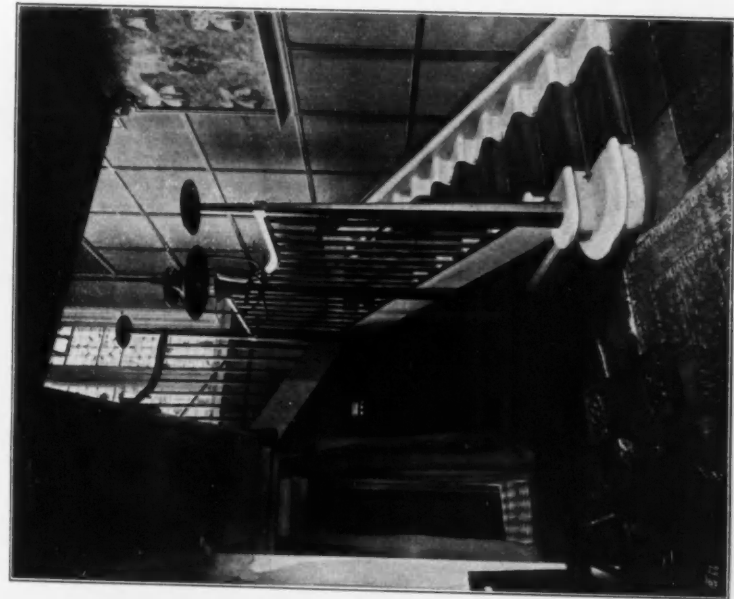
*Coachman's House and Stables, Duntwitch,
R. STEPHEN AYLING, A.R.I.B.A., Architect.*



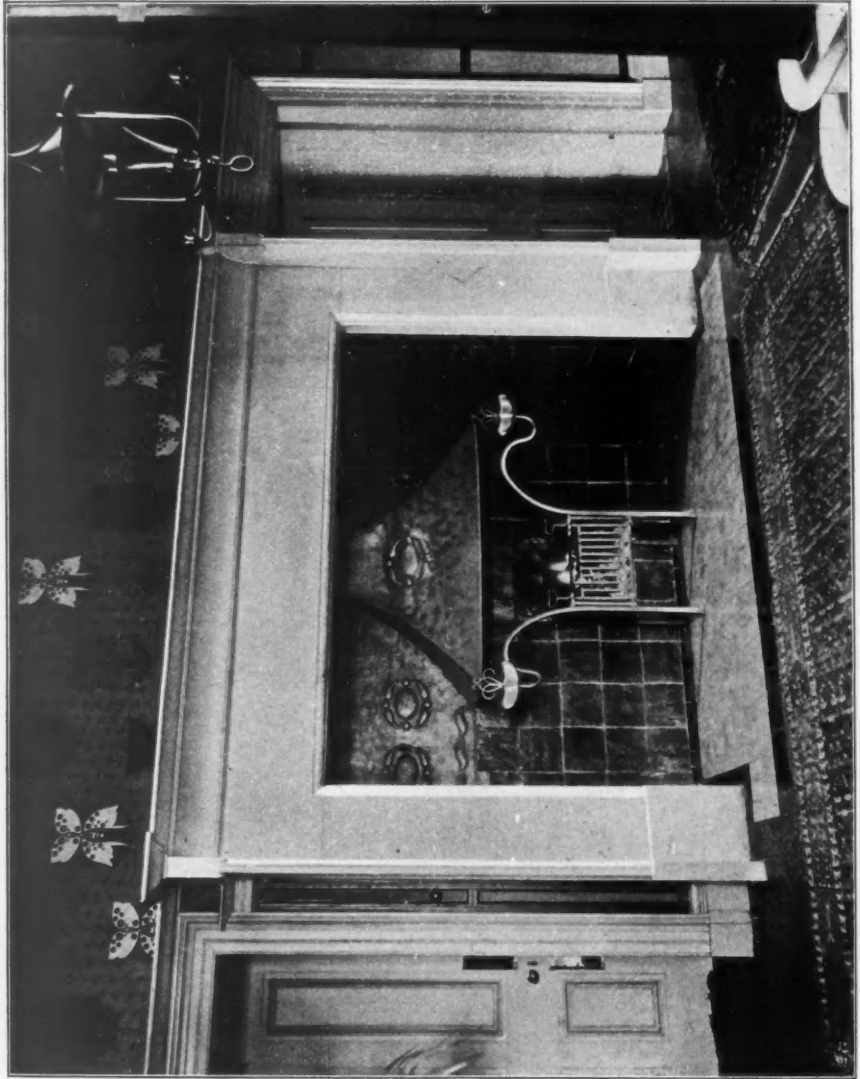
*260. New Street Building, Kirkcaldy,
SWANSTON AND LEGGE, Architects.*



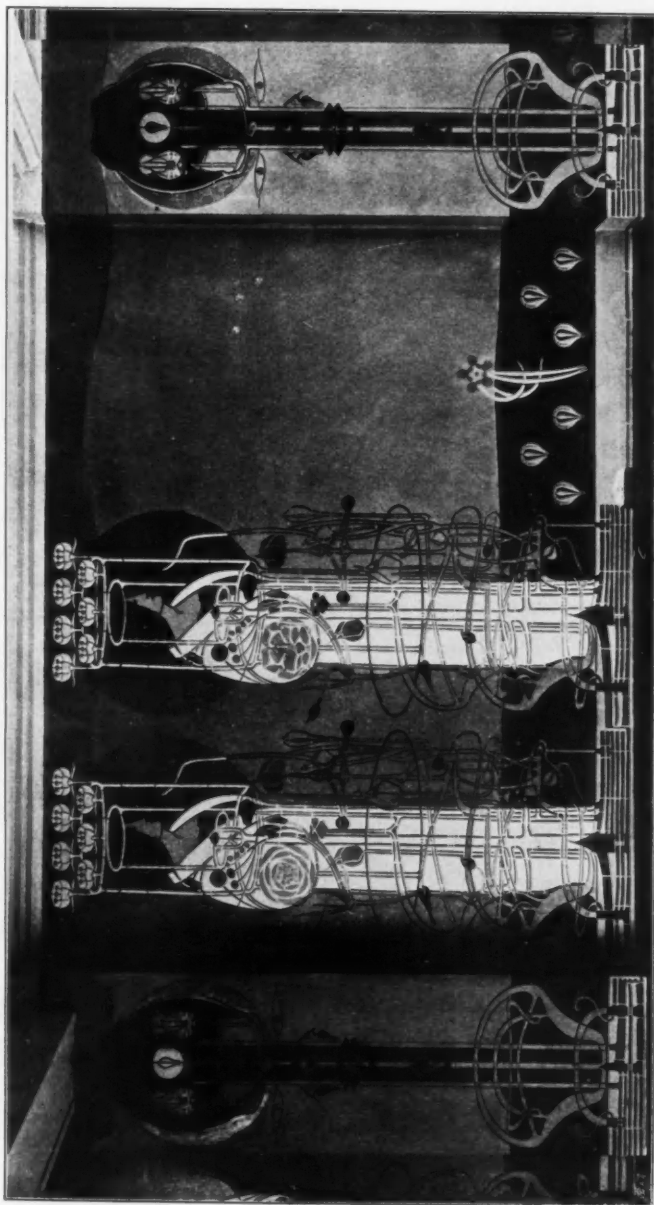
361. *Drawing Room, Leadameroch, for J. B. Gow, Esq., GEORGE WALTON, Artist.*



361. Entrance and Staircase, Leadchamber, for J. B. Gow, Esq., GEORGE WALTON, Artist.



361. *Hall Five Place, Leatarneroch, for J. B. Gow, Esq., GEORGE WALTON, Artist.*



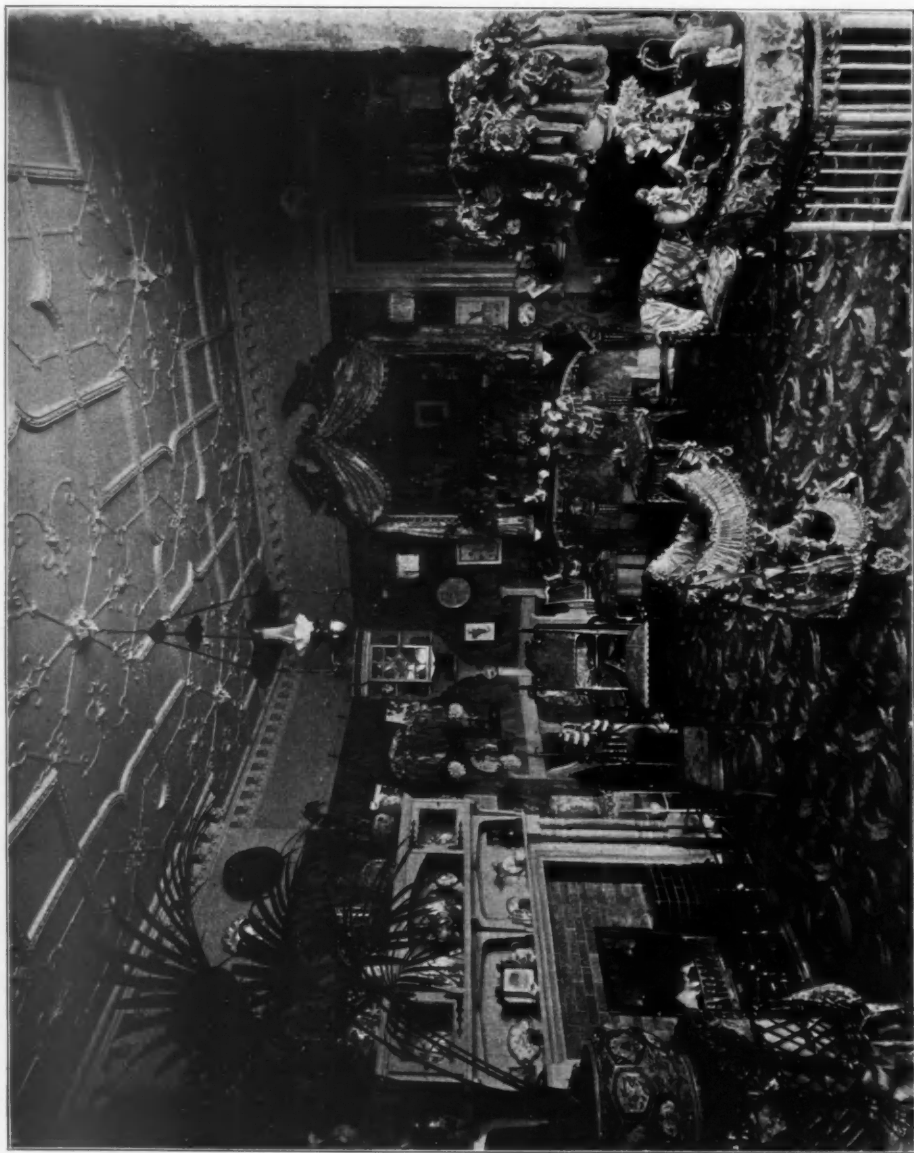
280. Wall Decoration of Miss Cranston's Tea Rooms, Glasgow, Ladies' Room, CHARLES R. MACKINTOSH, Artist.

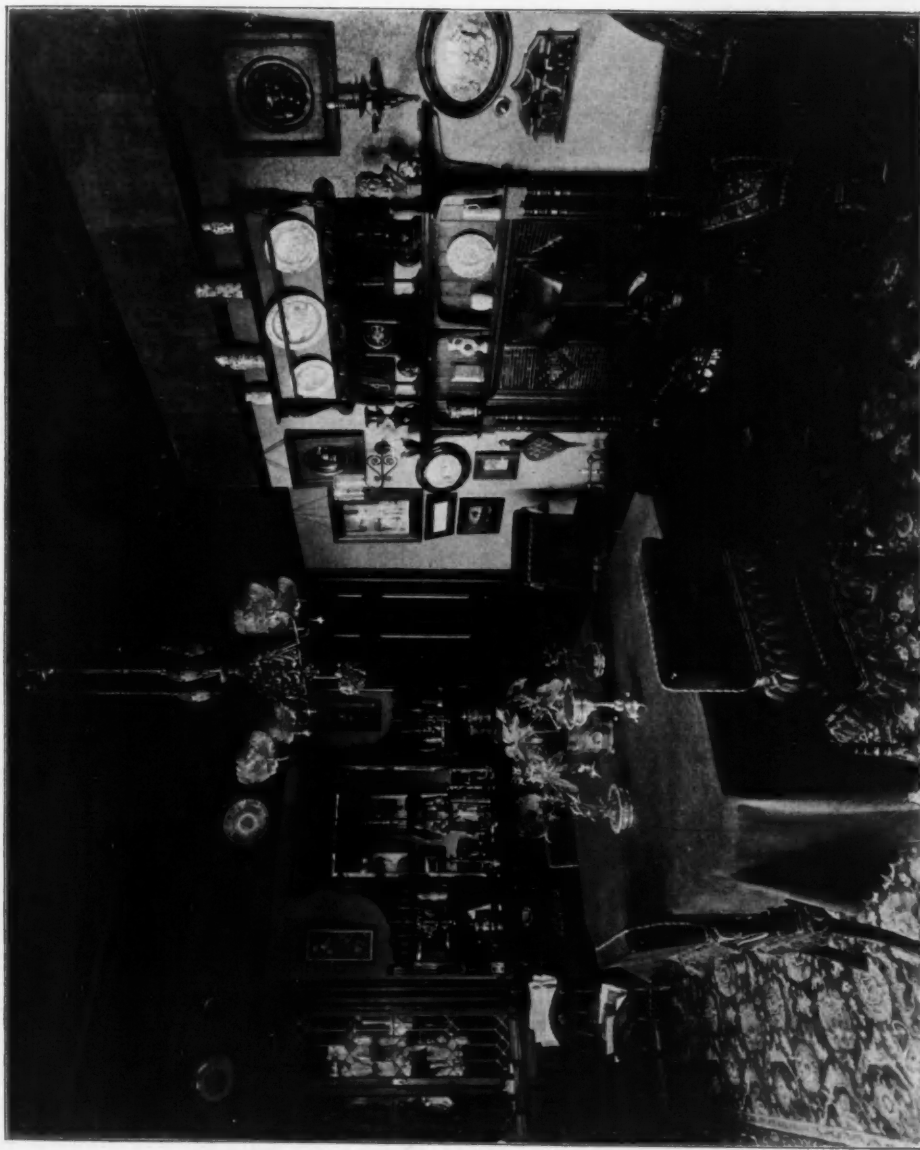


322. *Drawing Room, Balgairth, Ayrshire, James A. Morris, F.R.I.B.A., Architect.*

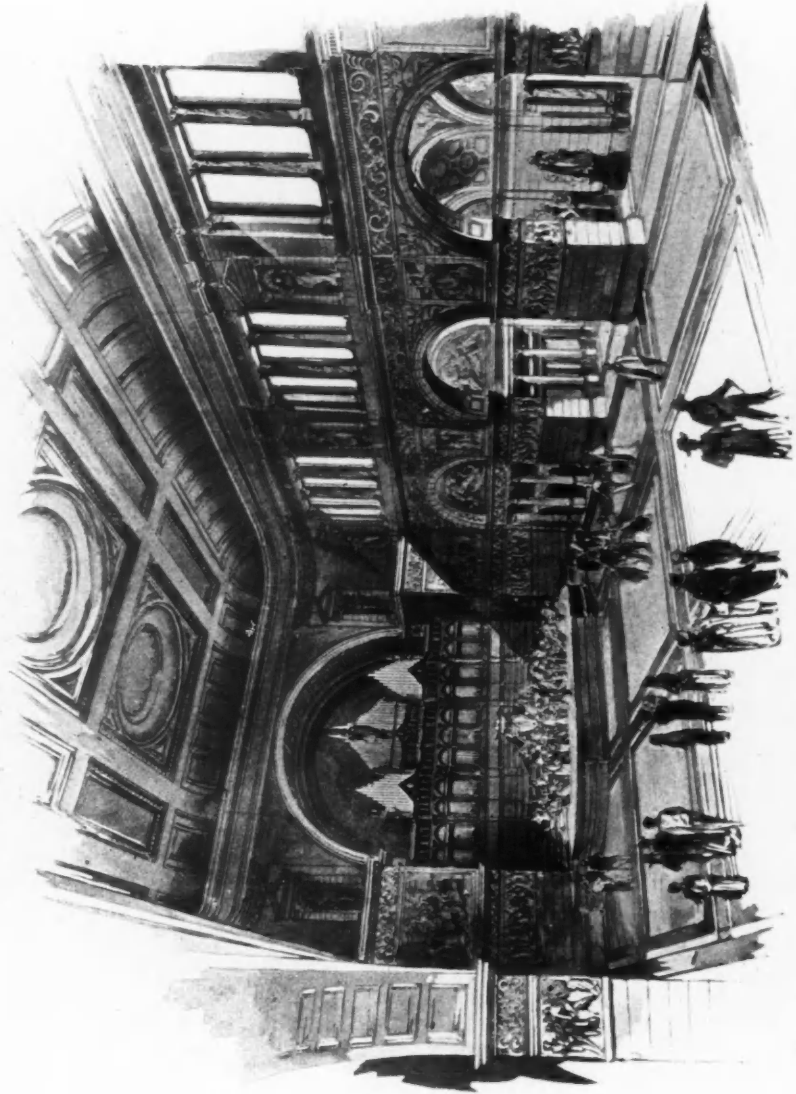


354 *Hall, The Quinta, Bridge-of-Weir, H. B. W. STEEL AND BALFOUR, Architects.*

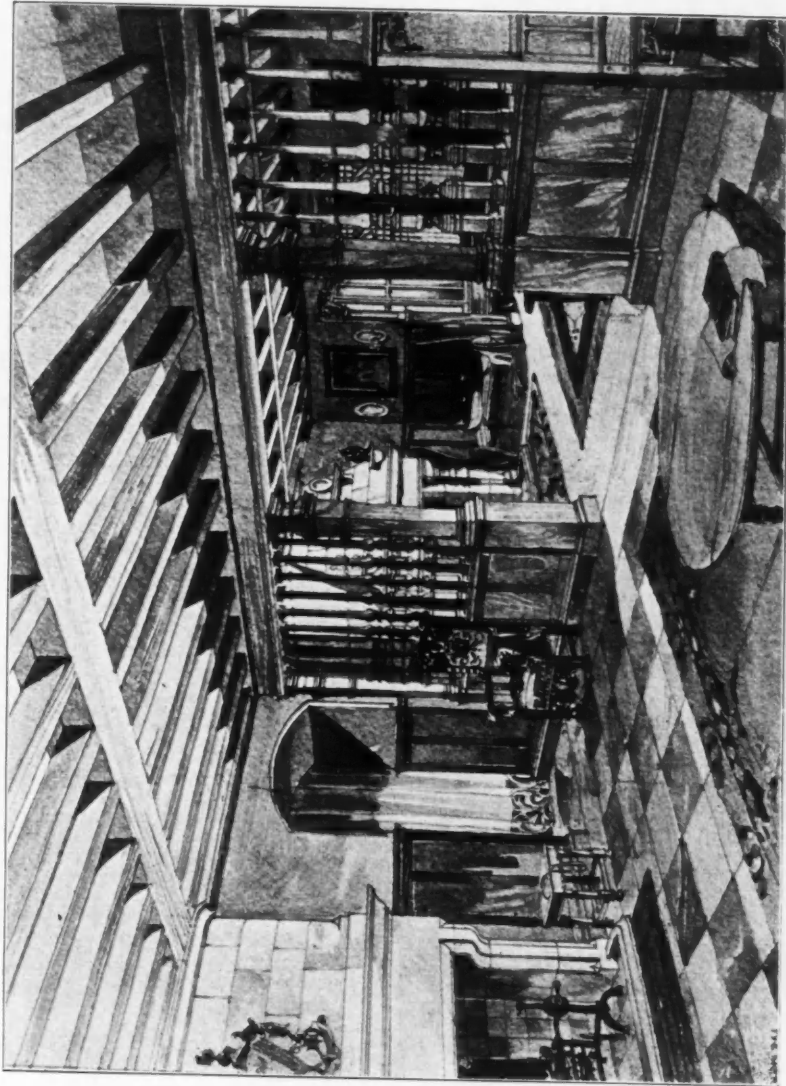
355. *Drawing Room, The Quinta, Bridge-of-Weir, H. B. W. STEEL AND BALFOUR, Architects.*



353. *Dining Room, The Quinta, Bridge-of-Weir, H. B. W. STEEL AND BALFOUR, Architects.*



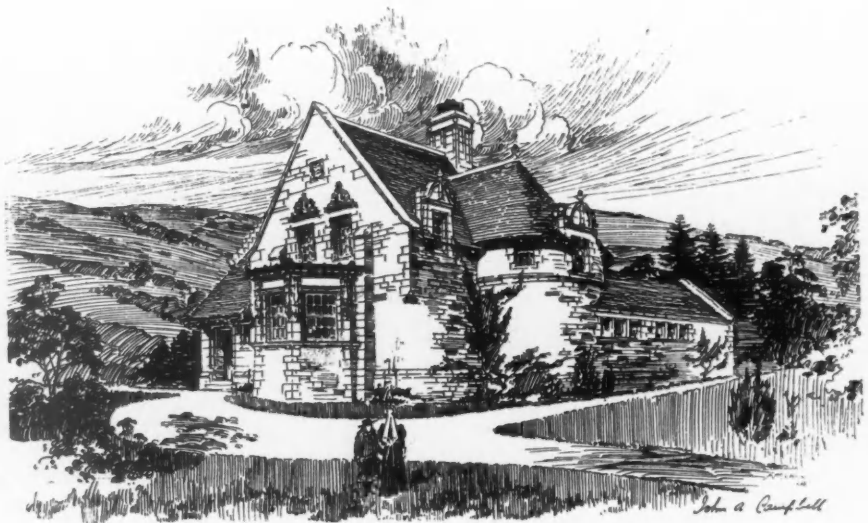
281. *Competitive Design (Hall), Glasgow Art Galleries, Kelvingrove Park, JOHN HONEYMAN AND KEMPPE, Architects.*



321. Entrance Hall, "The Ross," Hamilton, ALEX. CULLEN, I.A., Architect.
(For Main Staircase, see p. 38.)



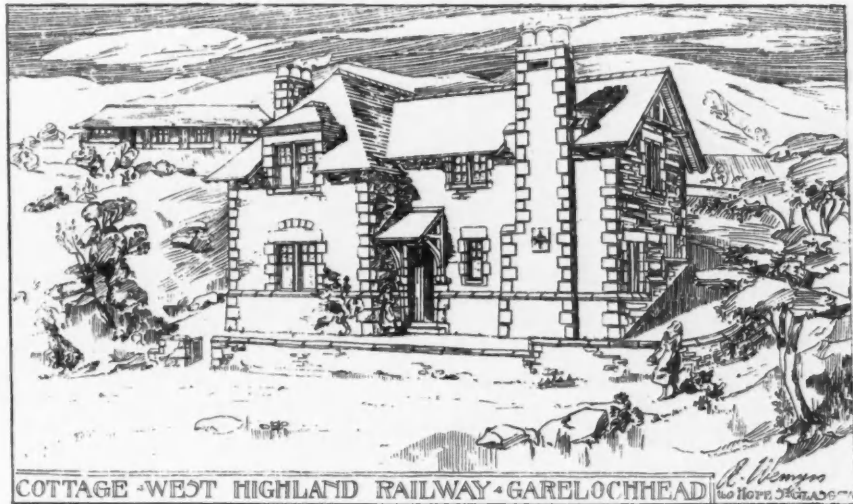
340. *Villa at Campbeltown for William Broom, Esq., JOHN JAMES BURNET, A.R.S.A., Architect.*
(For Plans, see p. 88.)



324. *Gilmour Cottage Homes, Drymen, JOHN A. CAMPBELL, Architect.*
(For Plans, see p. 88.)

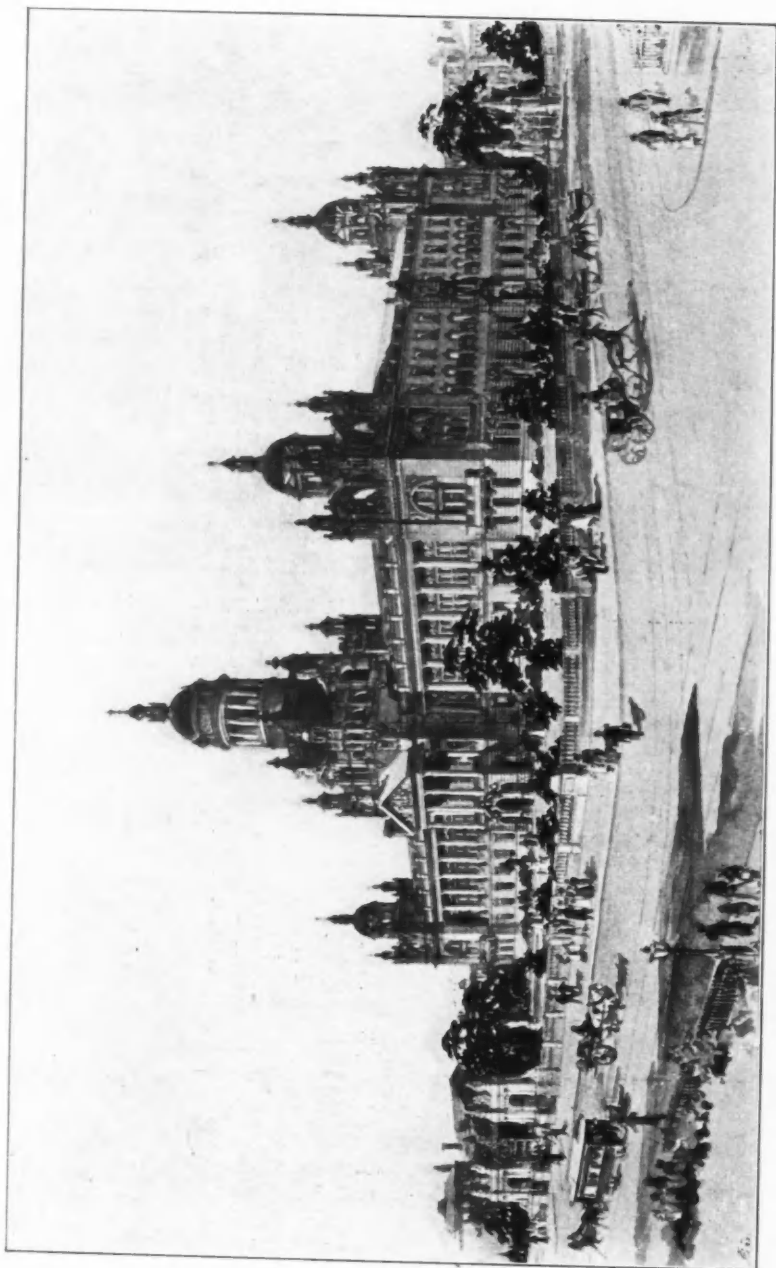


The Hut, Hunstanton, HERBERT G. IBBERSON, A.R.I.B.A., Architect.

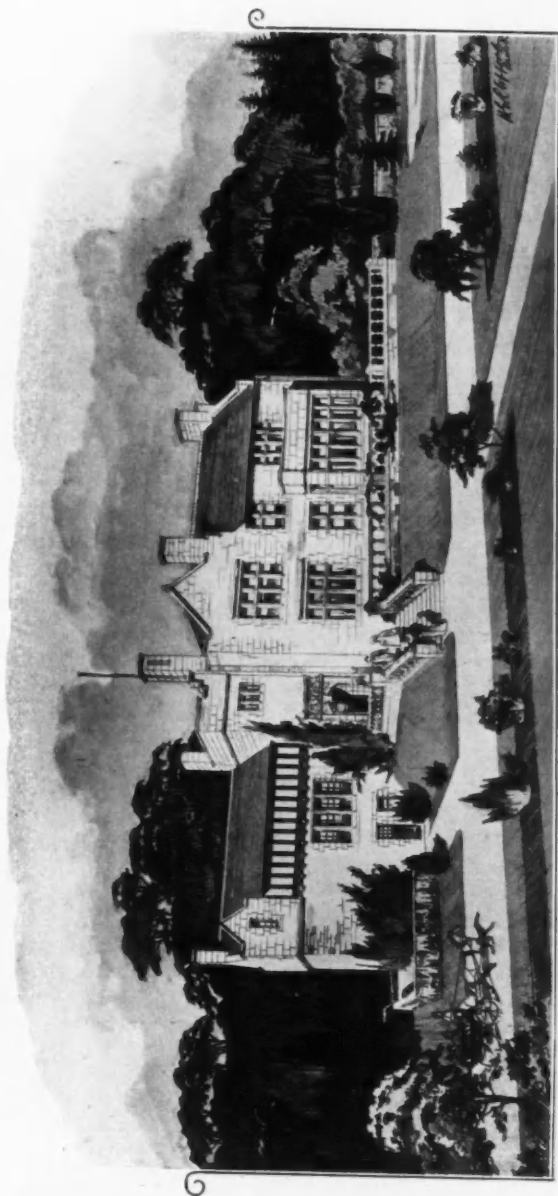


COTTAGE - WEST HIGHLAND RAILWAY - GARELOCHHEAD

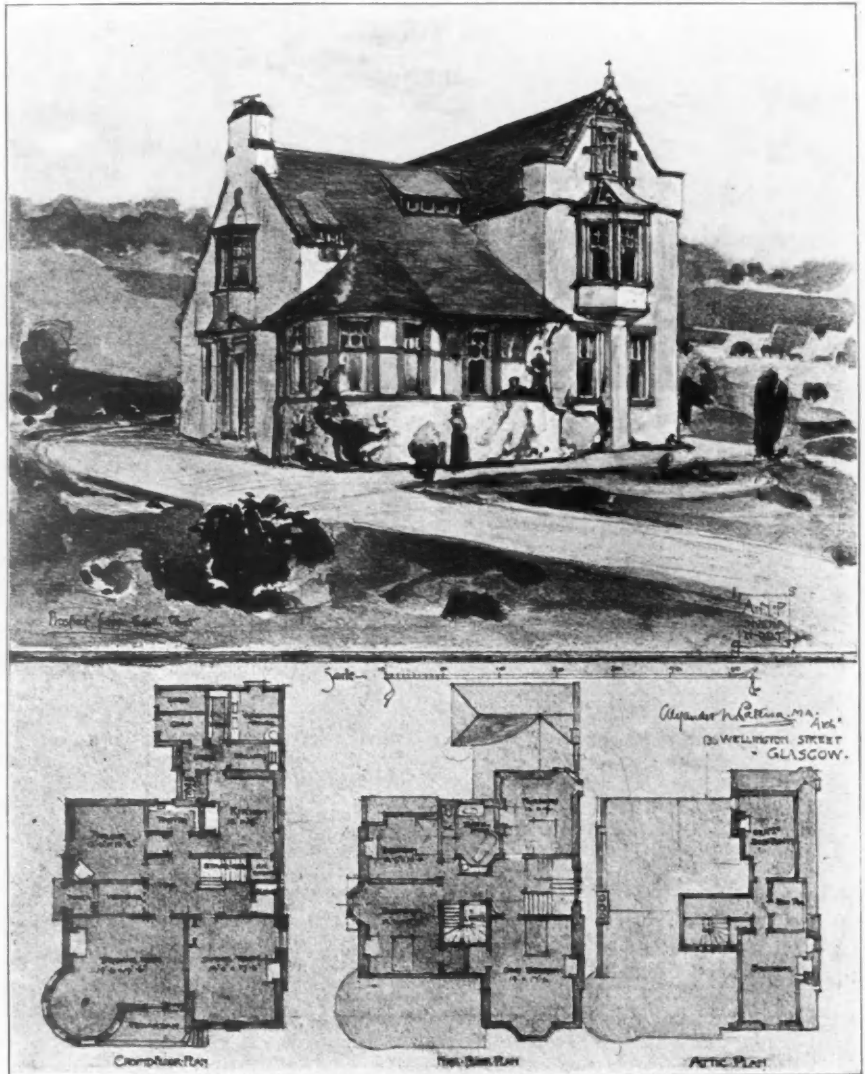
314. *Cottage, West Highland Railway, ROBERT WEMYSS, Architect.*



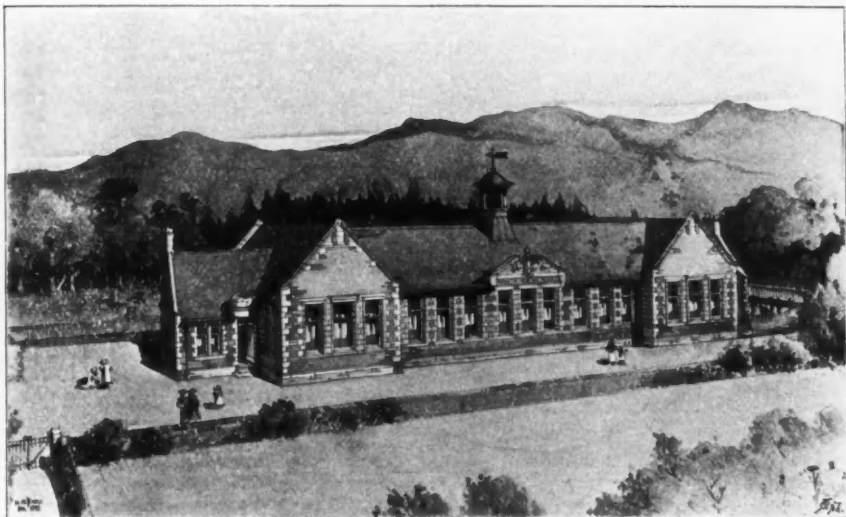
345. *Premiated Design for Belfast Town Hall, JAMES MILLER, Architect.*



288. *Whiteraigs, Kent/rewshire*, H. E. CLIFFORD, Architect.
(For Plans, see p. 89.)



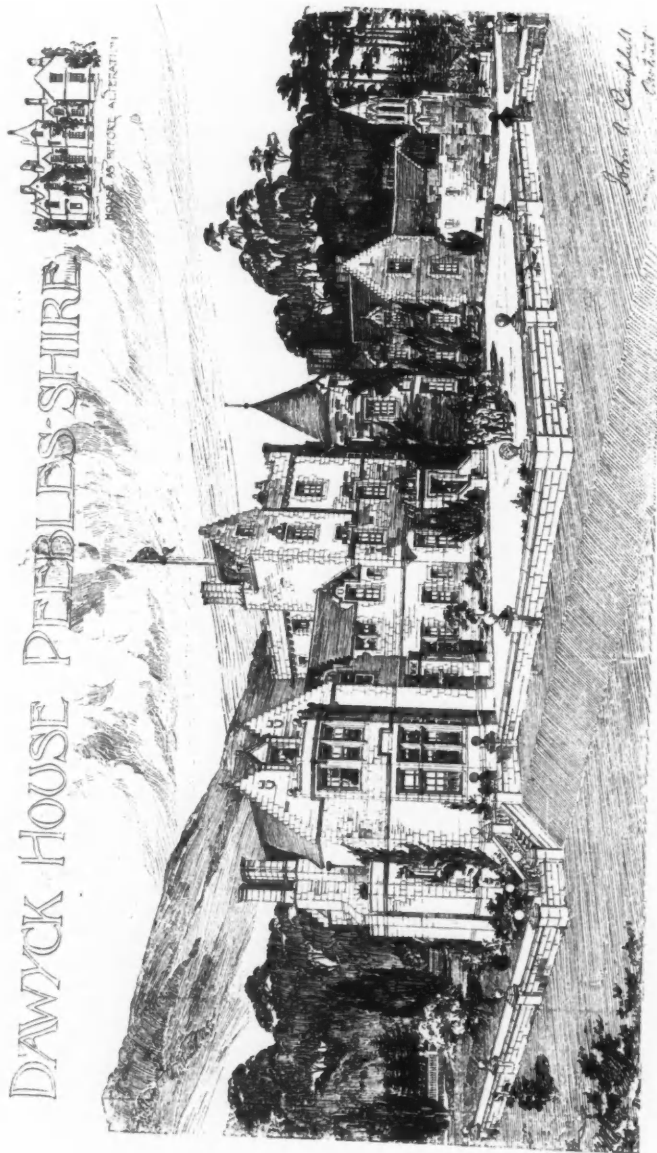
253. Uplands, West Kilbride, Sketch Design, ALEXANDER N. PATERSON, M.A., Architect.



272. *Noulin School, Competition Design*, WM. TAIT CONNER AND HENRY MITCHELL, Architects.
(For Plan, see p. 89.)



278. *Roadside Cottages, Walton-on-Thames*, NIVEN AND WIGGLESWORTH, Architects.



335. Dawyck House, Peeblesshire, JOHN A. CAMPBELL, Architect.
(For Plan, see p. 89.)

Glasgow Town Hall and Municipal Buildings.

Photograph by Messrs.



J. Wilson & Co. Glasgow, 1898.

379. Glasgow Town Hall and Municipal Buildings, J. THOMSON AND R. D. SANDILANDS, Architects.

VILLA AT CAMPBELTOWN.
J.J.BURNET.ARSA ARCH^{CT}



FIRST FLOOR PLAN

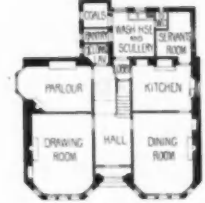


GROUND FLOOR PLAN

MANSE AT BUSBY.
W.G.ROWAN.I.A.ARCH^{CT}

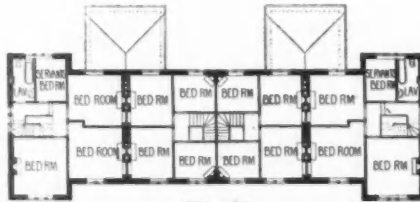


UPPER FLOOR

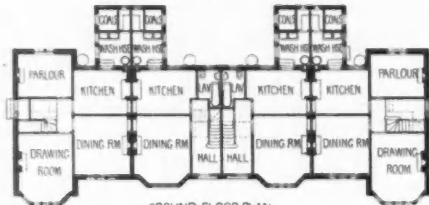


GROUND FLOOR

TERRACE AT BONESS.
W.G.ROWAN.I.A.ARCHCT

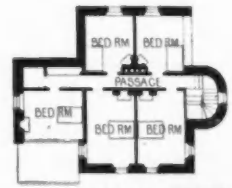


UPPER FLOOR.

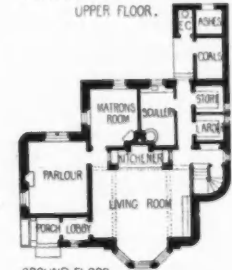


GROUND FLOOR PLAN

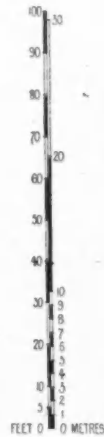
GIRLS COTTAGE HOME.
DRYMEN.
JOHN A.CAMPBELL ARCH^{CT}



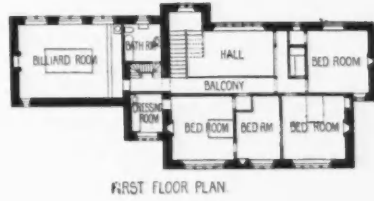
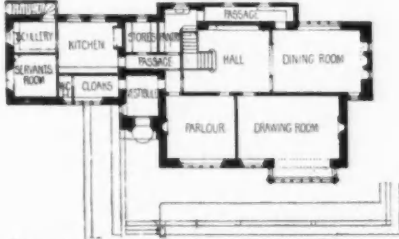
UPPER FLOOR.



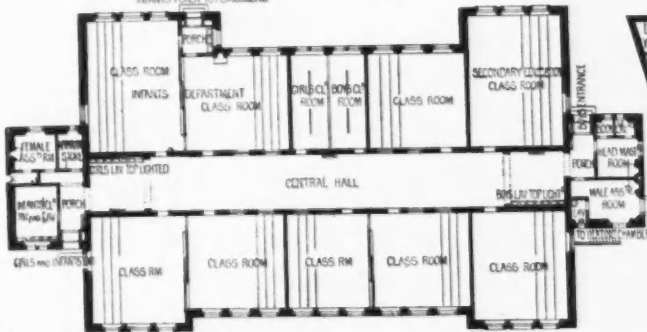
GROUND FLOOR



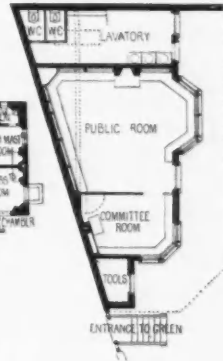
WHITECRAIGS RENFREWSHIRE.
H.E. CLIFFORD. ARCH^{CT}



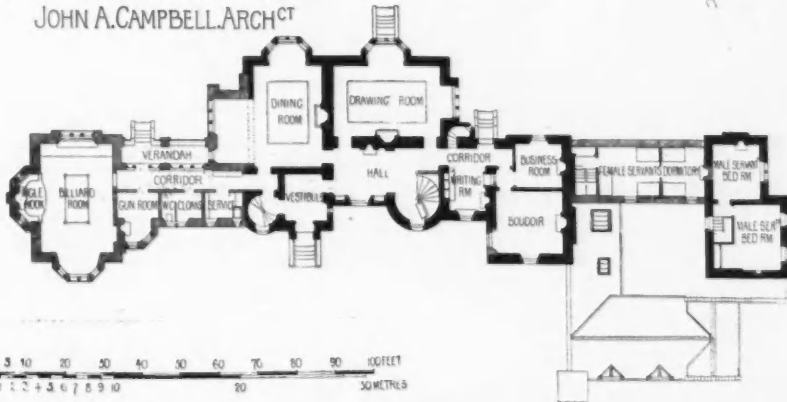
MOULIN SCHOOL BOARD PUBLIC SCHOOL.
T. CONNER AND H. MITCHELL. ARCH^{CTS}



A BOWLING CLUB HOUSE.
G.S. HILL. ARCH^{CT}



DAWYCK HOUSE. PEEBLES SHIRE
JOHN A. CAMPBELL. ARCH^{CT}





315. *Greenbank Manse, Busby*, W. G. ROWAN, I.A., Architect.
(For Plans, see p. 88.)



381. *Terrace, Boness, for Ernest Stewart*, W. G. ROWAN, I.A., Architect.
(For Plans, see p. 88.)

VAUS & CRAMPTON, LTD.

Process Engraving

IN

All Branches,

AND

Photo Lithographers.

A Special and Distinct Feature is made in the . . .

REPRODUCTION OF ARCHITECTURAL DESIGNS

. . . To secure Brilliancy and Detail.

OFFICE AND WORKS:

BALDWIN'S GARDENS,
GRAY'S INN ROAD,
HOLBORN,
LONDON, E.C.

CORRESPONDENCE INVITED.
ESTIMATES PER RETURN.

STUDIOS

(AGAIN ENLARGED):

"HELIOS WORKS,"
ALTON,
HANTS.

Telegraphic Addresses: "Cameralist, London," and "Helios Works, Alton."



STATUE OF HER MAJESTY ERECTED AT BRIGHTON BY
THE SCULPTURED MARBLE COMPANY, 11 QUEEN VICTORIA STREET, LONDON.

SCULPTURES

1898¹



794. *A Victim to Art*, EMMELINE HALSE, Sculptor.
G.I.F.A. Ex., 1898.



1818. *Charity, Group*, A. STANLEY YOUNG, Sculptor.



1831. *St. George and the Rescued Maiden, Group*, HENRY C. FEHR, Sculptor.



1961. *Even, Statue. One of a series of Eight Bronze Figures for Electric Light for City Square, Leeds, ALFRED DRURY, Sculptor.*



1880. *The Fisherman and the Mermaid, Group*, ED. LANTÉRI, Sculptor.

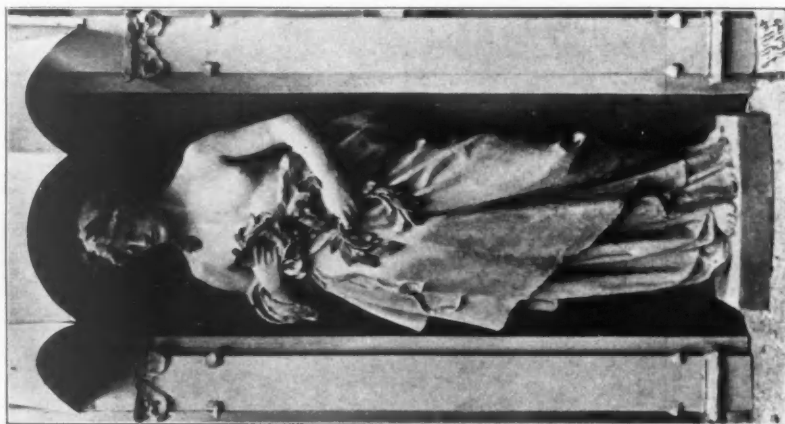
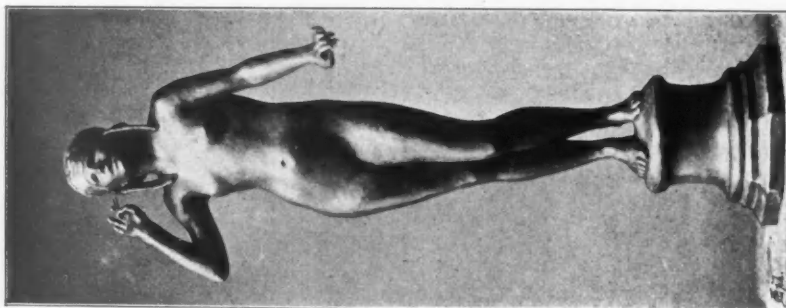


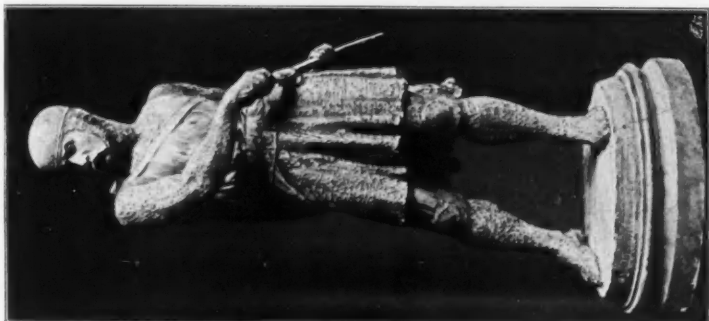
Figure of "Honour" on the New County Council Offices,
Walsfield.
BIRNIE RHIND, A.R.S.A., Sculptor.
GIBSON AND RUSSELL, Architects.



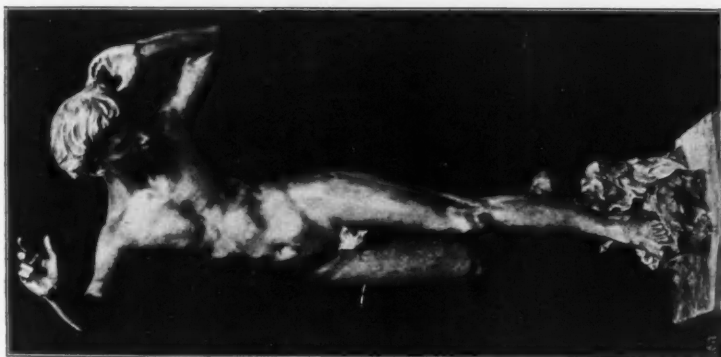
1914. *The Spirit of Harmony, Statuette,*
Bronze, by LLOYD, Sculptor.



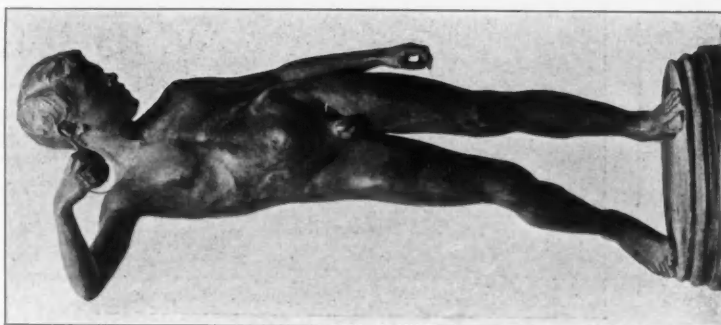
Statue of "Prudentia" for the Prudential
Assurance Coy.'s New Offices, Edinburgh,
BIRNIE RHIND, A.R.S.A., Sculptor.
A. WATERHOUSE, R.A., Architect.



795. *Llywelyn Ab Gruffudd, the last of the Welsh Princes.*
B. LLOYD, Sculptor.



816. *Narcissus, Bronze Statuette.*
HERBERT HAMPTON, Sculptor.
G.I.F.A. Ex., 1898.



795. *Pity, Bronze Statuette.*
J. NESFIELD FORSYTH, Sculptor.
G.I.F.A. Ex., 1898.



1964. *Perseus, as a symbol of the subduing and resisting of Evil, Statue, FREDERICK W. POMEROY, Sculptor.*



1820. *Wood Nymph, Statue*, GEORGE COWELL, Sculptor²



394. *Sketch Study for Colossal Statue of James V. of Scotland, to be executed for the National Portrait Gallery, Edinburgh, BIRNIE RHIND, A.R.S.A., Sculptor. R.S.A. Ex., 1898*



783. *La Bretonne* (in Teakwood and Lead), F. DERWENT WOOD, Sculptor.
G.I.F.A. Ex., 1898.



808. *Circe*, Bronze Relief, F. DERWENT WOOD, Sculptor.
G.I.F.A. Ex., 1898.



The Fainting of Psyche,
Inkstand by F. FAIVRE, executed in céramique by Lachenal.
Paris Salon, 1898.



1813. *La Madeleine, Statue,* MARY FOWNALL, Sculptor.



1811. *The Kingdom of Loos, Group*,
CLEMENT W. JEWITT, Sculptor.



1919. *L'Âme du Vin, Statuette*,
JOHN HUGHES, A.R.H.A., Sculptor.



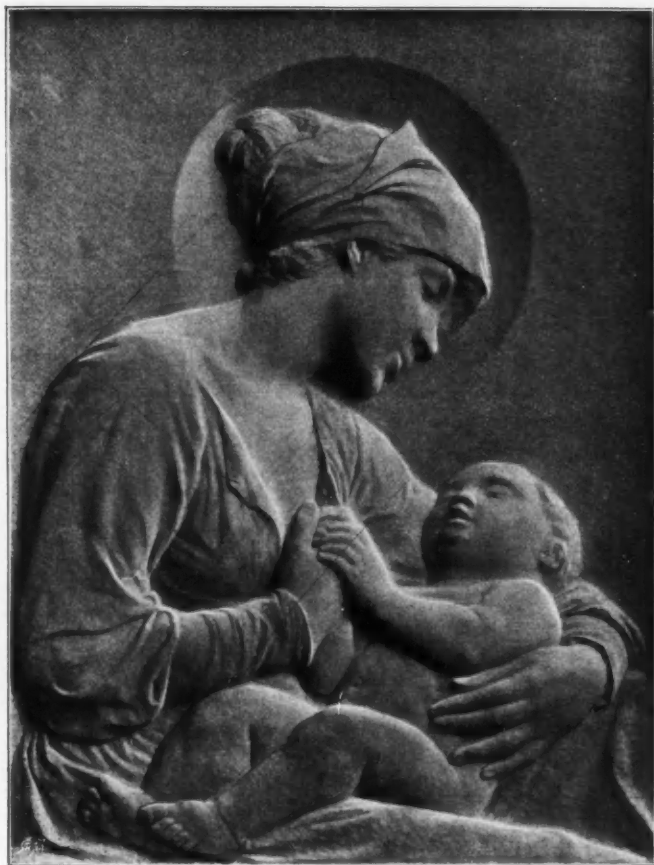
1856. *The Kingdom of Christ, Medallion*, ELLEN M. ROPE, Sculptor.



279. *Glass Mosaics*, 22, *Park Circus, Glasgow*, STEPHEN ADAM AND SON, Artists.
G.I.F.A. Ex., 1898.



1879. *Group of Children, Panel, Copper*, LYDIA GAY, Sculptor.



1868. *Maternity, Relief, Marble*, ARTHUR G. WALKER, Sculptor.



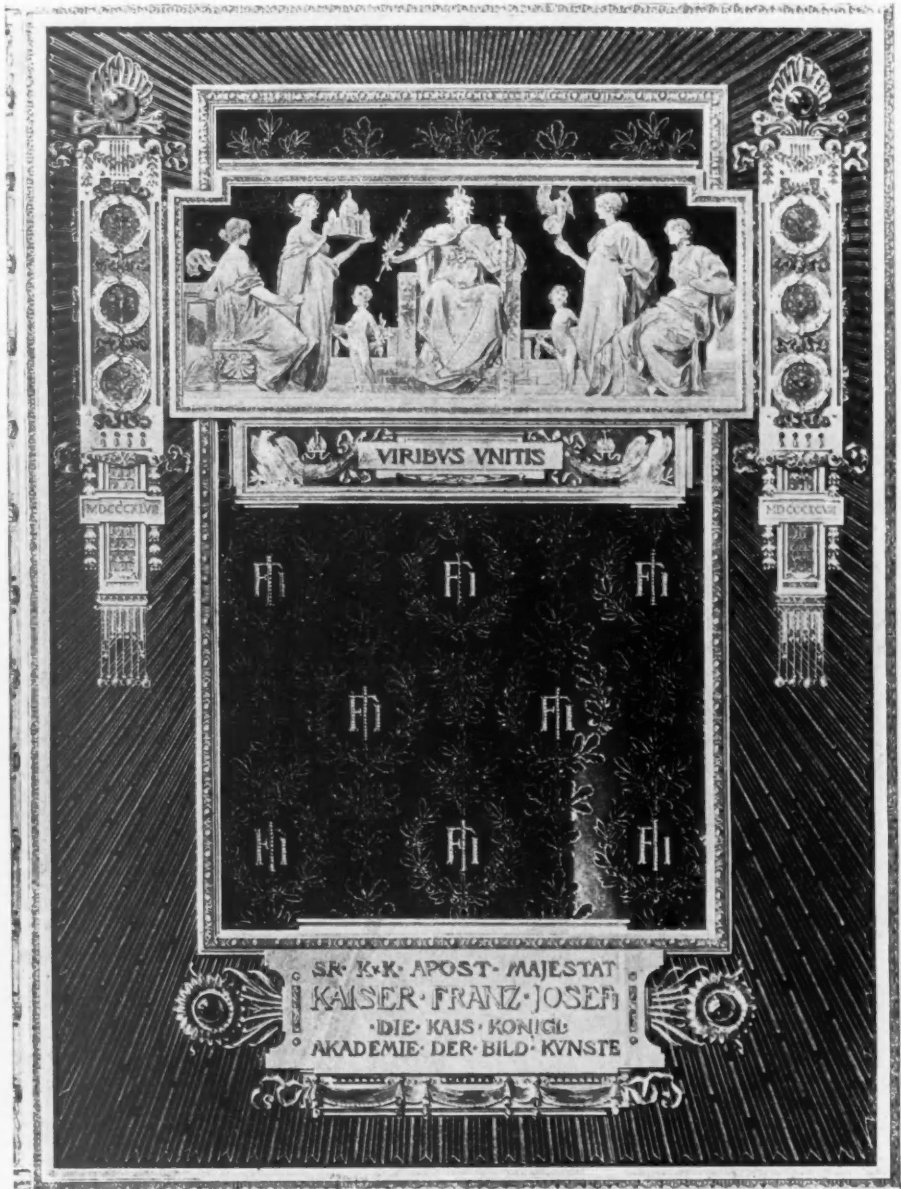
196. *Sylvan Harmony, Group*, THOMAS TYRRELL, Sculptor

ARCHITECTURAL REVIEW

1898¹.



"Ex Libris" for Graf Adam Skrzynski, THEODOR TALOWSKI, Architect, Krakau.

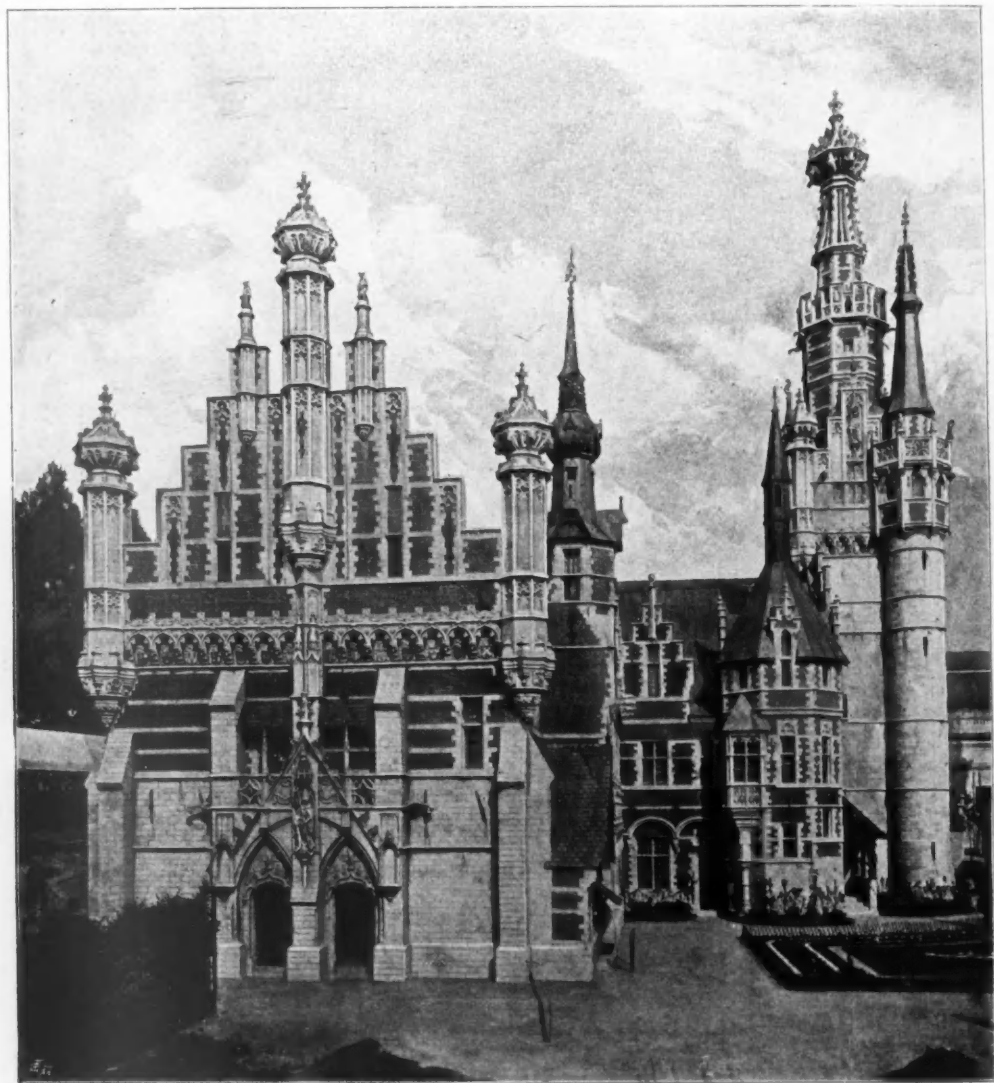


Entwurf zum Buchdeckel der Huldigungs-Adresse der K. K. Akademie der bild. Künste an Se. Majestät den Kaiser von Osterreich zum 50jährigen Regierungsjubiläum. PROF. OTTO WAGNER, K. K. Ober-Baurath, Wien.

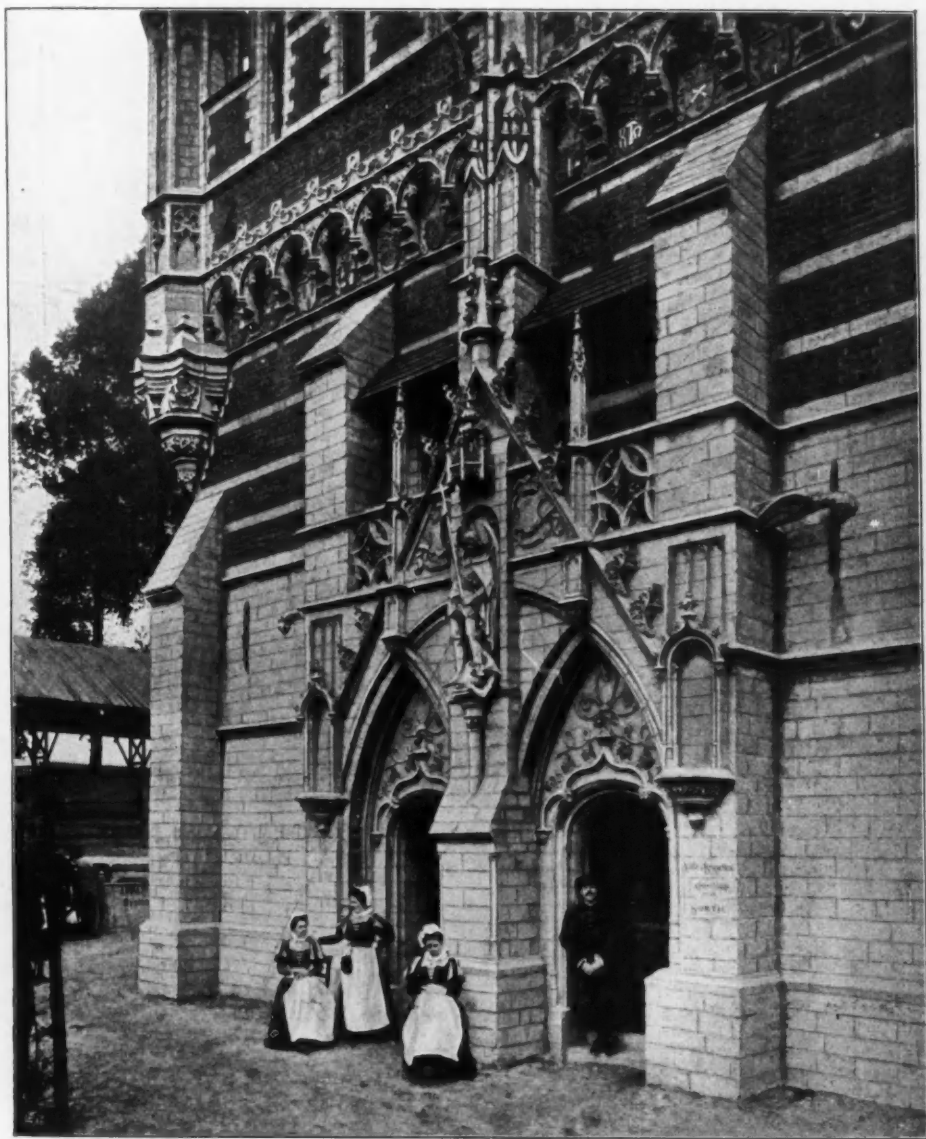
Aus: O. Wagner, Einige Skizzen, Projekte und ausgeführte Bauwerke. Zwei Bände à 70 Mk. (Verlag von Anton Schroll & Co., Wien.)



Kaschauer Dom, Restoration of the South Transept, PROFESSOR IMRE STEINDL, Architect, Budapest.



Exposition Internationale de 1897, Palais de la Ville de Bruxelles, Pignon et Beffroi,
PAUL SAINTENOY, Architect, Bruxelles.



*Exposition Internationale de 1897, Palais de la Ville de Bruxelles, Portail du Pignon,
PAUL SAINTENOY, Architect, Bruxelles.*



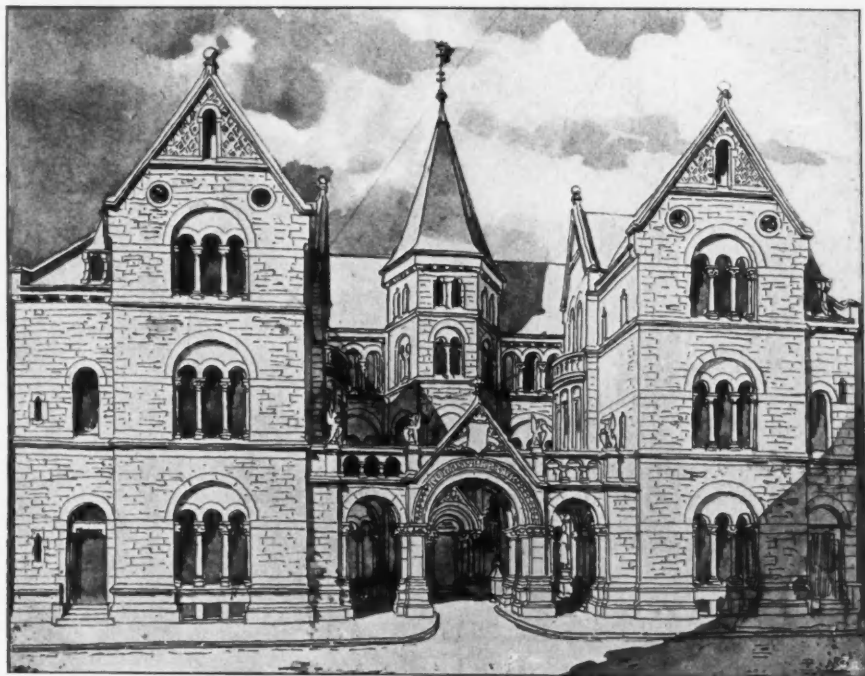
*Exposition Internationale de Bruxelles, 1897, Concours pour le "Vieux Bruxelles," 1^{re} Prime,
ÉMILE LAMBOT, Architect, Lacken, Bruxelles.*



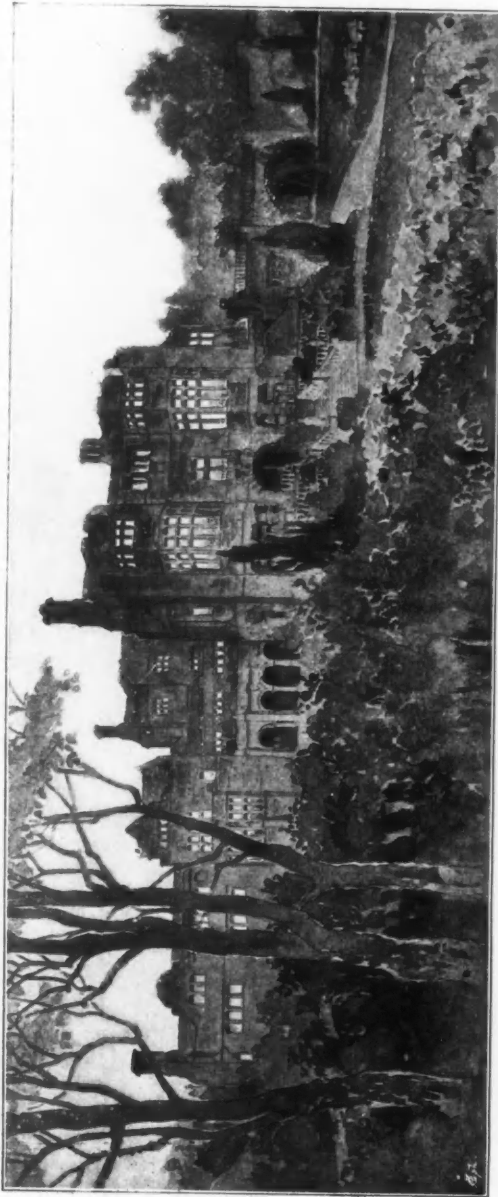
*Exposition Internationale de Bruxelles, 1897, Concours pour le "Vieux Bruxelles," 1^{re} Prime,
ÉMILE LAMBOT, Architect, Lacken, Bruxelles.*



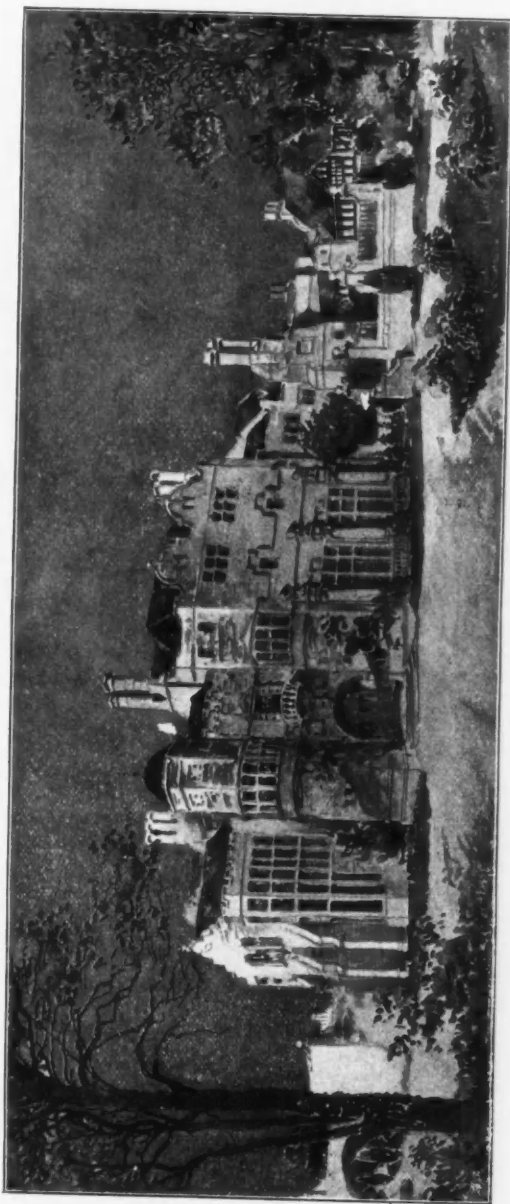
Stockholm Exhibition, 1897, State Pavilion, GUSTAF WICKMAN, Architect, Stockholm.
(For Plan, see Vol. XII., p. 113.)



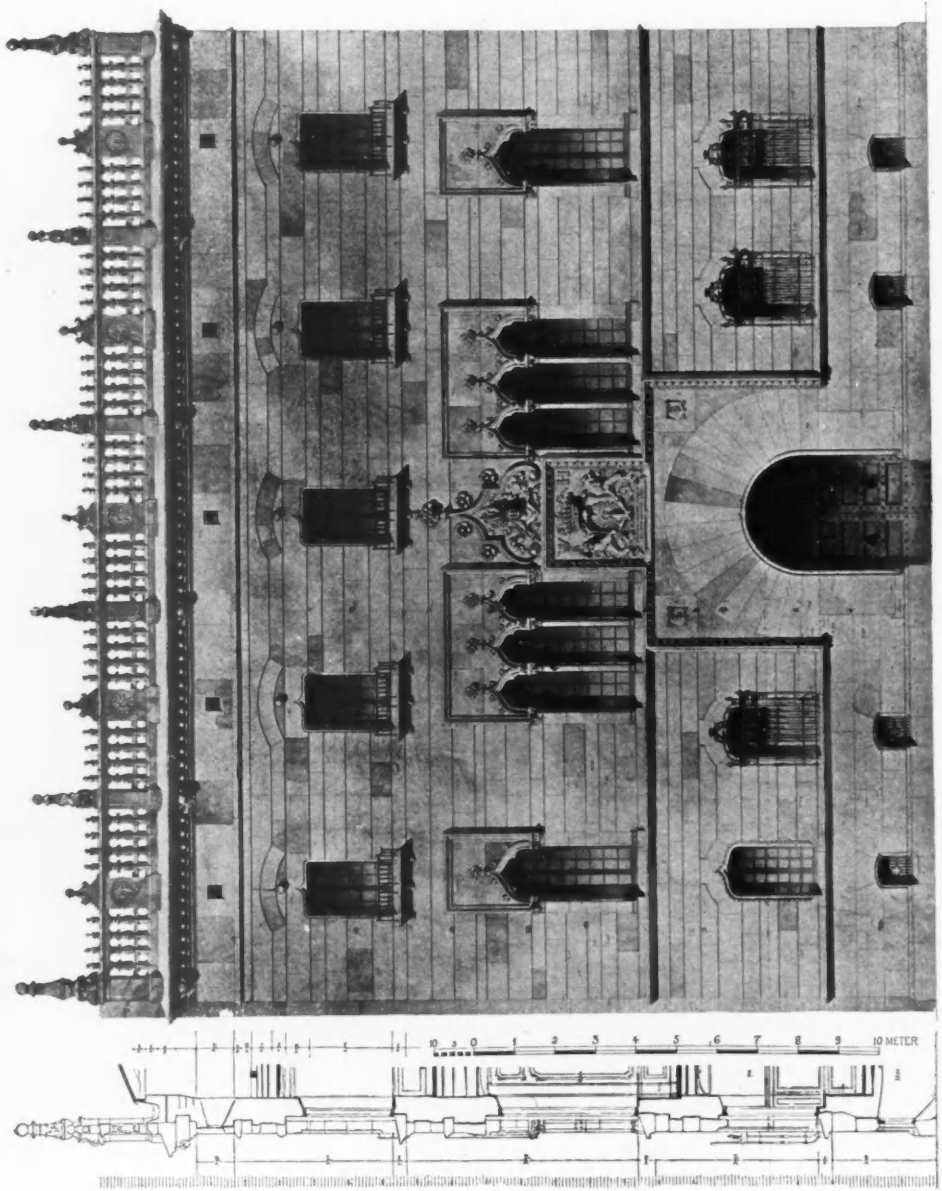
*Savings Bank at Lund, Sweden, first Prémiated Competition Design,
FREDRIK SUNDBÄRG, Architect, Jönköping.
(For Plans, see p. 133.)*



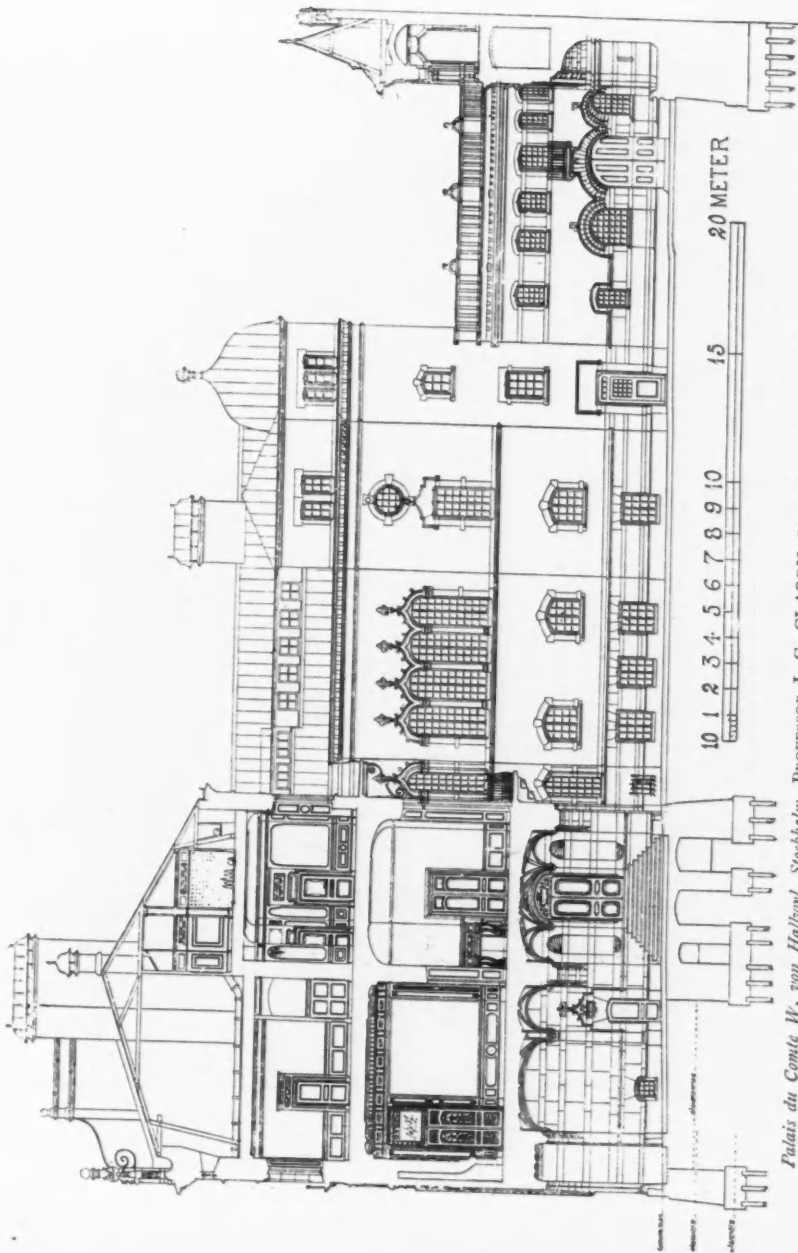
Förslag Till Hofvudbyggnad å Työholm, Accepted Design, L. J. WAHLMAN, Architect, Stockholm.



Förslag Till Hufvudbyggnad å Tjölöholm, Accepted Design, L. J. WAHLMAN, Architect, Stockholm.



Palais du Comte W. von Hattuy, Stockholm, Professor J. G. CLASON, Hon. Corr. Mem. R.I.B.A., Architect, Stockholm.
 (For Plans, see p. 133.)



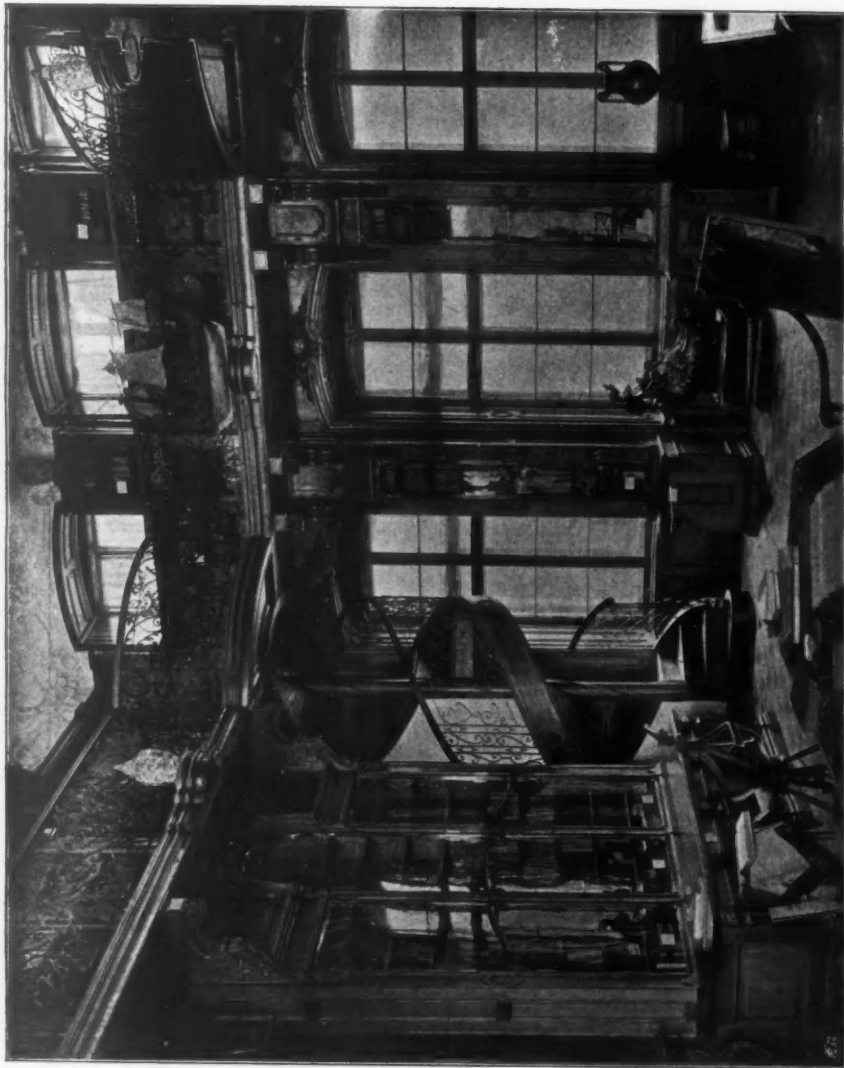
Palais du Comte W. von Halvay, Stockholm, PROFESSOR J. G. CLASON, Hon. Corr. Mem. R.I.B.A., Architect, Stockholm.
(For Plans, see p. 133.)



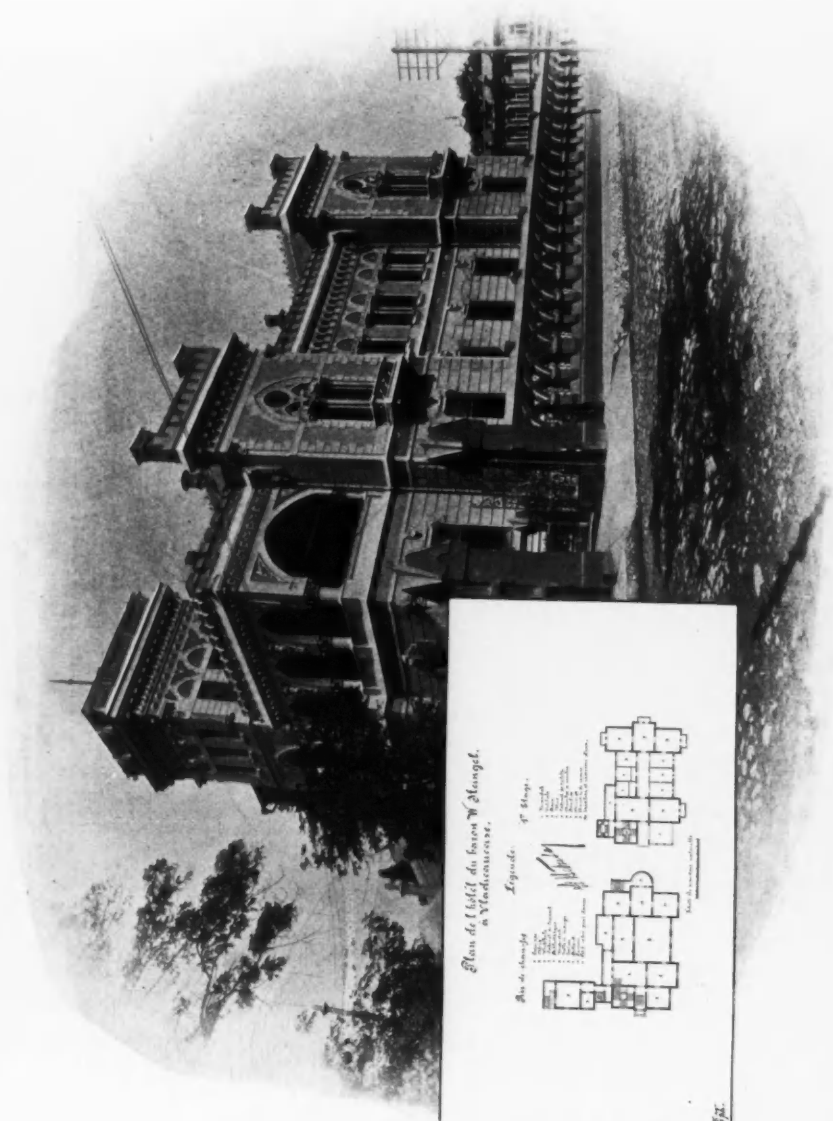
Palais du Comte W. von Halkwyl, Stockholm, Chimney Piece,
PROFESSOR J. G. CLASON, Hon. Corr. Mem. R.I.B.A., Architect, Stockholm.



Bibliotheksaal im Schlosse Rogalin bei Posen, Kamin an der Lungeite
SIGMUND HENDEL, Architect, Krakau.

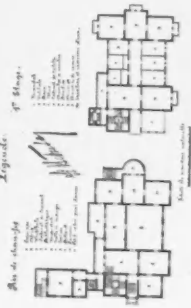


Bibliotheksaal im Schlosse Rogalin bei Posen, SIGMUND HENDEL, Architect, Krakau.



Plan de l'Hotel du baron W Stengel, à Vladicaucase.

Legende.



Hotel du Baron W. Stengel, à Vladicaucase, S. BELZETSKI, Architect, Vladicaucase.



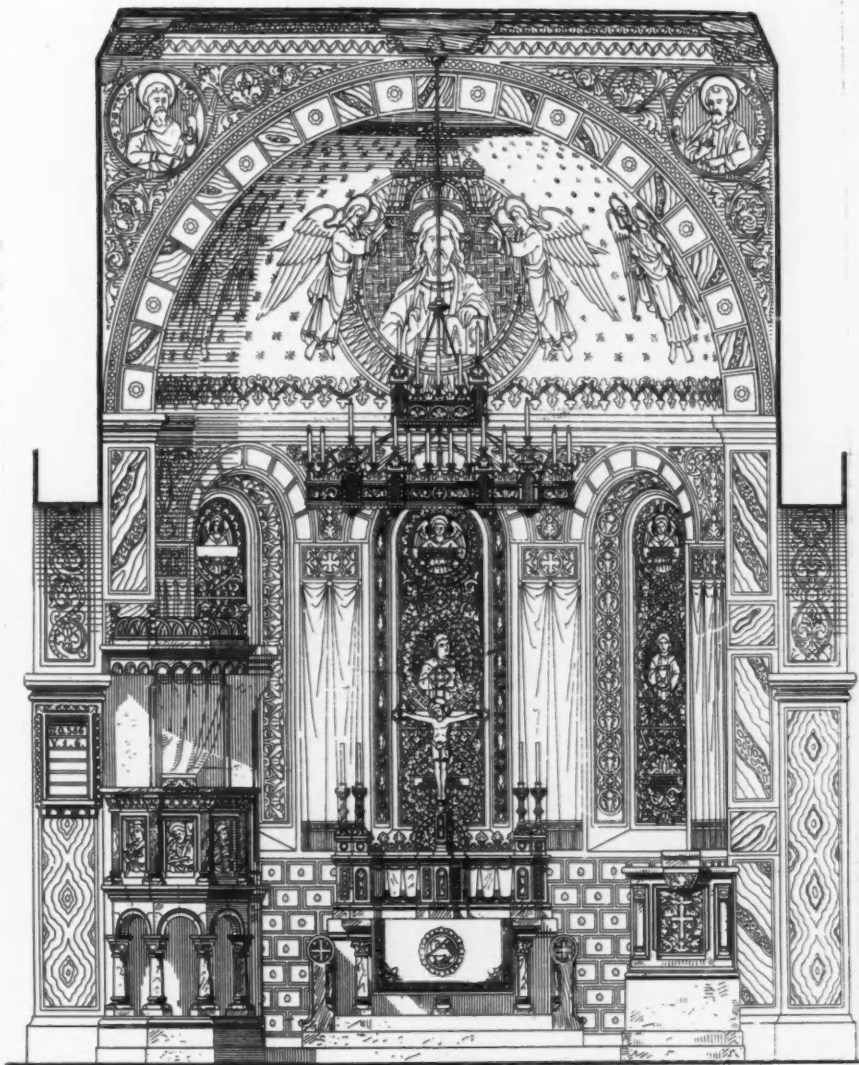
Sketch Design by L. FIEDLER, Architect, Budapest.



Sketch Design by L. FIEDLER, Architect, Budapest.



Städtebild, Phantasieskizze, ROBERT RITTMAYER, Architect, Cöln.



Altar Piece, St. Nicholas' Church, Eisenach, PROFESSOR HUBERT STIER, Architect, Hanover.



*Illgenhaus Dresden, Pirnaischer Platz. Treppe zum grossen Restaurant I Etage,
SCHILLING AND GRAEBNER, Architects, Dresden.*



Illgenhaus Dresden, Pirnaischer Platz, Restaurant im Erdgeschoss,
SCHILLING AND GRAEBNER, Architects, Dresden.

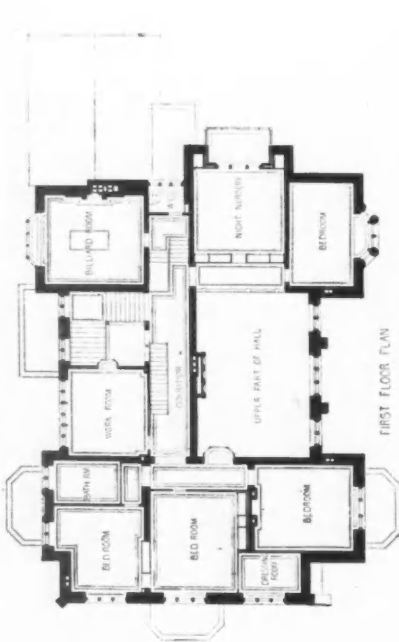


House by GRISEBACH AND DINKLAGE, Architects, Berlin.
(For Plans, see p. 132.)

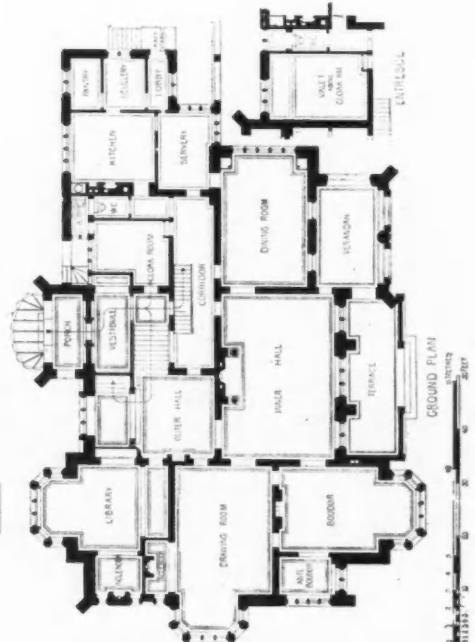


House by GRISEBACH AND DINKLAGE, Architects Berlin
(For Plans, *see* p. 132.)

HOUSE FOR H. RUEGG-HONEGGER ESQ., ZÜRICH.
ALEX. KOCH, ARCHT., LONDON.



FIRST FLOOR PLAN

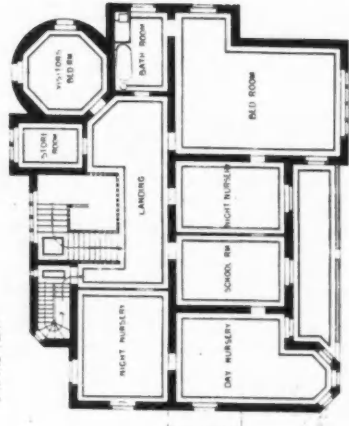


GROUND PLAN

HOUSE
CRISEBACH AND DINKLAGE, ARCHT^S BERLIN, W.

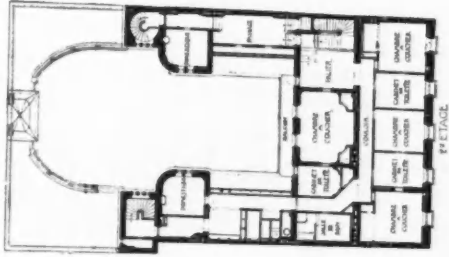
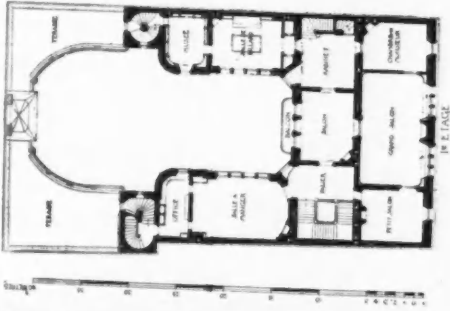
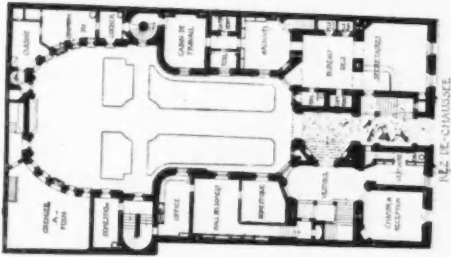
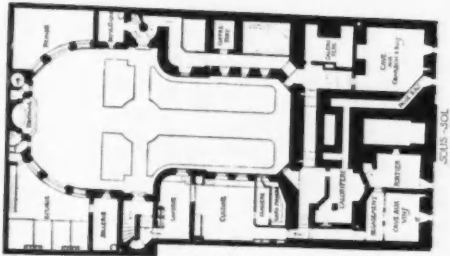


GROUND PLAN

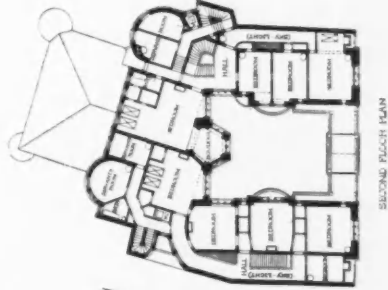
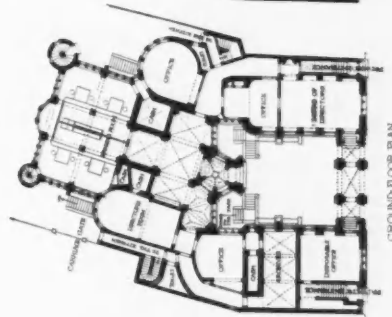
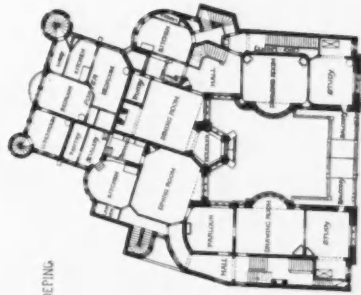


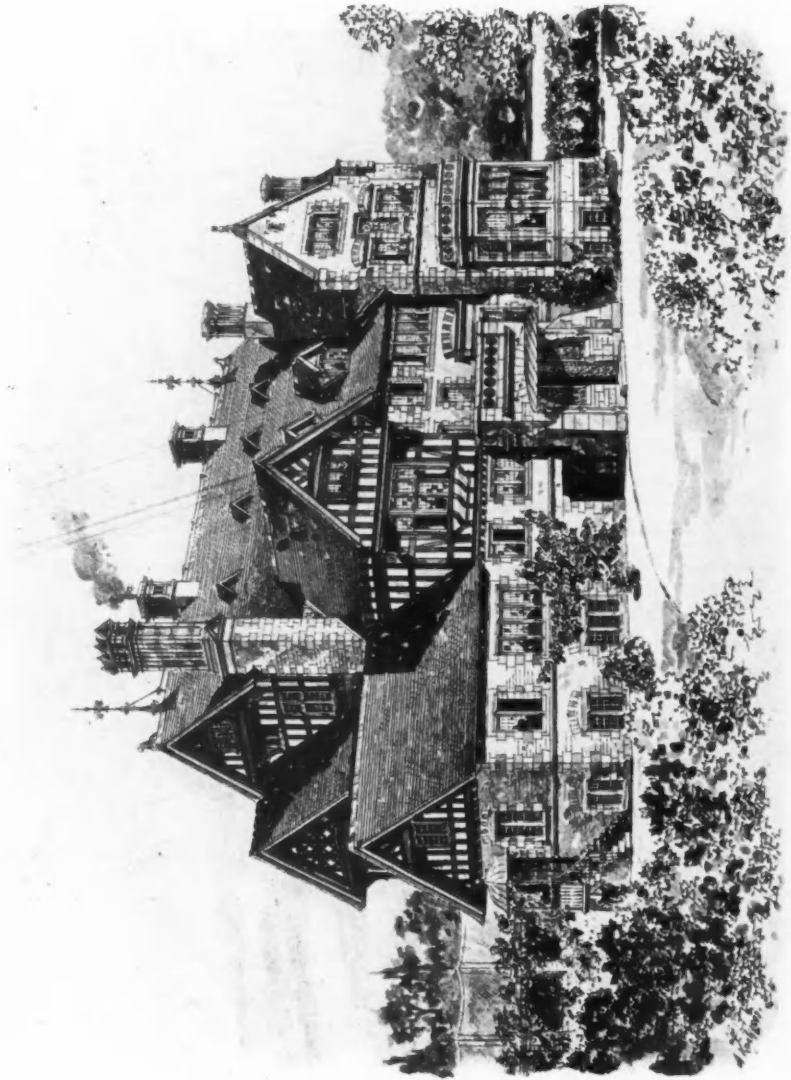
FIRST FLOOR PLAN

BALAS DE CONTE W DE HALIMZL PROCEBUA

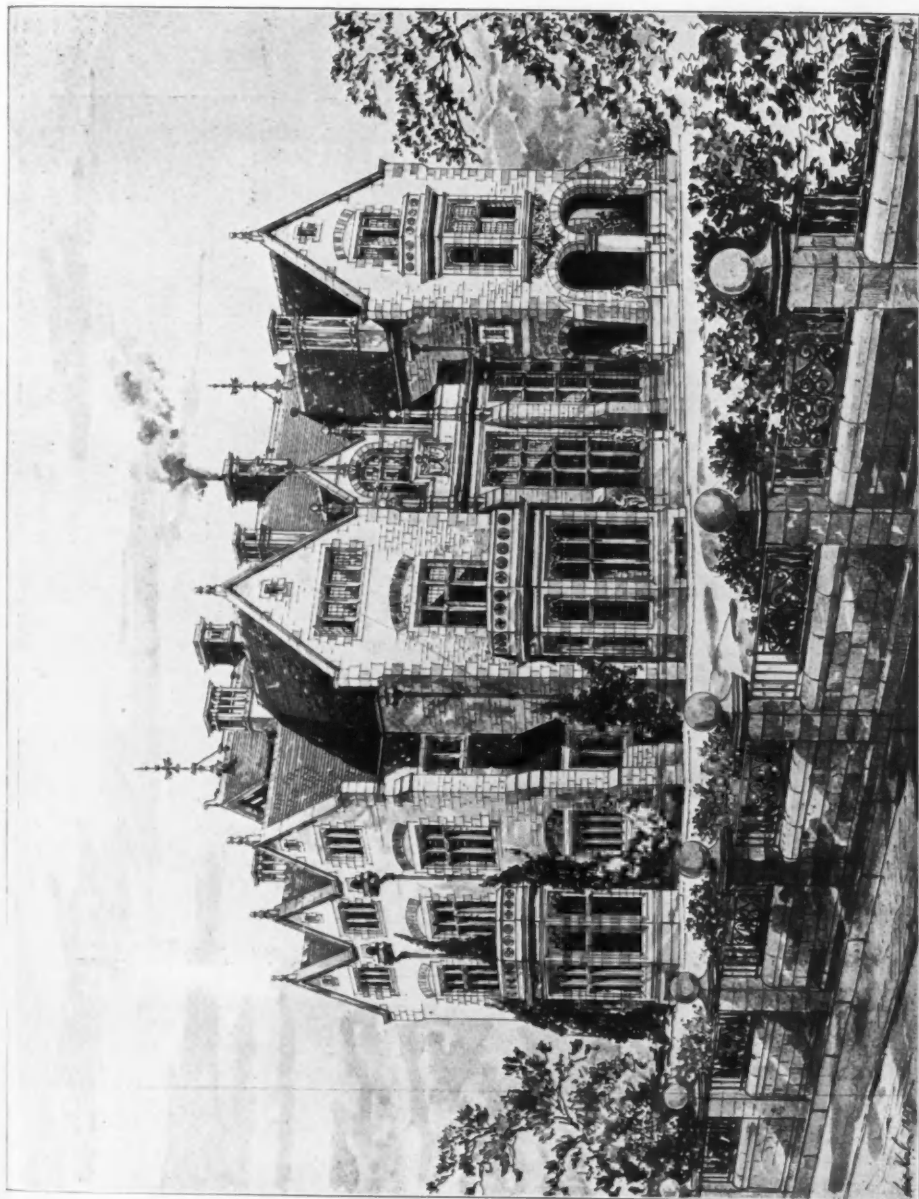


SAVINGS BANK of LUND SWEDEN
FREDRIK SUNDBERG/ARCHIT.-AENKOEING





*House at Zürich, for H. Riegg-Hungerer, Esq., Entrance Front, ALEX. KOCH, Architect, London.
(For Plans, see p. 132.)*



House at Zürich for H. Ruegg-Honegger, Esq., Garden Front, ALEX. KOCH, Architect, London.
(For Plans, see p. 132.)

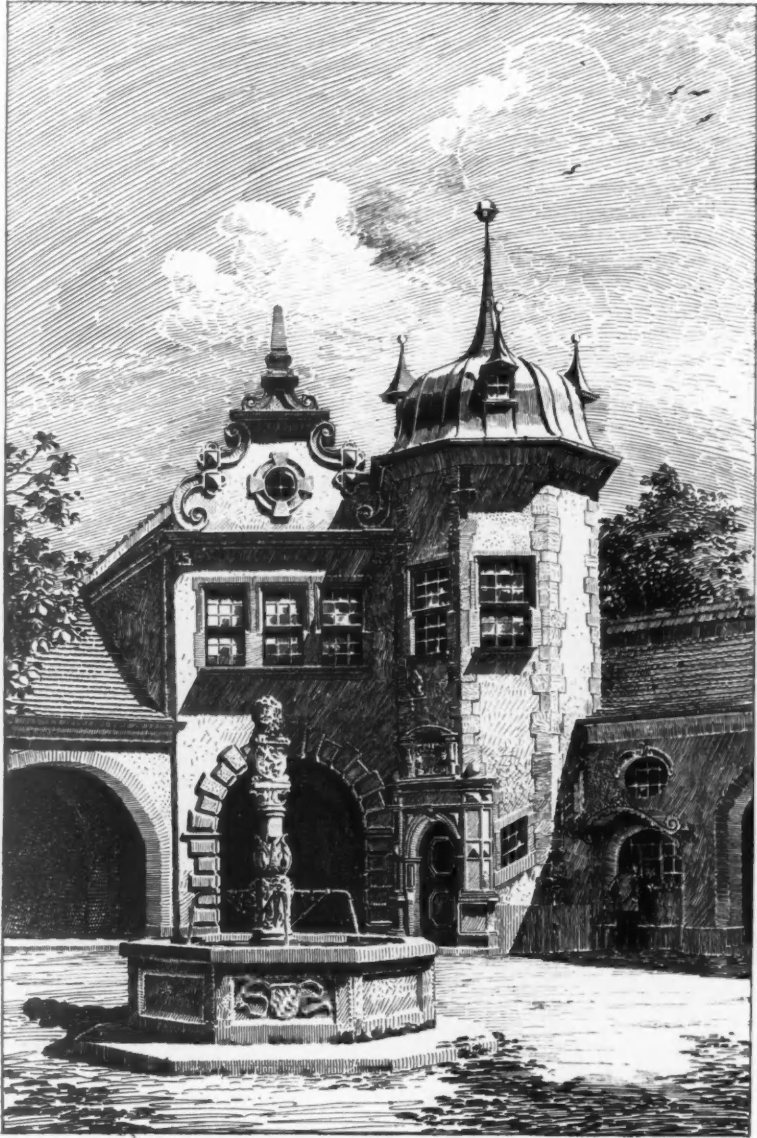


Villa A. Andree in Königstein im Taunus, FRANZ VON HOVEN, Architect, Frankfurt a.M.



Studie für ein Landhaus bei St. Gallen, ROBERT RITTMAYER, Architect, Cöln.

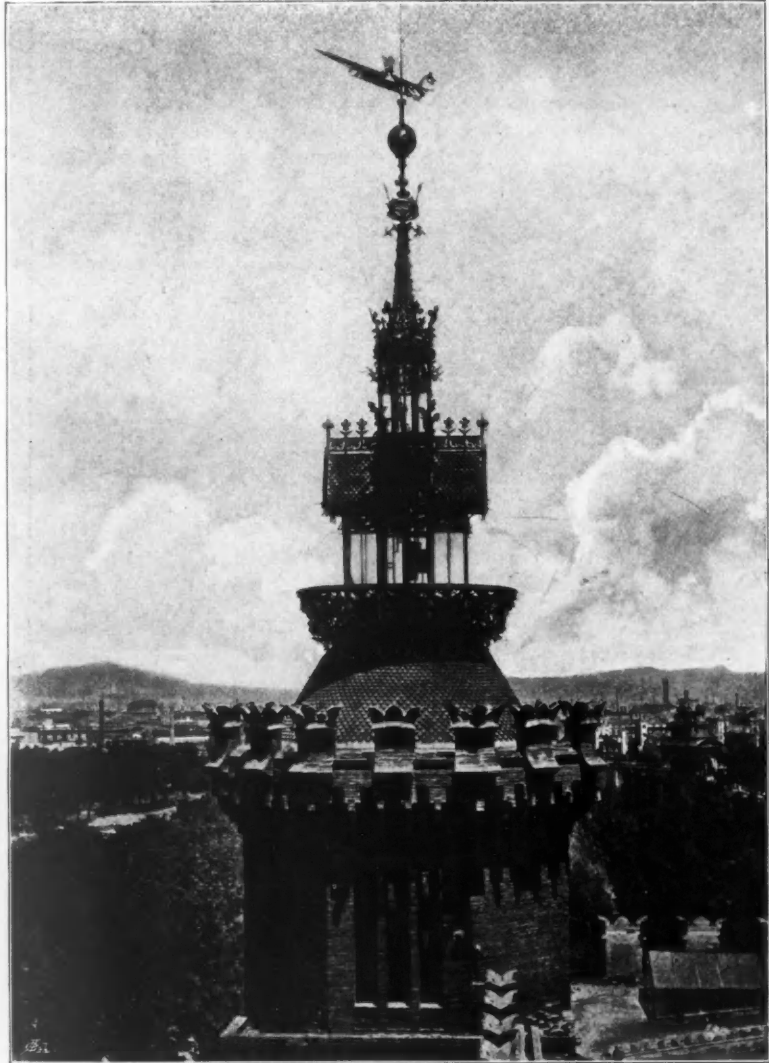
Villa A. Andreae in Koenigstein im Thaurus, FRANZ VON HOVEN, Architect, Frankfurt a.M.



Kgl. Hofbräuhaus, Munich, Courtyard, HEILMANN AND LITTMANN, Architects, Munich.



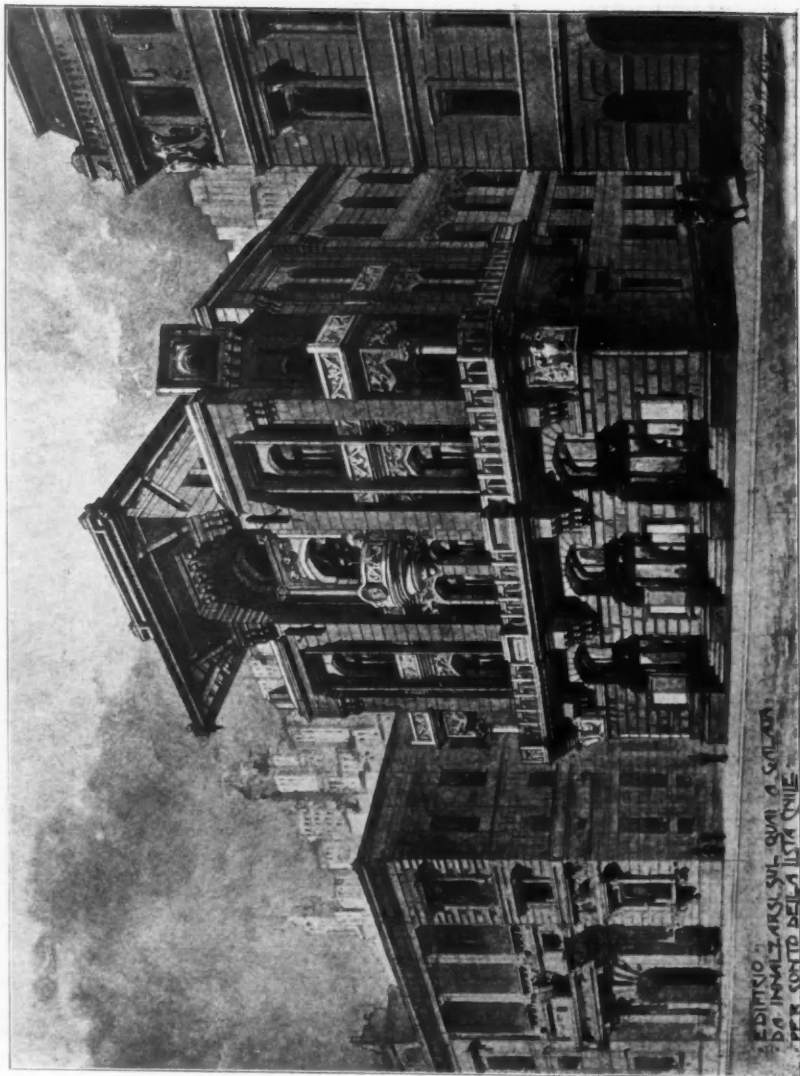
Kgl. Hofbräuhaus, Munich, Arcade in the Courtyard, HEILMANN AND LITTMANN, Architects, Munich.



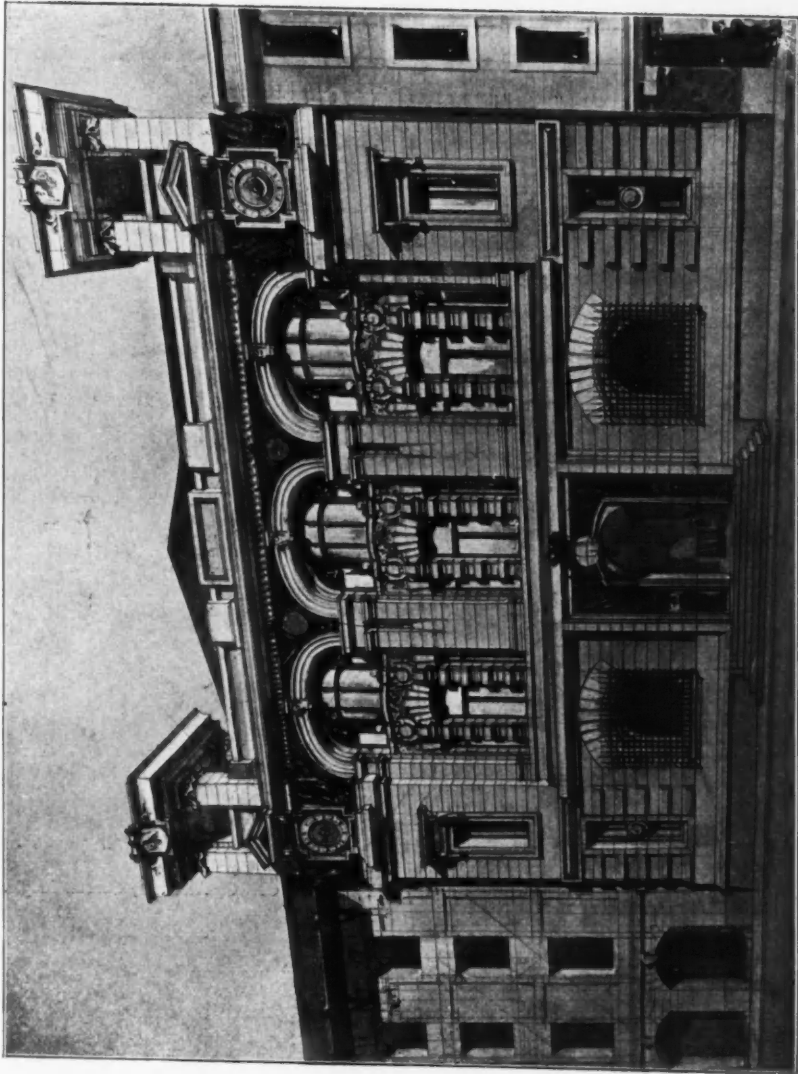
Restaurant du Parc, now Municipal School of Music, L. B. MONTANER, Architect.
Architecture Moderne de Barcelone, Published by Parera & C^o, Editeurs, Ronda Universidad, 4, Barcelone.



La Maison des Lions dans le Parc de la Ville, PIERRE FALQUÉS, Architect.
Architecture Moderne de Barcelone, Published by Parera & Cie., Editeurs, Ronda Universidad, 4, Barcelone.



Edificio da Innalzarsi Sul Quai a Galata, Per Conto Della Lista Civile, R. D'ARONCO, Architect, Constantinople.



Corps de Garde de la Caserma di Galata, Constantinople, Architect, R. D'ARONCO.



Exposizione Imperiale Ottomana, Padiglione d'Angolo, R. D'ARONCO, Architect, Constantinople.

