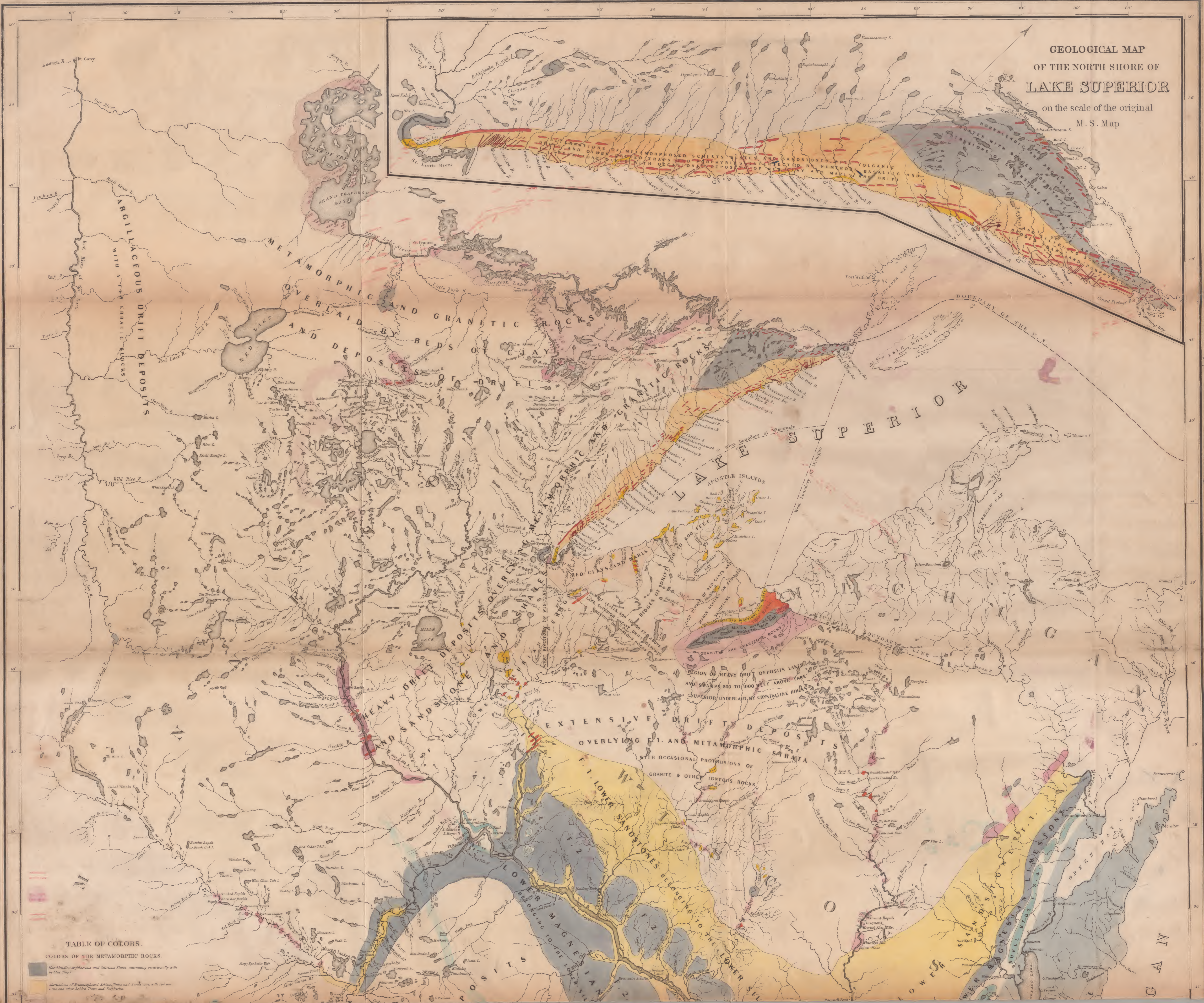


Map lected case (Ghent) MS 1851.09

Map
Lected
Case
G4042
MS
1851
09

**GEOLOGICAL MAP
OF THE NORTH SHORE OF
LAKE SUPERIOR**
on the scale of the original
M. S. Map



ARGILLACEOUS DRIFT DEPOSITS
WITH A FEW ERRATIC ROCKS

METAMORPHIC AND GRANITIC ROCKS
OVERLAIN BY BEDS OF CLAY
AND DEPOSITS OF DRIFT

LAKE SUPERIOR
APOSTLE ISLANDS

HEAVY SANDSTONE AND
SHELL BEDS OF THE LOWER SILURIAN

EXTENSIVE DRIFT DEPOSITS
OVERLYING F.1. AND METAMORPHIC
WITH OCCASIONAL PROTRUSIONS OF
GRANITE & OTHER IGNEOUS ROCKS

F.1. LOWER SILURIAN
SANDSTONES BELONGING TO THE LOWER SILURIAN

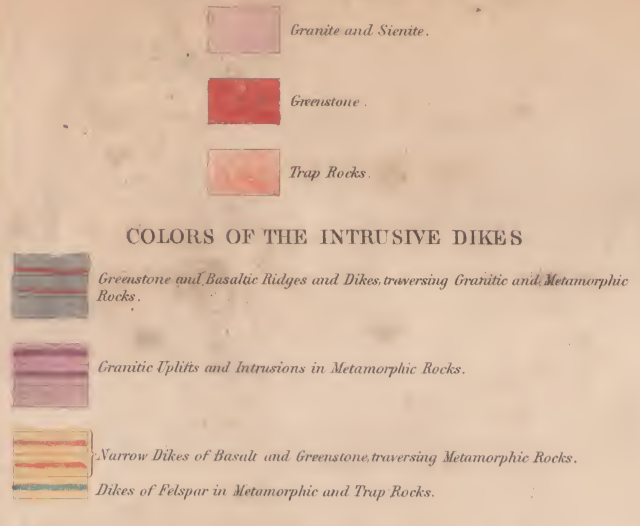
GREEN HILLS
SHELL BEDS OF THE LOWER SILURIAN

TABLE OF COLORS.
COLORS OF THE METAMORPHIC ROCKS.

- Horizontally Argillaceous and Siliceous Slates, alternating occasionally with bedded Traps.
- Horizontally Metamorphosed Schists, Slates and Sandstones with Volcanic Intrusions and other bedded Traps and Porphyries.

BYU Map Collection

COLORS OF THE IGNEOUS ROCKS



COLORS OF THE SUPERFICIAL SEDIMENTARY DEPOSITS.



COLORS AND SUPERPOSITION OF THE FOSSILIFEROUS STRATA.



GEOLOGICAL MAP OF WISCONSIN, IOWA AND MINNESOTA:

Exhibiting, also, the extension of the Iowa Coal-field into Missouri, and its relation to the Illinois Coal-field.

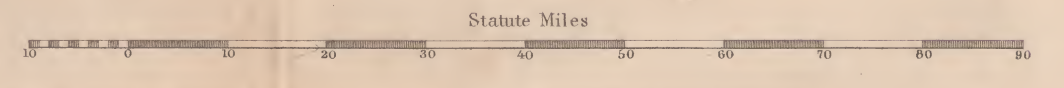
Constructed from observations by the UNITED STATES GEOLOGICAL CORPS,

Under instructions from the Secretary of the Treasury, BY DAVID DALE OWEN, M.D. Principal Geologist.

Middle, Northern and Northeastern Minnesota, BY J. G. NORWOOD, M.D. Assistant Geologist.

The greater part of the Southern Shore of Lake Superior, in Wisconsin, BY COL. CHAS. WHITTLESEY.

1851.



BRIGHAM YOUNG UNIVERSITY 3 1197 23273 1452

STATE LINE BETWEEN ILLINOIS AND INDIANA