

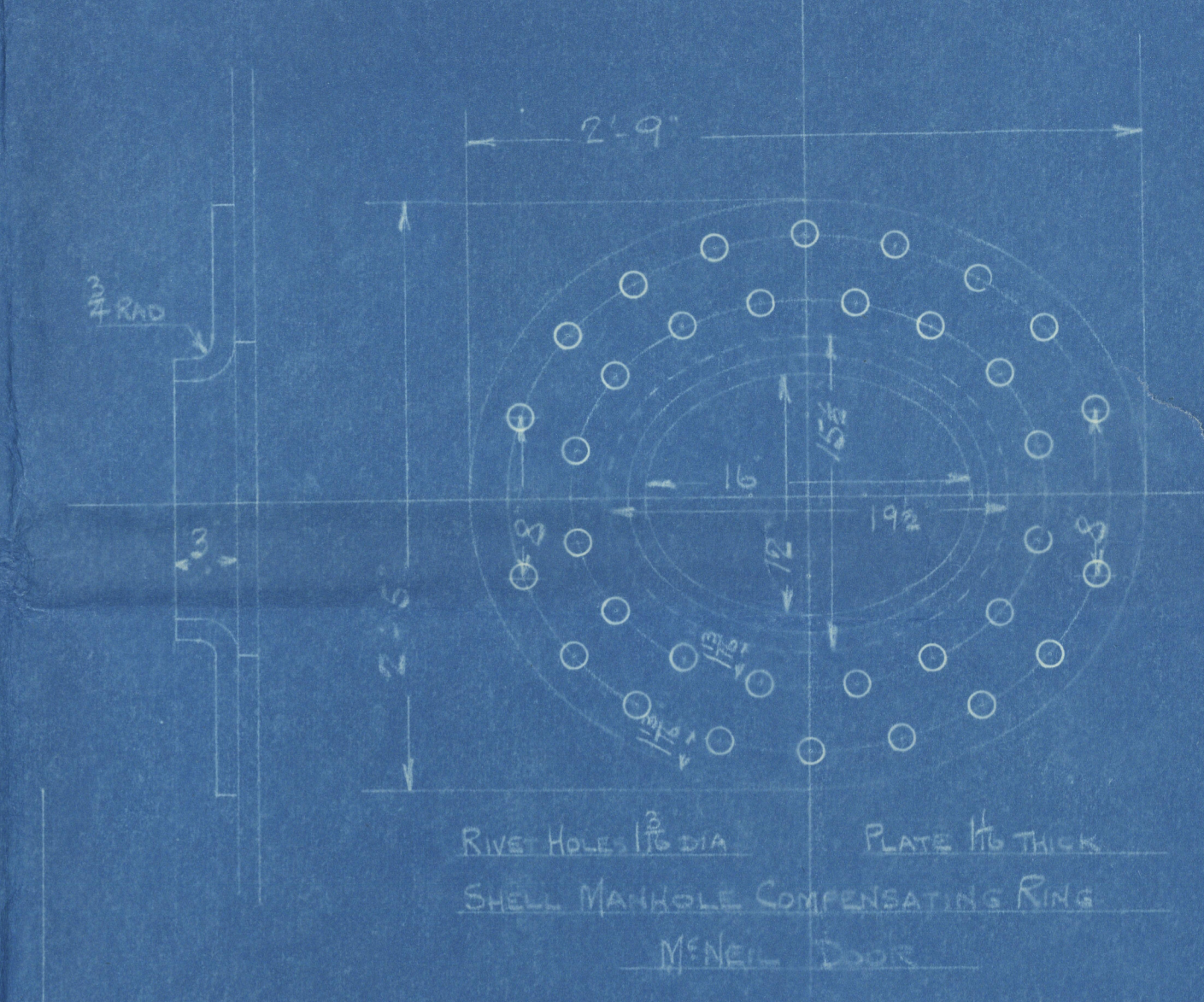
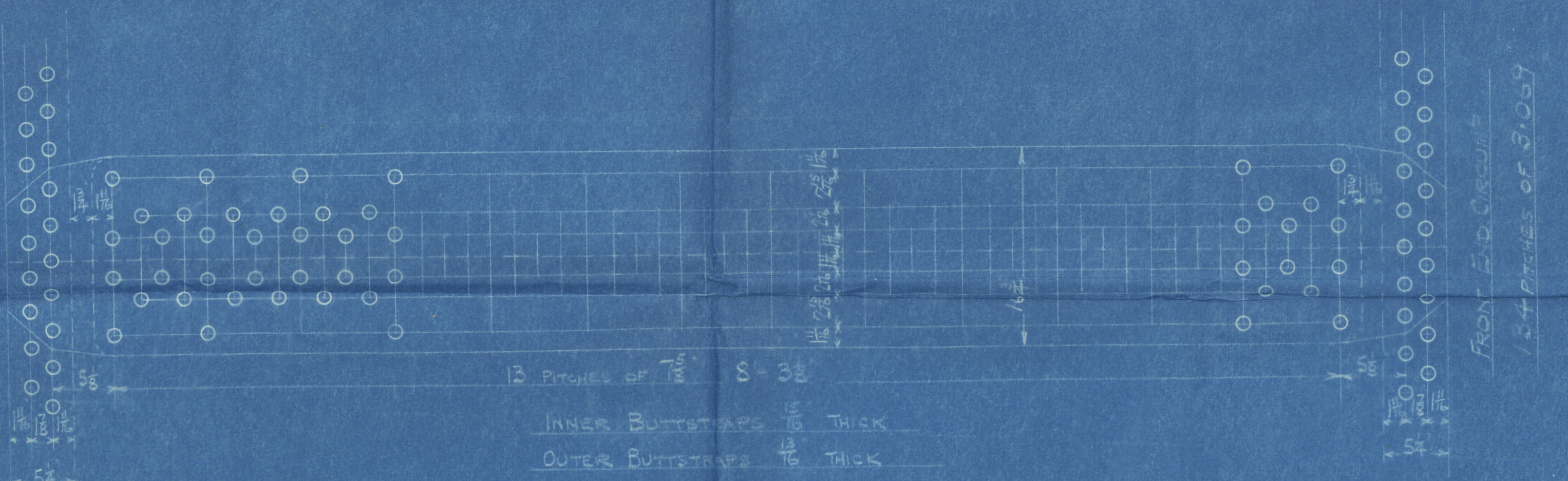
SURFACES		ONE BOILER
TUBES		835
FRONTSIDE TOP AND SIDES		69
BACK		28
TUBERATE		77
FURNACES		1050
TOTAL HEATING SURFACE		34
GRATE AREA (5" x 6" BARS)		5.5
TUBE AREA		190
STEAM SPACE		1
GRATE AREA : HEATING SURFACE		1 : 30.88
GRATE AREA : TUBE AREA		1 : 24.5
STEAM SPACE : TUBE AREA		1 : 2.85
STEAM SPACE : HEATING SURFACE		1 : 5.6
% BOILER ABOVE FIREBOX		24.7
WEIGHT OF WATER		124 TONS

RIVETING	
LONG	END
RIVET HOLE DIA	1 1/8
PITCH	2 1/2
% PLATE	85.12
% RIVET	90.7
% COMBINED	88.7

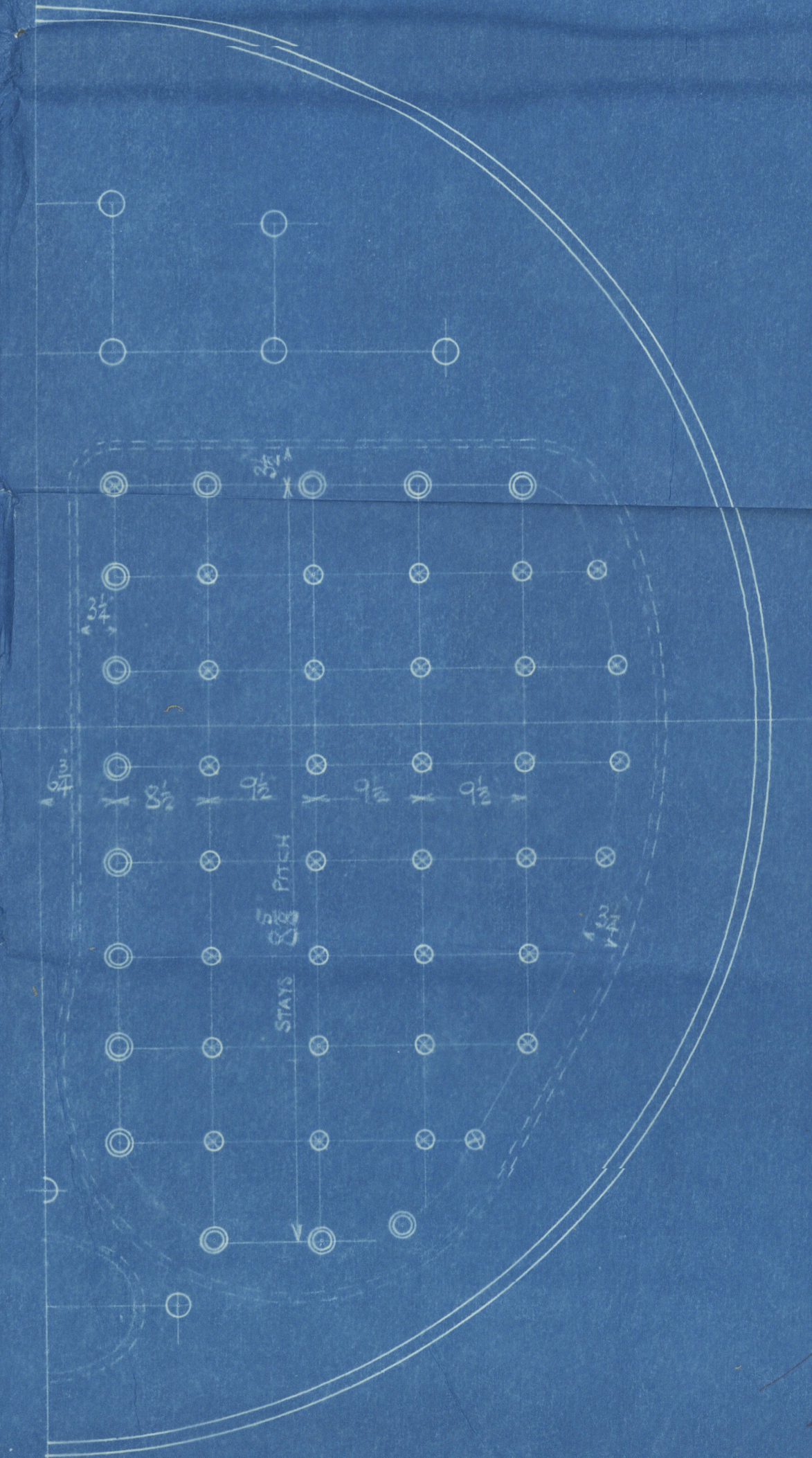
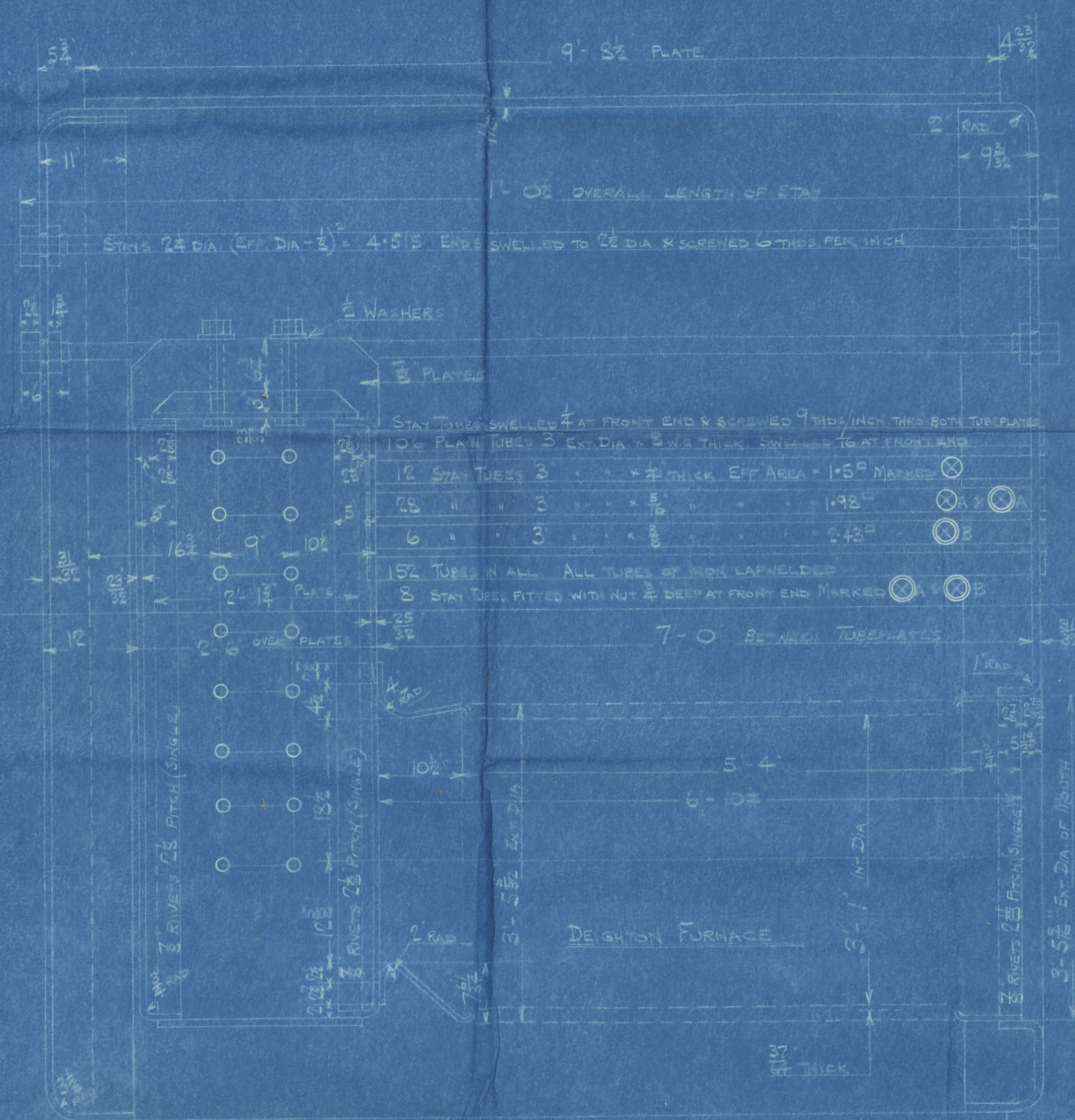
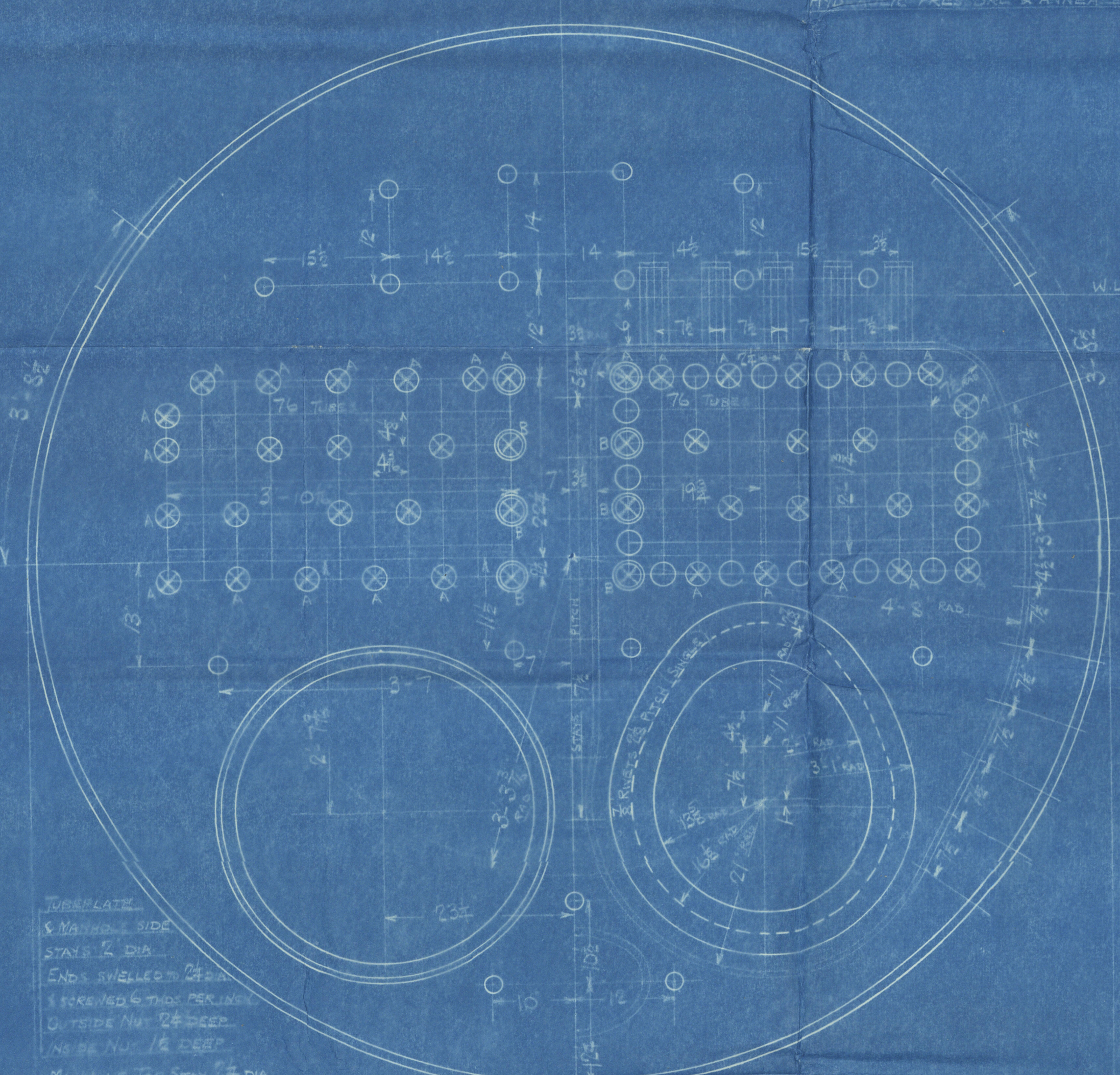
LIMITS OF TENSILE STRENGTH & MATERIAL	
GIROERS	28 x 32
OTHER PLATES	24 x 30
FURNACES	26 x 30
MAIN STAYS	26 x 30
SCREENED STAYS	26 x 30
RIVET BARS	26 x 30

SIGNER: MARTIN J. JONES

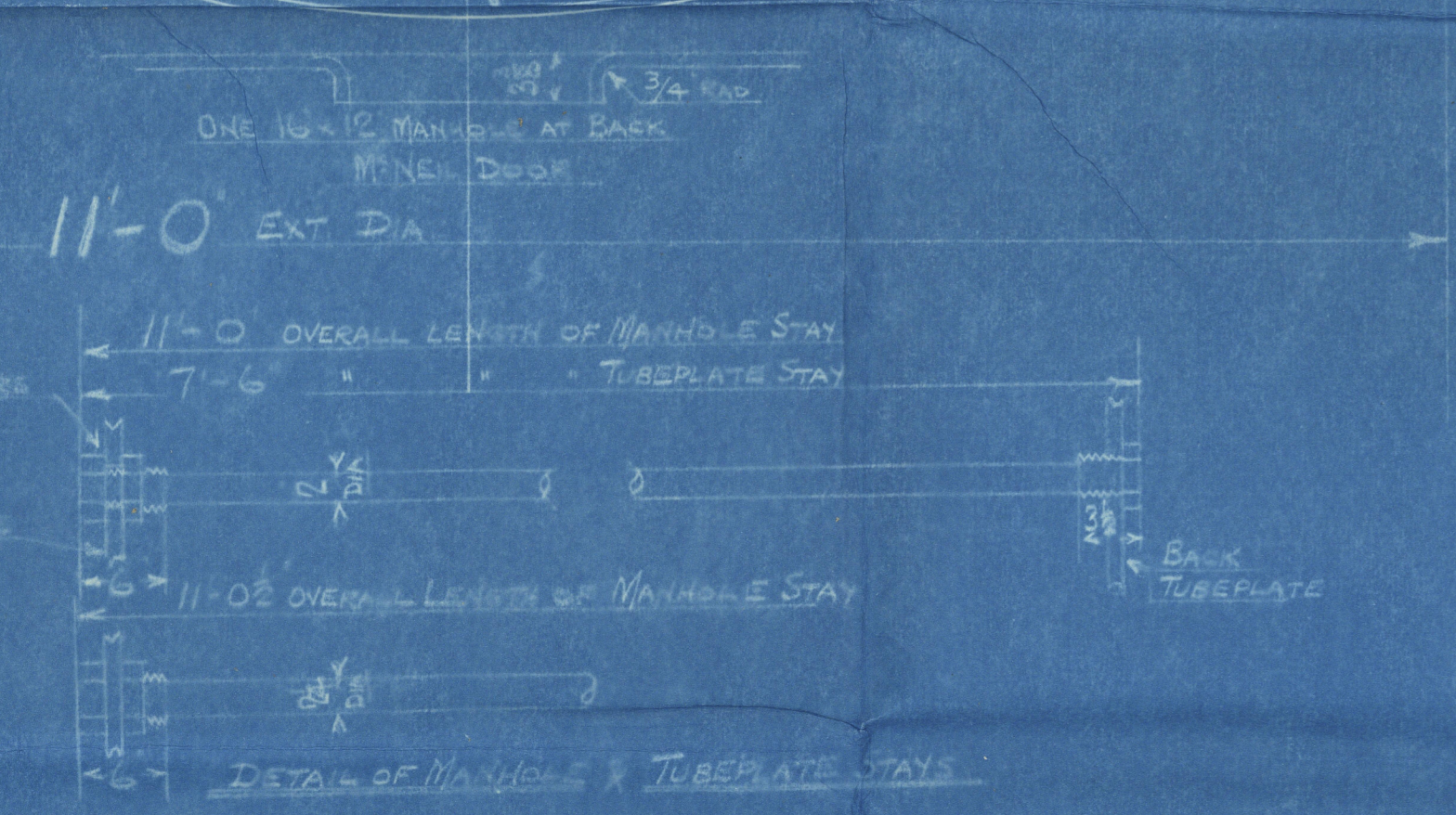
BACK END CIRCUMFERENCE
18 1/2 PITCHES OF 3.069



ALL RIVET HOLES DRILLED IN PLACE
MAIN STAYS SHELLS AT ENDS BY
HYDRAULIC PRESSURE & RAINGAGE



TUBERATE
MANHOLE SIDE
STAYS 2 DIA
ENDS SWELLED TO 2 1/2 DIA
& RIVETED TO TUBERATE
OUTSIDE NUT 2 DEEP
INSIDE NUT 1 1/2 DEEP
MANHOLE TOP SIDE 2 1/2 DIA
ENDS SWELLED TO 2 1/2 DIA
& RIVETED TO TUBERATE
OUTSIDE NUT 2 DEEP
INSIDE NUT 1 1/2 DEEP



DONKEY BOILER
ONE OFF EACH CONT. N^o
CONT'S N^{os} 980-981

WORKING PRESSURE 220 LBS PER SQUARE INCH
TEST PRESSURE 330 LBS PER SQUARE INCH
TO FINE LLOYD'S SURVEY
SCALE: ONE INCH = ONE FOOT

POSITION	MARK DIA	(DIA - 25) THICK	SCREWED
TOP & SIDES	0	1 1/8	1
BACK	0	1 1/8	1
WIDE SPACES TOP ROW	0	1 1/8	1
TOP CORNERS	0	2	1

ALL FIREBOX STAYS SCREWED THRU BOTH PLATES AND NUT FITTED AT EACH END.
ALL 1 1/8" NUTS 3 DEEP EXCEPT ON GIRDER TOPS WHERE THE OUTSIDE NUTS ARE 1 1/2 DEEP.
ALL 3/4" NUTS 1 DEEP



07.38593.A

GLASGOW

DAVID ROWAN & CO. LD

DONKEY BOILER N^o 981

W.P. - 220 LBS

DUPLICATE OF N^o 980

BURNISLAND S.B.C. S/N: 187

"
Justice
"
GLASGOW REPORT No. 56150

RETAIN



© 2019

Lloyd's Register

Foundation