

GROWTH OF CITY
Glendale's population in 1910 was 2,742; in 1920 was 12,356. Per cent of increase, 352. Present population, estimated, 16,500.

BUILDING RECORD
During 1920 the total building permits issued in the City of Glendale was \$3,138,664, a national record, in proportion to population.

VOL. XVI RAIN TONIGHT; CLOUDY TUESDAY GLENDALE, (LOS ANGELES POSTOFFICE), LOS ANGELES COUNTY, CAL., MONDAY, FEBRUARY 21, 1921 SIX PAGES 145

WOMAN IS AID TO BURGLAR, BELIEF

ANDY STEPHENSON HOME AT 1241 SOUTH CENTRAL IS RANSACKED SATURDAY

VALUABLES TAKEN

OFFICERS THINK ACCOMPLICE IS WORKING HERE WITH CLEVER SNEAK THIEF

With the robbery of the Andy Stephenson home at 1241 South Central avenue Saturday night, in which much valuable loot including clothing and jewelry was obtained, local authorities are prone to believe that a sneak thief is operating in Glendale with a woman as an accomplice.

There have been a series of early evening robberies in which the back doors have been "jimmied" open and the houses thoroughly ransacked. Coincident with these daring burglaries, a woman has been noticed going from house to house in the vicinity of the crimes, ringing the doorbells and trying the latches. When questioned she stated she was looking for a furnished house to rent.

Woman Acts as Foil
It is believed that this woman has been acting as a foil, according to the officers' theory, and when she found householders absent, directed the attention of the thief to the place and acted as lookout to warn of policemen's arrival.

At the Stephenson home, which was robbed between 6 and 9 o'clock, Saturday night, a silver locket, several scarf pins, a valuable silver chain and a gold lavalier, set with eight pearls, were among the jewelry taken. Three men's suits, one overcoat, four neckties, one shirt and one ladies' waist comprised the missing clothing. A description of the lost articles has been furnished to the police.

Warning Is Issued
Captain McGuire and Officer Wells investigated the case and once again householders are requested to inform the police department of any suspicious characters.

Already co-operation has been extended along this line and if the police are enabled to investigate such persons, they have that much more opportunity of stopping the present wave of housebreaking.

J. W. Harward of 1927 Gardena avenue reported a prowler about his home shortly after 9 o'clock last night and an immediate investigation by the police resulted in the discovery of a man in the vicinity who was chased across the Southern Pacific railroad tracks at the Glendale Pacific Electric tower.

Guests Greeted At Henry Miller Home

Mr. and Mrs. Henry Miller of 720 North Louise street, who have recently completed their home there, had as their guests Sunday, Mr. and Mrs. Miles S. Gregory of Los Angeles, Mrs. Gregory and Mrs. Miller are sisters of Daphne Pollard, London opera comedienne, and all three were formerly members of the Pollard Opera company. At one time, Alf Golding, motion picture director residing here, was stage manager of the same company.

Paint Parking Lines On Business Streets

For the convenience of motorists who park in the business section of Glendale, the city has had white markers painted on the pavement indicating the space which one automobile will require. In this way more machines can be accommodated and less confusion result from someone trying to crowd in or out of a space less than practical.

Bus Line's Traffic Shows New Increase

Indicative of the large number of tourists in Southern California at this season, the Pasadena, Glendale, Hollywood and Ocean Park bus line was running "double headers" yesterday afternoon and evening to care for the traffic. H. A. Wilson, formerly of Glendale, is the owner of the line.

SECOND ATTACK IS MADE
MANCHESTER, Eng., Feb. 21.—Sinn Feiners for a second time attacked Manchester Mills in an incendiary campaign, inflicting damage of more than \$200,000 in ten week-end fires. All fires broke out simultaneously. Several factories were destroyed.

FIRST UNIT FOR NEW GLENDALE SANITARIUM AND HOSPITAL OPEN

Large Crowd Hears Program and Inspects Well Equipped Building and Nurses' Home

Formal opening of the first unit of the new Glendale Sanitarium and Hospital, corner Jackson street and Wilson avenue, and the nurses' dormitory, which were erected and equipped at a cost of about \$106,000, took place yesterday afternoon, with close to 1000 persons participating. The unit is the first of a seven-unit building project, which calls for an expenditure of about \$500,000, for the institution of the Southern California Conference of Seventh-day Adventists, to occupy the square between Wilson avenue and East Broadway.

W. M. Adams, elder, chairman of the institution's board of trustees and president of the conference, presided. A program was given in which prominent men of Glendale, Los Angeles and other communities participated, then the hospital unit and the nurses' dormitory were shown open for public inspection.

Under sunny southern California skies, the program was given out-of-doors, hundreds of people occupying benches arranged in the quadrangle formed by the hospital building, while others had seats on the structures' porches.

Everything Is Perfect
Weather, arrangements and program were perfect and the big crowd was deeply interested in the talks and musical numbers, and in the visitation of the buildings which followed.

The program opened with all singing "America." Then C. E. Kimlin, the institution's business manager, who has had a prominent part in bringing the first unit to a successful completion, told how, after many months of labor, the structure, with its modern equipment, was ready for service.

Mr. Kimlin said that those closely connected with the work had had many trials, but that everyone had worked faithfully with one end in view—the completion of the unit—and now it was ready and open to the public.

The speaker paid a tribute to those who had, in any way, aided the project and declared that it was the purpose to continue to make the institution a credit to Glendale and the southland. Then he introduced W. M. Adams as the master of ceremonies.

Tells of Future Plans
Elder Adams related how those having the work in charge spent

Choral Society Of Church Entertained

Mrs. B. Van Tassel of 110 North Cedar street, assisted by Mrs. C. H. Jones and Mrs. E. MacDonald, entertained the members of the Choral Society of the Seventh-day Adventist church Saturday night. Miss Ophelia Roach rendered two piano selections. Those present participated in a study of musical terms under the direction of Mrs. C. A. Brandstater. Each one defined and demonstrated the different marks of expression employed in their spring songs. Mrs. Nelson as critic judged the correctness and adequacy of the definitions given. Other exercises which tested the vocal observations of the guests were enjoyed. The ladies were asked to suggest a suitable name for one of the cakes, the formula of which was quite complex. The society disposed of several important items of business. Those present spent a most enjoyable time.

Arthur G. Lindley Drawing Church Plans

Arthur G. Lindley, a Glendale architect, is preparing plans for alterations to the Pico Heights Methodist Episcopal church. Class rooms, parlors, kitchen and furnace room are to be incorporated in the edifice at a cost of about \$6000.

Mr. Lindley is also preparing plans for the alteration of the First Methodist church of Santa Monica to cost approximately \$15,000. The auditorium will be enlarged, social and banquet rooms, gymnasium and showers, locker rooms and a kitchen provided.

Work Is Begun On Auto Parking Sheds

Glendale students at Occidental college report that excavation work has commenced on the new gymnasium and auto parking sheds at that institution to cost \$75,000. Many of those who attend from here motor to and from their studies and the new accommodation for cars will be appreciated.

24 CANDIDATES FOR DIRECTORS

RESULT OF PRIMARY BALLOT BY COMMERCE CHAMBER MADE KNOWN TODAY

DIRECT VOTE NEXT

TWELVE WILL BE NAMED TO SERVE ON BOARD AND POLLS CLOSE FEB. 24

Twenty-four members of the Chamber of Commerce, twelve of whom are to compose the board of directors, were selected at the primary election, concluded Saturday night.

The twenty-four received the highest vote at the primary. Their names are being sent out to the membership today to be voted upon, the twelve receiving the high vote to be declared elected directors.

The polls will close at 7:30 o'clock next Thursday, the returns canvassed immediately and on Friday the twelve directors will meet and organize.

A total of 265 votes was cast in the primary election. As the entire membership was put to pick from, there was a large scattering of votes.

Twenty-four Highest

J. C. Cooper	159
Jesse E. Smith	120
V. M. Hollister	129
George H. Bentley	97
J. G. Huntley	97
David L. Gregg	78
C. D. Lusby	66
Roy L. Kent	63
H. M. Butts	62
Peter L. Ferry	57
R. D. White	57
H. P. Coker	51
R. F. Kitterman	49
J. W. Uslton	47
S. C. Packer	46
C. E. Neale	45
L. T. Howley	45
Dan Campbell	44
A. R. Eastman	43
A. T. Cowan	40
W. E. Edmonds	39
C. H. Toll	38
A. W. Beach	38
Dr. Henry Harrower	37

Annexation Project Beaten, 76 to 36

By a vote of 76 to 36, that portion of Casa Verdugo west of Central avenue, which as yet is not incorporated in the bounds of Glendale, defeated the proposition to annex to this city at a special election held Saturday.

The issue in the election was the surety of public service extensions by the city to many of the valuable estates in the district which is one of the most exclusive in the community. Annexation has been defeated by these residents several times before, principally because it would slightly increase taxes on their valuable property.

Officials of the election were James Conner, Mrs. Jessie A. Mitchell and George Montgomery.

Whole Block Milk Bottles Are Stolen

A whole block of milk bottles was reported stolen by the Glendale Creamery Company this morning, according to the police. Every house on Burchett street to which that concern delivers was minus its milk for the morning and the wagon driver avers he delivered them as usual.

Medals Of Merit To Be Given By France

Several Glendale residents who served with the French forces during the world war will be interested in the following official announcement regarding medals of merit for more than 10,000 American men and women workers in military auxiliaries:

"All serving with French military and naval forces, nurses, doctors, etc., various organizations auxiliary to French army; Knights of Columbus, American Red Cross, French or foreign women employed as auxiliaries. The tricolor ribbon attached to the decoration may be worn at once by all entitled to the medal, by decision of the French government."

JAPAN NOT TO EVACUATE

TOKIO, Feb. 21.—Japan has no intention of meeting American requests that she evacuate Vladivostok, foreign Minister Uchida declared today, addressing the budget committee of the house of peers. He declared it was necessary to maintain an army in Siberia because of disturbed conditions in Korea.

ALLIED STATESMEN MEET FOR CONFERENCE

(Special Service to Glendale Evening News)
LONDON, Feb. 21.—As allied statesmen gathered here today there was a prospect:

That Germany's bill will be redrafted;
That the French cabinet may be overturned if that bill is lightened;

That the future relations between France and Great Britain will be finally determined;
That Turkey and Greece may adjust their territorial claims and proclaim peace.

Statesmen brand as impossible chances of a split between France and Great Britain, but they admitted they saw no chance of reconciling the views of Premiers Briand and Lloyd George in regard to Germany.

DAUGHERTY MAY BE ATTORNEY GENERAL

(Special Service to Glendale Evening News)
ST. AUGUSTINE, Fla., Feb. 21.—President-elect Harding has asked Harry M. Daugherty of Ohio to be attorney general, it was announced today.

George Foss, former congressman from Illinois, today was under consideration by Harding for the post of secretary of the navy. A. T. Hert of Kentucky and John Hays Hammond, who probably would be accredited to California, were still in the running, however, Herbert Hoover's appointment as secretary of commerce appeared to be accepted as a certainty by Harding's advisors.

GREATEST BLIZZARD IN N. Y. SINCE 1900

(Special Service to Glendale Evening News)
NEW YORK, Feb. 21.—New York today was "digging out" after the greatest blizzard since 1900. The snow fall was twelve and a half inches. Deaths of ten persons were ascribed to the storm.

BOSTON, Mass., Feb. 21.—With seven deaths reported, train and trolley service practically at a standstill, and shipping along the coast completely tied up, New England today was endeavoring to uncover from the heaviest snow fall in 22 years.

HEAVY PROPERTY LOSS RESULT OF STORM

(Special Service to Glendale Evening News)
EUREKA, Cal., Feb. 21.—Heavy property damage has been done and many families have been driven from their homes by a freshet on the Eel and Elk rivers which began yesterday. The dam at the mill of the Elk River Lumber company burst, releasing half a million feet of redwood logs which crashed down stream, tearing out bridges and uprooting trees along the bank. The road and railroad along the river was under six feet of water. Transportation was by means of row boats only.

ADMIT GERMANY TO LEAGUE MEMBERSHIP

(Special Service to Glendale Evening News)
PARIS, Feb. 21.—Germany was admitted today to membership in the League of Nations technical organization. The league council, at the opening of its sitting here, invited Germany to participate in the international transit conference at Barcelona next month, thereby inaugurating the policy of admitting her to all technical commissions, pending her actual admission to the league.

Little Children At Pleasant Gathering

Mr. and Mrs. J. Ratcliff of 207 West Lexington Drive entertained a number of tiny tots on Saturday, February 19, to celebrate their little daughter Marjorie's seventh birthday. Miss Dorothy Ratcliff, assisted by Miss Corrish and Miss K. Coleman, visitors from Australia, helped entertain the little guests in true Australian style with many novel games. Marjorie received many beautiful gifts from her guests, most of whom were her school mates.

Refreshments were served in the large dining room, the table decorations being carried out in pale yellow and pink. Large yellow balloons hung from the electrolier, much to the delight of the children, who each selected her own. Little Marjorie herself performed the ceremony of cutting the gaily-decorated birthday cake, and presented each guest on departure with a dainty basket of candy.

Among the guests were the Misses Doris Bradley, Betty Brown, Leona Colton, Helen Daniel, Frances Dunlop, Ruth Fakler, Roberta Freeman, Betty Hagood, Hilda Howie, Ethelwyn Kent, Gretchen Kuehny, Eleanor McMillan, Margaret Newby, Lucille Phillips, Sarah Roper, Daisy Siberell, Mabel Siberell, Martha Siberell and Margaret Waltcn.

SEASON'S RAINFALL 8.17
With this morning's showers bringing the season's rainfall here to 8.17 inches, Jupiter Pithius needs weep more copiously over this section if last year's record of 8.87 is to be overcome. But .05 inches fell this morning. Rain tonight, however, and cloudy weather tomorrow is promised by the weather forecaster, so there's some hope of a more than sufficient water supply in southern California this summer.

MOTION MEETS DEFEAT

WASHINGTON, D. C., Feb. 21.—Western and southern farm states' senators today were worsted in a contest to decide whether the agriculture interests or the railroads should have preference in having their needs considered. The senate defeated a motion to take up the agriculture bill.

NOVEL FEATURES AT MASQUERADE

ELKS' BALL IS BIG SUCCESS AND CHARACTERIZATIONS WELL SUSTAINED

PRIZES ARE GIVEN

FANCY DANCES PLEASE LARGE CROWD; COMMITTEE WINS PRAISE FOR EVENT

When you were a youngster reading fairy tales, Arabian Nights stories, stories of the South Sea Islands and of history, didn't you visualize quite vividly the costumes of these people? At the Elks' masquerade ball Saturday night many of the grown-ups took that opportunity of impersonating some of the characters about whom they had read.

Fairies, Colonial dames and gentlemen, ballet dancers, gypsies, Dutch girls, cannibals, farmers and farmer girls and boys, Oriental costumes, Spanish dancers, clowns, Indian men and squaws, Hula dancers, Chinamen, old-fashioned gowns, Red Riding Hood, waiters and waitresses, Red Cross nurses, "The Mark of Zorro" and many original costumes were represented.

Prizes Are Awarded
Prizes were awarded for the fanciest, funniest and most original costumes, were won by Miss Barbara Mitchell, who was dressed as a knitting bag from which knitting needles were protruding. She carried a piece of knitting and a pair of needles. A pair of needles were also thrust through her hair.

First prize for the fanciest gentleman's costume was won by J. T. Murphy, who was dressed as a Colonial gentleman.

First prize for the funniest ladies' costume was won by Mrs. Geo. W. Smith. She wore a dress made entirely from the labels of flour sacks.

First prize for the funniest gentleman's costume was won by Homer Miller, who wore a cannibal's outfit, with a necklace of teeth and skulls.

First prize for the most original ladies' costume was won by Miss Crawford, who wore a ballet dress of purple and white tulle, the Elks' colors, and a pastebord clock face pointing to the hour of 11.

Vernon Shively, who was dressed as "The Mark of Zorro," was awarded a prize. H. E. McCartney was awarded a prize for the most original gentleman's costume. He was (Continued on Page Three)

Pasadena Youth To Face Theft Charge

Russell Walker, a Pasadena youth, charged with attempting to steal an automobile owned by Ernest Butler, 516 Milford street, will have his preliminary hearing this afternoon at 2 o'clock in Judge F. H. Lowe's city court.

This morning the judge heard about a half-dozen traffic violation cases and on Friday he cleared 15 from the calendar.

Local Elks Defeated In Close Ball Game

Glendale Elks' baseball nine played the Palms baseball team at Palms yesterday. It was a very close and very interesting game, the score being 1 to 0 in favor of Palms. Boland as pitcher and Hastings as catcher played their usual good game. McGillis played a splendid game on short.

STEAMER REPORTED ASHORE
SAN FRANCISCO, Feb. 21.—The steamer "Alaskan," bound from New York to San Francisco, is ashore on the Lower California coast south of San Diego, according to advices received here today. There were no passengers aboard. Meager reports stated that a steamer was standing by ready to give assistance.

THE GLENDALE EVENING NEWS

Published Daily Except Sunday
A. T. COWAN - Publisher and Proprietor
Office of Publication, 139 South Brand Boulevard
PHONE GLENDALE 132

Entered as second-class matter Sept. 12, 1913, at the Postoffice at Los Angeles, Cal., under the Act of March 3, 1879.
SUBSCRIPTION RATE—Single Copy, 5 Cents; One Year, \$5.00; Six Months, \$2.75; Three Months, \$1.40; Two Months, \$1.00; One Month, 60c

GLENDALE, CALIFORNIA, MONDAY, FEBRUARY 21, 1921

ANNOUNCEMENTS

PROPERTY OWNERS, ATTENTION
An application of our ASBESTOS FIBER LIQUID CEMENT will make your old roof waterproof for ten years. One coat equals the thickness of five coats of paint. Guaranteed not to crack or peel. WRITTEN GUARANTEE FOR TEN YEARS WITH EACH ORDER. Made in colors—Black, Red, Green. Work promptly attended to. Estimates cheerfully given. FOX-WOODS LUMBER CO., 714 East California Avenue, Glendale, Cal. Phone 10.

NOTICE TO THE PUBLIC
This is to certify that Harry E. Bartran, who has been doing business at 801 North Central Avenue, Glendale, California, announces to the public that he will not be responsible for debts other than those contracted by himself.
HARRY E. BARTRAN,
Glendale, California, Feb. 17, 1921.

ELEMENTARY THEOSOPHY STUDY CLASS
Every Friday evening, 7:30, Carpenter's Hall, Central Building, Broadway. Everybody welcome.

MASONIC MEETING
Unity Lodge No. 368, F. & A. M., Glendale, Calif., will have a smoker and good fellowship meeting at Masonic Temple, Wednesday, February 23, at 7:30 p. m.
Judge Robert T. Linney, an able and eloquent speaker under the auspices of the Masonic Education Committee of the Grand Lodge, will speak on "Masonic Citizenship."
All members and sojourning Master Masons are requested to attend. (Signed) FREDERICK BAKER, Chairman Masonic Education Committee.

CLASSIFIED ADS.

First Insertion—Minimum charge 30 cents including four lines counting six words to the line. Additional lines 5 cents per line.
Subsequent consecutive insertions—5 cents per line. Minimum 15c.
Twenty cents additional for first insertion if cash does not accompany order.
Office Hours—3:30 a. m. to 9:30 p. m. except Sunday.
139 S. Brand Blvd.
Phone Glendale 132

FOR SALE

REAL ESTATE
FOR SALE—New bungalow, 4 large rooms, breakfast nook, garage, all conveniences. 515 Fairmont, price \$4200, terms. Owner, 335 Patterson. Phone Glendale 417. Courtesy to agents.

NOTICE TO AGENTS
House at 512 Vine street off the market. Mrs. E. G. Carlson.

PLEASE READ CAREFULLY
It is pitiful to face the many people every day looking for small places to rent who are willing to pay a very reasonable price for same, and to think that we have several small places for sale as low as \$2300 up to \$3500 that can be purchased on long terms, that will produce an attractive revenue from the investment. Why not buy one or two of these and let them pay themselves out?
This is good logic; investigate at once.
Hart Realty Co.
120 North Brand

EXPECT to move about February 22 and am offering my home at a very low figure, strictly modern, up to date, 2 story house, furnace, automatic heater, newly decorated, hardwood floors throughout. See owner, 411 North Central Avenue. Glendale 2175-W.

WE HAVE GOOD HOMES for sale in all parts of the city. Always ready to show our patrons around.
LEE & HANNAH THOMAS
123 North Brand

FOR SALE—The nicest little four room modern in Glendale. Beautiful built-in features, breakfast nook, very large rooms, exquisite design. Garage. South front. Reasonable cash handles. Phone Glendale 1104-W.

FOR SALE—Before buying, look at 1002 South Central, corner Acacia, lot 86x23 1/2, with 8 room house, hardwood floors, built-in features. At big bargain or will sell rear part 80x86 with good garage 20x20.

FOR SALE BY OWNER—Six room modern bungalow, \$500 cash, \$40 monthly. 1505 South Glendale Avenue. Immediate possession.

FOR SALE—Beautiful new 5 and 6 room colonial houses, ready to move right in, on 56x150 ft. lots, 20 ft. alley. They have all modern built-in features, hardwood door panels, oak floors, woodwork finished in ivory, walls covered with beautiful imported paper. Everything first class and at prices that can not be duplicated. Call for H. J. Eggers, at Glendale Sanitarium, or phone Glendale 2.

SANTA MONICA
Elegantly finished, modernized adobe of Spanish design, built and for sale by owner, in best residence section. Be sure to inspect this property before purchasing. 1023 Seventh, Santa Monica.

FOR SALE—New two room building, partly furnished, \$1700, \$100 down, \$25 per month.
Burton & Chandler
Glendale 2330. 133 South Brand

A PLACE TO LIVE
2 room garage-bungalow, large lot, only \$1050. Act quick.
Hart Realty Co.,
120 N. Brand.

WE AGAIN REPEAT, "NOW IS THE TIME TO BUY" AND HERE ARE THREE UNUSUAL BUYS
First: We have a nine room modern home, just off Broadway and business center. Maple hardwood throughout. Sleeping porches and many extra features; beautiful palms in front. Can be made into three apartments and a nice revenue derived from same. \$7500. Be sure and see this.
Also a five room modern, close-in on corner, with garage, shade trees and lawn, for the special price of \$3250. Nothing to prevent this from being a very frugal investment.
Third: A new, modern, five room bungalow, with garage, hardwood floors, kitchen, beautiful bath fixtures. Lovely French doors and buffet. Never been occupied, but owner has just taken this place in trade, so that we may offer it for the special price of \$4500, on terms of \$1250 down, balance easy.
HART REALTY CO.
120 North Brand

FOR SALE—Strictly modern four room bungalow, specially well built, all modern built-in features, including built-in bed. An ideal home, priced right, \$4000, easy terms. E. N. Smith, 304 E. Broadway.

FOR SALE—Strictly modern 8 room bungalow, living room, dining room, den, breakfast room, kitchen, 2 bedrooms and sleeping porch. All built-in features, oak floors, three fireplaces, two fitted for gas; substantial cement work, garage, shrubbery and fruit. Call owner, Glendale 2093-W.

FOR SALE—Just completed, high class 5 room bungalow and garage. Pioneer Drive, near Central. The best buy in Glendale. Truitt, 317 West Doran. Phone 1283-M.

BONDS

will be accepted at par on a good home of six rooms. Priced right. Modern, clean and vacant. 3 lots, W. Milford, each 25x140. \$250
NOTICE TO BUYERS AND AGENTS
10 acres, Lankershim, \$5000
40 Acres, Lankershim, water, house, \$10,000
The best 6-room house in Glendale, vacant. Modern, garage, \$6,000.
For Sale—One Overland, \$250, terms; 1 trailer, \$50.
Immediate possession. Real snaps These real homes will sell quickly to real buyers. See us today. Plenty of other property. No trouble to show you the best bargains going. See EZRA P. PARKER, 117 S. Brand boulevard. Telephone Glendale 40.

FIVE rooms, specially constructed, modern bungalow, near Central; price \$5600.
5 room, new colonial, hardwood floors throughout, deep lot, garage; special at \$5800.
New and modern stucco, \$6700.
Hart Realty Co. 120 North Brand
READY for occupancy, new four room house in East Glendale near car line. \$500, \$35 a month, \$3800 lowest cash price. Box 356 Glendale Evening News.

FOR SALE—Very handsome six room and sleeping porch modern bungalow. Instantaneous hot water, mirror doors, floor furnace, fireplace, breakfast room, cobblestone trim, garage, store house, profusion of flowers. Complete and ideal. Phone owner, Glendale 1104-W.

FOR SALE—Modern bungalow, 5 rooms and sleeping porch, garage, 16 fruit trees, grapes, berries, lot 50x182, chicken corrals, 24 chickens. Owner on premises. 441 W. Windsor Road.

FOR SALE OR EXCHANGE—Attractive 5 room bungalow on Boynton street, sleeping porch, garage, cellar, fruit, \$3800, terms. Will exchange for country home with some land. Owner, 461 West Harvard street, or phone Glendale 1253-J after 5 p. m.

FOR SALE—New three room cottage and garage on large lot 63x137, young fruit trees, price \$2600, \$600 down. Will take less if right party. balance \$25 per month. Party going east. Phone Glendale 1646-J or call at 1424 East California Avenue.

BUSINESS OPPORTUNITIES

FOR SALE—Well established transfer business, one contract brings in over \$200 per month. Business has been running from \$350 to \$500 per month. Party forced to change location. \$950 buys truck in good condition, office good will and all. See Davenport & Strother
Glendale 1011 217 South Brand
FOR SALE—Thriving business having sole rights for Glendale, activity and ability. To drive Ford essential. Price \$2500. Phone Glendale 464-J.

POULTRY AND STOCK

FOR SALE—Thoroughbred White Wyandotte hatching eggs, \$2 per dozen, also thoroughbred White Wyandotte cockerels for breeding, \$7. 451 Patterson Ave.
FOR SALE—Black Orpington laying hens, movable pens, chicken wire, gas heater, hatching eggs, 200 East Palmer Avenue, Glendale 396-J.
FOR SALE—Exhibition quality Reds, trapezoid bred-to-lay breeding cockerels. Hatching eggs from pens headed by third prize cockerel livestock show 1920 and his sire; \$3 per setting, two for \$5. An extra choice pen \$5 per setting, two for \$8.50. Visitors welcome. 335 West Broadway.

FOR SALE—19 Rhoads Island Red hens, \$2 each, lawn mower, hose and garden tools; also air tight heater. Call 509 E. Palmer Ave.
FOR SALE—Rabbit hutches, chicken coops, wire, old lumber, only \$25, big bargain. 720 N. Louise St.

FOR SALE—Two fine breeding pens of Anconas and Leghorns. Registered doe kid and milk goat. Rhode Island Red hatching eggs, \$1.50 per setting. Glendale 458-J. 1239 East Harvard.

FURNITURE

FOR SALE—Sanitary folding couch. Call evenings. 317 North Brand boulevard.
FOR SALE—White iron bed complete, \$15; dresser \$15, oak dining set \$30, \$x10 rug \$10, 9x12 rug \$20 323 Hawthorne St.
GLENDALE FURNITURE STORE
New and used furniture for sale. We buy everything. Repairing and refinishing a specialty. Call Glendale 20-W. Merrick & Walker, 606-608 East Broadway.

For Sale—Furniture
Heal & King
Glendale 847
246 N. Brand
FOR SALE—White mission twin bed, also one cot. 1009 East Orange Grove Ave.

MISCELLANEOUS

LANE & COBB
Contractors and builders. Can start work at once. Phone Glendale 600-J.
HOUSE painting and paper hanging. Our prices and material are the best; let us prove it. MUNGER BROS. Phone Glendale 908.

HEMSTITCHING and Piecing Attachment; works on all sewing machines. Price \$2. Personal checks, 10c extra, Light's Mail Order House, Box 127, Birmingham, Ala. W. N. U. Denver, No. 6, 1921.

LAUNDRY WORK carefully done. LUX used. 20 pieces rough dry for \$1. 919 Orange Grove Ave., Glendale 1636-J.

WANTED

SINGER AGENCY
Sewing machines repaired, rented and sold on easy terms.
106 E. Broadway Glendale 1444-J
WANTED—Electric needle specialist would like a few more patrons; will work at the home \$3 an hour. Bertie Christopher, Phone Wilshire 3566. 825 Waterloo Street, Los Angeles.

WANTED—Good, sound, gentle horse to drive and ride; weight about 1050. Phone Glendale 904.
BUILDER AND CONTRACTOR
Your estimates furnished on short notice, free and cheerfully. 413 East Elk. Phone Glendale 532-M.
TEACHER of band and orchestra instruments; mandolin and guitar; anyone wishing instruction call R. E. Bach, Glendale 2216-R.

FRUIT TREES

are selling rapidly but we still have a good line; come and look them over whether ready to buy or not. Always a pleasure to show our stock. Peach trees 35 cents to \$1. Figs, plums, etc., 75 cents to \$1.50.
Glendale Plant & Floral Co.
118 South Brand

GUARANTEED PAINTS

We manufacture, you save half. Wholesale to consumer.
Inside Flat White and Ivory, \$2.00
Outside Paint in All Colors, \$2.25
Outside House Paints, gal., \$2.75
Outside White, \$2.50 and \$3.25
Flat White and Ivory, gal., \$2.75
White and Ivory Enamel, \$3.50
Floor Paints, all colors, gal., \$2.75
Best Grade Tints, lb., \$1.07
House Stains, Roof Cote, gal., \$1.56
60,000 feet of Wall Board
No Seconds
Immediate Delivery
PACIFIC PAINT & SUPPLY CO.
117 1/2 W. Broadway Glendale 656

TO CONTRACTORS AND PLASTERERS
Sand and rock for sale; delivered in Glendale. For prices call Hollywood 607 or 559119.

MOTOR VEHICLES

FOR SALE—Bargain. 16 Republic truck, one ton, lots of power, heavy duty, special engine for heavy work or grades. 27 horse power. Call at Wishart's, 222 E. Colorado, Eagle Rock.
FOR SALE—Good strong trailer. Phone Glendale 417 or call at 335 Patterson.

FOR RENT

FOR RENT—Attractive furnished apartment, private entrance; also large sleeping porch and garage. 827 East Colorado.
WANTED—To share my nicely furnished 4 room bungalow with middle aged lady. Rent reasonable. For information call Glendale 2258-R.
FOR RENT—New, small cottage, furnished, all improvements. 414 East Acacia.
FOR RENT—One sleeping room, connecting bath, private entrance, to men employed. Garage if desired. 247 West Broadway.

FOR RENT—A three room and bath, newly furnished. 317 West Broadway, rear.
FOR RENT—Four room furnished apartment, large rooms, private bath. Call at 724 East Broadway. Phone Glendale 73-J.

FOR RENT—Room for one or two gentlemen, garage if desired. 1122 S. Central Ave.
FOR RENT—Room and garage; breakfast if desired. Phone Glendale 573.

FOR RENT—Large front rooms. 205 North Glendale.
FOR RENT—Four furnished rooms, garage, and washing machine. 1115 S. San Fernando Road, Phone Glendale 660-J.

FOR RENT OR SALE—Four room bungalow, with garage, 414 West Park Avenue.
FOR RENT—Furnished house, also 1 sleeping room. Call H. H. Wheeler, Glendale 1024-M, 560 E. Maple St.

FOR RENT—To adults about 1st of March, upstairs apartment, 4 rooms and porch; partly furnished, \$400 completely furnished, \$45. Phone Glendale 233-R.

FOR RENT—Elegant suite of 4 rooms, adapted for 2 doctors, in Glendale Theatre building.
H. L. Miller Co.
853 109 South Brand

FOR RENT—Large front office room, also an apartment. Phone Glendale 957-J.
FOR RENT—Four rooms, garage, and washing machine. 1118 South San Fernando Road. Phone Glendale 660-J.

For Rent
Furnished or unfurnished houses, \$60 to \$125 per month.
Pollack & George,
107 W. Broadway.

FOR RENT—Small office spaces for rent at 107 West Broadway. Call between 10 and 4 o'clock, or phone Glendale 101-J.

FOR RENT—Furnished 3 room apartment, also furnished sleeping room at 745 E. Wilson.
FOR RENT—Two furnished sleeping rooms, also garage. Glendale 390-W, 47 West Windsor Road.

FOR RENT—Furnished bungalow, no objection to children. \$125 per month. 151 Patterson Avenue, Glendale 203-M.

MISCELLANEOUS

LANE & COBB
Contractors and builders. Can start work at once. Phone Glendale 600-J.
HOUSE painting and paper hanging. Our prices and material are the best; let us prove it. MUNGER BROS. Phone Glendale 908.

HEMSTITCHING and Piecing Attachment; works on all sewing machines. Price \$2. Personal checks, 10c extra, Light's Mail Order House, Box 127, Birmingham, Ala. W. N. U. Denver, No. 6, 1921.

LAUNDRY WORK carefully done. LUX used. 20 pieces rough dry for \$1. 919 Orange Grove Ave., Glendale 1636-J.

WANTED

SINGER AGENCY
Sewing machines repaired, rented and sold on easy terms.
106 E. Broadway Glendale 1444-J
WANTED—Electric needle specialist would like a few more patrons; will work at the home \$3 an hour. Bertie Christopher, Phone Wilshire 3566. 825 Waterloo Street, Los Angeles.

WANTED—Good, sound, gentle horse to drive and ride; weight about 1050. Phone Glendale 904.
BUILDER AND CONTRACTOR
Your estimates furnished on short notice, free and cheerfully. 413 East Elk. Phone Glendale 532-M.
TEACHER of band and orchestra instruments; mandolin and guitar; anyone wishing instruction call R. E. Bach, Glendale 2216-R.

LOST

LOST—Army overcoat off truck Monday, somewhere in Glendale. Return to R. W. Jessup, Glendale 421-W.
LOST—Elk pin on East Broadway between Verdugo Road and Eagle Rock car line. Reward for return to Public Service Department, City Hall.
LOST—Ivory pin, hand shaped with flowers in hand, Thursday, on Glendale Ave. between Broadway and Lomita. Valued as keepsake. Call Glendale 1215.

WANTED

Girl wishes to assist with housework and care for children. Address Box 354, Evening News.
WHAT have you for live young married man with Ford touring car. Address Box 353, Glendale Evening News.

Wanted At Once
From private party, clean furniture and rugs; will pay cash. Phone 23986 Los Angeles, or Box 322, Glendale Evening News.
WANTED—By business woman, one or two furnished or unfurnished rooms or small apartment, close in. By March 1. Glendale 2170-J.

WINDOWS CLEANED

IF you want painting, papering or decorating done right, call 835-W. S.B. Johnston & Son, 536 Patterson.
WANTED—4 to 6 room modern bungalow, unfurnished or partly furnished, rent around \$35, by family of three. Will lease. Address 315 Walgrove Apartments, Los Angeles, or phone Broadway 462 and ask for Mr. Forster.

WANTED TO RENT—Four or five rooms in south part of Glendale preferred. Phone Glendale 2230.
WANTED—Have a cash buyer for 1-2 acre or 100 ft. frontage with variety fruit, prefer without building. E. H. Kerker
Glendale 108 136 North Brand

PAINTING, paperhanging and carpenter work. Phone Glendale 1004-W.
WANTED—Wicker or reed baby carriage, reversible gear, reasonable price. Call Glendale 700-W.

PAPERHANGING and painting by the room or job by an expert mechanic. Phone Glendale 1585-M.
WANTED—An experienced girl to wait on table. Apply 128 S. Brand.

WANTED—Carpenter work by contract by first class mechanics, finish preferred. Phone Glendale 716-W.
WANTED—Experienced saleslady would like position in Glendale, grocery or department store. Box 355, Evening News.

WANTED—Resident district manager for Ancient Order United Workmen, lady or gentleman. Attractive income-producing contract. E. T. Lisle, State Manager, Ramona Hall, 349 South Hill Street, Los Angeles.

WANTED—To lease, a location on Brand boulevard, between Harvard and Wilson or between Broadway and Maryland, space 20x25 ft. or larger to be used for lunch room or smokers' den by a Glendale resident. Address Box 328, Glendale Evening News.

CARPENTER JOBBING—118 So. Kenwood street. Phone evenings, Glendale 511-J. Good references.

WANTED—Permanent position typing, clerking, cashier or other work. Phone Glendale 1287-J, or 1210 S. Glendale Ave.

SAFETY FIRST—Insure your automobile against everything with Lee Thomas, 123 North Brand boulevard.

EXCHANGE—21 acres, half in oranges and half in lemons, plenty of water, located near San Bernardino for property in or around Glendale. Burton & Chandler
Glendale 2230. 133 S. Brand.

MOVING AND GENERAL TRUCKING. Beach and country trips; storage. Laguna Transfer Co. 104-A North Brand, Phone Glendale 1927. Night phone Glendale 722.

WILL DO plain sewing at 412 1/2 W. Cypress.
WANTED—Lot from owner, cash payment, balance monthly payments. Box 348, Evening News.

MONEY WANTED
We have several clients who desire loans. Good safe investment. Phone Glendale 51. Bentley-Schoeneman Lumber Company.

WANTED—Man to mix plaster, \$5 per day. 110 North Cedar.
FIRST CLASS auto mechanic will call at your home and repair your car; will give estimate free of charge. Phone Glendale 1081-W between 7 a. m. and 6 p. m., or call at 417 North Maryland.

PAINTING—For anything in this line see F. H. Dunbar. 314 Los Feliz Road.
WANTED—Work by day, week or month, gardening and lawn, all kinds of jobs by a handy man. Phone Glendale 2197-J.

WANT Glendale acreage for Long Beach income. (Two houses). Rose Real Estate, 451 Two Avenue, Long Beach, Cal.

WANTED—Board in Glendale for an eight-year-old girl. Call at the White Inn and ask for Mrs. Burwell.

CAN START THE PAINTING or decorating on your house any time. Have several extra good painters and paper-hangers. Lexie H. Allison, 416 West Maple. Phone Glendale 834.

WANTED TO RENT—By April 1 to 15, by reliable party, unfurnished 6 room modern house or bungalow, will lease one year. Box 352, Glendale Evening News.

WRITE YOUR fire insurance in a Board company with Lee Thomas, 123 North Brand.

WANTED—Wardrobe trunk in good condition; price must be reasonable. Phone Glendale 608-J.

MEN WANTED—Hats cleaned, blocked and made to look like new by expert hatter. Ask Fred B. Walton, with H. S. Webb & Co., Halberdasher.

WANTED—At once, 4 room furnished bungalow, close in, permanent, not more than \$50. Phone Glendale 236-M.

LOST

LOST—Army overcoat off truck Monday, somewhere in Glendale. Return to R. W. Jessup, Glendale 421-W.
LOST—Elk pin on East Broadway between Verdugo Road and Eagle Rock car line. Reward for return to Public Service Department, City Hall.
LOST—Ivory pin, hand shaped with flowers in hand, Thursday, on Glendale Ave. between Broadway and Lomita. Valued as keepsake. Call Glendale 1215.

STATISTICAL FACTS

MATTERS OF INTEREST WHICH ARE BASIS FOR QUESTIONS
MANY TIMES DAILY
Believing that the many new residents of Glendale are vitally interested in the statistical facts concerning the city of their adoption, The Evening News presents below a few concrete items of this kind. These all pertain to matters concerning which many inquiries are made by newcomers:

Table with 2 columns: Item, Value. Population, 1910: 2,742; Population, 1920: 13,356; Population, 1921: 15,657; Per cent of increase: 393; Area in square miles: 11.7; Miles of paved streets: 60; Miles of unpaved streets: 30.

Assessed Valuation of Property
Last fiscal year: \$5,504,481
Present fiscal year: 9,384,525
Increase: 3,880,044

Altitude at Various Points
Brand and San Fernando: 440
Broadway and San Fernando: 470
Brand and Broadway: 540
City Hall: 560
Broadway and Glendale: 565
Brand and Dryden: 570
Brand and Mountain: 600
Brand View Ave. and Kennel Road: 610
Broadway and Eagle Rock Road: 617
Piedmont Park: 620
Grand View Ave. and Mountain St.: 785
Canada Blvd., north end: 960
North city limits and Verdugo Road: 1,150

Building Permits Since Jan. 1, 1920
January: 155,531
February: 144,715
March: 282,872
April: 125,612
May: 101,429
June: 202,471
July: 203,970
August: 517,278
September: 436,767
October: 326,223
November: 332,141
December: 154,746
Total for year 1919: 587,015
Year 1920: 3,136,664
January, 1921: 143,783
February, 1921, to date: 112,805
Year 1921, to date: 256,588

Water and Light Connections
Number of electric light connections: 5,505
Number water connections: 4,886
Gas connections: 5,200

Schools
Glendale Union High enrollment: 1,013
(Pincipal and 42 instructors)
Grammar Schools: Enrollment fourth week Same period last year. (Principal, 8 supervisors, 68 teachers)

Public Library
Main library, books: 10,925
Branch library, books: 3,669

Trains per day
Glendale to L. A.: 60
L. A. to Glendale: 60
Glendale to Burbank: 25
Burbank to Glendale: 25
Glendale to Eagle Rock: 30
Eagle Rock to Glendale: 30
Glendale to La Crescenta: 19
La Crescenta to Glendale: 19

Fraternities
Elks lodge: 1,500
Masonic: 325
Blue lodge: 125
Chapter R. A. M.: 90
Commandery, Knights Templar: 250
Eastern Star: 250
Odd Fellows: Not stated
Rebeksahs: 60
Knights of Pythias: 120
Pythian Sisters: 50
G. A. R.: 75
Sons of Veterans: 35
W. R. C.: 200
Daughters of Veterans: 40
D. A. R. of Columbus: 100
Knights of Columbus: 240
American Legion: 68
Women's Auxiliary: 500
Tuesday Afternoon Club: 27
P. E. O.: 42
Chapter B. A.: 26
Chapter L.: 26
Chapter A. H.: 26
W. C. T. U.: 15

Churches
First Presbyterian: 750
Tropico Presbyterian: 120
First Methodist: 700
West Glendale Methodist: 120
Casa Verdugo Methodist: 90
Central Avenue Methodist: 130
Christian: 420
Baptist: 400
Congregational: 214
Seventh-day Adventist: 400
Christian Science: Not stated
Episcopal: 250
Catholic: 700
Christian and Missionary Alliance: 50
Lutheran: 50

Postal Statistics
Total receipts year ending June 30, 1919: \$22,411.82
For the year ending June 30, 1920: 41,658.65
Increase (per cent): 85.88
Money orders issued for year ending June 30, 1920: 9,624
Letters registered: 4,042
Change of address orders filed: 20,240
Letters with no street address marked up for delivery by carriers: 95,670

FOR EXCHANGE

TO TRADE—Six room bungalow on lot 50x300 ft. family orchard, rose garden, tennis court, garage. Want seven rooms or larger on small lot. Box 329, Evening News.

FOR EXCHANGE—A homestead of 160 acres near Victorville, Calif., for auto or lot in Glendale. 312 North Isabel street. Glendale 2274-W.

FOR TRADE—Want to trade equity in 5 room bungalow with

NOTED WOLF DEAD

WASHINGTON—The famous "Custer Wolf" is dead. Shorn of statistics, it is a story of animal savagery and cunning unexcelled even in fiction. For nine years, the wolf terrorized ranches 100 miles about Custer; N. D., and escaped hunters and trappers with such uncanny elusiveness that legends of the range country endowed him with a monstrous craftiness they said could come only of a sinister mating of wolf and mountain lion. Department reports credited him with slaying \$25,000 worth of livestock. He was here one night, and tomorrow, a hundred miles across the hills; he slaughtered a dozen cattle, mutilating them with wanton lustfulness—a leg broken, a tail bitten off. The price on his head was raised from \$100 to \$500.

Bears Charmed Life
Hunters shot at him only to miss or have their pieces fail. He carried away traps and skinned poison bait disdainfully. Riders said he bore a charmed life, and they fingered their belts apprehensively at his ghoulish waltz out of the night. Once stockmen thought they had located him and called a round-up. The wolf escaped.

Four years ago, he lost his mate. He never took another. Finally, in March last year, H. P. Williams, government hunter, was ordered to the trail and not to return without the wolf. Williams scented his shoes and began laying traps. The old wolf, lured in great excitement by what he thought a possible mate, went to the Pelgar mountains, cleared out two old dens and made a new one which ran 50 feet back under the hill.

On April 1, Williams sighted his quarry only to learn of new difficulties. The wolf had enlisted two coyotes as guards, one traveling 100 to 200 yards on either flank. Repeatedly baffled by the guards, Williams shot them.

FIRE INSURANCE!

Seven A-1 Good Companies
Independent—Lowest Rates
Also Auto Insurance, Com-
pensation Insurance, Earth-
quake & Burglar Insurance

H. J. MILLER CO.
109 S. Brand Glendale 853



SHOWS DAILY
1, 3, 5, 7 and 9 p. m.

TONIGHT

WILL ROGERS IN
THE GUILF OF WOMEN
Also two-part comedy, "The Kick in High Life"

TOMORROW
ROSCOE 'FATTY' ARBUCKLE
in
BREWSTER'S MILLIONS



Matinee Daily.....2:30
Evening.....7:00 and 9:00

TODAY
The Hundredth Chance

(Made in England)
Featuring
Dennis Neilson Terry
(Son of Ellen Terry)
and Mary Glynn
Latest Pathe News
Topics of the Day
Monte Banks in
"His Naughty Night"
Featuring
Southland's Greatest
Theatre Organ
"My Rosary"
Mme. Clement
Tomorrow
George Barr McEntcheon's
Story, "Sherry"

PERSONALS

Henry A. Goodwin of 304 East Windsor Road is reported suffering from pneumonia.

Mr. and Mrs. O. A. Lane and Mrs. Sarah J. Lane of 209 East Chestnut street had as their Sunday guest Mrs. Goodwin of Chicago.

Born this morning to Mr. and Mrs. Harry H. Parker of 712 North Louise street, a baby girl. Mother and daughter are reported doing nicely.

Mr. and Mrs. H. F. Croft of 1753 Gardena avenue had as their Wednesday evening dinner guest Mrs. H. L. Miller of Chicago, Illinois, who is spending the winter in California.

Mr. and Mrs. W. H. Reynolds of 2000 Kenneth Road entertained R. E. Beers and family of Anaheim as their guests Sunday. Mr. Beers is Mrs. Reynolds' brother.

Mrs. Emma Johnson of Northwood, Ia., and Mrs. Eva Kaasa of San Diego were entertained Sunday at the home of Mr. and Mrs. Ed Cleophas, 337 North Central avenue.

Mr. and Mrs. O. O. Clark of 346 North Louise street spent Saturday at their cabin at Camp Baldy. Sunday they visited the Orange show at San Bernardino and called on friends at Redlands.

W. C. Raley, auditor of the Pacific Union Conference here, returned to this city yesterday after several weeks at the St. Helena sanitarium, where he audited the books of that institution.

C. E. Bryson and family, who are residents of Long Beach, were in Glendale yesterday looking for a furnished house in order to make their home here. Mr. Bryson is engaged in electrical work in Los Angeles.

Mrs. William Tatham and her son Norman of San Bernardino and Mr. and Mrs. John Goetz of 339 West Garfield were luncheon guests Sunday of Mr. and Mrs. Albert Cornwell of 343 North Central avenue.

Miss Helen Wallace of 141 South Cedar street, who specialized in commercial work while attending the University of California, southern branch, has accepted a position in a school at Ventura, and left this morning to begin her new work.

Mr. and Mrs. A. P. McBoyle of 369 Milford had as their guest for the week-end Mrs. Adam Brust of Greenville, Idaho. Sunday Mr. and Mrs. McBoyle and Mrs. Brust attended a Greenville picnic at Long Beach.

Charles Geisz and John Geisz, brother and nephew of Mrs. Susie Weisling of 621 East Colorado street, will leave Saturday, February 26, for their home in Evansville, Ind., after two months' visit with friends and relatives in southern California.

Misses Kathryn and Amelia Weisling of 621 East Colorado street motored to Long Beach Sunday to attend the First Christian church and also to visit with friends from St. Louis, who will be teachers in the school of methods to be held in Long Beach this week.

Mr. and Mrs. Harry Vallant, formerly of Glendale but now of Lennox, and Mrs. Irene Breach of Bloomington, Ill., who is spending the winter with her daughter, Mrs. Vallant,

were the Sunday evening dinner guests of Mr. and Mrs. C. J. Orff of 465 Milford street.

F. W. Griggs, sales manager of the Fred H. French Paper Company of Los Angeles, is again a resident of Glendale. For the past year he has been making his home in Alhambra, but recently he secured a home at 1326 Valley View. He likes Glendale and, having lived here before, is glad to return.

Professor and Mrs. W. W. Ruble of 420 North Isabel street left Glendale Sunday afternoon for Alexandria, Minn., to accompany the body of Mrs. Sarah M. Chapman, mother of Mrs. Ruble, to her last resting place. Mrs. Chapman died Friday. Interment will be in the family plot at the Alexandria cemetery beside the body of her husband.

Frank Guillemin, 514 South Glendale avenue, is a recent arrival in Glendale, but he likes the city and, he says, he is planning to make investments here. Mr. Guillemin and his family came to Glendale from Portland. He declares that, in his opinion, the southland's growth has only begun and, he predicts, the development of this valley has just commenced.

Mr. and Mrs. H. E. Graham of Pittsburg, Pennsylvania, who have been visiting their parents, Mr. and Mrs. J. W. Graham of 364 West Broadway, and Mrs. J. H. Orth and daughter Marcella of 153 South Central avenue spent Wednesday and Thursday in San Diego. Mr. and Mrs. H. E. Graham left Saturday for the east. They will make their home in New York City, where Mr. Graham has made new business connections.

The Soangeta'ha Campfire girls held an informal tea Thursday afternoon at the home of Emma Laura Cooper as a welcome to the new guardian of the fire, Mrs. Viola Andrews, and as a farewell to the old, Miss Mary Wilkins. The girls are sorry to lose Miss Wilkins as she has been so faithful and interested in the work. Mrs. Andrews, who has had fires before, spoke to the girls about their work. Members present were Veda Knapp, assistant guardian; Alice Farrow, president; Emma Laura Cooper, secretary; Mildred Thompson, treasurer; Margaret Wilson, Sarah Allan, Flora Mae McGee, Alice Mercer and Katherine Guthrie.

Mrs. Jesse Joseph of 201 West Lexington Drive received word Friday morning of the critical illness of her brother, Charles Horton, of Iowa, who underwent a serious major operation. Mrs. Joseph has since then received word that his condition is somewhat improved.

Varied Program Is At Glendale Theatre

Patrons of the Glendale Theatre last night enjoyed the Stoll Film corporation's picturization of Ethel M. Dell's novel, "The Hundredth Chance," and Monte Banks in a hilarious comedy film entitled "His Naughty Night." News views and other features added to the attractiveness of the program while in the afternoon Madame Clement gave the customary organ concert which drew an enthusiastic audience of music-lovers.

Sunday's program is shown again this afternoon and tonight at the Glendale Theatre.

CROP ACREAGE AND PRICES

In view of the plans being formulated in this country to reduce the acreage of cotton this year and of the decrees of the Egyptian government limiting the area of each estate cultivated in cotton to a third of the total, the question whether there is any direct relation between the volume of a crop and its price becomes very pertinent.

If the purchasing power of money remained constant, prices would rise when crops were small, and fall when they were large. But since the purchasing power of money fluctuates, the price of farm products depends on many other factors than volume of production.

For example, in 1900 the production of twelve main crops was 7 per cent greater than in 1896, but the average prices were 36 per cent higher. This is due to the fact that in 1896 prices were at their lowest ebb in a cycle of depression, whereas in 1900 business had taken an upward swing. For the same reason, although production was 54 per cent greater in 1919 than in 1901, prices in 1919 were 169 per cent higher.

On the other hand, while the yield of these crops in 1920 was 4.9 per cent greater than in 1919, their average prices were 43 per cent less. In view of the large carryover of cotton a reduction of acreage may be expected, but past experience shows that current price levels of all commodities is, after all, the important factor in determining what the farmer is to receive.

FOREIGN MARKET IS HURT

As a result of an increase in the French production and improvement in the quantity of automobile tires, the demand for American-made tires has almost completely disappeared from the market in that country.

INVENTS NEW AUTO JACK

A resident of New Zealand is the inventor of an automobile jack consisting of base and head plates connected by toggle joint arms that are brought together with a screw terminating in a crank.

AT MASQUERADE

LARGE CROWD IS PRESENT AT BALL SATURDAY NIGHT BY ELKS' LODGE

(Continued from Page 1)
dressed as a French waiter. Miss Marie Hearnshaw won the prize for the most original juvenile costume. She wore a red tarlatan dress with a ribbon fringe over the skirt. At the end of each ribbon was attached a star, her costume representing the Stars and Stripes.

Decorations and Amusements
The ballroom was decorated with ropes of red draped from the center of the room to all corners, red and orange pom poms, and tinsel. During the evening serpentine and horns were passed to the dancers. Splendid music was furnished by the Elks' orchestra. Punch was served throughout the evening.

At 10 o'clock fancy dances were given by little Martelle and Radora McKee, Constance and Marguerite Steelman and Estella Sooy. These tiny tots were dressed as fairies, and, indeed, they were as pretty as fairies are supposed to be.

Mr. Drago gave an eccentric Yiddish dance, his costume fitting the part to perfection.

Delicious refreshments of French pastry and brick ice-cream were served in the banquet room at 10:30 o'clock. The customary 11 o'clock toast was given by John Fanset, exalted ruler, after which dancing continued until midnight.

Committee in Charge

The committee in charge of this successful dance was under the chairmanship of J. F. Hearnshaw and consisted of J. E. Bellue, Ed Wolbach, H. L. Whaley, Owen Emery, Walter Jones and Emil Kiefer, to whom much credit is due. This dance, which was one of the jolliest ever given by the local lodge, will stand out prominently in the annals of Glendale Elks' social affairs.

The next dance will be a St. Patrick's dance to be given March 19.

Will Rogers Feature For Palace Grand

Will Rogers in his latest comedy drama, "Guile of Women," is the feature film at the Palace Grand theatre tonight. In addition there will be a popular two-reel Henry Lehrman comedy entitled "The Kick in High Life" as well as a news reel. All who know Rogers and Lehrman productions will anticipate the enjoyment to be had at the continuous performance at the Palace Grand this afternoon and tonight.

Madame Sherry will be the overture played by Jensen's Palace Grand orchestra.

Income Tax

—Phone Glendale 853—

January 25 — February 23 — March 8

Returns—Claims—Adjustments. W. H. Schmick, Income Tax Advisor. Formerly with Federal Income Tax Unit.

109 South Brand Blvd.

Glendale Plumbing Co.

ENGINEERS
SANITARY AND HEATING
For Service and Satisfaction
Phone Glendale 885 :::: 134 S. Orange St.

Banking By Telephone

Don't Forget—

that this bank has a telephone. If you desire any information that a well equipped bank could give you, call the

First National Bank

You will find that prompt and courteous attention will be paid to your inquiry.

C. C. Cooper, President

R. F. Kitterman, Cashier

GENTLEMEN— We Want To Thank You—

OUR OPENING WAS A HUGE SUCCESS

Personal and business friends visited us by the score and everybody seemed to be pleased with our efforts to establish in Glendale a

Quality Store for Men

AND BOYS

America's leading lines of nationally advertised furnishings will be featured and "if it's new" you'll find it here.

Popular Prices for Exclusive Merchandise

will be the foundation stones of our business
COME IN AND GET ACQUAINTED

ROBINSON'S MEN'S SHOP

116-A South Brand Boulevard



A Special Purchase on Sale

Friday, February 25

On that day we will put on sale 1500 yards natural

Aeroplan Linen

at **49^c** yd.

This is Standard Aeroplan Linen—very strong and a cloth most suitable for
Dresses, Skirts, Waists, Rompers, Pillows, Scarfs and Centers

Order early as this will sell out quickly at this special price.

IRISH LINEN STORE

117 North Brand Boulevard

RED DOTS

Indicate Monarch Ads

Monarch Ads indicate matters of interest to you. We call your attention today to

Thompson's Graphite Penetrating Oil

The miracle worker for springs and squeaks. Rust removing. Rust preventing.

Monarch Auto Supply Co.

121 S. Brand

Glendale 679

Glendale Home Burglarized

Such headlines in the newspapers are becoming all too common.

Burglars are becoming too numerous and too bold for the householder's peace of mind when duty or pleasure calls all the members of the family away from home.

Saturday night another Glendale home was robbed.

If It Had Been Your Home, What Then?

If your valuables had been taken would it have meant a total loss to you? Or do you carry

Larger Burglar Insurance?

You can't afford to take a chance when you can purchase burglar insurance at so reasonable a rate as we can sell it to you.

SEE A. L. BAIRD ABOUT IT. HE'S AN INSURANCE SPECIALIST

Roy L. Kent Co.

130 South Brand Blvd.

Glendale 408

PROFESSIONAL CARDS

DR. CAROLINE PAINE-JACKMAN
OSTEOPATHIC PHYSICIAN
515 North Kenwood Street
Phone Glen. 655-J

DR. MARLENEE
Optometrist—Optician
RELIABILITY—QUALITY—SERVICE
20 YEARS A SPECIALIST

A. D. Cochran, D. C.
CHIROPRACTOR

If you want the best in the art, call and see me. 112-A East Broadway.

Lee S. Thomas
ATTORNEY AT LAW
123 North Brand

DR. J. P. LUCCOCK
DENTIST
Hours: 9 to 12 and 1 to 5

Dr. Frank N. Arnold
DENTIST
Flower Block, over Glendale Savings Bank, Brand and Broadway.

Glendale Clinical Laboratories
Laboratory Diagnostician
DR. A. GOFF

J. K. GILKERSON
CHIROPRACTOR
CITY OFFICE
1117 VAN NUYS BLDG.

BETTIE D. WEBSTER
TEACHER OF PIANO
Studio 318 W. Harvard

WE KNOW HOW TO DO IT!
Glendale Carpet & Mattress Works
1411 South San Fernando Road

OPEN SUNDAYS
ALL DAY
PURITY BAKERY
718 EAST BROADWAY

Andy's Express
We haul anything at any time
DAY OR NIGHT
Glendale 1901 109 1/2 S. Brand

Plastering Contractor
W. RATH
1216 East California Avenue
Phone 338-J Glendale, Cal.

J. W. HILTON
PLASTERER CONTRACTOR
Phone Glendale 495-W
Res. 719 North Central, Glendale

CESSPOOL DIGGING
Work Promptly Done
Prices Reasonable
L. E. JONES
222 South Verdugo Road

Why Heat With Gas?
Because
High Efficiency
Gas Furnaces
are ECONOMICAL
DURABLE
CLEAN
CONVENIENT
NON-RUSTABLE
NO CEMENT JOINTS

LICENSE NEEDED

DOG COLLECTOR WILL START
MARCH 1 TO TAKE DOGS
NOT PROPERLY TAGGED

March 1—a week from tomorrow—a city dog license collector will be put on the job and owners who have not tagged their fighting or fondled Fidos properly will be seriously requested to attend to the matter.

This action is necessitated by the numerous complaints being received by the police department of canines' depredations.

CATHOLIC CHURCH

BIDS ARE BEING RECEIVED
FOR CONCRETE STRUCTURE
TO BE BUILT HERE

Architect A. C. Martin, according to the Southwest Contractor and Builder, is taking bids for a reinforced concrete church building to be erected for the Holy Family Catholic church at Elk avenue and Everett street in this city.

The new edifice will contain an auditorium to seat 400 people. It will have reinforced concrete walls, cement plastered exterior, tile and composition roofing, pine trim, art glass windows and gas heating.

This improvement by the Roman Catholic bishop will give Glendale one more imposing church structure, of which the city now boasts more than a dozen.

Government Is Now
In Mattress Business

WASHINGTON—Mattresses for the bunks and coal for the bunkers—under the modern facilities provided by the American government, steamships calling at the Panama canal may now obtain both of these items.

"Mattresses to order," built upon specifications which ship captains may send in by wireless, is a new feature of the service which the American authorities have established at Panama.

The canal mattress factory can produce fifty mattresses a day, besides turning out all classes of upholstery, canvass work and draperies. The service is available to vessels at either end of the canal.

The kildeer is found in every part of America.

SIGNAL LIGHTS

BETTER POLICE PROTECTION
IS AFFORDED SOUTHERN
PORTION OF CITY

Greater police protection is now afforded the Tropic district of Glendale with the installation of two red signal lights by the public service department. The lights are located where the patrolman on duty in the southern part of the city can see one or the other at all times.

Quick Action Needed
To Save Much Timber

WASHINGTON—Between 8,000,000 and 9,000,000,000 feet of spruce and hemlock timber in the state of Washington along the notorious spruce railroad, which caused such a scandal in the airplane investigation has been blown down by recent storms and by reason of this fact the opening of the road as a common carrier is asked by the secretary of agriculture.

In a letter to the secretary of war he has asked that this road be opened at once with enough motive power and car equipment to move 1,000,000 feet of lumber a day and that the war department ask congress for an appropriation of \$100,000 to secure the immediate functioning of this road as a common carrier.

In his letter the secretary of agriculture also requests that immediate action be secured as the spruce and hemlock down timber will speedily deteriorate and that the condition of the forest is such as to invite forest fires.

He urges the immediate operation of the road for the purpose of getting out the down timber and to permit the forestry service to cut fire lines and protect the whole surrounding country from pending disaster in the shape of widespread forest fires with no chance to stop the same if it once starts.

HERE'S WEEKLY DON'T

Don't forget that it's poor economy to use nearly worn out casings in the winter time. Slush and mud seep into cuts and cracks and ruin the fabric in short order. A casing good for 2000 miles in dry weather will not last 500 miles now. Better replace the old casings with new ones and save in the long run.

English railways handled more freight and passengers during 1920 than any previous year in their history.

Where Did She Come
From? You've Got One
Guess; Yes, From L. A.

A woman rushed into the public service department of the city hall today and said:

"I want a water meter installed at once. Can I have it, please?"

"Certainly," replied the cashier, "if you will fill out this blank form it will be attended to."

The woman soon had given the required information and added in a resigned tone:

"Now how long will I have to wait?"

"Well, possibly a day or two," was the rejoinder.

"Oh, gracious. I don't want it so soon. Please postpone the installation a week, won't you?"

"Certainly," was the answer, for it was easy to be seen that the woman was from Los Angeles where they are used to waiting for service.

C. E. Neale Back Again

He went, he saw and was conquered.

C. E. Neale, of the firm of Neale & Gregg, hardware merchants, returned Saturday night from his first trip to San Francisco. He accompanied E. J. Jackson of the Burbank Hardware Company and they made the trip north in fourteen hours and returned in twelve hours and forty-five minutes, which isn't so slow.

While in San Francisco they attended the California Retail Hardware Dealers' convention which was held in the Palace hotel. They also visited the bay cities and Mr. Neale declared that San Francisco is the busiest western metropolis he has seen. He was more than pleased with the hospitality extended by the northern wholesalers.

You Little Brown Jug!

Have you ever seen the little brown jug, so popular in England and Scotland, that comes filled with ginger beer? It's an innovation on the Pacific coast and brought out by the Henry-Brown Company, makers of Sierra Club ginger ale and other beverages. Their factory is at Isabel street and Wilson avenue, Glendale.

From New Brighton, Pa., potteries they have received 43,000 of the little brown jugs and already the demand for the popular British drink has proved amazing, according to Francis J. W. Henry of the firm. He states that the drink is a slightly carbonated beverage, made from the pure root of the Jamaica ginger, an especial importation for Sierra products.

This new drink, in addition to their ginger ale and fruit punches, is expected to keep the largest bottling machine on the coast more than busy during the coming summer months. It has a 4000-dozen bottle daily capacity. Visiting days at the model plant are Mondays, Wednesdays and Fridays, although inspection is invited at any time by Mr. Henry.

Controversy Nears
With China, Believed

WASHINGTON—State department officials have expressed confidence that the controversy with China over the threat of that government to cancel the contract of an American company to establish a high power station at Shanghai would be satisfactorily terminated before the new administration comes into office March 4. It was stated that a note characterized as a strong remonstrance had been sent to the Chinese government. Officials here were said to have been convinced that cancellation of the American Federal company's contract would be a direct blow at the open door policy in China.

Investigation by Minister Crane at Peking showed, it was asserted, that China acted under pressure by Great Britain which sought to safeguard a monopolistic concession granted a British concern. The foreign office in London has been informed of the definite stand taken by the United States in its note to the Peking foreign office.

The state department officials would not admit that the note to China was in such manner as to indicate the withdrawal of the American minister in the event China insisted upon canceling the contract, but it is known that the communication was of such character as to cause the Chinese government to regard such action as a probability.

Confidence of officials that the matter will be adjusted satisfactorily appeared to rest on a belief that China would not insist on cancellation of the American company's contract, in view of the support given the company by the government's action in sending the note. It was expected that the Peking government would inform the British that no agreement would be concluded, in view of the American attitude and arguments as to maintaining an open door in China.

LECTURE PLANNED

OLIVER W. STEWART TO TALK
SUNDAY, FEBRUARY 27, AT
LOCAL HIGH SCHOOL

Oliver W. Stewart, former member of the Illinois legislature, will speak under the auspices of the Flying Squadron Foundation in the Glendale high school auditorium Sunday, February 27, at 3 p. m. His subject will be "Our Part in the World Crisis." He discusses the military, industrial, social and economic crisis which, he says, faces the nation today.

Mr. Stewart is president of the Foundation and is declared to be an able speaker. He has been heard here and many may wish to hear him again. The admission free and the public is invited.

Canvasback ducks get all their food by diving.

A Pittsburg Water Heater
The Greatest Achievement of the Pittsburg Water Heater Co.
MEANS NEVER-FAILING HOT WATER IN THE HOME
ADDS TO THE HEALTH AND COMFORT OF THE FAMILY
We shall be glad to install a A HOFFMAN WATER HEATER PITTSBURG WATER HEATER A WARD GAS FLOOR FURNACE
We will be glad to figure your plumbing job—large or small. We guarantee you satisfaction.
E. COKER, The Plumber
121 NORTH BRAND BLVD. GLENDALE 617



THE SMARTEST SPRING MODELS ARRIVING DAILY

YOUR IDEAS CARRIED OUT IN OUR OWN WORK ROOMS

YOU'LL AGREE WITH US THERE'S SOMETHING DISTINCTIVE ABOUT
YARBROUGH MILLINERY
IT'S A LITTLE MORE "CHIC" THAN THE AVERAGE LINES BEING SHOWN \$5.00 to \$25
YARBROUGH HAT SHOP
EXCLUSIVE MILLINERY

SOMETHING DECIDEDLY NEW

and something that every lady in Glendale will thoroughly appreciate.

A Modern School
for an Academic
Course of Designing
and Costume Making

Under our instructions every lady can reproduce the most modish

Coats, Suits, Gowns

from their own materials, insuring styles of individuality at a very great saving.

We want to tell you all about our course of instruction and our rates

Our studio is real convenient—won't you call and investigate?

GLENDALE SCHOOL
OF DESIGNING and
COSTUMING

MARY JANE BREWER
Instructress

Suite 7, Rudy Block Hours 10-4

GRAND VIEW
MEMORIAL PARK

Is peculiarly a Glendale Park now that it is within the incorporated limits of Glendale

Great Improvements Are Being Made

WHICH WILL ADD TO THE

Natural Beauty of the Grounds

Arrangements have been perfected whereby perpetual care will be given without assessment to lot owners. Far from the busy traffic of the world, it will be a beautiful city of peace, where the mourner can experience some feeling of satisfaction and comfort in the environment love has been able to provide for the dear one. Quiet and apart, it is still accessible to those who desire to visit ground made sacred.

When you need our service telephone Glendale 410-W and the manager will at once call upon you.

LOTS ARE PRICED AT REASONABLE FIGURES

Grand View Memorial Park

Telephone Glendale 410-W

Large Number of Glendale People Present at Impressive Ceremonies Held Yesterday

BIG CROWDS VISIT PERFECT HOSPITAL

EXCELLENT PROGRAM IS GIVEN, ALSO WORDS OF PRAISE IN BEHALF OF INSTITUTION

(Continued From Page One)

spot and all Glendale, I feel confident in saying, is with you." Vocal Number is Enjoyed Following the city manager, Dr. H. R. Harrower pleased with a vocal number, "Promise of Life," accompanied by Mrs. Homer Rue. Elder J. W. Christian, president of the Pacific Union Conference, Seventh-day Adventists, was then presented by Chairman Adams and he made a stirring address in which he told of the object of the church. It was, he said, to follow the teachings of Christ—to preach the gospel and heal the sick.

The speaker pointed out that one group in the service was following one line, that of teaching, while the other was working in behalf of the physically afflicted.

He told of the needs of the world and said that those living in comfort and plenty should respond to the call sent out by the destitute. He declared that more lives had been lost since the world war because of hunger and disease than were lost in the war itself and urged that those having comforts listen to the call of those in distress.

Enlistments Are Urged Elder Christian paid a tribute to the training school and pleaded for enlistments in the service. He said that where one is sent forth now, an army should go, for, he declared, millions are in need of care.

The speaker asserted the institution was not here for the sake of making money, but to follow the gospel and heal the sick. He pointed out that health means happiness and that highest efficiency cannot be obtained through a handicap of bodily ills.

The world, he declared, needs to forget differences. Millions, he said, are in need of care and it should be the object to train men and women to serve, some as teachers, others as medical missionaries.

He complimented all those having a part in completing the first unit of the hospital and asserted that success had come because of the spirit back of the enterprise.

Dr. Boyer Praises Equipment Mrs. Homer Rue favored with two piano selections and then Dr. H. R. Boyer, president of the Glendale Physicians' club, was the next speaker. He declared the first unit showed the institution would be a great one, not surpassed by any hospital in the country. He declared the equipment was modern to the minute, he praised the large rooms and complimented the nurses.

Millions of dollars, he said, were lost yearly because of illness and accident and, he said, it should be a comfort to many to know that such a fine institution was in their midst to care for them when afflictions came.

Dr. Boyer paid a tribute to the nurses of the hospital and asserted that the surgical technique was not excelled anywhere within his knowledge.

Dr. Harrower again delighted with a song, sung in Swedish. "It's a little song about a lark," he explained. He was accompanied by Mrs. Rue.

Dean of White Memorial Dr. P. T. Magon, dean of the White Memorial of Los Angeles was the next speaker. He declared a world of credit was due all who had a part in bringing the first unit to a successful conclusion. He paid a tribute to the equipment in the surgical division and said that hearty congratulations were due those who had, "when the dollar bill was its shortest," completed the hospital building and the nurses' dormitory. He asserted that sometimes, when he saw huge office buildings, he wished that hospitals could be financed just as easily. But then, he said, another viewpoint could be taken, for, it was the struggle and labor in a cause for humanity to bring it to a successful conclusion that made success the sweetest.

Nurses And Patients Interested In Crowd

Among the interested spectators at the opening of the first unit in the new Glendale Sanitarium and Hospital building yesterday were a number of nurses and patients.

The sanitarium and hospital has seventy-seven nurses. Of these fifteen are registered nurses and sixty-two are in training. As many as possible attended the ceremonies and aided in showing the visitors through the unit and the nurses' new dormitory.

And, too, some of the patients evidenced a lively interest in the proceedings and, from sheltered spots about the large grounds, viewed the hundreds of visitors and heard the talks and music.

As the nurses had a large part in the planning of the new unit, they, naturally, took a great deal of satisfaction in showing the visitors through the building and their new home just across the street.

The nurses listened with pride to the many exclamations of praise from the visitors and took real pleasure in showing the guests the modern structure and its "last minute" equipment.

Six More Units To Be Built Proposed

The first unit of the Glendale Sanitarium and Hospital opened yesterday is but a link in a chain of buildings destined to fill the block between Wilson avenue and East Broadway now partially occupied by the structure erected in 1887.

A seven-unit building is proposed, the first unit being that opened yesterday on the corner of Jackson street and Wilson avenue. The plans called for an expenditure of about \$500,000.

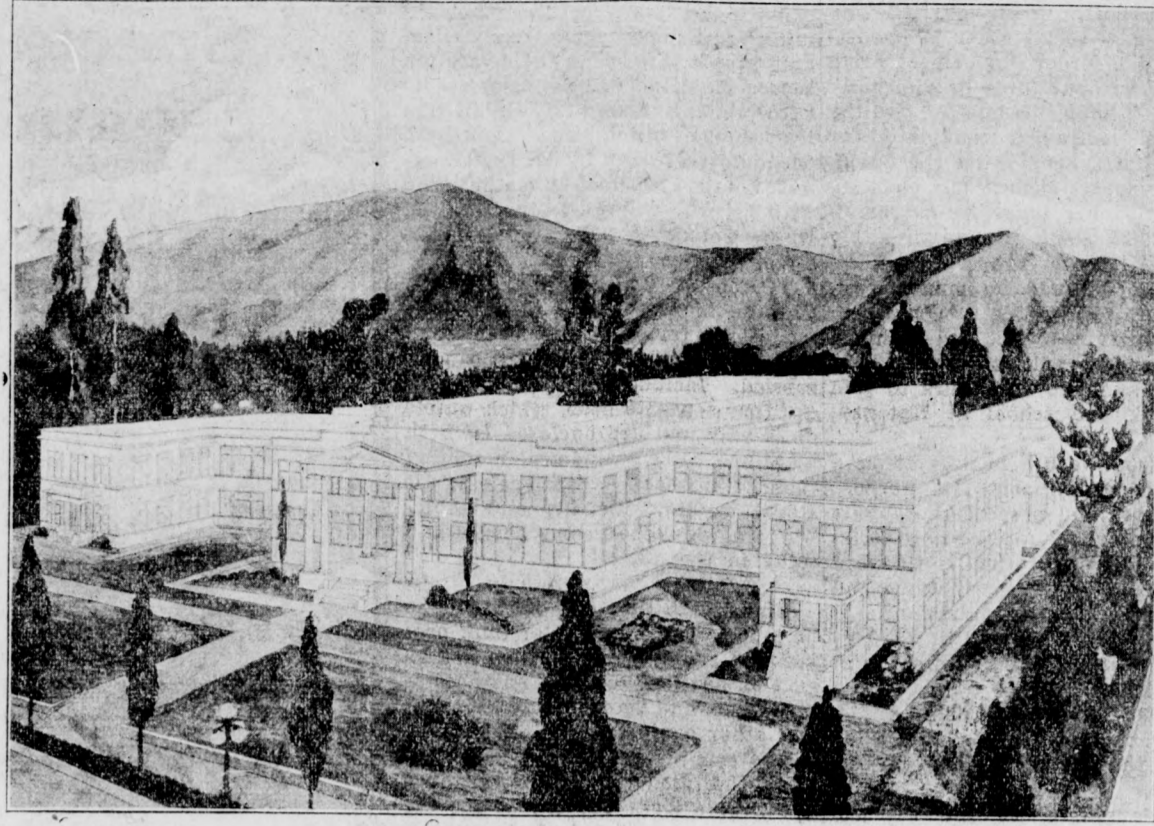
The first unit is a one-story stucco structure, 116 by 140 feet, built around a quadrangle, open to the south.

Just across the street is a new two-story dormitory erected for the nurses.

The plans call for the construction next of a two-story building for medical patients. It will be erected immediately to the south of the unit opened yesterday and off Jackson street.

The seven units, when completed, will, the plans show, make an imposing appearance and a credit to Glendale.

Here is the Way Hospital will Appear when Fully Completed



Large Crowd Attends Opening First Unit

The board of trustees of the Glendale Sanitarium and Hospital expected a crowd for the formal opening of the first unit in the new building yesterday, but did not, evidently, anticipate such a large number as attended, for the entire seating capacity was taken and many stood during the ceremonies.

About 250 seats were arranged on the two long porches of the building and seats for hundreds more were arranged in the central quadrangle 140 feet long.

Every seat was occupied before the ceremonies were opened by C. E. Kimlin, business manager of the sanitarium and hospital, others stood on the runways and more stood at the entrance at the south.

The porches and quadrangle provided an admirable place for the ceremonies, the speakers' stand being a porch to the north. The arrangements were excellent, the program carried through successfully with W. M. Adams, chairman of the board of trustees, presiding, and everyone in the big crowd able to hear every word uttered.

NEW BUILDING IS FINELY EQUIPPED

SURGICAL DEPARTMENT SAID TO BE ONE OF BEST IN ENTIRE SOUTHLAND

The first unit of the new Glendale Sanitarium and Hospital building is one-story stucco, 116 by 140 feet, built around a central quadrangle. It is located at the corner of Jackson street and Wilson avenue on the property now occupied by the Seventh-day Adventists' institution. The other six units will be built as rapidly as possible.

The building is provided with large operating and maternity rooms, utility and patients' rooms, each fully equipped with modern apparatus and furnishings. A new two-story dormitory for the seventy-seven nurses in attendance has recently been completed, and another improvement has been made by the installation of an entirely new heating plant.

Next One Is Two-Story As the grounds are cleared of the original buildings, the other units will be erected until the plan is complete, the one next in order being a two-story building for medical patients.

The Glendale Sanitarium and Hospital is famous for its rational methods of treatment which comprise not only the administration of Hydrotherapy, Electrotherapy, Heliotherapy, Massage, Dietetics, Manual Swedish movements and Physical Culture, but also instructs the patient in the simple yet seemingly intricate art of doing the ordinary things of life in the best possible way.

Keynote Is Simplicity Excluding medical and dietetic aids it strikes the keynote of simplicity in habits, a return to nature in principle—the utilization of those great powers which create and maintain all living things and which alone can cure.

Visitors to the new unit yesterday remarked on the equipment. Physicians and surgeons declare that the surgical quarters are among the best equipped in the southland.

The nurses' dormitory, just across the street from the hospital unit, is a most comfortable home for the big force at work at the institution.

Controlled by Conference The Glendale Sanitarium and Hospital is controlled by the Southern California Conference of Seventh-day Adventists, the president of which, W. M. Adams, is the chairman of the board of trustees with C. E. Kimlin, secretary; other members of the board being Dr. H. G. Westphal, M. M. Hare, G. W. Reaser, W. D. Salisbury and B. M. Emerson. Besides the medical superintendent the Sanitarium staff consists of Drs. W. J. Johnson, Julia A. White, Margaret Banta and Ralph W. Maker (Roentgenologist).

The superintendent of nurses, Mrs. Daisy D. Harris, has under her direction seventy-seven nurses, sixty-two being in training while the remainder are registered nurses.

Dr. H. G. Westphal, medical superintendent; C. E. Kimlin, business manager, and G. W. Reaser, financial agent of the Pacific Union and Southern California Conference of Seventh-day Adventists, outlined the plans for the building project, the architect being L. M. Hodge. H. J. Eggers is the building manager.

Total Of \$106,000 Is Cost For Unit

How much did the first unit of the new Glendale Sanitarium and Hospital cost?

That question was frequently heard yesterday at the formal opening conducted at the new building at the corner of Jackson street and Wilson avenue.

W. M. Adams, chairman of the board of trustees and president of the Southern California Conference of Seventh-day Adventists answered it when he, during the course of his address, stated that the cost was about \$106,000.

And as the grounds are cleared of other buildings, the other units in the seven-unit sanitarium and hospital will be erected until the proposed \$500,000 project is carried to a successful conclusion and Glendale will have one of the most modernized and completely equipped institutions of the kind in the country. It is predicted that the institution, when completed, will be one of the show places of the south and, of course, one of the best for the care of the afflicted.

LEWIS C. DAVIS TRANSFER AND STORAGE Pianos, Furniture and General Hauling; Any Time, Place or Distance. Good Service at Reasonable Rates. Glendale 2012 118 E. Broadway

MILLINERY MISS HOISETH With HEMSTITCHING SHOP Glendale 1911-J 209 E. Broadway

Some History About Sanitarium Building

It was about thirty-four years ago that the main building of the Glendale Sanitarium and Hospital was built—but not for an institution for the afflicted. In 1887 the building was erected for a hotel. It was an imposing structure for those days and was one of the show places of the valley.

Then the hotel became St. Hilda's hall, a school for girls. Later it was used for high school purposes by the Glendale school district.

The structure stood vacant for a few years and, finally, it came into the possession of the Seventh-day Adventists. It was completely remodeled and enlarged to accommodate the treatment of a large number of patients and to be used as a training school for nurses.

The institution's growth has been steady and for some time it was seen that a large plant is necessary to care for the needs of the district, so the seven-unit building project was outlined and the first unit was formally opened yesterday.

Adventist Teachers Hold Session Here

An institute of teachers from Seventh-day Adventist schools from Arroyo Grande to Long Beach began Saturday and ends this evening at the Glendale Seventh-day Adventist school on Isabel street. There have been thirty teachers in attendance.

The institute was in charge of Mrs. H. E. Osborne from the Pacific Union College at St. Helena; Professor W. W. Ruble, educational secretary of the Pacific Union Conference, a resident of Glendale; Professor H. G. Lucas, educational secretary of the Southern California Conference, a resident of Glendale; Professor A. E. Hall, Miss Helen Knight and Miss Hazel Carmichael, from the San Fernando Academy; Miss Ada Somerset, educational secretary from Riverside, and Max Hill, principal of the Seventh-day Adventist school of Glendale.

The local school covers eleven grades and has five teachers. The general work of the schools is under discussion at the institute.

Receive Suggestions About New Building

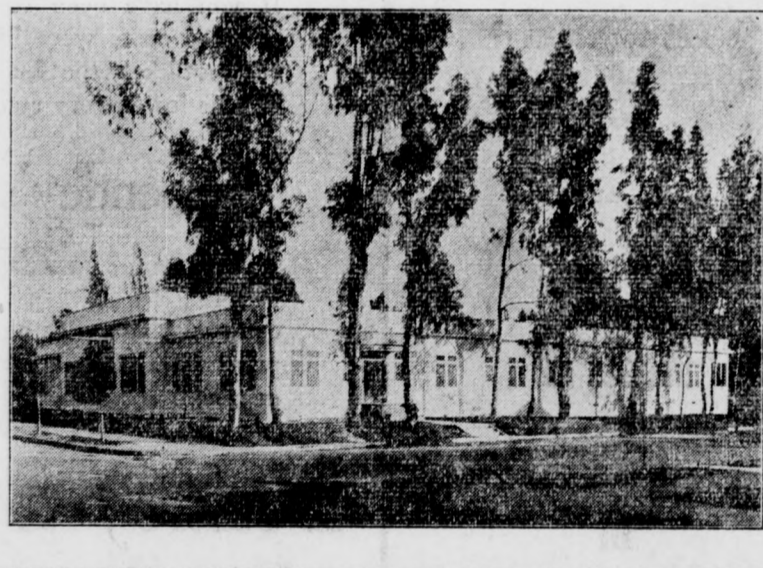
The Glendale Sanitarium and Hospital has Dr. H. G. Westphal for its medical superintendent and C. E. Kimlin for its business manager. Both are capable executives and have done much to bring the institution into the front rank.

Dr. Westphal and Mr. Kimlin, joined by G. W. Reaser, financial agent of the Pacific Union and the Southern California Conference of Seventh-day Adventists, outlined the plans for the new sanitarium and hospital, the first unit of which was opened yesterday.

The architect was L. M. Hodge, the building manager being H. J. Eggers.

Many conferences were held before a final plan was agreed upon and suggestions were taken from a number of sources, notably from the doctors and nurses, for it was the desire to have a structure complete in every detail. So a large number of people did his or her bit in making up the plans and the result is, the officials point out, a perfect building.

First Unit of New Hospital



The speaker declared that there was a movement on foot over the state to do away with cheap and money-making hospitals. He declared the healing of the sick was one of the greatest things that could be done for mankind and he was of the opinion it should be done without thought of making big sums of money to pay interest on investments or to pay bondholders.

In closing his remarks he told of the discovery by an Englishman of the fact that mosquitoes are responsible for malaria and he read a brief verse written by the scientist.

Program Is Closed Miss Leola McDowell of Los Angeles

Nurses Are Praised For Work As Guides

Many expressions of praise were heard yesterday at the opening of the new Glendale Sanitarium and Hospital unit at the skillful manner in which the hundreds of visitors were shown through the structure and through the new dormitory for nurses.

The plan for handling the big crowd was carefully planned in advance. Lines were formed and the visitors were directed through the rooms and corridors in a most efficient manner by the nurses in attendance. In every room were nurses to explain the uses of the modern equipment. A wide variety of questions were cheerfully answered, the nurses were very obliging and the greatest care was used in seeing to it that no detail or courtesy was overlooked.

As was to be expected because of the large crowd, a number of "foolish questions" were asked of the nurses by the laymen, but perfect courtesy prevailed and every effort was made to satisfy curiosity and to give the inspecting and critical public a clear understanding of the institution. Many compliments were extended to the nurses for their kindness and efficiency.

Algeria, France's most important colony, has a greater area than the mother country.

Kansas is shipping large quantities of corn to the famine districts of China.

New Dormitory For Nurses



Mrs. Daisy D. Harris is superintendent of nurses at the Glendale Sanitarium and Hospital. She has fifteen registered nurses under her direction and sixty-two in training.

Of more than local interest is the fact that out of 231 nurses who took a recent state examination, Miss

Stella Voris of the Glendale Sanitarium and Hospital received the highest grade of the entire number. All of the Glendale nurses who took the examination passed successfully, which speaks well for the training school.

The new dormitory is well arranged and the nurses are provided with every possible comfort.

DRAMA SECTION

HUSBANDS OF MEMBERS ARE GUESTS AT DELIGHTFUL PARTY FRIDAY NIGHT

The drama section of the Tuesday Afternoon club gave a very delightful party for the husbands of members Friday night at the home of Mrs. Charles H. Temple, 145 North Orange street.

Those present were Mr. and Mrs. F. G. Abbey, Mr. and Mrs. J. Roger Bentley, Mr. and Mrs. A. E. Bode, Dr. and Mrs. Colin Cable, Mr. and Mrs. C. D. Thom, Mr. and Mrs. L. G. Sherman, Mr. and Mrs. Harry Clinton Wilcox, Mr. and Mrs. Roy L. Kent, Mr. and Mrs. W. F. Nash, Mr. and Mrs. H. R. Gibbs, Mr. and Mrs. Max Green, Mr. and Mrs. H. D. Lockwood, Mrs. Mabel Franklin Ocker, Mr. and Mrs. W. L. Andrews, Mr. and Mrs. J. W. Feinstein, Dr. and Mrs. R. E. Chase and Mr. and Mrs. W. H. Verity.

Original characters of some of the modern plays were acted out. Delicious refreshments of hot biscuits, crab salad, coffee and cake were served. An evening's performance of three one-act plays to be given by the drama section was discussed and plans made for their presentation.

CITY IMPRESSES

MR. AND MRS. JOHN D. MUNRO LIKE GLENDALE; HIGHWAYS ARE GIVEN PRAISE

Mr. and Mrs. John D. Munro of Philadelphia, who have been the house guests of Mr. and Mrs. James Wilson of 220 West Chestnut street for the past month, left Thursday for San Francisco.

Mr. and Mrs. Munro were charmed with the beauties of southern California and enjoyed visits to Riverside, San Diego, Catalina, Mt. Lowe and many of the other attractions in this section, but were particularly impressed with Glendale as being the real home city.

Mr. Munro, although past 70, drove over 1400 miles while here and said he never expects to find such good roads until he returns to California.

HERE'S AN AVERAGE AUTO

An analysis of the passenger automobiles of 1921 shows they are heavier by slightly more than 100 pounds, they are longer by two inches, the average wheel base having risen from 119 to 121. The engine is slightly greater in displacement, the average bore and stroke being 3 7-16 by 4 15-16.

BIG PAINT SALE

- | | | | |
|--|--------|-------------------------------|---------|
| All Paint Inside and Outside, All Colors, Gallon | \$2.25 | Roof Coating, Gallon | 50c |
| Snow White and Ivory Enamels, Gallon | \$2.95 | Graphite, lb. | 6c |
| Special Boiled Paint Oil, Your Can, Gal., 65c | | Linseed Oil, Your Can, Gallon | \$1.15 |
| Calcimines and Tints, lb. | 7 1/2c | Dutch Boy White Lead, 100 lb. | \$13.50 |
| Schumacher Wall Board, All Sizes, Seconds, \$47.50 per thousand. | | No. 1 Roofing, roll | \$1.61 |
| | | Window Shades, 3x6 ft., each | 55c |

Come Early and Save 50%

Western Wholesale Paint Co. 710 E. Broadway Glendale 469

Have Experts Look Your Car Over at the
McBryde Lubricating Station
 Cor. Harvard and Brand Blvd.
 We oil and grease all parts of the car; drain crank cases free; graphite the springs, and take out the squeaks.
All Work Guaranteed

House Wiring Fixtures
Jewel Electric Company
 Phone Glendale 568. 202 E. Bdwy.
 Repairing Appliances

We Make Trips Anywhere
Taylor's Transfer
 520 East Broadway
 Phone Glen. 62
 PRICES REASONABLE

PIANO TUNING
 and Adjusting. Expert Workmanship Guaranteed. Free Estimates
GLENDALE PHONOGRAPH AND PIANO COMPANY
 Glendale 90

Iowa Long-Distance Taxi
 W. A. MEREDITH
 Picnic Parties Solicited
 143 South Brand Glendale 1918-J
 Residence Phone Glendale 1423-M

I. O. O. F. MEETING
 Glendale Lodge No. 358 meets every Thursday night at 8 o'clock at 111-A East Broadway. A hearty welcome for visiting brothers and newcomers.

103-A No. Brand Glendale 670
Glendale Shampoo Parlors
 Marinello Combing Preparations Made Up

INDEPENDENT ICE CO.
 Ice on Platform or Delivered Courteous Treatment
 OFFICE
106 East California St.
 Phone Glendale 217

"Everything in Sheet Metal"
GLENDALE
Sheet Metal Works
 Welding, Brazing and Radiator Repairing
 Phone Glen. 1422-J
 127 No. Glendale Ave., Glendale

Nish's Taxi Service
 Studebaker Special "6." Day and night service. Locals, 1 or more passengers 50c. By day or hour, special terms. Stand 103 West Broadway. Phone Glendale 1208

Notice of Public Work

Public Notice is hereby given that the Board of Trustees of the City of Glendale on the 3rd day of February, 1921, did at its meeting on said day adopt a Resolution of Intention No. 1158, to order the following improvement to be made on a portion of that certain alley in Tract No. 2292.

SECTION 1. That the public interest and convenience require, and it is the intention of the Board of Trustees of the City of Glendale to close up, vacate, and abandon for street and alley purposes, all that certain portion of that fifteen (15) foot alley in Tract No. 2292 as per map recorded in Book 23, Pages 106 and 107 of Maps, Records of Los Angeles County, California, more particularly described as follows:

All that portion of that first alley east of Canada Boulevard, from the northerly line of Hiawatha Drive to the southerly line of Wabasso Way, said alley being one hundred and sixty (160) feet easterly and parallel to the easterly line of Canada Boulevard.

The district to be assessed to pay the damages, costs and expenses for the described improvement is described in and reference is hereby made to Resolution No. 1158 for further particulars of said work.

T. W. WATSON,
 City Manager and Ex-Officio Street Superintendent of the City of Glendale.
 137110

NOTICE THAT COPIES OF PROPOSED CHARTER FOR THE CITY OF GLENDALE MAY BE HAD.

Pursuant to the order of the Board of Trustees of the City of Glendale, public notice is hereby given that copies of the proposed charter for the City of Glendale prepared by the Board of Freeholders and filed with the City Clerk on the 12th day of January, 1921, have been printed in convenient pamphlet form, and that such copies may be had upon application therefor at the office of the City Clerk in the City Hall of the City of Glendale.

J. C. SHERER,
 City Clerk of the City of Glendale.
 1-27-3-29

NINTH IN LIST
FIGURES GIVEN ON BUILDING DONE IN STATE DURING MONTH OF JANUARY

Glendale with its \$143,000 in building during January comes ninth in the list of California cities, according to the current issue of the Southwestern Builder and Contractor. Los Angeles is listed fourth among the cities of the United States.

While Glendale usually takes a higher place in the building figures than some of the larger cities, there were practically no great civic improvements here that usually mark the first of the year in other places.

Glendale's Position

That in a way accounts for Glendale's position in the following table of Pacific coast cities' building:

Los Angeles	\$3,301,714
San Francisco	1,246,808
Seattle	683,840
Portland	646,560
Oakland	546,239
San Diego	499,342
Long Beach	472,570
Fresno	341,550
Tacoma	179,169
Pasadena	179,016
Sacramento	148,712
Glendale	143,000
Berkeley	138,533
Santa Monica	133,410
San Jose	98,772
Stockton	97,650
Venice	86,000
Santa Ana	71,000
Spokane	37,120
Alameda	11,312

Morgan Bros.' Transfer
 Formerly
JESSE'S EXPRESS
 Glendale 75 109 B E. Broadway

CITY TRANSFER
 ANY PLACE
 ANY TIME
 Office 143 South Brand
 Glendale 964-W—Nights 1219

Trucking
 We Move Anything
 Prices Reasonable
HARRY'S TRUCK CO.
 312 E. Broadway—Glendale 180

SHOES!!
 We repair them. Better work for LESS money. Trial will convince you. Shoes Colored For And Delivered
A. BAINES
 Opposite Fire Station
 312 E. Bdwy. Glendale 180

Mr. Property Owner
 AS A PROTECTION AND INVESTMENT
 Have your old, sundried, inflammable felt roof water-proofed with asphalt and surfaced with a fire proofing of red crushed brick or green granite, adding years of service to your roof, improving the appearance of your house and increasing the selling value of your property. Advice based on twenty years' roofing experience cheerfully given. Built-up work and repairing a specialty. For prices and particulars inquire of
WILLIAM TYRRELL
 Composition Roofing Contractor, 714 N. Pacific Ave. Ph. Glendale 2031-R

Glendale Hardwood Flooring Company
 If your floors need renewing or you are contemplating installing new floors, our prices will interest you. We have a full crew of skilled mechanics and guarantee to perform all work in a complete and satisfactory manner.
 Machine Sanding a Specialty
 Gl. 557 220 W. Hawthorne

Cesspools
E. H. KOBER
 Office Phone Gl. 889. Res. Gl. 1107-R

CERTAIN
 WE are certain that the courteous dignity with which we perform our duties appeals to our fellow townsmen. We render the proper service in a polite spirit.

L. G. SCOVEN CO.
 FUNERAL DIRECTORS
 1000 SO. BRAND BLVD.
 PHONE GLENDALE 147

LEAVES LUXURY
WEALTHY WOMAN WILL DEPART FROM RICH SURROUNDINGS AND LIVE IN CABIN

HARTFORD, Conn. — Believing that "a new social order is inevitable," and in order "to help to bring it about without force or violence," Mrs. M. Toscan Bennett, wealthy Hartford suffragist, candidate for United States Senator on the Farmer-Labor party ticket last election, is forsaking her luxurious surroundings and is going to live in a log cabin. All of her property in Hartford and the handsome country residence in fashionable Farmington, Mrs. Bennett is to sell and within a short time she will leave with her husband and two daughters to join the Brookwood school at Katonah, N. Y.

The Brookwood school is about a mile outside Katonah. Its purpose is "to equip and prepare thoroughly qualified workers for the new social order." The institution is financed through voluntary contributions and by levies by labor organizations. It was organized in the fall of 1919 by members of the "Fellowship of Reconciliation."

To Build Log Cabin
 The Bennetts intend to build a log cabin at the school and keep no servants.

"My daughters, 18 and 15, will continue to live at the school," Mrs. Bennett said, "but Mr. Bennett and I shall get back to the simple life. Money and valuables are only fetters. They just tie you down, and after all happiness does not lie in wealth and riches."

As Bennett explains it, the idea of the school is based on the ethics of Jesus. It is not connected with any organization, church or ritualistic religion, as its founders believe that the new social order is rooted in the teachings of Jesus, who "did not propose to improve the world, but to regenerate it, and aimed not for a better world, but for a different kind of world."

At the school now, as instigators of the movement, are William Finche, former Yale football player, and Mrs. Finche, Spencer Miller of Columbia university, and Miss Sarah Cleghorn, poetess.

HOME ON WHEELS
MR. AND MRS. R. C. YOUNG OF 337 WEST MYRTLE SEE NOVEL AUTO 'HOUSE'

With the season for "automobumming" fast approaching, many Glendale people who spend their vacation season motoring will be interested to know about a "Camp-O" combination truck-home which was driven to Glendale yesterday by M. Diefenderfer, South Pasadena inventor, who with his wife called on Mr. and Mrs. R. C. Young of 337 West Myrtle street Sunday.

"Camp-O," which is built on an Oldsmobile ton-chassis, has accommodations for four people in comfort, although six or eight can be carried. Included in the equipment are four separate beds, which unfold outwardly and are enclosed by both glass and screen windows; a folding table of box shape which encloses the stove, cooking utensils and tableware; a wardrobe in one corner and toilet in the other.

Carries Water Supply
 Underneath the body of this home on wheels is a huge water tank providing a supply while on the road, as well as auxiliary oil and gas accommodations and room for a tool chest and other equipment.

The rear doors lock from the inside, the front right side entrance has a Yale lock; the top of the car extends over the hood of the engine, so that when camping a curtain may be let down and the whole machine be protected from the elements.

Heavy flowered crash curtains decorate the windows, while the floor is covered with matting. Altogether, Mr. Diefenderfer's Camp-O outfit looks quite inviting for touring. He has many of the innovations in the machine covered by patent, expecting that thousands of tourists in years to come will desire such conveniences.

Turkish authority has never been actually and fully recognized by the Arabs.

The United States consumes annually about 350,000 tons of sugar in confectionery.

No. B90012
ACTION BROUGHT IN THE SUPERIOR COURT OF THE COUNTY OF LOS ANGELES, AND COMPLAINT FILED IN THE OFFICE OF THE CLERK OF THE SUPERIOR COURT OF SAID COUNTY.

HELEN MARGUERITE OLMSTED,
 Plaintiff,
 vs.
THORNE & COULTER, C. M. COULTER, A. W. THORNE, John Doe, Jane Doe, Samuel Coe Co., a Corporation, Richard Roe and William Roe, Partners,
 Defendants.

IN THE SUPERIOR COURT OF THE COUNTY OF LOS ANGELES, STATE OF CALIFORNIA.
 The People of the State of California send greeting to
THORNE & COULTER, C. M. COULTER, A. W. THORNE, John Doe, Jane Doe, Samuel Coe Co., a Corporation, Richard Roe and William Roe, partners,
 Defendants.

You are directed to appear in an action brought against you by the above named plaintiff in the Superior Court of the County of Los Angeles, State of California, and to answer the complaint therein within ten days after the service on you of this summons, if served within the County of Los Angeles, or within thirty days if served elsewhere, and you are notified that unless you appear and answer as above required, the plaintiff will take judgment for any money or damages demanded in the Complaint, as arising upon contract, or will apply to the Court for any other relief demanded in the Complaint.

Given under my hand and seal of the Superior Court of the County of Los Angeles, State of California, this 28th day of January, 1921.
L. E. LAMPTON,
 County Clerk.
 By **G. W. M'DONALD,**
 Deputy.
 (Seal Superior Court Los Angeles County)
HENRY P. GOODWIN, 231-3 Title Insurance Bldg., Los Angeles, Calif., Attorney for Plaintiff. 12719M
 Date of First Publication, January 31, 1921.

United States Army Small In Comparison

WASHINGTON—In proportion to population, the United States has a smaller regular army than any nation in Europe and Asia, and only three other American nations have a lesser percentage of population under arms. Statistics on the subject were disclosed without any comment by the war department, after the passing in congress over the president's veto, of the resolution limiting the size of the United States army to 175,000, and the house action in appropriating for the next fiscal year for only 150,000 men.

The figures show that the regular army of the United States is .31 per cent of the total continental population.

Of the European countries, Germany is lowest with .27 per cent, while Switzerland has the greatest percentage of population under arms, 4.25 per cent. Of the great powers, France has the largest army, the percentage being 1.85 per cent; Italy, 1.26 per cent, and Great Britain, .93 per cent. Japan has .47 per cent. Uruguay leads South America with .70 per cent, and Mexico leads in Central America with .56 per cent.

The only three countries which have a smaller army than the United States in proportion to population are Brazil, Paraguay and Colombia.

On the basis of an army of 175,000 men, as it will be under the recent decision of congress, the American percentage will be reduced to about .16 per cent, and on the further reduced basis of 150,000 men it will be approximately .14 per cent.

Paderewski Declares His Career Is Ended

NEW YORK—Paderewski has ended his professional career as a piano player, according to an announcement made by him upon his arrival here from Europe. Although the Polish musician stated that he may do some composing he considers piano playing a closed chapter in his life. Strenuous efforts in behalf of Poland during the last five years have left their imprint on his appearance.

The number of sheep in the United States has increased about 4,000,000 in ten years.

Eskimos eat the stomachs of deer, with their contents, to supply the vitamins in their diets.

Stop and Look for
111 N. Brand Blvd.
 and follow the crowd to the
C. & S. CAFETERIA
 where you can get real food, all you can eat at a helping, and prices to suit your pocketbook. Breakfast served. 6:30 to 9:30
 Lunch 11:00 to 2:15
 Supper 5:00 to 7:30
LOUISE STOCKER,
 Manager

RUGS
Special Sale for One Week, beginning, Saturday, Feb. 19

\$62.50 9x12 Axminster Rugs at	\$49.00
\$35.00 6x 9 Axminster Rugs at	\$25.00
All 8-3x10-6 Tapestries at	\$32.50
\$20.00 36x72 Wilton Rugs at	\$12.50

Grass rugs at your own price. 10 per cent off on all reed furniture.

Taylor Furniture Co.
 520 E. Broadway Phone Glendale 62

You Owe Your Children A Home

Have You Children?

That's the first question a landlord asks and if you answer in the affirmative he soon makes it clear that you would not be a desirable tenant.

It's a child's right to have a home.

Why do you submit to such intolerable conditions when you can have a home of your own where you can make your children welcome.

It's as easy to build a home as it is to pay rent, and the feeling of independence and self-respect that comes with home ownership is worth millions.

If you have been waiting to build because building costs were high—now is your time. It is not likely that building material and labor will be lower very soon.

Bentley's Building Service
 can assist you with helpful suggestions, plans, photos and by careful selection of building material.

Glendale Needs More Homes

Building is a Splendid Investment Now

Put Your Money In a Home in Glendale

A. GELMOR
 Ladies' and Gents' TAILOR
 138 S. BRAND BLVD.
 Easter Comes Early This Year. Order Your Suit Now.
 Dry Cleaning \$1—Pressing 50c

The Glendale Book Store
PICTURE FRAMING
 C. H. BOTT, Prop.
 113 S. BRAND BOULEVARD

ROOFING
 New Composition Roofs Laid, Old Roofs Rebuilt or Repaired. Material and Labor Fully Guaranteed. Estimates cheerfully given

Bentley-Schoeneman Lumber Co.
 Glendale 49 Glendale 51
 140 West Los Feliz Road

Brick Contracting and MANTLES
 Call
J. F. KLANN
 Glendale 706-J

RUGS
Special Sale for One Week, beginning, Saturday, Feb. 19

\$62.50 9x12 Axminster Rugs at	\$49.00
\$35.00 6x 9 Axminster Rugs at	\$25.00
All 8-3x10-6 Tapestries at	\$32.50
\$20.00 36x72 Wilton Rugs at	\$12.50

Grass rugs at your own price. 10 per cent off on all reed furniture.

Taylor Furniture Co.
 520 E. Broadway Phone Glendale 62

You Owe Your Children A Home

Have You Children?

That's the first question a landlord asks and if you answer in the affirmative he soon makes it clear that you would not be a desirable tenant.

It's a child's right to have a home.

Why do you submit to such intolerable conditions when you can have a home of your own where you can make your children welcome.

It's as easy to build a home as it is to pay rent, and the feeling of independence and self-respect that comes with home ownership is worth millions.

If you have been waiting to build because building costs were high—now is your time. It is not likely that building material and labor will be lower very soon.

Bentley's Building Service
 can assist you with helpful suggestions, plans, photos and by careful selection of building material.

Bentley-Schoeneman Lumber Company
 460 W. Los Feliz Road Glendale 49

The Glendale Bazaar!
 is the place to go for bargains in used clothing for the whole family, and you will find also many needed articles for the home.
 143 NORTH GLENDALE AVENUE

CONSTRUCTION COMPANY
 General Building Contractors—Estimates Furnished on Contract or Percentage
 Glendale 44. 103 1/2 So. Brand

Hardwood Floors
 OLD FLOORS SCRAPED
 Floors Laid, Scraped and Finished
 Estimates Cheerfully Furnished
H. R. BOWERS FLOORING CO.
 311 W. Harvard. Glendale 1963

PLAITING HEMSTITCHING BUTTONS
BROOKS' DRESSMAKING SHOP
 123 NORTH BRAND

11TH NATIONAL ORANGE SHOW SAN BERNARDINO FEBRUARY 18-28

MILLIONS OF ORANGES IN WONDERFUL FEATURE EXHIBITS COMPLETE INDUSTRIAL SECTION OF FARM AND RANCH EQUIPMENT

10 REGULAR TRAINS DAILY FROM LOS ANGELES

PACIFIC ELECTRIC RAILWAY

EVENING NEWS ADS GET RESULTS