

3-bedroom FARMHOUSE

...with attached
two-car garage

COOPERATIVE
FARM BUILDING
Plan No. 7132
(3-SHEETS)
PLAN EXCHANGE



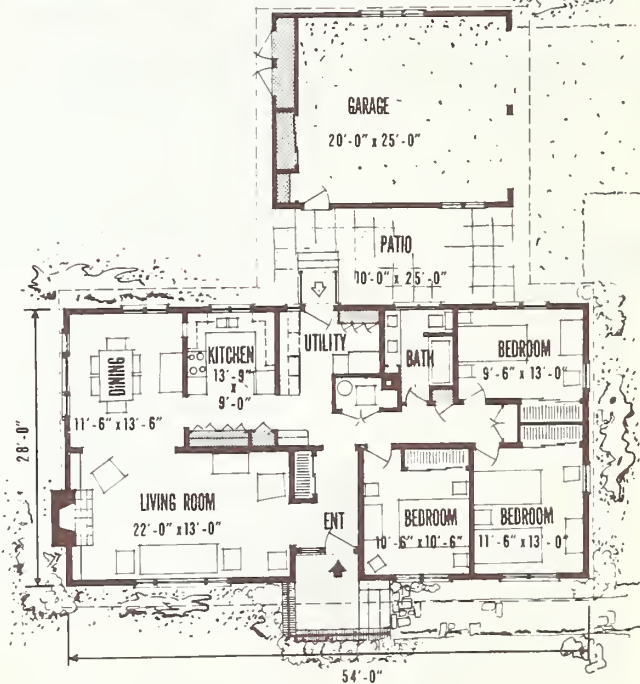
WELL-PLANNED SPACE

No space is wasted in this simple rectangular farmhouse plan, which is distinguished by a front entrance recessed for protection from weather, and a two-car garage connected to the house by a covered patio.

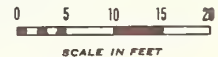
This plan has a central passageway extending from the front to the rear entrance, which gives access to any area of the house without interfering with activities in any one room.

The fireplace, with built-in bookshelves on either side, highlights the 22-foot living room. Adjoining is a corner dining room with windows on two sides. A pass-through from the kitchen to the dining room saves steps in serving meals. In the U-shaped kitchen, the arrangement and dimensions of counters and storage spaces are based on the findings of USDA and State research.

Along the passage wall of the kitchen is a pantry for canned goods, a cleaning closet, and a telephone-desk corner. The utility room is shown equipped with washer, dryer, laundry tub, and freezer. It has a closet for workclothes. The heating unit is centrally located.



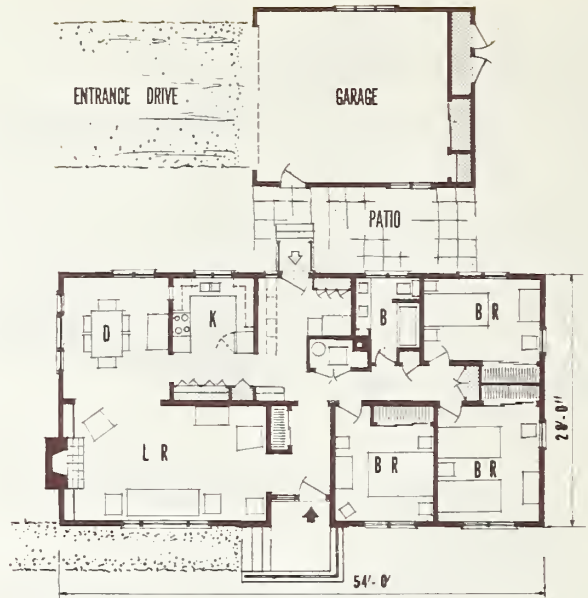
	Square feet
Living area.....	1,512
Garage.....	500
Patio.....	250



The bathroom has twin lavatories set in a counter. Cabinets under the counter provide storage for towels and bath supplies.

The covered patio between the house and the garage can be used for many activities, such as children's play, drying laundry, or outdoor barbecues and entertaining. It also serves as a protected walkway from the car to the house in bad weather.

Closets and other storage areas inside the house meet space standards developed through research by USDA and the State agricultural experiment stations. Each of the three bedrooms has a closet over 6 feet long. There is a coat closet 5 feet long in the front hall, ample for family and guest wraps. Workclothes are stored in the closet near the rear entrance. The double garage offers additional storage. One storage unit opens into the yard behind the garage for convenience in handling outdoor furniture and garden tools.



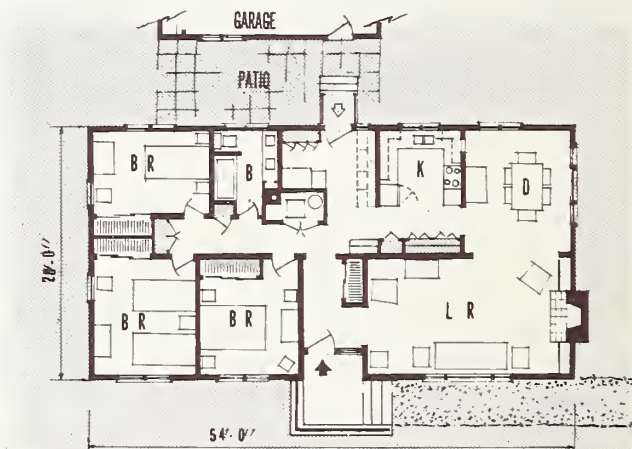
PLAN WITH ALTERNATE GARAGE ENTRY

PLAN WITH ALTERNATE GARAGE LOCATION

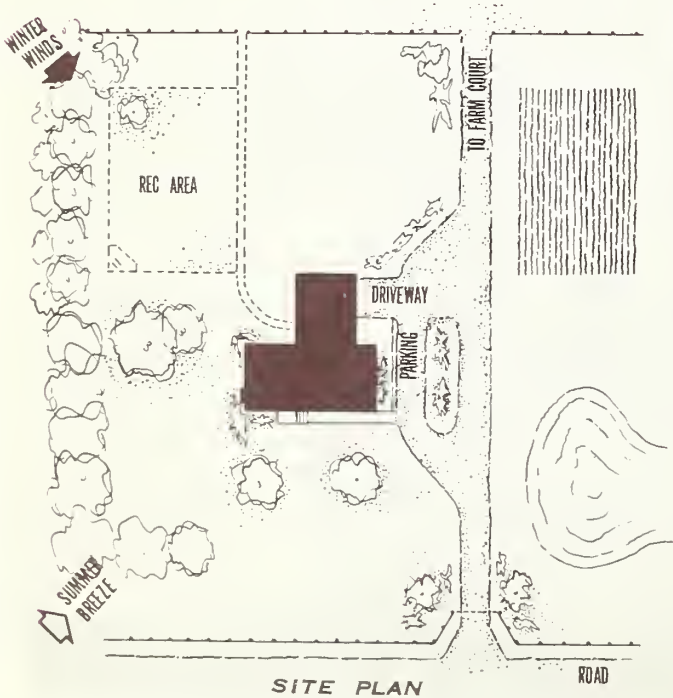
The plan at upper right shows the garage storage and garage doors in reverse location, to permit access to the garage from a driveway to the left of the house.

REVERSE PLAN

The reverse plan at right may be more suited to the site selected. Garage doors can be at either end of the garage, depending on the location of the driveway.



REVERSE PLAN (GARAGE TO SUIT)



SITE PLAN

Complete working drawings may be obtained through your county agent or from the Extension agricultural engineer at most State agricultural colleges. There is usually a small charge.

ORDER PLAN NO. 7132, 3-BEDROOM FARMHOUSE

If working drawings of this plan are not available in your State, write to the U.S. Department of Agriculture, Agricultural Engineering Research Division, Plant Industry Station, Beltsville, Md. The U.S. Department of Agriculture does not distribute drawings, but will direct you to a State that does distribute them.

Developed by:

**AGRICULTURAL ENGINEERING RESEARCH DIVISION
CLOTHING AND HOUSING RESEARCH DIVISION**

AGRICULTURAL RESEARCH SERVICE

