

**CALIFORNIANS  
"AS WE SEE 'EM"**









**Californians**  
**“As We See ‘Em”**

A Volume of CARTOONS  
and CARICATURES

10

7-100  
C.15

LIBRARY of CONGRESS  
Two Copies Received  
JAN 10 1906  
Copyright Entry  
*Jan. 2, 1906*  
CLASS *F* XXc. No.  
*38440*  
COPY B.

PUBLISHED BY E. A. THOMSON FROM THE  
PRESS OF THE STANLEY-TAYLOR COMPANY.  
PHOTOGRAPHS FROM WHICH THESE PEN  
AND INK SKETCHES WERE PRODUCED  
HAVE BEEN FURNISHED BY TABER. EN-  
GRAVINGS BY YOSEMITE ENGRAVING CO.

*Copyright* 1906

by

E. A. THOMSON



# CONTENTS

	PAGE		PAGE		PAGE
Abbott, Wm. M.	110	Godehanx, Edmond	152	Paddock, H. L.	133
Abbott, S. L.	139	Godeau, Julius S.	193	Page, Chas.	75
Ach, Henry	212	Goldberg, H. M.	91	Paine, Chas. W.	283
Alden, B. F. M. D.	33	Goodman, T. H.	37	Palmer, Geo. H. M. D.	217
Alexander, D. E.	190	Gormly, W. F.	279	Pardee, Gov. Geo. C.	11
Allen, H. S.	188	Graves, W. C.	93	Parkyn, G. A.	263
Anderson, Alden	264	Green, J. Chas.	169	Payot, Henry	14
		Griffith, H. H.	299	Pease, R. H.	129
		Grover, Wm. S.	163	Pearce, W. E.	132
Babcock, Wm.	52			Peltier, Geo. W.	268
Bachmach & Cordes Co.	204	Halton, R. V.	159	Perkins, Geo. C.	70
Baehr, Harry	114	Hammond, A. B.	127	Peyton, William C.	225
Barrett, John J.	95	Hanlon, Chas. F.	104	Pierce, W. Frank	68
Bartnett, W. J.	224	Harrison, Wm. Greer	8	Pillsbury, E. S.	41
Bates, Chas.	235	Hart, E. C.	270	Plaut, Carl S.	253
Baum, Alexander R.	182	Hart, Wm. H. H.	92	Pohelm, J. F. M. D.	78
Bauer, Geo. W.	111	Hassett, W. J.	285	Pohli, Emil	105
Beede, W. M. M. M. D.	296	Hatch, P. O.	148	Pollock, Allan	185
Bell, Harmon	51	Hayes, J. O.	260	Powell, H. A.	196
Bergerot, P. A.	146	Hayes, E. A.	261		
Berton, G. A.	112	Heald, E. P.	179	Reed, Geo. W.	243
Bettens, Albert	145	Hecht, M. H.	19	Regensburger, Alfred E. M. D.	99
Bianchi, Eugenio, Jr.	113	Hechtman, A. J.	103	Richie, R. R.	229
Bills, Chas. B.	282	Heggerty, Chas. J.	30	Rixford, E. H.	197
Birmingham, John	107	Hendy, S. J.	173	Rolph, James, Jr.	40
Bissell, W. A.	108	Heeseeman, C. J.	240	Rothschild, J. M.	213
Black, P. C.	251	Hewitt, W. R.	89	Rothschild, Jos.	100
Booth, S. F.	76	Heynemann, A.	88	Ruef, A.	97
Bowers, A. B.	138	Hicks, Joel Whitten	183	Ruhstaller, F.	278
Bowles, P. E.	72	Hoag, E. L.	27	Rushforth, Geo.	298
Breed, A. H.	238	Holland, A. P.	258	Ryan, Daniel A.	101
Breiner, John	109	Humphrey, C. F.	87	Saroni, Louis	220
Breuner, Louis F.	272	Humphrey, William F.	177	Schlesinger, Bert	42
Brown, J. Dalzell	12			Schluetter, A. H.	241
Buck, J. A.	140	Irvine, R. S.	295	Schmitz, Eugene E.	96
Bull, Franklin P.	137			Schulze, Henry A.	71
Burt, J. J.	115	Jaynes, Frank	167	Scooffy, L. J.	210
Byington, Lewis F.	116	Jenks, Livingston	80	Scott, Tom	284
		Jennings, Rufus P.	17	Seely, Walter Hoff	130
Caffrey, John	144	Johnson, Grove L.	266	Seymour, H. S.	274
Calvin, E. E.	122	Jones, T. R.	275	Shannon, W. W.	277
Campbell, Donald Y.	20			Shea, Frank T.	200
Capelle, Robert	81	Kains, A. C.	13	Shea, W. D.	201
Carmichael, D. W.	281	Katzenstein, Geo. B.	267	Sherman, L. S.	203
Carson, Geo. R. M. D.	143	Kelley, J. M.	254	Shields, Peter J.	271
Caswell, Geo. W.	142	Kent, S. H.	156	Shortridge, Samuel M.	44
Christeson, A.	136	Kiesel, Fred W.	269	Shotwell, W. J.	34
Chapman, Edgar C.	141	Kirk, Joseph	155	Shumate, Thomas E. M. D.	219
Chase, Geo. Q.	134	Kirkpatrick, John C.	43	Sibley, Walter F.	294
Clifford, C.	77	Knight, Geo. A.	31	Slack, Charles W.	24
Clark, Asa, M. D.	288	Knowland, J. R.	231	Smith, Charence M.	83
Coghlan, John J.	135	Kollofrath, Edm.	211	Smith, Mortimer	236
Conlisk, C. W.	223	Kunz, Henry	226	Snook, Chas. E.	257
Cook, Carroll	35			Sonntag, Chas.	46
Cooper, F. J.	206	LaBoyetaux, W. H.	160	Southard, W. F.	208
Cope, W. B.	106	Lake, Fred'k B.	154	Stetson, James B.	23
Corbin, Wm.	66	Lane, Frank E.	290	Stallman, Charles	199
Crothers, Geo. E.	207	Lane, Ralph S.	291	Steindorff, Paul	150
Crowell, Clarence	259	Langdon, W. H.	181	Stern, M. M.	151
Currier, J. Parker	118	Lanz, Paul, M. D.	237	Stone, George	9
Curtlett, Wm.	124	Lawlor, William P.	32	Stuart, Percy R.	175
Curtis, John M.	147	Leach, A. P.	250	Stubbs, D. D.	53
Curtis, Peter J.	117	Lenzen, Theo. W.	194	Sullivan, Harry P.	69
Cutting, H. C.	82	Lewis, John M.	227	Sutro, Charles	172
		Lloyd Reuben	21	Sutton, Albert	209
Dalton, H. P.	234	Longshore, James	287		
Dargie, W. E.	232	Lynch, Jno. C.	153	Thompson, G. Howard	187
Davis, R. D.	120	Lyon, George F.	26	Thompson, Edw. R.	292
Davis, R. J.	119			Thomson, E. F.	286
Day, C. A.	121	Macdonald, A. S.	125	Tobin, J. S.	45
Deal, W. E. F.	15	Maestretti, F. A.	176	Union Pacific	302
De Golia, Geo. E.	248	Martel, A. F.	79	Upham, Isaac	16
DeLancey, John S.	256	Martin, George H. M. D.	214	Upton, Albert E.	189
Dernham, Henry	192	Matson, Capt. Wm.	195		
DeRome, Louis	191	Mauzy, Byron	57	Van Der Naillen, A., Jr.	61
Devlin, Robert T.	36	McClymonds, J. W.	232	Van Fleet, W. C.	47
Dibble, Henry C.	25	McCord, Don C.	246	Van Ness, T. C.	48
Bohrmann, F. W.	38	McDonald, J. J.	245	Van Trees, Frank S.	171
Dohrmann, Geo. D.	301	McDonald, J. W.	222	Varney, Thos. H. B.	168
Doubleday, D. G.	205	McElroy, J. E.	244		
Dow, George E.	218	McEberney, Garret W.	98	Waller, C. W.	186
Drew, F. C.	174	McGary, Edw.	249	Ward, James W. M. D.	62
Drown, W. N.	131	McNab, Gavin	29	Waste, Wm. H.	239
		McNear, Geo. W.	85	Watt, Rolla V.	49
Earl, E. T.	262	McNear, G. W. Jr.	84	Webb, V. S.	65
Elkus, Albert	265	Metcalfe, J.	122	Wehe, Frank R.	162
Enos, M. M. M. D.	252	Metsun, W. H.	54	Weil, Wm. M.	158
		Meussdorffer, C. A.	166	West, T. C.	50
Fay Chas. W.	202	Michels, Leopold	55	Westbay, W. W.	292
Filmer, George	60	Middlecoff, W. W.	300	White, Burrell G.	161
Fiske, Arthur G.	94	Miller, C. O. G.	184	White, John	157
Fitzgerald, R. M.	28	Mooser, William	86	White, Lovell	64
Ford, Tiley L.	39	Moraghan, Chas. A.	198	Williamson, W. F.	215
Foster, A. W.	74	Morehouse, H. V.	102	Wilson, Chas. E.	10
Frank, Nathan H.	149	Moroney, J. F.	228	Wilson, James K.	128
Freeman, J. Eugene	221	Mott, Frank K.	230	Wilson, J. C.	126
				Willcutt, J. L.	65
Gallagher, Robt. F.	170	Naphtaly, Joseph	56	Woolner, Benj. F.	242
Gardner, M. J.	289	Naylor, Chas. E.	58	Woodworth, Fred	178
Gerstle, Mark L.	90	Neff, J. H.	59	Woodworth, Marshall B.	180
Gett, Wm. A.	273	Nelson, Chas.	22	Wolfe, E. Myron	67
Gibson & Ingram	247	Newhall, George A.	216	Woods, Victor W.	280
Gier, Theo. O.	255			Wright, Allen G.	164
Gillis, J. L.	276	O'Brien, Jas. H.	73	Wright, E. B.	298
Glass, Louis	18			Wright, Geo. T.	165



MR WILLIAM GREER HARRISON

WM. GREER HARRISON



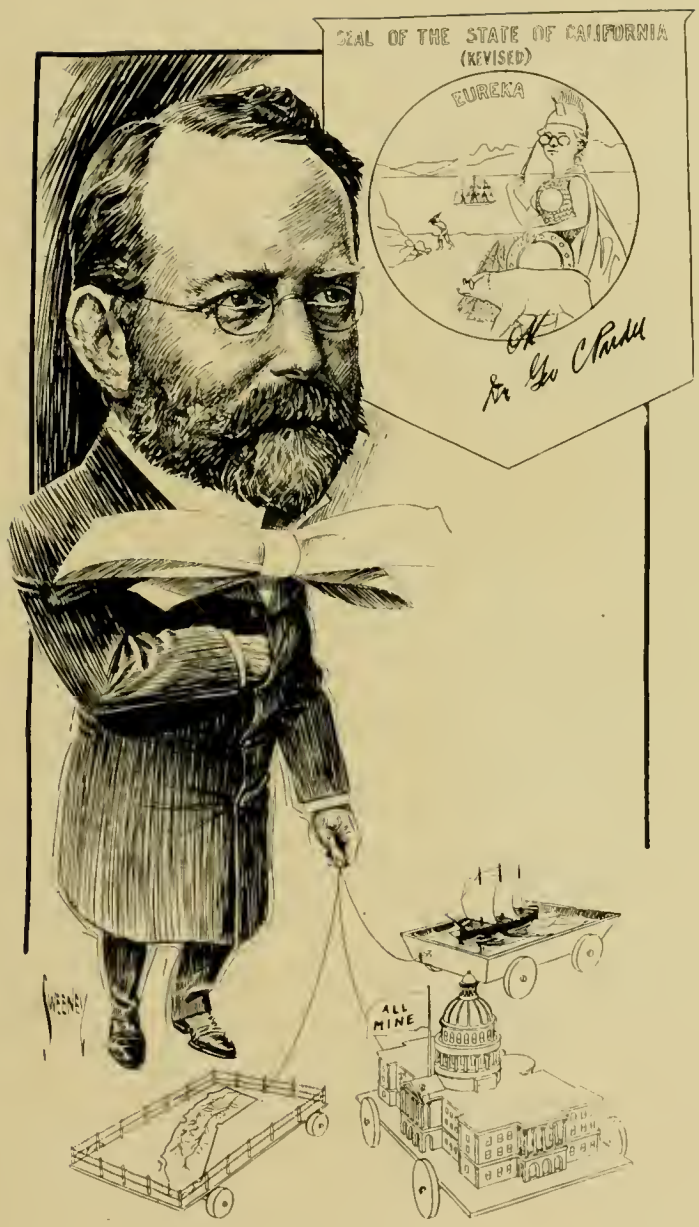
GEO. STONE





CHAS. E. WILSON

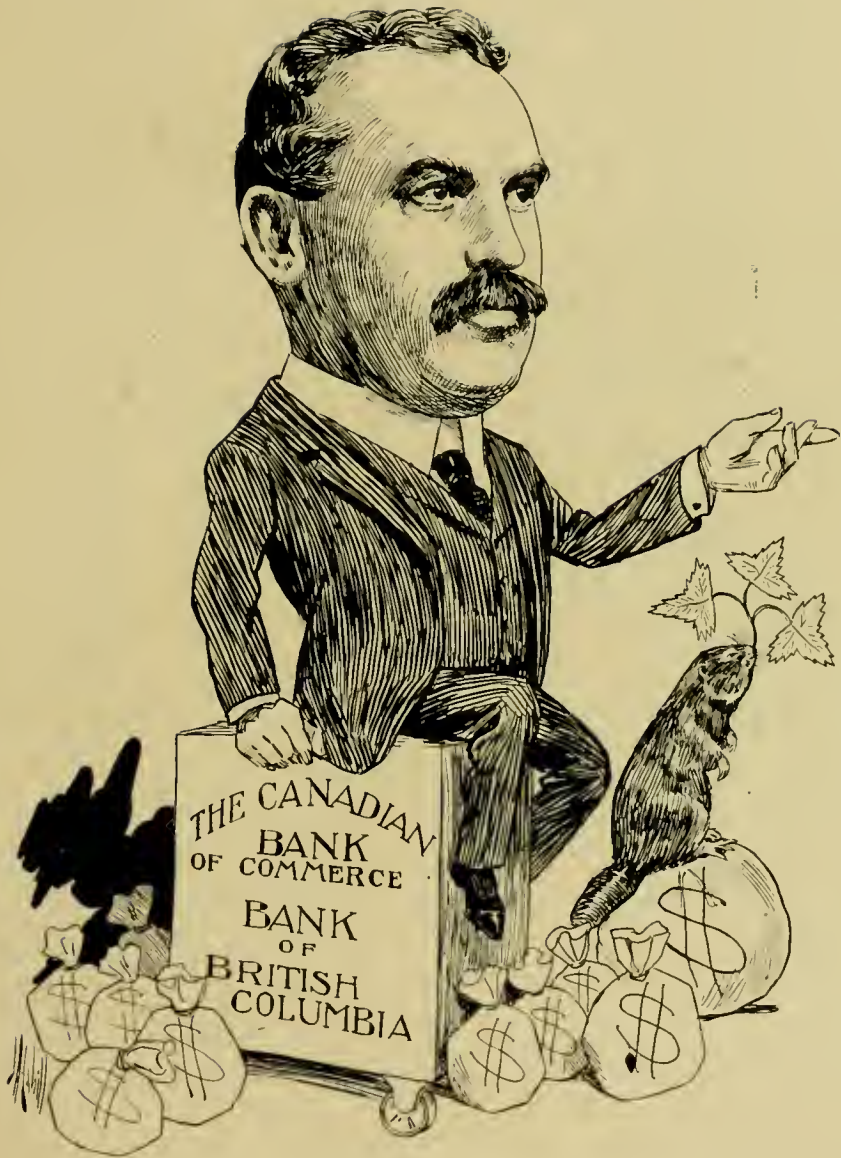




GEO. PARDEE



J. DALZELL BROWN

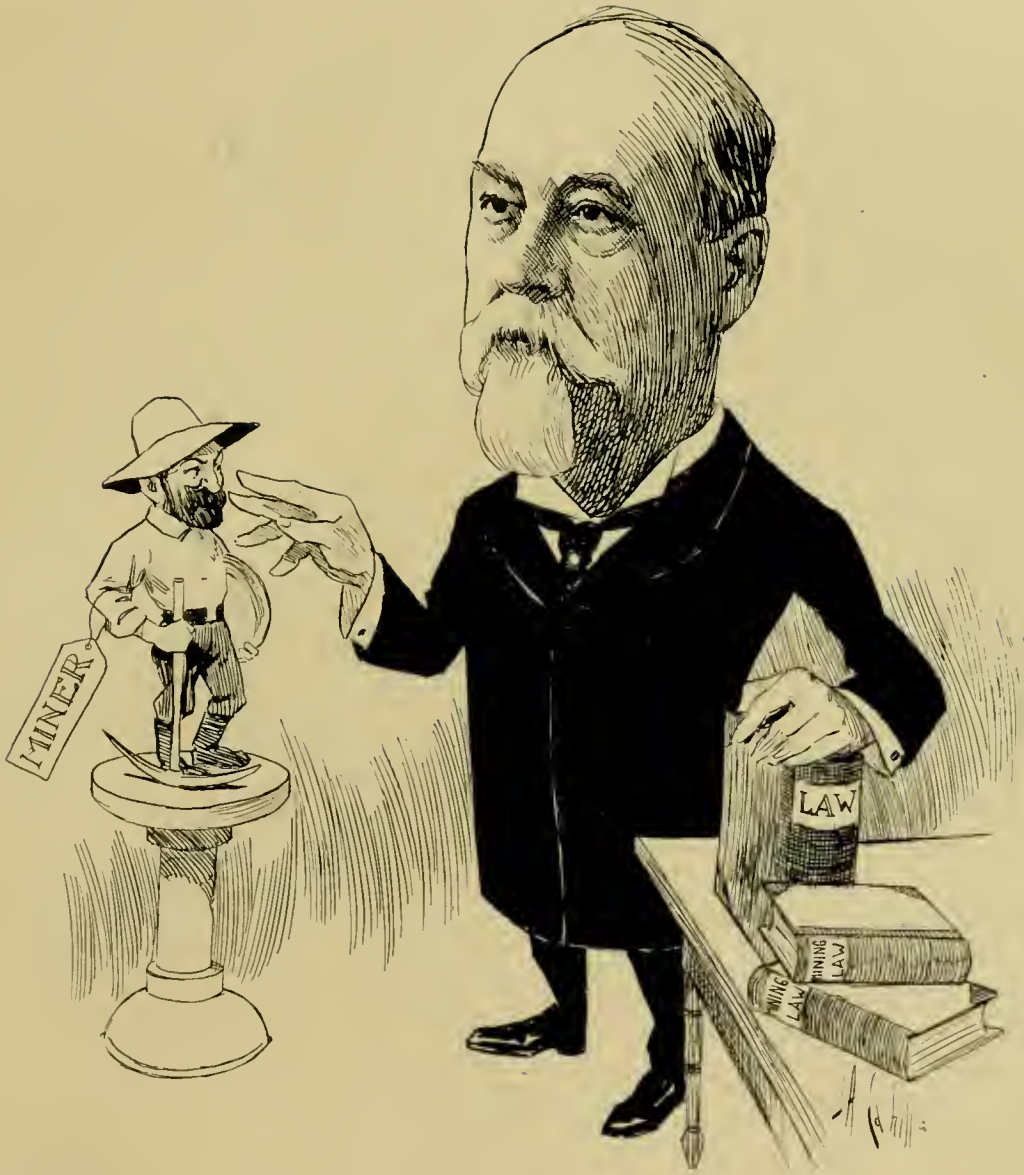


A. C. KAINS



HENRY PAYOT

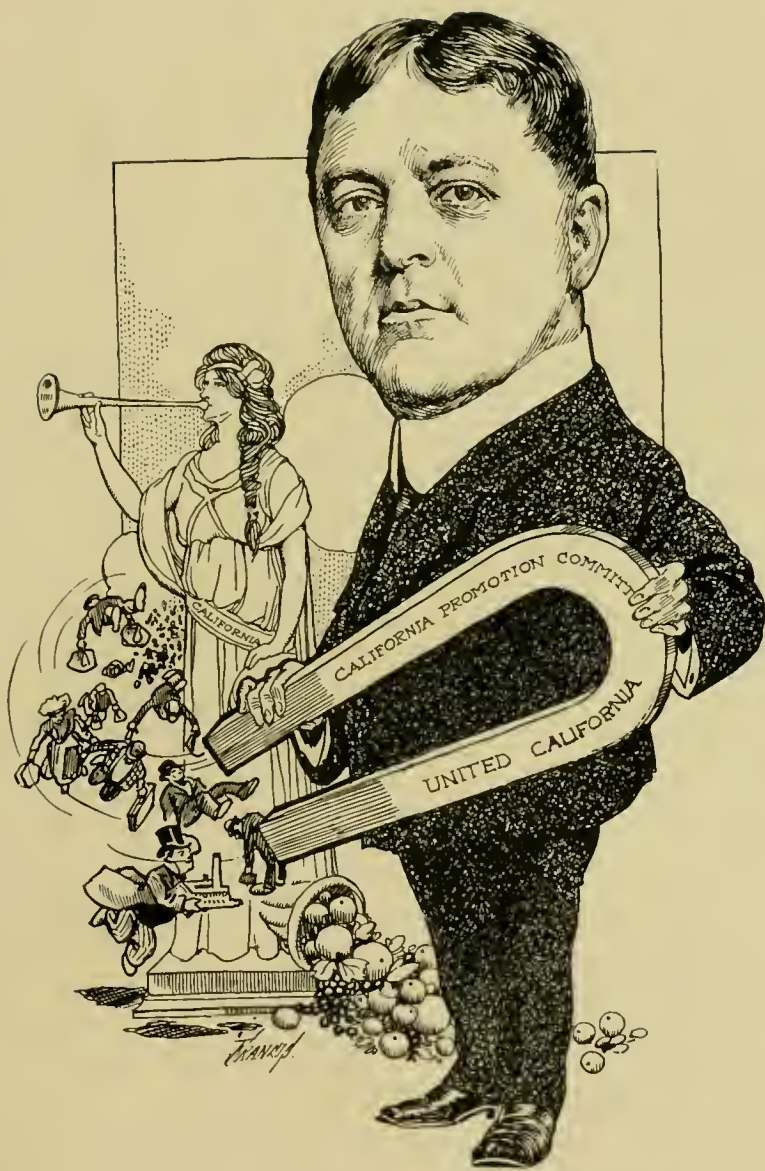




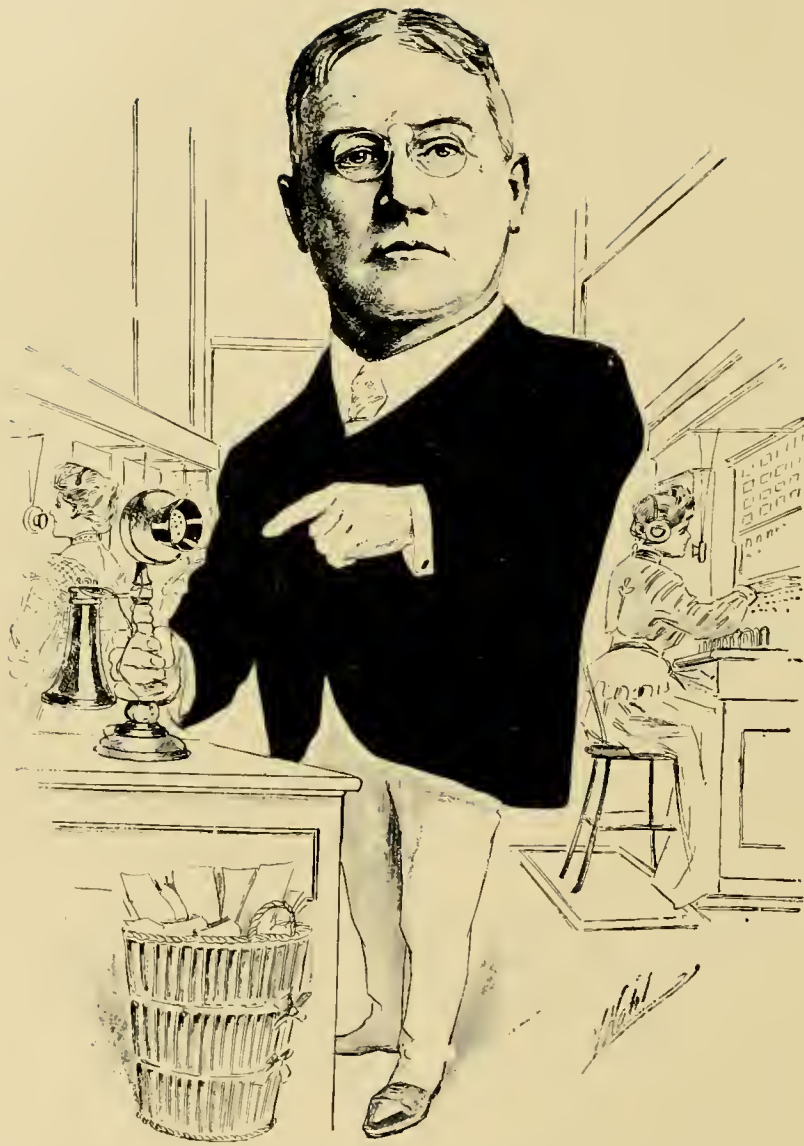
W. E. F. DEAL



ISAAC UPHAM



RUFUS P. JENNINGS



LOUIS GLASS





M. H. HECHT



DONALD Y. CAMPBELL

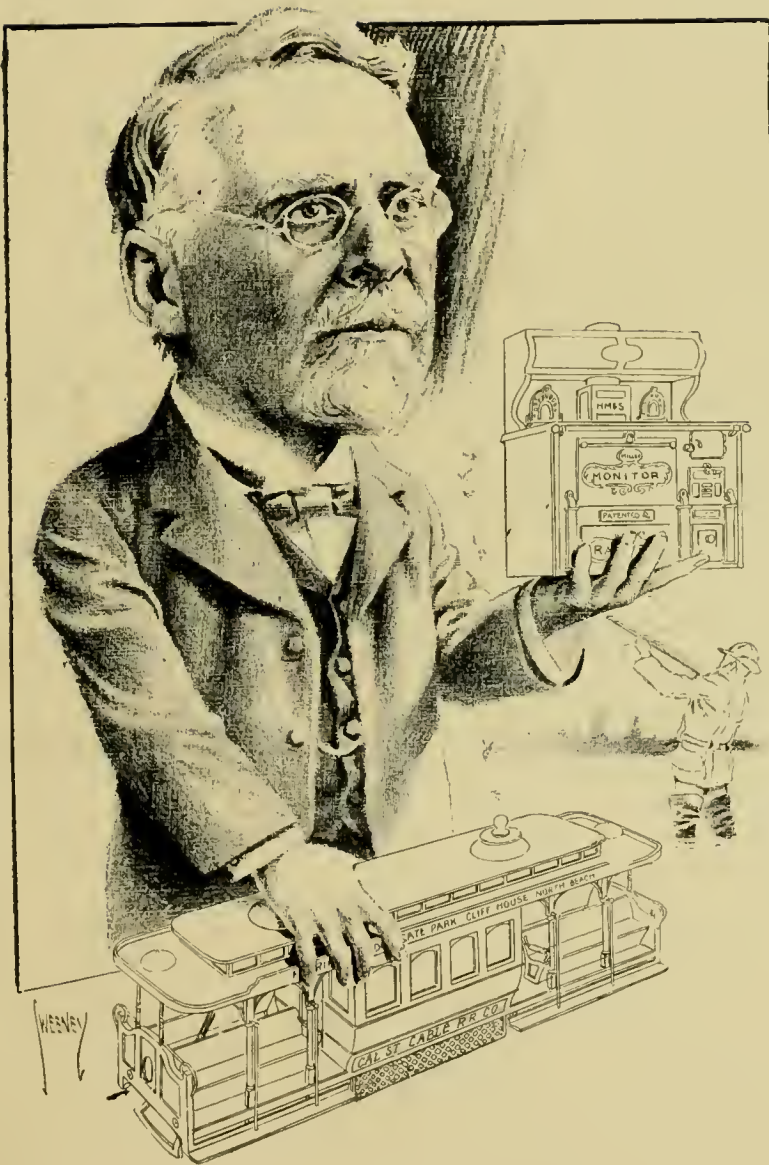


REUBEN LLOYD



WILLIAM P. LAWLOR





JAMES B. STETSON



CHARLES W. SLACK



HENRY C. DIBBLE



GEORGE F. LYON





E. L. HOAG



R. M. FITZGERALD



GAVIN McNAB



CHAS. J. HEGGERTY





GEO. A. KNIGHT



CHAS. NELSON



B. F. ALDEN, M. D.





W. J. SHOTWELL





CARROLL COOK



ROBERT T. DEVLIN





F. W. DOHRMANN





TIREY L. FORD





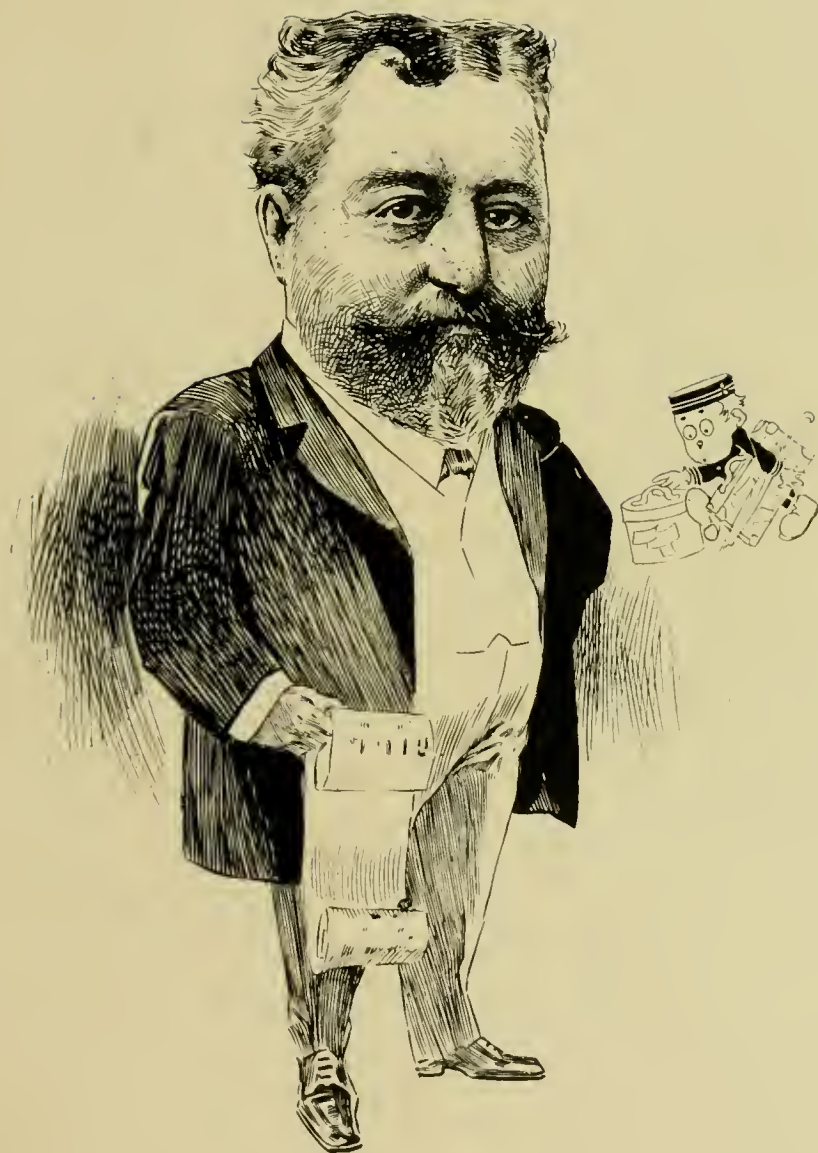
JAMES ROLPH, JR.



E. S. PILLSBURY



BERT SCHLESINGER



JOHN C. KIRKPATRICK





SAMUEL M. SHORTRIDGE





J. S. TOBIN



CHAS. SONNTAG



W. C. VAN FLEET



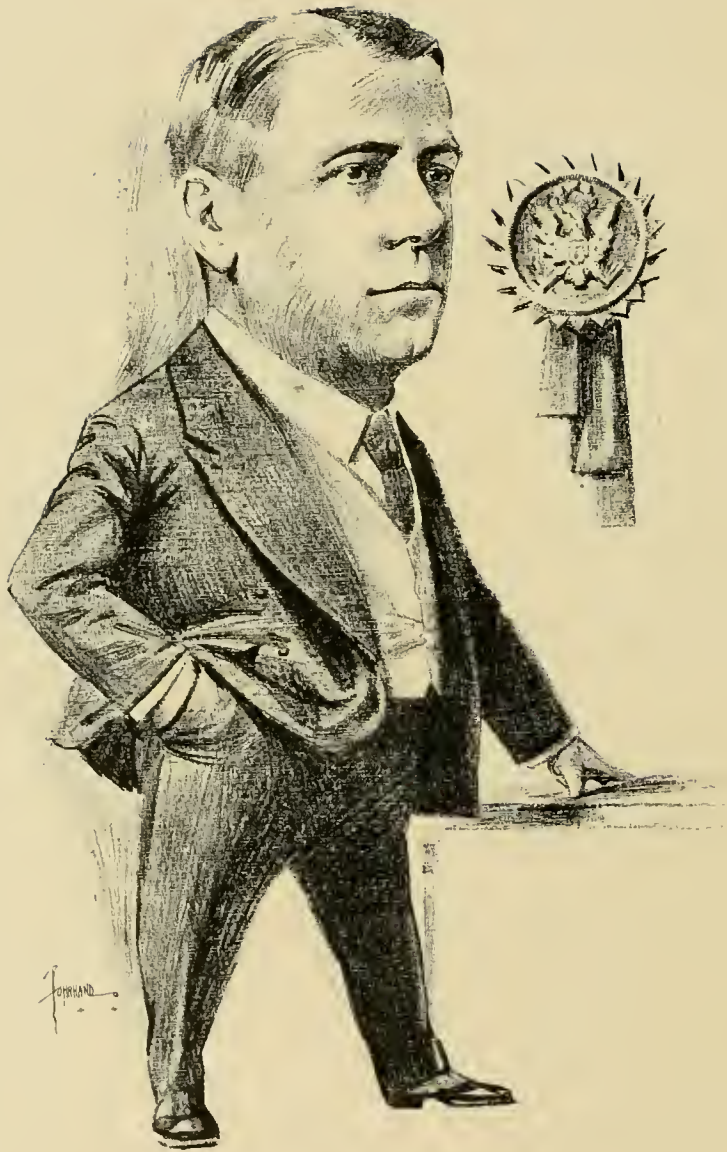
T. C. VAN NESS





ROLLA V. WATT





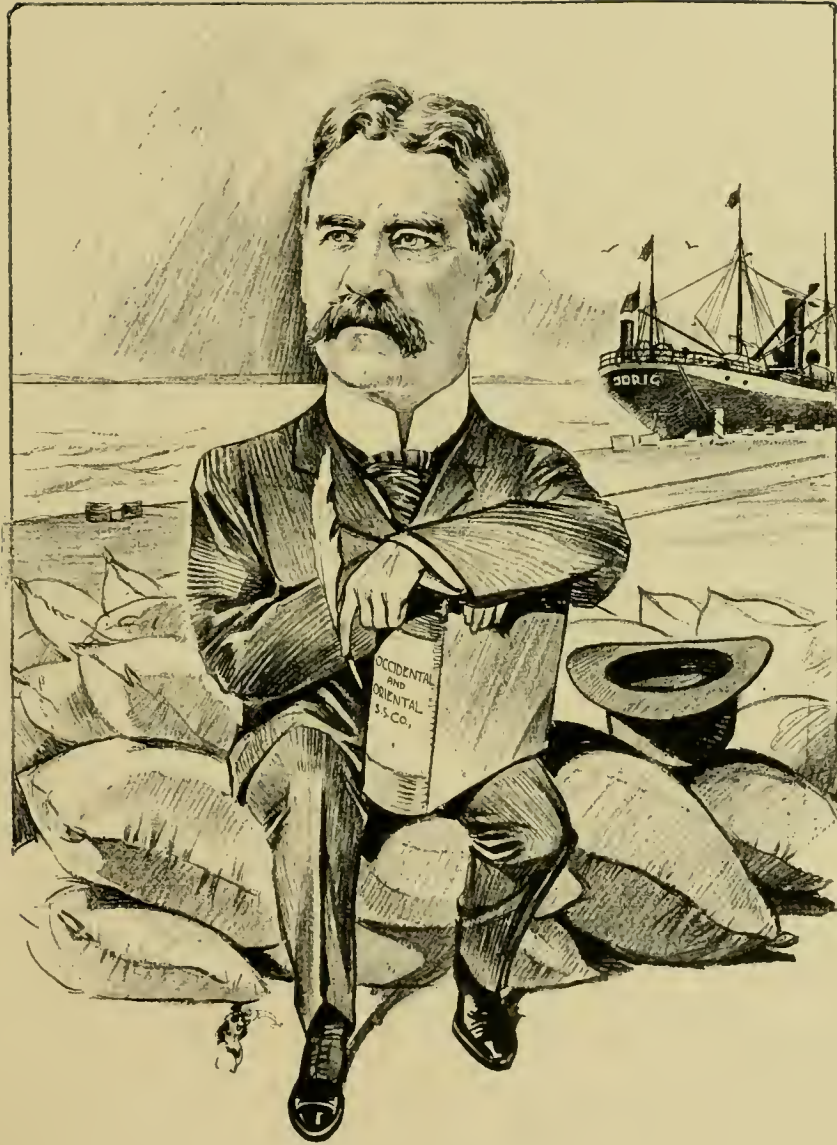
T. C. WEST



HARMON BELL



WM. BABCOCK



D. D. STUBBS





W. H. METSON





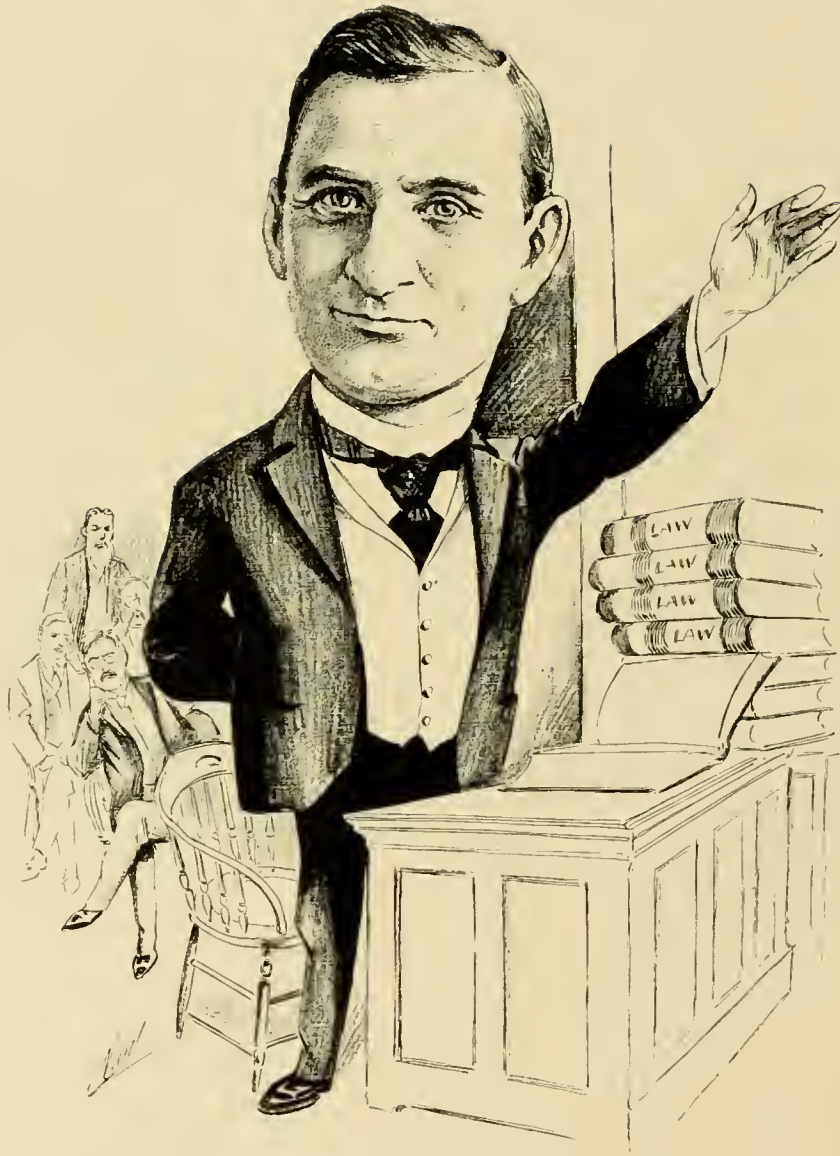
LEOPOLD MICHEL'S



JOSEPH NAPHTALY



BYRON MAUZY



CHAS. E. NAYLOR





A TOUCHIN

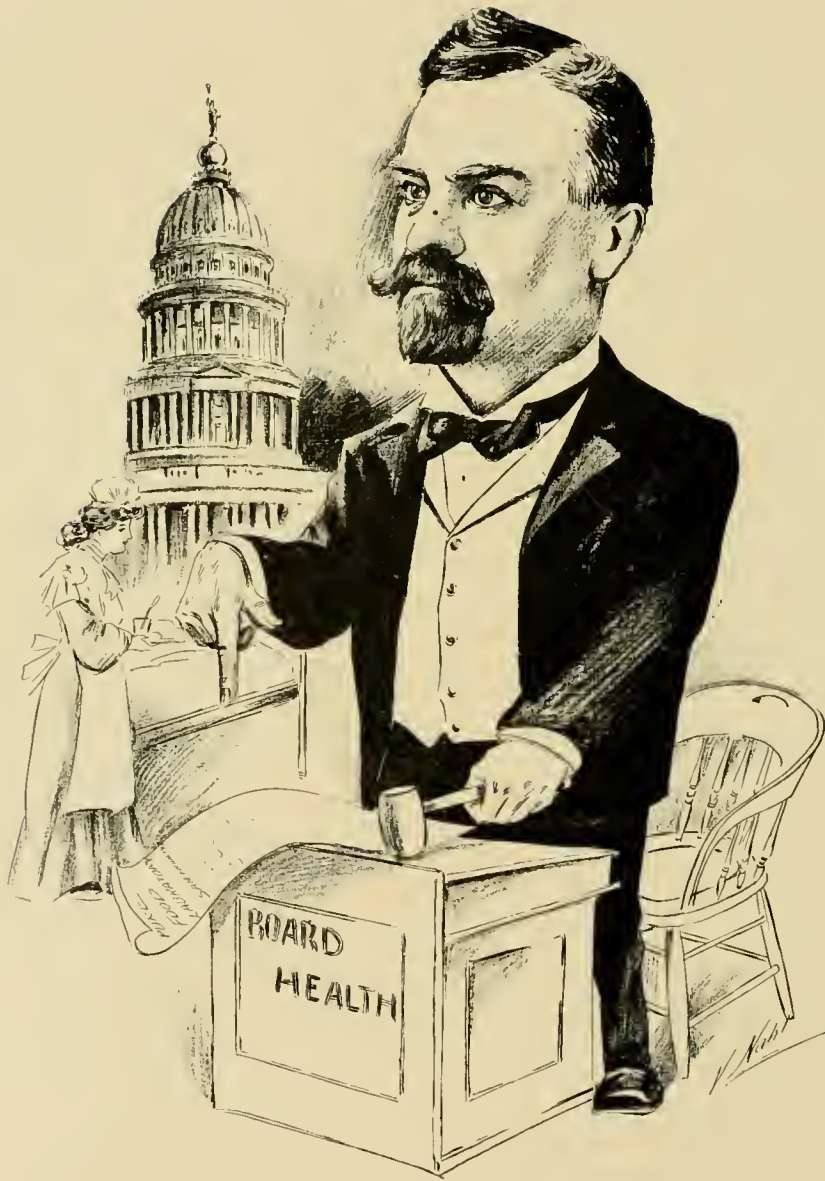
J. H. NEFF



GEORGE FILMER



A. VAN DER NAILLEN, JR.

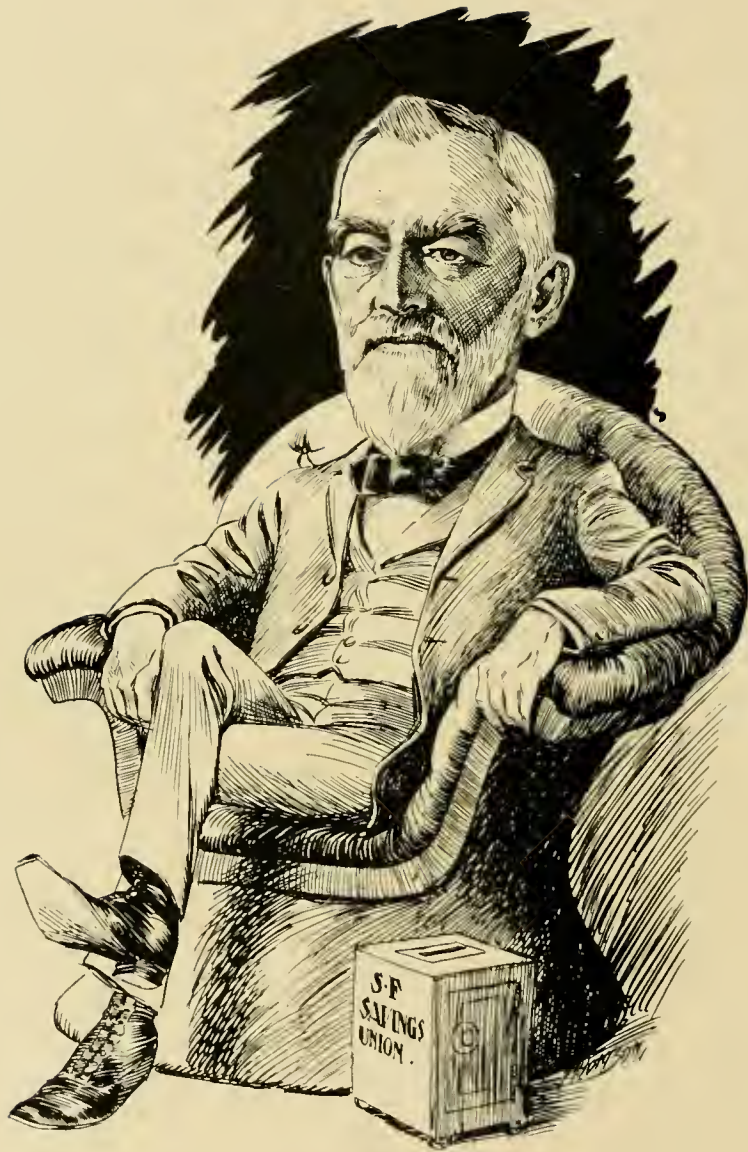


JAMES W. WARD, M. D.

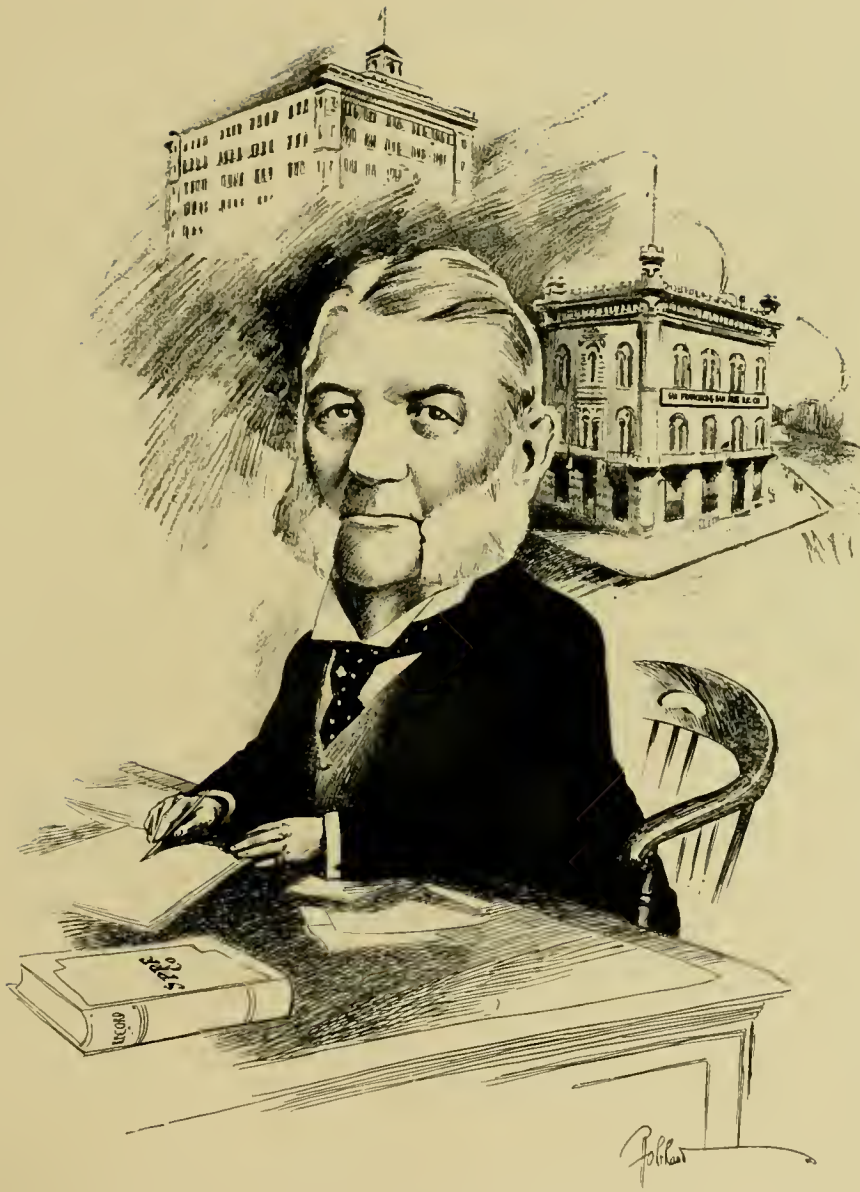




U. S. WEBB



LOVELL WHITE



J. L. WILLCUTT



WM. CORBIN





E. MYRON WOLFE



W. FRANK PIERCE



HARRY F. SULLIVAN





GEO. C. PERKINS





HENRY A. SCHULZE



P. E. BOWLES



JAMES  
H.  
O'BRIEN  
IN  
POLITICS

JAS. H. O'BRIEN





A. W. FOSTER





CHAS. PAGE



S. F. BOOTH



C. CLIFFORD



J. F. POHEIM, M. D.





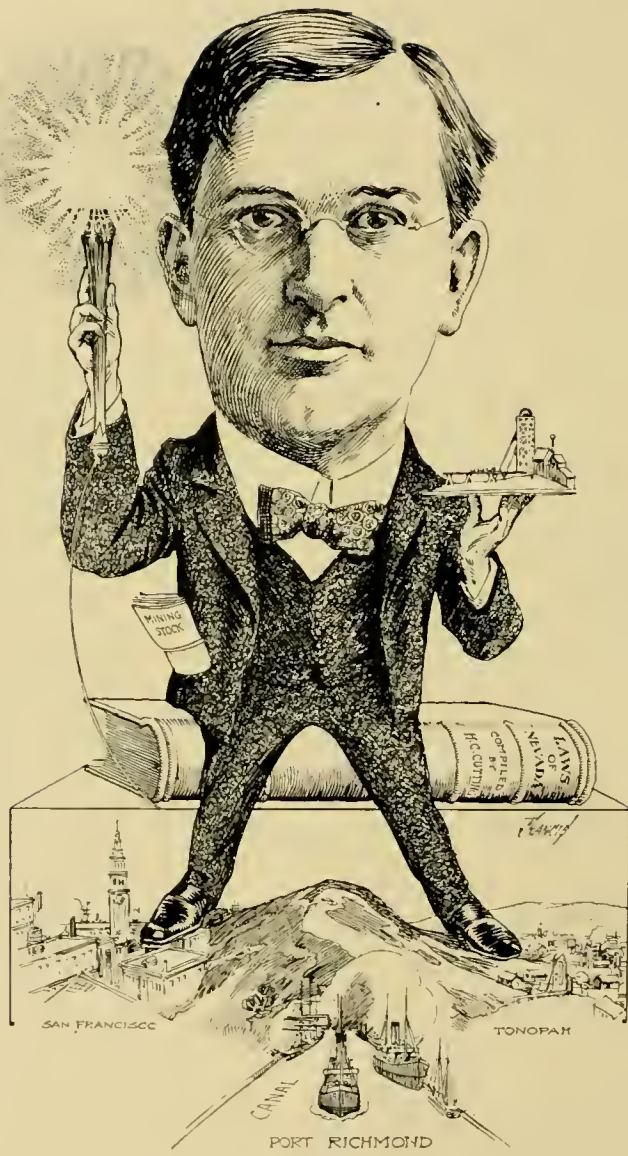
A. F. MARTEL



LIVINGSTON JENKS



ROBERT CAPELLE



H. C. CUTTING





CLARENCE M. SMITH



G. W. McNEAR, JR.



GEO. W. McNEAR



WILLIAM MOOSER

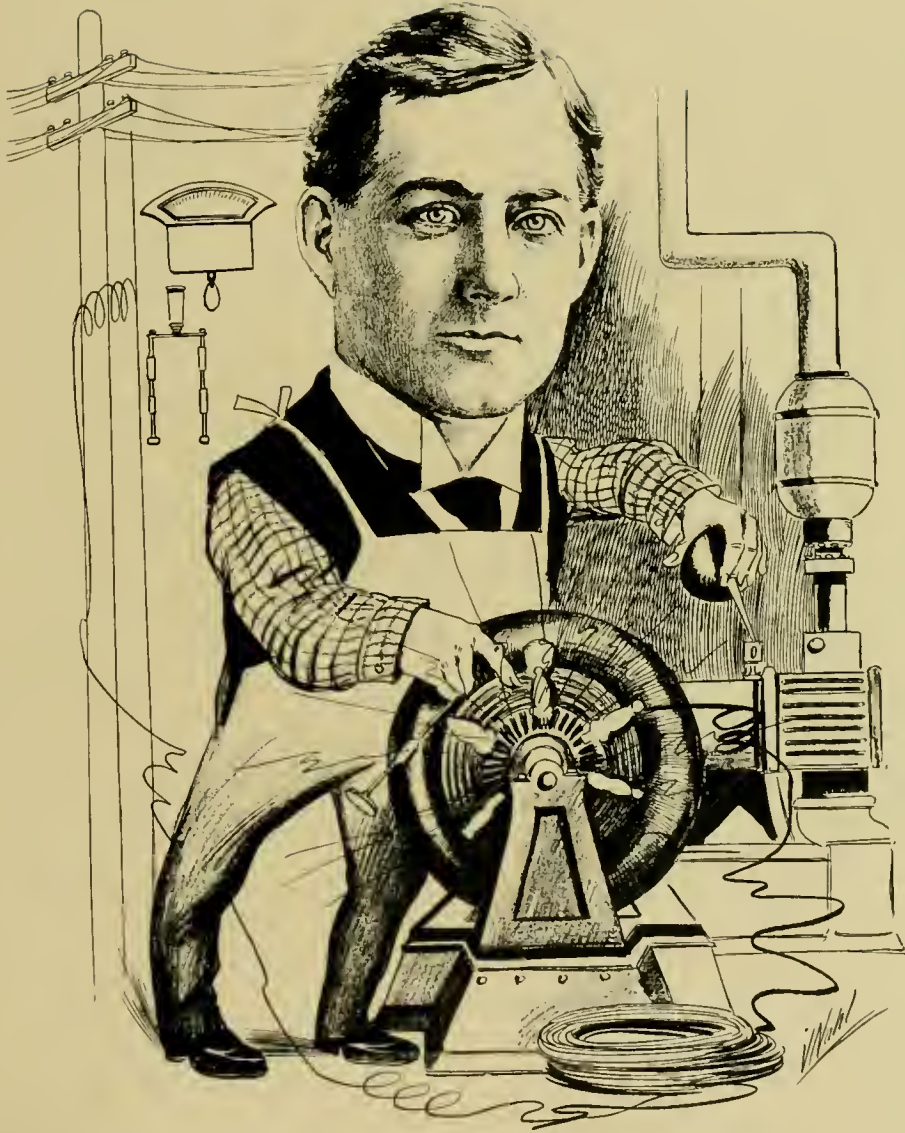




C. F. HUMPHREY



A. HEYNEMANN



W. R. HEWITT

PRESIDENT  
OF THE  
HOME  
TELEPHONE  
OF  
SAN FRANCISCO



MARK L. GERSTLE





H. M. GOLDBERG



WM. H. H. HART



W. C. GRAVES



ARTHUR G. FISKE





JOHN J. BARRETT



EUGENE E. SCHMITZ



A. RUEF



GARRET W. McENERNEY





ALFRED E. REGENSBURGER, M. D.



JOS. ROTHSCHILD



DANIEL A. RYAN



H. V. MOREHOUSE





A. J. HECHTMAN



CHAS. F. HANLON

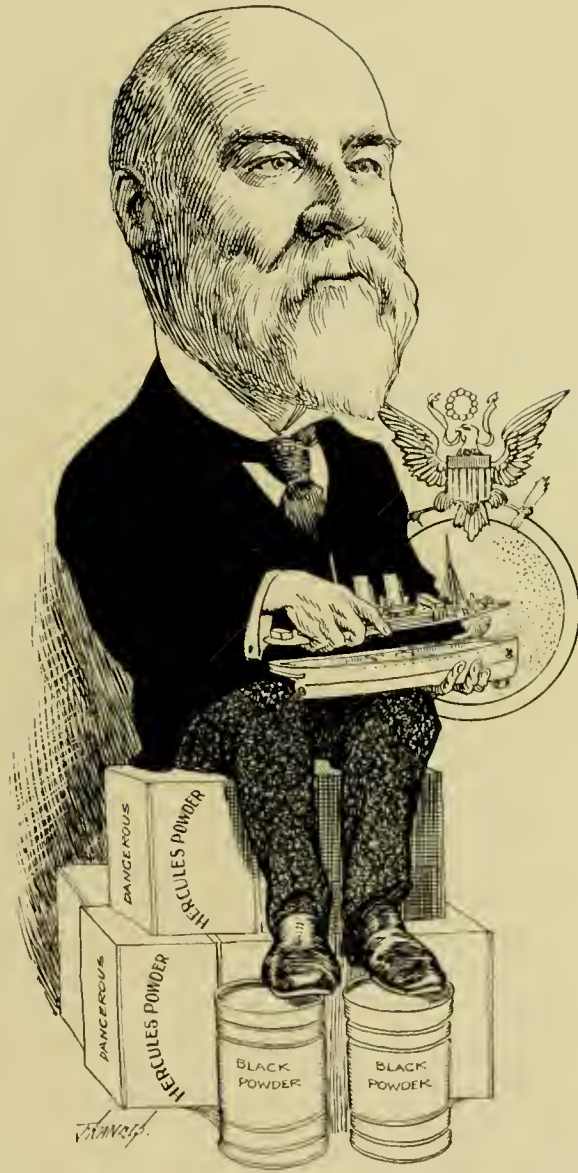


EMIL POHLI



W. B. COPE





JOHN BIRMINGHAM



W. A. BISSELL

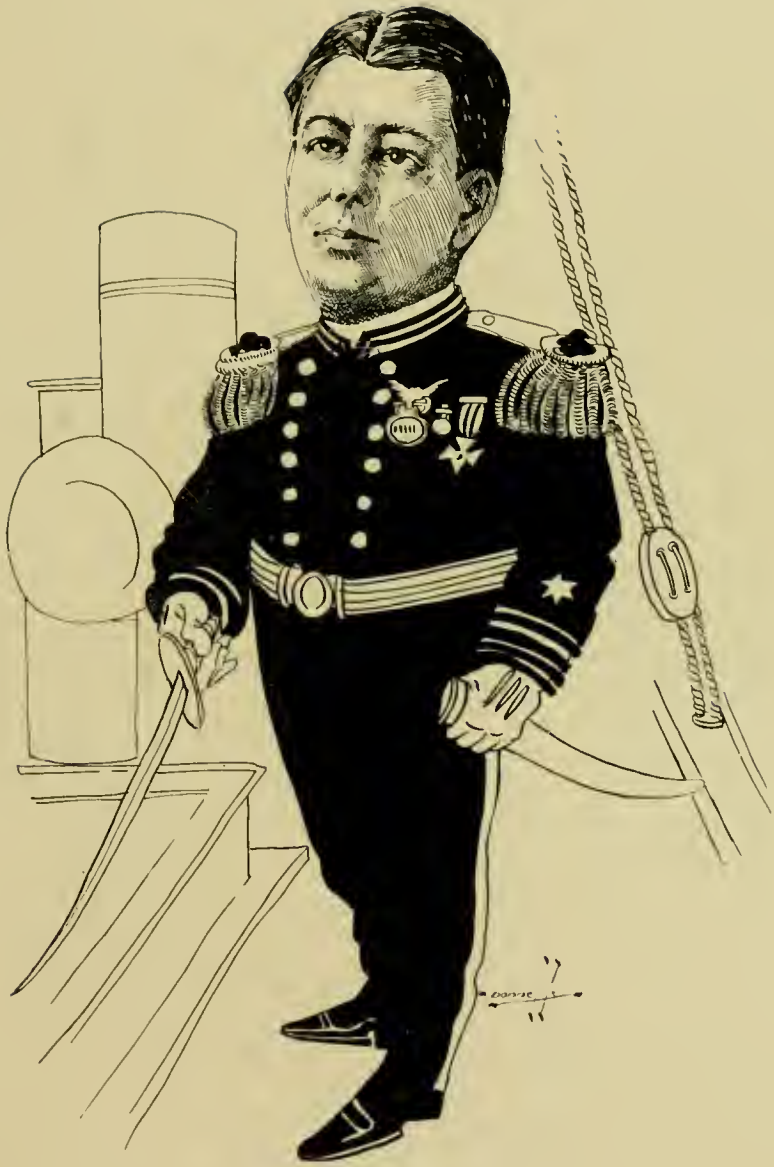


JOHN BREUNER

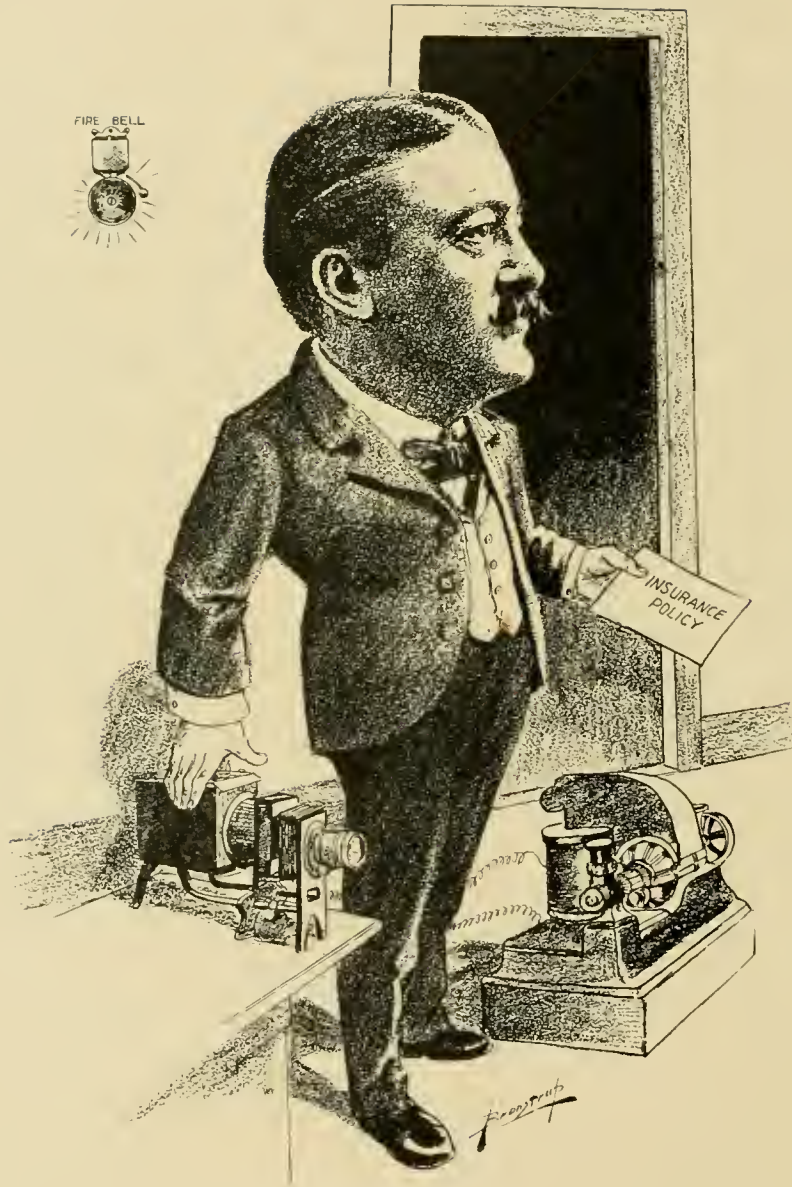


WM. M. ABBOTT





GEO. W. BAUER



G. A. BERTON



EUGENIO BIANCHI, JR.

**WATCH DOG  
OF THE  
TREASURY**



HARRY BAEIR





J. J. BURT



LEWIS F. BYINGTON

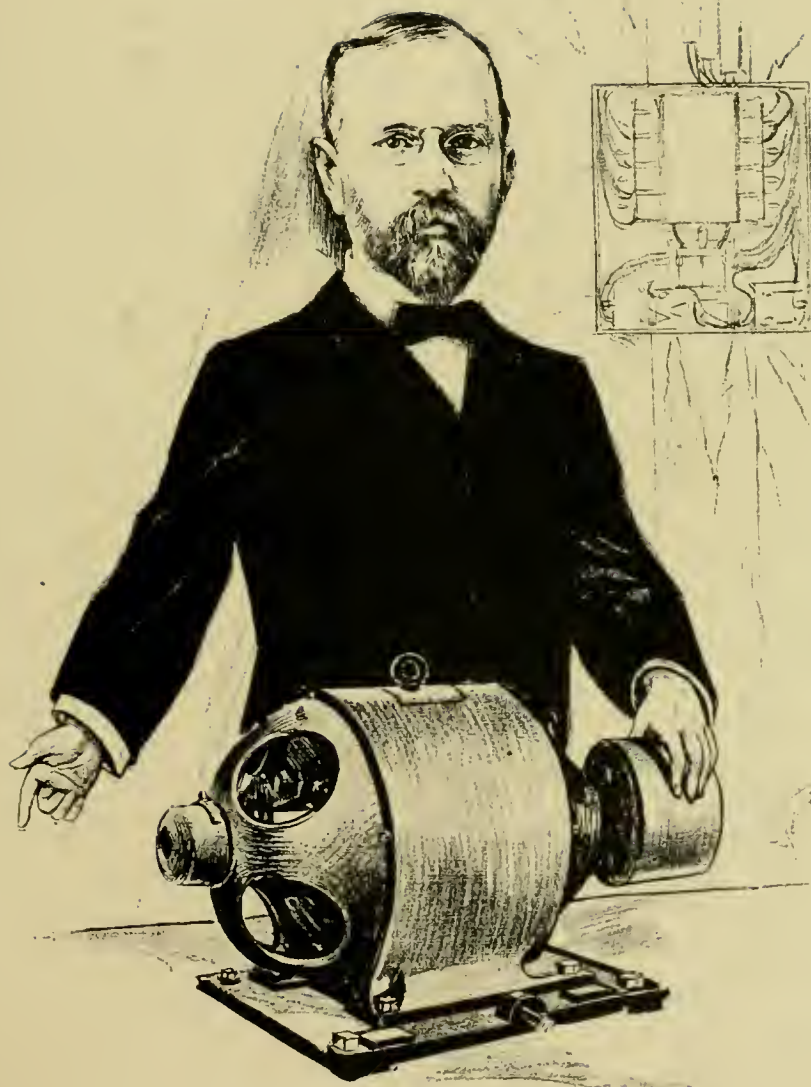


PETER J. CURTIS



J. PARKER CURRIER





R. J. DAVIS



R. D. DAVIS



C. A. DAY

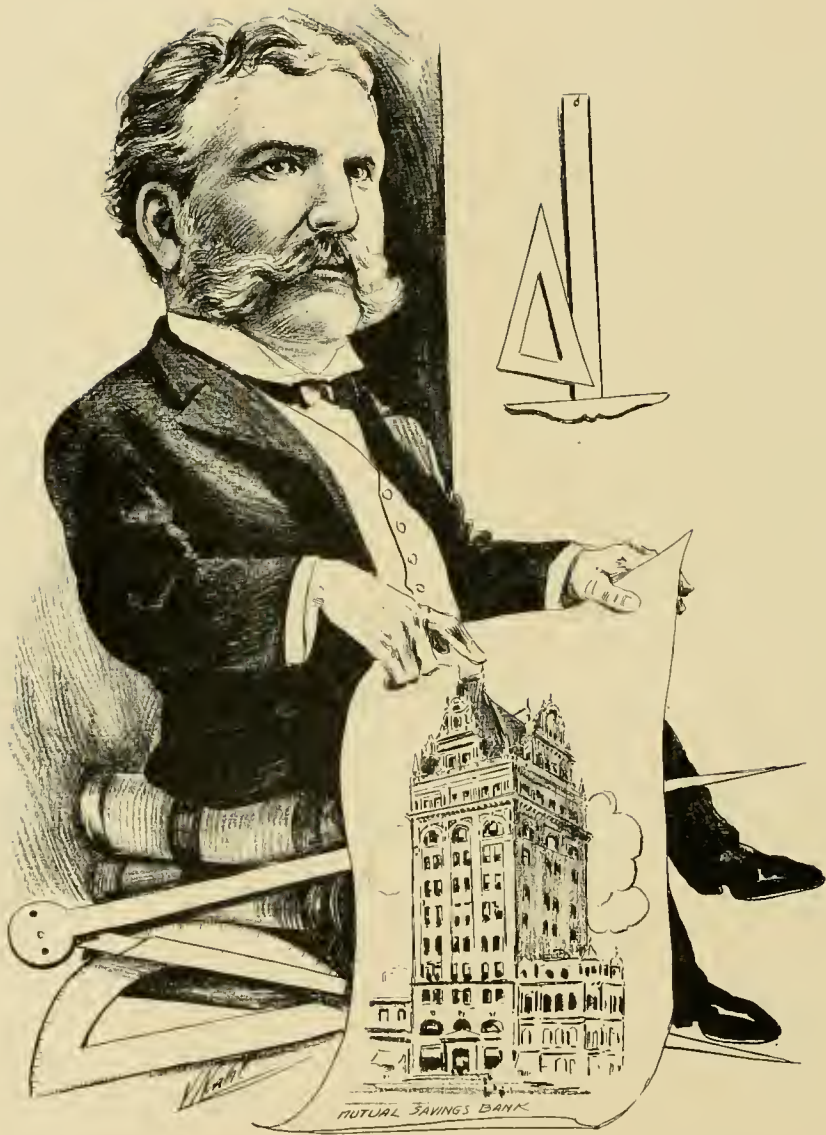


E. E. CALVIN





J. METCALFE



W.M. CURLETT



A. S. MACDONALD



J. C. WILSON





A. B. HAMMOND



JAMES K. WILSON



R. H. PEASE



WALTER HOFF SEELY





W. N. DROWN



W. E. PEARCE



H. L. PADDOCK



GEO. Q. CHASE





JOHN J. COGHLAN



A. CHRISTESON



FRANKLIN P. BULL





A. B. BOWERS





S. L. ABBOTT



HOW WOULD YOU  
LIKE TO BE A  
SUGAR ICE MAN?

J. A. BUCK



EDGAR C. CHAPMAN



GEO. W. CASWELL





GEO. R. CARSON, M. D.



JOHN CAFFREY



ALBERT BETTENS



P. A. BERGEROT





JOHN M. CURTIS



F. O. HATCH



NATHAN H. FRANK

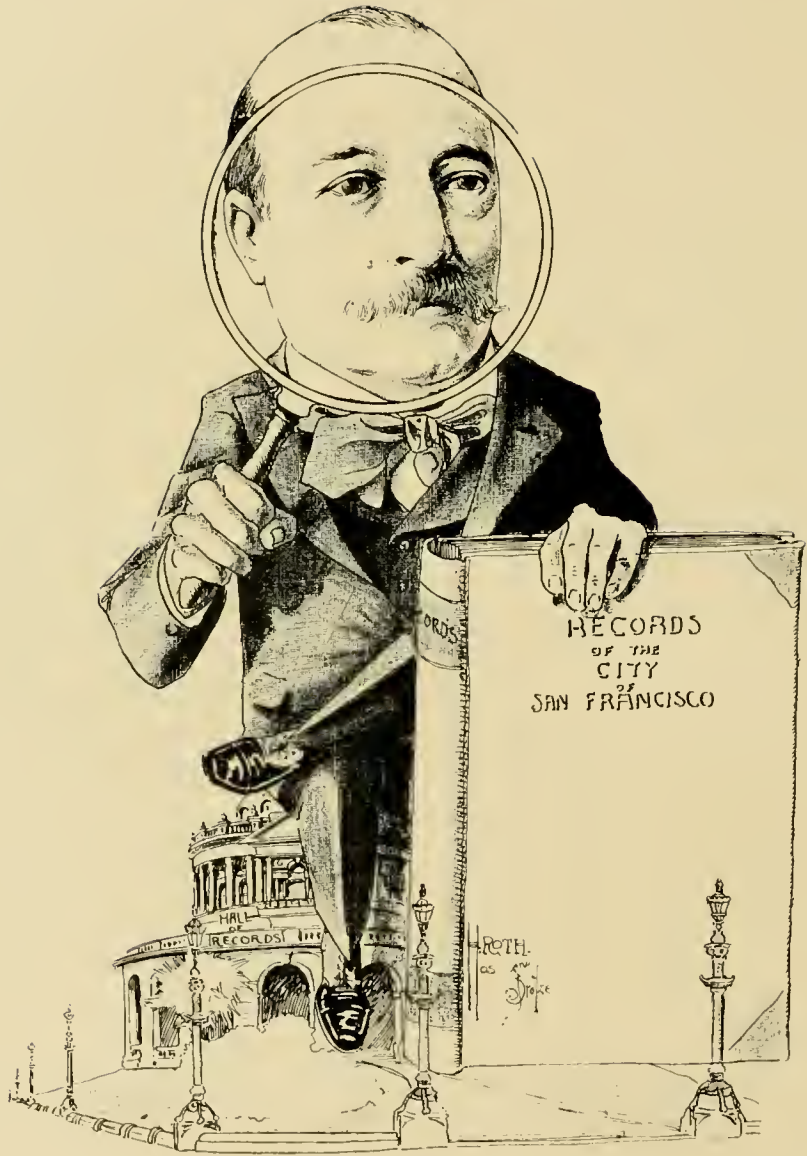


PAUL STEINDORFF





M. M. STERN



EDMOND GODCHAUX



JNO. C. LYNCH



FRED'K B. LAKE

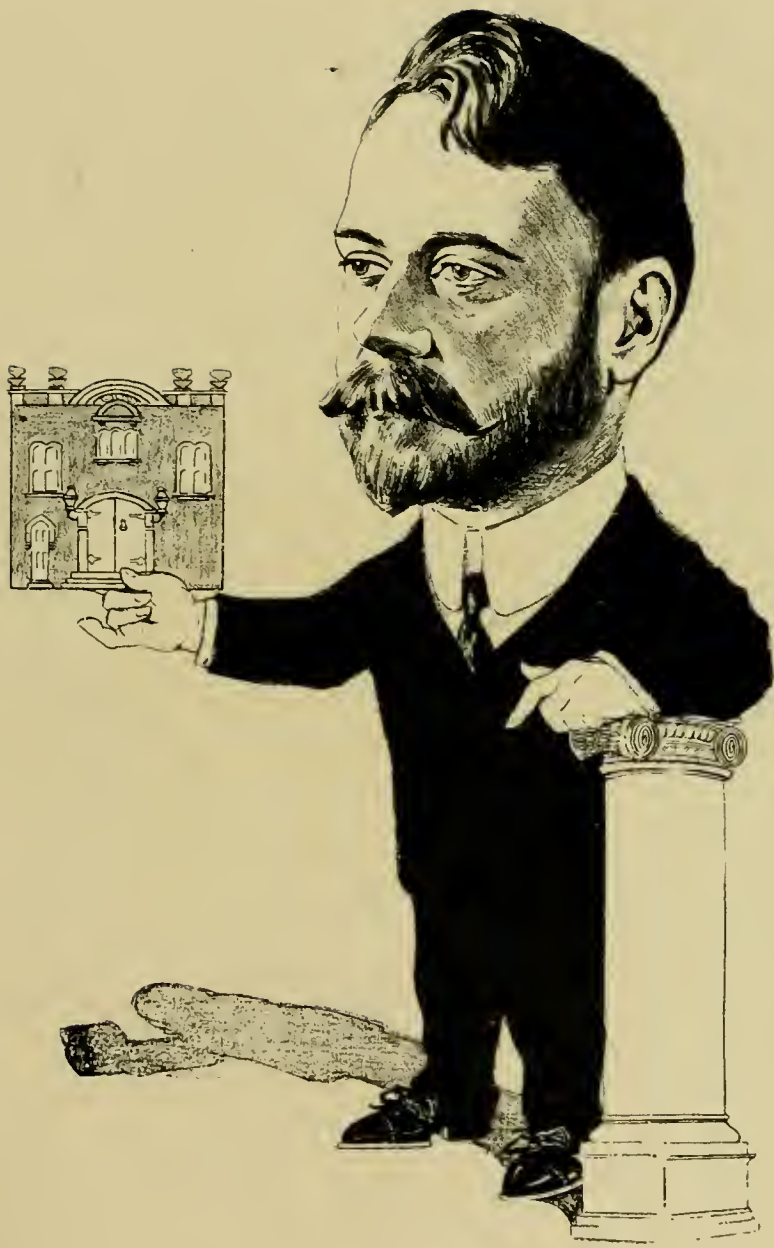




JOSEPH KIRK



S. H. KENT



JOHN WHITE



W.M. M. WEIL





R. V. HALTON



MARINE  
INSURANCE

W. H. LABOYTEAUX



BURRELL G. WHITE



FRANK R. WEHE





WM. S. GROVER



ALLEN G. WRIGHT



GEO. T. WRIGHT



C. A. MEUSSDORFFER





FRANK JAYNES



THOS. H. B. VARNEY



J. CHAS. GREEN





ROBT. F. GALLAGHER

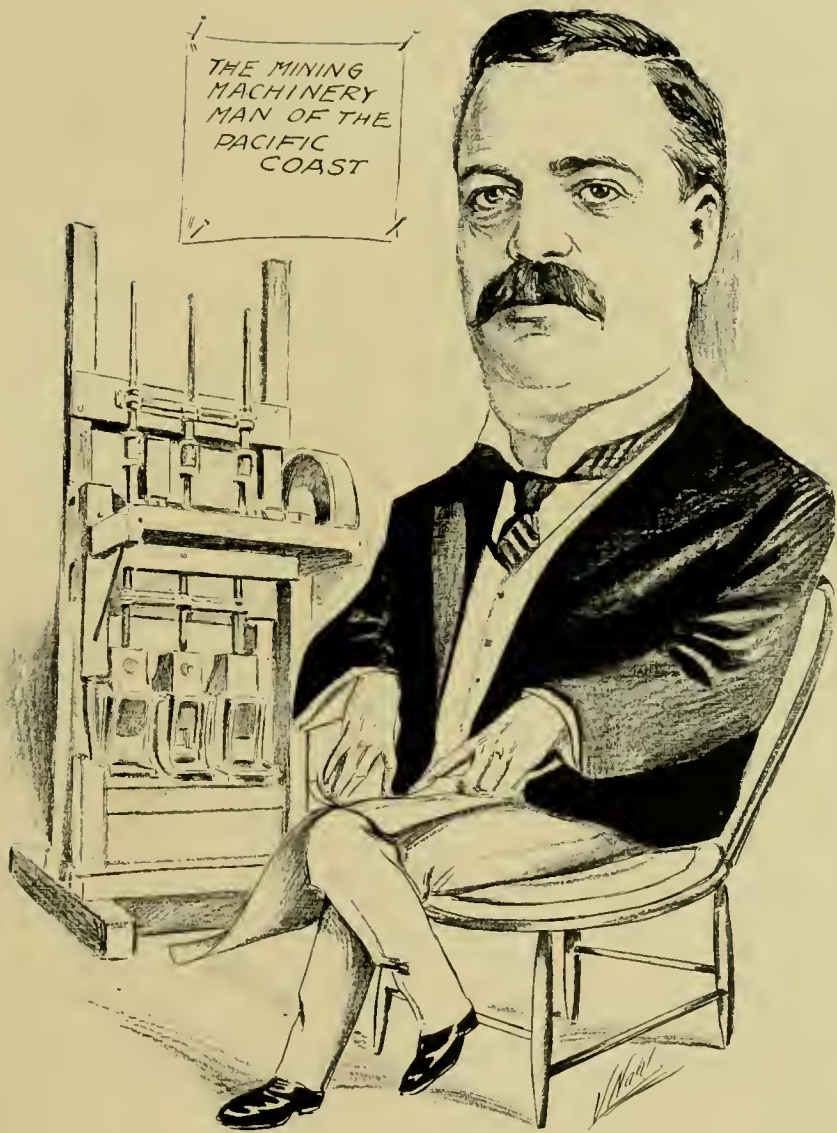




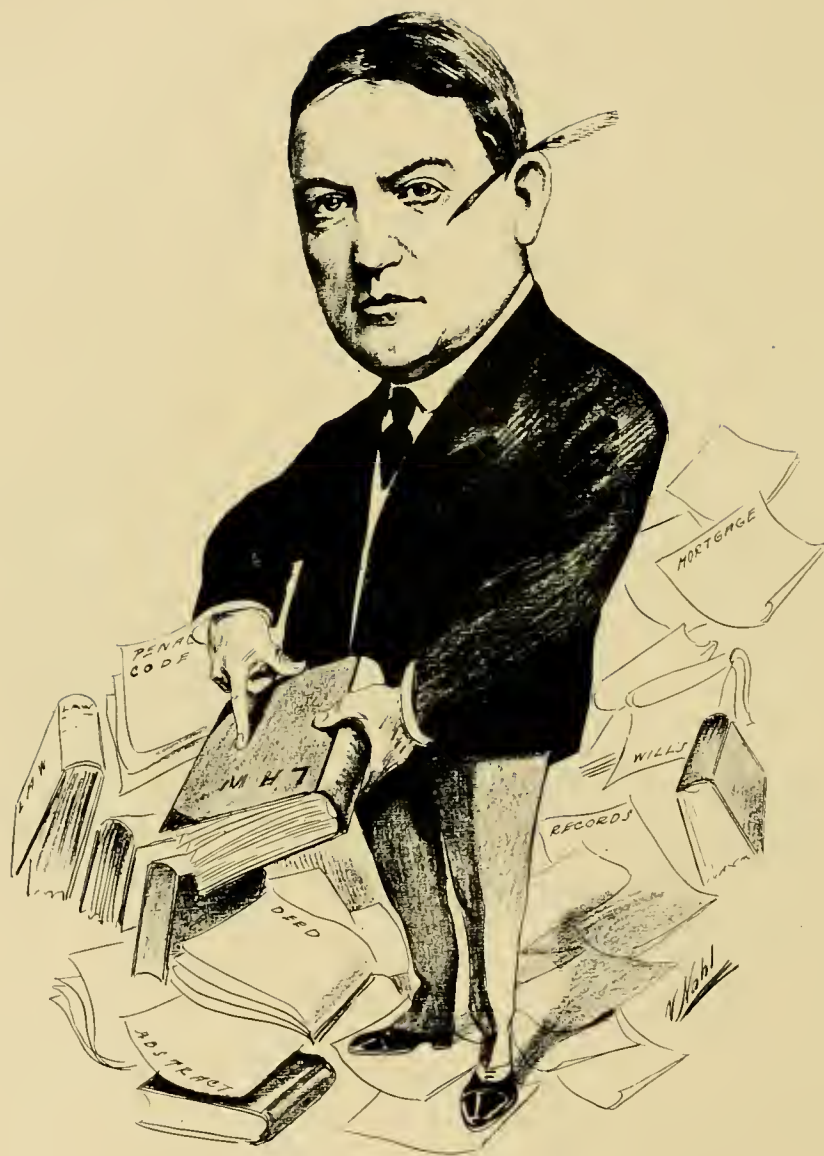
FRANK S. VAN TREES



CHARLES SUTRO

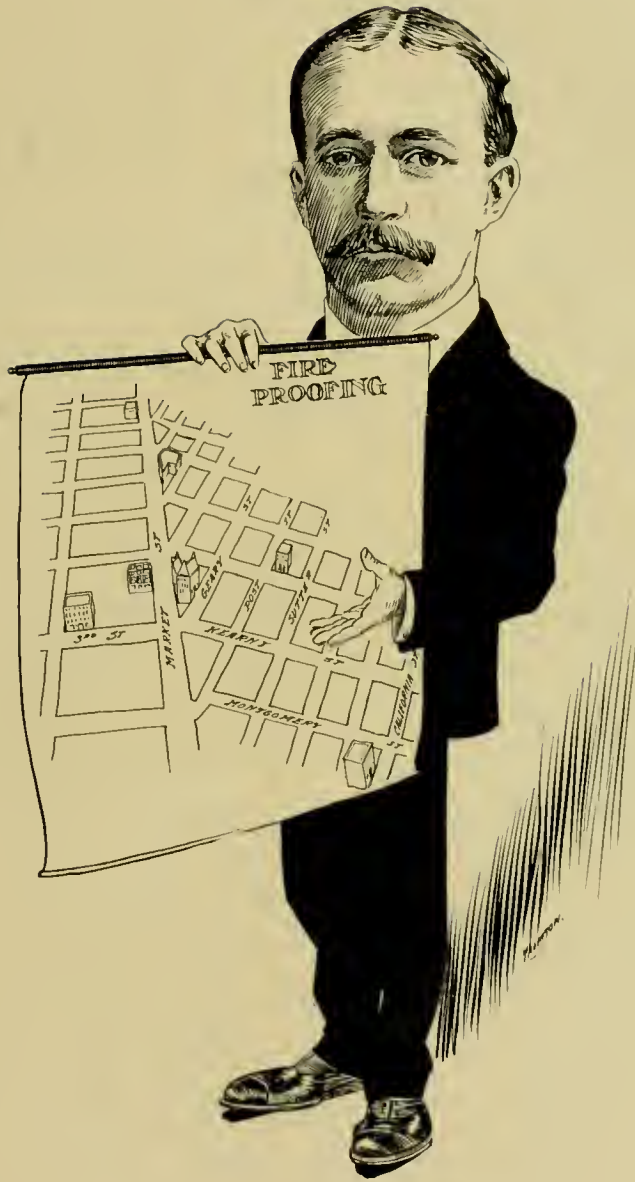


S. J. HENDY

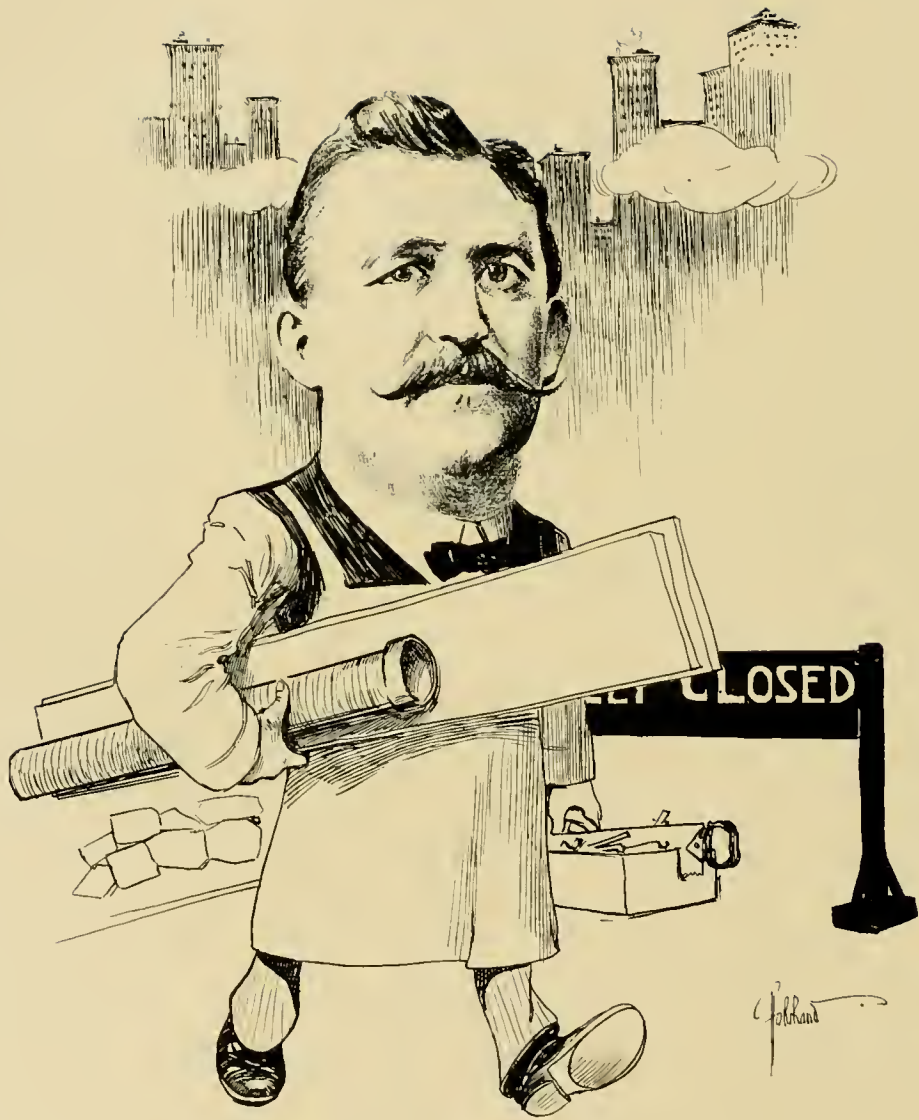


F. C. DREW





PERCY R. STUART



F. A. MAESTRETTI



WILLIAM F. HUMPHREY



FRED WOODWORTH





E. P. HEALD



MARSHALL B. WOODWORTH



W. H. LANGDON





ALEXANDER R. BAUM





JOEL WHITTEN HICKS



C. O. G. MILLER



ALLAN POLLOCK



C. W. WALLER



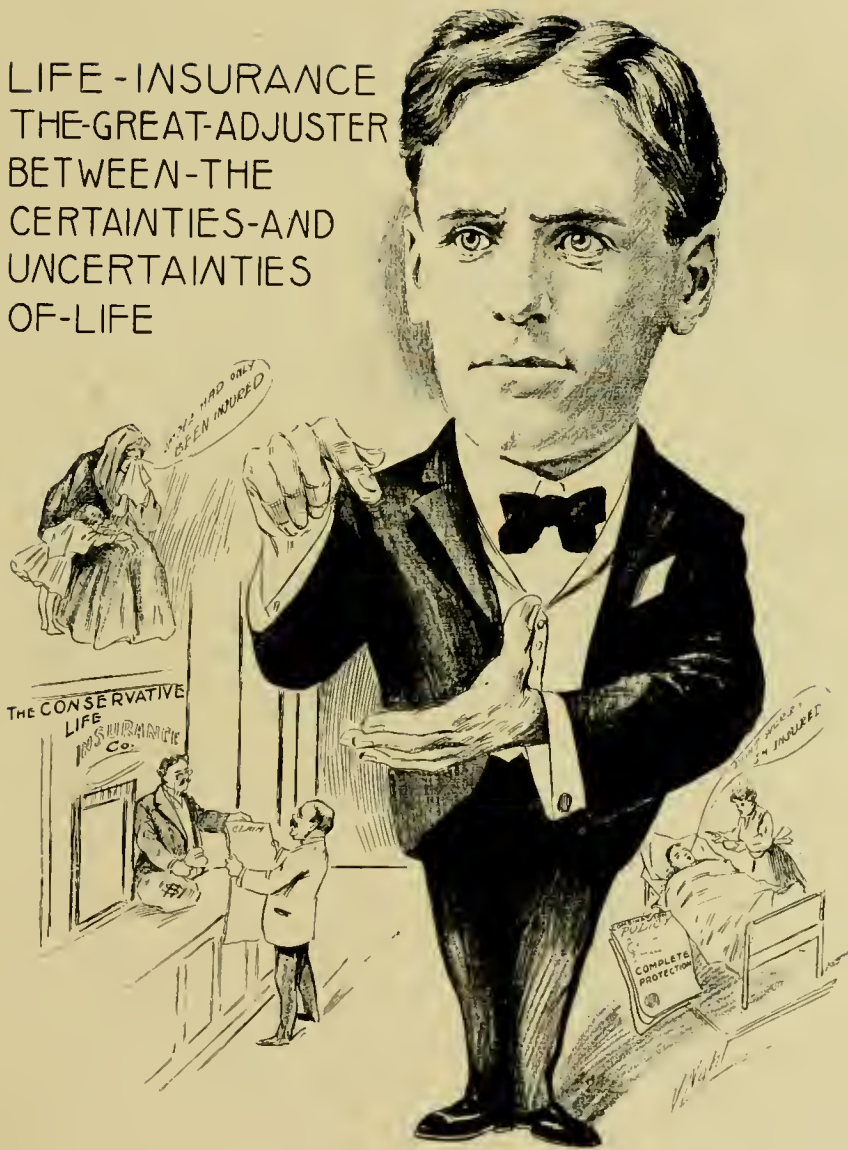


G. HOWARD THOMPSON

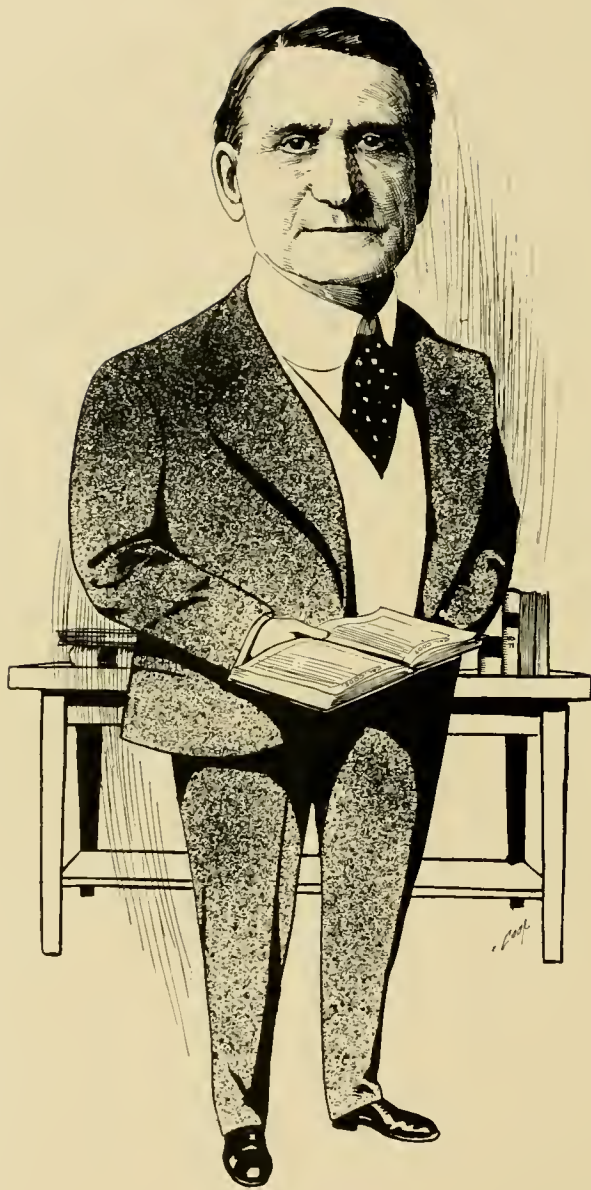


H. S. ALLEN

LIFE - INSURANCE  
THE-GREAT-ADJUSTER  
BETWEEN-THE  
CERTAINTIES-AND  
UNCERTAINTIES  
OF-LIFE



ALBERT E. UPTON



D. E. ALEXANDER





LOUIS DEROME



HENRY DERNHAM



JULIUS S. GODEAU

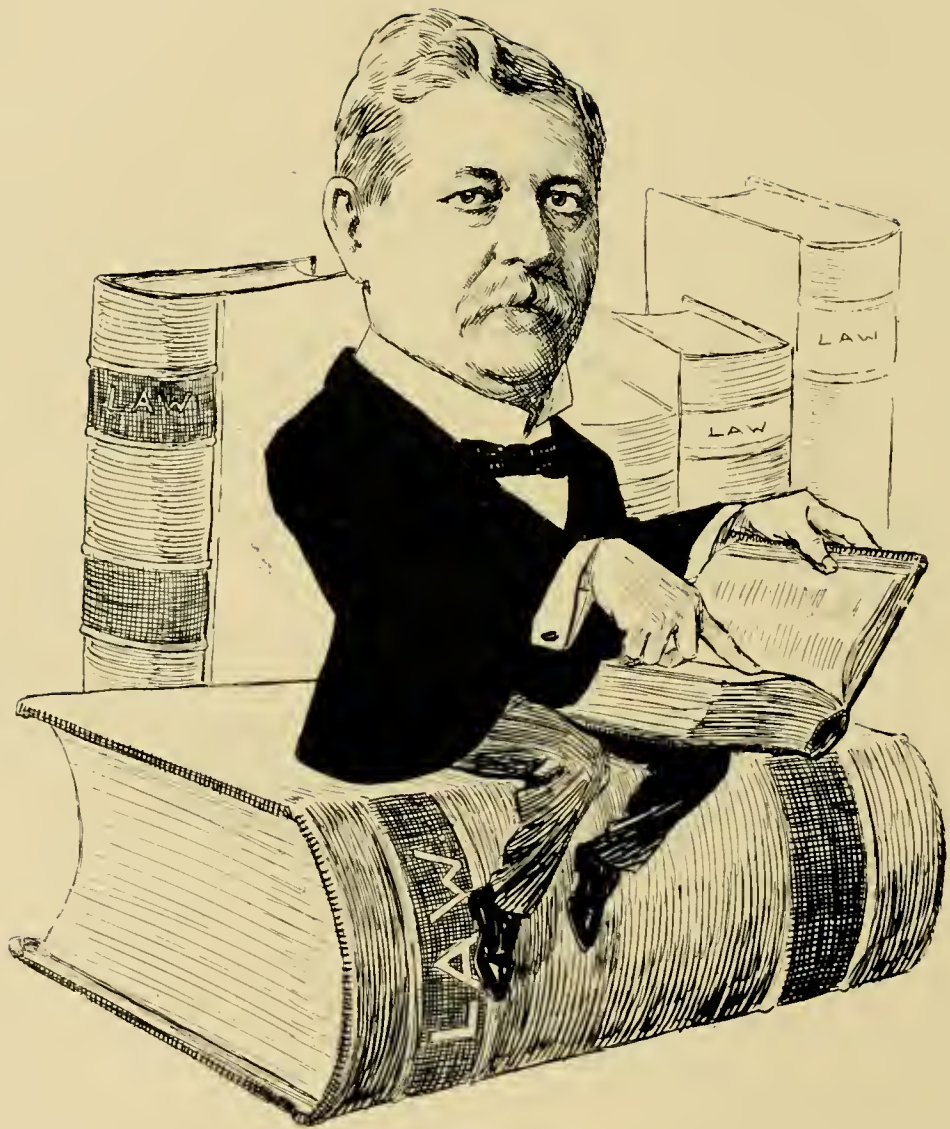


THEO. W. LENZEN





CAPT. WM. MATSON



H. A. POWELL



E. H. RIXFORD





CHAS. A. MORAGHAN





CHARLES STALLMAN



FRANK T. SHEA



W. D. SHEA



CHAS. W. FAY





L. S. SHERMAN



BACHRACH & CORDES CO.

DOUBLEDAY  
BANKER  
AND  
BROKER



D. G. DOUBLEDAY



F. J. COOPER





GEO. E. CROTHERS



W. F. SOUTHARD



ALBERT SUTTON



L. J. SCOOFFY





EDM. KOLLOFRATH



HENRY ACH



J. M. ROTHSCHILD



GEORGE H. MARTIN, M. D.





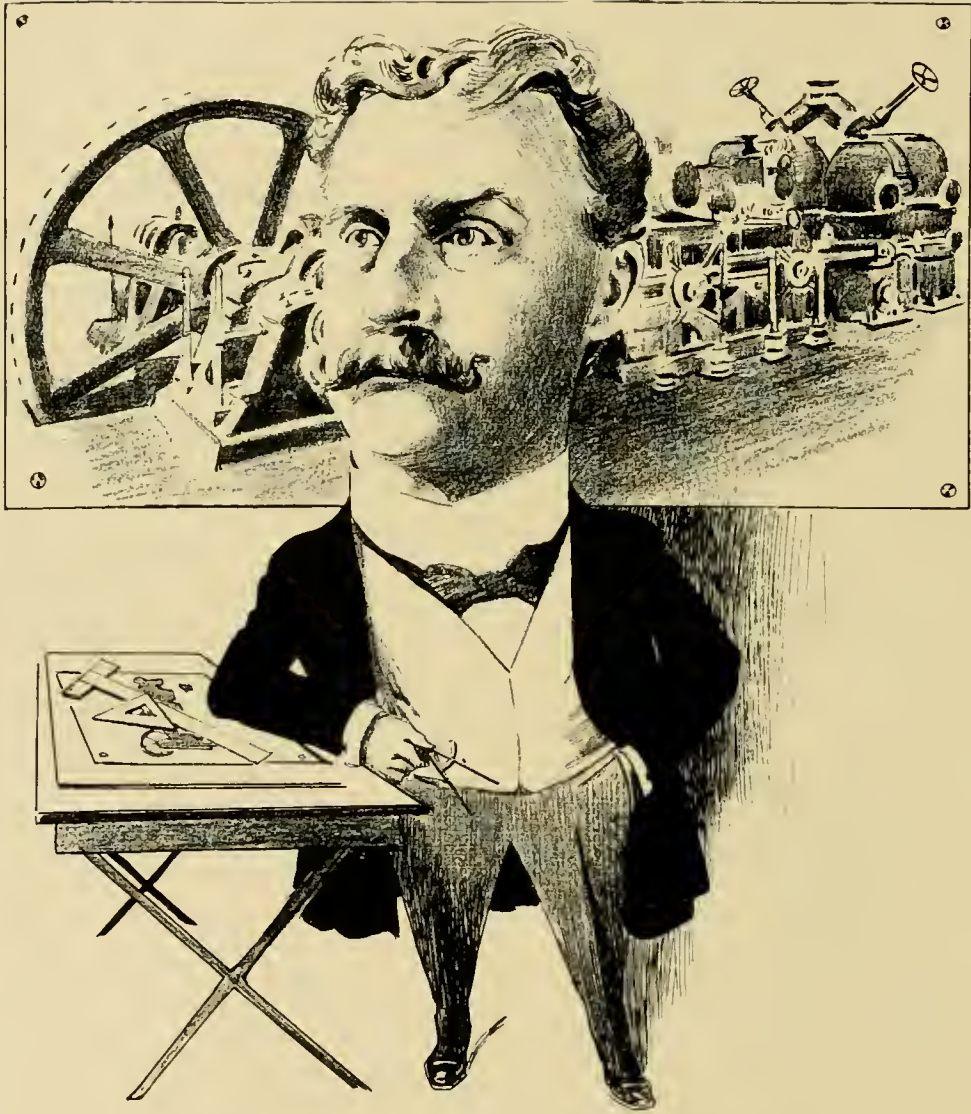
W. F. WILLIAMSON



GEORGE A. NEWHALL



GEO. H. PALMER, M. D.



GEORGE E. DOW





THOMAS E. SHUMATE, M. D.



LOUIS SARONI



J. EUGENE FREEMAN



J. W. McDONALD





C. W. CONLISK



W. J. BARTNETT



WILLIAM C. PEYTON



HENRY KUNZ

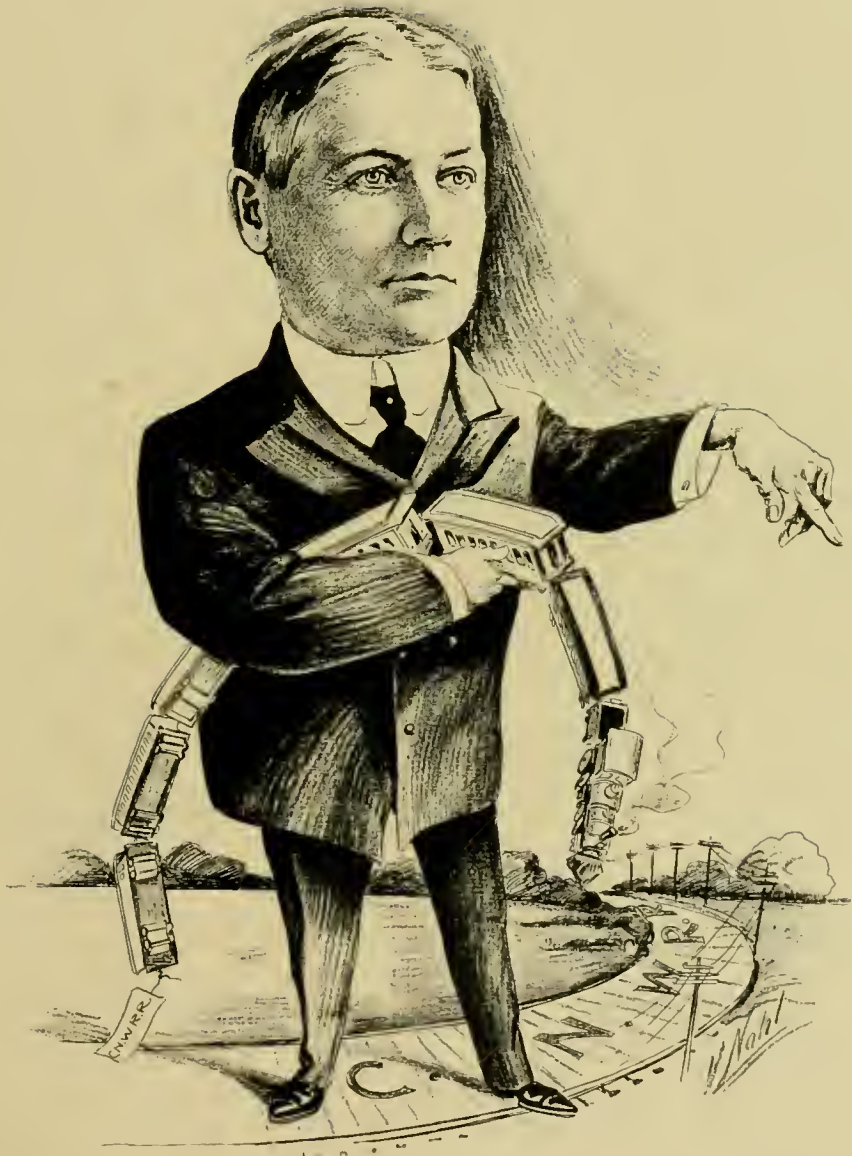




JOHN M. LEWIS



J. F. MORONEY



R. R. RICHIÉ



FRANK K. MOTT  
Oakland





J. R. KNOWLAND  
Oakland



W. E. DARGIE  
Oakland

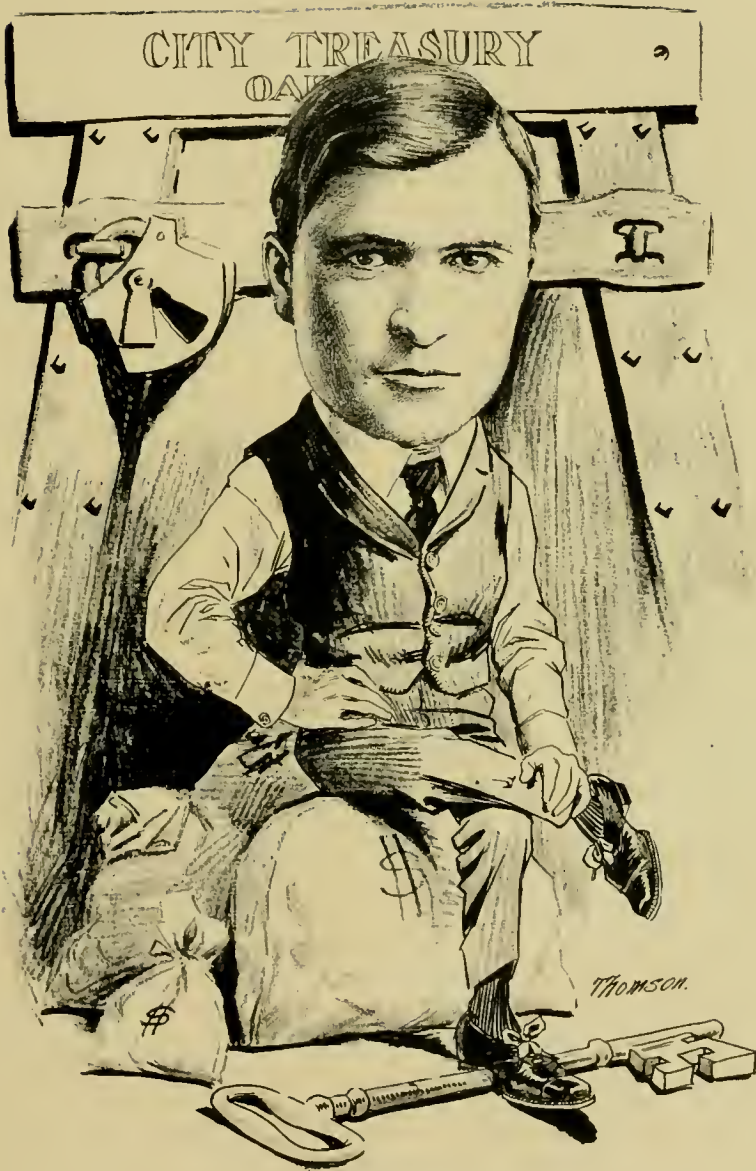


J. W. McCLYMONDS  
Oakland



H. P. DALTON  
Oakland





CHAS. BATES  
Oakland



MORTIMER SMITH  
Oakland

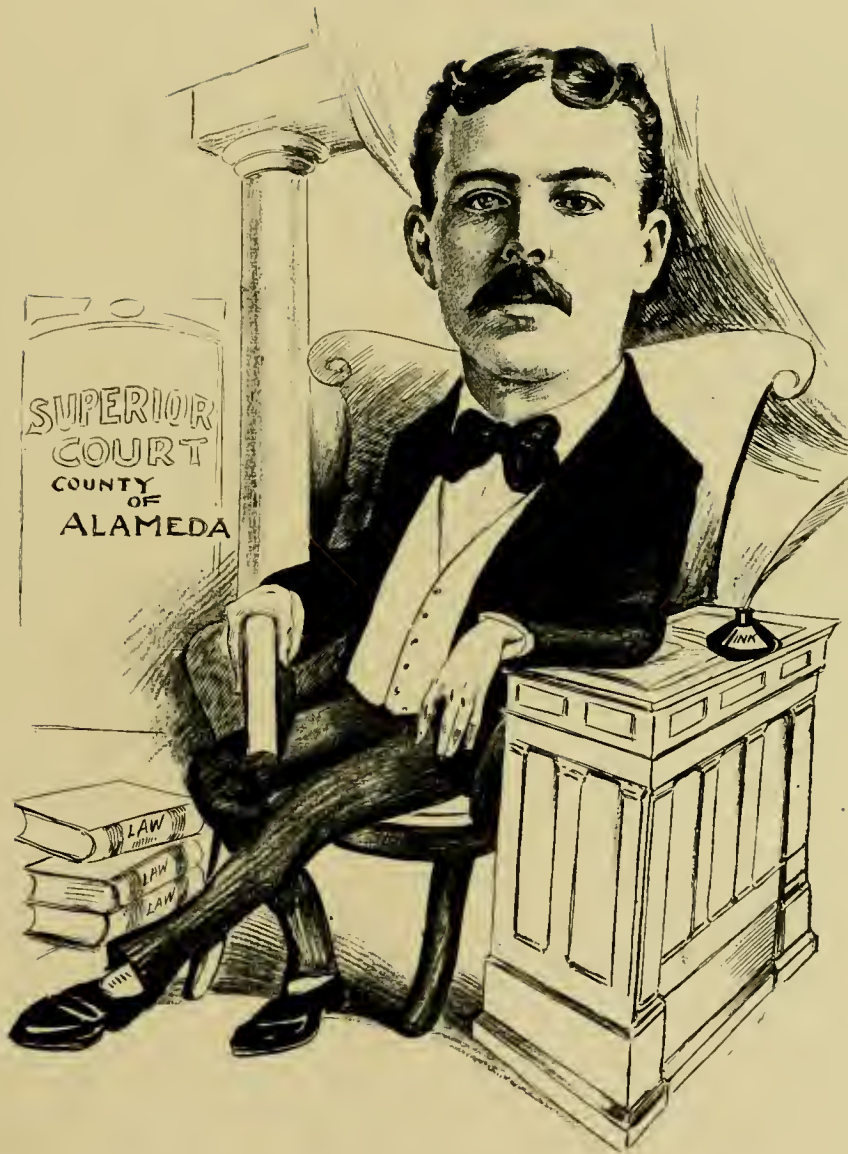


PAUL LANZ, M. D.  
Oakland

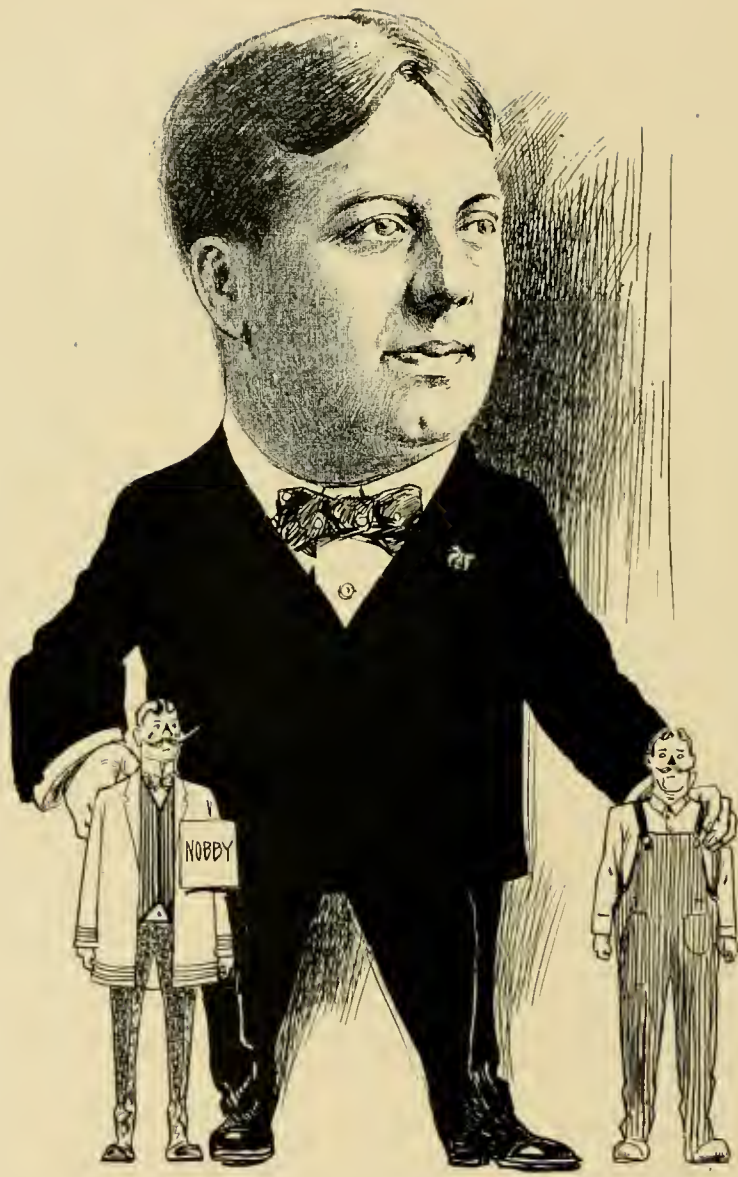


A. H. BREED  
Oakland





WM. H. WASTE  
Oakland



C. J. HEESEMAN  
Oakland

*Polkand*



A. H. SCHLUETTER  
Oakland





BENJ. F. WOOLNER  
Oakland





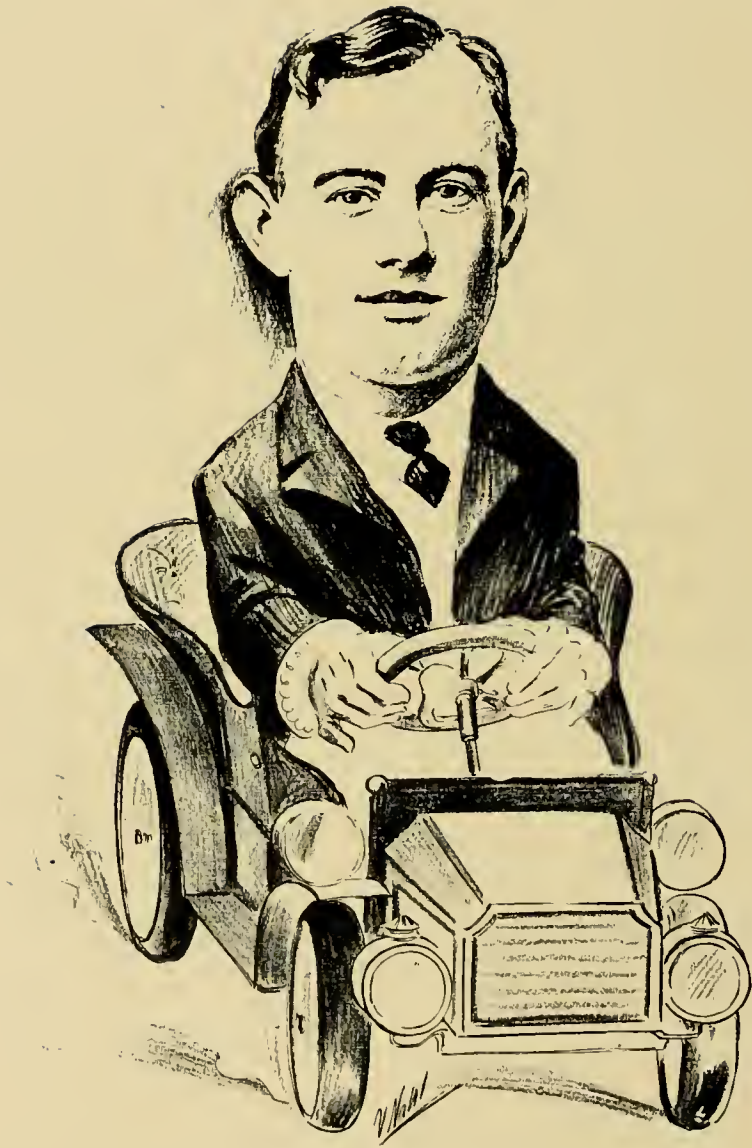
GEO. W. REED  
Oakland



J. E. McELROY  
Oakland



J. J. McDONALD  
Oakland



DON C. McCORD  
Oakland





GIBSON & INGRAM  
Oakland



GEO. E. DeGOLIA  
Oakland



EDW. McGARY  
Oakland





A. P. LEACH  
Oakland

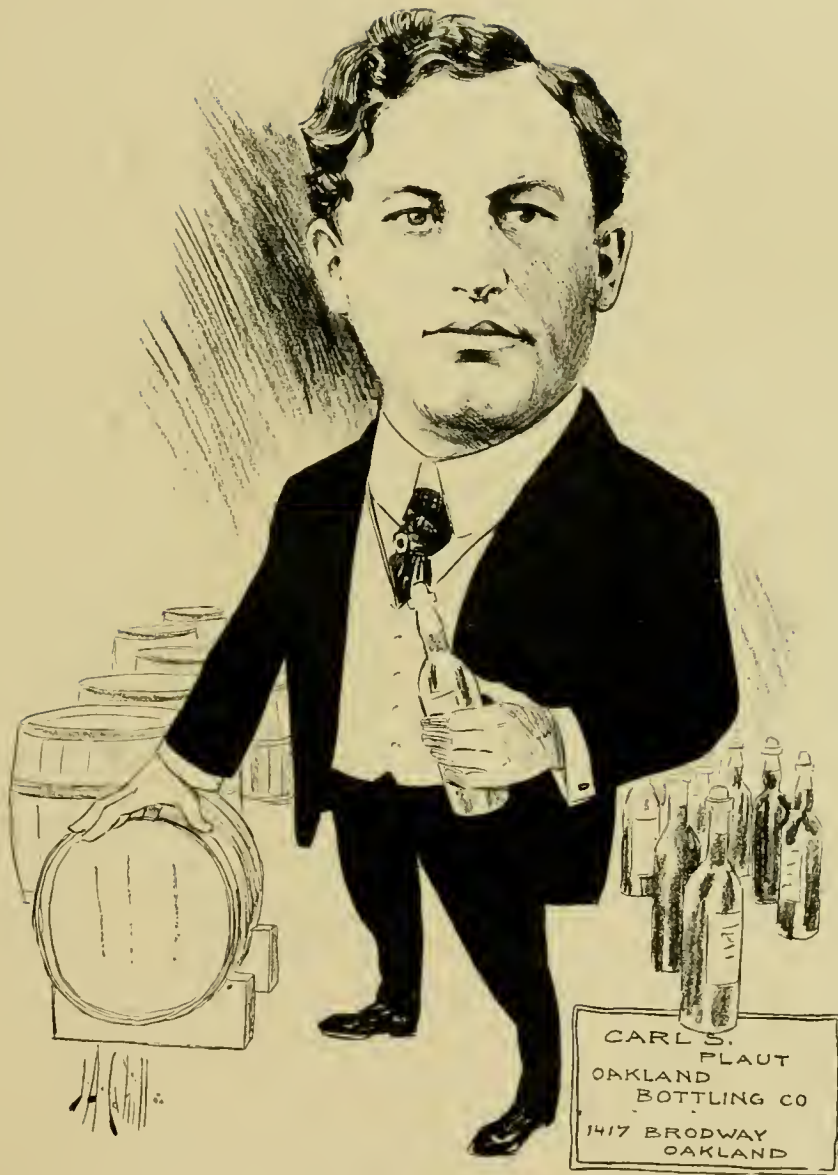




P. C. BLACK  
Oakland



M. M. ENOS, M. D.  
Oakland



CARL S. PLAUT  
Oakland

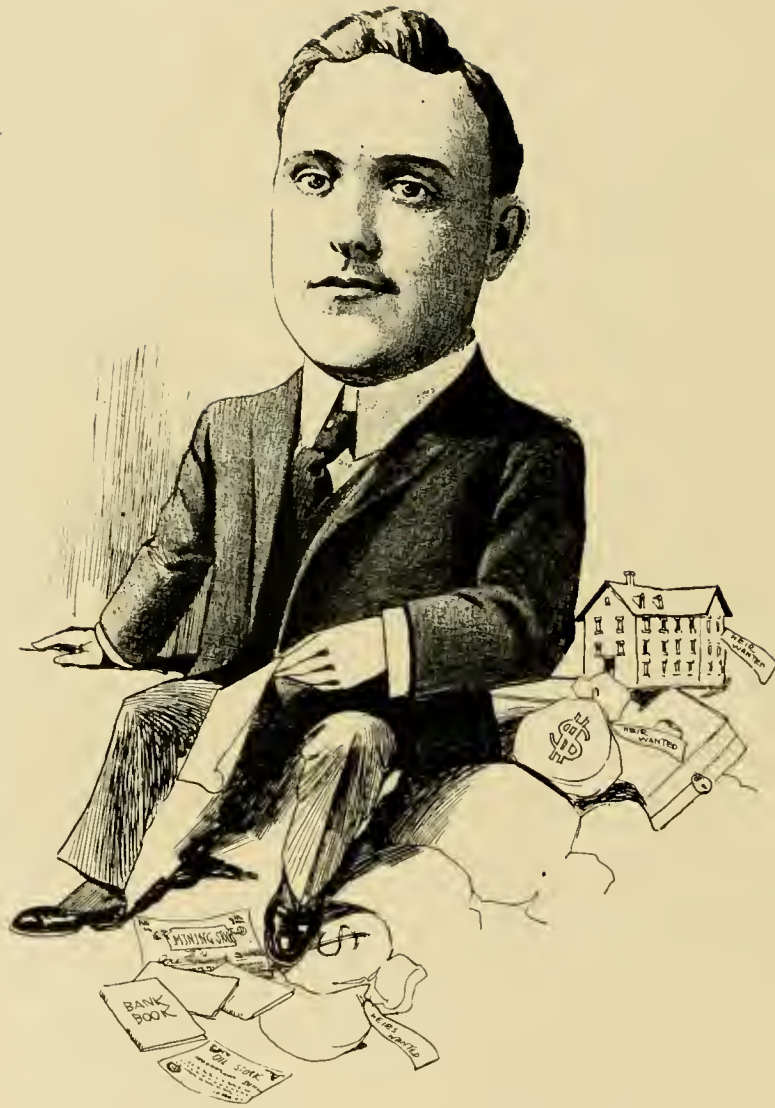


J. M. KELLEY  
Oakland





THEO. O. GIER  
Oakland



JOHN S. DeLANCEY  
Oakland

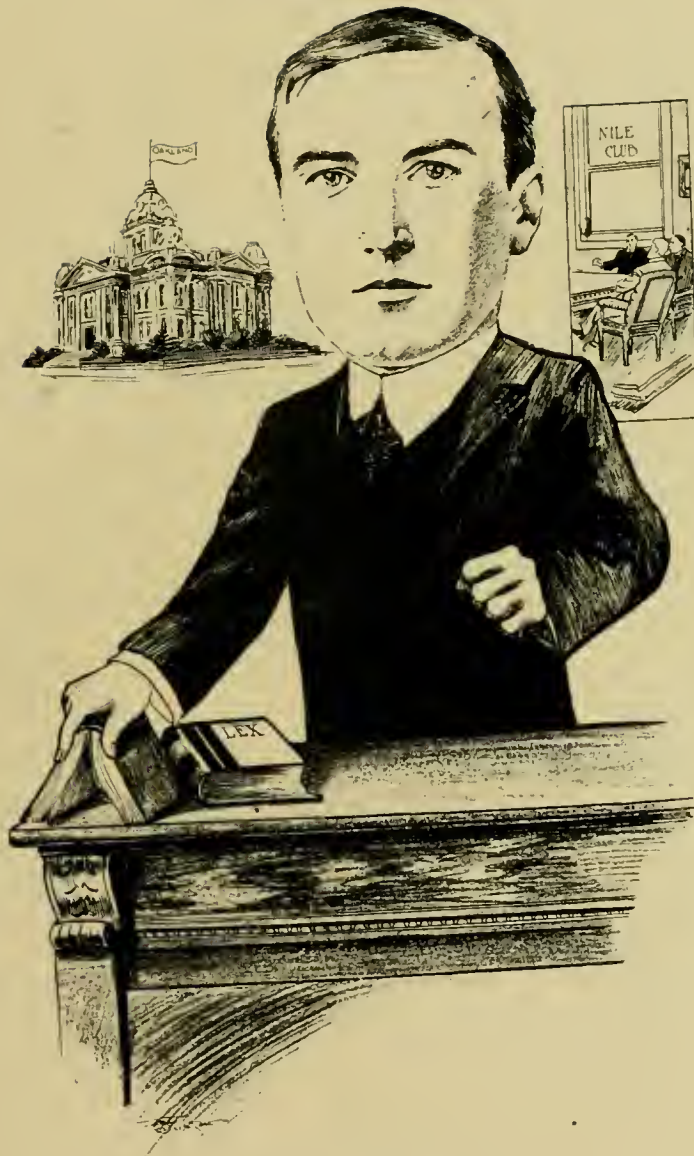


CHAS. E. SNOOK  
Oakland



A. P. HOLLAND  
Oakland





CLARENCE CROWELL  
Oakland



J. O. HAYES  
San Jose





E. T. EARL  
Los Angeles





G. A. PARKYNS  
Los Angeles



ALDEN ANDERSON  
Sacramento



ALBERT ELKUS  
Sacramento



GROVE L. JOHNSON  
Sacramento





GEO. B. KATZENSTEIN  
Sacramento



GEO. W. PELTIER  
Sacramento

"I HAVE FINALLY CONQUERED  
PHYLLOXERA."

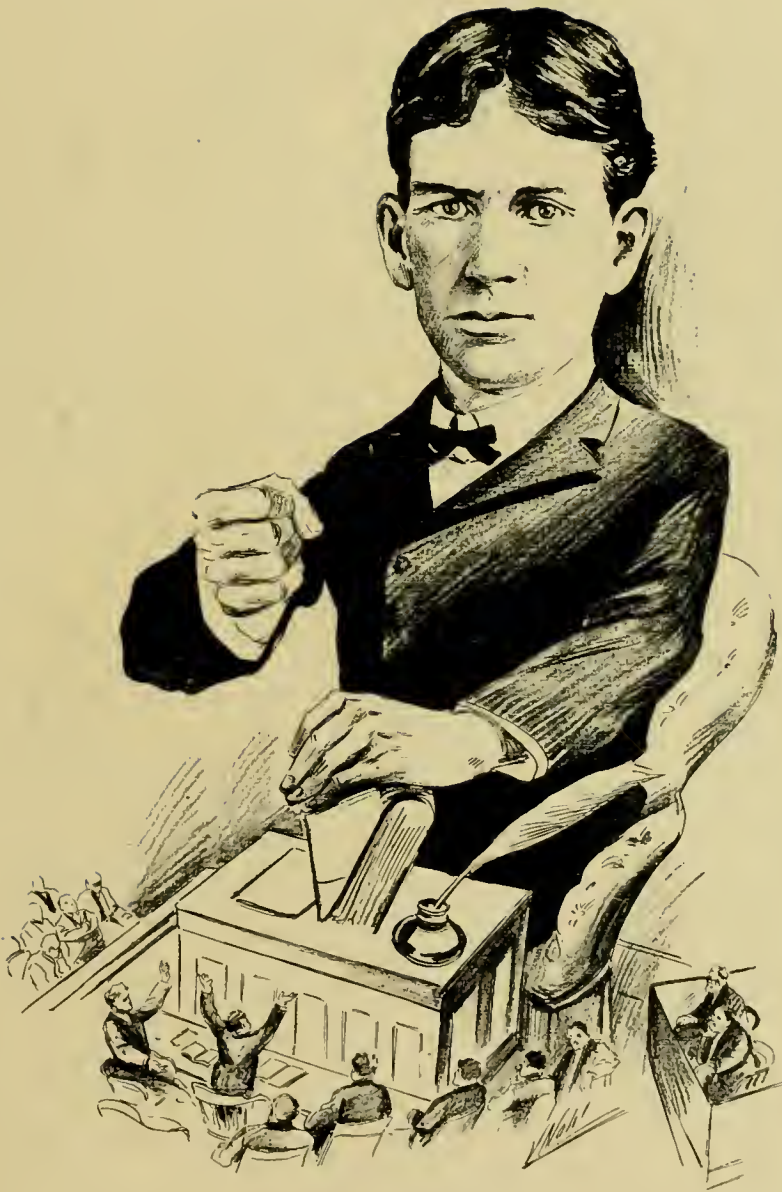


FRED W. KIESEL  
Sacramento



E. C. HART  
Sacramento





PETER J. SHIELDS  
Sacramento



LOUIS F. BREUNER  
Sacramento



WM. A. GETT  
Sacramento



H. S. SEYMOUR  
Sacramento





T. R. JONES  
Sacramento



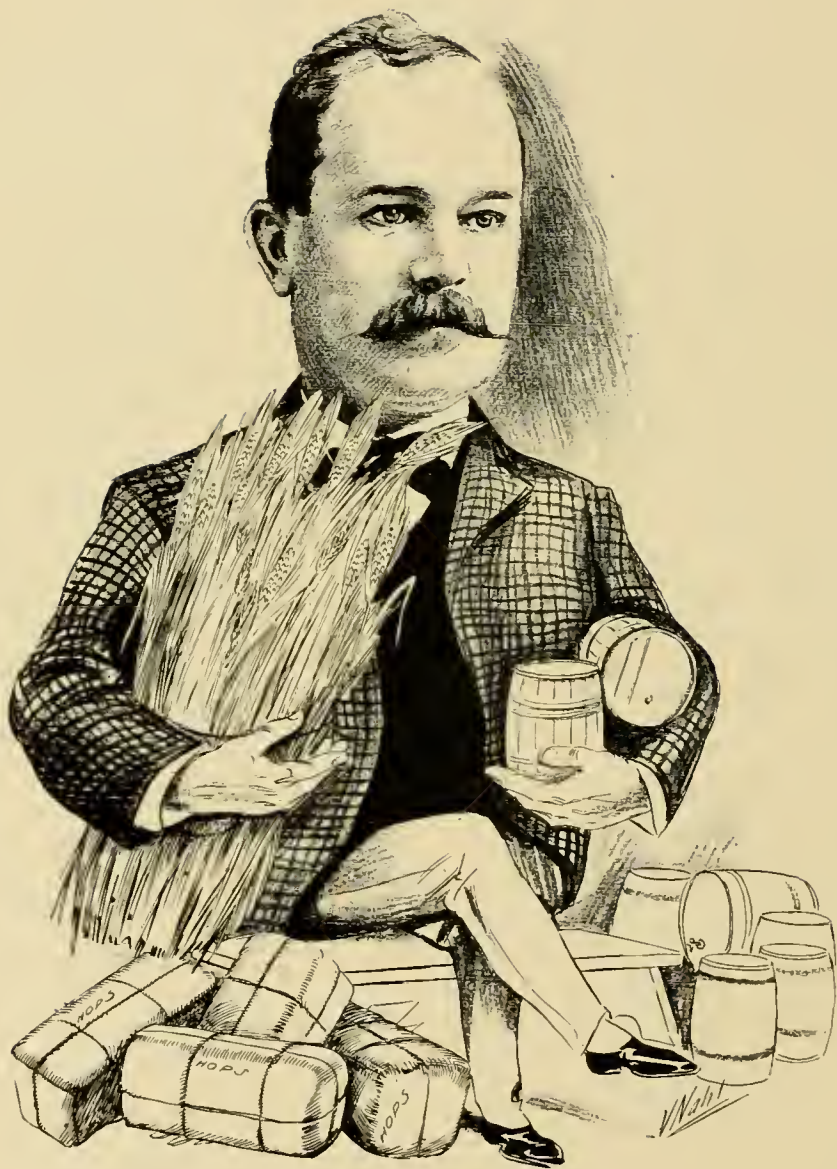
J. L. GILLIS  
Sacramento



*Richard*

W. W. SHANNON  
Sacramento





F. RUHSTALLER  
Sacramento





W. F. GORMLY  
Sacramento



VICTOR W. WOODS  
Sacramento

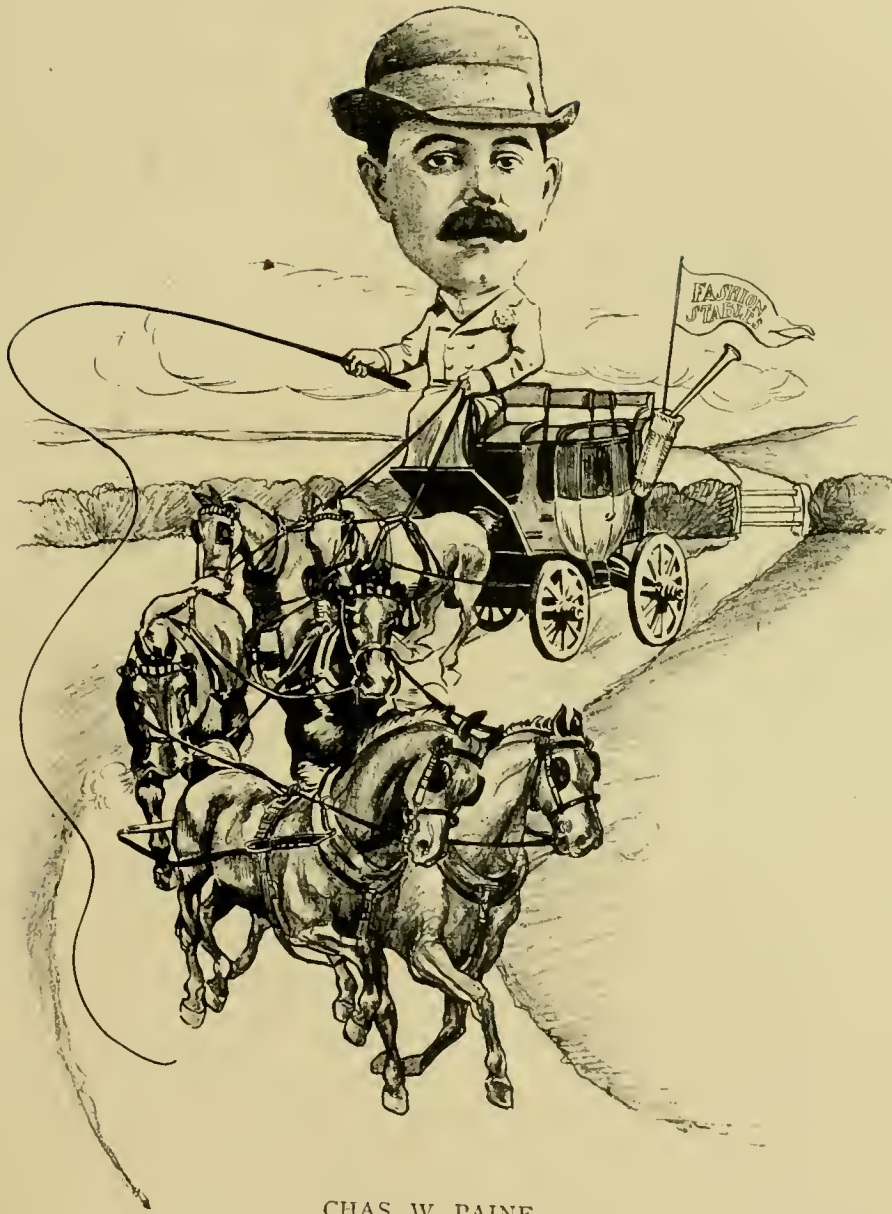


D. W. CARMICHAEL  
Sacramento



CHAS. B. BILLS  
Sacramento

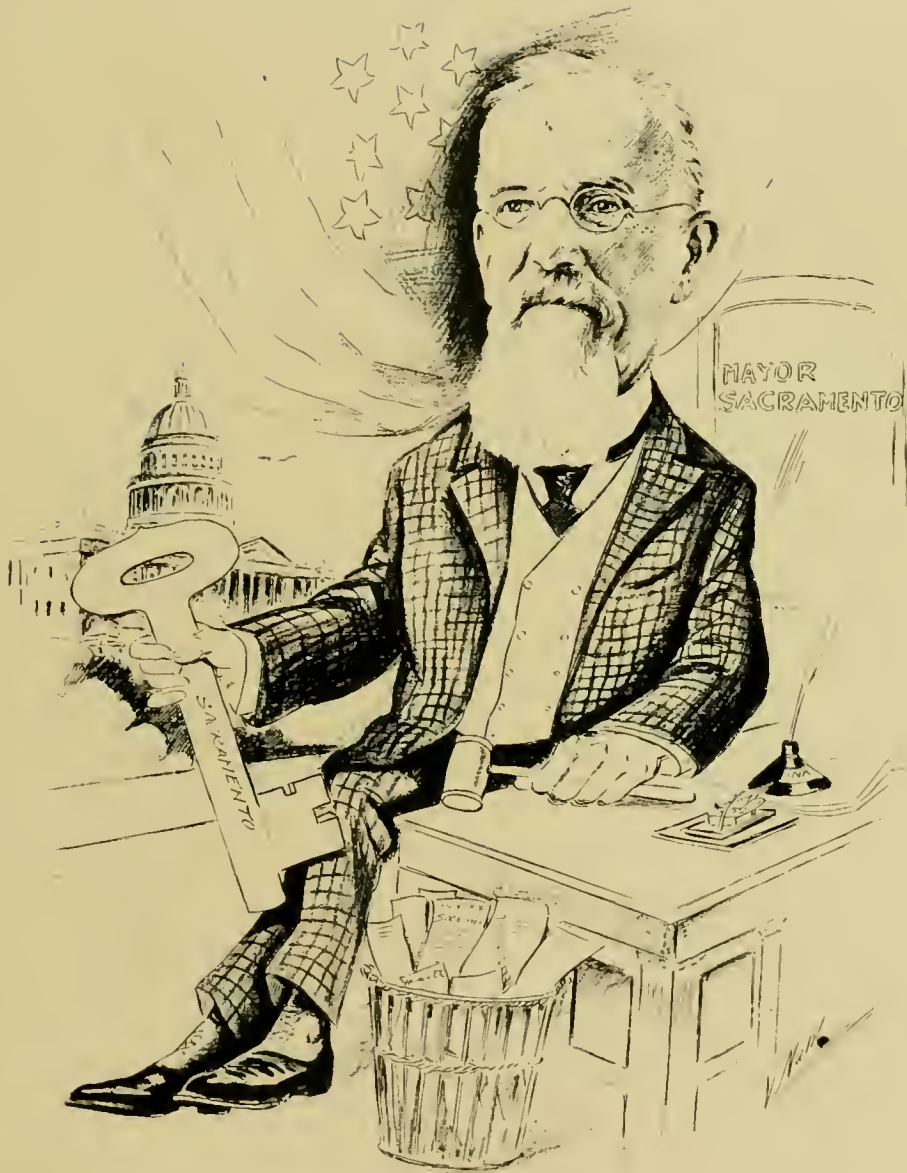




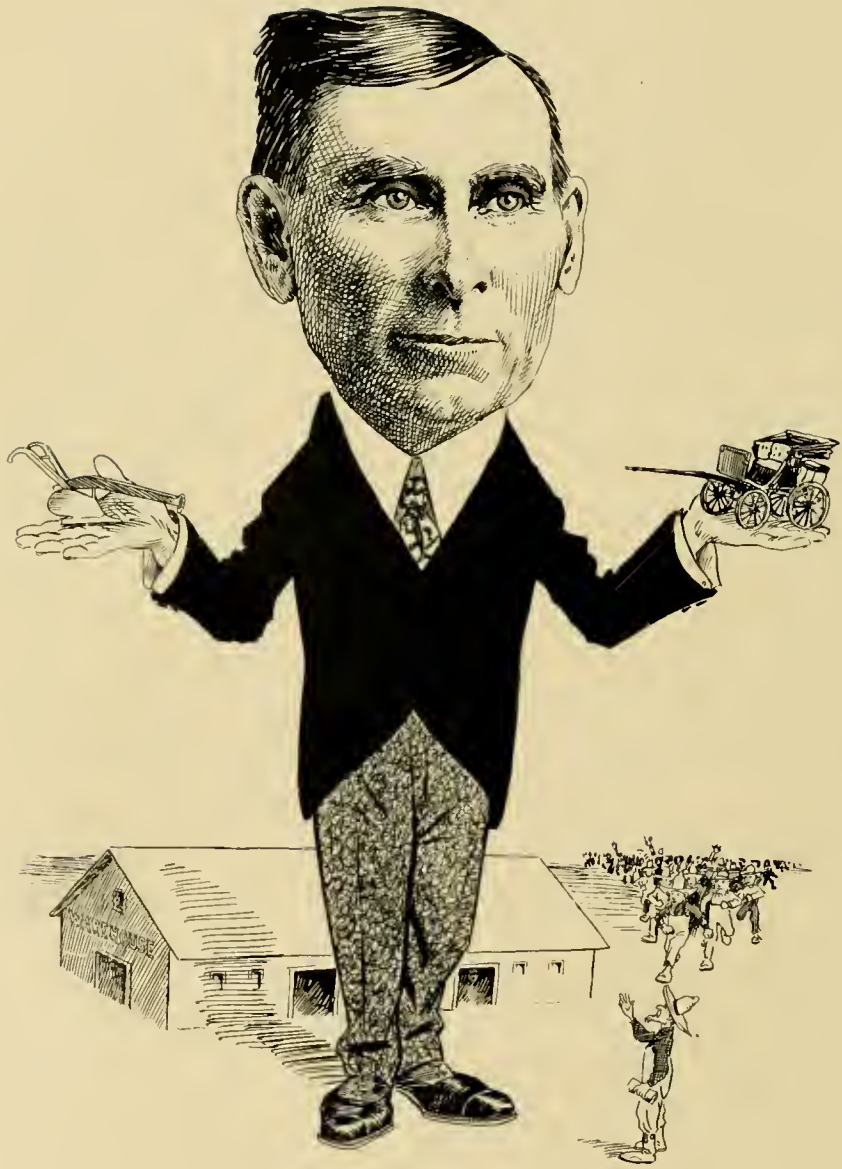
CHAS. W. PAINE  
Sacramento



TOM SCOTT  
Sacramento



W. J. HASSETT  
Sacramento



F. F. THOMSON  
Sacramento





JAMES LONGSHORE  
Sacramento

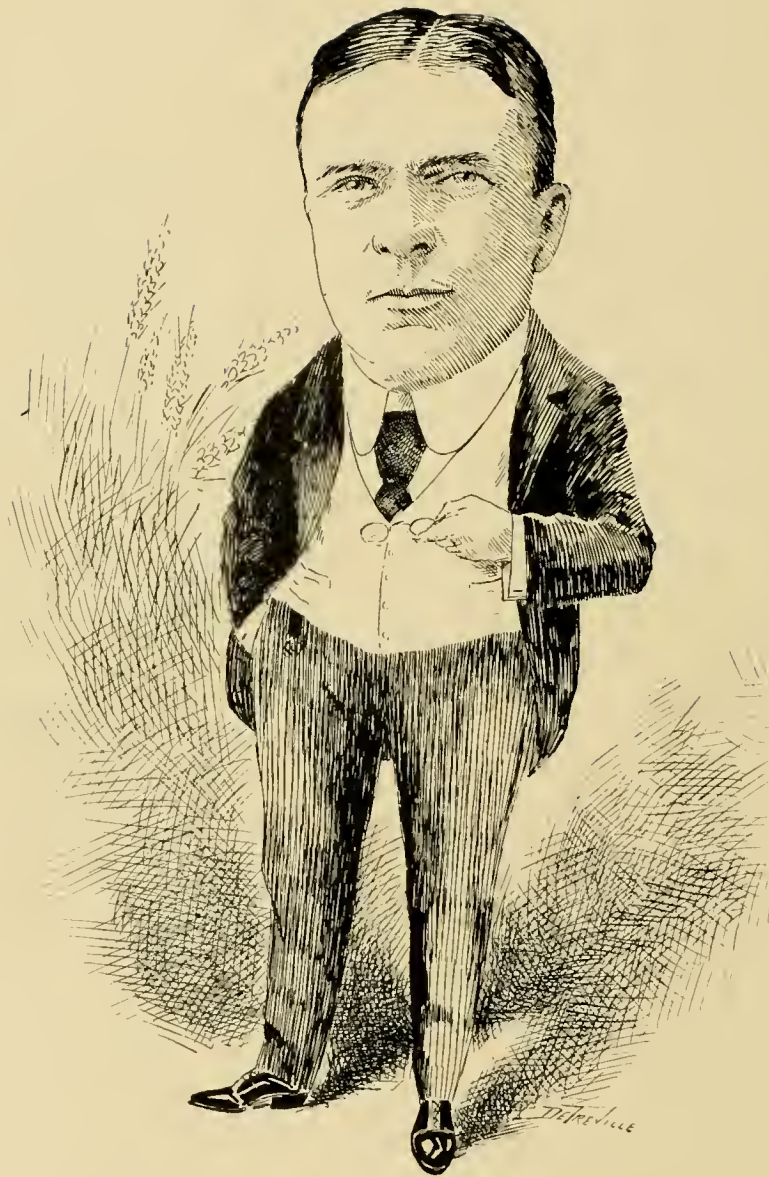


ASA CLARK, M. D.  
Stockton



M. J. GARDNER  
Stockton





FRANK E. LANE  
Stockton





RALPH S. LANE  
Stockton



W. W. WESTBAY  
Stockton



EDW. R. THOMPSON  
Stockton



WALTER F. SIBLEY  
Stockton

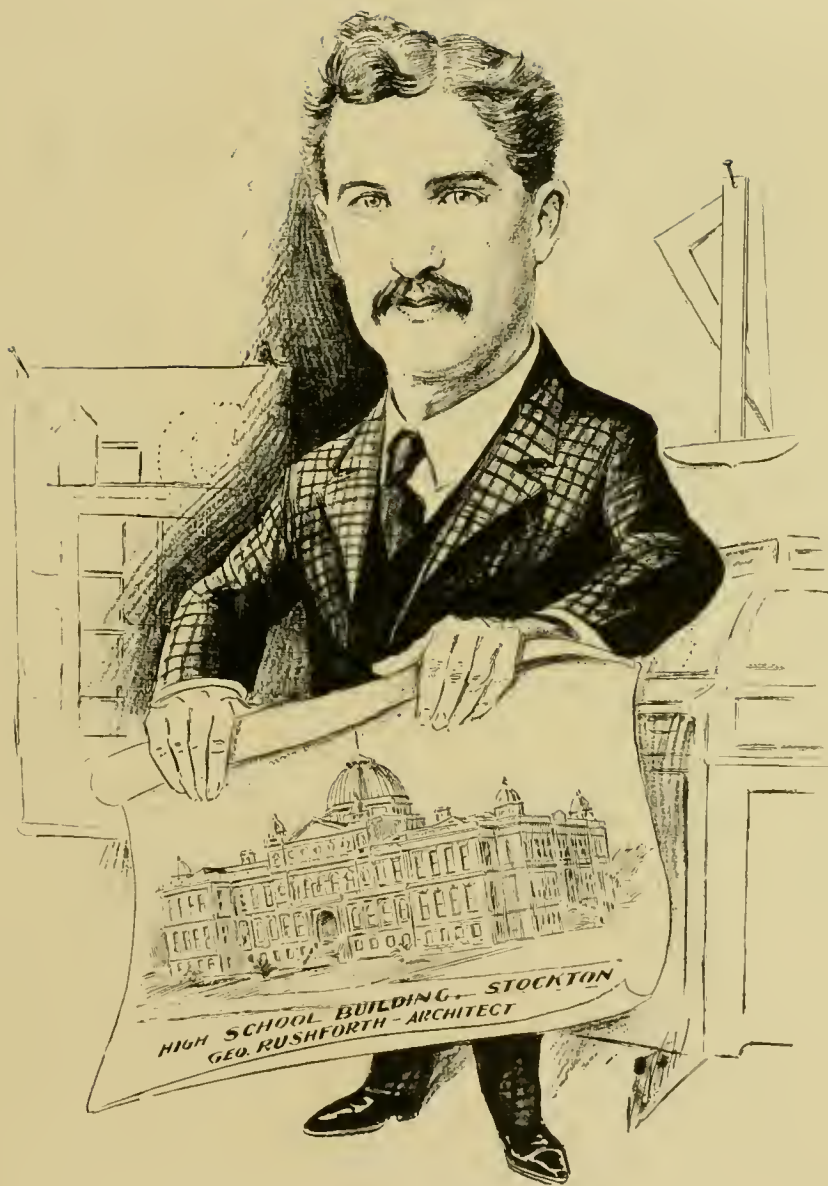




R. S. IRVINE  
Stockton



W. M. M. BEEDE, M. D.  
Stockton



GEO. RUSHFORTH  
Stockton



E. B. WRIGHT  
Stockton





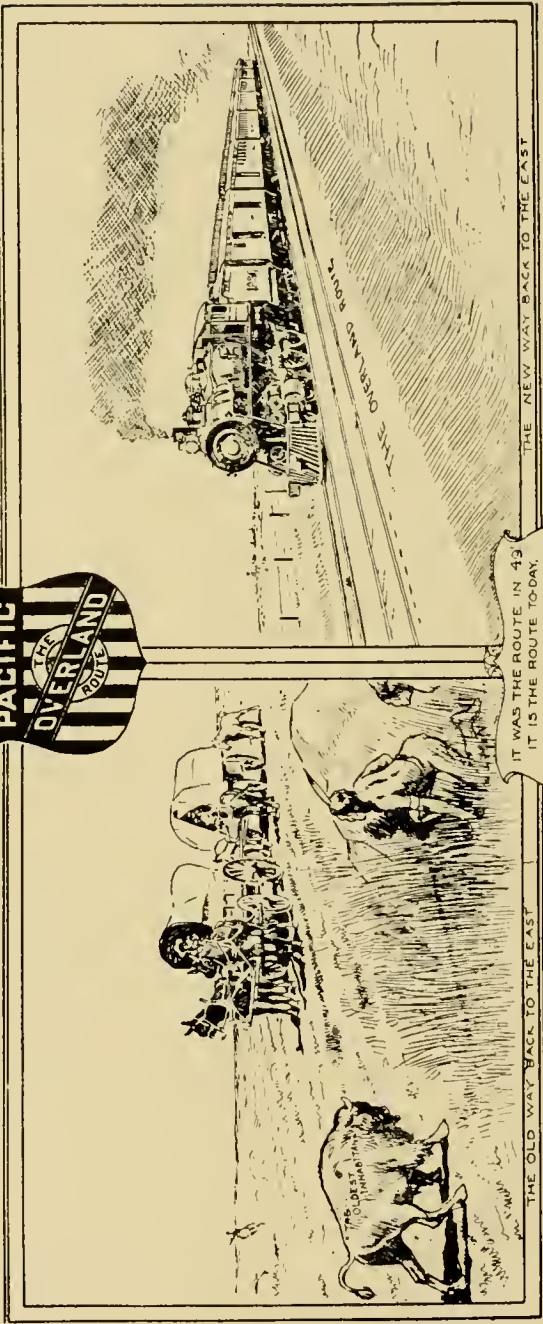
H. H. GRIFFITH  
Stockton



W. W. MIDDLECOFF  
Stockton



GEO. D. DOHRMANN  
Stockton



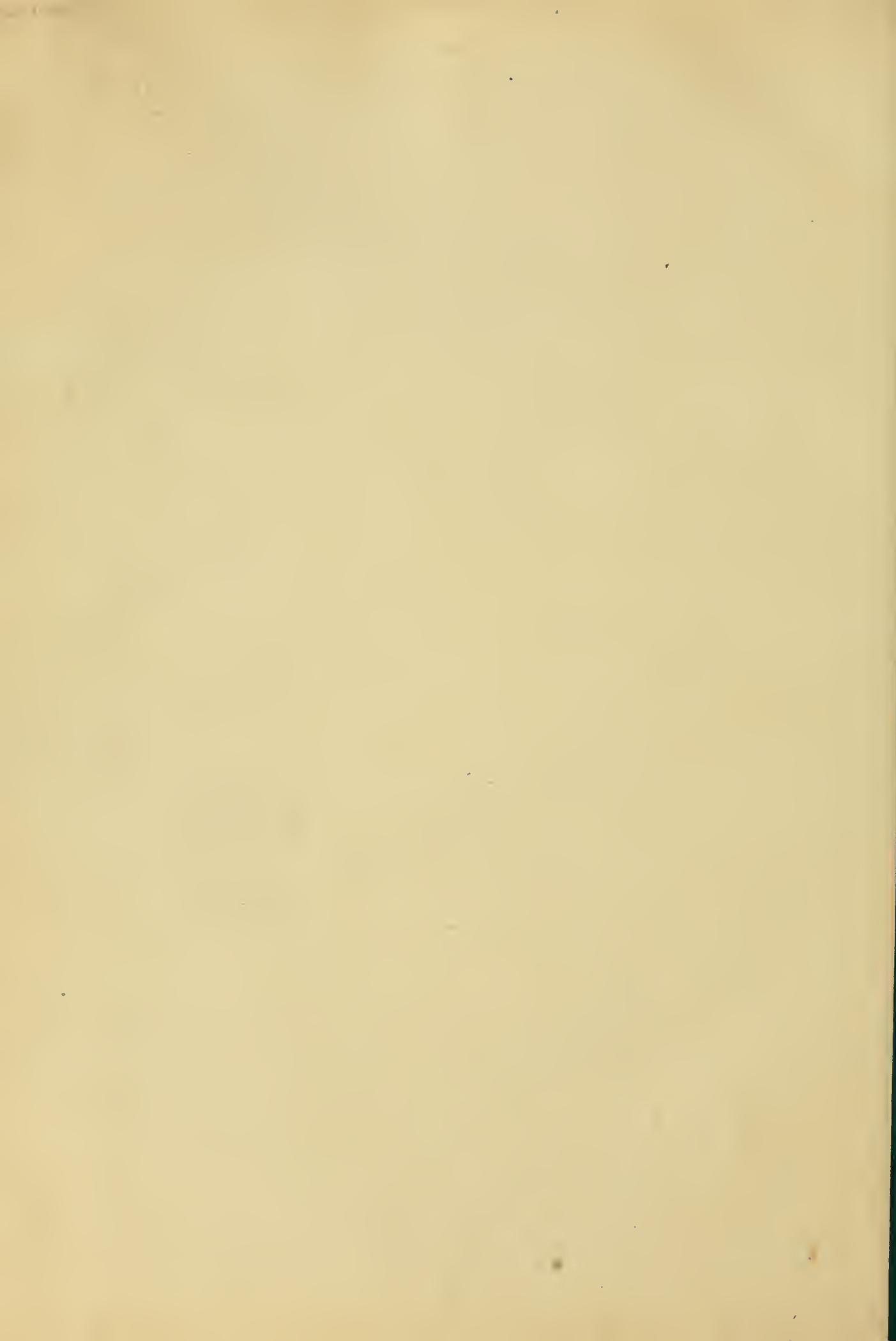
IT WAS THE ROUTE IN '43  
IT IS THE ROUTE TODAY,  
AND WILL BE FOR ALL TIME TO COME.  
UNION PACIFIC — SOUTHERN PACIFIC

THE NEW WAY BACK TO THE EAST

THE OLD WAY BACK TO THE EAST

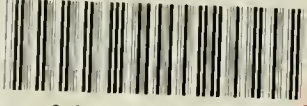








LIBRARY OF CONGRESS



0 007 192 031 8

