

Historic, Archive Document

Do not assume content reflects current scientific knowledge, policies, or practices.

6209

LIBRARY
RECEIVED
MAY 14 1928



Carl Salbach

DAHLIAS ~ GLADIOLUS

1928

General Information

Please read carefully before ordering.

Order Early. Early orders are solicited to prevent disappointments in case the variety selected should be sold out.

Please write your *name and address* plainly.

Stock. All of our dahlia orders will be filled with strong divisions of field grown tubers. All gladiolus bulbs will be of good blooming size and irises good strong rhizomes.

Forwarding. We begin to fill our dahlia orders just as early as the clumps can be safely divided in the Spring, and as soon as the weather will permit of shipment. Gladiolus can be shipped either in the Fall or Spring. Iris orders will be filled from June to November.

Substitutions. We do not substitute unless directed to do so. If late in the season, we suggest that you indicate a second choice.

Terms. Cash should accompany order unless satisfactory credit references are given. Remit by Postal Money Order from Canada and other foreign countries.

Postage. All retail orders amounting to \$1.00 or over will be delivered prepaid to all points reached by Parcel Post.

On orders of less than \$1.00 add 25 cents for postage.

Guarantee. We exercise every care to ship only first-class stock, but give no warranty, expressed or implied and will not be in any way responsible for the results of planting or forcing of any seeds, bulbs, roots or tubers sent out by us. We are anxious to satisfy all of our customers and will gladly make replacement or refund purchase price of any article that does not prove true to name or does not arrive in good growing condition. Please notify us at once if a shipment should not arrive in satisfactory condition. If the purchaser does not accept the goods on these terms no sale is made, and they must be returned at once.

Prices given in this catalog cancel all previous quotations.

References. For our business standing, please refer to *First National Bank and Bank of Italy in Berkeley, Farmers and Merchants Savings Bank, Oakland, California.*



Originator and Grower

301 Woodmont Avenue

Berkeley, Calif., U. S. A.

Telephone Ashberry 1066



The lathstring is always out

THE task of selecting the varieties of dahlias and gladiolus offered to you in our 1928 catalog has been a very pleasurable one—we have so many splendid new varieties and such satisfactory standard varieties to choose from.

It is also an added pleasure to know that the roots and seeds we send out have been well grown and are from such good healthy stock, that wherever your garden, East or West, North or South, you can raise just as beautiful flowers as we can.

On page 20 we have given extracts from the letters of customers in different parts of the country, telling of their enjoyment of our flowers. These testimonials make us feel well repaid for our efforts to keep the standards of our stock at the highest possible level.

Why we are able to supply you with the finest of Dahlias, Gladiolus and Irises

WE grow the new varieties of dahlias, gladiolus and irises of hundreds of different growers. From these and from thousands of new creations of our own, we select for our customers' choice only those varieties that are of outstanding merit in their particular class. Varieties for which we find more worthy successors are discarded each year.

This is of necessity more expensive of time, money and acreage than private gardeners find practicable. But because of this process of critical selection and elimination our customers can feel absolutely certain that any flower they may select from our catalogs or special lists are the best and the most worth while.

Of equal importance with the beauty of bloom is the fine quality of the stock we send out.

Our acreage is selected with greatest care. As summer rains in California are of rare occurrence, adequate irrigation systems must be provided. We find overhead sprinkling most satisfactory and have so equipped our different gardens. We water consistently and cultivate throughout the whole season. We use no fertilizer in our stock gardens, so the bulbs are never forced. Our long growing season allows us to plant early and harvest late; we are therefore sure our crops are properly matured and thoroughly cured before being stored.

Our gladiolus bulbs are dug in the early fall and are cured in the open. They are then cleaned and placed in specially built screen bottom trays which allow full circulation of air. Our storage house is built with skeleton racks to fit the trays and to insure proper ventilation through the winter.

Our gardens are on the eastern slope of the Berkeley hills where the drainage for the winter season is perfect. In this part of the state the winters are always mild so we do not lift our dahlias till early spring. The tubers are therefore always plump and sound.

Irises are shipped best when dry and dormant. Our rainless summers and perfect drainage keep the rhizomes in ideal condition for immediate shipment till late fall.

Our help is carefully trained and the standing rule in the shipping room is to send out only the best stock in the trays. We would rather return your money than to have you find that the part of your garden planted with our stock is not the most beautiful in your neighborhood.

Naturally we are always pleased to hear about your gardens and the prizes you win.

Our long experience, splendid equipment and ideal growing conditions enable us to supply our customers with the finest stock money can buy. Our prices are always moderate.



A Corner of the Salbach Dahlia Garden

The Salbach Gardens

THE Salbach Gardens originated in 1912 as an office man's hobby. We first planted our own back yard, then our neighbors' lots, then we rented acreage. In 1925 we purchased virgin land on the east slope of the Berkeley hills. This property is ideally located and a trip up to the gardens is one of the most scenic about San Francisco Bay.

To reach the gardens follow Euclid Avenue (which has recently been repaved) keeping to the right on Grizzly Peak Boulevard (a continuation of Euclid Avenue) turning left onto Creston Road. Follow our garden signs. We are just one mile from the end of the D-Cragmont car line.

Carl Salbach

301 Woodmont Avenue,
Berkeley, Calif.

Phone Ashberry 1066

Member of

Alameda County Floral Society
American Dahlia Society
American Gladiolus Society
American Iris Society
Calif. State Iris Society

California Gladiolus Society
Dahlia Society of California
Dahlia Society of Southern California
The Dahlia Society of San Francisco
British Gladiolus Society

Care and Culture of Dahlias

Dahlias will thrive in almost any kind of soil. They grow best in a sunny location except in extreme warm climates, where they do better if shaded during the heat of the day.

Prepare the dahlia plot in the fall, if possible, by spading deep and leaving rough. If the soil is thin, work in barnyard manure or other fertilizer at this time. Spade again in the spring. Plant from April to June, according to climatic conditions.

If you plant your dahlias close together in a garden by themselves, study your colors well, as you can more than double the beauty of the planting.

We plant our garden in two sections. For the first we list the salmon pinks, the yellow reds, and the rich yellows—the autumn colors.

For the second section the pure whites, the lavender pinks, amethyst, purple and blue reds. A third list of cream whites, primrose and amber yellows we use for distribution through both beds as the need is evident for lighter spots.

The actual planting plan then is mainly one of comparative heights and respective size of blooms for there is almost no possibility of color clashes. The listing is most easily done while the garden is in bloom, but it is an interesting occupation for a rainy day.

Make a chart of your planting and file it away till digging time—the labels sometimes disappear.

The clumps must be separated before planting. It is better to wait till the eyes or buds begin to push through the base of the stalk or head. On some clumps there will be more eyes than tubers and on others the reverse. It is imperative that at least one eye with a good portion of the head be cut with each division. Two or more tubers however may be cut with each eye. Greatest care must be used not to break or twist the necks of the tubers as they will not grow if damaged. A small block of wood, a slender saw, a small wooden mallet and good sharp paring knives are excellent tools. The cut surfaces should dry several hours before planting or storing. These divisions should be covered with moss or dry shavings if they are to be kept for any length of time. This prevents the eyes from drying out.

Dig the holes twelve to eighteen inches deep, refilling to within six inches of the surface. If the drainage is poor, mix a shovel full of sand or wood ashes with the loose soil in the bottom of the hole.

Never use fertilizer at planting time.

Lay the tuber flat in the bottom of the hole, eye side up—drive a stake near the eye end and cover the tuber with three inches of loose soil. Fill in the remaining three inches as the plant grows. Water only moderately till blooming time but cultivate persistently.

When the dahlias begin to bloom, fertilizer may be applied and deep cultivation should cease. Water well at least twice a week where there are no summer rains. Disbudding will produce larger blooms.

The time of digging varies with the severity of the winter. In mild climates, where the drainage is good, some growers leave the clumps in the ground through the winter. Where the ground freezes they must be lifted early.

Cut the stems off close to the ground and lift clumps carefully to prevent breaking the necks of the tubers. Where the winters are mild, the clumps may be dried a few hours in the open and stored, with such soil as adheres to them, in a cool, dry place, protected from frost. In cold climates, the dirt should be washed off and the tubers thoroughly dried. Then pack in boxes or barrels and cover with *dry* earth or sand. Keep boxes in a cool, dry basement, raised off the ground, ventilated but away from the furnace and protected from frost.

Cactus Dahlias

True fluted type; flowers fully double; floral rays or petals long, narrow, incurved or twisted, with sharp, divided or fluted points and with margins revolute (rolled backward or outward), forming in the outer florets a more or less perfect tube for more than half the length of the ray or petal. The petals of the American cactus are not so fine or tightly rolled as those of the English type and are usually shorter than those of the hybrid cactus.

Decorative Dahlias

Double flowers, full to the center, early in the season at least; flat rather than ball shaped, with broad, flat, somewhat loosely arranged floral rays with broad points or rounded tips, which are straight or recurved (turned down or back), not incurved, and with margins revolute, if rolled at all.

Hybrid Cactus Dahlias

Flowers fully double, floral rays, broad, flat, recurved or twisted, not sharply pointed except when tips are divided (staghorn), margins only slightly revolute and tubes of outer florets, if any, less than half the length of ray or petal.

Peony Flowered Dahlias

Flowers are semi-double, having two, three, or more rows of broad, flat, loosely arranged rays or petals, surrounding an open center which is usually a conspicuous golden yellow; the inner floral rays being usually curled or twisted, the outer rays either flat or more or less irregular. Sometimes the rays are pointed, occasionally they curl and twist over the center.

Show Dahlias

Show dahlias are double flowers, globular or ball shaped rather than broad or flat, full to center, showing regular spiral arrangement of florets; floral rays more or less quilled, or with markedly involute margins and rounded tips. The hybrid shows are of the same general form, but larger, more flatly globular and more loosely built.

Pompon Dahlias, page 22

	Page
Dahlia Seed	21
New Dahlias	7
General list of dahlias	9
Special dahlia collections	19
Gladiolus	23
How to grow	23
Planting suggestions	23
New Gladiolus	24
General list large flowering gladiolus	28
General list primulinus hybrid gladiolus	32
Special collections of gladiolus	25 and 33

Join the Dahlia Society of San Francisco, a new and progressive organization. Send \$2.00 with your application to H. T. Hennig, Secty., 621 3rd Ave., San Francisco, Calif. This pays your dues for one year.



Clump of Dahlia Tubers—Mrs. Carl Salbach



Cactus Dahlias

Dahlias as Cut Flowers

DAHLIAS are the most glorious of all flowers for large decorations. While some varieties are most valuable for color masses in the garden, the majority will cut well if properly prepared. This means cutting the foliage and side branches to the minimum. It also means much more beautiful garden plants.

While the lateral buds are still small, the stems should be disbudded two or three joints below the terminal bud, this being determined by the length of the flower stalk.

The flowers should be cut in the early morning, the lower leaves stripped off and the ends of the stems dipped into boiling water for half a minute. The dahlias should then be stood in deep containers full of cold water.

The baskets or jars in which the flowers are to be displayed should be placed where they are to remain and filled three quarters full of cold water. Several sprays of huckleberry in each container will provide foliage and will keep the heavy flowers from shifting their position. After the dahlias are arranged more water should be added if the containers are not full.

Add fresh water daily and *cut* off the blooms that fade. The major part of the bouquets will keep nearly a week.

New Dahlias

- Anselmo** (*Bessie Boston*) 1928. *D.* A very fine large deep flower of chamois suffused with pink. The reverse of the petals are also pink. The stem is very stiff and strong and of course carries the flower erect. Attractive foliage. Blooms early and freely the whole season. **\$5.00**
- Barbara Redfern** (*Redfern*) 1927. *D.* An immense decorative of wonderful substance and strong stout stems. The color is a blend of old rose and gold. Blooms early and profusely all season. Stock limited. **\$7.50**
- Dorothy Dix** (*Bessie Boston*) 1928. *HC.* An immense hybrid cactus of silvery pink which is good at all seasons. The form is incurved. Bushes grow tall and branching and are always full of very large flowers. Centers in November were closed as they were in the beginning of the season. This is one of the largest hybrid cactus ever offered and has splendid stems. It is as useful for cutting as for exhibiting. Shipping date April 15 or later. **\$15.00**
- Flaming Meteor** (*Barker*) Decorative. This new dahlia will be grown by everyone who loves rich colors, by growers who sell to florists and by fans who exhibit dahlias for prizes. It was awarded many first prizes last fall at the various dahlia shows held in Southern California. The flower is large, of good depth, splendid form and unexcelled keeping qualities. Stems long, tough and cane like. The color is a flaming orange scarlet deepening to burnt orange at center where each petal shows an amber yellow base, thus making a beautiful central halo. See page 17. **\$5.00**
- Gertrude** (*Salbach*) 1927. One of the finest red pompons we have grown. The color is a glowing carmine. The blooms are perfect and the stems long. Very free blooming. Plant and cut with Lolita. Stock limited. **\$1.00**
- Gertrude Ederle** (*Bessie Boston*) 1928. *HC.* This straight petaled hybrid cactus was exhibited in the 1926 show but was not offered for sale until this season. It is a soft primrose yellow. Flowers are very large and always true to form. One of the varieties which has unusual lasting qualities when cut. Stem is stiff and hard and carries the flower well out of the foliage but will need some disbudding as the laterals grow quickly. A profuse bloomer. It starts early and continues the entire season. There were many flowers on the bushes in November. This is a blossom which will attract attention anywhere and especially under artificial light. It won the Santa Barbara cup for the best twelve blooms in the 1927 Palace Hotel Show. Those twelve flowers were unfaded after three days. Shipping date April 15 or later. See page 13. **\$10.00**
- Joy** (*Bessie Boston*) 1927. *D.* A beautiful clear silvery lavender without a trace of white. It is an immense flower which grows on the end of the stem like a chrysanthemum. The substance is excellent, making it an ideal cut flower. A profuse bloomer early and late, never shows center. Won the Rookwood vase for the best new lavender at the Dahlia Show 1926. Stock limited. **\$10.00**
- Juanita Chubbuck** (*Davies*) 1928. *P.* This is one of the finest of the peony type. A huge basket of these beautiful flowers exhibited on long stems, at the recent Palace Hotel show was the source of much favorable comment. The color is a clear white with a blush of lavender. The blooms are very large and graceful. The stems are long and rigid. We predict a fine future for this dahlia. **\$5.00**
- Mischief** (*Bessie Boston*) 1928. *D.* The outer petals are bright red while the center petals are white with a slight suffusion of red. A most unusual dahlia. Flowers come very true until late in the season when the red will predominate. Plants grow tall and very bushy. One of the first dahlias to bloom and blossoms profusely till frost. Flower is large and very well formed. Stem is good. **\$5.00**
- Miss New York** (*Badetty*) *HC.* A great wavy petaled hybrid cactus of spectacular beauty. Rich rose in color showing a trace of rosolane purple on reverse of petal. A splendid exhibition dahlia. **\$3.50**
- Miss San Francisco** (*Pelicano*) 1928. *D.* This is one of the best dahlias Mr. Pelicano has introduced in years. The color is a true orchid shade mixed with a deep rose. The plants are sturdy growers and the immense flowers are held high above the foliage on very strong stems. The blooms have great depth and substance and never show centers, averaging nine to ten inches in diameter. The keeping qualities are excellent and as exhibition flower it is unexcelled. **\$5.00**
- Mr. E. Leedham** (*Bessie Boston*) 1928. *D.* A huge orange scarlet decorative which does not burn in the hot sunshine. Plants grow tall and branching and bloom early. The flowers are carried on very long stiff stems and grow right at the top of them. This characteristic is very noticeable until very late in the season. Stems at all times are stiff and the flowers have unusual depth. Shipping date April 15 or later. **\$15.00**
- Myrtle** (*Pelicano*) 1928. *D.* A very free flowering variety of golden apricot suffused salmon rose. The plant is of medium height and a hardy grower. The flowers are large, averaging 9 to 10 inches, and have excellent long stiff stems. Myrtle is a continual bloomer till late fall. **\$3.00**
- Ophir** (*Bessie Boston*) 1928. *D.* Golden yellow bronze, tipped yellow and shading to a bright yellow center. Petals are long and twisting, form is uncommon, stem is strong and straight, bushes grow to medium height and produce very freely of blossoms the entire season. **\$5.00**
- Pompador** (*Bessie Boston*) 1928. *HC.* A very regularly formed hybrid cactus of deep royal purple. Flower is large and carried on a good stem. A variety which has attracted unusual attention all through the season. Will be found admirable for exhibiting as well as for cutting. The tall bushes have most attractive foliage. Flowers never burn even in the warmest weather and remain true to form the entire season. A free bloomer. **\$5.00**

New Dahlias—Continued

Regal (*Bessie Boston*) 1928. *D.* A huge decorative. A variety which can be grown without trouble ten inches and with careful disbudding twelve inches. The plants grow medium height and begin to bloom early and continue to flower profusely the entire season keeping large size to the very end. The color is uncommon and is a bronze, heavily suffused with old rose, shading to gold at the center. Stem is absolutely rigid and carries the blossoms well out of the foliage. This decorative won the gold medal at the Palace Hotel Show in 1926 for the best six blooms of a three year old seedling. It also won the Western Horticultural Prize at the same show in 1927 for the best 25 blooms. Photo of Regal on front cover page, taken by Western Horticulture Magazine. Shipping date April 15 or later. **\$25.00**

Rose (*Bessie Boston*) 1928. *D.* This dahlia resembles the American Beauty rose in color and form and has an absolutely stiff stem like this flower. Bushes grow medium height and produce countless flowers from the very early to the very late season. The large deep flowers always keep their form and last excellently when cut. **\$5.00**

Runa (*Barker*) 1928. *D.* A charming orchid pink decorative with a splendid future as a florists' flower. For the abundance of large blooms no dahlia surpasses Runa. Its long stems and unusual keeping qualities make it an especially desirable cut flower. At the 1927 show of The Dahlia Society of Southern California, Runa was awarded the first prize for the best fifty blooms of one variety. **\$5.00**

Santa Ana (*Pelicano*) 1927. One of the largest and best hybrid cactus in this coloring—beautiful salmon rose suffused with gold. The plant is of medium height and a free bloomer. The flowers are held well above the dark green foliage on good stems. The petals are long and

wiry giving the flower its striking form. Does well in a warm climate. The color of this new dahlia has won the admiration of every one wherever shown. Fine for exhibition purposes. Won first prize for the largest dahlia at California State Floral Society Dahlia Show 1926. Stock limited. **\$5.00**

Starlight (*Bessie Boston*) 1928. *HC.* Pure unshaded gold, hybrid cactus, a color which always attracts in any type. Flower is huge and there is no limit to the size to which it can be grown. Bushes grow tall and luxuriantly and flowers start early and continue with closed centers until frost. Form is excellent, and petals roll evenly until late in the season. The stem is stiff and strong and the flowers grow out of the foliage. This variety will be found excellent for cutting as well as exhibiting and is always a delight in the garden. Shipping date April 15 or later. **\$20.00**

Valentino (*Bessie Boston*) 1928. *D.* An enormous decorative of a new color combination, salmon pink shading to cream. This variety has excellent form and keeps its center the entire season. Bushes grow medium height and are always full of flowers. Stem is stiff and cane-like and grows well out of the foliage. Coloring is distinctive and has attracted great attention on the exhibition table as well as growing in the garden. Shipping date April 15 or later. **\$15.00**

Winsome (*Bessie Boston*) 1928. *D.* A decorative of a clear medium shade of pink. Very large well formed blossoms of narrow petals. The chief characteristic of this variety is its long leafless stem. It starts to bloom in mid season and will produce an abundance of blooms, all of which are perfect. The flower is always pink, has no lavender variations or shadings. Bushes grow tall. Shipping date April 15 or later. **\$15.00**





Salbach's White (Decorative—See page 17)

General List of Dahlias

AC signifies American cactus; C cactus; D decorative; HC hybrid cactus; HS hybrid show; P peony; S show.

The pompon dahlias are not included in this general list, but are described on page 19.

Al Koran (Davies) D. A beautiful amber yellow. The flowers are large and full, the petals long and slightly waved, the stems long, straight and strong. This dahlia is a mass of bloom through the whole season. Fine for the garden, for cutting and exhibiting. Plant and cut with Jersey's Beauty and Mrs. Carl Salbach... **\$1.50**

Amun Ra (Seal) D. The group of Amun Ra with its great rich coppery bronze blossoms and big dark leaves is always the center of the "ohs and ahs" of the visitors who love size and rich colors. We plant and cut it with Champagne, another regal dahlia..... **\$1.00**

Dahlias—General List Continued

- Anna Rehorst** (*Rehorst-Bessie Boston*) *HS.* A wonderful hybrid show of deepest purple. **50c**
- Anselmo** (*Bessie Boston*) 1928. *D.* A very fine large deep flower of chamois suffused with pink. The reverse of the petals are also pink. The stem is very stiff and strong and of course carries the flower erect. Attractive foliage. Blooms early and freely the whole season. **\$5.00**
- A. R. Perry** (*Stredwick*) *C.* Old rose tipped gold. Large flower with incurved petals. Splendid for exhibition and very attractive in the garden. **75c**
- Ballet Girl** (*Bessie Boston*) *AC.* A most interesting cactus dahlia of ivory white and orange, each blossom in varying proportions of these colors. It has good form, size, stems and keeping qualities. Invaluable to exhibitors. Plant and cut with F. W. Fellows and Golden West. **\$1.50**
- Barbara Redfern** (*Redfern*) 1927. *D.* An immense decorative of wonderful substance and strong stout stems. The color is a blend of old rose and gold. Blooms early and profusely all season. Stock limited. **\$7.50**
- Bear Claws** (*Staats*) *AC.* An immense American cactus of rich true carmine. The blooms are made up of many large long claw-shaped petals, well incurved. The plant is tall and the stems good. A very free bloomer. The largest and most striking cactus dahlia we have seen. **\$2.00**
- Beau Ideal** (*Bessie Boston*) 1927. *D.* A Mariposa in decorative form. The flowers of this dahlia vary from pink to lavender on different bushes and sometimes on the same bush. The growth is tall and luxurious and from early in the season there are always masses of long stemmed blooms. Stock limited. **\$10.00**
- Betty Bird** (*Seal*) *HS.* A beautiful glowing salmon pink ball shaped dahlia, with graceful wiry stems and excellent keeping qualities. The bushes are of low growth and always full of bloom. Stock always scarce. **\$5.00**
- Big Ben.** *HS.* One of the largest and most perfect show dahlias. The flowers are of a beautiful raspberry red. Stock limited. **\$1.50**
- Black Diamond,** *HS.* Large rich flower of deep velvety maroon. Grows well in warm climates. **50c**
- Black Jack** (*Dressler*) *D.* This dahlia has been well named. We know of no other dahlia with such richness and depth of color—a deep rich maroon, almost black. The plant is tall and robust and is always filled with large flowers of splendid form. The stems are very long and strong. **\$2.00**
- Blue Bird** (*Bessie Boston*) *P.* A beautiful peony with broad petals in amaranth pink, shading to lilac. Very large; blooms early and late. **\$1.00**
- Bueno** (*Bessie Boston*) 1927. *D.* A beautiful new decorative of coppery rose shading brownish, with bright yellow at the center. The bush is tall, the flower large and deep with splendid stem. An excellent keeper. **\$7.50.**
- California Enchantress** (*Bessie Boston*) *HC.* Beautiful shade of light rose pink. The large well-formed blooms are held perfectly erect on long stout stems. **\$1.00**
- Caroline Wintjen** (*McWhirter*) *D.* Beautiful salmon pink with rose shadings. Large blooms with good stems. Fine bedding variety as the plants are always laden with flowers. **50c**
- Champagne** (*Bessie Boston*) *D.* The color is rare and delightful. According to Ridgway's Color Chart it is a rich cream suffused light jasper red, giving the flower a pinkish orange buff color. The bushes are filled with massive flowers held high on long rigid stems. A beautiful decorative and a wonderfully fine lasting cut flower. Plant and cut with Amun Ra. **\$1.50**
- City of Portland** (*Gill*) *P.* Deep, clear, rich yellow. The blooms are immense and are held well above the foliage on good stems. Splendid for cutting. One of the best for exhibition. **75c**
- Contra Costa** (*Salbach*) 1927. *D.* A lovely clear salmon rose decorative dahlia that is most excellent for cutting. The form and substance are fine, the stems long and wiry. Beautiful planted and cut with light blue and lavender delphinium. **\$3.00**
- Daddy Butler** (*Bessie Boston*) *HC.* A large hybrid cactus of fine form. American Beauty in color with a pale rose purple on the reverse of the petals. A most prolific bloomer with fine stems and unusually good lasting qualities. **\$1.00**
- Daniel Cornish,** *S.* Large ball shaped flowers of raspberry red. Good stems. **50c**
- Delice,** *D.* A beautiful rosy pink, unequalled in color by any of the larger dahlias. Fine for the florists. **50c**
- Dorothy Dix** (*Bessie Boston*) 1928. *HC.* An immense hybrid cactus of silvery pink which is good at all seasons. The form is incurved. Bushes grow tall and branching and are always full of very large flowers. Centers in November were closed as they were in the beginning of the season. This is one of the largest hybrid cactus ever offered and has splendid stems. It is as useful for cutting as for exhibiting. Shipping date April 15 or later. **\$15.00**
- Dr. Tevis** (*Pelicano*) *D.* This is one of the most beautiful of all decorative dahlias. The color is a soft salmon rose, suffused with old gold, with golden apricot at center. The reverse side of petals is a rich old rose. The blooms are extra large and borne in profusion on long stout stems. This dahlia has won many prizes. **75c**
- Earle Williams** (*Doolittle*) *D.* A splendid bicolor with fine substance and strong straight stems. The crimson centers blend into a creamy white, sometimes just at the tips of the petals, sometimes the largest part is white and occasionally an all red blossom appears. **\$1.00**
- E. F. Hawes** (*Stredwick*) *C.* One of the most vigorous growers of all the cactus. The large pink flowers are held erect on long, stout stems. A very prolific bloomer. Always in demand as a cut flower. Lovely with Jersey's Beauty. **75c**
- Eleanor Martin** (*Pelicano*) *D.* One of the finest decoratives. A giant flower on a good stiff stem. Very graceful and elegant. The color is a beautiful mulberry suffused with gold. A perfect exhibition bloom and a beautiful cut flower. **\$3.00**

Dahlias—General List Continued



Eleanor Martin (Decorative—See Page 10)

El Dorado (*Bessie Boston*) *D.* A very large gold flower deepening to a richer gold at the base of the petals. A dahlia of great depth and excellent substance. Stems absolutely straight and stiff. A free flowering, low growing bush and an early bloomer.**\$3.00**

El Granada (*Bessie Boston*) *HC.* A glorious orange hybrid cactus, showing a rich creamy yellow on the reverse of the curling petals. The stems are long, the bushes tall and the flowers are abundant and of exceptional keeping qualities. Centers closed to the end of the season. A most beautiful cut flower and a most excellent exhibition variety.**\$2.50**

Ellinor Vandever (*Seal*) *D.* These large blooms of glowing satiny rose pink are of great depth and substance and are held far above the tall sturdy bush on exceptionally long stiff stems.**\$2.50**

Elsie Oliver (*Bessie Boston*) *HC.* One of the largest hybrid cactus dahlias grown. The color is a delicate pink shading to apricot. While the flower is very large the fine form and delicate coloring give it the necessary grace to make it exceedingly attractive. The bushes are decidedly branching and produce an abundance of blooms, which are held well above the foliage on good stems.**\$1.50**

Dahlias—General List Continued

- Esmond, S.** Beautiful ball shaped canary yellow of fine form and growing habits. A lovely flower. **50c**
- Flaming Meteor (Barker) D.** This new dahlia is one that will be grown by everyone who loves rich colors, by growers who sell to florists and by fans who exhibit dahlias for prizes. It was awarded many first prizes this last fall at the various dahlia shows in Southern California. The flower is large, of good depth, splendid form and unexcelled keeping qualities. Stems long, tough and cane like. The color is a flaming orange-scarlet deepening to burnt orange at center, where each petal shows an amber yellow base thus making a beautiful central halo. See page 17. **\$5.00**
- Futurity (West) D.** The beautiful old rose color of this dahlia makes it one of the most admired. The flowers which are of medium size, are held high on good stems. It is a perfect decorative and a very free bloomer. **75c**
- F. W. Fellows (Stredwick) C.** The large orange to terra cotta blooms are produced in great abundance on good wiry stems. A wonderful exhibition flower and splendid for cutting. Plant near Golden West. **75c**
- General Haig (Kettlewell) S.** Best scarlet show. Pure English exhibition type. **\$1.00**
- George Walters (Carter) HC.** A very large soft coral pink suffused with gold in center. The plant has splendid growing habits and the flowers are produced in great profusion on good stout stems. An exceptionally fine dahlia. **50c**
- Gertrude Ederle (Bessie Boston) 1928. HC.** This straight petaled hybrid cactus was exhibited in the 1926 show but was not offered for sale until this season. It is a soft primrose yellow. Flowers are very large and always true to form. One of the varieties which has unusual lasting qualities when cut. Stem is stiff and hard and carries the flower well out of the foliage but will need some disbudding as the laterals grow quickly. A profuse bloomer. It starts early and continues the entire season. There were many flowers on the bushes in November. This is a blossom which will attract attention anywhere and especially under artificial light. It won the Santa Barbara cup for the best twelve blooms in the 1927 Palace Hotel Show. Those twelve flowers were unfaded after three days. Shipping date April 15 or later. **\$10.00**
- Gladys Champion (Champion) P.** A very large peony dahlia of apricot yellow shading to jaspered on the reverse of the petals, which are long, broad and slightly twisted. The center is surrounded by many tiny curling florets. The stems are excellent, the bush of medium height and a profuse bloomer. Thrives well in warm climates. Awarded Certificate of Merit at D. S. C. trial gardens 1924. **\$1.00**
- Golden Opportunity (Doolittle) HS.** Rich buttercup yellow, shaded burnt orange in center. One of the best hybrid shows, and a fine cut flower. **75c**
- Golden West (Broomall) AC.** This variety is a typical American cactus. A vigorous grower, producing a great number of perfect blooms of deep rich yellow heavily overlaid with orange. The stems are fine and the blooms last well when cut. Very popular for basket work and table decorations. Plant and cut with F. W. Fellows. **50c**
- Grizzly, The (Burns) D.** The richest deep velvety red dahlia yet produced. The plant is a vigorous grower and the very large stately blooms are held high on extra stout stems. Does especially well in a warm climate. Every grower should have this splendid dahlia. **75c**
- Helen Durnbaugh (Broomall) D.** A pleasing shaped flower with fine upright habits. The blooms are very beautiful. The color is a soft white shading to a glowing pink deep in the flower. **50c**
- Herbert Raby (Stredwick) C.** Very large flower of purple crimson. Incurved. Plants tall, stems good. Free blooming. **50c**
- Insulinda, D.** A Holland introduction. Very large orange buff, overlaid with a golden sheen, shading to orange deep in center, with old rose on reverse of petals, which are broad and curly. The stems are perfectly straight and wiry, and the blooms face up like a chrysanthemum. Stock limited. **\$1.00**
- Ione Haslam (Haslam) P.** A rich scarlet peony of great size. Fine form, long wide petals, slightly curled, making a very graceful flower. Stems long and strong. One of the finest dahlias in the trial gardens of the Dahlia Society of California, 1924, scoring 89. Very striking planted or cut with Susan Tevis. **\$1.50**
- Islam Patrol (Davies) HC.** A stunning red and gold California hybrid cactus. The plant is a strong grower and the fine stalks hold the blooms well above the foliage. This was one of the most popular dahlias exhibited at the different shows this year. This is a very decorative indoors flower. **\$3.50**
- J. D. Long (Wilmore) D.** A tall, thrifty, robust plant, producing fine large blooms of great substance, which hold through the hottest weather. Excellent stems. A lovely blending of salmon pink, amber and bronze. **75c**
- Jean Chazot (French Importation) AC.** This beautiful dahlia is a charming cut flower. It is an abundant bloomer with perfectly straight stems that hold the flower well above the foliage. A very fine cactus dahlia of rich amber suffused nasturtium red. **\$1.00**
- Jersey's Beauty (Waite) D.** This salmon rose pink dahlia is one of the best cut flowers in the garden. The blooms are of good size and fine substance and the stems are long and tough. It is beautiful with the autumn colored group or with the amethysts. Plant back of a bunch of purple sage or near the cactus dahlias E. H. Hawes and Herbert Raby or in a group with Al Koran and Mrs. Carl Salbach. Because of the great adaptability of this dahlia and the very moderate price we anticipate a very heavy sale. **\$1.00**
- Joy (Bessie Boston) 1927. D.** A beautiful clear silvery lavender without a trace of white. It is an immense flower which grows on the end of the stem like a chrysanthemum. The substance is excellent, making it an ideal cut flower. A profuse bloomer early and late, never shows center. Won the Rookwood vase for the best new lavender at the Dahlia Show 1926. Stock limited. **\$10.00**

Dahlias—General List Continued



Gertrude Ederle (Hybrid Cactus—See page 12)

Juanita Chubbuck (*Davies*) 1928. *P.* This is one of the finest of the peony type. A huge basket of these beautiful flowers exhibited on long stems, at the recent Palace Hotel show was the source of much favorable comment. The color is a clear white with a blush of lavender. The blooms are very large and graceful. The stems are long and rigid. . . . \$5.00

Judge Marean (*Marean*) *D.* An immense flower of changing blends of glowing salmon, pink, red, orange, and gold. Free blooming, long straight stems. . . . \$1.00

Kalif (*Englehardt*) *HC.* Rich scarlet of perfect form. The plant has splendid habits of growth. The very large blooms are freely produced on

good long, strong stems. Fine for exhibition and for cutting. . . . 75c

Karma (*Finley-Spencer*) *D.* A beautiful clear amaranth pink of medium height. The bushes were a mass of bloom from early summer till late fall. Especially lovely for border planting and fine for exhibiting and for cutting. . . \$2.50

King of Purple, *S.* Deep velvety dahlia purple. Large and ball shaped. Does especially well in warm climates. . . . 50c

Kitty Dunlap (*Bessie Boston*) *D.* A very free blooming, fine form dahlia of American Beauty rose. The stems are long and stiff. We recommend this dahlia highly for exhibiting and cutting. . . . \$1.00

Dahlias—General List Continued

- La Favorita** (*Lohrmann*) *HC*. This beautiful large flaming orange hybrid cactus is without doubt one of the best dahlias of this color. The blooms are of fine form and hold their centers till late in the season. The stems are long and stiff. Should be in every collection. **75c**
- Les Amours de Madame**, *S*. Beautiful ball shaped flowers of lovely rose pink, occasionally striped deep rose. Very prolific of bloom and well adapted to warm climates. **50c**
- Logan's White** (*Logan*) *D*. This beautiful dahlia won the Highest Award of Merit at the Trial Garden of the Dahlia Society of California in 1922. The blooms are large, snow white and perfect. Stems are long and rigid and the bushes always full of blossoms. . . **\$1.00**
- Lolita Velasco** (*Bessie Boston*) *AC*. A very large white American cactus, blooming well above the foliage on long straight stems. The petals are of good substance, very long and rolled back the full length. Center excellent. One of the best in this class. **\$2.00**
- Mabel B. Taft** (*Bessie Boston*) *D*. Yellow, suffused with pinkish apricot, shading to lighter center. The blooms are large and are held on perfectly stiff stems. Splendid for exhibition and cutting. Very profuse bloomer. **50c**
- Mariposa** (*Bessie Boston*) *HC*. An immense flower of bright yet delicate rose pink, shading deeper at the center. Blossoms abundantly all season, holding its center throughout. The stems are long and stiff and the flowers are fine both for cutting and exhibiting. Grows well in warm climates. **\$1.50**
- Maude Adams** (*Alexander*) *S*. Exquisite white, each petal edged and tipped pink. Thrives well in warm climates. **50c**
- Millionaire** (*Stillman*) *D*. Very large full lavender pink. Has won innumerable first prizes for the largest bloom in the show. **50c**
- Minnie Marden** (*Salbach*) *C*. A beautiful watermelon pink cactus dahlia of fine form and keeping qualities. The bushes are covered with flowers the whole season through. . . **75c**
- Mischief** (*Bessie Boston*) 1928. *D*. The outer petals are bright red while the center petals are white with a slight suffusion of red. A most unusual dahlia. Flowers come very true until late in the season when the red will predominate. Plants grow tall and very bushy. One of the first dahlias to bloom and blossoms profusely till frost. Flower is large and very well formed. Stem is good. **\$5.00**
- Miss California** (*Pelicano*) *D*. 1926. A large decorative dahlia, perfectly formed and of beautiful new color known as oriental fuchsia. Tall and hardy. Stems strong and stiff, four to five feet in length. Blooms high above foliage, six to nine inches in diameter. An excellent keeper, so it is a wonderful bloom for commercial as well as for exhibition purposes. Miss California won first prize for six blooms of the best three year old seedling at the California State Floral Society, 1925. Early. . **\$4.00**
- Miss New York** (*Badetty*) *HC*. A great wavy petaled hybrid cactus of spectacular beauty. Rich rose in color showing a trace of rosolane purple on reverse of petal. A splendid exhibition dahlia. **\$3.50**
- Miss San Francisco** (*Pelicano*) 1928. *D*. This is one of the best dahlias Mr. Pelicano has introduced in years. The color is a true orchid shade mixed with a deep rose. The plants are sturdy growers and the immense flowers are held high above the foliage on very strong stems. The blooms have great depth and substance and never show centers, averaging nine to ten inches in diameter. The keeping qualities are excellent and as exhibition flower it is unexcelled. **\$5.00**
- Mr. E. Leedham** (*Bessie Boston*) 1928. *D*. A huge orange scarlet decorative which does not burn in the hot sunshine. Plants grow tall and branching and bloom early. The flowers are carried on very long stiff stems and grow right at the top of them. This characteristic is very noticeable until very late in the season. Stems at all times are stiff and the flowers have unusual depth. Shipping date April 15 or later. **\$15.00**
- Mrs. A. D. Lockwood** (*Lockwood*) *D*. A very large decorative of soft primrose yellow. The petals are long and graceful; stems long and wiry. Keeps well as a cut flower. **\$2.00**
- Mrs. Carl Salbach** (*Salbach*) *D*. One of the most dependable of all dahlias. A sturdy, vigorous grower, full of blooms and a fine tuber maker. The flowers, which are uniformly symmetrical, are a beautiful mallow pink and are borne on long stout stems. The bushes are stately in the garden, the flowers cut unusually well. Invaluable as a house decoration and as an exhibition flower. **75c**
- Mrs. C. Cooper** (*Burrell*) *C*. Buff, suffused salmon. An immense flower of perfect form. Free bloomer. **\$1.00**
- Mrs. Ethel F. T. Smith** (*Broomall*) *D*. An immense creamy white shading to lemon. Our visitors called it the "White Poinsettia." The plant is tall and vigorous and is a generous producer of large blossoms. The stems are long and straight. **50c**
- Mrs. I. de Ver Warner** (*Marean*) *D*. One of Judge Marean's best creations. Very large beautiful flowers of fine form and substance. Color a rich rosy mauve. Stems long and rigid. Very attractive in the garden and one of the best for exhibition and for cutting. . . **75c**
- Mrs. Jessie Seal** (*Gleadell*) *P*. The large blooms of beautiful old rose are held high on long, graceful, wiry stems. A vigorous grower and very prolific bloomer. One of the most satisfactory all round dahlias grown. **\$1.00**
- Mrs. Warren Dee Miller** (*Miller-Salbach*) *HC*. A hybrid cactus of beautiful symmetry and elegance. White suffused delicate rose pink deep in the flower. The plant is vigorous, the blooms large and very abundant. This is a lovely white dahlia to use in an amethyst basket. Keeps beautifully. Medium height. Plant and cut with Rookwood and Susan Tevis. Stock limited. **\$2.00**
- Myrtle** (*Pelicano*) 1928. *D*. A very free flowering variety of golden apricot suffused salmon rose. The plant is of medium height and a hardy grower. The flowers are large, averaging 9 to 10 inches, and have excellent long stiff stems. Myrtle is a continual bloomer till late fall. **\$3.00**

Dahlias—General List Continued



Mrs. Warren Dee Miller (Hybrid Cactus—See page 14)

Naranya (*Shulte*). A beautiful English single of orange scarlet. The plants are tall and always full of bloom. They make better bushes if pinched back when six or eight inches high. **.75c**

Neva (*Salbach*) *D.* A glowing scarlet decorative. Large, good form, good stems and good keeping qualities. The bushes are of vigorous growth and are a mass of color all season. **\$1.00**

Norman (*West*) *C.* One of the largest and most satisfactory English cactus. The blooms are composed of a great number of fine twisted petals, giving the flower great depth. The color is a deep rich scarlet and the blooms are held perfectly erect on good straight stems. **.75c**

Nugget, *S.* Large ball shaped dahlia of golden yellow overlaid and edged scarlet-red. A very richly colored flower. Fine in warm climates. **.50c**

Ophir (*Bessie Boston*) 1928. *D.* Golden yellow bronze, tipped yellow and shading to a bright yellow center. Petals are long and twisting, form is uncommon, stem is strong and straight, bushes grow to medium height and produce very freely of blossoms the entire season. **\$5.00**

Oregon Sunset (*White*) *P.* A highly colored flower of scarlet and yellow of the Geisha type, but somewhat larger. The petals are broader and more regularly set and the stems are better. **\$1.00**

Dahlias—General List Continued

- Oriole, The** (*Burns*) *P.* A very striking peony in a most remarkable combination of burnt orange, red and yellow; many of the flowers shading to white at the tips. The blossoms are very large and numerous, and the stems are fine; a beautiful cut flower and a good producer **75c**
- Paul Michael** (*Michael*) *D.* Deep orange buff, shading to old rose on reverse of petals. One of the largest dahlias. **\$1.00**
- Pompador** (*Bessie Boston*) 1928. *HC.* A very regularly formed hybrid cactus of deep royal purple. Flower is large and carried on a good stem. A variety which has attracted unusual attention all through the season. Will be found admirable for exhibiting as well as for cutting. The tall bushes have most attractive foliage. Flowers never burn even in the warmest weather and remain true to form the entire season. A free bloomer. **\$5.00**
- Pride of California** (*Lohrmann*) *D.* Without doubt the best of the red decoratives. A vigorous grower and a very free bloomer. The large deep red flowers are borne high above the foliage on very long, rigid stems and keep exceptionally well when cut. Thrives in warm climates. **50c**
- Queen of the Garden Beautiful**, *D.* An enormous primrose yellow decorative. A strong vigorous grower with long straight tough stems. This dahlia was originated in "The Garden Beautiful" at San Quentin, the state prison. Against keen competition at the 1925 California Dahlia Society show, twenty-five of these great blooms won the coveted Samuel W. Heller prize for the dahlia showing most preeminent merit. It has been awarded numerous first prizes as the largest flower in the show. We brought one of these flowers home the last night of the show and kept it in good condition for a week. Stock limited. **\$5.00**
- Queen Marguerite** (*Spagnoli-Salbach*) *D.* A tall growing variety that is always filled with blooms. The color is a warm saffron pink shading to lemon yellow at base of petals. Awarded Certificate of Merit by the American Dahlia Society. Most beautiful in warm climates. **\$1.00**
- Regal** (*Bessie Boston*) 1928. *D.* A huge decorative. A variety which can be grown without trouble ten inches and with careful disbudding twelve inches. The plants grow medium height and begin to bloom early and continue to flower profusely the entire season keeping large size to the very end. The color is uncommon and is a bronze, heavily suffused with old rose, shading to gold at the center. Stem is absolutely rigid and carries the blossoms well out of the foliage. This decorative won the gold medal at the Palace Hotel Show in 1926 for the best six blooms of a three year old seedling. It also won the Western Horticultural Prize at the same show in 1927 for the best twenty-five blooms. Photo of Regal on front cover page, taken by Western Horticulture Magazine. Shipping date April 15 or later. **\$25.00**
- Regent** (*Bessie Boston*) *AC.* A prize winning American cactus in Tyrian pink, shading lighter to the center, which is entirely hidden by the incurving petals. The flower has size, pleasing color, long straight stems, is free blooming, and keeps well. **\$1.00**
- Rollo Boy** (*Pelicano*) 1925. *HC.* An immense hybrid cactus of beautiful form and long straight stems. Delicate amber to old gold. Won first prize for Best Dahlia at the 1924 Palace Hotel Show and also first for the largest dahlia. A very fine flower. **\$3.00**
- Rookwood** (*Bessie Boston*) *D.* This lovely dahlia was planted in the front row of our exhibition garden and was a continuous mass of color, one of the first and one of the last to bloom. The flowers are large and full to the end of the season and the stems are good. The color is a clear cerise-rose with no magenta. A beautiful flower for cutting and exhibiting. Bushes low and spreading. Plant with Mrs. Warren Dee Miller and Susan Tevis. . . . **\$2.50**
- Rosa Nell** (*Broomall*) *D.* Another favorite with both the cut flower lovers and the exhibitors. The very large blooms are of a bright clear rose and are carried well above the foliage on good wiry stems. This is one of the first dahlias to attract the attention of visitors to our garden. Rosa Nell always grows a fine large plant from very small round tubers. Thrives in warm climates. **50c**
- Rose** (*Bessie Boston*) 1928. *D.* This dahlia resembles the American Beauty rose in color and form and has an absolutely stiff stem like this flower. Bushes grow medium height and produce countless flowers from the very early to the very late season. The large deep flowers always keep their form and last excellently when cut. **\$5.00**
- Rose Fallon** (*Marean-Harding*) *D.* A perfect deep old gold decorative that it will be hard to equal. Immense as to size but not in the least coarse or out of proportion and with wonderful keeping qualities. The stems are long and rigid and hold the flowers up for the admiration of all. A glorious flower for cutting for the garden or for exhibiting. **\$7.50**
- Roselani** (*Bessie Boston*) 1927. *D.* This is a large deep decorative, rose pink in color shading to white at the center, each graceful petal is faintly edged carmine. Stems are long and stiff, bushes tall and productive of quantities of perfect blooms. One of the longest—keeping cut flower dahlias. **\$5.00**
- Runa** (*Barber*) 1928. *D.* A charming orchid pink decorative with a splendid future as a florists' flower. For the abundance of large blooms no dahlia surpasses Runa. Its long stems and unusual keeping qualities make it an especially desirable cut flower. At the 1927 show of The Dahlia Society of Southern California, Runa was awarded the first prize for the best fifty blooms of one variety. **\$5.00**
- Sagamore** (*Badette*) *D.* A large perfect flower of pure gold deepening to rich reddish apricot at center. The stems are straight and strong and the keeping qualities of these huge flowers is unexcelled. Thrives in warm climate. . . **\$2.00**

Dahlias—General List Continued



Flaming Meteor (Decorative—See page 7)

Salbach's White (*Salbach*) 1926. *D.* A most beautiful large ivory white decorative dahlia of perfect form. Full and deep and of wonderful substance. Keeps well and does not burn. A very profuse bloomer, plants of medium height. We feel that this is the peer of all white dahlias. It was awarded the Gold Medal at the Trial Gardens of the Dahlia Society of California in 1924. Was awarded first prize for the best white dahlia, at the show of the Dahlia Society of Southern California, 1927. See page 9.....\$5.00

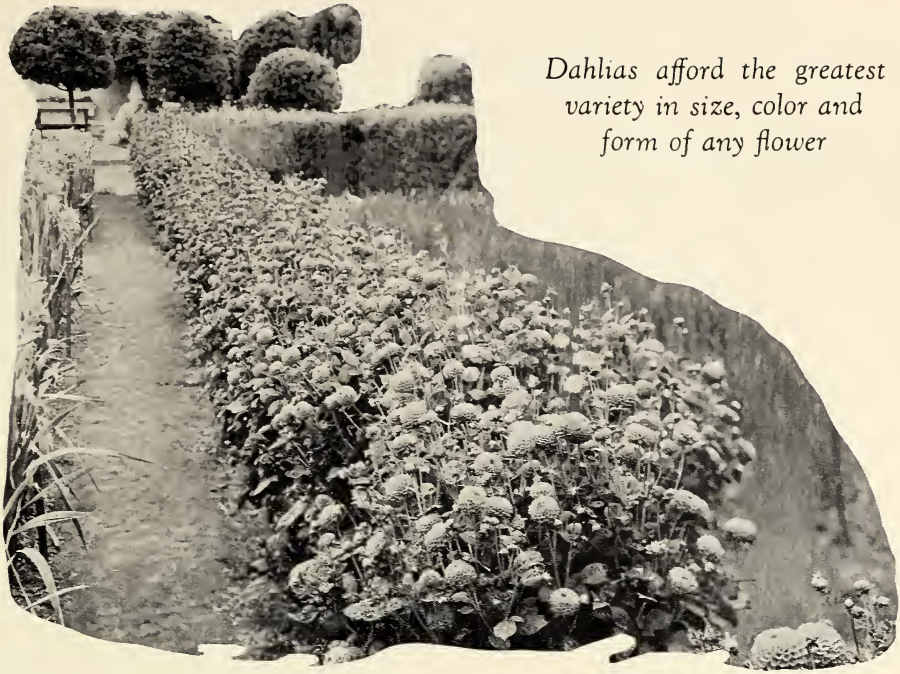
Santa Ana (*Pelicano*) 1927. *HC.* One of the largest and best hybrid cactus in this coloring;

beautiful salmon rose suffused with gold. The plant is of medium height and a free bloomer. The flowers are held well above the dark green foliage on good stems. The petals are long and wiry giving the flower its striking form. Does very well in a warm climate. The color of this new dahlia has won the admiration of every one wherever shown. Fine for exhibition purposes. Won first prize for the largest dahlia at California State Floral Society Dahlia Show 1926.....\$5.00

Scarlet Queen. A most attractive scarlet red collarette dahlia with a yellow collar. Stock limited.....75c

Dahlias—General List Continued

- Shudow's Lavender** (*Bessie Boston*) *D.* Very large silvery lavender, shading to white. The stems are perfect and hold the blooms high above the lacy foliage. The lavender becomes deeper late in the season. Awarded many first prizes. **\$2.00**
- Silverhill Park** (*Stredwick*) *C.* Large glistening white, beautifully incurved cactus dahlia with perfect center. Long straight stems. Does not burn. A fine flower for garden, cutting and exhibiting. **\$1.00**
- Starlight** (*Bessie Boston*) 1928. *HC.* Pure unshaded gold, hybrid cactus, a color which always attracts in any type. Flower is huge and there is no limit to the size to which it can be grown. Bushes grow tall and luxuriantly and flowers start early and continue with closed centers until frost. Form is excellent, and petals roll evenly until late in the season. The stem is stiff and strong and the flowers grow out of the foliage. This variety will be found excellent for cutting as well as exhibiting and is always a delight in the garden. Shipping date April 15 or later. **\$20.00**
- Suffragette** (*Hodgens*) *D.* The huge flowers of this decorative dahlia are clear canary yellow with the center petals usually tipped white. The plant is tall, the stems stout and the blooms cover the bush. Plant with Mrs. Carl Salbach and Susan Tevis. **\$1.00**
- Susan G. Tevis** (*Bessie Boston*) *D.* One of the largest and most perfectly formed decoratives in existence. No other dahlia closely resembles it. The color of this stately flower is a deep shade of lilac with a silvery sheen. The plant is unusually vigorous and the foliage dark and rich. The large blooms are supported on exceptionally strong stems. Beautiful by contrast planted or cut with orange cannas. **\$2.50**
- Sweet Briar** (*Stredwick*) *C.* A very beautiful rose-pink cactus dahlia. The blooms are of excellent form and are held high on stout stems. Very free bloomer. **75c**
- Sweetheart's Bouquet** (*Wilmore*) *D.* A generously blooming peony with good straight stems. Rich salmon rose, pleasing alike in both day and night light. Particularly fine late in the season. Does well in warm climates. **50c**
- Sydney B. Mitchell** (*Salbach*) 1926. *D.* A very large decorative of rich, deep velvety red almost black in the center shading through carmine to Tyrian rose at end of petals. Fine stems. Bushes covered with blooms. An outstanding flower in the garden or in an exhibition group. Awarded certificate of merit at the trial gardens of The American Dahlia Society at Storrs, Conn., 1925. A very rich note of color in the amethyst-lavender group. **\$2.50**
- Tom Lundy** (*Fenton*) *HC.* An especially good dahlia for a warm climate and heavy soil. One of the largest true hybrid cactus grown. The blooms are a deep rich crimson and the stems are long and stout. A very free bloomer. **50c**
- Tommy Atkins** (*Bessie Boston*) *D.* We have never grown a red dahlia that has called forth so much admiration as Tommy Atkins. The beautiful glowing scarlet blooms of large size and fine form are held well above the plants on long straight stems. The plant is a vigorous grower and prolific bloomer. This flower is as happy an addition to the garden, the bouquet or the show table as the British Tommy to the story or song. **\$2.00**
- Treasure** (*Bessie Boston*) 1927. *D.* A large graceful decorative with long narrow petals that twist and turn showing cream on the face and deep jasper pink on the reverse. The center is illuminated with a peculiar greenish light. The stem is perfect, long and stout, carrying the flowers well out of the foliage. Bushes tall and robust and always full of blooms. Keeps well when cut. **\$7.50**
- Union Jack.** A very unique English single, stems striped red and white. Excellent for massing as the bushes grow quite low. **75c**
- Valentino** (*Bessie Boston*) 1928. *D.* An enormous decorative of a new color combination, salmon pink shading to cream. This variety has excellent form and keeps its center the entire season. Bushes grow medium height and are always full of flowers. Stem is stiff and cane-like and grows well out of the foliage. Coloring is distinctive and has attracted great attention on the exhibition table as well as growing in the garden. Shipping date April 15 or later. **\$15.00**
- Walter E. Magee** (*Salbach*) *D.* Very large decorative of great depth and exquisite coloring. The judges at the Trial Gardens of the Dahlia Society of California, 1924, described the colors as bitter sweet orange, shading to apricot buff with a suffusion of carmine. A very rich color combination. Scored 91. Awarded Certificate of Merit by D. S. C. The blooms are held well above the foliage on fine stems. Stock limited. **\$5.00**
- Winsome** (*Bessie Boston*) 1928. *D.* A decorative of a clear medium shade of pink. Very large well formed blossoms of narrow petals. The chief characteristic of this variety is its long leafless stem. It starts to bloom in mid season and will produce an abundance of blooms, all of which are perfect. The flower is always pink, has no lavender variations or shadings. Bushes grow tall. Shipping date April 15 or later. **\$15.00**
- Wizard of Oz** (*Doolittle*) *D.* One of the largest dahlias grown. The color is a glowing amber pink, soft in tone. The plant is a strong grower and flowers are held erect on stout stems. **\$3.00**
- Yuban**, *HS.* Yellow striped and speckled red. Immense blooms. **\$1.00**
- Yukon** (*Bessie Boston*) 1927. *D.* A very attractive dahlia of clear purple with a light blue suffusion, a very rich tone in an orchid-amethyst basket. The flower is very symmetrical with small shell shaped petals. The bush is tall, luxuriant and full of blooms with good stiff stems. **\$2.50**



Dahlias afford the greatest variety in size, color and form of any flower

A lovely garden border of Pompon Dahlias

Pompon Dahlias

Pompon dahlias are of the same shape as the shows and hybrid shows, but the flowers must be under two inches in diameter.

Pompon dahlias should be planted as soon as received, as the tubers are small and the eyes are apt to dry out if left exposed to the air for any length of time.

- Amber Queen.** Rich golden bronze of fine form. **50c**
- Baby Plummer** (*Salbach*). A very small begonia rose pompon. **50c**
- Bacchus.** Bright scarlet. **50c**
- Bantam** (*Henning-Bessie Boston*). Brownish red of fine form, long stems and excellent keeping qualities. **\$1.00**
- Dandy** (*Bessie Boston*). A perfect orange. **50c**
- George Ireland.** Beautiful mauve; fine for cutting and exhibition. **50c**
- Gertrude** (*Salbach*) 1927. One of the finest red pompons we have grown. The color is glowing carmine. The blooms are perfect and the stems long. Very free blooming. Plant with Lolita. **\$1.00**
- Girlie.** A very beautiful pure rosy lilac, much in demand. **50c**
- Glow.** Light old rose to coral. One of the favorites. **50c**
- Lilias.** A very lovely cream pompon that is heavily suffused pinkish mauve. **50c**
- Little Beeswing.** Golden yellow heavily tipped cherry red. One of the most popular for cutting and exhibition. **50c**
- Little Bugler.** Rosy purple. Fine for cutting. **50c**
- Little David** (*Twitchett*). Deepest orange, very free flowering. One of the best. **50c**
- Lolita** (*Salbach*) 1927. Beautiful blooms of rich yellow with a prominent brownish red center. The plant is a vigorous grower and produces an abundance of flowers on good long stems. It is also a good tuber maker. **50c**
- Nerissa.** Soft rose. **50c**
- Phyllis.** Rose red showing yellow at base of petals. Long stems. **50c**
- Regulus.** (*Little Dorritt*). Bright purple; small and compact. Good. **50c**
- Rosea.** Deep lilac. **50c**
- Yellow Gem** (*McWhirter*) Creamy yellow. A strong vigorous grower and a remarkable free bloomer. Fine for exhibiting and for cutting **50c**

One dozen of any of the pompons listed above, at 50c each, for **\$5.00**.

Testimonials

DAHLIAS

W. P. Strandborg, 510 Electric Bldg., Portland, Ore, April 12th, 1927:—

"I am greatly pleased with the splendid Alma Davies dahlia tuber you sent me. It is a perfect specimen of stock and I know I shall have good luck with it. Also, I want to thank you for the Glad. bulbs you included as extras with my order. Your business methods have given me, a very small customer, 100 percent satisfaction."

A. F. Styers, Dahlia Gardens, Grove City, Mercer Co., Pa., June 7, 1926:—

"I received the Dahlia roots O. K. and they were the nicest roots I have ever received from any firm and I deal with a good many firms."

Dr. Guy Steel, 1 Church St., Cambridge, Maryland:—

"Everything I have gotten from you has turned out satisfactory, especially Dahlia La Favorite. I like your Catalog too. Your book seems to give an honest description of what you have to sell."

R. P. Liphart, Prop., Melrose Gardens, 3501 Brook Road, Richmond, Va.:—

Salbach's White.—"Salbach's White has done fine for me, and consider it finest white I have seen and very much pleased with it."

DAHLIA SEED

Otis F. Jones, c/o Georgia Agricultural Works, Fort Valley, Ga., 6/15/27:—

"I just want to take this opportunity of telling you of the very great joy the package of Dahlia seed bought of you in January is giving me at this time. I have some 300 plants in my garden, 75 of them are seedlings from this package bought of you. Planted the seed under glass in January, transferred to open ground around March 15th, my first bloom from one of them came late in May, and now nearly every one of the 75 have bloomed and those that have not are in bud. I never knew it was possible for such blooms to come from seedlings especially the first season. I have on my desk today a seedling bloom measuring 8 to 9 inches in diameter a full 4 inches deep. Have had one cactus type bloom bringing 3 blooms at the same time measuring 7, 8 and 9 inches, and by far the prettiest I have ever seen." Oct. 24/27.—In addition to the very large decorative I wrote you about earlier in the season—I have two, one cream and one red that I would not take \$25.00 each for—ten times what I paid for the packet of seed."

Richard F. Grimes, 1016 Potomac Ave., S. E., Washington, D. C., Sept. 13, 1927:—

"As per instructions in your Catalog of 1927, I am giving you notice, two weeks in advance, of my intention to exhibit the seedlings grown by me from the Dahlia seeds which I purchased from you last spring. The plants and blooms produced from your seed are just wonderful. Out of about 70 plants, I have at this writing 15 perfect tight centered Decoratives, and Hybrid Decoratives; 1 true Cactus and 1 Hybrid Cactus, and also 1 fine Peony flower variety. Also many others that show partial centers and may possibly improve within the three years required to determine their value. I have more buds which have not opened yet which I can tell from my long experience in growing Dahlias will be fine tight centered blooms."

Mrs. Ben Manning, 282 Galena Ave., Pasadena, Cal., October 30, 1927:—

"I have had some of the most glorious and wonderful flowers which I grew from your seeds this year. Such beautiful combinations of colors. And oh the size of them! They ran all the way from the pale pastel shades up to the deep rich fulltones."

Mrs. Lillian Hagewood, Tullahoma, Tenn., Oct. 2, 1927:—

"I am writing you in regard to seedling Dahlias. I purchased the seed from you in the spring. I got first prize at the Fair here and third prize at the State Fair. I want you to keep me 100 of your very best seed for next year."

J. I. Ramsey, Eldorado, Ill., Sept. 1, 1927:—

"I have 65 fine dahlia plants from the selected seed I purchased from you. Most all of them are blooming and they are the finest I ever saw. They are putting out as large and as good blossoms in every way as my plants from bulbs."

Mr. Oscar Briggs, 308 West Blvd., Marion, Ill., October 20, 1927:—

"In regard to the Dahlia Seed I purchased from you last spring, and my success with them, I had some very fine blooms from them. Have two that I class with some of the best seedlings of today and that is saying a great deal. Won first prize in the Marion Dahlia Show with them."

Mr. Geo. Dryburgh, Prop., Ridgelawn Farm, Emmerado, N. D., Oct. 8, 1927:—

"I want to let you know I am very pleased with the seedlings I grew from seeds of Dahlias bought from you last spring. I have the nicest lot of seedlings you ever saw. I exhibited them at our Horticultural Society at Walhall, N. D., and took first prize on seedlings."

Mrs. Albert Simon, Placerville, Cal., October 26th, 1927:—

"You may remember that last spring I sent to you for a packet of Dahlia Seed and you may be interested in knowing how they turned out. About 80 to 85 germinated and of this number over 50 have bloomed, some of course double and some single and all sorts, shades and combinations. All of them have been a great deal of pleasure and I have I think a few exceptional ones."

Mrs. W. L. Schoonover, 118 Ashland Ave., Bloomfield, N. J., Aug. 27, 1927:—

"I want to say that I am more than pleased with the blooms I am getting from the Dahlia seeds that I purchased from you. My neighbors are all talking about my seedlings."

Mr. W. S. Clarke, 13 E. Washington St., Kensington, Md., November, 1927:—

"My seedling dahlias, grown from your seed this year, were the finest I ever saw."

Dahlia Seed

Dahlia seed is very easy to grow and the plants will bloom the first year. It can be started indoors in flats or small boxes and transplanted out of doors after all danger of frost is over.

Practically all the new dahlias come from seeds, many of the best commercial varieties have come from the back yard gardens of amateurs.

Our seed is gathered from our exhibition garden where we plant the very newest and best varieties. Naturally the choicer the stock from which the seeds come, the greater the chances are of producing prize winners. Read the testimonials on the opposite page.

We are offering two \$20.00 Cash Prizes

One to the exhibitor in the 1928 Dahlia Show of the American Dahlia Society who wins first prize for the best one year old seedling, PROVIDING said exhibitor purchased the Dahlia seed from us.

Another to the winner in the same class in the 1928 show of the Dahlia Society of San Francisco, PROVIDING said exhibitor purchased the Dahlia seed from us.

Other prizes of \$10.00 orders will be given to winners in the same class in organized shows in other parts of the country. These orders will be filled with the winner's own selection of dahlias, gladiolus or irises listed in our 1928 catalogs.

Notice of intention to exhibit must be sent us two weeks in advance of show

Seeds are available as follows:

100 choice seeds	\$1.00
100 selected seeds	\$2.50

This seed has been collected from our exhibition gardens where only the choicest dahlias are grown.



Assortments of Dahlias

For those not acquainted with the different varieties of dahlias, we will make up a collection of one dozen tubers, of our own selection, all named varieties, for **\$5.00, \$10.00** or **\$15.00**. In each case we will give *good values and generous count. Special inducements to beginners desiring a complete collection.*

Gladiolus

The modern gladiolus of the summer garden are the most popular of all flowers. They are invaluable to the landscape gardener for color splashes and for bedding and to the florist and the home decorator they are the most beautiful and lasting of all the garden blooms.

The spikes grow tall and elegant, sturdy and dignified, slender and graceful, and the color range is absolutely infinite. There is a single spike for the slender vase, a corsage for the luncheon guest, an adorable basket for the debutante and a glorious bowl full for the dance.

A hundred bulbs can be planted in a bed four feet by six. They grow in practically any soil and climate and may be planted to give a succession of blooms.

Our collection of gladiolus is the result of years of study and work and our equipment the best that money can buy. Our bulbs are clean, healthy and vigorous, the finest stock that can be grown. We feel certain that we can make your summer garden a joy to you and all your friends.

Gladiolus Planting Suggestions

Color selection for your gladiolus planting is more vital than with dahlias, for there is so much less intervening green foliage to soften any possible color clashes.

If your garden is big enough to permit of several plantings, three weeks apart, of the different seasonal varieties, you can have blooms through the whole summer and fall. We had Prince of Wales, Early Sunrise, Superba and Mrs. John S. Wood in May and are still cutting in mid-November, Nancy Hanks and Salbach's Prim.

If you plant in rows, make them stagger rows with the bulbs from 4 to 6 inches apart in the rows and the rows 3 or 4 inches apart. The effect is much more satisfactory than a thin single row, even if it is planted closer together. A strip 6 feet long will take from 2 to 3 dozen bulbs.

If you plant in groups in the borders or among the shrubbery where the sunshine is abundant, use 7 or more of one variety or of one color group, planting 4 to 6 inches apart. An oval approximately 2 ft. by 3 will take 2 or 3 dozen bulbs. Plant the rear portion of your space with a third of the bulbs allotted to the group at the first planting, the second third, three weeks later and the rest after another three weeks interval, thus securing a longer period of bloom and also having the best looking part always at the fore. Three months is the average time from planting to blooming.

How to Grow Gladiolus

The bulbs should be planted in the spring, after all danger of frost is over. Plant from four to six inches deep, according to the lightness of the soil and the size of the bulbs. In a cool climate they thrive best in a good sunny place. Where the summers are extremely warm, a partially shaded place is preferable.

We do not advocate the use of dressing too liberally. A light application of any well decayed manure or good commercial fertilizer applied on the top of the ground after the plants are several inches high will aid in producing larger blooms. *Never apply fertilizer at the time of planting.* The ground should be kept moist (not wet) until the flower spikes begin to appear, then water freely. The spikes can be cut as soon as the first bud begins to open. Four or five of the lower leaves should be left to help mature the new bulb.

The bulbs should be dug as soon as the leaves turn yellow or as soon as they are killed by frost. They should be lifted tops and all and allowed to cure, preferably out of doors. If in a warm climate, they should be shaded during the heat of the day and should at all times be protected from frost. The usual time for curing is from four to six weeks. When thoroughly dry, the tops should be cut off close to the bulbs and the old dried corms removed from the bottom of these new bulbs. Store in shallow trays in a cool dry place protected from frost.

Gladiolus orders can be filled in the fall to spring.

New Gladiolus

Baby Mine (*Salbach*) 1927. Grandiflora primulinus. Large wide open pure La France pink with milk white throat. Tall and vigorous in growth. Long flower spikes with 6 to 8 beautifully placed blooms open at one time. Substance excellent. We predict a fine future for this variety.....\$2.00 each

Bernard Shaw (*Diener*). Very pale lilac delicately penciled with light phlox purple. Faint dashes of lemon on lower petals. Flowers very large and open. Long well built spikes.....\$3.00 each

Betty Nuthall (25 1/11) (*Salbach*) 1928. As an American tribute to England's foremost woman tennis player we have named our most outstanding 1928 introduction Betty Nuthall. This beautiful flower impressed us the first time we observed it in bloom and each year thereafter it has been one of the most outstanding varieties in our test garden. The plants are tall and vigorous in growth. The flower spikes are long and graceful, carrying from six to eight large well expanded blooms open at one time. Some blooms have measured six inches across. The color is a warm light coral, with pale orange throat markings and light feathering of carmine. It is a good increaser, the large bulbs usually produce from two to three separate stalks.....\$10.00 each

Don of Peralta (*Salbach*) 1928. A Rose Ash seedling inheriting much of the vigor of the parent but differing entirely in color. The plant is tall with a long flower spike. The large blooms are brilliant red with a prominent blotch of straw yellow. Very striking.\$1.00 each

Dorothy Simpson (*Salbach*) 1928. Large beautifully ruffled Persian lilac with soft mallow purple heart set into a pale amber yellow blotch. From five to six well placed blooms open at one time. Very heavy substance.....\$3.00 each

Dr. Nelson Shook (*Kunderd*) 1925. A giant in plant and flower. Deep Tyrian rose color. Has been awarded many first prizes at the National Shows.....\$1.00 each, \$10.00 doz.

Fay Lanphier (*Miss America*) (*E. L. Williams*). Large flowers of coral luster with cerise blending. Large graceful spike. .25c each; \$2.50 doz.

Field's Pink. Deep glowing geranium pink differing in shade from any of the other pink gladiolus. Vigorous grower.....\$1.50 each

Frank M. Shick (23 2/3) (*Salbach*) 1928. This is one of the loveliest gladiolus in our whole collection. The blooms are of good size and are clear geranium pink except the soft cream throat markings. From eight to ten well placed blooms open at one time. This gladiolus has a splendid future.....\$5.00 each

Frederick Christ (*Diener*) 1925. Ground color La France pink with geranium pink markings. Large spot of pinard yellow sprinkled with nopal red on the lip. Flesh color pistil, light



Frank M. Shick

phlox purple anthers. Large flowers, good spikes, and fine build. Very tall. One of the most wonderful color combinations ever produced in gladiolus! Rare.....\$30.00 each

Gay Hussar (200 1/7) (*Salbach*) 1928. From a tall yellow seedling and Nancy Hanks. Large wide open rich salmon orange, shading to orange yellow throat, scarlet throat markings. Many well expanded flowers open at one time. A wonderful flower and a rapid multiplier. See page 29.....\$5.00 each

Golden Amber (*Salbach*) 1928. A very attractive tall primulinus hybrid on the order of Souvenir but of a deeper richer yellow with a longer flower spike. 5 to 6 blooms open at one time. The backs of the petals and the buds are bronze.....\$2.50 each

Golden Dream (*Groff*). A clear deep golden yellow of splendid substance; very tall, many open at one time. Has a fine future. \$5.00 each

New Gladiolus—Continued



Helen Wills

Helen Wills (*Salbach*) 1926. A very elegant, clean, large white, shading to soft canary on lower petals. Tall, vigorous and of wonderful substance. This flower is the finest white gladiolus we have seen and we have named it in honor of America's finest woman tennis player. Six to eight blooms open at one time. A rapid propagator. The coming white for florists. Splendid forcing variety.

. \$5.00 each; \$50.00 doz.

Hope Hampton (*Diener*) 1925. Strawberry pink spotted with deep peach red. Carmine spot surrounded by salmon orange on the lower petals. Large and open.

. \$1.50 each

Improved Tiplady (*Salbach*) 1928. Saffron orange very similar to Alice Tiplady but taller with longer flower spike and more flowers open at one time. Foliage smooth and straight. Rapid multiplier.

. \$1.00 each; \$10.00 doz.

Improved Queen of the Night (*Diener*) 1928.

Deep maroon. Flowers very large and open.

. \$1.00 each

Jean Tenny (*Australian*). Light silvery rose, edges flushed and sometimes striped with a darker shade of pink, cream blotch in center. Large flowers, long spikes of good form.

. \$1.50 each

John Toland (*Salbach*) 1927. Massive spike of very large bold flowers. Peach red shading lighter to center, prominent velvety ox-blood blotch on lower petals, five to six open at once.

Substance excellent. A very striking variety, vigorous grower, rapid multiplier.

. \$2.50 each; \$25.00 doz.

La Gaieté. An extra fine cherry-rose with a flaming scarlet blotch, a very attractive color combination.

. \$1.00 each; \$10.00 doz.

Linalee (*Diener*) 1928. Geranium pink with saffron yellow stripe through the center of the two lower petals. Tall and very large. Five to six inches across.

. \$5.00 each

May McAvoy (*Diener*) 1925. Very delicate rose lilac, a very clean color. Phlox purple speckles on the lower petals. Flowers measure five inches. Spikes very tall with four to five side spikes.

. \$10.00 each

Mimi (18 1/8) (*Salbach*) 1928. Shrimp pink with a mahogany blotch that shades to cherry toward the front of the petal. A half moon of canary runs through the front part of the blotch. Very unusual and attractive.

. \$2.50 each

Miss Berkeley (*Salbach*) 1927. Delicate shrimp pink with suggestion of yellow deep in throat. Soft pansy purple throat markings. Fine long flower spike with 8 to 10 well placed blooms open at one time. Very dainty and beautiful.

. \$2.50 each

Mrs. A. B. C. Dohrmann (*Diener*) 1925. Venetian pink overlaid jasper red. Fine stripe of pale green yellow on the lip. Lip faintly spotted with scarlet red. Very large flowers and long spikes. One of Diener's best.

. \$5.00 each

Mrs. F. C. Hornberger (*Hornberger*). A beautiful pure white gladiolus without markings. Nicely ruffled, wide open, perfectly placed blooms of remarkable texture. Twenty-eight buds to the spike. Strong, sturdy and vigorous.

. \$3.50 each

Mrs. Van Konynenburg. Good blue gladiolus are extremely scarce and this new Holland variety is most welcome. It is a beautiful lilac blue, large, of splendid substance, good form and makes an excellent spike. It is a vigorous grower and a good producer.

. \$5.00 each

Orange Butterfly (*Salbach*) 1928. A rich glowing bronzy orange primulinus hybrid. As the name indicates the flowers are butterfly shape. They are of excellent substance, and beautifully placed, six to eight open at one time. This flower was invariably the first one to be noticed in every basket in which it appeared.

. \$5.00 each

Pagan (*Diener*). Tall bordeaux maroon. Six open at one time.

. \$2.00 each

Pearl of California (*Kingsley*). One of the finest of the new introductions. The flowers are of great size and are a beautiful clear La France pink. We have seen as many as twelve open flowers and twenty buds on the same spike. We congratulate Mr. Kingsley on producing such a glorious gladiolus.

. \$5.00 each; \$50.00 doz.

Persia. Another dark maroon with bright green foliage and black buds. A striking novelty.

. 50c each; \$5.00 doz.

Phaenomen (*Pfitzer*). Tall with many flowers open. A most pleasing salmon rose color with light creamy blotch. An exquisite novelty.

. \$1.00 each; \$10.00 doz.

New Gladiolus—Continued

Pfitzer's Triumph (*Pfitzer*). This is unquestionably one of the largest and finest gladiolus ever introduced. The enormous Amaryllis-like flowers are bright flaming salmon with a cherry blotch in the throat. It is the most striking gladiolus in the garden. **\$5.00** each

Primrose Princess (*Salbach*) 1927. Very large stately, wide open, clear primrose yellow. Two lower petals rich amber yellow, soft carmine markings deep in throat; 5 to 7 well placed blooms open at one time. Tall plant growth and long flower spike. The large blooms, fine color harmony and poise of the flower all contribute to its elegance. This is without doubt the largest and most regal of all the yellow gladiolus. . **\$4.00** each; **\$40.00** doz.

Queen Mary (*Salbach*) 1927. A lovely ruffled variety of most excellent substance. Live strawberry pink with a scarlet heart set into the pale orange yellow of the lower petals. The color combination is exquisite. Beautiful in the garden and wonderful for florist's work. A rapid multiplier. **\$4.00** each; **\$40.00** doz.

Radiant (*Salbach*) 1927. A primulinus hybrid of delicate strawberry pink shading to lighter throat. Lower petals soft orange pink, beautifully penciled carmine. Tall with a fine placement. **\$1.00** each; **\$10.00** doz.

Rita Beck (*Fischer*). Large wide open flowers of excellent substance. The color is a clear La France pink. Many flowers open at one time. **\$3.00** each

San Mateo (9 6/7) (*Salbach*) 1928. A very lovely clear rose pink similar in shade to that of Pink Lily. San Mateo is however a larger flower with a longer spike. The texture is very heavy. **\$2.50** each

Senorita (200 1/6) (*Salbach*) 1928. Very large, clear wide open orange shading to salmon. Lower petals bright orange yellow with prominent carmine tongue and penciling. Very attractive and unusual. Plants sturdy and of medium height. **\$2.50** each

Sheba (23 10/11) (*Salbach*) 1928. Very large, wide open, tall jasper pink self. Five to six well placed blooms open at one time. A splendid cut flower and a rapid multiplier. **\$2.00** each

Simonetta (*Salbach*) 1927. A beautiful tall primulinus hybrid of delicate coral pink, carmine penciling on lower petals with soft canary midrib. Long flower spike with 5 to 6 open at one time. Very early. **\$1.00** each

The Orchid (*Sprague*). The most orchid like of all the gladiolus. The petals are long, narrow, ruffled and lacinated; pale lavender flecked toward the ends with lavender pink. Very dainty for basket work and for corsages. **\$2.50** each

Veilchenblau (*Pfitzer*). A large flowering violet blue. Tall and vigorous. **\$2.00** each

Wm. Kent (*Diener*). Creamy shell pink with golden ochre center. Flowers very large and beautifully ruffled. **\$1.00** each

Special Collections of New Gladiolus

One Bulb each Salbach 1928 introductions:—

Betty Nuthall.	\$10.00
Don of Peralta.	1.00
Dorothy Simpson.	3.00
Frank M. Shick.	5.00
Gay Hussar.	5.00
Golden Amber.	5.00
Improved Tiplady.	1.00
Mimi.	2.50
Orange Butterfly.	5.00
San Mateo.	2.50
Senorita.	2.50
Sheba.	2.00

Value. **\$44.50 for \$40.00**

One Bulb each Salbach 1928 introductions and the following 1927 introductions:—

Baby Mine.	\$2.00
Helen Wills.	5.00
John Toland.	2.50
Primrose Princess.	4.00
Queen Mary.	4.00
Radiant.	1.00

Value. **\$18.50**
1928 introductions. **44.50**

Value. **\$63.00 for \$50.00**

One bulb each all new Gladiolus listed on pages 23, 24 and 25. Value. **\$159.25 for \$135.00**

Testimonials -- Gladiolus

A. W. King, 22 Emily Street, Brantford, Ontario, Can., Feb. 8th, 1927:—

"I hope to be favored with a copy of your catalog again this year. The Gladiolus bulbs you sent me gave great satisfaction."

Adam Steinhauer, 2995 Eastlawn, Detroit, Mich. March 18, 1927:—

"Last growing season out our way was very wet. It was the acid test for the survival of the fittest glads. Due to this abnormal weather condition the mother corms died early in the season and consequently the cormels came in very meager numbers. Among the few glads that showed good returns were your Arthur Lockwood, Nancy Hanks, Reah and Saraband. These even bloomed from corms to very good advantage.

Salbach Originations Receive Awards In England

Copy of letter from Mr. A. E. Amos, Honorable Secretary the British Gladiolus Society. 10 Bergholt Road, Colchester, England, Nov. 12, 1927.

Mr. Carl Salbach
Woodmont Avenue
Berkeley, Calif., U. S. A.

Dear Mr. Salbach:

Delighted to note the following of your varieties of Gladioli have received awards after trial at Wisley:—Osalin, Nancy Hanks, Ada de Poy. Heartiest congratulations.

Yours sincerely, A. E. Amos.

General List, Large Flowering Gladiolus

Acme (Metzner). Very large and tall. Bright pink flaked darker pink, prominent cream lip. Long flowerspike **15c** each; **\$1.50** doz.

Alton (Kunderd). A wonderfully ruffled variety of fine orange color **25c** each; **\$2.50** doz.

Anna Eberius (Diener). Dark velvety purple, throat shading deeper. Wide open flowers of excellent substance. **15c** each; **\$1.50** doz.

Anthony B. Kunderd (Kunderd). Tall, large, intensely ruffled. Delicate deep cream color, overspread blush pink. Lower petals primrose cream flushed pink at edges. **15c** each; **\$1.50** doz.

Arthur Lockwood (Salbach) 1925. Very tall variety of clear hermosa pink. Blooms well placed on a spike. As many as 8 open at one time. The good keeping qualities, fine clean color and length of spike make this a splendid cut flower. Early **25c** each; **\$2.50** doz.

Bernard Shaw (Diener). Very pale lilac delicately penciled with light phlox purple. Faint dashes of lemon on lower petals. Flowers very large and open. Long well built spikes. **\$3.00** each

Betty Nuthall (25 1/11) (Salbach) 1928. As an American tribute to England's foremost woman tennis player we have named our most outstanding 1928 introduction Betty Nuthall. This beautiful flower impressed us the first time we observed it in bloom and each year thereafter it has been one of the most outstanding varieties in our test garden. The plants are tall and vigorous in growth. The flower spikes are long and graceful, carrying from six to eight large well expanded blooms open at one time. Some blooms have measured six inches across. The color is a warm light coral, with pale orange throat markings and light feathering of carmine. It is a good increaser, the large bulbs usually produce from two to three separate stalks. **\$10.00** each

Byron L. Smith (Kunderd). A beautiful orchid-like lavender pink. The blooms are large, wide open and exceptionally well placed. This is the peer of all the lavenders. Much in demand as a cut flower. **15c** each; **\$1.50** doz.

California Canary (Salbach). 1925. Very tall light golden yellow to canary with rich amber yellow on two lower petals. From 18 to 20 flowers on spike with 6 to 8 open at one time. Well placed **50c** each; **\$5.00** doz.

Catherine Coleman (Coleman). Very large geranium pink. Excellent substance, fine placement; long tall spikes. One of the aristocrats. See back cover. **50c** each; **\$5.00** doz.

Claremont (Salbach). A beautiful clear canary yellow self of excellent substance and fine placement. Spike strong. Six to eight blooms open at one time. **30c** each; **\$3.00** doz.

This is what a prominent Canadian grower says about this gladiolus:

"Claremont, the most charming glad. in my collection, and were I limited to one yellow, it would be Claremont. Tall and straight with beautifully placed flowers of distinctive formation and purest color."

Crimson Glow (Betscher). A very large wide open glowing crimson. The flowers are of fine form and exceedingly well placed on the spike. A vigorous grower **10c** each; **\$1.00** doz.

Diener's American Beauty (Diener). Brilliant American beauty color, prominent cream yellow throat. Flowers large and well placed. Many open at one time. **15c** each; **\$1.50** doz.

Don of Peralta (Salbach) 1928. A Rose Ash seedling inheriting much of the vigor of the parent but differing entirely in color. The plant is tall with a long flower spike. The large blooms are brilliant red with a prominent blotch of straw yellow. Very striking. **\$1.00** each

Dorothy Simpson (Salbach) 1928. Large beautifully ruffled Persian lilac with soft mallow purple heart set into a pale amber yellow blotch. From five to six well placed blooms open at one time. Very heavy substance. **\$3.00** each

Dr. F. E. Bennett (Diener). One of the finest of all the reds. Very large, tall, brilliant flame scarlet. Many open at one time. Awarded numerous first prizes as the best red **35c** each; **\$3.50** doz.

Dr. Nelson Shook (Kunderd) 1925. A giant in plant and flower. Deep Tyrian rose color. Has been awarded many first prizes at the National Shows. **\$1.00** each, **\$10.00** doz.

Early Sunrise (Velthuys). This beautiful gladiolus has the colors of a sunrise before a storm. The blooms are large, wide open and very handsome. Early **15c** each; **\$1.50** doz.

E. J. Shaylor (Kunderd). Tall, strong spike, with large blooms of beautiful deep rose pink. Awarded Certificate of Merit by Royal Horticultural Society of England. A very fine variety. Ruffled. **10c** each; **\$1.00** doz.

Elizabeth Tabor. Early, light pink, with maroon blotch in throat. Tall, very early and many open at one time. **15c** each; **\$1.50** doz.

Emile Aubrun (Lemoine). Through an error this was listed in our 1926 catalog as Ensign. A very large wide open Australian variety. The blooms are in the fuchsia shades with a gray overtone. A Tyrian rose blotch on the lower petals with a halo of scarlet, glows like molten lava. Tall and vigorous. A most unusual and fascinating flower **\$1.50** each; **\$15.00** doz.

Fay Lanphier (Miss America) (E. L. Williams). Large flowers of coral luster with cerise blending. A large graceful spike. **25c** each; **\$2.50** doz.

Fern Kyle (Kunderd). Rich cream of fine form and excellent substance. Large, tall and heavily ruffled. **50c** each; **\$5.00** doz.

Field's Pink. Deep glowing geranium pink differing in shade from any of the other pink gladiolus. Vigorous grower **\$1.50** each

Gladiolus—General List Continued

Frank M. Shick (23 2/3) (*Salbach*) 1928. This is one of the loveliest gladiolus in our whole collection. The blooms are of good size and are clear geranium pink except the soft cream throat markings. From eight to ten well placed blooms open at one time. This gladiolus has a splendid future. See cut page 23.\$5.00 each

Freda (*Salbach*). 1923. Very large, wide open geranium pink shading to La France pink center. Cream lip with faint carmine markings in throat. A vigorous grower. 10c each; \$1.00 doz.

Frederick Christ (*Diener*) 1925. Ground color La France pink with geranium pink markings. Large spot of pinard yellow sprinkled with nopal red on the lip. Flesh color pistil, light phlox purple anthers. Large flowers, good spikes, and fine build. Very tall. One of the most wonderful color combinations ever produced in gladiolus.\$30.00 each

Gay Hussar (200 1/7) (*Salbach*) 1928. From a tall yellow seedling and Nancy Hanks. Large wide open rich salmon orange, shading to orange yellow throat, scarlet throat markings. Many well expanded flowers open at one time. A wonderful flower and a rapid multiplier. See page 29.\$5.00 each

Geraldine Farrar (*Diener*). Beautiful pale lavender violet with deep violet spot on the lip.\$1.50 each; \$15.00 doz.

Giant Nymph (*Coleman*). A very large tall variety of light rose pink, with creamy yellow throat. Vigorous grower. 15c each; \$1.50 doz.

Gold (*Hoeg*). Lovely large clear yellow. Very early.15c each; \$1.50 doz.

Golden Dream (*Groff*). A clear deep golden yellow of splendid substance; very tall, many open at one time. Has a fine future. \$5.00 each

Golden Measure (*Kelway*). Large blossoms of rich golden yellow with no markings. Slightly ruffled. Strong growth with very large spike of bloom.15c each; \$1.50 doz.

Helen Wills (*Salbach*). 1926. A very elegant, clean, large white, shading to soft canary on lower petals. Tall, vigorous and of wonderful substance. This flower is the finest white gladiolus we have seen and we have named it in honor of America's finest woman tennis player. Six to eight blooms open at one time. Splendid forcing variety. A rapid propagator. The coming white for florists.\$5.00 each; \$50.00 doz. See page 24.\$5.00 each; \$50.00 doz.

Henry C. Goehl (*Fischer*). Pearly white with prominent carmine blotch. Good height and form. Very conspicuous. 20c each; \$2.00 doz.

Henry Ford (*Diener*). Large wide open flower of rhodamine purple, many open at one time. The size and color of this flower command instant attention.25c each; \$2.50 doz.



Idamae

Hope Hampton (*Diener*) 1925. Strawberry pink spotted with deep peach red. Carmine spot surrounded by salmon orange on the lower petals. Large and open.\$1.50 each

Idamae (*Salbach*) 1925. Very large wide open ivory white. Lower petals overlaid pinard yellow with delicate Tyrian rose pencillings and throat markings. Good substance, fine placement. Tall and vigorous. 25c each; \$2.50 doz.

Improved Queen of the Night (*Diener*) 1927. Deep maroon. Flowers very large and open.\$1.00 each

J. A. Carbone (*Diener*). Large. Glowing orange salmon with yellow throat. Sturdy plant, good spike, flowers well placed. Fine cut flower.25c each; \$2.50 doz

Gladiolus—General List Continued

- Jean Tenny** (*Australian*). Light silvery rose, edges flushed and sometimes striped with a darker shade of pink, cream blotch in center. Large flowers, long spikes of good form. \$1.50 each
- Jenny Lind** (*Hoeg*). Pure soft apricot pink, pale yellow throat. Very beautiful and elegant. 25c each; \$2.50 doz.
- John Toland** (*Salbach*). 1927. Massive spike of very large bold flowers. Peach red shading lighter to center, prominent velvety ox-blood blotch on lower petals, five to six open at once. Substance excellent. A very striking variety; vigorous grower, rapid multiplier. \$2.50 each; \$25.00 doz.
- Karl Volkert** (*Pfitzer*). A very early, glowing salmon orange of excellent substance. 25c each; \$2.50 doz.
- Kirchhoff's Violet** (*Kirchhoff*). A deep rich violet. 35c each; \$3.50 doz.
- La Gaieté**. An extra fine cherry-rose with a flaming scarlet blotch, a very attractive color combination. \$1.00 each; \$10.00 doz.
- Le Marechal Foch** (*P. Van Deursen*). One of the best of the recent introductions. Pure delicate rosy pink, wide open, broad petaled. Very large lily-like flower. Blooms two weeks earlier than America, and multiplies rapidly. Fine for forcing. 10c each; \$1.00 doz.
- Linalee** (*Diener*). Geranium pink with saffron yellow stripe through the center of the two lower petals. Tall and very large. Five to six inches across. \$5.00 each
- Llewellyn** (*Salbach*). 1925. A seedling of Pink Lily but much taller and of a lighter shade of rose pink with soft cream throat. Heavily ruffled. See page 30. 35c each; \$3.50 doz.
- Lorraine Woerner** (*Salbach*). 1926. A very large, wide open white with a faint suggestion of rose pink and a touch of rose deep in throat. The tall graceful spikes have the purity and elegance of alabaster. Fine substance, many blooms open at one time. 75c each; \$7.50 doz.
- Los Angeles** (*Houdyshel*). Beautiful shrimp pink with glowing orange-carmine blotch in throat, tall and graceful. This is a lovely flower in the garden as it blooms over a long period of time and it is in constant demand by the florists. 25c each; \$2.50 doz.
- Louise** (*Wright*). Large, well opened orchid-like flower. The color is an attractive bright lavender, with wine-colored blotch in throat. 15c each; \$1.50 doz.
- Madame Sully** (*De Groat*). Ivory white with carmine blotch in throat. Very distinct and beautiful. 35c each; \$3.50 doz.
- Magic** (*Kunderd*). Tall, lavender blue, with rich purple throat blotches. 15c each; \$1.50 doz.
- Margaret Glendinning** (*Salbach*). A seedling of Rose Ash containing more rose pink than its stately parent. A very lovely flower to cut with Rose Ash, or any of the rose pink gladiolus. 15c each; \$1.50 doz.
- Marie Kunderd** (*Kunderd*). A beautifully ruffled pure white, with almost invisible soft pink line in center of lower petals. Awarded First Class Certificate of Merit by North Shore Horticultural Society, Manchester, Mass. 20c each; \$2.00 doz.
- Marietta** (*Metzner*). Very large geranium pink with prominent velvety carmine blotch in throat. A very rich color combination. Tall and stately. 25c each; \$2.50 doz.
- Marshal Foch** (*Kunderd*). Warm salmon pink, with soft scarlet blotch in throat, finely ruffled. A very lovely flower. 15c each; \$1.50 doz.
- Martha Washington** (*Vaughan*). A warm light red with dark velvety blotches, almost black, on the lower petals. 20c each; \$2.00 doz.
- Maurice Fuld** (*L. Merton Gage*). Large well expanded flowers of rich rose doree with a blotch of Tyrian rose on pure white throat. Very striking. 75c each; \$7.50 doz.
- May McAvoy** (*Diener*) 1925. A delicate rose lilac, a very clean color. Phlox purple speckles on the lower petals. Flowers measure five inches. Spikes very tall with four to five side spikes. \$10.00 each
- Mimi** (18 1/8) (*Salbach*) 1928. Shrimp pink with a mahogany blotch that shades to cherry toward the front of the petal. A half moon of canary runs through the front part of the blotch. Very unusual and attractive. \$2.50 each
- Miss Berkeley** (*Salbach*). 1927. Delicate shrimp pink with suggestion of yellow deep in throat. Soft pansy purple throat markings. Fine long flower spike with 8 to 10 well placed blooms open at one time. Very dainty and beautiful. \$2.50 each
- Mrs. A. B. C. Dohrmann** (*Diener*) 1925. Venetian pink overlaid jasper red. Fine stripe of pale green yellow on the lip. Lip faintly spotted with scarlet red. Very large flowers and long spikes. One of Diener's best. \$5.00 each
- Mrs. Dr. Norton** (*Kunderd*). The color is delicate pink, shading to rose pink at tips of pointed petals. The lower petals are blotched sulphur yellow, outside of flower is rose. 10c each; \$1.00 doz.
- Mrs. F. C. Hornberger** (*Hornberger*). A beautiful pure white gladiolus without markings. Nicely ruffled, wide open, perfectly placed blooms of remarkable texture. Twenty-eight buds to the spike. Strong, sturdy and vigorous. \$3.50 each
- Mrs. Frank Pendleton** (*Kunderd*). Flushed salmon pink with rich maroon blotched on lower petals. 10c each; \$1.00 doz.
- Mrs. Frederick C. Peters** (*Fischer*). Beautiful shade of rose lilac with a soft crimson blotch, bordered white, on the lower petals. The blooms are slightly ruffled and many open at one time. Plant tall and vigorous. Substance excellent. We consider this one of the finest that we grow. 15c each; \$1.50 doz.
- Mrs. J. K. Armsby** (*Diener*). Coral pink delicately penciled vermilion near the edges. Throat cream speckled ruby. Flowers large and many open at one time 50c each; \$5.00 doz.

Gladiolus—General List Continued

Mrs. John S. Wood (*Metzner*). One of the largest and tallest gladiolus grown. Deep salmon pink shading to coral pink. Flaked scarlet with ruby dots in throat. A dozen of these great beauties in a local florist's window caused a sensation. Vigorous grower and rapid multiplier. **50c each; \$5.00 doz.**

Mrs. Leon Douglass (*Diener*). Large Salmon pink flaked scarlet. Pale lemon lip slightly speckled ruby. Similar to Mrs. John S. Wood; with us not so tall nor so good a multiplier. **35c each; \$3.50 doz.**

Mrs. Van Konynenburg. Good blue gladiolus are extremely scarce and this new Holland variety is most welcome. It is a beautiful lilac blue, large, of splendid substance, good form and makes an excellent spike. It is a vigorous grower and a good producer. **\$5.00 each**

Muriel (*Velthuys*). Very lovely light blue with darker throat markings. **20c each; \$2.00 doz.**

Myrtle (*Kunderd*). Tender, delicate rose pink. Spike strong and slender. Because of the beautiful shade of pink, this gladiolus is very popular with florists. **10c each; \$1.00 doz.**

Nancy Hanks (*Salbach*) 1925. Rich apricot to orange pink with grenadine tongue. These primulinus-hybrid colors are very unusual in the large flowering gladiolus. Six or more flowers open at one time, fine placement and substance. Vigorous grower and rapid multiplier. A splendid cut flower. Will not burn in hot climate. Received award of Merit, Haarlem, Holland, also British Gladiolous Society 1926-27. **50c each; \$5.00 doz.**

Osalin (*Salbach*) 1925. A very lovely coral pink with soft orange marking in throat. Especially beautiful under electric light. This variety is the mid-season pink to use with the early Prince of Wales and Richard Diener. Good height, fine placement, six large blooms open at one time. One of the loveliest gladiolus in the whole garden. Received Award at British Gladiolus Society 1927. **50c each; \$5.00 doz.**

Pagan (*Diener*). Tall bordeaux maroon. Six open at one time. **\$2.00 each**

Pearl of California (*Kingsley*). One of the finest of the new introductions. The flowers are of great size and are a beautiful clear La France pink. We have seen as many as twelve open flowers and twenty buds on the same spike. We congratulate Mr. Kingsley on producing such a glorious gladiolus. **\$5.00 each; \$50.00 doz.**

Persia. Another dark maroon with bright green foliage and black buds. A striking novelty. **50c each; \$5.00 doz.**

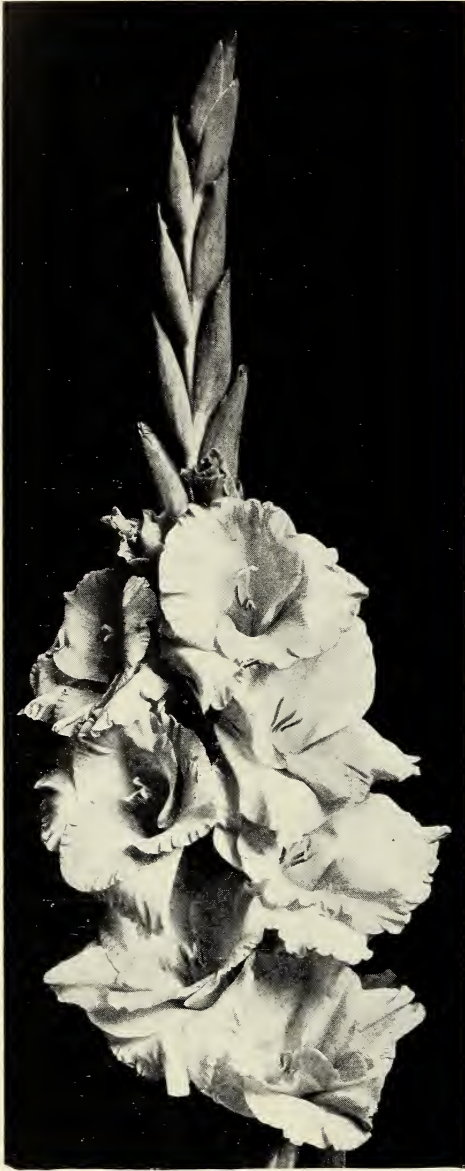
Phaenomen (*Pfitzer*). Tall with many flowers open. A most pleasing salmon rose color with slight creamy blotch. An exquisite novelty. **\$1.00 each; \$10.00 doz.**



Gay Hussar (See page 23)

Pfitzer's Triumph (*Pfitzer*). This is unquestionably one of the largest and finest gladiolus ever introduced. The enormous Amaryllis-like flowers are bright flaming salmon with a cherry blotch in the throat. It is the most striking gladiolus in the garden. **\$5.00 each**

Gladiolus—General List Continued



Llewellyn See page 28

Pink Lily (Kunderd). A magnificently ruffled deep rose pink. Well placed on sturdy spikes. **10c each; \$1.50 doz.**

Pink Wonder (Kemp). One of the largest pink varieties ever introduced. It is a strong, vigorous grower with many massive flowers open at one time. The color is stippled pink edges, over white ground, with a silvery sheen over the whole flower. The faint yellow shading at the base of the petals is overlaid with rose feathering. **10c each; \$1.00 doz.**

Primrose Princess (Salbach). 1927. Very large, stately wide open, clear primrose yellow. Two lower petals rich amber yellow, soft carmine markings deep in throat, 5 to 7 well placed blooms open at one time. Tall plant growth and long flower spike. The large blooms, fine color harmony and poise of the flower all contribute to its elegance. This is without doubt the largest and most regal of all the yellow gladiolus. **\$4.00 each; \$40.00 doz.**

Prince of Wales (Kelway). One of the finest Holland introductions. An improved Halley. Large clear grenadine pink with deeper throat markings. Excellent substance. Beautiful early blooming, and fine for cutting. **10c each; \$1.00 doz.**

Purple Glory (Kunderd). Deepest velvety maroon red with darker blotches. Beautifully ruffled. Very tall and striking. **25c each; \$2.50 doz.**

Queen Mary (Salbach). 1927. A lovely ruffled variety of most excellent substance. Live strawberry pink with a scarlet heart set into the pale orange yellow of the lower petals. The color combination is exquisite, beautiful in the garden and wonderful for florists' work. A rapid multiplier. **\$4.00 each; \$40.00 doz.**

Reah (Salbach). 1925. Rich mallow purple shading to mallow pink in center, deep velvety blotch almost black in throat. Large wide open blooms. A striking novelty. **35c each; \$3.50 doz.**

Red Emperor (Graff). Very large glowing blood red. This is the most showy gladiolus in our whole collection. **50c each**

Rev. Ewbank (Velthuys). Fine light blue with dark blue tongue tipped cream. Tall and early. A very fine light blue. **25c each; \$2.50 doz.**

Richard Diener (Diener). A very large clear glowing La France pink with light flakings of geranium pink and soft orange tongue. The blooms are slightly ruffled and are beautifully set on splendid spikes. Eight to ten open at once. **20c each; \$2.00 doz.**

Rita Beck (Fischer). Large wide open flowers of excellent substance. The color is a clear La France pink. Many flowers open at one time. **\$3.00 each**

Rose Ash (Metzner). A gladiolus that offers a decidedly new color. Mr. Chas. E. F. Gersdorff, who is recognized as authority on gladioli, says: "It is easily of XXXX quality. I found the color to be old rose, overlaid and blended daphne pink and daphne red; bases of petals straw yellow dusted eugenia red. General effect, what is known as 'Ashes of Roses'." One bulb often throwing three or four spikes which are all tall, straight and vigorous. **10c each; \$1.00 doz.**

San Mateo (9 6/7) (Salbach) 1928. A very lovely clear rose pink similar in shade to that of Pink Lily. San Mateo is however a larger flower with a longer spike. The texture is very heavy. **\$2.50 each**

Gladiolus—General List Continued

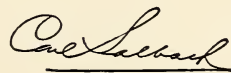
- Saraband** (*Salbach*). 1925. Very large wide open flower of rich velvety bordeaux with straw yellow blotch, feathered bordeaux. Stamens deep rose red. Fine placement, good substance. Tall. A very unusual flower, rich as an oriental rug. \$1.00 each
- Scarlet Princes** (*Kunderd*). A beautiful soft raspberry red, shading to begonia rose in throat. Large, lovely wide open flowers well placed on spike. A very charming self color gladiolus. Same as Virginia 10c ea.; \$1.00 doz.
- Senorita** (200 1/6) (*Salbach*) 1928. Very large, clear wide open orange shading to salmon. Lower petals bright orange yellow with prominent carmine tongue and penciling. Very attractive and unusual. Plants sturdy and of medium height. \$2.50 each
- Sheba** (23 10/11) (*Salbach*) 1928. Very large, wide open, tall jasper pink self. Five to six well placed blooms open at one time. A splendid cut flower and a rapid multiplier. \$2.00 each
- Shell Pink** (*Kunderd*). A very handsome shell pink. Tall and graceful. Flowers large, wide open and well placed, six or more open at one time. This prim is in a class by itself. 50c each; \$5.00 doz.
- Sidney Plummer** (*Salbach*). 1923. Beautiful soft yellow, suffused delicate pink. Rich amber lip, amaranth purple tongue. An exquisite color combination. Blooms large, well placed, and slightly ruffled. Many open at one time. A very fine yellow. Rated by Mr. Chas. E. F. Gersdorff at 95, both as a commercial and exhibition flower. 15c each; \$1.50 doz.
- Superba** (*Coleman*). Rich glowing scarlet bordering on carmine. The blooms are large, wide open and showy. Early. 15c ea.; \$1.50 doz.
- The Orchid** (*Sprague*). The most orchid like of all the gladiolus. The petals are long, narrow, ruffled and lacinated; pale lavender flecked toward the ends with lavender pink. Very dainty for basket work and for corsages. \$2.50 each
- The Quakeress** (*Salbach*). 1928. A most unusual gladiolus in that it is all gray, a lavender gray with a suggestion of cream in the throat. It is a sport of Rose Ash. \$1.00 each
- Veilchenblau** (*Pfitzer*). A large flowering violet blue. Tall and vigorous. \$2.00 each
- Virginia**. See Scarlet Princes.
- W. H. Phipps** (*Diener*). Beautiful La France pink overlaid light salmon rose. Lower petals faintly striped and speckled ruby. Flowers are enormous, ten or more open at one time. The plant is tall and the flower spike long. This is one of Mr. Diener's masterpieces. \$1.00 each; \$10.00 doz.
- Wm. G. Badger** (*Metzner*). A very large salmon of tall sturdy growth. Stock limited. \$1.50 each; \$15.00 doz.
- Wm. Kent** (*Diener*). Creamy shell pink with golden ochre center. Flowers very large and beautifully ruffled. \$1.00 each

Primulinus Hybrids page 32. *Special offers* page 33.

You Are Invited

to become a member of the American Gladiolus Society. As a member you will receive the monthly 32 page "Bulletin" published by the Society. Devoted solely to Gladiolus, it will teach you many new things about Gladiolus, it will show you the way to a more beautiful garden, it will keep you informed as to the new varieties which are constantly being created.

I can sincerely recommend it.



An application blank will be found on the next page.

Primulinus Hybrids

These beautiful flowers are a cross between the small Primulinus species which is found growing wild near Victoria Falls, South Africa, and the large gladiolus. The result is a new variety known as Primulinus Hybrids. The blooms are smaller than those of the gladiolus, are slightly hooded, and are poised like butterflies on long, graceful stems. They come in the beautiful nasturtium shades, with a few exquisite pink varieties. Because of the size and the graceful pliant stems, they are especially lovely in baskets and for table decorations.

Ada De Poy (*Salbach*). 1925. A typical primulinus hybrid of clear apricot with bronze shadings. Very long spikes with six to eight flowers open at one time. Slightly ruffled. Received Award, British Gladiolus Society 1927. See back cover page. **50c** each; **\$5.00** doz.

Alma Gluck (*L. Merton Gage*). A primulinus hybrid of brilliant peach red with rich yellow throat markings. Very distinct and fine for cutting. **20c** each; **\$2.00** doz.

Altair (*Kunderd*). Extra tall. Beautiful salmon saffron. **10c** each; **\$1.00** doz.

Baby Mine (*Salbach*). 1927. Grandiflora prim. Large wide open pure La France pink with milk white throat. Tall and vigorous in growth. Long flower spikes with six to eight beautifully placed blooms open at one time. Substance excellent. We predict a fine future for this variety. One bulb only to a customer. **\$3.00** each

Coral Prim (*Salbach*). 1927. An improved Glow. Tall glowing light coral red to orange yellow throat, with soft scarlet red tongue and veining on lower petals. Fine long flower spike. A strong grower and a rapid multiplier. **\$1.00** each

Elberton (*Kunderd*). Beautiful light yellow to cream. Lower petals and throat deeper. Blooms large and wide open. The best of this color. **15c** each; **\$1.50** doz.

Glow (*Zeestraten*). Light grenadine pink with soft carmine throat markings and buff yellow lip. Long wiry graceful stems. **15c** each; **\$1.50** doz.

Golden Amber (*Salbach*) 1928. A very attractive tall primulinus hybrid on the order of Souvenir but of a deeper richer yellow with a longer flower spike. Five to six blooms open at one time. The backs of the petals and the buds are bronze. **\$5.00** each

Improved Tiplady (*Salbach*) 1928. Saffron orange very similar to Alice Tiplady but taller with longer flower spike and more flowers open at one time. Foliage smooth and straight. Rapid multiplier. **\$1.00** each; **\$10.00** doz.

Jewell (*Zeestraten*). Light salmon pink with golden yellow throat. Flowers large and wide open, slender graceful stems. Very attractive. **25c** each; **\$2.50** doz.

Liberty (*Zeestraten*). Like Jewell, but of a deeper shade of salmon. **25c** each; **\$2.50** doz.

Maiden Blush (*Grullemens*). Wide open delicate pink. One of the best for forcing. Very early. **10c** each; **\$1.00** doz.

Ming Toy (*Kunderd*). Large showy buff-yellow of fine form. **15c** each; **\$1.50** doz.

Myra (*Kunderd*). Very large deep salmon over yellow ground. Yellow throat with pink lines. Tall and slender. **15c** each; **\$1.50** doz.

If You Are a Member Please Hand This to Some Friend

Special Offer

Garden & Home Builder (yearly rate \$3.00) and membership in American Gladiolus Society (annual dues \$2.00)

BOTH for only \$4.00

Garden & Home Builder is the most reliable, timely and complete guide for the garden. Each month it covers the garden work for that month.

The A.G.S. will send you its monthly magazine, devoted solely to Gladiolus.

This combined, unusual service will aid with every problem of your garden.

"I hereby apply for membership in the American Gladiolus Society, and inclose \$2.00 as annual membership dues, \$1.00 of which is for a year's subscription to the 'American Gladiolus Society Monthly Bulletin.'"

Mail this application and \$2.00 to
ROSCOE HUFF, Secretary
Goshen, Indiana

or if you desire to subscribe for Garden & Home Builder send \$4.00

Name _____

Street and No. _____

City or Town _____ State _____

Amateur or Professional _____

This application to be credited as coming through Carl Salbach.

(OVER)

Primulinus Hybrids—Continued

Orange Butterfly (*Salbach*) 1928. A rich glowing bronzy orange primulinus hybrid. As the name indicates the flowers are butterfly shape. They are of excellent substance, and beautifully placed, six to eight open at one time. This flower was invariably the first one to be noticed in every basket in which it appeared. **\$5.00** each

Orange Queen. An apricot orange primulinus hybrid. Beautiful wide open flowers of excellent substance. Very desirable. Stock limited. **50c** each

Radiant (*Salbach*). 1927. A primulinus hybrid of delicate strawberry pink, shading to lighter throat. The lower petals soft orange pink, beautifully penciled carmine. A charming color combination. Tall with a fine flower spike. **\$1.00** each

Revue (*Bill*). A large flowering graceful primulinus hybrid of soft yellow, shading to delicate pink at edges and tips of petals. **25c** each

Salbach's Prim (*Salbach*). 1923. Tall, peach red shading to strawberry pink, deep in throat; empire yellow on two lower tips. Long slender flower spikes. Many large beautifully ruffled blooms open at one time. One of the most cheerful and lovely of the primulinus hybrids. **15c** each; **\$1.50** doz.

Salmon Beauty (*Kunderd*). Large lovely flower of deep salmon with deep salmon yellow throat. The flower spikes are very tall and graceful. **15c** each; **\$1.50** doz.

Scarlet Bedder (*Salbach*) 1926. A most welcome newcomer in the primulinus family. This beautiful scarlet flower, is large and glowing, yet the color is soft enough to be in harmony with the general pastel tones of the primulinus hybrids. The different growers throughout the country are quite in accord with us in feeling that this "glad" has a big future. Stock limited. One only to a customer. **\$1.50** each

Simonetta (*Salbach*). 1927. A beautiful tall primulinus hybrid of delicate coral pink, carmine penciling on lower petals with soft canary midrib. Long flower spike with five to six open at one time. Very early. **\$1.00** each

Souvenir (*Jonkheer*). The most beautiful of all the yellow primes. Spikes tall and graceful; flower lovely amber yellow. **15c** each; **\$1.50** doz.

Sunset Glow (*Gibbs*). Clear scarlet, blended into a throat of pure golden yellow. A prim that is remarkable for its size and height. A beautiful cut flower and a rapid multiplier. **25c** each

Zenobia (*Kunderd*). One of the most highly colored and showy of all the primulinus hybrids. The brilliant orange red blooms are carried on very long graceful stems. **10c** each; **\$1.00** doz.

Special Gladiolus Collections—Sent By Prepaid Post

We make up these collections to give special values to those who enjoy many colors as well as for those who like special color groups. Many of these collections are sent out as gifts and bridge prizes, others as nucleus collections, for new gardens.

All orders are filled with large bulbs that will give beautiful blooms next season, and they are sent prepaid.

Enclose your personal greeting card for the gift orders.

12 Primulinus Hybrid Gladiolus, all different.	\$1.00
12 Pink and Rose, large flowering Gladiolus, all different.	1.00
12 Salmon, Orange and Red, large flowering Gladiolus, all different.	1.00
12 Orchid, Amethyst and Smoky, large flowering Gladiolus, all different.	1.00
12 Choice Mixed, large flowering Gladiolus, all different.	1.00
25 Choice Mixed, large flowering Gladiolus	2.00
50 Choice Mixed, large flowering Gladiolus	3.00
100 Choice Mixed, large flowering Gladiolus	5.00

Special offers of new gladiolus are listed on page 25.



Ada de Poy (Primulinus Hybrid)

Carl Salbach
DAHLIAS ~ GLADIOLUS
1928