

F 144
.P4 P5
Copy 1



CEDAR LAWN
CEMETERY

PATERSON NEW JERSEY

CEDAR LAWN CEMETERY
INCORPORATED 1865



V. Royle
1916

Entrance the Circuit

CEDAR LAWN CEMETERY

PATERSON

NEW JERSEY



ESTABLISHED 1867

7-25

COPYRIGHT 1917
BY CEDAR LAWN CEMETERY



©Cl. A 481117

DEC 26 1917

707.

CONTENTS

ADMINISTRATION BLDG., (new)	48-49
CARE, SPECIAL, OF PLOTS	31
CEDAR LAWN CEMETERY, GENERAL	11-23
ENDOWMENTS	33
FACILITIES, MISCELLANEOUS	47
FACILITIES, SPECIAL	37
GRAVES, BRICKED	39
GRAVE VAULTS, SLATE	37
LOT OWNERS, LIST OF	65-119
OFFICERS AND DIRECTORS	8
PERPETUAL CARE FUND	29
PRICES OF PLOTS AND GRAVES	25
RECEIVING VAULT	27
RULES AND REGULATIONS	51-63
SHELTER, (new)	49
TITLE TO PLOTS	27
VAULTS, UNDERGROUND	41, 43, 45

CEDAR LAWN CEMETERY

Office: 129 Market St., Paterson, N. J.

OFFICERS

J. EDWARDS BARBOUR, *President* MORTIMER INGLIS, *Vice-President*
JOHN G. EDWARDS, *Treasurer* M. L. McLANE, *Secretary*
SIDNEY HEMINSLEY, *Superintendent*

DIRECTORS

CHARLES AGNEW
ARTHUR W. BISHOP
JOHN G. EDWARDS
MORTIMER INGLIS

J. EDWARDS BARBOUR
J. WILLARD DE YOE
JOHN W. FERGUSON
VERNON ROYLE

ALBERT A. ZABRISKIE



V. Ag. 16
1916



V. R. R. M.
1926

The Office Entrance
Dunbar Drive

CEDAR LAWN CEMETERY

FIFTY YEARS OF GROWTH

PRIOR to 1867, interments in Paterson and its vicinity were made in graveyards, most of them in the direct line of the city's growth; all of them unprotected by any adequate guarantee for the future. They were left to time and chance, with the inevitable result that they fell into a state of neglect that was little short of scandalous and, what was worse, with no possibility of improvement. The longer they existed, the worse they got, which was the common end of all graveyards established under the system prevailing two or three generations ago.

CEDAR LAWN CEMETERY was incorporated on March 28th, 1865, by a group of far-sighted citizens who saw, in a cemetery surrounded by proper safeguards, the only remedy for the then existing state of affairs. These safeguards were essentially two: topographical and financial.

In choosing a site for the cemetery, a location was sought, the surroundings of which were, of themselves, of a character to insure permanence. Such a site was found at the southeast corner of the city immediately opposite to the widening of the Passaic River, known as Dundee Lake, where the land runs up in a gentle slope westward from the lake. In all, 135 acres have been here purchased, beginning at the crest of the rise and running down to the boulevard which skirts Dundee Lake. A glance at the location shows how admirably the natural configuration of the land protects the cemetery against the encroachment of buildings. On the west, owing to the slope of the land, it is practically impossible to even see the city buildings from the cemetery grounds; to the north and south, it is bordered by wide boulevards, while on the east, Dundee Lake will always prevent the erection of buildings immediately contiguous to the cemetery. The result of all this is that the cemetery enjoys, and will continue to enjoy for genera-



V. H. Hale
1915

Entrance - The Circuit

CEDAR LAWN CEMETERY

tions, a rural seclusion unique in a cemetery so close to a large and growing city and so readily accessible from all directions. Nature provides the barriers against intrusion, hence, so far as human foresight can predict, the cemetery will remain, for all time, an ideal resting place for the dead. The tide of buildings can never overwhelm it, as it has overwhelmed the old city graveyards. It may sweep around to the north and south, but even then, the cemetery will be safe—a quiet, rural retreat, sacred to the dead forever.

But natural barriers alone will not suffice to secure the future of a burial place. Experience has proved that the desecration of graveyards is not alone due to badly chosen sites but to lack of financial support as well. When a burying ground is merely financed for the time being, as was the case with the old graveyards, its eventual decay and abandonment are only a matter of time. New generations arise that forget the old dead; there are no funds to pay for caretakers, and the place is left at the mercy of vandals. The founders of Cedar Lawn, well aware of this, took steps to provide for the care of the cemetery for all time by providing, out of monies received, for funds devoted exclusively to the care of the cemetery. The charter provides that out of all sums received from the sale of plots, one-third shall be set aside for the care and improvement of the cemetery; and this has always been done, the percentage set aside for this purpose usually exceeding the amount specified in the charter. This fund, which is used exclusively for the general care of the cemetery, now amounts to \$180,000, and is constantly growing. In addition to this fund, there has also been established a Sinking Fund, which is held in trust for the benefit of the cemetery, and which acts as a further safeguard. It will thus be seen that with a large income devoted solely to the care and improvement of the cemetery as a whole, the future financial needs of the cemetery are adequately guaranteed.



The Grand

CEDAR LAWN CEMETERY

Having secured a uniquely beautiful and appropriate site, the services of Gen. Egbert L. Viele, an expert topographical and landscape engineer, were secured to lay out the grounds. This was done with great skill, General Viele, who pronounced the site one of the best for its purpose he had ever seen, utilizing the natural advantages of the spot in such a way as to supplement without destroying the rural charm of the place.

The cemetery is laid out on the lawn system, and while plot owners are allowed a wide latitude in the adornment of their plots, wise restrictions are imposed which prohibit anything that conflicts with the general plan and beauty of the cemetery. It is the policy of the management to work in harmony with plot owners for the general benefit, and the excellence of the regulations is universally admitted. Roads and drives are laid out so as to make all parts of the cemetery readily accessible; trees and shrubbery are planted, wherever this can be done to advantage; walls and fences have been erected around the cemetery to protect it; a fine receiving chapel has been built; and every convenience has been provided that can in any way render the service of the cemetery more acceptable.

The first lot sold in the cemetery was purchased by Mr. John Swinburne on August 20th, 1867, about one month before the cemetery was dedicated. The dedication took place on September 19th, 1867, and the first interment, that of Nancy Fletcher, wife of John Fletcher, took place on September 27th, 1867. From that time on, the sale of plots constantly increased, not only to those seeking to provide for future needs but for resting places for those removed from the old Sandy Hill and other graveyards then and since falling into decay. Every graveyard in the vicinity contributed its quota, hence it is not too much to say that the history of the city may be read on the tombstones in Cedar Lawn. From the old Water Street graveyard (the oldest in the city) the bones of Gen. Abram



Receiving Vault - The Church

CEDAR LAWN CEMETERY

Godwin, of Revolutionary fame, were brought to rest out of reach of vandalism; and here lie the Danforths, Rogers and Cookes, who developed the locomotive industry in Paterson; the Barbours, whose great thread industry is now represented by the fourth generation; John Ryle, the "Father of the Silk Industry," and a host of their successors as well as men eminent in other walks of life, such as Philemon Dickerson, at one time Secretary of State of the United States; and Garret Augustus Hobart, who filled the office of Vice-President with distinction.

The growth of the cemetery since its opening has been remarkable. Its manifest advantages have caused it to grow in the favor not only of the citizens of Paterson but those of surrounding cities and towns as well; in fact, it is everywhere acknowledged to be the finest cemetery in Northern New Jersey with the best assured future. In all, about 5,000 plots have been sold and 27,000 interments made. As the total capacity of the cemetery is over 250,000 graves, it is clear that its service to the community will continue indefinitely. At the present time, the valuation of the cemetery, including land and permanent improvements, is about \$500,000. As an added element of value, must be counted the monuments erected by individuals. Many of these are notable, especially some of the mausoleums recently erected which will bear comparison, architecturally, with the finest examples to be seen in the noted cemeteries of the country. Altogether, conservative estimates place the cost of the monuments in the cemetery at about \$1,500,000; which would give the cemetery a total value of \$2,000,000, protected by the Sinking Fund and Perpetual Care Fund above mentioned. As the value of the cemetery is constantly increasing and promises to double in the course of the next fifty years, it is incredible that so great an investment should ever be allowed to fall into ruin. In the magnitude and character of the cemetery, plot owners have the best guarantee of permanence.



V. Bayle
1915

The Circuit

CEDAR LAWN CEMETERY

The cemetery is divided up into plots of various sizes, the smallest having room for three graves. From this they increase in size to plots large enough for any requirement. In addition to this, two sections are set aside where single graves are sold, one section being exclusively for infants under five years of age. While the prices of plots vary considerably, according to location, all are very moderate, and in every case, the purchaser has the satisfaction of knowing that a large part of the purchase price will be devoted to the general purposes of the cemetery and to the perpetual care of his individual plot.

Full information regarding prices of available plots may be obtained at the offices of the Cemetery in the Paterson Savings Institution Building, Market and Main Streets, Paterson, N. J., or at the Cemetery.

Intending purchasers are urged to visit the Cemetery, where every facility for fully informing themselves as to its advantages will be extended to them.





V. Royle
1916

On Glen Ave, & Sunny Glen

CEDAR LAWN CEMETERY

CEDAR LAWN CEMETERY TO-DAY

CEDAR Lawn Cemetery covers a tract of 135 acres situated at the southeast corner of the City of Paterson, Passaic County, New Jersey. It is bordered on the south by Crooks Avenue, with an annex running south from Crooks Ave. to Roosevelt Avenue; on the west by Lakeview Avenue, 120 feet wide; on the north by a tract of land that lies between the Cemetery and Market Street; and on the east by the River Drive and Dundee Lake. The topography is such that the Cemetery cannot be encroached upon by buildings, except possibly on the north. The western boundary runs along the crest of a ridge from which the land slopes gently down to the river, the slope of the land preventing any view of buildings to the west while the river secures the eastern front for all time. A broad avenue and a residential section cover the Cemetery to the north and south. As a consequence of this situation, Cedar Lawn, while readily accessible, enjoys a rural seclusion highly appropriate to its purpose and most unusual in a site so near a city.

BEAUTY

Cedar Lawn is a place of great natural beauty, and this advantage has been accentuated by careful development. Trees and shrubbery have been planted, lawns have been made and excellent roads have been laid out and maintained, the general effect being that of a fine and well-kept park.

ACCESSIBILITY

Although the Cemetery enjoys an almost rural seclusion, yet it lies entirely within the city limits and can be easily reached by trolley or carriage from the city or surrounding towns. Out-of-town visitors arriving by either the Erie or N.Y.S. & W.R.R. can reach the Cemetery by taking the Cedar Lawn trolley from either station. From Passaic, Lake View and Clifton and adjoining sections, the White



V. R. 18
1916

Glen Ave

CEDAR LAWN CEMETERY

Line Trolley may be taken to the Lake View Avenue entrance. From points north and west of Paterson the Ridgewood or Suffern lines may be taken, passengers transferring to the Cedar Lawn line in the city. From Hackensack and adjoining territory, the Hudson River line or the N. Y. S. & W. R.R. may be taken to Paterson. All trolley lines entering the city give transfers to the Cedar Lawn line. For those visiting the Cemetery by carriage or automobile, excellent roads run from all points to the main entrance on the River Road, near Market Street, and to the Lake View Ave. entrance at Lake View Avenue and Crooks Avenue.





V. Royle
1916

The Circuit

CEDAR LAWN CEMETERY

TO INTENDING PURCHASERS

THE time to buy a plot in Cedar Lawn is NOW—now, when you have the time to give the matter the attention it merits.

Life is uncertain and you do not know how soon the necessity for a burial plot may arise. It is the part of wisdom to provide for a certain need before it is upon you, therefore, choose your plot now when you can give the selection due consideration rather than wait until you have to do it under the spur of necessity.

PLOTS

The Cemetery has plots of any required size from three graves up, the price varying according to size and location. If not convenient to pay the whole purchase price at once, arrangements can be made for partial payments, the lot being available for use after the first payment.

SINGLE GRAVES

Single graves may be purchased in sections of the Cemetery set aside for the purpose of single interments.

PLOTS FOR FAMILY GROUPS

In cases where families and their connections wish to be buried in close proximity, it is suggested that sufficient space be secured at once in sections where adjoining plots are available. If enough space is not taken in the beginning, the intention of the owner may be defeated by the purchase of intermediate tracts by other parties. By providing adequately and at once for future possibilities, you will avoid disappointment and regret and have the satisfaction of knowing that those near to you in life will not be separated from you in their last resting place. In buying a burial plot, remember that you are buying for future generations as well as for the present.



V. Koye
1916

The Circuit

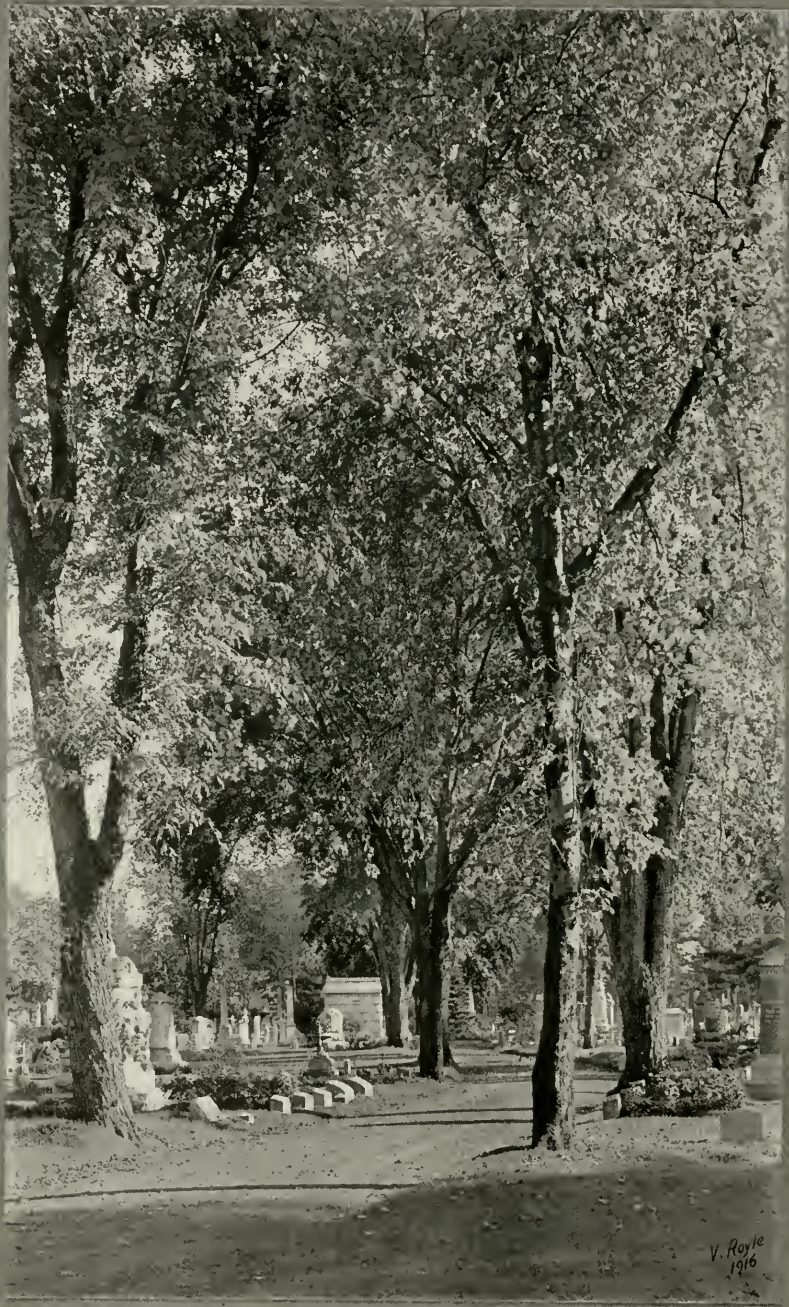
CEDAR LAWN CEMETERY

TENURE AND OCCUPANCY

Deeds granted by the Company convey the right of sepulture in the plot absolutely to the purchaser and his heirs forever subject to the rules adopted by the Company and with no other restriction except that bodies may not be admitted for interment for a financial consideration. Each deed includes a diagram of the lot or lots, such diagram forming part of the deed itself. An exact copy of this diagram is kept on file at the office of the Cemetery, on which are noted locations of graves, monuments or vaults, the whole forming a clear and precise record of interments so that future identification will be easy and exact. Interments may be made immediately after the first payment on the purchase price of the plot upon order signed by the lot owner or owners, duly presented at the office of the Cemetery, where all such orders must be filed before permits for interment are issued. Order blanks will be furnished at the office of the Cemetery, on application.

RECEIVING VAULT

To provide a temporary resting place for the dead while arrangements are made for final interment, the Company maintains a Receiving Vault, where bodies, if contained in metal-lined caskets, may remain indefinitely. If the case is not metal-lined, bodies may remain no longer than five days between May 1st and September 1st. The Receiving Vault is of modern construction, tasteful in design and well ventilated. The antechamber to the vault proper is a chapel 19 ft. by 38 ft., suitably furnished, where services can be held, in appropriate surroundings, prior to consigning the body to the vault.



V. Royle
1916

Union Ave.

CEDAR LAWN CEMETERY

CARE AND MAINTENANCE

PERPETUAL CARE

THE future of Cedar Lawn is assured by a Trust Fund, the income from which is devoted to the Perpetual Care of the Cemetery. Under the regulations of the Cemetery, one-third of the purchase price of every plot is set aside to form this fund, which now amounts to over \$180,000, and is constantly growing. It is held by The Paterson Savings Institution as Trustee and cannot be diverted to any other purpose than that for which it was established.

All deeds include the following clause covering Perpetual Care.

“The consideration named herein includes the perpetual care of the premises hereby conveyed, but does not include the care or renewal of any monument, stone, bronze or other work now upon said premises or which may hereafter be erected thereon.”

The importance of this fund cannot be over-estimated. It is an unfortunate fact, within the experience of all, that graveyards left without the protection of a permanent fund for their maintenance inevitably fall into decay. In process of time, they become filled, they cease to be actively used and are soon forgotten and neglected by the posterity of those interred in them. This state of affairs is a reproach to the communities where it exists, but it exists nevertheless and will always do so unless provision for the future is made in time. The policy of Cedar Lawn is to provide this protection by the only logical and certain method and the only one that can assure permanence of existing conditions. So far as it is possible to predict, Cedar Lawn is secure forever. The income of the Trust Fund is applied broadly to the care and upkeep of the Cemetery, both individual plots and general features, such as roads, walls,



V. Rayle
1916

Union Ave

CEDAR LAWN CEMETERY



Lake View and Crooks Aves. Entrance

trees, shrubbery, etc. It includes the cutting and fertilizing of grass, keeping graves in order, the care of the roads, etc., things which will always be necessary, also the general care of mausoleums, which are swept and dusted weekly without extra charge.

SPECIAL CARE

In cases where special service is required, such as the planting and care of shrubbery, ivy, flowers, etc., as well as the decoration of graves with cut flowers on anniversaries or stated times, such service may be secured by the payment of a fixed sum annually. Trained gardeners are employed for this work who give the plot individual attention. This service supplements and does not conflict with that covered by the Perpetual Care Fund, and is designed to meet the needs of those who wish for attendance of special features in their plots, not included in the general scheme of the Cemetery.



V. Roy 19
1915

MOON AVE.

CEDAR LAWN CEMETERY

SPECIAL ENDOWMENTS

WHERE exceptional care is required for all time, plots may be endowed, the services so provided for including special care of shrubbery, ivy or other plants with renewal when necessary, the cleaning of monuments and such other individual care of the plot as is not provided for by the Perpetual Care Fund.

Wise foresight suggests that the time to provide for such care of your plot is now, and on a sufficiently liberal scale to insure the carrying out of your wishes to the fullest extent. Endowments may be made by depositing an agreed sum with the Company during your lifetime, or by bequest.

No personal care that you may give your plot during your lifetime will survive your death and the best way to insure its continuance is by establishing a fund that will guarantee the maintenance of the special features of your plot forever. It is not to be expected that those who come after you will have the same vital interest in the matter as yourself, therefore timely action is necessary to guarantee the future. Cedar Lawn Cemetery regards endowments as sacred trusts and accepts them as such.

CO-OPERATION WITH PLOT OWNERS

THE management solicits the co-operation of plot owners in beautifying and maintaining the Cemetery, and gratefully acknowledges the assistance it has received in the past. Many handsome mausoleums and monuments have been erected which greatly enhance the beauty of the Cemetery, and plot owners generally have always shown themselves heartily in accord with our efforts to make Cedar Lawn the most beautiful cemetery in the state.



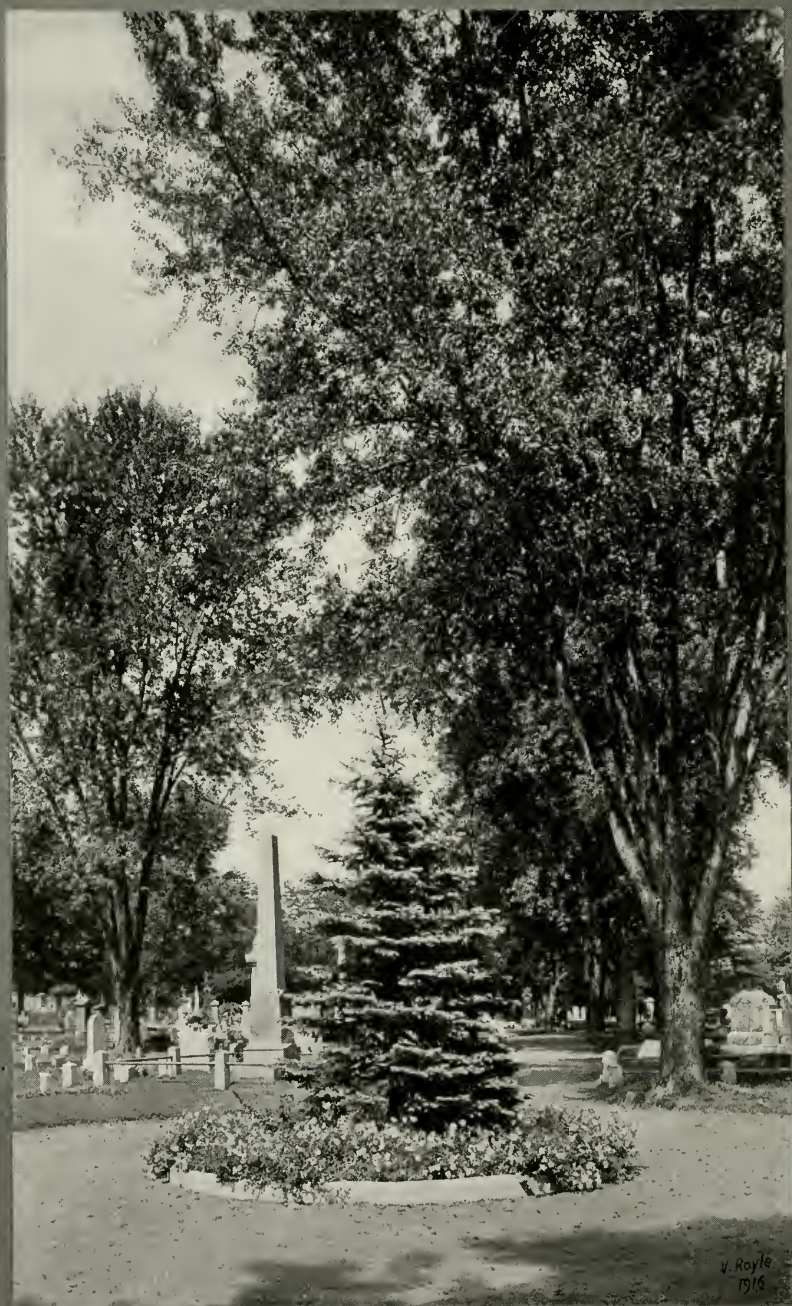
Union Ave.

CEDAR LAWN CEMETERY

INFORMATION

THE Company is ready at all times to give intending purchasers full information regarding available plots and to place at their command every facility for inspecting the property. Maps will be furnished and prospective buyers are urged to visit the Cemetery and inspect the plots offered.



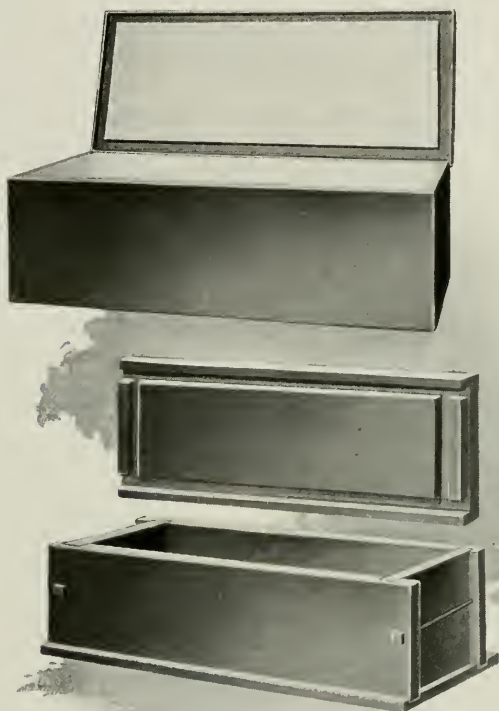


V. Royle
1916

Union Ave.

CEDAR LAWN CEMETERY

SPECIAL FACILITIES



SLATE OR CONCRETE GRAVE VAULTS

THE Company is prepared to furnish SLATE or CONCRETE GRAVE VAULTS as here illustrated. These are practically indestructible. They are damp-proof and protect the casket from decay and prevent the grave from falling in. The concrete vaults are of re-inforced construction, the concrete waterproofed by a special process.

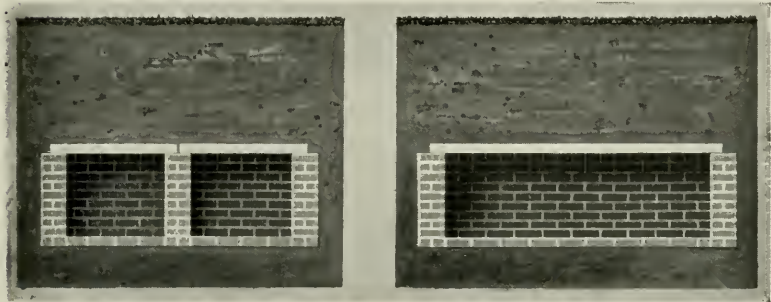
Prices on application



V. Royle
1916

Union Ave.

CEDAR LAWN CEMETERY



BRICKED GRAVES

Bricked graves, of the styles shown in the accompanying illustrations, can be prepared at short notice; two or three days being usually sufficient for their construction.

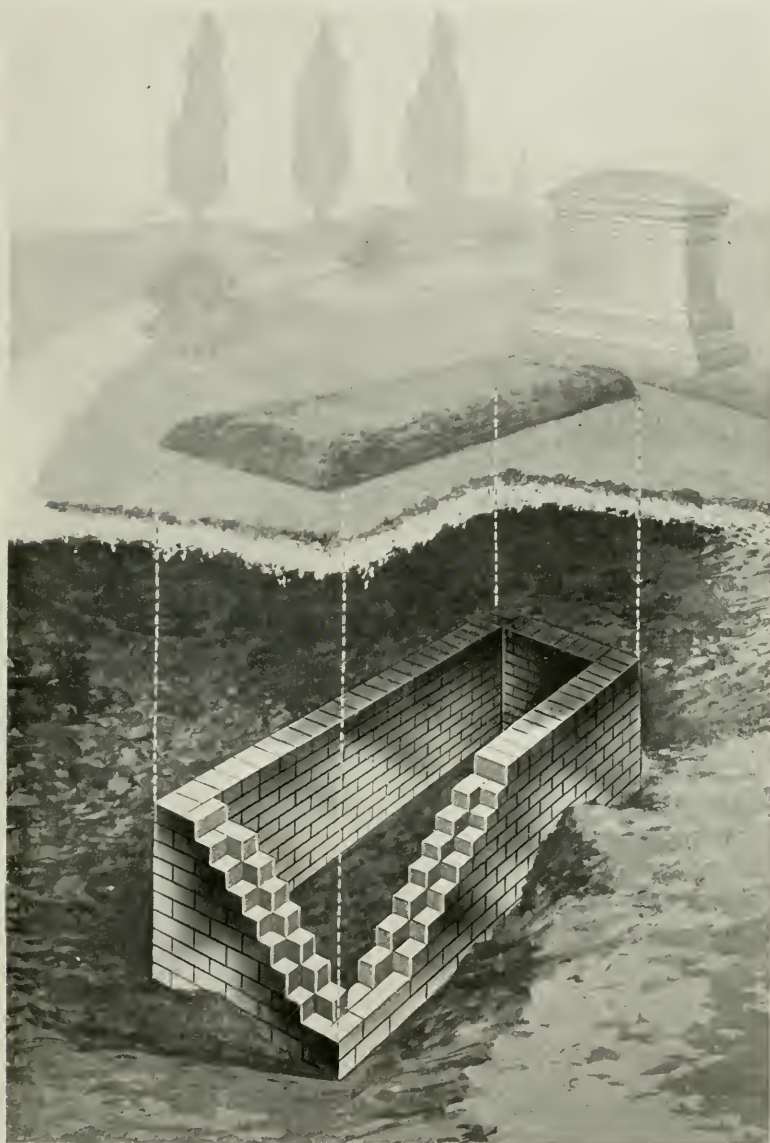
Prices on application





Union, Wells & Glen Aves.

CEDAR LAWN CEMETERY



GRAVE VAULTS

Grave Vaults, with two or three crypts, can be built, either with walls reaching surface to form foundation for the tomb, or ending below the surface, as preferred.

Prices on application



V. Royle
1916

Wells Ave

CEDAR LAWN CEMETERY



CONCRETE VAULTS

Vaults can be built with concrete outer walls and brick lining, with one, two or three crypts, as illustrated, ready for the tomb, which is not furnished by us.

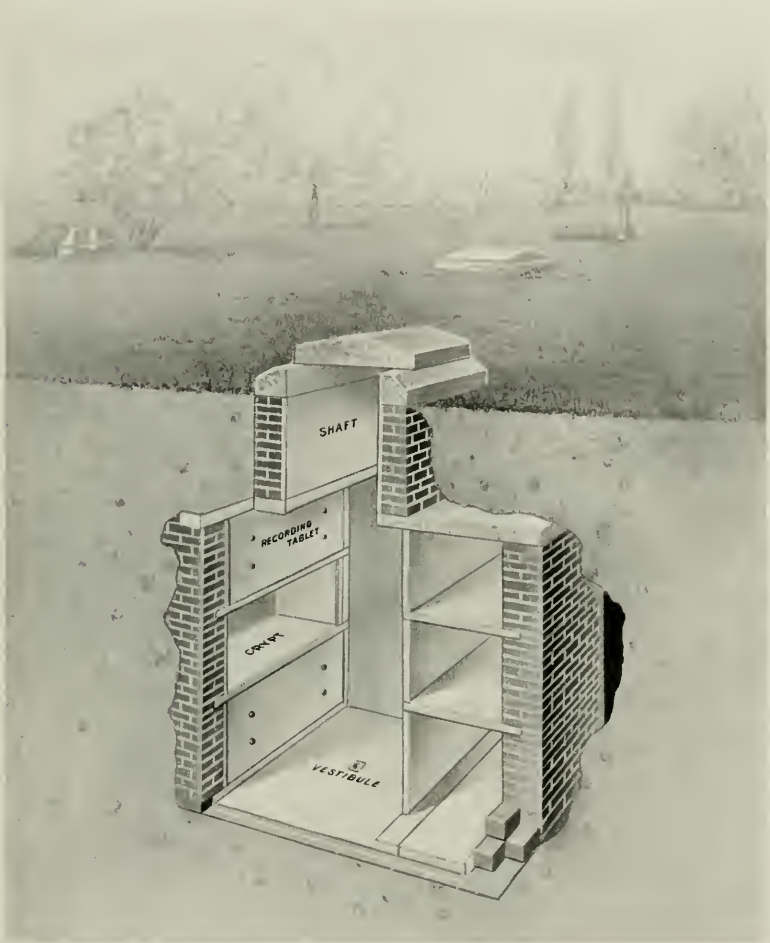
Prices on application



V. Royle
1916

Wells Ave.

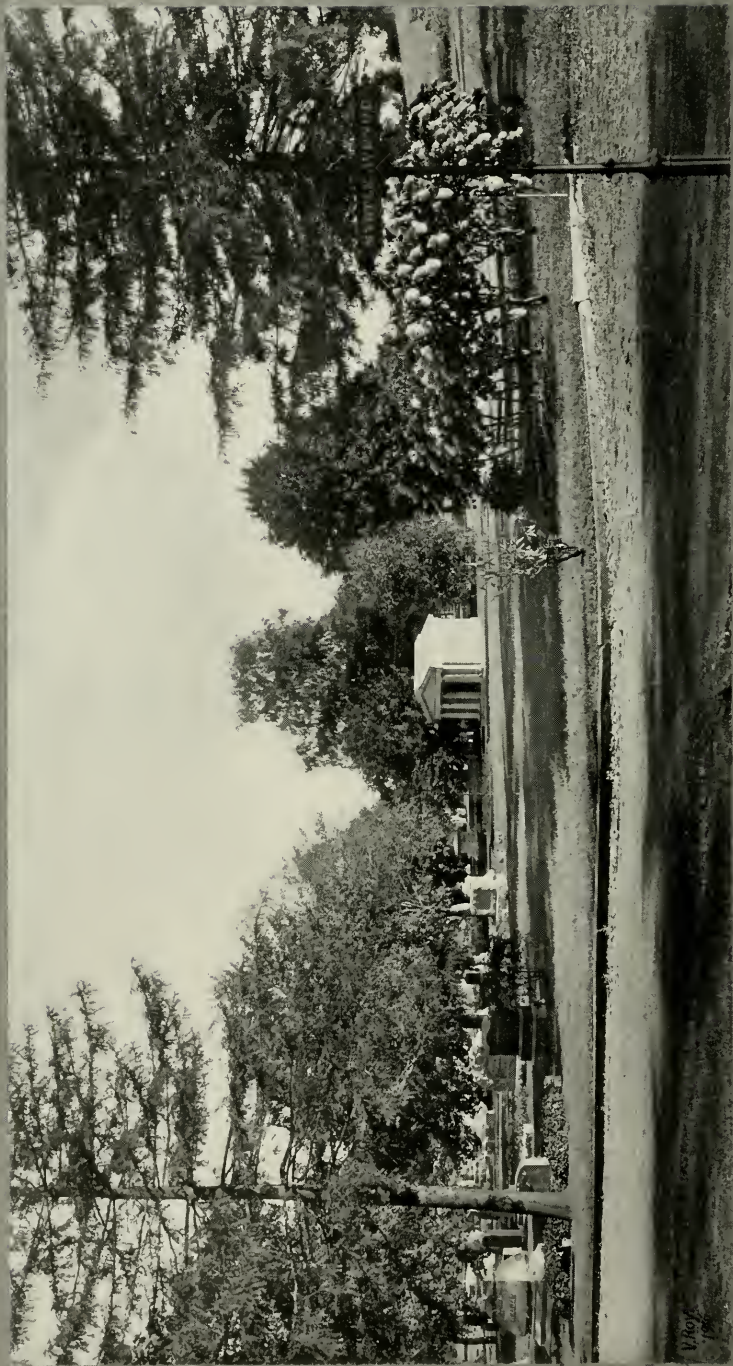
CEDAR LAWN CEMETERY



UNDERGROUND VAULTS

Underground Vaults, of suitable size in proportion to the plot, can be made. They are built of brick or with concrete outer walls lined with hard red or enameled brick. The shaft may be continued to the surface to form the foundation for the tomb, or closed below the ground level to permit of grass being grown on the surface.

Prices according to size and arrangement of the vault



On Myrtle Ave.

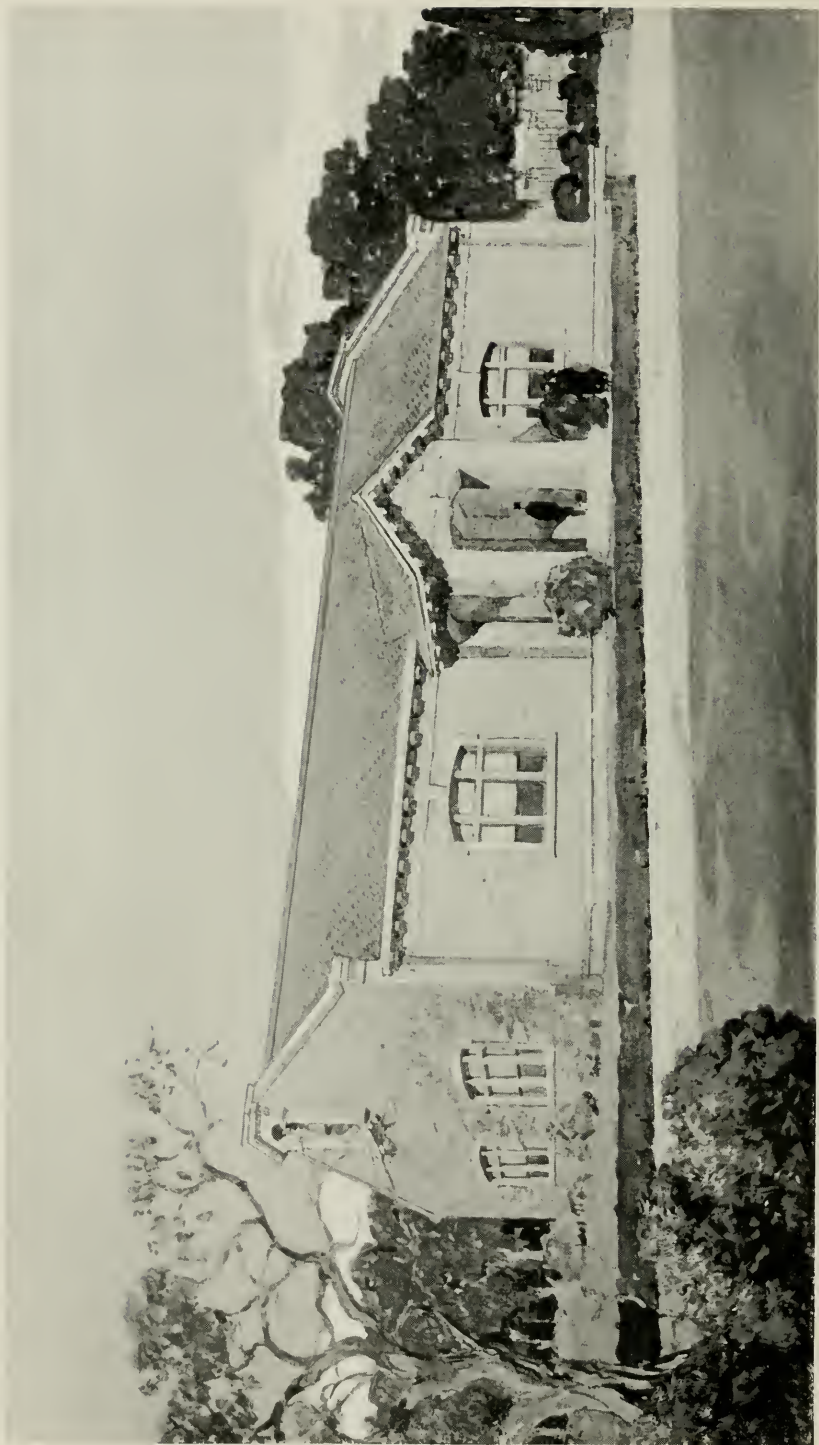
V. Roy
1907

CEDAR LAWN CEMETERY

GENERAL

THE various vaults shown on the preceding pages are of the types most commonly used. Variations in detail can be made to suit the needs of individuals, and aside from the styles shown, we can construct special vaults or graves of any form which do not conflict with the Rules of the Cemetery. Those intending to have vaults constructed, are advised to consult the Superintendent, at the Cemetery, who is at all times prepared to give full information.

Aside from these special facilities, the Cemetery keeps on the grounds, ready for use, all the most accepted devices for facilitating the work of interment, such as raising and lowering devices, carpets, canopies, etc. Where these are required, the necessary arrangements can be made with the Superintendent at the Cemetery.



Administration Building (From the architect's drawing)

CEDAR LAWN CEMETERY



Crooks Ave. Shelter

The Company is now, September, 1917, breaking ground for two new buildings that will add to the beauty and convenience of the Cemetery.

THE ADMINISTRATION BUILDING. This building will be erected at the new entrance to the Cemetery and when completed, will replace the old building for general administrative purposes. It will be built of pink Pompton granite, after a tasteful and appropriate design, and will contain convenient offices for the transaction of business, a large reception room, toilets, private office, a retiring, or robing, room and a strong fire-proof vault for the protection of records.

CROOKS AVE. SHELTER. At the Crooks and Lake View Aves. entrance a Shelter will be erected for the use of visitors to the Cemetery. It will be of hollow tile construction, stuccoed, and will include a well-furnished waiting room, toilets, etc. In summer, the windows will be removed leaving a cool, open pavilion from which an extended view of the Cemetery and surrounding country may be obtained.

Both buildings will be available to the public at any time the Cemetery is open to the public.



J. Royle
1916

Myrtle Ave.

CEDAR LAWN CEMETERY

RULES

Governing Cedar Lawn Cemetery.

1. All lots in Cedar Lawn Cemetery shall be held subject to the conditions, limitations, reservations, rules and regulations heretofore established or which may be hereafter established by said Company in respect thereto whether expressed herein or not.

2. The lots in Cedar Lawn Cemetery shall be held pursuant to the act incorporating said Company, and the supplements thereto, and shall not be used for any other purpose than as a place of burial for the dead, and no person shall be interred therein who shall have died in prison or who shall have been executed for any crime, without the express permission of the Company.

3. The owner or owners of any lot or plot shall not be permitted to have interments made in them for a remuneration, nor shall any transfer or assignment of any lot or of any interest therein be valid without the consent of the Company in writing first had, and endorsed upon such transfer or assignment, and all transfers must be entered in the Register of the Company kept for that purpose.

4. Disinterments will not be allowed unless permission be first obtained for that purpose at the office of the Company, and if given, such permission shall be in writing, and signed by the President or the Secretary of the Company.

5. The Company shall have the right and may from time to time lay out or alter such avenues or walks and make such rules or regulations for the government of the grounds as it may deem requisite and proper to secure and promote the general objects of the Cemetery.

6. The owner or owners of a lot or lots, and their families, will be allowed access to the grounds at all times, observing the rules which have been or may be adopted for the regulation of visitors.



W. Boyle
1918

Union & Hobart Ave.

CEDAR LAWN CEMETERY

7. The owner or owners of any lot or lots shall have the right to cultivate plants or shrubs in the same. Trees growing within any lot or border thereof shall not be cut down or destroyed; nor shall any tree be planted without the consent of the Company.

8. If any trees or shrubs situated in any lot shall by means of their roots or branches or otherwise, become detrimental to the adjacent lots or avenues, or unsightly, or which may obstruct passage in any way, the Company shall have the right or privilege to enter such lot or lots and remove the said trees or shrubs, or such part thereof, as it may deem detrimental, unsightly or obstructive.

9. All rubbish made by lot owners, or persons employed by them, must be removed immediately to such place or places of deposit as are or shall be provided for the purpose.

10. Lot owners will not be allowed to dig up or improve their lots on Sunday.

11. All persons are prohibited from picking flowers or breaking any tree, shrub or plant. Lot owners are requested to notify the Superintendent of their intention to pick flowers or remove any plant from their own or any other lot in the Cemetery.

12. A lot or plot shall not be defined by any so-called fence, coping, hedge or embankment, nor shall it be raised or lowered for any reason from the grade established by the Company.

13. On receiving permission from the owner or owners of lots the Superintendent is authorized to take down and remove fences and put the lots in perfect condition free of expense to the owner or owners.

14. If any monument, effigy or enclosure or any structure whatever or any inscription be placed in or upon any lot which shall be determined by the Company to be offensive or injurious to the appearance of the surrounding lots or ground, it shall have the



V. Royle
1916

On Lemon Ave.

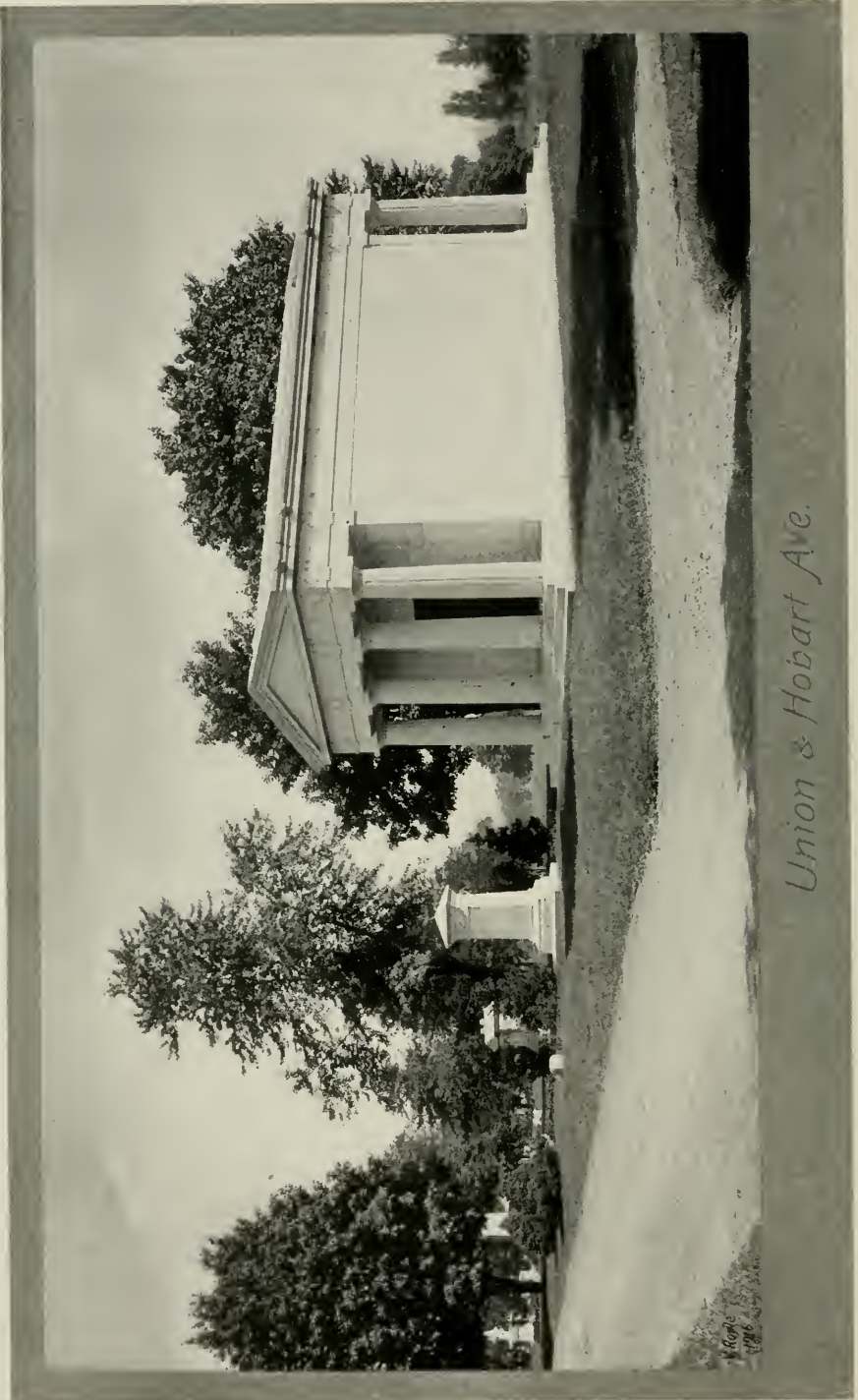
CEDAR LAWN CEMETERY

right and it shall be its privilege to enter such lot and remove the offensive or improper object. Benches, settees and urns made of wood, boxes, shells, toys and similar articles scattered upon graves or lots are inconsistent with the proper keeping of the grounds and will not be permitted.

15. The owner or owners of a lot or lots, or the person or persons actually in charge thereof in making improvements on lots under perpetual care will be charged with the expense of putting the same in order after such improvements are completed, provided it is found necessary to incur any expense.

16. No person other than the owner or owners, or the proper officers and employees of the Company, shall be allowed to perform any work on any lot or parcel of ground in said Cemetery without a permit from the Secretary of the Company first obtained; and all work done in said Cemetery shall be performed between the hours of seven o'clock in the morning and six o'clock in the evening, provided that no work mentioned in the last preceding rule shall be done by any person other than the proper officers or employes of the Company.





Union & Hobart Ave.

*M. R. ...
1906*

CEDAR LAWN CEMETERY



MONUMENTAL WORK

17. The owner or owners of any lot or lots shall have the right to erect any proper stones, monuments or sepulchral structures thereon; but upright slabs or stones less than four inches thick will not be allowed, and every slab or stone not four inches thick must be placed on the ground in a horizontal position; and every head or foot stone exceeding two feet in height above the ground must rest on a cut stone base, with stone foundation. Foundations for monuments and headstones must be of solid masonry and not less than six feet deep and the same size as the first base of the superstructure, and orders for the same must be in writing, and signed by the lot owner or owners, and given to the Superintendent at least three weeks before the erection of the monument.

18. Steps to lots will not be allowed, unless special permission be obtained from the officers of the Company, and if permission be so given, the steps must be in all cases of solid cut stone, with side pieces, and rest on a good stone foundation.



V. Royle
1916

On Union Ave

CEDAR LAWN CEMETERY

19. Bases for stones for single graves should not be over two feet six inches long, by one foot three inches wide, and the entire stone not over three feet six inches high.

20. Monuments, gravestones or memorials of any kind; urns, settees or plants shall not be removed, nor shall any inscription be made or any cleaning done without a written order signed by the owner of the lot or his or her representative, giving a description of the changes to be made.

21. Vaults shall not be erected wholly or in part above ground without permission of the Company, and every vault must be furnished with catacombs, allowing interments to be separately made and closely sealed. Such portions as are above ground to be faced with cut quarry stone, marble or granite.

22. All linings for mausoleums shall be at least one inch in thickness.

23. All markers must have an unfinished extension below finished line of six inches, and be set in Portland cement on a foundation made and charged for at regular rates by the Company for that purpose; top of said foundation to be seven inches below grade to allow of proper bedding.

24. The first base of all superstructures must be of uniform thickness and the bottom cut to a level surface and properly bedded in place with Portland cement.

25. After superstructures shall have been finished the Company will cement and point up the lower edges of the first base and re-sod around the same and put the lot in proper condition.



J. Boyle
1916

Ch Union Ave

CEDAR LAWN CEMETERY

26. All boundary posts must be set even with the ground and will be furnished by the Company; the cost thereof to be paid by the lot owner. In no case will corner posts be allowed at boundaries of lots already designated by posts of the adjoining lots.

27. In order to secure uniformly the best work, and to protect as far as may be the rights and property of owners of lots in the Cemetery, all excavations, grading, sodding and the building of foundations shall be done by the Company at a fair, reasonable and uniform charge therefor, to be paid by the owner or owners of said lots.

28. Monuments or grave marks made of any metallic substance, except standard bronze, will not be allowed, and in all cases when representing grave, mark must not be less than four inches in thickness.

29. Materials for building or setting of monuments, tablets or any other work of any description will not be received or allowed on Saturday, unless by permission of the Superintendent.

30. Persons engaged in erecting monuments or other structures are prohibited from attaching ropes to trees or shrubs unless by permission of the Superintendent; also from scattering their material over adjoining lots, or leaving the same on the ground any longer than is absolutely necessary, but must in all cases act in accordance with the rules, and under the direction of the Superintendent. Any damage to adjoining lot or plot on which monuments are being erected shall be put in order by the Cemetery Company and the Contractor charged therefor.

31. All heavy carting for monumental work to be constructed on the hill or westerly side of the Cemetery, shall enter the Cemetery through the gate on Lake View Avenue.



Section 7 - Union Ave

W. H. Poffe
1916

CEDAR LAWN CEMETERY

HEIRSHIP OF LOTS

IN order to prevent any misunderstanding as to the proper method of securing the use of lots after the death of owners, the following information is submitted:

Orders for the use of lots can be received only from the owners, and no persons can be recognized as lot owners unless their names appear as such upon the records of the Cemetery Company.

Upon the death of the owner, leaving no will, or leaving a will which does not dispose of the lot, an affidavit of one of the heirs, embracing the facts of the case relating to heirship, must be filed in the office in The Paterson Savings Institution Building.

In all cases where the owner has left a will which disposes of the lot, the will or a copy of the same, certified by the Surrogate, must be produced, but will be returned after examination.

The information usually required to prepare the affidavit where the owner has died intestate, or where the lot is not affected by the will, will be supplied by furnishing:

First.—The name of the deceased owner, and the date of death.

Second.—The names of the children; if any have deceased, the names of their children.

Third.—If there be no children living, nor descendants of deceased children, state the names of the brothers and sisters, and whether living or not, and the names of the descendants of any deceased brother or sister.

Fourth.—If there be no children living, nor descendants of deceased children, nor brother or sister living, give the names of the father and mother of the deceased owner.

The charge for registering the change of ownership on the records of the Cemetery is one dollar. Affidavits will be prepared, if desired, without additional charge.

— — — —

The Cemetery will be open to visitors from 7 A. M. until sunset, daily.



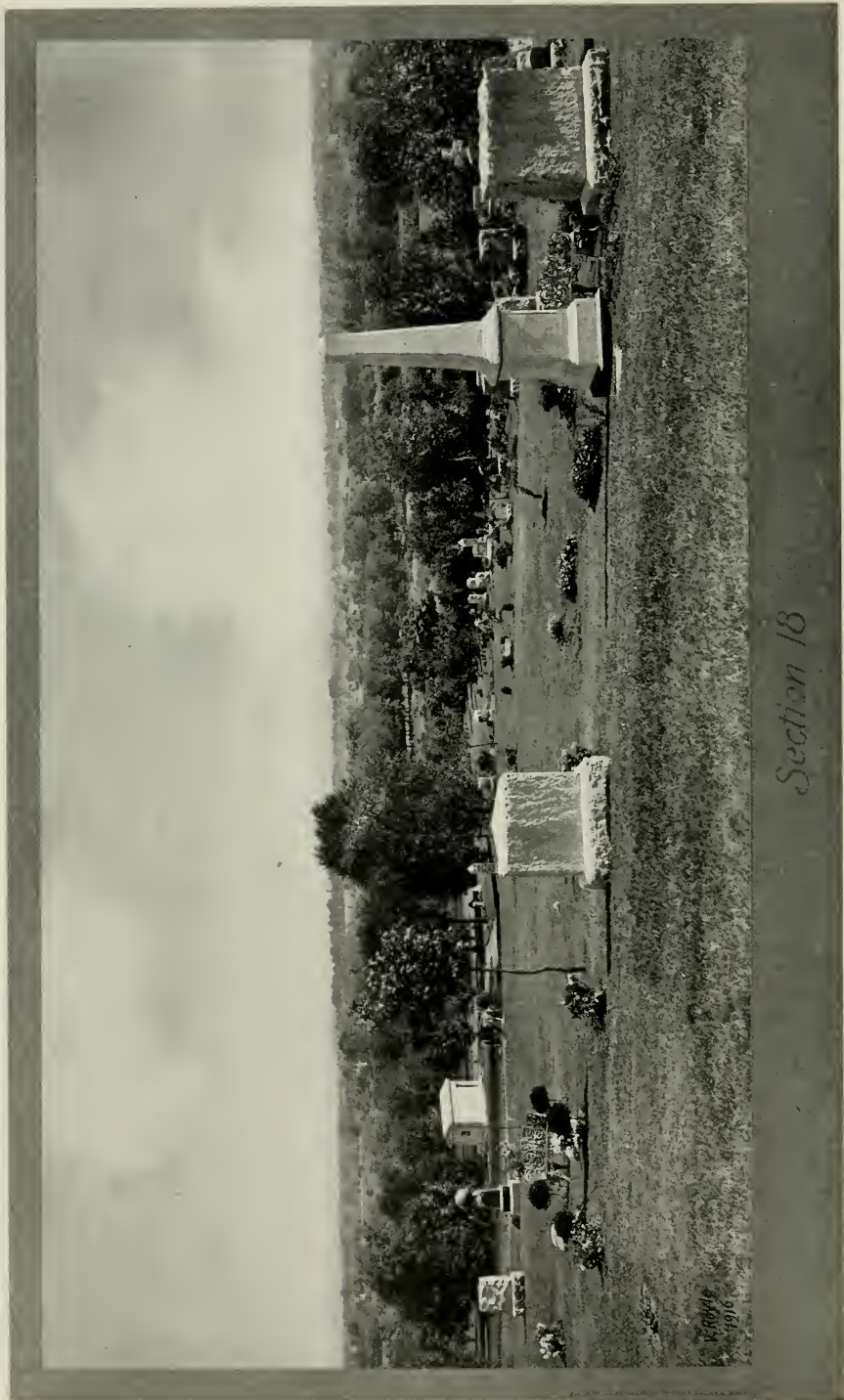
On Union Ave.

*V. Royle
1916*

CEDAR LAWN CEMETERY

LIST OF LOT OWNERS

Abbott, Anna
 Abbott, John T.
 Abbott, Josephine
 Abbott, William
 Abele, Wm. F. & wife
 Abers, Eliza A.
 Abrams, Mary
 Ackart, Caroline
 Ackerman, A. N.
 Ackerman, Abram N.
 Ackerman, David D.
 Ackerman, Gertrude
 Ackerman, Elmore E.
 Ackerman, Emma L.
 Ackerman, Jacob V.
 Ackerman, James S.
 Ackerman, Jennie
 Ackerman, John E. & Geo. H.
 Ackerman, John W.
 Ackerman, Harold S.
 Ackerman, Henry P.
 Ackerman, Maggie
 Ackerman, Mary
 Ackerman, Simeon
 Ackerman, Susan
 Ackerman, Wm. D.
 Ackerman, Wm. W. & Chas.
 Ackerman, Wilson S.
 Ackerson, Jane E.
 Acorn, Jane (Miss)
 Adams, Annie M.
 Adams, Henry
 Adams, James M.
 Adams, Estate of Margaret
 Adams, Margaret
 Adams, Oliver
 Adams, Peter
 Adams, Richard
 Adams, Rose Cooke
 Adam, Thomas, Jr.
 Adams, Sarah F.
 Adams, Susan
 Adams, William
 Addy, George
 Adickes, Johan N.
 Agel, Oscar
 Ahrens, Mary
 Aikman, James
 Ainsworth, John.
 Aitchison, William
 Aitken, Samuel
 Aitken, Wm. R.
 Akhurst, Charles
 Albert, Lucas & John J.;
 Louisa M., *et al.*
 Albinston, Thos., Sr.
 Albrecht, Emil
 Albutt, Susan M.
 Alcock, Fred'k W.
 Alden, Louis Morse
 Aldous, Levi & Mary E.
 Aldred, Mary
 Aldrich, Mary E.
 Alesbrook, Ann
 Alexander, Gavin & wife
 Alexander, John
 Alexander, Robert
 Alexander, William
 Alexander, Willis E.
 Allard, Adolphe
 Allee, John B.
 Allee, Wm. P.
 Allen, Alpheus S.
 Allen, Amelia J.
 Allen, Ellen
 Allen, Frank W.
 Allen, Jane K.; Maggie B.;
 Mary
 Allen, John Franklin
 Allen, John E.
 Allen, John
 Allen, Joseph
 Allen, Mabel
 Allen, Martha A.
 Allen, Mary Eliz.
 Allen, Peter
 Allen, Robert
 Allen, Samuel C. M.
 Allen, Samuel E.
 Allen, Stephen
 Allen, William F.
 Allison, James
 Almond, David
 Almond, Emma
 Almond, Jacob
 Almond, John
 Alyea, Annie M.
 Alyea, Isaac
 Alyea, Nicholas
 Alyea, Richard
 American Silk Ind. Ass'n
 Amery, John
 Amhoff, Emma S.
 Amiraux, Mary E.
 Amos, Mary L.
 Anderson, Archibald
 Anderson, Frederick W.
 Anderson, John
 Anderson, J. Spence
 Andreas, Elizabeth N.
 Andresen, Ferdinand
 Andrews, Wm. C.
 Andrus, Annie Denton
 Andruss, Estate of Wm. L.
 Angleman, Walter C. & wife
 Angus, James
 Annandale, John
 Anthony, Dominick
 Aquadro, Lucia, *et al.*
 Archer, George
 Archer, John
 Archer, Vilotta
 Arden, Eliza
 Arentsen, Garret
 Arentzen, Caroline
 Arlington, Susie R. W.
 Armand, Ella
 Armitage, James
 Armitage, Sarah J.
 Armitage, William
 Armitt, James
 Armitt, Mary Jane
 Armour, Henry
 Armstrong, Henry E.
 Armstrong, Robt. R.
 Armstrong, Sam'l S.
 Arnault, Claire
 Arning, Julia Anna
 Arnold, David
 Arnold, George
 Arnold, Jacob M.
 Arnold, Michael
 Arnold, Thomas J.
 Arnot, Hamilton
 Arnot, John
 Arnot, Joseph
 Arteaga, Eunie C.
 Arthurs, Samuel
 Ash, Geo. W. & wife
 Ash, Harry M.
 Ash, James
 Ash, John
 Ash, Mathew
 Ashley, Dwight
 Ashton, Francis P.
 Aspell, Sarah E.
 Aspinwall, Martha
 Atchison, Margaret
 Atchison, Walter G.
 Atchison, Wm. & Eliz.
 Atherton, Mary J., *et al.*
 Atherton, Sophia W.
 Atkins, Chas. & Martha
 Atkins, John N.
 Atkinson, Ann M.
 Atkinson, Henry M.
 Atkinson, Henry
 Atkinson, Isabella A.
 Atkinson, James
 Atkinson, John
 Atkinson, Richard
 Atkinson, Robert
 Atterbury, E. Boudinot
 Atterbury, John T.
 Atterbury, Robert Rennie
 Atwood, Kimball C.
 Austin, Augustus A.
 Austin, Lewis S.
 Avison, John
 Axford, Calvin B.



Section 18

15-10-1916
1916

CEDAR LAWN CEMETERY

- Aycrigg, Catherine E.
 Aycrigg, Heirs of John B. & Jane
 Aycrigg, Julia E.
 Ayres, David H.
 Ayers, Martha

 Babbitt, Elizabeth
 Babcock, Albert K.
 Babcock, Elizabeth A. & Margaret E.
 Bacon, Sarah Ann & Alfred
 Baer, Carrie S.
 Baer, Frederick
 Baer, Est. of Jacob F.
 Baggaley, Annie A.
 Bailey, Benjamin
 Bailey, B. V. B.
 Bailey, Fatnall
 Bailey, Margaret
 Bailey, Jacob & Mary
 Bailey, Peter
 Bailey, Rebecca.
 Bailey, Wm. G.
 Baine, William
 Baisch, Frederica
 Baisley, George
 Bakelaar, Henry
 Bakelaar, Jacob
 Baker, Elizabeth
 Baker, Henry A.
 Baker, Leonard
 Baker, Meyer
 Baker, Peter
 Bakhaus, August
 Baldwin, Emelie S.
 Baldwin, James M.
 Baldwin, Joseph R.
 Baldwin, Richard
 Baldwin, Thomas J.
 Balfour, F. Augustus
 Ball, Joseph B.
 Ball, Jos. & Wm.
 Ball, Levester G.
 Ball, Martin
 Ballentine, Elizabeth
 Ballon, Augustus
 Baltzele, Catherine D.
 Bamber, Isaac
 Bamber, Isaiah Lees
 Bamber, Wm. L.
 Bamber, Wm. L. & Mary A.
 Bame, Emma
 Bamford, Ann
 Banigan, Peter M.
 Banker, Phoebe
 Banks, Grace
 Bannigan, Augustus
 Bannigan, Catherine M.
 Banta, Catherine
 Banta, John H.
 Banta, John C.
 Banta, Wesley H.

 Barbarow, Isabella
 Barbarow, William H.
 Barbarow, Wm. H.
 Barber, Jane
 Barber, Mary A.
 Barber, Thomas
 Barbour, John Edwads
 Barbour, Sarah R.
 Barbour, Thomas
 Barclay, Annie W. C., Excr.
 Barkalow, John S.
 Barkalow, Tunis
 Barker, Henry C.
 Barker, John
 Barker, William
 Barkley, Anna M.
 Barlow, John
 Barned, Joseph & Reuben
 Barnes, Elizabeth
 Barnes, David A.
 Barnes, George
 Barnes, George A.
 Barnes, Henry H.
 Barnes, James, Jr.
 Barnes, Richard
 Barnes, Robert
 Barnes, Susan
 Barney, Daniel J.
 Barnickel, Henry
 Barnickel, Henry A.
 Barnickel, William
 Barr, Alexander
 Barr, James
 Barrett, Elizabeth A.
 Barrett, Sarah
 Barrowclough, Charles
 Barry, Henry A.
 Barry, Lizzie B.
 Barry, Sarah J.
 Barry, Est. of Henry A.
 Bartlett, Lewis W.
 Bartlett, Pamela
 Barton, Andrew D.
 Barton, Charles
 Barton, David
 Barton, Edwin
 Barton, Mary E.
 Barton, Selina
 Barton, Thomas
 Bateman, Jemima
 Bathmann, Frederick L.
 Bauer, Josephine
 Baumberger, Mary
 Baumgarten, Minnie
 Baum, Louis
 Baun, Andrew
 Baxter, Amanda
 Baxter, Henry
 Baxter, Hiniman, Est. of
 Baxter, John
 Beach, Henry M.
 Beam, Carrie S.
 Beam, David B.

 Beam, Hester
 Beam, John R.
 Beardsley, Catherine
 Beardsley, Robert
 Beasley, George
 Beattie, Edmund
 Beattie, Lucy
 Beatty, Hamilton K.
 Beatty, William
 Beaufooy, John
 Beaumont, Benjamin
 Beaumont, John
 Beaumont, John & Wm. C.
 Beaumont, Robert
 Bechtel, A.
 Beck, Peter
 Becker, Johannah C. M.
 Beckett, Anna
 Beckett, James
 Beckingham, Eva
 Beckler, Leo
 Beckman, Henry
 Beckwith, Franklin C.
 Bedell, Harry E.
 Becroft, Abalena Mason
 Begg, Emma Deming
 Begg, Jeannie
 Beggs, Harry
 Beggs, James
 Beggs, Joseph, *et al.*
 Beggs, Joseph
 Beggs, Kate
 Behrmann, Julia
 Bell, Caroline
 Bell, Chas. E.
 Bell, Edward T.
 Bell, Eliza
 Bell, James
 Bellows, Abram
 Bender, Fred'k
 Bender, John
 Benjamin, Robert
 Benjamin, Zachery F.
 Benjamin, Zachary T. & Eva M.
 Bennett, Elizth. G. W.
 Bennett, Ellen
 Bennett, Louisa E.
 Bensen, Cornelius R.
 Bensen, David & Albert, Excrs. of R.
 Bensen, Garret B.
 Bensen, Richard
 Benson, Susan A.
 Bentéjac, Adele
 Bentley, Harriet
 Bentley, Sophia Maria
 Bentley, John
 Bentley, Thomas W.
 Benzler, John
 Berdan, Garrabrant V. H.
 Berdan, Henry L.
 Berdan, Jacob R.



On The Circuit & Violet Bank

CEDAR LAWN CEMETERY

- Berdan, Jane A.
 Berdan, John H.
 Berdan, John O.
 Berdan, John R.
 Berdan, William
 Berens, Catherine
 Bergner, Charles
 Bergstrom, Christina E.
 Bergstrom, Walter A.
 Berkan, Margaret C.
 Berndt, Wm. F.
 Berne, Augustine
 Berry, Charles Martin
 Berry, David J.
 Berry, Elizabeth
 Berry, Elmer E.
 Berry, Hirst & Sophia G.,
 his wife
 Berry, John B.
 Berry, Perley Milton
 Berry, Reuben
 Berry, Richard & Clara
 Berry, William
 Bertkau, William F.
 Bertkau, Wm. F. Excr.
 Bertschy, Albert
 Bestwick, Hester
 Bestwick, Wright
 Bethel, Benjamin & Annie E.
 Betz, Jacob & wife
 Beucker, Albert G.
 Beveridge, Thomas
 Beveridge, Thomas, Jr.
 Bewkes, Lambert
 Beyea, Adeline & Fanny
 Beyerstorfer, George & wife
 Bianchi, Emiglia
 Bibby, James S.
 Bibby, Mary
 Biddell, Clara L.
 Bidmead, Eliza
 Bigelow, Reuben W. &
 Frank W.
 Biggs, Mary
 Billsborrow, Francis
 Billsborrow, Mary A.
 Bilz, Hugo
 Bimson, John
 Bimson, Richard
 Bingham, Clementina
 Binns, Wm. Henry
 Bippus, Germain
 Birbeck, Susannah
 Birch, Mary E.
 Birch, Samuel M.
 Bird, Crines
 Bird, J. T. F.
 Birckbeck, Joseph
 Bishop, John
 Bishop, Mary T.
 Bissell, Annie P.
 Black, Edward D.
 Blackburn, Robert
 Blackshaw, Frederick
 Blackwood, Robert A.
 Blair, Jennie
 Blair, Lyman
 Blake, Chas.
 Blakiston, Henry Y., Chas.
 & Clara
 Blanch, Martha
 Blanchard, Elizabeth
 Blanchard, Hiram
 Blauvelt, Caroline Millicent
 Blauvelt, Eleanor Elizabeth.
 Excr.
 Blauvelt, Elizabeth
 Blauvelt, Franklin A.
 Blauvelt, Frank Remington
 Blauvelt, Garret I.
 Blauvelt, Henry S.
 Blauvelt, Isaac D.
 Blauvelt, Jacob H.
 Blauvelt, James G.
 Blauvelt, John
 Blauvelt, John J. & Martin
 Blauvelt, Lydia M.
 Blauvelt, Sarah A.
 Blauvelt, Wm. D.
 Blauvelt, Wm. H.
 Bleezarde, Geo. W.
 Bleuitt, Hannah
 Block, John
 Bloy, James W.
 Blue, Isabella
 Blundell, Jas. & Wm.
 Boardman, Isaac E.
 Bockner, Charles
 Boeckel, John C.
 Bogart, David J.
 Bogart, Gilbert D.
 Bogert, David B.
 Bogert, Eugene
 Bogert, Nellie M.
 Boggs, Catherine A.
 Boggs, Harriet A.
 Boice, Garret S.
 Bolton, DeWitt C.
 Bolton, Susie
 Bond, Geo. A. & Mary, his
 wife
 Boon, Meindert
 Booth, Alfred G.
 Booth, Anne M.
 Booth, Benjamin
 Booth, George
 Booth, John H.
 Booth, Richard
 Booth, Thomas
 Boothby, John
 Boothroyd, Margaret
 Borden, Davis P.
 Borden, Ruel C.
 Borden, R. Williams
 Born, Chas. E.
 Borneman, Est. of Bernardess
 Borneman, Louisa
 Borneman, Peter
 Bornkessel, Geo. H.
 Borrowe, Hallett A.
 Boschardt, A. Louisa &
 Emilie
 Bosland, Benjamin
 Bosland, Martin
 Bossardt, Elizabeth
 Botbyl, Gustus G.
 Bottomley, Susannah
 Boudinot, Jennie J.
 Boughton, Wm. A.
 Bounds, Peter B. & Ann, his
 wife
 Bowden, David
 Bowden, William
 Bower, Annetta
 Bowers, John
 Bowers, Samuel
 Bowker, Reginald H.
 Bowker, Walter L.
 Bowles, Harry & wife
 Bowman, Elizabeth Jane
 Bowman, Sarah E.
 Bowne, J. H. & Harriet K.
 Boyd, Arthur
 Boyd, Benjamin
 Boyd, Charity & John
 Boyd, George
 Boyd, John T.
 Boyd, Sarah Jane
 Boydell, James
 Boydell, John & wife
 Boydell, Wm., Sr.
 Boyle, Jane
 Bozong, Florence
 Brabender, Emma
 Bradbury, Alice
 Bradbury, Robt. & Jane, his
 wife
 Bradley, Ann
 Bradley, Betty
 Bradley, Elizabeth
 Bradley, John & Lillian
 Bradley, Mary
 Bradshaw, Henry W.
 Braen, Nellie Tanis
 Brain, Cornelius
 Brain, Jacob
 Brain, Martha P.
 Brainerd, Edwin F.
 Braithwaite, William
 Brand, Joseph
 Brand, William
 Brandenburger, Adeline
 Brandes, Julius
 Brands, Mary
 Brandt, Jacob & wife
 Brannlick, Charles
 Braun, Christina
 Braun, Caroline
 Braun, Louis C.



V. Royce
1915

Western Boundary

CEDAR LAWN CEMETERY

- Bray, Harriet Alice
 Breck, Chas. R. & W. A. M.
 Bredin, Frederick M.
 Breen, Abraham E.
 Breen, Cornelius
 Breen, Jacob
 Breen, Joseph
 Breen, Leonard
 Breen, Paul
 Breen, William
 Breese, Robert R.
 Bremmer, Andrew
 Brenning, Adam
 Brereton, Ann
 Brereton, Mary
 Brereton, Percy H.
 Breur, Esdra
 Brewster, Amos A.
 Briggs, James
 Briggs, Rachel
 Brindle, Wm. H.
 Brindle, William
 Brindley, James
 Brinkerhoff, Andrew Q.
 Brinkerhoff, George A.
 Brinkerhoff, Helena
 Brinkerhoff, Rachel
 Briscoe, James H.
 Bristol, Peter D.
 Bristow, Mary
 Brizzell, Alex'r & wife
 Brock, Alexander
 Brock, Isabella
 Brodie, Harriet
 Bromley, Ann
 Broomhead, James & Ann
 Broomhall, Geo. L.
 Broughton, Grimshaw
 Brower, Daniel D.
 Brower, David
 Brownlee, Hugh
 Brower, George V.
 Brown, Andrew J.
 Brown, Annie W.
 Brown, Alexander
 Brown, Catherine
 Brown, Chas. F.
 Brown, Chas. M.
 Brown, Christina
 Brown, Elizabeth F.
 Brown, Emma
 Brown, George
 Brown, George W.
 Brown, Geo. W. & wife
 Brown, J. Hanford
 Brown, Henrietta Est.
 Brown, Henrietta C.
 Brown, Jacob P. & Mary P.
 Brown, James
 Brown, John
 Brown, John G.
 Brown, John J.
 Brown, John Seth
 Brown, Mrs. John
 Brown, Mae
 Brown, Mary Ann
 Brown, Maggie C.
 Brown, Mary E.
 Brown, Orson H.
 Brown, Sarah L.
 Brown, A. Swan
 Brown, A. Swan, Trustee
 Brown, Thomas C.
 Brown, William
 Brown, Wolston R.
 Brooke, H. R.
 Brooks, Ann
 Brooks, Eliza Jane
 Brooks, Hannah
 Brooks, John W.
 Brooks, Peter
 Bruce, Alexander
 Bruce, Donald
 Brundred, Elizabeth
 Brush, Catherine
 Bruning, Henry C.
 Bruns, Adeline
 Bryan, Robert
 Bryce, Margaret
 Bryson, Sarah Jane
 Buchan, Catherine
 Buckholst, Brady & Alfred C.
 Buckley, Benjamin
 Buckley, Benjamin, Excr.
 Buckley, Frederick
 Buckley, John
 Buckley, William H.
 Budde, Christina A.
 Buggelin, Henry
 Bullen, Alma Currie
 Buller, John J.
 Buller, Watson & wife
 Bulmer, Josephine M.
 Bunce, George J.
 Bunnell, Brice B. & Elizabeth
 V.
 Buntzen, Francis P.
 Burbridge, Chas.
 Burchell, Daniel
 Burdan, William
 Burdett, Samuel Dyer
 Burger, Martin
 Burgess, Jennie
 Burgess, Robert
 Burghard, Louis
 Burghardt, Louis & A.
 Burhans, Sarah
 Burk, Chas. E.
 Burkhard, John & Wm.
 Burkhard, William. H.
 Burner, Mary
 Burnett, Annie M.
 Burnett, Chas. D., Excr.
 Burnett, David, Estate of
 Burnish, William
 Burns, James F.
 Burns, Mary
 Burns, Milton H.
 Burrell, Wm.
 Burrell, Valentine
 Burroughs, Margaret
 Burroughs, Mary B.
 Burslem, Albert E.
 Burtis, J. L., Jr.
 Burton, Annie
 Burton, Ellen
 Burton, Leah
 Burton, Nathaniel
 Busch, Peter
 Buser, Sophia
 Bush, James H.
 Bush, John
 Buss, Nettie L.
 Bussee, William
 Bustard, Joseph L.
 Bustard, Robert & John
 Bustard, Thos. M.
 Butler, Christina
 Butler, Henry L.
 Butler, Henry V.
 Butler, Mary E. Est.
 Butler, Mary L.
 Butler, William A.
 Butterworth, Jane
 Butterworth, John
 Butterworth, Mary
 Byard, John
 Byram, John J.
 Cadmus, Agnes A.
 Cadmus, Agnes Ann
 Cadmus, Annie M.
 Cadmus, Charity
 Cadmus, Clara
 Cadmus, Cornelius J.
 Cadmus, Edo V.
 Cadmus, Emma
 Cadmus, Garret C., Ira A.
 Cadmus, Sarah A.
 Cadmus, Thomas
 Cadmus, Dr. Wm. J.
 Cairns, Caroline B.
 Cairns, John
 Cairns, Robert
 Cairns, William
 Cameron, Duncan
 Cameron, Eliza
 Campbell, Geo. W.
 Campbell, Henry G.
 Campbell, Jennie & Maggie
 Campbell, John
 Campbell, John D.
 Campbell, John M.
 Campbell, Mary B.
 Campbell, Thomas A.
 Campbell, William
 Cannon, John
 Canova, Ernesto
 Cardinal, Andre



V. Boyle
1916

Buffalo Ave. Gate

CEDAR LAWN CEMETERY

- Cardinal, Catherine, E.
 Carlisle, Emeline J.
 Carlough, Frank V.; William
 H. & Edgar D.
 Carlough, Geo.
 Carlough, John J.
 Carlough, Lavina
 Carlough, William J.
 Carnrick, David H.
 Carpenter, Elisha & wife
 Carpenter, Eliza Jane
 Carr, Sarah E.
 Carr, William S.
 Carroll, Annie S.
 Carshore, William J.
 Carson, Thomas J.
 Cartwright, Jabez
 Caruth, Benjamin
 Carver, Sarah
 Case, George M.
 Case, William H.
 Casey, William
 Cashell, Mary B.
 Caspers, Peter
 Casson, Edwin
 Casson, George
 Casson, George W.
 Casson, John
 Catlin, Louise E.
 Caunce, Richard
 Cavadini, Teresa
 Caverly, Henry B.
 Cellarius, Laura H.
 Chadwick, Abbie
 Chadwick, Henry & Esther,
 his wife
 Chadwick, James & Martha
 Chadwick, James S.
 Chadwick, Joseph
 Chadwick, Julia
 Chadwick, Louise S. & Fred'k
 F.
 Chamberlain, Chas. C.
 Chamberlain, George
 Chamberlain, Ira
 Chamberlain, Raymond &
 Archie S.
 Chamberlain, Thomas
 Chamberlin, Cassie
 Chamberlin, Joseph
 Chamney, Thomas
 Champin, John
 Chaplain, James
 Chaplain, John S.
 Chapman, Carrie G.
 Chapman, Fannie
 Charcot, Margaret
 Charters, David A.
 Chase, Frank S.
 Checkley, Lizzie
 Cheetham, Edith
 Cheyne, John
 Child, K. Lillian; Anna H.
 & Mary O.
 Childs, Ellen S.
 Chiswell, George S.
 Chiswell, Mary A.
 Chiswell, Richard B.
 Chittenden, Irene C.
 Chitty, Mercy L.
 Christensen, Lawrence C.
 Christie, Frank
 Christie, George
 Christie, James C.
 Christie, Maria J.
 Christie, Thos. J.
 Church, Charles A.
 Church, William E.
 Clapp, Sandford E.
 Clark, Amzie B. & wife
 Clark, Ann
 Clark, Caroline
 Clark, David
 Clark, Edward
 Clark, Frances E.
 Clark, Henry
 Clark, Herbert H.
 Clark, Isabel F.
 Clark, James
 Clark, James L.
 Clark, Lucius W.
 Clark, Mary
 Clark, Thomas
 Clark, William B.
 Clark, William E.
 Clarke, Maria
 Clarkson, Jane
 Clarkson, Margaret Ann McL.
 Class, William & Fanny
 Claxton, Forbes
 Claxton, Joseph A.
 Claxton, Langley
 Claxton, Matilda
 Claxton, Priscilla
 Claxton, William
 Clearwater, W. S.
 Clegg, Aaron
 Clegg, Abraham
 Clements, Mary
 Clements, William J.
 Clemons, Mary E.
 Clerihew, Mary E.
 Cleveland, Anna B.
 Clift, Edward M.
 Clift, Mary
 Clinton, Francis De W.
 Close, Ann Eliza
 Close, Mary
 Close, Thermuthis
 Clough, John
 Clough, Geo. A.
 Clough, Sam'l & Mary Ann
 Clough, Wm. B.
 Clover, Edward A.
 Cluss, Allen
 Cluss, Ettie C.
 Clyde, Annie Scott
 Cobb, Henry D.
 Cochran, Agnes
 Cochran, Catherine Jane
 Cochran, William B.
 Cocker, James
 Cocker, Joseph
 Cocker, Mattie
 Cockran, Mary
 Coddington, Elizabeth
 Coe, Catherine
 Coe, Drusilla
 Coe, Sarah J.
 Coger, Glorenea W.
 Coirin, Gustave
 Colburn, Ann
 Cole, Delia A.
 Cole, Ellen
 Cole, Henry W.
 Cole, Mary A.
 Cole, William H.
 Cole, William W.
 Colegrove, James E.
 Colgan, Ann
 Collard, Thos. A., Deborah
 & Arthur W.
 Collard, Thos. T.
 Collet, Laura S., Excr.
 Collerd, Allie
 Collier, Abram
 Collier, Elizabeth S.
 Collier, Julia R.
 Collins, Charles C.
 Collins, George B.
 Collins, Janet
 Collins, John
 Collins, Louisa F.
 Collins, Mabel
 Collins, Peter & Mary
 Collins, Samuel
 Collins, Samuel H.
 Collins, Sarah
 Collyer, G. William
 Coman, Tinie L.
 Combs, Ella
 Compa, Joseph
 Compton, Charles & Harry C
 Comstock, Annie
 Conant, Andrew Percy
 Conant, Asa W.
 Conant, Warren N.
 Condit, Lucinda
 Congdon, Joseph W.
 Conklin, George W.
 Conklin, Hannah
 Conklin, J.
 Conklin, John L.
 Conklin, John S.
 Conklin, Joseph B.
 Conklin, Lewis L.
 Conklin, Lucy
 Conkling, Agnes J.



W. Hoyle
1916

Lake View Ave.

CEDAR LAWN CEMETERY

- Conlin, James
 Conlon, William J.
 Conner, Margaret
 Connolly, John
 Connors, Charles S.
 Conover, Daniel W.
 Contesse, Susie
 Cook, Albert B.
 Cook, Rachel
 Cooke, Ann Maria
 Cooke, Chas. D.
 Cooke, W. Henry
 Cooke, Ida L.
 Cooke, Ida M.
 Cooke, James
 Cooke, Jas. W.
 Cooke, John
 Cooke, John, James, Watts
 & Wm.
 Cooke, Lydia S.
 Cooke, Sarah A.
 Cooke, Watts
 Cooke, William
 Coons, Mary J.
 Cooper, Annie
 Cooper, Arnold P.
 Cooper, Chas. C. & wife
 Cooper, George
 Cooper, Herman H.
 Cooper, Jacob
 Cooper, Jehu
 Cooper, Jennie
 Cooper, John T.
 Cooper, Thomas S.
 Cooper, William
 Copping, Aminta
 Cordon, Charles
 Corgan, Mary A.
 Cornelisse, Johannes
 Cornelius, William
 Cornet, John B.
 Cornish, George B.
 Cornish, Jeannette
 Corry, Richard & wife
 Cortelyou, James H.
 Cortelyou, Julia M.
 Corwin, Maritta & Harry J.
 Cott, Elizabeth
 Couenhoven, Elizabeth J.
 Coughlin, Edward J.
 Coughlin, Richard
 Coulson, Joseph
 Coulter, Michael
 Courter, Flora M.
 Courter, Stephen
 Courter, Wm. H.
 Coury, John A.
 Cowan, Emma C.
 Cowan, Wm. Henry & John
 Cowdrey, De Witt C.
 Cowdrey, Louis Rader
 Cowley, Matthew
 Cox, Angenetta S.
 Cox, George
 Cox, Joseph
 Craig, Thomas H.
 Cramer, Joseph G.
 Crampton, Lizzie & John R.
 Crane, Alfred B.
 Crane, Benjamin
 Crane, Charles
 Crane, Elizabeth D.
 Crane, Harrison W.
 Crane, Israel
 Crane, Richard T. & Chas. S.
 Crandall, Harland B.
 Cranmer, Mary L.
 Crassous, Harriet A.
 Crawford, Charles W.
 Creathorne, Annie
 Crew, Alfred
 Crockett, Lizzie
 Croker, Grace R.
 Crocker, Thomas W.
 Croker, William L.
 Crompton, Henry
 Cronk, John & Frederick
 Crooks, George, Jr.
 Crooks, James
 Crooks, Juliet
 Crooks, Katherine B.
 Crooks, Mary P.
 Croosley, Thomas
 Crosby, Henry B.
 Crossley, Sarah H.
 Crossett, William
 Crouter, Cornelius F.
 Crouter, Rebecca J.
 Crow, John
 Crowther, Mary
 Crygier, Catherine
 Cubby, Christopher
 Cubby, Richard, Sr., &
 Eliza
 Culver, Tuttle
 Cundell, Charles H.
 Cundle, Sophia
 Cunningham, Caroline
 Cunningham, Geo. W. &
 Robt.
 Cunningham, Janet
 Cunningham, Mary Ellen
 Cunningham, Robert
 Cunningham, Stewart
 Curie, Charles
 Curtis, John
 Curtis, Florence Wright
 Cushman, S. Anna
 Cutler, D. Edelbert
 Cutler, Geo. E.
 Cutler, John
 Dadley, Ada Mary
 Dagers, Belle M. &
 husband
 Dagers, John R.
 Dalglish, Wm. C.
 Dalling, May
 Dalton, Elizabeth
 Dalzell, Robert
 Dalzell, William
 Damon, Allen C.
 Daniel, Janet
 Daniels, David E.
 Dann, Thomas
 Dannatt, Annie
 Dater, Rev. Henry
 Datesman, Hiram F.
 Datesman, Sabra H.
 Daum, Wm. F.
 Davenport, Harry J.
 Davidson, Anna S.
 Davidson, Joseph
 Davidson, Margaret
 Davidson, Mary E.
 Davidson, William
 Davies, Eliza C.
 Davis, John
 Davis, Mark B.
 Davis, Sidney & Chattie,
 his wife
 Davis, Sylvanus, Jr., &
 Isabella
 Davis, Thomas
 Davison, John G.
 Dawes, Mary M.
 Dawson, Elizabeth
 Day, Ellen C.
 Day, Frederick & Mary
 Day, George B.
 Day, James H.
 Day, John
 Day, Joseph
 Day, Miles S. & wife
 Day, Warren D.
 Dean, James B.
 Dean, John B.
 Dean, Mary Staley
 Dean, Samuel R.
 Dean, Thomas
 Deane, Sarah
 De Baum, Hester E.
 De Baum, Dr. Edwin
 De Boer, Albert, Christopher,
 Nick
 Dechert, Catherine
 Dechert, Julius
 Decker, Abraham M.
 Decker, Eliza & Minnie
 Decker, J. E.
 Decker, Jennie E.
 Decker, Sylvanus W.
 Decnyf, Geo. R.
 Deaths, Ann
 Deaths, Henry
 Degelman, John



V. Royte
1916

On the Circuit

CEDAR LAWN CEMETERY

- De Gray, Martha G., Trustee
 De Gray, Mary E.
 De Gray, Richard
 De Groot, Adriaan & John
 De Groot, Marinus J.
 De Groot, Nina E.
 De Keyser, John, Jr.
 Delhom, Madeline
 Dell Orto, Archille
 Demarest, Andrew H.
 Demarest, Barney C.
 Demarest, Charity
 Demarest, Charlotte J.
 Demarest, Eliza
 Demarest, Garret
 Demarest, Garret H.
 Demarest, John J.
 Demarest, Julia M. & Peter J., Excrs.
 Demarest, Lucinda
 Demarest, Mary
 Demarest, Nicholas J.
 Demarest, Peter Terhune & wife
 Demarest, Wm. W.
 Deming, Ida M.
 De Mol, Lou
 De Mott, George V.
 De Mott, Hiley A. & Catherine
 De Mouth, Edward & James
 Dempwolf, Antonia
 Dempwolf, Max
 De Muth, Gustave A. *et al.*
 Denblyker, Leonard, Sr.
 Den Bleyker, Nicholas
 Den Boer, Nellie
 Dench, Betsey
 Denholm, George & Charles
 Denholm, William A.
 Denike, Annie
 Denike, Georgiana
 Denison, Geo. S.
 Denison, Mary A.
 Denton, Ann
 Denton, Annie Mac D.
 Denton, George
 Derbyshire, Mary
 Derbyshire, William
 Dermond, Margaret
 Derrick, Est. Andrew
 Derrom, Andrew
 Desmet, Jules H.
 Deuster, William
 Deville, William
 De Voc, Charles
 Devoc, Welcome N.
 Devoc, William
 De Vogel, Wm.
 De Vries, Daniel
 Dewolfe, Wm.
 Dey, Arthur H. & wife
 Dey, Margaret L.
 Dey, Mary L.
 Dickerson, Edward N.
 Dickerson, Maria E.
 Dickerson, Sarah
 Dickson, James G.
 Dietz, August P. & wife
 Dilger, Elizabeth
 Dill, Charles T.
 Dillingham, Geo. L.
 Dilliston, Alfred
 Dime, Johanna
 Dinsmore, Elizabeth
 Dishian, Misag H.
 d'Isoard, Leonie
 Dittman, Theresa & Annie
 Douglas, Wm., Jr.
 Dixon, Ann
 Dixon, Anna Jane
 Dixon, William
 Dobbelaer, Henry
 Dobbs, Emma L.
 Dobbs, Mary
 Dobson, Ann
 Dobson, Henry
 Dobson, Maggie
 Dobson, William
 Dodds, Hannah
 Dodge, Frederick N.
 Doherty, Henry
 Doherty, John
 Dohm, Margaret
 Doig, John & Sarah
 Doland, Annie L.
 Donaldson, Margaret
 Donaldson, William
 Donat, John, Excr.
 Donkersley, Helen S.
 Donkersloat, Caroline
 Dooley, William
 Doolittle, Harry
 Doolittle, John A.
 Doolittle, Millard F.
 Doremus, Andrew
 Doremus, Anna Maria
 Doremus, Benj. D.
 Doremus, Charity V. B.
 Doremus, Cornelius
 Doremus, Cornelius A. & Albert C.
 Doremus, Cornelius P.
 Doremus, Eliza C.
 Doremus, Ellen
 Doremus, Francis E. & Henry C.
 Doremus, George C.
 Doremus, Goline
 Doremus, Helen W.
 Doremus, Henry, Excr.
 Doremus, Henry, Jr.
 Doremus, Henry P.
 Doremus, Jacob W.
 Doremus, Jane
 Doremus, John
 Doremus, John G. & wife
 Doremus, John P.
 Doremus, Josiah P.
 Doremus, Martha & Cornelius
 Doremus, Mary E.
 Doremus, P. W.
 Doremus, Peter & Jacob W.
 Doremus, Phillip H.
 Doremus, Stephen
 Doremus, William
 Doremus, William C.
 Doremus, William H.
 Doremus, William P.
 Doriarty, William
 Doring, Henry
 Dorman, Anna A.
 Dormida, Benjamin S. & wife
 Dougherty, Mary E.
 Dougherty, Stephen F.
 Doughty, James Wilson N.
 Doughty, John H.
 Douglas, Henry
 Douglass, Alfred
 Douglass, Annie
 Douglass, Sarah E.
 Douglass, William
 Doute, Ernest H.
 Dow, Daniel J.
 Dowell, John C.
 Drake, Henry M.
 Dressendorfer, Catherine
 Drew, Catherine
 Drew, Catherine T.
 Drew, Ezra
 Drew, John
 Drew, Lydia
 Drew, Martin R.
 Drew, Peter
 Dreyer, Louis
 Dreyer, Sebastian
 Drukker, Louis & wife
 Drummond, James T.
 Drury, Emma G. & Ella M.
 Drury, Elizabeth
 Du Bois, Edward T.
 Duffey, William
 Duffield, Geo. L.
 Dufford, Catherine A.
 Dufford, William
 Duncan, Jane N.
 Duncan, Minnie
 Duncan, Sarah Jane
 Duncan, Robert
 Dunkerley, Daniel
 Dunkerley, John
 Dunkerley, Joseph
 Dunkerley, M. Josephine
 Dunkerly, Harriet
 Dunkerly, James
 Dunkerly, John
 Dunkersley, Hannah



V. Royle
1916

Cypress Glade

CEDAR LAWN CEMETERY

- Dunkin, Richard J.
 Dunlop, Jean
 Dunlop, R. & Agnes
 Dunlop, Robert
 Dunn, James
 Dunnell, J. H.
 Dunnican, Richard
 Dunning, Geo. B.
 Dunning, John E.
 Dunning, T. Star
 Dunning, Wm. H.
 Dunwoody, Hugh K.
 Du Quette, Jacob
 Durden, Dorcas B.
 Durieux, August
 Durkin, John
 Duryea, Rev. John H.
 Duryea, Sarah J.
 Dusenbery, Ethel E.
 Dutcher, Fred. & Chas.
 Dutcher, Robt. Warren
 Dutchess, George
 Dutton, Thomas
 Dwyer, Rebecca
 Dye, John
 Dyer, Charles
 Dyson, Mary A.
- Eadie, Thomas & wife
 Eakings, Lizzie & Francis
 Eakins, John S. & Wm. R.
 Eardman, Christopher
 Earley, James
 Eastwood, Benjamin
 Eastwood, Moses & Sarah,
 his wife
 Eastwood, Sarah
 Eaves, William
 Edge, James
 Edge, John
 Edge, Hannah
 Edge, Martin
 Edick, Chas. H.
 Edleston, Geo. H. & wife
 Edwards, Alice
 Edwards, Annie E.
 Edwards, De Witt C.
 Edwards, Emilie
 Edwards, E. Gordon
 Edwards, James B.
 Edwards, John
 Edwards, Robert T.
 Eelman, Arie, Jr.
 Eelman, Arie, Sr.
 Eelman, John
 Effler, Adeline R.
 Ehmann, Anton
 Ehret, George
 Einermann, Dora
 Eisenhauer, Nicholas
 Eiskings, Francis
 Eskins, Robert M.
 Elder, David
- Ellig, Minna
 Elliott, James
 Elliott, Lizzie
 Ellmore, Jeanette
 Elvin, Andrew
 Ely, Chester D.
 Emerson, Fanny P.
 Emley, Eugene
 Emmans, Abraham
 Emmerick, Louis
 Emmons, Ann E.
 Emmons, Silas H., Jr.
 Emsley, Elizabeth
 England, Henry
 English, Ann
 Ennis, Ava M.
 Ennis, William
 Ensign, James W.
 Ensign, Samuel C.
 Ensor, Albert
 Entwistle, Fanny
 Erdmann, Edward
 Erdmann, Emma
 Erdmann, Henry
 Erhardt, Alfred
 Erikson, Gustave
 Ernst, Laura
 Escher, Emilie A.
 Esson, Robert J.
 Esty, James B.
 Ettinger, Joseph
 Eukers, George
 Evans, Isabella
 Evans, Mary
 Evans, Mary Elizabeth
 Evans, Richard
 Evans, Thomas
 Evans, William H.
 Evans, William W.
 Everett, Henry Hoffman
 Everett, Walter
 Eves, Philmer
 Ewart, Annie E.
 Ewing, John B.
 Eynon, David
- Faber, August A.
 Faeth, John
 Fair, Isabella
 Fairbairn, Alice
 Fairbanks, Albert D.
 Fairbanks, Eleanor S.
 Fairbanks, Madeleine
 Fairbanks, Wilson L.
 Fairchild, John O.
 Fairclough, Bertha M. &
 Jennie M.
 Fairclough, N. B., Jr.
 Fairclough, Napoleon B.
 Fairclough, Olive
 Fairclough, Wallace E.
 Fairhurst, Thomas
 Falls, James
- Falstrom, Gustave W.
 Farbain, Alice
 Farlan, Arthur
 Farlow, John
 Farquhar, Louise T.
 Farquhar, William
 Farrar, Ann
 Farrell, John H.
 Farrell, John M.
 Farrell, Patrick
 Farrell, Susan
 Fauerbach, Emil
 Faure, Conrad
 Fawcett, Jane
 Fayerweather, Frederick O.
 Fayerweather, Wm. O.
 Fayerweather, Wm. Oakley
 Feeney, Eliza
 Felch, Isaac N., Guardian
 Felch, John D.
 Felix, Francis J.
 Fenner, Wm. G.
 Fenwick, Sarah E. & Jas. H.
 Fenzlein, Sarah Ellen
 Ferguson, David
 Ferguson, Ferdinand S.
 Ferguson, James
 Ferguson, Peter G.
 Ferrell, Wm. H.
 Fettis, Jesse
 Fichter, August
 Field, Maria & Geo. H., Excers.
 Fieldhouse, William
 Fielding, Jas, Thos., Wm ,
 Geo. & Henry
 Fielding, Jennie V.
 Fielding, William
 Fields, Maria & Geo., R., Excers.
 Fields, Nancy J.
 Fields, Phebe
 Fields, Rachel W.
 Fields, Robert J.
 Fields, Robert T.
 Fields, Viola
 Fifield, George
 Finch, Catherine
 Fine, Jarvis
 Finkemeier, Charles
 Finkemeier, John W.
 Finnegan, Thomas
 Firth, Emanuel C. & Matilda
 Fischback, Jacob
 Fischer, Theresa
 Fish, William
 Fish, Wm. Jay
 Fischer, Albert P.
 Fisher, Calvin M.
 Fisher, John & Mary
 Fitch, Geo. R.
 Fitzgerald, Miles W.
 Flavell, Elizabeth
 Flavell, William
 Fleet, Mary



v. Royce
1916

On Rose Bank.

CEDAR LAWN CEMETERY

- Fleigh, Henry D.
 Fleming, Andrew
 Fleming, David
 Fleming, Jason E.
 Fleming, John
 Fletcher, John
 Fletcher, Joseph
 Fletcher, Wm. H.
 Flitcroft, Edward
 Flitcroft, Thos.
 Flitcroft, Wm.
 Florence, Saml. R., John B.,
 Wm.
 Folley, Rachel A.
 Folley, Sarah
 Fonda, Mary A.
 Fontayne, Chas. H.
 Forbes, Catherine J.
 Forbes, Cyrus L.
 Forbes, Edward T.
 Forbes, Henry
 Forbes, Horatio
 Forbes, Joseph
 Forbes, Thomas
 Forbes, Wm. L.
 Force, Columbus
 Ford, Julia W. W.
 Fordyce, Mary B. & husband
 Foreman, Martin V.
 Forrest, James & wife
 Fortune, Wm. M.
 Fossati, Josephine
 Foster, Caroline
 Foster, Garret
 Foster, William Geo.
 Foulds, Andrew
 Foulds, John
 Fowler, Anna M.
 Fox, Arthur H. & wife
 Fox, Charles
 Fox, Rachel A.
 Frain, Jas. O. & Violet M.
 Francies, Maria
 Francis, Mary N.
 Frank, Wm.
 Franke, Hannah
 Frankhauser, Margaret
 Franklin, Chas. H.
 Franz, William
 Fraser, Barbara
 Frazier, Charles
 Frebel, Henry
 Frebel, Henry L.
 Frederick, Jeremiah
 Frederick, Lizzie May
 Frederick, Nicholas
 Freeland, Abigail
 Freely, Amelia
 Freely, Cornelius
 Freeman, Argus L.
 Freestone, Geo. A. L.
 Freestone, Lydia
 French, Francis
 Freudenthal, Chas.
 Frickel, Otto J.
 Friedel, John G.
 Friend, Theresa
 Frier, James
 Frisch, Jacob
 Fritsche, Salome
 Fritzsche, Chas. O. H.
 Froelich, Albert
 Frommelt, Herman E.
 Frost, Andrew
 Frost, Frank, Chas. & Harry
 B.
 Fry, Lilian M.
 Fryer, Mary H.
 Fuchs, Andrew
 Fuller, James A. & wife
 Fullerton, David
 Fullerton, Ethelbert G.
 Fulton, Frank M.
 Funk, Albert & Louis
 Furman, Alfred A.
 Fyfe, Alexander
 Gaede, Robert
 Gag, Mary
 Galbricht, Henry
 Gall, James
 Gallant, Walter
 Gannon, David
 Gannon, Daniel
 Garabrant, Annie M.
 Garabrant, John G.
 Garbaccio, Amalia
 Garbaccio, Giuseppe
 Gardiner, John
 Gardiner, Joseph
 Gardner, Caroline & Oscar
 Gardner, Fred W.
 Garlick, Henry
 Garlick, Seth
 Garlick, Susannah
 Garlick, William
 Garnier, Josephine
 Garrabrant, Aaron K.
 Garrabrant, Fanny
 Garrabrant, Joanna E.
 Garrabrant, John
 Garrabrant, Margaret A.
 Garrabrant, Peter J.
 Garretson, Helen Everrett
 Garretson, Kittie
 Garrison, David M.
 Garrison, Henry
 Garrison, Henry D.
 Garrison, Jas. E., Elbert J.
 Garrison, John
 Garrison, John M.
 Garrison, Kittie
 Garrison, Margaret
 Garrison, Maria E.
 Garrison, Rachel
 Garrison, Robt. B.
 Garrison, Simeon Z.
 Garrison, Sophrina
 Garry, Norine
 Garside, Irad L.
 Garside, Lees
 Garside, Priscilla
 Garside, Thomas P.
 Gaston, John & Wm. F.
 Gatjen, Herman
 Gatter, Richard D.
 Gautschy, Henry
 Gay, Helen E.
 Gaynor, Chas. C.
 Gebhardt, Frederick
 Gebhart, Henry L.
 Gedney, Estella
 Geering, Emil
 Gehring, Margaretta
 Geipel, Ernest
 Gelderman, F. H.
 Gememhardt, Matilda
 George, Mae L.
 Gerber, Marie S.
 Gerhardt, Wm. & wife
 Gerum, Katherine
 Gerow, Heber
 Gerrie, Jennie Dunlop
 Gerstinger, Lena
 Gerstmayer, J. F.
 Gery, John
 Getchius, John
 Getsinger, William E.
 Getty, Chas. H.
 Gibb, Harry
 Gibbs, Marinus
 Gibbs, Wm. H.
 Gibson, Jane
 Gibson, William
 Giebelhausen, Frederick R.
 Gifford, Caroline A.
 Gilbert, Chas. N.
 Gilbert, Mary C.
 Gilchrist, William
 Giles, Lucy A. & Cora A.
 Gilfillan, Wm., Jr.
 Gilfillan, Wm., Sr.
 Gill, Hannah
 Gillen, Wm. H.
 Gillespie, John
 Gillies, Frederick
 Gillmor, Deborah A.
 Gillmor, Mary Ellen
 Gillmore, David T.
 Gilmore, Frederick
 Gilson, Catherine
 Gilson, Esther
 Gladwin, Henry
 Glass, Daniel
 Glass, Robert
 Glasser, Wm. F.
 Glastaeter, James
 Glatt, Dora F.
 Gleason, Elizabeth B.

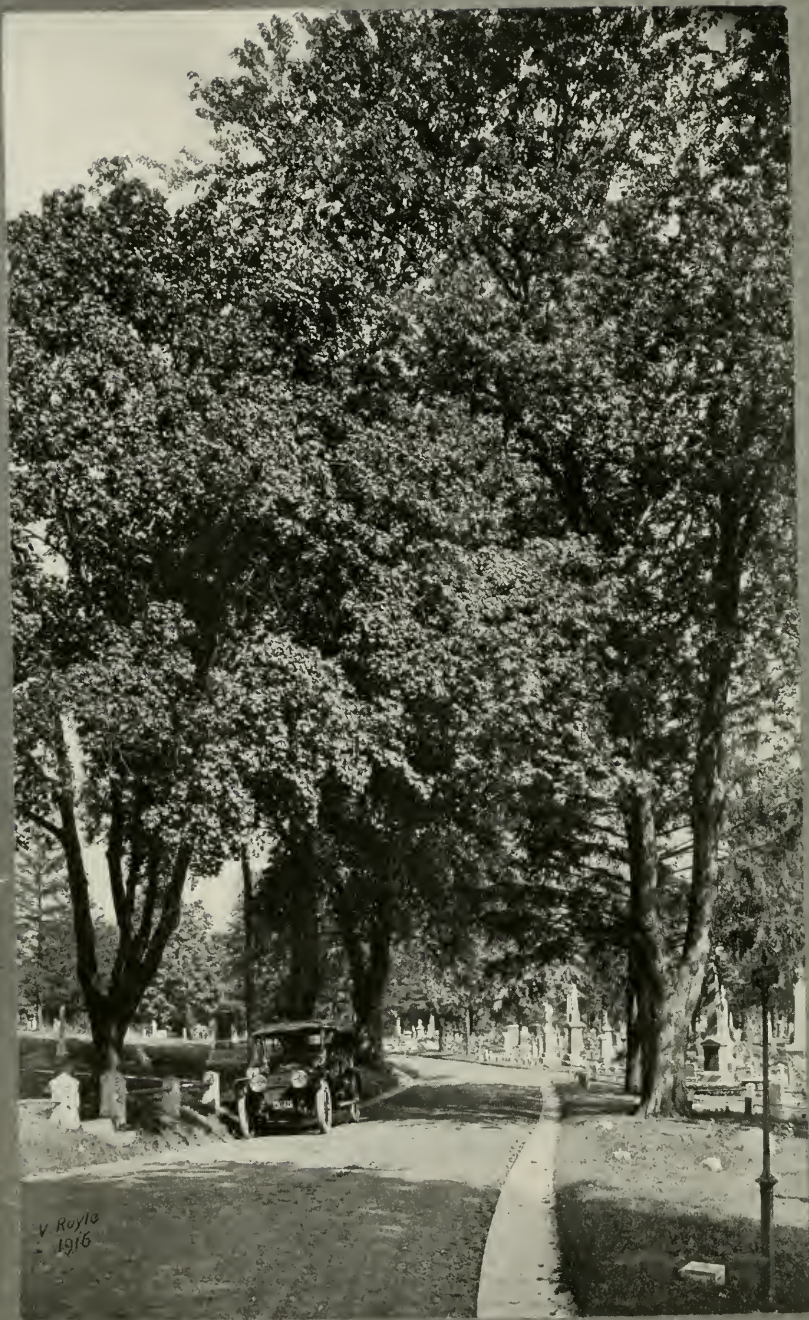


v. Royle
1916

On Cypress Glade

CEDAR LAWN CEMETERY

- Gledhill, Mary L.
 Gledhill, Mary & Jos., Excers.
 Gledhill, Robt.
 Glenn, Louis S.
 Glenney, Abram
 Gloor, Adolf
 Glover, Adelaide
 Glover, George
 Glover, Job
 Glover, Sarah
 Goble, Cornelius W.
 Goble, John
 Godden, Charles
 Godden, Christopher
 Godwin, Abram H.
 Godwin, Abram H. & Parker,
 Trustees
 Godwold, Est. of Mary
 Goelet, Evelyn
 Goetschius, Jemima
 Goetschius, John H.
 Goetschius, Peter V. H.
 Goldie, Thomas
 Goldsmith, James C.
 Goldsmith, R. C.
 Gollmer, Louis C.
 Goodbody, Margaret Jane
 Goode, John
 Goode, William
 Goodenough, Harriet Louise
 Goodridge, Emma
 Gordon, Clara
 Gordon, David D.
 Gordon, Hannah
 Gordon, Robert J.
 Gore, Sarah H.
 Gore, Thomas E. & wife
 Gore, William
 Gorley, Fanny
 Gorman, Agnes J.
 Gorman, Mary J.
 Gormley, Fanny
 Gosling, Wm.
 Goss, Daniel S.
 Gould, Abraham
 Gould, Henrietta
 Gould, Hiram
 Gould, Julia
 Gould, Mary
 Gould, Mary J.
 Gould, Mary S.
 Gould, Moses E.
 Gould, Moses E., Thos.,
 Stephen D., Mary S.
 Gould, Stephen D.
 Gould, Thomas
 Goulden, Wm. H.
 Gradwell, John
 Graf, Joseph, Sr.
 Graham, Arthur
 Graham, Est. of George
 Graham, James & Archibald
 Graham, Jane
 Graham, Joseph R.
 Graham, Lydia A.
 Graham, Mary J.
 Graham, Wallace
 Graham, Wm. H.
 Graham, Wm., Jr.
 Grailes, William
 Granger, Carrie H.
 Granger, Samuel
 Graul, Frederick G.
 Gravatt, Harry
 Gray, Arthur G. & Marion M.
 Gray, John S.
 Gray, William
 Gear, Leonard L.
 Greaves, Joseph
 Greaves, William
 Green, Albert D.
 Green, Charlotte M.
 Green, Elizabeth & Walter J.
 Green, Isaac
 Green, John
 Green, John C.
 Green, John D. & wife
 Green, Louise
 Green, Mills
 Green, Thomas
 Green, Wm. J.
 Greene, Chas. H.
 Greene, Jessie B.
 Greenhalgh, Salina, John R.,
 Frank, Samuel & James
 Greenhalgh, William
 Greenlie, Wm. P.
 Greenwood, Elizabeth
 Greenwood, Frederick W.
 Greenwood, Henry
 Greenwood, Lydia
 Greenwood, Mary
 Greenwood, Samuel
 Greenwood, Wm. S.
 Gregory, Mary E.
 Gregory, Thos. W.
 Gregson, Sarah
 Greig, Esther J., *et al.*
 Greiner, Louise
 Greivta, Marietta
 Grenfell, Thomas E.
 Grenell, Rev. Zelotus
 Griebel, Emma F.
 Griebel, Julius B.
 Grier, Robert
 Grieves, Harriet W.
 Griffith, Ann
 Griffiths, Maria
 Griggs, L. Elizabeth P.
 Griggs, Admr. John L.
 Griggs, John W.
 Griggs, J. W., Trustee
 Griggs, Nelson
 Grime, Ellen
 Grimshaw, George
 Grimshaw, Harry
 Groetsch, Christopher
 Grocock, Franklin
 Grocock, Samuel
 Grocock, Samuel P.
 Groser, Alex'r T.
 Gross, Robert
 Gross, Theodore
 Grossenbacher, Apoline
 Groves, Sam'l & Isabella
 Growney, James & wife
 Grubb, Wm. Henry
 Grund, Tony W.
 Grundy, Joseph C.
 Gueriel, Mary
 Guetrelle, Alexander
 Gunning, Isabella A.
 Gurnee, Chas. P., Geo. A. &
 Ann E.
 Gurnee, Elizabeth
 Gurnee, Flavilla & H. Louise
 Gurnee, Jas.
 Gurney, John
 Gurriell, James
 Gurriell, John
 Gushee, Warren
 Guthrie, Clara G.
 Gutwiller, Mary A.
 Gysbers, Alexander A.
 Gysbers, Marinus & Garret
 Haamstee, Jacob
 Hass, Fidel
 Habben, Henry & wife, &
 Caroline
 Habben, John
 Hackenbroch, John P.
 Hackett, Agnes
 Hackett, Jonathan & Emily
 Haerberle, Jacob
 Haefeli, Adele
 Haehnlen, Jacob F.
 Haenichen, Adolph
 Haenichen, Wm.
 Hagadorn, Henry
 Hagelstein, Anna
 Hagen, Chas. D. & wife
 Hagerdon, Henry
 Hague, Eleanor
 Hague, Will
 Haines, Sarah B.
 Hakemeyer, Chas. E.
 Haldenwang, Chas., Jacob,
 Wm. & Annie
 Hale, Edward M.
 Halfeli, Adele
 Hall, Annie M.
 Hall, Arthur
 Hall, Eliza
 Hall, Louise
 Hall, Le Roy W.
 Hall, Sarah
 Hall, Sophia De Muth, *et al.*
 Hall, Thos. W.



V. Roylo
- 1916

The Circuit

CEDAR LAWN CEMETERY

Hall, Vaughn Smith
 Hall, Wesley
 Hall, Wm. H.
 Hallenbeck, Bertha
 Hallett, George
 Halliday, Jane
 Halliday, John
 Halliwell, Grace
 Halliwell, John C.
 Halliwell, John C. & Geo. P.
 Halliwell, Thomas J.
 Hallowell, Ethel J. & John W.
 Halstead, Byron D.
 Halstead, Geo. W.
 Halstead, Mary
 Halstead, Wm. M.
 Hammeeteman, Maria
 Hameetman, Job
 Hameetman, Peter
 Hameetman, Thos.
 Hameetman, Zacharias
 Hamer, Alice
 Hamer, Hannah
 Hameteman, Dana
 Hamilton, David S.
 Hamilton, John
 Hammond, Edwin J.
 Hammond, Mary
 Hammond, Mary J.
 Hammond, Sara Belle
 Hampson, Eliza
 Hampson, Julia
 Hampton, Thomas
 Hancox, George
 Hand, Christina
 Handley, William
 Handwerk, Otto
 Hankel, Henry
 Hanks, Chas. G.
 Hanriot, John
 Hanson, Ann
 Hanson, Edward
 Hanson, Louisa
 Hanson, Wm., *et al.*
 Hardcastle, Geo. F.
 Hardcastle, Mary Est.
 Hardenbergh, Herman, *et al.*
 Hardenbergh, Willis E.
 Hardenburgh, Martha Ann
 Hardern, John
 Hardifer, John
 Harding, Elizabeth
 Harding, Frederick
 Hardy, John J.
 Hardy, Mary & Ellen
 Hardy, Robert
 Hargraves, Richard W.
 Hargreaves, Adam
 Haring, Aimee E. C.
 Haring, John
 Haring, Mary
 Harmon, Wm. H.
 Harper, Julia G. & Geo. S.
 Harper, Leon
 Harper, Mary
 Harries, Anna M.
 Harris, Isaac
 Harris, James S.
 Harris, Maria L.
 Harris, Rachel
 Harris, Richard A. T.
 Harrison, Bethuel
 Harrison, Eliza
 Harrison, Jesse D.
 Harrison, Chas. F. & Minnie
 Harrison, Wm. C.
 Harrison, Wm. W.
 Harrop, Sarah
 Harshaw, Wm. K.
 Hart, Isabel
 Hartley, Christopher
 Hartley, Clara
 Hartley, Ira
 Hartley, John
 Hartley, Mary E.
 Hartley, Richard
 Hartmann, Annie
 Hartmann, Chas. & wife
 Hartmann, Theresa
 Hartmeier, Jessie A.
 Hartog, Cornelius
 Hartt, Geo. LeB.
 Harvey, David
 Harvey, Emeline
 Harvey, Henry C. & wife
 Harvey, Jean
 Harvey, Janet
 Harwood, Henry
 Harwood, James
 Harwood, Margaret, Excers.
 Harwood, William
 Hasbrouck, John A.
 Hasbrouck, Richard O. & wife
 Hascup, Charles Henry
 Hascup, Peter
 Hascy, Emily H.
 Haslam, Thomas
 Hassell, James
 Hassen, William
 Hasting, Arthur
 Hastings, Susannah
 Hathaway, Hiram & Henry
 Hathorn, Hannah J. & Ann
 Hatrick, Chas.
 Havens, Mary
 Haviland, Henry
 Haviland, James F.
 Haviland, Mary W.
 Hawkins, Joseph R.
 Hawrey, Jacob
 Hawthorn, Arthur T.
 Hay, Lillie
 Haycock, Frances
 Haycock, Andrew
 Haycock, Margaret
 Haycock, Richard
 Haycock, Thomas
 Haycock, Thomas
 Hayden, Clarissa
 Hayden, Thomas H.
 Hayes, Albert E.
 Hayes, Kate M.
 Hayes, Robert
 Hayes, William H.
 Haynes, Joseph H.
 Hays, Alice M. & Ethel C.
 Hayward, Ann A.
 Haywood, Charles
 Haywood, Henry B.
 Hazel, Herman & Julius
 Heacock, Harriet
 Heacock, Spencer
 Heald, James & Ellen
 Healey, William I.
 Healey, Richard A.
 Healy, Chas. F.
 Healy, Geo. D.
 Healy, Wm. F.
 Heap, Christopher
 Heap, Wm. H.
 Heard, Wm.
 Hearn, Edwin R.
 Heath, Fanny
 Heath, Lewis
 Heath, Mary E.
 Heathcote, Mary J.
 Hebenstreit, Max
 Heck, Catherine
 Heckel, Anna
 Heckel, John
 Heckendorm, John
 Hegeman, Aletta M.
 Heinzelmann, Chas. C. & John W.
 Heinzelman, George
 Heinzelman, John
 Heinzman, Joseph
 Heller, Wm. Frederick, Frank
 Helme, James
 Helmrick, Wm. E.
 Helms, Mary L.
 Heming, Gustave
 Hemingway, Chas., Est. of
 Hemingway, John
 Hemingway, Saml. F.
 Hemion, John
 Heminsley, Elizabeth
 Hemming, Walter W.
 Hemstead, Catherine M.
 Hendershot, Elizabeth
 Henderson, Henrietta
 Hendricks, Elizabeth
 Hendry, William
 Henggeler, Jacob
 Henion, John W.
 Henion, Luther V.
 Henniger, Diedrich & Herman
 Hennion, Eliza M.



JOHN FLETCHER
1820 - 1886

NANCY FLETCHER
1824 - 1897

JAMES H. FLETCHER
1837 - 1887

FLETCHER

V. Royle
7916

*Nancy Fletcher Monument-
The Circuit*

CEDAR LAWN CEMETERY

Hennion, John W.
 Henrichs, August
 Henrick, Christian
 Henrick, Matilda
 Henry, Annie C., Excr.
 Henry, David
 Henry, Hannah
 Henry, Margaret
 Henser, Chas. J. & Anna, his wife
 Henshall, Thomas
 Hepburn, Katie W.
 Hepner, Carrie S.
 Hepp, Christian
 Herig, C. Rudolph
 Herington, Frederick W.
 Herman, Christian
 Herman, Frederick
 Hermann, Justus
 Hermann, Ferdinand L.
 Herrick, Hugh M.
 Herrick, Louise M.
 Herrman, Wm. P.
 Hertner, Emil & Verena, his wife
 Hesketh, James
 Hess, Paulina
 Hetzel, Richard
 Heuschke, Frederick A.
 Heuser, Barbara
 Heuser, Wm. G.
 Hewes, Sarah Eliza
 Hewett, James
 Hewitt, James
 Hewitt, William
 Hewson, J. W.
 Hewson, Mary E.
 Hey, Mary Ann
 Hickman, John
 Hierskup, Aaron
 Hierskup, John
 Higbid, Uretta L.
 Higbie, Charles
 High, Catherine
 High, Peter
 Higham, Isabella
 Higinson, Rachel
 Hildreth, Chas. M. & wife
 Hill, Ann
 Hill, Alexander D.
 Hill, Eliza
 Hill, Harold D.
 Hill, James
 Hill, Lucy G.
 Hill, Robt. C.
 Hill, Smith
 Hillen, John
 Hiller, Gottlob
 Hilliard, James R.
 Hilliard, Mary E.
 Hillman, Harmon
 Hillman, Henry T. L.
 Hilton, Benjamin
 Hilton, John T.
 Hilton, John F.
 Hilton, Martha J.
 Hilton, Saml. H.
 Hilton, William
 Hinchliffe, Anne S.
 Hinchliffe, William
 Hinchman, Eliza A.
 Hind, James F.
 Hind, Mary Louisa, Trustee
 Hindle, Est. of John H.
 Hindle, John H.
 Hindley, George
 Hindley, Thomas
 Hine, Est. of Reuben H.
 Hine, Wm. H.
 Hinton, George
 Hirschner, August, Jr.
 Hobart, Garret A.
 Hobart, Jennie T.
 Hobbs, Henry
 Hoche, Armand
 Hockenberg, Harmon
 Hockett, Ann
 Hodge, Geo. E.
 Hodge, James
 Hodge, Sarah
 Hodgson, John
 Hoelbe, Henrietta
 Hoffbauer, Emily L.
 Hoffman, May & Caroline
 Hoffman, John B.
 Hoffman, William
 Hofgesang, Anna
 Hogan, John D.
 Hogarth, Hannah
 Hohenstein, Bertha
 Holbrook, James
 Holden, Mary J.
 Holden, Robt.
 Holden, William
 Holdsworth, Joseph
 Hollinde, Emil
 Hollingsworth, John H.
 Hollister, George
 Hollister, Saml. W.
 Holmes, Ella E.
 Holmes, Harry
 Holmes, Henry A.
 Holmes, Walter H.
 Holpp, Rosa
 Holt, Adam
 Holt, Cryus
 Holt, Mary
 Holt, Ormenta
 Holt, Rebecca
 Holt, Samuel
 Holt, Susan
 Holt, Thomas
 Holster, Tunes
 Holtham, Joseph
 Home, Elizabeth
 Homes, John
 Hope, Wm. J.
 Hopkins, Caroline de la M.
 Hopkins, James H.
 Hopper, Abby A.
 Hopper, Abram G.
 Hopper, Adaline
 Hopper, Adrian
 Hopper, Albert C.
 Hopper, Andrew
 Hopper, Bessie S.
 Hopper, Chas. C.
 Hopper, Cornelius C.
 Hopper, Demarest
 Hopper, Ellen
 Hopper, Geo. D., Jr.
 Hopper, George W.
 Hopper, Henry, *et al.*
 Hopper, Jacob B.
 Hopper, John
 Hopper, John A.
 Hopper, John D.
 Hopper, John H.
 Hopper, Jonathan C.
 Hopper, Joseph C.
 Hopper, Mary
 Hopper, Mary J.
 Hopper, Mary K.
 Hopper, Melissa
 Hopper, Peter C.
 Hopper, Peter D.
 Hopper, Robt. I.
 Hopper, Samuel
 Hopper, Sarah J.
 Hopper, William H.
 Hopson, Chas. R.
 Hopson, Wm. A.
 Hornbeck, Delia
 Hornbeck, Sarah & Wm. H.
 Hornberger, Caroline
 Hornberger, George
 Hornberger, John B.
 Hornberger, Louisa
 Horne, Peter & wife
 Hornung, August & Charlotte
 Horsfield, Joshua
 Horton, Abel
 Horton, Alfred N.
 Horton, Bertha
 Horton, Elizabeth
 Horton, Rayton E.
 Hosford, Jennette H.
 Hosford, Saml. C.
 Hough, Mary A.
 Hough, Thomas
 Houghton, Margaret Ann
 Houlgrave, Ann
 House, John
 Houston, David
 Houston, James & Robt.
 Houston, John
 Houston, Thos. B.
 Howard, John
 Howatt, Gerald



The Cemetery

CEDAR LAWN CEMETERY

Howcroft, Sarah
 Howe, Albert E.
 Howe, Chas. M.
 Howe, Edwin I., Chas. M.,
 Geo. R.
 Howe, John
 Howe, John Moffett
 Howe, John Morgan
 Howe, Robt.
 Howe, Wm. & Jas.
 Howell, Carrie E.
 Howell, Ezra M.
 Howell, Isabella
 Howell, Minnie
 Howett, Mary
 Hoxsey, Margaret
 Hoxsey, T. Frank & Margaret
 Hoxsey, Thomas D.
 Hubbard, Danl. B.
 Hubbard, Geo.
 Huber, Christina
 Huber, Ida Ruegg
 Hudd, Alfred
 Hudson, Emma B.
 Hudson, Thomas
 Hudson, Wm., Jr.
 Hudson, Wm. S.
 Hugginson, Phebe
 Hugginson, Richard
 Hughes, Ada L.
 Hughes, Anthony
 Hughes, Clara L.
 Hughes, Frank & Inez
 Hughes, Geo.
 Hughes, James & Hannah
 Hughes, Mary A.
 Hughes, Robt. S.
 Hughes, Samuel
 Hughes, William
 Hummel, Friederike
 Humphreys, John B.
 Hundertmark, Elizabeth A.
 Hunt, Amelia
 Hunt, Ann & Harry
 Hunt, Ernest
 Hunt, Jane
 Hunter, Annie
 Hunter, James
 Hunter, Phineas T.
 Huntoon, Henry C.
 Huntoon, James H.
 Hunziker, Hilma
 Hupfer, Christian
 Hurd, Agnes B.
 Hurd, Eleanor
 Hurd, John H.
 Hussey, Frank S.
 Hussey, Ruth
 Hutcheon, John
 Hutchinson, Eliza M.
 Hutchinson, James
 Hutchinson, Kate C.
 Ibach, Hugo
 Ibbeson, John, Jr.
 Icke, John & wife
 Iles, Mary Jane
 Imgrund, Frederick
 Indoe, Frederick E.
 Inglis, Catherine E.
 Inglis, Charles
 Inglis, James
 Inglis, James, Jr., Excr.
 Inglis, Jane
 Inglis, Robt. J.
 Inglis, William
 Inglis, Wm. M.
 Ingram, James F.
 Ingram, Thomas
 Inman, Jonas & wife
 Ireland, Robinson
 Irish, Lewis (Guardian)
 Irving, Helen
 Irwin, James
 Irwin, Jane
 Irwin, Martha
 Irwin, Sophia
 Isaac, Mary Speakman
 Isherwood, Francis F.
 Isleib, Frederick
 Isleib, Mary E.
 d'Isoard, Leonie
 Ives, Arthur H.
 Ives, Susanna S.
 Jackson, A. D.
 Jackson, Carrie, James M.,
 Kate A., J. Ross
 Jackson, Emily H.
 Jackson, Frank R. & wife
 Jackson, James
 Jackson, John
 Jackson, Joseph
 Jackson, Martha
 Jackson, Mary Ann
 Jackson, William
 Jackson, Wm. W.
 Jacob, George
 Jacobus, John H.
 Jacobus, John N.
 Jacobus, John S.
 Jacobus, Mary E.
 Jacobus, Nicholas
 Jacobus, Richard A.
 Jacobus, T. H.
 Jacobus, Wm. & Cornelius
 Jacqua, Sherman
 Jacques, Abraham
 Jaeger, Emil E.
 Jaeger, Henry
 Jaiger, Catherine
 James, John W.
 James, Joseph B.
 Jamieson, Ann
 Jansen, James H.
 Janson, Christian F.
 Janville, Joseph
 Jarl, Gustave
 Jarvis, Edwin
 Jeffrey, Mathilde C.
 Jeffrey, Phoebe L.
 Jehn, Max T.
 Jelleme, Emker
 Jelleme, Emker, Excrs.
 Jelleme, John
 Jelleme, Leonora
 Jelleme, Lester
 Jenkins, Edw. & Ann
 Jenkins, Jacob
 Jenks, Robt. V.
 Jennett, Maggie L. & Eliza J.
 Jennings, John
 Jennison, William H.
 Jeorg, Conrad A.
 Jersey, Theodore
 Jewett, Phineas M.
 Jochem, Warren V.
 Johns, David
 Johns, Geo. W.
 Johns, Richard
 Johnson, Delia Ann
 Johnson, Eliza A.
 Johnson, Emma
 Johnson, Franklin
 Johnson, Geo. F.
 Johnson, Helena
 Johnson, James
 Johnson, Johanna M.
 Johnson, Jonathan, Martha &
 Edward
 Johnson, Lina & John F.
 Johnson, Lydia L.
 Johnson, Marie A.
 Johnson, Martin J.
 Johnson, Walter B.
 Johnson, William
 Johnston, Allen
 Johnston, James
 Johnston, Rebecca L.
 Johnston, Robert
 Johnston, Wesley S. B.
 Jones, Albert
 Jones, Bertha L.
 Jones, Chas. G.
 Jones, Edward E.
 Jones, Edwin
 Jones, George W.
 Jones, Harriet & husband
 Jones, John M.
 Jones, John M. & Lavinia
 Jones, John W.
 Jones, Margaret S. C.
 Jones, Nellie
 Jones, Thomas
 Jones, Thomas C.
 Jordan, James
 Jowett, Theophilus
 Joynson, Frederick
 Juhnke, Harriet



V. Boyle
1916

Pilgrims Rest

CEDAR LAWN CEMETERY

- Kaeffer, Edward & wife
 Kamerline, Arent
 Kamerling, Garret
 Kamerling, Henry & wife
 Kamerling, Jacob
 Kamerling, Marinus
 Kamerling, Peterjje
 Karr, Richard F.
 Kastrup, Helga
 Kattenstroth, Julia
 Katterman, August & wife
 Kay, John Charles
 Kay, Joseph
 Kealey, James & wife
 Kearsing, Ambrose W.
 Keasler, Hiram
 Keating, Wm. E. J.
 Keefe, Amelia
 Keeler, Chas.
 Keeler, Daniel
 Keeler, John
 Keen, Caroline
 Keen, Justus C.
 Keene, John
 Kegelman, Theodore B.
 Keisshaur, Jane
 Keller, Gottlick & Frederick
 Kelley, Edwin R.
 Kelley, Margaret J. S.
 Kelley, Mary F.
 Kelley, Sarah
 Kelly, William
 Kelshaw, Jonathan
 Kelso, Emily
 Kelson, John
 Kennell, John
 Kennell, Kate
 Kent, Benjamin
 Kent, Ridley
 Kent, William
 Kenter, Laura
 Kenworth, Ellen
 Ker, Jeanette
 Kerns, Catherine
 Kerr, John
 Kerr, Wm. M.
 Kershaw, Fanny
 Kershaw, Jane
 Kershaw, John
 Kesse, Henry
 Kesse, Herman B.
 Kesselring, George
 Kessler, Geo. M.
 Kessler, Wm. H.
 Ketcham, Tredwell
 Keuppers, Otto
 Kevit, Job C.
 Kevitt, Cornelius
 Keyes, Charles
 Keymer, George H.
 Keymer, James A.
 Keyser, Abram
 Keyser, Abram C.
 Keyser, Stephen
 Keyzer, Johanna
 Kidd, James
 Kierstead, Jacob
 Kierstead, Wilson G.
 Kiersted, Margaret
 Kievit, Cornelia
 Kievit, Tunis C. & wife
 Kijewski, Peter
 Kilpack, Charles
 Kimble, Henry
 Kincaid, Elizabeth
 King, Aaron E.
 King, Alpheus L.
 King, Ambrose F.
 King, Andrew B.
 King, Cornelius A.
 King, Elias B.
 King, Elizabeth
 King, Emma A.
 King, Griffith
 King, Henry B.
 King, John
 King, John W.
 King, Margaret R.
 King, Mary
 King, Mary C.
 King, Mary J.
 King, Mary L.
 King, Samuel
 King, Wallace R.
 Kingsland, Geo. W.
 Kingsland, John & Kate A.
 Kingsland, Wm. D.
 Kinne, John W.
 Kinne, Porter S.
 Kinne, Sandford H.
 Kinne, Theodore Y.
 Kinsell, Benjamin E.
 Kinsey, Mary B.
 Kinsey, Samuel
 Kinsilla, Chas. P.
 Kinsilla, Wm. & Chas.
 Kip, Cornelius
 Kip, Edo
 Kip, Frederic E.
 Kip, Frederick E.
 Kip, Henry & John
 Kip, Ira A.
 Kip, John E.
 Kip, John W., James V. B.,
 Walter
 Kip, Mary J.
 Kip, Peter H.
 Kip, Peter P.
 Kipp, Peter J.
 Kipp, Richard P.
 Kipp, Walter N.
 Kirchner, Chas.
 Kirchner, Frederick
 Kirchner, Oswald
 Kirchner, William
 Kireker, Charles
 Kireker, Lottie C.
 Kirk, John
 Kirkman, Grace
 Kirkpatrick, J. A.
 Kirsinger, Louis
 Kittner, Herman
 Kittredge, Geo. W.
 Kivet, Tunis
 Klaeger, Albertine S.
 Klausner, Frank H. & Mar-
 garet, his wife
 Klein, Frederick
 Kline, Joseph R.
 Klober, August
 Klotzbach, Chris.
 Knapp, A. H.
 Knapp, David H.
 Knapp, Huldah
 Knapton, Lulu
 Knauss, Rosina W.
 Knell, Caroline
 Knight, Emma & Mary
 Knight, Joseph B.
 Knights of Pythias
 Knipper, Marie
 Knipscher, Mathilde
 Knoble, Chas. E.
 Knowles, David
 Knowles, Eliza
 Knowles, Frank B.
 Knox, Robert
 Koar, Hugo
 Kohlhaas, Gladys
 Kohlhaas, Marie
 Kohn, Anthony
 Kohn, Elizabeth
 Konzelmann, Agnes
 Konzelmann, John G.
 Kook, Christian
 Koopman, Cornelius
 Koyer, William
 Kraiger, Jennie
 Krajewski, Rose
 Kraus, Mary Isleib
 Kreamer, William M.
 Kressler, James E.
 Kronauer, Max
 Kreuger, John
 Krug, Ida, Arthur, Herbert
 Kuemmel, Mary D.
 Kueppers, Otto
 Kuett, Chas. F.
 Kuett, Geo. F. & Mary B., his
 wife
 Kuhn, Anna
 Kuhn, Henry
 Kuhn, Lena
 Kuiken, Lukas
 Kuken, Lewis & wife
 Kummer, Elizabeth
 Kunz, Bertha



V. Royle
1916

Vernal Ave. cor. The Circuit.

CEDAR LAWN CEMETERY

- Kurvy, Sarah M.
 Kusant, Cornelius
 Kusant, Mary
 Kuyper, Tunis
- Laauwe, Nicholas
 Laauwe, Sarah
 La Bar, Marietta
 Labaugh, Barney
 Labaugh, Catherine
 Labaugh, James M.
 La Boyteau, Samuel S.
 Lackey, Harriet
 La Forge, Moses
 La Forge, Moses T., Excr.
 Laing, Margaret
 Laird, James
 Laird, Mary J.
 Laird, Wm. & Mary E.
 Lake, Isabel N.
 Lakeland, William
 Lamb, Helen
 Lamb, Thomas W.
 Lambert, Catholina
 Lambert, Fred E.
 Lambert, Jacob J.
 Lambert, Walter I.
 Lammers, Rachel
 Landrock, Moritz
 Lane, Alice
 Lane, Annie
 Lane, Eliza Ann
 Lane, Elsie B.
 Lane, Kate
 Lang, George
 Langford, Frank E.
 Langguth, Gertrude
 Langwith, William
 Lanning, Chas. P.
 Lanning, Robt., Excr.
 Lanza, Baptiste
 Lapham, Mary
 Last, Jacob
 Latchford, Wm.
 Latham, Henry
 Latimer, John
 Latus, Jacob
 Laverack, Amelia
 Law, George
 Lawrence, Frank B.
 Lawrence, Geo. N.
 Lawrence, Stephen
 Lawson, Chas. B.
 Laytham, Martha
 Leach, Chas. E.
 Leach, Henry P.
 Leach, Wm. C.
 Leal, John L.
 Leal, Mary E.
 Leavens, Philo F.
 Leavens, William Barry
 Leaycraft, Wm.
 Leazer, Isabella
- Lederer, Arthur
 Lee, James
 Lee, Mary E.
 Lee, Sarah T.
 Leers, Gretchen
 Lees, Eli H. & Wm.
 Lees, Samuel
 Lefferson, Mrs. Jas. W.
 Lefferts, Joseph H. & Donald
 Le Fevre, Sarah Elizabeth
 Lehman, John
 Lehman, Paul
 Lehner, Ernestine
 Lemley, James
 Lendrim, Henry
 Lendrim, Margaret Jessie
 Lendrim, Thomas
 Lenton, Frances
 Lenton, Joseph
 Leonard, Daniel
 Leonard, Harriet
 Leonard, Henry W. & Matilda
 Leonard, Orville W.
 Leonard, Fanny
 Leonhauser, John Chas.
 Leoy, Katie
 Lerigo, Margaret
 Leslie, John S.
 Leslie, Robert
 Leswing, Henry
 Leswing, John Frederick & wife
 Leupin, Emil & wife
 Levi, Eliza
 Levie, James
 Levie, Wm. H.
 Lewis, Chas. W.
 Lewis, Hannah Davis
 Lewis, Wallace J.
 Lewis, William
 Lienarz, Adolf A.
 Lillibridge, Katherine H.
 Lincoln, Emma
 Lincoln, John
 Lind, Charlotta
 Lind, Mary
 Lindners, John
 Lindsley, Louise M.
 Liotard, Louis F.
 Lister, Joseph
 Littell, Wm. Archibald
 Little, Caroline
 Little, Samuel
 Littlewood, Fred & wife
 Llewelyn, Ann
 Lloyd, Jane
 Lloyd, Thomas
 Lock, Arthur
 Lockett, John
 Lockwood, J. D.
 Lockwood, Rachel
 Lockwood, William
- Loman, Chas.
 Longwell, James W.
 Looschen, Jared J.
 Loper, Chas. M.
 Lord, Annie B.
 Lord, Catherine
 Lord, Fred W.
 Lord, Mary Ann
 Lord, Wm. H.
 Lotan, Samuel
 Lotan, William
 Lotz, Frederick & Margaret, his wife
 Lotz, Martha
 Lounsbury, Mary J.
 Lovatt, Ada B.
 Love, Sara C.
 Lovell, Julia A.
 Low, Mrs. H. M.
 Lowe, John Payne
 Lowe, Wm. Herbert
 Lowe, Wm. J.
 Lucas, Timothy C.
 Lucie, Mary J.
 Luck, David A.
 Ludlam, Dorothy & Maria
 Ludlum, W. Theodore
 Ludwig, Frederick
 Luettgen, Elizabeth
 Luhrs, Henry
 Luke, Edmon Conner
 Luke, Mary E. Miller
 Luke, William H.
 Lum, James
 Lum, John
 Lundquist, Hjalmar I.
 Luques, Herbert L.
 Lussi, Elizabeth
 Lutton, William J.
 Lutz, Elwood S.
 Lyle, Janet (Miss)
 Lyle, Robert
 Lyness, Rebecca
 Lyon, Lewis B.
- MacChesney, Saml. D.
 MacCulloch, John W.
 Mace, Martha
 MacDonald, Edward J.
 MacDonald, Hugh J. & wife
 Macdonald, John O.
 Macdonald, Mary Joanna
 MacDonald, Thomas & wife
 Macdonald, Thos. A.
 MacGeachie, Tillie
 Mackay, Lotan
 Mackey, Laura E. & Florence M.
 Mackie, Isabella
 Mackintosh, James H.
 Mackrell, Charlotte
 Maclagan, Geo.
 Maclagan, John W. H.



V. RAY
1916

The Rustic Stair

CEDAR LAWN CEMETERY

- Macpherson, Agnes B.
 Macpherson, Geo. W.
 Macwatty, Chas. & wife
 Madison, Isabella
 Madison, Mary Gertrude C.
 Maes, Leon
 Maffett, Adam C.
 Magee, Wm. T.
 Magennis, Carrie W.
 Magill, John A.
 Magill, Samuel
 Magovern, Mary Amanda
 Mahar, Louisa J.
 Mahar, Est. of Mary J.
 Mahony, Emma A.
 Maines, Chas. Frederick
 Mainey, Ann Ellen
 Makepeace, Margaret
 Makepeace, William
 Malcolm, Emma E.
 Malcolm, Margaret P.
 Malcolm, Wm.
 Malcolm, Wm. S.
 Mallery, William
 Mallon, Elizabeth
 Mallon, John
 Malloy, Martha
 Malstrom, Andrew
 Manchee, Leonard W., Wm.
 & Wilfred A.
 Manchee, Wilfrid A.
 Mandell, G.
 Mandell, Mary G.
 Mandigo, Abram
 Mangold, Albert
 Mann, Percy E.
 Mann, Phoebe C. Preswich
 Manson, John E.
 Manter, Reinhold
 Mapps, Morris
 Marcy, Jos. E. & John F.
 Mardle, Henry
 Markert, Carrie
 Marselis, John D.
 Marselis, Mary
 Marsellus, Catherine
 Marsellus, John C.
 Marsellus, Peter E.
 Marsh, Ann
 Marsh, Chas. M.
 Marsh, Elias J.
 Marsh, Frederick B.
 Marsh, Stanford
 Marsh, Thos.
 Marsh, Wm. H.
 Marshall, Abraham
 Marshall, Amos
 Marshall, Henry
 Marshall, Joseph
 Marshall, Mary
 Marshall, Warner S.
 Martin, Barbara
 Martin, James
 Martin, Jas. L. & Mary M.
 Martin, Jane
 Martin, Luther H.
 Martin, Mabel & Walter C.
 Martin, Martha T.
 Martin, Mary & James
 Martin, Saml. C.
 Masker, Abraham
 Mason, Edgar M.
 Mason, Elizabeth D.
 Mason, Geo. C.
 Mason, Jacob & wife
 Mason, James H.
 Mason, Joseph
 Mason, John
 Mason, John B.
 Mason, Wm., Jr.
 Massaker, J. H.
 Mastenbrook, John
 Matchett, David
 Mathe, William
 Mather, Ernest
 Mather, James H.
 Matthews, Irving C.
 Matthews, Thos.
 Mattison, Charles H.
 May, Maria
 May, Martha L.
 May, Michael B.
 Maybury, James, Sr.
 Mayers, James
 Mayhew, Francis H.
 Mead, John C.
 Mead, Phebe
 Mead, Sarah A.
 Meakle, Sarah A.
 Meding, Charles E.
 Meisch, John
 Meister, Rosie
 Meloney, James W.
 Meller, James
 Meller, John P.
 Mellor, Alice
 Mellor, Jennie
 Mendell, Mary M.
 Mennel, Christian
 Mennel, Christian & wife
 Mennel, Wm.
 Mentnick, Philip
 Merboldt, Mary
 Mercer, Andrew
 Mercer, Petrina
 Mercier, Wm.
 Merdein, Emma De Muth,
 et al.
 Meredith, Saml. & Mary
 Ann, his wife
 Merikle, Isaac L. H.
 Merkel, John L.
 Merrett, Ezra
 Merrick, Edwin
 Merrick, Noah
 Merrill, Clara C.
 Merrill, Elizabeth F. & James
 F.
 Merrill, John R.
 Merrill, Sherburne R.
 Merritt, Geo. W. & John C.
 Merselis, Bertha M.
 Merselis, Edo I.
 Merselis, Jane
 Merselis, John H.
 Merselis, John H., Edwin,
 Stephen, William B. &
 Elizabeth
 Merselis, Peter J.
 Merselis, Sarah V.
 Merselis, Stephen
 Merselis, Wm. B.
 Mersereau, Edwin F. & wife
 Mertell, Herman E.
 Mertens, Elizabeth
 Meshew, Margaret R.
 Mesler, Rachel A.
 Messenger, Annie
 Mewhiney, John
 Mewhiney, Joseph
 Meyer, Catharine
 Meyer, Catherine D.
 Meyer, Jacob G. A.
 Meyers, Elizabeth
 Mick, Jacob
 Mick, Jeannette, Emma &
 Jacob
 Mickle, James A.
 Microp, Mina, Cornelius
 Middleton, Geo. C. & W. H.
 Miedendorp, Wm. H.
 Milano, Rosina, Peter, Emilio
 Millar, Wm. S. & John
 Miller, Andrew & John Geo.
 Miller, Annie A.
 Miller, Barbara
 Miller, Mrs. Christian
 Miller, Clara E.
 Miller, Clifford Jones
 Miller, Cyrus
 Miller, Daniel (Guardian)
 Miller, David
 Miller, Eliza
 Miller, Geo. W.
 Miller, Hattie M.
 Miller, James
 Miller, John
 Miller, John W.
 Miller, Joseph F.
 Miller, Joseph R.
 Miller, Mary E.
 Miller, Peter M.
 Miller, Robt., Estate of
 Miller, Sarah J.
 Miller, Thomas
 Miller, Tillie
 Miller, William
 Miller, Wm. A.
 Miller, Wm. F.



V. Royle
1916

On Vernal Ave.

CEDAR LAWN CEMETERY

- Miller, William J.
 Millerchip, Amelia & Emily
 Milligan, David (Guardian)
 Millington, Aaron
 Millington, John
 Millington, Leah
 Millson, Elizabeth
 Millnett, Catherine
 Mills, Elizabeth F.
 Mills, George
 Mills, Herbert W.
 Mills, Julia N.
 Mills, Margaret
 Mills, Martha J.
 Milne, Geo. A.
 Milne, William
 Milnes, Henry
 Milnes, Henry & Wm.
 Minish, James G.
 Mitchell, Albert E.
 Mitchell, Amelia
 Mitchell, Gertrude O.
 Mitchell, Henry
 Mitchell, Henry & Catherine,
 his wife
 Mitchell, James
 Mitchell, Jennie
 Moffet, Sarah C.
 Moffett, Frederick
 Mollen, Garret Henry
 Moller, Katie & husband
 Molteni, Domenico
 Mombert, Frederick A.
 Monday, Garret W. & Cor-
 nelius
 Mondrick, Annie
 Monin, Victor
 Monks, Lizzie
 Monroe, James
 Montalant, Maria
 Montalent, Marie P.
 Montgomery, Margaret &
 Robert
 Montgomery, Robert
 Montanye, Olin D. L.
 Montrose, Catherine
 Montrose, Wm. H. & wife
 Moody, Ernest R.
 Moore, Carrie E.
 Moore, Edward
 Moore, Geo. A. & wife
 Moore, Est. of Isabella
 Moore, Jacob W. & Louisa A.
 Moore, James
 Moore, John E.
 Moore, Margaret J. & Wm.
 W.
 Moore, Saml. F. & wife
 Moore, Sarah J.
 Moore, Thos. & wife
 Morand, Corydon F.
 Morehead, Charles
 Morehead, Chas. F.
 Morehead, John & Chas.
 Morehead, Robt. B.
 Morehead, Sarah
 Morehead, Sarah A.
 Morehouse, Elias
 Morejohn, Francis A.
 Moreland, John & Leonard
 Morgan, Alex'r W.
 Morgan, Elizabeth
 Morgan, Fanny R.
 Morgan, Frances
 Morgan, John
 Morgan, John N.
 Morgan, Kate
 Morlot, George
 Morrell, Richard
 Morris, Emma A.
 Morrison, Adam
 Morrison, Andrew N.
 Morrison, James
 Morrison, Henry
 Morrison, John
 Morrison, Margaret
 Morrison, Wm. S.
 Morrow, George
 Morrow, James W.
 Morrow, John H.
 Morrow, John J.
 Morrow, Lizzie
 Morrow, Margaret
 Morrow, Mary E.
 Morrow, Sophia
 Morrow, Wm.
 Morrow, Wm. B.
 Morse, Aaron
 Morse, Edwin C.
 Morse, John M.
 Mort, Joseph
 Mortimer, John
 Mortimore, Frank T. & wife
 Morton, Robt.
 Moseley, Charles
 Moseley, Henry
 Moser, Andrew
 Moses, Amanda M.
 Moses, John C.
 Moss, Saml., James A. &
 Charlotta
 Moss, Michael
 Mosson, Mary
 Mount, Sarah E.
 Moyer, Maggie
 Moyer, Richard & Dora, his
 wife
 Muhs, Henry
 Muhs, Henry Louis
 Mulhern, Wm. M.
 Muller, August J.
 Muller, Eliza
 Muller, Elizabeth
 Muller, Mary
 Muller, Werner
 Mundy, Rose Mary
 Munn, A. G.
 Munn, Samuel
 Munn, Saml. & Abram G.
 (Trustees)
 Munn, A. G., Jr.
 Munroe, John A.
 Munson, Albert G.
 Munson, Carrie
 Munson, Lewis
 Munson, Minnie T.
 Munson, Nettie Laura
 Munson, Phebe
 Munson, U. V.
 Mura, Martin
 Murphy, Boetius
 Murphy, Ellen F.
 Murphy, John, Excr.
 Murphy, John F.
 Murray, Lavinia
 Muse, Peter & wife
 Muth, Julia
 Muth, Casper
 Muth, Henry
 Muth, Margaret
 Muzik, Frank
 Muzzy, Saml. V. S.
 Myer, Jacob
 Myers, G. A.
 McAlister, James
 McAlister, Washington
 McAlister, William
 McAllister, Martha
 McAllister, Mary Ann
 McCarthy, Elizabeth
 McCarthy, Mary E.
 McCaulden, Margaret
 McCausland, Geo. A. & Saml.
 McClean, Isabella
 McClean, Robt.
 McCleece, Cornelius
 McCleece, James
 McClellan, Catherine A.
 McCloud, Wm. G.
 McCracken, Mary E.
 McCrea, Elizabeth Ann
 McCreery, James H.
 McCulloch, Robt.
 McCully, Emeline
 McCully, Francis K.
 McDaniel, Gilbert
 McDonald, Alexander
 McDonald, Robt. H.
 McDougall, Hugh
 McElroy, Annie
 McEwen, Edward
 McEwen, Jane, Extrix.
 McFadyen, Margaret
 McFarren, John
 McFillin, Emma
 McGaw, Hannah
 McGee, Mary E.
 McGibbon, Wm. C.
 McGill, William



V. Roylo
1910.

On Glen Ave. cor. Vernal Ave.

CEDAR LAWN CEMETERY

- McGlade, Mary
 McGlashan, Matilda
 McGlure, James
 McGregor, Bella
 McGregor, Mary H.
 McGregor, W. P.
 McGregor, Walter S.
 McGrogan, Ann
 McGrogan, James
 McIlwaine, Wm.
 McIlwraith, Matilda
 McInnes, Anna
 McKay, Kate
 McKay, Neil
 McKeague, Mina
 McKee, James W.
 McKee, Margaret
 McKee, Mary Ann
 McKelvey, Chas. D.
 McKenzie, William
 McKeon, Parthenea D.
 McKewan, George
 McKewin, Samuel
 McKinnon, John
 McKinzie, Peter
 McLane, Charles
 McLane, William
 McLaughlin, John
 McLaughlin, Louise
 McLaughlin, Robt. L.
 McLean, Alex'r
 McLean, Andrew
 McLean, Harry
 McLean, John
 McLean, Thomas
 McLees, Mary A.
 McLellan, Chas. F.
 McMahan, John
 McMains, William
 McMunn, Jane, Margaret,
 Mary
 McMurray, Louise
 McNab, Isabella
 McNab, Matilda
 McNeill, Charles
- Naef, Caroline
 Nathan, Chas. C.
 Naumann, Frank
 Naumann, Marie
 Naumann, Wilhelm C.
 Neal, Mary
 Neal, Samuel
 Neale, Arthur R. & Lulu P.,
 his wife
 Neale, James
 Neale, James & wife
 Neer, John
 Neer, Rush
 Neer, Rush, Excr.
 Neill, John F.
 Neill, Margaret A.
 Neill, Thomas
- Nelson, Chas. F. & Alice,
 his wife
 Nelson, Richard
 Nelson, William
 Nesslage, John H. W.
 Netz, Frederick L.
 Neuenhaus, Antoinette
 Nevins, Wm. H.
 Newell, Geo. L.
 Newkirk, Arrianna
 Newman, Chas. R.
 Newman, Wm. C.
 Newton, Wm. K.
 Niblo, Ellie
 Niclas, William A.
 Nichols, Robert
 Nickweiler, John
 Nield, Ann
 Nightingale, Jas. C., Excr.
 Nightingale, John & Joseph
 Nimewegen, Garret
 Noblett, Arthur W.
 Noblett, Bertha R.
 Norene, Louis M.
 Norman, Annie
 Norman, Harriet
 Norman, Mathias
 Norman, Wm. H.
 Norris, James, Jr.
 Norton, Julia K.
 Northrop, Julia
 Norwood, Delia J.
 Norwood, John
 Norwood, John, Trustee
 Norwood, Robert
 Norwood, Robt. & Mira
 Nussey, Joseph
 Nuttall, Sarah Ann
 Nutting, Mary
 Nutley, Wm. H.
 Nyenhouse, John H.
- Oates, Edward Brooke
 Oates, Eliza
 Oates, George
 Oakley, Chas. W.
 Oatman, Jacob M.
 Oates, George, Jr.
 Oberg, Peter
 O'Brien, John H.
 O'Brien, Peter
 O'Brien, John T.
 Ochs, Lena
 Oddy, Christopher
 O'Dell, Harry
 Odell, Henry
 O'Dell, Miles
 Oeser, Anna
 Offord, Sarah Etta
 Oft, Wm.
 Ogden, Mary, Estate
 Okell, Hannah
 Okell, Mary
- Oldham, David
 Oldis, Wm. F. & wife
 Oliphant, William
 Olmsted, Edward K.
 Onsted, Wilson B. & Annie E.
 Oothout, Mary A.
 Orange, Hannah Louise
 Orr, Philip
 Orr, Sadie E.
 Orr, Thomas
 Orr, William Jay
 Osborn, Edward
 Osborn, Peter Y.
 Osborn, William A.
 Osborne, Augustus, Sr., &
 Catherine, his wife
 Osborne, Eliza Jane
 Ostrander, Eliza M.
 Otton, Frederick O.
 Oudendyke, Pauline
 Outwater, Nellie
 Outwater, Richard H.
 Overdyking, Richard J.
 Owens, James
 Ower, Hay
 Ower, Peter
 Ower, Peter, Jr.
- Pack, Wm. H.
 Packer, Levina
 Page, Elizabeth
 Page, Francis A.
 Pages, Marie & Emily
 Palmer, Aletta B., Stephen
 H. & Nelson
 Palmer, James
 Palmer, S. Fielder
 Palmer, Winifred V. & Nelson
 G.
- Parcells, John J.
 Pardy, Peter
 Park, John
 Park, Josephine M.
 Parke, Henry
 Parker, Ada Frances
 Parker, Ann
 Parker, Ann C.
 Parker, Fred'k A.
 Parker, J. Banks
 Parker, James
 Parker, Joseph
 Parker, Wm. E.
 Parkins, Eliza
 Parks, Annie M.
 Parlman, Bradley
 Parlman, John H.
 Parmeland, Ada
 Parmelee, Henry H.
 Parmley, Elmore
 Parnly, Sarah M.
 Parsons, Belle P.
 Partridge, Edna E.
 Partridge, Jane



V. Roylo
1916

Victoria Ave. cor. Glen Ave

CEDAR LAWN CEMETERY

- Paterson Protestant Orphan
 Asylum
 Paterson Safe Dep. & Trust
 Co.—Excr.
 Patmos, Jacob & wife
 Patrick, James
 Patterson, Alexander
 Patterson, John E.
 Patterson, Josiah
 Patterson, Rose
 Patterson, Wm.
 Paulison, Amelia E.
 Paulison, C. M. K.
 Paxton, Abram
 Paxton, John P.
 Paxton, Jos. & Kittie L.
 Paxton, Louisa B.
 Payne, Emma
 Payne, Louise H.
 Pearce, Catherine Z.
 Pearce, Mary A.
 Pearl, Julia S.
 Pearman, Caroline
 Pearman, David
 Pearman, Ernest J.
 Pearman, Harry
 Pearson, James
 Pearson, Samuel
 Pearson, Wm.
 Pearson, W. E.
 Pedrick, Alfred C.
 Peel, James
 Pehle, Est. of Ernst
 Pelgram, Eliza M.
 Pell, John H., Fred'k A.,
 Wm. A., Ella Laura
 Peltz, Mary E.
 Pelucchi, Emilio & wife
 Pengilly, Josiah W.
 Penney, Wm. J.
 Penny, Margaret
 Pepper, Stephen T.
 Perkins, Margaret A.
 Perrin, Marie
 Perry, Daniel & Mary J., his
 wife
 Perry, Edward L.
 Perry, Eliza
 Perry, Geo. W.
 Perry, Wm. B.
 Perry, Wm. S.
 Peter, James
 Peterer, Madeline
 Peters, Elizabeth Ann
 Peters, John A.
 Peters, Thos. G.
 Peters, Walter
 Peterson, Anna S.
 Peterson, Geo. H.
 Peterson, Gerhard H.
 Peterson, Herman D.
 Peterson, J. H.
 Peterson, Est. of Jane
 Peterson, Nettie Scott
 Petrie, David
 Petry, Cornelius L.
 Petry, Elizabeth
 Petry, Geo. Daniel, Sarah &
 Daniel S.
 Pettengill, Katherine
 Pettigrew, Thomas
 Pettigrew, Thos., Excr.
 Petty, Elenora B.
 Pfafflein, Frederick
 Pfannebecker, Phillip
 Pfeil, C.
 Pfister, Alfred
 Phelps, Lucius J.
 Philhower, Charity
 Phillips, Benj. F.
 Phillips, Sadie R.
 Phillips, Wm.
 Phillips, Wm. B.
 Phillis, James
 Piaget, A. W.
 Piaget, Cornelia A.
 Piaget, Louis A.
 Pickford, Anthony
 Pickford, Wm.
 Pierce, Edwin
 Pierce, George
 Pierce, John
 Pierce, Wm.
 Pierce, W. & J. R.
 Pierson, Hiram
 Pierson, Walter T.
 Pilgrim, Claudia V.
 Pilkington, Mary J.
 Pinkerton, Thomas
 Plant, Jane
 Planten, Garret
 Planten, Martha Ann
 Platt, James
 Platt, John W. & Amelia
 Platt, Thomas
 Plog, Annie & husband
 Plog, Benjamin
 Plumstead, Margaret
 Plumpton, Mison
 Pohlman, John
 Poillon, John H.
 Pojanowski, Annie M.
 Polhamus, Aaron, Jr.
 Polhamus, David
 Polhemus, Jacob
 Polhemus, Lizzie W.
 Polhemus, Minnie
 Polhemus, Rachel E.
 Pollard, Charles
 Polley, John F.
 Pollitt, Geo. W. & Emeline H.
 Pollitt, John T.
 Poole, Amanda
 Poole, Isaac
 Poole, Mary
 Popple, Emly E.
 Porrett, George
 Porritt, John
 Porter, Alexander A.
 Porter, Wm. B. & wife
 Porter, Wm. S.
 Post, Abraham, Jr.
 Post, Abraham A., Jr.
 Post, Alfred H.
 Post, Anna
 Post, Annie E.
 Post, Caroline B.
 Post, Catherine J.
 Post, David & Albert
 Post, Edward B.
 Post, Eliza Jane
 Post, Garret
 Post, Geo. W.
 Post, Henry
 Post, Henry P.
 Post, Jennie B. & Roy T.
 Post, James
 Post, John
 Post, John & Adrian
 Post, John H.
 Post, John J.
 Post, John P.
 Post, Marcellias
 Post, Margaret A.
 Post, Margaret L.
 Post, Margaret M.
 Post, Maria
 Post, Napoleon B.
 Post, Paul
 Post, Philip V. R.
 Post, Ralph W. & wife &
 Mabel
 Post, Rebecca
 Post, Richard I., David D.,
 John A., Charity
 Post, Rosie
 Post, Sarah
 Post, Sarah & John G.
 Post, Wm. W.
 Potter, Eva
 Potts, Chas. S. & wife
 Potzsch, Franz G.
 Pousbach, Peter G.
 Powell, Wm.
 Powell, Wm. R.
 Powers, John H.
 Powers, John R. A.
 Prall, Aaron
 Prall, Eleanor
 Prall, John
 Prall, Leonard J.
 Prall, Rachel M.
 Pratt, Wm. W.
 Pray, Ella C.
 Prehn, Thomas
 Prentice, John
 Prentice, Peter
 Preston, Geo. A.
 Preston, Wm. Harvey



V. Royle
1916

Glen Ave. cor. Vernal Ave.

CEDAR LAWN CEMETERY

- Prestwick, Benjamin
 Price, Theodore N.
 Prince, Mary
 Probert, Arthur T.
 Probert, John
 Probert, John T.
 Probert, Thos. T.
 Proskey, Madgie
 Provan, Elizabeth J.
 Pruden, David
 Pruden, Edward H.
 Pulhamus, Aaron
 Pulis, Eugene E.
 Pulis, Chas. T.
 Pulis, Garret W.
 Pulis, Ida A.
 Pulis, Wm. Eugene
 Puller, Gustav
 Pullin, Henry T.
 Pullis, Jane A.
 Purdy, Sarah Ann
 Putoz, Josephine
- Quackenbush, Catherine
 Quackenbush, Charity A.
 Quackenbush, David P.
 Quackenbush, Elizabeth
 Quackenbush, John
 Quackenbush, Peter
 Quackenbush, Rynier
 Quackenbush, Timothy
 Quarmly, Sarah A.
 Quigley, Annie E.
 Quin, Mary I. & Louise J.
 Quinn, Maggie
- Radcliff, Susan
 Radcliffe, James
 Rahfield, Chas. E., Augusta
 M. & Mary E.
 Rainey, James
 Ramm, Frederick
 Ramph, Lina
 Ramsden, Chas.
 Ramsey, Albert
 Ramsey, Margaret & Kate
 Rancier, Eliza
 Randall, Thos. W., Jr.
 Randall, Thos. W.
 Randol, Christiana Terhune
 Raney, Geo. & Elizabeth A.,
 his wife
 Raney, Richard
 Rankin, James
 Rankin, Jean
 Ransley, John
 Ratsch, Ernest B.
 Ratzler, Elizabeth
 Rauchfuss, Leah Margaret
 Rawson, Ann
 Rawson, Thos. & Margaret
 Rawson, Thomas, Trustee
 Ray, Elizabeth
- Ray, Gilbert A.
 Raymond, David F.
 Raymond, John L.
 Raynar, James A. & Chas. H.
 Raynor, Wm. H.
 Rayot, Albert H.
 Rea, Amanda
 Rea, Margaret, Mary J.,
 Georgiana
 Rea, Wm.
 Read, William
 Reader, Albert J.
 Real, Dorothy
 Real, John
 Rear, Ann, Mary K. & Chas. M.
 Rebbbeck, Frank O.
 Redman, Jane
 Redmond, Wm.
 Reed, Chas.
 Reed, Sarah L.
 Regner, John
 Regner, John E.
 Reid, Charles A.
 Reid, Elizabeth
 Reid, John
 Reid, John H.
 Reid, John I.
 Reid, Nancy & Agnes
 Reid, Peter
 Reid, Peter, Trustee
 Reid, Wm.
 Reiher, Chas. F.
 Reimann, Jacob
 Reinhard, Jennie L.
 Reinhardt, Joseph A.
 Reinhart, Eugene
 Reinhart, J. Albert
 Reinhold, Max
 Reinstra, John B. & Mary
 Reitz, George
 Remig, Leonard
 Remig, Leonard & Cath'n,
 his wife
 Remick, Chas.
 Renardson, Judith M.
 Renfrew, James
 Rennie, Geo. W. D.
 Renz, Arnold
 Resler, Louis
 Rettger, Christopher C.
 Reynolds, John
 Reynolds, Rebecca P.
 Rice, Arthur Wm.
 Rice, Chas. A. & Brownie J.
 Rice, Dr. F. H.
 Richard, James
 Richardson, Wm.
 Ricker, Peter
 Ridenour, Wm. B.
 Ridgway, Ann
 Ridgway, Henry
 Rietmulder, Cornelius
 Rigby, Holden
- Rijswijk, Elizabeth
 Riker, David
 Riker, Ellen
 Risk, Mary
 Riley, Edward
 Riley, Eliza M.
 Riley, John
 Riley, Marion E.
 Riley, Sidney Alfred
 Ringer, Adolph
 Rinz, Gabriel
 Rippey, Mary Ann
 Rippey, James S.
 Risk, Mary & Thos. H.
 Risk, Robt. J.
 Ritchie, Allan
 Ritchie, Allan S.
 Riter, Marinus & wife
 Ritter, Henry
 Riva, Margaret
 Robblee, Frank A.
 Roberts, Benjamin
 Roberts, Chas. E. & wife
 Roberts, Elizabeth
 Roberts, John
 Roberts, Mary Ann
 Roberts, Sarah R.
 Roberts, Wm. H.
 Robertson, Colin T.
 Robertson, Diana
 Robertson, Ellis
 Robertson, John
 Robertson, John C. G.
 Robinson, Agnes D.
 Robinson, Amanda M.
 Robinson, Geo.
 Robinson, Henry S.
 Robinson, Henry T.
 Robinson, Ireland
 Robinson, James
 Robinson, James S.
 Robinson, James S. G.
 Robinson, John H.
 Robinson, Kate E.
 Robinson, Louisa
 Robinson, Miriam C.
 Rockwell, Andrew B.
 Roe, David
 Roe, Jane
 Roe, John C.
 Roedel, Louise W.
 Roehrs, Julius
 Rogers, Alex'r
 Rogers, Alex'r W.
 Rogers, Emma
 Rogers, Jacob S.
 Rogers, James H.
 Rogers, Jason Est.
 Rogers, Mary Ann
 Rogers, Mary & Georgina
 Rogers, Susie
 Rogers, Thomas
 Rohde, F. J.



V. Royle
1916

Section 7, Vernal Ave.

CEDAR LAWN CEMETERY

- Rohloff, Ernest
 Romaine, De Witt
 Romaine, Helmas
 Romaine, John W.
 Romaine, Martin R. & John B.
 Ronaldson, Jennie
 Roney, Ida
 Ronk, Eleanor G.
 Roscoe, Jas. H. & Byron E.
 Rose, Allen W.
 Rose, Asa & Benton, Trustees
 Rose, Augusta A.
 Rose, Ebenezer K.
 Rose, Geo. K.
 Rose, Geo. W.
 Rose, Helen
 Rose, Jacob
 Rosenheim, Ralph
 Rosewaine, John
 Ross, Adam & Mary
 Ross, Ellen
 Ross, Hamilton M., Sr.
 Ross, Hamilton M., Jr.
 Rossiter, Jennie
 Roswell, Phebe E.
 Rosz, John
 Rote, Eliza
 Roth, Emma
 Roth, Frederick
 Rothenberger, Charles
 Row, John
 Row, Wm.
 Rowe, James
 Rowland, Elizabeth
 Rowland, Thomas
 Rowlands, Margaret J.
 Rowlee, Geo. T. & wife
 Rowson, Peter R.
 Royle, John
 Royle, John, Jr.
 Royle, Vernon
 Royle, Vernon & John, Jr.
 Rozell, Nicholas
 Rozell, Wm.
 Ruben, Cornelius
 Rudman, Erena
 Ruegg, Emma
 Ruff, Catherine
 Ruffner, Victor
 Rumler, John J.
 Rumppler, Chas.
 Rundle, Geo. L.
 Runge, Anna E.
 Runyon, Agnes C.
 Rushmer, William
 Rusling, Geo. M.
 Rusling, Joseph L.
 Rusling, Van Dyck
 Russell, Ellen
 Russell, Frederick R.
 Russell, Josephine H.
 Russell, Robert & wife
 Russell, Thomas
 Rust, Geo. P.
 Rutan, Abraham R.
 Rutan, John P.
 Rutan, Lucetta
 Rutt, Herbert C. & wife
 Rutten, Jacob
 Ryan, Emma E.
 Ryan, Hannah
 Ryan, Jane
 Ryer, Petrina
 Ryerson, Caroline
 Ryerson, Chas. A. W.
 Ryerson, Ella
 Ryerson, Garrabrant
 Ryerson, Ira
 Ryerson, Martin
 Ryerson, Mary
 Ryerson, Theodore
 Ryle, John
 Ryle, John C.
 Ryle, Katharine H.
 Ryle, Mary E.
 Ryle, Peter, Thos. M. & Jemima
 Ryle, Wm.
 Ryle, Wm. & Rueben
 Ryle, Wm., Trustee
 Saal, Christopher G.
 Saal, D. & Louisa
 Saal, Elizabeth
 Saal, Geo. F.
 Sadler, Mary A. & Ella M.
 Saerland, Wm. J.
 Sagar, Emma M.
 Sagar, Saml. & wife
 Salisbury, Alice
 Salisbury, Edward
 Salisbury, Robt.
 Salmon, Wm. B.
 Sampson, Anna
 Samuels, Charlotte E.
 Samuels, James N.
 Sanders, Annie J.
 Sanders, Charles
 Sanders, Chas. M.
 Sanderson, Benjamin
 Sanderson, Chas.
 Sanderson, James F.
 Sanderson, John
 Sanderson, Wm., Sr.
 Sandford, Peregrine & sons
 Sandford, Cornelius
 Sandford, Elizabeth J.
 Sandford, Ellen A.
 Sandford, Jacob
 Sandford, John
 Sandford, Leonard
 Sands, Geo. A.
 Sangstone, Mary B.
 Saulsbury, Fred. & Elizabeth
 Saunders, Bertram H.
 Saunders, Eliza
 Saunders, John
 Savage, Geo. J.
 Savary, Louise
 Saxon, Wm. James
 Saxton, John
 Scales, Joseph
 Schaaf, Sarah
 Schadegg, John
 Schadkenberg, John & wife
 Schaefer, Louis
 Schagen, Albert
 Schagen, William & wife
 Scharff, Joseph H.
 Schatzkin, Elizabeth A.
 Schaub, Marie
 Schaub, Wm.
 Schauble, Wm. J.
 Scheck, Geo. T.
 Schember, Mary
 Schilinski, Edward
 Schilling, George
 Schlenz, Julius
 Schmalfeldt, Frederick & wife
 Schmid, Otto
 Schmidt, Eva Margaret
 Schmidt, Herman A.
 Schmidt, John
 Schmirgert, Catherine
 Schmidt, J. Frederick
 Schmitz, Angelieka
 Schmutz, Bertha
 Schnatz, Henry
 Schneeweiss, Adolph E.
 Schneider, Chas. C.
 Schnell, Kelmens
 Schnetz, Emelie
 Schoen, Adolph
 Schoendorf, Nicholas
 Schofield, Jonathan
 Schofield, Maria
 Schofield, Mary A.
 Schofield, Wilfred
 Schoonmaker, Annie E.
 Schoonmaker, Isaac
 Schoonmaker, James H.
 Schoonmaker, Jacob D.
 Schoonmaker, Sarah M.
 Schoendorf, Carl F. & wife
 Schott, Philip
 Schroeder, Emma
 Schroeder, Ernest
 Schroeder, Henry
 Schroeder, Henry R.
 Schroeder, John
 Schroeder, John H.
 Schryver, Marinus
 Schubert, Christina
 Schultheis, Alfred Louis, Sr.
 Schultheis, Max
 Schulting, Ruth A.
 Schumacher, Frederick A.
 Schuster, Leo



Olen Ave.

CEDAR LAWN CEMETERY

Schuster, Robt. & wife
 Schweizer, Agnes
 Schweizer, Christina
 Schweizer, Theophie
 Schwenk, Ida
 Schwindenhammer, Edwin
 W.
 Schwoy, Elizabeth H.
 Schwoy, Mary
 Scollon, James
 Scott, Ann A.
 Scott, Francis, Jr.
 Scott, Geo.
 Scott, Henry L.
 Scott, John J.
 Scott, Lena J.
 Scott, Martha
 Scott, Matilda
 Scott, Robt. W.
 Scott, Wm.
 Scott, Wm. D.
 Scott, Wm. G. & Isabella
 Scott, Wm. W. & Winfield T.
 Scull, Sarah
 Scussel, Michael
 Seager, Jane
 Seaton, James
 Secker, Wm. K.
 Secor, Ambrose
 Secor, Ambros F.
 Secor, Mortimor
 Seddon, Sarah G.
 Seddon, Wm.
 Seddon, Wm. D.
 See, Ann
 See, Chas. Wm.
 See, Wm. & Frederick
 Seed, Wallace Walter
 Seel, Wm.
 Seibel, Margaret
 Seibert, Mary F.
 Seil, Charles
 Sell, Louis & wife
 Sella, Joseph
 Sellis, Jane
 Sengstack, Caesar R. &
 Adolph E.
 Senior, David J., Amelia,
 Mary L.
 Senior, Wm.
 Serven, Nancy
 Servens, Eliza
 Setz, John H.
 Sexton, Ann
 Seymour, Chas. F.
 Seymour, Harriet C.
 Shafer, Luther
 Shaffer, Mrs. Louis
 Shane, Annie T.
 Shannon, Emma
 Shannon, Sadie
 Sharp, Wm. H.
 Sharrah, Jennie
 Shaw, Agnes
 Shaw, Annie
 Shaw, Betsy
 Shaw, Betty
 Shaw, Emily
 Shaw, Hugh
 Shaw, Israel & Chas. V.
 Shaw, James
 Shaw, Jennie A.
 Shaw, John
 Shaw, Mary Campbell
 Sheely, Anna A.
 Sheldon, Est. Sam'l
 Shelp, Mary A.
 Shephard, Isabella E.
 Shephard, Mary, Exc.
 Sherlock, Esther M.
 Sherman, Harriet & Frank
 Sherman, Henry
 Sherman, Wm.
 Sherrett, Chas.
 Sherrett, Thomas
 Sherwood, Charity-M.
 Sherwood, Samuel S.
 Shields, Ella R.
 Shields, Fred S. & wife
 Shields, Herbert B. & wife
 Shields, Lucinda
 Shields, Patrick H.
 Shinton, Wm.
 Shirrell, James
 Shore, Thomas
 Shore, Thomas, Jr.
 Shorrock, John D.
 Shorrock, Mary A.
 Shorrock, Thos. B.
 Shotten, Ralph
 Shriner, Miriam C.
 Shugg, Wm. H.
 Sickles, David B.
 Siegrist, Chas. & wife
 Siegrist, Johanna
 Siemons, Louis
 Sigler, Chas.
 Sigler, Isaac J.
 Sikkelee, Louis & wife
 Sikkelee, Nan & wife
 Silk Industrial Ass'n
 Silvernail, Frank H.
 Simister, Theophilus & wife
 Simmons, Ann Elizabeth
 Simmons, Catherine
 Simmons, Ellen C.
 Simmons, James H. & wife
 Simonton, James
 Simonton, Julia F.
 Simonton, Saml. H. & Chas.
 C.
 Simonton, Thomas C.
 Simpson, Frederick
 Simpson, Geo.
 Simpson, Henry D.
 Simpson, James
 Simpson, James E.
 Simpson, John & Jane
 Simpson, Margaret J.
 Simpson, Samuel M.
 Sip, Aaron
 Sipp, Grant
 Sipp, John & Grant
 Sipp, Marie & Jane
 Sisco, Chas. & Solomon
 Siverson, Wm. C.
 Sjoberg, Waldemar
 Skeels, Bessie Wilkins
 Skelton, Annie E.
 Skelton, Eliza J.
 Skelton, Grace
 Skidmore, Samuel
 Skinner, Elizabeth
 Slater, Eliza
 Slater, Eliz. S. & husband
 Slater, John
 Slater, John J.
 Slater, Robt. A.
 Slingland, Chas. E.
 Slingland, Edward
 Slingland, Geo.
 Slingland, John
 Slingland, John J.
 Slingland, Nicholas
 Slingland, Thomas
 Slingland, Thos. V.
 Sloat, John
 Sloat, Sarah
 Sloper, Jennie
 Small, Chas. S. Aylmer
 Small, Geo. L.
 Smallfield, Robert J.
 Smallwood, Ann
 Smallwood, James
 Smart, Catherine
 Smead, Adolphus
 Smit, Willempie
 Smith, Aaron P.
 Smith, Abraham
 Smith, Alex., Wm. & Frank
 Smith, Ann
 Smith, Ann Maria
 Smith, Archibald H.
 Smith, Augusta E.
 Smith, Blanche R.
 Smith, Catherine M.
 Smith, Clara
 Smith, Clarissa
 Smith, Cyrus C.
 Smith, Daniel B.
 Smith, Daniel D.
 Smith, David
 Smith, Elizabeth
 Smith, Elizabeth H.
 Smith, George
 Smith, Harmon G.
 Smith, Est. Hiram J.
 Smith, Irving C. & Wm.
 Adrian



Glen Ave

CEDAR LAWN CEMETERY

- Smith, Jacob N.
 Smith, James F.
 Smith, Jane
 Smith, Jemima
 Smith, John
 Smith, John H.
 Smith, John T.
 Smith, Joseph A.
 Smith, Julia P.
 Smith, Kittie F.
 Smith, Laurastine C.
 Smith, Letty
 Smith, Luther L.
 Smith, Maria
 Smith, Margaret
 Smith, Margaret E.
 Smith, Martha
 Smith, Mary
 Smith, M. Jennie
 Smith, Mildred J.
 Smith, Robert
 Smith, Robt. H.
 Smith, Saml.
 Smith, Sarah
 Smith, Sarah A.
 Smith, Susan L.
 Smith, Thomas
 Smith, Wm.
 Smith, William C.
 Smith, Wm. C., Rachel D.
 & Fred B. & Donald T.
 Smith, Wright
 Smithers, Betsy
 Smylie, James M.
 Smyth, John R.
 Smythe, R. L.
 Sneden, Geo. L.
 Snew, Ellen E.
 Snow, Ella
 Snow, Sarah H. R.
 Snowden, Leona M.
 Snyder, James L.
 Snyder, Jennet N.
 Snyder, Elizabeth E.
 Snyder, Lettie A.
 Snyder, Ten Eyck D.
 Snyder, Wm. V.
 Society Useful Manufactures
 Sohmer, Benedict
 Sommerfeld, Chas.
 Sommers, Frederica & Henry
 Sommerville, Alexander
 Sommerville, Wm.
 Soule, F. W.
 Soule, Francis W.
 Soule, F. A.
 Soule, Frederick A.
 Souter, Wm.
 Sowerbutt, Nancy S.
 Spaeth, Elizabeth
 Spangenmacher, Augusta L.,
 Raymond
 Spanton, Carrie
 Spanton, Seth B.
 Sparrenberger, Gertrude
 Speaker, Cornelius
 Spear, Albert
 Spear, Cornelius I.
 Spear, David
 Spear, George
 Spear, Jacob
 Spear, Margaret
 Spear, Margaret A.
 Spear, Rose M.
 Speckers, John W. P.
 Speer, Anna
 Speer, A. Wesley
 Speer, Delia E.
 Speer, Edward
 Speer, Ellen E.
 Speer, Henry
 Speer, Henry A.
 Speer, James
 Speer, James H.
 Speer, John A.
 Speer, John T.
 Speer, Maria
 Speer, Mary J.
 Speirs, Elizabeth May
 Spence, Caroline
 Spence, Thos. H.
 Spencer, Burt
 Spencer, Lucius F.
 Spencer, Wm. M.
 Spengeman, Edward A.
 Spickers, Wm.
 Spiegel, Annie E.
 Spier, Hugh
 Spiers, Wm.
 Spindler, Frederick
 Sprague, Enos H.
 Spraggins, Joseph H.
 Sprattler, Christina
 Sprattler, Gustav
 Spreen, Catherine
 Spreitzer, Christina & Char-
 lotte
 Spreitzer, Josephine
 Spreitzer, Martin
 Sprietzer, Geo.
 Springer, Chas.
 Sproat, David
 Sproat, John R.
 Staada, Christian
 Stager, Susan
 Stagg, Abraham R.
 Stagg, Albert W.
 Stagg, Ann Maria
 Stagg, John
 Stagg, Mary C.
 Stagg, Peter
 Stagg, Tunis
 Stahl, Mary E.
 Stanley, Wm.
 Stansbury, Chas. C.
 Stansbury, Rachel
 Stansfield, James
 Stansfield, John
 Stanton, Catherine
 Stapleton, Agnes
 Stapleton, Benj. A.
 Stapleton, Isaac
 Starck, Philip
 Stark, Wm. D.
 Steadman, Josephine
 Steele, James
 Steiger, Henry
 Steinhauser, Henry
 Steinhilber, Martin
 Stelle, Lawrence J. & Alex. D.
 Stelle, Louis R.
 Stephens, Elizabeth R.
 Stephens, Rachel
 Stephenson, Wm.
 Sterrett, Sarah E.
 Stevens, Albert C.
 Stevens, Caroline
 Stevens, C. Guy
 Stevens, Frederick
 Stewart, Andrew
 Stewart, Ann
 Stewart, Annie
 Stewart, Catherine
 Stewart, David
 Stewart, David & wife
 Stewart, Isabelle
 Stewart, John
 Stewart, Mrs. Mathew
 Stewart, Sarah & Letitia
 Stiles, Ezra M.
 Stiles, Geo. W., Jas. J.,
 Parker
 Still, Charlotte
 Still, Sarah E.
 Stinson, Geo. B.
 Stinson, Wm. & Benj., Exrs.
 Stirling, William
 Stites, Chas. S.
 Stocker, Salome
 Stocum, Catherine F.
 Stoddard, Alice J.
 Stoddard, Frances M.
 Stoddard, James
 Stoddard, Sarah J.
 Stohler, Albertina
 Stohr, John
 Stokes, Emma
 Stokoe, Thomas
 Stolz, August & Annie E.,
 his wife
 Stone, James
 Stone, Sarah
 Stoneley, Mary Ann & Harry
 G.
 Stoner, Wm.
 Storey, James A.
 Storms, Abraham
 Storms, Catherine
 Storms, Garrett H. & wife



Glen Ave.

V. Royce
1916

CEDAR LAWN CEMETERY

- Storms, George
 Storms, Geo. F.
 Storms, Jennie M.
 Storms, William
 Stoutenborough, Alfred
 Stoutenborough, Alfred, Exr.
 Stoutenborough, Alfred, Jr.
 Stoutenborough, Wm.
 Stoutenburg, Jas. E.
 Strachan, James
 Strange, Wm.
 Stratton, Martha C.
 Straub, Edith
 Straut, Jennie
 Straut, Richard J. & Hannah
 Straw, Ellen
 Strayer, Jennie E.
 Strayer, Lavinia & Magdalena
 Streckfuss, Wilhelmina
 Strong, Geo. W.
 Stroud, Mary Ann
 Struck, John
 Strutt, Agnes
 Stuart, Andrew F.
 Stumpf, Elizabeth
 Sturm, Elizabeth
 Styles, James
 Sutor, Wm.
 Sullivan, Joseph
 Sutcliff, Henry
 Sutherland, Wm.
 Sutter, Annie
 Sutter, Eliz.
 Suttle, Catherine
 Suttle, Matthew
 Suttle, Wm. T.
 Sutton, John
 Sutton, Wm.
 Svenson, Albert S.
 Swain, Clara
 Swan, Frank M.
 Swan, James Arthur
 Swan, Lizzie Anna
 Swartz, Andrew & Wm. M.
 Swenson, Jennie E.
 Swenson, John & wife
 Swick, Richard
 Swift, Geo., Exr.
 Swift, Geo., Mary M.
 Swift, John
 Swift, Wellington
 Swift, Wm.
 Swift, Wm. & John H.
 Swinburne, John
 Swinburne, Wm.
 Swindell, Eliza
 Swindells, Joel
 Swinley, Robt. H.
 Sword, Wm.
 Sykes, Joseph E.
 Sykes, Thos. & Samuel
 Sylvander, Amelia M.
 Symington, Alexander
 Symington, James & wife
 Tack, Abraham
 Taggart, Matilda D.
 Tainter, Horace B.
 Talcott, Annie Mercereau
 Talks, Elizabeth E.
 Tallis, Alfred
 Tallman, Eliza R.
 Tanis, Hubert
 Tanis, Jacob H.
 Tanis, Job
 Tanis, John
 Tanis, Komer
 Tanner, Minnie
 Tardy, Catherine
 Tarleton, Maggie E.
 Tattersall, Annie
 Tattersall, Geo. R.
 Taylor, Alexr.
 Taylor, Alexander M. & Jas.
 Taylor, Amelia
 Taylor, Amery M.
 Taylor, Chas. J.
 Taylor, Cora Ryerson
 Taylor, Elizabeth
 Taylor, Emily
 Taylor, Emily W.
 Taylor, Emma
 Taylor, Evan & wife
 Taylor, Frances
 Taylor, Geo. E.
 Taylor, George
 Taylor, Jas W.
 Taylor, John
 Taylor, J. N.
 Taylor, John W.
 Taylor, John & wife
 Taylor, Joseph & wife
 Taylor, Josephine
 Taylor, Mary
 Taylor, Mary H.
 Taylor, Mary Matilda
 Taylor, Minnie & Chas. B.
 Taylor, Robt. C.
 Taylor, Rose
 Taylor, Samuel
 Taylor, Wm. H. & Joseph
 Taylor, Wm. S.
 Taylor, Thos.
 Teal, Benj. F.
 Teale, Alfred
 Tebbs, John
 Tedford, William
 Telford, Sarah A.
 Terhune, Albert A. & John O.
 Terhune, Andrew Z.
 Terhune, Bessie
 Terhune, Cornelius S.
 Terhune, Edith H.
 Terhune, Ellen & Peter
 Terhune, Garret
 Terhune, Helen A.
 Terhune, Herman V. D.
 Terhune, Henry V. E.
 Terhune, John
 Terhune, John N.
 Terhune, Maria E.
 Terhune, Nicholas P.
 Terhune, Percy H.
 Terhune, Peter J.
 Terhune, Sophia
 Terribery, Geo. W.
 Tevendale, William
 Thayer, Geo. A.
 Thiblier, Anthony
 Thiessen, Herbert & wife
 Thom, Mary, James & Alexander
 Thomas, Elizabeth
 Thomas, Isaac
 Thomas, William & wife
 Thompson, Andrew
 Thompson Bros.
 Thompson, Fannie
 Thompson, Fernando C.
 Thompson, Israel L.
 Thompson, James & Julia
 Thompson, Maggie
 Thompson, Matilda
 Thompson, Samuel
 Thompson, Saml. R.
 Thompson, Sarah
 Thompson, Sarah Ellen
 Thompson, Wm.
 Thompson, Wm. L.
 Thomson, Arthur
 Thomson, Geo. H.
 Thomson, Henry
 Thomson, John
 Thomson, Robert
 Thorne, Annie E.
 Thorp, Anna F.
 Thorp, Samuel
 Thorp, Sarah E.
 Thorpe, Eliz. R.
 Thorpe, Sarah & John T.
 Threlfall, Fanny
 Thrift, Orlando
 Thrift, Walter H. & wife
 Thrift, William
 Thurston, James O.
 Thurston, Maria L.
 Thurston, Sarah J. & Henry N.
 Tibby, John
 Tibby, Wm. C.
 Tice, Hannah
 Tichanc, Raoul & wife
 Tichler, John J.
 Tiddens, Jacob
 Tiddes, John
 Tier, Austin
 Tier, Mary
 Tier, William



V. Boyles
1916

Sunny Glen

CEDAR LAWN CEMETERY

- Tiers, James
 Tierson, Jennie S.
 Tiffany, James H.
 Tillier, William
 Tillotson, Saml. J., Jr.
 Tillotson, Saml. J. & wife
 Tilton, Margaret C.
 Tillsley, Thos. & wife
 Tims, Anna M.
 Tindall, Richard B.
 Tinquer, Susan C.
 Titus, Austin
 Titus, Levinia
 Titus, Margaret B.
 Titus, Mary
 Titus, Mary M.
 Titus, Richard
 Todd, Annie M.
 Todd, Emily F.
 Todd, Joseph C.
 Todd, Mary
 Toll, Raymond R.
 Tompkins, Geo. B.
 Tooney, James
 Tops, Margaret
 Torbet, Frank T.
 Torbet, Robt. M.
 Tornquest, Peter
 Totten, John O.
 Totten, Samuel
 Touw, Richard & Kommertje
 Townley, Wm. G.
 Townsend, Nathaniel and
 Zebulon E.
 Traud, Joseph
 Travis, Floyd
 Treadwell, Mary L.
 Tregidgo, Henry Charles &
 wife
 Tremain, Chas. E.
 Tremper, Alfred J.
 Tremper, Hiram P.
 Trimble, Geo F. & Sarah
 Trimble, Sarah
 Trowbridge, Jas. A.
 Truax, Augustus C.
 Tryon, Mead H.
 Tschudin, Elise
 Tschudin, Gustave
 Tschudin, Gustav
 Tunis, Martin
 Tunstill, John
 Turnbull, David
 Turner, Edward
 Turner, James
 Turner, James A.
 Turner, Ralph
 Turner, Wm. F.
 Turton, Henry
 Turton, Mary N.
 Tuttle, Eliz. A.
 Tuttle, Socrates
 Twist, Ernest E.
 Tygert, Elizabeth
 Tynan, Leonard J. & wife
 Ullman, William
 Ulrich, Bessie G.
 Ulrich, Carl F.
 Urban, Ernest
 Urmson, Samuel
 Utter, H. B.
 Vacher, Martha R.
 Vail, Leah E.
 Vail, Martha
 Vale, Ellen
 Valerius, Emma A.
 Valtz, Marguerite
 Van Allen, Peter
 Van Arsdale, Elias S.
 Van Arsdale, Nathaniel H.
 Van Arsdel, Andrew
 Van Asperan, Catherine
 Van Beuren, Emma M.
 Van Blarcom, Albert J.
 Van Blarcom, C. Henry
 Van Blarcom, Caroline M.
 Van Blarcom, Cornelius. Ann
 M. & Isaac M.
 Van Blarcom, David
 Van Blarcom, Frederick W.
 Van Blarcom, Garrabrant
 Van Blarcom, Henry C.
 Van Blarcom, Isaac
 Van Blarcom, J. B., Excr.
 Van Blarcom, Mrs. James
 Van Blarcom, John B.
 Van Blarcom, Josephine M.
 Van Blarcom, Levi
 Van Blarcom, Wm. D. &
 Jacob C.
 Van Brederode, J. C. M.
 Van Bussum, Geo.
 Van Cleve, Frank
 Van Dale, Cornelius
 Van Dam, Martin
 Van Derbeck, Francis I.,
 Isaac I.
 Vanderbeek, Saml. I., Sr.
 Vanderbilt, Abram
 Vanderbilt, Lizzie S.
 Vanderbilt, Richard
 Van Derhoof, George
 Vanderhoven, Orrin
 Vanderlinda, Cornelius
 Vandermade, Ruth S.
 Vander Vleit, Adrian & wife
 Van Der Vliet, Annie
 Van Dervoort, Christopher B.
 Van Der Voort, C. F.
 Van Dervoort, Cornelius F.
 Van Dervoort, John C.—
 Guardian
 Vandervoort, John C.
 Vandervoort, Prudence
 Vanderwanda, Peter
 Van Deusen, Isaac S.
 Van Dien, Albert C.
 Van Dien, Jennie
 Van Dillen, Isaac, Sr.
 Van Dolsen, Annie C.
 Van Dorn, Jacob J.
 Van Drahle, Garret
 Van Drahle, John H.
 Van Drele, Herman
 Van Drele, John G.
 Van Dusen, Josephine
 Van Dyck, Cornelius C.
 Van Dyck, Francis C.
 Van Dyne, Philip L.
 Van Eck, Leonard
 Van Engers, Myers
 Van Gieson, Aaron
 Van Gieson, Alice
 Van Gieson, Augustus
 Van Gieson, Henry C.
 Van Gieson, Mary
 Van Handel, Cornelius, Sr.
 Van Hassel, Crine
 Van Hassel, Peter & wife
 Van Haste, John & wife
 Van Hemest, Marina
 Van Horn, Wm. A.
 Van Houten, Aaron
 Van Houten, Adrian V. R.
 Van Houten, Ann M. &
 Isaac
 Van Houten, Anthony B.
 Van Houten, Catherine
 Van Houten, Cornelius C.
 Van Houten, Edward
 Van Houten, Edward, Jr.
 Van Houten, Elizabeth
 Van Houten, Henry
 Van Houten, Henry I.
 Van Houten, Isaac H.
 Van Houten, John B. &
 Edgar W.
 Van Houten, John H.
 Van Houten, John R.
 Van Houten, J. S.
 Van Houten, James
 Van Houten, Peter
 Van Houten, Peter A.
 Van Houten, Peter V. R.
 Van Houten, Ralph & Sophia
 Van Houten, Richard
 Van Houten, Richard A. &
 Edward W.
 Van Houten, Richard H.
 Van Houten, Wm. H. H.
 Van Houten, Wm. T.
 Van Houten, Zabriskie A.
 Van Hoven, Grietje
 Van Hoven, Jacob & wife
 Van Hoven, Nicholas
 Van Hovenberg, Robt. E.
 Van Iderstine, Edmund A.



Sunny Glen

CEDAR LAWN CEMETERY

- Van Iderstine, Elizabeth
 Van Iderstine, John V. R.
 Van Iderstine, Mary M.
 Van Iderstine, Richard
 Van Iderstine, Tunis
 Van Kirk, Peter S.
 Van Lindo, Peter
 Van Maanen, John L.
 Van Ness, Aaron
 Van Ness, Wallace M.
 Van Noordt, Flora A.
 Van Nostrand, Jacob
 Van Orden, Andrew
 Van Orden, Peter & Mary M.,
 his wife
 Van Orden, Nerissa
 Van Pelt, John C.
 Van Rensalier, William
 Van Riper, Ann
 Van Riper, Catherine
 Van Riper, Charlotte
 Van Riper, Cornelius
 Van Riper, Dr. Cornelius S.
 Van Riper, Edwin F.
 Van Riper, George
 Van Riper, Geo. P.
 Van Riper, Hester A.
 Van Riper, Isabel S.
 Van Riper, Jane E.
 Van Riper, Jessie
 Van Riper, Lucinda
 Van Riper, Margaret
 Van Riper, Maria A.
 Van Riper, Mary E.
 Van Riper, Sarah E.
 Van Riper, T. Henry
 Van Sant, Horatio M.
 Van Saun, John B.
 Van Saun, Joseph P.
 Van Saun, Margaret
 Van Saun, Samuel A.
 Van Sice, John I.
 Van Splinter, Peter
 Van Treerum, Peter & Joseph
 Van Teglen, Barney
 Van Valkenburgh, Jas. V. D.
 Van Vladeracken, Mary &
 Henry
 Van Voorhies, Sarah Ann
 Van Vorst, Garret H.
 Van Vorst, Jacob
 Van Wagoner, Andrew H.
 Van Wagoner, Garret
 Van Wagoner, Isaac
 Van Wagoner, Peter H.
 Van Winkle, Albert Waling
 Van Winkle, Catherine
 Van Winkle, Cornelius N.
 Van Winkle, Cornelius V. R.
 Van Winkle, Edo
 Van Winkle, Elizabeth.
 Annie, Mary, John H.
 Van Winkle, Halmagh
 Van Winkle, Helena
 Van Winkle, Jacob
 Van Winkle, J. A.
 Van Winkle, John A., Excr.
 Van Winkle, John E.
 Van Winkle, John P.
 Van Winkle, John V. S.
 Van Winkle, Matilda
 Van Winkle, Sarah
 Van Winkle, Stephen
 Van Winkle, Theodore
 Van Winkle, Theodore &
 Helena, Excrs.
 Van Zile, Henrietta
 Varick, John
 Varick, Julia
 Varker, Josephine
 Vasseur, J. B.
 Veitch, Francis A. & wife
 Veith, Josephine A.
 Venable, Harriet
 Venable, Peter
 Veneman, Tiny
 Veneman, William
 Vernon, N. E.
 Ver Nooy, John H.
 Verrinder, Jas. N. G.
 Vert, Alexander
 Vescelius, Isaac
 Vescelius, J. Edwin W. &
 Arthur I.
 Vesey, William
 Vehyl, Mary
 Visser, Johanna
 Vivian, Emma
 Vogel, George G.
 Vogel, Margaret
 Vogt, Carl H.
 Voorhies, Annie L.
 Voorhies, George
 Voorhies, Geo. B.
 Voorhis, Isaac H.
 Vorrath, Henry H. & wife
 Vreeland, Abraham
 Vreeland, Andrew
 Vreeland, Andrew D.
 Vreeland, Annie
 Vreeland, Cornelius
 Vreeland, David D.
 Vreeland, Elias A., A. J. &
 John
 Vreeland, Elias H.
 Vreeland, Geo.
 Vreeland, Henry
 Vreeland, Henry R.
 Vreeland, Jacob
 Vreeland, Jacob H.
 Vreeland, Jane
 Vreeland, John C.
 Vreeland, John E.
 Vreeland, Margaret A.
 Vreeland, Maria
 Vreeland, Matilda
 Vreeland, Rachel A.
 Vreeland, Rebecca
 Vreeland, Remus
 Vreeland, Romulus
 Vreeland, Wm. D.
 Waddell, Jane
 Waddell, Margt.
 Wadsworth, Joseph
 Wagner, Anthony
 Wagner, Fred
 Wagner, John & Barbara
 Wagner, Verena
 Wainwright, Ira
 Waite, William
 Wakefield, Caroline
 Walder, Jacob
 Walder, Louis A.
 Walker, Geo. R.
 Walker, Janet
 Walker, Mary
 Walker, William
 Walker, Wm. F.
 Walker, Wm. H.
 Wall, Maggie
 Wallace, Francis
 Wallace, Maria
 Wallace, Walter W. & wife
 Walmsley, Richard
 Walsh, Matthew
 Walthall, Annie
 Walton, Mary
 Walz, Mary
 Wannamaker, Eliza
 Warburton, Emma Elizabeth
 Ward, Benj. I.
 Ward, Christina, Mamie E.
 & Wm. F.
 Ward, Garret
 Ward, Martha
 Ward, Martin L.
 Ward, Wm., Wm. T., Chas.
 J. & John H.
 Ward, Wm. E.
 Ward, Zebulon M.
 Ward, Zophar W.
 Wardle, Alice
 Wardle, Charles
 Wardle, Henry
 Wardle, John
 Wardle, Minnie B.
 Waring, Carrie M.
 Warner, Ann S.
 Warner, Caroline & Chas. H.
 Warner, Cornelius
 Warren, Ellen M.
 Warren, Peter
 Washburn, Martha Frances
 Wasnidge, Henry
 Waterhouse, Geo. B.
 Waterhouse, Sarah B.
 Waters, Jane
 Waters, Sarah Belle

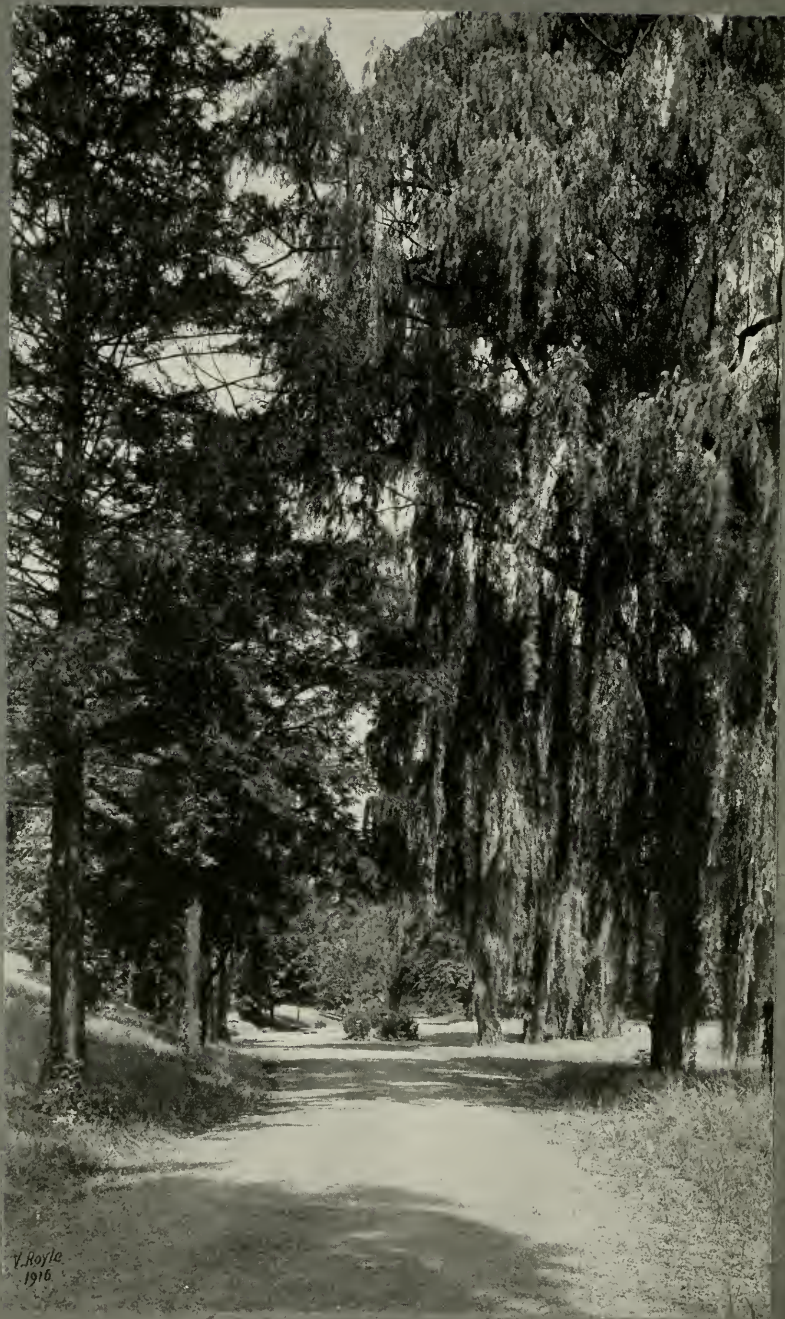


V. Boyle
1916

On Sunny Glen

CEDAR LAWN CEMETERY

Watson, Edward	Westervelt, Cornelius S.	Wiegold, Annie
Watson, Edward M.	Westervelt, David R.	Wiettsbach, Est. of Albin
Watson, Eliza	Westervelt, Helen A.	Wiggins, Caroline W.
Watson, Eliza L.	Westervelt, James P.	Wiggins, James
Watson, Helen	Westervelt, John C.	Wike, William
Watson, James	Westervelt, Rev. John P.	Wilber, Minerva
Watson, John	Westervelt, Lizzie C.	Wilcox, Albert A.
Watson, Louisa	Westervelt, Margaret S.	Wilcox, Hormer A.
Watson, Maggie	Westervelt, Mary C.	Wilcox, Martha Ann
Watson, Maggie D.	Westervelt, Mary H.	Wild, Susan A.
Watson, Samuel J.	Westervelt, Peter A.	Wilde, John James
Watson, Thos. & Maggie	Westervelt, Salina	Wilde, Rosa
Watson, Wm. G., Jr.	Westervelt, Sarah C.	Wilder, Rachel
Watson, Wm. W.	Westervelt, Stephen H.	Wiles, Lemuel M.
Watt, Est. of James	Westervelt, Susannah	Wiley, Cordelia
Watt, Jane	Westhoven, Jacob	Wiley, John
Watters, Archibald	Weston, Ernest R.	Wiley, Mary
Watts, Alice	Weston, Jane A.	Wiley, Wm. J. & wife
Waywell, James	Weyman, John H.	Wilkes, Alfred
Waywell, Est. of Luke	Weymar, Jacob	Wilkin, Joseph
Webb, Alvin	Weymer, Chas., Idaletta & Florence A.	Wilkinson, Sarah E.
Weber, Ann	Weymer, Sarah J.	Wilkinson, Edward
Webster, Charles	Whadcock, Elivira	Wilkinson, Henry
Weed, Edward B.	Whadcock, Harriet	Wilkinson, Mark
Weeks, Andrew J.	Whalen, Edward P., Sr.	Wilkinson, Robert S.
Wehnert, George	Wharburton, Henry	Willett, John A.
Wehnert, John & wife	Wheatley, Zach. & Hannah	Williams, Alonzo
Wehnert, Paulina	Wheeler, Anna G.	Williams, Chas. E.
Weidmann, Jacob	Wheeler, Edward W. & wife	Williams, Geo. & Albert
Weight, James W.	White, Chas. L. & Helen	Williams, Hattie A.
Weight, Sarah E.	White, Cornelius	Williams, Henry A.
Weinhold, Ralph Carl	White, David	Williams, John
Weir, James H.	White, Elizabeth	Williams, Richard
Weir, Mary	White, Geo. B.	Williams, Est. of Salome
Weiss, Constantin & Elise, his wife	White, Henry R.	Williams, Sophie
Welch, Geo. T.	White, Jacob	Williams, William
Welcher, Margaret E.	White, James	Williamson, Ernest A.
Welland, Jessie & Jennie	White, James, S. F. & W. C.	Williamson, Arthur E.
Welle, Lorenz	White, Leonard	Williamson, Chas.
Weller, Catherine H.	White, Mary	Williamson, Jemima
Wellman, Frederick A.	White, Peter	Williamson, Martha A.
Wells, Almira	White, Sarah E.	Williamson, Sarah & Mary E.
Wells, Chas. J.	Whitehead, Isabella	Williamson, Wilmer
Wells, Geo. M.	Whitehead, Joseph	Williard, William A.
Wells, Heber	Whitehead, Susie T.	Willis, Wm.
Wells, Mary A.	Whiteley, Ann	Willmott, Geo. W.
Wells, Estate of Reuben	Whiteley, Joseph	Willmott, Jane
Wells, Susan A., Frances A. & Louisa	Whitely, John	Wilson, Andrew & wife
Welshaw, Jane	Whiteman, Elizabeth C.	Wilson, Annie
Wemple, Laura A.	Whitfield, Est. of Joseph	Wilson, Chas.
Wentink, Cornelius	Whitford, John H.	Wilson, Emma J.
Wentink, Paul	Whitley, Ralph	Wilson, Esther A.
Wentink, Peter	Whitlock, Harmon C.	Wilson, Grace
Wentink, Tunis	Whitmore, Wm. T., Jr.	Wilson, Hannah M.
Wenzel, Mary	Whittaker, Edmund	Wilson, Isaac A. & wife
Werner, Franz	Whittaker, Ellen	Wilson, James
Wessells, Hannah	Whorwell, Askham G. & Eliza	Wilson, James, Jr.
West, Sarah	Whowell, Henry	Wilson, John
Westcott, Harry J.	Whowell, John & Thos.	Wilson, John J.
Westervelt, Conelius C.	Whyranch, Amelia	Wilson, Margaret
Westervelt, Cornelius I.	Wick, Mary A.	Wilson, Mary
	Wicke, Aletta	Wilson, Mary M.
		Wilson, Sarah



V. Hoyle
1916

The Circuit.

CEDAR LAWN CEMETERY

Wilson, Sarah Jane	Woods, Theodore B. & wife	Yereance, Abram
Wilson, Thos. B. & Emma V.	Woodward, Chas. A.	Yeareance, Ann
Wilson, Thos. W., Wm. II., & Jennie I.	Woodward, Chas. T.	Yereance, Benj. J.
Wilson, Wilhelmina	Woodward, Fannie	Yereance, Thomas
Wilson, William	Woodward, Mary T.	Yereance, Wilhelmus
Wilson, William A.	Woodworth, Abel M.	Yoemans, Josiah
Winans, John E.	Woolley, Jennie E.	York, Abram C.
Winans, Mathias C., Excr.	Woolley, Joseph	Young, Andrew
Winans, Nancy	Woolley, Susannah	Young, Anne E.
Windhorst, Lena & husband	Woolley, Wm. J. & Margaret, his wife	Young, David
Windhurst, Henrietta	Woolson, Bessie	Young, Elizabeth A.
Winkler, Garry	Worden, George	Young, Geo.
Winse, Adolph L.	Worden, Geo. H.	Young, Hester
Winslow, Gertrude C.	Worden, Peter J. & wife	Young, John & wife
Winterberg, Elizabeth	Workman, Mary	Young, Thomas
Winterbottom, Thomas	Worsley, Dwight L.	Young, Thos., Jr.
Winters, August	Wortendyke, David H.	Young, Vienna, Caroline & David
Winters, George	Worthen, Moses E.	Young, William
Winters, Jacob, Excr.	Worthen, Moses E., Trustee	Young, Wm. C.
Winters, William E.	Worthington, John G.	Youngster, Nicholas and Abram Peter
Wise, Serena	Wragg, Hester A.	Yuile, David
Wiseman, Ada	Wright, Agnes	Yunker, Jacob
Wiseman, Bessie B.	Wright, Andrew D.	
Wiseman, Geo. J.	Wright, J. Bidmead & Annie S.	Zabriskie, Albert T.
Wiseman, Stephen	Wright, James	Zabriskie, Andrew H.
Wiseman, William	Wright, John	Zabriskie, Elizabeth J.
Withers, Gene Catherine	Wright, Maggie S.	Zabriskie, Geo.
Withington, Alice	Wright, Mary Ada	Zabriskie, John H.
Witte, Aaron	Wright, Martha, Excr.	Zabriskie, John V. B.
Witte, Cornelius	Wright, Sarah	Zabriskie, Maria
Witte, John & Jane (his wife)	Wright, Thomas	Zabriskie, Myra V. H.
Wolfe, John	Wrigley, Jane C.	Zann, Adam
Wolff, Edward	Wrigley, John & Alice	Zeitlinger, Peter
Wolfhegel, Chas.	Wrigley, Thomas B.	Zelch, Margaret
Wood, Alexr.	Wuerker, Paul R. & wife	Zellner, William
Wood, Bertha & Sidney	Wunsch, Fredericka	Zeluff, David S.
Wood, Geo. H. & Wm. E.	Wurts, George	Zeluff, Eliza A.
Wood, Harrietta A. & Min- nie E.	Wyley, Sarah	Zeluff, Grace
Wood, James	Wylie, Jane	Zeluff, Mary Josephine
Wood, James & Mary L.	Wyness, Cecilia & Jane R.	Ziegler, Catherine
Wood, Wm. A.	Wynkoop, Alice J.	Zimmerman, John A.
Woodcock, Grace	Wyvill, Sarah E.	Zimmerman, Julius
Woodcock, Mary Ann		Zimmerman, Samuel
Woodhead, Frank	Yates, Benjamin	Zingli, John J.
Woodier, Maria & Wm. David	Yates, Elizabeth T.	Zinser, George
Woodruff, Catherine	Yates, Jane Grafton	Zippel, Agnes
Woodruff, John H.	Yates, Susanna	Zwicker, Mary
Woods, Sarah	Yawger, Elizabeth M.	Zwicker, Paul
	Yeomans, Jane	Zwingle, Florence M.



Boyle
1916

Receiving Vault

CEDAR LAWN CEMETERY

A WORD OF ADVICE

DO not put off the purchase of a burial plot until you are compelled to act under the pressure of instant need. If you wait until driven by circumstances, your choice will necessarily be a hasty one, involving the possibility of regret later on.

By taking up now with Cedar Lawn Cemetery the question of buying a plot, you will be able to give the subject the attention it merits. You can make your choice with deliberation, after a careful study of the situation, and so make sure of securing a plot adequate for your prospective needs and of such a character as to conform to your taste and means. So long as you are unprovided with a burial plot, you are at the mercy of untoward chances. Life is uncertain, and you will rest easier if you know that when the inevitable happens, you will be prepared and not be compelled to deal with the question of a burial plot at an inopportune moment.

CEDAR LAWN CEMETERY offers you, at all times, every possible help in the choice of a plot and in the arrangement of terms of payment.





LXVII - Beech

CEDAR LAWN CEMETERY

BEAUTY AND PERMANENCE

THE illustrations in this book are intended to convey an idea of the general character of the Cemetery. The beauty of the pictures reflects the beauty of the place, the series presenting each section of the Cemetery in order, so that by studying the pictures, it is easy to form an accurate conception of the Cemetery as a whole.

To fully appreciate the charm and seclusion of the Cemetery, however, it is necessary to visit it. Visitors are welcome, and those interested in choosing a last resting place for their dead, will not find an hour spent in Cedar Lawn wasted.

But more important than anything else, is the guarantee of permanence afforded by the Perpetual Care Fund which will stand forever between the Cemetery and neglect. The advantages Cedar Lawn possesses to-day are the advantages it will possess for all time, so far as human foresight can provide; therefore, when you buy a plot in Cedar Lawn, you can be confident that the unique qualities which have given it a pre-eminent position amongst the cemeteries of the State will continue to distinguish it indefinitely, so that the Cemetery will always remain as it is to-day, *AN IDEAL RESTING PLACE FOR THE DEAD.*



LIBRARY OF CONGRESS



0 014 223 205 4

