

Table with columns for Day, Air Pressure (mm), Direction and Velocity of Wind (m/sec), and Amount of Precipitation (mm). Includes sub-columns for morning and afternoon observations and a monthly average row.

Table with columns for Day, Air Temperature (C), Rel. Humidity (%), and Amount of Clouds (0-10) and Forms of Cloud. Includes sub-columns for morning and afternoon observations and a monthly average row.

重力ノ更正 Reduction to standard gravity - 0.2
海面ノ更正 Reduction to mean sea level + 3.8

Table with columns for Day, Air Pressure (mm), Direction and Velocity of Wind (m/sec), and Amount of Precipitation (mm). Includes sub-columns for morning and afternoon observations and a monthly average row.

Table with columns for Day, Air Temperature (C), Rel. Humidity (%), and Amount of Clouds (0-10) and Forms of Cloud. Includes sub-columns for morning and afternoon observations and a monthly average row.

重力ノ更正 Reduction to standard gravity - 0.1
海面ノ更正 Reduction to mean sea level + 18.8

長春

Table with columns for Day, Air Pressure (A.M., P.M., Mean), Wind Direction and Velocity (A.M., P.M., Mean), and Precipitation (A.M., P.M., Total). Includes daily data from Day 1 to 30 and a summary row.

天津

Table with columns for Day, Air Temperature (A.M., P.M., Mean, Max, Min, Range), Rel. Humidity (A.M., P.M., Mean), and Cloud Amount and Form (A.M., P.M., Mean). Includes daily data from Day 1 to 30 and a summary row.

Vertical force correction Reduction to standard gravity - 0.4
Sea level correction Reduction to mean sea level + 0.4

Table with columns for Day, Air Pressure (A.M., P.M., Mean), Wind Direction and Velocity (A.M., P.M., Mean), and Precipitation (A.M., P.M., Total). Includes daily data from Day 1 to 30 and a summary row.

芝罘

Table with columns for Day, Air Temperature (A.M., P.M., Mean, Max, Min, Range), Rel. Humidity (A.M., P.M., Mean), and Cloud Amount and Form (A.M., P.M., Mean). Includes daily data from Day 1 to 30 and a summary row.

Vertical force correction Reduction to standard gravity - 0.5
Sea level correction Reduction to mean sea level + 2.0

杭州 HANGCHOW.

JUNE, 1915.

大正四年六月

Table with columns for Day, Air Pressure (A.M., P.M., Mean), Wind Direction and Velocity (A.M., P.M., Mean), and Amount of Precipitation (A.M., P.M., Total). Includes daily data from June 1 to 30 and a monthly average row.

Table with columns for Day, Air Temperature (A.M., P.M., Mean, Max, Min, Range), Relative Humidity (A.M., P.M., Mean), and Amount of Clouds (A.M., P.M., Mean). Includes daily data from June 1 to 30 and a monthly average row.

重力ノ更正 Reduction to standard gravity..... - 1.0
海面ノ更正 Reduction to mean sea level..... + 0.9

南京 NANKING.

JUNE, 1915.

大正四年六月

Table with columns for Day, Air Pressure (A.M., P.M., Mean), Wind Direction and Velocity (A.M., P.M., Mean), and Amount of Precipitation (A.M., P.M., Total). Includes daily data from June 1 to 30 and a monthly average row.

Table with columns for Day, Air Temperature (A.M., P.M., Mean, Max, Min, Range), Relative Humidity (A.M., P.M., Mean), and Amount of Clouds (A.M., P.M., Mean). Includes daily data from June 1 to 30 and a monthly average row.

重力ノ更正 Reduction to standard gravity..... - 0.8
海面ノ更正 Reduction to mean sea level..... + 2.6

杭州

南京

Table for HANKOW weather data: Air Pressure (mm), Wind Direction and Velocity (m/sec), Amount of Precipitation (mm). Includes daily data from Day 1 to 30 and a summary row.

Table for HANKOW weather data: Air Temperature (°C), Rel. Humidity (%), Amount (0-10) and Form of Cloud. Includes daily data from Day 1 to 30 and a summary row.

重力ノ更正 Reduction to standard gravity - 0.9
海面ノ更正 Reduction to mean sea level + 3.2

Table for SHASI weather data: Air Pressure (mm), Wind Direction and Velocity (m/sec), Amount of Precipitation (mm). Includes daily data from Day 1 to 30 and a summary row.

Table for SHASI weather data: Air Temperature (°C), Rel. Humidity (%), Amount (0-10) and Form of Cloud. Includes daily data from Day 1 to 30 and a summary row.

重力ノ更正 Reduction to standard gravity - 1.0
海面ノ更正 Reduction to mean sea level + 4.4

大正四年十二月十六日印刷
大正四年十二月十六日發行

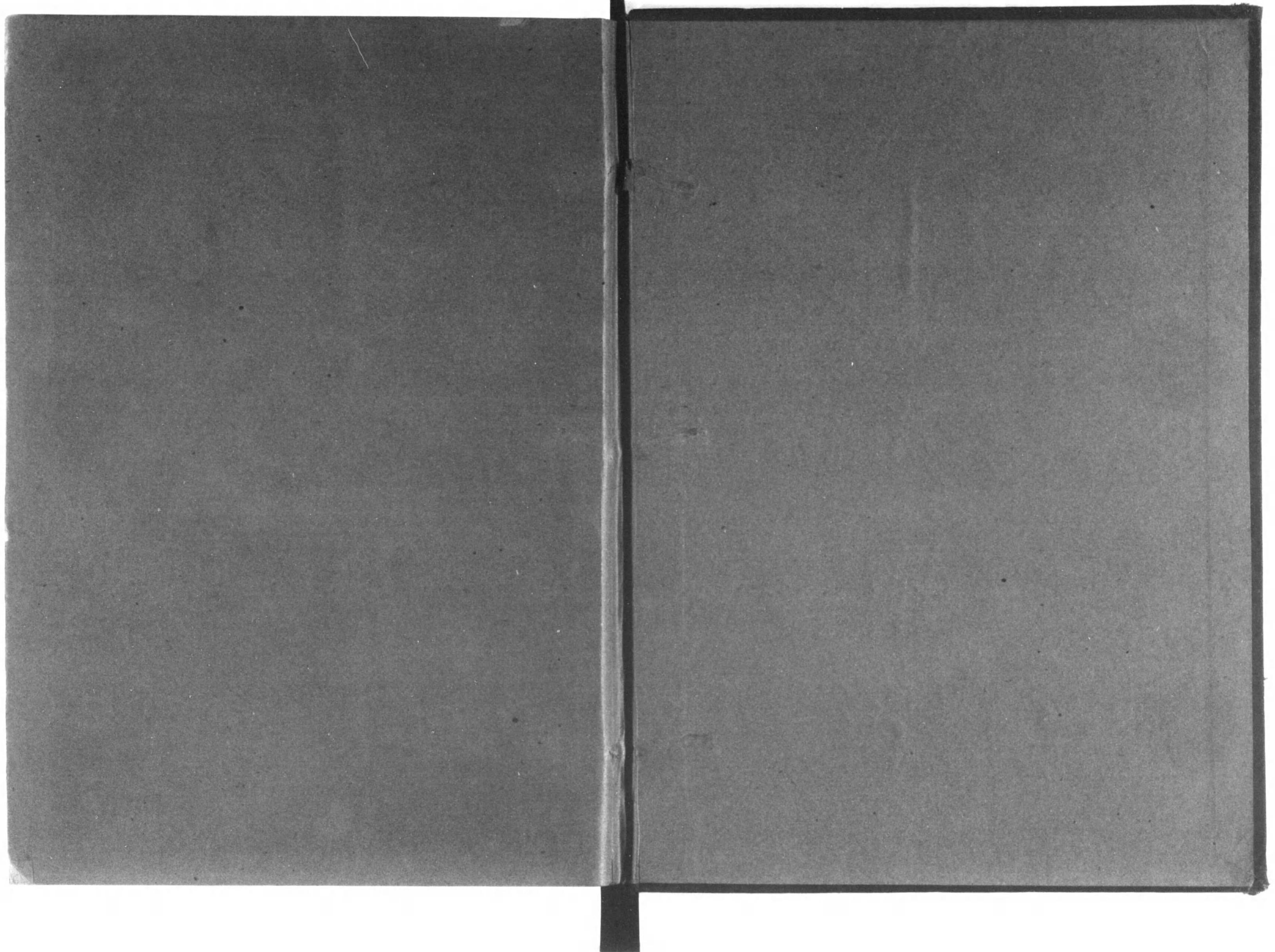
(定價金壹圓五拾錢)

中央氣象臺

印刷人 東京市芝區櫻田區前町九番地
石丸 鶴吉

印刷所 東京市京橋區鈴木町二番地
東亞印刷株式會社
電話(京橋) 長二二四番
二二五番

販賣所 東京市麴町區代官町中央氣象臺構内
大日本氣象學會



14. 6二-24
•1200701616502•



終