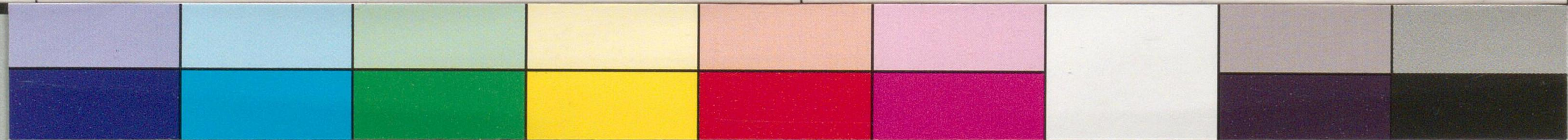
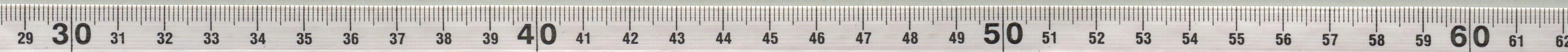


Handwritten text in a cursive script, likely a historical document or letter, written on aged paper. The text is arranged in two columns, with the right column being more legible than the left. The script appears to be a form of Japanese or Chinese cursive, possibly from the Edo or Meiji periods. The paper shows signs of age, including creases and discoloration.





Handwritten text in a cursive script on aged paper, likely a document or letter. The text is written vertically and appears to be in a historical Japanese or Chinese style. The paper is yellowed and has some damage at the top edge.



