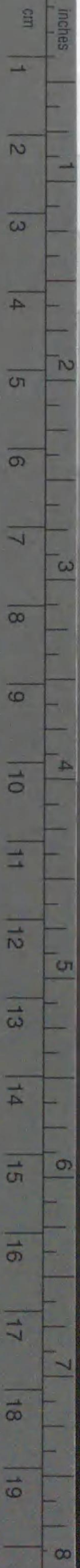


Kodak Gray Scale



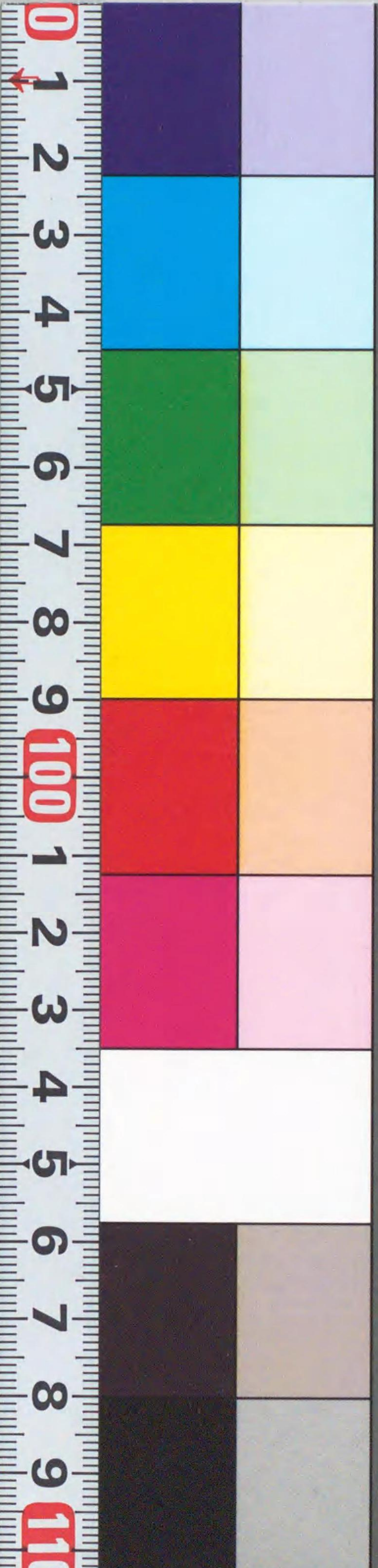
© Kodak, 2007 TM: Kodak

A 1 2 3 4 5 6 M 8 9 10 11 12 13 14 15 B 17 18 19

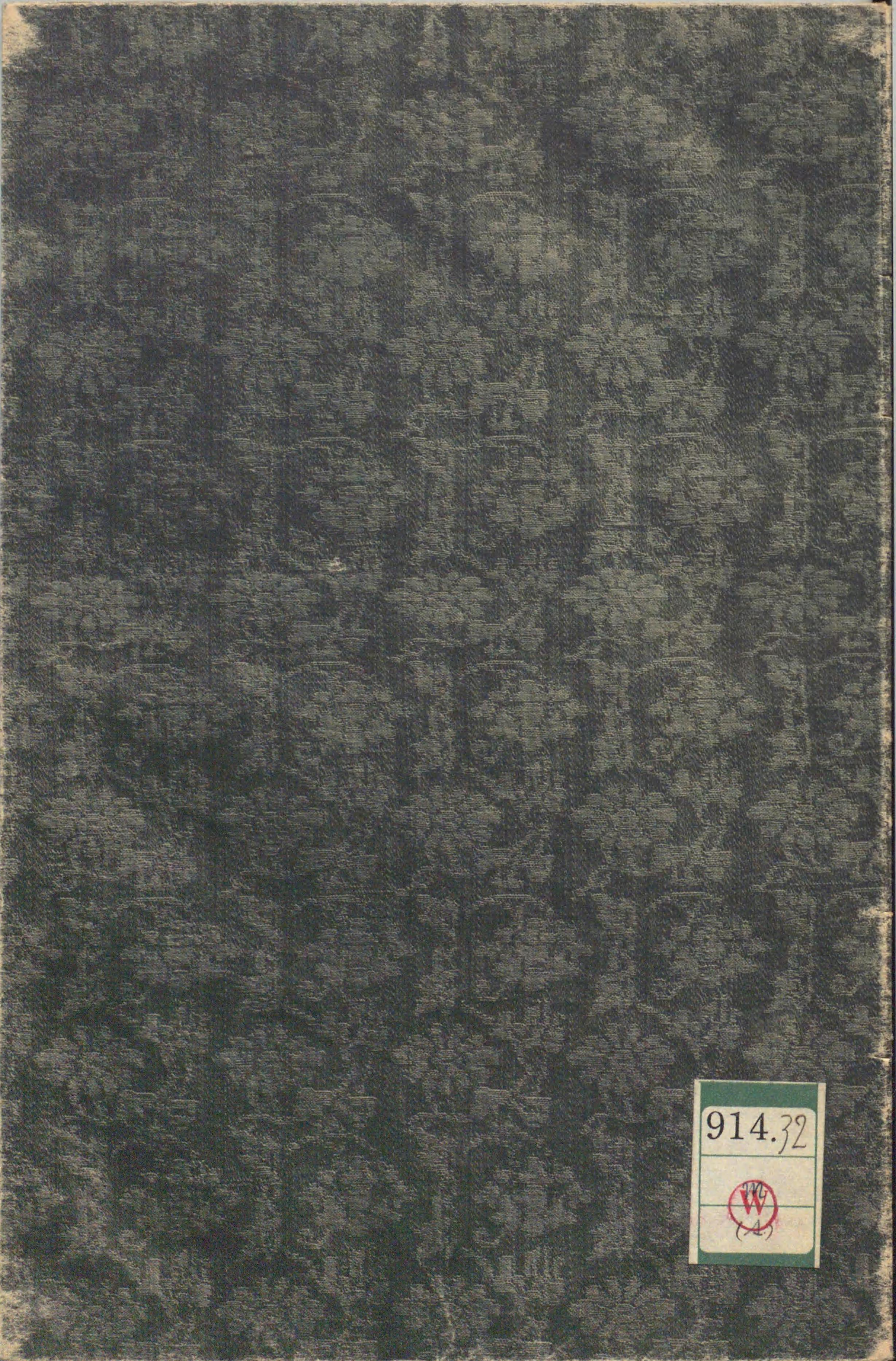


Kodak Color Control Patches

Blue Cyan Green Yellow Red Magenta White 3/Color Black



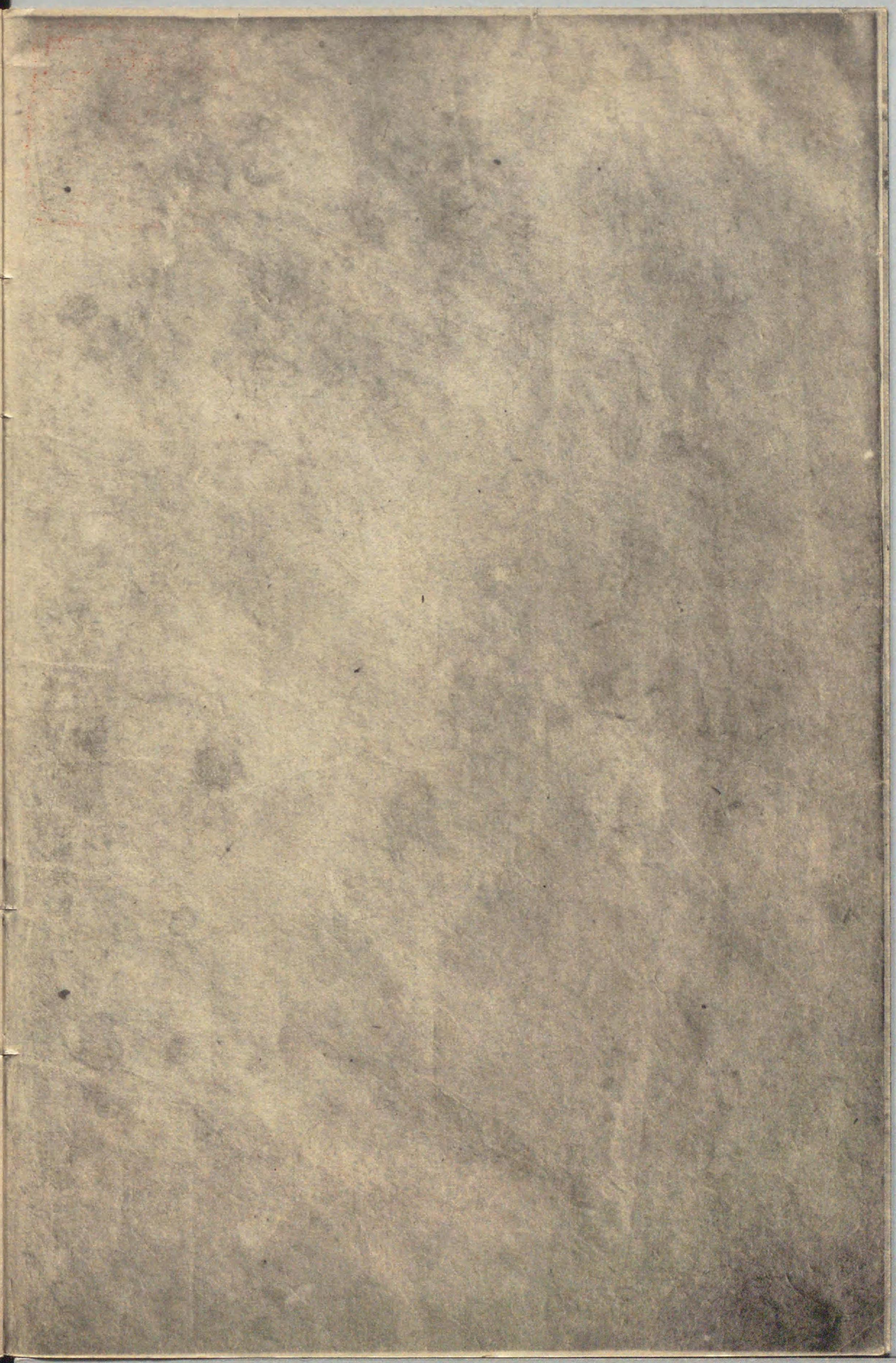
914.32





216477

Handwritten text in a cursive script, likely a form of Japanese calligraphy (sōsho). The text is arranged in approximately 12 vertical columns, reading from right to left. The characters are fluid and connected, characteristic of the style. The ink is dark on aged, yellowish paper.



Handwritten text in a cursive script, likely a letter or document, spanning the left page of the manuscript. The text is written in dark ink on aged, yellowish paper.

Handwritten text in a cursive script, likely a letter or document, spanning the right page of the manuscript. The text is written in dark ink on aged, yellowish paper.

Handwritten text in a cursive script, likely a letter or document, consisting of several lines of text.

Handwritten text, possibly a signature or a specific heading, located in the upper right portion of the page.

Handwritten text in a cursive script, continuing the text from the first page.

Handwritten text in a cursive script, continuing the text from the first page.

Handwritten text in a cursive script, continuing the text from the first page.

Handwritten text in a cursive script, continuing the text from the first page.

Handwritten text in a cursive script, continuing the text from the first page.

Handwritten text, possibly a signature or a specific heading, located at the bottom right of the page.

Handwritten text in a cursive script, likely a letter or document fragment.

5

Handwritten text in a cursive script, continuing the document.

Handwritten text in a cursive script, continuing the document.

216477

Handwritten text in a cursive script, continuing the document.

Handwritten text in a cursive script, continuing the document.

Handwritten text in a cursive script, continuing the document.

... ..

... ..

...

... ..

...

... ..

... ..

... ..

... ..

... ..

... ..

... ..

... ..

... ..

... ..

... ..

... ..

Handwritten text at the top of the right page.

Handwritten text on the right page, line 1.

Handwritten text on the right page, line 2.

Handwritten text on the right page, line 3.

Handwritten text on the right page, line 4.

Handwritten text on the right page, line 5.

Handwritten text on the right page, line 6.

Handwritten text on the right page, line 7.

Handwritten text on the right page, line 8.

Handwritten text at the top of the left page.

Handwritten text on the left page, line 1.

Handwritten text on the left page, line 2.

Handwritten text on the left page, line 3.

Handwritten text on the left page, line 4.

Handwritten text on the left page, line 5.

Handwritten text on the left page, line 6.

Handwritten text on the left page, line 7.

Handwritten text at the bottom of the left page.

Handwritten text in cursive script, likely a letter or document, starting with a large initial character.

Handwritten text in cursive script, continuing the text from the previous page.

Handwritten text in cursive script, starting with a large initial character.

Handwritten text in cursive script, continuing the text from the previous page.

Handwritten text in cursive script, continuing the text from the previous page.

Handwritten text in cursive script, likely a list or index.

Handwritten text in cursive script, possibly a date or reference.

Handwritten text in cursive script, possibly a name or title.

Handwritten text in cursive script, possibly a name or title.

Handwritten text in cursive script, possibly a name or title.

Handwritten text in cursive script, possibly a name or title.

Handwritten text in cursive script, possibly a name or title.

Handwritten text in cursive script, possibly a name or title.

Handwritten text in cursive script, possibly a name or title.

Handwritten text in cursive script, possibly a name or title.

Handwritten text in cursive script, likely a list or index of names or terms.

Handwritten word or phrase in cursive script.

Handwritten word or phrase in cursive script.

Handwritten word or phrase in cursive script.

Handwritten word or phrase in cursive script.

Handwritten word or phrase in cursive script.

Handwritten word or phrase in cursive script.

Handwritten word or phrase in cursive script.

Handwritten word or phrase in cursive script.

Handwritten word or phrase in cursive script.

Handwritten word or phrase in cursive script.

Handwritten word or phrase in cursive script.

Handwritten word or phrase in cursive script.

Handwritten word or phrase in cursive script.

Handwritten word or phrase in cursive script.

Handwritten word or phrase in cursive script.

Handwritten text in a cursive script, likely a list or account. The text is written on aged, yellowed paper and is organized into several lines. The script is dense and characteristic of early modern European handwriting. The lines are separated by horizontal strokes, and the overall appearance is that of a formal record or ledger.

Handwritten text in a cursive script, continuing from the previous page. The text is written on aged, yellowed paper and is organized into several lines. The script is dense and characteristic of early modern European handwriting. The lines are separated by horizontal strokes, and the overall appearance is that of a formal record or ledger.

出のりありきよ 二葉の院 小の院 小一葉 ちの院
皆井 ちの院 小二葉 ちの院 冬泉院
ちの院 ちの院 東院 小野宮
ちの院 ちの院 東二葉 小一葉 竹葉
のん院 朱雀院
ちの院 ちの院
ちの院
冬泉院
のん院

かゝるに

ちの院 ちの院 ちの院 ちの院

ちの院 ちの院 ちの院 ちの院

ちの院 ちの院

ちの院 ちの院 ちの院 ちの院

ちの院 ちの院 ちの院

ちの院 ちの院 ちの院 ちの院

ちの院 ちの院 ちの院 ちの院

ちの院 ちの院

Handwritten text in a cursive script, likely a historical document or letter. The text is written in a fluid, connected style across approximately 12 lines.

Handwritten text in a cursive script, continuing from the previous page. The text is written in a fluid, connected style across approximately 12 lines.

Handwritten text in a cursive script, likely a historical document or letter, spanning the left page of the manuscript.

Handwritten text in a cursive script, likely a historical document or letter, spanning the right page of the manuscript.

Handwritten text in a cursive script, likely a letter or a page from a manuscript. The text is written in a fluid, connected style across approximately 12 lines.

Handwritten text in a cursive script, continuing from the previous page. It features several lines of text, including a prominent line that reads "木の子" (Mokko no ko) at the top left of this page.

Handwritten text in a cursive script, likely a form of Arabic or Persian calligraphy, covering the left page of the manuscript. The text is written in a fluid, connected style across approximately 12 lines.

Handwritten text in a cursive script, likely a form of Arabic or Persian calligraphy, covering the right page of the manuscript. The text is written in a fluid, connected style across approximately 12 lines. A small vertical inscription is visible near the top right of the page.

Handwritten text in a cursive script, likely a letter or a page from a manuscript. The text is written in a fluid, connected style across several lines.

Handwritten text in a cursive script, continuing from the previous page. The text is written in a fluid, connected style across several lines.

は

木

か

う

な

ま

ゆ

ら

い

Handwritten text in a cursive script, likely a letter or document, covering the left page of the manuscript.

Handwritten text in a cursive script, likely a letter or document, covering the right page of the manuscript.

Handwritten text in a cursive script, likely a list or account. The text is written in dark ink on aged, yellowish paper. It consists of approximately 12 lines of text, with some lines starting with a dash or a small symbol. The script is highly stylized and difficult to decipher without a key.

Handwritten text in a cursive script, continuing from the previous page. It consists of approximately 12 lines of text, with some lines starting with a dash or a small symbol. The script is highly stylized and difficult to decipher without a key.

Handwritten text in Arabic script, likely a religious or historical document. The text is written in a cursive style and spans the width of the page.

Handwritten text in Arabic script, continuing from the previous page. The text is written in a cursive style and spans the width of the page.

۱۱۱

Handwritten text in a cursive script, likely Persian or Arabic, consisting of several lines of text.

Handwritten text in a cursive script, likely Persian or Arabic, consisting of several lines of text.

Handwritten text in a cursive script, likely Persian or Arabic, consisting of several lines of text.

Handwritten text in a cursive script, likely Persian or Arabic, consisting of several lines of text.

Handwritten text in a cursive script, likely a historical document or letter. The text is written in a dark ink on aged, yellowish paper. It consists of approximately 10 lines of text, with some lines starting with a large, decorative initial letter. The script is highly stylized and characteristic of the Ottoman or Persian calligraphic tradition.

Handwritten text in a cursive script, continuing from the previous page. The text is written in a dark ink on aged, yellowish paper. It consists of approximately 10 lines of text, with some lines starting with a large, decorative initial letter. The script is highly stylized and characteristic of the Ottoman or Persian calligraphic tradition.

13

あつちのふくやうなうらなひのついでに

あつちのふくやうなうらなひのついでに

あつち

あつちのふくやうなうらなひのついでに

あつち

あつちのふくやうなうらなひのついでに

あつちのふくやうなうらなひのついでに

あつち

あつちのふくやうなうらなひのついでに

あつち

あつちのふくやうなうらなひのついでに

あつち

あつち

あつちのふくやうなうらなひのついでに

あつち

あつちのふくやうなうらなひのついでに

あつちのふくやうなうらなひのついでに

千手観音すらくく六観音

すらくくを

弥勒

かうはんをいんがはおうわ

あまのつたはれとらふのきりせしちかみまき

しゆらん

釋迦

く

もん

地蔵

神

まのまの國をいんがはおうわ

うらなをいんがはおうわ

うらなをいんがはおうわ

うらなをいんがはおうわ

うらなをいんがはおうわ

うらなをいんがはおうわ

うらなをいんがはおうわ

うらなをいんがはおうわ

うらなをいんがはおうわ

うらなをいんがはおうわ

うらなをいんがはおうわ

うらなをいんがはおうわ

行ハ

普賢の十敬

法華經の方便品

系上品

帝不輕菩薩の行

系行經

金剛般若

法華經の卷

壽命經

法華經

すのりく

阿耨後の大咒

ろんしろう 後羅庄

千千後羅庄

後羅庄の月

演法

法華經の不斷の行

修法ハ少ク此真言ナリト云フヤ今ヤウク打テ

うま

法師ハ

あたまの打つておこなうたあまの打つておこなう

これとるれおこなうて

律師 内供

説法師ハ少ク此真言ナリト云フヤ今ヤウク打テ

あたまの打つておこなうたあまの打つておこなう

あたまの打つておこなうたあまの打つておこなう

Handwritten text in Arabic script, consisting of approximately 10 lines of dense cursive writing.

Handwritten text in Arabic script, consisting of approximately 10 lines of dense cursive writing, continuing from the previous page.

Handwritten text in a cursive script, likely a historical document or manuscript. The text is written in a dark ink on aged, yellowish paper. It consists of approximately 12 lines of text, with some lines starting with a large initial letter. The script is highly stylized and difficult to decipher without a key.

Handwritten text in a cursive script, continuing from the previous page. The text is written in a dark ink on aged, yellowish paper. It consists of approximately 12 lines of text, with some lines starting with a large initial letter. The script is highly stylized and difficult to decipher without a key.

Handwritten text in a cursive script, likely a historical document or letter. The text is written in a dark ink on aged, yellowish paper. It consists of approximately 12 lines of text, starting with a large initial letter 'P' on the left side of the page. The script is dense and characteristic of early modern European handwriting.

Handwritten text in a cursive script, continuing from the previous page. The text is written in a dark ink on aged, yellowish paper. It consists of approximately 12 lines of text, starting with a large initial letter 'P' on the left side of the page. The script is dense and characteristic of early modern European handwriting.

Handwritten text in cursive script, likely a list or account entry.

Handwritten text in cursive script, possibly a signature or a specific entry.

Handwritten text in cursive script, continuing the list or account.

Handwritten text in cursive script, possibly a signature or a specific entry.

Handwritten text in cursive script, continuing the list or account.

Handwritten text in cursive script, continuing the list or account.

Handwritten text in cursive script, possibly a signature or a specific entry.

Handwritten text in cursive script, possibly a signature or a specific entry.

Handwritten text in cursive script, continuing the list or account.

Handwritten text in cursive script, possibly a signature or a specific entry.

Handwritten text in cursive script, possibly a signature or a specific entry.

Handwritten text in cursive script, continuing the list or account.

Handwritten text in cursive script, possibly a signature or a specific entry.

Handwritten text in cursive script, continuing the list or account.

Handwritten text in a cursive script, likely a historical document or letter. The text is written in a dark ink on aged, yellowish paper. It consists of approximately 10 lines of text, starting with a small horizontal line at the top left. The script is highly stylized and difficult to decipher without a key.

Handwritten text in a cursive script, continuing from the previous page. It consists of approximately 10 lines of text, written in a dark ink on aged, yellowish paper. The script is highly stylized and difficult to decipher without a key.

Handwritten text in a cursive script, likely a letter or a page from a manuscript. The text is written in a fluid, connected style across several lines.

Handwritten text in a cursive script, possibly a signature or a specific phrase.

Handwritten text in a cursive script, possibly a signature or a specific phrase.

Handwritten text in a cursive script, possibly a signature or a specific phrase.

Handwritten text in a cursive script, possibly a signature or a specific phrase.

Handwritten text in a cursive script, possibly a signature or a specific phrase.

Handwritten text in a cursive script, possibly a signature or a specific phrase.

Handwritten text in a cursive script, possibly a signature or a specific phrase.

Handwritten text in a cursive script, possibly a signature or a specific phrase.

Handwritten text in a cursive script, possibly a signature or a specific phrase.

文集

とくしつ

るんこ

あし

あし

あし

あし

集

古今集

古今

後集

あし

あし

あし

あし

あし

あし

あし

あし

あし

あし

あし

あし

あし

あし

あし

あし

あし

おんくろくしんせき

おんくろくしんせき

おんくろくしんせき

おんくろくしんせき

おんくろくしんせき

おんくろくしんせき

おんくろくしんせき

おんくろくしんせき

おんくろくしんせき

おんくろくしんせき

おんくろくしんせき

おんくろくしんせき

おんくろくしんせき

おんくろくしんせき

おんくろくしんせき

おんくろくしんせき

おんくろくしんせき

おんくろくしんせき

Handwritten text in cursive script, top line on the left page.

Handwritten text in cursive script, second line on the left page.

Handwritten text in cursive script, third line on the left page.

Handwritten text in cursive script, fourth line on the left page.

Handwritten text in cursive script, fifth line on the left page.

Handwritten text in cursive script, sixth line on the left page.

Handwritten text in cursive script, seventh line on the left page.

Handwritten text in cursive script, eighth line on the left page.

Handwritten text in cursive script, ninth line on the left page.

Handwritten text in cursive script, top line on the right page.

Handwritten text in cursive script, second line on the right page.

Handwritten text in cursive script, third line on the right page.

Handwritten text in cursive script, fourth line on the right page.

Handwritten text in cursive script, fifth line on the right page.

Handwritten text in cursive script, sixth line on the right page.

Handwritten text in cursive script, seventh line on the right page.

Handwritten text in cursive script, eighth line on the right page.

Handwritten text in cursive script, ninth line on the right page.

Handwritten text in cursive script, tenth line on the right page.

Gene, de Thurst, 1755

1755

1755

1755

1755

1755

1755

1755

1755

1755

1755

1755

1755

1755

1755

1755

1755

1755

Handwritten text in cursive script, likely a name or title.

Handwritten text in cursive script, likely a name or title.

Handwritten text in cursive script, likely a name or title.

Handwritten text in cursive script, likely a name or title.

Handwritten text in cursive script, likely a name or title.

Handwritten text in cursive script, likely a name or title.

Handwritten text in cursive script, likely a name or title.

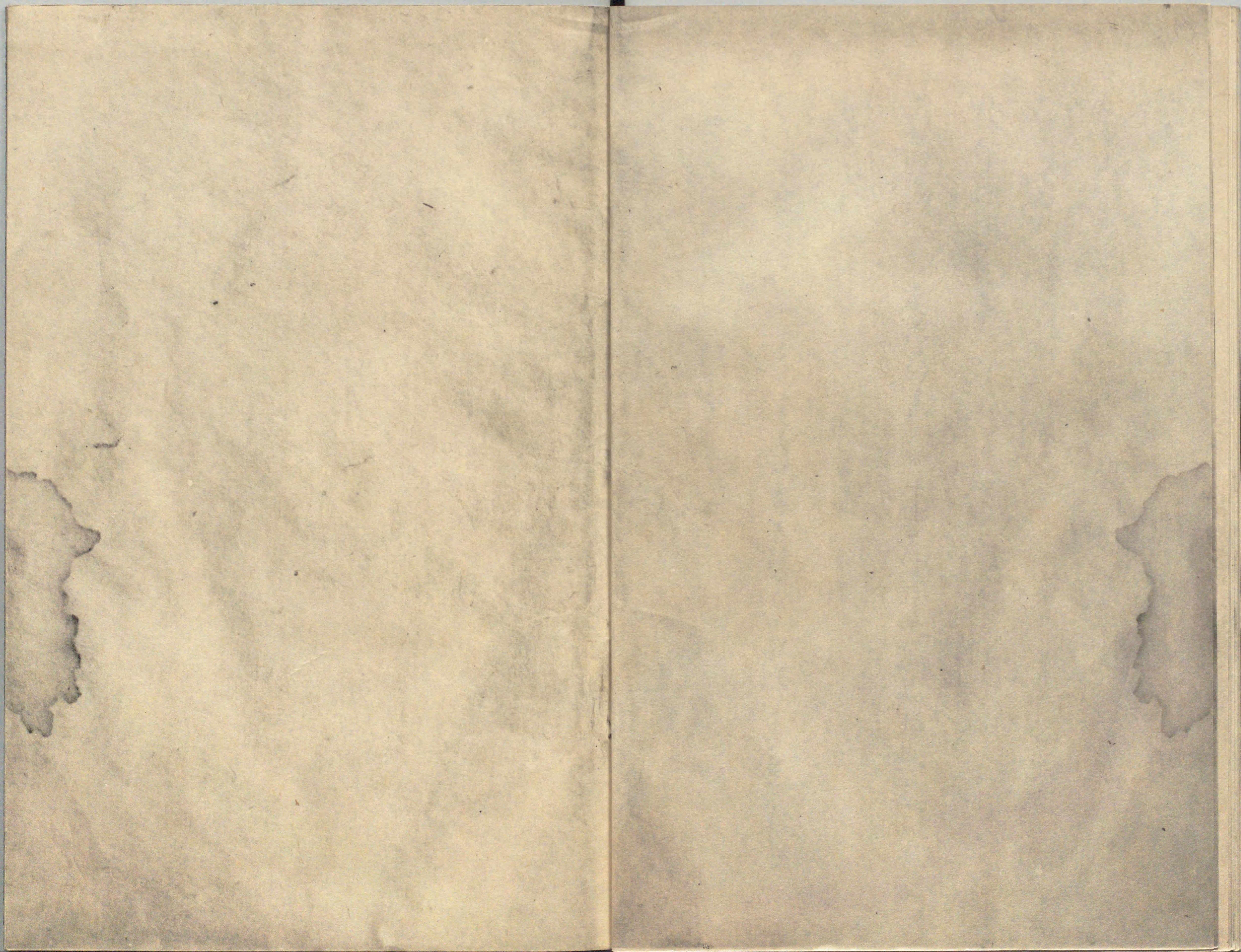
Handwritten text in cursive script, likely a name or title.

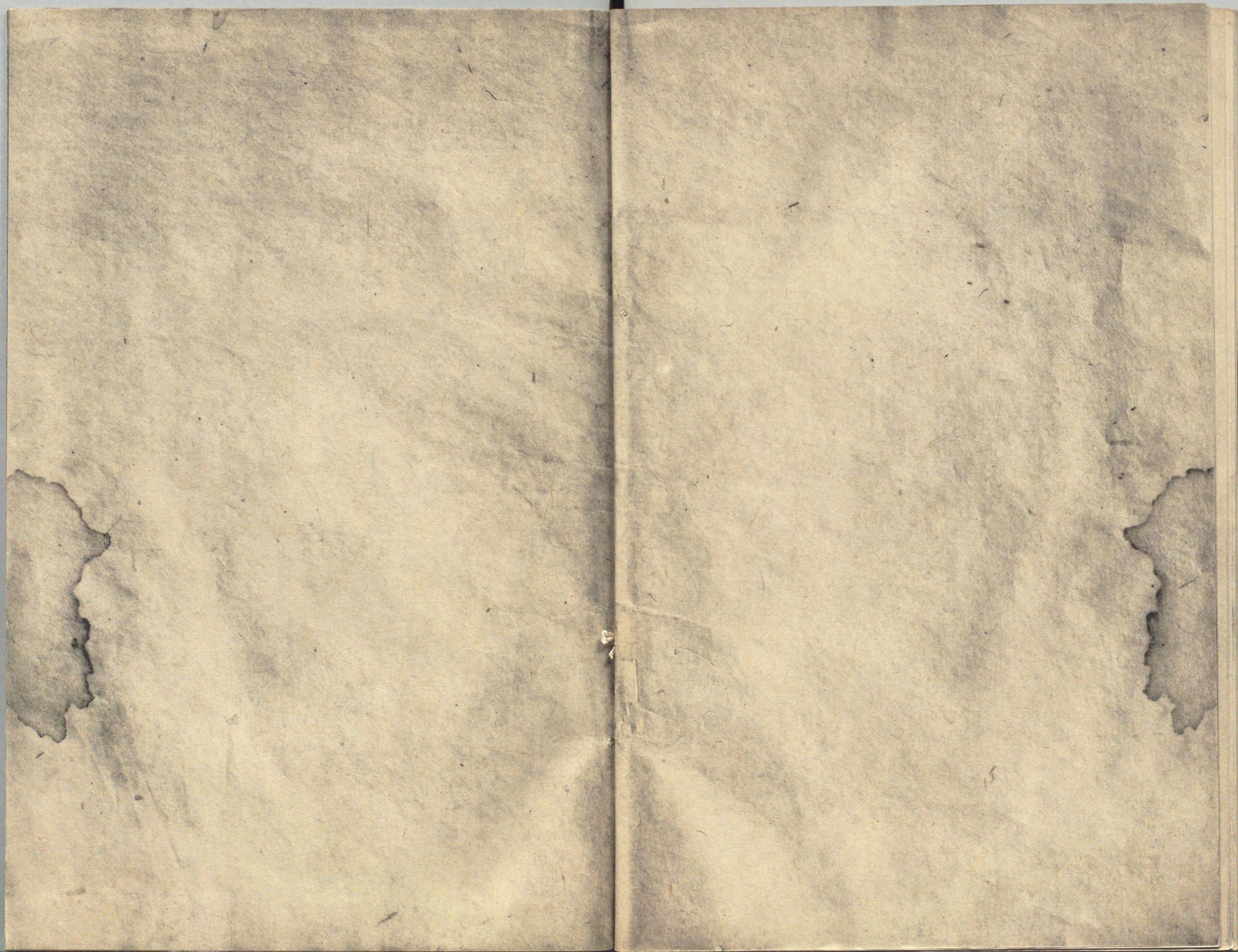
Handwritten text in cursive script, likely a name or title.

Handwritten text in cursive script, likely a name or title.

Handwritten text in cursive script, likely a name or title.

Handwritten text in cursive script, likely a name or title.





善付家書

