

## **Historic, Archive Document**

Do not assume content reflects current scientific knowledge, policies, or practices.



62.83

LIBRARY

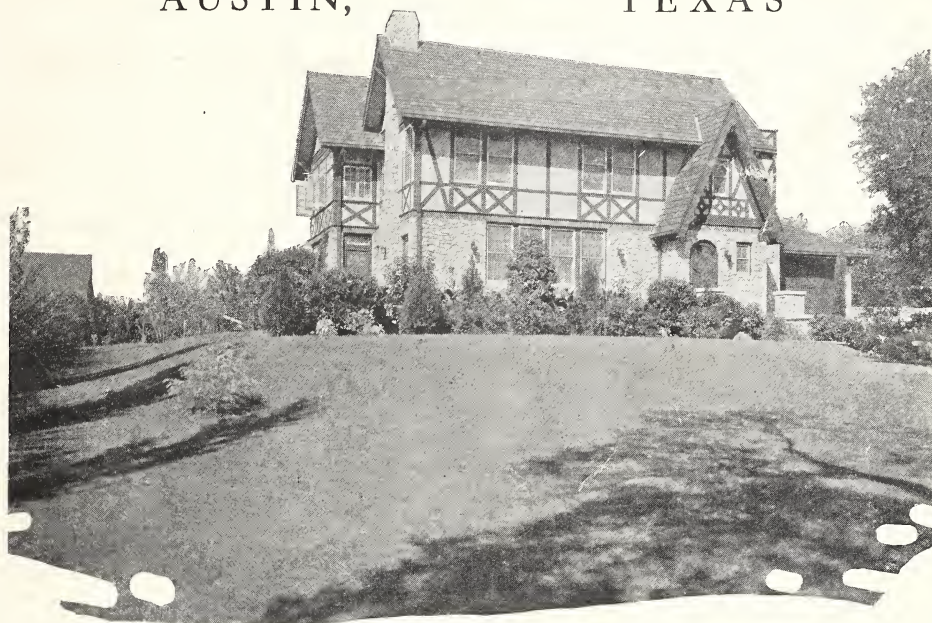
RECEIVED

FEB 3 1930 ★

U. S. DEPARTMENT OF AGRICULTURE

1875 RAMSEY'S 1930  
AUSTIN NURSERY

AUSTIN, TEXAS



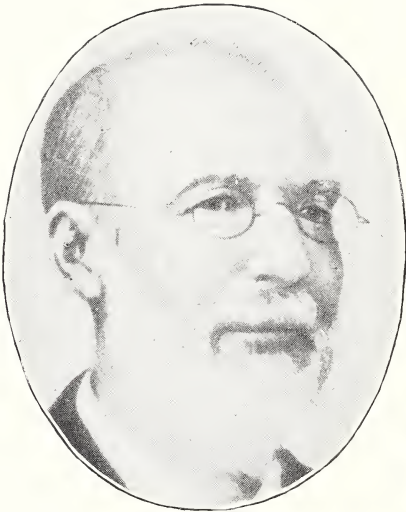
THE HOME BEAUTIFUL

*Nurserymen and  
Landscape Architects*

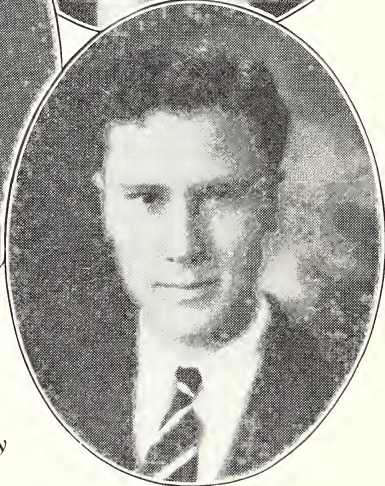
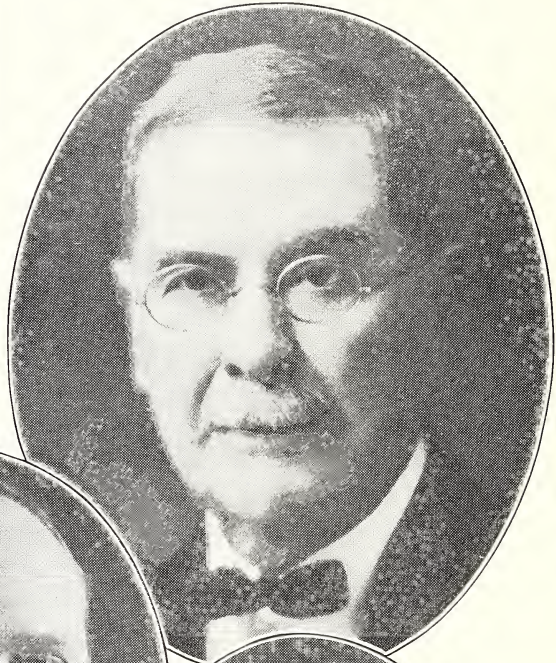


*Bringers of Bounty—Builders of Beauty*

## Four Generations of Ramsey's Austin Nursery



A. M. Ramsey  
1824-1895



Upper right: F. T. Ramsey

Left: J. Murray Ramsey

Lower right: Murray P. Ramsey

A record of fifty-five years in the nursery business in Texas is something to be proud of—if not to boast. A reliable firm, however strong, can render good service from the beginning, but in looking back over the half century of our family's participation in the upbuilding of Texas and the Southwest by growing and distributing millions of trees and plants, we feel like admitting pride and expressing gratitude that we have been able to serve, and maintain a record that may be unsurpassed.

Every order that comes to us indicates a pleased customer, or one who has confidence in our products and manner of dealing. Every word of appreciation from thousands of customers makes us very happy, and at the same time more determined to serve better with the passing of the years.

We ask to be pardoned for printing in this catalogue a few of these testimonials, which are especially given for those who have not dealt with us heretofore.

A word here should be said concerning the men and women in our organization, whose training and loyal services have contributed very materially to the maintaining of our standard and record of service. Many of them have been with us for twenty-five years and more. To the foreman in the field and packing house, to the men who perform through heat and cold the labor that is necessary at a certain time, to those who give their best thought and efforts in the handling of orders and correspondence in our office, to the salesmen all over the country whose satisfaction of doing something worthwhile is greater than their financial reward . . . . to all these, and our good friends who use what we produce—we express appreciation and gratitude.

**RAMSEY'S AUSTIN NURSERY**

F. T. RAMSEY, President

J. M. RAMSEY, Vice-President and General Manager

# INDEX

REFER TO THIS INDEX. You will be interested in reading it carefully and referring to descriptions of plants with which you are not familiar.

	Page		Page		Page
<b>A.</b> Abelia .....	32	Eupatorium .....	34	Peach, Flowering .....	33
Acacia .....	34	Evergreens .....	36-41	Pear .....	12
Agarita .....	39	<b>F.</b> Fertilizer .....	47, 50	Pecan .....	21-23
Agave .....	43	Fig .....	13-14	Pennisetum .....	42
Almond .....	20, 32	Flowering Shrubs .....	31	Perennials .....	31
Althea .....	32	<b>G.</b> Gladiolus .....	26	Persimmon .....	16
Amaryllis .....	25	Goldenrod .....	31	Photinia .....	40
Anisacanthus .....	34	Gooseberry .....	20	Pittosporum .....	40
Antigonon .....	30	Grape .....	17	Planting and Pruning .....	46
Apple .....	12-13	Grasses .....	42	Planting Distances .....	45
Apricot .....	15	<b>H.</b> Habranthus .....	26	Plum .....	10-11
Arbor Vitae .....	38	Hackberry .....	35	Plumbago .....	33
Ash .....	35	Hedge Plants .....	41-42	Poinciana .....	33
Asparagus .....	20	Helianthus .....	31	Pomegranate .....	33
<b>B.</b> Bamboo .....	42	Hibiscus .....	31	Poplar .....	36
Berberis .....	39	Holly .....	41	Privet, Amoor .....	41
Bignonia .....	30	Hollyhock .....	31	Privet, California .....	41
Blackberry .....	18	Honeysuckle .....	30, 34	Privet, Japan .....	40
Blue Bonnet .....	43	Huisache .....	34	Prune .....	15
Box Elder .....	35	Hyacinths .....	26	Pyrus Japonica .....	33
Box Tree .....	39	Hypericum .....	32	<b>Q.</b> Quince .....	15, 33
Bridal Wreath .....	33	<b>I.</b> Iris .....	26	<b>R.</b> Ramsey Hybrid .....	38
Buddleia .....	32	Ivy .....	30	Raspberry .....	20
Bulbs .....	25	<b>J.</b> Jasmine .....	32	Red Bud .....	34
Business Notices .....	2	Japan Varnish .....	35	Retama .....	34
<b>C.</b> Cactus .....	44	Jujube .....	16	Roses .....	28-29
Caladium .....	26	Juniper .....	38	<b>S.</b> Salt Cedar .....	33-34
Callicarpa .....	34	<b>K.</b> Kudzu .....	30	Salvia .....	34
Canna .....	25	<b>L.</b> Lantana .....	34	Santolina .....	42
Cape Jasmine .....	32	Leucophyllum .....	40	Selection for Home Or- chard .....	4
Catalpa .....	35	Liatris .....	26	Shade Trees .....	34-35
Century Plant .....	43	Lilac .....	33	Smilax .....	30
Cherry .....	12	Lilies .....	26	Spraying .....	47, 50
Chestnut .....	34	Ligustrum .....	40-41	Spirea .....	33
China Umbrella .....	35	Locust .....	35	Strawberry .....	19
Chrysanthemum .....	31	<b>M.</b> Mallow Marvel .....	31	Sumach .....	34
Clematis .....	30	Malvaviscus .....	31	Sycamore .....	36
\$1.00 Collections .....	2	Mock Orange .....	33	<b>T.</b> Tamarix .....	33-34
Copperas .....	47	Morning Glory .....	31	Trumpet Creeper .....	30
Coralberry .....	34	Mulberry .....	20	Tuberose .....	26
Cottonwood .....	35	Mulberry Shade .....	35	Tulip .....	26
Crabapple .....	13	<b>N.</b> Nandina .....	40	<b>V.</b> Varnish, Japan .....	35
Crape Myrtle .....	32	Narcissus .....	26	Vinca .....	30
Currant .....	19	Native Shrubs .....	34	Vines .....	30
Cypress .....	39	Nectarine .....	15	Virginia Creeper .....	30
Cypress, Native .....	35	<b>O.</b> Oaks .....	35	Vitex .....	34
<b>D.</b> Dahlia .....	26	Oleander .....	33	<b>W.</b> Walnut, English .....	20
Daisy .....	31	Ornamental Department .....	24	Walnut, Shade .....	36
Dasylyrion .....	43	<b>P.</b> Palm .....	44	Willow, Flowering .....	34
Dewberry .....	19	Parkinsonia .....	34	Willow, Weeping .....	36
<b>E.</b> Elderberry .....	34	Pavonia .....	34	Wistaria .....	30
Elm .....	35	Peach .....	6-9	<b>Y.</b> Yaupon .....	41
Euonymus .....	39-40			Yucca .....	43

## BUSINESS NOTICES

Read Before Making Order.

1. *Shipping Season extends* from about November 15 to April 15.

2. *Guarantee.* We guarantee safe arrival, in good condition, of our stock, and beg to be notified if it is otherwise. Complaint, to receive attention, must be made on receipt of goods.

3. *True to Name.* Every tree and plant sent out we guarantee to be healthy and true to name. If any should prove not to be, we will return amount paid us for them, or furnish other trees. But it is agreed we shall not be liable to purchaser for any further claim or damages.

4. *Certificate of Inspection* with every shipment.

5. *We pay Express in Texas on Orders for \$5.00 or over, and for \$10.00 or over in Arkansas, Arizona, Louisiana, New Mexico, and Oklahoma.* Customers thus will know exactly what their trees will cost, delivered. *Delivery to Your Express Office or Door* is our motto.

6. *Parcel Post.* Particular attention given to parcel post orders, for convenience of customers who can not receive express easily. Fairly large orders can be sent this way, and often cheaper than by express. On orders under \$5.00, to be mailed, please add 5 cents postage for each dollar's worth.

7. *Our Shipping Facilities* are unexcelled. We have a large frost-proof packing house, 120x180 feet. *M. K. and T., Missouri Pacific and Southern Pacific Railroads.*

8. *Explicit Directions* for marking and shipping orders should always be given. Give express and postoffice also.

9. *Terms Cash, or C. O. D.,* unless otherwise agreed beforehand. We accept checks in payment.

10. *We Replace Trees that Die in Six Months at Half Price,* if customer has taken reasonable care of them. This does not mean half the trees free.

11. *Selection of Varieties.* Unless particular varieties are wanted, it is a good idea to leave the selection to us, as we know the needs of all different sections, but state whether fruit is wanted for home or market, what months of ripening, class of soil, etc. If we are out of a particular variety ordered, we will substitute another as good or better, unless requested not to do so.

12. *Ripening Dates* are given for the locality of Austin. The same varieties will vary in time of ripening from a few days to two weeks or more, according to section of country and the season.

**OUR GUARANTEE—Our Responsibility Does Not End with Delivery to Transportation Company. Customers Should Call at Express Office for Shipments Before Receipt of Notice of Arrival.**

## OUR POLICIES

For more than fifty years we have followed certain policies, some of which were not advocated by others in the nursery business.

1. *Errors.* We know that mistakes can be made, but we have never failed to correct any error brought to our attention. This, of course, is only honest dealing, which any reputable firm will practice.

2. *We pay transportation charges* on orders over certain amounts. (See under Business Notices). In the last few years firms in the nursery and other lines of business have adopted this policy of prepaying express, freight or parcel post. If cheap prices are offered, consider the quality of the stock, the reliability of the seller, and ascertain whether the prices include prepayment of transportation.

3. *Replacement at half price.* This has been opposed by brother nurserymen. There are two sides to the question. When a nursery sells and delivers the trees, its responsibility might cease. However, we agree to replace at half of catalogue price any trees that fail to live six months. We have faith in our trees and plants, and show it with this guarantee. Our customers have never taken advantage of us, by seeking replacement when loss was due to their neglect.

4. *Our Experience* with varieties of fruits for all sections of the South and Southwest is offered freely and gladly at all times. Conditions between south Texas and north Texas (and corresponding parts of other states) are as different as between north Texas and Michigan. We always try to see that proper varieties of fruits go in every order.

5. *Landscape Service.* Not only do we grow the best fruit trees, evergreens, shrubs and plants that can be grown, but we also provide a landscape service that will help those who may not know what to plant or how to arrange for best effects. Pictures in this catalogue will show you some of our work.

## One Dollar Collections

Cheap but good things to plant sent by prepaid parcel post. Any six collections for price of five. All varieties of our selection, best for your particular locality. Be sure to order by number of collection, and not by names of the plants.

No. 1.	Six small Peach trees . . . . .	\$1.00
No. 2.	Five small Plum trees . . . . .	1.00
No. 3.	Five Grapes . . . . .	1.00
No. 4.	Twelve assorted Cannas . . . . .	1.00
No. 5.	Twenty-four hardy bulbs . . . . .	1.00
No. 6.	Six Althea, assorted colors . . . . .	1.00
No. 7.	Six assorted flowering shrubs . . . . .	1.00
No. 8.	Six hardy climbing vines . . . . .	1.00
No. 9.	Six assorted ornamental grasses . . . . .	1.00



UPPER PICTURE: Six mules hauling a load of our trees, seventy miles across the deep sand of the Plains from Midland to Gaines County, within ten miles of the New Mexico line. March, 1914.

LOWER PICTURE: The same trees in a profitable 60-acre orchard in 1923. We traded the trees for 160 acres of adjoining land. It was a good trade for our customer and ourselves. The trees bore at two years. Letters from Mr. Hoover, the planter, about the fruit are great testimonials. We selected our new Sure-bearing varieties. The firm, white and yellow sweet clings would ship without ice to England and be better peaches on arrival than England ever saw.

## VALUE OF FRUIT

Cotton is the money crop of the South. A farmer is desirous of making money as well as a living for his family. If his cotton money is needed to purchase the necessities of life for the household, there is little prospect of laying aside a bank balance.

But, if the farm can be made to produce fruits, vegetables, meat and other necessities, which can be canned for winter use, cotton money can be banked instead of spent for food.

HERE is the result of a careful study of the needs of the Farm Home, made by "Farm and Ranch":

"For every person in a family per year, 60 quarts of fruit, 27 quarts of vegetables, 12 quarts of greens, 18 quarts of tomatoes, 26 quarts of meat, 11 quarts of pickles and relishes, 37 glasses of jelly or jam.

"In addition to these, every person should have per year: 20 dozen eggs, 138 pounds of pork and lard, 17 gallons of milk, 45 pounds of

butter, 57 pounds of poultry, 8 gallons of syrup, besides the breadstuffs."

Moreover, *Fruit Raised in Itself* can become a money crop. Any community in the Southwest will purchase all the fresh fruit that can be grown on five to twenty acre orchards in their midst.

People will drive miles to get fresh fruits. Few fruit growers need to bother about reaching the shipping market with their fruit, because it can all be sold right in the orchard.

The scarcity of fruit orchards in Texas and adjoining States is mainly due to the failure to plant and care for them.

Every home in the Southwest can have all the fruit needed for its own use. Most of them can raise a substantial surplus to market. Even city folks can produce enough fruit in their back yards to supply all their needs.

Read the account of *Haupt* Blackberries, where the production was 500 gallons on one-fourth acre in Bosque County.

## WE TRADE FOR LAND

We are able to consider trading trees for land in Texas, and shall be glad to consider such a proposition with any one who has land to spare and wants the trees.

This is a good time to plant a commercial orchard. The towns are full of autos and the autos are full of people, who will drive twenty miles to get fresh fruit.

## MONEY-SAVING PAGE OF PRICES

If you are in doubt as to just what to plant, the lists below will help you:

One of the most attractive parts about a home should be the back yard. This may be beautified in the same way as the front yard, or may be filled with fruit trees and berry plants. We have seen hundreds of back yards that supplied more fruit than families could use.

### SPECIAL OFFERS

Here are suggestions for plantings of different sizes, with specially low prices.

Be sure to order by number of the collection, and not by name of the plants.

Varieties will be selected by us, and we will take into consideration all requirements of soil and climate. Customers may be sure of receiving only the best for every section.

A reasonable substitution on the part of the customer will be permitted. For instance, if in Collection A, you do not want the Japan Persimmon. Instead you may indicate that you want Nectarine, or other kind of about the same value.

The lists given below apply to Texas and similar sections of all adjoining states. We greatly appreciate the liberal patronage from our customers in Arkansas, Arizona, Louisiana, New Mexico, Oklahoma, and all the southern states from Texas to Florida.

In most sections a few pecans should be included in any planting. These will be separate from the lists as given.

On all these special collection offers, express or parcel post will be prepaid by us. The buyer will have nothing whatever extra to pay.

### VALUABLE COLLECTIONS AT LOW PRICES

#### FOR THE BACK YARD ORCHARD

##### FOR ALL OF TEXAS, EXCEPT THE PLAINS

- 4 Peach, 2 to 3 feet.
- 2 Plum, 2 to 3 feet.
- 1 Pear, 2 to 3 feet.
- 1 Ramsey Fig.
- 1 Japan Persimmon.
- 6 Dewberry.
- 6 Blackberry.

*Collection A-1.* The list as given above. Regular price, \$5.10. Special price, \$4.50.

*Collection A-2.* The list as given above, except the trees indicated will be 3 to 4 feet. Regular price, \$5.90. Special price, \$5.25.

*Collection A-3.* The list as given above, except the trees indicated will be 4 to 6 feet. Regular price, \$7.20. Special price, \$6.45.

##### FOR THE PLAINS

- 4 Peach, 2 to 3 feet.
- 2 Plum, 2 to 3 feet.
- 1 Pear, 2 to 3 feet.
- 1 Helm Apple, 2 to 3 feet.
- 1 Cherry, 2 to 3 feet.
- 3 Grape.

*Collection B-1.* The list as given above. Regular price, \$4.65. Special price, \$4.15.

*Collection B-2.* The list as given above, except the trees indicated will be 3 to 4 feet. Regular price, \$5.90. Special price, \$5.25.

*Collection B-3.* The list as given above, except the trees indicated will be 4 to 6 feet. Regular price, \$7.75. Special price, \$6.95.

### FOR THE ONE-ACRE ORCHARD

#### TREES PLANTED 20 FEET APART

##### FOR ALL OF TEXAS, EXCEPT THE PLAINS

- 60 Peach, 2 to 3 feet.
- 30 Plum, 2 to 3 feet.
- 4 Pear, 2 to 3 feet.
- 2 Apricot, 2 to 3 feet.
- 6 Fig.
- 4 Persimmon.
- 2 Jujube Improved.
- 6 Grape.
- 24 Dewberry.
- 24 Blackberry.

*Collection C-1.* The list as given above. Regular price, \$37.64. Special price, \$30.00.

*Collection C-2.* The list as given above, except the trees indicated will be 3 to 4 feet. Regular price, \$45.64. Special price, \$36.00.

*Collection C-3.* The list as given above, except the trees indicated will be 4 to 6 feet. Regular price, \$61.24. Special price, \$50.00.

##### FOR THE PLAINS

- 60 Peach, 2 to 3 feet.
- 30 Plum, 2 to 3 feet.
- 4 Pear, 2 to 3 feet.
- 2 Apricot, 2 to 3 feet.
- 6 Apple, 2 to 3 feet.
- 4 Cherry, 2 to 3 feet.
- 2 Jujube Improved.
- 6 Grape.
- 24 Dewberry.
- 24 Blackberry.

*Collection D-1.* The list as given above. Regular price, \$37.16. Special price, \$30.00.

*Collection D-2.* The list as given above, except the trees indicated will be 3 to 4 feet. Regular price, \$47.24. Special price, \$38.00.

*Collection D-3.* The list as given above, except the trees indicated will be 4 to 6 feet. Regular price, \$64.24. Special price, \$53.00.





**Oldest Bearing Peach Tree**

*Elberta Peach Tree.* Bought from Ramsey's Austin Nursery in 1883, or 47 Years ago. Photograph made in July 1929, when this old monarch of fruit trees produced about two bushels of fine fruit. This tree is located on the place of Mr. Fred Reavis, near Florence, Texas near the line of Burnet and Williamson counties. This tree and many other trees over the State answer the question, *Do fruit trees live long?*



*Youngest Bearing Peach Tree.* Best June peach tree at Georgetown, Texas, bought from Ramsey's Austin Nursery December 1928. Picture made June 16, 1929, six months later. This tree had 57 blooms, set 33 peaches and matured 14 perfect fruits. Nine peaches are shown in this picture. We recommend, however, that fruit trees be cut back when planted, and in this way no fruit could be expected the first summer. Our salesman, Mr. W. H. King, is shown in picture.

**Trees Packed in Bale 166 Days**

This Bale of Trees Illustrates the Method of Packing used by Ramsey's Austin Nursery. This was an order packed for shipment November 29, 1927. The trees were not called for and the bale stood outside the house in all kinds of weather until May 15, 1928, when the picture was made. Notice that the trees are in full leaf and growth, and probably would have lived for a year. When the bale was moved in place for the picture, the decayed burlap almost fell off. Our trees will reach you in good condition.



# STANDARD AND SPECIAL FRUITS

## PEACH, PLUM, AND APPLE



Five Peach Trees in each bunch showing our grades 2 to 3, 3 to 4, and 4 to 6 feet. Notice the root systems with strong main roots and small feeder roots, and the strong stocky bodies. Better trees can not be produced. When planted the trees should be cut back to 18 to 24 inches above the ground.

Customers will notice these two classes. Our standard varieties are those of oldest standing, and embrace only such as have proven themselves worthy of propagation. Our list is selected from many hundreds of varieties which we have tested. Such names as Elberta, Mamie Ross, Stinson, etc., are familiar to every one and indicate what are our Standard varieties.

Our *Special* varieties are of more recent introduction, and are, we can safely say, the choice of all varieties in the world. We have either secured these after long years and great expense of testing or have secured the right to them by purchase from other experimentors and propagators or we pay a royalty on every tree sold. All have been thoroughly tested and proven. We charge slightly more because we test and discard.

We have letters from Alabama to Arizona saying no other peaches, pears, apricots or apples ever grown in their neighborhoods would compare with the special varieties sold by us.

We selected them out of a thousand choice ones.

It is the pleasure and pride of our lives to be able to offer our Specials, which excel in all points desirable for fruits. Every orchard should contain them.

Salado, Texas, Nov. 25, 1929.

From Mrs. A. S.

I want three Chilow Peach trees, if you still grow them. We bought some from your father thirty years ago, when my father, W. J. Caskey was agent for your nursery. I have always been anxious to get more Chilows as I believe it one of the best eating, preserving and canning peaches I have ever tasted.

## SPECIAL PEACH

See Directions for Planting and Pruning, Page 46

F. FREESTONE; C. CLING; S. C. SEMI-CLING

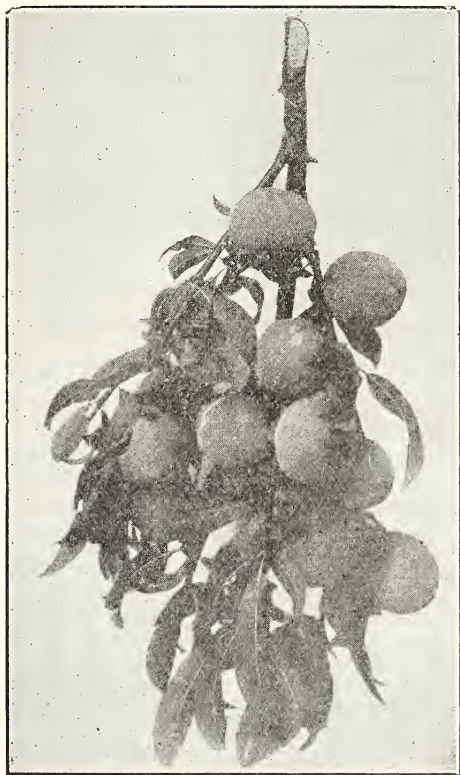
	Each.	Dozen.	100.
2 to 3 feet .....	\$ .40	4.50	32.00
3 to 4 feet .....	.50	5.00	40.00
4 to 6 feet .....	.75	8.00	55.00

SPECIAL PEACHES—MAY—JUNE

EARLY WHEELER. C. May. Fine early peach, specially for North and Northwest Texas. Large, with clear meat, overspread with red.

BESTMAY, F. May 20. Most prolific, extra early large peach. Best shipper, as fruit is bright red all over ten days before ripe. For central and south Texas it is unequaled, and no doubt it will be good farther north. Originated in Fayette County and has been thoroughly tested. Those who plant this variety now will receive big profits in the years ahead.

**SPECIAL PEACH—Continued**



*Leona Peach*

**SPECIAL PEACHES—JULY**

✓ **LEONA. F.** July 8. Like Elberta in color and size, and better quality. Large, yellow with red cheek. Ripens earlier, and is immensely prolific and regular in bearing. We have tested it twenty years. Leona trees are somewhat dwarfish, indicating heavy bearing quality, and therefore will not be as large as most other varieties when shipped from nursery.

**WHAT A LEADING HORTICULTURIST AND NURSERYMAN OF THE UNITED STATES SAYS ABOUT LEONA**

Friend Ramsey:

The Leona has made me a believer. I find it a great improvement over Elberta. It is better flavored, more beautiful color, finer texture truer to type, and more uniform . . . a superior peach in every way. You can greatly obligate me by giving me some historical notes about this peach.

Accept perpetual blessings,

E. W. KIRKPATRICK.

✓ **BEST JUNE. S. C.** June 28. Light color, red cheek. Fruit large, most delicious. Regular and prolific bearer. A prize for Central and South Texas. Some orchardists below San Antonio in Bexar and Atascosa Counties after watching this variety for several years wanted it in preference to all others. It originated from seed in Fayette County.

✓ **TAYLOR. F.** July 10 to 25. Origin from Elberta seed in Austin. Like Elberta in size and color. Slightly later. It will be planted by thousands when it becomes known.

✓ **CHILOW. C.** July 10 to 20. Pure yellow. Large. One of most regular bearers of all varieties. Flavor is always very high. Few if any peaches surpass Chilow in quality and quantity of crops. Best canned fruit we ever tasted on the market was Chilows sliced in one-eighths. Origin Williamson County.

✓ **MINNIE STANFORD. C.** July 15. Large, white and yellow cling. Firm and delicious. Regular bearer. We recommend it as one of the best.

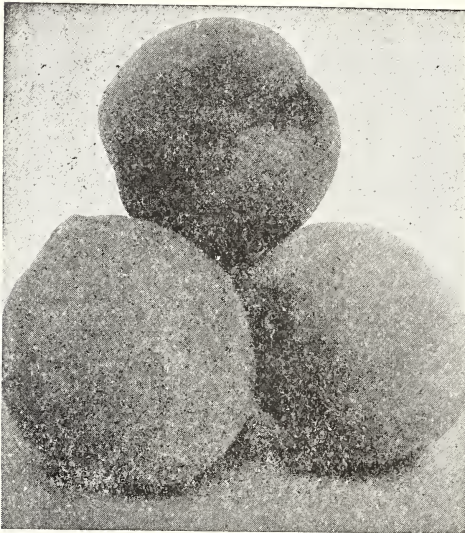


*Basket of Annabel Peaches, 10 to 12 Inches Around*

✓ **ANNABEL. F.** July 10 to 20. One of the largest peaches we have ever seen. The color is most gorgeous red and yellow. Mr. Capps of Blanco County sent us buds several years ago from a seedling in his yard. It is the queen of peach queens, a surprise in any orchard.

✓ **SMITH. F.** July 10. Surest bearer we know. Has record in Lampasas County, where it originated, for 28 years without a failure of crop. We have had it in our orchard eighteen years, and it has borne full every year, when all other varieties have failed or varied one or more seasons. Introduced by Mr. Fernando Miller, who says: "For regular and abundant bearing and for deliciously sweet fruit, I know nothing which equals it." Fruit is medium size, white, with pink cheek.

**SPECIAL PEACH—Continued**



*Governor Lanham Peach, July 15, 11 Inches in Circumference*

**GOV. LANHAM. C.** July 15. One of most beautiful and largest. Yellow, with bright red shadings. Firm, best of shippers. Origin Travis County.

**SMITH INDIAN. C.** July 15. Red-flesh, juicy Indian, that will reach good size. Has borne in bad fruit years, and proven worthy of being in every orchard. Has made its own strong demand from the plains of Texas and New Mexico down to the very coast.

**SPECIAL PEACHES—AUGUST**

**AUGBERT. F.** Aug. 1. Yellow, resembling Elberta, ripening later. More prolific, and fruit is of highest quality. Has been a most prolific peach on sandy or black soil. Trade marked. Sometimes called Late Elberta.

**SPECIAL PEACHES—SEPTEMBER**

**WILLIAMS. C.** Sept. 1. A yellow, prolific, sure-bearing cling that originated in the yard of H. M. Williams of Austin. It is probably the best bearer of all the large, late yellow clings. Fine for market, canning, or sweet pickles.

**SPECIAL PEACHES—OCTOBER**

**OCTOBERTA. F. OCT. 1.** Like a fine Elberta, but one of latest peaches. Has created sensation where tried. Some grown in Dallas were the talk of the town.

**STANDARD PEACH**

See Directions for Planting and Pruning, Page 46

	Each	Dozen	100
2 to 3 feet.....\$	.30	3.25	24.00
3 to 4 feet.....	.40	4.50	32.00
4 to 6 feet.....	.60	6.50	50 00

F., FREESTONE; C., CLING; S. C., SEMI CLING

**MAY PEACHES**

**JAPAN DWARF. F.** May 24. Dwarfish tree. Meat partly red. Sure bearer.

**MAYFLOWER. F.** May 25. One of the best early varieties. Fruit medium size, almost covered with red. Flavor extra good for early peach.

**GREENSBORO. F.** May 27. Large, white oblong, prolific.

**JUNE PEACHES**

**HONEY. F.** June 15. Medium size, white, sweetest. For the South.

**SLAPPY. F.** June 15 Originated in Georgia. A yellow freestone. Our customers in the Western part of the State praise its full crops and high quality without limit.

**JULY PEACHES**

**PALLAS. F.** July 1. Medium, white deliciously sweet. Regular bearer. Honey type.



*Hobson Peach Tree Seven Years Old in an Austin Back Yard. This tree measured 28 feet across and 28 supports were necessary to keep the limbs from breaking under their load of fruit. In 1928 this tree produced six bushels and in 1929 more than eight bushels of fine large delicious peaches.*

**STANDARD PEACH—Cont.**

**HOBSON. S. C.** July 1. An improved Mamie Ross, ripening earlier. Firm.

**MAMIE ROSS. S. C.** July 4. Large, white and red, prolific.

**CARMAN. F.** July 5. Cross of Elberta and Mamie Ross. Large, white, red cheek.

**CARPENTER. C.** July 8. Medium size, light color, regular heavy bearer. This is one of the few peaches that is entirely successful from extreme southern Texas to Oklahoma. Delicious flavor, and best of shipping qualities.

**ELBERTA. F.** July 10. Large, yellow flesh, red cheek. Fine shipper.

**LEE. C.** July 15. Large, cream color. Sure bearer.

**AUGUST PEACHES**

**INDIAN CLING. C.** AUG. 1. Medium, red meat. Old fashioned Indian.

**SNOW CLING. C.** Aug. 10. White, firm, very profitable variety.

**HEATH. C.** Aug. 25. Medium, white, fine old variety.

**SEPTEMBER PEACHES**

In west and northwest Texas and corresponding sections, the best peaches ripen mostly after the first of August. In other sections, the late varieties require watering for satisfactory results.

**SALWAY. F.** Sept. 1. Yellow, Ripens in August in South part of Texas.

**OCTOBER PEACHES**

**STINSON. C.** Oct. 10. White, red cheek. Regular, one of the best all-around late peaches.

**SEEDLING PEACHES**

	Each	Dozen	100
2 to 3 feet.....	\$ .20	\$2.00	\$15.00
3 to 4 feet.....	.30	3.25	20.00
4 to 6 feet.....	.40	4.50	30.00

We do not recommend the planting of seedling peach trees, because there is no assurance as to the kind of fruit they will produce. We bud and graft our named varieties of fruit trees so as to be sure of having exactly the kind of fruit described for each variety. The idea that seedlings will live longer than budded or grafted trees is a mistake. A budded or grafted tree that produces small, inferior fruit, like many seedlings, will live as long as a seedling tree. On the other hand, a seedling tree that produces fine large fruit will not live longer than a budded tree producing the same kind of fruit. It is impossible to have every good characteristic in any one fruit, person or animal.

**LIST OF BEST PEACHES FOR SOUTH AND SOUTHWEST TEXAS**

Bestjune, Bestmay, Carpenter, Greensboro, Hobson, Honey, Japan Dwarf, Leona, Mamie Ross, Pallas, Smith, Smith Indian.

**LIST OF BEST PEACHES FOR TERRITORY BELOW FOOT OF PLAINS AND FOR NORTH AND CENTRAL TEXAS**

Annabel, Augbert, Bestjune, Bestmay, Carman, Carpenter, Chilow, Early Wheeler, Elberta, Gov. Lanham, Greensboro, Hobson, Indian Cling, Lee, Leona, Mamie Ross, Mayflower, Minnie Stanford, Octoberta, Salway, Slappy Smith, Smith Indian, Snow Cling, Stinson, Taylor, Williams.

**LIST OF BEST PEACHES FOR THE PLAINS**

Annabel, Augbert, Bestmay, Carpenter, Chilow, Early Wheeler, Elberta, Gov. Lanham, Heath, Leona, Mamie Ross, Mayflower, Minnie Stanford, Octoberta, Salway, Slappy, Smith Indian, Snow Cling, Stinson, Taylor, Williams.

Newspaper clipping. Midland, Texas.

By winning second prize at the State Fair with peaches, S. H. Gwynn has attracted wide attention as a fruit grower, and has won much publicity for Midland. The peaches were larger than those which won first prize, but were not quite as uniform. No better peaches are grown anywhere. The trees from which these peaches came were raised in the Ramsey Nursery at Austin; V. C. Ray being the local representative for that nursery.

The RAMSEY FIG trees, by being some of them in tree form for early fruit, and some cut to the ground in the spring for late fruit, have given us sweet ripe figs every day for over five months. Come by any day from June to November, and see for yourself. See page 14.

From H. W. L. Winters, Texas.

Under separate cover I am mailing to you photographs of a limb which broke from one of my Mamie Ross trees, which limb had fifty-two good sized peaches on it. It broke just as the peaches were beginning to turn. The limb was two and a half feet long. The tree was six or seven years old, and had about ten bushels of perfect peaches on it last season.

# PLUM

Of all the fruits that grow in this country we consider plums one of the most successful. A few years ago all the varieties that were worthy of planting ripened within a period of six weeks. Now the season is extended to four months—from May to September.

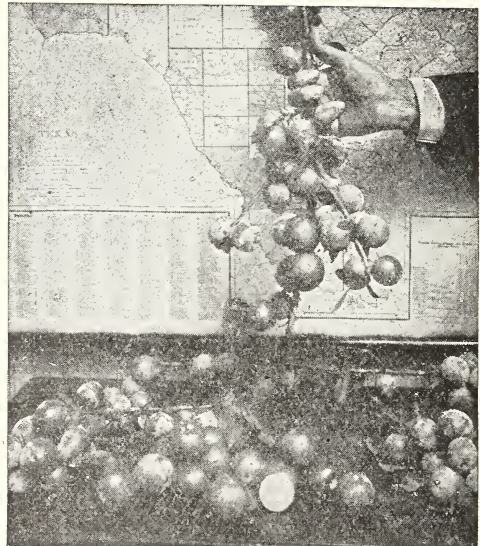
Then the only good variety was the Wild Goose. Now there are dozens that are of more value. We offer the best out of the 350 varieties that we have tested.

NOTE: The best one-year trees of Golden Beauty and several Chickasaw varieties are often less than four feet high. We charge the 4 to 6 foot price for the best of them.

See *Directions for Planting*, Page 46.

## Special Plum

	Each	Dozen	100
2 1/2 to 3 feet.....\$	.50	\$5.00	\$40.00
3 to 4 feet.....	.60	6.50	50.00
4 to 6 feet.....	.75	8.00	60.00



*BRUCE PLUM.* Tree three years after planting.  
Early, large, fine quality

**BRUCE.** June 5. Large, red, productive. A hybrid originated by Mr. A. L. Bruce of Donley County, Texas. On account of early ripening, large size, firm shipping quality, productiveness, and deliciousness of flavor, we believe we should have to consider this the most profitable of all plums.

## *Happiness Plum*

**HAPPINESS.** June 20. Trees handsome, leaves very large. Sun cannot burn plums. Fruit large, often six inches around; color glowing red, quality very fine. Bears full, but does not overbear, so has no off years.

**GOLD.** July. Large, firm, glowing yellow, with some red. Has a wide range, sure bearer, and a money maker.

**GONZALES.** July 1. Introduced by us in 1898. Color brilliant red, with pleasant sweetness and juiciness of a good Wild Goose and firmness and flavor of a Japanese plum. Has made a reputation over many states for quick and certain returns. Is a fine keeper and shipper.

**ADVANCE.** May 20. Very large, firm, bright red. Tree robust. Biggest early plum, earliest big plum.

**BILONA.** June 25. A cross or hybrid between a Japanese plum and the native wild plum, combining the flavor of both. An excellent variety for preserves, jam and jelly. Fruit when thoroughly ripe is of excellent flavor. Tree heavy bearer.

**METHLEY.** May 10. From South Africa and introduced by the United States Department of Agriculture. A large plum, four to four and one-half inches in circumference, with greenish red skin and brilliant red flesh of a peculiar delightful sweetness. The best flavored of all early plums.

**SANTA ROSA.** June. Magnificent, large, rich color of dark red. Has not failed.

**SIX WEEKS.** Same as Advance.

## PLUM—Continued

### Standard Plums

	Each	Dozen	100
2 to 3 feet.....\$	.40	\$4.50	\$32.00
3 to 4 feet.....	.50	5.00	40.00
4 to 6 feet.....	.65	7.00	55.00

**AMERICA.** July 1. Enormously productive. Medium to large. Sure bearer, yellow and red.

**BURBANK.** June 15. Fruit large, firm, red. Youngest bearer, and very prolific.

**EAGLE.** July 1. Red, medium. Heaviest bearer. Fine for jelly.

**EXCELSIOR.** July 1. Purplish red, large. Succeeds far south. Annual bearer everywhere.

**GOLDEN BEAUTY.** Aug. and Sept. Medium yellow. Finest of late plums.

**NONA.** July 10. Large, bright red. Flesh yellow, juicy; high quality. Big crops.

**OMAHA.** July. Large red plum, handsome. Flesh reddish firm. Tree hardy.

**POOL'S PRIDE.** July 5. Red, medium, oblong, very prolific.

**SHIRO.** July. Large, yellow. Fine keeper. Tree vigorous. An unexcelled variety on sandy land.

**"THICKET" PLUMS.** Our plum trees are all grown on peach and Mariana plum stocks, neither of which sucker. We are also growing for sale some different colored varieties on their own suckering roots, that make thickets where one tree is planted. Good to plant in odd corners like the big back yards of farm homes.

**WICKSON.** July. Tree upright. Fruit large, heart shape. Red, flesh yellow, delicious.

**BARTLETT.** June 15. Fruit red, with yellow spots. Flesh salmon-colored. Quality fine, tastes like Bartlett pear. Long-lived tree. Thrives on any poor soil.

#### A LIST OF BEST PLUMS FOR SOUTH AND SOUTHWEST TEXAS

Advance, America, Bartlett, Bilona, Bruce, Burbank, Excelsior, Golden Beauty, Gonzales, Happiness, Methley, Nona, Shiro, Santa Rosa, Six Weeks, Thicket, Wickson.



*One branch of a Bartlett plum tree we sold our neighbor, H. C. Wright. This is the nineteenth successive crop. It is on poor sandy land. It seems to live "forever." Mr. Burbank, who produced Bartlett, wrote us that the old mother seedling tree is still living.*

#### LIST OF BEST PLUMS FOR TERRITORY BELOW FOOT OF PLAINS AND FOR NORTH AND CENTRAL TEXAS

Advance, America, Bartlett, Bilona, Burbank, Bruce, Gold, Golden Beauty, Gonzales, Happiness, Methley, Nona, Omaha, Poole's Pride, Santa Rosa, Shiro, Six Weeks, Thicket, Wickson.

#### LIST OF BEST PLUMS FOR THE PLAINS

Advance, America, Bilona, Bruce, Burbank, Golden Beauty, Gold, Omaha, Poole's Pride, Santa Rosa, Six Weeks, Shiro, Thicket.

## PLUM-CHERRY HYBRIDS

Crosses between Cherry and Plum, originated by Prof. Hansen of the South Dakota Experiment Station. They partake of the flavor and characteristics of both cherry and plum, and are hardy into the far North. To our surprise, they have fruited excellently at Austin, and we recommend them in territory from Austin north, and as worth a trial farther south. Young and heavy bearers. Ripen June 20.

Prices:	Each	Dozen	100
2 to 3 feet.....\$	.50	\$ 5.00	\$40.00
3 to 4 feet.....	.75	8.00	60.00
4 to 6 feet.....	1.00	10.00	80.00

**OPATA.** (Sioux Indian word meaning "Bouquet.") Fruit medium large, dark, purplish-red skin and flesh. June 5.

**SAPA.** (Sioux Indian word meaning "Black") Fruit excellent flavor, dark purplish-red skin, with flesh varying from greenish-red to purple. June 5.

# PEAR

*See Directions for Planting, Page 46.*

Plant from 16 to 24 feet each way. Kieffer, and Garber should be cut back for two or three years to make the tree spread.

Kieffer has proven commercially profitable in nearly every section of the State and is almost immune against blight.

	Each	Dozen	100
2 to 3 feet.....\$	.60	\$ 6.50	\$50.00
3 to 4 feet.....	.80	8.50	65.00
4 to 6 feet.....	1.00	10.00	80.00

**BARTLETT.** July. Well known old pear of fine quality. Does best in northern and western parts of the state.

**GARBER.** August. Tree most vigorous grower; fruit large, firm.

**KIEFFER.** September. The universal pear for America. Robust, handsome tree; fruit large and of good quality when fully ripe; one of the sure bearers; beautiful yellow color. The fruit, when pulled and wrapped in paper, will soon become mellow and delicious.

**PINEAPPLE.** September. A new variety, considered blight-proof. Fruit large, resembling Kieffer, and of good quality. Tree is a thrifty grower and heavy producer.

# CHERRY

Not generally valuable in Central and South Texas, but popular toward the Panhandle.

Price: \$1.00 each, \$10.00 per dozen.

**EARLY RICHMOND.** Early, bright red, acid. Tree strong grower.

**DYEHOUSE.** Dark red, nearly black, very acid

**MONTMORENCY.** Large, red, acid. Rather late in ripening.

**COMPASS CHERRY-PLUM.** A cross between a plum and cherry. Succeeding in parts of country not adapted to other cherries.

# APPLE

*See Planting Directions, Page 46*

Texas is rapidly pushing to the front as an apple state. On the plains and in New Mexico, is some of the best apple territory in the world.

While other parts of the state are not specially adapted to apples, we have a few native Texas varieties of our own introduction that are well worth planting.

## SPECIAL APPLE

	Each	Dozen	100
2 to 3 feet.....\$	.50	\$5.00	\$40.00
3 to 4 feet.....	.75	8.00	55.00
4 to 6 feet.....	1.00	10.00	75.00

HERE IS A REPORT FROM ONE OF OUR SALESMEN

Konohasset, Glasscock County, Texas.

Weather fine. I am selling a good lot of trees, especially the Helm Apples. It certainly is best in state. Six-year-old trees are producing five bushels.

W. S. TRIPP

Ysleta, Texas, Aug. 30, 1929.

From M. F. F.

I have one tree of Helm Apples which was loaded. It was five years old and it must have had five or six bushels of apples on it. Every one admired it.

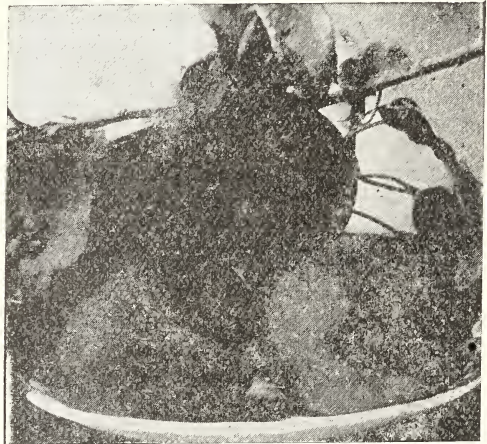
Midland, Texas, Nov. 11, 1929.

From F. C.

I have a Helm Apple tree that has not missed a crop for twenty years. W. S. Tripp sold the tree.

**FOGLE.** Originated in Austin. Extra healthy growing tree. Fruit large, flat, yellow. Summer.

**HELM.** July-Aug.-Sept. The best apple we have yet found. Twenty-five years ago one of our salesmen called our attention to an



*Helm Apple*

old seedling tree in Lee County. It had already made a local reputation. Sprouts jerked off around the collar of the tree by the neighbors were bearing. We at once got grafts for a start of it.

It nearly always bears the second year after planting and never misses.

The fruit is large, of typical apple shape, red with white specks, and the quality is not surpassed; flesh cream color. Clear across Northwest Texas and New Mexico and Arizona have come complimentary letters about Helm.



APPLES—Continued

Standard Apple

	Each	Dozen	100
2 to 3 feet..... \$	.40	\$ 4.25	\$32.00
3 to 4 feet.....	.60	6.50	50.00
4 to 6 feet.....	.80	8.50	65.00

**ARKANSAS BLACK.** Tree vigorous; fruit large, dark red—almost black. Winter.

**BEN DAVIS.** Sept. 15. Large, beautiful red, While the quality is hardly up to that of some other apples, it is a money-maker.

**DELICIOUS.** Fall. Fruit large, conical in shape, beautiful, blushed and striped with red. Flavor extra fine. Tree strong grower.

**JONATHAN.** Winter. Bright red, prolific, popular market variety.

**PERON.** A leading summer apple from Mexico. The fruit is above medium size, yellow with the most exquisite fragrance ever known

with fruit. For generations this has been the most popular apple in the northern states of Mexico.

**RED JUNE.** An old standard red summer apple, fruit medium size, tree good bearer.

**STAYMAN WINESAP.** A high quality winter apple, good keeper, large, striped with carmine, flesh juicy and crisp.

**WINESAP.** Fall. Medium size, solid red, highest quality; always in demand.

**YELLOW TRANSPARENT.** Early summer apple, medium size, waxen yellow.

Crab Apple

Price: Same as *Standard Apples*.

**TRANSCENDANT.** (Siberian). July. An attractive yellow color, splashed and striped with red; bears very young. We value it highly for preserves. Buds and blossoms exquisitely beautiful.

FIGS

See *Planting Directions*, Page 46.

will fruit every year, even when frozen back in the winter. The best varieties for North Texas are Ramsey and Magnolia.

**BROWN TURKEY.** October. Large brown. Latest fig. Should be planted only in extreme south.



Magnolia Figs

	Each	Dozen	100
Ramsey Fig..... \$	.75	\$8.00	\$60.00
Other varieties.....	.35	3.50	25.00

Figs should be planted more extensively. Do not let the sprouts or suckers grow, but prune the trees so as to have clean bodies at least two feet high. Cut tops back to six or twelve inches above ground when planting. Such trees will bear full and will stand much colder weather than if the sprouts are allowed to grow. However, Ramsey and Magnolia Figs, especially in Central Texas, may be allowed to grow with several sprouts or suckers, which



Ramsey Fig Tree, Six Months Old

**BRUNSWICK.** July, August and September.  
Very large, reddish purple.

**CELESTIAL.** July. The common little blue fig. None is sweeter; very hardy.

**MAGNOLIA.** July, August and September.  
Large, pale green or white; shape varies from ordinary fig shape to very short or flat; always bears at one year old, and if frozen, will bear on the young wood the first year. In some sections it is called Neverfail.

**THE RAMSEY FIG.** \$.75 each, \$8.00 per dozen, \$60.00 per 100. A seedling grown from one of our Lemon fig trees, probably crossed with Magnolia. Resembles Magnolia, but does not crack open. Three to four times as prolific as any other fig. Ripens from August to frost. One-year trees always bear full, and each limb will bear 20 to 40 delicious figs. Bears first year. Fruit medium to large. This variety is good in North Texas. Color, brownish yellow.

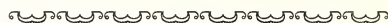
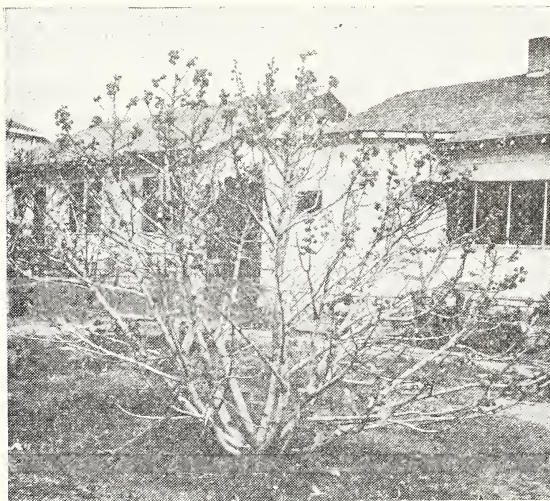
Mr. Gould, of the United States Department of Agriculture, visited us and enthusiastically declared he had never seen such a row of figs. The hundreds on a small tree and the delicious quality were unheard of, unthought of, and wholly unequalled.

Figs should be preserved with skin and stems on them. It is less trouble than any other way, but nothing is better. They can be boiled in syrup and candied, or crystallized by drying in the sun.

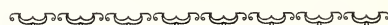
There is a little fortune in a few hundred of these trees in either town or country.

#### PRUNING FIGS

In the colder sections, where figs often freeze to the ground, the tops should be cut off, allowing new growth to come from below the ground. Where such freezing does not occur every year, it is best to prune or train the trees to one stem or body about two feet high before branches begin. This enables them to endure colder weather. Ramsey and Magnolia will bear on the new growth every year, but other varieties require two years' growth.



Here is a letter from Mr. H. R. Davis, in whose yard the Ramsey Fig tree stands which is shown in picture. This photo was taken the first day of December, 1927, and shows tree with about a bushel of ripe fruit remaining. Fifteen dollars worth had already been sold from this tree in 1927.



Austin, Texas, December 13, 1927.

The Austin Nursery, Austin, Texas.

Mr. Murray Ramsey,

Dear Sir:

Just want you to know how well pleased I am with the fruit trees I bought from you in 1922 and 1923.

In 1925 and 1926 I sold forty dollars worth of fruit from two Ramsey Fig trees and two peach trees, Leona and Mamie Ross.

In 1927 I sold sixty dollars worth of fruit from the two fig trees and two peach trees, had plenty for my own use, and gave some away. The Mamie Ross alone produced four bushels of excellent fruit.

The LEONA peach has produced the most gorgeous fruit I have ever seen, and the best flavored—slightly acid.

Every one who ate the RAMSEY FIG pronounced them the sweetest and largest fig they had ever seen. My boy said that the only fault he had to find with the RAMSEY FIG was that they were so rich and sweet that he could eat only two or three before he had enough.

Generous irrigation and plenty of fertilizer is the secret of success with fruit trees.

Sincerely yours, H. R. DAVIS, 511 East 42nd Street.

From Mrs. J. H. B.

Last spring you sent me three fig bushes. Ramsey's have about a dozen figs on them. . . . I am delighted.

England, Ark., Sept. 5, 1929.

They were late, being set April 16. The two Ramsey's have about a dozen figs on them. . . . We've had no rain since June, or I feel

# APRICOTS

See *Planting Directions, Page 46*

Apricots do specially well when planted in back yards, or where they are cultivated only with hoe or spading fork for first few years. A tree planted in some odd corner will often produce several times as much as another planted in a well kept orchard. They like a hillside or sloping ground.

	Each	Dozen	100
2 to 3 feet.....	\$ .50	\$5.00	40.00
3 to 4 feet.....	.60	6.50	50.00
4 to 6 feet.....	.75	8.00	60.00

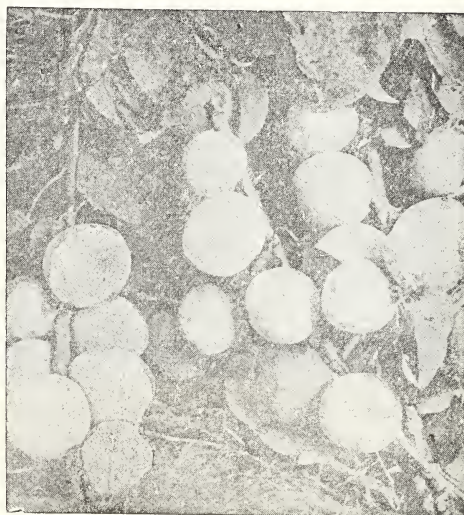
**CLUSTER.** June 20. Originated in our orchard, from Russian seed. Of beautiful symmetrical growth. Very vigorous and hardy; an enormous bearer. Fruit medium sized, yellow, with occasional fleck of red and of excellent quality. Blooms late; has passed through six freezes in one season after blooming and still produced a heavy crop of fruit.

**EARLY GOLDEN.** July 1. Large, beautiful, yellow, delicious.

**MOORPARK.** June. Large; orange, with red cheek; productive.

**ROYAL.** June. Early, large, fine color and flavor. We received one order from California for twenty thousand trees.

**RUSSIAN seedlings.** From these have come the best of our apricots.



*Cluster Apricots grown at Lampasas on 3-year-old tree sold by the Austin Nursery*

# NECTARINE

See *Planting Directions, Page 46*

Will flourish on any land adapted to the peach, and with the same cultivation, etc.

Nectarines are like peaches, except for having smooth skin like plums.

	Each	Dozen	100
2 to 3 feet.....	\$ .50	\$ 5.00	\$40.00
3 to 4 feet.....	.75	8.00	55.00
4 to 6 feet.....	1.00	10.00	75.00

**BRECK.** Originated from peach seed in the yard of Mrs. Breck of Austin. We are the sole introducers. A duplicate of Honey Peach in size, shape, and delicious quality, but a perfect nectarine. Sure.

**WILKINSON.** Mr. Wilkinson, on the coast just above Corpus Christi, sent us sample fruit a few years ago and we eagerly got some buds. The trees have borne full at one year old and every year since. It is another step forward. It is of the Honey or Pallas strain, and is very valuable at least this far north. It surely extends the range of nectarine to the far south.

**DAVIS.** A new seedling in Austin that seems to be of the same strain as Pallas Peach. It has not missed a full crop since it was two years old. When not overloaded it almost reaches the size of a large Elberta Peach. Its sweetness resembles a Honey Peach.

# QUINCE

Price: 75 cents each, \$8.00 per dozen.

**CHAMPION, MEECH, ORANGE**

# PRUNES

Commencing west of Fort Worth, prunes are valuable on most locations all the way west to Pecos City and north through the Panhandle.

See *Planting Directions, Page 46.*

	Each	Dozen	100
2 to 3 feet.....	\$ .60	\$ 6.50	\$50.00
3 to 4 feet.....	.80	8.50	65.00
4 to 6 feet.....	1.00	10.00	80.00

**GERMAN.** Flesh firm, greenish, very sweet.  
**ITALIAN.** Suited to the South. Very popular.  
**TRAGEDY.** Grows far south; rich, sweet; almost a freestone.

# JAPAN PERSIMMON

Some of these should be planted by every family. The fruit often measures ten inches in circumference. They ripen in August, Sep-

tember and October. The trees bear young, and are very ornamental.

Trees should be planted two inches deeper than in nursery. Cut tops back, leaving three or four good eyes or buds on body. Mound soil up on stems six inches or more above level of ground.

Price: 75 cents each, \$8.00 per dozen, \$60.00 per 100.

**HACHIYA.** Very large, oblong, pointed; flesh yellow; skin red.

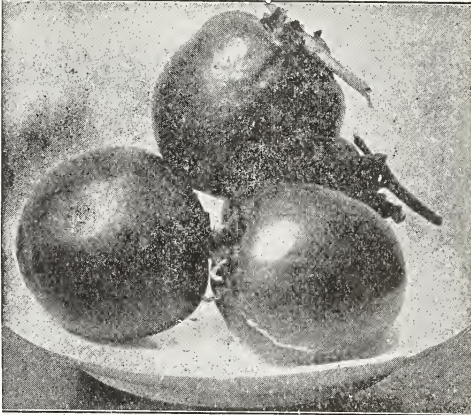
**HYAKUME.** Large, round; skin orange red; flesh brown or dark; very sweet.

**OKAME.** Large, oblate, carmine skin; clear yellow flesh, few seed.

**TANE NASHI.** Large, oblong; orange red; yellow flesh; generally seedless.

**YEMON.** Large, flat, tomato shape; red skin.

**LONE STAR.** A large pointed black fleshed persimmon introduced by the late C. Falkner of Waco, to whose estate we pay a royalty on every tree we sell. It is a most regular bearer and sweet and edible long before it is soft. It promises to be a fortune maker. No fruit is more healthful. Price \$1.00 each, \$10.00 per dozen, \$75.00 per 100.



*Japan Persimmons Grow on any Land Especially on Sand*

# CHINESE JUJUBE

(ZIZYPHUS)

Prices of Jujubes. Seedling or Sucker Plants:

	Each	Dozen
1½ to 2 feet.....	\$ .50	\$ 5.00
2 to 3 feet.....	.75	8.00
3 to 4 feet.....	1.00	10.00

Improved varieties, \$2.00 each.

A fruit from the high interior of China, to which the United States Department of Agriculture has given much attention in recent years. We have tried it carefully, and are sure it will prove to be one of the most valuable of fruits for our country. It is adapted to a wide range of territory and all kinds of soils.

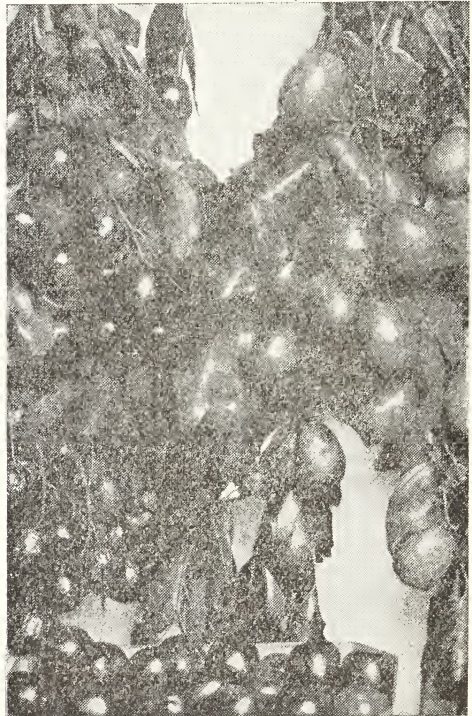
Tree is very hardy, slightly resembling Prickly Ash. Fruit is chocolate colored, some varieties round, some olive-shaped, and some pear shaped, of the texture of an apple. Size: one to two inches long. Fruit can be eaten fresh, preserved, or cured like dates. For preserves, add lemon or orange juice. Ripens July to November.

Every home should have a few trees. We recommend the Jujube most heartily. It likes a clean back yard, where it is not cultivated, but will grow anywhere.

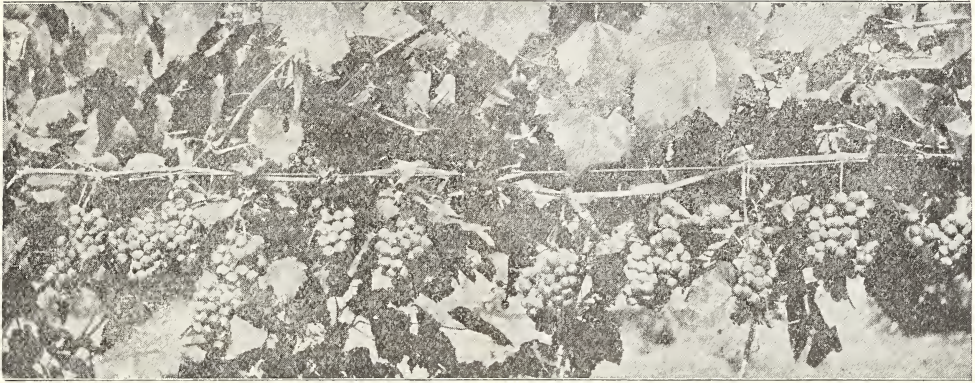
### TO MAKE DATES OUT OF JUJUBES

Gather the fruit when it is first colored all over or nearly so. It should be firm. Score the skin with knife six or eight times or, better, make a hackle by driving three-penny nails half an inch apart through a half-inch board or paddle; spread the fruit on a table or in a box and hackle the skins full of nail holes.

Then put them in sugar syrup or honey and boil twenty to thirty minutes and set off over night. Boil ten minutes and let cool, then strain out and drip them and they are ready to pack down or for immediate use.



*Chinese Jujube Fruit*

*Carman Grape Vine*

## GRAPES

Price: \$.35 each, \$3.50 a dozen, \$24.00 per 100.

### AMERICAN GRAPES

The American varieties are those native to our country, including their hybrids, and crosses. Generally speaking, they are best adapted to those sections of the South not mentioned under the heading of Vinifera.

**BLACK SPANISH.** July. Medium to small, black berry; bunch large. Hardy.

**CARMAN.** Dark red, fine quality. For hardiness and regular crops, we consider this the equal of Herbemont and Black Spanish, and it is larger.

**CONCORD.** July. Large blue or blue-black.

**EDNA.** A hardy, white, delicious grape containing Malaga, Muscat and Armlong blood. A wonder over the Southwest. Highest quality.

**ELLEN SCOTT.** A cross between Armlong and Herbemont. At least for the Southwest it promises to be the best for home and market. Violet, delightful flavor.

**HERBEMONT.** July. Medium size, round, black; not good when first it turns black, but delicious when thoroughly ripe; vine robust and long-lived.

**MOORE'S EARLY.** June. Vigorous vine, fruit large, black; very early.

**MUSTANG.** Native wild grape. Makes an everlasting arbor. Good for jelly.

**NIAGARA.** (*White Concord*). July 1. Large, amber-white berry; good quality.

### VINIFERA GRAPES

In recent years they have been planted in the southwestern and western portions of Texas, in New Mexico, Arizona and Mexico. The Vinifera Grapes are not successful in Central and Northern Texas.

**CORNICHON, BLACK.** Berries large, oblong, dark. Good for shipping.

**HAMBURG BLACK.** Bunches and berries large. Black, sugary, and rich.

**MALAGA.** Very large bunch and berry; white or pink-white.

**MUSCAT OF ALEXANDRIA.** One of the best known of the white varieties.

**SULTANA** (Seedless). A delicious table grape. Long branches, amber-colored.

**THOMPSON'S SEEDLESS.** Vines we sold in Arizona and New Mexico are proving of great value. Fruit larger than Sultana, and greenish yellow.

**TOKAY FLAME.** Bunches large and compact. Berries large, light red.

### HOW TO TRAIN GRAPE VINES

Set a post 6½ feet long, two feet in the ground, placing a crossarm two feet long at top. Place these posts every 20 feet along the rows, putting two strings of wire upon the ends of the crossarm. Tie the single stem of vine up between these wires, the branches of the vine then forming on these two wires an arbor, shading the fruit and vine, and being easily sprayed. Prune heavily in February, before the sap starts. A straight stake by each vine is sufficient for the first year.

The American varieties of grapes after the first to second year, should be pruned back severely every year, in December or January, leaving two or three eyes or buds of the last season's growth on each new shoot.

The Vinifera varieties of grapes should be pruned back so as to form thick bodies or trunks three to four feet high with short heavy branches, and not allowed to form vine on trellis or other support.

### SPRAY FOR GRAPES

Successful growing of grapes depends much on spraying in order to control disease, especially rot. For this purpose, use Bordeaux Mixture. See information in back of this catalogue under Control of Insects, etc.

# BLACKBERRIES AND DEWBERRIES

No farm or city garden should be without a patch of black or dewberries. These are the surest crops that can be grown and produce fruit the second spring after planting. They pay more per acre than almost anything else, while the expense of working and marketing is very low. They ripen in the spring while the weather is cool and pleasant for preserving and making jams and jellies.

All varieties of Blackberries and Dewberries do well on loam or sandy soil. Haupt and McDonald are the best adapted for black land. Heavy soil with loose rock is good berry land.

See Distances for Planting in back of catalog.

## BLACKBERRIES

**DALLAS.** Price: \$1.00 per dozen, \$5.00 per 100, \$35.00 per 1000. Combines all good points; large, fine quality. Early to mid-season.

**MCDONALD.** Price: \$1.00 per dozen, \$5.00 per 100, \$35.00 per 1000. Cross between dewberry and blackberry. Early, good shipper. A fine bearer, but sometimes needs other berries planted near to pollinize it. A patch of alternate rows of Haupt and McDonald makes the best combination we know. Ripens May 1.

**HIMALAYA BLACKBERRY.** 25 cents each, \$2.50 per dozen, \$15.00 per 100. A rank growing variety that requires a trellis. In order to fruit successfully, it should be pruned back severely every winter. Cut preceding summer's growth back, leaving only two or three eyes or buds in the same manner as pruning grapes. Plenty of water in spring and summer is required. Ripens after other varieties, in June and July.



A HAUPT BERRY VINE

*The same every year. Never plant McDonald Berries without planting a row of Haupt beside them. It will pollinize them and make them bear.*

**HAUPT.** 20 cents each, \$1.25 per dozen, \$6.00 per 100, \$45.00 per 1000.

It is difficult to conceive of anything the equal of this berry. It never fails to bear full of large, sweet, luscious fruit. Apparently a cross between a dewberry and blackberry, discovered by the late Colonel Haupt of Hays County, from whom we bought full rights and all stock many years ago. It originated in Wharton County. Reports from the coast across Texas and into New Mexico and Arizona pronounce it the finest ever known.

The original stock consisted of four slightly different strains, which were retained for the sake of pollination. We have selected and multiplied as far as possible the best of these strains, and now offer a better variety than was originally introduced.

Haupt will pollinize McDonald and make it bear heavily. No other variety is needed to pollinize Haupt. Ripens in Austin May 1 to June 1.

## Record of Production of Haupt in Our Nursery

One-half acre returns were as follows:

1249 plants produced 5448 pint boxes. These were sold at an average of  $10\frac{1}{2}$ ¢ per pint box, making returns of \$572.04.

The expenses were as follows:

Material for boxes.....	\$ 35.00
Picking berries at $2\frac{1}{2}$ ¢ per box.....	136.20
Miscellaneous labor.....	35.00
	<hr/>
Total.....	\$206.20
Production.....	\$572.04
Expenses.....	206.20

Net receipts ..... \$365.84

This is equivalent to net returns of \$731.68 per acre.

## Read What Satisfied Customers Say About Our Haupt Berry

From J. L. Brown.

Meridian, Bosque County, Texas.

I had one-fourth acre of the Haupt Berries from which I gathered five hundred gallons in 1923. They were grown on light up-land.

I think it ought to have been named the Wonder Berry, as it is the most wonderful berry I have ever seen.

From W. W. Walling.

San Augustine, Texas.

The Haupt Berries I bought of you a few years ago are truly a **Wonder** over here. I gathered 40 gallons from 12 vines the second year from purchase. Will report on the Leona Peach just as soon as it comes in bearing.

## DEWBERRIES

Dewberries grow better on loam or sandy soil. Haupt and McDonald Blackberries are best for black or heavy soil. All varieties succeed in sandy land.

Prices for Dewberries: \$1.00 per dozen, \$5.00 per 100, \$35.00 per 1000.

**AUSTIN-MAYS.** May and June. Robust. Fruit very large, prolific. Sure bearer. Slightly better on sandy soil or sandy loam.

**ROGERS.** April. Earliest, and fairly prolific.

**THORNLESS DEWBERRY.** \$1.50 per dozen; \$7.50 per 100; \$50.00 per 1000. A new variety from North Texas, claimed to be as good as Austin-Mays, but without thorns.

### Trellising Berry Vines

The question is often asked whether this is a good idea. In a large commercial planting we hardly think it would pay, but for a small number of vines, where the space is limited, it will be very satisfactory. Posts set in ground about eight feet apart, with cross arms eighteen and thirty inches above ground, and wires running from ends of cross arms to cross arms on next post, will provide a good trellis.

### DIRECTIONS FOR PLANTING AND PRUNING

#### *Planting*

Blackberry and dewberry plants should be planted about the same as tomato or potato slips, but deeper. The ground should be plowed and harrowed or spaded up, in the best condition possible. In large plantings, furrows may be made and cross checked with plow.

The plants should be set deeper than they were in the nursery, leaving only a part of the top above ground. There is not much danger of getting the plants too deep. It will always pay to give a quart or more of water to each plant, even though soil may be moist at the time. After giving the water, place dry soil over the wet and bring almost to the top of the plants.

For a large planting, as soon as the shoots begin to grow, a heavy drag may be run over the rows to kill the first crop of weeds.

#### *Pruning*

Tops of plants should be cut back to about three or four inches above the roots before planting. It is best to set the plants in a bed slightly raised above the level of the ground.

After the second year's growth, particular pruning should be given blackberry and dewberry plants. After the fruit is gathered in the spring, cut out all the growth of the preceding year. At this time there will be long canes or shoots of new growth, which will produce

fruit the following spring. If the new growth is abundant, it should be cut back about one-half. Sometimes this new growth interferes with picking the fruit, and it may be cut back at the time, but it is better to wait until it is more mature. It is also better to cut this new growth during a dry spell of weather. A good rain or irrigation for the plants after pruning will be beneficial. Such pruning may be done as late as the first of August.

In case of Haupt and McDonald blackberries only, we cut off all tops with a hoe or mowing machine a few inches above the ground. This can be done any time after the fruit is gathered and until August, provided the plants are not making a soft and vigorous growth.

It will be sufficient to give this severe pruning once every two years, but if plants make a strong growth it may be done every year. Proper pruning gives more and better berries, and allows better cultivation. See Distances for planting and number per acre in back of catalogue.

## STRAWBERRY

	Dozen	100	1000
Everbearing and Texas as Everbearing....	\$ .50	\$2.50	\$20.00
Other varieties.....	.25	1.50	10.00

**EVERBEARING.** Has long bearing season. Favorable reports from many sections.

**TEXAS EVERBEARING.** Endures summer heat and drouth. Mid-season. Most desirable. Large, delicious. This is the most nearly everbearing variety for Central and Southern Texas.

**EXCELSIOR.** Very early; has proven profitable over a wide range of territory.

**KLONDYKE.** From Alvin to Illinois praised by all growers. The standard commercial variety. Ten days later than Excelsior.

**LADY THOMPSON.** A great favorite with all growers. Mid-season.

### Planting and Care of Strawberries

Set the plants as you would tomato plants, one foot by two or two and a half feet. Give each plant a quart or more of water. Straw (free of seed) or leaves should be spread as a mulch over the ground to cover partially or entirely the plants through cold spells in the winter. During warm spells, rake the mulch away from the plants, and replace when cold. During the summer, partial shade over the plants is necessary in most sections. This can be given by means of brush or lattice placed several feet above ground. Plants must have moisture. If planted October 15 to December 15, they will fruit in early spring.

## CURRENT

Best varieties: 35 cents each, \$3.75 per doz.

**BERRIES—Continued**

**GOOSEBERRY**

Recommended for northern part of Texas.  
Price: 35 cents each, \$3.75 per dozen.

**RASPBERRY**

**KANSAS.** (Black). **CUTHBERT** and **ST. REGIS.** Red. Price: \$1.25 per dozen, \$7.50 per 100. These are standard varieties of the Central and Northern States. Recommended only for Northwest Texas and similar sections.

**SOUTHERN RASPBERRY.** 20 cents each, \$2.00 per dozen, \$12.00 per 100, \$90.00 per

1000. A new red Raspberry from Central China that is bearing successfully as far south as the Gulf Coast. It promises to revolutionize Raspberry growing over the entire South, where no other variety has ever been very good.

Here is a letter from a grower in Tarrant County, Texas, referring to his crop of 1927:

"I picked five crates (24 pints each) of Southern Raspberries off of one-seventh acre patch, all of which I sold to Turner and Dingee, Fancy Grocery Store, in Fort Worth for \$8.00 per crate, the season covering about ten days. I was complimented very highly by the manager of this firm on my success with these berries, and he said they were very superior to any ever shipped here, and that he could have handled many more at the same price."

**MULBERRY**

Every farm should have mulberry trees about the back yard and where the chickens run. They make a quick, long-lived shade. They commence to ripen before peaches or plums and continue six to eight weeks.

**ENGLISH.** (Black). April and May. Luxuriant. Bears at two years old; berry large.

**HICKS.** The old standard, everbearing variety. Tree very hardy. Never freezes.

	Each	Dozen	100
3 to 4 feet.....	\$ .50	\$5.00	\$35.00
4 to 6 feet.....	.60	6.00	45.00
6 to 8 feet.....	.75	8.00	55.00

**ASPARAGUS**

Roots 75 cents a dozen, \$5.00 a 100. An asparagus bed is made as follows: Dig trench two or three feet wide and twenty-one inches deep. Put in six inches of rich barnyard fertilizer, then six inches of good black or loamy soil. On top of this, set the plants, and fill

in or cover with six inches of loose soil, preferably leaf mold. This will leave a depression of three inches so that a little extra soil may be added yearly, and long tender growth be made under ground. Such a bed will last for three years.

**ENGLISH WALNUTS (Budded)**

Although the English Walnut has been grown and produced nuts in different parts of Texas, it has never done sufficiently well to justify large plantings. However, we have a variety from Oregon that gives more promise than any other we have tried, and is worthy of trial everywhere at least in a small way.

Prices (budded on native walnut):

	Each	Dozen	100
1 to 2 feet.....	\$1.75	\$19.00	\$150.00
2 to 3 feet.....	2.50	27.00	200.00
3 to 4 feet.....	3.00	32.00	250.00

**ALMONDS**

Price: \$1.00 each, \$10.00 per dozen, \$75.00 per 100

**MEDINA ALMOND.** A seedling in Medina County. As fine as any imported soft-shelled almond.

**SULTANA ALMOND.** A standard commercial variety.

Luling, Texas, Sept. 15, 1929.

From O. R. C.

I purchased 37 trees from your nursery last year, planted them out in December. They are a fine lot of trees now, 35 of which are living. I am well pleased with them.

Fredericksburg, Texas, April 21, 1929.  
From H. F. J.

I am writing you to tell you that all the trees I got from you this last season show a vigorous growth. The pecan trees have new growth about six inches long, which came through the mound (of soil), and the stem is green up to the top, where they were cut off.



# PECANS

## About Pecans

### DEMAND AND PRICES

Wholesale prices for nuts of the improved budded and grafted varieties are from 40 cents to 65 cents per pound in any quantity up to a carload. Retail prices 50 cents to \$1.00 per pound. (The nuts from native seedling trees bring only from 8 to 25 cents per pound.) The demand at present for the larger nuts is only partially supplied. It will be increased many fold, as the supply increases, when the foreign market can be entered. There will be the increasing demand by candy manufacturers and for making oil. There is no prospect of meeting the demand for a hundred years.

### BEARING AGE

Seedling trees hardly ever begin to bear under eight years and they do not become profitable under fifteen years. Budded or grafted trees begin to bear in from three to six years after being planted, and yield a large profit in from eight to ten years. Seedling trees should be top-worked.

### VALUE PER ACRE

Groves eleven years old have paid \$500.00 an acre per year. Ten-acre groves of this age have sold for \$1000.00 an acre, and many owners have refused larger prices. Trees fifteen to twenty years old produce from 100 to 500 pounds of nuts, worth 50 cents a pound. Twenty-seven trees per acre, producing at least \$50.00 a tree, will pay \$1350.00. And the expense of gathering the nuts will be paid largely by crops that can be grown between rows.

### PLANTING.

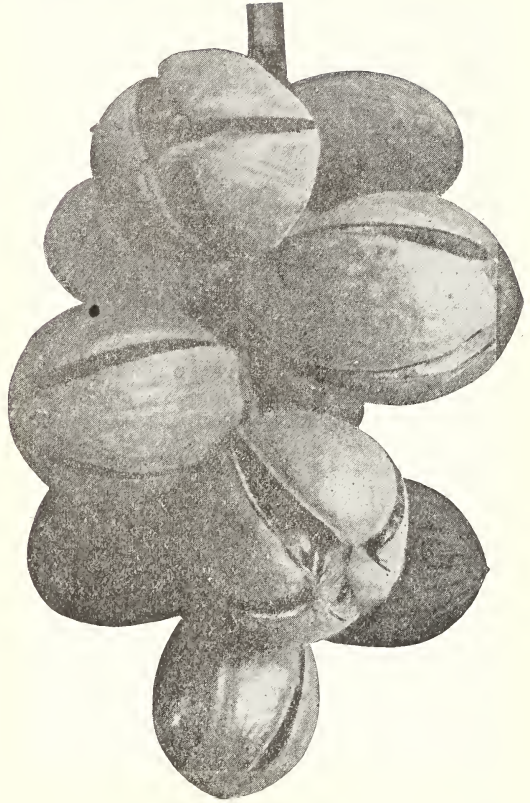
Proper distance is 40 to 60 feet. Pecans may be planted to advantage between peach and plum trees in every other row, making them 32 to 40 feet apart. Following are trees per acre: 40x40 feet, 27 trees; 50x50, 17 trees; 60x60 feet, 12 trees.

We recommend 30x60 feet, making 24 trees per acre. After fifteen or twenty years half of the trees should be cut out, leaving the remainder 60x60 feet, about the best distance apart. Meanwhile, the trees to be removed would have fruited several years and paid a hundred fold their cost, without requiring any additional ground or cultivation.

We usually dig holes 24 to 30 inches across and three feet or more deep. See How to Plant (*next page*) for further information. We dig trees with roots two to four and a half feet long according to size of tree. Trees should be watered first year during very dry spells.

### CROPS BETWEEN ROWS

Almost full crops can be grown between the wide rows until trees reach profitable bearing age, and even longer. Corn, cotton, vegetables



*A cluster of ten Pecans on a young grafted tree. We have sixty varieties bearing in our test orchard. If you plant Pecans you do not need life insurance.*

and fruit trees, such as peach, plum, fig, and orange, and berry plants, are well adapted. Cover, or hay crops should not be grown until trees are several years old. After that time, they can be grown without hurting trees. Pecans do not need cultivation after a few years. Their roots go down.

### SOIL

Texas has three-fourths of the native pecan trees of the United States, and the most and best pecan land in the world. We know the soil is suitable for the pecan, where native trees are flourishing. But there are thousands of acres of soil just as good, where there are no trees now, because the seeds have not been washed there. The pecan likes rich soil, with plenty of sunshine and moisture. Shallow water 20 to 30 feet deep, without solid rock between it and the surface of ground, will solve the water problem. However, trees are doing well on black upland and on top of solid limestone ridges. They should be planted for home use in such places, but not in large orchards.

## PECANS—Continued

The pecan is largely confined to the cotton-belt of the South and to Northern Mexico. Some varieties are proving successful as far north as Indiana and Illinois. New Mexico, Arizona and California are making plantings of considerable size.

### CHOICE OF VARIETIES

Two classes of pecans are Eastern and Western. Eastern are those originating in the eastern Southern States. They are adapted to all of the pecan belt, East and West. The Western are those varieties originating mostly in Texas, which should be planted only west of a line from Dallas to Austin. Perhaps the Western are as a class more profitable for the West, though we could not give up some of the Eastern kinds there also.

A few varieties have proven specially adapted to upland, as follows:

*Western Varieties:* Halbert, Texas Prolific, Burkett, Oliver.

*Eastern Varieties:* Moneymaker, Stuart, Success, Delmas.

### ENEMIES OF THE PECAN

There are some insects that injure the crops, but not every year. The National and State Governments are working on this problem and we expect to see it solved. But Texas is much more nearly free from these pests than the East. There is no more reason to fear them now than any disease or insect that might injure peaches, pears, cotton, or other crops.

The worst pest is an insect called the case-bearer that punctures the young nuts. We suggest the use of lime-sulphur in January and February. See formula under *Control of Insects*, in back pages.

### HOW TO PLANT

Pecans are commonly considered hard to transplant. We find the difficulty is slight, if the tops are cut back, leaving only three or four eyes or buds above the point of the bud or graft, which can be told by a slight off-set on the body of the tree. Plant trees two to four inches deeper than they stood in nursery, according to size of trees, which are usually one to six feet tall. Dig holes at least two feet square and deep, and then put down a post hole in center of large hole one to two feet deeper, or as deep as may be necessary to hold the long root.

After trees are set and well watered, mound dry soil up on stem of tree a foot or more above level of ground, or even to top of the stem or trunk, after it has been cut back, as directed above. Leave a ditch around this mound to hold sufficient water to soak down to end of root. New growth will come through the mound of soil in the spring or summer, and the soil will work down gradually to a level.

Abundance of water the first year will almost insure the living of the trees.

### THE GREATEST INVESTMENT

There is no other investment we know of that offers as large and sure returns as the pecan. In ten years a grove is worth a fortune. No wonder Luther Burbank said if he were a

young man, he would come to Texas and grow pecans! They are the best investment, the safest life insurance, the greatest legacy.

### Seedling Pecans for Shade and Fruit

	Each	Dozen	100
1 year, small.....	\$ .15	\$ 1.50	\$10.00
2 to 5 years, 3 to 4 feet.....	.75	8.00	60.00
4 to 6 feet.....	1.25	14.00	100.00
6 to 8 feet.....	2.00	22.00	150.00



This picture shows Mr. F. T. Ramsey holding his hand behind a cluster of Pecans on the tree planted at Governor Hogg's grave at Austin. It bore at two years old.

### THE WORDS OF EX-GOVERNOR HOGG

Ex-Governor Hogg, just before he died, made this request:

*"I want no monument of stone, but let my children plant at the head of my grave a Pecan tree, and at the foot of my grave a Walnut tree, and when these trees shall bear, let the Pecans and Walnuts be given out among the plain people of Texas, so that they may plant them and make Texas a land of trees."*

## PECANS—Continued

### Budded and Grafted Pecans

In planting budded or grafted trees, one knows they will bear the kind of nuts desired.

Prices of Budded and Grafted Pecans:

	Each	Dozen	100
1 to 2 feet.....	\$ 1.00	\$11.00	\$80.00
2 to 3 feet.....	1.25	14.00	100.00
3 to 4 feet.....	1.50	16.50	130.00
4 to 6 feet.....	2.00	22.00	160.00

#### EASTERN VARIETIES OF PECANS

See heading, "Choice of Varieties," under "About Pecans," preceding.

**DELMAS.** Mississippi. Large, slightly elongated. Scores very high on all points of a good pecan.

**MONEYMAKER.** Louisiana. Medium size, roundish. Well filled kernel. Good bearer, one of the best varieties.

**SCHLEY.** Mississippi. Somewhat elongated, above medium size. Considered by many to be best flavored pecan. Shell thin, kernel plump.

**STUART.** Mississippi. Perhaps the best known. Large, elongated, medium shell. Good quality, fairly productive.

**SUCCESS.** Mississippi. Large, extra quality. Very desirable.

#### TEXAS OR WESTERN VARIETIES OF PECANS

See heading "Choice of Varieties," under "About Pecans," preceding.

**BURKETT.** Callahan County. Large, almost round, shell thin. Flavor excellent. One of the best. Bears young and every year, fine.

**BURKHARDT.** Karnes County. Long, large, extra well filled kernel. Originated farthest South of all varieties. Sure cropper.

**HALBERT.** Coleman County. Almost round medium size. Flavor highest. Perhaps the youngest bearer known. Prolific. An all-around pecan. Very thin shell.

**OLIVER.** Kimble County. Extra large, Shell medium, quality fine. Old tree has produced eighteen bushels in one crop, and is a constant bearer.

**TEXAS PROLIFIC.** San Saba County. Large, rather long. Thin shell, fine kernel. Bears young. Heavy and sure bearer.

From Mr. W. G. S.

Houston, Texas.

Figs received today in O. K. condition and I want to say Ramsey & Son are the squarest nurserymen that ever grew a tree and I want to thank you for the way you have treated me.



*We sold a big one year old grafted Stuart Pecan tree in December. At time of taking the above picture it was seven years old and had borne four crops.*

From A. H. K

Jim Wells County.

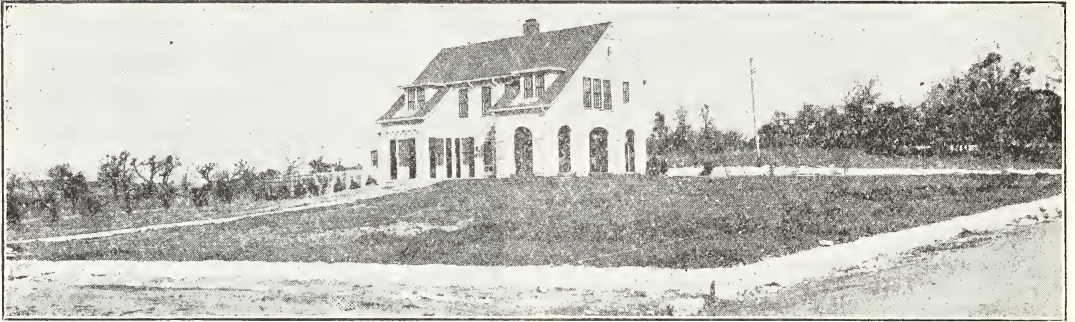
Blackberries in our orchard have again been a grand success and the Haupt produced by far the most. We always look forward with much delight to the berry season like to the watermelon time.

OUR EXPERIENCE OF OVER FIFTY YEARS GROWING TREES AND TWENTY YEARS IN MODERN LANDSCAPE WORK IS OFFERED YOU FREELY. WRITE US OR VISIT OUR NURSERY AT ANY TIME.

YOU MAY KNOW WHAT YOUR TREES WILL COST DELIVERED. WE PAY EXPRESS ON \$5.00 ORDERS IN TEXAS.

OUR BEST EFFORTS ARE ALWAYS MADE TO PLEASE OUR CUSTOMERS. IF AT ANY TIME OUR STOCK IS NOT SATISFACTORY, WE WISH TO BE NOTIFIED.

OUR FATHER AND GRANDFATHER PLANTED HIS FIRST TEXAS ORCHARD IN BURNET COUNTY IN 1858



AN AUSTIN RESIDENCE BEFORE PLANTING

## MORE BEAUTIFUL HOME GROUNDS

No matter who the reader may be, he remembers with fondness certain trees that grew around his childhood home. The very memory gives pleasure of a kind that can not be obtained with money.

We should be willing that our children may have similar memories in future years.

In the beautification of Home Grounds there are a few outstanding principles:

1. There should be foundation planting that largely obscures the foundation lines and corners of the house and ties it to the ground. This is illustrated by pictures of our plantings shown in this catalogue.

2. There should be a back ground planting, including larger trees back of the house that will grow as tall as the house or taller. This may be accomplished by tall growing Evergreens along the back line, or large shade trees, or both.

3. Planting may be and, in many cases, should be made down the sides of the front yard. Hedges are sometimes appropriate, but as a rule we prefer groups or masses of evergreens and flowering shrubs.

4. The front yard should consist mostly of lawn. A perfect lawn adds to the effect of the best of landscapes. Trees and plants should not be set promiscuously over the lawn. Planting should in whole or in part separate front and back yards.

5. Shade trees should be planted where they are needed for shade, or in the back yard for back ground.

6. Everyone realizes the importance of the beautification of the front yard, but for the enjoyment of the family the back yard is even of more importance. The back yard should be an *outdoor living room*.



THE SAME AUSTIN RESIDENCE AFTER PLANTING BY RAMSEY'S AUSTIN NURSERY

## INFORMATION AND ASSISTANCE

We know that many people who have a general idea of the result desired do not know the plants to choose or how to arrange them. Right here we offer a landscape service for every type of planting, small or large home grounds, public grounds and parks. Our advice as to the best kinds of ornamentals for any planting and general ideas as to grouping them is free. Do not hesitate to call on us.

If you wish a plan in detail, which is almost necessary in many cases, we have to make a nominal charge to cover the actual time necessary to make it. This small charge will be applied in part on in full on the cost of the trees and plants, depending on the amount used.

Full directions will be sent you how to give us the necessary information, and we can then prepare a planting plan, which almost any one can follow, and which will give the best effect possible in harmony with modern landscape art.

## BEAUTY HAS REAL VALUE

Few people see the wall paper and furniture in your home. Thousands of people judge you largely by the appearance of the grounds around your house. Why not have them beautiful?

Nature provides most wonderful material for out-door decoration—flowers and foliage with infinite combinations of colors.

### GARDEN CLUBS

Garden Clubs in towns and cities can create greater interest in civic improvement than individuals, especially nurserymen, who may be financially interested in selling plants.

While planting trees and shrubs interests the nurseryman, the benefit to him is small as compared with the benefit in pleasure, satisfaction, and property value to the community and individual home owners.

We are always glad to co-operate with such clubs or other civic organizations in fostering plans for City Beautiful Campaigns.

### PERSONAL VISIT

In case of larger grounds or parks, or whenever desired, we can make a personal visit before preparing the plan. This will always be more satisfactory, and the expense will be the least possible.

## BULBS, LILIES, ETC.

These are so easily grown and produce such a gorgeous lot of colors that no home should be without them. They can generally be safely left in the ground over winter, or they may be taken up and left to dry until early spring. They should be transplanted at least every two years for best results.

All bulbs can be planted to advantage November to April, except the Winter and Early Spring Blooming Bulbs which should be planted in November, December and January.

In planting, do not leave any part above ground. Plant from two to six inches deep, according to size of bulb.

**AMARYLLIS JOHNSONII.** 50 cents each \$5.00 a dozen. Gorgeous red lily; earliest.

### CANNAS

Scarcely anything else can give the beauty afforded by the best cannas. Here is the best assortment to be had, at lowest prices.

If the old flowers are cut off before seed are formed and the plants are given plenty of water, Cannas will give a luxuriance of blooms through the entire season, from early summer until frost.

### CANNAS—RED FLOWERS

**KING HUMBERT.** 15 cents each, \$1.25 per dozen, \$10.00 per 100. Orange red, streaked with gold. Luxuriant bronze foliage.

**PILLAR OF FIRE.** 15 cents each, \$1.25 per dozen, \$10.00 per 100. Tall grower, producing bright red flowers in abundance.

**PRESIDENT.** 25 cents, \$2.50 a dozen. Tall grower. Color rich glowing scarlet. Very large flowers.

### CANNAS—ORANGE AND RED FLOWERS

**ALLEMANIA.** 15 cents each \$1.25 per dozen, \$10.00 per 100. Large orchid flowers. Orange scarlet spotted with golden yellow.

### CANNAS—PINK FLOWERS

**MRS. A. F. CONARD.** 25 cents each, \$2.50 per dozen. Exquisite pale pink with darker pink in throat. Grows three to four feet.

**CITY OF PORTLAND.** 25 cents, \$2.50 per dozen. Medium height, glowing pink; profuse bloomer.

**HUNGARIA.** 25 cents each, \$2.50 per dozen.

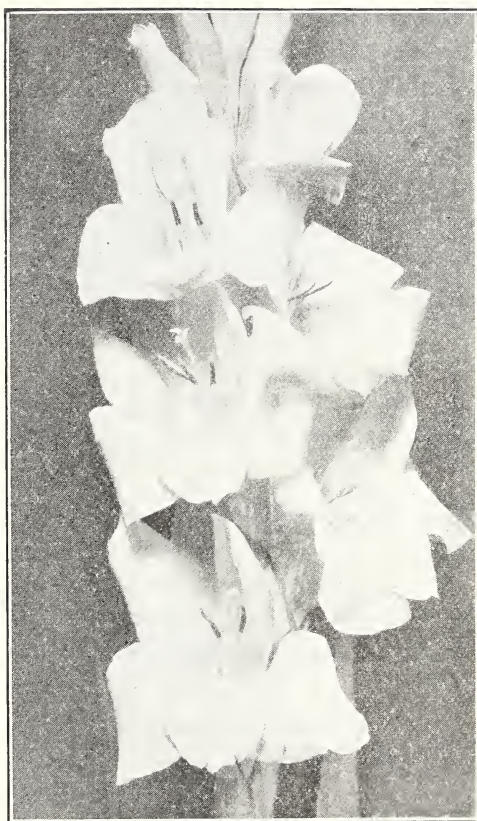
Leaves green, flowers beautiful shade of soft pink. Most attractive. Medium height.

### CANNAS—YELLOW FLOWERS

**AUSTRIA.** 15 cents each, \$1.25 per dozen, \$10.00 per 100. Tall. Canary yellow, with spots of red in throat.

### FOLIAGE CANNAS

**KING HUMBERT.** 15 cents each, \$1.25 per dozen, \$10.00 per 100. Dark bronze leaves, luxuriant. Large orange red flowers.

*Gladiolus*

**GLADIOLUS.** Mixed, all colors, 75 cents per dozen, \$5.00 per 100. Separate colors, pink, red, salmon, white, and yellow, \$1.00 per dozen, \$6.00 per 100.

**CALADIUM.** *esculentum* (Elephant's Ear). Medium size bulbs 25 cents, large bulbs 50 cents. Large leaves. Caladiums produce a tropical effect. Need abundance of water.

**DAHLIA.** 25 cents each, \$2.50 per dozen. Assorted colors.

**YELLOW DAY LILY.** (*Hemerocallis Fulva*). 20 cents each, \$2.00 per dozen. Hardest, lasts forever. Rich gold color, striped inside.

**DOUBLE DAY LILY.** 25 cents each, \$2.50 per dozen. Rare, beautiful, double, orange and gold.

**IRIS, WHITE, AND PURPLE.** 15 cents each, \$1.25 per dozen. Old fashioned flags. Great profusion of flowers in early spring.

**LIATRIS.** (*Punctata*.) 25 cents. Perennial, 2 to 3 feet high, with spikes of purplish-blue flowers that retain their color all winter when cut and dried. Blooms late summer and fall. A hardy, desirable native.

*Angel Lilies*

**ANGEL LILY.** (*Crinum Fimbriatum*). 25 cents each, \$2.50 per dozen. Cluster of five to nine large white lilies, with faint wine-colored shadings. Profuse, fragrant.

**RAIN LILY.** (*Cooperia Pedunculata*). 50 cents per dozen, \$3.00 per 100. Native White Fairy Lily. Springs up and blooms in three days after rain.

**HABRANTHUS.** 10 cents each, \$1.00 per dozen, \$7.00 per 100. Beautiful red lilies from Chile, with dwarf stalks eight inches high. Profuse bloomer in fall. Green all winter. Will grow and bloom in sod. Good for low border.

*Mexican Tuberose. Fragrant. They Bloom All Summer*

**MEXICAN TUBEROSE.** 50 cents per dozen, \$4.00 per 100. Introduced by us from high, cool interior of Mexico. Single, prettiest, most fragrant tuberose known. Tall, stiff stems. Blooms constantly from June till frost. Cut flowers keep a week. Very profitable near any town or city.

# RAMSEY'S AUSTIN NURSERY

## SPECIAL DISCOUNT COUPON

GOOD UNTIL FEBRUARY 15, 1930

Attach this coupon to your order. It is good for credit as follows:

30 cents on order for \$3.00 or more.

50 cents on order for \$5.00 or more.

\$1.00 on order for \$10.00 or more.

See sheet in catalogue or back of order blank allowing further credit of 50 cents or \$1.00 for list of names.

RAMSEY'S AUSTIN NURSERY

## AN ACTUAL NEED

We are glad to mail you today our catalogue.

There has never been a greater need for fruit trees than exists to-day. Every home in Texas can raise fruit of some kind. If you are in doubt as to what you can raise best, write us and we will advise you honestly.

Peaches, Plums, Pears, Apples, Apricots, Figs, Nectarines, Jujubes, Persimmons, Berries, Pecans . . . all these will provide fruit for health and pleasure, and add value to property.

There are good farmers who have to borrow several hundred dollars in the spring and summer, when one or two acres of fruit and berries would supply the cash, save interest, and avoid the embarrassment of having to borrow.

Back yards in towns can produce all the fresh fruit wanted for home use, with some to spare. What a pleasure to have it!

Abundance of moisture in ground now provides the best season for planting we have had in several years.

## HELM APPLE AND RAMSEY FIG

Our catalogue shows the best varieties of all fruits for every section of the entire Southwest. We call attention to two kinds in particular.

The HELM APPLE is the surest and best, and succeeds farther south than any other variety. It may be planted successfully as far south as a line from Huntsville to Austin and Del Rio, Texas. In an apple country, it is unsurpassed. It is a native of Lee County, Texas. See description in catalogue.

THE RAMSEY FIG is another native of Texas. This is without question the best variety for home use ever known. From the Rio Grande to Red River it has established a faultless reputation. We recommend it anywhere in the Southwest except the Plains. In north and central Texas, it will usually be frozen to the ground but will come out and produce abundantly every year. See description in catalogue.

## BEAUTIFUL HOME GROUNDS

Home owners are beginning to realize the importance and value of having beautiful Home Grounds. The exterior in some respects is more important than the interior.

In financing new homes, owners should allow for landscaping. Loan companies will loan as high as \$2.00 per plant, even though plants may cost only fifty cents. They know that in two years a fifty cent plant will be worth five dollars or more.

We are prepared to render real service in properly planning and planting. See information in catalogue. Write us.

## OUR POLICIES AND GUARANTEES

We make and have made for fifty-five years broader guarantees than any one else ever offered.

We pay express or parcel post on \$5.00 orders in Texas, and on \$10.00 orders in adjoining states.

We guarantee arrival in good condition. Customer makes complaint to us, and not to the transportation company. If notified promptly, we make trees good at once.

Then we replace at half of catalogue price any plants that die in six months.

Our intention at all times is to give absolute satisfaction.

We are proud of the fact that many people have bought from us for twenty, thirty, and even fifty years.

RAMSEY'S AUSTIN NURSERY

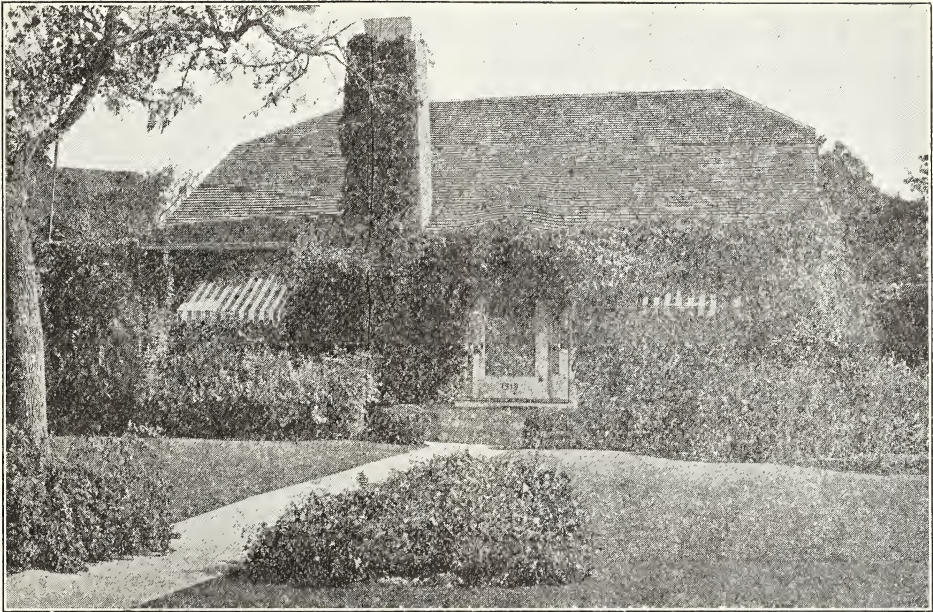
Bringers of Bounty

Austin, Texas

Builders of Beauty

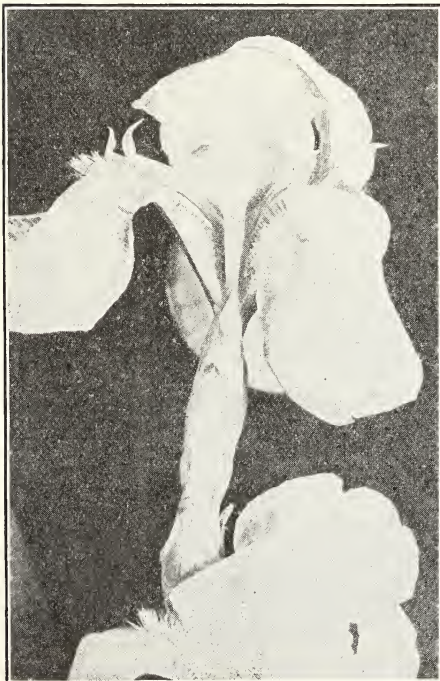






Landscaping by Ramsey's Austin Nursery. This gives the inviting appearance of a real home, not merely a house. The vine over the door and windows is Antigonon (Queen's Wreath).

**WINTER AND EARLY SPRING BLOOMING BULBS**



*Iris*

Plant in October, November, December and January.

	Each	12
Hyacinths, separate colors . . . \$	.25	\$2.50
(Colors—light blue, dark blue, rose, light pink, red, white.)		
Tulips, best Darwin, assorted colors . . . . .	.15	1.50
Narcissus, white . . . . .	.12	1.25
Yellow . . . . .	.25	2.50

**PLANTING DIRECTIONS**

**HYACINTHS.** Plant outdoors as directed for tulips. If planted in pots, use one bulb in five inch pot, or four in six inch pot. Use light rich soil (not manure), leaving tops of bulbs half an inch under soil, an inch below rim of pot. Water well and cover with sand, set away in cool place for six weeks, and bring to light as required.

**TULIPS.** Plant in well drained soil. Cover bulbs two or three inches deep. Do not apply rich fertilizer, unless bone meal, but use good soil, preferably somewhat sandy. Bulbs may remain in ground two or three years without being moved, and may also be grown in pots.

**NARCISSUS.** Plant same as Tulips, but in moist shady place. Bulbs may remain in ground several years, and may be grown in pots.

## ROSES

Each Dozen

Largest, 2 years old, field grown... \$.60 \$6.00  
 Smaller, 2 years old, field grown... .50 5.00

We have some roses on their own roots, grown from cuttings in the greenhouse, and others which do best budded on other, hardier stocks. In the case of budded or grafted roses, it is necessary not to allow the roses to grow from below the bud. The bud is usually indicated by a slight offset or elbow about where the branches of the bush begin, or somewhat lower.

All are robust plants that have already bloomed in the field.

Roses are the most beautiful flowers while in bloom, but at other times the bushes are not attractive. Therefore, they give best effect when planted in the back or side yard, or with grouping of other plants whereby they are not conspicuous when not in bloom.

**Light Pink, Bush Roses**

**J. L. MOCK.** Clear imperial pink; with petals rosy pink underneath. Flowers extra large with long stems.

**LA FRANCE.** Full; fragrant; universally popular.

**LOS ANGELES.** Vigorous grower, with long pointed buds, and long stems. Color, light pink, tinged with coral and gold.

**MADAM C. TESTOUT.** Soft pink. Beautiful buds. Profuse.

**Dark Pink, Bush Roses**

**COLUMBIA.** Large flowers, glowing pink.

**KILLARNEY.** Brilliant color. Beautiful, very large buds.

**MDM. BUTTERFLY.** Harmony of bright pink, apricot and gold.

**OPHELIA.** Salmon-flesh, shaded with rose.

**PAUL NEYRON.** Rich pink; extra large; full, fragrant; tall grower. Spring and fall.

**PINK RADIANCE.** Brilliant, rose pink. Large full flowers, very fragrant. An excellent rose.

**PREMIER.** Deep pink, fragrant, thornless.

**Red Bush Roses**

**AMERICAN BEAUTY.** Large, fragrant.

**BABY RAMBLER.** Dwarf. Brilliant crimson clusters of 15 to 30 roses.

**ETOILE DE FRANCE.** Clear, red-crimson velvet. Large flowers, long stems. Extremely vigorous and free blooming.

**FRANCIS SCOTT KEY.** Large, red, shading to cerise.

**RED RADIANCE.** One of the best, hardiest red roses. Flowers in bud and full blown are perfect. Bright, rich red color.

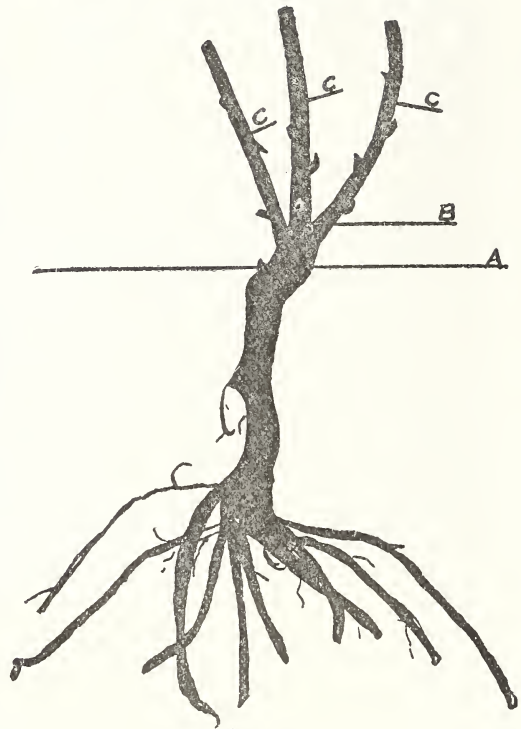
**White Bush Roses**

**WHITE AMERICAN BEAUTY.** (*Frau Karl Druschki*). Snowy white blooms, with very large petals. Hardy everywhere.

**KAISERINA.** Long, pointed buds, full when open; flowers last well; long stems. For an outdoor white rose it has no rival.

**Yellow Bush Roses**

**FRANCES KRUEGER.** Large flowers, deep copper yellow, tinged with pink. Very hardy and constant bloomer.



HOW TO PLANT ROSES

"A" indicates ground line in nursery. Set the plant about one inch deeper at "B." Cut top off three or four inches higher at "C." Then mound soil up on stems two or three inches, almost to "C."

Rose plants should always be cut back at time of planting as shown in cut above. Cut stems three or four inches long, and mound soil up almost to top of these stems. Older bushes should be cut back about half in February and March, and again partly in August between the summer and fall blooming periods. This will increase quantity and size of flowers. Climbing roses after growing one or two years should have any dead wood cut out in the winter, and extra long shoots or branches cut back about half.

**LADY HILINGDON.** Deep yellow to orange. Fine buds. One of hardiest yellow roses.

**LUXEMBURG.** Golden yellow. Thrifty grower.

**MRS. AARON WARD.** A wonderful combination of colors, copper, golden-yellow, shading to lemon-cream. Profuse bloomer.

**SUNBURST.** Golden yellow to golden orange, intense shades; long stems.

**Pink Climbing Roses**

**AMERICAN PILLAR.** Magnificent climber, dark foliage. Flowers large, single, rich rosy pink, with glint of white at center.



*Red Radiance Rose*

**ROSES---Continued**

**CLIMBING HELEN GOULD.** One of the finest pink climbers.

**DOROTHY PERKINS.** Gorgeous pink; spring bloomer. An evergreen and most excellent for arbors or screens.

**SEVEN SISTERS.** Very light to dark pink; great clusters of flowers in spring, hardy.

**Red, Climbing Roses**

**CLIMBING AMERICAN BEAUTY.** Like American Beauty, but strong climber.

**CRIMSON RAMBLER.** Brilliant red in great clusters, early in spring; beautiful foliage.

**CLIMBING METEOR.** Flower similar to Meteor; vine rugged climber.

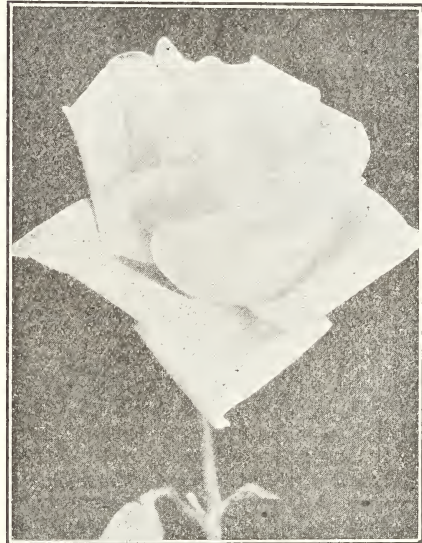
**REINE MARIE HENRIETTA.** Fine red climber; successful on all soils.

**White, Climbing Roses**

**CLIMBING KAISERINA.** Elegant, pure-white, robust vine.

**Yellow, Climbing Roses**

**MARECHAL NEIL.** Most popular of all climbers; rich deep yellow; fine plants on own roots, and budded on hardy stock at common price.



*Kaiserina Rose*



Foundation planting, corner of Scottish Rite Dormitory, University of Texas, Austin. Landscaping by Ramsey's Austin Nursery. Such a planting ties the large building to the ground, destroys the coldness of the brick and stone, and gives an appearance of warmth and luxuriance.

## CLIMBING VINES

	Dozen	100
25c plants.....	\$2.50	\$20.00
35c plants.....	3.75	30.00
50c plants.....	5.00	40.00
75c plants.....	8.00	60.00

**ANTIGONON LEPTOPUS.** 50 cents. (Rose of the Mountain, or Queen's Wreath.) A perennial vine with sprays of glowing pink flowers all summer. The bulb should be covered with two inches of extra soil, if left in the ground all winter.

**BIGNONIA GRANDIFLORA.** \$1.00. Gorgeous, orange or reddish-tinted orange flowers, twenty to forty in cluster. Each flower shorter but about twice as broad as the old Trumpet Creeper. Tall climber, or it may be planted as a half climber, or even as a shrub. It shows for half a mile. A really valuable addition to any list or yard.

**RED TRUMPET CREEPER.** 35 cents. The old-fashioned sort. Good for covering back fences or dead trees.

**YELLOW TRUMPET CREEPER.** 75 cents. New, rare. Like above except the color is a gleaming yellow.

**TEXAS VIRGINIA CREEPER.** (*Ampelopsis quinquefolia Texana*). 50 cents. Native, in leaf earlier than the Virginia, with smaller, but much brighter green leaves all summer. Creeps on wood or stone more closely than any vine we know. Will grow on west side of building, in the hot sun.

**CLEMATIS COCCINEA.** 50 cents. Red, coral-like, bell-shaped flowers; all spring and summer. Hardy. Very dainty for trellising.

**CLEMATIS CRISPA.** 50 cents. Like the above, but flowers are blue.

**CLEMATIS PANICULATA.** 75 cents. Strong growing vine, with white, star-shaped flowers all summer and fall. Very fragrant. Evergreen.

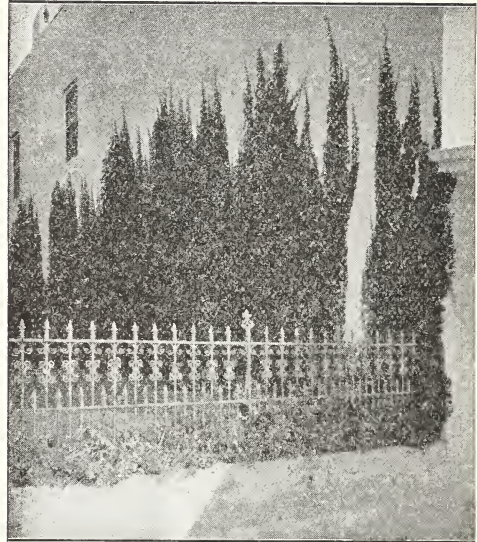
**HONEYSUCKLE.** (*Evergreen*). 35 cents. Fragrant, white and yellow flowers; dense, rank foliage; the best for shade or screens.

**HONEYSUCKLE.** (*Red Coral*). 50 cents. Coral red flowers; commences to bloom early.

**ENGLISH IVY.** (*Hedera Helix*). 50 cents. Clings to stone, brick or wood. Hardy with thick dark green leaves.

**LAWN IVY.** 50 cents. Leaves dark evergreen like English Ivy, but smaller. Grows close to ground in shade or sun. Most excellent for covering bare spaces.

**JAPAN OF BOSTON IVY.** (*Ampelopsis Veitchii*). 50 cents. Hardy wall creeper. Foliage shows rich shades of red and yellow in the fall.



*Texas Virginia Creeper in Austin. It will cling to walls too smooth for other creepers. See description of Texas Virginia Creeper.*

**KUDZU VINE.** 35 cents. Rankest growing vine known. Grows 75 feet. Large dark green leaves. Also used for forage.

**SMILAX.** 50 cents. The native evergreen vine so much used for decoration.

**VINCA.** 15 cents, \$1.50 per dozen. Most desirable for trailing on ground in shady or sunny places. Bright leaves, evergreen. Blue flowers all summer.

**VINCA (variegated).** 15 cents, \$1.50 per dozen. Like above, but with variegated foliage, green and white.

**WISTARIA (purple).** 75 cents. Hardy woody vine that soon runs 50 feet; fragrant flowers in early spring, in long sprays.

We like to have reports as to success with our trees. We will appreciate it if you will write us just how our trees and plants have done for you. If they have done well, the knowledge will please and encourage us to give still better service. If anything has been wrong, we certainly want to know that also.

### BEST PLANTS FOR SHADED PLACES

Following are the best shrubs and evergreens to plant in locations that do not receive average amount of direct sunlight: Agarita, Malvaviscus, Pavonia, Bird Pepper, Japan Quince, Redbud, Salvia, Baby Sumach, Evergreen Sumach, Yaupon, Euonymus. Refer to Index for description.

# PERENNIALS AND SMALL PLANTS

Perennials are plants that remain in the ground from year to year, their tops usually dying in the winter, with growth coming from the root again in the spring. They should as a rule be divided and transplanted every two or three years.

Perennials that have lived in one spot for a long time, dying and living again year by year, make a special appeal to the lover of plants and old memories.

## LIKE THE FLOWERS IN GRAND-MOTHER'S GARDEN

"Mother set that out upward of fifty years ago," an elderly man said the other day, pointing to a flowering almond bush covered with a profusion of small buttonlike pinkish blossoms. "I can just remember it. Aunt Ruth Sherwin brought her the root wrapped up in an old blue-checked gingham apron. There's never been much done to the bush. It just stands there where it was put and flowers every year when the right time comes."—Youth's Companion.

NOTE: Varieties in *heavy type* are natives of Texas.

Quantity prices:	Dozen	100
25c plants.....	\$2.50	\$20.00
50c plants.....	5.00	40.00
75c plants.....	8.00	60.00

**CHRYSANTHEMUM.** 20 cents each, \$2.00 per dozen. Yellow and white. Best for outdoor planting. Hardy. Flowers medium size. Produces masses of blooms in fall.

**GOLDENROD.** 15 cents, \$1.00 per dozen. Tall spikes of yellow flowers in fall. Best strain of Goldenrod we have seen.

**HELIANTHUS.** (*Maximiliani*). 25 cents. Large yellow flowers, with yellow centers, stems 5 to 7 feet. Blooms in fall. Most effective in all plantings.

**HIBISCUS.** 75 cents. One of the best old-fashioned favorites. Blooms freely after second year. Single red.

**MALLOW MARVELS.** 50 cents. Improved, hardy Hibiscus. Large flowers, white, pink, crimson and scarlet, mixed.

**HOLLYHOCK.** Assorted colors. 25 cents each, \$2.50 per dozen.



*Shasta Daisy*

**SHASTA DAISY.** 50 cents per dozen, \$4.00 per 100. Largest flowers, most constant bloomer. Wonderfully hardy.

**MALVAVISCUS.** (*Drummondii*). 50 cents. Heavy green leaves, scarlet flowers all summer. Thrifty everywhere. Excellent for low borders and backgrounds.

**MALVAVISCUS.** (*Grandiflorus*). 75 cents. A larger growing variety than Drummondii, making six or seven feet height, with large scarlet flowers. Excellent for indoor or outdoor growing. A most desirable plant.

**BUSH MORNING GLORY.** 50 cents. Has large pink flowers like Morning Glory vine, but is a bush or shrub growing four to six feet high. Blooms all summer. Effective in mass planting.

# FLOWERING SHRUBS

The ultimate purpose of plant life is to produce flower, fruit and seed. The complete process is carried through by fruit trees in the maturing of luscious peaches, red and yellow plums, healthful apples, and other fruits. Likewise the process is completed by almost all trees and plants, but by others in a less conspicuous manner. We think of fruit trees for their fruit, of evergreens for their evergreen foliage, and of flowering shrubs for their flowers.

By means of natural selection and the efforts of man, the flowers of thousands of plants, shrubs and trees have been improved in size and beauty

to such an extent that we forget that they make fruit and seed.

Our list contains fully ninety per cent of all the shrubs known to be good in the Southwest. They have been chosen for their beauty and hardiness, and all are best adapted for outdoor planting.

## PRUNING

Flowering Shrubs should be cut back considerably when planted, as a rule half way or more. They should also be pruned back to more or less extent every winter. If the flowers are cut off as soon as they are past their best, and seed are

## FLOWERING SHRUBS—Cont.

not allowed to form, most shrubs will continue to bloom freely for a longer season than they otherwise would.

We offer a list of the usual or standard varieties, followed by a list of native Texas varieties.

Prices:	Dozen	100
25c plants.....	\$ 2.50	\$20.00
30c plants.....	3.25	25.00
35c plants.....	3.75	30.00
40c plants.....	4.25	35.00
50c plants.....	5.00	40.00
75c plants.....	8.00	60.00
\$1.00 plants.....	10.00	75.00
\$1.25 plants.....	12.50	90.00

**ABELIA.** 1 to 2 feet, 75 cents; 2 to 3 feet, \$1.25. A beautiful evergreen shrub, with white flowers all summer, very hardy.

### ALTHEA (Rose of Sharon)

50 cents each, \$5.00 per dozen.

See Hedge Price, under "Hedges."

The Althea is one of the hardiest and most widely adapted of all flowering shrubs. It lives and blooms freely with little water or rainfall, but with abundance of water it gives a profusion of flowers in many colors all summer. Our plants have all bloomed in the field, and will bloom the first summer after planting.

The Althea may be grown in bush or tree form and kept from five to eight feet tall, by pruning.

#### CHOICEST NAMED VARIETIES OF ALTHEAS

**TOTUS ALBA ALTHEA.** Single, snowy white flowers, persistent bloomer.

**BURKHARDT ALTHEA.** Double, variegated, pink and white.

**AMPLISSIMA ALTHEA.** Double, rosy red, early bloomer.

**DUCHESS de BRABRANT ALTHEA.** Double, dark red, free bloomer.

**JOAN OF ARC ALTHEA.** Pure white, very double, petals crimped and look like tissue paper. They keep a long time when cut. They are exquisitely beautiful and are admired as some new rare flowers. A constant bloomer.

**LADY STANLEY ALTHEA.** White, shaded rose; semi-double.

**SINGLE PURPLE ALTHEA.** Beautiful shade of purple, excellent, free flowering.

**DOUBLE PURPLE ALTHEA.** Clear shade of purple, double flowers, blooming constantly.

**ALMOND.** 75 cents. Double flowering, dwarf, pink and white. A shower of color in early spring. Perfectly hardy.

**BUDDLEIA.** (*Variabilis Magnifica*). 75 cents. Of fast growth, from 4 to 8 feet, with dense foliage and profusion of fragrant purple and violet flowers, in large panicles. Called Butterfly Bush, because of attraction for butterflies. Blooms from spring until frost.

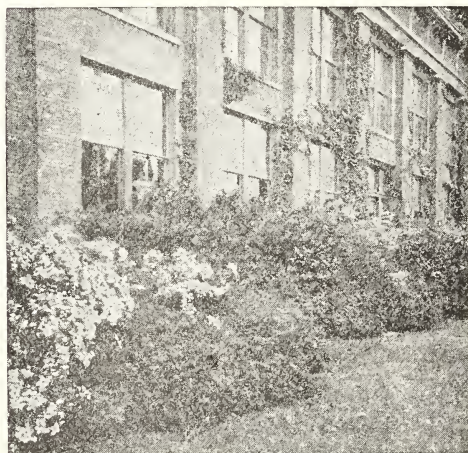
**CAPE JASMINE.** 2 feet, \$1.00; smaller 75 cents. The well known evergreen with beautiful white fragrant flowers. Austin and southward.

**HYPERICUM.** (*Moserianum*). \$1.00 Grows two feet, with heavy foliage on graceful drooping branches. Flowers large, bright yellow. Evergreen.



Row of Totus Alba Althea in Front of Tamarix in Our Nursery

**JASMINE.** (*Humile*). 75 cents. Beautiful evergreen shrub, with bright green leaves and stems. Fragrant yellow flowers. Hardy, desirable.



A Cheerful Planting Around a Factory Building Adds Many Times Its Cost to Value of Property

**CRAPPE MYRTLE.** Well known old favorite. A glow of color. Light Pink, Watermelon Pink, Lavender, Red, Scarlet. 1 to 2 feet, 50 cents; 2 to 3 feet, 75 cents; 3 to 4 feet, \$1.00. White, 2 to 3 feet, 75 cents. It is to the South what Lilac and Snow Ball are to the North. Plant a Crape Myrtle hedge. Nothing more attractive. Abundance of water all summer will give profusion of flowers every day. Crape Myrtle may be grown in bush or tree form and kept from five to eight feet tall, by pruning. Special prices on large quantities.

**FLOWERING SHRUBS—Cont.**

**LILAC.** Purple. Fragrant, early bloomer, evergreen. Old favorite. 75 cents.

**MOCK ORANGE.** (*Philadelphus*). 75 cents. Makes small tree. Beautiful white, fragrant flowers.

**OLEANDER.** Pink and white, 75 cents. Red \$1.

**PLUMBAGO CAPENSIS.** 75 cents. Low shrub with masses of beautiful fluffy soft blue flowers all summer and fall.

**POINCIANA.** Royal Dwarf. 50 cents. Very hardy, 5 to 6 feet. Covered with panicles of yellow and red flowers. Very striking.

**POMEGRANATE,** *flowering.* 50 cents. Double red flowers, approaching beauty of roses. Large growing bush, very hardy.

**POMEGRANATE,** *fruiting.* 75 cents. Best constant bloomer. Fine fruit. Best for landscape effects. Flowers bright red. Fruit showy on trees.

**PEACH,** *flowering.* 75 cents. Pink, red and white.

**QUINCE, JAPAN.** (*Pyrus Japonica*). \$1.00. Scarlet flowers, very early in spring. Fire-bush.

**SPIREA.** 75 cents. Bridal Wreath. Single and double. A bank of white flowers in spring.

**TAMARIX.** (*Improved Salt Cedar*). 2 to 3 feet, 50 cents; 3 to 4 feet, 75 cents. Hardy, graceful, grows anywhere. Following are three best kinds of some fifteen in our nursery.

**TAMARIX ESTIVALIS.** Beautiful plume like foliage, with profuse pink flowers.

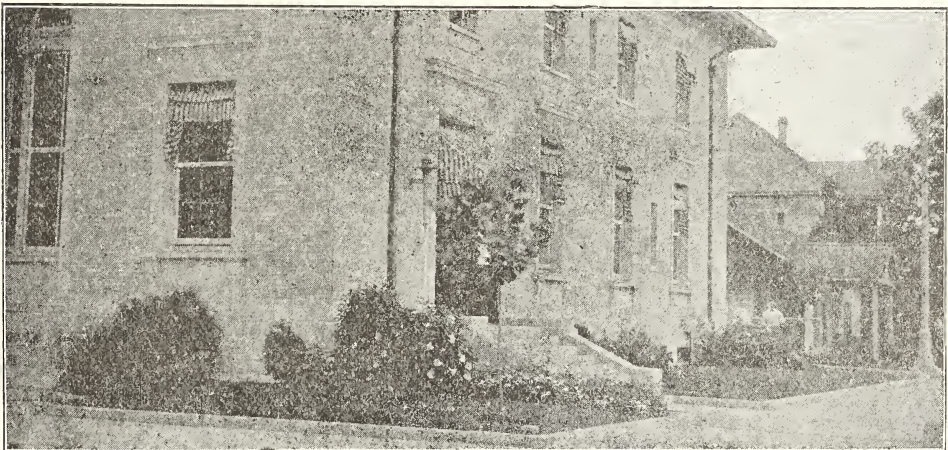
**TAMARIX JAPONICA** (*Plumosa*). Becomes medium size shade tree. Each limb a mammoth plume of feathery-like green. Every landscape needs them. Pink flowers.



*Crape Myrtle*



*Eight or Ten Spirea (Bridal Wreath) in a Group Make a Great Show in Early Spring*



Postoffice, Cuero, Texas. Six months after planting by Ramsey's Austin Nursery. A small expenditure for planting around public buildings produces effective improvement. Citizens have a right to expect reasonable improvement of public and semi-public grounds.

FLOWERING SHRUBS—Continued

**EVERGREEN TAMARIX.** Athol Tree. \$1.00. Holds beautiful gray-blue foliage through ordinary winter in Central Texas, and always until after Christmas. This is a valuable addition to our list of ornamentals. Makes striking contrast in front of darker green foliage. It will remain green all winter

in South Texas, and we recommend it as far north as Oklahoma, New Mexico, and Arizona.

**VITEX.** Blue. 75 cents. Very hardy, growing 6 to 10 feet. Large spikes of blue flowers. Commonly called Sweet Lavender.

NATIVE FLOWERING SHRUBS

Our beautiful, climate-proof Natives are not surpassed in the world. Natives for the most part of West Texas, they are indifferent to drouth and disease. They require severe pruning back when transplanted. Agarita and Pithecolobium in particular should be cut back almost to the ground, leaving only about two inches of growth above roots. Then mound soil entirely over the stems.

See quantity prices under *Standard Flowering Shrubs* preceding.

**ANISACANTHUS.** (*Wrightii*). 50 cents. Another valuable, hardy native Texas flowering shrub. Grows three to five feet tall, covered with orange-red flowers all summer and fall. In extreme drouth it grew and bloomed luxuriantly in the field without irrigation. Should be cut back to six inches in February or March.

**CALLICARPA.** 50 cents. Attractive foliage. Has clumps of balls of reddish-purple berries for months in the fall.

**DWARF CHESTNUT.** (*Aesculus octanara*). 75 cents. Another climate-proof native, 3 to 5 feet. Gorgeous trusses, ten inches long, of glowing pinkish red flowers in spring and summer, but well worth growing for foliage alone.

**CORALBERRY.** 50 cents. New, scarlet. Hardy, pretty foliage, with coral red berries all winter. Will grow in shade. A very superior variety.

**ELDERBERRY.** 25 cents. Trusses of white flowers in summer. Desirable.

**EUPATORIUM.** 75 cents. Shrub 4 to 7 feet, with wonderful fragrant white flowers in fall. It is covered with butterflies on fair days.

**HONEYSUCKLE.** (*Bush*). 75 cents. Grows 4 to 6 feet. A hardy shrub, blooming profusely early in spring, before leaves come out. Fragrant. Colors: Red, white and pink.

**HUISACHE.** (*pronounced wee-satch*). (*Acacia farnesiana*). \$1.00. Medium sized tree, beautiful fern-like foliage. Gorgeous display, yellow flowers in spring.

**LANTANA.** (*L. Camara*). Orange. 50 cents. Low bush, dark green foliage, handsome orange colored flowers. Very hardy. Stands drouth. Extremely attractive; blooms all summer.

**LANTANA.** Pink. 75 cents.  
**LEUCOPHYLLUM.** See under *Evergreens*.  
**PARKINSONIA ACULEATA.** (*Relama*). Reaches 15 feet. Foliage like Mesquite. Glow of yellow flowers all summer. 3 to 4 feet, 50 cents; 7 to 8 feet, \$1.00.

**PAVONIA.** 50 cents. Two feet, hardy, covered from spring until winter with bright rosy-pink flowers. A fine thing.

**REDBUD.** 50 cents. Grows to be ten feet tall. Covered with purplish-red flowers early in spring, before leaves come out.

**SALVIA.** (*Greggii*). 50 cents. Native of West Texas. Almost evergreen; 2 to 3 feet. Covered with dark crimson flowers from spring to frost. Of compact growth that is improved by pruning. Hardy everywhere, and suitable for many purposes, especially for low borders and for massing.

**SUMACH.** (*Staghorn*). 75 cents. Large leaf, exquisite autumn foilage in red, green and yellow.

**SUMACH.** (*Evergreen*). 75 cents. Hardy native, growing 4 to 6 feet. Foliage shows beautiful shades all winter, with red limbs and twigs. A grand and valuable addition. Perfect evergreen.

**SUMACH.** (*Native*). (*Rhus copallina*). 50 cents. While it is worth growing for its beautiful leaves all the summer, it is a charming sight all fall with its dress of scarlet, orange, and yellow. It is so hardy and easy to transplant, one rarely dies. The clusters of red seed are greatly admired. Should be cut back to one foot above ground in February or March.

**WILLOW.** Flowering. 75 cents. (*Chilopsis linearis*). Native of Western Texas and New Mexico. Constant bloomer, May till fall. Lace-like flowers in clusters. Colors, lilac and white. Tree reaches 20 feet.

SHADE TREES

Prices, except where noted:

	Each	Dozen	10C
5 to 6 feet.....	\$ .75	\$ 8.00	\$ 60.00
6 to 7 feet.....	.90	10.00	75.00
7 to 8 feet.....	1.10	12.00	90.00
8 to 10 feet.....	1.60	18.00	140.00
10 to 12 feet.....	2.00	22.00	175.00
12 to 14 feet, 1½ to 2 in. diameter.....	2.50	27.00	210.00
12 to 14 feet, 2 to 2½ in. diameter.....	3.00	32.00	250.00
3 inches diameter....	4.00	44.00	325.00

**EXTRA HEAVY TREES.**—In nearly all kinds of shades, we have *extra heavy* trees which we can supply. Prices furnished upon inquiry.

**TOPS CUT BACK.** Shade trees should have the tops severely cut back. If the top is left on, the extra express charges amount to a considerable sum. Unless expressly requested to do otherwise, we shall cut tops off the larger shade trees before they are shipped. This is better for the trees, the customers and nurseryman.

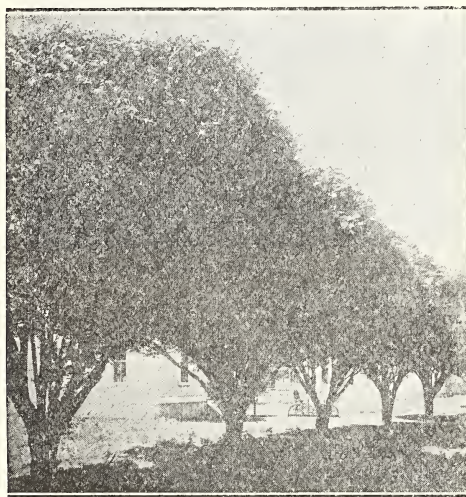


## SHADE TREES—Cont.

## HOW TO PLANT AND PRUNE SHADES

The planting is the same as for fruit trees. Most planters demand long-bodied shades. This is not natural in this climate. Instead of leaving or cutting the tops 8 to 12 feet from the ground, cut them 6 or 8 feet. A tree cut 7 feet or less will in any number of years make about twice as much shade as if it had been cut 12 feet. The branches can be pruned up as the years go by and then the lower foliage will be as far from the ground as on the long-bodied trees.

The more any tree is cut back when planted, the more likely it is to live.



*Texas Umbrella China*



*A Noble Elm Tree. We Think We Have All the Different Shades That are Successful in Our Territory*

**EVERGREEN ASH.** Also called Rio Grande or Arizona Ash. This is a rather new, but most excellent shade tree. In South Texas it is nearly evergreen, but farther north it loses its leaves in the winter. The leaves are especially bright green and glossy.

6 to 7 feet, \$1.25 each; \$12.50 per dozen.  
7 to 8 feet, \$1.50 each; \$15.00 per dozen.

**BOX ELDER.** Handsome, quick-growing tree.

**CATALPA, JAPAN.** A healthy, rank growing long-lived shade tree. Beautiful clusters of white, fragrant flowers in spring.

**CHINA, TEXAS, UMBRELLA.** Quick growing. Dense round top.

3 to 4 feet, 50 cents; \$5.00 per dozen.  
5 to 6 feet, \$1.00; \$10.00 per dozen.  
6 to 8 feet, \$1.75; \$18.00 per dozen.  
8 to 10 feet, \$2.50; \$25.00 per dozen.

**CYPRESS, NATIVE.** (*Taxodium distichum*). 1 foot, 50 cents; 2 feet, \$1.00; 3 to 4 feet, \$2.00. A grand, stately tree. On the mountain streams west of Austin it reaches a diameter of eight feet. Needs plenty of moisture.

**COTTONWOOD.** A rapid grower on rich land.

**HACKBERRY.** One of the hardiest trees in existence. On poor land or very dry locations it is to be recommended.

**ELM.** The long limbed, fast-growing American Elm grows well on any ordinary soil.

**ASH.** Beautiful, clean, adapted to nearly all soils.

**JAPAN VARNISH.** 3 to 4 feet, 75 cents; 4 to 5 feet, \$1.25; 6 to 8 feet; \$2.00. A stately, tulip-leaved tree from Japan, smooth, green bark.

**LIGUSTRUM, JAPAN.** See Evergreens.

**LOCUST, BLACK.** A good shade tree in certain soils. Large panicles of flowers in spring.

**RUSSIAN MULBERRY.** Some of these trees will prouced some fruit, some will not. They are grown from seedlings and we can not guarantee strictly non fruiting. Most excellent and hard shade tree for any part of the Southwest. It flourishes in west Texas and New Mexico.

**NON BEARING RUSSIAN MULBERRY.**

Be sure to mention non-bearing Mulberry. This has all the qualities of the Russian Mulberry listed above, but the trees are grafted from strictly non-bearing trees. It makes one of the most satisfactory shades in the world. Unlike the Chinese Elm, the Russian Mulberry is of long life, and it thrives in soil where the Chinese Elm will not live.

6 to 7 feet, \$1.25 each; \$12.50 per dozen.  
7 to 8 feet, \$1.50 each; \$15.00 per dozen.

**PECAN.** See under PECANS.

**OAK, LIVE.** 2 to 10 feet, 40 cents a foot. The native evergreen oak. A beautiful tree. Well rooted, nursery grown. If all liveoaks 5 feet and under are cut off near the ground when planted and soil mounded over the stump, they never or rarely die. If larger trees are cut back to 6 feet and wrapped with burlap (old sacks), they rarely die.

## SHADE TREES—Continued

**POPLAR, CAROLINA.** Resembles cottonwood; branches more slender and leaves slightly smaller. Should be largely planted.

**POPLAR LOMBARDY.** Graceful, tall, slender; gives fine effect.

**POPLAR, SILVER-LEAF.** Leaves white on underside and, when stirred by the breeze, the tree seems laden with white flowers.

**SYCAMORE, AMERICAN.** One of our most reliable and satisfactory shades for all kinds of soils and locations. Bark white, leaves light green. Sycamore and Elm are universally successful.

**WALNUT BLACK.** This is one of the best shade trees in the entire south. The trees live almost as long as pecan trees. We have seen the Black Walnut flourishing on the tops of chalky hills. Good for shade, fruit, and timber.

**WEeping WILLOW.** 75 cents; large, \$1.25. At the back of most lawns or landscapes a willow generally gives a pleasing, quiet tone. Support the body for the first year or two with a stick or post to the height desired, until trunk is strong.



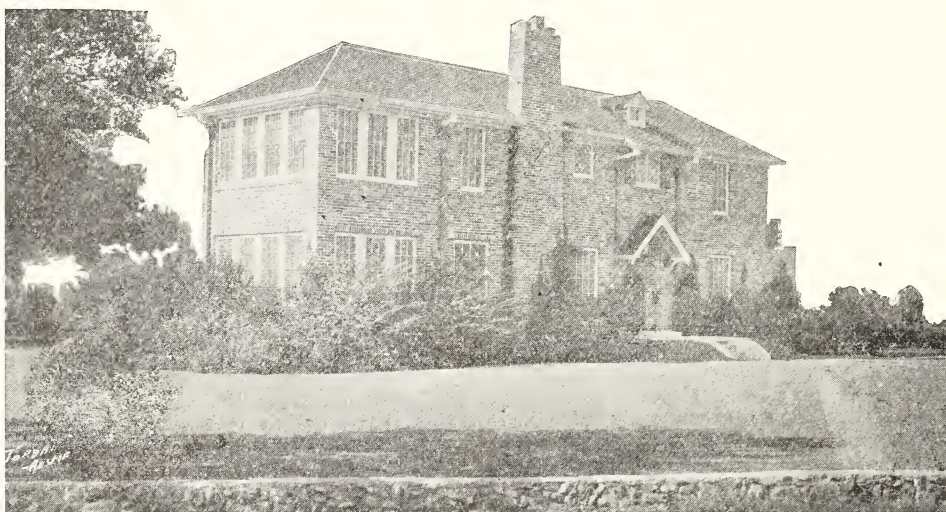
*Sycamore. Beautiful hardy shade tree*

## EVERGREENS

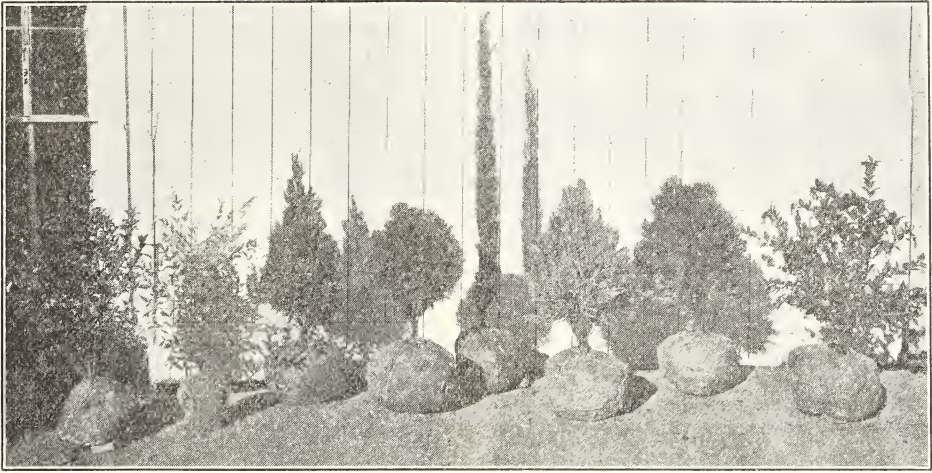
If one asked us how to spend a few dollars to bring the most good, we would say, besides planting some Haupt Berries, to plant some evergreens, for windbreaks or screens. Every home on the prairies should have a grove of Chinese Arbor Vitae or other evergreens on the north side of residence and barn lot. Plant some where the chickens run. They protect from the sun in summer, the cold and wind in winter.

In a general way, evergreens should not be cut off as other trees or shrubs. If any parts are dead or injured, cut off such parts. In planting, mound up soil several inches on body. In watering, do not let water touch the foliage. It is often necessary to use a stake by which to support the trees till roots take hold.

Many calls are received for fir, spruce, and other evergreens hardy in the North. These, however, are not satisfactory for planting in the Southwest.

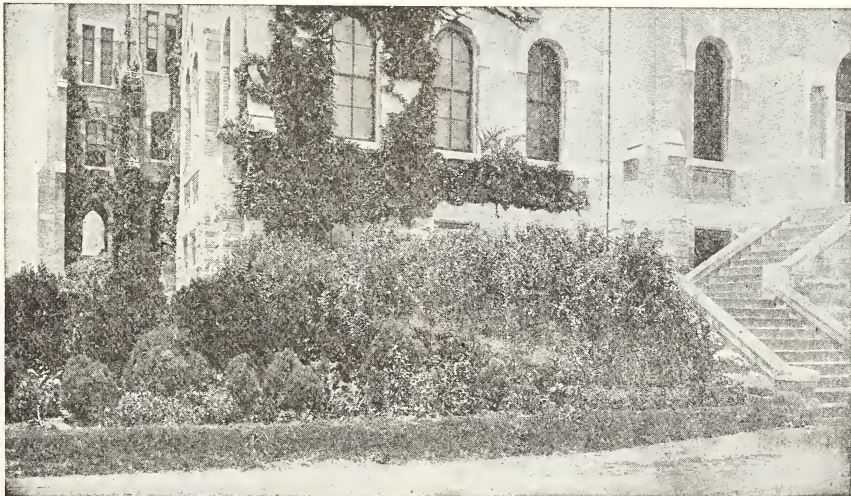


Planned and planted by Ramsey's Austin Nursery. Large house and grounds. Partial view only, including secluded back yard. Vine on chimney is *Bignonia grandiflora*.



- |                             |   |   |   |                                 |   |   |   |
|-----------------------------|---|---|---|---------------------------------|---|---|---|
| 1                           | 2 | 3 | 4 | 5                               | 6 | 7 | 8 |
| 1. Euonymus Japonicus       |   |   |   | 5. Pyramidal (Italian) Cypress  |   |   |   |
| 2. Nandina                  |   |   |   | 6. Rosedale Arbor Vitae         |   |   |   |
| 3. Dwarf Golden Arbor Vitae |   |   |   | 7. Compact Arbor-Vitae          |   |   |   |
| 4. Bonito Arbor Vitae       |   |   |   | 8. Ligustrum lucidum (wax leaf) |   |   |   |

Evergreens B. and B. (Balled and burlapped). That is, taken up with ball of earth. The burlap should not be removed when plants are set in ground.



A mass of evergreens to "kill" the ground line, harsh corner, and glaring walls at our State University. Photo taken one year after planting. Everything furnished by our Nursery. Planting consists of Japan Ligustrum, Chinese, Golden and Rosedale Arbor Vitae, Euonymus Japonicus, and few shrubs.

**EVERGREENS—Continued**  
**HARDY CONIFEROUS EVERGREENS**

*Special Notice.*—Most of the evergreens below can be transplanted with reasonable safety when bare-rooted, but we would urge our customers to buy them taken up with ball of earth on roots, securely burlapped. This entails an extra expense in packing and a big increase in express or freight charges. We have to charge fifty per cent extra for the balling, but it is the next thing to insurance that trees will live. It is almost necessary to have the largest trees balled. Do not remove sack when planting B. and B. trees.

**QUANTITY PRICES:**

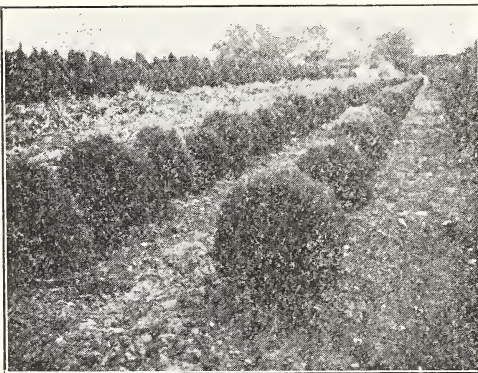
- 10 per cent discount per dozen.
- 20 per cent discount per 100.

“B & B” indicates balled and burlapped—that is, taken up with earth. Varieties so marked are not sold bare-rooted.

**CHINESE ARBOR VITAE.** (*Biota orientalis*). Fast grower, always green. Good for specimens, screens or windbreaks. This variety by proper pruning may be kept any size and shape desired. In fact annual pruning is necessary for best results.

**Selected Specimens.**

1 foot, \$ .50	B. and B., \$ .80
2 feet, 1.00	B. and B., 1.75
3 feet, 1.50	B. and B., 2.25
4 feet, 2.50	B. and B., 3.75
5 feet, 3.00	B. and B., 4.50
6 to 7 feet, 3.50	B. and B., 5.25



*Bonito Arbor Vitae in Our Nursery*

**BONITO ARBOR VITAE.** A perfect globe, easy to transplant. Rich, dark green.

12 to 15 inch, B. and B. . . . .	\$3.00
18 to 24 inch, B. and B. . . . .	4.50

**COMPACT ARBOR VITAE.** Compact, even outline, pure green.

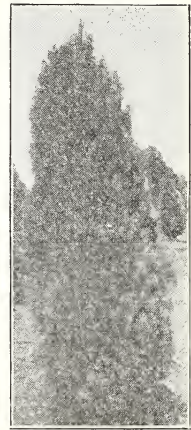
18 inch, \$1.50	B. and B., \$2.50
2 feet, 2.25	B. and B., 3.50
3 feet, 3.25	B. and B., 4.50

**DWARF GOLDEN ARBOR VITAE.** A dwarf compact form, with green foliage, tinged with gold.

1 foot, \$1.50	B. and B., \$2.50
18 inch, 2.25	B. and B., 3.50
2 feet, 3.00	B. and B., 4.50



*Pyramidal Arbor Vitae in Our Nursery*



*Rosedale Arbor Vitae Sheared into Pyramidal Form*

**PYRAMIDAL ARBOR VITAE.** Symmetrical, upright, elegant form.

1 foot, \$1.00	B. and B., \$1.50
18 inch, 1.50	B. and B., 2.25
2 feet, 2.00	B. and B., 3.00
3 feet, 3.00	B. and B., 4.25
4 feet, 4.00	B. and B., 6.00

**ROSEDALE ARBOR VITAE.** Feathery, light green foliage.

1 foot, \$1.00	B. and B., \$1.50
18 inch, 1.50	B. and B., 2.25
2 feet, 2.00	B. and B., 3.00
30 inch, 2.50	B. and B., 3.75
3 feet, 3.00	B. and B., 4.50

**JUNIPERUS.** *Pfitzer* (Trailing or Prostrate Juniper). A fine, slow growing evergreen, almost trailing on the ground, spreading three feet wide. Good for massing against low foundation.

8 to 12 inches, B. and B. . . . .	\$2.75
18 inches, B. and B. . . . .	3.75

**RAMSEY HYBRID.** This is a cross between the hardy Chinese Arbor Vitae, and the slender Pyramidal Italian Cypress, and originated in Ramsey's Austin Nursery. In a few years it has become recognized as the most valuable and attractive of the upright growing evergreens. It is not as slender as the Pyramidal Cypress, but is much more slender than the Arbor Vitae. Foliage is more like the Cy-

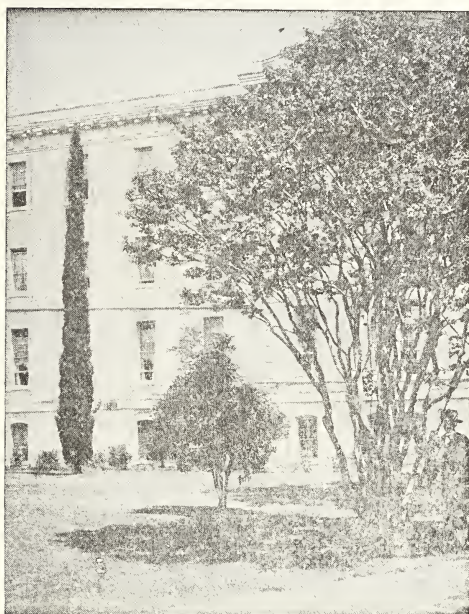
**EVERGREENS—Continued**

press. It grows to be 12 to 15 feet tall, but may be kept any size and shape desired by pruning.

- 3 feet, B. & B., \$3.50 each.
- 4 to 5 feet, B. & B., \$5.00 each.
- 5 to 6 feet, B. & B., \$7.00 each.

**PYRAMIDAL CYPRESS.** The well-known Italian Cypress. Slender, tapering form. Will grow 30 feet tall.

- 1 foot, B. and B. .... \$1.50
- 2 feet, B. and B. .... 3.00
- 3 feet, B. and B. .... 4.00
- 4 feet, B. and B. .... 5.00



Sold by Austin Nursery. A Pyramidal Cypress 30 Feet High; a Texas Mountain Laurel 10 Feet High; a Pink Crepe Myrtle 25 Feet High.

**HORIZONTAL CYPRESS.** Branches grow horizontally, parallel with the ground.

Price, same as PYRAMIDAL CYPRESS

**ARIZONA CYPRESS.** Branches growing almost horizontally or parallel with ground. Foliage gray, with tinge of blue in winter. Grows to be eight to twelve feet tall.

- 2 feet, B. and B. .... \$3.00
- 3 feet, B. and B. .... 4.00
- 4 feet, B. and B. .... 5.00

**BROAD-LEAVED EVERGREENS**

These are among the most valuable plants for landscape work. As a class, they are easily transplanted, and with their many shades of green foliage produce splendid effects even

when planted alone, without the aid of flowering shrubs. They give background against which to plant the flowering shrubs, which combine harmoniously with them to give the best results.

See under Coniferous Evergreens for information in regard to Balling and Burlapping, (B. and B.), which indicates taken from ground with ball of earth.

Quantity Prices:  
10 per cent discount per dozen.  
20 per cent discount per 100.

**ABELIA.** See under Flowering Shrubs.

**AGARITA.** (Berberis Trifoliata. Commonly called Algerita or Chaparral.)

- Plants, 8 to 10 inch, \$ .50 B. and B.... \$1.00
- 1 to 2 feet, 1.00 B. and B... 1.75

Evergreen shrub, 3 to 5 feet. Leaves ash green. Bright red berries make a striking appearance in spring, are acid, good tasting, and used for jelly.

**AGARITA SWASEY'S** (Berberis Swaseyi).

- Plants, 1 foot, \$ .75 B. and B..... \$1.25
- 2 feet, 1.50 B. and B..... 2.50
- 3 feet, 2.50 B. and B..... 3.50

In style and color somewhat resembling the silver colored, three-leaved Agarita, Berberis Trifoliata.

In our rambles in West Texas on arid slopes untrodden by those who have gone before, we found plants with five to fifteen leaflets.

The brilliant red berries make a Christmas tree for six weeks in April, May and June.

The edges of the leaves would make a dainty lace pattern for the fairies.

**BOX, BOXWOOD, or BOXTREE.** The old favorite, glossy leaved, compact, slow growing, almost dwarf.

- 8 to 12 inch, \$1.00 B. and B., \$1.75
- 18 inch, 2.00 B. and B., 3.00

Larger, choicest specimens, prices on application.

**EUONYMUS, Japonicus.** Very hardy, easy to transplant. Round, dark green glossy leaves. Can be sheared into any shape. Our plants are extra bushy and are not to be compared with single stem plants.

	Each	Dozen	100
One year plants, 4 to 7 inches.....	\$ .25	\$2.50	\$18.00
Bushy plants, 1 foot...	.75	8.00	
Bushy plants, 18 inch..	1.00	10.00	
Bushy plants, 2 feet...	1.25	12.00	
Bushy plants, 30 inch..	1.50	15.00	

**EUONYMUS GOLDEN.** Like the hardy Japan Euonymus, but with gold and green leaves. It does not grow quite as large as the Japan.

- 1 foot, \$1.00; B. & B., \$1.50.
- 15 to 18 inches, \$1.50; B. & B., \$2.00.

**EUONYMUS. Sieboldianus.** Price, same as Euonymus Japonicus. Like the Japonicus, except leaves are not so thick and glossy, but it has attractive red berries in fall and winter, which are in striking contrast with the green foliage.

**EVERGREENS—Continued**

**EUONYMUS COMPACTUS ERECTUS.**

1 foot,	\$1.00	B. and B.,	\$1.50
18 inch.	1.50	B. and B.,	2.25
2 feet,	2.00	B. and B.,	2.75

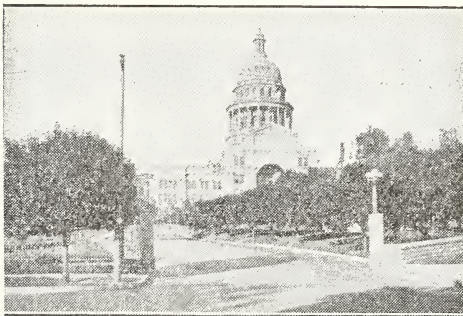
This is an upright grower, very compact, scarcely requiring any pruning. Dark green. Grows three and four feet. Excellent in any planting, and suitable for urns.



*Largest Block of Leucophyllum (nursery grown) in the World*

**LEUCOPHYLLUM.** Texanum. Evergreen, ashen colored foliage, pale lilac flowers through summer. Excellent for contrast effects.

Plants, 8 to 10 inch	.....	\$1.00
2 feet, B. and B.	.....	3.50



*Japan Ligustrums in Front of Our State Capitol Grown and sold by Us.*

Always rich glossy green. No litter from leaves. They live four hundred years. A dense cool shade. When unpruned they protect from disagreeable winds and disagreeable views.

**NANDINA. domestica.**

8 to 10 inches B. & B.	.....	\$1.25
12 inches B. & B.	.....	1.50
18 to 24 inches B. & B.	.....	3.00

One of the best evergreens ever introduced. Leaves turn bright red in winter, and plant produces clusters of red berries. Grows three to four feet.

**PHOTINIA. Serrulata.** Large leaves, which take on beautiful shades of green, yellow, and red in winter. Grows six feet, upright.

2 feet,	\$2.00	B. and B.,	\$3.00
3 feet,	2.75	B. and B.,	4.00



*Two, eight year old, unpruned, Japan Ligustrums, that made a dense screen thirty-two feet long and eighteen feet high. A perfect wind-break. Photo made in our nursery.*

**PITTOSPORUM. Tobira.**

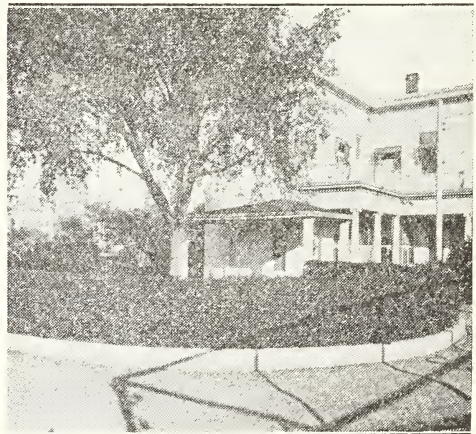
10 to 15 inches.....	\$1.50
10 to 15 inches, B. and B.....	2.50
18 to 20 inches, B. and B.....	3.50

Very fine evergreen shrub, growing to be six feet high and thick, and larger. Suitable for trimming, to be kept any size. White flowers. **SALVIA. Greggii.** See under Native Flowering Shrubs.

**SUMACH. Evergreen.** See under Native Flowering Shrubs.

**LIGUSTRUM JAPONICUM (JAPAN PRIVET OR LIGUSTRUM)**

The smooth-leaved evergreen, shown so beautifully on plazas in San Antonio and along the drive in front of the State Capitol. Grows to be fine shade tree, or may be kept as shrub, if desired. It is very desirable for a medium or tall hedge. Bright green, winter and sum-



*Hedge of Japan Ligustrums in back yard of the Governor's Mansion. Rich green. They may be kept at any height up to 16 feet. The Texas Capitol in the distance.*

**EVERGREENS—Continued**

mer, with black berries at Christmas. We have largest stock in the world. Should be planted only in bush form in North Texas.

**IMPORTANT NOTE:** This *Ligustrum* will be greatly improved and give better satisfaction if it is regularly pruned. The more pruning, the more foliage and better shape. The lower branches of bush-form plants should not be cut off near the body of the tree, but should be cut back somewhat, the same as other branches. Any shape desired may be obtained by pruning, which can be done any month in the year.

This is also true for Amoor Privet.

PRICES for Japan *Ligustrum*. Hedge size.

	Dozen	100
8 to 12 inches.....	\$1.25	\$ 8.00
12 to 18 inches.....	1.75	12.50
2 feet.....	3.25	22.00

*Pruned, Tree Form or Bushy, Unpruned.*

	Each	Dozen
2 feet.....	\$ .60	\$ 6.00
3 feet.....	.75	8.00
4 feet.....	1.00	10.00
5 feet.....	1.50	16.00
6 feet.....	2.00	22.00
7 feet.....	2.75	30.00
8 feet.....	3.50	38.00
9 feet.....	4.50	48.00

**BE SURE TO INDICATE WHETHER YOU WISH THE TREE OR BUSH SHRUB FORM**

*Balled Trees*

*Ligustrums* are very safely handled with

bare roots, but the money is never wasted that is spent for a ball of earth about the roots. Extra charge of 50 per cent of above prices for balling.

**LIGUSTRUM LUCIDUM.** Thickest waxy glossy leaves.

18 to 24 inches, \$2.00	B. and B., \$3.00
2 to 3 feet, 3.00	B. and B., 4.50

**LIVEOAK.** 2 to 6 feet, 40 cents per foot. (See under Shades for instructions for planting). No grander tree grows. It thrives across the South and makes everlasting shade in the Western desert. Our longest lived tree.

**AMOOR RIVER PRIVET.** Small bright leaves. Rapid, graceful grower. Profuse white flowers. Fine for specimen trees and for massing. Ours are an extra choice strain.

Hedge size, 18 to 30 in.	Each	Dozen	100
Bushy plants, 18 to 24 inch.....	.50	5.00	
Bushy plants, 30 to 36 inch.....	1.00	10.00	
Bushy plants, 3 to 4 ft.	1.50	15.00	

**YAUPON, EVERGREEN—Holly (*Ilex Vomitoria*).** Native of east and south Texas. An evergreen that grows as a bush or small tree. Its masses of bright red berries set in the glossy evergreen leaves are exquisitely beautiful from October to April. Bushy Plants, 2 feet, B. & B., \$3.50. Plants 1 foot, Bare-rooted, \$1.00.

**HEDGES**

The planting of hedges, screens and wind-breaks is becoming more popular every year, and justly so. They add beauty by making backgrounds against which to plant smaller shrubs and plants, or by hiding undesirable views. They give comfort by breaking the cold winds from house or barns.

**ALTHEA.** \$3.00 per dozen, \$20.00 per 100. Mixed colors. The most hardy of all flowering shrubs. For hedge, plant 18 to 24 inches apart.

**CHINESE ARBOR VITAE.** Every prairie farm should plant a row or double row on north side of barn lots; and a grove for chickens. See under *Evergreens* for prices. Plant 3 to 5 feet apart.

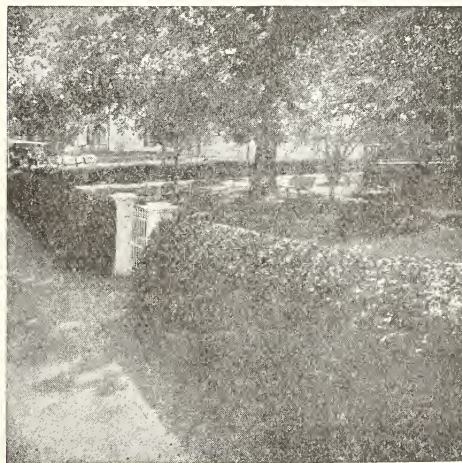
**EUONYMUS.** See under *Evergreens*. For hedge, plant 15 to 20 inches apart. \$2.50 per dozen, \$18.00 per 100. From two-inch pots.

**CALIFORNIA PRIVET.** For quick uniform hedge. These and most hedge plants should be cut within three inches of the ground when planted, for best results. Plant 9 inches apart.

Prices California Privet:

	Dozen	100	300
1 foot.....	\$1.00	\$ 7.00	\$18.00
1 to 2 feet.....	1.50	10.00	25.00
2 to 3 feet, with heavy branches.	2.00	15.00	40.00

**LODENSE PRIVET.** This is a new very dwarfish privet that has proven to be perfectly hardy, and the best real dwarf hedge we have ever seen. Can easily be kept one foot high if desired. Two year plants 7 to 10 inches, 25c each; \$2.50 per dozen.



*Hedge of California Privet. Sold by Ramsey's Austin Nursery*

**HEDGES—Continued**

**ROSDALE ARBOR VITAE.** Small one year plants, \$3.50 per dozen; \$25.00 per 100. For description, see *Evergreens*.

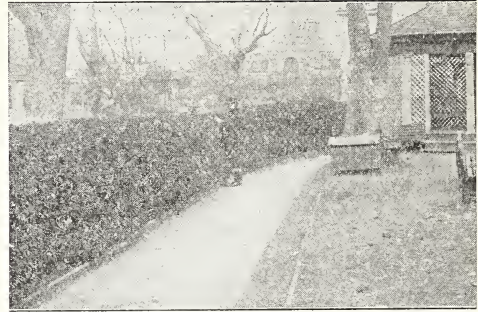
**POMEGRANATE.** \$3.50 per dozen. \$25.00 per 100. Very attractive; nearly evergreen. 3 to 4 feet, double Flowering. Plant 18 to 24 inches apart.

**JAPAN LIGUSTRUM.** For hedge, plant 15 to 24 inches apart.

Prices:	Dozen	100
8 to 12 inches.....	\$1.25	\$ 8.00
12 to 18 inches.....	1.75	12.50
2 feet.....	3.25	22.00

**AMOUR RIVER PRIVET.** Choicest strain. Plant 12 to 18 inches apart.

18 to 30 inches, \$2.00 per dozen, \$12.50 per 100, \$32.00 per 300.



*Hedge of Euonymus. Observe It Is Not Hurt by Hackberries Growing in the Hedge*

**ORNAMENTAL GRASSES**

**BAMBOO.** 50 cents. Grows ten to twenty feet high, even on uplands.

**GEORGIA CANE.** 25 cents. Grows 12 feet. Attractive in landscape planting.

**LEMON GRASS.** 50 cents each; \$4.00 per dozen. Three blades make a pleasant cup of tea. Said to cure tuberculosis. Very fragrant.

**MOCK PAMPAS (Erianthus Ravennia).** 40 cents. Plumes two feet long, resembling genuine Pampas. Height 7 to 10 feet.

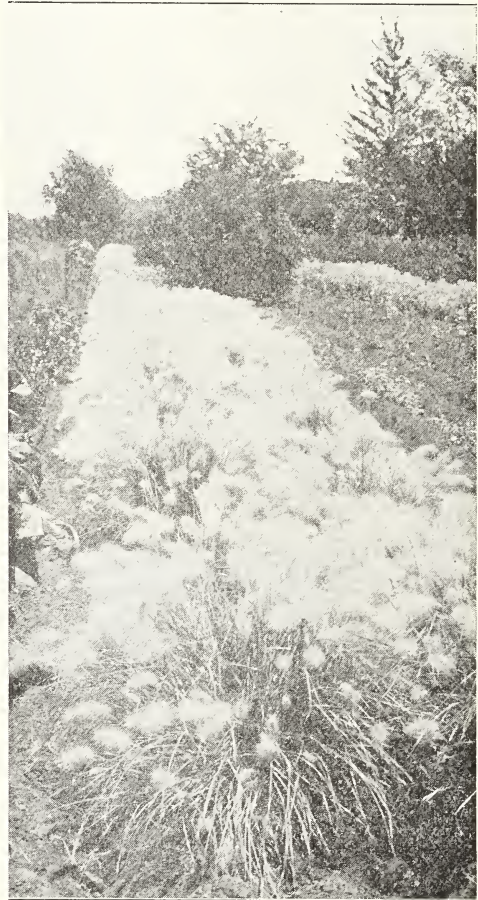


*Pampas Grass*

**PAMPAS GRASS.** Clumps, \$1.00 each. Grows five to six feet. Its fluffy white plumes, two feet in length, make it the most striking of all grasses.

**SANTOLINA. (Cotton Lavender).** Large Clumps, 75c each, \$3.00 per dozen. Most attractive evergreen low growing plant, with ashen gray foliage. Grows 12 to 18 inches tall, and two feet broad, excellent for low border, or individual planting.

**UMBRELLA GRASS.** Very beautiful, growing about three feet high, many stalks from each root with umbrella-like tufts of leaves at top. 25 cents.



*Pennisetum Grass*

**PENNISSETUM.** Small clumps, 25 cents; \$2.50 per dozen. Dwarf grass, growing eighteen inches tall, with beautiful white plumes. Fine for bedding.



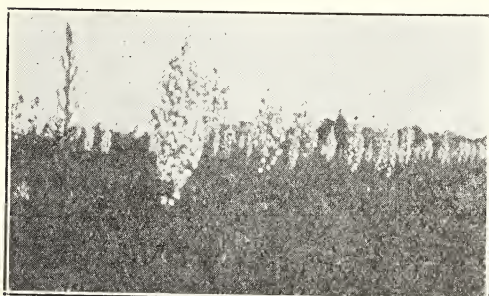
# YUCCAS AND SIMILAR PLANTS

Natives of the Southwest, especially the arid regions, they are adapted to this section. Valuable in ornamental plantings.

## YUCCAS WITH A CAUDEX (Stem or Trunk)

**YUCCA radiosa.** Stem attaining several feet, surrounded by a large head of narrow, divergent leaves, that are somewhat filamentose. Large inflorescence. Blooms in spring and fall.

	Each	Dozen
With stems, 1 foot....	\$1.00	\$10.00
With stems, 2 feet.....	2.00	20.00
With stems, 3 feet.....	3.00	30.00



*Yucca Nobilis in Bloom in Our Nursery.*

## YUCCAS WITHOUT A CAUDEX

**YUCCA filamentosa.** Leaves not rigid or stiff reaching 2 feet long, 1 to 1½ inches wide, curved. Flower stem 4 to 8 feet.

	Each	Dozen
With leaves, 1 foot....	\$ .75	\$ 8.00
With leaves, 18 inches.	1.25	12.00
With leaves, 2 feet.....	1.75	18.00

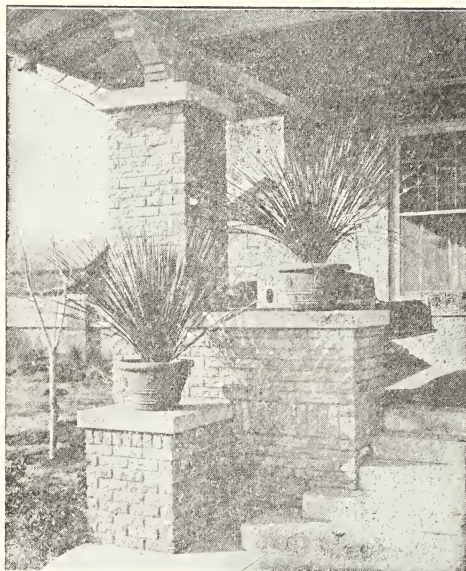
**YUCCA nobilis.** Very graceful. Wide leaves curving to ground. Suitable for urns and pots.

	Each	Dozen
With leaves, 1 foot....	\$1.00	\$10.00
With leaves, 18 inches.	1.50	15.00
With leaves, 2 feet....	2.00	20.00

**YUCCA RECURVIFOLIA.** Its wide leaves droop gracefully. This is a hardy beautiful yucca suitable for planting out doors or in urns and pots. Grows 3 feet tall.

	Each	Dozen
With leaves, 1 foot.....	\$ 1.00	\$ 10.00
With leaves, 18 inches....	2.00	20.00

**RED YUCCA.** (*Hesperaloe parviflora*). Blooming size \$2.00 each. One of the rarest plants in existence. Native of a limited area in West Texas and Mexico. Dark green pliant leaves. Flower stalks 5 to 6 feet. Covered with scapes of brilliant coral red flowers from April till late summer. For beauty and hardiness we can hardly name an equal.



*Dasyliirion Is a Good All-the-Year Plant for Urns.*

**DASYLIIRION.** Plants with leaves 1 foot, \$1.00; 18 inches, \$1.50; 2 to 3 feet, \$2.00. Older plants have one hundred to two hundred symmetrically arranged leaves of a brilliant intense green every day in the year. Fine for large urns, rockeries and lawns.

**CENTURY PLANT (Agave Americana).** The Maguey or pulque plant of Mexico. Plants with leaves 6 inches long, 50 cents; 12 inches, \$1.00; 2 feet, \$2.00; large specimens, \$3.00 to \$5.00. The flower stalks reach 18 feet, the flower spike resembling a chandelier. Will not stand the winters north of Dallas.

## TEXAS BLUEBONNET

**TEXAS BLUEBONNET SEED.** 50 cents an ounce. Plant September to December.

**TEXAS BLUEBONNET PLANTS.** 50 cents per dozen, \$3.50 per 100. Plants ready in January, February and March.

## BLUEBONNETS IN NEW YORK

From Mrs. L. U. K., Peekskill, N. Y., March, 1927:

"We had some Bluebonnet seed from you two years ago, and you may be interested to know that it was a great success here at Peekskill, the plants being in bloom all summer and lasting right up until frost."

# SPINELESS CACTUS

## The Thornless Prickly Pear

(*Opuntia Ellisiana*)

Price: Slabs, 10 cents each, \$1.00 per dozen \$8.00 per 100.

This is a good plant to use in landscape work and is one of the most valuable feed crops that can be grown. Yield runs as high as forty tons per acre per year, after the third year. A ton of this Cactus equals in feeding value a ton of green cane hay.

We guarantee it to stand 10 degrees above zero, and it has not been hurt by lower temperature. It is not to be compared with California

varieties, which are killed by 28 degrees. Money invested in this variety is better invested than in silos.

When fed to milch cows regularly in small quantities, it will increase milk flow twenty per cent, increase the butter fat, and fatten the animals. Mules and horses like it, and protection against rabbits must be given young plants.

**HOW TO PLANT:** Lay slabs or leaves flat on top of ground, on slightly raised bed of loose soil. Press down firmly. Do not stick slabs in the ground. It can be planted any month, but preferably in fall and in March and April.

**TO BE SURE OF ARRIVAL IN GOOD CONDITION, WE SHIP BY EXPRESS OR PARCEL POST, AND PREPAY CHARGES ON \$5.00 ORDERS IN TEXAS, AND \$10.00 ORDERS IN ADJOINING STATES.**

# PALMS

All hardy for outdoor planting.

Cut off the leaves or most of them, as soon as planted.

**SABAL TEXANUM.** Native in Southwestern Texas. Stands more cold than Washingtonia. Leaves fan-shaped, tree reaches over 20 feet. Does not freeze back at Austin. Smooth stem. Pure green leaves.

As this variety is hard to transplant from the field, we are growing plants in pots, so as to make transplanting safe. After this year, we shall have larger plants to offer.

Prices: For plants from pots.

	Each
Plants, 8 inches, B. and B.....	\$.75
1 foot, B. and B.....	1.00
15 to 18 inch B. and B.....	1.50

On request, prices will be made for field grown trees 15 to 20 feet high, with trunks 12 to 20 inches in diameter.

**WASHINGTONIA FILIFERA.** Fan-leaved, hardy. Grows 20 feet. We have this variety only 3 to 4 feet, and smaller.

	Each	Dozen
2 year in pots.....	\$1.00	\$10.50
2 to 3 feet.....	2.00	20.00
3 to 4 feet.....	3.50	36.00

We recommend that all Palms larger than the \$2.00 grade be taken up with ball of earth, making the price fifty per cent additional. Remember we pay express on orders of five dollars in Texas.



**SABAL TEXANUM PALM**

The native Texas Palm, with no thorns. Foliage, finest shade of green. Makes largest tree with trunk twenty to thirty feet high. Zero temperature has never killed one. This palm should have the lower leaves cut off every year in February, if a tall trunk is desired.

DISTANCES FOR PLANTING

Depending on character of soil, etc.  
 Peach, Plum, Apple, Apricot, 20 to 25 feet  
 apart each way.  
 Pear, 20 to 30 feet apart each way.  
 Pecans, 40 to 60 feet each way.  
 Figs, 12 to 18 feet apart each way.  
 Haupt, McDonald and Dallas Berries, 3½ by  
 5 feet. In rich land 4 by 6 feet.  
 Other Blackberry and Dewberry, 3 by 4 feet.  
 Strawberry, 1 by 2½ feet.  
 Grapes 12 by 18 feet.



A one year old six foot Peach tree planted in February and cut back to 18 inches. Photographed in October. Six feet of new growth. The sun will never burn its body. The two or three lower branches should now be cut off.

NUMBER OF TREES OR PLANTS TO THE ACRE

1 x 1 foot,	43,560	16x16 feet,	170
1 x 2½ feet,	17,424	18x18 feet,	130
2 x 2 feet,	10,890	20x20 feet,	108
1½x 3 feet,	9,680	20x25 feet,	87
3 x 4 feet,	3,630	25x25 feet,	69
3½x 5 feet,	2,430	30x30 feet,	48
4 x 4 feet,	2,722	30x60 feet,	24
4 x 6 feet,	1,815	25x30 feet,	53
10 x10 feet,	435	40x40 feet,	27
12 x12 feet,	302	40x50 feet,	22
12 x18 feet,	201	50x50 feet,	17
14 x14 feet,	223	60x60 feet,	13

To determine number of trees to an acre for any given distance apart, multiply distance apart, and divide 43,560 by this product.

For example:

18 by 20 feet=360. 43,560 ÷ 360=121.

There are 121 trees per acre, planted 18 by 20 feet.



One summer's growth on a Plum tree, properly cut back when planted.

## FRUIT TREES AND COTTON

Cotton will always be our staple crop, but it must not be our only crop.

Five acres of fruit will pay as much as fifty acres of cotton, year after year, with less work and trouble.

No home can afford to be without fruit for home use, or for sale, where land is available for planting a large number of trees.

Then homes in the cities and towns can raise enough or almost enough fruit for their own use. It is remarkable the amount that can be

grown in a small back or side yard, when the right varieties are used. We will help you select the best kinds.

FRUIT CAN BE SOLD, EATEN FRESH, PRESERVED, OR DRIED—BUT COTTON CAN ONLY BE SOLD, AND AT A PRICE WHICH THE OTHER FELLOW MAKES.

IF YOU PLANT PECAN AND FRUIT TREES, THEY DO THE WORK; IF YOU PLANT COTTON, YOU DO THE WORK.

## PLANTING AND PRUNING

### *Directions for Planting and Pruning Fruit Trees.*

When trees are received, if they can not be planted immediately, they should be unpacked, set in a trench, with mellow earth thrown around them and thoroughly wet.

If trees are frozen when received, the whole bunch should be laid in a trench and entirely covered with earth until the weather moderates.

It is best for the ground to be thoroughly plowed before the trees are received. Dig holes one to two feet deep, and two feet or more across. When a plow can be used the holes are easily dug by throwing out two or three furrows and shoveling out the dirt where the trees are to stand. Check with plow.

To plant fruit trees, throw in or take out soil until the tree stands the same depth as in the nursery; then throw in soil until the roots are covered, and pour in as much water as hole will contain, shaking the trees; then fill in the balance of soil, mounding it up slightly, but do not pack hard. Then cut the top off from 12 to 24 inches from the ground. Some two-year-old trees should be cut above three or four of the branches and the branches cut three or four inches from the body.

By cutting all trees severely one almost insures the life of the tree, and it makes a low, robust, round-headed tree that shades its own body. It is better to buy a tree and cut the top than to have it given to you and leave the top on.

If any limbs or roots of trees or plants are bruised or injured in any way, cut off all such injured parts.

Keep all sprouts or suckers cut off from 6 to 12 inches from the ground. At the end of the first year cut out the drooping and weaker branches of all trees. Pear and plums need the long branches cut back half the length or more, and this treatment may be given each year in January and February. In taking off a branch, cut or saw close to the body of the tree.

Frequent and thorough cultivation with plow and hoe, especially for the first few years, is absolutely necessary.

To prevent rabbits from injuring young trees, we would suggest that either straw or corn stalks be tied around each tree. Old newspapers will answer the purpose, and either may be left on during the summer to partially shade the trunks of the trees. This is the only absolutely safe way to protect trees from these pests.

Do not make a horse lot or calf pasture of your orchard.

### PLANT TREES PROMPTLY

While trees may be kept in bundles, by being watered regularly, or in the ground, for a long time and then planted safely, we always sug-

gest that they be planted where they are to stand as soon as possible.

Customers should follow carefully all directions for planting and pruning, and if they do not understand any detail, or desire further information, we are very glad to supply all we can upon inquiry.

### HOW TO WATER TREES AND SHRUBS

In planting fill the hole nearly full of soil and then pour in water until it stands for a moment. While the water is standing shake the tree or shrub to settle the mud around the root; then mound up the soil, either dry or naturally moist, a few inches above the level covering all wet soil. Do not pack this mound.

All pecans, large evergreens, and trees of any kind that are dry, are benefited by having the soil mounded up around them a foot or more.

We should earnestly request all our customers, in watering anything at any time after it is planted, not to pour water on top of the ground and leave it exposed to the wind and sun. This practice is sure to be the death of roses. Dig a shallow hole by the side of the tree or shrub, and after the water has soaked in, cover up the hole and all wet soil with dry, loose soil, unpacked.

Trees and plants, as a rule, should not be watered more than once a week in dry weather, but watering should be sufficient to reach the roots, one to two feet deep. Do not try to water trees and plants by sprinkling, as you would do for grass.

### FROST PROTECTION

In the Southwest the time has come when it is almost necessary to spray orchards to control insects and fungi. This has been necessary for many years in other fruit sections of the United States.

Perhaps the most serious handicap to fruit growing is our late frosts or freezes, and this trouble can be overcome to a large extent. In any year it will hardly ever be necessary to give frost protection for more than one to three nights, and then only sufficiently to raise the temperature 2 to 5 degrees.

There are smudge pots burning crude oil that will handle the situation in large orchards.

In smaller orchards a smoke through the night can be maintained by burning brush, logs, straw or cobs on the windward side. This is generally sufficient, and staying up with your trees one or two nights will certainly pay.

In towns, spraying the trees thoroughly with water about dark, when frost threatens in March or April, after buds have swollen or opened, is practicable and almost certain protection. If one had a sprayer sufficiently large, this is perhaps the best method to protect fifty trees, or even more. Spray with water again before midnight if possible.

HOW TO HELP POLLINATION

Several stands of Bees near fruit trees or berry plants will greatly improve pollination and increase the yields of fruit.

EXCESS OF LIME IN SOIL

The effects of Root Rot and of Lime on the tops of trees are at first very much the same. The leaves turn yellow, but in the case of Root Rot the trees die quickly, whereas, in the case of excessive lime in the soil, the trees do not die quickly. The effect on the roots is different. In the case of Root Rot, the bark of the roots peels off easily, whereas, in the case of lime, the root is hard. To overcome the condition of excessive lime, use one to one and one-half pounds of Iron Sulphate around an orchard tree, worked into the soil so as to reach the ends of the roots. This will be made available for the roots by rain or irrigation.

USE OF COPPERAS (*Iron sulphate*)

Copperas can be bought at any drug store.

For convenience of customers, we are keeping a supply of copperas on hand for prompt shipment.

	Delivered by Express or Parcel Post Per Pound	At Nursery Per Pound
2 to 5 pounds.....	\$ .16	\$ .10
6 to 9 pounds.....	.14	.10
10 to 25 pounds.....	.13	.09
26 to 50 pounds.....	.12	.07
75 to 100 pounds.....	.10	.06

Larger quantity, price on application.

Delivered by prepaid express or parcel post.

We recommend the use of copperas for all kinds of trees and plants, especially in limey soils or wherever leaves turn yellow. It will cause foliage to turn green and healthy in about three weeks time, and it is possible that it will help destroy root rot in the soil.

Two or four tablespoonfuls should be applied to roses, grapes, and plants of similar size; a pound and a half to bearing fruit trees, and corresponding quantities to other trees and plants according to size.

The copperas may be worked into the soil and then be dissolved by rain or irrigation, as well as by dissolving it in water first and pouring the water around the roots. Afterward more water should be given to carry it to the roots.

Apply around trees so as to reach the young roots. This means a radius of about two feet around small plants, and ten feet around large fruit trees.

Copperas should be applied in the spring and during the growing season, but may be given in the winter time, especially for evergreens and any fresh planted stock. Generally, one application per year is sufficient.

TO CONTROL ALKALI AND ROOT ROT

Root Rot is caused by a fungus which can not live through the winter where there are no

live roots of trees or plants which are susceptible to it. Pear and Apple are the most susceptible fruit trees, while Peach and Plum are hardly affected.

Morning Glory or Tie Vines and certain weeds that have live roots in the ground through the winter will carry the fungus through and cause it to multiply. Cotton is very susceptible, while the grains and sorghums are not. The best remedy, therefore, is to grow crops on such land that are not susceptible to the root rot fungus and to give late summer and fall cultivation so that no live roots are left in the soil through the winter. In one or two years it is possible to reduce the extent of this trouble very considerably.

USE OF FERTILIZER

Many soils require fertilizer, and almost all soils will be benefited by its application. There is none better than old barnyard manure, which is available in small quantities nearly everywhere. When trees are being planted, the fertilizer should be mixed thoroughly with the soil that goes in the hole, in the proportion of one part fertilizer to four parts soil.

Thereafter, every year or two an application should be made on top of the ground, working it into the soil. As trees grow larger, the fertilizer should be applied farther from the body of the tree so as to reach the small feeding roots, which in the case of fruit and shade trees several years old may be out eight to fifteen feet from the trunk.

Application of commercial fertilizers will depend on nature of soil. Information as to these can be obtained from the manufacturers of such products, from the local county farm demonstration agents, or we shall be glad to give any information we can.

FREE INFORMATION

We are glad to give at all times any information we can, and we know also that the A. and M. College, College Station, Texas, and the State Department of Agriculture, Austin, Texas, as well as similar schools and departments of other states, with their trained men, are always ready to help in any way possible.

We desire further to commend the work of the County Demonstration Agents, and to urge everybody to become acquainted with them and make use of their advice and service, which is gladly and freely given. Every county should have such an agent.

CONTROL OF INSECTS AND FUNGUS DISEASES OF PLANTS

(For more detailed information, write A. & M. College, College Station, Texas, or State Department of Agriculture, Austin, Texas.)

Materials for sprays can be obtained from most drug stores.

## SCALE INSECTS

(San Jose, Oyster Shell, Scurfy Scale and others.)

To be used as a dormant spray during winter only.

*No. 1—Lime-Sulphur Wash.*

Can be bought already prepared from Paint stores and Drug stores.

Stone Lime.....	20 pounds
Sulphur.....	15 pounds
Water.....	50 gallons

*Preparation:* Use two iron kettles each holding 20 to 25 gallons of water. Make sulphur into a paste by stirring in a small quantity of water, and add to about 15 gallons of water in kettle No. 1, which has been brought to boiling. When the sulphur solution is boiling, the stone lime is gradually added.

Kettle No. 2 is filled with water which is also brought to boiling. To prevent mixture from boiling over, pour small quantity of water from kettle No. 2 into it. Boil about one hour or until the yellow color of the sulphur has disappeared, then strain the mixture into spray tank and add enough hot water to make 50 gallons. Spray onto trees while still hot through a coarse nozzle.

After day's work, thoroughly cleanse spray machine with hot water.

Ordinarily two thorough applications, one in late fall and another in early spring before trees bud out, will control a very severe infestation of scale insects.

*Summer Spray.*

Sometimes a supplementary spray is necessary. Such spray should be applied during the growing season when the young or "crawlers" are most abundant in May or June. For such spraying, we recommend formula No. 2.

*No. 2—Kerosene Emulsion.*

Kerosene.....	2 gallons
Soap.....	½ pound
Water (soft).....	1 gallon

*Preparation:* Dissolve soap in water by boiling, remove from fire, add kerosene and stir vigorously until it forms a creamy mass and emulsion. Dilute in from 10 to 35 gallons of soft water according to tenderness of growth.

Spray thoroughly, as it is a lack of painstaking effort that explains many failures in scale control.

## SUCKING INSECTS

(Plant Lice, Thrips, Squash Bugs, Melon Aphid, Grape Leaf Hopper, Midge, and Mealy Bugs—use sprays Nos. 2 or 3.)

*No. 3—Nicotine Solution.*

"Black Leaf 40".....	1¼ teaspoonfuls
Soap.....	1 ounce
Water.....	1 gallon

*Preparation:* Dissolve soap in water by boiling, let cool, and add "Black Leaf 40."

Spray must come in contact with insects.

*No. 4—Sulphur.*

(For controlling Plant Mites and Red Spider.)

Sprinkle plants with water, or when dew is still on plants; dust with sulphur through duster or bellows on a clear sunshiny day. This same treatment will also control mildew affecting roses.

## LEAF-CHEWING INSECTS

*No. 5—Arsenate of Lead.*

(For all leaf-chewing insects.)

Arsenate of Lead (dry)....	2 pounds
Rock Lime.....	2½ pounds
Water.....	50 gallons

Slake lime in water and add it with arsenate of lead to 50 gallons of water. Spray onto plants so that all portions are covered with the poison.

*No. 6—Calcium Arsenate.*

(For Eight Spotted Forester Caterpillar on Grape Vines.)

Dust vines with calcium arsenate when dew is still on, or first sprinkle vines with water.

*No. 7.*

Arsenate of Lead.....	2 pounds
"Black Leaf 40".....	½ pint
Bordeaux Mixture, See No. 9. .	50 gallons

Sometimes a combination spray is desired for controlling chewing and sucking insects as well as fungus diseases. No. 7 is a good combination spray.

## BORERS

Borers are small white worms that work under the bark of trees.

To prevent Borers, rake away earth from around base of tree and apply compound made of the following:

*No. 8—Tree Wash.*

Strong Soap.....	2 quarts
Crude Carbolic Acid.....	½ pint
Paris Green.....	2 ounces
Water.....	2 gallons

Clay or Lime enough to make thin paste.

Apply to trunk of tree with a stiff paint brush.

*To Destroy Borers:*

1. The surface of the earth is lightly broken and leveled about to the foot of the tree. One ounce of paradichlorobenzene is distributed evenly in a band of 2 inches wide around base of tree about 2 inches from tree and is covered with a mound of dirt about two or three inches deep. The mound is packed evenly with a shovel, and left sloping from the tree to facilitate drainage. This material should be applied about October 10th, and after 5 or 6 weeks the mound should be removed with a hoe.

The dosage should be reduced for trees less than five years old to prevent injury.

2. A very effective method generally used by orchardists is the worming method, i. e., dig the borers out with a sharp knife or by the use

of a flexible wire. They can easily be detected by swollen bark or oozing out of a gum, and are usually only under the bark of the tree.

3. Inject small amount of high life (bisulphide of carbon) into holes or tunnels of borers, and stop up holes with clay, putty or wax.

### CUTTING ANTS

(a) *Calcium cyanide*. Use dust gun and blow sufficient amount of calcium cyanide into entrance holes which will penetrate to all tunnels and nests of the ants. Also place small quantity of the material in each hole after treatment.

(c) *Carbon Bisulphide* (high life). Pour liquid into entrance of holes and cover with loose dirt. A better method, however, is to place about a pint of the liquid in an open container at the hole and place over the container and the hole a tin bucket, tub or large can. The sun's heat causes the liquid to evaporate and it will penetrate far into the hole or tunnel. Do not have fire near this material.

### FUNGUS PLANT DISEASES

#### No. 9—*Bordeaux Mixture*.

Can be bought already prepared from Paint Stores and Drug Stores.

(For Stone Fruits.)

Copper Sulphate.....	3 pounds
Stone Lime.....	6 pounds
Water.....	50 gallons

#### No. 10—*Bordeaux Mixture*.

(For Hardy Trees and Plants, Apples, Potatoes, Grapes, etc.)

Copper Sulphate.....	4 pounds
Stone Lime.....	4 pounds
Water.....	50 gallons

*Preparation:* Have three 50-gallon barrels. Crush copper sulphate, place in sack and suspend overnight in barrel containing 25 gallons of water. Slack lime in second barrel and add enough water to make 25 gallons.

The next day copper sulphate and lime solution are poured bucket by bucket of each into the third barrel. Stir thoroughly and use. Test to see if amount of lime is right, i. e., drop a quantity of yellow prussiate of potash into mixture. If this material turns brown, add more lime. Spray through fine nozzle onto all portions of plant. Best applied in spring after considerable amount of foliage is on plant. Applications must be repeated every 14 days until 3 applications are made.

### MILDEW

- (a) Use spray No. 9 or 11.
- (b) Potassium Sulphide.....1 ounce  
Water.....1 gallon  
Mix and spray onto plants immediately.

(c) Fine powdered sulphur dusted on plants while dew is on, of a clear sunshiny day, or sprinkle plants with water before dusting. This treatment also applies to the control of mites and red spiders.

### BROWN ROT (PEACH MOULD)

#### *Scab and Curculio.*

Brown Rot is the worst fungus disease, and the Curculio is the worst insect pest affecting the fruit of the peach and plum.

Brown Rot starts as a small circular brown spot which enlarges rapidly under moist conditions, and soon causes decay of the entire fruit. Scab causes the drying up of the skin and subsequent cracking.

Curculio is an insect which often destroys a plum crop, and frequently attacks the peach. It is best known in its larva or grub stage as a small whitish worm.

#### *How to Control Brown Rot, Scab and Curculio.*

(a) Spray trees in winter about middle of February with Lime-Sulphur wash. (See formula No. 1 above.) This formula is helpful as a fungicide and an insecticide against any possible scale insects.

(b) Spray trees with arsenate of lead alone (See formula No. 5) about 7 to 10 days after petals fall, when fruit is barely forming.

(c) Spray trees with self-boiled lime-sulphur and arsenate of lead (Formula No. 11) two weeks later or about four weeks after petals have dropped

(d) Spray trees with self-boiled lime-sulphur alone (See formula No. 11, omitting arsenate of lead) four or five weeks before fruit ripens. Use very fine nozzle so as to apply thinnest spray possible.

#### No. 11—*Self-Boiled Lime-Sulphur and Arsenate of Lead Spray.*

Fresh Stone Lime.....	8 pounds
Sulphur.....	8 pounds
Water.....	50 gallons

*Preparation:* Place stone lime in barrel and pour on about 6 gallons of water to cover it. See that sulphur is sifted fine with no lumps. As soon as lime begins to slake add the sulphur. Stir constantly and add more water (3 or 5 gallons) to form a thick paste and then gradually a thin paste. The lime will supply enough heat to boil the mixture several minutes. As soon as it is well slaked, in 4 or 5 minutes, water should be added to cool the mixture and prevent further cooking. Strain into the spray tank, dilute with enough water to make 50 gallons. Make paste of 2 pounds of arsenate of lead in

little water and add to the mixture of lime and sulphur. Apply to trees.

While spraying, see that the mixture is constantly stirred.

For a few trees, use same proportions to make less amount. About one gallon of mixture per tree is required for an ordinary orchard. Apply thoroughly to limbs, foliage and fruit.

Considering the benefit from using these sprays, the cost is hardly worth considering. It will pay to spray one tree or a thousand trees. There are all kinds of spray pumps available from a small hand machine to the largest power machine.

In spraying plum trees for curculio alone, it is necessary to use only (b) and (c) above.

#### *Commerical Spraying Preparations.*

There are now several good commerical preparations of lime-sulphur and Bordeaux mixture on the market which may be substituted for the home-made preparations.

#### GRASSHOPPERS, ETC.

##### *No. 12—Poison Bran Mash.*

(For Controlling Grasshoppers, Cutworms, and Sowbugs or Pill Bugs.

Bran . . . . . 6 pounds  
Paris Green or White Arsenic 4 ounces  
Cheap Cane Molasses (Not corn  
syrup) . . . . .  $\frac{1}{2}$  pint  
Juice of 1 lemon.

Water to make a wet mash.

Mix, dry and thoroughly, the bran and Paris Green; stir into this the molasses and lemon juice, then add just enough water to make a wet mash, but not dripping wet. Sow small pellets of the mash broadcast on infested ground, preferably in evening, about 1 pound to each 100 square feet of plant beds.

This material will kill chickens or other animals if they are allowed to eat much of it.

## STIM-U-PLANT

### *The Magic Fertilizer in Tablet Form*

STIM-U-PLANT is the only complete plant food in tablet form. Guaranteed analysis 11 per cent Nitrogen, 12 per cent Phosphoric Acid, 15 per cent Postash—all of which elements are water-soluble and immediately available to the feeding root-hairs of the plant.

#### TABLET FORM OF GREAT VALUE

They give an EXACT FEEDING UNIT.

MAXIMUM EFFICIENCY because no food-value lost in scattering, leaching, or run-off of soil surface water.

#### EASY TO USE

Simply insert tablets in soil about 3 inches from stem of plant, or dissolve in water at the rate of four tablets to the gallon and apply as liquid manure. Complete directions with every package.

One, two or three tablets placed two inches under watermelon seed when planted produce wonders; or if you have to water seed, dissolve tablets in the water. They are good for everything.

Price: 30 tablets, 30c; 100 tablets, 75c; 1,000 tablets, \$3.50.

### Best Spray for Insects and Diseases

All-in-One Spray, one pound can . . . . . \$1.00  
Small Hand Dust Gun . . . . . 1.50  
Delivered by prepaid express or parcel post.

We have found the All-in-One Spray the best we have ever tried for all kinds of plant troubles, including insects, mildew, fungi, and diseases, either outdoors or indoors. Use spray whenever needed, especially in the spring time.

For convenience of customers we are prepared to supply this material, together with a gun to apply it. Either may be ordered separately.

From R. B. Jackson, S. C.

The Haupt Blackberries I got from you last year were a wonder this year. They bore all the vines could hold, fine berries.

From G. W. M. East Raymond, Wash.

The berry vines came through all right and in good condition.

Mrs. B. J. McK. Casa Grande, Arizona,

It is about five years since I have had any correspondence with you, but you helped me make the ranch near Wilcox a garden spot and now I am going to ask your assistance with this one, which we are starting. We sold the former five years ago, and now it is a beautiful place—everything grew.

From Mr. M. M. D. College Station, Texas,

I received the trees and shrubs that you sent me in good order, and I must say that I have never seen better or more healthy trees in all of my experience.

From J. W. J. Conway, Ark.

The parties to whom I sold some of your Haupt berry plants are gathering a fat crop this season and have been after me time and again for information as to cultivation, pruning, etc., also asking for prices on plants, hence I am writing you for information as above.

From W. T. K. Pasadena, California.

I have a Ramsey Fig that is quite a wonder to all who see it. It is a small tree yet, but beats anything to bear. I am getting it photographed for a printing plate.

From Mrs. E. N. Itasca, Texas,

You should see how nicely the trees have grown and some of the finest fruit you ever saw for black land orchards. My orchard is the talk of this part of the country. . . . Please send me your catalog for this year. I am so well pleased with your trees and vines that I shall buy from you hereafter all that I need. My Haupt berries have never failed. Have had a full crop every year.









An Austin Home. Landscaping by Ramsey's Austin Nursery. Photo one year after planting. Observe wide spacing, allowing for natural growth and development of plants.



An eight hundred dollar parcel post shipment to Utah. We can deliver to your door.

FROM  
RAMSEY'S AUSTIN NURSERY  
4500 AVENUE B.  
AUSTIN, TEXAS

Sec. 435½ P.L. & R.

U. S. POSTAGE  
**PAID**  
AUSTIN, TEXAS  
PERMIT NO. 45

For

U. S. DEPARTMENT OF AGRICULTURE

WASHINGTON, D. C.

BUREAU OF PLANT INDUSTRY  
Horticulture

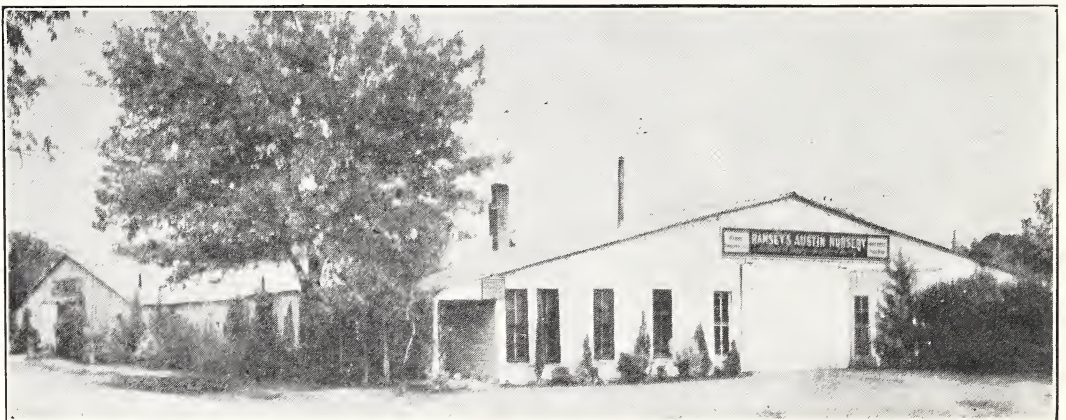
GOVERNMENT PRINTING OFFICE J32437

M. R. N.

RETURN POSTAGE GUARANTEED AFTER 10 DAYS



RAMSEY FIG. Tree twelve feet high, fifteen feet broad, growing on north side of house. Fifteen to twenty dollars worth of fruit sold from it every year, besides plenty for home use. The surest bearing and heaviest producing variety ever known.



FROST PROOF PACKING HOUSE, RAMSEY'S AUSTIN NURSERY  
120 by 180 feet. Here all trees and plants are packed for shipment without exposure to sun and air.