

Presented to the L. H. Bailey Hortorium  
by the Missouri Botanical Garden, 1972.

No. 300.

1895.

R



SPECIAL OFFER TO THE TRADE  
OF  
**CHOICE SEEDS,**  
INCLUDING MANY  
NOVELTIES <sup>AND</sup> SPECIALITIES,  
ALSO  
MISCELLANEOUS BULBS AND TUBERS.

THE SEEDS HEREIN OFFERED MAY BE RELIED ON AS BEING OF VERY SUPERIOR MERIT; INDEED,  
IT IS DOUBTFUL IF SEED OF SUCH EXCELLENCE, AND AS CAREFULLY HYBRIDISED (WHERE  
NECESSARY), CAN BE PROCURED ELSEWHERE,  
SO THAT THE GREAT ADVANTAGE OFFERED IS SEEDS OF CHOICE STRAINS  
: AT PRICES AS LOW AS THOSE FOR INFERIOR ARTICLES.

**WILLIAM BULL,**

F.L.S., F.R.G.S., F.Z.S., F.R.H.S., M.A.I., F.R.B.S. & M.S.A.,  
SOCC. HORT. BEROL., BRUXELL., ST. PETERSBURG ET PARIS,  
ET SOC. AGRIC. ET BOT. GANDAV. SOCIUS.

*NEW PLANT MERCHANT,*

536, KING'S ROAD, CHELSEA

(AND ASHBURNHAM PARK),

**LONDON, S. W.**

# WILLIAM BULL'S ILLUSTRATED CATALOGUE

OF NEW AND RARE PLANTS, with description and prices. Price 1s.

## INLAND PARCEL POST.

Small orders not exceeding 11 lbs. in weight, inclusive of packing, can be sent at the following rates:—Under 1 lb., 3*d.*; and 1½*d.* for every additional pound.

## FOREIGN AND COLONIAL PARCEL POST.

Parcels not exceeding 7 or 11 lbs. in weight, according to destination, may be sent to many Foreign Countries and most of the Colonies, at rates varying from 7*d.* to 1s. 4*d.* per lb.

Small quantities of Seeds can be sent by Sample Post.

## FOREIGN ORDERS.

Plants, Seeds, &c., for transmission abroad, selected and packed with the greatest possible care in Bull's Patent Plant Cases or closed boxes, according to the nature of the goods, and despatched by the best Routes, Mail Steamers, Clipper Ships, and Railways to any part of the world.

Bulbs and Seeds in boxes under 50 lbs. weight can be sent by Indian Parcel Post, to India, Ceylon, and British Burmah, at an uniform rate of 1s. per lb.; and to the Straits Settlements at 1s. 4*d.* per lb.

Owing to the great difficulty of collecting accounts abroad, Mr. W. B. respectfully intimates that

**A REMITTANCE MUST ACCOMPANY ALL FOREIGN ORDERS,** sufficient in amount to cover cost of order and of packing, or an order must be sent for payment in London.



## EXPORTING.

Mr. W. B. is continually receiving the most gratifying accounts of the excellent condition in which the Bulb, Plant, and Seed orders entrusted to him reach their destinations, and the satisfaction given by the selections made.

Cheques to be crossed "LONDON JOINT STOCK BANK."

Post-Office Orders to be made payable at 510, KING'S ROAD, CHELSEA, S.W.

NOVELTIES FOR 1895, OFFERED BY WILLIAM BULL, F.L.S.



SPECIAL TRADE OFFER

OF

**FLOWER SEED**



NOVELTIES FOR 1895

*(For Vegetable Specialities, vide page 27)*

BY

WILLIAM BULL, F.L.S.,

NEW PLANT AND SEED MERCHANT,

536, King's Road, CHELSEA, LONDON, S.W.

## CHRYSANTHEMUM JAPONICUM IMPERIALE.

### LARGE-FLOWERING IMPERIAL JAPANESE CHRYSANTHEMUM.

The Seed now offered has been received from the largest Chrysanthemum grower in Japan, the collection of varieties from which it has been saved being the largest and most select extant, containing very many kinds of a surpassing beauty and excellence not known in this country. The blooms are of gigantic size, of smooth, downy or twisted petals, and are of almost all colours except blue. Some are almost black, others pure white: others again are of the tenderest pink and carnation, besides many charming shades in yellow, brown, bronze and other brilliant hues. Fine mixed Seed, 1s. per packet. (Retail price, 1s. 6d. per packet.)



CLARKIA ELEGANS NANA ROSEA.

## CLARKIA ELEGANS NANA ROSEA.

A new dwarf compact-growing variety of this free-flowering hardy annual. The bushy plants attain only a height of 10 to 12 inches, and produce their large charming rose-coloured flowers on short upright branches. It will be found very effective and pretty for groups in borders or beds.

8d. per packet, 6s. per dozen packets.

(Retail price, 1s. per packet.)



NOVELTIES for 1895.

## CONVOLVULUS MAJOR FL. PL.

### DOUBLE-FLOWERED MORNING GLORY.

A double-flowered form of the well-known and popular *Convolvulus major* or Morning Glory. Like the type, it is of rapid growth, and freely produces its double flowers, which somewhat resemble in form those of *Calystegia pubescens fl. pl.* They are white with a slight spot of red or of blue at the base of the larger petals. About 80 per cent. are reproduced true from Seed.

1s. per packet; 10s. per dozen.

(Retail price, 1s. 6d. per packet.)



## DATURA CORNUCOPIA.

A very interesting and beautiful novelty, which will succeed admirably in a greenhouse. The flowers are produced when the plants are only a few inches high, the blossoming period extending all through the Summer. The individual blooms are semi-erect and of immense size, attaining on well grown plants, nearly a foot in length. The inner surface of the funnel-shaped tubes is of a French white, while the outside is marmorated and suffused with bright purple. To add to their great beauty the flowers are deliciously scented.

1s. per packet; 10s. per dozen.

(Retail price, 1s. 6d. per packet.)



## DIANTHUS LACINIATUS,

### "SALMON QUEEN."

This pretty new variety produces in great profusion, handsomely fringed and lacinated flowers of the most brilliant salmon colour imaginable, changing into a lovely salmon rose. The plants attain a height of 10 to 12 inches, and will be found of the greatest use for planting in beds and borders, the flowers being very showy and most useful for cutting.

1s. per packet; 10s. per dozen.

(Retail price, 1s. 6d. per packet.)



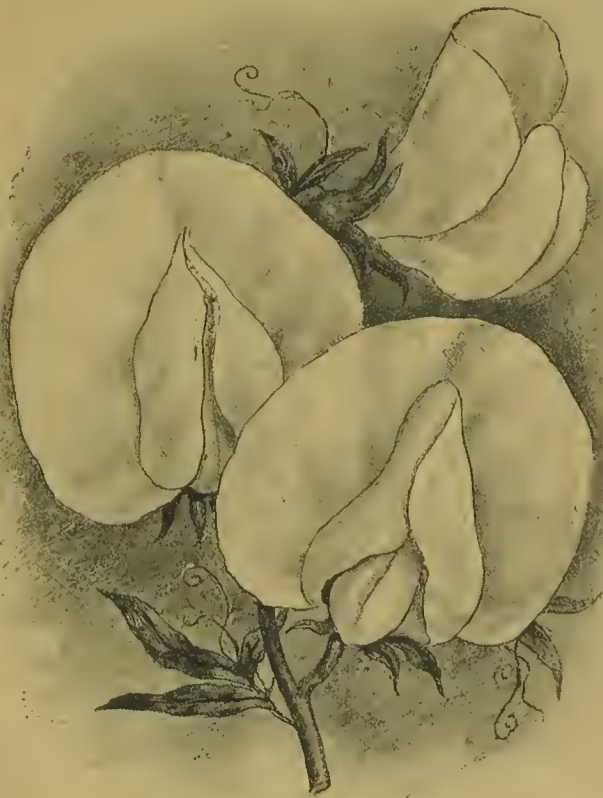
MIGNONETTE, GOLDEN GEM.

## MIGNONETTE, GOLDEN GEM.

A beautiful dwarf-growing Mignonette, of compact and regular pyramidal growth, producing an abundance of spikes of a rich golden-yellow colour. It is of the greatest value either for growing in pots for general decoration, or sown in the open borders for cutting purposes. *Vide* illustration.

9d. per packet ; 8s. per dozen.

(Retail price, 1s. per packet.)



SWEET PEA, BLANCHE BURPEE.

## NEW GIANT WHITE SWEET PEA, BLANCHE BURPEE.

A new pure white variety of exquisite form and immense size, having a bold upright shell-shaped standard of great substance, absolutely free from the central notch, so conspicuous in other white varieties ; the wings are also pure white, and it is said to be by far the finest pure white Sweet Pea as yet introduced. It is of exceptionally robust habit, bearing usually three flowers on a stalk. Has been awarded two First Class Certificates.

In raiser's sealed packets, 9d. each.

(Retail price, 1s. each.)



PETUNIA,  
"GIANTS OF CALIFORNIA."

A splendid large-flowering strain of Petunias, raised by a celebrated Californian grower. The flowers are of immense size, measuring sometimes 5 inches in diameter, and comprise almost every shade of colour, the veining and markings being most exquisite. The blossoms are of great substance and beautifully fringed.

9s. per dozen packets. (Retail price, 1s. per packet.)

PRIMULA OBCONICA GRANDIFLORA.

A large-flowered form of the pretty decorative *Primula obconica*, producing almost continuously large trusses of bloom, the individual flowers measuring from 1 to 1½ inch in diameter; they are also much deeper in colour than the normal small-flowered type, to which it is infinitely superior.

1s. 8d. per packet; 18s. per dozen packets. (Retail price, 2s. 6d. per packet.)

TECOMA SMITHII.

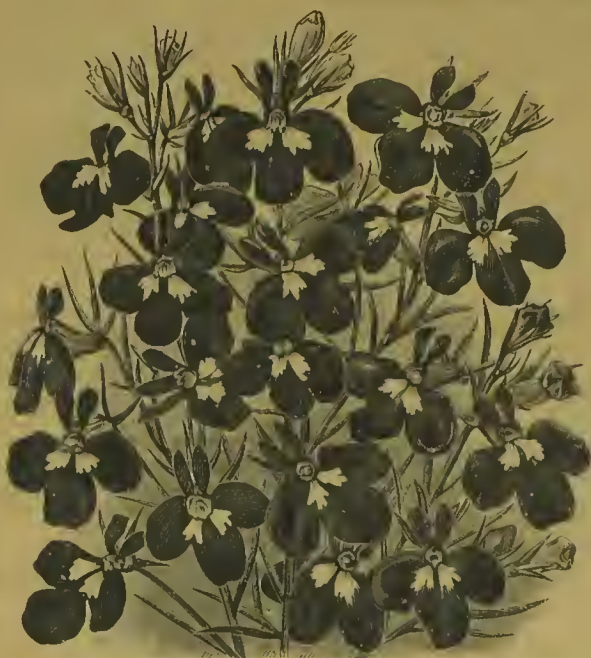
One of the finest Seed Novelties yet introduced, and an exceedingly beautiful addition to our Autumn and Winter flowering greenhouse plants. The flowers are tubular in shape, about 2 inches long, and about 1 inch in diameter at the mouth, of a rich lemon colour shaded with dark orange, borne in large terminal corymbiform heads, presenting a most charming appearance, and lasting in full beauty for upwards of a month.

The plant is very easily grown, in fact, is as easily managed as a Chrysanthemum. Was awarded a First Class Certificate by the Royal Horticultural Society.

Per packet, 1s. 6d. (Retail price, 2s. 6d. per packet.)

# SPECIALITIES FOR 1895.

(For Vegetable Specialities, vide page 27.)



## LOBELIA, BARNARD'S PERPETUAL.

This splendid acquisition sent out by Mr. William Bull, is without doubt the finest Lobelia yet raised. The flowers are of the most brilliant ultramarine blue, strikingly ornamented with a pure white marking at the base of each of the two lower petals. It is of compact habit, and alike useful for bedding or growing in pots, while the bright and effective colouring of its flowers, combined with its perpetual blooming character, renders it most desirable for beds and ribbon borders. It was awarded a Certificate of Merit by the Royal Horticultural Society when exhibited in May, 1892, at the Temple Show.

9s. per dozen packets; 70s. per 100 packets. (Retail price, 1s. 6d. per packet.)

## ASPARAGUS PLUMOSUS.

A very useful decorative plant for the greenhouse. 1s. 8d. per packet; 15s. per dozen. (Retail price, 2s. 6d. per packet.)



## ASPARAGUS PLUMOSUS NANUS.

An elegant and graceful ornamental greenhouse plant. 1s. 8d. per packet; 15s. per dozen. (Retail price, 2s. 6d. per packet.)

## NEW DOUBLE MARGARET CARNATIONS.

A beautiful novelty, growing about 12 inches high, and producing in the utmost profusion charming flowers of every variety of colour, including yellow. The plants are of vigorous growth, the numerous flower stalks being exceedingly strong and robust, and do not therefore require to be supported by sticks. For pot culture this variety cannot be excelled, and is, besides, most valuable for growing in beds and borders, and for cut-flower purposes generally.

3s. per dozen packets. (Retail price, 6d. per packet.)

MARGARET CARNATION.



CROZY'S CANNAS.

## CANNAS.

### CROZY'S GLADIOLUS- FLOWERED STRAIN.

The magnificent varieties of Cannas raised and sent out by M. Crozy, are too well-known and appreciated to need any lengthened description. They are of the greatest value for bedding purposes and flowering when quite dwarf, are admirably adapted for growing in pots for the decoration of greenhouses and conservatories, their showy spikes of flower remaining in full beauty for a length of time, exhibiting a wealth and variety of gorgeous colouring scarcely obtainable in any other class of plant. Some are brilliant yellow, others intense shades of scarlet, orange, salmon, crimson, red, maroon, &c., many being dotted, striped, maculated or rayed with yellow or scarlet, others again being crimson or scarlet, margined with a band of golden yellow; the flowers indeed are most diversified and pleasing in every way. Seed is now offered of many of the best sorts.

Mixed Seed, saved from Crozy's new varieties. 1s. per packet; 9s. per dozen packets.

(Retail price, 1s. 6d. per packet.)

Collection of 12 finest varieties, 2s. 6d. per collection. 24s. per dozen collections.

(Retail, 3s. 6d. per collection.)

For dormant roots, *vide* page 40.

## DWARF FRENCH MARIGOLD.

### "PURPLE AND GOLD."

A charming new Dwarf French Marigold of regular growth, producing uninterruptedly from July until the frost sets in, a great profusion of pretty single flowers of a lovely golden yellow colour, each petal being ornamented with a velvety purple spot, imparting to the blooms a very attractive appearance. This pretty annual will be found of great use for cutting, being very floriferous and of easy culture, succeeding in any situation.

8d. per packet; 6s. per dozen.

(Retail price, 1s. per packet.)



## MYRSIPHYLLUM (SMILAX) ASPARAGOIDES.

A charming greenhouse climber with small dark-green cordate foliage, which is extremely useful for decorative purposes, as it remains fresh and green for several days after being cut. 4d. per packet; 3s. per dozen packets.

(Retail, 6d. per packet.)





STOCK, "PRINCESS MAY."

## NEMESIA STRUMOSA SUTTONI.

The flowers of this pretty and distinct half-hardy plant range from ivory white to primrose, orange scarlet, crimson and purple, flowering in the open air all through the Summer. 9d. per packet. (Retail price, 1s. per packet.)

## SAINTPAULIA IONANTHA.

A distinct and pretty greenhouse plant, producing an abundance of Violet-like flowers on slender stalks. The blossoms are of a violet blue colour, with golden yellow stamens. 9d. per packet. (Retail price, 1s. per packet.)

## TEN-WEEK STOCK, "PRINCESS MAY."

A handsome variety, bearing large spikes of light primrose coloured flowers. The individual blossoms, when fully expanded, attain a diameter of two inches, the glossy green of the foliage showing off the delicate hue of the flowers to the best advantage. One of the earliest to flower. 1s. per packet; 9s. per dozen. (Retail price, 1s. 6d. per packet.)



SUNFLOWER, "THOUSAND-FLOWERED."

## STREPTOCARPUS. New Hybrids.

These handsome hybrids are admirably adapted for greenhouse and conservatory decoration, their pretty trumpet-shaped flowers being produced in the utmost profusion through the Summer and early Autumn months. The value of these charming flowering plants is greatly enhanced by their great diversity of colour, which ranges from pure white to deep rose and violet-purple. 1s. 8d. per packet; 15s. per dozen.

(Retail price, 2s. 6d. per packet.)

## SUNFLOWER, "THOUSAND-FLOWERED."

When planted singly in good soil this new Sunflower is said, by the introducer, to grow to a height of from 12 to 15 feet, branching from the base to the top, each branch bearing a multitude of medium-sized golden-yellow flowers with small black centre, invaluable for cutting and other decorative purposes.

4d. per packet; 3s. 6d. per dozen.

(Retail price, 6d. per packet.)

# PRIMULAS.

Special  
Offer  
of Seed



from  
Prize  
Strains.

**PRIMULA SINENSIS FIMBRIATA ALBA**, per packet, 1s. & 1s. 8d.; per dozen packets, 9s. & 15s. (Retail, 1s. 6d. & 2s. 6d. per packet.) Trade packets, 5s. Per  $\frac{1}{2}$  oz., 10s.;  $\frac{1}{4}$  oz., 20s.;  $\frac{1}{2}$  oz., 37s. 6d.; 1 oz., 75s.

**PRIMULA SINENSIS FIMBRIATA RUBRA**, per packet, 1s. & 1s. 8d.; per dozen packets, 9s. & 15s. (Retail, 1s. 6d. & 2s. 6d. per packet.) Trade packets, 5s. Per  $\frac{1}{2}$  oz., 10s.;  $\frac{1}{4}$  oz., 20s.;  $\frac{1}{2}$  oz., 37s. 6d.; 1 oz., 75s.

**PRIMULA SINENSIS FIMBRIATA, RED & WHITE, MIXED**, per packet, 1s. and 1s. 8d.; per dozen packets, 9s. & 15s. (Retail, 1s. 6d. and 2s. 6d. per packet.) Trade packets, 5s. Per  $\frac{1}{2}$  oz., 10s.;  $\frac{1}{4}$  oz., 20s.;  $\frac{1}{2}$  oz., 37s. 6d.; 1 oz., 75s.

Mr. WILLIAM BULL has the greatest confidence in offering Seed of the above, knowing that the produce cannot be excelled, it having been saved from the finest strains in cultivation, the flowers being remarkable for size, brightness of colour, and substance, while in general habit the plants leave nothing to be desired.

## PRIMULA SINENSIS FIMBRIATA.

### "PREMIER MIXTURE."

Seed of Mr. WILLIAM BULL'S select strain is offered in mixture, containing all the new and most distinct colours and varieties; the many unsolicited testimonials received point conclusively to the fact of its being appreciated as of unusual excellence. To distinguish this from the ordinary mixture of *P. alba* and *rubra* generally supplied, Mr. W. B. designates this choice mixture as above. Per packet, 1s. & 1s. 8d.; per dozen packets, 9s. and 15s. (Retail price, 1s. 6d. & 2s. 6d. per packet.) Trade packets, 5s. Per  $\frac{1}{2}$  oz., 10s.; per  $\frac{1}{4}$  oz., 20s.; per  $\frac{1}{2}$  oz., 37s. 6d.; per oz., 75s.

## FERN-LEAVED PRIMULAS.

**PRIMULA SINENSIS FIMBRIATA FILICIFOLIA, PURITY (New)**.—Flowers pure white, of great substance and beautifully fringed; of compact dwarf habit. Per packet, 1s. 8d.; per dozen packets, 15s. (Retail, 2s. 6d. per packet.)

**PRIMULA SINENSIS FIMBRIATA FILICIFOLIA ALBA**, per packet, 1s. & 1s. 8d.; per dozen packets, 9s. & 15s. (Retail, 1s. 6d. & 2s. 6d. per packet.) Trade packets, 5s. and 10s. each.

**PRIMULA SINENSIS FIMBRIATA FILICIFOLIA RUBRA**, per packet, 1s. & 1s. 8d.; per dozen packets, 9s. & 15s. (Retail 1s. 6d. & 2s. 6d. per packet.) Trade packets, 5s. and 10s. each.

**PRIMULA SINENSIS FIMBRIATA FILICIFOLIA STRIATIFLORA**, per packet, 1s. and 1s. 8d.; per dozen packets, 9s. & 15s. (Retail, 1s. 6d. & 2s. 6d. per packet.) Trade packets, 5s. and 10s. each.

**PRIMULA SINENSIS FIMBRIATA FILICIFOLIA, MIXED**, per packet, 1s. & 1s. 8d.; per dozen packets, 9s. & 15s. (Retail, 1s. 6d. & 2s. 6d. per packet.) Trade packets, 5s. and 10s. each.

*The above beautiful varieties of the Fern-leaved section possess most elegantly fringed edges.*

Not less than  $\frac{1}{8}$  oz. of **PRIMULA, CALCEOLARIA** or **CINERARIA** weighed, but Trade Packets are supplied.

## PRIMULAS, CHOICE NAMED.

The following beautiful varieties are specially recommended :—

- PRIMULA SINENSIS FIMBRIATA, BRILLIANT (New).**—Beautiful fringed flowers of the most brilliant and richest shade of crimson-magenta, tinged with carmine, lemon-yellow eye. Per packet, 1s. 9d. ; per doz. packets, 18s. (Retail price, 2s. 6d. per packet.)
- PRIMULA SINENSIS FIMBRIATA, COMET (New).**—A very beautiful new variety, the flowers being of an extremely rich carmine-erimson colour, shaded with magenta ; the throat is yellow, surrounded at the mouth with a small dark maroon zone. The foliage is of a pleasing green and the plant of good habit. 1s. 9d. per packet ; per dozen packets, 18s. (Retail price, 2s. 6d. per packet.)
- PRIMULA SINENSIS FIMBRIATA, GIPSY (New).**—Fine trusses of beautifully fringed flowers, thrown well above the foliage ; white with a delicate shade of rose. Per packet, 1s. 8d. ; 15s. per dozen. (Retail price, 2s. 6d. per packet.)
- PRIMULA SINENSIS FIMBRIATA ALBA MAGNIFICA.**—Very exquisitely fringed pure white variety, with deep yellow eye ; flowers of great substance. 1s. 8d. per packet ; per dozen packets, 15s. (Retail price, 2s. 6d. per packet.)
- PRIMULA SINENSIS FIMBRIATA ALBA OCULATA-LUTEA.**—A distinct variety ; splendidly fringed white flower, with large bright yellow centre, which extends to half the flower. Per packet, 1s. 8d. ; per dozen packets, 15s. (Retail price, 2s. 6d. per packet.)
- PRIMULA SINENSIS FIMBRIATA, AVALANCHE.**—This is a robust grower, leaves of a beautiful dark green, with red foot-stalks. The flowers are pure white, with yellow eye, very large, of good substance, and beautifully fringed. 1s. 8d. per packet ; 15s. per dozen packets. (Retail price, 2s. 6d. per packet.) Trade packets, 5s. and 10s. each.
- PRIMULA SINENSIS FIMBRIATA, CHISWICK RED.**—Brilliant scarlet-carmine. Per packet, 1s. 8d. ; per dozen packets, 15s. (Retail price, 2s. 6d. per packet.)
- PRIMULA SINENSIS FIMBRIATA FULGENS.**—Very bright scarlet-carmine with small yellow eye. Per packet, 1s. 8d. ; per dozen packets, 15s. (Retail price, 2s. 6d. per packet.)
- PRIMULA SINENSIS FIMBRIATA, IMPERIAL BLUE.**—Flowers of a beautiful lilac-blue, blossoms of large size and elegantly fringed. Per packet, 1s. 8d. ; per dozen packets, 15s. (Retail price, 2s. 6d. per packet.)
- PRIMULA SINENSIS FIMBRIATA KERMESINA SPLENDENS.**—A fine variety, with rich madder-red flowers. Per packet, 1s. and 1s. 8d. ; per dozen packets, 9s. and 15s. (Retail price, 1s. 6d. and 2s. 6d. per packet.) Trade packets, 5s.
- PRIMULA SINENSIS FIMBRIATA, MONT BLANC.**—Unrivalled in the pureness of its snowy white densely fringed flowers, which are of great size and substance. 1s. 8d. per packet ; per dozen packets, 15s. (Retail price, 2s. 6d. per packet.) Per  $\frac{1}{2}$  oz., 15s. ;  $\frac{1}{4}$  oz., 30s. ;  $\frac{1}{2}$  oz. 60s. ; 1 oz. 120s.
- PRIMULA SINENSIS FIMBRIATA PUNCTATA ELEGANTISSIMA.**—Crimson shaded with purple and dotted with white, centre deep gold ; very distinct and beautifully fringed. Per packet, 1s. 8d. ; per dozen packets, 15s. (Retail price, 2s. 6d. per packet.)
- PRIMULA SINENSIS FIMBRIATA, VIOLACEA.**—Rosy-lilac, prettily margined with white ; deep yellow eye. Per packet, 1s. 8d. ; per dozen packets, 15s. (Retail price, 2s. 6d. per packet.)

## DOUBLE-FLOWERED PRIMULAS.

The following double Primulas are a valuable acquisition, especially to cut from, as they do not drop their flowers like the single varieties.

- PRIMULA SINENSIS FIMBRIATA ALBA FL. PL.** Per 100 seeds, 2s. 6d. ; per 1,000 seeds, 20s.
- PRIMULA SINENSIS FIMBRIATA ROSEA FL. PL.**—Pretty semi-double flowers of a charming blush rose colour. Per 100 seeds, 3s. 6d.
- PRIMULA SINENSIS FIMBRIATA RUBRA FL. PL.** Per 100 seeds, 2s. 6d. ; per 1,000 seeds, 20s.
- PRIMULA SINENSIS FIMBRIATA KERMESINA SPLENDENS FL. PL.**, rich madder-red flowers. Per 100 seeds, 3s. ; per 1,000 seeds, 25s.
- PRIMULA SINENSIS FIMBRIATA STRIATIFLORA FL. PL.**—Semi-double blush rose flowers, prettily punctuated and striated with crimson. Per 100 seeds, 3s. 6d.
- PRIMULA SINENSIS FIMBRIATA FL. PL.**, Mixed. Per 100 seeds, 2s. 6d. ; per 1,000 seeds, 20s.

## SEEDS FROM PRIZE STRAINS.

## CALCEOLARIA.



**CALCEOLARIA, HERBACEOUS,**  
Prize Strain.—With the greatest confidence Mr. W. B. recommends the above magnificent strain; the seed has been saved from a collection of the most beautiful and varied flowers, of excellent form and substance, and including almost every shade of colour, exquisitely spotted and blotched, the foliage retaining a healthy green colour throughout the season. Per packet, 1s. and 1s. 8d.; per dozen, 9s. and 15s. (Retail price, 1s. 6d. & 2s. 6d. per pkt.) Trade packets, 7s. 6d. Per  $\frac{1}{3}$  oz., 12s. 6d.; per  $\frac{1}{4}$  oz., 25s.; per  $\frac{1}{2}$  oz., 50s.; per oz., 100s.

## CINERARIA.

**CINERARIA, choice mixed.**—Saved from a collection unsurpassed for richness and variety of colour, perfection of form, and elegance of habit. Per packet, 1s. and 1s. 8d.; per dozen packets, 9s. and 15s. (Retail price, 1s. 6d. & 2s. 6d. per packet. Trade packets, 7s. 6d. Per  $\frac{1}{3}$  oz., 12s. 6d.; per  $\frac{1}{4}$  oz., 25s.; per  $\frac{1}{2}$  oz., 50s.; per oz., 100s.

**CINERARIA, DOUBLE, choice mixed.**  
—This may be expected to produce a good percentage of double flowers of many beautiful colours. Per packet, 1s. 8d.; per dozen packets, 15s. (Retail, 2s. 6d. per packet.) Trade packets, 5s. and 10s. each.

**CINERARIA HYBRIDA GRANDIFLORA NANA.**—Splendid dwarf variety with large flowers of many beautiful colours and shades. Per packet, 1s. and 1s. 8d.; per dozen packets, 9s. and 15s. (Retail, 1s. 6d. and 2s. 6d. per pkt.)

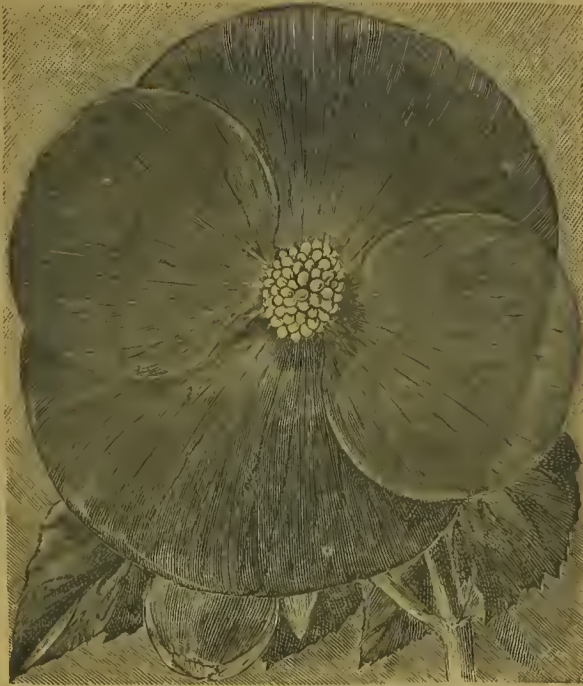
**CINERARIA HYBRIDA GRANDIFLORA, BLUE.**—Per packet, 1s. 8d.; per dozen packets, 15s. (Retail, 2s. 6d. per packet.)

**CINERARIA HYBRIDA GRANDIFLORA, WHITE.**—Per packet, 1s. 8d.; per dozen packets, 15s. (Retail, 2s. 6d. per packet.)

**CINERARIA HYBRIDA GRANDIFLORA, CRIMSON.**—Per packet, 1s. 8d.; per dozen packets, 15s. (Retail 2s. 6d. per packet.)

Not less than  $\frac{1}{3}$  oz. of PRIMULA, CALCEOLARIA, or CINERARIA weighed, but Trade Packets are supplied.





SINGLE-FLOWERED BEGONIA.



DOUBLE-FLOWERED BEGONIA.

## BEGONIAS.

### Gigantic Flowering Varieties.

The flowers of the following Begonias are of gigantic size, and the whole collection of great excellence:—

**CANARY.**—Deep canary yellow, large flower 1s. per packet. (Retail 1s. 6d.)

**CHAMPION.**—Salmon-pink, immense flowers. 1s. per pkt. (Retail 1s. 6d.)

**CHELSEA GIANT.**—Light carmine-scarlet; a huge flower. 1s. per packet. (Retail 1s. 6d.)

**CRIMSON GLORY.**—Bright crimson; shell-like petals. 1s. per packet. (Retail 1s. 6d.)

**FIRE KING.**—Rich fiery vermilion; colossal flowers. 1s. per packet. (Retail 1s. 6d.)

**MARS.**—Rich deep crimson, very large flower of good shape. 1s. per packet. (Retail 1s. 6d.)

**MASTERPIECE.** Bright vermilion, very rich and attractive. 1s. per packet. (Retail 1s. 6d.)

**MINOTAUR.**—Bright orange scarlet, very large flower. 1s. per packet. (Retail 1s. 6d.)

**PINK BEAUTY.**—Bright rosy pink, very large fine flowers. 1s. per packet. (Retail 1s. 6d.)

**RUBY GEM.**—Rich magenta, exceptionally handsome. 1s. per packet. (Retail 1s. 6d.)

**SANSPAREIL.**—Blush, tinted with rose, good shaped flower. 1s. per packet. (Retail 1s. 6d.)

**SNOWDRIFT.**—Pure white, of good shape. 1s. per pkt. (Retail 1s. 6d.)

The Collection of the above twelve choice varieties of Begonias, price 5s. 6d. (Retail, 10s. 6d. per collection.)

**BEGONIA HYBRIDA GIGANTEA,** mixed.—This strain produces flowers of gigantic size, each blossom measuring 4 to 5 inches, and embraces the various rich and attractive colours of the handsome-flowered section. The plants are of stiff, compact habit, and produce their immense flowers in the greatest abundance. 1s. & 1s. 8d. per packet; 9s. and 15s. per dozen. (Retail, 1s. 6d. & 2s. 6d. per packet.) Per  $\frac{1}{2}$  oz., 42s.

## BEGONIAS.

### Double Flowering.

The many handsome varieties now to be found among double-flowering Begonias render this section as desirable as the single-flowered kinds, and the flowers, being very persistent, last much longer in beauty than the single-flowered varieties. The seed now offered may be expected to produce a large proportion of well-formed double flowers of the most brilliant and varied colours. 1s. 8d. per packet; 15s. per dozen. (Retail, 2s. 6d. per packet.)



### CYCLAMEN PERSICUM GRANDIFLORUM.

- Extra choice mixed.—This may be expected to produce all the best varieties peculiar to this family. 1s. and 1s. 8d. per packet. 9s. and 15s. per dozen packets. (Retail price, 1s. 6d. and 2s. 6d. per packet.) Per  $\frac{1}{2}$  oz., 10s. 6d.;  $\frac{3}{4}$  oz., 21s.; 1 oz., 42s.
- ALBUM**, fine pure white flowers of good form and substance. 1s. and 1s. 8d. per packet. 9s. and 15s. per dozen. (Retail price, 1s. 6d. and 2s. 6d. per packet.)
- DELICATUM**, 1s. and 1s. 8d. per packet. 9s. and 15s. per doz. (Retail price, 1s. 6d. & 2s. 6d. per pkt.)
- ROSEUM**, well shaped flowers of great beauty. 1s. and 1s. 8d. per packet. 9s. and 15s. per dozen. (Retail price, 2s. 6d. per packet.)
- BARONESS BURDETT-COUTTS**.—A superb pure white variety, with short broad petals of great substance. First Class Certificate, R.H.S. 1s. 8d. per packet. 15s. per dozen packets. (Retail price, 2s. 6d. per packet.)
- CHARMING BRIDE**.—A beautiful pure white variety, the flowers being of immense size, perfect in form, and of great substance. Awarded a First Class Certificate R.H.S. 1s. 8d. per packet. 15s. per dozen packets. (Retail price, 2s. 6d. per packet.)
- CRIMSON KING**.—Brilliant crimson, deepening at the base to a deep red. 1s. and 1s. 8d. per packet. 9s. and 15s. per dozen packets. (Retail price, 1s. 6d. and 2s. 6d. per packet.)
- DUKE OF CONNAUGHT**.—Rich purplish crimson flowers of unusually large size and substance. First Class Certificate, R.B.S. 1s. and 1s. 8d. per packet. 9s. and 15s. per dozen packets. (Retail price, 1s. 6d. and 2s. 6d. per packet.)
- DUKE OF FIFE**.—Flowers of a rich dark rose. Certificated R.B.S. 1s. 8d. per packet. 15s. per dozen packets. (Retail price, 2s. 6d. per packet.)
- MAUVE QUEEN**.—Mauve-coloured flowers of grand form. 1s. 8d. per packet. 15s. per dozen packets. (Retail price, 2s. 6d. per packet.)
- MONT BLANC**.—A grand flower of great substance and width of petal; pure snowy-white. 1s. 8d. per packet. 15s. per dozen packets. (Retail price, 2s. 6d. per packet.)
- PRINCE OF WALES**.—Large bright red flowers, of good form and substance. Award of Merit, R.H.S. 1s. 8d. per packet. 15s. per dozen packets. (Retail price, 2s. 6d. per packet.)
- PRINCESS MAY**.—A beautiful variety, bearing large flowers of a charming shade of pink. 1s. 8d. per packet. 15s. per dozen packets. (Retail price, 2s. 6d. per packet.)
- PERSICUM GIGANTEUM**.—For size and substance of bloom and general excellence, this magnificent Cyclamen is unsurpassed. It has been awarded a First Class Certificate by the Floral Committee of the Royal Horticultural Society. 1s. and 1s. 8d. per packet. 9s. and 15s. per dozen packets. (Retail price, 1s. 6d. and 2s. 6d. per packet.)
- PERSICUM GIGANTEUM COMPACTUM**.—A very large and remarkable variety of compact habit, bearing a profusion of immense pure white flowers, with deep purple base. 1s. 8d. per packet. 15s. per dozen packets. (Retail price, 2s. 6d. per packet.)
- PERSICUM GIGANTEUM ROSEUM**.—A beautiful variety of compact habit, with magnificent large flowers of a light rose colour, having a dark crimson eye; of symmetrical form and massive substance. 1s. 8d. per packet. 15s. per dozen packets. (Retail price, 2s. 6d. per packet.)

**CARNATIONS AND PICOTEES.**  
**FROM PRIZE STRAINS.**



**CARNATION.**



**PICOTEE.**

- CARNATION (Prize Strain).**—Saved from finest Bizarre Flowers. 1s. 8d. and 2s. 4d. per packet. 15s. and 21s. per dozen. (Retail price, 2s. 6d. and 3s. 6d. per packet.)
- CARNATION (Prize Strain).**—Saved from finest Flaked Flowers. 1s. 8d. and 2s. 4d. per packet. 15s. and 21s. per dozen. (Retail price, 2s. 6d. and 3s. 6d. per packet.)
- CARNATION (Prize Strain).**—Saved from finest Self Flowers. 1s. 8d. and 2s. 4d. per packet. 15s. and 21s. per dozen. (Retail price, 2s. 6d. and 3s. 6d. per packet.)
- CARNATION (Prize Strain).**—Saved from finest Yellow-Ground Flowers. 1s. 8d. and 2s. 4d. per packet. 15s. and 21s. per dozen. (Retail price, 2s. 6d. and 3s. 6d. per packet.)
- CARNATION, extra choice.**—Saved from a collection of superbly coloured varieties, including flakes, bizarres, and selfs. 1s. 8d. per packet. 15s. per dozen. (Retail price, 2s. 6d. per packet.)
- CARNATION, Germania.**—One of the finest of yellow selfs. 1s. 8d. per packet. 15s. per dozen. (Retail price, 2s. 6d. per packet.)
- CARNATION, White Lady.**—A new and large-flowered white self. 1s. 8d. per packet. 15s. per dozen. (Retail price, 2s. 6d. per packet.)
- CARNATION, Perpetual Tree.**—This may be expected to produce beautiful new varieties of various colours and of the highest merit. 1s. and 1s. 8d. per packet. 9s. and 15s. per dozen. (Retail price, 1s. 6d. and 2s. 6d. per packet.)
- CARNATION, Perpetual Tree, in separate colours—**
- |   |   |         |                     |               |                               |
|---|---|---------|---------------------|---------------|-------------------------------|
| “ | “ | White,  | 1s. 8d. per packet. | 15s. per doz. | (Retail, 2s. 6d. per packet.) |
| “ | “ | Yellow, | 1s. 8d. “           | 15s. “        | “ 2s. 6d. “                   |
| “ | “ | Red,    | 1s. 8d. “           | 15s. “        | “ 2s. 6d. “                   |
- CARNATIONS AND PICOTEES.**—From Show Flowers, all classes mixed. 1s. 8d. per packet. 15s. per dozen. (Retail price, 2s. 6d. per packet.)
- PICOTEE, PRIZE STRAIN.**—Saved from choicest named varieties. 1s. 8d. and 2s. 4d. per packet. 15s. and 21s. per dozen. (Retail price, 2s. 6d. and 3s. 6d. per packet.)
- PICOTEE, choice mixed.**—Saved from one of the finest strains in cultivation. 1s. and 1s. 8d. per packet. 9s. and 15s. per dozen. (Retail price, 1s. 6d. and 2s. 6d. per packet.)
- PICOTEE.**—Purple edged. 1s. 8d. per packet. 15s. per dozen. (Retail price, 2s. 6d. per packet.)
- |   |                |           |           |        |             |
|---|----------------|-----------|-----------|--------|-------------|
| “ | Red            | “         | 1s. 8d. “ | 15s. “ | “ 2s. 6d. “ |
| “ | Rose           | “         | 1s. 8d. “ | 15s. “ | “ 2s. 6d. “ |
| “ | Scarlet        | “         | 1s. 8d. “ | 15s. “ | “ 2s. 6d. “ |
| “ | Yellow ground. | 1s. 8d. “ | 15s. “    | “      | “ 2s. 6d. “ |
- PINK, from laced flowers.**—Saved from the finest laced varieties. 1s. 8d. and 2s. 4d. per packet. 15s. and 21s. per dozen. (Retail price, 2s. 6d. and 3s. 6d. per packet.)
- PINK, DOUBLE, extra choice mixed.**—Saved from the finest double flowers. 1s. 8d. per packet. 15s. per dozen. (Retail price, 2s. 6d. per packet.)

## ECKFORD'S AND OTHER NEW SWEET PEAS.



**APPLE BLOSSOM.**—Standards bright pinkish rose, the wings a beautiful shade of Apple blossom, very pretty and distinct. A very fine large-flowered variety. 2*d.* per ounce.

**BLANCHE BURPEE,** *vide* page 3.

**BLUSHING BEAUTY.**—Soft pink suffused lilac. A superb flower and beautiful variety. 1*s.* per ounce.

**BOREATON.**—A very fine dark Pea, with bold stout flowers, the standard being a rich shining bronzy-crimson, the wings of a beautiful crimson-purple shaded with rose. 3*d.* per ounce.

**CAPTAIN OF THE BLUES.**—*First Class Certificate, R.H.S. 1891.* Standard bright bluish-purple, with pale blue wings. A very striking and fine variety. 4*d.* per ounce.

**CARDINAL.**—A splendid robust growing variety, producing a great profusion of bright shining crimson-scarlet flowers, very distinct and handsome. 3*d.* per ounce.

**COUNTESS OF RADNOR.**—Pale mauve standards, with a deeper shading of mauve; wings pale lilac or delicate mauve; a most chaste and lovely variety. 9*d.* per ounce.

**DELIGHT.**—Wings white, standards white, beautifully crested with crimson; very pretty; dwarf habit. 3*d.* per ounce.

**DOROTHY TENNANT.**—*Award of Merit R.H.S.* Puce-violet or rosy-mauve self, very distinct and beautiful, extra fine. 1*s.* per ounce.

**DUCHESS OF EDINBURGH.**—A very distinct and beautiful variety; the standard light scarlet, flushed with crimson, slightly marbled or splashed at the edge with creamy white, wings deep rose. 3*d.* per ounce.

**DUKE OF CLARENCE.**—A large self-coloured flower of a rosy claret colour. 1*s.* per ounce.

**EMILY HENDERSON.**—A splendid pure white variety of great merit. 6*d.* per ounce.

**EMPRESS OF INDIA.**—Clear rosy-pink standards and white wings, large and very pleasing. 6*d.* per ounce.

**FIREFLY.**—A self-coloured intense glowing crimson, of good size and substance. 1*s.* per ounce.

**HER MAJESTY.**—A beautiful soft, rosy-pink self, very large, showy and handsome; a flower difficult to describe; very grand. 9*d.* per ounce.

**IGNEA.**—Fine standards of a peculiar shade of crimson scarlet, wings pale scarlet flushed with purple. 1*s.* per ounce.

**IMPERIAL BLUE.**—Blue, shaded mauve; very distinct. 3*d.* per ounce.

**INDIGO KING.**—Standard dark maroon-purple, indigo-blue wings. 3*d.* per ounce.

**ISA ECKFORD.**—Creamy white, suffused with rosy-pink. 6*d.* per ounce.

**LEMON QUEEN.**—Delicate blush-pink standards tinted with lemon, with blush, almost white, wings; a very pleasing light variety, large, grand. 6*d.* per ounce.

**LOTTIE ECKFORD.**—Reverse of standards deep mauve, paler on the surface, wings white, margined with soft mauve. 3*d.* per ounce.

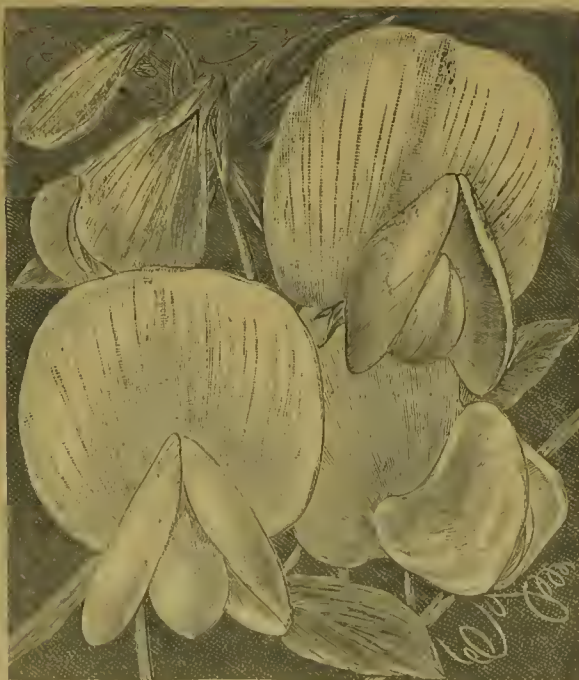
**MISS BLANCHE FERRY.**—Deep red with white, early and free flowering. 3*d.* per ounce.

**MISS HUNT.**—Pale earmine, salmon standards. A very pretty variety. 6*d.* per ounce.

**MONARCH.**—Bronzy-crimson standards, with rich deep blue wings; a very large and striking variety. 4*d.* per ounce.



## ECKFORD'S AND OTHER NEW SWEET PEAS.



QUEEN OF ENGLAND.

- MRS. ECKFORD.**—*F.C.C., R.H.S.*  
Large, handsome, self-coloured flower, of the finest substance, colour a peculiarly delicate shaded primrose. 1s. per ounce.
- MRS. GLADSTONE.**—Delicate pink standards; the wings blush, edged with delicate pink; a singularly pretty and pleasing variety. 6d. per ounce.
- MRS. SANKEY.**—*F.C.C., R.H.S.*  
Pure white, a large bold flower; a fine improvement on all other whites; very grand. 3d. per oz.
- ORANGE PRINCE.**—One of the most distinct varieties ever sent out; awarded a First Class Certificate Royal Horticultural Society. The standard is bright orange-pink, flushed with scarlet, wings bright rose veined with pink; extremely handsome. 3d. per ounce.
- PRIMROSE.**—Quite novel and distinct in colour, the standards and wings pale primrose-yellow. First Class Certificate Royal Horticultural Society. 3d. per ounce.
- PRINCESS BEATRICE.**—A beautiful blush pink variety. 3d. per ounce.
- PRINCESS MAY.**—The colouring throughout is of a delicate shade of pale heliotrope or lavender, the colour being of a rather darker tint in the buds than in the fully expanded flowers. The blossoms are large and the standard well displayed. First Class Certificate. 8d. per packet; 6s. per dozen. (Retail price, 1s. per packet.)
- PRINCESS VICTORIA.**—Standards dark cerise, the wings mauve-pink, and slight lines of rose; very attractive. 4d. per ounce.
- PRINCESS OF WALES.**—A lovely variety, shaded and striped with mauve on a white ground, in a most pleasing manner. It has been awarded a First Class Certificate by the Floral Committee of the Royal Horticultural Society. 3d. per ounce.
- QUEEN OF ENGLAND.**—Splendid large pure snow-white flowers of great substance. Deliciously fragrant and flowering most profusely, this variety will be found one of the very best for cutting purposes. *Vide illustration.* 3d. per ounce.
- SENATOR.**—A large bold flower, finely expanded standards, shaded and striped chocolate on creamy ground; a lovely variety. 3d. per ounce.
- SPLENDOUR.**—*F.C.C., R.H.S.* Colour rich bright pinkish-rose, shaded with crimson; flowers large, and of the finest form; a superbly distinct variety. 3d. per ounce.
- THE QUEEN.**—A very beautiful and pleasing variety, the light rosy-pink standard being in charming contrast to the wings, which are light mauve. 6d. per ounce.
- VENUS.**—Salmon-buff, standards shaded with rosy pink, a distinct and lovely variety. *Award of Merit, R.H.S.* 8d. per packet; 6s. per dozen. (Retail price, 1s. per packet.)
- WAVERLEY.**—Standards rosy claret, pale blue wings shaded rose, very distinct. 6d. per packet; 4s. 6d. per dozen. (Retail price, 9d. per packet.)
- ECKFORD'S MIXED NEW SWEET PEAS.**—This special strain of mixed Sweet Peas is saved from choice named and unnamed varieties of Mr. Eckford's raising. These are of various colours, and the mixture includes many of great merit. 3d. per ounce, 1s. 6d. per pound.

# MR. WILLIAM BULL'S SPECIAL TRADE LIST OF SEEDS FOR 1895.

## EXTRA CHOICE SEEDS.

Half-a-dozen Packets (but not less) of any one article supplied at the dozen rate, unless otherwise quoted; and in all cases single Packets, or any less number than half-a-dozen, at one-third less than the retail price per Packet; not less than  $\frac{1}{8}$ -oz. weighed, of Primula, Calceolaria, or Cineraria, but Trade Packets are supplied.

OTHER SEEDS NOT HERE ENUMERATED CAN BE SUPPLIED AT  
CURRENT PRICES.

ACACIA LOPHANTHA, handsome ornamental foliage. Per ounce, 4*d.*

AGERATUM, IMPERIAL DWARF.—A popular bedding plant, of a cheerful azure-blue colour, throwing a dense mass of blossom throughout the Summer. Per ounce, 8*d.*

AGERATUM TOM THUMB, WHITE GEM.—This charming Ageratum is of very dwarf and compact habit, attaining only a height of 4 inches, the plants being completely covered with large heads of beautiful white flowers. It will be found a most valuable acquisition for ribbon borders. 6*d.* per packet; 5*s.* per dozen. (Retail price, 1*s.* per packet.)

AMARANTHUS MELANCHOLICUS RUBER.—Per ounce, 4*d.*

AMARANTHUS TRICOLOR.—Per ounce, 5*d.*

ANTIRRHINUM, choice mixed.—From a fine collection of named flowers. Per ounce, 9*d.*

ANTIRRHINUM, QUEEN OF THE NORTH.—A valuable plant for pot culture, being densely covered with large pure white flowers. A gem for beds and borders. 7*s.* 6*d.* per dozen packets. (Retail price, 1*s.* per packet.)

AQUILEGIA GLANDULOSA.—One of the finest of all the Columbines, large elegantly-shaped flowers of a deep rich blue, with pure white centre. It is perfectly hardy, and very free-flowering. Per 1,000 seeds, 1*s.*

ASTER, CHRYSANTHEMUM-FLOWERED DWARF, choice mixed.—6*s.* per dozen packets. (Retail price, 1*s.* per packet.)

ASTER, COCKADE or CROWN, choice mixed.—3*s.* per dozen packets. (Retail, 6*d.* per packet.)

ASTER, IMPROVED PEONY-FLOWERED PERFECTION.—The flowers are large and double, of true Peony form, and petals beautifully incurved; height, 15 to 18 inches. Choice mixed, 1*s.* per packet; 9*s.* per dozen. (Retail price, 1*s.* 6*d.* per packet.)

ASTER (JEWEL), APPLE BLOSSOM.—A magnificent Aster, obtained from the large-flowered "Peony Perfection" Aster. Somewhat dwarfer in habit than the latter, it is distinguished by its perfectly round flowers, which may be compared to the finest varieties of the Incurved class of Chrysanthemums (*vide* Illustration). The blossoms measure from 2½ to 3 inches in diameter, and being borne on long stalks will prove especially useful for cutting. 6*s.* per dozen; 8*d.* per packet. (Retail price, 1*s.* per packet.)

ASTER (JEWEL), Extra choice mixed.—8*d.* per packet; 6*s.* per dozen. (Retail price, 1*s.* per packet.)



JEWEL ASTER.

**ASTER, IMPROVED PÆONY-FLOWERED PERFECTION**, choice mixed.—6s. per dozen packets. (Retail price, 1s. per packet.)

**ASTER, COMET**.—A beautiful section, forming regular pyramids from 12 to 15 inches in height, profusely covered with large flowers, very full and double. Collections of 6 distinct varieties, 1s. 6d. each. (Retail price, 2s. 6d.)

**ASTER, COMET, white**.—The flower, which resembles very closely a pure white large-flowered Japanese Chrysanthemum, is very large and double, the petals being much longer than in the ordinary Comet Aster, and more twisted; each petal is ribbed, giving the flower a very elegant appearance. 1s. 6d. per dozen packets. (Retail price, 9d. per packet.)

**ASTER, DWARF PYRAMIDAL BOUQUET**, choice mixed.—6s. per dozen packets. (Retail price, 1s. per packet.)

**ASTER, IMPROVED REID'S (BETTERIDGE'S) QUILLED ASTER**, choice mixed.—3s. per dozen packets. (Retail price, 6d. per packet.)

**ASTER, DWARF VICTORIA**.—A splendid variety, growing from 8 to 12 inches high, excellent for pot culture. *Vide* illustration. Extra choice mixed, 6s. per dozen packets. (Retail price, 1s. per packet.)

**ASTER "TRIUMPH"**.—Colour peculiarly rich and brilliant; when beginning to flower it is a pure scarlet, changing, when in full bloom, to a magnificent crimson-lake. 8d. per packet, 6s. per dozen. (Retail price, 1s. per packet.)

**ASTER, VICTORIA**, fine mixed.—6s. per dozen pkts. (Retail price, 1s. per packet.)

**AURICULA, ALPINE**.—Very choice, from a prize strain. *Vide* illustration. Per  $\frac{1}{4}$ -oz., 3s. 6d.

**AURICULA, SHOW**.—From finest named green, grey, and white edged varieties. 1s. 8d. per packet. (Retail, 2s. 6d. per packet.)

**BALSAM, CAMELLIA-FLOWERED**.—A splendid strain, bearing full double flowers of great substance. Per ounce, 2s.

**BALSAM, CARNATION STRIPED**.—A magnificent strain, beautifully striped and blotched. Per ounce, 2s.

**BEGONIA FRÆBELII**.—Flowers brilliant scarlet. 6s. per dozen packets. (Retail, 1s. per packet.)

**BEGONIA, GIGANTIC VARIETIES**. *Vide* page 11

**CALCEOLARIA HERBACEOUS, Prize Strain**.—*Vide* page 10.

**CALLIOPSIS ATROSANGUINEA**.—Dark crimson flowers. 3d. per ounce.

**CALLIOPSIS TINCTORIA**.—Flowers yellow with brown centre. 3d. per ounce.

**CALLIOPSIS GRANDIFLORA**.—A fine thing for cutting purposes. 3s. 6d. per ounce.

**CANDYTUFT, TOM THUMB, white**.—Of compact growth, from 4 to 6 inches in height; flowers of the purest white and of great substance. Invaluable for edging. 1d. per ounce.

**CANDYTUFT, extra dark crimson**.—Very showy. 4d. per ounce.

**CANDYTUFT, WHITE ROCKET**.—Sweet scented and very useful for cutting. 1d. per ounce.



ASTER, DWARF VICTORIA.



AURICULA ALPINE.

**CANNAS.**—These striking foliage plants are most effective for sub-tropical gardening and border grouping. They are extremely useful for Summer decorative purposes. (In raising Cannas it is recommended that the seeds, before being sown, should be slightly filed, so that the embryo may easily burst through the hard shell, as Cannas seeds possess a very hard tegument.) Finest mixed. 3s. per dozen. (Retail, 6d. per packet.)

**CANNAS.**—Crozy's New Varieties. *Vide* page 6.

**CARNATION.**—*Vide* page 13.

**CELOSIA CRISTATA.**—*Vide* Cockscomb.

**CELOSIA PYRAMIDALIS ALBA.**—Handsome white plumes. 2s. per dozen packets. (Retail price, 4d. per packet.)

**CELOSIA PYRAMIDALIS AUREA.**—Golden yellow. 2s. per dozen packets. (Retail price, 4d. per packet.)

**CELOSIA PYRAMIDALIS COCCINEA.**—Bright scarlet. 2s. per dozen packets. (Retail price, 4d. per packet.)

**CELOSIA PYRAMIDALIS, "REID'S PERFECTION."**—Bears magnificent plumes of a brilliant magenta colour. 3s. per dozen packets. (Retail, 6d. per packet.)

**CENTAUREA CANDIDISSIMA.**—This invaluable decorative foliaged plant is too well known to require description. Per 1,000 seeds, 1s. 3d.

**CENTAUREA CYANUS, blue (Cornflower).**—Useful for cut flowers. 4d. per oz.

**CENTAUREA CYANUS, Double.**—Comprises all the well-known colours of the single sorts, such as white, light blue, rose, brick-red, purple, &c., and in addition many perfectly new and beautiful shades and stripes. Per dozen packets, 3s. (Retail, 4d. per packet.)

**CHAMÆPEUCE CASSABONÆ.**—Thistle-like plant, with smooth glossy dark green leaves, and white nerves and spines. Per 100 seeds, 6d.

**CHAMÆPEUCE DIACANTHA.**—A beautiful plant, the mid-rib of the leaves and spines ivory white, margined with glossy green, and covered with a white silky down. 6d. per 100 seeds.

**CHRYSANTHEMUM CARINATUM FL. PL.**—Flowers extremely variable. Some are pure white, yellow, or crimson, but the prevailing types are bronzy yellow, the florets tinged with red or lilac-rose, the imbricated ray florets beautifully pencilled, others have rich crimson centres with clear yellow guard petals. *Vide* illustration. 4d. per packet: 3s. per dozen. (Retail, 6d. per packet.)

**CHRYSANTHEMUM JAPONICUM FL. PLENO** (Hybrid Japanese Chrysanthemums).—Finest hybridised. 6s. per dozen packets. (Retail price, 1s. per packet.)

**CHRYSANTHEMUM JAPONICUM IMPERIALE,** *vide* page 1.

**CHRYSANTHEMUM, LARGE-FLOWERING CHINESE,** choice mixed.—Saved from a choice collection of named flowers, including all colours. 6s. per dozen packets. (Retail price, 1s. per packet.)

**CHRYSANTHEMUM, POMPON VARIETIES,** choice mixed.—From a splendid collection of named flowers. 6s. per dozen packets. (Retail price, 1s. per packet.)



**CHRYSANTHEMUM CARINATUM FL. PL.**

**CINERARIA**, choice mixed.—*Vide* page 10.

**CLIANTHUS DAMPIERI**.—Gorgeous crimson-vermilion flowers, marked at the base of the upper petal with a shining black blotch. 6s. per dozen packets. (Retail, 1s. per packet.) Per oz., 5s.

**COBEEA SCANDENS**.—Most useful climbing plant with purple flowers. 2s. per dozen packets. (Retail price, 4d. per packet.)

**COCKSCOMB**, Glasgow Prize.—Very fine dwarf crimson. 6s. per dozen packets. (Retail price, 1s. per packet.)

**COCKSCOMB**, **VESUVIUS**.—A beautiful novelty, the result of many years' careful selection. The plant is of dwarf habit, and produces magnificent combs of fiery red, most effectively displayed on a golden yellow ground. Splendid for pot culture. 8d. per packet; 6s. per dozen packets. (Retail, 1s. per packet.) *Vide* illustration.



**COCKSCOMB, VESUVIUS.**

**COLEUS**, extra choice hybridised.—Will produce varieties of unequalled beauty, the colours embracing many shades of glowing red, magenta, crimson, purple, and claret. Per 1,000 seeds, 2s.

**COLEUS**, extra choice, from new varieties. 2s. 6d. per packet; 21s. per dozen packets. (Retail price, 3s. 6d. per packet.)

**CYCLAMEN**.—*Vide* page 12.

**DAHLIA** (single).—These exceedingly showy plants are most effective for back lines in flower borders or planting in shrubberies. Various colours, mixed, 1s. per ounce.

**DAHLIA** (single), striped flowered.—The blooms of these are splashed, striated, rayed and variegated in the most pleasing manner. 1s. 6d. per ounce.

**DAHLIA**, double choice mixed.—From finest varieties. 6s. per dozen packets. (Retail price, 1s. per packet.)

**DIANTHUS HEDDEWIGII DIADEMATUS FL. PLENO**.—Flowers most exquisitely fringed or toothed. 2s. per ounce.

**ECHEVERIA SECUNDA GLAUCA**.—A fine edging plant. 1s. 6d. per 1,000 seeds.

**ESCHSCHOLTZIA, MANDARIN**.—Very distinct variety, the outer side of the petals brilliant orange-crimson, the inner side rich orange, very showy. 9d. per ounce.

**EUCALYPTUS GLOBULUS** (The Blue Gum of Tasmania).—Said to possess the remarkable power of destroying miasmatic influence in fever-stricken localities. 2s. per ounce.

**FREESIA REFRACTA ALBA**.—A most lovely bulbous plant, producing pure white delightfully fragrant flowers; forces readily, and very easily grown. Per dozen packets, 6s. (Retail, 1s. per packet.)

**FUCHSIA**.—Saved from finest new varieties. Very choice. 1s. per 100 seeds; 8s. 6d. per 1,000 seeds.

**GAILLARDIA, LORENZ'S PERFECTION**.—By careful cultivation and selection the present strain has now been produced and fixed from the well-known *G. picta Lorenziana*. In this variety the quilled petals are produced in such great abundance as to give the flowers the appearance of a round ball. It will be found a grand cut-flower for bouquets. 1s. per ounce.



**GAILLARDIA, LORENZ'S PERFECTION.**

**GAILLARDIA PICTA LORENZIANA**.—Produces large globular heads of flowers of various colours, from pale yellow to deep crimson, very useful for cutting. 8d. per ounce.

**GLOXINIA GRANDIFLORA ERECTA**.—This seed has been carefully saved from erect-flowering kinds, and will produce flowers of many beautiful shades of colour, with a good proportion of spotted flowers. Per dozen packets, 9s. and 15s. (Retail, 1s. 6d. and 2s. 6d. per packet.)

**DOUBLE HOLLYHOCK.***Vide next page.*

**GLOXINIA, FINEST SPOTTED.**—Saved from a collection of the finest of these most beautiful varieties. Per dozen packets, 15s. (Retail, 2s. 6d. per packet.)

**GLOXINIA.**

For Gloxinia Tubers, *vide* page 38.

**GLOXINIA, extra choice hybridised.**—Embraces all the various colours and shades, with the beautifully spotted kinds. Per dozen packets, 9s. and 15s. (Retail, 1s. 6d. and 2s. 6d. per packet.)

**GODETIA, DUCHESS OF ALBANY.**—Flowers satiny white, about 4 inches across. 1s. per ounce.

**GODETIA, LADY ALBEMARLE.**—Flowers intense carmine-crimson, shaded with delicate lilac. 6d. per ounce.

**GODETIA, WHITE PEARL.**—A pure white dwarf satiny white variety, of regular and compact growth, admirably adapted for planting in beds and ribbon borders. 1s. per ounce.

**GREVILLEA ROBUSTA.**—A most graceful and ornamental plant. 3s. per dozen packets. (Retail price, 6d. per packet.)

**HELICHRYSUM, SILVER BALL.**—A magnificent variety of this old and favourite Everlasting, producing, in the most profuse manner, large regularly formed double flowers of a beautiful silvery white. 4d. per packet; 3s. per dozen. (Retail, 6d. per packet.)

**HELIOTROPE, from best varieties, mixed.** 3s. per dozen packets. (Retail, 4d. per packet.)

**HEUCHERA SANGUINEA.**—An extremely attractive hardy perennial, producing a profusion of elegant spikes of rich bright crimson campanulate flowers, particularly adapted for cutting and other decorative purposes. In habit the plant is dwarf and compact, the leaves being light green and slightly pubescent. *Vide* illustration. 8*d.* per packet; 6*s.* per dozen. (Retail price, 1*s.* per packet.)

**HOLLYHOCK,** very extra choice mixed. From first-class flowers; cannot be surpassed. 6*s.* per dozen packets. (Retail, 1*s.* per packet.)

**HUMULUS JAPONICUS VARIEGATUS** (The Variegated Hop).—The Japanese Hop is well known as being one of the most useful and ornamental of fast-growing hardy climbers, and the variety now offered possesses the advantage of having handsomely variegated leaves, mottled, blotched and marmorated with silvery-white, creamy-yellow, light and dark green, in the most effective manner. It will be found of the greatest use for quickly covering fences, arbours, rustic arches, &c. 3*s.* 6*d.* per dozen packets. (Retail price, 6*d.* per packet.)

**INULA ENSIFOLIA.**—A very free-flowering and showy perennial composite, growing from 12 to 15 inches in height, and producing at the end of every growth large pure golden-yellow flowers, fully 1½ inch across. When sown early in the year, this will flower the first season. 8*d.* per packet; 6*s.* per dozen. (Retail price, 1*s.* per packet.)

**LOBELIA, BARNARD'S PERPETUAL,** *vide* page 5.

**LOBELIA CARDINALIS** (The Cardinal Flower).—A splendid herbaceous perennial, bearing long spikes of cardinal-scarlet flowers. 9*d.* per packet; 8*s.* per dozen packets. (Retail price, 1*s.* per packet.)

**LOBELIA ERINUS SPECIOSA,** Crystal Palace variety.—A really fine strain. 2*s.* per ounce.

**LOBELIA, ROYAL PURPLE.**—3*s.* per doz. packets. (Retail, 6*d.*)

**MARIGOLD, AFRICAN (Orange).**—A magnificent strain, bearing immense brilliant orange-coloured flowers. 3*s.* per dozen packets. (Retail price, 6*d.* per packet.)

**MARIGOLD, AFRICAN (Lemon).**—In excellence of habit the same as above, but of a pure lemon. 3*s.* per dozen packets. (Retail price, 6*d.* per packet.)

**MARIGOLD, SUPERB FRENCH STRIPED.**—Selected only from the most perfectly striped and formed flowers. 3*s.* per dozen packets. (Retail price, 6*d.* per packet.)

**MESEMBRYANTHEMUM CORDIFOLIUM VARIEGATUM.**—A proeminent succulent plant, with flat fleshy leaves, distinctly margined with cream colour. ½ oz., 2*s.* 6*d.*

**MIGNONETTE,** sweet scented.—3*d.* per ounce.

**MIGNONETTE, GOLDEN GEM.** *Vide* page 3.

**MIGNONETTE, GOLDEN QUEEN.**—Compact habit; highly recommended for pot culture. 8*d.* per oz.

**MIGNONETTE, MACHET.**—The dwarf and vigorous growths are terminated by massive spikes of deliciously-scented red flowers. 1*s.* 8*d.* per ounce.



HEUCHERA SANGUINEA.



INULA ENSIFOLIA.



MARIGOLD.

**MIGNONETTE, MAMMOTH.**—A splendid Mignouette, producing enormous spikes of flowers. 1s. 6d. per ounce.

**MIGNONETTE, MILES' SPIRAL.**—A really vigorous and free-growing variety, admirably suited for decorative or market purposes. 6d. per ounce.

**MIGNONETTE, RED GIANT.**—This Mignouette is without doubt the finest red-flowered Mignouette yet offered, the flower-spikes being of enormous size, and of an intense red colour. 6d. per ounce.

**MIMOSA PUBICA** (The Sensitive Plant.) 2s. per dozen packets. (Retail, 4d. per packet.)

**MIMULUS TIGRINUS GRANDIFLORUS.**—Richly spotted and blotched. 6s. per dozen packets. (Retail price, 1s. per packet.)

**MIMULUS TIGRINUS ALBO-SANGUINEUS.**—White ground, beautifully blotched and spotted in a diversified manner. 3s. per dozen packets. (Retail price, 6d. per packet.)

**MUSK** (*Mimulus moschatus*).  $\frac{1}{2}$  oz., 1s.

**MYOSOTIS ALPESTRIS, VICTORIA.**—A very pretty and distinct Forget-me-not, of dwarf bushy habit, bearing large umbels of azure-blue flowers. Admirably adapted for edgings, masses and growing in pots. 4d. per packet; 3s. per dozen. (Retail, 6d. per packet.)

**MYOSOTIS DISSITIFLORA.**—One of the best of all Forget-me-nots. 14s. per ounce.

**NASTURTIUM, EMPRESS OF INDIA.**—Of excellent habit; flowers intense crimson-scarlet with a velvety gloss. 6d. per ounce.

**NEMOPHILA INSIGNIS.**—3d. per ounce.

**NICOTIANA AFFINIS.**—Produces freely long-tubed pure white flowers, which emit a delicious fragrance. 9d. per ounce.

**PANSY, ASHBURNHAM STRAIN.**

The most beautiful Pansies known. "We have never seen Pansies anything approaching them." Per packet, 1s. 8d.; per dozen, 15s. (Retail price, 2s. 6d. per packet.) Trade packets, 5s.; per  $\frac{1}{2}$ -oz., 7s. 6d.; per  $\frac{1}{4}$ -oz., 15s.; per oz., 30s.

**PANSY, PEACOCK.**—This charming variety is exceedingly attractive. On each of the upper petals is a large blotch of peacock blue on a maroon ground surrounded with crimson, and margined with a narrow edging of white. The remaining petals are crimson heavily shaded with rich maroon, the lower one being ornamented with a spot of peacock blue, all edged with white, in the same manner as the upper petals. 3s. and 6s. per dozen packets. (Retail price, 6d. and 1s. per packet.)

**PANSY, SHOW, choice mixed.**

Saved from a fine collection. Per dozen packets, 9s. and 15s. (Retail, 1s. 6d. and 2s. 6d. per packet.)



PANSY.

**PAPAVER, "American Flag."**—A beautiful Double Poppy of robust growth. The flowers are large, very double and charmingly colored—a pure white ground, margined with dark orange-scarlet. 3s. per dozen packets. (Retail, 6d. per packet.)

**PAPAVER PAVONINUM** (Peacock Poppy).—A very free-flowering and beautiful single-flowering Poppy of dwarf habit. The colour is brilliant scarlet, each petal having a glossy black zone. 3s. per dozen packets. (Retail, 6d. per packet.)

**PAPAVER NUDICAULE** (Yellow Iceland Poppy).—Clear yellow. 4d. per packet; 3s. per dozen. (Retail, 6d. per packet.)

**PAPAVER NUDICAULE ALBUM** (White Iceland Poppy).—Pure white. 4d. per packet; 3s. per dozen. (Retail, 6d. per packet.)



**PAPAVER NUDICAULE MINIATUM** (Scarlet Iceland Poppy).—Orange-scarlet. 4d. per packet; 3s. per dozen. (Retail, 6d. per packet.)

**PAPAVER NUDICAULE MINIATUM FL. PLENO.**—A very striking double-flowering form of the bright orange-scarlet variety of the Iceland Poppy, producing from 40 to 50 per cent. of plants with perfectly double flowers. 8d. per packet; 6s. per dozen. (Retail price, 1s. per packet.)

**PAPAVER, CARDINAL.**—Dwarf and robust, attaining a height of about 18 inches, and freely producing enormous and very double flowers of glowing scarlet, on a white ground. 4d. per packet; 3s. per dozen packets. (Retail price, 6d. per packet.)

**PAPAVER GLAUCUM, "The Tulip Poppy."**—A showy and brilliant species, producing splendid flowers of the most vivid scarlet imaginable. As will be seen from the illustration, the flowers are somewhat peculiar in shape, the two inner petals remaining erect in the centre of the flower, thus forming a cup-like receptacle containing the anthers and capsule. 3s. 6d. per dozen packets. (Retail price, 6d. per packet.)

**PAPAVER MARSELLI—THE MIKADO.**—The petals of this quaint and charming Poppy are cut and fringed in the most elegant manner, pure white at back, the fringed edges crimson-scarlet. 1s. per ounce.

**PAPAVER ORIENTALE.**—A perennial species, with immense brilliant crimson-scarlet flowers. 6s. per ounce.

**PAPAVER, THE BRIDE.**—A pure white single selection from the ordinary *Papaver somniferum*, the flowers of large size, and the petals nearly entire at the margin. A great acquisition for cutting purposes. 1s. per oz.

**PAPAVER, THE SHIRLEY.**—The range of colours extends from pure white through the most delicate shades of pale pink, rose and carmine, to the deepest crimson, whilst, to add to the effect, many are most delicately edged, shaded and striped. *Vide illustration.* 1s. per ounce.

**PAPAVER, WHITE SWAN.**—Produces, on strong slender stems, large pure white double flowers, the petals being beautifully lacinated. From the snowy whiteness of the blossoms, they are admirably adapted for cutting. 1s. per ounce.

**PASSIFLORA CÆRULEA.**—The well-known hardy Passion Flower. 2s. per dozen packets. (Retail price, 3d. per packet.)

**PASSIFLORA CÆRULEA GRANDIFLORA.**—4s. 6d. per dozen packets. (Retail price, 9d. per packet.)

**PASSIFLORA EDULIS.**—The edible fruited Passion Flower. 4d. per packet; 3s. per dozen. (Retail price, 6d. per packet.)

**PELARGONIUM, FANCY, choice hybridised.**—From the newest and best varieties in cultivation. Per 100 seeds, 2s.

**PELARGONIUM, GOLD AND BRONZE.**—Saved from a splendid collection of these popular favourites. Per 100 seeds, 2s. 6d.

**PELARGONIUM, IVY-LEAVED, extra choice hybridised.**—From the newest and best varieties in cultivation. Per 100 seeds, 2s.

**PELARGONIUM, SHOW, choice hybridised.**—Saved from the best named flowers of all the most eminent raisers. Per 100 seeds, 2s. 6d.



PAPAVER GLAUCUM.



PAPAVER, THE SHIRLEY.

- PELARGONIUM, SPOTTED.**—Saved from choice varieties. Per 100 seeds, 2s. 6d.
- PELARGONIUM, TRICOLOR.**—The seed now offered has been carefully hybridised. Per 100 seeds, 2s. 6d.
- PELARGONIUM, ZONAL, choice hybridised.**—Saved from all the best named varieties. Per 100 seeds, 2s.
- PETUNIA, choice hybridised.**—Saved from the best and most distinct striped and blotched flowers. 6s. per dozen packets. (Retail, 1s. per packet.)
- PETUNIA HYBRIDA GRANDIFLORA FIMBRIATA, finest mixed.**—Very pretty single flowers with beautifully fringed edges. 6s. per dozen packets. (Retail, 1s. per packet.)
- PETUNIA HYBRIDA GRANDIFLORA FIMBRIATA FLORE PLENO.**—Large flowering double fringed. 9s. and 15s. per dozen packets. (Retail, 1s. 6d. and 2s. 6d. per packet.)
- PETUNIA HYBRIDA GRANDIFLORA FLORE PLENO, fine hybridised.**—6s. and 9s. per dozen packets. (Retail, 1s. and 1s. 6d. per packet.)
- PETUNIA HYBRIDA GRANDIFLORA FLORE PLENO, "SUNSET."**—A distinct double-fringed Petunia, producing a profusion of brilliant carmine-rose flowers. 8d. per packet; 6s. per dozen. (Retail, 1s. per packet.)
- PETUNIA HYBRIDA NANA COMPACTA MULTIFLORA.**—A charming dwarf variety, with striped flowers. 6s. per dozen packets. (Retail, 1s. per packet.)
- PETUNIA INIMITABLE FLORE PLENO.**—Double striped and blotched. 9s. and 15s. per dozen packets. (Retail, 1s. 6d. and 2s. per packet.)
- NOTE*—Double-flowered Petunia Seed is saved from flowers which have been carefully hybridised, and may be expected to yield a good percentage of varieties with double flowers.
- PHACELIA CAMPANULARIA.**—This lovely annual bears a profusion of erect, bell-like flowers of the brightest ultramarine blue. 2s. per ounce.
- PHLOX DRUMMONDII CUSPIDATA.**—The petals, which are five in number, are much elongated in a cuspidate manner, thus giving the flowers a most distinct star-like appearance. All colours, finest mixed, 3s. per dozen. (Retail, 6d. per packet.)
- PHLOX DRUMMONDII FIMBRIATA.**—The blossoms are in this variety partly fimbriate, partly three-toothed, all distinctly bordered with white. Mixed Seed, all colours, 3s. per dozen. (Retail, 6d. per packet.)
- PHLOX DRUMMONDII PURPUREO-MARMORATA PLENA.**—A new semi-double variety of this favourite annual, producing heads of rich dark purple flowers attractively marbled with rose. 8d. per packet; 6s. per dozen. (Retail price, 1s. per packet.)
- PICOTEE.**—*Vide* page 13.
- POLYANTHUS, choice, saved from the finest gold-laced flowers,** 1s. per packet. Per ounce, 7s. 6d.
- POLYANTHUS, choice mixed, saved from flowers of various colours.** 3s. per dozen packets. (Retail, 6d. per packet.) Per ounce, 5s.
- POPPIES.**—*Vide* pages 22 and 23.
- PRIMROSE POLYANTHUS, HARDY HYBRID.**—These beautiful hardy hybrids produce a profusion of large flowers of many bright and brilliant colours. 8d. per packet; 6s. per dozen. (Retail, 1s. per packet.) Per  $\frac{1}{4}$  ounce, 2s. 6d.
- PRIMROSE, Yellow.**—One of the earliest harbingers of Spring. 3s. per dozen packets. (Retail, 6d. per packet.)
- PRIMULA OBCONICA.**—A pretty and interesting Primula, with flowers of a soft lilac shade of colour.  $\frac{1}{8}$  oz., 3s. 6d.
- PRIMULA OBCONICA GRANDIFLORA.**—*Vide* page 4.
- PYRETHRUM AUREUM (Golden Feather).**—Per ounce, 1s. 6d.
- PYRETHRUM AUREUM SELAGINOIDES.**—A distinct form of *Pyrethrum aureum*, of dwarf and compact habit. 3s. per dozen packets. (Retail, 6d. per packet.) Per ounce, 8s. 6d.
- RHODANTHE MACULATA FLORE PLENO.**—Perfectly double flowers of a bright rosy-carmine colour. 6s. per dozen packets. (Retail price, 1s. per packet.)
- RICINUS GIBSONI.**—Dark purple stem and leaves, very fine and ornamental. Per ounce, 6d.
- RICINUS ZANZIBARENSIS, mixed.**—Very handsome sub-tropical foliage plant. 3s. per dozen packets. (Retail price, 6d. per packet.)
- ROSA RUGOSA.**—Single Japanese Rose, with large bright crimson flowers. 6s. per dozen packets. (Retail price, 1s. per packet.)



PHLOX DRUMMONDII FL. SEMI-PLENO.

- SALVIA COCCINEA SPLENDENS.**—Splendid bright scarlet flowers. 3s. per dozen packets. (Retail price, 6d. per packet.)
- SALVIA PATENS.** Flowers of a deep rich blue colour. Per 100 seeds, 1s. 3d.; per 1,000, 10s.
- SCABIOSA HYBRI A VICTORIÆ.**—A very pretty dwarf perennial variety, producing its charming double flowers in many diverse colours, such as pink, rose, violet, white, dark purple, etc., etc. Very useful for cutting for bouquets and other decorative purposes. 3s. per dozen packets. (Retail price, 6d. per packet.)
- SILENE PENDULA COMPACTA.**—Forms dense cushion two or three inches in height, which, during the season, are perfectly solid with bloom. Per ounce, 1d.; per pound, 3s. 6d.
- SILENE PENDULA COMPACTA ALBA.**—White flowered variety of the above. Per ounce, 4d.
- STOCK, EAST LOTHIAN, choice mixed.**—3s. & 6s. per dozen pkts. (Retail price, 6d. & 1s. per pkt.)
- STOCK, EAST LOTHIAN.**—These Stocks are offered in the following colours:—Crimson, scarlet, purple, and white. In separate colours, 6s. per dozen packets. (Retail price, 1s. per packet.)
- STOCK, EARLY AUTUMN FLOWERING INTERMEDIATE.** Six splendid colours, separate, 1s. (Retail price, 1s. 6d.)
- STOCK, EARLY AUTUMN FLOWERING INTERMEDIATE, choice mixed.** 3s. per dozen packets. (Retail price, 6d. per packet.)
- STOCK, LARGE-FLOWERED EMPEROR, choice mixed.**—3s. per dozen pkts. (Retail price, 6d. per pkt.)
- STOCK, LARGE-FLOWERED GERMAN TEN-WEEK.**—  
Collections of 12 splendid colours, separate, 1s. 3d. each collection. (Retail price, 2s. 6d.)  
Collections of 6 splendid colours, separate, 9d. each collection. (Retail price, 1s. 6d.)
- STOCK, LARGE-FLOWERED GERMAN TEN-WEEK, choice mixed.**—3s. per dozen packets. (Retail price, 6d. per packet.)
- STOCK, TEN-WEEK, PRINCESS ALICE.**—This most desirable novelty is especially valuable for cut flowers, producing its snow-white blooms in uninterrupted succession from May until November. It is particularly suited for border cultivation, and is equally recommended for pot culture. In packets, 6s. per dozen. (1s. each, retail.)
- STOCK, TEN-WEEK, TRIUMPH.**—Magnificent spikes of brilliant crimson flowers. About 70 per cent. come double, but the single ones are almost equally attractive, the petals being large and round. 8d. per packet; 6s. per dozen. (Retail, 1s. per packet.)
- SUNFLOWER, LARGE PRIMROSE-COLOURED.**—A variety of *Helianthus annuus*, with primrose-coloured flowers. Per ounce, 4d.
- SUNFLOWER, MINIATURE.**—Height about 2½ feet. The most suitable of all Sunflowers for cut bloom. Per ounce, 6d.
- SWEET SULTAN, Yellow.**—Per ounce, 1s. }  
" " White " 6d. } Showy sweet-scented annuals, suitable for bouquets.  
" " Purple " 6d. }
- SWEET WILLIAM, AURICULA-EYED.**—Very rich, beautifully coloured, smooth-edged flowers, produced in immense trusses. Per ounce, 9d.
- TACSONIA VAN VOLXEMI.**—This beautiful climber flowers most abundantly, and for almost the whole year; the flowers individually are about five inches in diameter, and of the richest scarlet. 1s. 6d. per 100 seeds; 10s. per 1,000 seeds.
- TAGETES NANA GRANDIFLORA FL. PL.**—A new variety producing large perfectly double flowers from 2 to 3 inches across, rich crimson-brown in colour, edged with golden-yellow. 3s. per dozen packets. (Retail price, 6d. per packet.)
- TAGETES SIGNATA PUMILA, GOLDEN RING.**—A neat and compact annual, covered with orange-coloured flowers, especially adapted for bedding purposes, continuing in bloom throughout the Summer. 3s. per dozen packets. (Retail, 6d. per packet.) Per ounce, 10d.
- TORENIA FOURNIERI.**—A charming half-hardy annual, bearing large sky-blue flowers with three spots of a dark indigo blue and a bright yellow stain in the centre. Per ½ oz., 2s.
- TORENIA, WHITE WINGS.**—This lovely annual is a sport from the well-known *Torenia Fournieri*, and possesses the same compact habit of growth and floriferousness as that variety. The colour is pure white, with a slight flush of rose at the throat. 4d. per packet; 3s. per dozen. (Retail price, 6d. per packet.)
- TROPÆOLUM CANARIENSE (Canary Creeper).** Per ounce, 1s. 6d.
- VERBENA COMPACTA COCCINEA OCLATA.**—A beautiful variety especially useful for bedding, its compact growth rendering the usual training and pegging quite unnecessary. The flowers, which are borne in large trusses in the greatest profusion, are bright scarlet with a large white eye. 8d. per packet; 6s. per dozen. (Retail price, 1s. per packet.)



VERBENA COMPACTA COCCINEA OCLATA.

**VERBENA HYBRIDA COMPACTA CANDIDISSIMA.**—An exceedingly dwarf and compact variety, with pure white flowers. 6s. per dozen. (Retail price, 1s. per packet.)

**VERBENA (choice mixed).**—Saved from a splendid collection. 6s. per doz. pkts. (Retail price, 1s. per pkt.)

**VERBENA, CARNATION STRIPED.**—May be expected to produce flowers variously striped, blotched and spotted. 6s. per dozen packets. (Retail price, 1s. per packet.)

**VERBENA HYBRIDA, SCARLET DEFIANCE.**—Very brilliant; excellent for bedding. 6s. per dozen packets. (Retail, 1s. per packet.)

**VERBENA, MAMMOTH.**—A greatly improved strain of Verbenas, the plants yielding a profusion of immense trusses of flowers, of all the colours known in this useful section of bedding plants. The colours present the same wide range as the ordinary type. 4d. per pkt.; 3s. per doz. (Retail, 6d. per pkt.)

**VIOLA, SNOW QUEEN.**—A very attractive variety, flowers of a delicate satiny white; suitable for bedding. 3s. per dozen packets. (Retail, 6d. per packet.)

**WALLFLOWER, DARK BLOOD RED.**—Fine dark colour. Per ounce, 6d.

**WALLFLOWER, GOLDEN TOM THUMB.**—Dwarf compact habit; it maintains a dense bright green appearance during the winter, followed by an abundant display of bright yellow blossoms during the spring; the flowers are large and well-shaped. 1s. per oz.

**WALLFLOWER, HARBINGER, Autumn and Winter-Flowering Variety.**—It continues in bloom through the winter months (unless very cold), and thereby ensures cut blooms of this favourite sweet-scented flower when no other outdoor, and but few greenhouse flowers can be had. The flowers are of a rich dark red colour. Per oz., 1s.; per lb., 14s.

**WALLFLOWER, PRIMROSE DAME.**—Sturdy and compact habit, with beautiful clear primrose-yellow flowers. Per ounce, 1s.

**WALLFLOWER, DOUBLE GERMAN, EXTRA SELECTED.**—Choice mixed, 8d. per packet. (Retail, 1s. per packet.) 8s. per ounce. Collections of 10 distinct varieties, separate, 1s. 6d. each collection. (Retail price, 2s. 6d.) Collection of 6 distinct varieties, separate, 1s. each collection. (Retail price, 1s. 6d.)

**WIGANDIA CARACASANA.**—A well-known ornamental foliaged plant. 6d. per packet; 4s. 6d. per dozen packets. (Retail price, 9d. per packet.)

**WIGANDIA VIGIERI.**—Handsome foliage. 8d. per packet; 6s. per dozen. (Retail price, 1s. per pkt.)

**ZEA GRACILLIMA VARIEGATA.**—This elegant variety is much superior to the old type *Zea japonica variegata*, being more compact in habit, whilst its numerous long, drooping, graceful leaves are striped in the prettiest manner. 4d. per packet; 3s. per dozen. (Retail, 6d. per packet.)

**ZINNIA, DOUBLE STRIPED PERFECTION, "SCARLET AND GOLD."**—Very large and faultlessly shaped flowers are of a pure golden yellow, elegantly striped with bright scarlet. *Vide illustration.* 8d. per packet; 6s. per dozen. (Retail price, 1s. per packet.)

**ZINNIA ELEGANS, TOM THUMB, DOUBLE.**—A very desirable acquisition, forming charming, compact, free-flowering dwarf bushes, varying from 6 to 12 inches high, their beautiful flowers comprising all the beautiful colours known in this favourite annual. *Vide illustration.* 3s. per dozen packets. (Retail price, 6d. per packet.) Per ounce, 1s. 3d.



ZINNIA, DOUBLE STRIPED PERFECTION,  
"SCARLET AND GOLD."



ZINNIA ELEGANS, TOM THUMB DOUBLE.

# CHOICE VEGETABLE SEEDS. 27

## CUCUMBERS.

	Per oz.	Per 100 seeds.
	s. d.	s. d.
ALL THE YEAR ROUND .. .. .	14 0	2 0
BERKSHIRE CHAMPION .. .. .	14 0	2 0
BLUE GOWN .. .. .	14 0	2 0
CARDIFF CASTLE .. .. .		2 6
CLIMAX .. .. .		2 6
COMMANDER (New) .. .. .		2 6
DUKE OF EDINBURGH (Daniel's) .. .. .	14 0	2 0
LORD KENYON'S FAVOURITE .. .. .	15 0	2 0
LOCKIE'S PERFECTION, handsome black-spined variety .. .. .	16 0	2 6
MARQUIS OF LORNE .. .. .		2 6
ROCHFORD'S MARKET (New) .. .. .	20 0	3 0
TELEGRAPH (Rollissons') .. .. .	14 0	2 0
TELEPHONE .. .. .		2 6
TENDER AND TRUE .. .. .	16 0	2 6

## MELONS.

	Per 100 seeds	s. d.
A 1 'Sutton's', Scarlet Flesh, First Class Certificate, Royal Horticultural Society .. .. .		2 6
BEAUTY OF SION (New), Scarlet and Green, First Class Certificate, R.H.S. Medium sized fruit of excellent flavour, bright golden netted skin. An extra fine prolific variety .. .. .		3 0
BEAUTY OF WORDSLEY, Green Flesh .. .. .	6s. per oz.	2 0
BENHAM PARK, Green Flesh, an excellent variety .. .. .	6s. per oz.	2 0
BLENHEIM ORANGE, Scarlet Flesh, F.C.C., R.H.S. .. .. .		2 0
DAVENHAM EARLY, Green Flesh .. .. .		2 0
HERO OF LOCKINGE, White Flesh, of exquisite flavour .. .. .	6s. per oz.	1 6
HIGH CROSS HYBRID, Green Flesh .. .. .		2 6
IMPERIAL GREEN FLESH, very thick, melting, and of luscious flavour .. .. .		2 0
LA FAVOURITE (New), Green Flesh, superb flavour, F.C.C., R.H.S. .. .. .		2 0
LONGFORD GEM, White Flesh (New) .. .. .		2 6
MONARCH, Green Flesh, superb flavour, F.C.C., R.H.S. .. .. .		3 0
PRIDE OF STOURBRIDGE, Scarlet Flesh .. .. .		2 6
SCARLET INVINCIBLE, exquisite flavour, F.C.C., R.H.S. .. .. .		2 0
SION HOUSE, Scarlet Flesh, Certificate of Merit, R.H.S. .. .. .		2 6
THE COUNTESS, White Flesh, exceedingly tender and juicy, F.C.C., R.H.S. .. .. .		2 0
TRIUMPH (Sutton), Scarlet-Green Flesh, F.C.C., Crystal Palace Show .. .. .		2 6
WINDSOR CASTLE (New), Green Flesh, oval fruit of extraordinary size and handsomely netted, the deep green flesh being of superb flavour .. .. .		3 0

## TOMATO.

**CHALLENGER.**—Four F.C. Certificates, fruit smooth, very deep, solid and heavy, bright scarlet, of grand flavour. 9d. per packet; 8s. per dozen. (Retail, 1s. per packet.)

**CONFERENCE**, very handsome, perfectly round and smooth, very firm and solid, of delicious flavour, and bright glossy red colour. 9d. per packet; 8s. per dozen. (Retail, 1s. per packet.)

**HAM GREEN FAVOURITE**, fruit medium size, smooth, handsome, colour a full red, one of the best sorts ever introduced. 9d. per packet; 8s. per dozen. (Retail, 1s. per packet.)

**HATHAWAY'S EXCELSIOR**, a fine early variety. 1s. per ounce.

**PLENTIFUL** (Sharpe's), a magnificent variety of extra merit. 12s. per dozen packets.

**PRELUDE**, a distinct dwarf variety, bearing small round fruits in clusters of a rich scarlet colour. 8d. per packet; 6s. per dozen. (Retail, 1s. per packet.)



CAPSICUM "ELEPHANT'S TRUNK."

## CAPSICUM

### "ELEPHANT'S TRUNK."

A very remarkable variety, producing unusually long and attractive glossy scarlet fruits, from 8 to 11 inches in length by 2 to 2½ inches in diameter, resembling in shape the trunk of an Elephant. The fruits are of mild flavour and valuable for use in the green state. Very ornamental grown in pots.

4d. per packet; 3s. per dozen.  
(Retail, 6d. per packet.)

## GLADIOLUS. (HYBRIDS OF GANDAVENSIS.)

There are few flowers more showy and beautiful than the Gladiolus, and the varieties of the *Gandavensis* section are perfectly hardy and easily grown, whilst their erect and stately growth, and long spikes of flowers, developing themselves successively, never fail to win admirers.

To facilitate the cultivation of this highly decorative plant, a few remarks may be necessary to some:—

The best and safest time for planting is from the beginning of April to the end of May, when a continuous bloom may be assured from July to September.

Soil is not much a point for consideration, so long as it is not stiff and consolidated; but it is important that it should be deeply dug previous to planting.

Large bulbs should be planted from 3 to 4 inches, and smaller bulbs 2 inches deep.

During excessively dry weather, copious waterings are recommended.

When any bulbs show signs of growth before the time mentioned above, they should be potted and kept in a cool frame until the proper season for planting out.

### CHOICE GLADIOLUS.

This beautiful tribe of plants should be largely planted everywhere.

Orders are booked throughout the year at the following prices, and the bulbs supplied in January, February, or March.

12 choice named varieties, 2s. 6d.,  
4s., 6s. & 9s.

According to Selection.

25 „ „ „ 4s. 6d., 6s., 9s. & 12s.

According to Selection.

50 in 25 „ „ „ 9s., 12s., 18s. & 24s.

According to Selection.

100 in 50 „ „ „ 24s., 35s. & 48s.

According to Selection.

### GLADIOLUS, Finest Mixed Hybrids.

The flowers of these magnificent hybrids are of great beauty, possessing great diversity of colour, many being striped and splashed in the most handsome manner. Invaluable for cutting.

Various colours, 6s. per 100; 1s. per dozen.

### GLADIOLUS BRENCHLEYENSIS.

This beautiful and showy bright scarlet species is most effective when planted in quantity in beds or borders.

Selected bulbs, 5s. per 100, or 15s. per 1,000.

### GLADIOLUS, SNOW-WHITE.

A magnificent White Gladiolus, with large and elegantly formed flowers of great substance slightly shaded with cream, a faint line of purple extending half-way through the lower petal. 7s. 6d. per dozen; 9d. each.

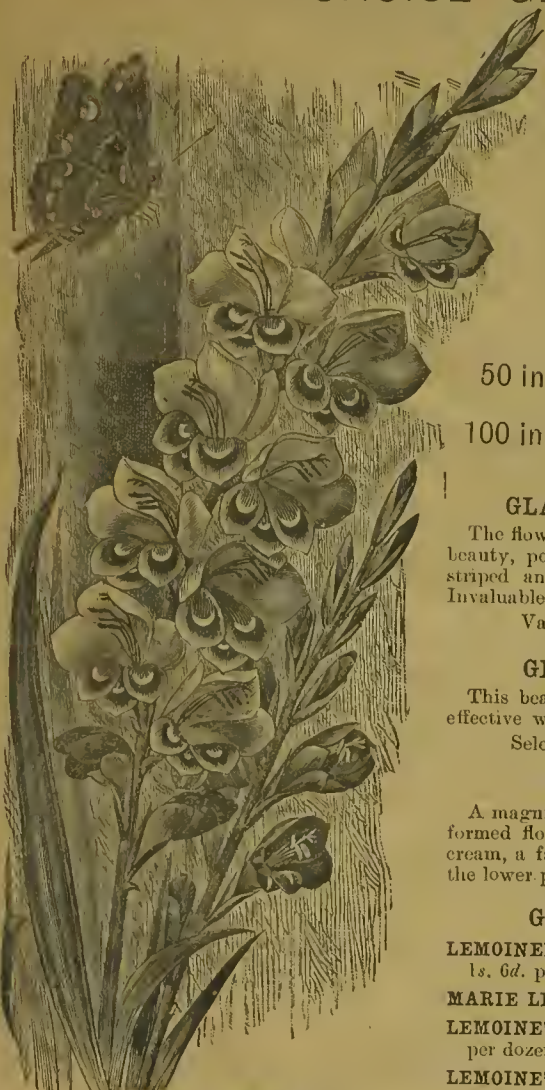
### GLADIOLUS, HARDY HYBRIDS.

LEMOINEI.—A handsome hybrid early-flowering variety. 1s. 6d. per dozen.

MARIE LEMOINE.—Very beautiful. 1s. 6d. per dozen.

LEMOINE'S HYBRIDS.—Named varieties. 3s. 6d. and 5s. per dozen.

LEMOINE'S HYBRIDS.—Large blotched, choice mixed. 1s. 3d. per dozen; 7s. 6d. per 100.



GLADIOLUS LEMOINEI.



AMARYLLIS BELLADONNA.



AMARYLLIS.

This deservedly popular family cannot be too highly recommended. The ease with which they are cultivated and the gorgeously beautiful flowers they produce at almost any season, make them most desirable in any collection. By gradually drying the bulbs they can be put to rest at any time during the year, and then, when required, if started in a gentle heat, they quickly develop their large Lily-like blossoms, which are of various colours, generally embracing crimson, white and red, scarlet, rose-flaked, striped white and crimson, with various shades of colours.

Choice selections of good sorts, 30s., 42s. and 60s. per dozen.

AMARYLLIS BELLADONNA.

(The Belladonna Lily.)

These beautiful hardy bulbs have large handsome bluish flowers, richly flushed with rosy purple, rendering them extremely useful for greenhouse and conservatory decoration. 4s. and 6s. per dozen; 25s. to 40s. per 100.

AMARYLLIS IGNESENS.

This distinct and ornamental species is one of the most handsome of stove bulbs. It is very free-blooming, and bears on erect scapes umbels of fiery orange-scarlet flowers. 1s. 6d. and 2s. 6d. each. 15s. and 24s. per dozen.

AMARYLLIS PROCERA.

(“Imperatrice de Brazil.”)

A species with lilac-blue flowers. Very distinct and ornamental. Will succeed in a greenhouse. 10s. 6d. each.



AMARYLLIS FORMOSISSIMA.

AMARYLLIS FORMOSISSIMA.

A very handsome bulbous plant, freely producing magnificent flowers of a very rich dark velvety crimson. This distinct and attractive Amaryllis is very suitable for growing in pots, and is always interesting, owing to the rich colour and peculiar shape of its flowers. *Vide* illustration. It will succeed well in a warm greenhouse. 4s. per dozen.



ANTHERICUM LILIASTRUM MAJUS.  
 ANATHERICUM LILIAGO (*St. Bernard's Lily*), white, 2s. per dozen.  
 — MAJUS, 6s. per dozen.  
 — LILIASTRUM (*St. Bruno's Lily*), white, 6s. per dozen.  
 — MAJUS, 9d. and 1s. each; 7s. 6d. and 10s. per dozen.



CYCLAMEN AFRICANUM.

## CYCLAMEN PERSICUM.

Too much can scarcely be said in favour of the superb varieties of this plant, of which the old *C. persicum* is the type, whether they are regarded as objects for the ornamentation of the greenhouse or conservatory, or for table decoration, for which their compact floriferous character eminently fits them. The flowers are also extremely useful for bouquets, and when plucked, if kept in water, they will last in freshness and beauty some weeks. 6s., 9s. and 12s. per dozen. Flowering plants, 18s., 24s. and 30s. per dozen.



CYCLAMEN EUROPÆUM.

CYCLAMEN AFRICANUM, a handsome, hardy species, with large ornamental leaves. Flowers bright reddish crimson. *Vide* illustration. 9d. each; 6s. per dozen.

CYCLAMEN EUROPÆUM, red, sweet scented, quite hardy (*vide* illustration), 3s. per doz.; 21s. per 100.

- COUM, bright red, 4s. per dozen.
- HEDERÆFOLIUM, 4s. per dozen.

## DAHLIAS.

DAHLIAS, CHOICE EXHIBITION VARIETIES. 6s., 9s. and 12s. per dozen.

- FANCY FLOWERS. 6s., 9s. and 12s. per dozen.
- DWARF BEDDING VARIETIES. 6s. and 9s. per dozen.
- BOUQUET or POMPON VARIETIES. 6s. and 9s. per dozen.
- SINGLE-FLOWERED. 4s., 6s. and 9s. per dozen.
- CACTUS-FLOWERED VARIETIES. 6s., 9s. and 12s. per dozen.



IRIS.

IRIS GERMANICA OR EVERGREEN.

The handsome hybrids of this beautiful section are of the greatest use for the adornment of beds and borders; the flowers are of rich and varied colours, and striped or blotched with purple and violet, on a white or yellow ground.

Choice mixed varieties, per 100, 10s. 6d.; per dozen, 1s. 6d.

Assortment of 50 in 50 choice varieties, 24s. and 30s.

Assortment of 25 in 25 choice varieties, 12s. 6d. and 15s. 6d.

Assortment of 12 in 12 choice varieties, 4s. 6d. and 9s.



IRIS KÄMPFERI.

IRIS KÄMPFERI.

Many magnificent varieties of this handsome and attractive plant have been imported from Japan; indeed scarcely any plants in the flower garden can compare for gorgeous beauty with this section of Iris. Varying in colour from pure white to rich maroon-crimson, there are few flowers surpassing them in size and the brightness of their colouring. They succeed admirably planted on the margin of a lake or pond, or in any situation where plenty of moisture can be given. 1s. 6d. and 2s. 6d. each; choice varieties, 3s. 6d. and 5s. each. Mixed Seedlings, 6s. and 8s. 6d. per dozen.

IRIS PUMILA.

PUMILA ATROCÆRULEA.—Rich violet-purple. Per 100, 8s.; per dozen 1s. 6d.

— CÆRULEA.—Beautiful sky-blue. Per 100, 8s.; per dozen, 1s. 6d.

— LUTEA.—Bright yellow. Per 100, 12s. 6d.; per dozen, 2s.

These charming Iris grow 6 to 9 inches high, and flower during the months of March, April, and May. They succeed almost in any soil and situation, and are especially valuable for groups in mixed borders.

NEW IRIS, FROM THE HOLY LAND.

Per doz.—s. d.

ATROFUSCA, a very remarkable and distinct species, growing 3 feet, flowers rich velvety black, covered with black hairs. F.C.C., R. Hort. Society .. 1s. each 9 0

ATROPURPUREA, very dark, blackish purple flowers, with a black blotch covered with yellow hairs on each of the falls, 4d. each 3 6

FLORENTINA, large pure white flowers, very free flowering and sweet scented, 1s. each 9 0

HISTRIO, a beautiful species, porcelain blue with dark blotches, veined and netted white .. 1s. 6d. each —

LORTETII, inner segments pale lilac, prettily veined; falls cream colour, profusely veined and spotted with brownish-rose. *Vide illustration* .. 1s. 3d. each 12 0

MARIÆ (HELENÆ), beautiful lilac flowers, deep purple blotch on falls .. 6d. each 5 0

MOABITENSIS, new, flowers brown and purple-black .. 1s. 6d. each 15 0

PALESTINA .. .. 9d. each —

SAARII NAZARENSIS, light blue, veined with purple; falls of a peculiar ashy-grey, beautifully veined with purple, large black blotch on falls.. 1s. 3d. each 12 0

VARTANI, a pretty little species, flowers azure blue, height ½ foot .. 1s. 3d. each 12 0



IRIS LORTETII.

**SPIRÆA ASTILBOIDES.**

**SPIRÆA JAPONICA AUREO-RETICULATA.**—Pretty variegated foliage, added to which it bears a profusion of handsome compact spikes of pure white flowers. 6s. per dozen.

**SPIRÆA JAPONICA COMPACTA MULTIFLORA.** This most desirable variety is a great improvement on the old *S. japonica*, as it produces a profusion of large and dense spikes of pure white flowers, in telling contrast to the dark green foliage of the plant, the habit of which is dwarf and compact. 4s. per dozen.

**SPIRÆA PALMATA.**—The bright pink Spiræa, one of the most beautiful hardy plants in cultivation, producing lovely broad corymbs of pink flowers. It is a native of Japan. 4s. per dozen.

**SPIRÆA PALMATA ALBA.**—A counterpart of *S. palmata*, except in the colour of the flowers, which are pure white; a very beautiful and elegant variety. 4s. per dozen.

**SPIRÆAS.**

**SPIRÆA ASTILBOIDES.** One of the most handsome of hardy herbaceous perennials, which cannot be too highly appreciated as a decorative plant for early forcing. Certificated both by the Royal Horticultural and Royal Botanic Societies. The inflorescence consists of compound feathery branches of elegant white flowers. It is a charming and indispensable plant for pot culture, its beautiful flowers being produced in the greatest profusion. 6s., 9s. and 12s. per dozen.

**SPIRÆA ASTILBOIDES FLORIBUNDA.** Produces thyrsoid spikes of bloom, much crowded with flowers. 1s. 6d. each; 15s. per dozen.

**SPIRÆA (HOTELA) JAPONICA.**—Most useful for decorative purposes. *Strong clumps* by the hundred or thousand at 2d. and 3d. each.

**TIGRIDIAS.**

**CONCHIFLORA,** home grown; yellow, spotted with purple. 1s. 3d. per dozen; 9s. per 100.

**GRANDIFLORA** (*speciosa*), home grown. 1s. 3d. per dozen; 9s. per 100.

— **ALBA,** home grown; beautiful white-flowered variety. 1s. 3d. per dozen; 9s. per 100.

**PAVONIA,** home grown; red and orange. 1s. 3d. per dozen; 9s. per 100.

**TROPÆOLUMS.**

**AZUREUM GRANDIFLORUM.** 2s. 6d. and 3s. 6d. each.

**BRACHYCERAS.** 1s. 6d. each.

**PENTAPHYLLUM.** 1s. each.

**POLYPHYLLUM.** 4d. each; 3s. 6d. per dozen.

**SPECIOSUM.** Handsome crimson flowers. 6s. per dozen.

**TRICOLOR GRANDIFLORUM** (*Jarattii*). 4s. per dozen.

**TUBEROSUM.**—Flowers scarlet and yellow; a very attractive and decorative species for open-air cultivation. 2s. 6d. per doz.; 3d. each.





SINGLE-FLOWERED BEGONIA.



DOUBLE-FLOWERED BEGONIA.

## BEGONIAS.

### HANDSOME FLOWERED TUBEROUS-ROOTED SECTION.

The immense size to which the flowers of this popular race of plants have now attained considerably enhances their value for decorative and bedding purposes. Of nearly every shade of colour, from deepest crimson-scarlet to white, the blooms are produced in the utmost profusion, thus rendering them extremely showy and attractive.

### SINGLE-FLOWERED.

Selections of good single-flowering named varieties can be made by Mr. W. B. at 9s., 12s. and 18s. per dozen.

Single-flowered unnamed Seedlings of various colours, 3s., 4s. and 6s. per dozen; 17s. 6d., 25s. & 35s. per 100.

For Seed, *vide* page 11.

### DOUBLE-FLOWERED.

Named Varieties with double flowers, at 24s., 30s. and 42s. per dozen.

Double-flowered unnamed Seedlings of various colours, 4s., 6s. and 9s. per dozen. 25s., 35s. and 50s. per 100.



## NEW AND CHOICE CALADIUMS.

Mr. WILLIAM BULL'S Selection of Twelve Varieties, 12s., 18s. and 30s.

Mr. WILLIAM BULL has the pleasure to offer this year, many magnificent and beautiful New Varieties distinguished in the following list by the names being printed in darker type. For descriptions see Plant Catalogue.

- |  |                            |  |   |
|--|----------------------------|--|---|
| <b>ACQUISITION</b> , 31s. 6d.          | ALPHAND, 1s. 6d. & 2s. 6d. | ARISTIDE, 2s. 6d.                          | <b>BARBARA</b> , 21s.                       |
| AD MADSEN, 7s. 6d.                     | ALPHONSE KARR, 2s. 6d.     | ARSINOË, 2s. 6d. & 3s. 6d.                 | BARILLET, 2s. 6d. & 3s. 6d.                 |
| ADOLPHE ADAMS, 1s. 6d.<br>and 2s. 6d.  | ALTAIR, 5s.                | ARTEMISE, 2s. 6d.                          | BARON ADOLPHE DE<br>ROTHSCHILD, 21s.        |
| ADOLPHE ANDRIEU, 2s. 6d.               | ALZIRE, 5s.                | ASSUNGUY, 7s. 6d.                          | BARON DE ROTHSCHILD,<br>2s. 6d.             |
| <b>ADRIAN</b> , 21s.                   | AMALTHÉE, 2s. 6d.          | ATALA, 2s. 6d.                             | BARONEZA DE OLIVEIRA<br>CASTRO, 7/6 & 10/6. |
| AORIPPINE DIMITRY,<br>2s. 6d.          | AMONUM, 2s. 6d.            | AUGUSTE CARPENTIER, 3/6                    | BARONNE CLARA DE<br>HIRSCH, 7s. 6d.         |
| AÏDA, 3s. 6d.                          | ANDROMAQUE, 5s.            | AUGUSTE LEMOINIER, 2/6                     | BARONNE JAMES DE<br>ROTHSCHILD, 3/6 & 5/-.  |
| ALBO-LUTEUM, 2s. 6d.                   | <b>ANGELO</b> , 21s.       | AUGUSTE RIVIÈRE, 2s. 6d.                   | BARRAL, 2s. 6d. & 3s. 6d.                   |
| ALCIBIADE, 2s. 6d.                     | ANNA DE CONDEIXA, 2/6.     | AURORE BOREALE, 5s.                        | BETHHOVEN, 1s. 6d.                          |
| ALCIDE MICHAUX, 2s. 6d.                | ANNIBAL, 2s. 6d.           | <b>AYMORE</b> , 15s.                       | BELJA-FLOR, 7s. 6d.                         |
| ALFRED BLEU, 1s. 6d.                   | <b>ANTONIO</b> , 21s.      | AZULAO, 5s.                                | BELLEMEI, 1s. 6d.                           |
| ALFRED MAME, 5s.                       | APELLES, 3s. 6d.           | BACURY, 7s. 6d.                            | BELLINI, 2s. 6d.                            |
| ALICE FLEMMING, 2s. 6d.<br>and 3s. 6d. | ARAPONOA, 21s.             | BARAO DE MAMORE, 7/6.                      |   |
| ALICE VAN GEERT, 3s. 6d.               | ARASSUAHY, 5s.             | BARAQUINI BUCEPHALE,<br>2s. 6d.            |   |
|  | ARETHUSE, 2s. 6d.          | BARAQUINI SUPERBUM,<br>2s. 6d. and 3s. 6d. |   |
|  | ARGYBITES, 1/- & 1/6.      | <b>BARBACENA</b> , 15s.                    |   |
|  | <b>ARIADNE</b> , 21s.      |  |   |
|  | ARISTÉE, 2s. 6d.           |  |   |

- BELLONE, 2s. 6d.  
 BENEVENTE, 15s.  
 BENJAMIN CONSTANT, 15s.  
**BERNHARD WAGNER**,  
 10s. 6d.  
 BROSE, 3s. 6d.  
 BICOLOR, 1s.  
 BICOLOR FULGENS, 2/6.  
 BICOLOR SERICUM, 5s.  
 BICOLOR SPLENDENS, 1/6.  
**BILONTRA**, 21s.  
 BOIELDIEU, 2s. 6d.  
 BOSPHORE, 3s. 6d.  
 BOTAFOGO, 7s. 6d.  
 B. S. WILLIAMS, 5s.  
 BRONGNIARTII, 1 6 & 2/6.  
 BUREL, 2s. 6d.  
 CACAPAVA, 7s. 6d.  
**CAJUBI**, 7s. 6d.  
**CALABAR**, 15s.  
 CALYPSO, 2s. 6d.  
 CANDIDUM, 3s. 6d.  
 CANNERTII, 1s. 6d.  
**CAPIBARIBE**, 15s.  
 CARACAS, 7s. 6d.  
 CARAMURU, 10s. 6d.  
 CARDINALE, 5s.  
**CASSANDRA**, 21s.  
**CAVALIER**, 31s. 6d.  
**C. E. DAHLE**, 5s.  
 CERES, 3s. 6d.  
 CHACTAS, 3s. 6d.  
 CHANTINII, 1s. 6d.  
 CHANTINII FULGENS,  
 2s. 6d. and 3s. 6d.  
 CHARLEMAGNE, 3s. 6d.  
 CHARLES VERDIER, 1s. 6d.  
 and 2s. 6d.  
 CHELSONI, 1s. 6d.  
 CHICORINHA, 10s. 6d.  
 CHLOE, 3s. 6d. and 5s.  
 CHLORIS, 2s. 6d.  
**CLAUDIUS**, 21s.  
 CLO, 3s. 6d.  
 COIMBRA, 7s. 6d.  
 COMTE DE GERMINY, 5s.  
 COMTESSE DE BROSE, 3/6.  
 COMTESSE DE CONDEIXA,  
 3s. 6d.  
 COMTESSE DE MAILLE,  
 2s. 6d.  
 COMTESSE DU BERTHIER,  
 2s. 6d.  
 COMTESSE FERD. DE  
 MAILLE, 2s. 6d.  
 COMTESSE FERD. DE  
 LESSEPS, 3s. 6d.  
**CONCORD**, 31s. 6d.  
**CONDOR**, 21s.  
**CONQUEROR**, 31s. 6d.  
**CORINTH**, 31s. 6d.  
**CORSAIR**, 21s.  
 COYPEL, 2s. 6d.  
**CRYSTAL**, 10s. 6d.  
 CYPRIIS, 2s. 6d.  
**DAMON**, 21s.  
 DARIUS, 2s. 6d.  
 DE CANDOLLE, 2s. 6d.  
 DE HUMBOLDT, 2s. 6d.  
 DELICATISSIMUM, 3s. 6d.  
 DEVINCK, 2s. 6d.  
**DIADEM**, 21s.  
**DIAMANTINA**, 7s. 6d.  
 DIANE, 2s. 6d.  
 DONA CARMEN MACEDO,  
 7s. 6d.  
 DONIZETTI, 2s. 6d.  
 DON PEDRO D'ALCAN-  
 TARA, 7s. 6d.  
 DR. BOISDUVAL, 2s. 6d.  
 DR. FELIPE MEYER,  
 7s. 6d.  
 DR. LINDLEY, 2s. 6d.  
 DR. L. WITTMACK, 7s. 6d.  
**DR. SINGELMANN**,  
 7s. 6d.  
**DUCHESS**, 21s.  
 DUCHESS DE MORTE-  
 MART, 3s. 6d.  
 DUCHESS OF PORTLAND,  
 5s.  
 DUC DE CLEVELAND, 2 6.  
 DUC DE MORNAY, 2s. 6d.  
 DUC DE MORNAY SPLEN-  
 DIDUM, 3s. 6d.  
 DUC DE NASSAU, 1/6 & 2/6  
 DUC DE RATIBOR, 1s. 6d.  
 and 2s. 6d.  
 DUCHARTRE, 2s. 6d.  
 DUKE OF DEVONSHIRE,  
 5s.  
 DUKE OF PORTLAND, 5s.  
 EDOUARD ANDRE, 2s. 6d.  
 EDOUARD MOREAUX, 2/6.  
 E. G. HENDERSON, 1/6.  
**ELFRIDA**, 21s.  
 ELVINA, 2s. 6d.  
**EMBLEM**, 31s. 6d.  
 ENLIE VERDIER, 2s. 6d.  
 ERNEST CALLE, 5s.  
 ERNST SCHMIDT, 5s.  
 E. SALADIN, 3s. 6d. & 5s.  
 ETOILE D'ARGENT, 3/6.  
 EUCHARIS, 3s. 6d.  
 EURYDICE, 10s. 6d.  
 EUTERPE, 2s. 6d. & 3s. 6d.  
 EXCELLENT, 2s. 6d.  
 FAIRBAIRN, 5s.  
 FAUST, 3s. 6d.  
 FELICIEN DAVID, 2s. 6d.  
 and 3s. 6d.  
 FELIX PETIT, 3s. 6d.  
 FERDINAND DE LESSEPS,  
 3s. 6d.  
 FLORE, 3s. 6d.  
**FLORIAN**, 21s.  
 FRANZ JOSST, 3s. 6d.  
 FRED. BAUSE, 2s. 6d.  
**FRUCTAL**, 7s. 6d.  
 FULGIDUM, 3s. 6d.  
 GABRIELLE LEMOINIER,  
 3s. 6d.  
**GARNET**, 21s.  
**GARTEN-DIRECTOR**  
**GIREOUD**, 7s. 6d.  
 GASPARD CRAYER, 2s. 6d.  
 and 3s. 6d.  
 GASTON CHANDON, 2s. 6d.  
 GAZE DE PARIS, 2s. 6d.  
**GENERAL**, 21s.  
 GEORGES BERGER, 15s.  
 GERARD DOW, 3s. 6d.  
 GLUCK, 2s. 6d.  
 GOLDEN QUEEN, 3s. 6d.  
 GOSSEC, 3s. 6d.  
 GRATIOSUM, 2s. 6d.  
 GRETRY, 2s. 6d.  
 GUARAREMA, 5s.  
**GUIL-MAR**, 15s.  
**GURUPA**, 10s. 6d.  
 HALVY, 2s. 6d.  
 HEBE, 5s.  
 HENRIETTE BASSET, 7/6.  
 HERMIONE, 7s. 6d.  
**HERMON**, 21s.  
 HEROLD, 2s. 6d.  
 HOMERE, 7s. 6d.  
 HORACE, 3s. 6d. and 5s.  
 HOULETTI, 1/6 & 2/6.  
 HRUBYANUM, 2/6 & 3/6.  
**IANTHE**, 31s. 6d.  
**IBICUHY**, 7s. 6d.  
 IBIS ROSE, 7/6 & 10/6.  
 IBIS ROUGE, 7/6 & 10/6.  
**ICARUS**, 21s.  
 IDA, 7s. 6d.  
**IGUATU**, 7s. 6d.  
 IMPERATRICE EUGENIE,  
 2s. 6d.  
 IMPERATRIZ THEREZA,  
 7s. 6d.  
 INDEPENDENCIA, 7s. 6d.  
 ISADORE LEROY, 2s. 6d.  
 ISIS, 3s. 6d.  
**JAGUARUNA**, 15s.  
 JAMES H. LAING, 5s.  
 J. C. SCHMIDT, 5s.  
**JESSICA**, 21s.  
**JOAQUIM NABUCO**, 15s.  
 JOHN LAING, 5s.  
**JOHN PEED**, 31s. 6d.  
 JOHN R. BOX, 2s. 6d.  
 JOINVILLE, 7s. 6d.  
 JULES DUPLESSIS, 2s. 6d.  
 JULES PUTZEYS, 2s. 6d.  
**JULIUS**, 31s. 6d.  
**JUMNA**, 31s. 6d.  
 JUNON, 2s. 6d.  
 JUPITER, 2s. 6d.  
 KETTLER, 2s. 6d.  
 LAINGII, 7s. 6d.  
 L'ALBANE, 2s. 6d.  
 LA LORRAINE, 7s. 6d.  
 and 10s. 6d.  
 LAMARTINE, 2s. 6d.  
 LA NACRE, 2 6 & 3 6.  
 LA PERLE DU BRESIL,  
 2s. 6d.  
 L'AUBRE, 3s. 6d. & 5s.  
 L'AUTOMNE, 3s. 6d.  
 L'INSOLITE, 15s.  
**LE CARAVAGE**, 31s. 6d.  
 LE CORREGE, 3s. 6d.  
 LE GRAND SUCCEES, 3s. 6d.  
 LE NAIN ROUGE, 5s.  
 LEOPOLD ROBERT, 2s. 6d.  
 and 3s. 6d.  
 LEPSCHIKINEI, 2s. 6d.  
 LEPLAY, 2s. 6d.  
 LE TIEN, 2s. 6d.  
 LILLIE BURKE, 7s. 6d.  
 and 10s. 6d.  
 LINNE, 31s. 6d.  
 LOUISE DUPLESSIS, 2s. 6d.  
 LOUIS POIRIER, 2s. 6d.  
 LOUIS VAN HOUTTE, 5s.  
 LUCIDUM, 15s.  
 LUCY, 2s. 6d.  
 LUDDEMANNI, 2s. 6d.  
 LULII, 2s. 6d. & 3s. 6d.  
 LURLINE, 5s.  
 LUTEUM AURATUM,  
 7s. 6d. and 10s. 6d.  
 LYMINOTON, 3s. 6d.  
 MADAME ALFRED BLEU,  
 1s. 6d. and 2s. 6d.  
 MADAME ALFRED BLEU  
 MAJOR, 7s. 6d.

- MADAME ALFRED MAGNE, 7s. 6d.  
 MADAME ALFRED MAME, 1s. 6d. and 2s. 6d.  
 MADAME ANDRIEU, 3/6.  
 MADAME DE LA DEVANSAYE, 2s. 6d.  
 MADAME D'HALLOY, 3/6.  
 MADAME DOMBRAIN, 2/6.  
 MADAME ED. Pynaert, 7s. 6d.  
 MADAME FRITZ KÖEHLIN, 2s. 6d.  
 MADAME GROULT, 5s.  
 MADAME HEINE, 2s. 6d.  
 MADAME HOULLET, 2/6.  
 MADAME HUBER, 3s. 6d.  
 MADAME HUNNEBELLE, 2s. 6d.  
 MADAME IMBERT KÖEHLIN, 3s. 6d. & 5s.  
 MADAME J. R. BOX, 5s.  
 MADAME JULES MENOIREAU, 2s. 6d.  
 MADAME JULES PICOT, 3/6.  
 MADAME LAFORGE, 2/6.  
 MADAME LEMOINIER, 3/6.  
 MADAME LEON SAY, 7/6.  
 MADAME MAROCHAND, 3/6 and 5s.  
 MADAME MARJOLIN SCHEFFER, 2s. 6d.  
 MADAME MERCIER, 5s.  
 MADAME MITJANA, 3/6 and 5s.  
 MADAME SCHMITT, 2s. 6d. and 3s. 6d.  
 MADAME T. DE VIOIER, 2s. 6d.  
 MADAME WILLAUME, 2/6.  
 MAN'ACAPURU, 21s.  
 MARCHANDII, 7s. 6d.  
 MARGUERITE GELINIER, 7s. 6d. and 10s. 6d.  
 MARIA MITJANA, 5s.  
 MARIE FREEMAN, 5s.  
 MARQUIS DE CAZAUX, 2/6.  
 MARQUIS F. D'ALBERTAS, 2s. 6d.  
 MARS, 2s. 6d.  
 MARTHA, 3s. 6d.  
 MARTHA LAFOROE, 10/6 and 15s.  
 MASACCIO, 5s.  
 MAXIME DUVAL, 2s. 6d.  
 MAX KOLB, 1/6 & 2/6.  
 MEM DE SA, 15s.  
 MERCADANTE, 2s. 6d.  
 MERCÈDES DAROENT, 10/6 and 15s.  
 MEYERBEER, 1/6 & 2/6.  
 MICHEL BUCHNER, 7/6.  
 MINERVE, 2s. 6d.  
 MINUS ERUBESCENS, 1s. and 1s. 6d.  
 MIRACEMA, 7s. 6d.  
 MIRITY, 7s. 6d.  
 MITHRIDATE, 2s. 6d.  
 MONSIEUR A. HARDY, 2s. 6d.  
 MONSIEUR BRIAN WYNNE, 15s. and 21s.  
 MONSIEUR CHABER, 10/6 and 15s.  
 MONSIEUR DELOS, 3/6.  
 MONSIEUR D'HALLOY, 2s. 6d.  
 MONSIEUR J. LINDEN, 2s. 6d.  
 MONSIEUR LEON SAY, 7s. 6d.  
 MONSIEUR PAUCHARD, 5s.  
 MONSIEUR S. WALTER, 7s. 6d.  
 MONSIEUR WILLAUME, 3/6.  
 MOSSORO, 21s.  
 MOZART, 2s. 6d.  
 MRS. HARRY VEITCH, 7s. 6d. and 10s. 6d.  
 MRS. LAINO, 2s. 6d.  
 MUCURUPE, 7s. 6d.  
 MUNDURUCU, 15s.  
 MURILLO, 2s. 6d.  
 NAPOLEON III., 2s. 6d.  
 NOBILE, 3s. 6d.  
 ŒDIPE, 7s. 6d.  
 OMBRELLE PARISIENNE, 3s. 6d.  
 ONSLOW, 2s. 6d.  
 ORACLE, 21s.  
 ORIFLAMME, 3s. 6d.  
 ORNATUM, 2s. 6d.  
 OPHÉE, 15s.  
 OURO FINO, 7/6 & 10/6.  
 PÆCILE ANGLAIS, 2s. 6d.  
 PAILLET, 1s. 6d.  
 PASHA, 15s.  
 PAUL VERONESE, 2s. 6d.  
 PEDRO ALVARES CABRAL, 15s.  
 PERIPERI, 7s. 6d.  
 PERIQUITO, 7s. 6d.  
 PETROPOLIS, 2s. 6d.  
 PHILIPPE HERBERT, 1/6.  
 PHILIPPE SCHULTZ, 3/6.  
 PHEBUS, 3s. 6d.  
 PIANCO, 7s. 6d.  
 PINTADO, 10s. 6d.  
 PORTIA, 21s.  
 PREFET BEROER, 3s. 6d.  
 PRESIDENT DE LA DEVANSAYE, 21s. & 31s. 6d.  
 PRIAM, 15s.  
 PRINCE ALBERT EDWARD, 1s. 6d.  
 PRINCE OF WALES, 3s. 6d.  
 PRINCESS ALEXANDRA, 2s. 6d. and 3s. 6d.  
 PRINCESS BEATRICE, 3/6 and 5s.  
 PRINCESS OF TECK, 3s. 6d.  
 PRINCESS OF WALES, 3/6.  
 PRINCESS ROYAL, 3s. 6d.  
 PROBUS, 31s. 6d.  
 PROSERPINE, 2s. 6d.  
 PURUS, 3s. 6d. and 5s.  
 PUVIS DE CHAVANNES, 31/6.  
 PUTUMAYO, 15s.  
 PYRRIUS, 2s. 6d.  
 QUADRICOLOR, 2s. 6d.  
 RACINE, 31s. 6d.  
 RAMEAU, 2s. 6d.  
 RAOUL PUGNO, 2/6 & 3/6.  
 RAULINI, 2s. 6d.  
 RAYMOND LEMOINIER, 2s. 6d. and 3s. 6d.  
 RAYON D'OR, 15s.  
 REINE DE DANEMARK, 2s. 6d.  
 REINE MARIE DE PORTUGAL, 2s. 6d.  
 REINE VICTORIA, 1s. 6d.  
 RICCI, 3s. 6d.  
 RIO CLARO, 21s.  
 RIO DE JANEIRO, 7s. 6d.  
 ROBERT BROWN, 7s. 6d. and 10s. 6d.  
 ROMA, 15s.  
 RONCADOR, 7s. 6d.  
 RONURA, 21s.  
 ROSE LAING, 21s.  
 ROSINHA, 7s. 6d.  
 ROSSINI, 2s. 6d.  
 ROSSINI SUPERBUM, 3/6.  
 ROUILLARD, 2s. 6d.  
 RUBENS, 3s. 6d.  
 RUBRUM AURATUM, 15s.  
 RUBRUM METALLICUM, 5s.  
 SANCHONIATHON, 2s. 6d.  
 SALVATOR ROSA, 2s. 6d.  
 SEMIRAMIS, 3s. 6d.  
 SENATOR, 21s.  
 SIEBOLD, 2s. 6d.  
 SIRIUS, 3s. 6d. and 5s.  
 SIR WALTER SCOTT, 2/6.  
 SOCRATES, 3s. 6d.  
 SOPHIA, 3s. 6d.  
 SOPHOCLE, 5s.  
 SOUVENIR DE LILLE, 5s.  
 SOUVENIR DE MADAME BERNARD, 2s. 6d.  
 SOUVENIR DE MADAME E. ANDRE, 2s. 6d.  
 SOUVENIR DE PARA, 1s. 6d. and 2s. 6d.  
 SOUVENIR DES TOUCHES, 5s.  
 SOUVENIR DU DOCTEUR BLEU, 7s. 6d.  
 SPLENDIDUM, 2s. 6d.  
 SPONTINI, 3s. 6d.  
 SUYA, 7s. 6d.  
 TENIERS, 5s.  
 THERESA, 21s.  
 TRAHIRAS, 7s. 6d.  
 TRICOLOR, 3s. 6d.  
 TRIOMPHE DE COMTE, 7s. 6d. and 10s. 6d.  
 TRIOMPHE DE L'EXPOSITION, 1s. 6d.  
 TRIUMPHO, 7s. 6d.  
 TYMBIRA, 7s. 6d.  
 URANUS, 2s. 6d.  
 VAN DEN HECK, 2s. 6d.  
 VAN DYCK, 2s. 6d.  
 VELASQUEZ, 2s. 6d.  
 VELLEDA, 2s. 6d.  
 VERDI, 2s. 6d.  
 VERONA, 21s.  
 VESTA, 2s. 6d.  
 VICOMTESSE DE LA ROQUE-ORDAN, 1s. 6d.  
 VILLE DE HAMBOURG, 3/6.  
 VILLE DE LAON, 15s.  
 VILLE DE MULHOUSE, 2/6.  
 VIOLACEUM, 2s. 6d.  
 VIRGILE, 2s. 6d.  
 VIRGINALE, 2s. 6d.  
 VIUVA SANT ANNA NERY, 7s. 6d.  
 VIVIAN, 21s.  
 WEBER, 3s. 6d. and 5s.  
 WIGHTII, 1s. 6d.  
 WIGHTII SUPERBUM, 2/6.  
 WILH ZIEGLER, 7s. 6d.  
 WILLIAM BULL, 3s. 6d.  
 WILLIAM F. DREER, 5s.  
 WILLIAM MARSHALL, 31/6.  
 XENOPHON, 3s. 6d.  
 XERES, 3s. 6d.

## DOUBLE TUBEROSES

(POLIANTHES TUBEROSA.)

The perfectly double flowers of *Polianthes* are well known for their delicious fragrance and pearly whiteness, being admirably adapted for Button-holes, Bouquets, &c.; indeed, are of the greatest value wherever cut flowers are required. By successional plantings these lovely flowers may be had all through the summer and autumn. They should be potted in rich loamy soil and started in a good bottom heat, being afterwards grown on in a stove, with plenty of moisture.

### DOUBLE AMERICAN.

Good bulbs, 5s. 6d. per 100. 50s. per 1,000.  
Selected bulbs, 7s. 6d. and 9s. 6d. per 100.

### DOUBLE AMERICAN.

"THE PEARL."

Good bulbs, 5s. 6d. per 100; 50s. per 1,000.  
Selected bulbs, 7s. 6d. and 9s. 6d. per 100.

The above can be supplied about the end of December.

### AFRICAN.

These can be supplied in fine bulbs in October and November.

9s. 6d. per 100.



## MONTBRETIAS.

	Each.	Per Doz.	Per 100.
MONTBRETIA CROCOSMIÆFLORA .. .. .	2d.	9d.	1s.
— CROCOSMIÆFLORA AUREA .. .. .	6d.	3s. 6d.	25s.
— — — BOUQUET PARFAIT .. .. .	4d.	3s.	
— — — DRAP D'OR .. .. .	2s. 6d.		
— — — ELDORADO .. .. .	4d.	3s.	21s.
— — — ELEGANS .. .. .	3d.	2s.	15s.
— — — ETOILE DE FEU .. .. .	3d.	2s.	15s.
— — — FLORE PLENO, new double variety .. .. .	2s. 6d.		
— — — GERBE D'OR .. .. .	6d.	5s.	30s.
— — — INCENDIE .. .. .	2s.		
— — — METEORE .. .. .	1s.		
— — — PHARE .. .. .	3d.	2s.	15s.
— — — PLUIE D'OR .. .. .	9d.	7s. 6d.	
— — — PYRAMIDALIS .. .. .	4d.	3s.	21s.
— — — RAYON D'OR .. .. .	3d.	2s.	
— — — SOLFATARE .. .. .	6d.	5s.	
— — — SOLEIL COUCHANT .. .. .	4d.	3s.	21s.
— — — TIGRIDIE .. .. .	9d.	7s. 6d.	
— — — TRANSCENDENT .. .. .	3d.	2s.	15s.
— (TRITONIA) POTTSII .. .. .	2d.	9d.	4s.
— (—) — GRANDIFLORA .. .. .	9d.	6s.	

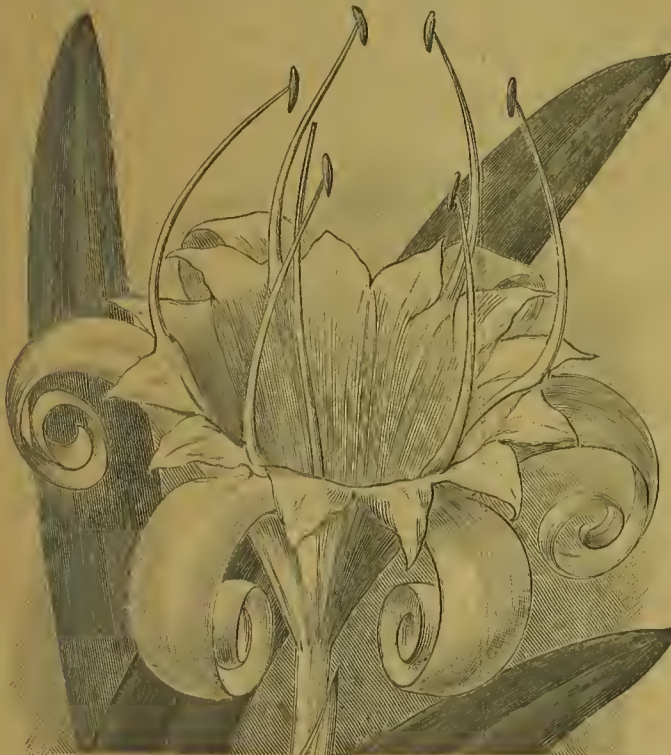
## CHOICE GLOXINIAS.

The handsome and showy flowers of these beautiful bulbous plants render them of the greatest value for the decoration of stoves and conservatories. Of easy culture, they can, with judicious treatment, be had in bloom at almost any season of the year; their attractive flowers, being of large and good shape, are admirably adapted for cutting. The colours are most varied, every hue being pure and distinct, while some of the kinds are spotted and maculated in a most pleasing manner.

Choice selections made by Mr. W. B. at 12s., 18s. and 24s. per dozen, according to sorts.


### MIXED GLOXINIAS OF VARIOUS COLOURS.

Good blooming tubers, unnamed, of various colours, raised from handsome varieties, 4s., 6s. and 9s. per dozen; 30s., 40s. and 50s. per 100.



### MIXED GLOXINIAS,

#### SPOTTED AND MACULATED.

Good blooming tubers, unnamed, spotted and maculated kinds, of various colours, 6s. and 9s. per dozen. 

### GLOXINIA SPARKLER.

A handsome variety with rich bright crimson flowers, 1s. each; 9s. per dozen.

### PANCRATIUM ZEYLANICUM.

An exceedingly attractive dwarf-growing stove species, bearing large pure white flowers, very deliciously scented. As will be seen by the illustration, the corona is funnel-shaped and deeply serrated on the margin, from which the filaments arise and incurve towards the centre. The petals being gracefully recurved lend an additional charm to the flowers of this desirable species. 1s. 6d. each; 15s. per dozen.

For other Pancratiums, *vide* page 44.



## MISCELLANEOUS BULBOUS, TUBEROUS-ROOTED AND OTHER PLANTS.



## ACHIMENES.

- 12 named varieties, 3 bulbs each sort, 36 bulbs. Mr. W. B.'s selection. 5s.  
 6 named varieties, 3 bulbs each sort, 18 bulbs. Mr. W. B.'s selection. 3s.  
 Choice sorts, 4s., 6s. and 9s. per dozen.  
 For names, *vide* Mr. WILLIAM BULL'S Plant Catalogue.

**AGAPANTHUS UMBELLATUM** (*African Lily*), blue, 6d. each, 4s. per dozen.

— **ALBUM**, bears pure white flowers, extremely useful for bouquets. 1s.

## ALSTROMERIAS.

Hardy varieties, for the open border.

**ALSTROMERIA AURANTIACA**, 2s. per dozen.

— **BRASILIENSIS**, 2s. 6d. per dozen.

— **CHILENSIS**, 2s. per dozen.

— **PSITTACINA**, 2s. per dozen.

For Greenhouse or Conservatory Culture.

**ALSTROMERIA ERREMBULTII**, 6s. per doz.

— **LUTEA**, 4s. per dozen.

— **PEREGRINA ALBA**, a lovely species, with rare pure white flowers, excellent for pot work. 2s. each; 18s. per dozen.

— **ROSEA**, a rose-coloured variety of the above. 9d. each; 7s. 6d. per dozen.

— **PULCHELLA**, 4s. per dozen.

— **TRICOLOR (PULCHRA)**, 3s. per dozen.

**AMARYLLIS.**—*Vide* page 29.

**AMORPHOPHALLUS CAMPANULATUS**, fine tubers of this remarkable Aroid. 5s. and 7s. 6d. each.

— **RIVIERI.**—9d. and 1s.

**SINGLE FRENCH ANEMONES.**—Extra choice mixed, per 100, 3s. 6d.; per dozen, 9d.

**ANEMONE FULGENS, GOLDEN RING.**—Blossoms of the richest scarlet, the jet black centre being surrounded by a broad ring of golden yellow. 3s. 6d. per dozen.

**ANEMONE JAPONICA ALBA.**—4d. each; 3s. 6d. per dozen; 17s. 6d. per 100.

— **LADY ARDILAUN** (New.)—Flowers much larger and finer than the well-known *A. japonica alba*. 2s. 6d. each.

— **HYBRIDA.**—4d. each; 3s. 6d. per doz.

— **RUBRA.**—4d. each; 3s. 6d. per dozen.

— **WHIRLWIND.**—A double flowered white variety. 1s. each.

**ANTHERICUM.**—*Vide* page 30.



**ARUM ARISTATUM.**

**ARUM ARISTATUM.**—Very large flowers, black inside, olive-coloured and striped outside. It is an interesting species and quite odourless. *Vide* illustration. 9d. each; 7s. 6d. per dozen.

— **BOWEII.**—A dwarf-growing species, with conspicuous milk-white flowers. 1s. 6d. each; 15s. per dozen.

— **CORSICUM.**—A distinct species, spathes dark purplish-black. 1s. each.



ARUM DIOSCORIDES.

**ARUM DIOSCORIDES.**—A remarkable variety, producing on short stalks attractive olive-coloured flowers, marked with dark purple spots. *Vide illustration.* 1s. each; 10s. per doz.

— **DRACUNCULUS** (*The Dragon Arum*). 3s. per dozen; 21s. per 100.

— **ITALICUM.**—Greenish white, variegated leaves. 2s. per dozen; 12s. per 100.

— **SANCTUM.**—A very handsome and compact-growing variety introduced from the Holy Land. In the early spring the plants produce large sweet-scented flowers, the spathe being from 14 to 18 inches long, of a brilliant dark purple colour. The spadix is about 10 inches long, deep velvety black. Is admirably suited for pot culture. 1s. each; 10s. per dozen.



CANNAS.

**ASCLEPIAS TUBEROSA.**—Rich orange-yellow flowers. 4s. per dozen.

**AZALEA MOLLIS.**—Quite hardy and very useful for forcing. 12s., 15s. and 18s. per dozen.

**BEGONIAS.**—*Vide page 33.*

**BRODIEA COCCINEA.**—3s. 6d. per dozen.

**BRUNSVIGIA JOSEPHINÆ.**—The Candelabra plant. 5s. each.

**CALADIUMS.**—*Vide page 34.*

**CALADIUM ESCULENTUM.**—1s. 6d. and 2s. 6d.

**CALLA.**—*Vide Richardia.*

**CALLIPHURIA HARTWEGIANA.**—1s. 6d. each; 12s. per dozen.

— **SUBEDENTATA.**—1/6 each; 12s. per doz.

**CALOCHORTUS.**—Of sorts. 4s. per dozen.

## CANNAS.

The following includes many of the fine sorts raised by the eminent cultivator M. Crozy. Selections made by Mr. B. at 6s., 9s., 12s. and 18s. per dozen.

**ALPHONSE BOUVIER.**

**AUGUST FERRIER.**

**CROZY PERE.**

**EMPEROR WILLIAM.**

**FREDERICK BENARY,** poppy-red.

**GEOFF. ST. HILAIRE,** orange-vermilion.

**IRIDIFLORA EHEMANNI,** crimson scarlet.

**ISAAC CASATI,** carmine.

**JULES CHRETIEN,** flowers cerise purple.

**KETELEERI,** bright red.

**L'AVENIR,** bright cinnabar red.

**MADAME CROZY,** salmon-vermilion, bordered with gold.

**M. CLEVELAND.**

**M. DUTERRAIL.**

**METALLICA,** lustrous metallic purple leaves.

**MISS SARAH HILL.**

**PETITE JEANNE,** red and yellow.

**PIERETTE.**

**PRESIDENT CARNOT.**

**PRESIDENT FAIVRE,** foliage purple bronze.

**PRESIDENT HARDY.**

**T. S. WARE.**

**VIOLACEA MACROPHYLLA,** dark purple leaves.

**CHLIDANTHUS FRAGRANS.**—A greenhouse bulb, producing fragrant trumpet-shaped yellow flowers. 4d. each; 3s. 6d. per dozen.

**COMMELINA TUBEROSA.**—Rich blue. 2s. per dozen; 12s. 6d. per 100.

— **ALBA.**—White. 3s. per dozen; 21s. per 100.

**CRINUM ASIATICUM.**—2s. 6d.

— **AUSTRALE,** very handsome. 7s. 6d. each.

— **CAPENSE ALBUM.**—9d.

each; 7s. 6d. per dozen.

— **ROSEUM.**—6d. each;

5s. per dozen.

— **FIMBRIATULUM,** flowers in umbels, very large and showy, striped white and carmine; very fragrant. 2s. 6d. each.

— **GIGANTEUM.**—5s.

— **KIRKII.**—Deliciously-scented large white flowers, ornamented with a deep reddish purple stripe through the centre of each petal. *Vide illustration,* page 41. 3s. 6d. and 5s. each.

— **LONGIFLORUM.**—3s. 6d. each.

— **MOOREI.**—Produces spikes of beautiful blush flowers. 5s. each.

} These are  
two hardy  
species for  
the open  
border.



CRINUM KIRKII.

- CRINUM POWELLI.—3s. 6d. and 5s. each.  
 — ZEYLANICUM.—2s. 6d. each.  
 CROCOSMIA AUREA.—1s. per dozen; 9s. per 100.  
 — — MACULATA.—2s. 6d. each.  
 — — IMPERIALIS.—A very remarkable and striking species, producing spikes of immense fiery orange-scarlet flowers. Price 1s. 6d. and 2s. 6d. each.  
 CYCLAMEN.—*Vide page 30.*  
 CYPRIPEDIUM SPECTABILE.—The most beautiful of the hardy Cypripediums. Strong blooming crowns. 1s. 6d. each.  
 CYRTANTHUS ANGUSTIFOLIUM.—Red, 3s. 6d.  
 — MACKENII.—Long tubed, scented white flowers. 1s. 6d. each.  
 — INTERMEDIUM.—A pretty, new hybrid variety, bearing on an erect scape a truss of many flowers, which are orange-pink, and about 1½ inch long, being curved and tubular trumpet-shaped; will succeed admirably in a greenhouse. 3s. 6d. each.  
 — OBLIQUUM.—3s. 6d. each.  
 DAHLIAS.—*Vide page 30.*  
 DEUTZIA CRENATA ROSEO-PLENA, 1s.  
 — PRIDE OF ROCHESTER.—A handsome flowering new double variety, *vide illustration.* 1s. each; 9s. per dozen.  
 — GRACILIS.—6s. and 9s. per dozen.

- DIELYTRA SPECTABILIS.—Very pretty, for early blooming. Strong roots, 3s. per dozen.  
 DIOSCOREA ILLUSTRATA.—A handsome foliaged climber, the leaves being heart-shaped, and having an irregular band of silvery grey down the centre, with scattered blotches of the same. The surface is satiny green shaded with olive green. 2s. 6d. each.  
 DIOSCOREAS.—Of sorts. 2s. 6d. and 3s. 6d. each.  
 ERYTHRONIUM AMERICANUM.—Yellow. 2s. per dozen.  
 — DENS-CANIS ALBUM (Dog's Tooth Violet). 9d. per dozen; 5s. per 100.  
 — — ROSEUM.—9d. per doz.; 5s. per 100.  
 — — PURPUREUM.—9d. per dozen; 5s. per 100.  
 EUCHARIS AMAZONICA.—1s. and 1s. 6d. each; 10s. and 15s. per dozen.

EUCODONIAS.

A free-flowering and dwarf-growing section of Gesneraceous plants, with attractive flowers intermediate between Tydeas and Gloxinias. 9d. each.

- EUCOMIS PUNCTATA.—9d. each; 5s. per dozen.  
 EURYCLES AUSTRALASICA.—A beautiful stove bulbous plant, introduced from Australia. It is free flowering, and produces large heads of elegant and charming white flowers, especially useful where cut flowers are required. 2s. 6d. each; 24s. per dozen.



DEUTZIA, PRIDE OF ROCHESTER.

**FUNKIA GRANDIFLORA.**—Spikes of lovely white flowers, deliciously scented. 9*d.* each; 7*s.* 6*d.* per dozen.

— **LANCEOLATA VARIEGATA.**—6*d.* each; 5*s.* per dozen.

— **OVATA.**—9*d.* each.

— **SIEBOLDII.**—6*d.* each; 5*s.* per dozen.

**GALTONIA (HYACINTHUS) CANDICANS.**—4*s.* 6*d.* per 100; 40*s.* per 1,000.

**GESNERAS (NÆGELIAS).**

Produce splendid pyramidal spikes of blossom, which are extremely handsome. Selections of good varieties at 1*s.* and 2*s.* per dozen, according to sorts.

**GESNERA PYRAMIDAL.**—Rose-coloured flowers. 2*s.* 6*d.*

— **SOUVENIR DE MADAME JOIGNOT.**—Rich carmine-purple. 2*s.* 6*d.*

— **DOUGLASII.**—2*s.* 6*d.* each  
 — **DUVALII.**—2*s.* 6*d.* each. } Stove  
 — **MACRANTHA.**—Orange- } Plants.  
 scarlet. 1*s.* 6*d.* and 2*s.* 6*d.*

**GLADIOLUS.**

*Vide* page 28.

**GLORIOSA (METHONICA) PLANTII.**—1*s.* 6*d.*

— (—) **SUPERBA.**—2*s.* 6*d.*

**GLOXINIAS.**—*See* page 38.

FOR GLOXINIA SEED, *vide* page 19.

**GRIFFINIA HYACINTHINA.**—Freely produces umbels of beautiful flowers, white conspicuously striped with sky-blue. 3*s.* 6*d.* and 5*s.* each.

**HÆMANTHUS ALBIFLOS.**—1*s.* 6*d.* and 2*s.* 6*d.* each.

— **CINNABARINUM.**—A very handsome species, bearing fine heads of bright cinnabar-red flowers. 2*s.* 6*d.* each.

— **COARCTATUM.**—White, 1*s.* 6*d.* and 2*s.* 6*d.* each.

— **KATHERINE.**—3*s.* 7*d.* and 5*s.*

— **COCCINEUM.**—1*s.* 6*d.* & 2*s.* 6*d.* each.

— **MULTIFLORUM.**—5*s.* and 7*s.* 6*d.* each.

— **PUNICEUM.**—1*s.* 6*d.* and 2*s.* 6*d.* each.

— **TIGRINUM.**—Orange. 1*s.* 6*d.* each.

**HEMEROCALLIS.**

**HEMEROCALLIS DISTICHA.**—4*d.* each; 3*s.* per dozen.

— **FLORE PLENO.**—Reddish orange. 4*d.* each; 3*s.* per dozen.

— **FLAVA.**—Yellow, sweet-scented. 3*d.* each; 2*s.* 6*d.* per dozen.

**HEMEROCALLIS FULVA (crocea).**—Orange. 3*d.* each; 2*s.* 6*d.* per dozen.

— **FLORE PLENO.**—Double flowering. 9*d.* each; 7*s.* 6*d.* per dozen.

— **FOLIIS VARIEGATIS.**—6*d.* each; 6*s.* per dozen.

— **KWANSO FLORE PLENO.**—Showy double flowers. 3*d.* each; 2*s.* 6*d.* per dozen.

— **FOLIIS VARIEGATIS.**  
 Handsome flowers and beautifully variegated foliage. 6*d.* each; 5*s.* per dozen.

— **THUNBERGII.**—4*d.* each; 3*s.* per dozen.

**HEPATICICA.**—Single blue, good flowering crowns. 5*s.* per 100.

— Single red, 2*s.* per dozen; 12*s.* 6*d.* per 100.

**HIPPEASTRUM.**—*Vide* Amaryllis.

**HYACINTHUS CANDICANS,** *vide* Galtonia.

**HYDRANGÆA PANICULATA GRANDIFLORA.**  
 9*s.* and 12*s.* per dozen.



LILY OF THE VALLEY.

(CONVALLARIA MAJALIS.)

These are imported and supplied in strong clumps towards the end of the year, expressly for forcing, and cannot be surpassed.

Prepared clumps for early forcing, 10*s.* and 12*s.* per dozen.

Single selected crowns, 4*s.* 6*d.* per 100; 40*s.* per 1,000.



NERINE JAPONICA.



NERINE SARNIENSIS.

LEUCOJUM ÆSTIVUM (*Summer Snowflake*). White, 9d. per dozen; 5s. per 100.

LILY OF THE VALLEY, *vide* page 42.

IRIS.—*Vide* page 31.

KÆMPFERIAS.—Of sorts, 3s. 6d. and 5s. each.

KNIPHOFIA ALOIDES (TRITOMA UVARIA).—6d. each; 5s. per dozen.

— GLAUDESCENS.—9d. each; 7s. 6d. per dozen.

— GRANDIFLORA.—6d. each; 5s. per dozen.

— NOBILIS.—1s. 6d. each; 15s. per dozen.

LYCORIS AUREA, a pretty golden-flowered Amaryllidaceous plant, requiring the same treatment as *Fallos* and *Nerines*, a native of China. In the autumn it throws up stout spikes, bearing in an umbel, six or more sweet-scented rich golden yellow flowers, very attractive and ornamental. 1s. and 1s. 6d. each.

MILLA BIFLORA.—4d. each; 3s. 6d. per dozen.

MONTBRETIA CROCOSMIEFLORA.—*Vide* page 37.

NEGELIAS.—*Vide* Gesnera.

### NERINES.

NERINE ATROSANGUINEA.—7s. 6d.

— CORUSCA.—1s.

— MAJOR.—2s. 6d.

— ELEGANS.—5s.

— CÆRULEA.—5s.

— CARMINATA.—5s.

— FOTHERGILLII.—1s. 6d.

— MAJOR.—2s. 6d.

— HUMILIS CÆRULEA.—5s.

— ELEGANS.—5s.

— JAPONICA.— This pretty hardy species is known as the "Japanese Spider Lily," and produces handsome heads of bright reddish-crimson flowers, the protruding anthers being of unusual length. *Vide* illustration. 9d. each; 6s. per dozen.

— ROSEA.—1s. 6d.

— SARNIENSIS (The Guernsey Lily).—6s. and 9s. per dozen.

### PÆONIES.

HERBACEOUS.— In variety, 6s., 9s. and 12s. per dozen.

PANCRATIUMS.

- PANCRATIUM AMÆNUM.—2s. 6d. each.  
 — CARIBBÆUM, a distinct and beautiful species from the West Indies, flowers pure white, very fragrant and most useful for cutting for bouquets and other decorative purposes. 1s. 6d. and 2s. 6d. each; 12s. and 18s. per dozen.  
 — FRAGANS.—2s. 6d., 3s. 6d. and 5s.  
 — GUIANENSE.—5s. and 7s. 6d. each.  
 — ILLYRICUM.—9d. each; 7s. 6d. per dozen.  
 — LITTORALE.—3s. 6d. each.  
 — MARITIMUM.—A hardy variety, bearing spikes of large fragrant white flowers. 6d. each; 5s. per dozen.  
 — PARVIFLORUM.—Pretty white flowers. 9d. each; 7s. 6d. per dozen.  
 — SPECIOSUM.—3s. 6d. and 5s. each.  
 — ZEYLANICUM.—*vide* page 38.



TYDÆAS.

These can be cultivated so as to produce an abundance of bloom throughout the winter. With a little management a succession of bloom can be had nearly throughout the year. 12s., 18s. and 24s. per dozen, according to sorts.

- PARDANTHUS CHINENSIS (Leopard Flower). 4d. each; 3s. 6d. per dozen.  
 PHÆDRANASSA CHLORACEA.—A fine species, colour rich crimson-scarlet with green points, 4d. each; 3s. 6d. per dozen.  
 POLYGONATUM MULTIFLORUM (Solomon's Seal), 2s. per dozen.  
 RHEUM OFFICINALE.—Fine ornamental foliage. 9d., 1s. and 1s. 6d. each; 7s. 6d., 10s. and 15s. per dozen.  
 RICHARDIA AFRICANA (Calla æthiopica).—4s. and 6s. per dozen.  
 — LITTLE GEM, 9s. per dozen.  
 — NITIDA, 1s. 6d. each.  
 — ALBO-MACULATA.—Beautifully spotted foliage, flowers creamy white, produced in great profusion; forces well (*vide* illustration). 1d. each; 3s. per dozen.  
 — HASTATA.—A distinct yellow-flowered species. 3s. 6d.



RICHARDIA ALBO-MACULATA.

- SPIRÆAS.—*vide* page 32.  
 TIGRIDIAS.—*vide* page 32.  
 TRITONIA AUREA, *vide* Crocosmia aurea.  
 TRITOMA, *vide* Kniphofia.  
 TROPÆOLUMS, *vide* page 32.  
 TUBEROSSES Polianthes tuberosa, *vide* page 37.  
 VALLOTA PURPUREA (The Scarborough Lily). 1s. and 1s. 6d. each.  
 ZEPHYRANTHES CARINATA.—Large rose flowers. 9d. each; 7s. 6d. per dozen.  
 — TUBISPATHA.—9d. each; 6s. per dozen.  
 ZINGIBER OFFICINALE (Ginger).—2s. 6d. each.

Besides those herein enumerated, large quantities of Bulbs and Tuberous Plants are kept in Stock, and can be supplied at current Prices.

# LILIUMS.



LILIUM AURATUM.

	Each.	Per dozen.
<b>ALEXANDRÆ</b> (Uke-Uri), a beautiful new white flowering species from Uke Island .. .. .	5s.	
<b>AURANTIACUM</b> , <i>vide</i> croceum.		
<b>AURATUM</b> , fine bulbs of this popular Lily, <i>vide</i> illustration.	....	4s., 6s., 9s., 12s. & 18s.
— <b>CRUMENTUM</b> , the finest of the <i>auratum</i> section, each petal being marked down the centre with a broad band of the richest crimson .. .. .	5s.	
— <b>ORNATUM</b> .. .. .	5s.	
— <b>PICTUM</b> .. .. .	3s. 6d.	
— <b>PLATYPHYLLUM</b> , gigantic flowers with large and very broad segments, much greater in substance than the ordinary variety	1/6 & 2/6	15s. & 24s.
— <b>VIRGINALE</b> .. .. .	3s. 6d.	
— <b>RUBRO-VITTATUM</b> ..	3/6 & 5 -	
— <b>VIRGINALE</b> (Wittei)	3s. 6d.	
— <b>WITTEI</b> , <i>vide</i> auratum <i>virginale</i>		
<b>BATEMANÆ</b> .. .. .	9d. & 1/-	7/6 & 10/-
<b>BROWNII</b> , very handsome	2/6 & 3/6	
<b>BULBIFERUM</b> .. .. .	9d.	7s. 6d.
<b>BYZANTINUM</b> , <i>vide</i> chalcedonicum.		
<b>CALIFORNICUM</b> .. .. .	1s. 6d.	15s.
<b>CALLOSUM</b> .. .. .	1/6 & 2/6	
<b>CANADENSE</b> .. .. .	9d. & 1 -	7/6 & 10/-
— <b>RUBRUM</b> .. .. .	1s. 6d.	15s.
<b>CANDIDUM</b> .. .. .	12s., 15s. & 17s. 6d. per 100	1s. 6d.
— Gigantic selected bulbs .. .. .		3s. & 4s.
— <b>FLORE PLENO</b> .. .. .	4d.	3s.
<b>CHALCEDONICUM</b> (Byzantinum), a very effective and showy Lily, with brilliant scarlet flowers .. .. .		1s. 10s.
<b>COLUMBIANUM</b> .. .. .	1/- & 1/6	10/- & 15/-
<b>CONCOLOR</b> .. .. .	1/6 & 2/6	
— <b>CORIDIUM</b> .. .. .	1s. 6d.	15s.
<b>CORDIFOLIUM</b> , a rare Japanese Lily .. .. .	2s. 6d.	24s.
<b>CROCEUM</b> (aurantiacum) .. .. .	3d. & 4d.	2/6 & 3/6
<b>DALMATICUM</b> , <i>vide</i> martagon dalmaticum.		
<b>DAHURICUM ERECTUM</b> .. .. .	6d.	5s.
— <b>FULGIDUM</b> (Sappho) .. .. .	3d.	2s. 6d.
— <b>GRANDIFLORUM</b> .. .. .	5d.	4s.
— <b>IMMACULATUM</b> .. .. .	5d.	4s.
— <b>INCOMPARABILE</b> .. .. .	3d.	2s. 6d.
— <b>SULPHUREUM</b> .. .. .	1s.	10s.
<b>ELEGANS</b> (THUNBERGIANUM) .. .. .	1s.	
— (—) <b>ALICE WILSON</b> .. .. .	3s. 6d.	
— (—) <b>ALUTACEUM</b> .. .. .	5d.	4s.
— (—) <b>ATROSANGUINEUM</b> (fulgens) .. .. .	5d.	4s.

Good and varied Selections of Lilies made at 9/-, 12/-, 18/- and 30/- per dozen.

LILIUMS—continued.

	Each.	Per dozen.
ELEGANS (THUNBERGIANUM) BICOLOR .. .. .	1/6 & 2/6	15/- & 24/-
— (—) CRUENTUM .. .. .	2s. 6d.	
— (—) FLAVESCENS .. .. .	1s. 6d.	
— (—) FORMOSUM .. .. .	1s.	10s.
— (—) GUTTATUM .. .. .	1s. 3d.	15s.
— (—) LATERITIUM (biligulatum) .. .. .	5d.	4s.
— (—) MACULATUM .. .. .	5d.	4s.
— (—) PICTUM .. .. .	5d.	4s.
— (—) PRINCE OF ORANGE (citrinum) .. .. .	5d.	4s.
— (—) SANGUINEUM .. .. .	5d.	4s.
— (—) STAMINOSUM (flore pleno) .. .. .	1s.	10s.
— (—) WALLACEI .. .. .	1s.	
EXCELSUM, <i>vide testaceum</i>		



LILIUM LONGIFLORUM HARRISII.

LONGIFLORUM HARRISII.—This is the handsome free-flowering Easter Lily of Bermuda, invaluable for pot culture, its pure white flowers being borne in the greatest profusion. *Vide illustration.*

Fine bulbs .. .. .	4d., 6d. & 9d.	3/-, 5/ & 7/6
Splendid bulbs .. .. .	1/- & 1/6	10s. & 15s.
— WILSONI, one of the handsomest white Lilies known .. .. .	1/- & 1/6	10s. & 15s.
MARTAGON (Common Turk's Cap Lily) .. .. .		2s.
— ALBUM (White Turk's Cap Lily) .. .. .	2/6 & 3/6	
— AURANTIACUM (Yellow Turk's Cap Lily), <i>vide pyrenaicum</i> .		
— COCCINEUM (Scarlet Turk's Cap Lily), <i>vide chalcodonicum</i> .		
— DALMATIUM (Black Turk's Cap Lily), a very distinct and attractive Lily, producing beautiful flowers of a rich blackish purple .. .. .	1/- & 1/6	10s. & 15s.
— CATTANIÆ (Dark Purple Turk's Cap Lily), purple .. .. .	1/6 & 2/6	15s. & 24s.

Good and varied selections of Lilies made at 9s., 12s., 18s. and 30s. per dozen.

EXIMIUM, <i>vide longiflorum oximum</i> .		
GIGANTEUM .. .. .	3 6s. & 7 6	
GRAYII, a new red-flowered Lily from California .. .. .	2s. 6d.	
HANSONI, bright golden yellow, spotted with crimson .. .. .	3s. 6d.	
HENRYII .. .. .		
HUMBOLDTII, large golden-yellow flowers, spotted with purple .. .. .	1s. 6d.	15s.
ISABELLINUM, <i>vide testaceum</i> .		
JAPONICUM (odorum), a beautiful sweet-scented white Lily .. .. .	5s.	
KAMSCHATICUM (Sarana), "The Black Lily" .. .. .	2s. 6d.	
KRAMERI, an exceedingly elegant Lily, with large trumpet-shaped blossoms of a beautiful rose colour .. .. .	1/- & 1/6	10s. & 15s.
LANCIFOLIUM, <i>vide speciosum</i> .		
LEICHTLINII, scarce .. .. .	2/6 & 3/6	
LONGIFLORUM .. .. .	5d.	4s.
— gigantic bulbs .. .. .	7d.	6s.
— EXIMIUM .. .. .	6d. & 9d.	5/- & 7/6
— FOLII ALBO-MARGINATIS .. .. .	1s. 6d.	15s.
— — VARIEGATIS .. .. .	2s. 6d.	24s.



## LILIUMS—continued.

	Each.	Per dozen.
<b>MONADELPHUM SZOVITZIANUM</b> , rich citron colour spotted with black; anthers of a rich chocolate-brown; flowers most deliciously fragrant; one of the best of Lilies. When established, the flower stems grow from 3 to 4 feet high and produce as many as twenty of its attractive flowers .. .. .	1/- & 1/6 2s. 6d.	10/- & 15/-
— gigantic bulbs .. .. .		
<b>NEILGHERRENSE</b> , a magnificent Lily, one of the finest of its section; the blossoms are creamy-white, deliciously fragrant and nearly a foot long, it is of free growth and admirably adapted for conservatory decoration .. .. .	2/6 & 3/6 5s.	
<b>NEPALENSE</b> , very rare and extremely beautiful .. .. .	3s. 6d.	
<b>OCHROLEUCUM SULPHUREUM</b> , a magnificent Lily, deliciously scented		
<b>PARDALINUM</b> , a very showy hardy Lily, freely producing its fine flowers, which are of a rich golden-orange colour, attractively spotted with maroon-purple .. .. .	9d. & 1s. 2s. 6d.	7/6 & 10/-
— <b>BOURGÆI</b> .. .. .		
<b>PARRYI</b> , deep citron-yellow flowers, with a few scattered purplish spots and chocolate anthers; it is easily grown and a desirable species..	2/6 & 3/6	
<b>PARVUM</b> , canary yellow, slightly spotted .. .. .	1/6 & 2/6	
<b>PEREGRINUM</b> , <i>vide testaceum</i> .		
<b>POLYPHYLLUM</b> , a charming Lily, very scarce and rare .. .. .	7s. 6d.	
<b>POMPONIUM</b> , an elegant species with bright scarlet flowers .. .. .	9d. & 1/-	7/6 & 10/-
— extra strong English-grown bulbs .. .. .	1/6 & 2/6	
<b>PUBERULUM</b> .. .. .	1s. 6d.	15s.
<b>PURPUREUM (RUBESCENS)</b> .. .. .	2/6 & 3/6	24/- & 36/-
<b>PYRENAICUM</b> .. .. .	5d.	4s.
<b>ROSEUM</b> , <i>vide Thompsonianum</i> .		
<b>RUBESCENS</b> , <i>vide purpureum</i> .		
<b>SPECIOSUM (LANGIFOLIUM) ALBUM</b> .. .. .	9d. & 1s. 6d. & 9d.	7/6 & 10/- 5/- & 7/6
— ( ) — <b>CORYMBIFLORUM</b> .. .. .	3s. 6d.	
— ( ) — <b>NOVUM</b> .. .. .	1s. 6d.	15s.
— ( ) — <b>CRUENTUM</b> .. .. .	1/- & 1/6	10/- & 15/-
— ( ) — <b>KRÆTZERI</b> , most exquisitely formed flowers of snowy whiteness	3s. 6d.	
— ( ) — <b>SUPERBUM</b> .. .. .	1/6 & 2/6	15/- & 24/-
— ( ) — <b>MELPOMENE</b> , very rich colour, the best of the section ..	1/- & 1/6	10/- & 15/-
— ( ) — <b>PUNCTATUM</b> .. .. .	1/6 & 2/6	15/- & 24/-
— ( ) — <b>PURPURATUM</b> .. .. .	4d., 6d., & 9d.	3/6, 5/ & 7/6
— ( ) — <b>ROSEUM</b> .. .. .	4d., 6d. & 9d.	3/6, 5/ & 7/6
— ( ) — <b>RUBRUM</b> .. .. .	1s.	10s.
— ( ) — <b>CORYMBIFLORUM</b> .. .. .	1/- & 1/6	10/- & 15/-
— ( ) — <b>SUPERBUM</b> .. .. .	1s.	10s.
— ( ) — <b>SCHRYMAKERSI</b> .. .. .	6d. & 9d.	5/- & 7/6
<b>SUPERBUM</b> .. .. .	1s. 6d.	15s.
— <b>PYRAMIDALE</b> .. .. .		
<b>SZOVITZIANUM</b> , <i>vide monadelphum Szovitzianum</i> .		
<b>TESTACEUM</b> ( <i>excesum, Isabellinum, peregrinum</i> ), nankeen coloured flowers	1s.	10s.
<b>THOMPSONIANUM</b> ( <i>roseum</i> ), a scarce Afghanistan species; colour rose, flushed with violet.. .. .	9d.	7s. 6d.
<b>THUNBERGIANUM</b> , <i>vide elegans</i> .		
<b>TIGRINUM</b> .. .. .	2d.	1s. 6d.
— <b>FLORE PLENO</b> .. .. .	3d.	2s. 6d.
— <b>FORTUNEI</b> .. .. .	4d. & 6d.	3/6 & 5/-
— <b>JUCUNDUM (MAXIMOWICZII)</b> .. .. .	1/- & 1/6	
— <b>LEOPOLDII (SPLENDENS)</b> , bright orange-scarlet, large dark spots; exceedingly attractive; this and the double-flowered variety are the most handsome of the "tigrinum" section .. .. .	4d. & 6d.	3/6 & 5/-
<b>UKE-URI</b> , <i>vide Alexandre</i> .		
<b>UMBELLATUM</b> , <i>vide dahuricum</i> .		
<b>VENUSTUM</b> .. .. .	1s.	10s.
<b>WALLICHIANUM</b> .. .. .	5s.	
<b>WASHINGTONIANUM</b> , this noble Lily inhabits the Western slope of the Californian Sierra Nevada; the flowers are white, slightly flushed with lilac, and sweet-scented .. .. .	1/6 & 2/6	15s. & 24s.

Good and varied selections of Lilies made at 9s., 12s., 18s. and 30s. per dozen.



# BULL'S FOOD FOR PLANTS.

Contains in a concentrated form all the essential elements of plant life. It is of immense benefit applied as a top-dressing to plants and bulbs of all sorts grown in pots, especially when pot-bound, completely restoring exhausted energy, a few applications ensuring vigorous healthy growth, the flowers being produced in a most luxurious manner, combined with great richness of colouring. It can also be mixed with ordinary soil in potting, or may be used with most beneficial effect for Chrysanthemums, Shrubs, Vines, and all kinds of Fruits, whether in pots or planted in the open air.

FOR TESTIMONIALS see next page.

## DIRECTIONS FOR USE.

For **POT PLANTS AND BULBS**.—Sprinkle on the surface of the soil, about every three weeks, at the rate of a large teaspoonful to a 5-inch pot, so that when the plants are watered, the Plant Food will be gradually absorbed into the soil.

For **CHRYSANTHEMUMS**.—At the time of potting, and afterwards, when the buds begin to swell, frequent top-dressings should be given, the quantity used being estimated according to the size of the pots and vigour of the plants.

For **ROSES, SHRUBS, VINES, &c.**, in Pots.—Use about a tablespoonful to a 12-inch pot several times during the season.

For **PLANTS, FRUITS, ROSES**, and all Plants in Borders and the Open Ground.—Apply about 2 ozs. to the square yard as often as occasion may require, raking and watering it in.

For **LAWNS**.—Scatter broadcast at the rate of 2 ozs. to the square yard, and well water.

Sold in Tins, containing about 1½ lb., price 8s. per dozen (Retail 1s. each.) Larger Size, containing about 5 lbs., 20s. per doz. (Retail 2s. 6d. each.)

Also in Bags, 14 lbs., 3s. 6d. (4s. 6d. Retail); 28 lbs., 5s. 6d. (7s. 6d. Retail); 56 lbs., 9s. (12s. 6d. Retail); 112 lbs., 16s. (20s. Retail.)

MANUFACTURED SOLELY BY

**WILLIAM BULL, F.L.S.,**  
ESTABLISHMENT FOR NEW & RARE PLANTS,  
536, KING'S ROAD, CHELSEA, LONDON, S.W.

# BULL'S FOOD FOR PLANTS.

## TESTIMONIALS.

THE GARDENS, MOUNT MERRION, Booterstown, Dublin, 4th December, 1894.

Sir,—I am well pleased with your Plant Food. I grew my Chrysanthemums this year with it, and won four First Prizes, one £20 Cup, and one £10 Cup at the Dublin Show.

Yours truly, HUGH CRAWFORD, Gardener to the Rt. Hon. Earl of PEMROKE.

CROFTON, AIGBURTH, LIVERPOOL, 20th February, 1894.

Dear Sir,—After giving your Food for Plants a fair trial for over two years, I must say that I like it better than any Artificial Manure I have ever used. In 1892 I grew my Chrysanthemums with it, which won the 10-Guinea Cup at Grassendale and Aigburth Shows, also the First Prize at Liverpool. In 1893 I was again successful in carrying off like honours. I have used it on hard and soft wooded plants, and the results were everything that could be desired. It has no unpleasant odour, so that, unlike many Manures, is not offensive in the Conservatory.

Yours truly, DONALD FORBES.

HANKSTEAD RECTORY, near Ipswich, May 10th, 1894.

Dear Sir,—Having used your Plant Food on Chrysanthemums with such good results, I have no hesitation in saying that it is the best Artificial Manure I have ever used, producing flowers of great size and depth, indeed, it is invaluable to those who have to exhibit blooms of the finest quality. One thing greatly in its favour is, that if applied in moderation, anyone may use it without running the risk of injuring the roots or the flowers damping, which is often the case with other Manures.

I am, Sir, yours respectfully, GEORGE JORDAN, Gardener to the Rev. HUGH BERNERS.

IMPNEY HALL, DSOITWICH, 13th February, 1893.

Dear Sir,—I am very pleased with the results from using your Plant Food. I grew my Chrysanthemums with it last season, which won the City of Edinburgh Silver Cup, also the three First Prizes for cut-blooms in the large Open Classes at Birmingham, and the First Prizes at Sheffield. I have also used it with excellent results for Strawberries, Melons, Pines, &c. I am now using it on Vine and Peach Borders with every confidence of its producing good results. I shall be glad if you will kindly forward another 5 cwt. and oblige,

Yours truly, RICHARD PARKER, Gardener to J. CORBETT, Esq.

CROSWOOD PARK, ABERYSTWYTH, 17th March, 1894.

Dear Sir,—I am delighted with your Food for Plants, I find it is excellent for Chrysanthemums, Pelargoniums, Fuchsias, Cinerarias, &c., in fact for all soft wooded plants. I also used it on my Vine borders and it enabled young Vines to carry remarkably heavy crops that ripened up well, while the flavour was everything that could be desired. A great advantage is that it has no unpleasant smell, so can be used in the Conservatory.

I am, yours faithfully, R. C. WILLIAMS, Gardener to Rt. Hon. Earl of LISBURNE.

OAKLANDS, AIGBURTH, LIVERPOOL, 12th March, 1894.

Dear Sir,—I have much pleasure in stating that I have used your Food for Plants with great success on Vines, Peaches, Roses, &c., in fact I never had better results. For hard and soft wooded plants I can confidently recommend it as a safe and excellent Fertilizer.

Yours truly, JOHN BOUNDS, Gardener to ALFRED L. JONES, Esq.

THE NURSERY, HAMMOND STREET, CHESSBURT, July 18th, 1894.

Dear Sir,—Will you send me 1 cwt. more of your Plant Food, and quote price for quarter ton, as I find my Tomatoes have greatly improved since using it on them, according to the directions.

Yours truly, B. SEARING.

THE GARDENS, KEIR, DUNBLANE, BRIDGE OF ALLAN, N.B., 8th September, 1893.

Dear Sir,—Your Plant Food is the best I have ever used. I have tried it on various plants with excellent effect, and for stimulating and imparting colour to Crotons and other foliage plants, it is all that can be desired. I tried it on Cevlamens, and the results were marvellous. I took First Prize with these at Edinburgh last year. Kindly send me double the quantity, obliging

Yours truly, THOMAS LUNT, Gardener to ARCHIBALD STIRLING, Esq.

MANOR HOUSE, STRATTON AUDLEY, BICESTER, 9th November, 1893.

Dear Sir,—I have used your Food for Plants for nearly two years, and like it better than any artificial Manure I have ever had. I have used it on my Vines and never had such a good crop. It is excellent for Chrysanthemums, Primulas, Ferns, &c. Please forward me another cwt., and oblige,

Yours faithfully, W. PARKER, Gardener to the Right Hon. Lady ROSE LEIGH.

ST. ANNE'S, CLONTARE, DUBLIN, 2nd March, 1893.

Dear Sir,—I have used many Artificial Manures for plants in the past 36 years, but none that I like so well as your "Plant Food." Not only is it a quick Fertilizer, but it has no unpleasant odour—a great desideratum.

Yours faithfully, CHARLES SMITH, Gardener to the Right Hon. Lord ARDILAUN.

THE DEN, BELFAST, 27th January, 1893.

Dear Sir,—You will doubtless be interested to know that last season I won twenty-three First and ten Second Prizes for plants and fruit grown with your Food for Plants, which has proved a most excellent stimulant, and is certainly the best Manure I have ever used. It is cleanly to use, creates no fumes, and has no unpleasant odour; in fact, no gardener should be without it. Please send me another cwt. and oblige,

Yours truly, WM. McILROY, Gardener to G. W. WOLFF, Esq.

LEIGHTON GARDENS, WELLSPOOL, 7th January, 1892.

Now that I have used Mr. William Bull's Food for Plants over twelve months, I have very great pleasure in stating that I believe it to be the best Plant Manure in the market. It produces fine foliage, large flowers, and gives a good healthy appearance to Stove and Greenhouse Plants in general. I have also used it on Melons, Cucumbers, Tomatoes and Vines with good results, and it is excellent for Chrysanthemums.

WILLIAM ROTHWELL, Gardener to Mrs. NAYLOR.

THE NURSERY, LOWTON, NEWTON-LE-WILLOWS, 15th December, 1893.

Dear Sir,—Please send me 5 cwt. of your Plant Food at your earliest convenience. I must say it is the best Fertilizer I have tried on soft-wooded Plants, especially for Chrysanthemums and Pelargoniums.

Yours truly, JOSEPH LEIGH.

FORDE ABBEY, CHAND, 27th January, 1894.

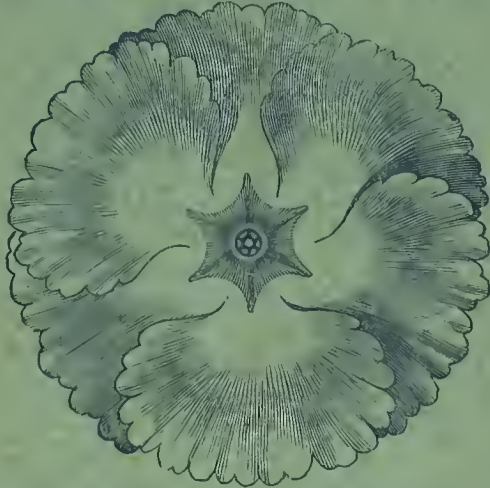
Dear Sir,—I think most highly of your Plant Food. It is splendid for all kinds of pot-stuff, and especially that which needs a strong Manure. It is grand for Chrysanthemums and all kinds of Winter-blooming plants.

Yours truly, JOHN CROOK, Gardener to W. H. EVANS, Esq.

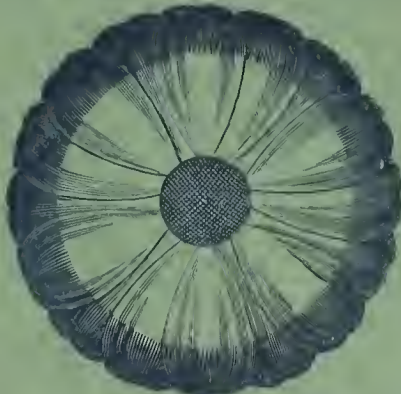
For Full Particulars see preceding page.



▷ CALCEOLARIA, HERBACEOUS (choice hybridised).  
*Vide page 10.*



PRIMULA SINENSIS FIMBRIATA.  
*For choice varieties, vide pages 8 and 9.*



CINERARIA (choice mixed colours).  
*Vide page 10.*