

Historic, Archive Document

Do not assume content reflects current scientific knowledge, policies, or practices.

47
Season 1932

Archias' Seed Annual

ARCHIAS SEED STORE CORP.

SEDALIA, MISSOURI

LIBRARY
RECEIVED

★ MAR 5 1932 ★

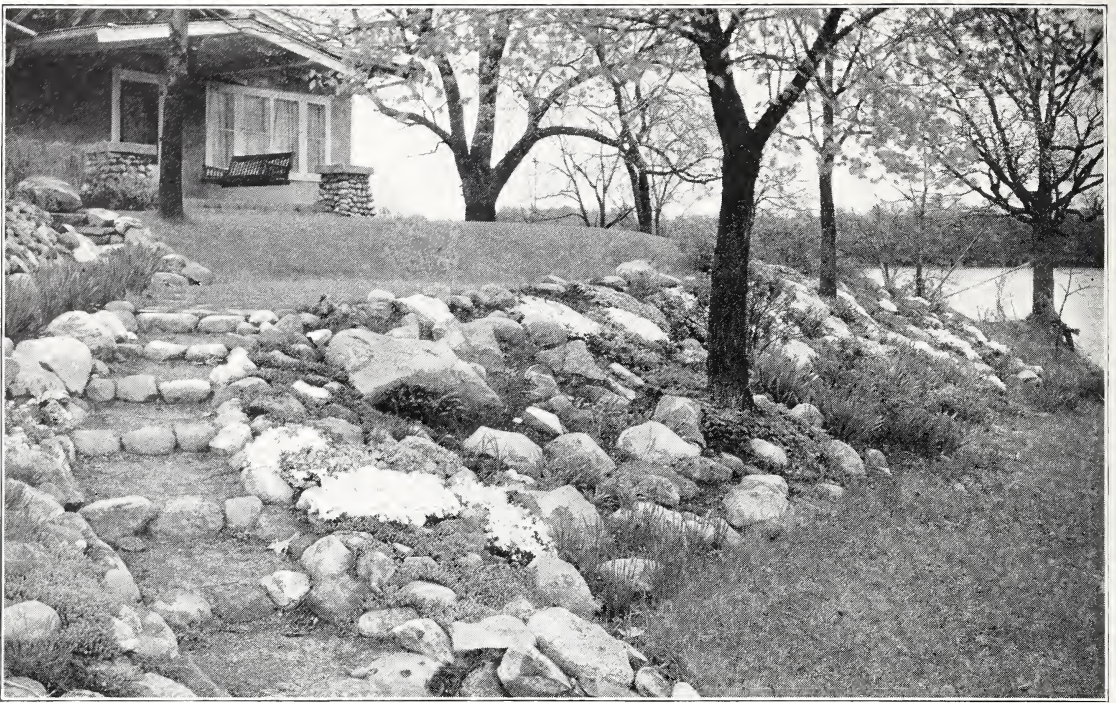
U. S. Department of Agriculture

Vegetable Seed Trials

FEB 29 1932



For Hardy Perennials, see First Inside Cover and Page 19.



Plan Your Garden Early

Plant Liberally for Pleasure, Health and Profit
Plant Archias' "Sure Seeds", Bulbs and Plants

ARCHIAS' "SURE TO PLEASE" ROCK GARDEN PLANT COLLECTION
28 Fine Perennials for your Rock Garden, Only

\$2.00

- 2 Alyssum saxatile. Yellow.
- 2 Aquilegia. Mixed.
- 2 Achillea, Boule de Neige. White.
- 2 Funkia variegata. Blue.
- 2 Artemisia, Silver King. Silver foliage.
- 2 Aster. Hardy. Mixed.
- 2 Cheiranthus Allioni. Orange.
- 2 Dianthus plumarius. Mixed.
- 2 Geum, Mrs. Bradshaw. Scarlet.
- 2 Myrtle. Trailing. Blue.
- 2 Myosotis. Hardy.
- 2 Forget-Me-Not. Blue.
- 2 Sedums. Upright and trailing. Red and yellow.
- 2 Veronica. Blue.
- 2 Viola, Jersey Gem. Violet.

ARCHIAS' FAMILY GARDEN COLLECTION OF CHOICE VEGETABLES
30 Packets (Value \$2.20), All For

\$1.00

- Pkt.
- 1 Beet, Early Wonder
 - 1 Beans, Pencil Pod Wax
 - 1 Beans, Full Measure
 - 1 Carrots, Danvers Half Long
 - 1 Celery, Giant Pascal
 - 1 Cucumber, New Everbearing
 - 1 Dill, for pickles
 - 1 Endive, White Curled
 - 1 Lettuce, New York Market
 - 1 Mustard, Chinese Curled
 - 1 Okra, Dwarf Green
 - 1 Onion, Southport Red Globe
 - 1 Parsley, Moss-Curled
 - 1 Parsnip, Hollow Crown
 - 1 Peas, Archias' Early Surprise
 - 1 Pepper, Chinese Giant
 - 1 Pumpkin, Japanese Pie
 - 1 Radish, Scarlet White Tip
 - 1 Spinach, Long Standing Bloomsdale
 - 1 Squash, Early White Bush
 - 1 Sweet Corn, Golden Bantam
 - 1 Tomato, June Pink
 - 1 Tomato, Marglobe
 - 1 Turnip, Purple Top Globe
 - 6 Flower Seed, Popular Varieties

Rock Garden Primer

By Archie Thornton

Covering conditions for the temperate region of America, and written with particular regard for the benefit of those who require information on every minute point connected with the making of a rock garden.

152 pages, 70 illustrations and four 4-color plates. Bound in imitation leather.

Price \$2.00; postpaid, \$2.15

BLOOMS FOR SUMMER AND LATE FALL

Archias' Summer Flowering Bulbs. They always please. 26 bulbs; \$2.10 value for

\$1.00

- 1 doz. Mammoth Gladioli
- 1/4 doz. Fancy Show Dahlias
- 1/2 doz. Orchid Flowering Cannas
- 2 Angel's Lilies

ARCHIAS' "SURPRISE" VEGETABLE COLLECTION, 15 PACKETS
POSTPAID,

50c

- Pkt.
- 1 Beans, Stringless Green Pod Bush
 - 1 Beans, Kentucky Wonder Pole
 - 1 Beets, Early Wonder
 - 1 Cabbage, Early Flat Dutch
 - 1 Carrot, Oxheart
 - 1 Cucumber, Davis Perfect
 - 1 Lettuce, Large Hanson
 - 1 Mustard, Southern Giant Curled
 - 1 Okra, White Velvet
 - 1 Onion, Prizetaker
 - 1 Peas, Premium Gem
 - 1 Radish, White Tip
 - 1 Squash, White Bush
 - 1 Tomato, Stone
 - 1 Watermelon, Tom Watson

ARCHIAS' COLLECTION OF ANNUAL FLOWER SEEDS FOR ROCK GARDEN (90c VALUE)

50c

- | | |
|------------------------------|------------------------------|
| Abronia | Candytuft |
| African Golden Daisy | Ice Plant |
| Ageratum | Lobelia |
| Arctotis grandis | Portulaca, Double and Single |
| Bellis (Giant English Daisy) | Sweet Alyssum |
| | Virginia Stocks |

ARCHIAS' COLLECTION OF PERENNIAL FLOWER SEEDS FOR ROCK GARDEN

50c

- Alyssum saxatile
- Aquilegia. Mixed Columbine
- Campanula. Finest colors
- Coreopsis lanceolata
- Daisies, Shasta
- Digitalis. Mixed Foxglove
- Dianthus, Hardy Garden Pinks
- Forget-Me-Nots. Hardy blue
- Poppy, Oriental Hybrid
- Sweet William, Mixed
- Veronica

ARCHIAS' CELEBRATED "RAIN-BOW" GLADIOLUS MIXTURE ONLY

\$1.00

75 BULBS, POSTPAID

This is a real bargain, selected from named sorts. 50 large blooming bulbs and 25 smaller ones. Guaranteed to please.

"BARGAIN" MIXED GLADIOLUS OFFER 100 ALL COLORS MIXED
POSTPAID FOR ONLY

50c

These are smaller bulbs and bulletts selected from the larger ones, and will surprise you. Order plenty of these for growing or just say "Bargain" Gladiolus Offer and order early, 100 for 50c; 250 for \$1.00; 500 for \$1.90; 1000 for \$3.50, postpaid.

1884 - 47 Years of "SURE SEED" Service - 1932

For almost a half century we have served the American public, growing and handling the finest quality **Seeds, Plants and Bulbs**, also supplies for the Gardener, Farmer, Dairyman, and Poultryman. We are proud of our record.

We own and operate one of the largest and oldest **Seed Establishments** in the middle west and also a system of 13 greenhouses and a 15-acre nursery devoted exclusively to growing cut flowers for all occasions, plants and nursery stock for your home and garden and for seed testing. Our trial grounds are open to the public at all times.

Our years of experience enables us to pack carefully, ship promptly, and guarantee safe arrival of all orders.

Lower Prices. Owing to the excellent quality and abundant harvest of our growers the past season, we are enabled to greatly reduce the prices on most items which means a **great saving to our customers.**

Our New Store. We regret space will not permit giving a picture of our **New Seed House**, but when in Sedalia, please pay us a visit and make yourself at home, both at our Seed House, 106-108 East Main St., and our Greenhouses, 4th and Park Ave., where you are always **welcome.**

Archias Seed & Floral Company wants your business this year and your **good will** for future business and we feel confident our efforts will assist you in raising better crops and give you a feeling of **good will** toward Archias.

Plan Your Garden Early. Plenty of fresh crisp vegetables from your own garden each morning reduces your grocery bill, as well as giving you health and strength. Plant a liberal assortment of **easy** grown annuals and perennials and beautify your home with an abundance of flowers all summer and fall. Plant plenty of bulbs of Gladiolus, Cannas, Dahlias, etc.

Try Gardening this year for health and profit.

How to Send Money

Money can be sent safely either by Postoffice Order, Bank Draft, Express Order or Registered Letter. We receive postage stamps the same as cash. No mail orders accepted or filled for less than 25c.

We Ship by Parcel Post Anywhere

Seeds, Plants and Bulbs can be mailed, the rate being one cent for each two ounces up to eight ounces. All packages over eight ounces take pound rates as per table below. In ordering a pound, remit postage for two pounds, as packing will increase weight.

The weight limit in all zones is 70 pounds.

Bulk limit (measurement around package both ways), in all zones, 72 inches.

Liquids and goods packed in glass must go by express.

PARCEL POST RATES

	1 lb.	Each additional lb. or fraction
First Zone—up to fifty miles	7c	1c
Second Zone—50 to 150 miles	7c	1c
Third Zone—150 to 300 miles	8c	2c
Fourth Zone—300 to 600 miles	8c	4c
Fifth Zone—600 to 1000 miles	9c	6c
Sixth Zone—1000 to 1400 miles	10c	8c
Seventh Zone—1400 to 1800 miles	12c	10c
Eighth Zone—over 1800 miles	13c	12c

Ask your Postmaster what zone you are in, making note of it and use this table.

Archias' Seed Store Corporation

106-108 East Main Street, SEDALIA, MISSOURI.
Owners of Archias' Floral Co., Greenhouses and Nursery.

L. H. ARCHIAS, President.
L. H. ARCHIAS, Jr., Vice-Pres. and Mgr. Floral Dept.
L. ARCHIAS, Secretary.
L. A. KIPPING, Mgr. Seed Dept.
H. L. WESTERMIER, Mgr. Supply Dept.
W. M. HOWELL, Mgr. Shipping Dept.

Same Day Shipping Service

Orders received in the morning's mail are usually shipped the same day. We believe in service, we know when you order from us you need it. We have every facility for filling and shipping orders promptly. We have an immense stock of all the items shown in this book. You can depend on immediate shipment and prompt delivery.



The Perfecto Flower Box

Proper Irrigation

Proper Ventilation

We have the following sizes enameled in Green finish or Old Ivory finish. Specify color desired in ordering. Delivered upon receipt of price.

26 inches long, 6 inches deep, 7 inches wide	\$1.50
32 inches long, 6 inches deep, 7 inches wide	2.00
38 inches long, 6 inches deep, 7 inches wide	2.50
44 inches long, 6 inches deep, 7 inches wide	3.00

We Guarantee

All goods ordered of us to reach the purchaser safely and in good condition. If lost or damaged we will refill the order. While we exercise great care in selecting all seeds, bulbs, plants and trees, and having them reliable and true-to-name, we give no warranty, expressed or implied, as to purity or germination, and will not hold ourselves responsible for any failure thereof. If not accepted on these conditions they must be returned at once.

ARCHIAS' SEED STORE CORP.

Free Seeds for Early Orders

With every order for \$1.00 or over sent us before April 1st, 1932, we will send you absolutely Free five large packets (one each) of the following Choice Flower Seed:

Japanese Double Pink, choice mixed colors.
Chinese Woolflower, crimson.
Zinnia, Double Dahlia-Flowered mixed.
Phlox Drummondii, choice mixed.
Poppy, Flanders Field, scarlet.

This is the greatest offer we have ever made. Remember, only one collection Free to each customer who sends us an order of \$1.00 or over, accompanied with the cash, before April 1st, 1932.



Archias' Evergreen Lawn Grass Seed

This is a mixture of celebrated Kentucky Blue Grass and other soft-bladed grasses that will withstand the heat and dry weather of our Summer and our most severe Winters, and insure a permanent evergreen lawn. Archias' Evergreen Lawn Grass Seed is as pure and reliable as can be found anywhere. We highly recommend this mixture for general purposes. Lb., 35c; 3 lbs., \$1.00; 10 lbs., \$2.75, prepaid.

Archias' "Shady Nook" Lawn Mixture

A mixture of grasses that will thrive in a shady situation, under trees or close to walls where there is little sun. Lb., 35c; 3 lbs., \$1.00; 10 lbs., \$2.75.

KENTUCKY BLUE GRASS. Fancy clean. For lawns when mixed with other grasses, and especially valuable as a pasture grass. About three bushels to the acre for pasture. Lb., 30c; 5 lbs., \$1.25; 10 lbs., \$3.25, by mail postpaid.

RED TOP FANCY. Re-cleaned seed. Grows well in almost any soil and is valuable either for meadows, pasture or lawns, especially so for moist land. About 15 pounds to the acre. Lb., 20c; 5 lbs., 90c; 10 lbs., \$1.75.

Archias' Terrace Sod Lawn Grass

Best mixture for terraces, railroad embankments and side hills, preventing heavy rains from washing. Will withstand drought and produce a rich, velvety green turf throughout the season. Lb., 35c; 3 lbs., \$1.00; 10 lbs., \$2.75.

ITALIAN RYE GRASS. American grown. An annual grass with tall, broad, flat leaves; plants grow in tufts if left uncut. Very valuable for winter and spring lawns with its quick growth. Lb., 30c; 5 lbs., \$1.00, postpaid.

WHITE CLOVER. (*Trifolium repens*). Valuable in lawn grass mixtures and indispensable in pasture mixtures. Lb., 65c, postpaid.

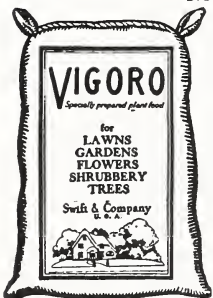
To Produce a Good Lawn

Plow or dig up the surface thoroughly to a depth of 12 inches and mix the soil with well rotted manure or our Archias' Sure Lawn Fertilizer, the latter being at all times preferable, as it is more durable in its effect and free from weed seeds, which are always contained in more or less quantities in stable manure.

The soil should be well pulverized before sowing, and the lawn kept free from weeds the first season. The quantity of seed required is one pound to every 300 square feet.

Fertilizers for Farm, Lawn, Garden, Greenhouses

No Land is so Good But It Will Pay a Good Profit on a Judicious Use of Fertilizer.



Vigoro

Specially Prepared Plant Food
VIGORO produces velvety lawns, more and prettier flowers, full foliaged shrubbery, delicious vegetables and leafy trees. It is the ideal plant food for whatever you grow. For top dressing 100 lbs. will cover lawn 40x100 feet. 5 lbs., 50c; 25 lbs., \$1.75; 50 lbs., \$2.75; 100 lbs., \$5.00.

Loma

Can also supply LOMA at same price of Vigoro. All new fresh stock.

Bone Meal

For Roses, Grapes, Fruit and Ornamental Trees. Lb., 10c; 3 lbs., 25c; 10 lbs., 65c; 25 lbs., \$1.25.

Lime for Lawns and Gardens

This is an excellent tonic—sweetens the soil, stimulates growth, deepens color, improves quality, releases nitrogen for plant food and aids blooming. Flowers in pots, boxes or in the garden, vegetables and also fruit and ornamental trees and shrubs show marked increase in growth and beauty by a liberal application of lime. Apply about a pound to every 30 square feet surface and rake in gently. This may be done before planting or after plants are several inches high. 10-lb. bag, 25c; 50 lbs., 65c; 100 lbs., \$1.00. Delivered in Sedalia.

Wizard Brand Sheep Manure

Pulverized Sheep Guano is the ideal dressing for cemetery or private lawns, golf courses, or wherever a strong, luxuriant growth of grass is needed. Market gardeners and truckers will find sheep guano extremely profitable to use on all crops. Carnations, roses, chrysanthemums and violets are particularly benefited by its liberal use. 25-lb. bag, 75c; 50-lb. bag, \$1.25; 100-lb. bag, \$2.25.

Potting Soil

For repotting ferns and all house plants. Specially prepared and ready for use. Pk., 35c; ½ bu., 50c; bu., 85c; 2 bu., \$1.50, not prepaid.

Nitrate of Soda

For vegetables use 300 lbs. to acre. For lawns and pot plants use in liquid form. 1 lb. to 25 gals. water. Price. lb., 15c; 10 lbs., \$1.00; 25 lbs., \$1.50; 100 lbs., \$4.50.

Sulphate of Ammonia

Increases plant growth on farms, gardens, orchards, vineyards, greens, lawns and shrubs. Lb., 15c; 5 lbs., 50c; 10 lbs., 85c; 25 lbs., \$1.75; 100 lbs., \$4.75.

Armour's Reliable Fertilizer

Ask for Prices Stating Quantity Wanted.

Fairy Brand Plant Food

Will make your house plants and garden flowers more vigorous and beautiful. Price per can (feeds 25 plants for six months) for only 20c each, postpaid. See page 17.

NOTE PRICES GREATLY REDUCED

Archias' Superior Garden Seeds

Garden Beans

Archias' Green Podded Bush Beans

One pound will plant 50 to 100 feet of drill.

If wanted by mail add 7c first pound and 1c additional pound for postage.

BURPEE'S STRINGLESS GREEN POD. Earliest and absolutely stringless. Pkt., 10c; lb., 25c.

IMPROVED RED VALENTINE. Popular green pod, productive. Pkt., 10c; lb., 25c.

BOUNTIFUL. Pods are flat, absolutely stringless, rich green, very large and handsome. Pkt., 10c; lb., 25c.

FULL MEASURE. Pods 6 to 7 inches long, which are solid, meaty, brittle and stringless. Splendid for home or market use. Pkt., 10c; lb., 25c.

ARCHIAS' BOSTON NAVY BEAN. Wonderfully productive. Pkt., 10c; lb., 15c.

Archias' Wax Bush Beans

ARCHIAS' IMPROVED RUST-PROOF GOLDEN WAX.

Pkt., 10c; lb., 25c.

PENCIL POD BLACK WAX. A popular variety. Pkt., 10c;

lb., 25c.

Bush Lima Beans

BURPEE'S BUSH LIMA. Grows 10 to 30 inches; handsome large pods. Pkt., 10c; lb., 30c.

HENDERSON'S BUSH LIMA. Produces enormous crops. Pkt., 10c; lb., 25c.

Archias' Pole Lima Beans

SMALL WHITE LIMA or SIEVA. Productive, pods short, beans white. Pkt., 10c; lb., 30c.

KING OF THE GARDEN LIMA. Most productive of the Limas. Pkt., 10c; lb., 30c.

JACKSON WONDER. Ripens early, beans spotted red, very prolific. Pkt., 10c; lb., 25c.

Pole and Cornfield Beans

One pound will plant 200 hills.

ARCHIAS' MISSOURI WONDER. Originated in Missouri; stringless if picked young. Large pkt., 10c; lb., 30c.

KENTUCKY WONDER. Pkt., 10c; lb., 25c.

CUT SHORT RED SPECKLED. Good cornfield variety. Pkt., 10c; lb., 30c.

CREASEBACK or FAT HORSE. Pkt., 10c; lb., 30c.

INOCULATE BEANS WITH "NITRAGIN"—INCREASES YIELD—SEE PAGE 14.

Archias' Superior Beet Seed

CULTURE. Beets should be planted on a deep, rich, sandy loam, sowing in rows 18 inches apart, covering about ½ inch deep, pressing the soil firmly over the seed. When plants are well established, thin to 4 to 6 inches in the row. About 60 days in maturing, according to variety. One ounce to 50 feet of row; 6 to 8 lbs. to an acre.

ALL GARDEN SEEDS POSTPAID.

ARCHIAS' CRIMSON GLOBE BEET. The Money Maker for Market Gardeners. Smooth skinned, slightly oblong, deep crimson color, and of the very finest quality. Pkt., 5c; oz., 10c; ¼ lb., 20c; lb., 65c.

EARLY WONDER. A Very Fine Extra Early Market and Table Beet. Pkt., 10c; oz., 15c; ¼ lb., 25c; lb., 75c.

ARCHIAS' IMPROVED BLOOD TURNIP. Medium early, and when sown late desirable for Winter. Pkt., 5c; oz., 10c; ¼ lb., 20c; lb., 65c.

DETROIT DARK RED. One of the best red turnip-shaped varieties. Pkt., 5c; oz., 10c; ¼ lb., 20c; lb., 65c.

CROSBY'S EGYPTIAN. Improved strain of the Egyptian beet. Pkt., 5c; oz., 15c; ¼ lb., 20c; lb., 65c.

SWISS CHARD or SPINACH BEET, FORDHOOK GIANT. Pkt., 5c; oz., 10c; ¼ lb., 25c.

MANGELS OR STOCK BEETS

FARMERS AND STOCK RAISERS ATTENTION. Sow 5 pounds to the acre, in rows 2½ feet apart.

ARCHIAS' JUMBO LONG RED MANGEL. Immense cropper, yielding 1,500 bushels to the acre. Oz., 10c; ¼ lb., 20c; 1 lb., 60c.

GOLDEN TANKARD MANGEL WURZEL. One of the best stock beets. Oz., 10c; ¼ lb., 20c; lb., 60c.

IMPERIAL WHITE SUGAR. Good for making sugar and stock feeding. Oz., 10c; ¼ lb., 25c; lb., 60c. Special prices to parties raising large quantities of beets for stock.



Pencil Pod Black Wax Beans.

Giant Washington Asparagus

\$100.00 to \$600.00 Per Acre Growing the New Rust Resistant Variety.

PEDIGREED WASHINGTON RUSTPROOF. Pkt., 10c; oz., 15c; ¾ lb., 35c; lb., \$1.00, postpaid.

BARR'S MAMMOTH WHITE. Pkt., 5c; oz., 10c; ¼ lb., 25c; lb., 65c, postpaid.

Vegetable Plants and Roots

ASPARAGUS ROOTS, Barr's Mammoth. 2-year, 25 for 50c; 100 for \$1.25; 500 for \$5.00, prepaid.

NEW WASHINGTON ASPARAGUS ROOTS. 25 for 65c; 50 for \$1.00; 100 for \$1.50, postpaid.

HORSERADISH SETS. 25 for 25c; 100 for 75c; 1000 for \$6.50, postpaid.

RHUBARB ROOTS, Mammoth Victoria. Large roots. 3 for 25c; 75c per doz., postpaid. 25 for \$1.25; 100 for \$1.75, not prepaid.

SAGE PLANTS, Holt's Mammoth. The largest variety grown; plants are strong. 15c each; 2 for 25c; 5 for 50c; \$1.00 per doz., postpaid.

CABBAGE PLANTS. Frostproof. 45c per 100; \$3.50 per 1000, postpaid.

CAULIFLOWER PLANTS, Snowball and Extra Early Erfurt. 50 for 60c; 100 for \$1.00, postpaid.

SWEET POTATO PLANTS. 100 for 45c; 500 for \$2.00; 1000 for \$3.75, postpaid.

Potato Plants are in season only from May 1st to July 1st.

CELERY PLANTS. Field grown and transplanted. 100 for 75c; 1000 for \$6.50, postpaid.

PEPPER PLANTS. Doz., 20c; 50 for 75c; 100 for \$1.25, postpaid.

TOMATO PLANTS. Transplanted. Doz., 20c; 50 for 65c; 100 for \$1.00; 1000 for \$9.00, postpaid.

CHIVES. Small plants of the onion family, used for seasoning. Clumps, 15c each; 2 for 25c; 5 for 60c, postpaid.

BERMUDA ONION PLANTS. 15c per 100; \$1.25 per 1000.

NOTE OUR LOW PRICES AND ORDER EARLY



Archias' Late Flat Dutch.

Archias' Sure Cabbage Seed

One ounce will produce about 2,000 plants; ¼ lb. seed in beds will produce plants for 1 acre.

GOLDEN ACRE. Similar to Copenhagen Market, but several days earlier. Pkt., 10c; oz., 35c; ¼ lb., \$1.00.

ARCHIAS' ALL HEAD EARLY CABBAGE. All head and always sure to head. Pkt., 10c; oz., 20c; ¼ lb., 65c.

SELECT EARLY JERSEY WAKEFIELD (True American). Very early. Pkt., 5c; oz., 20c; ¼ lb., 60c.

CHARLESTON or LARGE WAKEFIELD. Large, solid heads of good quality. Pkt., 5c; oz., 20c; ¼ lb., 60c.

COPENHAGEN MARKET CABBAGE. Largest of the early round-headed varieties. Pkt., 10c; oz., 30c; ¼ lb., \$1.00.

EARLY FLAT DUTCH. Well known standard early. Pkt., 5c; oz., 15c; ¼ lb., 50c.

ARCHIAS' SELECTED WORLD BEATER. Best and largest winter Cabbage. Pkt., 10c; oz., 30c; ¼ lb., \$1.00.

ARCHIAS' SELECTED TRUE ALLSEASONS. Second early, reliable header. Pkt., 5c; oz., 20c; ¼ lb., 60c.

ARCHIAS' SELECTED LATE FLAT DUTCH. Superior strain, grown exclusively for us. Pkt., 5c; oz., 20c; ¼ lb., 60c.

GLORY OF ENKHUIZEN. Ready for market in 90 days. Pkt., 5c; oz., 20c; ¼ lb., 60c.

ARCHIAS' SELECTED SURE HEAD. A grand and popular cabbage. Pkt., 5c; oz., 20c; ¼ lb., 60c.

CHINESE CABBAGE

CULTURE. For early use sow in hot bed in February or March. When 4 inches high transplant, if the weather is suitable, 1 foot apart in 2½ foot rows. For late or main crops, sow in August or early September.

WONG BOK. A comparatively short type with blocky, pear-shaped head. The foliage is medium light yellowish green and the plants are compact and leafy. Heads are 8 to 10 inches tall, tightly folded and are rich creamy white in color. This tender, succulent variety possesses a rich, appetizing flavor. Pkt., 10c; oz., 25c; 2 oz., 45c; ¼ lb., 75c.

BROCCOLI

CULTURE. The same as Cauliflower. 1 ounce will produce 1500 plants.

ITALIAN GREEN SPROUTING. Pkt., 15c; ½ oz., 25c; oz., 45c; ¼ lb., \$1.35.



Chinese Cabbage.

Cauliflower

Cauliflowers delight in a rich, moist soil, and in dry seasons should be abundantly watered, especially when heading. Sow the seed early in the hotbed and transplant the plants 2 to 3 inches apart in boxes or in another hotbed until such time as they are safe to be planted in the open ground, which in this latitude is usually the 10th of April. Set the plants in the field 15x24 inches apart.

ARCHIAS' SELECT EARLY SNOWBALL. An extremely early dwarf variety, grown for us by the best Cauliflower specialists in Denmark, producing magnificent white heads of fine quality. Pkt., 15c; 2 pkts., 25c; ¼ oz., 35c; oz., \$1.50.

AUTUMN GIANT. Popular in the south. Giant size, compact and firm. Pkt., 10c; ½ oz., 30c; oz., 50c.



Early Snowball Cauliflower.

Sweet or Garden Corn

One pound to 100 hills; 15 pounds to the acre.

CULTURE. Plant in hills 18 inches apart with rows 3 feet apart. Three or four seeds may be planted in each hill but not more than two plants allowed to stand. As suckers or excess shoots appear they should be removed, as they take strength from the mother plant.

BANTAM EVERGREEN. Noted for its excellent qualities; much larger than Golden Bantam and more productive. Pkt., 10c; lb., 25c.

HOWLING MOB. Pkt., 10c; lb., 25c.

ADAMS' EARLY. Popular with gardeners. Pkt., 10c; lb., 15c.

EARLY MINNESOTA. Eight rows of quite large sweet grains. Pkt., 10c; lb., 15c.

GOLDEN BANTAM. Height, 4 feet, bearing 2 or more ears. Pkt., 10c; lb., 15c.

COUNTRY GENTLEMAN. An old time favorite. Pkt., 10c; lb., 20c.

STOWELL'S EVERGREEN. Large ears and long, deep kernels. Pkt., 10c; lb., 15c.

EVERGREEN FODDER CORN. Excellent for early feed. 10 lbs., \$1.00.

FIELD CORN. See Field Seeds, page 13.

Archias' Selected Pop Corn

ARCHIAS' GOLDEN SEAL. A new yellow pop corn that is ahead of all others. Pkt., 10c; lb., 20c; 6 lbs., \$1.00, postpaid.

JAPANESE HULLESS or DWARF RICE. Very tender and almost hullless. Pkt., 10c; lb., 20c; 6 lbs., \$1.00, postpaid.

MUSHROOM or GIANT YELLOW SOUTH AMERICAN. Largest and best pop corn in existence. Pkt., 10c; lb., 20c; 6 lbs., \$1.00, postpaid.

HAND THIS CATALOG TO YOUR FRIENDS—but do not do so until you have sent in your own order. Your friends will thank you for loaning them this catalog for it contains much valuable information. Do this and we will thank you. Another catalog will be sent you free on request.

Archias' Select Table Carrots



Danvers
Half Long.

One ounce will sow 100 feet of drill.

CULTURE. The land should be thoroughly manured the previous season. Sow the early sorts in March and April, in drills 1 inch deep and 14 inches apart; thin out to 4 inches. For main crop sow in May or beginning of June. Care should be taken at all times to see that the soil is firm over the seeds, either by means of feet, roller or garden drill. Slug-Shot dusted over the ground will prevent maggots.

RED ST. VALERY. Rich, deep orange color, large and handsome. Pkt., 5c; oz., 10c; ¼ lb., 25c; lb., 75c.

OXHEART (Stump Rooted). Bright orange, fine grained and sweet; very productive. Pkt., 5c; oz., 10c; ¼ lb., 25c; lb., 75c.

DANVERS HALF LONG SCARLET. Smooth and handsome; excellent market variety. Pkt., 5c; oz., 10c; ¼ lb., 25c; lb., 75c.

EARLY SCARLET HORN. Finest quality for table; forces well. Pkt., 5c; oz., 10c; ¼ lb., 25c; lb., 75c.

LONG ORANGE. Large, popular variety for winter use. Pkt., 5c; oz., 10c; ¼ lb., 25c; lb., 75c.

YELLOW BELGIAN. For stock feed only. Wonderful yielder. Good keeper. Oz., 10c; ¼ lb., 20c; lb., 65c.

Archias' Prolific Cucumbers

Carefully Selected Strains, True to Name and Very Best for Table and Pickling.

One ounce will plant about 50 hills.

CULTURE. Do not plant cucumbers before danger of frost has passed, as the plants are very tender and the least frost will damage them or kill them. Plant in hills or rows 4 feet apart, 10 to 15 seeds to each hill; make soil very rich. For pickles, plant from June 1st to middle of July.

ARCHIAS' SELECTED EARLY WHITE SPINE. Fruit uniformly straight and handsome, dark green. Pkt., 5c; oz., 15c; ¼ lb., 35c; lb., \$1.00.

DAVIS' PERFECT CUCUMBER. A sure money maker for those growing Cucumbers. Pkt., 5c; oz., 15c; ¼ lb., 35c; lb., \$1.00.

ARCHIAS' NEW EVERBEARING. Very early, enormously productive. Pkt., 5c; oz., 15c; ¼ lb., 35c; lb., \$1.00.

GHERKIN or BURR. Oval shaped, prickly; for pickling only. Pkt., 10c; oz., 50c; ¼ lb., 50c.

IMPROVED EXTRA LONG GREEN. Grows very long, very productive. Excellent for pickles. Pkt., 5c; oz., 15c; ¼ lb., 35c; lb., \$1.00.

NEW JAPANESE CLIMBING CUCUMBER. Grown on trellises, fences, etc., saving valuable space. Pkt., 5c; oz., 15c; ¼ lb., 35c; lb., \$1.00.

Archias' Superb Lettuce Seed

Two ounces will sow 150 feet of drill; 4 to 5 pounds to acre.

CULTURE. Lettuce seed should be sown very early in the Spring and at intervals of 15 days for a succession, sow the seed in shallow drills, being careful to firm the soil well over the seed and thin to 4 inches apart in row.

ARCHIAS' NEW YORK MARKET. The largest heading lettuce of all. Produces immense heads 15 to 18 inches across and as solid as cabbage; blanches beautifully; crisp, tender and delicious; absolutely free from bitterness. Pkt., 10c; oz., 20c; ¼ lb., 60c; lb., \$2.00.

IMPROVED LARGE HANSON. Heads very solid, beautifully blanched, crisp, mild and tender. Pkt., 5c; oz., 10c; ¼ lb., 35c; lb., \$1.25.

PRIZE HEAD or SATISFACTION. Dark reddish brown color; heads large. Pkt., 5c; oz., 10c; ¼ lb., 35c; lb., \$1.25.

BLACK SEEDED SIMPSON. Archias' Selected Stock. Standard for early Spring planting and growing under glass. Pkt., 5c; oz., 10c; ¼ lb., 35c; lb., \$1.25.

ARCHIAS' EXTRA SELECTED BIG BOSTON LETTUCE. Popular variety for every purpose on the market. Large pkt., 5c; oz., 15c; ¼ lb., 35c; lb., \$1.25.

ARCHIAS' NEW ICEBERG. A beautiful Lettuce, worthy of universal cultivation. Pkt., 5c; oz., 15c; ¼ lb., 35c; lb., \$1.00.

GRAND RAPIDS FORCING. Especially adapted for greenhouse culture. Pkt., 5c; oz., 10c; ¼ lb., 35c; lb., \$1.10.

CHICKEN LETTUCE. Oz., 15c; ¼ lb., 35c; lb., \$1.00.

PARIS WHITE COS. Pkt., 10c; oz., 20c; ¼ lb., 45c.

Celery

One-fourth ounce to 100 feet of row; 4 ounces to the acre.

CULTURE. Celery is slow to germinate and ample time must be given. Sow thinly, cover lightly and keep constantly moist. When seedling plants are three inches high, clip for stocky growth or else transplant.

GOLDEN SELF-BLANCHING. Perfectly solid, of fine flavor. Pkt., 5c; oz., 35c; ¼ lb., \$1.25.

WHITE PLUME. Naturally white, requires very little banking to bleach. Pkt., 5c; oz., 20c; ¼ lb., 75c.

GIANT PASCAL. A mammoth variety growing in favor. Pkt., 5c; oz., 20c; ¼ lb., 75c.

CELERY PLANTS. Field grown and transplanted, 100 for 75c; 1,000 for \$6.50, prepaid.

Kale or Borecole

DWARF GREEN. Sow in Autumn for sprouts of green; desirable in every garden. Height, 8 inches. Pkt., 5c; oz., 10c; ¼ lb., 20c; lb., 65c.

TALL GREEN SCOTCH. Pkt., 5c; oz., 10c; ¼ lb., 25c; lb., 65c.

Mustard

Make repeated sowings in shallow drills a foot apart; of easy cultivation. Cut when not over 3 inches high.

WHITE. Best for salad. Pkt., 5c; oz., 10c; ¼ lb., 20c; lb., 50c.

BROWN or BLACK. Stronger than the white. Pkt., 5c; oz., 10c; ¼ lb., 20c; lb., 50c.

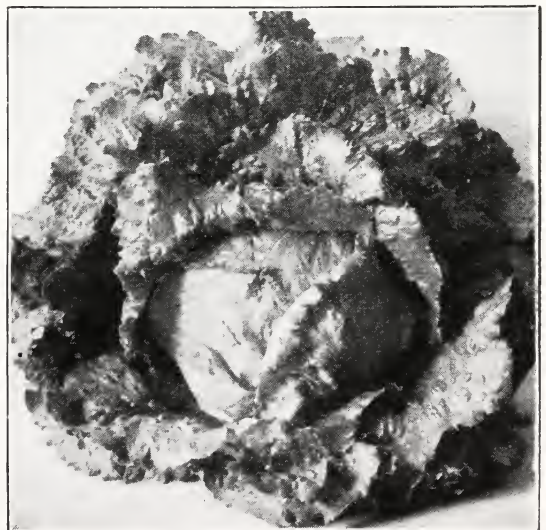
SOUTHERN GIANT CURLED. Highly esteemed for salads, leaves very curly. Pkt., 5c; oz., 10c; ¼ lb., 20c; lb., 65c.

Mushroom Spawn

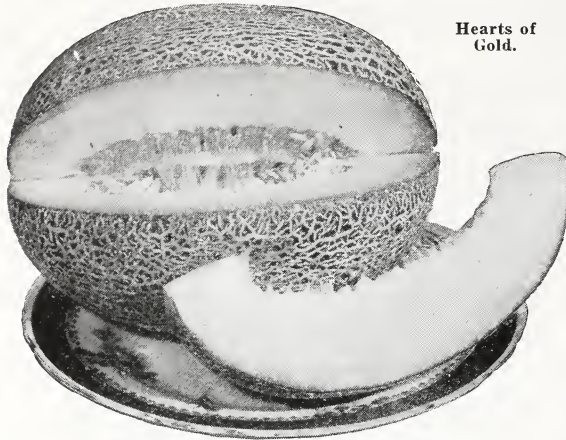
AMERICAN PURE CULTURE SPAWN. Produced by a new method from virgin spores. Pure Culture Spawn is far superior to spawn that is imported, and when once used no other is wanted. The results show it is by far the cheaper. A brick weighs 1½ pounds, and is sufficient for a bed 2x4 feet. We receive fresh spawn every few weeks direct from the best makers. Cultural directions free with every order. One brick, 35c; 3 bricks, \$1.00, postpaid.

Book on Mushroom Culture

By J. H. Dick. 16 pages, 30c, postpaid.



Improved Large Hanson.



Archias' Delicious Muskmelon

CULTURE. Late in the Spring drop 20 seeds in hills 5 feet apart. When up large enough thin out to three or four plants; work the same as watermelons. The following list contains none but choice varieties.

SLUG SHOT KILLS MELON BUGS. See page 24.

HEARTS OF GOLD. Handsome and attractive. Medium size. Heavily netted. Flesh is very thick; rich orange color. Matures in 70 days. Pkt., 10c; oz., 15c; ¼ lb., 35c; lb., \$1.00.

ARCHIAS' SELECTED POLLOCK No. 10-25. The most desirable type of the Rocky Ford melons. Pkt., 5c; oz., 10c; ¼ lb., 35c; lb., 90c.

EDWARDS' PERFECTO. Deliciously sweet, deep flesh with very small seed cavity. Pkt., 5c; oz., 10c; ¼ lb., 25c; lb., 75c.

BURRELL'S GEM. Salmon flesh of unusual thickness. The melons grow to an average size of 6 inches. Pkt., 5c; oz., 10c; ¼ lb., 35c; lb., 90c.

ROCKY FORD MELON. Small seed cavity, thick, luscious flesh, high flavor. Pkt., 5c; oz., 10c; ¼ lb., 35c; lb., 90c.

BANANA. The flesh is rich salmon color, very sweet and melting. Pkt., 10c; oz., 15c; ¼ lb., 35c; lb., \$1.00.

HONEY DEW MELON. The green flesh is thick and is of a peculiar sweet flavor. Pkt., 10c; oz., 15c; ¼ lb., 35c; lb., \$1.25.

IMPROVED EARLY HACKENSACK. Pkt., 5c; oz., 10c; ¼ lb., 35c; lb., 90c.

HONEY BALL. Resembles in appearance the Honey Dew and the flavor is blended with the popular Texas Cannonball. Pkt., 10c; oz., 15c; ¼ lb., 45c; lb., \$1.50.

Endive

One ounce will sow about 200 feet of drill.

GREEN CURLED. Crisp, dark green leaves; the hardiest. Pkt., 5c; oz., 10c; ¼ lb., 35c.

WHITE CURLED. Leaves pale green. Pkt., 5c; oz., 10c; ¼ lb., 35c.

Archias' Eggplant Seed

CULTURE. A very delicious vegetable that gives decided change in diet. Sow seed in hotbeds early in the Spring and transplant to the open after all danger of frost is over. Transplant 2 feet apart each way and cultivate frequently. One ounce of seed for 2,000 plants; eight ounces of seed for an acre.

BLACK BEAUTY. This is a very early, large Eggplant, usually maturing in about 120 days. The fruit is jet black, the average weight being about 2 to 3 pounds; very dwarf in growing habit, bearing its fruit close to the main stem; excellent for truckers. Pkt., 10c; oz., 45c; ¼ lb., \$1.25, postpaid.

NEW YORK IMPROVED SPINELESS. This type is very early and entirely spineless, bearing extra large fruits of a deep purple color; very smooth with white, delicious flesh. Pkt., 10c; oz., 45c; ¼ lb., \$1.25, postpaid.

WE SHALL BE PLEASED TO SEND YOUR FRIENDS A COPY OF OUR CATALOG. ASK THEM TO WRITE.

Hearts of Gold.

Archias' Sure Watermelon Seed

One ounce will plant about 25 hills, 4 to 5 pounds to an acre.

CULTURE. Treat same as muskmelon, except that they should be planted 8 to 10 feet apart according to variety.

KLECKLEY SWEET or MONTE CRISTO. Oblong in shape, skin dark green, flesh bright red. Pkt., 5c; oz., 10c; ¼ lb., 25c; lb., 75c.

NEW "IRISH GREY." Yellowish grey. Flesh is very sweet and firm. Pkt., 5c; oz., 10c; ¼ lb., 25c; lb., 75c.

REUTER'S WONDER MELON. It is the sweetest flavored of all melons. Pkt., 5c; oz., 10c; ¼ lb., 25c; lb., 75c.

NEW STONE MOUNTAIN WATERMELON. The greatest Watermelon in existence. Pkt., 5c; oz., 10c; ¼ lb., 25c; lb., 75c.

PORTO RICAN IMPROVED GOLDEN HONEY. Sweet as Honey. Color of Gold. Pkt., 10c; oz., 20c; ¼ lb., 45c; lb., \$1.50.

HALBERT HONEY. One of the finest watermelons for the home garden; uniform in color and shape, being free from any tendency to "neck." Skin dark glossy green; flesh beautiful crimson. Pkt., 5c; oz., 10c; ¼ lb., 25c; lb., 75c.

THE TOM WATSON. Best quality, fine shape, large size, good shipper. Extra long melon of attractive appearance, uniform in shape and quality; the luscious crimson flesh is "as sweet as honey." The average melon will weigh 50 to 60 lbs. and measure about 23 inches long and about 12 inches in diameter. Skin dark green, with thick netting. Our choice seed was grown under the most painstaking care and selection. Pkt., 5c; oz., 10c; ¼ lb., 25c; lb., 75c.

SPECIAL OFFER. One ounce each of the above wonderful melons, postpaid, for only 50c.

Vine Peach

Vegetable Orange or Mango Melon. Fruit size and color of medium orange—vines much like muskmelons and require same care. Fruits used for pickles, pies and preserving. Cut fruit in halves and cook in syrup. Easily grown and wonderfully prolific. Pkt., 10c; oz., 25c; ¼ lb., 75c.

Herbs

Every kitchen garden should have a few herbs. They are easily grown and are always pleasant and desirable for flavoring, perfuming and medical purposes. Varieties marked with (*) are perennial.

BASIL. Pkt., 10c; oz., 20c.

***CARAWAY.** Pkt., 10c; oz., 15c.

DILL. Pkt., 10c; oz., 20c.

***THYME.** Pkt., 10c; oz., 25c.

***SAGE.** Pkt., 10c; oz., 35c.

TAME LAMBSQUARTER. Excellent for greens. Large pkt., 10c; 3 pkts., 25c.

Kohl-rabi

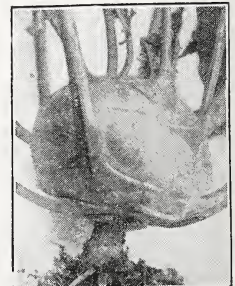
Kohl-rabi is grown for its turnip-shaped bulb, which is formed above ground. The bulb should be used while young and tender. Set plants 8 inches apart.

EARLIEST WHITE VIENNA. Greenish white outside, with clear, white flesh within. Smooth, short leaf; good for forcing; fine quality. Pkt., 10c; oz., 15c; ¼ lb., 45c.

EARLIEST PURPLE VIENNA. Same in every respect as Earliest White Vienna, except in the outside color. Pkt., 10c; oz., 15c; ¼ lb., 45c.



Black Beauty Eggplant.



White Vienna Kohl-rabi.

Archias' Pedigreed Onion Seed

Celebrated for Purity, Quality, Size and Productiveness—
Money Makers and Prize Winners

One ounce will sow 100 feet of drill; 4 to 5 pounds per acre for large onions.

CULTURE. Sow in rich sandy loam in drills 1 foot apart, as early as possible in Spring; cover with fine soil; when plants are strong, thin out to 3 or 4 inches. Have ground thoroughly cultivated, free from weeds and well fertilized.

MAMMOTH PRIZE-TAKER. Mild and delicate in flavor; excellent for Fall and early Winter. Pkt., 5c; oz., 20c; ¼ lb., 65c; lb., \$2.00.

ARCHIAS' LARGE RED WETHERSFIELD. Grandest Red Onion grown. Very productive and fine keeper. Pkt., 5c; oz., 15c; ¼ lb., 45c; lb., \$1.50.

SELECT YELLOW GLOBE DANVERS. Large size, early and abundant cropper. Pkt., 5c; oz., 15c; ¼ lb., 45c.

SOUTHPORT WHITE GLOBE. Bulbs are of good size, splendid globe shape, pure white. Pkt., 5c; oz., 20c; ¼ lb., 65c.

SOUTHPORT RED GLOBE. Large size, mild and tender. Pkt., 5c; oz., 20c; ¼ lb., 50c.

BERMUDA ONION SEED FROM TENERIFFE—WHITE BERMUDA. Onion is really straw yellow color; large size, very mild and easy to grow. Pkt., 10c; oz., 20c; ¼ lb., 75c; lb., \$2.25.



Red Wethersfield



Archias' Select Early.

Archias' Select Garden Peas

Add 7c for first pound and 1c each additional pound for postage.

ARCHIAS' SELECT EARLY SURPRISE PEAS. One of the earliest wrinkled varieties. Vines about 24 inches high. Pkt., 10c; lb., 30c; 5 lbs., \$1.35; 10 lbs., \$2.50.

ARCHIAS' SELECT EXTRA EARLY. It ripens in about 40 days, grows about 18 inches high, pods well filled and of good quality. Pkt., 10c; lb., 25c; 5 lbs., \$1.00.

ALASKA EXTRA EARLY. The earliest blue pea; height, 2 feet. Pkt., 10c; lb., 25c; 5 lbs., \$1.00.

PREMIUM GEM. Seeds green, wrinkled, height 1 foot. Second early. Pkt., 10c; lb., 25c; 5 lbs., \$1.00.

NOTT'S EXCELSIOR PEA. The pods are filled with 7 to 9 large peas of superior tenderness and flavor. Height, 1 foot. Pkt., 10c; lb., 25c; 5 lbs., \$1.00.

LANTON'S PROGRESS. A delicious new Pea, about 18 inches tall and a few days earlier than Laxtonian. Pods are 4 inches long and contain 8 large, sweet, green Peas. Wrinkled seed. Pkt., 10c; lb., 25c.

LANTONIAN. A large-podded, dwarf variety. Height, 1½ feet. Large pkt., 10c; lb., 25c; 5 lbs., \$1.00.

AMERICAN WONDER. One of the earliest wrinkled sorts; about 9 inches high. Pkt., 10c; lb., 25c; 5 lbs., \$1.00.

Medium Early or Main Crop Peas

ARCHIAS' SELECT EVERBEARING. Two and one-half feet high. The peas are very large and wrinkled. Pkt., 10c; lb., 25c; 5 lbs., \$1.00.

IMPROVED STRATAGEM. A splendid pea for main crop; exceedingly productive. Pkt., 10c; lb., 25c; 5 lbs., \$1.00.

IMPROVED CHAMPION OF ENGLAND. Very rich, wrinkled, fine flavor; long, large pods. 4 feet. Pkt., 10c; lb., 25c; 5 lbs., \$1.00.

MAMMOTH MELTING SUGAR. The wonderful Edible Podded Pea. Height five feet. Pkt., 10c; lb., 30c; 5 lbs., \$1.25.

Okra or Gumbo

CULTURE. Sow in May and June after the ground is warm, in drills 3 feet apart, and thin to 10 inches apart in rows. An ounce of seed to 100 feet of row.

KLECKLEY'S FAVORITE. Pods 6 inches in length, carrying the thickness well throughout the length. Plant grows 3 feet high. Very early, prolific, light green pod. Pkt., 5c; oz., 10c; ¼ lb., 20c; lb., 50c.

WHITE VELVET. Pods are round and smooth. Superior flavor and tenderness. It is very productive. Pkt., 5c; oz., 10c; ¼ lb., 20c; lb., 50c.

DWARF PROLIFIC GREEN POD. Low growing variety. Pkt., 5c; oz., 10c; ¼ lb., 20c; lb., 50c.

We Will Send Your Friends a Catalog.
Send in Their Names.

SELECT ONION SETS

It is impossible for us to make fixed prices. Lowest market prices on large or small quantities will be given on application at any time. We handle Onion Sets in large quantities.

YELLOW BOTTOM ONION SETS.
WHITE BOTTOM ONION SETS.
RED BOTTOM ONION SETS.

Bermuda Onion Plants

These plants give you two months' start over seed, maturing onions of the highest quality. The Bermuda is a good keeper.

Now you may have large, delicious, tender Bermuda Onions right from your own garden.

Hundreds of millions of these plants are now used by professional gardeners. They produce the same fine results wherever used.

Order your plants now and grow your own big Bermuda in your own garden.

100 plants for 15c; 500 for 65c; 1,000 for \$1.25, post-paid.

Bermuda Onion Plants.

NOTICE Market Gardeners
Special Prices
See Page 27

The Best Parsnips

Spade the soil deep and sow in shallow drills 15 inches apart early in the Spring in rich soil. Hoe often and deep.

HOLLOW CROWN, LONG SMOOTH. Smooth, large, tender and sugary; one of the best. Our stock is very fine. Pkt., 5c; oz., 10c; ¼ lb., 20c; lb., 65c.

The Finest Peppers

An ounce of seed will produce 1,250 plants; ½ lb. per acre.

CULTURE. The pepper plant is tender, and must be started under glass, like eggplant. The plants should be set 1½ feet apart in rows 2 to 3 feet apart. A warm, moist soil is best, with plenty of rotted manure plowed under.

NEW CHINESE GIANT. Immensely productive, a profitable variety both for market gardeners and amateurs. Pkt., 10c; oz., 35c; ¼ lb., \$1.25.

NEW RUBY KING. Wonderful yielder, peppers 3 to 4 inches in diameter, very desirable for mangoes. Pkt., 5c; oz., 25c; ¼ lb., 80c.

CELESTIAL. Pods are borne upright; conical in shape. Pkt., 5c; oz., 25c; ¼ lb., 80c.

CAYENNE. Very hot, long and slim; for seasoning. Pkt., 5c; oz., 25c.

CHERRY. Round, small, good bearer, fine for fancy pickles. Pkt., 5c; oz., 25c.

PIMENTO, Archias Perfection. The sweetest pepper grown. Popular for canning. Pkt., 10c; oz., 30c.

TABASCO. Used exclusively for the famous Tabasco Sauce. Extremely hot. Pkt., 10c; oz., 35c.

FINEST MIXED PEPPERS. A mixture which you will find very desirable for pickling, mangoes, relishes, etc. Price, 5c per pkt., oz., 25c.



Chinese Giant Pepper.

Sweet Potatoes

Varieties: Red Nansemond, Cuban Yam, Yellow Nansemond, Southern Queen, Jersey Yellow, Red Jersey, Nancy Hall, and Red Bermuda.

Carefully packed in barrels or crates free.

Prices furnished on application in bedding season, March 10th to April 25th. Potatoes shipped at owner's risk of rotting or freezing.

Sweet Potato Plants, 100 for 45c; 500 for \$2.00; 1000 for \$3.75, postpaid.

Potato plants are in season only from May 1st to July 1st.

Parsley

A Flavoring Herb of the Highest Culinary Value.

CULTURE. Soak seed for several hours and sow in border or frame. Thin the rows or transplant to another bed. If to be carried late into the Fall, set 8 inches both ways, and cover with litter. It will go through the Winter with moderate protection. Use 1 ounce of seed to 150 feet of drill. Make open air sowing in April.

CHAMPION MOSS CURLED. Beautifully crimped, curled leaves. Pkt., 5c; oz., 10c; ¼ lb., 25c.

DOUBLE CURLED. Compact; very curly. Bright green. Pkt., 5c; oz., 10c; ¼ lb., 25c.

Archias' Northern Grown Seed Potatoes

CERTIFIED STOCK. Minnesota grown certified by the grower. Inspected and found free from serious diseases and varietal mixture and is from vigorous fields.

ARCHIAS' NEW EARLY SIX WEEKS.

BLISS TRIUMPH or BERMUDEA.

EARLY OHIO (Certified Seed).

IRISH COBBLER (Certified Seed).

ARCHIAS' SELECTED CHICAGO MARKET.

For Prices on Seed Irish Potatoes, see our Weekly Price List or write for prices, stating quantity and variety wanted.

Archias' Potato Fertilizer 3-18-9

Greatly increases your yield and improves the quality by using 400 lbs. of this fertilizer per acre. Specially prepared for potatoes and onions. Prices on application.

For soils where Potash is not needed and where a liberal supply of manure is available we recommend Acid Phosphate at the rate of 600 lbs. per acre drilled in the furrows and mixed with soil before seed is planted. Prices on application.

SEED POTATOES BY MAIL

For those who desire to test the merits of any of these varieties of potatoes we furnish whole tubers by mail at 25c per lb., or 3 lbs. for 55c.

Archias' Prolific Pumpkins

For Bugs on Squashes and Pumpkins Use "Slug-Shot." See page 24.

KENTUCKY FIELD. Best for field culture in corn. Oz., 5c; ¼ lb., 15c; lb., 50c.

JAPANESE PIE. Flesh very thick, solid, fine grained, dry and sweet. Pkt., 5c; oz., 10c; ¼ lb., 30c; lb., \$1.00.

TENNESSEE SWEET POTATO. Excellent for pies. Good keeper. Pkt., 5c; oz., 10c; ¼ lb., 25c; lb., 85c.

KING OF MAMMOTHS. Bright golden yellow. One of the best pie pumpkins. Pkt., 5c; oz., 10c; ¼ lb., 35c; lb., \$1.00.

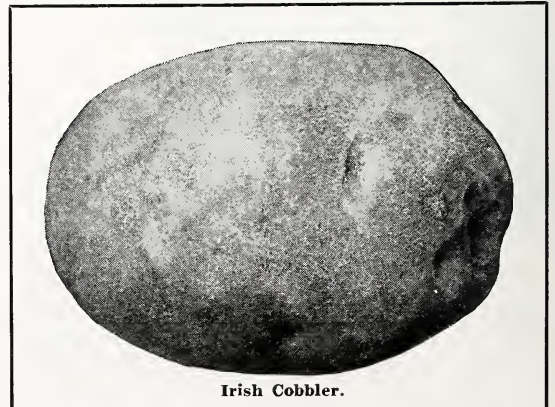
LARGE CHEESE. Yellow flesh, sweet, brittle and thick. Oz., 10c; ¼ lb., 20c; lb., 60c.

SUGAR PUMPKIN. Orange-yellow; small; keeps well; prolific. Pkt., 5c; oz., 10c; ¼ lb., 25c; lb., 75c.

GREEN STRIPED, CROOKNECK CUSHAW. Very prolific. Pkt., 5c; oz., 10c; ¼ lb., 35c; lb., \$1.00.

MAMMOTH WHITE CUSHAW. Crookneck. One of the very best. Pkt., 5c; oz., 10c; ¼ lb., 35c; lb., \$1.00.

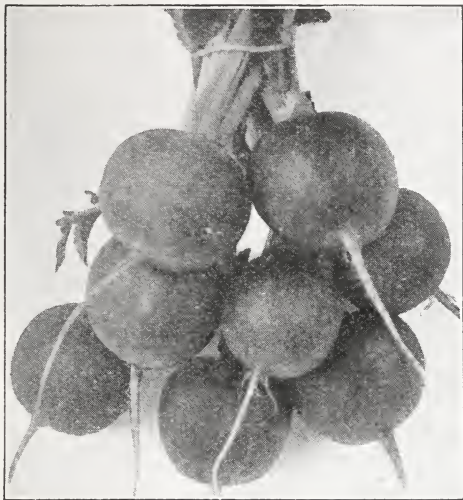
CONNECTICUT FIELD or YANKEE PIE. Large size; red; ribbed. Oz., 5c; ¼ lb., 15c; lb., 50c.



Irish Cobbler.

Archias' Radishes

Radishes must be grown quickly in rich, loose soil, and gathered before reaching full size to prevent becoming soft and pithy. Frequent plantings should be made for succession, to insure a supply of fresh, tender Radishes for table use at all times.



Early Scarlet Globe Radish.

Early Turnip-Shaped Varieties

COOPER'S SPARKLER (Scarlet Turnip White-Tip). Very crisp and of good quality. Pkt., 5c; oz., 10c; ¼ lb., 25c; lb., 75c.

EARLY SCARLET ERFURT TURNIP. Particularly adapted to forcing. It has a very small top, and will bear close planting. Pkt., 5c; oz., 10c; ¼ lb., 25c; lb., 75c.

ARCHIAS' NEW SCARLET GLOBE. Best Radish for forcing in the greenhouse or outdoors. Pkt., 5c; oz., 10c; ¼ lb., 25c; lb., 75c.

EARLIEST WHITE TURNIP (White Box). Of quick growth; leaves short. Pkt., 5c; oz., 10c; ¼ lb., 25c; lb., 75c.

MIXED EARLY TURNIP RADISH SEED. A select mixture of the most desirable Turnip sorts. Pkt., 5c; oz., 10c; ¼ lb., 25c; lb., 65c.

Long Radishes—Spring and Summer

ARCHIAS' LONG WHITE ICICLE. About six inches in length. Matures in 20 to 28 days. Pkt., 5c; oz., 10c; ¼ lb., 25c; lb., 75c.

LONG SCARLET, SHORT TOP. The standard long variety for market and home. Pkt., 5c; oz., 10c; ¼ lb., 25c; lb., 75c.

NEW BRIGHTEST LONG SCARLET. Fiery scarlet, tipped white; early. Pkt., 5c; oz., 10c; ¼ lb., 25c; lb., 75c.

WHITE VIENNA or **LADY FINGER**. Pure white, long fine grain, tender. Pkt., 5c; oz., 10c; ¼ lb., 25c; lb., 75c.

CHARTER or **SHEPHERD**. Does not become pithy or hollow. Pkt., 5c; oz., 10c; ¼ lb., 25c; lb., 75c.

WHITE STRASBURG. Oblong, tapering shape; firm, brittle and tender. Best variety for Summer use. Pkt., 5c; oz., 10c; ¼ lb., 25c; lb., 75c.

FRENCH BREAKFAST. Bright red, tipped with white. Oblong in shape. Pkt., 5c; oz., 10c; ¼ lb., 25c; lb., 75c.

Winter Varieties

LONG BLACK SPANISH. Very hardy and a good keeper; sow with your turnips. Pkt., 5c; oz., 10c; ¼ lb., 25c; lb., 75c.

CHINESE ROSE WINTER. Very smooth, bright rose color; large. Pkt., 5c; oz., 10c; ¼ lb., 25c; lb., 75c.

CALIFORNIA WHITE MAMMOTH. Eight to twelve inches long, and about 2½ inches thick; solid. Pkt., 5c; oz., 10c; ¼ lb., 25c; lb., 75c.

MIXED WINTER RADISHES. A mixture of the best Fall and Winter varieties; sow broadcast with turnips; sure to please. Pkt., 5c; oz., 10c; ¼ lb., 25c.

Salsify (Vegetable Oyster)

Sow early in Spring in drills 15 inches apart, and thin to 2 inches apart. Cultivate like carrots or parsnips.

MAMMOTH SANDWICH ISLAND. The roots grow to double the size of the old sort, are very smooth, of superior quality. Pkt., 10c; oz., 20c; ¼ lb., 50c; lb., \$1.50.

Rhubarb or Pieplant

Rhubarb is very highly esteemed for use in pies, tarts, jelly and marmalade. Sow in drills one foot apart early in the Spring. In the Fall or next Spring transplant 3 feet apart in deeply dug, very rich soil.

ARCHIAS' MAMMOTH VICTORIA. The largest and most productive variety known. Large pkt., 10c; oz., 15c; ¼ lb., 50c.

RHUBARB ROOTS. Set in Spring, they will furnish leaf stalks the following season. Large roots, 3 for 25c; doz., 75c, by mail, postpaid. By express at purchaser's expense, 25 for \$1.25; 100 for \$4.75.

RHUBARB CLUMPS. We can also supply extra large clumps at 75c each; 2 for \$1.25. These clumps are extra large and heavy, and will be sent by express or freight (at buyer's expense).

Archias' Best Squashes

Cream of the Squash Family. Acknowledged the Very Best.

CULTURE. About the same as melons. A good sandy rich loam is best. The Squashes are all tender, and the seed should not be planted until warm weather. Allow 4x4 feet for the bush squashes and 8x8 feet or more for the running varieties. Three plants to the hill; 2 to 3 pounds of seed to the acre. For Summer squashes estimate 4 ounces to 100 hills; winter sorts, 8 ounces. Use Slug-Shot for the bugs.

EARLY WHITE BUSH SCALLOPED. Light cream color. Pkt., 5c; oz., 10c; ¼ lb., 25c; lb., 85c.

GOLDEN SUMMER CROOKNECK. Early, warty, yellow variety of good quality. Pkt., 5c; oz., 10c; ¼ lb., 25c; lb., 85c.

MAMMOTH CHILL. Largest of all Squashes. Pkt., 5c; oz., 10c; ¼ lb., 35c; lb., \$1.00.

GOLDEN HUBBARD. Good Fall and Winter variety. Pkt., 5c; oz., 10c; ¼ lb., 35c; lb., \$1.00.

HUBBARD (Chicago Warted). For Fall and Winter use. Pkt., 5c; oz., 10c; ¼ lb., 35c; lb., \$1.00.

BANANA. Excellent winter Squash. Flesh deep yellow, fine grained and sweet. Pkt., 10c; oz., 15c; ¼ lb., 35c.



Hubbard Squash.

Spinach

Should be planted in very rich ground, the richer the better. For early Spring use sow early in Autumn and protect the plants with a light covering of leaves or straw. In the South Spinach can be grown without covering.

It requires about 20 pounds to sow an acre broadcast; 5 to 8 pounds per acre in drills; 1 ounce to 30 or 35 feet of drill.

SELECTED BLOOMSDALE. The large leaves are very thick, rounded, dark green and curled. Pkt., 5c; oz., 10c; ¼ lb., 15c; lb., 40c; 5 lbs., \$1.50.

LONG STANDING BLOOMSDALE. An improved strain of excellent quality; a favorite with the market gardeners. Pkt., 5c; oz., 10c; ¼ lb., 15c; lb., 40c.

NEW ZEALAND. Prickly seeded. Oz., 10c; ¼ lb., 20c; lb., 50c.

The Best Tomatoes

CULTURE. Sow seed in March and April in the hotbed, or in pots in a sunny exposure in the house. If it is desired to make very stocky plants they may be transplanted when about 2 to 3 inches high. When 5 or 6 inches high, if the ground has become warm, transplant to the open ground, on a rainy or cloudy day. Set the plants 4 feet apart each way; the dwarf sorts may be planted closer.

Archias' Selected Ponderosa

A purple-pink, main crop Tomato of the largest size. The vines are vigorous and very productive. The fruit is solid with exceptionally few seeds; fairly smooth and considered of very good quality, especially by those who prefer a tomato quite free from acid. It is a very desirable tomato for slicing.

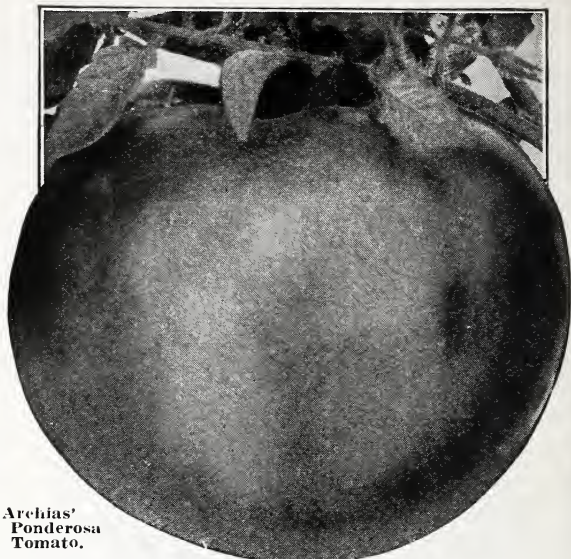
Pkt., 10c; 2 pkts., 15c; ½ oz., 25c; oz., 45c; ¼ lb., \$1.50.

ARCHIAS' MISSOURI GIANT. The "Jumbo" of All Tomatoes. The largest fruited of the Climbing Tomatoes, bearing enormous crops from early harvest until killed by frost. Bright red fruit, ripening well up to the stem; unexcelled for keeping, shipping, canning, preserving or prepared fresh for the table. Well cultivated plants have attained the height of 9 feet and 10 feet across. Pkt., 10c; 2 pkts., 15c; ½ oz., 35c; oz., 55c.

DWARF CHAMPION. Dwarf, compact, upright growth; fruit smooth, solid. Pkt., 5c; oz., 35c; ¼ lb., \$1.00.



Oxheart Tomato.



Archias' Ponderosa Tomato.

OXHEART. (120 days). A new variety of unique shape—like a big ox-heart, or a Delicious apple. Of large size, best quality of tomato flavor, smooth pink skin, few seeds; its supreme qualification is the broken cell structure, and the one to two inches of solid flesh before a seed is reached. A heavy yielder; on healthy, open, spreading vines. Pkt., 10c; 3 pkts., 25c; ½ oz., 35c; oz., 65c.

BURBANK. Extremely early, solid and fine quality. Claimed to be blight proof. Pkt., 10c; 3 pkts., 25c; ½ oz., 30c; oz., 50c.

STONE. Late or main-crop, yielding a good crop. Large, smooth, solid, deep scarlet. Pkt., 5c; oz., 25c; 4 ozs., 75c.

JOHN BAER. Early and productive; not unlike Chalk's Jewel in size, form and color. A heavy yielder. Pkt., 5c; oz., 25c; 4 ozs., 75c.

MARGLOBE. Wilt resistant. New midseason sort. A hybrid from Marvel and Livingston's Globe. Entirely immune from rust and wilt. Pkt., 10c; ½ oz., 20c; oz., 35c; 4 ozs., \$1.25.

BONNY BEST. Large, smooth red. Very prolific. Pkt., 5c; oz., 25c; ¼ lb., 75c.

LIVINGSTON'S BEAUTY TOMATO. Its size, shape, and productiveness make it desirable for all purposes. Pkt., 5c; oz., 25c; ¼ lb., 75c.

GOLDEN QUEEN. Handsome large yellow, very solid and smooth. Pkt., 10c; oz., 35c; ¼ lb., \$1.00.

JUNE PINK TOMATO. Earliest and most productive pink fruited Tomato. Pkt., 5c; oz., 35c; ¼ lb., \$1.00.

CRIMSON CUSHION or BEEFSTEAK. Remarkable size; crimson-scarlet; very solid. Pkt., 10c; oz., 45c; ¼ lb., \$1.50.

Preserving Tomatoes

Yellow Pear, Red or Yellow Peach, Strawberry or Husk Tomato. Price, either variety, pkt., 5c; 6 pkts., 25c.

Archias' Table Turnips

CULTURE. For Spring crop, sow early as the ground can be worked, and none but early varieties. For Fall crop, sow middle of Summer. Sow 1 to 2 lbs. seed per acre.

EXTRA EARLY RED TOP MILAN. The earliest in cultivation. Oz., 10c; ¼ lb., 25c; lb., 75c.

PURPLE TOP STRAP LEAF. For Spring and Fall use. Oz., 10c; ¼ lb., 20c; lb., 50c.

LARGE EARLY RED TOP GLOBE. Very large, globe-shaped. Oz., 10c; ¼ lb., 20c; lb., 50c.



Purple Top Strap Leaf Turnip.

LARGE WHITE GLOBE. Good for table and stock. Oz., 10c; ¼ lb., 20c; lb., 50c.

GOLDEN BALL. Globe shaped, amber colored and sweet. Oz., 10c; ¼ lb., 20c; lb., 50c.

AMERICAN YELLOW PURPLE-TOP RUTABAGA. Requires a longer season in which to grow than do the turnips, the seed should be sown about the first to middle of July. Oz., 10c; ¼ lb., 25c; lb., 75c.

Pedigreed Tobacco Seeds

HAVANA. Grown from seed imported from Vuelta de Abajo. Per pkt., 10c; oz., 40c.

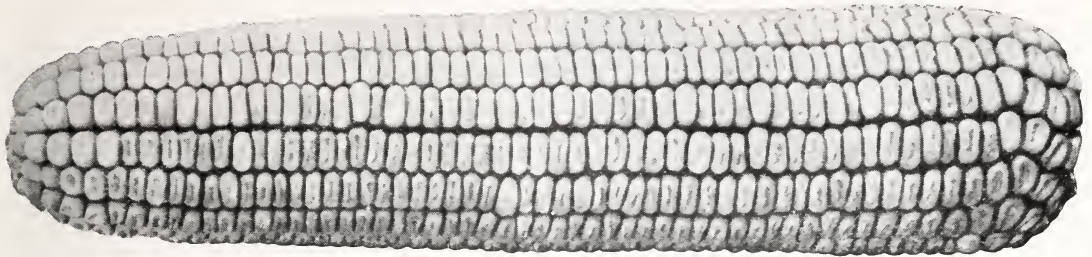
CONNECTICUT SEED LEAF. An old, well known variety. Per pkt., 10c; oz., 30c; ¼ lb., \$1.00; lb., \$3.25, postpaid.

IMPROVED WHITE BURLEY. A popular sort. Per pkt., 10c; oz., 40c; ¼ lb., \$1.25.

YELLOW PRIOR. Good variety. Pkt., 10c; oz., 30c; ¼ lb., \$1.00.

BIG YELLOW ORONOKO. Favorite Virginia variety. Pkt., 10c; oz., 30c; ¼ lb., \$1.00.

Renew Your Seed Corn This Year While Prices Are So Low



Archias' Seed Corn and Forage Crops

Buy Missouri Grown Seed Corn and Take No Chances on Getting the European Corn Borer.

Golden Mortgage Lifter

This wonderful variety, first introduced by us in 1893, has gained great favor among the corn growers everywhere. The large amount of corn produced on so small a cob surprises everyone.

Price of Archias' Golden Mortgage Lifter, postpaid—big package, 15c; pint, 30c; quart, 50c. By freight or express, pk., 90c.

Early Red Snow Cap

The earliest red corn of all. Matures in 80 to 85 days. Kernels are of a bright cherry-red color, with yellowish cap—the result of a cross between a red flint and a yellow dent. This corn often matures in less than 80 days. Price, by mail, postpaid, lb., 25c. By freight or express, pk., 50c.

Special Reid's Yellow Dent

This is the highest type of this most popular and wonderful variety. Reid's Yellow Dent won more prizes at the many corn shows than all others combined. Pkt., 10c; lb., 25c; 3 lbs., 60c, postpaid. By freight or express, per qt., 25c; pk., 50c.

Early Yellow Rose

The stalks grow 8 to 10 feet high, full dark foliage, setting its ears low, usually maturing two good sound ears 8 to 12 inches long. 90 to 100 days. By mail, postpaid, 1 lb., 25c. By freight or express, qt., 25c; pk., 50c.

Boone County White

Good on strong land and a heavy yielder. White cob of medium size. Matures in 115 to 120 days. By mail, postpaid, 1 lb., 20c. By freight or express, qt., 25c; pk., 50c.

St. Charles White

A pure white variety with small red cob; ears 8 to 11 inches long, 16 to 18 rows of medium deep, broad kernels. By mail, postpaid, 1 lb., 20c; 3 lbs., 50c. By freight or express, qt., 25c; pk., 50c.

Iowa Silver Mine

It is a pure white corn, with large ears, often measuring 10 to 11 inches in length. Matures in about 100 days. By mail, postpaid, 1 lb., 25c. By freight, qt., 25c; pk., 50c.

Can also furnish Golden Cartner, Improved Leaning, Iowa Gold Mine, Golden Beauty, Johnson C. White, Hickory King, Speckled Beauty. Ask for prices.

Japanese Buckwheat

This is the most productive of all buckwheat. Bes. for bees. Per lb., 15c; pk., 50c.

Broom Corn

ARCHIAS' IMPROVED EVERGREEN. Grows about 8 to 10 feet high, stands up well, entirely free from crooked brush. The fiber is long and fine. Lb., 15c; 5 lbs., 45c.

BLACK SPANISH. An excellent standard variety. Lb., 15c; 5 lbs., 45c.

Barley

SCOTCH (Six-rowed). It is good for feeding, not having as long beard as some other kinds. Lb., 15c; 2 lbs., 25c; pk., 50c; 1 bu., \$1.75; 2 bus., \$3.25.

Cane Seed for Fodder

Cane seed is also largely grown for stock feeding. It yields heavily. It can be raised anywhere and is sown extensively in dry sections where tame grasses can not be grown. For forage sow 50 to 100 pounds broadcast to the acre. We sell many carloads of Cane Seed annually for fodder, and will be pleased to name special prices on application. State quantity wanted.

Cane Seed for Sorghum

GOLDEN DRIP or HONEY CANE. Makes the finest sorghum. 20c per lb., 5 lbs., 75c, postpaid. By express or freight, 5 lbs., 50c; 1 pk., \$1.00.

EARLY ORANGE CANE. Stalk heavier and a little later than Amber. Best seed. 20c per lb., postpaid. By express or freight, 5 lbs., 35c; 1 pk., 50c.

EARLY AMBER CANE. The earliest. Best seed. Lb., 20c, postpaid. By express or freight, 5 lbs., 35c; pk., 50c.

Rye

May be sown in either Fall or Spring. Makes fine pasture. Sow 1 1/2 to 1 3/4 bushels per acre. Price on application.

Kaffir Corn

One of the best forage plants. Makes an excellent food for poultry, horses and cattle. Grows on land too poor for corn.

WHITE. The best variety, postpaid, per lb., 15c.

Feterita

Feterita is recommended especially for its earliness and its ability to withstand dry weather. Chinch bugs do attack it but they seem to prefer other crops. The grain is white, large and softer than that of Kaffir. It should not be planted too early nor too deeply. Lb., 15c.

Seed Disinfectants (DU BAY)

SEMESAN JR. or BAYER DUST. A dust disinfectant for seed corn. 4-oz. tin, 50c; 1-lb. tin, \$1.75; 5-lb. tin, \$8.00.

CERESAN. A dust disinfectant for wheat, oats, barley and certain other cereals. 8-oz. tin, 50c; 1-lb. tin, 75c; 5-lb. tin, \$3.00.

SEMESAN. A general disinfectant for many vegetable and flower seeds or bulbs, and certain plant diseases. 2-oz. tin, 50c; 1-lb. tin, \$2.75; 5-lb. tin, \$13.00.

SEMESAN BEL. An instantaneous dip disinfectant for seed potatoes. 4-oz. tin, 50c; 1-lb. tin, \$1.75; 5-lb. tin, \$8.00.

Du Bay Seed Disinfectants are poisonous and owing to present Postal Regulations cannot be sent through the mails but must be sent by express or freight.

Improved Virginia Jumbo Peanuts

Pods large and well filled, of finest quality. The vines make excellent forage.

This peanut does best in light, sandy soil, tolerably high. They should be planted in rows 3 1/2 feet apart in the row. Drop two or three good peas in each hill, cover about two inches. 6 to 8 quarts shelled nuts to an acre. Per lb., 20c; 5 lbs., 85c, postpaid.

Prices on this page subject to market changes. Write for special prices stating kind and quantity wanted.

Archias' Hay and Pasture Grasses

Prices on this page subject to market changes. Write for special prices stating kind and quantity wanted.

Archias' Northern Grown Alfalfa or Lucerne (Medicago Sativa)

"There is no state in the Union in which Alfalfa cannot be successfully grown."

Alfalfa produces 3 to 7 tons of hay to the acre. "Its long, branching roots penetrate far down, and thus constitute a gigantic subsoiler. These become an immense magazine of fertility. As soon as cut they begin to decay and liberate the vast reservoir of fertilizing matter below the p.l.w. to be drawn upon by other crops for years to come."

Prepare the land thoroughly and sow seed at the rate of 15 to 20 pounds per acre, with a broadcaster or grass seeder. Cover with a brush or light harrow. Young plants are quite tender, and the land must be free from weeds until they become established. **Lb., 25c; 5 lbs., \$1.00; 10 lbs., \$1.75.** See below for Nitragin for inoculating.

Korean Lespedeza

MAMMOTH KOREAN LESPEDEZA, AMERICA'S GREATEST LEGUME. Adapted to any soil, sweet or sour, rich or poor. Makes crop of hay or seed same year sown. Reseeds itself each year, unexcelled for pasture, hay or soil building. It is drouth-resistant. Height, 15 to 24 inches. 5 pounds per acre will produce a heavy crop of hay the second year, but 10 to 15 pounds will secure a full hay crop or seed for harvest the first year. Our stock is of the highest quality and will give satisfaction. **Price of Genuine Mammoth Korean Lespedeza, 1 lb., 25c; 5 lbs., \$1.00, postpaid.** For prices on larger quantities see our Red List or write us stating quantity wanted.

ARCHIAS' SELECTED AND RECLEANED

Grass and Clover Seed

ALL NEW CROP.

Clover, Red, fancy.
Clover, Red, choice.
Clover, Red, prime.
Clover, Mammoth, fancy.
Clover, Alsike, fancy.
Clover, Alsike, choice.
Clover, Alsike and Timothy.
Clover, Sweet, White Blossom, hulled.
Clover, Sweet, Yellow Blossom, hulled.
Clover, White Dutch, fancy.
Alfalfa, Grimm, Dakota grown.

Timothy, fancy.
Timothy, choice.
Timothy, prime.
Red Top, fancy.
Red Top, choice.
Ky. Blue Grass, fancy.
Ky. Blue Grass, choice.
English Blue Grass, fancy.
Ky. Orchard Grass, fancy.
Ky. Orchard Grass, prime.
Archias' Evergreen Lawn Grass.
Hubam Sweet Clover.

Write for prices on Grass and Clover Seeds, state kind and quantity wanted.

Cow Peas

Do not plant until ground becomes warm. Cow Peas and Soja Bean Hay is fully equal to Red Clover or Wheat Bran. Write for special prices on bushel lots or over.

WHIP-POOR-WILL. Brown speckled pea, bushy variety. **Lb., 10c; 5 lbs., 40c; 10 lbs., 75c.**

NEW ERA. An extra early Whip-poor-will. Price same as Whips.

ARCHIAS' NEW DIXIE or MAMMOTH BLACK EYE. An improved variety, valuable for table use. **Pkt., 10c; lb., 20c; 5 lbs., 85c; 10 lbs., \$1.50.**

LADY PEAS. Splendid for table use; great yielder. **Pkt., 10c; lb., 30c; 2 lbs., 50c; 10 lbs., \$2.25.**

Archias' Big Yielding Millet

Sow 30 to 40 pounds to the acre.

ARCHIAS' GOLDEN or GERMAN MILLET. It is sown in the Spring, and after harvesting leaves the ground in the finest condition for wheat. **10 lbs., 45c.**

Mammoth Russian Sunflower Seed

One of the best egg-producing foods known for poultry. It can be planted any time until July and will bring a large crop. Just what you need to fill up the vacant spots in your garden. **1 lb., 15c; 5 lbs., 60c; 10 lbs., \$1.00; 25 lbs., \$2.25.**

Soy or Soja Beans

Soy Beans should be planted in May or June. They withstand drought to an extraordinary degree. One-third to one-half bushel of seed is planted per acre, with a drill, in rows 30 inches apart.

MIDWEST or MONGOL YELLOW. An early bunch variety, very prolific, a popular sort. **1 lb., 10c; 5 lbs., 30c; 10 lbs., 50c.**

EARLY MORSE. A leading variety, grows 3 to 4 feet high, produces a good crop of hay and a heavy seeder. **Lb., 10c; 5 lbs., 30c; 10 lbs., 50c.**

WILSON. Matures in 120 days. A black bean, upright in growth. It is popular for hay. **1 lb., 10c; 5 lbs., 30c; 10 lbs., 50c.**

VIRGINIA. The best Bean for hay or ensilage. It attains a height of 50 inches. Brown seeds. **1 lb., 10c; 5 lbs., 30c; 10 lbs., 50c.**

Red Rust-Proof or Texas Red Seed Oats

Yields enormous crops of heavy golden grain.

COLUMBIAN OATS.

IOWA BLACK OATS.

KANOTA OATS. Earlier than Red Texas and a heavy yielder.

Write for prices stating quantity wanted.

Dwarf Essex Rape

True Stock, the Very Best; Yields Immense Crops. Sow in Summer for Fall and Winter pasture. It is especially good for sheep, but all kinds of stock and chickens are fond of it and do well on it. Sow 5 pounds to the acre broadcast. **Pkt., 10c; lb., 20c, prepaid. Not prepaid, lb., 15c; 5 lbs., 50c; 10 lbs., 85c; 25 lbs., \$2.00.**

Sudan Grass

A New Forage Crop of Immense Value to the Middle West. Sudan is a tall, annual grass, reaching a height of from 7 to 9 feet when planted in rows and allowed to mature for a seed crop; broadcasted and cut "in the bloom" for hay, about 4 feet.

For a seed crop plant 2 pounds seed per acre in rows 36 inches apart. For hay crop broadcast or drill 12 to 20 pounds to acre. **Price, 15c per lb., postpaid. Not prepaid, lb., 10c; 5 lbs., 35c; 10 lbs., 65c. Special price on 100-lb. lots.**

Alfalfa, All Clovers, Soy Beans, Cow Peas, Peas, Beans, Vetch, Peanuts, should be inoculated with



Restores and Maintains Soil Fertility

NITRAGIN PRICES ARE POSTPAID

ALFALFA, ALL CLOVERS			VETCH, PEAS, BEANS		
Size	Inoculates	Price	Size	Inoculates	Price
1/4 bu.	15 lbs. seed	\$0.40	1/2 bu.	30 lbs. seed	\$0.40
1/2 bu.	30 lbs. seed	.60	1 bu.	60 lbs. seed	.70
1 bu.	60 lbs. seed	1.00	3 1/2 bu.	210 lbs. seed	1.80
5 bu.	300 lbs. seed	4.75	5 bu.	300 lbs. seed	2.50

SPECIAL PRICES ON SOY BEANS AND COW PEAS

(Note sizes carefully—not packed in smaller sizes)

1-bu. size—inoculates	60 lbs. seed\$0.40
2-bu. size—inoculates	120 lbs. seed70
5-bu. size—inoculates	300 lbs. seed 1.50
10-bu. size—inoculates	600 lbs. seed 2.50

GARDEN NITRAGIN

Inoculates from 1 ounce to 8 lbs. seed of Beans, Peas, or Sweet Peas. **Price, 25c.**

IMPORTANT: When ordering NITRAGIN, always be sure to state kind of legume seed you wish to inoculate.



Archias' Select Flower Seeds

Containing the most popular varieties and choicest strains from the best growers in America and Europe. Adapted for cultivation in the conservatory, greenhouse and garden. Our seeds are fresh and germinate readily. OUR AIM IS TO SUPPLY NOTHING BUT THE BEST AND SUREST TO PLEASE.

All Flower Seeds Delivered Postpaid at Prices Given.

Archias' American Late Branching Asters

A splendid American strain, producing handsome double flowers on long stems. Plants from 2 to 3 feet in height, and branch freely. Any of the following: Per pkt., 10c; 3 pkts., 25c; ¼ oz., 45c; ½ oz., 75c.

HEART OF FRANCE. Deep ruby red.

DARK BLUE. A fine shade of deep violet-blue.

LAVENDER. Light lavender; large and double.

INVINCIBLE PINK. Deep rose-pink.

MARY SEMPLE or SHELL-PINK. Soft, rosy flesh.

WHITE. Large, double white.

SPECIAL OFFER—One packet each of the six named American Branching Asters for only 45c, postpaid.

AMERICAN LATE BRANCHING MIXED. Pkt., 10c; ¼ oz., 35c; ½ oz., 65c.

QUEEN OF THE MARKET (Mixed). A class of asters characterized by extreme earliness and the profusion of their flowers. Pkt., 10c; 1 oz., 85c.

Five Most Gorgeous Asters

Any of the following five "Gorgeous" Asters, large pkt., 10c; 3 for 25c; ¼ oz., 40c; ½ oz., 75c.

DAYBREAK ASTER. Delicate sea-shell pink.

LAVENDER GEM ASTER. Charming shade of lavender.

PURITY ASTER. A snow-white aster.

LADY ROOSEVELT. Magnificent rose-pink.

VIOLET KING ASTER. Soft violet-lilac. Pkt., 10c; oz., 75c.

SPECIAL OFFER—One packet each of the five new asters, Daybreak, Lavender Gem, Purity, Lady Roosevelt and Violet King, for only 40c; two collections for 75c.

Two New Asters

ARCHIAS' ENCHANTRESS PINK. Vigorous, upright habit with a profusion of large, long, strong-stemmed flowers, the color of Pink Enchantress Carnations. Extremely pleasing. Pkt., 15c; 2 pkts., 25c.

ARCHIAS' CRIMSON GIANT ASTER. This variety has all the good qualities of our Superb Late Branching type, but is of upright growth. Extra large. Color a very rich blood-crimson, full of fire. Pkt., 15c; 2 pkts., 25c.

One packet each Archias' Enchantress Pink and Archias' Crimson Giant Aster, for 25c.

ABRONIA (Sand Verbena). Rosy lilac flowers in profusion all summer. Plant for rock gardens. Requires sun. Pkt., 10c.

AGERATUM. Excellent for cut flowers and fine for large beds in Summer, and as pot plants in Winter. Height, 2 ft. Finest colors, mixed. Pkt., 5c; oz., 35c.

ALYSSUM (Madwort). (Little Gem, or "Carpet of Snow"). A dwarf, very compact growing variety, only six inches high. Pkt., 5c; ½ oz., 25c; oz., 45c.

SANATILE COMPACTUM (Basket of Gold). 9 in. May-June. Hardy perennial. Pkt., 10c.

AMARANTHUS, tricolor (Joseph's Coat). Pkt., 5c.

ARCHIAS' BALSAM or LADY SLIPPER (Double Camellia-Flowered). Finest mixed. Pkt., 5c; ¼ oz., 20c; ½ oz., 35c; oz., 75c.

CALENDULA (Pot Marigold). Orange King (New). Pkt., 5c; ¼ oz., 15c.

Lemon Queen. Sulphur-yellow color. Pkt., 5c; ¼ oz., 10c.

Ball's Orange. Florists strain of bright orange. Pkt., 15c; ¼ oz., 35c; 1 oz., \$1.00.

Radio. Petals attractively quilled. Deep golden yellow 3 pkts., 25c; ¼ oz., 45c; ½ oz., 75c.

CANDYTUFT.

Giant Empress. Hyacinth-flowered, large, pure white. Pkt., 5c; ¼ oz., 15c; oz., 45c.

Dwarf Hybrids. Mixed. Pkt., 5c; ¼ oz., 20c. All Colors Mixed. Pkt., 5c; ½ oz., 15c; oz., 25c.

CAMPANULA (Canterbury Bell).

Medium. Single, separate colors, white, blue and rose. Pkt., 10c.

Medium. Single, mixed colors. Pkt., 10c; ¼ oz., 25c.

Archias' Prize Mixture. A fine mixture of the best classes and colors, single, double and "Cup and Saucer" varieties. Pkt., 10c; 2 pkts., 15c.



Archias' Enchantress Pink Aster.

CASTOR BEANS (Ricinus). Giant Zanzibar. Pkt., 5c; oz., 15c; 2 ozs., 25c. Mixed Sorts. Pkt., 5c; oz., 10c; lb., 70c.

CLEVELAND CHERRY. Very beautiful and useful pot plant for Winter. 1 foot. Pkt., 15c; 2 pkts., 25c.

COLUMBINE (Aquilegia). Double Variegated Mixed. Pkt., 10c; ¼ oz., 20c.

Single Variegated Mixed. All the best sorts. Pkt., 5c.

ARCHIAS' NEW MARGUERITE CARNATIONS. The most magnificent of all the pink family. Flowers of perfect form large and very sweet scented. Mixed colors, Pkt., 10c; ¼ oz., 20c; ½ oz., 35c.

CHINENSIS or CHINA PINK. Double mixed. Pkt., 5c; ¼ oz., 25c.

DOUBLE CLOVE PINKS (Plumarius Flore Pleno). Hardy. Pkt., 10c.

HEIDELWIGI MIXED. Flowers three inches across; rich, beautiful colors. Pkt., 5c.

ARCHIAS' SPECIAL MIXTURE. Of single Dianthus Pinks, of easy culture. Pkt., 5c; ¼ oz., 25c; ½ oz., 40c; oz., 75c.

ARCHIAS' MIXTURE OF DOUBLE PINKS. All the double varieties, including the clove pinks. Large pkt., 10c.

CENTAUREA IMPERIALIS (Giant Sweet Sultan). Mixed colors, pkt., 10c; ¼ oz., 25c; 1 oz., 85c.

CENTAUREA CYANUS (Bachelor's Button). Finest mixed colors. Pkt., 5c; ¼ oz., 15c; oz., 25c.

CENTAUREA CANDIDISSIMA (Dusty Miller). Pkt., 10c.

CANNAS, FROM SEED. Large Flowering French. Large pkt., 5c; oz., 25c.

CANNA ROOTS. See Summer Flowering Bulbs.

CHINESE WOOLFLOWER. Flower heads of purplish crimson color. Pkt., 10c; 3 pkts., 25c.

COXCOMB (Celosia). Glasgow Prize. Pkt., 10c. Finest Dwarf. A choice mixture of all sorts. Pkt., 5c.

COREOPSIS. Large, golden yellow flowers borne in great profusion during the Summer. Pkt., 5c; oz., 50c.

ARCHIAS' MAMMOTH COSMOS.

Early Flowering. Mixed. Large varieties, a grand assortment. Pkt., 5c; oz., 50c.

Giant Late Flowering. Mixed. Pkt., 5c; oz., 30c.

Double-Crested. This is wonderfully beautiful. Mixed. Pkt., 15c.

DAISIES, SHASTA. Originated by Burbank. Pkt., 10c.

GOLDEN AFRICAN. (Dimorphotheca). Pkt., 10c.

BELLIS or ENGLISH MAMMOTH MIXED. Pkt., 10c.

DIGITALIS (Foxglove). Ornamental; hardy. Mixed colors, 5c.

EUPHORBIA VARIEGATA (Snow-on-the-Mountain). 3 ft. Pkt., 5c; ¼ oz., 15c.

EUPHORBIA HETEROPHYLLA (Annual Poinsettia). Also called Mexican Fire Plant. Easily grown. Pkt., 10c.

JOB'S TEARS. Hardy Annual. Ornamental grass. Pkt., 5c; oz., 15c.

MIGNONETTE, Sweet Grandiflora (Reseda Odorata). Pkt., 5c; oz., 20c.

EVERLASTINGS or STRAWFLOWERS.

Acroclinium: Mixed, pkt., 10c; ¼ oz., 25c.
Globe Amaranth. Mixed, pkt., 5c; oz., 20c.
Helichrysum. All colors. Mixed, pkt., 5c.
Mixed Everlastings. All colors. Pkt., 5c; oz., 40c.

FORGET-ME-NOT, Myosotis. Many colors, mixed. Pkt., 10c; ¼ oz., 20c.

FOUR O'CLOCK (Marvel of Peru). Mixed, all colors. Pkt., 5c; ½ oz., 15c; oz., 25c.

GYPSOPHILA Elegans. Annual Baby's Breath. Pkt., 5c; oz., 20c.

GYPSOPHILA Paniculata. Perennial. Pkt., 10c.

DAHLIAS, FROM SEED. Large flowering choicest double mixed. Pkt., 10c; ¼ oz., 30c; ½ oz., 50c.
Giant Perfection. Single mixed. Pkt., 10c; ¼ oz., 25c.

ESCHSCHOLTZIA (California Poppies). Finest Single Mixed. Pkt., 5c; oz., 25c.

HIBISCUS (Mallow Marvel). This is popular for backgrounds or foundation plantings. Has immense white, pink or red hollyhock-shaped blossoms. Mixed colors. Pkt., 10c.

HOLLYHOCKS, Fine Double Mixed. This is an especially good assortment of double flowering. Pkt., 5c; ¼ oz., 25c.

ICE PLANT. Pkt., 5c; ¼ oz., 15c.

HARDY LARKSPUR, Belladonna (Everblooming Hardy Larkspur). Pkt., 10c; 3 for 25c.
Bellamosum. Dark blue. Pkt., 10c; 3 for 25c.
Gold Medal Hybrids. Finest strain of Mixed Hybrids. Pkt., 10c; 3 for 25c.

LARKSPUR (Annual Varieties).

Hyacinth-Flowered. Mixed. Pkt., 5c; ¼ oz., 15c.
Stock-Flowered. Mixed. Pkt., 5c; ¼ oz., 15c.

MARIGOLD, African Tall Double Mixed. Pkt., 5c; ½ oz., 30c.

French Dwarf Double Mixed. Many striped and blotched. Pkt., 5c; ½ oz., 30c.

Legion of Honor. Single golden yellow blossoms marked with red. Pkt., 10c; ½ oz., 30c.

Dwarf African. Lemon quilled. Pkt., 10c.
Dwarf African (Orange). Pride of the Garden. Pkt., 10c.

MEXICAN FIRE BUSH (Kochia). This beautiful plant forms regular pyramids from 2 to 3 feet in height. Stays green all during the Summer and in the Fall turns fiery red.

CHILDSI IMPROVED. This is the latest type of Kochia. Pkt., 10c; ½ oz., 25c.

Imperial Japanese Morning Glory

These grand New Morning Glories from Japan are remarkable for their large size and exquisite colors. Pkt., 5c; oz., 35c.



Spencer Sweet Peas.

Moonflowers or Evening Glory

A beautiful rapid climber, having large flowers from 4 to 6 inches in diameter, that open in the evening.

GIANT WHITE. Pkt., 10c.

GIANT PINK. Pkt., 10c.

HEAVENLY BLUE. Flowers 4 to 5 inches across; color, sky-blue. Pkt., 10c.

SPECIAL OFFER. One packet each of the above three Grand Ipomoeas for 25c.

Miscellaneous Climbers

CARDINAL CLIMBER. Very beautiful, with clusters of fiery scarlet flowers. Pkt., 10c.

CYPRESS VINE. Mixed. Scarlet and white. Pkt., 5c; oz., 25c.

COBAEA VINE. Large, bell-shaped purple flowers. Pkt., 10c.

KULZU VINE SEEDS. Pkt., 10c; ¼ oz., 15c; oz., 50c.

KUDZU VINE ROOTS. Strong two-year roots. Grows more rapidly than from seeds, as seeds germinate very slowly. Each, 35c; 3 for \$1.00; 6 for \$1.75.

HYACINTH BEAN. Tender, ornamental climber.

Purple Sudan. Pkt., 5c; oz., 20c.

Princess Helen. White. Pkt., 5c; oz., 20c.

Mixed, pkt., 5c; oz., 20c.

BALSAM APPLE AND PEAR. Very curious, rapid and dense climbers, with ornamental foliage and golden yellow fruit, which open when ripe, showing the seed and blood-red interior. Pkt., 5c; oz., 35c.

WILD CUCUMBER. Quick growing climber. Pkt., 10c; ½ oz., 15c; oz., 25c.

Gourds

HERCULES CLUB. Grows six feet long. Pkt., 5c.

SUGAR TROUGH. Often used for buckets. Pkt., 5c.

DISH CLOTH or CHINESE SPONGE (Luffa). Pkt., 10c.

JAPANESE NEST EGG. White egg-like fruits. Pkt., 5c.

DIPPER GOURD. Used for dippers. Pkt., 5c.

Archias' Nasturtiums

ARCHIAS' SPECIAL MIXTURE OF NAMED DWARF NASTURTIUMS. Many pretty showy colors. Pkt., 5c; oz., 15c; 2 ozs., 25c; ¼ lb., 35c; lb., \$1.25.

ARCHIAS' FINEST MIXED TALL NASTURTIUMS. Composed of the finest and most distinct varieties in this grand free-flowering type. Planted in masses it will produce most gorgeous and showy effects. Pkt., 5c; oz., 15c; 2 ozs., 25c; ¼ lb., 35c; lb., \$1.25.

Archias' Superb Poppies

DOUBLE CARNATION FLOWERED. Of large size and variety of colors. Pkt., 5c; ½ oz., 15c.

ARCHIAS' PEONY FLOWERED. Double mixed. Pkt., 5c.

THE SHIRLEY POPPY. Colors from purest white, rose, pink, carmine and crimson. Very interesting. Pkt., 5c.

FLANDERS FIELD POPPIES. Cherished by the American Legion boys. Pkt., 10c; 3 pkts., 25c.

ARCHIAS' SPECIAL MIXTURE of above, and many other choice poppies. Pkt., 10c; ½ oz., 15c.

ORIENTAL POPPY. This is the large perennial Poppy with the blossoms at least six inches across. It is very easily grown from seed planted in the early Spring, or after the first of September in the Fall. Transplant them only during August and early September when dormant. Pkt., 10c.

SPECIAL OFFER—One packet each of the six varieties including the Hardy Oriental for only 35c.

Spencer Sweet Peas

(Orchid Type)

PRICE, NAMED SORTS: Pkt., 10c; oz., 30c; ¼ lb., 85c; lb., \$2.50.

Mrs. Tom Jones. A real azure-blue; beautifully waved and of great substance.

Royal Scot. A true orange-cerise-scarlet.

Hawmark Pink. Rich, bright rose-pink, deeply flushed and shaded salmon.

Archias' White King. Pure white.

Queen Victoria. Cream-white, mottled rich orange-salmon.

Florence Nightingale. Largest lavender Spencer yet introduced.

Bridesmaid. Pleasing shade of rich salmon-pink.

Hercules. A magnificent soft rose-pink.

King Edward Spencer. Standard and wings deep rosy carmine-scarlet, reverse of wings deep rosy carmine.

Special Offer. One packet each of the above 9 wonderful orchid-flowering Sweet Peas for only 50c.

Spencer Mixed. Pkt., 10c; oz., 25c; ¼ lb., 75c.

Hardy or Everlasting Peas

Climbers, growing 6 to 8 feet. Flowers red, white and flesh colored. The roots penetrate the ground to a great depth and survive our winters. Mixed Colors. Pkt., 10c; ½ oz., 15c; oz., 25c.

PORTULACA (Rose Moss).

Large Flowering Single. Mixed. Pkt., 5c; ¼ oz., 20c; oz., 50c.

Large Flowering Double Varieties. Mixed. Pkt., 10c; 2 pkts., 15c.

SCABIOSA (Mourning Bride). Mixed double flowering sorts. Pkt., 5c.

SNAPDRAGON (Antirrhinum).

Dwarf Varieties. Finest mixed. Pkt., 10c.

New Large Flowering Tall Mixed. Pkt., 10c.

Nelrose Pink. Pkt., 15c; ¼ oz., 40c.

SUNFLOWER (Helianthus). Cut-and-Come-Again. Small yellow flowers with black center. Blossoms all Summer. Pkt., 5c.

California. Double, orange colored flowers; free bloomer. Pkt., 5c.

Giant Russian. Flowers 20 inches across. Pkt., 5c.

Salvia (Flowering Sage)

BONFIRE (Fireball). New. Best scarlet, 18 to 20 inches. Pkt., 10c; ¼ oz., 60c.

FIREBRAND. Extra dwarf scarlet bedder. Blooms from early spring 'til frost. Pkt., 15c; 2 pkts., 25c.

Archias' Giant Pansies

ARCHIAS GIANT FLORIST'S MIXTURE. Richest, handsomest and largest Pansies known. Profitable for florists. Pkt., 15c; ¼ oz., 75c; ¼ oz., \$1.25; oz., \$4.50.

GIANT TRIMARDEAU. Mixed, pkt., 10c; ¼ oz., 30c.

LIBERTY PARK MIXTURE. Finest mixed, large, fine colors. Pkt., 10c; ¼ oz., 30c; ¼ oz., 50c.

Archias' Gorgeous Petunias

BLOTCHED AND STRIPED SINGLE. Beautiful large flowered, striped and blotched Petunias of the most symmetrical shape and form; sure to please. Pkt., 10c; 3 pkts., 25c.

FLUFFY RUFFLES. The petals are waved and frilled and curled and twisted, giving an extremely dainty and pretty flower. Pkt., 25c.

ROSE OF HEAVEN. Or Improved Rosy Morn. Soft rose-pink with white throat; very dainty. Pkt., 10c; 3 pkts., 25c.

ELK'S PRIDE. Plain, edged black-purple. Pkt., 20c; 2 pkts., 35c.

FINE MIXED SINGLE BEDDING. A splendid mixture of single varieties, beautifully striped, blotched and mottled. For borders and massing. Pkt., 5c; ¼ oz., 25c.

Archias' Large Flowering Phlox

PHLOX DRUMMONDI GRANDIFLORA. Choice mixed. Popular large-flowering sorts; all colors. Pkt., 10c; ¼ oz., 30c.

DWARF DRUMMONDI NANA COMPACTA MIXED PHLOX. Valuable for low beds, edgings and pot culture, of compact growth, 8 inches high. Mixed colors. Pkt., 10c; ¼ oz., 30c.

THUNBERGIA. Mixed. Pkt., 10c; ¼ oz., 25c.

SWEET WILLIAM. Mammoth. Mixed single varieties. Pkt., 10c.

Mammoth. Mixed, double varieties. Pkt., 10c.

Archias' Fairy Brand Plant Food

Archias' Fairy Brand Plant Food assures house plants a healthy growth, makes them quick flowering, gives the foliage a deeper, richer green. A pinch in a vase of cut flowers preserves them bright and fresh a much longer time. Make home beautiful by securing the best results with your plants. Everyone can do so by using Fairy Brand Plant Food according to simple directions on every package.

With each package we send free the book, "How to Make the Window Garden a Success."

PRICE PER CAN (feeds 25 plants 6 months), 20c, postpaid. 2 cans for 35c. Order a can today.



Double Dahlia-Flowered Zinnia.

Double Dahlia-Flowered Zinnias

BODGER'S PRIZE WINNING STRAINS

Flowers of mammoth size and in form like a perfect decorative dahlia. They are just as easy to grow as the Mammoth Zinnias, and the large flowers with their beautiful range of colors are simply indescribable.

SPECIAL MIXTURE. Pkt., 10c; 3 pkts., 25c, postpaid.

New Giants of California

This is the largest flowering of all Zinnias, growing 3 to 4 feet tall. The flowers differ from the Giant Mammoth type in having smaller flat centers and more loosely placed petals.

LEMON QUEEN. Canary-yellow.

PURITY. Pure white flowers.

ORANGE KING. Glistening orange.

ROSE QUEEN. Bright rose.

SCARLET GEM. Pure scarlet.

ENCHANTRESS. Rose-pink.

MISS WILLMOTT. Soft pink.

Any of the above. Pkt., 10c; 1/16 oz., 25c; ¼ oz., 40c.

MIXED. This is a complete mixture of all the colors in this type. Pkt., 10c; 1/16 oz., 20c; ¼ oz., 35c.

Lilliput Zinnias

A beautiful border plant, 18 inches tall, with small, double, symmetrical flowers.

GOLDEN GEM.

SALMON-ROSE.

CANARY-YELLOW.

WHITE GEM.

SCARLET GEM.

Any of the above. Pkt., 10c; ¼ oz., 45c; ½ oz., 75c.

DOUBLE LILLIPUT. Mixed. Contains all colors. Pkt., 10c; ¼ oz., 30c; ½ oz., 50c.

Verbenas

Our Mammoths are truly large and beautiful. The following named varieties are furnished separate:

ARCHIAS' NEW MAMMOTH MIXED. Embracing all sorts, including the eyed and variegated verbenas. Pkt., 5c; ¼ oz., 40c; oz., \$1.50.

HYBRIDA ATROPURPUREA. Giant purple. Pkt., 15c.

HYBRIDA LUMINOSA. Giant flame pink. Pkt., 15c.

Summer Flowering Bulbs

All Bulbs Under This
Heading Are Prepaid

Angel's Lily - *Ismene Calathina*

Summer and Winter flowering. Produces with freedom, giant Amaryllis-like pure white fragrant blossoms. Can be taken up in Fall, and, after a few weeks' rest, potted for Winter blooms or kept over for planting another season. 35c each; 3 for \$1.00; 12 for \$3.50. Largest size 18c each.

Calla Lilies - *Calla Aethiopica*

Large, beautiful, pure white flowers, easy culture. 25c each; 45c per two, postpaid. Larger bulbs, 40c each; \$1.00 per three.

NEW YELLOW CALLA (Mrs. Roosevelt). Flowers light clear yellow, foliage blotched white. 40c each; \$1.00 per three, postpaid.

Caladium Esculentum - Elephant Ear

Good Sized Bulbs. Six to eight inches around. 10c each; 3 for 25c; doz., 75c.

Medium Bulbs. Eight to ten inches around. 15c each; 2 for 25c; doz., \$1.25.

Mammoth Bulbs. Ten to twelve inches around. 35c each; 3 for \$1.00.

The Seven Best Gladioli

ARCHIAS' NEW PRIZE WINNING SORTS
ALL PREPAID

AMERICA. Beautiful flesh-pink, tinged lavender. Old favorite. 3 for 15c; 45c per doz.; \$2.50 per 100.

ANNA EBERIUS. Dark velvety purple, very dark throat. 3 for 20c; 50c per doz.; \$3.50 per 100.

GOLDEN MEASURE. Large, thick flowers with heavy stems. Orange-yellow with gold blotch on lower petal. 3 for 20c; 50c per doz.; \$3.50 per 100.

LOS ANGELES. Shrimp-pink with orange-carmine throat. 3 for 20c; 50c per doz.; \$3.50 per 100.

MRS. LEON DOUGLAS. Flowers of enormous size on very long stems. Begonia-rose color with flame-scarlet stripes. 3 for 20c; 65c per doz.; \$4.75 per 100.

ALBANIA. Glistening pure white, without throat markings—clearest and finest white yet produced. 3 for 15c; 50c per doz.; \$3.00 per 100.

VIRGINIA. Iridescent color shifting from shining scarlet to raspberry-red. Fine long spikes. 3 for 25c; 75c per doz.; \$3.50 per 100.

SPECIAL OFFER

1 bulb of each (7 bulbs), prepaid for\$0.40
6 bulbs of each (42 bulbs), prepaid for 1.75
12 bulbs of each (84 bulbs), prepaid for 3.00

ARCHIAS PRIZE MIXTURE. A superb mixture of the standard type of Gladiolus composed of strictly first-size bulbs. A great variety of shades and colors are included, many of the newer varieties. They will please you. Doz., 30c; 25 for 50c; 100 for \$1.75, prepaid.

Archias' Hardy Lilies

THE QUEEN OF FLOWERS

AURATUM (Golden Banded Lily of Japan). Extra large. 35c each; \$3.50 per doz.

SPECIOSUM RUBRUM. White shaded deep rose and spotted red. Extra large bulbs. 35c each; \$3.50 per doz.

CANDIDUM (St. Joseph's or Annunciation Lily). 35c each; \$3.00 per doz.

WHITE DAY LILY (Funkia). Beautiful white flowers, blooms in clusters. 35c each; \$1.00 per three, postpaid.

YELLOW DAY LILY (*Hemerocallis flava* or Lemon Lily). Very bright, pleasing color. 20c each; 50c per three; \$1.60 per doz.

REGALE. A grand new Lily from China. White with yellow center. 3 to 4 feet high; very fragrant flower; perfectly hardy. 25c each; 6 for \$1.00.

SPECIAL OFFER

One each of the six elegant Japan and other hardy Lilies listed in next column, including the Day Lily and the Regal Lily, for only \$1.75, postpaid.

WATER LILIES. Sweet scented. White, each 50c; 3 for \$1.25. Pink, each, \$1.50; 3 for \$4.00.



Six Gorgeous Decorative Dahlias For \$1.35

JEAN KERR. The most valuable white Dahlia with lovely medium-size blooms carried on long stems. Blooms early and continuously.

MINA BURGLE. Producing flowers of gigantic size and remarkable beauty; brilliant scarlet. Flowers are decorative type.

PRIDE OF CALIFORNIA. Immense brilliant cardinal. Excellent cut flowers. Keeps well.

SYLVIA. Flowers 4 to 6 inches; color white shaded soft pink; a good one.

YELLOW DUKE. Decorative. Canary yellow, quilled petals; giant flowers.

MISS MINNIE McCULLOUGH. Color soft yellow, overlaid with bronze.

Price of above, 25c each; 5 for \$1.00; 12 for \$2.00, postpaid

Four Best Decorative Dahlias

1 each (value \$3.00) for\$2.25
3 each (value \$9.00) for 6.50

JANE COWL (I. D.) A striking Dahlia presenting a blend of bronze, buff, and brilliant gold. Massive, well shaped, and huge. \$1.00 each.

JERSEY'S BEAUTY. This is certainly a beauty and should be in every garden on account of its wonderful color and stem—in a class by itself—a beautiful pink. 50c each.

MRS. I. DE VER WARNER. The queen of the garden—a most charming color of deep mauve-pink. True type and very fine form on wonderful stem. 50c each.

SAGAMORE. Bright amber-gold, with just a ray of warm salmon-rose and orange-buff. It is one of those lovely Autumn shades. \$1.00 each.

MIXED DOUBLE DAHLIAS. Over 100 choice and valuable sorts, including many of last year's novelties in mixture and unnamed. 10c each; 6 for 50c; doz., 90c, postpaid. By express, at purchaser's expense, doz., 75c; 100 for \$5.00.

Orchid-Flowering Cannas

Price—Your choice, 10c each; 3 for 25c; doz., 90c; 25 for \$1.75, postpaid.

QUEEN HELEN ("Yellow King Humbert") Leaves green instead of bronze; immense flower, brilliant yellow spotted with red. 4 to 4½ feet.

KING HUMBERT. Bronze-leaved; flowers are bright orange-scarlet. Height, 5 feet.

THE PRESIDENT. Green foliage. Color bright glistening scarlet. Height, 5 feet.

HUNGARIA. Color, purest La France pink with satin sheen. The most delicate pink in Cannas. 3½ feet.

MIXED LARGE FLOWERING CANNAS

Every season we have a considerable number of unnamed large flowering Cannas, which we offer at low price of 10c each; doz., 75c; 25 for \$1.50; 100 for \$4.50, postpaid.

Archias' Choice Hardy Perennial Plants

All perennials are strong, field-grown plants with the exception of a few which are pot-grown. All varieties in this list, except where otherwise quoted, 25c each; \$1.00 per 5; \$2.50 per doz.; \$16.00 per 100, postpaid.

ACHILLEA

PTARMICA, BOULE DE NEIGE (Ball of Snow). An improved Pearl with fuller and more perfect flowers. Fine for cutting. 1½ feet. June to September.

MILLEFOLIUM ROSEUM (Rosy Milfoil). July to October. Rosy pink flowers in dense heads, on stems 18 inches high. Effective on edge of shrubbery or in border. 3 for 50c; 12 for \$1.50, postpaid.

ALYSSUM

SAXATILE COMPACTUM. Broad masses of bright yellow flowers in early spring. Excellent for rockery or front of borders. 1 foot. 3 for 50c; 12 for \$1.50, postpaid.

ANCHUSA

ITALICA, DROPMORE. Gentian-blue; pyramidal spikes. 4 to 5 feet. June.

AQUILEGIA

COERULEA (Rocky Mountain Columbine). Blue and white; long spurs. 1½ feet. May-June.

COERULEA, LONG SPURRED HYBRIDS. A magnificent strain of the choicest Columbines. 2½ to 3 feet. May-June. 3 for 50c; 12 for \$1.50, postpaid.

HARDY ASTERS

(Michaelmas Daisy or Starwort)

Among the showiest of our late flowering hardy plants, giving a wealth of bloom during September and October. 3 for 50c; 12 for \$1.50, postpaid.

CAMPANULA (Canterbury Bells)

18 to 24 inches high; flowers produced freely during June and July. **MIXED COLORS**. 3 plants for 60c; \$1.75 per doz., postpaid.

CALYCANTHEMUM (Cup and Saucer Canterbury Bells). Choice hybrids. 2 to 3 feet. June.

CARNATIONS (Hardy Grenadin)

We have a nice stock of these free-flowering, fragrant garden Carnations. With a little protection they are hardy everywhere. Flowers are large. **MIXED COLORS**. 3 for 50c; 12 for \$1.50.

COREOPSIS

LANCEOLATA. Golden yellow. 2 feet. June-October.

GRANDIFLORA. One of the most popular hardy plants. The flowers are a rich golden yellow, of graceful form and invaluable for cutting; bloom during the entire summer and autumn. 30c per 3; \$1.00 per doz., postpaid.

CHRYSANTHEMUMS

GLORY OF SEVEN OAKS. Everblooming hardy "mum." Brilliant clear yellow. Earliest and longest season.

PETIT LOUIS. Tall growing, beautiful rose-pink color with mauve center. Very attractive.

NORMANDIE. Large flowering, creamy white. Very early and free flowering.

BOSTON BRONZE. Wonderful satin bronze color.

INDIAN. Soft red, flowers beautiful shade, good size.

Price, any variety: Any three for 50c; \$1.75 per doz., postpaid.

DELPHINIUMS

GOLD MEDAL HYBRIDS. Hardy. Grows 24 to 60 inches. Plant in sunny location. Blooms June to September. One of the most popular, attractive and meritorious hardy border plants. "Gold Medal Hybrids" represent selected varieties. Nice young plants, 30c each; 75c per 3; \$1.50 per 6; \$2.50 per doz.

BELLADONNA. The clear turquoise blue of its flowers is unequaled. 3 for 50c; \$1.75 per doz.

BELLAMOSUM. This is a dark blue form of the popular light blue Belladonna, with which it is identical in freedom of bloom and other good qualities but with intensely rich, deep blue flowers. 50c per 3; \$1.75 per doz.

DIANTHUS

PLUMARIUS (June Plants). Spicy fragrance. 1 foot. May-June.

DIELYTRA

SPECTABILIS (Bleeding Heart). 1½ feet. April-June. 75c each; \$7.50 per doz.

DIGITALIS

GLOXINIAEFLORA, THE SHIRLEY (Giant Foxglove). (New). Many new colors. 6 to 7 feet. June-July.

FUNKIA

UNDULATA VARIEGATA. Creamy white foliage marked with bright green. Light blue flowers. 30c each; 3 for 75c; \$2.50 per doz.

SUBCORDATA. Magnificent for shaded or semi-shaded locations, bearing large white flowers during the summer. 2 feet tall. Showy leaves. 35c each; 3 for \$1.00; \$3.00 per doz.

GAILLARDIA

GRANDIFLORA HYBRIDS. Yellow and orange-red; very brilliant. 1½ feet. May-November. 3 for 40c; 12 for \$1.25, postpaid.

GEUM

MRS. BRADSHAW. Double; orange-red. 2 feet. June-September.

GYPSOPHILA

PANICULATA (Baby's Breath). Grayish white. 2 to 3 feet. June-July.

GOLDEN GLOW (Rudbeckia)

4 to 7 feet. Produces numerous stems laden with double, golden yellow flowers, lasting well when cut. 3 for 50c; 12 for \$1.50, postpaid.

HARDY HIBISCUS

NEW GIANT FLOWERING (Mallow Marvels). Enormous flowers frequently 10 to 12 inches in diameter. Thrive in dry or wet ground. Perfectly hardy. In separate colors, Red, Pink and White.

HOLLYHOCKS

SINGLE MIXED. Splendid color range. 5 to 7 feet. July-September.

DOUBLE, CHATER'S FINEST. White, Pink, Yellow and Crimson. 5 to 7 feet. July-September.

MYOSOTIS

PALUSTRIS SEMPERFLORENS (Everblooming Forget-me-not). Bright blue. June to October.

ARCHIAS' PROFUSE FLOWERING HARDY PHLOX

Price: Nice, 1-year, field-grown plants, 25c each; 5 for \$1.00; \$2.00 per dozen.

JULES SANDEAU. (Medium). Lively salmon-pink, light center.

R. P. STRUTHERS. (Tall). Bright rosy red, claret red eye.

RHEINLANDER. (Medium). Beautiful salmon-pink, deep red eye.

THOR. (Medium). Soft ruddy salmon with mottled center.

MRS. JENKINS. The best all-around pure white. Very effective for massing; early and free bloomer.

PANTHEON. A variety medium in height. Color bright salmon-pink with lighter shadings and dark crimson eye.

POPPY

ORIENTAL. Nothing can equal these Poppies during their period of flowering for a gorgeous display of a rich, brilliant coloring. Each, 25c; 3 for 70c; doz., \$2.50, postpaid.

PLATYCODON

GRANDIFLORA (Saucer Flower). Blue or white, balloon-shaped buds; most attractive. 1½ feet. June-July.

PYRETHRUM

HYBRIDUM (Colored Daisies). Mixed. 2 feet. June-July.

SALVIA, HARDY BLUE

AZUREA. A Rocky Mountain species. 3 to 4 feet high, producing during August and September, pretty sky-blue flowers in the greatest profusion. Plants, 2 for 25c; 12 for \$1.00, postpaid.

SEDUM

SPECTABILE BRILLIANT. A new variety having flowers of a bright shade of deep crimson.

SPURIUM COCCINEUM. 6 inches, 1-inch leaves on creeping branches; crimson flowers on red stems. 20c each.

KAMTSCHATICUM. Orange-yellow flowers, with prostrate, green foliage, turning golden in autumn.

All varieties, 3 for 50c; \$1.75 per doz.

SHASTA DAISY

ALASKA. A decided improvement. Pure glistening white. 1½ ft. June-September. 3 for 50c; 12 for \$1.50, postpaid.

STATIC (Great Sea Lavender)

LATIFOLIA. Large, spreading panicles of light, graceful, deep blue flowers; prized for winter decoration, dried.

SWEET WILLIAM (Dianthus Barbatus)

DOUBLE MIXED. A well known, attractive, free-flowering hardy perennial, producing in early summer a splendid effect in beds and borders. Containing all colors. 20c each; 3 for 50c; \$1.75 per doz.

TRITOMA (Flame Flower)

Grows 2 to 4 feet in sunny location. The flower spikes are of gigantic size, frequently 4½ feet high, with heads of blooms over 12 inches long, from July to October, of rich orange-scarlet shading to salmon-rose. Nice plants.

VERONICA

BLUE RIDGE. Bright blue; handsome spikes. 2 feet. July-September. 3 for 50c; 12 for \$1.50, postpaid.

VINCA

MINOR (Myrtle). Blue flowers. Splendid for shade; grows anywhere. 6 inches. April-May.

YUCCA

FILAMENTOSA (Adam's Needle). Of tropical appearance; large pyramidal clusters of creamy flowers. 4 to 6 feet. June-July.

Collection of Hardy Perennials

For customers who are not acquainted with the various varieties, we offer the following collections, in varieties strictly of our selection, in good, strong roots, that will, with little care, keep the garden gay with flowers from the time frost leaves the ground until late in autumn.

12 plants, assorted, our selection, postpaid	\$1.25
25 plants, assorted, our selection, postpaid	2.25
50 plants, assorted, our selection, postpaid	4.00
100 plants, assorted, our selection, postpaid	7.50

Hardy Flowering Shrubs and Trees

Hedges, Vines and Shade Trees Will Make Your House a Home

Hardy two-year-old field grown shrubs, well branched, that will bloom the first season after planting. Many have already bloomed in the nursery row. The selection of shrubs we offer has been chosen for a wide range of height, color and type of bloom.

Note sizes offered vary considerably with the different varieties, due to the habits of growth. For instance a 12- to 18-inch Crimson Spirea is as strong and healthy a plant as a 2- to 3-ft. Syringa.

For Spring shipment February 15th to May 1st.

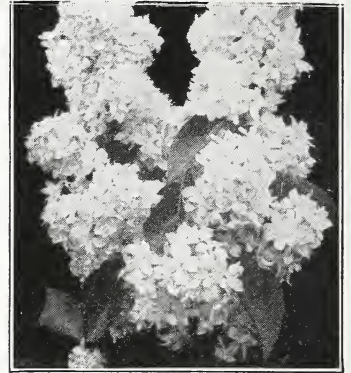
Shrubs Prices Prepaid

	Each	Per 5 Each
Althea or Rose of Sharon. Pink, white or red. 2 to 3 ft.	\$0.55	\$0.45
Barberry, Japanese. 18 to 24 in.50	.40
Beauty Bush. Pale pink bells marked with orange veins.75	.60
Beechler's Double Flowering Crab. 2 to 3 ft.	1.05	.95
Corallberry or Indian Currant. 2 to 3 ft.45	.40
Cydonia Japonica (Japan Quince or Firebush)60	.50
Deutzia, Bride of Rochester. 2 to 3 ft.45	.35
Forsythia or Golden Bell, Upright. 2 to 3 ft.55	.45
Forsythia or Golden Bell, Weeping. 2 to 3 ft.65	.55
High Bush Cranberry. 18 to 24 in.65	.55
Honeysuckle, Japan Bush. 2 to 3 ft.45	.40
Hydrangea, Arborescens Grandiflora. 18 to 24 in.65	.55
Hydrangea, Paniculata Grandiflora. 18 to 24 in.65	.55
Lilac, Budded. Dark purplish red, double white, double blue. 2 to 3 ft.95	.85
Lilac, Persian Purple. 2 to 3 ft.80	.70
Lilac, Common Purple. 2 to 3 ft.55	.45
Snowball, Common. 12 to 18 in.60	.50
Snowball, Japanese. 18 to 24 in.75	.65
Snowberry. 2 to 3 ft.55	.45
Spirea, Crimson. 12 to 18 in.55	.45
Spirea, Billiard's. Pink. 2 to 3 ft.55	.45
Syringa or Mock Orange. 2 to 3 ft.45	.40
Tamarix, Pink flower. 2 to 3 ft.60	.50
Weigela. Pink. 2 to 3 ft.55	.45
Weigela Hybrid, Eva Rathke. Red. 18 to 24 in.55	.45

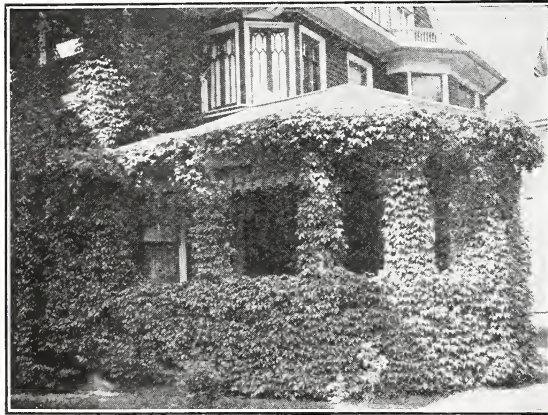
EVERBLOOMING BUTTERFLY BUSH (Deciduous Shrub, Buddleia Variabilis Magnifica). Blooms all Summer. It produces long, graceful stems of beautiful lilac colored flowers that are borne by the hundreds. Nice plants, 35c each; 5 for \$1.00; \$2.00 per doz., postpaid.



Golden Bell.



Syringa—Lilac.



Englemann's Ivy.

Hardy Japanese Kudzu Vine

(Pueraria Thunbergiana; "Jack-and-the-Bean-Stalk" Vine)

The most remarkable and rapid growing of all hardy vines, often making a growth of 50 to 75 feet in one season and flourishes where nothing else will grow; will last for 25 years or more. Valuable for covering porches, arbors, fences, old trees, etc. Large, 2-year-old plants, 35c each; 3 for \$1.00; 6 for \$1.85, postpaid.

Chinese Wisteria

Two-year plants, 35c each; 3 for \$1.00, postpaid.

CHINESE PURPLE. Rich, violet-purple, deliciously scented and handsome.

CHINESE WHITE. Similar habit to the purple variety.

Silver Lace Vine

(Polygonum Auberti)

This is a very popular vine. Is a vigorous grower, attaining a height of 10 to 15 feet, producing numerous small, creamy white flowers through summer and fall. Very satisfactory. 75c each, postpaid.

Archias' Hardy Climbing Vines Ampelopsis

Two-year, strong, 35c each; 3 for \$1.00.

AMPELOPSIS VEITCHI (Japan or Boston Ivy). A rapid grower, with small purplish green leaves, which change in Autumn to beautiful tints of crimson and orange.

ENGELMANN'S IVY. This is the hardiest of all climbing ivy. Climbs rocks, wood, stone or brick.

Clematis

CLEMATIS PANICULATA (Japanese Virgin's Bower).

One of the finest climbers; clouds of small, fragrant flowers; blooms in August and September. 2-year, strong plants, 35c each; 3 for \$1.00, postpaid.

JACKMANI. Large violet-purple. 95c each; 3 for \$2.60.

Honeysuckles

Two-year plants, 35c each; 3 for \$1.00, postpaid.

HALL'S JAPAN or HALLIANA. White and creamy yellow; fragrant; bloom the whole season. Almost evergreen.

MONTHLY FRAGRANT. Red and yellow; very fragrant. Blooms all Summer.

Hardy English Ivy

This is a hardy, evergreen climbing vine, for covering the walls of churches and for covering graves. 35c each; 3 for \$1.00, postpaid.

Lathyrus Latifolius

(Perennial Flowering Peas)

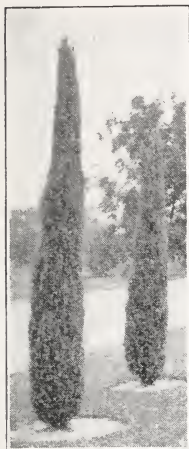
The popular perennial flowering Pea, called Hardy Sweet Pea; however, they have no fragrance. Usually supply pink and crimson 25c each; 5 for \$1.00; 12 for \$2.00, postpaid.

Four Easily Grown Hardy Vines

For Only **\$1.00**

1 Wisteria 1 Hardy Japanese Kudzu Vine
1 Honeysuckle 1 Clematis Paniculata

ARCHIAS' EVERGREENS for Year Around Beauty



Irish Juniper.

Archias' Evergreens will add a certain beauty to your lawn that you can get from no other plant. Their rich green foliage and pleasing form make them very attractive both summer and winter. Plant at least two or three Archias Evergreens this year as a start toward beautifying your home.

AMERICAN ARBOR-VITAE. Most popular evergreen. Used for windbreaks, hedges, etc. Flat foliage of dark and light green. Vigorous. 18 to 24 inch.

GLOBE ARBOR-VITAE. Dwarf, globular form. Dense foliage. Low growing. Fine for foundation planting. 12 to 15 inch.

PYRAMIDAL ARBOR-VITAE. Narrow growing, compact tree. Fine for formal effects. Bright green foliage. Very desirable. 18 to 24 inch.

NORWAY SPRUCE. Tall growing, with spreading branches. Rapid grower. Foliage dark and dense. Splendid for windbreaks. 18 to 24 inch.

BLACK HILLS SPRUCE. Medium growing Spruce. Rapid grower; very attractive, dense foliage. 18 to 24 inch.

PFTZER JUNIPER. A spreading Juniper of unusual form. Not symmetrical. Splendid for borders. Very popular. 12 to 15 inch.

IRISH JUNIPER. Narrow at top and bottom. Bright green foliage. Excellent for doorway decoration or in group plantings. 18 to 24 inch.



Norway Spruce.

NOTE. When planting Evergreens do not remove burlap. After putting ball of earth in hole, cut top strings, fill in soil around ball, using plenty of water to settle soil firmly.

ARCHIAS' EVERGREEN PRICES

Your choice of any Evergreen listed here, **\$1.75 each**; 10 for **\$15.00**. You pay express charges. **Larger sizes may be purchased at our nursery grounds at 4th and Park Ave**

Archias' Evergreen Collections

LAWN COLLECTION—\$5.50

	Inches
5 White Spruce	8-10
5 American Arbor-vitae	10-12
5 Douglas Fir	8-10
5 Mugho Pine	6-8

ROCK GARDEN COLLECTION—\$1.25

1 Pftzer Juniper	8-10
1 Savin Juniper	8-10
1 Mugho Pine	6-8
1 Woodward Arbor-vitae	10-12
1 Douglas Fir	10-12
1 Pyramidal Arbor-vitae	10-12
1 White Spruce	10-12
1 American Arbor-vitae	10-12

FOUNDATION COLLECTION—\$7.25

2 Pftzer Juniper	10-12
2 Mugho Pine	10-12
2 Pyramidal Arbor-vitae	12-18



American Arbor-Vitae.



Black Hills Spruce.

Hedge Plants

Hedges are of course more beautiful though less expensive than fences.

Prices Prepaid.

	Each	5	25	100
Privet, Amoor River North, Hardy, 12 in.	\$0.18	\$0.75	\$2.00	\$ 5.00
Privet, Amoor River North, 18 to 24 in.20	.89	3.00	7.50
Japanese Barberry, 12 to 18 in.35	1.12	3.97	12.00
Spiraea Van Houttei, 12 to 18 in.25	1.00	2.75	7.50
Spiraea Van Houttei, 18 to 24 in.35	1.75	3.75	12.00
Spiraea Van Houttei, 2 to 3 ft.60	2.50	8.50	25.00

Trees

UMBRELLA CATALPA (Catalpa Bungei). The large, heart-shaped leaves and umbrella-like top of this little tree make it a favorite for lawn planting and formal setting. **1-yr. heads, \$2.00 each; 2-yr. heads, \$2.50 each; 3-yr. heads, \$3.00 each.**

PUSSY WILLOW (Salix Discolor). Easily grown, highly prized for its downy buds, which appear early in the Spring, followed by a grand crop of golden yellow blossoms. We have the genuine stock—try one. **Each, 35c; 3 for \$1.00. Large plants, 50c to 75c each.**

TAMARIX ODESSANA (Caspian Tamarix). 4 to 6 feet. Exquisitely feathered foliage of silvery green, blooming in July and August with large, loose panicles of lavender-pink flowers. **Large plants, 75c each; 3 for \$2.00. Extra-large plants, \$1.50 to \$2.00 each.**

Evergreen Special

for Spring 1932

Golden Arbor Vitae

(Berckman's)

Dense slow growing type, fresh, bright golden color both summer and winter. Valuable for groups or specimen planting and on each side of walks and steps.

Size 24 to 30 in. (a \$4.00 value in 1931). Our special price—this spring, **\$2.00 each; pair, \$3.50.**

Archias' Selected Fruit Stock

Hardy, thrifty, vigorous trees and plants grown on our famous Ozark Mountain soil. The kind that make profitable, productive orchards. Every shipment carries State Nursery Inspection Certificate and is guaranteed by us to be free from injurious insects or disease; to be full of vitality; to reach you in good condition and to meet your approval on arrival.

For Fall shipment—October 25th to December 10th. For Spring shipment—February 15th to May 15th.

Pear - Standard

Bartlett, Seckel, Lincoln, Kieffer.

	Each	3	10	25
2 yr., 4 to 6 ft., branched	\$.075	\$2.10	\$6.48	\$12.50
1 yr., 3 to 4 ft.	.60	1.32	3.66	7.80

You are buying production, not trees. The best is the cheapest in the long run.



Wealthy Apple.

Apple

EAT APPLES FOR HEALTH

	Each	3	10	25
2 yr., 5 to 6 ft., well branched	\$.050	\$1.35	\$3.80	\$8.90
1 yr., 3 to 5 ft.	.40	1.10	3.10	6.98

Summer: Yellow Transparent, Duchess, Wealthy and Crabapple.

Fall: Jonathan, Grimes Golden, King David.

Winter: Delicious, Stayman, Black Ben, Winesap, York Imperial, Rome Beauty.

The varieties offered here have been carefully selected for their particular adaptability to soil and climatic conditions of Missouri, Kansas, Illinois, Arkansas and Oklahoma. They are proven varieties selected for their quality and productiveness and desirable for both home use or market.

Archias' Missouri Pride Peach

THE WORLD'S BEST PEACH

Resembles Elberta in color and flavor, but tree is hardier; a strong grower and productive. Bears when Elberta fails.

Price of Archias' Missouri Pride, 2-yr.-old extra choice trees, each, 65c; 3 for \$1.75; 10 for \$4.85. Order early.

Other Good Peaches

Every garden should contain a few Peaches—no fruit is more luscious and pleasing than a ripe, juicy Peach. Plant 16 feet apart; mulch in Spring.

Fill your fruit jars with Home Grown Peaches.

VARIETIES

Early: Early Rose, Carman.

Midseason: Champion, Belle of Georgia, J. H. Hale, Elberta, Early Elberta.

Late: Crosby, Late Elberta, Heath Cling.

If you could only compare stock when you compare prices you would appreciate more the extraordinary values we offer.

	Each	3	10	25
4 to 5 ft.	\$.050	\$1.35	\$3.80	\$8.06
3 to 4 ft.	.35	1.00	3.18	6.61

Plum

Bears abundantly at an early age.

Abundance, America, Burbank, Endicott, Shropshire, Damson, Red June, Wild Goose, Compass Cherry-Plum.

	Each	3	10	25
4 to 5 ft.	\$.075	\$1.98	\$5.26	\$10.56
3 to 4 ft.	.60	1.51	3.72	7.96

Though our prices are reasonable we offer only quality stock.

Cherry

VARIETIES

Early Richmond, Montmorency; midseason, highest quality. English Morello, late.

	Each	3	10	25
Well branched, 3 1/2 to 4 1/2 ft.	\$.075	\$2.10	\$6.48	\$12.50
Budded trees, 2 to 3 ft.	.47	1.47	3.68	7.76

Archias' reputation of 44 years of square dealing is back of your purchase.

Chinese Yellow Apricots

The hardest Apricot! Fruit large, two inches in diameter. Pale yellow and the half exposed to sun overlaid with red. By express or freight, 4 to 5 ft., 75c each; \$2.00 per 3.

Mastodon Everbearing Strawberries

This new everbearer has proven itself to be all that has been claimed for it. You have read some apparently extravagant stories about it. The results you will get from it will prove they are true. Mastodon will produce three large crops within 18 months after planting and big, fine berries, too. Try a patch this year—you will be pleasantly surprised. 25 plants, 75c; 50 for \$1.25; 100 for \$2.25; 500 for \$8.00, postpaid.

Standard Strawberries

A FEW OF THE BEST ONES

Those marked (P) are pistillate varieties. They are the most productive, but a row of (S), a staminate or perfectly formed sort, should be planted every 10 or 12 feet to pollenate the flowers.

EXCELSIOR. (S). Exceedingly prolific; extra early; bright shining red; excellent.

KELLOGG'S PREMIER. (S). Extra early. The prize winning, money making, frost proof Strawberry; hardy, productive, and beautiful. Succeeds everywhere, never fails to give a big crop of big, choice berries. Satisfies and delights everyone who sees it in fruit.

SENATOR DUNLAP. (S). Large size; medium late.

AROMA. (S). The best late.

GLEN MARY. (P). Bright, deep red; medium.

Prices, 25 for 35c; 100 for 85c; 200 for \$1.50; 500 for \$3.50; 1000 for \$6.50. By mail, add 10c per 100 for postage.



Premier Strawberries.

These trees and plants have thriftiness and vitality crown into them, carefully preserved by proper handling and are delivered to you in A-1 condition.

Special Large Quantity Wholesale Rates will be quoted on application to those who are planting commercial orchards. Give list of varieties desired, number of each and size preferred.

We guarantee all trees and plants to be true-to-name, but in no event do we stand liable for more than the purchase price.

Latham Raspberry

(Minnesota No. 4)

Yields Twice as Much as Other Red Raspberries.

Here is a new red Raspberry that was originated in Minnesota and acclaimed for its hardiness in that state. During the past few years its merits have spread with its planting throughout the middle and eastern states. The high yielding ability of the Latham is due largely to its resistance to Mosaic and other red Raspberry diseases; wherever tried, reports have been most favorable. It possesses the hardiness of "King" and produces very strong, vigorous, thornless canes; very productive. Berries are large, of highest quality, ripen evenly and hold up well throughout the season. The canes do not need covering even in severe locations. We have a fine stock of this splendid new variety and hope you will give it a thorough trial, as we are sure it will prove a money-maker for you, especially in a season when other standard varieties freeze out. 12 for 75c; 25 for \$1.00; 100 for \$3.00, postpaid.

Other Good Raspberries

	12	25	100
Cumberland and Kansas. Black	\$0.50	\$0.90	\$2.50
Cuthbert. Red50	.90	2.50
St. Regis. Red. (Everbearing)70	1.00	2.95

Blackberries

	12	25	100
Eldorado and Early Harvest	\$0.60	\$1.00	\$3.10

Dewberry Plants

	12	25	100
Lucretia Dewberry	\$0.60	\$1.00	\$2.95

New Purple Youngberry

The remarkably prolific Purple Blackberry-Dewberry that has created a sensation wherever grown. Flavors of Blackberry, Dewberry, Red Raspberry and Strawberry. Deep maroon-purple color. Large berries that sell at a high price on the market, and are delicious for table use, pies, canning, etc. 1-year, No. 1 plants, 6 for 85c; 12 for \$1.50; 25 for \$2.75; 50 for \$4.50; 100 for \$7.50.

Archias' Prolific Currants

We have a fine supply of heavily rooted, vigorous, disease-free, two-year plants and have priced them very low.

No garden is complete without them. Easy to grow and sure to bear. Our list comprises only the very best in cultivation. Plant 3 x 6 feet. Use Arsenate of Lead or Slug Shot for worms.

FAY'S PROLIFIC. The leading red market variety.

RED DUTCH. The old, well known red Currant.

WHITE GRAPE. Very productive; excellent quality.

Price, any of the above varieties, 2-year-old, 3 for 50c; 10 for \$1.50; 100 for \$8.00, prepaid.

PERFECTION CURRANT. Color a beautiful bright red; a great bearer, with rich, sub-acid flavor, plenty of pulp and a few seeds. Best Currant lately introduced. Won the gold medal of the Western New York Horticultural Society in competition with all the old leading varieties; also gold medal at St. Louis World's Fair. 3 for 65c; 10 for \$2.25.

Gooseberries

Gooseberries like a cool, moist loam in partial shade, and good mulch. Gooseberries are one of the most useful of all small fruits for the middle western territory.

DOWNING. Downing is a large, handsome, pale green berry and of splendid quality. Good for both cooking and table use. No. 1, strong plants, 3 for 50c; \$1.50 per doz.

HOUGHTON. Medium, rounding oval. Pale red, very sweet and tender. Prolific. This berry does not mildew. No. 1, strong plants, 3 for 50c; \$1.50 per doz.

JOSSELYN. A wonderful cropper, with bright crimson, healthy foliage. Large size, and prolific. No. 1, strong plants, 3 for 60c; \$1.75 per doz.

Special Currant and Gooseberry Collection

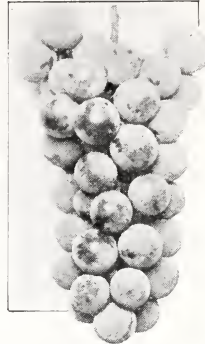
This is a real bargain and will give you a fine assortment of this fine fruit.

- 3 Perfection Currants
- 3 Fay's Prolific Currants
- 3 Downing Gooseberry
- 3 Josselyn Gooseberry

\$1.95

Twelve strong, 2-year plants, only

All Blackberries, Raspberries, Currants, Gooseberries and Dewberries are postpaid or express prepaid in zones 1, 2, 3 and 4; zones beyond add 10 per cent for postage.



Niagara.



Worden.

Archias' Delicious Table Grapes

Every home should have a dozen or more Grape vines planted on an arbor or along the garden fence. They are delicious to eat fresh from the vines; can be made into the most health producing grape juice; and jelly—well who doesn't like Grape jelly? Once planted the Grape vines will continue to yield for years with practically no special attention. Our Grapes are strong, well rooted plants that are sure to grow for you.

AGAWAM. Very large deep red berry, sweet and of fine flavor.

BRIGHTON. One of the best red grapes in cultivation. Bunches large and compact. Very productive.

CONCORD. Favorite black grape. Does well wherever planted. Large and productive.

DIAMOND. A leading early white grape with rich yellow tinge. Sweet and juicy. Large size.

MOORE'S EARLY. Good yielder, large berry. A valuable early, hardy black grape.

NIAGARA. Standard white. Fruit large and productive. Fine quality.

WORDEN. A splendid blue grape, ripening ahead of Concord. Vigorous and hardy.

Prices Prepaid

Strong 2-yr. vines

	Each	3	10	25
Concord	\$0.15	\$0.35	\$1.00	\$2.00
Moore's Early15	.35	1.00	2.00
Worden20	.50	1.25	2.50
Diamond20	.50	1.25	2.50
Niagara20	.50	1.25	2.50
Agawam20	.50	1.25	2.50
Brighton20	.50	1.25	2.50

Special Offer on Table Grapes

- 2 Concord
- 2 Moore's Early
- 2 Worden
- 1 Diamond
- 1 Brighton
- 1 Niagara
- 1 Agawam

10 vines, 2-year-old, as above, postpaid, for **\$1.00**

Directions for Planting Strawberries

For small gardens, plant 12 x 30 inches apart. For field culture, plant 1½ x 3 feet, requiring 8,000 plants per acre. Well drained, rich soil. Fertilize with Vigoro or Vegetable Special Fertilizer. Do not use stable manure as it will attract grubs and cut worms. Mulch in fall.

Insecticides—Poisonous Insecticides CANNOT be sent by mail—Express only.

TOBACCO DUST. Kills green and black lice, beetles, fleas, etc. Dust the plants with it. Lb., 10c; 10 lbs., 75c; 25 lbs., \$1.50; 100 lbs., \$5.00.

PARIS GREEN. ½ lb., 35c; lb., 60c.

SLUG-SHOT. Lb., 15c; 2 lbs., 25c; 5 lbs., 60c; 10 lbs., \$1.10.

INSECT POWDER GUN. Holds about 3 ounces of powder. 15c each; 3 for 35c.

Dry Lime-Sulphur



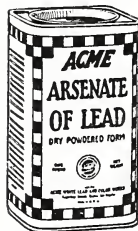
For dormant spray use 12 to 15 lbs. to each 50 gals. of water. For Summer spray, 3 to 4 lbs. to each 50 gals. of water.

Lime-Sulphur Powder. Lb., 35c; 5 lbs., \$1.20; 12½ lbs., \$1.90.

Lime-Sulphur Solution. Qt., 50c; gal., \$1.00; 5 gals., \$4.50; 10 gals., \$8.50.

Arsenate of Lead

(Dry). For dusting and spraying. Solves the problem of controlling practically all leaf-eating insects in an efficient manner. 1 lb., 30c; 4 lbs., 95c.



Bordeaux Mixture

(Dry). The best fungicide for curing and preventing black rot, mildew, blight, leaf curl, scab or other fungoid diseases on fruits and plants. 1 lb. will make 5 gallons liquid. Lb., 30c; 4 lbs., 95c.



Carbon Disulphide

For ants and cut worms. 1 lb., 50c.

MILDEW DUST. Carbonated Lime and Sulphur. An excellent preventative of Mildew, wilt and fungoid diseases on roses, asters, tomatoes, grapes, melons, etc. 4 ozs., 10c; lb., 30c; 5 lbs., \$1.00, postpaid.

Sulpho-Tobacco Soap

Nicotine, Sulphur and Soap—three well known insecticides, are all combined in this soap. Much more effective than a simple nicotine spray against black and green aphid, mealy bug, red spider and many other sucking insects.

Invaluable for spraying plants, shrubs, trees, vines; especially recommended for roses. Just dissolve in water. Simple directions with each cake.

A 3-oz. cake (makes 1½ gallons of prepared solution) mailed for 15c; 8-oz. cake (makes 4 gallons of solution), mailed for 30c; lb., 45c; 10 lbs., \$3.75, postpaid.



Germo Insecticide

The greatest disinfectant, germ and insect killer. Will not stain. Small bottle, 35c; large bottle, 65c; 1-gal. Jug, \$2.75.

Eureka Mole Exterminator

Kills moles instantly—guaranteed. Price, 50c per can.

Terro Ant Killer

Guaranteed to rid any place of ants in 24 hours or money refunded. Full directions with each package. 50c per bottle.

Nikoteen

Nikoteen (30 per cent). An economical and powerful nicotine extract. Death to aphid or green fly, spider, mealy bug, thrip, and many other forms of flower, fruit and vegetable lice. Small bottles, 30c and 50c; ½ lb., \$1.25; lb., \$2.25. Full directions on each bottle.

Black Leaf 40



is a solution of Nicotine Sulphate. It is highly recommended by Experiment Stations throughout the United States as a spray for soft bodied sucking insects. For spraying only. Directions must be followed carefully. 1-oz., bottle, 35c; 5-oz. bottle, \$1.00, (makes 40 to 100 gallons); 1 lb., \$2.25; 2-lb. can, \$3.35, (makes 200 to 500 gallons).

Cyanogas Calcium Cyanide "G"

Greenhouse fumigant. Aphid, white fly, thrips, soft scale, and mealy bug and control for crop destroying rodents. Lb., 75c; 5 lbs., \$2.50; 25 lbs., \$8.50; 100 lbs., \$25.00. Write for leaflet.



Volck

The scientific insecticide for nursery, greenhouse and garden. Controls scale insects, mealy bug, white flies, red spiders, rust mites, aphid and thrips. ¼ pt., 50c; pt., 75c; qt., \$1.00; gal can, \$3.00; 5-gal can, \$12.50.

Rat Corn

Will exterminate rats, mice and gophers from your premises in a safe, sane and sanitary manner.

It mummifies them. No matter where they die, they simply DRY UP. Positively do not smell.

Rat corn is a new scientific discovery, and without a doubt the greatest rat destroyer in the world. The only one that kills rats without any bad, dangerous or disagreeable effects. A trial will convince you. 25c, 50c and \$1.00 per can. 6-lb. pail, \$5.00. Add 5c for postage. Booklet "How to Destroy Rats" free with each can.

The Auto Spray

Eight to ten strokes of plunger in air chamber compresses enough air to discharge entire contents, making continuous spray for nine minutes. "Auto Spray" is improved by addition of the "Auto Pop" shown in illustration.

Price, galvanized iron reservoir, with "Auto Pop," \$6.50. Solid brass reservoir, with "Auto Pop," \$9.00.

Extension rods, 2-foot lengths. 50c. Two row attachment, \$1.50.



Archias' Faultless Sprayer

Capacity one quart. The best sprayer made. Throws a spray as fine as mist, rendering the use of strong solutions safe on tender foliage plants. Price, 48c, postpaid.

Archias' Continuous Sprayer

The only sprayer on the market that can be used as a fire maker, pipe thawer, flame sterilizer and oil generator, besides being a perfect sprayer for insecticides, disinfectants, lubricating oil, paints and lacquers. Holds one quart.

No. 1—135-lb. IX tin, brass atomizing head. 78c each, postpaid.

No. 2—All brass. \$1.15 each, postpaid.

Star Force and Spraying Pump

Throws a stream 40 feet and makes a spray as fine as mist, all with one nozzle. Has no equal for spraying trees, flowers, lawns, gardens or bath houses. Spray your cattle, hog or poultry houses with it.

The "Star" is all solid brass except handle, foot and hose. Has double-acting piston. Agitator at bottom. Has non-clogging spraying device. Price, only \$3.95.

Hudson Dust Sprayers

"Cadet." All metal; each, 60c.

"Guide." A good duster; each, 90c.

Bird Cages and Supplies

BARGAINS IN BIRD CAGES

A New Home for the Birdie
NEW DESIGN CAGE AND
STAND, POSTPAID
\$2.50

Complete with perches,
cups, and guards. Beautifully
Ducoed.

ALL BRASS BEEHIVE
CAGE. Complete with
seed guard, etc., including
brass stand as shown,
\$3.00, postpaid.

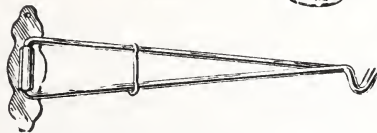
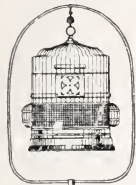
Other Styles from \$3.50
up; Cage Only, 75c; \$1;
\$1.25; \$1.65 and up.

Cage Brackets and Springs

BRACKET, Brass, 10-inch.
Each, 25c, postpaid.

CAGE SPRINGS, Single
heavy brass with chain.
Each, 25c, postpaid.

CAGE SPRINGS, Short.
Each, 10c, postpaid.



Breeding Cages

	Long	Wide	High	
No. 86,	19 1/2 in.	10 in.	14 3/4 in.	\$5.75
No. 87,	22 in.	11 in.	16 1/4 in.	6.50
No. 88,	24 1/2 in.	12 1/2 in.	17 in.	7.25

SEED CUPS, 10c, postpaid.
BATH DISHES, 15c, postpaid.

Bird Seeds

Our Bird Seed is strictly fresh and clean and our packages contain more seed than any other brand.

	Lb.	5 lbs.	10 lbs.
MIXED BIRD SEED	\$.015	\$0.60	\$1.00
HEMP SEED	.15	.60	1.00
CANARY	.20	.85	1.50
MILLET, (Recleaned)	.15	.50	.90
RAPE, Large German	.15	.60	1.00
SUNFLOWER SEED, For Parrots	.15	.60	1.00
MIXED SEED, For Parrots	.15	.60	1.00

HIGH GRADE GOLDFISH Price List of Goldfish

By express only, customer paying express charges.
CHINESE GOLDFISH, Small size, 20c each; 4 for 75c; \$2.00 per dozen. Medium size, 25c each; 3 for 65c; \$2.25 per dozen. Large size, 45c to 75c each.

JAPANESE FANTAIL FISH, Imported Japanese fish; very handsome. Price, according to shape and color, 50c to 75c each. Some extra choice, 75c to \$1.25 each.

TADPOLES, Used to keep the water pure. 10c each; 3 for 25c.

DOG AND CAT FOODS AND SUPPLIES

Postage extra if by mail.

SPRATT'S PUPPY BISCUITS. A perfect food for puppies of all breeds. Puppies should be started on these biscuits when about one month old and they should be continued until such time as their teeth become sound and strong, usually when they are about six months old. Follow directions on each package. 30-oz. carton, 40c; 5-lb. carton, 90c.

SPRATT'S FIBO—An Appetizing Granulated Food. For puppies or growing dogs, shy feeders or those recovering from sickness, or as a change of food at any time for all dogs. 2-lb. carton, 45c; 5-lb. carton, 90c.

SPRATT'S OVALS—The Pocket Dog Biscuit. A small Meat-Fibrine Dog Biscuit, suitable as a staple diet for small dogs and toys. 26-oz. carton, 40c; 5-lb. carton, 85c.

SPRATT'S CAT FOOD. A complete food for cats. Used at the leading cateries throughout the world and daily becoming more popular among the fancy. 24-oz. carton, 35c; 5-lb. carton, 85c.

SPRATT'S PATENT DOG SOAP. Kills fleas, prevents mange and other skin diseases. Used in preparing dogs for exhibition. It leaves the coat smooth and glossy. 50c per cake, by mail.

SPRATT'S PATENT DISTEMPER CURE. 75c per box.
SPRATT'S PATENT MANGE CURE. 75c per box.
SPRATT'S PATENT WORM REMEDY. 50c per box.

Singing Canary Birds

A LIVE MUSIC BOX IN YOUR HOME

A joy and pleasure morning,
noon and night. Our Canaries
are tested and guaranteed
singers.

St. Andreasberg Rollers, Male,
\$5.95; Female, \$2.50.

Hartz Mountain, Male, \$3.95;
Female, \$1.50.

Chopper Canaries, Male, \$5.00;
Female, \$2.00.

Birds can only be shipped by
express.



BIRD REQUISITES

CUTTLEFISH BONE. Oz., 5c; lb., 45c.

If wanted by mail, add postage at zone rate.

BIRD MANNA. Great moulting season food; birds are very fond of it; a feed and a medicine combined. Pkg., 15c; 2 for 25c, postpaid.

BIRD BITTERS. Bottle, 25c; postpaid, 35c.

WHITE BIRD GRAVEL. Pkg., 15c; 2 for 25c.

RED GRAVEL. The finest and best on the market. 2-lb. pkg., 15c; 2 for 25c.

ARCHIAS' HEALTH GRIT with CHARCOAL. Pkg., 15c; 2 for 25c.

BIRD TONIC. A valuable medicine for colds and other disorders of birds. Simply put it in the drinking cup. Large bottle, 35c; postpaid, 45c.

CAYENNE PEPPER. Doz., 15c; 1 lb., 50c, postpaid.

MOULTING PEPPERS. Pkg., 25c, postpaid, 30c.

INSECT OR MITE POWDER FOR BIRDS. Pkg., 25c, postpaid.

INSECT POWDER BELLOWS. 15c each; 2 for 25c.

NESTLING FOOD. An egg food for young birds which will keep indefinitely, and which is cheaper than eggs. Box, 25c; 3 for 65c, postpaid.

BIRD NESTING. Prepared of hair moss and other material for birds to build their nests. Pkg., 15c; 3 for 35c, postpaid.

WIRE BIRD NESTS. 15c each; 3 for 35c, postpaid.

HALLER'S CANARY BIRD PIE. A treat. Pkg., 15c, postpaid.

HALLER'S CANARY COLOR FOOD. Pkg., 25c, postpaid.

HALLER'S DUTCH SONG RESTORER. Never fails. Small size pkg., 15c; large size pkg., 25c, postpaid.

HALLER'S HEALTH FOOD. A builder. Pkg., 25c, postpaid.

COD LIVER OIL NESTLING FOOD. Pkg., 25c.

WE HAVE SEVERAL THOUSAND ELEGANT FISH AT EXTREMELY LOW PRICES—WE LEANT THEM ALL!

Fish Globes

One-quart, 15c; 2-qt., 30c; 4-qt., 50c; 8-qt., 95c; 12-qt., \$1.50.

SQUAT FISH GLOBES at same price.

The above globes are made of the best glass and in elegant designs



ARCHIAS WAFFER FISH FOOD. Pkg., 10c; 3 for 25c, postpaid.

ARCHIAS NATURAL FISH FOOD. Pkg., 10c; 3 for 25c, postpaid.

SPRATT'S MEAT "FIBRINE" VEGETABLE DOG CAKES. The standard dog food. Used at the leading kennels and dog shows throughout the world. A staple and constant food for all breeds of dogs. 26-oz. carton, 45c; 5-lb. carton, 95c.

Perfection Dog Food

A Balanced Meat-Cereal Food for Puppies and Grown Dogs. Endorsed and used as a dog and puppy food by the leading dog and kennel owners throughout the United States. Price, 5 lbs., 60c; 10 lbs., \$1.00; 25 lbs., \$1.75; 50 lbs., \$3.00; 100 lbs., \$6.00; 500 lbs., \$27.50.

SULPHO-TOBACCO SOAP. An excellent soap for washing dogs and cats. Pkg., 15c and 30c, postpaid.



CATNIP MICE—Exercising Toys for Cats. They can't let it alone, ridiculously amusing; positively beneficial; will last a lifetime. Catnip and other herbs, Nature's own remedy for cats. Price, complete, 15c, postpaid.

Archias' Dependable Dairy Supplies

Archias' Special Milk Bottles



"THATCHER" Quality

The very best quality flint glass, properly annealed, absolutely accurate in measurement, comply with all State Laws, easily cleaned, take regular No. 2 Milk Bottle Caps.

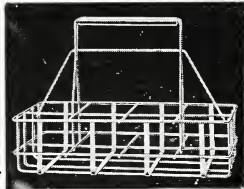
Size	Doz.	6 Doz.	12 Doz.
½-pint	\$.50	\$2.50	\$4.75
1-pint	.65	3.15	5.95
1-quart	.85	4.45	8.45
½-gal.	2.25		

Archias' Sanitary Milk Bottle Caps

Our prices are right. 500 for 25c; 1000 for 45c; 5000 for \$2.25. CAPS WITH LIP OR TONGUE. Same price as plain caps. Ask for special prices on 50,000 lots, your name printed on same.

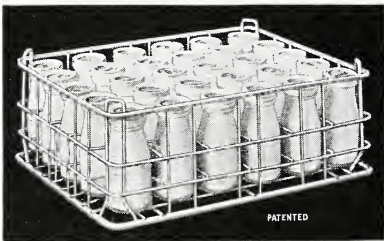
Wire Delivery Baskets

For carrying milk bottles. Made for six 1-quart bottles or four quart and two pint bottles. Each, \$1.10; 8-bottle carrier, 4 quarts and 4 pints, \$1.25 each.



Milk Bottle Cases

Best made. Electrically welded and retinned. Can also supply metal bound, wooden cases. Prices on application.



MILKING STOOLS, MILK PAILS, MILK AND CREAM TESTERS, MILK COOLERS and AERATORS, MILK BOTTLE CAPPERS, MILK BOTTLE FILLERS.

We carry a full line of Dairy Supplies. Prices of above on application.

Poultry Supplies

Save Money on Leg Bands, Crushed Shell, Bone Meal, Grit, Drink Fountains, Poultry Feeds, Remedies and All Poultry Supplies—We Want Your Orders.



Bee Keepers' Supplies--- Order Now

AT FACTORY PRICES AND WE PAY THE FREIGHT

Write for Free Catalog of Bee Keepers' Supplies.

Milk Strainers

One piece, heavy tinned steel, absolutely sanitary. Each, \$1.75, postpaid.

Strainer Pads

Our cotton strainer pads for straining milk are made of finest sterilized absorbent cotton packed 300 to carton. Price per carton, 6 in., \$1.15; 6½ in., \$1.45, postpaid.

Wyandotte Cleaner and Cleanser



A cleaning compound in powder form for scrubbing floors, tables, vats, churns, etc., for washing milk cans and bottles, and cleaning windows; in fact, for any and every purpose. Makes everything clean, sweet and pure. 5-lb. bag, 45c. Special prices on kegs and barrels on application.

Wyandotte Detergent

For cleaning painted surface, tile, marble and linoleum. 5-lb. bags, 60c; 75-lb. kegs, price on application.

Sterilize Your Milk Bottles With



Greatest germ-killing disinfectant and deodorant on the market. Destroys foul odors. Leaves no stain on walls or utensils. 10-oz. bottle, 50c; qt., 90c; gal., \$2.00.

Dairy Salt, 10-pound bag	30c
Bottle Brush	50c each
Jersey Can Brush	50c each
Gong Can Brush	60c each
Floor Brush	\$1.25 each
Separator Bowl Brush	25c to 75c each
Milking Tubes	35c to 60c each
1-lb. Butter Cartons	\$1.25 per 100
Parchment Putter Paper, 1000 sheets	\$1.50

Blatchford's Calf Meal

It is shown by government records and statistics that the slaughter of cattle in the United States between the year 1900 to 1910 increased 66 per cent; that the slaughter of calves increased more than 500 per cent. Take advantage of the opportunity. Raise your calves without milk. SEND FOR PAMPHLET—"How to Raise Calves Cheaply and Successfully Without Milk."



100-lb. Bag	25-lb. Bag	
BLATCHFORD'S CALF MEAL	\$5.75	\$1.75
CONKEY'S CALF MEAL	5.25	1.50
CONKEY'S PIG MEAL	4.00	1.25

F. O. B. Sedalia.

OUR BULB CATALOG WILL BE READY FOR MAILING IN SEPTEMBER—SEND FOR A COPY—FREE

Archias' Seed Store Corporation, Sedalia, Missouri

The Old Reliable Seed and Supply House That Saves You Money

Archias' Wholesale Prices 1932

For Market Gardeners, Florists
Large Planters and Dealers

Our Gilt Edge Warranty is Your Protection

These special, very low prices do not include delivery. If wanted by mail, add postage as per schedule, zone rates.

ASPARAGUS. See Page 5.

Giant Washington Rust-Proof	1/4 lb.	1 lb.
Barr's Mammoth White

BEANS—DWARF. See Page 5.

Stringless Green Pod, Burpee's	10 lbs.	25 lbs.
Improved Red Valentine, Green Pod
Golden Wax
Pencil Pod Black Wax
Burpee's Bush Lima
Henderson's Bush Lima

BEANS—POLE. See Page 5.

Kentucky Wonder	10 lbs.	25 lbs.
Cut Short Red Speckled
King of the Garden Lima
Jackson's Wonder Pole Lima

BEETS—For Table Use. Page 5.

Crimson Globe	1 lb.	5 lbs.
Detroit Dark Red
Crosby's Egyptian
Early Eclipse
Early Wonder
Swiss Chard

BEETS—For Stock Feed. Page 5.

Golden Tankard Mangel	1 lb.	5 lbs.
Mammoth Red Jumbo

CABBAGE. See Page 6.

Golden Acre	1/4 lb.	1 lb.
Archias' Allhead Early
Archias' Surehead
Early Jersey Wakefield
Early Flat Dutch Improved
Copenhagen Market, Danish
Glory of Enkhuizen, Danish
Premium Late Flat Dutch
Chinese Celery Cabbage (Wong Bok)

CARROTS. See Page 7.

Oxheart or Guerande	1 lb.	5 lbs.
Early Scarlet Horn
Danvers
Yellow Belgian, For stock

CELERY. See Page 7.

Giant Pascal, French	1/4 lb.	1 lb.
White Plume, French
Golden Self-Blanching

SWEET CORN. See Page 6.

Howling Mob	10 lbs.	25 lbs.
Golden Bantam
Bantam Evergreen
Early Adams (Not Sweet)
Early Minnesota
Country Gentleman
Stowell's Evergreen

CUCUMBERS. See Page 7.

Davis' Perfect	1/4 lb.	1 lb.	5 lbs.
Improved Long Green
White Spine Improved
New Everbearing

LETTUCE. See Page 7.

New York Market	1/4 lb.	1 lb.	5 lbs.
Improved Big Boston
Grand Rapids
Hanson
Black-Seeded Simpson
Prize Head
Paris White Cos

MUSKMELON. See Page 8.

Pollock's 10-25 Salmon Tint, Selected Seed	1 lb.	5 lbs.
Rocky Ford Cantaloupe
Burrell's Gem

MUSKMELON—Continued.

Hackensack	1 lb.	5 lbs.
Honey Ball
Honey Dew

WATERMELON. See Page 8.

Kleckley's Sweet	1 lb.	5 lbs.
Tom Watson
New Wonder Melon
New Stone Mountain
Irish Grey
Halbert Honey

ONION. See Page 9.

Danvers Yellow Globe	1 lb.	5 lbs.
Southport Red Globe
Large Red Wethersfield
Prizetaker
Southport White Globe

PARSNIPS. See Page 10.

Hollow Crown	1 lb.	5 lbs.
--------------------	-------	--------

PEAS. See Page 9.

Alaska, Very early	10 lbs.	25 lbs.
Archias' Extra Early
Laxtonian
American Wonder
Premium Gem
Laxton's Progress
Archias' Select Everbearing

PEPPER. See Page 10.

Ruby King	1/4 lb.	1 lb.
Chinese Giant
Long Red Cayenne
Pimiento—Archias' Perfection

PUMPKIN. See Page 10.

Large Cheese—Kentucky Field	1 lb.	5 lbs.
Large Yellow Cornfield

RADISHES. See Page 11.

Archias' Scarlet Globe Forcing	1 lb.	5 lbs.
Early Scarlet Turnip, White Tipped (Sparkler)
Early Scarlet Turnip
French Breakfast
Chartier
Long Scarlet Short Top
Icele Long White
China Rose Winter
Long Black Spanish

RUTABAGA. See Page 12.

Purple Top Yellow	1 lb.	5 lbs.
-------------------------	-------	--------

SPINACH. See Page 11.

Long Standing Bloomsdale	1 lb.	5 lbs.
New Zealand

SQUASH. See Page 11.

Yellow Summer Crookneck	1 lb.	5 lbs.
White Bush Scalloped
Hubbard

TOMATO. See Page 12.

John Baer	1/4 lb.	1 lb.
Earliana
Beauty
Ponderosa
Dwarf Champion
Archias' Missouri Giant
Stone
Marglobe—Wilt Resistant

TURNIP. See Page 12.

Extra Early Purple Top Milan	1 lb.	5 lbs.
Purple Top Strap Leaf
Early White Flat Dutch
White Egg
Red or Purple Top Globe
Amber Globe
Large White Globe

If wanting varieties in quantities that are not named in this list, please write us.



Foundation Planting

3 Spirea Van Houttei, 2-3 ft.	75c each	\$2.25
1 Butterfly Bush, 2-yr.	55c each55
2 Weigela, pink, 2-3 ft.	55c each	1.10
1 Red Barberry, 18-24 in.	75c each75
1 Barberry, Japanese, 18-24 in.	50c each50
2 Hydrangea A. G., 18-24 in.	65c each	1.30
2 Spirea, Crimson, 12-18 in.	55c each	1.10
1 Forsythia, Upright, 2-3 ft.	55c each55

Value \$8.10

Only \$5.00

Delivered to Your Door Free.
You Save \$3.10. Please Order Early.

Archias' Water Garden Plants

- ODORATA.** Hardy, sweet-scented white water lily. Each 50c; 5 for \$2.00.
- MEXICANA.** Large, beautiful yellow flower with dark green leaves. Hardy. Each \$1.00; 5 for \$4.00.
- TUBEROSA ROSEA.** Exquisite, light blush pink; very desirable. Hardy. Each \$1.50; 5 for \$6.00.
- WATER HYACINTH.** Best plant for fish to spawn in. Elegant clusters of light blue hyacinth flowers. Each 25c; 5 for \$1.00.
- CYPERUS.** Well known Umbrella plant with palm-like foliage. Each 15c; 5 for 50c.
- CABOMBA.** Grows entirely under water, valuable for both pools and aquariums. Bunch 15c; 5 for 50c.
- PARROT'S FEATHER.** A species of Myriophyllum. Long feathery leafage. Bunch 15c; 5 for 50c.

Special Collection of Aquatics

Hyacinths, Umbrella plants, Cabomba, and Parrot's Feather

One select plant each of the three beautiful Water Lilies, white, yellow, and pink; 2 each Water Lilies, Umbrella plants, Cabomba, and Parrot's Feather (regular value \$4.30). Prepaid for **Only \$3.00**

