

Yellowstone
F
722.9
Ata no. 210

GREAT FALLS and GRAND CANYON of the YELLOWSTONE

The marvelous Canyon, a riot of color, majestic, inspiring, and the Great Falls, 310 feet high, are the culminating glories of the Yellowstone Park Tour, nothing like it in the World.

SEASON JUNE 10—SEPTEMBER 15.

Visit the Park and Grand Canyon during 1907 while en route to the Pacific Northwest. Just the place for a summers' recreation. Write for "Wonderland 1906" (six cents), "Land of Geysers," Park, and time folders.

\$60.00 Round Trip Coast Rate Next Summer.
From St. Paul and Minneapolis, Daily from June 1.

\$50.00 Round Trip Rate June 20—July 12.
Daily from St. Paul and Minneapolis

Northern Pacific Railway

St. Paul, Minneapolis, Duluth, Superior to North Pacific Coast Points

For booklets and full information write

A. M. CLELAND,
General Passenger Agent,
ST. PAUL, MINN.



Never accept substitutes; insist on getting what you ask for.

Paint Buying Made Safe

White Lead and Linseed Oil need no argument, no advertising to maintain themselves as the best and most economical paint yet known to man. The difficulty has been for the buyer to be always sure of the purity of the white lead and oil.

This trade-mark on the side of a keg means strictly pure White Lead manufactured by the Old Dutch Process.

It is the hall-mark for quality and purity.

This trade-mark is for *your* protection as well as our own. Since (with the exception of one State) it is no crime in law to brand as "Pure White Lead" a keg of anything that looks like white lead, we have registered the trade-mark of the Dutch Boy Painter to be the same final proof of quality, genuineness and purity to paint buyers everywhere as the sterling mark is to silver buyers. The care and knowledge heretofore necessary to be sure of securing Pure White Lead is now simplified down into *knowing this boy*.

We Have Published a Book

It is handsomely printed, and illustrated by the celebrated artist, Henry Hutt. It is full of practical suggestions and helps to the intelligent use of paint. We will gladly mail a *de luxe* copy to anyone interested in paint. A postal card request will answer. Address

NATIONAL LEAD COMPANY

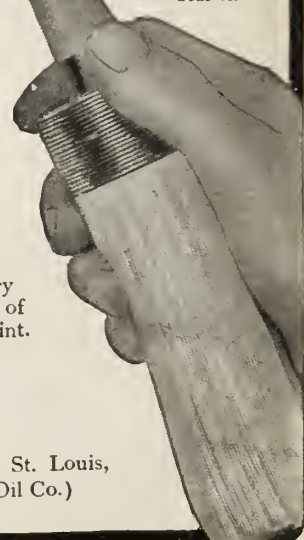
in whichever of the following cities is nearest you:

New York, Boston, Buffalo, Cleveland, Cincinnati, Chicago, St. Louis, Philadelphia (John T. Lewis & Bros. Co.); Pittsburg (National Lead & Oil Co.)



NOTICE

The use of this new trade mark was begun Jan. 1, 1907. All our standard brands of white lead packed since that date will bear it.



Never accept substitutes; insist on getting what you ask for.



Old Faithful Inn

YELLOWSTONE PARK

Largest log hotel building in the world. Of unique and beautiful architecture. Electric lighted; steam heated; rooms with private bath; every luxury and the best of cuisine. Two minutes walk from famous Old Faithful Geyser; close to Giantess, Beehive, Lion, Castle and other great geysers.

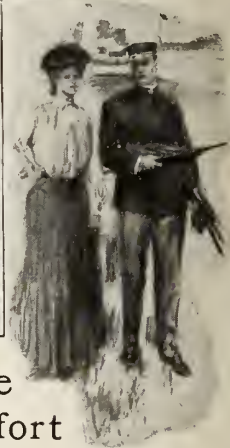
MAKE THE PARK TRIP THIS YEAR

Season, June 10 to Sept. 15, 1907

LOW COAST RATES ALL SUMMER

Northern Pacific Railway

For illustrated booklets and full information write
A. M. CLELAND, G. P. A.
St. Paul, Minn.



The Army and Navy and the Social Life at Old Point Comfort

THE Hotel Chamberlin is located on the government reservation of Fortress Monroe, the largest military post in the country, and overlooks Hampton Roads, the rendezvous of the American Navy.

From "reveille" to "taps," from sunrise to sunset gun, life at the Chamberlin is brightened by the picturesque features of both military and naval life, and the Hotel is the constant scene of the exchange of courtesies between officers representing both arms of the service.

Thus social life at Old Point Comfort, which centers in the Hotel Chamberlin, is enlivened by the intercourse of the military and naval services, and it is apparent that the Chamberlin is the most popular resort in this country for society folk.

In the evenings you will enjoy dancing in the Grand Ball Room.

All of these functions the girl guests receive an abundance of attention.

For, as you will always find plenty of men at Old Point, cards and time are filled to overflowing.

And here the gay uniforms of army and navy officers mingling with the beautiful costumes of the women, lend a dash of color to give the scene unique brilliancy.

By day golf links and tennis courts claim the attention of the social set.

But, very likely you will be tempted to linger about the hotel by day. Simply because there is in the atmosphere of the Hotel Chamberlin a genial glow of comforting, restful coziness.

With all its magnificence—all its splendors—this homelike feeling dominates this great hotel and distinguishes it from others in its class.

You will find that the great soft leather arm chairs in the spacious Rotunda will claim the right to comfort you. You may sun yourself in the Sun Parlor or chat with successful Americans and dignified army and navy officers in the Palm Room or one of the Drawing-Rooms.

* * *

The Hotel Chamberlin is the most magnificent resort hotel in America, with perfect appointments, a famous cuisine and every comfort and convenience.

This ideal resort has justly earned its place as "The Famous Rendezvous of the Army, the Navy and Society."

Hotel Chamberlin

Fortress Monroe, Virginia

New This Year A complete bathing establishment has been instated by the Chamberlin. There is a Sea Pool radiant with sunlight, filled with pure, fresh sea-water at an agreeable temperature. There are Medicinal Baths of every description—Nauheim Baths, Electric Light Baths, Massage Baths, Tonic Baths. Our baths possess everything offered by the best establishments, with the additional virtues of the salts of pure sea-water, which is extensively used. Special booklet on Baths and Bathing on request.

Jamestown Exposition Just across the water from the Chamberlin, in full view, is the site of the Jamestown Exposition, celebrating the three hundredth anniversary of the earliest English settlement in America. The Chamberlin will be headquarters for Foreign Officials and Commissioners during the Exposition, its location and equipment making it pre-eminently desirable for this purpose. The Chamberlin is the most convenient and comfortable residence for all visitors to the Exposition. Its accommodations are ample and its facilities are unequalled.

If you fail to find literature descriptive of the Chamberlin at the offices of the various transportation companies, write to me. I will gladly give you any desired information regarding rates, reservation of rooms, etc. If you write me that you are coming, I shall be ready to welcome you, and every arrangement will be made for your comfort. Your room will be ready and your baggage will be taken in charge as soon as it reaches Old Point Comfort.

Geo. F. Adams.

Manager
Box 79
Fortress Monroe, Va.

A pad of two hundred Score Cards for Bridge Whist for ten cents in stamps.

Yellowstone
E
700.9
H
12.214

1907
THE WORLD'S WORK ADVERTISER



Cleopatra Terrace, Mammoth Hot Springs
Yellowstone Park

NATURE'S
MASTERPIECES

Yellowstone Park abounds in them

Nowhere else may the same wonderful geysers, hot springs, canyons and giant peaks be enjoyed in such combination. Finest region in America for your Summer Vacation.

Visit **YELLOWSTONE PARK** en route to Puget Sound or Alaska

Northern Pacific Railway

For booklets, rates and full information write

A. M. CLELAND
General Passenger Agent
St. Paul, Minn.

ALASKA YUKON - PACIFIC EXPOSITION, 1909



For information regarding railroad and steamship lines, write to the Readers' Service

OUTING DAYS



DEMAND

Cuticura SOAP

For preserving, purifying, and beautifying the skin, scalp, hair, and hands, for irritations of the skin, heat rashes, sunburn, bites and stings of insects, lameness and soreness incidental to summer sports, for sanative, antiseptic cleansing, and for the toilet and bath Cuticura Soap, assisted by Cuticura Ointment is priceless.

Sold throughout the world. Depots: London, 27, Charterhouse Sq.; Paris, 5, Rue de la Paix; Australia, R. Towns & Co., Sydney; India, B. K. Paul, Calcutta; China, Hong Kong Drug Co.; Japan, Maruya, Ltd.; Tokio; Russia, Ferrein (Apteka), Moscow; South Africa, Lennox, Ltd., Cape Town, etc.; U.S.A., Potter Drug & Chem. Corp., Sole Props., Boston.

Post-free, Cuticura Booklet on the Skin.

DUPONT BRUSHES

TRADE MARK

When You Buy Brushes

for the teeth, hair, face, hands, etc., always look for **DUPONT'S** name. It insures quality, wear, cleanliness—absolute satisfaction.

DUPONT BRUSHES are the best made in the world—the best "bristles" and "backs" procurable put together by the most skilled labor in an absolutely clean and sanitary factory—the largest and most complete in the world. **DUPONT BRUSHES** outlast two or three ordinary brushes—but cost you no more.

Hundreds of styles and sizes, all woods—**REAL EBONY**—bone, pearl, ivory, etc. Prices to suit every purse. At all good stores. Your dealer will get them if you insist—if not we will tell you where to get them.

FREE BOOKLET explaining how to select and take care of Brushes, etc., sent on receipt of your name and address.

E. DUPONT & CO.,
PARIS, BEAUVAIS, LONDON
New York Office, 26-28 Washington Place

POND'S EXTRACT

AFTER SHAVING USE POND'S EXTRACT

Nothing else is so refreshing and healing. **Ponds Extract** prevents the most tender skin from becoming sore. Keep it always at home. Insist on your barber's using it.

Get the genuine. Sold only in original, sealed bottles—never in bulk.

THE STANDARD FOR 60 YEARS.

Lamont, Corliss & Co., Agts., New York

The Readers' Service will aid you in planning your summer vacation trip

Yellowst = W
E 722.9
.Ala
wa. 216



Visit the California Expositions This Summer

It will be an educational trip. The San Francisco Exposition is surely one of progress, containing exhibits from forty-two nations and forty-three states of the Union. The San Diego Exposition celebrating the official completion of the Panama Canal, is a work of art, and the exhibits illustrate the activities of the world.

Travel via the Northern Pacific Railway Over the Scenic Highway

In through daily transcontinental trains from Chicago, St. Louis and Kansas City direct to North Pacific Coast points connecting with Steamship Companies at Seattle, Tacoma, Portland, the Great Northern Pacific S. S. Co. at Astoria or the "Shasta Rail Route," to San Francisco. Choice of routes at no additional cost via Pacific Coast Cities, or along the majestic Columbia River from Spokane. On your going or return trip stop off at Gardiner Gateway

For a Tour of Yellowstone Park

View the strange phenomena and unequalled beauty of the world's greatest Wonderland. The 143-mile coaching trip in comfortable stage coaches provides for a stop each night at large, comfortable modern hotels.

Low Round Trip Excursion Fares Daily, March 1 to Nov. 30

Send for illustrated travel literature, including Exposition Folder, and let us assist you in planning your 1915 vacation.

A. M. CLELAND, General Passenger Agent, St. Paul, Minn.

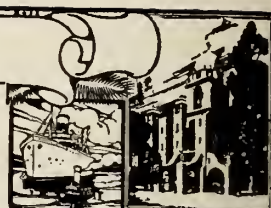
"SEE AMERICA"



HOTELS & RESORTS PACIFIC COAST AND SOUTHWEST

This Bureau has complete information about the Hotels and Resorts named below, which will be furnished upon request. We will also make arrangements for hotel accommodations. This service is free. These Hotels and Resorts are favorably known, and we do not hesitate in recommending them to our readers.

Garden City **DOUBLEDAY, PAGE & CO.** New York
Chicago: 1118 Peoples Gas Bldg.
Los Angeles. Baker Detweiler Bldg.
11 West 32nd St., N. Y. City
447 Tremont Bldg., Boston



Hotel Oakland — Oakland, California

Visitors to the 1915 Exposition at San Francisco will find this the logical Hotel at which to stop. European Plan. Splendid service and cuisine. All outside rooms. Thirty-five minutes by direct ferry to Exposition grounds. Write for booklet.

VICTOR REITER, Manager

PASADENA, CALIFORNIA

The Huntington Hotel **The Maryland and Bungalows**
The Huntington, reinforced concrete construction throughout, overlooking snow-capped mountains to the North and Orange Groves in the Valley below with the Blue Pacific and Catalina Island in the distance.

The Maryland is a hotel of Homes—Bungalowland is a little World of its own—a retreat set in the heart of a tropical garden.

D. M. LINNARD, Manager

Hotel Galvez, Galveston, Texas

On Seawall overlooking the beautiful Gulf of Mexico. All outdoor sports—good roads.

A winter paradise. Booklets

DAVID LAUBER, Manager

Hotel Clark Los Angeles California

New Fireproof Hotel. 555 Rooms, located in the heart of the City, offers Commercial, Tourist and Family Trade every possible convenience. Write for booklet.

F. M. DIMMICK, Manager

Arrowhead Hot Springs Arrowhead Springs, California

Hottest and most curative springs in the World. Natural Steam Caves of Di-Sodium Arsenate. Water 200° hot. Modern Hotel. Altitude 2000 feet. Home grown vegetables, dairy and chicken ranch. American plan table.

SETH MARSHALL, President

Hotel Van Nuys, Los Angeles, California

Centrally located to shopping, theater and club districts. Quiet and dignified atmosphere—perfect service—faultless cuisine. Provides every comfort, convenience and luxury known to modern hotels.

C. H. KNAPPE, Manager

The Rice Hotel Houston Texas

A house that combines pleasing service with genuine hospitality—a feature not purchasable and never forgotten.

HOMER D. MATTHEWS, Manager

Hotel San Marcos, Chandler, Arizona

SITUATED in the heart of Salt River Valley. Mission style, fireproof, modern and most unique hostelry in Arizona. Cuisine a feature. Table supplied from hotel ranch. Side trips to ancient Cliff Dwellers, Great Roosevelt Dam, Ostrich Farm, Copper Mines, etc. Perpetual sunshine. Golf, tennis, horses, motoring, etc. Ideal place to spend the winter. Write for booklet.

MRS. W. H. ROBINSON, Manager

Hotel Washington Annex SEATTLE

A select hotel with every modern appointment and merited reputation for attentive, personal service. Absolutely fireproof; centrally located. Commodious, handsomely furnished suites for families and touring parties. Excellent café service.

J. H. DAVIS, Proprietor

BELLEVUE HOTEL San Francisco, California

Strictly first class. Built of concrete and steel. Private bath to every room. Refined surroundings. Twelve minutes from the Exposition without transfer.

H. W. WILLS, Manager

A Free Service for Property Hunters Who Wish to Buy or Rent

We realize the many difficulties which confront the prospective home buyer or lessee. It is sometimes a hard problem to find just the kind of property to fill one's requirements. The following service was established to help those contemplating the purchase or lease of a property. This service is free.

In connection with the Real Estate Department in **COUNTRY LIFE IN AMERICA**, we operate a Real Estate Directory File in which are placed descriptions of country, suburban and sea-shore properties for sale and rent in various parts of the United States. Perhaps your "ideal" is among those listed. You are invited to send your requirements if you have searched unsuccessfully for a place. Address,

Manager Real Estate Department, Country Life in America

Garden City, L. I.

The National Real Estate Medium

11 West 32d St., N. Y.

Yellowstone
F 722.9
Ala
no 210



THE MAMMOTH HOTEL & FORT YELLOW/TONE-CAPITAL OF YELLOW/TONE NATIONAL PARK. REACHED MOST CONVENIENTLY BY NORTHERN PACIFIC RY.

SEE

Yellowstone National Park *This Summer*

Geysers, canyons, mountains, colored terraces, paint pots, animals, rivers, lakes, falls, etc. The greatest wonderland and natural museum of the world. Excellent large hotels; comfortable camps. Start your tour at Gardiner Gateway, the original, logical and only northern entrance, reached only by the

Northern Pacific Railway

Through trains to Yellowstone National Park, Rainier National Park, beautiful Puget Sound and the North Pacific Coast. Scenery unexcelled—three ranges of mountains, including the American Rockies and Cascades. Dining car service internationally popular. The Route of the Great Big Baked Potato.

Connections at Seattle, Tacoma and Portland with steamship lines and Shasta Route for California points, Great Northern Pacific S. S. Co.'s "Palaces of the Pacific" between Portland-Astoria and San Francisco.

Send for free travel literature and details.

A. M. CLELAND, General Passenger Agent
512 Northern Pacific Bldg.
St. Paul, Minn.

"SEE AMERICA"

Send 5c for a collection of *Wonderland Poster Stamps*; a dozen different sets, 5c per set.



Hudson River Day Line



**The Finest and Fastest River Steamers Ever Built
Washington Irving-Hendrick Hudson-Robert Fulton and Albany**

The interest and beauty of the Hudson appeal to every American. You can see this world-famous river in all its glory by taking this world-famous trip between New York and Albany. Season opens May 13. All through rail tickets via New York Central or West Shore R. R. are also available by this line. Send 4 cents for Summer literature. All service daily except Sunday.

Hudson River Day Line Desbrosses Street
Pier, New York City

Plan a Trip to the Pacific Coast

where the joy of out-of-doors is enhanced a thousandfold by hundreds of miles of incomparable boulevards along the sunny Pacific and to the summit of the snowy Sierras; where you can swim, boat, fish, play golf, tennis and polo, climb the mountains and motor. Arrange to visit Portland, the City of Roses, climb Mount Hood, take a trip over the wonderful Columbia Highway, visit Spokane and Seattle, with Mount Ranier, then to San Francisco, passing Mount Lassen, the active American Vesuvius, and Mount Shasta, to the Golden Gate. Santa Barbara and Los Angeles are the playground of the Pacific Coast and the center of hundreds of points of romantic interest—Pasadena, San Gabriel, the beaches, Mount Lowe and Mount Wilson, and Riverside, the center of the orange district and the site of the historic Mount Rubidoux, a short distance from Arrowhead Hot Springs and on the main automobile route to San Diego, where the all-year-round 1916 Exposition is being held. Across the Bay is Coronado with its polo, bathing and out-door sports. Return through Arizona, and the Grand Canyon, Salt River Valley and Chandler, via the Roosevelt Dam; then Southeast through New Mexico, through El Paso, San Antonio, Houston and Galveston, or the Gulf of Mexico. Include all or any part of these hotels in your itinerary; full information, with illustrated booklets, will be forwarded from

TRAVEL SERVICE BUREAU

WORLD'S WORK COUNTRY LIFE IN AMERICA
11 West 32nd Street, New York

REVIEW OF REVIEWS CO. THE OUTLOOK COMPANY
30 Irving Place, New York City 381 Fourth Ave., New York City

E. K. HOAK, *Pacific Coast and Southwest Mgr.*
412 West Sixth Street Los Angeles, California

CHANDLER, Arizona

San Marcos Hotel
MRS. W. H. ROBINSON
Manager

SAN FRANCISCO, California

Hotel St. Francis
JAMES WOODS
Manager

LOS ANGELES, California

Hotel Alexandria
VERNON GOODWIN
Vice-President and
Managing Director

RIVERSIDE, California

Glenwood Mission Inn
FRANK MILLER
Master

SAN DIEGO, California

U. S. Grant Hotel
JAS. H. HOLMES
General Manager

CORONADO BEACH, California

Hotel del Coronado
J. J. HERNAN
Manager

1912 yellowst-Q
F 722.9
.A19
no. 210



Two
Daily Trains
From Chicago

One
From St. Louis
and Kansas City

Visit
Yellowstone Park

This summer, on your way through the Storied Northwest to the North Pacific Coast, Puget Sound region, Columbia River country and Alaska. The great SEEING AMERICA trip.

Very Low Fares

To Yellowstone Park and to the Coast. Special Convention Fares effective on dates in April, May, June, July and August. Go with the Elks to Portland via "Northern Pacific." Write for full particulars. Enclose 6 cents in stamps for "Through Wonderland." Ask also for "The Fertile Northwest."

A. M. CLELAND, General Passenger Agent
ST. PAUL, MINN.

Annual Rose Festival, Portland: June 10-15, 1912. Montemara Fests, Tacoma: July 2-4, 1912. Elks' Grand Lodge Meeting, Portland: July 9-13, 1912. Golden Potlatch Carnival, Seattle: July 15-20, 1912. Panama Pacific International Exposition, San Francisco: 1915.

Northern Pacific Ry.

Direct and Only Line to Gardiner Gateway, Official
Yellowstone Park Entrance

SEE AMERICA FIRST





Modern Construction Demands Kahn System Products

Giving buildings that are permanent, fireproof, full of daylight, sanitary, economical. Kahn System Products cover the entire field in construction: Reinforced Concrete for all uses, Steel Sash for windows, Hy-Rib for roofs and walls, Waterproofings, Technical Paints and Building Specialties.

Hy-Rib is a Steel Sheathing with deep stiffening ribs, a combined unit of reinforcement, centering, studs and lath for concrete and plaster. Does away with wood forms and expensive equipment. Makes a monolithic wall, partition, ceiling and roof at very low cost.

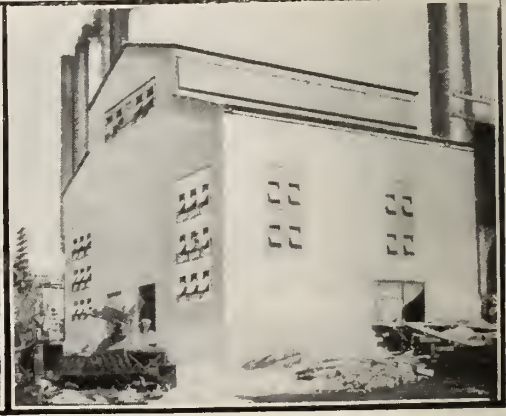


United Steel Sash Floods the Factory with Daylight

Bringing into usefulness every foot of space, and assuring full efficiency of employees. **United Steel Sash** is made of solid steel sections unweakened by cutting or punching, and has large ventilators with double contact joints to shut out drafts and storms.

Write us if you intend to build. Our engineers have an attractive, money-saving proposition for you. Catalogs and suggestions for any type of building, large or small, **free** on request.

Trussed Concrete Steel Co., 504 Trussed Concrete Bldg., Detroit, Mich.



Yellowst-Q
F 722.9
. A1a
W. 210

1916



MAMMOTH HOTEL & FORT YELLOWSTONE-CAPITAL OF YELLOWSTONE NATIONAL PARK. REACHED MOST CONVENIENTLY BY NORTHERN PACIFIC RY.

SEE

Yellowstone National Park *This Summer*

Geysers, canyons, mountains, colored terraces, paint pots, animals, rivers, lakes, falls, etc. The greatest wonderland and natural museum of the world. Excellent large hotels; comfortable camps. Start your tour at Gardiner Gateway, the original, logical and only northern entrance, reached only by the

Northern Pacific Railway

Through trains to Yellowstone National Park, Rainier National Park, beautiful Puget Sound and the North Pacific Coast. Scenery unexcelled—three ranges of mountains, including the American Rockies and Cascades. Dining car service internationally popular. The Route of the Great Big Baked Potato.

Connections at Seattle, Tacoma and Portland with steamship lines and Shasta Route for California points, Great Northern Pacific S. S. Co.'s "Palaces of the Pacific" between Portland-Astoria and San Francisco.

Send for free travel literature and details.

A. M. CLELAND, General Passenger Agent
502 Northern Pacific Bldg.
St. Paul, Minn.

"SEE AMERICA"

Send 5c for a collection of Wonderland Poster Stamps; a dozen different sets, 5c per set.



"Mention the Geographic—it identifies you."

The Confidence
that no disturbing incident will mar the pleasure of your trip makes travel on a



RAYMOND-WHITCOMB TOUR
an ideal vacation and rest

ALASKA and the Midnight Sun—including Alaska Voyage, White Pass, Atlin Lakes, Yukon River, Dawson, Klondike Gold Fields, and the Arctic Circle. Frequent departures in May and June.

CALIFORNIA and the Yosemite National Park—Leisurely tours via Grand Canyon, Apache Trail, Yellowstone Park, and Canadian Rockies. Departures every week.

South America—June 24, July 8, and October 21.

Japan and Hawaii—July 8 and September 23.

Send for Booklet Desired

RAYMOND & WHITCOMB CO.

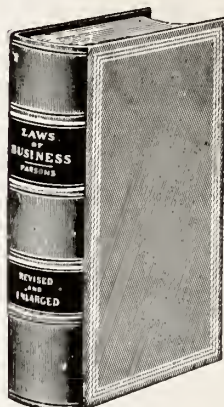
DEPT 7 - 17 TEMPLE PLACE - BOSTON

New York • Philadelphia • Chicago • San Francisco

Examine FREE the **PARSONS**
Indispensable NEW

The foremost of money-savers in telling one what NOT to do

The Famous Legal Standard, Parsons'
LAWS OF BUSINESS



The invaluable companion of every one in business, every one who does business, every one needing knowledge about business; every one who holds property or wishes to hold it; that is, all the world.

Over 260,000 sold of former editions. Whether or not you have one, you cannot afford not to own The New, Greatly Enriched 1916 Edition.

With up-to-date chapters on Employers' Liability; Workmen's Compensation; Powers and Liabilities of Stockholders, Officers, and Directors of Corporations; Food and Drug Law; New Trade-Mark Law; New Copyright Law, Bailment, etc.; also a Full Glossary of Law Terms.

It treats also of rights and duties under Contracts, Sales, Notes, Agency, Agreement, Consideration, Limitations, Leases, Partnership, Executors, Interest, Insurance, Collections, Bonds, Receipts, Patents, Deeds, Mortgages, Liens, Assignments, Minors, Married Women, Arbitration, Guardians, Wills, and very much besides.

9 x 6 1/4 in. 946 pp.

Splendidly bound in Law Canvas

Up-to-date, 1916—The book contains also abstracts of All State Laws relating to collection of Debts, Interest, Usury, Deeds, Holidays, Days of Grace, Limitations, Liens, etc. Likewise nearly 300 Approved Forms of Contracts of all kinds, Assignments, Guaranty, Powers of Attorney, Wills, etc.

Sent by prepaid express, on examination for ten days. If what we claim, remit \$3.50 in payment; if not wanted we will send stamps for return.

S. S. SCRANTON CO. 117 Trumbull St. HARTFORD, CONN.

SEE
Alaska
ATLIN AND THE YUKON

But to really know and appreciate the inexpressible scenic grandeur of this Northland and enjoy its ideal summer climate—its flowers and sunshine—you must see more than the shores. The advice of travelers who know is—

“Go Beyond The Shores”

See the strangely fascinating interior by modern trains and steamers. See the Atlin Lake Country “The Beauty Spot of the World.” Sail down the ever interesting Yukon through the Five Finger Rapids to Dawson in the Klondike—or on down crossing and recrossing the Arctic—where the sun shines at midnight—to Fairbanks and Nome and return via Seward Valdez and Cordova. Truly a trip of a lifetime.

Frequent sailings—exceptionally good meals and service.

Early reservations essentials. Write now for our interesting booklets.
HERMAN WEIG, G. P. A. A. F. ZIFF, T. M.
119 W. Washington St. Chicago 835 Ataska Bldg. Seattle, Wash.

White Pass & Yukon Route

Look for the **Yellow Label**

The Yellow Label—Witt's—is the mark of Sanitation, Safety, and Economy in cans and pails. Sanitation because Witt's is fly-, dog-, and rat-proof—tight-fitting lid makes it so. Safety because Witt's is absolutely fire-proof. Economy because Witt's outwears two or three of the ordinary kind—for it is made of deeply corrugated steel, galvanized and rust-proof, and 29 times stronger than plain steel. Write for booklet and name of nearest Witt dealer. THE WITT CORNICE CO. Dept. B, Cincinnati, Ohio.

WITT'S
Can and Pail

“Mention the Geographic—It identifies you.”

Yellowstone - G
17722.0
1911
1912

YELLOWSTONE at Lowest Cost in History!

Standard 2½-day tour of Yellowstone Park, via hotels and modern sightseeing buses, \$36. Include Yellowstone on your trip to or from the Pacific Coast.



Route Your
Freight "N. P."



TRAVEL NORTHERN PACIFIC *Scenic Route Across America!*

To Yellowstone and Rainier National Parks... California and Golden Gate Exposition . . . Pacific Northwest . . . Alaska . . . Montana-Wyoming Dude Ranches. Low-cost planned individual trips and Escorted Tours. Tell us where and how you wish to go. We'll send literature and full information. Address E. E. Nelson, 305 Northern Pacific Building, St. Paul, Minnesota.

NORTHERN PACIFIC RAILWAY

ROUTE OF THE
Air-Conditioned

NORTH COAST LIMITED

"Mention the Geographic—It identifies you."

It's a Pleasure
TO USE THIS LAWN MOWER!

You who are proud of your lawn—and like to cut it at times—need this new F & N Marathon lawn mower. It cuts your grass so beautifully—so evenly and perfectly—just like you've always wanted! And it rolls so easy a child can push it! This mower is a satisfaction to own, and a thrill to use!

Introduced this year by the leading lawn mower manufacturer, the F & N Marathon is entirely different and *better*. Practically all parts are made of zinc alloy—a new metal that is die-cast for machine precision—that is stronger and longer wearing, and 40% lighter. Here's a

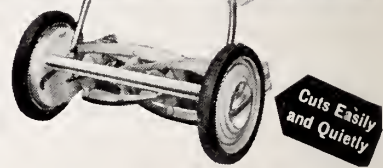
mower that's built to last for years and years—with extra easy, quiet operation throughout its long life.

YOU'LL BE PROUD of its streamlined beauty, its pastel green finish, trimmed in chromium. Extra large air-cushion tires, rubber-covered roller, and hig, comfortable handle-grips help make it a pleasure to use. See all these features—and the Marathon's many other advantages before you buy any mower. Never before a lawn mower value like this! Quality buyers won't accept any other! Sold by good lawn mower dealers everywhere.

F&N LAWN MOWER CO., Richmond, Ind.



New F & N **Marathon** LAWN MOWER
REG. U. S. PAT. OFF.
FROM THE WORLD'S LEADING LAWN MOWER BUILDERS



Your Holiday in
British Columbia
 THE VACATION-LAND THAT HAS EVERYTHING!

North of the Border . . . a refreshing, Evergreen Playground, where your American dollar is worth 10 per cent more. No passports needed . . . no border difficulties. Write for further information and free illustrated literature to the
BRITISH COLUMBIA GOVERNMENT TRAVEL BUREAU
 VICTORIA, B.C., CANADA

THIS FREE BOOK

UPSETS HEATING TRADITION

HERSHEY MACHINE & FOUNDRY CO.
 240 Eby St., Manheim, Pa.

Mail your free, 12-page book, and full details of "Automatic Heat Which Pays for Itself". I live where hard coal is available.

Name _____
 Street Address _____
 City _____ State _____

Read how your *present* furnace is suited for lowest-cost automatic heat and how Motorstokor handles coal and ashes automatically and keeps a uniform temperature. Mail the coupon and learn how to cut fuel cost up to 1/3 or more. See this booklet at once.

PAY FOR YOUR EQUIPMENT WITH MOTORSTOKOR SAVINGS

Motorstokor actually saves cash from the very first year, while ending all furnace tending, uneven heat, and furnace dirt. See why Motorstokor is also ideal for new homes.

YOUR BOOK MAILED IMMEDIATELY by one of the oldest manufacturers of automatic coal stokers, free of charge to residents in anthracite (hard coal)-burning sections. Send for it now. No obligation. Just your name and address on this coupon.