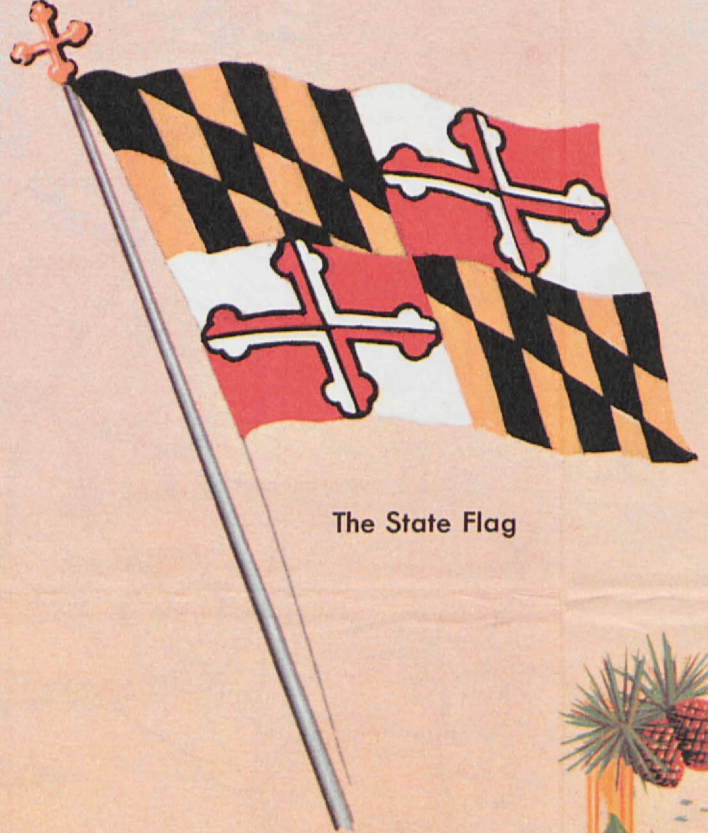






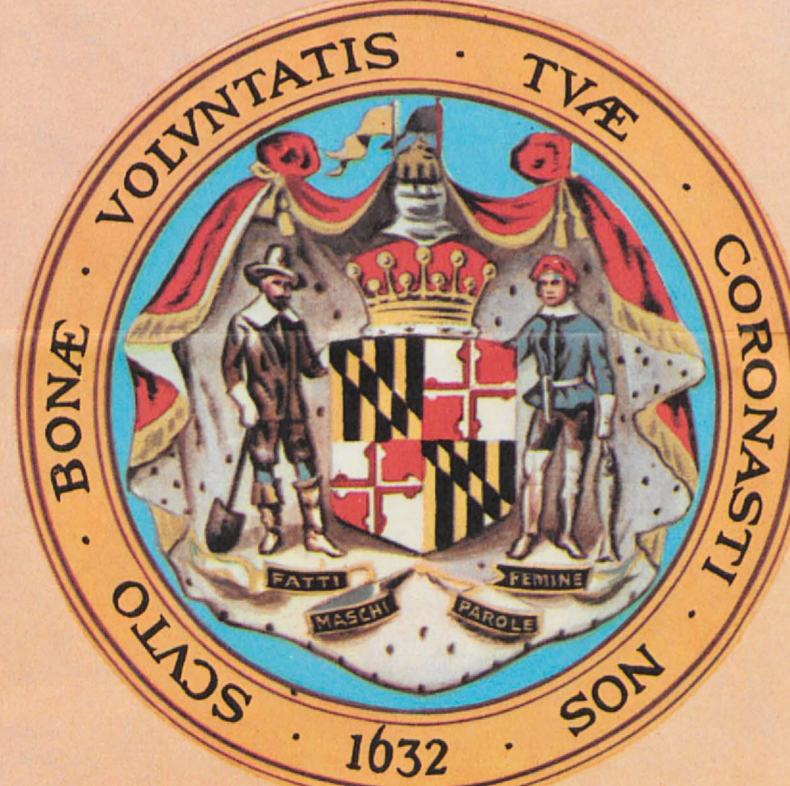
# A PICTORIAL MAP of Maryland



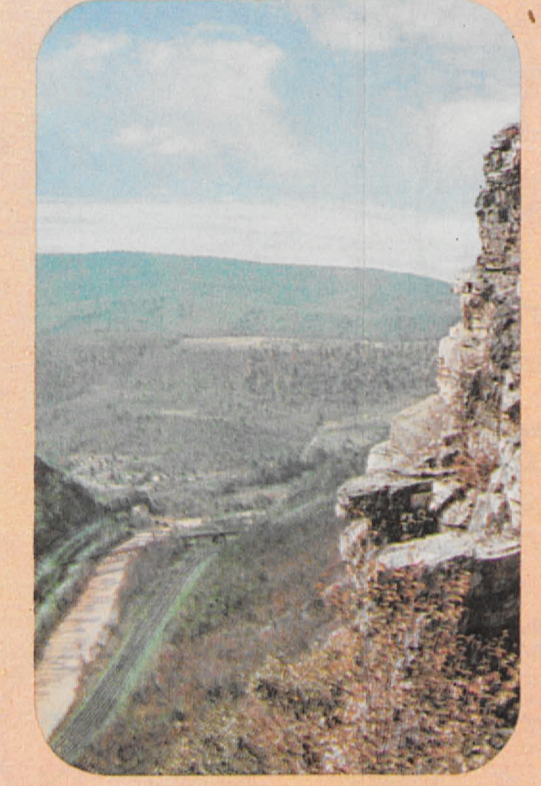
The State Flag



The State Bird  
Baltimore Oriole



The Great Seal of Maryland



"Gateway to the West"—The Narrows, Cumberland, Maryland



The romance of early Maryland history centers around production of Tobacco



The State Flower  
Black-Eyed Susan



Hampton House, National Historic Site—an outstanding example of Georgian architecture



One of 100 such picnic areas along Maryland Highways



Baltimore's Stadium—home of the World's Champion Colts and the American League's Orioles



"Bloody Lane," Anietan Battlefield, a grim reminder of "The War Between the States"



Maryland's old homes and gardens attract thousands of visitors every Spring—scene from famous Sherwood Gardens



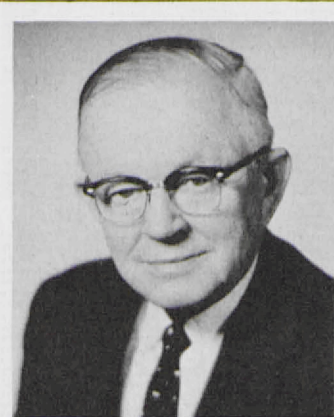
A typical oyster tanger and his boat add interest and color to the scene of the quaint draw bridge at Crisfield



Maryland's courteous State Police are on duty 24 hours daily to render assistance

## A MESSAGE FROM GOVERNMENT HOUSE

This is the 1960 edition of Maryland's Official Highway Map. Our State has embarked on an accelerated program of primary road construction which will give safe and efficient transportation to the greatest number of motorists in the shortest possible time. Maryland believes that better roads save time, lives and money. This map will help the motoring public make the best possible use of these new roads as well as the established routes within our State.



In addition, I believe the pictorial map on the reverse side will open up new opportunities for motorists to explore the many historical, scenic and recreational areas in Maryland. Marylanders feel certain that visitors to our State will find it as interesting and enjoyable as those of us who live here.

Wherever you travel in Maryland you will find accommodations staffed by people anxious to serve you and eager to help you enjoy our State to the utmost.

Maryland's road builders have incorporated every modern concept of safety into our newer highways. Won't you help by showing an equal interest and drive with care, observing all the rules of the road which were established for your safety?

It is hoped that your highway map will be both interesting and useful to you. It is also hoped that you will use the fine picnic areas, State forests, parks and recreation sites that have been created and are maintained for your use along our roads.

Sincerely,  
80-00745  
MEASC 1427-1-1639  
J. Millard Tawes  
Governor of Maryland

### STATE ROADS COMMISSION

John B. Funk  
Chairman of Commission and Director of Highways  
Commission Members  
Paul J. Bailey Thomas N. Kay  
Harley P. Brinfield John J. McMullen  
Lansdale G. Claggett William B. Owings

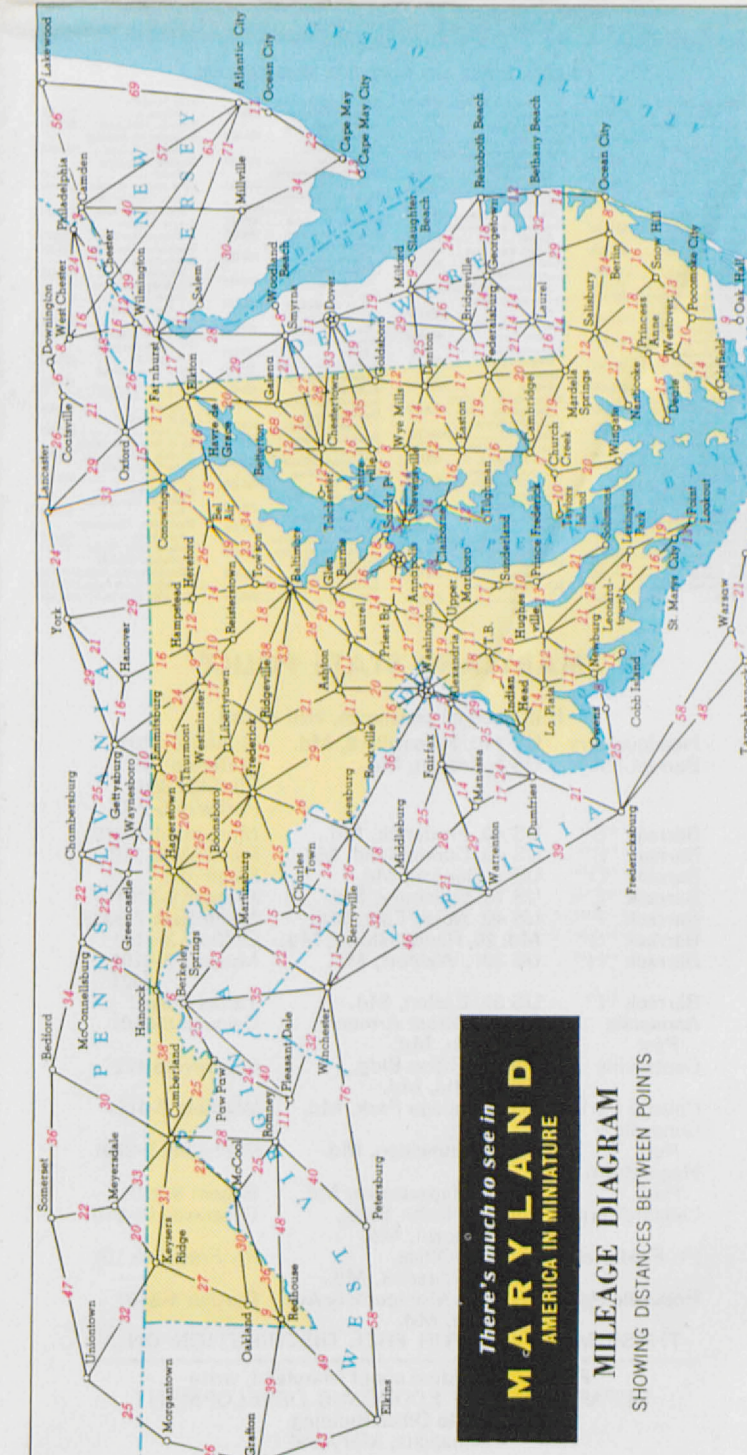
## Maryland OFFICIAL HIGHWAY MAP



1960

## Visit Historic ANNAPOLIS

Maryland's capital city is filled with lasting reminders of America's colonial period and the vibrant days when our Republic was young. Fine Georgian mansions where patriots gathered still stand alongside the quiet, tree-lined streets of Annapolis. Here is located the seat of Maryland's Government, the State House. It is the oldest such building in continuous legislative service in the nation. It was in Maryland's State House that George Washington resigned his commission as Commander-in-Chief of the Continental Army. Distinguished visitors in the early days of the United States once walked the sidewalks of Annapolis. The Marquis de Lafayette frequently stopped here. Annapolis is the home of two famous institutions of learning, the United States Naval Academy and St. John's College. John Paul Jones, the Revolutionary sea hero, is buried on the grounds of the Naval Academy, and Francis Scott Key, author of the Star Spangled Banner, was graduated from St. John's. Everywhere in Annapolis, the past is always present. Even though the city maintains its close touch with history, it is progressive in spirit and, like a modern American city, has its eye on the future.



There's much to see in MARYLAND. See it in this MILEAGE DIAGRAM. SHOWING DISTANCES BETWEEN POINTS.