

BOUNTIFUL RIDGE NURSERIES.



Growers of the World's Finest Fruit Trees and Berry Plants
PRINCESS ANNE, MARYLAND

LIBRARY
RECORDED
★ SEP 25 1941 ★
U. S. Department of Agriculture

Sec. 562 P. L. & R.

U. S. POSTAGE
PAID
Princess Anne, Md.
Permit No. 4

J. A. Burness
Bureau Plant Industry
U. S. Horticultural Sta.
Beltsville, Md.

POSTMASTER—Postage for return and forwarding guaranteed. This package may be opened for postal inspection if necessary. If forwarded to new address notify sender on Form 3547. Postage for notice guaranteed.

— — OUR COMPLETE PRICE LIST FOR FALL 1941 — —

THESE PRICES CANCEL ALL PREVIOUSLY PUBLISHED PRICES

ARE YOU PLANTING THE BEST?

Modernize Your Orchards: Remove Those Slacker Trees and Varieties
Plant New Improved Tested Varieties For Future Markets
and Consumer Demand.

TODAY, MORE THAN EVER BEFORE, THE PROGRESSIVE PLANTER REALIZES THE PARAMOUNT IMPORTANCE OF VARIETY SELECTION—TREE SELECTION AND JUDICIOUS PLANTING AS AN INVESTMENT, FOR FUTURE PRODUCTION AND PROFITS.

Plant Bountiful Ridge Trees
for Quick, Dependable Results

The Day Is Past When The Planter Can Afford to Buy "Just a Tree or Plant!"

LET US HELP YOU TO PLAN AND PLANT FOR FUTURE PRODUCTION AND PROFIT.

The World's Most Eminent Authorities on Tree Identification

SAY BOUNTIFUL RIDGE TREES ARE "TRUE TO NAME"

We Use Every Care Humanly Possible to Insure "All Bountiful Ridge Grown Trees Are True to Variety Name"

STATEMENTS OF INSPECTIONS FOR TRUENESS TO NAME

Vineland, Ontario, July 26, 1941

To Whom It May Concern:

It is impossible to positively distinguish all varieties of peaches in the nursery row but Bountiful Ridge Nurseries' saleable peach trees have been examined in the summer of 1941 and are thought to be true to name

W. H. Upshall

Amherst, Mass., August 8, 1941

To Whom It May Concern:

This is to state that all the saleable apple, pear, one-year plum, one-year sweet cherry, and two-year sour cherry stock now growing in the nurseries of Bountiful Ridge Nurseries near Princess Anne, Md., have been examined for trueness to name by A. P. French, O. C. Roberts and L. Southwick and, as they now stand in the nursery row all trees are, to the best of our knowledge and belief, true to name.

J. K. Shaw

Research Professor of Pomology

Photograph shows Dr. Upshall (center), along with Mr. Edgar Kemp (left) and Mr. Homer Kemp (right) in our block of 1 year old peach. This block contains over one-half million peach trees and Dr. Upshall has examined every row in this field for trueness to name. Dr. Upshall has been doing variety identification work on peach for many years and his time is very limited to this class of work, and we feel exceedingly fortunate in being able to have our trees examined by such an authority on variety identification by leaf and growth characteristics. Our trees this year are as fine as it is possible to grow.

"It Pays to Plant Bountiful Ridge Grown Trees and Plants"



BOUNTIFUL RIDGE GROWN TREES
ABSOLUTELY PLEASE

Mr. Wm. Tomlinson, Dover, writes: "I have bought all my peach trees from Bountiful Ridge Nurseries and am absolutely pleased with all of them. Picture shows 3 year old Gage Elberta which produced a crop of 1/2 bushel to the tree at 2 years of age". This is a splendid example of proper orchard care and demonstrates what can be done when Bountiful Ridge Grown Trees are planted.



Proper Variety and Tree Selection Will Lead to Quicker Results and Greater Profits.

Our Variety Listings Lead the "March of Progress to Better Fruits"

RECENT INTRODUCTIONS OF NEW OUTSTANDING VARIETIES TO MEET MODERN DAY DEMANDS.

WRIXPARENT

(U. S. PLANT PATENT NUMBER 388)

The King of All Early Apples

BRIEF FACTS ABOUT THE WRIXPARENT

1. EARLINESS—Ripens 10 to 15 days before Yellow Transparent.
2. ANNUAL BEARER—Normal to heavy crops each year.
3. LARGE SIZE—Apples under normal conditions pack out 2 1/4" and 2 1/2" size and up.
4. QUALITY—Unexcelled as an early cooking apple.
5. SHIPPING ABILITY—Does not show bruises, will carry to distant markets, and will keep for weeks.
6. TREE IS VIGOROUS, SEMI-SPREADING GROWTH HABITS, BLIGHT RESISTANT, COMES INTO BEARING EARLY.

The tree is more spreading than Transparent, vigorous and hardy in wood not being subject to blight

and other fungus diseases. The fruit averages large in size being a little more flat in shape than Transparent and packing out commercial sizes of 2 1/4". The Wrixparent ripens from 10 to 15 days before the yellow transparent and ripens its fruit evenly so that the entire crop may be harvested in two pickings if desired. It is an attractive light green color without markings; the flesh is white, crisp, sprightly, very fine in texture and does not bruise readily or turn dark after bruising. Sub-acid in flavor and unsurpassed as a cooking apple. The fruit keeps well and can be held for 10 to 15 days after picking without storage. The Wrixparent is an annual bearer and continues to bear large fruits on the older trees. Can supply 1 yr. trees only.

WARNING—Wrixparent and Colora Red York are patented varieties and cannot be propagated for any purpose by anyone, other than Bountiful Ridge Nurseries.

"America's Earliest Apple - Ripening Two Weeks Before Yellow Transparent!"



Photograph showing relative size of Wrixparent over its two nearest competitors. Left, Transparent; center, Wrixparent; right, Lodi. Note size. All picked the same day, June 19th, 1941.

RICHARED

TRADE MARK REG. U.S. PAT. OFF.

The DELICIOUS Supreme

ITS SUPERB QUALITY, ITS BEAUTIFUL BRIGHT, SOLID RED COLOR TYPIFIES ITS NAME—"RICHER-RED"

There are many so called red varieties of the Delicious apple being offered today but EVERY PLANTER SHOULD KNOW DEFINITELY WHAT TYPE RED DELICIOUS HE IS PLANTING. THE RICHARED DELICIOUS IS NOW FRUITING FROM COAST TO COAST AND IS A TRADE MARKED VARIETY THAT CANNOT BE SECURED FROM EVERY NURSERY. CAN YOU AFFORD TO GAMBLE THE FUTURE OF YOUR ORCHARD BY PLANTING JUST A RED DELICIOUS? KNOW WHAT YOU ARE PLANTING BY BUYING RICHARED DELICIOUS FROM BOUNTIFUL RIDGE NURSERIES.

BLAXTAYMAN

TRADE MARK REG. U.S. PAT. OFF.

APPLE

The fruiting record of Blaxtayman has established it as one of America's foremost commercial apples and a leader of all improved types of Staymans now being offered. It is truly "The Glorified Staymans." THE COLOR IS EQUAL TO THE SOLID RED OF THE JONATHAN AND THE TREES AND BUDS HAVE THE SAME HARDY CHARACTERISTICS AS THE OLD STAYMANS.

ALL THESE OUTSTANDING VARIETIES NOW THE SAME PRICE AS OTHER STANDARD APPLE TREES

See Prices on Opposite Page

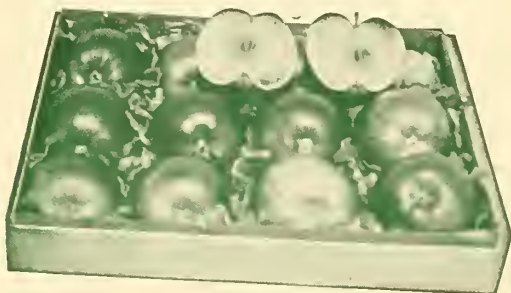
ANNOUNCEMENT!

A NEW EARLY SPORT OF THE BLAXTAYMAN. COLORS A BRILLIANT RED AND IS READY FOR PICKING THREE WEEKS BEFORE REGULAR STAYMANS AND A WEEK TO TEN DAYS EARLIER THAN BLAXTAYMAN. The Sport was found in the orchard of Mr. F. S. Nepling, Waterford, N. J. Second generation trees have now fruited for several years, reproducing fruits true to type of the original sport limb. The color is more brilliant than Blaxtayman, its parent. The apple has the familiar Stayman Stripe and identical to Staymans in quality and tree characteristics. This new sport should open up new producing areas for the Stayman type apple and help the picking problem of the large grower of Staymans. TREES WILL BE OFFERED FOR SALE AND DELIVERY DURING FALL 1942 and SPRING 1943, exclusively by BOUNTIFUL RIDGE NURSERIES.

BOUNTIFUL STRAIN

IMPROVED WINESAP

The Famous Winesap Apple Now Comes to The Planter In A Glorified Bud Selected Strain With Fruits Averaging 2 1/2" Size With Same Beautiful Color—Same Quality—Same Keeping Ability.



3 1/2" Apples

Bountiful Strain "IMPROVED WINESAP"

The fruit has every characteristic of the Old Winesap in shape, color, quality and growth habits. Most of the apples in the 2 3/4" up size, the balance going into the 2 1/2" grade. The tree is a typical Winesap

tree in growth, having the exact leaf markings of the Old Winesap. We know this will revive planting interest in this great apple. We have a fine lot of both one and two year trees of this IMPROVED WINESAP and WE ARE SELLING THESE TREES AT NO ADDITIONAL COST TO THE PLANTER.

The "COLORA" Red York

U. S. Plant Patent No. 168)

THE "COLORA RED YORK" MARKS A NEW ERA FOR THE GREAT YORK IMPERIAL APPLE EARLIER COLORING—EARLIER PICKING—100% COLOR—GREATER PROFITS TO THE GROWER.

The tree of the COLORA RED YORK has the same rugged characteristic as the old type York. The "COLORA RED YORK" can be picked from one to two weeks earlier than the regular York Imperial, with every apple passing U. S. No. 1 grade for color and enabling the grower to pack out a fancy grade of apples. There is no longer any reason for planting the old type York when better fruits and greater profits can be had by planting COLORA RED YORK.

THE "COLORA RED YORK" IS A BOUNTIFUL RIDGE INTRODUCTION AND IS GROWN AND FOR SALE EXCLUSIVELY BY THE BOUNTIFUL RIDGE NURSERIES.

GALLIA BEAUTY (Red Rome)

The Growers' Choice Wherever It Is Producing. It leads all other Red Rome Beauty type apples. It can rightfully be called "One of America's Most Beautiful Apples." Demand the Gallia Beauty when planting the Red Rome type apple.

The Gallia Beauty originated in Ohio and is a typical Rome type tree, being thrifty, hardy and productive. The fruit of the Gallia Beauty colors a brilliant bright red, without stripe and seems to be of higher quality than the regular Rome Beauty, and keeps exceptionally well in storage. The Gallia Beauty will size up equal to the regular Rome but many of the other inferior so-called Red Rome types will not size up satisfactory and again we urge you to plant only the Genuine Gallia Beauty. We offer you the best and charge you no more.

PLEASE NOTE:—For complete description of varieties listed herein refer to our general catalog for spring 1941. If you do not have our complete catalog, it will be sent you promptly on request.

L O D I (Big Transparent)

A new Transparent cross.

Called by some "Big Transparent"

Proving outstanding and a market leader.

A product of the New York Experimental Station

The Lodi after being tested over quite a large area is now proving one of our most worthy Early Apples. It is of Transparent type only much larger and more firm. The tree is more spreading and vigorous and bears more regular than Transparent. It should be interplanted for cross polinization. It ripens a few days later than Transparent but is large and can be picked with Transparent if desired. We ask no additional price for Lodi.

The New "CLOSE" Apple

This variety, tested as U. S. D. A. No. 57, ripens with or slightly ahead of the Yellow Transparent. It appears to adapt itself over a wide growing area. The fruit is medium to large size averaging 2 1/2"; fair to good quality, suitable for both dessert and cooking. The fruit develops a bright, attractive color when full ripe but when grown for the large commercial markets would have to be picked with 1/4 to 1/2 color. It seems to stand high summer temperatures well, thereby making it desirable in early apple producing areas of the South. The tree is vigorous, productive annual bearer and comes into fruiting while the trees are young. This variety has outstanding promise as an EARLY RED APPLE ADAPTED TO BOTH HOME AND COMMERCIAL ORCHARD PLANTINGS.



The CLOSE Apple

Thrifty - Hardy - Dependable Planting Stock Leads To Success!

WE LIST A VARIETY FOR EVERY LOCATION, SEASON AND PURPOSE

GENERAL LIST OF APPLE VARIETIES for Fall 1941 NEW PRICES ON APPLE TREES!

In figuring prices you may combine all varieties of apple to get advantage of large quantity rates.

APPLE (prices are per tree)	1-9	10-49	50-299	
2 yr., 5-6 ft., 11-16" up.....	\$.80	\$.65	\$.45	Write for Prices on Larger Quantities
2 yr., 4-5 ft., 9-11-16".....	.70	.60	.40	
2 yr., 3-4 ft., 7-9-16".....	.60	.50	.35	
	1-9	10-49	50-299	
1 yr., 5-6 ft.....	\$.75	\$.60	\$.40	Write for Prices on Larger Quantities
1 yr., 4-5 ft.....	.65	.55	.35	
1 yr., 3-4 ft.....	.45	.35	.25	

All prices are net F.O.B. Princess Anne, Md.

NOTE

The ripening order of varieties is designated by bracketed number after the name. Varieties overlapping in ripening season are indicated by sub-letter. Example: McIntosh and Kendall are same season and are designated as by numbers 10a and 10b. We are endeavoring to give the ripening order and not the picking order as this will vary greatly according to the grower and where they are marketed. Many of our green apples are picked early for cooking purposes. Other highly colored red apples are marketed long before actual ripening time and again soil, fertilization and climatic conditions will cause a variation in ripening season. We trust this listing will be helpful to you. We have endeavored to make it as authentic as possible.

IMPROVED ALL RED MCINTOSH (10). A special selected strain of the famous McIntosh apple. Solid red color without stripe. Finest type of the McIntosh Red strain at present. Both 1 yr. and 2 yr. old trees available.

McINTOSH (10A)

Tree vigorous with spreading head, good bearer; fruit medium to large, brilliant crimson, flesh snow-white, crisp, slightly aromatic, good quality.

KENDALL (10B). Has attracted more attention from fruit growers than any other new apple of McIntosh season. Apples large, whitish, fine grained flesh of McIntosh. Flavor the same. Apples hang better than McIntosh.

LAWFAM (10C). A product of Central Experiment farm, Ottawa, Canada. A cross between Lawer and Fameuse and one of the most beautiful of the new McIntosh types of apples. Excellent quality.

CORTLAND (10D)

Is an improved McIntosh. The fruits of the two varieties are similar, but those of Cortland are more oblate, average larger, and are more uniform in size; they have more color and the red is lighter and brighter and the stripings and splashes are laid on differently; the taste of Cortland can hardly be distinguished from that of McIntosh; the flesh is firmer but just as juicy; the apples do not drop so readily and ship better.

OHIO NONPAREIL (10E) (Red Bellflower). We re-list this old variety in response to many requests from Ohio fruit growers. High dessert quality and fine appearance is responsible for its popularity.

JOAN (10F). A cross between Anisim and Jonathan. Large size, smooth form with solid bright red color makes Joan highly attractive. The flesh is white, medium grain, juicy, mild sub-acid, quality fair. A fine baking and cooking apple. Joan is recommended because of its beautiful fruit and regular annual production. Ripens with or a little earlier than Jonathan. For home orchard and local market. 1 yr. trees only.

SMOKEHOUSE (11). Moderate bearing. Fruit yellow, striped with dull red, very attractive.

IMPROVED ALL RED JONATHAN (11A). If you are not getting enough color on your Jonathan, plant this Improved strain. You will be satisfied with the results.

JONATHAN (11B). A good commercial apple, hard to equal for hardiness and productiveness. Good quality, medium size, excellent eating and cooking apple. Used as filler and pollinator.

GRIMES GOLDEN (11C). Highest quality fancy dessert apple. Ranks with Delicious and Jonathan. Medium to large, bright yellow, pink cheek. Trees hardy, highly recommended to pollinize.

TWENTY OUNCE (12). Fruit exceptionally large, color green slightly tinged with red blush. Tree vigorous and one of our finest baking apples.

OPALESCENT (12A). Very large, brilliant dark red all over; tree bears young and very prolific. Quality good.

NORTHWEST GREENING (12B). Tree vigorous, hardy. Fruit large to very large; green skin, yellow fleshed, fine grained and firm. Very attractive.

TOLMAN SWEET (12C). Medium to large size, pale yellow, firm, rich and very sweet. Vigorous, hardy and productive.

YELLOW DELICIOUS (13)

Famous for quality, which is hard to equal. This combined with fine, firm texture of flesh and its golden yellow skin, attracts the consuming public. Tree thrifty and extremely productive, bears early with abundant crop.

MACOUN (13A). Very highly colored, no stripe. Same quality as McIntosh, same texture fruit. Hangs better than McIntosh. Ripens 2 to 3 weeks after Cortland. Recommended to extend McIntosh season.

RICHARD DELICIOUS (13B). See full description on page 2.

LOWRY (13C). Origin is obscure. A comparatively new variety which is rapidly becoming a popular commercial apple wherever grown. Very juicy, slightly sub-acid, a mahogany red color, medium size, regular in shape and a sure cropper. The tree is a strong grower and annual in bearing. Fruit ripens with or slightly before Red Delicious. Recommended for commercial planting where Delicious does well. 1 yr. trees only.

DELICIOUS (14). Fruit large, nearly covered with brilliant dark red; flesh fine grained, crisp, and melting; juicy, with a delightful aroma; of very highest quality. A splendid keeper and shipper. Tree a vigorous grower.

MEDINA (14A). Delicious shape and appearance. Recommended by N. Y. Fruit testing asso. to prolong the Delicious season.

ORLEANS (14B). Same season as Delicious only better keeper in common storage. The flavor resembles that of Staymans. Apple shape and color of Delicious.

RHODE ISLAND GREENING (15). Fruit large and handsome. Dark green overspread with yellow. Flesh tender, rather acid, flavor excellent.

NORTHERN SPY (15A). Large, roundish-conical, slightly ribbed, handsomely striped with red, flavor rich, aromatic, mild sub-acid.

RED NORTHERN SPY (15B). A typical Northern Spy except in color. The Red Spy colors a solid red without stripe or splashes.

SECOR (15C). A cross between Salome and Jonathan. Quality is outstanding and hard to equal as a dessert apple. The flesh is firm, crisp, juicy, sprightly sub-acid with a spiciness that lends a distinct flavor. The fruit oblate-conic in form, nearly covered with a cherry red and carries a stripe which makes it very attractive. Ripens about six weeks later than Jonathan. Free of Jonathan spot in storage and keeps very well. Tree is very hardy and heavy annual bearer. 1 yr. trees only

TURLEY (16)

The Turley is a Winesap seedling originating in Indiana. This beautiful apple is gaining in popularity. The trees resemble those of the old Staymans, are vigorous and productive. The apples average large to very large. The skin is smooth and colors a bright attractive red almost over the entire apple. The flesh is firm, similar to Staymans.

ALBEMARLE—NEWTON PIPPIN (16A). Large, smooth skinned, beautifully colored yellow apple. A valuable market variety.

COLORA RED YORK (17). See description on page 2.

YORK IMPERIAL (17A). Fine, hardy, red Winter apple. Succeeds over a wide range of country. Bears four years from planting, regularly and heavy. Fruit of medium size, skin yellow covered with two shades of red. October 1.

BLANTAYMAN (18). See full description page 2.
STAYMANS WINESAP (18A). Tree vigorous and hardy, early bearer, very productive, fruit medium to large, skin smooth, slightly striped, colored to dull red. Flesh yellow, firm, rich, sub-acid, aromatic, a splendid late keeping variety. October 10-15.

GALLIA BEAUTY (18B). See description page 2.
ROME BEAUTY (18C). Keeps in good condition until May and June. Large round, mottled and striped different shades of red.

WINTER BANANA (19). Vigorous grower, early bearer. Fruit smooth and golden yellow usually shaded with red blush, flesh fine grained, rich, sub-acid.

BALDWIN (19A). No home orchard is complete without the Baldwin. An old favorite and one of the great apples in the northern sections. Noted for quality and long keeping merits.

RED CANADA (Steele's Red) (20). The tree is medium to large, vigorous and upright in growth. The fruit medium to large, uniform in size and shape, coloring a beautiful deep red striped with deeper red on a background of yellow. Flesh is yellow, firm, crisp, aromatic, and juicy.

PARAGON (21). One of the best of the long keeping winter apples. Does well on most any soil; thrifty grower and fruits young; bears regular. Winesap type, fine quality.

WINESAP (21A). Medium size, dark red, juicy, mild. A favorite late winter apple and a leading commercial variety on all markets, as well as a very popular home apple in the West.

IMPROVED WINESAP (21B). See description on page 2.

CRAB APPLES

Prices same as other standard apple trees.
Hyslop Transcendent Dolga

VIRGINIA CRAB - HIBERNAL CRAB
FRENCH CRAB TREES

FOR BUDDING - GRAFTING - TOP-WORKING
AND INARCH WORK.

Can supply these in 1 and 2 yr. old trees. Submit your list, giving quantity and grade wanted for special quotations.

RED WARRIOR (6A)

Meets Every Demand for a Mid-Summer Apple

The tree is normally vigorous, and bears regularly. The fruit is large to very large. The skin is smooth and colored a brilliant bright red from stem to calyx without stripe. The flesh is white and fine texture. Its ripening season is about with Wealthy.

WEALTHY (7). Fruit brilliant red, fine quality, best of its season, good keeper, adapted to cold climates, bears early. Used as a pollinator.

SUMMER RAMBO (7A). Large, flat, streaked red and yellow. Fine flavor, juicy, tender, productive.

GLENTON (8). A seedling of the Northern Spy. A new apple ripening with and just after Wealthy. The trees are vigorous nicely shaped and annual bearers. The apples are medium to large, highly colored with attractive red and good quality for either cooking or eating.

LOBO (9). Same season as McIntosh, larger apple, colored earlier, full red, extra quality. Recommended for Southern growers.

PLEASE NOTE: For full description of stock listed on this page consult our complete catalog for Spring 1941.

We Present "The Bountiful Ridge Peach World"

EACH SUCCEEDING YEAR PROVES the WISDOM of FOLLOWING CLOSELY BOUNTIFUL RIDGE LISTINGS and RECOMMENDATIONS.

America's Earliest Freestone Peach

ERLY-RED-FRE

U. S. PLANT PATENT NUMBER 320

Introduced, Grown and For Sale Exclusively By
Bountiful Ridge Nurseries

"The Greatest Early Commercial, White Fleshed Peach of All
Time; Standing Without an Equal For Its Season"

1941 FRUITING SEASON PROVED THE REAL COMMERCIAL VALUE OF
ERLY-RED-FRE

Young trees bearing in all Eastern Peach States—many Central and far
Western States including Washington State and Canada attest to its UNIVERSAL
ADAPTABILITY.

MANY FRUITS OVER 3 inch SIZE, PLUS UNUSUAL BEAUTY AND IN-
COMPARABLE QUALITY FOR AN EARLY PEACH.

TREE REQUIRES (under definite test) LESS REST PERIOD THAN EL-
BERTA. GEORGIA AND OTHER FAR SOUTHERN STATES CAN PLANT
ERLY-RED-FRE KNOWING THEY WILL HAVE REGULAR, HEAVY PRO-
DUCTION.

ERLY-RED-FRE should entirely replace Early Rose, Mt. Rose, Uneeda, Red
Bird and Greensboro in your orchard planting program.

COMPARE MARKET PRICES ON FREESTONE AND CLINGSTONE
PEACHES. COMPARE YOUR AVERAGE MARKET PRICES OF PEACHES
RIPENING THE SEASON OF ERLY-RED-FRE WITH OTHER MARKETING
PERIODS AND YOU WILL HAVE SOME OF THE REASONS YOU SHOULD
PLANT ERLY-RED-FRE THIS YEAR.

The ERLY-RED-FRE ripens uniformly, does not show bruises readily and
will keep and ship better than ELBERTA. It is definitely the first ripening free-
stone peach now in cultivation to our knowledge, following closely the May-
flower and preceding the Golden Jubilee by several weeks.

The ERLY-RED-FRE originated as a chance seedling in the orchard of
Wm. Perry near Chase City, Va. Our attention was first called to this splendid
peach in 1935. The second generation trees bore in 1937 at 2 years of age, the
fruits on these being identical with those on the Parent tree. The fruit is very
highly colored with an attractive bright red on a creamy white background.
The skin is tough and medium thick. The flesh of the peach is of such texture
that it does not show bruises through the skin for several days after being
bruised and is a clear white through to the pit. We believe this peach has one
of the smallest pits of any cultivated peach we know of in existence. The fruit
averages large for an early peach, some specimens weighing 12 ounces and the
entire crop under normal conditions and care can be packed out 2 1/4" and up if
desired. The tree is very vigorous, resistant to Bacteriosis, bears while very
young.

The Tree is:
Hardy
Vigorous
Early Bearing
Disease Resistant
Heavy Bloomer
Frost Resistant
Self-fertile
Bears Consistently

The Fruit is:
Large Size
White Flesh
Freestone
Highly Colored
Finest Quality
Firm
Good Shipper
Disease Resistant



ERLY-RED-FRE FRUITS

RIPENS WITH RED BIRD; 3 to 4 WEEKS BEFORE GOLDEN JUBILEE;
6 to 7 WEEKS BEFORE ELBERTA

NEW PRICES ON EARLY-RED-FRE and FISHER PEACH TREES

	1-9	10-49	50-299	
5-6 ft., 11/16 up.....	\$1.00	\$.75	\$.45	Write for Prices on Larger Quantities
4-5 ft., 9-11/16.....	.75	.45	.30	
3-4 ft., 7-9/16.....	.55	.40	.25	
2-3 ft., 5-7/16.....	.40	.30	.20	
2-3 ft., 1/4 to 5/16.....	.35	.25	.18	
18-24 in.30	.20	.15	
All prices are net f.o.b. Princess Anne, Md., unless on special quotations.				

The FISHER Peach

U. S. PLANT PAT. NO. 233

The Fisher Peach Is Hardy—Medium to Large Size—Highly Colored
With Handsome Appearance and Superb Quality

FISHER came through in our test orchard this year with a very heavy crop.
Fruits sized up well; were very beautifully colored and handsome fruits. Ob-
serving this peach here and in other locations this year FISHER has proven its
ability to fruit heavy on young trees, to size its fruits well, and the tree seems
to adapt itself over wide area but should have 60 ft. elevation or more and de-
velops better on light soil with some gravel or shale. The trees are vigorous
and should have a well balanced fertilizer which will harden the fruits consider-

ably for shipping to distant markets. WE BELIEVE TIME WILL PROVE THE
FISHER HAS A DEFINITE PLACE IN OUR PEACH VARIETY LIST, ES-
PECIALLY FOR THE CENTRAL AND NORTHERN GROWER. ITS SIZE,
BEAUTIFUL COLORING, HIGH QUALITY, THE FLESH BEING A CLEAR
YELLOW FROM PIT TO SKIN AND ITS SEASON, RIPENING 10 DAYS BE-
FORE GOLDEN JUBILEE MAKES IT WORTHY OF CONSIDERATION BY
EVERY PLANTER. Six straight days of rain just before ripening period of
FISHER here this year hardly gave it a fair show. Fruits here were semi-free
but were free stone at other locations. WE STRONGLY RECOMMEND FISHER
FOR TRIAL IN ALL COMMERCIAL PEACH SECTIONS.

GEMMERS LATE ELBERTA (15B)

Beautiful color, large size, excellent quality, fine
shipping and keeping ability combine in GEMMERS
LATE ELBERTA to make it one of the most prom-
ising varieties we have ever observed to follow the
Elberta season.

Originating in the orchards of Mr. Conrad Gem-
mer, Sussex, N. J., we have observed this peach for
several years and it seems superior in appearance,
size, quality and shipping ability to any other peach
we now have to follow Elberta. It is a typical El-
berta in fruit and tree characteristics. It ripens 10
to 12 days after Elberta, just following Shippers
Late Red and before Lizzie and Salberta. There is
a place here for a good Elberta type peach and we
believe Gemmers Late Elberta will fill it. N. J.
Experiment Station has grown Gemmers for several
years and seem favorably impressed with its per-
formance at New Brunswick. Fruits are very uni-
form, large, well colored with a brilliant red on an
attractive golden yellow, almost fuzless, having a
smooth tough skin. Flesh very firm, being slightly
tinged with red about the pit but red does not ex-
tend into the golden yellow flesh. Originating at
Sussex, N. J., well up in the Mountains where many
varieties of peaches fail to stand their climatic
conditions should recommend GEMMERS as a hardy
variety both in tree and bud. WE RECOMMEND
"GEMMERS LATE ELBERTA" FOR TRIAL IN
ALL PEACH SECTIONS WHERE YOU WISH TO
CONTINUE THE ELBERTA SEASON WITH A
REAL PEACH. WE OFFER THIS PEACH THIS
YEAR FOR THE FIRST TIME. IT IS GROWN
AND FOR SALE EXCLUSIVELY BY BOUNTIFUL
RIDGE NURSERIES.

DIXIGOLD (10A)

A YELLOW FLESHED SEEDLING OF THE
FAMOUS BILEY

Developed by the U.S.D.A. at Ft. Valley, Ga., as
an open pollinated seedling of Hiley. Tree has
many characteristics of the parent, being very vig-
orous in growth habits and so far has been resist-
ant to bacteriosis. Requires very short rest period.
Flowers self-fertile. Fruit averages larger than H-
iley, is a freestone and ripens 4 to 5 days earlier
than Hiley. The flesh has fair to good quality,
medium firmness and smooth texture. It colors a deep
lemon yellow overlaid with a blush of red on one
side. The relative low demand for winter cold
makes DIXIGOLD very desirable for southern peach
growing regions, and other sections where Hiley
does well.

Our trees propagated from wood of the original
tree. Supply limited.

Sullivan's Early Elberta (12A)

A new bud sport of the famous Elberta, ripening
a full seven days ahead of its parent.

The variety found as a bud sport in the orchard
of Mr. P. J. Sullivan at Zebulon, Ga. The tree and
fruit characteristics were found to be identical with
Elberta. Sullivan's Early Elberta is being planted
extensively throughout Georgia and adjoining states.
Our trees are propagated from the original strain.
Supply limited.

RED HAVEN (5B)

It looks like another
"GREAT COMMERCIAL PEACH FROM SOUTH
HAVEN EXPERIMENT STATION"

BEAUTIFUL COLOR, YELLOW FLESHED, FREE-
STONE, VERY FIRM, RIPENS 8 DAYS
BEFORE GOLDEN JUBILEE.

We congratulate those at South Haven Station on
releasing to the peach world another variety which
has every promise of becoming one of our great com-
mercial peaches. RED HAVEN is a cross between
Hale Haven and Kallhaven. We first observed this
variety in 1939 and had our first fruits here in our
test orchards this year. It colors a brilliant red
and beautiful yellow. Skin is smooth, almost fuz-
less, resembling J. H. Hale in color, skin and flesh.
Flesh is very firm and fruits ripen uniformly. Tree
is very vigorous with heavy bud set and bears
young. Fruits medium size and well filled when
ready to pick, suture being rather prominent until
peach approaches picking period. Growers may
be inclined to pick too early because of good color
and should watch this and when trees set too heavy
thinning should be practiced to increase size of the
fruits. Trees are proving satisfactory in test plant-
ing over a wide area. IT IS A PEACH EVERY
GROWER SHOULD WATCH AND MAKE TRIAL
PLANTINGS OF AS A COMMERCIAL PEACH TO
PRECEDE THE GOLDEN JUBILEE AND HALE
HAVEN. Our supply of trees is limited; place your
order early.

Never in the History of the Peach Industry Have We Offered the Grower Such an Outstanding List of Varieties to Select From Which are Adapted to all Producing Sections

"Buy Your Peach Trees This Year From Bountiful Ridge Nurseries"

New Prices on Peach Trees

NOTE

Ripening order of varieties designated by bracketed numbers after name. Varieties overlapping in ripening season indicated by sub-letter. Example: Elberta and Hale are about same season and are designated by numbers 13 and 13A.

Prices given are per tree.	1-9	10-49	50-299	Write
5 to 6', 11/16" and up.....	\$.70	\$.60	\$.40	for
4 to 5', 9/16" to 11/16".....	.40	.35	.25	Prices
3 to 4', 7/16" to 9/16".....	.35	.30	.20	on
2 to 3', 5/16 to 7/16".....	.25	.20	.15	Larger
2 to 3', 1/4 to 5/16".....	.20	.15	.12	Quantities
18 to 24".....	.17	.12	.10	

All prices are net F.O.B. Princess Anne, Md.

SUNHIGH (N.J. No. 82) (9D). N. J. Station introduction. A large, red, bright smooth peach. Colors all over before ripening. Does best in hilly sections. High quality. Yellow freestone.

HALE HAVEN (10)

We Endorse and Recommend This Great Peach to Growers in All Sections Where Size, Color, Quality and Shipping Ability Are Paramount Considerations.

We know of no peach of recent introduction that is proving so universally satisfactory as the Hale Haven. The tree is a strong thrifty grower resistant to common peach diseases. The fruit is large, oval shaped like a well grown J. H. Hale, it has a good tough skin, the flesh of the peach being of such texture that it will not bruise easily and best of all it has a beautiful handsome red color that at once attracts the buyer and a flavor that is as good as the very best. The Hale Haven is a product of South Haven Experimental Station, in Michigan.

DIXIGOLD (10A). See description page 4.

SOUTH HAVEN (10B). An excellent peach, tree thrifty and productive. Peach of Elberta type, ripening 15 to 18 days before Elberta. Freestone, yellow fleshed. Desirable for local or roadside markets.

HILEY BELLE (11). Medium size, white fleshed, freestone peach, beautiful red blush, and tough skin, juicy and tender.

SLAPPY IMP. (11A). A selected strain of Slappy which we consider superior to the regular Slappy variety. Yellow freestone, very good quality, ripening Hiley Belle time.

VALIANT (11B). A seedling of Elberta, introduced by Experiment Station, Vineland, Ontario, Canada. A large yellow fleshed, high colored peach, ripening 3 to 7 days after Védette. Excellent quality fruit, hardy tree and very productive.

GOLDEN EAST (N.J. No. 87). (11C). Introduced by N. J. Station. Ripens Hiley season. Usually a freestone. Fruit large, oval, firm, high colored.

ECLIPSE (11D). Dark red, yellow fleshed, freestone peach, firm texture, good flavor. Ripening with Hiley.

CHAMPION (11E). Free. Large yellowish-white mottled with red. Flesh white and red at pit.

VETERAN (11F). A cross between Vaughan and Early Elberta; of Canadian origin. The fruit is large, round, yellow fleshed, freestone and superior to Elberta in quality. Ripens a few days after Valiant.

KALHAVEN (12). Originated in Michigan and is a cross between J. H. Hale and Kalamazoo. The trees are hardy, vigorous and fast growing. The fruits are medium to large, very attractive in appearance and are freestones.

SULLIVAN'S EARLY ELBERTA (12A). For description see page 4.

EARLY ELBERTA (12B)

A Great Commercial Peach Ripening Just Before Regular Elberta.

Where Quality, Size, Productiveness and Beauty Is Desired, Plant Our Old Original Strain of Early Elberta. There is a difference.

A very large, attractively colored, yellow fleshed, freestone peach ripening with Belle of Georgia or from 3 to 8 days before the regular Elberta. The highest quality peach of all the Elberta types grown commercially.

PRIMROSE (12C). A large yellow fleshed, freestone of good quality, ripens with Belle of Georgia.

SUMMERCREST (N.J. No. 94) (12D). Introduced by N. J. Station. Large oval freestone of fine quality. Flesh deep golden yellow, melting and sweet. Ripens with Georgia Belle.

BELLE OF GEORGIA (12E)

The White Peach That Has Stood the Test of Time and Stands Today as the Leader of All White Peaches of its Season Adapted to Large Commercial Plantings in All Peach Producing Areas.

ELBERTA (13)

The Famous Elberta Peach Continues to be America's Leading Commercial Peach!

The Peach With A Pedigree—and the Worlds Greatest Money Making Peach.

Plant Bountiful Ridge Selected True Strain Elberta for Greater Profits and Consumer Satisfaction.

J. H. HALE (13A). Skin deep crimson, smooth type without fuzz, flesh golden-yellow, firm, has delicious flavor.

SHIPPER'S LATE RED (14)

Hard to Equal as a Large, Productive, Handsome Peach to Follow Elberta.

A large, very highly colored attractive red, yellow fleshed freestone and good quality peach, of distinct Hale type. Ripens just after Elberta and J. H. Hale. A good shipping peach, extremely productive, very hardy and its beauty and size enables it to bring top prices on the Markets.

GAGE ELBERTA (14A)

A Disease Resistant Bud Sport of the Famous Elberta Peach, Which We Can Recommend Highly.

Gage Elberta blooms from two to four days after Elberta, setting a crop of fruit under unfavorable conditions. The fruit is so near the Elberta that only an expert can distinguish the difference. It ripens two to three days later than Elberta.

THE BRACKETT PEACH (14B). Its season is about five days after Elberta, with a beautiful orange-yellow skin tinged with carmine. Flesh is a deep yellow and much higher flavored than Elberta. This peach sizes up well under heavy crops and is equal to Elberta as a shipper. A perfect freestone.

AFTERGLO (N.J. No. 84) (14C). Introduced by N. J. Experiment Station. Ripens 3 to 5 days after Elberta. Fruits large, round oval, completely overspread with red. More hardy than J. H. Hale.

HOPE FARM (15). Introduced by us in 1925. A large white fleshed freestone peach of superior quality. Follows the Elberta about five days in ripening. Partially self-sterile. Fine for roadside market.

WILMA (15A) Very large, late yellow freestone peach, fine color, good quality, ripens 5 to 8 days after Elberta. Tree hardy.

GEMMER LATE ELBERTA (15B). For description see page 4.

CRAWFORD'S LATE (16). Free. Large, roundish, oval, yellow with broad red cheeks, flesh yellow, very good.

ROBERTA (Augbett) (16A). Very similar to Elberta except its season. One week to 10 days later.

IRON MOUNTAIN (17). Free, white, medium to large size, color poor, white with slight bluish, good quality, good keeper.

LIZZIE (17A). Distinct Elberta type peach, very large, freestone, yellow flesh, excellent quality. Ripens 12 to 16 days after Elberta.

SALBERTA (18). Large yellow freestone peach, Elberta type, good color and quality similar to Roberta. Ripens 1 week later.

HEATH CLING (Cling) (18A). Very large, creamy white with delicate red blush, flesh white, juicy and sweet. Valuable for canning.

SALWAY (Free) (19). Large round, deep yellow with rich red cheeks, flesh yellow, firm. Trees hardy. Late market sort.

KRUMMEL'S OCTOBER (20). Fine peach, best late yellow freestone, ripening after Salway or 5 weeks after Elberta. Medium large, almost round, deep yellow, carmine shaded, very firm.

GOLDEN JUBILEE (6B)

A PROVEN MONEY MAKER

Planted and producing in every peach producing section of the United States and Canada and stands without an equal as an early, yellow freestone peach of exceptional quality. The Golden Jubilee is a second generation seedling of the Elberta crossed with the Greensboro. The tree is unusually hardy.

CARMAN (6C). Hardy, sets fruit well, early white peach, red color, flesh medium fine, juicy.

TRIOGEM (N.J. No. 70) (6D). Introduced by N. J. Station. An early yellow freestone peach ripening with Jubilee. Tree a heavy cropper. Requires good soil.

RADIANCE (7). Large oval, white fleshed freestone, good quality, good color, ripens after Carman.

FAIR BEAUTY (7A). An early peach following Golden Jubilee three to five days. Tree vigorous, spreading, very hardy in bud, often producing a crop when other varieties are winter killed. Fruit is medium to large in size, skin a deep golden yellow blushed with bright red, the flesh is firm.

NEW DAY (N.J. 79) (7B). Introduced by N. J. Station. Large yellow fleshed peach, ripening a few days after Triogem. Tree is vigorous, fruit is showy, firm in texture.

ROCHESTER (8). Large, yellow and red peach. Flesh yellow and of fine quality.

COLORA PEACH (9)

Possibly The Most Outstanding Hardy, Early, Yellow Freestone Peach in Cultivation.

Tree and Buds Stand Low Temperatures Where Other Varieties Fail.

High Color and Superb Quality Are Reasons Why You Should Plant Colora This Year. Introduced in 1936.

A new frost resistant, yellow freestone peach. Withstood temperatures in past winters of about 17 degrees below zero. The peach is an attractive yellow, freestone, well colored and of excellent quality, ripening about 15 to 20 days before Elberta. In size it is about the same as Elberta.

NEW EARLY HILEY (9A). Has all the characteristics of its famous parent, but is a full week earlier in ripening.

GOLDEN GLOBE (N.J. 83) (9B). Introduced by N. J. Station. Largest and most showy of all N. J. varieties. Peach is yellow with fine coloring. Delicious flavor. Valuable for roadside and nearby markets. Usually a freestone.

VEDETTE (9C)

A Peach of Proven Merit Adapting Itself to Southern Peach Areas.

Size, High Color, Excellent Quality and Shipping Ability Establish the Védette as One of the Leading Peaches to Follow the Colora. A seedling of Elberta.



Hardy, Thrifty Dependable Planting Stock

Leads to Success—We Bring You The Best Available at Fair Prices



PLUM TREES

PLUMS (All Varieties)		1-9	10-49	
2 yr., 5-6'	11/16"	\$.90	\$.75	Write for Prices on Larger Quantities
2 yr., 4-5'	9-11/16"	.75	.60	
2 yr., 3-4'	7-9/16"	.60	.50	
1 yr., 4-5'		.75	.60	
1 yr., 3-4'		.55	.45	
1 yr., 2-3'		.50	.40	

STANLEY. The fruit is of the Prune type, excellent for cooking or eating out of hand. The tree is healthy, vigorous and produces full crops annually. Fruit is large in size, dark-blue with heavy bloom; flesh greenish-yellow, juicy, fine-grained, tender, firm, sweet, pleasant; quality good to very good. Freestone. Mid-season. Stanley is one of the New York Experiment Station's prize plums.

FELLEMBURG or ITALIAN PRUNE. Our most popular commercial plum. It succeeds under most all climatic and soil conditions. The fruit is dark purple with a dark blue bloom medium to large size, oval, pointed and tapering. The flesh is juicy and delicious and it is very fine for drying and canning.

Other Varieties of Plums

German Prune	Burbank
Imperial Gage	Reine Claude
Lombard	Bradshaw
Shropshire Damson	Wickson
Damson	*Methley
Abundance	*Early Italian Prune

Those marked (*) can only be supplied in 1 yr. old trees.

QUINCE TREES

ORANGE and CHAMPION		1-9	10-49	
2 yr., 4 to 5 ft., 9 to 11/16"		\$1.00		Write for Prices on Larger Quantities
2 yr., 3 to 4 ft., 7 to 9/16"		.80		
2 yr., 2 to 3 ft., 5 to 7/16"		.65		
1 year 3 to 4 ft. and 2 to 3 ft. same price as 2 year of this grade.				

FIG TREES

MAGNOLIA FIG. One of the hardiest species, doing well where the winters are not too severe. Fruit very large and of rich straw color.

BROWN TURKEY. Very hardy, dwarfish and prolific. Fruit medium size to large, pear shaped, good quality.

CELESTE. Most widely planted of all figs. Can be grown where less hardy varieties fail. Fruit is medium in size, flesh white to rose color.

EVERBEARING TYPE. Characteristics similar to the Brown Turkey, otherwise it starts to bearing in the season and continues to bear fruit throughout the growing season into late fall.

Prices all Fig Varieties:
2 to 3 feet, 60c each; \$5.00 for 10.

Sweet Cherry Trees

We have a fine lot of sweet cherry that are hard to equal. You will find these trees ideal for orchard planting.

SWEET CHERRY (All Varieties)		1-9	10-49	
2 yr., 11/16" up, 5-6'		\$1.00	\$.80	Write for Prices on Larger Quantities
2 yr., 9-11/16", 4-5'		.80	.65	
2 yr., 7-9/16", 3-4'		.70	.55	
1 yr., 5-6'		1.00	.80	
1 yr., 4-5'		.70	.60	
1 yr., 3-4'		.60	.50	

Varieties of Sweet Cherries

SENECA	LAMBERT
BING	NAPOLEAN BIGGAREAU
BLACK TARTARIAN	SCHMIDT'S BIGGAREAU
GOVERNOR WOOD	WINDSOR
	POLLY ANNE

For descriptions see our 1941 catalogue.

JAPANESE PERSIMMONS

The Japanese persimmon is adapted to most regions in the south and can be raised successfully as far north as Penna.

YEMON. Fruit is large to very large, bright yellow and generally seedless. Flavor is brisk and very good. Skin is smooth without any tinge of red.

TANE-NASHI. Large to very large, conical in shape. Light yellow changing to red as the fruit ripens. Flesh is astringent until fully ripe when it acquires a delightful flavor that is characteristic of the fruit.

Price: 3 to 4 ft., 60c each; \$5.00 for 10.

PEAR TREES

Prices (All Varieties)		1-9	10-49	
2 yr., 11/16" up, 5-6'		\$.90	\$.75	Write for Prices on Larger Quantities
2 yr., 9-11/16", 4-5'		.75	.60	
2 yr., 7-9/16", 3-4'		.60	.50	
1 yr., 4-5'		.75	.60	
1 yr., 3-4'		.50	.45	
1 yr., 2-3'		.45	.40	

WAITE PEAR

WE HAIL A NEW PEAR OF COMMERCIAL POSSIBILITIES 10 TIMES MORE BLIGHT RESISTANT THAN THE KEIFFER.

A product of the U. S. D. A. Bureau of plant industry developed by Mr. M. B. Waite. The Waite pear is outstanding in blight resistance never developing under severe test conditions, more than 10% as much blight as the Keiffer. The fruit resembles that of Bartlett and is about same size, ripening about same season as Keiffer. The flesh is smooth in texture and is almost free of grit cells. It is more acid than Bartlett but is excellent for cooking and canning and fairly good for dessert purposes. The tree is rather slender, willowly grower and of moderate vigor. Requires cross pollination for consistent heavy crops.

General List of Varieties

GORHAM	D'UCHES D'Angouleme
OVID	SECKEL
BARTLETT	FLEMISH BEAUTY
CLAPP'S FAVORITE	WORDEN-SECKEL
BIERRE BOSCH	DOUGLAS
ANJOU (Buerre d'Anjou)	KEIFFER

DWARF PEARS

Prices and description same as Standard Pear listed above. Can supply in 2 yr. 9-11/16", 2 yr. 7-9/16" and 1 yr. 2-3 ft.

Varieties:

SECKEL	KEIFFER
DUCHESS	CLAPP'S FAVORITE
	BARTLETT

Sour Cherry Trees

Try our Bountiful Ridge Grown Sour Cherry for best success.

SOUR CHERRY (All Varieties)		1-9	10-49	
2 yr., 11/16" up, 4-6'		\$.90	\$.75	Write for Prices on Larger Quantities
2 yr., 9-11/16", 3-4'		.75	.60	
2 yr., 7-9/16", 2-3'		.50	.40	
2 yr., 5-7/16", 18-24"		.40	.35	

Prices and grades same on 1 yr. Sour Cherry as on 2 yr.

IMPROVED MONTMORENCY

BOUNTIFUL STRAIN

ADD TO SOUR CHERRY PROFITS BY PLANTING THIS GREAT NEW TYPE MONTMORENCY

This is the largest and most beautiful type Montmorency cherry that has ever come under our observation. It was discovered in the orchards of Clyde S. Mumma, Dayton, Ohio, in a general planting of Montmorency trees, loaded down with fruit, having a heavier crop than other trees adjoining it. The tree is vigorous but not any larger than other trees. The fruits have the same rich red color as other Montmorency cherries but seems to be slightly more mild in flavor. Its immense size immediately attracted our attention. Nature again contributes an IMPROVED TYPE TO ONE OF OUR GREATEST SOUR CHERRIES. Please state when ordering whether you wish the Regular Montmorency or BOUNTIFUL STRAIN IMPROVED MONTMORENCY. We can supply them in both one and two year trees.

Other Varieties of Sour Cherries:

LARGE MONTMORENCY	ENGLISH MORELLO
EARLY RICHMOND	BRASSINGTON

SWEET SEPTEMBER CHERRY

NEW FALL BEARING

There is no previous record in the history of Horticulture of a Fall-bearing cherry. The fruits are an attractive medium dark red similar to the Windsor, deliciously sweet, excellent for eating fresh or canning. It ripens in Ohio about September first.

Each	10
3-4 feet, 1 year	\$1.50 @ \$1.45

GRAPE VINES

1941 REGISTERS A SUCCESSFUL SEASON FOR THE EASTERN GRAPE GROWER
Plant This Year to Maintain Grape Production For The Future

	Each	3	10	25	50
Concord, 2 yr., No. 1	\$.30	\$.80	\$1.50	\$3.00	\$5.00
Concord, 1 yr., No. 1	.25	.60	1.25	2.50	4.00
Moore's Early, 2 yr., No. 1	.35	.95	1.65	3.25	5.50
Moore's Early, 1 yr., No. 1	.30	.70	1.40	2.75	4.50
Niagara, 2 yr., No. 1	.35	.95	1.65	3.25	5.50
Niagara, 1 yr., No. 1	.30	.70	1.40	2.75	4.50
Worden, 2 yr., No. 1	.35	.95	1.65	3.25	5.50
Worden, 1 yr., No. 1	.30	.70	1.40	2.75	4.50
Catawba, 2 yr., No. 1	.35	.95	1.65	3.25	5.50
Catawba, 1 yr., No. 1	.30	.70	1.40	2.75	4.50
Caco, 2 yr., No. 1	.50	1.30	3.00	6.00	10.00
Caco, 1 yr., No. 1	.40	1.10	2.00	4.00	7.50
Portland, 2 yr., No. 1	.35	.95	1.75	3.50	6.00
Portland, 1 yr., No. 1	.30	.80	1.50	3.00	5.00
Fredonia, 2 yr., No. 1	.35	.95	1.75	3.50	6.00
Fredonia, 1 yr., No. 1	.30	.80	1.50	3.00	5.00
Sheridan, 2 yr., No. 1	.35	.95	1.75	3.50	6.00
Sheridan, 1 yr., No. 1	.30	.80	1.50	3.00	5.00
Agawam, 2 yr., No. 1	.35	.95	1.75	3.50	6.00
Agawam, 1 yr., No. 1	.30	.80	1.50	3.00	5.00
Delaware, 2 yr., No. 1	.35	.95	1.75	3.50	6.00
Delaware, 1 yr., No. 1	.30	.80	1.50	3.00	5.00
Golden Muscat, 1 yr., No. 1	.60	1.65	5.00	11.25	21.25
Moore's D., 2 yr., No. 1	.35	.95	1.65	3.25	5.50
Moore's D., 1 yr., No. 1	.30	.70	1.40	2.75	4.50
Ives, 2 yr., No. 1	.35	.95	1.65	3.25	5.50

Write for prices on larger quantities giving varieties and size.

APRICOTS

Popular In All Fruit Sections Where Peaches Do Well
MOHR'S APRICOT

Apparently a new apricot coming to us from Mr. Frank Mohr near Fogelsville, Penna., having many characteristics which recommend it for home and commercial planting. It is extremely hardy. Fruit is large and a freestone. Flesh firm, solid and excellent quality.

MOORPARK. One of the largest; orange-yellow with numerous specks and dots; flesh yellow, sweet, juicy and rich. August.

EARLY GOLDEN. A good variety; very large, deep golden yellow, and fine in quality.

SUPERB. Very good quality. Fruit is beautiful yellow with slight blush; flesh firm and solid.

ROYAL. One of the leading commercial Apricots. Color pale yellow with orange cheek tinged with red. Flesh rich, yellow, firm, very good quality.

BUDD. Fruits very early; skin golden yellow, tinged with red; flesh bright orange, juicy, sweet, semi-cling.

PRICES OF APRICOTS and NECTARINES (All Varieties)

	1 to 9	10 to 49
5-6 feet	\$.90	\$1.75
4-5 feet	.75	.60
3-4 feet	.60	.50
2-3 feet	.50	.40

Write for prices on larger quantities.

NECTARINES

THE DELIGHT OF THE FAMILY PLANTING

A smooth-skinned Plum-Peach; Tree grows like Peach. Fruit looks like large Plum. The Flavor both Peach and Plum.

SURE CROP. The tree is vigorous and productive. The fruit is large, roundish, white, and overlaid with very attractive red. The flesh is firm, tender.

RUBIED. The fruit is of large size, smooth skin, fine red color and excellent quality, with winy flavor which is particularly pleasing.

BOSTON. Yellow blushed with crimson. Yellow fleshed, sweet aromatic, good quality.

HUNTER. Fruits are large, somewhat round, and attractive yellow with red blush, and a freestone. Good quality.

QUETTA. Very hardy, fruits large, color white splashed with attractive red. White fleshed, juicy and very sweet flavor.

NUT TREES

Plant Bountiful Ridge Grafted Pecan, English Walnut and Black Walnut Trees For Quick Results.

SCHLEY PECAN, Grafted trees, 2-3'	\$1.00	\$1.50
STUART PECAN, Grafted trees, 2-3'	1.00	4.50
SUCCESS PECAN, Grafted trees, 2-3'	1.00	4.50
ENGLISH WALNUT, Grafted trees, 3-4'	1.00	4.50
Benge Black Walnut, Grafted trees, 3-4'	1.00	4.50
Stabler Bk. Walnut, Grafted trees, 3-4'	1.00	4.50
Thomas Bk. Walnut, Grafted trees, 4-5'	1.25	5.50
Thomas Bk. Walnut, Grafted trees, 3-4'	1.00	4.50
BLACK WALNUT, 4-5'	.70	3.00
BLACK WALNUT, 3-4'	.50	2.00
JAPAN WALNUT, 2-3'	.60	2.50
BUTTER NUT, (White Walnut) 3-4'	.70	3.00
AMERICAN FILBERT, (Hazel Nut) 2-3'	.65	2.50
BARCELONIA FILBERT, 2-3'	.70	3.00
DUCHILLY FILBERT, 2-3'	.70	3.00

Plant Bountiful Ridge Selected Blueberries

They Are Always A Dependable Crop For Extra Profits and Beauty.

BLUEBERRIES



We suggest from six to eight plants for a family of 5 people. Ask for and follow our free cultural directions. Plant our Blueberries this year for pleasure and profit.

RANCOCAS. The bush of slender, vigorous, upright habit rarely surpasses five feet in height. The berries are larger than Rubel and ripen several days earlier.

STANLEY. A recent development fast being recognized in New Jersey Blueberry sections as one of the outstanding Blueberries. Vigorous plants, large berries, very productive. Supply limited.

PIONEER. Named by Dr. Coville of the U. S. Department of Agriculture. The bushes are stocky. Pioneer produces heavy crops; they are larger than Rubel.

CONCORD. The bush is of upright habit and at maturity exceeds six feet in height. The berries are large, frequently reaching three-quarters of an inch in diameter; earlier than Rubel.

RUBEL. Well developed bushes stand six feet or more high, vigorous and beautiful. Planted extensively for commercial fruit production.

JERSEY. The bush is of vigorous habit and grows very large. The berries are the largest of any here listed; ripen about the same time as Rubel.

Bountiful Ridge Blueberry Plants Must Please!

R H U B A R B

Early Production—Long Market Season—Good Net Profits.

MYATT'S LINNAEUS. The markets growers choice. It is an early, tender variety, with a mild sub-acid flavor. Strong 1 yr. whole roots, 1 to 1½ in. caliber, 12c each; 90c for 10; \$1.90 for 25; \$3.25 for 50; \$5.00 for 100; \$20.00 for 500; \$37.50 for 1000.

McDONALD RED. The plants are healthy strong growers producing long deep red to pink ribs of very fine flavor.

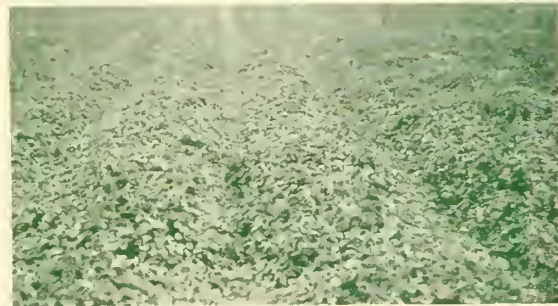
Prices for 3 to 5 eye divisions:

Each	5	10	25	50	100	500
\$.25	\$1.00	\$1.75	\$3.50	\$6.00	\$11.00	\$50.00

Strawberry Plants

We Challenge Any Plant Nursery to Grow Better Plants Than You Can Buy At Bountiful Ridge.

Our Plants Are Field Inspected Several Times For All Known Injurious Plant Diseases and Must Be Right Before Shipping To You. Our Production Methods and Soil Selection For Plant Fields Guarantees You Plants of Full Vitality, Plants That Will Prove Superior Wherever Planted.



Bountiful Ridge Grown U.S.D.A. Yellows Free strain Blakemore Plants such as these must give results. Other so-called yellow free types showed many yellow plants this year in this section. We urge all Blakemore growers to plant only the U.S. D.A. strain.

New Yellows Resistant Blakemore

U. S. D. A. Strain Out-Rivals Previous Records!

Under date of June 6th, 1940, Eugene Sterling, Crisfield, Md., reports: Have already picked 918 —24 quart crates of berries from 15000 plants set spring 1939 and further picking will bring production to well over 1000 crates.

Truly a remarkable record which demonstrates the bearing ability of these yellows-free strain. Plant U.S.D.A. strain Blakemore, the central East's greatest early commercial berry.

NOTE:—500 or more at the 1000 rate.

Early Varieties	25	50	100	200	400	1000
Daybreak	.25	.40	.60	1.00	1.55	3.50
Blakemore U.S.D.A. type	.25	.40	.60	1.00	1.55	3.50
Nancy Lee	.30	.45	.65	1.20	2.10	4.50
Dorset	.30	.45	.70	1.20	2.10	4.75
Fairmore	.25	.40	.65	1.10	1.80	4.00
Northstar	.35	.50	.75	1.30	2.20	5.00
Premier	.30	.45	.70	1.20	2.10	4.75
Howard 17	.30	.45	.70	1.20	2.10	4.75
Missionary	.25	.40	.60	1.00	1.55	3.50
Fairfax	.30	.45	.70	1.20	2.10	4.75
Senator Dunlap	.25	.40	.65	1.10	1.80	4.00
Klondyke	.25	.40	.60	1.00	1.55	3.50
Mid-Season Varieties	25	50	100	200	400	1000
Pathfinder	.30	.45	.70	1.20	2.10	4.75
Catskill	.30	.45	.70	1.20	2.10	4.75
Aberdeen	.30	.45	.65	1.20	2.00	4.50
Big Joe	.30	.45	.70	1.20	2.10	4.75
Dresden	.35	.50	.75	1.30	2.20	5.00
Aroma	.25	.40	.65	1.10	1.80	4.00
Late Varieties	25	50	100	200	400	1000
Chesapeake	.35	.50	.75	1.30	2.20	5.00
Wm. Belt	.30	.45	.70	1.20	2.10	4.75
Lupton	.30	.45	.65	1.20	2.00	4.50
Pearl	.30	.45	.70	1.20	2.10	4.75
Culver	.30	.45	.70	1.20	2.10	4.75
Everbearing Varieties	25	50	100	200	400	1000
Mastodon	.40	.65	1.20	1.95	3.15	7.00
Gem	.40	.65	1.20	1.95	3.15	7.00

ALL OF OUR STRAWBERRY PLANTS ARE GROWN BY THE MATTED ROW SYSTEM AND ARE NOT SUFFICIENTLY ROOTED FOR TRANSPLANTING BEFORE SEPT. 10th, THEREFORE, WE CANNOT SHIP STRAWBERRY PLANTS BEFORE SEPT. 10th.

PLANTS FOR SEPT. SHIPMENT ADD 30% to above prices. PLANTS FOR OCT. SHIPMENT ADD 20% to above prices. ALL PRICES ARE NET AS GIVEN FOR PLANTS ORDERED DURING NOVEMBER AND DECEMBER 1941.

Write for special prices on large quantities.

BLUEBERRY PRICES

	Each	3-9	10-29	30-99	100 or more
1 yr., 3-6".....	\$.40	\$.35	\$.30	\$.25	\$.20
2 yr., 4-12".....	.75	.65	.50	.45	.40
12-18 in.....	1.00	.85	.70	.65	.60
18-24 in.....	1.50	1.30	1.15	1.00	.85

NOTE: Varieties listed in order of ripening. First fruit picked in southern New Jersey usually about June 15th to 20th.

CABOT. One of the earliest of the blueberries. Very vigorous and develops naturally to well formed plants.

Early Profit-Makers for Every Farm

The New Boysenberry

Its Large Size, Superb Quality, Heavy Bearing and Adaptability Make the Boysenberry A Welcome Addition to The Small Fruit Family

PRICES ON BOYSENBERRY

Large 2 Year Bearing Size Boysenberry Plants

These large Transplanted plants are strongly recommended for Fall planting in the Central and Northern districts or wherever quick results are desired. We have a liberal supply of them this year

Each	2	5	10	25	50	100	200	300	500	1000
\$.35	\$.60	\$1.25	\$2.00	\$4.00	\$6.00	\$10.00	\$17.50	\$21.00	\$31.25	\$52.50
1 year heavy rooted strong plants for shipment only after Nov. 1st.										
\$.40	\$.80	\$1.20	\$2.20	\$3.70	\$6.50	\$12.00	\$16.20	\$21.30	\$40.00	

Raspberries·Blackberries·Dewberries

A DEPENDABLE SOURCE OF INCOME THAT PAYS BIG DIVIDENDS ON LOW INVESTMENTS

Our low prices in all varieties of raspberries, blackberries, and dewberries. All plants triple inspected, strictly No. 1 of the grade offered.

	10	25	50	100	300	500	1000
Black Raspberry Plants							
CUMBERLAND, 1 yr., No. 1 tips.....	.75	\$1.40	\$2.30	\$4.00	\$9.75	\$12.80	\$23.75
NEW LOGAN, 1 yr., No. 1 tips.....	.80	1.45	2.40	4.15	10.15	13.40	24.95
BLACK BEAUTY, 1 yr., No. 1 tips.....	.80	1.45	2.40	4.15	10.15	13.40	24.95
SHUTTLEWORTH, 1 yr., No. 1 tips.....	.80	1.45	2.40	4.15	10.15	13.40	24.95
Red Raspberry Plants							
LATHAM, 1 yr., No. 1 succor plants.....	.85	1.50	2.60	4.45	11.10	15.00	26.95
CHIEF, 1 yr., No. 1 succor plants.....	.85	1.50	2.60	4.45	11.10	15.00	26.95
NEUBURG, 1 yr., No. 1 succor plants.....	.90	1.55	2.65	4.60	11.45	15.65	28.20
TAYLOR (New Red) 1 yr., No. 1 succor plants.....	.90	1.60	2.70	4.70	11.85	16.25	29.40
MARCY (New Red) 1 yr., No. 1 succor plants.....	.95	1.65	2.90	5.10	12.95	18.15	33.00
Everbearing Red Raspberry Plants							
ST. REGIS (Red Ranere) 1 yr., No. 1 succor plants.....	.85	1.50	2.60	4.45	11.10	15.00	26.95
INDIAN SUMMER, 1 yr., No. 1 succor plants.....	.90	1.60	2.75	4.85	12.20	16.90	30.60
Purple Raspberry Plants							
WEBSTER, 1 yr., No. 1 tips.....	.95	1.65	2.90	5.10	12.95	18.15	33.00
Blackberries							
BLOWERS, 1 yr., No. 1 rooted cuttings.....	.80	1.50	2.50	4.35	10.80	14.20	26.75
ELDORADO, 1 yr., No. 1 rooted cuttings.....	.80	1.50	2.50	4.35	10.80	14.20	26.75
ALFRED, 1 yr., No. 1 rooted cuttings.....	.90	1.55	2.60	4.60	11.55	15.60	29.50
Dewberries							
LUCRETIA, No. 1 tip plants.....	.70	1.25	2.10	3.50	8.25	10.35	18.00
AUSTIN, No. 1 tips.....	.70	1.25	2.10	3.50	8.25	10.35	18.00

ASPARAGUS

For adaptability, consistent production, and steady income, plant Bountiful Ridge grown Asparagus Roots. We list only the finest commercial rust-resistant varieties. For full description of varieties consult Catalogue for Spring 1941.

Prices for Martha Washington, Mary Washington and Giant Mary Washington.

	25	50	250	500	1000
2 year, No. 1.....	\$.85	\$1.15	\$3.45	\$5.35	\$9.00
1 year, No. 1.....	.65	.90	2.70	4.10	7.25

Write for prices on 3000 plants or more. Please give definite quantity wanted when requesting prices.

PLEASE NOTE: For full description of stock listed on this page consult our complete catalog for Spring 1941.

"Its Not A Home Until Its Planted"

Plant Bountiful Ridge Grown Stock For Permanent Beautiful Homes and Lawns

FLOWERING SHRUBS

THE BEST OFFERED AT
THE LOWEST PRICES.
BUYS YOU MAY NEVER BE ABLE
TO DUPLICATE

In many cases it would be better to plant Shrubs in groups of several to one side of the lawn instead of following the method of planting one in a certain place and spoiling the effect of the open lawn. In most cases, three, six, eight or twelve of one variety should be used in a particular grouping. Several such groupings make an excellent border or foundation planting.

	Each	3
Althea (Rose of Sharon), assorted colors 2 to 3 ft.	\$.40	\$1.00
BUTTERFLY BUSH (BUDDLEA)		
Charming, Heavy 2 yr., 2-3 ft.	.50	1.25
Ilde de France, 2 yr., 2-3 ft.	.50	1.25
Beautybush, 18-24 in.	.60	1.50
Indian Currant, 18-24 in.	.30	.80
Snowberry, 2-3 ft.	.10	1.00
Improved Coralberry, 18-24 in.	.40	1.00
Crepe Myrtle, 18-24 in.	.60	1.50
Deutzia (Pride of Rochester) 2-3 ft.	.30	.80
Deutzia Lemoine, 18-24 in.	.45	1.25
Forsythia Intermedia Spectabilis, 2-3 ft.	.40	1.00
Fortune's Golden Bell, 2-3 ft.	.40	1.00
Forsythia (Intermedia), 2-3 ft.	.40	1.00
Forsythia (Viridissima), 2-3 ft.	.40	1.00
Flowering Almond, double pk. 18-24 in.	.50	1.25
Honeysuckle, Pink Tartarian, 2-3 ft.	.40	1.00
Honeysuckle, Red Tartarian, 2-3 ft.	.40	1.00
European Cranberry Bush, 2-3 ft.	.60	1.60
Japan Quince, Scarlet, 18-24 in.	.45	1.25

LILAC VARIETIES

Charles X (Hybrid) Purple, 18-24 in.	.70	1.80
Ludwig Spaeth (Hybrid) Purple, 18-24"	.75	2.00
Mme. Lemoine (Hybrid) White, 18-24"	.70	1.80
Mrs. Edward Harding (Hybrid) Pure Red, 2 yr., 18 in. plants.	1.00	2.70
President Lincoln (Hybrid) Blush Violet, 2 yr., 18 in.	1.00	2.70
President Grey, Bright Blue, 18-24 in.	.60	1.50
White (S. Vulgaris Alba), 18-24 in.	.50	1.50
Purple (S. Vulgaris), 2-3 ft.	.45	1.25
Persian Type, Purple, 18-24 in.	.50	1.35

HYDRANGEAS

Oak Leaf Hydrangea, 2-3 ft.	.75	2.00
Hydrangea Arborescens Sterilis 18-24 inch	.40	1.00
Hydrangea (Paniculata Grandiflora) 18-24 inch	.40	1.00
Hydrangea Otaksa, 2 yr., No. 1 plants.	.75	2.00
Pearl Bush, 18-24 in.	.40	1.00
Spirea Anthony Waterer, 12-18 in.	.40	1.00
Spirea Van Houtte, 2-3 ft.	.40	1.00
Sweet Scented Shrub, 2-3 ft.	.60	1.50

MOCK ORANGES

Philadelphus, Grandiflora, 2-3 ft.	.45	1.25
Philadelphus, Virginialis, 2-3 ft.	.60	1.60
Philadelphus, Coronarius, 2-3 ft.	.45	1.25

Tamarix Africana, 18-24 in.	.40	1.00
Snowball (Gardenia Scented) 15-18 inch, heavy.	1.60	4.25
Snowball Common, 2-3 ft.	.60	1.65
Japanese Snowball, 18-24 in.	.65	1.75
Weigela Eva Rathke, 18-24 in.	.50	1.35
Weigela Rosea, 18-24 in.	.45	1.25
Weigela Van Houttei, 18-24 in.	.45	1.25

The Rare FRANKLINIA, 18-24 in.	1.75	4.75
--------------------------------	------	------

Climbing Vines

COVER THOSE BARE, UNSIGHTLY WALLS
AND TRELLISES WITH BEAUTIFUL CLIMB-
ING VINES—WE LIST A CLIMBING VINE
FOR EVERY PURPOSE.

	Each	10
Purple Wisteria, 2 yr. grafts.	\$.40	\$3.50
White Wisteria, 2 yr. grafts.	.40	3.50
Clematis Paniculata, 2 yr.	.40	3.00
Clematis Jackmani, 2 yr.	.70	6.00
Hall's Japan Honeysuckle, 2 yr.	.25	2.00
English Ivy, Hedera Helix, 2 yr.	.30	2.50
Boston Ivy, 2 yr. strong plants.	.30	2.50
Kudzu Vine, 2 yr.	.35	3.00
Silver Lace Vine	.65	6.00

BOXWOOD

	Each	10
Boxus Sempervirens, 15-18 in.	\$1.50	2.00
18-24 in.	2.00	2.25
Boxus Suffruticosa, 4-6 in.	.30	4.00
6-8 in.	.45	7.50
8-10 in., sheared specimens.	1.00	

PEONIES

In our listings you will find varieties of beauty for home and commercial culture. The liberal size and fine quality of our well balanced divisionals is sure to please you, again the size and form of blossom, the hardy profuse blooming types listed are economically priced for these healthy disease free 3 to 5 eye divisions.

For best success with peonies they should be planted during late September, October, November and December. Write for Free Cultural Directions. Place your orders early.

GROUP NO. 1. Prices all varieties in this group, your selection:

50c each; 3 for \$1.25; 10 for \$3.50

Adolphe Rousseau, Dark lustrous red, Double, Very large, Early mid-season.	
Early June, Double, Rose Pink, Distinctive, Very Early.	
Enechantresse, White, Double, Very Late, Splendid.	
JAMES Kelway, Double, Pale Pink, Early Mid-season, All-purpose.	
Jeanot, Double, Pale Rose-Pink Exquisite, Late.	
Lamarline, Double, Dark old-rose pink, Late, Very good.	
Primivere, Anemone type, Canary yellow, Mid-season, Very desirable.	
Sokoge, Double, Cream white, Late, Beautiful.	
Tonrangelie, Double, Pale cream white, Late, None better.	

GROUP NO. 2. Prices all varieties in this group, your choice:

35c each; 3 for \$1.00; 10 for \$3.00

Alsace Lorraine, Double, Pure white, Late Mid-season.	
Avalanche, Double, Blush white, Late Mid-season.	
Baroness Schroeder, Double, Flesh white, Late mid-season.	
Edulis Superba, Double, Rose pink, Extra early.	
Felix Crousse, Double, Brilliant Crimson, Mid-season.	
Festiva Maxima, Double, White, Early.	
Fountainelle, Double, Brilliant Crimson, Early.	
Georgiua Shaylor, Double, Rose pink, Late mid-season.	
Lady Alexander DuF, Double, Blush Pink, Mid-season.	
Benjamin Franklin, Double, Dark Crimson, Mid-season.	
Madam Calot, Double, Very light old rose pink, Early.	
Madame de Verneville, Double, White, Early.	
Madame Emile Galle, Double, Rose pink, Late.	
Meissouier, Double, Brilliant crimson, Mid-season.	
Mons Dupont, Double, White, Late mid-season.	
Octavie Demay, Double, Light old rose-pink, Early.	
Sarah Bernhardt, Double, Dark pink, Late.	
Umbellata Rosea, Double, Violet-rose, Very early.	

FLOWERING and ORNAMENTAL TREES

MAGNOLIAS

	Each	3
Magnolia Grandiflora, 2-3 ft.	\$1.25	\$ 3.00
Star Magnolia, 15-18 in.	1.00	2.70
Water Lily Magnolia, 15-18 in.	2.00	5.10
Magnolia Solangeana, 2-3 ft.	2.00	5.10
Bechtel's Double Flowering Crab		
3-4 ft.	.85	2.25
Judas Tree or Red Bud, 3-4 ft.	.75	2.00
Dogwood, White Flowering, 4-5 ft.	1.00	2.75
Dogwood, Pink Flowering, 2-3 ft.	1.75	4.50
Double Flowering Peach, Pink and White, 3-4 ft.	.65	1.75
Jap. Blood Leaf Maple, 18-24 in.	1.75	4.50
Prunus Pissardi, Purple-Leaved, 5-6 ft.	.75	2.00
Japanese Maple, Purple-Leaved 12-15 inch	1.25	3.00
Paul's Scarlet Thorn, 5-6 ft.	1.50	4.00

WEEPING ORNAMENTAL TREES

Tea's Weeping Mulberry, 2 yr. heads 5-6 ft. stems.	2.25	6.00
Wisconsin Weeping Willow, 6-8 ft.	1.25	3.00
Cut Leaf Weeping Birch, 5-6 ft.	1.50	4.00
6-8 ft.	1.75	5.00

BROAD-LEAVED EVERGREENS

Abelia Grandiflora, 18-24 in.	.75	2.00
American Holly, 3-4 ft.	2.50	6.50
Japanese Holly, 3-4 ft.	2.50	6.50
Scotch Broom, 2-3 ft.	1.25	3.00
Nandina Domestica, 18-24 in.	1.25	3.50
Rhododendron Carolina, 2-3 ft.	2.50	6.50
Rhododendron Catawba, 2-3 ft.	2.50	6.50
Rhododendron Rosebay, 2-3 ft.	2.00	5.00
Kalmia Latifolia, 2-3 ft.	2.00	5.00

HARDY EVERGREEN AZALEAS

Amoena (Rosy-purple) 12-15 in.	1.50	4.00
Hinodergiri (Fiery-Red), 10-12 in.	1.25	3.00
Flame (Brilliant Red), 6-8 in.	1.00	2.75
Sweet Brier (Rose Pink), 6-8 in.	1.00	2.75

DECIDUOUS AZALEAS

Kirishima (Damask Rose), 8-12 in.	.75	2.00
Flame Azalea, 18-24 in.	1.25	3.25
Ladifolia Alba (White), 10-12 in.	1.00	2.75

ORNAMENTAL HEDGES

	10	100
New Red Leaf Barberry, 12-15 in.	2.50	20.00
Japanese Barberry, 12-15 in.	1.50	12.00
Amor River Privet North, 12-18 in.	1.00	6.00
California Privet, 12-18 in.	.50	4.00
18-24 inch	.70	6.00
2-3 ft.	1.25	10.00

SHADE TREES

All Shade Trees Shipped by Express or Freight

	Each	10
Sweet Gum, 5-6 ft.	\$1.00	\$ 7.50
Maple, Norway, 10-12 ft. heavy.	2.50	15.00
8-10 ft., well branched.	1.75	10.00
6-8 ft., branched.	1.25	10.00
Schwedler's Purple Leaved Maple 6-8 ft., branched.	2.00	17.50
Maple, Sugar or Hard (A. Saech- arum, 6-8 ft.	1.25	10.00
8-10 ft.	1.50	12.50
10-12 ft., heavy.	2.00	17.50
Maple, Silver-Leafed or Soft (A. Dusy- carpum), 10-12 ft., heavy.	1.25	10.00
8-10 ft., heavy.	1.00	8.50
6-8 ft., heavy.	.75	6.50
Birch White, 6-8 ft.	1.00	9.00
4-6 ft.	.75	6.00
Mulberry, New American, 8-10 ft.	1.00	9.00
Elm, American White, 6-8 ft.	1.00	9.00
8-10 ft.	1.25	10.00
Chinese Elm, 5-6 ft.	.75	6.00
6-8 ft.	1.00	9.00
8-10 ft.	1.50	12.50
Oriental Plane or European Sycamore, 8-10 ft.	1.25	16.99
6-8 ft.	.75	6.50
Tulip Tree (L. Talipifera), 6-8 ft.	1.25	10.00
4-6 ft.	.75	6.00
Poplar, Lombardy, 6-8 ft.	.75	6.00
4-6 ft.	.50	4.00

HARDY EVERGREENS

	Each	3
Arborvitae (American), 2-3 ft.	\$1.50	\$ 4.00
Arborvitae (Pyramidalis), 24-30 in.	1.50	4.00
18-24 in.	1.25	3.25
Arborvitae Globe, 15-18 in.	1.25	3.25
Arborvitae Berkman's Golden, 8-10 in.	.75	2.00
12-15 in.	1.25	3.25
Cripps Golden Cypress, 24-30 in.	1.75	4.50
Irish Juniper, 24-30 in.	1.50	3.75
18-24 in.	1.25	3.00
Pilzteriana Juniper, 12-18 in.	1.25	3.40
18-24 in.	1.75	4.75
Spiny Greek Juniper, 9-12 in.	1.00	4.50
Audora Juniper 24-30 in.	1.75	4.50
Juniperus Virginiana Glauca, 18-24 in.	1.00	2.50
Taxus Cuspidata (Jap. Yew), 12-15 in.	1.00	2.75
18-24 in.	1.75	4.50
Taxus Baccata Hibernica, 18-24 in.	2.00	5.50
Taxus Baccata Repandens, 15-18 in.	1.50	4.00
Taxus, Media Hicksi, 15-18 in.	1.50	4.00
Taxus Media Hicksi, 12-15 in.	1.35	3.75
Savin Juniper, 15-18 in.	1.25	3.50
Taxus Cuspidata Capitata, 8-10 in.	.40	1.00
Heath Retinospora, 9-12 in.	.50	1.25
Goldust Retinospora, 9-12 in.	.50	1.25

Japanese Flowering Cherry

For varieties, sizes and prices on Flowering Cherry, please consult Spring of 1941 Catalogue.

PLEASE NOTE: For full description of stock listed on this page consult our complete catalog for Spring 1941.