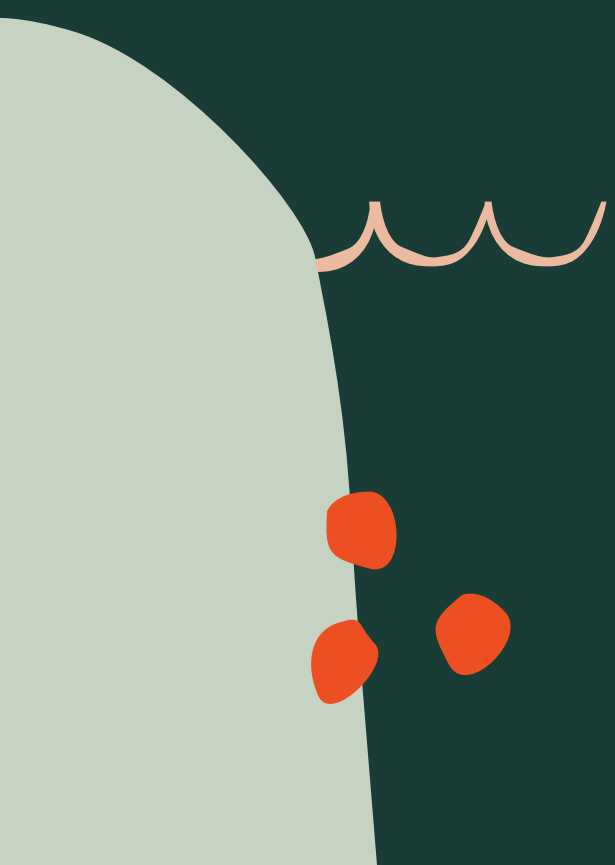
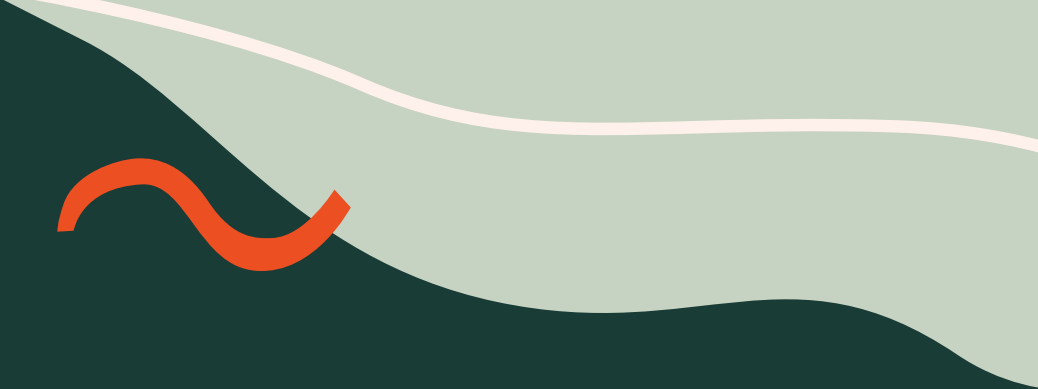


# Semicolon

By Adara Orta



# Semicolon definition:

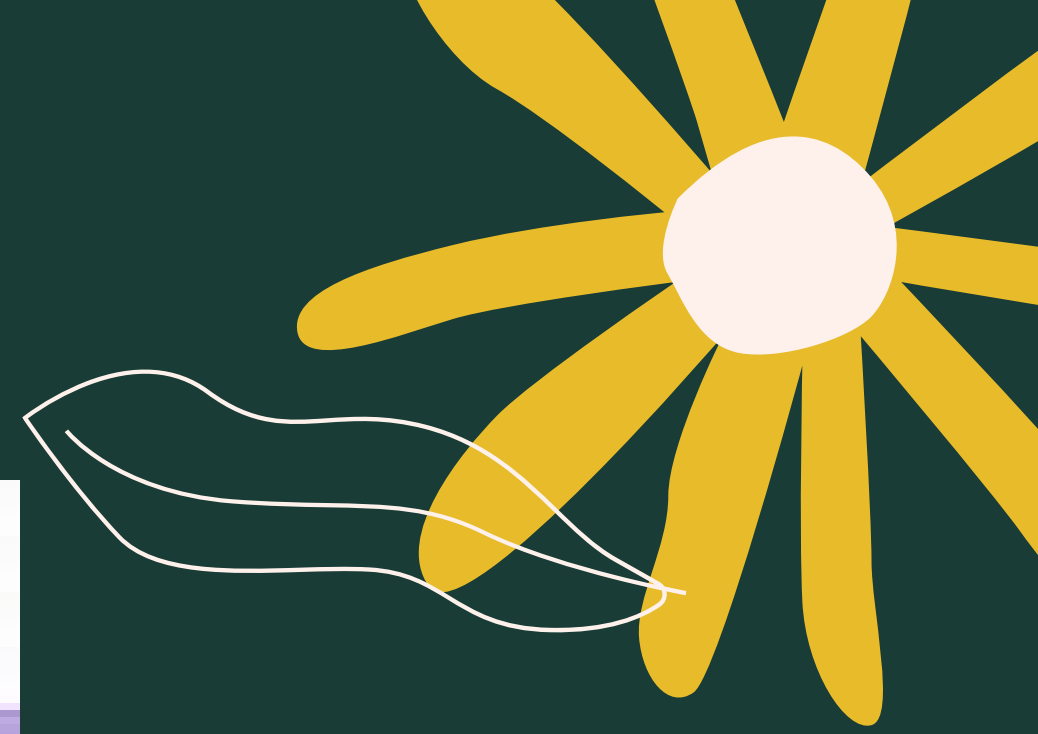
-the punctuation mark (;) used to indicate a major division in a sentence where a more distinct separation is felt between clauses or items on a list than is indicated by a comma, as between the two clauses of a compound sentence.

<https://www.dictionary.com/browse/semicolon>

## Definition of semicolon

Semicolon definition, the punctuation mark (;) used to indicate a major division in a sentence where a more distinct separation is felt between clauses or items on a...

 dictionary.com



# Semicolon




A punctuation mark that connects two separate but related independent clauses

I missed the bus; I guess I'm walking to school.

 YOUR DICTIONARY

## Semicolon



A punctuation mark that connects two separate but related independent clauses

I missed the bus; I guess I'm walking to school.

### When and How To Use a Semicolon ( ; )

What purpose does a semicolon serve in a sentence?  
If you're looking for the answer, look no further....

 [yourdictionary.com](https://www.yourdictionary.com)



The most frequent use of the semi-colon is between two complete sentences. It can be substituted for a comma plus a conjunction.

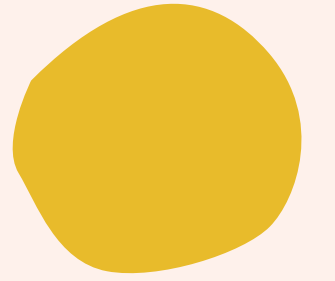
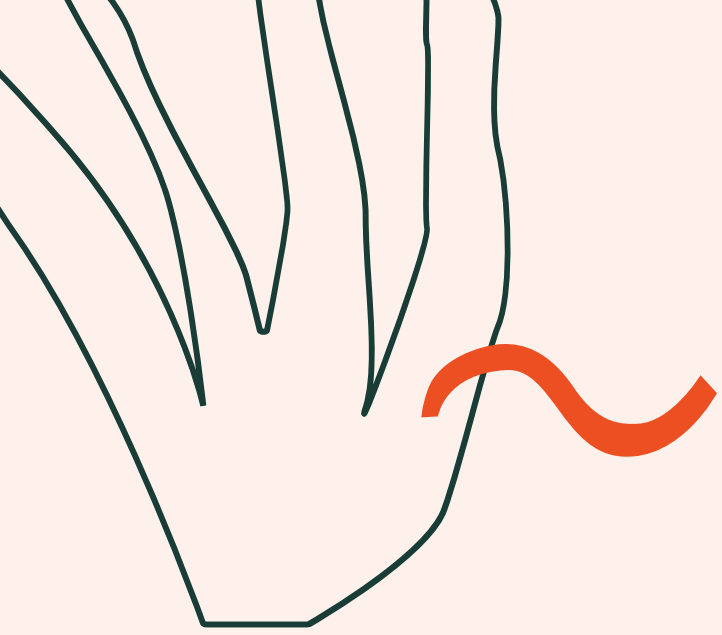
- Ex: Tom ate breakfast with his family, **and** then he left for his trip.
- Tom ate breakfast with his family; then he left for his trip



### Semi-Colons, Colons and Hyphens

Learn about semi-colons, colons, and hyphens to improve your academic writing with this Academic Resource Center guide.

 Lycoming College



Use semi-colons before (and commas after) conjunctive adverbs that come between two sentences.

- Ex: Unemployment was down; consequently, the stock market surged.




### **Semi-Colons, Colons and Hyphens**

Learn about semi-colons, colons, and hyphens to improve your academic writing with this Academic Resource Center guide.

 Lycoming College





Remember to make sure there is a COMPLETE sentence on BOTH sides of the conjunctive adverb.

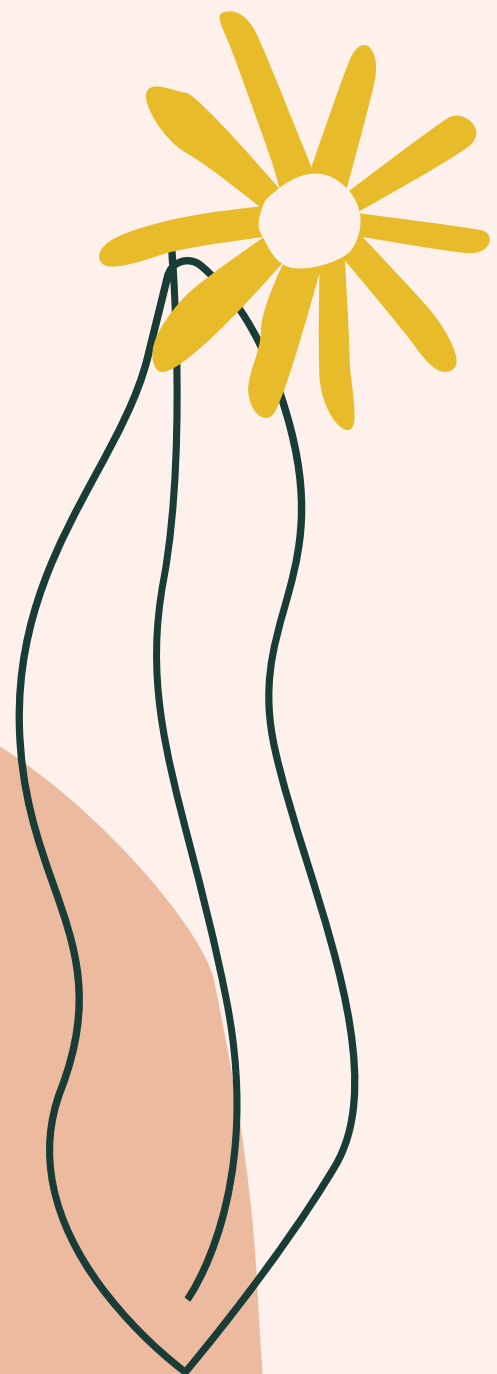
- Ex: The butcher started work early; however, he was still unable to fill the order in time. The butcher, however, was not included on the guest list. (This is only one sentence, there is no semi-colon here.)



### Semi-Colons, Colons and Hyphens

Learn about semi-colons, colons, and hyphens to improve your academic writing with this Academic Resource Center guide.

 Lycoming College



# Don't

Don't use it with conjunctions.

Conjunctions are words like *and*, *but*, *or*, *nor*, *for*, *so*, and *yet*.

“ My aunt's hairy knuckles are magnificent indeed, but I have no desire to stroke them. ”

A comma is used because there's a *but* separating the two clauses.



How to use a semicolon



**How to use a semicolon**

The most feared punctuation on earth.

 The Oatmeal

- 
- Do NOT use a semi-colon with a conjunction.
    - Ex: Tom ate breakfast; and then he left.



### Semi-Colons, Colons and Hyphens

Learn about semi-colons, colons, and hyphens to improve your academic writing with this Academic Resource Center guide.

 Lycoming College

