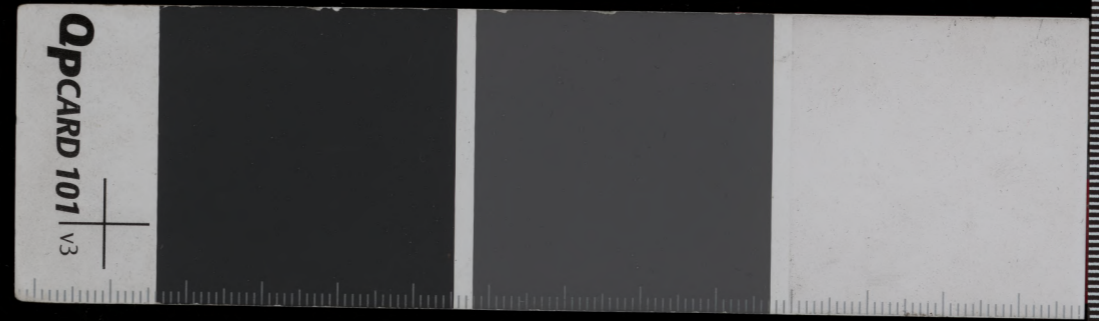


Handwritten text on a palm leaf manuscript strip, likely in Burmese script. The text is arranged in a single line across the length of the leaf. There is a significant hole on the left side of the leaf, partially obscuring the text.



Handwritten text in a cursive script, likely a historical document or manuscript. The text is written on a long, narrow strip of aged, yellowish-brown paper with a significant hole on the left side. The script is dense and difficult to decipher due to its cursive nature and the condition of the paper.

၁၂

Handwritten Burmese script on a palm leaf manuscript strip. The text is arranged in approximately five horizontal lines, written in a cursive style. The script is densely packed and covers most of the length of the leaf. There are two distinct dark circular spots on the leaf, one near the center and another towards the right side. The leaf itself is aged and shows some wear at the edges.

Handwritten text in a cursive script, likely a form of shorthand or a specific dialect, written on a long, narrow strip of aged paper. The text is densely packed and spans the entire length of the strip. There are two distinct dark spots, possibly ink blots or holes, located approximately one-third and two-thirds of the way across the strip.

Handwritten text in an ancient script, likely Pāli, inscribed on a palm leaf. The text is arranged in approximately 10 horizontal lines across the length of the leaf. Two circular holes are visible, which were traditionally used for threading a cord to bind multiple leaves together into a book format. The script is finely etched into the surface of the dried leaf, which shows some natural texture and slight discoloration.

Handwritten text in a cursive script, likely a historical document or manuscript, written on aged, yellowed paper. The text is densely packed and spans the entire length of the strip. Two circular holes are visible, suggesting the strip was part of a bound volume or a scroll. The script is highly stylized and difficult to decipher without specialized knowledge of the language.

Handwritten text in a cursive script, likely a historical document or manuscript, written on aged, yellowed paper. The text is densely packed and spans the entire length of the strip. There are two distinct dark spots or holes on the paper, one near the center and one towards the right side. The script is difficult to decipher due to its cursive nature and the age of the document.

Handwritten text in a cursive script on a palm leaf manuscript. The text is arranged in approximately 10 horizontal lines. The script is dense and characteristic of traditional Southeast Asian writing. There are two distinct circular holes punched through the leaf, one located roughly in the middle and another towards the right side. The leaf shows signs of age, with some discoloration and wear at the edges.

Handwritten text in a cursive script on a narrow strip of aged paper. The text is densely packed and spans the entire length of the strip. There are two distinct circular holes punched through the paper, one approximately one-third of the way from the left and another approximately two-thirds of the way from the left. The script is highly stylized and difficult to decipher without specialized knowledge of the language or dialect used.

Handwritten text in a cursive script on a long, narrow strip of aged paper. The text is densely packed and spans the entire length of the strip. There are two distinct circular holes punched through the paper, one approximately one-third of the way from the left and another approximately two-thirds of the way from the left. The paper shows signs of wear, including some staining and fraying at the edges.

Handwritten text in a cursive script, likely a historical document or manuscript, written on aged, yellowed paper. The text is densely packed and spans the entire length of the strip. The script is highly stylized and difficult to decipher without specialized knowledge of the language and script. The paper shows signs of wear, including two distinct circular holes and some staining, particularly on the right side.

Handwritten text in a cursive script, likely a historical document or manuscript, written on aged, yellowed paper. The text is densely packed and spans the entire length of the strip. The script is highly stylized and difficult to decipher without specialized knowledge of the language or dialect. The paper shows signs of wear, including two distinct circular holes and some staining, particularly at the left edge.

Handwritten text in a cursive script, likely a historical document or manuscript, written on aged, yellowed paper. The text is densely packed and spans the entire length of the strip. The script is highly stylized and difficult to decipher without specialized knowledge of the language and script. The paper shows signs of wear, including two prominent dark spots (possibly holes or stains) and some fading of the ink.

Handwritten text in a cursive script, likely a historical document or manuscript. The text is written on a long, narrow strip of aged paper and is arranged in approximately four horizontal lines. The script is dense and difficult to decipher due to its cursive nature and the age of the document. The paper shows signs of wear, including discoloration and a small hole near the center.

Handwritten text in a cursive script, likely a historical document or manuscript, written on a long, narrow strip of aged paper. The text is arranged in several lines, with some characters appearing to be in a non-Latin script, possibly a form of shorthand or a specific dialect. The paper shows signs of wear, including a prominent hole near the center and some discoloration.

Handwritten text in a cursive script, likely a historical document or manuscript, written on a long, narrow strip of aged paper. The text is densely packed and spans the entire length of the strip. The script is highly stylized and difficult to decipher without specialized knowledge of the language and script. The paper shows signs of age, including discoloration and some damage, particularly a large tear on the left side and two circular holes near the center.

၅၅

Handwritten Burmese script on a palm leaf manuscript strip. The text is arranged in approximately four horizontal lines. The script is a traditional form of Burmese, likely used for religious or historical records. The leaf shows signs of age, including some dark spots and wear along the edges.

Vertical handwritten text on the right edge of the leaf, possibly serving as a title or a reference mark.

Handwritten text in a cursive script, likely a historical document or manuscript. The text is written on a long, narrow strip of aged paper and is arranged in approximately four horizontal lines. The script is dense and difficult to decipher due to its cursive nature and the age of the document. There are several dark spots and irregularities on the paper, possibly due to damage or ink bleed-through from the reverse side.

Handwritten text in a cursive script, likely a form of shorthand or a specific dialect, written on a long, narrow strip of aged paper. The text is arranged in several lines, with some characters appearing to be stylized or abbreviated. The paper shows signs of wear, including a small hole and some discoloration.

Handwritten text in an ancient script, likely Burmese, inscribed on a palm leaf. The text is arranged in approximately four horizontal lines across the length of the leaf. The script is finely etched into the surface of the dried leaf. The leaf shows signs of age, including some discoloration and a small dark hole near the center.

၆၅၁

Handwritten Burmese script on a palm leaf manuscript strip. The text is arranged in approximately 10 horizontal lines, written in a cursive style. Two circular holes are visible, used for binding multiple leaves together. The script is densely packed and covers most of the length of the leaf.

Handwritten text in a cursive script on a palm leaf manuscript. The text is arranged in approximately four horizontal lines. The script is dense and characteristic of traditional Southeast Asian writing systems. There are two distinct circular holes punched through the leaf, which were used for threading a cord to bind multiple leaves together into a book format. The leaf shows signs of age, including some staining and wear at the edges.

၆၅

Handwritten Burmese script on a palm leaf manuscript strip. The text is arranged in approximately five horizontal lines, written from left to right. The script is a traditional form of Burmese, likely used for religious or historical records. The leaf shows signs of age, including two distinct circular holes and some surface wear.

Handwritten text in a cursive script, likely Burmese, covering the entire length of the palm-leaf manuscript strip. The text is arranged in approximately four horizontal lines. The script is dense and characteristic of traditional Burmese inscriptions on palm leaves. There are two distinct circular holes visible on the strip, which were used for threading a cord to bind multiple leaves together into a book format. The ink is a dark brown color, and the leaf itself is aged and yellowish-brown.

Handwritten text in a cursive script, likely a form of shorthand or a specific dialect, covering the entire length of the strip. The text is densely packed and follows the curve of the strip. Two circular holes are visible, suggesting the strip was part of a bound volume or a scroll.

၆၅

Handwritten Burmese script on a palm leaf manuscript strip. The text is arranged in approximately 10 horizontal lines, written in a cursive style. The leaf shows signs of age, including two distinct circular holes and some staining.

Handwritten Burmese script on a palm leaf manuscript strip. The text is arranged in approximately 10 horizontal lines, written in a cursive style. Two circular holes are visible, used for binding multiple leaves together. The script is densely packed and covers most of the length of the leaf.

Handwritten text in a cursive script, likely Burmese, on a long, narrow strip of aged paper. The text is arranged in approximately five horizontal lines. The script is dense and fluid, with some characters appearing to be ligatures. There are two distinct circular holes or indentations on the strip, one near the left edge and one near the right edge, which suggest the strip was part of a bound volume or a scroll. The paper is heavily aged, showing significant discoloration and wear, particularly at the edges.

Handwritten text in a cursive script on a palm leaf manuscript. The text is arranged in approximately four horizontal lines across the length of the leaf. The script is dense and characteristic of traditional Southeast Asian writing systems. There are two distinct circular holes punched through the leaf, one located roughly in the middle and another towards the right side. The leaf shows signs of age, with some discoloration and wear at the edges.

၅

Handwritten Burmese script on a palm leaf manuscript strip. The text is arranged in approximately five horizontal lines, written in a cursive style. The leaf shows signs of age, including two distinct circular holes and some surface wear.

Handwritten text in a cursive script on a palm leaf manuscript. The text is densely packed and spans the entire length of the leaf. It appears to be a continuous passage of text, possibly a historical record or a religious text, written in a traditional Southeast Asian script. The leaf shows signs of age, including some discoloration and small holes.

Handwritten Burmese script on a palm leaf manuscript. The text is arranged in approximately five horizontal lines. The script is a traditional form of Burmese, likely used for religious or historical records. The leaf shows signs of age, including some staining and wear at the edges. The text is densely packed and covers most of the length of the leaf.

Handwritten text in a cursive script, likely Burmese, covering the entire length of the palm-leaf manuscript strip. The text is densely packed and follows the natural curve of the leaf. There are several dark spots and signs of wear on the surface, particularly a prominent circular hole near the center-left and some staining at the bottom edge.

Handwritten text in a cursive script on aged paper, likely a manuscript or document. The text is written in a single line across the page and is highly stylized and difficult to decipher. It appears to be a form of shorthand or a specific dialect of a language. The paper shows signs of wear, including two distinct circular holes and some staining at the bottom edge.

Handwritten Burmese script on a palm leaf manuscript strip. The text is arranged in approximately four horizontal lines, written in a cursive style. The leaf shows signs of age, including two distinct circular holes and some surface wear.

၅၅

လူ့အဖွဲ့အစည်းတို့သည် အလွန်အမင်း ကျင့်ကြံမှုများကို ပြုလုပ်ခဲ့ပြီး နေရာဒေသများကို ဖြိုဖျက်ခဲ့ကြောင်း ဖော်ပြပါသည်။
ထို့ပြင် အခြားအဖွဲ့အစည်းတို့သည်လည်း အလွန်အမင်း ကျင့်ကြံမှုများကို ပြုလုပ်ခဲ့ပြီး နေရာဒေသများကို ဖြိုဖျက်ခဲ့ကြောင်း ဖော်ပြပါသည်။
ဤသို့ အလွန်အမင်း ကျင့်ကြံမှုများကို ပြုလုပ်ခဲ့ပြီး နေရာဒေသများကို ဖြိုဖျက်ခဲ့ကြောင်း ဖော်ပြပါသည်။
ထို့ပြင် အခြားအဖွဲ့အစည်းတို့သည်လည်း အလွန်အမင်း ကျင့်ကြံမှုများကို ပြုလုပ်ခဲ့ပြီး နေရာဒေသများကို ဖြိုဖျက်ခဲ့ကြောင်း ဖော်ပြပါသည်။

Handwritten Burmese script on a palm leaf manuscript strip. The text is arranged in four horizontal lines, written from left to right. The script is a traditional form of Burmese, likely used for religious or historical records. The leaf shows signs of age, including two distinct circular holes and some surface wear.

Handwritten text on the left side of the strip, possibly a date or reference number.

Handwritten text in the center of the strip, appearing to be a list or record of items.

Handwritten text on the right side of the strip, possibly a signature or additional notes.