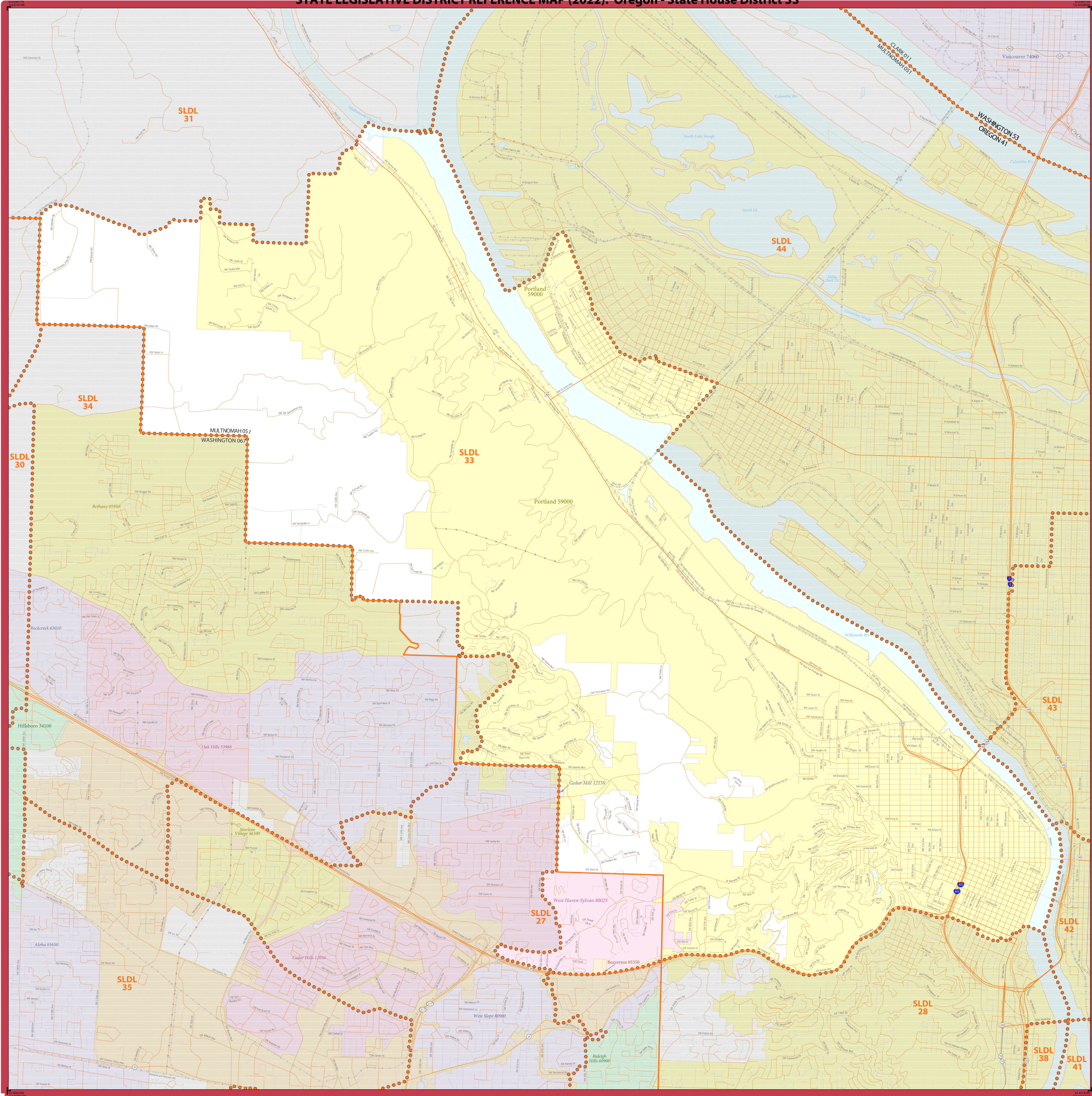


STATE LEGISLATIVE DISTRICT REFERENCE MAP (2022): Oregon - State House District 33



LEGEND

SYMBOL DESCRIPTION	SYMBOL	LABEL STYLE
International	— · — · — ·	CANADA
Federal American Indian Reservation	■ ■ ■ ■ ■ ■ ■ ■ ■ ■	L'ANSE RES 1880
Off-Reservation Trust Land	■ ■ ■ ■ ■ ■ ■ ■ ■ ■	T1880
State American Indian Reservation	■ ■ ■ ■ ■ ■ ■ ■ ■ ■	Tama Res 9400
Alaska Native Regional Corporation (ANRC)	▲ ▲ ▲ ▲ ▲ ▲ ▲ ▲ ▲ ▲	NANA ANRC 52120
State (or statistically equivalent entity)	— · — · — ·	NEW YORK 36
County (or statistically equivalent entity)	— — — — —	ERIE 029
Minor Civil Division (MCD) ^{1,2}	— — — — —	Bristol town 07485
Consolidated City	● ● ● ● ● ● ● ● ● ●	MILFORD 47500
Incorporated Place ^{3,4}	■ ■ ■ ■ ■ ■ ■ ■ ■ ■	Davis 18100
Census Designated Place (CDP) ⁵	■ ■ ■ ■ ■ ■ ■ ■ ■ ■	Incline Village 35100
State Legislative District - Lower (House) ⁶	● ● ● ● ● ● ● ● ● ●	SLDL 94

DESCRIPTION	SYMBOL	DESCRIPTION	SYMBOL
Interstate	— 1 — 1 — 1	Water Body	■ ■ ■ ■ ■ ■ ■ ■ ■ ■
U.S. Highway	— 1 — 1 — 1	Military	■ ■ ■ ■ ■ ■ ■ ■ ■ ■
State Highway	— 1 — 1 — 1	National or State Park, Forest, or Recreation Area	■ ■ ■ ■ ■ ■ ■ ■ ■ ■
Other Road	— 1 — 1 — 1	Inset Area	■ ■ ■ ■ ■ ■ ■ ■ ■ ■
4WD Trail System, Alley, Walkway, or Ferry	— 1 — 1 — 1	Outside Subject Area	■ ■ ■ ■ ■ ■ ■ ■ ■ ■
Railroad	— 1 — 1 — 1		
Pipeline or Power Line	— 1 — 1 — 1		
Ridge or Fence	— 1 — 1 — 1		
Nonvisible Boundary or Feature Not Elsewhere Classified	— 1 — 1 — 1		

Where international, state, county, and/or MCD boundaries coincide, the map shows the boundary symbol for only the highest-ranking of these boundaries.

Geographic area names are followed by either their FIPS or census code.

1 MCD boundaries are shown in the following states in which some or all MCDs function as general-purpose governmental units: Connecticut, Illinois, Indiana, Kansas, Maine, Massachusetts, Michigan, Minnesota, Missouri, Nebraska, New Hampshire, New Jersey, New York, North Dakota, Ohio, Pennsylvania, Rhode Island, South Dakota, Vermont, and Wisconsin. (Note that Illinois and Nebraska have some counties covered by nongovernmental precincts and Missouri has most counties covered by nongovernmental townships.)

2 A "*" following an MCD name denotes a false MCD. A "*" following a place name indicates that a false MCD exists that is coextensive with the place and has the same name and FIPS code as the place; the false MCD label is not shown.

3 Place label color corresponds to the place fill color.

4 2022 State Legislative Districts.

Due to space limitations, some road names, along with other feature and geography names on the map, may not be shown.

SUBJECT AREA COUNTIES ON MAP SHEET
 41051 Multnomah
 41067 Washington

The state legislative district boundaries reflect those in effect for the 2022 election cycle; all other legal boundaries and names are as of January 1, 2020. The boundaries shown on this map are for Census Bureau statistical data collection and tabulation purposes only; their depiction and designation for statistical purposes does not constitute a determination of jurisdictional authority or rights of ownership or entitlement.

Data Source: U.S. Census Bureau's MA/TIGER database (ACS22)
 Map Created by Geography Division: October 12, 2022

U.S. DEPARTMENT OF COMMERCE U.S. Census Bureau

Projection: Albers Equal Area Conic
 Datum: NAD 83
 Spheroid: GRS 80
 1st Standard Parallel: 42 43 45
 2nd Standard Parallel: 45 34 55
 Central Meridian: -120 34 56
 Latitude of Projection's Origin: 41 59 44
 False Easting: 0
 False Northing: 0

Scale: 1:22,116



Sheet 1 of 1 PARENT sheets
 Total Sheets: 1 (Index 0; Parent 1; Inset 0)

NAME: State House District 33
 ENTITY TYPE: State Legislative District - Lower (House)
 ENTITY CODE: 033
 ST: Oregon (41)

SLDL REF MAP (PARENT)
 Sheet ID: 20704030001