

## **Historic, archived document**

Do not assume content reflects current scientific knowledge, policies, or practices.



FEB 23 1926



Sixth Annual List  
OF

Dependable

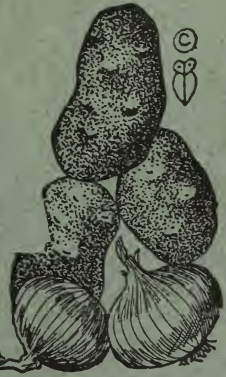
Seeds, Plants

—AND—

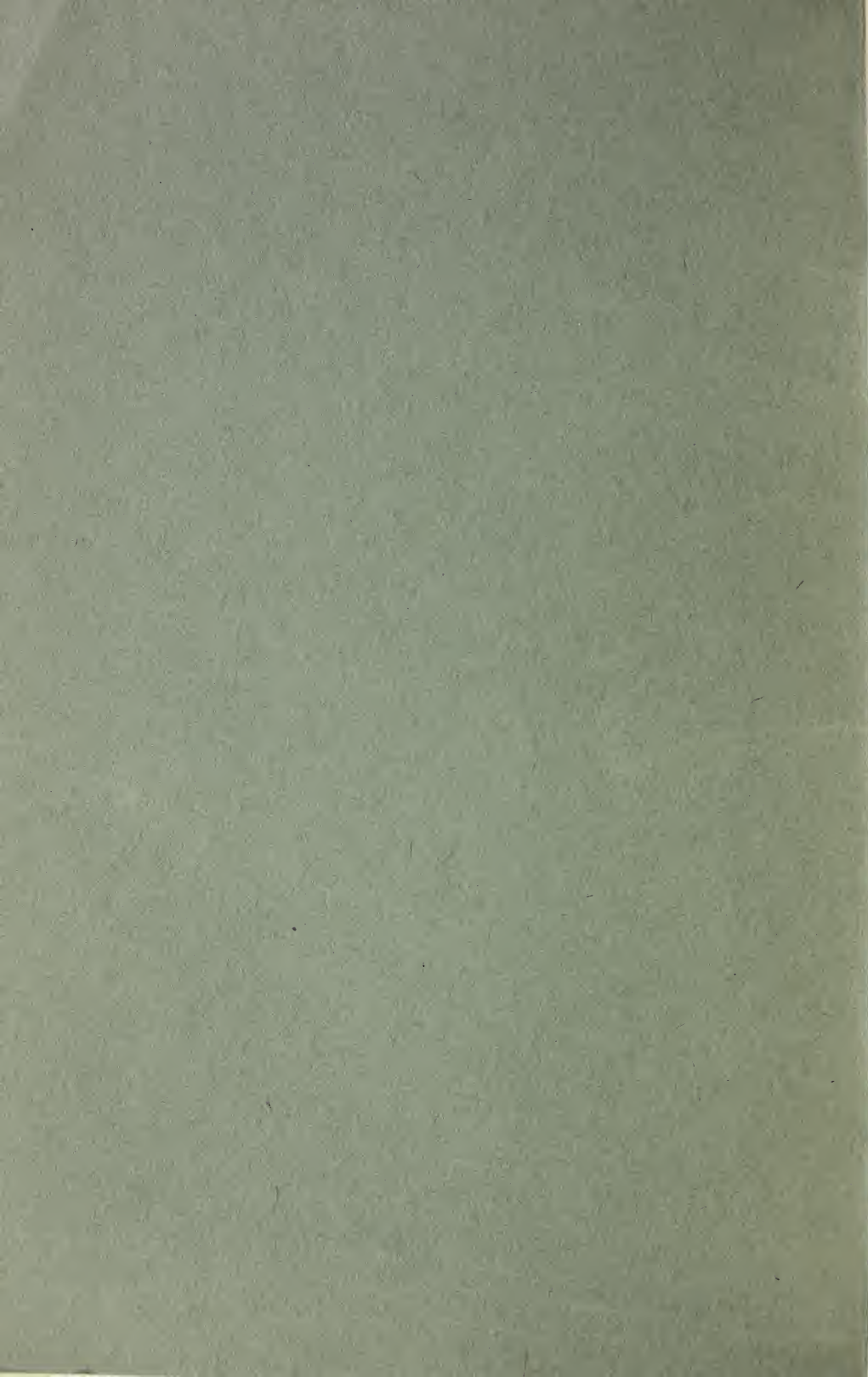
Nursery Stock

1926

T. G. Banning  
914 Meade Street  
Brookfield, Missouri



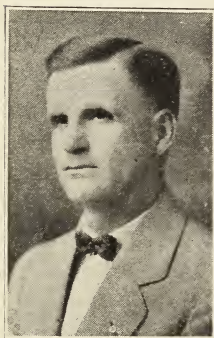
D. N. Steamaker



# DEPENDABLE SEEDS, PLANTS, AND NURSERY STOCK

TO MY FRIENDS, MY CUSTOMERS:

I want to express my appreciation of the loyalty and good will shown by the customers into whose hands the annual lists have gone the preceding years. Each year many orders are received that are sent on the recommendation of neighbors who have been receiving my annual list.



I feel that no business can be a success unless founded on square business dealing, and I want every customer, a **satisfied customer**.

**If an error in your order is made, write and tell me and it will be corrected by return mail.**

By fair and square dealings, this business has steadily grown for several years and I hope to be able to merit a share of your business again this year.

Yours truly,

T. G. BANNING.

## LOCATION

I am now located in the northeast part of Brookfield, at 914 Meade street. This location is just two blocks east of the High school. My telephone number is 141.

## REFERENCE

This annual list will go into the hands of many home owners, who possibly might wonder if it is safe to send an order to me with cash enclosed. As to my business standing in my home community, I can refer you to the Brownlee Bank, Brookfield, Mo., or ask your neighbor, anywhere in Linn county, Mo.

## GUARANTEE

I guarantee the vitality and purity of the seeds I sell to the full amount of the purchase price. Even with the quality of the seeds sold, garden success depends largely upon cultivation, soil and weather conditions. Therefore, it is mutually agreed that in no case, shall I be liable for more than the amount actually paid for the seeds.

Safe arrival of your seeds guaranteed and I guarantee their quality to the amount of the purchase price. You can have your money back anytime in 1926 if you are not satisfied with any seeds you may purchase from me.

## PARCEL POST RATES

All seed in this catalog delivered to you by prepaid parcel post. Plant orders under \$1.00 add 7c for postage. All plant orders over \$1.00 delivered to you by prepaid parcel post.

## MAIL ORDERS

Several years ago I placed a small advertisement in a Brookfield paper, announcing that I would accept orders for plants to be mailed to any customer. At that time, the advertisement stated that all plants were guaranteed to reach destination in good condition. If damaged in transit, that any loss would be made good to customer without charge. This guarantee is still in force and I want all buyers, either old or new, to know that this means exactly what it states. Any buyer who receives an order in damaged condition, just drop me a card and your loss will be made good by return mail. That this rule has been followed is shown by the fact that the first mail order customers that I found by my small advertisements, are still regular buyers, and their orders are welcome visitors each spring. Mail orders are given just as careful attention as orders from customers who come personally for their order. **I try to have all orders filled correctly, but errors will occur. Always keep a copy of your order and if you find any error in your order let me know by return mail and correction will be made at once.** Each season many letters are received from satisfied customers, expressing their satisfaction. Four sample letters are printed, but many more are received each year:

Ethel, Mo., April 30, 1925.

Mr. T. G. Banning.

Dear Sir:

Received cabbage plants this morning on route in fine shape. Was pleased very much with them..

Yours truly,

R. R. No. 2

O. W. Lewis.

Bucklin, Mo., May 13, 1925.

Mr. Banning.

Dear Sir:

Enclosed find money order for 75c for which please sent me sweet potato plants. Your plants are finer than we can get anywhere else.

Route 3

L. J. Svensson.

Meadville, Mo., April 16, 1925.

Mr. Banning.

Dear Sir:

I am enclosing 50 cents. Will you please send me that amount in Copenhagen Market cabbage plants. I got this variety of you last year. They were the finest I ever used. Every plant made a nice solid head. Had quite a few to weigh ten pounds.

Yours very truly,

Mrs. Willis Swetnam.

Browning, Mo., April 2, 1925.

Mr. Banning.

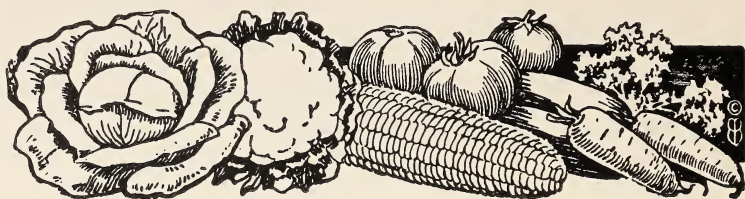
Dear Sir:

I am a little late with my order which always includes some for a neighbor or two. You have several on Route 1, I am sure, from my recommendation. All like your plants same as myself. You are excellent when it comes to word of honor in your orders. They are always fine! I always speak a good word for you.

Yours respectfully,

R. R. No. 1, Box 89

Mrs. F. L. Jacobs.



## SEEDS

It is with pleasure that I can again this year offer the same high grade garden seed. These strains of seed have been tested under actual growing conditions in my market garden, where they have to meet the same weather conditions that they find in any home garden. Plant any of these seeds, give them clean cultivation and your efforts will be rewarded with a bountiful harvest of quality vegetables. These strains of garden seed have been developed by a seed firm especially to meet the wants of market gardeners, for they are the most critical seed buyers in the country. Thousands of gardeners can recommend their worth. I buy the seed in bulk and put them up in packages, so you get fresh seed each season. I have such faith in these seeds, that any time in 1926, I will refund the purchase price for any seed with which any customer may be dissatisfied. **All seed mailed post paid at price quoted. No order too small for careful attention. Early orders solicited.**

### BEANS

Burpee's Stringless Green Pod—The best of all green podded bush beans. Pods are round, entirely stringless and of the best quality. Plants are strong growers and produce tender pods early in the season. The seed is quite hardy and does not rot in cool spring weather, near as easily as seed of wax varieties. I make three plantings of this variety during the growing season. The first, the last part of April, the other plantings about the middle of June and July. Last season with three plantings, I marketed nearly 100 bushels, many of which were sold to housekeepers for canning.  $\frac{1}{4}$  pound, 10c; 1 pound, 35c.

Early Valentine—Plants dwarf and prolific. Pods four inches long, round, meaty and brittle even when full grown. One of the best early green pod varieties.  $\frac{1}{4}$  pound, 10c; 1 pound, 35c.

Pencil Pod Black Wax—Grows a tall, strong and vigorous



bush with long, slender, straight, handsome pods, shaped much like a pencil.  $\frac{1}{4}$  pound, 10c; 1 pound, 35c.

Webber Wax—An early stringless wax podded bean of high quality. A heavy yielder of pods, which are almost immune from blight and pod spot. Originated by a market gardener and it has met with favor wherever tried.  $\frac{1}{4}$  pound, 10c; 1 pound, 35c.

Kentucky Wonder Pole Beans—The one best bean, as dry weather does not burn up the vine as it does the bush variety. Not as early as the bush beans but is a heavy yielder of fine beans, either to snap when young or hull later. Often will get two full crops in a season. Drive a lath or any kind of pole in the ground, plant three or four beans to a hill, and see how many beans you get to a hill.  $\frac{1}{4}$  pound, 10c; 1 pound, 35c.

Henderson's Bush Lima—A very productive bush variety of small lima beans. Vines are literally covered with pods, holding two to four beans.  $\frac{1}{4}$  pound, 15c;  $\frac{1}{2}$  pound, 25c; 1 pound, 45c.

Burpee Bush Lima—After a test of this variety for two years I believe it is the best and most productive of the large bush lima beans. It sets a good crop of pods with three to five large beans to a pod. Have the same good qualities of the large pole limas.  $\frac{1}{4}$  pound, 15c;  $\frac{1}{2}$  pound, 25c; 1 pound, 45c.

Pole Lima—King of the garden. Strong grower with pods of four to five large beans of excellent quality. One of the best tall growing lima beans.  $\frac{1}{4}$  pound, 15c;  $\frac{1}{2}$  pound, 25c; 1 pound, 45c.

### BEETS

Detroit Dark Red—Medium early, dark red in color, round with a small tap root. Beets are round, smooth and quality is of the best. Beets remain tender even when of large size. Fine for canning.  $\frac{1}{2}$  ounce, 10c; ounce, 15c;  $\frac{1}{4}$  pound, 40c.

Mammoth Long Red—A large stock beet which is eaten in winter by all kinds of stock. Should be thinned in the rows to stand 6 to 8 inches apart.  $\frac{1}{2}$  ounce package, 10c; ounce, 15c;  $\frac{1}{4}$  pound, 35c.

### SWISS CHARD

Does not make a bulb but is grown for the leaves and stalks which are used for greens. Can be used all summer after spinach is gone.  $\frac{1}{2}$  ounce package, 10c; ounce, 15c;  $\frac{1}{4}$  pound, 40c.

### CABBAGE

Early Jersey Wakefield—Standard early pointed heads of medium size. Heads early, but does not stand long without bursting. Package, 10c; ounce, 35c.

Copenhagen Market—Heads round with few outside leaves. Can be set as close together in a row as Jersey Wakefield and will stand for a long time without bursting. This is the only early variety that I now plant for market. Package, 10c; ounce, 40c.

Early Flat Dutch—Old standard, flat-headed early cabbage. About two weeks later than the first early cabbage. Heads good size. Package, 10c; ounce, 35c.

Premium Late Flat Dutch—Standard late cabbage for fall and winter use. Large, solid, flat heads. Package, 10c; ounce, 35c.

### CAULIFLOWER

Early Snowball—Good for either early or late, but to make good heads cauliflower needs plenty of moisture. This is an extra good strain. Package, 15c.

### CELERY

White Plume—Earliest and easiest blanched. When it has plenty of moisture it grows rapidly and will almost blanch itself without hilling up. Package, 10c.

Golden Self Blanching—Almost as early as White Plume, but stalks are larger and better quality. Package, 10c.

Giant Pascal—Winter variety with large bunches of heavy ribbed stalks. Plants grow large and when blanched are tender and of fine flavor. Package, 10c.

### CARROT

Danvers—The smooth roots are deep orange color; flesh is sweet and tender, and are easily pulled.  $\frac{1}{2}$  ounce package, 10c; ounce, 15;  $\frac{1}{4}$  pound, 45c.

### SWEET CORN

Golden Bantum—Extra early, with golden yellow kernels of fine quality. Ears are medium size, just right for the table.  $\frac{1}{4}$  pound package, 10c; pound, 35c; 5 pounds, \$1.50.

Early Minnesota—Standard early variety with good size ears. Slightly larger than Golden Bantum.  $\frac{1}{4}$  pound package, 10c; pound, package, 35c; 5 pounds, \$1.50.

Stowell's Evergreen—A favorite main crop variety excelling in productiveness and quality. Makes a large ear of sugary sweetness.  $\frac{1}{4}$  pound package, 10c; pound, 35c; 5 pounds, \$1.50.

Country Gentlemen—A productive variety of high quality with deep, slender grains, irregularly arranged on the cob.  $\frac{1}{4}$  pound, 10c; pound, 35c; 5 pounds, \$1.50.

Bantam Evergreen—A cross between Golden Bantam and Stowell's Evergreen, with the quality of Bantam and part of the

size of Evergreen. A good sized golden ear of first quality.  $\frac{1}{4}$  pound, 10c; pound, 35c; 5 pounds, \$1.50.

### CUCUMBER

Improved Long Green—Fruits are long green. Fine for slicing.  $\frac{1}{2}$  ounce package, 10c; ounce, 15c;  $\frac{1}{4}$  pound, 50c.

Chicago Pickle—Small fruits, grown mostly for pickling.  $\frac{1}{2}$  ounce package, 10c; ounce, 15c;  $\frac{1}{4}$  pound, 50c.

Early White Spine—Vines vigorous, early and productive. One of the best sorts for table use.  $\frac{1}{2}$  ounce package, 10c; ounce, 15c;  $\frac{1}{4}$  pound, 50c.

### LETTUCE

Black Seeded Simpson—A loose, fluffy headed variety of quick growth and good quality. The best variety for out door planting.  $\frac{1}{2}$  ounce package, 10c; ounce, 15c;  $\frac{1}{4}$  pound, 50c.

Prize Head—Crisp, tender leaves, shaded a reddish brown. Grows rapidly. A valuable sort for the home garden.  $\frac{1}{2}$  ounce package, 10c; ounce, 15c;  $\frac{1}{4}$  pound, 50c.

### MELONS

Rockyford—The netted green fleshed cantaloupes shipped in large quantities from the growing centers. Vines productive and melons are sweet to the rind.  $\frac{1}{2}$  ounce package, 10c; ounce, 15c;  $\frac{1}{4}$  pound, 45c; pound, \$1.25.

Tip Top—Muskmelon of large size with fine flavored salmon flesh. Pale green skin distinctly ribbed and slightly ribbed. A melon that is tip top in quality, appearance and productiveness.  $\frac{1}{2}$  ounce package, 10c; ounce, 15c;  $\frac{1}{4}$  pound, 45c; pound, \$1.25.

Kleckley Sweets Water Melon—Vines vigorous and productive. Fruit medium size. This is the fine dark green melon which is grown so much in the Missouri bottoms.  $\frac{1}{2}$  ounce package, 10c; ounce, 15c;  $\frac{1}{4}$  pound, 40c; pound, \$1.00.

Tom Watson—Large, long melon of fine flavor. Produces a heavy crop.  $\frac{1}{2}$  ounce package, 10c; ounce, 15c;  $\frac{1}{4}$  pound, 40c; pound, \$1.00.

### MUSTARD

Chinese Smooth Leaved—Used for greens. Plant some in your garden for greens. Hoe up any left before blooming and you will have no trouble with it seeding itself.  $\frac{1}{2}$  ounce package, 10c; ounce, 15c.

### OKRA

Okra—Largely used in the south for soups, etc. Pods should be gathered and used when still young and tender. Seed should be sown after weather is settled and nights are quite warm. Package, 10c.

### ONIONS

Bermuda Onion Plants—Millions of these plants are grown in the south and shipped north in the spring. They should be set three or four inches apart and they soon fill the row with handsome onions, which have a mild flavor. They will not make green onions for table use as quickly as sets, but will produce larger bulbs than can be grown from sets. These plants are put up 100 in a bunch and can only be sold in some multiple of 100. Prices, postpaid, 200 for 50c; 500 for \$1.00; 1,000 for \$1.75.

Red Globe—Dark red onions of globe shape. Planted thinly will make extra large bulbs. An extra good strain. Package, 10c; ounce, 40c.

### PARSNIPS

Hollow Crown—Roots long, tender and sweet. The most popular parsnip.  $\frac{1}{2}$  ounce package, 10c; ounce, 15c;  $\frac{1}{4}$  pound, 40c.

### PARSLEY

Moss Curled—Rich, green color, with leaves curled and twisted. One of the best varieties for garnishing.  $\frac{1}{2}$  ounce package, 10c; ounce, 15c.

### PEAS

Early Alaska—Extra early. Seed is smooth and can be planted as early in March as the ground is fit to work. Pods medium size and peas are of good flavor.  $\frac{1}{4}$  pound package, 10c; pound, 35c.

American Wonder—Esteemed for earliness, productiveness and quality. Robust vines about ten inches high which produce quantities of good sized pods closely packed with peas.  $\frac{1}{4}$  pound, 10c; pound, 35c.

Little Marvel—A pea rightly named. Vines grow 12 to 15 inches high. No earlier wrinkled peas and the quality satisfies everybody. Pods dark green, about three inches long, filled with six to seven peas.  $\frac{1}{4}$  pound, 10c; pound, 35c.

**PEPPERS**

Ruby King—Large, sweet mangoes. Green at first, turning to deep crimson when ripe. Mangoes are always smooth, even in the largest ones. Package, 10c.

Chinese Giant—The largest sweet mango grown. Does not bear as many fruit as the Ruby King. Its mammoth size always commands attention. Package, 10c.

Long Hot Cayenne—Peppers are two to three inches long, half inch in diameter and fiery hot. Package, 10c.

**PUMPKIN**

Large Cheese—Shape flat, flesh yellow, thick and tender.  $\frac{1}{2}$  ounce package, 10c; ounce, 15c;  $\frac{1}{4}$  pound, 40c.

**RADISH**

Icicle—Early long, white radish. Flesh tender and crisp.  $\frac{1}{2}$  ounce package, 10c; ounce, 15c;  $\frac{1}{4}$  pound, 40c.

White Tipped Scarlet Turnip—Early round radishes with white tap roots. Flesh tender and snappy.  $\frac{1}{2}$  ounce package, 10c; ounce, 15c;  $\frac{1}{4}$  pound, 40c.

**SALSIFY**

Salsify or Oyster Plant—This is grown for fall and winter use and is highly esteemed for the fine flavor of the roots. The name of oyster plant has been given to Salsify because the roots have an oyster-like flavor. Sow the seed thinly in shallow drills early in the spring. Package, 10c; ounce, 20c.

**SPINACH**

Victoria—Early large leaved variety. Should be planted early.  $\frac{1}{2}$  ounce package, 10c; ounce, 15c;  $\frac{1}{4}$  pound, 40c.

**SQUASH**

Warty Hubbard—Large size winter squash with a hard, warty skin. Splendid for baking.  $\frac{1}{2}$  ounce package, 10c; ounce, 15c;  $\frac{1}{4}$  pound, 40c.

**TOMATO**

Earliana—Extra early tomatoes. The first fruits are the best but the size soon runs small. Plant a late variety to come on when the best fruits are gone. Package, 10c; ounce, 35c.

Chalk's Early Jewell—Not quite as early as Earliana, but far better quality. Fruit is smooth and ripens up evenly to the stem. Package, 10c; ounce, 35c.

Ponderosa—Large, meaty, variety of tomato with few seeds. No garden complete without this tomato. Ripens early for such large fruits. Package, 10c; ounce, 45c.

Stone—A leading variety for main crop, with large smooth fruit. Color bright scarlet. Ripens evenly to stem. One of the best varieties for canning. Package, 10c; ounce, 35c.

Red Head—A fine early red tomato ripening as early as Chalk's Early Jewel. Fruit is large and smooth. A productive variety of solid quality tomatoes. Package, 10c.

Golden Queen—Rich golden yellow tinged on the blossom side with pink. Solid, smooth, of good size. Package, 10c.

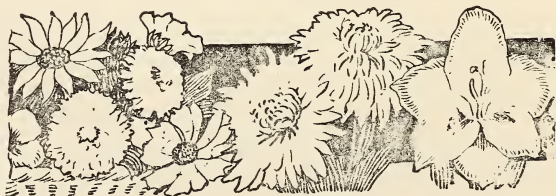
### TURNIP

Purple Top White Globe—An early turnip of globe shape, which is rapidly taking the market away from all other varieties.  $\frac{1}{2}$  ounce package, 10c; ounce, 15c;  $\frac{1}{4}$  pound, 40c.

Early Purple Top Strap Leaf—An early turnip used extensively for table use. The leaves are few and upright in growth. Roots are flat, purple above ground, white color. Roots are flat, flesh fine grained.  $\frac{1}{2}$  ounce, 10c; ounce, 15c;  $\frac{1}{4}$  pound, 40c.

### RUTABAGA

Improved Purple Top—Hardy and productive. Roots are globular with a small tap root and a small neck. Color bright yellow with a purple top.  $\frac{1}{2}$  ounce, 10c; ounce, 15c.



### NASTURTIUMS

Dwarf Mixed—One of the best for plenty of flowers. Bright colored flowers are borne with profusion. Fine for edging beds. There is no flower that will give such an abundance of bloom for the little care that they take.  $\frac{1}{2}$  ounce package, 10c; ounce, 15c.

Tall Mixed—These are fine for growing in solid masses. Will grow on fences or can be let trail loose on the ground  $\frac{1}{2}$  ounce package, 10c; ounce, 15c.

### SWEET PEAS

Spencer Varieties Mixed—This is a good mixture of fine Spencer Sweet Peas. Should be planted early in the Spring. Package, 10c; ounce, 20c.

### CASTOR BEANS

Large variety, often growing ten to twelve feet high. Leaves are extra large. Seed should not be planted in the open ground until maples are leaving out. Package, 10c.

### ASTERS

Queen of the Market, Mixed—Early flowers double and large on stems of good length. Fine for cutting. The best colors blended in this mixture. Package, 10c.

### MARIGOLDS

Marigolds—This is an old favorite free flowering annual of easiest culture. They have uniformly large yellow orange colored flowers. They do best when grown with full exposure to the sun. Package, 10c.

### ZINNIA

Zinnia Mixed—A blend of several colors of good size blossoms. An old fashioned flower which has been much improved. Zinnias will stand more neglect and drought and produce more flowers than most any other flowers. Package, 15c.

Giant Zinnia—This is a strain of large Zinnias. Flowers are large, with very few single blossoms. No better strain of this seed can be produced anywhere. For largest blossoms, the plants should be thinned to stand one foot apart. The small plants can be easily transplanted. Have this seed in three colors, red, purple and rose. Package, 15c.



## PLANTS

In growing plants, it is not my custom to see how many can be produced under each sash, but rather to get the seed sown thin enough to produce plants strong enough to grow when set out in the open.

The price at which the plants are quoted is less than asked for plants of the same quality by large wholesale growers.

Weather conditions being favorable, all plants ready about May 1, except sweet potatoes, which are generally ready about May 15 to 20.

All plants are grown from the same strains of seed which I sell and use in my garden work.

All plants guaranteed to reach customer in good order, or I will make good any loss. Plant orders under \$1.00 add 7c postage. Orders \$1.00 or over mailed postpaid.

### TOMATO

Earliana—Extra early variety with small, slender vines. Sets fruit early. Tomatoes good size at first but last of crop is small. Do not plant all of your garden to this variety.

Chalk's Early Jewell—A second early variety from a week to ten days later than Earliana. Fruits large and smooth. Bears over a long season and last fruits are of the same high quality as the first.

Red Head—An early tomato possibly a little earlier than Jewell. Fruit smooth, of medium size and of fine quality.

June Pink—Best described as a pink Earliana. Ripens as early as Earliana, but fruit is of better quality.

Stone—A large, smooth red tomato and main crop variety for canning. Vine's bear a heavy crop over a long season.

Buckbee's Beefsteak—An extra large smooth tomato, fine for slicing and canning. Few seeds.

Ponderosa—Very large, purple colored fruit. The large fruits are extra fine for slicing. No garden complete without this variety.

Golden Queen—Fruit large and solid. Color, a beautiful golden yellow, sometimes with a blush of red. Smooth and superior quality.

All tomato plants, 15c per dozen; 95c per hundred.



**POTTED TOMATO PLANTS**

Earliana, Jewell, Red Head, June Pink, Stone, Beefsteak, Ponderosa, 50c per dozen. By mail, 10c extra per dozen.

**SWEET POTATOES**

Red Bermuda, Nancy Hall—Red Bermuda produces earlier potatoes. The Nancy Hall is practically a vineless variety. Any kind, 50c per hundred, \$4.75 per 1000.

**CABBAGE**

Jersey Wakefield—Early pointed heads.

Copenhagen Market—Early round heads, as early as Jersey Wakefield and will average twice the size. Fine quality.

Early Flat Dutch—Second Early. Flat heads. An improved strain.

Premium Late Flat Dutch—Standard late cabbage. Large, flat heads.

**FROST PROOF CABBAGE PLANTS**

I do not handle any of the southern grown plants, for a good home grown plant set out after April 15 will most seasons do far better than the southern grown plants. Before sending out any cabbage plants, I try to get them hardened to outside weather conditions so that they will stand frosty weather without killing. Frost-proof plants are generally ready April 15 to 20. Jersey Wakefield and Copenhagen.

All cabbage plants, 12 for 10c; 25 for 15c; 50 for 25c; 100 for 45c; 1000 for \$4.25.

**CAULIFLOWER**

Early Snowball—10c per dozen.

**PEPPERS**

Chinese Giant, Ruby King, Neapolitan, Pimento. All sweet mangoes. Red Cayenne, hot peppers. 15c per dozen.

**EGG PLANT**

New York Purple—Fruit large and smooth. 15c per dozen.

**CELERY**

White Plume, Golden Self Blanching, early varieties. Giant Pascal, late variety. 50 for 25c; 100 for 45c. Ready about June 15c.

**FLOWERING PLANTS**

These plants ready about May 1 for setting out.

### CANNAS

Three varieties ready early in May. These cannas are the best three kinds which were grown in the Brookfield Park Oval Canna beds during the summer of 1925. All free bloomers and strong growers.

King Humbert—Bronze leaves. Large scarlet flowers. Height 4 feet.

Yellow King Humbert—Large green foliage with deep yellow flowers spotted with red. Height 4 feet.

The President—Large green foliage growing to a height of 4 feet. Flowers a rich glowing red.

Any Cannas, 20c each; 6 for \$1.00.

Pansies in bud and bloom, 6 for 25c.

Salvias or Scarlet Sage, 6 for 25c.

Snap Dragon, mixed colors, 6 for 25c.

Verbenas, 6 for 25c.

Asters, mixed colors and white, 12 for 15c.

Gladioli—Best bulb for spring planting. Makes long spikes of fine flowers, which last for a long time after cutting. Mixed colors. 6 bulbs, 25c; 12 for 40c.

### STRAWBERRIES

Finest of all fruits. Every garden should contain a strawberry patch. A very small plot of ground will furnish all the berries a family can use on the table and some to preserve. With strawberries in your garden you can have fresh berries whenever you want them. To plant a bed, make rows 2½ feet apart and set the plants 15 inches apart in the rows. If you want to put out a patch large enough to cultivate with horse tools, make rows 3½ feet apart and set plants 15 inches apart in the rows. When cold weather comes the following December, cover the strawberries two inches deep with straw or prairie hay. I have two spring bearing varieties, Senator Dunlap and Aroma, both of which bear a good crop of large berries. Either variety will bear when set alone, but I believe a better crop of berries is produced when both varieties are set out together. Strong, thrifty plants, 100 for 85c; 200 for \$1.60; 500 for \$3.50.

Progressive—Everbearing variety that produces fruit in the summer and fall just as well as in the spring. The Progressive is

one of the best of this type of berries. Plants set in the spring should have the buds and blossoms picked off the first year until July 1. Fruit of this variety is medium size, sweet and stands up well after picking. 100 for \$1.75.

#### FALL BULBS

Every spring when tulips, narcissus and hyacinths are blooming, many people plan to have them in their own yard the coming year. These bulbs are grown in Holland and France and **can only be planted in the months of October and November**. If you care for prices on these bulbs, mention it to me anytime this spring or summer and I will give you prices on them in September.

#### FERTILIZER

I have some inquirers for bone meal, pulverized sheep manure and other fertilizers. I get my supplies from one of the best companies making these goods and can quote prices to anyone interested.



## NURSERY STOCK

Nursery stock quoted in this list is grown by **Neosho Nurseries Co., of Neosho, Mo.** Their nursery is located at Neosho, Mo., in the heart of the Ozark fruit country, where all fruits reach perfection in growth and quality. You can be assured of receiving first class stock from them at prices that are very reasonable when the quality of their stock is considered. For their motto is "**Yours for growing satisfaction.**" That means the customer receives **Varieties truly labeled, good sizes for their age, dug only after fully mature and dormant, handled without exposure to sun or wind, free from insect pests and diseases, vitality unimpaired, packed properly to arrive in prime condition, and satisfaction to customer on arrival of order.** Whether only a few trees, shrubs or plants, or a large amount, are set out, the buyer wants them to grow and give satisfaction. I can personally guarantee the stock grown by this nursery. All prices quoted are for delivery to Brookfield, Mo., spring, 1926. If you live close enough to Brookfield to receive your order here, I can take your order for delivery here. If you cannot come to Brookfield for your order let me know your wants and I can make you a price direct from Neosho,

Mo. If at any time you should write the nursery, please mention my name. No order too small. If you only want one tree, shrub or vine, your order will be given careful attention. Can give you special prices on large orders for commercial planting.

Inquiries promptly answered. I will be glad to call at any home in Brookfield to help make up an order. A small amount spent for trees and shrubbery will add many times their cost to the value of your home.

### STANDARD APPLES

Height	1 to 4 Rate	5 to 24 Rate	25 Rate
5 to 7 feet branched	.90	.85	.75
4 to 6 feet	.70	.65	.55
3 to 5 feet whips	.55	.50	.45
Liveland Raspberry	Yellow	Transparent	
Duchess or Oldenburg	Red	Astrachan	
	Red	June	
Maiden Blush	Wealthy		
Grimes Golden	King David		
	Jonathan		
Black Ben Davis	Rome Beauty		
Willow Twig	Delicious		
Stayman Winesap	Mammoth Black Twig (Paragon)		
Winesap	Winter Banana		
	York Imperial		

### CRABAPPLES

(Same price as apples)

Excelsior (Very Large—Midseason)

Hyslop (Late) Florence

### CHERRIES

Minimum Height	1 to 4 Rate	5 to 24 Rate	25 Rate
4 feet up	1.50	1.35	1.20
3½ feet up	1.20	1.05	.90
<b>Early</b>		<b>Midseason</b>	
Early Richmond		Montmorency	

### PLUMS

Minimum Height	1 to 4 Rate	5 to 24 Rate	25 Rate
5 feet up	\$1.35	1.20	1.05
4 feet up	1.05	.95	.85
3½ feet up	.75	.65	.60

Wild Goodse—(Very Early)	Red June
Italian Prune	Abundance
America	Burbank
Endicott	Shropshire Damson

**PEACHES**

Minimum	1 to 4	5 to 24	25
Height	Rate	Rate	Rate
5 feet up	.80	.75	.65
4 feet up	.60	.55	.50
3 feet up	.50	.45	.40
*Carmen—Early	*Belle of Georgia—Mid-Season		
*Greensboro—Early	*Champion—Mid-Season		
	*Heath Cling—Very Late		
	Early Elberta—Mid-Season		
Elberta—Mid-Season	Krummel—Very Late		
J. H. Hale	Early Rose—Early		
	(*Hardest Varieties)		

**STANDARD PEARS**

Minimum	1 to 4	5 to 24
Height	Rate	Rate
4 feet up, 2 year	1.10	1.00
3 to 5 feet, 1 year whip	.75	.70
2 to 3 feet, 1 year whip	.55	.50
Garber	Keiffer	

**DWARF PEARS**

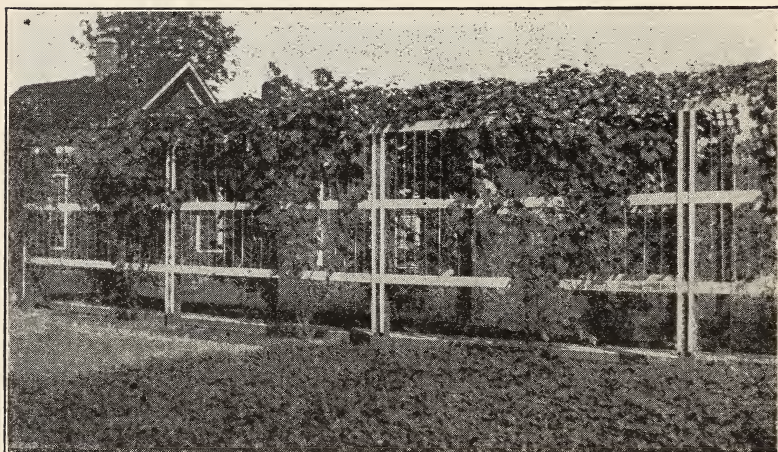
	1 to 4 Rate	5 Rate
½ to ¾	1.30	1.15
Anjou—Mid-Season	Bartlett—Early	
Duchess—Mid-Season	Seckel—Mid-Season	

**CURRANTS**

Perfection, 2 year No. 1		
1 to 4 rate, .60		5 rate, .50

**GOOSEBERRIES**

Oregon Champion, 2 year No. 1		
1 to 4 rate, .60		5 rate, .50



### GRAPES

One of the best fruits to eat right from the vine and one of the easiest to grow. How would you like to have a grape arbor like the one shown in the photograph? This is an actual photograph of a grape arbor right here in Brookfield. The camera was small so only five vines show, but there are six on each side. These one year vines were set out in April, 1922, and the photograph was taken in October, 1923, or a little less than eighteen months after planting. In 1923 the arbor bore all the grapes one family could use. Twelve Concord grape vines to plant arbor like this cost only \$2.40. Any home owner can get the same results in almost any kind of soil. It is simply a case of doing it. There is a place for grape vines in every yard. These vines came from the Neosho Nursery Co., and I can tell you more just like the.

	1 to 4 Rate	5 to 24 Rate	25 Rate
Concord (Black)	.25	.20	.15
Niagara (White)			
Agawam (Red)			
Worden (Black)			
	.45	.40	.35
Moore Early	.30	.25	.18

**BLACKBERRIES**

10 for 1.15	25 for 2.25	100 for 7.50
McDonald	Lucretia Dewberry	
	Early Harvest	

**RASPBERRIES**

10 for 1.15	25 for 2.25	100 for 7.50
Cumberland (Black)	Kansas Black	
Cuthbert (Red)	St. Regis	

**RHUBARB**

Strong Divisions	Per 5, 60c	Per 25, 2.00
------------------	------------	--------------

**ASPARAGUS**

Washington, 2 years old	Per 25, 1.00	Per 100, 3.75
Washington, 1 year old	Per 25, .75	Per 100, 2.25



**SHRUBS**

Strong vigorous plants. Sizes varying with varieties.

Althea or Rose of Sharon	3-4 feet	1.10	1.00
pink, white or red	2-3 feet	.90	.85
Barberry Japanese	2-2½ feet	.90	.75
	18-24 inches	.65	.55
	12-18 inches	.45	.35

Bechtel Flowering Crab	2-3 feet	2.00	1.75
Butterfly Bush	2 year No. 1	.75	.65
Sweet Shrub	18-24 inches	1.10	1.00
Deutzia Lemoinei	18-24 inches	1.00	.90
Deutzia, Pride of Rochester	3-4 feet	.90	.80
	2-3 feet	.75	.65
Dogwood, Red Twigged	2-3 feet	.75	.65
Elder, Golden	2-3 feet	1.00	.90
Golden Bell, Weeping	2-3 feet	.90	.80
High Bush Cranberry	2-3 feet	1.10	1.00
Honeysuckle, Japanese Bush	3-4 feet	1.00	.90
	2-3 feet	.90	.80
Japan Quince	18-24 inches	1.10	1.00
Lilac, Budded, red, white or blue	2-3 feet	2.25	2.00
Lilac, common purple	2-3 feet	1.10	1.00
Snow Ball	18-24 inches	1.20 <sup>m</sup>	1.10
Snowberry	2-3 feet	.90	.80



Spirea, Crimson	18-24 inches	1.10	1.00
Spirea, Van Houtti, or	3-4 feet	.85	.75
Bridal Wreath	2-3 feet	.65	.55
Syringa or Mock Orange	3-4 feet	.90	.80
Weigela, Pink	2-3 feet	.95	.85



## HEDGE

		5 to 24	25 to 99	100
		Rate	Rate	Rate
California Privet	2-3 feet	.18	.15	.13
	18-24 inches	.14	.11	.09
Amoor and Ibota Privet	18-24 inches	.30	.22	.18
	12-18 inches	.22	.18	.15



Spirea, Van Houttei	2-3 feet	.55	.45	.40
	18-24 inches	.35	.30	.25
Japanese Barberry	18-24 inches	.55	.45	.35
	12-18 inch	.35	.30	.25

## ROSES—2 Year Field Grown

Everblooming varieties marked with star (\*)

Teas and Hybrid Teas.

*Gruss An Teplitz, Red, each	1.50
*Kaiserin Augusta Victoria (White, Hardy)	1.50
*Killarney Pink (Clear Bright Pink, Hardy)	1.50
*La France (Bright Pink)	1.50
*Maman Cochet (Rich Rosy Pink)	1.50
*Madame Carolina Testout (Light Pink)	1.50
*Ophelia (Light Salmon, Blending to Yellow, Hardy)	1.50
*Radiance (Rosy Carmine with Yellow)	1.50

*Wm. R. Smith (Silvery White and Pink)	1.50
*Sunburst (Bronze Yellow)	1.50
Hybrid Perpetuals	
Marshall P. Wilder (Cherry Pink)	1.35
*Frau Karl Druschki (Snow Queen, Very Hardy)	1.35
Paul Neyron (Bright Ruddy Pink)	1.35
General Jacqueminot	1.35
Climbing Roses	
Climbing American Beauty	1.20
Dr. Van Fleet (Flesh Pink)	1.35
Silver Moon (Silvery White)	1.35
Dorothy Perkins (Shell Pink)	1.00
Excelsa (Radiant Blood Red)	1.00
Paul's Scarlet Climber	1.35



### PEONIES

Peonies are the most widely planted and popular of all hardy flowers. Once planted with hardly any care at all, they will produce flowers for a life time. They are easy to grow, but do best if given rich soil in a sunny place. They are fine for planting in permanent locations for they do not have to be disturbed for years. Fall is the proper time to set them and orders for roots

can be filled about September 15. I can take your order any time for fall delivery. Twelve of the best varieties are listed. Strong divisions.

1 to 4 rate, .75

5 rate, .60

**COURONNE D'OR (Crown of Gold) (Late)**—Very large white, full flower with ring of golden stamens and few carmine tipped petals at the center; fragrant. Strong grower and very free bloomer.

**DORCHESTER (Late)**—Pale pink. Large, compact, rose type; fragrant; medium height; strong, thick stems. One of the most beautiful pink peonies.

**DUCHESS DE NEMOURS (Early)**—Cup-shaped bloom, broad guard petals of white and narrow central petals of sulphur color with oftentimes a marking of green; very fragrant; free bloomer.

**DUC DE WELLINGTON (Late Mid-Season)**—Ivory white, creamy center; very large and double fragrant.

**FESTIVA MAXIMA (Medium Early)**—White, usually central petals tipped with carmine; very large, double with spicy fragrance. Best of the whites.

**LA SUBLIME**—Crimson, fine, full, fragrant, tall.

**MADAME LEBON (Mid-Season)**—Bright, cherry pink, very large.

**DELACHEI**—Deep purple crimson. Large. Late.

**ROSEA SUPERBA**—Deep cerise pink. Compact.

**MEISSONIER (Mid-Season)**—Brilliant, reddish-purple; medium size; well formed bloom; odor pleasant; tall vigorous grower; free bloomer.

**NIGRICANS (Mid-Season)**—Dark crimson; compact bloom.

**PRINCE IMPERIAL (Moderately Late)**—Dark red, very large.

#### IRIS

Per 5, .75

Per 25, 3.00

Per 100, 7.50

**AMERICAN BLACK PRINCE**—Dark purplish blue; very early.

**CELESTA**—Pale azure blue, large.

**FAIRY**—White with touch of soft blue; fragrant.

**MADAME CHEREAU**—White frilled with clear blue. Long season.

**PERFECTION**—Purple and lavender; very beautiful.

**QUEEN OF THE MAY**—Lilac with rose tint; one of the best.

**SAN SOUCI**—Canary yellow and crimson brown.

**ORIENTALS**—Intense blue; beautifully marked.

**IRIS COLLECTION**—Assorted colors, our selections, 25 for \$2.25

### VIOLETS

Single, Purple, Fragrant, Hardy  
 Per 25, 1.25                      Per 50, 2.00                      Per 100, 3.50

### CLIMBING VINES

	1 to 4 Rate	5 Rate
Boston Ivy	.60	.50
English Ivy	.60	.50
Kudsu	.50	.45
Clematis, Japanese (White)	.75	.65
Clematis (Purple), Large Flowering	1.50	1.35
Honeysuckle, Halls, (White)	.50	.45
Trumpet Vine	.50	.45
Wisteria, Japanese	.50	.45
Honeysuckle (Scarlet)	.75	.65

### ORNAMENTAL TREES

		1 to 4 Rate	5 Rate
Box Elder	6-8 feet	1.50	1.40
Catalpa (Umbrella)	5 foot stems	3.75	3.40
Crab, Bechtel's Flowering	2-3 feet	2.00	1.75
Dogwood, White Flowering	3-4 feet	1.50	1.35
Ash, Green	8-10 feet	2.25	2.10
	6-8 feet	1.50	1.35
	5-6 feet	1 10	.95
Maple, Norway	6-8 feet	4.00	3.75
Maple, Silver	8-10 feet	2.25	2.10
	6-8 feet	1.50	1.35
Maple, Sugar	6-8 feet	3.75	3.50
Mulberry, Russian	5-6 feet	1.00	.90
Mulberry, American	4-5 feet	1.50	1.25
Lindon, American	6-8 feet	3.00	2.75

---

Poplar, Carolina	8-10 feet	1.25	1.10
	6-8 feet	.90	.80
	5-6 feet	.75	.65
Poplar, Lombardy	8-10 feet	1.50	1.35
	6-8 feet	1.10	1.00
	5-6 feet	.90	.80
Red Bud or Judas Tree	3-4 feet	1.75	1.60
Tulip	6-8 feet	3.00	2.75
	5-6 feet	2.25	2.00
Willow, Weeping	6-8 feet	2.00	1.75
	5-6 feet	1.50	1.35





# EVERY ONE

Should keep a Copy of All Orders. Should There be Any Mistake Made, it Will Be Known Just What it is.

Number or Quantity	NAME OF ARTICLE WANTED	Dollars	Cents
	<i>AMOUNT FORWARD</i>		
	<i>TOTAL AMOUNT OF ORDEK</i>		

If you think your neighbor would care for a copy of this list write their name and address.

---



---



---



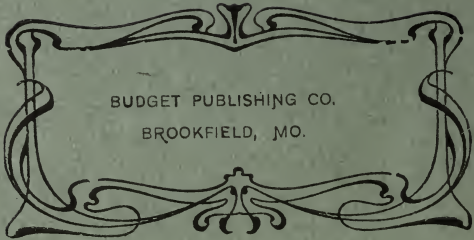
---

**YOUR FRIENDS** will appreciate your asking them to send with you for some of **BANNING'S DEPENDABLE SEEDS, LIVE PLANTS and TREES.**

If you receive two copies of this Catalog, please hand a copy to your neighbor.







BUDGET PUBLISHING CO.  
BROOKFIELD, MO.