

SI-MNH-958e
7-28-64

SMITHSONIAN INSTITUTION
DIVISION OF BIRDS
AT SEA DAILY LOG -- E

BCF

DATE 10 June 1965
Pg. # 1



time	species	#	dir.	hgt.	remarks	loc.
1445					Begin observations Lv. Pearl	
1445	Brown Booby	1				
1507	Gr. Frigate	1	N	100'		
1509	Gr. Frigate	1	N	100'	→	✓ Brown Booby 1-1
1513	Wedgetail	1	N		R.P	✓ Gr Frigate 3-3
1517	Wedgetail	1	N		R.P	✓ Wedgetail 16-96
1519	C. Noddy	1	N			✓ C Noddy 4-5
1520	Wedgetail	1	N		R.P	✓ S. Tern 10-122
1520	Sooty Tern	3	SE			✓ R-FB 3-12
1526	Wedgetail	1	N		R.P	✓ Sooty Tern 1-1
1526	Wedgetail	1	N		R.P	
1527	Sooty Tern	1			R.P	38-239
1530	Wedgetail	1	N		R.P	
1530	Sooty Tern	1	N		R.P	
F 1533	R-f Booby	10				
	Wedgetail	75 ± 10				Distant appeared to be feeding.
	S. tern	100 ± 20				
1535	Sooty Tern	1	N			
1535	Sooty Tern	1	N			
1535	Wedgetail	1	N		R.P	
1545	C. Noddy	1	N			
1550	C Noddy	1	N			
1559	Wedgetail	1	N		R.P.	
1600	Sooty Tern	1				
1600	Wedgetail	1				
F 1608	Sooty Tern	5				
	Wedgetail	2				
1608	Sooty Tern	1				
1608	Wedgetail	1			R.P	
1610	Wedgetail	1				
	C. Noddy	2				
1615	Wedgetail	1			R.P	
1615	sooty Tern	1				
F 1623	R-f Booby	1				
	Wedgetail	2			Spread out	
	Sooty Tern	7				
F 1625	G. Frigate	1				
1626	Wedgetail	5				
1627	R-f Booby	1			A.d.	

SI-MNH-958e
7-28-64

SMITHSONIAN INSTITUTION
DIVISION OF BIRDS
AT SEA DAILY LOG -- E

DATE BCF-10 June 1965
Pg. # 2



time	species	#	dir.	hgt.	remarks	loc.
1627	Sooty Tern	1				
1630	G Frigate	1				
1636	G Frigate	1			J.C. Noddy 4-34	
	R-f Booby	2			✓ S. Tern 5-38	
	Wedgetail	1			✓ G Frig 4-4	76
1637	S. Tern	1			JR-f B 7-209	254
1645	R-f Booby	2			✓ WTS- 10-45	28
F 1650	G Frigate	1			Booby 1-1	558
	Booby sp	1			1 B. Booby 1-1	
	Sooty Tern	5			✓ tern 1-20	
1655	Sooty Tern	1			✓ Bul 4-4	
FF 1700	R-f Booby	200±25			Some sitting on water. appeared to be feeding.	
	Wedgetail	25±5			RTTB-2-2	
1715	Brown Booby	1				
	R-f Booby	2				39-358
	G Frigate	1				
F 1735	R-f Booby	1	NE		Not feeding. Flying towards land.	
	C. Noddy	30±5				
	Wedgetail	8±2				
	Sooty Tern	30±5				
1740	R-f Booby	1	NE		adult	
1750	Wedgetail	1	NE		light	
F 1751	terns	20±5			very distant	
1753	Bulwer's	1	ENE			
1800	Bulwer's	1	ENE			
1805	C. Noddy	1	ENE		53	
1810	Wedgetail	1	ENE		305	
1812	C. Noddy	1	ENE			
1817	R-f Booby	1	ENE			
1821	Wedgetail	1	EN			
1824	Bulwer's	1	ENE			
1826	C. Noddy	2	SE			
1829	Wedgetail	3				
1830	R-T Tropic	1				
1830	R-T Tropic bird	1				
1840	Wedgetail	1	SE			
1843	Bulwer's	1	SE			
1845	Wedgetail	1				
1850	Wedgetail	3	NE			

582

120

100

221

141

18

SI-MNH-958e
7-28-64

SMITHSONIAN INSTITUTION
DIVISION OF BIRDS
AT SEA DAILY LOG -- E



BCF
DATE 10 June 1965
Pg. # 3

time	species	#	dir.	hgt.	remarks	loc.
1850	Bulwer's	1				
1906	Sooty Tern	1	ENE			
1910	Bulwer's	1				
1914					Sunset	

✓ Bulwer's 2-2
✓ Sooty T. 1-1

361
239

600

SI-MNH-958e
7-28-64

SMITHSONIAN INSTITUTION
DIVISION OF BIRDS
AT SEA DAILY LOG -- E

BCF
DATE 11 June 1965
Pg. #



time	species	#	dir.	hgt.	remarks	loc.
0544	Wedgetail	2	W		R.P.	
0546	Newell's	1	W			
0546	Bulwer's	1	F		Sunrise	
0550	Newell's	1			Same as above Sun up now.	
0600	R-T Tropic	1				
0604	Bulwer's	1				
0615	Wedgetail	2	W		RP	✓ Newell's 2-2
0615	Frigate	1				✓ RTTB 1-1
0620	Wedgetail	2	NW		RP	✓ Bul 5-6
0622	Wedgetail	1	W		RP	✓ WT 10-13
0629	Wedgetail	1			RP	✓ Frig 4-4
0635	Bulwer's	1			RP	✓ WTTB 1-1
0636	Wedgetail	2	W		DP+RP.	✓ STern 3-8
0640	W-T Tropic	1				✓ FTern 1-1
0650	Sooty Tern	4				✓ PTern 5 2-2
0652	Gr Frigate	1		125'	→	✓ Boon Type 1-1
0700	Wedgetail	1			R.P.	
0702	Bulwer's	1				30-39
0711	Wedgetail	1	N		RP	
0720	Sooty Tern	2				
0735	Bulwer's	2				
0745	F. Tern	1				
0755	Wedgetail	1			RP	
0757	Pterodroma	1				
0802	Bulwer's	1				
0813	Loon's Pter.	1				
0815	Frigate	1				
0815	Sooty Tern	2	N			
0837	Frigate	1				
0904	Newell's	1				
0910	Boon Type	1			Dark back	
0930	Wedgetail	1			R.P.	
0945	Wedgetail	1			R.P.	
1015						

BWP

~~1015~~

SI-MNH-958e
7-28-64

SMITHSONIAN INSTITUTION
DIVISION OF BIRDS
AT SEA DAILY LOG -- E

BCF

DATE 11 June 1965
Pg. # 2



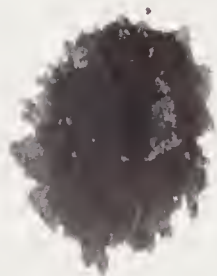
	time	species	#	dir.	hgt.	remarks	loc.
F	1015	Fairy Tern	3			Not feeding. Didn't appear to be feeding.	
		Sooty Tern	70±10			Wedgetails sitting on H ₂ O.	
		Wedgetail	40±10				
		G Frigate	4				
	1040	Wedgetail	1			R.P.	
	1050	Sooty Tern	6				
	1144	Bulwer's	1				
	1115	Bulwer's	1				
F	1130	Sooty Tern	17			Not feeding. TRAVELING	
		R-T Tropic	3				
	1130	Kermadec P	1			dark phase	
	1219	Bulwer's	1				
	1230	Wedgetail	1			R.P.	
	1245	Bulwer's	1				
F	1249	Wedgetail	5			R.P. TRAVELING Not feeding	
		Sooty Tern	5				
	1259	Wedgetail	1			R.P.	
BWP	1300	Bonin type	1			dark back	
	1320	terns	2				
	1325	Pterodroma	1				
	1355	Wedgetail	1			R.P.	
	1359	Wedgetail	1			R.P.	
	1413	Wedgetail	1	N		R.P.	
	1420	Bulwer's	1				
	1430	Wedgetail	1			R.P.	
	1435	Pterodroma	1			Gray back with distinct black on dark head. also contrasting with back. Cook-Bain size. also typical cook underwing.	
	1450	Bulwer's	1				
F	1500	Sooty Tern	10±2			was appeared to be feeding.	
		Wedgetail	30±5				
	1500	W + Tropic	1				

117
20
40

187



30-213



SI-MNH-958e
7-28-64

SMITHSONIAN INSTITUTION
DIVISION OF BIRDS
AT SEA DAILY LOG -- E

BCF

DATE 11 June 1965
Pg. # 3



time	species	#	dir.	hgt.	remarks	loc.
1610	Newell's	1				
1625	GF frigate	1			♂	Newell's 1-1
1647	Bulwer's	1				Bulwer's 2-2
1758	Bulwer's	1				GF frigate 1-1
1812	RT Tropic	1			adult	RT Tropic 1-1
1829	Sooty Tern	1				Sooty T 2-2
1833	Wedgetail	1				Wedgetail 1-1
1835	Sooty Tern	1				
19	Sunset.					

28
213
39
260

SI-MNH-958e
7-28-64

SMITHSONIAN INSTITUTION
DIVISION OF BIRDS
AT SEA DAILY LOG -- E

BCF

DATE 12 June 1965
Pg. # 1



	time	species	#	dir.	hgt.	remarks	loc.
	0553					Sunrise	
	0555	Wedgetail	1	S			
	0608	Newell's	1	NW			
	0630	Kermadec	1	NW			
BWP	0647	Cook's in Typ	3	S		light Dark phase. dark phase	WTS 9-152 New 1-1 Hem 2-4 Ban
	0654	Pterodroma	1				
	0700	W-T Tropic	1				
FF	0705	Wedgetail	60±10			Feeding	Petr 3-3 WTTB 2-2 Tern
		S. terns	15±5				S. Tern 3-25
	0715	WT Tropic	1				
	0720	R-T Tropic	1				VRTTB 2-2
BWP	0725	Cook's	3				✓Cook 7-13
"	0725	Cook	2				✓Bud 2-2
	0725	wedgetail	1			R.P.	Frig 2-3
	0759	Bulwer's	1				✓S-P 1-1
	0800	Wedgetail	1				31 177 8
	0800	Pterodroma	1			R.P. on H ₂ O	34-208.
F	0810	Kermadec	3				
BWP		Cook's	3			Not seen feeding.	160
		Wedgetail	40			all seen l.p.	48
		G Frigate	1			07	68
		Sooty Tern	5				
	0845	Shear-Pet	1	N			
"	0850	Cook's	1				
	0900	Wedgetail	1				75
	0908	Bulwer's	1				80
"	0908	Cook's	1	S			22
"	0914	Cook's	2				177
	0935	wedgetail	1			on H ₂ O	
	1000	Wedgetail	2			h.p.	
	1010	R-T Tropic	1			l.p.	
	1020	Pterodroma	1	N		adult	
F	1025	Wedgetail	15±5			appeared to be feeding	
		Sooty Tern	5			07	
		G Frigate	2				

SI-MNH-958e
7-28-64

SMITHSONIAN INSTITUTION
DIVISION OF BIRDS
AT SEA DAILY LOG -- E

Bcf

DATE 12-June-1965
Pg. # 2



time	species	#	dir.	hgt.	remarks	loc.
1040	Bulwer's	1	N			
1220	W-n Petrel	1	n			
1257	Cook's	1				
1315	Cook's	1				
1316	Bulwer's	1	N			
1337	Shear-Pet.	1				
1350	Wedgetail	1			RP	
1352	Cook's	1	W			
1455	Wedgetail	1	E		RP.	
1623	R-T Tropic	1				
1642	Wedgetail	2	E		RP	
1710	Tropic	3				
1715	Cook's	1				
1730	F. Tern	1				
1730	Cook's	1				
1802	Wedgetail	1			RP	
1810	Cook's	1				
1820	R-T Tropic	1				
1822	Bulwer's	1	n			
1830	Wedgetail	1			RP.	
19					Sunset	

✓ Bul 3-3

✓ W-n 1-1

✓ Cook's 6-6

✓ S-p 1-1

✓ WTS 5-6

✓ RTTB 2-2

✓ Tropic 1-3

✓ F Tern 1-1

20-23

SI-MNH-958e
7-28-64

SMITHSONIAN INSTITUTION
DIVISION OF BIRDS
AT SEA DAILY LOG -- E

BCF

DATE 13 June 1965
Pg. # 1



time	species	#	dir.	hgt.	remarks	loc.
0605	D-r Petrel	1	~		D-r 1-1	
0630	W-n Petrel	1	N		W-n 4-4	
0635	Pterodroma	1	NW		Ptero 6-7	
BWP 0642	Cook's	3	~		Cook 9-11	
0650	Pterodroma	2			B-fB 1-1 WTS 6-9	
" 0708	Cook's	1			S-P 2-2	
0708	Pterodroma	1			Bul 1-1 New 1-1	
0710	B. f. Booby	1			PA caught + banded 757-60944 130157°	
" 0845	Cook's	1				
" 0927	Cook's	1			ant/20 31-37	
0932	Wedgetail	1			R.P.	
0936	Pterodroma	1	NW			
0945	Pterodroma	1				
0950	Shear-Pet	1	N			
1033	Wedgetail	1	~		R.P.	
1058	Bulwer's	1	S			
" 1101	Cook's	1	S			
" 1115	Cook's	1	~			
1120	Shear-Pet	1	S			
" 1213	Cook's	1	S			
1230	Newell's	1	NW			
1232	Wedgetail	1	~		R.P.	
" 1237	Cook's	1				
1250	Wedgetail	1	N		Dark phase	
" 1256	Cook's	1	~			
1302	Pterodroma <i>P. leucoptera?</i> D.P.	1	S		dark head side of face. lighter back with distinct black W. Cook-Bonin size didn't appear to have line running from upper wing to head. <u>leucoptera?</u> -Prim. molt.	
1308	W-n Petrel	1	N			
1310	Wedgetail	1	N		D.P.	
1315	W-n Petrel	1	N			
1318	W-n Petrel	1	N			
1320	Wedgetail	4	NW		3D. 1R.	

SI-MNH-958e
7-28-64

SMITHSONIAN INSTITUTION
DIVISION OF BIRDS
AT SEA DAILY LOG -- E



BCF
DATE 13 June 1965
Pg. # 2

time	species	#	dir.	hgt.	remarks	loc.
1324	Newell's	1	NW			
1327	Wedgetail	2	S		D.P.	
1328	J.F. Pet.	1	S		molt.	
1335	Wedgetail	1	S		Z.P.	
1342	Pterodroma Pterodroma?	1	S		same as 1302.	
1400	Phoenix Is Tahiti P	1	SW		seen imperfectly - white belly dark darker back appeared brown in direct sun. Molt.	
1410	J.F. Pet	1	~			
1425	Sooty Tern	1	E			
1430	Shear-Pet	1	N			
1440	Wedgetail	1	~		DP	
1445	Pterodroma	1	~			
1451	Shear-Pet	1	N		DP	
1500	Wedgetail	1	N		dp	
1500	Pterodroma	1	N			
1515	Wedgetail	15	NW		dp. all part of very spread out group moving to NW. prim. molt.	
1517	Wedgetail	2	NW		dp	
1519	W-n Petrel	1	NW		prim. molt.	
1521	Pterodroma	1	NW			
1530	Ptero	1	NW			New 1-1
1534	Shear-Pet	1	NW			WTS 10-27
1536	Pterodroma	1	NW			JFP 3-3
1537	Wedgetail	1	~		dp.	Ptero 8-8
1600	Shear-Pet	2	~			JFP 1-1
1605	Shear-Pet	5			distant	S. Tern 1-1
1605	Wedgetail	2	NW		dp.	S-P 5-10
1609	Pterodroma	1	NW			W-n 2-2
1610	W-n Petrel	1	~			Bul 1-1
1621	J.F. Petrel	1	~		sitting on H ₂ O	32-54
1644	Wedgetail	1	NW		dp	
1745	Pterodroma	1				
1810	Bulwer's	1	NW			
1811	Wedgetail	1	NW		D.P.	

SI-MNH-958e
7-28-64

SMITHSONIAN INSTITUTION
DIVISION OF BIRDS
AT SEA DAILY LOG -- E



BCF
DATE 13 June 1965
Pg. # 3

time	species	#	dir.	hgt.	remarks	loc.
1815	Aerodroma	1				
1850	Wedgetail	1			dp.	

SI-MNH-958e
7-28-64

SMITHSONIAN INSTITUTION
DIVISION OF BIRDS
AT SEA DAILY LOG -- E



BCF
DATE 17 June 1965
Pg. # 1

time	species	#	dir.	hgt.	remarks	loc.
0600					Sunrise	
0605	JF Petrel	1	NW		molt.	X JFP-8-12
0607	Sooty Tern	1	SE		imm.	
0620	J-f Pet	1	NW			✓ Sooty T 2-86
0620	Cook's	1	~			✓ Cook's 3-3
0628	Pterodroma	1	NW			✓ Ptero 8-23
0631	JF Pet.	1	NW			✓ S-P 8-9
0642	Shear-Pet	1			98	✓ B-f B 1-1
0642	Shear-Pet	1				✓ W-n Pat 1-1
0642	Shear-Pet	1				
0642	Pterodroma	1				36 135
0645	Pterodroma	1	NW			22
0645	Pterodroma	1	NW			✓ Wedge 5-22
0650	Pterodroma	1	NW			36-157
0653	Pterodroma	1	NW			
0700	J.F. Pet	1	SE		molt	
0707	Shear-Pet	1	SE			F 1-5
0715	Wedgetail	2	~		dp molt	1-115
0717	JF Petr	1	NW			
0720	B-f Booby	1	SE		SA → imm ←	
0723	Pterodroma	2	NE			2 8-12
0723	Wedgetail	2	SE		dp molt	13-17
0725	Shear-Pet	2	~			2 11-16
F 0730	JF Petrel	5	~			5-22 6-27
FF 0732	Sooty Tern	85±10			appear to be feeding	9-9 7-12 72
	Wedgetail	15±5			dp	
	Pterodroma	15±5				
BWP 0740	Cook's	1	~			5-27 -70
0754	Shear Pet	1	SE			
0755	Wedgetail	1	SE		dp	
0759	Wedgetail	2	SE		dp	
0800	W-n Petrel	1	SE		molt	
0808	Shear-Pet	1	—			
0830	JF Petrel	1	SE			
BWP 0835	Cook's	1	SE			
0843	JF Petrel	1	SE			

SI-MNH-958e
7-28-64

SMITHSONIAN INSTITUTION
DIVISION OF BIRDS
AT SEA DAILY LOG -- E

BCF

DATE 14 June 1965
Pg. # 2



time	species	#	dir.	hgt.	remarks	loc.
0850	JF Petrel	2	~			
0855	JF Petrel	1	NW			
0855	Newell's	1	~			X JFP -13-17
0901	Wedgetail	1	SE		dp.	✓ New 2-2
0906	Wedgetail	1	~		dp molt	✓ WT 9-9
0906	JF Petrel	1	~		molt	✓ Ptero 2-2
0911	Wedgetail	1	SE		dp molt	✓ Cook's 7-7
0915	JF Petrel	2	SE		molt	✓ P. leuco. 1-1
0916	JF Petrel	1	NW			✓ Bnd 1-1
0916	Wedgetail	1	NW		dp	
0916	Pterodroma	1				
0919	JF Petrel	1	~			<u>35-39</u>
0919	JF Petrel	1	~			
0919	JF Petrel	1	~			
0927	JF Petrel	2	~		molt	
0927	Wedgetail	1			dp.	
BWP 0935	Cook's	1	SSE			
0937	Wedgetail	1	~		dp	
BWP 0937	Cook's	1	SSE			
0957	JF Petrel	2	~			
1003	Pterodroma	1	~			
1005	P. leucoptera	1	~			
BWP 1032	Cook's	1	SE			
1032	Wedgetail	1	~		dp.	
1040	JF Petrel	1	~			
1040	Newell's	1	~		molting.	
BWP 1045	Cook's	1	~			
1045	JF Petrel	1	~			
BWP 1050	Cook's	1	~			
1111	Wedgetail	1	NW		dp.	
1128	JF Pet.	1	NW			
1129	Bulwer's	1	~			
1138	Wedgetail	1	~		dp	
BWP 1159	Cook's	1				
BWP 1206	Cook's	1				

SI-MNH-958e
7-28-64

SMITHSONIAN INSTITUTION
DIVISION OF BIRDS
AT SEA DAILY LOG -- E

BCF

DATE 14 June 1965
Pg. # 43



	time	species	#	dir.	hgt.	remarks	loc.
	1205	Shear-Pet.	1				
	1230	Sh Pter.	1	~			
	1235	Kern. Pet	1				✓ Shear-Pet 3-4
BWP	1240	Cook's	1				✓ Pter 2-3
F	1253	Wedgetail	6			dp on H ₂ O not feeding.	Kern 1-1
	1307	JF Petrel	1	~			✓ Cook's 3-3
	1310	JF Petrel	1	~			✓ Wedge 7-12
	1312	Shear-Pet	2				× JFP 11-16
	1315	Wedgetail	1	SSE		dp.	✓ PIP? 1-1
	1319	Wedgetail	1	SSE		lap	
	1319	Phoeb's Pet?	1	SE			
BWP	1321	Cook's	1	S			✓ Newell 1-1
	1330	Shear-Pet	1				✓ F Tern 2-2
	1340						
						35+ Popsises	31-43
	1346	JF Petrel	1	SE			Flocks 1-6
	1348	JF Petrel	3				not F
	1349	JF Petrel	1				
	1350	JF Petrel	1				
	1359	Pterodroma	2	~			
	1407	Newell's	1	SE			
	1410	Wedgetail	1	S			
	1410	JF Petrel	1	~			
	1420	F. Tern	1				
BWP	1426	Cook's	1				
	1426	JF Petrel	1	-			
	1430	JF Petrel	2				
	1431	Wedgetail	1			dp.	
	1531	F. Tern	1	~			
	1550	JF Petrel	3				
	1600	JF Petrel	1			dp.	
	1615	Wedgetail	1			dp.	
	1620	Wedgetail	1			dp.	

SI-MNH-958e
7-28-64

SMITHSONIAN INSTITUTION
DIVISION OF BIRDS
AT SEA DAILY LOG -- E

BCF
DATE 14 June 1965
Pg. # 4



time	species	#	dir.	hgt.	remarks	loc.
1630	JF Petrel	1				
1635	Wedgetail	1			dp molt	
1640						
1645	JF Petrel	1				XJFP-6-27 ³⁹ ₅₇
1650	Newell's	1				Wedgetail 5-27 ⁹³
1655	Pterodroma	2				✓ Newell's 2-5
FF 1700	Newell's	4				✓ Ptero 1-2
	JF Petrel	20±5			actively feeding	✓ Sooty Tern 1-5
	Wedgetail	20±5				✓ Fairy Tern 1-2
	Sooty Tern	5				✓ Shear-Pet 1-25 ¹⁸
	Fairy Tern	2				
	Shear-Pet	25±5				17-93
1830	Wedgetail	1			RP	FFlock 1-96
1750	JF Petrel	1				
1800	Wedgetail	4	SE		dp.	
1805	JF Petrel	1				
1810	JF Petrel	3				
1820	Wedgetail	1			dp.	

SI-MNH-958e
7-28-64

SMITHSONIAN INSTITUTION
DIVISION OF BIRDS
AT SEA DAILY LOG -- E

BCF
DATE 15 June 1965
Pg. # 1



time	species	#	dir.	hgt.	remarks	loc.
0600	Newell's	1	N		Newell's 1-1	
0613	JF Petrel	2	~		molt JFP 13-31	
0616	JF Petrel	1	~		WT 13-35	
0620	Wedgetail	1			RP Flocks W-n 1-1	
0620	JF Petrel	2			1-40 Pter 8-25	
0625	W-n Petrel	1	~		Cook's 1-1	
0630	Wedgetail	3			dp molt CB-FB 1-1	
0637	Wedgetail	4			38-95	
0640	Pterodroma	2				
FF 0650	Wedgetail	15±2			actively feeding. Flying fish underneath.	
	JF Petrel	15±2				
	Pterodroma	10±2				
0658	Wedgetail	2			dp	
0659	JF Petrel	1			about 1000 ft	
0700	Wedgetail	1			at 1000 ft	
0702	JF Petrel	1			RP	
0715	JF Petrel	3				
0720	Pterodroma	1				
0725	Wedgetail	1	N		dp	
0730	Wedgetail	2	S		dp.	
0740	Wedgetail	2			dp	
0735	Pterodroma	3				
0800	Wedgetail	1	S		RP	
0800	Wedgetail	1			dp	
0800	Pterodroma	2				
0810	JF Petrel	1				
0810	JF Petrel	1				
0818	Pterodroma	2				
0818	Pterodroma	3				
0825	Pterodroma	2				
BWP 0825	Cook's	1				
0830	JF Petrel	1	S			
0833	JF Petrel	1				
0834	JF Petrel	1				
0835	JF Petrel	1				
0840	Wedgetail	1	W		dp	
0845	B-F Booby	1				
0845	Wedgetail	1	W		R.P.	

SI-MNH-958e
7-28-64

SMITHSONIAN INSTITUTION
DIVISION OF BIRDS
AT SEA DAILY LOG -- E

BCF
DATE 15 June 1965
Pg. # 2



time	species	#	dir.	hgt.	remarks	loc.
0900	Shear-Pet	3				
0910	W-n Petrel	1			W-n 2-2	
0925	JF Petrel	1	S		JF 9-15	
0930	JF Petrel	2	N		S-P 4-6	
0940	Wedgetail	2	S		WT 3-4	
0945	Cook's	1	N		Cook's 1-1	
0950	W-n Petrel	1			Kerm 1-1	
1030	JF Petrel	1			Pter 1-1	
1040	JF Petrel	1				
1045	JF Petrel	1				21-30
1155	JF Petrel	2				Flock's
1205	JF Petrel	1				1-5
1210	JF Petrel	5			appeared to be feeding	
1240	Shear-Pet	1				
1250	Kerm Pet	1	N		dark	
1315	JF Petrel	1	W			
1434	Shear-Pet	1				
1453	Pterodroma	1	S			
1459	Wedgetail	1	W		dp molt.	
1515	Wedgetail	1	N		dp	
1559	Shear-Pet	1	N			125
					Sunset	

SI-MNH-958e
7-28-64

SMITHSONIAN INSTITUTION
DIVISION OF BIRDS
AT SEA DAILY LOG -- E

BCF
DATE 16 June 1965
Pg. # 1



time	species	#	dir.	hgt.	remarks	loc.
0608	D-r Petrel	1	S			
0615	Shear-Pet	1	N			D-r P 2-2
0618	Pterodroma	1	N			S-P 7-9
0645	JF Petrel	1	S			Ptero 4-4
0655	Pterodroma	1	N			JFP 2-2
0707	R-T Tropic	1	N			RTTB 3-3
0715	Shear-Pet	1	SE			WTTB 2-2
0820	JF Petrel	1				Cook's 1-1
0830	W-T Tropic	1				Bul 1-1
0910	Pterodroma	1	N			Sooty T 1-1
1035	R-T Tropic	1				<hr/>
1035	D-r Petrel	1				23-25
1043	R-T Tropic	1			on H ₂ O	
1215	Pterodroma	1				
1223	Shear-Pet	1	S			
1248	W-T Tropic	1			on H ₂ O	
✓ 1401	Shear-Pet	1				
✓ 1425	Shear-Pet	1				
1511	Shear-Pet	3				
1545	Shear-Pet	1				
1612	Sooty Tern	1	N			
1648	Cook's	1	NW			
1800	Bulwer's	1				

2
23 | 1087
23 | 25.0
200
184
160

SI-MNH-958e
7-28-64

SMITHSONIAN INSTITUTION
DIVISION OF BIRDS
AT SEA DAILY LOG -- E

BCF
DATE 17 June 1965
Pg. # 1



time	species	#	dir.	hgt.	remarks	loc.
0540					Sunrise	
0545	Wedgetail	1	S		L.P.	
F 0610	Sooty Tern	18	S		not feeding	WT- 9-22
0610	Wedgetail	1	N		Lp	✓ Sooty 15-201
FF 0616	Sooty Tern	30±5			actively feeding	✓ Ptero 2-3
0616	Pterodroma	1	N			✓ Frig 2-2
0632	Wedgetail	1	E		Lp	D-r 1-1
F 0706	Sooty Tern	6	S			✓ Bul 1-1
0714	Pterodroma	2				WTTB 1-1
0715	Sooty Tern	1	SE			Fairy 2-3
0758	Sooty Tern	1	S			33-234
0759	Sooty Tern	1	S			
0800	Wedgetail	1	N		Lp	
0815	Wedgetail	1	~		Lp	Flocks 8-205
F 0815	Sooty Tern	75±5			Not feeding searching	57 25 132 161 35 201
	or Frigate	1				
F 0825	Wedgetail	10			sitting on H ₂ O probably part of 0815 Flock that had finished feeding.	
0915	Sooty Tern	3				
0920	Wedgetail	1			Lp	51
0955	D-r Petrel	1				58
0958	Bulwer's	1	S			75
1030	Sooty Tern	1				50
1035	W-T Tropic	1			on H ₂ O	234
F 1045	Sooty Tern	7	-		not feeding	
1155	Sooty Tern	4				
1213	Sooty Tern	1	W			
1245	Sooty Tern	3				
1250	Fairy Tern	1			feeding	
1255	Wedgetail	1			Lp	261 35
FF 1310	Sooty Tern	15±2			Feeding.	295 18
	Fairy Tern	2				
	or Frigate	1				
F 1321	Sooty Tern	35±5			Not feeding.	
	Wedgetail	5			L.P.	searching

SI-MNH-958e
7-28-64

SMITHSONIAN INSTITUTION
DIVISION OF BIRDS
AT SEA DAILY LOG -- E



BCF
DATE 17 June 1965
Pg. # 2

time	species	#	dir.	hgt.	remarks	loc.
1328	Wedgetail	1	N		RP	
1338	Wedgetail	1	S		RP	
F 1348	Sooty Tern	6	N		B not feeding ^{travel}	WT- 9-13
1349	Wedgetail	1	W		RP	✓ Sooty 7-60
1350	Wedgetail	4	N			✓ ATTB- 1-1
F 1400	Sooty Tern	15 ± 2		75'	not feeding	✓ Bul 1-1
1400	Wedgetail	1			RP	✓ WTTB 1-1
1414	Sooty Tern	1	S			S-P 1-1
1416	Wedgetail	1	N		dp	✓ Frig 1-3
1421	R-T Tropic	1	N			
1425	Sooty Tern	1	E			
1535	Bulwer's	1	E			21-80
1542	Wedgetail	1	SW		RP	Flocks 3-61
1545	Wedgetail	1			RP	
1600	W-T Tropic	1	N			
1625	Sooty Tern	1				
1630	Sooty Tern	1	W			
1650	Shear-pet	1	NW			
FF 1820	Sooty Tern	35 ± 2			Feeding. Frigates chasing terns.	
	Gr Frigate	3				
	Wedgetail	2				
1901					Sunset	

SI-MNH-958e
7-28-64

2.3
3 6.77



SMITHSONIAN INSTITUTION
DIVISION OF BIRDS
AT SEA DAILY LOG -- E

BCF
DATE 18 June 1965
Pg. # 1

time	species	#	dir.	hgt.	remarks	loc.
0543	Sooty Tern	2				
0543	Sooty Tern	2				
F 0600	Sooty Tern	35±5			appeared to be feeding.	
	Gr Frigate	2				
0705	Wedgetail	1	W		R.P.	
0710	Sooty Tern	2	N			
0715	Sooty Tern	2	W			
0720	Sooty Tern	1	E			
0735	D-r Petrel	1	E			
0740	Sooty Tern	3				
0750	Sooty Tern	1				
0752	Wedgetail	2	W		R.P.	
0823	Bulwer's	1	~			
→ 0830	Sooty Tern	1				
0830	Sooty Tern	1				
0830	Gr Frigate	1				
0858	Sooty Tern	1				
√ F 0940	Sooty Tern	35±2			not feeding. search	
0945	Leach's SP	1				
1035	Wedgetail	1			LP on H2O	
1044	Sooty Tern	1				
F 1055	Sooty Tern	45±10			appeared to be feeding	
	Gr Frigate	2				
1055	Wedgetail	1				
1105	Sooty Tern	1	N			
1107	Sooty Tern	3	N			
BWP 1115	Bulwer's Cook's?	1	~		Fresh plumage with black w appeared to be black area from eye to back.	
1120	Pterodroma	1	W			
F 1125	Sooty Tern	35±5			appeared to be feeding.	
1220	Shear-Pet	1	W			
1307	G Frigate	2		100'		
1317	Bulwer's	1				
1408	Pterodroma	1			small	
1420	Bulwer's	1				

171
Sooty T 17-136
Trig 4-7
WT 4-5
D-r 1-1
Bul 3-3
Leach 1-1
Ptero 2-2
Cook? 1-1
S-P 1-1
Flocks
34-192

42
Flocks 4-154

SI-MNH-958e
7-28-64

SMITHSONIAN INSTITUTION
DIVISION OF BIRDS
AT SEA DAILY LOG -- E

BCF

DATE 18 June 1965
Pg.# 2



time	species	#	dir.	hgt.	remarks	loc.
1530	Bulwer's	1	N			
1603	W-Tropic	1			on H ₂ O	
BWP 1645	Bonin Type	1			dark back	
1708	Shear-Pet	1				Bnd 2-2
1817	Bulwer's	1				WTFB 1-1 S-P 1-1 Bonin 1-1

SI-MNH-958e
7-28-64

SMITHSONIAN INSTITUTION
DIVISION OF BIRDS
AT SEA DAILY LOG -- E

BcF

DATE 19 June 1965
Pg. # 1



time	species	#	dir.	hgt.	remarks	loc.
					Drift Station	
0540	Shear-Pet	1				Bulwer 1-1
0544	Pterodroma	1				S-P 5-5
0546	Sooty Tern	1	N			Pter 3-3
0553	Sooty Tern	1				S. Tern 2-2
0625	R-t Tropic	1				RTTB 1-1
0645	Pterodroma	1				cook 2-2
BWP 0735	Bonin Cook	1			on H ₂ O back	tropic 1-1
" 0743	Cook	1	S		molt	fr 1-2
0750	Pterodroma	1	S			WT 1-3
0755	Tropic	1				<u>17-20</u>
0830	Cr Frigate	2		75'	07 still present at 1230	
0950	Shear-Pet	1	SSE			
1013	Shear Pet	1				
1014	Shear-Pet	1				
1259	Bulwer's	1	NW			
1450					2 porpoises	
1650	wedgetail	3			R.P.	
1844	Shear-pet	1				
1851					Sunset.	

SI-MNH-958e
7-28-64

SMITHSONIAN INSTITUTION
DIVISION OF BIRDS
AT SEA DAILY LOG -- E

BCTF
DATE 20 June 1965
Pg. # 1



time	species	#	dir.	hgt.	remarks	loc.
0528					Sun Up.	
0555	Bulwer's	1				
0555	D-n Petrel	1				D-r 1-1
0618	Bulwer's	1	S			Bul 4-4
0645	Frigate	1				frig 2-3
0710	Shear-Pet	1				S-P 7-7
0813	Cr Frigate	2			♂ + imm.	Pter 3-3
0815	Shear-Pet	1	NW			WT 3-5
0823	Shear-Pet	1				Cook 7-9
0850	Pterodroma	1				JFP 2-3
1030	Shear-Pet	1				29-35
1045	Bulwer's					
1047	Pterodroma	1				
1110	Wedgetail	1			R.P.	
1240	Wedgetail	1			L.P.	
BWP 1245	Cook's	2	S			
" 1325	Cook's	2	S			
1355	JF Petrel	1				
" 1415	Cook's	1	S		Molt	
1417	Bulwer's	1	S			
1440	Shear-Pet	1	S			
1443	JF Petrel	2			cutH2O	
" 1457	Cook's	1			lean fresh plumage very gray with distinct black W didn't appear to have black head	
1525	Pterodroma	1	S			
" 1528	Cook's	1	W		type I	
1535	Bulwer's	1	S			
" 1650	Cook's	1			feeding	
1652	Shear-Pet	1				
" 1713	Cook's	1	S			
1716	Wedgetail	3			R.P.	
1740	Shear-Pet	1	N			

SI-MNH-958e
7-28-64

SMITHSONIAN INSTITUTION
DIVISION OF BIRDS
AT SEA DAILY LOG -- E

BCF

DATE 21 June 1965
Pg. # 1



time species # dir. hgt. remarks loc.

time	species	#	dir.	hgt.	remarks	loc.
0547	R-T Tropic	1	S			RTTB - 3-3
0623	Bulwer's	1	~			Bul - 6-6
0630	J.F. Petrel	1	~		molting.	JFP - 8-25
0645	W-T Tropic	1				WTTB 2-2
0703	Wedgetail	1	S		R.P.	WTS 3-3
0804	Shear-Pet	1				BFA 1-1
0810	B-f alba	1				SP 9-13
0823	Shear-Pet	2				Ken 1-1
0840	Shear-Pet	1	S			Pter 2-4
0900	W-T Tropic	1			a H2O	S.Tem 2-17
0925	Wedgetail	1	S		R.P.	37-75
0930	Bulwer's	1	~			
0942	R-T Tropic	1	S			
0945	Wedgetail	1	N		R.P.	
1023	Ken. Pet	1	NW			
1023	J.F. Petrel	1	NW			
1038	J.F. Petrel	1	NW			
1120	Pterodroma	1				
F 1213	J.F. Petrel	8	~		molting. Chasing flying fish	18
1228	Bulwer's	1	E			22
1307	Shear-Pet	1	NW			10
1311	R-T Tropic	1				6
1327	Sooty Tern	2				46
1354	Shear-Pet	1	NW			
1354	J.F. Petrel	1	N		molting	
1402	Shear-Pet	1	NW		molting	
1402	Shear Pet	1	NW			
1413	Bulwer's	1	NW			
1413	J.F. Petrel	1	~		molting	
1428	J.F. Petrel	2	S			
1437	Shear-Pet	1				
1456	Bulwer's	1				
F 1510	Sooty Tern	15 ± 2			Not seen feeding.	
	Pterodroma	3			searching	
	Shear-Pet	4				
F 1525	J.F. Petrel	10			Chasing flying fish. Molting.	
1530	Bulwer's	1	N			
1534	Shear-Pet	1				

SI-MNH-958e
7-28-64

SMITHSONIAN INSTITUTION
DIVISION OF BIRDS
AT SEA DAILY LOG -- E



B c F
DATE 21 June 1965
Pg. # 7

time	species	#	dir.	hgt.	remarks	loc.
1535	C. Petrel Pterodroma	2	NW			
1558	JF Petrel	1				
1604	Shear-Pet	1				ptno - 2-3
F 1657	JF Petrel	6			appeared to be feeding.	JFP 6-11
1713	Pterodroma	1				S-P 2-2
1720	JF Petrel	1	N			WTS 2-2
1740	Wedgetail	1	S		dp	RTTB 1-1
1756	Wedgetail	1	N		dp	<u>13-19</u>
1804	JF Petrel	1	NW			
1808	R. T Tropic	1	SE			
1818	JF Petrel	1	N			
1825	Shear-Pet	1	S			
1833	JF Petrel	1			on H ₂ O	

SI-MNH-958e
7-28-64

SMITHSONIAN INSTITUTION
DIVISION OF BIRDS
AT SEA DAILY LOG -- E



DATE ^{BcF} 22 June 1965
Pg. # 1

time	species	#	dir.	hgt.	remarks	loc.
0539	-	-	-	-	Sunrise	Drift Station
0610	Pterodroma	1	SW			
0615	Pterodroma	1	SW			
0617	Pterodroma	1	SW			
0620	Bulwer's	1				
BWP 0625	Cook's	1	SW			
0630	J.F. Petrel	1	W			Pter 9-9
0640	Pterodroma	1				Bul 1-1
0700	Sooty Tern	1	~		Immature.	Cook 2-2
0710	Pterodroma	1				JFP 3-3
0712	R-T Tropic	1				S. Tern 1-1
0722	Pterodroma	1				RTTB 2-2
0745	Shear-Pet	1				WTB 1-1
0815	Pterodroma	1	S			Fp 1-1
0817	Wedgetail	2	W		DP.	WTS 2-2
BWP 0830	Cook's	1	N			BFB 1-1
0907	J.F. Petrel	1	~			
0950	WT Tropic	1				
1030	Pterodroma	1				23-24
1105	J.F. Petrel	1				
1207	Wedgetail	1	S		LP	
1412	R-T Tropic	1				
1510	Bf Booby	1			Imm → SA	
1655	Pterodroma	1	N			
1833					Sunset	

SI-MNH-958e
7-28-64

SMITHSONIAN INSTITUTION
DIVISION OF BIRDS
AT SEA DAILY LOG -- E

BCF
DATE 23 June 1965
Pg. # 1



time	species	#	dir.	hgt.	remarks	loc.
0545	JF Petrel	1				
0546	JF Petrel	1	S			
0600	Wedgetail	1			dp	
0605	Shear-Pet	1				
0610	Shear Pet	1				
0615	JF Petrel	3				JFP 17-40
0620	JF Petrel	2			all JFP molting.	WTS 6-8
0625	JF Petrel	1				JS-P 3-12
0630	JF Petrel	1				JPTer 10-24
FF 0645	JF Petrel	20 ± 5			actively feeding	Woods 2-2
	Pterodroma	15 ± 3				PIP 1-1
0700	JF Petrel	2				Newt 1-1
BW 0713	Cook's	1				STerr 1-1
0725	JF Petrel	1	NW			
* 0745	JF Petrel	1				
0747	Pterodroma	1				
0749	Pterodroma	1				
0751	Pterodroma	1				
0755	JF Petrel	1				
0805	Pterodroma	1				
0808	Pterodroma	1				
0810	JF Petrel	1				
0815	Pterodroma	1				
0817	Pterodroma	1				
0820	PR. Is Pat	1				
0824	JF Petrel	1				
0830	Pterodroma	1				
0831	Pterodroma	1				
BW 0842	Cook's	1				
0857	JF Petrel	1	W			
0857	JF Petrel	1	W			
0902	Wedgetail	1	W		dp	
0903	Newell's	1				
0930	Wedgetail	1				
0940	wedgetail	1	SE		dp.	
0945	wedgetail	2			dp.	
0959	wedgetail	2	NW		dp	
F 1000	Sooty tern	1			feeding	
	Shear-Pet	10				
1005	JF Petrel	1				
1006	JF Petrel	1				

JFP 17-40
WTS 6-8
JS-P 3-12
JPTer 10-24
Woods 2-2
PIP 1-1
Newt 1-1
STerr 1-1

41.89

89
136

225

105
119

5

SI-MNH-958e
7-28-64

SMITHSONIAN INSTITUTION
DIVISION OF BIRDS
AT SEA DAILY LOG -- E

BCF
DATE 23 June 1965
Pg. # 2



time	species	#	dir.	hgt.	remarks	loc.
1030	Shear-Pet	1	NW			
1032	JF Petrel	1				
BWP 1033	Cook's	1	ww			S-P 6-7
1035	JF Petrel	2	NW			JFP 20-23
1055	Pterodroma	1				Cook 3-3
1115	JF Petrel	1				Pter 2-2
1133	Wedgetail	1			dp	VWTS 1-1
1134	JF Petrel	1				Bul 2-2
1245	Shear-Pet	1				PIP 1-1
1318	Bulwer's	1	NW			
1320	JF Petrel	1				
1405	JF Petrel	1				35-39
BWP 1420	Cook's	1	SE			
" 1437	Cook's	1	SE			
1449	JF Petrel	1	~		molting.	
1455	Bulwer's	1	NW			
1500	Shear-Pet	1				
1514	JF Petrel	1				
1520	Shear-Pet	2				
1530	Shear Pet	1				
1531	JF Petrel	1				
1534	JF Petrel	1	W			
1535	F Petrel	1	W			
1536	JF Petrel	1	SE			
1550	Pterodroma	1	N			
1559	JF Petrel	1	~		on H ₂ O	
1600	JF Petrel	1	~			
1601	Phoebe Pet	1	~		on H ₂ O	
1606	JF Petrel	1	NW			
1607	JF Petrel	1	NW			
1608	Shear-Pet	1				
1610	JF Petrel	1				
1611	JF Petrel	1				
1615	JF Petrel	3				
1623	JF Petrel	1	NW			

SI-MNH-958e
7-28-64

SMITHSONIAN INSTITUTION
DIVISION OF BIRDS
AT SEA DAILY LOG -- E

BCF
DATE 23 June 1965
Pg. # 3



128

	time	species	#	dir.	hgt.	remarks	loc.
	1627	Pterodroma	2	SE			
	1629	JF Pet	1				
	1630	Pterodroma	1				
	1631	Shear-Pet	1				
	1633	JF Pet	1	NW			
	1634	Shear-Pet	1				
	1640	Pterodroma	1	NW			
	1650	Pterodroma	2				
	1651	JF Petrel	1				
F	1655	JF Petrel	15±3			appeared to be feeding.	
BWP		Cook's	5				
	1710	Pterodroma	15±3				
F	1720	JF Petrel	25±5	SE		feed	
	1723	Shear-Pet	1				
	1725	Shear-Pet	1	SE			
	1726	Pterodroma	1				
	1727	Wedgetail	1			dye	
	1728	JF Petrel	1				
	1728	Pterodroma	2	SE			
	1731	Pterodroma	1				
	1734	Pterodroma	2				
	1738	Pter Sh-Pet	1				
	1739	JF Petrel	2	SE			
	1741	JF Petrel	1				
	1746	JF Petrel	4				
	1750	Pterodroma	1				
	1800	JF Petrel	1				
	1806	JF Petrel	1	NW			
BWP	1807	Cook's	1	NW			
	1807	Pterodroma	1				
	1818	JF Petrel	1	NW			
	1820	JF Petrel	1	NW			
	1825					Sunset.	

Ptero 11-29
JFP 14-56
✓ S-P 5-5
✓ Cook 2-6
MWS 1-1

33-97-

63
56

119

1-35
1-11
1-35

1-25

4-106

SI-MNH-958e
7-28-64

SMITHSONIAN INSTITUTION
DIVISION OF BIRDS
AT SEA DAILY LOG -- E

BCF

DATE 24 June 1965
Pg. # 1



time	species	#	dir.	hgt.	remarks	loc.
0533					Sunrise	
0614	Pterodroma	1				
0615	Shear-Pet	1				
0617	W-Tropic	1				
0617	B-F Booby	1			Immature	
0617	JF Petrel	2				Ptero 15-15
0622	Shear Pet	1				S-P 8-9
0640	Wedgetail	1			dp	WTTB 1-1
0641	Shear-Pet	1				BFB 1-1
0643	Pterodroma	1				
0645	Pterodroma	1				
0650	JF Petrel	2	W			WTTB 1-1
0652	Wedgetail	2	W		dp.	WTS 6-11
0700	Shear-Pet	1				JFP 7-9
0703	JF Petrel	1				Cook 2-2
0705	Shear-Pet	2				
0707	Wedgetail	3	W		dp	
0711	Pterodroma	1				41-49
0712	Pterodroma	1				
0717	Pterodroma	1				
0719	Pterodroma	1				
0720	Wedgetail	1			L.P.	
0722	Pterodroma	1				
0722	Pterodroma	1				
0727	Pterodroma	1				
0730	JF Petrel	1				
0730	Pterodroma	1				
0745	Shear-Pet	1				
0753	Pterodroma	1				
0754	R-T Tropic	1				
0759	Wedgetail	1	W		dp.	
0800	Shear Pet	1				
0802	JF Petrel	1	W			
0803	Pterodroma	1				
0809	Shear Petrel	1	W		molting.	
0811	Wedgetail	3	NW		dp.	
0813	JF Petrel	1	~			
0815	Pterodroma	1				
0820	Cook's	1	N			
0823	Pterodroma	1				
0825	Cook's	1				
0830	JF Petrel	1	NW			

BWP

"



SI-MNH-958e

7-28-64

SMITHSONIAN INSTITUTION
DIVISION OF BIRDS
AT SEA DAILY LOG -- E
 BCF
 DATE 24 June 1965
 Pg. # 2

time	species	#	dir.	hgt.	remarks	loc.
0833	Pterodroma	1	NW			
0834	Shear-Pet	1	NW			
0837	JF Petrel	1	NW			
0842	Shear-Pet	1				
0857	Pterodroma	1	NW			
0857	Wedgetail	1	NW		L.P.	
0905	Shear-Pet	1				
0907	JF Petrel	1				
0909	Cook's	1	S			
0911	JF Petrel	2				
0920	Pterodroma	1				
0925	Cook's	2	NW			
0926	JF Petrel	1				
0926	Wedgetail	1	NW		dp	
0927	Pterodroma	1				
0930	Pterodroma	1				
0935	Wedgetail	1	N		dp	
0936	Pterodroma	1				
0940	Wedgetail	1	~		LP	
0940	Cook's	1	S			
0940	Wedgetail	1	NW		dp.	
0945	Wedgetail	1	S		dp.	
0950	Pterodroma	1				
0952	Shear-Pet	1	S			
0955	JF Petrel	1	N			
1001	Cook's	1	NW			
1010	Pterodroma	1				
1011	JF Petrel	1	NW			
1015	Wedgetail	2	SE		dp	
1016	JF Petrel	1	~			
1025	Cook's	1	NW			
1030	Shear Pet	1	NW			
1043	Wedgetail	1	NW		dp	
1050	Shear-Pet	1				
1055	RT Tropic	1				
1055	Pterodroma	1	NW			
1120	Newell's Sh	1	~		molting.	
1121	JF Petrel	1				
1127	Wedgetail	2	SE		dp	
1127	Shear-Pet	1				

 ✓ Ptero 9-9
 ✓ S-P 7-7
 ✓ JFP 8-9
 WTS 9-11
 Cook 5-6

 Newell 1-1
 RTBT-1

40-44

SI-MNH-958e
7-28-64

SMITHSONIAN INSTITUTION
DIVISION OF BIRDS
AT SEA DAILY LOG -- E

BcF

DATE 24 June 1965
Pg. # 3



93 time species # dir. hgt. remarks loc.

	time	species	#	dir.	hgt.	remarks	loc.
F	1135	Sooty Tern	30 ± 5			^{clawed} Not feeding	
		JF Petrel	3				
	1140	JF Petrel	4				
F	1145	Wedgetail	5			dp ^{scapular} not feeding	S Tern 3-35
	1200	Sooty Tern	1	E			JFP 14-23
	1203	JF Petrel	1				WTS 9-19
	1205	Wedgetail	1	N		dp molting	Pter 2-2
	1215	JF Petrel	2				IS-P 4-18
	1217	Wedgetail	3	SE		dp.	look 3-3
	1219	Wedgetail	2			dp.	
	1223	Wedgetail	2	SE		dp.	
	1225	Wedgetail	1	~		dp.	
	1237	JF Petrel	2	SE		Molting.	35-100
	1238	JF Petrel	2	SE			
	1240	Wedgetail	1	NW		dp.	
	1249	Pterodroma	1				
	1250	Shear-Pet	1				
	1255	JF Petrel	1	N			
BWP	1308	Cook's	1	NW			
	1308	JF Petrel	1				
	1309	Shear-Pet	1				
	1315	S. Tern	4				
F	1317	Shear-Pet	15 ± 2			searching	
	1345	JF Petrel	2				
	1349	JF Petrel	1				
"	1358	Cook's	1				
	1359	JF Petrel	1	~			
	1401	Wedgetail	2	N		dp	
	1404	JF Petrel	1	~			
	1411	Pterodroma	1				
	1415	Shear-Pet	1	NW			
"	1420	Cook's Pet	1	NW			
	1427	Wedgetail	2	N		dp	
	1427	JF Petrel	1				
	1428	JF Petrel	1				

SI-MNH-958e
7-28-64

SMITHSONIAN INSTITUTION
DIVISION OF BIRDS
AT SEA DAILY LOG -- E

BcF
DATE 24 June 1965
Pg. # 4



193

	time	species	#	dir.	hgt.	remarks	loc.
F	1430	Sooty Tern	50 ± 10			Didn't appear to be feeding. Searching	
		Wedgetail	10 ± 5				
		JF Petrel	5 ± 1				
		Shear-Pet	5 ± 1				
	1431	Wedgetail	1			dp.	
	1454	JF Petrel	1				
	1455	RT Tropic	1				
EWP	1456	Cook's	1			clean plumage distinct black W. Type IA	
	1457	S. Tern	1			immature	
	1459	Wedgetail	1	N		dp.	
	1509	JF Petrel	1	S			✓ Stern 3-61
	1509	Wedgetail	1	~		dp.	WTS 7-19
	1514	Pterodroma	2				S-P 5-9
	1516	JF Petrel	1	NW			✓ JFP 11-95
FF	1530	JF Petrel	80 ± 10			actively feeding.	RTTB 1-1
		Sooty Tern	10 ± 2				look 2-2
		Pterodroma	10 ± 2				✓ Pter 7-36
	1545	Pterodroma	1	N			<u>36-223</u>
	1550	Shear-Pet	1				
	1555	JF Petrel	1				
	1557	Shear-Pet	1				
	1557	JF Petrel	1				
"	1600	Cook's	1				
F	1614	Pterodroma	20 ± 5			distant search	
	1618	JF Petrel	1				
	1637	JF Petrel	2				
	1637	JF Petrel	1			on H ₂ O	
	1641	Wedgetail	2			dp.	
	1646	Pterodroma	1				
	1648	Wedgetail	2			dp.	
	1648	Pterodroma	1				
	1649	Wedgetail	2			dp + LP.	
	1700					Three RT Tropics over ship, stopped for Hydro one definitely the one seen at 1455 Assume others also not seen earlier in the day.	
	1708	Pterodroma	1				
	1711	Shear-Pet	1				
	1711	Shear-Pet	1				
	1712	JF Petrel	1				

SI-MNH-958e
7-28-64

SMITHSONIAN INSTITUTION
DIVISION OF BIRDS
AT SEA DAILY LOG -- E

BCF
DATE 24 June 1965
Pg. # 5



427

time	species	#	dir.	hgt.	remarks	loc.	
1730	Shear-Pet	1					
1730	JF Petrel	1					
1731	Shear-Pet	1					
1733	JF Petrel	1				15-P 3-3	
1735	Pterodroma	4				✓AFP 7-27	
1736	JF Petrel	1	~			✓Pter 2-14	
1737	JF Petrel	2				✓WTS 2-4	
1738	Wedgetail	1			dp.		
F 1750	JF Petrel	20±5			actively feeding		
	Wedgetail	3			dp.		
	Pterodroma	10±5				17-48	
1800	JF Petrel	1	N				
1801	JF Petrel	1	N				
1817	Shear-Pet	1					
1820	Sunset						

333
397
49
474

SI-MNH-958e
7-28-64

SMITHSONIAN INSTITUTION
DIVISION OF BIRDS
AT SEA DAILY LOG -- E

BcF
DATE 25 June 1965
Pg. # 1



	time	species	#	dir.	hgt.	remarks	loc.
	0527					Sunrise	
BWP	0545	Cook's Pet	1			on H ₂ O	
	0548	Pterodroma	2	N			
	0550	Cook's Pet	1			on H ₂ O	
	0555	Cook's Pet	1	N			✓ Cook 5-5
	0557	Pterodroma	3	N			Pter 8-29
	0600	JF Petrel	2	N			✓ JFP 12-37
	0602	Shear-Pet	2	N			✓ S-P 10-52
	0603	Pterodroma	2	N			✓ WTS 4-5
	0604	JF Petrel	1			on H ₂ O	
	0608	Shear-Pet	2				39-128
	0615	Shear-Pet	2	N			F5-79
	0615	Pterodroma	2	N			
	0616	JF Petrel	2	N			
	0625	JF Petrel	1	~			
	0625	Wedgetail	2	NW		dp.	
	0625	Pterodroma	2	NW			
	0630	Pterodroma	2	NW			
	0630	JF Petrel	1	NW			
	0637	Wedgetail	1	NW		dp.	
	0650	JF Petrel	1	N			
F	0653	Shear-Pet	15±3			Distant appeared to be feeding.	
	0656	JF Petrel	3	NW			
	0702	Wedgetail	1	N		dp.	
BWP	0705	Cook's	1	~			
	0712	JF Petrel	1				
F	0715	Shear-Pet	10±2			Distant search	
F	0730	JF Petrel	15±3			appeared to be feeding.	
		Pterodroma	15±3				
F	0800	Shear-Petrel	15±3 III			distant search	
	0825	Shear-Pet	3				
	0830	Shear-Pet	1				
	0831	Pterodroma	1				
F	0833	JF Petrel	8	NW		not feeding	
		Wedgetail	1			dp	
	0835	S-Petrel	1	NW			
	0839	JF Petrel	1	~			
	0840	Shear-Pet	1	NW			
BWP	0851	Cook's	1	NW			
	0855	JF Petrel	1	N			

SI-MNH-958e
7-28-64

SMITHSONIAN INSTITUTION
DIVISION OF BIRDS
AT SEA DAILY LOG -- E

B.C.F.
DATE 25 June 1965
Pg. # 2



	time	species	#	dir.	hgt.	remarks	loc.
	0900	JF Petrel	4				
	0940	Pterodroma	1				
	0940	JF Petrel	1				
	0950	Shear Pet	1				
	0955	JF Petrel	1				
	1010	Pterodroma	1	NW			
BWP	1035	Cook's	1	N			
	1035	Newell's	1				
	1037	Shear - Pet	1				
	1043	JF Petrel	1				
	1112	JF Petrel	1				
	1120	JF Petrel	1				
"	1207	Cook's	1				
	1220	JF Petrel	1				
	1230	W-T Tropic	1				
"	1250	Cook's	1	N			
	1300	JF Petrel	1				
	1310	Shear Pet	1				
"	1320	Cook's Pet	1			on H ₂ O	
FF	1325	JF Petrel	8±2			Feeding.	
		Shear Pet	7±2				
	1350	JF Petrel	1				
	1400	JF Petrel	2	N		Molting	
	1412	JF Petrel	1	N			
	1414	JF Petrel	1	N			
	1418	Pterodroma	1	NW			
	1422	JF Petrel	1	NW			
"	1440	Cook's	1	NW			
	1445	Shear Pet	4				
	1449	JF Petrel	1			on H ₂ O	
	1450	JF Petrel	1	NW			
	1507	JF Petrel	1			on H ₂ O	
FF	1515	JF Petrel	8±2			Feeding.	
		Shear Pet	7±2				
FF	1530	JF Petrel	6			Feeding.	
FF	1540	JF Petrel	13±3			Feeding.	
		Pterodroma	4±1				

JFP 20-55
Pter 4-9
S-P 6-21
Cook 5-5
Newell 1-1
WTTB 1-1

37-90

F 4-53

79
53
32
167

SI-MNH-958e
7-28-64

SMITHSONIAN INSTITUTION
DIVISION OF BIRDS
AT SEA DAILY LOG -- E

BCT
DATE 25 June 1965
Pg. # 3



time	species	#	dir.	hgt.	remarks	loc.
1610	JFPetrel	1				
1624	Shear-Pet	1				JFP 16-41
1625	JFPetrel	1	N			
1630	Pterodroma	2				S-P 3-13
F 1633	JFPetrel	13±2			Not feeding.	Ptero 6-8
	Pterodroma	2			search	RTTB 1-1
1703	JFPetrel	3				WTS 1-1
1707	JFPetrel	2				<u>27-64</u>
F 1710	JFPetrel	10±2			search	F 2-35
	Shear-Pet	10±2				
1713	JFPetrel	1				
1715	JFPetrel	1				
1716	JFPetrel	2				
1720	Pterodroma	1				
1722	Pterodroma	1				
1725	JFPetrel	1				
1730	RTTropic	1				
1733	JFPetrel	1	N			
1735	Shear-Pet	2	NW			
1737	JFPetrel	1	NW			
1740	Pterodroma	1	NW			
1742	JFPet	1	NW			
1743	JFPet	1	NW			
1744	JFPet	1			on H ₂ O	
1745	Pterodroma	1	NW			
1747	JFPet	1	NW			
1750	Wedgetail	1	SE		dyz	

SI-MNH-958e
7-28-64

SMITHSONIAN INSTITUTION
DIVISION OF BIRDS
AT SEA DAILY LOG -- E

DATE 26 June 1965
Pg. # 1



time	species	#	dir.	hgt.	remarks	loc.
0520					Sunrise	
0535	Shear-Pet	1	N			
0537	Shear-Pet	1				
0542	Shear-Pet	1				
0600	J.F. Petrel	1	N			
0605	JF Petrel	1	N			
BWP 0610	Cook's Pet	1	~			
0618	JF Petrel	1				
0619	R.T. Tropic	1				
0620	JF Petrel	1	N			
0640	JF Petrel	1	~			
0645	Pterodroma	1				
FF 0700	JF Petrel	8±2			Feeding	
	Shear-Pet	7±2				
0717	JF Petrel	1	NW			
0725	JF Petrel	1				
0728	JF Petrel	1				
0750	JF Petrel	4				
0754	JF Petrel	2			on H ₂ O	
0800	JF Petrel	3	S			
F 0810	JF Petrel	5±2				
	Pterodroma	5±2				
0823	Shear-Pet	1				
0830	Wedgetail	1			dp	
BWP 0842	Cook's Petrel	1	NW			
0900	JF Petrel	2	~			
0925	Pterodroma	1				
0935	W-n Petrel	1				
	JF Petrel	3				
" 0956	Cook's	1			Red gray back black w distinct bar on ?	
" 1008	Cook's	1	W			
1040	R.T. Tropic	1				
F 1115	JF Petrel	5			not feeding	
F 1215	JF Petrel	30±3			Not seen feeding.	
1230	JF Petrel	3				
1231	JF Petrel	2				
1415	Shear-Pet	1				
1425	Shear-Pet	1	NW			
1525	JF Petrel	1				
1540	JF Petrel	1				

Pter 3-7
S-P 7-13
JFP 21-77
Cook 4-4
RTTB 2-2
W-n 1-1
WTS 1-1
39-105
F 4-60

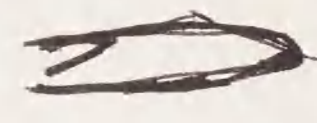
SI-MNH-958e
7-28-64

SMITHSONIAN INSTITUTION
DIVISION OF BIRDS
AT SEA DAILY LOG -- E

BCF

DATE 27 June 1965
Pg. # 1



	time	species	#	dir.	hgt.	remarks	loc.
	0528	JFPetrel	1				
	0537	Wedgetail	2	N		LP	
	0540	Shear-Pet	1				
	0542	Shear-Pet	1				
	0545	Shear-Pet	1				
	0555	Shear-Pet	3				
	0600	Shear-Pet	1				
	0626	Pterodroma	2				
FF	0650	Shear-Pet	12 ± 2			feeding. Distant	
FF	0710	Shear-Pet	10 ± 3			LP feeding	
	0725	Wedgetail	2				
BWP	0730	Bonin?	1			lean plumage, gray with black W	
	0750	WT Tropic	1				
	0820	Shear-Pet	1				
F	0830	Shear-Pet	15 ± 2			Distant search	
	0833	Fairy Tern	2				
BWP	0833	Cook's	1				
"	0834	Cook's	1				
"	0850	Cook's	1			Brown, uniform colored back 	
	0915	JFPetrel	4	N			
	0916	JFPetrel	1				
	0920	Gr Frigate	1	Q		→	
	0930	JFPetrel	2	N			
	0941	JFPetrel	1	N			
	1000	JFPetrel	2				
	1001	Wedgetail	1			LP	
	1012	B-R Booby	1				
"	1020	Cook's	1				
	1030	Pterodroma	2				
	1032	Pterodroma	1				
	1131	JFPetrel	2				
"	1145	Cook's	1				
	1210	Shear-Pet	1	N			
	1225	JFPetrel	1				
	1241	RTTropic	1				
	1258	wedgetail	1	S		LP	
	1310	wedgetail	1	S		LP	
"	1330	Cook's	1	S			
BWP	1357	Bonin?	1	S		Same as 0730	

JFP 8-14
WTS 5-7
SP 10-46-
Pter 3-5
Bonin 2-2
Cook 6-6
Frig 1-1
FTern 1-2
BFB 1-1
RTTB 1-1
WTTB 1-1

39-86

SI-MNH-958e
7-28-64

SMITHSONIAN INSTITUTION
DIVISION OF BIRDS
AT SEA DAILY LOG -- E

BCF
DATE 27 June 1965
Pg. # 2



time	species	#	dir.	hgt.	remarks	loc.
1405	S-Petrel	2				
1421	JF Petrel	2	N			
1423	JF Petrel	1	N			
1437	JF Petrel	2	N			
1440	JF Petrel	1	N			
1455	JF Petrel	3				
1516	Bulwer's Pet	1	E			
1645	S-Pet	1	N			
BWP 1647	Cook's	1	S			
1650	Wedgetail	1	S		RP	
1720	Shear-Pet	1				
BWP 1805	Cook's	1	N			
1820	JF Petrel	1	N			
1840					Sunset.	

S-P 3-4
JF P 5-10
WTS 1-1
Bal 1-1
Cook 2-2

13-18



time	species	#	dir.	hgt.	remarks	loc.
0515	Shear-Pet	1				
0520	Shear-Pet	1				
0540	Shear-Pet	1				
0555	JF Petrel	1				
0607	Shear-Pet	1				
0713	Pom. Jaeger	1				
0713	Shear-Pet	1				
0713	WT Tropic	1				
0725	JF Petrel	1				
0740	JF Petrel	1	S			
0745	Shear-Pet	1	N			
0758	Shear-Pet	1				
0810	Gr Frigate	1				
0840	Bonin Petrel	1				
1208	JF Petrel	2	S		clean plumage very gray - black side of head. very distinct black W on back.	
1227	Cook's?	1				
1227	RT Tropic	1				
1500	WT Tropic	1				
1523	JF Petrel	1			at 120	
1545	Shear-Pet	1				
1625	Bonin IPet P. leucosternus?	1			Same as 0840 entry.	
					Green flash.	

Bonin 2-2
SP 8-8
JFP 5-6
Jaeger 1-1
WTTB 2-2
RTTB 1-1
Frig 1-1
Cook's? 1-1



BWP?

SI-MNH-958e
7-28-64

SMITHSONIAN INSTITUTION
DIVISION OF BIRDS
AT SEA DAILY LOG -- E

BCF

DATE 29 June 1965
Pg. # 1



time	species	#	dir.	hgt.	remarks	loc.
0545	Bulwer's	1	S			
F 0705	Bulwer's	5			appeared to be feeding.	
0715	Shear-Pet	1				
0723	Bulwer's	1	S			
0745	B-f alba	1				Bul 8-12
0837	Bulwer's	1				BFA 1-1
1045	R-Tropic	1				RTTB 2-2
1118	Bulwer's	1				S-P 1-1
1300	R-Tropic	1				<u>12-16</u>
1430	Bulwer's	1	S			
1742	Bulwer's	1				
1955	Bulwer's	1	SSW			
1959					Sunset.	

SI-MNH-958e
7-28-64

SMITHSONIAN INSTITUTION
DIVISION OF BIRDS
AT SEA DAILY LOG -- E

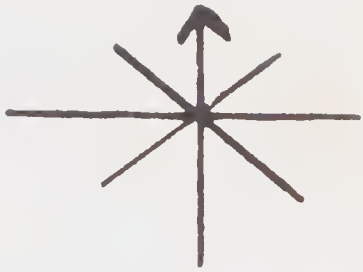
BCF

DATE 30 June 1965
Pg. # 1

409



time	species	#	dir.	hgt.	remarks	loc.
0505	tropicbird					
0525						
0540	Bulwer's	1			Sunset	
0545	Sooty Tern	1	E			
0550	Sooty Tern	1	E			
0603	Bulwer's	1	~			Bul 11-11
0620	Pterodroma	2	NW			STern 7-101
0625	Bulwer's	1				Pter 1-2
0630	Fairy Tern	2				Fair 1-2
0630	wedgetail	1			LP	WTS 4-9
0635	Gr Frigate	1			Immature	WTB 2-3
0640	WTTropic	2				S-P 2-2
0650	Shear-Pet.	1				B/P 4-6
0855	Bulwer's	1	S			Tag 4-5
0905	Bulwer's	1	S			
BWP 0955	Baird I. P.?	1				
1209	Sooty Tern	2				
1250	Gr Frigate	1			→	
1250	Sooty Tern	1				36-171
1315	Bulwer's	1				
1410	Bulwer's	1	S			
BWP 1453	Baird I. P.?	1	E			
BWP 1515	Baird I. P.	3			brownish back very broad black lines on underwing.	
1515	Shear-Pet	1				
1518	wedgetail	1			R.P.	
FF 1535	Sooty Tern	5			Feeding	
	Gr Frigate	2				
1543	Bulwer's	1	S			
1630	Sooty Tern	1				
1640	W-TTropic	1			S Adult	
1758	Bulwer's	1	S			
1758	Bulwer's	1	~			
FF 1800	Sooty Tern	90 ± 5			Feeding	
	Gr Frigate	1				
	wedgetail	6				
1825	Bulwer's	1	S			
1840	wedgetail	1			LP	
BWP 1845	Baird I. P.?	1				



B L F
DATE 30 June 1965
Pg. # 2

time	species	#	dir.	hgt.	remarks	loc.
1700	Bulwer's Pet	1				
1705	Gr Frigate	1			Sun.	
1910	Bulwer's P.	1				Bul 2-2
1912	Wedgetail	1			DF	Frige 1-1
1913	Wedgetail	1			Sunset	WTS 2-2
1915						

SI-MNH-958e
7-28-64

SMITHSONIAN INSTITUTION
DIVISION OF BIRDS
AT SEA DAILY LOG -- E

BCF
DATE 1 July 1965
Pg. # 1



X 2 8 45
6 7 8 9 10
11 12 13

time	species	#	dir.	hgt.	remarks	loc.
0545	Wedgetail	1	-		RP.	
0555	Sooty Tern	1	S			
0556	Sooty Tern	1				
0605	Sooty Tern	4				WTS 8-12
0605	Wedgetail	1			RP	STern 19-131
0607	Sooty Tern	1				Bul 1-1
0615	Sooty Tern	1				Pter 5-9
0645	Bulwer's	1				RTTB 1-1
F 0645	Sooty Tern	20 ± 3			not feeding	WTB 1-1
0650	Pterodroma	1				Fair 1-2
0650	Sooty Tern	1	N			Frig 1-1
0658	Sooty Tern	1				BIP 1-1
0700	Wedgetail	1			RP	New 2-2
0700	Pterodroma	2				
0706	RT Tropic	1				
0715	Sooty Tern	2				
0725	Wedgetail	3				
0725	S Tern	1				40-161
0727	Wedgetail	1				
0730	S Tern	1				F4-114
0732	S Tern	1				
0735	S Tern	1				
0740	Wedgetail	1			RP.	
0742	W-T Tropic	1				
0758	Sooty Tern	1				
0800	Pterodroma	2				
F 0805	Sooty Tern	55 ± 5			searching not feeding	
0805	Wedgetail	2				
0806	Pterodroma	3				
F 0810	Sooty Tern	6			searching N. feeding	
	Fairy Tern	2				
0810	Wedgetail	2				
0810	Newell's	1				
0811	Newell's	1				
FF 0815	Sooty Tern	30 ± 5			Feeding.	
	G. Frigate	1				
BWP 0820	Baird's Pet	1	N		thick black lines underneath.	
0825	Pterodroma	1				
0825	Sooty Tern	2				
0826	Sooty Tern	1				

SI-MNH-958e
7-28-64

SMITHSONIAN INSTITUTION
DIVISION OF BIRDS
AT SEA DAILY LOG -- E

BCF
DATE 1 July 1965
Pg. # 2



time	species	#	dir.	hgt.	remarks	loc.
0827	Sooty Tern	4				
0830	Sooty Tern	2				
0830	Bulwer's	1				S Tern 13-140
0835	Bulwer's	1				Bul 10-11
0840	Sooty Tern	1				WTS 9-15
0840	Sooty Tern	4				New 1-1
0840	Wedgetail	1				RTTB 1-1
0842	Sooty Tern	1				BIP 3-3
0845	Wedgetail	1			RP	WTTB 1-1
0845	Sooty Tern	3				Fry 2-3
0847	Wedgetail	1			RP.	Nod 1-1
0855	Bulwer's	1				
0855	Newell's	1				
0900	Sooty Tern	4				
0935	Bulwer's	1				71-176
0941	RT Tropic	1				
0950	Bulwer's	1				2-126
0950	Sooty Tern	2				
0955	Sooty Tern	1				
1001	Baird's Pet	1				grayish back black w distinct
1006	Bulwer's	1				broad black lines underwing. head
1015	Bulwer's	1				side of head <u>not</u> black.
BWP 1018	Baird's Pet	1				
1019	Wedgetail	1			R.P.	
1028	W-Tropic	1				
2- 1037	Wedgetail	1				
1045	Cr Frigate	1				
1045	Sooty Tern	2				
FF 1045	Sooty Tern	45±2			Feeding.	
	Wedgetail	7±2			RP	
	C. Noddy	1				
1102	Wedgetail	1			RP	
1105	Bulwer's	1				
1105	Bulwer's	1				
1112	Wedgetail	1			RP	
BWP 1120	Baird's Pet	1				
F 1250	Wedgetail	1			Distant	feed
	Sooty Tern	70±10				
	Cr Frigate	2				
1213	Bulwer's	2				
1213	Sooty Tern	1				

20
275
158
289
47

$\frac{295}{47} = 747$

16 2
7
70
48
6
81
10

$\frac{149}{81} = 30$

SI-MNH-958e
7-28-64

SMITHSONIAN INSTITUTION
DIVISION OF BIRDS
AT SEA DAILY LOG -- E

BCF

DATE 1 July 1965
Pg. # 3

337



	time	species	#	dir.	hgt.	remarks	loc.
F	1225	Sooty Tern	16	±4		not feeding	
	1225	Bulwer's	1				
	1245	Bulwer's	1				
	1245	Wedgetail	1				
	1245	Sooty Tern	1			70	5 Tern 25-242
	1255	W-Tropi-bird	1			211	Bul 4-4
	1328	Bulwer's	1			281	WTS 8-30
	1329	Sooty Tern	1				WTTB 1-1
	1331	Bulwer's	1				New 1-1
	1340	Newell's	1				Frag 1-1
	1400	Sooty Tern	2				BEP 1-2
	1414	Sooty Tern	3				
	1415	Sooty Tern	3				
	1415	Sooty Tern	1				
	1430	Wedgetail	3				
	1435	Sooty Tern	2				41-281
	1435	Wedgetail	1				
	1436	Sooty Tern	1				
	1437	Sooty Tern	4				
F	1437	Wedgetail	7	N		not feeding travel	
	1438	Sooty Tern	1				
	1440	Sooty Tern	1				
FF	1445	Sooty Tern	65	±5		Feeding	
		Wedgetail	5	±2			
BWP	1500	BE Petrel	2			one had real gray back with ^{reach} dis. W	
	1500	Sooty Tern	2			on back also black on tip of tail.	
	1513	Sooty Tern	1				
	1515	Wedgetail	2				
F	1530	Sooty Tern	40	±10		distast. feed	
	1540	Sooty Tern	3				
F	1542	Sooty Tern	6		100°	N Feed. travel	
	1540	Sooty Tern	3				
FF	1600	Sooty Tern	70	±10		Feeding	
		Wedgetail	10	±3			
		G Frigate	1				
	1602	Sooty Tern	1				
F	1610	Sooty Tern	10			feeding	
	1610	Wedgetail	1				
	1620	Sooty Tern	2				
	1620	Sooty Tern	2				
	1620	Sooty Tern	1				

SI-MNH-958e
7-28-64

SMITHSONIAN INSTITUTION
DIVISION OF BIRDS
AT SEA DAILY LOG -- E

159
225
638

BCF
DATE July 1965
Pg. # 4



time	species	#	dir.	hgt.	remarks	loc.
1620	Bonin IPet	1				
1620	Wedgetail	1				
F 1630	Sooty Tern	20±5			Distant searching	BIP 3-3
1630	G Frigate	2				WTS 8-87
F 1640	Sooty Tern	225±25			Feeding	STern 19-701
	Wedgetail	50±10				
1642	Wedgetail	1			RP.	Frig 3-7 25
1645	Bonin IP	1				C Nod 2+15
1645	Sooty Tern	1				New 1-1
1650	Bonin IP	1				Bul <u>2-2</u>
FF 1700	Sooty Tern	55±2			feeding	
F 1701	Sooty Tern	50±2			feed	
F 1708	Sooty Tern	10			feeding	
F 1712	Sooty Tern	30±5			feeding	38-816
	Wedgetail	2				
F 1725	Sooty Tern	13			not feeding	
FF 1730	Sooty Tern	60±5			feeding	
	C. Noddy	10±2				
	Wedgetail	5				
F 1740	Sooty Tern	25±3			Feeding.	
1745	Wedgetail	1			RP	
F 1745	Sooty Tern	10			not feeding	
F 1800	Sooty Tern	150±25			feeding	
	Wedgetail	25±5				
	G Frigate	4				
F 1815	Sooty Tern	7			not feeding	
F 1825	Sooty Tern	35±5			feeding.	
	C. Noddy	5±2				
1830	Newell's Sh.	1				
1832	Sooty Tern	1				
1847	Sooty Tern	1				
1850	G Frigate	1			→	
1850	Wedgetail	2				
1850	Bulwer's	1				
1855	Sooty Tern	3				
1858	Sooty Tern	2				
1904	Sooty Tern	3				
1904	Bulwer's	1				

48
295 480
105 368
123 48
210 816
35

SI-MNH-958e
7-28-64

SMITHSONIAN INSTITUTION
DIVISION OF BIRDS
AT SEA DAILY LOG -- E



BCF
DATE July 1965
Pg. # 5

time	species	#	dir.	hgt.	remarks	loc.
1910	Wedgetail	1				
1910	Sooty Tern	1			WTS 1-1 S Tern 1-1	

SI-MNH-955b
3-4-64

SMITHSONIAN INSTITUTION
DIVISION OF BIRDS
AT SEA SURVEY CHART B

DATE 10 June 1965

Time at sunrise = Position at sunrise = ¹⁴⁴⁵ N.A. ^{21° 15' N 157° 54' W}
Time at sunset = Position at sunset = 1911 20° 39' N 157° 18' W
Miles traveled from 0000 hours to sunrise =
Miles traveled from sunrise to sunset = 59
Miles traveled from sunset to 2400 hours = 33

TIME OF FIX	TYPE OF FIX	LONGITUDE	LATITUDE
1.			
2.			
3.			
4.			
5.			
6.			

DATE 11 June 1965

Time at sunrise = Position at sunrise = 0550 ^{19° 01'} ~~18° 57'~~ N 157° W
Time at sunset = Position at sunset = 1902 17° 30' 157° W
Miles traveled from 0000 hours to sunrise = 68
Miles traveled from sunrise to sunset = 91
Miles traveled from sunset to 2400 hours = 0

TIME OF FIX	TYPE OF FIX	LONGITUDE	LATITUDE
1.			
2.			
3.			
4.			
5.			
6.			

SI-MNH-955b
3-4-64

SMITHSONIAN INSTITUTION
DIVISION OF BIRDS
AT SEA SURVEY CHART B

DATE 12 June 1965

Time at sunrise = Position at sunrise = 0554 17° 25' N 157° W

Time at sunset = Position at sunset = 1858 15° 09' N 157° W

Miles traveled from 0000 hours to sunrise = 5

Miles traveled from sunrise to sunset = 136

Miles traveled from sunset to 2400 hours = 39

	<u>TIME OF FIX</u>	<u>TYPE OF FIX</u>	<u>LONGITUDE</u>	<u>LATITUDE</u>
1.				
2.				
3.				
4.				
5.				
6.				

DATE 13 June 1965

Time at sunrise = Position at sunrise = 0601 13° 17' N 157° W

Time at sunset = Position at sunset = 1852 11° 27' N 157° W

Miles traveled from 0000 hours to sunrise = 73

Miles traveled from sunrise to sunset = 110

Miles traveled from sunset to 2400 hours = 47

	<u>TIME OF FIX</u>	<u>TYPE OF FIX</u>	<u>LONGITUDE</u>	<u>LATITUDE</u>
1.				
2.				
3.				
4.				
5.				
6.				

DATE 14 June 1965

Time at sunrise = Position at sunrise = 0559 10°37'N 155°19'W
Time at sunset = Position at sunset = 1838 10°27'N 154°W
Miles traveled from 0000 hours to sunrise = 66
Miles traveled from sunrise to sunset = 115
Miles traveled from sunset to 2400 hours = 57

	TIME OF FIX	TYPE OF FIX	LONGITUDE	LATITUDE
1.				
2.				
3.				
4.				
5.				
6.				

DATE 15 June 1965

Time at sunrise = Position at sunrise = 0551 12°09'N 154°W
Time at sunset = Position at sunset = 1846 14°03'N 154°W
Miles traveled from 0000 hours to sunrise = 45
Miles traveled from sunrise to sunset = 114
Miles traveled from sunset to 2400 hours = 26

	TIME OF FIX	TYPE OF FIX	LONGITUDE	LATITUDE
1.				
2.				
3.				
4.				
5.				
6.				

DATE 16 June 1965

Time at sunrise = Position at sunrise = 0546 15° 36' N 154° W
 Time at sunset = Position at sunset = 1852 17° 41' N 157° W
 Miles traveled from 0000 hours to sunrise = 67
 Miles traveled from sunrise to sunset = 125
 Miles traveled from sunset to 2400 hours = 53

	TIME OF FIX	TYPE OF FIX	LONGITUDE	LATITUDE
1.				
2.				
3.				
4.				
5.				
6.				

DATE 17 June 1965

Time at sunrise = Position at sunrise = 0537 19° 28' N 154° W
 Time at sunset = Position at sunset = 1901 21° 51' N 154° W
 Miles traveled from 0000 hours to sunrise = 54
 Miles traveled from sunrise to sunset = 143
 Miles traveled from sunset to 2400 hours = 35

	TIME OF FIX	TYPE OF FIX	LONGITUDE	LATITUDE
1.				
2.				
3.				
4.				
5.				
6.				

DATE 18 June 1965

Time at sunrise = Position at sunrise = 0529 ^{23°24'N 154°W} ~~N 154°W~~
Time at sunset = Position at sunset = 1855 23°32'N 151°46'W
Miles traveled from 0000 hours to sunrise = 60
Miles traveled from sunrise to sunset = 133
Miles traveled from sunset to 2400 hours = 43

TIME OF FIX	TYPE OF FIX	LONGITUDE	LATITUDE
1.			
2.			
3.			
4.			
5.			
6.			

DATE 19 June 1965

Time at sunrise = Position at sunrise = 0519 22°35'N 151°W
Time at sunset = Position at sunset = 1850 22°N 151°W
Miles traveled from 0000 hours to sunrise = 53
Miles traveled from sunrise to sunset = 35
Miles traveled from sunset to 2400 hours = 15

TIME OF FIX	TYPE OF FIX	LONGITUDE	LATITUDE
1.			
2.			
3.			
4.			
5.			
6.			

SI-MNH-955b
3-4-64

SMITHSONIAN INSTITUTION
DIVISION OF BIRDS

AT SEA SURVEY CHART B

DATE 20 June 1965

Time at sunrise = Position at sunrise = 0527 20°45' N 151°W

Time at sunset = Position at sunset = 1842 18°37' N 151°W

Miles traveled from 0000 hours to sunrise = 60

Miles traveled from sunrise to sunset = 132

Miles traveled from sunset to 2400 hours = 55

TIME OF FIX	TYPE OF FIX	LONGITUDE	LATITUDE
-------------	-------------	-----------	----------

1.

2.

3.

4.

5.

6.

DATE 21 June 1965

Time at sunrise = Position at sunrise = 0532 17°09' N 151°W

Time at sunset = Position at sunset = 1836 14°45' N 151°W

Miles traveled from 0000 hours to sunrise = 33

Miles traveled from sunrise to sunset = 144

Miles traveled from sunset to 2400 hours = 42

TIME OF FIX	TYPE OF FIX	LONGITUDE	LATITUDE
-------------	-------------	-----------	----------

1.

2.

3.

4.

5.

6.

SI-MNH-955b
3-4-64

SMITHSONIAN INSTITUTION
DIVISION OF BIRDS
AT SEA SURVEY CHART B

DATE 22 June 1965

Time at sunrise = Position at sunrise = 0539 13° N 151° W
Time at sunset = Position at sunset = 1833 13° N 151° W
Miles traveled from 0000 hours to sunrise = 63
Miles traveled from sunrise to sunset = 0
Miles traveled from sunset to 2400 hours = 29

TIME OF FIX	TYPE OF FIX	LONGITUDE	LATITUDE
1.			
2.			
3.			
4.			
5.			
6.			

DATE 23 June 1965

Time at sunrise = Position at sunrise = 0542 11° 28' N 151° W
Time at sunset = Position at sunset = 1822 10° 41' N 149° 27' W
Miles traveled from 0000 hours to sunrise = 63
Miles traveled from sunrise to sunset = 103
Miles traveled from sunset to 2400 hours = 57

TIME OF FIX	TYPE OF FIX	LONGITUDE	LATITUDE
1.			
2.			
3.			
4.			
5.			
6.			

SI-MNH-955b
3-4-64

SMITHSONIAN INSTITUTION
DIVISION OF BIRDS

AT SEA SURVEY CHART B

DATE 24 June 1965

Time at sunrise = Position at sunrise = 0533 9°58' N 148°W

Time at sunset = Position at sunset = 1820 11°42' N 148°W

Miles traveled from 0000 hours to sunrise = 37

Miles traveled from sunrise to sunset = 104

Miles traveled from sunset to 2400 hours = 58

<u>TIME OF FIX</u>	<u>TYPE OF FIX</u>	<u>LONGITUDE</u>	<u>LATITUDE</u>
--------------------	--------------------	------------------	-----------------

1.

2.

3.

4.

5.

6.

DATE 25 June 1965

Time at sunrise = Position at sunrise = 0527 13°23' N 148°W

Time at sunset = Position at sunset = 1827 15°40' N 148°W

Miles traveled from 0000 hours to sunrise = 43

Miles traveled from sunrise to sunset = 137

Miles traveled from sunset to 2400 hours = 45

<u>TIME OF FIX</u>	<u>TYPE OF FIX</u>	<u>LONGITUDE</u>	<u>LATITUDE</u>
--------------------	--------------------	------------------	-----------------

1.

2.

3.

4.

5.

6.

SI-MNH-955b
3-4-64

SMITHSONIAN INSTITUTION
DIVISION OF BIRDS
AT SEA SURVEY CHART B

DATE 26 June 1965

Time at sunrise = Position at sunrise = 0518 17°24' N 148°03' W

Time at sunset = Position at sunset = 1833 19°02' N 148° W

Miles traveled from 0000 hours to sunrise = 59

Miles traveled from sunrise to sunset = 98

Miles traveled from sunset to 2400 hours = 9

TIME OF FIX	TYPE OF FIX	LONGITUDE	LATITUDE
-------------	-------------	-----------	----------

1.

2.

3.

4.

5.

6.

DATE 27 June 1965

Time at sunrise = Position at sunrise = 0515 20°11' N 148° W

Time at sunset = Position at sunset = 1840 22°25' N 148° W

Miles traveled from 0000 hours to sunrise = 60

Miles traveled from sunrise to sunset = 134

Miles traveled from sunset to 2400 hours = 58

TIME OF FIX	TYPE OF FIX	LONGITUDE	LATITUDE
-------------	-------------	-----------	----------

1.

2.

3.

4.

5.

6.

SI-MNH-955b
3-4-64

SMITHSONIAN INSTITUTION
DIVISION OF BIRDS

AT SEA SURVEY CHART B

DATE 28 June 1965

Time at sunrise = Position at sunrise = 0506 24°05'N 148°W

Time at sunset = Position at sunset = 1849 26°26'N 148°W

Miles traveled from 0000 hours to sunrise = 44

Miles traveled from sunrise to sunset = 141

Miles traveled from sunset to 2400 hours = 14

TIME OF FIX	TYPE OF FIX	LONGITUDE	LATITUDE
-------------	-------------	-----------	----------

1.

2.

3.

4.

5.

6.

DATE 29 June 1965

Time at sunrise = Position at sunrise = 0506 25°54' 149°20'

Time at sunset = Position at sunset = 1858 24°56' 151°17'

Miles traveled from 0000 hours to sunrise = 70

Miles traveled from sunrise to sunset = 109

Miles traveled from sunset to 2400 hours = 51

TIME OF FIX	TYPE OF FIX	LONGITUDE	LATITUDE
-------------	-------------	-----------	----------

1.

2.

3.

4.

5.

6.

SI-MNH-955b
3-4-64

SMITHSONIAN INSTITUTION
DIVISION OF BIRDS

AT SEA SURVEY CHART B

DATE 30 June 1965

Time at sunrise = Position at sunrise = 0524 25° N 153° 05' W
Time at sunset = Position at sunset = 1917 24° 57' N 155° 39' W
Miles traveled from 0000 hours to sunrise = 57
Miles traveled from sunrise to sunset = 143
Miles traveled from sunset to 2400 hours = 47

	<u>TIME OF FIX</u>	<u>TYPE OF FIX</u>	<u>LONGITUDE</u>	<u>LATITUDE</u>
1.				
2.				
3.				
4.				
5.				
6.				

DATE 1 July 1965

Time at sunrise = Position at sunrise = 0542 24° 43' N 157° W
Time at sunset = Position at sunset = 1917 22° 34' N 157° W
Miles traveled from 0000 hours to sunrise = 48
Miles traveled from sunrise to sunset = 129
Miles traveled from sunset to 2400 hours = 33

	<u>TIME OF FIX</u>	<u>TYPE OF FIX</u>	<u>LONGITUDE</u>	<u>LATITUDE</u>
1.				
2.				
3.				
4.				
5.				
6.				

SI-MNH-955b
3-4-64

SMITHSONIAN INSTITUTION
DIVISION OF BIRDS

AT SEA SURVEY CHART B

DATE 2 July 1965

Time at sunrise = Position at sunrise = 0551 21°14'N 157°44'W

Time at sunset = Position at sunset = 0645 ~~21°24'N 157°44'W~~

Miles traveled from 0000 hours to sunrise = 62

Miles traveled from sunrise to sunset = 4

Miles traveled from sunset to 2400 hours =

TIME OF FIX	TYPE OF FIX	LONGITUDE	LATITUDE
1.			
2.			
3.			
4.			
5.			
6.			

DATE _____

Time at sunrise = Position at sunrise =

Time at sunset = Position at sunset =

Miles traveled from 0000 hours to sunrise =

Miles traveled from sunrise to sunset =

Miles traveled from sunset to 2400 hours =

TIME OF FIX	TYPE OF FIX	LONGITUDE	LATITUDE
1.			
2.			
3.			
4.			
5.			
6.			

TC # 17

June 1965 BCF Townsend Cromwell Cruise No:17

The June 1965 Townsend Cromwell cruise, from 10 June to 2 July, was the last of a series of ~~18~~ monthly cruises run by the U.S. Fish and Wildlife Service's Bureau of Commercial Fisheries to the south, east, and north of the high Hawaiian Islands for the purpose of determining monthly variation in the structure and position of water types and currents in the area.

This was the fourteenth cruise in which Pacific Project personnel have taken part. Daily sunrise to sunset bird observations were made for a total of 282.2 hours. Paul Woodward was the sole Project personnel aboard this cruise.

Paul W. Woodward
Pacific Project

General Summary

Fewer birds were seen this month than last, due mainly to the fact that the ship passed in darkness through the area just north of Oahu where large numbers of Noddy and Sooty Terns were seen in May. However, large numbers of Sooty Terns were seen over 100 miles north of Oahu on 1 July. A new record of 26 flocks was recorded on this date, mainly small groups of Sooty Terns. Except for Juan Fernandez Petrels, numbers this month were roughly comparable to June 1964. Six hundred and eighty-seven Juan Fernandez Petrels were seen in the southern part of the area. Numbers comparable to this were not seen until July last year.

Interesting sightings were 8 Kermadec Petrels, 4 Phoenix Island or Tahiti Petrels and a few possible Pterodroma leucoptera.

Species Account

Black-footed Albatross

Two birds of this species were seen this month, compared with only one last June. One was in the northeast corner and the other one was seen at 16° N. It followed the ship for four hours. The other one did not follow the ship.

Wedge-tailed Shearwater

Numbers increased slightly over last month's total and June 1964's total, 1054 individuals being seen. Dark phase birds were more numerous in the southern part of the area than May and got as far north as 15°. Almost all of these dark birds were molting. Several birds were flying in a northerly direction indicating perhaps movement to more northerly feeding grounds. This would account for the increase this month over May with

White-tailed Tropicbird

Twenty three individuals were seen this month. The species was randomly distributed over the area.

Blue-faced Booby

Five of the six birds seen this month were at the southern end of the area. The other one was seen at 21°N. One bird was an immature while the others were sub-adults. A sub-adult that landed on the ship at 13°N was banded and released.

Brown Booby

Two birds were seen near Oahu. One was in a feeding flock.

Red-footed Booby

A large (200) feeding flock of this species was seen just south of Oahu. Twenty one other birds were seen in the same general area.

Great Frigatebird

A new high of 62 was recorded in June, 14 more than May. Only 6 were seen last June.

Pomarine Jaeger

One individual was seen in the northwest corner.

Sooty Tern

Due mainly to the fact that the ship passed through the area just north of Oahu during the night only 2557 birds were seen this month compared with 5020 last month. Large numbers of this species were seen over 100 miles north of Oahu on 1 July in small feeding flocks. This month greater numbers were seen in the southern part of the area including immature birds, probably from Palmyra or Christmas Islands.

Noddy Tern

Only 55 birds were seen this month, due mainly to the fact that the ship passed in darkness through the area where most of the 1516 were seen last

the dark phase birds further south in May moving into the southern part of the area in greater numbers in June with the corresponding greater penetration north.

Newell's Shearwater

Numbers of this species decreased 53 percent from May (49) to June (23). A similar decrease occurred last year. The largest concentration (10) was in the southwest corner instead of the southeast corner where it was located in May. Lesser numbers were seen north and south of Oahu and in the southeast corner.

Kermadec Petrel

Eight individuals of this species were seen this month, four times as many as May. They were seen mostly in the western part of the area. Three were seen in a feeding flock. None were seen last June.

Phoenix Island or Tahiti Petrel

Four individuals were seen in the southern part of the area - two in the southeast corner and two in the southwest corner. Separation of these two species at sea is almost impossible.

Dark-rumped Petrel

Only six birds of this species were seen in June compared to sixteen in May. The concentration north of the high Hawaiian Islands was not present this month. One bird was seen as far south as 13°N. Exact data is lacking for June 1964, but it appears that fewer birds were seen this June than last June.

Juan Fernandez Petrel

Six hundred and eighty-seven birds were seen this month plus 12 with white napes. Only 263 were seen in May. This large increase occurred last year between June (186) and July (609). Two large concentration areas were

noted - the southeast and southwest corners. The southeast concentration was not present in May. The species also penetrated further north (26°) this month. Almost all of the white nape forms were seen in the western part of the area this month instead of the eastern part as occurred in May. Most of the birds were molting.

Cook's Petrel

A slight decrease occurred this month - 147 in May to 130 in June. The distribution pattern was similar to the Juan Fernandez Petrel except that several were seen north of the high Hawaiian Islands. This writer is not convinced that the small Pterodroma can be identified in the field without collecting them so all these birds were lumped under the heading of Cook's Petrel. It is very likely that those birds seen north of Oahu were Bonin Island Petrels. A few birds were seen that could have been Pterodroma leucoptera. These birds had fresh plumage, deep gray with a very distinct black W on the back. The head was black on the top and on the side of the face. Most all of the rest of the birds were molting.

Bulwer's Petrel

94 of these birds were seen this month, 3 less than May. Distribution was similar to May except that there was a large concentration to the northeast of Oahu.

Leach's Petrel

Only one bird was seen this month. Seven individuals were seen last year.

Red-tailed Tropicbird

Thirty four individuals were seen this month, over twice as many as last month. Fifteen were seen last June.

month. Sixteen birds were seen over 100 miles north of Oahu in Sooty Tern feeding flocks. Only 23 were seen in June 1964.

Fairy Tern

Twenty-two birds were seen this month compared with 13 in May and 18 in June 1964. Four birds were 500 miles from the nearest land.

Table I

Date	Minutes of Observation	Total Miles
June 10	266	59
11	792	91
12	784	136
13	771	110
14	759	115
15	775	114
16	786	125
17	804	143
18	804	133
19	811	35
20	789	132
21	784	144
22	774	0
23	760	103
24	767	104
25	780	137
26	795	98
27	805	134
28	823	141
29	832	109
30	833	143
July 1	815	129
2	24	4
Total	16933	2439
Average	736.2	106

Table II							
Date	Total Birds	Total Sightings	Birds/ Sighting	Birds/ Mile	Flocks	Numbers in Flocks	
June 10	600	64	9.38	10.17	8	527	
11	260	62	4.19	2.86	4	187	
12	231	47	4.91	1.69	3	177	
13	93	65	1.43	.85	2	20	
14	332	113	2.93	2.88	4	222	
15	125	57	2.19	1.09	2	45	
16	25	23	1.09	.20	0	0	
17	314	48	6.54	2.19	11	285	
18	197	37	4.32	1.48	4	154	
19	20	17	1.17	.57	0	0	
20	35	29	1.21	.27	0	0	
21	94	48	1.97	.65	4	46	
22	24	23	1.04	-	0	0	
23	225	105	2.14	2.18	4	106	
24	464	157	2.95	4.46	7	276	
25	282	96	2.93	2.06	11	167	
26	105	36	2.91	1.07	4	60	
27	104	52	2.00	.72	3	37	
28	22	21	1.04	.16	0	0	
29	16	12	1.33	.15	1	5	
30	146	38	3.84	1.02	2	104	
July 1	1436	147	9.83	11.13	26	1259	
2	437	-	-	109.25	-	- *	
Total	5586	1309	71.34	157.10	100	3677	
Average	242.8	56.9	3.10	6.83	4.35	159.8	

* Birds flying by in continuous stream

Table III

Date	Procellari- forms	Tropicbirds	Terns	Boobies	Frigatebirds
June 10	147	2	220	224	7
11	120	7	124	0	9
12	193	9	26	0	3
13	91	0	1	1	0
14	236	0	95	1	0
15	124	0	0	1	0
16	19	5	1	0	0
17	42	3	264	0	5
18	18	1	171	0	7
19	14	2	2	0	2
20	32	0	0	0	3
21	71	6	17	0	0
22	19	3	1	1	0
23	224	0	1	0	0
24	363	4	96	1	0
25	280	2	0	0	0
26	103	2	0	0	0
27	98	2	2	1	1
28	17	3	0	0	1
29	14	2	0	0	0
30	34	3	103	0	6
July 1	186	5	1233	0	12
2	212	0	219	0	6
Total	2657	61	2576	230	62
Average	115.5	2.65	112	10	2.69

TABLE IV

Procellariiform Breakdown

DATE	Black-footed Albatross	Wedge-tailed Shearwater	Newell's Shearwater	Juan Fernandez Petrel	Kermadec Petrel	Cook's Petrel	White-necked Petrel	Leach's Storm Petrel	Dark-rumped Petrel	Bulwer's Petrel	Phoenix Island Petrel	Unknown
June 10	0	141	0	0	0	0	0	0	0	6	0	0
11	0	96	3	0	1	2	0	0	0	14	0	4
12	0	158	1	0	4	19	1	0	0	5	0	5
13	0	37	2	3	0	11	6	0	1	2	1	28
14	0	70	8	72	1	14	1	0	0	1	1	68
15	0	39	1	46	1	2	3	0	0	0	0	32
16	0	0	0	2	0	1	0	0	2	1	0	13
17	0	35	0	0	0	0	0	0	1	2	0	4
18	0	5	0	0	0	2	0	1	1	5	0	4
19	0	3	0	0	0	2	0	0	0	1	0	8
20	0	5	0	3	0	9	0	0	1	4	0	10
21	1	5	0	36	1	0	0	0	0	6	0	22
22	0	3	0	3	0	2	0	0	0	1	0	10
23	0	10	1	119	0	11	0	0	0	2	2	79
24	0	64	1	163	0	13	0	0	0	0	0	122
25	0	6	1	133	0	10	0	0	0	0	0	130
26	0	1	0	77	0	4	1	0	0	0	0	20
27	0	8	0	24	0	10	0	0	0	1	0	55
28	0	0	0	6	0	3	0	0	0	0	0	8
29	1	0	0	0	0	0	0	0	0	12	0	1
30	0	11	0	0	0	6	0	0	0	13	0	4
July 1	0	145	5	0	0	9	0	0	0	18	0	9
2	0	212	0	0	0	0	0	0	0	0	0	0
Total	2	1054	23	687	8	130	12	1	6	94	4	636

SI-MNH-955c

3-4-64

SMITHSONIAN INSTITUTION

DIVISION OF BIRDS

AT SEA SURVEY CHART C

DATE ^{BCF} 10 June 1965

TIME	LAT	LONG	PRES	WEA	VIS	SLP	DRY B	DEW PT	HUM %	TL SKY	OPA SKY	WAVES	SEA TEMP	WIND S	WIND D	SHIP COURSE/SPD.
0100																
0200																
0300																
0400																
0500																
0600																
0700																
0800																
0900																
1000																
1100																
1200																
1300																
1400																
1500	21° 15' N	157° 54' W														
1600	21° 06' N	157° 45' W														
1700	20° 57' N	157° 36' W														
1800	20° 49' N	157° 28' W														
1900	20° 40' N	157° 19' W														
2000	20° 35' N	157° 15' W														
2100	20° 35' N	157° 15' W														
2200	20° 29' N	157° 10' W														
2300	20° 20' N	157° 07' W														
2400	20° 08' N	157° 08' W														

REMARKS:

ALL TIMES LOCAL (WHISKEY); WIND DIR. IN WHOLE DEGREES; WIND SPEED IN KNOTS; TEMPERATURES IN FAHRENHEIT; VISIBILITY IN NAUTICAL MILES;
 WAVES IN WHOLE DEGREES; WAVE PERIOD IN SECONDS; WAVE HEIGHT IN WHOLE FEET; SEA LEVEL PRESSURE IN MILLIBARS

SI-MNH-955c

3-4-64

BCF

DATE 11 June 1965SMITHSONIAN INSTITUTION
DIVISION OF BIRDS
AT SEA SURVEY CHART C

TIME	LAT	LONG	PRES WEA	VIS	SLP	DRY B	DEW PT	HUM %	TL SKY	OPA SKY	WAVES	SEA TEMP	WIND S	WIND D	SHIP COURSE/SPD.
0100	19° 55' N	156° 58' W													
0200	19° 43' N	156° 58' W	Unchanged	10	1019.1	77.2	69.8		3/8 clds		60° 10s 9-10'	75.2	27	60°	
0300	19° 30' N	156° 58' W													
0400	19° 17' N	156° 58' W													
0500	19° 05' N	156° 59' W													
0600	18° 59' N	156° 59' W													
0700	18° 55' N	156° 59' W													
0800	18° 45' N	156° 59' W	clds form	5	1018.6	91.6	73.4		100% clds		E 10s 9-16'	77	17	E	
0900	18° 34' N	156° 59' W													
1000	18° 23' N	156° 59' W													
1100	18° 12' N	156° 59' W													
1200	18° 02' N	156° 59' W													
1300	17° 51' N	156° 59' W													
1400	17° 42' N	156° 59' W	clds diss	5	1017.6	77	69.8		7/8 clds		60° 10s 9-16'	77	25	60°	
1500	17° 30' N	156° 59' W													
1600	17° 30' N	157° 04' W													
1700	17° 30' N	157° 04' W													
1800	17° 30' N	157° 04' W													
1900	17° 30' N	157° 04' W													
2000	17° 30' N	157° 04' W	Unchanged	5	1017.6	77	69.8		7/8 clds		80° 10s 9-16'	77	22	80°	
2100	17° 30' N	157° 04' W													
2200	17° 30' N	157° 09' W													
2300	17° 30' N	157° 10' W													
2400	17° 30' N	157° 11' W													

REMARKS:

ALL TIMES LOCAL (WHISKEY); WIND DIR. IN WHOLE DEGREES; WIND SPEED IN KNOTS; TEMPERATURES IN FAHRENHEIT; VISIBILITY IN NAUTICAL MILES;
WAVES IN WHOLE DEGREES; WAVE PERIOD IN SECONDS; WAVE HEIGHT IN WHOLE FEET; SEA LEVEL PRESSURE IN MILLIBARS

SI-MNH-955c

3-4-64

BcF

DATE 12 June 1965

SMITHSONIAN INSTITUTION

DIVISION OF BIRDS

AT SEA SURVEY CHART C

TIME	LAT	LONG	PRES WEA	VIS	SLP	DRY B	DEW PT	HUM %	TL SKY	OPA SKY	WAVES	SEA TEMP	WIND S	WIND D	SHIP COURSE/SPD.
0100	17° 30' N	157° 13'													
0200	17° 30' N	157° 13'	Clouds disag.	5	1017.6	77	68		5/8 cloudy		ENE 10s 9-10'	78.8	22	ENE	
0300	17° 30' N	157° 13'													
0400	17° 36' N	157° 13'													
0500	17° 27' N	157° W													
0600	17° 27' N	157° W													
0700	17° 15' N	157° W													
0800	17° 03' N	157° W	Unchanged	10	1017.6	77	68		5/8 cloudy		ENE 8s 6-7'	77	24	ENE	
0900	16° 51' N	156° 59' W													
1000	16° 40' N	156° 59' W													
1100	16° 30' N	156° 59' W													
1200	16° 19' N	156° 59' W													
1300	16° 07' N	156° 59' W													
1400	15° 59' N	156° 59' W	Clouds disag.	5	1015.8	77	71.6		5/8 cloudy		ENE 8s 6-7'	78.8	24	55-64°	
1500	15° 57' N	156° 59' W													
1600	15° 44' N	156° 59' W													
1700	15° 32' N	156° 59' W													
1800	15° 20' N	156° 59' W													
1900	15° 09' N	156° 59' W													
2000	15° N	156° 59' W	Rain	5	1015.8	75.2	71.6		7/8 cloudy		ENE 8s 6-7'	77	22	75-84°	
2100	14° 54' N	156° 59' W													
2200	14° 42' N	156° 59' W													
2300	14° 30' N	157° W													
2400	14° 30' N	157° W													

REMARKS:

ALL TIMES LOCAL (WHISKEY); WIND DIR. IN WHOLE DEGREES; WIND SPEED IN KNOTS; TEMPERATURES IN FAHRENHEIT; VISIBILITY IN NAUTICAL MILES;
WAVES IN WHOLE DEGREES; WAVE PERIOD IN SECONDS; WAVE HEIGHT IN WHOLE FEET; SEA LEVEL PRESSURE IN MILLIBARS

SI-MNH-955c

3-4-64

BCF

DATE 13 June 1965

SMITHSONIAN INSTITUTION

DIVISION OF BIRDS

AT SEA SURVEY CHART C

TIME	LAT	LONG	PRES WEA	VIS	SLP	DRY B	DEW PT	HUM %	TL SKY	OPA SKY	WAVES	SEA TEMP	WIND S	WIND D	SHIP COURSE/SPD.
0100	14° 17' N	157° W													
0200	14° 05' N	157° W	<i>Drizzle</i>	5	1014.1	77	71.6		<i>2/3 cloudy</i>		<i>ENE 85-79'</i>	77	25	<i>ENE</i>	
0300	13° 53' N	157° W													
0400	13° 41' N	157° W													
0500	13° 29' N	157° 01' W													
0600	13° 17' N	157° 01' W													
0700	13° 06' N	157° W													
0800	13° N	157° W	<i>Clouds drizzle</i>	10	1013.6	77	69.8		<i>1/2 cloudy</i>		<i>ENE 65-45'</i>	78.9	25	<i>ENE</i>	
0900	13° N	157° W													
1000	12° 50' N	157° W													
1100	12° 39' N	157° W													
1200	12° 27' N	157° W													
1300	12° 15' N	157° W													
1400	12° 03' N	156° 59' W	<i>Cl. drizzle</i>	10	1012.8	78.8	69.8		<i>1/8 cloudy</i>		<i>75-84° 65-67'</i>	78.8	20	<i>75-84°</i>	
1500	11° 53' N	156° 59' W													
1600	11° 41' N	156° 59' W													
1700	11° 29' N	156° 58' W													
1800	11° 29' N	156° 58' W													
1900	11° 25' N	156° 58' W													
2000	11° 22' N	156° 45' W	<i>Rain</i>	10	1011	78.8	69.8		<i>2/3 cloudy</i>		<i>ENE 65-67'</i>	78.8	18	<i>ENE</i>	
2100	11° 19' N	156° 45' W													
2200	11° 15' N	156° 45' W													
2300	11° 10' N	156° 32' W													
2400	11° 05' N	156° 18' W													

REMARKS:

ALL TIMES LOCAL (WHISKEY); WIND DIR. IN WHOLE DEGREES; WIND SPEED IN KNOTS; TEMPERATURES IN FAHRENHEIT; VISIBILITY IN NAUTICAL MILES;
WAVES IN WHOLE DEGREES; WAVE PERIOD IN SECONDS; WAVE HEIGHT IN WHOLE FEET; SEA LEVEL PRESSURE IN MILLIBARS

SI-MNH-955c

3-4-64

BCF

DATE 14 June 1965

SMITHSONIAN INSTITUTION

DIVISION OF BIRDS

AT SEA SURVEY CHART C

TIME	LAT	LONG	PRES WEA	VIS	SLP	DRY B	DEW PT	HUM %	TL SKY	OPA SKY	WAVES	SEA TEMP	WIND S	WIND D	SHIP COURSE/SPD.
0100	11° N	156° 04' W													
0200	10° 55' N	155° 55' W	Rain	5	1011.6	78.8	73.4		100% cloudy		35-44° 6.5-6.7'	78.8	22	75-84°	35-44°
0300	10° 50' N	155° 46' W													
0400	10° 46' N	155° 36' W													
0500	10° 41.5' N	155° 28' W													
0600	10° 37' N	155° 19' W													
0700	10° 32.5' N	155° 10' W													
0800	10° 28' N	155° 01' W	Cld. forming	5	1011.6	78.8	73.4		7/8 cloudy		35-44° 10.5-9-10'	78.8	28	ENE	25-34°
0900	10° 23.5' N	154° 52' W													
1000	10° 19' N	154° 43' W													
1100	10° 14.5' N	154° 34' W													
1200	10° 10' N	154° 26' W													
1300	10° 06' N	154° 18' W													
1400	10° 03' N	154° 09' W	Unchanged	5	1010.6	82.4	73.4		7/8 cloudy		ENE 10.5-8.9'	80.5	20	ENE	
1500	10° N	154° W													
1600	10° N	154° W													
1700	10° 10' N	154° W													
1800	10° 19' N	154° W													
1900	10° 31' N	154° W													
2000	10° 41' N	154° W	Unchanged	5	1012.6	78.8	73.4		100% cloudy		55-64° 10.5-8.9'	78.8	24	NE	
2100	10° 50' N	154° W													
2200	11° N	153° 59' W													
2300	11° 12' N	153° 59' W													
2400	11° 24' N	153° 57' W													

REMARKS:

ALL TIMES LOCAL (WHISKEY); WIND DIR. IN WHOLE DEGREES; WIND SPEED IN KNOTS; TEMPERATURES IN FAHRENHEIT; VISIBILITY IN NAUTICAL MILES;
WAVES IN WHOLE DEGREES; WAVE PERIOD IN SECONDS; WAVE HEIGHT IN WHOLE FEET; SEA LEVEL PRESSURE IN MILLIBARS

SI-MNH-955c
3-4-64

SMITHSONIAN INSTITUTION
DIVISION OF BIRDS
AT SEA SURVEY CHART C

DATE ^{Bcf} 15 June 1965

TIME	LAT	LONG	PRES WEA	VIS	SLP	DRY B	DEW PT	HUM %	TL SKY	OPA SKY	WAVES	SEA TEMP	WIND S	WIND D	SHIP COURSE/SPD.
0100	11° 31' N	153° 58' W													
0200	11° 31' N	154° W	unchanged	5	1013.6	77	69.8		100% cloudy		55-64° 10s 8-9'	78.5	24	55-64°	
0300	11° 43' N	154° W													
0400	11° 55' N	154° W													
0500	12° N	153° 56' W													
0600	12° 11' N	154° W													
0700	12° 23' N	154° W													
0800	12° 35' N	154° W	Cl. devd N. dr	10	1013.8	77	69.8		3/8 cloudy		54-64° 10s 8-9'	78.8	25	NE	
0900	12° 47' N	154° W													
1000	12° 54' N	154° W													
1100	12° 56' N	154° W													
1200	12° 58' N	154° W													
1300	13° 10' N	154° W													
1400	13° 22' N	154° W	Cl. disapp	10	1013.6	78.8	66.2		5/8 cloudy		NE 10s 7-9'	78.8	22	NE	
1500	13° 33' N	154° W													
1600	13° 45' N	154° W													
1700	13° 55' N	154° W													
1800	14° 03' N	154° W													
1900	14° 03' N	154° W													
2000	14° 03' N	154° W	Cl. disapp	10	1014.6	77	68		3/8 cloudy		NE 10s 7-9'	78.8	20	ENE	
2100	14° 06' N	154° W													
2200	14° 18' N	154° W													
2300	14° 29' N	154° W													
2400	14° 29' N	154° W													

REMARKS:

ALL TIMES LOCAL (WHISKEY); WIND DIR. IN WHOLE DEGREES; WIND SPEED IN KNOTS; TEMPERATURES IN FAHRENHEIT; VISIBILITY IN NAUTICAL MILES;
WAVES IN WHOLE DEGREES; WAVE PERIOD IN SECONDS; WAVE HEIGHT IN WHOLE FEET; SEA LEVEL PRESSURE IN MILLIBARS

SI-MNH-955c

3-4-64

BcF

DATE 16 June 1965

SMITHSONIAN INSTITUTION

DIVISION OF BIRDS

AT SEA SURVEY CHART C

TIME	LAT	LONG	PRES WEA	VIS	SLP	DRY B	DEW PT	HUM %	TL SKY	OPA SKY	WAVES	SEA TEMP	WIND S	WIND D	SHIP COURSE/SPD.
0100	14° 40' N	154° 0' W													
0200	14° 51' N	154° 0' W	cds fm	5	1014.6	77	69.8		7/8 cloudy		55-49°/05-7-9'	78.8	25	55-64°	
0300	15° 03' N	154° 0' W													
0400	15° 15' N	154° 0' W													
0500	15° 27' N	154° 0' W													
0600	15° 39' N	154° 0' W													
0700	15° 50' N	154° 0' W													
0800	15° 59.4' N	154° 0' W	cds dirag	10	1016.6	75.2	68		3/8 cloudy		ENE 10s 7-9'	77	20	ENE	
0900	16° 0' N	154° 0' W													
1000	16° 12' N	154° 0' W													
1100	16° 22' N	154° 0' W													
1200	16° 32' N	154° 0' W													
1300	16° 44' N	154° 0' W													
1400	16° 56' N	154° 0' W	unchanged	25	1018	78.8	69.8		1/4 cloudy		35-44°/05-7-9'	77	22	35-44°	
1500	17° 08' N	154° 0' W													
1600	17° 18' N	154° 0' W													
1700	17° 30' N	154° 0' W													
1800	17° 30' N	154° 0' W													
1900	17° 43' N	154° 0' W													
2000	17° 54.3' N	154° 0' W	unchanged	25	1017.6	77	66.2		1/4 cloudy		35-44°/05-7-9'	75.2	20	35-44°	
2100	17° 59' N	154° 0' W													
2200	18° 10' N	154° 0' W													
2300	18° 21' N	154° 0' W													
2400	18° 34' N	154° 0' W													

REMARKS:

ALL TIMES LOCAL (WHISKEY); WIND DIR. IN WHOLE DEGREES; WIND SPEED IN KNOTS; TEMPERATURES IN FAHRENHEIT; VISIBILITY IN NAUTICAL MILES;
WAVES IN WHOLE DEGREES; WAVE PERIOD IN SECONDS; WAVE HEIGHT IN WHOLE FEET; SEA LEVEL PRESSURE IN MILLIBARS

SI-MNH-955c

3-4-64

BCF

SMITHSONIAN INSTITUTION

DIVISION OF BIRDS

AT SEA SURVEY CHART C

DATE 17 June 1965

TIME	LAT	LONG	PRES WEA	VIS	SLP	DRY B	DEW PT	HUM %	TL SKY	OPA SKY	WAVES	SEA TEMP	WIND S	WIND D	SHIP COURSE/SPD.
0100	18°46'N	154°0'W													
0200	18°58'N	154°0'W	unchanged	25	1018.6	75.2	68		1/4 cloudy		35-44° 10s 6-7'	77	19	35-44°	
0300	19°04'N	154°0'W													
0400	19°10'N	154°0'W													
0500	19°22'N	154°03'W													
0600	19°34'N	154°03'W													
0700	19°46'N	154°03'W													
0800	19°57'N	154°03'W	unchanged	25	1019.6	77	66.2		1/4 cloudy		35-44° 10s 6-7'	75.2	16	35-44°	
0900	20°10'N	154°03'W													
1000	20°20'N	154°03'W													
1100	20°28'N	154°03'W													
1200	20°31'N	154°02'W													
1300	20°43'N	154°02'W													
1400	20°55'N	154°02'W	unchanged	25	1019.7	78.8	68		1/4 cloudy		35-44° 10s 6-7'	77	16	35-44°	
1500	21°07'N	154°02'W													
1600	21°18'N	154°0'W													
1700	21°28'N	154°0'W													
1800	21°40'N	154°0'W													
1900	21°51'N	154°0'W													
2000	21°53'N	154°0'W	unchanged	25	1019.9	75.2	68		1/4 cloudy		35-44° 10s 6-7'	77	17	35-44°	
2100	21°59.9'N	154°0'W													
2200	22°N	154°0'W													
2300	22°12'N	154°0'W													
2400	22°24'N	154°0'W													

REMARKS:

ALL TIMES LOCAL (WHISKEY); WIND DIR. IN WHOLE DEGREES; WIND SPEED IN KNOTS; TEMPERATURES IN FAHRENHEIT; VISIBILITY IN NAUTICAL MILES;
WAVES IN WHOLE DEGREES; WAVE PERIOD IN SECONDS; WAVE HEIGHT IN WHOLE FEET; SEA LEVEL PRESSURE IN MILLIBARS

SI-MNH-955c

3-4-64 BCF

DATE 18 June 1965SMITHSONIAN INSTITUTION
DIVISION OF BIRDS
AT SEA SURVEY CHART C

TIME	LAT	LONG	PRES WEA	VIS	SLP	DRY B	DEW PT	HUM %	TL SKY	OPA SKY	WAVES	SEA TEMP	WIND S	WIND D	SHIP COURSE/SPD.
0100	22° 34' N	153° 58' W													
0200	22° 46' N	153° 59' W	Olds form	25	1020.6	75.2	68		2/3 cloudy		35-44° 6s 4s'	75.2	10	35-44°	
0300	22° 59' N	153° 59' W													
0400	23° 10' N	153° 59' W													
0500	23° 20' N	153° 59' W													
0600	23° 28' N	153° 59' W													
0700	23° 28' N	153° 57' W													
0800	23° 28' N	153° 45' W	Olds disag	25	1021	75.2	68		3/8 cloudy		55-64 8s 6-7'	75.2	20	ENE	
0900	23° 28' N	153° 37' W													
1000	23° 28' N	153° 22' W													
1100	23° 28' N	153° 11' W													
1200	23° 29' N	153° 01' W													
1300	23° 29' N	152° 51' W													
1400	23° 29' N	152° 40' W	Unchanged	25	1021	75.2	66.2		3/8 cloudy		75-84 8s 6-7'	75.2	18	E	
1500	23° 29' N	152° 28' W													
1600	23° 29' N	152° 18' W													
1700	23° 32' N	152° 07' W													
1800	23° 32' N	151° 57' W													
1900	23° 32' N	151° 45' W													
2000	23° 32' N	151° 33' W	Olds form	5	1020.6	75.2	64.4		7/8 cloudy		E 8s 6-7'	75.2	18	E	
2100	23° 32' N	151° 28' W													
2200	23° 32' N	151° 17' W													
2300	23° 32' N	151° 06' W													
2400	23° 28' N	151° 0' W													

REMARKS:

ALL TIMES LOCAL (WHISKEY); WIND DIR. IN WHOLE DEGREES; WIND SPEED IN KNOTS; TEMPERATURES IN FAHRENHEIT; VISIBILITY IN NAUTICAL MILES;
WAVES IN WHOLE DEGREES; WAVE PERIOD IN SECONDS; WAVE HEIGHT IN WHOLE FEET; SEA LEVEL PRESSURE IN MILLIBARS

SI-MNH-955c

3-4-64

BCF

DATE 19 June 1965

SMITHSONIAN INSTITUTION
DIVISION OF BIRDS
AT SEA SURVEY CHART C

TIME	LAT	LONG	PRES WEA	VIS	SLP	DRY B	DEW PT	HUM %	TL SKY	OPA SKY	WAVES	SEA TEMP	WIND S	WIND D	SHIP COURSE/SPD.
0100	23° 23' N	151° W													
0200	23° 12' N	151° W	Prep in sight	10	1020.6	73.4	66.2		3/8 cloudy		ENE 856-7'	75.2	25	ENE	
0300	23° N	151° W													
0400	22° 50' N	151° W													
0500	22° 39' N	150° 57' W													
0600	22° 28' N	150° 57' W													
0700	22° 17' N	150° 57' W													
0800	22° 05' N	150° 57' W	cloud forming	5	1020.8	75.2	68		100% cloudy		ENE 856-7'	75.2	22	ENE	
0900	22° N	150° 56' W													
1000	22° N	150° 56' W													
1100	22° N	150° 56' W													
1200	22° N	150° 56' W													
1300	22° N	150° 56' W													
1400	22° N	150° 56' W	clear diss.	25	1019.6	75.2	66.2		1/4 cloudy		ENE 856-7'	75.2	21	75-84°	
1500	22° N	150° 56' W													
1600	22° N	150° 56' W													
1700	22° N	150° 56' W													
1800	22° N	150° 56' W													
1900	22° N	150° 56' W													
2000	22° N	150° 56' W	clear diss.	25	1018.6	73.4	66.2		1/4 cloudy		ENE 856-7'	75.2	22	75-84°	
2100	22° N	150° 56' W													
2200	22° N	150° 56' W													
2300	21° 55' N	150° 56' W													
2400	21° 45' N	150° 56' W													

REMARKS:

ALL TIMES LOCAL (WHISKEY); WIND DIR. IN WHOLE DEGREES; WIND SPEED IN KNOTS; TEMPERATURES IN FAHRENHEIT; VISIBILITY IN NAUTICAL MILES;
WAVES IN WHOLE DEGREES; WAVE PERIOD IN SECONDS; WAVE HEIGHT IN WHOLE FEET; SEA LEVEL PRESSURE IN MILLIBARS

SI-MNH-955c

3-4-64

BCF

DATE 20 June 1965

SMITHSONIAN INSTITUTION

DIVISION OF BIRDS

AT SEA SURVEY CHART C

TIME	LAT	LONG	PRES WEA	VIS	SLP	DRY B	DEW PT	HUM %	TL SKY	OPA SKY	WAVES	SEA TEMP	WIND S	WIND D	SHIP COURSE/SPD.
0100	21° 34' N	151° 0' W													
0200	21° 23' N	151° 0' W	Unchang	25	1017.6	73.4	64.4		1/4 cloudy		ENE 8s 6-7'	75.2	22	ENE	
0300	21° 12' N	151° 0' W													
0400	21° N	151° 0' W													
0500	20° 50' N	151° 0' W													
0600	20° 41' N	151° 0' W													
0700	20° 30' N	151° 0' W													
0800	20° 30' N	151° 0' W	Prep in sight	10	1018.2	73.4	66.2		3/8 cloudy		E 10s 6-7'	75.2	20	ESE	
0900	20° 19' N	151° 0' W													
1000	20° 07' N	151° 0' W													
1100	19° 55' N	151° 0' W													
1200	19° 43' N	151° 02' W													
1300	19° 31' N	151° 03' W													
1400	19° 19' N	151° 03' W	reds disc	10	1016.2	75.2	68		1/4 cloudy		ENE 10s 6-7'	75.2	22	ENE	
1500	19° 07' N	151° 03' W													
1600	18° 59' N	151° 04' W													
1700	18° 57' N	151° 04' W													
1800	18° 45' N	151° 04' W													
1900	18° 33' N	151° 05' W													
2000	18° 22' N	151° 04' W	Unchang	10	1015.8	75.2	68		1/4 cloudy		ENE 10s 6-7'	75.2	22	ENE	
2100	18° 17' N	151° 04' W													
2200	18° 06' N	151° 0' W													
2300	17° 54' N	151° 0' W													
2400	17° 42' N	151° 0' W													

REMARKS:

ALL TIMES LOCAL (WHISKEY); WIND DIR. IN WHOLE DEGREES; WIND SPEED IN KNOTS; TEMPERATURES IN FAHRENHEIT; VISIBILITY IN NAUTICAL MILES;
WAVES IN WHOLE DEGREES; WAVE PERIOD IN SECONDS; WAVE HEIGHT IN WHOLE FEET; SEA LEVEL PRESSURE IN MILLIBARS

SI-MNH-955c

3-4-64

BCF

DATE 21 June 1965

SMITHSONIAN INSTITUTION

DIVISION OF BIRDS

AT SEA SURVEY CHART C

TIME	LAT	LONG	PRES WEA	VIS	SLP	DRY B	DEW PT	HUM %	TL SKY	OPA SKY	WAVES	SEA TEMP	WIND S	WIND D	SHIP COURSE/SPD.
0100	17° 29' N	150° 59' W													
0200	17° 28' N	150° 59' W	03 clouds	10	1015.5	75.2	68		7/8 cloudy		ENE 8s 6f	75.2	18	ENE	
0300	17° 28' N	150° 59' W													
0400	17° 26' N	150° 59' W													
0500	17° 15' N	150° 59' W													
0600	17° 03' N	150° 57' W													
0700	16° 52' N	150° 57' W													
0800	16° 40' N	150° 57' W	Squall	5	1016.6	75.2	68		100% cloudy		95-104 12s 4.5'	77	15	ESE	
0900	16° 28' N	150° 53' W													
1000	16° 15' N	150° 52' W													
1100	16° 03' N	150° 52' W													
1200	16° 00' N	150° 52' W													
1300	15° 51' N	150° 52' W													
1400	15° 39' N	150° 52' W	clouds form	5	1015.1	77	69.8		7/8 cloudy		95-104 12s 4.5'	77	15	ENE	95-104°
1500	15° 27' N	150° 55' W													
1600	15° 16' N	150° 55' W													
1700	15° 04' N	150° 58' W													
1800	14° 52' N	150° 58' W													
1900	14° 41' N	150° 58' W													
2000	14° 30' N	150° 59' W	Prep in sight	5	1014.9	77	69.8		7/8 cloudy		E 12s 4.5'	77	15	75-84°	
2100	14° 20' N	150° 59' W													
2200	14° 25' N	150° 59' W													
2300	14° 14' N	150° 59' W													
2400	14° 03' N	151° W													

REMARKS:

ALL TIMES LOCAL (WHISKEY); WIND DIR. IN WHOLE DEGREES; WIND SPEED IN KNOTS; TEMPERATURES IN FAHRENHEIT; VISIBILITY IN NAUTICAL MILES;
WAVES IN WHOLE DEGREES; WAVE PERIOD IN SECONDS; WAVE HEIGHT IN WHOLE FEET; SEA LEVEL PRESSURE IN MILLIBARS

SI-MNH-955c

3-4-64

BCF

DATE 22 June 1965

SMITHSONIAN INSTITUTION

DIVISION OF BIRDS

AT SEA SURVEY CHART C

TIME	LAT	LONG	PRES WEA	VIS	SLP	DRY B	DEW PT	HUM %	TL SKY	OPA SKY	WAVES	SEA TEMP	WIND S	WIND D	SHIP COURSE/SPD.
0100	13° 51' N	151° W													
0200	13° 40' N	151° W	Drizzle	5	1014.1	75.2	69.8		7/8 cloudy		E 12s 4-5'	78.8	12	75-84°	
0300	13° 29' N	151° W													
0400	13° 18' N	151° 09' W													
0500	13° 09' N	151° 02' W													
0600	13° 01' N	151° W													
0700	13° 01' N	151° W													
0800	13° 01' N	151° W	clbs diss	25	1014.6	77	68.8		5/8 cloudy		E 14f 0s 4-5'	78.8	9	ENE	
0900	13° 01' N	151° W													
1000	13° 01' N	151° W													
1100	13° 02' N	151° W													
1200	13° 03' N	151° 09' W													
1300	13° 03' N	151° W													
1400	13° 03' N	151° W	clbs form	25	1014.1	78.8	68		2/3 cloudy		95-104° 0s 4-5'	78.8	8	95-104°	
1500	13° 03' N	151° W													
1600	13° 02' N	151° W													
1700	13° 02' N	151° W													
1800	13° 03' N	151° W													
1900	13° 04' N	151° W													
2000	13° 04' N	151° W	clbs diss	25	1013.5	78.8	69.8		3/8 cloudy		ENE 8s 4s'	78.8	17	ENE	
2100	13° N	151° W													
2200	12° 53' N	151° W													
2300	12° 42' N	151° W													
2400	12° 31' N	151° W													

REMARKS:

ALL TIMES LOCAL (WHISKEY); WIND DIR. IN WHOLE DEGREES; WIND SPEED IN KNOTS; TEMPERATURES IN FAHRENHEIT; VISIBILITY IN NAUTICAL MILES;
WAVES IN WHOLE DEGREES; WAVE PERIOD IN SECONDS; WAVE HEIGHT IN WHOLE FEET; SEA LEVEL PRESSURE IN MILLIBARS

SI-MNH-955c

3-4-64

SMITHSONIAN INSTITUTION

DIVISION OF BIRDS

AT SEA SURVEY CHART C

BCF

DATE 23 June 1965

TIME	LAT	LONG	PRES WEA	VIS	SLP	DRY B	DEW PT	HUM %	TL SKY	OPA SKY	WAVES	SEA TEMP	WIND S	WIND D	SHIP COURSE/SPD.
0100	12° 20' N	150° 58' W													
0200	12° 09' N	150° 58' W	Clds fam	5	1013.6	77	71.6		100% clds		55-64° 8s 4.5'	78.8	24	55-64°	
0300	11° 58' N	150° 57' W													
0400	11° 47' N	150° 56' W													
0500	11° 36' N	150° 56' W													
0600	11° 28' N	150° 56' W													
0700	11° 28' N	150° 56' W													
0800	11° 28' N	150° 56' W	Unchange	10	1013.6	78.8	71.6		7/8 cloudy		55-64° 6s 4.5'	78.8	17	55-64°	
0900	11° 28' N	150° 56' W													
1000	11° 23' N	150° 46' W													
1100	11° 18' N	150° 37' W													
1200	11° 13' N	150° 28' W													
1300	11° 08' N	150° 18' W													
1400	11° 03' N	150° 09' W	Drizzle	5	1013.5	77	73.4		100% clds		75-84° 10s 4.5'	80.6	18	75-84	
1500	10° 59' N	150° 00' W													
1600	10° 53' N	149° 50' W													
1700	10° 48' N	149° 40' W													
1800	10° 42' N	149° 30' W													
1900	10° 38' N	149° 22' W													
2000	10° 33' N	149° 10' W	Cld dir	5	1012.8	78.8	73.4		7/8 clds		ENE 10s 6.7'	80.6	21	ENE	
2100	10° 30' N	149° 01' W													
2200	10° 26' N	148° 55' W													
2300	10° 21' N	148° 45' W													
2400	10° 15' N	148° 35' W													

REMARKS:

ALL TIMES LOCAL (WHISKEY); WIND DIR. IN WHOLE DEGREES; WIND SPEED IN KNOTS; TEMPERATURES IN FAHRENHEIT; VISIBILITY IN NAUTICAL MILES;
WAVES IN WHOLE DEGREES; WAVE PERIOD IN SECONDS; WAVE HEIGHT IN WHOLE FEET; SEA LEVEL PRESSURE IN MILLIBARS

SI-MNH-955c

3-4-64

SMITHSONIAN INSTITUTION

DIVISION OF BIRDS

AT SEA SURVEY CHART C

BCF

DATE 24 June 1965

TIME	LAT	LONG	PRES WEA	VIS	SLP	DRY B	DEW PT	HUM %	TL SKY	OPA SKY	WAVES	SEA TEMP	WIND S	WIND D	SHIP COURSE/SPD.
0100	10°11'N	148°25'W													
0200	10°05'N	148°15'W	Clds diss	10	10129	77	71.6		1/4 clds		ENE 1036-7'	80.6	22	ENE	
0300	10°N	148°06'W													
0400	9°58'N	148°01'W													
0500	9°58'N	148°W													
0600	9°57'N	148°W													
0700	9°57'N	148°W													
0800	9°57'N	148°W	Pres in sight	10	10136	80.6	73.4		7/8 clds		55-64° 10s 4.5'	78.8	25	55-64°	
0900	10°09'N	148°W													
1000	10°21'N	148°W													
1100	10°32'N	148°W													
1200	10°44'N	148°W													
1300	10°56'N	148°W													
1400	11°08'N	148°W	Clds diss	10	10143	78.8	71.6		1/2 clds		55-64° 10s 4.5'	80.6	20	NE	
1500	11°19'N	148°W													
1600	11°30'N	148°W													
1700	11°30'N	148°W													
1800	11°38'N	148°W													
1900	11°50'N	148°W													
2000	11°59'N	148°W	Clds diss	10	10156	77	68		1/4 clds		55-64° 10s 4.5'	78.8	20	NE	
2100	12°05'N	148°W													
2200	12°17'N	148°W													
2300	12°28'N	147°58'W													
2400	12°40'N	147°58'W													

REMARKS:

ALL TIMES LOCAL (WHISKEY); WIND DIR. IN WHOLE DEGREES; WIND SPEED IN KNOTS; TEMPERATURES IN FAHRENHEIT; VISIBILITY IN NAUTICAL MILES;
WAVES IN WHOLE DEGREES; WAVE PERIOD IN SECONDS; WAVE HEIGHT IN WHOLE FEET; SEA LEVEL PRESSURE IN MILLIBARS

SI-MNH-955c

3-4-64

BCF

DATE 25 June 1965

SMITHSONIAN INSTITUTION

DIVISION OF BIRDS

AT SEA SURVEY CHART C

TIME	LAT	LONG	PRES WEA	VIS	SLP	DRY B	DEW PT	HUM %	TL SKY	OPA SKY	WAVES	SEA TEMP	WIND S	WIND D	SHIP COURSE/SPD.
0100	12° 49' N	147° 56' W													
0200	12° 58' N	147° 56' W	CBs fair	10	1014.2	75.2	64.4		1/2 clds		SS-64° 10s 4-5'	77	25	55-64°	
0300	12° 58' N	147° 56' W													
0400	13° 04' N	147° 56' W													
0500	13° 17' N	147° 51' W													
0600	13° 29' N	147° 51' W													
0700	13° 40' N	147° 57' W													
0800	13° 51' N	147° 57' W	Unclary	10	1015.5	75.2	66.2		1/2 clds		ENE-10s 3-4'	77	22	ENE	
0900	14° 03' N	147° 57' W													
1000	14° 13' N	147° 57' W													
1100	14° 24' N	147° 57' W													
1200	14° 28' N	147° 57' W													
1300	14° 36' N	147° 57' W													
1400	14° 48' N	147° 58' W	Rain insight	10	1014.2	75.2	68		3/8 cloudy		ENE-10s 4'	77	23	ENE	
1500	15° 0' N	147° 58' W													
1600	15° 11' N	147° 58' W													
1700	15° 22' N	147° 58' W													
1800	15° 34' N	147° 58' W													
1900	15° 46' N	147° 58' W													
2000	15° 59' N	148° W	Rain insight	10	1015	75.2	68		3/8 cloudy		ENE-10s 4-5'	77	20	ENE	
2100	15° 59' N	148° W													
2200	16° 02' N	148° W													
2300	16° 12' N	148° W													
2400	16° 25' N	148° W													

REMARKS:

ALL TIMES LOCAL (WHISKEY); WIND DIR. IN WHOLE DEGREES; WIND SPEED IN KNOTS; TEMPERATURES IN FAHRENHEIT; VISIBILITY IN NAUTICAL MILES;
WAVES IN WHOLE DEGREES; WAVE PERIOD IN SECONDS; WAVE HEIGHT IN WHOLE FEET; SEA LEVEL PRESSURE IN MILLIBARS

SI-MNH-955c

3-4-64

SMITHSONIAN INSTITUTION
DIVISION OF BIRDS
AT SEA SURVEY CHART CDATE ^{BCF} 26 June 1965

TIME	LAT	LONG	PRES WEA	VIS	SLP	DRY B	DEW PT	HUM %	TL SKY	OPA SKY	WAVES	SEA TEMP	WIND S	WIND D	SHIP COURSE/SPD.
0100	16° 37' N	148° W													
0200	16° 48' N	148° W	Rain in sight	5	1014.7	75.2	68°		2/3 clouds		ENE 10.6-9'	75.2	22	ENE	
0300	16° 59' N	148° W													
0400	17° 10' N	148° 01' W													
0500	17° 21' N	148° 03' W													
0600	17° 30' N	148° 03' W													
0700	17° 32' N	148° 03' W													
0800	17° 44' N	148° 02' W	Clouds forming	5	1016.6	75.2	68°		100° clouds		95-104° 12.6-9'	75.2	22	95-104°	
0900	17° 55' N	148° W													
1000	18° 06' N	148° W													
1100	18° 17' N	148° W													
1200	18° 28' N	148° W													
1300	18° 41' N	148° W													
1400	18° 54' N	148° W	Rain in sight	5	1016	73.4	68°		7/8 clouds		ENE 12.5-16'	75.2	18	ENE	
1500	19° N	147° 59' W									7-9'				
1600	19° 01' N	148° W													
1700	19° 01' N	148° W													
1800	19° 02' N	148° W													
1900	19° 02' N	148° W													
2000	19° 03' N	148° W	Unchanged	5	1016.9	73.4	68°		7/8 clouds		ENE 12.5-16'	75.2	20	75-84°	
2100	19° 03' N	148° W									7-9'				
2200	19° 03' N	148° W													
2300	19° 04' N	148° W													
2400	19° 11' N	148° W													

REMARKS:

ALL TIMES LOCAL (WHISKEY); WIND DIR. IN WHOLE DEGREES; WIND SPEED IN KNOTS; TEMPERATURES IN FAHRENHEIT; VISIBILITY IN NAUTICAL MILES;
WAVES IN WHOLE DEGREES; WAVE PERIOD IN SECONDS; WAVE HEIGHT IN WHOLE FEET; SEA LEVEL PRESSURE IN MILLIBARS

SI-MNH-955c

3-4-64

BCF

DATE 27 June 1965

SMITHSONIAN INSTITUTION

DIVISION OF BIRDS

AT SEA SURVEY CHART C

TIME	LAT	LONG	PRES WEA	VIS	SLP	DRY B	DEW PT	HUM %	TL SKY	OPA SKY	WAVES	SEA TEMP	WIND S	WIND D	SHIP COURSE/SPD.
0100	19° 21' N	148° W													
0200	19° 33' N	148° W	Unchanged	5	1017.1	73.4	66.2		2/3 clds		ENE 12s 7' 7"	75.2	22	ENE	
0300	19° 44' N	148° W													
0400	19° 56' N	148° W													
0500	20° 08' N	148° W													
0600	20° 20' N	148° W													
0700	20° 31' N	148° W													
0800	20° 31' N	147° 59' W	Drizzle	5	1020.6	73.4	66.2		1/8 clds		100° 10s 6-7'	75.2	26	100°	
0900	20° 41' N	147° 57' W													
1000	20° 53' N	148° W													
1100	20° 05' N	148° W													
1200	20° 17' N	147° 57' W													
1300	21° 29' N	147° 58' W													
1400	21° 41' N	148° W	Clds diss	25	1020.5	75.2	64.4		1/8 clds		80° 10s 7-9'	73.4	22	80°	
1500	21° 54' N	148° W													
1600	22° 01' N	148° W													
1700	22° 05' N	148° W													
1800	22° 17' N	148° W													
1900	22° 30' N	148° W													
2000	22° 40' N	148° W	Clds form	10	1020.9	73.4	66.2		1/8 clds		E 10s 7-9'	73.4	22	E	
2100	22° 45' N	148° W													
2200	22° 57' N	148° W													
2300	23° 09' N	148° W													
2400	23° 21' N	148° W													

REMARKS:

ALL TIMES LOCAL (WHISKEY); WIND DIR. IN WHOLE DEGREES; WIND SPEED IN KNOTS; TEMPERATURES IN FAHRENHEIT; VISIBILITY IN NAUTICAL MILES;
WAVES IN WHOLE DEGREES; WAVE PERIOD IN SECONDS; WAVE HEIGHT IN WHOLE FEET; SEA LEVEL PRESSURE IN MILLIBARS

SI-MNH-955c

3-4-64

DCF

DATE 28 June 1965

SMITHSONIAN INSTITUTION

DIVISION OF BIRDS

AT SEA SURVEY CHART C

TIME	LAT	LONG	PRES WEA	VIS	SLP	DRY B	DEW PT	HUM %	TL SKY	OPA SKY	WAVES	SEA TEMP	WIND S	WIND D	SHIP COURSE/SPD.
0100	23°29' N	147°59'													
0200	23°30' N	147°59'	Clds form	10	1022.8	71.6	66.2	1	100% clds		E 10s 6-1'	75.2	24	E	
0300	23°41' N	148°													
0400	23°52' N	148°													
0500	24°04' N	148°													
0600	24°14' N	148°													
0700	24°24'	148°													
0800	24°36'	147°58'	Unchang	10	10244	75.2	66.2		7/8 clds		E 10s 6-7'	75.2	22	80°	
0900	24°48'	147°56'													
1000	25° N	147°55'													
1100	25° N	148°													
1200	25°14'	147°56'													
1300	25°28'	148°													
1400	25°39'	148°	Clds diss	25	10246	73.4	64.4		1/2 clds		80°/10s 4-5'	75.2	22	80°	
1500	25°51'	148°													
1600	26°02' N	148°													
1700	26°14' N	148°													
1800	26°26' N	148°06' W													
1900	26°26'	148°													
2000	26°26'	148°	Unchanged	25	10248	73.4	64.4		1/8 clds		E 10s 4-5'	75.2	19	E	
2100	26°26'	148°													
2200	26°26'	148°													
2300	26°26'	148°													
2400	26°21' N	148°15'													

REMARKS:

ALL TIMES LOCAL (WHISKEY); WIND DIR. IN WHOLE DEGREES; WIND SPEED IN KNOTS; TEMPERATURES IN FAHRENHEIT; VISIBILITY IN NAUTICAL MILES;
WAVES IN WHOLE DEGREES; WAVE PERIOD IN SECONDS; WAVE HEIGHT IN WHOLE FEET; SEA LEVEL PRESSURE IN MILLIBARS

SI-MNH-955c

3-4-64

BCF

SMITHSONIAN INSTITUTION

DIVISION OF BIRDS

AT SEA SURVEY CHART C

DATE 29 June 1965

TIME	LAT	LONG	PRES WEA	VIS	SLP	DRY B	DEW PT	HUM %	TL SKY	OPA SKY	WAVES	SEA TEMP	WIND S	WIND D	SHIP COURSE/SPD.
0100	26° 16'	148° 32'													
0200	26° 11'	148° 44'	Unchang	25	1023.6	71.6	64.4		1/8 clds		E 10s 4-5'	75.2	15	E	
0300	26° 06'	148° 57'													
0400	26°	149° 06'													
0500	25° 54'	149° 19'													
0600	25° 48'	149° 31'													
0700	25° 42'	149° 41'													
0800	25° 37'	149° 50'	Clds form	10	1024.6	71.6	64.4		2/3 clds		E 8s 4-5'	73.4	14	100°	
0900	25° 31'	150°													
1000	25° 25'	150° 10'													
1100	25° 19'	150° 20'													
1200	25° 13'	150° 30'													
1300	25° 07'	150° 41'													
1400	25° 01'	150° 52'	Unchang	10	1023.1	77	66.2		1/8 clds		ENE 8s 3-4'	73.4	15	ENE	
1500	24° 56'	151° 05'													
1600	24° 56'	151° 05'													
1700	24° 56'	151° 05'													
1800	24° 56'	151° 05'													
1900	24° 56'	151° 17'													
2000	24° 56'	151° 30'	Clds diss	25	1022.6	75.2	64.4		1/2 clds		E 10s 4-5'	75.2	15	E	
2100	24° 56'	151° 33'													
2200	24° 56'	151° 45'													
2300	24° 56'	151° 53'													
2400	24° 56'	152° 05'													

REMARKS:

ALL TIMES LOCAL (WHISKEY); WIND DIR. IN WHOLE DEGREES; WIND SPEED IN KNOTS; TEMPERATURES IN FAHRENHEIT; VISIBILITY IN NAUTICAL MILES;
 WAVES IN WHOLE DEGREES; WAVE PERIOD IN SECONDS; WAVE HEIGHT IN WHOLE FEET; SEA LEVEL PRESSURE IN MILLIBARS

SI-MNH-955c

3-4-64

BCF

DATE 30 June 1965

SMITHSONIAN INSTITUTION

DIVISION OF BIRDS

AT SEA SURVEY CHART C

TIME	LAT	LONG	PRES WEA	VIS	SLP	DRY B	DEW PT	HUM %	TL SKY	OPA SKY	WAVES	SEA TEMP	WIND S	WIND D	SHIP COURSE/SPD.
0100	24° 59'	152° 16'													
0200	24° 59'	152° 27'	Dingy	10	1022.6	73.4	66.2		100%		ENE 10s 4'	75.2	19	ENE	
0300	24° 59'	152° 39'													
0400	24° 59'	152° 51'													
0500	25°	153° 01'													
0600	25°	153° 11'													
0700	25°	153° 23'													
0800	25°	153° 33'	Prep in sight	25	1023	75.2	66.2		1/2 clds		80° 10s 3-4'	75.2	17	80°	
0900	25°	153° 44'													
1000	25°	153° 57'													
1100	25° 02'	154°													
1200	25° 02'	154° 07'													
1300	25° 02'	154° 19'													
1400	25° 02'	154° 32'	Unchange	25	1022.3	80.6	66.2		1/2 clds		80° 8s 3-4'	77	14	80°	
1500	25° 02'	154° 45'													
1600	25° 02'	154° 59'													
1700	24° 57'	155° 12'													
1800	24° 57'	155° 24'													
1900	24° 57'	155° 36'													
2000	24° 56'	155° 48'	Prep in sight	25	1022	77	66.2		1/2 clds		80° 12s 3-4'	77	12	80°	
2100	24° 56'	155° 53'													
2200	24° 56'	156° 05'													
2300	24° 56'	156° 17'													
2400	24° 56'	156° 29'													

REMARKS:

ALL TIMES LOCAL (WHISKEY); WIND DIR. IN WHOLE DEGREES; WIND SPEED IN KNOTS; TEMPERATURES IN FAHRENHEIT; VISIBILITY IN NAUTICAL MILES;
WAVES IN WHOLE DEGREES; WAVE PERIOD IN SECONDS; WAVE HEIGHT IN WHOLE FEET; SEA LEVEL PRESSURE IN MILLIBARS

SI-MNH-955c

3-4-64

BCF

SMITHSONIAN INSTITUTION

DIVISION OF BIRDS

AT SEA SURVEY CHART C

DATE 1 July 1965

TIME	LAT	LONG	PRES WEA	VIS	SLP	DRY B	DEW PT	HUM %	TL SKY	OPA SKY	WAVES	SEA TEMP	WIND S	WIND D	SHIP COURSE/SPD.
0100	25° 01'	156° 40'													
0200	25° 01'	156° 50'	Drizzle	10	1023.8	73.4	68		3/8 clds		80° 1253-4'	77	16	ENE	
0300	25° 01'	157°													
0400	25° 01'	157°													
0500	24° 51'	157°													
0600	24° 40'	157°													
0700	24° 30'	157°													
0800	24° 20'	156° 58'	Prep in sight	10	1022.3	75.2	66.2		1/2 clds		ENE 105 5-6'	77°	21	ENE	
0900	24° 10'	156° 58'													
1000	24°	156° 58'													
1100	23° 50'	156° 58'													
1200	23° 39'	156° 57'													
1300	23° 28'	156° 58'													
1400	23° 28'	156° 58'	Unchanged	10	1021.3	75.2	69.8		3/8 clds		80° 1055-6'	77	21	E	
1500	23° 17'	156° 58'													
1600	23° 07'	156° 59'													
1700	22° 54'	156° 59'													
1800	22° 44'	157°													
1900	22° 33'	157°													
2000	22° 26'	157°	Prep in sight	10	1019.6	77	66.2		3/8 clds		80° 1055-6'	77	19	E	
2100	22° 22'	157°													
2200	22° 11'	157°													
2300	22° 01'	156° 59'													
2400	22° 01'	156° 59'													

REMARKS:

ALL TIMES LOCAL (WHISKEY); WIND DIR. IN WHOLE DEGREES; WIND SPEED IN KNOTS; TEMPERATURES IN FAHRENHEIT; VISIBILITY IN NAUTICAL MILES;
WAVES IN WHOLE DEGREES; WAVE PERIOD IN SECONDS; WAVE HEIGHT IN WHOLE FEET; SEA LEVEL PRESSURE IN MILLIBARS

SI-MNH-955c

3-4-64

BcF

SMITHSONIAN INSTITUTION
DIVISION OF BIRDS
AT SEA SURVEY CHART C

DATE 2 July 1965

TIME	LAT	LONG	PRES	WEA	VIS	SLP	DRY B	DEW PT	HUM %	TL SKY	OPA SKY	WAVES	SEA TEMP	WIND S	WIND D	SHIP COURSE/SPD.
0100	21° 51'	157° 09'														
0200	21° 43'	157° 15'	02		10	1019.1	75.7	68		3/8 lds		80 105 5-6'				
0300	21° 35'	157° 20'														
0400	21° 25'	157° 27'														
0500	21° 18'	157° 35'														
0600	21° 14'	157° 45'														
0700	at 0615 stop - Diamond Head Bay															
0800																
0900																
1000																
1100																
1200																
1300																
1400																
1500																
1600																
1700																
1800																
1900																
2000																
2100																
2200																
2300																
2400																

REMARKS:

ALL TIMES LOCAL (WHISKEY); WIND DIR. IN WHOLE DEGREES; WIND SPEED IN KNOTS; TEMPERATURES IN FAHRENHEIT; VISIBILITY IN NAUTICAL MILES;
WAVES IN WHOLE DEGREES; WAVE PERIOD IN SECONDS; WAVE HEIGHT IN WHOLE FEET; SEA LEVEL PRESSURE IN MILLIBARS

625 25-43 149-31

910 25-29 150