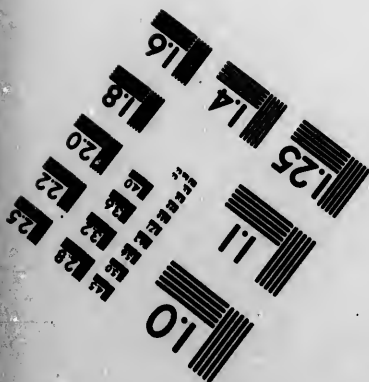
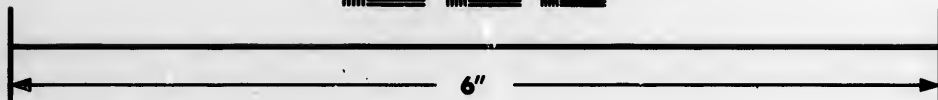
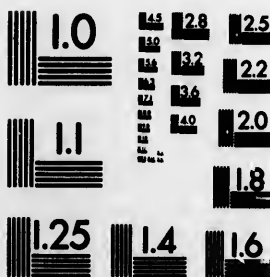


**IMAGE EVALUATION
TEST TARGET (MT-3)**



**Photographic
Sciences
Corporation**

23 WEST MAIN STREET
WEBSTER, N.Y. 14590
(716) 872-4503

1.8
2.0
2.2
2.5
2.8
3.2
3.6
4.0
4.5
5.0
5.6
6.3
7.1
8.0
9.0
10.0
11.2
12.5
14.0
16.0
18.0
20.0
22.5
25.0
28.0
31.5
36.0
40.0
45.0
50.0
56.0
63.0
71.0
80.0
90.0
100.0

**CIHM/ICMH
Microfiche
Series.**

**CIHM/ICMH
Collection de
microfiches.**



Canadian Institute for Historical Microreproductions. / Institut canadien de microreproductions historiques

© 1987

1.0
1.2
1.5
1.8
2.0
2.2
2.5
2.8
3.2
3.6
4.0
4.5
5.0
5.6
6.3
7.1
8.0
9.0
10.0
11.2
12.5
14.0
16.0
18.0
20.0
22.5
25.0
28.0
31.5
36.0
40.0
45.0
50.0
56.0
63.0
71.0
80.0
90.0
100.0

Technical and Bibliographic Notes/Notes techniques et bibliographiques

The Institute has attempted to obtain the best original copy available for filming. Features of this copy which may be bibliographically unique, which may alter any of the images in the reproduction, or which may significantly change the usual method of filming, are checked below.

L'Institut a microfilmé le meilleur exemplaire qu'il lui a été possible de se procurer. Les détails de cet exemplaire qui sont peut-être uniques du point de vue bibliographique, qui peuvent modifier une image reproduite, ou qui peuvent exiger une modification dans la méthode normale de filmage sont indiqués ci-dessous.

- Coloured covers/
Couverture de couleur
- Covers damaged/
Couverture endommagée
- Covers restored and/or laminated/
Couverture restaurée et/ou pelliculée
- Cover title missing/
Le titre de couverture manque
- Coloured maps/
Cartes géographiques en couleur
- Coloured ink (i.e. other than blue or black)/
Encre de couleur (i.e. autre que bleue ou noire)
- Coloured plates and/or illustrations/
Planches et/ou illustrations en couleur
- Bound with other material/
Relié avec d'autres documents
- Tight binding may cause shadows or distortion along interior margin/
Le reliure serrée peut causer de l'ombre ou de la distorsion le long de la marge intérieure
- Blank leaves added during restoration may appear within the text. Whenever possible, these have been omitted from filming/
Il se peut que certaines pages blanches ajoutées lors d'une restauration apparaissent dans le texte, mais, lorsque cela était possible, ces pages n'ont pas été filmées.
- Additional comments: /
Commentaires supplémentaires:

- Coloured pages/
Pages de couleur
- Pages damaged/
Pages endommagées
- Pages restored and/or laminated/
Pages restaurées et/ou pelliculées
- Pages discoloured, stained or foxed/
Pages décolorées, tachetées ou piquées
- Pages detached/
Pages détachées
- Showthrough/
Transparence
- Quality of print varies/
Qualité inégale de l'impression
- Includes supplementary material/
Comprend du matériel supplémentaire
- Only edition available/
Seule édition disponible
- Pages wholly or partially obscured by errata slips, tissues, etc., have been refilmed to ensure the best possible image/
Les pages totalement ou partiellement obscurcies par un feuillet d'errata, une pelure, etc., ont été filmées à nouveau de façon à obtenir la meilleure image possible.

[PRINTED EPHEMERA] 1 SHEET [4]P.

This item is filmed at the reduction ratio checked below/
Ce document est filmé au taux de réduction indiqué ci-dessous.

10X	14X	18X	22X	26X	30X
<input type="checkbox"/>	<input type="checkbox"/>	<input type="checkbox"/>	<input type="checkbox"/>	<input checked="" type="checkbox"/>	<input type="checkbox"/>
12X	16X	20X	24X	28X	32X

The copy filmed here has been reproduced thanks to the generosity of:

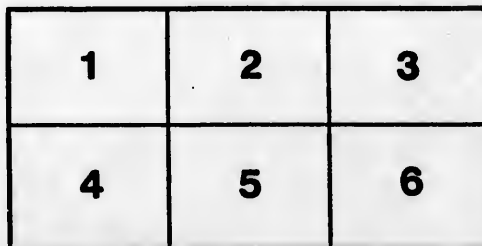
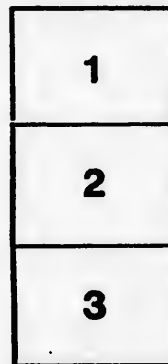
Metropolitan Toronto Library
Canadian History Department

The images appearing here are the best quality possible considering the condition and legibility of the original copy and in keeping with the filming contract specifications.

Original copies in printed paper covers are filmed beginning with the front cover and ending on the last page with a printed or illustrated impression, or the back cover when appropriate. All other original copies are filmed beginning on the first page with a printed or illustrated impression, and ending on the last page with a printed or illustrated impression.

The last recorded frame on each microfiche shall contain the symbol \rightarrow (meaning "CONTINUED"), or the symbol ∇ (meaning "END"), whichever applies.

Maps, plates, charts, etc., may be filmed at different reduction ratios. Those too large to be entirely included in one exposure are filmed beginning in the upper left hand corner, left to right and top to bottom, as many frames as required. The following diagrams illustrate the method:



L'exemplaire filmé fut reproduit grâce à la générosité de:

Metropolitan Toronto Library
Canadian History Department

Les images suivantes ont été reproduites avec le plus grand soin, compte tenu de la condition et de la netteté de l'exemplaire filmé, et en conformité avec les conditions du contrat de filmage.

Les exemplaires originaux dont la couverture en papier est imprimée sont filmés en commençant par le premier plat et en terminant soit par la dernière page qui comporte une empreinte d'impression ou d'illustration, soit par le second plat, selon le cas. Tous les autres exemplaires originaux sont filmés en commençant par la première page qui comporte une empreinte d'impression ou d'illustration et en terminant par la dernière page qui comporte une telle empreinte.

Un des symboles suivants apparaîtra sur la dernière image de chaque microfiche, selon le cas: le symbole \rightarrow signifie "A SUIVRE", le symbole ∇ signifie "FIN".

Les cartes, planches, tableaux, etc., peuvent être filmés à des taux de réduction différents. Lorsque le document est trop grand pour être reproduit en un seul cliché, il est filmé à partir de l'angle supérieur gauche, de gauche à droite, et de haut en bas, en prenant le nombre d'images nécessaire. Les diagrammes suivants illustrent la méthode.

ails
du
odifier
une
mage

rrata
o
pelure,
à

2 June 1864
J. C. W.

Reasons in favor of the Bill now before Parliament for the reorganization of the Ottawa and Prescott Railway.

The Ottawa and Prescott Railway Company was incorporated by Statute 13 and 14, Victoria, cap. 132. (The name was then the Bytown and Prescott Railway.) The Railway passes from Prescott to Ottawa City, and is 54 miles in length.

The Company was organized in 1851 and the Railway was opened through Ottawa City in 1855. The total cost of Road amounts to..... \$2,000,000

and is composed of the following items :

Shares	\$431,758
Mortgages.	
1st Mortgage, 1855, to secure Bonds held by E. V. Company....	\$476,833
2nd do. to Municipalities, 1853.....	300,000
3rd do. to Grand Trunk Railway Company, 1857.....	243,330
	1,020,163
	\$1,452,022
Interest.	
On 1st Mortgage.....	\$154,432
“ 2nd do.....	235,499
“ 3d do.....	34,166
	424,097
	\$1,876,119
debts	127,767
	\$2,003,886

The first mortgage Bonds which are the first security were sold, and iron for the laying of the Rails purchased with the proceeds. These Bonds are now held by the Ebbw Vale Company who furnished the iron, but which Company, during a period of ten years, that the Iron has been laid down, has only received about six months' interest upon the cost of it.

Proceedings in Chancery were taken some time ago to foreclose this mortgage, and under these proceedings the Railway is now in the hands of a Receiver, administering its affairs under the orders of the Court of Chancery.

Negotiations have taken place between the holders of this first mortgage, and the different parties interested in the Road, Shareholders and others, the result of which has been that a Compromise has been agreed upon, with the object of putting the affairs of the Company into a state which would enable it to carry on operations, and prevent the completion of the foreclosure of the mortgage and the sale of the Road by the Sheriff.

The basis of this arrangement is that the Bondholders shall be allowed to vote, and that the mortgages shall so waive their legal rights as will enable the Company to go on without the necessity of pushing the Chancery proceedings to their necessary conclusion, and, thus by sale, placing the whole property in the hands of the first mortgage, entirely destroy every interest coming after that of the first mortgage.

The Road and Rolling Stock are at present in a state of very great and dangerous deterioration. Several wooden bridges on the Line are in an exceedingly insecure state, particularly the two structures ; one across the Rideau and the other across the Nation River.

The net Earnings of the Line up to this time have not only been insufficient to meet any interest upon the first mortgage on the Road, but have barely sufficed to cover the working Expenses. Large amounts for wages and materials supplied for the use of the Road being now in arrear, and the Company encumbered by a very heavy floating debt which it can by no possibility ever be able to pay.

The sleepers are greatly decayed and require renewing throughout a very large portion of the line ; the rolling stock is both entirely insufficient in quantity and in an antiquated state as regards repairs.

With the present amount of rolling stock, it is quite impossible that the line can accommodate the traffic that will offer by the time that the seat of Government is removed to Ottawa, indeed it is quite certain that unless immediate steps are taken to reorganize the affairs of the Company, and put the road and rolling stock in proper repair, and to secure proper confidence on the part of the public that it will be impossible when the seat of Government is removed to Ottawa for the road to be kept open.

The Bill provides, that in addition to the reorganization of the affairs of the Company, and the placing of its various securities in a position which will give each a chance of obtaining something if the road should hereafter become more successful than it has been in the past, and that authority shall be given to raise a sum of \$250,000 as a first charge upon the revenues of the road. This sum, if raised at all, must be found almost, if not entirely, by the holders of the first mortgage, and there is every reason to believe that if the present measure is passed they will consider that their interest will be best served by raising this amount of money and using it for the purpose of putting the road and Rolling stock in a proper and efficient position, in the hope that by this course they may be able not only to secure interest on this new first charge but place the road in a position to earn something for the first mortgage as well as for those parties who hold securities coming after them.

Unless this is done, the road must, during the approaching winter, if not sooner, come to an absolute stoppage. It cannot, in its present state, continue much longer to run trains, and certainly cannot attempt to carry traffic which will offer as soon as the seat of Government is removed to Ottawa. If therefore the present Bill is not passed there will be no course left but for the first mortgagees to enforce their present Chancery proceedings, (which are already in a forward state; the railway being now in the hands of a Receiver,) and as speedily as possible to have the Road sold under the directions of the Sheriff.

In doing this of course the Road must be stopped until such time as the necessary legal proceedings can be carried through, and measures taken for the reorganization of the Company and the placing of its affairs in a position which will enable money to be raised to execute these repairs which are indispensable to its proper and safe working.

Full evidence of the present position of the Company and the cause of the embarrassed state in which it now is, will be given before the Railway Committee to which the Bill will be referred after it has been read a second time in the House.

