

Albertino Pimentel (1874–1929)

Templo Ideal

Canção

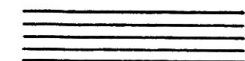
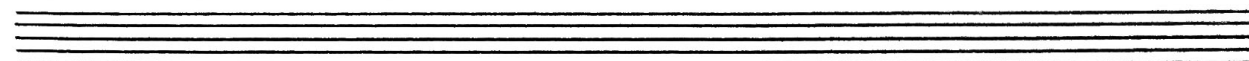
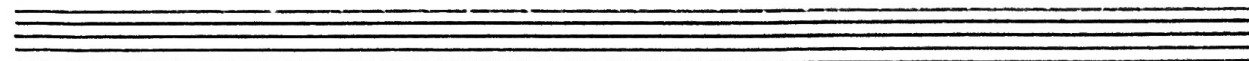
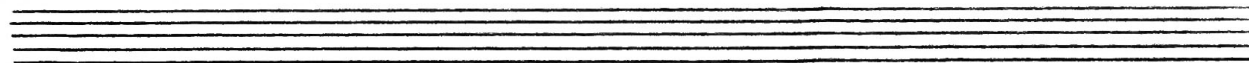
Transcrição: Nelson Piló

violão  
(*acoustic guitar*)

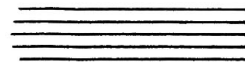
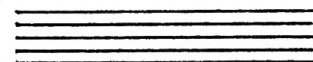
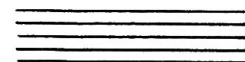
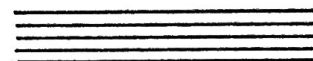
3 p.



MUSICA BRASILIS

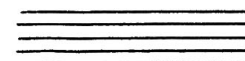
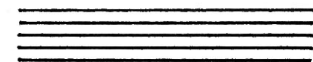


CATULLO DA PAIXÃO CEARENSE  
ALBERTINO PIMENTEL (CARRAMONA)

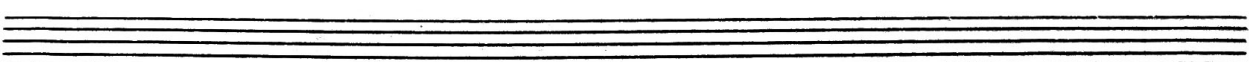
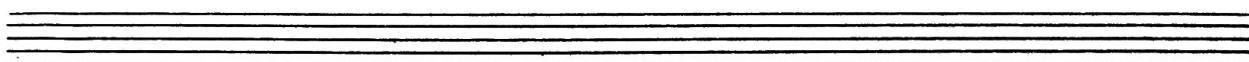
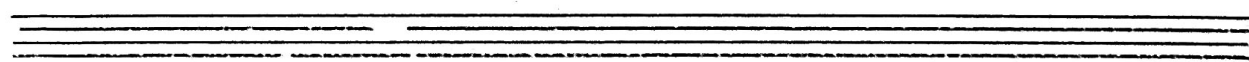
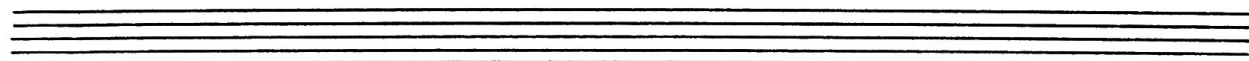
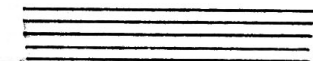
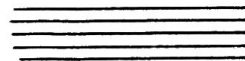
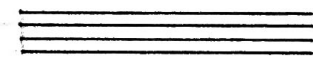


TEMPO IDEAL

Canção



Transcrição para Violão-Solo  
(Guitar-Solo) por NELSON PILO



The image displays a handwritten musical score for guitar, consisting of six systems of two staves each (treble and bass clef). The music is written in G major (one sharp) and 4/4 time. The notation includes various rhythmic values, accidentals, and specific fingering instructions such as (1), (2), (3), (4), (5), (6), (7), (8), (9), (10), (11), (12), (13), (14), (15), and (16). Some measures feature slurs and accents. The piece concludes with the word "Fim" and a double bar line with repeat dots. The handwriting is clear and legible.

Handwritten musical score for guitar, page 4. The score consists of six systems of two staves each. The first system includes fingerings (12), (3) (4), (3), (5), (3), (4), (3), (4), (3), (0) (0). The second system includes a bracketed section with fingerings (12), (13), (5), and a chord diagram for A0 with notes # and E. The third system starts with a treble clef and contains a melodic line with a 7th fret marking. The fourth system continues the melodic line. The fifth system continues the melodic line. The sixth system includes fingerings (2), (2), (3), (5), (2), (3), (5), (7), (7) and ends with a chord diagram for A0 with notes # and E, and the text "E FIM."