

Cass County Schools  
an Illustrated Directory

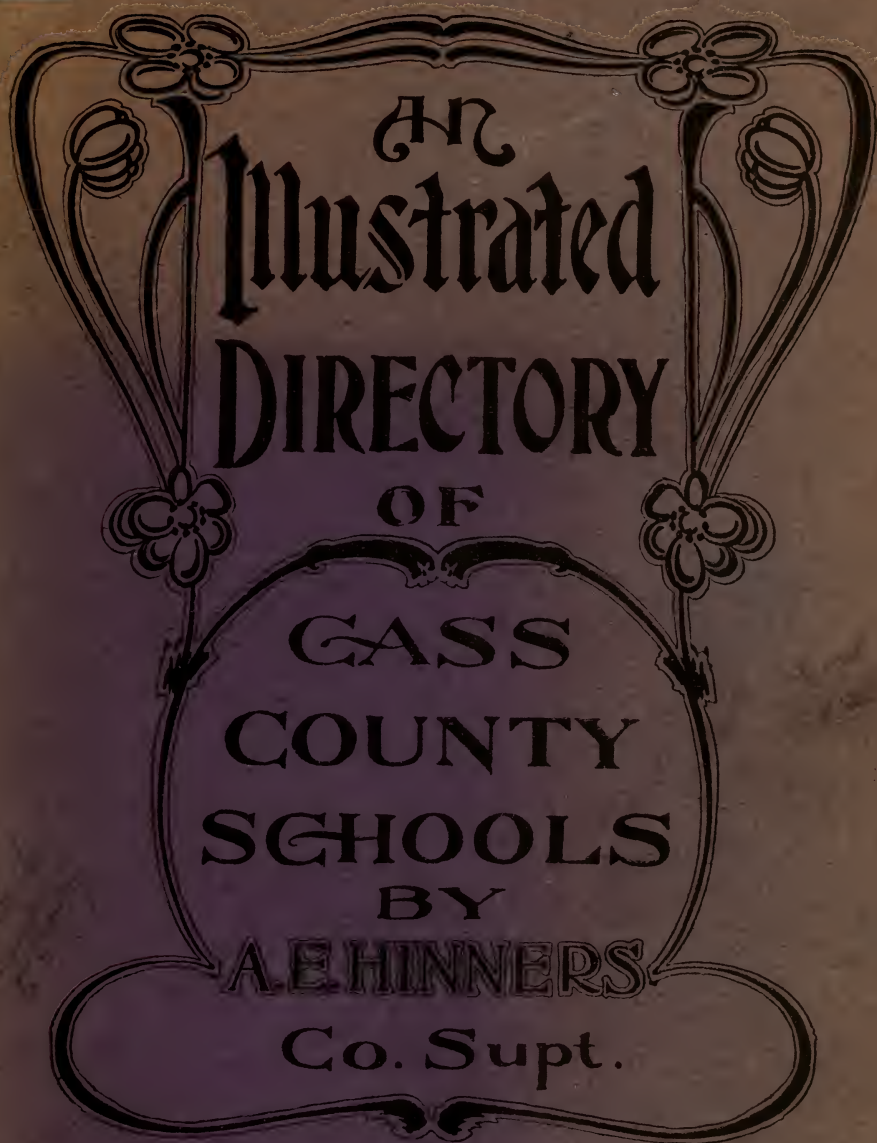
1901-02

LIBRARY OF CONGRESS



0 019 887 258 1

L 903  
.I33 C2  
Copy 1



AN  
Illustrated  
DIRECTORY  
OF  
GASS  
COUNTY  
SCHOOLS  
BY  
A. E. HINNERS  
Co. Supt.

L  
903  
.I33C2



# AN ILLUSTRATED DIRECTORY

...OF...

## CASS COUNTY SCHOOLS



BY  
A. E. HINNERS  
COUNTY SUPERINTENDENT



1000  
I 2802

THE LIBRARY OF  
CONGRESS,  
TWO COPIES RECEIVED  
MAY. 24 1902  
COPYRIGHT ENTRY  
*Feb. 28, 1902*  
CLASS *a* XXc. No.  
*27830*  
COPY B.

## PREFACE



We take pleasure in presenting this Illustrated County School Directory to the pupils and patrons in Cass county, and also in taking this opportunity of extending our thanks for the liberal patronage of the advertisers to whom we are much indebted for the success of this undertaking. To the pupils of Cass County's Public Schools this Directory is dedicated, and we trust it will prove of much interest and enjoyment to them. The advertisements herein contained are of reliable and responsible business men and bona-fide business firms and organizations.

A. E. HINNERS,  
County Superintendent.

Y9A90U 3HT  
2280000 70



ALBERT E. HINNERS.

Albert E. Hinners was born in this county near Hager station June 22, 1873. Attended his home district school until 1889 when he entered the Arenzville high school from which he graduated as valedictorian of his class in 1891. Taught school for three terms in the district schools, then entered the Western Normal College of Bushnell, Ill., from which he graduated in 1895. From 1895 to 1898 taught as assistant principal in the Chandlerville schools. In May 1898 he was nominated by the democratic convention for County Superintendent of Schools and elected the following November. On December 5, 1898, he was installed in the office of County Superintendent which position he now holds.

# OFFICIAL LIST OF TEACHERS

Term of 1901-1902—With Postoffice Addresses



Richard Linder, Arenzville.	Leonia Nolden, Beardstown.
Eda Feldner, Arenzville.	Eda Pappmeier, Beardstown.
Christine Lippert, Arenzville.	Lillie Mohlman, Beardstown.
Alice Guthridge, Arenzville.	Hannah Brodman, Beardstown.
Kate Abney, Arenzville.	Fannie Long, Beardstown.
H. F. Lightfoot, Arenzville.	Louis Mayreis, Beardstown.
Pearl Shaw, Beardstown.	Mrs. J. Charles, Beardstown.
Adelaide Fischer, Arenzville.	Emma Yeck, Beardstown.
Alice Hinchee, Bluff Springs.	J. H. Rishell, Beardstown.
Henrietta Philippi, Beardstown.	Minnie Menze, Beardstown.
Maggie Terril, Beardstown.	Rose Beck, Beardstown.
Effie Bennett, Meredosia.	Ralph Holmes, Ashland.
Mollie Milner, Beardstown.	Lloyd Hamilton, Virginia.
Nellie Rew, Beardstown.	Anna Britton, Ashland.
Grace Emerick, Lydda.	Maida McCormick, Ashland.
Prof. H. J. Jokisch, Beardstown.	Ada Glenn, Ashland.
Joseph Hutton, Beardstown.	Bert Short, Ashland.
Elva J. Saunders, Beardstown.	Carrie Eaton, Ashland.
Anna Crans, Beardstown.	J. May Spears, Ashland.
Jean Newcomer, Beardstown.	Arden Cavender, Ashland.
Emile Feddersen, Beardstown.	Frances Savage, Ashland.
Frances Weaver, Beardstown.	Kate Constans, Ashland.
Mrs. J. G. Dowler, Beardstown.	Clara Sinclair, Ashland.
Nellie McLane, Beardstown.	John Brown, Ashland.
Emma Fisher, Beardstown.	Lewis Anderson, Virginia.
Lena Rausch, Beardstown.	Della Stiltz, Philadelphia.
Mary Long, Beardstown.	Anna Smith, Philadelphia.
Julia Brodman, Beardstown.	Mayme Moreland, Philadelphia.
Rose Oetgen, Beardstown.	Mary Kilham, Virginia.





ALFRED BAYLISS.

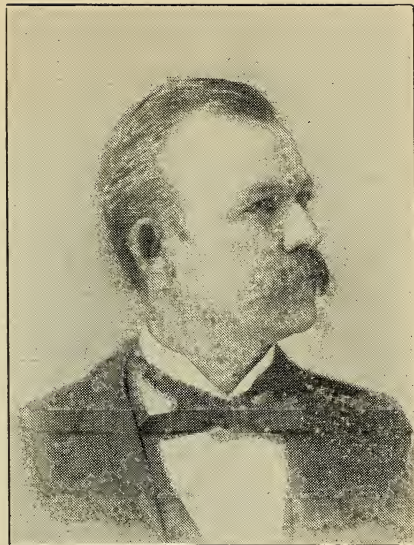
State Superintendent of Public Instruction.

## OFFICIAL LIST OF TEACHERS

(Continued)



J. C. Walters, Chandlerville.	Mrs. Bettie Way, Virginia.
Chas. Harbison, Chandlerville.	Josephine Sallee, Virginia.
Margaret Irvine, Chandlerville.	Edith Coleman, Virginia.
Emma Overman, Chandlerville.	Lee Springer, Virginia.
Louise Horstman, Chandlerville.	Eugene Sinclair, Virginia.
Edith Hinkle, Chandlerville.	Lee Robinson, Virginia.
Mrs. N. McDonald, Chandlerville.	Robert Wright, Newmanville.
Mrs. Sallie Wilson, Chandlerville.	John Lockwood, Oakford.
Josephine Watkins, Chandlerville.	Ira O. Fox, Virginia.
Josphine Craven, Chandlerville.	Florence Black, Virginia.
Chas. Dillow, Chandlerville.	Grace Todd, Beardstown.
John Reynolds, Philadelphia.	Laura Brown, Beardstown.
Amelia Miles, Chandlerville.	Vida Crum, Virginia.
Mauve Alcorn, Sylvan.	Lillian Nester, Sylvan.
Jean Reid, Virginia.	Emma McDonald, Chandlerville.
Emma Suffern, Virginia.	Anna Nordsiek, Beardstown.
Kate Lebkeucher, Beardstown.	Florence Fox, Virginia.
M. J. Alkire, Virginia.	Virginia Kikendall, Virginia.
Kate Bellersheim, Virginia.	Ethel McNeill, Jules.
Chas. W. Russell, Virginia.	Pearl Garner, Sylvan.
Ella Wilson, Virginia.	Louise Savage, Virginia.
Henry Jacobs, Virginia.	Eva Ater, Virginia.
Alice Suffern, Virginia.	Frank Reynolds, Philadelphia.
Edith Mains, Virginia.	Olive Fielder, Virginia.
Anna Suffern, Virginia.	Lizzie Treadway, Beardstown.
Ernestine Hillig, Virginia.	Flora Doyle, Beardstown.
Mabel Leeper, Virginia.	Alice Flinn, Beardstown.
Harmonia Tate, Virginia.	Bert Springer, Virginia.



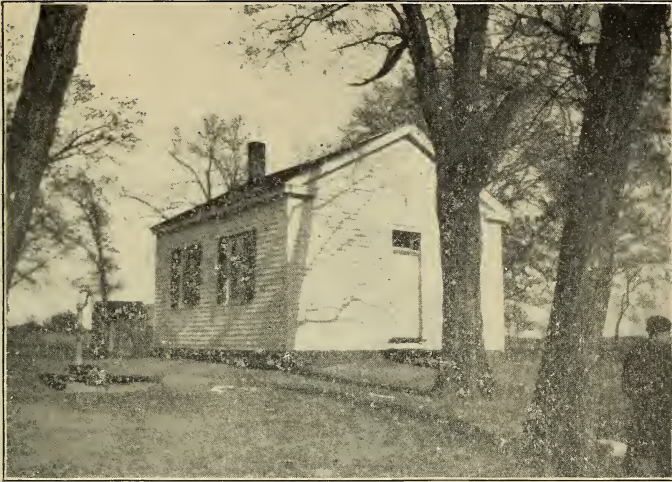
**CHARLES A. SCHAEFFER.**

Charles A. Schaeffer was born in Bluff Springs precinct May 24, 1855. Received his early education in the district school, afterwards attended the Virginia high school and the State Normal school. He taught a number of terms in the district schools and in 1886 was elected County Superintendent and served for two terms. In 1896 he was elected States Attorney of Cass county and served one term.

## TOWNSHIP SCHOOL TREASURERS



Ryal Armstrong, 19-8,	Oakford
W. T. Pratt, 19-9,	Chandlerville
W. G. Harris, 19-11,	Beardstown
Geo. R. Mathews, 18-8,	Newmanville
W. K. Mertz, 18-9,	Chandlerville
Andrew Schaad, 18-10,	Chandlerville
Louis Perbix, 18-11,	Beardstown
John Nicholson, 18-12,	Beardstown
W. S. Rearick, 17-8,	Ashland
Wm. J. Higginson, 17-9,	Philadelphia
J. I. Parkhurst, 17-10,	Virginia
J. M. Swope, 17-11,	Arenzville
Henry Hinners, 17-12,	Beardstown
Christ Lovekamp, 17-12 and 13,	Arenzville



## HAGENER SCHOOL.

District No. 39, 17-12.

This school house was built in 1850 and was first used as a German and English school. This is the home district of Supt. A. E. Hinners, and it was here that he first entered school. The present teacher is Miss Pearl Shaw.

### BOARD OF DIRECTORS.

H. A. Hierman, President, Beardstown.

A. Schuman, Clerk, Arenzville.

W. F. Hinners, Member, Beardstown.

# CIRCULAR



APRIL 1, 1902.

TO THE DIRECTORS OF CASS COUNTY:—

GENTLEMEN:

In visiting among the schools the past years, I have made a note of the fact that in many districts there is a mixture of text books. It is not unusual to find two or three texts in arithmetic of various kinds, and as great a variety of readers, thus necessitating the formation of extra classes to accommodate pupils of the same grade of advancement. In this way the time of the teacher is dissipated and the energies of the pupil wasted. It is certainly poor economy to pursue a course in the management of a district school that requires the formation of two or more classes in the same subject where, if the text books were the same, one class would accomplish much more, on account of the extra time the teacher could devote to the subject, and added enthusiasm in the larger class over the smaller. Uniformity of text books in the district is essential, and in the county desirable. If all the schools of the county were using the same texts it would effect a great saving to the renter who can ill afford to provide a new set of books for his children every time he moves from one district to another. It would effect a saving to all of the patrons, because dealers would have less dead stock to carry and could therefore sell at a lower price and still make a better profit. It would enable the county superintendent to better plan and arrange his work for advancement, examinations and promotions.

Some of the texts in use in the schools are very old and compare just as unfavorably with the later texts

as the old-fashion single-shovel plow compares with the latest pattern of riding plow; and the pupil who must use the old book labors under as much of a handicap as does the farmer with the old-time plow.

To this end that our schools may be benefitted at little or no additional cost, I have made an examination of the later text books, some of which are already in use in a number of districts in the county, and take pleasure in recommending to directors generally, the following list:

The Baldwin Readers,	Natural Speller,	Milne's Arithmetics
Maxwell's Grammers,	Natural Geographies,	McMaster's Histories,
Overton's Physiologies,		Barnes' Natural Slant Copy Books
Milne's Algebras,	Williams & Rogers' First Lessons in Book-Keeping.	

I do not believe in frequent changes in text books, but there come times when it is to the best interests of all concerned to have a change. This I have to suggest: Make the exchange of the old books for the new at such times as classes are promoted from one grade to the next higher, using the old book to pay 40 per cent. of the introduction price of the new book. Arrangements for the exchange will be made with all the dealers in the county. I hope you will co-operate with me in this matter, for I know it will prove to be a good thing for the school of the county.

Please bring the matter up at your next meeting, and if you adopt the list make a record of the adoption, then, in order to preserve uniformity, do not allow teacher or any one else to induce a change. Following are the prices dealers will charge for the new books. The exchange price will prevail during the period of introduction, when the old book in use is given as part pay for the new.

The introduction price will be charged where no old book is given in exchange, and is to prevail during,

as well as after, the period of introduction, as long as the books are in use in the county.

	Introduction—	.20	Exchange	.12
Natural Speller—				
Baldwin Reader, 1st year.....	“	.25	“	.15
Baldwin Reader, 2nd year.....	“	.35	“	.21
Baldwin Reader, 3d, 4th or 5th year..	“	.40	“	.24
Baldwin Reader, 6th, 7th, years.....	“	.45	“	.27
Baldwin Primer.....	“	.30	“	.18
Milne’s Elements of Arithmetic.....	“	.30	“	.18
Milne’s Standard Arithmetic.....	“	.65	“	.39
Maxwell’s First Book in English.....	“	.40	“	.24
Maxwell’s Intro, Lessons, Eng. Gram.	“	.40	“	.24
Maxwell’s Advanced “ , Eng. Gram.	“	.60	“	.36
Natural Elementary Geography.....	“	.60	“	.36
Natural Advanced Geography.....	“	.75	“	1.25
McMaster’s Primary History.....	“	.60	“	.36
McMaster’s United States History.....	“	1.00	“	.60
Overton’s Primary Physiology.....	“	.30	“	.18
Overton’s Intermediate Physiology...	“	.50	“	.30
Overton’s Advanced Physiology.....	“	.80	“	.48
Milne’s Elements of Algebra.....	“	.60	“	.36
Milne’s High School Algebra.....	“	1.00	“	.60
Williams & Rogers, First Lessons				
Book-Keeping.....	“	.70	“	.42
Blanks for the same, per set of six.....				45
Barnes’ Natural Slant Copy Books No. 8, per Doz .....				75

I Shall be glad to have directors, patrons and teachers, confer freely with me concerning this uniformity of text books, as well as on all other subjects pertaining to schools.

Let us strive together to make our schools more efficient than they have been. Education pays as an investment, to say nothing of the broader, higher view of the subject. Education renders labor more effective. A man who is intelligent and skillful can perform more work of any kind than one who is ignorant and awkward.

A good education is everywhere a passport to good society. We are all anxious that our children should possess the PASSPORT.

Yours very respectfully,

A. E. HINNERS,

County Supt. of Schools,





## HALL SCHOOL.

District No. 50, 17-11.

Teacher, Miss Louise Savage.

Frank Stribling, President, Virginia.

Angus Taylor, Clerk, Virginia.

Philo Davis, Member, Virginia.

This is one of the oldest school buildings in the county, but has a large and beautiful shaded lawn.



## BLUFF SPRINGS SCHOOL.

District No. 17, 18-11.

Teacher, Miss Mayme Moreland.

G. G. Trussell, President, Bluff Springs.

John Hegener, Clerk, Bluff Springs.

A. Jokisch, Member, Bluff Springs.

This is one of the largest schools in the county, enrolling about sixty pupils, and was built about 1870.



## SPRINGER SCHOOL.

District No. 31, 17-11.

Miss Olive Fielder. Teacher.

George Tritsch. President. Arenzville.

J. D. Springer. Clerk. Arenzville.

Howard Turley, Member. Arenzville.

This school was built in 1888 and is nicely arranged for a country school. Many interesting debates were held in this school by its literary and debating societies.

# VIRGINIA PUBLIC SCHOOLS.



## BOARD OF EDUCATION.

E. Needham, President. J. T. Robertson, Secretary.  
Robert E. Widmayer. C. A. Simmons. Samuel R. Suffern.  
Chas. Wilson. Philemon Stout.

## CORPS OF TEACHERS.

Milem J. Alkire, Superintendent.  
Kathryn H. Bellersheim, Principal High School.  
Chas. W. Russell, A. B., Assistant Principal High School.  
Henry Jacobs, Eighth Grade.  
Ella Wilson, Seventh Grade.  
Anna Suffern, Fifth Grade. Josephine Sallee, Sixth Grade.  
Ernestine Hillig, Fourth Grade.  
Mabel Leeper, Third Grade.  
Alice Suffern, Second Grade.  
Harmonia Tate, First Grade.  
Mrs. Pauline R. Mantle, Supervisor of Music.

Tuition—High School, \$20 per year; 8th to 4th grade, \$18; 4th to 1st, \$14. Library containing about 1000 volumes is at pupils' disposal.



## HIGH SCHOOL COURSE.

English I.	English II.	English III.	English IV and
Algebra I.	Plane Geometry.	Solid Geometry.	Grammar.
Civics-Physiology	Zoology and	and Algebra II.	Physies.
Music.	Botany.	General History	Physical Geogra-
	Music.	Music.	phy, Arithmetic.
			Music.

(Required.)

Latin I.	Latin II.	Latin III.	Latin IV.
German I.	German II.	Book-keeping.	English and Amer-
		German II.	ican History.
			German II.
			Book-keeping

(Choose one of the above.)



## GERMAN PAROCHIAL SCHOOL.

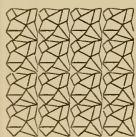
Township 17, Range 12.

This school is sectarian and under the control of the German Lutheran congregation of Lydia Cass county, Illinois. As this is a parochial school it is under the management of this denomination which contributes the funds for its support. The Rev. Kletke is the present pastor of this church and teacher of the school.

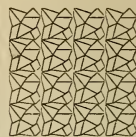
JOHN SOURS.  
ALBERT AMANT.

Chandlerville  
Manufacturing Company

MANUFACTURERS AND DEALERS IN ALL KINDS OF



NATIVE LUMBER  
AND EXCELSIOR



CUSTOM SAWING  
DONE TO ORDER FOR ALL KINDS OF BUILDINGS.

YOUR PATRONAGE SOLICITED.

ALL WORK GUARANTEED.

HENRY DORR...

GENERAL HARDWARE  
STOVES . TINWARE  
BUILDERS' HARDWARE  
PAINTS . OILS . GLASS  
PUMPS . WINDMILLS

... CHANDLERVILLE, ILL.

GET A FEW POINTS  
FROM

G. W. LEEPER & SON

OF

CHANDLERVILLE, ILL.

ON FURNITURE, CARPETS AND WINDOW SHADES

UNDERTAKING AND EMBALMING



## MORGAN SCHOOL.

District No. 6. 18-9.

John Reynolds. Teacher.

H. H. Herring. President. Chandlerville.

Joseph J. Eble. Clerk. Chandlerville.

William P. Kirchner. Member. Chandlerville.

This school house was built in 1897 on the same site where the old brick school house was located. This school enrolls about forty pupils and is a good modern, substantial building.

F. M. FREER, Publisher.

G. M. FREER, Editor.

# THE ARENZVILLE TIMES

FREER & SON

A GOOD ADVERTISING MEDIUM  
A CLEAN, READABLE FAMILY PAPER  
HOME NEWS A SPECIALTY

\$1.00 PER YEAR

UP TO DATE JOB WORK OF ALL KINDS

ALL WORK GUARANTEED TO GIVE SATISFACTION

OPPORTUNITY IS  
THE MASTER OF  
HUMAN DESTINY

This maxim applies to all trades or professions. The above will be fully demonstrated by calling upon the undersigned, who carry a full line of General Merchandise.

Very respectfully,

**HYSINGER & WEEKS**

ARENZVILLE, ILL.

FACES FIXED FOR FASTIDIOUS  
FOLKS WITHOUT FIERCE  
FEATURES, FRECKLES OR FROWNS, AT

**H. W. RECKAMP'S  
BARBER SHOP**

WHITE SWAN  
LAUNDRY AGENT

ARENZVILLE, ILL.





## BUCK SCHOOL.

District No. 38, 17-11.

Miss Alice Hinchee, Teacher.

Ferdinand Winholdt, President, Beardstown.

Henry Kloker, Clerk, Arenzville.

Elsie Merritt, Member, Arenzville.

This school building was built in 1892 and is one of the most convenient and adequately arranged school houses in the county. The surroundings are beautiful and all things considered this is an exemplary district school.

# Moral



Buy your Dry Goods, Clothing, Hats, Shirts and Shoes, at AMANT'S, and like the man with the twins, you will get more than you expected or bargained for.

## R. Amant Est.

CHANDLERVILLE, ILL.

## The Home Bakery

Is the place for Fresh Bread, Rolls, Pies, Cakes, Etc.  
Special Attention given to Weddings and Parties.  
Ice Cream and Oysters in Season.

Virginia, Ill.

John Stieler, Prop.

## J. C. GREER..

LIVERY, FEED AND  
SALE STABLE..

OPPOSITE HOTEL MANN.

..VIRGINIA, ILL.



## LOVEKAMP SCHOOL.

District No. 46, 17-11.

Miss Kate Abney, Teacher.

Herman Roegge, President, Arenzville.

L. C. Hackman, Clerk, Arenzville.

Lewis Lovekamp, Member, Arenzville.

Built in 1865. remodeled in 1890. This school enrolls about thirty pupils. Supt. Hinnars taught this school two terms, 1893-1895. Many other of Cass county's prominent teachers have wielded the birch here, among whom are Misses Rausch, Long, Milner and Green.

OFFICIAL PAPER OF CASS COUNTY

Established 1874

\$1.50  
PER YEAR IN ADVANCE.

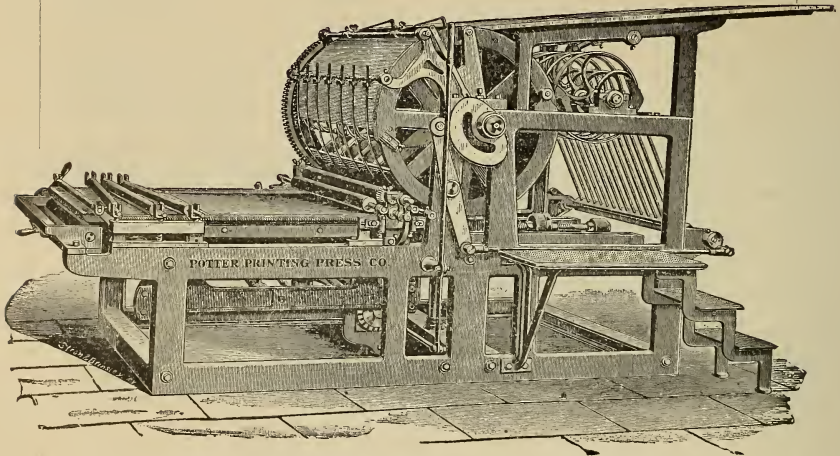
THE

# Virginia Enquirer.

Established 1874

\$1.50  
PER YEAR IN ADVANCE.

HARRY F. DOWNING, Editor and Publisher.



( The Press That Printed This Directory—The ENQUIRER'S Potter Jr. )

## A Job Department

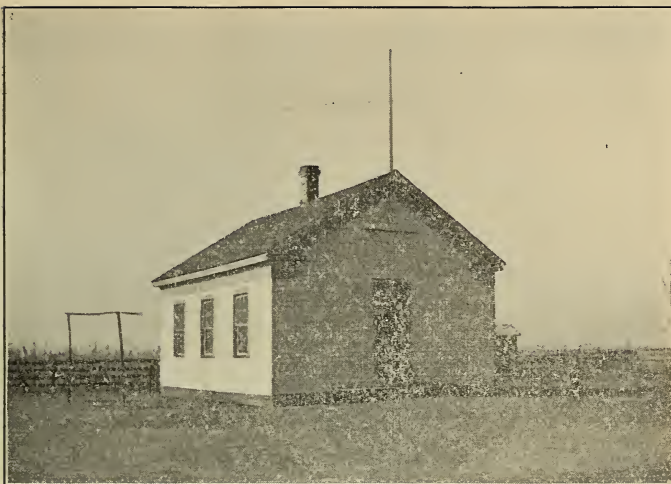
OF THE BEST EQUIPMENT.



The Imprint

### “ENQUIRER PRESS”

Insures Excellence and Satisfaction.



## CROW'S POINT.

District No. 112, 17-8.

Miss Kate Constans. Teacher.

Noah Smith, President. Ashland.

Wm. Newell, Clerk. Ashland.

H. C. Stribling. Clerk, Ashland.

Crow's Point school was moved from near Ashland in 1894 and is one of the first school houses built in Cass county. It has a nice large yard in which the planting of trees would greatly improve the appearance of the school property.

## TRUSTEES BY TOWNSHIPS.



19-8—J. T. Lynn, Oakford.

T. A. King, Chandlerville.

J. W. Lynn, Chandlerville.

19-9—J. F. Adkins, Chandlerville.

Geo. Friend, Chandlerville.

N. H. Boone, Chandlerville.

18-8—Samuel Edwards Newmanville. 19-11—F. Lebkeucher, Beardstown.

A. A. Ormiston, Newmanville.

Edward Stuke, Beardstown.

Heye Dorn, Newmanville.

Peter Blohm, Beardstown.

18-9—G. W. Leeper, Chandlerville.

John A. Phelps, Chandlerville.

S. E. Hutches, Chandlerville.

18-11—Chas. Blume, Beardstown.

18-10—David Carr, Chandlerville.

Wm. Schuttén, Beardstown.

John Brech, Virginia.

Geo. H. Kuhlman, Beardstown.

Chas. McNeill, Virginia.

18-12—John H. Hagener, Beardstown.

John Shultz, Beardstown.

H. C. Meyer, Beardstown.

17-9—James Cunningham, Virginia.

17-8—L. C. Hewitt, Ashland.

Wm. Reynolds, Philadelphia.

P. A. Sinclair, Ashland.

Abraham Bailey, Philadelphia.

John Beggs, Ashland.

17-10—Wm. Buracker, Virginia.

D. N. Walker, Virginia.

J. D. Ward, Virginia.

17-12—C. S. Kreuger, Arenzville.

17-11—G. W. Crum, Arenzville.

John Korsmeyer, Lydda.

H. E. Lovekamp, Arenzville.

August Hamsmeier, Arenzville.

F. W. Lovekamp, Arenzville.

17-13—Fred Holtman, Beardstown.

H. W. Korsmeyer, Lydda.

John Pelker, Beardstown.



## WALNUT GROVE SCHOOL.

District No. 52, 17-9.

Frank Reynolds, Teacher.

G. W. Sprangler, President, Philadelphia.

Morris Jokisch, Clerk, Virginia.

A. Liter, Member, Little Indian.

The first school house was built on present site about 1862, and was struck by lightning and burned in 1871, after which the present structure was erected. This school enrolls about thirty pupils.

# Virginia Tile and Brick Works

---

Hard Coal  
Springfield Soft Coal  
Tile, Brick and Building Stone  
Wood  
Fence Posts

---

Number One Hard Wood and Cut Stove Wood.

Large Supply of

Fine Seven-Foot White Oak Fence Posts.

All Orders Promptly Filled.

## Chas. E. Paul

Proprietor.

Bell Phone 232 . . V. & L. I. 22





## PAROCHIAL SCHOOL.

This is a good picture of the German Parochial school of St. Peter's Evangelical Luthern church of Arenzville and is maintained by the congregation of St. Peter's Luthern church. Rev. J. D. Schmidt is the pastor of St. Peter's church and the teacher of this school.

J. E. SPEAKER

SOUTH SIDE

JEWELER

VIRGINIA, ILL.

FOR EVERYTHING IN THE JEWELRY LINE.

ALSO ALL KINDS OF  
WATCH, CLOCK AND JEWELRY REPAIRING

ALL GOODS AND WORK GUARANTEED.

YOUR  
FAMILY DRUGGIST

FOR DRUGGISTS' SUNDRIES  
STATIONERY  
PAINTS AND OILS  
WALL PAPER  
CHOICE LINE OF CIGARS

NO SUBSTITUTING IN ANY FORM.

SODA WATER IN SEASON  
TRY OUR NEW DRINKS FOR THIS SEASON.

ELI McCAULLEY

SOUTH SIDE SQUARE



## VIRGINIA PRIMARY SCHOOL.

District No. 32, 17-10.

Miss Harmonia Tate, Teacher 1st Grade. Miss Alice Suffern, 2nd Grade.

Under control of Board of Education of the city of Virginia.

This building was formerly the old Cass county Court House but was remodeled and ever since has been used for the primary grades of the Virginia schools. The school grounds consist of an entire block abundantly shaded by towering locust trees.

# THE NORTH STAR

## DRY GOODS AND MILLINERY STORE

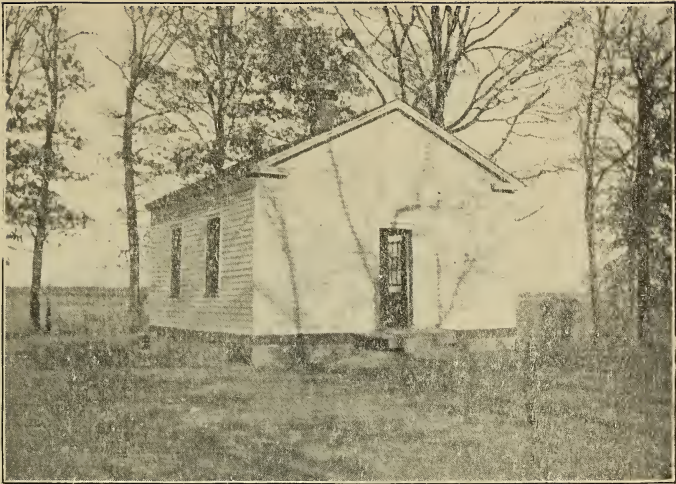
### AN EASY LESSON

---

If you want to learn an easy lesson in economy, better examine into this proposition. Here we have plenty of excellent things to offer and plenty of reasons for believing you will want to buy. It's our impression that you'll be pleased with what we sell, and that in any and every purchase there will be no doubt of the quality of the article you buy, nor uncertainty of such complete satisfaction that we will be justified in counting on your continued custom.

# A. H. CREWS

NORTH SIDE SQUARE, VIRGINIA, ILLINOIS.



## QUEBEC SCHOOL.

District No. 22, 17 and 18-9.

I. O. Fox, Teacher.

F. C. Fox, President, Virginia.

Wm. Millner, Clerk, Philadelphia.

Frank Reding, Member, Virginia.

This school building is small, but the grounds are rolling and make it a good school site. The yard is well shaded with trees and all things considered this school property is in fairly good condition.

Good Circulation—Excellent Advertising Medium  
Rates Made Known on Application

---

# CHANDLERVILLE TIMES

EB. SPINK, Publisher.

---

Subscription \$1.50 Per Year  
Only Paper in a Town of 1,200 Inhabitants

For Reliable DRY GOODS, DRESS GOODS,  
SILKS, TRIMMINGS,  
and NOVELTY DRESS GOODS, go to

# HUEYS

NEW STORE  
East Main St.  
BEARDSTOWN,  
ILL.

All Kinds of Fancy Goods at Lowest Prices.

Best Values in Skirts,

Petticoats and Muslin Underwear.

Shoes and Men's Furnishing Goods.

Fall and Winter Jackets, Capes and Suits.

Our Motto—QUICK SALES, SMALL PROFITS.

You will find it pays to trade at HUEYS.



**ANNA M. SMITH.**

Miss Anna M. Smith was born in Chandlerville and attended the public schools and graduated from the Chandlerville high school in 1892. Began teaching school in fall of 1892 in the district schools of Mason county. Taught in the graded schools of Bath and Chandlerville, and in the district schools of this county at Box Elder and is now teaching the Philadelphia school where she is meeting with the most eminent success.

JOHN S. NICHOLSON.  
F. M. FULKS.

---

The  
Beardstown  
Illinoisian-Star

cccc

Daily and Weekly

---

---

WEEKLY ISSUED ON FRIDAY  
AND DAILY EACH EVENING

---

---

Subscription—

Weekly \$1.50 Per Year, In Advance.

Daily \$4.50 Per Year

or 10c Per Week, Delivered to Your Home.

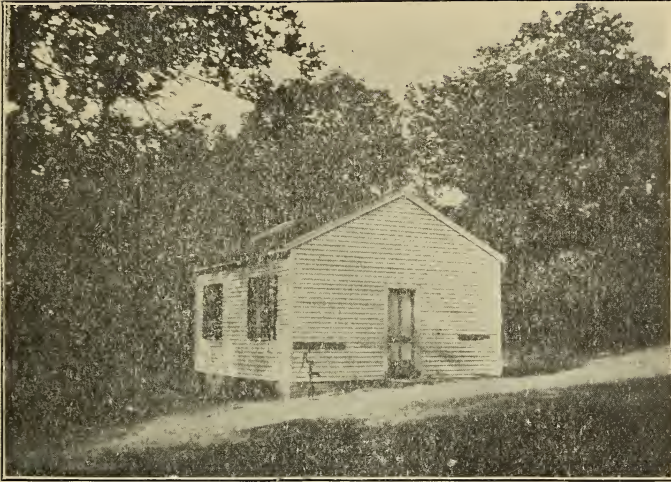
All Job Work Done Promptly  
and  
in First-Class Style

When in Need of Printing Come and See Us.

NICHOLSON & FULKS.

EDITORS AND PROPRIETORS—BEARDSTOWN, ILL.





## KORSMEYER SCHOOL.

District No. 41, 17-12 and 13.

Grace Emerick, Teacher.

Henry Fricke, President, Lydda.

H. H. Korsmeyer, Clerk, Lydda.

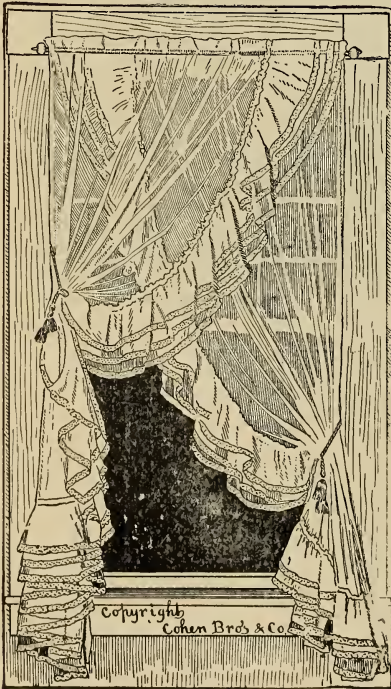
Henry Schnake, Member, Lydda.

This school was built in 1866, and has been repaired and remodeled several times since. It is located in the woods and is almost surrounded by timber.

The Big Dry Goods and Carpet Store  
OF CASS COUNTY

# The Model

SIGHTSEEING OR SHOPPING, NOBODY VISITS BEARDSTOWN  
WITHOUT SEEING THE INSIDE OF THE BIG STORE



All the novelties, as they appear in the markets, are exhibited on our counters at popular prices.

In connection with a complete assortment of Dress Goods, Table Linens, Underwear and Notions we carry an enormous line of Ingrain Carpets, Art Squares and Rugs at city prices.

We show fifty styles of Lace Curtains, Rope Portierres, Damask Curtains, Oil Shades, Tapestry and Valour Drapery.

We welcome you to our store whether you buy or not.

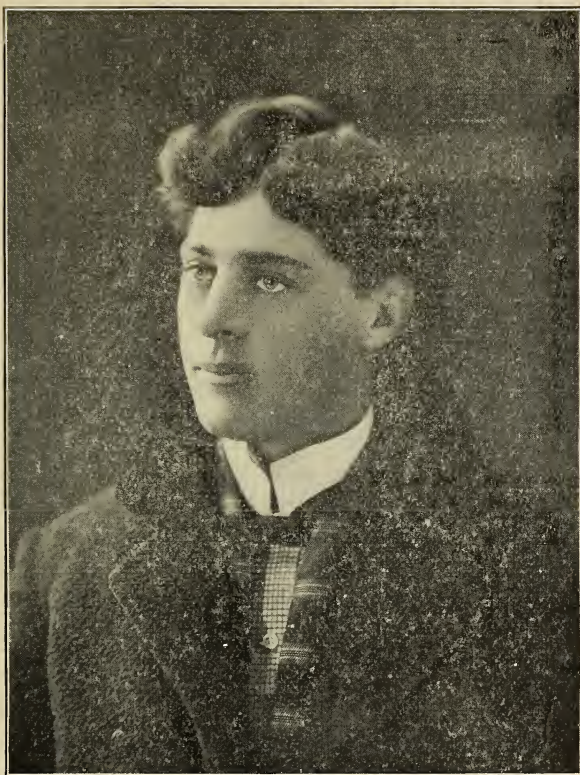
Samples and prices sent on request.

We want your business and you need our goods.

TELEPHPONE 674.

## KUHL & JOCKISCH.

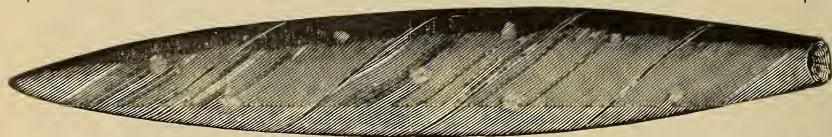
BEARDSTOWN, ILL.



**ROBERT WRIGHT.**

Robert Wright was born in this county near Philadelphia and attended the district school near his home. He began teaching in 1890, and has taught successfully in various schools of Cass, Morgan and Menard counties. At present he is teaching his second term at the Circleville school.

Why pay 10c for a cigar  
when you can get

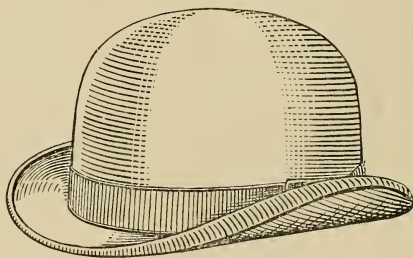


Kessler's Special Binder  
for 5c

which is equally as good



Manufactured by A. Kessler  
Virginia, Ill.



The only Exclusive Ladies'  
and Gents' Furnishing House  
in Cass County where you  
will find the latest and most  
up to date clothing for ladies  
and gentlemen is that of

**J. J. CLEGG,**

CHANDLERVILLE, ILL.



## WILSON SCHOOL,

District No. 4, 19-9.

Amelia Miles, Teacher.

Arthur Harbison, President, Chandlerville.

J. T. Wilson, Clerk, Chandlerville.

Smith Workman, Member, Chandlerville.

This school enrolls about thirty-five pupils and has for a number of years been considered one of the best graded district schools in the county. This school has always been represented in the central examinations and quite a number of these scholars hold county common school diplomas.

# You Get One Paper Free

The subscription price of the Gazette is \$2.00 per year, but each subscriber who pays a year in advance is entitled to a year's subscription free, to either the Chicago Weekly Inter Ocean, Prairie Farmer, Iowa Homestead or Goodall's Farmer and Weekly Drovers' Journal. For \$2.35 you can get the Gazette one year and either the Twice a Week St. Louis Globe Democrat, Twice a Week Republic, Twice a Week State Journal, Twice a Week State Register or Wallace Farmer one year. The Daily Drovers' Journal and Gazette one year for \$5.00. Daily Globe or Republic one year with Gazette \$5.50.

THE GAZETTE IS THE BEST ADVERTISING MEDIUM  
BECAUSE IT HAS A LARGER NUMBER OF READERS  
THAN ANY OTHER NEWSPAPER IN CASS COUNTY

## THE VIRGINIA GAZETTE

C. M. TINNEY, Publisher.  
HENRY McDONALD, Business Manager.

VIRGINIA, ILL.

ALWAYS THE BEST...NOW THE BIGGEST AND BEST



## OREGON SCHOOL.

District No. 25, 18-8 and 9.

Florence Black, Teacher.

A. R. Taylor, President, Sylvan.

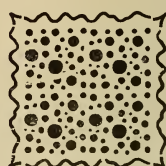
D. M. Wyatt, Clerk, Sylvan.

J. H. Garner, Member, Sylvan.

This school was built in 1855 and remodeled in 1889. It is situated near a nice grove of trees and has a large open play ground or campus.

# Virginia-Little Indian Telephone Company

INCORPORATED.



CONNECTIONS MADE WITH ALL POINTS IN  
CASS AND ADJOINING COUNTIES.

Patronize  
a Home Industry.

## The Horse Shoe Lunch Room

E. L. CLARK, Proprietor,

Lunch at All Hours, Open Day and Night.  
Fine Bakery Goods, Cake and Pies  
Fine Tobacco and Cigars. Fruits, Candies, Etc.  
Peanuts Roasted Daily. Regular Meals 25c. Oysters served in any  
style. All Kinds of Soft Drinks  
South Side Square, VIRGINIA, ILLINOIS.

## The Ashland Sentinel

A Weekly Paper For All The People.

P. W. BAST,  
Publisher.

Subscription—\$1.50 Per Year.





## ZION SCHOOL.

District No. 51, 17-10.

Eva Ater. Teacher.

J. W. James. President. Little Indian.

Frank Colston. Clerk, Little Indian.

Jesse Decker, Member, Little Indian.

This school house, when first located on the present site, was a brick structure which was torn down and the frame house built in 1876. This building was formerly used as a church and is commonly known as the Little Indian school.

# S. W. Bailey & Son,

Dealers in

STAPLE AND FANCY GROCERIES,  
FRUITS, CIGARS AND TOBACCO.

NORTH SIDE SQUARE, VIRGINIA, ILLINOIS.

## HENRY C. KIEL

DEALER IN

Stoves, Tin and Hardware,  
Meyer & Bros., Steel Fur-  
naces, Round Oak Stoves  
and Majestic Ranges

a specialty.

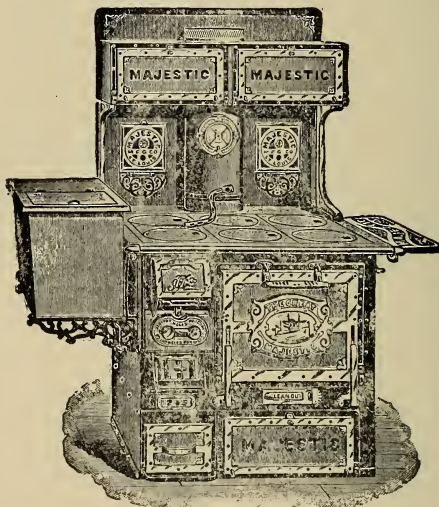
Roofing

Guttering

Spouting

and Plumbing done on short  
notice and at reasonable  
prices.

Beardstown,  
Illinois.

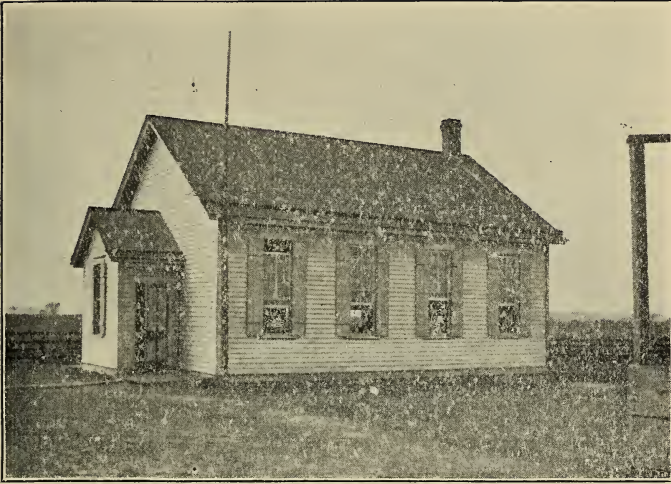


## Mrs. J. C. H. Eberwein & Sons

DEALERS IN

DRY GOODS, OIL CLOTHS  
GROCERIES, Carpets, AND RUGS.

BEARDSTOWN, ILLINOIS.



## UNION SCHOOL.

District No. 19, 18-10.

Ethel McNeill, Teacher.

John Bierhaus, President, Virginia.

E. A. Biddlecome, Clerk, Virginia.

Milton Bierhaus, Member, Virginia.

This school is nicely located and is well arranged on the interior. The walls are papered and hung with appropriate pictures. This school has given a number of first class literary entertainments.



## WAGONER BRIDGE SCHOOL.

District No. 43, 17-12.

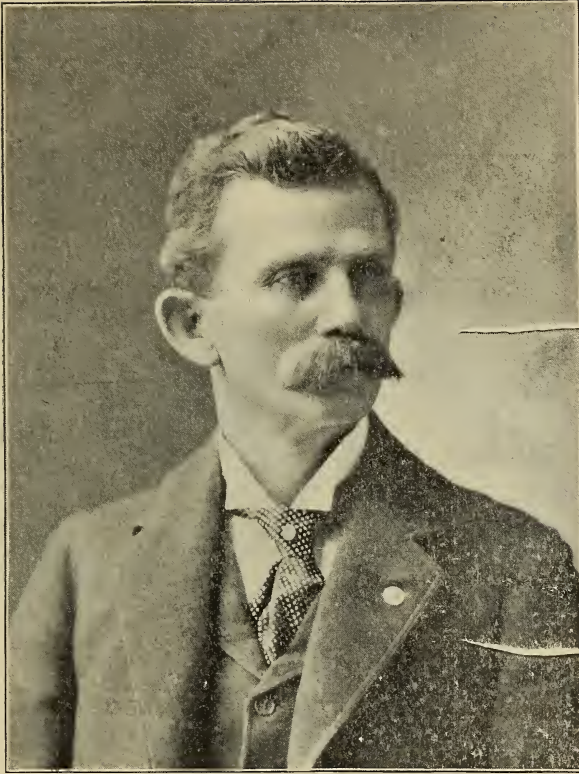
Alice Guthridge, Teacher.

Henry Schnake, President, Arenzville.

F. K. Dufelmeier, Clerk, Arenzville.

Geo. F. Schweer, Member, Arenzville.

Wagoner Bridge school was built in 1867, and is about centrally located in township 17, range 12. This school building is used as the voting place of Indian Creek precinct and also for township and road commissioners elections.



**EX-COUNTY SUPERINTENDENT JOHN G. PEARN.**

John G. Pearn was born in this county and attended the common school in his district. As a young man he taught in the district schools of this county and later was for several years principal of the Ashland schools. In 1894 was elected County Superintendent, in which office he served for four years with honor to himself and credit to the Cass county schools.

**STOP!**

AT

**McDonald's Drug Store**

FOR PURE DRUGS, PAINTS, OILS, WALL PAPER  
AND SCHOOL SUPPLIES.

**Chandlerville, Ill.**

**M. DOOLING & SONS**

Proprietors of the

**Virginia Brick Yard.**

GOOD BUILDING BRICK. ESTIMATES FURNISHED WITHOUT CHARGE. PRICES RIGHT.

Give us a call when in need of building material.

**PETER VOLLMER**

Fancy and staple Groceries. Flour and Provisions.

Dry Goods, Hats and Notions

Highest prices paid in exchange

for farm produce, Eggs, Poultry, Butter.

**Chandlerville, Illinois.**

**C. F. NOEKER**

Practical Watchmaker and Jeweler

Established 1874.

He does not send his repair work off, but does it himself satisfactory

He carries the largest stock of

**Watches, Clocks, Diamonds, Silverware and Jewelry**

in Virginia.

Clarence H. Noeker, his artistic engraver.



## LYNN SCHOOL.

District No. 1, 19-8.

John Lockwood. Teacher.

C. A. Pratt. President. Chandlerville.

B. R. Sutton. Clerk. Chandlerville.

T. T. Lynn, Jr.. Member. Chandlerville.

This is one of the largest schools in the county, enrolling upwards of sixty pupils. It is heated with a furnace and is a good substantial building.

## Arenzville Barber Shop

HARRY F. TRIEBERT, Prop.

For an up-to-date hair cut or a smooth shave  
call at one door south of postoffice.

All toilet soaps and lotions on hand.

Weems' Laundry and Dye Works Agency.

## The Arenzville Meat Market

J. G. MANION, Prop.

All kinds of Fresh and Salt Meats constantly on hand.  
Highest price paid for

### Butcher Stock.

Give me a call.

# HUSS & BATIS

DEALERS IN

## Implements and Farm Machinery

Our lines consist of the following well known makes:

Deere & Co., Moline Plow Co., Emmer-  
son & Sattley Mfg. Co., Wilson, Moline  
and Columbia Buggies, Milwaukee and  
Minneapolis Binders and Mowers, Ply-  
mouth Binding Twine.

Arenzville,        =        =        =        Illinois





## ARENZVILLE HIGH SCHOOL.

District No. 45, 17-11.

Richard Linder, Principal.

Eda Feldner, Intermediate.

Christian Lippert, Primary.

### BOARD OF DIRECTORS.

Val. Hahling, President, Arenzville.

J. S. Batis, Clerk, Arenzville.

Geo. Engelbach, Member, Arenzville.

This is a four room school building, arranged in modern style and presents a beautiful appearance. The school grounds are large and give plenty of space for play grounds.

OSWELL SKILES

S. H. PETEFISH

GEORGE CONOVER

W. S. REARICK

J. J. WYATT

**SKILES, REARICK & CO.,**  
BANKERS.

ASHLAND, . . . . . ILLINOIS.

WE SOLICIT THE ACCOUNTS OF

Farmers,  
Merchants and  
Shippers,

AND PROMISE OUR CAREFUL ATTENTION.

Exchange sold on the principal cities of the United States and Europe.

**Wm. Jordan's**

**Livery and**

**Feed Stable**

LIGHT LIVERY A SPECIALTY.

CONVEYANCES FURNISHED FOR

**Fishers, Hunters and Campers**

To the fine lakes of the Sangamon Bottom.

**Give me a call.**

**Chandlerville, Ill.**



## CENTENARY SCHOOL.

District No. 28, 17-8.

Frances Savage, Teacher.

Alfred Campbell, President, Ashland.

Louis Savage, Clerk, Ashland.

Jas. E. Thornley, Member, Ashland.

This school has the reputation of paying the highest salary of any district school in the county. It is pleasantly situated and enrolls about twenty-five pupils.

ROBERT H. GARM.  
J. EDWARD GARM.

# R. H. Garm & Co.

Fire, Cyclone

Old Line Life

...and Accident Insurance

LONG ESTABLISHED, THOROUGHLY RELIABLE COMPANIES  
THE BEST INSURANCE AT THE LOWEST RATES  
PARTICULAR ATTENTION PAID TO ADJUSTMENT OF LOSSES  
PROMPT SETTLEMENT GUARANTEED

Money to Loan REAL ESTATE OR PERSONAL SECURITY  
EASY TERMS, LONG TIME

Office at First State Bank, Beardstown, Ill.

ESTABLISHED 1875.

MILL,

BEARDSTOWN.

Dealers in Grain.

ELEVATORS:

BEARDSTOWN  
BLUFF SPRINGS  
CASS SIDING  
ASTORIA  
MEREDOSIA  
BROWNING  
HARRIS LANDING  
FLORENCE  
BADERS

# Schultz, Baujan Co.,

MILLERS OF WINTER WHEAT.

Daily Capacity 600 Barrels.

Beardstown, Illinois.



## EAST WARD SCHOOL.

District No. 15, 18-12.

BEARDSTOWN.

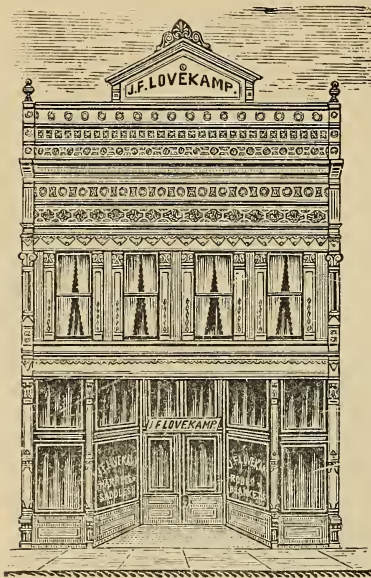
Teachers—Louis Mayries, Principal; Minnie Menze, Mrs. J. Charles, Rose Beck.

### BOARD OF EDUCATION.

Harrison Hines, President.

F. M. Fulks, Secretary.

Members—J. J. Beatty, H. C. Keil, W. D. Epler, John Listman.



# John F. Lovekamp

DEALER IN

High Grade  
Hand Made  
... Harness

Also a Complete Line of

Horse Furnishing  
Goods

Such as Collars, Bridles, Halters,  
Whips,  
Blankets, Robes, Fly Nets,  
Dusters, Etc.

Arenzville, Ill.

## BLUE FRONT SHOE STORE

MANUFACTURERS  
AND  
DEALERS IN

BOOTS . SHOES  
AND  
RUBBER GOODS

LADIES' AND GENTS' FINE SHOES A SPECIALTY  
REPAIRING NEATLY DONE

## FRIEDRICH & SON

CHANDLERVILLE, ILL.



## UNION GROVE SCHOOL.

District No. 110, 17-11.

H. F. Lightfoot, Teacher.

J. F. Charlesworth, President, Arenzville.

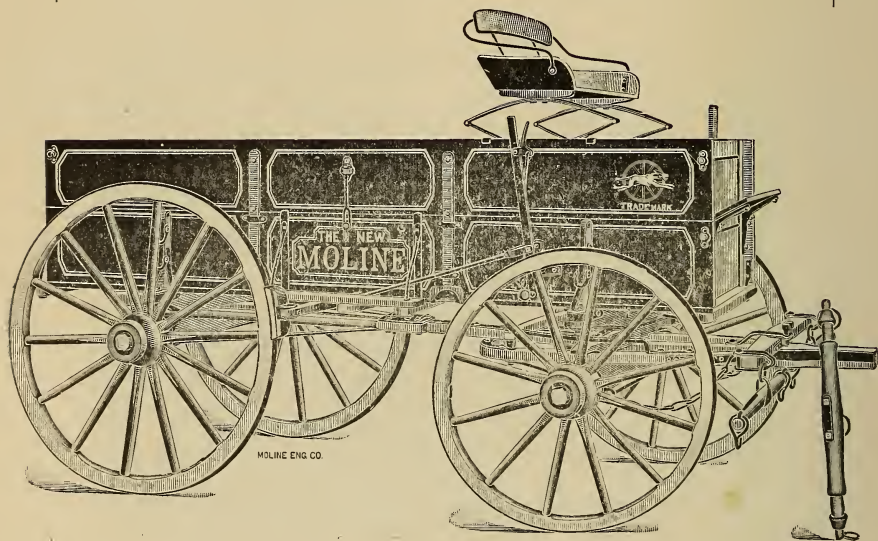
W. J. Kircher, Clerk, Arenzville.

J. G. Irving, Member, Arenzville.

This school was built in 1870 and is a good sized country schoolroom. It is situated near the woods and is furnished plenty of shade by beautiful walnut trees surrounding it. Sunday school is held in this building during the summer months.

# W. W. BISHOP

VIRGINIA, ILL.



## HARNESS, SADDLERY AND IMPLEMENTS

Defiance Gang and Sulky Plows.  
Moline Captain Kidd Disc Cultivators.  
Lean Harrows and Rollers.  
Hoosier Drills and Seeders.  
Sandwich Bailing Presses and Feed Grinders.  
Black Hawk Corn Planters.  
Avery Planters and Cultivators.  
Disc Gang and Sulky Plows. Walking Plows and Cultivators.  
Moline Wagons Avery Wagons.  
Havana Farm Truck Wagons and Metal Wheels.  
Full line of Buggies, Surreys and Road Wagons in Medium and  
Best Grades.  
Plymouth Binder Twine.  
Minneapolis Harvesters and Mowers.  
All above at lowest market price.

Clover, Timothy and Millet Seed Bought and Sold.





## JULES SCHOOL.

District No. 35, 17 and 18-9 and 10.

Mary Kilham. Teacher.

Perry Davis. President, Virginia.

Ed. L. Oetgen, Clerk, Bluff Springs.

— Member, Resigned.

This school was built in 1899 and is a very pleasant schoolroom with high ceiling and the walls are decorated with appropriate pictures. There is woods near this school, but a few trees should be planted on the school yard.

JOHN DIEHL

DEALER IN

BOOTS AND SHOES

ALL THE LATEST STYLES IN

FOOTWEAR



..... REPAIRING NEATLY DONE.....

STATE STREET . OPPOSITE PARK

BEARDSTOWN . ILLINOIS

THE NEW STORE

DEPPE BROS.

NO. 2 GRAND OPERA HOUSE BLOCK  
BEARDSTOWN, ILL.

A Complete Line of Up to Date Dry Goods  
and Millinery.

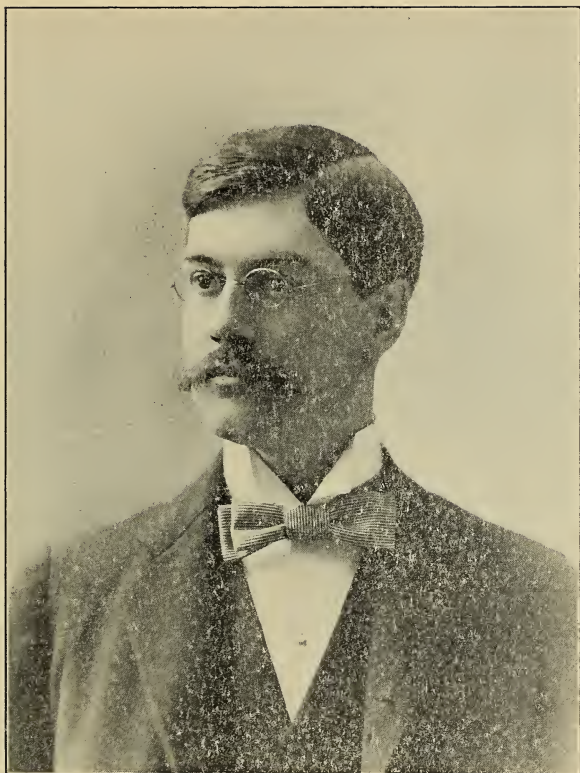
Prices Always the Lowest.

We Solicit Your Trade.

We are Agents for the Standard Patterns.

Send Us Your Mail Order.

DEPPE BROS.




**CHAS. W. RUSSELL.**

Chas. W. Russell was born near Virginia, Ill., June 10, 1871. He attended the public schools in Virginia graduating from the high school in 1888. The following fall he entered the University of Illinois at Champaign, graduating from that institution in 1893 with the degree of B. A. He at once accepted the position of instructor in Latin in the high school at Champaign which position he held for three years. After several years spent in other pursuits he has again taken up school work, being at present assistant principal of the Virginia High School.



OFFICE AND SHOW ROOM.

  
S. L.  
Van Fossen  
Beardstown, Ill.

I carry in stock the most complete line of

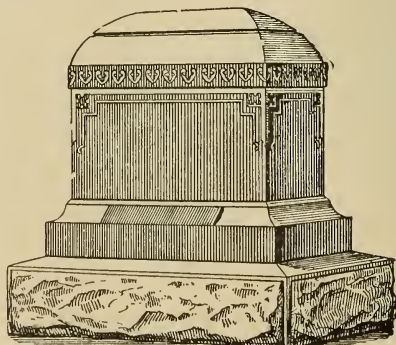
# Fine Monuments

of any house in the state, and handle only the

Best Material  
and Employ the Finest Workmen  
that money can secure.

My Prices  
are Always the  
Lowest

Give Me a Call.





## ASHLAND HIGH SCHOOL.

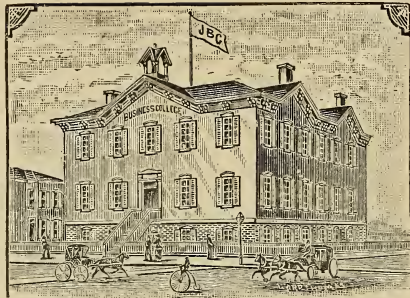
District No. 57, 17-8.

R. R. Holmes, Principal; Lloyd Hamilton, Assistant Principal; Anna Britton, Maida McCormick, Carrie Eaton, Bert Short, J. May Spears, Lillian Rhu, Ada Glenn. Mrs. Mantle, Supervisor of Music.

This is a very neat and nicely arranged school building. The pupils of this school are especially proficient in vocal music. Quite a number of this school's pupils hold county common school diplomas.

### BOARD OF EDUCATION.

Meyer Hexter, President.	Robt. Anderson, Secretary.	
J. B. Lohman.	J. A. Glenn.	S. L. Hamilton.
S. S. Beggs.	V. C. Elmore.	



JACKSONVILLE (ILL.) BUSINESS COLLEGE.

**A LIVE SCHOOL.**

# *Brown's Business College.*

G. W. BROWN, President and Manager.

**A PRACTICAL EDUCATION**

WITHIN REACH OF EVERYONE.

An Energetic Class of Young People,  
A Complete Corps of Teachers,

... and ...

A Management Unexcelled,

**MEANS SUCCESS**

For Information Address

T. R. HOPKINS,

Jacksonville, Ill.



MISS M. S. KILHAM.

Miss Kilham was born in Macon county, Ill., January 13, 1878, and moved with her parents to Virginia, Ill., where she attended school, graduating in 1898. She has taught three terms of school in this county and is considered a very successful teacher, being exceptionally strong in mathematics.

# First State Bank

of Beardstown, Illinois

Organized under the banking laws of Illinois in February, 1889.

## OFFICERS.

H. M. Schmoldt,	R. H. Garm,
President.	Cashier.
William Huppers,	J. Edward Garm,
Vice-President.	Ass't Cashier.

## DIRECTORS.

H. M. Schmoldt.	William Huppers.	Anton Rink.
	Philip Kuhl.	W. Steurnagel.
E. L. Oetgen.		F. M. Fulks.

## CONDENSED STATEMENT

AS MADE TO THE  
AUDITOR OF PUBLIC ACCOUNTS OF THE STATE OF ILLINOIS  
ON THE 26TH DAY OF FEBRUARY, 1902

### RESOURCES.

Loans, Discounts and Bonds, . . . . .	\$227,966.09
Banking House, . . . . .	7,875.00
Cash and Sight Exchange, . . . . .	24,712.45
Total, . . . . .	<u>\$260,553.54</u>

### LIABILITIES.

Capital and Profits, . . . . .	\$65,825.64
Deposits, . . . . .	194,727.90
Total, . . . . .	<u>\$260,553.54</u>

We invite the public to call and make our acquaintance. Any business given to us will receive prompt and careful attention. We loan money on terms as easy and reasonable as are consistent with the management of a conservative bank.





## BEARDSTOWN CENTRAL SCHOOL.

District No. 15, 18-12.

Teachers—H. J. Jokisch, Superintendent; Joseph Hutton, Principal; Elva J. Saunders, Jean Newcomer, Anna Crans, Emilie Feddersen, Frances Weaver, Mrs. J. G. Dowler, Nellie McLane, Emma Fischer, Lena Rausch.

### BOARD OF EDUCATION.

Harrison Hines, President. F. M. Fulks, Secretary.  
H. C. Keil. B. F. Epler. John Listman. J. J. Beatty.

This is the largest public and High School building in the county, and is almost centrally located in the city of Beardstown.

MILLS & CLIFFORD  
LAWYERS.

ABSTRACTS OF TITLE A SPECIALTY.  
VIRGINIA, . . . ILLINOIS.

When You Have

OCCASION TO SEND MONEY ANY-  
WHERE, USE A BANK DRAFT. IT IS  
THE SAFEST AND MOST CONVEN-  
IENT WAY AND COSTS LESS THAN  
BY ANY OTHER METHOD. DRAFTS  
ARE GOOD ANYWHERE IN THE  
UNITED STATES AND CAN BE OB-  
TAINED FOR ANY AMOUNT FROM

Conover, Skiles & Mertz,  
Bankers.

Chandlerville, = Illinois.

John C. Morse

*THE PLACE TO BUY YOUR*

SCHOOL SUPPLIES  
DRUGS

HARDWARE AND JEWELRY

Chandlerville, = Illinois.



## HICKORY SCHOOL.

District No. 8, 18-10.

Emma Suffern. Teacher.

Preston Horrom, President, Virginia.

Angus Taylor, Clerk, Virginia.

J. C. Schaad, Member, Virginia.

Hickory school was built in 1880 and is a good substantial brick building. The school enrolls about thirty pupils and has a nice library of about 100 volumes.

THE LEADING BARBER  
SHOP IN THE CITY

# B. F. CARR

PROPRIETOR.

All tonsorial work done in first-class style.  
All Face and Skin Lotions  
constantly on hand. Give us a call.

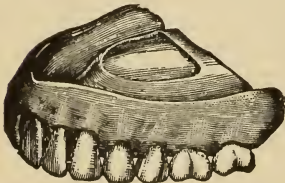
CHANDLERVILLE, ILLINOIS.

*C. Adison*

GENERAL DEPARTMENT GOODS,

VIRGINIA, ILLINOIS.

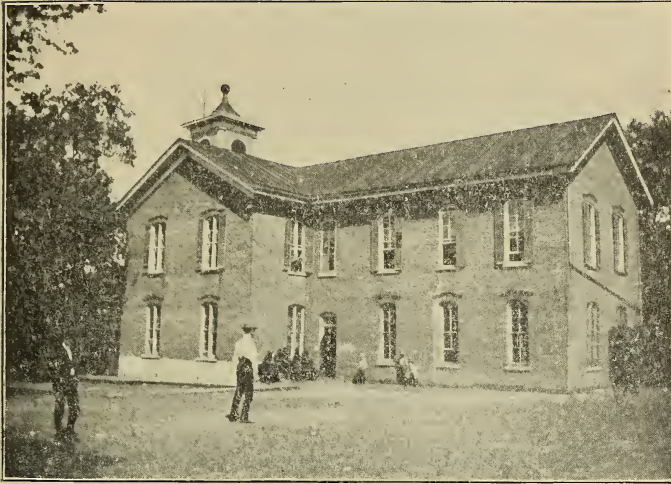
Dr. J. I. PARKHURST,  
DENTIST.



Location

FISHER BUILDING  
South Side Square

VIRGINIA, ILLINOIS.



## CHANDLERVILLE SCHOOL.

District No. 5, 18-9 and 10.

Teachers—J. C. Walters, Principal; Chas. Harbison, Assistant Principal; Emma Overman, Louise Hostman, Edith Hinkle, Mrs. Nellie McDonald.

### BOARD OF EDUCATION.

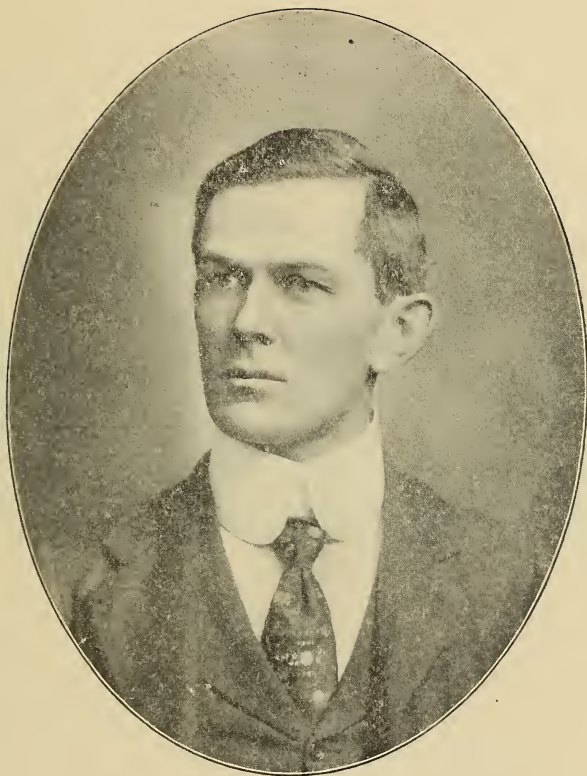
Jas. Abbott, President.	John Cherry, Secretary.	
B. E. Bowman.	Dr. H. Boone.	G. T. Humphrey.
P. A. Markert.	W. A. McNeil.	

The Chandlerville school was built in 1867 and at that time was one of the most modern buildings in the county. It enrolls about 250 pupils and has a good High School course.



**FRANK REYNOLDS.**

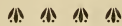
Born at Bluff Springs, Ill., March 9, 1876. Parents, William Reynolds and Anna Reynolds (deceased). Received a common school education in the schools of this county, after which attended the Northern Illinois Normal School at Dixon, Ill., and graduated with class of 1901. For the past three years has been engaged in teaching at Walnut Grove and has met with splendid success.



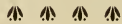
**JOHN REYNOLDS.**

Born at Bluff Springs, Ill., April 30, 1873. Parents, William and Anna Reynolds (deceased). Received a common school education in the schools of this county. Afterwards he attended the Northern Illinois Normal School at Dixon, Ill., and graduated with the class of 1900. For the past two years he has been engaged in teaching at Morgan school. He and his brother, Frank Reynolds, are considered two of Cass county's leading teachers.

# The Why and Wherefore



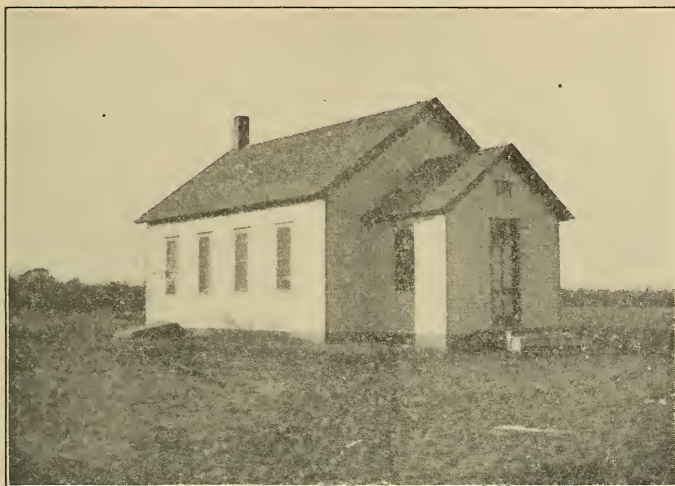
The best way to judge a clothing store is by the way it meets your demands upon it. If you will agree to give us a trial purchase we predict that you will be satisfied. Your judgment will approve of our methods and the kind of clothing we sell and we will have made a customer. Consider the matter and give us a call.



## GARM BROS.,

THE STORE WHERE THE  
GOOD  
CLOTHES COME FROM





## ARENZ SCHOOL.

District No. 16, 18-11.

Laura Brown, Teacher.

Ethel Brown, Assistant Teacher.

L. W. Carls, President, Beardstown.

C. F. Johnson, Clerk, Beardstown.

Geo. Wilkie, Member, Beardstown.

This school was built in 1901 and is a new, neat and complete building with furnace and high ceiling, with plenty of light and ante-rooms. This school enrolls about sixty pupils and is one of the largest country schools in the county.

# BEARDSTOWN HIGH SCHOOL.



## COURSE OF STUDY.



### LATIN AND GERMAN COURSES.

#### FRESHMAN.

FIRST SEMESTER	SECOND SEMESTER
Algebra I.	Algebra II.
Physiology.	Phy. Geography.
Latin I.	Latin II.
Classics—2 Hours.	Classics—2 Hours

#### SOPHMORE.

FIRST SEMESTER	SECOND SEMESTER
Algebra III.	Botany.
Latin III.	Caesar.
Gen. History I.	Gen. History II.
Rhetoric I.	Rhetoric II.

#### JUNIOR.

FIRST SEMESTER.	SECOND SEMESTER
Geometry I.	Geometry II.
Chemistry.	Cicero or
Cicero or	German II.
German I.	Civics.
Classics.	Classics

#### SENIOR.

FIRST SEMESTER.	SECOND SEMESTER.
Physics I.	Geometry III.
Virgil or	Physics II.
German III.	Virgil or
Eng. Literature.	German IV.
Classics.	American Literature—3 Hours.
	Classics—2 Hours.

### GERMAN SCIENTIFIC COURSE.

#### FRESHMAN.

FIRST SEMESTER.	SECOND SEMESTER.
Algebra I.	Algebra II.
Physiology.	Phy. Geography.
Zoology.	Zoology.
Classics—2 Hours.	Classics—2 Hours.

#### SOPHMORE.

FIRST SEMESTER.	SECOND SEMESTER.
Algebra III.	Chemistry.
Chemistry.	Botany.
Gen. History I.	Gen. History II.
Rhetoric I.	Rhetoric II.

#### JUNIOR.

FIRST SEMESTER.	SECOND SEMESTER.
Geometry I.	Geometry II.
U. S. History.	Civics.
German I.	German II.
Classics.	Classics.

#### SENIOR.

FIRST SEMESTER.	SECOND SEMESTER.
Physics I.	Geometry III.
Eng. Literature	Physics II.
German III.	American Literature—3 Hours.
Classics.	German IV.
	Classics—2 Hours.

All subjects five hours per week unless otherwise indicated.

Tuition rates \$20 per year. A library of 2500 volumes in connection with this school for pupils' use.



## PLEASANT RIDGE SCHOOL.

District No. 24, 18-8 and 9.

Mauve Alcorn, Teacher.

Geo. W. Murphy, President, Chandlerville.

James Watkins, Clerk, Chandlerville.

Wm Hewitt, Member, Chandlerville.

This school is pleasantly situated and has plenty of shade. Prof. Scott, of Sangamon College, taught in this school a number of terms. Pupils of this school have done considerable advanced work in their studies.

# Condensed Statement

Close of Business, March 29, 1902.



# First National Bank

of Beardstown, Ill.



## RESOURCES.

Loans and Discounts.....	\$429,800.38
Overdrafts.....	6,028 19
United States Bonds.....	100,000 00
Other Bonds.....	41,850 00
Real Estate.....	10,800 00
Cash on hand and with Banks.....	63,675 16
	<hr/>

\$652,153.73

## LIABILITIES.

Capital Stock.....	\$100,000.00
Surplus Fund.....	75,000 00
Undivided Profits.....	15,873 82
Circulation.....	100,000 00
Dividends Unpaid.....	3,020 00
Deposits.....	358,259 91
	<hr/>

\$652,153.73



## DIRECTORS.

JOHN SCHULTZ. JOHN S. NICHOLSON.  
J. V. JOCKISCH. HENRY C. MEYER. W. E. MCCOLLOUGH,  
MARTIN McDONOUGH. T. K. CONDIT.

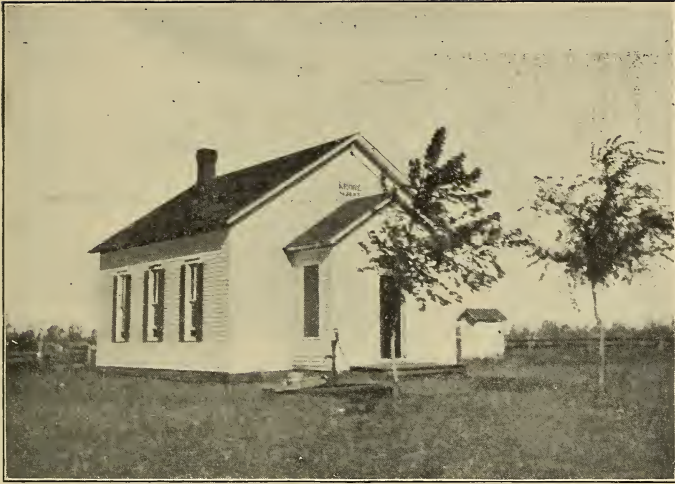
## OFFICERS.

JOHN SCHULTZ, President.  
HENRY C. MEYER, Vice-President.  
T. K. CONDIT, Cashier.  
F. M. CONDIT, Assistant Cashier.  
J. H. COLEMAN, Assistant Cashier.



With largest capital of any bank in county, we have ample facilities for handling business of our customers on sound banking principles.

We Solicit  
the Patronage of the Public.



## KROHE SCHOOL.

District No. 37, 17-11.

Henrietta Philippi, Teacher.

Henry Korte, President, Beardstown.

H. J. M. Ruppel, Clerk, Beardstown.

Dan. Scott, Member, Bluff Springs.

Krohe school was built in 1892 and is a very pretty country school, enrolling about thirty pupils. Trees have been planted on the grounds and in a few years will give plenty of shade.

# Condensed Statement

Close of Business, March 29, 1902.



# First National Bank

of Beardstown, Ill.



## RESOURCES.

Loans and Discounts.....	\$429,800.38
Overdrafts.....	6,028 19
United States Bonds.....	100,000 00
Other Bonds.....	41,850 00
Real Estate.....	10,800 00
Cash on hand and with Banks.....	63,675 16
	<hr/>
	\$652,153.73

## LIABILITIES.

Capital Stock.....	\$100,000.00
Surplus Fund.....	75,000 00
Undivided Profits.....	15,873 82
Circulation.....	100,000 00
Dividends Unpaid.....	3,020 00
Deposits.....	358,259 91
	<hr/>
	\$652,153.73



## DIRECTORS.

JOHN SCHULTZ. JOHN S. NICHOLSON.  
J. V. JOCKISCH. HENRY C. MEYER. W. E. MCCOLLOUGH,  
MARTIN McDONOUGH. T. K. CONDIT.

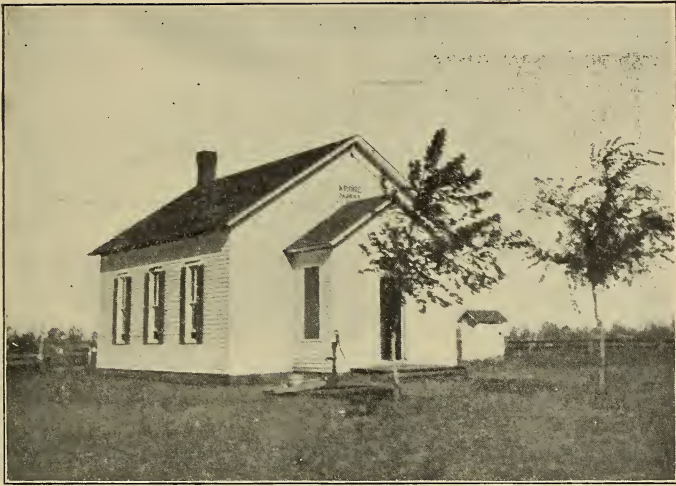
## OFFICERS.

JOHN SCHULTZ, President.  
HENRY C. MEYER, Vice-President.  
T. K. CONDIT, Cashier.  
F. M. CONDIT, Assistant Cashier.  
J. H. COLEMAN, Assistant Cashier.



With largest capital of any bank in county, we have ample facilities for handling business of our customers on sound banking principles.

We Solicit  
the Patronage of the Public.



## KROHE SCHOOL.

District No. 37, 17-11.

Henrietta Philippi, Teacher.

Henry Korte, President, Beardstown.

H. J. M. Ruppel, Clerk, Beardstown.

Dan. Scott, Member, Bluff Springs.

Krohe school was built in 1892 and is a very pretty country school, enrolling about thirty pupils. Trees have been planted on the grounds and in a few years will give plenty of shade.



Home Office  
**Franklin Life Insurance Co.**  
Springfield, Illinois.

High grade and progressive methods have won for THE FRANKLIN a high rank among the leading life insurance companies of the country. The policies issued by the Franklin are thoroughly up to date in every respect and furnish the maximum amount of first-class old line insurance for each dollar paid in premiums.

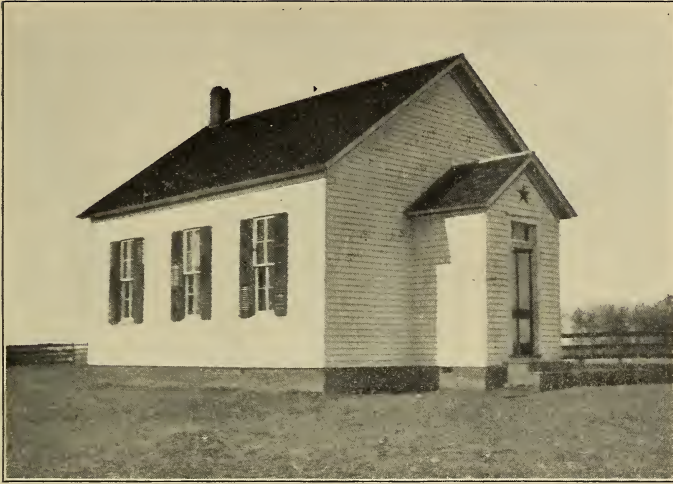
Every policy is secured by a deposit of the net value or legal reserve with the State Insurance Department.

No company is in a position to do better by its policy holders than the Franklin.

To the teachers wishing to spend their spare time and vacations in the most profitable manner, we have a special proposition to act as agents for the company.

Address the Home Office, or, R. L. JONES, General Agent,  
Springfield, Illinois.





## STAR SCHOOL.

District No. 14, 18-11.

Maggie Terrill. Teacher.

H. Bokemeier. President, Beardstown.

Mrs. L. E. Kelly, Clerk. Beardstown.

Wm. Reeve. Member. Beardstown.

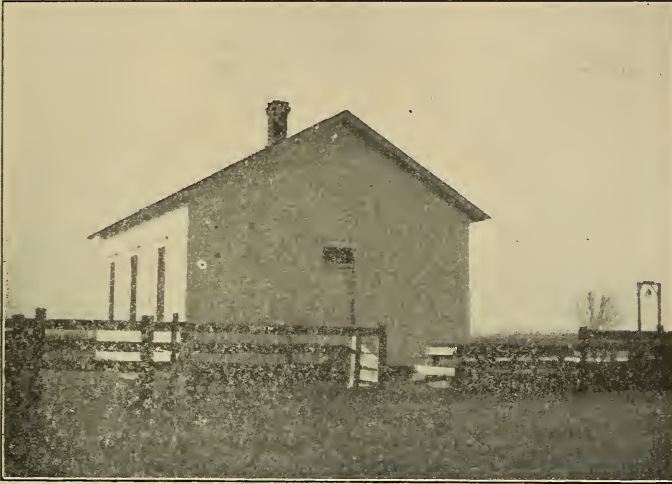
This school was built in 1894 and is a very neat and nicely arranged country school. The citizens of this vicinity are up and abreast with the times and help to conduct a very interesting literary society in connection with this school.

## Pupils Granted Diplomas.



The following pupils have passed the central examinations and been granted county common school diplomas during the past three years:

George Maurer, Jules.	George Williams, Philadelphia.
Bertha Davis, Virginia.	Celia Johnson, Chandlerville.
Daisie Beadles, Virginia.	Lottie McNeill, Chandlerville.
Jessie Beadles, Virginia.	Frieda Vollmers, Chandlerville.
George Davis, Virginia.	Alberta Bullock, Chandlerville.
Henrietta Phillipi, Beardstown.	Anna Dorr, Chandlerville.
R. Guy Hinchee, Philadelphia.	Ethel Shore, Chandlerville.
Edward Buxton, Beardstown.	Nancy Force, Chandlerville.
Albert Morse, Chandlerville.	Ethel Hager, Beardstown.
Della Dearing, Chandlerville.	Mattie Bowman, Chandlerville.
Carrie Fielden, Chandlerville.	George Blair, Chandlerville.
Carl Hinkle, Chandlerville.	Ella Hall, Oakford.
Irene Butcher, Chandlerville.	Roy Crouse, Philadelphia.
Sara Rethorn, Chandlerville.	Alma Graff, Ashland.
Pearl Blohm, Beardstown.	Willie Graff, Ashland.
Lillie Nieman, Arenzville.	Louise Spears, Ashland.
Constance Williams, Philadelphia.	Newton Nix, Ashland.
Irvin Fischer, Arenzville.	Roscoe Sinclair, Ashland.
Lee Capper, Chandlerville.	Willie George, Ashland.
Fay Spink, Chandlerville.	Elias Hexter, Ashland.
Alma Zorn, Chandlerville.	Lennie Zirkle, Ashland.
Mattie McDonald, Chandlerville.	Sherman Dorand, Ashland.
Daisy Perrine, Chandlerville.	Emma Leitch, Ashland.
Bertha Anderson, Virginia.	Emma Bentley, Ashland.
Verna Miller, Arenzville.	Belle Smith, Newmanville.
May E. Harris, Beardstown.	Lizzie Sutton, Chandlerville.



## GURNEY SCHOOL.

District No. 56, 17-8 and 9.

Arden Cavender, Teacher.

Chas. Zirkle, President, Ashland.

W. D. Harding, Clerk, Ashland.

Fred Walbaum, Member, Ashland.

This school was built in 1883 and has a large yard in which there should be a number of trees planted. The school now enrolls about fifteen pupils.

# Pupils Granted Diplomas.

(Continued )



Joseph Watkins, Chandlerville.	Esther Asplund, Little Indian.
Maud Manion, Arenzville.	Blanch Hagerstrom, Little Indian.
Ethel Bowser, Arenzville.	Nellie Long, Arenzville.
Arthur Jokisch, Bluff Springs.	Effie Long, Arenzville.
Hazel Ross, Philadelphia.	Esther Peterson, Beardstown.
Frank Devlin, Philadelphia.	Cora Shute, Beardstown.
Arthur Carls, Bluff Springs.	Della Reeve, Beardstown.
Stella Sutton, Chandlerville.	Eva Hager, Beardstown.
John Devlin, Philadelphia.	Rudy Jokisch, Bluff Springs.
Norman Robertson, Beardstown.	Lee Blohm, Bluff Springs.
Bertha Treadway, Beardstown.	Carrie Coleman, Beardstown.
Maggie McDonald, Philadelphia.	Frank Sorrells, Ashland.
Joseph Wright, Philadelphia.	Clark Jones, Ashland.
Carl Yapple, Virginia.	Clarice Rearick, Ashland.
Pearl Stigall, Virginia.	Mae Thomson, Ashland.
Katie Treadway, Virginia.	Lela Lohman, Ashland.
Pearl Davis, Jules.	Nellie Nix, Ashland.
Florence Davis, Virginia.	Emma Hash, Chandlerville.
Lillian Nester, Sylvan.	Lee Blair, Chandlerville.
Cassie Clemons, Newmanville.	Jennie Plue, Chandlerville.
Lena Cline, Sylvan.	Eda L Smith, Virginia.
Alta Davis, Chandlerville.	Grace Newman, Chandlerville.
Casper Watkins, Chandlerville.	Walter Treadway, Arenzville.
Gifford Mathew, Newmanville.	Conrad Hahling, Arenzville.
Bessie Stowell, Newmanville.	Inez Blohm, Bluff Springs.
Harry Harding, Ashland.	Howard Williams, Bluff Springs.



## SUGAR GROVE SCHOOL.

District No. 30, 17-9.

Florence Fox, Teacher.

John Miles, President, Virginia.

James Cunningham, Clerk, Virginia.

George Cosner, Member, Virginia.

This is a very convenient school building and is nicely shaded. The present enrollment is about thirty pupils.

## Pupils Granted Diplomas.

(Continued.)



Chas. Parry, Bluff Springs.	Pearl Stoker, Arenzville.
Oswell Jokisch, Bluff Springs.	Bertha Pfeil, Arenzville.
Hilda Hagener, Bluff Springs.	Olga Huss, Arenzville.
Effie Capper, Chandlerville.	Malinda Stock, Arenzville.
Lulu Altie, Chandlerville.	Floyd Dyer, Arenzville.
Myrtle Liter, Little Indian.	Dollie Virgin, Arenzville.
Reuben Jokisch, Virginia.	Katie Meyer, Virginia.
Edward Rose, Philadelphia.	Clara Hiners, Beardstown.
Eva Jokisch, Philadelphia.	Earl Stiltz, Prentice.
Grace Jokisch, Virginia.	Carrie Bruner, Ashland.
Grace Dick, Chandlerville.	Olga Dorand, Ashland.
Lizzie Gebhardt, Chandlerville.	Katie Laurie, Ashland.
Nellie Carlton, Chandlerville.	Saidee Duffy, Ashland.
Grace Theivaght, Chandlerville.	Blanch Lohman, Ashland.
Allan Scott, Chandlerville.	Lizzie Nottingham, Ashland.
Jean Scott, Chandlerville.	Robt. Taylor, Sylvan.
Eda M. Krohe, Bluff Springs.	Frank Smedley, Tallula.
Earl Lawyer, Bluff Springs.	Mary Stiltz, Tallula.
Oscar Savage, Bluff Springs.	Sarah Stiltz, Tallula.
Dora Hewitt, Beardstown.	Adrain Shankland, Sylvan.
Maud Kircher, Arenzville.	Ada Looker, Virginia.
Elsie Wood, Arenzville.	Edna Horrom, Virginia.
Otis Willey, Arenzville.	Howard Horrom, Virginia.
Dora Lovekamp, Arenzville.	Mabel Ross, Virginia.
Zelma Hackman, Arenzville.	Alma Ross, Virginia.
Grace Burrus, Arenzville.	Reasie Wilkie, Virginia.



## ISLAND SCHOOL,

District No. 42, 17 and 18-13.

Effie Bennett, Teacher.

John Miller, President, Meredosia.

John Clark, Clerk, Meredosia.

Member moved from district.

This school is usually called in session early in the fall so as to give pupils the advantage of the good roads, as the water usually becomes high during the spring months and the school can be closed about the 1st of March.



## SPRINGER SCHOOL.

District No. 31, 17-10.

Lee Springer, Teacher.

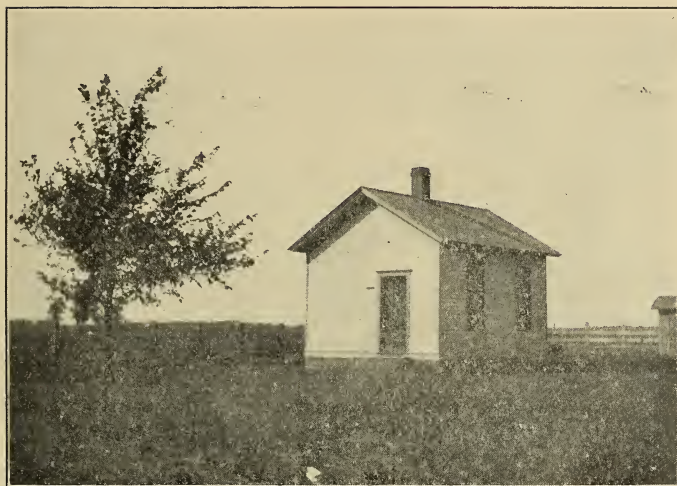
J. S. Springer, President, Virginia.

J. W. Yaple, Clerk, Virginia.

John Williamson, Member, Virginia.

This school enrolls about twenty pupils and has a large yard in which several maple trees have been planted and in a few years will furnish abundant shade.





## CAMPBELL SCHOOL.

District No. 33, 17 and 18-10.

Virginia Kikendall, Teacher.

Deitrich Brockhouse, President, Virginia.

Edwin Campbell, Clerk, Virginia.

Henry Campbell, Member, Virginia.

This is the smallest school building in Cass county and the school enrolls about ten pupils. Although this is a small school yet the pupils have done very nice work.



## WARRIOR SCHOOL.

District No. 18, 18-11.

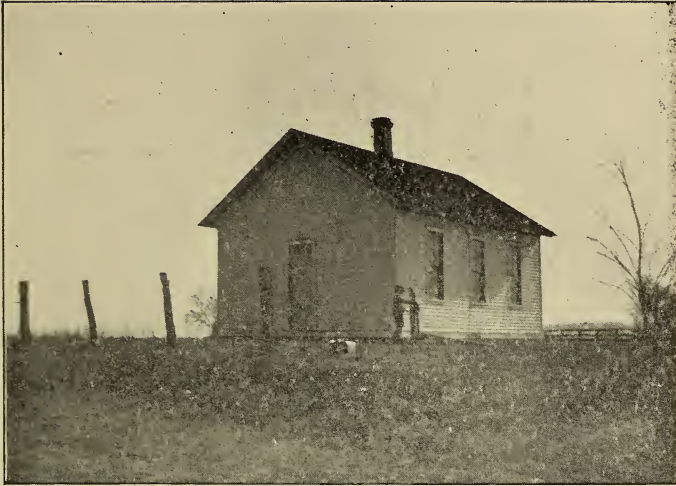
Nellie Rew, Teacher.

J. W. Blohm, President, Bluff Springs.

Wm. Brown, Clerk, Bluff Springs.

Thomas Dee, Member, Bluff Springs.

This school was built in 1883 and enrolls about thirty pupils.



## HARMONY SCHOOL.

District No. 55, 17-9.

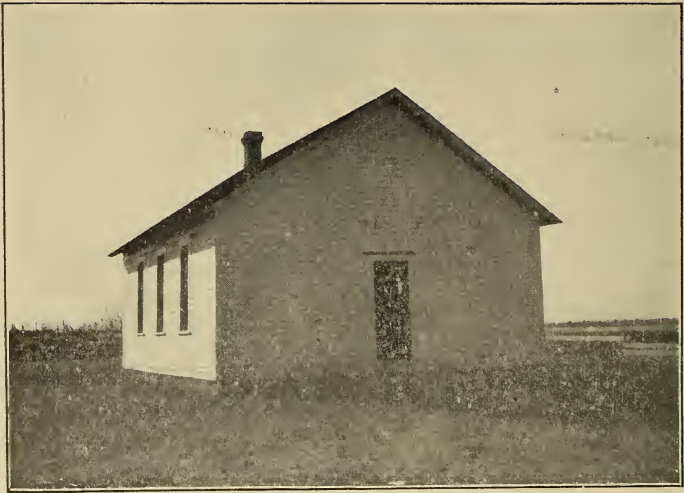
Clara Sinclair, Teacher.

L. C. Hewitt, President, Ashland.

H. B. Baxter, Clerk, Ashland.

G. F. Jokisch, Member, Philadelphia.

Harmony school was built in 1875 and enrolls about twenty-five pupils at the present time. This school is without shade trees which should be supplied.



## PANTHER GROVE SCHOOL.

District No. 29, 17 and 18-9.

Lewis Anderson. Teacher.

Robert Lowden, President. Philadelphia.

Wm. Gilbert. Clerk. Philadelphia.

James Maslin. Member. Philadelphia.

Panther Grove school was built in 1892. This school ground should be planted with trees. The building is in very fair condition.



## LIMBO SCHOOL.

District No. 12, 18 and 19-11 and 12.

Flora Doyle, Teacher.

Chas. Lebkeucher, President, Beardstown.

Jacob Robertson, Clerk, Beardstown.

William Blohm, Member, Beardstown.

This school was built in 1857 and is one of the two buildings in the same district. This is the only country school district that has two school buildings.



## BIRCH SCHOOL.

District No. 12, 18 and 19-11 and 12.

Lizzie Treadway, Teacher.

Chas. Lebkeucher, President, Beardstown.

Jacob Robertson, Clerk, Beardstown.

William Blohm, Member, Beardstown.

This school was built in 1858 and enrolls about twenty pupils. This district is so large that two school houses have been built for the accommodation of the scholars in this district.



## WEST POINT SCHOOL.

District No. 44, 17-12.

Adelaide Fischer. Teacher.

E. F. Hackman. President, Arenzville.

Wm. Niestradt. Clerk, Arenzville.

Wm. Lovekamp. Member, Arenzville.

This school was built in 1864 and has been remodeled several times since. Supt. A. E. Hinners taught his first term of school at this place during the winter of 1892-1893.

## THEY SAY

That it's better late than never; but better never late.  
Start at once to buy your groceries of

# J. W. Schaefer,

he has saved others dollars and can do the same for you.

FOOT OF LAFAYETTE ST.

BEARDSTOWN, ILL.



**BANNERMANS'  
GERMICIDE  
SOAP**

**TRY**

This Wonderful Soap  
when other Remedies fail to cure Eczema,  
Malignant Ulcers, Old  
Sores, and all Skin Diseases,  
Sore & Weak Eyes, Gonorrhea.

**A POSITIVE GERMICIDE  
PRICE \$1.00  
GUARANTEED TO CURE OR MONEY REFUNDED.**

**Bannerman's Toilet Soap.**  
For the Toilet, Bath and Nursery, is  
unequaled. Cures Chapped Hands,  
Burns, Itching, Pimples, and Purifies  
the skin.

Price 25c—Sample 10c Post Paid  
AGENTS WANTED. WRITE FOR TERMS.  
**O. M. Crum & Co., Virginia, Ill**

# G. W. Rexroat

DEALER IN

Staple and Fancy Groceries,

Glassware, Queensware.

SOUTH SIDE SQUARE,

VIRGINIA, ILLINOIS.





## UNION SCHOOL.

District No. 110, 17-11.

Lee Robinson, Teacher.

W. B. Rexroat, President, Virginia.

John Virgin, Clerk, Virginia.

John White, Member, Virginia.

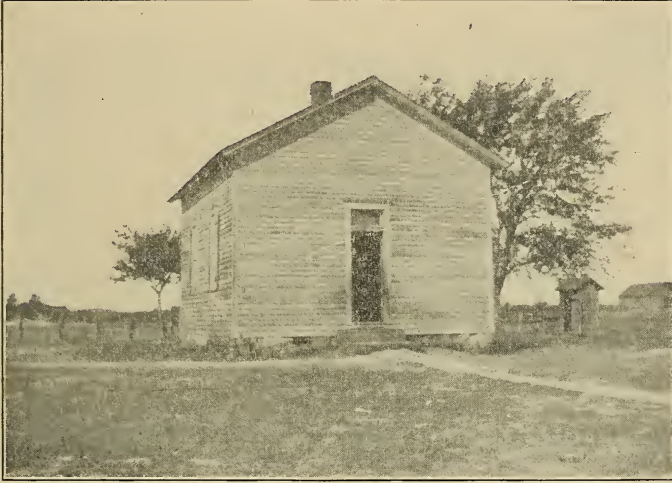
About two years ago this building was moved to its present site from the old site near the church. A number of trees have been planted on this school ground which in a few years will furnish good shade. This school enrolls thirty pupils.

## Roll of Honor.



List of pupils for 1901-1902 who were neither absent nor tardy during this six months term:

NAME.	SCHOOL.	NAME.	SCHOOL.
Ethel Wyatt, Oregon.		Carrie Maurer, Circleville.	
Andrew Wyatt, Oregon.		Eva Clemons, Circleville.	
Ethel Dick, Cottonwood.		Nelle Yaple, Springer.	
Earl Mathews, Newmanville.		Eugene Smith, Crows Point.	
May Jokisch, Harmony.		Lena Davis, Science Hill.	
Mary Winner, Harmony.		Gracie Nebold, Gurney.	
Homer Schaeffer, Harmony.		Addie Smith, Gurney.	
Myrtle Hewitt, Harmony.		Forrest Nebold, Gurney.	
Hattie Hendricker, Krohe.		Rosa Maslin, Panther Grove.	
Nellie Brown, Warrior.		Hazel Reding, Quebec.	
Tillie Koch, Warrior.		Ralph Mathew, Sugar Grove.	
Cora Fiedler, Warrior.		Ethel Mathew, Sugar Grove.	
Edgar Blair, Morgan.		Etta Kircher, Union Grove.	
Arthur Reynolds, Walnut Grove.		Myrtle Frankenfield, Dick.	
Paul Carls, Arenz.		Mertes Cook, Dick.	
Pearl Buxton, Arenz.		Zelma Leonhard, Red Oak.	
Leonard Treadway, Jules.		Glenna Leonhard, Red Oak.	
Lula Treadway, Jules.		Stella Anderson, Hagener.	
Lida Stiltz, Circleville.		Myrtle Schuman, Hagener.	
Eula Stiltz, Circleville.		Elmer Schuman, Hagener.	
Frank Smedley, Circleville.		Gerald Jacobs, Sugar Grove.	
Pearl Maurer, Circleville.		Leta Defrates, Sugar Grove.	



## GERMANY SCHOOL.

District No. 20, 18-10.

Jean Reid, Teacher.

John Bierhaus, President, Virginia.

R. R. Ross, Clerk, Virginia.

Stuart Reid, Member, Virginia.

This is an old building and not large enough for the number of pupils who attend this school, which has an enrollment of over forty. Next summer it is the intention of this board of directors to build a new and more commodious school house.

Established 1870.

---

# Petefish, Skiles & Co.

Bankers

Virginia, Illinois

---

Transact a General Banking Business

Courtesy, Promptness

and

Liberality

Extended to All.

We Want Your Business.

---

S. H. PETEFISH.

L. A. PETEFISH.

O. SKILES.

MATT YAPLE.

GEORGE CONOVER.



## HICKORY HOME GUARDS.

This picture represents a company of pupils of the Hickory school who are known as the Hickory Home Guards. This little company of boys under their captain, Willie Wilson, take much pride in their little organization and are able to execute some of the military drills in excellent style.

There is no mistake about it.

# King & Taylor

WILL SELL YOU MORE GOODS FOR THE MONEY THAN ANYONE ELSE. IN FACT WE ARE THE ONLY PEOPLE WHO CLAIM TO MEET ALL CATALOGUE PRICES WHICH WE POSITIVELY DO ON ALL GOODS.



Pianos and Organs,            Bed Room Suits,  
Parlor Suits,                    Dining Room Furniture,  
Refrigerators,            Couches and Lounges  
Kitchen Safes and Cabinets,  
Chiffoners and Wardrobes, Hall Trees, Hall Mirrors,  
Pictures and Easels,        Folding Beds,  
Mattresses,                    Baby Cabs and Sleepers  
Tables of all descriptions,  
Window Shades and Poles, Rockers, Dining Chairs,  
Sideboards and Buffets,    China Closets,  
Plate Racks,                  Dressers,                  Iron Beds.

DON'T FAIL TO SEE OUR STOCK BEFORE BUYING.



Everything Delivered.

# King & Taylor,

Virginia, Illinois.

Undertaking,



## VIRGINIA HIGH SCHOOL.

District No. 32, 17 10.

M. J. Alkire, Superintendent.

Kate Bellersheim, Principal

Chas. W. Russell, Assistant Principal.

### GRADE TEACHERS.

Henry Jacobs.

Anna Suffern.

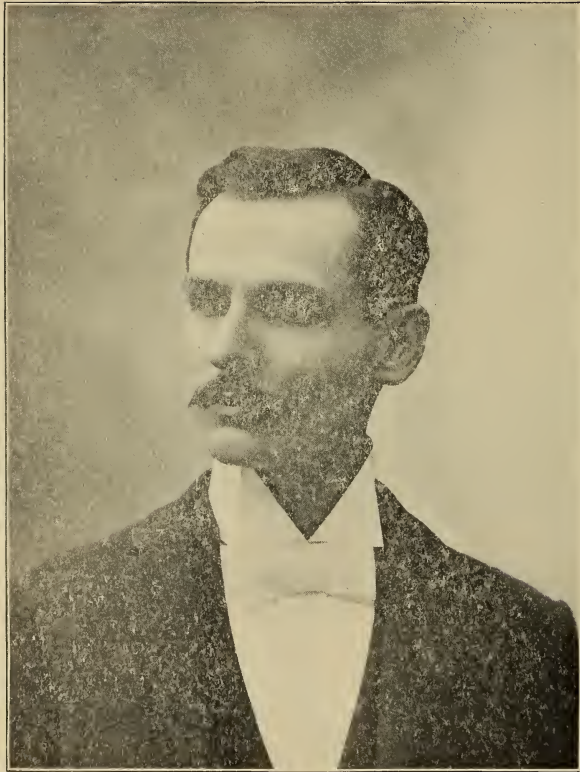
Ella Wilson.

Josephine Sallee.

Ernestine Hillig.

Mabel Leeper.

This is one of the most modern and nicely arranged school buildings in the county. In connection with this building is a large campus for a play ground for the pupils.



**PROF. C. S. HOOVER.**

Prof. Calvin S. Hoover was born in Pennsylvania near Philadelphia and attended his home district school. Began teaching at the age of eighteen in Indiana. Attended the University of Indiana and Illinois and did since work in Chicago University. At present Mr. Hoover has the chair of history in Valparaiso Normal. Mr. Hoover has been instructor in our county institutes for the past three years, and will be next summer.





## GERMAN EV. LUTH. CHURCH, BEARDSTOWN.

The St. John's Ev. Lutheran Parochial school, of Beardstown, Illinois, is owned and controlled by the First German Ev. Luth. St. John's church of Beardstown. It was established in 1848 and has flourished through all these years. It is a German-English school aiming to impart to its pupils a thorough religious instruction, a thorough knowledge of German and a good English common school education equal to that imparted in the public schools. For the last nine years there has been a steady increase in the number of pupils. The school is divided into two divisions, the lower division containing thirty-one and the upper division forty-nine pupils, eighty in all. The present instructors are Rev. F. Berg, principal; Miss Ida H. Ortwein and Miss Lydia Berg. The managing board consists of the pastor of the church, ex officio, and Messrs. H. Greb and H. Koehne. A monthly tuition fee of fifty cents for each pupil is charged, but when three children of the same family attend the school at the same time, the third child is taught free of charge. The school building, the oldest part of which was erected in 1871, was enlarged to its present dimensions in 1898 and is situated in the rear of the church on corner of Sixth and Jefferson Sts.

# Beardstown Enterprise,

DAILY AND WEEKLY.



## THE MORNING ENTERPRISE.

PUBLISHED EVERY MORNING EXCEPT MONDAY. THE LARGEST CIRCULATION OF ANY DAILY PUBLISHED IN CASS COUNTY. SUBSCRIPTION 10c PER WEEK DELIVERED, \$4.50 PER YEAR BY MAIL.

## THE WEEKLY ENTERPRISE.

PUBLISHED EVERY THURSDAY MORNING. THE CIRCULATION IS AS LARGE AS THAT OF ANY WEEKLY PUBLISHED IN CASS COUNTY. SUBSCRIPTION \$1.50 PER YEAR PAYABLE IN ADVANCE. THESE EDITIONS FURNISH THE BEST ADVERTISING MEDIUM IN CASS COUNTY.

## ENTERPRISE JOB OFFICE.

IS UP-TO-DATE IN EVERY RESPECT, BEING WELL EQUIPPED FOR DOING ALL KINDS OF FINE AND ARTISTIC JOB PRINTING.

## RATES ON ADVERTISING

AND JOB PRINTING REASONABLE AND MADE KNOWN ON APPLICATION. FOR FURTHER PARTICULARS CALL ON OR ADDRESS

## ENTERPRISE OFFICE,

BEARDSTOWN, ILLINOIS.

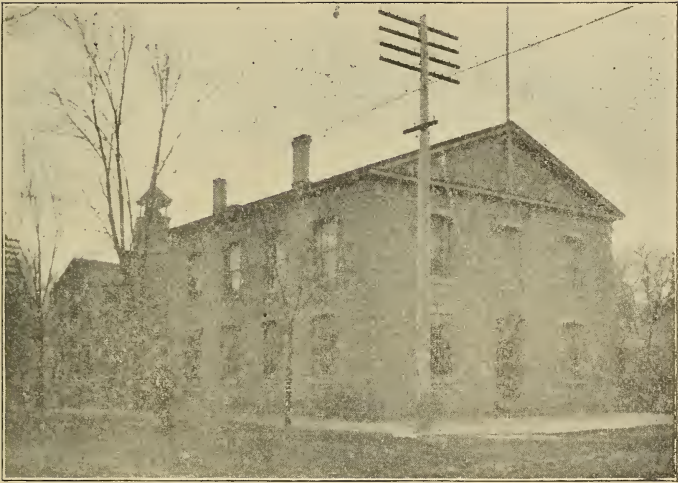
A. S. COIL and CHAS. A. SCHAEFFER

Editors and Proprietors.

CHAS. A. SCHAEFFER, Editor and Publisher.

A. S. COIL, Assistant Editor and Business Manager.

Firm Name—COIL & SCHAEFFER.



## OLD CASS COUNTY COURT HOUSE.

Now City Hall at Beardstown, Illinois.

In this building Abraham Lincoln made some of his famous speeches and it was here that Lincoln conducted the defense in the famous Armstrong case. The records in this case in Abraham Lincoln's own hand writing are filed in the circuit clerk's office in this county.

# Harbison & Rethorn

The Leading Grocery House  
in Chandlerville ❁

New Goods, Fresh Stock, Everything Clean and Up to Date.  
Farm Produce Taken in Exchange.

Give Us Your Trade.

# Yaple & Petefish

Agents

Represent the Following Old and Reliable

## Fire Insurance Companies

Aetna	North British and Mercantile
Hartford	Springfield Fire and Marine
Ins. Co. of North Am.	Phoenix of Hartford
Niagara	Phoenix of London

When in Virginia  
Call and Get Your Property Insured.

Matt Yaple.

L. A. Petefish.

E. P. WIDMAYER.

R. E. WIDMAYER.

Established 1877.

## Widmayer Bros.

Retail and Wholesale Dealers in

### FRESH AND SALT MEATS

Buyers and Sellers of All Kinds of Live Stock.



**COURT HOUSE.**  
**COUNTY OFFICERS.**

Judge—J. F. Robinson.

Clerk—A. M. Pendleton Sr.

Deputy Clerk—A. M. Pendleton Jr.

Circuit Clerk—A. F. Sielschott,

Sheriff—E. P. Widmayer. Deputy Circuit Clerk—D. N. Walker.

Deputies—C. I. Haskell and Geo. Widmayer.

Assessor and Treasurer—A. S. Coil.

County Superintendent of Schools—A. E. Hinners.

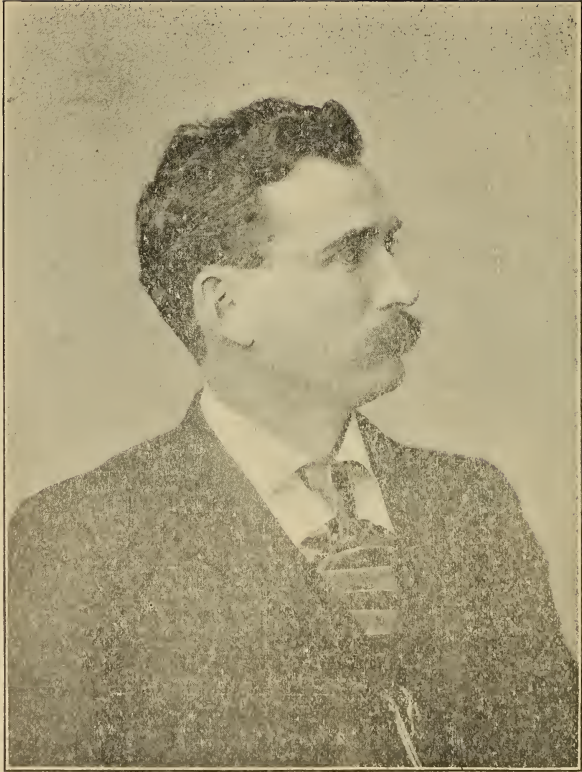
States Attorney—C. A. Gridley.

Surveyor—J. H. Goodell.

Coroner—C. H. Cummings.

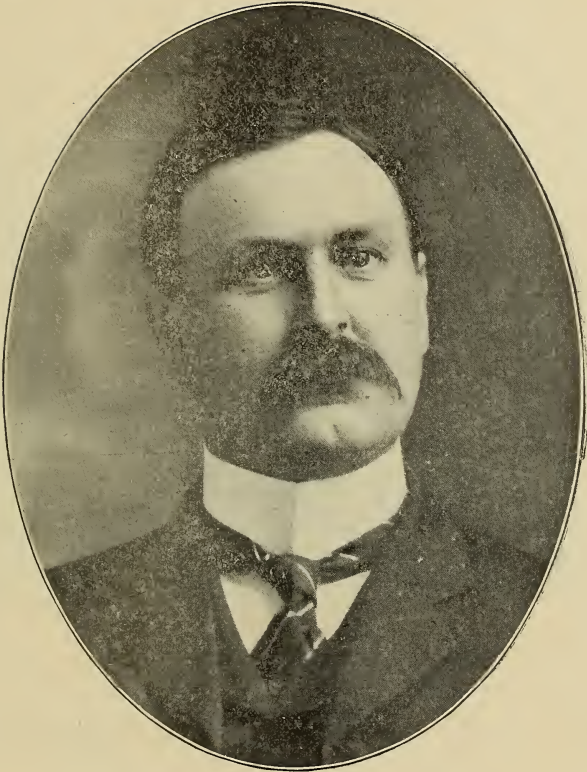
Commissioners—A. H. Krohe, Geo.

Chittick and R. H. Armstrong.



**RICHARD LINDER.**

Richard Linder was born in Hart county, Kentucky, and received his first schooling in the public schools of that state. At the age of 12 years removed with his parents to Illinois, locating near Bath, Mason county. Commenced teaching in the fall of 1884 and taught for seven years in country districts. In 1891 was elected to the principalship of the school at Bath, Ill., and remained in that position four years. Was then chosen as principal of schools at Meredosia, Morgan county, Ill., and was re-elected to the same position for four years. Took charge of the Arenzville school in 1899, which position he still holds.



**JAMES C. WALTERS,**  
Principal Chandlerville Schools.

James C. Walters was born Aug 21, 1869 near Petersburg, Menard county, Illinois. He was a member of the state militia and was chosen captain of his company and served in that capacity in the Chicago strike riots which occurred during the Altgeld administration. Taught in the public schools of Menard county, was principal of the Bath schools two years, and since 1899 has been principal of Chandlerville schools.

# New Numbers of School Districts.



In compliance with a law passed by the last General Assembly and taking effect July 1, 1901, requiring that school districts in the county be numbered in consecutive order, I herewith submit this list, giving the old and new numbers of school districts in Cass county. District clerks and township treasurers will from this time report their districts under the new number assigned and thus comply with the new law.

School.	Old No.	Township.	New No.
Lynn .....	1	19 8	1
Dick .....	5	19-9	2
Pontiac .....	4	18-8 & 9	3
Wilson .....	2	19-9	4
Chandlerville .....	4	18-9 & 10	5
Morgan .....	4	18-9	6
Live Springs .....	1	18-9 & 10	7
Hickory .....	2	18-10	8
Box Elder .....	7	18-10	9
Red Oak .....	8	18-11	10
Cottonwood .....	6	18-11	11
Limbo .....	1	18 & 19 11 & 12	12
Birch .....	1	18 & 19 11 & 12	12
Brick .....	2	18-11	13
Star .....	9	18-11	14
Beardstown .....	1	18-12	15
Arenz .....	7	18-11	16
Bluff Springs .....	4	18-11	17
Warrior .....	5	18-11	18
Union .....	3	18-10	19
Germany .....	4	18-10	20
Anderson .....	6	18-9 & 10	21
Quebec .....	6	17 & 18-9	22
Science Hill .....	7	18-9	23
Pleasant Ridge .....	3	18-8 & 9	24
Oregon .....	5	18-8 & 9	25
Circleville .....	5	18-8	26
Bailey .....	9	18-8 & 9	27
Centenary .....	2	17-8	28
Panther Grove .....	1	17 & 18-9	29
Sugar Grove .....	2	17-9	30
Springer .....	6	17-10	31
Virginia .....	1	17 & 18-10	32
Campbell .....	5	17 & 18-10	33
Pleasant Hill .....	8	17-10	34
Jules .....	10	17 & 18-10	35
Monroe .....	1	17-11	36
Krohe .....	8	17 & 11	37





## BOX ELDER SCHOOL.

District No. 9, 18-10.

Josephine Craven, Teacher.

Frank Briar, President, Chandlerville.

Wm. Theivaght, Clerk, Chandlerville.

M. B. Scott, Member, Chandlerville.

This school enrolls about thirty pupils, and was built about 1861 or 1862. A pupil of this school, Mr. Jean Scott, won the prize last year offered by Illinois College for making the highest average in the Central Examination.

# New Numbers of School Districts.

(Continued.)

School.	Old No.	Township.	New No.
Buck.....	2	17 & 11	38
Hagener.....	4	17 & 12	39
Sand Prairie.....	3	17 & 12	40
Korsmeyer.....	5	17 & 12-13	41
Island.....	1	17 & 18-13	42
Wagoners Bridge.....	2	17-12	43
West Point.....	1	17-12	44
Arenzville.....	3	17-11	45
Lovekamp.....	7	17-11	46
Springer.....	5	17-11	47
Providence.....	2	17-10 & 11	48
Bethlehem.....	3	17-10	49
Hall.....	7	17-10	50
Zion.....	4	17-10	51
Walnut Grove.....	3	17-9	52
Philadelphia.....	5	17-9	53
Washington.....	5	17-9	54
Harmony.....	4	17-9	55
Gurney.....	8	17-8 & 9	56
Ashland.....	6	17-8	57
Babb.....	13	17-8	58
Coddington.....	9	17-8	59
Newmanville.....	2	18-9	60
Lafayette.....	1	18-8	61
Mud College.....	5	16 & 17-10	67
Union Grove.....	6	17-11	110
Union.....	4	17-10 & 11	111
Crow's Point.....	3	17-8	112



## RED OAK SCHOOL.

District No. 10, 18-11.

Grace Todd, Teacher. Last half of term, Edith Mains.

Wm. Parry, President, Beardstown.

Ed. W. Ryan, Clerk, Jules.

Henry Theivaght, Member, Beardstown.

This school enrolls about twenty pupils and has a small library and an organ for the pupils' use. The people in this district hold Sunday school and religious meetings in this school house.

THE PEOPLES BANK,  
OF  
Arenzville, Illinois.

---

Transacts a General Banking Business.

Accounts Solicited.

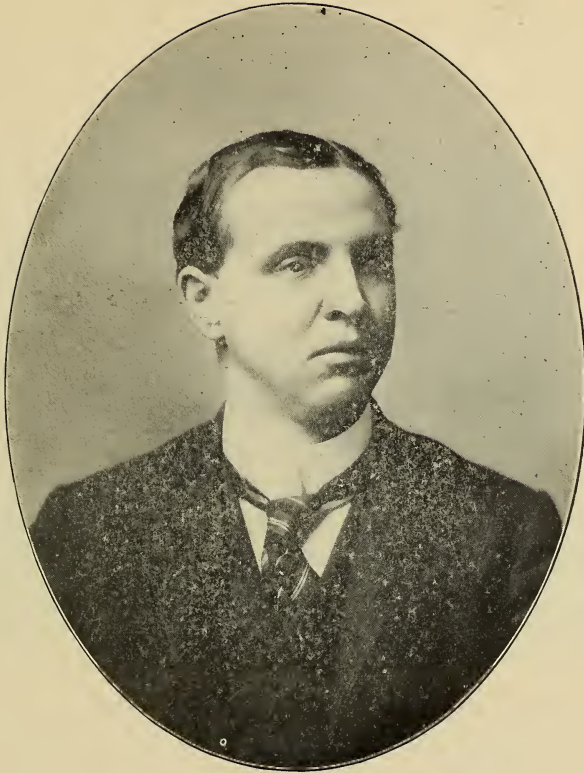
Exchange on All Principal Cities

at

Lowest Possible Rates.

---

HERMAN ENGELBACH, - President.  
GEORGE ENGELBACH, - - Cashier.  
FRED ENGELBACH, - Assistant Cashier.



**HENRY JACOBS.**

Henry Jacobs was born in Virginia, and graduated from the Virginia High School in 1893. He taught the school at Bluff Springs two years, 1893-1895, and the Mt. Pleasant school at Anderson two years, 1895-1897. He attended the University of Illinois during the fall and winter terms of 1897-1898 and taught the spring term of 1898 at Mt. Pleasant.

In 1898 he won a free trip to Washington, D. C., offered by the Virginia Enquirer to the Cass county teacher securing the most votes. This contest extended from February to July and was very spirited.

He was assistant principal of Chandlerville school for three years, 1898-1901. In 1901 he was married to Mamie D. Wyatt and at the present time is teaching in the 8th grade in Virginia and is also president of the Cass County Teachers' Association.



## CIRCLEVILLE SCHOOL.

District No. 26, 18-8.

Robert Wright, Teacher.

James Stiltz, President, Tallula.

Jens Marcussen, Clerk, Newmanville.

James Masten, (deceased), Member, Ashland.

Robert Wright, the teacher of this school whose portrait appears elsewhere in this Directory, was born near La Belle, Missouri, and later moved to Lagrange, Mo., where he was educated in the public schools, and graduated from the Lagrange Baptist College. He came to Illinois in 1890 and has taught schools in Cass, Morgan and Menard counties. He is now teaching his second term at Circleville school.



## ANDERSON SCHOOL.

District No. 21, 18-9 & 10.

Mrs. Emma Ross, Teacher.

Henry Millner, President, Virginia.

George Needham, Clerk, Virginia.

Joseph Turner, Member, Chandlerville.

This school was built in 1892 and is nicely located. The yard contains a grove of beautiful trees that furnish abundant shade. This school enrolls about thirty-five pupils.

# Illinois College

73rd Year.



*ACADEMY PREPARATORY TO THE COLLEGE.*

---

LOCATION: Jacksonville, one of the most beautiful towns in Illinois.

PLANT: Seven buildings, a large campus and good athletic field.

STUDENTS: A fine class of manly fellows, hearty in their support of college life and work.

INSTRUCTORS: Thoroughly qualified in character and learning, graduates of Yale, Harvard, Williams, Chicago and the best home and foreign Universities.

ALUMNI: Richard Yates, sr., Richard Yates, jr., Wm. Jennings Bryan, Newton Bateman, Judge Carter and hundreds more of distinction.

---

**Clifford W. Barnes,**  
President.

Catalogue sent on application.





MILEM J. ALKIRE.  
Superintendent City Schools, Virginia, Ill.



## MONROE SCHOOL.

District No. 36, 17-11.

Anna Nordsiek. Teacher.

Henry Wildt. President. Virginia.

Edward Yaple. Clerk. Virginia.

William Miller. Member. Virginia.

This school was built in 1854 and enrolls about twenty pupils. It is nicely located, adjoining a beautiful grove. Sunday school is held in this building and the organ of the Sunday school may be used by the pupils.



RALPH R. HOLMES.

Mr. Holmes was born in Bloomington, Illinois, and attended the schools of that city. He is a Normal graduate and has served as principal of a number of city and village schools in this state. At present he is the principal of the Ashland schools where he is meeting with good success.



## SCIENCE HILL SCHOOL.

District No. 23, 18-9.

Bert Springer, Teacher.

Ed Drake, President, Chandlerville.

Chas. Arthalony, Clerk, Chandlerville.

Nick Powley, Member, Chandlerville.

This school enrolls about thirty-five pupils and is too small for so many children. The building is an old one and should be replaced by a new and up-to-date school house.



## BAILEY SCHOOL.

District No. 27, 18-8 and 9.

Lillian Nester, Teacher.

James C. Daniel, President, Ashland.

James N. Pettit, Clerk, Ashland.

C. K. Garner, Member, Sylvan

This school was built in 1877 and enrolls about twenty pupils. There are no trees on the school grounds and this matter should be attended to by the directors of this district.



**GROUP OF VIRGINIA TEACHERS.**

- |                   |                   |               |                   |
|-------------------|-------------------|---------------|-------------------|
| Ella Wilson.      | Anna Suffern.     | Mabel Leeper. | Josephine Saltee. |
| Kate Bellersheim. | Ernestine Hillig. |               |                   |



SUPT. H. J. JOKISCH S. B.

Was born in this county and educated at following institutions: State Normal at Normal, Illinois; Leland Stanford Jr. University, California; Illinois College, Jacksonville, Ill.; University of Chicago, Chicago, Ill. Taught two years in district schools. Two years in seventh grade, Beardstown, Ill. Two years Principal Beardstown High School. Three years Superintendent of City Schools at Beardstown.

# \$125.

One hundred and twenty-five dollars per acre is the current price for good land in Champaign county, Illinois, PROVIDED that the title is good. Black land in Cass county will soon sell for as much if an abstract showing good title can be furnished.

A Cass county farmer once came into my office and ordered an abstract of his title. He said he did not want to sell, nor mortgage, but did want to know whether he had good title. It turned out that he had bought 80 acres of a bachelor, who lived in Missouri. This bachelor sent a power of attorney to his agent in Cass county, authorizing him to make the deed. The agent and the farmer went to a justice of the peace who wrote the deed, and the agent SIGNED HIS OWN NAME, instead of the owner, to the deed. I hunted up this agent who said he signed the deed just as the justice told him to do. I learned the address of the bachelor, sent him a deed in proper form, and it was signed, acknowledged and recorded. In less than one year I read of the death of this bachelor, who left a large estate; his heirs were nephews and neices and other relatives scattered all the way from Dakota to Texas. Suppose the farmer had not learned of his bad title till after the death of the bachelor; what do you say it would have cost him to have hunted up all these heirs, got them into court, made his proofs in order to obtain a valid decree establishing his title? What was his 80 worth in the market, with the deed signed only by the agent who had no title to it.

Who bought your land from the United States? If you can not tell, you do not know much about your title. If you will come to my office, I will tell you who entered or located your land and what it will cost to make an abstract. This information will cost you nothing except the little time it will take to get it.

I have the only set of title abstracts in the county, my records contain more than one thousand conveyances of lands and lots in this county, that were not copied when the conveyances were taken from the records at Jacksonville where they were kept when Cass formed a part of Morgan county.

If you want to buy more land and need money, I can furnish it, on satisfactory land security at a rate of five per cent. interest per year payable annually. You can repay the loan in one hundred dollar payments at any time; not at the end of any year, but whenever you get the money. You can borrow for five years and pay in five days or five months if you want to. Did you ever have money offered you on so favorable terms?

My law and abstract office is in Virginia, Illinois, on Front Street the first door south of the Farmer's National Bank.

## J. N. GRIDLEY.





MISS HARMONIA TATE.

Primary Teacher in Virginia Schools.



## COTTONWOOD SCHOOL.

District No. 11, 18 11.

Alice Flinn, Teacher.

Edward Krohe, President, Beardstown.

D. G. Smith, Clerk, Virginia.

A. E. Sudbrink, Member, Virginia.

This school enrolls about fifteen pupils and is situated on a hill overlooking the Sangamon valley. There are no trees on the school grounds but there is timber adjoining.



## DICK SCHOOL.

District No. 2, 19 9.

Mrs. Sally Wilson. Teacher.

Henry Schaad, President Chandlerville.

Daniel Cook, Clerk, Chandlerville.

Wm. Frankinfield. Member, Chandlerville.

This house was built in 1895 and the school numbers about twenty pupils. Several of the pupils of this school hold county common school diplomas.



## WASHINGTON SCHOOL.

District No. 54, 17-9.

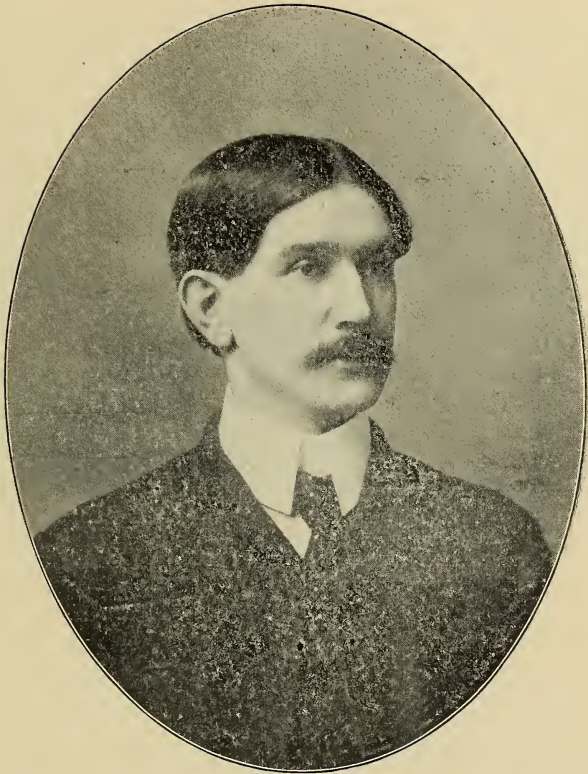
Della Stiltz, Teacher.

Chas. W. Bailey, President, Philadelphia.

Frank Cosner, Clerk, Philadelphia.

Frank Wright, Member, Philadelphia.

This school house was built in 1889 and moved to its present location in 1901. It was remodeled and painted and is now a very good, substantial school building. The enrollment is about fifteen pupils.



LEWIS ANDERSON.

Lewis Anderson was born in this county and received his early education in his home district school. Later he attended the Western Normal College, of Bushnell, Ill., and the Eastern Illinois Normal at Charleston. He has taught several years in this county with success, and is considered one of Cass county's leading teachers.



## LIVE SPRINGS SCHOOL.

District No. 7, 18-9 and 10.

Chas. Dillow, Teacher.

Archibald Taylor, President, Chandlerville.

Lincoln Fielden, Clerk, Chandlerville.

James Wing, Member, Chandlerville.

This school was built in 1874 and now enrolls thirty pupils with an average daily attendance of twenty. This is a good substantial brick building.



## PLEASANT HILL SCHOOL.

District No. 34, 17-10.

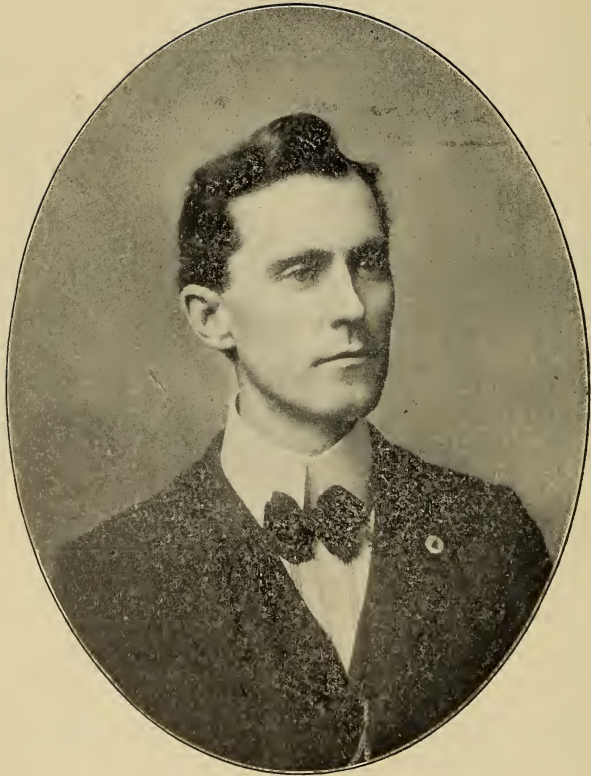
Edith Coleman, Teacher.

J. A. Way, President, Virginia.

W. W. Beard, Clerk, Virginia.

S. A. Quigg, Member, Virginia.

This school was built in 1858 and enrolls about fifteen pupils. It is not a large school, but some of its pupils have done some very nice work.



JOHN F. LOCKWOOD.

Teacher of the Lynn school, the largest district school in the county. This is Mr. Lockwood's first term in Cass county, having taught in Menard county, but his work has proved very satisfactory.





## BABB SCHOOL.

District No. 58, 17-8.

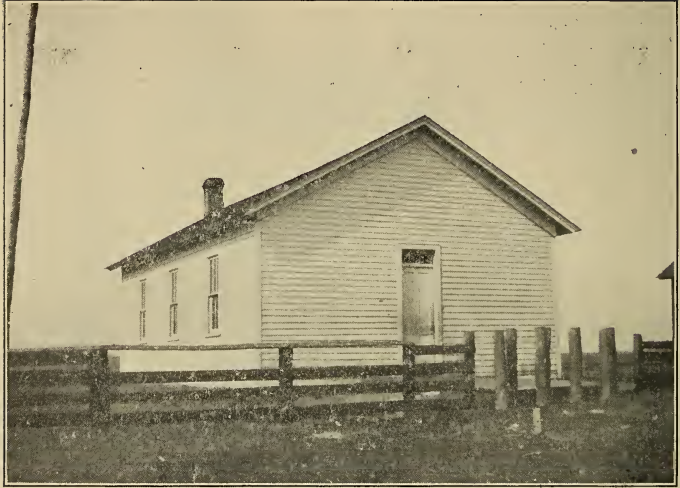
John Brown, Teacher.

J. W. Babb, President, Ashland.

Henry Votsmeier, Clerk, Ashland.

C. Kavanaugh, Member, Ashland.

This school house was built in 1874, near the county line separating Cass and Menard counties, part of the district lying in Menard. This school yard is without trees which should be attended to at once.



## NEWMANVILLE SCHOOL.

District No. 60, 18-9.

Pearl Garner, Teacher.

J. T. Witty, President, Newmanville.

James Struble, Clerk, Newmanville.

W. W. Mathew, Member, Newmanville.

This school enrolls about thirty-five pupils and was built in 1868. Quite a number of its pupils hold county common school diplomas. A few shade trees planted on these grounds would help its appearance very much.



## BETHLEHEM SCHOOL.

District No. 49, 17-10.

Eugene Sinclair. Teacher.

John Lacy, President, Virginia.

Chas. Beadles, Clerk, Virginia.

Henry Meier, Member, Virginia.

This school building is nicely located in a large yard. Only a few trees are on the grounds and more should be planted. This school last year had the best German class in the county. Bethlehem enrolls about twenty pupils.



MISS LENA RAUSCH.

Primary Teacher in the Beardstown Schools.



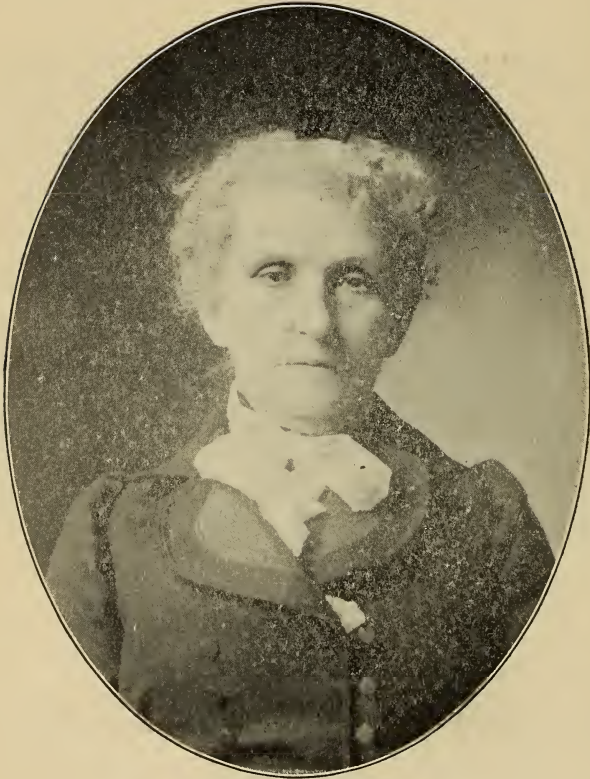
## SECOND WARD SCHOOL.

BEARDSTOWN.

District No. 15, 18-12.

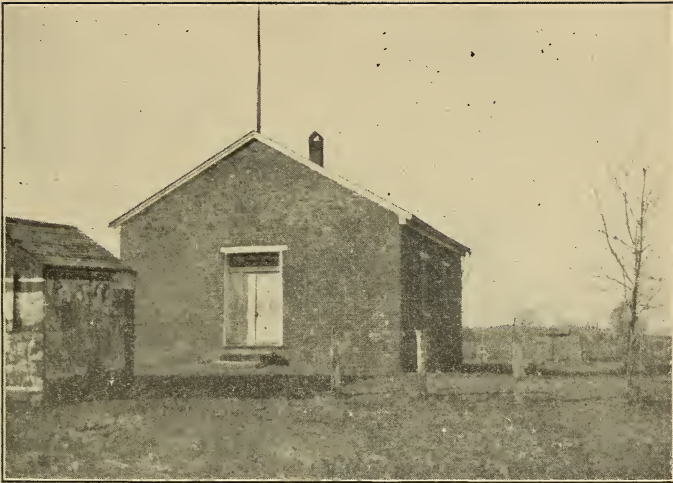
Teachers—Eda Pappmeier. Principal: Hannah Brodman. Lillie Mohlman. Fannie Long.

This school was built in 1893 and is a good modern school building, containing four rooms and large halls and stairways.



MRS. J. G. DOWLER.

We take pleasure in presenting the picture of Mrs. J. G. Dowler, who is a pioneer school teacher of this county and perhaps of the state. Mrs. Dowler has taught for forty-four consecutive years in the Beardstown schools. A great many of Beardstown's prominent citizens were at one time pupils of hers. In addition to her many years' experience Mrs. Dowler keeps abreast with the times and is well posted on the modern methods employed in teaching. We believe that Mrs. Dowler's record as a teacher can hardly be duplicated.



## BRICK SCHOOL.

District No. 13, 18-11.

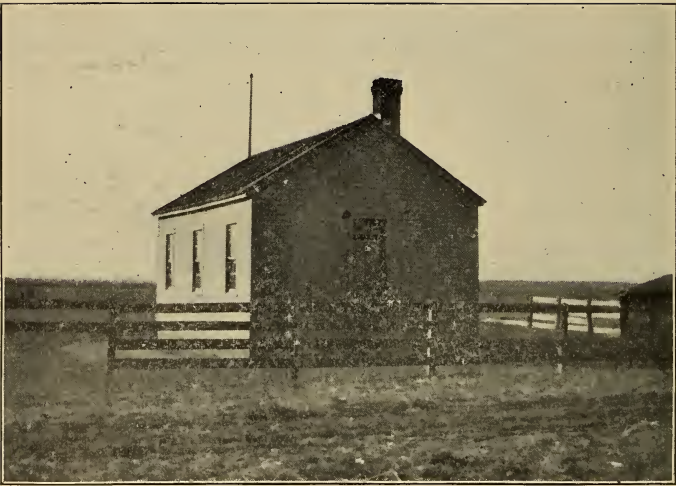
Kate Lebkeucher, Teacher.

Wm. Coleman, President, Beardstown.

Z. E. Main, Clerk, Beardstown.

J. P. McGovern, Member, Beardstown.

This is one of the oldest school buildings in the county, situated in a large yard with a number of trees which in a few years will furnish good shade.



## STOCK SCHOOL.

District No. 15, 18-12.

J. H. Rishell, Teacher.

Under control of Board of Education of Beardstown. This school enrolls about twenty-five pupils and is situated four miles south of Beardstown. The pupils from this school on finishing the common school grades are entitled to enter the Beardstown schools.





## BEARDSTOWN WEST WARD SCHOOL.

District No. 15, 18-12.

Teachers—Mary Long, Principal, Leonia Nolden, Julia Brodman,  
Rose Oetgen.

### BOARD OF EDUCATION.

Harrison Hines, President.	F. M. Fulks, Secretary.		
J. J. Beatty.	H. C. Keil.	John Listman.	W. D. Epler.

## PICTURES IN THIS DIRECTORY.

The photographs in this book were made from my negatives taken with a Magazine Cyclone Kodak and developed and finished by R. H. Mann, Photographer, Virginia, Ill. The cuts for printing were made by the Binner Engraving Co., of 21-25 Plymouth Court, Chicago, the largest engravers of the world. When desiring work in either of these lines, we heartily recommend the two above mentioned business firms,

A. E. HINNERS.



## FOURTH WARD SCHOOL BEARDSTOWN.

Teachers—Emma Yeck, Principal; Nellie Baujan.

Under control of Board of Education, Beardstown, Ill.



EMMA FISCHER.

Teacher in Central Building, Beardstown, Ill.

AMERICA'S MOST POPULAR RAILROAD  
**CHICAGO**  
AND  
**ALTON**  
**RAILROAD.**  
PERFECT PASSENGER SERVICE TO

**CHICAGO, ST. LOUIS,  
KANSAS CITY,  
PEORIA, DENVER.**

AND POINTS IN

**ILLINOIS,  
MISSOURI,**

AND TERRITORY BEYOND.



FOOT BALL TEAM OF VIRGINIA HIGH SCHOOL CLASS 1900.

Ted Kors	Ed Bullard	Scottie Menzies
Frank Robertson		Richard Martin
Tom Finn		Harry Paul
	Allen Davis	
Lee Widmayer		George Walker
Lee Robinson		Preston Kors



## PROVIDENCE SCHOOL.

District No. 48, 17-10 & 11.

Vida Crum, Teacher.

John T. Cooper, President, Virginia.

Chas. L. Davis, Clerk, Virginia.

Robt. H. Knight, Member, Virginia.

This is one of the old school buildings in the county. The school does not present a good appearance and the surroundings should be improved. About 15 pupils are enrolled.



MISS JEAN REID.





## SAND PRAIRIE SCHOOL.

District No. 40, 17-12.

Mollie Milner, Teacher.

Henry Stock, President, Beardstown.

Henry Elliott, Clerk, Beardstown.

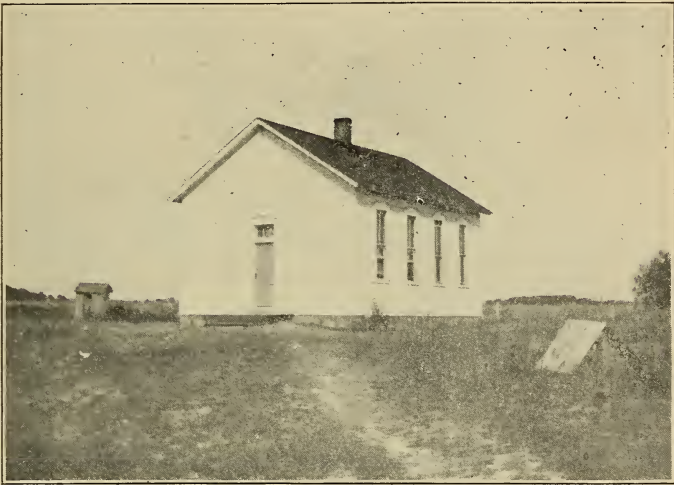
John Wilson, Member, Beardstown.

This school enrolls about 40 pupils and is too small for the number of scholars. Possibly a new building will be erected soon.

**N. E. A. MEETING AT MINNEAPOLIS JULY 7-11, 1902.**

Round trip tickets, including \$2 association fees, \$14.20 from any point in Cass County over the B. & O. and C. B. & Q.

Leave Beardstown at 1:10 p. m. and arrive in Minneapolis at 8 a. m. All Cass County teachers should avail themselves of this trip. For further information inquire of A. E. Hinners or any railroad ticket agent.



## PONTIAC SCHOOL.

District No. 3, 18-8 & 9.

Josephine Watkins, Teacher. Last part term. Marguerite Irvine.

J. W. Milstead, President, Chandlerville.

J. W. Branian, Clerk, Chandlerville.

Bristow Cooper, Member, Chandlerville.

This school enrolls about 40 pupils and is nicely located on a hill in a large school yard. A few trees should be planted to give shade.



## PHILADELPHIA SCHOOL.

District No. 53, 17-9.

Anna M. Smith, Teacher.

Wm. J. Greenwood, President, Philadelphia.

Charles Coleman, Clerk, Philadelphia.

Henry Climer, Member, Philadelphia.

This school was built in 1901 and is a modern and up-to-date building, having high ceiling, plenty of light and a furnace for heating purposes. This school enrolls about 45 pupils.

## Additional Names to Roll of Honor.



Name.	School.	Name.	School.
Pearl Rhineberger,	Bluff Springs.	Laura Jokisch,	Bluff Springs.
Alma Jokisch,	Bluff Springs.	Verna Jokisch,	Bluff Springs.
Viola Jokisch,	Bluff Springs.	Bertha Jokisch,	Bluff Springs.
Ellen Grant,	Limbo.	Clarence Grant,	Limbo.
Lee Flora Doerr,	Limbo.	Henry Kuhlman,	Brick.
Otto Tritsch,	Springer.	Harry Tritsch,	Springer.
Minnie Jordens,	Brick.	Louise Fox,	Quebec.
Andrew Fox,	Quebec.	George Treadway,	Sugar Grove.
Alfred Treadway,	Sugar Grove.	Minnie Treadway,	Sugar Grove.
Charles Newburn,	Birch.	Agnes Voeller,	Arenz.
Charlie Jones,	Arenz.	Harry Jones,	Arenz.
Albert Measle,	Arenz.	Henry Schall,	Krohe.
Louise Mains,	Philadelphia.	Della Shortridge,	Philadelphia.
Stella Shortridge,	Philadelphia.	Ethel Shortridge,	Philadelphia.
Myrtle Westerholt,	Philadelphia.	Johnny Westerholt,	Philadelphia.

MAY 24 1902

1 COPY DEL TO CAT. DIV.

MAY 26 1902

MAY 31 1902





# Recent Publications.

**Readers:** The Holton Primer, Lights to Literature, Five-book Series and by Grades Eight Book Series, Sunbonnet Babies' Primer, illustrated in colors; Child's Garden of Verses.

**The Canterbury Series:** A Graded Series of Supplementary Readers.

**Geography:** Rand McNally's Elementary Geography, Rand McNally's Grammar School Geography, NEW EDITION of both books, including full description of our recent annexed territory and census of 1900.

**Library Books:** A very complete line of standard library books, superior bound books at very low prices.

## Forthcoming Publications.

**Arithmetics:** A Two-Book Series by David Felmley, Pres. Illinois Normal University and George Schutts, Instructor State Normal School, Whitewater, Wis.

**History:** A Grammar School History of United States, by Dr. Wm. H. Mace, of Syracuse University.

Many more publications in press. Write us concerning your wants.

## Rand McNally & Co.

160-178 Adams Street, Chicago, Illinois.