

Doc. 2073 Evide

Folder 5

(22)



2073

書目類第二の七三號

證

余中山 登ハ余ガ日本語及ビ

露西亞語ニ精通セル者ナルコト並ニ

露西亞語原文及ビ日本語原文ヲ對照

ノ上右ハ本書類ヲ眞實ニ且正確ニ翻譯

セルモノナルヲ確證セルコトヲ茲ニ證ス

署名

中山

登  
中山

昭和二十一年八月十六日



Судены сче-  
ваны по дтм.  
Саме  
ИВ

Второго  
принципа  
работаемый  
ИВ

4.7  
37

# ОБВИНИТЕЛЬ ОТ СОЮЗА ССР в Международном Военном Трибунале в Токио

---

ней сего  
сеем  
Возмущение  
ИВ

Document No 2073  
USSR No 7.

Report on the organization of a division of  
the Kwantung Army on 3 sheets with two maps in  
two copies



9.7

Copy N

R E P O R T

Organisation of Division of Kwantung Army

From the very beginning of occupation of Manchuria the Kwantung Army was always manned by regular reinforced Infantry Divisions consisting of 24-29000 men, while on the other theatres of war operated divisions consisting 13-16000 men.

The number of personnel and the armament of the reinforced Division of the Kwantung Army was twice as much of a normal Japanese Infantry Division.

In 1942 there were 17 Infantry Divisions, out of them 5 Divisions of ( type A-I : I, 8, II, I2 and 23 Infantry Division ) consisting of 29000 men and 12 Divisions ( type A: 2, 9, 10, 14, 19, 20, 24, 25, 28, 29, 57 and 71 Infantry Division ) consisting of 24000 men.

These Divisions were disposed in the districts adjacent to the frontier of the U.S.S.R. in the most important operation directions. Some of these Divisions had taken part in the operations against the Red Army on the lake Hassan ( 1938 ) and on the river Khalhin-Gol ( 1939 ) .

Number and Armament of Reinforced and Normal Infantry Divisions.

COMPARATIVE T A B L E .

N A M E	Reinforced division type A - I	Reinforced division type A.	Normal Division
Man-power	29.400	24.600	13.000 - 16.000
Piece of ordnance (all calibres)	148	102	75
Tanks	81	7	-



During the whole Pacific Ocean war 1941-1945 the Kwantung Army consisted of the most efficient and best equipped units and formations of Japanese Army.

Presence of Reinforced Infantry Divisions in Japanese Army as a whole and Kwantung Army.

Comparative Table.

	Total in Japanese Army	In Kwantung Army
Reinforced Infantry Divisions type A-I ....	5 &	5
Reinforced Infantry Divisions type A .....	19	12

Appendix: 1. Scheme of organisation, number and armament of Japanese reinforced Infantry Division type A-I in Manchuria.

2. Scheme of organisation, number and armament of Japanese normal Infantry Division.  
Deputy Chief of Department of Red Army General Staff.

January 1946.

Colonel ( Tsigichko )

CERTIFICATE OF TRANSLATION OF THE ABOVE DOCUMENT:

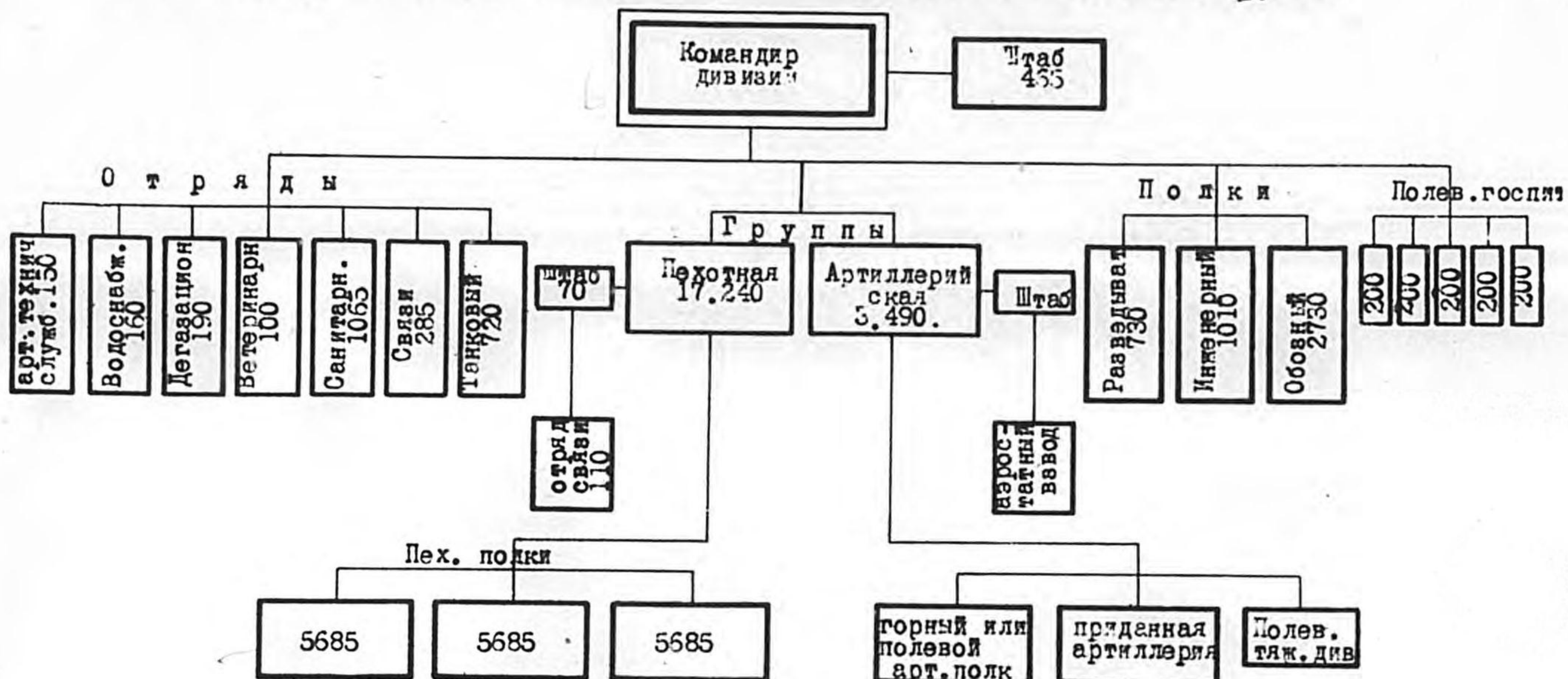
I, M. Menshova, hereby certify that I am thoroughly conversant with the Russian and English languages/ and the above is a correct and true translation of the indicated Document.

Signature Menshova



*English*

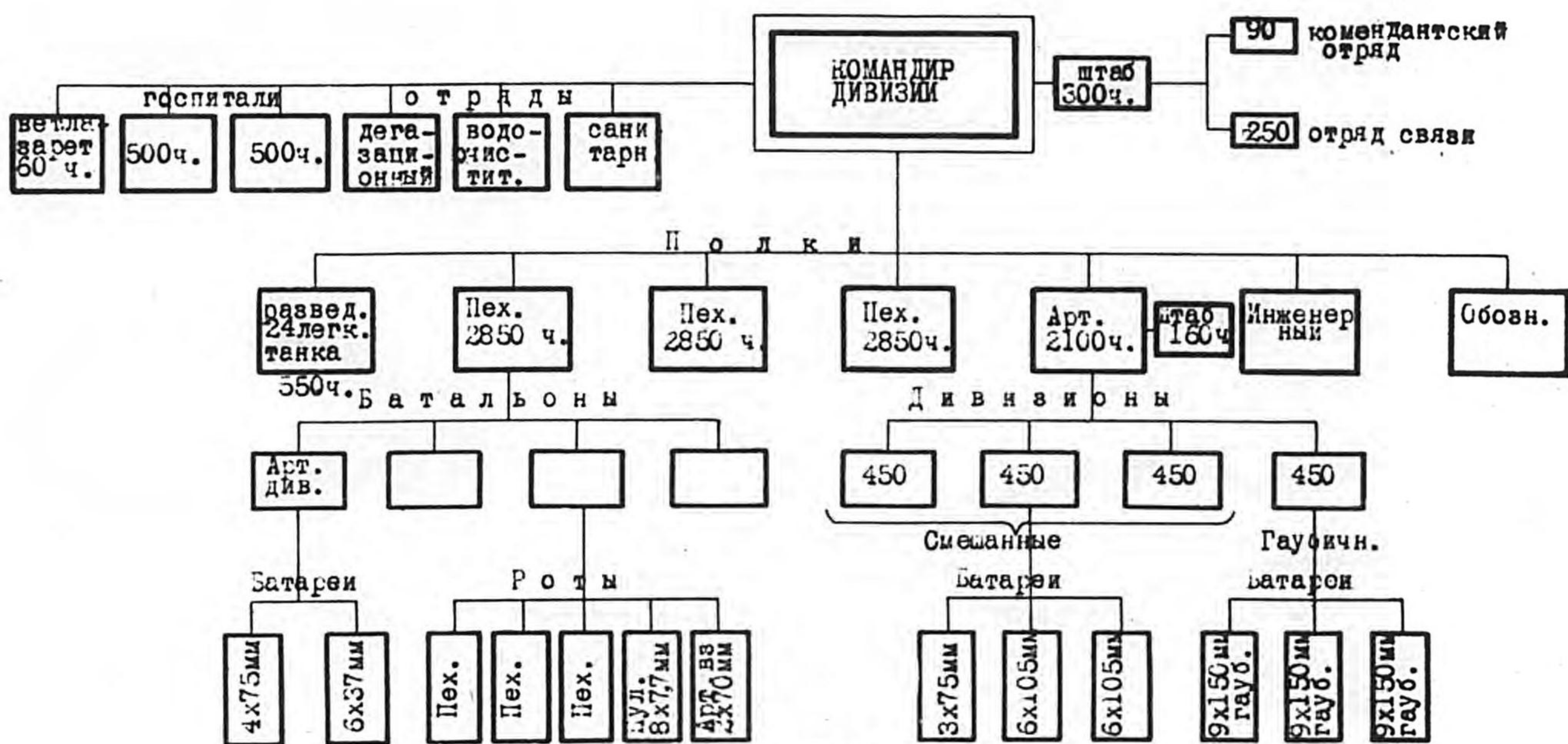
**Организация, численность и вооружение пехотных дивизий усиленного состава, находившихся в Манчжурии**



**ВСЕГО В ДИВИЗИИ:**

Людей	- 29.400	Орудий (всех калибров)	- 148
Пулеметов (всех кал.)	- 517	Танков и танкеток	- 81

**Организация, численность и вооружение пехотных дивизий, действовавших на других театрах**



**ВСЕГО В ДИВИЗИИ**

Людей	- 14.800	Орудий всех калибров	- 75
Пулеметов (всех калибров)	- 348	Танков	- 24



REPORTOrganisation of Division of Kwantung Army

From the very beginning of occupation of Manchuria the Kwantung Army was always manned by regular reinforced Infantry Divisions consisting of 24-29000 men, while on the other theatres of war operated divisions consisting 13-16000 men.

The number of personnel and the armament of the reinforced Division of the Kwantung Army was twice as much of a normal Japanese Infantry Division.

In 1942 there were 17 Infantry Divisions, out of them 5 Divisions of (type A-1: 1, 8, II, 12 and 23 Infantry Division) consisting of 29000 men and 12 Divisions (type A: 2, 9, 10, 14, 19, 20, 24, 25, 28, 29, 57 and 71 Infantry Division) consisting of 24000 men.

These Divisions were disposed in the districts adjacent to the frontier of the U.S.S.R. in the most important operation directions. Some of these Divisions had taken part in the operations against the Red Army at the Lake Hassan (1938) and at the river Khalhin-Gol (1939).

Strength and Armament of Reinforced and Normal Infantry Divisions.

COMPARATIVE TABLE.

<u>NAME</u>	<u>Reinforced division type A-1</u>	<u>Reinforced division type A.</u>	<u>Normal Division</u>
Man-power	29.400	24.600	13.000- 16.000
Piece of ordnance (all calibres)	148	102	75
Tanks	81	7	-

During the whole Pacific Ocean war 1941-1945 the Kwantung Army consisted of the most efficient and best equipped units and formations of Japanese Army.



## Reinforced Infantry Divisions in the Japanese Army as a whole and in the Kwantung Army.

## Comparative Table.

	Total in Japanese Army	In Kwantung Army
Reinforced Infantry Divisions type A-1 .....	5 &	5
Reinforced Infantry Divisions type A .....	19	12

- Appendix: I. Scheme of organisation, strength and armament of Japanese reinforced Infantry Division type A-I in Manchuria.
2. Scheme of organisation, strength and armament of Japanese normal Infantry Division.  
Deputy Chief of Department of the Red Army General Staff.

January 1946.

Colonel (Tsigichko)

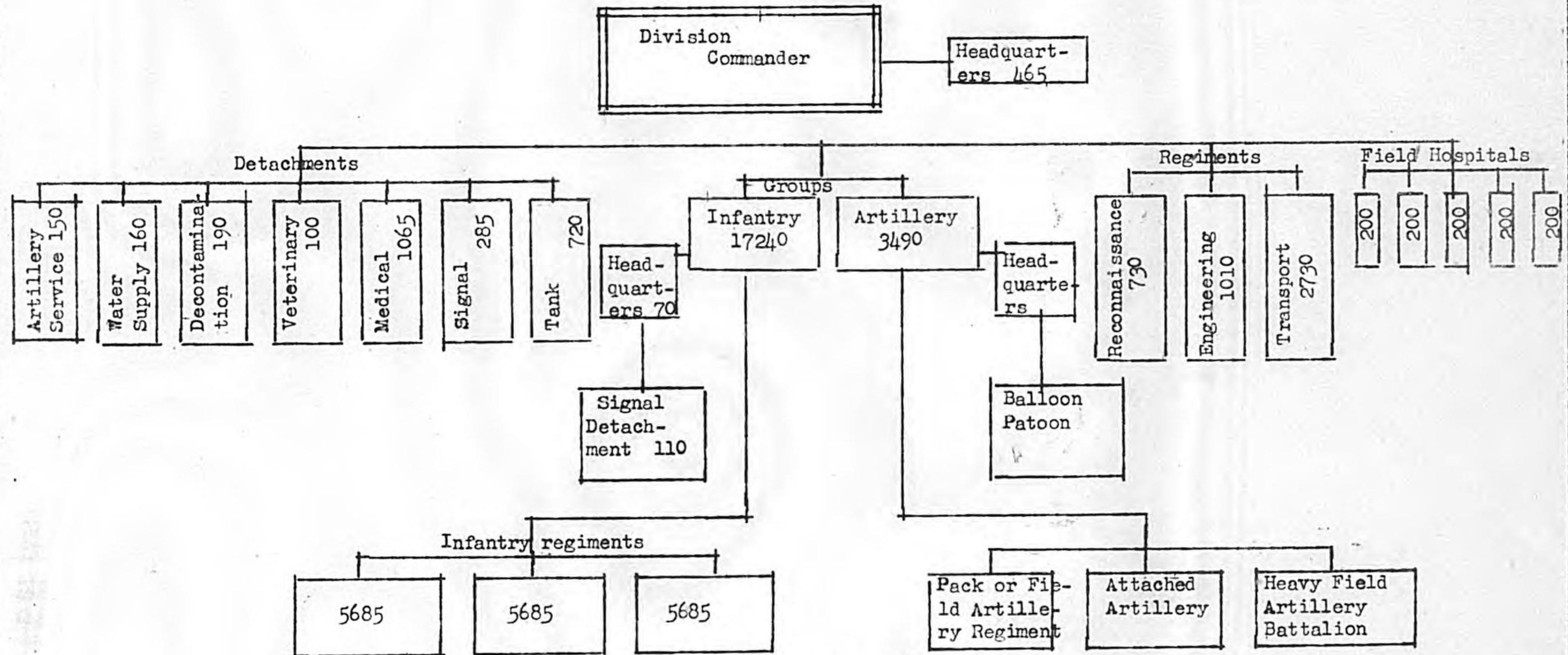
## CERTIFICATE OF TRANSLATION OF THE ABOVE DOCUMENT:

I, M. Menshova, hereby certify that I am thoroughly conversant with the Russian and English languages/ and the above is a correct and true translation of the indicated Document.

Signature Menshova



ORGANISATION, STRENGTH AND ARMAMENT OF REINFORCED  
INFANTRY DIVISIONS IN MANCHURIA



TOTAL IN DIVISION:

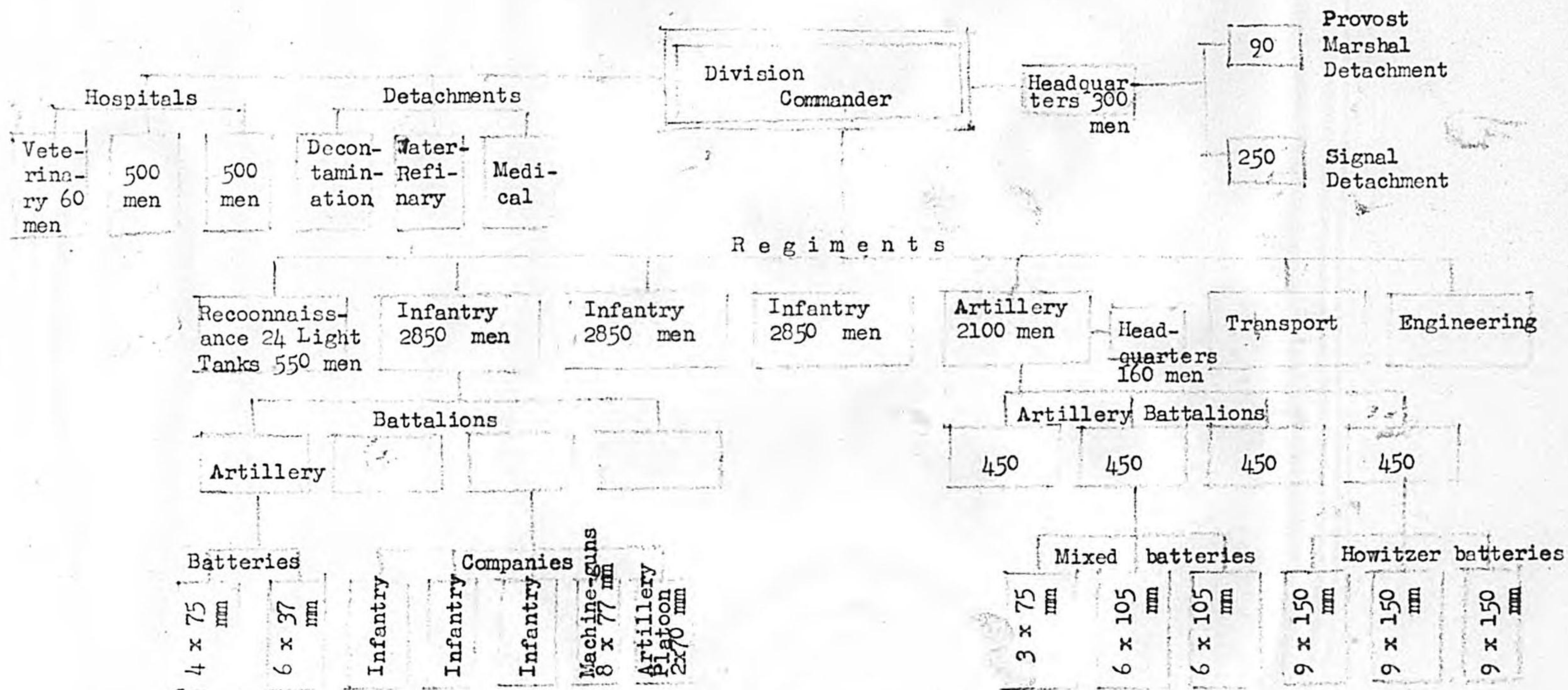
Man-power . 29400  
Machine guns . 517  
(all calibres)

Tanks and tankettes . 81  
Guns (all calibres) . 148



ORGANISATION, STRENGTH AND ARMAMENT OF INFANTRY DIVISIONS

ACTING ON THE OTHER THEATRES OF WAR



TOTAL IN DIVISION:

Men-power - 14,800  
 Machine guns (all callibres) - 348

Guns (all callibres) - 75  
 Tanks - 24



CHARGE OUT SLIP

SEP 25 1946

DATE \_\_\_\_\_

EVIDENTIARY DOC. NO. 2073

TRIAL BRIEF \_\_\_\_\_

EXHIBIT NO. \_\_\_\_\_

BACKGROUND DOC. NO. \_\_\_\_\_

*Report on Organization  
of Division of Quanty  
Army.*

SIGNATURE *A. D. Veauvry*

ROOM NO. 314

*Ed.  
# 707  
de court*



INTERNATIONAL PROSECUTION SECTION

REQUEST FORM

INCIDENT - ACCUSED

22 July

1946

Disposes of previous request for the processing of this document of June 18, 1946.

JUDGE ALBERT WILLIAMS

The undersigned requests the consideration of Document # 2073 *A*  
(describe):

Report about the organization of a division of the Kwantung Army on 3 sheets with 22 maps in two copies.

for introduction in evidence (specify purpose)

To prove, the characteristic features the organization of the Kwantung Army division and greater part of which consisted of 24.000 - 29.000 men.

Lt. Col TARANENKO  
Staff Attorney

*Taranenko*

22 July 1946

25 JUL 1946

TO THE DOCUMENT OFFICER:

The above document has been approved for processing by you with changes as follows:

*Opportunity 7-26  
we coordinate with  
Bureau of documents  
Kb  
Bureau of documents & evidence  
submit to [unclear] [unclear]  
20.7  
[Signature]*

*Albert Williams*

Judge Albert Williams  
Document Control Attorney

By \_\_\_\_\_  
Secretary



GENERAL HEADQUARTERS  
SUPREME COMMANDER FOR THE ALLIED POWERS  
INTERNATIONAL PROSECUTION SECTION

RE: DOCUMENT 2073

6/8

1946

TO: Translation (Russian Three-Way Check)

Request that the attached material be checked from Russian to English and from Russian to Japanese and that all the changes be incorporated in the checking so that returned work will be ready for reproduction.

Miss Allen



# 関東軍師団編成に関する調査

DOC. 2073

関東軍は滿洲占領直後より<sup>第二</sup>二四〇〇〇名乃至二九〇〇〇名の兵員を有する正規の、補充歩兵師団に依りて編成されておるが一方他の不戦地已等に於ては兵員一三〇〇〇名乃至一六〇〇〇名より成る師団が活動してゐた。

関東軍の補充師団は人員及び設備の共に於て正規の日本歩兵師団に殆んど倍優勢であつた。

一九四二年に関東軍には一七個歩兵師団があつた。

其の中五ヶ師団(タイプA)：カ一、カ八、カ二一、

カ二二、カ二三の各歩兵師団(は二九〇〇〇名より

成り、又三ヶ師団(タイプA)：カ二、カ九、カ一〇、カ

一四、カ一九、カ二〇、カ二四、カ二五、カ二八、カ二九、カ五七、

カ七一の各歩兵師団)は二四〇〇〇名より成つてゐた。

此等の師団は最重要任務方面のソブエト聯

邦國境隣接地に適當に配置されてゐた。

此等師団中若干の師団はハサン湖(一九三一年)

及びハルビンゴル河(一九三九年)に於て対赤軍任務

D-5-5-5-5-5







DOC. 2073

日本軍全般並に南東軍に於ける補充歩兵師団實在

比較表

	日本軍中全部	南東軍中
補充歩兵師団 9120 A-1	5	5
補充歩兵師団 9120 A	19	12

附録

1. 在滿補充編成日本歩兵師団 9120 A-1 の  
組織人員並に裝備系統圖。

2. 常備編成日本歩兵師団。組織人員  
並に裝備系統圖。

赤軍兵謀本部 總務部 次長

大佐

署名

(44143)

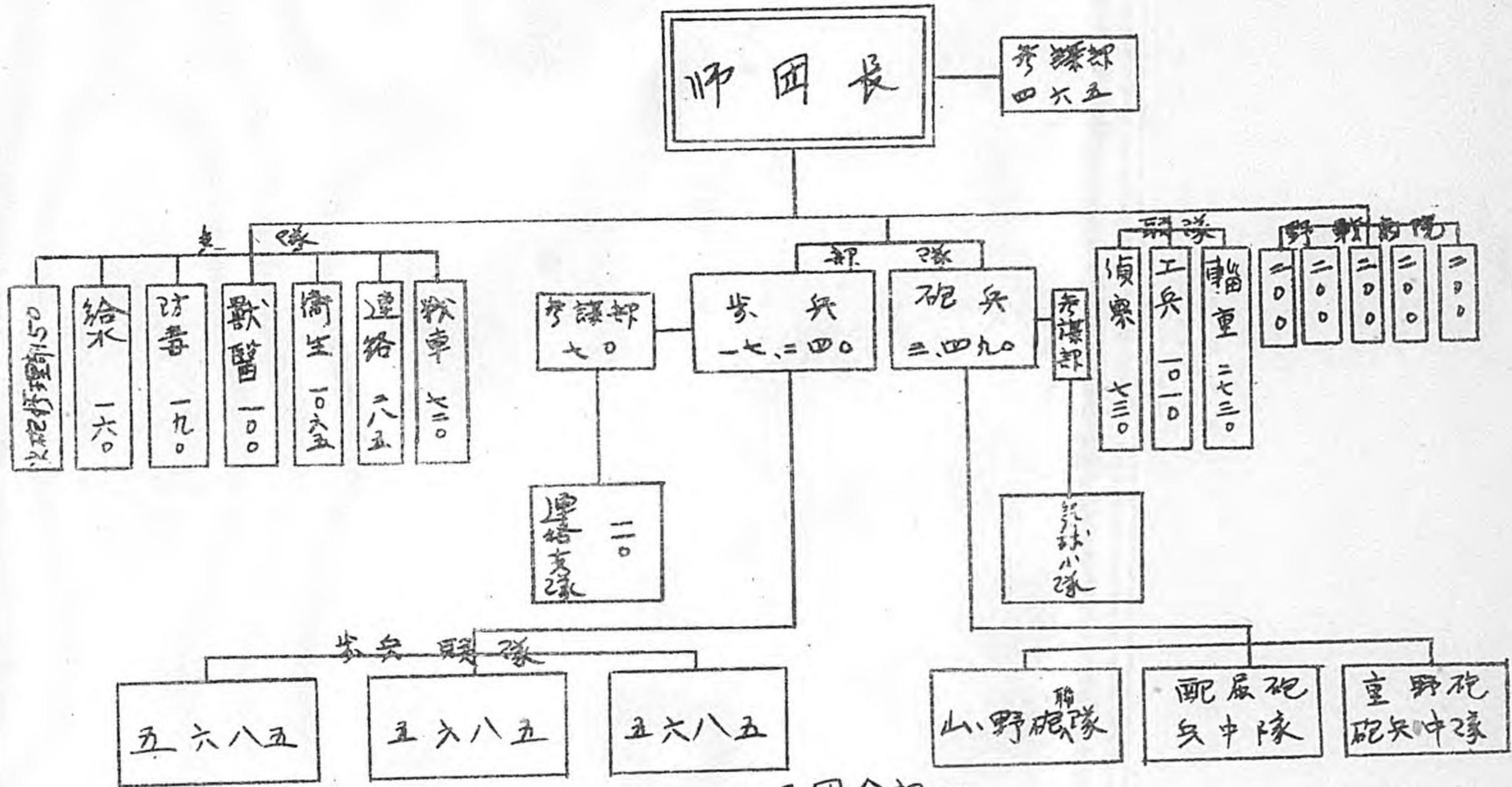
一九四六年一月三〇日



No. 4

Doc. 2073

在滿補充編步兵師團の組織人員並ニ武裝



一ノ師團全部で

人員——二九四〇〇 機關銃(各種口径)——五一七 火砲(各種口径)——一四八 戰車(輕戰車)八一



N0.5

DOC. 2073

此、系統図写真原本は「関東軍師団組織」についての  
の調査書に不十分の附録である

赤軍参謀本部総務部次長  
大佐

署名

(4ギ-4コ)

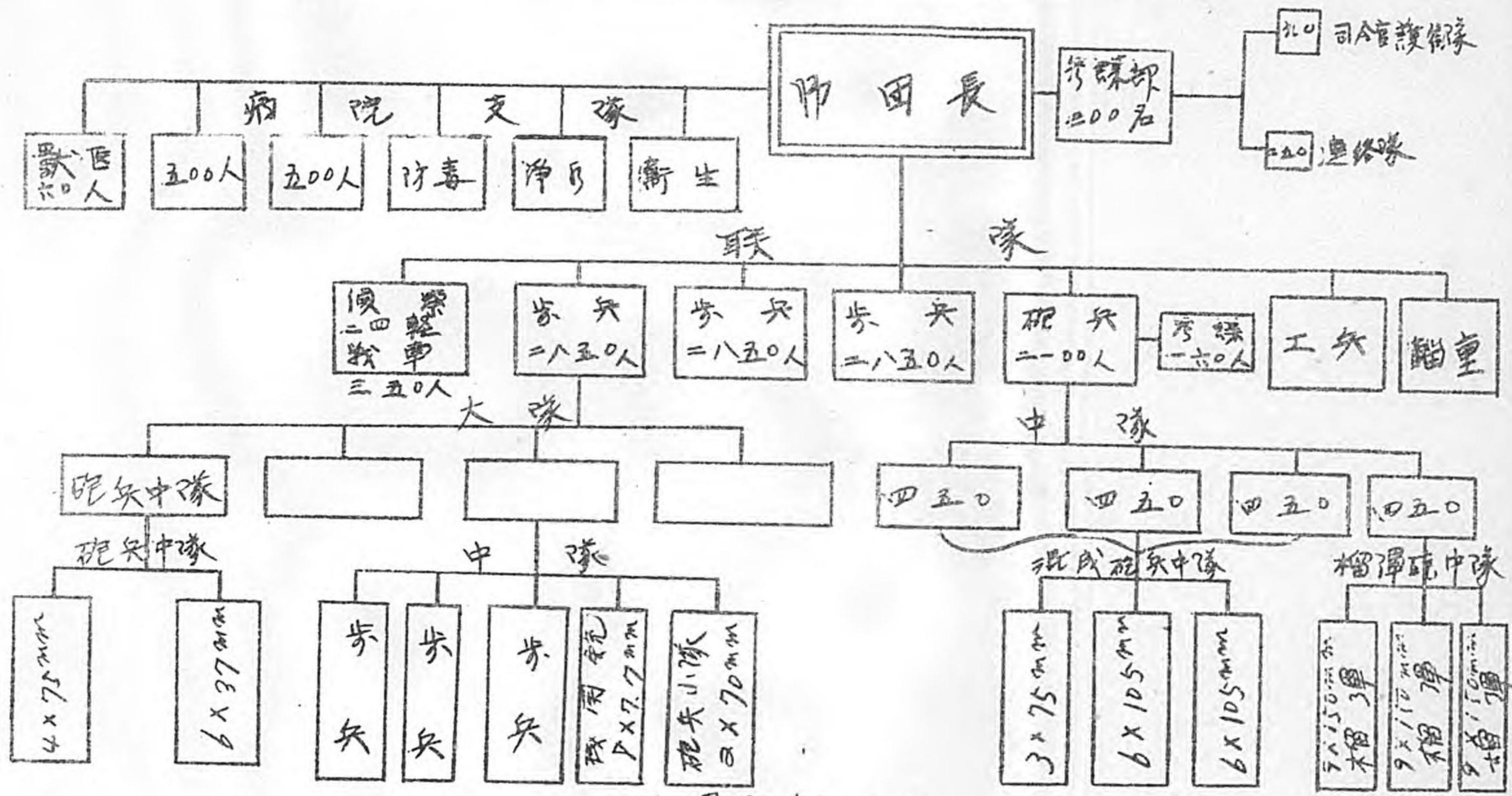
1946年1月30日



No. 6

DOC. 2073

其他の作戦諸地域に行動する歩兵師団の編成、人員並に武装



人員一四八〇〇  
 一ヶ師団全部にて  
 機関銃(各種口径)三〇八  
 火砲(各種口径)七五  
 戦車 = 四



No. 7.

DOC. 2073

此、系統圖寫真寫本は「関東軍師団組織」  
に「...」の調査書に下り分の附録にある。

兼軍考謀本部総務部次長

大佐

署名

(4ギ-4コ)

1946年1月30日



INTERNATIONAL PROSECUTION SECTION

Doc. No. 2073

Date: 20 June 1946

ANALYSIS OF DOCUMENTARY EVIDENCE

DESCRIPTION OF ATTACHED DOCUMENT

Title and Nature: Report re Organization of a Division of Kwantung Army with Charts to Show Comparisons between Reinforced and Regular Inf. Div.

Date: Jan. 1946 Original ( ) Copy (X) Language: Japanese-English

Has it been translated? Yes (X) No ( )  
Has it been photostated? Yes ( ) No (X)

LOCATION OF ORIGINAL (also WITNESS if applicable)

Document Division

SOURCE OF ORIGINAL: Russian Division

PERSONS IMPLICATED:

CRIMES TO WHICH DOCUMENT APPLICABLE: Planning aggression against U.S.S.R.

SUMMARY OF RELEVANT POINTS (with page references):

Report shows that from beginning of Manchurian occupation, Kwantung Army was always manned by regular reinforced Infantry Divisions consisting of 24-29,000 men disposed in districts adjacent to U.S.S.R. frontier.

Attached charts show:

1. Organization, number, and armament of reinforced infantry divisions in Manchuria.
2. Organization, number, and armament of Infantry Divisions acting on other theaters of war.

Analyst: 2nd Lt. Blunhagen

Doc. No. 2073



2073

27

C E R T I F I C A T E

I, Lt.Colonel TARANENKO G.I.,  
a member of the military forces of the U.S.S.R., do here-  
by certify that report on the organization of a division  
of the Kwantung Army on 3 sheets with two maps in two  
copies.

was delivered to me by the General Staff of the Red  
Army

on or about January 30, 1946, and that the original  
of the said document may be found in \_\_\_\_\_

\_\_\_\_\_.

I do further certify \_\_\_\_\_

\_\_\_\_\_

\_\_\_\_\_

\_\_\_\_\_.

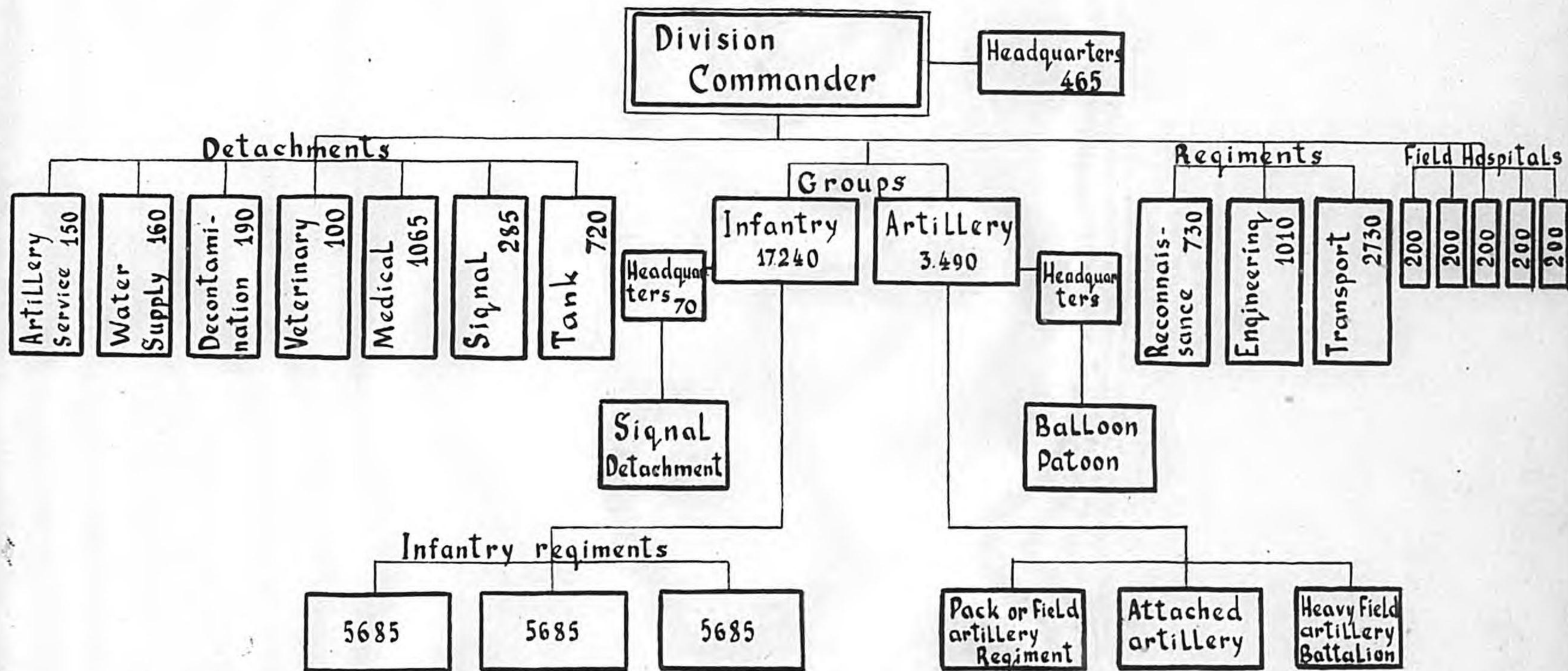
*He Myguro*

Lt. Col Taranen  
(Signature and rank.)

Tokyo, Japan,  
June 11, 1946.



# ORGANISATION, NUMBER AND ARMAMENT OF REINFORCED INFANTRY DIVISIONS IN MANCHURIA



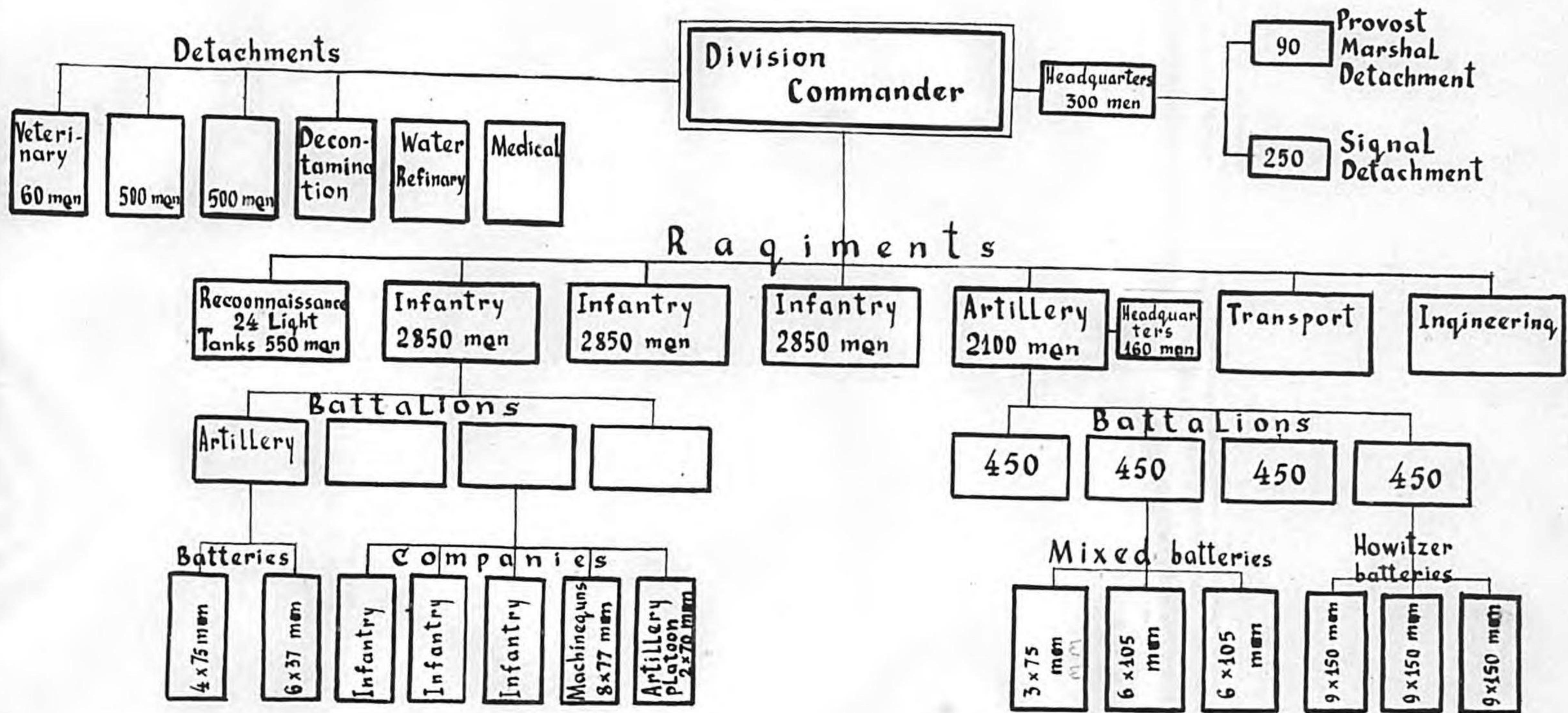
## TOTAL IN DIVISION :

Man-power - 29400  
 Machine guns - 517  
 (all calibres)

Tanks and tankettes - 81  
 Guns (all calibres) - 148



# ORGANISATION, NUMBER AND ARMAMENT OF INFANTRY DIVISIONS ACTING ON THE OTHER THEATRES OF WAR



## TOTAL IN DIVISION:

Men-power - 14,800  
Machine guns (all callibres) - 348

Guns (all callibres) - 75  
Tanks - 24.