

Spring Coming Via The Stereopticon

Dr. Steckbeck Will Show How to Welcome It

During that beautiful April snow storm a short time ago a Narberth housewife remarked, as she glanced out of the window, "I wonder if we are going to have any summer at all this winter?"

It will help us to understand these gay and cheerful children of the woods if we ever hear the illustrated lecture on "Wild Flowers of Pennsylvania," to be given by Dr. D. Walter Steckbeck, Assistant Professor of Botany at the University of Pennsylvania.

Another feature of this meeting will be an address by Superintendent Downs, of the Lower Merion Public School System. Supt. Downs has consented to speak upon the subject of "Co-operation Between Parents and Teachers."

The public in general as well as the parents are cordially invited to this meeting, which is next to the last to be held this year.

HOW TO MAKE AND KEEP A LAWN

New Lawns.—First the soil. Grass will never grow (although weeds will) on yellow clay which the builder may have taken from below the topsoil; neither will it grow on bricks, stones and a mortar bed.

When the soil has been raked fine and leveled it should be finished with a wooden toothed rake, the seed sown evenly and raked in lightly with the wooden rake.

For a shady lawn give up the idea of getting a good stand of perennial grass and be contented with a fresh new lawn of annual grasses from May till August. Sow Italian rye seed early in the spring. It will shoot up quickly and make a nice lawn, but must be re-sown the following year.

If the lawn is small, water copiously after sowing; if very large, of course we will have to depend on the irrigation system of Jupiter Pluvius.

Now the first season only as often as necessary to keep a good appearance and leave the cuttings on the lawn unless the grass is so long that it will smother the lawn. And the bad spots or sows with white clover.

Fall Grass is an annual and its greatest danger is in being disturbed at seed time, approximately August, and the seeds sown for the following year. Herein lies the danger of raking the lawn, particularly with the steel-toothed rake.

Old Lawns.—Roll with that heavy roller in the spring. The winter plays havoc with a lawn. Keep the iron rake away, and if you want a particularly fine lawn spread a light covering of cut tobacco stems in the fall.

LINNAEUS. THE POPULAR YELLOW JACKET

This is not a fashion note. It is a notice that at the Palace Theatre, Ardmore, on the evening of May 8, the Yellow Jacket will again be staged by the dramatic class of the Community Club.

A PERENNIAL FLOWER GARDEN

Or, strictly speaking, a garden of perennial flowers. All that is needed is a sunny location, good soil about a foot deep and water in dry weather.

Of course, the plants are necessary in a garden and a little pleasurable labor in preparing and planting the bed or border and in weeding, but the results in the appearance of the garden and the flowers that can be cut are surely a pleasure.

Phlox Divaricata Canadensis will be the earliest to bloom in this list. From May 10th to the 25th ordinarily the plant about 10 inches high blooming in sun or part shade with a fragrant lavender blue flower. Very hardy.

Aquilegia or Columbine begins to bloom in May, and also continues for about two weeks, does well in full sun or part shade, grows about 24 inches high and comes in various shades and combinations of red, yellow, blue, white and pink. Gather the seeds of choice blooms and sow at once for plants for next spring's flowering.

Tall Bearded Iris. We used to call them flags, but the modern iris is one of the most beautiful and deservedly popular plants in the hardy garden. Irises are better planted in July or August, as spring moving will likely prevent their blooming for this season, so better get the names of your favorites and order them for later delivery.

Oriental or Hardy Poppies. Nothing quite so gorgeous as these great big flowers on long stems in scarlet, pink, white or crimson, blooming in late May and June. Can be planted in early spring, but better in the fall, about September. During July and August all the foliage disappears, but comes back in September after its vacation.

Peonies. Peonies, more Peonies. The king of all the flowers long live the king, the hardest frost or the driest drought can't kill him, he's too strong for any insects, just blooms more and better every year until we have to divide him up and give him more room. The only reason we don't see more peonies in our gardens is because the plants cannot be divided and moved while they are in bloom, and Mr. or Mrs. Almyer intends to order them in September and either forgets the names of them or forgets them altogether.

Pyrethrum or Painted Daisy. One of the prettiest and most satisfactory of the hardy perennials. About 18 inches high, with fern-like foliage, blooms in June, and if the flowers are cut will bloom again in late summer. The colors are in shades of red, rose, pink and white, all with yellow centers.

Hardy Larkspur or Delphinium. There is nothing more gorgeous in the garden, and little elsewhere, than a well-grown plant of a good Hybrid Delphinium, usually about six feet high, with a full spike in the deep blue, light blue, lavender or a combination of similar colors that is only found in this wonderful flower. They deserve good soil and a position in the sun, where water will not stand, summer or winter.

Japanese Iris. Late June, when the big burst of bloom of the earlier perennials is over, is the time for the Japanese Irises, with flowers up to 10 inches in diameter, in white, blue, purple and pink, some veined and mottled. Absolutely hardy, will stand some shade. All they require is water in blooming time and not too much water in the winter.

Hardy Phlox. The best and only perennial for late summer. Beginning in July and continuing until September, the phloxes in all shades and combinations of purple, rose, red, scarlet, mauve, pink and white will keep in bloom and lend a delicate fragrance to the garden. They will stand some shade and will multiply rapidly. Miss Lingard—a particularly ambitious white variety—starts earlier and blooms later than her gayly colored sisters.

Hardy Chrysanthemums till frost. After the phloxes and while the dahlias are blooming (oh! yes! we must have dahlias, but they are not perennials) the hardy "mums" will begin to show their red, pink, yellow and white and will provide lots of cut flowers with pretty foliage. Divide them in the spring and use them in the front of the earlier blooming plants.

Roses might be classes with the perennials, especially the Hybrid-Perpetuals or June bloomers and the Climbers, as they require no winter protection, even the Hybrid Teas are hardy under some conditions, but roses had better be treated as a special subject and not included with the plants mentioned above, known to the growers as herbaceous perennials.

EDGARDEN. A MODEL ACRE

Give me an acre wild and bleak That I may call my own, Where I may dwell and daily seek Pure Beauty to enthroned, And by my effort fill with green Each dry, unfruitful, weedy space And show the world how 'twould appear.

News of the Churches

ST. MARGARET'S CATHOLIC CHURCH

Sunday masses at 7 o'clock and 10 o'clock. On first and third Sundays the late Mass is a High Mass, followed by benediction.

Daily Mass at 8 A. M.

THE OLD MERION FRIENDS' MEETING HOUSE

Montgomery Pike, Narberth, was established 1682. Here William Penn worshipped, as well as many other noted Friends. One of the historical spots of America is open for worship every First-day (Sunday) morning at 11 o'clock.

First-day School is held every First-day (Sunday) at 10 A. M. in the Meeting House. Any one desiring to attend either the adult class or the young people's class will be very welcome.

THE PRESBYTERIAN CHURCH

Rev. John Van Ness, Minister.

Meetings for April 22, 1923: 9:45 A. M.—Sunday School. A place and a welcome for all.

11:00 A. M.—Public worship. Sermon theme, "Christ, Worthy of More Glory than Moses." 4:00 P. M.—Junior Endeavor meeting. 7:00 P. M.—Senior and Intermediate meeting. 7:45 P. M.—Evening worship. Discussion of the most popular hymn in Christendom.

Church Notes

At the prayer meeting next Wednesday evening, Mr. Van Ness will begin a series of brief addresses based on Paul's Epistle to the Romans.

On Sunday evening, April 29, Miss Clovis Aiken will be with us and will speak in the Young People's meeting and later at 7:45 will give her famous address, "Experiences of a Private in the Army of the Lord." She will also sing, with guitar accompaniment.

HOLY TRINITY LUTHERAN CHURCH

W. E. McClain, Pastor.

Regular services April 22, 1923: Sunday School and Bible Class at 9:45 A. M.

Morning service at 11:00 A. M. Evening service at 7:30 P. M. Theme for the morning—"The Shepherd and His Fold." Theme for the evening—"The Wonderful Life."

To these services a cordial invitation is given. The Catechetical Class will meet in the Hall balcony Friday, at 4:30 P. M. The Ladies' Aid meets at 219 Dudley Ave., the home of Mrs. Warner, Wednesday, the 25th, at 7:30 P. M.

NARBERTH METHODIST EPISCOPAL CHURCH

Rev. Arthur S. Walls, D. D., Pastor.

Sunday, April 22: 9:45 A. M.—Bible School. 11:00 A. M.—Sermon, "The Funeral of God." Anthem: "How Sweet The Name," Shelley. Quartet: "The Morning After Rain," Miles. 6:45 P. M.—Epworth League. 7:45 P. M.—Sermon, "His Real Presence." Anthem: "Onward, Christian Soldiers," MacDougal. Quartet: "Just Keep The Fire Burning," McClelland.

Hear both sermons. Church Notes Miss Marcella Sinn, of Korea, who delighted a large audience at the open-air Union Twilight Services last summer will be the speaker at our church on Sunday morning, April 29th. It will be the occasion of the Annual Thank-Offering of the Woman's Foreign Missionary Society. Hear Miss Sinn tell her thrilling story of her native land.

BAPTIST CHURCH OF THE EVANGEL

Rev. Avery S. Demmy, Pastor.

Sunday, April 22, 1923: 9:45 A. M.—The Sunday School. Interesting classes for all. 11:00 A. M.—Morning Worship. Selections by the Evangel Quartette. Sermon: "The Glory of Going On." 7:00 P. M.—Young People's Society. 7:45 P. M.—Evening Worship. Featuring the Evening Song Service. Selected Hymns with Organ, Violins and Cornet. Sermon: "Victorious Gladness."

Wednesday, 8:00 P. M.—Mid-week Prayer Meeting.

On Saturday, at 8:00, the Young People's Society will present the three act comedy, "Guig," a delightful finished production by an unusually good amateur cast.

ST. MARGARET'S BRIDGE CLUB OBSERVES FIRST ANNIVERSARY

A formal luncheon in the Du Barry Room of the Arcadia, whence all present adjourned to the matinee of "Captain Applejack" at the Garrick Theatre, was the manner in which St. Margaret's Bridge Club observed their first anniversary on Wednesday, April 11, 1923. It was a thoroughly enjoyable afternoon.

Speeches were made by Mrs. Stedem, who furnished a valuable dissertation on the influence of bridge in its connection with religiosity, and by Mrs. Butler, who discoursed at great length on the fact that grapes were made so that they would turn into raisins for use in rice pudding, and for no other purpose.

ONCE AGAIN! THE BIG EVENT OF NARBERTH'S YEAR! St. Margaret's Minstrels TWO EXTRAORDINARY PERFORMANCES Wednesday, April 25, 1923 Thursday, April 26, 1923 PARISH HALL, 8.10 P. M. SUPERB! STUPENDOUS!! SPECTACULAR!!! Produced Under the Professional Direction of Mr. William Lawrence NARBERTH VIA LONDON Revealing for the first time on any American stage a marvelous demonstration of the tremendous superiority of masculine mind over mundane matter. All the physicians of the Borough will be on hand to stick on heads that have been laughed off! COUES SCOOP A bewildering display of anatomical artistry. Come and be convinced that the French doctor did not visit our shores in vain. Sebastian Rudolph in tights is alone worth the small admission price. THE MAN FROM THE EAST Far out from the tomb of Old King Tut comes into our midst the Mystic of the generation. Aply assisted by Joe Kelly in a shepherd's plaid coat furnished by the Civic Association. 12-PIECE ORCHESTRA Songs that are pretty, Songs that are bright, Songs that you'll whistle From morning to night. SEVERAL HOURS OF EXCELLENT DANCING GET YOUR TICKETS EARLY On Sale at the Stores and at the Rectory ONE DOLLAR

GARDEN NURSERIES A. E. WOHLERT, Owner MONTGOMERY AVE. AT PRICE AVE., NARBERTH Shade Trees Evergreens Flowering Trees Flowering Shrubs Hyrid-Tea Rose Bushes Hardy Perennial Plants SPECIALS Start some Beautiful Chinese Flowering Crab Apple Trees in your Garden. Grafts (small plants), 4 for \$1.50 or 10 for \$3.00, in 6 different varieties. FERTILIZERS Bone Meal Sheep Manure Sheep Manure Combings Leaf Mold Humus Everything for the Hardy Garden THE GARDEN NURSERIES Montgomery Avenue NARBERTH, PENNA.

Narberth

Has grown because of its Home Owners and Home Lovers.

To retain the present attractiveness, or add to it, will require occasional repairs to Porches, Steps, Roofs, etc.

Beautify your Lawns, Gardens or Garages with neatly built Trellis.

Let us help select, from our well assorted stock of White Pine, Yellow Pine or Pacific Coast Products, the proper kind of LUMBER for your special requirements.

Many readers of "Our Town" do not know there is a

LUMBER YARD so near Home.

Phone Cynwyd 662 and let's get acquainted, or call personally at

29 Bala Avenue, Bala-Cynwyd

Shull Lumber Co.

Supplies for the Home Gardener

And that notice applies to the majority of home owners in Narberth. It would be useless for us to give a long list of the various articles embodied in the head line because almost every one has fairly definite ideas as to the tools he likes to use. We can say, however, that we try to give our customers the best tools we can at the most reasonable prices.

This year we carry Landreth's grass seed in bulk as well as in bags. And we have had a great success so far. If cold weather selling is an augury we should see a lot sold this summer.

In package seed, we carry Michell's and Ferry's, and both of them are well known.

As a final word, we destroyed a lot of seed this spring and are not offering last year's seed for sale.

Bergner Hardware Company

LOWER PRICE

The Radiola Model RC, formerly \$207.50, now \$142.50.

Complete with 3 Radiotron Tubes WD12, 3 Dry Cells, "B" Battery, Phones, and Telephone Plug.

Complete—installed—\$142.50

NARBERTH ELECTRIC SHOP

W. G. CASE, Manager

Phone Narberth 2282 or 2270-J 226 Haverford Ave.

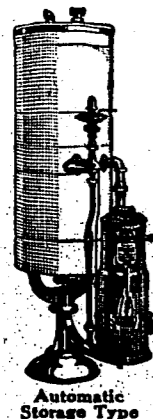
MARSHALL CO.

CONTRACTING PAPERHANGERS

PHONE, NARBERTH 1661 J

STRANGER THAN FICTION

We have all heard that "truth is stranger than fiction." And isn't it so? If our forefathers had been told of the comforts and advantages that gas service would bring to the womenfolks, would they not have regarded it as the vision of a dreamer? Yet today, with one great invention after another crowding upon us, we accept as commonplace what would have been regarded as a miracle in the past.



Automatic Storage Type

This is Not Fiction

If you have a small coal stove in your cellar to heat water for the bath and other uses, someone must make so many trips to the cellar to take care of it that in effect he or she is climbing Pike's Peak once a year to get hot water. And at that the water is not always hot when you want it.

The storage type of gas water heater requires no attention—it is automatic. It eliminates a mountain of work and worry. You turn a spigot any minute of the day or night—and there is ample clean hot water. Yet this costs you no more and probably less than the old-fashioned stove system. Come in and see a demonstration.

Counties Gas and Electric Company
Ardmore - Bryn Mawr - Wayne

Karnival Enjoyed By Everybody

Baby Show Was Most Successful

Spring came to Narberth last Friday and Saturday in spite of the snow and rain. Not in the gardens and in the fields, but in the Y. M. C. A. building, which on those two days was a mass of pink and white blossoms and filled with sunshine of happy faces.

To put it all in a few words it would read like this. The Karnival given by the Women's Community Club was a real success.

If you were there you know how lovely it looked. If you bought anything you know that it was both good and useful. If you dined there, you were abundantly satisfied. And if you danced, you had nothing more to ask.

Each evening there was an entertainment, while the excellent cafeteria dinner was being served. All the singers and dancers were popular, but two of the smallest performers—Virginia Chappatte and Florence Haist—made perhaps the biggest hit. With their little green wing-like skirts they seemed more like fairies than real little girls. In response to the applause they were compelled to give a number of encores.

Some of the other children who danced were Mary McGee, Eleanor Michaelson, Juliet Shaw, Margaret McKelvey, Margaret Odiorne and Julia Robinson. Miss Carter who has taught these children danced both nights, and Miss Augusta Witherow and Miss Jeanne Davis sang.

It was unfortunate that the space was so limited for the Baby Show. There was not adequate room to display the hundred children that were entered. But the interest was not lessened because of the crowded condition, for everyone was anxious to see the children and watch the judging. This was a difficult task and took much time but the winning babies were satisfied with the results.

The first five dollar gold piece went to Nancy Crowe as the healthiest baby. Nancy has been attending the Community Club Nursery ever since she was a month old, while her mother has been enjoying the club meetings.

The other awards were:

- Youngest—
Caroline Shaw, 9 weeks.
- Prettiest—
Class A—Junior Burns, prize.
Donald Claghorn, honorable mention.
Virginia Henry, prize.
Margaret McCahill, honorable mention.
Class B—Tom Sawyer, prize.
Ernest Aldrich Bailey, Jr., honorable mention.
Ellen V. Gibb, prize.
Carol Twordoska, honorable mention.
Class C—Wills Borrowes, Jr., prize.
Hugh McCahill, honorable mention.
Betty Brearley, prize.
Miriam Puleh, honorable mention.
- Classes A, B, and C—
Healthiest—Nancy Crowe.
Fattest—Herbert Yowell.
Cutest—Mary Mitchell.
- Twins—
Tom and Joe Rudolph.
- Most freckled—
Robert Torchiana, first prize.
Adele Aungst, second prize.
- Fancy Dress—
Margaret Taylor, Quaker girl.
DeHaven Grace, Pirate.
Kenneth Bower, baseball player.

BAPTISTS WIN

The play off games to determine the winner of the third period of the Inter-Church Bowling League, which ended in a tie between the Baptists and Methodists, were rolled on Monday night, April 16th. The Baptists were in fine condition and romped away with all three games.

Each of the three periods has been won by a different team, the Methodists taking the first and the Presbyterians the second. These three teams will now play off for the winners of the series.

The score was as follows:

| Baptists. | | |
|---------------|-----|-----|
| Nicholson | 110 | 142 |
| Claypole | 131 | 157 |
| Keim | 176 | 146 |
| W. O. Smedley | 152 | 171 |
| Trotter | 147 | 148 |
| H. Smedley | 163 | 123 |
| Totals | 769 | 698 |
| Methodists. | | |
| Smith | 100 | 146 |
| Johnson | 157 | 121 |
| Eger | 121 | 110 |
| F. Miller | 135 | 148 |
| C. L. Jenkins | 129 | 123 |
| E. Jenkins | 129 | 123 |
| Bailey | 177 | 141 |
| Totals | 698 | 679 |

CONCERT A SUCCESS

The ladies of the Lutheran Church are to be congratulated on the success of the musical events given last week, both from an artistic and a financial standpoint.

The talent from New York proved a rare treat to an appreciative audience.

Julia Floyd, soprano, has a beautiful voice, with perfect tone qualities, showing unusual power in all registers. Her pleasing personality added much to the delight of the audience.

Ruth McInn, pianist, is without doubt a master musician. Her marvelous touch and perfect technique demonstrated this fact.

Mrs. Geo. Merritt Davis who is well known in Narberth, delighted the audience with her humorous selections.

Miss Farley, of Philadelphia, also gave two pleasing numbers.

The social hour during which refreshments were served to all was especially in honor of the new members.

Send in Fireside Items.

GOOD SERVICE

Established 1804

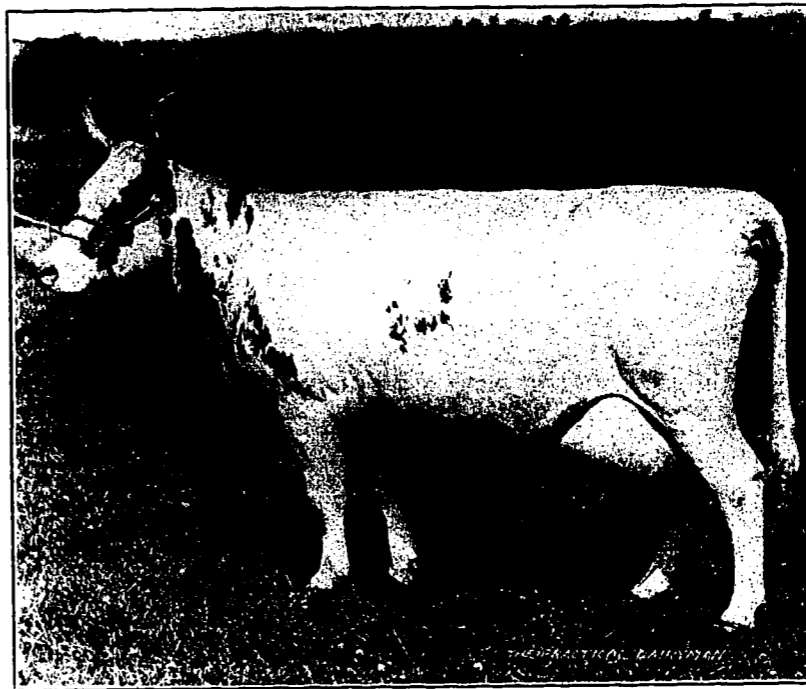
GOOD WILL

MILK

FRESH, PURE, CLEAN, RICH

From Selected Main Line Dairies

Insured by Daily Tests in our own Laboratory and Regular Bacteriological Control by an Independent Public Laboratory



INSPECTED RAW, TUBERCULIN-TESTED

Conforming to the latest Milk Codes of Pennsylvania State, Lower Merion Township and the Borough of Narberth

Produced by the Pioneer herd of Registered Ayrshires at Highland Farm, Bryn Mawr, and well-known for 20 years on the Main Line, in addition to Soapstone Farm Ayrshire Milk.

GRADE A, PASTEURIZED, 4.50 PER CENT. BUTTER FAT

The milk that saves lives and makes children grow!

Produced by Tuberculin-tested and Federal Accredited Herds of Ardrossan Farm, Ithan, and Idlewild Farm, Bryn Mawr. The health and the feed of the cattle are under regular Veterinary supervision, insuring pure milk with complete protein and Vitamine content. Pasteurized for absolute safety.

GRADE B, PASTEURIZED MILK

From selected dairy-farms on the Main Line, insuring the freshest milk obtainable. Every can of milk is inspected and tested before being accepted. All milk is clarified and Pasteurized by the Holder process, being heated to 145°F. for 30 minutes and then cooled quickly to 45°, preventing any pathogenic or harmful condition, and free from all extraneous matter.

We Solicit Your Order, Not Only Because We Are the Oldest Dairy, But Because We Can Give You the Best Service

HIGHLAND DAIRIES, INC.

PHONE, BRYN MAWR 882

Office, 758 Lancaster Avenue, Bryn Mawr

JOHN ALBRECHT'S NURSERIES

MONTGOMERY AVE. AT MEETING HOUSE LANE

THE GREENHOUSES

Bedding Plants, Potted Plants, Cut Flowers at all Seasons
For your House and Garden

THE NURSERIES

Evergreens Flowering Shrubs Flowering Trees
Hardy Perennial Plants Vines Shade Trees
Rose Bushes

THE PRIMROSE FLOWER SHOP

No. 4 W. LANCASTER AVE., ARDMORE

Telephone, Ardmore 438-W

Potted Plants Cut Flowers
Funeral Designs

JOHN ALBRECHT'S NURSERIES

NARBERTH, PENNA.

Telephone, Narberth 366

ARCADIA

CHESTNUT, Bel. 16th St.
Photoplays—Continuous 10 A. M. to 11.30 P. M.

PROGRAM
WEEK OF APRIL 23
"The Go Getter"
MAIN PRODUCTION STARTS AS NEAR AS POSSIBLE TO 10.00 A. M. 12.00, 2.00, 5.45, 7.45, 9.50 P. M.

Narberth Taxi Service
Patrick F. Donahue
Open Day and Night Phone 1633

TENNIS SHOES
JUST IN
We Carry a Full Line
DAVIS' SHOP

TAILOR
Cleaning, Altering, Pressing
Ready-made Suits and Suits Made to Order
S. N. PRAGER
211 HAVERFORD AVENUE

For Bowling and Pocket Billiards
come to the RECREATION ROOM
No. 1 Forrest Ave.
A. C. L. PARKE

Every Spring there is a shortage of cars and late buyers are obliged to wait for a long time for deliveries.
Why not anticipate this condition by ordering now?

DURANT and STAR
DORAN MOTOR CO.
Show Room, 45 E. Lancaster Avenue
Ardmore 171

Thos. A. Kerrigan & Son
Building and Contracting
Homes For Sale Or Rent
Plans & Estimates
Furnished For Alterations & Repairing
Write, Phone, Call
429 BROOKHURST AVE.

For Permanent Satisfaction
BUY A
Smedley Built Home
WM. D. & H. T. SMEDLEY

BELL PHONE, Narberth 1259-W
GEORGE W. BOTTOMS
Contractor and Builder
429 Rockland Ave., Narberth, Pa.

HARRY B. WALL
Plumbing, Gas Fitting and Heating
NARBERTH PA
Phone, Narberth 1802-J

HIGHLAND DAIRIES
MILK AND CREAM
758 LANCASTER AVE.
BRYN MAWR.
Telephone: Bryn Mawr 882

COOK BROS.
PLUMBING, HEATING ROOFING
Jobbing promptly attended to
Night Phone, Narberth 887
Day Phone, Narberth 323

AN ORDINANCE

To amend an ordinance entitled "An ordinance providing for the election of a Building Inspector, regulating the erection, construction, tearing down, moving, and alteration of buildings in the Borough of Narberth, and providing for the issuing of permits and inspection of buildings," approved the eighth day of March, 1915.
Be it ordained by the Council of the Borough of Narberth, and it is hereby ordained by authority of the same:
Section 1. That Section 1 of an ordinance entitled "An ordinance providing for the election of a building inspector, regulating the erection, construction, tearing down, moving, and alteration of buildings in the Borough of Narberth, and providing for the issuing of permits and inspection of buildings," approved the eighth day of March, 1915, be and the same is hereby amended by the insertion at the beginning thereof of the following words: "The following shall and are hereby declared to be the fire limits of the Borough of Narberth: beginning at the intersection of Narberth Avenue with the northern property line of the Pennsylvania Railroad Company, thence in a westerly direction along said property line to a point at the intersection with the center line of Dudley Ave., thence in a northerly direction along said center line to its intersection with the center line of Windsor Avenue, thence in an easterly direction along said center line to its intersection with the center line of Narberth Avenue, thence in a southerly direction along said center line to the point of beginning. Every building hereafter erected or enlarged within the fire limits shall be enclosed on all sides with walls constructed wholly of stone, brick, hollow building tile, concrete, or other equivalent incombustible materials; and shall have the roof, top, and sides of all roof structures, including dormer windows, covered with incombustible material. All cornices shall be of incombustible material. No frame building shall be removed from without to within the fire limits. It shall be lawful to erect, for temporary use, one-story frame buildings for use of builders during construction. Any existing frame building within the fire limits which may hereafter be damaged by fire, decay or otherwise, to an amount greater than twenty-five percentum (25%) of its present size, exclusive of the foundation, shall not be repaired or rebuilt but shall be removed. No building hereafter erected within the corporate limits of the Borough of Narberth, having walls of hollow building tile or concrete blocks, shall exceed three (3) stories, or forty (40) feet in height, and no building hereafter erected or altered shall exceed four (4) stories, or fifty-five (55) feet, in height, unless it be of fire proof construction throughout, when it shall not exceed ten (10) stories, or one hundred and twenty-five (125) feet, in height. Appointment of Inspector.
Section 1. The following shall and are hereby declared to be the fire limits of the Borough of Narberth: beginning at the intersection of Narberth Avenue with the northern property line of the Pennsylvania Railroad Company, thence in a westerly direction along said property line to a point at the intersection of the center line of Dudley Avenue, thence in a northerly direction along said center line to its intersection with the center line of Windsor Avenue, thence in an easterly direction along said center line to its intersection with the center line of Narberth Avenue, thence in a southerly direction along said center line to the point of beginning. Every building hereafter erected or enlarged within the fire limits shall be enclosed on all sides with walls constructed wholly of stone, brick, hollow building tile, concrete, or other equivalent incombustible materials; and shall have the roof, top, and sides of all roof structures, including dormer windows, covered with incombustible material. All cornices shall be of incombustible material. No frame building shall be removed from without to within the fire limits. It shall be lawful to erect, for temporary use, one-story frame buildings for use of builders during construction. Any existing frame building within the fire limits which may hereafter be damaged by fire, decay or otherwise, to an amount greater than twenty-five percentum (25%) of its present size, exclusive of the foundation, shall not be replaced or rebuilt but shall be removed. No building hereafter erected within the corporate limits of the Borough of Narberth, having walls of hollow building tile or concrete blocks, shall exceed three (3) stories, or forty (40) feet in height, and no building hereafter erected or altered shall exceed four (4) stories, or fifty-five (55) feet, in height, unless it be of fireproof construction throughout, when it shall not exceed ten (10) stories, or one hundred and twenty-five (125) feet, in height. Appointment of Inspector.
The Town Council shall elect at its first meeting after the passage of this ordinance and thereafter on the first Monday in January in even numbered years by a majority vote of the members present one person properly qualified to serve as a building inspector, who shall receive such compensation as is hereinafter provided, and who shall hold office until his successor is duly elected and qualified. His duties shall be to examine plans and specifications of proposed constructions and alterations to buildings as soon as they are filed with him, to approve them if they conform to the municipal requirements, and thereupon to issue permits for such construction and alterations, to disapprove such as do not conform, and to refuse permits therefore until they are modified to conform to such requirements, to secure the compliance with such requirements, and to prosecute any infractions thereof, or violations of this ordinance.
Sec. 2. That Section 2 of the ordinance aforesaid, which reads: "Section 2. After the passage of this ordinance every person, co-partnership, corporation or association desiring to erect, construct, raise, enlarge, alter, build, tear down, move, or remodel any dwelling house, shop, warehouse, carriage house, stable, garage, or any building within the Borough of Narberth shall before proceeding there-with obtain from the Building Inspector a permit signed by that officer which shall designate that the applicant therein undertakes to comply with the municipal building regulations," be and the same is hereby amended by striking out the word "undertakes" and substituting, therefore, the word "agrees," and by adding thereto the following sentence: "No building shall be moved until a permit has been obtained from the Building Inspector and the Chief of the Fire Department, which such officials shall not issue if in their judgment the proposed new location of the building would seriously increase the fire hazard of the surrounding buildings."
Sec. 3. That the title of Section 5 of the ordinance aforesaid, which reads: "Permits," be and the same is hereby amended by striking out the word "Permits," and substituting, therefore, the word "permits," and by adding thereto the following sentence: "The party applying for a permit to erect a new building shall pay to the inspector for the use of the Borough, for each and every building containing a total floor area not exceeding 2,000 square feet, the sum of five dollars (\$5.00) and a further sum of one dollar (\$1.00) for each additional 1,000 square feet of floor area, or fractional part thereof. Provided: That no permits issued for the erection of any building described in this ordinance shall cost less than five dollars (\$5.00) nor more than one hundred dollars (\$100.00). In determining the floor area in buildings, as referred to anywhere by this ordinance, the outside measurements of the building shall be taken. For a permit for the placing of additions to existing buildings, the fees shall be the same as provided above for the erection of new buildings. For a permit to raise, alter, remove, tear down, move, remodel, or install a new heating system in any old building, the sum of one dollar (\$1.00) for each one thousand dollars (\$1000.00) or fractional part thereof, of the estimated cost of such work; provided, that no such permit shall be issued for a less sum than three dollars (\$3.00). Ordinary repairs that do not add to or change the construction of a building may be made without a permit," be and the same is hereby amended by striking out the last clause therein, which reads: "Ordinary repairs that do not add to or change the construction of a building may be made without a permit," and by adding thereto the following sentence: "Section 11. All chimneys shall be built of brick, stone, or concrete, and lined with terra cotta flue lining, and walls of chimneys surrounding the flue lining shall be at least four (4) inches thick. The joints of terra cotta flue lining shall be set evenly, and be firmly bedded and bonded in mortar. No smoke flues shall be less than eight (8) inches by eight (8) inches and shall not be cut off below, but shall be supported wholly by stone, brick, concrete, or iron built up on solid foundation from the bottom of the cellar, and all smoke pipe connections to chimney flue shall be protected by a terra cotta thimble. All chimneys shall be topped and at least four (4) feet above the roof, if flat, and two (2) feet above the ridge if a pitched roof, unless such chimneys may be lower, providing that the top of such chimney be no closer than ten (10) feet to the nearest portion of the roof. When smoke flues occur on party walls, the full thickness of the party wall must separate the flue from the adjoining property. No wood work of any character shall come closer than two (2) inches of the outside wall of any brick, hollow tile, or concrete chimney, and in the case of a stone chimney it shall not come closer than ten (10) inches of the flue lining," be and the same is hereby amended by inserting in line 2, after the word "stone," the words, "hollow tile" and by inserting before the word "lined" in line 3 the words "unless otherwise approved by Council" and by striking out the period in line 6 after the word "thick" and adding thereto a comma and the words "but this shall not preclude the use of a metal smoke stack when located inside of a vent shaft having walls not less than eight (8) inches thick, and having an air space between the walls and stack on all sides. Hollow building tile shall not be used for the walls of isolated or independent chimneys, but may be used for chimneys built in connection with exterior hollow tile walls of buildings not exceeding three (3) stories in height, in which case the chimney walls shall not be less than eight (8) inches thick. The outer eight (8) inches of a building wall may serve as the outside wall of the chimney, but the remaining chimney walls shall be constructed of two (2) layers of four (4) inch tile set with broken joints; or they may be built of four (4) inches of solid brick work. In either case the walls of the chimney shall be securely bonded into the wall of the building. No chimney shall be corbeled from a hollow tile wall. All chimneys built of hollow building tile shall have fire clay flue lining."
Sec. 6. That Section 13 of the ordinance aforesaid, which reads: "Section 13. All open hearth grates or fire places shall be built of stone, brick or concrete material and shall not rest upon or be supported by any material of combustible nature. The jambs shall be of at least nine (9) inches width and the back at least nine (9) inches thick. No range (other than a gas range) shall be set against any wall or partition or within nine (9) inches thereof unless such wall or partition be of brick, stone or concrete or protected with slate not less than one (1) inch thick, and four (4) feet high and of the full width and depth of such range, and shall be set upon a base of brick, stone, concrete, or slate, showing hearth of ten (10) inches," be and the same is hereby amended by inserting, after the word "gas" in line nine (9), the words "or electric" and by adding at the end of the section the following clauses: "Where open oil, gas, or electric stoves are used there shall be a fire-resistant material between the said" (Continued on Page 6)

We take pleasure in contributing our advertising space in this week's edition of "Our Town" to the Narberth Base Ball Club.
ROBERT J. NASH
REALTOR
At the Station, Narberth, and 1214 Locust Street, Philadelphia

TO ALL BASE BALL PLAYERS!
The first practice of the season will be held this (Saturday) afternoon at the field on the south side, Rockland Avenue and Wynnewood Road.
Every fellow who would like to make a try for the team is urged to come out. Don't hesitate because you have not played for some time, or because you are a newcomer.
Look me up—and let's get acquainted. If you cannot make it this afternoon, but would like to talk it over, give me a phone call at my home (Narberth 674).
I will look forward to seeing a good turnout of the members of last year's team. We want to take full advantage of an early start to get our eye on the old pill and see if we can't knock the cover off it.
Altogether: "Narberth, 1923 Champions, Main Line League."
Cordially,
WILMER G. CROWELL,
Manager.

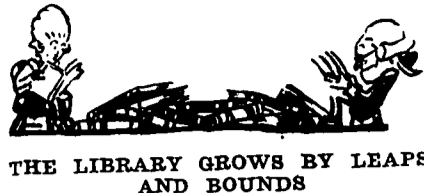
TO THE BASE BALL FANS OF NARBERTH:
Baseball—that's all!
The New York Giants go out each season with their pocketbooks wide open and try to buy a pennant. They collect a wonderful bunch of stars—but that isn't all there is to base ball.
When you and I were kids we grabbed our older brother's cast-off mit and raced around some old back lot. 'Twas real fun—but there's more than even that to base ball.
Narberth has had a real team. Narberth has a real team right now—bringing prestige to our town, acting as a healthy outlet for the boys of our town—and for you and me, too. Narberth's team isn't a galaxy of temperamental prima donnas, nor a bunch of cow pasture kids.
But it is an honest-to-goodness team that is a credit to the whole community—and we want more of the community back of it.
Annual membership in the Narberth Baseball Club will cost you \$10.00. You don't need to be a member to see the games—but you must be a member if you're going to get all there is to be gotten out of base ball in Narberth. The bigger our membership the bigger will be the teams we can bring to Narberth and LICK, and you can help lick them.
Can we count on your \$10.00 this season? If so, use attached coupon. Base ball—that's all.
(Signed)
ROBERT J. NASH, President
J. J. CABREY, Vice-President
A. C. SHAND, JR., Vice-President
CHAS. E. HARNDEN, Secretary-Treas.
WILMER G. CROWELL, Manager
SAMUEL WISER, Business Manager

I hereby apply for membership in the Narberth Base Ball Club, and am enclosing my dues for the year 1923, which entitles me to a season ticket for all regular games played at home, as well as a voting membership in the Club.
Name
Address
(Dues for 1923, \$10.00)
Clip out and mail promptly to CHARLES E. HARNDEN, Treasurer
310 Dudley Avenue
Narberth, Pa.
DO IT TODAY!

HUGH B. BARCLAY
Narberth, Penna.
732 Montgomery Ave. East of Wynnewood Road
PLANTS FOR SHADY PLACES
RHODODENDRONS LAUREL
PACHYSANDRA
GARDEN FURNITURE
BIRD BATHS, ETC.
HORTICULTURAL ADVICE
AND PLANTING
Catalog on Request
HUGH B. BARCLAY, HORTICULTURIST
TELEPHONE - NARBERTH, 1623

MRS. FLORENCE FISH
Milliner
Formerly of Cricket Avenue, Ardmore is conducting her business at No. 6 East Lancaster Avenue, Ardmore, Pa.
HOWARD C. FRITSCH
Justice of the Peace
REAL ESTATE
Fire Insurance—Best Companies
Phone 1749W—215 Haverford Ave.

Do not wait until the flies are here. It is advisable to buy your Screen Wire, Screens and Screen Doors now.
We also have a stock of lumber if you prefer to make your own screens.
H. RICKLIN
"Our Prices Are Always Right"



THE LIBRARY GROWS BY LEAPS AND BOUNDS

The eighteen books which started the Narberth Library were good healthy books. Their infancy caused no trouble and their youth was blameless. Indeed, they lived peacefully in their home. But now they have matured and acquired such a huge bulk that will not fit in anywhere.

HOW TO PLANT FLOWERS

LARKSPUR—(How) Sow thinly in well-prepared ground, in shallow drills, preferably a cool, rather moist soil, thin to six inches apart when well started. Confine to beds or borders and use liberally in the informal garden.

These are strong-growing plants. Thin to six inches apart. Place in the border in masses for best effect. (When) Sow in early spring. (What) Robusta Grandiflora for large size; Liliput for little ones. There are also special varieties of zinnias having solid colors.

ASTERS—(How) Sow the seed a fourth of an inch deep in well-prepared soil, and thin the plants when they appear to allow them plenty of room. Nine inches apart is none too much space. (When) For mid-season and late flowers, sow in May. For early flowers, sow very early in the spring in a window where plenty of sun will reach them, or in a hotbed, and transplant when the danger of frost is past.

CHRYSANthemum—(How) Summer chrysanthemums should be sowed indoors or in a hotbed for best results, and transplanted, or with a little less satisfactory results they may be sown out of doors where they are to stand. Let the plants, whether transplanted or thinned where planted, stand at least eight inches apart. While young, pinch back and remove excessive buds to obtain largest possible blooms. (When) Sow indoors very early in the spring and transplant out of doors when the weather is settled. Otherwise sow out doors as early as soil can be readily worked and danger of frost is about past. (What) For a wide variety in limited space use mixed varieties. The Chameleon is a new variety producing large single flowers in purple, black, crimson, yellow, and copper. Double Annual is very variable, both in color and form, having both double, semi-double and single flowers. Once you've raised chrysanthemums you'll always want them.

AGERATUM—(How) Sow quite thickly a quarter of an inch deep in well-prepared soil, thin to six inches apart. (When) Sow outdoors when the weather is settled, indoors four to six weeks before you expect to transplant them. (What) The blue varieties are usually considered the best. Stella Gurney is a favorite.

BALSAM—(How) Plant in a sunny location, in a rich, moist soil. It makes its best show in the border. (When) Do not sow until danger of frost is well past. (What) The double or camellia-flowered varieties are the more favored ones.

BARTONIA—(How) Sow the seed where the plants are to stand in the border. Select a moderately rich soil. Due to the straggly habit try to get the planting in a somewhat out of the way location. The fragrance of the plants at night is their remarkable feature. (When) Sow when the weather is settled. (What) Mixed seed is the rule.

CANDYTUFT—(How) Sow liberally in borders in a rich, moist soil in a sunny situation, and sow in succession to insure flowers until frost. Candytuft is one of our best plants for edgings, rockeries, bedding and cut flowers. (When) Sow indoors in April for transplanting out doors in May where the plants are to stand. Transplant when the weather is settled. (What) Several varieties are very fragrant. (How) tall varieties for bedding, dwarf varieties for edging.

BACHELOR BUTTON—(How) Sow in any good soil moderately thickly for bed or border. (When) As soon as the weather has settled, or earlier indoors or in hotbed for transplanting at that time. (What) The fine old-fashioned flower comes in mixed colors.

CALENDULA—(How) Sow in rich soil where they are to stand, or in a hotbed or indoors for transplanting in case you want earlier flowers. (When) Early in spring as possible and at the same time avoid danger of frost. (What) Orange King is a fine rich orange colored double flower, but the mixed varieties will give a wider range of color and types for the garden limited in size.

BLANKET FLOWER OR GAILLARDIA—(How) Sow out of doors one-fourth inch deep in rows eighteen inches apart. Later, thin to eight or ten inches apart in the row. Sow for mass effect in borders. (When) In early spring, or for a longer season sow indoors and transplant when the weather is settled. (What) The Grandiflora is a liberal-flowering sort.

COSMOS—(How) Plant in a rather light not too rich soil, if possible, but they do well most anywhere. Use for background and for border. Sow moderately thickly, thin or transplant to twelve inches apart. (When) In early spring, or sooner indoors for spring transplanting. (What) Select early varieties in northern sections to be sure of flowers. The large, late varieties may be used where seasons are long.

PINKS—(How) Sow one-fourth inch deep in well-prepared soil only moderately rich, fairly thickly, and thin to six inches apart. (When) In early spring as soon as weather settles. (What) Fireball for red, Snowball for white, and Oriental Mixed for variegated colors over a wide range.

POPPY—(How) Make shallow sowings in well-prepared warm loam soil where the poppies are to stand. Thin to four or six inches apart in the row. (When) Sow very early in the spring, and at intervals of two weeks for four or five successive sowings. (What) Select a variety using Orientals, and mixed poppies for the home garden.

MARIGOLD—(How) Sow in any good soil, in borders or mixed beds. Plant a quarter of an inch deep, thin to six inches apart. (When) Sow indoors for transplanting outdoors when the weather is settled, or sow out of doors in early spring. (What) For beds in the informal garden select a mixture. Choose tall ones in the center, dwarf ones at the edge. Use mixed varieties as fillers in the border. Lemon Queen is a soft lemon color, Orange Ball and Eldorado are a deep golden orange. African Mixed are tall-growing, Dwarf French, low-growing, as the name indicates.

ZINNIA—(How) Sow a quarter to a half inch deep in any ordinary soil

public "be and the same is hereby amended to read: "Section 16. Every building hereafter erected within the fire limits of the Borough shall have a fire-resistive roof covering, and no existing wooden shingle roof within said limits, if damaged more than twenty-five percentum (25%) shall be renewed or repaired with other than a fire-resistive roof covering. All buildings in the Borough shall be kept provided with proper metallic leaders for conducting water from the roof to the ground, or storm sewer in such manner as will protect the wall and foundations from damage and shall not menace the health or comfort of the public."

Sec. 9. That Section 17 of the ordinance aforesaid be and the same is hereby made Section 19; that Section 18 be and the same is hereby made Section 20; that Section 19 be and the same is hereby made Section 21; and that a new Section, to be numbered Section 17 be inserted immediately following Section 16, the said new section to read: "Section 17. Electrical installations. All electrical installations shall be in accordance with the National Electrical Code and no installation of electrical equipment shall be made, except in conformity thereto and no current shall be furnished until all work has been inspected and approved by the local Board of Fire Underwriters and a proper certificate issued by the aforesaid Board," and that a further new section to be numbered Section 18, be inserted immediately following Section 17 as herein set forth, the said new section to read "Section 18. To every dwelling inside the fire limits hereafter erected or altered, there shall be appurtenant a space open from ground to sky unobstructed by any construction, of at least the following area: Private dwellings, either seven hundred and fifty (750) square feet or forty percentum (40%) of the lot; two family dwelling either fifteen hundred (1500) square feet, or forty percentum (40%) of the lot multiple dwelling, either

seven hundred and fifty (750) square feet for each apartment or suite of rooms, or fifty percentum (50%) of the lot: Provided, that in estimating the number of apartments for the purpose of this section six rooms shall be deemed to constitute an apartment, irrespective of their arrangement, and provided, further, that where there are stores on the first story, said open space may start at the top of said first story when there is a clear and unobstructed passageway of sufficient width and height to permit access to the rear of the building in case of fire."

Passed the 9th day of April, 1923. (Signed) W. R. D. HALL, President of Council. Approved the 10th day of April, 1923. (Signed) CARL B. METZGER, Chief Burgess.

Attest: (Signed) CHARLES V. NOEL, Narberth 371-Y Ardmore 168-J

VERL PUGH Electrical Contractor Electrical Repairs and Appliances 314 Grayling Ave. Narberth, Pa. 8 Cricket Ave. Ardmore, Pa.

Gara-McGinley Co. 218 N. 13th St. Phila. Bell Phone, Spruce 38-06 and 38-07 Keystone Phone, Rec 70-34

GARAnteed Roofs

Advertisement for Pennsylvania R.R. System featuring a train and text: \$3.25 Harrisburg The State Capital \$2.90 Elizabethtown With its Masonic Homes \$2.25 Lancaster AND RETURN Sunday, April 22

CLASSIFIED ADVERTISEMENTS Two cents per word if cash accompanies advertisement; otherwise, five cents per word.

ESTATE NOTICE.

ESTATE OF HOWARD T. HAMER, late of Narberth, Montgomery County, deceased.—Letters testamentary on the above estate having been granted to the undersigned, all persons indebted to said estate are requested to make immediate payment, and those having legal claims, to present the same without delay to

SARAH J. HAMER, P. O. address 28 Avon Road, Narberth, Pa. Or her Attorney, EDRED J. PENNELL, P. O. address 402 De Kalb St., Norristown, Pa.

FOR RENT—Unfurnished apartment, 4 rooms, bath, electric light, porch, etc. \$50.00 monthly. Phone Narberth 619-M. Possession May 1st. (28-c)

FOR SALE—Household furniture, parlor, dining room and bed room suites, Premier vacuum cleaner, rugs and kitchen utensils. On sale every day and evening next week except Wednesday evening. Rowbotham, 222 Wayne avenue. Phone 647-R. (28-p)

FURNISHED APARTMENT to sublet, very reasonable. Five rooms and bath. Front porch. Phone Narberth 315-J between 4 and 9 P. M. (28-p)

BOARDING—Desirable vacancy for gentleman or business couple. Telephone Narberth 631. (28-p)

WNTED—By young couple, 2 or 3 unfurnished rooms for light house keeping. Phone 1606-Y. (28-p)

FOR SALE—Large library table and two golden oak chairs. Phone Narberth 1718-R. (28-p)

GARAGE SPACE for rent in private garage, 514 Dudley Avenue, phone Narberth 1215-J. (27-p)

FOR RENT—Second story apartment, 5 large rooms and bath, 102 Grayling Avenue. Phone 1706-W. (27-p)

EXPERT AUTO REPAIRING Done Promptly Rates Reasonable W. M. Hubbard 225 Hampden Ave. Phone 668-W

NARBERTH BEAUTY SHOP Scientific Care of Face and Scalp Manicuring Marcel Waving Hair Bobbing Phone 1000-Y Residential Appointments 211 Haverford Avenue

HEMSTITCHING SEWING OF ALL KINDS MODERATE PRICES WORK PROMPTLY DONE A. J. HERRSCHAFT 318 Dudley Ave., Narberth, Pa.

PAINTING DECORATING GLAZING JOBBING WILLIAM NEWBORG & CO. Painting and Decorating 212 Woodbine Ave., Narberth, Pa. Phone, Ardmore 1438 W Narberth 1758 W

NARBERTH GARAGE Raymond Weis, Proprietor GASOLINE, OIL, SUPPLIES EXPERT REPAIRING Telephone Narberth 1633

WD11 TUBES IN STOCK Eveready "B" Batteries, 22 1/2-Volt, Large \$1.95 Rheostats .70 Sockets .80 Aerial Wire (100 feet) .65 A. W. WARD, Jr. RADIO 417 Narberth Avenue Phone 1255-W

Order your coal as far ahead as possible and state the size you prefer and your next choice. While coal will be scarce, everyone will be supplied. NEWTON COAL answers the burning question 27 yards in Philadelphia and Suburbs at your service, including one at ARDMORE. GEORGE B. NEWTON COAL CO. MAIN OFFICE: FRANKLIN BANK BUILDING, 1417 SANSOM STREET.

The "Rainy Day" when sickness or misfortune causes unexpected expense is easily passed by those who have a Savings Account here. The time to start your "RAINY DAY" fund is now, and the way to make it grow is to deposit something regularly each week—no matter how little. Come in today and start your Account. THE MERION TITLE & TRUST COMPANY ARDMORE NARBERTH BALA-CYNWYD

THE BIG REASON WHY MEN PREFER CLOTHES TAILORED TO THEIR ORDER Men of character like clothes of character. The personal satisfaction they get out of them cannot be realized in any other way. The new summer styles and fabrics are ready to show you—they're correct—and the cost is not an obstacle. Let us show you our idea of clothes value at \$40.00 and up. ADELIZZI BROTHERS Ladies' and Gents' Tailors Cleaners and Dyers Pressing Relining Remodeling 102 Forest Avenue Narberth 1749-R Narberth, Pa. We call and deliver

Old Time Medicine Sale For one week, starting today, we are making Big Bargain Price Reductions on 21 Popular Household Remedies 4 ounces Puretest Boric Acid 12c Peppermint 17c 4 ounces Puretest Precipitated Chalk Powder 9c 2 oz. Puretest Aromatic Spirits of Ammonia 21c 4 ounces Puretest Cream of Tartar 18c 100 Puretest Bland's Pills 15c 4 ounces Puretest Rochelle Salt 17c 100 Cathartic Compound Pills 29c Puretest Zinc Stearate, 2 pkgs 25c 4 oz. Puretest Aromatic Cascara 31c Glycerine Suppositories 12 in bottle 15c Full pound Puretest Sodium Bicarbonate 10c 4 oz. Castor Oil 17c 1 oz. Puretest Essence of 100 Aspirin Tablets 49c 1 oz. Puretest Spirit Camphor 17c Pint Witch Hazel 39c 1 oz. Puretest Tincture of Iodine 13c Pint Rubbing Alcohol 39c Pint Mineral Oil 59c Puretest Epsom Salt, 4 oz., 7c; 2 full pounds, 25c C. H. CRANE The Rexall Store "Everything in Drugs" We Deliver Phone 1620

A \$10.00 Payment Brings a Ranger BOYS and Bicycles pair up as naturally as bread and butter. Nothing can beat the famous Ranger Bicycles. They're the best on the road, in appearance, sturdy build, up-to-the-minute equipment and speed. Our Deferred Payment Plan makes it easy for every boy (and every girl) to enjoy a Ranger this summer. The initial payment is \$10.00, with monthly payments of \$10.00 (or \$2.50 a week) to complete the purchase price. For those who live near the water—the renowned Old Town Canoes may be purchased on the same plan of deferred payments. Strawbridge & Clothier Philadelphia I am interested in further information about the famous Ranger Bicycles and Old Town Canoes. Name _____ Street _____ City and State _____ Effective April 12th CHUTE CARRY Egg \$14.50 \$15.00 Stove } Chestnut } 11.50 12.00 Pea 8.50 9.00 Buckwheat 9.00 9.50 Coke 25 cents a ton discount will be allowed for cash on delivery Buy In Narberth. "Coal that Really Heats" NARBERTH COAL & BUILDING MATERIAL CO. NARBERTH PENNA. PHONE NARBERTH 875