

Historic, archived document

Do not assume content reflects current scientific knowledge, policies, or practices.

**STRAWBERRIES-BLUEBERRIES
FRUIT TREES-GRAPES-ASPARAGUS-ORNAMENTALS**

RECEIVED
JAN 19 1963
U. S. DEPARTMENT OF AGRICULTURE

RAYNER'S BERRY BOOK 1963

SMALL GARDEN

- 25 FAIRFAX Early
- 25 CATSKILL Mid-Season
- 25 ROBINSON Mid-Season
- 25 SPARKLE Late

100 Plants
 Catalog Price: \$5.50
 Special \$4.50

MEDIUM GARDEN

- 50 PREMIER Early
- 50 CATSKILL Mid-Season
- 50 POCAHONTAS Mid-Season
- 50 ARMORE Late

200 Plants
 Catalog Price: \$9.10
 Special \$7.65

LARGE GARDEN

- 100 FAIRFAX Early
- 100 SURECROP Mid-Season
- 100 CATSKILL Mid-Season
- 100 Jerseybelle Late

400 Plants
 Catalog Price: \$14.90
 Special \$12.25

All Season Garden

- 25 REDGLOW Early
- 25 SURECROP Mid-Season
- 25 SPARKLE Late
- 25 ARMORE Late
- 25 Superfection Evb.

125 Plants
 Catalog Price: \$7.85
 Special \$6.75





SURECROP

THE MOST DEPENDABLE STRAWBERRY

Virus-Free, Disease Resistant,
Drought Resistant, Highly Productive

Surecrop was developed by the U. S. Dept. of Agriculture especially for resistance to the red stele disease. It has such high resistance to this trouble that it will produce perfect crops where most varieties would be complete failures. In addition, Surecrop is resistant to Verticillium wilt, leaf spot, and leaf scorch. Then, as an extra bonus, Surecrop is one of the most drought resistant of all strawberries. Under almost any soil condition Surecrop's unexcelled vigor will produce an abundant crop of wonderful fruit. Thus, you can understand why we call it the most dependable of all strawberries.

Surecrop ripens in midseason and has large, bright-red berries with a nice cap and bright seeds. The berries are very uniform and have a fine appearance. The flavor is good for fresh use and preserves; likewise, Surecrop is good for freezing. The flesh is quite firm; thus, Surecrop will hold up well for shipping and keep its fine appearance for several days. Therefore, this is an excellent commercial variety as well as a fine berry for home gardens.

Surecrop has rapidly become one of the leading strawberry varieties in the eastern United States. Its consistently high yields, amazing vigor, and excellent berry characteristics make this one of the best of all for commercial profits and for dependable home garden production. If you want a strawberry that is very easy to grow, and one that you can show with pride, you definitely want Surecrop.

Because of its great vigor, Surecrop may produce too many plants, so for best results be sure to keep the bed fairly narrow with several inches between each plant.

25 PLANTS \$1.40; 100 PLANTS \$3.70; 1000 FOR \$18.50. Complete Price List Page 20.
Prices in this catalog DO NOT include postage. See page 21 for Postal Rates.

Again in 1961, as in 1960, Surecrop was the highest yielder in official tests in West Virginia conducted directly with strawberry growers. It led all other varieties with an average yield of 5,854 quarts per acre and in one test produced at the rate of 12,100 quarts. West Virginia Agriculture Extension Service, Misc. Pub. No. 88.



Crimson King Maple

(Patent No. 735)

Crimson King Maple, a great improvement over any red maple yet introduced, is truly king of all red maples. Its deep crimson foliage, that holds its color all through the summer, adds an exhilarating contrast to the green of other trees. It becomes more attractive each year, and is a fast growing tree which reaches a height of about 50 ft. at maturity.

Your lawn will take on a new look of distinction when you plant your Crimson King Maple. We know you will always cherish one of these beautiful trees.

PRICE: 4-5 FT. TREES—EACH \$4.75
Plus Postage

Complete Shipping Information and Postal Rates are given on page 21.

BUY RAYNER'S PLANTS AND YOU
BUY THE BEST.

To Our Customers and Other Friends

My son-in-law, P. Curtis Massey, has joined our firm; and I am especially pleased to introduce him to you. "Curt" was raised in Hagerstown, Maryland and has always been interested in plants and agriculture. After college he served in the Marine Corps and received a commission as First Lieutenant. With Rayner Brothers he will be concerned with general management so that he can become familiar with all phases of our business. I believe he will be very helpful in maintaining and improving the many activities that are so important to our customers.



Jack Rayner

Our registered, virus-free strawberry plants continue to prove that they are the very best planting stock for abundant yields of big, high quality berries. For both commercial growers and home gardeners Rayner's strawberry plants are your most important assurance of profit and success. You will note that we offer the greatest selection of all virus-free stock and that our varieties are those that have been proven by official tests to be the best. It is very likely that you can purchase plants for even less than our reasonable prices; but if you will consider that with poor planting stock all of your labor and potential profits may be lost, you will realize why it is so important to buy Rayner's registered virus-free strawberry plants.



P. C. Massey

Another of our specialties is production of the best selection of cultivated blueberry plants. From our 100-acre fruiting field we select the finest planting stock for you. The new hybrid blueberries are truly sensational. Whenever proper growing conditions are provided, they will produce the biggest blueberries you have ever seen.

Of much importance to you is the fact that all of our plants are backed by a reliable guarantee. This guarantee applies to all of our nursery plants that are planted during the spring season and to strawberries planted by July 1st.

"We guarantee you will receive top quality stock. If for any reason you are not pleased with our plants, write us within 30 days and we will replace the plants or refund the complete purchase price. After the 30 days period and within one year of the date the plants were purchased, we will replace at one-half purchase price any plants that are not satisfactory. This guarantee covers full purchase price and does not imply any further responsibility or liability."

Also of vital importance to you is the Rayner policy of honest, efficient dealings with our customers. We fully realize that satisfied customers are the backbone of our business and we will make every reasonable effort to provide you with top-quality plants and service.

We hope you will take the time to read the information in this catalog concerning methods of planting strawberries, blueberries and other nursery stock. We have tried to provide the best possible directions because we certainly want you to be successful. Also planting instructions are sent with each order. Give our plants satisfactory growing conditions and they will reward you many times over with abundant crops of top quality plants.

Yours for continued success with Rayner's plants,

H. JACK W. RAYNER, President

Where to Find the Finest Nursery Stock

STRAWBERRY PLANTS	Pages 1-21	NUT TREES	Pages 30-31
RASPBERRY PLANTS	Pages 22-23	WILLOW TREES	Page 32
BLACKBERRY PLANTS	Page 23	MAGNOLIA	Page 32
GRAPE VINES	Page 24	RHODODENDRON	Page 32
ASPARAGUS	Page 25	HOLLY	Page 32
RHUBARB	Page 25	MULTIFLORA ROSE	Page 32
APPLE TREES	Page 26	YEW'S	Page 32
PEACH TREES	Page 26	PINES	Page 33
PEAR TREES	Pages 27-28	SPRUCE AND FIR	Page 33
CHERRY TREES	Page 28	CANADIAN HEMLOCK	Page 33
PLUMS, PRUNES & DAMSONS	Page 28	BLUEBERRIES	Pages 34-40
DWARF FRUIT TREES	Page 29	CHEROKEE CHIEF DOGWOOD	Page 39



In addition to Membership in The American Association of Nurserymen, Rayner Bros., Inc. belongs to The Maryland Nurserymen's Association and the Delmarva Nurserymen's Association.

As Business References we submit the following: Union Trust Company, Salisbury, Md.; Maryland National Bank, Salisbury, Maryland; Dun & Bradstreet.

BUY RAYNER'S PLANTS AND YOU BUY THE BEST

How to Choose the Best Strawberry Varieties

Your choice of strawberry varieties depends, to a large extent, on the purpose for which they are to be grown. Some varieties are especially good for fresh eating while others are quite tart, but good for long-distance shipping. Some are superior for freezing, and others are extra good for preserves. Some varieties will give fine results in nearly any soil, while others require very good growing conditions. Some varieties are resistant to diseases while others are susceptible. Below is a list of general strawberry characteristics when grown under normal conditions. It must be remembered that excess fertility and other conditions can greatly alter strawberry qualities. Thus, we strongly recommend that you try several of the most desirable varieties and decide which ones are best for your particular location. Complete descriptions of all our strawberry varieties are given in this catalog.

CHARACTERISTICS OF SOME STRAWBERRY VARIETIES

- BEST FOR FLAVOR AND GENERAL HOME USE:** Redglow, Fairfax, Armore, Pocahontas, Sparkle, Catskill.
- BEST FOR LARGE SIZE:** Armore, Robinson, Jerseybelle, Catskill, Empire, Pocahontas, Vesper.
- BEST FOR HIGH YIELDS:** Catskill, Pocahontas, Surecrop, Earlidawn, Midway.
- BEST FOR FIRMNESS:** Dixieland, Blakemore, Pocahontas, Surecrop, Tennessee Beauty, Midway.
- BEST FOR FREEZING:** Midland, Pocahontas, Dixieland, Redglow, Sparkle, Surecrop.
- BEST FOR PRESERVES AND JAMS:** Dixieland, Blakemore, Pocahontas, Tennessee Beauty.
- BEST FOR EARLINESS:** Earlidawn, Midland, Premier, Redglow.
- BEST FOR LATENESS:** Armore, Sparkle, Jerseybelle, Tenn. Beauty, Redstar, Vesper.
- BEST FOR VIGOR AND GROWTH IN POOR OR DRY LAND:** Surecrop, Robinson, Premier, Blakemore, Sen. Dunlap.
- BEST FOR RESISTANCE TO RED STELE:** Surecrop, Stelemaster, Redglow, Sparkle, Midway, Vermillion.
- BEST FOR RESISTANCE TO VERTICILLIUM WILT:** Vermillion, Catskill, Surecrop, Premier, Robinson.
- BEST FOR RESISTANCE TO LEAF TROUBLES:** Fairfax, Premier, Midland, Surecrop, Catskill, Empire, Redstar, Tennessee Beauty.
- BEST FOR VERY COLD CLIMATES:** Catskill, Empire, Sen. Dunlap, Premier, Sparkle.
- BEST FOR FROST RESISTANCE:** Earlidawn, Premier.
- BEST FOR SOUTHERN STATES:** Albritton, Pocahontas, Dixieland, Blakemore, Surecrop, Tennessee Beauty.
- BEST FOR FLORIDA:** Florida 90.

For the best success with strawberries we hope you will read the culture information given on pages 18-19. Naturally we want our customers to have fine results with our plants and therefore, we try to keep you informed of the very best methods for growing strawberries and other plants we sell. Each spring we send a copy of our bulletin "Better Berries" to our customers and in it you will find detailed information on fertilizing, pruning, mulching, pest control, and similar important points for success with various crops. The 19th annual issue of "Better Berries" will be sent this spring and back copies of all issues are available. If you do not have these valuable bulletins, you may obtain the entire set by sending 20c to cover handling and postage.

June 28, 1962

Brooklyn, New York

A few weeks ago I wrote to you about a blueberry bush that failed to grow. I would now like to tell you how much I appreciate your prompt replacement of this bush. It is growing nicely. It is a pleasure to deal with people who make good their guarantee as promptly and efficiently as you do.

Joseph Frank

March 9, 1962

Bluefield, West Virginia

Please permit me to express my appreciation for your kindness in providing me with the 18 issues of your "Better Berries" bulletins. I have them in a binder and they provide me with a lifetime of valuable information concerning the requirements of many kinds of plants in understandable and working terms.

Yours very truly, M. L. Workman

"Plants referred to as "virus-free" in this catalog have been field grown by us from virus-free foundation stock furnished by the U. S. Department of Agriculture Bureau of Plant Industry, Soils and Agricultural Engineering, Beltsville, Maryland, and State Horticultural Department, University of Maryland. Our field-grown stock has been dusted with parathion to control aphids which transmit the virus diseases. It has also been grown at considerable distance from any other strawberry plants. Since viruses do not produce clear-cut symptoms in most strawberry varieties, but simply weaken and devalue the plants, no guarantee can be made that these plants are 100 percent free of viruses. Because of the measures that we have used to protect these plants from virus infection, we believe them to be substantially virus-free."

SPACE BELOW IS FOR ADDITIONAL ITEMS OR REMARKS.

HOW MANY	NAMES OF VARIETIES ORDERED	PRICE	
		Dollars	Cents

SEND FOUR NAMES FOR
\$1.00 BONUS PLANT OFFER
 IF YOUR ORDER AMOUNTS TO \$5.00 OR MORE

Send us the names and addresses of four persons who grow berries or who have a garden and may be interested in receiving information on berry growing. We will include 25 strawberry plants FREE. We must reserve right to choose variety of plants, but are sure you will be well pleased. Bonus plants will not be sent for less than four names. Plants will be shipped with order.

WRITE NAMES HERE FOR BONUS PLANT OFFER

List Names and Addresses Here. Please Print or Write Legibly.

Please be sure to include Street Address or R.F.D. Number. Also note whether Mr., Mrs. or Miss.

1. _____
2. _____
3. _____
4. _____

INSTRUCTIONS TO PURCHASERS

TIME TO ORDER—As soon as convenient after receiving this catalogue. Late in the season we may be out of some varieties, but if you order early, plants will be reserved until you are ready for them. Be sure to **PLANT EARLY!**

TIME OF SHIPMENT—From November 1st to May 15th. All orders filled after May 15th will be at purchaser's risk. We will use every precaution in our power to put the plants through in good condition. (See Planting Instructions.)

PAYMENT—Money Order or Personal Check with order, or if desired ¼ payment and balance before date of shipment.

REFERENCE — Union Trust Co., Maryland National Bank, Salisbury, Md., Dun & Bradstreet, your own State Experiment Station or County Agent.

GUARANTEE — 100% satisfaction or your money back. Claims if any, must be made within 30 days after receipt of goods. After 30 days and within 1 year we will replace at ½ the original purchase price. We cannot be responsible for conditions over which we have no control. At no time will we be responsible for any sum greater than that paid for the stock.

TRUE-TO-NAME—We use every precaution to have our plants true-to-name. Should any prove otherwise we will replace them or refund the purchase price.

SHIPMENT — Express is generally cheaper on 2000 plants or more beyond the third zone and on all large orders.

PARCEL POST — On all orders under 2000 Parcel Post is generally cheaper. Be sure to send enough postage to save C.O.D. charges for balance. Any excess postage will be returned.

BUY RAYNER'S PLANTS AND YOU BUY THE BEST



EARLIDAWN

NEW LEADER FOR EARLY PROFITS. TREMENDOUSLY PRODUCTIVE - VIRUS FREE

Earlidawn has really made a hit with berry growers who want those big early profits. It ripens several days before other varieties and leads the customers right to you. Berries of Earlidawn are large, moderately firm, and very attractive. The flesh has a nice bright red color and makes a fine frozen product. Earlidawn ripens uniformly, without white tips, and the whole row shines with that unmatched color of big ripe strawberries. Production is good and the crop ripens uniformly with 50% being harvested in the first week.

Despite the fact that Earlidawn is the earliest of all strawberries, it has good frost resistance and will produce a full crop where other varieties are badly injured. In poor soils, Earlidawn is not as vigorous as some varieties, but give it good growing conditions and you will be amazed at its wonderful production of big, beautiful, early berries. land that has recently been cropped to tomatoes, northeastern and Central states Earlidawn has with Rayner's registered, virus-free plants, you have extra assurance of success. Order early to reserve your plants.

For best results it should not be grown in and other strawberries. Throughout the proven that it is a real profit maker and you have extra assurance of success. Order early to reserve your plants.

25 Plants \$1.50; 50 for \$2.50; 100 for \$4.00; 1,000 for \$20.00. Complete Prices Page 20.

Our prices do not include Postage. See Page 21 for Postal Rates.

DIXIELAND

VIRUS FREE

There are two very valuable features of Dixieland that make it an important commercial variety. First is the unusual firmness of the berry. This quality is of extreme importance to growers and produce buyers who ship to distant markets. Dixieland arrives in fine condition and brings repeat orders because when placed on the sales shelf it still is bright and attractive. Another important quality of Dixieland is its resistance to fruit rot. It will often produce perfect berries under wet conditions that favor much loss of other varieties.

Dixieland ripens early and is sufficiently frost-resistant to give fine yields in northern states. The berries are large and light-red in color. They have a distinct neck and a small cap. The flavor is definitely tart but for preserves there is no better variety. The bright inside color helps make Dixieland an excellent variety for freezing.

A genetic variegation (June Yellows) has developed in all known sources of the variety Dixieland. This is not caused by a virus. Plants may be weakened and yields reduced. Attempts are being made to locate non-yellowing stock and we have removed all plants showing this trouble from our fields. However, we can make no guarantee as to performance of Dixieland.



FIRMEST OF ALL STRAWBERRIES. FINE COMMERCIAL VARIETY

Prices: 100 Plants for \$3.80; 1,000 for \$19.00. Complete Prices on Page 20.

BUY RAYNER'S PLANTS AND YOU BUY THE BEST

MIDLAND

**VIRUS - FREE. OUTSTANDING
EARLY VARIETY. Top Quality**



With development of virus-free stock, Midland has become increasingly popular. At one time it was difficult to grow but with Rayner's registered virus-free plants, and good fertile soil, Midland will produce an excellent fruiting row. Throughout the north-eastern and Central states, this is one of the finest of all strawberries for flavor, quality, and appearance. The berries are very large and have a beautiful deep red color. The flesh is firm and has a fine solid-red texture that rates Midland as one of the best of all for freezing. Berries ripen very early and bring top prices so this is a fine variety for either small or large scale commercial use. On Long Island virus-free Midland has proven to be an outstanding variety for the high-quality New York market. It is probably the most widely planted strawberry in that important area.

Throughout all but the southern states we recommend Midland highly as an outstanding early variety.

All of our plants are guaranteed; see page 3 for details.

25 Plants \$1.50; 50 for \$2.50; 100 for \$4.00; 1,000 for \$20.00. Postal Rates Page 21.

January 25, 1962

The Midland strawberry plants we obtained from you 3 years ago have had a wonderful crop of huge berries.

Phillipsburg, New Jersey

Mrs. Evelyn E. McCoy

May 31, 1962

In all the years we have been buying strawberry plants from you, we have never had a crop failure. We have always been satisfied—no matter what plants we buy.

Chevy Chase, Maryland

Charles N. Hutchinson

PREMIER

**U. S. D. A.
Virus-Free
Strain**

THE OLD FAVORITE EARLY BERRY

For over forty years Premier has been the standard early strawberry for northern states. It has long been recognized as one of the most dependable varieties since it has frost resistance and will grow under nearly any soil conditions. The foliage is vigorous and makes an abundance of sturdy plants which produce heavy yields.

Berries of Premier have an attractive light red color and are of medium size. The flavor is generally good and in northern states is better than in warm areas. Premier is not as firm in texture as some other varieties but is generally satisfactory for fresh market sales and home use. In areas, where winter-hardiness is important, Premier is a good choice since it has established a fine record of performance in cold climates. Recently it has been shown that Premier has resistance to Verticillium Wilt. This trouble occurs in some northern soils, especially where tomatoes and potatoes have been grown.

25 Plants for \$1.40; 50 for \$2.30; 100 for \$3.70; 1,000 for \$18.50

Complete Prices Page 20. Postal Rates Page 21.

BUY RAYNER'S PLANTS AND YOU BUY THE BEST



**VIRUS
FREE**

REDGLOW

**UNUSUALLY
FINE
FLAVOR**

RED STELE RESISTANT

We are firmly convinced that for real strawberry flavor and quality Redglow is outstanding. If allowed to remain on the plant a few days after it first turns red the fresh flavor is truly delicious and cannot be excelled by any other strawberry. In addition to such fine flavor Redglow is also one of the most beautiful varieties. The berries are medium to large in size and have a fine bright red color that really shines. The flesh is firm and has a fine color which results in an excellent frozen product. It grows well in most soils but is best in rich, moist land. It has red stele resistance so if this soil disease is a problem just plant Redglow and enjoy the finest strawberries you have ever known.

Redglow ripens very early in most locations; in tests on Long Island, New York it was earlier than Midland and just 1 or 2 days behind Earlidawn. In 1960 Redglow was among the varieties tested in West Virginia, and was rated large for fruit size; firm for texture; and very good for freezing. Foliage of Redglow is generally quite vigorous, and it readily produces a nice bed of plants if growing conditions are at all favorable. It is not as well adapted to growth on dry or poor land as are some varieties.



25 Plants \$1.50; 50 for \$2.50; 100 for \$4.00; 1,000 for \$20.00. Complete Prices Page 20.

Our prices do not include Postage. See Page 21 for Postal Rates.

March 12, 1962

Melsonville, Ohio

I have raised berries for 20 years and tried more than 30 varieties. Redglow is one of the best I have ever raised.

Charles M. Hutchinson



STELEMMASTER

**VIRUS
FREE**

**SUPERIOR RESISTANCE
TO RED STELE**

In soils where the red stele disease is a problem Stelemaster can be the difference between a good crop and a failure. It was developed by the U. S. Department of Agriculture because of the increasing need for superior resistance to red stele. Stelemaster ripens early and produces elongate, firm berries of good size. The flavor and quality are good. Under good growing conditions Stelemaster can produce very high yields and will have vigorous growth. However, it is not well suited to poor or sandy soils. If the red stele disease is a problem, we recommend a trial planting of Stelemaster for the early variety.

Rayner's stock of virus-free Stelemaster will give good results in the eastern and central states.

25 Plants \$1.45; 100 for \$3.90; 1,000 for \$19.50

SEE PAGE 20 FOR COMPLETE PRICE LIST

BUY RAYNER'S PLANTS AND YOU BUY THE BEST

**VIRUS
FREE**

FAIRFAX

**EARLY, PRODUCTIVE
VERY VIGOROUS**

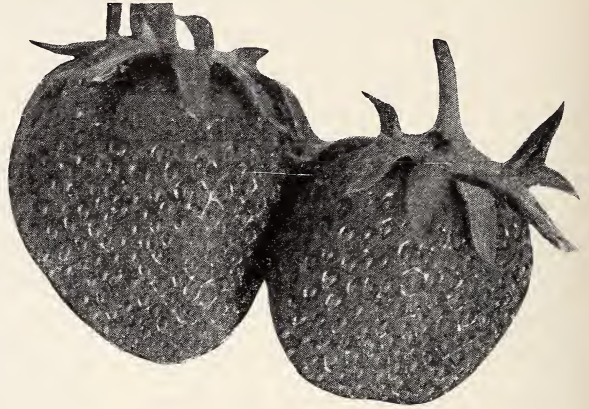
THE OUTSTANDING VARIETY FOR DELICIOUS FLAVOR

Fairfax was introduced in 1928 by the United States Department of Agriculture and immediately became very popular because of its excellent flavor and quality. In this respect it is still the leader of all strawberries and therefore, the favorite variety for home gardens and local sales where flavor is appreciated. You will find in Fairfax the true strawberry flavor that is so important to all who enjoy fresh strawberries. Its berries are large and have a deep red color when fully ripe. The flesh is likewise a dark red color.

With the new vigor of Rayner's registered virus-free plants, Fairfax is a very dependable variety giving fine production for home gardens and for commercial production where "repeat" business is important. Your Customers will continue to come back for more of this delicious berry.

Fairfax is quite winter-hardy and is well adapted to the northern states as well as to the middle-Atlantic and Central area. It grows well in nearly any type of soil but like most strawberries gives best results in fertile land having a good supply of moisture. The berry color of Fairfax becomes quite dark when fully ripe but this is the time for best flavor. These fully-ripe berries are not as satisfactory for freezing as those that are picked while the color is not so deep. Order early so that you will be sure to get this fine variety.

25 Plants \$1.45; 100 for \$3.80; 1,000 for \$19.00. Complete Prices Page 20.



Virus - Free

BLAKEMORE

THE BEST FOR PRESERVES, JAMS, AND JELLIES

For many years the excellent processing qualities of Blakemore have made it one of the most important of all strawberry varieties. Its berries are very firm and have an outstanding bright red color. Blakemore is a bit tart for most fresh use but when sugar is added there is an excellent flavor. These features make Blakemore an outstanding favorite with all who want to make the best jams, jellies, and preserves. The bright sparkling product will prove that Blakemore well deserves its fine reputation in this respect. For freezing it is likewise excellent since the berries are unusually firm and hold their shape and color very well. When frozen fresh, with the caps still on, Blakemore makes a beautiful delicious treat for winter days. This is a very vigorous early variety and will give good results in all but the coldest states.

25 Plants \$1.15; 50 for \$1.90; 1,000 for \$15.00. See Page 20 for Complete Price List.

VIRUS FREE

FLORIDA 90

BEST FOR FLORIDA

Because of the lack of cold weather in Florida there is not sufficient winter-dormancy for fruit development in most varieties of strawberry. The plants will grow but production of fruit is poor or absent. For many years Missionary was the only variety that would produce good crops under Florida conditions, but in recent years it has been largely replaced by Florida 90, a berry developed in Florida for Florida conditions. This is the berry that is grown so extensively for shipment to the north. Its berries are large and elongate and have a rich red color and nice flavor. The plants are relatively small but very vigorous, making excellent growth on a wide variety of soils. Recently Florida 90 has been found to give fine results in parts of Georgia, where it has excellent commercial possibilities. For the home gardener in Florida, there is no better strawberry than this fine berry which is tailor-made for your climate.

25 Plants \$1.05; 100 for \$2.80; 1,000 for \$14.00. Complete Prices Page 20. Postage P. 21.

**TREMENDOUS
YIELDS OF
LARGE BERRIES**

MIDWAY

VIRUS FREE
New U. S. D. A. Hybrid

In the season of 1962 this wonderful new variety, from the U.S. Department of Agriculture, made many friends. In New Jersey it gave such outstanding yields of big, high quality berries that even the most experienced growers were very favorably impressed. In Ohio it was one of the best varieties in official trials at the Wooster Experiment Station. In Maryland and Michigan, it was one of the heaviest producers and brought top prices at the auction markets.

Midway ripens in early midseason and produces large, bright berries, with a fine cap, and yellow seeds. The berries have a good uniform shape and hold their large size and fine appearance for the full picking season. Berries of this variety have a firm flesh and firm skin which permits long distance shipment and results in a fine looking berry a day or two after they have been picked.

Midway is a cross of Dixieland x Temple and has the same type of red stele resistance that helped to make the Temple such a reliable variety. Likewise, it has a lot of that fine Temple flavor. It had been tested for five years as selection MD. - U.S. 2389 and gave excellent results during this time in many states, including Mass., W. Va., Md., N. J., Penna., Ohio, Indiana, Missouri, and eastern Washington. It consistently produced high yields, up to 11,000 quarts per acre, which rank it with the best in this respect. Thus, Midway has already been proven to be outstanding and you need have no worry about results with Rayner's registered virus-free stock.

Our tests with Midway show that it gives the best results in fertile soils which have a good supply of moisture and that it may not be as good as some varieties if planted in dry, sandy land. We recommend Midway as a red stele resistant variety to replace both Fairland and Temple which are being discontinued because they are not virus-free. We feel certain that if you will give Midway a chance it will reward you with outstanding yields of wonderful, large, strawberries. Order early since there will be a shortage of Midway.

25 Plants \$1.50; 50 for \$2.50; 100 for \$4.00; 1,000 for \$20.00. Complete Prices Page 20.

Our prices do not include Postage. See Page 21 for Postal Rates.



**VIRUS
FREE**

SURECROP

**SEE INSIDE
FRONT COVER**

The amazing variety that is so vigorous it will grow almost anywhere in nearly any soil. Everyone can have success with this outstanding variety. See inside front cover for color picture and full details. We believe this is the finest strawberry variety ever developed.

July 10, 1962

We planted 525 of your plants in April, 1959 and picked 1000 quarts from them this spring. Surecrop and Pocahontas out-produced the rest.

Chambersburg, Pennsylvania

Elwood Gipe

May 23, 1962

You should see those Surecrop strawberries. They beat anything I have ever had so far.

Fairmont City, Pa.

Paul E. Hilliard

April 12, 1962

By actual count I received 507 strawberry plants for the 450 ordered. After 3 weeks I have 507 vigorous, growing, healthy plants. The reason for this incredible count is the fine quality and condition of the plants when received and my well prepared soil, rich in humus and organic plant food.

White Stone, Virginia

A. W. Wiseman

BUY RAYNER'S PLANTS AND YOU BUY THE BEST

VIRUS
FREE

POCAHONTAS

EXTRA BIG YIELDS OF HIGH QUALITY BERRIES. EXCELLENT



FOR BOTH COMMERCIAL
AND HOME PLANTINGS.

The features which make Pocahontas so outstanding are its tremendous yield, of large, high-quality berries, and exceptional plant vigor. Pocahontas was released by the U. S. Dept. of Agriculture in 1954 and has rapidly become the leading commercial variety in many areas. Likewise, it is one of the very best strawberries for home gardens. In official tests in many states Pocahontas has consistently ranked near the top for production. Of special significance are the many enthusiastic reports from berry growers who find Pocahontas to be the best strawberry they have ever known. From Texas to Georgia and northward to New York and Iowa this is a variety that is setting new records for production and profits. In the eastern area of Maryland, Virginia, and North Carolina, Pocahontas is a leading commercial va-

riety since its firm, large berries can be shipped long distances to market and still maintain their attractive appearance.

Pocahontas ripens in mid-season and produces large berries that "hold their size" for the entire season. They have a bright red, firm skin and a fine red flesh. The flavor is excellent if the berries are allowed to ripen fully before picking. If picked too soon, Pocahontas is rather tart and in the northern states this tartness seems to be more evident than in warmer areas. For preserves and freezing Pocahontas is excellent.

Another fine feature of Pocahontas is its unusual plant vigor which results in good growth in nearly any type of soil. In fact, it will make too much vine growth in some locations and then it is necessary to control runner production or the yield will be reduced. Excellent results have been obtained with Pocahontas when it is planted in June or July under irrigation. A bed of well-spaced plants is developed which produces very big berries the next spring. The demand for Pocahontas has increased so greatly that it is difficult to supply enough plants. So if you want this wonderful berry be sure and place your order early.

25 Plants for \$1.45; 50 for \$2.35; 100 for \$3.80; 1000 for \$19.00. Complete Prices Page 20.

Our prices do not include Postage. See Page 21 for Postal Rates.

June 2, 1962

Woodhaven, Virginia

The 1,000 Pocahontas I bought from you in 1961 has really made me a nice crop of large, sweet, berries. I have tried many different kinds of strawberry plants from different companies but from now on I am sold on your Pocahontas.
Emmett Sharp

June 18, 1962

Pawling, New York

I have never seen any strawberries like the Pocahontas — they are wonderful. Very large berries — the demand for them is so great I have to turn customers away. Many people have told me that they have never seen such beautiful berries. I put them in exhibit in the federated Garden Clubs of New York State, Inc. I won 1st prize special award and also award of merit — thanks to Rayner's good plants. They also told me this was the highest award given to anyone in New York State in 17 years.
Wells Baker

July 10, 1962

Allentown, Pennsylvania

Last year we bought 25 of your Pocahontas, planted them 36 inches apart, and permitted only 11 runners from each plant to take root. This spring the total yield was 135 quarts which is equal to 21,900 quarts per acre.
Claude Weida, Jr.

January 11, 1962

Clearfield, Pa.

In April, 1960 I received 200 Pocahontas and 100 Catskill from you and only lost 2 plants. This was my first attempt to raise strawberries. We cared for them as you recommended and in 1961 to my amazement, we picked 537 quarts of the nicest berries I ever saw.
James L. Demi, Sr.

April 30, 1962

Lowman, New York

In 1960 I purchased 200 Pocahontas plants from you and picked 520 quarts of berries in 1961. They were large, delicious, and just wonderful.
Richard Sawdey

UNUSUALLY
VIGOROUS

ROBINSON

VIRUS
FREE

Extra Large Berries

Robinson (also known as Kardinal King and Scarlet Beauty) has several outstanding good features that far outweigh its less desirable qualities. It is one of the most vigorous plant makers and will often give good results in poor or sandy soils where other varieties fail. Even under drought conditions it will usually produce good crops. Another fine quality is its very large berry size. Fruit of Robinson are really large and with their light red color, they bring good prices. Its ripening period begins soon after Premier but it is generally considered a midseason variety. In Michigan Robinson is the leading commercial variety. The plants are small but the fruiting beds are very wide and vigorous — in fact best results are obtained if late-formed runners are removed.

In cool climates the quality and firmness of Robinson is good enough to satisfy most customers. However, in warm areas it may not be suitable. Because of its vigor and large berry size Robinson remains a favorite of many home gardeners and commercial growers in the northeast. Rayner's registered virus-free stock of Robinson will bring the best out of this variety. For big berries try Robinson.

100 Plants for \$3.70; 1,000 for \$18.50. Prices on Page 20.



March 31, 1962

In all my life as a farmer, I never picked so many quarts off so few plants as with your Robinson. Berries were very big and they also had good appearance, color, and taste.

Fredonia, New York

Sam R. St. George

VIRUS
FREE

EMPIRE

EXCELLENT FOR COMMERCIAL
AND HOME USE IN THE NORTH.

Empire is another of the fine fruit developments of the New York State Experiment Station. Thus, it is well suited to the northern states where it is a fine midseason companion of Catskill. Yields are good and it has sufficient frost and winter hardiness to be a very dependable producer. Empire is an especially attractive berry since it has a very glossy, medium red color and a fine green cap. The berry shape is somewhat elongate and irregular. Berry size is large and this size holds up well for the entire picking season. The flesh color of Empire is somewhat pale, and it is a bit soft, but the flavor is very good. Large berries may have a hollow center. However, its large size, fine appearance and good flavor rate Empire as a real profit maker in northern states. We definitely believe you will like this excellent variety.

Plants of Empire are very vigorous and are hardy in cold climates. Runner plants are developed freely and result in a good fruiting row. In all the New England area, we believe you will have excellent results with Rayner's virus-free Empire. It is very good for any fresh market sales but is not rated too highly for processing.

Empire Prices: 100 for \$3.80; 1,000 for \$19.00. Order Early. Complete prices page 20.



March 31, 1962

We have had good results with Empire and Pocahontas. Catskill has been exceptionally good and very popular with local customers.

Zanesville, Ohio

Dean A. Baughman

BUY RAYNER'S PLANTS AND YOU BUY THE BEST

CATSKILL

**BIG YIELDS OF BIG BERRIES
OUTSTANDING NORTHERN VARIETY
VIRUS FREE. WINTER HARDY**

The outstanding feature of Catskill is its consistently high yields throughout the northern states. Under most growing conditions, its virus-free vigor and extreme winter hardiness always result in fine production. Thus, it is well liked by the amateur who wants a strawberry that is easy to grow and it is a favorite for commercial planting where this dependability is so important. In addition to such fine plant vigor and high yields Catskill has excellent berries of large size. The flavor is good and they have a nice bright red color. Berries of Catskill are not as firm as some varieties and for best results should be handled promptly. But for many years this has been the leading midseason variety throughout most of the northeast so it must be good. Catskill was developed in 1933, at the New York Experiment Station and has consistently been one of the best of all strawberries. It is noted for its tall, light green foliage which is so resistant to leaf troubles. Likewise, Catskill is highly resistant to Verticillium Wilt, which is of importance in some northern soils. Recent tests in West Virginia showed an outstanding average yield under growers conditions of 6,850 quarts per acre.



For good results with strawberries in cool climates be sure to try some of Rayner's registered virus-free Catskill. Order early and we will reserve your plants.

25 Plants \$1.45; 50 for \$2.35; 100 for \$3.80; 1,000 for \$19.00. Complete Prices Page 20.

Prices in this Catalog do not include postage. See page 21 for Postal Rates.

May 27, 1962

I received 2000 strawberry plants about 2 weeks ago and I don't believe a single plant had died. I also have 2000 from last year that are growing very well and I am expecting a big crop from them.

Orient, Maine

Samuel Weeks, Jr.

May 4, 1962

I received 10,000 plants from you in April and they arrived in wonderful shape. After 3 weeks 98% are growing. Well pleased.

McAllisterville, Pa.

Harold B. Smith

SENATOR DUNLAP VIRUS FREE

THE OLD-FASHIONED VARIETY WITH WILD-STRAWBERRY FLAVOR

Dunlap was named in Illinois in 1890 and has withstood the test of time better than any standard variety. It was a favorite long ago because of its wonderful flavor and excellent quality for fresh use and preserves. Today Senator Dunlap still has these same excellent features and has also proven to be fine for freezing. The plants are extremely winter hardy and will grow in our coldest states. Thus, it is well liked in Minnesota, Wisconsin, North Dakota, South Dakota, and other states having severe winter weather. Dunlap will also grow well in poor soils and in heavy clay soils and is very drought resistant. Berries of Senator Dunlap are of medium size and have a rich red color inside and out. For berries that will bring back memories of that delicious wild strawberry flavor try Rayner's registered stock of virus-free Dunlap. Place your order early to be sure of obtaining the desired varieties.

25 Plants \$1.15; 50 for \$1.90; 100 for \$2.95; 1,000 for \$15.00. Complete Prices Page 20.

May 2, 1962

We want you to know that we were very pleased with the 30,000 Dunlap obtained from you. They were fine plants and it is really a pleasure to set out stock like that.

Newport, Minnesota

Martin Swanlund

SPARKLE

FAVORITE LATE VARIETY FOR FRESH USE AND FREEZING — VIRUS FREE

Sparkle has red stele resistance combined with virus-free plant vigor and thus will give fine results in nearly all soil types. Sparkle is very winter hardy giving dependable production throughout the New England area. Berries of this variety are well named for they have such a fine bright color that they seem to sparkle. The seeds are bright yellow and with its nice cap Sparkle is a beautiful berry. U.S.D.A. Farmers Bulletin #1043 states the following about Sparkle "Berries usually medium-sized, sometimes small, short blunt conic to oblate, medium firm, glossy, rich medium red, mildly subacid, of very good dessert quality, medium late. Leaves medium sized, and resistant to leaf spot and leaf scorch; plants making runners very freely."



For many years Sparkle has been a favorite late variety because of its excellent yields of delicious berries that bring good prices. It is a pleasure to grow this fine berry because it is so good to eat and your customers always come back for more. For freezing Sparkle is one of the very best and for jams and preserves, it is also excellent.

In Michigan, it is the leading red stele resistant variety, and is commonly known as Paymaster. For best results with this fine variety use Rayner's registered virus-free plants. Reserve your plants by placing your order early.

25 Plants \$1.45; 50 for \$2.35; 100 for \$3.80; 1,000 for \$19.00. Complete Prices Page 20.

May 9, 1962

The 3200 Sparkle plants which you shipped on April 18 by Parcel Post, special handling, arrived at our Post Office at 3:19 P.M. on April 19. We could hardly believe our eyes. Two days after we planted there was a foot of snow but the plants are progressing at a rapid rate which proves that cold storage plants are the best for Maine.

Oakland, Maine

Raymond Fitch

VIRUS FREE

VERMILION

RESISTANT TO RED STELE, WILT, AND LEAF SPOT



In 1950 Vermilion was introduced by the University of Illinois as a red stele resistant variety for commercial production in the north-central states. It is also being grown both as a commercial and home garden berry in much of the northeast. In 1960 it ranked second in variety trials in West Virginia.

Vermilion has high disease resistance that makes it a very dependable variety. In addition to the red stele disease it is also resistant to Verticillium wilt and leaf spot. Thus, this variety will give excellent results in a wide range of soils and growing conditions. Of much importance is the high quality of the fruit which makes Vermilion a favorite for old-fashioned strawberry flavor. It produces fine crops of medium sized, bright berries of good firmness. The fruit are solid and have a fine red flesh color which makes this variety

very good for freezing and preserves. A somewhat unusual feature of Vermilion is its irregular ripening season in different areas. In 1959 is was rated as a very early berry in Indiana while in West Virginia it ripened in late-midseason. Rayner's virus-free stock will give you the best results with this fine variety.

100 Plants \$3.60; 1,000 for \$18.00. Complete Prices Page 20. See Page 21 for Postal Rates.

BUY RAYNER'S PLANTS AND YOU BUY THE BEST

**NOW ALL OF RAYNER'S
PLANTS ARE REGISTERED
VIRUS-FREE**

JERSEYBELLE

HUGE, BEAUTIFUL BERRIES, EXTRA-LATE. BIG PROFITS.

If you want big strawberries, then you want Jerseybelle. For several years these exceptionally large, beautiful berries have been a sensation in the Hammonton, New Jersey area where they are grown for the New York market. Jerseybelle has consistently brought higher prices than any other variety and has rapidly become the leading berry in that area. Recently virus-free stock of Jerseybelle became available and it has resulted in a tremendous improvement in this variety. Now Jerseybelle has excellent plant vigor and will give fine results in most soils.

Berries of Jerseybelle have consistently been the largest of any variety we have ever seen and they have a beautiful glossy color that gives a waxed appearance. The cap is large and the seeds are bright yellow, resulting in a berry of unusual beauty. The flesh is not nearly as juicy as in some varieties thus, Jerseybelle will hold its appearance quite well. The flavor is not as good as for some berries but is satisfactory. The ripening season is quite late, about a week after Sparkle, which greatly helps to prolong the picking season.

Jerseybelle may show some leaf troubles but generally this is not a serious problem. In northern soils, it is best not to plant Jerseybelle in land recently grown to tomatoes, potatoes, or other strawberries. But if you are looking for that extra big berry that will make real profits, you will make a planting of Rayner's registered, virus-free Jerseybelle.



25 Plants \$1.50; 50 for \$2.50; 100 for \$4.00; 1,000 for \$20.00. Complete Prices on Page 20.

**MOST PERFECT
OF ALL BERRIES**

ALBRITTON

**VIRUS
FREE**

CAROLINA FAVORITE

This excellent variety originated as a result of a cooperative breeding program between the U. S. Dept. of Agriculture and the North Carolina Agricultural Experiment Station. Albritton is unquestionably one of the most perfect of all strawberries. It is very large, has a beautiful glossy color with bright seeds, and a large attractive cap. The fruit are so uniform in shape that they look as if they were all carefully graded. Flavor and quality are excellent and the flesh is firm enough to be a good shipping berry. It is considered a late variety.

Unfortunately it is very restricted as to the area where it will produce consistently good yields. In the coastal area of North Carolina it is usually excellent but in areas of Virginia, Maryland, and New Jersey it is not always a dependable variety.

100 Plants \$3.20; 1,000 for \$16.00

Complete Prices Page 20. Postal Rates Page 21.



March 4, 1962

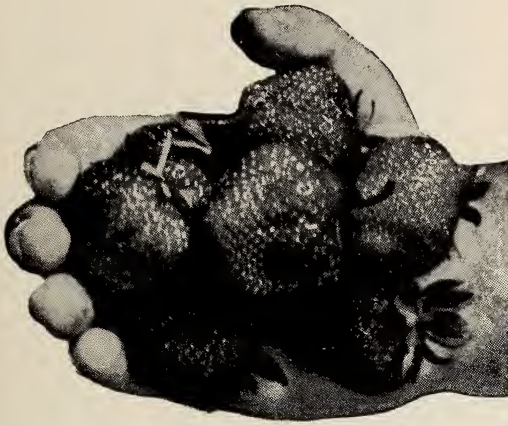
On March 31, 1960 I set 500 Albritton that I ordered from you. In May and June 1961 I picked \$200.00 worth of berries, gave lots away, and put 120 quarts in the freezer.

Bridgeton, N. C.

Harvey Moore

**EXTRA LARGE BERRIES
LATE — EXTRA FINE FLAVOR**

VIRUS-FREE



ARMORE

During the past few years Armore has gained greatly in popularity in the north-eastern states. Armore could almost be considered a late-season Catskill. Its berries are very large and have a nice bright color that makes them very attractive. The flesh color is light red and the quality is excellent. It is good for freezing.

Armore has really found a place with berry growers who sell direct to the customers because it is very large, late-ripening, and has a fine sweet flavor. These features bring repeat sales and good profits. Armore is well suited to the south central and middle-Atlantic states and is also well liked in the northern area. It is quite vigorous but its foliage is not as resistant to leaf troubles as some varieties.

25 Plants \$1.35; 100 for \$3.60; 1000 for \$18.00. Complete Price List Page 20.

TENN. BEAUTY

**VIRUS
FREE**

Tennessee Beauty is the late commercial variety for most of the southern states. It is a vigorous plant maker that gives good results in the hot, dry southern summers. Berries are medium size, bright, very firm, and the cap is very attractive. Yields are excellent. For freezing, preserves, and fresh use Tennessee Beauty is a fine variety and is quite popular with home gardeners. Rayner's registered virus-free stock assures success.

25 Plants \$1.40; 50 for \$2.30; 100 for \$3.70; 1,000 for \$18.50, Plus Postage, see P. 21.

REDSTAR

**VIRUS
FREE**

The big feature of Redstar is its unusual lateness. It ripens a week or more after the normal late varieties. Thus, Redstar is very popular with both home gardeners and commercial producers who want to extend the berry season as long as possible. Another advantage of this lateness is that Redstar rarely is hurt by frost and thus is a dependable producer.

Redstar does best in fertile soil where it will make a nice bed of unusually large plants. The fruit is large, attractive, and has a very big cap that makes Redstar a beautiful berry. Flavor and quality are good and it makes a nice frozen product.

Rayner's registered stock of virus-free Redstar has resulted in a great increase in popularity of this fine variety. It still requires good growing conditions for best results, but now Redstar is much more dependable. In any of the northern areas where a very late strawberry is desired we believe that Redstar will be very satisfactory.

25 Plants \$1.50; 50 for \$2.50; 100 for \$4.00; 1,000 for \$20.00. Complete Prices Page 20. Postal Rates Page 21.



BUY RAYNER'S PLANTS AND YOU BUY THE BEST

New

VESPER

**VIRUS
FREE**

Vesper, which was tested as New Jersey selection No. 157, provides strawberry growers with the biggest and one of the latest of all strawberries. This variety is truly amazing because of its huge berries which are larger than any other variety we know. It is much like Jerseybelle in most respects, which it now displaces as champion for berry size. For lateness it is about as late as Redstar which is generally considered to be the latest of all June-bearing strawberries. Foliage of Vesper is generally vigorous but like Jerseybelle is a bit more susceptible to leaf troubles than some varieties. But with proper growing conditions Vesper can be one of the most remarkable strawberries you have ever seen.

The unusually late ripening of this variety is additional reason why it can be a real profit-maker since you will still have fine berries after other strawberries are gone. Be sure to try at least a few of this amazing new variety that will show you and your friends just how big a strawberry can be.



**25 Plants \$1.95; 50 for \$3.10; 100 for \$5.00; 1,000 for \$25.00. Complete Prices Page 20.
Our prices do not include Postage. See Page 21 for Postal Rates.**

May 8, 1962 Scranton, Pennsylvania
I would like to take this opportunity to thank you for the very prompt and efficient service that you rendered me not only this time but in the past. I have never seen strawberry plants any nicer than the ones you sent me, regardless of the cost.
Clifford Weinstock

May 31, 1962 Farmington, Maine
The strawberry plants arrived in fine condition and never have trees been packed with greater care nor can one find better quality of root system. You may count on me to recommend Rayner's plants and service at every opportunity.
John E. Mudge

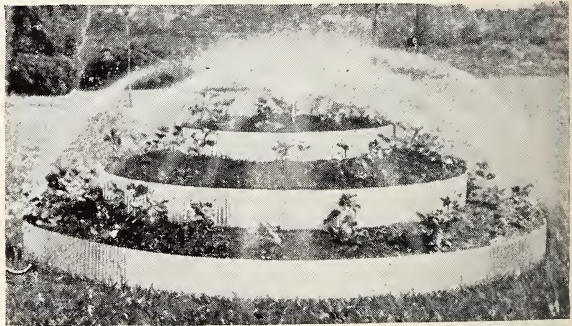
BERRY TERRACE

**50 feet of Row in a
6 foot space**

IDEAL FOR SMALL YARDS

The Terrace is made of aluminum to hold its beauty for years. It will accommodate 50 Everbearing strawberry plants. The ease of watering and fertilizing enables much more production of fruit than would normally be realized. The beauty of foliage and blossoms and the harvest of berries from spring to frost will prove a constant delight.

You may prefer to grow one or two of the excellent June-bearing varieties in your pyramid. Do not remove the blossoms but cut off the runners and you will have excellent berries 60 days or less after planting. Pocahontas, Catskill, Redglow, or Fairfax should give excellent results in a terrace. The second season they would be at their best, producing almost 1 quart of fine berries per plant.



NEW MODEL PYRAMID

Consists of 3 attractive corrugated aluminum bands with a base diameter of 6 feet. Complete with sprinkler system ready for attachment to your garden hose.

**BERRY TERRACE \$7.95 Shipping
COMPLETE Weight, 7 lbs.**

ACCESSORIES FOR PYRAMID

- Cover (Plastic) makes small Green House .. \$4.95
- Support Strips (for cover) \$3.30
- Net (for bird protection) \$6.35

EVERBEARING STRAWBERRIES

PICK DELICIOUS STRAWBERRIES SPRING, SUMMER AND FALL

SUPERFECTION

VIRUS - FREE

Superfection is our most dependable everbearer. It is a vigorous grower and readily produces good fruiting rows. This variety is also known as Gem and Brilliant.

The berries can be very large and quite attractive. The color is a good light red and the flavor ranges from mild to tart. Superfection is not as good as the June bearing varieties, but it will give you a fair amount of nice berries in June and July and another crop in the early fall that will continue until freezing weather. Also a good spring crop.



25 Plants \$2.40; 100 for \$6.40.

These prices do not include Postage. See page 21 for Postal Rates

January 12, 1962

Last fall we picked close to 6,000 quarts from less than an acre of your Superfection.

Aylmer, Ontario, Canada

David Wagler

GEM

**VIRUS
FREE**

Gem is so much like Superfection that we consider it to be the same variety. But call it what you want, it is still the most dependable everbearer for the northeast. Prices are shown on page 20.



STREAMLINER

VIRUS FREE EVERBEARER

FINE FLAVOR, GOOD YIELDS,

LARGE SIZE

In many areas of the central and mid-southern states Streamliner is the outstanding everbearer. It has very vigorous, beautiful foliage and produces an abundance of runner-plants under most growing conditions. Berries of Streamliner are of good size and have a fine appearance and good flavor. A good crop is produced in the spring but best production is in the fall when you can really appreciate this fine variety. For fresh use and freezing, it is quite good and thus Streamliner is rapidly increasing in popularity not only in the South but in northern states as well. This excellent everbearer is certainly worth a trial if you want a fall-bearing strawberry.

25 Plants \$2.60; 50 for \$4.40; 100 for \$7.00. Complete Price List Page 20

BUY RAYNER'S PLANTS AND YOU BUY THE BEST

Growing Strawberries

Strawberries are one of the easiest crops to grow. Good plants set at the proper season in good soil will respond with ordinary care and cultivation. There is nothing complicated about growing strawberries, and by following these easy instructions the beginner can be sure of good results. Rayner's registered virus-free stock is further assurance of success.

Where strawberries can be grown: In every state of the union strawberries are grown at least to some extent. They are quite hardy and will give good results in any reasonably fertile soil that is fairly well drained. Like other fruit, strawberries will not produce a good crop in a shady location.

Soil and fertilizer: A good soil for strawberries is one that is slightly acid, in good condition, and reasonably free of weed seed. Newly plowed pasture land or sod often gives poor results but recently cleared woodland is excellent. If good soil is properly prepared it can be successfully replanted to strawberries a year after an old planting was plowed up. Important requirements for strawberries are high organic matter and high fertility. Well rotted barnyard manure is one of the best materials for good strawberry growth but other organic matter is very helpful. Well rotted poultry manure can be used but may cause plant injury and also increases the weed problem. Many growers plow under about 500 lbs. of complete fertilizer 2 or 3 weeks before planting but if the soil contains a good supply of manure this is not necessary.

Use of a good soluble fertilizer at time of planting is recommended. Soluble fertilizer will not burn the plants and can be safely used at any time during the growing season.

Strawberries have a high requirement for nitrogen but it must be applied at the proper time or else very adverse affects may result. Fruit buds, which determine the spring crop, are developed in the plant during August and September. Therefore, this is the most important time to apply fertilizer. Most successful growers apply about 500 lbs. per acre of a 10-6-4, 8-8-8, or similar fertilizer at this time. This is equal to about 1 lb. per 80 sq. ft. of strawberry bed. The fertilizer should be spread directly on the plants when dry and then brushed off the leaves. If applied when the leaves are wet considerable damage can occur.

An excellent organic plant food for strawberries and nearly all other plants is cottonseed meal. It is obtained entirely from ground cottonseed and is thus entirely organic in nature. Usually it contains about 6% nitrogen, 3% phosphoric acid, and 2% potash plus other important elements. Thus, cottonseed meal is a perfect plant food for those who follow the highly commendable practices of organic gardening. It is usually used at the rate of 4 lbs. per 25 ft. of strawberry row and will cause no injury or damage to the plants. It should be applied once in early spring and again in mid-summer.

In general, it is best not to apply fertilizer during the spring on fruiting beds. This can cause excess plant growth, reduced fruit production and poorer quality. We believe this

is one of the most common causes of poor strawberry yields and recommend that fruiting beds should not be fertilized in the spring.

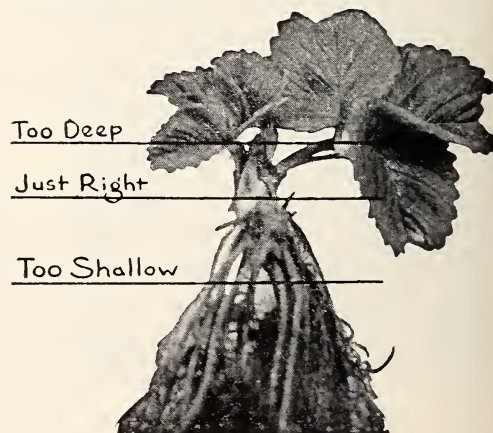
When to plant: Early spring is usually the best time to plant strawberries but in northern states it is best to wait until May or even June when the soil is in good condition. With Rayner's dormant plants, there is a definite trend to summer planting with growers who have irrigation. This gives a less crowded plant bed which yields unusually heavy crops of very large berries. In cold climates we do not recommend planting after mid July. Fall plantings are sometimes successful but are often damaged or completely destroyed by winter injury.

How to plant: It is important not to set the plant too deep or too shallow—see photo below. Do not clip the roots but spread them out full length and press dirt around the plant so that the roots are firmly anchored in the soil. For best results we recommend use of a soluble fertilizer as a transplanting solution. About a pint of solution should be poured around each plant when it is put in the hole. A good planting distance is 2 ft. apart in the row with 4 ft. between rows. Slightly narrow fruiting beds will usually have better yields and higher quality than beds that are unusually thick.

Plants Required Per Acre

Plants required per acre at various planting distances:

Rows	Distance in Row	Plants per Acre
3½ feet apart	18 inches	8,325
3½ feet apart	24 inches	6,225
3½ feet apart	30 inches	5,000
4 feet apart	15 inches	8,750
4 feet apart	18 inches	7,300
4 feet apart	24 inches	5,425
4 feet apart	30 inches	4,375



STRAWBERRY CULTURE

(Continued from page 18)

Care of the plants: A few weeks after the strawberries are planted they will produce blossoms. For the regular matted-row system it is best to remove these blooms since the plants will make better growth. Hoeing and cultivation are necessary practices for weed control but much benefit can be obtained by use of a good weed-killer. We recommend Sesone. Consult your state agricultural authorities for recommendations. We use geese in our fields for weed control; about three per acre will do a good job on young grass.

In northern states it is important to mulch strawberries for prevention of winter injury. Straw, hay or marsh grass are the best materials. It should be applied in the fall when the temperature first reaches 20°F and used so as to cover the plants to a depth of three to four inches. About three to six tons of hay or

straw per acre is needed. As soon as new strawberry leaves begin to grow in the spring the mulch should be removed so that only about an inch remains. The rest should be kept between the beds where it will help keep the berries clean and free of rot. Even in the south many berries are mulched to help keep them free of dirt and decay.

Control of Diseases and Insects: Two soil diseases, red stele and Verticillium wilt sometimes damage strawberries. On page 4 there is a list of resistant varieties. In our No. 17 issue of "Better Berries" we have a chart showing control of diseases and insects. Your county agent can also give recommendations.

For further information concerning strawberry production write to your state agricultural experiment station. For 20c we will send a complete set of "Better Berries" which gives more details concerning culture of berry crops, fruits, and other crops. Send to Rayner Bros., Inc., Salisbury, Md.

RAYNER'S PROVEN PLANTING SYSTEM GIVES YOU DELICIOUS RIPE STRAWBERRIES WITHIN 60 DAYS AFTER PLANTING

The usual and most reliable method of growing strawberries is to remove the blossoms that are produced the same season the plants are set. For large plantings this is the best method since it gives better stands of plants if growing conditions are unfavorable.

But with the new virus-free vigor of Rayner's registered strawberry plants it is now possible to leave the blossoms on the newly set plants and to harvest big delicious berries within 6 to 8 weeks after planting. We recommend this method only for those who are willing to take the small amount of extra care that is necessary. But if you will follow the method described below we feel certain that you will be rewarded with a fine yield of beautiful berries within 60 days after planting and that you will be truly amazed at the yield and size of berries the second season.

1. Select a piece of well drained soil that receives full sunlight. During the fall or early spring, make a heavy application of organic matter. Well rotted stable manure is preferred but chicken manure is also good. Compost, sawdust, and peat are also satisfactory but if they are used some type of fertilizer would be helpful. For each bushel use 8 oz. of Ammonium nitrate or 1 lb. of 5-10-5 or similar fertilizer. This material should be mixed thoroughly into the soil at least 2 weeks before planting. Plant as early as possible in the spring and no later than June 15. This method is not recommended for strawberries set after this date.

2. Set the plants about 18 inches apart in the row and have 3 ft. between rows. Make a hole for each plant so that the roots can be fully extended and spread outward slightly. Pour about 1 pint of soluble fertilizer around each plant and press the soil firmly around it so that the roots are fully covered but no soil is on the bud.

3. Each week during the growing season strawberries require about 2 inches of water.

If this is not received by rainfall, it should be applied.

4. About 25-30 days after planting the plants will produce blossoms. Do not remove these blossoms since in another 25-30 days they will develop into delicious ripe strawberries.

5. Runner plants will develop from the original plants during the summer and fall. Allow each plant to form no more than 6 runners and keep the rest removed. This will involve some extra work but is well worth the effort. This results in a spaced fruiting bed for the next season that will give tremendous yields of unusually large berries. If the regular type of matted fruiting bed is preferred there is no need for runner control but yield and size are generally less in matted rows than in spaced rows.

6. In mid-August spread a complete fertilizer such as 10-6-4 directly on the plants when they are dry. Use about 1 lb. per 40 ft. of row and brush it off the leaves to prevent burning. A foliar fertilizer or any type of well rotted manure could also be used.

8. During the winter a mulch of about 2 inches of straw should be placed over the plants when the temperature first reaches 20°F. This should be lightly raked to the row middles in early spring where it will help to keep the berries clean. If frost threatens the blossoms it can be spread on the plants and removed after the danger of frost has passed.

9. Nearly any variety of strawberry can be used for this method but the plants should have the virus-free vigor provided by Rayner's registered stock.

In northern states it is best to plant varieties resistant to Verticillium wilt in land where tomatoes, potatoes, have recently been grown. Some excellent resistant varieties are Surecrop, Catskill, Vermilion, Premier, and Robinson.

BUY RAYNER'S PLANTS AND YOU BUY THE BEST

BETTER BERRIES
BUILT
OUR BUSINESS

PRICE LIST

SATISFACTION
OR
YOUR MONEY BACK

Rayner's High Quality Strawberry Plants

These prices are F.O.B. Salisbury, Md. They apply only to purchase of the varieties indicated. Several varieties cannot be combined to obtain a lower rate. The prices listed in this catalog supercede all other prices previously listed by Rayner Bros. Complete planting instructions sent with each order. We do not sell less than 25 plants of a variety.

ALL VARIETIES NOW REGISTERED VIRUS-FREE

	25 Plants	50 Plants	100 Plants	200 Plants	300 Plants	500 Plants	750 Plants	1000 Plants	5000 Plants
Early Varieties									
BLAKEMORE (V.F.)	\$.115	\$1.90	\$2.95	\$5.25	\$6.75	\$ 9.40	\$12.40	\$15.00	\$72.50
DIXIELAND (V.F.)	1.45	2.35	3.80	6.60	8.55	11.85	15.65	19.00	92.50
EARLIDAWN (V.F.)	1.50	2.50	4.00	7.00	9.00	12.50	16.50	20.00	97.50
FAIRFAX (V.F.)	1.45	2.35	3.80	6.60	8.55	11.85	15.65	19.00	92.50
FLORIDA 90 (V.F.)	1.05	1.75	2.80	4.90	6.30	8.75	11.55	14.00	65.00
MIDLAND (V.F.)	1.50	2.50	4.00	7.00	9.00	12.50	16.50	20.00	97.50
PREMIER (V.F.)	1.40	2.30	3.70	6.50	8.35	11.55	15.25	18.50	90.00
REDGLOW (V.F.)	1.50	2.50	4.00	7.00	9.00	12.50	16.50	20.00	97.50
STELMASTER (V.F.)	1.45	2.40	3.90	6.85	8.75	12.70	15.95	19.50	95.00
Midseason Varieties									
CATSKILL (V.F.)	1.45	2.35	3.80	6.60	8.55	11.85	15.65	19.00	92.50
EMPIRE (V.F.)	1.45	2.35	3.80	6.60	8.55	11.85	15.65	19.00	92.50
MIDWAY (V.F.)	1.50	2.50	4.00	7.00	9.00	12.50	16.50	20.00	97.50
POCAHONTAS (V.F.)	1.45	2.35	3.80	6.60	8.55	11.85	15.65	19.00	92.50
ROBINSON (V.F.)	1.40	2.30	3.70	6.50	8.35	11.55	15.25	18.50	90.00
SEN. DUNLAP (V.F.)	1.15	1.90	2.95	5.25	6.75	9.40	12.40	15.00	72.50
SURECROP (V.F.)	1.40	2.30	3.70	6.50	8.35	11.55	15.25	18.50	90.00
VERMILION (V.F.)	1.35	2.25	3.60	6.30	8.10	11.25	14.85	18.00	87.50
Late Varieties									
ALBRITTON (V.F.)	1.20	2.00	3.20	5.60	7.20	10.00	13.20	16.00	77.50
ARMORE (V.F.)	1.35	2.25	3.60	6.30	8.10	11.25	14.85	18.00	87.50
JERSEYBELLE (V.F.)	1.50	2.50	4.00	7.00	9.00	12.50	16.50	20.00	97.50
REDSTAR (V.F.)	1.50	2.50	4.00	7.00	9.00	12.50	16.50	20.00	97.50
SPARKLE (V.F.)	1.45	2.35	3.80	6.60	8.55	11.85	15.65	19.00	92.50
TENN. BEAUTY (V.F.)	1.40	2.30	3.70	6.50	8.35	11.55	15.25	18.50	90.00
VESPER (V.F.)	1.85	3.10	5.00	8.75	11.25	15.60	20.60	25.00
Everbearing Varieties									
GEM (V.F.)	2.40	4.00	6.40	11.60	14.40	20.00	26.40	32.00
STREAMLINER (V.F.)	2.60	4.40	7.00	12.25	15.75	21.85
SUPERFECTION (VF)	2.40	4.00	6.40	11.60	14.40	20.00	26.40	32.00

(V.F.) — Indicates plants are grown under virus-free conditions. See page 4 for definition of virus-free.

All of our plants are guaranteed. See page 3 for details of our guarantee.

TERMS — One-fourth with order; balance before shipment.

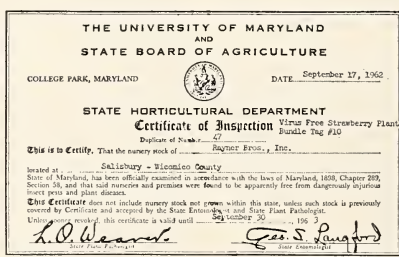
All Prices F.O.B. Salisbury, Maryland

Parcel Post Rates Page 21

WE WILL BE GLAD TO QUOTE DELIVERED PRICES.

OUR PLANTS ARE CERTIFIED

A COPY OF OUR STATE CERTIFICATE IS SENT WITH EACH SHIPMENT



HOW to FIGURE PARCEL POST RATES

Your Parcel Post ZONE is listed below with your State. Locate this ZONE number in the Parcel Post Rate Chart below and include postage for total weight of your shipment. Please note weight of each type of plant is listed. Please include this amount with your order. It will save you the C.O.D. collection charge made by the Postoffice on Parcel Post Collect shipments. On orders of 2,000 strawberry plants beyond the 3rd zone, and on all orders of more than 3,000 plants express is cheaper. Do not send money for express shipping costs as it will be collected on delivery. If you do not indicate how to ship we will use best way, charges collect. After May 15 all postal orders of plants will be sent by "Special Handling" in order to prevent any delay during warm weather. We recommend this service on all orders sent by mail.

YOUR ZONE NUMBER IS LISTED WITH YOUR STATE

Alabama 5	Indiana 4	Montana 7	North Dakota 7	Texas 6
Arizona 8	Iowa 5	Nebraska 6	Ohio 4	Utah 6
Arkansas 5	Kansas 6	Nevada 8	Oklahoma 6	Vermont 4
California 8	Kentucky 4	New Hampshire 4	Oregon 8	Virginia 3
Colorado 7	Louisiana 5	New Jersey 2	Pennsylvania 3	(east of
Connecticut 3	Maine 4	(north of New	(Counties south	Richmond 2)
Delaware 1 & 2	Maryland 1 & 2	Brunswick 3)	and east of	Washington 8
Dt. Columbia 2	Massachusetts 4	New Mexico 7	Harrisburg 2)	West Virginia 3
Florida 5	Michigan 4	New York 3	Rhode Island 3	(Charleston and
Georgia 4	Minnesota 5	(north of	South Carolina 4	south and west 4)
Idaho 8	Mississippi 5	Albany 4)	South Dakota 6	Wisconsin 5
Illinois 5	Missouri 5	North Carolina 3	Tennessee 5	Wyoming 7

WEIGHT TABLE*

(Includes packing material & container)

STRAWBERRIES		BLACKBERRIES	
Quantity of Plants	Weight in lbs.	Quantity	Weight
25 Plants	1 lb.	6 Plants	3 lbs.
50 Plants	2 lbs.	12 Plants	6 lbs.
100 Plants	4 lbs.	25 Plants	10 lbs.
200 Plants	8 lbs.	50 Plants	15 lbs.
300 Plants	12 lbs.	100 Plants	20 lbs.
400 Plants	16 lbs.	250 Plants	50 lbs.
500 Plants	20 lbs.		
750 Plants	25 lbs.		
1000 Plants	30 lbs.		

ASPARAGUS		GRAPES, RHUBARB	
Wt. Per 25 Plants		Quantity	Weight
1 Year ... 1 Pound		3 Vines or	4 lbs.
2 Years ... 3 Pounds		Roots	each additional
3 Years .. 5 Pounds		add	12 ounces

BLUEBERRIES		Quantity	Weight
6 Plants 1 yr., 3-9"	2 lbs.	
each additional plant add	2 ounces	
6 Plants 2 yr., 9-12"	5 lbs.	
each additional plant add	3 ounces	
6 Plants 3 yr., 12-18"	12 lbs.	
each additional plant add	1 lb.	
6 Plants 3 yr., 18-24"	15 lbs.	
each additional plant add	1½ lbs.	
6 Plants - Jumbo Size	18 lbs.	
each additional plant add	2 lbs.	

SHRUBS AND TREES

Not over 2 ft. tall, each 1 lb.
2 ft. to 4 ft. tall, each 2 lbs.

EVERGREEN SEEDLINGS — 5 lbs. per 100 plants and 45 lbs. per 1,000.

MULTIFLORA ROSE — 15 lbs. per 100 plants.

* Due to variation in plants these are approximate weights only. If you send too much for postage we will promptly refund any over payment. If not enough is sent we will request it.

PLEASE INCLUDE POSTAGE WITH ORDER

If you send too much we will promptly rebate at time of shipment. FOR SPECIAL HANDLING please add 25c on orders up to 2 lbs.; 35c up to 10 lbs., and 50c if over 10 lbs. Mark on order, "Ship Special Handling." This is a service of the United States Post Office.

PARCEL POST RATES								
Pounds	Zones 1 & 2	Zone 3	Zone 4	Zone 5	Zone 6	Zone 7	Zone 8	
2	\$.33	\$.35	\$.39	\$.45	\$.51	\$.58	\$.64	
338	.41	.47	.55	.64	.74	.83	
443	.47	.55	.65	.77	.90	1.02	
548	.53	.63	.75	.90	1.06	1.21	
653	.59	.70	.85	1.03	1.22	1.40	
758	.65	.77	.95	1.16	1.38	1.59	
863	.71	.84	1.05	1.29	1.54	1.78	
968	.77	.91	1.15	1.42	1.70	1.97	
1073	.83	.98	1.25	1.55	1.86	2.16	
1177	.89	1.05	1.35	1.67	2.02	2.34	
1281	.95	1.12	1.45	1.79	2.18	2.52	
1385	1.01	1.19	1.55	1.91	2.34	2.70	
1489	1.07	1.26	1.65	2.03	2.50	2.88	
1593	1.13	1.33	1.75	2.15	2.66	3.06	
1697	1.18	1.40	1.85	2.27	2.81	3.24	
17	1.01	1.23	1.47	1.95	2.39	2.96	3.42	
18	1.05	1.28	1.54	2.05	2.51	3.11	3.60	
19	1.09	1.33	1.61	2.15	2.63	3.26	3.78	
20	1.13	1.38	1.68	2.25	2.75	3.41	3.96	
21	1.17	1.43	1.75	2.34	2.87	3.56	4.14	
22	1.21	1.48	1.82	2.43	2.99	3.71	4.32	
23	1.25	1.53	1.89	2.52	3.11	3.86	4.50	
24	1.29	1.58	1.96	2.61	3.23	4.01	4.68	
25	1.33	1.63	2.03	2.70	3.35	4.16	4.86	
30	1.53	1.88	2.38	3.15	3.95	4.91	5.76	
35	1.73	2.13	2.75	3.60	4.50	5.61	6.61	
40	1.93	2.38	3.08	4.05	5.05	6.31	7.46	
45	2.13	2.63	3.43	4.50	5.60	7.01	8.26	
50	2.33	2.88	3.78	4.95	6.15	7.71	9.06	
55	2.53	3.13	4.08	5.35	6.70	8.36	9.86	
60	2.73	3.38	4.38	5.75	7.25	9.01	10.66	
65	2.93	3.63	4.68	6.15	7.80	9.66	11.46	
70	3.13	3.88	4.98	6.55	8.35	10.31	12.26	

We will notify you by first class mail the day your order is shipped. Be on the alert for your plants so there will be no delay in receiving them. Rayner's plants are guaranteed to arrive in good condition.

RED RASPBERRIES



SEPTEMBER NEW RED EVERBEARING

The September raspberry variety was developed by the New York State Experiment Station and is an outstanding contribution to the berry industry. It is an everbearing type of red raspberry that produces a large crop in June and yet another fine crop in September. This fall crop is considerably earlier than that of other everbearing raspberries so September is especially desirable. The berries are unusually large and have a delicious flavor. You will surely want some of this wonderful variety in your garden.

6 for \$2.15; 12 for \$3.15; 25 for \$4.95

See Page 21 for Postal Rates

**DELICIOUS
FLAVOR**

LATHAM

**MOST WIDELY
GROWN RED**

Latham is the standard red raspberry for most of the eastern United States. Its plants are strong and hardy and produce bumper crops of large, firm, delicious fruit. It grows well in many soil types and has high resistance to diseases. Berries are of very high quality — good for fresh market, for freezing, or preserving. Latham is an excellent commercial variety because it produces big crops of berries that can be carried long distances to market. If you want red Raspberries you want Latham. See next page for prices.

**EXTRA LARGE
RED RASPBERRY**

TAYLOR

**FINE FLAVOR, GOOD
PRODUCTION, HARDY**

Taylor is an excellent early red raspberry, ripening a few days before Latham. Its berries are very large and have an elongate shape. The berries have a fine color, good texture, and excellent flavor. For freezing Taylor is outstanding. Plants are tall, vigorous, and productive and usually so sturdy that they can be grown without support if properly pruned. In New York and other northern states Taylor shows good winter hardiness and has such superior fruit that it is one of the best of all raspberries.

GROWING RASPBERRIES

Raspberries give best results in areas where the summers are not unusually hot or dry. Therefore they are not generally grown south of Tennessee and Missouri. A good, fertile soil that retains moisture but is still not poorly drained gives best results. Raspberries should be planted in early spring for best results. If possible a high amount of well rotted manure should be mixed into the soil before planting. Also a regular spring application of about 450 pounds per acre of 10-10-10 fertilizer is important. This is equivalent to about 6 ounces per plant. In small plantings the rows are usually 6 feet apart

with 4 feet between plants. Raspberries are generally planted in early spring and will produce a crop about 15 months after planting. The canes are tied to wires or to posts, depending upon the planting system. After the first fruiting season the fruiting canes of regular red and black raspberries are pruned out — leaving the new canes which will bear fruit the next season. In the case of everbearing raspberries the canes which produced the fall crop should not be pruned out but only slightly cut back in the spring. For best results with raspberries a recommended spray program for control of diseases and insects is necessary. Further details in Bulletin 14.

BLACK RASPBERRIES

CUMBERLAND

For dependable production of fine berries of excellent quality Cumberland has long been outstanding. This midseason variety is very vigorous and hardy.

BRISTOL

An excellent early variety that has rapidly become the most important black raspberry in Ohio and other areas. Top yields of large, high quality berries.

LOGAN

Another fine early variety that is rapidly gaining in popularity. Berries are large and of excellent quality. This is the new improved Logan strain.

MORRISON

This late season variety keeps producing fine, large berries after other black raspberries are gone. Plants are vigorous and hardy.



PRICE LIST OF ALL RASPBERRY PLANTS

3 plants	6	12	25	50	100	200	300	400	500	750	1000
\$1.35	\$2.15	\$3.15	\$4.95	\$9.25	\$16.95	\$29.95	\$38.75	\$47.95	\$55.75	\$74.75	\$98.00

These are certified 1 year, No. 1, well rooted plants and are guaranteed to give good results. Prices do not include postage. See Page 21 for Postal Rates.

June 7, 1961

The excellent September raspberries you furnished several years ago are bearing wonderfully well.

Amherst, Virginia

J. J. Ambler

Blackberries

New! DARROW

Unquestionably the finest of all blackberries. This new introduction of the N. Y. Experiment Station has very heavy production of delicious, large, firm berries that are about 1 inch long and $\frac{3}{4}$ inch wide. Plants are very vigorous and especially winter hardy. Darrow has proven to be outstanding for dependable early production.

3 1-Yr. No. 1 Plants \$2.25; 6 Plants \$4.25; 12 for \$6.30; 25 for \$9.95; 50 for \$17.25; 100 for \$31.90.

HEDRICK

A very productive late blackberry with excellent vigor and good winter hardiness. Berries are large, firm, and have a fine sweet flavor.

3 1-Yr. No. 1 Plants \$1.95; 6 Plants \$3.60; 12 for \$5.25; 25 for \$8.25; 50 for \$14.25; 100 for \$26.50. Prices in this catalog do not include postage. See page 21 for rates. Our plants are guaranteed. See page 3.



NEW! THORNLESS BOYSENBERRY

Boysenberries have been rapidly increasing in popularity during recent years. However, with the development of this wonderful thornless vine, boysenberries are really going to town. This bramble fruit is related to blackberries and raspberries, combining the best qualities of both. The berries are very large and have a sweet delicious flavor. Not hardy in Northern States.

1 yr., No. 1 Plants, 10 for \$2.75; 25 for \$4.95. See Page 21 for Parcel Post Rates.

BUY RAYNER'S PLANTS AND YOU BUY THE BEST

GET THE FULL FLAVOR OF VINE-RIPENED GRAPES

Grapes

THE OUTSTANDING EASTERN VARIETIES

CONCORD — The Best Blue

This wonderful variety has what most people mean when they say "that real grape flavor." It is one of the most delicious of all grapes for fresh eating. Concord is also an old favorite for jams, jelly, and juice. Since about 1844 this variety has proven beyond any doubt that it is hardy in New England and westward into Missouri. Vines of Concord are very vigorous and productive. **Concord is tops either as a home garden or commercial variety.** It is still the leading grape variety in much of the Eastern United States.

Order Rayner's quality stock of this excellent variety and get the best.

CACO — The Best Red

This is a late-midseason, light-red variety that is very vigorous and hardy under a wide range of climates and soil types. **Berries of Caco are large and of high quality.** Its bright, juicy fruit make Caco excellent for the home garden as well as for commercial plantings. It is adapted to about the same area as Concord.

NIAGARA — The Best White

Niagara is a real favorite with those who know grapes because of its unusual vigor, high yields, and large, uniform clusters. The skin is tender and the flesh is sweet and juicy. Adapted to most of the Concord area.

FREDONIA—Outstanding Flavor

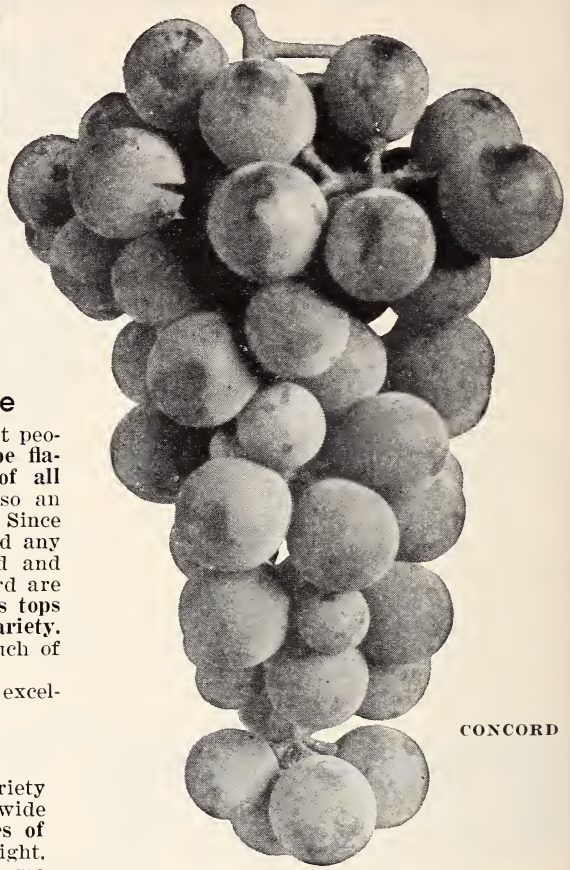
For several years we have watched the performance of Fredonia and believe it is one of the best of all eastern grapes. It has unusually fine flavor, a deep blue color, and high quality. Fredonia ripens early and is very productive and winter hardy.

PRICES CONCORD, NIAGARA, CACO, FREDONIA

2 Year, No. 1 Plants

85 cents each; 3 for \$2.25; 10 for \$6.30; 25 for \$13.10. These are extra-large, vigorous plants.

See page 21 for Postal Rates



CONCORD

Illustration about two-thirds actual size

GRAPES ARE EASY TO GROW AND LAST FOR YEARS

Grape vines may be planted in early Spring or in the Fall in November and December. Grapes should be set in a well-drained soil that would produce garden crops.

Vines are usually planted 8 to 10 feet apart in the home garden and where a vineyard is planned the rows should be 10 feet apart with vines 4 to 5 feet apart in the row. Grapes may be trained along a garden fence or a regular arbor may be constructed to suit the desired arrangement in the garden.

A simple method of support is followed by commercial growers. Wires are strung from posts with top wire 5 feet above the ground and the lower wire 2½ feet above the ground.

Pruning is one of the most important factors in obtaining marvelous grape harvests. Our Better Berries Bulletin No. 3 completely outlines most popular pruning methods; other information is given in Bulletin No. 14.

COMPLETE PLANTING INSTRUCTIONS also will be sent with your order.

Tender, Fresh

ASPARAGUS

From Your Own Plantings
Year After Year

Asparagus is one of the first vegetables to make appearance in the Spring and its succulent, green stalks are a welcome change to the table. Because of its earliness, asparagus can be depended upon to realize a profit and there is an ever increasing demand for canning and freezing.

Any home gardener can enjoy delicious, healthful asparagus fresh from his garden six to ten weeks each spring. Cooked, frozen or canned immediately after it is cut is the way to really enjoy asparagus. You won't believe the difference until you try it from your own plantings.

Plant This Great Strain of

Mary Washington Roots

Favorite heavy yielder developed by the U. S. Department of Agriculture. The best you can plant for high production and quality. Our MARY WASHINGTON is from the "Roberts" seed selections, very early, a strong grower, and produces shoots of finest quality, more uniform in size, shape and color than others. Healthy green color, rich flavor and juicy tenderness.

50 to 100 roots supply an average family. 200 roots will take care of canning, freezing needs, too.

A planting of Rayner's asparagus will yield loads of fine food for many years. Plant early in the spring in fertile soil to which about 5 pounds of 10-6-4 fertilizer per 100 square feet has been added. Spread the roots in a trench about 6 inches deep and 8 inches wide. Place plants about 16 inches apart and cover crowns with about 2 inches of soil. As the plants begin to make new growth gradually fill the trench.

ASPARAGUS PRICES — ORDER EARLY FOR SPRING PLANTING

	6 plants	12	25	50	100	250	500	1000
3 yr. Jumbo Roots...	\$1.75	\$2.75	\$4.50	\$7.50	\$12.00	\$24.00	\$42.50	\$75.00
3 yr. No. 1 Roots...	1.00	1.80	2.60	4.35	7.00	14.00	26.85	45.00
1 yr. No. 1 Roots...	.60	1.00	1.70	2.80	4.50	9.00	16.95	27.50

Big 3 Yr. Roots will produce stalks large enough for cutting the second year.

These prices do not include Postage. See page 21 for Postal Rates.



MacDonald
Red

RHUBARB



RHUBARB is a very popular perennial where winters are sufficiently cold to freeze ground 3 to 4 inches. A few plants well tended make an excellent supply for sauce and pies.

We offer only the MacDonald Red variety because of its marked superiority. Matures earlier, sweeter, and one planting lasts a lifetime. Plant in Spring, 3 to 4 feet apart. Rhubarb culture is given in Bulletin No. 18.

Prices for Large, Vigorous Divisions
\$1.00 each; 3 for \$2.70; 10 for \$8.00

BUY RAYNER'S PLANTS AND YOU BUY THE BEST

FRUIT TREES



APPLE TREES

- WINESAP-IMPROVED STRAIN.** Beautiful deep red color. Vigorous, hardy, productive, early bearing. Rich flavor. Crisp, tender apples of long-keeping quality.
- GRIME'S GOLDEN.** A vigorous producer of excellent Fall apples. Big golden yellow, tender, crisp apples of fancy dessert quality.
- YELLOW DELICIOUS.** Heavy yielding, early bearing. Bright golden yellow, crisp, juicy apples. National favorite.
- RED McINTOSH.** A leading commercial variety. Fancy red apples with white, tender flesh of high quality and aroma. Tree very hardy and vigorous.
- RED DELICIOUS.** Large apples of rich red color and excellent flavor and aroma. Uniform fruit. Tree very hardy. Great favorite with home gardeners as well as orchardists.

PEACH TREES

- REDWIN (U. S. Plant Patent #1661).** Extra early, new, white peach of large size. Hardy through New Jersey and excellent in the southern peach area. Very vigorous.
- GOLDEN JUBILEE.** An unusually hardy tree unequalled for production of early yellow, freestone peaches of exceptional quality. 3 to 4 weeks before Elberta.
- HALE HAVEN.** A deep crimson freestone peach. Flesh is golden-yellow, firm and of unusually good flavor. Strong, thrifty.
- BELLE OF GEORGIA.** Considered the best of white-fleshed peaches. Large size, freestone. Delicious flavor.
- ELBERTA.** This variety is most widely planted because it is adaptable to a wide range of soils and climates. Most popular market peach. Beautifully colored, firm, juicy.

Please include postage with your order. See page 21 for Postal Rates.

PARCEL POST SIZES	EXPRESS SHIPMENT SIZES
\$1.75 each	\$2.50 each
3 to 4 ft. 10 to 49 trees \$1.50 ea.	5 to 6 ft. 10 to 49 trees \$1.95 ea.
50 trees or more \$1.00 ea.	50 trees or more \$1.45 ea.

You may combine all peach and apple varieties for quantity rate.

All of our trees are shipped "full length" but if notified we will prune them to proper planting length (see below). One or two Express size trees can be pruned to meet Parcel Post mailing regulations. More than two Express size trees must be sent by Railway Express.

HOW TO PLANT AND GROW RAYNER'S HARDY FRUIT TREES

Below the Mason-Dixon line fall is generally considered the best time to plant fruit trees but in northern states there is too much danger of winter injury so spring planting is recommended. We do not guarantee nursery stock planted in the fall in northern states.

A hole should be dug that is slightly deeper and wider than the root system. Place fertile top soil in the bottom of the hole so that the upper roots will be about two inches below the surface. Next add more soil to fill in the hole packing it firmly around the roots and adding water. Be sure to eliminate air pockets around the roots.

Apples, cherries, and pears should be pruned to a main stem with 2 or 3 side branches while peaches should be cut back to a single stem about 2 ft. tall. Maintain a heavy mulch of sawdust or other organic matter around each tree and wrap the lower stem with fine-mesh wire if there is danger of rabbit injury. In early spring apply manure or complete fertilizer such as 10-6-4 or 8-8-8. Use 1/2 lb. on young trees and 3 to 4 lbs. on older trees. Write for Rayner's No. 16 bulletin describing culture of fruit trees. Obtain spraying information from your State Agriculture Extension Service or County Agent.

BUY RAYNER'S PLANTS AND YOU BUY THE BEST

3 New Pear Varieties

Developed by U. S. Dept. of Agriculture

New! MAGNESS EXTREMELY BLIGHT RESISTANT

It is possible that introduction of the new pear varieties, Magness and Moonglow, will be one of the most important events in the history of eastern tree fruit culture. Apples and peaches can be grown commercially in all of the available climatic ranges in this area but except for a small northern section pears cannot be grown on a commercial basis. This has been due to the serious fire blight disease which has prevented development of a potentially valuable pear industry. As a result of an extensive breeding and testing program these two wonderful blight resistant pears have been developed. Magness produces big crops of medium size pears with a soft, sweet flesh that is almost free of grit cells. The skin is firm and slightly covered with russet. It ripens about a week later than Bartlett but can be held in cold storage for 3 months with fine quality. Magness can be pollinated by Moonglow and most other pears; but since it is pollen sterile, it does not pollinate other pears. It is recommended for general trial, but its northern and southern limits are not known.

Sturdy Grafted Trees, 3-4 ft. Size, \$2.95 each; 3 for \$7.95

Larger Grafted Trees, 5-6 ft. Size, \$3.50 each; 3 for \$9.25



MAGNESS

(Courtesy U.S. Dept. Agriculture)

New! MOONGLOW HIGH RESISTANCE TO FIRE BLIGHT

Moonglow is a large high quality pear, that ripens about 2 weeks earlier than Bartlett. The large attractive fruit have a soft, fairly juicy flesh that is nearly free of grit cells. Tests indicate that it will be good for processing as well as for fresh use. When picked early and held at 70° the fruit will ripen to excellent quality in about 16 days. Whereas Magness has a spreading growth habit, trees of Moonglow are very upright. They are vigorous, very heavily spurred, and begin to bear crops early. Moonglow produces an abundant supply of good pollen and thus is fine for pollinating other pears. It can be pollinated by Keiffer, Bartlett, Seckel, and most any other pear. Like Magness it has been artificially tested under the most severe conditions of fire blight and has shown very little infection. Therefore, it is recommended for trial in any of the pear growing areas. The adaptability of these pears to various areas is not fully known so they should be tested if there is doubt concerning winter hardiness or chilling requirements.

Sturdy Grafted Trees, 3-4 ft. Size, \$2.95 each; 3 for \$7.95

Larger Grafted Trees, 5-6 ft. Size, \$3.50 each; 3 for \$9.25



MOONGLOW

(Courtesy U.S. Dept. Agriculture)

New! DAWN NOT BLIGHT RESISTANT FOR BARTLETT AREA

Dawn is an excellent pear but it is not blight resistant. Therefore, it is recommended for trial only in the areas where Bartlett can be grown. It resembles Bartlett in shape and appearance but ripens about 2 weeks earlier at Beltsville, Maryland. Fruit quality is very good being sweet-spicy, and very juicy as well as nearly free of grit cells. Tree growth is moderately vigorous and upright. Pollen production is moderate.

Sturdy Grafted Trees, 3-4 ft. Size, \$2.95; each; 3 for \$7.95. 4-5 ft. Size, \$3.50 each; 3 for \$9.25

BUY RAYNER'S PLANTS AND YOU BUY THE BEST

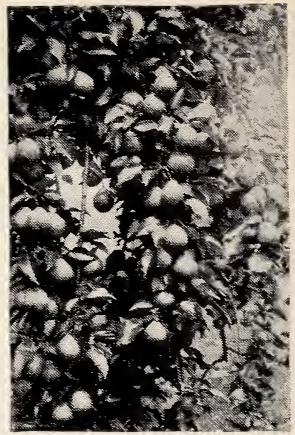
PEAR TREES

BARTLETT. Old favorite pear considered best for home garden and market throughout the northern half of country. Large, golden yellow pears have a reddish blush. Flavor excellent, vigorous, highly productive.

CLAPP'S FAVORITE. An excellent producer of large, lemon-colored pears with dotted brown markings. Flavor delicate, juicy, sweet. Hardy, vigorous. Pollinator for Bartlett, Seckel, and Devoe.

SECKEL. A pear of excellent flavor, fruiting in September and October. Fruit medium-sized with a deep brown, reddish cheek when fully ripe. Vigorous, disease resistant.

Parcel Post Size (2 yr., 3-4 ft.) Express Size (2 yr., 4-5 ft.)
Ea. \$2.10; 10 or more \$1.50 ea. Ea. \$2.40; 10 or more \$2.10 ea.



New DEVOE PEAR U. S. PLANT PATENT # 728

Devoe Pear is sufficiently different from other pear varieties to be granted a U. S. plant patent. This variety was discovered in a New York orchard about 25 years ago and has consistently shown much vigor and dependable production of high quality fruit. Devoe ripens about with Bartlett but its fruit are quite different in appearance. They are large and long and have a fine light-yellow skin tinged with red. The white, firm flesh has a very good flavor and it also has good keeping quality. Devoe apparently is self fertile but we recommend another variety for cross-pollination. Trees are upright and the strong branches bear a heavy crop without breakage. In the northeastern pear area, Devoe will ripen about a week after Bartlett.

Parcel Post Size (2 yr., 3-4 ft.) Express Size (2 yr., 4-5 ft.)
\$2.45 each; 3 for \$6.50 \$2.95 each; 3 for \$7.95

Montmorency SOUR CHERRY

For commercial plantings as well as home use Montmorency is by far the leading variety of sour cherry. The fruit are large, firm, and have a beautiful bright red color. Fruit first ripens in early July and can be kept on the tree about a month. This variety is self-fertile.

Rayner's stock of Montmorency is of the excellent virus-free strain.

Well rooted 2 yr. trees, 3-4 ft. tall are \$1.95 each; five or more \$1.65 each. See page 21 for Postal Rates.

March 31, 1962 Lehighton, Pa.
The dwarf red delicious apple I purchased from you in 1960 produced 2 large apples in 1961. I also had a good crop of strawberries from plants received the same time as the trees.
Clarence E. Steigerwalt

May 19, 1962 Trout, West Virginia
We always get the best results with your plants. When we order any more it will be from you.
B. G. W. Payne

PLUMS, PRUNES, AND DAMSONS

STANLEY PRUNE

These prune-plums are large and have a fine blue color and a golden-yellow flesh when full ripe. The trees are hardy and very vigorous. A fine tree for any home garden. A truly delicious fruit.

ITALIAN PRUNE

Another excellent prune-plum is the Italian or Fellemburg variety. Its fruit is dark purple and of large size. The flesh is yellowish and juicy, with a fine flavor when ripe. This variety is very vigorous.

These Plums are all of the 2-yr., 3-4 ft. size. Price is \$2.25 each or 3 for \$6.50. Prices in this catalog do not include Postage. See Page 21 for Postal Rates.

METHLEY PLUM

This fine reddish-purple plum is of large size and has bright red flesh. It is excellent when fully ripe having a very distinctive, sweet flavor. The trees are vigorous and give good crops each year.

ABUNDANCE PLUM

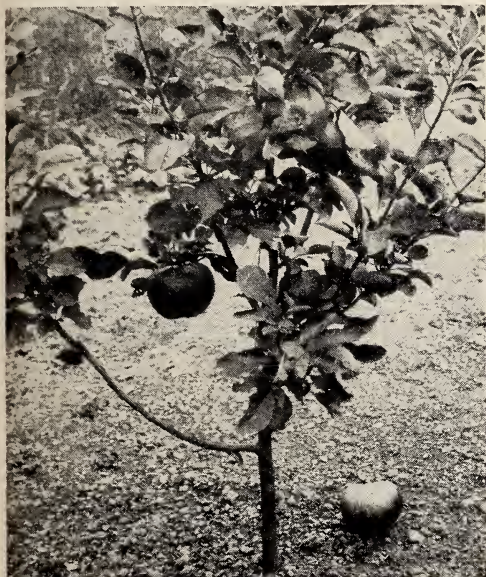
This excellent Oriental plum produces fine red fruit with yellow flesh. They are juicy and have fine flavor when ripe. Trees are vigorous and hardy and begin to produce large crops while still quite young.

DWARF FRUIT TREES

ORNAMENTAL - PRODUCTIVE. SAVE VALUABLE GARDEN SPACE

Trees Are Small Yet Fruit Is Of Regular Size And Quality

No longer just a special feature of exclusive gardens, dwarf fruit trees are now available to all, and at reasonable prices. These wonderful space saving trees are produced by budding or grafting regular varieties on special dwarfing rootstocks. Apples are usually dwarfed by use of the Malling IX root system and Quince rootstocks produce dwarf pears. Peaches are budded to special dwarfing root systems. Even though the trees remain much smaller the fruit is of full size and quality. One outstanding feature of dwarf trees is that they begin to bear fruit when only 3 or 4 years old. Just the thing for home gardens where space is so valuable. Write for Rayner's Bulletin No. 16 on Culture of Dwarf Trees.



Dwarf Apple Trees

Rayner's high quality dwarf apples are available in the following varieties.

McINTOSH	RED DELICIOUS
WINESAP	YELLOW DELICIOUS

Same fruit as large apple trees. See variety description on page 26.

3 feet up, \$2.95 each
3 trees for \$7.50 10 trees for \$23.50

See Page 21 for Postal Rates

Dwarf Pear Trees

We have these famous varieties of Pears on dependable dwarf stock. Plant 2 or 3 varieties for Pollination.

BARTLETT	CLAPP'S FAVORITE
SECKEL	DEVÖE (Pat. No. 728)

Same fruit as large pear trees. See variety description on page 28.

3 feet up, \$2.95 each
3 trees for \$7.50 10 trees for \$23.50

Dwarf Peach Trees

One of the most attractive ornamental trees in the spring when it is loaded with beautiful pink blossoms. Then in the summer you will harvest an abundance of delicious, full-size fruit. These trees usually reach 8 to 10 ft. at maturity and begin to bear in 2-3 years.

RED HAVEN (Early)	GOLDEN JUBILEE (Mid-Season)
BELLE OF GEORGIA (Mid-Season)	ELBERTA (Late)

3-4 ft. branched trees, \$3.15 each; 3 for \$8.85 plus postage.

BUY RAYNER'S PLANTS AND YOU BUY THE BEST

We Finally Have A Supply of Good Hardy Pecans!

For many years we have been trying to obtain enough of these trees to list them in our catalog. Difficulties of grafting have prevented this but now we have a limited supply. So order early if you want these hard-to-get northern-type pecans. These trees will produce dependable crops at least to the 40th latitude (approximately from Philadelphia, Pa. to Springfield, Ill). The trees are hardy much further north than this and rapidly develop into beautiful ornamental and shade specimens. Plant at least 2 varieties for cross-pollination. Write for Rayner's Bulletin No. 18 which includes culture of nut trees.

MAJOR Northern Type Pecan

With respect to climate there are two main groups of pecans. The northern type will mature a crop within 175 to 225 days, of growing temperature while the Southern pecans require up to 300 days. Major is one of the best of the northern type and will produce excellent crops as far north as any pecan. Thus it is one of the most dependable of all pecans for those who want to grow this fine crop near the northern range for pecans. Nuts of Major are of medium size and have excellent flavor and quality. The shell is thin and kernels are plump. Trees of Major are very hardy and vigorous and begin to bear within 4 or 5 years. It is a good pollinator for other varieties.



BUSSERON Northern Type Pecan

This is another of the northern type pecans and will produce excellent crops in many areas where pecans have never been considered to be reliable. Nuts of Busseron are of medium size and have a fine rich flavor and good cracking quality. It is an early-ripening type and a good pollinating variety for other pecans. Busseron originated in Illinois about 1908 and has made a good reputation as a fine pecan for extension of the northern limit of this wonderful crop.



GILES Northern Type Pecan

Giles is one of the heaviest producing of the northern pecans with one report of 125 lbs. of nuts from an 18 year old tree. It originated in Kansas and is generally considered to be a very dependable producer with good tree vigor. Nuts of Giles are of average size, and easy to crack and have excellent flavor. Trees begin to bear in 3 to 5 years and rapidly attain a beautiful shape that has much ornamental and shade value.

PLEAS HYBRID HICAN (Hickory X Pecan Hybrid)

One of the most unusual of the nut trees is the hican. This is a hybrid between a pecan and a hickory and like most hybrids has unusual vigor. The excellent Pleas variety will make good growth in most of the northern states and rapidly develops into a magnificent shade tree. The nuts are shaped more like a hickory nut than a pecan but are of very large size. They are very meaty and have excellent flavor. If you want a different nut tree try a Pleas hican.

Prices of Major, Giles, and Busseron Pecans and Pleas Hican:

STURDY GRAFTED TREES:2-3 ft. size \$4.95 each; 3 for \$14.10

STURDY GRAFTED TREES:3-4 ft. size \$5.95 each; 3 for \$16.95

These Prices Do Not Include Postage. See Page 21 for Postal rates.

GRAFTED STUART PECAN

Stuart is one of excellent southern-type pecans that will consistently yield big crops of very high quality nuts. The trees are fast growing and are excellent for shade even in northern states, but nut production is irregular north of the Mason-Dixon line. Plant two or more trees for cross-pollination. These are vigorous grafted trees that are sure to give good results. Like all of Rayner's other plants they are fully guaranteed.

2-3 ft. size \$3.85 each; 3 for \$9.90 plus postage. See page 21 for Postal Rates.

EXCELLENT
FOR SHADE

NUT TREES

DELICIOUS
FLAVOR

FAST GROWING; EARLY-PRODUCING

Chinese Chestnut

HARDY BLIGHT RESISTANT

Here is the most popular of all nut trees. In a short time it becomes one of the most beautiful trees on your place and you will look forward to each fall harvest of delicious nuts.

Chinese Chestnuts are highly resistant to the blight disease, very hardy, and will produce excellent crops of large nuts, when only a few years old. The trees are vigorous and have a spreading shape that makes them fine for shade as well as for their crop. Plant 2 or more trees for cross-pollination. These are vigorous seedlings selected from highly productive trees. Be sure to include postage with order.



Parcel Post Size

Express Shipment

2 to 3 ft. \$1.60 each
10 to 49 trees; \$1.40 each
50 or more; \$1.25 each

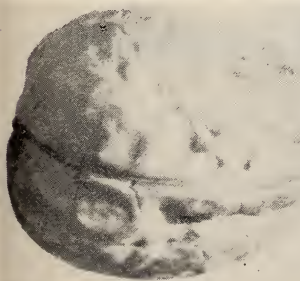
Sizes
4 to 5 ft. \$2.95 each
10 to 49 trees; \$2.75 each
50 or more; \$2.60 each

Write for Bulletin No. 18 on Nut Tree Culture.

CARPATHIAN ENGLISH WALNUT

Mature Trees Are Hardy to 40 Below Zero

This is the exceptionally hardy Persian or English walnut that has become so popular in most of the northern states. Mature trees are said to be hardy to 40° below zero and still produce big crops of large, thin-shelled, meaty nuts. The trees are very vigorous and have a nice spreading shape which is ideal for shade.



CARPATHIAN WALNUT

These vigorous seedling trees are very dependable for consistent yields as far North as Minnesota. For good crops it is best to have two or more trees for proper pollination. Vigorous, well rooted, seedling trees.

2-3 ft. size, \$3.25 each;
3 for \$9.00 plus postage

THOMAS BLACK WALNUT

These sturdy grafted trees are the best black walnuts available. Very vigorous, giving good yields of large meaty nuts into central New York. Grows best in deep, well drained soil. Use another black walnut for cross-pollination.

2-3 ft. size: \$3.85 each; 3 for \$9.90 plus postage

American Filbert (Hazel Nut)

A small, attractive nut tree commonly known as HAZEL NUT. A good dependable type commonly planted in northeastern states. Use two or more varieties for cross-pollination.

2-3 ft. trees, \$1.95 each

Barcelona Filbert

Because of its high yields of large nuts Barcelona is an important commercial filbert in Oregon and Washington. It is also a fine variety for the northeastern area.

2-3 ft. trees, \$2.95 each

Du Chilly Filbert

Du Chilly is another popular filbert with dependable production of large nuts. It appears to be a good pollinating variety for other filberts.

2-3 ft. trees, \$2.95 each

HALL'S HARDY ALMOND

These favorite nut trees are closely related to peaches and require about the same climate. They also produce a similar type of tree with beautiful pink blossoms and will begin to bear in 3 or 4 years. Plant 2 or more for cross-pollination.

Sturdy 3-4 ft. trees: \$2.75 each; 3 for \$7.50

See postal rates page 21.

BUY RAYNER'S PLANTS AND YOU BUY THE BEST

RAYNER'S
QUALITY

TREES AND SHRUBS

WE SPECIALIZE IN YOUNG TREES OF VARIETIES THAT WILL GIVE EXTRA FAST GROWTH. YOU CAN REALLY SAVE WITH YOUNG TREES AND BE SURE OF GOOD RESULTS. THESE TREES WILL SOON DEVELOP INTO BEAUTIFUL SPECIMENS.

Japanese Yews (Taxus)

Yews are the finest of all evergreens for landscape planting. Their deep green foliage makes a solid wall of beauty that adds charm and value to any home. Easily kept to any shape by regular shearing; grows well in sun or shade; and in any well-drained soil. Plant upright type at corners and other locations where height is desired and spreaders under windows or other locations where a plant of broad, low shape is required. Be sure to specify upright or spreader when ordering.

Prices in this catalog do not include postage.
2 yr. 10-12 inch: \$1.00 each; 3 for \$2.75.
See page 21 for postal rates.

American Holly Seedlings

Only the female holly trees produce the well-known bright red berries but male trees are needed for pollination. These vigorous seedlings are about 12-16 inches tall and usually consist of about equal proportions of male and female trees. But the sex cannot be determined in seedlings. American holly thrives from Georgia to Massachusetts and prefers a moist, acid soil.

6 for \$2.95; 12 for \$5.25; 25 for \$10.00

Potted Holly Plants

These hollies were raised from cuttings from male or female trees so the sex is known. Sold only in the combination of 2 female and 1 male. Approximately 12-15 inches tall.

3 HOLLY PLANTS from pots, \$3.95.

Multiflora Rose



Not Just A Beautiful Plant —
But A Practical Living Fence.

In All Types of Soil The Cheapest
Fencing You Can Buy - It Mends
Itself - It Lasts A Lifetime!

Grows Rapidly!

Suitable For All U. S. A. Except Most
Northern Areas.

MULTIFLORA ROSE PRICE LIST

Vigorous 12-18" Branched Plants

25 plants	\$2.25
50 plants	4.15
100 plants	7.50
500 plants	30.00

See page 21 for Postal Rates

Protects Your Property With An Impenetrable Thorny
Barrier. Excellent Bird and Game Cover.

Evergreen Seedlings

Rayner's pines and spruces are excellent for Christmas tree plantings — seedlings that cost only a few pennies now will soon be worth dollars. Make poor land or hillsides produce a real profit. Ideal for erosion control, wind-breaks, and hedges. For ornamental use plant in a nursery bed and soon you will have ideal specimen trees for your own use and for sale.

SCOTCH PINE

This is one of the best trees for Christmas plantings since it grows very fast and will reach saleable size in 5 years. Grows well in dry or moist soil and makes a nicely shaped tree with very little shearing. Our special French strain Scotch Pine have a very nice blue-green color which holds well in coldest weather. Excellent for ornamental use.

AUSTRIAN PINE

Another popular tree for Christmas plantings or ornamental use. Will grow well in nearly any soil from sand to clay and will tolerate industrial smoke and fumes that kill other pines. Needles are dark green and quite stiff. Develops into nice bushy saleable tree in about 7 years.

DOUGLAS FIR

This has long been a favorite tree for Christmas plantings since it has a naturally compact type of growth. With relatively little shearing it will produce high-grade trees. Needles of Douglas fir are short and have a blue-green color. Best results are obtained in soils that are not too heavy or poorly drained. Our trees are of the special San Isabel, Colorado, strain that is the best of all Douglas Fir.

WHITE PINE

One of the most beautiful of all trees with soft, slender needles having a fine light-green color. White pines grow well in nearly any soil type and will give good results in poorly-drained land where most other pines will not grow. For Christmas trees, shearing is necessary but in 6 years an excellent compact tree can be produced.

NORWAY SPRUCE

Norway Spruce has long been a favorite specimen tree in northern gardens where its stately beauty cannot be excelled. But as a Christmas tree it is also outstanding since with reasonable shearing it will produce fine compact trees with a nice pyramidal shape. Prefers moist soils rather than dry land and will make a nice tree in about 8 years.

COLORADO BLUE SPRUCE

A truly magnificent tree with an outstandingly different blue-green color. In contrast with other evergreens this blue spruce is most unusual and thus is highly prized for its ornamental value. This beautiful color likewise makes it a very desirable tree for Christmas use, bringing top prices. Gives good results in moist, fertile soil and requires relatively little shearing.

CANADIAN HEMLOCK

For graceful beauty the hemlock cannot be excelled. It produces short, dark-green needles which gives its long drooping boughs an almost feathery appearance. Only on large parks and estates should it be allowed to develop into its full magnificent size. But in restricted areas Canadian Hemlock can be easily pruned to form a fine hedge, an excellent background or sheared specimen trees. Hemlocks are very easy to grow and do well in sun or shade.

Prices of top quality 3 yr. Rooted Seedlings. Available Oct. 15 to Nov. 15 and March 15 to May 15. Write for prices on larger quantities. Get the best for less at Rayner's.

Fully Guaranteed - See page 3.	10 plants	25	50	100	250	500	1000
AUSTRIAN PINE (8-18 in.)	\$1.30	\$2.60	\$4.50	\$8.00	\$16.00	\$25.00	\$40.00
SCOTCH PINE (8-18 in.)	1.30	2.60	4.50	8.00	16.00	25.00	40.00
WHITE PINE (4-8 in.)	2.00	4.00	7.00	11.00	21.00	33.00	55.00
DOUGLAS FIR (8-10 in.)	2.50	5.00	8.00	12.00	22.00	35.00	60.00
COLO. BLUE SPRUCE .. (8-10 in.)	2.50	5.00	8.00	12.00	22.00	35.00	60.00
NORWAY SPRUCE (8-14 in.)	2.00	4.00	7.00	11.00	21.00	33.00	55.00
CANADIAN HEMLOCK (4-8 in.)	3.00	6.00	9.50	16.00	27.00	55.00	80.00

Write for Rayner's Bulletin #19 Giving Complete Culture Information for Evergreens.

These prices do not include Postage. See page 21 for Postal Rates.

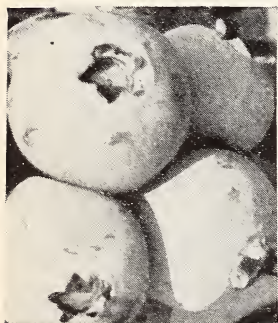
BUY RAYNER'S PLANTS AND YOU BUY THE BEST

Rayner's FAMOUS BLUEBERRIES



Giant Berries Big as Nickels, Picked from our 100 Acre Fruiting Field

HERE ARE THOSE AMAZING EXTRA LARGE HYBRIDS



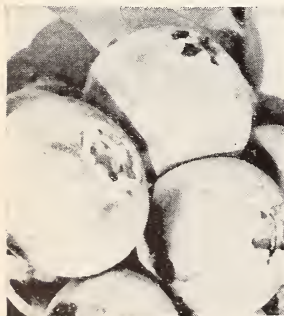
BERKELEY

MILD
SWEET

BERKELEY

MOST
BEAUTIFUL

This is our selection for the best of all home garden blueberries. It ripens in mid season producing large, loose clusters of the biggest, most beautiful blueberries you have ever seen. Unlike some varieties, the flavor is good almost as soon as the berry turns blue. Plants of Berkeley are very vigorous and have an excellent semi-spreading shape and usually a heavy main stem. The leaves are very large and very attractive in summer and fall. For all but the most northern states, we strongly recommend Berkeley as an outstanding blueberry.



BLUECROP

HEAVY
PRODUCER

BLUECROP

WINTER
HARDY

This excellent midseason variety is another of the outstanding introductions of the U.S. Department of Agriculture. Within just a few years Bluecrop has rapidly gained an outstanding reputation as one of the best of all blueberries for commercial production. It is very winter and frost hardy and can be grown in most of the northern states. Berries are large and maintain their size through the long picking season. Yields are very heavy and quality is good. The plants are fairly upright and have a tendency to develop several stems from the ground.

April 11, 1962

Several years ago I purchased 15 blueberry plants from you and last season I picked 160 quarts from them.

Selkirk, New York

Everett Trask

**GROWERS
FAVORITE**

BLUERAY

**EXTRA
VIGOROUS**

This early variety includes as parents such fine old varieties as Jersey, Pioneer, Stanley, and June and is closely related to Bluecrop. It was released in 1955 by the U. S. D. A. and the New Jersey Agriculture Experiment Station. Since then it has gained rapid acceptance as a commercial berry because of its unusual vigor and tremendous yields of large berries. Blueray has good winter hardiness giving fine results in Michigan and the New England states.



BLUERAY

April 15, 1962

Asheville, North Carolina

Your blueberry bushes are wonderful. We had a few berries last year and are looking forward to a good crop this season. The asparagus plants are the best we ever saw.

J. Calvin Palmer

New! COLLINS

**WONDERFUL
FLAVOR**

In 1959 this variety was released by the U. S. D. A. and the N. J. Experiment station. It is a cross between Stanley and Weymouth and ripens midway between Earliblue and Bluecrop. Berries are large, firm, light blue in color, and have a mild sweet flavor. Collins appears to have excellent prospects as a home garden berry because of its fine flavor, excellent quality, and dependable production. Plants are reasonably hardy and should give good results in most of the New England and central states.



COLLINS

July 6, 1962

Freeport, Pennsylvania

The plants are growing beautiful. My older blueberry plants are loaded with blueberries this year. We expect a bumper crop. Last year we picked 126 quarts off 21 bushes. This year I know we will have more.

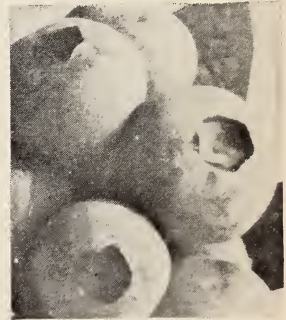
Carl H. Collier

**EXTRA
LATE**

COVILLE

**BIG
BERRIES**

This very late ripening variety greatly prolongs the blueberry season. Under our conditions we begin to pick Earliblue about June 10 and Coville in early July. Berries are large and very attractive and continue to ripen for several weeks. Good flavor does not usually develop in Coville until after the berries have fully ripened but allow them to remain for a week after turning blue and the quality can be very good.



COVILLE

June 4, 1962

Woodstock, Connecticut

I would like to say that the blueberry plants I purchased two years ago are covered with blooms. I am looking forward to a fine crop of berries this year. Thank you again for such fine plants.

Michael T. Janket

**VERY
EARLY**

EARLIBLUE

**FINE
QUALITY**

This excellent commercial berry is about as early as Weymouth and has many fine commercial features. The berries are large and ripen uniformly in big, tight clusters. The picking scar is good and berries are resistant to cracking. Of special interest to home gardeners is the mild sweet flavor of Earliblue. Plants are vigorous and have a fine upright growth. This variety has good cold resistance and has proven to be a fine berry both for commercial and home use.



EARLIBLUE

BUY RAYNER'S PLANTS AND YOU BUY THE BEST



HERBERT

**VERY
HARDY**

HERBERT

**BIG AND
LATE**

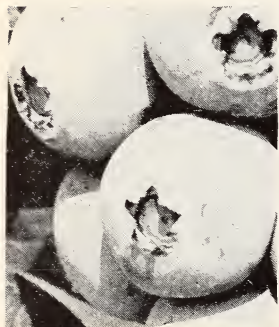
Herbert is very different in appearance from most blueberries since its fruit has a shiny black luster and a flattened shape. These extra large berries ripen late in the season in loose clusters and have very good quality. Bushes are vigorous and produce heavy crops. Of much importance is the winter hardiness which permits Herbert to be grown in most of the northern states. It is a good variety for home gardeners since it combines winter hardiness, large berry size, good productions, and fine quality.

May 28, 1962

My blueberries I have bought from you at various times are beautiful this year. They are loaded with berries.

Frederick, Maryland

Paul W. Steele



IVANHOE

**BEAUTIFUL
CLUSTERS**

IVANHOE

**UNUSUAL
FLAVOR**

Ivanhoe is outstanding because of its unusually beautiful berry cluster which look much like bunches of blue grapes. Another feature is the wonderful fruity flavor. However, this flavor does not develop until the berries are fully ripe which is about a week after they first turn blue. The berries are very large and have a dark blue color. Plants of Ivanhoe grow very rapidly and have a fine appearance. Ivanhoe is not as winter hardy as some varieties.

April 26, 1962

My order of blueberry plants received OK, and I am well pleased with them. They are fine plants and starting to grow now.

Silver Spring, Maryland

George A. Corbin

BUY YOUR PLANTS DIRECTLY FROM THE GROWER AND GET THE BEST FOR LESS

See Page 37 For Complete
Planting Information

PRICE LIST

Prices Do Not Incline Postage.
See Page 21

THESE PRICES ARE FOR BERKELEY, BLUECROP, BLUERAY, COLLINS, COVILLE, EARLIBLUE, HERBERT, AND IVANHOE.

Healthy True-To-Name Plants	Single	3 to 9	10 to 29	30 to 100
	Each	Each	Each	Each
1 yr. 3-9" rooted cuttings.....	\$.75	\$.70	\$.60	\$.50
2 yr. 9-12" field transplants (branched).....	1.60	1.50	1.40	1.25
3 yr. 12-18" field transplants (well branched)	1.95	1.75	1.65	1.40
3 yr. 18-24" field transplants (well branched)	2.95	2.75	2.65	2.25

WRITE FOR PROMPT QUOTATIONS ON LARGER QUANTITIES

Varieties May Be Combined To Take Advantage Of Quantity Prices

March 5, 1962

Indiana, Pa.

The 25 blueberries I bought from you in the spring of 1960 were nice and all of them grew and made nice growth. Last year they produced more than a quart to the plant.

Rev. J. H. Wimmer

September 18, 1961

Madera, Penn.

In 1952 I bought 6 blueberry plants from you. In 1955 we picked 7 quarts and this year we picked 80 quarts.

Irvin Mac Tavish

**NO MATTER HOW
MUCH YOU PAY**

You will never buy berries as good as the fresh harvests of your own locality. With "shipped-in" berries the quality and flavor cannot match the vine-ripened perfection right out of the patch. That's why more and more folks grow their own. Grow more! Save more! Have more!

SPACE BELOW IS FOR ADDITIONAL ITEMS OR REMARKS.

HOW MANY	NAMES OF VARIETIES ORDERED	PRICE	
		Dollars	Cents

**SEND FOUR NAMES FOR
\$1.00 BONUS PLANT OFFER
IF YOUR ORDER AMOUNTS TO \$5.00 OR MORE**

Send us the names and addresses of four persons who grow berries or who have a garden and may be interested in receiving information on berry growing. We will include 25 strawberry plants FREE. We must reserve right to choose variety of plants, but are sure you will be well pleased. Bonus plants will not be sent for less than four names. Plants will be shipped with order.

WRITE NAMES HERE FOR BONUS PLANT OFFER

List Names and Addresses Here. Please Print or Write Legibly.

Please be sure to include Street Address or R.F.D. Number. Also note whether Mr., Mrs. or Miss.

1. _____
2. _____
3. _____
4. _____

INSTRUCTIONS TO PURCHASERS

TIME TO ORDER—As soon as convenient after receiving this catalogue. Late in the season we may be out of some varieties, but if you order early, plants will be reserved until you are ready for them. Be sure to **PLANT EARLY!**

TIME OF SHIPMENT—From November 1st to May 15th. All orders filled after May 15th will be at purchaser's risk. We will use every precaution in our power to put the plants through in good condition. (See Planting Instructions.)

PAYMENT—Money Order or Personal Check with order, or if desired ¼ payment and balance before date of shipment.

REFERENCE — Union Trust Co., Maryland National Bank, Salisbury, Md., Dun & Bradstreet, your own State Experiment Station or County Agent.

GUARANTEE — 100% satisfaction or your money back. Claims if any, must be made within 30 days after receipt of goods. After 30 days and within 1 year we will replace at ½ the original purchase price. We cannot be responsible for conditions over which we have no control. At no time will we be responsible for any sum greater than that paid for the stock.

TRUE-TO-NAME—We use every precaution to have our plants true-to-name. Should any prove otherwise we will replace them or refund the purchase price.

SHIPMENT — Express is generally cheaper on 2000 plants or more beyond the third zone and on all large orders.

PARCEL POST — On all orders under 2000 Parcel Post is generally cheaper. Be sure to send enough postage to save C.O.D. charges for balance. Any excess postage will be returned.

BUY RAYNER'S PLANTS AND YOU BUY THE BEST

Growing Blueberries

These instructions apply to Rayner's hardy, top quality plants. Be sure to prune about $\frac{1}{2}$ of top from large size bushes before planting.

WHERE BLUEBERRIES CAN BE GROWN:

The varieties of blueberries we offer will grow well from North Carolina to Maine and westward from Michigan to Missouri. They also grow well in parts of Oregon and Washington. For best fruit production blueberries require full sunlight. The best time to plant is early spring.

SOIL ACIDITY:

One of the most important factors in successful blueberry culture is to use acid soil — a pH range of 4.0 to 5.5 is considered best. Many soils naturally have this much acidity but in many areas where blueberries could otherwise grow well the soil is not sufficiently acid. For small scale plantings this difficulty can be readily overcome. One of the best methods is to dig a hole about 18 inches deep and about the same in width. Mix half of this soil with well rotted leaf mold or peat and then mix in 3 oz. ammonium sulfate fertilizer plus $\frac{1}{4}$ lb. of cottonseed meal. Replace this mixture in the hole and set the plant properly and you have overcome the main problem in growing blueberries.

DRAINAGE:

Cultivated blueberries require a uniform supply of moisture but they will not tolerate poorly drained or soggy soil. Avoid heavy clay soil for large plantings.

HOW TO PLANT:

If the roots have become dry in shipment they should be placed in water for about an hour. Best results are obtained if about half of the top growth is pruned from the plant. This allows the plant to become established faster and better. It will rapidly make an abundance of new, sturdy growth. After the holes have been dug and the soil prepared as previously described the plant should be set so that the upper roots are covered by about an inch of soil. It is very important not to set blueberries too deep in the ground for, they may make poor growth or die. It is helpful to water the newly set plant with a soluble fertilizer—using about one quart of solution per plant. Next the soil should be firmly packed around the roots and a mound of soil made around the edge of the hole so that the plant can be properly watered. Frequent watering during the first season will be very helpful in getting plants well established.

In commercial plantings blueberries are usually set 4 feet apart in the row with 8 to 10 feet between rows. However, in home gardens they may be arranged in any manner and can be pruned to nearly any desired shape. Blueberries are especially suitable for hedge plantings and other ornamental uses.

MULCHING: It is very helpful if a heavy mulch can be maintained around the plants. Any natural organic matter is satisfactory.

Sawdust; new or old, oak or pine, also gives excellent results. Sawdust is very desirable for mulching blueberries and we strongly recommend its use. However, when sawdust is used as a mulch it is necessary to add extra nitrogen to the soil. For each ton of sawdust approximately 24 pounds of actual nitrogen is needed. This can be obtained from 115 pounds of ammonium sulfate or 72 pounds of ammonium nitrate. This corresponds to 13 ounces of ammonium sulfate per bushel of sawdust or 8 ounces of ammonium nitrate per bushel. Any other type of fertilizing material could be used if the proper amount of nitrogen is provided.

FERTILIZING:

We definitely recommend that blueberries should receive regular fertilizer applications. Use an acid-type, complete fertilizer early in the spring at the rate of about $\frac{1}{4}$ pound per each small plant or $\frac{1}{2}$ pound for large plants. Another application in early summer is usually helpful. Do not apply fertilizer in late summer or fall since it may make plants tender and thus subject to winter injury. Cottonseed meal, $\frac{1}{4}$ lb. for young plants and $\frac{1}{2}$ lb. for old plants, is a complete organic fertilizer that is ideal for blueberries and most other plants. Ammonium sulfate, 2 oz. per small plant and $\frac{1}{4}$ lb. per large plant, is an excellent commercial fertilizer. About 250 lbs. per acre is recommended for large plantings. Half should be applied in March or April and the rest during May or June.

PRUNING:

When first planted about half of the upper branches should be removed. Then during each dormant season further pruning is required. Since blueberries usually make too much top growth some of this must be thinned out or the fruit will be small. Normally it is best to prune out slender twigs, leaving the heavier, stronger growth. Low branches should be removed as well as any weak or dead wood. Write for Rayner's Bulletin's 3 and 18 on blueberry pruning.

YELLOW FOLIAGE:

Blueberries are especially free of disease and insect troubles and thus do not generally require any spraying or dusting. The most common trouble is a yellow color of the leaves (Chlorosis). This yellowing can be corrected in two ways—one is by making the soil more acid by addition of vinegar or sulphur and the other is to add iron directly to the plant and to the soil. Yellow leaves will often become a healthy, green color within a few days after iron is added. We recommend Iron Chelate for this purpose. About 1 level tablespoonful in a gallon of water can be applied to the leaves and soil and will be of much help in improving foliage.

CROSS POLLINATION:

Since cultivated blueberries are partly self-sterile it is best to plant at least two varieties for cross-pollination. Any combination of varieties is usually satisfactory.

Rayner's Famous Blueberries

FRESH, FULL RIPE BLUEBERRIES ARE A FLAVOR SENSATION—WONDERFUL FOR PROFIT AS WELL AS ORNAMENTAL BEAUTY. BUY YOUR PLANTS DIRECTLY FROM THE PRODUCER AND GET BETTER PLANTS AT LOWER PRICES. THESE ARE THOSE WONDERFUL IMPROVED VARIETIES THAT HAVE BEEN PROVEN SO SUCCESSFUL BY MANY YEARS OF PLANTING IN HOME GARDENS AND FOR COMMERCIAL USE. RAYNER BROS. OFFER THE MOST COMPLETE SELECTION OF THE BEST VARIETIES. FULL PLANTING INFORMATION ON PAGE 37. Other Varieties, pages 34-36.

BURLINGTON Very Late

Burlington remains a favorite with commercial growers because of its firmness, good picking scar, fine keeping quality, and exceptional winter hardiness. Plants are vigorous and have a fine upright-spreading shape. A very dependable variety.

DIXI Very Late and Very Large

Dixi has the largest berries of any of the older varieties. The berry quality is good and texture is firm. Plants are vigorous and have an open spreading shape. Dixi is a very heavy producer and ripens late.

JERSEY Late and Sweet

Jersey is one of the most important commercial varieties because of its dependable production of big crops, of beautiful, fine-flavored fruit. In North Carolina it is well liked because of its resistance to stem canker. The plants are vigorous and erect.

PEMBERTON Mid-Season

Pemberton is a very good variety for home gardens since it is unusually vigorous, very productive, and has a nice appearance. Berries are dark blue, of medium size, and firm.

They have a very good flavor and are excellent for processing.

RANCOCAS Early and Vigorous

Rancocas is one of the most dependable varieties for home gardens, giving good results in most of the eastern and central states. Berries are small but are produced in long attractive clusters. Berries are firm, with good flavor, and fine for cooking.

RUBEL Wild Flavor

Rubel is a selection from a wild, productive, highbush blueberry. It has that wonderful flavor we associate with wild huckleberries; is very winter hardy. It is a vigorous late ripening attractive plant for the home gardens.

STANLEY Fine Quality

Of all the older varieties we believe that Stanley is definitely one of the best. Plants are very vigorous and erect, reaching a height of 8 feet or more. The berries have a fine color, excellent flavor, and a very heavy production. A fine variety for home gardens.

WEYMOUTH Very Early

Weymouth has long been a very important commercial variety because of its very early ripening season which results in the best prices. Berries are medium size and have fine flavor. Bushes are low and slow growing, but very productive and quite winter hardy.

See Page 37 For Complete Planting Information

PRICE LIST

These Prices Do Not Include Postage. See Page 24.

BUY DIRECT FROM THE GROWER AND GET THE BEST FOR LESS

These prices are for Burlington, Dixi, Jersey, Pemberton, Rancocas, Rubel, Stanley and Weymouth. See page 36 for other varieties and prices.

Healthy, True to Name Plants	100					Plant 2 Varieties for Pollination.
	Single Each	3 to 9 Each	10 to 29 Each	30 to 99 Each	or more Each	
1 yr. 3-9" rooted cuttings	\$.45	\$.35	\$.30	\$.25	\$.20	Varieties may be combined to take advantage of quantity prices.
2 yr. 9-12"	1.00	.90	.80	.70	.60	
3 yr. 12-18"	1.35	1.10	1.00	.90	.80	
3-4 yr. 18-24"	1.90	1.65	1.40	1.25	1.15	

Write us for prompt quotations on large quantities.

JUMBO Size Blueberry Plants 5 yr. 24" to 36" Plants

We have a limited supply of extra large plants that have already fruited for two years in the nursery and will bear lots of fruit this coming season.

The varieties available in this 24-36 size are. Rancocas, Rubel, Jersey, Pemberton and Stanley. These are really beautiful plants and are certain to bear a crop. For a big crop in a short time, try these Jumbo plants.

\$2.65 each; 3 for \$6.75; 10 for \$20.00. SEE SPECIAL OFFERS—Page 40

Cherokee Chief

RED DOGWOOD

U. S. Plant Patent No. 1710

EACH TREE CARRIES THIS
PATENT TAG



At last there is a truly red Dogwood—not a pink; but a fine, deep red that is amazingly different. The wonderful new Cherokee Chief originates from a bud sport and is propagated by grafting on to a sturdy rootstock. Even the new foliage is a red color, and in the fall the leaves are scarlet. In late summer there is an abundance of fine red berries that add to the beauty of this excellent ornamental tree. Cherokee Chief is very vigorous and makes a fine tree with uniform branching.

It will grow in full sun but prefers some shade for best results.

Sturdy, well rooted trees,
24-30 in. tall, \$3.95 plus postage



CHEROKEE CHIEF

July 15, 1961

Dear Mr. Rayner: Your letter and shipment of May 31 again demonstrated your outstanding service. We have been most impressed by your products and your cooperation. I trust that you will place us on your mailing list to receive your complete catalogues so that we may continue this pleasant association with your firm.

Highland Park, Illinois

Asher J. Birnbaum

April 23, 1962

I have in the past obtained plants from other places, but yours were without question the nicest. Thanks very much for the good service.

Erwinna, Penna.

Mrs. Wm. Carr, Jr.

WINTER HARDY AZALEAS

New Selection of Most Hardy Varieties
Will thrive at 10° below and even colder

STEWARTSTONIAN — A fine orange-red Gable hybrid. Vigorous upright growth.

HINOCRIMSON — Brilliant red blossoms, hardy compact plant. Excellent foliage.

DELAWARE VALLEY WHITE — Large white flowers, fairly tall and spreading.

CAROL — Gable hybrid, with pink, double blooms; low, compact growth habit.

OLD FAITHFUL — Beautiful light orchid flowers; vigorous upright growth.

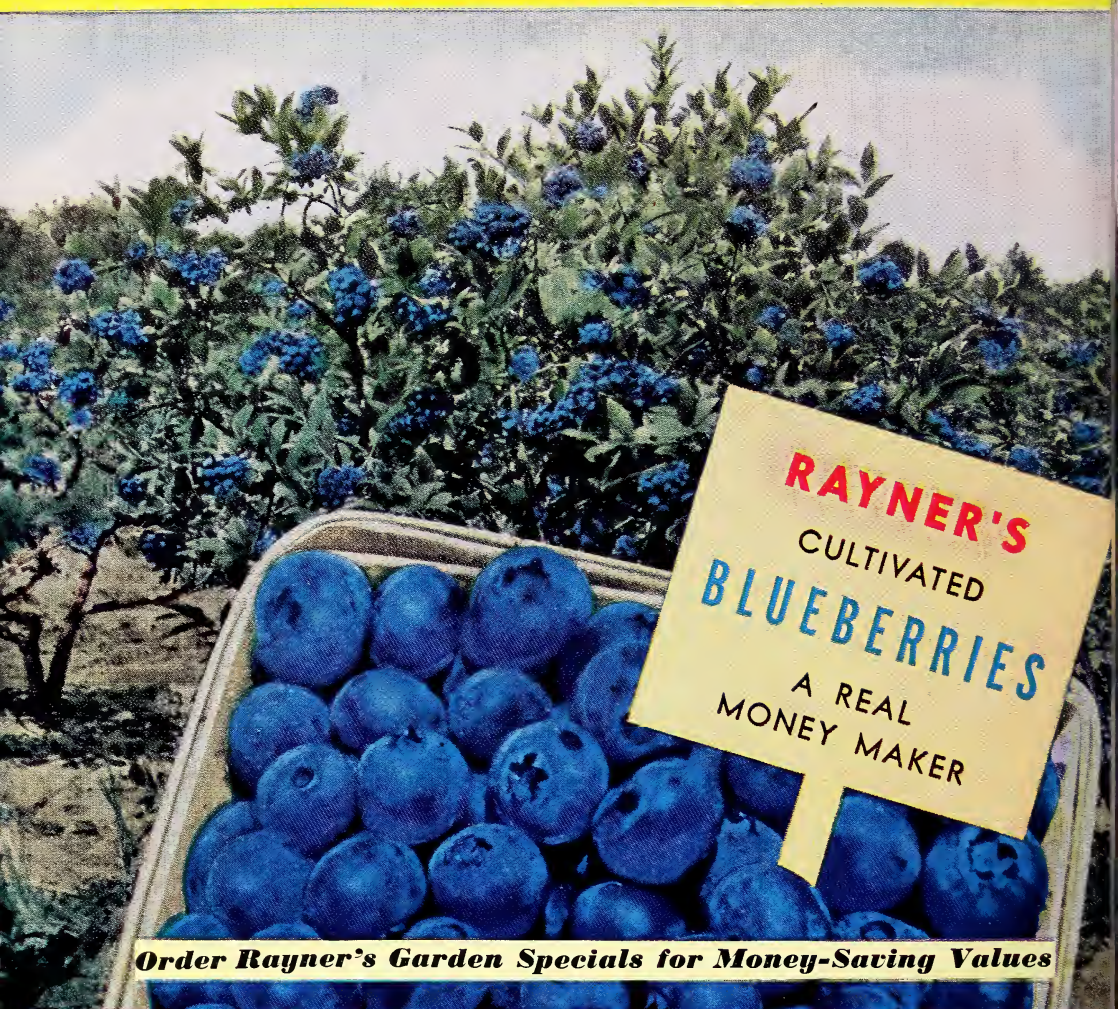
Follow Blueberry Culture and Plant in Shade
Field Grown, 3 yr. plants, 8-12 inches tall:

\$1.50 each; 3 for \$4.25 - plus postage.



ALL OF RAYNER'S PLANTS ARE GUARANTEED. SEE PAGE 3 FOR DETAILS

BUY RAYNER'S PLANTS AND YOU BUY THE BEST



RAYNER'S
 CULTIVATED
BLUEBERRIES
 A REAL
 MONEY MAKER

Order Rayner's Garden Specials for Money-Saving Values

Economy Garden	Quality Garden	Bearing Garden	Jumbo Garden
2 CONCORD	3 RANCOCAS	3 PEMBERTON	2 RANCOCAS
2 STANLEY	3 STANLEY	3 RANCOCAS	2 STANLEY
2 JERSEY	3 RUBEL	3 STANLEY	2 JERSEY
— 2 yr.	— 3 yr.	— 4 yr.	— 4 yr.
6 Plants 9-12"	9 Plants 12-18"	9 Plants 18-24"	6 Plants 24-36"
Catalog Price: \$5.40	Catalog Price: \$9.90	Catalog Price: \$14.85	Catalog Price: \$13.50
SPECIAL \$4.90	SPECIAL \$8.90	SPECIAL \$13.50	SPECIAL \$11.95

