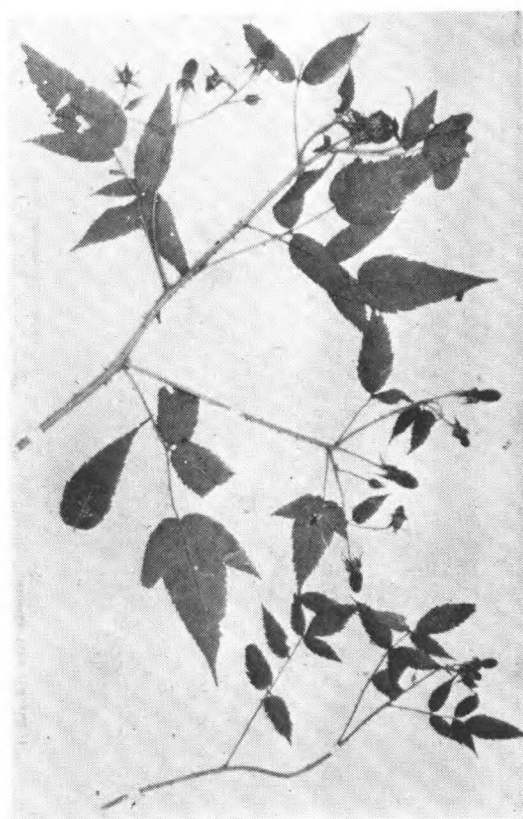


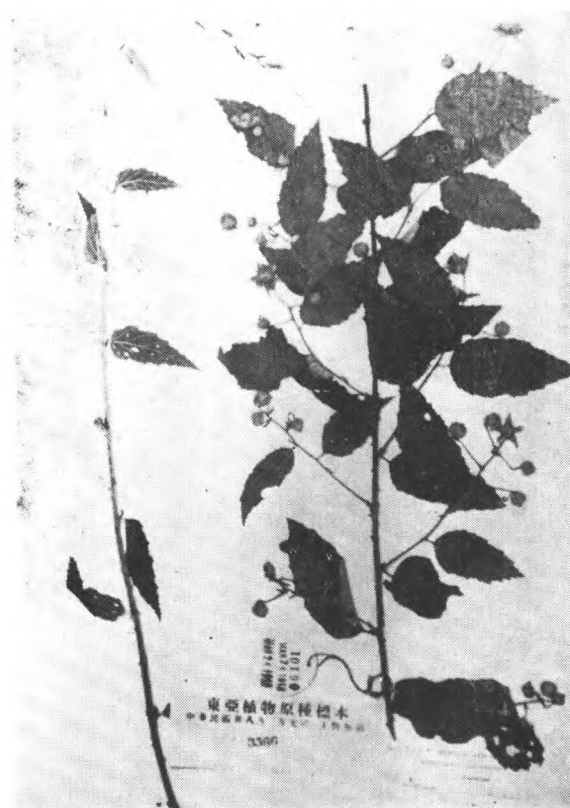
*Rubus subtibetanus* H.-M.  
Schneider 1000 四川



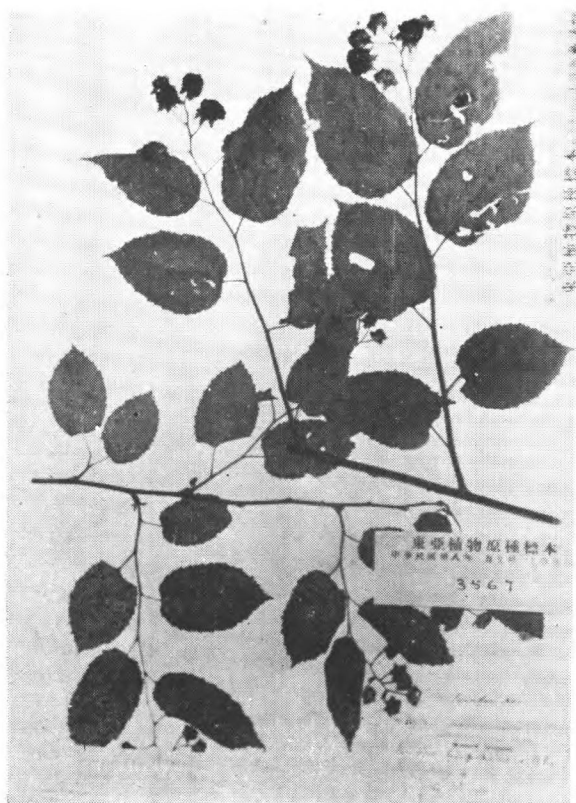
*Rubus suishaensis* Hay.  
Wils. 10221 台灣



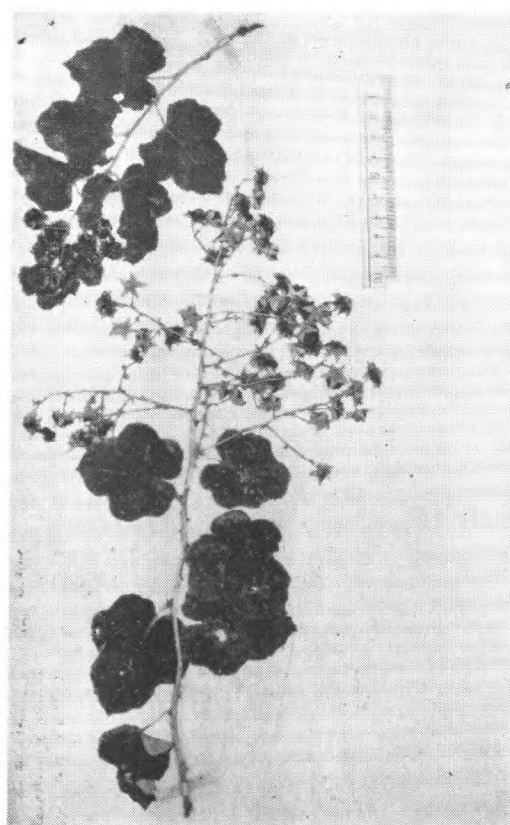
*Rubus sumatranus* Miq.  
Maxim. 1863 (cotype) 日本长崎



*Rubus Swinhoei* Hance  
Wils. 10190 台灣



*Rubus Swinhoei* Hance var. *hupehensis*  
(Oliver) Metcalf.  
Wils. 99 湖北巴东



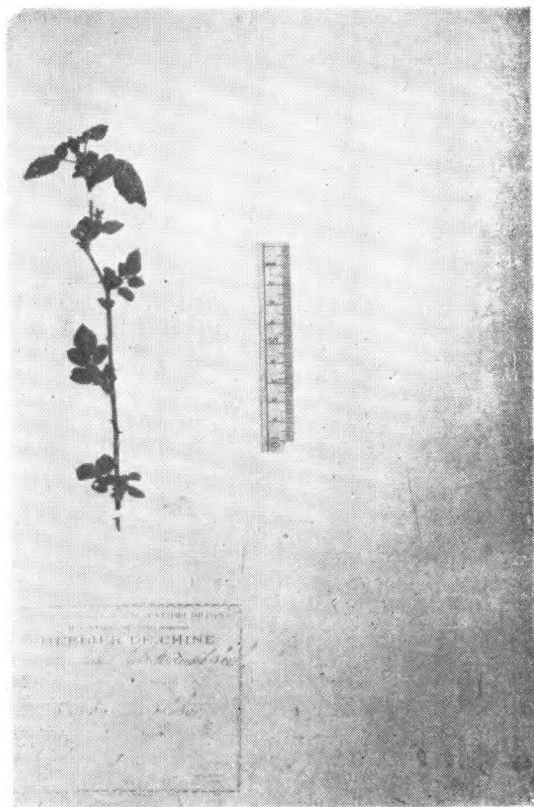
*Rubus tephrodes* Hance  
Shearer, (type) 江西九江



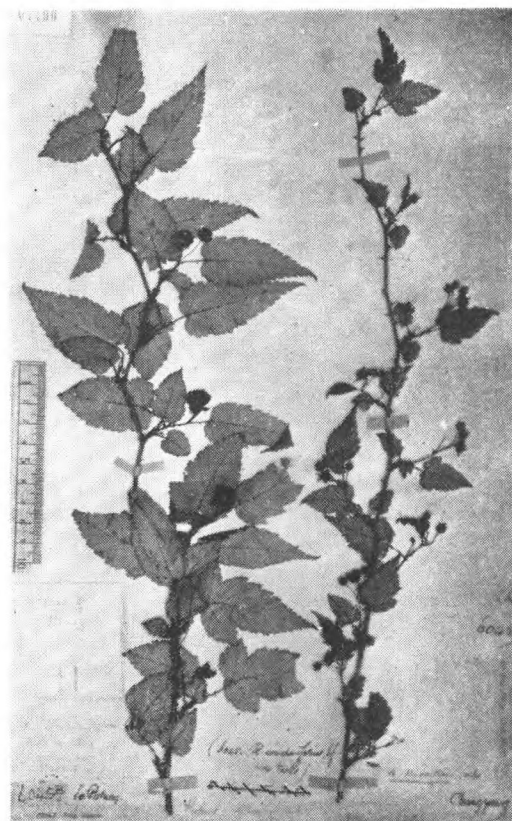
*Rubus tephrodes* Hance var. *setosissimus*  
H.-M.  
H.-M. 12399 (type) 湖南武崗云山



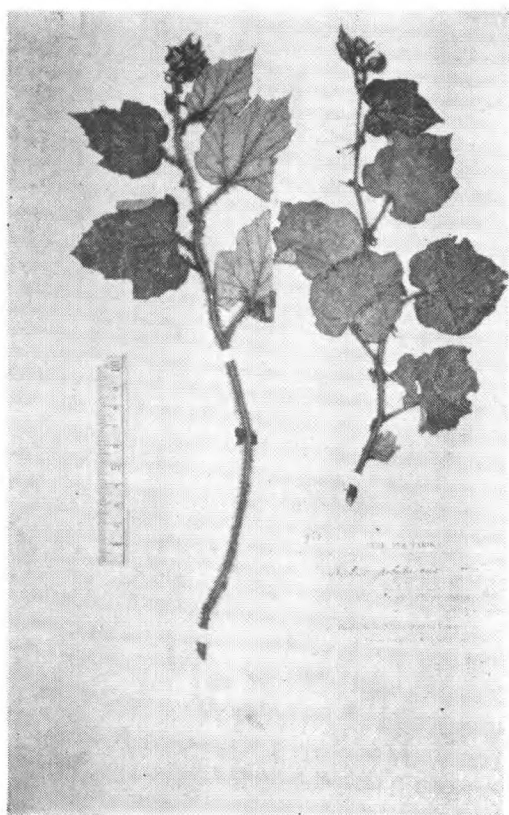
*Rubus thibetanus* Fr.  
Wils. (Veitch) 3483 (type) 中国西部



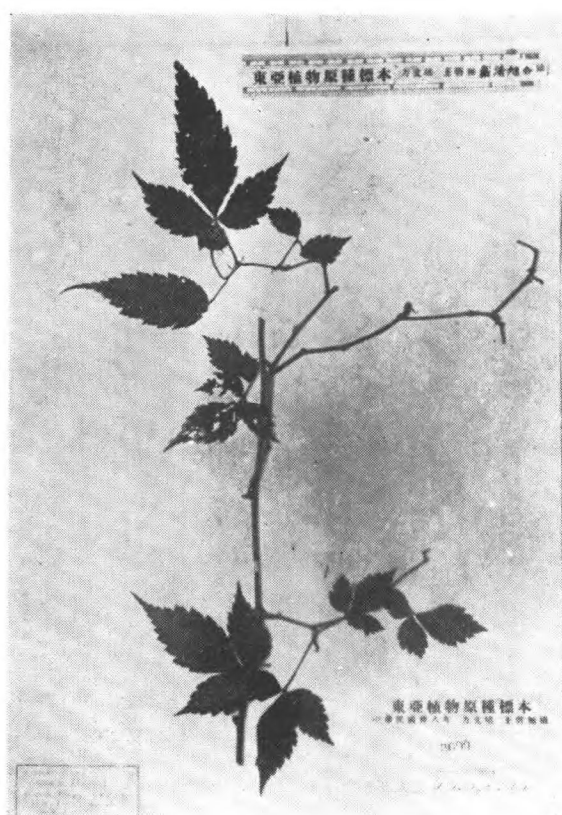
*Rubus thunbergii* Sieb. et Zucc. var.  
*talaikiaensis* (Lévl.) Lévl.  
(type) 江苏



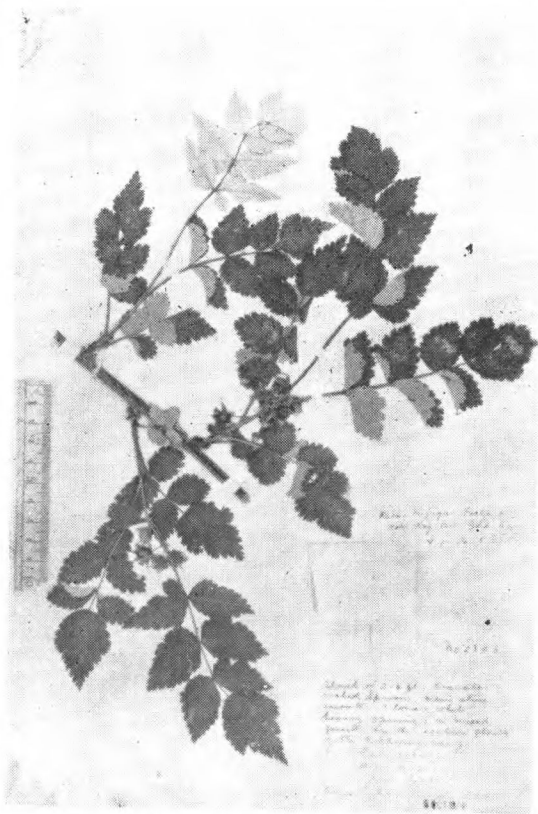
*Rubus trianthus* Focke  
Henry 6045a, b, (type) 湖北



*Rubus tricolor* Focke  
Delavay 954 (cotype) 云南苍山



*Rubus tridactylus* Focke  
Henry 10233 (isotype) 云南蒙自



*Rubus trijugus* Focke  
Forr. 2303 (type) 云南



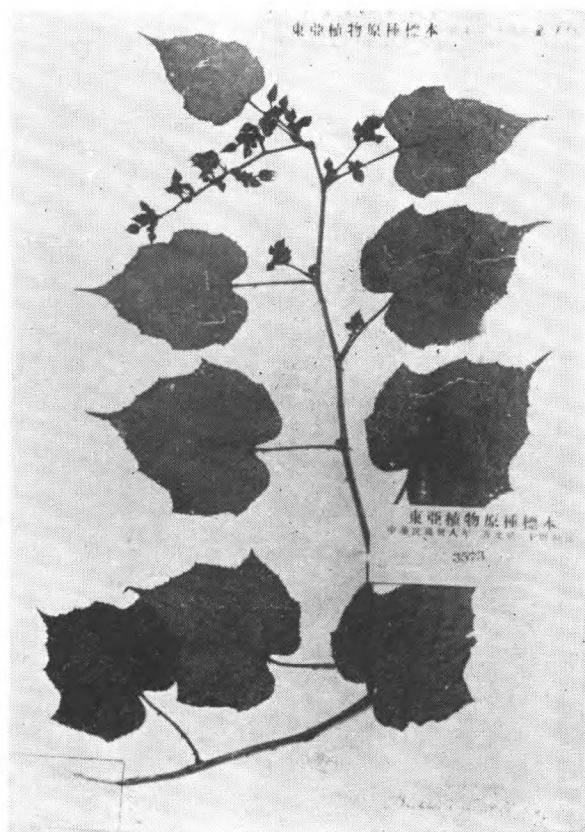
*Rubus trullissatus* Focke  
Wils. 57 (isotype) 湖北兴山县



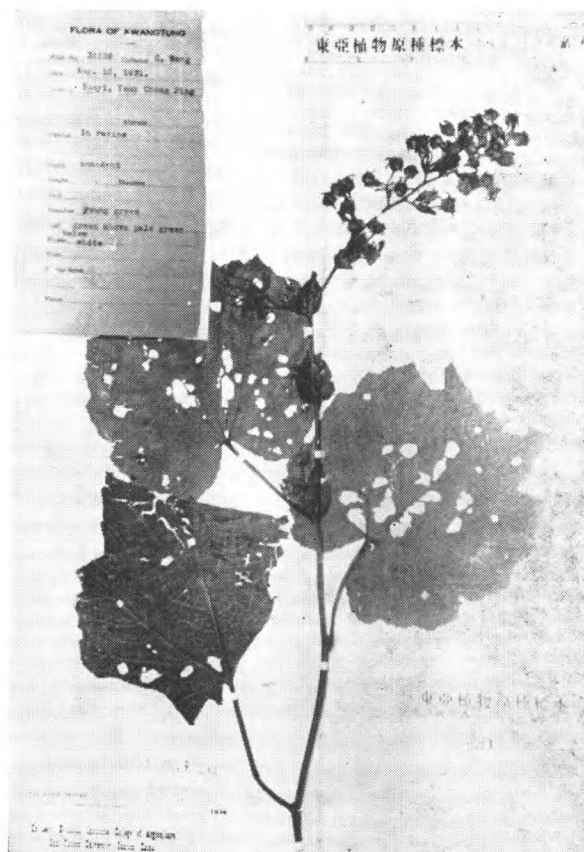
*Rubus Tsangorum* H.-M.  
Ching 1723 (isotype) 浙江



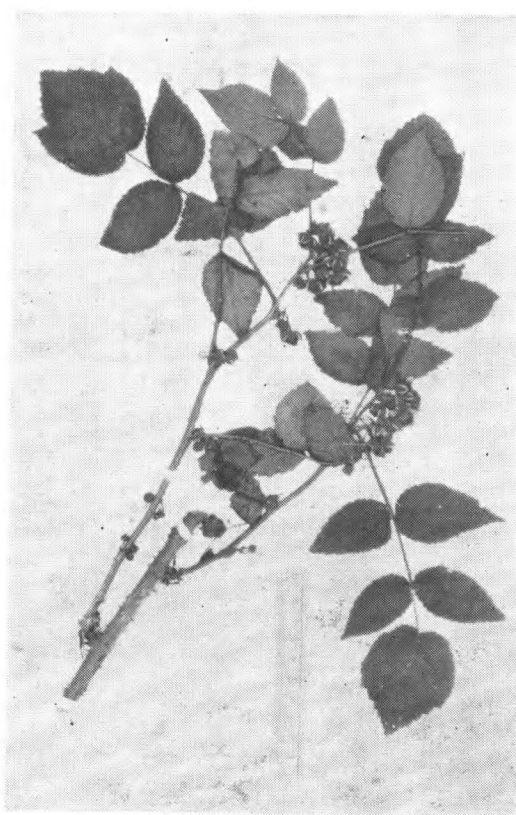
*Rubus vicarius* Focke  
Wils. 948 (isotype) 四川瓦山



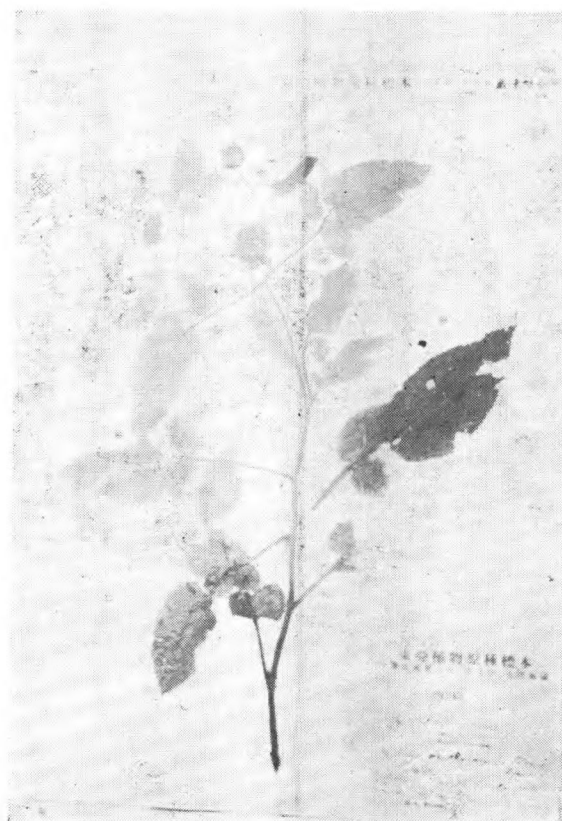
*Rubus viscidus* Focke  
Henry 9143A (type) 云南蒙自



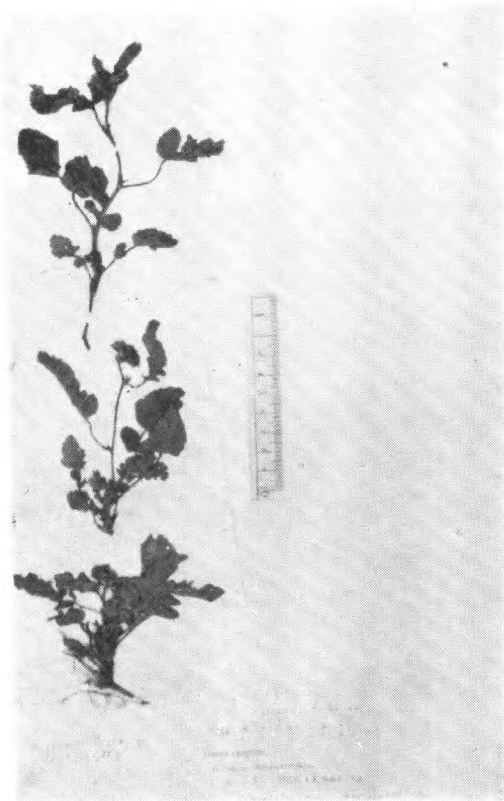
*Rubus Wangii* Metcalf  
Wang 31129 (type) 广东



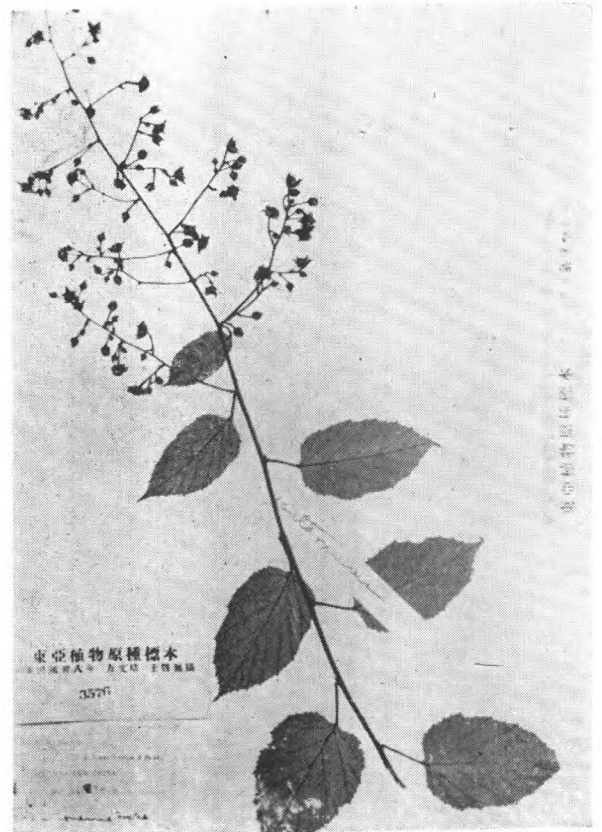
*Rubus Wilsonii* Duthie  
Wils. (type) 中国西部



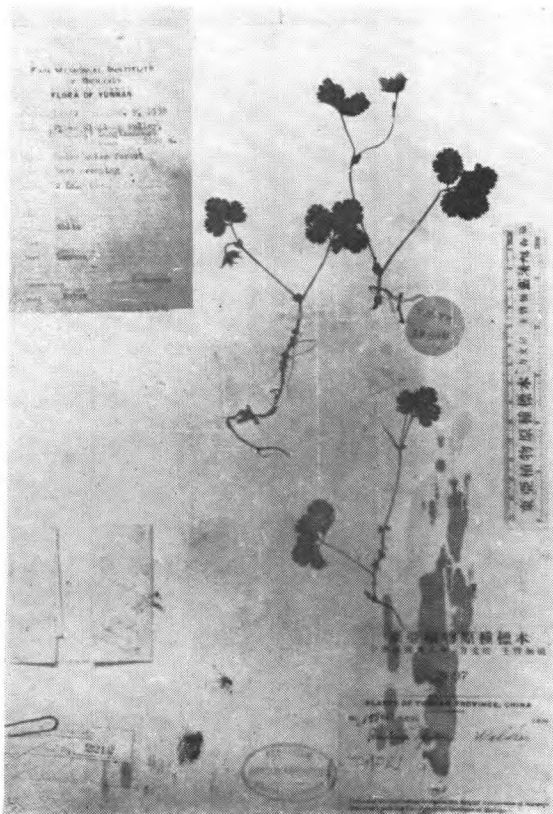
*Rubus xanthocarpus* Bur. et Fr.  
Wils. 4137 (isotype) 四川



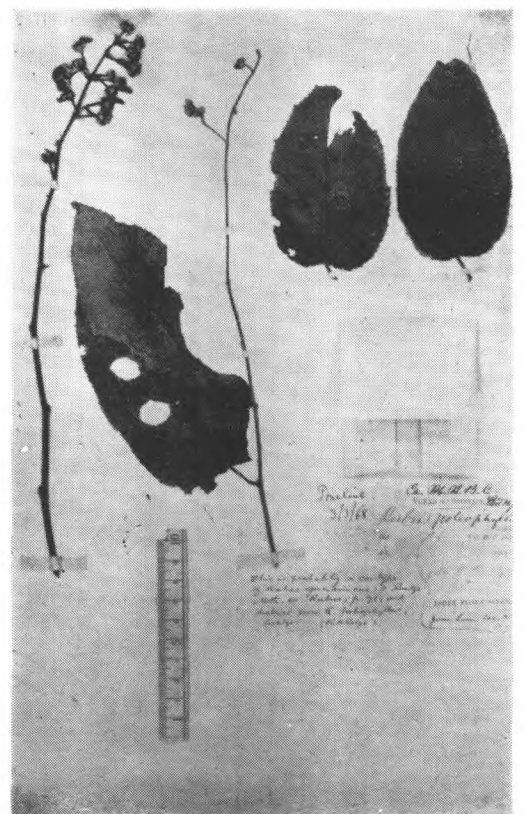
*Rubus xanthocarpus* Bur. et Fr. var.  
*tibetanus* (Focke) Cardot  
Soulié 862 (cotype) 西康打箭炉



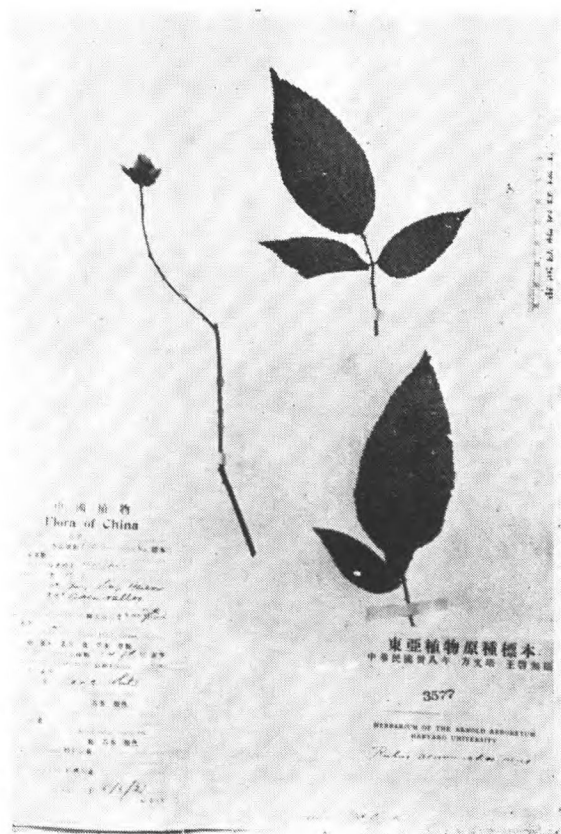
*Rubus xanthoneurus* Focke  
Wils. 4844 四川峨眉



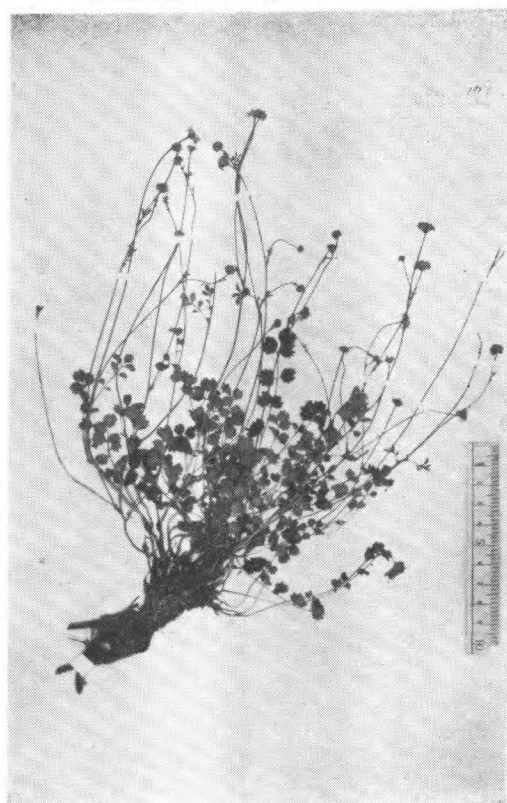
*Rubus Yui* Walker  
T. T. Yu 19840 (type) 云南



*Rubus yunnanensis* O. Ktze.  
Anderson 云南

地榆屬 *Sanguisorba* Linn.

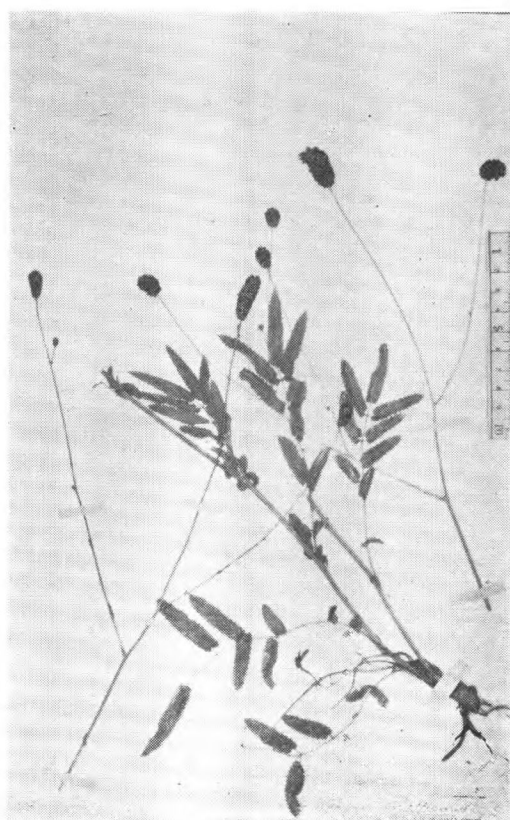
*Rubus acuminatissimus* Sm.  
Hu 810 江西



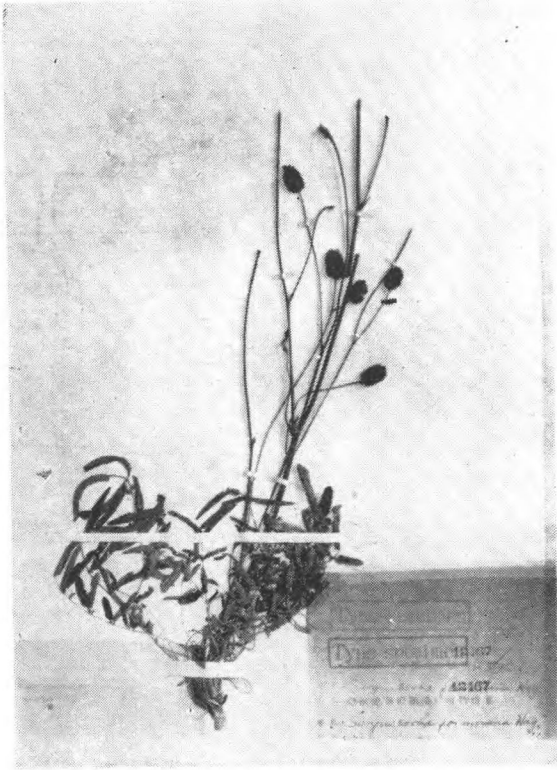
*Sanguisorba filiformis* (Hook. f.) H.-M.  
Pratt 241 西康打箭爐



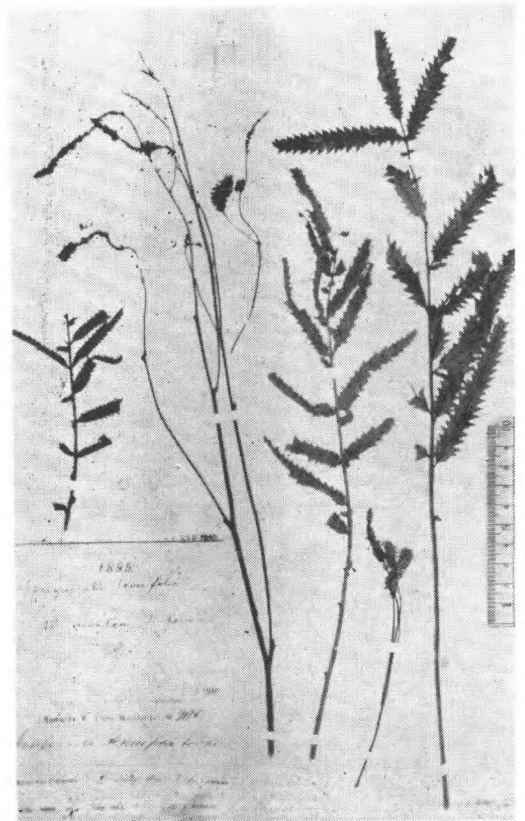
*Sanguisorba obtusa* Maxim.  
Ichonoski (cotype) 日本



*Sanguisorba officinalis* L.  
Bushell. 1868-71 北京

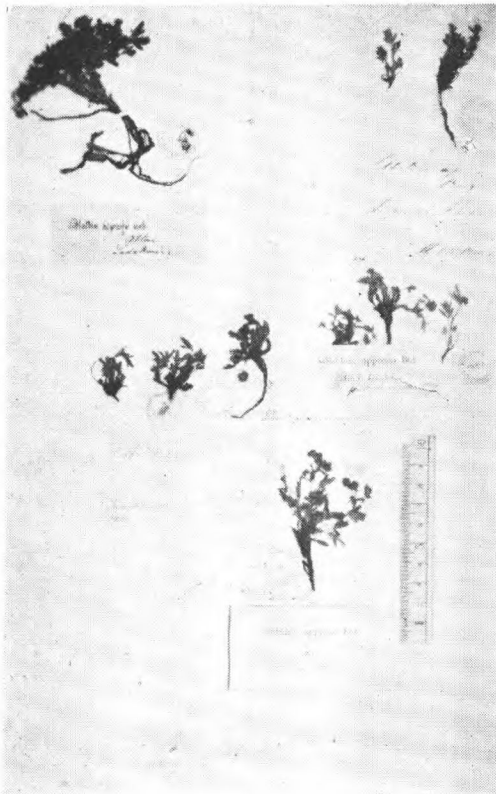


*Sanguisorba formosana* Hay.  
S. Sasaki 无号 (isotype) Toyencho,  
Daikyuyen, 台湾

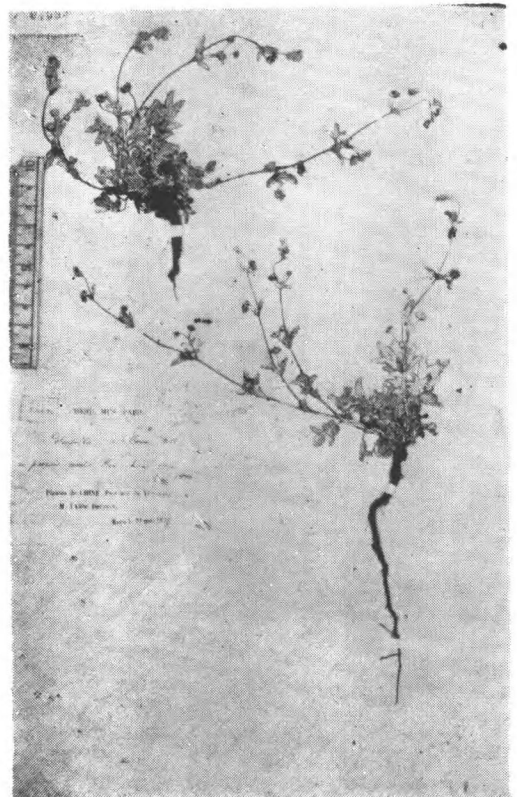


*Sanguisorba tenuifolia* Fisch.  
Komarov 907 黑龙江

西巴德属 *Sibbaldia* Linn.



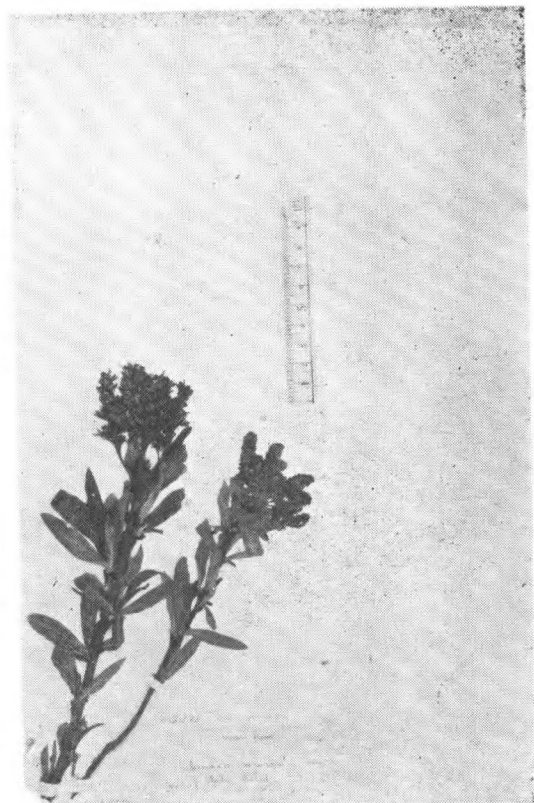
*Sibbaldia adpressa* Bge.  
(cotype) 阿尔泰



*Sibbaldia micropetala* (Don) H.-M.  
Delavay 云南黑山門



鮮卑花屬 *Sibiraea Maxim.*



*Sibiraea angustata* (Rehd.) H.-M.  
Wils. 2773 四川灌县



*Sibiraea laevigata* Maxim.  
Meyer 819



*Sibiraea laevigata* var. *angustata*  
Rehd.  
Wils. 2773 (type) 四川



*Sibiraea tomentosa* Diels  
Forr. 21107 云南

珍珠梅屬 *Sorbaria* A. Br.



*Sorbaria sorbifolia* A. Br.  
Wilson No. 7339



*Sorbaria arborea* var. *glabrata* Rehd.  
Ex. Herb J. Hers 2377. 陝西隴州



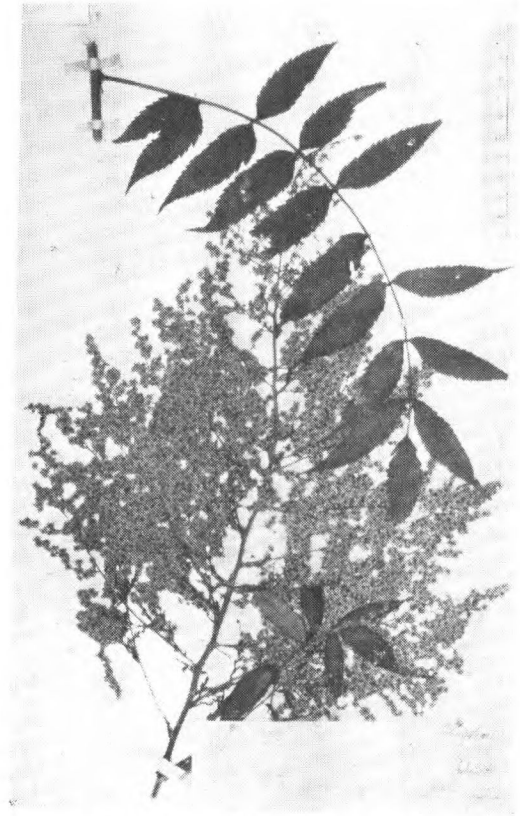
*Sorbaria Kirilowi* Maxim.  
Harry Smith 5853 山西



*Sorbaria sorbifolia* A. Br.  
Rehd. (type.)

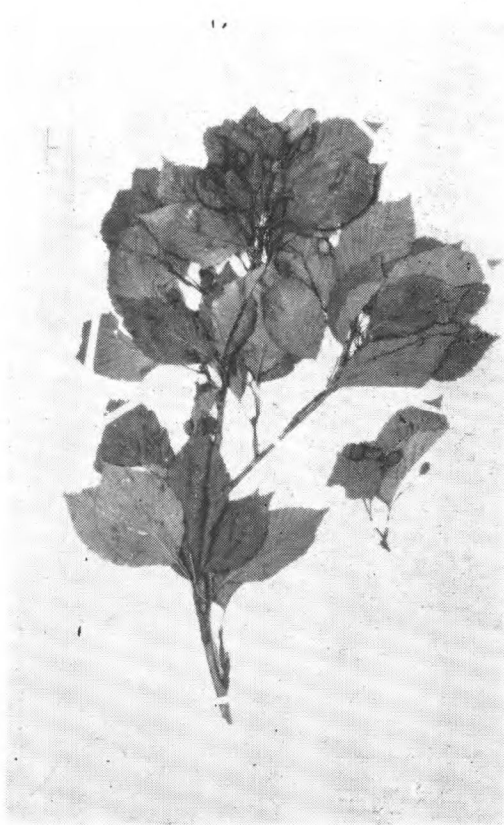


*Sorbaria sorbifolia* var. *stellipila*  
Schneider  
Uno 15528 日本

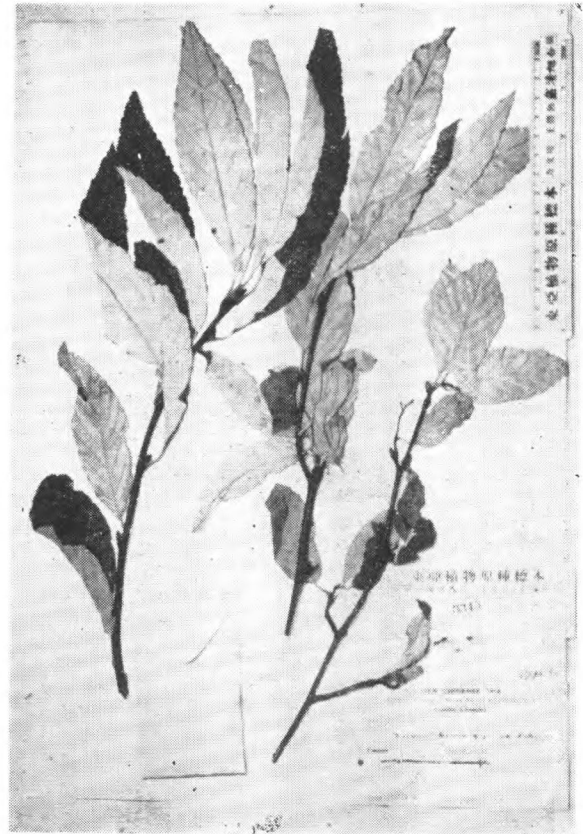


*Sorbaria arborea* Schneider  
Henry 6458 (type) 湖北兴山县

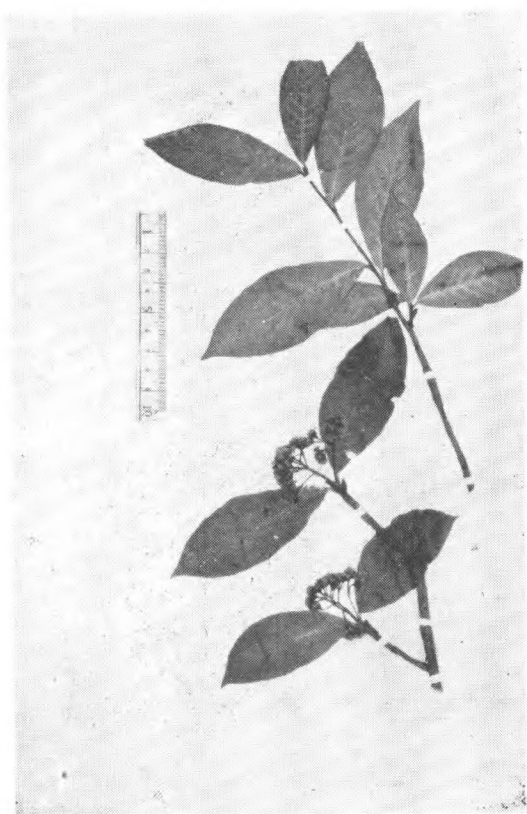
花楸屬 *Sorbus* Linn.



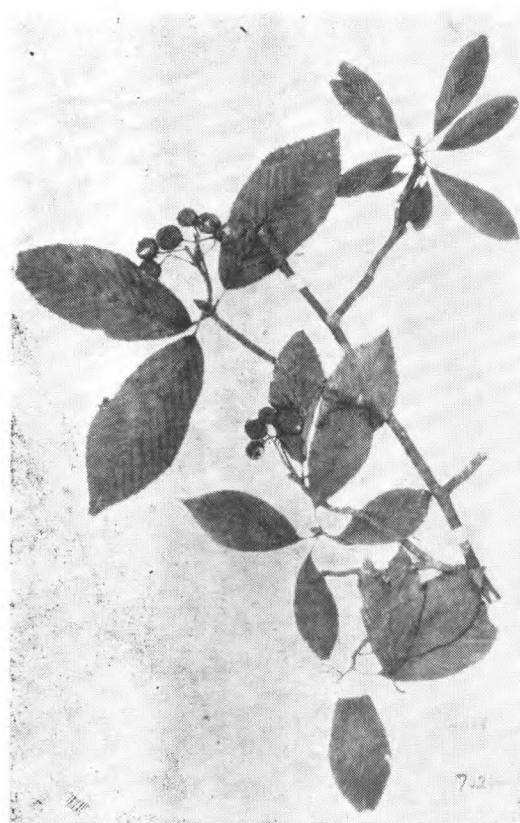
*Sorbus alnifolia* (Sieb. et Zucc.) K. Koch  
R. C. Ching 2790 安徽九华山



*Sorbus ambrozyana* Schneider  
Schneider 2913 (cotype) 云南



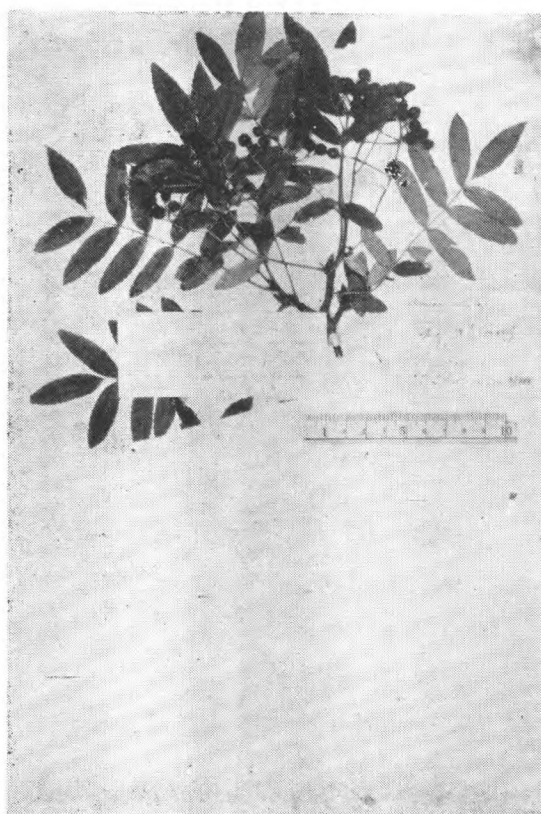
*Sorbus aronioides* Rehd.  
Wils. 2993 (type) 四川(瓦山)



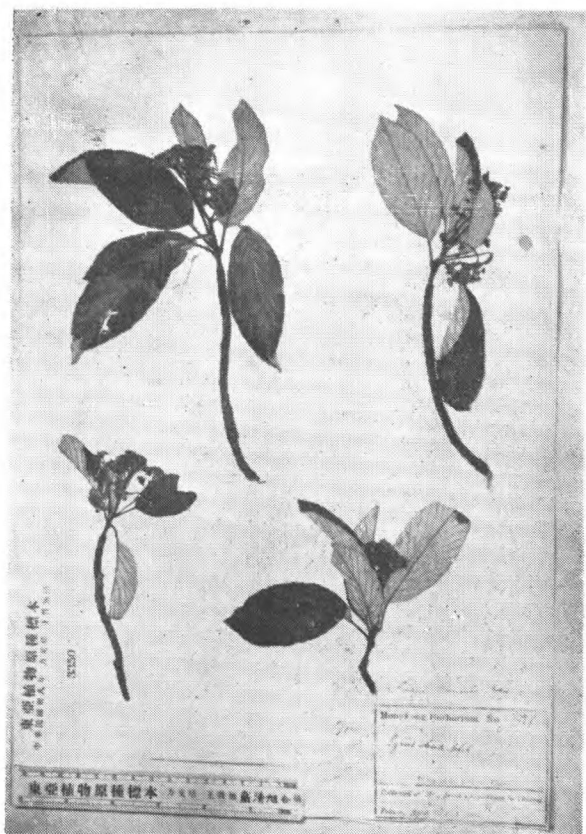
*Sorbus caloneura* (Stapf) Rehd.  
Henry 7027 (type) 四川巫山



*Sorbus Conradinae* Koehne  
Wils. 1015 (eyntype) 四川汶川县西



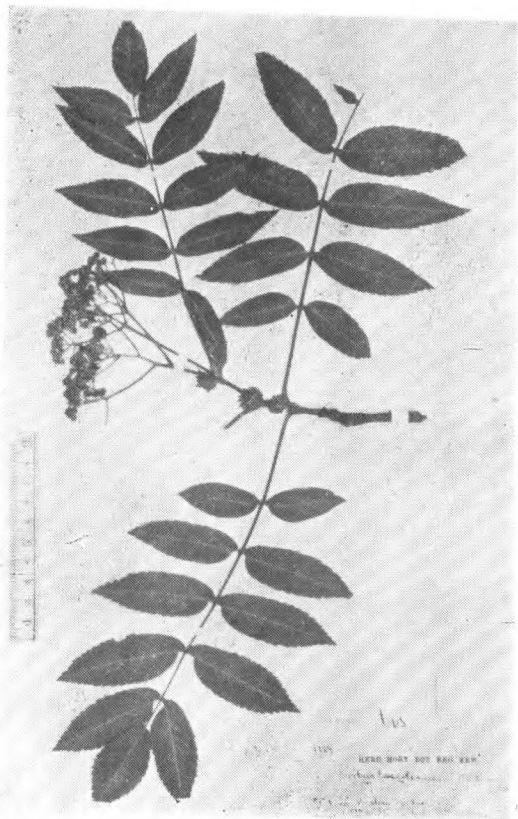
*Sorbus discolor* Maxim.  
Bullock 91.



*Sorbus Dunnii* Rehd.  
Hgkg. Herb. 2597 (type) 福建



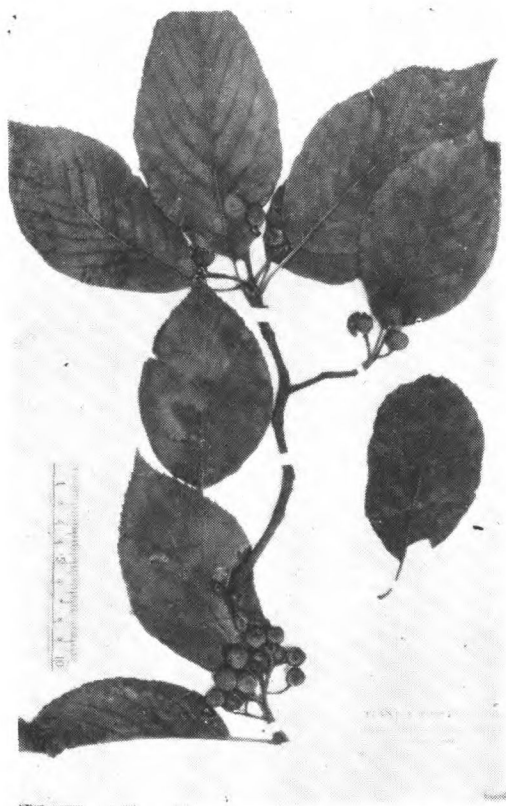
*Sorbus epidendron* H.-M.  
H.-M. 7874 (type) 云南长瀾之間



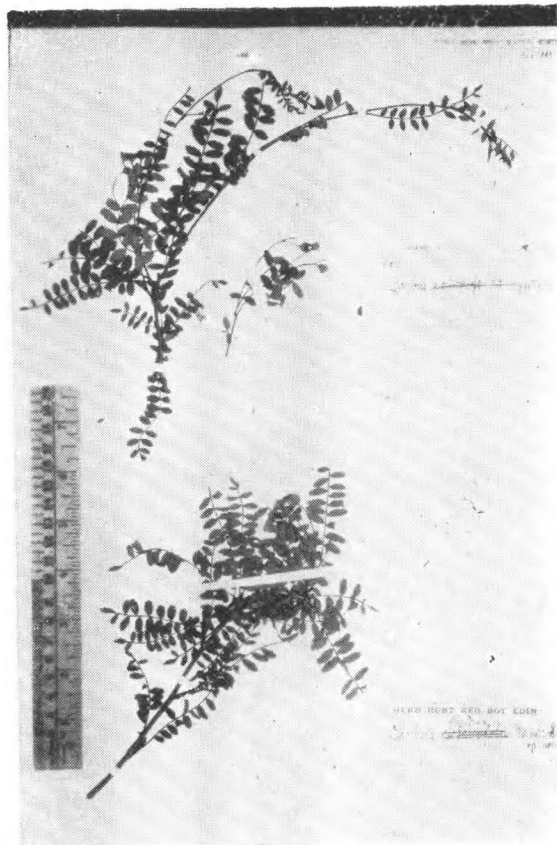
*Sorbus Esserteauiana* Koehne  
Wils. 1128 (syntype) 四川穆坪



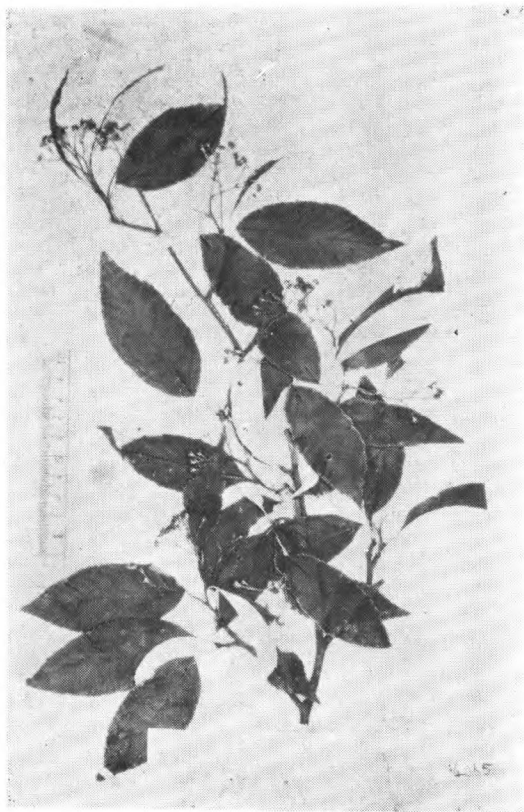
*Sorbus expansa* Koehne  
Wils. 406 (type) 湖北宜昌



*Sorbus ferruginea* (Wenzig) Rehd.  
Forr. 15814 云南



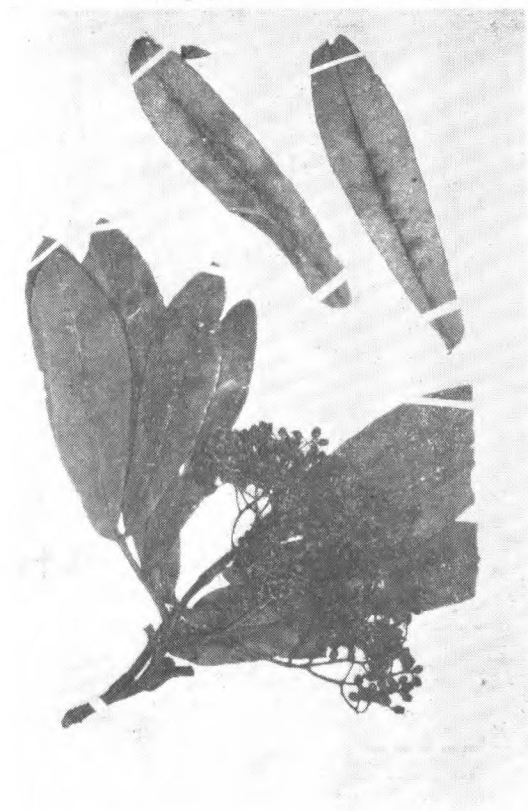
*Sorbus filipes* H.-M.  
Forr. 19547, 20941 云南



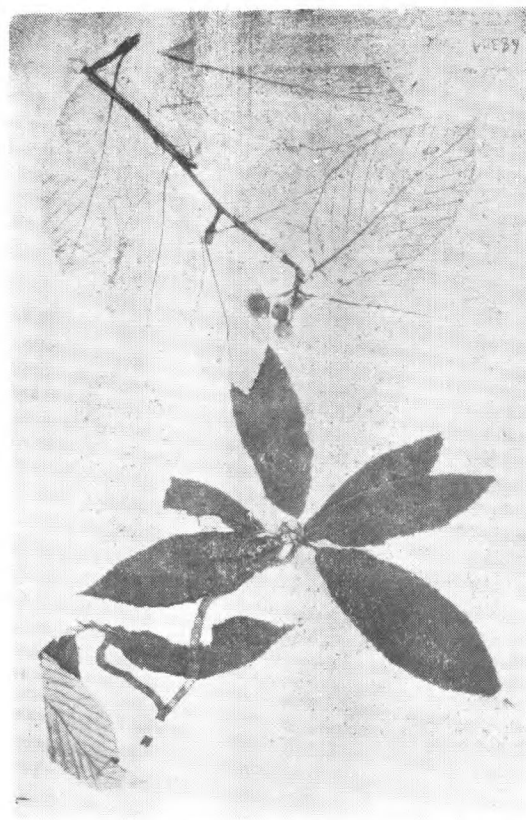
*Sorbus folgneri* (Schneider) Rehd.  
Henry 4065 (type) 湖北巴东



*Sorbus glomerulata* Koehne  
Wils. 3001 (type) 湖北长阳



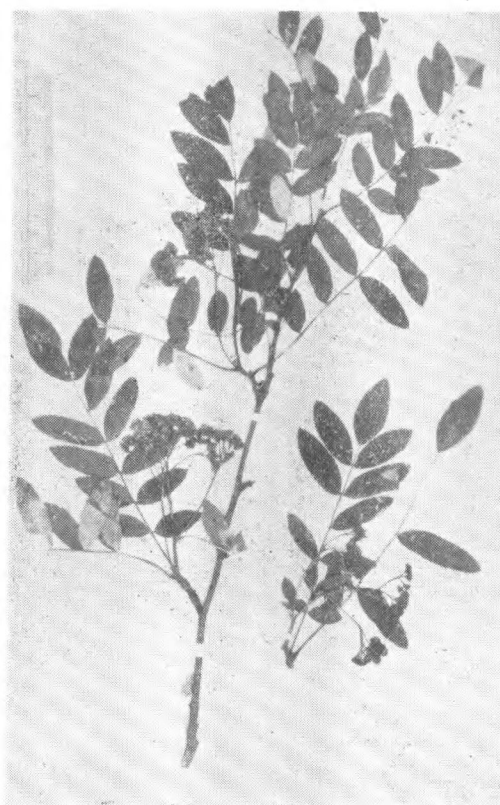
*Sorbus Harrowiana* (Balf. f. et. W. W. Sm.) Rehd.  
Forr. 9040 (syntype) 云南



*Sorbus Hemsleyi* (Schneider) Rehd.  
Henry 6830a (type) 湖北房县,  
Henry 7905 湖北长阳



*Sorbus Henryi* Rehd.  
Henry 8957 (type) 四川东部



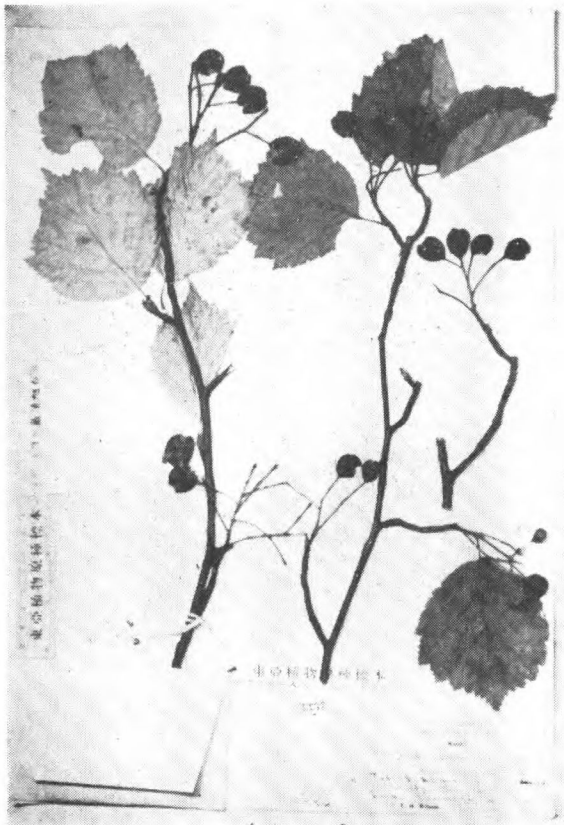
*Sorbus hupehensis* Schneider  
Purdom 1034 甘肃岷州



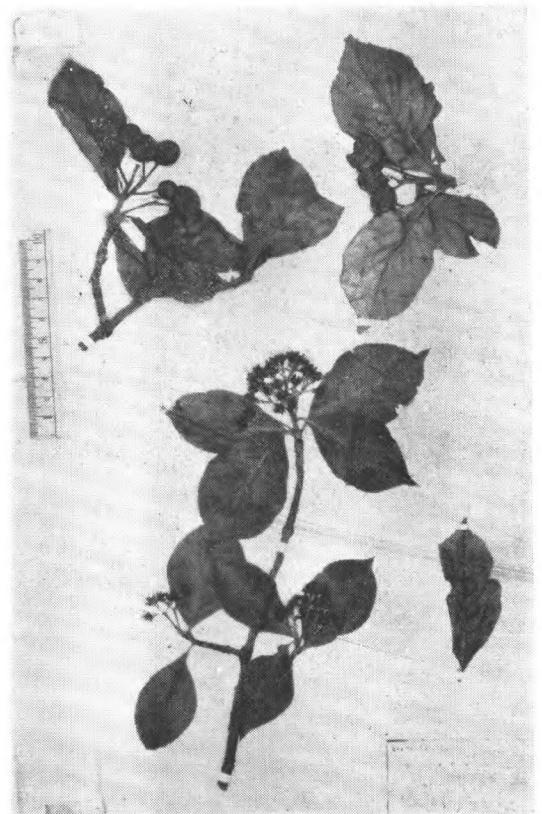
*Sorbus hupehensis* Schneider. var.  
*aperta* (Koehne) Schneider  
Wils. 4155 (type) 四川岷州谷茂州



*Sorbus hupehensis* Schneider var.  
*syncarpa* Koehne  
Wils. 320 (syntype) 湖北房县

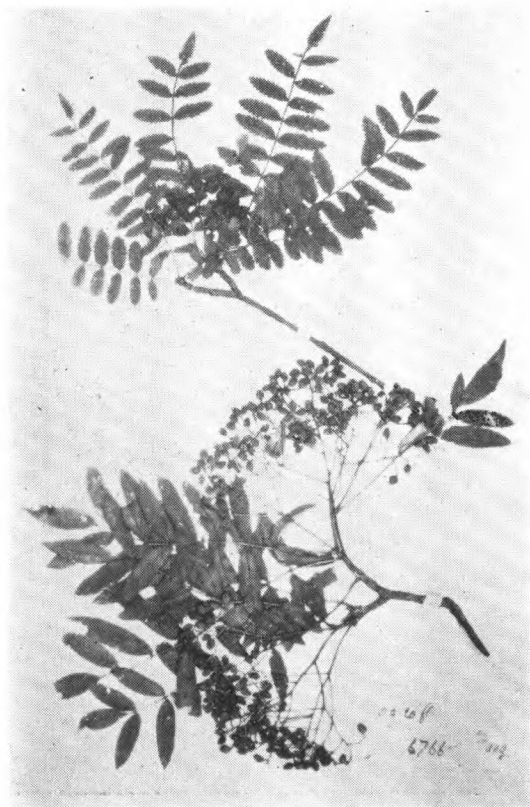


*Sorbus japonica* var. *calocarpa* Rehd.  
Wils. (type) 日本



*Sorbus Keissleri* (Schneider) Rehd.  
Wils. (Veitch) 593 (type) 湖北西部

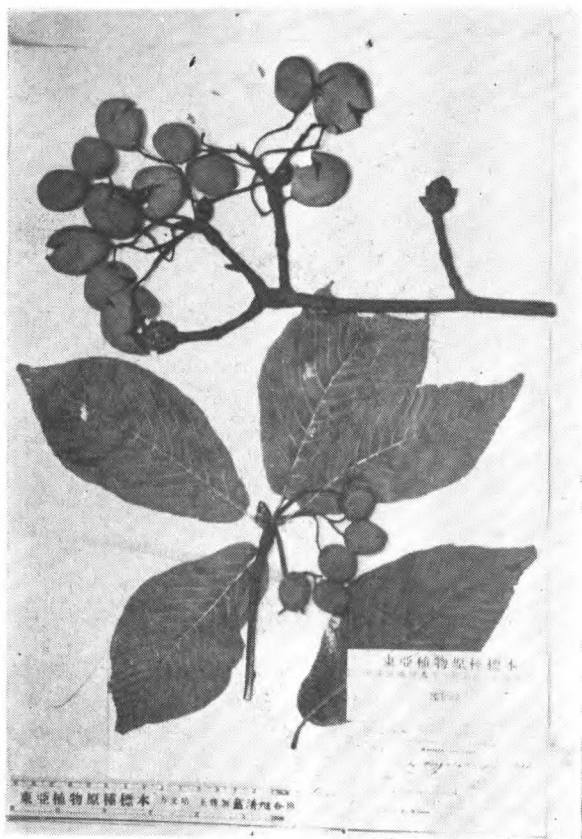




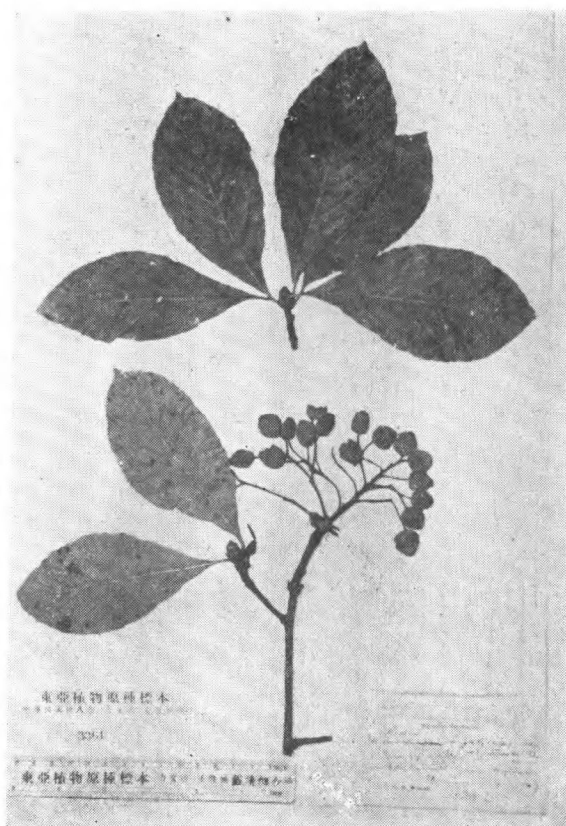
*Sorbus Koehneana* Schneider  
Henry 6766 (type) 湖北房县



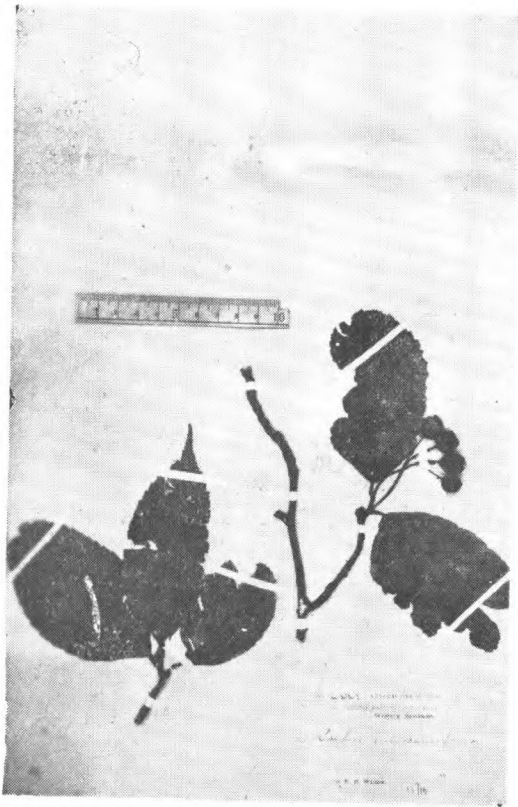
*Sorbus laxiflora* Koehne  
Wils. 3008 (type) 四川打箭炉



*Sorbus megalocarpa* Rehd.  
Wils. 956 (type) 四川穆坪



*Sorbus megalocarpa* var. *cuneata* Rehd.  
Wils. 4215, (type) 四川穆坪



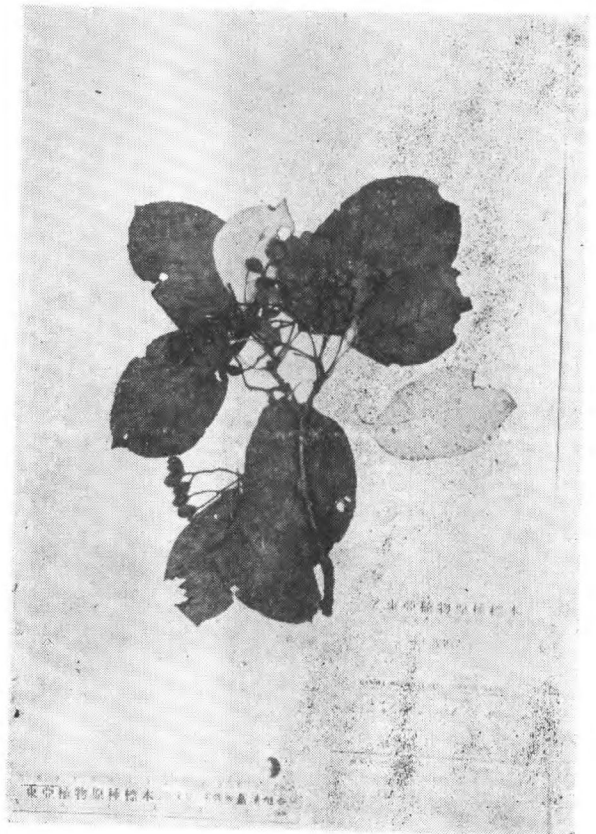
*Sorbus meliosmifolia* Rehd.  
Wils. 4221 (type) 四川穆坪



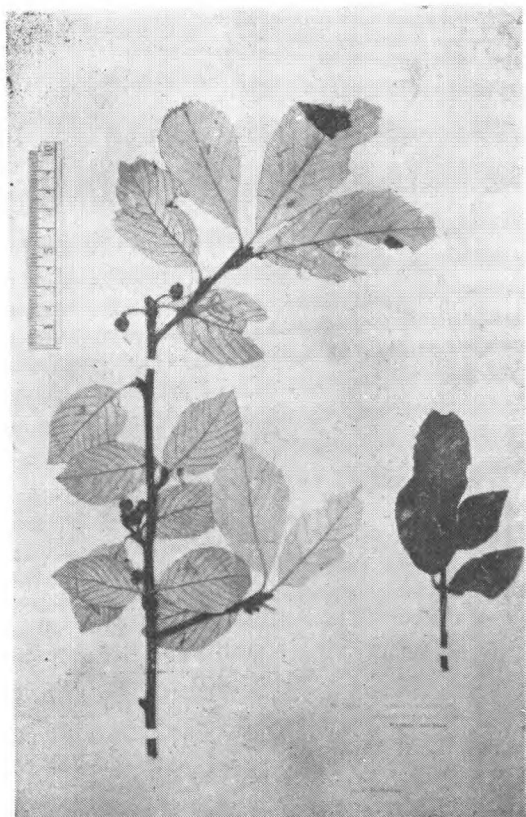
*Sorbus multijuga* Koehne. var.  
*microdonta* Koehne  
Wils. 864a (type) 四川汶川县西



*Sorbus munda* Koehne  
Licent 4740 甘肃西部



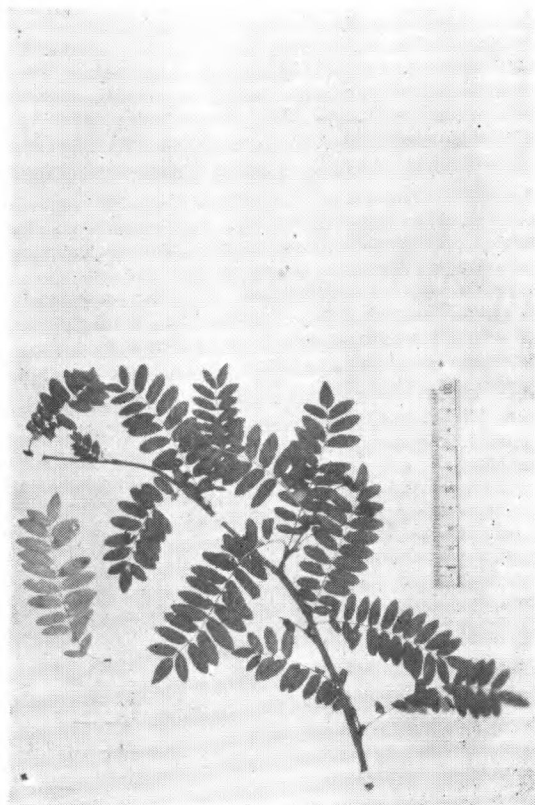
*Sorbus nubium* H.-M.  
H.-M. 384-11182 (isotype) 湖南



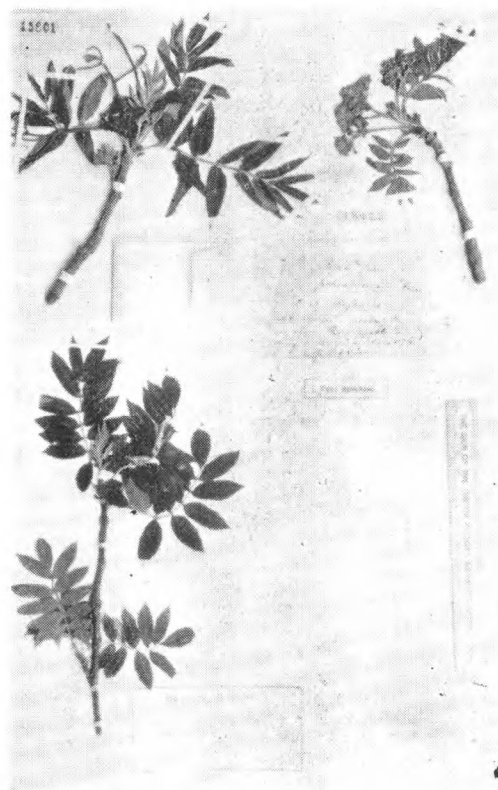
*Sorbus pallescens* Rehd.  
Wils. 1255 (type) 西康打箭炉



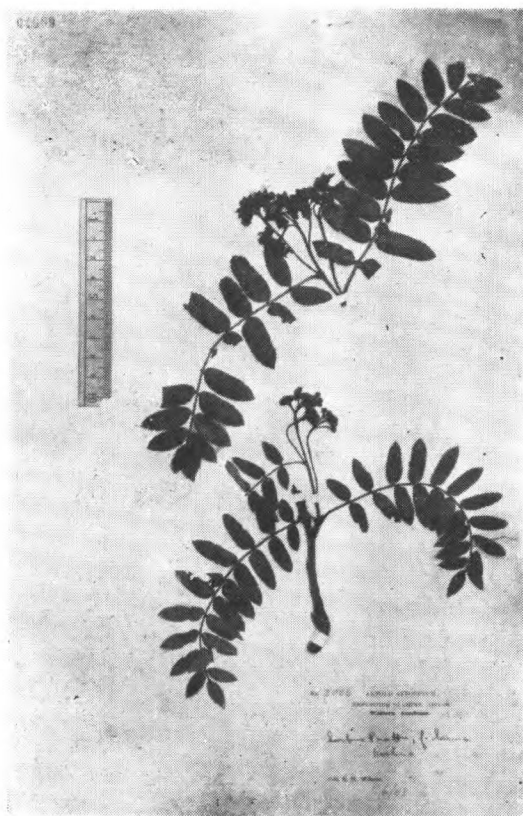
*Sorbus pluripinnata* (Schneider) Koehne  
Henry 8960 (type) 四川



*Sorbus pogonopetala* Koehne  
Wils. 3003 (type) 四川灌县西



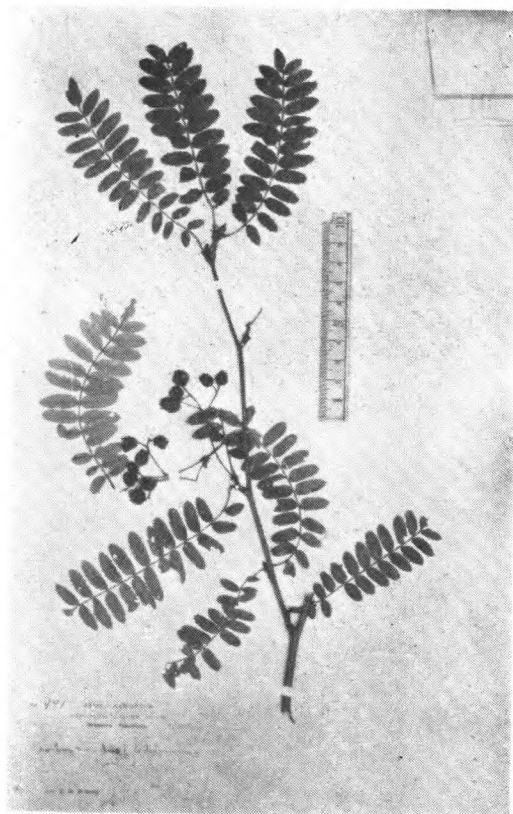
*Sorbus pohuashanensis* (Hance) Hedl.  
Bretschneider in Herb. Hance. 18423  
(type) 北京



*Sorbus Pratii* Koehne var. *laevis*  
Koehne  
Wils. 3006 (type) 西康打箭炉



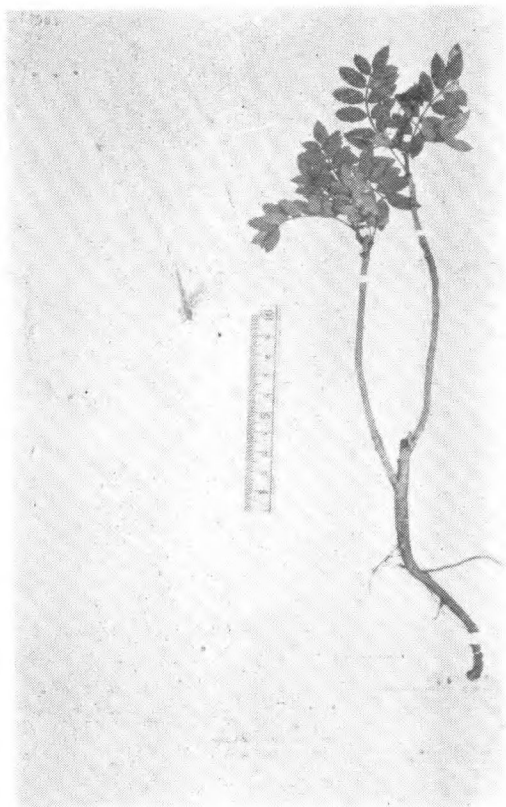
*Sorbus Pratii* Koehne var. *striata* Koehne  
Pratt 234 (type) 西康打箭炉



*Sorbus Pratii* Koehne var. *tatsienensis*  
(Koehne) Schneider  
Wils. 991 (type) 西康打箭炉



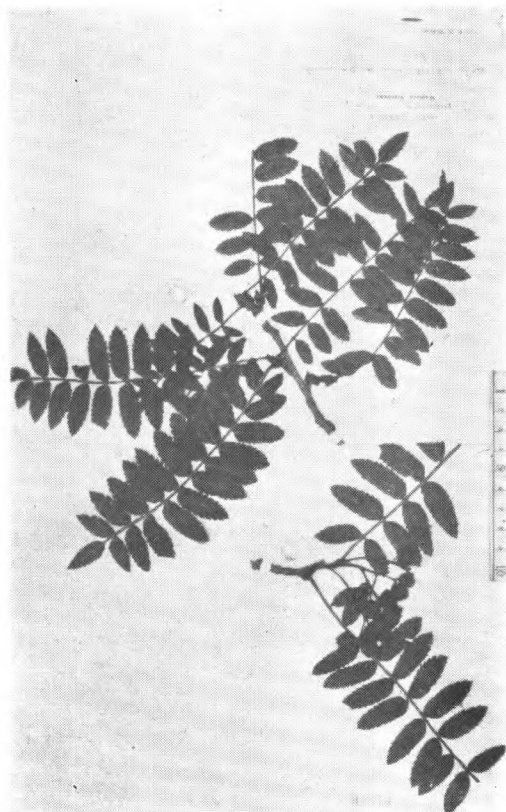
*Sorbus pteridophylla* H.-M.  
Forr. 16682 (type.) 云南



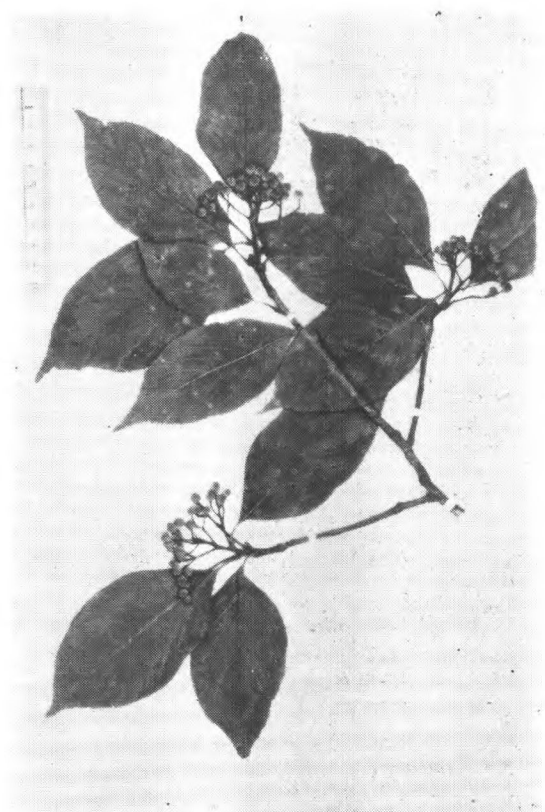
*Sorbus reducta* Diels  
Forr. 2238 (type) 云南丽江



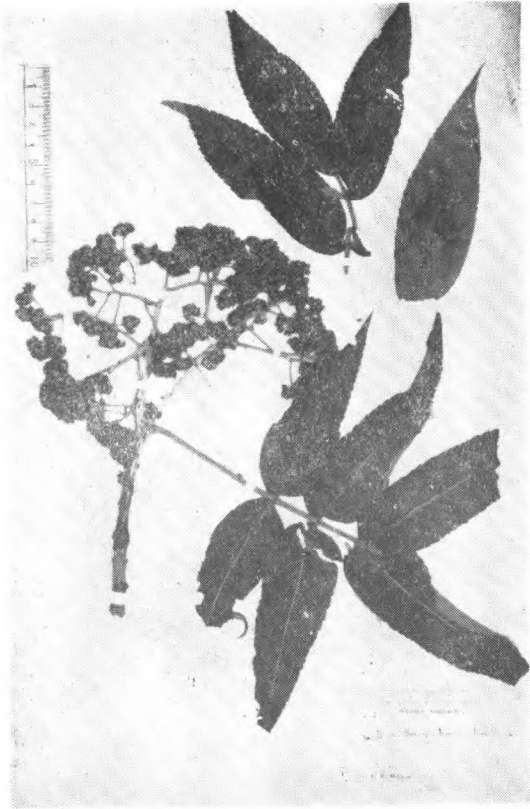
*Sorbus Rehderiana* Koehne  
Wils. 1281, 1266 (syntype) 西康打箭炉



*Sorbus Rehderiana* Koehne var.  
*grosseserrata* Koehne  
Wils. 1035 (type) 四川汶川县西



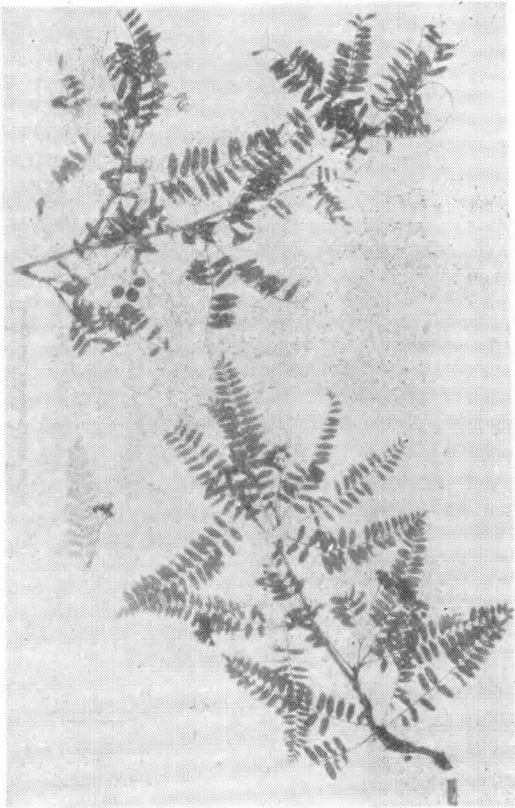
*Sorbus rhamnoides* (DC.) Rehd.  
Forr. 23255 云南澜沧江、怒江



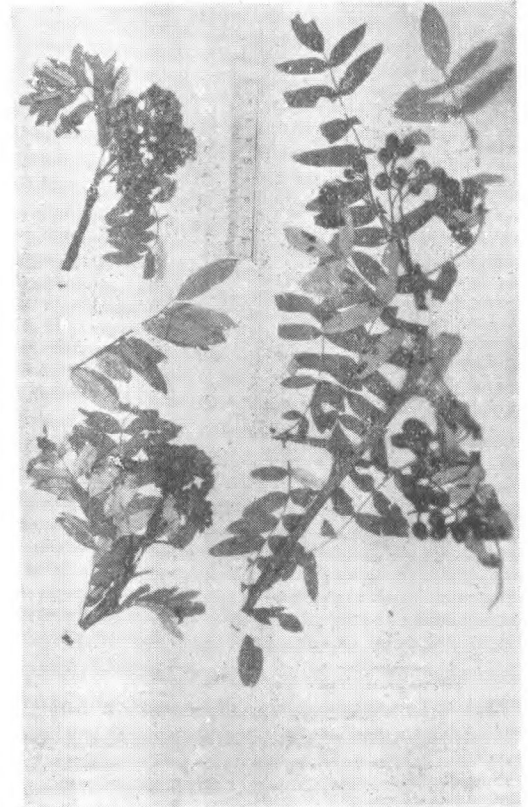
*Sorbus Sargentiana* Koehne  
Wils. 3011 (syntype) 四川灌县



*Sorbus scalaris* Koehne  
Wils. 922 (type) 四川瓦山



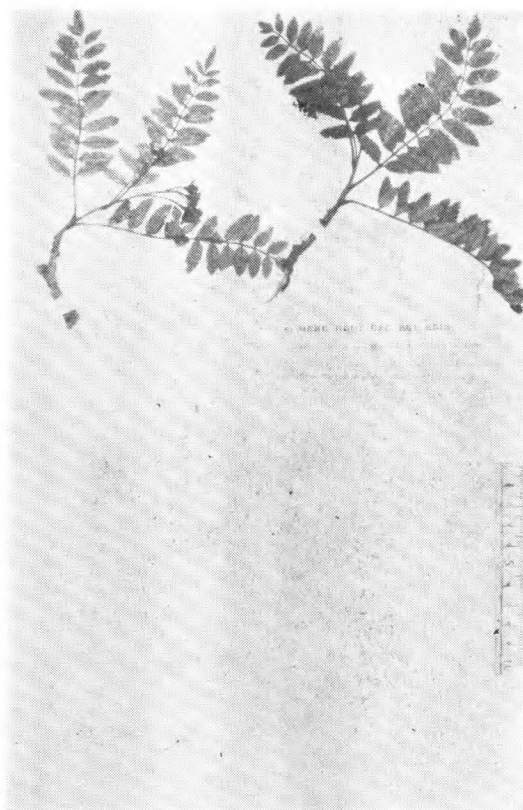
*Sorbus setschwanensis* (Schneider)  
Koehne  
Wils. 3007 (type) 四川灌县牛头山



*Sorbus tianschanica* Rupr.  
Przewalski 124, 428 甘肃



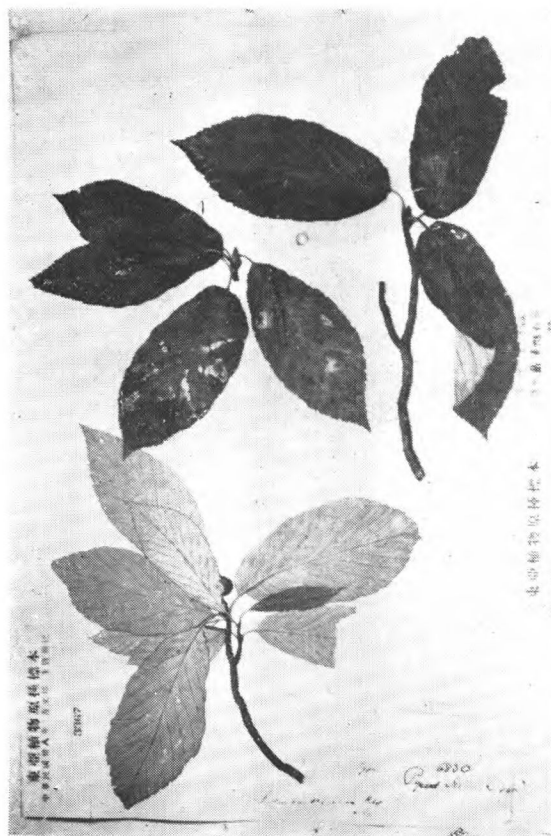
*Sorbus unguiculata* Koehne  
Wils. 874a (syntype) 西康打箭炉



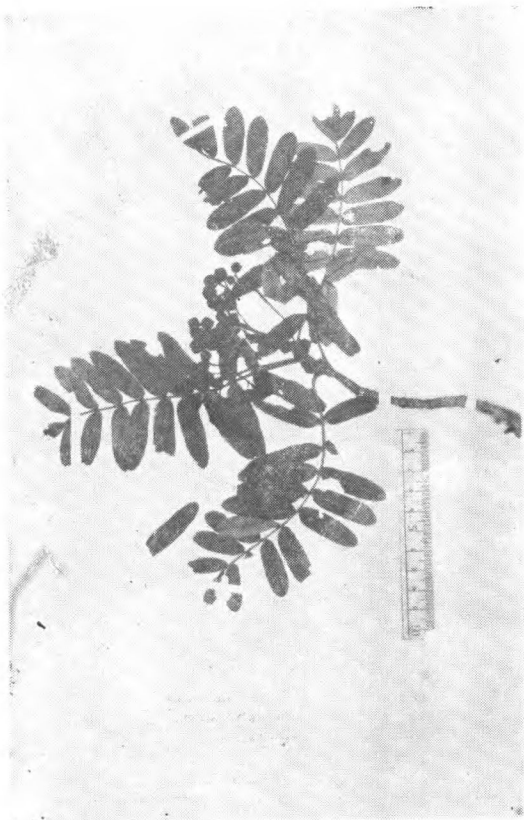
*Sorbus Valbrayi* Lévl.  
Forr. 1440 云南(大理)



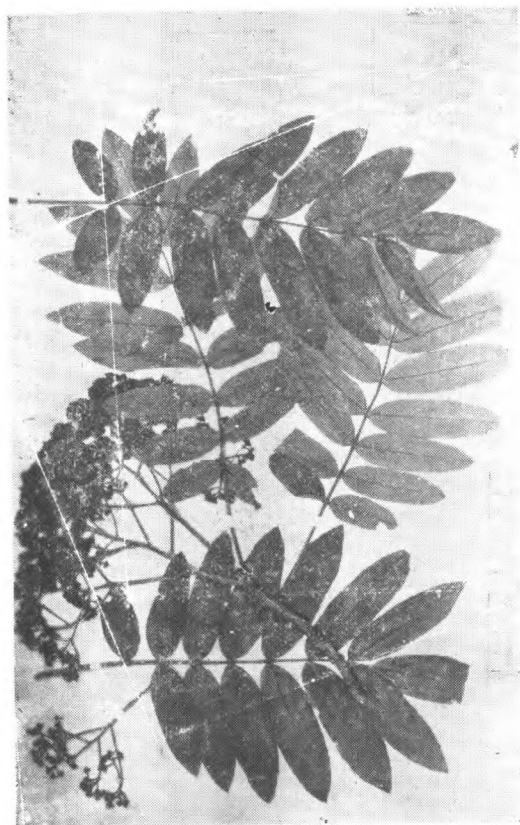
*Sorbus Vilmorini* Schneider  
Vilmorin, (type)



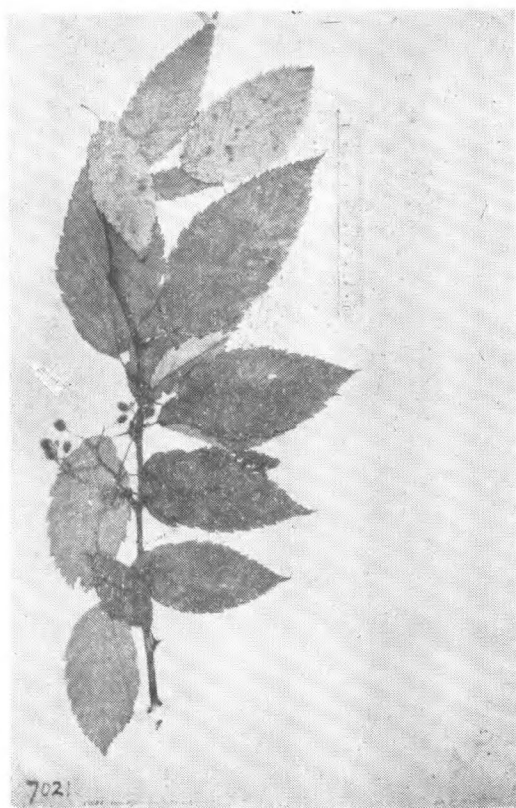
*Sorbus xanthoneura* Rehd.  
Henry 6830 (type) 湖北



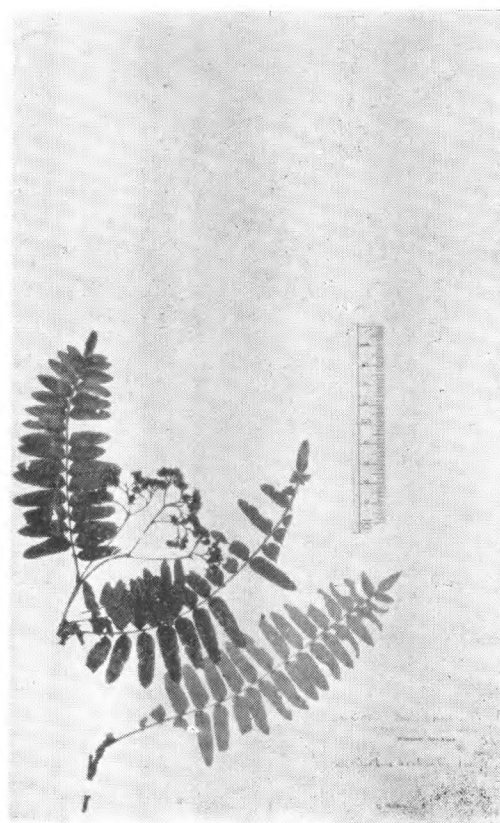
*Sorbus Monbeigii* Card.  
(*Pyrus Monbeigii* Card.)  
Delavay, (cotype) 云南



*Sorbus Wilsoniana* Schneider  
Wils. 985 (type) 湖北巴东



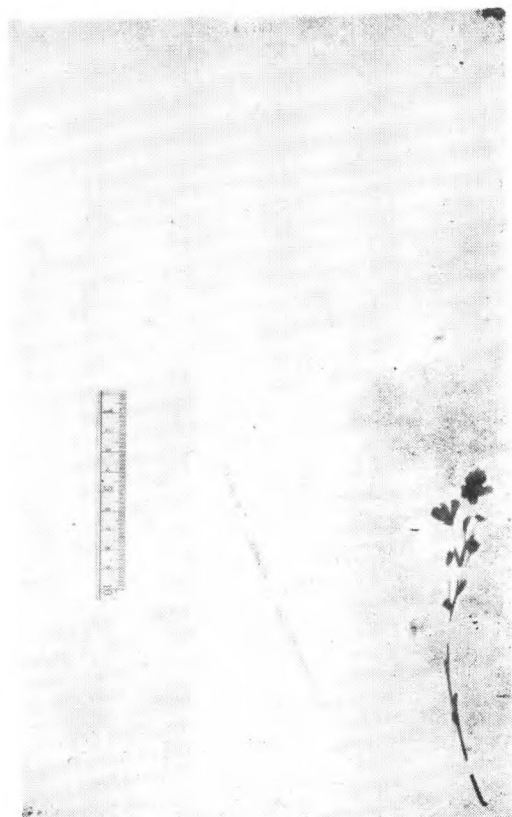
*Sorbus Zahlbruckneri* Schneider  
Henry 7021 type 四川南巫山



*Sorbus aestivalis* Koehne  
Wils. 3002 (type) 四川(瓦山)

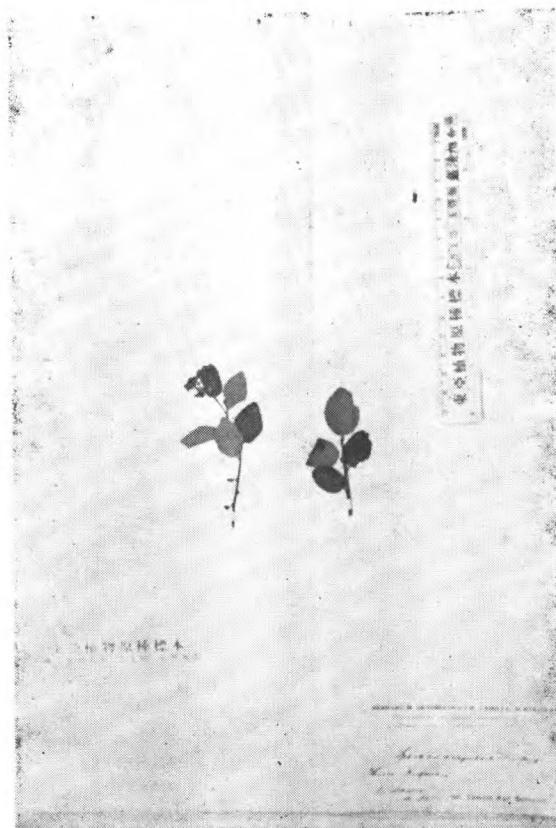


斯宾草属 *Spenceria* *Trimen*

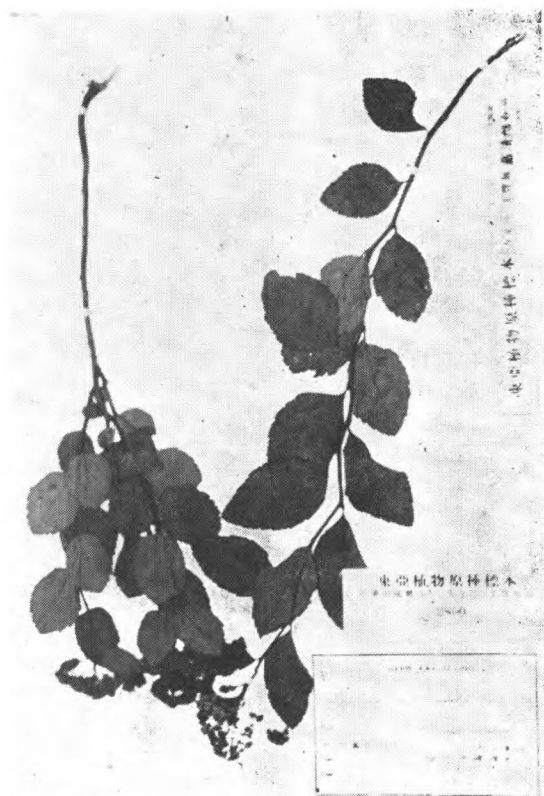


*Spenceria ramalana* *Trimen*  
Capt. Gill. (type) 西藏

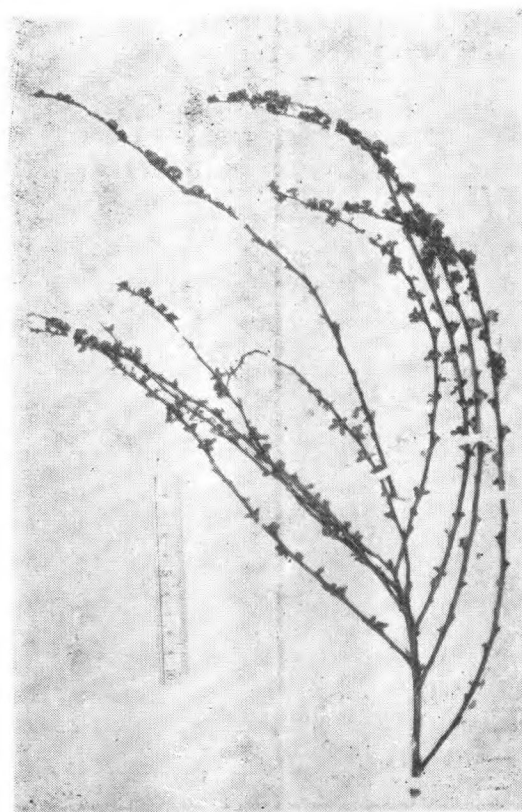
繡綫菊属 *Spiraea* *L.*



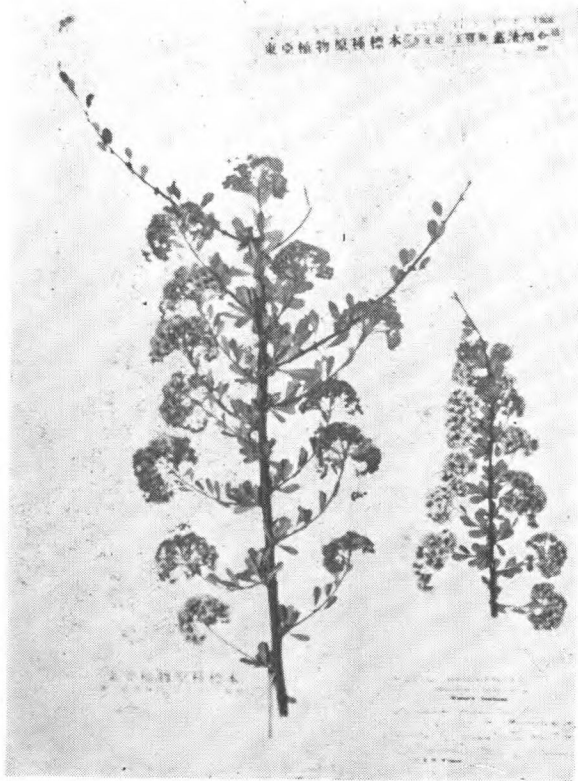
*Spiraea angulata* *Fritsch*  
Wawra 865 (type)



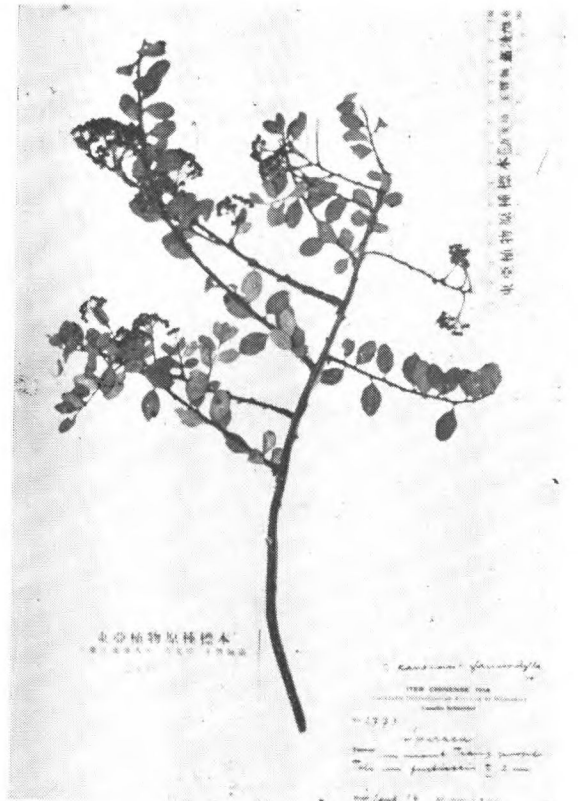
*Spiraea betulaefolia* *Pall.*  
Uno 20037.



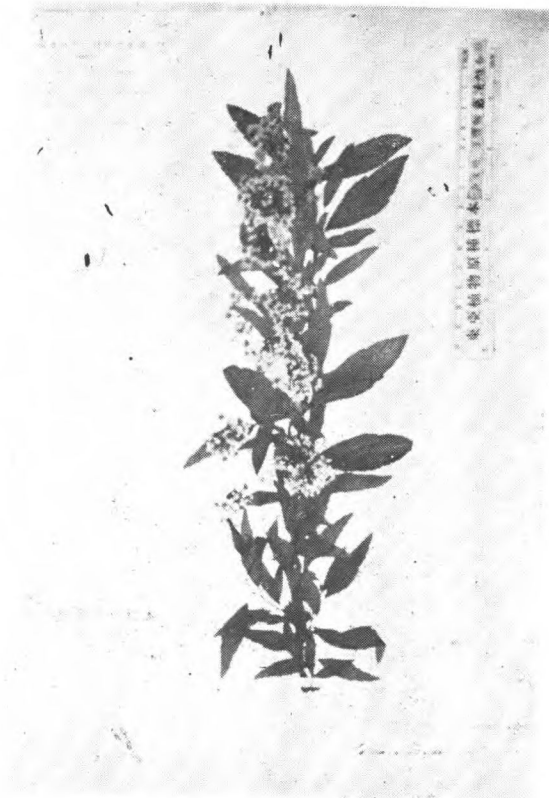
*Spiraea calcicola* *Smith*  
Forr. 5730 (type?) 云南



*Spiraea canescens* G. Don var.  
*oblanceolata* Rehd.  
Wils. 2762 (type) 四川西部



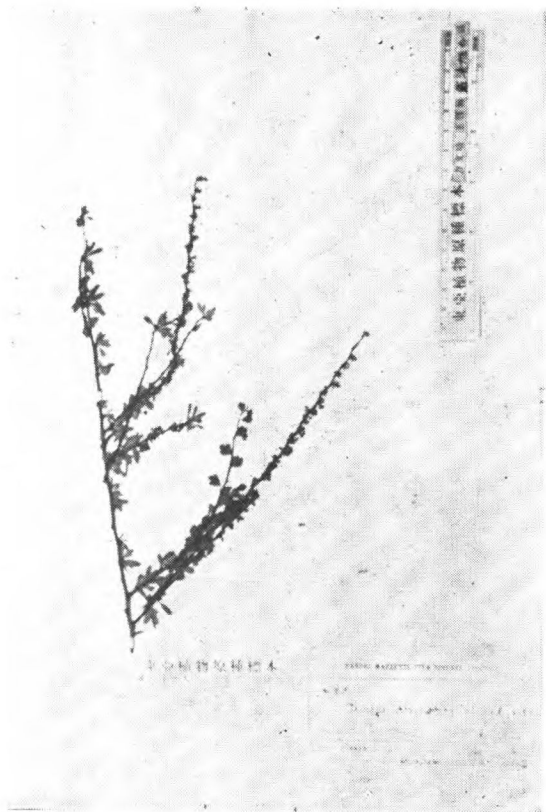
*Spiraea canescens* var. *glaucophylla*  
Franchet  
Schneider 2773



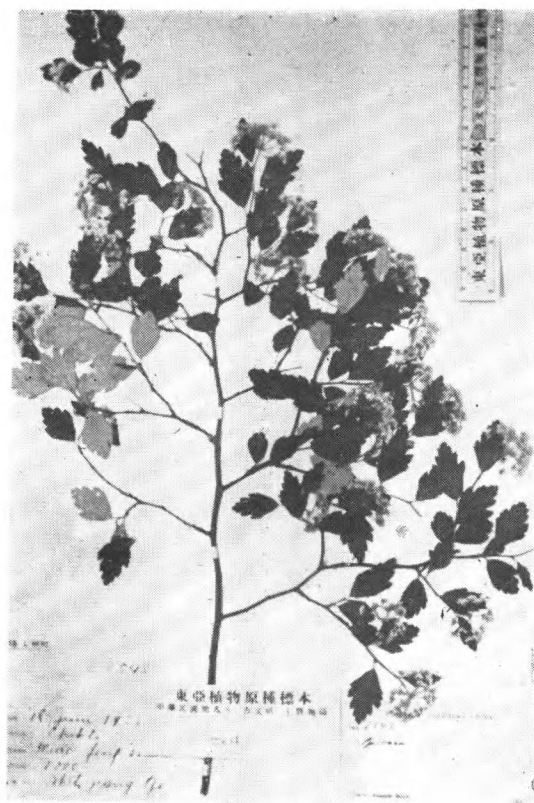
*Spiraea cantonensis* Loureiro  
T. T. Yu 518 四川峨眉



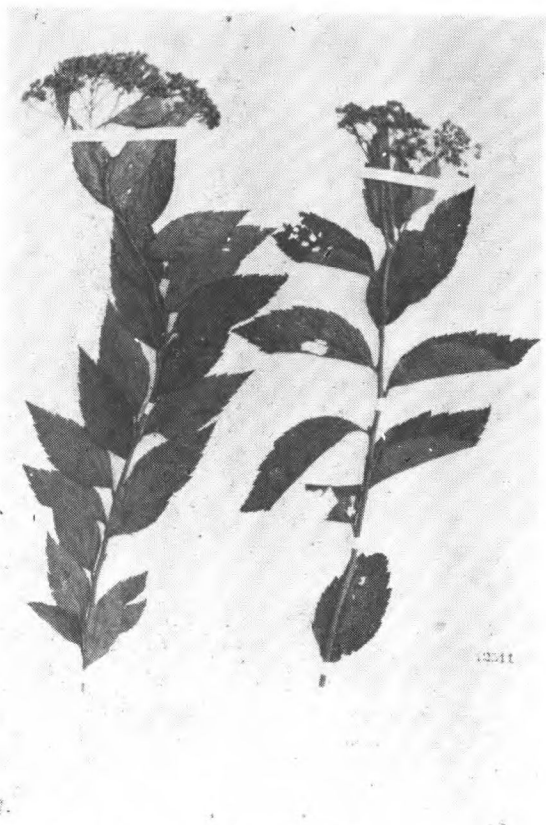
*Spiraea cantonensis* var. *lanceolata*  
Zabel.  
Woodcock 775.



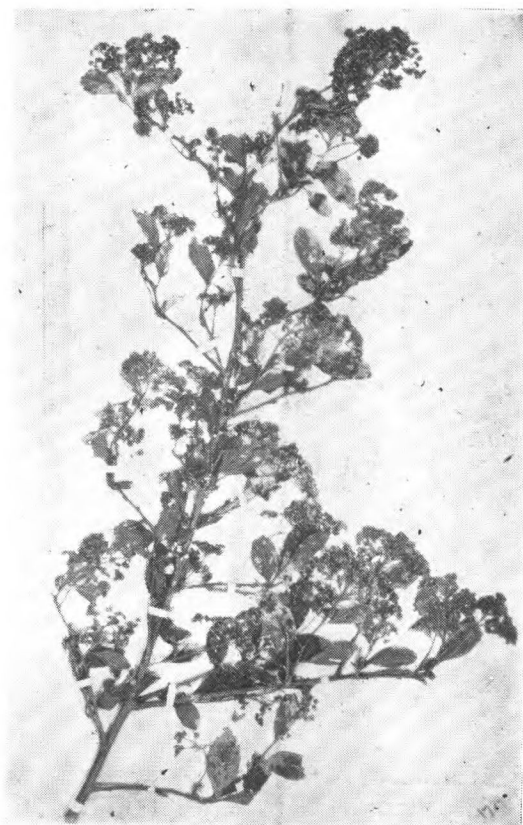
*Spiraea compsophylla* H.-M.  
H.-M. 7608 (type) 云南



*Spiraea dasyantra* Bge.  
J. Hers 2543.



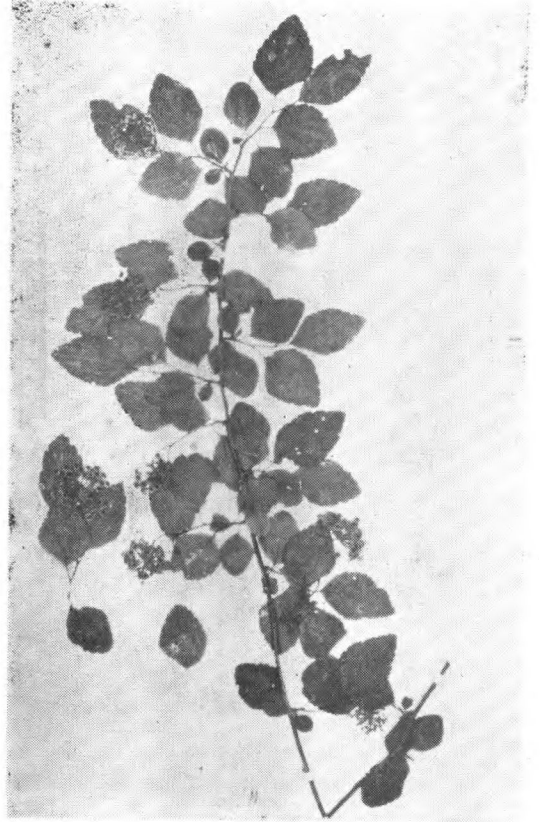
*Spiraea formosana* Hay.  
T. Kawakami et U. Mori 无号  
(isotype) 台湾 Randaisan



*Spiraea Henryi* Hemsl.  
Henry 1729 (type) 湖北巴东



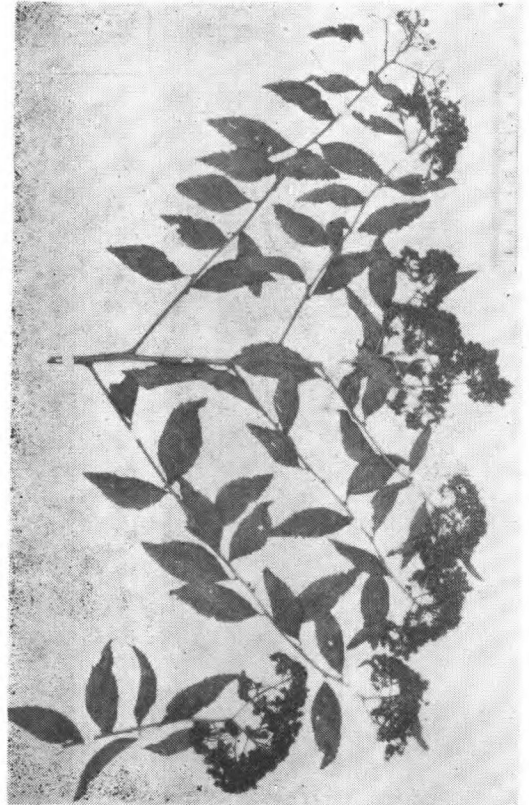
*Spiraea hirsuta* Schneider  
Wils. 2768 湖北



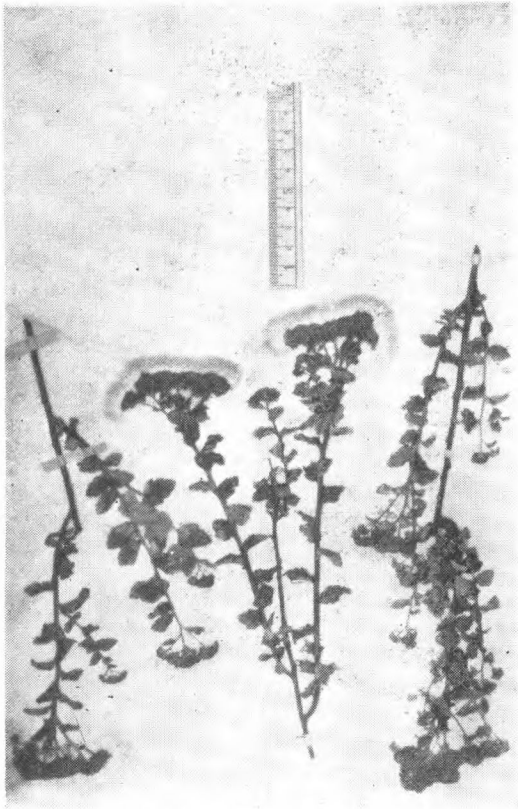
*Spiraea hirsuta* (Hemsl.) Schneider var.  
*rotundifolia* (Hemsl.) Rehd.  
Wils. 2770 湖北长乐县



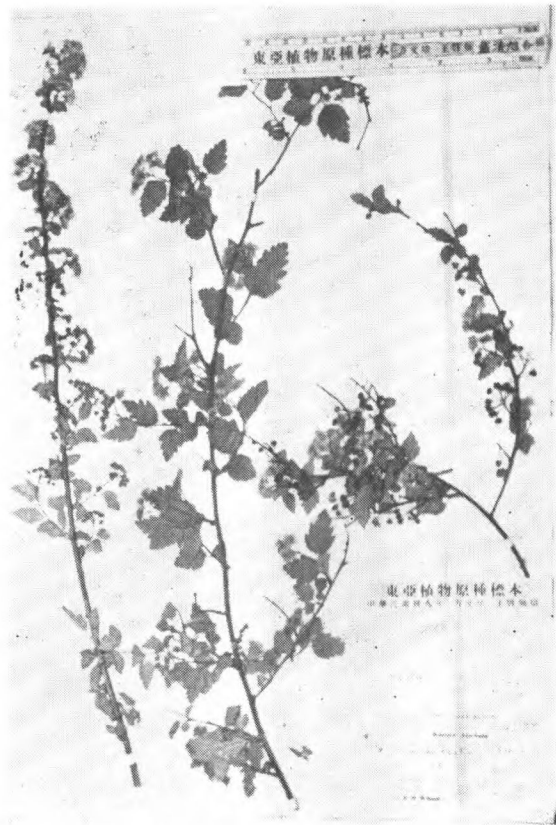
*Spiraea hypericifolia* var. *hupehensis*  
Rehd.  
. Wils. 2754 (cotype) 湖北巴东



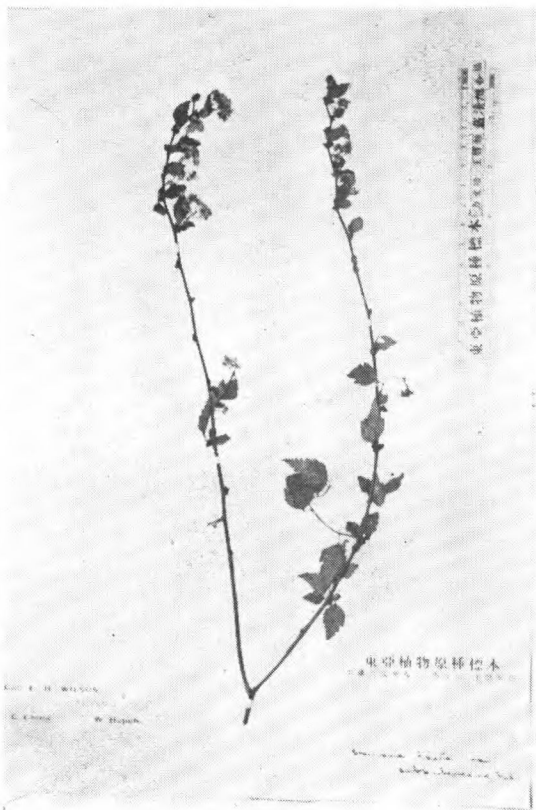
*Spiraea japonica* var. *stellaris* Rehd.  
Henry 9280 (type) 云南蒙自西南



*Spiraea koreana* Nakai  
Wils. 8620 朝鮮



*Spiraea laeta* Rehd.  
Wils. 2767 (type) 四川清溪縣



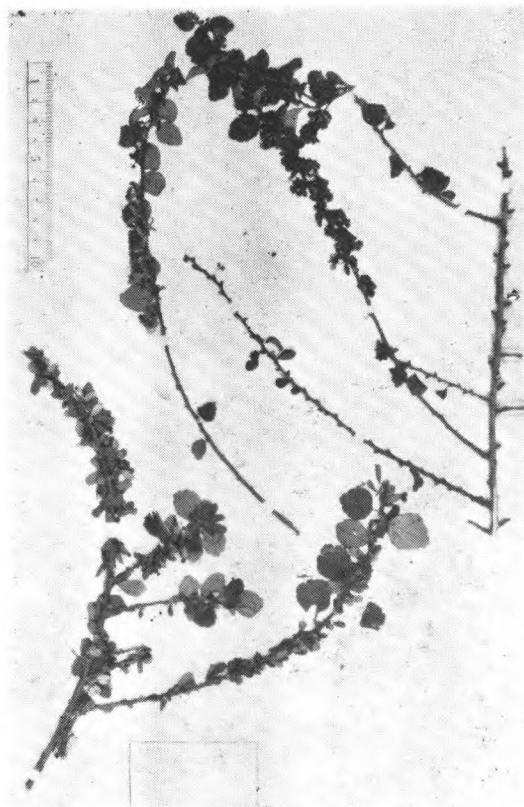
*Spiraea laeta* var. *subpubescens* Rehd.  
Wils. 97 (type) 湖北巴東



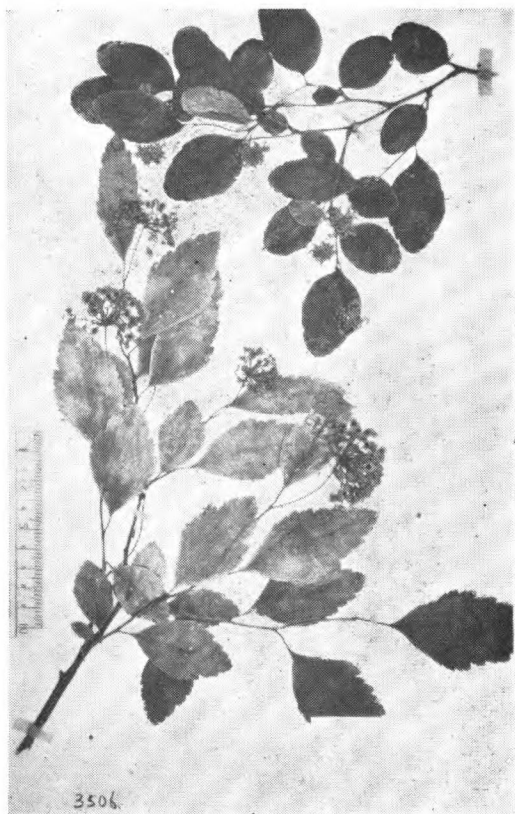
*Spiraea laeta* var. *tenuis* Rehd.  
Wils. 2772 (type) 四川灌縣



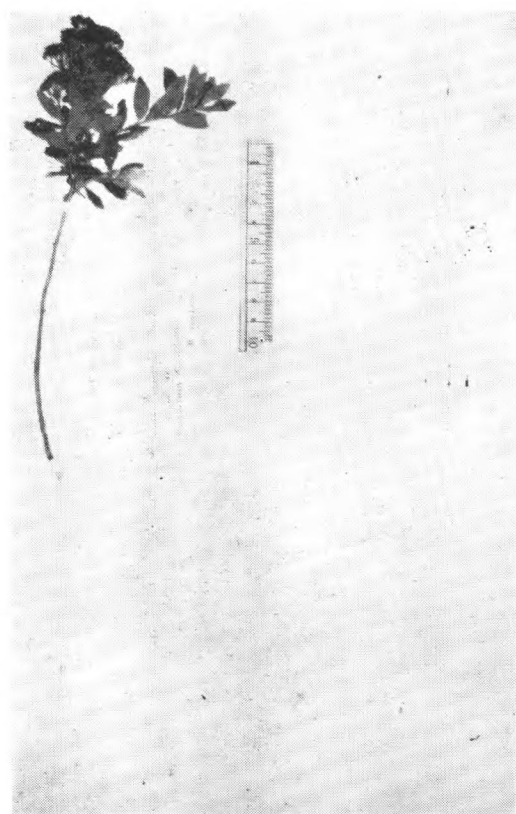
*Spiraea longigemmis* Maxim.  
Potanin (1885) 甘肃东洮河大河桥



*Spiraea Martinii* Lévl.  
Henry 10662 (type) 云南蒙自



*Spiraea Maximowicziana* Schneider  
Henry 3506 (type) 湖北宜昌



*Spiraea media* F. Schmidt  
Faurie 777 (cotype) 日本



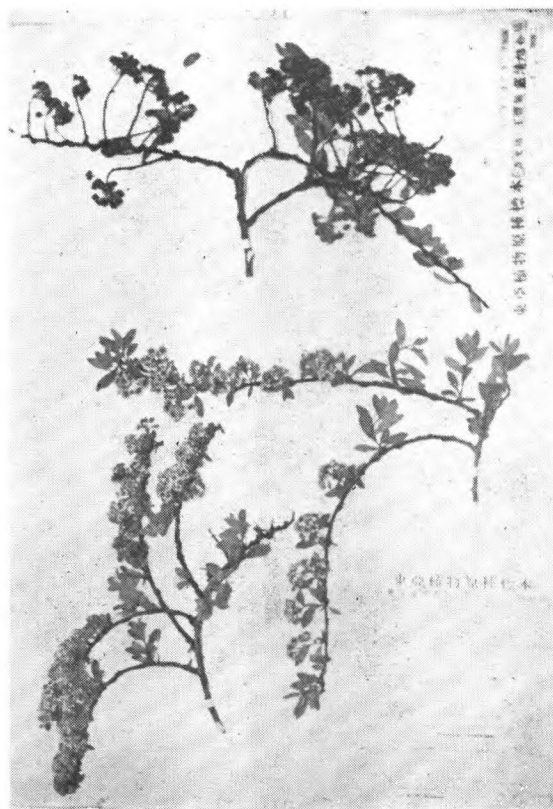
*Spiraea Miyabei* var. *glabrata* Rehd.  
Wils. 195 (type) 湖北



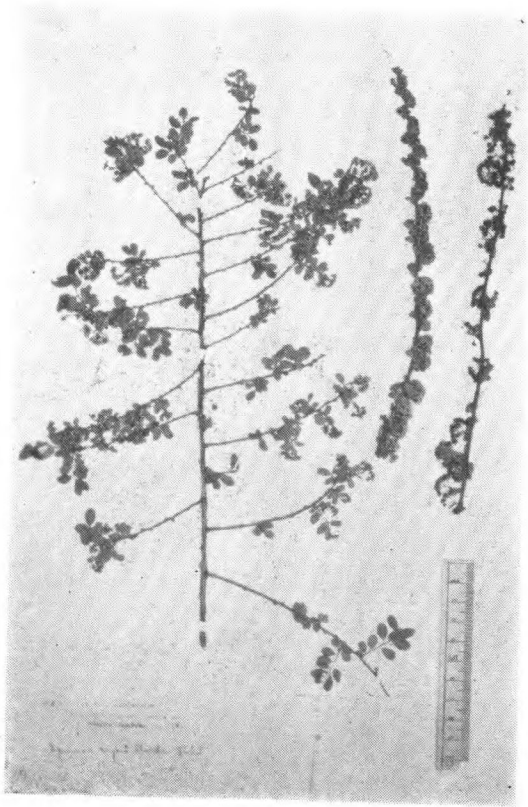
*Spiraea Miyabei* var. *pilosula* Rehd.  
Wils. 2756 (type) 湖北



*Spiraea Miyabei* var. *tenuifolia* Rehd.  
Wils. 4840 (type) 四川峨眉



*Spiraea mollifolia* Rehd.  
Wils. 1158 (type) 四川



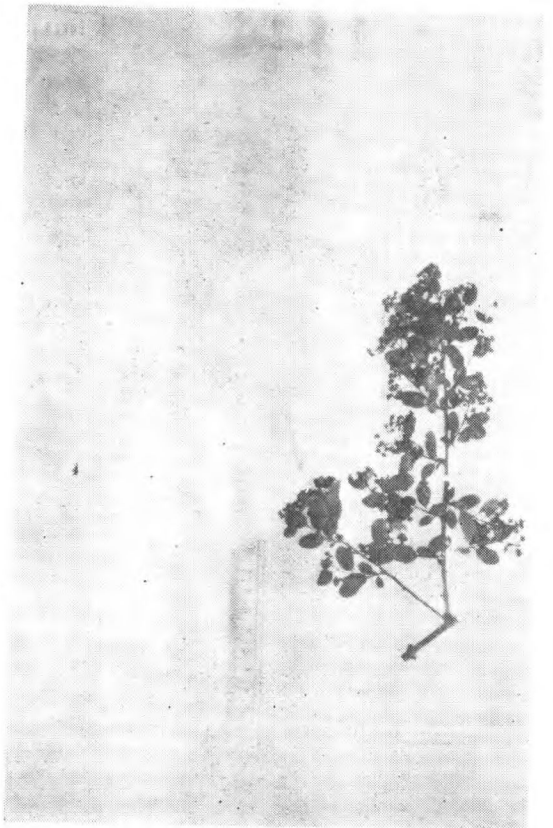
*Spiraea morrisonicola* Hay.  
T. Kawakami et U. Mori 2233.  
(iso-syn-type) 台湾摩利嵩山



*Spiraea myrtilloides* Rehd.  
Wils. 989 (type) 西康打箭炉

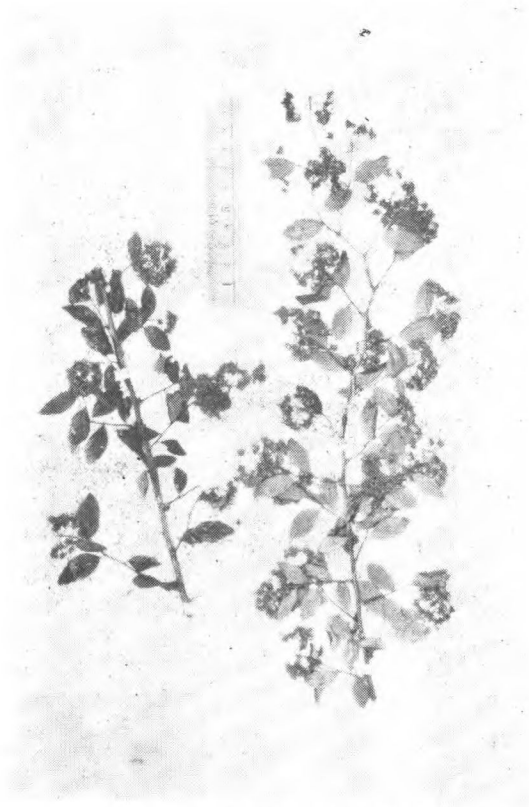


*Spiraea myrtilloides* Rehd. var. -  
amphidoxa (Rehd.) Sprague  
Wils. (Veitch) 3557a (type) 四川瓦山



*Spiraea ovalis* Rehd.  
Wils. 4573 (type) 湖北房县

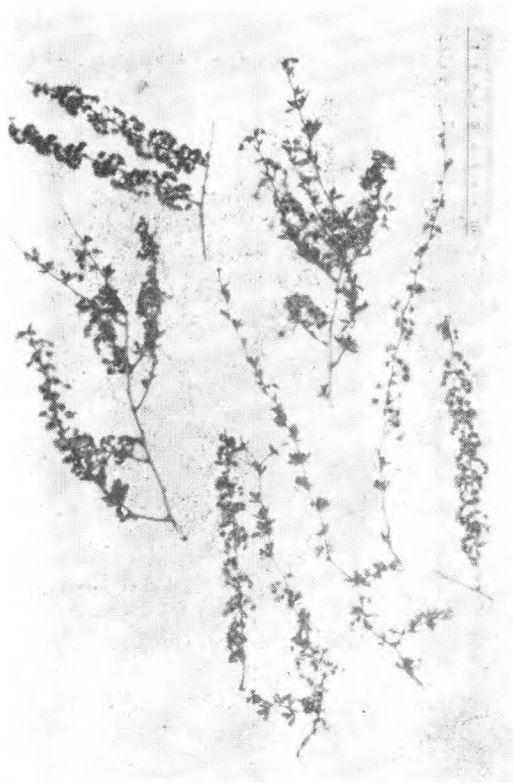




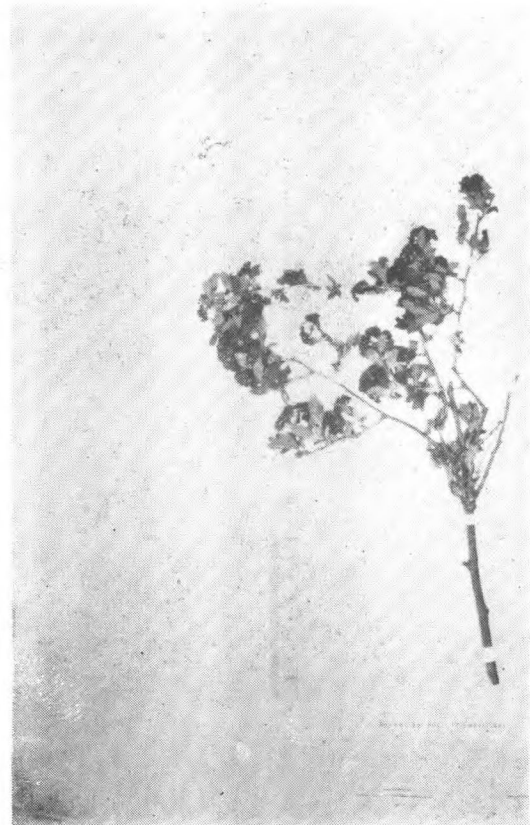
*Spiraea papillosa* Rehd.  
Wils. 3550 (type) 四川 Tung river 谷  
(打箭炉东南)



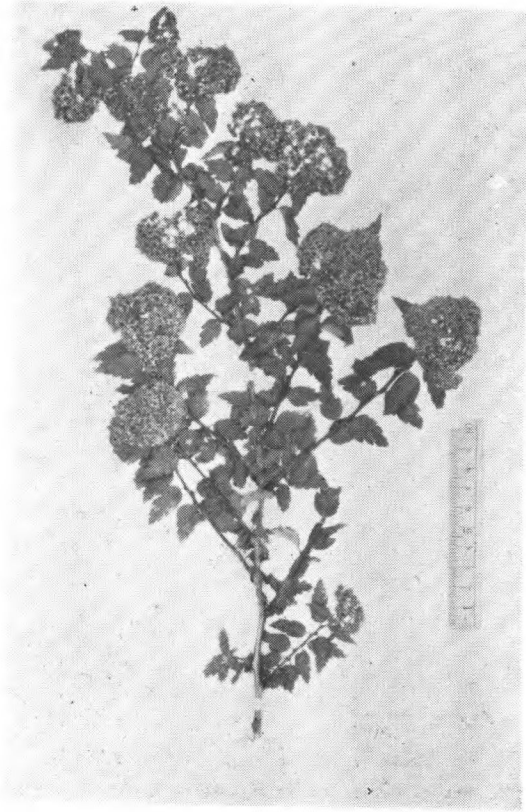
*Spiraea Prattii* Schneider  
Pratt 190 (type) 四川西部



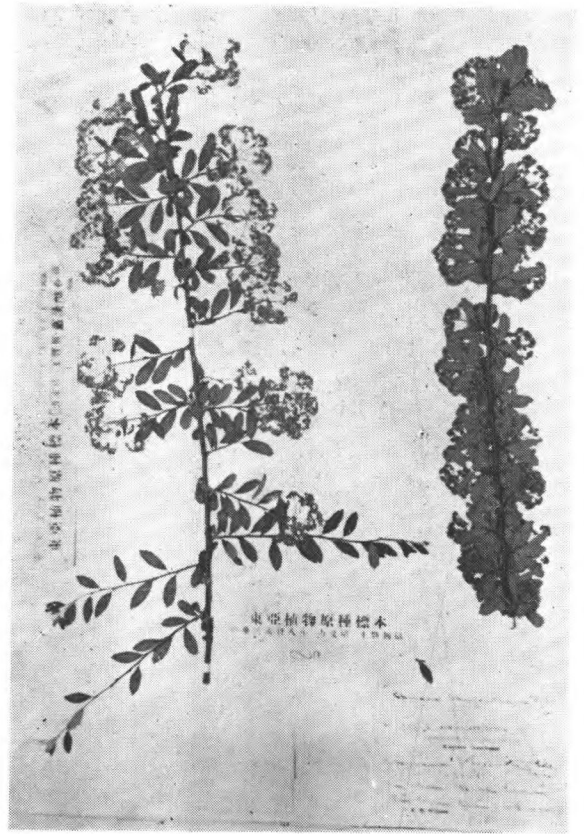
*Spiraea brunifolia* Sieb. et Zucc. var.  
*hupehensis* (Rehd.) Rehd.  
Purdom 346 陝西延安府



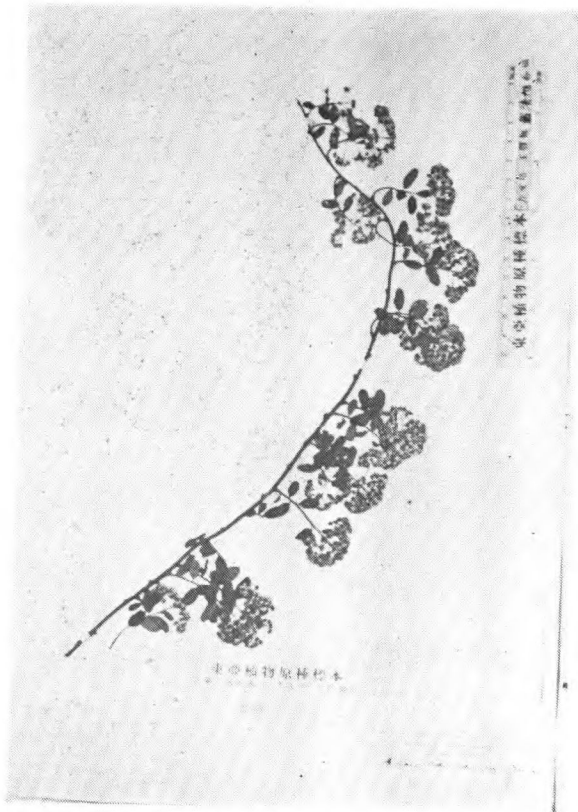
*Spiraea pubescens* Turcz.  
Przewalski 蒙古 Tugo-Lehara



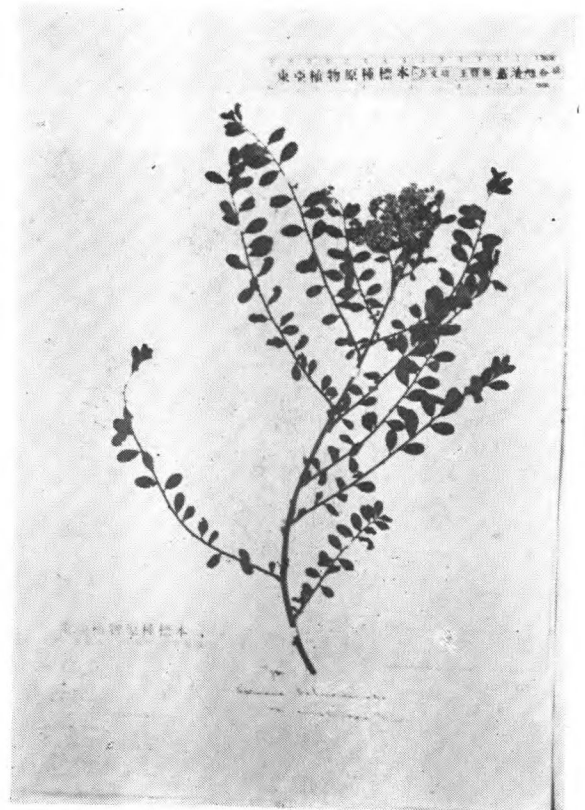
*Spiraea Rosthornii* Pritz.  
Pratt 190 西康打箭炉



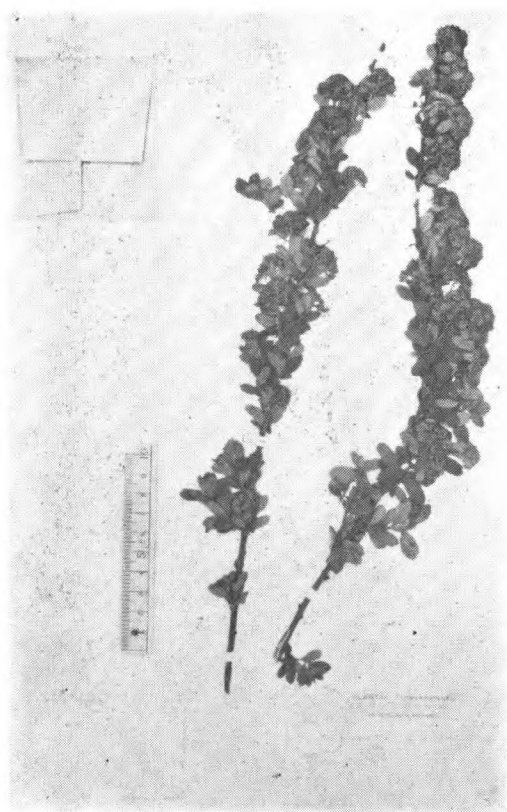
*Spiraea Sargentiana* Rehd.  
Wils. 1318a (type) 四川汶川县



*Spiraea Schneideriana* Rehd.  
Wils. 3557 (type) 四川



*Spiraea Schneideriana* var. *amphidoxa*  
Rehd.  
Wils. 3557A (type) 四川瓦山



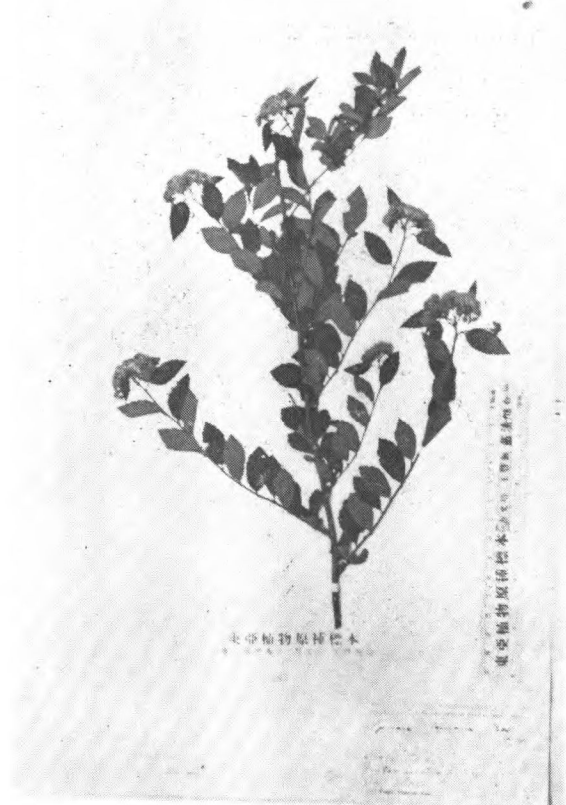
*Spiraea Schochiana* Rehd.  
Schoch 84 (type) 云南昆明



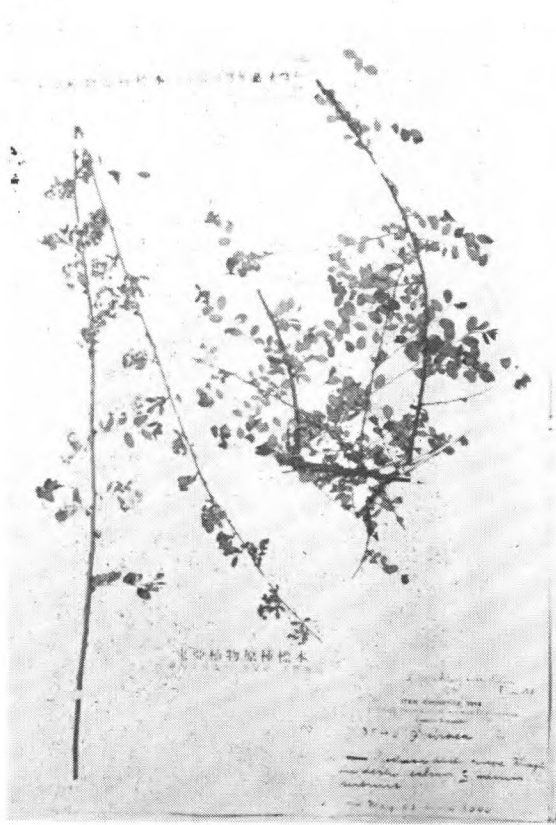
*Spiraea sublobata* H.-M.  
T. T. Yu 1105 西康西昌县



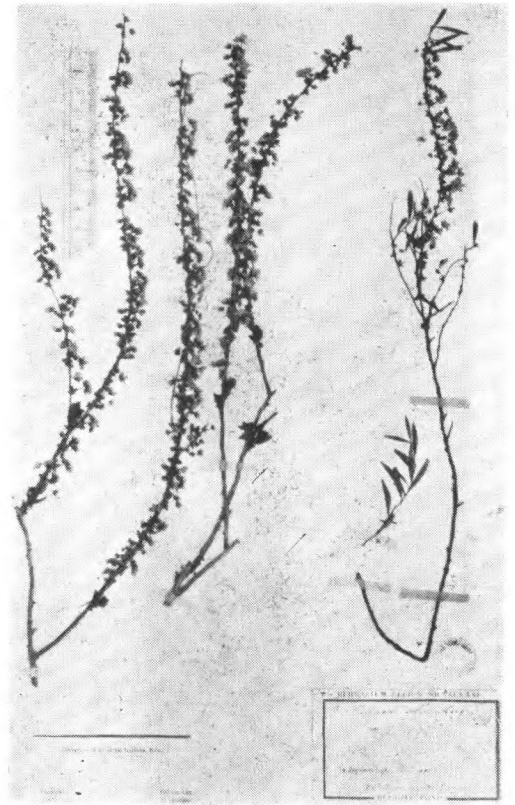
*Spiraea tarokoensis* Hay.  
B. Hay. et S. Sasaki 68  
(isotype) 台湾 Taroko.



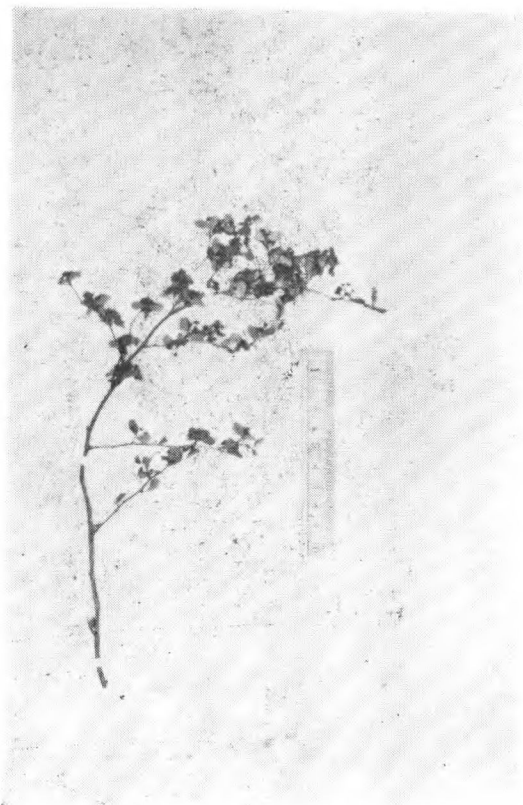
*Spiraea Teniana* Rehd.  
Ten 165 (type) 云南



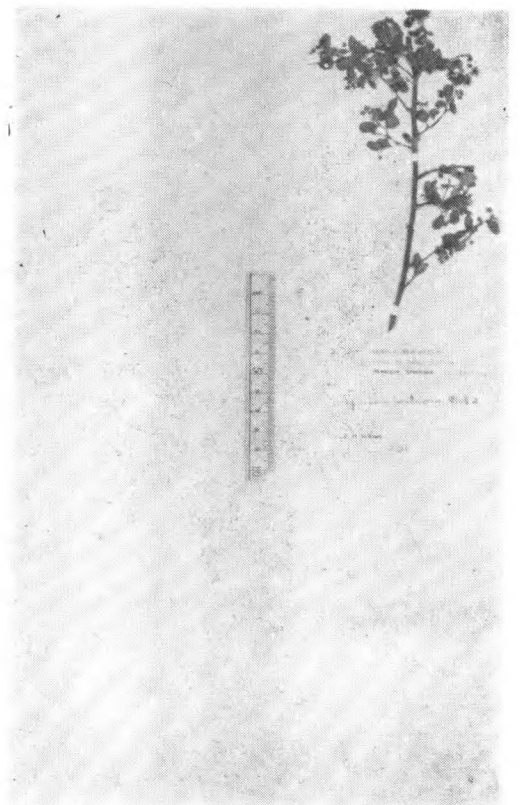
*Spiraea teretiuscula* Schneider  
Schneider 3546 (type)



*Spiraea Thunbergi* Sieb.  
Oldham 502 日本长崎, Buerger  
(Cotype) 日本



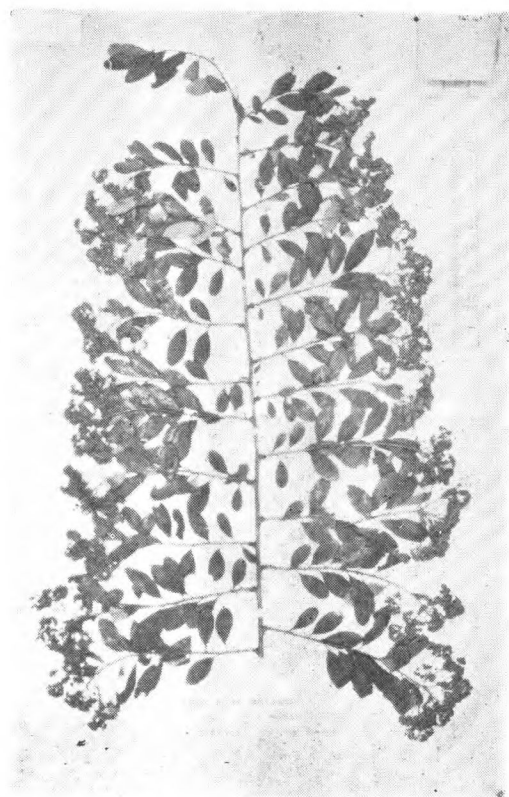
*Spiraea tortuosa* var. nov.  
Licent. 1868 山西中部



*Spiraea tortuosa* Rehd.  
Wils. 2764 (type) 四川茂州



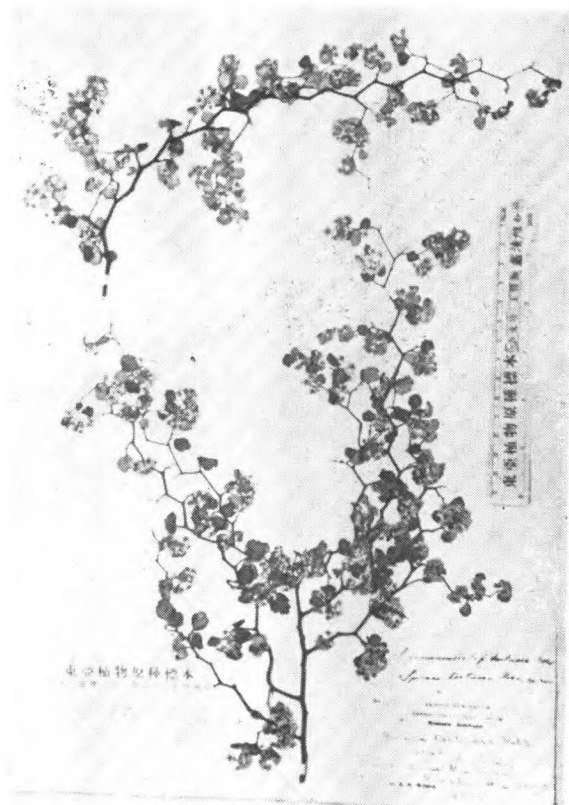
*Spiraea trilobata* Linn.  
Hers 1581 河北



*Spiraea Veitchii* Hemsl.  
Wils. (Veitch) 2276—1062 (type)  
湖北西部

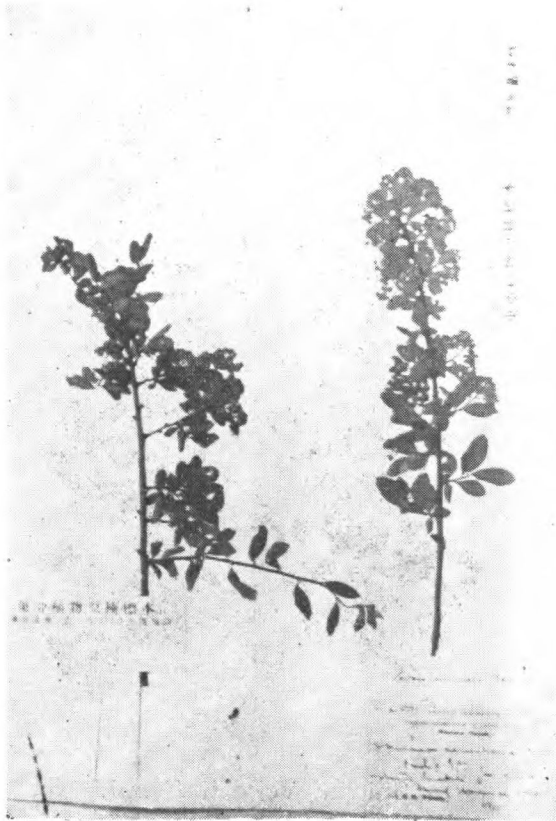


*Spiraea Wilsonii* Duthie  
Wils. 6542 (type)

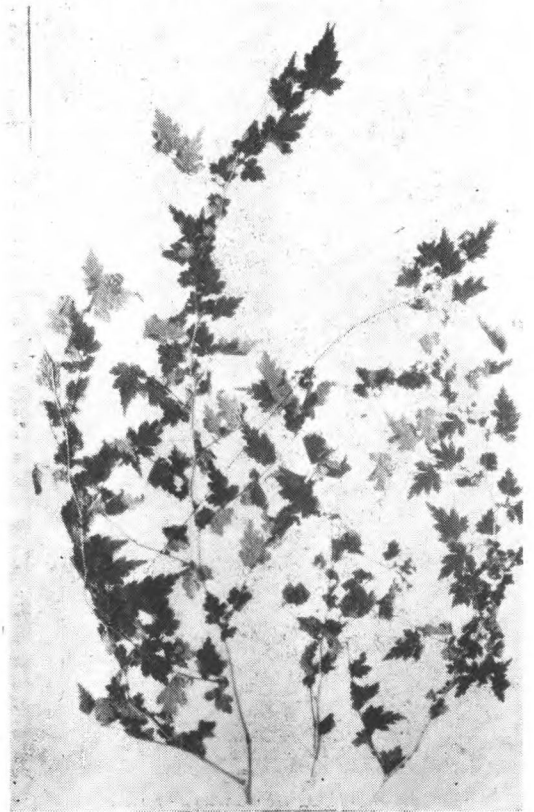


*Spiraea yunnanensis* Franch.  
*form. tortuosa* Rehd.  
Wils. 2764 (type) 四川茂州

野珠兰属 *Stephanandra* Sieb. et Zucc.



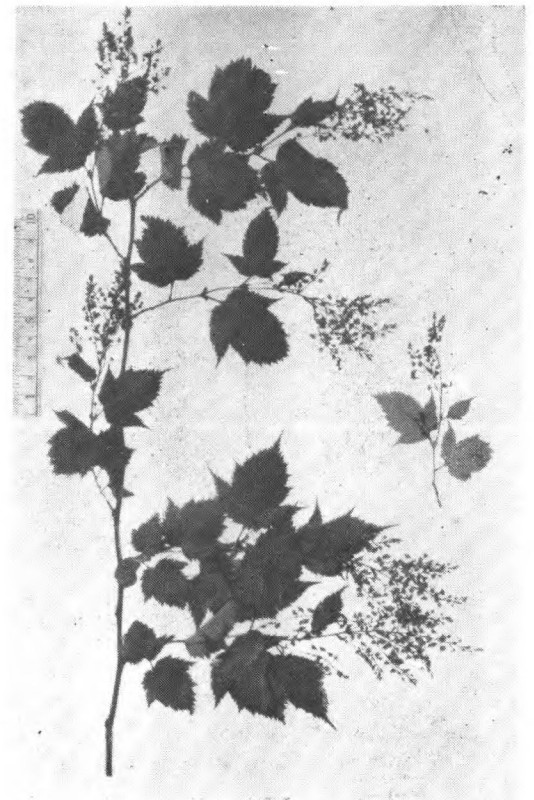
*Spiraea aemulans* Rehd.  
Wils. 4571 (type) 湖北房县



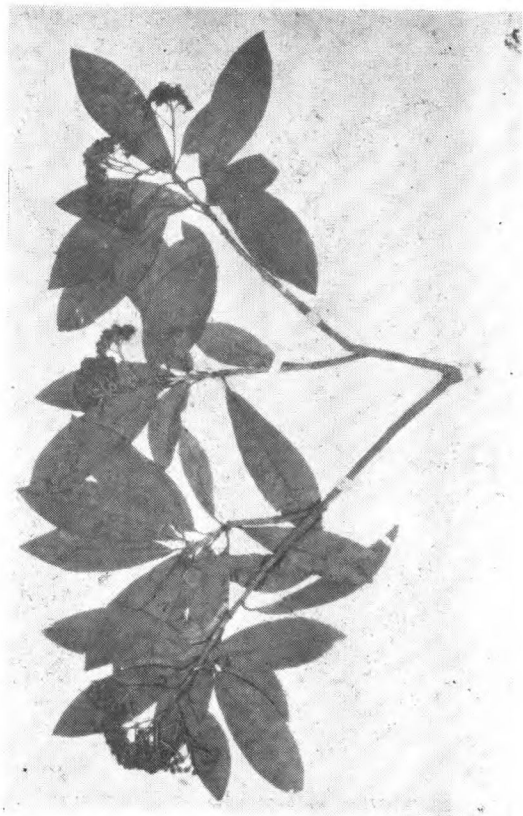
*Stephanandra incisa* (Thbg.) Zabel  
Thbg. (type) 日本



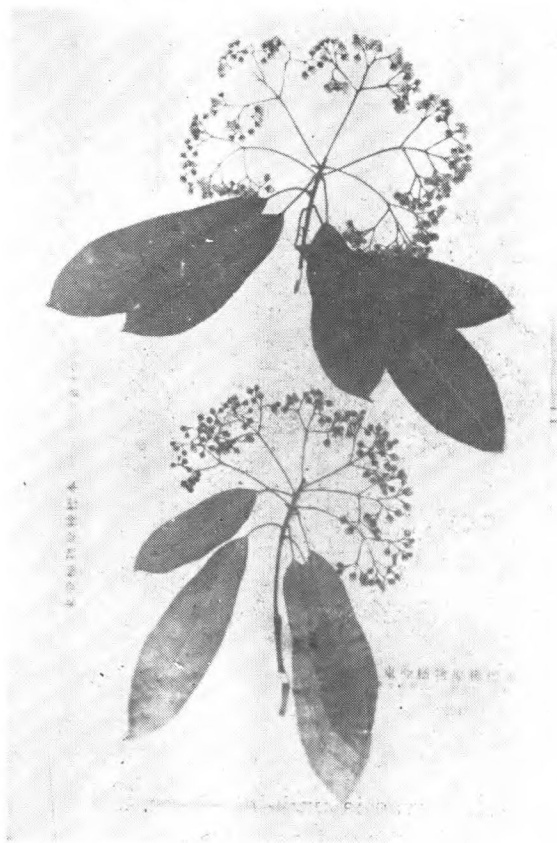
*Stephanandra chinensis* Hance  
Hance 21998 (type) 安徽蕪湖



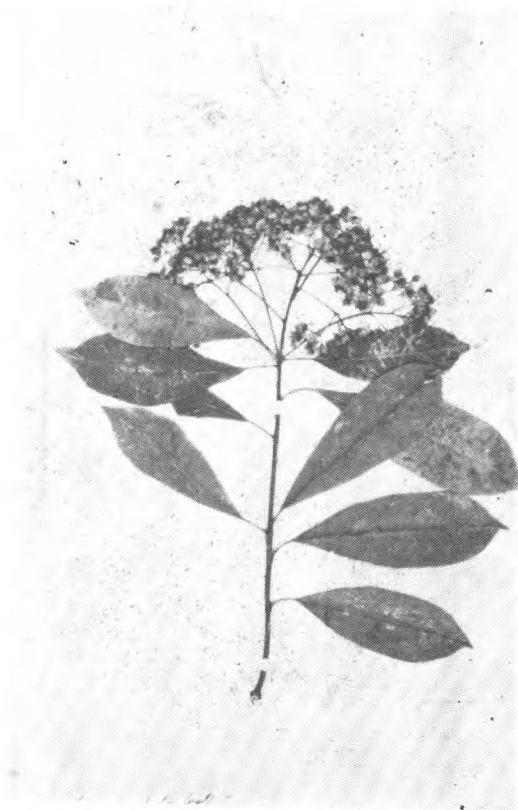
*Stephanandra Tanakae* Franch. et Sav.  
type of Bot. Mag. t. 7782 日本

斯脱兰木属 *Stranvaesia* Lindl.

*Stranvaesia Henryi* Diels  
Henry 108 (cotype) 四川巫山



*Stranvaesia nussia* var. *oblanceolata*  
*Rehd. et Wils.*  
Henry 11615 (type) 云南思茅



*Stranvaesia oblanceolata* Stapf  
Henry 11615B. (syntype) 云南思茅



*Stranvaesia salicifolia* Hutchinson  
Ex. Hort. Kew (type)

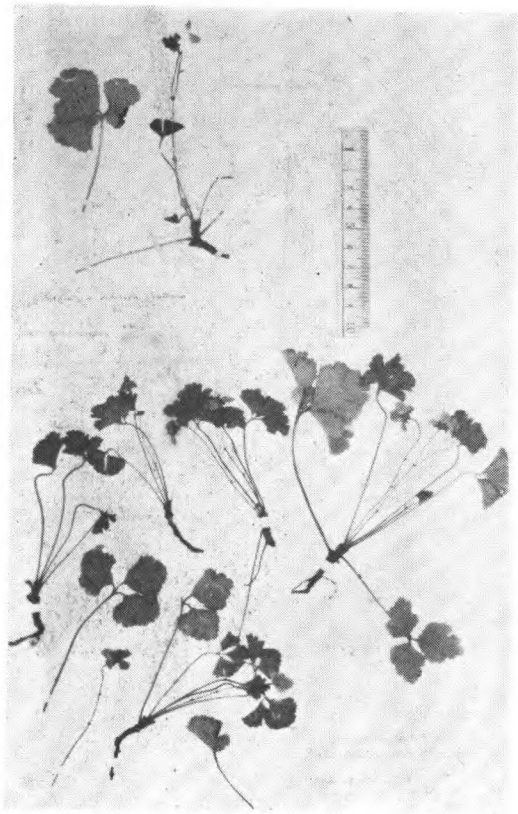


*Stranvaesia undulata* Desc.  
Ex Hort. Kew. (type)



*Stranvaesia Davidiana* Decaisne  
Ex Hort. Kew (type)

*Waldsteinia* Willd.



*Waldsteinia ternata* (Steph.) Fritsch  
Webster 137 辽宁瀋阳北陵

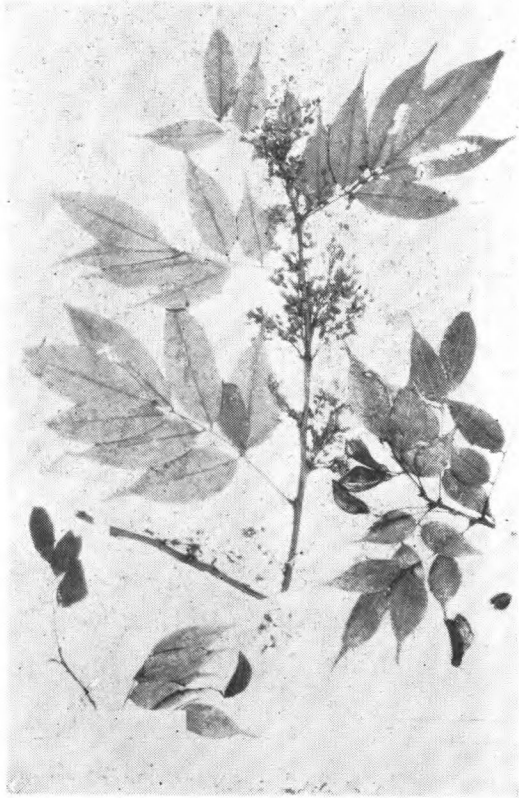
71. 牛栓藤科 Connaraceae  
牛栓藤屬 Connarus L.



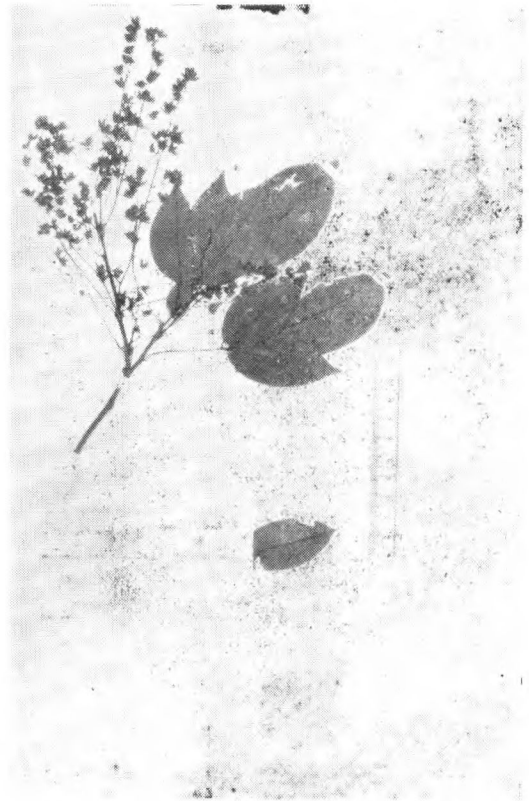
*Connarus Wrightii* Hk. f.  
Stock (type)



*Santaloides* Pier.

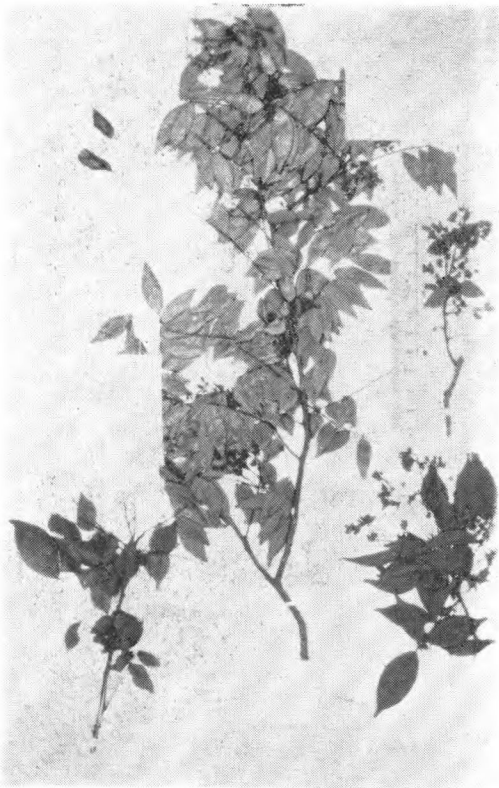


*Santaloides caudatum* (Planch.) O. Ktze.  
Henry 11607 云南思茅

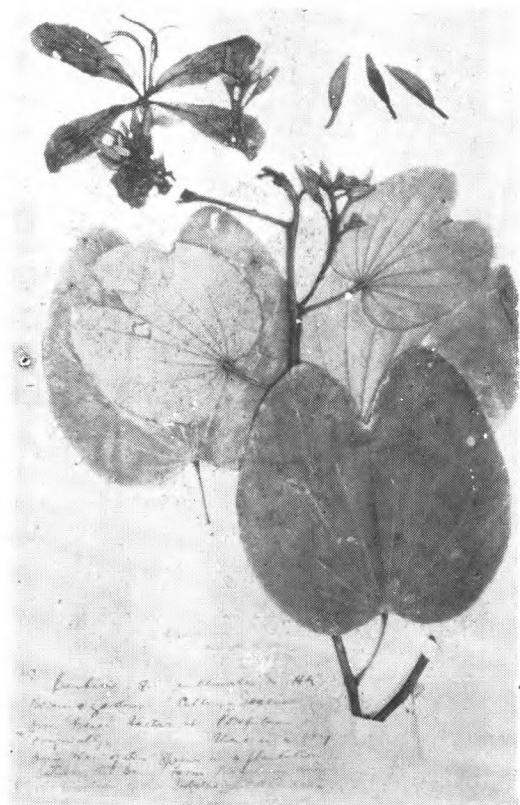


*Santaloides Roxburghii* (Hk. et Arn.)  
O. Ktze.  
Ford 23 广东

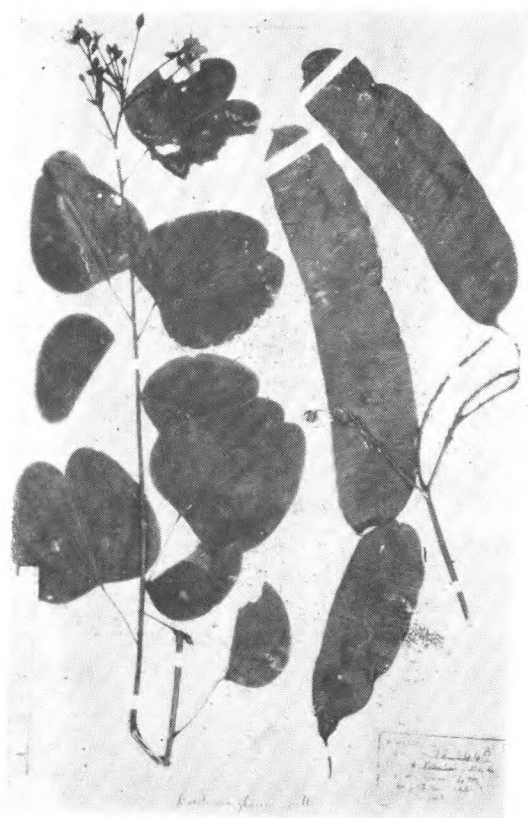
72. 豆科 Leguminosae  
云实亚科 Caesalpinioideae  
羊蹄甲属 *Bauhinia* L.



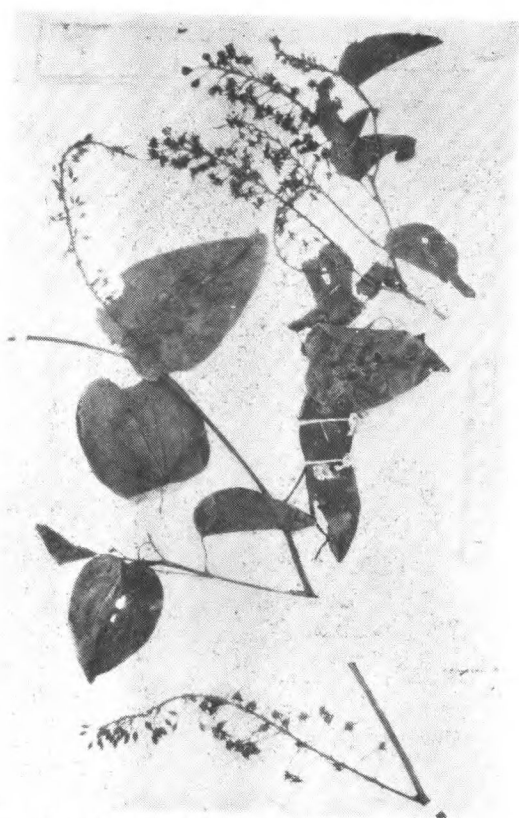
*Santaloides microphyllum* (Hk. et Arn.)  
Schellenb  
Fortune 116, Champion 84 香港



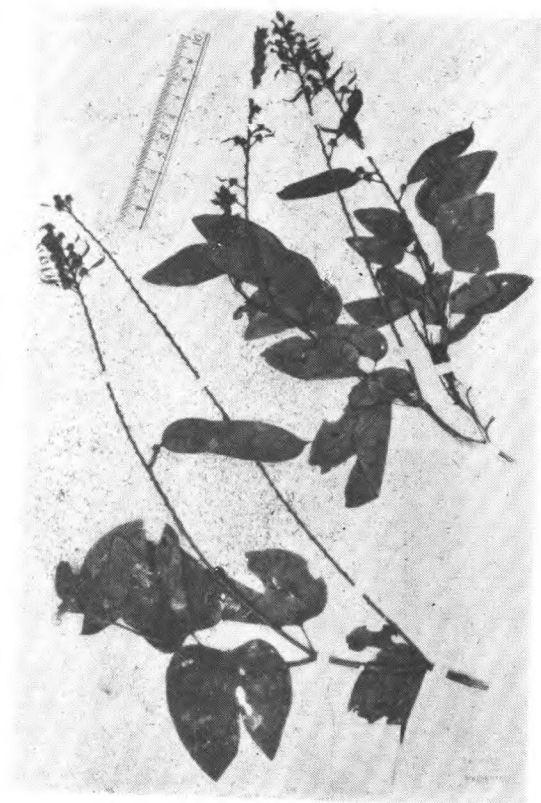
*Bauhinia Blakeana* Dunn  
S. T. Dunn 793.



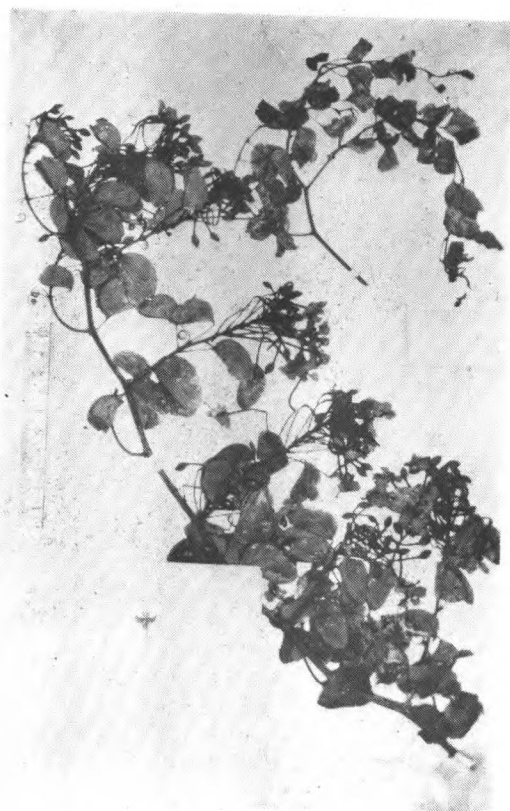
*Bauhinia caterviflora* L. Chen  
Henry 12344A (type) 云南思茅



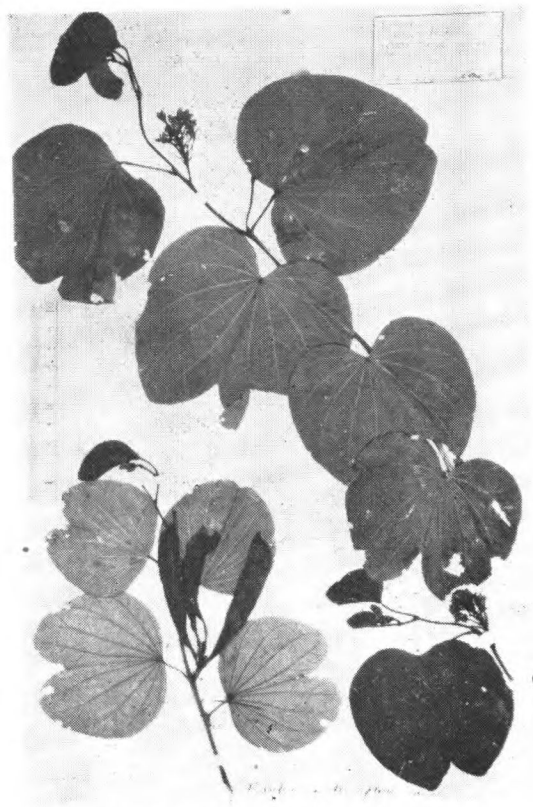
*Bauhinia Championi* (Bth.) Benth.  
Champion 258. (type) 香港



*Bauhinia comosa* Craib  
Henry 13358. (type) 云南临安(建水)



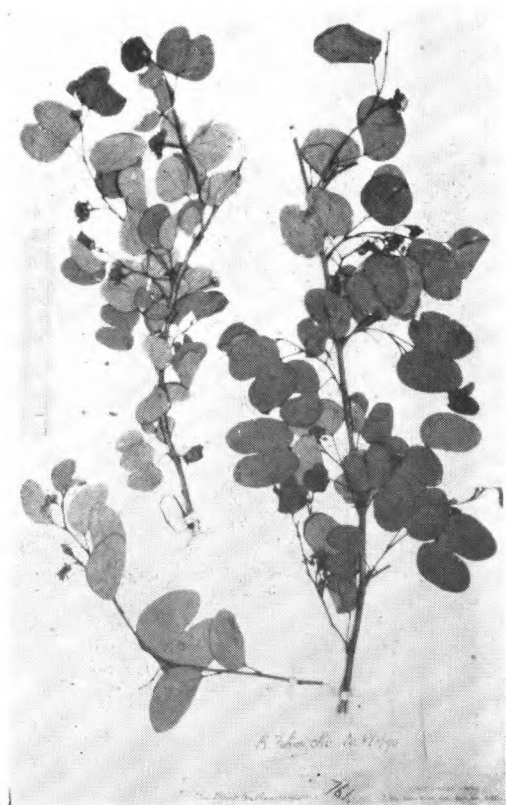
*Bauhinia corymbosa* Roxb.  
Bot. Mag. t. 6621. (type)



*Bauhinia Delavayi* Franch.  
Delavay 523 云南大坪子



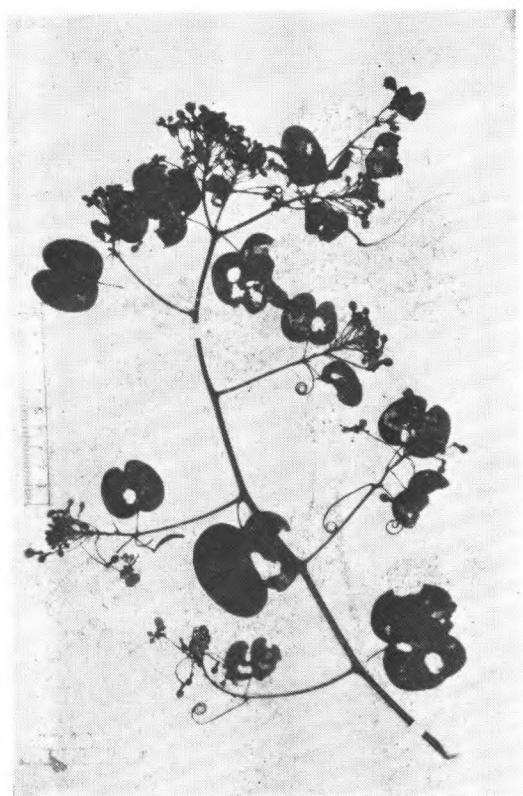
*Bauhinia densiflora* Franch.  
Henry 10289 云南蒙自



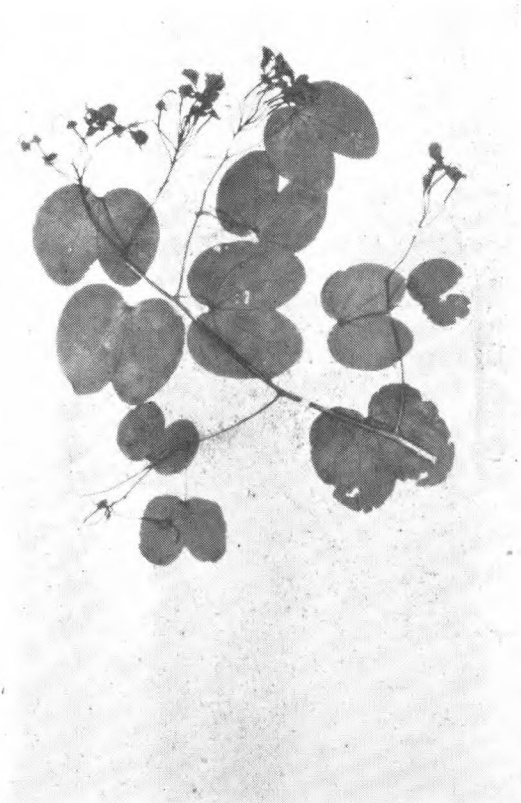
*Bauhinia Faberi* Oliv.  
E. Faber 761 (type) 四川巫峡



*Bauhinia Faberi* Oliv. var. *microphylla*  
Oliv.  
Henry 7179 (type) 湖北巴东县



*Bauhinia genuflexa* Craib  
Morse 408 (type) 广西龙州



*Bauhinia hupehana* Craib  
Wils. 3373 (type) 湖北长乐县



*Bauhinia japonica* Maxim.  
Maxim. (isotype)



*Bauhinia Lecomtei* Gagnep.  
J. Cavalerie 云南



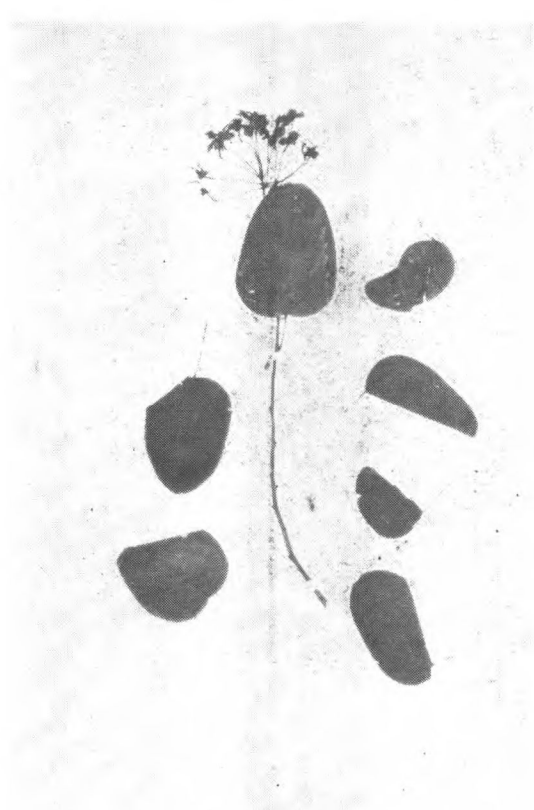
*Bauhinia purpurea* Linn.  
Millet



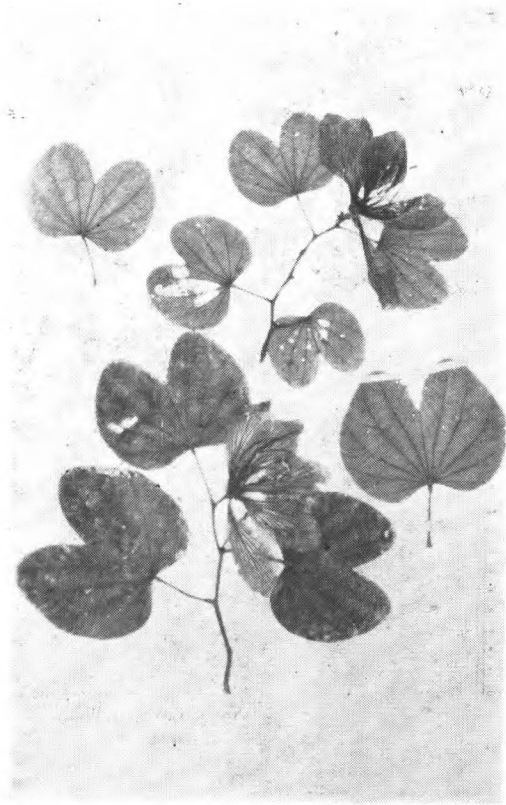
*Bauhinia pyrrhoclada* Drake  
Morse 461 广西龙州



*Bauhinia racemosa* Lamarck  
Millet



*Bauhinia touranensis* Gagnep.  
Cavalerie 2218 云南

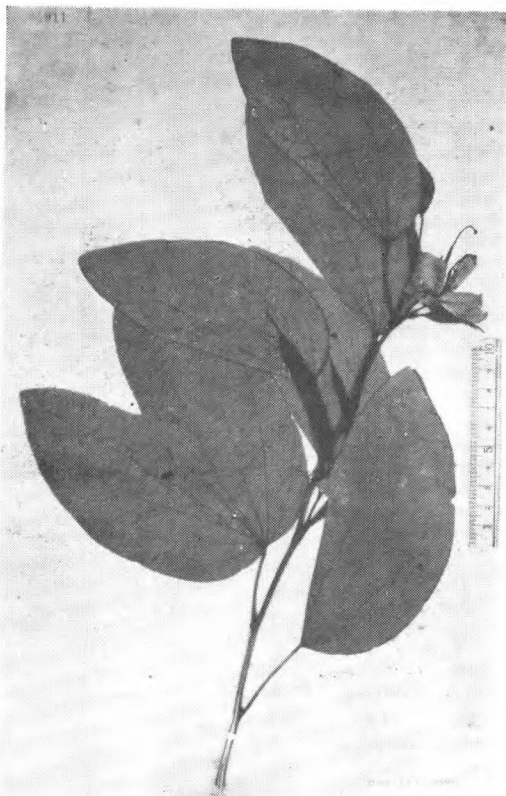


*Bauhinia variegata* Linn.  
Urquhart 47 香港



*Bauhinia yunnanensis* Franch.  
Delavay 2836 云南大坪子

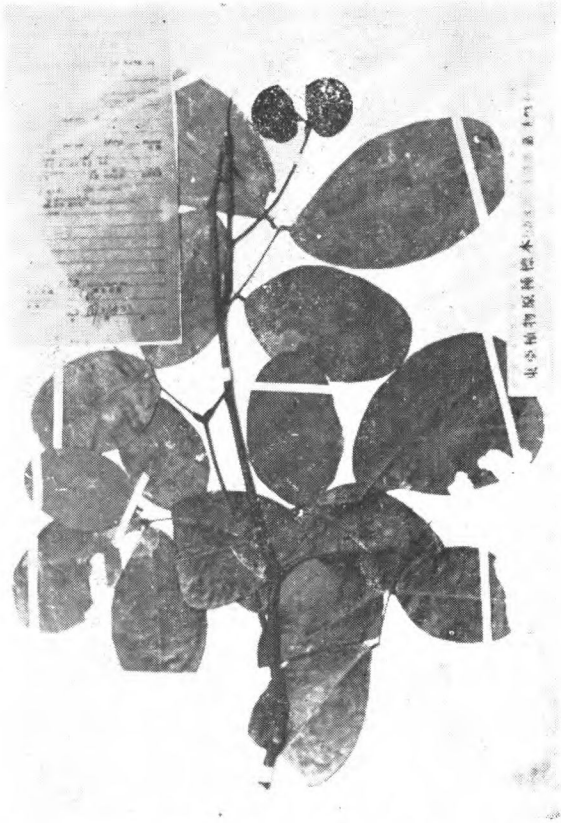
云实屬 *Caesalpinia* Linn.



*Bauhinia acuminata* L.



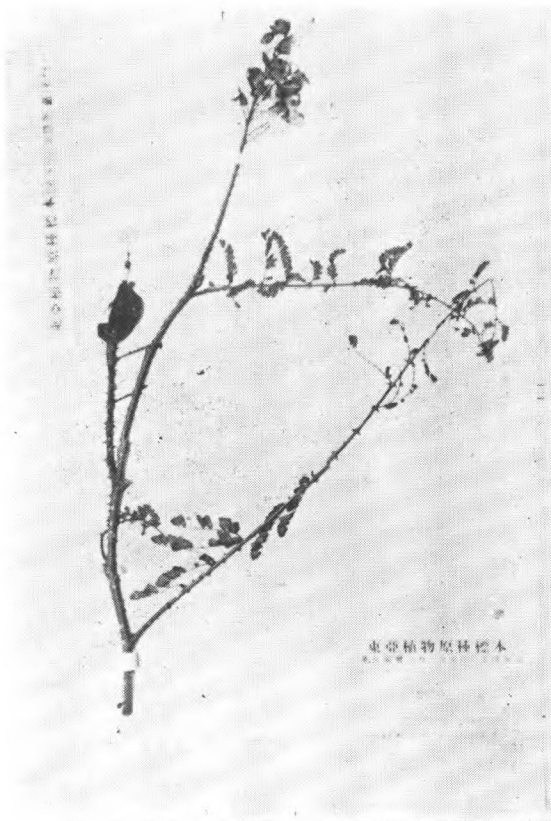
*Caesalpinia kwangtungensis* Merr.  
CCC. No. 12838. (type) 广东



*Caesalpinia magnifoliolata* Metcalf  
Steward et Cheo 583 (type) 广西



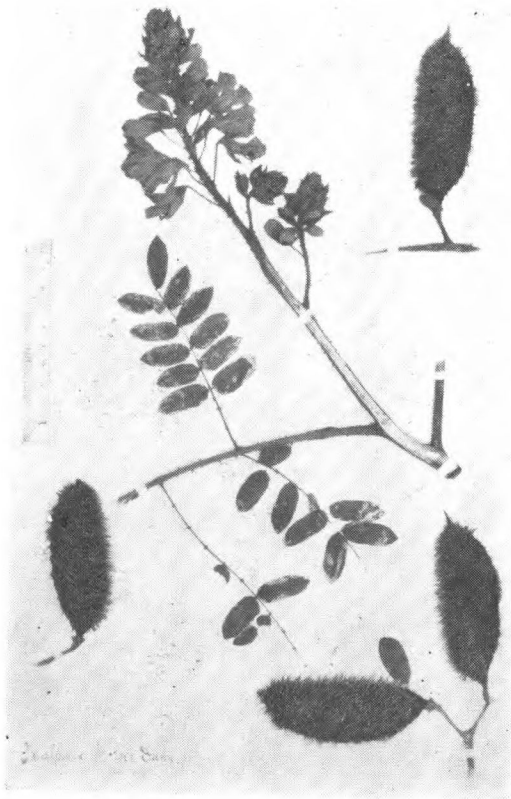
*Caesalpinia Millettii* Hook. et Arn.  
Hance 16402.



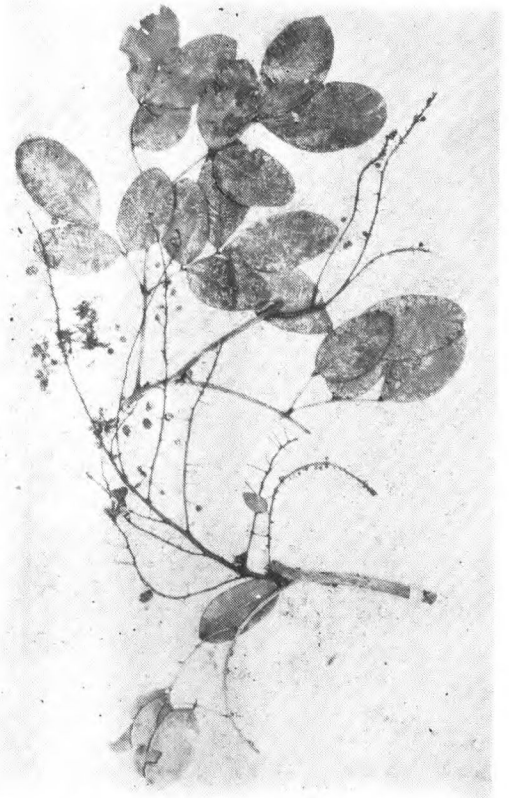
*Caesalpinia mimosoides* Roxb.  
Rock 2357. 云南



*Caesalpinia minax* Hance  
Hance 22284 (type)



*Caesalpinia Morsei* Dunn  
H. B. Morse 303 (type)



*Caesalpinia Nuga* (L.) Ait.  
Ford. 237 香港



*Caesalpinia pulcherrima* (L.) Swartz  
Henry 8207 海南島



*Caesalpinia Sappan* Linn.  
C. Ford 397 海南島

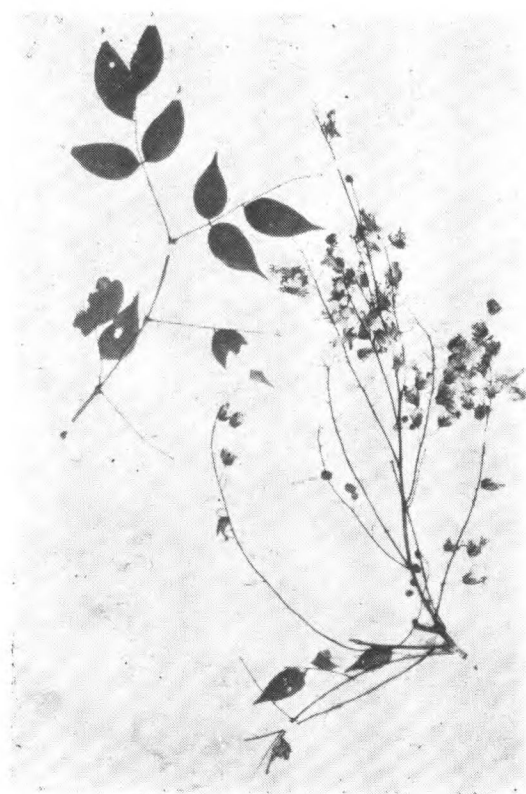




*Caesalpinia sepiaria* Roxb.  
Shearer 209 江西



*Caesalpinia szechuenensis* Craib  
Wils. 3255 (isotype) 四川西部



*Caesalpinia stenoptera* Merrill  
Morse 545 广西龙州



*Caesalpinia vernalis* Champ.  
C. Wilford 169 广东

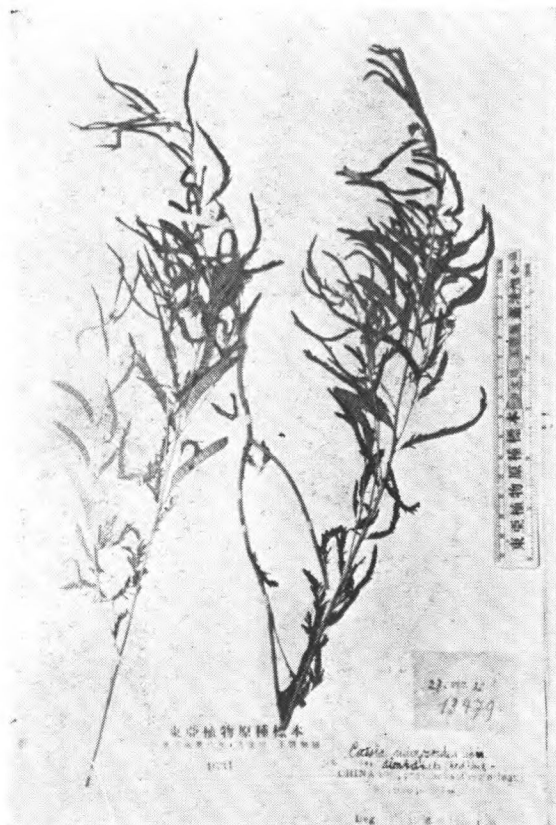
决明属 *Cassia* Linn.



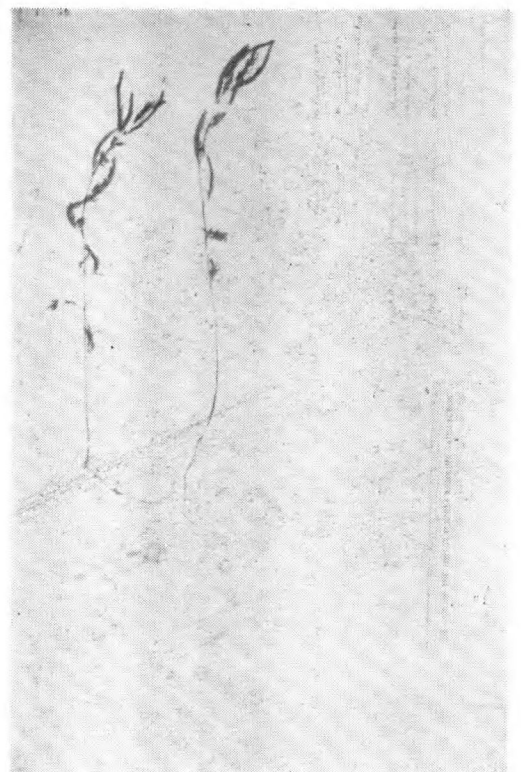
*Caesalpinia crista* L.  
C. A. Barber 4799 印度



*Cassia mimosoides* Linn.  
Tsiang 6247 贵州



*Cassia mimosoides* var. *dimidiata*  
(Roxb.) Baker  
Licent 山东



*Cassia nictitans* Linn.  
W. R. Carles 北京