




THE FACE OF
CHINA

BY E. G. KEMP, F.R.S.G.S.

UNIVERSITY OF CALIFORNIA LIBRARY









THE FACE OF
CHINA

E. G. KEMP



ornia
al

紙可解畫畫可美宣紙
我中華千古教遺風向
有誰人：新有勸身日
貨真真竹古實
三次奉美看看取孩
民猴性歸去來多田園
將藝胡不旧

韓玉
冊
冬月
廿二年





THE AUTHOR AS CHINESE "FEMALE TRAVELLING SCHOLAR"

THE FACE OF CHINA

TRAVELS IN EAST, NORTH, CENTRAL
AND WESTERN CHINA ¶ WITH SOME
ACCOUNT OF THE NEW SCHOOLS, UNI-
VERSITIES, MISSIONS, AND THE OLD
RELIGIOUS SACRED PLACES OF CON-
FUCIANISM, BUDDHISM, AND TAOISM
THE WHOLE WRITTEN & ILLUSTRATED
BY E. G. KEMP, F.R.S.G.S.



NEW YORK
DUFFIELD & COMPANY

1909



TEA-HOUSE IN OLD SHANGHAI



Wu Hsien
Shanghai



A VILLAGE SCHOOL



OFFICIAL (COURT DRESS)



MOUNTAIN CHAIR



TAI SHAN



PRIVATE HOUSE: KÜFOW



CONFUCIAN TEMPLE



Gateway of the Cemetery
of the "most holy One" - Confucius.
E.G.K.



Our escort (Shantung)
Oct 19. 1907
E.G.H.



OUR HOUSEBOAT, GRAND CANAL



CAMEL INN



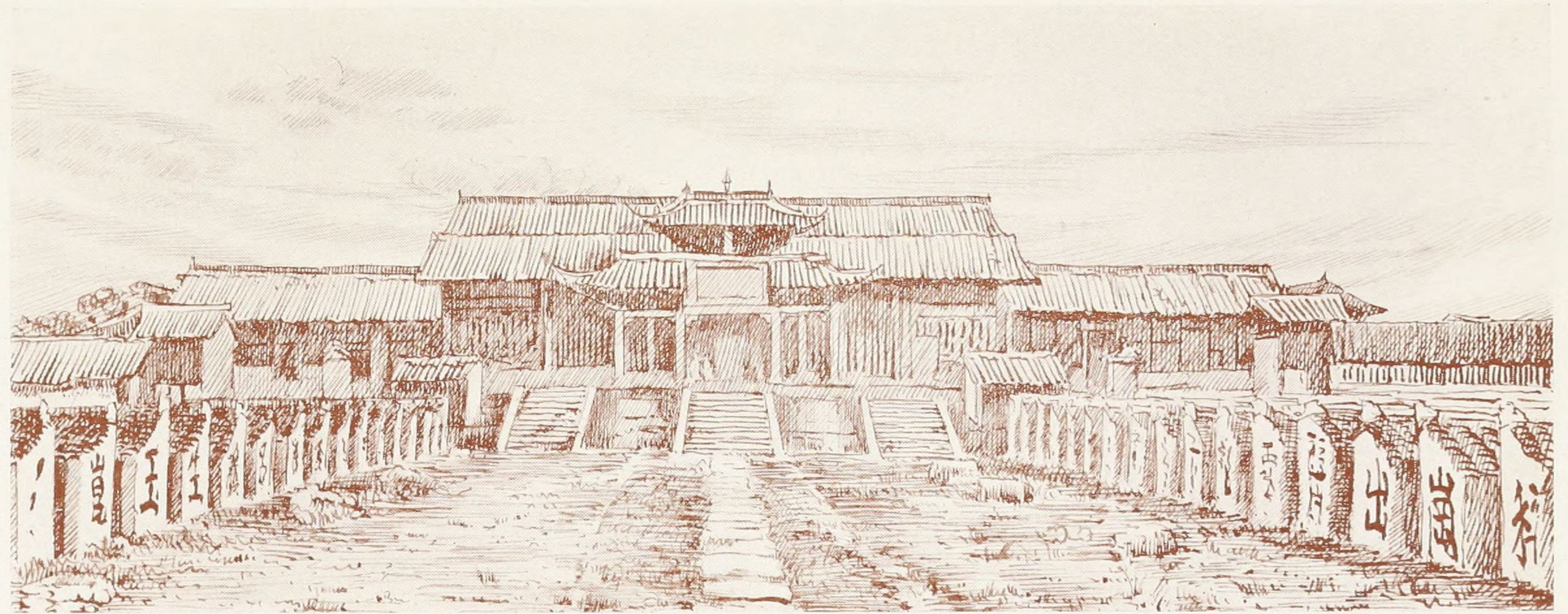
THEATRE STAGE



PAGODA



TIGER BRAVE



OLD EXAMINATION BUILDINGS



SOUTHERN SERVANT



SCHOLAR



CITY WALL OF PEKING



TEMPLE OF HEAVEN



AN OFFICIAL



A LADY OF QUALITY



BOXER



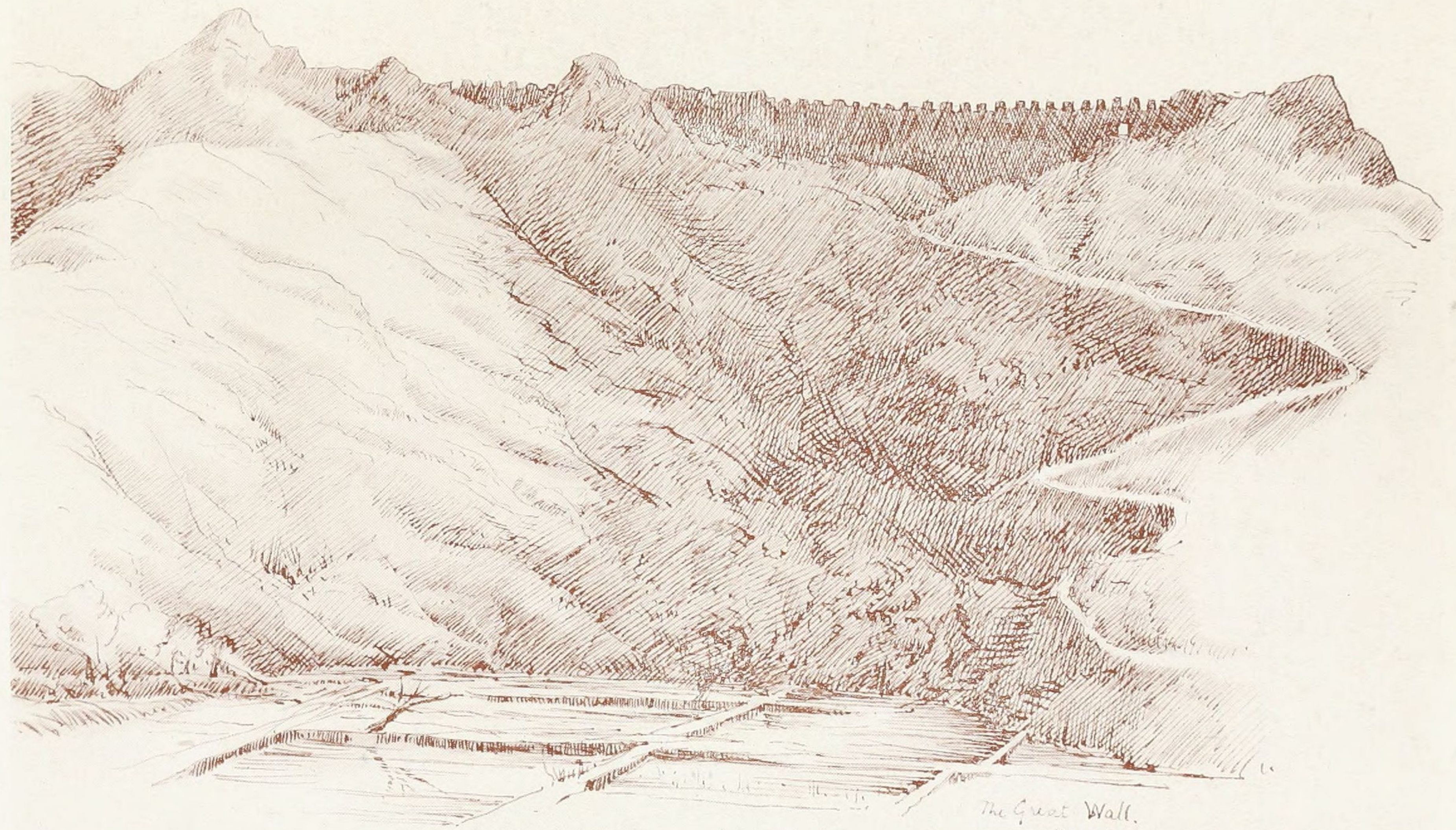
KACHIN WOMAN



MR. KU



on the P'han Rly.
Nov. 1907.



The Great Wall.
Hupeh.

GREAT WALL



Chinese graves.

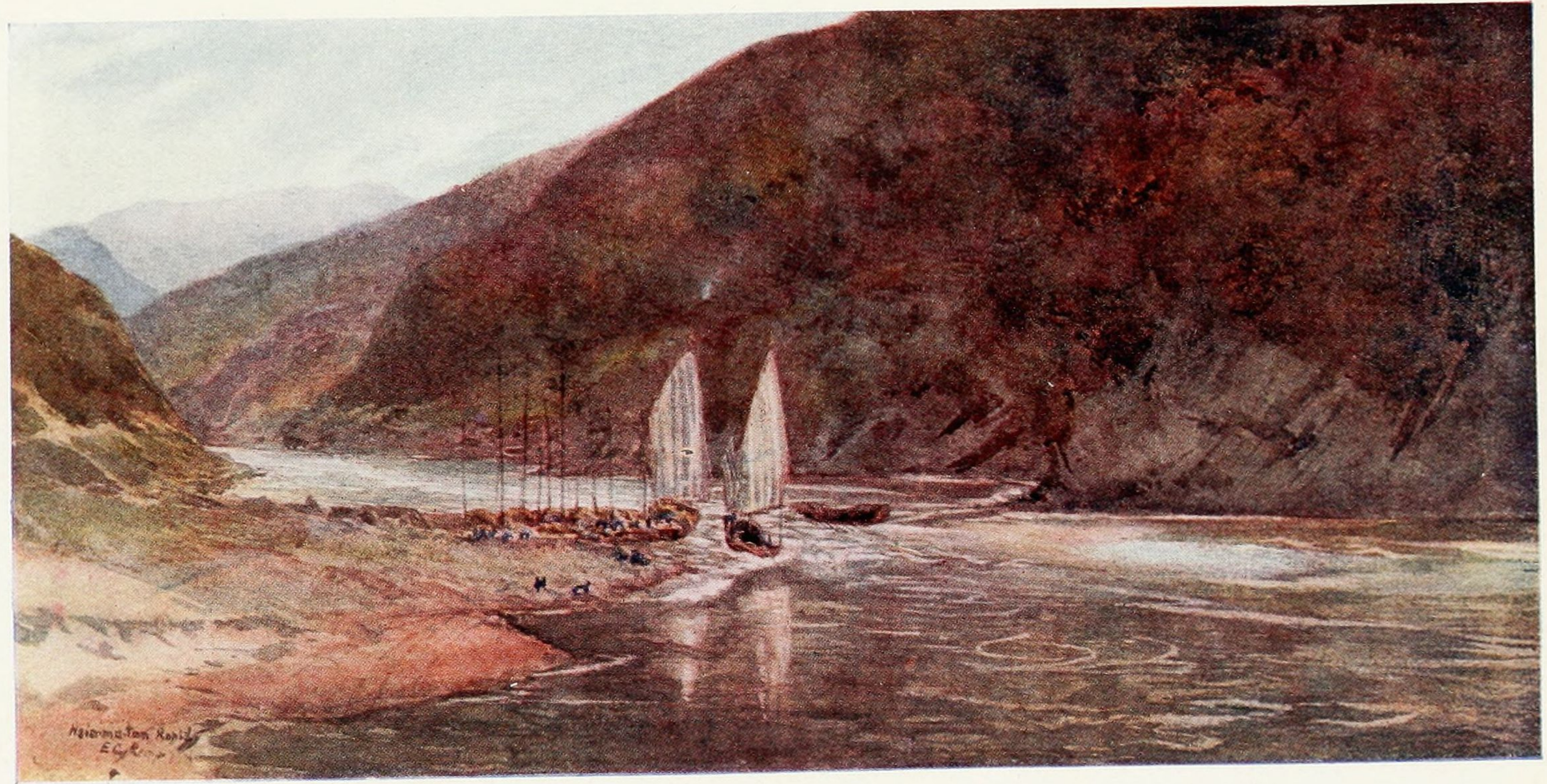
Jehang
Nov 22.



ANCESTRAL TABLET



BLUE DAWN



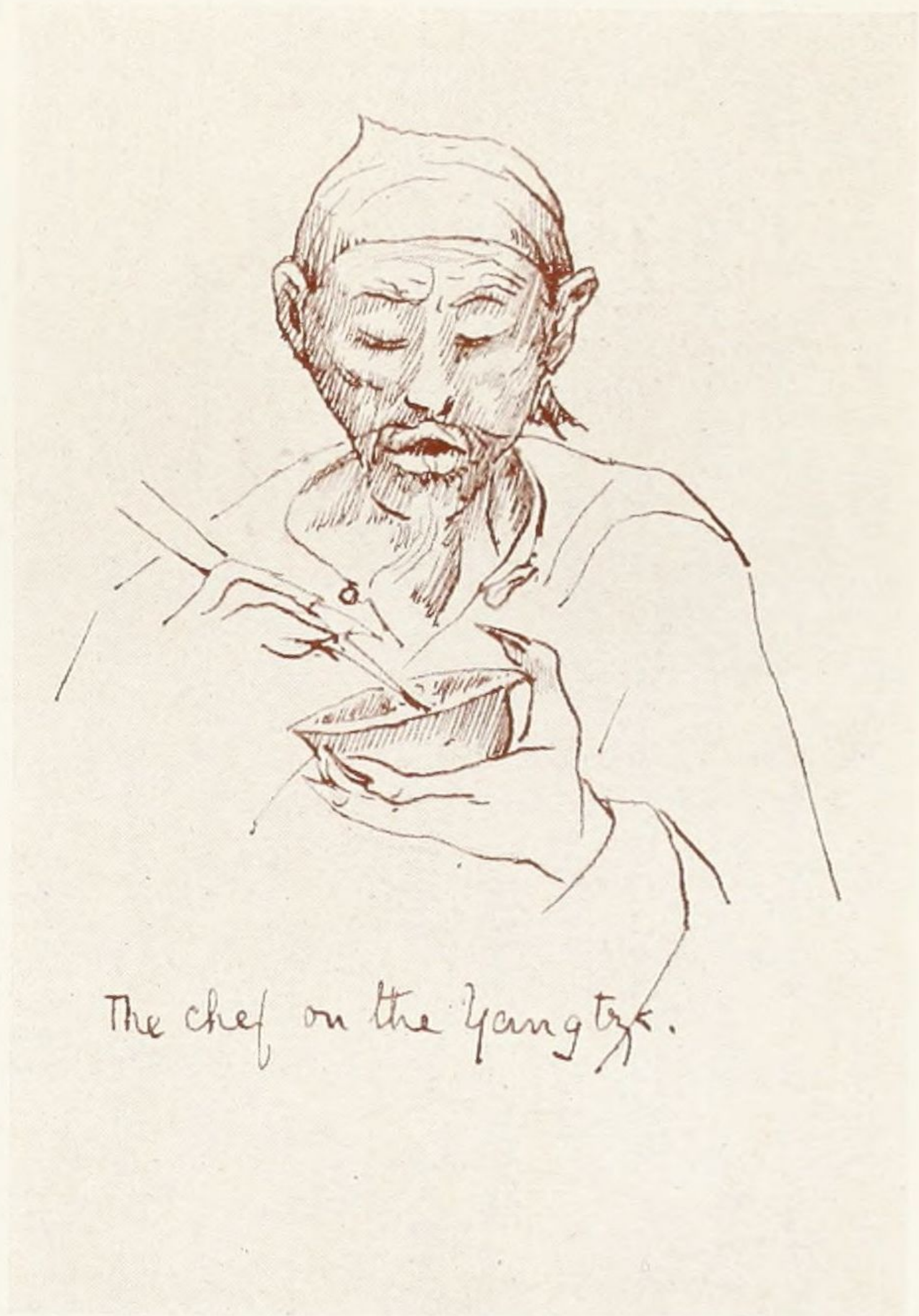
YEH TAN RAPID



THE LOOK-OUT ON THE YANGTZE



riverside shrine.



The chef on the Yangtze.



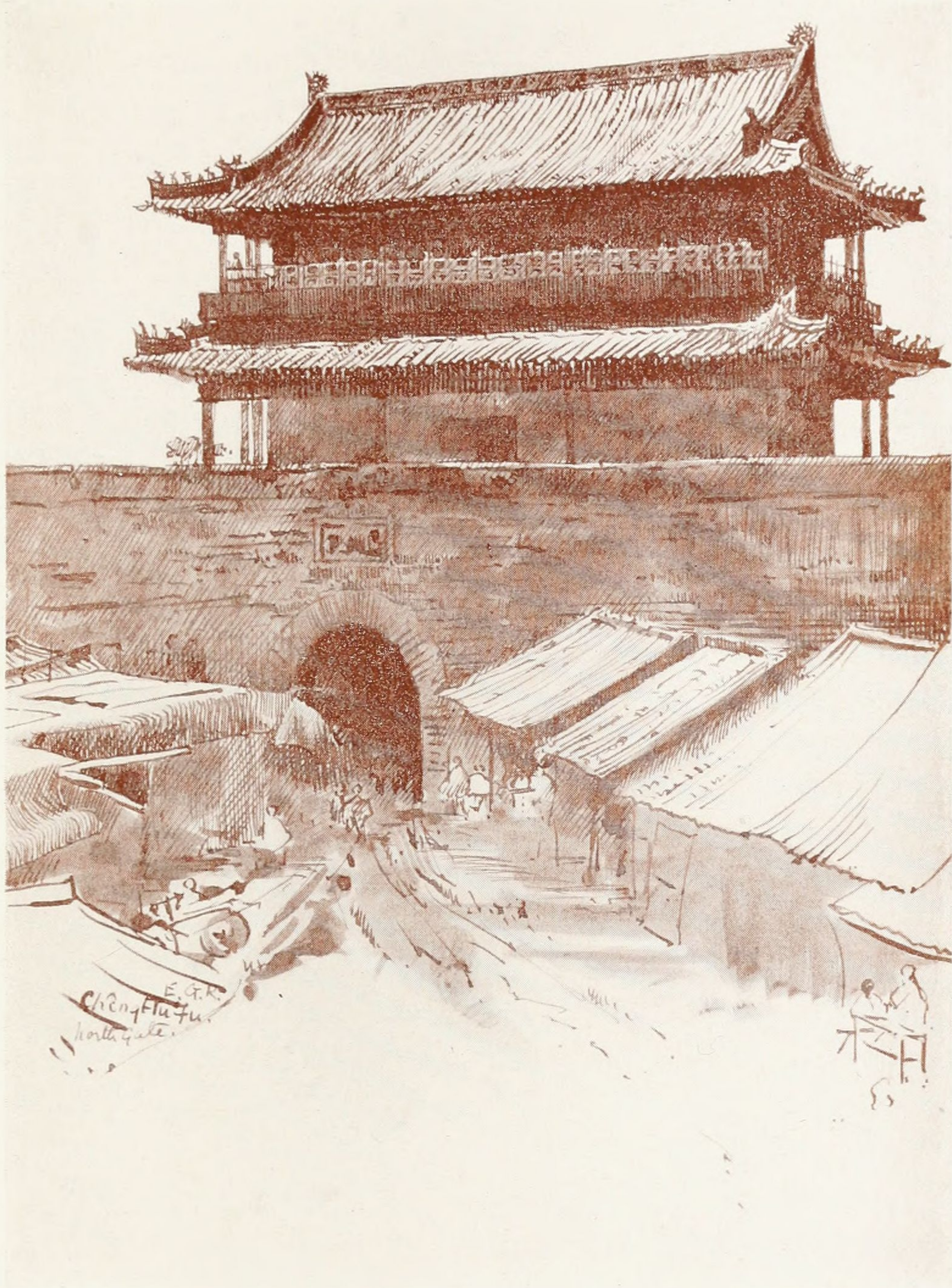
CAMEL-BACK BRIDGE



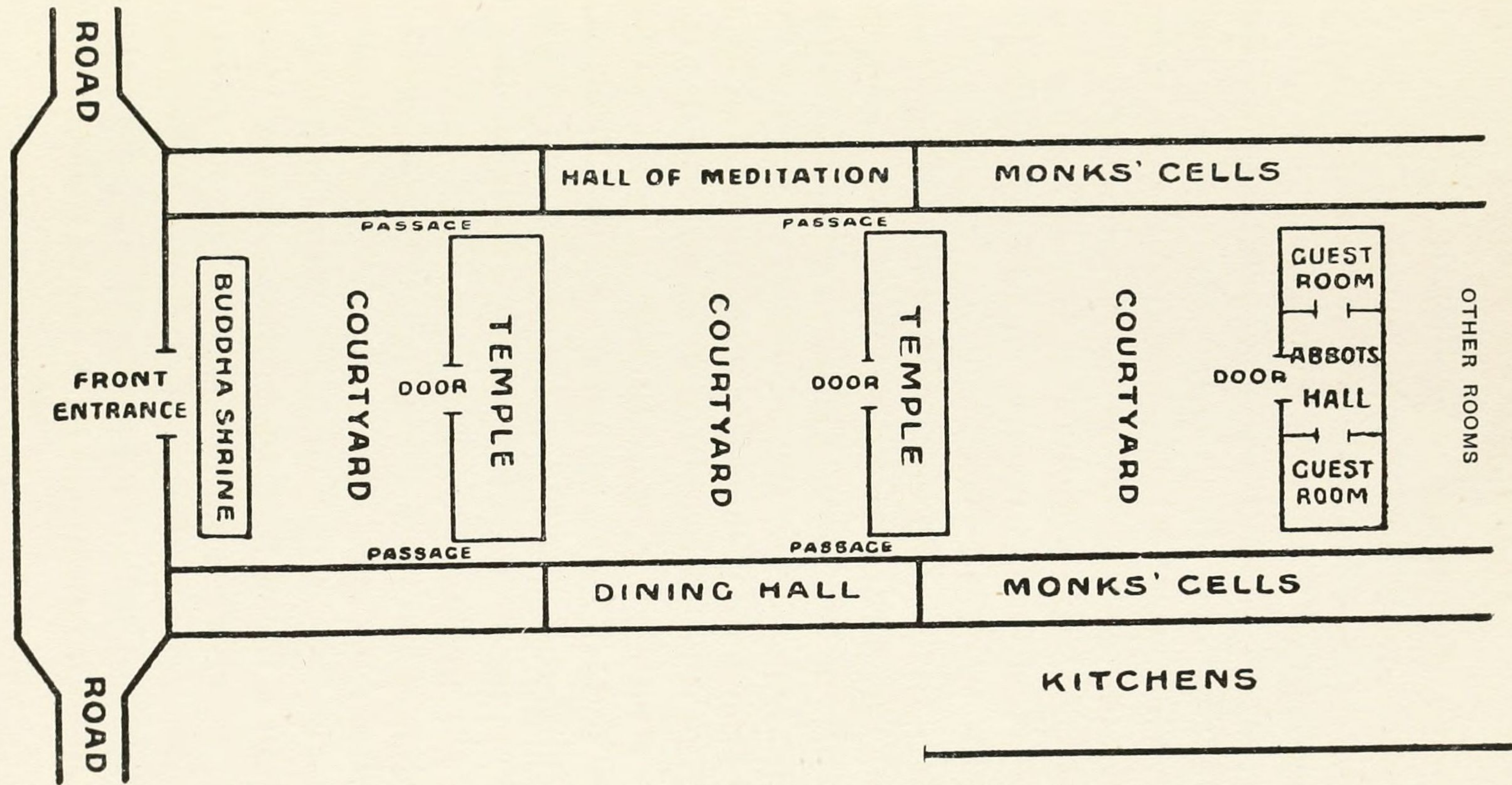
SZECHWAN HIGHWAY



SUNLIGHT AND MIST IN THE MOUNTAINS



CITY GATE, CHENGTU.



PLAN OF MONASTERY, CHENGTU



BUDDHIST MONASTERY



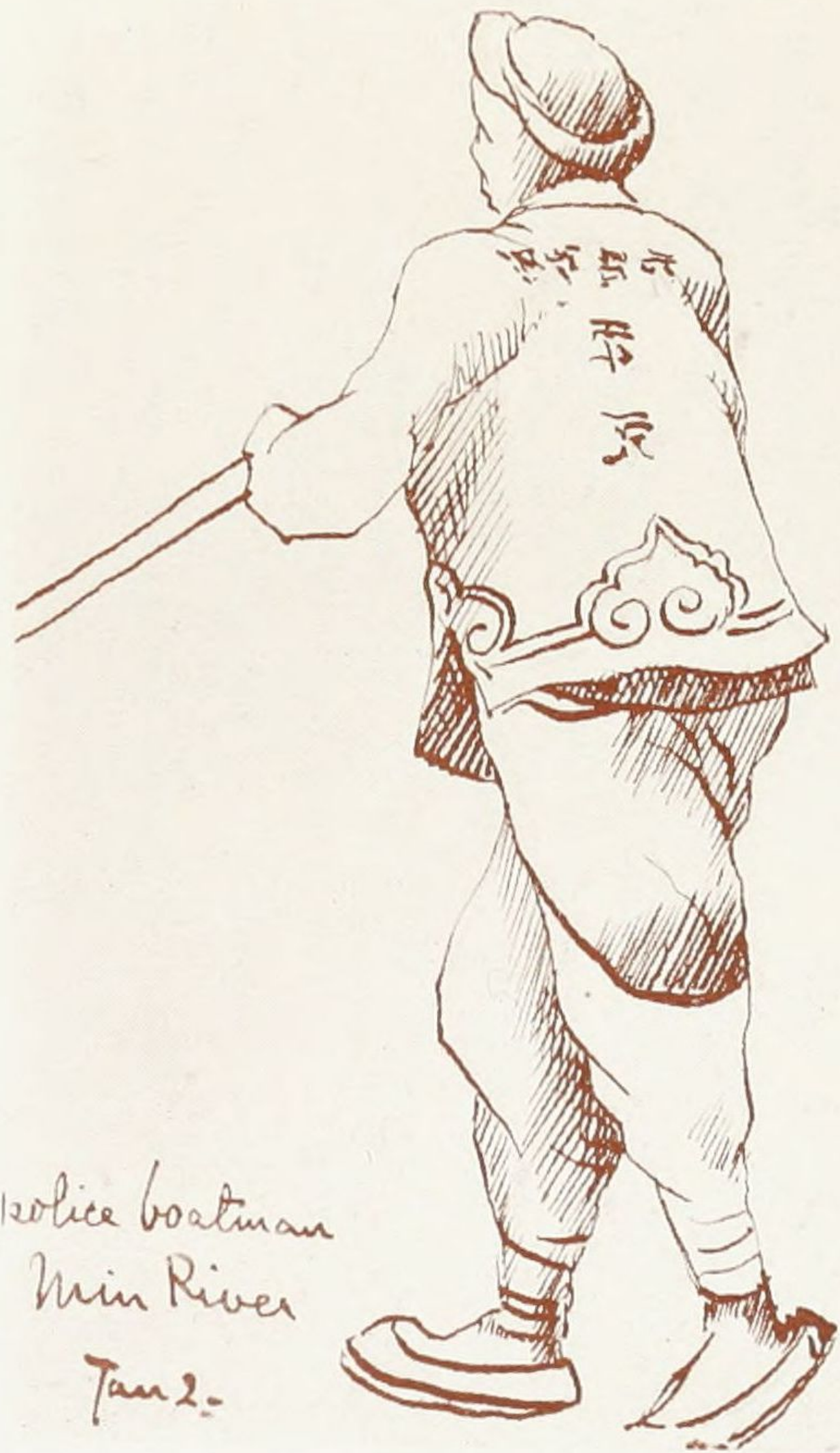
MILITARY YAMEN



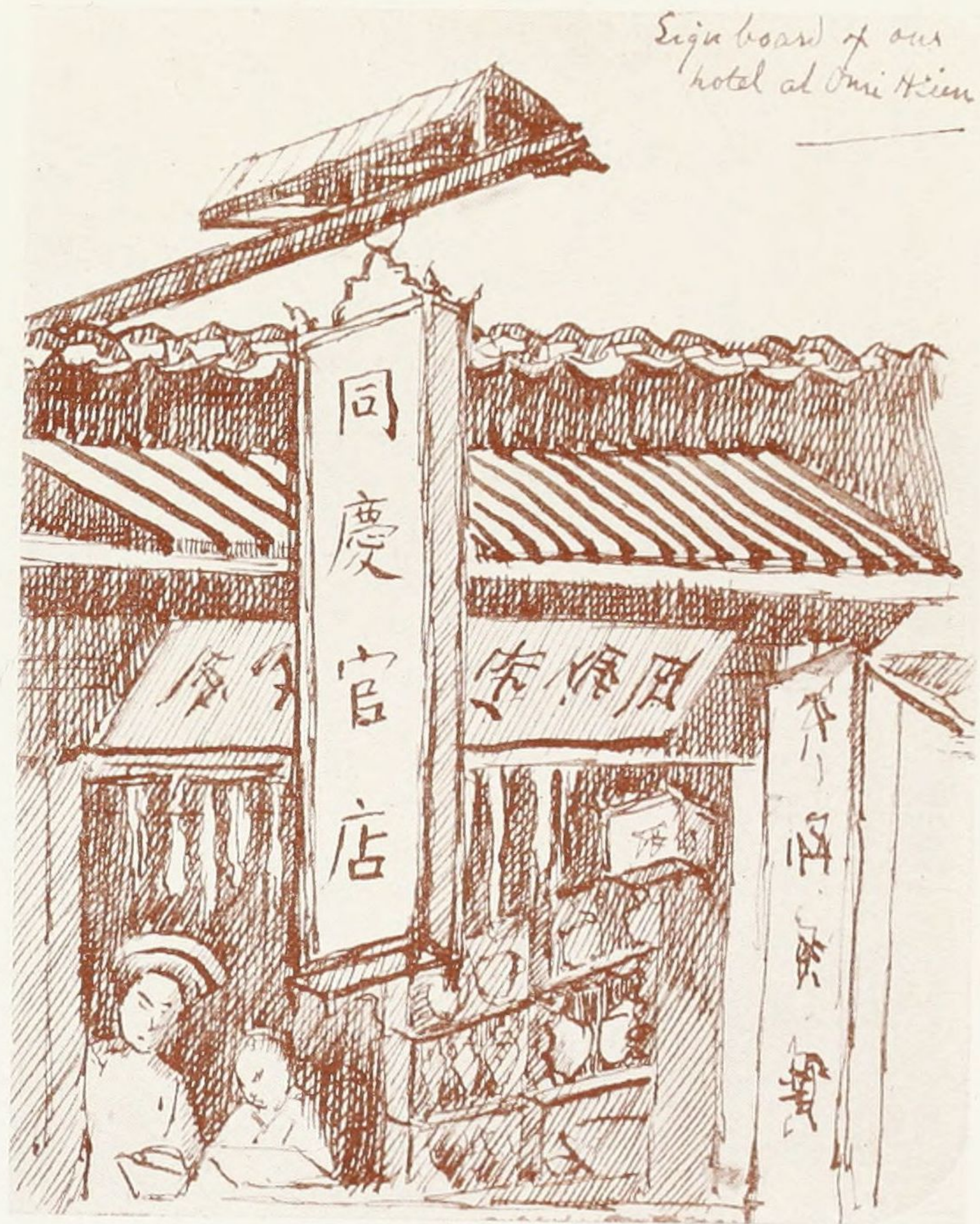
HOUSE ON MIN RIVER



OTTER FISHING ON MIN RIVER



Police boatman
Min River
Jan 2.



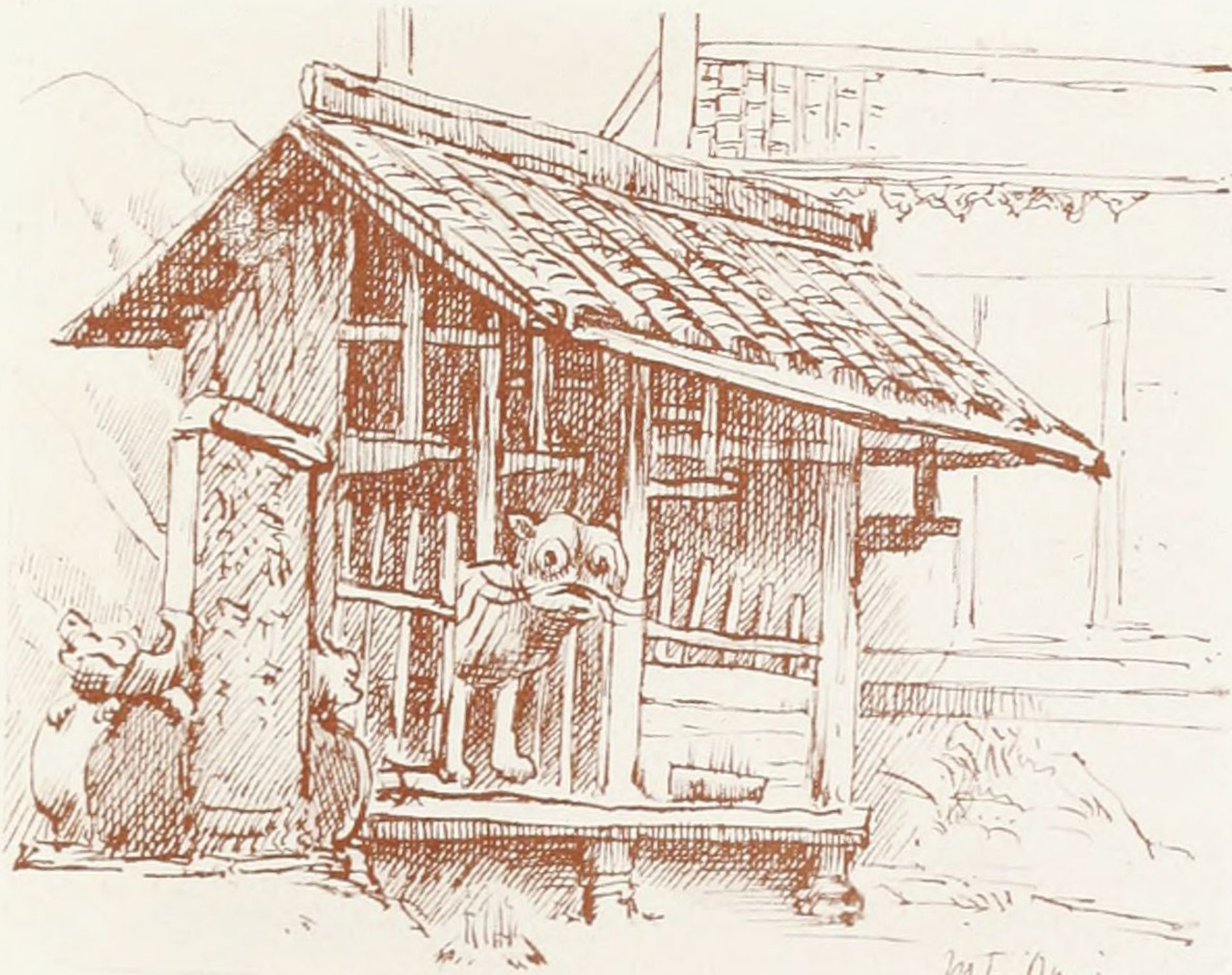
Sign board of our
hotel at Pui Kien



MOUNT OMI BRIDGE



BUDDHIST MONK, CHANTING



TIGER SHRINE



SUMMIT OF MOUNT OMI

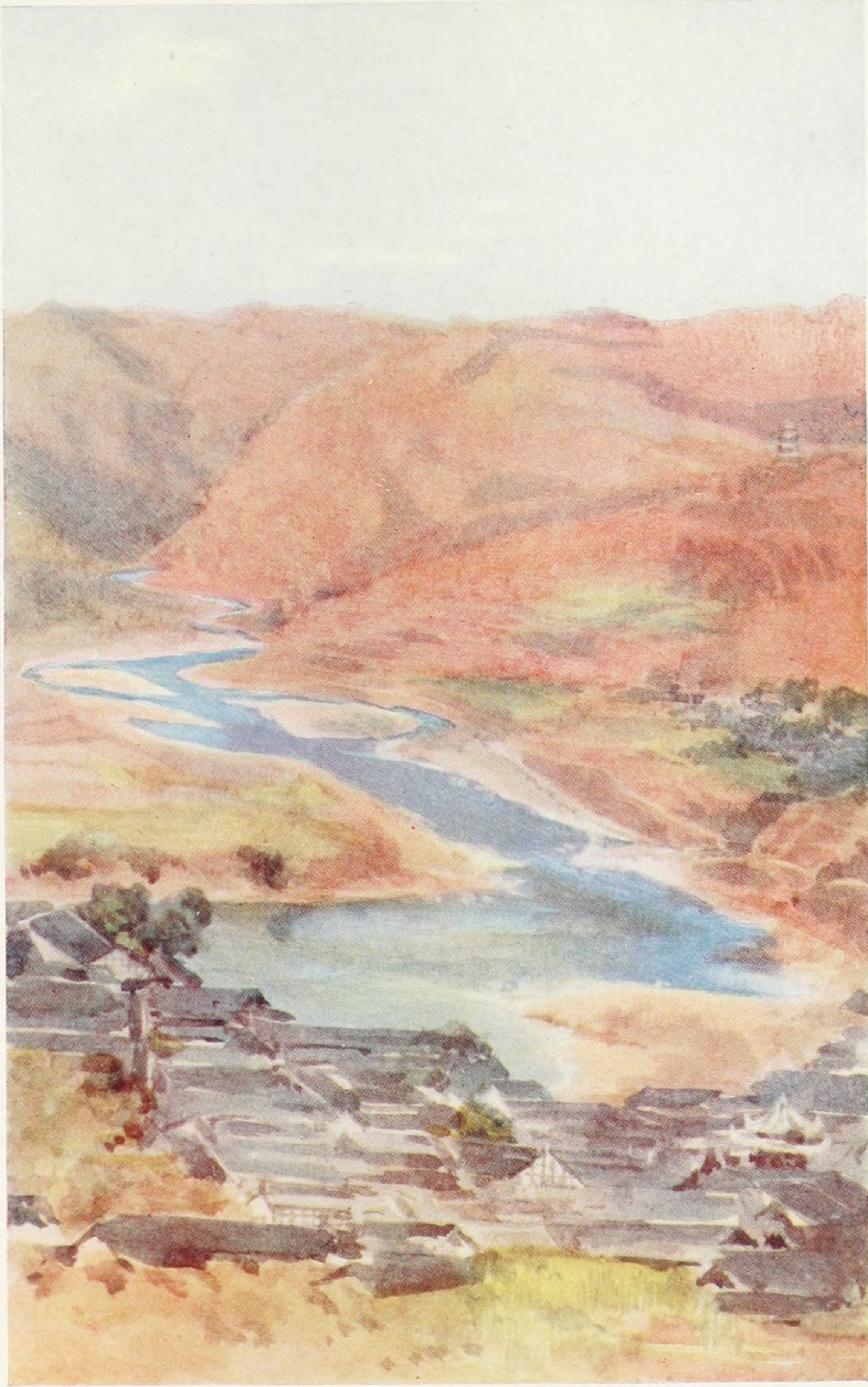
四川省敘府真武山大銅菩薩披髮祖師像



COPPER IMAGE, SUIFU



CORMORANTS ON THE CORMORANT RIVER



LAOWATAN RIVER



OUR MILITARY ESCORT



"ORPHAN SPIRIT" SHRINE



TOWER OF REFUGE



"OMI TO FU" SHRINE



WHA MIAO



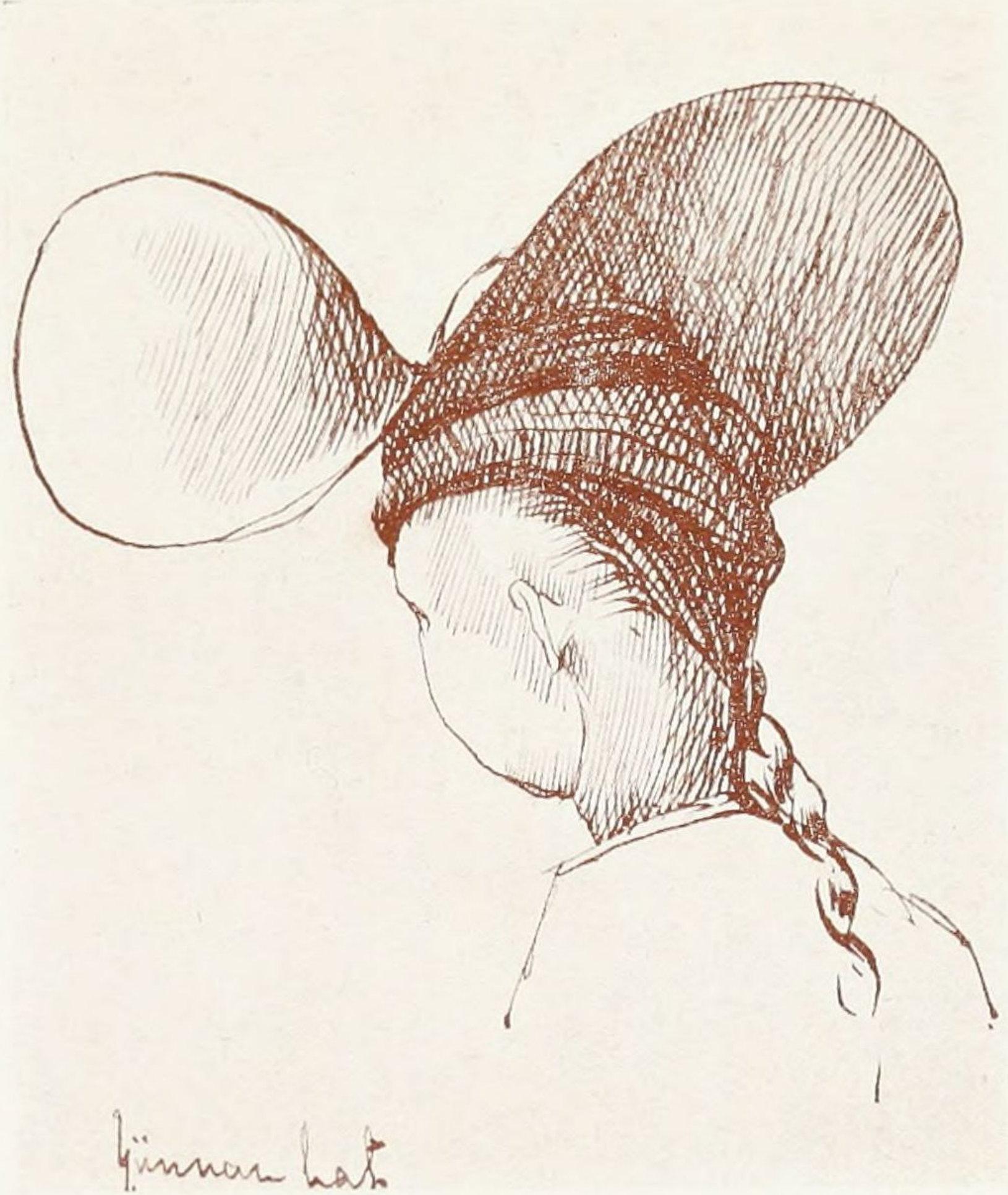


UPLAND VILLAGE



Uh-Chai
June 25

UH CHAI



Yunnan hat



Yunnan woman = Lolo.
Tongchuan.



Feb 6
a young girl
/ bride groom



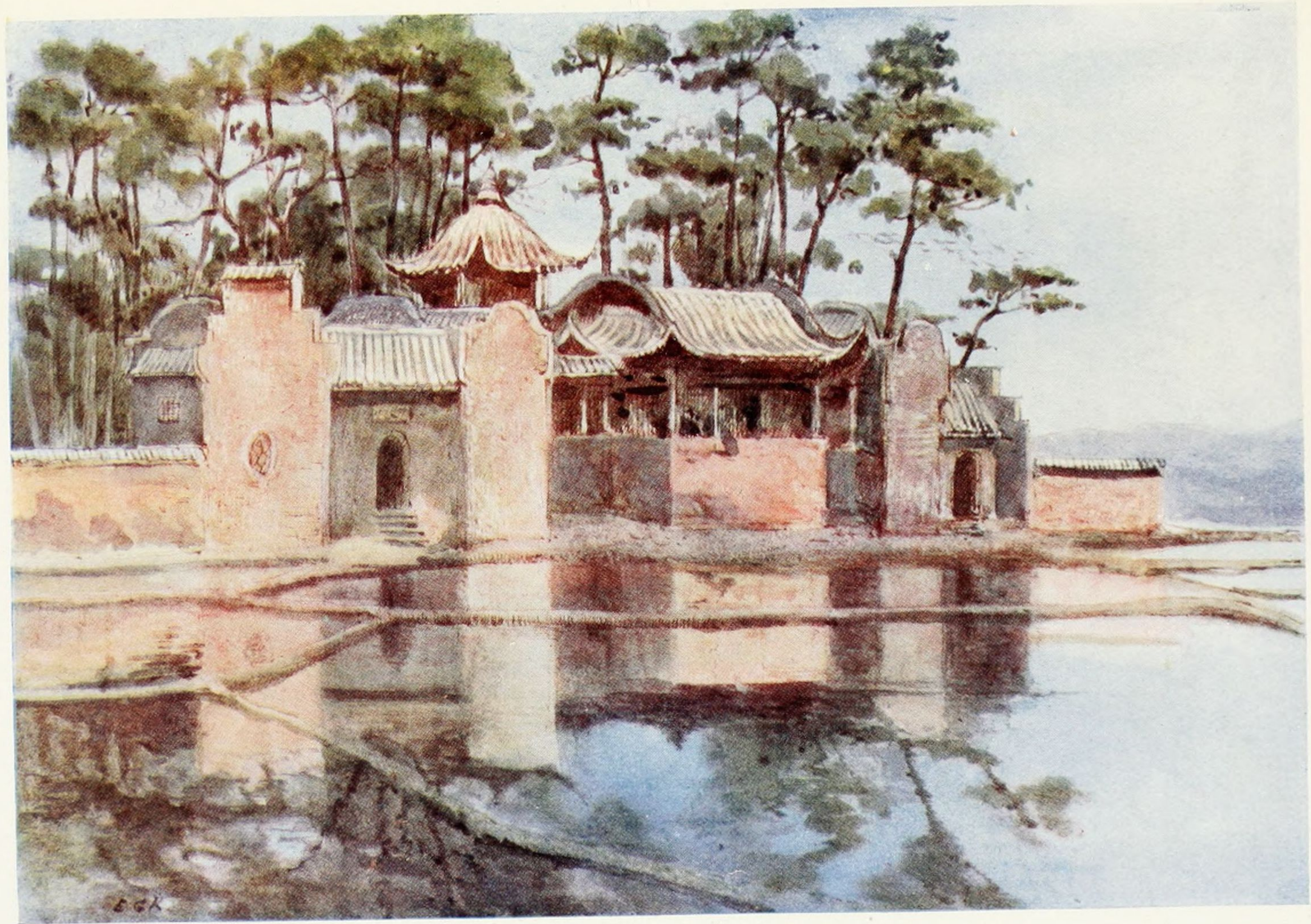
Paper funeral pagoda for
Feb 8. burning.



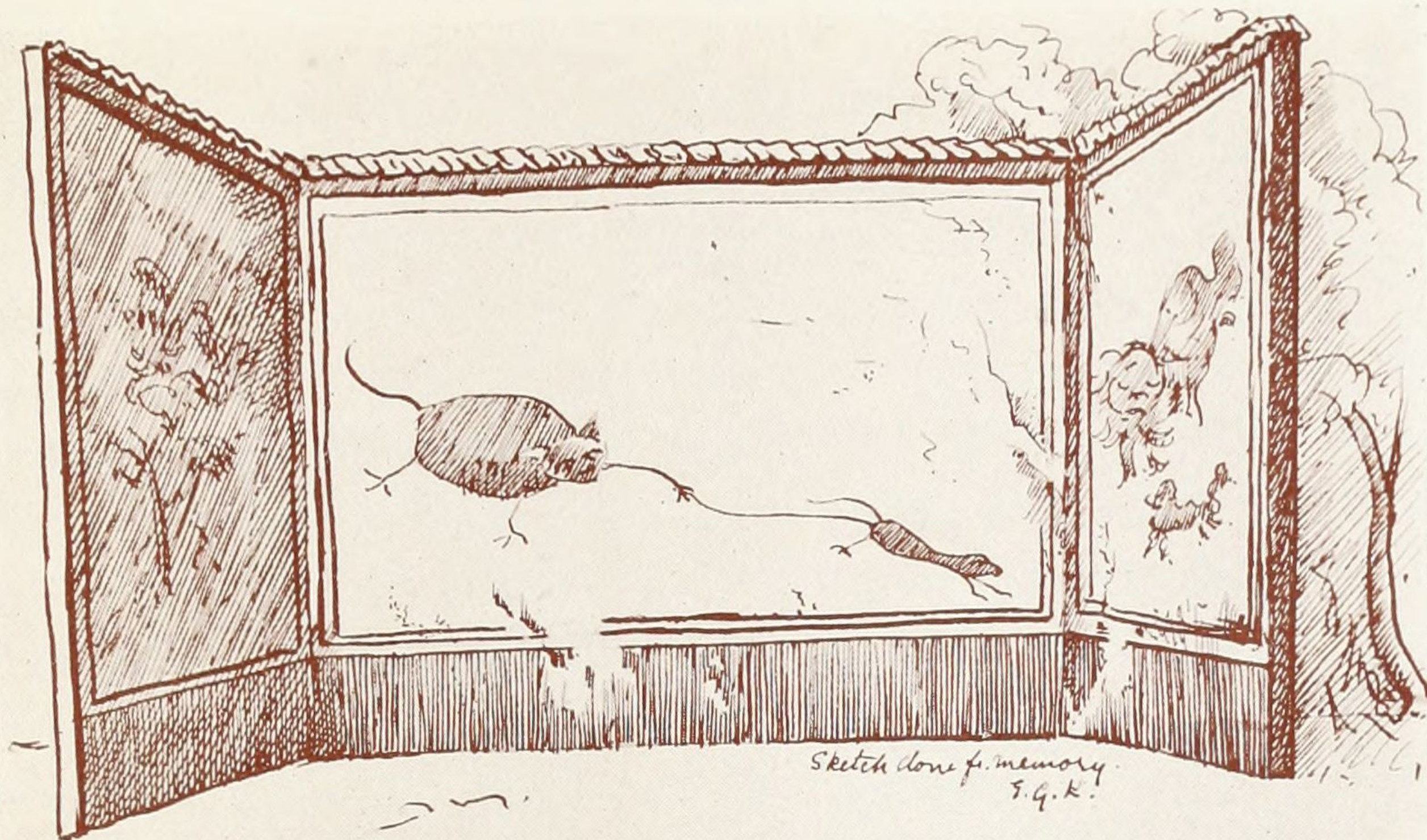
TEMPLE OF THE GOD OF LITERATURE



Fillon, Cambodia
Feb 21, 1908
E.G.K.

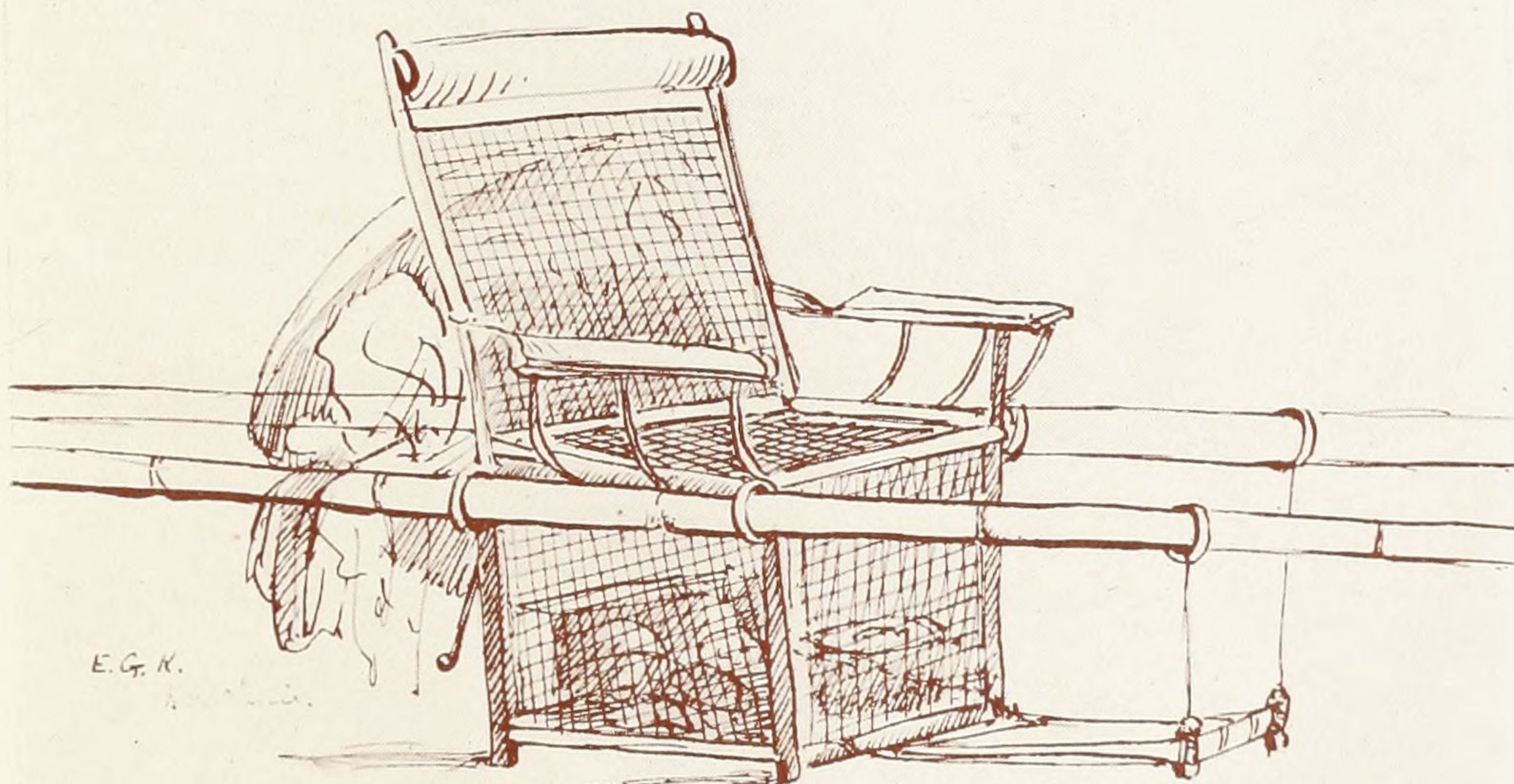


TOMB OF A PHILOSOPHER AMONG RICE-FIELDS



Sketch done from memory
E.G.K.

VILLAGE SCREEN WALL



E.G.K.

CARRYING CHAIR



TALI FU



SUSPENSION BRIDGE



BRIDGE MADE OF CREEPERS



SHAN WOMAN

