

Historic, archived document

Do not assume content reflects current scientific knowledge, policies, or practices.

62

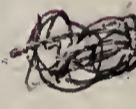
*Catalog
Number
28*

New Rose
TEXAS CENTENNIAL

Plant Patent Pending

● Bright Red Sport of Hoover
Developed by Dixie Rose Nursery

Described on page 3



© 1935

C 1935

DIXIE ROSE NURSERY

TYLER *South's Leading Rose Nursery* **TEXAS**



Announcing the New Rose TEXAS CENTENNIAL

1836 - ONE HUNDRED YEARS - 1936

A NEW BRIGHT-RED SPORT OF THE HOOVER ROSE

As patriotic Texans whose ancestors fought in the revolution of 1836, we are contributing for the state-wide Centennial Celebration in 1936, a splendid new rose which we registered last year with the American Rose Society as "Texas Centennial".

It is a worthy offspring of a worthy parent - the Hoover Rose. The Hoover Rose, after five years of test throughout the country, was awarded the Hubbard Gold Medal by the Rose Society as the best rose of the period. "Texas Centennial" is a counterpart of the Hoover in form of flower and habit of growth, and has made good this year in test gardens, public and private, all over the United States. These tests assure us it will pass all requirements for hardiness of plant and popularity of bloom. Because these widespread tests have proven its worth, "Texas Centennial" will be grown and distributed next year by more than a score of America's leading rose growers.

Distribution of plants so far has been confined entirely to tests. The opening of the fall season finds us with a fair supply of excellent two-year plants. Most of these plants are budded on Multiflora Japonica root stock, though we have a limited supply on Texas Wax for those who prefer it. Order "Texas Centennial" now, for our stock must supply the nation this year.

In keeping with our progressive policy we have added to our list this year many new roses from Europe and America. Most of the old favorites are retained. Send us your order with the assurance that it will receive our most careful attention as to selection and proper packing.

A. F. Watkins Manager,
DIXIE ROSE NURSERY



Field View of our New Rose "Texas Centennial".... 50,000 two-year plants

Two New Sports of the Hoover Rose

Beauty and utility reach new heights with the introduction of these two fine new Roses. Most Roses of easy growth have lack-luster blooms. The delicate color-blends of these free-growing plants are truly wonderful.

TEXAS CENTENNIAL HT.

ILLUSTRATED ON FRONT CATALOG COVER
(Dixie Rose Nursery, 1935.) Plant Patent Pending

This bright vermilion-red Rose has a light tone of gold at the base of petals, with a lighter red at center of the bloom. It gradually tones to a deep, rich pink as the bloom ages. Bud is long-pointed, opening to a large, moderately fragrant flower on a long, strong stem. Holds its color in the sun better than any other red Rose we have ever grown. \$1.00 each, \$2.50 for 3, \$10.00 per doz.

TEXAS GOLD HT.

ILLUSTRATED ON BACK CATALOG COVER
(Wolfe, The Florist, 1935.) Plant Patent No. 135

Color, rich gold, many blooms showing pink on lower tiers of petals, especially during hot weather. Medium-length bud, opening into a large, full flower on a long, straight stem. Growth is tall, heavy, free-blooming. A true sport of the President Herbert Hoover Rose, with same habits of growth, foliage, and bloom. \$1.00 each, \$2.50 for 3, \$10.00 per doz.

Texas Centennial Rose

Forever in the gardens of the world
A rose will hold the sceptre and the throne,
Unbarred by some pretender of a day—
Sure sovereign of a kingdom all her own.

In Texas for a glorious hundred years
The rose's fragrance has bewitched the air,
And, listening to a mockingbird's sweet song,
Young girls have fastened roses in their hair.

In nineteen thirty-six a new queen reigns—
One in whose youthful, regal body flows
A pure rich stream of noble, royal blood—
A lovely, radiant queen—Centennial rose.

Her arms are graceful as green woodland ferns;
Her body a slim pedestal of jade—
A red rose burnished with the setting sun—
A queen whose matchless beauty will not fade.

—ELLA V. FREEMAN

OUR GUARANTEE

All Roses sold through our Retail Catalog are guaranteed, Number 1, two-year plants, true to name and first class in every respect. We exercise great care to keep all varieties true to name, but in case of error on our part our liability is no greater than the free replacement of plants proving untrue or the refund of the purchase price. In all cases the plants are guaranteed to reach the purchaser in good condition.

IMPORTANT NOTICE. The descriptions are those given by the introducers, which are, of course, based on the behavior of the varieties in the particular locality where they were observed. To save disappointment, please refer to the chart on the index, page 31, which shows how varieties behave in this section, which represents the general South.

TERMS: READ CAREFULLY. Terms are cash with order, as we have no credit department. Orders of \$2.00 or more are sent prepaid anywhere in the United States. On orders of less than \$2.00, please add 15 cts., regardless of number of plants, to cover extra packing and transportation costs. No order accepted for less than \$1.15, including packing and postage.



© 1935 Matador

Patent applied for

New Novelty and Patented Roses

MATADOR HT.

(G. A. van Rossem, 1935)

Plant Patent applied for

Nowadays a new red Rose must be quite superior to attract the attention of a critical jury, and Matador did it. When exhibited in European shows, it was hailed the greatest red Rose in years. Our tests have confirmed the opinion and further proved it well adapted to southern conditions. Large, full Rose, well formed, scarlet-crimson with darker silky sheen on the reverse, very fragrant. Vigorous, healthy plant. \$1.50 each, \$15.00 per doz.

TOKEN HT.

(Montgomery & Co., 1935)

Plant Patent No. 95

Pure orange, with a shade of pink as it ages. Upright, strong and a dependable bloomer. \$1.50 each, \$15.00 per doz.

MRS. PIERRE S. DU PONT

HT. (C. Mallerin, 1929)

Here is a splendid golden yellow Rose which is the finest of its color for garden use. The well-shaped, golden yellow flowers resemble those of the lovely old Mme. Butterfly in form. Plant is compact and leafy, growing about 2½ feet high, and blooms with unceasing abundance throughout entire season. We regard it very highly. 60 cts. each, \$6.00 per doz.



Mrs. Pierre S. du Pont

AUTUMN HT.

(L. B. Coddington, 1931)

Gorgeous dark crimson and yellow. A descendant of Sensation and Souv. de Claudius Pernet. Buds have burnt-orange tinge and open to very double flowers of deep pink and orange-yellow. In warm weather, flowers have a striped appearance which disappears in cool weather, leaving deep crimson and gold. Moderately vigorous. 60 cts. each, \$6.00 per doz.

“You may remember that last fall I sent for some Roses from you and told you at the same time that I did not believe that southern-grown Roses were able to grow and stand the New England winters. My apologies. Your Roses were put into the ground the day before Christmas, and that is very late here, and immediately there started the most severe winter there has been for over seventy years, with the thermometer going 20 and 30 degrees below zero. I thought that I would lose all my established Roses and never gave the southern Roses a chance, but to my surprise they all lived and are doing as well as the others. Again my apologies and congratulations. Be sure to send me your Catalog this year.” Edward W. Burt, M.D., New Bedford, Mass.

New Novelty and Patented Roses

GOLDEN CLIMBER HW.

Mrs. Arthur Curtiss James

Plant Patent No. 28

Originated by Mr. and Mrs. Walter D. Brownell, Rhode Island, who have been improving the size, color, hardiness, and blooming qualities of climbing Roses, this magnificent new golden yellow climber has met sensational approval. Virtually a yellow Mary Wallace, though foliage is glossier and healthier, and the long-stemmed yellow flowers are borne singly. Blooms immense, with glorious, long-pointed buds, won the acclaim of members of American Rose Society assembled in Boston. Finest hardy yellow climber introduced to date. \$1.50 each, \$15.00 per doz.

All Roses sold to our Retail Trade are mature, 2-year plants that have bloomed through the year

© 1933 Golden Climber Plant Patent No. 28

NEW DAWN HW.

Everblooming Dr. W. Van Fleet

(Somerset Rose Nursery, 1930)

Plant Patent No. 1

Most popular hardy climber. The lovely flesh-pink Dr. W. Van Fleet has produced a sport which is a true everblooming climber, hardy enough to withstand severe frost. Flowers have same exquisite shell-pink tint, and while plants are not so vigorous as original, they are strong enough to make splendid, glossy-leaved pillars. \$1.50 each, \$15.00 per doz.

ANNE POULSEN Poly.

(D. T. Poulsen, 1934)

Plant Patent applied for

First shown in 1934 at the National Rose Show in London by the originator, where great interest was aroused by its color and form. Of the Hybrid Polyantha type, with semi-double flowers of a vivid rose-cerise color. Like all Roses of its class the blooms are carried in clusters or sprays of ten or more, and the plants are seldom without flowers from June to frost. \$1.25 each, \$12.50 per doz.

"My shipment of Roses arrived in excellent condition and was planted at once. I never saw finer plants. I hope to have some very fine Roses. If I don't it will be the fault of the planting and not the plants, as I never saw finer plants." — Louisville, Kentucky.



© 1935

Anne Poulsen Plant Patent applied for



© 1935

Gloaming

Plant Patent No. 137

New Novelty and Patented Roses

GLOAMING HT.

(J. H. Nicolas, 1934)

Plant Patent No. 137

The bud is long-pointed, salmon-color lightly tinged with orange. The open bloom, which is large and full, is luminous pink, suffused with salmon, the outer petals forming a lighter collarette. The plant is a vigorous, upright grower with dark green foliage that resists disease. Flowers are produced intermittently from late May to November, on long stems, and remain in good condition for several days. Seems to be hardier than most Hybrid Tea Roses. \$1.50 each, \$15.00 per doz.

ALEZANE

(L. Pabissa, 1935)

Plant Patent No. 116

Almost brown in bud, but opens to a vivid orange-pink. Plants are healthy and robust in habit, and very free blooming. \$1.50 each, \$15.00 per doz.

MME. NICOLAS AUSSEL HT.

(Pernet-Ducher, 1930)

This stunning new Rose won a Gold Medal at the Exposition of Lyons, France, in 1930. It is a remarkable blend of deep glowing orange and salmon-pink, fragrant, beautifully formed, and lasting when cut. Bud is very large, shapely, heavily tinged with salmon and carmine. The open flower is glowing salmon suffused with gold and orange. Plant is vigorous and produces a fine crop of flowers several times each season. One of best new Roses. 60 cts. each, \$6.00 per doz.



Mme. Nicolas Aussel

Why We Offer You America's Finest Field-Grown Roses

The prices in this Catalog demonstrate that you can have a beautiful Rose-garden at small cost. Cheaper Roses may be bought elsewhere, but plants of Dixie Quality cannot be produced and shipped to you at prices lower than we quote. All our Roses are field-grown and budded on Rosa Multiflora Japonica understock. We are budding nearly a million Rose plants annually, and our prices are the lowest for which our large and experienced organization can produce finest quality Roses.

The plants which we send out are all two-year-old, Number 1, budded bushes. They are guaranteed to reach you in good condition.

New Novelty and Patented Roses

MARY HART HT.

Red Talisman

(G. B. Hart, 1932)

Plant Patent No. 8

A stunning, glorious red sport of the well-known Talisman which it resembles in almost all respects except color, having the same erect habit, with foliage of somewhat darker green. It is an unceasing bloomer, producing warm brownish crimson flowers both early and late, with the unusual merit for a red Rose that the color does not turn bluish as blooms fade. \$1.00 each, \$10.00 per doz.



Mary Hart

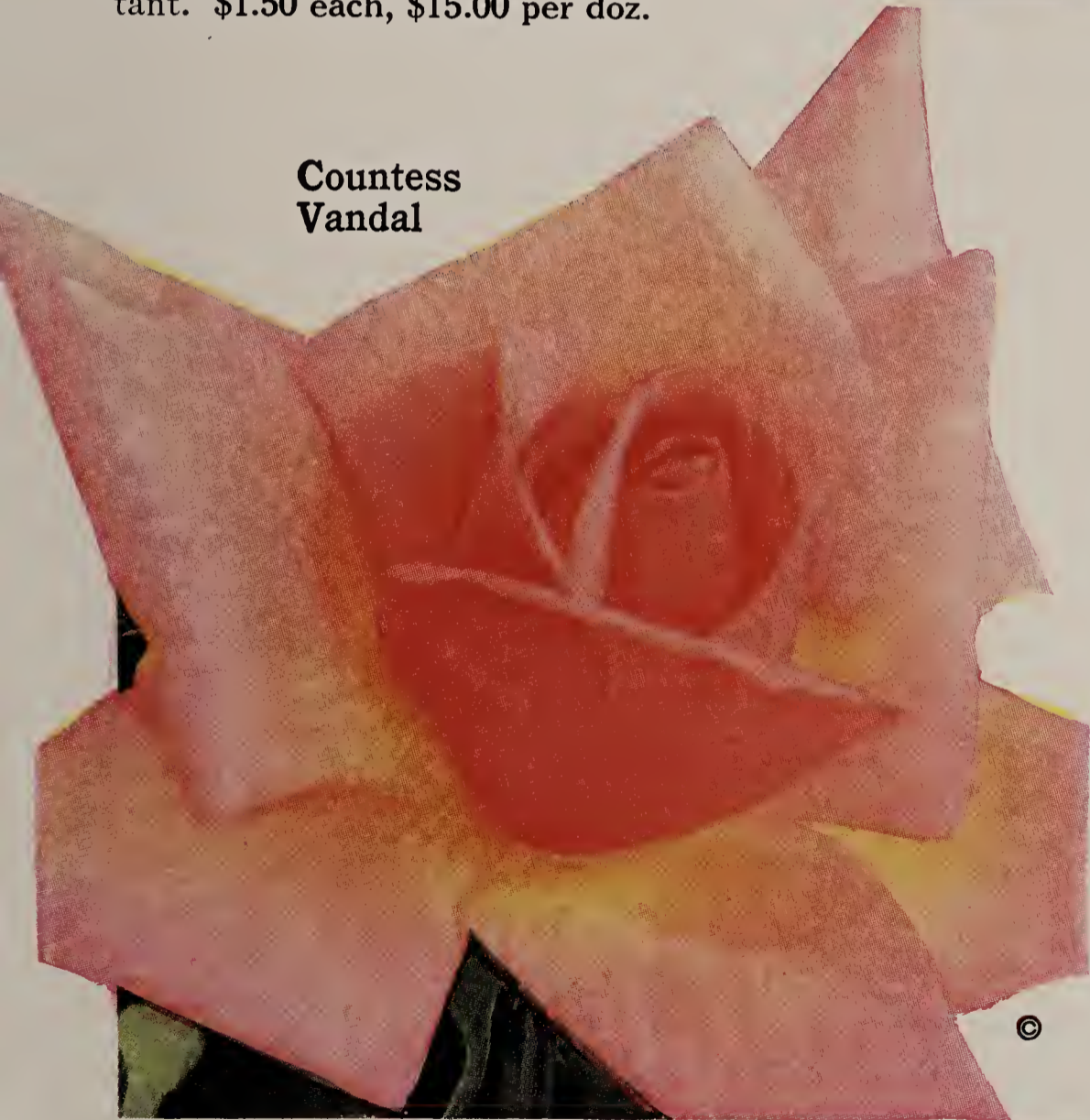
CARMELITA

(F. Spanbauer, 1933)

Plant Patent No. 91

A deep, yet brilliant, crimson flower of good substance and pronounced fragrance. Strong, free blooming, and disease-resistant. \$1.50 each, \$15.00 per doz.

Countess
Vandal



COUNTESS VANDAL

HT. (M. Leenders & Co., 1932)

Plant Patent No. 38

At Rose shows in Europe and America, during the seasons of 1931-33, this Rose took many first prizes, medals, and awards of commendation, making a veritable sensation in the Rose-world. Its long, pointed buds are coppery salmon and golden yellow, opening to large, bronzy pink flowers frequently over 5 inches wide. Long, deep petals reflex in a graceful manner, giving it exquisite delicacy of form unapproached by Roses of similar size. Bronzy foliage. Upright, vigorous; prolific flowering habit. \$1.00 each, \$10.00 per doz.

*We are testing a New
Countess Vandal Climber
which we expect to offer
for Fall, 1936.*

The "Key to Classification" on page 31 gives the growing strength of each variety. If your growing conditions are not good it will be best for you to order only strong-growing varieties. Special quantity prices will be found on page 23. Our prices are lower than those of other Rose-growers of established reputation, because our large production, our methods and climatic conditions reduce our production costs. Remember, all prices shown in this Catalog are PREPAID TO YOU, except as noted under "TERMS" on page 3.

New Novelty and Patented Roses

JULIEN POTIN HT.

(Pernet-Ducher, 1927)

A fine clear golden yellow Rose of vigorous, erect habit, with very shapely, medium to large blooms of long-pointed form, which hold their color well. Excellent exhibition Rose. Free flowering and fragrant. 60 cts. each, \$6.00 per doz.



Julien Potin



Margaret McGredy

SOUVENIR HT.

Golden Talisman. (A. N. Pierson, 1932)
Plant Patent No. 25

Pure golden yellow sport of the remarkable Talisman, which it equals in vigor and resembles in upright growth, healthy light green foliage, and free blooming. Flowers slightly larger than Talisman and a little more loosely built, correcting a minor fault of Talisman. Blooms are fadeless yellow and last a long time, on the bush or when cut. A free-flowering, non-fading yellow Rose. Its Talisman parentage assures vigor and excellent blooming. \$1.00 each, \$10.00 per doz.



Souvenir

MARGARET MCGREDY

HT. (S. McGredy & Son, 1927)

It is difficult to describe the extraordinary vividness of this scarlet-orange or brick-red flower. The color stands out in the garden like a torch. Its symmetrical blooms are cup-shaped and double, with an excellent circular arrangement of petals, and they are produced with astonishing freedom throughout the season. This wonderful Rose never fails to draw favorable comment from visitors who see it growing in our nursery. Its sturdy growth, delightful perfume, and remarkable blend of colors is everything that could be desired. We recommend it for mass planting. 60 cts. each, \$6.00 per doz.

We expect to offer our New Climbing Margaret McGredy for Fall, 1936

New Novelty and Patented Roses



Golden Dawn

GOLDEN DAWN HT.

(Patrick Grant, 1929)

One of the finest garden Roses grown in America. Flowers are fully double, deep yellow in bud, occasionally tinged with bronze, opening to fine, richly fragrant, pale lemon-yellow flowers of great size and lasting quality. Plants are dwarf and spreading, with dark, glossy green foliage which seems impervious to black-spot. We believe it has a great future. 60 cts. each, \$6.00 per doz.



Blaze

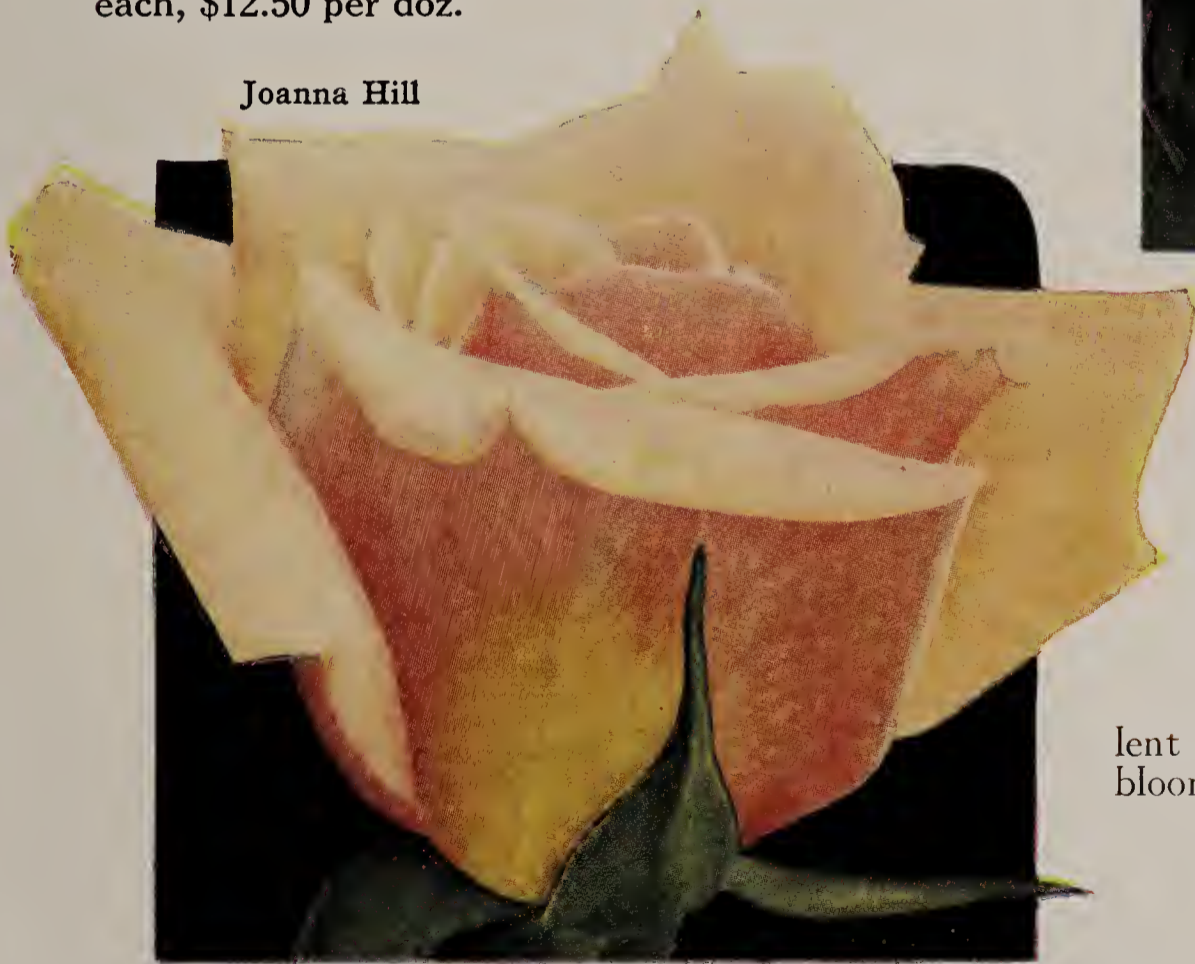
BLAZE (Everblooming Paul's Scarlet)

H.Cl. *(Jackson & Perkins Co., 1932)*

Plant Patent No.10

Although there is some controversy about Blaze, we believe that with improved bud-selection methods, Blaze plants offered this year will come nearer bearing out the ideals of the introducers in giving you continuous blooms. Blaze plants in our nurseries have bloomed continuously through this spring and summer. Can be pruned low for bed massing, trained as a shrub, or tied up as a climber. \$1.25 each, \$12.50 per doz.

Joanna Hill



JOANNA HILL HT.

(J. H. Hill Co., 1928)

Bright yellow and cream-colored flowers, like an improved Sunburst. Bud very large and long-pointed, semi-double, full, very lasting, moderately fragrant. Stems long and stiff, making the blooms excellent for cutting. A steady, continuous bloomer. 60 cts. each, \$6.00 per doz.

A Rose-Garden Enhances the Value and Salability of Any Home

All Roses Sold Through Our Retail Catalog Are Mature, Two-Year Plants

Novelty and Patented Roses

NIGRETTE HT.

"The Black Rose of Sangerhausen"

(M. Krause, 1934)

Plant Patent No. 87

Nigrette was introduced in America last season from Germany. Plant it for its novel coloring. In the bud it is a very dark, velvety red, opening to deeper shades almost black. It is an easy, sure grower in our nursery fields. Especially valuable for bedding as it is prolific in branches and blooms. Stems are rather willowy. \$2.00 each, \$20.00 per doz.



Nigrette

© 1934

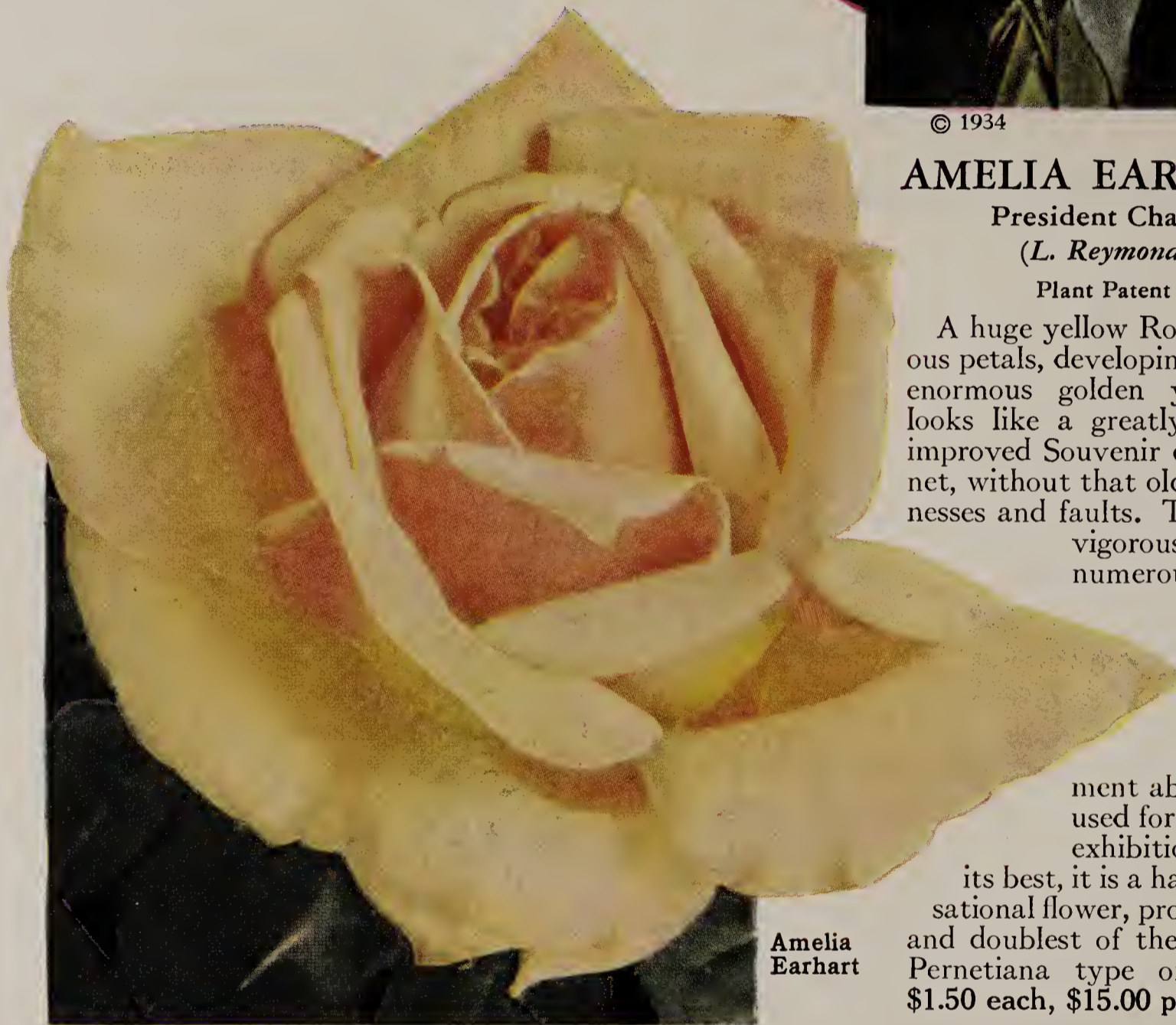
AMELIA EARHART HT.

President Charles Hain

(L. Reymond, 1929)

Plant Patent No. 63

A huge yellow Rose full of numerous petals, developing slowly from an enormous golden yellow bud. It looks like a greatly magnified and improved Souvenir de Claudius Pernet, without that old variety's weaknesses and faults. The plant is very vigorous, producing its numerous stiff-stemmed flowers throughout the season. This Rose has attracted a great deal of favorable comment abroad, where it is used for both garden and exhibition purposes. At its best, it is a handsome and sensational flower, probably the largest and doublest of the modern race of Pernetiana type of Hybrid Teas. \$1.50 each, \$15.00 per doz.



Amelia Earhart

© 1934

GOV. ALFRED E. SMITH HT.

(Veuve Denoyel, 1933)

Plant Patent No. 62

A very handsome, globular Rose reminiscent of the older Miss Lolita Armour. The brownish buds open to very double flowers of buff, terracotta, and golden salmon. \$1.25 each, \$12.50 per doz.

DOUBLOONS H. Set.

(M. H. Horvath, 1934)

Plant Patent applied for

A stunning new hybrid of the wild Prairie Rose, *Rosa setigera*, with fine deep golden yellow flowers of excellent shape, both in bud and open bloom. Plant is a ruggedly hardy climber. \$1.50 each, \$15.00 per doz.

(J. H. Nicolas, 1935) **ROCHESTER HT.** Plant Patent No. 131

A lovely, constant-flowering bedding Rose. Is good for cut-flowers in baskets or broad vases as it blooms in clusters. Flowers are full double with an iridescence of pearl overlaid with gold, reverse of petals tinted with carmine. Vigorous. Winter-hardy. \$1.25 each, \$12.50 per doz.

New Novelty and

Patented Roses



© 1935

(Dixie Rose Nursery, 1935) **DIXIE CLIMBER HT.** *Plant Patent applied for*

A sport of the superb Rose, Gov. Alfred E. Smith, and the individual orange, pink, and salmon blooms are even larger. Plant is a vigorous climber with large, handsome foliage. The wood is hard and resistant and the plant can be classified among the Hardy Climbers. Blooms repeatedly throughout the season. A great acquisition. \$1.00 each, \$10.00 per doz.

MAX KRAUSE HT.

(Max Krause, 1930)

Fat, globular buds of deep, butter-orange, which open to huge, double, golden yellow flowers with petals paling lighter at the edges and deepening into soft coppery tones in center of bloom. Does well in the garden and blooms freely, producing large blooms. It is a deeper yellow than Louise Krause. \$1.25 each, \$12.50 per doz.

CARILLON HT.

(J. H. Nicolas, 1935)

Plant Patent No. 136

This lovely Rose bears several large blooms on a stem; brilliant flame-pink, finishing coral-pink. Continuous bloomer. \$1.50 each, \$15.00 per doz.

LOUISE KRAUSE HT.

(Max Krause, 1930)

Almost a twin sister to Max Krause, which it resembles in large bloom and color—orange, paling to cream at edges of petals. Lighter color than Max Krause. Free flowering. Vigorous. \$1.25 each, \$12.50 per doz.

PERMANENT WAVE

(M. Leenders, 1934)

Plant Patent No. 107

Large, semi-double blooms in clusters, on long stems. Color bright cochineal-carmine. Strong plant and a continuous, free bloomer. \$1.50 each, \$15.00 per doz.

Special 60-cent Novelty-Rose Offer C

Any fifteen 60-cent Roses Listed in Dixie Rose Catalog No. 28, Ordered for One Shipment, Will Be Prepaid Anywhere in the U. S. A. for ONLY \$6.95.

Better
Times



New Novelty and Patented Roses

BETTER TIMES HT.

(J. H. Hill Co., 1934)

Plant Patent No. 23

Brilliant crimson-cerise sport of the florists' Rose, Briarcliff. The well-shaped flowers are borne erect on stiff stems freely throughout the season. \$1.50 each, \$15.00 per doz.

©
1934

ESSENCE HT.

(B. R. Cant & Sons, 1930)

Introduced in England in 1930, and almost at once became a popular Rose. The bud is long and tapers to a pronounced point. The open blooms, however, are the real beauty of the plant—a fiery crimson that glistens and glows with a velvety sheen. The flowers have a pleasing fragrance. 60 cts. each, \$6.00 per doz.

Essence



Director
Rubio

DIRECTOR RUBIO HT:

(P. Dot, 1929)

In our climate, this sterling variety is one of the handsomest of Roses. Its huge, vivid pink buds are borne on relatively short, stiff, and erect stems and open out like peonies into broad, somewhat flat flowers of shining crimson-pink with a broad collar of huge petals surrounding a group of incurved smaller ones in the center. The giant size and brilliant color of this stunning Rose attract admiring attention from everyone. 60 cts. each, \$6.00 per doz.



New Novelty and Patented Roses

EDITH NELLIE PERKINS HT.

(A. Dickson & Sons, 1928)

The open bloom is a delightfully shaped flower of two contrasting tints, the outside of petals gleaming with bright orange-cerise and the inside overspread with pale salmon-pink, flushed with orange-gold. Buds are firm and handsome, richly dyed with copper tones before they open. Plant stands up vigorously and is well clothed with glossy, disease-resistant foliage. More than ordinarily vigorous, it makes a splendid bush for formal bedding use. Provides abundance of exquisite blooms for cut-flowers. 60 cts. each, \$6.00 per doz.



Edith Nellie Perkins

MEVROUW G. A. VAN ROSSEM

HT. (G. A. van Rossem, 1926)

Stunning bright yellow and orange Rose of erect habit, with rather small foliage and thick, thorny canes. The medium-sized, gorgeous, globular blooms are golden yellow, flamed with orange and scarlet; exquisite clean-cut veins of deeper tones, deepening at times to bronze and brown. A most unusual and striking bloom. Best grower of its color class for southern gardens but fades in hot weather. 60 cts. each, \$6.00 per doz.



Mevrouw G. A. van Rossem

EDITOR MCFARLAND HT.

(C. H. Mallerin, 1931)

A deep, sparkling pink Rose of the Lady Ashtown type, borne with the utmost liberality by vigorous, upright bushes which hold the flowers stiffly erect and make them particularly suitable for cutting. The clear, unfading color is especially pure, and the general vigor and reliability of the plants have made friends for it in all parts of the country, both as a bedding Rose and as a cut-flower. 60 cts. each, \$6.00 per doz.



Editor McFarland

We Grow Principally Hybrid Teas or Everblooming Roses

Hybrid Tea Roses (indicated by HT.) do not bloom all the time, but if kept healthy and growing, they bloom successively throughout the growing season. Our plants are adapted to all sections, with winter protection where necessary.

Special or Newer Everblooming Bush Roses

All Roses listed below are 60 cts. each, \$6.00 per doz.



BETTY UPRICHARD

(A. Dickson & Sons, 1922)

HT. Brilliant copper-red buds, opening to brilliant orange-carmine flowers, showing light salmon reflexes.

INDEPENDENCE DAY

(Bees Ltd., 1919)

HT. A showy bedding Rose with pointed, brilliant yellow buds tinged with orange and copper, opening to broad orange-yellow blooms, borne in profusion through the season.



CUBA

(Pernet-Ducher, 1926)

HT. Vivid, orange-scarlet buds, opening to immense, cup-like flowers of iridescent copper-red and brilliant orange-vermilion. Free-flowering and exceptionally vigorous.

AMI QUINARD

Illustrated below. (C. H. Mallerin, 1927)

HT. One of the darkest and yet most brilliant, crimson Roses ever introduced. The large, semi-double flowers have a lovely velvety scarlet sheen and are produced in steady succession throughout the summer on vigorous plants of more than average growth.

Ami
Quinard



BRIARCLIFF

(Briarcliff Greenhouses, 1926)

HT. A brilliantly colored sport of the famous Columbia, with huge, rich pink flowers on long, strong stems.

CHATEAU DE CLOS VOUGEOT

(Pernet-Ducher, 1908)

HT. Most beautiful of all the deep black-crimson Roses, fragrant and handsome. A favorite of all who treasure Roses for their sheer beauty.



ETOILE DE HOLLANDE

(H. A. Verschuren & Sons, 1919)

HT. Brilliant red blooms of magnificent size, perfect in half-open state; attractive centers when full blown; enormous petals; fragrant. Healthy. Free-flowering.



ANGELUS

(F. H. Lemon & Co., 1921)

HT. A strong, upright-growing bush with huge, pure white flowers somewhat similar to those of Kaiserin Auguste Viktoria, but doubler and richly fragrant.

Special or Newer Everblooming Bush Roses, continued

All Roses listed below are 60 cts. each, \$6.00 per doz.

DAINTY BESS

(W. E. B. Archer & Daughter, 1928)

HT. The charming single flowers in large clusters are soft mauve-pink, with petals of kid-like texture, emphasized by a sparkling garnet-crimson center. A tall-growing plant.



DUCHESS OF WELLINGTON

(A. Dickson & Sons, 1909)

HT. Handsome, long, saffron-yellow buds opening to very large, semi-double, pale creamy yellow flowers. Strong plants.

EDEL

(S. McGredy & Son, 1919)

HT. Huge, very double, snow-white flowers with many exquisitely curled petals. The tall plants are vigorous and exceptionally free-flowering, especially late in the season.



DAME EDITH HELEN

Illustrated below. (A. Dickson & Sons, 1926)

HT. A superb Rose of the exhibition type, producing huge, shapely buds and very large, high-centered blooms of clear dazzling pink, composed of many concentric petals full to the center and sweetly fragrant. Stems are erect and very stiff. Probably the handsomest and showiest fully double pink Rose for exhibition.



Dame Edith Helen

CHARLES P. KILHAM

(G. Beckwith & Son, 1926)

HT. Huge, double flowers of brilliant oriental red suffused with gay orange and scarlet. A greatly improved Mme. Edouard Herriot both in substance of flower and in vigor.



MRS. HENRY BOWLES

(Chaplin Bros., 1921)

HT. Ovoid buds and globular flowers of clear, piercing pink, with lighter shades. A fine firm center, well held, and fairly fragrant. Vigorous, free-blooming plants with good foliage.



IRISH CHARM

(S. McGredy & Son, 1927)

HT. Medium-sized, double flowers of bright golden apricot passing to blush-pink. Fragrant and very lovely.



MRS. LOVELL SWISHER

(Howard & Smith, 1926)

HT. Large, pointed buds and huge, gorgeous flowers of salmon-pink and gold, passing to flesh-pink at edges. Strong grower and free bloomer. One of the largest Roses.

IRISH ELEGANCE

(A. Dickson & Sons, 1905)

HT. Large, single flowers of orange-scarlet, tinged with bronze and apricot. A very decorative single-clustered flower.

RAPTURE

(Traendly & Schenck, 1926)

HT. Much like Mme. Butterfly in growth and shape of bloom, but the color is deeper and more brilliant. Considered the best of the Ophelia race.

JOHN RUSSELL

(Dobbie & Co., 1924)

HT. Large, ovoid buds and immense crimson flowers of globular type. Very vigorous. 35 petals.

CALEDONIA

(Dobbie & Co., 1928)

HT. Extremely long, delicate, pure white buds, opening to double, high-centered blooms of creamy texture. A superb, snowy white Rose when fully developed.

Special or Newer Everblooming Bush Roses, continued

All Roses listed below are 60 cts. each, \$6.00 per doz.

LULU

(W. Easlea, 1919)

HT. Remarkable for its long, slender, deep orange-red buds, and bright, single flowers. A favorite with men as a boutonniere.



ROSELANDIA

(Walter Stevens, 1924)

HT. Rich yellow flowers (resembling Golden Ophelia) carried on long stems, have a pleasing fragrance. The plant blooms freely, grows lustily, has good foliage, and is disease-resistant.

MAMAN COCHET

(S. Cochet, 1893)

T. Huge, long-pointed flowers, double to the center and deliciously fragrant, pale pink. One of the best old Tea Roses, especially adapted to the South.



MRS. MacKELLAR

(A. Dickson & Sons, 1915)

HT. Large, exquisitely formed blooms of deep citron-yellow, paling to canary and cream tints. Rated as one of the most beautiful Roses in existence.

LADY MARGARET STEWART

(A. Dickson & Sons, 1926)

HT. Large exhibition bloom with enormous petals, perfect form, high-pointed center, golden yellow, shaded and streaked with orange and red. Handsome, healthy foliage.

MME. JULES BOUCHE

Illustrated below. (J. Croibier Sons, 1911)

HT. Superb white flower, shaded light blush or primrose at center; double, full, lasting, fragrant. Plant extra-strong, healthy, very free blooming. Rated as the finest white or light-colored decorative Rose for garden use.



Mme. Jules Bouche

MISS LOLITA ARMOUR

(Howard & Smith, 1919)

HT. Extremely double, deliciously scented, coppery orange and pink flower of striking appearance. Bush is strong.

MRS. A. R. BARRACLOUGH

(S. McGredy & Son, 1926)

HT. Huge, pointed buds and extremely double, high-centered flowers of glowing light salmon-pink.

Classification and Strength of Growth of All Roses Shown on Page 31

McGREDY'S SCARLET

(S. McGredy & Son, 1930)

HT. Huge, loosely formed flower of bright crimson shaded with dazzling orange-scarlet. Extremely fine.



PRISCILLA

(A. N. Pierson, 1922)

HT. Outer petals rose-pink, center petals Tyrian-pink; very large bloom, carried singly on long, stiff stem. Does well in the South.

MRS. E. P. THOM

(Howard & Smith, 1926)

HT. Probably the best clear medium yellow garden Rose for the North. Slender, shapely, golden yellow buds; large, symmetrical blooms of light canary-yellow. Erect, vigorous, blooming freely.



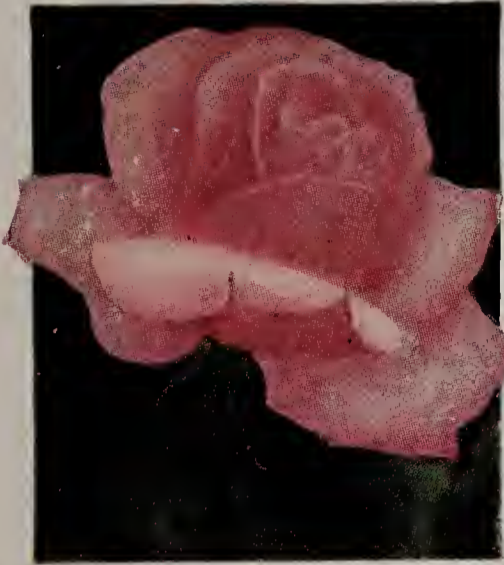
SOEUR THERESE

(F. Gillot, 1930)

HT. Bud and bloom large, golden yellow, changing to cadmium-yellow, edges spotted carmine. Hardy, vigorous, and blooms freely all season.

Special or Newer Everblooming Bush Roses, continued

All Roses listed below are 60 cts. each, \$6.00 per doz.



IMPRESS

(A. Dickson & Sons, 1929)

HT. Very large, double flowers of beautifully incurved shape, with petals of bright salmon-pink, suffused with luminous orange.

MME. EDOUARD HERRIOT

(Pernet-Ducher, 1913)

HT. One of the most famous Roses in the world. Gorgeous coral-red and orange tinged with yellow and gold. Free-flowering and exceedingly brilliant in the garden. Does best in the North.



E. G. Hill



REV. F. PAGE-ROBERTS

(B. R. Cant & Son, 1921)

HT. Copper-red buds opening to large, double, golden yellow blooms, stained outside with red; fragrant. 50 petals. Healthy foliage.

MISS ROWENA THOM

(Howard & Smith, 1928)

HT. Enormous buds and blooms of fiery rose and mauve, shaded with old-gold at center. Long, strong stems. A profuse bloomer. Has not made good in the South.



MRS. PERCY V. PENNYBACKER

(Jos. Vestal & Sons, 1929)

HT. A charming Rose of Mme. Butterfly type, with double flowers of soft peach-pink and silver. The fragrance is sweet. Plant strong and free-flowering.

PINK PEARL

(M. Leenders & Co., 1924)

HT. This is the best of all Roses of the Columbia type. Its erect stems bear its solid, deep pink flowers rigidly erect. Very double and deliciously fragrant.



ROSLYN

(Edwin Towill, 1929)

HT. Charming, pointed buds of golden yellow and frilled, open flowers of buttercup hue strengthened with orange. A remarkably free-blooming garden plant of moderate vigor. An interesting new variety.

SPECIAL OFFER D. Any ten 60-ct. Roses and any ten 45-ct. Roses (a Total of 20 2-Year, No. 1 Roses) PREPAID in U. S. A. for only \$8.75

Special or Newer Everblooming Bush Roses, continued



LORD CHARLEMONT

(S. McGredy & Son, 1922)

HT. This Rose has won popularity because of its fragrance and vivid crimson-scarlet color. Blooms are globular, full, and upright on strong stems. A good garden Rose for cut-flowers. Vigorous grower. Has a tendency to die back. 60 cts. each, \$6.00 per doz.

STANDARD OFFER No. E

Any 25 Standard or 45-ct. Roses Ordered for One Shipment—All Two-Year, No. 1 Plants—PREPAID Anywhere in U. S. A., ONLY \$8.95.

SOUVENIR DE MME. C. CHAMBARD

Illustrated below. (C. Chambard, 1931)

HT. Sturdy plants of Hybrid Perpetual habit, producing immense, upstanding flowers of gorgeous rosy red and salmon, with a deep orange-yellow glow underlying the whole flower. Blooms all season. \$1.00 each, \$10.00 per doz.



SYRACUSE

(C. Mallerin, 1930)

HT. Bright crimson flowers full of wavy petals, outer petals recurving. Open bloom is very double. Borne singly on good stems by tall, vigorous, bushy plants of healthy foliage. Not so good as E. G. Hill in the South. 60 cts. each, \$6.00 per doz.

Twenty-eight years we have been growing Roses in East Texas, where more than one-third of America's commercial Field Roses are grown annually.

Standard or Well-Known Hybrid Perpetuals

45 cts. each, \$4.50 per doz. These Roses bloom in late spring and in the autumn

FRAU KARL DRUSCHKI

(P. Lambert, 1901)

HP. White American Beauty. Pinkish buds and magnificent, snow-white blooms with deep, firm petals. A flower of unsurpassed shape. Best white Rose of any class. Very strong; 4 to 6 feet high. Prune often. Foliage normal. Blooms freely and continuously throughout the summer and fall.

GENERAL JACQUEMINOT

(Roussel, 1852)

HP. Scarlet-crimson buds and clear red blooms of moderate size and excellent shape; very fragrant. Plant strong; 3 to 6 feet high. Normal foliage. Often blooms a second time. An old favorite.

MME. ALBERT BARBIER

(Barbier & Co., 1925)

HP. Full, cupped flowers of soft fawn-yellow, paling to white; pinkish shades in the center. Growth moderate; blooms steadily through the season. Remarkable combination of yellow shades.

PAUL NEYRON

(A. Levet, 1869)

HP. Dark lilac-rose blooms of immense size, fair form, very double; remarkably fragrant. Vigorous. Strong, smooth canes. Tough, leathery foliage. It is more profuse in bloom than other Roses of its color, and one of the largest of all Roses.

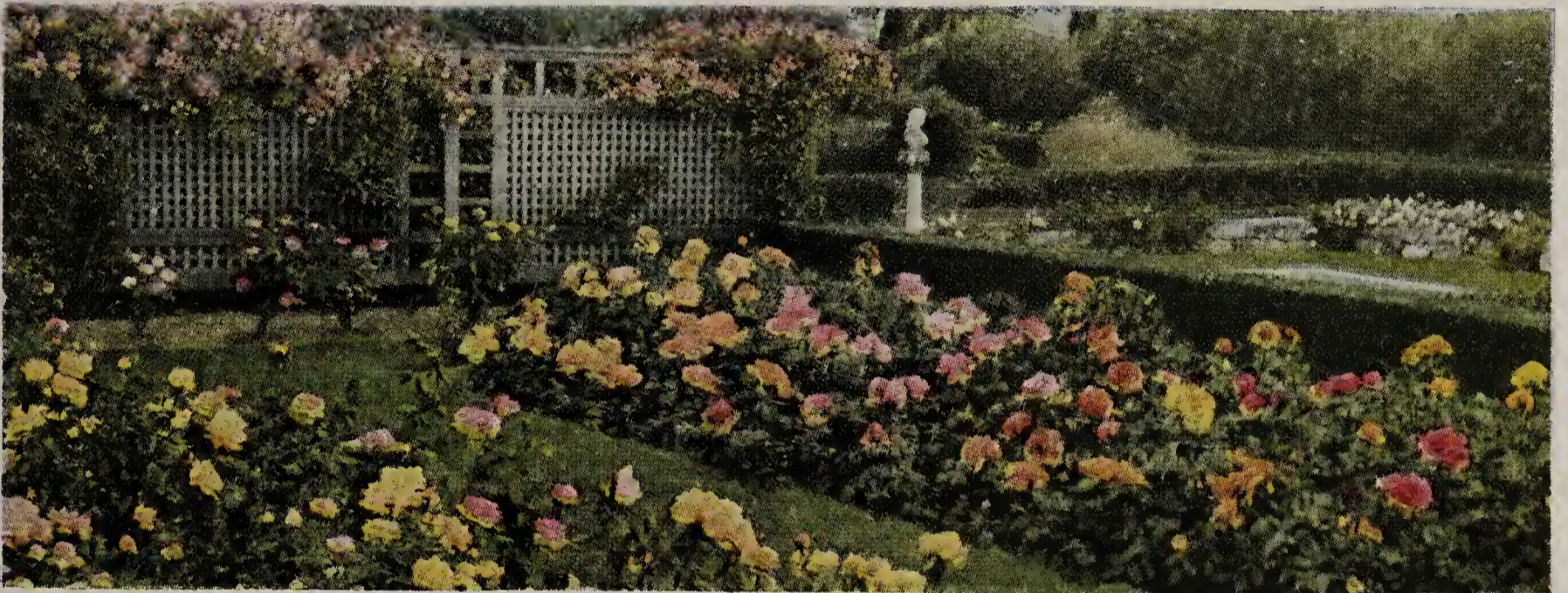
FINANCIAL RESPONSIBILITY of Dixie Rose Nursery is \$250,000.00. The owners of Dixie Rose Nursery are A. F. Watkins; W. V. Henson, Vice-President of Texas Pecan Nursery; and R. W. Fair, all experienced nurserymen. REFERENCES: Dun & Bradstreet, Tyler Chamber of Commerce, any Tyler bank. Our methods and our guarantee are dependable.

Special Group Prices to Garden Clubs

Because it is easier to handle large orders than small ones, we can afford to make special reductions in prices to Garden Clubs whose members group their orders, or to any number of Rose-lovers who group together for the purpose of securing favorable prices on Roses. If one hundred or more Roses are ordered to be shipped at one time, you are entitled to the 100-lot prices quoted at bottom of page 23.

Dixie Rose Nursery is a member of the American Rose Society. Because it endorses the work of that organization, it will give one annual membership in the American Rose Society to every Rose group or individual which orders 100 or more Dixie Rose bushes this season, to be shipped at one time. Membership in the American Rose Society is an honor and a privilege. Among other advantages, each member receives a practical book on Rose-growing called "What Every Rose-Grower Should Know."

A Rose-Garden Completes the Ideal Home



Every home should have at least fifty to a hundred Roses in the garden. Roses are fast becoming the most popular flower in America, as they have long been the best loved. The popularity of Roses is growing by leaps and bounds, and Garden Clubs and Rose Societies devoted to the culture of this lovely flower are being formed everywhere. Many of these Garden Clubs and Rose Societies have planted Municipal Rose-Gardens for the benefit of every citizen in the community. The American Rose Society will help in all undertakings of this kind by giving advice and suggestions. Plans and reports of municipal Rose-garden activities are available. We shall be glad to give further information on request.

Early Winter Planting in the South

Late fall is the best planting-time in the South because growth ceases for only a few weeks in midwinter. Bushes planted before winter comes make good root-growth and are ready to begin growing vigorously when spring opens. In the southern states, Roses may be planted at any time in winter when the ground is not frozen, but particularly from November 15 to February 15. If possible, prepare the ground several weeks in advance before planting, to allow plenty of time to settle before the Roses are planted. It is also well to protect newly planted Roses by hilling the earth up around them the first winter.

"I purchased from you in March, 1932, one of your Climbing Talisman and I believe that I have the finest plant of that variety in this state. Last spring we had from 30 to 50 blooms at one time—all large fine buds with stems from 10 to 18 inches in length."—Mrs. Felix P. Clay, Montgomery, Ala.

See Key to Classification and Strength of Growth on page 31

Standard or Well-Known Everblooming Roses

All Roses listed below are 45 cts. each, \$4.50 per doz.

There are thousands of standard or well-known Roses. However, we are now offering you only the bush and climbing varieties which we consider are worthy and adaptable to most soils and conditions.



AMERICAN BEAUTY

(Ledechaux, 1886)

HP. Large, globular buds and deep vinous crimson flowers, intensely fragrant, borne freely on strong stems over a long season. Very popular; always wins great admiration for its delicious perfume.

FRANK W. DUNLOP

(J. H. Dunlop, 1919)

HT. Very large buds and flowers of deep, brilliant rose-pink, extremely double and highly perfumed. Tall, with sparse foliage; blooms freely.



COLUMBIA

(E. G. Hill Co., 1916)

HT. Lively, bright pink, sweetly scented flowers of exquisite shape and strong, stiff petals, deepening in color as they expand. Free-flowering; good growth. Healthy foliage.

PRES. HERBERT HOOVER

(L. B. Coddington, 1930)

HT. Cross of Sensation X Souv. de Claudius Pernet. Large, cerise-pink, flame, scarlet, and yellow bloom; thick, broad petals; fragrant. This variety has proved itself through several years' test as one of the best of the newer garden Roses for the South, for it grows with exceptional vigor and produces an unbroken succession of handsome flowers.

**President
Herbert
Hoover**



CHAS. K. DOUGLAS

(H. Dickson, 1919)

HT. Fine, long-pointed buds, opening to large, loosely formed flowers of striking crimson-scarlet; slightly fragrant. The strong, branching plants are of ideal bedding habit. Abundant, healthy foliage.

GRUSS AN TEPLITZ

(Geschwind, 1897)

China or Bengal in character. Clusters of medium-sized, bright crimson flowers, with velvety shadings; intense fragrance. Ideal for massing or edging. Blooms freely. Vigorous, hardy.



ANTOINE RIVOIRE

(Pernet-Ducher, 1896)

HT. Pale silvery pink, often shaded lilac, with a touch of yellow at base; opens flat; double to center; medium size; fragrant. Erect, moderate growth. Foliage small, dark. Free-blooming spring and fall.



LADY ASHTOWN

(A. Dickson & Sons, 1906)

HT. Satiny buds and double, high-centered blooms of deep shining pink, with yellow glow at base of petals; quite fragrant. Strong; free-blooming. Hardy; healthy. 50 petals.

Standard or Well-Known Everblooming Roses, continued

All Roses listed below are 45 cts. each, \$4.50 per doz.

JONKHEER J. L. MOCK
(M. Leenders & Co., 1910)

HT. Carmine buds of gigantic size, opening slowly to enormous deep carmine-pink blooms with inner surface silvery rose. Stems are strong; bush is vigorous and unusually healthy.



KILLARNEY, DOUBLE WHITE
(Waban Rose Conservatories, 1909)

HT. Pure white sport of original Killarney, and identical in shape of bud, petalage, and blooming qualities. Dwarf, upright grower, but very sturdy.

LADY ALICE STANLEY
(S. McGredy & Son, 1909)

HT. Massive buds and fully double blooms of pale flesh-pink; outside of petals coral-rose; very sweet-scented. A strong-growing, free-blooming plant, unusually free from disease.

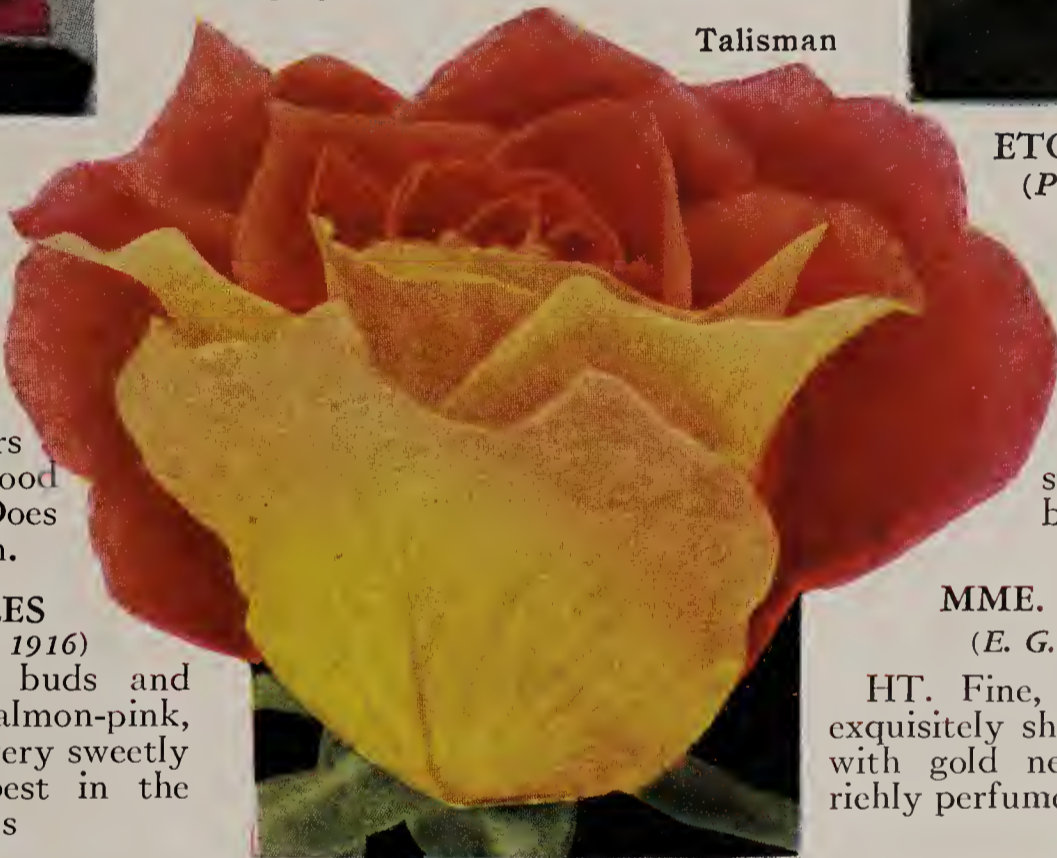


TALISMAN

(Montgomery Co., 1929)

HT. Brilliant red and golden buds that open to beautifully shaped blooms of scarlet-orange and golden yellow. Vigorous; tall; blooms constantly. Thrives almost everywhere. The 1933 American Rose Annual places Talisman in the No. 1 list of Roses—that is, varieties that have received the most widespread praise with the least criticism, from those who have thoroughly tested this wonderful Rose.

Talisman



FRANCIS SCOTT KEY
(J. Cook, 1913)

HT. Very large, light crimson buds and massive, very double (95 petals) blooms of noblest form; slightly fragrant. Erect. Flowers in great abundance. Good foliage. Quite hardy. Does extra well in the South.

ETOILE DE FRANCE
(Pernet-Ducher, 1904)

HT. One of the really fine old-fashioned, clear crimson Hybrid Teas, with large, double, star-shaped flowers borne singly on long stems. A good, bushy, bedding variety.

LOS ANGELES

(Howard & Smith, 1916)

HT. Very lovely buds and exquisite flowers of salmon-pink, with yellow shading; very sweetly perfumed. Thrives best in the West. For dry climates

MME. BUTTERFLY

(E. G. Hill Co., 1918)

HT. Fine, light pink buds and exquisitely shaped flowers, tinted with gold near base of petals; richly perfumed.



LADY HILLINGDON
(Lowe & Sawyer, 1910)

T. Slender, pointed buds and elegantly cupped flowers of deep saffron-yellow, paling lighter toward edges of petals; fragrant. Erect. Perfect foliage. Requires some shade in hot weather. Free-flowering.



KAISERIN AUGUSTE VIKTORIA

(P. Lambert, 1891)

HT. Well-formed, creamy buds which develop slowly to snowy white blooms of perfect form, with lemon tint at center; fragrant. Moderately vigorous. Hardy.



LUXEMBOURG

Marie Adelaide, Grande Duchesse de Luxembourg

(Soupert & Notting, 1912)

HT. Yellow, shading to copper at center. Stiff, upright stems, producing large flowers especially valuable for cutting.

Standard or Well-Known Everblooming Roses, continued

All Roses listed below are 45 cts. each, \$4.50 per doz.



**MARY, COUNTESS OF
ILCHESTER**

(A. Dickson & Sons, 1909)

HT. Large, double, full, cupped blooms of deep rose-pink; fragrant. Plant bushy; blooms freely. Very hardy. 52 petals. One of the best Roses for the South.



HADLEY

(Montgomery Co., Inc., 1914)

HT. A rich crimson-red flower with velvety texture, lovely form, and perfume unsurpassed in cut-flower value. Moderate in bloom and growth. The flowers show their best color in the fall.



**SOUVENIR DE GEORGES
PERNET**

(Pernet-Ducher, 1921)

HT. Gigantic flowers of glowing orange-pink, tinged with yellow. Buds almost scarlet. A dwarf, stocky plant which holds its huge blooms erect, making a fine bedding or massing variety.



**SOUVENIR DE CLAUDIUS
PERNET**

(Pernet-Ducher, 1920)

HT. Fadeless yellow, paling somewhat toward the edges; most beautiful when half open. Parent of most two-toned Roses. Poor grower except in the West.

MME. CAROLINE TESTOUT

(Pernet-Ducher, 1890)

HT. Large, globular flowers of satiny rose, shaded lighter toward outer edges of enormous petals; fragrant. Plant extra strong, healthy, very free-blooming.

*See Our Special
Standard Offer E
on page 18*



SENSATION

(J. H. Hill Co., 1922)

HT. Enormous, double, scarlet-crimson blooms of fine, deep form; sweetly scented. Plant strong and very active. 45 large petals.



SUNBURST

(Pernet-Ducher, 1912)

HT. Fine, well-shaped yellow flowers, suffused with orange at center. A well-known, fragrant garden Rose. Has proved its value in all southern gardens. Holds foliage better than most yellows.

WILLOWMERE

(Pernet-Ducher, 1913)

HT. Superb buds and blooms of richest pink, shining with yellow glow from heart of the flower. Strong grower; persistent bloomer. Its beauty is worth care. 54 petals.



Willowmere

*See Our Special
Color Offer F
on page 23*

Standard or Well-Known Everblooming Roses, continued

All Roses listed below are 45 cts. each, \$4.50 per doz.



RADIANCE
(J. Cook, 1908)

HT. Brilliant rose-pink buds, opening to well-formed, shining, globular flowers with lighter tints on reverse of petals; very fragrant. Plant of splendid growth; wonder bloomer.



RED RADIANCE
(Gude Bros., 1916)

HT. Big, globular blooms of deep rose-red on strong canes. The plant blooms freely until frost and in every respect is fully equal to Radiance. Foliage excellent.



MRS. CHARLES BELL
(Mrs. Charles Bell, 1913)

HT. Lovely shell-pink buds and blooms of fine globular form, with shadings of soft salmon; sweetly perfumed. Plant is strong, bushy. Good, healthy foliage.

OPHELIA
(W. Paul & Son, 1912)

HT. A creamy white and pale pink bloom with a glint of golden yellow in folds of petals; very fragrant. Plant strong; sparse habit; blooms liberally. One of the first florist Roses to have a perfectly formed bud.

COLOR OFFER F

15 Standard 45-cent, Two-Year Roses, any 5 each of Red, Pink, and Yellow, Your Selection (our selection if you prefer), Guaranteed First Quality, PREPAID in U. S. A., for \$5.35.

Special Prices on Quantity Orders

These Prices Apply to Individuals or Garden Clubs

	12 or more	50 or more	100 or more
45-ct. Standard Roses.....	37½c each	35c each	30c each
60-ct. Special or Newer Roses.....	50c each	47½c each	45c each
65-ct. Climbing Talisman, page 25.....	54c each	52c each	50c each
75-ct. Special or Newer Roses.....	65c each	60c each	55c each
\$1.00 Rose, Souv. de Mme. C. Chambard, page 18.....	85c each	80c each	75c each

PATENTED ROSES described on pages 3 to 12 do not take quantity prices except as shown under each description

Orders of 12 or more Roses in one shipment take quantity rates, regardless of the number of varieties in shipment.

All prices in this Catalog are PREPAID in the United States, provided the total order is \$2.00 or more; otherwise add 15 cts. for extra packing and transportation costs. No orders accepted for less than \$1.15, including packing and postage.

Order Your Roses Early This Season

Texas state-wide home beautification program, sponsored by the "Dallas Morning News" and Texas A. & M. College, in celebration of our Texas Centennial, will draw heavily on our supply of Roses. Since we have only a normal crop, we suggest that you order early. We sold out many varieties by February 15 last season. Mail us your selections NOW and tell us WHEN to ship.

Everblooming Climbing Roses

These plants bloom throughout the blooming season. They require winter protection in the North.

CLIMBING METEOR

(Dingee & Conard, 1901)

Cl.HT. One of the best old favorite dark red Roses. Blooms all season when established. 45 cts. each, \$4.50 per doz.



KITTY KININMONTH

(A. Clark, 1922)

HG. Superb, vigorous climber with huge, glowing pink flowers of vivid color. One of the finest climbing Roses. 60 cts. each, \$6.00 per doz.

CLIMBING SUNBURST

(Stuart Low & Co., 1915)

Cl.HT. A vigorous climbing form of the well-known Sunburst. Beautifully shaped, golden orange flowers borne profusely without interruption all season. 60 cts. each, \$6.00 per doz.

SCORCHER

(A. Clark, 1922)

Cl.HT. An astonishing new climber from Australia, with huge, semi-double flowers whose ruffled petals are blazing rose-red, entirely different in effect from any other climber of its class. One of the most spectacular varieties. Several blooming periods. 60 cts. each, \$6.00 per doz.

BLAZE

Everblooming seedling of Paul's Scarlet Climber and Gruss an Teplitz. Described and illustrated on page 9. \$1.25 each, \$12.50 per doz.

CLIMBING RED RADIANCE

(Pacific Rose Co., 1927)

Cl.HT. A strong climber, in bud and bloom like bush Red Radiance described on page 23. 60 cts. each, \$6.00 per doz.

MERMAID

(W. Paul, 1918)

H.Brac. Huge, single, pale yellow flowers all season. 60 cts. each, \$6.00 per doz.

MARECHAL NIEL

(Pradel, 1864)

Nois. Best yellow climber for the South. Fragrant, golden yellow flowers on drooping stems. Vigorous. Tender to frost. The Rose of southern memories. 60 cts. each, \$6.00 per doz.

CLIMBING RADIANCE

(W. D. Griffing, 1926)

Cl.HT. Climbing form of the well-known pink Radiance described and illustrated on page 23. 60 cts. each, \$6.00 per doz.



COUNTESS OF STRADBROKE

(Hazlewood Bros., 1928)

Cl.HT. Flower bell-shaped, moderately fragrant, borne on average-length stem. Color dark red. Continuous bloomer. 75 cts. each, \$7.50 per doz.

CLIMBING POLYANTHAS

Described and Priced on Pages 26 and 27

CLIMBING CECILE BRUNNER

Everblooming, Salmon-pink

PRINSES

VAN ORANJE

Everblooming, Orange-red

RED EXPLORER

Everblooming, Crimson-red

CLIMBING ROSE MARIE

(Pacific Rose Co., 1927)

Cl.HT. Sport of Rose Marie. Fragrant, rose-pink flowers of large size, borne freely on plants of notable vigor and health. Our choice of a pink climber. 60 cts. each, \$6.00 per doz.

CLIMBING KAISERIN AUGUSTE VIKTORIA

Mrs. Robert Peary

(A. Dickson, 1897)

Cl.HT. Pure white, lemon center. Vigorous climbing sport of K. A. Viktoria described on page 21. One of the best white climbers. 45 cts. each, \$4.50 per doz.

SPECIAL OFFER B

12 No. 1 ROSES, including 6 of the best Everblooming varieties. Guaranteed in good condition.

ALL 12 ROSES LISTED BELOW DESCRIBED ON PAGES 20, 21, 22, AND 23

4 RED ROSES—2 Red Radiance and 2 Charles K. Douglas.

4 YELLOW ROSES—2 Lady Hillingdon, 2 Luxembourg.

4 PINK ROSES—2 Radiance, 2 Mary, Countess of Ilchester.

12 Two-Yr. Roses . . . VALUE \$5.40. PREPAID Anywhere in U. S. A.—Only \$4.35

Seven New Everblooming Climbing Roses

Originated and Developed by Dixie Rose Nursery at Tyler

Originated by Dixie Rose Nursery and Registered with American Rose Society. We have tested these climbers for two years or more, and recommend them as healthy, free-branching, and free-blooming in sections where they are adapted. Some of them, notably Climbing Talisman and Climbing President Hoover, have already proved excellent climbers in a number of states. They need winter protection in the North during midwinter, as do all Hybrid Tea or Everblooming Roses.

CLIMBING TALISMAN

Cl.HT. (Dixie Rose Nursery, 1930)

Sport of Talisman, described on page 21. We originated and tested this climber and recommend it for the South. The most wonderful new climber. Vigorous plants with an abundance of foliage and blooms. 65 cts. each, \$6.50 per doz.

CLIMBING PRES. HOOVER

Cl.HT. (Dixie Rose Nursery, 1931)

Sport of President Herbert Hoover, described on page 20. The plants we sell were originated by us and are adapted to the South. Strong plants and long, straight canes, excellent for cut-flowers. 75 cts. each, \$7.50 per doz.

CLIMBING MRS. THOM

Cl.HT. New. (Dixie Rose Nursery, 1933)

Rose-lovers throughout the Nation agree that the most satisfactory yellow everblooming garden Rose is Mrs. Erskine Pembroke Thom. This new climbing form carries the same profusion of lovely, medium-toned, unfading yellow flowers on an erect and thrifty plant. 75 cts. each, \$7.50 per doz.

CLIMBING PINK PEARL

Cl.HT. New. (Dixie Rose Nursery, 1933)

Climbing sport of the well-known bush Rose, Pink Pearl. Strong, stocky, healthy grower. Large buds; double, fragrant blooms of deep rose-pink. Free bloomer. Similar to Columbia, its ancestor, in growth and bloom, but has more sturdy growth and better foliage. 75 cts. each, \$7.50 per doz.

COUNTESS MARY

Cl.HT. (Dixie Rose Nursery, 1933)

Climbing sport of the popular Rose, Mary, Countess of Ilchester. Large, double, fragrant, full cupped blooms of deep pink, in clusters. Strong, healthy growth; long, rigid canes. Our choice of a pink climber. 75 cts. each, \$7.50 per doz.



Captain Glisson of Police Department, Memphis, Tenn., with his two Climbing Talisman Roses, two years after transplanting from Dixie Rose Nursery. His hobby is Roses and Rose-culture. He is an organizer of Men's Garden Clubs, a lecturer, and a nationally known rosarian. The Jos. H. Hill Company is naming a new Rose for Captain Glisson this season.

DIXIE CLIMBER. Cl.HT. (Dixie Rose Nursery, 1935)

Wonderful new pink climber, described and illustrated on page 11. \$1.00 each, \$10.00 per doz.

CLIMBING RAPTURE

Cl.HT. New. (Dixie Rose Nursery, 1933)

Richest pink and gold of good old Ophelia's descendants is Rapture, fragrant and always in bloom. Our new sport has the same exquisite flowers but is a rampant climber. Sport of Rapture described on page 15. 75 cts. each, \$7.50 per doz.

Everblooming Polyantha Roses

Bush Polyanthas are low-growing, but not weak. Polyanthas bloom in clusters and are ideal for mass color, borders, and low, colorful hedges

CECILE BRUNNER

Sweetheart Rose

(Mme. Ducher, 1880)

Small, exquisitely formed buds and flowers of light pink with yellow base, borne in graceful clusters. 60 cts. each, \$6.00 per doz.



ELLEN POULSEN

(Poulsen, 1912)

Large, fairly full flowers of bright rose-pink, darker toward edges; profuse; large clusters; fragrant. Plant 15 to 18 inches high. 45 cts. each, \$4.50 per doz.



RED EXPLORER

(A. Penny, 1928)

HM. A vigorous, everblooming sport of the Polyantha, Miss Edith Cavell, with the same brilliant crimson flowers borne in huge clusters. It is one of the best of the so-called hardy everblooming climbers. 60 cts. each, \$6.00 per doz.

ERNA TESCHENDORFF

(Victor Teschendorff, 1911)

Fairly small, bright red, semi-double flowers in large clusters on plants 10 to 15 inches high. Continuous blooming. Hardy. 45 cts. each, \$4.50 per doz.



ELSE POULSEN

(Poulsen, 1924)

Tall variety with huge, loose sprays of 5-petaled, brilliant salmon-pink flowers borne unceasingly all season. 60 cts. each, \$6.00 per doz.



GOLDEN SALMON

(W. Cutbush & Son, 1926)

Bright orange-salmon flowers in huge clusters. Growth vigorous and bushy. First really orange Polyantha. Splendid display in masses. 45 cts. each, \$4.50 per doz.

KATHARINA ZEIMET

(P. Lambert, 1901)

Small, very double, pure white flowers in large clusters; fragrant. Vigorous, faithfully blooming plants. One of the best white ramblers. 45 cts. each, \$4.50 per doz.



KIRSTEN POULSEN

(Poulsen, 1924)

Big, bushy plant bearing huge sprays of single, crimson-scarlet flowers nearly 2 inches across. Fine for low hedges or massing. Companion for Else Poulsen. 60 cts. each, \$6.00 per doz.



GLORIA MUNDI

(G. de Ruiter, 1929)

Huge clusters of small, orange-scarlet flowers of a deeper tone than Golden Salmon. A very startling color in the Rose-garden. 50 cts. each, \$5.00 per doz.

PERMANENT WAVE

(M. Leenders, 1934)

Plant Patent No. 107. Large, semi-double blooms in clusters, on long stems. Color bright cochineal-carmine. Strong plant and a continuous, free bloomer. \$1.50 each, \$15.00 per doz.

Everblooming Bush and Climbing Polyanthas

**IDEAL**

(J. Spek, 1921)

Dense, compact bunches of small, dark scarlet blooms, shaded with black, borne in tremendous profusion. Plant vigorous, long-branching, continually in bloom. Makes a splendid mass of velvety color all season. 45 cts. each, \$4.50 per doz.

CL. CECILE BRUNNER

(F. P. Hosp, 1894)

Cl. Poly. A charming, ever-blooming climber, with delicate salmon-pink and paler colored flowers in clusters. A very strong grower. 60 cts. each, \$6.00 per doz.

GEORGE ELGER

(E. Turbat, 1912)

Dainty golden buds and pale cream flowers. 45 cts. each, \$4.50 per doz.

EBOUISSANT

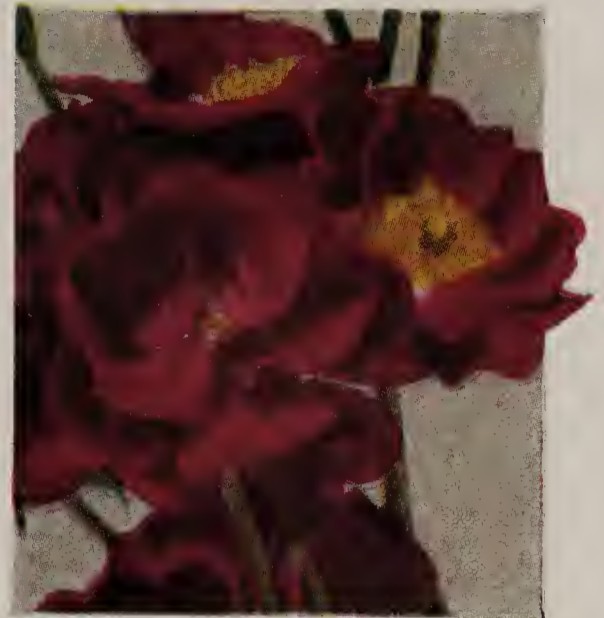
(E. Turbat & Co., 1908)

Velvety scarlet flowers in large clusters. Each bloom resembles a miniature cactus dahlia. Unfading and always attractive color. 60 cts. each, \$6.00 per doz.

**LAFAYETTE**

(Nonin, 1924)

Compact plant bearing huge sprays of semi-double, brilliant light crimson flowers about 2 inches wide. Very showy bedding variety which is highly esteemed for hedging or massing. 60 cts. each, \$6.00 per doz.

**Eblouissant****MISS EDITH CAVELL**

(Meiderwyk, 1917)

Small, semi-double, brilliant scarlet-red flowers, produced in big, cone-shaped clusters. Sturdy, well-branched plants. One of the best. 45 cts. each, \$4.50 per doz.

GRUSS AN AACHEN

(P. Geduldig, 1909)

Large blooms of Hybrid Tea type borne on dwarf, bushy plants. Color varies from orange-red and salmon-pink to cream and yellow. 50 cts. each, \$5.00 per doz.

PRINSES VAN ORANJE

Mult. Climbing Polyantha

(G. de Ruiter, 1933)

Plant Patent No. 106

An everblooming rambler, sport of Gloria Mundi, the brightest orange-scarlet sport of Orleans Rose. A stunning Rose of bright reddish orange. Nearly always in flower. \$1.25 each, \$12.50 per doz.

ANNE POULSEN

New rose-cerise Polyantha. See page 5.

Hybrid Rugosas

These plants bloom in small clusters like Polyanthas, but they grow much higher, making beautiful mass-color hedges.

F. J. GROOTENDORST (J. B. de Goey, 1918)

Small, bright red, fringed flowers, in large clusters throughout season. Vigorous, 6 feet or more. Large foliage of superb quality. A fine everblooming hedge when kept cut to 4 feet. 45 cts. each, \$4.50 per doz.

PINK GROOTENDORST (Grootendorst & Son, 1923)

Clusters of small, fringed, clear shell-pink blooms. Vigorous, bushy; very hardy; constantly in flower. Excellent for borders or masses; 4 to 5 feet high when pruned. 45 cts. each, \$4.50 per doz.

Twenty-Eight Years of Knowing and Growing Beautiful Roses

Hardy Climbers

These climbers withstand winter temperatures in most states, but have only one blooming period. They bloom profusely in their blooming season



**MME. GREGOIRE
STAECHELIN**
(P. Dot, 1927)

CL.HT. (New.) Buds long-pointed; very large flowers of delicate pink with curled petals stained crimson outside. A Rose that everybody admires for its great size and exquisite delicacy of color. 60 cts. each, \$6.00 per doz.

JACOTTE

(Barbier & Co., 1929)

HW. Clusters of large, semi-double, orange-yellow flowers 3 inches across, tinted copper-red. Strong, profuse bloomer. 60 cts. each, \$6.00 per doz.

GOLDEN CLIMBER

Mrs. Arthur Curtiss James

Described and priced on page 5.

ALBERTINE

(Barbier & Co., 1921)

HW. Very large, soft peach-pink, semi-double flowers, borne freely on an extremely vigorous, thoroughly hardy plant. 60 cts. each, \$6.00 per doz.

CHAPLIN'S PINK CLIMBER

(Chaplin Bros., 1928)

HW. Broad trusses of wide, flat flowers in brilliant pure pink. Vigorous; very free-flowering, covering itself with sheets of bloom. 60 cts. each, \$6.00 per doz.

CLIMBING

AMERICAN BEAUTY

(Hoopes, Bro. & Thomas Co., 1909)

HW. Light crimson flowers, most beautifully shaped. Early bloomer. 45 cts. each, \$4.50 per doz.

DR. W. VAN FLEET

(Dr. W. Van Fleet, 1910)

HW. Pale pink buds; wonderful flowers in shape and size, on long stems. Produces thousands of blooms in midseason. 45 cts. each, \$4.50 per doz.

PAUL'S SCARLET CLIMBER

(W. Paul & Son, 1916)

HW. Bright scarlet blooms of excellent shape and moderate size, in small trusses. 45 cts. each, \$4.50 per doz.



PRIMROSE

(Barbier & Co., 1920)

HW. Large, double flowers of soft primrose-yellow, in clusters, on vigorous plants. 60 cts. each, \$6.00 per doz.

MARY WALLACE

(Dr. W. Van Fleet, 1910)

HW. Large, semi-double, warm rose-pink flowers. Vigorous, glossy foliage. 60 cts. each, \$6.00 per doz.

SILVER MOON

(Dr. W. Van Fleet, 1924)

HW. Long, creamy buds; immense, nearly single, saucer-shaped, creamy white flowers with golden anthers. 45 cts. each, \$4.50 per doz.

**FEED ROSES WITH
VIGORO**

The Complete Food for Plants with free directions for practical use.



Used exclusively on the Rose-Garden of A Century of Progress.

Cash Prices:

100-lb. bag, f. o. b. Tyler	\$4.00
50-lb. bag, f. o. b. Tyler	2.50
25-lb. bag, f. o. b. Tyler	1.50
10-lb. carton, prepaid	1.25
5-lb. carton, prepaid75
12-oz. carton, prepaid20

Special Offer A

12 No. 1 ROSES, including 7 of the most practical and most beautiful varieties of 60-ct. and 65-ct. Roses.

	Described on page	Value
4 Red Roses—2 E. G. Hill	17	\$1.20
and 2 Etoile de Hollande	14	1.20
4 Pink Roses—2 Dame E. Helen	15	1.20
and 2 Margaret McGredy	8	1.20
3 Yellow—1 Golden Dawn	9	.60
and 2 Mrs. P. S. du Pont	4	1.20
1 Multicolor—Climbing Talisman	25	.65

12 Two-Year Roses . . VALUE \$7.25

PREPAID Anywhere in the United States for only \$5.95

The Annual East-Texas Rose Festival

Celebrated at Tyler, October 3, 4, 5, and 6, 1935

is becoming one of the chief attractions for Rose-lovers throughout the United States. More than 50,000 people now attend this Festival annually

Texas Centennial blooms held by Queen Louise Boren, great-granddaughter of John Karner, a hero of San Jacinto, April 21, 1836



New Salmon-Pink Rose

STRATFORD

Plant Patent applied for

Originated by J. H. Nicolas, internationally-known hybridizer. To be distributed on a coöperative financial basis with Robert E. Lee Foundation, for reclaiming the 1104-acre Robert E. Lee estate, Stratford-on-Potomac.

Our Deep Pink Rose

**QUEEN LOUISE
BOREN**

(Dixie Rose Nursery, 1936)

Also originated by J. H. Nicolas. Christened at the Queen's Coronation, October, 1934, by J. H. Nicolas in person. A sister Rose to Stratford, as both these new Roses are crosses of the golden yellow Marechal Niel and the rich pink La France.



Queen Louise of The House of Boren

Reigning in the Annual East-Texas Rose Festival of 1934

The 1935 Festival was lengthened from two days to four, because of added features of entertainment. A new feature is the annual football game between outstanding colleges. This year Temple University played Texas A. & M. College. Among features of entertainment are noonday luncheons and evening banquets where America's leading rosarians discuss Rose culture; a mammoth floral parade; horse show; informal social functions for visitors; the Queen's reception and ball following her coronation; and open-air sacred concerts in the city parks on Sunday.

Free Automobile Tours for Visitors Daily

Every day during the Festival visitors are shown the most accessible Rose-fields in the great Tyler Rose Area, where more than 6,000,000 Rose bushes are grown in the fields annually. In this area more than one-third of America's commercial field Roses are produced each year, including many new varieties of the United States and Europe.

Nursery on Highway 37 North City Limits of Tyler

ORDER BLANK Dixie Rose Nursery TYLER, TEXAS

THE SOUTH'S LEADING ROSE NURSERY

IMPORTANT NOTICE—We exercise care to keep all varieties TRUE to name, and hold ourselves in readiness at all times to replace, on proper proof, all that may prove otherwise; but it is mutually agreed between purchaser and ourselves that we shall not at any time be liable for any amount greater than the original price of stock. All sales made subject to stock being unsold when order is received, or loss by any and all unavoidable causes.

Sold to _____ PLEASE PRINT NAME

Date Ordered 193

Address _____

Date to Ship 193

City _____ State _____

IMPORTANT: Sometimes it may avoid delay to allow us to substitute, but should you not wish it, write "Do Not Substitute" here. If in doubt about varieties for your locality, write in COLORS of Roses wanted, and whether Climbers or Bush, and we shall select the best for you.

(If shipping point is different from Post Office Address given above, fill in the following)

SPECIAL INSTRUCTIONS

Ship to _____

See special instructions in our Catalog on prepaying orders of less than \$2.

Address _____

City _____ State _____

Table with 6 columns: Quantity Wanted, NAME OF VARIETIES, Amount, Quantity Wanted, NAME OF VARIETIES, Amount. Includes summary rows for TOTAL NUMBER OF PLANTS and TOTAL AMOUNT FOR PLANTS.

Check your order carefully before you mail it. Avoid Errors and Delays

INVOICE NO.

(SIGN HERE)



© 1935

TEXAS GOLD Plant Patent
No. 135

A New Gold and Pink Sport of the Hoover Rose . . . Disseminated by

DIXIE ROSE NURSERY, Tyler, Texas