

Historic, archived document

Do not assume content reflects current scientific knowledge, policies, or practices.

GLADIOLUS

1941
DESCRIPTIVE
LIST

ELMER
GOVE

BURLINGTON
VERMONT

Elizabeth the Queen



CHAMPLAIN VIEW GARDENS

Margo



King Midas



GREETINGS

Another year has rolled around and we are ready to start another year with our glorious flower. I want to thank my thousands of customers for the fine business they gave me last season. It came near being the best I ever had. From the thousands of fine letters I have had I believe it was a very successful year with my customers also.

Many of my old customers have had the best glads ever and have won quantities of prizes at the Shows and many new customers have been initiated into the finest hobby imaginable. I have heard more of these than ever before. It was a much better season for selling blooms than the year before. The general public is beginning to realize that there is no more beautiful flower than the gladiolus and is most suitable for every purpose.

The growth of my bulbs has been good the past season but I understand that in some parts of the country growing conditions have not been so good and that No. 1 bulbs are scarce.

The hybridizers must have been working overtime and I have found more outstanding new varieties to introduce than usual. Besides Mr. Palmer's usual fine set of new ones which are really good, I have 8 others that are outstanding including a lavender that is miles ahead of any other lavender I have ever seen and I have introduced some good ones myself.

With the mounting tension due to World conditions let's have a garden of glads in which we can find refuge and solace and which will brighten our lives and the lives of those with whom we share them.

Yours for more Beauty in the World,

Elmer Gove.

Which Varieties to Grow

To the beginner who doesn't know one variety from another the various descriptions are rather confusing. And there isn't much that can be done about it. I make the descriptions as clear and concise as possible and the only thing for the beginner to do is to go by the descriptions and color ratings. Many people ask me to give them the names of some of the good ones. They are all good, with of course some really better than others, but those rated the highest might not suit you so well as some of the 3 star varieties. Tastes vary immensely and what is one person's favorite no doubt would be detested by another. Just go by the descriptions, star ratings and price and you can't go wrong. There is no one variety that excels in all points.

Do not ask me for a list of best 10 or best 25. There is no such list that any group of growers would agree upon. Read the descriptions and you will know my ideas about the various varieties. Many people seem to have the idea that my descriptions are not my own convictions but are written by the office boy just to fill space. You may be assured such is not the case. I try to give you my honest opinion about all kinds.

Where to Grow Glads

Many people ask me if glads can be grown in their locality. I assure you they can even without knowing where you live. I have sold bulbs in most every civilized country from Alaska to South Africa. You can grow them anywhere there are 80 days of summer weather without freezing provided they have water and sun and good drainage. Do not plant in the shade.

Do Gladiolus Change Color? No.

I am asked this hundreds of times every year. I want to say positively "they do not" except for the occasional sport. What happens when you start in with an assortment of colors and they finally simmer down to one or two shades is this: some varieties are strong and vigorous and propagate well even sometimes the bulblets blooming, while others are inclined to be weak and acquire disease and die. Don't let anyone tell you that their glads have changed color because they positively cannot except once in a great while an individual plant will sport to another shade.

Sports

The glads do not change color "en masse" they do occasionally sport to another shade. That is one bulb will produce a flower that is usually like the parent but of a different color, nearly always a lighter shade. This occurs rarely. You might grow glads for years and never see a sport but certain varieties are more prone to sport than others.

Vagabond Prince has sported lighter and tho we pull out all the sports we see during blooming time you will occasionally find one in it yet. Sometimes Marmora will revert to the darker shade of Emile Aubrun from which this variety came. Buccaneer is a sport of Pirate and I have seen Pirate sport to purple. This past season I found a few rose sports of Rewi Fallu.

However, if you find in a certain variety a glad that is different in form and general characteristics as well as color, that is probably a "rogue" or another variety that got mixed in by mistake.

Glad-i-o'-lus

Please pronounce it this way with the accent on the o, and use the same form for both singular and plural. Of course *gladioli* is correct for the plural but it is not so easy to speak. And some years ago the American Gladiolus Society went on record as favoring *gladiolus* for both singular and plural.

Do not under any conditions call them *gladiola*. This is entirely wrong. Many people don't seem to know what to call them but if we can all work together in popularizing the word *gladiolus* it will be much simpler for everyone.

TO HELP YOU

IN SELECTING VARIETIES, I am giving you my opinion on certain points that characterize the leading varieties.

Tallest

Bagdad, Barcelona, Beacon, Black Opal, Cordelia, Corona, Creve Coeur, Debonair, King Lear, Laddie, Lady Winsome, Magna Blanca, Mermaid, Mrs. G. G. Errey, Sensation, Shirley Temple, Titan and Vista Bonita.

Earliest

Bernece, Champlain, Colossus, Cordelia, Excellence, Firefly, King Lear, Kings Ransom, Margaret Peter, Margo, Mibloom, Muskoka, and Prelude.

Most Ideal Stem

Algonquin, Beacon, Corona, Debonair, Diane, Eloise, Laddie, Maid of Orleans, Mermaid, Miss Bloomington, Mrs. G. G. Errey, Solita and Uncas.

Largest

Aladdin, Bagdad, Corona, King Lear, Laddie, Mam. White, Marguerite, Miss New Zealand, Picardy, Premier Henry, Rewi Fallu, Rima, Sensation, Takina, The Mogul, Titan, Vista Bonita, White Gold, Wurtembergia.

Longest Flower Head

Bagdad, Beacon, Chamouny, Debonair, Golden Goddess, Lady Winsome, Mar. Beaton, Sensation, Shirley Temple.

Most Heavily Ruffled

Amulet, Bolero, Glamis, King Arthur, Myrna, Premier Henry, Sensation, Shirley Temple, Tecumseh, Vassar.

Having Most Open Florets

Avalon, Black Opal, Chamouny, Damaris, Edith Robson, Flagship, Golden Goddess, Lombardy, Padre, Red Charm.

Best for Exhibition

Ordinarily the varieties best for exhibition are those with the largest blooms and the most blooms open. Here are a few that when well grown are among the best. Aladdin, Algonquin, Bagdad, Black Opal, Beacon, Bit O'Heaven, Blue Wonder, Chamouny, Com. Koehl, Damaris, Edith Robson, Flagship, Golden Goddess, Irak, Jalna, Laddie, Lady Winsome, Margaret Beaton, Minuet, Miss New Zealand, Mother Machree, Myrna, Picardy, Recado, Red Charm, Red Lory, Regent, Rosa Van Lima, Sahara, Sensation, Takina, Vagabond Prince, Wings of Song.

Most Beautiful

Tastes differ so much that I dislike selecting the most beautiful as many people will certainly not agree with me in all cases. However, by the best standards of judging I believe the following list would be considered very beautiful. But there are many more that are just as beautiful to many persons.

Algonquin, Amberglow, Amrita, Amulet, Angelus, Avalon, Barcarole, Candy Heart, Carillon, Conquest, Corona, Elizabeth the Queen, Glamis, Helen of Troy, Jasmine, King Arthur, King Lear, Magnolia, Margaret Beaton, Mermaid, Mrs. Langford, Nadia, Picardy, Premier Henry, Prestige, Rima, Rocket, Sandra, Sensation, Shirley Temple, Snow White, Timbuctoo, Vassar, Winston.

Most Striking and Unusual

Aladdin, Algonquin, Beacon, Bolero, Chamouny, Coral Glow, Elizabeth the Queen, Irak, King Lear, King Midas, Mermaid, Mywag, Padre, Penzance, Recado, Rewi Fallu, Rocket, Sahara, Tecumseh, Timbuctoo, and Vagabond Prince.

The Most Likely to Succeed as Commercial Among the Newer Varieties

Aladdin, Algonquin, Barcarole, Beacon, Carillon, Chamouny, Coral Glow, Corona, Dr. Dentz, Early Rose, Elizabeth the Queen, Eloise, Jasmine, Laddie, Lady Jane, Margaret Beaton, Margo, Mermaid, Mother Kadel, Myrna, Padre, Prelude, Rima, Rocket, Rosa Van Lima, Sensation, Simcoe, Timbuctoo, Winston.

Most Useful in Hybridizing

Tho no one can tell what the results will be from any cross you make, the following varieties have been parents of one or more nice seedlings. If a variety can produce a good seedling once, the chances are it will again. Aladdin, Algonquin, Beacon, Bill Sowden, Com. Koehl, Early Rose, Glamis, Golden Goddess, King Lear, Maid of Orleans, Mammoth White, Minuet, Miss New Zealand, Mrs. Langford, Mother Machree, Orange Butterfly, Picardy, Premier Henry, Royal York, Shirley Temple, Takina, Wasaga, Wurtembergia.

There are many more worth trying. It is largely a matter of getting the right combination of parents. However, some kinds never seem to produce good seedlings no matter what they are crossed with. Don't ask for any further information about varieties to cross as if there were any hard and fast rules about crossing certain varieties to produce world beaters, the hybridists would have taken advantage of them long ago.

How to Get the Most Out of Your Gladiolus

Any gladiolus fan wants to have gladiolus blooms over as long a period as possible. To do this plant early, mid-season and late varieties. Also plant the early ones as early as possible and make a succession of plantings every ten (10) days up to July 1st or thereabouts according to your locality. Here we can plant until about July 1st but in some of the northern places you could not plant so late as that but further south you could plant some later and still stand a good chance of getting good blooms in the fall. If you want certain varieties over a long period, either make a succession of plantings or plant bulbs of different sizes, such as my collections No. 42 and No. 43 of Long Season Specials. In this way you will have blooms over as long a period as is possible.

A Classic

The following paragraph describing the various stages of gladiolus growing has attracted so much attention and been quoted so many times that I am repeating it again.

"There is a fascination about growing glads that becomes a hobby, then a craze. There are five stages of interest in growing "glads." First you just grow them as an amateur, same as you would any other flower. Then as your interest in them increases you become a "fan," then a "bug," then a "nut," then finally a "fiend." When you reach this final stage you are hopeless. You think of "glads" all day, dream of them at night, spend every available minute of your time in the garden, talk of them, visit the shows, read all the catalogs and spend all your money on them. You will look lovingly at the last flower in the fall, will handle over your bulbs in the wintertime and will hardly be able to wait till you can lovingly plant the bulbs in the spring. From then till the first bloom appears is a period of happy anticipation. When finally the spikes of bloom begin to appear you are in heaven."

Disclaimer

I, Elmer Gove, try my utmost to have all bulbs true to name, free from disease and insects of all kinds and send out only first class stock but I wish it to be understood that in case of failure of crop for any reason whatsoever or bulbs are found to be untrue to name that I will not be held responsible beyond the actual cost of the bulbs.

Seedlings

Many people have asked me "What is a seedling"? All new varieties come from seed. A seedling is a new variety not yet named. I list some seedlings for Mr. Palmer. These are new varieties that for one reason or another we do not care to name. And yet most of them are fully as good as many named varieties on the market and some are better. Mr. Palmer wants to name only 5 or 6 varieties a year so these seedlings are offered at bargain prices considering their quality.

Failures

The glads are about the easiest thing in the world to raise we occasionally hear from someone who says his glads were a failure. This in spite of the fact that other customers who had bulbs out of the same lot had wonderful success. I don't know what can be the trouble in such cases but whenever it does happen if the customer feels it is the fault of the bulbs we try to adjust matters to the satisfaction of the customer.

One possible cause of such failures might be that the bulbs were shipped in the winter and were frozen. We pack our shipments very warm but once in awhile a package is frozen and if the customer is not familiar with gladiolus bulbs he doesn't realize they are frozen and plants them just the same. In such a case of course the bulbs would not grow or if they were only chilled a little they might grow for a time and then die.

Small Varieties

I find very little demand for small flowered varieties. The only ones I grow that can be called small are Nadia, Orange Butterfly, Brightside and Angelica. Moreover the first two open many blooms at a time and are not really in the same class as other so called small varieties.

Flowers for Identification

When sending blooms for identification always send part of the flower head with at least three or four buds and send them in the bud. Whenever anyone sends a bloom in an envelope almost invariably the color is out when it arrives and is beyond recognition. If they are sent in the bud they will either be in good condition on arrival or will open afterward.

The above paragraph was in my last year's catalog, yet this past summer I received quantities of full blown single blooms in letters, for identification. The color was all out of them so I could not help the persons sending them.

Better send part of a spike with several buds, in the bud, and preferably not the very top buds, as they often fade and do not look like the blooms farther down the stem.

Culture of Gladiolus

With every order that goes out we send a six page leaflet giving all the necessary information about growing them. If you want to go deeper into the subject we have a book on the "Gladiolus" by Rockwell which sells for \$1.25 prepaid or we give it free with a \$12.00 order if you ask for it and if you have not already had one.

This is the only book I know of on gladiolus at this writing, November 1940. This book was written some years ago and it's cultural instructions are all right but the list of recommended varieties is very much out of date. Hardly any of the varieties recommended in the book are in commerce now.

There is another book supposed to be published in the spring of 1941, by Dr. Forman T. McLcan and still another one by Roscoe Hufl, the former secretary of the American Gladiolus Society. If you are interested in one of these books drop me a line and as soon as information is possible regarding them will let you know.

Years ago you could just "stick bulbs in the ground" and expect nice blooms. And many people still do that but like everything else better culture will give much better results. Then with the prevalence of thrips nowadays in some parts of the country it is wise to spray the plants with a good insecticide during the growing season.

If you want a copy of our circular before you receive the bulbs drop us a card and we will send you one.

Variable Performance

All bulbs of a variety will not produce equally good blooms and plants. Of course culture makes a big difference in the quality of bloom but even with the best of culture most varieties will produce a certain number of plants and spikes of bloom not quite up to the level of others from the same lot of bulbs. For this reason do not make final judgment on a variety from the trial of just a bulb or two.

Many people send me bulbs of seedlings or new varieties for trial. Sometimes one of these doesn't do well for me and yet later the variety is introduced and many people report it is very fine. Evidently either my culture was not good or else I had poor bulbs, tho they looked perfectly good.

The ability of a variety to produce a high percentage of top notch spikes is inherent in the variety and varieties vary a great deal in this respect. Yet it is not always the fault of a variety when it doesn't produce as well as it should. Virus diseases attack glads and weaken the constitution of many bulbs so that they don't perform quite up to par.

Often a variety will do better in your garden the second year. They just need to be acclimated. So don't pass final judgment on a variety till you have given it a fair trial of at least two years or of two lots of bulbs.

Grow Gladiolus for Shows

I have never paid nearly so much attention to show growing as I should. There are thousands of people however, throughout the country who do grow for the shows and get a great kick out of winning prizes. It is a great game and one that you should get into if you live anywhere near where a show is being held.

Many people think that because they have only a comparatively small garden and grow only a few gladiolus that they can't compete with the commercial growers. This is wrong. Though you can not have so many spikes of blooms to choose from, you can give them better care and much better culture and fuss with them much more than a commercial grower can. A commercial grower usually just goes out to his fields and cuts the best he has. But the small amateur grower can prepare the soil better, feed them properly and water them and should be able to produce much better flowers than the larger growers.

At every show many people come and say that they have better glads at home. This is usually a fact. At every show there are lots of poor blooms exhibited, sometimes the entries being so poor that no first prizes are awarded. So if your gladiolus look good to you, bring them to the shows and win some prizes. Even if you don't win the first time you will get a kick out of it however, and pick up points that will help you next time.

I am no show grower myself but last year did put up exhibits at Boston and the World's Fair and won the following prizes for my displays.

At the Boston Show I won the Massachusetts Horticultural Society gold medal. The N.E.G.S. Silver Medal, and an N.E.G.S. Gold Medal, Special Award.

For my display at the World's Fair won a Silver Medal certificate and a Cultural certificate.

"I have wonderful results with your bulbs this year."

—F. Van Voast, Wis.

Guarantee

I guarantee to do my utmost to please my customers. We mean to send out only clean bulbs, free from disease and insects. Any claims or complaints in regard to bulbs should be sent soon after receiving the bulbs.

Of course if any bulbs are not true to name you can not make claims for that until after blooming. If anything goes wrong we always try to make a satisfactory settlement with the customer. This is the only way that anyone can hope to build up a business.

However we do not guarantee in any way the bulbs you harvest as unsatisfactory growing conditions or disease in the soil are beyond our control and we cannot be responsible for the crop you harvest except that if bulbs should not be true to name we will be glad to replace them or make a satisfactory settlement.

My Rating by Stars

- ★★★★ means the variety is "extra good," or as good as there is in its color.
- ★★★★½ means "very good."
- ★★★ means "good."
- ★★★ } means "fairly good."
- ★★½ }

As you will see there are very few four star varieties. It takes the very best to rate four stars. Many of the two and a half star varieties no doubt you would like but most of them have some feature that keeps them out of the higher ranking.

Necessarily this star rating has to be a rather composite affair. A variety may rate higher as an exhibition variety than as a commercial or vice versa but we have to give a rating that will average for both classes. My rating may change on various varieties from year to year according as they perform in my field. Many varieties do perform differently in different locations so I can't guarantee all varieties will do as well for you as for me. On the other hand I know they will do better in many locations than in my garden.

Pure Vermont Maple Syrup

Griddle cakes or Waffles and Maple Syrup, Oh! Boy! Tho maple syrup is made in 3 or 4 other States the Vermont product is recognized as the finest to be had. If you have never eaten the Fancy Vermont Syrup you don't know what you are missing. It is not to be compared in any way with the black blended concoctions sold under many different brands as Maple Syrup.

Vermont Maple Syrup is of many grades known as Fancy, No. 1, No. 2 etc. The fancy is the only kind I eat myself and the only kind I like to sell. I know people in some parts of the country who are used to eating the strong dark blended syrups like the poor grades better than the fancy, and my jobber tells me I could make more selling that kind but my artistic conscience won't let me do it. I want only the best either in syrup or glads.

The various grades of syrup may be pure in the sense that they are not adulterated but poor and unclean methods of making produce low quality syrup. Many people think the light colored grades are adulterated with white sugar. The laws of the State are very strict about this. It simply is not done by the good producers. The poor dark grades would be more likely to be adulterated as they would come from the poor unskilled producers who might use white sugar to lighten the color of their syrup.

At this writing, November 1910, fancy syrup is very scarce. I have just secured a limited quantity of very fine quality. When this is gone we shall probably have to wait until the new crop comes in before getting any more.

ABOUT SUGAR. The 2 oz. cakes are nice if you want it to eat like candy, but this sugar gets very hard in a short time. The 5 lb. pails of soft sugar is cheaper and the thing to use for cooking or eating either. It will stay soft a long time.

PRICES:

1 GALLON \$2.50	½ GALLON \$1.50	1 QUART 90 cents
A case of 12 PINTS \$1.50	A case of 12 HALF-PINTS in glass \$2.50	
MAPLE SUGAR. 2 oz. cakes 60 cents a lb. 5 lb. pail soft sugar \$2.50.		



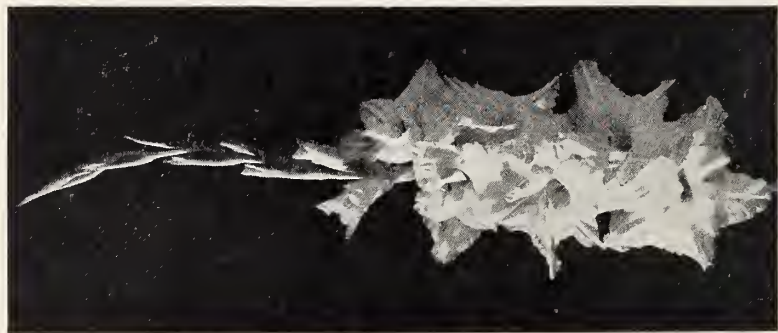
Timbuctoo



Sahara

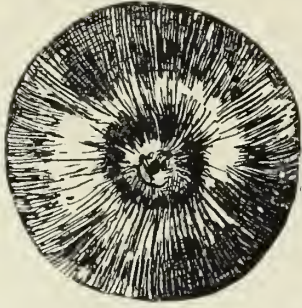


Beacon

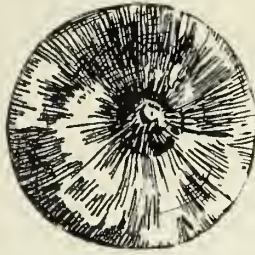


Amrita

SIZES OF BULBS



No. 1



No. 2

LARGE



No. 3



No. 4

MEDIUM



No. 5



No. 6

SMALL

These cuts show the average standard sizes of bulbs. When No. 1 run much larger than the cut they are called Jumbos. Some growers prefer Jumbos for exhibition and I can furnish them in some varieties for 10% more than listed prices. Personally I don't think size alone will produce better flowers than No.

2 or No. 3. Age of bulbs and other factors have something to do with it, tho theoretically No. 1 and No. 2 should produce better blooms than medium size. However, you will be pleasantly surprised at the bloom you will get from the medium sizes and even from small ones.

People who are not familiar with glads often think they have to have large overgrown bulbs such as the chain stores sell. The fact is that many times the chain store bulbs are old and past their usefulness and so have been sold by commercial growers who prefer younger tho smaller bulbs.

Small bulbs will most all bloom satisfactorily and will make nice large bulbs for the next year and will usually produce more bulblets than larger bulbs.

No. 3 or No. 4 or MEDIUM bulbs will produce very satisfactory bloom and are preferred by many commercial growers as the price is much lower and the blooms from large bulbs often not enough better to warrant the extra price.

Bulblets sold in packages and in bulk are mostly medium size. In small quantities especially of the newer kinds I put in the largest I have but

some varieties never make large bulblets. Size hasn't anything to do with germinating qualities tho it happens that in most varieties that produce large bulblets the bulblets make large growth. However, if a variety produces only medium or small bulblets we cannot furnish large ones.



Extra Large Bt.



Large Bt.



Medium Bt.



Small Bt.

The Palmer Strain of Gladiolus

Originated by Mr. E. F. Palmer of Canada.

It is Mr. Palmer's idea that a gladiolus or any other flower in order to justify its existence should be beautiful. A flower should possess beauty not only of color but also of form and texture. Mr. Palmer is not only a good judge of these different forms of Beauty, which many hybridizers evidently are not, but is usually able to recognize the potentialities of a seedling the first time it blooms, a time when many seedlings do not to the ordinary person show much promise. Also he seems to have an uncanny ability to pick varieties, which when crossed produce nice seedlings. As a consequence Mr. Palmer has built up a strain that is unique in its grace and beauty. So much so that the word "beauty" as applied to gladiolus has come to have a new meaning. Nearly every Palmer variety can be called really and truly beautiful. A very few of them are not really beautiful in the strictest sense of the word but at least those few are "different" and are considered beautiful by many persons.

Of course many other hybridizers are also producing fine varieties but I know of no one else who is producing so many outstanding varieties as Mr. Palmer, or in whose total number of introductions such a high per cent are outstanding. It can truly be said that the tremendous advance in gladiolus the past few years is due largely to the influence of Picardy and other varieties of the Palmer strain.

Also most Palmer varieties are good propagators and easy doers. No matter how good a variety is if you can't make it increase, it isn't very valuable. Mr. Palmer doesn't like to bother with such kinds. A *Palmer variety is a good variety*. A grower who is looking for the best varieties to invest in can do no better than to string along with Palmer and make the Palmer strain his main line.

I am proud to be the sole introducer of The Palmer Strain. Mr. Palmer retains only the introduction of his varieties in Canada and also the wholesale sales, in Canada, for all varieties for 4 years after introduction. So if you live in Canada and want to buy the newer Palmer varieties in larger than retail quantities you will have to get them from Mr. Palmer or one of his agents. Canadian customers interested in quantity buying of the Palmer varieties and who don't know which varieties I can sell can correspond about them.

1941 Palmer Introductions

Mermaid (Seedling 34047) (Maid of Orleans x Picardy) Decorative and Exhibition and Commercial. True medium pink with cream blotch. A fine florist color having a clean, fresh appearance. Opens 8 to 10 large wide open lightly waved blooms with the remainder showing color. 20 total buds on a very tall, strong, always straight spike. Very strong robust grower and fine propagator. This will certainly become a valuable commercial variety. Florist visitors to my gardens have been much impressed with it. 80 days to bloom. Mid-season.

Price \$5.00 each for any size. 10 for \$40.00 Bulblets \$1.00 each, \$80.00 per 100. Used as a premium bulb. See page 3 of the price list.

Muskoka (Seedling 33312) (Roi Albert x Mary Frey) x Picardy. Large Decorative and Commercial. Smoky salmon with a soft diffused darker blotch. Opens 6 to 7 large wide open, always well placed blooms at a time on a spike of about 18 total buds. Stem is tall, strong and always straight. Very early, 65-70 days. Stands hot weather well but being early is gone before real hot weather comes on. Good propagator. Should make a good commercial and fine for the home garden. Received an award of Merit at the C.G.S. Show 1938.

Price \$3.00 each any size. 10 for \$25.00. Bulblets \$.75 each or \$60.00 per 100.

Penzance (Seedling 33204) Premier Henry x (Herbstzauber x Coryphee) Decorative and Exhibition. Smoky dark red with darker blotch. Resembles Vag. Prince a little but darker and more smoky. A very distinctive color. Opens 8 to 10 wide open perfectly placed medium large blooms at a time. Stems are straight and of medium height. Mid-season, 85 days to bloom. Very unusual and bound to be popular with those who like the dark shades.

Price \$4.00 each for any size. 10 for \$35.00. Bulblets \$.75 each or \$60.00 per 100.

"I am positively sure that you have the best bulbs found in the states."
—Lydia A. dePerez Moris, Puerto Rico.

Tecumseh (Seedling 33156) Picardy x (Tycko Zang x Roi Albert) A novelty of novelties. Soft salmon smoky with a soft darker blotch. Heavily ruffled and waved and needlepoint petals and often lacinated. Has the heaviest texture I ever saw in a gladiolus, like leather. 6 to 7 well placed blooms open on a tall slender but strong straight spike. Most unusual and attractive color and form. Entirely distinct in appearance from any other variety. Has about everything that you can expect in the unusual. 95 days to bloom.
Price \$4.00 each for any size. 10 for \$35.00. Bulblets \$.75 each, \$60.00 per 100.

Winston (Seedling 322016) (Picardy x Wasaga) Decorative and Commercial. Clear bright light cream shading to lemon in the throat. Opens 5-7 large wide open moderately waved and ruffled blooms at a time on a tall strong spike. A most exquisitely beautiful variety, that has to be seen to be appreciated. 18 total buds. Early mid-season, 70 days to bloom. Award of Merit by C.G.S. 1938 and at New York World's Fair 1939. Fine propagator. Used as a premium bulb. See page 3 of the price list.
Price \$4.00 each for any size. 10 for \$35.00. Bulblets \$.75 each, \$60.00 per 100.

THE PALMER STRAIN

Aladdin ★★★½ (Ex) (Com) (Mid-season) Bright reddish salmon with large cream blotch. 8-10 immense beautifully ruffled blooms open on a long head. Plants very strong and robust but sometimes only medium height. Aladdin has created a sensation wherever shown. A wonderful variety for florist use, exhibition and the home garden. When well grown one of the finest varieties of all time. Has won sweepstakes at various shows. See cut on back cover.

Algonquin ★★★★★ (Ex) (Com) (Early) Brilliant glowing scarlet. Just a shade darker than Rocket. 8-9 wide open beautifully ruffled needlepoint blooms open on a tall straight spike. When well grown this is about the finest scarlet I have ever seen. We consider it the best light red, tho some think that Rocket is even better. They are entirely different and there is room for both of these two varieties and Regent. A wonderful exhibition and commercial variety. See cut on back cover.

Amberglow ★★★ (Com) (HG) (Early) Deep amber yellow of unusual and beautiful shade and attractive form. 6-8 good size blooms open on a tall spike. Sometimes in warm weather it crooks but I have had very little trouble with it myself in this respect. A beautiful yellow variety.

Amrita ★★★½ (Com) (Dec) (Mid-season) Shades of light buff well blended, producing the appearance of clear buff with warm yellow throat. Sometimes it is tinged with pink. 6-8 wide open heavily ruffled blooms open on a spike of 16-18 buds. Very beautiful pastel. Fine propagator. See cut on page 8.

Amulet ★★★½ (Com) (Dec) Beautiful clear medium buff. 6 or more heavily ruffled medium size well placed blooms open. A sister seedling of Amrita, Barcarole and several others and to me fully as beautiful as any of them. The color would probably be nearer Amrita than the others. I personally like it better than Amrita but there is room for both. See cut on page 44.

Angelus ★★★½ (Com) (Dec) (Late mid-season) Beautiful medium clear salmon of unusual shade. 6 or more large blooms open on a long flower head. Somewhat ruffled. Very tall husky grower. Fine as a commercial and for the home garden.

Bagdad ★★★½ (Ex) Late. Smoky old rose that is very fine for exhibition and has limited use as a commercial. Opens 6-8 immense blooms at a time. Very popular for the home garden.

"My VAGABOND PRINCE came into bloom. I had three spikes. 18 flower buds on each. 6-8 in bloom, from one bulb, not bad, I would say. The smokies are all beautiful."
—Mrs. Chas. Milhaus, Pa.

Barcarole ★★★★★ (Com) (Dec) (Late mid-season) Large clear grenadine orange of perfectly clean clear shade, with no markings whatever. 6-7 medium large beautifully ruffled blooms of heavy substance. Sister seedling of Amulet, Amrita and several others. One of the most distinctly beautiful varieties of all time. This has taken well with the growers who have tried it and with me this past season was the finest I have ever seen it. See cut on page 39.

Beacon ★★★★★ (Ex) (Com) (Mid-season) Clear bright rose scarlet with large cream blotch. Extremely showy. Opens 8-10 medium large somewhat ruffled blooms on a very tall straight but willowy spike. This is coming to be one of the most popular commercial varieties though the stock is quite limited yet. The big cut flower growers in Florida and other places are stocking up with it. It is the most popular Palmer variety that has been put out since Picardy. One of the real out-standing gladiolus. See cut on page 8.

Bolivar ★★★ (Com) (HG) (Early mid-season) 5-6 very large medium red blooms open. A strong vigorous plant. Have many good reports on it.

Buccaneer ★★★★★½ (Com) (Late mid-season) A color sport of Pirate. Identical with Pirate except in color which is a very nice medium rose shade and should be very popular as a commercial and for the home garden. Opens up 5-6 large flaring wide open blooms at a time on a tall slender plant.

Camellia ★★★ (Com) (Ex) (Mid-season) Blush white tinted pink. 6-8 well placed slightly ruffled blooms open on a long flower head. Medium height plant. A beautiful variety. I have had many fine reports on it.

Carillon ★★★★★½ (Com) Clear LaFrance pink with clear creamy blotch. 5-6 medium large wide open slightly ruffled blooms on a tall spike. A beautiful and distinctive pink and very reliable. Very few duds. This should become a very popular commercial.

Champlain ★★★ (Com) (Very early) Clear light blue with darker lines in the throat. 6-7 large blooms open on a tall straight spike. Not so fast a propagator as some but very nice early cut flower blue.

Cordelia ★★★ (Dec) Very early clear deep rose. Large wide open moderately ruffled blooms. 5 well placed blooms open on a head of about 18 buds. Sister seedling of King Lear and similar to that except in color and flowers wider open.

Corona ★★★★★½ (Com) (Dec) (Mid-season) Creamy white shading somewhat deeper in the throat with rose picotee edge on the petals. Very distinctive and beautiful. 6-8 very large wide open blooms open on a head of about 18 buds. Tall strong robust grower. Attracts a lot of attention in the field. Was one of the most admired in my exhibit at the Boston Show. See cut on page 17.

Debonair ★★★ (Com) (Late mid-season) LaFrance pink shading shrimp pink with creamy throat blotch. Often flakes darker. 6-8 medium size blooms open on a very tall always straight spike with flower head sometimes 3 feet long. In some parts of the country this does better than Picardy. There are very few poor spikes and it stands the heat well and never crooks. A good commercial.

"I want you to know the gladiolus bulbs that I bought from you this year were extra good. HECTOR was extremely large and was very popular with the neighbors."
—Mrs. Mary Alcaide, Calif.

"This year you may be sure I sprayed for thrips besides disinfecting before planting. From being a very discouraged glad grower I am now a very enthusiastic Glad Fan."
—Mrs. L. J. Conley, Ill.

Duna ★★★ (Com) (Dec) (Mid-season) Soft light pinky buff shading to pale yellow toward the center. Back of petals a brighter shade. A beautiful clear distinctive shade that is fine for florist use. Especially popular with the ladies. This variety has never been very popular for some reason or other until this past season, when I had many good reports on it. It seems to be one of the varieties that people were just naturally suspicious of from the description. A fine florist flower and I am sure you will like it.

Evensong ★★★ (Ex) (HG) Large ruffled smoke with creamy blotch. 7-8 large blooms open. Some call this an improved Mother Machree. Produces oodles of bulblets.

Firefly ★★★ (Com) (Very early) Dazzling scarlet with white lines on lip. Probably the best early scarlet variety. Have had very good reports on it.

Glamis ★★★½ (Com) (Dec) Salmon rose with creamy lip. Beautiful clear unflecked color. Blooms are large wide open with petals fluted ruffled and needlepoint. 7-8 large blooms open on a medium height straight spike. A very beautiful variety. See cut page 39.

Hector ★★★ (Com) (Early mid-season) Salmon scarlet with reddish speckles on a cream throat. 5-7 large ruffled blooms open at a time. Good commercial.

Helena ★★★ (Ex) (Com) (Late) Lavender pink with darker lines in the throat. 8-9 or more good size well placed blooms open on a medium tall straight spike. One of the best commercial lavender pinks on the market. Very fine cut flower variety. See cut on page 17.

Jalna ★★★ (Ex) (HG) (Mid-season) Iridescent salmon and ashes of roses. Opens 10 large odd but beautiful and unusual smoky blooms on medium tall spike. Everyone seems to like this smoky. Medium height.

Jasmine ★★★ (Com) (Dec) (Early) Clear pale lemon yellow of a very distinctive shade. Absolutely clear color, beautifully ruffled. 6-7 large blooms open on a tall strong spike. This would be good in the yellow class but it is really in a class of its own as far as color goes. A very beautiful flower which must be seen to be appreciated. A fine grower.

Jonquil ★★★ (Com) (Early) Clear deep yellow. About the deepest yellow known. Up to 8 medium size blooms open on a tall straight spike. Fine early cut flower yellow.

King Lear ★★★★ (HG) Very early clear deep reddish purple with silver line on edge of all petals. Very large and heavily ruffled. 5-6 blooms open on a very tall spike. The finest purple I have ever seen. See cut on page 39.

Lombardy ★★★ (Ex) (Com) Light salmon softly blotched deeper salmon. 8-10 wide open large well placed blooms open on a tall straight spike. A strong husky plant.

Magnolia ★★★½ (Com) (Dec) Light soft creamy rose pink. Sometimes streaks in warm weather. However usually is a beautiful clean smooth chaste color. Blooms are large and petals somewhat rolled back at the edge. 6-8 open on a strong spike. Good propagator.

Maytime ★★★ (Com) (Early) Beautiful light creamy salmon with cream throat. Fine commercial variety. About the best thing I have in my fields during its blooming season. Many commercial growers buy this in quantity every year.

"We are enjoying the flowers so much and are developing a nice cut flower trade."
—Earle Coburn, Oregon.

Mermaid

New introduction. See page 10.

Muskoka

New introduction. See page 10.

Mywag

★★★ (Dec) (HG) (Mid-season) Light salmon, shading to white throat with large dazzling scarlet blotch. Immense round somewhat ruffled blooms. One of the finest and most beautiful varieties grown. Sometimes crooks in warm weather but a beautiful thing just the same. In good demand. Stock very limited.

Penzance

New introduction. See page 10.

Picardy

★★★★ (Com) (Ex) (Mid-season) Clear soft salmon with flesh throat on which is a soft inconspicuous feathering of rose. 7-9 very large well placed blooms. It isn't necessary to go into details about Picardy as most everyone knows all about it now. It has been on the market 10 years and is by far the finest and most popular variety ever introduced. And is the foundation of the famous Palmer strain. There are other varieties on the market fully as beautiful but there is no variety that I know of that is as good an all around gladiolus as Picardy.

Premier Henry

★★★ (Com) (Dec) (HG) (Late mid-season) Geranium pink shading lighter in the throat with darker feather. 4-5 immense round ruffled blooms open on a straight spike. Though a beautiful variety it is often rather short stemmed. Except for this it would rate 4 stars. It is very popular for the home garden and is the parent of some very fine seedlings.

Rapture

★★★ (Com) (Mid-season) Medium light salmon with diffused creamy yellow blotch. Tall strong grower and heavy propagator. Opens 7-8 large flowers at a time which are arranged in a staggered single line. Not quite so popular as a cut flower variety but produces a higher per cent of good spikes than Picardy.

Recado

★★★½ (Ex) (HG) (Late mid-season) Rosy ash flecked and splashed with orange scarlet with a diffused darker blotch. Opens up to 10 large well placed blooms. A strong grower and propagator. A fine exhibition variety and popular with everyone who likes smokies. Sells well in our shop. Buds are orange.

Regent

★★★★ (Ex) (Com) (Late mid-season) Clear glowing scarlet with somewhat darker blotch in throat. 9-10 large well arranged blooms on a flower head of 20-22 buds. Good shipper and one of the best all around scarlet varieties. Sister seedling of Algonquin and Rocket but different type. See cut page 17.

Reverie

★★★ (Com) (HG) Light peaches and cream. 6-8 medium size lightly ruffled blooms open at a time. Beautiful variety for local use but inclined to fade as the blooms open up the stem.

Rocket

★★★½ (Com) This variety has sold for the past two years under No. 30112. I have had so many fine reports on it from all over the country that we have decided to name it. It is a gorgeous scarlet. Vivid color probably not excelled in any other variety. Opens up to 7-8 gorgeous well placed blooms. Some commercial growers tried it in Florida last winter and said it was the best red they had found. I continue to get fine reports on it right along from those who tried it last year. Looks as if it would be one of the most popular reds grown. About the only fault I found with it here is that it is not quite tall enough, but have had no complaints on that score from anyone else. Grown in Oregon from bulblets it makes a growth of three feet or higher. You will certainly make no mistake in getting started in this variety. Mid-season.

"I also want to tell you that we are delighted with all the gladiolus that have bloomed, they are even prettier than we expected."

—Emma J. Inman, Va.

Roselle ★★★ (Com) (Ex) Beautiful salmon rose. 8-10 large well placed blooms open on a moderate height plant. Would make a fine commercial if it only grew taller.

Royal York ★★★ (HG) (Mid-season) Deep scarlet with a hint of salmon. 5-6 large wide open blooms open on a moderate height plant. Not especially noteworthy in itself but is a parent of Aladdin, Recado and some other good ones.

Sahara ★★★½ (Ex) (HG) (Late mid-season) Light russet with soft blotch of cream. Lightly peppered russet with scarlet penciling. Up to 10 medium large well placed blooms open on a tall strong straight spike. A very unusual color and popular. Stands the heat well. If you want something different, here it is. See cut on page 8.

Sandra ★★★ (Ex) (Com) Light shrimp pink with soft diffused amber blotch. Of Picardy type but little lighter in shade which is set off just right by the amber blotch on the lip. A very beautiful variety and one which I have had many fine reports on. A strong propagator.

Snow White ★★★ (HG) (Mid-season) Pure snow white with a touch of lemon in the throat. 5-6 large beautifully ruffled blooms open at a time. About the most beautiful white I have seen, but a little inclined to be soft so not suitable for commercial use.

Solita ★★★ (Com) (Late mid-season) A very nice light orange somewhat similar to Bit O'Heaven but a little lighter. Several medium size blooms open on a long spike. Tall slender ideal stem. A fine commercial variety that sells well late in the season because of its autumn shade.

Spray of Gold ★★★ (Com) (Dec) (Very early) Beautiful clear medium yellow, lightly ruffled. 4-5 medium large blooms open. One of the most beautiful yellows but for commercial purposes probably Miss Bloomington or Clarion are more valuable even though not so beautiful.

Symphony ★★★ (Com) Light rosy pink with clear cream blotch. 6-8 medium large blooms open on a tall straight spike. Very long flower head. A popular commercial.

Tecumseh New introduction. See page 11.

The Mogul ★★★ (Ex) (HG) (Mid-season) Salmony maroon with darker lines in the throat. A rather odd color but one which many people like. Up to 8 or more very large wide open slightly ruffled blooms open at a time, with most of the remaining buds showing color. A popular dark variety.

Titan ★★★ (Ex) (HG) Sister seedling of Aladdin. Huge salmon rose on a tall robust plant. Up to 9 enormous massive blooms open. A good dark salmon shade. Really good except in hot weather when the head is so heavy that it is inclined to crook. Fine for exhibition.

Vagabond Prince ★★★½ (Ex) (HG) Iridescent mahogany brown shading lighter in the throat with a small vivid flame scarlet blotch on the lip. 8-10 well placed medium size blooms open at a time. Odd and very distinct color, not a so called commercial color but I find that the leading florists in some of the larger cities do like a certain amount of these. It is something that attracts the attention of everyone and I am sure anyone selling blooms can sell a fair quantity of them. A must have for the home garden. See cut on page 39.

"The gratis bulbs of the numbered **Palmer Seedling 30112 (ROCKET)** that you sent with my last order have just bloomed. Although we had adverse weather conditions, this glad came through with a better spike and bloom than **PICARDY**.

"This unnamed Show Off politely snubbed such capable veterans as **VAGABOND PRINCE, MINUET, PICARDY, SAHARA** and others in a vase of mixed spikes. This glad was the most popular in my garden."
—Theron Rinehart, Md.

Wasaga ★★★ (Com) (Late mid-season) Clear glowing buff with 4-5 flowers open. Not a shipping variety but one that local florists can use to an advantage. For purity of color probably no other buff excels it though some of its seedlings are better in certain ways. Very fine for use in hybridizing as it is the parent of Amrita, Barcarole, Amulet and several other beautiful varieties.

Winston New introduction. See page 11.

Numbered Seedlings

27483 (HG) A novelty red and yellow speckled. Something different from anything else but one that many people have liked in my garden. Quite early.

30161 A very nice ruffled smoky seedling. A little inclined to be short. The gorgeous color makes up for that.

30289 Another smoky that opens up 10 or more medium size blooms. Has a yellow throat. Many people who tried this last year have asked me to name it.

33195 Ruffled rose with slightly darker throat. Large flower and very nice. Tall grower.

32145 Very pretty delicate flesh pink. Large flower, long head and all in all a beautiful pastel.

32201 A sister seedling of Amrita, Amulet and Barcarole and others. Very beautiful orange buff. Many people who tried this say it certainly should be named. Except for the fact that it often crooks from large bulbs in hot weather, it is fully as good as any of its sister seedlings. Opens up to 8 well placed blooms at a time. Think you will like it.

322024 Another sister seedling of the above. Beautiful lightly ruffled pinky buff. Long flower head.

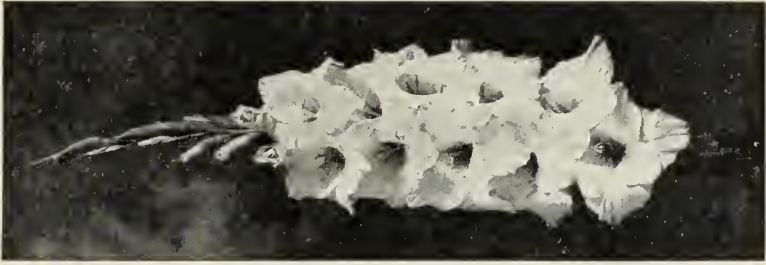
32203 Still another sister seedling of above. This is a pretty lemony cream on which I have had some fine reports. Doesn't grow so tall as some and doesn't open so many at a time but has beautiful color and form. There may be some bulbs of another light buff, fully as beautiful, mixed in with this seedling.

33102 Fine light rose with cream throat. Tall strong grower and opens up to 7 or more good size flowers.

340411 A sister seedling of *Mermaid*, that is being introduced this year. A beautiful buff but one in which the color is not quite so clear as we would like and so we are not naming it. However, it makes an enormously tall strong plant with exceedingly long flower head with 6-8 large blooms open and many buds showing color. This has attracted a lot of attention in my shop. If the color were a little bit clearer it would be very outstanding. And I feel that anyone who likes buffs will certainly like this one. Strong grower and propagator. If a lot of buyers of this seedling do not come clamoring for a name for it this fall I shall be much surprised. I am going to work up a stock of this for my own cut flower trade.



Corona



Myrna



Regent



Helena

"Want to say we were more than pleased the way you filled our order a year ago, you outdid yourself on counts, extras, and price."

—Wm. S. Moore, Jr., Neb.

1941 Introductions from Other Growers

FROM C. W. LEFFINGWELL OF CALIFORNIA

Bolero (Seedling L-7-50) (Phipps Seedling x Picardy) Exhibition and Novelty. Smoky orange with darker velvety red blotch bordered smoke. 7-8 large, 5 inch +, open with most of the remaining eight showing color. The florets are ruffled, fluted, wide open, needlepoint and of the heaviest texture imaginable. *Bolero* and *Tecumseh*, Palmer's new introduction, have a somewhat similar type of floret. Both are very unusual and fine. Height is 50 inches plus. A well known judge said this was the best thing I had in my exhibit at Boston this past season and I had some very nice varieties there. A strong grower and good producer of large bulbets that grow well. Mid-season bloomer.

Price \$3.00 each for any size, 10 for \$25.00. Bulbets 75 cents each, \$60.00 per 100.

Padre (Seedling L-701) (Mrs. S. A. Errey x Picardy) Exhibition. Light orange shading to yellow toward the center with a large dark reddish orange blotch. 18-20 buds with up to 12 large, 5 inch blooms open. Very showy. Florets are round and somewhat ruffled and have good substance. Height over 4 feet, strong slender stem. For exhibition this is the best orange I have seen. Produces lots of medium size bulbets that are fair to germinate. Through an accident we have no small bulbs to offer, only large ones 2 years old from bulbets. I believe you will like this one. Mid-season bloomer, a few days earlier than *Bolero*.

Price \$3.00 each. 10 for \$25.00. Bulbets 75 cents each, \$60.00 per 100.

FROM BYRON KADEL OF MARYLAND

Mother Kadel (Picardy x Spray of Gold) Decorative and commercial. Clear medium yellow shading slightly deeper in the throat. No markings whatever. Opens 5-7 well placed blooms with 5 showing color on a spike of 15-17 buds. Blooms 4-4½ inches across. The plant grows 48-56 inches. This variety unlike many yellows opens well in water. It is a free easy grower and good propagator. *Mother Kadel* looks like a very promising commercial prospect. See cut on back cover.

AWARDS 1940

American Home Achievement medal at the Maryland State Show.

At the Eastern New York Society Show at the World's Fair it won as *The Best Yellow*, *The Best Decorative* and an *Award of Merit*.

At the Empire State Show it won Honorable Mention, which is the only award given at this show for a seedling the first time shown. It was also voted the best seedling in the show.

Price \$1.00 each for large bulbs only.

FROM D. W. WHITE OF CANADA

Elizabeth the Queen (Buff seedling x Salbach's Orchid) Exhibition and commercial. Here at last is a lavender that is head and shoulders above any other lavender I have ever seen including *Minuet*. The color is a clean fresh mauve darker than *Minuet*.

"You will be interested to learn that your **JALNA** won for the Dunrovin Gardens the best spike in the spike and decorative classes at the Fairfield County Show. We won the sweepstakes gold medal (N.E.G.S.), two additional medals, two silver cups, 19 first prizes, 17 seconds and four thirds. We took both of the Trivett's tested seed cups. We are naturally very pleased."

—Arcie Lubeikin, Conn.

"I thought I would let you know what wonderful fine large blooms I got from the small bulbs which I bought from you last spring. The **COLOSSUS** is the largest bloom I ever grew, it was $6\frac{1}{4}$ inches. **PREMIER HENRY** and **KING ARTHUR** were $5\frac{1}{2}$ in. I was surprised to see that these blooms would come from such small bulbs."

—Lewis R. Baer, Md.

reaching way down to the throat with a reddish stippled feather in the throat and some flaking of the same color. The flaking gives the flower character instead of harming it as flaking usually does. Beautiful under artificial light. It is beautifully ruffled and somewhat needlepoint. It opens up to 7 or 8, $5\frac{1}{2}$ inch well placed blooms on a 26 inch flowerhead with a total height of 56-60 inches. Total number of buds 20. The stems are straight and the plant firmly anchored in the soil. There is no whipping around or bending over with consequent bad placement of bloom as in so many varieties. Propagation is very good. Altogether *Elizabeth the Queen* looks like a distinct advance in lavenders, just what we have been looking for for years. I believe it will largely replace all other lavenders on the market.

WINNINGS

1939 *Award of Merit* and best seedling at Province of Quebec Show in Montreal.

1940 *Best Novelty Seedling* at Exposition Institute Agricole Belge Au Canada.

Award of Merit and voted most beautiful flower at N. Y. World's Fair by Eastern N. Y. Society.

3 Spike Open Class at Province of Quebec Show.

The above description and winnings are for blooms produced from medium size bulbs. Through accident the large bulbs were destroyed. See cut on front cover.

Price \$5. each for any size or 1 each large, medium and small for \$10. Bulblets \$1. each. \$80.00 per 100.

Canadian customers can secure this from Alexander H. Downey, 400 Lake Promenade, Longbranch, Ont. He is Co-Introducer.

FROM HUMPHREY F. HEDGECOCK OF NEW YORK

Margo (Picardy x J. Van Tets) Exhibition and commercial. A very beautiful clear apple-blossom pink. Opens 8 perfectly spaced and placed 5 inch blooms on a 20 bud spike that is always strong and straight. Grows 50 inches or taller. Substance is heavy and heat resistant. An unusually good keeper and stands rough treatment. Good propagator. Blooms in 65 days. This looks like a very promising commercial prospect because of its general excellence, earliness and all round commercial qualities. See cut on inside cover.

WINNINGS 1940

American Home Achievement Medal N. Y. World's Fair at the Eastern N. Y. Show.

1st in the open (3 spike class) at Boston.

1st in the Advanced Amateur (2 spike class) at Boston.

Price \$3.00 each. 10 for \$25.00. Bulblets 75 cents each, \$60.00 per 100.

FROM W. G. HERRIDGE OF MARYLAND

King Midas This is not strictly a new introduction as it was on the market last year. However only a very few bulbs were sold. I have bought the entire stock now and am introducing it in conjunction with a few other growers.

This is a very deep yellow with a small red spot in the throat which intensifies the color. It opens 7-8 well placed 4 inch blooms on an always straight sturdy medium height spike. Has opened up to 12 blooms. I grew it this past season and liked it very much. It produces lots of bulblets.

King Midas has won in the open classes at several shows the past two seasons and I think it will win for you. You will make no mistake in trying it. Several of the leading growers had it this past season and liked it. See cut on inside front cover.

Price \$1.00 each, 10 for \$8.00. Bulblets 10 for \$1.00 or \$8.00 per 100.

"I would like to tell you of the pleasure I have had from your beautiful glads. Oh! they are all glorious and I will stock up early next year for another Season of Beauty."

—Mrs. Frank D. Lewis, Penn.

"Last spring I bought gladiolus bulbs from you, and I am very glad to report that they were the most satisfactory I have ever had. I have been raising gladiolus in a small way for many years."
—R. G. Barton, Conn.

CREAM VARIETIES

This year we are introducing 3 cream colored varieties, one from Mr. Palmer and the two below. They are all good and enough different to warrant introduction. Whether one will become more popular than the others remains to be seen. We have been looking a long time for a good cream and now we have three. From our use of cream varieties in our flower shop this past season I know that cream varieties are going to be very popular. They are much prettier than pure whites for wedding bouquets and many other uses. Watch their popularity grow.

FROM MR. LAKE OF CANADA

Lady Jane A clear glistening cream with deeper lip petal. 6-8 large, 5 inch, round wide open florets open. Slightly ruffled and waved. Grows 5 to 5½ feet tall and is always straight. Blooms well placed. Won an Award of Merit at the Canadian Show in 1939.

I have not grown this myself but Mr. Downey my co-introducer has grown it and he says it is one of the finest glads ever introduced. That it has about everything a real glad should have—perfect placement, wonderful texture, strong healthy grower and propagator and bulblet germinator. Will make a fine commercial.

Prices; large bulbs \$1.00 each; 10 for \$8.00. Medium and small \$.50 each; 10 for \$4.00. No bulblets for sale.

FROM DR. GEO. H. SCHEER, WISCONSIN

White Gold (Maid of Orleans x Picardy) Early-62-75 days. Clear cream with light gold throat. 5-6 very large well placed blooms open with 5 more showing color. 18-19 total buds from 2 year old bulbs. Younger bulbs even tho large have less buds. Blooms usually 6 inches or larger. Some have measured up to 7½ inches across.

A very strong, sturdy plant about 5 feet high with broad heavy foliage. Produces lots of bulblets that germinate about 100%.

WINNINGS

1940. At 4 shows White Gold won 7 awards including the American Home Achievement Medal at the Wisconsin Glad. Soc. Show.

I saw it at Boston and as shown there it was magnificent.

Price \$3.00 each for any size bulb. The early customers get the large bulbs if they prefer them. Bulblets are not sold separately but anyone purchasing bulbs, can have 10 bulblets for \$3.00 with each bulb purchased.

"Was very much pleased with those I got from you, and I especially thank you for **ALADDIN**, **AMULET** and **ROSELLE**, which you sent free. All were very fine and a wonderful collection."
—Charles Harmon, Mass.

"The Glad bulbs I bought from you this spring have all turned out wonderful."
—Alfred H. Taylor, Vt.

"As extras this year you sent me one **ROYAL YORK** and **AMBERGLOW**. They are both in bloom now. **ROYAL YORK** is huge and much more beautiful than **REW FALLU**. **AMBERGLOW** is a marvelous color, buds look like rose buds and wonderfully heavy texture. Must have both next year."
—Mrs. L. Farnsworth, Penn.

"The **VAGABOND PRINCE** and **MAYTIME** also **COLOSSUS** are the talk of the town. **EXCELLENCE** is very good under extreme heat. To make a long story short these flowers have surpassed my expectations 100 times."
—H. L. Armstrong, Pa.

"The 100 small glad bulbs which I purchased from you during the latter part of June, 1940 are beginning to blossom and the flowers are the finest I ever saw. I consider the \$1.00 I paid for the collection, well spent. Am more than pleased with them."
—Ed. Krantzfelder, Wis.

"CORONA, that is a beauty. Many people I talked with at the show spoke of it as THE outstanding new variety."
—William O. Causer, Mass.

Complete List

The letters following each variety is the abbreviation of the name of the originator: (Pf) PFITZER; (SAL) SALBACH. I am marking the varieties (Com) Commercial; (Ex) Exhibition; (Dec) Decorative; and part of them (HG) meaning suitable for Home Garden. Of course every variety is suitable for the home garden so I am marking those only HG that do not come under either the Ex and Com classes. Where I have put down a variety as commercial I mean only that the color is good and suitable for local florist use. Those that are especially adapted for long distance shipping or shipping to the big markets I have noted especially in the text.

About blooming dates I am giving only those that the originator has given. Where I don't mention the number of days to bloom you may consider them as midseason unless I mention in the text that they are early or late. Exact blooming dates are not reliable anyway as they vary in different parts of the country and according to the season. SO PLEASE DON'T WRITE ME ABOUT ANY FURTHER BLOOMING DATES THAN I HAVE GIVEN HERE as I cannot give any exact dates further than mentioned.

I have tried to make the descriptions in my catalog as accurate as possible without going into minute details. However I know that varieties will differ very much under different growing conditions and in different parts of the country so giving the exact number of days to bloom is very misleading, as in some parts of the country it requires two or three weeks longer than in other places. Then again all blooms of a variety do not open at the same time. Some varieties naturally bloom out rather quickly, that is all bulbs of a size would bloom out in 10 days or 2 weeks, while in other kinds they might straggle along for a month or more. Just calling them early, midseason or late is about the best anyone can do.

If any of these varieties don't do as well for you under your conditions as you think the description justifies don't blame me but give them another trial. In giving these descriptions I am giving the varieties credit for normal good growing conditions. No variety will do well in extreme hot weather or sand or clay soil without some artificial watering. Some varieties will do better the second year after becoming acclimated.

Aladdin Palmer strain. See page 11.

Algonquin Palmer strain. See page 11.

Amador ★★★ (KINGSLEY) (Com) Glowing medium red. 5 to 8 large beautiful blooms open at a time. One of the best medium reds.

Amberglow Palmer strain. See page 11.

Amrita Palmer strain. See page 11.

Amulet Palmer strain. See page 11.

Angelica ★★★½ (FISCHER) (Small Dec) A small flowered variety and so suitable only for certain purposes. But a very nice color and very early. The color is a delicate bright pink at edges, blending to snowy white in the throat with cream deep in the throat. Texture, waxy and ruffled. Very pretty for bridal bouquets, corsages and small table decorations.

"If anything would please me better than KING LEAR of Palmers I fear it would be GLAMIS. It has captivated me."
—Nina Ward, Ind.

Winston



Penzance



King Lear



Aladdin

Gladiolus Price List

JANUARY -- 1941



This List Supersedes All Previous Lists

Do not use an old list. There are many changes in this one.

Please read pages 2 and 3 before making out an order.

CHAMPLAIN VIEW GARDENS

ELMER GOVE

BURLINGTON, VT.

Please Read Carefully

Please do not ask us to change collections or special sets. The collections are made up as they are for definite reasons and we cannot change them. Any of these collections or specials are very good value.

Do not split quantities as listed. Where a variety is listed at 2 for 15 cents or 4 for 15 cents do not order 1 or 2 at a lower price. There is no profit in any items of less than ten cents and very little at that price. **No single item accepted for less than ten cents.**

EXTRAS ON CASH ORDERS. On cash orders of \$2.00 to \$5.00 you can select 10% extra in bulbs of your own choosing. From \$5.00 to \$25.00 select 15%; \$25.00 to \$50.00 select 20% and above \$50.00 select 25%. **These Discounts do not Apply to Collections, Special Offers or Wholesale prices or New Introductions, or those marked "No Discount."**

VARIETIES MARKED "NO DISCOUNT" CAN NOT BE USED AS EXTRAS.

Discounts apply to gladiolus only and not to other articles listed.

TO MAKE OUT YOUR ORDER put everything down on the order blank, just as listed in the price list. Add it up, then figure out any special discounts or add on the extra bulbs of your choosing. It is all very simple but some people seem to have a lot of trouble in making out an order.

The above discounts and extras are all for cash orders. The earlier the orders are received and the larger they are the more generous we will be with our extras. If you cannot spare all the cash now send 25% and the balance later and we will see that you are satisfied. **But the above extras are only for cash before shipment.**

On cash orders of \$12.00 or more, for bulbs, I will give a copy of the "Gladiolus Book" by Rockwell if you ask for it and if you have not already had one.

Packages of bulblets run from twenty-five to fifty or more. We give very good value.

You can have 3 or more bulbs at the 10 rate; 25 at the 100 rate. But no single items for less than 10 cents.

Please do not send us orders of under \$1.00 as we lose money on them. I do usually fill such orders from regular customers as an accommodation but they cost us more than we get for them. On retail orders of under \$1. please enclose 10 cents for postage.

I GUARANTEE SATISFACTION, and I mean just that. If at any time, either after receiving the bulbs or after blooming, you have cause for complaint just write me about it and I will do my utmost to make things right. This is the only basis on which anyone can hope to conduct a business that will be permanently successful.

At these prices all bulbs, except the wholesale offers and growers' collections, are prepaid anywhere in the United States and Canada and all countries in the Postal Union.

SPECIAL QUOTATIONS. Do not ask for special quotations unless you have a large order. We will not consider quoting any special prices on small orders. I publish this price list to give people the prices and do not consider it honest to give one person a lower price than another.

REMEMBER in buying bulbs price is not everything. In fact sometimes the price is a minor item. Consider the quality, count, the reliability of the grower, etc. I always mean to put in enough extra count or over size to make up for any lower price that other good reliable growers might make. **Just leave it to me.**

IF YOU WANT TO PAY TRANSPORTATION and get extra count on your order just mention it and I will send your order collect for postage or express and will see that you are more than satisfied. Just mention whether you want extra count on your order or extras in other kinds and what kinds. If you want wholesale orders sent by mail it is better to let us send them **C.O.D. for the postage**, then we know the postage is correct and I will give you more than enough bulbs to make it up. People who send stamps or cash for the postage seldom send enough.

On wholesale orders do not ask us to prepay the carrying charges and take out enough bulbs to offset the express or parcel-post. This disrupts the whole office routine and makes us a lot of extra work. On wholesale orders which are not prepaid let us send them **C.O.D. for the postage** or express collect.

ON FAIR SIZED ORDERS, EXPRESS is safest and best especially in the winter time; I advise express if you are situated so as to get free delivery by the express company.

EXTRAS. It is the practice of most growers to give extras on orders. I always put in some myself. So it would help me if you will mention whether you want extras of the same varieties that you order or in other kinds. And if you have a preference it will help me still more if you can name the varieties in which you want your extras and if you want large, medium or small bulbs or bulblets.

Just give us a list of varieties from which to select your extras. We will put in what we think the order rates.

PLEASE give me a list from which to select your extras. Extras are given for orders from the retail list—not from the wholesale tho I usually put in something new to try anyway.

C.O.D. ORDERS—Please do not ask us to send an order C.O.D. without your making a deposit on it. If it is a small order we shall have to ask for a deposit of at least a dollar. Larger C.O.D. orders should be accompanied by 25% of the value. We cannot send out any more C.O.D. orders without at least some deposit.

Premium Bulbs Free

WINSTON Palmer Seedling No. 322016. A large very beautiful, ruffled cream, with slightly deeper cream throat. An exquisite creation that is bound to become very popular with those who can appreciate real beauty. Very early.

MERMAID Palmer Seedling No. 34047. Very tall, strong growing pink with white throat. A fine new color, suitable for florist work. Several well placed blooms open. Always straight. A Debonair stem with a really fine flower. Florist visitors to my fields have commented very favorably on this variety.

FREE with a **\$15.00** order, a large bulb of either one of the above varieties.

A **\$30.00** order will get a large bulb of both. Only one of each to a customer.

Do not ask for any other variety as a Premium bulb as the above two are the only ones we give for size of order.

THIS YEAR I am selling the premium bulbs, also, a thing I have never done before. The bulbs are priced at \$5.00 each. I can imagine a lot of people asking me for \$5.00 worth of bulblets as a premium instead of a large bulb. This we can not give. The premiums are large bulbs as noted above.

WHEN CORRESPONDING ABOUT A PREVIOUS ORDER, PLEASE GIVE ORDER NUMBER. IT SAVES US A LOT OF TIME.

F.O.B. ITEMS. When an order contains both F.O.B. items and retail items unless you give instructions to the contrary we ship them all together in one package F.O.B. but put in extra count and enough extras to more than offset the carrying charges on the retail items. If the order is large and you want the two different classes shipped separate we can do that if you ask us to but many orders contain both retail and wholesale items and it is usually simpler to send them all together.

CERTAIN VARIETIES because of their being new introductions of this year or because I am simply listing them for another grower or for some other reason I have marked "no discount." We do not give any discount whatever on introductions of the current year and there are no discounts on Golden Goddess, a patented variety, and a few others. These are marked in the price list.

The varieties marked "no discount" cannot be used as extras as either they are very limited in quantity or I am listing them for other growers at a nominal commission.

CANADIAN CUSTOMERS have to send to the Destructive Insect & Pest Act Advisory Board at Ottawa for permit to import bulbs.

At present writing (December, 1940) there is an embargo on bulbs to Canada—so no bulbs can be sent into Canada until the embargo is lifted, which no doubt will be for the duration of the war or longer.

AT THIS TIME most foreign money is discounted in this country so foreign customers in remitting for bulbs will please send a bank draft on a New York Bank in United States dollars.

ORDER EARLY. There are always certain varieties of which the stock is very limited and so we are usually sold out before spring, so if you order early you will be sure of getting just what you want. Then again we are always rushed in the spring as so many people wait until then to order. And by ordering early you will get what you want when you want it and it will be better for both of us.

ACKNOWLEDGMENT OF ORDERS. We always send an invoice as soon as possible after an order is received, usually within 1 or 2 days, however, as so many people procrastinate and wait until spring to order, that often in March and April we simply can not get these invoices out as soon as we would like to. Often get several days behind. If you do not get an invoice acknowledging your order within a few days, drop us a line. But in the spring it may be 10 days or more before you would get it. This is another reason for ordering early. Another invoice goes with the order of bulbs for checking.

PRICE LIST

	PER	LARGE	MEDIUM	SMALL	BULBULETS	
					PER	
ALADDIN	1	\$.50	\$.30	\$.20	7	\$.20
Wonderful ruffled salmon.	10	4.00	2.40	1.60	100	2.00
ALGONQUIN	1	.50	.30	.20	7	.25
Finest bright red.	10	4.00	2.40	1.60	100	2.00
AMADOR		2-.12	4-.15	10-.15	Pa.	.10
Nice bright red.	10	.50	.30	.15	100	.15
AMBERGLOW	1	.15	.10	2-.10	15	.10
Most beautiful amber yellow.	10	1.20	.80	.40	100	.60
AMRITA	1	.15	.10	2-.10	15	.10
Beautiful clear light buff.	10	1.20	.80	.40	100	.60
AMULET	1	.50	.30	.20	7	.20
Exquisite ruffled buff.	10	4.00	2.40	1.60	100	2.00
ANGELICANo Discount	1	.40	.25	.15
Small flowered pink white throat.						
ANGELUS	1	.10	2-.15	3-.10	15	.10
Pure pink, cream throat.	10	.80	.40	.25	100	.50
ARETHUSANo Discount	1	.60	.40	.25	7	.25
Ruffled cream.						
ARIADNE	1	.20	.15	.10	10	.15
Tinted white with red blotch.	10	1.60	1.20	.80	100	1.00
AVALON	1	2.00	1.50	1.00	1	.40
Beautiful pink and cream.	10	16.00	12.00	8.00	10	3.00
AVE MARIA		2-.12	4-.15	10-.15	Pa.	.10
Early medium blue.	10	.50	.30	.15	100	.15
BAGDAD		2-.12	4-.15	10-.15	Pa.	.10
Huge smoky old rose.	10	.50	.30	.15	100	.15
BARCAROLE	1	.50	.30	.20	5	.15
Wonderful deep ruffled orange.	10	4.00	2.40	1.60	10	.25
BARCELONANo Discount	1	1.50	1.50	1.50	1	.25
Immense cream.						
BEACON		2-.15	2-.10	4-.10	20	.10
Salmon scarlet, cream throat.	10	.60	.40	.20	100	.40
BEAUTIFUL OHIO	1	.25	.15	2-.15	20	.25
Nice lavender.	10	2.00	1.20	.60
BELLA DONNA		2-.12	4-.15	10-.15	Pa.	.10
Early light blue.	10	.50	.30	.15	100	.15
BERNECE		2-.12	4-.15	10-.15	Pa.	.10
Early deep bronzy yellow.	10	.50	.30	.15	100	.15
BETSY BOB-UP		2-.12	4-.15	10-.15	Pa.	.10
Late cream yellow, reddish lines in throat.	10	.50	.30	.15	100	.15
BEVERLYNo Discount	1	.50	.35	.25	6	.25
New commercial purple.	10	4.00	2.80	2.00	12	.50
BILL SOWDEN		2-.12	4-.15	10-.15	Pa.	.10
Huge deep blood red.	10	.50	.30	.15	100	.15
BIT O'HEAVEN		2-.12	4-.15	10-.15	Pa.	.10
Fine commercial orange.	10	.50	.30	.15	100	.15
BLACK OPAL	1	.25	.15	.10	10	.15
Exhibition dark red.	10	2.00	1.25	.80	100	1.00
BLEEDING HEART		2-.12	4-.15	10-.15	Pa.	.10
Tinted white, red blotch.	10	.50	.30	.15	100	.15
BLUE ADMIRAL		2-.12	4-.15	10-.15	Pa.	.10
Best deep blue.	10	.50	.30	.15	100	.20
BLUE BEAUTY	1	.10	2-.10	3-.10	Pkg.	.15
Early, medium deep blue.	10	.80	.50	.30	100	.25
BLUE WONDER	1	.25	.15	.10	15	.10
Exhibition blue.						
BOLERONo Discount	1	3.00	any size		1	.75
New Orange.	10	25.00	any size		100	60.00

	PER	LARGE	MEDIUM	SMALL	BULBETS PER	
BOLIVAR		2-.12	4-.15	10-.15	Pa.	.10
Huge red.	10	.50	.30	.15	100	.15
BRIGHTSIDE		2-.12	4-.15	10-.15	Pa.	.10
Orange and yellow decorative.	10	.50	.30	.15	100	.15
BUCCANEER	1	.15	.10	2 .10	Pkg.	.15
Rose sport of Pirate—fine.	10	1.20	.80	.40	100	.25
CAESAR		2-.12	4-.15	10-.15	Pa.	.10
Salmon red with darker blotch	10	.50	.30	.15	100	.15
CAMELLIA	1	.10	2-.15	3-.10	Pkg.	.10
Tinted pink, darker feather.	10	.80	.50	.30	100	.20
CANDY HEART No Discount	1	.45	.30	.15	25	.25
Flesh pink, darker blotch.	10	2.50	1.50	1.00	100	1.00
CARDINAL PRINCE		2 .12	4 .15	10 .15	Pa.	.10
Early clear cardinal red.	10	.50	.30	.15	100	.15
CARILLON	1	.50	.30	.20	10	.20
Beautiful clear rose, white throat.	10	4.00	2.40	1.60	100	1.50
CHAMPLAIN		2-.12	4-.15	10-.15	Pa.	.10
Early light blue	10	.50	.30	.15	100	.15
CHAMOONY	1	.30	.20		10	.25
Tall dark rose bordered by silver line.	10	2.40	1.60		100	2.00
CHIEF MULTNOMAH	1	.25	.15	.10	10	.15
Large showy smoky with red blotch	10	2.00	1.20	.80	100	1.00
CLARION		2 .12	4-.15	10 .15	Pa.	.10
Nice early yellow.	10	.50	.30	.15	100	.15
COLOSSUS		2-.15	2-.10	4-.10	20	.10
Large early salmon with red blotch	10	.60	.40	.20	100	.40
COMMANDER KOEHL		2 .12	4-.15			
Large red.	10	.50	.30			
CONQUEST	1	.10	2-.15	3-.10	25	.10
Ruffled light salmon cream blotch	10	.80	.50	.25	100	.25
CORAL GLOW No Discount	1	.25	.20	.10	10	.25
Fine coral red.						
CORDELIA	1	2.50	1.50	1.00	1	.35
New, early rose.						
CORONA	1	2.50	1.50	1.00	1	.25
Flesh with picotee edge	10	20.00	12.00	8.00	10	2.00
CREVE COEUR		2-.12	4-.15	10-.15	Pa.	.10
Tall orange with darker blotch.	10	.50	.30	.15	100	.15
DAMARIS	1	.15	.10	2-.10	15	.15
Deep burgundy red.	10	1.20	.80	.40	100	.80
DEBONAIR		2-.12	4-.15	10-.15	Pa.	.10
Tall strong LaFrance pink.	10	.50	.30	.15	100	.15
DIANE	1	1.00	.75	.50	1	.15
Late tall salmon orange	10	8.00	6.00	4.00	10	1.00
DREAM O'BEAUTY		2-.12	4-.15	10-.15	Pa.	.10
Deep rose	10	.50	.30	.15	100	.15
DR. DENTZ	1	.20	.15		15	.10
Rose pink—called an improved Picardy.	10	1.60	1.20		100	.60
DR. DURR		2-.12	4-.15	10 .15		
Early cream white.	10	.50	.30	.15		
DR. HOEG		2-.12	4-.15	10-.15	Pa.	.10
Glistening deep red.	10	.50	.30	.15	100	.15
DUNA		2-.12	4-.15		Pa.	.10
Soft light buff.	10	.50	.30		100	.15
EARLY ROSE		2-.12	4 .15	10 .15	Pa.	.15
Early medium dark rose.	10	.50	.30	.15	100	.25

" Was well pleased with the glods I purchased from you last year. I liked **BEACON** best of all "

William Deusser, Ohio

" To whom it may concern: Wish to state all the glods that I have bought from you were very beautiful and very large. I shall tell all my friends about your beautiful glods."

E. C. Knight, Maine

	PER	LARGE	MEDIUM	SMALL	BULBLETS	
					PER	
EDITH MASON		2-.12	4-.15	Pa.	.10
Nice light rose.	10	.50	.30	100	.15
EDITH ROBSON		2-.12	4-.15	10-.15	Pa.	.10
Exhibition salmon darker blotch.	10	.50	.30	.15	100	.20
ELIZABETH THE QUEENNo Discount	1	5.00	any size		1	1.00
Amazing new lavender.	3	10.00	1 of each size		100	80.00
ELOISE		2-.12	4-.15	10-.15	Pa.	.10
Nice new pinkish lavender.	10	.50	.30	.15	100	.15
EMBLEM OF PURITYNo Discount	1	1.00	.60	.40	2	.25
Fire pure white.	10	8.00	4.80	3.20	10	1.00
EMILE BRIDE	1	1.00	.65
Good smoky.	10	8.00	5.00
EVENSONG		2-.12	4-.15	10-.15	Pa.	.10
Smoky, cream blotch.	10	.50	.30	.15	100	.15
EXCELLENCE		2-.12	4-.15	10-.15	Pa.	.10
Large early red.	10	.50	.30	.15	100	.15
FIREFLY	1	.15	.10	2-.10	25	.10
Early flaming scarlet with white line.	10	1.20	.80	.40	100	.30
FLAGSHIPNo Discount	1	1.50	.80	.50	2	.20
Red, white and blue.						
FLORA FARMERNo Discount	1	.75	.50	.30	1	.10
Pure rose pink.	10	6.00	4.00	2.40	10	.80
GLAMIS	1	2.00	1.25	.75	1	.25
Ruffled clear salmon cream throat.	10	16.00	10.00	6.00	10	2.00
GLOAMING		2-.15	3-.15	6-.15	15	.10
Purple with white throat.	10	.60	.40	.20	100	.50
GOLDEN BROWN		2-.12	4-.15	Pa.	.10
Chocolate brown, medium size.	10	.50	.30	100	.15
GOLDEN GODDESSNo Discount		2-.15	2-.12
Exhibition yellow.	10	.75	.50
GRETA GARBO	1	1.00	.60
Beautiful soft creamy rose.	10	8.00	4.80
HECTOR		2-.12	4-.15	10-.15	Pa.	.10
Early ruffled salmon scarlet.	10	.50	.30	.15	100	.15
HELENA	1	.15	.10
Late lavender pink.	10	1.20	.80
HELEN OF TROYNo Discount	1	1.00	.50
Large buff with soft blotch.						
HERITAGE	1	.10	2-.15	3-.10	Pkg.	.15
Exhibition pink.	10	.80	.50	.25	100	.25
HINDENBURG'S MEMORY	1	.50	.30	.20	4	.10
Nice medium red.	10	4.00	2.40	1.60
HONOR		2-.12	4-.15	10-.15	Pa.	.15
Nice lavender.	10	.50	.30	.15	100	.25
IEKA	1	.50	.30	.20	4	.15
Big smoky with red blotch.	10	4.00	2.40	1.60	10	.30
INCENSENo Discount	1	.25	.25	.10
The scented gladiolus.						
INNOVATION	1	.10	2-.15	4-.15	20	.10
Bronze, slightly smoky.	10	.80	.60	.30	100	.40
IRAK	1	.10	2-.15	2-.10	20	.10
Lavender gray sport of Bagdad, fine.	10	.80	.50	.30	100	.40
JALNA	1	.10	2-.15	2-.10	Pkg.	.15
Exhibition smoky.	10	.80	.50	.30	100	.25
JASMINE	1	.50	.30	.20	10	.20
New ruffled light yellow.	10	4.00	2.40	1.60	100	1.50
JONQUIL		2-.12	4-.15	10-.15	Pa.	.10
Deepest yellow known.	10	.50	.30	.15	100	.15
JOSEPH HAYDEN	1	.35	.25
Light blue, large dark blue blotch.						

					BULBLETS	
	PER	LARGE	MEDIUM	SMALL	PER	
KING ARTHUR		2 .12	4 .15	10 .15	Pa.	.10
Ruffled mauve.	10	.50	.30	.15	100	.15
KING LEAR		1 .50	.30	.20	10	.20
Most beautiful purple, early	10	4.00	2.40	1.60	100	1.50
KING MIDAS No Discount	1	1.00	.60	.40	10	.40
New deep yellow.						
KINGS RANSOM		2-.15	2-.10	4 .10	15	.10
Early salmon scarlet.	10	.60	.40	.20	100	.50
LADDIE	1	.20	.15	.10	15	.10
Huge light rosc salmon.	10	1.60	1.20	.80	100	.60
LADY JANE No Discount	1	1.00	.50	.50		
New cream.	10	8.00	4.00	4.00		
LADY WINSOME		2-.15	4-.15	10-.15	Pa.	.10
Large rosy salmon with blotch.	10	.60	.30	.15	100	.15
LA PALOMA		2-.12			Pkg.	.10
Early light orange.	10	.50				
LEONA	1	.10	2 .10			
Purplish rose red, fine.	10	.80	.40			
LOMBARDY	1	2.00	1.25	.75	1	.25
Large exhibition salmon.						
LOYALTY		2-.12	4-.15		Pkg.	.10
Large, late yellow.						
LUCIFER		2-.12	4-.15	10-.15	Pa.	.10
Exhibition orange with darker blotch.	10	.50	.30	.15	100	.15
LUTEX	1	.75	.50	.25	8	.15
Big yellow						
MAGNA BLANCA		2-.12	4-.15		Pkg.	.10
Exhibition white.	10	.50	.30			
MAGNOLIA	1	2.00	1.25	.75	1	.25
Large light creamy rose.						
MAID OF ORLEANS		2-.12	4-.15	10-.15	Pa.	.10
Best all around white.	10	.50	.30	.15	100	.15
MAMMOTH WHITE		2-.12	4-.15			
Largest white.	10	.50	.30			
MARGARET BEATON	1	.40	.30	.20	5	.15
Very beautiful white with small scarlet blotch.	10	3.20	2.40	1.60	10 for	.25
MARG. FULTON	1	2-.12	4-.15	10-.15	Pa.	.10
Early clear rose salmon.	10	.50	.30	.15	100	.15
MARGO No Discount	1	3.00	any size		1	.75
New pink.	10	25.00	any size		100	60.00
MARGUERITE No Discount	1	1.00	.75	.50	2	.25
Large rose salmon.	10	9.00	6.75	4.50	10	1.00
MAR. PETER		2-.12	4-.15	10-.15	Pa.	.10
Early blotched tinted pink.	10	.50	.30	.15	100	.15
MARMORA		2-.12	4-.15			
Gray with purple blotch.	10	.50	.30			
MARY ANSTEEN		2-.12	4-.15	10-.15	Pa.	.10
	10	.50	.30	.15	100	.15
MARY DAMARIS	1	.30	.20	.10		
	10	2.40	1.60	.80		
MARY ELIZABETH		2-.12	4-.15	10-.15	Pa.	.10
Late white with cream throat.	10	.50	.30	.15	100	.15
MAUVE MAGIC		2-.12	4-.15	10-.15	Pa.	.10
Nice mauve shade.	10	.50	.30	.15	100	.15
MAUVETTE	1	1.50	1.00	.75		
A beautiful mauve with white throat. Opens up to 10 at a time. Most beautiful of mauve lavender						
Not in descriptive list.						
MAYTIME		2-.12	4-.15	10-.15	Pa.	.10
Early light pink cream throat.	10	.50	.30	.15	100	.15
MERMAID No Discount	1	5.00	any size		1	1.00
New pink.	10	40.00	any size		100	80.00
MIBLOOM		2-.12	4-.15		Pa.	.10
Very early, tinted white with blotch.	10	.50	.30		100	.15

	PER	LARGE	MEDIUM	SMALL	BULBULETS	
					PER	
MILFORD		2 .12	4 .15	10 .15	Pa.	.10
One of the best light blues.	10	.50	.30	.15	100	.15
MINUET		2 .12	4 .15			
Standard light lavender, may be slight l. mixed	10	.50	.30			
MISS BLOOMINGTON		2 .12	4 .15	10 .15	Pa.	.10
Fine early yellow.	10	.50	.30	.15	100	.15
MISS NEW ZEALAND		1 .10	2-.12			
Huge salmon pink.	10	.80	.50			
MORNING SERENADE		1 .75	.50			
Fine pink and cream.						
MOROCCO		2-.12	4 .15	10 .15	Pa.	.10
Deep red.	10	.50	.30	.15	100	.15
MOTHER KADEL No Discount	1	1.00				
New yellow.						
MOTHER MACHREE		2-.12	4-.15			
Smoky lavender tinted cream & pink.	10	.50	.30			
MRS. G. G. ERREY		1 1.25				
Exhibition tinted white.						
MRS. T. E. LANGFORD		2-.12	4-.15	10-.15	Pa.	.10
Peaches and cream.	10	.50	.30	.15	100	.15
MRS. W. G. WADE		1 .10	2 .10			
Ruffled yellow.	10	.80	.40			
MUSKOKA No Discount	1	3.00	any size		1	.75
New smoky salmon.	10	25.00	any size		10	60.00
MYRNA No Discount	1	.75	.50	.25	5	.45
New, large ruffled white.	10	5.00	3.50	2.00	100	5.00
MYWAG No Discount	1	.50	.30			
Huge blotched pink.						
NADIA		1 .15	.10	2-.15	10	.15
Small salmon and yellow decorative.	10	1.20	.80	.60	100	1.00
NANCY ANN		2-.12	4-.15	10-.15	Pa.	.10
Pale lavender pink.	10	.50	.30	.15	100	.15
ORANGE BUTTERFLY		2-.12	4-.15	10-.15	Pa.	.10
Small flowered orange, up to 12 open.	10	.50	.30	.15	100	.15
PADRE No Discount	1	3.00			1	.75
New orange.	10	25.00			100	60.00
PANDORA		1 1.25	.75	.50	2	.25
Beautiful medium size rose with softer darker blotch.	10	10.00	6.00	4.00	10	1.00
PEGGY LOU		1 .15	2-.15	3-.10	25	.15
New light rose.	10	1.20	.60	.30	100	.50
PELEGRINA		2-.12	4-.15	10-.15	Pa.	.10
Early dark blue. Darkest blue.	10	.50	.30	.15	100	.15
PENZANCE No Discount	1	4.00	any size		1	.75
New smoky.	10	25.00			100	60.00
PHYLLIS MCQUISTON		2 .12	4-.15	10-.15	Pa.	.10
Beautiful light rose.	10	.50	.30	.15	100	.15
PICARDY		2-.12	4-.15	10-.15	Pa.	.10
Large salmon, most popular variety in existence.	10	.50	.30	.15	100	.15
PRELUDE		1 .50	.30	.20	5	.15
Very early rose	10	4.00	2.40	1.60	10	.25
PREM. HENRY		2-.15	2-.10			
Huge geranium pink.	10	.60	.40			
PRESTIGE No Discount	1	2.00	1.60	.80		.15
Ruffled salmon pink with cream throat.						
PURPLE BEAUTY		1 .50	.35	.25	4	.15
Large round clear dark purple.	10	4.00	2.75	2.00	10	.30
RAPTURE		2-.12	4 .15	10-.15	Pa.	.10
Tall late salmon with creamy throat.	10	.50	.30	.15	100	.15
RECADO		1 .15	.10	2-.15	15	.10
Exhibition smoky	10	1.20	.80	.60	100	.50

		Per	LARGE	MEDIUM	SMALL	BIBLBY	
	No. Discount	1	1.50	.80	.50	Per	.20
RED CHARM							
Exhibition medium red							
RED LORY			2-.12	4 .15			
Exhibition red with purplish blotch. Maybe slightly mixed giving extra count	10	.50	.30				
RED PHIPPS			2-.12	4-.15	10-.15	Pa.	.10
Nice light scarlet.	10	.50	.30	.15		100	.15
REGENT			1 .15	.10		15	.10
One of best scarlet reds	10	1.20	.80			100	.50
REVERIE			2-.12	4-.15	10-.15	Pa.	.10
Peaches and cream.	10	.50	.30	.15		100	.15
REWI FALLU			2 .15	2-.10	4-.10	Pkg.	.10
Giant massive dark blood red.	10	.60	.30	.20		100	.50
RIMA			1 .15	2-.15		10	.10
Light pink tinted lavender.	10	1.20	.60			100	.80
ROCKET			1 .15	.10	2-.15	15	.10
Very fine red formerly sold as seedling No. 30112.	10	1.20	.80	.50		100	.50
ROI SOLEIL			2-.12	2-.15		Pkg.	.10
Early yellow	10	.50	.30				
ROSAMOND			1 .10	2-.15	3-.15	20	.10
Salmon rose	10	.80	.50	.30		100	.40
ROSA VAN LIMA			1 .25	.15	.10	10	.35
Early commercial and exhibition light rose, fine.	10	2.00	1.20	.80		100	3.00
ROSELLE			1 .50	.30	.20	10	.15
Beautiful soft exhibition rose	10	4.00	2.40	1.60		100	1.00
ROSE WINGS			2-.12	4-.15	10-.15	Pa.	.10
Rose carmine decorative.	10	.50	.30	.15		100	.15
ROYAL YORK			2-.15	2-.10	3-.10	Pkg.	.10
Large medium red	10	.60	.40	.25		100	.50
SAHARA			1 .20	.10	2-.10	10	.15
Light brown, stands heat well	10	1.60	.80	.40		100	1.00
SANDRA			1 .10	2-.10	4-.10	Pkg.	.10
Shrimp pink, amber blotch	10	.80	.40	.20		100	.50
SCARLET BEDDER			2-.12	4-.15		Pkg.	.10
Medium size vivid scarlet	10	.50	.30				
SENSATION			1 1.00	.75	.50	2	.25
Sensational new rose salmon	10	8.00	6.00	4.00		12	1.00
SEPTEMBER WHITE			1 .25	.15			
Nice late white.							
SHIRLEY TEMPLE			2-.12	4-.15	10-.15	Pa.	.10
Huge ruffled cream	10	.50	.30	.15		100	.15
SIMCOE			1 .15	.10	2-.15	10	.15
Nice light purple.	10	1.20	.80	.50		100	1.00
SMILING MAESTRO			2-.12	4-.15	10-.15	Pa.	.10
Fine deep salmon rose.	10	.50	.30	.15		100	.15
SNOW WHITE			1 1.00	.60	.40	6	.25
Beautiful ruffled white.	10	8.00	4.50	3.00		10	.40
SO BIG			1 .10	2-.15	2-.10	Pkg.	.15
Large lavender pink	10	.80	.60	.30		100	.30
SOLITA			2-.12	4-.15	10-.15	Pa.	.10
Nice late commercial orange.	10	.50	.30	.15		100	.15
SPRAY OF GOLD			2-.12	4-.15	10-.15	Pa.	.10
Fine early yellow.	10	.50	.30	.15		100	.15
STAR OF BETHLEHEM			2 .15	.10		Pkg.	.10
Exhibition white.	10	.60	.40				
SUSAN			2-.12	4-.15	10-.15	Pa.	.10
Smoky with darker blotch.	10	.50	.30	.15		100	.15
SYMPHONY			2-.12	4-.15	10-.15	Pa.	.10
Tall light pink.	10	.50	.30	.15		100	.15
TAIAROA			2-.12	4-.15	10-.15	Pa.	.10
Smoky salmon with dark blotch.	10	.50	.30	.15		100	.15

	PER	LARGE	MEDIUM	SMALL	BULBLETS	
					PER	
TAKINA		2-.15	2-.10	3-.10	Pkg.	.15
Large purplish rose.	10	.60	.40	.25
TECUMSEH	1	4.00	any size		1	.75
New smoky salmon.	10	35.00	100	60.00
THE MOGUL		2-.12	4-.15	10-.15	Pa.	.10
Huge salmony maroon.	10	.50	.30	.15	100	.15
TIMBUCTOO	1	.40	.25	.15	10	.15
Early dark rose red.	10	3.00	2.00	1.20	100	1.00
TITAN	1	2.00	1.25	.75	3	.25
Very large watermelon pink.						
TOKEN		2-.12	4-.15	10-.15	Pa.	.10
Early commercial salmon, cream throat.	10	.50	.30	.15	100	.15
TUNIAS BLUE	1	.50	.35	.25	2	.15
Large dark medium blue.						
UNCAS	1	.15	.10	2-.15	15	.10
Exhibition burnt orange.	10	1.20	.80	.50	100	.50
USONA	1	.15	.10	2-.15	15	.10
Large nice smoky.	10	1.20	.80	.50	100	.50
VAGABOND PRINCE		2-.12	4-.15	10-.15	Pa.	.10
Mahogany brown, with flame blotch.	10	.50	.30	.15	100	.15
VASSAR	1	1.00	.75	.50	2	.25
Beautiful ruffled light orange.	10	8.00	6.00	4.00	10	1.00
VISTA BONITA	1	.30	.15
Large geranium pink.	10	2.40	1.20
VREDENBURG	1	.15	.10
Large pure white.	10	1.20	.80
WASAGA		2-.12	4-.15	10-.15	Pa.	.10
Ruffled buff.	10	.50	.30	.15	100	.15
WHITE GOLD	1	3.00			10	3.00
New cream. With each bulb purchased 10 bulblets can be purchased for \$3.00. No bulblets are sold separately.						
WINGS OF SONG	1	.50	.30	.15	6	.25
Large rose pink, white throat.	10	4.00	2.40	1.20	25	.75
WINSTON	1	4.00	any size		1	.75
New cream.	10	35.00	100	60.00
WURTEMBERGIA		2-.12	4-.15	10-.15	Pa.	.10
Large dazzling red, white throat.	10	.50	.30	.15	100	.15
ZAUBERFLOTE	1	.10	2-.15
Early blotched peach rose.	10	.80	.50
ZUNI	1	.15	2-.15	2-.10	10	.15
One of the best smokies.	10	1.20	.60	.30	100	.50

PALMER SEEDLINGS

Not named but sold under number.

27483.....	1	.15	.10	2-.10	15	.10
A novelty—red and yellow speckled, early.	10	1.20	.80	.40	100	.50
30161		2-.15	2-.10	5-.15	25	.15
Beautiful ruffled smoky.	10	.60	.40	.20	100	.50
30289		2-.15	3-.15	5-.15	25	.15
Medium size smoky, yellow throat, many open.	10	.60	.40	.25	100	.50
33195	1	.10	2-.15	15	.10
Ruffled rose, slightly darker throat.	10	.80	.50	100	.50
32145		2-.12	4-.15	10-.15	Pa.	.10
Pretty delicate flesh color.	10	.50	.30	.15	100	.15
32201		2-.15	3-.15	5-.15	25	.15
Beautiful glowing buff.	10	.60	.40	.25	100	.50
322024	1	.15	.10	15	.10
Fine ruffled pinky buff.	10	1.20	.80
32203		2-.12	4-.15	10-.15	Pa.	.10
Fine lemony cream, ruffled.	10	.50	.30	.15	100	.15
33102	1	.15	.10	15	.10
Fine light rose with white throat.	10	1.20	.80

Wholesale Prices---Not Prepaid

NOT LESS THAN 25 OF A SIZE AND VARIETY AT 100 RATE, 250 OR MORE AT 1000 RATE. IN BULBLETS 250 AT 1000 RATE. ONE-HALF PINT BULBLETS AT QUART RATE.

	Per	BULBLETS							
		No. 1	No. 2	No. 3	No. 4	No. 5	No. 6	1000	QUART
ALADDIN.....	100	35.00	30.00	25.00	15.00	12.00	12.00	35.00
ALGONQUIN.....	100	35.00	30.00	25.00	20.00	15.00	12.00	15.00	50.00
AMBERGLOW.....	100	10.00	8.00	7.00	5.50	4.00	2.50	5.00	25.00
AMRITA.....	100	10.00	8.00	7.00	5.50	4.00	2.50	5.00	15.00
AMULET.....	100	35.00	30.00	25.00	20.00	15.00	12.00	15.00	50.00
ANGELUS.....	100	6.00	5.00	4.00	3.00	2.00	1.50	4.00	12.00
AVE MARIA.....	10060	.50	.60	1.50
	1000	5.00	4.00
BAGDAD.....	100	2.00	1.60	1.40	1.20	.80	.60	.60	1.50
	1000	16.00	14.00	11.00	9.00	7.00	5.00
BARCAROLE.....	100	35.00	30.00	25.00	20.00	15.00	12.00	16.00	50.00
BEACON.....	100	4.50	3.50	3.00	2.50	1.50	1.00	3.00	10.00
	1000	35.00	30.00	25.00	20.00	12.00	8.00
BELLA DONNA.....	100	2.50	2.00	1.50	1.20	.80	.60	1.00	3.00
	1000	20.00	16.00	12.00	9.00	6.50	5.00
BERNECE.....	100	4.00	3.20	2.50	2.00	1.50	1.00	1.25	3.00
BETSY BOB-UP.....	100	2.00	1.50	1.00	.80	.60	.75	1.50
BILL SOWDEN.....	100	1.60	1.20	.80	.60	.50	.80	2.00
	1000	14.00	10.00	7.00	5.00	4.00
BIT O'HEAVEN.....	100	3.00	2.50	2.00	1.50	1.20	.80	1.00	3.00
	1000	24.00	20.00	16.00	12.00	10.00	6.50
BLUE ADMIRAL.....	100	2.50	2.00	1.50
	1000	20.00	16.00	12.00
CAESAR.....	100	3.00	2.50	1.50	1.00	.80	.60	1.00	3.00
CAMELLIA.....	100	6.00	5.00	4.00	3.00	2.00	1.50	10.00	30.00
	1000	48.00	40.00	32.00	24.00	16.00	12.00
CARDINAL PRINCE.....	100	2.50	2.00	1.5090	.70	1.00	2.50
CARILLON.....	100	35.00	30.00	25.00	20.00	15.00	12.00	12.00	35.00
CHAMOUNY.....	100	20.00	18.00	15.00	13.00	16.00
CLARION.....	100	3.00	2.50	2.00	1.20	.80	.60	1.00	3.00
	1000	24.00	20.00	16.00	10.00	6.00	4.00
COLOSSUS.....	100	6.00	4.50	3.20	1.60	1.00	2.00	6.00
	1000	48.00	35.00	25.00	12.00	8.00
COMMANDER KOEHL.....	100	2.50	2.00	1.50
CREVE COEUR.....	100	3.00	2.50	1.80	1.20	.90	.70	1.00	3.00
	1000	24.00	20.00	15.00	10.00	7.00	5.00
DAMARIS.....	100	10.00	8.00	6.00	4.00	3.00	7.00	25.00
DEBONAIR.....	100	2.00	1.50	1.00	.80	.60	.50	.60	1.50
	1000	15.00	12.00	8.00	6.00	4.00	3.00
DR. DENTZ.....	100	12.00	10.00	8.00
DR. DURR.....	100	2.00	1.60	1.20	.90
	1000	16.00	12.00	9.00	7.00
DREAM O'BEAUTY.....	100	2.50	2.00	1.50	1.20	.80	.50	1.00	2.50
	1000	20.00	16.00	12.00	9.00	6.00	4.00
DUNA.....	100	2.00	1.60	1.2060	1.50
	1000	16.00	12.00	10.00
EARLY ROSE.....	100	3.00	2.50	2.00	1.50	1.20	1.00	2.00	5.00
	1000	24.00	20.00	16.00	12.00	10.00	8.00
EDITH MASON.....	100	2.50	2.00	1.50	1.00	2.50
	1000	20.00	16.00	12.00
EDITH ROBSON.....	100	2.00	1.50	1.20
	1000	18.00	12.00	9.00
ELOISE.....	100	3.00	2.50	2.00	1.50	1.20	.90	1.25	4.00
	1000	24.00	20.00	16.00	12.00	9.00	7.00

	Per	No. 1	No. 2	No. 3	No. 4	No. 5	No. 6	BULBETS	
								1000	QUART
EMBLEM OF PURITY	100	65.00	60.00	50.00	40.00	30.00	25.00	100	for 7.00
EXCELLENCE	100	2.00	1.60	1.20	1.00	.70	.50	.50	1.25
	1000	16.00	12.00	9.00	7.00	5.00	3.00		
FIREFLY	100	10.00	8.00	7.00	6.00	4.00	3.00	2.50	8.00
	1000	80.00	64.00	56.00	48.00	32.00	20.00		
HELENA	100	10.00	8.00	6.00					
HONOR	100	2.40	2.00	1.60	1.20	1.00	.80	1.25	3.00
INNOVATION	100	6.00	5.00	4.00	3.00	2.00	1.00	2.00	
	1000	45.00	40.00	32.00	24.00	16.00	8.00		
JALNA	100	6.00	5.00	4.00	3.00	2.00	1.00	2.00	5.00
	1000	45.00	40.00	32.00	24.00	16.00	8.00		
JASMINE	100	35.00	30.00	25.00	20.00	15.00	12.00	12.00	35.00
JONQUIL	100	3.00	2.50	1.50	1.20	1.00	.80	1.25	5.00
	1000		20.00	12.00	9.00	7.00	5.00		
KING ARTHUR	100	2.50	2.00	1.50	1.00	.80	.60	1.00	2.50
	1000	20.00	16.00	12.00	8.00	6.00	4.50		
KING LEAR	100	35.00	30.00	25.00	20.00	15.00	12.00	12.00	35.00
KINGS RANSOM	100	4.50	3.50	3.00	2.50	2.00	1.50	4.00	12.00
	1000	35.00	28.00	24.00	20.00	16.00	12.00		
LADDIE	100	13.00	11.00	10.00	8.00	6.00	5.00	5.00	20.00
LADY WINSOME	100	3.00	2.50	2.00	1.50	1.00	.70	1.25	4.00
	1000	24.00	20.00	16.00	12.00	8.00	6.00		
LOYALTY	100	2.50	2.00	1.50			.60	1.00	3.00
LUCIFER	100	3.00	2.50	2.00		1.00	.75	1.00	3.00
	1000	24.00	20.00	16.00		8.00	6.00		
MAID OF ORLEANS	100	1.80	1.50	1.20	.90	.70	.50	.60	1.50
	1000	16.00	12.00	10.00	7.00	5.00	4.00		
MAMMOTH WHITE	100	2.00	1.60	1.20					
MARGARET BEATON	100	28.00	24.00	20.00	16.00	12.00	10.00	20.00	
MAR. FULTON	100	1.80	1.60	1.20		.70	.50	.70	1.50
	1000	16.00	12.00	9.00		6.00	4.00		
MARGARET PETER	100	2.50	2.00	1.50	1.20	.80	.60	1.00	3.00
	1000		16.00	9.00	7.00	5.00			
MARY ELIZABETH	100	2.50	2.00	1.50	1.00			1.00	2.50
	1000		16.00	12.00	8.00				
MAUVE MAGIC	100	2.00	1.50	1.20	1.00	.80	.60	.60	1.50
	1000	16.00	12.00	9.00	7.00	5.00	4.00		
MAYTIME	100	2.50	2.00	1.50	1.00	.70	.60	.80	2.00
	1000	20.00	16.00	12.00	9.00	5.00	4.00		
MILFORD	100	3.00	2.50	2.00	1.50	1.00	.80	1.00	3.00
	1000	24.00	20.00	16.00	12.00	8.00	6.00		
MISS BLOOMINGTON	100	2.50	2.00	1.50			.70	1.00	2.50
	1000	20.00	16.00	12.00			5.00		
MOROCCO	100		2.00	1.60	1.20	1.00	.70	1.00	2.50
	1000		16.00	12.00	10.00	8.00	6.00		
MOTHER MACHREE	100	2.50	2.00	1.50	1.20				
MRS. T. E. LANGFORD	100	2.50	2.00	1.50	1.20	.80	.60	1.00	2.50
	1000		16.00	12.00	9.00	7.00	5.00		
MYRNA	100	50.00	40.00	30.00	20.00	15.00	10.00	40.00	
NANCY ANN	100	2.40	2.00	1.60	1.20	1.00	.80	1.25	4.00
ORANGE BUTTERFLY	100	2.50	2.00	1.50		.80	.60	1.00	2.50
	1000		16.00	12.00					
PEGGY LOU	100	6.00	5.00	4.00	2.50	2.00	1.50	2.00	6.00
	1000	40.00	35.00	25.00	18.00	13.00	8.00		
PELEGRINA	100	2.00	1.60	1.20	1.00	.70	.50	.70	2.00
	1000	16.00	14.00	10.00	7.00	6.00	4.00		
PHYLLIS MCQUISTON	100	2.50	2.00	1.50	1.20	.80	.60	1.00	2.50
	1000		16.00	12.00	9.00	7.00	5.00		
PICARDY	100	1.60	1.20	.90	.70	.50	.40	.50	1.50
	1000	12.00	10.00	8.00	6.00	4.00	3.00		
PREMIER HENRY	100		4.00	3.00	2.50				
	1000		32.00	24.00	20.00				

	Per	No. 1	No. 2	No. 3	No. 4	No. 5	No. 6	BULBLETS	
								1000	QUART
RAPTURE	100	1.60	1.20	.90	.70	.50	.40	1.00	2.50
	1000	12.00	10.00	8.00	6.00	4.00	3.00		
RECAÑO	100	10.00	8.00	7.00	6.00	5.00	4.00	4.00	15.00
RED LORY	100	2.00	1.60	1.20					
REGENT	100	10.00	8.00	7.00				4.00	15.00
REVERIE	100	2.50	2.00	1.50	1.00	.80	.60	1.00	2.50
	1000		16.00	12.00	8.00	6.00	4.00		
REWI FALLU	100	5.00	4.00	2.50	2.00	1.60	1.20	4.00	15.00
	1000		32.00	20.00	16.00	12.00	10.00		
ROCKET	100	10.00	8.00	7.00	6.00	5.00	4.00	4.00	15.00
ROI SOLEIL	100	2.50	2.00	1.50				1.00	2.50
	1000	20.00	16.00	12.00					
ROSA VAN LIMA	100	10.00	8.00	6.00	4.00	3.00	2.50	3.50	12.00
ROSELLE	100	35.00	30.00	25.00	20.00	15.00	12.00	8.00	20.00
SANDRA	100		5.00	4.00	3.00	2.00	1.25	3.00	8.00
SENSATION	100	70.00	65.00	55.00	45.00	40.00	30.00	100 for	8.00
SHIRLEY TEMPLE	100	3.00	2.50	2.00	1.60	1.20	.90	1.25	3.00
	1000	24.00	20.00	16.00	12.00	9.00	7.00		
SIMCOE	100	10.00	8.00	6.00					
SMILING MAESTRO	100	3.00	2.50	2.00	1.50	1.20	1.00	1.00	2.50
	1000		20.00	16.00	12.00	9.00	8.00		
SO BIG	100	2.40	2.00	1.60	1.20	1.00	.80	1.25	3.00
	1000	20.00	16.00	12.00	10.00	8.00	6.00		
SOLITA	100	2.50	2.00	1.60	1.20	.90	.70	1.00	2.50
	1000		12.00	9.00	7.00	5.00			
SPRAY OF GOLD	100	2.50	2.00	1.50		.90	.70	1.00	2.50
SUSAN	100	3.00	2.50	2.00	1.50	1.00	.80	1.50	4.00
	1000	24.00	20.00	16.00	12.00	8.00	6.00		
SYMPHONY	100	2.50	2.00	1.50	1.00	.80	.60	1.00	2.50
	1000	20.00	16.00	12.00	8.00	7.00	5.00		
TAIAROA	100	3.00	2.50	2.00	1.50	1.00	.80	1.25	3.00
TAKINA	100	5.00	4.00	3.00	2.50	2.00	1.50	5.00	
THE MOGUL	100	3.00	2.50	2.00		1.00	.80	1.50	4.00
	1000	24.00	20.00	16.00		8.00	6.00		
TIMBUCTOO	100	30.00	25.00	20.00	15.00	12.00	10.00	8.00	25.00
TOKEN	100	2.50	2.00	1.50	1.00	.80	.60	1.00	3.00
	1000	20.00	16.00	12.00	8.00	6.00	4.00		
UNCAS	100	10.00	8.00	6.00	5.00	4.00	3.00	4.00	10.00
	1000	80.00	64.00	48.00	40.00	32.00	24.00		
VAGABOND PRINCE	100	3.00	2.50	2.00	1.50	1.20	.80	1.00	2.50
	1000	24.00	20.00	16.00	12.00	9.00	6.00		
WASAGA	100	2.00	1.60	1.20				.50	1.50
	1000	14.00	12.00	9.00					
WURTEMBERGIA	100	2.50	2.00	1.50	1.20	1.00	.80	1.00	2.50
	1000	20.00	16.00	12.00	9.00	7.00	5.00		

PALMER SEEDLINGS				Bulblets		
	Per	Large	Medium	Small	1000	Qt.
30161	100	4.50	3.00	1.50	3.00	8.00
30289	100	4.50	3.00	1.50	3.00	8.00
	1000	35.00	25.00	12.00		
32145	100	3.00	2.00	1.00	2.00	5.00
32201	100	4.50	3.00	1.50	3.00	8.00
	1000	35.00	25.00	12.00		
32203	100	3.00	2.00	1.00	1.50	4.00
	1000	24.00	16.00	12.00		
33102	100	8.00	5.00		5.00	

"Just rec'd my order for glad bulbs and I am so pleased with them. And I thank you for the extras you sent me. I did not expect so many. Thanks again." —Mrs. W. S. Benner, Maine

"I received the bulbs today and they appear O.K. I want to thank you for the large number of extras you sent. I certainly didn't expect so many." —W. A. Schofield, Rhode Island

Special Collections and Sets

The following 5 collections are just the thing for those who don't care to keep the names of the varieties separate, but do want a nice garden of glads. I sell thousands of these collections every year and have a great many fine reports on them. If these bulbs were sold separately under name they would cost several times the price asked as collections.

No. 1. UNLABELED COLLECTION. 100 assorted large bulbs (1¼ inch up) in at least 40 varieties in about every shade in gladiolus. I have sold this collection for years and have thousands of very well pleased customers. I positively guarantee there is not a better collection sold by any grower in the country for anywhere near the price. I get many repeat orders every year from well pleased customers. 100 for \$3.00, 50 for \$1.75, 25 for \$1.00, all prepaid. With each 100 bulbs of this collection I will put in FREE 2 large Carillon, bulbs. This is a very unusual and beautiful variety. Also 1 large Amulet bulb, a beautiful creation.

No. 1a. SAME COLLECTION IN MEDIUM SIZE BULBS. 100 bulbs for \$2.00, 50 for \$1.25. With 100 bulbs will give 2 medium Carillon and 1 Amulet bulbs.

No. 1b. THE SAME COLLECTION IN SMALL BULBS. These may not all bloom the first year, but most of them should and all should make nice large bulbs for the next year.

No. 2. UNLABELED COLLECTION. 100 assorted as above containing 45 varieties and including many of the newer and higher priced ones. A wonderful collection at a moderate price. 100 for \$5.00, 50 for \$2.50, 25 for \$1.25.

No. 3. UNLABELED COLLECTION DE LUXE. 50 or more varieties, many of them being exhibition sorts and worth several times the price asked. Real aristocrats in gladiolus. Nothing better to be had in an unlabeled collection. 100 for \$10.00, 50 for \$5.00, 25 for \$2.50.

NONE OF THE ABOVE COLLECTIONS ARE LABELED AS TO VARIETIES. Don't ask us to give you the names of the varieties in the collections as we positively do not do it at these prices. If you want them labeled, buy them under name. I guarantee the collections to be the best you can buy for the price.

IN THE Following three collections, there are some Palmer unnamed seedlings and other varieties, not described in the catalog. Have no fears about them not being good. They are just as high quality as most of the named varieties on the market.

No. 4. BETTER TIMES COLLECTION. Large Bulbs (1-2 inches in diameter). \$3.00. All labeled. A very fine collection for a beginner or anyone else. Splendid varieties in many types and colors ranging thru many colors. You can't get started in good named varieties in a less expensive way than in getting this collection or one of the next two.

3 BELLA DONNA	2 LEANDER	4 SOLITA
2 BLEEDING HEART	3 LOYALTY	4 SPRAY OF GOLD
3 CARDINAL PRINCE	4 MAID OF ORLEANS	3 SUSAN
4 EDITH ROBSON	2 MAR. PETER	3 THE MOGUL
2 EVENSONG	2 NETHERLAND PRINCE	2 TOKEN
4 EXCELLENCE	2 PEERLESS PINK	4 No. 32203, CREAM
4 KING ARTHUR	2 ROI SOLEIL	2 No. 30291, PINK
2 LA PALOMA	2 SIMCOE	3 No. 32145 FLESH
2 LA FIESTA		

No. 5. \$3.00. LABELED COLLECTION. Another fine assortment of varieties and colors. Bulbs 1-2 inches in diameter.

4 BAGDAD	4 MARY ELIZABETH	2 REVERIE
4 BILL SOWDEN	4 MAUVE MAGIC	2 SCHUBERT
2 CAESAR	2 MILFORD	3 SYMPHONY
2 EARLY ROSE	2 MISS BLOOMINGTON	2 No. 32054 PINK
2 GOLDEN BROWN	3 ORANGE BUTTERFLY	3 No. 32201 BUFF
2 HECTOR	2 PRIMROSE PRINCESS	2 No. 33103 CREAM WHITE
3 MAGNA BLANCA	4 RAPTURE	2 No. 33194 RUFFLED
3 MAR. FULTON	2 RED LORY	SALMON
2 MARY ANSTEEN	2 RED PHIPPS	

No. 6. \$3.00. LABELED COLLECTION. Bulbs 1-2 inches in diameter. All different from two previous collections. All good ones.

3 AVE MARIA	2 HUGO ECKENER	2 NANCY ANN
3 BETSY BOB-UP	2 LADY WINSOME	2 PELEGRINA
2 CLARION	4 LONDONDERRY	4 PHYLLIS McQUISTON
2 COLOSSUS	4 LUCIFER	2 SMILING MAESTRO
2 DR. DURR	4 MAYTIME	2 TAIAROA
2 DREAM OF BEAUTY	2 MIBLOOM	2 No. 28263 RED
4 DUNA	3 MOROCCO	2 No. 300911 WHITE
3 EDITH MASON	3 MOTHER MACHREE	2 No. 30289 SMOKY
2 HERITAGE	3 MRS. LANGFORD	

Will sell the 3 collections Nos. 4-5-6 for \$8.50. With any one collection, Nos. 4-5-6, I will give FREE 1 ALADDIN or ALGONQUIN and if you order all three I will put in FREE 1 SNOW-WHITE or DIANE in addition to the ALADDIN or ALGONQUIN with each collection.

No. 7. SUPERIOR LABELED COLLECTION ENTIRELY DIFFERENT FROM THE PREVIOUS ONES. \$1.50. 1 large bulb of each of the following varieties. 2 bulbs of each for \$2.75.

AMADOR	DAMARIS	NADIA
BERNECE	DR. DENTZ	REWI FALLU
BIT O'HEAVEN	INNOVATION	SO BIG
BLUE ADMIRAL	IRAK	UNCAS
BOLIVAR	LADDIE	ZAUBERFLOTE
CREVE COEUR		

No. 8. LABELED COLLECTION. 2 medium bulbs of each of the varieties in No. 7 for \$1.75.

No. 9. LABELED PALMER COLLECTION. \$1.50. One large bulb of each of the following. 2 large bulbs of each for \$2.75.

AMBERGLOW	FIREFLY	SANDRA
AMRITA	HELENA	RECADO
ANGELUS	JALNA	REGENT
BEACON	PREMIER HENRY	THE MOGUL
BUCCANEER	SAHARA	VAGABOND PRINCE
CAMELLIA		

No. 10. LABELED PALMER COLLECTION. \$1.90. 2 medium bulbs of each of the varieties in No. 9.

No. 11. LABELED PALMER COLLECTION. \$3.50. One large bulb of each of the following varieties.

ALADDIN	BARCAROLE	KING LEAR
ALGONQUIN	CARILLON	ROSELLE
AMULET	JASMINE	SNOW WHITE

No. 12. LABELED PALMER COLLECTION. \$2.50. One medium bulb of each of the varieties in No. 11.

No. 13. LABELED PALMER COLLECTION. \$8.50. One large bulb of each of the following.

CORDELIA	GLAMIS	MAGNOLIA
CORONA	LOMBARDY	

"I am glad to note you named PALMER'S SEEDLING 30112. Almost every spike this year showed 10 open in the field—and that's without any cultivation whatsoever! Compared with all the other reds of that particular shade which I have tried out, it is far and away the finest.

"Thanks for the large Algonquin bulb you sent as an extra in my last order. Its form alone, aside from its coloring and manner of growing, puts it in a class by itself. No fan's collection will be complete without this variety.

"JASMINE bloomed for the first time. Every spike was identical—straight, exquisite and long-lasting. This should make a fine commercial."

Andrew Ensminger, New York

No. 30. LAVENDER PINK. 5 medium each, NANCY ANN, SO BIG, and 2 HELENA for 60 cents.

No. 31. ROSE PINK. 5 DREAM O'BEAUTY, EARLY ROSE, PHYLLIS MCQUISTON, ROSE WINGS and EDITH MASON, for 60 cents.

No. 32. SALMON PINK. 5 medium each, MARGARET FULTON, LADY WINSOME, PICARDY, RAPTURE, SMILING MAESTRO, and TOKEN for 65 cents.

No. 33. SALMON RED. 5 each medium, BEACON, HECTOR, and KINGS RANSOM, for 45 cents.

No. 34. LIGHT PINK. 5 each medium, DEBONAIR, MAYTIME, SEEDLING 32145, SANDRA and SYMPHONY, for 60 cents.

No. 35. WHITE. 5 each medium, DR. DURR, MAGNA BLANCA, MAID OF ORLEANS, and MARY ELIZABETH for 50 cents.

No. 36. BLOTCHED. 5 each medium, BEACON, BLEEDING HEART, COLOSSUS, EDITH ROBSON and MARY ANSTEEN, for 70 cents.

No. 37. SMOKY AND ODD SHADES. 5 each medium, BAGDAD, EVENSONG, MOTHER MACHREE, SUSAN, SEEDLINGS 30161 and 30289 for 75 cents.

No. 38. CREAM AND BUFF. 5 each medium, DUNA, MRS. LANGFORD, SEEDLINGS 32201, 32203 and 32204 and REVERIE for 75 cents.

No. 39. EARLY VARIETIES. 5 each medium, BERNECE, COLOSSUS, EXCELLENCE, MARGARET PETER and SPRAY OF GOLD for 60 cents.

No. 40. EXHIBITION VARIETIES. 5 each medium, BAGDAD, EDITH ROBSON, HERITAGE, LADY WINSOME, LUCIFER and PICARDY for 75 cents.

No. 41. EXHIBITION VARIETIES. 5 each large of varieties in No. 40, for \$1.25.

"The BEACON bulbs which I bought from you last year have created quite a sensation locally. BEACON has been almost perfect for me with long, very straight and sturdy stems."

—Walton R. Brewster, Florida

"Last year you sent me CARILLON extra—10 blossoms were out at once, large and two full spikes flowered from one bulb. We have a jewelry store and I keep flowers in store. I picked this spike and it attracted much attention in store."

—Edith Pagan, Pennsylvania

"Bulbs received today in grand condition, bulbs sure look good, nice and clean so free from disease spots like you get from some growers. And the count was all anybody could expect and more."

—W. F. Hemmerling, Iowa

"The four BEACON bulbs you sent me have been a joy—They are first choice after PICARDY."

—Mrs. H. Stannard, Vt.

"To Whom It May Concern: Wish to state in all the thousands of Glad Bulbs we have bought from you in the past five or six years have always obtained wonderful results. We won the big Blue Ribbon here in '39 with DEBONAIR and several of your other Glads."

—Respectfully yours, J. W. Byersdorfer, Minnesota

"Wherever I took BILL SOWDEN they raved over it. One I thought so grand was LADY WINSOME. I had one stalk 5 ft. tall straight as an arrow, 8 large blooms opened and 8 more buds that opened in the house."

—Mrs. Rex Horton, Missouri

No. 42. 50 Cent Long Season Specials

To have blooms of a certain variety over a long period I want to especially recommend the following collections. These consist of various sizes of bulbs of each variety. There are usually two or more large bulbs, some medium and some small. If you are not in the habit of buying medium or small bulbs you will be amazed at the fine blooms you will get from these. And if there is a particular variety that you especially like you can have blooms of this variety over a much longer period than you could if you planted all one size:

I can't give you the exact number of bulbs that you will receive in each lot because the varieties vary somewhat in price and I have a much larger stock of some kinds than of others but you may be assured that you will get big value. **Leave it to me.**

Remember each 50 cent special is only one variety and not an assortment of several varieties or of all of them. Each special consists of various sizes of just one variety. Select as many as you wish. But remember they are 50 cents for each one.

Any five lots for **\$2.25**. Any 10 lots for **\$4.00** or any 15 for **\$5.75**. In addition to this if you buy several lots I will put in something good for you to try out.

AMADOR
AMBERGLOW
AMRITA
ANGELUS
AVE MARIA
BAGDAD
BEACON
BELLA DONNA
BERNECE
BETSY BOB-UP
BILL SOWDEN
BIT O'HEAVEN
BUCCANEER
CAESAR
CAMELLIA
CHAMPLAIN
CLARION
COLOSSUS
CREVE COEUR
DAMARIS
DEBONAIR
DREAM O'BEAUTY
DR. HOEG
DUNA
EARLY ROSE
Seedling 32145

EDITH MASON
EDITH ROBSON
ELOISE
EXCELLENCE
FIREFLY
JALNA
JONQUIL
KING ARTHUR
LADDIE
LADY WINSOME
LOYALTY
LUCIFER
MAID OF ORLEANS
MARGARET FULTON
MARY ANSTEEN
MARY ELIZABETH
MAUVE MAGIC
MAYTIME
MILFORD
MOROCCO
MOTHER MACHREE
MRS. LANGFORD
NADIA
NANCY ANN
ORANGE BUTTERFLY
Seedling 32201

PELEGRINA
PHYLLIS McQUISTON
PICARDY
PREMIER HENRY
ROCKET
RAPTURE
RECADO
REGENT
REVERIE
REWI FALLU
ROSE WINGS
SANDRA
SCHUBERT
SIMCOE
SMILING MAESTRO
SO BIG
SOLITA
SUSAN
SYMPHONY
TAIAROA
THE MOGUL
TOKEN
UNCAS
VAGABOND PRINCE
WURTEMBERGIA
Seedling 30289

No. 43. Dollar Assortments

Here is another lot similar to the previous one but each set of assorted bulbs of a kind is **\$1.00**. Any five for **\$4.60**, or ten for **\$8.50**.

Just leave it to me to satisfy you on any of these lots of assorted size bulbs in the last two offers. If you want some bulblets and less bulbs just say so and I can fix them up that way.

ALADDIN
ALGONQUIN
AMULET

CARILLON
KING LEAR
MARGARET BEATON
PRELUDE

ROSELLE
SAHARA
TIMBUCTOO

"I was much pleased with the Glads I ordered a year ago as well as those ordered last spring. Many of the number 4 bulbs were as large as medium sized Bermudas when I dug them this fall."

—E. H. Kinne, Iowa

Growers' Collections---Not Prepaid

No. 44. LARGE SIZE. No. 1 and No. 2 assorted. 1000 bulbs for \$12.00. 100 each of any 10 of the following varieties for \$12.00. Not less than 1000 at this price. If you do not want just 100 each of 10 varieties you can have more of certain kinds and less of others but not more than 250 nor less than 50 of any one kind and not less than 7 varieties nor more than 15.

BAGDAD
 BELLA DONNA
 BILL SOWDEN
 CAESAR
 CLARION
 CREVE COEUR
 DEBONAIR
 DREAM O'BEAUTY
 DUNA
 EDITH MASON
 EDITH ROBSON
 EXCELLENCE

INNOVATION
 KING ARTHUR
 LOYALTY
 LUCIFER
 MAID OF ORLEANS
 MARGARET FULTON
 MARY ELIZABETH
 MAUVE MAGIC
 MAYTIME
 MOROCCO
 MRS. LANGFORD
 ORANGE BUTTERFLY

PELEGRINA
 PHYLLIS McQUISTON
 PICARDY
 RAPTURE
 REVERIE
 ROI SOLEIL
 SCARLET BEDDER
 SOLITA
 SUSAN
 SYMPHONY
 TOKEN
 WASAGA

No. 45. 500 large size bulbs of above varieties for \$6.50. Not less than 500 at this price. 50 each of any 10 of the above varieties or not more than 125 nor less than 35 of any one kind, and not less than 7 kinds nor more than 14.

No. 46. MEDIUM SIZE. No. 3 and No. 4 assorted. 1000 bulbs for \$8.00. The same conditions as to number of varieties and amounts of each variety as in No. 44.

AMADOR
 AVE MARIA
 BAGDAD
 BELLA DONNA
 BERNECE
 BETSY BOB-UP
 BILL SOWDEN
 CAESAR
 CARDINAL PRINCE
 CREVE COEUR
 DEBONAIR
 DREAM O'BEAUTY
 DR. DURR
 DUNA
 EDITH MASON

EDITH ROBSON
 EXCELLENCE
 JONQUIL
 KING ARTHUR
 LOYALTY
 LUCIFER
 MAGNA BLANCA
 MAID OF ORLEANS
 MARGARET FULTON
 MARGARET PETER
 MARY ANSTEEN
 MAUVE MAGIC
 MAYTIME
 MOROCCO
 MRS. LANGFORD

ORANGE BUTTERFLY
 PEERLESS PINK
 PELEGRINA
 PHYLLIS McQUISTON
 PICARDY
 RAPTURE
 REVERIE
 ROSE WINGS
 SCHUBERT
 SOLITA
 SUSAN
 SYMPHONY
 TOKEN
 WASAGA
 WURTEMBERGIA
 32203, CREAM

No. 47. MEDIUM SIZE. 500 bulbs for \$5.00. 50 each of any 10 of the varieties in the above offer. And the same conditions as to number of varieties and amounts of each variety as in No. 45.

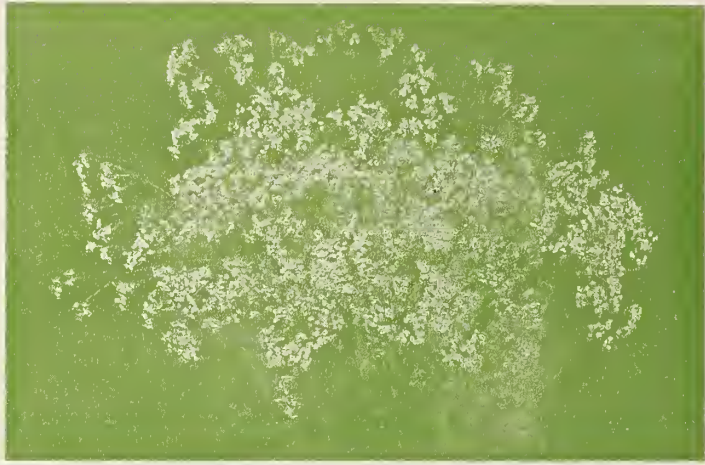
No. 48. SMALL BULBS. 100 each of any 10 of the following varieties for \$4.00. The same conditions as to number of varieties and amounts of each variety as in No. 44.

AMADOR
 AVE MARIA
 BAGDAD
 BELLA DONNA
 BETSY BOB-UP
 BILL SOWDEN
 BRIGHTSIDE
 CAESAR
 CARDINAL PRINCE
 CLARION
 DEBONAIR
 DR. DURR
 DREAM O'BEAUTY
 DUNA

EDITH ROBSON
 EXCELLENCE
 JONQUIL
 KING ARTHUR
 LOYALTY
 LUCIFER
 MAID OF ORLEANS
 MARGARET FULTON
 MARY ELIZABETH
 MAUVE MAGIC
 MAYTIME
 MISS BLOOMINGTON
 MOROCCO

ORANGE BUTTERFLY
 PELEGRINA
 PICARDY
 RAPTURE
 RED PHIPPS
 REVERIE
 RODERICK DHU
 SMILING MAESTRO
 SOLITA
 SUSAN
 SYMPHONY
 TOKEN
 WURTEMBERGIA

Please do not order varieties not in the collection you are ordering from.



Euphorbia Corolata

(FLOWERING SPURGE)

This is a hardy perennial somewhat similar to double Baby's Breath but blossoms later. Blooms through August and September. Just the thing to go with glads or any other kind of flower. Will grow on most any kind of soil, even on dry sand, but good garden soil will make it very much better.

This is a plant that should be grown in every garden and commercial growers should plant it by the hundred. Absolutely hardy and I am sure you will like it.

In the northern states I would suggest Euphorbia be planted early in the spring. In the south or where it does not freeze hard, fall planting would be perfectly all right.

Though Euphorbia is easy to handle, and there should be no reason for it not doing well, I have had some complaints about the roots not growing. I don't know why this is because if they are planted at once and given a good watering they should all grow. I have had no trouble with them myself. But in as much as I have had some complaints I no longer guarantee the roots. I do give good strong healthy roots and if given half a chance they should grow but if they do not grow I shall not be responsible.

Prices are 4 roots for 60 cents or one dozen for \$1.25 prepaid. **We do not sell less than four as they cannot be shipped with the gladiolus bulbs. We have to make a separate shipment. Can't usually ship roots after May 1st.**

To Southern customers we can ship this fall or anytime during the winter but would advise Northern customers to plant in the Spring.

100 roots \$6.00 f.o.b. with 50 at the 100 rate.

Pure Vermont Maple Syrup

Griddlecakes or Waffles and Syrup. Um! Um!

If you have never eaten the pure unadulterated Vermont Syrup you don't know what you have missed. The black blended concoctions sold throughout the country as Maple Syrup are not to be compared with the real Vermont Syrup any more than Halley is to be compared with Picardy. Then a lot of Vermont Maple products are not of good quality. I am a connoisseur of good syrup and send out only the best grade such as I would eat myself.

Prices are F.O.B. Burlington. A gallon can be sent as far south as Virginia for 35 cents and to the West Coast for \$1.00. The Express companies make a special rate on Maple products. Parcel Post costs much more. A gallon of syrup weighs 13 lbs. packed for shipment.

1 Gallon \$2.50	½ Gallon \$1.50	1 Quart 90 cents
A case of 12 Pints \$4.50		A case of 12 Half-pints in glass \$2.50

MAPLE SUGAR. 2 oz. cakes 60 cents a lb. 5 lb. pail soft sugar \$2.50.

Amulet



Jasmine



Sensation



Tecumseh

"Am just cutting the last of the **BEACON** I purchased last fall and they are all fine, could sell a lot more of them if I had them."

—Frank L. Clack, Pa.

Angelus Palmer strain. See page 11.

Arethusa ★★★ (FISCHER) (Large Dec) Early mid-season ruffled cream or buff. Tall spike with several well arranged blooms open at a time. The color is good but not so clear as some others of the same color class.

Ariadne ★★★★ (MITSCH) (Com) White, tinted pink with large crimson blotch. Tall straight plant. One of the best blotched varieties.

Avalon ★★★½ (MARSHALL) (Com) Mid-season. Very beautiful bright pink with large cream throat. A dainty color that appeals to everyone. Opens 8 to 10 medium size prettily ruffled blooms. Nice form and heavy substance. A good strong grower and propagator. A truly beautiful variety. Stock is still limited. See cut on page 44.

Ave Maria ★★★ (PF) (Com) Early mid-season. Medium blue with darker blotch. Opens 8 large, well placed blooms. One of the older blues but still one of the best, either for exhibition or florist use. A good grower.

Bagdad Palmer strain. See page 11.

Barcarole Palmer strain. See page 12.

Barcelona ★★★½ (KELLY) (Ex) (Com) Cream shading to yellow. 8 very large slightly ruffled round blooms open on a very tall, strong growing plant. Stock is still limited but is one of the best in its color class.

Beacon Palmer strain. See page 12.

Beautiful Ohio ★★★½ (HULLIBARGER) (Med. Dec) (Com) Beautiful lavender. Would be a fine commercial except that it is not quite so large as we would like, though not a small variety. It was better than usual with me this past season. One of the best lavenders.

Bella Donna ★★★ (PF) (Com) Early light blue with darker blotch. One of the best for commercial purposes. Lighter than Ave Maria and a clearer shade. A popular florist flower.

Bernece ★★★ (GRAY) (Com) (Dec) Very early. Deep golden yellow flaked with orange, giving the appearance of bronze. About 5 nicely ruffled medium large blooms open. Fine propagator. One of the very best of this shade.

Betsy Bob-Up ★★★½ (CANINE) (Com) Late. Color sport of Betty Nuthall. Creamy yellow tinged with pink. This comes in late in the season when good glads are scarce. And I think it is a much more valuable variety than Betty Nuthall. There are better pinks than the latter but good yellows are scarce and this seems to fit in nicely.

"**CAMELLIA** was especially fine."

—William M. Beck, Pa.

"I am more than delighted with my collection of glads, they are beautiful and I thank you for such a generous lot of extras. I shall want more next spring."

—Mrs. Frank Austin, Me.

"I wanted to tell you that I was delighted with **Palmer Seedling 32201**. It is so beautiful in form and color."
Mrs. E. H. Siter, Maine.

Beverly ★★★ (WRIGHT) (Com) (Mid-season) A nice purple that is popular with the florists. Not a clear solid color like King Lear but lighter, and composed of different shades of purple well blended. Looks like a good one for florist use.

Bill Sowden ★★★ (FALLU) (Com) (Dec) (Early mid-season) 5 to 6 immense massive ruffled deep blood red blooms open. Not a tall variety but beautiful, and fine for the home garden or local florist use.

Bit o' Heaven ★★★ (CROW) (Ex) (Com) Fine orange with yellow throat. Tall straight vigorous plant with 9-12 medium size blooms open. This and *Solita* are the two best commercial orange varieties. Both are very good.

Black Opal ★★★½ (ERREY) (Ex) Beautiful deep red. Up to 10 medium large well placed blooms open on a tall spike. One of the best dark reds. Fine propagator and an all around good doer.

Bleeding Heart ★★★ (BROWN) (Ex) (Com) (Mid-season) White tinted light pink with large scarlet blotch, somewhat similar to Ariadne, but a lighter blotch and not so large a flower.

Blue Admiral ★★★½ (CHRIST) (Com) (Dec) Dark blue, a little lighter than Pelegrina, 5 to 6 open. Tall straight stem. Probably the best dark blue. Doesn't open so many as Pelegrina but an all around better variety as the stem is stiffer. Stock limited.

Blue Beauty ★★★½ (PF) (Ex) (Com) Light blue, shading darker toward the edges. Giving the appearance of a medium shade of blue. Large wide open round flowers. A tall strong grower.

Blue Wonder ★★★ (BOTH) (Ex) Large medium blue. Would be the finest in its shade except that it has the tendency to crook. Opens a large number at a time. If you grow your gladiolus for exhibition and stake them up, this will be entirely satisfactory.

Bolero New introduction. See page 18.

Bolivar Palmer strain. See page 12.

Brightside ★★★ (PRESTGARD) (Com) Very early canary yellow shading to deep orange, giving the appearance of orange. 4 to 6 medium size blooms open on a tall straight stem. Just the type that florists should use for table decorations and small arrangements but seldom do. A good seller among the up to date florists.

Buccaneer Palmer strain. See page 12.

Caesar ★★★ (DEGROOT) (Com) Very nice medium red shading darker toward the center. Large round flower. Stem a little inclined to be weak but a very nice showy variety just the same.

Camellia Palmer strain. See page 12.

Candy Heart ★★★ (SALBACH) (Dec) (Com) Clear soft creamy flesh pink with large diffused blotch of light red. 5 to 6 large blooms open. Very distinctive and one of the most beautiful of glads.

“... And No. 30112! I never saw a red like it. No wonder people like it and are demanding a name for it. I suggest Sentinel because of its strong straight stem.”
(Now named ROCKET.) —M. G. Dearth, Penn.

Cardinal Prince ★★★ (K) (Com) Early clear cardinal red. A good variety and sells well.

Carillon Palmer strain. See page 12.

Champlain Palmer strain. See page 12.

Chamouny ★★★★★ (BAERMAN) (Med-large Dec) (Com) Light cerise rose with silver line on the edge of each petal. Somewhat similar in color to Prelude but different from that variety in that it is later and has a longer head. This past season was the first time I have grown this variety and I was very favorably impressed with it. It grew very tall and had heads 30 inches or more long, with up to 10 to 12 blooms open. I feel this is a variety that everyone will want. CHAMOUNY should make a first class variety for commercial use, for exhibition or for the home garden. I really believe it is one of the best varieties that has come out in recent years. As I have a fair stock of it, probably as much as anyone in the country, I have put the price down to where you can afford to buy it. I have it listed in both my retail and wholesale lists. However, I am not selling small stock this year and bulblets only by the hundred and thousand, as I wish to work up a large stock of it. I believe it is going places.

Chief Multnomah ★★★½ (ELLIS) (Ex) Large tall strong growing smoky with dark red blotch. One of the best.

Clarion ★★★½ (CROW) (Com) (Dec) Tall early medium dark yellow. Good size blooms that are placed rather far apart. Makes a nice spike. One of the best early yellows.

Colossus ★★★ (MITSCH) (Ex) (Com) Very early light pink with small red feather on a cream ground. Very large and usually has long heads of blooms. I have had good reports on this and think it should make a fine commercial.

Commander Koehl ★★★ (PF) (Ex) (Com) Large massive clear blood red. Tall straight spike. Is still one of the most popular reds, both for exhibition and commercial use. But doesn't open up too well after cutting. Will be popular until some of the higher priced reds get down in price. Can be very fine.

Conquest ★★★½ (MITSCH) (Com) (Dec) (Mid-season) Light salmon pink with cream throat blotch. 5 to 6 blooms open. Very beautiful pastel shade. Good grower and propagator.

Coral Glow ★★★½ (ELLIS) (Com) (Dec) Very fine clear light red with an orange sheen, giving the appearance of orange. Tall strong grower and looks like a fine commercial. Very beautiful and distinctive. Strong grower and propagator.

Cordelia Palmer strain. See page 12.

Corona Palmer strain. See page 12.

Creve Coeur ★★★ (YOUNG) (Com) Rather late burnt orange with throat blotch of deep red tipped with creamy yellow. Several medium large blooms on an always tall straight stem. An unique and attractive color. Think you will like it.

"With regard to your ROCKET Glad I can not praise it enough."

—S. B. Dennis, N. J.

Damaris ★★★½ (BEATRICE PALMER) (Ex) (Mid-season) Clear purplish red or burgundy. 9 to 10 medium large well placed blooms open with most of the remaining buds showing color. Tall and straight and should become very popular among those that like dark shades.

Debonair Palmer strain. See page 12.

Diane ★★★½ (KRUEGER) (Ex) (Com) Beautiful salmon orange with large cream throat. 6 to 7 large blooms open at a time. Tall, always straight stems. Good healthy plant and good grower. This is a rather late variety and so for the most northern growers, probably the large bulbs would be best.

Dream o' Beauty ★★★ (ZIMMER) (Ex) (Com) Large rose red. Good color and very popular. The two rows of blooms are sometimes too far apart but it seems to be very popular in the home garden and for cut flowers too. Always sells well as the color is unique.

Dr. Dentz ★★★ (HEEMSKERK) (Com) Pink, a darker shade than Picardy. This has been called a rose pink Picardy and that it should be more popular than Picardy. I have grown it only from small bulbs and though it looks good it doesn't seem to have the height and stretchiness of Picardy. Probably will be a good addition to the commercial list, as the color is what the florists like, that is something more on the rose or pink shade than Picardy.

Dr. Durr ★★★ (Com) Early cream white. 6 to 8 lightly ruffled blooms open. One of the best commercial whites among the older ones.

Dr. Hoeg ★★★ (PRESTGARD) (Dee) Glistening dark red of medium size. Has a beautiful sheen that no other red variety has. One of the best dark reds but a little inclined to have a weak constitution.

Duna Palmer strain. See page 13.

Early Rose ★★★½ (JACK) (Com) Early. Medium and dark shades of rose blended to make a rose color that seems to be very popular, and growing more so all the time. We have used it in our shop and people have learned to call for it by name. At the Washington State show this past season it was voted the most popular variety in the show. A good one for cut flower growers.

Edith Mason ★★★ (VAUGHAN) (Ex) (Com) Late mid-season. Large light pink with white throat and mid-ribs. Good commercial and strong grower.

Edith Robson ★★★ (BROWN) (Ex) (Com) Late mid-season. Light reddish rose with red blotch. 10 to 12 well placed blooms open on a tall vigorous plant. The color is not so soft and pleasing as some but is good for exhibition and very popular.

Elizabeth the Queen New Introduction. See page 18.

Eloise ★★★ (DORRETT) (Ex) (Com) Clear dark lavender of distinct shade with a few darker lines in the throat. 8 to 10 medium large blooms open on a long spike. Tall straight slender stem. Florist visitors at my garden have liked it very much. Should become a popular commercial lavender.

"Of the extras you sent me, I was greatly pleased with FIREFLY, BEACON, IRAK, and COLOSSUS."

Harold E. Smith, Virginia.

"I have had very fine success, with the glads this summer, that I bought from you, early in spring, and I am looking forward to next spring."

—Edward Stigler, Ohio.

Emblem of Purity (KINYON) (Dec) "Ruffled pure white. There is no other gladiolus that can equal this one for purity of color, performance and blooming ability. Will open 10 or 12 perfect round ruffled waxey textured blooms on medium tall stem. Won as a seedling in 1938 a first class Award and The American Home Achievement Award. All who have grown it say it is the best ever." (Introducer's description.)

Have not grown this myself but have had very good reports on it from other growers.

Emile Bride ★★★½ (TUTTLE) (Ex) Early large smoky rose or rose gray, shading to nearly red in the throat. 8 to 10 well placed blooms open on a tall spike. A fine variety for exhibition and home garden. Shy propagator with me.

Evensong Palmer strain. See page 13.

Excellence ★★★ (K) (Com) (Dec) Light bright scarlet with 5 to 6 blooms open. Very early. The best very early light red at a low price. Fine commercial.

Firefly Palmer strain. See page 13.

Flagship ★★★ (BUTT) (Ex) (Early mid-season) Flaked light red with a white throat penciled blue. Opens 10 to 11 or more blooms on a long head. Spikes tall and straight. Color not very refined but does make a big show and fine for exhibition. At the CGS show in 1939 won for the best spike in the show.

Flora Farmer ★★★½ (QUACKENBUSH) (Com) (Mid-season) Creamy white throat. Color brightens toward the edge. Opens 5 to 6 somewhat ruffled blooms. Looks like a nice one.

Glamis Palmer strain. See page 13.

Gloaming ★★★ (ZIMMER) (Med. Dec) Purple with white throat. Opens 7 or more medium size blooms on a tall straight slender stem. I understand that the florists like this very much. It is very nice if you like that combination of color.

Golden Brown ★★ (K) (HG) (Mid-season) Mahogany red shading lighter in the center. Medium size and seems to be very popular because of the odd color.

Golden Goddess ★★★★★ (SAL) (Ex) (Com) Medium sized plant with a long head. 10 to 12 open at a time. Finest exhibition yellow and should make a good commercial when the prices are down. This variety is patented and so the bulbs and their increase can not be sold. The blooms and seed can.

Stock of this variety is very short this year. It will be sold out before spring.

Greta Garbo ★★★½ (PF) (Dec) Beautiful soft light rose with creamy lip. Large blooms open flat, opening 6 or more at a time. To me this doesn't have quite character enough but other growers, whose judgment is fully as good as mine, think it is one of the best varieties in existence.

"I am very favorably impressed with your **Seedling 30112 (ROCKET)**."

—Albert Dumper, N. J.

"SENSATION bloomed again for us. It's utterly gorgeous. I feel that it and KING LEAR are the ones that we must add to above all others."

—Nina Ward, Ind.

Hector Palmer strain. See page 13.

Helena Palmer strain. See page 13.

Helen of Troy ★★★★★ (SAL) (EX) (COM) (Mid-season) Very large soft light apricot with a soft diffused smoky blotch edged with scarlet. This was extremely fine with me this past season and I consider it one of the finest varieties grown. The color is distinctive and very beautiful. This is a patented variety so the bulbs and increase can not be sold.

Heritage ★★★ (RISTOW) (EX) (COM) Nice pure pink shading lighter in upper throat with white throat and midribs. Stem under the flower head is rather short but has a long spike of blooms with 10 good sized blooms open. Is especially good in cool weather. In warm weather is inclined to crook somewhat.

Hindenburg's Memory ★★★ (PF) (EX) (COM) Large medium red and a little lighter than Commander Koehl. This past season this was very good with me. Stems little inclined to be weak, but is a nice thing just the same. Because of its name will not be very popular for awhile.

Honor ★★★ (KINYON) (DEC) (COM) (Mid-season) Beautiful clear lavender shading slightly deeper on the lower petals. Opens 6 large well placed blooms on a medium height stem.

Ieka ★★★½ (TUTTLE) (EX) Early. Distinctive smoky gray shaded to wine red. Large diffused scarlet blotch in center. 6 to 8 blooms open on a tall spike Unique and a fine propagator.

Incense ★★★½ (MILLER) (Small Dec) The fragrant glad. Medium size begonia rose with clear sulphur throat, somewhat ruffled. Has rose fragrance which deepens with age. The best fragrant glad I have seen.

Innovation ★★★ (BATH) (HG) A real bronze. 4 to 5 good sized blooms open on a medium height plant. This and Bernece are the only two bronze varieties that I know of. Both are good. Come on at different seasons and are different types.

Irak ★★★ (MITSCH) (EX) (COM) Gray sport of Bagdad. Beautiful clear gray that should be very popular as a florist flower and for exhibition. It is beautiful used with yellow or other colors. I consider this a much more valuable variety than Bagdad its parent. A distinct shade and one that you should try.

Jalna Palmer strain. See page 13.

Jasmine Palmer strain. See page 13.

Jonquil Palmer strain. See page 13.

Joseph Haydn ★★★ (PF) (HG) Light heliotrope violet with dark blue blotches. Large flowers of heavy substance on a tall spike with 5 to 6 open. Very beautiful variety but is inclined to have weak stems. And with me at least has been rather a poor propagator.

"The TIMBUCTOO is my favorite, 15 large blooms and a spike 2½ ft. long."

—J. C. Shelton, III.

"I was very much pleased with **KING LEAR** and **DAMARIS. PRELUDE** was very good and liked very much by most people who saw it."

—J. E. Crawshaw, Pa.

King Arthur ★★★½ (ARENUS) (Com) (Dec) Immense heavily ruffled lavender or mauve. A unique shade that is attractive and beautiful. Opens only 4 to 5 at a time, but the blooms are large and massive. This variety is entirely unlike any other and should be in every garden and should be used by every florist, though it probably is not a long distance shipping variety.

King Lear Palmer strain. See page 13.

King Midas New introduction. See page 19.

King's Ransom ★★★ (Com) (Dec) (Very early) Peach red blending to apricot salmon in the throat. A distinctive bright color and a valuable variety because of its earliness. Grows plenty tall. Think you will like it.

Laddie ★★★½ (WILSON) (Ex) (Com) Light pink but pinker than Picardy. 8 to 10 very large wide open somewhat ruffled blooms. Tall straight stem with long flower head. Larger and more ruffled than Picardy. This was introduced last year and it seems to have made a hit most everywhere. See cut on page 44.

Lady Jane New introduction. See page 20.

Lady Winsome ★★★½ (R. M. PALMER) (Ex) (Com) Tall immense rosy salmon with a darker feather in the throat. Buds tinted buff. Large blooms on a tall growing plant, with 8 or more open. Have had very fine reports on this. It is distinctive and very nice.

La Paloma ★★★½ (DUSINBERRE) Early light orange. Has been quite popular.

Leona ★★★½ (PRUITT) (Ex) Dark purplish red. 8–10 medium size well arranged blooms open on a tall straight spike. This is becoming more popular every year with those that like the dark varieties. Stock scarce.

Lombardy Palmer strain. See page 13.

Loyalty ★★★½ (AUSTIN) (Com) Late mid-season. Nice clear yellow and one of the largest ones. Strong husky grower and though an old timer is still one of the best.

Lucifer ★★★ (ERREY) (Ex) Bright orange with amaranth crimson blotch. Very unusual color. Long spike with 8 to 10 open. Some call it orange and others red. Whatever it is it is good for an exhibition variety and I think you will like it for the home garden.

Lutex ★★ (SUTTLE) (Ex) (Mid-season) Clear medium yellow with 8 to 10 large blooms open. At its best it is the finest yellow I have ever seen. However, it often crooks and the placement is not orthodox. Sometimes the blooms are all around the stem. But even then they make a fine showing and the color is rather distinctive. This past season it was quite good with me.

"The **JONQUIL** bulbs of last year produced wonderful blooms this year, much taller and fuller than I have ever seen this variety. Most people like it the best of all the yellows."

—Mrs. E. H. Siter, Maine.

"I have a spike of VAGABOND PRINCE blooming now from a bulb you sent me last spring and it is probably the most striking and unusual variety I have ever grown."
—J. G. Humphrey, Tenn.

Magna Blanca ★★½ (SAL) (EX) (Com) Large ivory white with creamy yellow throat. Opens several large blooms at a time making a huge spike that is often too heavy for the stem so it is often inclined to crook. In spite of its faults people like it. It makes a very impressive spike of blooms. Has been grown 8 ft. tall.

Magnolia Palmer strain. See page 13.

Maid of Orleans ★★★★★ (PF) (EX) (Com) Early mid-season. Milk white with creamy throat. Tall straight plant with up to 8 large well placed blooms open. This is the best all around white in existence. However, it doesn't open up so well as it might when cut in tight bud, and for that reason the large shipping growers are looking for something better. But in the meantime you can't do better than to use Maid of Orleans for most any purpose. More of this is grown than any other white variety.

Mammoth White ★★★ (PF) (EX) Immense creamy white. 5 to 6 very large blooms open at a time. A good exhibition variety and though a little inclined to be soft is considered a good commercial variety in some parts of the country. Always sells.

Margaret Beaton ★★★★★ (TWOKEY) (EX) (Com) (Mid-season) Pure snow white with small scarlet blotch in the throat. 6 to 8 usually well placed blooms open on a long flower head. Strong grower and fair propagator. This variety is one of the most beautiful varieties in existence and is bound to become immensely popular both as an exhibition and commercial sort. It is one of the must haves for every purpose. In any list of the 10 best varieties I would certainly include Margaret Beaton.

Margaret Fulton ★★★ (OGRODNICHEK) (Com) Early. Very pretty soft medium dark salmon. Clean and distinctive shade. 6-8 perfectly placed medium size blooms open. One of the best commercial pinks for early mid-season.

Margo New introduction. See page 19.

Marguerite ★★★★★½ (POMMERT) (Com) Mid-season. Large clear watermelon pink with cream throat. Good substance and nicely ruffled. Several blooms open on a nice straight spike. From one year's trial it looks very good.

Margaret Peter ★★★ (ERREY) (Com) Very early. White tinted pink with large crimson blotch. 6-8 blooms open. Fine early commercial variety. In warm weather is inclined to crook but it should be bloomed out before warm weather begins.

Marmora ★★★ (ERREY) (EX) Beautiful gray sport of Emile Aubrun. 8-10 well placed blooms open. Very popular for all purposes. Formerly produced long heads but late years they seem to be much shorter.

Mary Ansteen ★★★ (YOUNG) (Com) Mid-season. Deep begonia pink with blotch of soft orange red. 5 or more open. Good color and nice but stems little inclined to be short.

"This is the first year I have grown any of your bulbs and I will say they are the finest of any I have ever bought."
—J. G. Humphrey, Tenn.

"Your glads were very fine this year."
—Frank Fredericks, Wis.

"I had very good luck with your glads again this year as usual. I grow the finest around here, thanks to your bulbs. I also want to thank you for the extras you sent last spring, they were very beautiful."
—Laurence Hendricks, New Jersey.

Mary Damaris ★★★½ (CLARK) (EX) (Com) (Mid-season) This is a beautiful clear soft medium yellow. It opens up 6-8 large well placed blooms with several buds showing color. This is a beautiful variety though with me a little bit on the short side. However, I think it is one of the best yellows I have seen. Should make a good commercial and fine for the home garden and will hold its own as an exhibition variety.

Mary Elizabeth ★★★ (STEVENS) (EX) (Com) Late beautifully ruffled white with golden throat. 7-9 medium sized blooms open on a long spike. Good grower and propagator. Sometimes in the fall shows quite a good deal of pink.

Mauve Magic ★★★½ (ARENIUS) (EX) (Com) Mid-season. Distinctive and lively mauve color. Up to 8 medium size blooms open on a very tall spike. Good for florist use in conjunction with other colors.

Maytime Palmer strain. See page 13.

Mermaid New Palmer introduction. See page 14.

Mibloom ★★★ (STEVENS) (Com) White tinted pink with rose salmon blotch. About 5 large spreading blooms open on a medium height plant. This is the earliest variety I know of and valuable as a commercial and for the home garden because of its earliness. There doesn't seem to be anything earlier that can take its place. A sweet scent is often detected in this variety.

Milford ★★★½ (RIDES) (EX) (Com) Clear tall light blue with 7 or more large blooms open. One of the best of the light blues, and stronger grower than most blues. Very popular.

Minuet ★★★½ (COLEMAN) (EX) (Com) Late mid-season. Beautiful light pinkish lavender. Opens 5-6 well placed blooms at a time. For many years this is the lavender by which other lavenders have been judged. When well grown it still is as good as any of them.

I grow very little stock of Minuet myself because my stock is mixed. In fact most every stock of Minuet in the country is mixed. I buy my bulbs from reliable growers but some times these growers are too optimistic about their Minuet being true to name, for that reason I do not guarantee my Minuet bulbs to be 100% true to name. However, this year I am getting them from a grower in whom I have utmost confidence, and who says his Minuet is saved only from bloomed stock. I believe this stock that I am listing this year is as good as any to be found anywhere.

Miss Bloomington ★★★½ (K) (Com) Very early tall light yellow. 6-8 well placed blooms open. Fine florist variety and one of the best yellows I know of. But with me it doesn't propagate so fast as I would like.

Miss New Zealand ★★★ (JULYAN) (EX) Apricot salmon suffused with rose. Peach color blotch in the throat. 8 or more immense blooms open. This is a very popular variety but the color is not so clear as we would like and the flower heads are so heavy that it nearly always crooks. Personally I think Picardy is much better and perhaps there are others that are fully as satisfactory. Yet this is a big seller and very popular for exhibition and the home garden.

Morning Serenade ★★★½ (FISCHER) (EX) (Com) Pink and cream. 8 or more good sized well placed blooms open. A tall strong grower. Fine color.

"The bulbs ordered from you in June turned out grand. Had some giant blooms from medium bulbs of **TAKINA**, **REWI FALLU** and the **Seedling No. 30112 (ROCKET)**."
—Mrs. Frank Parsons, Indiana.

Morocco ★★★ (Pf) (Ex) Glistening deep red with fiery sheen. 6–8 medium size well placed blooms open. Not so large as we would like but probably as good a low priced dark red as there is.
Doesn't make a large bulb. No. 2 or even No. 3 will give you very satisfactory blooms.

Mother Kadel New introduction. See page 18.

Mother Machree ★★★½ (STEVENS) (Ex) Late. Smoky lavender overlaid toward the edge with salmon pink. When opened outdoors it is rather a slaty color but inside shows more buff which brightens it up a good deal. Tall plant. 8–12 medium size blooms open.

An old variety but still one of the most popular. Personally I like Recado much better and it is very much larger, but many people still consider Mother Machree the best smoky.

Mrs. G. G. Errey ★★★½ (Ex) (Com) Creamy white often flushed pink. 10 or more medium size well placed blooms on a very tall plant. Does not propagate as fast as some but a nice variety.

Mrs. T. E. Langford ★★★ (CROW) (Ex) (Com) Beautiful canary in the throat. 8–10 medium size blooms open on an always straight spike. Some people object to it because it is not larger, but a spike of bloom is very impressive just the same. A healthy variety and one of the parents of Beacon, another healthy one.

Muskoka New Palmer introduction. See page 10.

Mrs. W. G. Wade ★★★ (WHITELY) (Ex) (Com) Beautiful ruffled light yellow opening 8–10 at a time. A very nice yellow that should become popular.

Myrna ★★★½ (PRUITT) (Ex) (Com) Medium early. Heavily ruffled ivory white. 7–10 large well placed heavily ruffled blooms open on a medium tall spike. Good grower and propagator. This variety seems to have taken hold in good shape and gains favor every year. Received an Award of Merit in the British Test Gardens 1939. See cut page 17.

Mywag Palmer strain. See page 14.

Nadia ★★★ (LEFFINGWELL) (Com) (HG) (Small Dec) Upper petals bright salmon with lower petals deep yellow. Seedling of Orange Butterfly and very similar to that variety except in color and doesn't open quite so many, and with me at least, does not crook nearly so much as Orange Butterfly. This is very pretty and a real addition to the small decorative class. Received an Award of Merit at the British Test Gardens 1939.

Nancy Ann ★★★ (KINYON) (Com) Mid-season. Pale lavender blotch. 6 or more well placed slightly ruffled blooms open on a medium height spike. Very pretty variety but hasn't quite color enough to become a real popular commercial.

"I have been very much pleased with the gladioli I have bought from you."
—Miss Mabel L. Judd, Mass.

"I want to report on the extra bulbs you so generously included in my late summer order. The extras were **CAMELLIA**, **ANGELUS**, **ROCKET** and **AMRITA**. They were the finest I have ever grown and it would take a page to tell how I have enjoyed them."
—Yates Hawell, N. C.

Orange Butterfly ★★½ (SAL.) (EX) (HG) Mid-season. Small decorative type. Bright orange of good substance. 10-12 well placed blooms open. A spike of blooms reminds one of a flock of butterflies in flight. A very pretty thing but inclined to crook, which doesn't harm it for people who like to make artistic arrangements.

Padre New introduction. See page 18.

Penzance New Palmer introduction. See page 10.

Pandora ★★★½ (BEATRICE L. PALMER) (EX) (COM) Clear soft geranium pink with rosy carmine markings on the throat. 8-10 softly rounded wide open blooms on a medium height spike. A very good keeper. In my exhibition at Boston this past season it attracted more attention than most anything else.

Peggy Lou ★★★ (WILSON) (EX) (COM) Mid-season. Light rose that probably has won more awards on the show table for the past two or three years than any other variety except Picardy. Opens several blooms at a time. A tall strong grower.

Pelegrina ★★★ (PF) (EX) (COM) Early dark blue. 6 or more well placed blooms open with most of the remaining buds showing color, which gives the impression of a large spike of blooms. Doesn't usually crook with me but the heads are heavy and often bend over. Aside from this it is the best dark blue.

Phyllis McQuiston ★★★ (STEWART) (COM) Mid-season. Glowing shrimp pink shading lighter in the throat. In other words it is a nice distinct shade of pink. Tall plant with 5 or more blooms open at a time.

Picardy Palmer strain. See page 14.

Prelude ★★★ (BEATRICE L. PALMER) (COM) Very early light rose with velvety cerise shading on lower petals. 5-7 medium size well placed and spaced blooms. Stem of average height or higher. Valuable because of its nice clean color and earliness. Color is somewhat like Chamouny but very much earlier.

Premier Henry Palmer strain. See page 14.

Prestige ★★★½ (WINSOR) (EX) (COM) Soft pink slightly on the salmon shade with cream throat. Opens up about 8 well placed perfect blooms at a time. With me this is not nearly so large as Picardy but is a nicely ruffled and very beautiful thing. I think you will like this one. Opens well when cut.

Purple Beauty ★★★ (DEC) (HG) Large round flowers on a medium height stem. Clear deep purple. 4-5 open. In the same color class as King Lear but not so early and a much shorter plant. Different type.

Rapture Palmer strain. See page 14.

"Gove's bulbs have sure done well for us."

—Mrs. David Caak, N. Y.

"I have grown **KING MIDAS** for three years and believe it to be the finest yellow on the market today. I have never had a crooked spike and it usually carries from 8 to 10 florets open at one time. It is truly a beautiful flower, and a blue ribbon winner wherever shown. I recommend **KING MIDAS** to anyone wanting the best yellow."
—William C. Cookley, Maryland.

Recado Palmer strain. See page 14.

Red Charm ★★★½ (BUTT) (Ex) (Com) A very nice early red about the color of Commander Koehl. Opens up to 8-9 or more large well placed blooms on a tall straight spike. This is one of my favorites and I think you will like it.

Red Lory ★★★ (ERREY) (Ex) (Com) Late. Carmine rose red with large purplish red blotches. Opens up to 10 large well placed blooms on a fine exhibition spike. Always sells well.

Red Phipps ★★★ (BRIGGS) (Ex) (Com) Late mid-season. Unusual shade of light red. Medium tall plant with long flower heads. A popular florist variety.

Regent Palmer strain. See page 14.

Reverie Palmer strain. See page 14.

Rewi Fallu ★★★½ (FALLU) (Ex) (HG) Early deep blood red. Immense massive blooms, heavy texture. Tall spike, 6-8 blooms open with most of the remaining buds showing color. This was very fine with me this past season even from small bulbs. One of the most popular varieties.

Rima ★★★½ (MITSCH) (Ex) (Com) Light lilac pink with cream throat. Up to 7 large well placed blooms open on a tall strong spike. An unusual and beautiful color that should become popular. Hasn't been a fast propagator with me but may do better in other places. Has a peculiar but attractive texture.

Rocket Palmer Strain. See page 14.

Roi Soleil ★★★ (VELTHUYS) (Com) Very early primrose yellow with a few markings in the throat. This is one of the earliest and probably the largest yellow grown. An old variety. Valuable for its earliness.

Rosamond ★★★ (WRIGHT) (Ex) (Com) Late mid-season. Rose scarlet with darker blotch. 7-9 large well placed blooms open on a spike of 14-18 buds. Most of the remaining buds show color. Good commercial variety. Good shipper.

Rosa Van Lima ★★★★★ (HOLLAND) (Ex) (Com) Light rose with few lines in the throat. Up to 8 or more large well placed blooms open on a tall strong spike. This is a second early variety and one of the finest that has come out of Holland. I understand that it is not so good for long distance shipping but for most every purpose it is a very fine gladiolus.

Roselle Palmer strain. See page 15.

"All the bulbs you sent me last spring did well, giving a gorgeous array of blooms throughout the summer."
—Howard F. Dunham, N. H.

"We had wonderful results from the bulbs received from you and will give you another order next spring."
—Mrs. A. Siess, N. Y.

Rose Wings ★★★ (CROW) (Med. Dec) Mid-season. Beautiful rosy carmine deepening toward the edges with a deeper velvety lip and fine gold line on the edge of the petals. Opens 4-6 medium size blooms on a medium height plant. Foliage is very dark green and healthy. It is fine for small arrangements and baskets for those who appreciate something besides size.

Royal York Palmer strain. See page 15.

Sahara Palmer strain. See page 15.

Sandra Palmer strain. See page 15.

Scarlet Bedder ★★★ (SAL) (Med. Dec) A bright vivid scarlet of medium size. One of the finest colors in the light reds.

Sensation ★★★★★ (MARSHALL) (EX) (Com) Late. Bright but soft rose shading somewhat lighter in the upper throat with a darker feather in the lower throat. Some call this a deep salmon. Judge for yourself. 6-9 huge heavily ruffled massive blooms on a spike of 17-20 or more buds. Is an extremely tall massive plant. This past season had many spikes over 6 feet tall. See cut. Good propagator and one of the varieties that you will sooner or later grow. A vase of these will attract attention anywhere. It created a sensation in our shop window.



Yours truly with Sensation. It is really taller than the picture indicates.

with most of the remaining buds showing color. A very nice gladiolus and a fine color suitable for florist use. A good keeper and shipper.

Smiling Maestro ★★★★★¹/₂ (CHRIST) (EX) (Com) Deep salmon rose somewhat flaked darker. Opens 6-7 large wide open blooms on a medium height plant. The spike is not quite tall enough for the long distance shippers but it is one of my favorites and one that is very useful for commercial or exhibition use.

September White ★★★

(GRAETZ) Formerly called Geheimrat Duisberg. Late exhibition white. Slightly creamy. Makes a tall plant with long flower head. Very good for a late white.

Shirley Temple ★★★ (PRUITT) (EX)

(Com) Immense heavily ruffled cream with cream yellow throat, and sometimes a slightly darker feather in the throat. Opens 6 or more huge massive well placed blooms on a tall spike. One of the most beautiful varieties grown. But from large bulbs or in hot climates often crooks. Doesn't crook much from small bulbs or in cool weather. A fine variety that is worth trying. Last year all available large bulbs were sold out long before the end of the season.

Simcoe ★★★ (VICKERS) (Com) Light purple somewhat flaked darker. 6-8 medium size well placed blooms open

"I feel I must enclose a note to let you know I have so enjoyed your glads this summer. Words fail me to tell you how beautiful they have been. And I also want to thank you for the extras you sent."
—Sue Gerow, New York.

Snow White Palmer strain. See page 15.

So Big ★★★ (KINYON) (Com) (Mid-season) Very large deep lavender rose pink with violet feather on lower petals. Opens 6 well placed blooms. A strong husky plant and can be very nice.

Solita Palmer Strain. See page 15.

Spray of Gold Palmer strain. See page 15.

Star of Bethlehem ★★★½ (Pf) (Ex) (Com) (Mid-season) Very large pure white, cream deep in the throat. 8-10 large blooms open on a tall spike. This would be one of the very finest whites grown, except that it is somewhat temperamental as to health. When kept healthy it is one of the very best. But many growers have had to give it up, because of its inclination to disease. My bulbs this year seem to be fine, and had only two or three complaints last year.

Susan ★★★ (WEBSTER) (HG) A very pretty early smoky with red feather on a yellow throat. 6-7 large somewhat ruffled blooms open at a time. Worth trying if you like smokies.

Symphony Palmer strain. See page 15.

Taiaroa ★★★ (MILLER) (Ex) Large salmon pink flaked with slate and with a purplish blotch in the throat. Opens up to 8 at a time. Good exhibition variety.

Takina ★★★ (BURNS) (Ex) Odd color giant purple with several immense blooms open on a very tall spike. To me this is not beautiful but many people seem to think it is. Always a good seller and probably the best exhibition purple.

Tecumseh New Palmer introduction See page 11.

The Mogul Palmer strain. See page 15.

Timbuctoo ★★★★★ (ZIMMER) (Ex) (Com) (Second early) Beautiful deep rose red sometimes flaked darker. Opens 6-9 somewhat ruffled large well placed blooms with several buds showing color. Medium height. A very beautiful variety and suited for florist use and for any other purpose. One of the best. See cut on page 8.

Titan Palmer strain. See page 15.

Token ★★★ (PAPPAS) (Com) Early peach red or flame salmon with clear yellow throat. Opens several medium size well ruffled blooms of heavy texture. Have had very nice reports on this. Last winter blooms shipped from Florida often sold for more than Picardy.

Tunia's Blue ★★★ (BOTH) (Com) Large medium dark blue. Tall strong growing plants but with me a rather slow propagator.

"I believe your glads are the finest I or my neighbors have ever seen in bloom anywhere at anytime."
—B. P. Nickels, Wis.

"I feel you should know just how I feel about your glads. They are the most beautiful ones I have ever seen, large tall, healthy. We cut stems over four feet in length with four to eight blooms open at a time."
—Leland Nile, Maine.

Uncas ★★★ (WEBSTER) (EX) (COM) Dark coppery orange with feather tipped yellow. Up to 8 well placed blooms open on a tall strong plant. A nice autumn color that should be useful for florists and house decorations.

Usona ★★★ (JACK) (HG) (Mid-season) Large smoky rose with cream throat bordered coppery salmon. Up to 6-8 large well placed blooms on a long spike with several buds showing color. One of the prettiest smokies.

Vagabond Prince Palmer strain. See page 15.

Vassar ★★★ (HEDGECOCK) (Med. Dec) (COM) (Mid-season) Pale buttercup yellow blending to light tangerine orange, giving the general appearance of light orange with yellow throat. Beautifully ruffled and no foreign markings of any kind. Probably not large or tall enough for commercial purposes but a very beautiful variety for those who can appreciate real beauty.

Vista Bonita ★★★½ (ELLIS) (EX) Immense geranium pink blooms on a tall strong husky plant. Can be very fine though somewhat inclined to be soft. sometimes flaked darker.

Vredenburg ★★★½ (PF) (Large Dec) (COM) Early large pure white. Medium height. Looks like about the best pure white I have seen and well worth trying.

Wasaga Palmer strain. See page 16.

Wings of Song ★★★½ (ELLIS) (EX) (COM) Rose salmon with clear cream lip. Opens up to 8 or more large well placed blooms on a tall spike. A beautiful variety and one of the very best in this color class. This past season it showed some blue veining.

White Gold New introduction. See page 20.

Winston New Palmer introduction. See page 11.

Wurtembergia ★★★½ (PF) (EX) (COM) Late. 4-5 very large dazzling fiery scarlet blooms open on a tall straight spike. Cream white throat. About the brightest and one of the largest scarlets and probably the best one for late blooming.

Zauberflote ★★★ (PF) (COM) Medium early. Light peach rose with dark red blotch. Several large blooms open on a tall husky plant. A good blotched variety.

Zuni ★★★½ (MITSCH) (EX) Combination of salmon and slate with a slight feather of orange salmon. Some consider this the best colored smoky. Up to 10 large well placed somewhat ruffled blooms open on a long flower head. A strong straight grower. Will become one of the most popular smokies.

"Just a few lines to let you know that I had a very good gladiolus season with your bulbs.

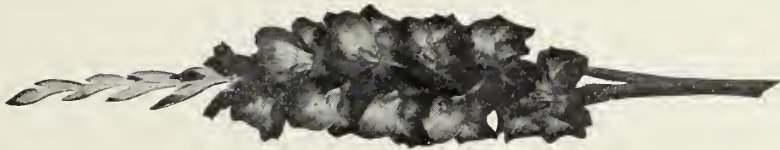
"I especially liked CAMELLIA and AMRITA and FIREFLY did good also. I had good results with No. 30112 (ROCKET) and it is the most vigorous grower that I have among the reds."
—W. H. Robertson, N. C.



King Lear



Glamis



Vag. Prince



Barcarole

Gladiolus Seed

Why not try a few seed this year? Glads are as easy to grow from seeds as many other kinds of plants. However they do not come true from seed. That is every bulb grown from seed will be different. Growing seedlings is one of the most fascinating features of gladiolus growing. You may not produce any world beaters tho you do stand a chance even to do that. But no doubt you will produce many seedlings that you will like. Complete instructions for growing seed goes with each package.

The difference in price of the different groups is due to quantity of seed available and to some varieties being newer and more expensive than others.

The first variety mentioned in each cross is the seed bearing parent.

This seed is produced by a Canadian grower. This year he is listing some crosses made with some of his seedlings that are not yet on the market. These seedlings are going under temporary names as it is easier to remember these than seedling numbers. The descriptions of these seedlings are at the bottom of the page. These crosses enable you to try the very newest kinds before introduction.

GROUP A

Package of 15 seeds for 25c

Package of 35 seeds for 50c

4008	Admiral x Cardinal	4026	Snow Princess x White Banner
4009	Paul Grampel x Admiral	4028	Admiral x Red Charm
4015	White Banner x Vredenburg	4062	Beacon x Duchess of Kent
4017	Barbara Shirley x Goldlack	4064	Beacon x J. S. Bach
4019	L. VanKattendyke x Lindy Lou	4079	Flagship x Regenbogen
4025	M. Brunings x Picardy		

GROUP B

Package of 15 seeds for 40c

Package of 35 seeds for 75c

4007	Atlas x White Banner	4059	Kassel x Rose Pfitzer
4020	Plesman x Barbara Shirley	4063	Rose Pfitzer x Beacon
4021	Scarlet Sheen x Admiral	4070	Seedling 3765 x Picardy
4027	Red Charm x J. S. Bach	4071	Red Charm x Rewi Fallu
4033	Sarasate x Swampfire	4077	Ariosa x Margaret Beaton
4040	Red Charm x Rosamond	4081	Scarlet Picardy x Rose Pfitzer
4042	Flagship x Red Charm	4093	Scarlet Picardy x Beacon
4047	Swampfire x Flagship	4097	Greta Garbo x Avalon
4048	Bit o' Heaven x J. S. Bach	4000A	Mrs. Marks Memory x Purple Beauty
4055	Tunias Triumph x Red Charm		

GROUP C

Package of 15 seeds for 55c

Package of 35 seeds for \$1.00

4030	Duchess of Kent x Swampfire	4082	Pfitzer's Masterpiece x Carillon
4041	Royal Gold x Barcarole	4085	Purple Beauty x Rose Pfitzer
4043	Red Charm x Scarlet Tananger	4086	Picardy x Purple Beauty
4046	Picardy x Flagship	4095	Heidel. Schloss x Beacon
4049	Duchess of Kent x Bit o' Heaven	4096	Carillon x Avalon
4074	Silentium x White Banner	4005A	Purple Robe x Mrs. Marks Memory
4075	Frascati x Margaret Beaton	4008A	M. Brunings x Lord Selkirk
4076	Margaret Beaton x Silentium	4012A	Jasmine x Harvest Moon
4080	Red Charm x Hindenburg's Memory		

Description of seedlings used in above crosses:

White Banner (Queen Louise x Maid of Orleans)—pure white. First prize in 3 spike class open section 1940 C.G.S.

Barbara Shirley (Apricot Glow x E. Aubrun)—orange, full sister to Picardy and Peggy Lou.

Lindy Lou (Zauberflote x Picardy)—pink with large red throat blotch.

Cardinal (Picardy x Stuttgartia)—early large salmon red

Scarlet Sheen (Comm. Koehl x Picardy)—very brilliant scarlet (same cross as Red Charm and Algonquin).

Swampfire (Roi Albert x Rose Pfitzer)—early tall, straight, smoky.

Seedling 3765 (Maid of Orleans x Green Light)—tall intensely ruffled cream.

Scarlet Picardy (Picardy x Allemania)—sparkling scarlet. Has produced some fine seedlings.

Scarlet Tananger (Salbachs Orchid x Erica Morini)—early ruffled red. 8-9 open at once.

Purple Robe (Moorish King x Sentinel)—very pleasing large light purple.

"ALADDIN was "TOPS" among the growers around here."

—M. W. Fehrman, Wis.

VARIETIES BY COLOR

White and Cream White

Dr. Durr
Emblem of Purity
Magna Blanca
Maid of Orleans
Mam. White
Mary Elizabeth
Myrna
Sept. White
Snow White
Star of Bethlehem
Vredenburg

Tinted White and White with Blotch

Ariadne
Bleeding Heart
Camellia
Candy Heart
Mar. Beaton
Mar. Peter
Mibloom

Cream and Buff

Amrita
Amulet
Arethusia
Barcelona
Betsy Bob-up
Duna
Helen of Troy
Lady Jane
Shirley Temple
Wasaga
White Gold
Winston
322024
32203
340411

Peaches and Cream

Corona
Mrs. Langford
Reverie

Light Pink

Edith Mason
Greta Garbo
Magnolia
Mrs. G. G. Errey
Rima
Symphony
Sandra
32145

Salmon Pink

Aladdin
Angelus
Conquest
Debonair
Glamis
Lady Winsome

Lombardy

Margaret Fulton
Maytime
Miss New Zealand
Muskoka
Nadia
Picardy
Prestige
Rapture
Rosamond
Roselle
Smiling Maestro
Titan
Token

Pink or Light Rose

Angelica
Avalon
Carillon
Dr. Dentz
Flora Farmer
Heritage
Incense
Laddie
Margo
Marguerite
Mermaid
Morning Serenade
Pandora
Peggy Lou
Phyllis McQuiston
Rosa Van Lima
Sensation
Vista Bonita
Wings of Song
33102

Pink with Blotch

Colossus
Edith Robson
Mary Ansteen
Mywag
Prem. Henry
Tairaoa
Zauberflote
33195

Salmon Red

Beacon
Hector
Kings Ransom

Rose and Dark Rose

Buccaneer
Chamouny
Cordelia
Dream O'Beauty
Early Rose
Prelude
Rose Wings

Yellow

Amberglow

Clarion

Golden Goddess
Jasmine
Jonquil
King Midas
Loyalty
Lutex
Mary Damaris
Miss Bloomington
Mother Kadel
Mrs. W. G. Wade
Roi Soleil
Spray of Gold

Orange and Orange Salmon

Barcarole
Bolero
Brightside
Coral Glow
Creve Coeur
Diane
La Paloma
Lucifer
Orange Butterfly
Padre
Uncas
Vassar
32201

Brown Russet and Bronze

Bernece
Golden Brown
Innovation
Sahara

Scarlet

Algonquin
Excellence
Firefly
Red Phipps
Regent
Rocket
Scarlet Bedder
Wurtembergia

Medium and Blood Red

Amador
Bill Sowden
Bolivar
Caesar
Cardinal Prince
Com. Koehl
Hidenburg's Memory
Red Charm
Red Lory
Rewi Fallu

Dark and Rose Red

Black Opal
Dr. Hoeg
Morocco

Royal York
The Mogul
Timbuctoo

Lavender Pink

Helena
Nancy Ann

Lavender

Beautiful Ohio
Elizabeth the Queen
Eloise
Honor
King Arthur
Mauve Magic
Minuet
So Big

Light and Medium Blue

Ave Maria
Bella Donna
Blue Beauty
Blue Wonder
Champlain
Jos. Haydn
Milford

Dark Blue

Blue Admiral
Pelegrina
Tunia's Blue

Purple

Beverly
Damaris
Gloaming
King Lear
Purple Beauty
Simcoe
Takina

Smoky and Odd

Bagdad
Chief Multnomah
Emile Bride
Evensong
Flagship
Ieka
Irak
Jalna
Marmora
Mother Machree
Penzance
Recado
Susan
Tecumseh
Usona
Vagabond Prince
Zuni
27483
30161
30289

"Wish to state all the glad bulbs that I have bought from you were very beautiful and very large. I shall tell all my friends about your beautiful glads."

—Eugene Knight, Maine.

"One very seldom goes wrong on varieties you recommend and it is a pleasure to do business with you. I won a large number of ribbons at the Wellsville show and several special awards too. I was sweepstakes winner in the exhibition class and also won with the best **PICARDY** in both the single and three spike entry. Also won with **MAGNA BLANCA** for the tallest spike."

—H. E. Beardmore, Ohio.

Thrips

The first time a person has thrips on his glads he seldom knows what the trouble is, this in spite of all that has been written about it. Thrips is a minute insect about 1-16 inch long and about as large as a pencil mark. It sucks the juice from the plants and especially the buds so that they dry up and do not open. Whenever the buds of your glads look burned and do not open you may know the trouble is thrips. The sun will sometimes burn the edges of the bud sheath but this does not prevent them from opening.

To Avoid Thrips

We fumigate our bulb storage several times during the winter so as to have perfectly clean bulbs. In spite of this however we urge everyone to disinfect their bulbs before planting using either Bichloride of Mercury or DELBETAR. The first time a person gets thrips he lays it on to the bulbs he bought. This may or may not be the origin of them as they may come from some one else's patch. They will go a long ways through the air to reach glads. Everyone who grows potatoes has potato bugs but that is no sign they were on the potatoes when planted.

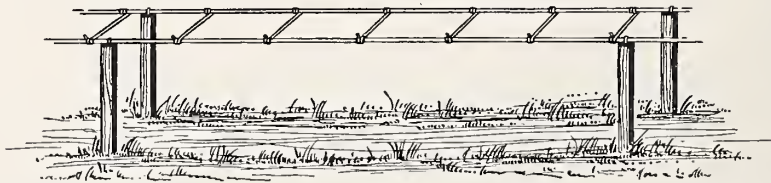
It is generally thought that thrips will freeze up out doors when the temperature goes down to freezing frequently during the winter. So that thrips are usually carried over on bulbs whether your own or your neighbors or in some distant place. For this reason you should spray your plants beginning when the plants are only three or four inches high and you should spray them about every week. For spray material most any good insecticide will do a fair job but DELBETAR as listed below I am recommending as it is both a first class insecticide and a fungicide too. Spraying with this will both prevent thrips and should help to prevent diseases that spread through the leaves. The manufacturer of DELBETAR has been able to grow fine bulbs in varieties which are naturally subject to disease and which before using DELBETAR produced many bad bulbs.

I do not sell DELBETAR myself but you can write direct to the manufacturer, Beckwith Gardens, North Street, Manchester Center, Vermont. The prices are as follows; at these prices DELBETAR is prepaid.

Trial 2 oz. size	\$.35	1 Quart	\$3.00
8 oz.	1.00	1/2 Gallon.....	5.00
1 Pint.....	1.75	1 Gallon.....	10.00
		5 Gallons.....	45.00

Just because you have thrips it is not necessary to discard your bulbs as the bulbs will be just as good as ever provided you get the thrips off from them after digging either by using Naphthalene Flakes or by soaking in DELBETAR or Bichloride of Mercury.

Horticultural Wire Fencing



Here is a wire support for glads that many growers have liked. This support consists of two parallel strands of wire seven inches apart and has cross wires about every six inches. This wire is simply tacked on to the tops of stakes driven into the ground. You can have them any height you want but for glads about eighteen inches is a good height. This might be too high for some short varieties

but should be high enough for most kinds. Of course for very tall growing varieties that are inclined to crook the wooden stake is the best support but where glads are planted fairly shallow so as to get the best increase a wire support of this sort is very useful. It keeps the plants right up straight and there is no danger of them falling over into the row. It can be used many years.

Price for a full roll of 500 feet is \$3.00 f.o.b. Joliet, Illinois. For less than a full roll price is 2 cents per foot f.o.b. Burlington. No orders taken for less than 25 feet.

Labels Everyone who grows bulbs under name will want labels. There are many different kinds on the market but I think the best cheap label is a painted wooden one. Unpainted labels do not seem to be satisfactory as they weather and the writing becomes illegible. It is difficult to get good labels but I think the best way is to buy painted labels such as I list below and then get a small can of cheap varnish and a cheap brush and give them a coat of varnish after the names are all written. This will hold them through the season whereas if they are not varnished sometimes the paint will come off and they have to be written over during the season.

The wired tree labels are the cheapest and these can be wired to any ordinary stake. Personally I like the 12" ones as they can be easily read and are better for my purposes. However where you have only a few bulbs smaller ones are perfectly all right.

WIRED TREE LABELS. 3½ x 5⁄8 inch copper wired. 50 for 25 cents. 15 cents per 100 and 500 for \$2.00, 1,000 for \$3.50.

GARDEN LABELS

6 x 5⁄8" Same price as tree labels. 10 x 3⁄4" 25 for 25 cts, 100 for 90 cts.
 8 x 3⁄4" 25 for 20 cts, 100 for 75 cts. 12 x 1½" 25 for 35 cts, 100 for \$1.25.

LABELS NOT POST PAID

Evermark Pencil As near indelible as I can find. 15 cents each.

Join a Gladiolus Society

and get all the benefits such a membership involves. If you are in any of the stages from "fan" to "fiend" by all means join up with some society. If you have a local or state society join those and if possible you should join a national society. At the present time the New England Gladiolus Society, Inc. with about 3,000 members is the only society in the United States of a really national character. This I believe is the strongest gladiolus society in the world at the present time. This year they are issuing a wonderfully fine Annual of over 200 pages which you receive free with your membership. This book contains articles by leading authorities on many different phases of gladiolus growing. This is well worth the price to anyone interested in glads. This book contains some wonderfully fine articles on gladiolus and many pictures, also ads from the leading growers of the world.

The Supplements with a total of over 100 pages give current news, latest research findings, advice on culture, show dates and reports of shows, symposiums, etc.

NEW ENGLAND GLADIOLUS SOCIETY, INC.

REGULAR MEMBER \$1.00
 Full benefits of the Society and a copy of Regular Edition of "The Gladiolus 1940."

SUPPLEMENT MEMBER \$2.00
 "The Gladiolus 1940" in flexible deluxe binding and also April, July, October SUPPLEMENTS. Over 30 pages each.

Send to ALBIN K. PARKER, NORWOOD, MASS.

"I am quite convinced never before was such a grand variety introduced, at such a low price as **LADDIE**. It was just about the nicest in my planting."

—Robert Hall, Pa.

"Outstanding blooms during the season were those of **SNOW WHITE** and **SHIRLEY TEMPLE** (rather a coincidence). I have yet to see as good a white as **SNOW WHITE**."

—R. W. Ryan, New Jersey.



Laddie



Avalon



Amulet

BOOKS YOU SHOULD HAVE

Below are some books that everyone having a garden should own. I can take your order and have them sent direct from the Publisher.

I can secure for you any book on any garden subject. SEND FOR COMPLETE CATALOG.

Gladiolus, by F. F. Rockwell. Recommended as "the best brief guide on gladiolus growing." It tells how to plant, fertilize, and cultivate; how to grow from seed or bulblets; how to harvest and cure; how to handle for cut flowers; and every other detail needed for success with this popular flower. 45 illustrations, 79 pages. **\$1.25**

Gladiolus Breeding, by J. A. Kemp. A trustworthy guide of 12 pages for the experimenter in the successful breeding of gladiolus. The various operations are described in plain, everyday garden language. Only a few copies of this left.

Postpaid, \$.55

The Home Garden Handbooks, by F. F. Rockwell. A series of pocket-size books, now eight in number, that it is a pleasure for us to recommend because each volume covers its ground so well and concisely. Use them when your seeds or plants arrive; they will show you how to prepare the soil, plant the seed, or transplant. Carry them out to the garden when you cultivate, prune and fertilize, they will save you many steps and help you avoid disappointments. Each volume has from 30 to 70 illustrations and contains about 90 pages. Strong cloth binding, four-color jackets. Price, \$1.25 per volume. The titles now published are:

Rock Gardens
Dahlias
Irises

Gladiolus
Roses
Peonies

Evergreens
Lawns

WAYSIDE MARKETING

The author of "Wayside Marketing," Schuyler Arnold, after several years of observation and much study on the subject, has written a book that is packed with worthwhile suggestions enabling the wayside stand owner to better marshal his opportunities, abilities and equipment.

Every angle of the situation is covered—location, building of the stand, details of measurement, stock to be offered (flowers, fruits and vegetables) and how to grow it, etc.

132 pages, bound in cloth, in an attractive jacket. \$1.00; postpaid, \$1.10

How to Arrange Flowers, by Dorothy Biddle. A very fine book by a real artist. Explains how to arrange your flowers artistically.

Postpaid, \$.75

1001 Garden Questions and Answers, by Alfred C. Hottes. A wonderfully fine book with a wealth of information covering flower, vegetable and fruit garden. Arranged in the form of questions and answers. This is not to be read for literary effect but to secure a quick answer to any definite question. If there is anything you want to know about the garden, what plants do well in certain places and what do not, construction of walks, garden seats, spraying information, judging scales, etc., be sure to get this book. I don't know of a better book for the amateur. 320 pages, fully illustrated. A new edition that has been 50% revised.

Postpaid, \$2.15

All About Flowering Bulbs, by T. A. Weston. Written especially for the amateur. This book gives all the information a home gardener requires on the culture of flowering bulbs of all seasons planted outdoors as well as those that do well in the house. This is a very fine book and gives a wonderful amount of information on the subject.

Postpaid, \$2.15

The Book of Bulbs, by F. F. Rockwell. With this complete and practical book you can get the utmost in beauty from every kind of bulbous plant. Clearly written by one who knows; illustrated with 187 beautiful photographs and instructive drawings. Includes tulips, daffodils, hyacinths, lilies, crocuses, glads, dahlias, peonies, irises, begonias, and scores of other beautiful but not-so-well known bulbs. We recommend it as the best and most complete bulb book. 187 illustrations, 265 pages.

\$2.50

Order Blank

CHAMPLAIN VIEW GARDENS

ELMER E. GOVE
BURLINGTON, VERMONT

Name (Mr., Miss or Mrs.) Date.....
Please write plainly

Street and No., P. O. Box }
or R. F. D. }

Post Office..... County.....

Express Office..... State.....
If different from P. O.

Ship when

Anything pertaining to this order, please write on back of Order Blank or separate sheet of paper.

AMOUNT ENCLOSED	
Money Order	\$.....
Check - -	\$.....
Cash - -	\$.....
Stamps - -	\$.....

We usually give extras with each order, varying with the size of the order; we want to send what you prefer so check which you desire.

.....Extra count of varieties ordered.Varieties of our choice.

.....Varieties you may like to try; mention several from which we may select.

Quantity	VARIETY	Size	Rate	Amount
1				
2				
3				
4				
5				
6				
7				
8				
9				
10				
11				
12				
13				
14				
15				
16				
17				
18				
			Balance Forward	

In making out order please give price from latest price list. Continue order on other side.

(Continue Order on this side)

Quantity	VARIETY	Size	Rate		Amount	
	Amount Brought Forward					
19						
20						
21						
22						
23						
24						
25						
26						
27						
28						
29						
30						
31						
32						
33						
34						
35						
36						
37						
38						
39						
40						
41						
42						
43						
44						
45						
46						
47						

FROM

Champlain View Gardens

Burlington, Vermont



Aladdin



Sensation



Mother Kadel



Algonquin