

つきじま WB2-11

01-001

国立国会図書館



Handwritten text in a cursive script, likely a historical document or letter, spanning two pages. The text is written in a fluid, connected style characteristic of early modern Japanese calligraphy. The right page contains approximately 12 lines of text, while the left page contains approximately 11 lines. The ink is dark and the paper shows signs of age and wear.





三十八日...
...
...

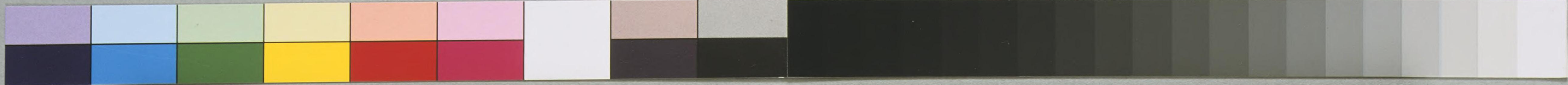


いさるとゆりく...
...
...

共庫

五六





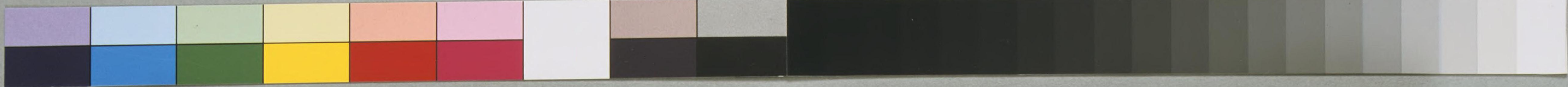
兵庫

上十

がいよゝんさくへんげりぢうらうのべよたひん
 うせくひとだづひう孫うりありさ海まのあはじ
 乃いぢうとあこまうぢうあうぢうくならいぢう
 すうぢうあうぢうよみぢうのぢうあひあひ
 ひぢうぢうぢうのぢうぢうぢうぢうぢうぢう
 ぢうぢうぢうぢうぢうぢう

ぢうぢうぢうぢうぢうぢう
 ぢうぢうぢうぢうぢうぢう
 ぢうぢうぢうぢうぢうぢう
 ぢうぢうぢうぢうぢうぢう
 ぢうぢうぢうぢうぢうぢう





国立国会図書館

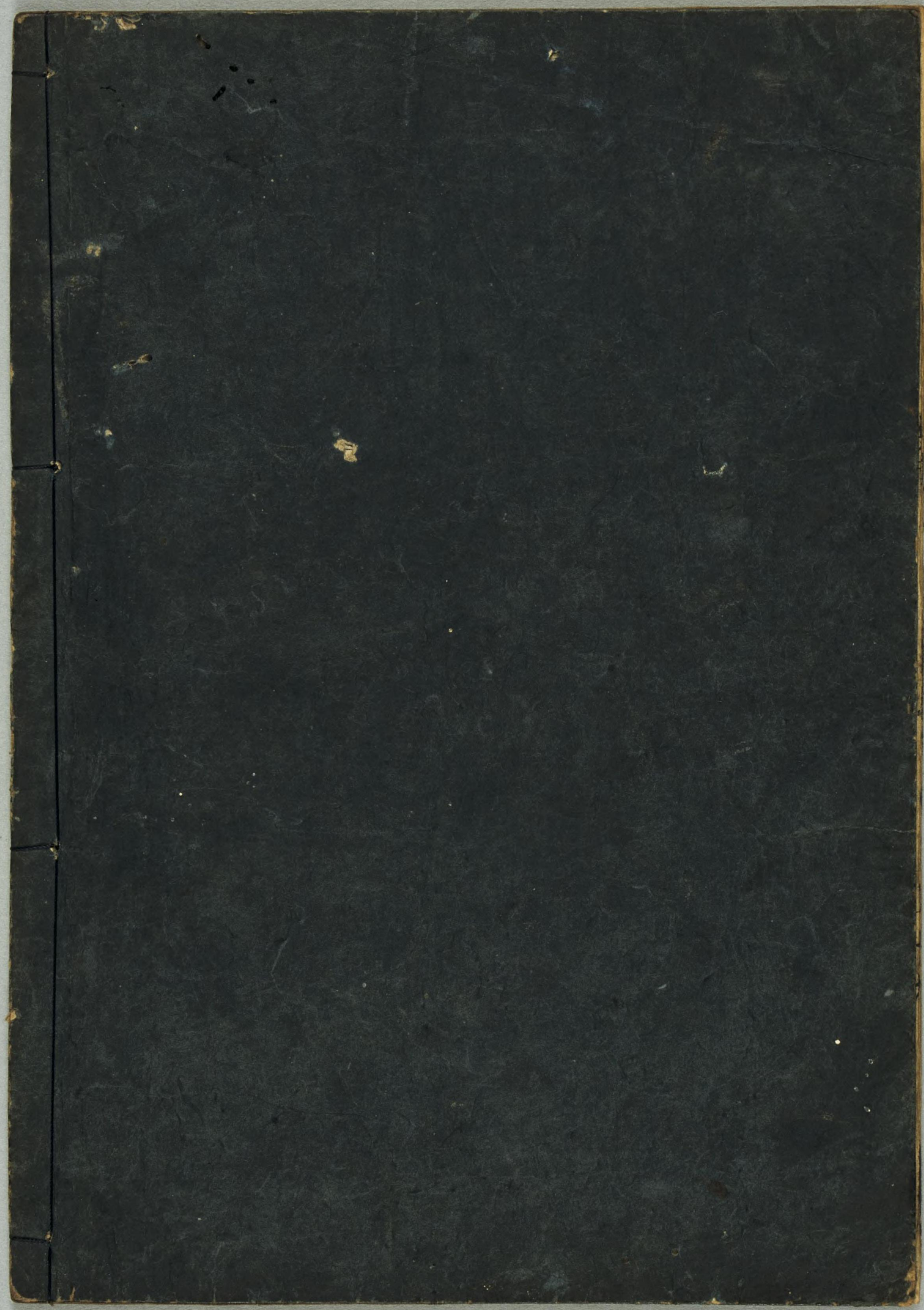
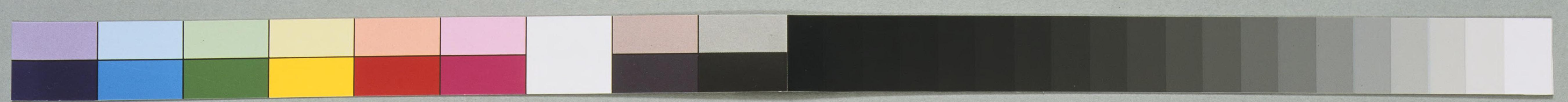


つきじま WB2-11

01-021

国立国会図書館





つきじま WB2-11

01-022

国立国会図書館

