



普我物語 八

特別
リ5
15643
8





Handwritten text in a cursive script, consisting of several lines of characters.

曾我初語卷第八

Handwritten text in a cursive script, consisting of several lines of characters.



Handwritten text in a cursive script, likely Persian or Urdu, consisting of approximately 12 lines of text.

Handwritten mark or signature at the bottom of the page.

Handwritten text in a cursive script, likely Persian or Urdu, consisting of approximately 12 lines of text.

Handwritten text in a cursive script, likely a historical document or letter. The text is written in a dark ink on aged paper. It consists of approximately 12 lines of text, starting with a large initial letter 'P' and ending with a flourish.

Handwritten text in a cursive script, likely a historical document or letter. The text is written in a dark ink on aged paper. It consists of approximately 12 lines of text, starting with a large initial letter 'P' and ending with a flourish.

Handwritten text in a cursive script, likely a form of shorthand or a specific dialect. The text is arranged in approximately 12 horizontal lines across the page.

Handwritten mark or symbol at the bottom of the page, possibly a signature or a specific character.

Handwritten text in a cursive script, continuing from the previous page. The text is arranged in approximately 12 horizontal lines across the page.

Handwritten text in a cursive script, likely a historical document or manuscript. The text is written in a dark ink on aged, yellowish paper. It consists of approximately 12 lines of text, with some lines starting with a small decorative flourish or initial. The script is dense and flowing, characteristic of historical cursive handwriting.

Handwritten text in a cursive script, likely a historical document or manuscript. The text is written in a dark ink on aged, yellowish paper. It consists of approximately 12 lines of text, with some lines starting with a small decorative flourish or initial. The script is dense and flowing, characteristic of historical cursive handwriting.

Handwritten text in a cursive script, likely a form of shorthand or a specific dialect. The text is arranged in approximately 12 horizontal lines across the left page of the manuscript.



Handwritten text in a cursive script, continuing from the left page. The text is arranged in approximately 12 horizontal lines across the right page of the manuscript.

Handwritten text in a cursive script, likely a form of shorthand or a specific dialect. The text is arranged in approximately 12 horizontal lines across the page.

Handwritten text in a cursive script, continuing from the previous page. The text is arranged in approximately 12 horizontal lines across the page.

مجلسه اول در بیان احوال و حال
مجلسه اول در بیان احوال و حال
مجلسه اول در بیان احوال و حال
مجلسه اول در بیان احوال و حال
مجلسه اول در بیان احوال و حال

مجلسه اول در بیان احوال و حال
مجلسه اول در بیان احوال و حال
مجلسه اول در بیان احوال و حال
مجلسه اول در بیان احوال و حال
مجلسه اول در بیان احوال و حال

مجلسه اول در بیان احوال و حال
مجلسه اول در بیان احوال و حال
مجلسه اول در بیان احوال و حال
مجلسه اول در بیان احوال و حال
مجلسه اول در بیان احوال و حال

مجلسه اول در بیان احوال و حال
مجلسه اول در بیان احوال و حال
مجلسه اول در بیان احوال و حال
مجلسه اول در بیان احوال و حال
مجلسه اول در بیان احوال و حال

Handwritten text in a cursive script, likely a historical document or manuscript. The text is written in a dark ink on aged paper. It consists of approximately 12 lines of text, starting with a large initial letter 'E' at the top left. The script is highly stylized and characteristic of early modern European handwriting.

Handwritten text in a cursive script, likely a historical document or manuscript. The text is written in a dark ink on aged paper. It consists of approximately 12 lines of text, starting with a large initial letter 'E' at the top left. The script is highly stylized and characteristic of early modern European handwriting.

Handwritten text in Arabic script, consisting of approximately 12 lines of cursive script.

Handwritten text in Arabic script, consisting of approximately 12 lines of cursive script.

Handwritten text in a cursive script, likely a historical document or manuscript, spanning two pages. The text is written in a dark ink on aged, yellowish paper. The script is dense and continuous across the lines, with some variations in line spacing and alignment. The right page contains approximately 12 lines of text, while the left page contains approximately 10 lines. The text appears to be a single, flowing narrative or record.

Handwritten text in a cursive script, likely a form of Urdu or Persian, consisting of approximately 12 lines of text.

Handwritten text in a cursive script, likely a form of Urdu or Persian, consisting of approximately 12 lines of text.

Handwritten text in a cursive script, likely a form of Arabic or Persian, consisting of approximately 12 lines of text.

Handwritten text in a cursive script, likely a form of Arabic or Persian, consisting of approximately 12 lines of text.

Handwritten text in a cursive script, likely a historical document or manuscript. The text is written in a dark ink on aged, yellowish paper. It consists of approximately 12 lines of text, starting with a large initial letter 'A' and ending with a period. The script is highly stylized and difficult to decipher without a key.

Handwritten text in a cursive script, likely a historical document or manuscript. The text is written in a dark ink on aged, yellowish paper. It consists of approximately 12 lines of text, starting with a large initial letter 'A' and ending with a period. The script is highly stylized and difficult to decipher without a key.

Handwritten text in a cursive script, likely a historical document or manuscript. The text is written in a dark ink on aged, yellowish paper. It consists of approximately 12 lines of text, with some lines starting with a small decorative flourish or initial. The script is dense and flowing, characteristic of a cursive hand.

Handwritten text in a cursive script, likely a historical document or manuscript. The text is written in a dark ink on aged, yellowish paper. It consists of approximately 12 lines of text, with some lines starting with a small decorative flourish or initial. The script is dense and flowing, characteristic of a cursive hand.

Handwritten text in a cursive script, likely a form of Urdu or Persian, consisting of approximately 12 lines of text.

Handwritten text in a cursive script, likely a form of Urdu or Persian, consisting of approximately 12 lines of text.

Handwritten text in a cursive script, likely Persian or Urdu, consisting of approximately 12 lines of text.

Handwritten text in a cursive script, likely Persian or Urdu, consisting of approximately 12 lines of text.

Handwritten text in a cursive script, likely a form of Urdu or Persian, consisting of approximately 12 lines of text.

Handwritten text in a cursive script, likely a form of Urdu or Persian, consisting of approximately 12 lines of text.

Handwritten text at the top of the right page.

Handwritten text on the right page, second line.

Main body of handwritten text on the right page, consisting of several lines.

Handwritten text on the right page, near the bottom.

Handwritten text at the bottom of the right page.

Main body of handwritten text on the left page, consisting of several lines.

Handwritten text in a cursive script, likely a historical document or manuscript. The text is written in a fluid, connected style across approximately 12 lines.

Handwritten text in a cursive script, likely a historical document or manuscript. The text is written in a fluid, connected style across approximately 12 lines.

Handwritten text in a cursive script, likely Urdu or Persian, consisting of approximately 12 lines of text.

Handwritten text in a cursive script, likely Urdu or Persian, consisting of approximately 12 lines of text.

Handwritten text in a cursive script, likely a form of shorthand or a specific dialect. The text is arranged in approximately 12 horizontal lines across the page.

Handwritten text in a cursive script, likely a form of shorthand or a specific dialect. The text is arranged in approximately 12 horizontal lines across the page.

Handwritten text in a cursive script, likely a historical document or letter. The text is written in a dark ink on aged, yellowish paper. It consists of approximately 12 lines of text, starting with a large initial letter 'S' and ending with a period. The script is highly stylized and characteristic of the early modern period.

Handwritten text in a cursive script, likely a historical document or letter. The text is written in a dark ink on aged, yellowish paper. It consists of approximately 12 lines of text, starting with a large initial letter 'S' and ending with a period. The script is highly stylized and characteristic of the early modern period.

Handwritten text in a cursive script, likely Urdu or Persian, consisting of approximately 12 lines of text.

Handwritten text in a cursive script, likely Urdu or Persian, consisting of approximately 12 lines of text.

Handwritten text in a cursive script, likely a historical document or manuscript. The text is written in a dark ink on aged, yellowish paper. It consists of approximately 12 lines of text, with some lines starting with a small decorative flourish or initial. The script is dense and flowing, characteristic of early modern cursive.

Handwritten text in a cursive script, continuing from the previous page. The text is written in a dark ink on aged, yellowish paper. It consists of approximately 12 lines of text, with some lines starting with a small decorative flourish or initial. The script is dense and flowing, characteristic of early modern cursive.

Handwritten text in a cursive script, consisting of approximately 10 lines of text.

Handwritten title or section header in the center of the page.

Handwritten text in a cursive script, consisting of approximately 10 lines of text.

Handwritten text in a cursive script, likely a form of Urdu or Persian, written on the left page of an open manuscript. The text is arranged in approximately 12 horizontal lines, flowing from right to left. The script is highly stylized and fluid, with many loops and flourishes. The ink is dark and the paper shows signs of age and wear.

Handwritten text in a cursive script, likely a form of Urdu or Persian, written on the right page of an open manuscript. The text is arranged in approximately 12 horizontal lines, flowing from right to left. The script is highly stylized and fluid, with many loops and flourishes. The ink is dark and the paper shows signs of age and wear.

Handwritten text in a cursive script, likely a form of shorthand or a specific dialect. The text is arranged in approximately 12 horizontal lines across the page.

Handwritten text in a cursive script, likely a form of shorthand or a specific dialect. The text is arranged in approximately 12 horizontal lines across the page.

Handwritten text in a cursive script, likely a form of Urdu or Persian, consisting of approximately 12 lines of text.

Handwritten text in a cursive script, likely a form of Urdu or Persian, consisting of approximately 12 lines of text.

Handwritten text in a cursive script, likely a historical document or letter. The text is written in a fluid, connected style across approximately 12 lines. The ink is dark and the paper shows signs of age.

Handwritten text in a cursive script, likely a historical document or letter. The text is written in a fluid, connected style across approximately 12 lines. The ink is dark and the paper shows signs of age.

Handwritten text in a cursive script, likely a historical document or letter. The text is written in a dark ink on aged paper. It consists of approximately 12 lines of text, starting with a large initial letter. The script is highly stylized and characteristic of the Ottoman or Persian calligraphic tradition.

Handwritten text in a cursive script, likely a historical document or letter. The text is written in a dark ink on aged paper. It consists of approximately 12 lines of text, starting with a large initial letter. The script is highly stylized and characteristic of the Ottoman or Persian calligraphic tradition.

Handwritten text in a cursive script, likely Persian or Urdu, consisting of approximately 10 lines of text.

Handwritten text in a cursive script, likely Persian or Urdu, consisting of approximately 10 lines of text.

Handwritten text in a cursive script, likely a historical document or manuscript. The text is written in a dark ink on aged, yellowish paper. It consists of approximately 12 lines of text, starting with a large initial letter 'A'.

Handwritten text in a cursive script, likely a historical document or manuscript. The text is written in a dark ink on aged, yellowish paper. It consists of approximately 12 lines of text, starting with a large initial letter 'A'.

Handwritten text in a cursive script, likely Persian or Urdu, consisting of approximately 12 lines of text.

Handwritten text in a cursive script, likely Persian or Urdu, consisting of approximately 12 lines of text.

Handwritten text in a cursive script, likely Persian or Urdu, consisting of approximately 12 lines of text.

Handwritten text in a cursive script, likely Persian or Urdu, consisting of approximately 12 lines of text.

Handwritten text in a cursive script, likely a historical document or manuscript. The text is written in a fluid, connected style across approximately 12 lines on the right page.

Handwritten text in a cursive script, likely a historical document or manuscript. The text is written in a fluid, connected style across approximately 12 lines on the left page.

Handwritten text in a cursive script, likely a historical document or letter. The text is written in a dark ink on aged, yellowish paper. It consists of approximately 12 lines of text, starting with a large initial letter 'A'.

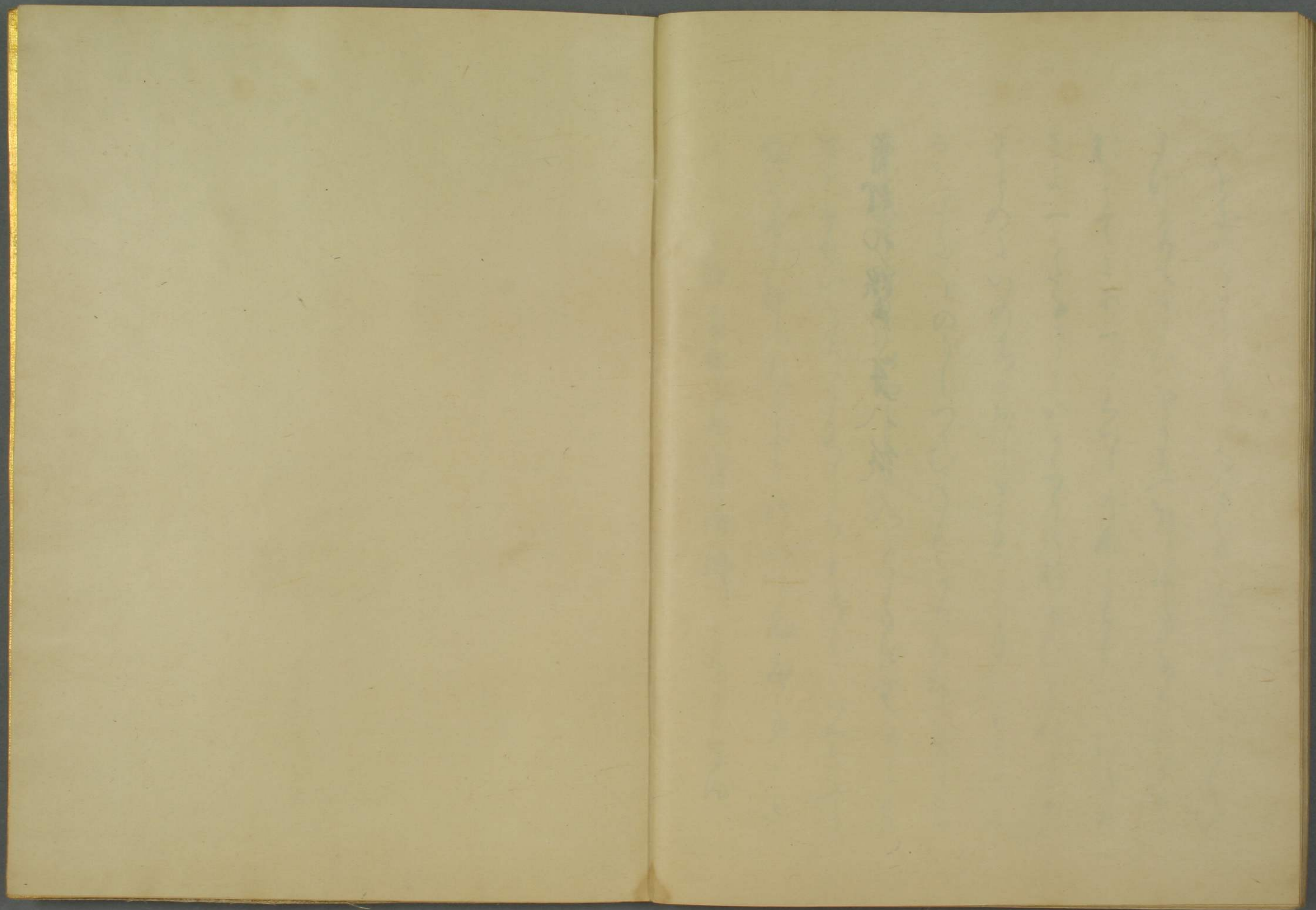
Handwritten text in a cursive script, likely a historical document or letter. The text is written in a dark ink on aged, yellowish paper. It consists of approximately 12 lines of text, starting with a large initial letter 'A'.

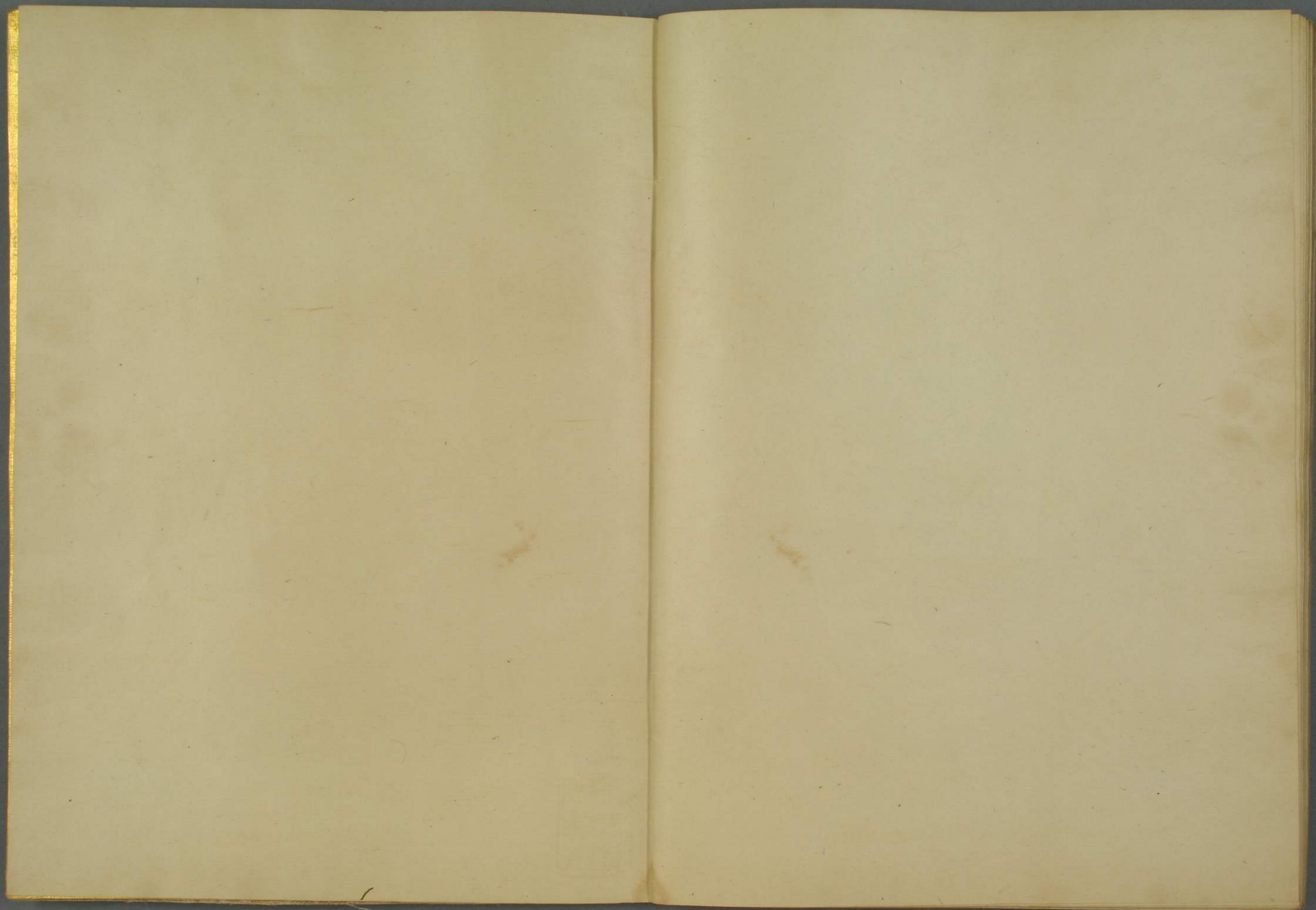
Handwritten text in a cursive script, likely a historical document or letter. The text is written in a dark ink on aged paper. The script is highly stylized and difficult to decipher without a key. The text appears to be organized into several lines, with some words or phrases being repeated or emphasized. The overall appearance is that of a formal or official document.

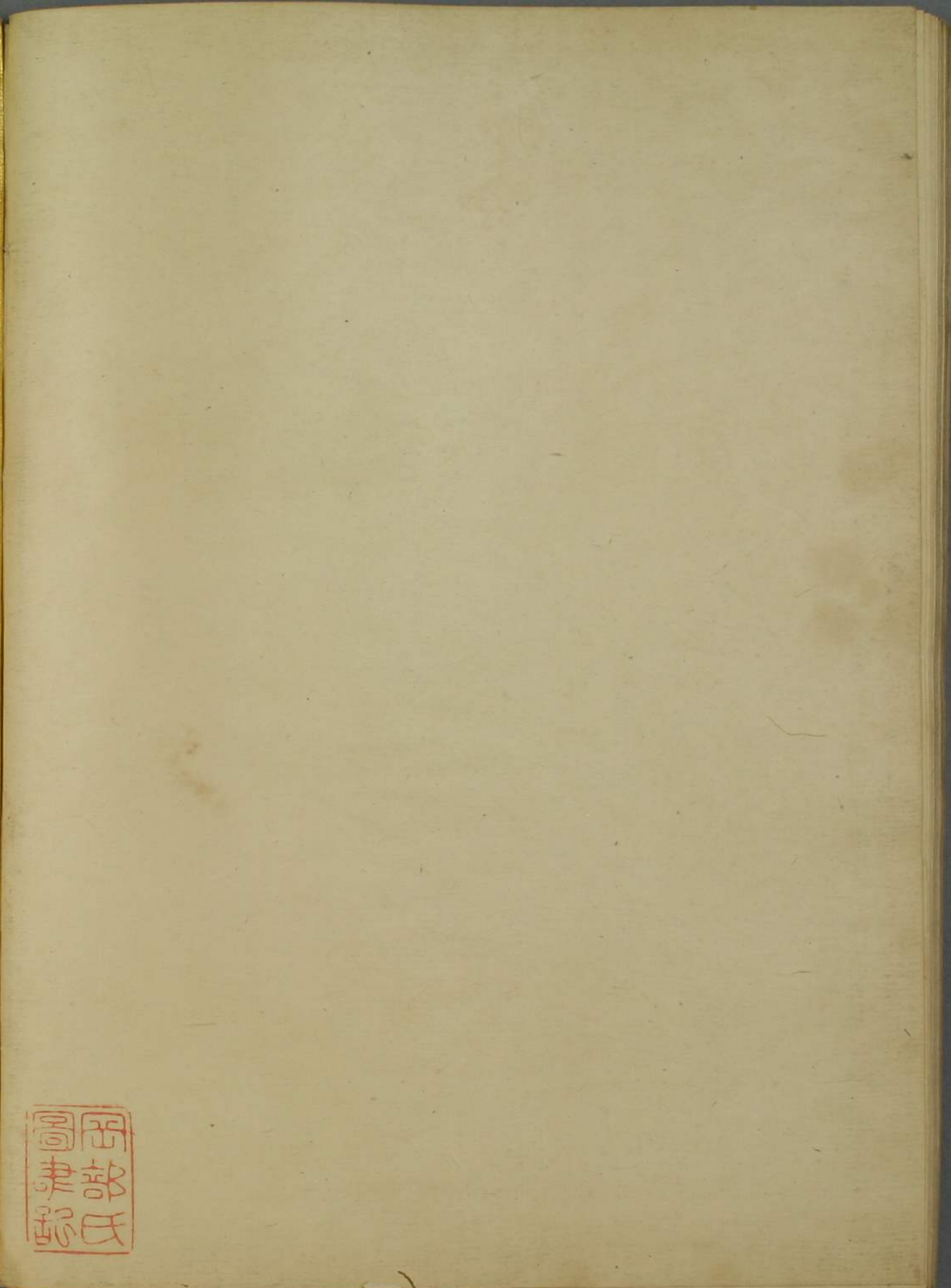
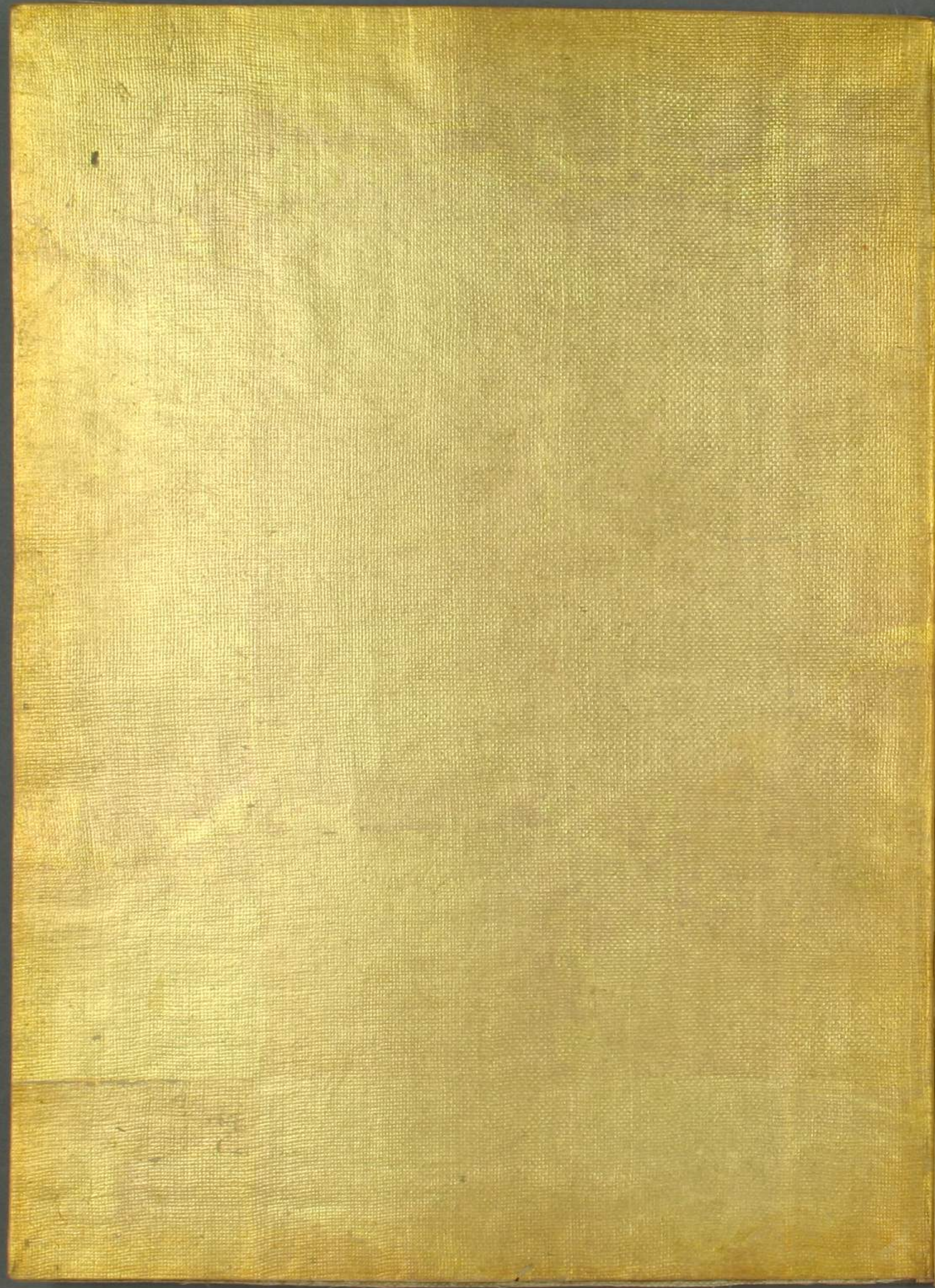
Handwritten text in a cursive script, likely a historical document or letter. The text is written in a dark ink on aged paper. The script is highly stylized and difficult to decipher without a key. The text appears to be organized into several lines, with some words or phrases being repeated or emphasized. The overall appearance is that of a formal or official document.

Handwritten text in a cursive script, likely a form of shorthand or a specific dialect. The text is arranged in approximately 10 horizontal lines across the right page of the manuscript.

曾抄初稿卷第八紙







岡部氏
圖書印

