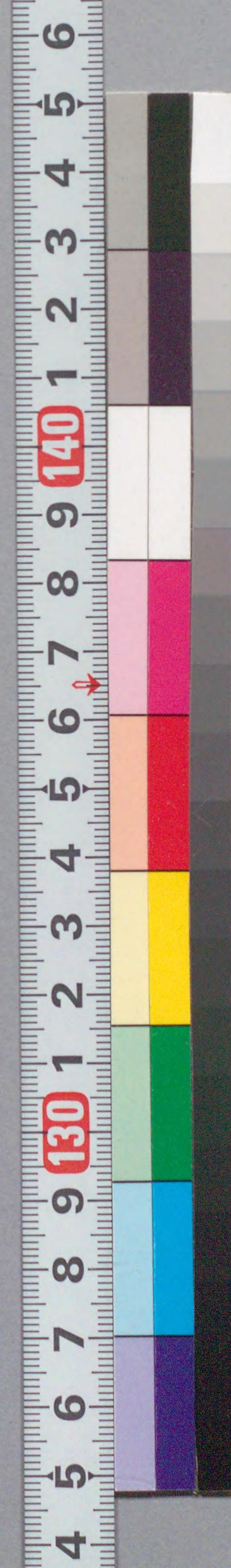




207  
3  
751



国立国会図書館 竜三升高根雲霧 3編12巻 207-751

ガラス使用





  
 聖壽  
 五師  
 玉尺  
 画  
  


**寢小便大奇薬**  
 一包代  
 三百銅  
此を身久し死病痴癡由又人小児男  
 女とも一包代代傳らるる散薬あり



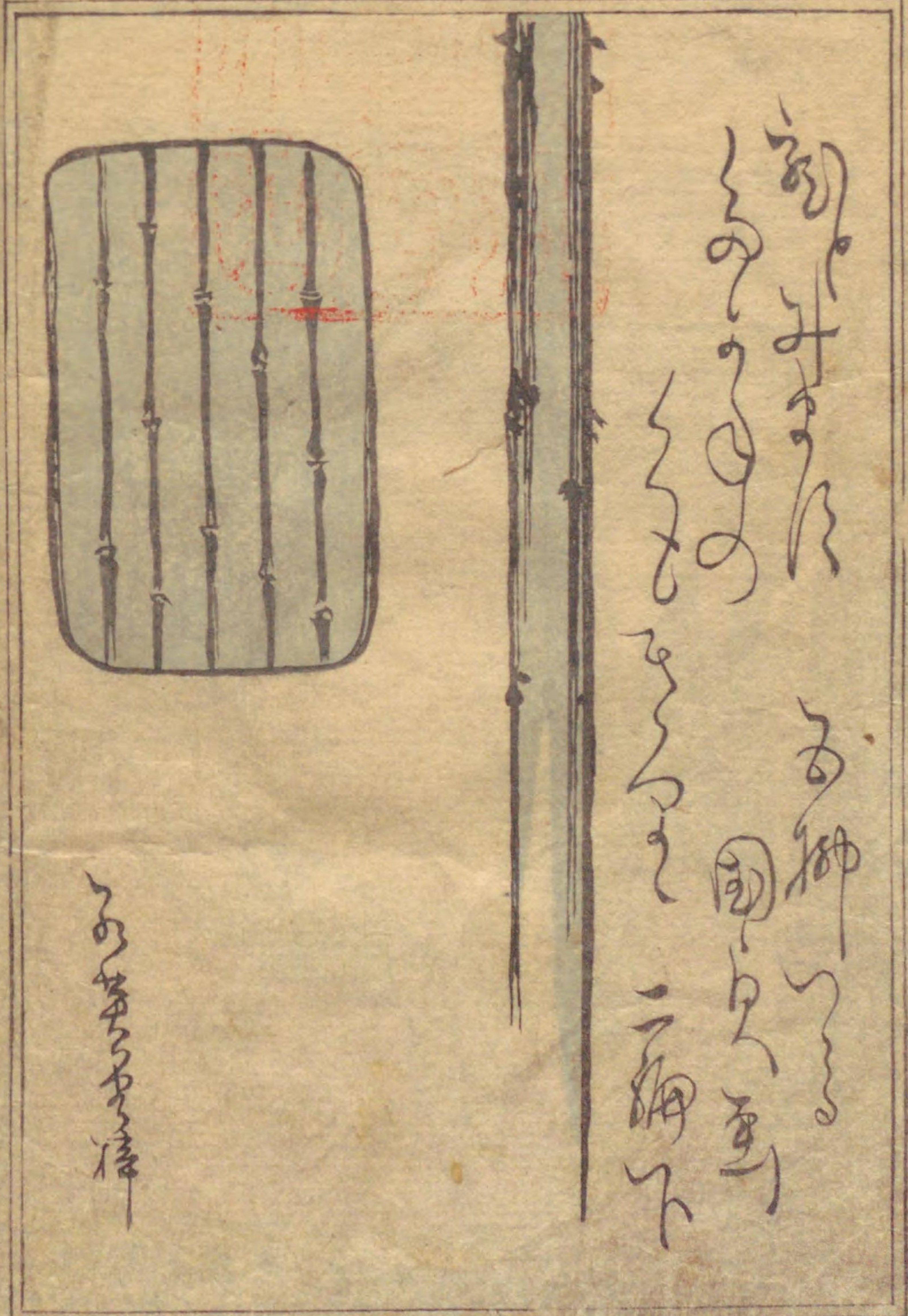
**御薬固齧散**  
 大包代百  
 小包代三十一銅  
功一ぬけを  
 一血らつ  
 能一用ひ空のうらふよとくおまろい

<b>足利絹手深紫</b> <small>あしきぬてふかむらさき</small> 二編 芳虎画録	<b>源家武勇盤</b> <small>げんけぶゆうばん</small> 二編 秀賀書	<b>敵討白石断</b> <small>てきうちしやくたぎ</small> 全二冊 芳虎画録	<b>伊賀越敵討物語</b> <small>いげえつてきうちものがたり</small> 全二冊	<b>離鶴笹湯壽</b> <small>りやかくささゆず</small> 紅摺大本 中本形 京六親著	<b>紅梅百人一首</b> <small>べんがくひゃくにんいっしゆ</small> 中本形 全一冊	<b>美玉百人一首</b> <small>みたまひゃくにんいっしゆ</small> 中本形 全一冊	<b>養生手引草</b> <small>じやうじやうていりやうそう</small> 全二冊 京山翁著 廣重画	<b>無病長壽</b> <small>むびやうじやうじゆ</small> 全一冊
---	--	---	---	--	---	--	--	--















Handwritten text in a cursive script, likely Japanese, covering both pages of the manuscript. The text is arranged in vertical columns, with some characters written in red ink. The script is dense and fills most of the page area, interspersed with the illustrations.

11  
11





Handwritten text in a cursive Japanese style (sōsho) surrounding the illustration of a man. The text is arranged in vertical columns, with some lines written horizontally above the figure. The man is depicted in a seated position, wearing a patterned kimono and a striped hakama. He has a surprised or expressive facial expression. The background shows a window with a grid pattern.

Handwritten text in a cursive Japanese style (sōsho) surrounding the illustration of a woman. The text is arranged in vertical columns, with some lines written horizontally above the figure. The woman is depicted in a seated position, wearing a patterned kimono and a striped hakama. She is holding a large, ornate tray filled with various items, possibly food or gifts. The background shows a window with a grid pattern.









Handwritten text in a cursive script, likely Japanese, covering both pages of the manuscript. The text is arranged in vertical columns, with some sections interspersed with illustrations. The script is dense and characteristic of Edo-period Japanese calligraphy.





Handwritten text in a cursive script, likely Latin or a similar European language, arranged in columns on the left page. The text is dense and fills most of the page area.



Handwritten text in a cursive script, likely Latin or a similar European language, arranged in columns on the right page. The text is dense and fills most of the page area.



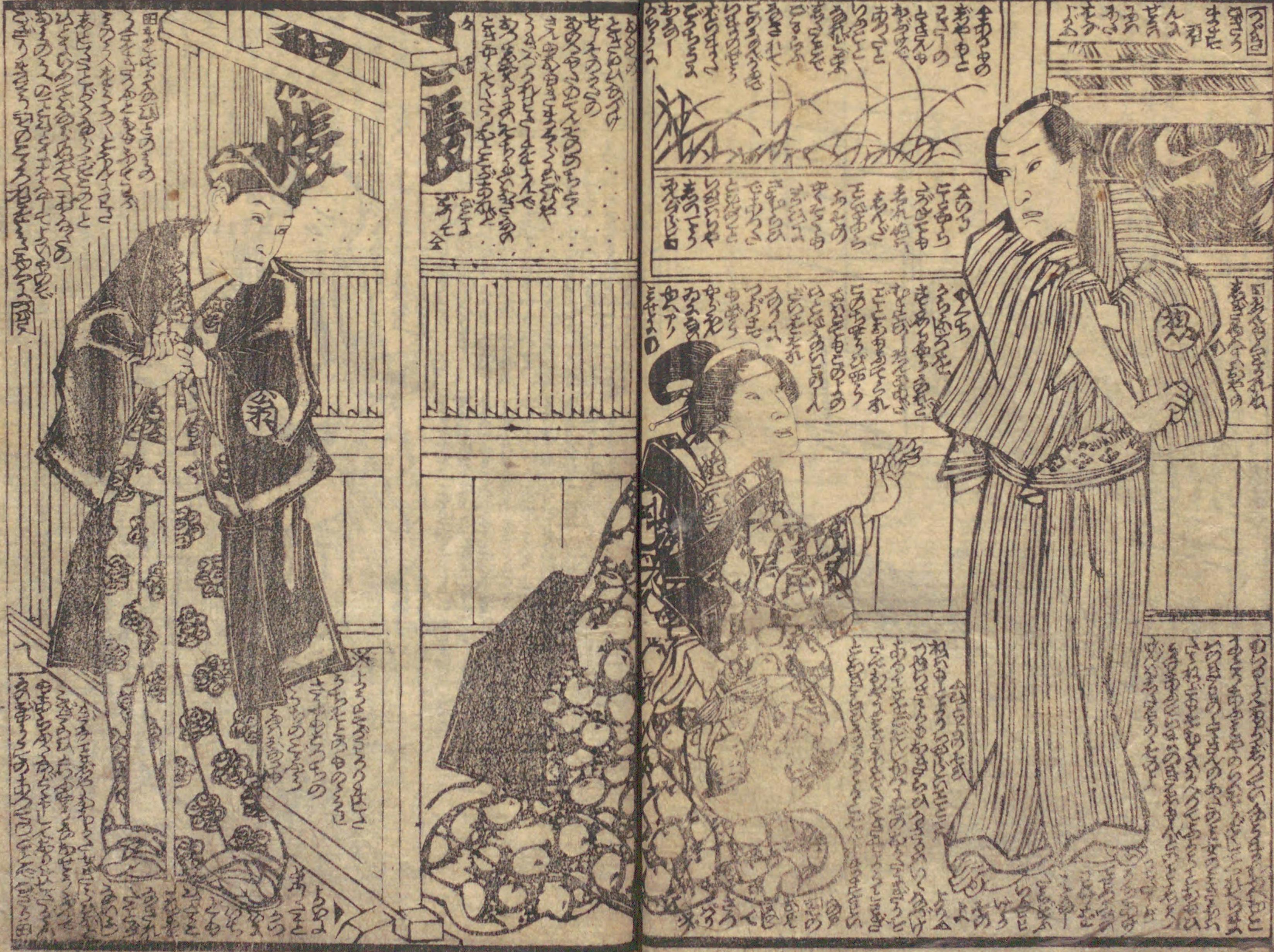














Handwritten text in a vertical column on the left side of the page, likely a commentary or description related to the illustration.



大國貞画



國貞画

Handwritten text in a vertical column on the right side of the page, likely a commentary or description related to the illustration.



五柳綴









Handwritten text in a cursive script, likely a form of Japanese calligraphy, filling the left page of the manuscript. The text is arranged in vertical columns, typical of traditional East Asian writing.



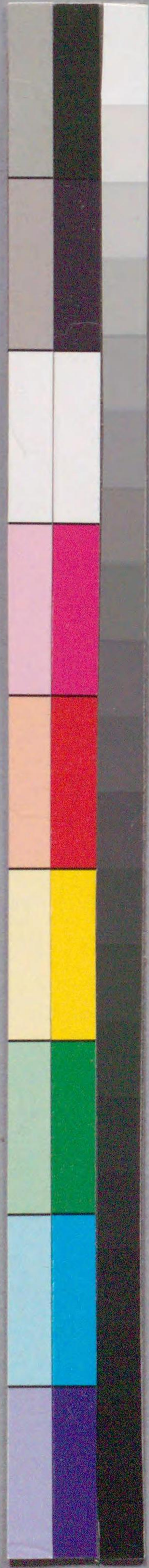
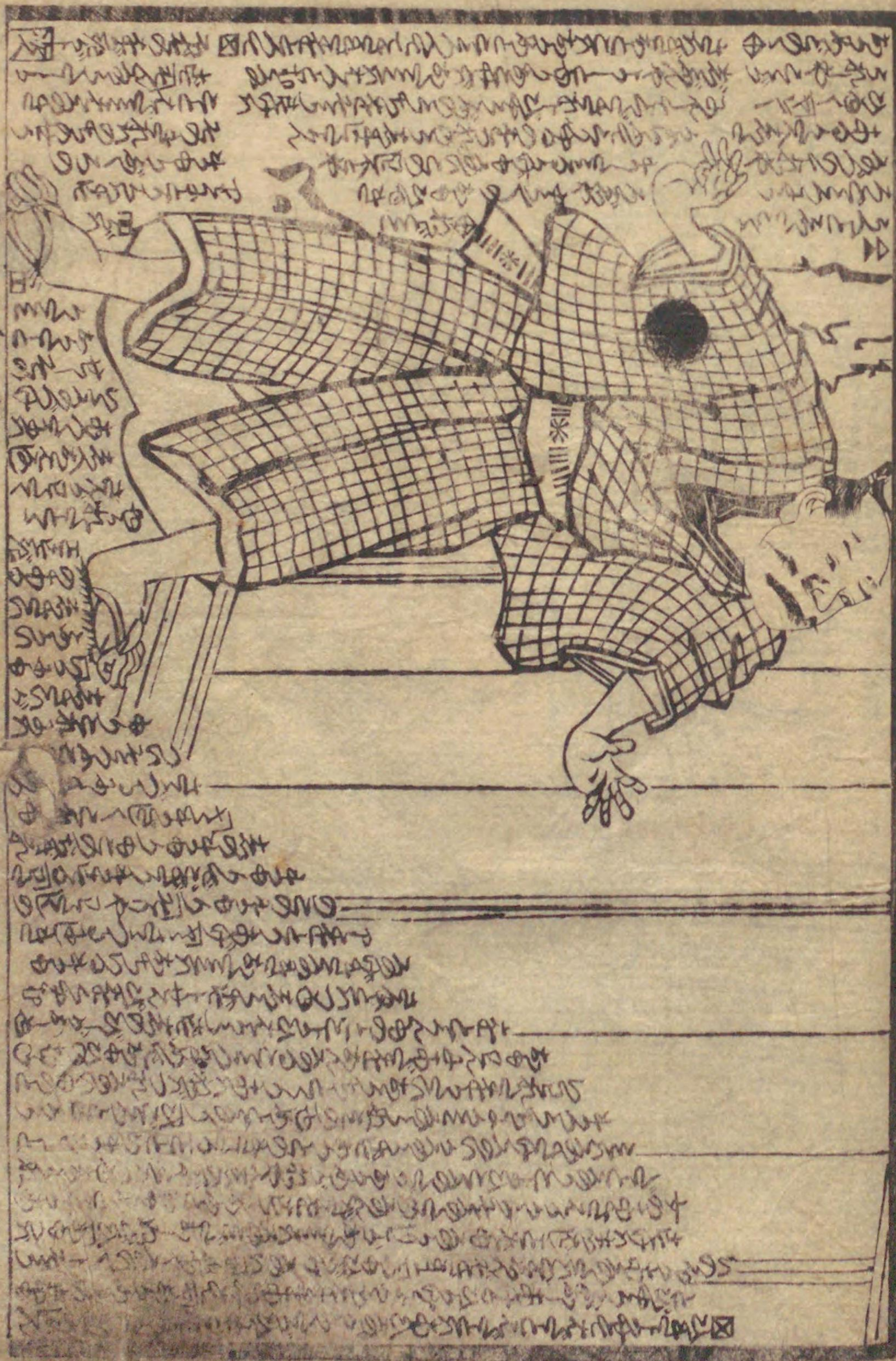
Handwritten text in a cursive script, continuing from the left page, filling the right page of the manuscript. The text is arranged in vertical columns.



Small vertical text or a signature located at the top right corner of the right page.



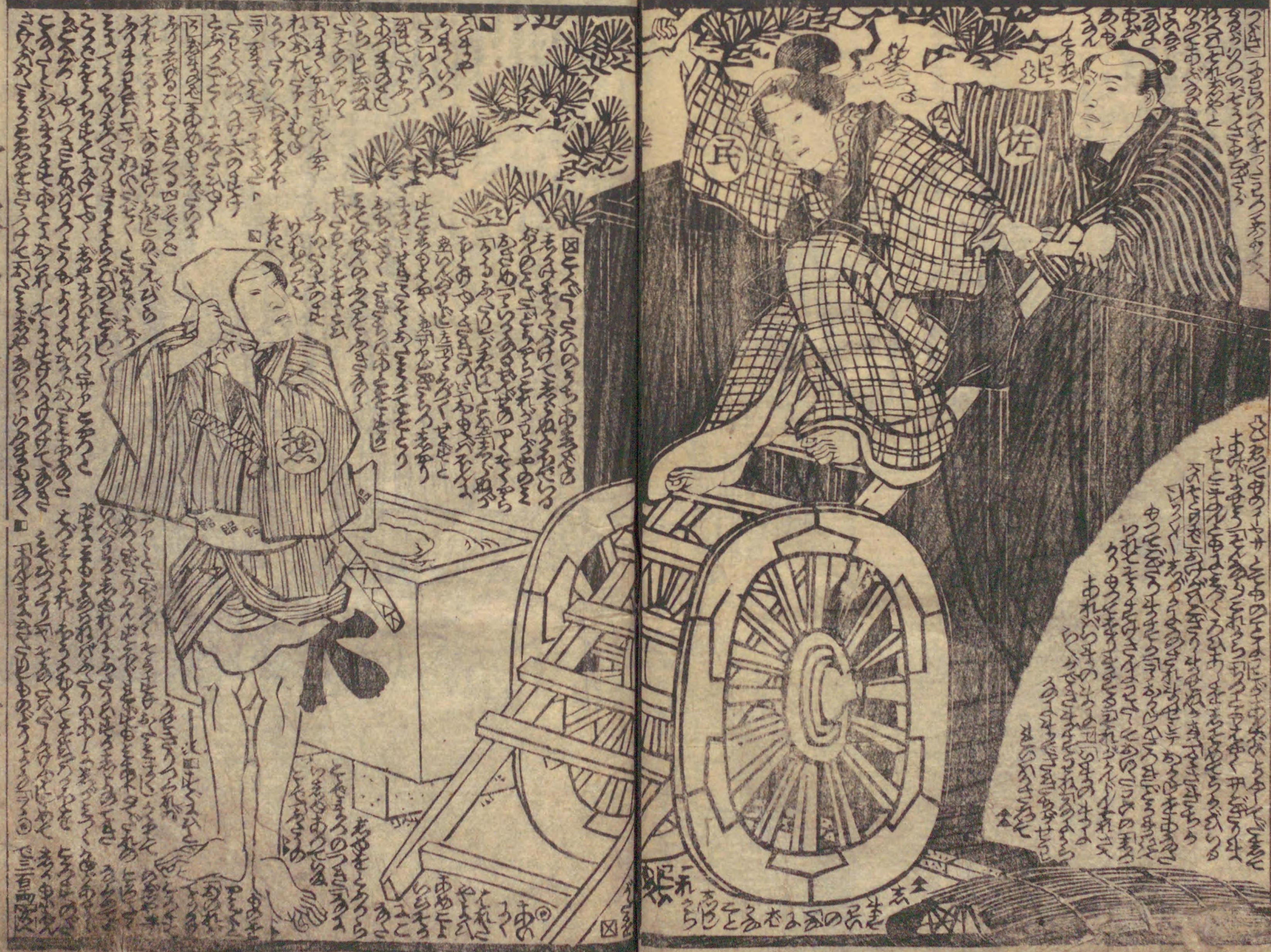


















Part Book 1

Handwritten text in a cursive script, likely a preface or introductory text, located at the top of the left page.

Handwritten text in a cursive script, located in the middle section of the left page.



Handwritten text in a cursive script, located at the bottom of the left page.

Handwritten text in a cursive script, located at the top of the right page.



Handwritten text in a cursive script, located at the bottom of the right page.











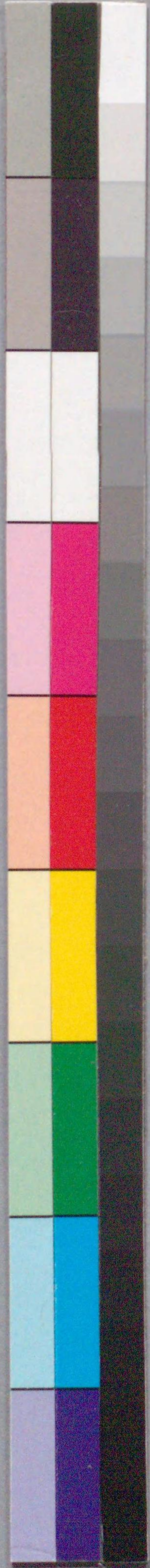


萬延二辛酉春開板目錄

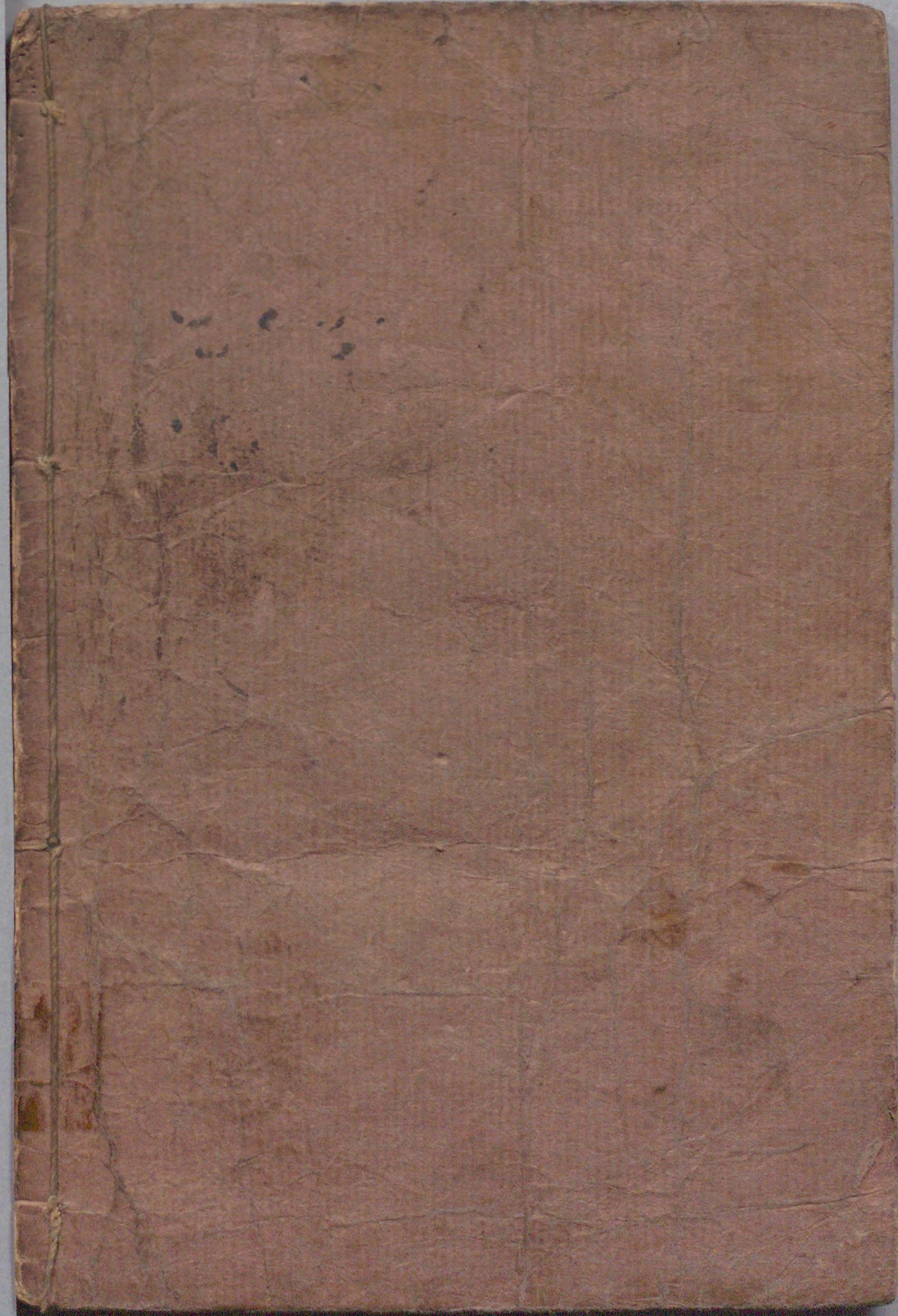
御所櫻梅松録 初編三編 御世緒を産入との角附合小始り四編五編 五編六編 未白縫の筑紫小御鎮座迄八遙	御所 奉公 河内日記 十一編 十二編 十三編	教革女房形氣 廿二編 廿一編 廿編	足利絹手染紫 三編金水作 廿編國貞画	源家武勇鑑 一編李賀校合 二編芳虎画録	庄地本問屋 錦橋堂 山田屋庄次郎板
---	---------------------------------------	----------------------------	--------------------------	---------------------------	-------------------------







国立国会図書館 竜三升高根雲霧 3編12巻 207-751



ガラス使用

