

The Oak

7491





The Students of Louisburg College



THE ANNUAL PUBLICATION

Present

THE **OAK**
for
1947

ON BEHALF of the student body and THE OAK staff we take this opportunity to extend appreciation to the many people who, in numerous ways, contributed to the publication of this yearbook. Especially do we wish to recognize the support of our advertising patrons, the promptness with which Brumfield Studio produced the student pictures, and the untiring efforts of Edwards & Broughton Co., publishers.

BILL BONHAM, *Editor-in-Chief.*

MAE BELL, *Business Manager.*

OF THE STUDENT BODY OF LOUISBURG...

ALMA MATER THROUGH

TYPICAL scenes of the campus through the years and in 1947 are shown below. In advancing through various physical stages since its birth, Louisburg College is seen taking increasing prominence in the lives of students. For the first time since the inauguration of co-education in 1931, men students outnumber women students by a majority of three to one. More than two hundred of the three hundred fifty students enrolled are veterans of World War II. In order to relieve the congestion in housing, the federal government is building an apartment house to accommodate eight married veterans and a second house for sixteen single veterans. Besides these housing units, a trailer camp of twenty trailers is being set up by the college.

Early Building



Main Building Damaged by Fire 1928

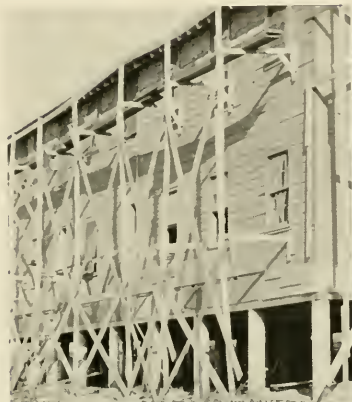


Main Building 1860



THE CHANGING YEARS...

Housing Unit for Married Veterans



Trailer Camp



Housing Unit for Single Veterans

THE FUTURE promises additional changes for Alma Mater. The financial gifts from friends are making possible the development of plans for the expansion of the physical plant and for the achievement of higher spiritual and scholastic goals. A gift of \$50,000 from Mr. James Gray, Winston-Salem, N. C., in January 1947, and the gifts of many other individuals, as friends and as members of The Methodist Church, indicate a brighter tomorrow for the college.

Dedicated to



R. W. RAINWATER, JR.

IN DEEP APPRECIATION of his untiring efforts, genuine enthusiasm, and earnest helpfulness the staff sincerely dedicates this 1947 OAK to Dean R. W. Rainwater, Jr.—leader, gentleman, and friend.

In Appreciation



DR. H. E. SPENCE
Professor of Religious Education
Duke Divinity School

AS A WRITER, clergyman, and teacher, Dr. Spence has won a place of high distinction. In churches and schools, plays and pageants from his pen have been presented with more than average effect.

The pageant, enacted on May Day in celebration of the 160th anniversary of Louisburg College, was written by Dr. Spence. To him, for his significant service to Alma Mater, we express the genuine appreciation of the student body.



DR. AND MRS. PATTEN



The
President's
Home



WALTER PATTEN, A.B., M.A., D.D.
President

DR. PATTEN became President of Louisburg College on the eve of a new era—an era of growth. During his eight years as President, he has contributed immensely to Alma Mater's financial and scholastic standing. To Dr. Patten—a truly great leader—we sincerely pay tribute.

On March 8, 1947, Dr. Patten passed away suddenly at his residence in Louisburg. His death came as a severe shock to all of the college family. His labors in behalf of our beloved Alma Mater were such as to cause the student body and faculty to remember him with lasting gratitude.



Main Building

Campus Scenes

FACULTY

LULA MAE STIPE, A.B.
Dean of Women

R. W. RAINWATER, JR.
A.B., B.D.
Dean of Men



GENEVIEVE PERRY
Treasurer



MARGARET B. KILEY
A.B., M.A.
Registrar





THOMAS C. AMICK
L.I., A.B., M.A., Ph.D.



JEWEL C.
BARTHOLOMEW
A.B.



ANNIE BENTON
Assistant Dietitian



ANNA BLUMENFELD
Ph.D.

AND STAFF

Franklin Building





Wright Dormitory



SAMUEL CRAWLEY
B.S.



MARJORIE CRISP
B.S., M.A.



ANNA DETTER
Assistant Librarian



SARAH FOSTER
B.S.



Wishing Well



ELIZABETH JOHNSON
A.B., M.A.



V. R. KILBY
A.B., M.A.



RUTH W. MERRITT
A.B., M.A.



VIVIAN McCALL
B.S.



I. D. MOON
A.B., B.Mus., M.A.

NELLIE T. MOON
A.B.

SARA K. PATTEN
A.B.
Librarian

E. E. RANDOLPH
A.B., M.A., Ph.D.

Socializing on Steps of Wright Dormitory



BESSE H. SCHER
Dietitian

MARIANNA SHARPE, R.N.
College Nurse



Davis Building

MILDRED SMITH
B.S.S.A.

BETTY W. TARPEY
A.B., M.A.



HELEN TUCKER
A.B.

MARY FRANCES TAYLOR
A.A.
Secretary to the President



ETHEL FINISTER, A.B., M.A.
Picture not available

Franklin Building

SENIORS



Students of the Second Year

Superlatives



Most Ideal
POLLY BULLARD

Best-All-Round Boy
BILL BONHAM

Friendliest
MAE BELL

Best-All-Round Girl
BETSY BOBBITT

Most Popular
JACK RASCOE

OFFICERS



Rascoe Bobbitt Cobb Fearing

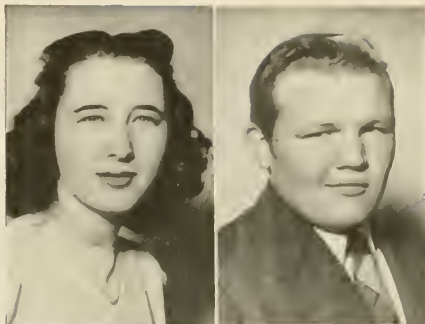
BRADFORD FEARING.....	<i>President</i>
JACK RASCOE.....	<i>Vice President</i>
BETSY BOBBITT.....	<i>Secretary</i>
PRUDENCE COBB.....	<i>Treasurer</i>

HISTORY

WE, THE SENIORS of Louisburg College, realizing the present need for higher education and Christian understanding in a world that must have the guidance of those who can successfully lead toward an era of peace, face the most important task in world history. The present generation is responsible for two accomplishments: one, the elimination of those ideologies and practices retarding the advancement of civilization; two, the direction of world society along the pathway of coöperation, brotherhood, and peace. The first objective was largely attained on August 14, 1945.

Today, our purpose in college is to preserve the gain made toward the first objective and to guarantee the success of the second. Even though others before us have failed, the light of hope still shines; and we, without doubt of success, are taking the responsibility of giving future generations a peaceful world.

Seniors



Left to right:

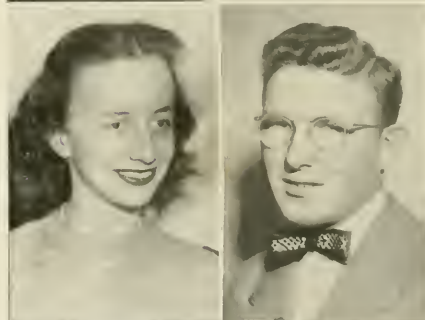
EUTHER ANDREWS, Louisburg
Dramatic Club; S.C.A.; Commercial
Club; Physical Education Club.

THURSTON ARNOLD, Wendell
S.C.A.; Columns.



RALPH BADGETTE, Cameron
Dramatic Club; S.C.A.

MAUDE BARNES, Sunbury
S.C.A.; Commercial Club.



MAE BELL, Louisburg
Physical Education Club; Athletic As-
sociation French Club; THE OAK.

ROBERT BELL, Snowden



CARLTON BLACKMAN, Garland
S.C.A.; Student Government.

KATIE BLANTON, Fayetteville
Phi Theta Kappa; S.C.A.; Glee Club;
THE OAK; Methodist Student Movement;
Beta Phi Gamma.

First row, left to right:

MARY BLUE, Vass

Athletic Association; Physical Education Club; S.C.A.

BETSY BOBBITT, Aberdeen

Athletic Association; S.C.A.; Physical Education Club.

BILL BONHAM, Rose Hill

THE OAK; Student Government; Glee Club; Dramatic Club; S.C.A.; Methodist Student Movement.

MARY BOWLES, Timberlake

Alpha Pi Epsilon; Commercial Club.

Second row:

JEAN BRIGHT, Elizabeth City

Alpha Pi Epsilon; Commercial Club.

MARY BROWN, Bridgeton

Physical Education Club; Glee Club; Commercial Club; Methodist Student Movement; S.C.A.

CHARLES BRYANT, Stedman

Veterans' Club; S.C.A.

POLLY BULLARD, Roseboro

Alpha Pi Epsilon; S.C.A.; Commercial Club; Physical Education Club.

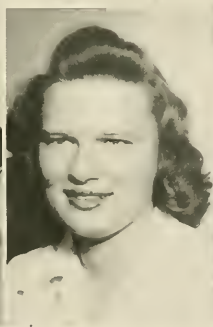
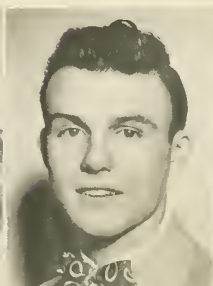
Seniors

Blue

Bobbitt

Bonham

Bowles



Bright

Brown

Bryant

Bullard

Seniors

Bynum



Byrd



Byrd



Carr



Carty



Clay



Cobb



Cole

First row, left to right:

MARGARET BYNUM, Farmville
Alpha Pi Epsilon; Commercial Club;
Physical Education Club; Student Gov-
ernment; S.C.A.

EARL BYRD, Apex

RICHARD BYRD, Warsaw
Beta Phi Gamma; Veterans' Club.

MARY CARR, Farmville
Alpha Pi Epsilon; Physical Education
Club.

Second row:

CHARLES CARTY, Durham
Veterans' Club.

RUSSELL CLAY, Roxboro
Veterans' Club.

PRUDENCE COBB, Windsor
S.C.A., *Columns*.

FRANCES COLE, Castalia
S.C.A.

Left to right:

JOYCE COLLIER, Pikeville

S.C.A.; Commercial Club; Physical Education Club; Glee Club.

STEVE CRESSWELL, Moncure

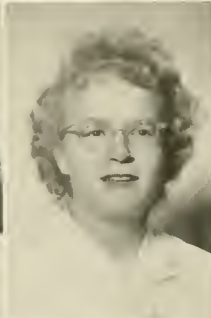


CREIGHTON CUTHRELL, Louisburg

Physical Education Club; Athletic Association.

FRANCES DAVIS, Carthage

Phi Theta Kappa; S.C.A.; Student Government; *Columns*.



DENNIS DICKERSON, Ingleside

AUBREY DIXON, Roper

Dramatic Club; S.C.A.



LAWRENCE DUNCAN, New Bern

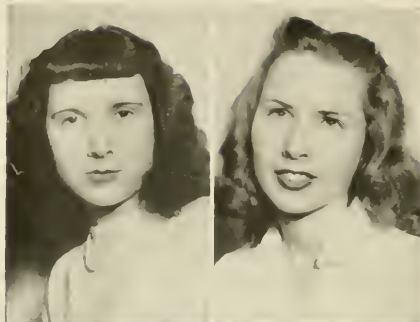
S.C.A.

SALLIE EDMONDSON, Pinetops

S.C.A.



Seniors



Left to right:

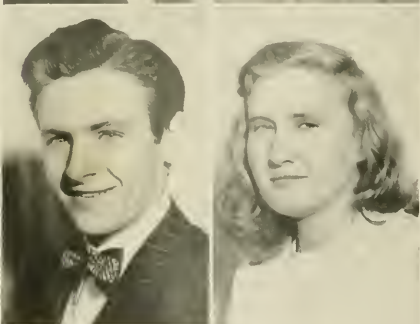
ELEANOR ELLINGTON, Monson
Glee Club; S.C.A.

JEAN EMERSON, Dallas, Georgia



GORDON ETHRIDGE, South Mills
S.C.A.

GEORGE EXUM, Rocky Mount
Dramatic Club; Veterans' Club; Com-
mercial Club.



BRADFORD FEARING, Manteo
Student Government; Dramatic Club.

ELOISE FOWLKES, Rocky Mount
Physical Education Club; Athletic As-
sociation; Dramatic Club *Columns*;
Student Government.



G. H. FUSSELL, Rose Hill
Veterans' Club.

MARY FUSSELL, Rose Hill
Commercial Club.

First row, left to right:

MARY GARDNER, Macon

LYDIA GREENE, Mt. Gilead
S.C.A.; Commercial Club.

CAROLYN GRIFFIN, Elizabeth City
Physical Education Club; S.C.A.;
Athletic Association.

ELWOOD GUILFORD, Florence, S. C.
Dramatic Club; S.C.A.

Second row:

RACHEL HAITHCOCK, Mt. Gilead
Glee Club; Dramatic Club; Alpha Pi
Epsilon; S.C.A.

LA VERNE HARDISON, Greenville

MARIE HAZELWOOD, Walnut Cove
S.C.A.; Commercial Club; Physical
Education Club.

MARIAN HODGES, Washington
Physical Education Club; Athletic As-
sociation.

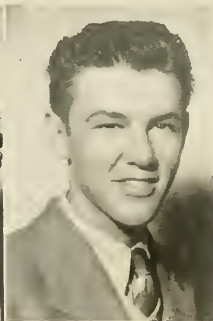
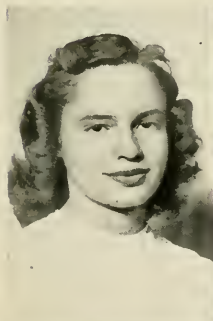
Seniors

Gardner

Greene

Griffin

Guilford



Haithcock

Hardison

Hazelwood

Hodges

Seniors

Holder

Jernigan

Jernigan

Layden



Little

Mann

Meggs

Merritt

First row, left to right:

MURPHY HOLDER, Apex

HAROLD JERNIGAN, Louisburg

HORACE JERNIGAN, Louisburg
S.C.A.; Phi Theta Kappa.

HARRIET LAYDEN, Hertford
S.C.A.; Commercial Club.

Second row:

MYRA LITTLE, Fayetteville
Physical Education Club; Athletic Association; S.C.A.

CHARLOTTE MANN, Newport
Alpha Pi Epsilon; Student Government.

BILLIE MEGGS, Elizabeth City
Phi Theta Kappa.

EVELYN MERRITT, Chapel Hill

Left to right:

NITA MIDGETTE, Stumpy Point
Commercial Club; S.C.A.

HARDY MILLS, Raleigh
THE OAK.



JOHN ORRELL, Winston-Salem

CLIVE OVERBY, Warrenton
Dramatic Club; Athletic Association.



HAZEL OWEN, Elizabethtown
Physical Education Club.

JEAN PARKER, Elizabeth City
Physical Education Club; Dramatic
Club.



MARJORIE PEELE, Middlesex
Glee Club; Alpha Pi Epsilon; Dramatic
Club; S.C.A.

RALPH PEGRAM, Winston-Salem
Phi Theta Kappa; S.C.A.; Commercial
Club.



Seniors



Left to right:

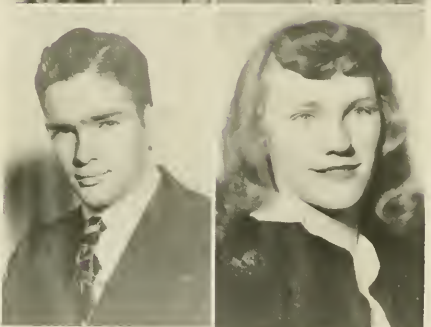
GLENN PERSON, Louisburg

JOHN PHILLIPS, Parkton



JACK RASCOE, Burlington
Veterans' Club; S.C.A.

JACK RASOR, Creswell
Beta Phi Gamma; *Columns*; Dramatic
Club; S.C.A.



BILLY REEVES, Fayetteville
Student Government; S.C.A.

ELEANOR RHODES, Newport
Physical Education Club; Dramatic
Club.



LINWOOD SHELOCK, Elizabeth City
Commercial Club; Dramatic Club;
S.C.A.

JOAN SIMMONS, Enfield
Physical Education Club; Dramatic
Club; Alpha Pi Epsilon; Glee Club;
Columns.

First row, left to right:

CHARLES SKINNER, Hertford
Veterans' Club.

EMOGENE SMITH, Pink Hill
S.C.A.; Glee Club; Physical Education
Club.

L. B. SMITH, Cameron
S.C.A.; THE OAK.

BETTY STAINBACK, Henderson
S.C.A.; Commercial Club.

Second row:

DOROTHY STAINBACK, Henderson
S.C.A.; Commercial Club.

ESTHER STALLINGS, Elizabeth City
Alpha Pi Epsilon; Commercial Club.

NELL STALLINGS, Zebulon
S.C.A.; Commercial Club; Physical Edu-
cation Club.

BETTY THIGPEN, Edenton
Alpha Pi Epsilon; S.C.A.; Student Govern-
ment; Glee Club; Dramatic Club;
Commercial Club; Physical Education
Club; *Columns*.

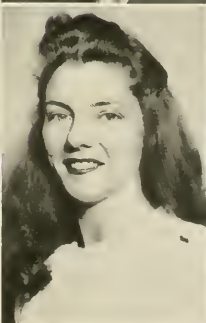
Seniors

Skinner

Smith

Smith

Stainback



Stainback

Stallings

Stallings

Thigpen

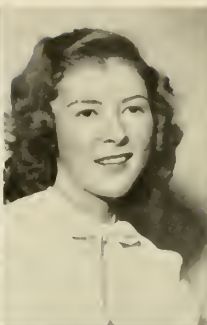
Seniors

Turnage

Vincent

Vick

Canon



Webb

White

Whitley

Williams

First row, left to right:

JANE TURNAGE, Farmville
Student Government; THE OAK; Physical Education Club; Athletic Association.

MARJORIE VINCENT, Roanoke Rapids
S.C.A.; Commercial Club; Dramatic Club.

JOYCE VICK, Morehead City
Commercial Club; Physical Education Club.

PEGGY VON CANON, Sanford
Glee Club; Physical Education Club; S.C.A.

Second row:

PEGGY WEBB, Pine Hall
S.C.A.; Commercial Club; Physical Education Club.

DOROTHY WHITE, Hertford
S.C.A.

GERALDINE WHITLEY, Kinley
Alpha Pi Epsilon; S.C.A.; Physical Education Club; Glee Club.

JOE WILLIAMS, Charlotte
Veterans' Club.

Left to right:

CURTIS WILSON. Chapanoke
Glee Club; Dramatic Club; S.C.A.

GEORGE WISE. Charlotte
Veterans' Club; Dramatic Club.



KATHERINE WOOD, Louisburg
S.C.A.

STANLEY YELVERTON, Eureka
Veterans' Club.



JUANITA YOUNG, Marion
Physical Education Club; Commercial
Club; S.C.A.



Seniors



JUNIORS



Students of the First Year

OFFICERS



Blalock Arnette Cameron Cooper

DAN CAMERON.....	<i>President</i>
W. E. COOPER.....	<i>Vice President</i>
CHARLYE ARNETTE.....	<i>Secretary</i>
TALMADGE BLALOCK.....	<i>Treasurer</i>

HISTORY

YESTERDAY we entered the halls of learning—our hopes high, and our hearts expectant. For some of us, school days were long past; for others of us, this adventure was our first away from home—for all of us, college was entirely new, and adjustments had to be made.

Today, faced with the knowledge that only through a constant search for truth will we become worthy leaders, we are determined to make the most of our opportunities that we may offer leadership of courage and integrity in tomorrow's world.

Juniors



Left to right:

BEN ALLEN, Louisburg
 W. R. ALLEN, Charlotte
 CHARLYE ARNETTE, Broadway
 HELEN AYSUCUE, Henderson

W. D. AYSUCUE, Kittrell
 THOMAS BAKER, Greensboro
 WALTER BAKER, Kinston
 GEORGE BALLANCE,
 Elizabeth City

RUSSELL BARNES, Cerro Gordo
 THOMAS BARNES, Garysburg
 COLETTE BARTHOLOMEW,
 Wilson
 WILLIS BARTLETT, Warsaw

TALMADGE BLALOCK, Durham
 ADELAIDE BLEDSOE, Raleigh
 JOHN BLUNDON,
 Rensselaer, N. Y.
 BARBARA BOOLE, Wilson

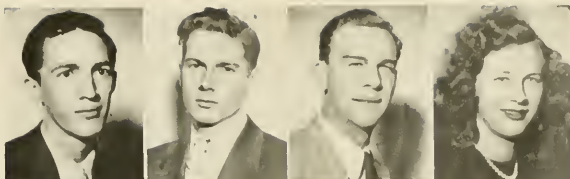
EARL BONNER, Aurora
 ADOLPH BOSTIC, Magnolia
 PALMER BOWDEN, Norfolk
 MARIAN BOWEN, Washington

B. T. BOYD, Edenton
 EDWIN BOYETTE, Benson
 DAVID BRADSHAW, Goldsboro
 BILL BRAMELL, Elmer, N. J.

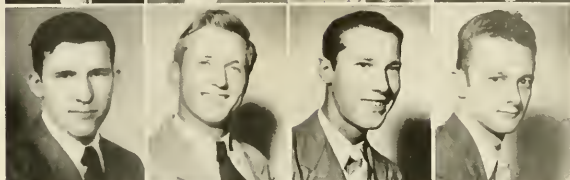
JAMES BRINN, Creswell
 JEWEL BROWN, Durham
 LOUIS BRYAN, South Hill, Va.
 JOHN BURCHETT, Norlina

Left to right:

RONALD BURNETTE, Louisburg
 AMOS BURTON, Reidsville
 DAN CAMERON, Jonesboro
 JULIA CARROLL, Garner



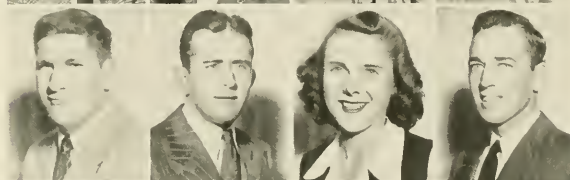
JAMES CARTER, Durham
 PAUL CASEY, New Bern
 CALVIN CAVINESS, Goldston
 ELWOOD CAYTON, New Bern



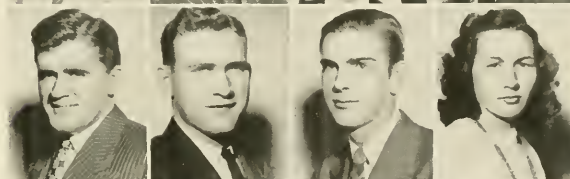
FRANK CERUZZI,
 Port Chester, N. Y.
 DARYL CLAYTON, Williamston
 RAYMOND CLONINGER,
 Charlotte
 JOHN COBB, Fremont



RICHARD COLE, Pinehurst
 LEW COLEY, Rocky Mount
 FRANCES COLLAWN,
 Baltimore, Md.
 KENDALL COOPER, Nashville



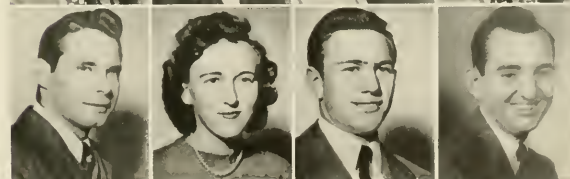
W. E. COOPER, Staley
 RUDOLPH DALE, Tyner
 BOBBY DAVIS, Clayton
 FRANCES DAVIS, New Hill



JAMES DODD, Clayton
 COY EAVES, Henderson
 DONALD FETNER, Durham
 MARSHALL FIELDS, Goldsboro



FRED FISHER, Elizabethtown
 NANETTE FLETCHER,
 Norfolk, Va.
 NYAL FLOWERS, Pamlico
 WALLACE FLYNT, Germanton



Juniors



Left to right:

JOHN FOREHAND, Swansboro
 JAMES FOURNIER, Swansboro
 JOHN FOUST,
 Mt. Vernon Spring
 ORLANDO FRANSI,
 Cardena, Cuba

MARVIN GARNER, Newport

MARTIN GARRETT,
 Cartersville, Va.

WILLIAM GAY,
 Roanoke Rapids

HARRIS GIBSON, Nichols, S. C.

J. H. GLASGOW, Rocky Mount

LITTLETON GLASS, Durham

JOHN GASSETT, Lillington

JOHN GRAVELY, Woodsdale

BRANT HACKNEY, Moncure

CHARLIE HAGWOOD, Louisburg

WM. HAIR, Elizabethtown

HAROLD HALES, Warsaw

GRACE HAMMOND, Wilmington

INEZ HARDISON, Arapahoe

HERMAN HARGROVE, Weldon

WILLIE HARRELSON,
 Fair Bluff

WILLIAM HARRELL, Palmyra

EDWIN HARRINGTON,
 Lillington

BAXTER HARRIS, Spring Hope

WILLIAM HARRIS, Henderson

WILLIAM HARRISON, Old Trap

ROBERT HARTSOE, Weldon

PERRY HAVNAER,
 Spartanburg, S. C.

GRACE HAYES, Norlina

Left to right:

WILLARD HAYES, Rocky Mount

BETTY HEENEY, Rockingham

WILLIAM HICKSON,
Jacksonville, Fla.

ETHRO HILL, Deep Run

OLIVER HOWELL, Sanford

GORDON HUNT, Goldsboro

CLYDE HUNTER, Rocky Mount

ANNE JACKSON, Kinston

MARY JACKSON, Kinston

EUGENE JAMES, Bethel

ROY JENNINGS, St. Brides, Va.

RUSSELL JERNIGAN, Louisburg

EVANS JOHNSON,
Richmond, Va.

ROBERT JOHNSON, Lillington

WILFRED JOHNSON, Monroe

SIDNEY JOHNSTON, Lillington

FRANK JONES, South Mills

BETTY KELLEY, Rocky Mount

WELDON KIMBALL, Kenbridge

FRANCES KINLAW, Lumberton

LOIS KINLAW, Lumberton

JOSEPH KNIGHT, Leaksville

E. D. LACKEY, Fallston

JOSEPH LAMB, Elizabeth City

B. M. LANGFORD, Raleigh

GEORGE LAWS, Durham

G. W. LEGGETT, Scotland Neck

JACK B. LILES, Spring Hope



Juniors



Left to right:

HULDAH LINEBERRY, Asheboro

MARVIN LOWDER,
Rutherford College

A. K. McDONALD, Star

SAMUEL MANN, Lillington

EARL MARCOM, Kinston

WILLIAM MARTIN, Eureka

LACY MAXWELL, Stedman

CHARLES MEEKINS,
Washington

PHILIP MEEKINS,
Stumpy Point

WILLIAM MELSON,
Elizabeth City

O. C. MELTON, Mamers

DOROTHY MIDGETTE, Waves

GLORIA MIDGETTE, Waves

M. M. MILLER, Elizabeth City

WILLIAM MONTAGUE,
Woodsdale

HUGH MOREHEAD, Mooresboro

GUIDO MUNNIZ, Havana, Cuba

HENRY NICHOLS, Washington

RALPH NUNN, Goldsboro

OTHO ODUM, Durham

HOWARD OLIVER, Burlington

EVELYN OVERSTREET, Wakulla

THOS. OWEN, Elizabethtown

C. M. PARKIN, Swansboro

JAMES PARKIN, Swansboro

HAROLD PARRISH, Mt. Gilead

CHAS. PARVIN, Washington

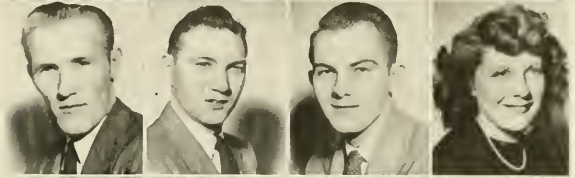
THERESSE PATTERSON, Wallace

Left to right:

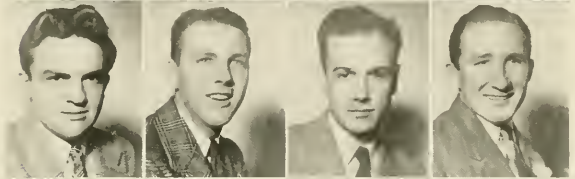
LOLA PEEDIN, Princeton
 WARD PENDLEY, Fort Bragg
 EDGAR PENNELL, Charlotte
 CLYDE PERDUE, Louisburg



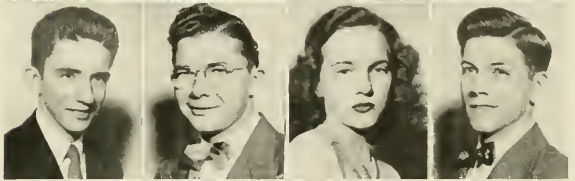
RUSSELL PERGERSON, Louisburg
 EDGAR PERRY, Louisburg
 WILLIAM PITTS, Spring Hope
 KATE POLIER, Raleigh



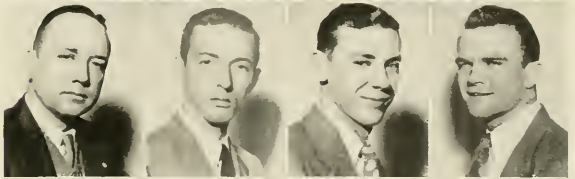
STUART POOLE, Virgilina, Va.
 WILLIAM ROBERTSON, Scotland Neck
 EARL ROGERS, Roxboro
 ED ROGERS, Fair Bluff



MIGUEL ROMERO, Enerucijada, Cuba
 McDONALD ROUSE, Rose Hill
 MARGARET ROWE, Suffolk, Va.
 WILLIAM ROWLAND, Kittrell



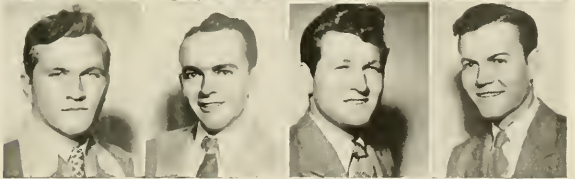
PHILLIP SADLER, Emporia, Va.
 BILL SANDERS, Roanoke Rapids
 HUNTER SANDERS, Goldsboro
 GORDON SANDERSON, Rose Hill



RUSSELL SANDERSON, Beulaville
 CLAUDE SAWYER, Camden
 RAYMOND SAWYER, Shawboro
 MARVIN SINGLETON, Washington



WILLIAM SKARREN, Beaufort
 CLAYTON SLEDGE, Weldon
 LLOYD SLOANE, Charlotte
 JARVIS SMITH, Cameron



Left to right:

WILLIAM SMITH,
South Beston, Va.

CLINTON SMITHDEAL, Raleigh

WM. SMITHDEAL, Raleigh

JOHN SMITHSON, Battleboro

JAMES SNEEDEN, Wilmington

SAM SOUTHERLAND,
Henderson

JOHN STALLINGS, Nashville

JULIAN STARLING,
Rocky Mount

WILLIAM STEWART, Dunn

GEORGE STILES,
Elizabeth City

HELEN STILES, Elizabeth City

ROGER STRICKLAND,
Cerro Gordo

LOUISE SWAIN, Jupiter, Fla.

RICHARD SWINDELL,
Morehead City

KIRK TAYLOR,
Roanoke, Rapids

DORIS THOMPSON, Raleigh

WILEY THOMPSON, Raleigh

EDWIN UTLEY, Moncure

WILLIAM VANN, Edison, Ga.

HASSEL VESTER, Rocky Mount

GILBERT WATKINS,
Rocky Mount

JAMES WATSON, Bear Creek

CHARLES WELLS, Wallace

VANCE WELLS, Washington

RICHARD WEST,
Tuckahoe, N. Y.

R. F. WHEELLESS, Rocky Mount

I. M. WHITAKER,
Scotland Neck

E. L. WHITE, Norlina



Left to right:

MARIE WHITEHURST,
South Mills

G. D. WIGGINS, Louisburg

RUSSELL WILCOCK,
Brooklyn, N. Y.

R. A. WILKERSON, Lumberton

DORMAN WILLIAMS, Graham

E. W. WILLIAMS,
Elizabeth City

RAY WOMBLE, Lillington

BARBARA WOOD, Norfolk, Va.



LELAND WOODLIEF,
Youngsville

ANN YOUNG, Apex

CAROLYN YOW, South Hill, Va.

Not Pictured

S. W. ALLSROOK, JR.,
Scotland Neck

W. M. ANGLIN, Weldon

G. C. BRANNAN, JR., Zebulon

P. R. BROUGHTON, Kenly

E. N. CREWS, JR., Oxford

BETTY EASON, Rocky Mount

F. E. FINCH, Louisburg

T. P. FISHER, Louisburg

R. G. FRADY, Wendell

C. H. FREEMAN, Hallsboro

L. M. FREEMAN, Leland

J. W. GILLIS, Raleigh

G. E. GUPTON, Millbrook

E. H. HALE, Louisburg

B. C. HARPER, Bunn

P. W. HENSLEY, Louisburg

A. R. HOOKER, Roper

DARRELL LANCASTER,
Louisburg

J. W. LILES, Zebulon

S. S. LONG, JR., Pittsboro

E. L. MARSHALL, Jacksncville

H. G. MASSEY, Zebulon

T. E. MCPHAIL, Tomahawk

T. H. MORRIS, JR., Greenville

A. D. PARROTT, Asheville

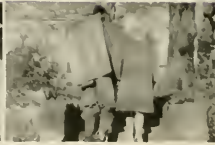
M. I. PATTON, Mebane

W. E. PHELPS, JR., Neuse

W. B. ROBERTSON, Louisburg

J. C. WYNN, Jonesboro

A Typical Day at Louisburg



Alma Mater's 160th Birthday



ALMA MATER

Alma Mater, shelt'ring college.
Thou hast been our guiding friend.
From thy fount of flowing knowledge
We would drink until the end.
Be thy children's inspiration,
Glowing light, to cheer and guide,
Stand, Old College, Alma Mater,
Through the changing years abide.

Greater love and veneration
Be thy portion, Mother dear.
May each coming generation
Bring rich gifts thy heart to cheer.
Till thy stalwart columns heavenward
Cease to point the way of Life.
Stand, Old College, Alma Mater,
Through the changing years abide.

The Acorn



1787

1802

AS INSIGNIFICANTLY as an acorn falling to the earth from its mother's arms, Louisburg College was conceived in 1787. In that year a charter was issued by the State of North Carolina under the name of Franklin Academy.

However, the soil for this institution proved to be unproductive; so it was necessary for a new acorn to be planted in 1802. In this latter year a second charter under the same name was issued. Ratified by the General Assembly of the State of North Carolina on December 17, 1802, the new charter recognized that "educating youth is essential to the happiness and prosperity of the community."

Thus Franklin Academy was planted at last in fertile soil. Responsible for this attainment were the following citizens of Franklin County: John Hunt, Francis Taylor, Epps Moody, John Haywood, Joshua Perry, Archibald Davis, William Lancaster, Jeremiah Perry, Jr., Richard Fenner, George Tunstall, Green Hill, William Green, Alexander Falconer, William Williams, Jr., and Jeremiah Perry.

The Seedling



1805

A CRACK in the soil soon was seen, indicating that the acorn planted had become a seedling. January 1, 1805, marks the date of this discovery, for then Franklin Academy actually began operation. Though the seedling could not compare in strength and stability with the larger oaks in the surroundings, it showed promise of a secure future. A passerby described the academy as "a pleasant building on the hill."

It was Mr. Matthew Dickerson, a graduate of Yale College, who became the seedling's caretaker. That Franklin Academy had as its head a person of character and learning is confirmed by the comment of one of its pupils: "You . . . informed me how essential a good education is . . . and gave me so many valuable precepts whereby I might attain the goal of Decency, and Décorum . . ."

Destined to mature into the greatness of a mighty oak, the seedling was now recognized. Not satisfied with the achievement of mere recognition by a passerby, the young academy was determined to brave any hardships of the future in order to fulfill its destiny.

The Sapling



1813

FREQUENT exchanges of caretakers threatened to limit the growth of the seedling, but the blessings of Mother Nature and the tender care of the planters assisted in the fight for survival and growth.

In September 1813 the academy, by reason of the addition of the Female Department, was prepared to admit young ladies for instruction in such subjects as Reading, Writing, English Grammar, Arithmetic, Geography, Astronomy, Painting, and Music. During 1814 a building to house the Female Academy was erected on the site now occupied by Main Building. On August 23, 1815 twenty-four girls were enrolled. In 1851 the Female and Franklin academies began to function under separate administrations.

Now what was once a seedling had become a growing sapling, ever reaching upward to a greater goal.

The Young Oak



1855

BY 1855 THE GROWING sapling gave evidence of becoming a young oak. The tree was rapidly growing new buds that were eventually to become young branches—branches that any oak would proudly acknowledge as its own.

Responding to the need for higher education for women, the leaders of the Female Academy organized "The Louisburg Female College" to begin the work of converting the academy into a college. Instruction was begun in the fall of 1857 under the direction of Mr. J. P. Nelson.

In 1891 the property of the college was purchased by Mr. Washington Duke of Durham, N. C., on the condition that "it should be used only for a white female school." Head of the institution at this time was Mr. S. D. Bagley. Upon the death of Mr. Duke in 1907, his son, Mr. Benjamin N. Duke, gave the college property in fee simple to the North Carolina Conference of the Methodist Episcopal Church, South.

In the fall of 1909 a movement was launched to erect a building as a memorial to Mr. Matthew S. Davis, who had served as principal of Franklin Academy and as president of the college. In this same year the North Carolina Conference authorized its first appropriation (\$1,000) for the college.

The growing sapling now had developed the stature of a young oak.

The Mature Oak



1914

THE YOUNG oak was rapidly maturing, enlarging its trunk and branches.

In 1914 the North Carolina Conference recommended that the college request the General Board of Education for classification as a junior college; and in 1915, under the presidency of Mrs. Ivey Allen, the institution was recognized with a junior-college rating.

By the fall of 1926 Mr. R. H. Wright of Durham, N. C., had contributed \$100,000 to the college in the form of the Pattie Julia Wright Memorial Loan Fund and Mr. Benjamin N. Duke had established an endowment fund of \$100,000. By reason of an additional gift of \$72,500 from Mr. Wright, the Pattie Julia Wright Dormitory had been erected. Franklin County Building, sponsored largely by citizens of Franklin County, was under construction; and the financial campaign for a continuing expansion of the college's physical plant was still underway. By the fall of 1927 student enrollment had increased to three hundred, and equipment and loan funds were valued at \$484,137.74. In its annual session of 1927 the North Carolina Conference gave authority to the trustees of the college "to issue \$125,000 in bonds for the purpose of funding the existing bonded indebtedness; to pay outstanding building obligations and complete the central heating system."

A mature oak now stood on the hill, claiming the attention of the passerby.

The Threatened Oak



1928

THIS MATURE oak would not retain its tranquil beauty for long. Soon it would experience the loss of some of its branches, and later it would face the danger of being uprooted.

In December 1928 fire almost destroyed the Main Building. By late in 1929 two of the college's greatest individual benefactors, Mr. R. H. Wright and Mr. B. N. Duke, had died; and President A. W. Mohn, under whose administration the Franklin and Wright buildings had been erected, had resigned. Moreover, a staggering indebtedness in excess of \$150,000 faced the Reverend C. C. Alexander, the successor to Mr. Mohn. In 1930 the indebtedness had reached a total of more than \$200,000.

The fall of 1930 found the Reverends F. S. Love and A. D. Willcox at the session of the North Carolina Conference pleading to conference delegates who would close the college, to give it the chance to survive its perils. The chance was given.

Elected to the presidency of the college in 1931, Mr. Wilcox inaugurated drastic changes in the college policy, including the reduction of operating expenses to an amount within the college income, the admission of men students in 1931, the change of the college's name to "Louisburg College," and the laying of plans for the liquidation of the indebtedness.

In 1937 the Reverend D. E. Earnhardt succeeded Mr. Wilcox to the presidency. In the next two years he led the college steadily forward, reducing the total indebtedness substantially and increasing the number of students enrolled to an unprecedented high.

Under the leadership of Dr. Walter Patten, successor to Mr. Earnhardt in 1939, the remaining indebtedness would be retired within the next few years.

Although it had been seriously threatened, the oak had proved its ability to endure.

The Mighty Oak



1947

HAVING endured the vicissitudes of the past, Louisburg College stands today as a mighty oak, more majestic than at any time in its long, colorful history. Now free of the burden of indebtedness, it confronts its greatest era of expansion and service.

Under the administration of Dr. Walter Patten and the present Board of Trustees, the college is marching toward higher spiritual and academic standards. Realizing that these standards require a strengthened faculty and more adequate material resources, Dr. Patten and the trustees are largely engaged at present in increasing the funds for endowment and scholarships, and in the expansion of the physical plant.

Currently underway is a campaign among Methodists of North Carolina for funds with which to undergird Methodist institutions of higher learning within the state. From the total funds to be raised, Louisburg College will receive a minimum of \$350,000. This amount will make possible a substantial increase in the college endowment, the complete renovation of the existing plant, and the construction of long-needed additional facilities.

Standing as a monument to the heroic leadership of the Wilcox, Earnhardt, and Patten administrations, the Louisburg College of today promises, through the use of enlarged resources in the immediate future, to serve more effectively the cause of Christian education among youth of the atomic age. Having witnessed the tragedies of the Civil War, World War I, and World War II, it is determined to make its proper contribution to the cause of "One World."

Like a mighty oak, "Stand, Old College, Alma Mater,
Through the changing years abide."

STUDENT ACTIVITIES



Government

Religion

Scholarship

Publications

Sports

Social Life

Organizations

Snaps

Campus Life in Review

GOVERNMENT . . .



BETTY THIGPEN
President
Girls' Council



TALMADGE BLALOCK
President
Student Body



CARLTON BLACKMAN
President
Men's Council



IN ORDER to create and maintain good will on our campus, a group is needed to act in behalf of the student body in student-faculty affairs. It is the purpose of the Men and Women Student Councils to act as this agency. The foremost aim of this organization is to work for the general good and happiness of the students through making the right ways of living easy and the wrong ways difficult. The Men and Women Student Councils are the students' government; council members are chosen by the student body.

RELIGION . . .

STUDENT CHRISTIAN ASSOCIATION



FRANCES DAVIS, *President*

THE STUDENT CHRISTIAN ASSOCIATION seeks, by means of devotion, service, and fellowship, to promote religious life on the campus. This organization was formed by the uniting of the Y.M.C.A. and the Y.W.C.A. in an effort to strengthen the religious activity of both men and women students. This group is a vigorous influence in the development of the Christian character of students.

METHODIST STUDENT MOVEMENT



O. C. MELTON, *President*

THE METHODIST STUDENT MOVEMENT is an out-growth of the Methodist Youth Fellowship. The purpose of this organization is to offer to the student body a means of directed devotion and wholesome social fellowship, and to provide a club to which all students may belong. This group is a division under the leadership of the Youth Division of the Methodist Church.

SCHOLARSHIP . . .

ALPHA PI EPSILON



MARGIE PEELE, *President*; JEAN BRIGHT, *Secretary*; RACHEL HAITHCOCK, *Treasurer*

THE NATIONAL honorary secretarial fraternity on our campus is Alpha Pi Epsilon. In order to enter Alpha Pi Epsilon, a student must have an average grade of "B" and must stand in the upper rank of his class. It is necessary for this qualification to be met with two added specifications—a student must be enrolled in the Commercial Department, and he must be elected unanimously by the members in order to become a fully-pledged member.



BETA PHI GAMMA



RICHARD BYRD, *President*

FOLLOWING a deeply-felt need for a journalistic fraternity on the campus of Louisburg College, Beta Phi Gamma, junior college division of Alpha Phi Gamma, was established. The purpose of Beta Phi Gamma is to recognize individual ability and achievement in journalistic efforts, and to serve and promote college welfare through journalism.

Members are tapped into this organization. In order to be eligible for membership, a student must be in the upper two-thirds of his class in scholastic achievements; and he must have served as an active and acceptable member on the staff of a college publication for at least one semester.



DELTA PSI OMEGA



RACHEL LEE HAITHCOCK, *President*

THE DELTA PSI OMEGA group is the junior college division of Alpha Psi Omega—a national dramatic fraternity. To become a member of this fraternity, a student must have participated in one or more public dramatic performances and maintained a scholastic average of "C" or above.

This is the newest fraternity on the campus.



PHI THETA KAPPA



BILLIE MEGGS, President

THE GAMMA UPSILON CHAPTER of Phi Theta Kappa was organized at Louisburg College in 1939. This organization is a national character-scholarship fraternity.

Membership is open to those students enrolled in the study of the Liberal Arts who have a scholastic standing in the upper ten per cent of their class, make an average grade of "B" or above, and give promise of good citizenship.

The motto of the chapter is Scholarship, Character, and Good Fellowship.



PUBLICATIONS . . .

COLUMNS

Staff

Editorial

Editor-in-Chief, JACK RASOR
Associate Editor, RICHARD BYRD
Managing Editor, ELOISE FOWLKES
News Editor, BRADFORD FEARING
Assistant News Editor, EVANS JOHNSON
News Reporters, LEONARD FREEMAN,
GRACE HAMMOND, BILL BRAMELL,
G. H. FUSSELL, STEVE CRESSWELL,
BILL SMITHDEAL.
Feature Editor, BILL PICKETT
Assistant Feature Editor, WILLIAM
MELSON
Men's Sports Reporters, CURTIS
VAUGHAN, JOHN GILLIS
Women's Sports Reporter, HULDAH
LINEBERRY

Faculty Adviser, RUTH MERRITT

Business

Business Manager, BETSY BOBBITT
Assistant Business Manager, JOAN
SIMMONS
Photographic Manager, RICHARD WEST
Assistant Photographic Manager,
AUBREY DIXON
Proof Readers, CAROLYN YOW, HORACE
JERNIGAN, GERALDINE WHITLEY
Make-Up Manager, PRUDENCE COBB
Typists, BETTY THIGPEN, MARGIE PEELE,
MARY E. CARR, CAROLYN GRIFFIN
Circulation Manager, THURSTON ARNOLD
Assistant Circulation Manager, FRANCES
COLLAWN



THE STAFF

JACK RASOR
Editor-in-Chief



How's that for copy?



About half through



Some paper this week!

AT WORK

THE OAK

BILL BONHAM, *Editor-in-Chief*

MAE BELL, *Business Manager*



Staff

Associate Editor, WALTER BAKER
Assistant Business Manager, AMOS BURTON
Literary Editor, KATIE BLANTON
Feature Editor, HARDY MILLS

Photographic Editor, RICHARD WEST
Sports Editors, JANE TURNAGE, BERT SMITH
Assistant Literary Editor, BETTY HEENEY

Typists, MARIE HAZELWOOD, LOIS KINLAW
Sponsor, ROLAND W. RAINWATER, JR.

THE ROUTE TO PUBLICATION

Staff



HARDY MILLS, *Feature Editor*



RICHARD WEST, *Photographic Editor*

SPORTS . . .

GIRLS' ATHLETIC ASSOCIATION

CAROLYN GRIFFIN, *President*

GIRLS who have made two or more varsities are qualified to become members of the Athletic Association. This organization, headed by Miss Marjorie Crisp's leadership, tries to promote and maintain enthusiasm, sportsmanship, clean sports, and ideals of happy living.



THE PHYSICAL EDUCATION CLUB

BETSY BOBBITT, *President*

The Physical Education Club is for students who are training for physical education teachers as well as students who are interested in athletics and sports. The purpose of the club is to promote discussion and study in the field of sports.

TENNIS



Sports



Parade



BOYS' MONOGRAM CLUB

DOUGLAS BRYANT, *President*

THE BOYS' MONOGRAM CLUB is an honorary athletic association. Its aim is to promote better and cleaner sports. Membership is reserved for boys who show outstanding ability in sports, maintain a satisfactory scholastic average, have a good character, and practice clean sportsmanship.





VARSITY BASKETBALL TEAM

V. R. KILBY, *Coach*

1946-47 Games

L. C.....	29	Pembroke	28
L. C.....	31	E.C.T.C.	51
L. C.....	30	E.C.T.C.	56
L. C.....	35	Pembroke	33
L. C.....	28	Campbell	57
L. C.....	44	Henderson	29
L. C.....	36	Bunn	25
L. C.....	56	Creedmoor	22
L. C.....	44	Henderson	22
L. C.....	35	Bunn	15
L. C.....	37	Oak Ridge	48
L. C.....	42	E.M.I.	47





CHEER LEADERS

SOCIAL LIFE . . .



ELEANOR RHODES, *Queen of May*; LINWOOD SHERLOCK, *King of May*; MAE BELL, *Maid of Honor*.

MARGARET BYNUM
Miss Louisburg College



BILL BONHAM
Mr. Louisburg College



Jitterbug Contest



VETERANS

THE WILLIAM M. McFADDEN Memorial Club is an organization on the campus to develop greater understanding between ex-servicemen and other



members of the student body. Membership in this club is open to all honorably discharged veterans of World War II. A primary function of the club is to sponsor social entertainment for both the student body and the faculty. Bearing the name of one of Louisburg's former students lost in the armed services, the club is serving campus life in a constructive manner; thus it is an appropriate memorial.

THE WILLIAM M. MCFADDEN MEMORIAL CLUB

COY EAVES, President



Dance
of
December 1946
Sponsored
by
McFadden Club

MARJORIE VINCENT
Queen of the Dance



ORGANIZATIONS...

DRAMATIC CLUB



GEORGE EXUM, *President*

THE DRAMATIC CLUB is composed of students interested in the study of various phases of drama and acting. It sponsors the production of plays for the college community, and provides amusement for its membership.

Any student interested in dramatic art is eligible for membership.

**"HOLD
EVERYTHING"**



GLEE CLUB

RICHARD COLE, *Business Manager*

THE GLEE CLUB is made up of students possessing vocal talent. Regular rehearsals are held. At intervals during the year concerts are given.

At the annual session of the North Carolina Conference of The Methodist Church in November 1946 the club gave a concert.



COMMERCIAL CLUB

LINWOOD SHERLOCK, *President*

THE COMMERCIAL CLUB exists for the purpose of promoting the social and educational welfare of commercial students.

Membership is open to any student regularly enrolled in the Commercial Department.

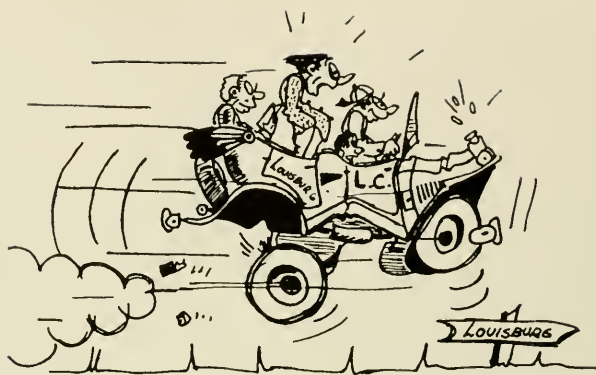


FRENCH CLUB

MAE BELL, *President*



THE FRENCH CLUB is a newly-organized campus group for the purpose of aiding students to speak and to write the French language. Membership is limited to students enrolled in classes of French.



SNAPSHOTS

JUST AHEAD



LOUISBURG COLLEGE

Under Control

North Carolina Methodist Conference

Accredited by

The State Department of Education
North Carolina College Conference
University of North Carolina



OFFERING TWO YEARS TERMINAL COURSES

— in —

COMMERCIAL SCIENCE, MEDICAL SECRETARY,
RELIGIOUS AND SOCIAL SECRETARIES

and

Two-Year Preparatory Courses Leading to Degrees in Senior Colleges in
Engineering, Agriculture, Dentistry, Commerce,
Home Economics and Liberal Arts



A LABOR SCHOLARSHIP

Will be granted to those who need to earn part
of their college expense.



For Details Write

LOUISBURG COLLEGE : Louisburg, N. C.

**Where Styles of Tomorrow
Are Shown Today**



THE FASHION SHOPPE

"A Smart Shop for Smart Women"



LOUISBURG, NORTH CAROLINA

**WILSON
ELECTRIC
COMPANY**
Contractors

—
Plumbing, Heating
& Electrical
Oil-O-Matic Oil Burners
Iron Fireman Stokers

—
Telephone 738
HENDERSON, N. C.

**HENDERSON
GROCERY**



Wholesale
Grocers

HENDERSON, N. C.



*Jean's
of Raleigh*

First in fashions
in the **C**arolinas

"Always Ready"

**STANDARD TAXI
COMPANY**

—
24 Hours Dependable
Service

—
PHONE 5211
LOUISBURG, N. C.

**LOUISBURG BUS
STATION**

For Your Traveling
Problems, Tours, and
Hotel Reservations.



S. T. STROP, Mgr.
126 North Main Street
PHONE 4461

Compliments of

**BELKS HENSDALE
DEPARTMENT STORE
FAYETTEVILLE, NORTH CAROLINA**

Compliments of



INSURANCE BUILDING

RALEIGH, N. C.

OSCAR CURRIN
Jeweler

Quality Jewelry
Diamonds : Watches

Expert Repairing

HENDERSON, N. C.

Compliments of

FIRST-CITIZENS
BANK



LOUISBURG, N. C.

WHITE'S
ICE CREAM

There IS a Difference

DILLON SUPPLY COMPANY

RALEIGH, DURHAM, ROCKY MOUNT
and GOLDSBORO



**Industrial and Farm
Machinery**

**FRANKLIN FARMER'S
EXCHANGE**

FCX Feeds and Seeds
Farm Machinery
Home Appliances
LOUISBURG, N. C.

Compliments of

**CHILDER'S
FURNITURE CO.**

—
PHONE 79-J
ROCKINGHAM, N. C.

**WAKE FOREST
LAUNDRY AND CLEANERS**

"Laundries safeguard public health"

WAKE FOREST, N. C.

PRUITT LUMBER COMPANY

•
We Offer You a Complete
Building Service
•

Phone 433-1

East Nash Street

LOUISBURG, NORTH CAROLINA

Drive to Henderson,
and get your car checked

**CLEMENTS
MOTOR CO.**

HILL TOP NO. 2

"The Place to Eat"

Henderson, N. C.

**JOHNSON COTTON
COMPANY**
of Louisburg, Inc.

TRACTORS, IMPLEMENTS,
FARM SUPPLIES, PARTS,
FURNITURE and SERVICE

Cash - Credit

**COLUMBIA BAKING
COMPANY**

•
RALEIGH, N. C.

EVERYTHING for the School and College

Files : Desks : Chairs : Tables : Pens : Pencils : Inks
Mucilage : Gem Clips : Staples : Stapling Machines
Typewriter Ribbons : Carbon Paper : Duplicating Machines
Both Gelatin and Fluid Type : Indexes : Transfer Cases
Card Filing Boxes : Stenographer's Notebooks, Etc.

CAPITAL PRINTING COMPANY PRINTERS

for College and School Papers
Catalogs and Yearbooks

DIAL 8316

110 WEST HARGETT ST.

Raleigh, North Carolina

Compliments of

**HALLUM
FURNITURE CO.**

Rockingham, N. C.

Compliments of

HOME OIL COMPANY

Louisburg, N. C.

**ALLEN'S
GULF STREAM
SERVICE STATION**

ROCKINGHAM, N. C.

**H. C. TAYLOR
HARDWARE : FURNITURE**

Sporting Goods
House and Furniture Paints

LOUISBURG, N. C.

BEST WISHES

Your Downtown Meeting Place

**BODDIE
DRUG STORE**

LOUISBURG, N. C.

**FULLERS ESSO
SERVICE**

ESSO PRODUCTS : ATLAS
TIRES : BATTERIES
ACCESSORIES

(Opposite Post Office)

Dial 357-1 Louisburg, N. C.

Compliments of

**HEENY TRANSFER
COMPANY**

ROCKINGHAM, N. C.

R. W. GOODMAN CO.

“Credit Clothing”

ROCKINGHAM, N. C.

CHESSON'S FLORIST

“Flowers to Please”

PHONE 3371
LOUISBURG, N. C.

FOR BETTER FURNITURE : FOR BETTER LIVING

HOME FURNITURE CO.

Louisburg, North Carolina

Dial 459-1

Westinghouse Electrical Appliances
Maytag Washers : Pittsburg Paints
Furniture by Tomlinson of High Point

***“Louisburg’s Oldest and
Largest Furniture Store”***

ROBERSON ELECTRIC SERVICE

H. H. Roberson Dial 3706

General Electrical Work

Contracting and Supplies
Radio Repairing

LOUISBURG, N. C.

Little River Ice Co.

ICE and COAL

Air Conditioned Ice Refrigerators
Water Coolers
Ice Cream Freezers
Stokers : Stoves

LOUISBURG, N. C.

Compliments of

Arch Wilson,
Bryant Cottrell and
Sterling Cottrell

TOBACCONIST

LOUISBURG, N. C.

LOUISBURG DRY CLEANERS

SYKES and STOVALL, Props.

DIAL 4361

LOUISBURG, N. C.

O'NEAL DRUG CO.

"Your Drug Store"



The Best of Everything for You



Service With a Smile

Hollingsworth Candies

Prescriptions

LOUISBURG, N. C.

Philco

Hot Point

"The Largest Furniture Store in this Section"

VANCE FURNITURE CO., Inc.

Complete Home Furnishing

325 S. Garnett St. *Cash or Easy Terms* Phone 182

HENDERSON, NORTH CAROLINA

COTTRELL & SMITH GULF SERVICE

U. S. Tires : Auto Accessories : Willard Batteries

WE WASH, GREASE and SIMONIZE

ACETYLENE WELDING

"Guaranteed to Satisfy"

Phone 5291

Louisburg, N. C.

The Home of Better Values
LEGGETT'S DEPARTMENT STORE

LOUISBURG, NORTH CAROLINA

Phone 3531



*"The South's Leading Distributors
of Reliable Merchandise"*

HONEYCUTT FRUIT & PRODUCE CO.

Wholesale Only

Raleigh, N. C.

Guy L. Honeycutt, Pres.

*A Step Ahead in Style
A Mile Ahead in Values*

FOX'S

*Louisburg's Largest and Best
Department Store*

**The Shopping Center
of Eastern Carolina**

Ellis Stone & Co

DURHAM'S BEST STORE SINCE 1886

Main Street

Durham, N. C.

C. C. MANGUM
GRADING CONTRACTOR

Telephone 3-1831
3010 Hillsboro Street
RALEIGH, N. C.

Compliments of
**ELETE BEAUTY
SALON**

—
LOUISBURG, N. C.

Compliments of
**KRISPY KREME
DOUGHNUTS**

RALEIGH, N. C.

Compliments of
**The Capital
COCA-COLA
Bottling Company Inc.**

—
RALEIGH, N. C.

G. W. Murphy & Son

Louisburg, N. C.

—
Dealers in

Groceries : Meats

Feeds : Seeds

—
***“Everything Good
To Eat”***

—
Your Patronage is
Appreciated

THE TURNAGE CO.

Inc.

General Merchants

Farmville, N. C.

**HAZEL ROBERSON
FLORIST**

211 Court Street
LOUISBURG, N. C.

Flowers for Decorations,
Funerals and all
Occasions

BEST WISHES *from . . .*

**D & L AMUSEMENT COMPANY
LOUISBURG THEATRE**

and a new 600 seat theatre
for next semester

R. GLENN DAVIS



W. L. LUMPKIN

Photography by

**BRUMFIELD
STUDIO**

CHARLOTTE, N. C.

Compliments of

DR. A. H. FLEMING

LOUISBURG, N. C.

**THE FOLLOWING PERSONS
CONTRIBUTED THIS SPACE:**



**BROGDEN SPENCE, Class of '34
Rockingham, N. C.**



**A. W. PERSON, Cotton Buyer
Louisburg, N. C.**



**W. B. TUCKER
Louisburg, N. C.**



**E. H. MALONE
Louisburg, N. C.**

LOUISBURG, N. C.

... is ...

RICH IN HISTORY, HEALTH, AND HOSPITALITY

There is not a more ideal place of residence in the world for a student than Louisburg. There exists here at all times an atmosphere of quiet, culture, and refinement, that encourages study and accomplishment. The material needs of every student can be purchased in Louisburg at most reasonable prices, therefore it is an economic and otherwise desirable home for students.

**Louisburg Sincerely Welcomes Everyone
At All Times**

TOWN OF LOUISBURG

W. C. WEBB, Mayor

J. W. JENKINS & SON

GULF OIL REFINING CO.

HENDERSON, N. C.



BUILDERS DREAMS

VISIONS created by the imagination precede the achievement of any really great accomplishment. The ability to weave the threads of imagination into the finished fabric is equally important.

It has been the privilege of the EDWARDS & BROUGHTON COMPANY to cooperate with the staff in creating their vision into material form.

Such cooperation is one of the "visions" which precede the building of a successful business, and is a part of the working policy of the EDWARDS & BROUGHTON COMPANY.

To those Staffs desiring complete cooperation, we offer unexcelled service. You, too, may be proud of your annual.

Correspondence is Invited

EDWARDS & BROUGHTON CO.

RALEIGH, NORTH CAROLINA

AUTOGRAPHS

THE CECIL W. ROBBINS LIBRARY
Louisburg College
Louisburg, N. C. 27540

