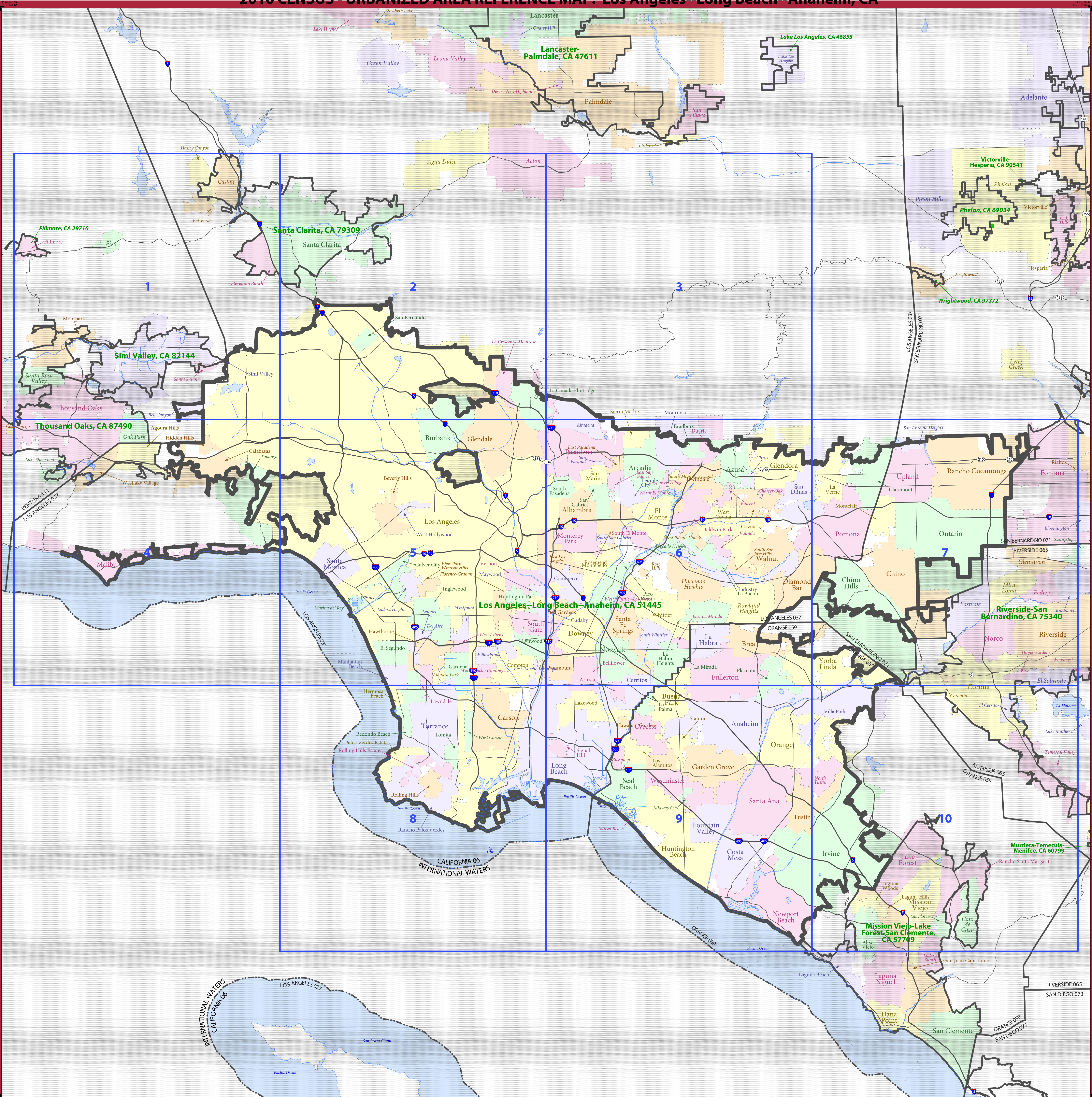


2010 CENSUS - URBANIZED AREA REFERENCE MAP: Los Angeles--Long Beach--Anaheim, CA



LEGEND

SYMBOL DESCRIPTION	SYMBOL	LABEL STYLE
International	--- --	CANADA
Federal American Indian Reservation	L'ANSE RES 1880
Off-Reservation Trust Land	T1880
Urbanized Area	█	Dover, DE 24580
Urban Cluster	█	Toolee, VT 88057
State (or statistically equivalent entity)	--- --	NEW YORK 36
County (or statistically equivalent entity)	---	ERIE 029
Minor Civil Division (MCD) ^{1,2}	---	Bristol town 07485
Consolidated City	MILFORD 47500
Incorporated Place ^{1,3}	Davis 18100
Census Designated Place (CDP) ²	Incline Village 35100

DESCRIPTION	SYMBOL	DESCRIPTION	SYMBOL
Interstate	— 1 —	Water Body	■ Pleasant Lake
U.S. Highway	— 2 —	Military	■ Fort Belvoir
State Highway	— 3 —	Outside Subject Area	■
Other Road	— 4 —		
Railroad	— 5 —		
Perennial Stream	— 6 —		
Intermittent Stream	— 7 —		

Where international, state, county, and/or MCD boundaries coincide, the map shows the boundary symbol for only the highest-ranking of these boundaries.

1 A ** following an MCD name denotes a false MCD. A *** following a place name indicates that a false MCD exists with the same name and FIPS code as the place; the false MCD label is not shown.

2 MCD boundaries are shown in the following states in which some or all MCDs function as general-purpose governmental units: Connecticut, Illinois, Indiana, Kansas, Maine, Massachusetts, Michigan, Minnesota, Missouri, Nebraska, New Hampshire, New Jersey, New York, North Dakota, Ohio, Pennsylvania, Rhode Island, South Dakota, Vermont, and Wisconsin. (Note that Illinois and Nebraska have some counties covered by nongovernmental precincts and Missouri has most counties covered by nongovernmental townships.)

3 Place label color corresponds to the place fill color.
Label colors: Davis Davis Davis Davis Davis

COUNTIES IN SUBJECT URBANIZED AREA

06037	Los Angeles
06059	Orange
06071	San Bernardino
06111	Ventura

All legal boundaries and names are as of January 1, 2010. Urban areas are based on results from the 2010 Decennial Census. The boundaries shown on this map are for Census Bureau statistical data collection and tabulation purposes only; their depiction and designation for statistical purposes does not constitute a determination of jurisdictional authority or rights of ownership or entitlement.

Geographic Vintage: 2010 Census (reference date: January 1, 2010)
Data Source: U.S. Census Bureau's MAI/TIGER database (TAB10)
Map Created by: Geography Division: March 11, 2012

U.S. DEPARTMENT OF COMMERCE Economics and Statistics Administration U.S. Census Bureau

Projection: Albers Equal Area Conic
Datum: NAD 83
Spheroid: GRS 80
1st Standard Parallel: 34 06 27
2nd Standard Parallel: 40 25 20
Central Meridian: -119 18 20
Latitude of Projection's Origin: 32 31 43
False Easting: 0
False Northing: 0

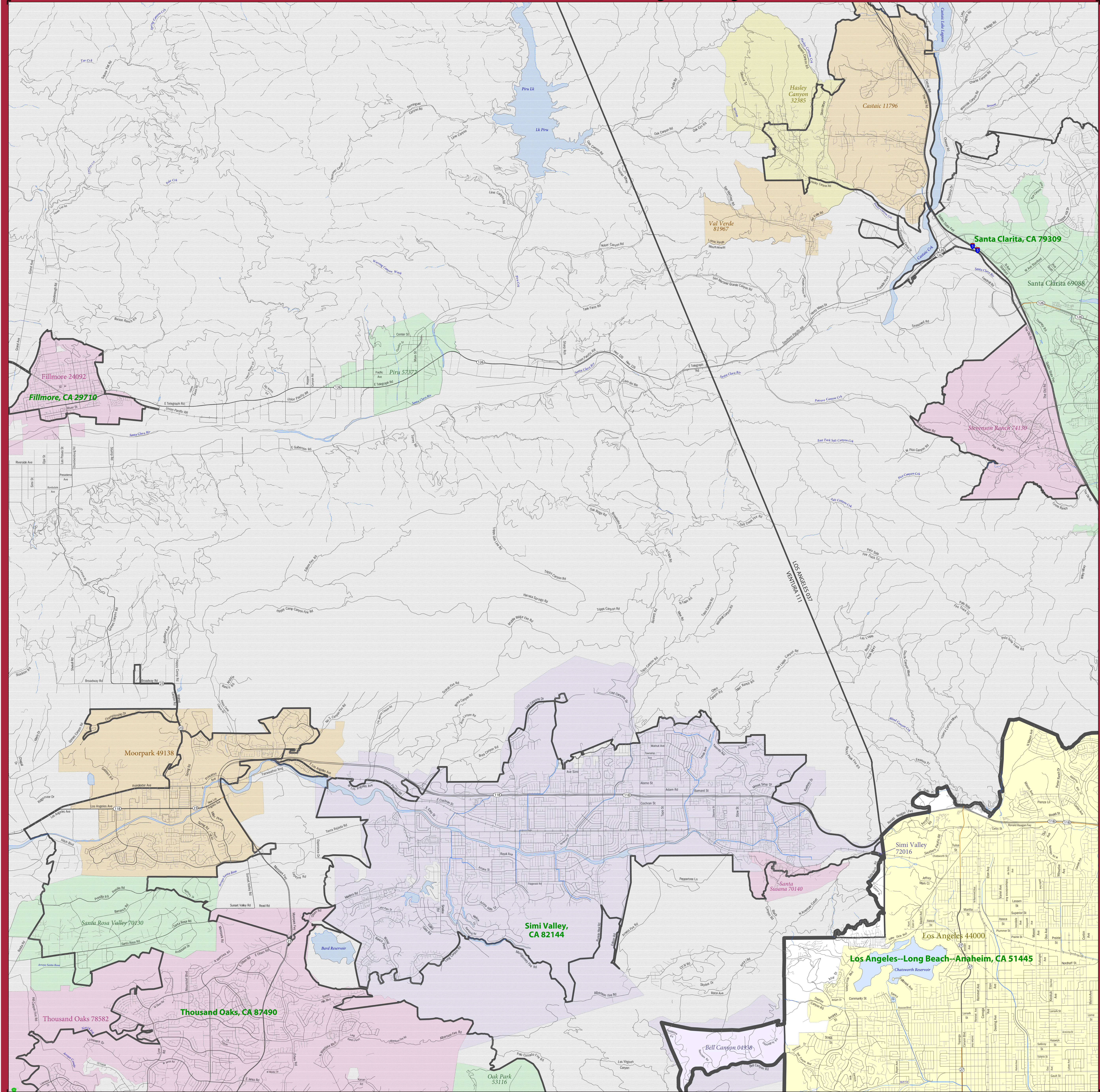
The plotted map scale is 1:99012

INDEX SHEET
Total Sheets: 11
Index Sheets: 1
Parent Sheets: 10

UA NAME: Los Angeles--Long Beach--Anaheim, CA
UA CODE: 51445
ENTITY TYPE: Urbanized Area (UA)
ST: California (06)

2010 CENSUS UA REF MAP INDEX
2110144000

2010 CENSUS - URBANIZED AREA REFERENCE MAP: Los Angeles--Long Beach--Anaheim, CA



LEGEND

SYMBOL DESCRIPTION	SYMBOL	SYMBOL	SYMBOL	LABEL STYLE
International	— · — · — ·	CANADA		CANADA
Federal American Indian Reservation	■ ■ ■ ■ ■ ■ ■ ■ ■ ■	L'ANSE RES 1880		L'ANSE RES 1880
Off-Reservation Trust Land	■ ■ ■ ■ ■ ■ ■ ■ ■ ■	T1880		T1880
Urbanized Area	■ ■ ■ ■ ■ ■ ■ ■ ■ ■	Dover, DE 24580		Dover, DE 24580
Urban Cluster	■ ■ ■ ■ ■ ■ ■ ■ ■ ■	Toolee, VT 88057		Toolee, VT 88057
State (or statistically equivalent entity)	— · — · — ·	NEW YORK 36		NEW YORK 36
County (or statistically equivalent entity)	— · — · — ·	ERIE 029		ERIE 029
Minor Civil Division (MCD) ^{1,2}	— · — · — ·	Bristol town 07485		Bristol town 07485
Consolidated City	● ● ● ● ● ● ● ● ● ●	MILFORD 47500		MILFORD 47500
Incorporated Place ^{1,3}	■ ■ ■ ■ ■ ■ ■ ■ ■ ■	Davis 18100		Davis 18100
Census Designated Place (CDP) ²	■ ■ ■ ■ ■ ■ ■ ■ ■ ■	Incline Village 35100		Incline Village 35100

DESCRIPTION	SYMBOL	DESCRIPTION	SYMBOL
Interstate	— 1 — 1 — 1 — 1 —	Water Body	■ ■ ■ ■ ■ ■ ■ ■ ■ ■
U.S. Highway	— 2 — 2 — 2 — 2 —	Military	■ ■ ■ ■ ■ ■ ■ ■ ■ ■
State Highway	— 3 — 3 — 3 — 3 —	Outside Subject Area	■ ■ ■ ■ ■ ■ ■ ■ ■ ■
Other Road	— 4 — 4 — 4 — 4 —		
Railroad	— 5 — 5 — 5 — 5 —		
Perennial Stream	— 6 — 6 — 6 — 6 —		
Intermittent Stream	— 7 — 7 — 7 — 7 —		

Where international, state, county, and/or MCD boundaries coincide, the map shows the boundary symbol for only the highest-ranking of these boundaries.

1 A * following an MCD name denotes a false MCD. A ** following a place name indicates that a false MCD exists with the same name and FIPS code as the place; the false MCD label is not shown.

2 MCD boundaries are shown in the following states in which some or all MCDs function as general-purpose governmental units: Connecticut, Illinois, Indiana, Kansas, Maine, Massachusetts, Michigan, Minnesota, Missouri, Nebraska, New Hampshire, New Jersey, New York, North Dakota, Ohio, Pennsylvania, Rhode Island, South Dakota, Vermont, and Wisconsin. (Note that Illinois and Nebraska have some counties covered by nongovernmental precincts and Missouri has most counties covered by nongovernmental townships.)

3 Place label color corresponds to the place fill color.
Label colors: Davis Davis Davis Davis Davis

SUBJECT AREA COUNTIES ON MAP SHEET
 06037 Los Angeles
 06111 Ventura

All legal boundaries and names are as of January 1, 2010. Urban areas are based on results from the 2010 Decennial Census. The boundaries shown on this map are for Census Bureau statistical data collection and tabulation purposes only; their depiction and designation for statistical purposes does not constitute a determination of jurisdictional authority or rights of ownership or entitlement.

Geographic Vintage: 2010 Census (reference date: January 1, 2010)
 Data Source: U.S. Census Bureau's MA/TIGER database (TAB10)
 Map Created by Geography Division: March 11, 2012

U.S. DEPARTMENT OF COMMERCE Economics and Statistics Administration U.S. Census Bureau

Projection: Albers Equal Area Conic
 Datum: NAD 83
 Spheroid: GRS 80
 1st Standard Parallel: 34 06 27
 2nd Standard Parallel: 40 25 20
 Central Meridian: -119 18 20
 Latitude of Projection's Origin: 32 31 43
 False Easting: 0
 False Northing: 0

Scale: 1:48000
 0 1 2 3 4 Kilometers
 0 1 2 Miles

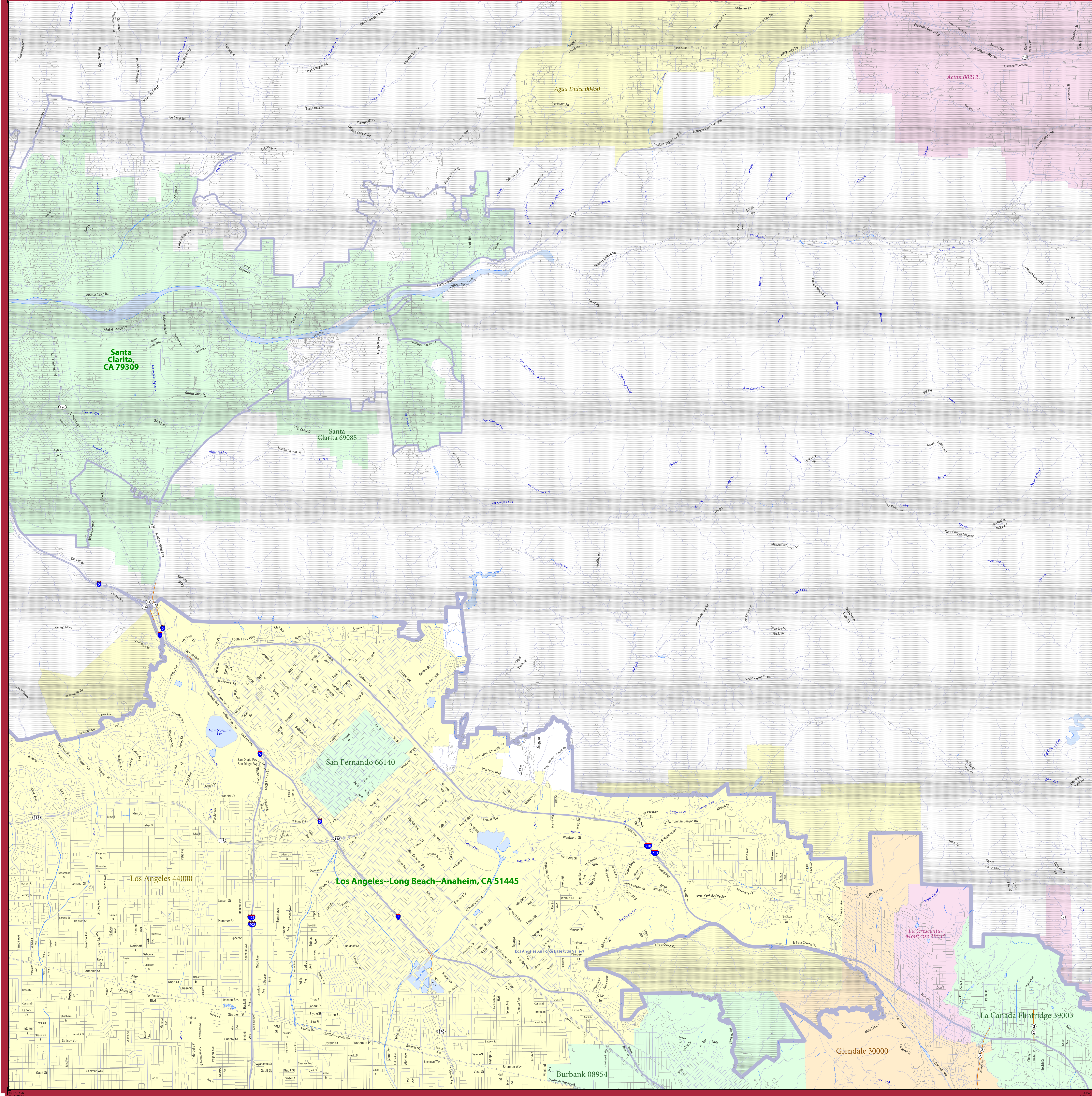
Key to Sheets

1	2
4	5

PARENT SHEET 1
 Total Sheets: 11
 Index Sheets: 1
 Parent Sheets: 10

United States Census Bureau

2010 CENSUS - URBANIZED AREA REFERENCE MAP: Los Angeles--Long Beach--Anaheim, CA



LEGEND	
SYMBOL DESCRIPTION	LABEL STYLE
International	CANADA
Federal American Indian Reservation	L'ANSE RES 1880
Off-Reservation Trust Land	T1880
Urbanized Area	Dover, DE 24580
Urban Cluster	Toole, VT 88057
State (or statistically equivalent entity)	NEW YORK 36
County (or statistically equivalent entity)	ERIE 029
Minor Civil Division (MCD) ^{1,2}	Bristol town 07485
Consolidated City	MILFORD 47500
Incorporated Place ^{1,3}	Davis 18100
Census Designated Place (CDP) ²	Incline Village 35100

DESCRIPTION	SYMBOL	DESCRIPTION	SYMBOL
Interstate		Water Body	
U.S. Highway		Military	
State Highway		Outside Subject Area	
Other Road			
Railroad			
Perennial Stream			
Intermittent Stream			

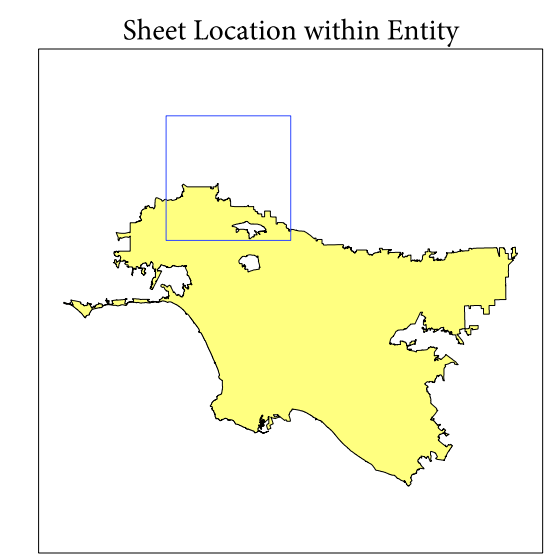
Where international, state, county, and/or MCD boundaries coincide, the map shows the boundary symbol for only the highest-ranking of these boundaries.

1 A ** following an MCD name denotes a false MCD. A *** following a place name indicates that a false MCD exists with the same name and FIPS code as the place; the false MCD label is not shown.

2 MCD boundaries are shown in the following states in which some or all MCDs function as general-purpose governmental units: Connecticut, Illinois, Indiana, Kansas, Maine, Massachusetts, Michigan, Minnesota, Missouri, Nebraska, New Hampshire, New Jersey, New York, North Dakota, Ohio, Pennsylvania, Rhode Island, South Dakota, Vermont, and Wisconsin. (Note that Illinois and Nebraska have some counties covered by nongovernmental precincts and Missouri has most counties covered by nongovernmental townships.)

3 Place label color corresponds to the place fill color.
Label colors: Davis Davis Davis Davis Davis

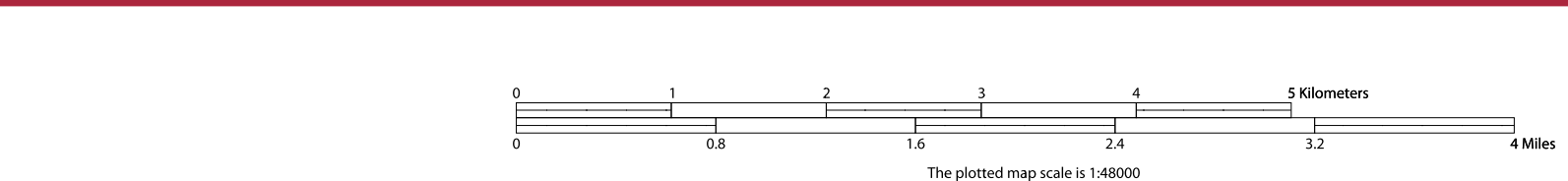
SUBJECT AREA COUNTIES ON MAP SHEET
06037 Los Angeles



All legal boundaries and names are as of January 1, 2010. Urban areas are based on results from the 2010 Decennial Census. The boundaries shown on this map are for Census Bureau statistical data collection and tabulation purposes only; their depiction and designation for statistical purposes does not constitute a determination of jurisdictional authority or rights of ownership or entitlement.

Geographic Vintage: 2010 Census (reference date: January 1, 2010)
Data Source: U.S. Census Bureau's MA/TIGER database (TAB10)
Map Created by Geography Division: March 11, 2012

Projection: Albers Equal Area Conic
Datum: NAD 83
Spheroid: GRS 80
1st Standard Parallel: 34 06 27
2nd Standard Parallel: 40 25 20
Central Meridian: -119 18 20
Latitude of Projection's Origin: 32 31 43
False Easting: 0
False Northing: 0

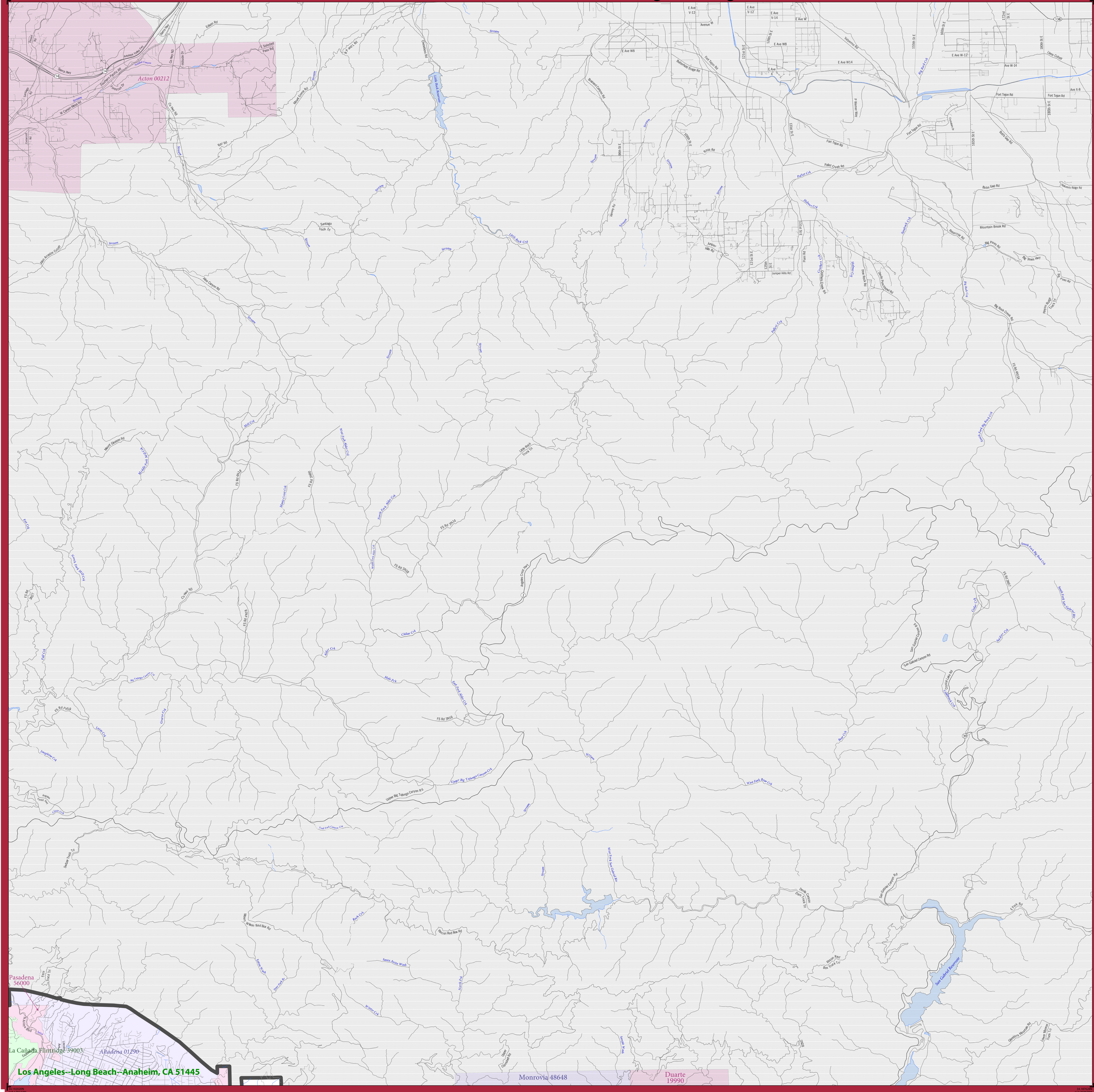


1	2	3
4	5	6

PARENT SHEET 2
Total Sheets: 11
Index Sheets: 1
Parent Sheets: 10

UA NAME: Los Angeles--Long Beach--Anaheim, CA
UA CODE: 51445
ENTITY TYPE: Urbanized Area (UA)
ST: California (06)

2010 CENSUS - URBANIZED AREA REFERENCE MAP: Los Angeles--Long Beach--Anaheim, CA



LEGEND

SYMBOL DESCRIPTION	SYMBOL	LABEL STYLE
International	--- ---	CANADA
Federal American Indian Reservation	L'ANSE RES 1880
Off-Reservation Trust Land	T1880
Urbanized Area	█	Dover, DE 24580
Urban Cluster	█	Toolee, VT 88057
State (or statistically equivalent entity)	---	NEW YORK 36
County (or statistically equivalent entity)	---	ERIE 029
Minor Civil Division (MCD) ^{1,2}	---	Bristol town 07485
Consolidated City	MILFORD 47500
Incorporated Place ³	Davis 18100
Census Designated Place (CDP) ³	Incline Village 35100

DESCRIPTION	SYMBOL	DESCRIPTION	SYMBOL
Interstate	— —	Water Body	■ Pleasant Lake
U.S. Highway	— —	Military	■ Fort Belvoir
State Highway	— —	Outside Subject Area	■
Other Road	— —		
Railroad	— —		
Perennial Stream	— —		
Intermittent Stream	— —		

Where international, state, county, and/or MCD boundaries coincide, the map shows the boundary symbol for only the highest-ranking of these boundaries.

1 A "*" following an MCD name denotes a false MCD. A "*" following a place name indicates that a false MCD exists with the same name and FIPS code as the place; the false MCD label is not shown.

2 MCD boundaries are shown in the following states in which some or all MCDs function as general-purpose governmental units: Connecticut, Illinois, Indiana, Kansas, Maine, Massachusetts, Michigan, Minnesota, Missouri, Nebraska, New Hampshire, New Jersey, New York, North Dakota, Ohio, Pennsylvania, Rhode Island, South Dakota, Vermont, and Wisconsin. (Note that Illinois and Nebraska have some counties covered by nongovernmental precincts and Missouri has most counties covered by nongovernmental townships.)

3 Place label color corresponds to the place fill color.
Label colors: Davis Davis Davis Davis Davis

SUBJECT AREA COUNTIES ON MAP SHEET
06037 Los Angeles

All legal boundaries and names are as of January 1, 2010. Urban areas are based on results from the 2010 Decennial Census. The boundaries shown on this map are for Census Bureau statistical data collection and tabulation purposes only; their depiction and designation for statistical purposes does not constitute a determination of jurisdictional authority or rights of ownership or entitlement.

Geographic Vintage: 2010 Census (reference date: January 1, 2010)
Data Source: U.S. Census Bureau's MAI/TIGER database (TAB10)
Map Created by Geography Division: March 11, 2012

U.S. DEPARTMENT OF COMMERCE Economics and Statistics Administration U.S. Census Bureau

Projection: Albers Equal Area Conic
Datum: NAD 83
Spheroid: GRS 80
1st Standard Parallel: 34 06 27
2nd Standard Parallel: 40 25 20
Central Meridian: -119 18 20
Latitude of Projection's Origin: 32 31 43
False Easting: 0
False Northing: 0

The plotted map scale is 1:48000

United States Census Bureau

Key to Sheets

2	3
5	6 7

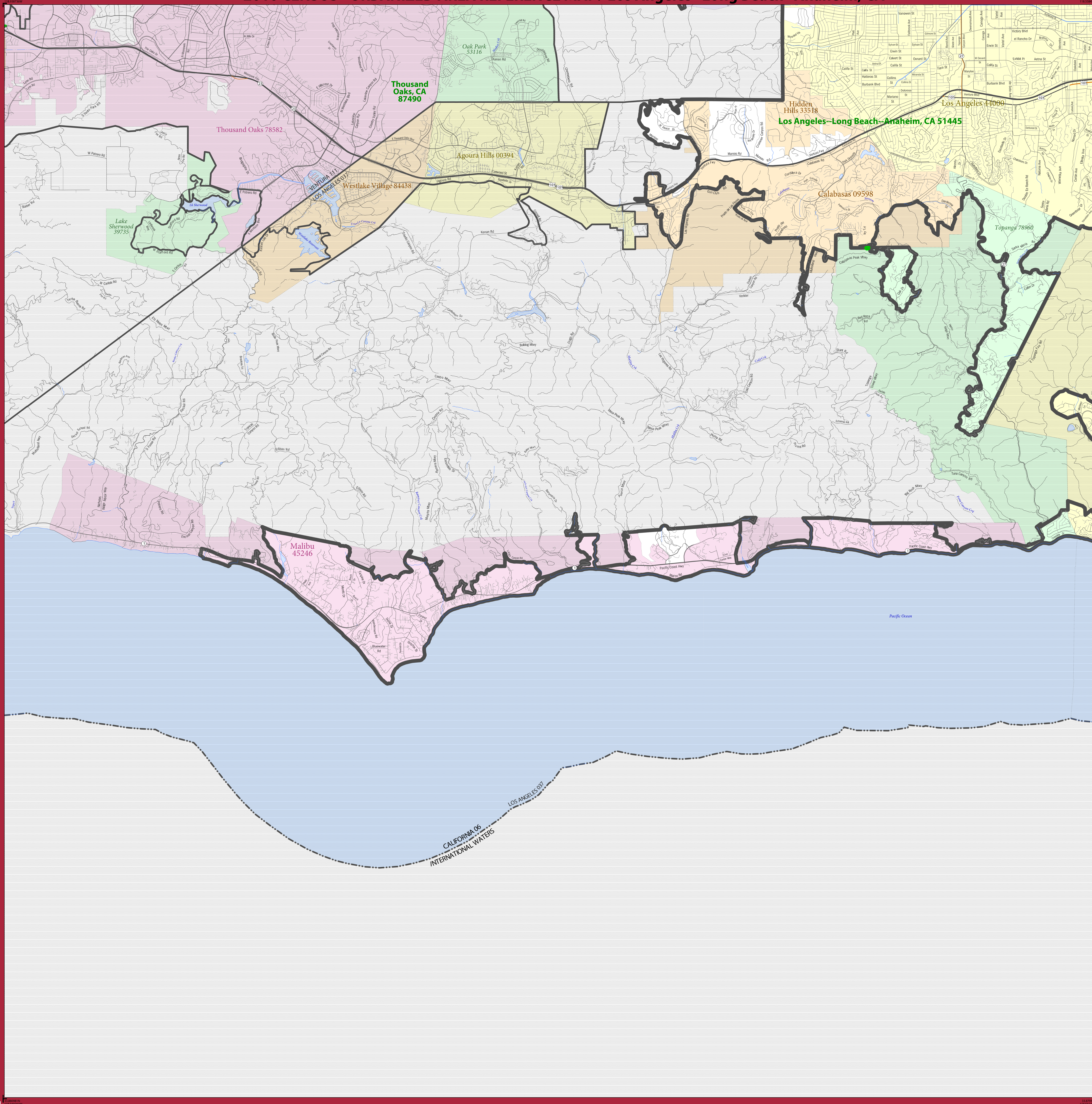
PARENT SHEET 3
Total Sheets: 11
Index Sheets: 1
Parent Sheets: 10

Sheet Location within Entity

Sheet Name: Los Angeles--Long Beach--Anaheim, CA
UA CODE: 51445
ENTITY TYPE: Urbanized Area (UA)
ST: California (06)

2010 CENSUS UA REF MAP (PART 1)
21101540003

2010 CENSUS - URBANIZED AREA REFERENCE MAP: Los Angeles--Long Beach--Anaheim, CA



SYMBOL DESCRIPTION		LEGEND	
SYMBOL DESCRIPTION	SYMBOL	SYMBOL	LABEL STYLE
International	--- ---	--- ---	CANADA
Federal American Indian Reservation	L'ANSE RES 1880
Off-Reservation Trust Land	T1880
Urbanized Area	█	█	Dover, DE 24580
Urban Cluster	█	█	Toolee, VT 88057
State (or statistically equivalent entity)	---	---	NEW YORK 36
County (or statistically equivalent entity)	---	---	ERIE 029
Minor Civil Division (MCD) ^{1,2}	---	---	Bristol town 07485
Consolidated City	MILFORD 47500
Incorporated Place ³	█	█	Davis 18100
Census Designated Place (CDP) ²	█	█	Incline Village 35100

DESCRIPTION	SYMBOL	DESCRIPTION	SYMBOL
Interstate	█	Water Body	█
U.S. Highway	█	Military	█
State Highway	█	Outside Subject Area	█
Other Road	█		
Railroad	█		
Perennial Stream	█		
Intermittent Stream	█		

Where international, state, county, and/or MCD boundaries coincide, the map shows the boundary symbol for only the highest-ranking of these boundaries.

1 A "*" following an MCD name denotes a false MCD. A "*" following a place name indicates that a false MCD exists with the same name and FIPS code as the place; the false MCD label is not shown.

2 MCD boundaries are shown in the following states in which some or all MCDs function as general-purpose governmental units: Connecticut, Illinois, Indiana, Kansas, Maine, Massachusetts, Michigan, Minnesota, Missouri, Nebraska, New Hampshire, New Jersey, New York, North Dakota, Ohio, Pennsylvania, Rhode Island, South Dakota, Vermont, and Wisconsin. (Note that Illinois and Nebraska have some counties covered by nongovernmental precincts and Missouri has most counties covered by nongovernmental townships.)

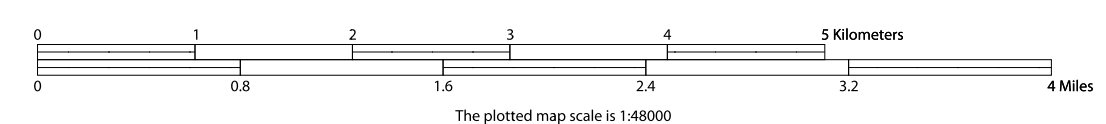
3 Place label color corresponds to the place fill color.
Label colors: Davis Davis Davis Davis Davis

SUBJECT AREA COUNTIES ON MAP SHEET
 06037 Los Angeles
 06111 Ventura

All legal boundaries and names are as of January 1, 2010. Urban areas are based on results from the 2010 Decennial Census. The boundaries shown on this map are for Census Bureau statistical data collection and tabulation purposes only; their depiction and designation for statistical purposes does not constitute a determination of jurisdictional authority or rights of ownership or entitlement.

Geographic Vintage: 2010 Census (reference date: January 1, 2010)
 Data Source: U.S. Census Bureau's MAI/TIGER database (TAB10)
 Map Created by Geography Division: March 11, 2012

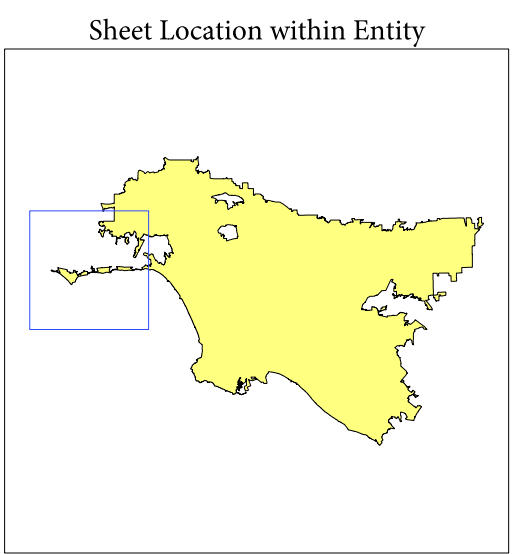
Projection: Albers Equal Area Conic
 Datum: NAD 83
 Spheroid: GRS 80
 1st Standard Parallel: 34 06 27
 2nd Standard Parallel: 40 25 20
 Central Meridian: -119 18 20
 Latitude of Projection's Origin: 32 31 43
 False Easting: 0
 False Northing: 0



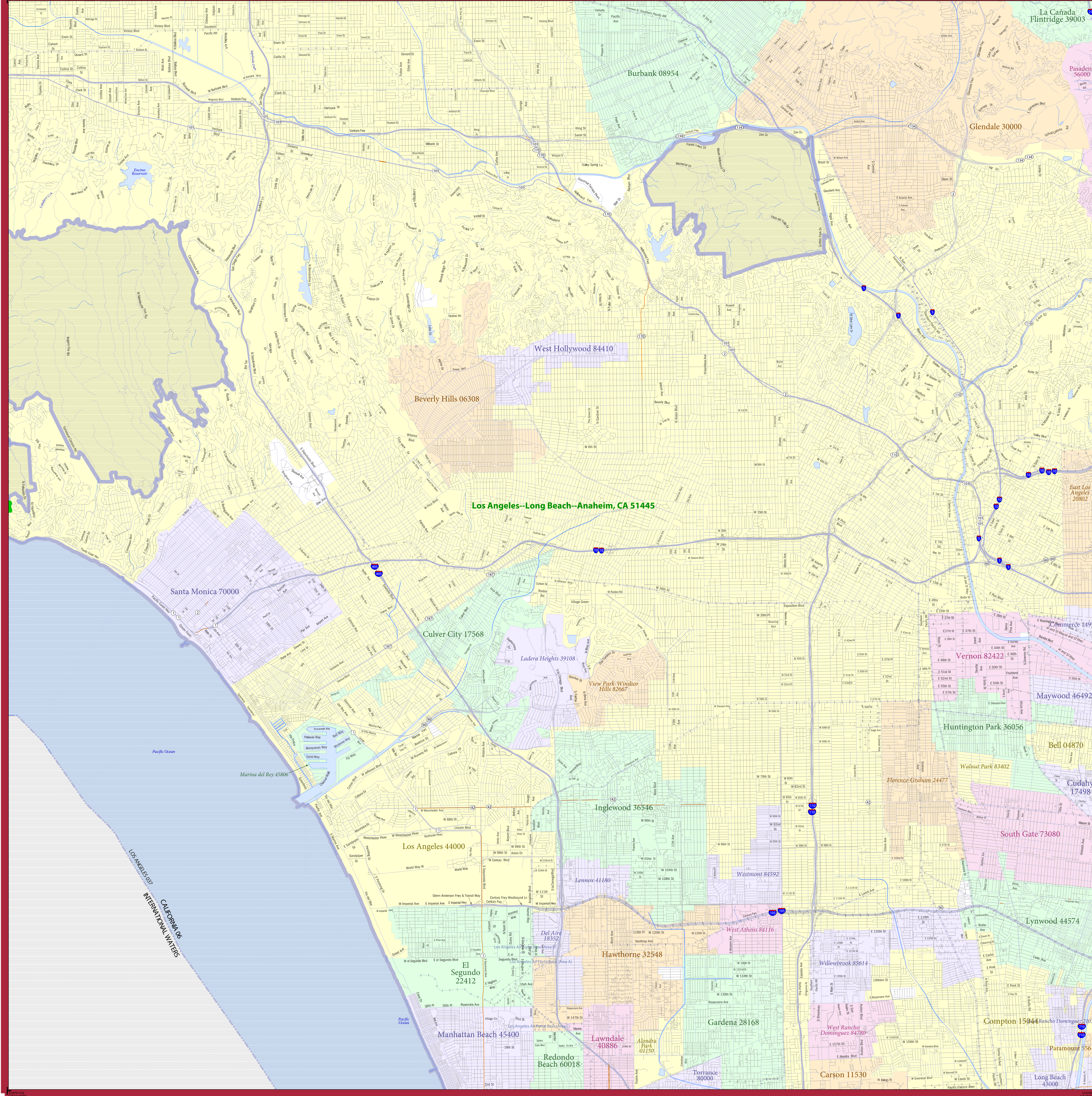
Key to Sheets	
1	2
4	5
	8

PARENT SHEET 4
 Total Sheets: 11
 Index Sheets: 1
 Parent Sheets: 10

UA NAME: Los Angeles--Long Beach--Anaheim, CA
 UA CODE: 51445
 ENTITY TYPE: Urbanized Area (UA)
 ST: California (06)



2010 CENSUS - URBANIZED AREA REFERENCE MAP: Los Angeles--Long Beach--Anaheim, CA



LEGEND

SYMBOL DESCRIPTION	SYMBOL	SYMBOL	SYMBOL	SYMBOL	SYMBOL
International	— — — — —	CANADA	— — — — —	CANADA	— — — — —
Federal American Indian Reservation	•••••	L'ANSE RES 1880	•••••	L'ANSE RES 1880	•••••
Off-Reservation Trust Land	•••••	T1880	•••••	T1880	•••••
Urbanized Area	— — — — —	Dover, DE 24580	— — — — —	Dover, DE 24580	— — — — —
Urban Cluster	— — — — —	Toole, VT 88057	— — — — —	Toole, VT 88057	— — — — —
State (or statistically equivalent entity)	— — — — —	NEW YORK 36	— — — — —	NEW YORK 36	— — — — —
County (or statistically equivalent entity)	— — — — —	ERIE 029	— — — — —	ERIE 029	— — — — —
Minor Civil Division (MCD) ^{1,2}	— — — — —	Bristol town 07485	— — — — —	Bristol town 07485	— — — — —
Consolidated City	•••••	MILFORD 47500	•••••	MILFORD 47500	•••••
Incorporated Place ³	•••••	Davis 18100	•••••	Davis 18100	•••••
Census Designated Place (CDP) ²	•••••	Incline Village 35100	•••••	Incline Village 35100	•••••

DESCRIPTION	SYMBOL	DESCRIPTION	SYMBOL
Interstate	— — — — —	Water Body	— — — — —
U.S. Highway	— — — — —	Military	— — — — —
State Highway	— — — — —	Outside Subject Area	— — — — —
Other Road	— — — — —		
Railroad	— — — — —		
Perennial Stream	— — — — —		
Intermittent Stream	— — — — —		

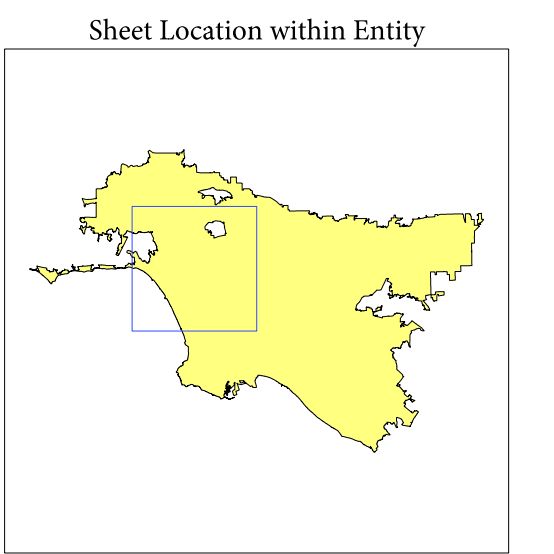
Where international, state, county, and/or MCD boundaries coincide, the map shows the boundary symbol for only the highest-ranking of these boundaries.

1 A ** following an MCD name denotes a false MCD. A *** following a place name indicates that a false MCD exists with the same name and FIPS code as the place; the false MCD label is not shown.

2 MCD boundaries are shown in the following states in which some or all MCDs function as general-purpose governmental units: Connecticut, Illinois, Indiana, Kansas, Maine, Massachusetts, Michigan, Minnesota, Missouri, Nebraska, New Hampshire, New Jersey, New York, North Dakota, Ohio, Pennsylvania, Rhode Island, South Dakota, Vermont, and Wisconsin. (Note that Illinois and Nebraska have some counties covered by nongovernmental precincts and Missouri has most counties covered by nongovernmental townships.)

3 Place label color corresponds to the place fill color.
Label colors: Davis Davis Davis Davis Davis

SUBJECT AREA COUNTIES ON MAP SHEET
06037 Los Angeles



All legal boundaries and names are as of January 1, 2010. Urban areas are based on results from the 2010 Decennial Census. The boundaries shown on this map are for Census Bureau statistical data collection and tabulation purposes only; their depiction and designation for statistical purposes does not constitute a determination of jurisdictional authority or rights of ownership or entitlement.

Geographic Vintage: 2010 Census (reference date: January 1, 2010)
Data Source: U.S. Census Bureau's MA/TIGER database (TAB10)
Map Created by: Geography Division: March 11, 2012

U.S. DEPARTMENT OF COMMERCE Economics and Statistics Administration U.S. Census Bureau

Projection: Albers Equal Area Conic
Datum: NAD 83
Spheroid: GRS 80
1st Standard Parallel: 34 06 27
2nd Standard Parallel: 40 25 20
Central Meridian: -119 18 20
Latitude of Projection's Origin: 32 31 43
False Easting: 0
False Northing: 0

Scale: 1:48000
Miles: 0 0.5 1 1.5 2
Kilometers: 0 0.5 1 1.5 2

Key to Sheets

1	2	3
4	5	6
8	9	

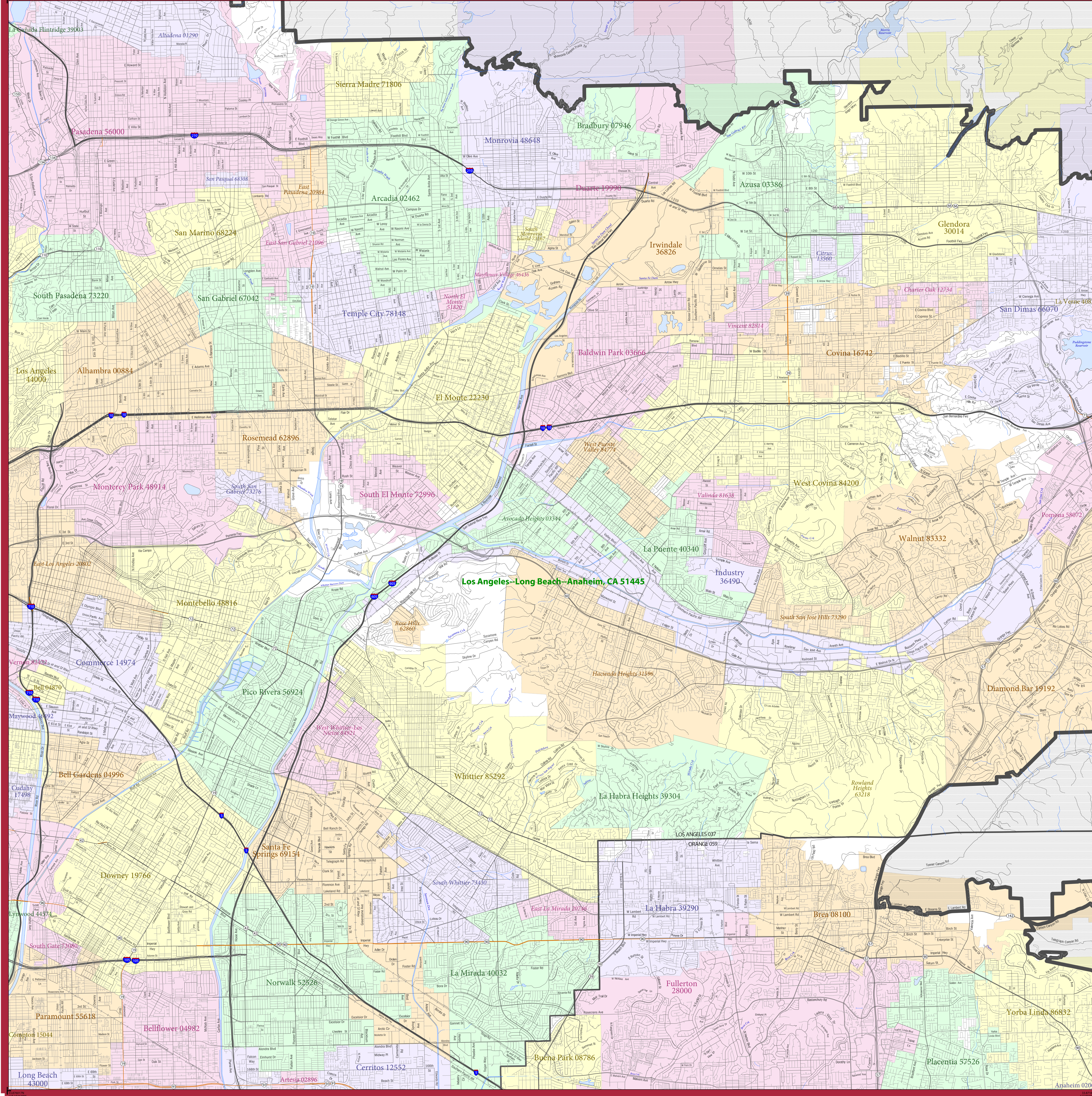
PARENT SHEET 5
Total Sheets: 11
Index Sheets: 1
Parent Sheets: 10

United States Census Bureau

UA NAME: Los Angeles--Long Beach--Anaheim, CA
UA CODE: 51445
ENTITY TYPE: Urbanized Area (UA)
ST: California (06)

2010 CENSUS UA REF MAP (PART 2)
21105144005

2010 CENSUS - URBANIZED AREA REFERENCE MAP: Los Angeles--Long Beach--Anaheim, CA



LEGEND

SYMBOL DESCRIPTION	SYMBOL	SYMBOL	DESCRIPTION	SYMBOL
International	-----	-----	Water Body	
Federal American Indian Reservation	-----	Military	
Off-Reservation Trust Land	-----	Outside Subject Area	
Urbanized Area	-----	-----	Placename Lake	
Urban Cluster	-----	-----	Fort Belvoir	
State (or statistically equivalent entity)	-----	-----		
County (or statistically equivalent entity)	-----	-----		
Minor Civil Division (MCD) 1,2	-----	-----		
Consolidated City	-----		
Incorporated Place 1,3	-----		
Census Designated Place (CDP) 2	-----		
Interstate				
U.S. Highway				
State Highway				
Other Road				
Railroad				
Perennial Stream				
Intermittent Stream				

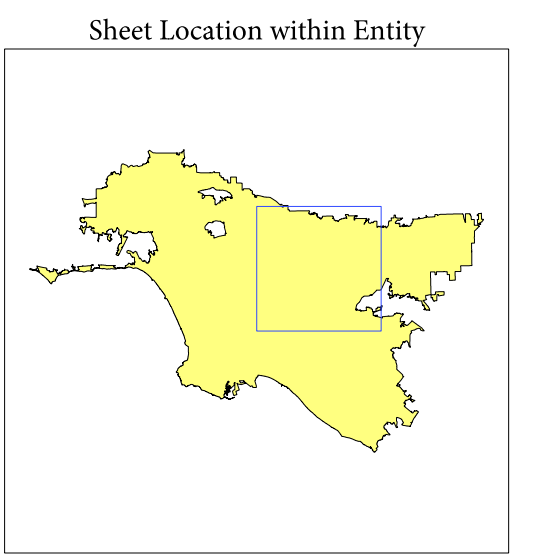
Where international, state, county, and/or MCD boundaries coincide, the map shows the boundary symbol for only the highest-ranking of these boundaries.

1 A * following an MCD name denotes a false MCD. A ** following a place name indicates that a false MCD exists with the same name and FIPS code as the place; the false MCD label is not shown.

2 MCD boundaries are shown in the following states in which some or all MCDs function as general-purpose governmental units: Connecticut, Illinois, Indiana, Kansas, Maine, Massachusetts, Michigan, Minnesota, Missouri, Nebraska, New Hampshire, New Jersey, New York, North Dakota, Ohio, Pennsylvania, Rhode Island, South Dakota, Vermont, and Wisconsin. (Note that Illinois and Nebraska have some counties covered by nongovernmental precincts and Missouri has some counties covered by nongovernmental townships.)

3 Place label color corresponds to the place fill color.
Label colors: Davis Davis Davis Davis Davis

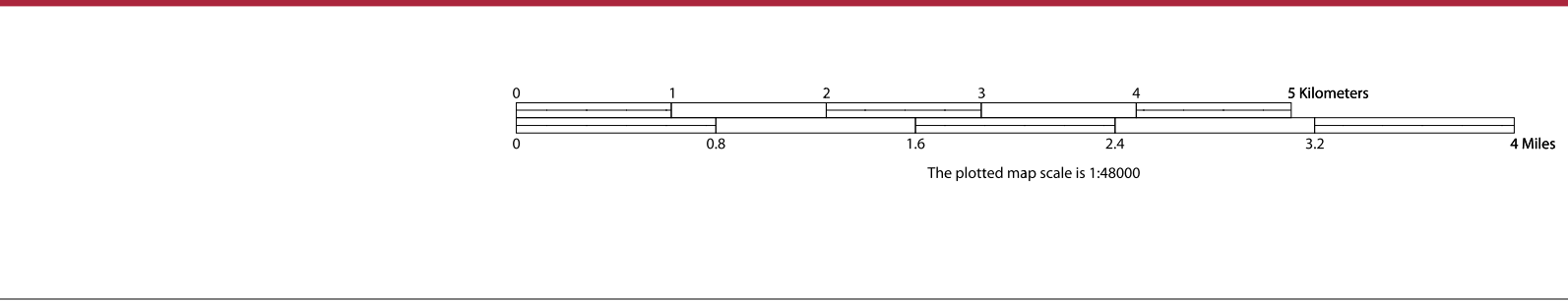
SUBJECT AREA COUNTIES ON MAP SHEET
 06037 Los Angeles
 06059 Orange



All legal boundaries and names are as of January 1, 2010. Urban areas are based on results from the 2010 Decennial Census. The boundaries shown on this map are for Census Bureau statistical data collection and tabulation purposes only; their depiction and designation for statistical purposes does not constitute a determination of jurisdictional authority or rights of ownership or entitlement.

Geographic Vintage: 2010 Census (reference date: January 1, 2010)
 Data Source: U.S. Census Bureau's MA/TIGER database (TAB10)
 Map Created by Geography Division: March 11, 2012

Projection: Albers Equal Area Conic
 Datum: NAD 83
 Spheroid: GRS 80
 1st Standard Parallel: 34 06 27
 2nd Standard Parallel: 40 25 20
 Central Meridian: -119 18 20
 Latitude of Projection's Origin: 32 31 43
 False Easting: 0
 False Northing: 0



Key to Sheets

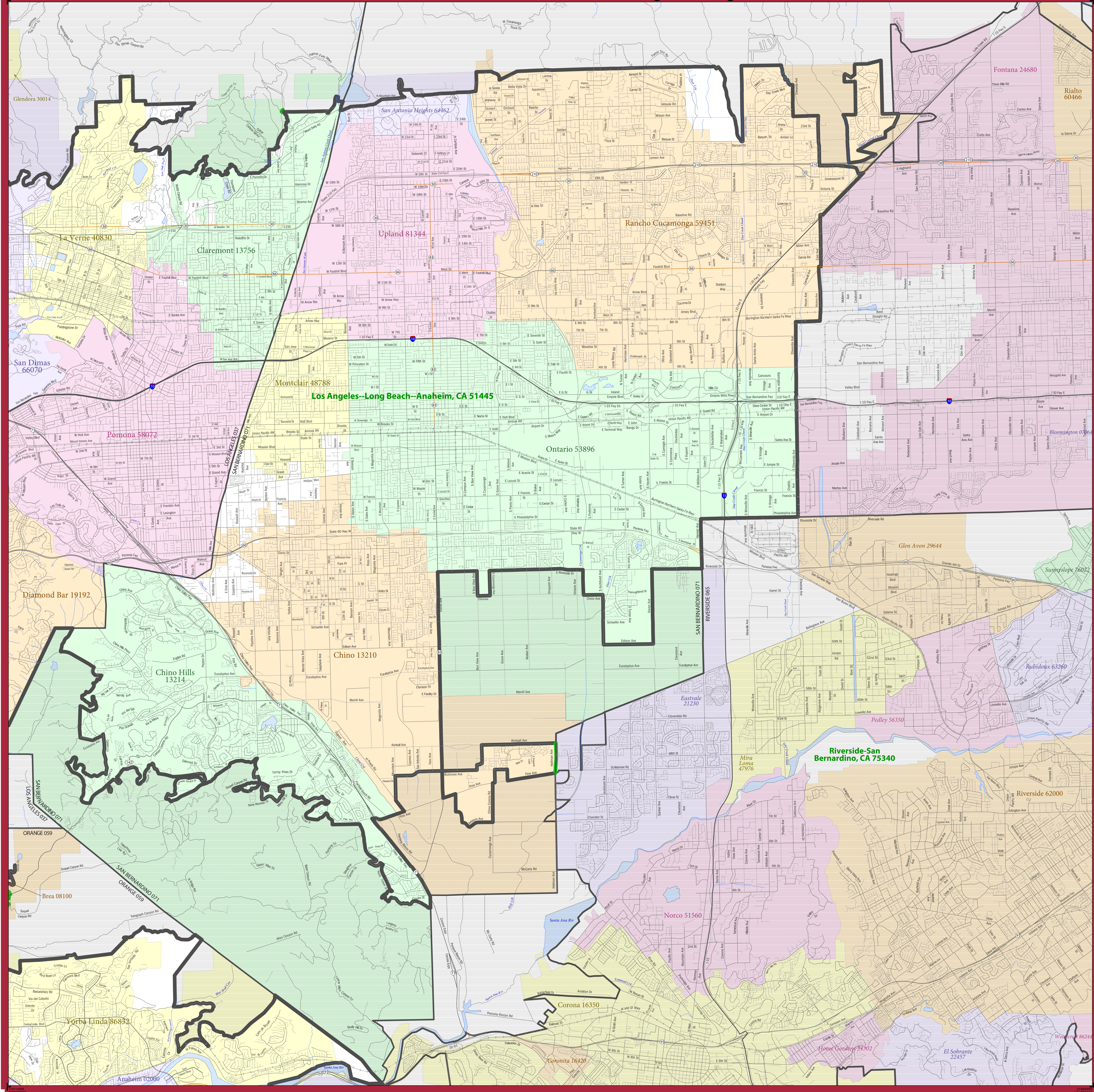
2	3
5	6
8	9

PARENT SHEET 6
 Total Sheets: 11
 Index Sheets: 1
 Parent Sheets: 10

UA NAME: Los Angeles--Long Beach--Anaheim, CA
 UA CODE: 5145
 ENTITY TYPE: Urbanized Area (UA)
 ST: California (06)

2010 CENSUS U.S. REF. MAP (PART 2)
 2110144006

2010 CENSUS - URBANIZED AREA REFERENCE MAP: Los Angeles--Long Beach--Anaheim, CA



LEGEND

SYMBOL DESCRIPTION	SYMBOL	SYMBOL	SYMBOL	DESCRIPTION	SYMBOL
International	-----	CANADA		Water Body	
Federal American Indian Reservation	L'ANSE RES 1880		Pleasant Lake	
Off-Reservation Trust Land	T1880		Military	
Urbanized Area	Dover, DE 24580		Outside Subject Area	
Urban Cluster	Toolee, VT 88057			
State (or statistically equivalent entity)	-----	NEW YORK 36			
County (or statistically equivalent entity)	-----	ERIE 029			
Minor Civil Division (MCD) 1,2	-----	Bristol town 07485			
Consolidated City	MILFORD 47500			
Incorporated Place 1,3	Davis 18100			
Census Designated Place (CDP) 2	Incline Village 35100			

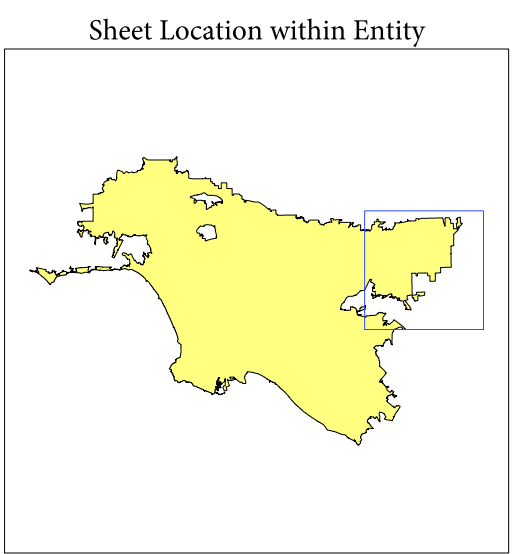
Where international, state, county, and/or MCD boundaries coincide, the map shows the boundary symbol for only the highest-ranking of these boundaries.

1 A ** following an MCD name denotes a false MCD. A *** following a place name indicates that a false MCD exists with the same name and FIPS code as the place; the false MCD label is not shown.

2 MCD boundaries are shown in the following states in which some or all MCDs function as general-purpose governmental units: Connecticut, Illinois, Indiana, Kansas, Maine, Massachusetts, Michigan, Minnesota, Missouri, Nebraska, New Hampshire, New Jersey, New York, North Dakota, Ohio, Pennsylvania, Rhode Island, South Dakota, Vermont, and Wisconsin. (Note that Illinois and Nebraska have some counties covered by nongovernmental precincts and Missouri has most counties covered by nongovernmental townships.)

3 Place label color corresponds to the place fill color.
Label colors: Davis Davis Davis Davis Davis

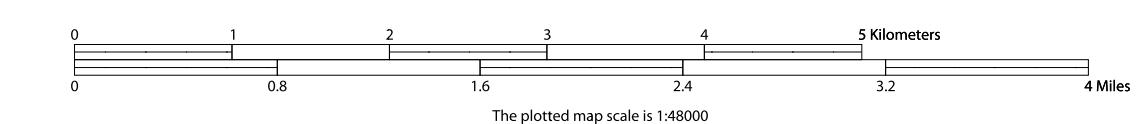
SUBJECT AREA COUNTIES ON MAP SHEET
 06037 Los Angeles
 06059 Orange
 06071 San Bernardino



All legal boundaries and names are as of January 1, 2010. Urban areas are based on results from the 2010 Decennial Census. The boundaries shown on this map are for Census Bureau statistical data collection and tabulation purposes only; their depiction and designation for statistical purposes does not constitute a determination of jurisdictional authority of rights of ownership or entitlement.

Geographic Vintage: 2010 Census (reference date: January 1, 2010)
 Data Source: U.S. Census Bureau's MA/TIGER database (TAB10)
 Map Created by Geography Division: March 11, 2012

Projection: Albers Equal Area Conic
 Datum: NAD 83
 Spheroid: GRS 80
 1st Standard Parallel: 34 06 27
 2nd Standard Parallel: 40 25 20
 Central Meridian: 119 18 20
 Latitude of Projection's Origin: 32 31 43
 False Easting: 0
 False Northing: 0



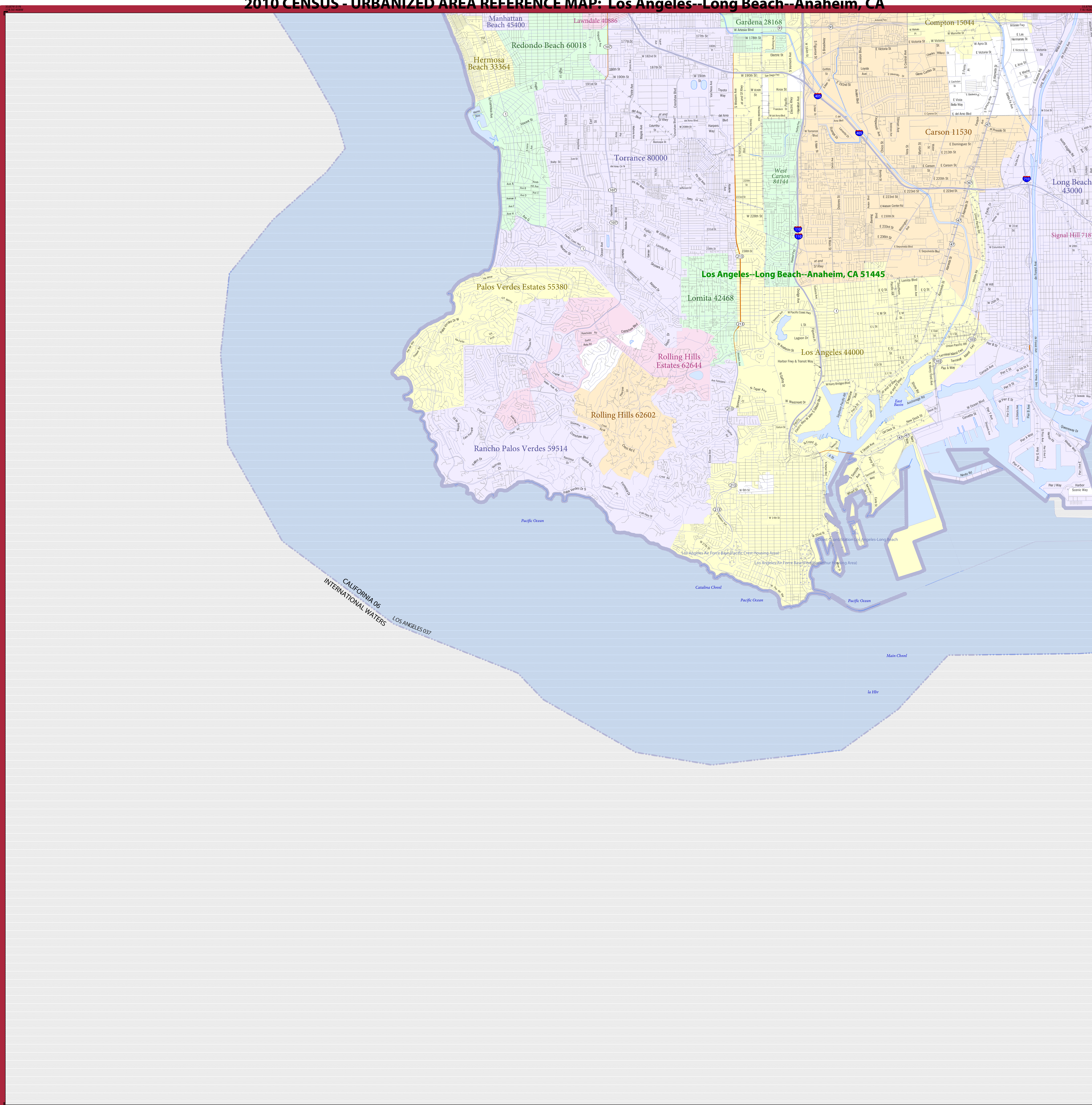
Key to Sheets

3	
6	7
9	10

PARENT SHEET 7
 Total Sheets: 11
 Index Sheets: 1
 Parent Sheets: 10

UA NAME: Los Angeles--Long Beach--Anaheim, CA
 UA CODE: 51445
 ENTITY TYPE: Urbanized Area (UA)
 ST: California (06)

2010 CENSUS - URBANIZED AREA REFERENCE MAP: Los Angeles--Long Beach--Anaheim, CA



LEGEND	
SYMBOL DESCRIPTION	LABEL STYLE
International	CANADA
Federal American Indian Reservation	L'ANSE RES 1880
Off-Reservation Trust Land	T1880
Urbanized Area	Dover, DE 24580
Urban Cluster	Toolee, VT 88057
State (or statistically equivalent entity)	NEW YORK 36
County (or statistically equivalent entity)	ERIE 029
Minor Civil Division (MCD) ^{1,2}	Bristol town 07485
Consolidated City	MILFORD 47500
Incorporated Place ^{1,3}	Davis 18100
Census Designated Place (CDP) ²	Incline Village 35100

DESCRIPTION	SYMBOL	DESCRIPTION	SYMBOL
Interstate		Water Body	
U.S. Highway		Military	
State Highway		Outside Subject Area	
Other Road			
Railroad			
Perennial Stream			
Intermittent Stream			

Where international, state, county, and/or MCD boundaries coincide, the map shows the boundary symbol for only the highest-ranking of these boundaries.

1 A ** following an MCD name denotes a false MCD. A *** following a place name indicates that a false MCD exists with the same name and FIPS code as the place; the false MCD label is not shown.

2 MCD boundaries are shown in the following states in which some or all MCDs function as general-purpose governmental units: Connecticut, Illinois, Indiana, Kansas, Maine, Massachusetts, Michigan, Minnesota, Missouri, Nebraska, New Hampshire, New Jersey, New York, North Dakota, Ohio, Pennsylvania, Rhode Island, South Dakota, Vermont, and Wisconsin. (Note that Illinois and Nebraska have some counties covered by nongovernmental precincts and Missouri has most counties covered by nongovernmental townships.)

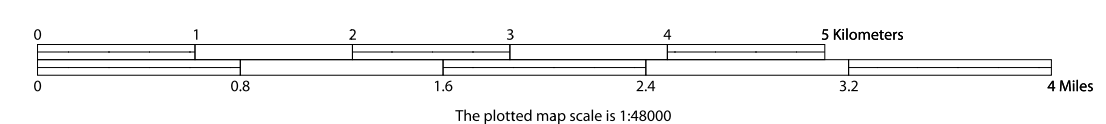
3 Place label color corresponds to the place fill color.
Label colors: Davis Davis Davis Davis Davis

SUBJECT AREA COUNTIES ON MAP SHEET
06037 - Los Angeles

All legal boundaries and names are as of January 1, 2010. Urban areas are based on results from the 2010 Decennial Census. The boundaries shown on this map are for Census Bureau statistical data collection and tabulation purposes only; their depiction and designation for statistical purposes does not constitute a determination of jurisdictional authority of rights of ownership or entitlement.

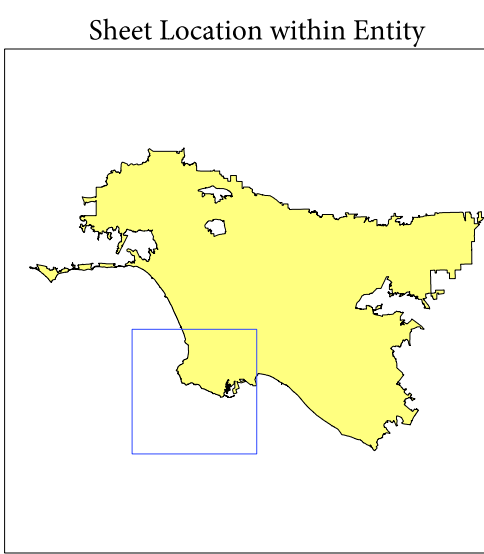
Geographic Vintage: 2010 Census (reference date: January 1, 2010)
Data Source: U.S. Census Bureau's MAI/TIGER database (TAB10)
Map Created by Geography Division: March 11, 2012

Projection: Albers Equal Area Conic
Datum: NAD 83
Spheroid: GRS 80
1st Standard Parallel: 34 06 27
2nd Standard Parallel: 40 25 20
Central Meridian: -119 18 20
Latitude of Projection's Origin: 32 31 43
False Easting: 0
False Northing: 0



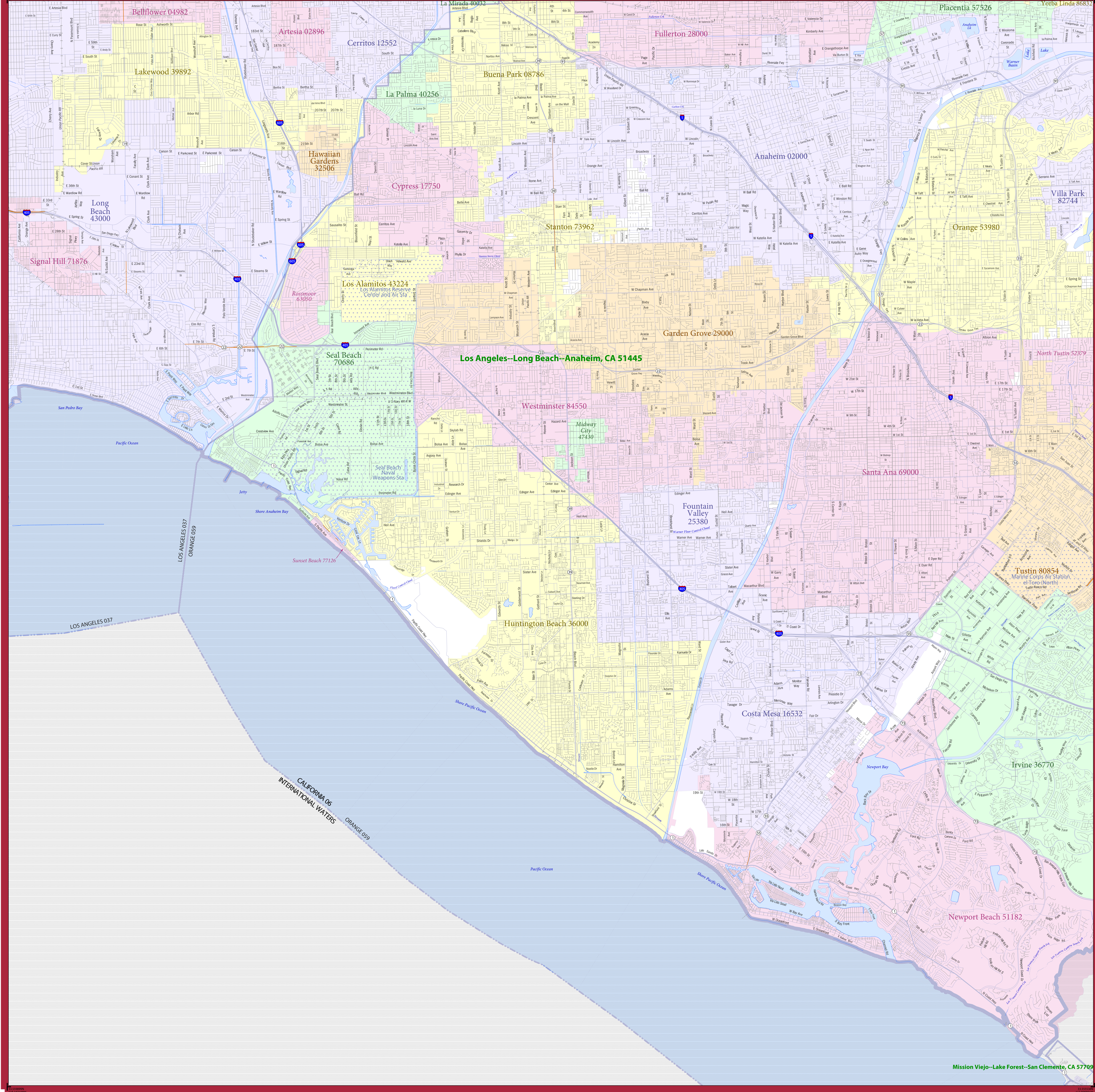
Key to Sheets		
4	5	6
	8	9

PARENT SHEET 8
Total Sheets: 11
Index Sheets: 1
Parent Sheets: 10



UA NAME: Los Angeles--Long Beach--Anaheim, CA
UA CODE: 51445
ENTITY TYPE: Urbanized Area (UA)
ST: California (06)

2010 CENSUS - URBANIZED AREA REFERENCE MAP: Los Angeles--Long Beach--Anaheim, CA



LEGEND

SYMBOL DESCRIPTION	SYMBOL	LABEL STYLE
International	--- --	CANADA
Federal American Indian Reservation	L'ANSE RES 1880
Off-Reservation Trust Land	T1880
Urbanized Area	Dover, DE 24580
Urban Cluster	Toolee, VT 88057
State (or statistically equivalent entity)	--- --	NEW YORK 36
County (or statistically equivalent entity)	--- --	ERIE 029
Minor Civil Division (MCD) 1,2	--- --	Bristol town 07485
Consolidated City	MILFORD 47500
Incorporated Place 1,3	Davis 18100
Census Designated Place (CDP) 2	Incline Village 35100

DESCRIPTION	SYMBOL	DESCRIPTION	SYMBOL
Interstate	Water Body
U.S. Highway	Military
State Highway	Outside Subject Area
Other Road		
Railroad		
Perennial Stream		
Intermittent Stream		

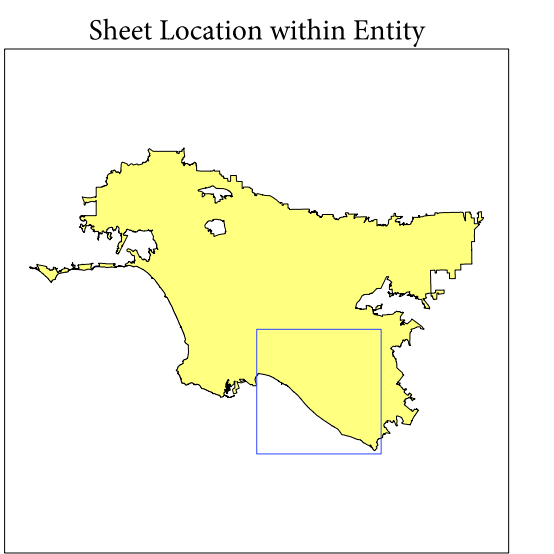
Where international, state, county, and/or MCD boundaries coincide, the map shows the boundary symbol for only the highest-ranking of these boundaries.

1 A ** following an MCD name denotes a false MCD. A *** following a place name indicates that a false MCD exists with the same name and FIPS code as the place; the false MCD label is not shown.

2 MCD boundaries are shown in the following states in which some or all MCDs function as general-purpose governmental units: Connecticut, Illinois, Indiana, Kansas, Maine, Massachusetts, Michigan, Minnesota, Missouri, Nebraska, New Hampshire, New Jersey, New York, North Dakota, Ohio, Pennsylvania, Rhode Island, South Dakota, Vermont, and Wisconsin. (Note that Illinois and Nebraska have some counties covered by nongovernmental precincts and Missouri has most counties covered by nongovernmental townships.)

3 Place label color corresponds to the place fill color.
Label colors: Davis Davis Davis Davis Davis

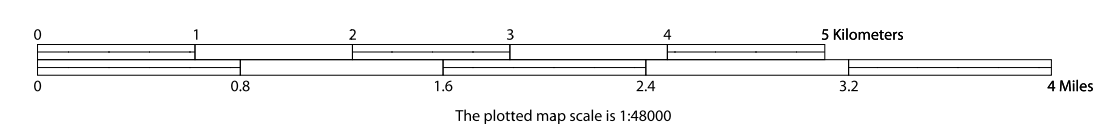
SUBJECT AREA COUNTIES ON MAP SHEET
 06037 Los Angeles
 06059 Orange



All legal boundaries and names are as of January 1, 2010. Urban areas are based on results from the 2010 Decennial Census. The boundaries shown on this map are for Census Bureau statistical data collection and tabulation purposes only; their depiction and designation for statistical purposes does not constitute a determination of jurisdictional authority or rights of ownership or entitlement.

Geographic Vintage: 2010 Census (reference date: January 1, 2010)
 Data Source: U.S. Census Bureau's MAF/TIGER database (TAB10)
 Map Created by Geography Division: March 11, 2012

Projection: Albers Equal Area Conic
 Datum: NAD 83
 Spheroid: GRS 80
 1st Standard Parallel: 34 06 27
 2nd Standard Parallel: 40 25 20
 Central Meridian: -119 18 20
 Latitude of Projection's Origin: 32 31 43
 False Easting: 0
 False Northing: 0



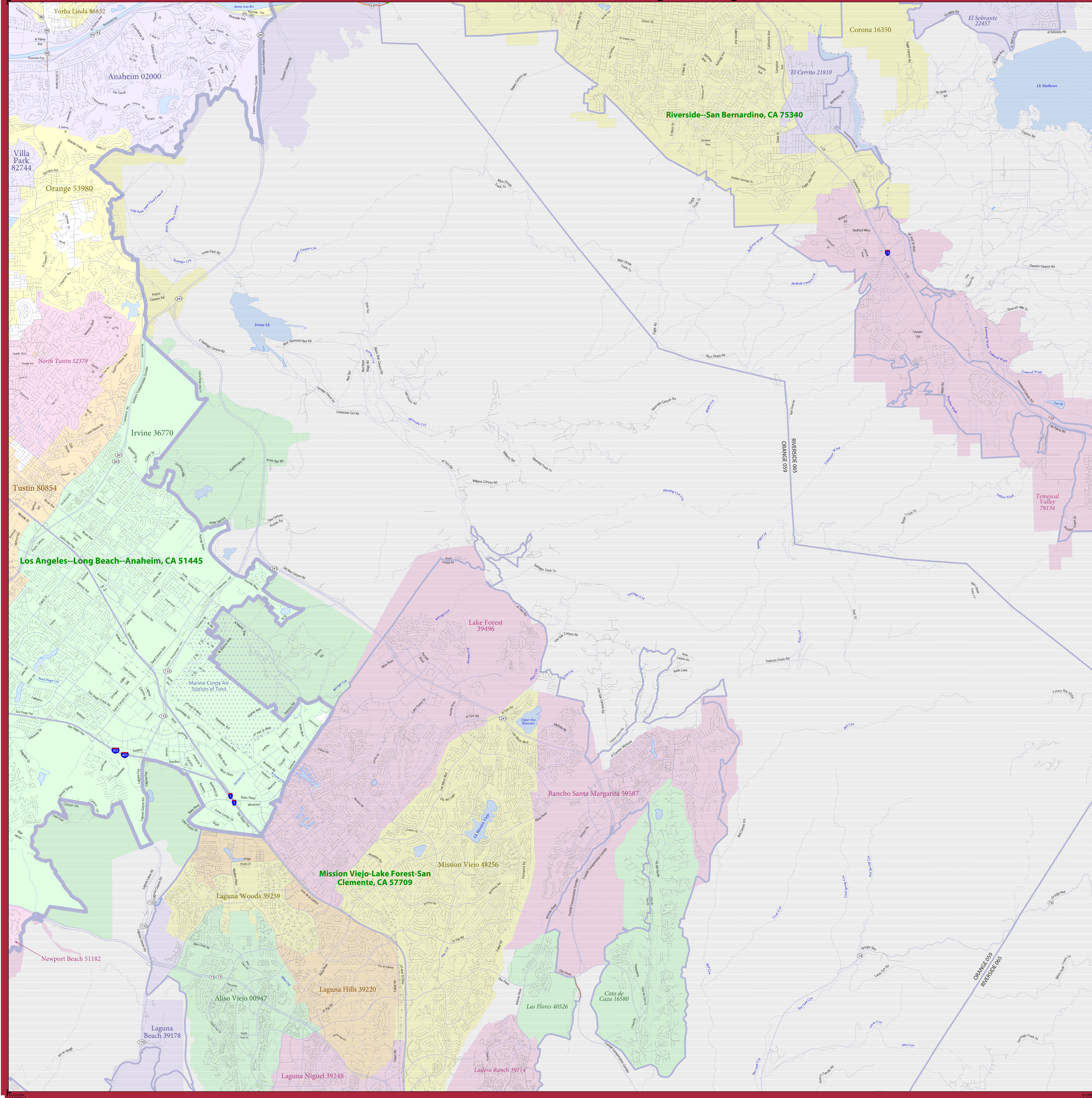
Key to Sheets

5	6	7
8	9	10

PARENT SHEET 9
 Total Sheets: 11
 Index Sheets: 1
 Parent Sheets: 10

UA NAME: Los Angeles--Long Beach--Anaheim, CA
 UA CODE: 51445
 ENTITY TYPE: Urbanized Area (UA)
 ST: California (06)

2010 CENSUS - URBANIZED AREA REFERENCE MAP: Los Angeles--Long Beach--Anaheim, CA



LEGEND

SYMBOL DESCRIPTION	SYMBOL	LABEL STYLE
International	--- ---	CANADA
Federal American Indian Reservation	L'ANSE RES 1880
Off-Reservation Trust Land	T1880
Urbanized Area	█	Dover, DE 24580
Urban Cluster	█	Toolee, VT 88057
State (or statistically equivalent entity)	--- ---	NEW YORK 36
County (or statistically equivalent entity)	---	ERIE 029
Minor Civil Division (MCD) ^{1,2}	---	Bristol town 07485
Consolidated City	MILFORD 47500
Incorporated Place ^{1,3}	Davis 18100
Census Designated Place (CDP) ²	Incline Village 35100

DESCRIPTION	SYMBOL	DESCRIPTION	SYMBOL
Interstate	— —	Water Body	■
U.S. Highway	— —	Military	■
State Highway	— —	Outside Subject Area	■
Other Road	— —		
Railroad	— —		
Perennial Stream	— —		
Intermittent Stream	— —		

Where international, state, county, and/or MCD boundaries coincide, the map shows the boundary symbol for only the highest-ranking of these boundaries.

1 A ** following an MCD name denotes a false MCD. A *** following a place name indicates that a false MCD exists with the same name and FIPS code as the place; the false MCD label is not shown.

2 MCD boundaries are shown in the following states in which some or all MCDs function as general-purpose governmental units: Connecticut, Illinois, Indiana, Kansas, Maine, Massachusetts, Michigan, Minnesota, Missouri, Nebraska, New Hampshire, New Jersey, New York, North Dakota, Ohio, Pennsylvania, Rhode Island, South Dakota, Vermont, and Wisconsin. (Note that Illinois and Nebraska have some counties covered by nongovernmental precincts and Missouri has most counties covered by nongovernmental townships.)

3 Place label color corresponds to the place fill color.
Label colors: Davis Davis Davis Davis Davis

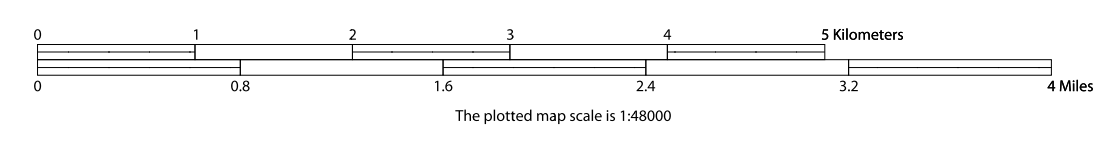
SUBJECT AREA COUNTIES ON MAP SHEET
06059 Orange

All legal boundaries and names are as of January 1, 2010. Urban areas are based on results from the 2010 Decennial Census. The boundaries shown on this map are for Census Bureau statistical data collection and tabulation purposes only; their depiction and designation for statistical purposes does not constitute a determination of jurisdictional authority or rights of ownership or entitlement.

Geographic Vintage: 2010 Census (reference date: January 1, 2010)
Data Source: U.S. Census Bureau's MAI/TIGER database (TAB10)
Map Created by Geography Division: March 11, 2012

U.S. DEPARTMENT OF COMMERCE Economics and Statistics Administration U.S. Census Bureau

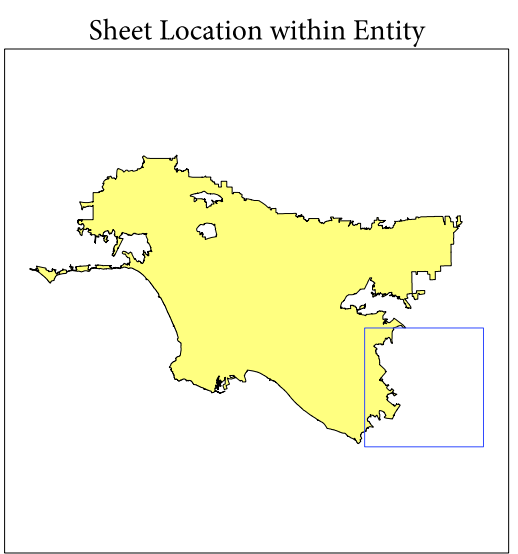
Projection: Albers Equal Area Conic
Datum: NAD 83
Spheroid: GRS 80
1st Standard Parallel: 34 06 27
2nd Standard Parallel: 40 25 20
Central Meridian: -119 18 20
Latitude of Projection's Origin: 32 31 43
False Easting: 0
False Northing: 0



Key to Sheets

6	7
9	10

PARENT SHEET 10
Total Sheets: 11
Index Sheets: 1
Parent Sheets: 10



Sheet Location within Entity

UA NAME: Los Angeles--Long Beach--Anaheim, CA
UA CODE: 51445
ENTITY TYPE: Urbanized Area (UA)
ST: California (06)