

Historic, archived document

Do not assume content reflects current scientific knowledge, policies, or practices.

2.09*

1949

*California
Sets the
Fashion*



America's Most Beautiful Red Rose
SAN FERNANDO (Pat. Pend.)
All America Rose Winner

A magnificent thirty-petaled rose of glowing currant red with blooms of unusually heavy texture—tall erect stems—truly deserving of its All America Award. Painted, well farmed buds opening a beautiful Scarlet. Dark green, leathery foliage. Its exquisite perfume fills the whole garden with lovely fragrance.

NR 108.\$2.00

GERMAIN'S
Horticultural Specialist Since 1921
LOS ANGELES, CALIFORNIA

GERMAIN'S

Again Sets the Fashion With
America's Most Beautiful Red Rose!

San Fernando

ALL AMERICA ROSE WINNER

Outstanding among Germain's world renowned roses, is "San Fernando," All America Winner. Because of its perfect form, and its 30 magnificent petals of glowing currant red, it is acclaimed "America's most beautiful red rose." Its heavy pleasing perfume fills your garden with lovely fragrance. (Complete description on Front Cover).

Germain's California Roses are renowned throughout the Nation. Their beauty, vitality and abundant bloom stem naturally from California's rich soil, milder climate and longer growing season.

In Sunny San Fernando, California's "Valley of Roses," we grow acres upon acres of roses each year. Here, where climatic conditions meet their requirements almost to perfection, roses make a larger, sturdier growth, develop strong sun-ripened canes which alone can give that satisfying burst of Spring bloom for which our roses are famous. By placing your order direct with Germain's, you are assured that your roses will be of the highest quality and first grade, strong stemmed, heavily rooted, two year old, field grown bushes—true to name and color.

Spring

1949



The Entrance
Germain's
Nursery



Germain's New Rose "San Fernando," All America Winner, honored during Fiesta at historic Mission San Fernando, San Fernando, California



THIS IS THE GIFT
CERTIFICATE WE SEND YOUR FRIENDS

Germain's Merchandise Certificate The Ideal Gift for Garden Lovers

What other gift could be more appreciated by your garden loving friends, than a gift of plants that will live and grow in beauty to remind them of your thoughtfulness for many years to come

It Is So Easy, Too!

When you are undecided, your gift problems are quickly solved in this convenient, easy way. Just send us your order with the name of the recipients and the amount of the certificates you wish us to send. We take care of all remaining details. Your friends will receive a certificate like the sample pictured above, also a copy of this Rose Book and General Garden Catalogue. Certificates are mailed at once or at a future date in accordance with your wishes. We shall be pleased to inclose gift card. You will, of course, receive our acknowledgment on receipt of your order.

General View
Germain's Nursery



You'll Want to Get Your *Roses, Seeds, Bulbs* DIRECT from CALIFORNIA

—the greatest flower growing center in the nation and as far as we know, the World. We are sure that you cannot start your garden year under better auspices than by ordering California Flower seeds, plants and bulbs from Germain's

Germain's *California Flower Seeds*

The Coastal Valleys of California have become the largest and most important Flower Seed growing section in the world. Practically all flower seeds used in America are produced in Southern California. The finest strains of Asters and Zinnias in the world and many other popular flowers owe their existence to the work of our Hybridists and Plant breeders—Dahlia-flowered and California Giant Zinnias, Early Giant, Giants of California and Princess Asters, Sunset Giant, Marigold, Ruffled Giants of California Petunias and Pacific Giant Delphiniums, to mention only a few, are all California originations. To be sure of the best—Get them direct from Germain's.

Germain's California Bulbs

California also grows large quantities of all varieties of summer flowering bulbs. Our California Giant Ranunculus have no equal anywhere and the quality of our Gladiolus, Dahlias, Tuberous Rooted Begonias, etc., is well known to Horticulturists and Nurserymen in every part of the country. You will be delighted with the high grade, healthy bulbs you receive from us.

WE PREPAY AND GUARANTEE DELIVERY

All prices quoted in this catalogue include special packing and carrying charges. Our experts employ specialized packing methods to protect live plants in transit and assure safe delivery to your door. All shipments are sent prepaid. You pay **no more** than the prices shown.

WHEN MAILING US YOUR ORDER

Use the order sheet enclosed in catalogue if possible. In the space reserved for address write plainly your name, post office, nearest express office (if different from post office), County and State. Keep a duplicate copy of your order for comparison.

REMITTANCES

Remittances may be made by Money Order, Bank Draft or Personal Check. If you remit in cash be sure to send in a Registered letter. Please send remittance in full with your order as we do not send shipments C. O. D.

PROMPT SHIPMENT OF ORDERS

All orders entrusted to us will be carefully filled and shipped promptly or at the proper planting time. We take every precaution to supply only Plants, Bulbs and Seeds of the highest quality and guarantee safe delivery.

Germain's, Inc., Los Angeles 21, California

Cultural Pamphlets

FREE

We have available and will gladly mail free on request any of the following cultural pamphlets:

- Rose Culture.
- Bulbs for Spring Planting.
- Camellias in California.
- Flower Seed Planting Guide.
- Gladiolus Cultural Directions.
- Dahlia Culture.

INDEX

Roses, pages	1-11
Pelargoniums, pages	12-13
Perennial Plants, pages	14-15
Carnations, page	16
Phlox, page	17
House and Conservatory plants, pages	18-21
Grape Vines and Berry Plants, page	22
Flower Seeds, pages	23-27
Bulbs, pages	28-32

GERMAIN'S *of California*

A California Institution With a National Clientele

IN 1871, The Germain Seed and Plant Company was founded in the City of Los Angeles one of the few pioneer firms in this city that can boast of three quarters of a century of continued progress and expansion. From a small retail store, it has become a National and International institution, shipping its products throughout the United States and to many foreign countries.

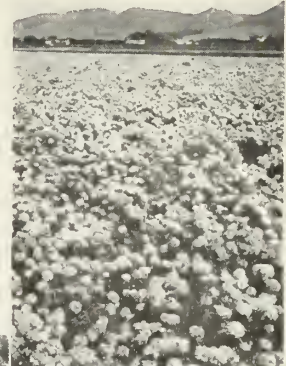
Germain's ultra-modern Retail establishment in Los Angeles' downtown business district is among the finest in America. No one should fail to visit it when in Los Angeles.

Branches patterned after the Los Angeles store are located in the following California communities: San Francisco, San Diego, Santa Maria, San Jose, Fresno, Compton, Salinas, El Monte, Watsonville, Sacramento, and Van Nuys and in Phoenix, Ariz.

At our nurseries, many acres of lath and greenhouses are devoted to the culture of orchids, flowering and foliage plants, roses and perennials. Thousands of acres in the West are devoted to the production of Germain's seeds, plants and bulbs and are supervised by men thoroughly trained in the Horticultural profession.

This, perhaps explains why more gardeners all over America are planting Germain's seeds and Horticultural products each year.

Field-View at Seed Ranches where Germain's Fine Flower Seeds are grown.



Entrance and typical view of Salesroom at one of Germain's Stores.



Artist's Sketch of Entrance To Germain's Camellia Lane



View in One of Our Nursery Sales Rooms

GERMAIN'S *P*REVIEW ROSES for *S*PRING

No C. O. D. Shipments

All Items Postpaid in U. S. A. Only

THE ROSES OFFERED ON THESE PAGES ARE AVAILABLE FOR
SPRING PLANTING ONLY



California grown roses have a longer growing season and therefore are larger and huskier and just as hardy as those grown in colder climates. Hardiness is inherent in the varieties and wherever grown they retain that hardiness. Roses will be shipped to you at the proper planting time for your locality. You may specify the time you wish your roses sent—from January to May 10th—according to the best planting time for your locality.

On foreign shipments we are obliged to make an additional 25% charge on the total amount of your order. This is necessary due to the extra packing and permits required on shipments leaving continental United States.

We pay postage anywhere in the U. S. A. To all other points, postage charges are 10% of your total order. Orders going forward by express or air are at the customer's expense.



SAN GABRIEL
(Pat. App. For)

The Mission Trio

Three New Sensational Roses

Introduced by Germain's

SAN FERNANDO

Plant Pat. 785

1948 All America Rose Selection
Winner

See Front Cover

A magnificent thirty-petaled rose of glowing currant red with blooms of unusually heavy texture—proudly borne on tall erect stems—truly deserving of its All America Award. Pointed, well formed buds opening a beautiful Scarlet. Dark green, leathery foliage. So heavy is its pleasing perfume that just one bush will fill your whole garden with lovely fragrance.

NR108..\$2.00 ea.; 3 for \$5.00

SAN GABRIEL

(Patent Applied For)

Long pointed buds of glowing salmon with a heavy overlay of tangerine orange and fire red. Distinct saffron yellow at the base of each petal. As the flower opens the petals reflex, showing all the beautiful coloring. Exceptionally free flowering and long lasting. Pleasing tea fragrance.

NR109..\$2.00 ea.; 3 for \$5.00

SAN LUIS REY

(Patent Applied For)

A veritable treasure trove of golden loveliness in full petaled blooms of matchless beauty. Long pointed buds of guinea gold opening to perfect flowers of satiny texture deepening at the base to rich cadmium yellow. Tea scented.

NR110..\$2.00 ea.; 3 for \$5.00

All Three only \$5.00, Postpaid

HEART'S DESIRE

Pat. 501

The bush is an exceptionally vigorous grower and unlike so many other red roses the blossom is not affected by the hot sun. Heart's Desire with its great red blooms is just what the name implies. Remember it has size, length of stem, vigor and rich fragrance.

NR042..\$1.50 ea.; 3 for \$3.75

TALLYHO

(Patent Applied For)

A new color in roses. Inside the petals are a delightful shade of pink, the outside varies from cardinal red to soft crimson. The ovoid buds open to full flowers of pleasing fragrance. Strong grower. An All-America Award winner for 1949.

NR124.....\$2.50 each



SAN LUIS REY (Pat. App. For)



TALLYHO
(Pat. App. For)

AUTUMN Medium-sized buds and cupped double flowers. Burnt orange streaked with red. Grows strong, blooms profusely. Dark glossy green leathery foliage.

NR001.....\$1.00 each

BETTY PRIOR (Pat. 340) Large branching clusters of single blooms resembling dogwood in shape, size and color. The plants are abundantly branched and continuous in bloom. Growth 3½ feet. Very much used for hedges.

NR004.....\$1.25 ea.; 3 for \$3.25

CHARLOTTE A new variety with medium sized dainty buds of rich coral pink, free-flowering and a strong grower.

NR007.....\$1.25 ea.; 3 for \$3.25

CHATTER (Pat. 739) (Not Pictured) A vivid bright crimson Floribunda type with beautiful velvety petals. Delicate old rose fragrance. For mass planting its generous trusses of bloom make a striking display.

NR005.....\$1.25 ea.; 3 for \$3.25

CHRISTOPHER STONE Lovely, long-pointed buds open to vivid scarlet blooms which are veiled in the fall with a dusky nap of blackish crimson.

NR008.....\$1.25 ea.; 3 for \$3.25

CONTRAST A bicolor that is startling in its contrasting tones with the upper surface a soft rose and the under side white with a gold suffusion at the base of the petals. The stems are exceedingly long which makes this variety one of the finest cutting roses offered.

NR011.....\$1.25 ea.; 3 for \$3.25

HEART'S DESIRE (Pat. 501)



CALIFORNIA GROWN PLANTING 1949

NO C. O. D. SHIPMENTS—All Items Postpaid in U. S. A. Only

DAINTY BESS The loveliness of this popular single rose is in its five-petaled flowers of delicate pink and its contrasting wine-red stamens. An extra strong grower and very free flowering variety.

NR014.....\$1.00 each

DONALD PRIOR (Pat. 377) This sparkling red twelve-petaled variety is an excellent mate for Betty Prior as they both grow to about 3½ feet tall. A prolific bloomer with large, shiny foliage.

NR013.. \$1.25 ea.; 3 for \$3.25

DUCHESS OF ATHOL The coloring of this variety is uncommon and delightful, an old golden orange flushed with peach pink, particularly attractive in the bud and open state.

NR018.....\$1.25 ea.; 3 for \$3.25

E. G. HILL The flower is scarlet, shading to a deeper pure red as it develops. It produces long stems naturally and the foliage develops freely and is of fine color. A good producer and an unusually good keeper. Does not fade even during the hottest weather. Sweetly scented.

NR020.....\$1.00 each

FRED EDMUNDS (Pat. 731) Winner of 1944 All-America Regional Award. Burnt-orange buds open to glorious, 25-petaled blooms of vivid, glowing coppery orange color which slowly changes to soft apricot. Rich fruity fragrance. Holly-like, very shiny foliage. This is one of the loveliest novelties in many years.

NR030.... \$1.50 ea.; 3 for \$3.75

NOCTURNE

(Pat. 713)

The color is bright cardinal-red with intriguing darker shadings of Chrysanthemum-crimson, opening to a somewhat lighter shade in hot weather. The large petals have good substance, are richly textured, and there are plenty of them so that the flower lasts a long time. The blooms are pleasantly fragrant.

NR083.....\$2.00 Each; 3 for \$5.00



NOCTURNE (Pat. 713)



FORTY NINER (Pat. 792)

FORTY-NINER

(Pat. 792)

One of the most brilliantly colored roses ever introduced. A combination of Orient red and straw yellow that is very spectacular. A vigorous upright grower. Winner of the All-America Award for 1949. Long pointed buds. Glossy foliage.

NR028.....\$2.50 each

CHARLOTTE ARMSTRONG

(Pat. 455)

Lovely pointed buds of spectrum-red open to flowers of brilliant rose-pink. The buds are unbelievably long and open to flowers six inches in diameter. Each petal is edged with a silver line. In the center the petals are arched giving the flower a high-centered appearance.

NR006.....\$1.50 ea.; 3 for \$3.75



CHARLOTTE ARMSTRONG (Pat. 455)

GRAND DUCHESS CHARLOTTE

(Pat. 774)

An All-America Winner for 1942. Medium sized buds of intense copper scarlet changing to glowing carmine in the open flower. Extremely free flowering, plants exceptionally vigorous and tall growing.

NR038.....\$1.50 ea.; 3 for \$3.75



GRAND DUCHESS CHARLOTTE (Pat. 774)

California Sets the

NO C. O. D. SHIPMENTS—All Items Postpaid in U. S. A. Only
PLEASE ORDER BY NAME AND NUMBER

**BUY
DIRECT
FROM
CALIFORNIA**



COUNTESS VANDAL (Pat. 38)

COUNTESS VANDAL (Pat. 38)

This rose has been enthusiastically received by rose lovers everywhere. Its long pointed bud, its distinctive shading of coppery bronze, suffused with soft gold, and its form are a continuous "movie" developing new beauty at all times during its long life. One of the most popular roses, because of its beauty as well as its abundant bloom.

NR010.....\$1.35 ea.; 3 for \$3.60

BEST REGARDS (Pat. 652)

A glorious rose that we feel should be in every garden. Extra large buds opening to full centered flowers. The inside of petals is a brilliant shade of cardinal red with a deep yellow marking at the base of each. The outside of flower is a tyrian rose with a coppery oversheen. A vigorous grower and an exceptionally prolific bloomer. Open flowers are five to six inches across.

NR003.....\$1.50 ea., 3 for \$3.75

BEST REGARDS (Pat. 652)



PINOCCHIO (Pat. No. 484)

PINOCCHIO (Pat. 484) Extremely hardy and easy to grow. A prolific and continuous bloomer. The plants are literally covered from Spring to frost with great quantities of beautiful buds which are salmon-pink flushed with gold. Wherever seen this rose has created a sensation. Used by leading florists for corsages and bouquets. Plant is compact and upright. It is a bushy, vigorous grower and due to its fine habit and lustrous green foliage it makes a wonderful rose hedge.

NR095. \$1.25 ea.; 3 for \$3.25

FEU JOSEPH LOOYMANS

Long pointed buds of tangerine yellow with a very vivid apricot center. Greatly admired wherever seen for its unusually striking color. The open flower is of large size with a spicy fragrance.

NR027\$1.00 each

FLORADORA The gayest Floribunda of them all. It is spectacular, constantly in bloom and an entirely new shade in Roses—a brilliant cinnabar-red, as arresting under artificial light as in the garden. Flowers are carried on sprays of six to twelve blooms. A fine floribunda type.

NR029. \$1.25 ea.; 3 for \$3.25

FRAU KARL DRUSCHKI

An ideal hardy white rose, pure white in color. A remarkably vigorous grower. Free flowering to a degree. In our opinion, the best of all white roses. Very hardy.

NR031\$1.00 each

GEN. McARTHUR One of the most popular and freest blooming of all red garden roses. Color is a bright rosy crimson. Especially valuable for bedding purposes. Fragrant. Sometimes inclined to fade in hot weather but nevertheless worth while.

NR033\$1.00 each



© J. & P. CO.

CRIMSON GLORY (Pat. 105)

CRIMSON GLORY (Pat. No. 105) This beautiful, vigorous and free flowering rose has proved to be one of our very best dark reds. The plants branch freely producing well-spread yet compact bushes of good symmetry. The large pointed buds open to flowers of intense deep and vivid crimson shaded with deep red. Foliage is plentiful and spaced on the stems which are long and exceptionally strong.

NR012\$1.50 each; 3 for \$3.75

Fashion in Roses

NO C. O. D. SHIPMENTS—All Items Postpaid in U. S. A. Only
PLEASE ORDER BY NAME AND NUMBER

SONATA (Plant Patent No. 732) All the delicate tones and vibrant harmony of a musical masterpiece find living expression in the exquisite form, enticing aroma, and sparkling color of this Rose. Sonata is truly as beautiful as a symphonic melody. Cochineal red in spring and fall, in summer lightening to unusual hues of deep, lively pink. The outside of the petals is several shades darker than inside. The large, fragrant flowers are perfectly shaped, opening gradually and artistically from long, pointed buds of intense cochineal-red. Growing proudly erect on long, strong stems, Sonata blooms abundantly from spring to fall.

NR119....\$1.50 ea.; 3 for \$3.75

GIRONA The full, double flowers are magnificently formed and are beautifully colored in various tones of pink, carmine and yellow, varying with the weather but always lovely. You'll find it one of the most fragrant roses you've ever inhaled. It produces long stemmed flowers very freely on a tall, strong plant. Splendid for cutting because the blooms keep so well.

NR035....\$1.25 ea.; 3 for \$3.25

HADLEY A rich glorious red shading to velvety purple. Flowers exceedingly fragrant. Buds are high and pointed. A rose that should be in every collection. Highly recommended.

NR039\$1.00 EACH

HOOSIER BEAUTY A dark rich velvety crimson of even color. Produces long stems. Flower is double and pointed. Sweetly scented. Not inclined to mildew. With the Hadley this variety can be rated as one of the best reds.

NR045\$1.00 EACH

J. OTTO THILOW The buds of this variety have just about the most perfect form of any rose grown and they open out into a full grown flower which keeps well. Color is rose-pink, similar to Rose Marie, but the flowers are larger and are on stiffer stems.

NR049\$1.00 EACH

JOANNA HILL Large buds and blooms that are high pointed. Color is a delicate shade of golden yellow, deepening toward the center to a warm apricot tinge. Stems strong and foliage healthy. Fragrant.

NR052\$1.00 EACH

K. A. VICTORIA Pure ivory white, producing quantities of beautiful buds and full flowers. Long considered the best white Rose for California because it blooms so freely and continuously, no matter what the weather.

NR054\$1.00 EACH



SONATA (Pat. 732)

CALIFORNIA CENTENNIAL

(Pat. Rts. Res.)

Vigorous and upright in growth. The three-foot canes are clothed in well spaced copper-green foliage. Thorns are so few they are negligible. The flower shoots break away well down on the parent canes, affording strong stems eighteen inches or more in length, crowned with long, spiral crimson buds of elegant texture. Gives a wealth of beautiful roses throughout the entire season. Very fragrant.

NR015.....\$2.00 EACH

PINKIE (Pat. 712)

A baby rose that has blooms with a perfection of form not heretofore found in this class. Dainty little pink buds of neyron rose that are long, slender, and perfect in every detail. Grows two feet tall.

NR093 \$2.00 ea.;
3 for\$5.00



CALIFORNIA CENTENNIAL
Patent Rights Reserved



PINKIE (Pat. 712)

PEACE (Pat. 591) one of the most glorious and sensational roses of all times. The range of color through which this variety passes is indeed marvelous. The big canary yellow buds open to five-inch flowers that turn to alabaster white with pique cerise edges. A flower of great beauty and substance. Shades of color vary from flower to flower. The foliage is glossy green. Strong grower.

NR086 \$2.00 ea.;
3 for\$5.00

PEACE (Pat. 591)



MARK SULLIVAN (Pat. 599). This gorgeously colored rose has a base color of golden-yellow. The large firm petals are heavily veined and shaded with deep rose-pink and cerise. Fragrance is alluring, comparable to honey. Glossy dark, green foliage.

NR069 \$1.50 ea.; 3 for \$3.75



MARK
SULLIVAN
(Pat. 599)

CALIFORNIA *Roses*

All Items Postpaid in U. S. A. Only
No C. O. D. Shipments

PLEASE ORDER BY
NAME AND NUMBER



LOWELL THOMAS (Pat. 595)

LOWELL THOMAS (Pat. 594)—A 1943 All America Winner. Magnificent chrome yellow flowers open from beautiful buds that are high centered and four inches across when fully open. A vigorous grower.

NR062.....\$1.50 ea., 3 for \$3.75



MIRANDY (Pat. 632)

MME. HENRI GUILLOT (Plant Pat. 337) This truly exquisite flower, with its beautiful color and novel urn shape, is an outstanding favorite. The large, firm petals open slowly and each richly fragrant flower of shining raspberry-pink color is held erect above the large, glossy foliage. Twice "Queen of the Show" in Portland, Ore.

NR067.....\$1.50 ea.; 3 for \$3.75

LADY FORTEVIOT Large ovoid buds opening to artistic moderately-double, well-lasting flowers of delightful fruity fragrance and pleasing color—orange on the inner face with a bright canary-yellow base and the back of the petals paler and inclined to apricot. Vigorous growth, healthy dark-green glossy foliage. Gold Medal, National Rose Society of England.

NR058.....\$1.25 ea.; 3 for \$3.25

LOS ANGELES You'll like this world-renowned "Gold Medal" variety. As colorful as the city of its origin. Rich flame pink shading to apricot and yellow.

NR060.....\$1.25 ea., 3 for \$3.25

LULU Dad's lapel favorite. Great quantities of dainty, extremely long and slender buds of coral-apricot, with which the bush is covered at all times.

NR064.....\$1.25 ea.; 3 for \$3.25

MME. JOSEPH PERRAUD The long, slender, and pointed Nasturtium orange buds open to sweetly fragrant flowers of a charming Nasturtium buff straying to a lovely shade of shell pink.

NR068.....\$1.00 each

MIRANDY (Pat. 632) The All-America winner for 1945. Extra large flowers with exquisite fragrance and unlike most varieties this rose does best in warm weather. Rich deep dark red with black shadings. Plant is vigorous and produces abundantly all through the season. Foliage is dark green and heavily textured.

NR076.....\$1.50 ea.; 3 for \$3.75



MME. HENRI GUILLOT (Pat. 337)

McGREY'S YELLOW Yellow rose enthusiasts rave about this one. The buds are medium size, with plenty of petals, a lovely uniform shade of buttercup yellow.

NR075.....\$1.00 each

MRS. PIERRE S. DUPONT Just visualize a bushy, 2-foot plant so thickly covered with luxuriant, glossy green foliage that you cannot see the ground, surmounted with many stiff-stemmed, medium-sized, golden yellow buds, heavy with fragrance. That's what you'll have in your garden all summer in this fine Rose.

NR080.....\$1.25 ea.; 3 for \$3.25

MRS. SAM McGREY This wonderful rose is a beautiful copper-orange in color, heavily flushed with Lincoln-red. There is no other color in roses like it. The buds are long-pointed, high-centered, and double, with a moderate fragrance. Growth low, robust and much branched with the most beautiful bronzy green foliage, glossy and luxuriant, ever seen on a rose bush. To cap it all, the flowers possess a sweet fragrance.

NR081.....\$1.25 ea.; 3 for \$3.25

PINK DAWN Produces a fragrant abundance of perfectly formed, full, double flowers of a deep rose color, opening to lovely pink blooms tinted with orange at the base of the petals.

NR091.....\$1.25 ea.; 3 for \$3.25

POINSETTIA Scarlet, red blooms of an unusual shade. Color resembles the Poinsettia from which it gets its name. Flowers are produced freely on erect growing plants throughout the season. Makes a wonderful garden show.

NR097.....\$1.25 ea.; 3 for \$3.25

RADIANCE Radiant rose-pink buds, opening to a well-formed shining flower with lighter tints on the reverse of the petals; fragrant.

NR102.....\$1.00 each

RED RADIANCE An even shade of rosy-red, this variety just about out-produces any rose we know. Habit and fragrance are the same as the variety Radiance.

NR104.....\$1.00 each

YOURS TRULY (Pat. 697) A glorious rose with great big blooms and the longest stems you ever saw. You'll be amazed at its size and delightful fragrance. Fully double flowers of glowing rose-pink, deepening on the inside to bright madder rose and enhanced by a rich golden tinge at the base. Magnificent in bud.

NR140.....\$1.50 ea.; 3 for \$3.75

YOURS TRULY
Pat. 697



AMERICA'S FINEST

No C. O. D. Shipments
All Items Postpaid in U. S. A. Only

PLEASE ORDER BY
NAME AND NUMBER



SIGNORA

SIGNORA (Pat. 201)—In our test garden it is seldom out of bloom and is such a fine strong grower (of much the President Hoover type) that it attracts much comment. The long buds are a sort of brownish salmon, opening to good double blooms of mandarin and orange. Very fragrant. Disease free.

NR115.....\$1.35 each; 3 for \$3.60

SANTA ANITA (Pat. 539)—A perfectly formed, slender bud opens into a high-centered spiral flower of deep pink which does not fade in the hottest weather. The bushy plants bloom all season and especially free during the hottest weather.

NR111.....\$1.25 each; 3 for \$3.25

SHOW GIRL (Pat. 646)—The color is a rich deep phlox-pink, deeper in the spring (sometimes almost a carmine), lightening as the flower opens to a softer tone but always deep pink. You'll find it to be one of the strongest plants in the rose garden, upright, with the big sturdy canes continually coming from the bottom of the plant and branching freely, thereby producing lots of those perfect buds. Just enough fragrance to give it character. If you want to enjoy the most beautiful, most perfect, and the longest deep pink rose buds, you'll want to plant Show Girl.

NR113.....\$1.50 each; 3 for \$3.75

SNOWBIRD A very fine, almost pure white rose which is not well known, but we think it is one of the prettiest white roses that can be grown. Long, beautifully shaped, flaring white buds of small to medium size open into snowy white, high-centered blooms crowded with small petals. Very fragrant. It is lovely in all stages, and the plant is free-branching, free-blooming, and better than average in vigor.

NR117.....\$1.25 each; 3 for \$3.25

TANGO A rose of unusual coloring. Outside of petals are a unique shade of ivory becoming golden towards the base. The inside of the petals is an attractive shade of vermilion-scarlet. The bush grows tall and vigorous. Blooms continuously throughout the season. Spicy fragrance. As colorful as a Spanish shawl.

NR126.....\$1.25 each; 3 for \$3.25

MME. CHIANG KAI SHEK

(Pat. 664)

This beautiful new rose received the coveted All-America award. Long shapely buds develop on opening into lovely, large, full petaled flowers of exquisite fragrance. In bud the flower is a buttercup shade which changes when the flower opens to a soft satiny creamy yellow. Extra long stems.

NR066..\$1.50 ea.
3 for \$3.75



MME. CHIANG KAI SHEK (Pat. 664)

TEXAS CENTENNIAL (Pat. 162) President Herbert Hoover has been an extremely successful and popular Rose, and this is a sport of Hoover and very similar to it in most characteristics, with the exception of color. It has the same strong, tall, vigorous 3 to 4 foot plant, with heavy strong stems and magnificent large full buds and blooms—but the color is a bright, glowing carmine-red which in cool weather becomes deeper blood-red. It is getting popular with more people all the time.

NR127\$1.25 each; 3 for \$3.25

THE DOCTOR This glorious great light pink flower has made a place for itself by the sheer beauty of the enormous, delicately colored, large-petaled blooms, which are so big sometimes you can hardly believe them real. The buds are just as long in proportion. The plant is modest in growth, and you will have to give it a little extra attention, but it is worth doing that to get those magnificent pink blooms, which, by the way, are sweetly fragrant as well.

NR130\$1.25 each; 3 for \$3.25

ECLIPSE (Pat. 172) The long, stream-lined bud, enhanced by ornamental sepals, is of rich gold without shading. Petals are large and tough, but not numerous, averaging 20 to 25, with more in the autumn. Speaking of this Rose, a connoisseur remarked, "Elegance is preferable to opulence." The name "Eclipse" came about because the seedling bloomed for the first time on the day of the total eclipse, August, 1932, and it was sent out with the slogan, "It Eclipses 'em all."

NR022\$1.35 each; 3 for \$3.60



ECLIPSE (Pat. 172)

McGREDY'S SUNSET (Pat. 317.) Tinted with delicate orange and rich scarlet—the saffron blooms open in glorious grandeur. Best loved of the Irish roses. Shapely flowers. Sweet fresh fragrance. Excellent 30-inch plants. Continuous bloomer; hardy.

NR073.....\$1.35 each;
3 for \$3.60

KATHERINE T. MARSHALL (Pat. 607) This is a Rose of rare beauty and delicacy of form. It grows vigorously with large, open, upright blooms of friendly warm glowing pink. Highly praised in all sections of the country. Bred to hardiness and perfect form. The growth and foliage is equal to the Radiance family and outstrips the old favorite President Hoover. Fruity fragrance. Long, fine stems. An ideal Rose for cutting, formal table arrangements, and bouquets.

NR056.....\$1.50 each;
3 for \$3.75

VILLE DE PARIS Not only holds its color better than any other yellow rose but provides for months quantities of slender sunflower yellow buds for cutting. Open flowers are of medium size.

NR134\$1.00

KATHERINE T. MARSHALL (Pat. 607)



McGREDY'S SUNSET (Pat. 317)

A Complete Rose Garden

With Germain's Famous Dozen

All Items Postpaid in U. S. A. Only

No C. O. D. Shipments
PLEASE ORDER BY NAME AND NUMBER



CONDESSA DE SASTAGO (Lower right) Brilliantly Spanish in coloring. The petals are two-toned, deep golden on the outside, copper-rose and scarlet on the interior.

NR009\$1.00

DUQUESA DE PENARANDA (Center right) Orange apricot with deeper coppery tones. Huge pointed buds are double, sweetly perfumed, long lasting.

NR019\$1.25

ETOILE DE HOLLAND (Top right) Brilliant red blooms of large size. Perfect in half open state. Holds its color well. One of the best reds.

NR023\$1.25

McGREY'S IVORY Creamy ivory white, lovely and delicate in texture, which turns to a very clear white. The buds are just about as perfect as roses can be.

NR071\$1.25

MRS. E. P. THOM The best bedding yellow rose we have today. Deep yellow. Glossy disease resisting foliage. Heavy and continuous bloomer.

NR078.....\$1.00

NIGHT One of the darkest of all roses, deep dramatic crimson-shaded black and maroon. You'll thrill to its delightfully spicy clove fragrance.

NR082\$1.25

PICTURE (Top left) A rose that is a picture. Every bud perfectly formed and with a cheerful glowing shade of light rose-pink without other shading. Has a sweet fragrance.

NR089\$1.00

PRES. HOOVER (Lower left) A combination of cerise-pink, flame-scarlet and yellow. Strong grower with large blooms and heavy stems.

NR099\$1.00

ROSE MARIE The buds are long and pointed, petals large and well-rounded. Color a delightful pure rose pink.

NR106\$1.00

SISTER TERESE (Center left) Its long pointed buds are chrome yellow, heavily marked with carmine. The open flower is rich daffodil yellow. Fragrant.

NR114\$1.00

SOUTHPORT A brilliant, unshaded scarlet rose with about 18 large petals and a fine tea scent. Particularly brilliant in bright sunshine.

NR120\$1.25

TALISMAN A combination of shadings of gold, apricot, yellow, deep pink and old rose. The outside of the petals are bright yellow, gold and pink.

NR125\$1.00

*Any \$1.25 Rose on this page, 3 for \$3.25



DDK

GERMAIN'S Famous Dozen Collection

Collection of twelve varieties listed on this page (a \$13.25 value) sent anywhere in the United States. Roses listed above may be purchased separately.

NR142\$10.50 Postpaid

Roses on this page can be ordered separately.
PLEASE NOTE—No substitution can be made on collections.

Climbing Roses

For Trellises, Arbors and Fences

No C. O. D. Shipments
PLEASE ORDER BY NAME AND NUMBER

All Items Postpaid in U. S. A. Only



CL. ETOILE DE HOLLANDE



CL. SANTA ANITA (Pat. Applied For)



CL. PICTURE (Pat. 524)

CL. BELLE OF PORTUGAL Large pearl pink blooms of unusual beauty. Vigorous growing, early flowering. Recommended only for Pacific Coast and Southern States.
NR150.....\$1.25

CL. CECIL BRUNNER A climbing form of the well-known bush variety. A rampant grower that produces masses of the same salmon baby roses.
NR154.....\$1.25

CL. CONDESSA DE SASTAGO This picturesque variety is now available in a climber. Long stemmed flowers of orange scarlet and intense bright yellow.
NR156.....\$1.25

CL. COUNTESS VANDAL This climbing sport was discovered by us several years ago. We regard it as one of the finest climbers. Salmon-pink heavily shaded with copper and gold tones. Richly perfumed.
NR157.....\$1.25

CL. DAINY BESS This single rose with its pink flowers and red stamens makes a wonderful show on a fence, arbor or trellis. Very desirable.
NR159.....\$1.25

CL. ETOILE DE HOLLANDE We rank this variety as just about tops in climbing hybrid tea roses. Big blooms of vivid dark red. It fairly shines when in bloom.
NR161.....\$1.25

CL. F. J. LOOYMAN The glossy green foliage of this variety is enhanced by the beautiful long pointed buds of tangerine yellow with a vivid apricot center. Very showy.
NR163.....\$1.25

CL. HADLEY Dark velvety red blooms that are very fragrant. Foliage is dark green and plentiful.
NR167.....\$1.25

CL. HEART'S DESIRE (Pat. 663) What could be more beautiful than this superb variety in climbing form? Great, dark red blooms of fine form and texture. Vigorous grower. Exceedingly fragrant. See colored illustration, Page 4.
NR169.....\$1.50

CL. KAISERIN VICTORIA Plants bloom throughout the season and the lovely white flowers are magnificent.
NR171.....\$1.25

CL. MAX KRAUSE The most beautiful yellow Rose of the year for outdoor use—a gold that stays gold. Long buds and cup-formed bloom of great substance. Foliage leathery.
NR172.....\$1.25

CL. MCGREDDY'S YELLOW An excellent yellow climber you'll treasure. Identical in every respect with the bush form, producing a wealth of blossoms.
NR174.....\$1.25

CL. MRS. E. P. THOM This deep lemon yellow rose makes one of the most attractive climbers. Will produce longer stems than the bush form and, of course, many more flowers. Fine foliage.
NR176.....\$1.25

CL. MRS. SAM MCGREDDY (Pat. 374)—Outstanding for its coppery orange flowers and buds. This variety unlike most climbers blooms profusely the first season after planting. The beautiful flowers are set off by the most luxurious handsome foliage imaginable.
NR178.....\$1.50

CL. PAUL'S SCARLET One of the most admired red climbing roses. Large scarlet flowers on long stems. This cluster rose is a sheet of color during June. The color is flame scarlet.
NR180.....\$1.25

CL. PINK DAWN Exquisitely beautiful flowers which are long lasting and have an alluring fragrance. No other pink rose has this same delicate coloring. Buds are long, flowers are fully double. The blooms are tinted with orange at the base.
NR181.....\$1.25

CL. PICTURE (Pat. 524) Where the bush form of this variety will produce dozens of flowers, the climbing form will produce hundreds. Long stemmed, perfectly formed buds and open flowers of clear pink with salmon undertone. Exceedingly fragrant. Beautiful foliage. The flowers are perfect in form.
NR183.....\$1.50

CL. PRES. HOOVER A vigorous grower. This rose in its climbing form is much admired. A combination of cerise-pink, flame-scarlet and yellow. Fine fragrance.
NR185.....\$1.25

CL. ROSE MARIE A vigorous climber that is a delightful shade of pure rose pink. The buds are long and pointed, petals large and well-rounded. A very prolific bloomer and a strong grower.
NR187.....\$1.25

CL. SANTA ANITA (Pat. applied for) The same glorious pink buds and flowers as the famous bush variety. This climbing form will produce bouquets of long stemmed flowers that are wonderful for cutting. Vigorous grower.
NR188.....\$1.50

CL. TALISMAN This well-known multicolored variety makes one of the most vigorous climbing roses. Produces great quantities of flowers which are a combination of gold, apricot, yellow and old rose.
NR189.....\$1.25

CL. TEXAS CENTENNIAL (Pat. 565) For years a climbing rose the color of the Cl. Texas Centennial has been sought. The sport of the bush variety has the same coloring which is a rich red, at times the color is rosy cerise. Long strong stems.
NR190.....\$1.50

CL. VILLE DE PARIS If you are acquainted with the bush variety you can imagine how the climbing form will look with its glossy foliage and long pointed deep yellow buds which never fade.
NR192.....\$1.25



CL. TEXAS CENTENNIAL (Pat. 565)

Rich
in
Charm



1



5



10



2



6



7



3



8



11



4



9



12

GERMAIN'S RARE

"Martha Washington"

THE GAYEST PERENNIAL

The collection of twenty-four lovely Martha Washington Geraniums includes some of the most beautiful in America. Make excellent pot plants.

- NP101 **Santa Monica** (1)—Light pink.
- NP102 **Mackenson** (2)—Fiery rose.
- NP103 **Marie Vogel** (3)—Pink and Salmon.
- NP104 **Duchess of Cornwall** (4)—Maroon.
- NP105 **Mary Bard** (5)—White
- NP106 **Salmon Queen** (6)—Salmon.
- NP107 **San Diego** (7)—Light purple.
- NP108 **Springtime** (8)—Pink and White.
- NP109 **Easter Greeting** (9)—Bright red.
- NP110 **Pink Giant** (10)—Rose Pink.
- NP111 **Bella Donna** (11)—Cerise.
- NP112 **Sue Jarrett** (12)—Salmon pink.

Three for \$1.40; Dozen \$5.40 Postpaid.
In U. S. A. Only.

Please order by Name and Number

The Gayest Perennial



PELARGONIUMS
Geraniums
IN THE FLOWER GARDEN

These handsome plants with their deep green foliage and season-long riot of bloom cannot fail to be a source of joy and constant admiration.

- IP113 **Giant Venus (13)**—Salmon Shades.
 - IP114 **Grandma Fisher (14)**—Bright Salmon.
 - IP115 **Amanda (15)**—Glowing Scarlet.
 - IP116 **Dark Presidio (16)**—Maroon and pink.
 - IP117 **Diener's Giant (17)**—Deep pink.
 - IP118 **Neuheit Faiss (18)**—Deep Lavender.
 - IP119 **Ida Henley (19)**—Rose and Maroon.
 - IP120 **Ruth McAfee (20)**—Salmon.
 - IP121 **Lavender Quedlinburg (21)**—Lavender.
 - IP122 **Gardner's Joy (22)**—White and Brown.
 - IP123 **Carmine King (23)**—Cerise Red.
 - IP124 **Sensation (24)**—Crimson.
- Three for \$1.40; Dozen \$5.40 Postpaid**
In U. S. A. Only
Please order by Name and Number



*Gay
in
Color*



in the Flower Garden

Rich
in
Charm

Gay
in
Color



GERMAIN'S RARE
"Martha Washington"
THE GAYEST PERENNIAL

The collection of twenty-four lovely Martha Washington Geraniums includes some of the most beautiful in America. Make excellent pot plants.

NP101 **Santa Monica** (1)—Light pink.
NP102 **Mackenson** (2)—Fiery rose.
NP103 **Marie Vogel** (3)—Pink and Salmon.
NP104 **Duchess of Cornwall** (4)—Maroon.
NP105 **Mary Bard** (5)—White.
NP106 **Salmon Queen** (6)—Salmon.
NP107 **San Diego** (7)—Light purple.
NP108 **Springtime** (8)—Pink and White.
NP109 **Easter Greeting** (9)—Bright red.
NP110 **Pink Giant** (10)—Rose Pink.
NP111 **Bella Donna** (11)—Cerise.
NP112 **Sue Jarrett** (12)—Salmon pink.
Three for \$1.40; Dozen \$5.40 Postpaid.
In U. S. A. Only.
Please order by Name and Number

PELARGONIUMS
Geraniums
IN THE FLOWER GARDEN

These handsome plants with their deep green foliage and season-long riot of bloom cannot fail to be a source of joy and constant admiration.

NP113 **Giant Venus** (13)—Salmon Shades.
NP114 **Grandma Fisher** (14)—Bright Salmon.
NP115 **Amanda** (15)—Glowing Scarlet.
NP116 **Dark Presidio** (16)—Maroon and pink.
NP117 **Diener's Giant** (17)—Deep pink.
NP118 **Neuheit Faiss** (18)—Deep Lavender.
NP119 **Ida Henley** (19)—Rose and Maroon.
NP120 **Ruth McAfee** (20)—Salmon.
NP121 **Lavender Quedlinburg** (21)—Lavender.
NP122 **Gardner's Joy** (22)—White and Brown.
NP123 **Carmine King** (23)—Cerise Red.
NP124 **Sensation** (24)—Crimson.
Three for \$1.40; Dozen \$5.40 Postpaid.
In U. S. A. Only.
Please order by Name and Number

The Gayest Perennial in the Flower Garden

Plant Germain's *Perennials*

NO C. O. D. SHIPMENTS
All Items Postpaid in U. S. A. Only



DELPHINIUM

Delphinium Pacific Hybrids

We believe this strain of delphiniums to be the equal of any strain in existence. Noted for their stiff stems and heavy foliage they are a standout in any garden. While easy to grow a few pointers may be needed to assist in growing them better. Delphiniums do no require a rich soil but do much better where lime is applied at planting time. Well-drained soil is essential to their well being. Keep crowns of plants above the soil line when planting. Sold in mixture only.

NP035.....3 for \$1.10; 10 for \$3.50



BILBERGIA NUTANS

BILBERGIA NUTANS Unique in all its detail is perhaps the best description of this unusual subject. Clusters of green edged blue nodding flowers with rose colored sepal sheaths. Grey foliage. Grows in shade or semi-shade and fine as a pot plant. Cannot be shipped to Hawaii.

NP007.....3 for \$1.40



GERBERAS

GERBERAS An excellent garden plant and at the same time one of the most beautiful of cut flowers. Extra large size in salmons, pinks, reds, yellows and their variations. Borne on long, wiry stems, ideal for cutting and keep easily over a week. In cold climates gerberas should be lifted after the first frost and stored in a cool place until the soil warms up in the spring. When planting, care should be taken to keep the crown of the plant above the surface of the soil. Sold in mixture only.

NP067.....3 for \$1.40; 12 for \$5.00

For Lasting Beauty

PLEASE ORDER BY NAME AND NUMBER



ESTHER REED DAISY

Hardy Free Flowering

ESTHER REED DAISIES This is without doubt one of the finest cut flowers that we have today. The blooms are pure white and completely double and are produced in large quantities from June to November. The plants are vigorous and free flowering and produce the blossoms on tall erect stems. This variety has found favor in the East and large quantities of blooms are shipped from California daily. Bound to be a favorite in your cut flower garden.

NP160.....3 for \$1.15; 10 for \$3.50

New Violet Blue Giant

A sensational new variety offered by us for the first time. The color is different in that it is a lustrous shade of blue which is very eye appealing. The center has a distinct white marking which adds to its beauty. Individual flowers are large and open like a viola. Stems are 9 to 12 inches long on well grown plants. Fragrance is the most delightful of violet perfumes. The plants are vigorous which accounts for the profusion of flowers.

NP164.....3 for \$1.65; 10 for \$5.00

Lovely Cut-flower

Daisies

MARCONI DAISIES Great shaggy flowers four inches across that make a beautiful showing and are indispensable in the cut flower garden. Stems are often two and one half feet long. Very much in demand by professional florists. Color is snow white with yellow center. Blooms over an exceptionally long period.

NP159....3 for \$1.35; 10 for \$4.00

The Single Shasta Daisy

This class of plant is very easy to grow and all varieties listed below are very free flowering. For borders or massing they are hard to beat.

GLOIRE DE VITRY Immense white single flowers in abundance on long strong stems.

NP155.....5 for \$1.00

The New Mount Shasta

A new variety that will make a welcome addition to your cut flower garden. Fully double high centered flowers of pure white. Resembles the Esther Reed in many respects, but has more depth of flower.

NP158....3 for \$1.35; 10 for \$3.50



VIOLET ROYAL ROBE

Fragrant Long-stem

Violet

VIOLET ROYAL ROBE Never before have you seen such deep-deep lustrous violet blue color, such delicate petals that open flat like a graceful viola. Never before have you enjoyed such a luscious scent—the very essence of fragrant violet perfume, and to top it all the stems are 9 to 10 inches long.

NP167....3 for \$1.15; 10 for \$3.50



PRIMROSE

Primroses

POLYANTHUS—ENGLISH PRIMROSE Among the most useful and beautiful plants to grow in shady places or in pots, Primroses provide color all through spring and early summer. Blooming throughout spring and summer, Polyanthus is one of our leading shade-loving plants. Colors are very bright, including red, gold, rose, blue, white and combinations of these colors. Sold in mixtures only, not by colors.

NP084.....3 for \$1.45; Dozen \$5.00



BLUE GIANT VIOLETS

New Fashioned Carnations, With The Old Fashioned Fragrance



NP012 **BARBARA BRIGHAM** (1) Orange apricot blooms with pink pencillings. A good producer and keeper.

NP023 **MELROSE** (2) Pink flowers which are very bright, full and well shaped. Prolific bloomer.

NP028 **RED CLOVE** (3) Deep crimson, fine stems. Free bloomer, good keeper, very fragrant.

NP015 **CALIFORNIA** (4) Clear light purple. Very attractive. Good producer. Very fragrant.

NP026 **PURITAN** (5) One of the most popular whites. Flowers are of good size. Fragrant.

NP025 **PELARGONIUM** (6) White background overlaid on each petal with crimson. Heavy perfume.

NP010 **BARBARA FARR** (7) Bright scarlet red. A splendid cut flower. Delicious perfume.

NP021 **JOHN BRIRY** (8) A dark pink that is one of the most perfect. Large flowers with strong stems.

NP013 **BETSY** (9) Ground color pale whitish lavender. Each petal edged and pencilled purple.

NP017 **CANDLELIGHT** (10) Sulphur yellow background with purple variegations. Very colorful.

NP030 **WOBURN** (11) Blooms are of good size and well formed. One of the finest reds. Fragrant.

NP019 **GOLDEN WONDER** (12) Sulphur yellow marked cerise red. Beautifully formed.

3 for \$1.35; NP031 Collection of Twelve \$5.00, Postpaid in U. S. A. Only.



Lasting Highlights

in Any Garden

PLEASE ORDER BY NAME AND NUMBER

PERENNIAL PHLOX

1. LILIAN A fine variety that is very much in demand. The color is clear cameo pink. A showy variety that lasts well when used as a cut flower.
NP140.....3 for \$1.25

2. SAN ANTONIO A vivid and beautiful variety. The color is carmine shaded plum red. A bed in bloom creates a beautiful mass effect of color.
NP148.....3 for \$1.25

3. MRS. JENKINS For many years this variety has been the favorite of phlox lovers. It is still the leading white. Produces large heads of flowers.
NP142.....3 for \$1.25

4. HARVEST FIRE An exceptionally brilliant variety growing about thirty inches tall and bearing large masses of flower trusses. The color is brilliant salmon-red.
NP139.....3 for \$1.25

5. SALMON GLOW A very free flowering variety that is sure to please. The color is flame pink with salmon shadings. A very strong grower.
NP146.....3 for \$1.25

6. CHIEFTAIN Deep crimson which holds its intense color very well. Closely packed trusses of flowers make this variety very desirable. Free flowering.
NP137 3 for \$1.25

7. CAROLINE VANDENBERG This true lavender-blue shade has large individual flowers. It is considered the best in its color class. Very free flowering.
NP135.....3 for \$1.25

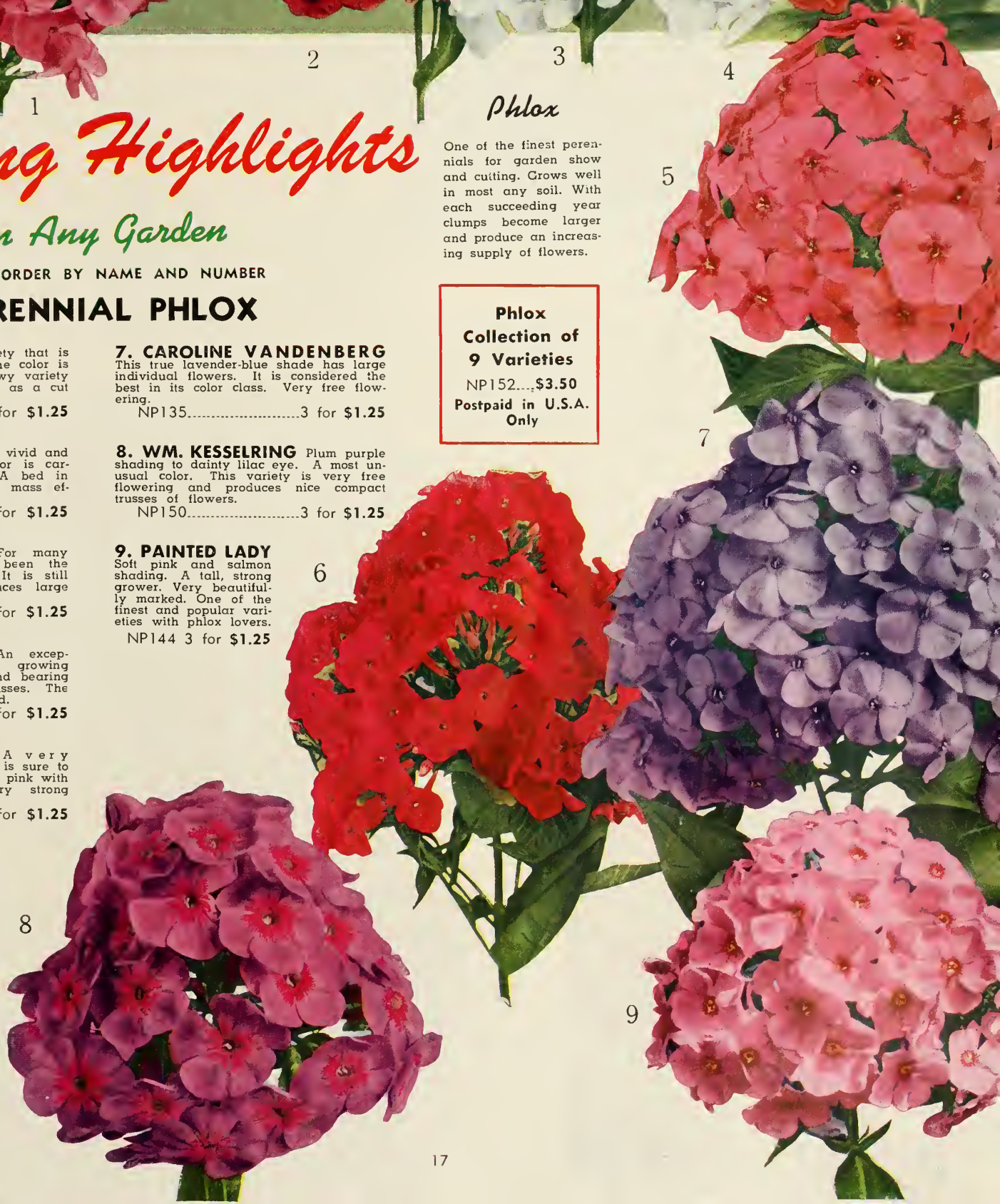
8. WM. KESSELRING Plum purple shading to dainty lilac eye. A most unusual color. This variety is very free flowering and produces nice compact trusses of flowers.
NP150.....3 for \$1.25

9. PAINTED LADY Soft pink and salmon shading. A tall, strong grower. Very beautifully marked. One of the finest and popular varieties with phlox lovers.
NP144 3 for \$1.25

Phlox

One of the finest perennials for garden show and cutting. Grows well in most any soil. With each succeeding year clumps become larger and produce an increasing supply of flowers.

Phlox
Collection of
9 Varieties
NP152....\$3.50
Postpaid in U.S.A.
Only



Unusual ORCHIDS and

All plant lovers admire and want to be able to successfully grow Orchids, and if you choose the correct types, you can grow them easily. The varieties listed on this page were selected for their ease of culture and their adaptability to conditions in the home or conservatory. These plants with their marvelous range of form and color have naturally excited the greatest interest on the part of cultivators and collectors.

Laelia

This class of Orchid is one of the easiest to grow and will thrive and bloom under the most adverse conditions. We would recommend the *Anceps*, *Autumnalis*, and *Majalis* to those who are beginning to grow Orchids. Grow in medium Osmunda fibre.

ANCEPS This variety has two to four flowers to a stem which grows two to three feet tall. The color is violet rose. Blooming season October to December. Grows on wooden slabs or in pots or baskets.

NX540\$5.00 each

AUTUMNALIS Flowers four inches across, borne three or four to a stem. Color rose purple with a white lip. Blooms are fragrant. Plant is easy to grow. Blooms October to December.

NX541\$4.50 each

MAJALIS (Grandiflora) The flowers are six to seven inches across and are borne one or two to a stem. Color is rose-lilac with a whitish lip, throat spotted purple. Blooms April to June.

NX546\$5.00 each

Strelitzia

REGINAE (Bird of Paradise) Rivaling the tropical Bird of Paradise in splendor, this flower with its combination of red, yellow, blue and orange is quite different from the average garden subject. Easily grown out of doors wherever Oranges thrive or suitable, as a tub plant in the colder sections. Should be left undisturbed in a sunny situation in a rather rich soil and liberally watered for most abundant bloom. Blooms last an unusually long time when cut. In great demand by florists everywhere.

NX510 3 year old plants\$2.50 each, Postpaid

East of the Mississippi\$2.75 each, Postpaid



BLETIA HYACINTHINA

Bletia (Bletilla)

A hardy garden Orchid that does well as a pot plant. This variety grows from a bulbous root which goes dormant during the winter months and comes up in the Spring producing quantities of true Orchid flowers that are splendid for corsages or table decoration. Any good well-drained soil with about one-third leafmold added suits them. Water sparingly when the plant is going dormant, increasing the supply as the new growth appears. Likes shade or semi-shade.

Hyacinthina, NP009 Beautiful mauve coloring. Throat marked darker.....85c each; 3 for \$2.40; 10 for \$7.50

EPIDENDRUM—LAVENDER BEAUTY



STRELITZIA REGINAE



RARE PLANTS

Epidendrums

This orchid makes a grand showing outdoors in frostless sections or as a house plant in cold climates. Soil should be well drained with plenty of leaf mold added. Water moderately. Shade loving.

EPIDENDRUM—APRICOT GLOW A new variety that is a grand shade of glowing apricot. Free flowering and easy to grow. Makes a fine house plant in cold sections.

NX504\$2.50 each

EPIDENDRUM BRACEYII The largest flowered of all the Epidendrums. Color is a bright Orange Scarlet which is so much wanted. The plant is more compact than any other variety, the flower spikes are unusually large and are borne in great profusion throughout the season. Stock is very limited.

NX506\$2.50 each Postpaid

EPIDENDRUM LAVENDER BEAUTY A new color in the popular free-flowering orchid, a beautiful shade of lavender that is bound to please. This variety lends itself to pot culture in that it is a vigorous grower and very attractive.

Flowers appear off and on all through the year, are very long-lasting and make fine corsages.

Any well-drained soil with plenty of leafmold is suitable. Shade loving.

NX505\$2.00 each

EPIDENDRUM O'BRIENIANUM This variety is probably the most widely distributed of all Epidendrums. Its exciting crimson-orange color is unusually attractive. Makes an excellent subject for pot culture.

The plant branches freely and blooms profusely. Excellent for corsages and cut flowers.

Any well-drained soil with plenty of leafmold is suitable. Shade loving.

NR507\$1.75 each

EPIDENDRUM RADICANS A welcome addition to this class of plant is the Radicans. The color is a very brilliant red and this variety is exceptionally free flowering.

NX509\$2.00 each Postpaid

CLIVIA



ODONTOGLOSSUM GRANDE

Odontoglossum

GRANDE This Orchid, a native of Guatemala, is one of the most unusual you have ever seen. The flowers are borne three or four to a stem and the individual flowers are about five inches across. The color is yellow lined and spotted dark brown. Deep golden yellow throat. This variety does well under pot culture and a mixture of fibrous peat and decayed leaves in equal quantity suits them best. Plenty of drainage is essential for success. Shade loving. Water moderately.

NX548\$5.00 each

Clivia

NEW HYBRID Clivias succeed best in dense shade and thrive under overhanging trees, in secluded nooks and patios. In California and the South they are more and more the distinctive feature of finer landscaping for shade, while in colder climates they are outstanding pot plants for the home or conservatory, bringing new color and beauty as well as a touch of rare quality to any collection of indoor plants. When used as a pot plant the Clivia should be allowed to become pot bound, more blooms will be obtained if plant is left undisturbed.

NX500 5" Pot Size.....\$2.25

NX501 6" Pot Size.....\$2.75

NX502 7" Pot Size.....\$3.75

Note: East of the Mississippi, please add 25c to above prices.

EPIDENDRUM O'BRIENANUM

No C. O. D.

Shipments

All Items

Postpaid

PLEASE ORDER

BY NAME

AND NUMBER



COLORFUL GERANIUMS

FOR BORDERS OR HOUSE PLANTS



CALIFORNIA BEAUTY—Double flowers of soft rose pink. White eye. Very attractive and showy.
NP0393 for \$1.40

CAMARILLO—Single. Deep crimson purple. Produces big trusses of flowers. Very prolific bloomer.
NP0413 for \$1.40

EL CAMINO REAL—Double. Showy crimson purple flowers produced in large quantities on strong growing plants.
NP0433 for \$1.40

E. G. HILL—Best Salmon pink variety. Single flowers.
NP0453 for \$1.40

FIESTA—Single. Glowing vermilion red. Very colorful flower.
NP0473 for \$1.40

GERTRUDE PEARSON—Pure rose-pink with large white eye. Single flowers.
NP0513 for \$1.40

JACQUERIE — Probably the finest dark-crimson single Geranium.
NP0533 for \$1.40

MME. BUCKNER—Snow white flowers. Free bloomer. Double.
NP0563 for \$1.40

MAXINE KOVALESKY—An unusual color—the nearest approach to orange. Single.
NP0573 for \$1.40

OLYMPIC RED—One of the finest and showiest. Large trusses of glowing scarlet, single.
NP0603 for \$1.40

PAUL CRAMPBEL—Generally recognized as one of the best scarlets. Double.
NP0613 for \$1.40

VELMA—Velvety garnet. Red. Large clusters. Single.
NP0633 for \$1.40

Collection of six, \$2.60; NP038 Collection of twelve, \$5.00, Postpaid

Cacti and Succulents

Flowering Leaf Cactus - (Epiphyllum)

A superb species with many beautiful named varieties. Free flowering and easy to grow. They are among the most prized and loveliest of all house plants. Our collection includes some of the rarest varieties.

Three Outstanding Varieties

HERMOSISSIMUS The coloring in this superb variety is especially remarkable. Crimson, cerise and white. NP173

ARGUS Large, broad petaled flower of rich rose pink. One of the best. NP174

AMBER QUEEN Fine tone of deep amber, blending to rich copper. A great favorite. NP175

Any of the above 3 for \$2.00

Or Collection: One each of the three varieties.....NP177 \$2.00

EPIPHYLLUM GENERAL COLLECTION

Agatha Deep pink, red eye. NP179	Eden Pure white. NP184	Montezuma Orange, lavender. NP190
Conway's Giant Maroon and cerise edge. NP180	Gloria Orange. NP186	Poinsettia Hanging basket, red. NP191
Dante Fuchsia and orange. NP182	Jos. de Lact Carmine and purple. NP187	Professor Ebert Deep Orchid. NP192
Deutsche Kaiserin Hanging basket, light pink. NP183	Mauvette Mauve rose. NP189	Sun Goddess Copper, cerise eye. NP193

Above Varieties Any 3 for \$1.75, NP195 Collection of Twelve \$6.00 Postpaid

CACTUS AND SUCCULENT PLANTS



FLOWERING CACTUS (Epiphyllum)

PLEASE ORDER BY NAME AND NUMBER

Cacti and Succulents

DEATH VALLEY COLLECTION

A fine collection that has hundreds of uses. Can be used for making up bowls and dishes or for growing in individual pots. Splendid for indoor growing or for outside culture where weather permits. Grow in sandy soil. Water sparingly.

Death Valley Collection NP198 Twelve fascinating desert plants, Collection.....\$2.50 each, Postpaid

Camellias

Aristocrats of Flowering Shrubs



GRANDIFLORA ROSZA

ALBA PLENA Long lasting snow white blooms considered the finest white Camellia. Blooms are large, fully double and of formal type.

NS320 Strong grafted plants.....\$5.00 each;
\$5.50 Postpaid

BLOOD OF CHINA Large peony type flowers of brilliant red. Very rare. Strong compact grower.

NS326 Grafted plants.....\$4.00 each;
\$4.50 postpaid

C. M. HOVEY Extremely large, semi-double rose red flowers sometimes edged purple. Very showy in all stages of bloom.

NS328 Grafted plants.....\$4.00 each
\$4.50 Postpaid

BELLA ROMANO Distinctive double flowers large and full of light rose pink, penciled and splashed with carmine. Mid-season.

NS324 Own root.....\$2.25 each;
\$2.75 Postpaid

CHANDLERI ELEGANS One of the most beautiful of all camellias. Great six inch flowers of old rose pink splashed with white. Very spectacular.

NS332 Own root plants.....\$3.00 each;
\$3.50 Postpaid

BELLA ROMANO



ALBA PLENA

Camellias are one of our most beautiful flowering shrubs and are in great favor on the Pacific coast and in the Southern and South Atlantic States.

Germain's specialize in Camellias and have one of the largest collections on the Pacific Coast. In the East, Camellias can be grown indoors or in conservatories. Soil requirements are one half leaf mold or peat moss and one-half sandy loam. Good drainage is essential. Shade loving.

COL. FIREY Fully double flowers of rich glowing crimson. Beautiful formal type. Exceedingly popular wherever grown. Exhibition type flowers.

NS335 Grafted plants.....\$4.00 each;
\$4.50 Postpaid

DEBUTANTE Highly popular and very scarce. This lovely clear pink flower of peony type is an ideal variety for corsages.

NS341 Grafted plants.....\$5.00 each;
\$5.50 Postpaid

DIA KAGURA Large loose peony type flowers of clear rose pink flecked with white. The first to bloom.

NS339 Grafted plants.....\$4.00 each;
\$4.50 Postpaid

EMPEROR WILHELM This is without doubt the finest Camellia in existence, in our opinion. Flowers are a striking combination of crimson with white marbeling. 6" blooms are not uncommon.

NS345 Grafted plants.....\$6.00 each;
\$6.50 Postpaid

FANNY BOLIS Enormous semi-double flowers of heavy texture. Color is a mixture of red and white. Strong grower and exceedingly attractive.

NS346 Own root plants....\$2.25 each;
\$2.75 Postpaid

GRANDIFLORA ROSEA Spectacular semi-double flowers of salmon rose color, with prominent yellow stamens. Very strong grower and very free flowering.

NS349 Own root plants....\$3.50 each;
\$4.00 Postpaid

PINK PERFECTION Shell pink, fully double flowers of formal type. This variety is one of the most popular of all Camellias. Excellent grower and free producer.

NS359 Own root plants.....\$2.25 each;
\$2.75 Postpaid

TE DEUM Tops in its class. A dark but brilliant shade of red. Interesting loose peony formed flowers. Very large and beautiful. Makes a splendid shrub.

NS376 Grafted plants....\$4.50 each;
\$5.00 Postpaid



COLONEL FIREY

CHANDLERI ELEGANS



All Camellias are taken from one gallon containers when shipped. They vary from twelve to twenty-four inches, depending on variety.

Germain's Grapes and Berries

GRAPES

FOREIGN VARIETIES

Foreign varieties of Grapes are not recommended North of Washington, D. C., and should be planted on a well-drained soil in a sunny location. In Pacific Coast States they are planted in practically all locations.

BLACK HAMBURG — A popular home vineyard variety suitable for your arbor. Has large bunches of coal black round berries, firm, juicy, sweet and rich.

NA952

BLACK MONUKKA — Elongated seedless fruit of medium size in large clusters; thin, almost black skin, sweet, juicy.

NA954

BLACK MUSCAT — The flavor of this variety even beats the white Muscat. Bears extremely heavy crops which ripen in August.

NA956

FLAME TOKAY — Very large bunches; large berries. Thick pale red or flame colored skin; firm, sweet flesh. You'll find it a splendid shipping grape. Medium.

NA958

LADY FINGER (Rish Baba) — The grape is large, fully two inches long, never too close. Long, olive-shaped, greenish amber berries.

NA960

MALAGA — Strong growing vine and immensely productive. Very large loose shouldered bunches, with large, oval, yellowish green berries. Early.

NA692

MUSCAT — Large, long and loose bunches. Large berries slightly oval, pale amber when ripe. The firm brittle flesh has an exceedingly sweet, rich flavor. Medium.

NA964

Any of the above varieties
3 for \$1.00; 10 for \$2.75

Available only Jan. to April
inclusive.

THE NEW "CARDINAL" GRAPE

The new, early, cardinal colored Grape was created and developed by the United States Department of Agriculture at Fresno, California under the direction of Elmer Snyder.

A cross between the Ribier and Tokay, this variety is the earliest Grape of all, as it matures two to three weeks earlier than the Thompson Seedless. Much larger than any early Grape. Its flavor is very distinctive bearing some resemblance to Muscat with the Ribier's crispness. A very productive bearer.

Not recommended for planting North of Washington, D. C.

NA973.....\$1.50 Each; ten for \$13.50 Postpaid

Write for Prices in larger quantities.



STRAWBERRY DORSETT

FOREIGN VARIETIES—(Cont)

RIBIER (Gros Guillaume) — Extra large berries on medium sized bunches. Intense blue-black color. The flavor and beauty will please you. Medium.

NA966

THOMPSON SEEDLESS—This favorite seedless grape, widely planted for raisins and market, is ideal for home growing. Very large bunches of small, greenish-yellow berries, sweet and mild. Early.

NA968

ZINFANDEL — Large, compact bunches; round dark purple berries covered with a heavy bloom. You can grow them easily in almost any climate. Medium.

NA970

Any of the above varieties
3 for \$1.00; 10 for \$2.75

Available only Jan. to April
inclusive.

THE FAVORITE AMERICAN GRAPE

CONCORD—Undoubtedly the most widely known and popular of all American grapes. Black in color, with a bluish bloom, borne profusely in medium sized bunches. The Concord does well in California, except in the regions of extremely hot summers, and its rich flavor is just the same when grown here as in the East. Hardy everywhere.

NA950....3 for \$1.40; 12 for \$5.00

Strawberries

DORSETT—For many years growers have hoped to produce a berry that would be as early and as fine looking as Klondyke, and one which would be sweeter. Dorsett fills that need.

NB732 25 for \$1.00; 100 for \$3.50

GEM EVERBEARING — Gem is a large berry. The fruit is of good quality with a sprightly flavor and is produced continuously through the summer and fall. One of the best everbearers for coast conditions.

NB735 25 for \$1.25; 100 for \$4.00

STREAMLINER — At last a strawberry that we believe is the best ever offered. You will agree, we are sure, that it is the sweetest berry you ever tasted. This new berry is of immense size, a sure cropper and a vigorous grower. Starts to bear early in the season and continues until well into winter. Needs practically no sugar, is excellent for canning, eating fresh, and quick freezing.

NB737 25 for \$1.75; 100 for \$5.00

Gooseberries

OREGON CHAMPION — Medium large, round, fine quality, productive and free from mildew. Excellent for pies. Does best in higher altitudes.

NB740.....3 for \$1.40

Currants

PERFECTION—Good quality; bright red; flavor rich, mild and sub-acid; exceedingly productive. Currants do not do well near the coast, but like the higher altitudes.

NB741.....3 for \$1.40

Boysenberry

The largest of all berries. Produces extra heavy crops of the most delicious berries. The fruit starts ripening about ten days after Youngberries, or about June first in this locality, and they last several weeks after Youngberries are gone, which means that we finish picking here in August. It is absolutely the largest bush or vine berry that we have ever seen. In color the fruit is identical with Youngberries, but it is more highly flavored and is less seedy.

NB706 Rooted Tips.....5 for \$1.00

10 for \$1.75; 100 for \$12.00

NB707 Transplants.....4 for \$1.25

10 for \$2.50; 100 for \$20.00



BOYSENBERRY

California Flower Seeds

for AMERICAN GARDENS of Delight

Leading Strains - Novelties - Specialties

New Princess Aster

2344 PRINCESS LINDA

New Introduction for 1949

Linda brings an important new florist's color into the already popular Princess type. It is pure, clear rose, a color long desired by florist growers who have had outstanding success with Princesses Bonnie, Marsha and Anne. The Princesses are ideal cutflowers, of attractive appearance and good color. They make satisfactory stems and bloom prolifically. Ideal for home garden bedding and cutting. Flowers have deep crested centers. Plants are branching, 2'-2½' high. Linda, like all the Princesses, is highly wilt-resistant. Pkt. 25c; 3 for 60c



COSMOS RADIANCE

New Sensation Cosmos

2764 RADIANCE

Top award winner in the All America Selections for 1948. A striking combination of two entirely new colors in Sensation Cosmos in the first bi-color Cosmos ever introduced. Radiance has the large, broad petaled flowers of the Sensation Strain, deep carmine rose in color overlaid with a large, well defined zone of rich crimson. Its abundant, magnificent bloom, vigorous growth and excellent cutting qualities, destine RADIANCE for immediate and lasting popularity in the nation's gardens. Pkt. 25c; ¼ oz. \$1.50



ASTER PRINCESS LINDA

Painted Daisy

(Annual Chrysanthemum)

2663 MERRY MIXTURE

A recent introduction, Merry Mixture is far superior to previously used strains of Painted Daisies. It includes new solid colors, as well as a better range of zoned or tricolored flowers. The plants 2½'-3' high bear a wealth of splendid cut flowers. Pkt. 25c; 3 for 60c

Petunia

3593 PINKIE

(Bronze Medal. All America Selections 1948)

The erect bushy plants often reach a height of 33 inches. The flowers are of an exquisite rosy-pink shade and extremely abundant, making a truly spectacular showing in any garden. Don't overlook this beauty!

Price Per Packet 25c

Marigold

3343 RED HEAD

(Bronze Medal. All America Selections 1948)

Red Head is a splendid new bedding and border Marigold of dwarf French type. It grows a little over a foot high and has an eighteen inch spread, the plant being almost completely covered with deep orange red flowers which gradually deepen to a dark bronzy red. Per Packet 25c; 3 for 60c



PAINTED DAISY MERRY MIXTURE

New California Wilt Resistant Asters

New Princess Asters

The newest and loveliest of the Crested Center Asters, especially prized for cut flowers. Blossoms 3" to 3½", early flowering practically 100% wilt resistant.

- 2349 **Bonnie.** Luscious salmon rose, golden center. Pkt. 15c
- 2348 **Anne.** Peach. Pkt. 15c
- 2346 **Barbara.** Orchid. Pkt. 15c
- 2347 **Golden Sheaf.** Yellow. Pkt. 15c
- 2351 **Princess Mixed.** Pkt. 15c

Crego's Giant

or

"Ostrich Feather" Aster
(Wilt Resistant)

Large, shaggy flowers look just like an ostrich feather fan! Rich color assortment!

- 2271 **Crimson.** Pkt. 15c
- 2272 **Flesh.** Pkt. 15c
- 2273 **Lavender.** Pkt. 15c
- 2276 **Purple.** Pkt. 15c
- 2274 **Rose.** Pkt. 15c
- 2277 **White.** Pkt. 15c
- 2280 **Crego's or Ostrich Feather Mixed.** Pkt. 15c

Asters Early Giants

(Wilt Resistant)

The finest giant-flowered, heavy stemmed wilt resistant Aster yet developed. Low branching, no laterals, immense chrysanthemum-like fluffy blooms. A garden delight! Long lasting, bright bouquets in the home.

- 2241 **Rose Marie.** Lovely giant bright rose flowers. Pkt. 25c; 3 for 60c
- 2234 **Light Blue.** Delightful delicate sky blue. Pkt. 25c; 3 for 60c
- 2233 **El Monte.** The richest crimson—a super giant in size. Pkt. 20c; 3 for 50c
- 2232 **Los Angeles.** Feathery silver pink, huge blooms. Pkt. 20c; 3 for 50c

Early California Giants

The immense, feathery, Chrysanthemum-like flowers measure from five to six inches. The stems are low branched, heavy, two feet in length and form no laterals, hence no disbudding is necessary. Informal flowers, of great size, charming and graceful. A florist's favorite! Blossoms full to the center, with broad curled and interlaced petals, borne on long, heavy, non-lateral stems.

- 2235 **Peach Blossom.** Florists' pink. Pkt. 25c
- 2236 **Purple.** Intense blue purple. Pkt. 25c
- 2237 **Deep Rose.** Vivid rose pink. Pkt. 25c
- 2238 **Light Blue.** Azure blue. Pkt. 25c
- 2239 **White.** Snowy white. Pkt. 25c
- 2240 **New California Giants.** Super-fine mixed! ½ oz. 75c; Pkt. 25c



ASTER—EARLY GIANT

American Beauty

(Wilt Resistant)

A renowned cut flower strain producing very large densely double flowers on long stems. The flowers are of the American branching type but much larger and sturdier and hold up remarkably well after cutting.

- 2246 **Crimson.** Rich red. Pkt. 20c
- 2247 **September Pink.** Pkt. 20c
- 2248 **Lavender.** Pkt. 20c
- 2249 **Purple.** Pkt. 20c
- 2251 **Rose.** Bright cerise. Pkt. 20c
- 2252 **White.** Large white. Pkt. 20c
- 2260 **American Beauty Asters.** Mixed colors. ½ oz. 45c; Pkt. 15c



SUNSHINE ASTERS

New California Sunshine Asters

These grand new Asters are a cross between the regular sunshine and the feathery giants of California.

2238 **California Sunshine Mixed.** Brilliant rose, flesh, violet, white, etc. ½ oz. 75c; Pkt. 25c



CARNATION ENFANT DE NICE

Golden Calendulas For Cutting



- 2496 **Orange King.** Enormous orange flowers with rich, dark center. 1/2 oz. 45c; Pkt. 10c
- 2494 **Lemon Queen.** Bright yellow. Oz. 60c; Pkt. 10c
- 2504 **Masterpiece.** Clear orange, contrasting dark center. 1/2 oz. 45c; Pkt. 15c
- 2510 **Germain's Extra Double Mixed.** Choice of many sorts! Oz. 60c; Pkt. 10c

2 Grand Calendulas

- 2488 **Yellow Colossal.** The largest golden yellow, informal, ideal cut flower. Pkt. 20c; 3 for 50c
- 2495 **Camp Fire.** The richest shade of orange red in calendulas. Pkt. 15c; 3 for 40c



ORANGE RUFFLES

Improved Giant French Carnations

Chabaud's Everblooming

Remarkably fine, vigorous strain of French origin. Flowers in about five months from seed, it blooms indefinitely! Large, double fragrant flowers in many lovely colors!

- 2582 **Bright Rose.** Pkt. 25c
- 2583 **Dark Crimson.** Pkt. 25c
- 2584 **Flesh Pink.** Pkt. 25c
- 2585 **Scarlet.** Pkt. 25c
- 2586 **Pale Lilac (Pearl).** Pkt. 25c
- 2587 **White (Jeanne Dionis).** Pkt. 25c

Enfant de Nice

Perpetual flowering, large, double, fragrant flowers! Wire-stemmed, vivid colors—finest of all French Carnations—easily grown from seed.

- 2591 **New Giant Enfant de Nice.** Many brilliant colors mixed. Pkt. 50c

- 2588 **Yellow (Marie Chabaud).** Pkt. 15c
- 2590 **Chabaud's Everblooming Giant Flower Mixed.** 1/16 Oz. 60c; Pkt. 10c

Bachelor Buttons

Red—White—Blue

The three favorite colors of this popular cut flower in newer, larger, very double varieties.

- 2625 **Red Coy.** New ruby red. Pkt. 10c
- 2627. **Snow Man.** Large snow white. Pkt. 10c
- 2623 **Blue Boy.** Very double true cornflower blue. Pkt. 10c
- 2631 **Red, White and Blue Cut Flower Mixture.** Pkt. 20c; 3 for 50c

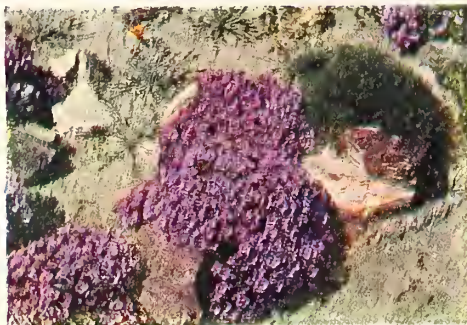
Dwarf Jubilee Gem

2622 **Jubilee Gem.** The finest of all Bachelor Buttons for border planting and bedding.

Pkt. 15c; 3 for 40c



BACHELOR BUTTON



Nierembergia Cup Flower

3471 **Purple Robe.** A very fine deep violet purple shade of the very popular dwarf Nierembergia. Purple Robe maintains its deep color even in full sun. The plant has a neat compact extremely free flowering habit.

Pkt. 25c

Ideal Bedding Dahlias

2813 Unwin's Ideal Dwarf

Hybrids. For bedding, cutting and general garden purposes, these dwarf, bushy plants covered with hundreds of medium size, gaily colored blooms are unrivaled. Easily grown from seed in one season.

Per Pkt. 25c
3 Pkts. 60c



IDEAL DAHLIAS

New Double Sunflower

3122 **Sungold.** New, semi dwarf, rapid growing Sunflower, effectively used for screens, background and tall borders. Very double, many-flowered variety, showy when cut.

3 Pkts. 40c; Pkt. 15c



SUNGOLD

Early Flowering Cosmos

Graceful, tall, long stemmed flowers and finely cut foliage. Invaluable in the Summer and Autumn garden; the plants are bushy, 5 to 6 feet high and produce a wealth of excellent cut flowers. Useful for backgrounds and screens, or wherever tall heavily branched flowering plants are needed. Easily grown from seed and succeeding anywhere.

GIANT SENSATION

- 2759 **Sensation Cardinal.** Crimson. Pkt. 15c; 3 for 50c
- 2771 **Sensation Pinkie.** Grand Pink! Pkt. 15c; 3 for 50c
- 2772 **Sensation Purity.** Extra large flowers! Pkt. 15c; 3 for 50c
- 2773 **Sensation Mixed.** 1/2 oz. 50c; packet 15c
- 2770 **Double Sensation Mixed.** Pink, Rosy Crimson and White fluted flowers. Pkt. 25c; 3 for 60c

NEW COSMOS—Orange Ruffles

Vivid and intense golden orange, the two or three extra rows of petals lend an airy butterfly-like beauty to the richly colored large blossoms. Orange Ruffles will add greatly to the beauty of any garden.

Per Packet 25c; 3 for 60c



GIANT SENSATION COSMOS

Pacific Giant Delphiniums

An outstanding achievement in plant breeding! Huge, all-double florets, in mammoth spikes, supported on extra tall, strong, wiry stems. Magnificent in gardens through spring and summer—unmatched as stately cut flowers.

- | | |
|---|---|
| 2824 Black Knight. Dark blue, dark bee. Pkt. 50c; 3 for \$1.25 | 2841 Guinevere Pinkish lavender, white bee. Pkt. 50c; 3 for \$1.25 |
| 2826 Blue Bird. Medium blue, white bee. Pkt. 50c; 3 for \$1.25 | 2831 Choice Named Varieties Mixed. Full range of colors, light and dark blue, pastel shades and pure white. Pkt. 50c; 3 for \$1.25 |
| 2839 King Arthur. Violet, white bee. Pkt. 50c; 3 for \$1.25 | 2834 Pacific Giants Mixed. Field grown mixture. Pkt. 15c |
| 2840 Summer Skies. Light blue, white bee. Pkt. 50c; 3 for \$1.25 | |
| 2833 Galahad. Giant white, white bee. Pkt. 50c; 3 for \$1.25 | |

Rust Resistant Snapdragons

Graceful, tall spikes of intriguing blossoms in a splendid range of the most pleasing shades. Effective in large beds and borders and highly prized for cutting.

RUST RESISTANT MAXIMUM

- | | |
|---|--|
| 2078 Copper King. Burnished copper with golden blotch on lower lip. Pkt. 20c | 2084 Loveliness. Soft rose. Pkt. 20c |
| 2082 Canary Bird. Canary yellow. Pkt. 20c | 2086 Paradise Rose. Rose pink. Pkt. 20c |
| 2080 Camp Fire. Vivid scarlet. Pkt. 20c | 2089 Rust Proof Maximum. Special choice mixture. Pkt. 20c |

R-R Super Majestic

A magnificent new strain with largest sized flowers, closely placed on strong sturdy stems! Beautiful and stately in your garden, they'll make lovely, long-lasting bouquets. All colors.

Super Majestic Mixed.

Pkt. 25c



DELPHINIUM—NEW PACIFIC GIANT



Swiss Giant Pansies

- 3337 **Swiss Giants Mixed.** The largest and most remarkable of all European strains! Well developed flowers of immense size! All popular colors, beautifully marked! 1/16 Oz. \$1.75; Pkt. 25c

SWISS GIANT PANSY

Four "King" Larkspurs

- 3230 **White King.** Superb spikes 4-5 ft. in height. Giant double, snow white flowers. Pkt. 20c; 3 for 50c
 3259 **Pink King.** Salmon pink. Pkt. 25c; 3 for 60c
 3254 **Carmine King.** Rich carmine. Pkt. 15c; 3 for 40c
 3255 **Lilac King.** Rich lavender lilac. Pkt. 25c; 3 for 60c
 3233 **Giant Imperial Mixed.** Beautiful shades. Tall, giant flowers. Pkt. 20c; 3 for 50c



PETUNIA GIANTS OF CALIFORNIA



DOUBLE GLEAM NASTURTIUM

Double Gleam Nasturtiums

- Large, semi-double, sweet scented flowers. Beautiful foliage, half-trailing habit.
 3426 **Golden Gleam.** The original fine golden yellow. Oz. 40c; Pkt. 15c
 3430 **Double Gleam Mixed.** Wide range of colors. Oz. 40c; Pkt. 15c

New Petunias

- 3614 **"GLORIOUS" All Double**
 A magnificent new strain of double petunias, producing 100% double flowers of the largest size and in superb shades of rose, lavender, white, purple, etc. Pkt. (About 200 Seeds) \$1.75
 2 Pkts. for \$3.00

- | | |
|--|--|
| 3602 Ruffled Giants of California. A justly celebrated strain of giant ruffled and frilled blossoms in a surprising range of colors. 1/4 Oz. \$2.50; Pkt. 25c | 3599 Germain's Select Bedding Mixed. A fine large flower strain in bright pastel shades. 1/4 Oz. \$1.25; Pkt. 15c |
| 3607 Germain's Dwarf Giants Mixed. A new giant flowered, dwarf growing form of superb Giants of California strain. 1/4 Oz. \$2.75; Pkt. 50c | |

Early Giant Imperial Stocks

A superb new strain of early flowering habit—equally successful for winter and summer flowering. Largest sized, double fragrant flowers grow profusely on heavy well furnished spikes. Choice new colors!

- | | |
|-----------------------------------|--|
| 3881 Dark Blue Pkt. 20c | 3876 Fiery Blood Red. Pkt. 20c |
| 3879 Chamois. Pkt. 20c | 3889 White (Santa Maria). Pkt. 20c |
| 3883 Golden Rose. Pkt. 20c | 3882 Elks Pride Purple. Pkt. 20c |
| 3884 Lavender. Pkt. 20c | 3890 Giant Imperial. Choice Mixed. Pkt. 15c |
| 3886 Deep Rose. Pkt. 20c | |

Excelsior "Column" Stocks

- 3924 **Excelsior Column Stocks Mixed.** Incomparable in size and beauty. Individual florets of immense size borne in giant single spikes over 3 ft. in height. Brilliant shades mixed. Pkt. 35c; 3 for 90c

Double Marigolds

HARMONY TYPE

- 3331 **Butterball.** An exquisite jewel-like Marigold. Ideal for outlining flower beds, borders. Low growth, long blooming season. Yellow, tipped maroon. 1/4 Oz. 50c; Pkt. 25c
 3348 **Harmony.** Rich bright color. Orange yellow with deep maroon collar. Very double, French type. 1/4 oz. 30c; Pkt. 20c



MARIGOLD HARMONY

Double African

3358 Sunset Giants

- Mixed.** Outstanding in the extra large African Marigold group. Pkt. 25c; 3 pkts for 60c

STOCK COLUMN



GERMAIN'S

Giant Summer Spencer Sweet Peas



Sweet Peas are one of our leading California specialties. It is in California that practically all sweet pea seeds used in America are grown. It is here also that the most outstanding modern varieties are developed. You will marvel at the exquisite shades, the vigor and length of stem, and the exceptional size of the selected varieties we offer. The vines easily reach a height of 10 to 12 feet, producing an abundance of fragrant bloom for the home and a riot of color in the garden.

- | | | |
|------|--|-------------------|
| 4342 | Pinkie. Large rose-pink. | Oz. 40c; Pkt. 10c |
| 4356 | Smiles. Beautiful clear salmon. | Oz. 40c; Pkt. 10c |
| 4281 | Ambition. Rosy lavender. | Oz. 40c; Pkt. 10c |
| 4361 | Tangerine. Sensational orange. | Oz. 40c; Pkt. 10c |
| 4285 | Crimson King. Rich color. | Oz. 40c; Pkt. 10c |
| 4321 | Illuminator. Glowing cerise-salmon. | Oz. 40c; Pkt. 10c |
| 4351 | Royal Purple. Rich royal purple. | Oz. 40c; Pkt. 10c |
| 4365 | Warrior. Bronzy maroon. | Oz. 40c; Pkt. 10c |
| 4368 | What Joy. Cream yellow. | Oz. 40c; Pkt. 10c |
| 4286 | Avalanch. Pure white. | Oz. 40c; Pkt. 10c |
| 4370 | Choice Spencer Mixed. | Pkt. 10c |
- Oz. 30c; 1/4 lb. 90c; lb. \$3.00

Summer Sunset Collection

Six splendid colors for cutting and garden display, and one package of plant food tablets. Complete in large collection package, illustrated in full color.

Regular 75c Value for 50c

New Spring Flowering Cuthbertson Sweet Peas

A new development and valuable addition to the Sweet Pea family.

Chief characteristics are—great vigor, profusion of large fragrant blossoms, extra long stems, clear popular colors. Ideal for Spring and Summer blooming.

- | | |
|-----------------------------------|----------|
| Lois, rose pink. | Pkt. 15c |
| Janet, black seeded white. | Pkt. 15c |
| Coline, scarlet. | Pkt. 15c |
| Evelyn, salmon cream pink. | Pkt. 15c |
| Tommy, blue. | Pkt. 15c |
| Frank G., lavender. | Pkt. 15c |
| Jessie, mauve. | Pkt. 15c |
| Carol, clear pink. | Pkt. 15c |

Price: 1/2 oz. 50c; oz. 95c

Choice Mixed. (Well balanced mixture.)

Oz. 75c; Pkt. 15c

EARLY SPENCER SUNSET BEAUTIES

- | | | |
|------|--|----------|
| 4265 | Treasure Island. Sparkling golden orange. | Pkt. 20c |
| 4258 | Memory. Giant lavender. A pastel beauty! | Pkt. 15c |
| 4260 | Skippy. Soft salmon pink. | Pkt. 20c |
| 4247 | Meadowlark. creamy yellow. | Pkt. 15c |
| 4250 | Pride. Long stem ruffled cerise. | Pkt. 15c |
| 4234 | Navy Blue. Giant clear navy. | Pkt. 15c |
| 4209 | Bridesmaid. Heavily ruffled silvery pink. | Pkt. 15c |
| 4244 | Mars. Rich oxblood crimson. | Pkt. 15c |

Price: 1/2 oz. 45c; oz. 80c



Early Spencer SUNSET COLLECTION

The entire collection of eight superb Sunset Beauties described on this page enclosed in handsome lithographed box.

Reg. \$1.30 Value for \$1.00 Postpaid



EARLY FLOWERING SWEET PEAS

4279 **Giant Ruffled Early Spencer Mixed.**

Pkt. 10c; 1/2 Oz. 25c; Oz. 50c;
1/4 Lb. \$1.50; Lb. \$5.00;
Postpaid.

Germain's Early Beauties

- | | | | |
|--|----------|-------------------------------------|----------|
| Blue Bird. Blue purple. | Pkt. 10c | Laddie. Mammoth rose. | Pkt. 10c |
| Cream. Creamy yellow. | Pkt. 10c | Harmony. Clear lavender. | Pkt. 10c |
| Othello. Rich maroon. | Pkt. 10c | Valencia. Deep orange. | Pkt. 10c |
| Illumination. Startling cerise. | Pkt. 10c | American Beauty. Fiery rose. | Pkt. 10c |
| Radiance. Salmon. | Pkt. 10c | White Harmony. | Pkt. 10c |

Price: 1/2 oz. 35c; oz. 65c

EARLY BEAUTIES COLLECTION

One Packet each of the above ten Early Beauties. (A \$1.00 value) for **85c** postpaid

Early Wonder Collection

A grand selection of six full sized packets of Giant Early Spencer Sweet Peas in favorite colors—PLUS—a handy package of plant food tablets. Complete in jumbo gift folder in natural colors.

Reg. 75c! A Special at 50c, Postpaid

Grow the World's Finest **ZINNIAS**

Gold Medal

Dahlia-Flowered Zinnias

Gold Medal Dahlia-Flowered Zinnias Collection No. 27

Six packets Giant Dahlia-Flowered— one full sized packet each of five distinct varieties and one packet Gold Medal Mixture. Ideal selection for large bed or border planting.

A 90c value for 60c

Deep centered Dahlia-like flowers of huge size. A favorite strain of large flowered zinnias for cutting. The plants are heavily branched and grow 2½ to 3 feet high. Our named varieties are true to color and our Gold Medal Mixture offers a beautiful range of the finest and most popular shades.

- 4087 **Canary Bird.** Primrose yellow. ½ oz. 70c; Pkt. 15c
- 4088 **Crimson Monarch.** Best crimson. ½ oz. 70c; Pkt. 15c
- 4089 **Dream.** Deep lavender or purple. ½ oz. 70c; Pkt. 15c
- 4091 **Exquisite.** Rose with darker center. ½ oz. 70c; Pkt. 15c
- 4092 **Golden State.** Rich orange yellow. ½ oz. 70c; Pkt. 15c
- 4097 **Polar Bear.** White. ½ oz. 70c; Pkt. 15c
- 4098 **Scarlet Flame.** Vivid scarlet. ½ oz. 70c; Pkt. 15c
- 4101 **Gold Medal Dahlia-Flowered Mixed.** A superb blend of many beautiful colors. Pkt. 20c
- 4103 **Choice Mixed.** ½ oz. 70c; 3 Pkts. for 50c Pkt. 10c

Germain's California Giants

Giants in size. Heavily branched, bearing large numbers of immense double flowers.

- 4175 **Daffodil.** Canary yellow. Pkt. 15c
- 4162 **Orange King.** Burnt orange. Pkt. 15c
- 4166 **Rose Queen.** Rose pink, deep rose center. Pkt. 15c
- 4174 **Violet Queen.** Lavender violet. Pkt. 15c
- 4167 **Scarlet Gem.** Glowing scarlet. Pkt. 15c
- 4164 **Purity.** Pure white. Pkt. 15c
- 4164 **Miss Willmott.** Favorite soft pink. Pkt. 15c
- 4168 **California Giant.** Named varieties mixed. Price: ½ oz. 70c; Pkt. 15c
- 4170 **Choice Mixed.** Pkt. 10c

ZINNIAS ARE
A LEADING
GERMAIN SPECIALTY

Pompon or Lilliput Zinnias

Small pompon Zinnias invaluable for cutting and gay garden borders.

- 4143 **Golden Gem.** Golden orange. Pkt. 15c
 - 4145 **Scarlet Gem.** Bright red. Pkt. 15c
 - 4146 **White Gem.** Pink white. Pkt. 15c
 - 4140 **Rosebud.** New rose pink. Pkt. 15c
 - 4149 **Lavender Gem.** Pleasing lavender blue. Pkt. 15c
 - 4141 **Canary.** Vivid canary yellow. Pkt. 15c
 - 4148 **Salmon Rose.** A lovely shade. Pkt. 15c
 - 4150 **Pompon or Lilliput Mixed.** Pkt. 10c
- ½ oz. 60c

New Fantasy Zinnias

Fantasy Zinnias are unlike any other type of Zinnia grown. The entirely novel, shaggy appearance presented by their fluted, quilled and informally curled petals is a pleasing surprise and offers a challenge to those who love to arrange unusual flower displays.

- 4158 **Melody.** The newest color in this type. It is an exquisitely soft shade of lavender blue. Pkt. 25c
 - 4153 **Wildfire.** A brilliant, flame scarlet, the most vivid and sparkling of all red shades. Pkt. 25c
 - 4152 **Star Dust.** Exquisite golden yellow. Pkt. 25c
 - 4154 **White Light.** Pure white. Pkt. 25c
 - 4151 **Fantasy Mixed.** 3 Pkts. 50c; Pkt. 15c
- ½ oz. 75c

Mammoth Flowering

Sturdy bushes 2 ft. tall, bearing great numbers of large, double flowers highly prized for cutting, beds, borders and massing in the garden.

- 4106 **Burnt Orange.** Pkt. 10c
- 4118 **Golden Yellow.** Pkt. 10c
- 4111 **Rose Pink.** Pkt. 10c
- 4112 **Purple.** Pkt. 10c
- 4115 **Scarlet.** Pkt. 10c
- 4117 **White.** Pkt. 10c
- 4120 **Mammoth Mixed** Price: ½ oz. 55c; Pkt. 10c

BLAZE O'COLOR COLLECTION No. 27A

Favorite assortment of six Giant Flowered Zinnias and one package of plant food tablets. A 75c value for 50c



CUT-AND-COME-AGAIN ZINNIAS

Novelty Zinnias

- 4160 **Haageana (Mexican Hybrids).** Small, very double flowers, interesting colors. Pkt. 15c
- 4157 **Linearis.** Free blooming single. Orange yellow with light yellow stripe. ½ oz. 45c; Pkt. 20c
- 4135 **Tom Thumb Mixed.** Dwarf, 6 inches high. Small double flowers. Pkt. 25c
- 4184 **Crown O' Gold** Pastel tints mixed. Pkt. 10c

CROWN O'GOLD ZINNIAS

- 4183 **Crown O' Gold Improved.** Large and Showy blooms over 5 inches across. Pkt. 25c; 3 Pkts. 60c



Fancy Leaf Caladium

Exotic tropical foliage plants, with gorgeous coloring in all the hues of the Rainbow. They provide a brilliant subject unexcelled for many uses. Taking little care, they are ideal pot plants for the home. In summer they can be recommended for outdoor use.

5932 **CANDIDUM** Popular Easter variety. (True strain.) Leaf snow-white with green veins and green border.

5033 **D. M. COOK** Shining bright metallic red center on moss-green ground.

ELEPHANT'S EAR

5038 **CALADIUM ESCULENTUM** The leaves of immense size on massive stems grow to a height of four feet. For a tropical effect this plant has no equal. Ready in January.

40c each, 3 for \$1.09; 6 for \$2.07
12 for \$3.99

GLOXINIA

Shade-loving velvety leaved pot or bedding plants with large trumpet-shaped flowers. They require a similar treatment to the begonias.

- 5280 **Mont Blanc**, pure white.
- 5281 **Blanche de Meru**, rose.
- 5282 **Etoile de Feu**, scarlet.
- 5283 **Emperor William**, violet.
- 5285 **Princess Elizabeth**, blue.
- 5286 **Violacea**, soft violet.

40c each; 3 for \$1.09
6 for \$2.09; 12 for \$3.99

GERMAIN'S GLOXINIA COLLECTION No. 5298

1 each of above varieties,
6 bulbs for \$2.00

5134 **LORD DERBY** Transparent rose with dark green ribs and edge.

5035 **MRS. EDITH E. MEAD** Erect snow-white leaf (not transparent) with red ribs and narrow green edge.

TUBEROSE

Originally a wild-growing Mexican herb! Rosette growth of spear foliage surrounds the flower spike, especially noted for its intense, sweet fragrance!

5790 **Mexican Everblooming Single**—Delightfully fragrant.

5791 **Double Pearl**—Large individual double white florets. Lovely in cut flower bouquets.

6 for 79c; 12 for \$1.49;
25 for \$2.79

TIGRIDIA

BIG SHELL TIGERFLOWER

5192 **Tigridia Pavonia Grandiflora**—A splendid strain of this showy garden plant. The curious three-petaled flowers are very large and are wonderfully marked and spotted. Plant 2 in. deep and 4 to 6 in. apart in shade or half shade.

6 for 59c; 12 for \$1.09;
25 for \$2.09

5036 **MRS. W. B. HALDEMAN** Medium leaf of bright pink with narrow green edge.

34c each; 3 for 99c; 6 for \$1.89

GERMAIN'S CALADIUM COLLECTION NO. 3051

1 each of 5 varieties for
\$1.50

Giant Amaryllis

Outstanding on this page is our famous strain of Amaryllis, which should not be confused with any ordinary strain. In mild climates they may be grown outdoors; in colder climates they make excellent pot plants. The culture is easy, a free pamphlet of cultural directions will be furnished free with all orders.

5005 **AMERICAN HYBRIDS MIXED**. A mixture of all known shades of Amaryllis.

39c ea.; 3 for \$1.09; 6 for \$2.09;
12 for \$3.99

5006 **RED SHADES**. Ranging from orange scarlet to deep crimson. Enormous flowers.
\$3.50 each

5007 **WHITE WITH RED STRIPES**. \$3.50 each

5008 **PURE WHITE**. \$5.00 each



GIANT AMARYLLIS

Calla Lilies

5150 **BLACK CALLA (Arum Pictum)**. A striking variety of Calla. The flower is of the deepest maroon black. This variety is also odorless.

79c each; 3 for \$2.19; 6 for \$4.19

5151 **WHITE CALLA**. Large flowered pure white waxlike flowers, on tall sturdy stems, surrounded with lush, glossy deep green foliage.

29c each; 3 for 84c; 6 for \$1.59; 12 for \$2.99

5152 **RARE PINK CALLA**. This lovely miniature Calla is carmine rose in color and about 2 inches in diameter. The plants reach a height of 1½ feet.

59c each; 3 for \$1.69; 6 for \$3.09

5153 **GOLDEN CALLA**. This lovely Calla produces grand deep yellow flowers on tall stems, leaves spotted white. Very attractive as shady garden or pot plant, also effective cut flowers.

34c each; 3 for 99c; 6 for \$1.89

5155 CALLA LILY COLLECTION

One bulb each of the four varieties listed above
for only \$1.79



PINK CALLA



GOLDEN CALLA

Germain's California Dahlias for 1949

Decorative Dahlias 5 Superb Cactus Dahlias

- 5600 **Avalon** Clear lemon yellow, large flowers borne on tall strong stems.
- 5601 **Clara Carder** Another large Dahlia of pure pink. Excellent for cut.
- 5602 **Gallant Fox** Large Claret Red flowers of good substance. Strong stems.
- 5603 **Ave Maria** A wonderful Dahlia of pure lavender Orchid.
- 5604 **Mrs. George Le Boutillier** Enormous cardinal red flowers borne on tall sturdy stems.
- 5605 **Mrs. I. de Ver Warner** A popular Dahlia of long standing. Large flowers of lavender pink.
- 5606 **Rose Glory** A beautiful shade of clear rose. A good cut flower of lasting quality.
- 5607 **Sir Lancelot** A most unusual Dahlia. The flowers are deep red with purple shadings.
- 5608 **Nathan Hale** Giant flowers in bronze shades. A Dahlia of great beauty and substance.
- 5609 **White King** Enormous flowers of pure white.

- 5610 **Animato** Clear pink of outstanding merit.
- 5611 **Arabesque** Warm golden yellow.
- 5612 **Autumn Pearl** Rich autumn shades of apricot, shading to deep bronze.
- 5613 **Rouge Bouquet** Brilliant orange red.
- 5614 **Peace** A true Cactus type in icy white shading to delicate cream.

Ball Type or Show Dahlias

One of the most attractive types of Dahlias. The plants are sturdy. The formal ball shaped flowers are borne on strong, erect stems. A good cut flower.

- 5615 **White Swan** Pure white.
- 5616 **Parthos** Deep red.
- 5617 **Bonnie Blue** Deep lavender.
- 5618 **Charlotte Caldwell** Clear orange.
- 5619 **A. D. Livoni** Clear pink.

The above Dahlias are all Priced alike.
59c each; 3 for \$1.59; 6 for \$2.89; 12 for \$5.59.

Germain's New Cut Flower Dahlia 5627 "Fireball"

A bright red Dahlia of the ball type. A profuse bloomer, medium sized flowers on long strong stems. Will last in water from a week to ten days.



49c Each;
3 for \$1.39
6 for 2.69

12 for \$5.19. Postpaid.

EXHIBITION DAHLIA COLLECTION NO. 5620

One tuber each of Avalon, Gallant Fox, Autumn Pearl, Rose Glory, Sir Lancelot and White King. All varieties of outstanding merit, not only for size but color. 6 bulbs in all for only.....\$2.50

GERMAIN'S CUT FLOWER DAHLIA COLLECTION NO. 5625

Six superb Dahlias suitable for cut or show. One each of Clara Carder, Mrs. I. de Ver Warner, Peace, Parthos, Bonnie Blue and Orange Imperator for only\$2.35

Six Choice Pompon Dahlias

These small ball shaped Dahlias are excellent cut flowers, like the miniature Dahlias they bloom profusely all through the summer and fall.

- 5628 **Yellow Gem** Pure Yellow.
- 5629 **Snow Clad** White.
- 5630 **Morning Mist** A beautiful shade of lilac.
- 5631 **Mary Munns** Clear lavender.
- 5632 **Little Herman** Red and white.
- 5633 **Cardinal** Bright red.

All priced alike at 49c Each; 3 for \$1.39; 6 for \$2.69; 12 for \$5.19, Postpaid.

GERMAIN'S POMPON DAHLIA COLLECTION

No. 5634— One each of the six Pompon Dahlia varieties listed above for only

\$2.50 Postpaid.

POMPON



ROSE GLORY



AVALON





Twelve Popular Exhibition Gladiolus

Each variety included in this collection is a prize winner and the selection presents every color known in Gladiolus. The bulbs are carefully selected, first size and hand-graded.

5234 **Aladdin**. Tall spikes of wide open orange scarlet flowers of great beauty and substance.

5235 **Beacon**. Large fiery orange red flowers with yellow throat. Excellent cut flower.

5236 **Bridesmaid**. Delicate blush pink with a touch of apricot tint. A prize winner.

5237 **Copper Bronze**. Huge flowers on long stiff stems. Color clear orange tinged bronze.

5238 **Gold Eagle**. Best of all yellow. Large flowers on erect long stems.

5239 **King Lear**. Wine purple with a blotch on the lower petal. Gladiolus of rare merit.

5240 **Lavender Beauty**. Clear lavender blue flowers. A superb variety.

5241 **Maid of Orleans**. A large stately white flower. One of the loveliest and clearest.

5242 **Paradise**. A beautiful shade of apricot, tinted buff and yellow. One of the best.

5243 **Pelagrina**. Deep violet blue. A rare color in gladiolus and the finest in its class.

5244 **Picardy**. Enormous flowers six inches across. Color soft shrimp pink with deeper center.

All the above varieties; 6 bulbs for 79c; 12 bulbs for \$1.49; 25 bulbs for \$2.89; 50 bulbs for \$5.29; 100 bulbs for \$9.89. Postpaid.

GERMAIN'S RARE NEW GLADIOLUS

5245 **Novelty Lipstick**. An unusual and charming Gladiolus, pure white with cream shading, petals edged and touched with lipstick red. A stunning combination for lovely flower arrangements.

35c each; 3 for \$1.00; \$3.50 per dozen.

Exhibition Collection B-41

5246

One bulb of each of the Giant Rainbow Gladiolus listed on this page, including the new variety "Lipstick." Individually labeled in colorful lithographed box. Makes a lovely gift for any garden lover.

Twelve Large Bulbs—\$1.84 value for \$1.69; 3 Collections for \$4.50



Eight Rare and Unusual GLADIOLUS

Outstanding in Size and Beauty

5248 **Abu Hassan**. Dark Violet Blue flowers, opening as many as eight at one time. Borne on tall straight stems.

1 for 25c; 3 for 69c; 6 for \$1.29; 12 for \$2.39.

5249 **Bagdad**. Large flowers of smoky, old rose with lighter throat. The stems are tall and sturdy.

1 for 25c; 3 for 69c; 6 for \$1.29; 12 for \$2.39.

5250 **Cloth of Gold**. Germain's 1947 Novelty. Tall spikes of well developed flowers in clear shades of tangerine shading to gold.

75c each; 3 for \$2.00; 6 for \$3.75.

5251 **Elizabeth the Queen**. One of the loveliest of lavender shades ever found in Gladiolus. The flowers are large and ruffled and the stems tall and sturdy.

1 for 25c; 3 for 69c; 6 for \$1.29; 12 for \$2.39.

5252 **Germain's Giant Red**. A spectacular new red Gladiolus. Tall plants with long straight flower spikes. Blooms well spaced and of large heavy substance.

1 for 25c; 3 for 69c; 6 for \$1.29; 12 for \$2.39.

5253 **Hinemoa**. Deep pink, flaked and spotted chocolate crimson. Throat clear yellow. An unusual Gladiolus of striking appearance.

1 for 25c; 3 for 69c; 6 for \$1.29; 12 for \$2.39.

5254 **Spotlight**. Tall spikes of brilliant red flowers, Spotted yellow in throat. Very effective.

1 for 25c; 3 for 69c; 6 for \$1.29; 12 for \$2.39.

5255 **Vagabond Prince**. Deep mahogany turning to garnet in the throat and across the petals. Strong and sturdy plants.

1 for 25c; 3 for 69c; 6 for \$1.29; 12 for \$2.39.

5256 **Rare Gladiolus Collection**. One bulb each of the eight varieties listed above. 8 Bulbs for \$2.25.



VAGABOND PRINCE



HINEMOA



BRIDESMAID

Germain's 15 Reliable Garden Gladiolus

5259 **Chamouny.** Rich rose pink with a dainty salmon edging.

5260 **Debonair.** La France pink, shading to shrimp pink, creamy throat flecked crimson.

5261 **E. I. Farrington.** Primrose yellow. Spikes of medium height. Flowers of good substance.

5262 **Edith C. Cole.** Beautiful light pink flowers shading to rosy pink in throat.

5263 **Jeannie.** Graceful, tall spikes of glistening clear pink blending to cream in the throat.

5264 **Lady Jane.** Large cream colored flowers, two lower petals shading to deep yellow.

5265 **La Paloma.** Gorgeous vivid orange flowers with tiny spearheads of white in the throat.

5266 **Margaret Beaton.** A wonderful Exhibition Gladiolus. Pure white with orange blotch in throat.

5267 **Phyllis McQuiston.** Flowers of deep glowing shrimp pink shading to light pink in the throat. Good cut flower.

5268 **Rosa Van Lima.** One of the most popular of rose colored Gladiolus. Throat and lower petals clear rose, shading to old rose towards the edges.

5269 **Red Phipps.** A beautiful Gladiolus of the clearest red. A wonderful cut flower.

5270 **Snow Princess.** Large pure white flowers, creamy throat.

5271 **Token.** Magnificent large blooms of flaming salmon with golden yellow throat.

5272 **White Gold.** Large flowers of rich creamy white shading to gold in the throat.

5273 **Valeria.** A very fine light red Gladiolus, many flowers open at one time. A good keeper.

All priced alike: 6 for 69c; 12 for \$1.29; 25 for \$2.49; 50 for \$4.89; 100 for \$9.69.

5275 **Collection** of two each of the above varieties. 30 bulbs in all for only \$2.89.

GERMAIN'S

*Tip Top
Gladiolus Mixture*

5279

A fine mixture of large sized bulbs comprising all the colors of the rainbow.

6 for 59c; 12 for \$1.09; 25 for \$2.09;
50 for \$4.09, Postpaid.

5280

SPECIAL GET ACQUAINTED OFFER

26 blooming size bulbs 5 each of five colors (our choice) plus one novelty.

\$1.00 Postpaid.



DOUBLE PICOTEE

CARNATION TYPE DOUBLE

CAMELLIA FLOWERED

*Germain's
Tuberous Rooted*

Begonias

TUBEROUS BEGONIAS are exceedingly popular with the Home Gardener, because of their lush green foliage and magnificently colored wax-like flowers. They are unsurpassed for shady locations or as pot plants. Pamphlet of cultural directions is furnished free with all orders.

5070 **CAMELLIA-FLOWERED.** This is the true strain of Camellia-flowered Doubles, which has been developed through years of painstaking hybridization. Flowers extra large. Colors: Red, Orange, Rose, Pink, Yellow and White.

5075 **CARNATION TYPE OR DOUBLE FRILLED.** Produces a large double flower, resembling a Carnation in form. Colors: Red, Orange, Rose, Pink, Yellow and White.

5080 **PICOTEE DOUBLE.** A Camellia type blossom with the edges of each petal marked in a different shade of color, making an unusual and striking contrast. Available in a mixture of pastel shades.

5085 **HANGING BASKET OR LLODII.** An unsurpassed strain containing double flowers only. Often hundreds of blossoms to the plant. Excellent for hanging baskets or rock gardens. Available only in mixed colors.

5090 **SINGLE CRISPA OR SINGLE FRILLED.** Enormous frilled and ruffled flowers. Colors: Red, Orange, Rose, Pink, Yellow and White.

5095 **ROSEBUD.** A double type resembling perfect rose buds. Many flowers are colored in two shades. Lovely mixture of pastel shades.

PRICE: All varieties on this page: Large tubers. 45c each, 3 for \$1.29, 6 for \$2.39, 12 for \$4.49. Postpaid.

5099 **COLLECTION.** One large bulb of each variety listed above, 6 bulbs in all\$2.25



HANGING BASKET OR LLODII

**Bargain Offer
No. 5100**

5 Bedding size Camellia-type Begonias. One each of 5 colors. Our choice. Plus One Hanging Basket Begonia.

\$1.00 Postpaid.



Grow Lovely and Fragrant

LILIES OF THE VALLEY

in the House All the Year 'Round

Anyone can grow fragrant blossoms indoors in 21 days! A gift to thrill your friends. Clusters of charming pure white bell-shaped blossoms on tall, graceful stems stand, full grown, just 3 weeks after you receive Germain's imported forcing pips. They are already planted in delightful California glazed pottery coffee or beverage mugs filled with prepared bulb fibre—you just add water.

- Six Lily of the Valley pips, No. 5361..... \$1.19
- 12 Lily of the Valley pips, No. 5361..... \$2.29
- 25 Lily of the Valley pips, No. 5361..... \$4.29
- No. 5567 Package of Fibre suitable for growing Lily of the Valley indoors 35c Postpaid

PLANTED CONTAINER NO. 5362

Beautiful Beverage Mug in colorful California Pottery. Complete with 5 Lily of the Valley pips. Choice of Blue or Rose container **\$2.75 Postpaid.**

