

EMORY UNIVERSITY
THEOLOGY LIBRARY

MINUTES
OF THE
FIFTY-THIRD SESSION
OF THE FLORIDA
ANNUAL CONFERENCE,
OF THE
METHODIST EPISCOPAL CHURCH, SOUTH,
HELD AT
TALLAHASSEE, FLA., DECEMBER 9-13, 1896.

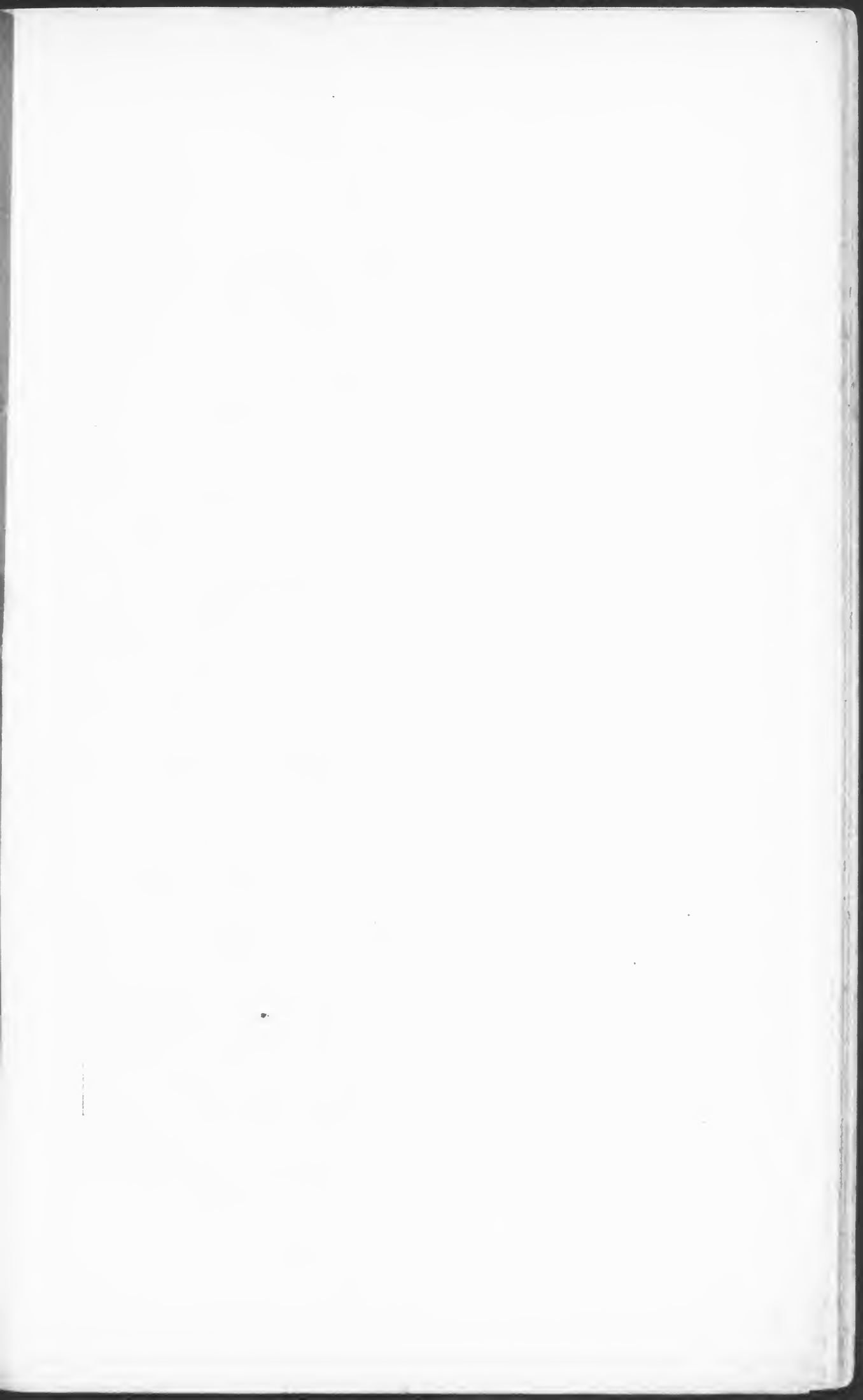
EDITORS :

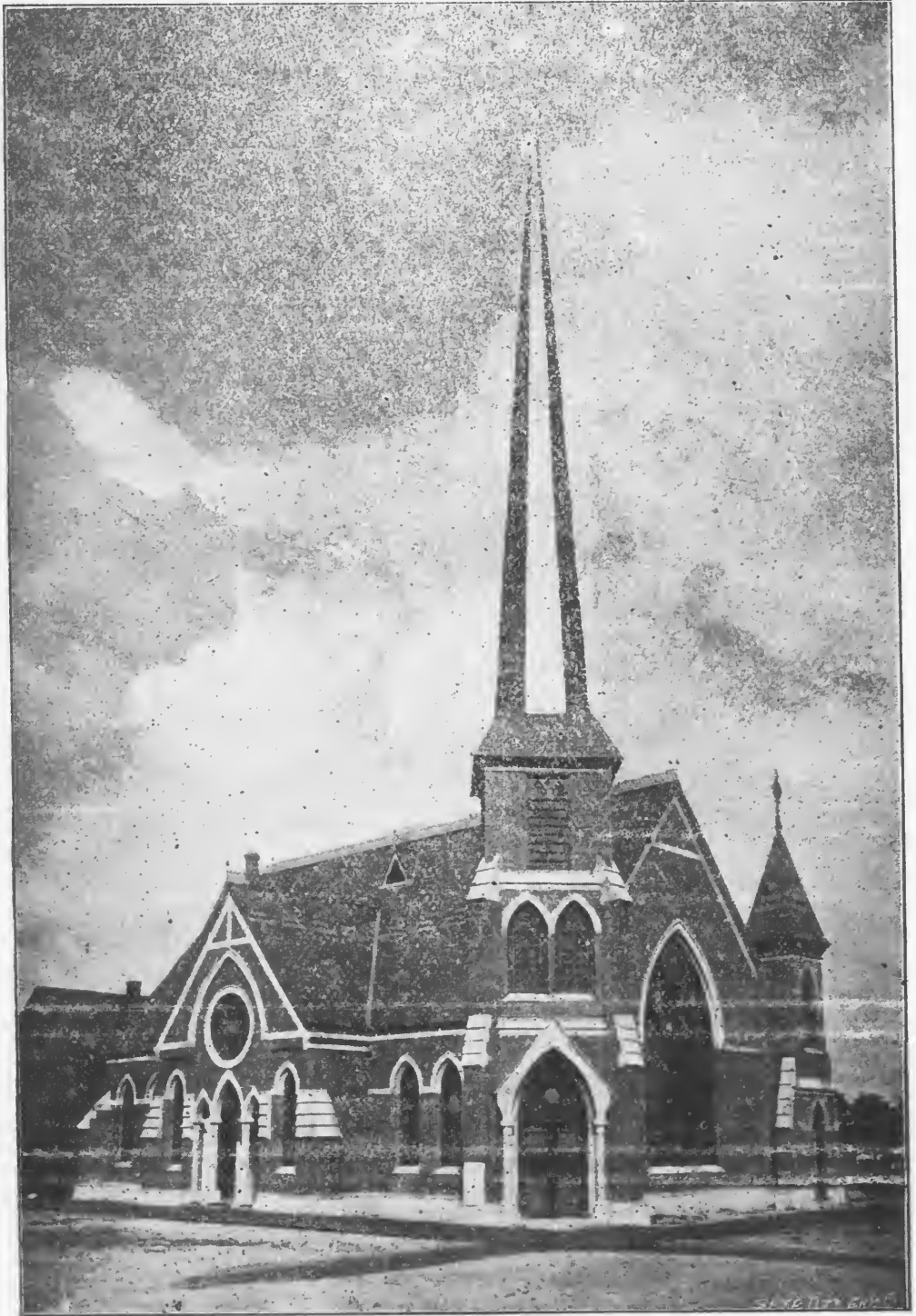
FREDERICK PASCO.

J. B. LEY.

INDEX.

	Page.
1. Frontice Piece.....	
2. Conference Sessions.....	3
3. Conference Register.....	4-6
4. Boards and Committees.....	7-9
5. Appointments.....	9-12
6. Resolutions.....	12-16
7. General Minutes.....	17-19
8. General Reports.....	21-26
9. Financial Reports.....	26-33
10. Conference Brotherhood.....	34-35
11. Memoirs.....	36-38
12. Errata and Editorial.....	39
13. Statistical.....	41-56
14. Appendix.....	57-59
15. Advertisements.....	60-64





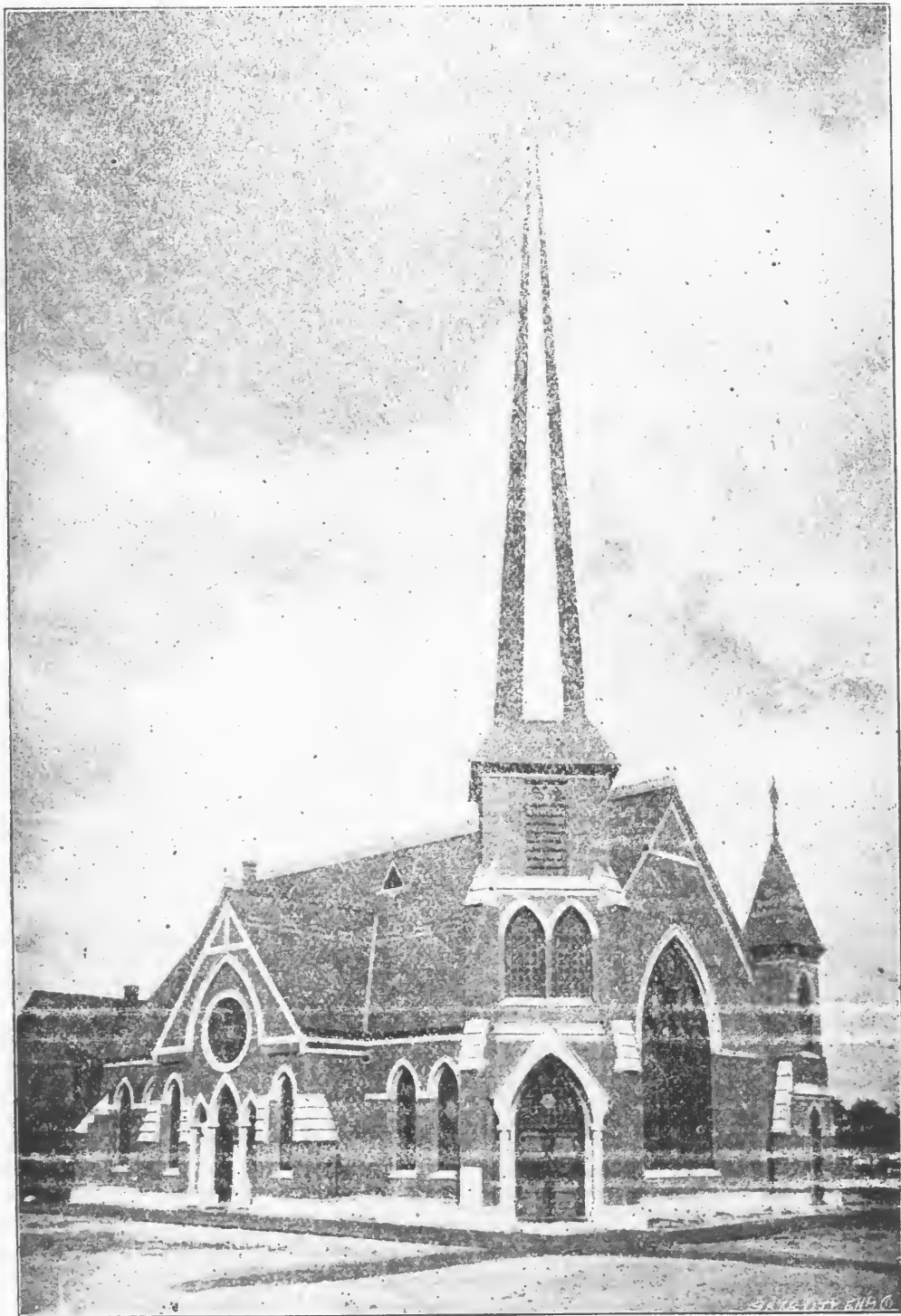
METHODIST EPISCOPAL CHURCH, SOUTH, TAMPA
Where the next Conference will be held.

MINUTES
OF THE
FIFTY-THIRD SESSION
OF THE FLORIDA
ANNUAL CONFERENCE;

OF THE
METHODIST EPISCOPAL CHURCH, SOUTH,

HELD AT
TALLAHASSEE, FLA., DECEMBER 9-13, 1896.

TALLAHASSEE, FLORIDA:
PRINTED AT THE TALLAHASSEAN BOOK AND JOB OFFICE.
1896.



METHODIST EPISCOPAL CHURCH, SOUTH, TAMPA
Where the next Conference will be held.

MINUTES
OF THE
FIFTY-THIRD SESSION
OF THE FLORIDA
ANNUAL CONFERENCE,
OF THE
METHODIST EPISCOPAL CHURCH, SOUTH,
HELD AT
TALLAHASSEE, FLA., DECEMBER 9-13, 1896.

TALLAHASSEE, FLORIDA:
PRINTED AT THE TALLAHASSEAN BOOK AND JOB OFFICE.
1896.

ORGANIZATION.

CONFERENCE OFFICERS.

PRESIDENT.

Bishop C. B. GALLOWAY, Jackson, Mississippi.

SECRETARY.

FREDERICK PASCO, Jacksonville, Florida.

ASSISTANTS.

C. F. BLACKBURN,	}	Statistics.
E. F. LEY,		
S. W. LAWLER.		

OFFICERS OF LEGAL CONFERENCE.

J. C. SALE.....	President
FREDERICK PASCO.....	Secretary
J. C. COOPER.....	Treasurer

SESSIONS OF THE FLORIDA CONFERENCE.

NO.	PLACE.	DATE.	PRESIDENT.	SECRETARY.
1	Tallahassee, Fla....	Feb. 6, 1845	Bishop J Soule.....	T C Benning
2	Monticello, Fla.....	Feb. 9, 1846	Bishop J O Andrew..	P P Smith
3	Quincy, Fla.	Feb. 10, 1847	Bishop W Capers	P P Smith
4	Waynesville, Ga....	Feb. 9, 1848	Bishop J O Andrew...	P P Smith
5	Albany, Ga.	Jan. 31, 1849	Bishop W Capers.....	P P Smith
6	Madi.on, Fla.....	Feb. 6, 1850	Ira L Potter	P P Smith
7	Thomasville, Ga....	Jan. 22, 1851	Bishop R Paine	P P Smith
8	Tallahassee, Fla....	Jan. 28, 1852	Bishop J O Andrew...	P P Smith
9	Quincy, Fla....	Jan. 1853	Bishop W Capers.....	P P Smith
10	Monticello, Fla.....	Dec. 1853	R H Howren.....	P P Smith
11	Madison, Fla....	Dec. 1854	Bishop W Capers.....	P P Smith
12	Bainbridge, Ga.....	Dec. 1855	{ S P Richardson... } { Bishop J O Andrew }	TNGard- ner.
13	Alligator, Fla... Dec.	24-30, 1856	Bishop J O Andrew...	P P Smith
14	Thomasville, Ga.	Dec. 1857	Bishop J Earley	P P Smith
15	Jacksonville, Fla. Dec.	15-20 1858	Bishop J O Andrew.....	J C Ley
16	Micanopy, Fla. Dec. 28,	1859, Jan 3, 1860	Bishop HH Kavanaugh	PP Smith
17	Monticello, Fla. Dec.	12-17, 1860	Bishop G F Pierce....	P P Smith
18	Quincy, Fla.... Dec.	12-15, 1861	Bishop G F Pierce....	P P Smith
19	Tallahassee, Fla... Dec.	11, 1862	Bishop J O Andrew..	P P Smith
20	Thomasville, Ga.. Dec	16-19, 1863.....	Bishop J O Andrew..	F A Branch
21	Monticello, Fla. Dec.	14-18, 1864	S P Richardson.....	F A Branch
22	Madison, Fla., Nov. 29,	Dec. 1, 1865.....	Bishop G F Pierce....	F A Branch
23	Quincy, Fla.	Dec. 13-15, 1866	Bishop H N McTyeire	F A Branch
24	Monticello, Fla., Dec.	6-9, 1867	Bishop G F Pierce..	F A Branch
25	Jacksonville, Fla. Jan.	13-17, 1869	Bish. W M Wightman	F A Branch
26	Lake City, Fla., Dec.	20-23, 1869	Bishop D S Doggett..	J P DePass
27	Tallahassee, Fla., Jan.	4-9, 1871	Bishop. W. M Wightman	U S Bird
28	Madison, Fla.....	Jan. 1872	Bishop W. M Wightman	U S Bird
29	Fernandina, Fla., Jan.	8-12, 1873	Bishop E M Marvin....	U S Bird
30	Jacksonville, Fla., Jan.	7-11, 1874	Bishop G F Pierce....	F Pasco
31	Live Oak, Fla., Dec.	16-20, 1874	Bishop W M Wightman	F Pasco
32	Quincy, Fla.....	Jan. 5-9, 1876	Bishop W M Wightman	F Pasco
33	Monticello, Fla... Jan.	11-15, 1877	Bishop G F Pierce.....	F Pasco
34	Tampa, Fla.... Nov.	15-18, 1877	Bishop G F Pierce....	F Pasco
35	Gainesville, Fla. Nov.	13-18, 1878	Bishop H H Kavanaugh	F Pasco
36	Tallahassee, Fla. Dec.	17-21, 1879	Bishop D S. Doggett.....	F Pasco
37	Ocala, Fla.....	Dec. 16-19, 1880	Bishop G F Pierce	F Pasco
38	Monticello, Fla., Jan.	18-23, 1882	Bishop H N McTyeire..	F Pasco
39	Jacksonville, Fla., Jan.	3-8, 1883	Bishop H H Kavanaugh	F Pasco
40	Madison, Fla.... Jan.	9-14, 1884	Bishop J C Keener....	F Pasco
41	Gainesville, Fla....	Jan. 7-13, 1885	Bishop Linus Parker...	F Pasco
42	Orlando, Fla.... Jan.	6-11, 1886	Bishop R K Hargrove..	F Pasco
43	Tallahassee, Fla.. Dec.	16-21, 1886	Bishop E R Hendrix...	F Pasco
44	Leesburg, Fla.... Dec.	14-19, 1887	Bishop J S Key.....	F Pasco
45	Bartow, Fla. Jan.	9-13, 1889	Bishop C B Galloway..	F Pasco
46	Gainesville, Fla.. Jan.	8-13, 1890	Bishop J C Keener....	F Pasco
47	Monticello, Fla... Jan.	7-12, 1891	Bishop W W Duncan....	F Pasco
48	Tampa, Fla. Jan.	6-11, 1892	Bishop J C Granbery..	F Pasco
49	Ocala, Fla. Jan.	4-9, 1893	Bishop O P Fitzgerald .	F Pasco
50	Palatka, Fla...	Jan. 3-8, 1894	Bishop A G Haygood...	F Pasco
51	Jacksonville, Fla.. Jan.	9-14, 1894	Bishop W W Duncan...	F Pasco
52	Orlando, Fla.. Dec.	18-23, 1893- 1895.....	Bishop J C Granbery...	F Pasco
53	Tallahassee, Fla.. Dec.	9-13, 1896	Bishop C B Galloway...	F Pasco

CONFERENCE REGISTER.

NAME.	POST OFFICE.
Josephus Anderson.....	Leesburg
W. F. Alexander.....	Waldo
T. S. Armstead.....	Bushnell
J. S. Barnett.....	Aucilla
R. H. Barnett.....	Leesburg
J. Beers*.....	Leesburg
J. F. Bell, D.....	Waukeelah
T. Bishop.....	Jacksonville
E. L. T. Blake, Sd*.....	Ocala
A. W. J. Best.....	Titusville
F. R. Bridges.....	Citra
T. C. Bradford.....	Live Oak
C. F. Blackburn.....	Starke
J. T. Coleman.....	
J. S. Colier, Sd*.....	Floral City
W. C. Collins.....	Newnansville
D. A. Cole.....	Dade City
C. S. Claridy.....	Palmetto
W. J. Carpenter.....	Orlando
John Dodwell*.....	Homeland
M. F. Dukes.....	Miccosukie
J. P. DePass.....	Williston
A. M. Daiger.....	Marion
H. Dutill.....	Maitland
J. P. Durrence.....	Emporia
R. M. Evans.....	Reddick
F. M. C. Eads.....	Umatilla
H. B. Frazee.....	Myers
C. A. Fulwood, P. E.....	Bartow
E. F. Gates, Sy*.....	Manatee
George W. Gatewood.....	Ozona
E. H. Giles.....	Oviedo
W. J. Gray, Sy.....	Crawfordville
J. G. Graham, Sd*.....	Anthony
T. Griffith*.....	Jacksonville
C. H. Greer.....	Ft. White
J. A. Hendry*.....	Apalachicola
R. L. Honiker.....	Bartow
J. A. Howland.....	West Palm Beach
J. P. Hilburn.....	Ocala
A. E. Householder, P E.....	Orlando
E. J. Hardee*.....	Sarasota
S. Hardin.....	Fort Bassenger
George K. Heydrick.....	Interlachen
H. Hice.....	Key West
R. A. Holloway.....	Madison
C. W. Inman.....	Mt. Tabor
A. Johnson, Sy*.....	Live Oak
J. L. Jones.....	Mosely Hall
W. C. Jordan.....	Bowling Green
G. J. Kennelly.....	Martel
E. F. Ley.....	Leesburg
J. B. Ley.....	Tallahassee

J. C. Ley	Lady Lake
T. G. Lang	Fernandina
S. W. Lawler	Kissimmee
J. H. D. McRae	Arcadia
H. S. Miller	Lake Butler
B. F. Mason	Key West
W. E. H. Mabry	Palatka
G. W. Mitchell	Apopka
J. E. Mickler	Carrabelle
L. W. Moore, P. E.	Live Oak
T. W. Moore	Quincy
S. G. Meadows*	Clear Water
W. S. McMannin	Pine Mount
A. M. Mann	King's Ferry
C. F. Mellor*	Callahan
W. C. Norton	Clear Water
W. F. Norton	Leesburg
T. J. Nixon	Jacksonville
M. H. Outland	Punta Gorda
George P. Parker	Cherry Lake
W. H. Parker	Largo
F. Pasco	Jacksonville
A. D. Penny, Sy*	Myers
H. W. Penny	Tampa
S. E. Phillips	Welborn
T. J. Phillips	Jasper
J. W. Porter	Mayo
I. S. Patterson	Sanford
F. Pixton	Lakeland
J. M. Pike, Sy*	Columbia, S. C.
W. M. Poage	Tampa
T. B. Reynolds	White Springs
W. S. Richardson	Rochelle
W. H. F. Roberts	High Springs
J. D. Rogers, Sd*	Clear Water
I. Ryder	Hermitage
W. F. Shoemaker, Sy*	Martel
S. Scott	Micanopy
H. B. Someillan	Tampa
C. A. Saunders, P. E.	White Springs
W. H. Steinmeyer	Melrose
F. E. Shipp	Monticello
J. C. Sale, P. E.	Bronson
G. W. Sellers	Manatee
J. F. Shands, Sy	Leesburg
T. H. Sistrunk	San Antonio
B. K. Thrower	Gainesville
J. R. Taylor	Anthony
F. A. Taylor	Leesburg
T. W. Tomkies, P. E.	Tallahassee
W. B. Tresca	Pine Level
G. D. Turner	Lake City
J. H. Vann	Inverness
I. A. Vernon	Orange Springs
C. D. Ward	Clermont
J. T. Waters, Sy	Welborn
William A. Wier	Crawfordville
T. M. White	Green Cove

E. K. Whidden, D.....	Webster
R. M. Williams.....	Concord
R. O. Wier.....	Brooksville
E. Wilson*.....	New Smyrna
N. L. Wiggins.....	St. Augustine
R. J. Wells.....	Callahan

PREACHERS ON TRIAL.

CLASS OF SECOND YEAR.

NAME.	POSTOFFICE.
Charles W. White.....	Seffner
R. L. Sumner.....	McClenny
James H. Owen.....	Key West
I. Barredo.....	Havana

CLASS OF FIRST YEAR.

J. T. Nolen.....	Leesburg
John R. Walker.....	Bristol
Hubert Baker.....	Key West
Eladio Diaz.....	Tampa
Manuel De Lofen.....	Key West
I. G. Blue.....	Green Cove
M. T. Bell.....	DeSoto

LAY DELEGATES.

TALLAHASSEE DISTRICT—J. T. Swearingen*, C. T. Carroli, J. N. Carn, T. J. Blalock.

LIVE OAK DISTRICT—A. W. McLeran*, M. A. Knight, H. J. Stewart, J. S. Michel.

GAINSEVILLE DISTRICT—H. W. Long, C. W. White, W. R. White*, J. D. Watkins*.

JACKSONVILLE DISTRICT—W. P. Ward, C. S. Bailey, J. P. Bessent, J. N. Walton.

TAMPA DISTRICT—R. F. Webb, J. W. Knight, A. C. Turner*, S. C. Curry*, W. H. McCormick.

ORLANDO DISTRICT—J. M. Lord*, George Lever*, S. G. Vallandingham.

BARTOW DISTRICT—D. W. Stanley*, W. M. Boswell*, C. S. Kemp*, S. Johnson*.

*Not present at Conference. Sd., Superannuated. Sy., Supernumerary, D., Deacon.

CONFERENCE BOARDS AND COMMITTEES.

BOARD OF MISSIONS.

Clerical—T. W. Moore, President; T. W. Tomkies, Secretary; F. Pasco, Treasurer; S. E. Phillips, R. H. Barnett, E. F. Ley, W. H. Steinmeyer, W. E. H. Mabry.

Lay—A. O. MacDonell, J. L. Bryan, W. M. Boswell, N. A. Carter, J. T. Bernard, W. N. Sheats.

BOARD OF CHURCH EXTENSION.

Clerical—C. A. Fulwood, President; W. S. Richardson, Secretary; J. Dodwell, G. W. Mitchell, F. Pixton, I. Ryder, James Bolton.

Lay—C. W. White, Treasurer; W. D. Stanley, J. C. Cooper, W. N. Ferguson, T. J. Watkins, S. E. Bond, G. I. Davis.

BOARD OF EDUCATION.

Clerical—J. Anderson, B. K. Thrower, W. H. Steinmyer, T. G. Lang, H. B. Frazee, J. P. DePass, J. M. Pike, E. H. Giles.

Lay—L. E. Robinson, W. N. Sheats, C. T. Carroll, J. W. Tucker.

SUNDAY SCHOOL BOARD.

Clerical—G. D. Turner, W. C. Collins, G. W. Sellers, S. Scott, J. C. Ley, R. L. Honiker, Treasurer.

Lay—G. W. Price, S. Wilson, T. W. Conard, A. M. C. Russell, W. A. Curtis, R. McConathy.

COMMITTEE ON MEMOIRS.

R. L. Honiker, C. A. Fulwood, T. Griffith.

COMMITTEE ON COLPORTAGE.

Clerical—T. J. Phillips, I. S. Patterson, D. A. Cole, W. S. Richardson.

Lay—C. W. White, C. T. Carroll.

COMMITTEE ON EXAMINATION.

On Trial—J. B. Ley, L. W. Moore.

First Year—J. F. Shands, E. F. Ley.

Second Year—F. R. Bridges, J. P. Hilburn, I. S. Patterson.

Third Year—F. E. Shipp, J. C. Sale, D. A. Cole.

Fourth Year—C. A. Saunders, T. Bishop, W. F. Alexander.

TRUSTEES FLORIDA CONFERENCE COLLEGE.

Clerical—A. E. Householder, President; R. L. Honiker, T. J. Nixon, R. H. Barnett, J. F. Shands, W. F. Norton, J. C. Sale, Edw. F. Ley, C. A. Fulwood, C. A. Sanders.

Lay—George M. Lee, C. N. Hildreth, J. C. Cooper, C. W. White, J. H. Dorsey, E. H. Swain, W. H. Cassady.

TRUSTEES PREACHERS' RELIEF FUND.

T. W. Moore, W. S. Richardson, C. A. Fulwood, J. W. Tucker, C. W. White, H. W. Long, Edw. F. Ley, Secretary; T. C. Carroll, Treasurer.

SPECIAL FOR ONE YEAR.

Committee on Public Worship—T. W. Tomkies, J. B. Ley, George I. Davis.

Committee on Temperance—J. A. Hendry, B. F. Mason, L. Bishop, J. H. Vann, S. W. Lawler, J. F. Bell, J. T. Swearingen.

Committee on District Conference Records—M. H. Outland, F. R. Bridges, A. M. Daiger, N. L. Wiggins, T. H. Sistrunk, G. P. Parker, F. M. C. Eads.

Committee on Epworth League—J. C. Ley, R. M. Evans, G. D. Turner, G. W. Sellers, J. P. Hilburn, W. J. Carpenter, H. B. Someillan, N. P. Ward.

Committee on Books and Periodicals—T. G. Lang, J. Dodwell, B. K. Thrower, J. F. Shands, J. W. Knight, J. P. Bessant, C. W. White, J. M. Barco.

Committee on Bible Cause—H. Hice, G. J. Kennelly, W. R. White, C. S. Clariday, W. E. H. Mabry, W. H. McCormack, T. J. Blalock.

Committee on Sunday Observance—J. R. Taylor, R. A. Holloway, F. Pixton, J. A. Howland, F. E. Shipp, E. H. Giles, R. F. Webb.

Committee on Conference Relations—W. H. Parker, W.

B. Tresca, J. S. Barnett, T. Griffith, I. A. Vernon, W. H. F. Roberts, E. F. Ley.

JOINT BOARD OF FINANCE.

Clerical—J. B. Ley, R. A. Holloway, T. G. Lang, J. P. Hilburn, W. M. Poage, E. H. Giles.

Lay—C. T. Carroll, Treasurer ; J. S. White, H. W. Long, W. P. Ward, F. A. Curtiss, R. F. Webb.

VISITING COMMITTEES.

Florida Conference College—W. B. Tresca, J. F. Bell, J. A. Hendry.

Emory College—W. F. Alexander, T. J. Phillips, S. M. Sparkman.

Wesleyan Female College—C. A. Fulwood, J. P. Hilburn, W. N. Sheats.

APPOINTMENTS FOR 1897.

Figures indicate consecutive appointment of incumbent to the charge.

TALLAHASSEE DISTRICT—T. W. TOMKIES, P. E., 3.

Tallahassee	J. B. Ley	3
Leon Circuit	M. F. Dukes	2
Monticello	F. E. Shipp	2
Madison	R. A. Holloway	1
Madison Circuit	G. Parker	2
Mosely Hall and Taylor Mission	J. L. Jones	2
Waukeenah Circuit	J. F. Bell	2
Wakulla Mission	W. A. Wier, 1 ; W. J. Gray, Sy	
Concord Circuit	R. M. Williams	2
Midway Mission	N. L. Wiggins	1
Quincy	T. W. Moore	3
Gadsden Circuit	I. Ryder	2
Liberty Circuit	J. R. Walker	2
Aucilla Circuit	J. S. Barnett	3
Apalachicola	J. A. Hendry	1
Carrabelle Mission	J. E. Mickler	1

LIVE OAK DISTRICT—L. W. MOORE, P. E., 1.

Live Oak	T. C. Bradford	1
Jasper Circuit	T. J. Phillips	1
Hamilton Mission	A. M. Daiger	3

White Springs	T. B. Reynolds	4
Welborn Circuit	S. E. Phillips	3
Pine Mount Mission	W. S. McMannin	3
Fort White Circuit	C. H. Green	2
LaFayette Mission	J. W. Porter	2
Newnansville Circuit	W. C. Collins	3
Columbia Circuit	C. W. Inman	4
Lake City	G. D. Turner	1
Lake Butler Circuit	H. S. Miller	2
McClenny Mission	R. L. Sumner	1
Starke	C. F. Blackburn	2
Waldo Mission	W. F. Alexander	3
High Springs Mission	W. H. F. Roberts	2

GAINESVILLE DISTRICT—J. C. SALE, P. E., 2.

Gainesville	B. K. Thrower	1
Bronson Circuit	J. P. DePass	3
Rochelle Circuit	W. S. Richardson	2
Orange Springs Circuit	I. A. Vernon	2
Melrose Circuit	W. H. Steinmeyer	2
Citra	F. R. Bridges	2
Micanopy Circuit	S. Scott	1
Ocala	J. P. Hilburn, 3; J. M. Pike, Sy	
Reddick Mission	R. M. Evans	1
Cotton Plant Circuit	G. J. Kennelly	1
Wildwood Circuit	J. Beers	1
Anthony Circuit	J. R. Taylor, 2; W. F. Shoemaker, Sy	
Inverness Circuit	J. H. Vann	1
Sumter Circuit	T. S. Armistead	4
Stewart's Chapel	E. K. Whidden	2
Brooksville	R. O. Wier	1
Leesburg	E. F. Ley, 2; J. F. Shands, Sy	
Lady Lake Mission	J. C. Ley	1
Editor Florida Christian Advocate	J. Anderson	10
Conference Colporter	R. H. Barnett	6
President Florida Conference College	J. T. Nolen	1
Professor Florida Conference College	F. A. Taylor	
Educational Secretary	E. F. Ley	

JACKSONVILLE DISTRICT—C. A. SAUNDERS, P. E., 2.

Jacksonville McTyeire Memorial	T. J. Nixon	1
Jacksonville Riverside	T. Bishop	1
Jacksonville St. Matthews	T. Griffith	3
Fernandina	T. G. Lang	2
King's Ferry Circuit	A. M. Mann	1

Callahan Circuit.....	R. J. Wells, 1; C. F. Mellor, Sy	
Mandarin Mission.....	T. M. White	2
Green Cove and Middleburg.....	T. G. Blue	1
Palatka.....	W. E. H. Mabry	3
Interlachen and St. John's River }	G. K. Heydrick	2
	E. W. Warwick, supply	1
St. Augustine.....	To be supplied by J. B. Trotter	1
Fruitland Circuit.....	To be supplied by J. C. Pace	1
Volusia and DeLand Mission.....	J. P. Durrence	1
Sanford.....	I. S. Patterson	1
New Smyrna Mission..	To be supplied by J. H. McDowell	1
Titusville and Cocoa.....	A. W. J. Best	1
Indian River Mission.. }	W. B. Tresca	1
	One to be supplied	
Oviedo Circuit.....	E. H. Giles	3
Biscayne Bay Mission.....	J. A. Howland	1
DeLand.....	To be supplied by E. A. Harrison	1
Principal Duval High School.....	Frederick Pasco	3

ORLANDO DISTRICT—A. E. HOUSEHOLDER, P. E., 4.

Orlando and Fairview. }	W. J. Carpenter	2
	R. N. Dickinson, supply	1
Maitland Mission.....	H. Dutill	2
Kissimmee Circuit.....	S. W. Lawler	2
Apopka Circuit.....	G. W. Mitchell	2
Clermont Mission.....	W. F. Norton	2
Umatilla Circuit.....	F. M. C. Eads	1
Bartow.....	R. L. Honiker	3
Kathleen and Greenwood Mission.....	J. S. Coleman	1
Lakeland and Plant City.....	F. Pixton	4
Homeland and Fort Meade.....	J. Dodwell	1
Bowling Green Circuit.....	W. C. Jordan	1
Wauchula Mission.....	To be supplied by R. T. Higgs	1
DeSoto.....	M. T. Bell	1
Arcadia.....	J. H. D. McRae	1
Punta Gorda Mission.....	M. H. Outland	2
Myers.....	H. B. Frazee	1
Fort Bassenger Mission.....	S. Hardin	2
Caloosahatchie.....	To be supplied by J. D. Martin	1

TAMPA DISTRICT—C. A. FULWOOD, P. E., 1.

Tampa.....	W. M. Poage	3
Seffner and Port Tampa.....	C. W. White	1
Hillsborough Mission.....	H. W. Penny	1
Alafia Circuit.....	W. C. Norton	1

Manatee.....	G. W. Sellers, 2; E. F. Gates, Sy	
Palmetto.....	C. S. Claridy	1
Sarasota.....	E. J. Hardee	1
Clear Water and St. Petersburg.....	S. G. Meadows	1
Largo Circuit.....	W. H. Parker	3
Pasco Mission.....	T. H. Sistrunk	2
Dade City Circuit.....	D. A. Cole	4
Key Largo Circuit.....	G. W. Galewood	1
Chuckaluskie Mission.....	J. H. Owen	1
Key West—First Charge.....	H. Hice	4
Key West—Spark's Chapel.....	B. F. Mason	2
Key West—Memorial Chapel Mission.....	H. Baker	1
Key West—Cuban Mission.....	M. De Lofen	5
Tampa—Cuban Mission.. }	H. B. Someillan	3
	E. Diaz	2
Havana—Cuban Mission.....	I. E. Barredo	2

TRANSFERRED.

C. D. Ward.....	To Louisville Conference
J. A. Castel.....	To Arkansas Conference
R. T. DuBose.....	To North Georgia Conference
T. A. Jordan.....	To Holston Conference
E. J. Gates.....	To East Texas Conference

RESOLUTIONS OF FORMER CONFERENCES.

SUNDAY SCHOOL MISSIONARY SOCIETY.

Resolved, That a Missionary Society be organized in each Sunday School.

PASSAGE OF CHARACTER.

Resolved, That no preacher's official character shall pass unless he can report that the collections ordered have been taken up.

CHURCH PROPERTY.

"It is recommended that in every case where the Church is about to acquire property, either by purchase or donation, that a lawyer be employed or solicited to make out the deed and obtain an abstract of the title, and thus be assured of the validity of the same. We recommend also that the trustees of such property be required, as soon as possible after they

are put in possession of the deed and abstract, to make a copy of the abstract, and forward it to the Secretary of the Conference, in order that it may be properly filed in the archives of the Conference, so that at any time required any desired information may be had of the title of the Church property."—*Report of Committee on Church Property at session of December, 1886. Adopted.*

Resolved, That the preachers in charge be requested to take their collections for Foreign Missions as early in the year as practicable, if possible, by the 1st of May.

Resolved, That hereafter the amount necessary for the publication of the Minutes and the incidental expenses of the Secretary be apportioned as follows: 30 per cent. each to the Joint Board of Finance and Boards of Missions, and ten per cent. to the Board of Church Extension.

LAY REPRESENTATION IN DISTRICT CONFERENCE.

Resolved, That, in addition to those whom the Discipline declares members of the District Conference, four delegates from each pastoral charge should be elected to the Quarterly Conference.

Resolved, That hereafter, on Wednesday night of Conference, the services close with the "Sacrament of the Lord's Supper."

WHEREAS, The Preachers' Relief Association has been productive of much good to the needy ones of our Conference in the past; and

WHEREAS, It is desirable to enlarge the sphere of its usefulness, therefore,

Resolved, That we will bring the nature and objects of the Preachers' Relief Association of the Florida Annual Conference to the attention of our people, with the view of procuring additional names to the roll of its contributing members.

Resolved, That each preacher prepare a memoir of himself, to be filed with the Secretary.

Resolved, That the preacher in charge of the principal church in the place where the Conference session shall in fu-

ture be held, with the Presiding Elder of the district, be constituted a committee to arrange with transportation companies, etc., for the usual courtesies extended to preachers attending and returning from Conference.

Resolved, That we advise the use of unfermented juice of the grape in administering the Sacrament of the Lord's Supper.

Resolved, That the Examining Committees be instructed to adopt a uniform system of examination, and report the same to the Conference at this session; and that the chairman of the Committee on Candidates for Admission on Trial be requested to call a meeting of said committee to carry out the provisions of this resolution.

As a lasting and fitting memorial of the 50th anniversary of the Florida Annual Conference.

Therefore, be it Resolved, That we take steps to establish an Orphan's Home, and that for this purpose a committee of seven be appointed to present this cause to our people, and to advertise for, and receive during, and report to our next session, all bids and offers of donations for an Orphan's Home, the following conditions to be observed:

1. That the Orphanage be located in that community offering the largest donations; lands and buildings suitable for a Home, be counted in the bid at the market cash value of such lands and buildings: Provided, further, That all the local conditions be suitable for such a Home.

2. That this committee solicit offers of donations from our people, and others to aid in building an Orphan's Home.

3. That no bid for location shall be considered unless sufficient to build a Home with necessary equipments to accommodate at least twenty-five orphans.

Resolved, That this Conference petition, through its Secretary, the next Legislature to enact a law prohibiting all Sunday excursions.

Second, That the Secretary of this Conference be instructed to communicate with the other religious denominations of Florida requesting them to forward a like petition to the Legislature.

Resolved, That this Conference renew its Memorial to next General Conference for an Inter-Conference Brotherhood. And that we also memorialize next General Conference to have our Church Extension Board provide for insurance of our church property.

C. T. CARROLL,
W. N. SHEATS.

Resolved, That Thursday night of each Conferenee session be observed as anniversary of our Florida Conference Brotherhood.

T. BISHOP,
R. M. EVANS.

RESOLUTIONS OF THIS CONFERENCE.

Resolved, That we express to Bishop Fitzgerald our heartfelt sympathy with him in the bodily affliction that has prevented him from presiding at this session of our Conference, and pray that he may speedily be restored to health.

Resolved, 1. That the Treasurers of Conference Boards receiving collections are requested to make to the Statistical Secretary a report, by districts and pastoral charges, of the money received by them.

2. That said Secretaries are authorized and directed to make corrections in their statistics, so that the same shall conform to the report of amount of money actually received.

Resolved, That the Conference appreciates our Book Agent's presence, and we ask Dr. Barbee to preserve by publication his valuable sermons and addresses for the future good of Methodism.

COMMITTEE ON CONFERENCE ENTERTAINMENT.

Resolved, That it is the sense of this Committee that the collection for the entertainment of the sessions of the Annual Conference be discontinued, and the amount now left in the hands of the Treasurer of the Joint Board of Finance, subject to the disposal of the Conference, to be applied to the expense of entertainment at such times as it may deem expedient.

THANKS.

Resolved, That the thanks of this Conference are most gratefully tendered to the citizens of Tallahassee for their munificent and cordial entertainment during this session; also, to the ministers of the various churches in the city, who have invited us to preach in their pulpits; also, to the various transportation lines for courtesies extended; also, to members of the press for their full reports of our proceedings.

J. C. SALE,

J. M. BARCO.

GENERAL MINUTES.

QUESTION 1—Who are admitted on trial? J. R. Walker, H. Baker, E. Diaz, M. De Lofen, James T. Nolen, M. T. Bell, T. G. Blue.

QUESTION 2—Who remain on trial? Charles W. White, I. Barredo, R. L. Sumner, James H. Owens.

QUESTION 3—Who are discontinued? None.

QUESTION 4—Who are admitted into full connection? E. K. Whidden. C. F. Mellor, William A. Wier, E. J. Hardee, George K. Heydrick, Smith Hardin.

QUESTION 5—Who are re-admitted? None.

QUESTION 6—Who are received by transfer from other Conferences? I. S. Patterson, of the New Mexico Conference; R. J. Wells, of the Illinois Conference; C. H. Greer, of the Kentucky Conference.

QUESTION 7—Who are the Deacons of one year? T. A. Jordan, J. Beers, H. W. Penny, M. F. Dukes, R. J. Wells, C. H. Greer.

QUESTION 8—What traveling preachers are elected Deacons? Smith Hardin, George K. Heydrick.

QUESTION 9—What traveling preachers are ordained Deacons? S. Hardin, George K. Heydrick.

QUESTION 10—What local preachers are elected Deacons? George F. Scott, Charles W. White.

QUESTION 11—What local preachers are ordained Deacons? George F. Scott, Charles W. White.

QUESTION 12—What traveling preachers are elected Elders? John A. Hendry, John E. Mickler.

QUESTION 13—What traveling preachers are ordained Elders? John A. Hendry, John E. Mickler.

QUESTION 14—What local preachers are elected Elders? John P. Bessent.

QUESTION 15—What local preachers are ordained Elders? John P. Bessent.

QUESTION 16—Who are located this year? George W. Forrest, J. Bolton, Thomas M. Strickland, W. N. Conoley.

QUESTION 17—Who are supernumerary? E. F. Gates, J. F. Shands, A. D. Penny, J. T. Waters, J. M. Pike, W. F. Shoemaker, W. J. Gray.

QUESTION 18—Who are superannuated? A. Johnson, E. L. T. Blake, J. G. Graham, J. D. Rogers, J. S. Collier, E. Wilson.

QUESTION 19—What preachers have died during the past year? J. M. Sweatt, W. G. Booth.

QUESTION 20—Are all the preachers blameless in their life and official administration? The names of the preachers were called one by one, and their character passed.

J. B. Anderson withdrawn from the Church and Ministry.

E. J. Holmes suspended from the Ministry for twelve months.

QUESTION 21—What is the number of local preachers and members in the several circuits, stations, and missions of the Conference? 132 preachers and 20,600 members.

QUESTION 22—How many infants have been baptised during the year? 655.

QUESTION 23—How many adults have been baptised during the year? 522.

QUESTION 24—What is the number of Epworth Leagues? (No report.)

QUESTION 25—What is the number of Epworth League members? (No report.)

QUESTION 26—What is the number of Sunday Schools? 285.

QUESTION 27—What is the number of Sunday-School teachers? 1881.

QUESTION 28—What is the number of Sunday-School scholars? 12,335.

QUESTION 29—What amount is necessary for the superannuated preachers, and the widows and orphans of preachers? \$3,000.

QUESTION 30—What has been collected on the foregoing account, and how has it been applied? \$1,720.26, and distributed among claimants.

QUESTION 31—What has been contributed for missions? (No report.)

QUESTION 32—What has been contributed for Church Extensions? \$575.60.

QUESTION 33—What has been done for the American Bible Society? \$99.21 raised.

QUESTION 34—What has been contributed for the support of presiding elders and preachers-in-charge? Presiding Elders, \$5,104.56; preachers-in-charge, \$38,536.44.

QUESTION 35—What has been contributed for the support of Bishops? \$585.15.

QUESTION 36—What is the number of societies, and the number and estimated value of church edifices? Number of societies, 131; number of church edifices, 262; value, \$354,791.

QUESTION 37—What is the number of pastoral charges, and the number and value of parsonages owned by them? Number of parsonages, 87; value, \$87,253.

QUESTION 38—What is the number and value of district parsonages? Number of district parsonages, 5; value, \$9,000.

QUESTION 39—What are the educational statistics? Joint interest in Emory College and Wesleyan Female College; Florida Conference College, 7 teachers and 85 pupils.

QUESTION 40—Where shall the next session of the Conference be held? Tampa.

QUESTION 41—Where are the preachers stationed this year? (See appointments.)

REPORTS.

EPWORTH LEAGUE.

Your committee is deeply impressed with the duty of the Conference to look at her responsibility in regard to our young members; if to see they are converted be of all admitted as of primary importance, how can their religious education and preservation to our Church be less important? In the medical world the nurse is as important as the remedy. It would be a sad day for the bodies of men if physicians were to disregard the nurse and value of hospitals. It would be a sad day in our homes if, after the birth, no further care and no more motherhood should be given.

The Church will cease to be a Church when conversions cease. Is it wise to divorce faith and works in the lives of our young membership, and expect results the equivalent of the abilities of the entire church?

In 129 charges—already we have reports from fifty-two Leagues—some brethren used blanks ante-dating the establishment of the League with a membership of 1,544, which have no place in this report.

An increase of forty-five per cent next year in a hundred Leagues would show our appreciation of the Church's requirements as expressed in question 3, paragraph 87, and again in question 5, paragraph 81, of Discipline. Should we not tire of answering "no, no," in quarterly, Church and annual conferences upon Epworth Leagues?

Your committee regrets that rival organizations for young people present decoys and temptations to our own children to leave our own for alien organizations. Loyalty to Church and duty to our own people require of us much repentance and greater diligence.

The Wise Pastor, sustained by His true membership, will so pilot our Ship of Zion to a safe landing with every one of our children without knocking off of any other ship her own rightful crew; but even this precaution should not prevent our outstretch to receive, in passing by, our beguiled ones sorry of their thoughtless mistake.

Resolved, That we will co-operate with our Epworth President, Brother Carpenter, and with hearty thanks to Brother Honiker for gratuitously editing the League Department in our Advocate, we pledge ourselves afresh to the full work of Methodist preachers.

1. We heartily endorse the Epworth Era, and pledge our

support and untiring efforts to increase the circulation of this paper.

2. We recommend the co-operation of all the presiding elders with the State organization in the extension of League work, and especially in the holding of Epworth District Conferences. We approve the holding of District and State Epworth Conferences.

G. D. TURNER, Chairman.

SABBATH OBSERVANCE.

Your Committee on Sabbath Observance offers the following report: We regard the Sabbath not only as divine in its origin and perpetual in its obligation, but as an organic law which underlies man's physical, intellectual and moral well-being, upon the perpetuity of which depend our civil and religious liberties.

It is of the first importance to us as Christians and as citizens of this great commonwealth that the Sabbath be kept as a sacred day.

We deprecate any tendency toward the European Sabbath, and wish to keep ourselves on record as decidedly opposed to Sunday excursions, base-ball games, and everything which tends to render less sacred this holy day; therefore,

Resolved, 1. That in our ministry we will keep this subject prominently before our people, preaching on it as occasion may demand; and that we will not use the Sunday trains as a means of conveyance except in cases of necessity.

2. That we emphasize the importance of the strict observance of the Sabbath in the Christian home, and urge all parents to use their authority and influence to have the day properly observed in their households.

3. That the Fourth Commandment be greatly stressed in the Sunday Schools, and we call upon the officers and teachers of the same to co-operate with us in maintaining this benign institution, which lies at the foundation of all that is dear to our hearts and homes.

J. R. TAYLOR, Chairman.

R. A. HOLLOWAY, Secretary.

BIBLE CAUSE.

Dear Brethren—One of the greatest agencies of the General Church is the American Bible Society of our own beloved land. In it we feel a national pride. Being totally undenominational, it becomes a great helper to all branches of

the Christian Church. We find as the years come and go it keeps pace with all the improvements of the age in its mechanical construction, and to-day is a peer in this respect of any similar publications from any land.

We note with pride the spirit that animates this Institution in its benevolence in freely donating to all who can not purchase it. Some of our fields have been supplied without cost, and it has gone on its way as a silent messenger and aid of the Church in bringing the world to Christ.

There comes to us this year the fact that the contribution of the people in its aid has not been as generous as in the year immediately before this. The house is now making urgent appeals to the Church and people to guard with care any diminution from their former generosity, so that it will not be compelled to restrict in any measure its annual output.

There are several depositories within the bounds of our Conference, and from the best evidence obtainable we find they are well patronized. We hope that there will be a sufficient amount obtained to maintain these depositories in all their completeness.

We would most earnestly recommend that the organizations already in operation may be strengthened by new members, and in counties where none are in existence, that they may be established as soon as possible.

Respectfully submitted, HENRY HICE, Chairman.

TEMPERANCE.

Your committee are at a loss for aught to say in addition to the many strong deliverances of our church on this subject.

Intemperance in its many hideous phases has been so oft discussed and the attitude of our church so clearly defined, that we scarcely know what language to employ, what form of resolution to adopt. Suffice it to say, we are painfully aware that the hydra headed monster is neither dead nor asleep. It is here, it is there, it is everywhere, in highway and by-way, in the homes of the lowly to make poverty and its attendant suffering deeper and more terrible, and irremediable.

In the palatial residences of the rich, the cultured, the refined holding the relentless mortgage, of its fiendish grasp, the peace and prosperity, temporal and eternal of that sacred precinct. Sooner or later to foreclose leaving only the abomination of desolation to reign in their stead. Like a vampire it sits on the body domestic, social, political on the material and intellectual resources of our blessed land, blighting paralyzing and destroying all with ruthless insatiate greed.

It feeds upon the fairest and the best, and strews the track of time with the carcasses of its victims.

In the face of these awful facts we can only reiterate, the strong expressions embodied in the reports of previous committees.

We pledge ourselves as a conference, as ministers, and as laymen, to increased diligence, and zeal in the inculcation of temperance sentiment, in the use of every means in our power as Christian ministers, members and citizens to the banishment of this curse from our homes, and from our land, from the world.

J. A. HENDRY, Chairman.

T. BISHOP, Secretary.

DISTRICT CONFERENCE RECORDS.

After carefully examining all of the District Conference Records we are pleased to report that they have been faithfully kept.

It is very evident from the accuracy and neatness of the work, that each book has been in the hands of one who was in every way equal to the task committed to him.

MAHLON H. OUTLAND, Chairman.

REPORT OF THE SUNDAY SCHOOL BOARD.

We are glad to state that help has been given twenty-seven schools during the year now closing. A number of schools which hitherto have helped our work have been aided by this Board during the year. We regard this as a part of our work, and we cheerfully respond to all calls made upon us by needy communities in our Conference. We trust that the schools we have helped will not fail to observe Children's Day, taking the collection which is required by law.

We commend the system of Home Study, prepared by the Sunday School editor, and request our pastors and workers to foster this enterprise among our people. Full particulars of this plan may be obtained from Barbee and Smith.

We urge the use of the publications provided by our own church, and we specially stress the importance of placing in the hands of all teachers our Sunday School Magazine.

"The Visitor" deserves to be extensively circulated, as it is unequalled by any young people's paper published on our continent. Indeed, the general excellence of all our publications calls for unqualified commendation.

At the request of Rev. James Atkins, D.D., Sunday School editor, we ask that the second evening of the Conference ses-

sion be hereafter set apart as a Sunday School anniversary occasion.

The following are the statistics for the year: No. of schools, 287; No. of officers and teachers, 1,881; No. of scholars, 12,335; Receipts, \$77.31; Disbursements, \$114.10.

For the Board.

G. D. TURNER, Chairman.

REPORT ON BOOKS AND PERIODICALS.

The happy selection of our connectional officers and the editors of our greater periodicals suggests the propriety of confidence in the judgment of our general deliberating assembly, if not in the Providence of God over our Methodism. The election of Dr. J. J. Tigert to his present position as editor of the Bi-Monthly Review is a conspicuous instance.

His consummate ability is evidenced in his own articles, editorials, and reviews, and in the fruits of other minds he garners into his pages.

We observe with a just pride the extraordinary prestige which our Review enjoys in the higher literary circles of universal Methodism, and note the appearance in a recent number of the Review of Reviews one of its articles as the leading attraction.

We view with pleasure its increasing circulation not only as the vindication of our General Conference in the selection of an editor, but as a testimony to the enlarging intelligence of our people.

The Christian Advocate, our connectional organ, easily ranks with the half-dozen greatest religious journals of the world. Dr. Hoss is on the editorial tripod, and to this end he seems to have been born.

This noble periodical flawlessly reviews the character and spirit of our Methodism. It stands for us faithfully and manfully. Its record in the past is the earnest of its victories for us in the future. This voice from the South is the defense and the advocacy of our policy and the integrity of our ecclesiastical history "gone out into all the earth."

We commend to the patronage of our people Our Homes, efficient organ of our Woman's Parsonage and Home Mission Society. We congratulate the Church on this new factor in its destiny, and bid it Godspeed on its needful mission.

While your committee may not unanimously approve the

unbroken record of our Epworth League organ, they scarcely believe the Era an "error," and devoutly wish it extensive circulation.

We cannot dissemble a feeling of pride in our Conference organ, the Florida Christian Advocate. It is as indispensable to Florida Methodism as our connectional organ is to Southern Methodism. God seems to have got his man, Dr. Josephus Anderson, ready for this work. And his name is not legion.

If the propriety of patronizing our Publishing House and making our orders through our Conference Colporteur, Rev. R. H. Barnet, was not so obvious, we would emphasize the obligations.

T. G. LANG,
For Committee.

REPORT ON EDUCATION.

Your committee congratulates the Conference on its reasons to thank God and take courage. Notwithstanding the widespread financial depression, nearly all the reports before us show a large enrollment of students in the institutions they represent than in many years of their previous history, and in one of them a larger enrollment than ever. Emory College is enjoying a prosperity unprecedented in the annals of this noble institution, and its future is bright with promise.

Wesleyan Female College is bravely confronting the perils that beset it in competitive institutions, and its present perspective is more commensurate with the demands of these closing years of the nineteenth century of grace.

The report from the Florida Conference College indicates universal prosperity for this institution, and gives assurance of an ultimate fruition of our hopes in the establishment of an institution of learning to meet the demands upon Florida Methodism of the youth within her borders.

For a very able and exhaustive report on our several educational works, we refer the members of this Conference and all our people to that of Hon. W. N. Sheats in our Souvenir Year Book and Minutes of the Fifty-Second Florida Annual Conference, edited by Revs. F. Pasco and J. B. Ley.

Your committee recommend:

1. That the assessment of \$2,000 be made upon the Conference, and apportioned upon the districts and several changes in the basis of the assessment for Conference claims, and the money raised to be divided between the trustees of the Conference College and the Conference Board of Education in the ratio of three to the former to one to the latter.

2. That the sum of \$200 be assessed in like manner for Paine and Lane Institutes.

3. That our preachers and people be requested to continue the observance of Children's Day.

4. That our preachers be requested to preach at some suitable time at least one sermon in each congregation upon the subject of Christian education.

5. That Rev. E. F. Ley be elected Secretary of Education.

6. That the Bishop be requested to appoint Rev. F. A. Taylor Professor in the Florida Conference College, and Rev. F. Pasco to Duval High School.

T. G. LANG, for Committee.

FINANCIAL REPORTS.

PREACHERS RELIEF FUND.

In account with C. T. Carroll, Treasurer.

1896.

May 16.	T. W. Moore note	\$100 00
	C. M. Brown note	1,000 00
	S. A. Jones note	50 00
	D. B. Givens note	25 00
	C. T. Carroll note	50 00
	E. L. T. Blake note	147 75
		<hr/>
		\$1,372 75

60 acres of land near Tampa, bequest of
Rev. A. A. Robinson.

PREACHERS RELIEF FUND.

In account with C. T. Carroll, Treasurer.

1896.

April 20.	To amount from H. W. Long	\$200 00
May 15.	To amount from H. W. Long	59 75
June 6.	To interest from Madison county bonds.	18 00
June 10.	To amount from H. W. Long	50 00
July 9.	To amount from H. W. Long	50 00
Dec. 11.	To amount from H. W. Long	50 00
	To amount from Jno. F. White	100 00
	To interest from T. W. Moore	8 00
	To interest from C. T. Carroll	4 00
	To amount donation	11 00
	To thank offerings	8 40
		<hr/>
		\$559 15

To interest from E. L. T. Blake.....	5 95
	<hr/>
	665 10
To Madisen county bonds No. 21, 39, 40	300 00
	<hr/>
	965 10

CR.

June 6. Exchange on coupons	15	
Dec. 11. Appropriation, Mrs. Sweat.....	\$20 00	
Appropriation, E. L. T. Blake..	17 00	\$37 95
		<hr/>
Cash assets.....		\$927 15

REPORT OF F. PASCO, TREASURER CONFERENCE BOARD OF MISSIONS.

1896.	<i>Dr.</i>	<i>Foreign Missions.</i>
Dec. 9—To balance from Jan. 1, 1896...	\$ 12.26	
To amount from charges.....	2,088.64	
To amount from anniversary collection.....	25.00	\$2,125.90.

1896.	<i>Cr.</i>	
March 14—By amount paid T. B. Holt, Treasurer.....	\$ 50.25	
April 6—By amount paid T. B. Holt, Treasurer.....	62.80	
May 4—By amount paid T. B. Holt, Treasurer.....	118.25	
June 4—By amount paid T. B. Holt, Treasurer.....	121.91	
July 18—By amount paid T. B. Holt, Treasurer.....	70.54	
Oct. 12—By amount paid T. B. Holt, Treasurer.....	47.00	
Dec. 3—By amount paid T. B. Holt, Treasurer.....	62.00	
Dec. 21—By amount paid T. B. Holt, Treasurer.....	60.00	
Dec. 22.....	1,533.14	\$2,125.90

1896.	<i>Dr.</i>	<i>Domestic Missions.</i>
Jan. 1—To balance.....	\$1,641.03	

	<i>Cr.</i>	
To amount paid presiding elders for missions, 1896.	\$1,692.85	
		<hr/>
Amount over.....	\$ 51.82	

1896.	<i>Dr.</i>	
Dec. 9—To amount from charges.....	\$1,888.55	
To amount from Sunday Schools	307.01	
To amount from anniversary collection	25.00	
To amount returned by C. A. Saunders.....	45.00—	\$2,265.56
	<i>Cr.</i>	
Dec. 14—By amount over.....	\$ 51.82	
By amount paid presiding elders, first quarter, 1897...	540.00	
By balance due J. A. Hendry.	30.00	
Dec. 22—By amount for publishing min- utes of 1897.....	60.00—	\$ 681.82
1897.		
Jan. 1—On hand.....		\$1,583.74

BOARD OF MINISTERIAL EDUCATION.

In account with R. L. Honiker, Treasurer.

1896.	<i>Dr.</i>	
Dec. 12—Collections to date.....	\$733.83	
Collected on notes.....	\$ 96.44	
Balance last report.....	8.23—	\$104.67
		====
	<i>Cr.</i>	
Amount paid Board of Trustees of Florida Confer- ence College.....		\$550.38
Appropriations—John Beers.....	\$75.00	
R. N. Saunders.....	60.00	
W. G. Fletcher.....	50.00	
J. H. Martin.....	35.00	

		\$220.00
Exchange, postage, etc.....	2.60	

		\$222.60
		=====
Balance.....	\$ 65.52	

MINUTE PUBLISHING REPORT.

Cr.

Amount Minute Fund, F. Pasco.....	\$175.00
Amount Minute Womans Missionary Society	81.75
Amount from advertising.....	60.00
Amount from miscellaneous sources.....	20.00—\$336.75

Dr.

To amount bill for printing.....	\$274.00
To amount bill for engraving.....	38.60
To amount expressage on plate matter.....	6.60
To amount printing circular letter.....	5.00
To amount clerical.....	10.00
To amount postage, stationary and sundries	43.03—\$377.23

Balance due or deficit	\$41.08
------------------------------	---------

J. B. LEY.

F. PASCO, EDITOR.

In account with Florida Conference.

1895.

Dr.

Dec. 18—On hand.....	\$ 6.73
Joint Board of Finance.....	60.00
Boards of Missions.....	120.00
Board of Church Extension.....	20.00
Cash.....	50—\$207.23

1896.

Cr.

Feb. 19—By Voucher No. 1.....	175.00
Dec. 9—By Voucher No. 2.....	4.55
On hand.....	27.68—\$207.23

I recommend that the balance on hand be turned over to J. B. Ley to reimburse him in part for the deficit incurred in publishing the Souvenir Edition of the Minutes of the past year.

F. PASCO, Editor.

REPORT OF THE JOINT BOARD OF FINANCE.

Joint Board of Finance in account with Florida Conference.

Dr.

To amounts from charges.....	\$1,720.26
To amounts from Publishing House....	440.00
To amounts from Colvin Fund.....	12.00
To balance from last year.....	19.99—\$2,192.25

	<i>Cr.</i>	
By amount to claimants.....	2,125.00	
By amount to Minute Fund.....	60.00	
By amount to Incidental Fund.....	2.25	
By balance on hand.....	7.00	

Bishops Fund.

	<i>Dr.</i>	
To amounts from charges.....	\$ 538.15—\$	538.15

	<i>Cr.</i>	
By cash to Barber & Smith.....	\$ 538.15—\$	538.15

P. & L. Institutes.

	<i>Dr.</i>	
To amounts from charges.....	\$ 93.17—\$	93.17

	<i>Cr.</i>	
By check to Chas. Goodrich.....	\$ 93.17—\$	93.17

General Conference Delegates.

	<i>Dr.</i>	
To amounts from charges.....	\$ 215.69—\$	215.69

	<i>Cr.</i>	
By check to Barber & Smith.....	\$ 215.69—\$	215.69

Conference Entertainment.

	<i>Dr.</i>	
To amounts from charges.....	\$ 143.93—\$	143.93
On hand subject to expense of Conference Entertainment.....	\$	143.93

Respectfully submitted,

J. B. LEY, Chairman.

J. P. HILBURN, Secretary.

APPORTIONMENT.

Claimant.	Post-office.	Amount.
Rev. E. L. T. Blake, Ocala, Fla.....		\$ 180.00
Rev. J. D. Rogers, Clear Water, Fla.....		85.00
Rev. A. Johnson, Live Oak, Fla.....		70.00
Rev. J. G. Graham, Anthony, Fla.....		40.00
Rev. J. S. Collier, Floral City, Fla.....		95.00
Mrs. T. W. Cooper, Flemington, Fla.....		75.00
Mrs. Wm. Scott, Starke, Fla.....		75.00
Mrs. L. B. Robinson, Manatee, Fla.....		45.00
Mrs. A. E. Munden, Ocala, Fla.....		95.00
Mrs. T. A. Bright.....		60.00
Mrs. C. E. Pelot, Tampa, Fla.....		75.00
Mrs. T. Taylor, Boston, Ga.....		40.00

Mrs. J. M. Stokes, Live Oak, Fla.....	70.00
Mrs. L. M. Rhodes, Monticello, Fla.....	105.00
Mrs. G. C. Leavel, Wildwood, Fla.....	95.00
Mrs. O. Eady,.....	80.00
Mrs. Wm. Davies, Webster, Fla.....	50.00
Mrs. W. J. Morris, Waldo, Fla.....	35.00
Mrs. R. M. Tydings, Anthony, Fla.....	70.00
Mrs. T. H. Capers, Atlanta, Ga.....	45.00
Mrs. S. A. McCook, Coleman, Fla.....	55.00
Mrs. A. A. Barnett, Leesburg, Fla.....	95.00
Mrs. C. S. Byrd, Cocoanut Grove, Fla.....	70.00
Mrs. R. Stork, Ashville, Fla.....	45.00
Mrs. M. Williams,.....	45.00
Mrs. J. E. Penny, Tampa, Fla.....	75.00
Three Children of R. Martin, Brandon, Fla.....	80.00
J. R. Sharp, Starke, Fla.....	25.00
Daughter of J. E. Neal, Live Oak, Fla.....	40.00
Miss Maggie Wiggins, Chattahoochee, Fla.....	25.00
Mrs. S. Gardner, Key West, Fla.....	25.00
Miss Boothe, No. 417, Monroe St., Birmingham, Ala.....	60.00
Total.....	\$2,125.00

ASSESSMENT—APPORTIONMENT TO DISTRICTS.

Name of District.	Confer- ence Claim- ants.	Educat'n.	Bishops.	Paine and Lane In- stitute.	Del. to General Confer- ence.
Tallahassee.	\$ 458.00	\$ 300.00	\$ 165.00	\$ 35.00	\$ 78.00
Live Oak...	432.00	275.00	163.80	30.00	78.00
Gainesville.	520.00	350.00	165.00	35.00	78.00
Jacksonville	525.00	355.00	165.00	35.00	78.00
Orlando....	530.00	360.00	165.00	35.00	78.00
Tampa.....	535.00	360.00	165.00	35.00	78.00
Totals.	\$3,000.00	\$2,000.00	\$ 988.80	\$ 200.00	\$ 468.00

Respectfully submitted,

J. B. LEY, Chairman.

J. P. HILBURN, Secretary.

MISSIONARY REPORT.

Thirty-five missions have been under the supervision of our Board during the year 1896. All of these fields are hard! Many of the places are strategic and of special importance touching the future of Methodism in Florida. The men who

have served the works are heroes after the pattern of the New Testament. We honor them!

The following appropriations for 1897, were made:

Tallahassee District.

Moseley Hall and Taylor.....	\$ 50.00	
Wakulla.....	50.00	
Midway.....	50.00	
Carrabelle.....	40.00	
	<hr/>	
Total.....		\$ 190.00

Live Oak District. \$100.00

Hamilton.....	40.00	
Waldo.....	60.00	
High Springs.....	90.00	
LaFayette.....	50.00	
Pine Mount.....	40.00	
McClenny.....	75.00	
	<hr/>	
Total.....		\$455.00

Gainesville District.

Reddick.....	\$ 50.00	
Levy.....	90.00	
Lady Lake.....	50.00	
	<hr/>	
Total.....		\$190.00

Jacksonville District.

DeLand.....	\$200.00	
Biscayne Bay.....	240.00	
New Symrna.....	100.00	
Indian River.....	50.00	
Norwalk.....	50.00	
Mandarin.....	40.00	
	<hr/>	
Total.....		\$680.00

Orlando District.

Clermont.....	\$ 50.00	
Maitland.....	50.00	
Ft. Bassinger.....	50.00	
Kathleen and Greenwood.....	50.00	
Wauchula.....	50.00	
Punta Gorda.....	50.00	
	<hr/>	
Total.....		\$300.00

Tampa District.

Hillsborough.....	\$ 60.00
Pasco.....	60.00
New Church.....	150.00
Chuckaluskee.....	75.00
Total.....	\$345.00
Grand Total.....	\$2,160.00

The following are the assessments for 1897:

Districts.	Foreign Missions.	Domestic Missions.	S. S. Special.
Tallahassee.....	\$ 625.00	\$ 525.00	\$ 100.00
Live Oak.....	600.00	500.00	100.00
Gainesville.....	725.00	625.00	100.00
Jacksonville.....	725.00	625.00	100.00
Orlando.....	750.00	650.00	100.00
Tampa.....	775.00	675.00	100.00
Total.....	\$4,200.00	\$3,600.00	\$ 600.00

The assessments simply show the *minimum* that each charge is expected to pay. The absolute needs are expressed in the assessments, and therefore every dollar ought to be paid. We would call attention to the Disciplinary provision for the organizing of every Sunday School into a Missionary Society, and for holding a Missionary Massmeeting in every charge. Let all our pastors take their collections *very early* in the year, and by systematic effort secure a contribution from each member. Circulate our literature; The "World for Christ" ought to be in every home and the "Review of Missions" in the hands of every preacher.

T. W. TOMKIES, Secretary.

THE FLORIDA CONFERENCE BROTHERHOOD.

Constitution and By-Laws.

ARTICLE I.

SECTION 1. The association shall be called The Florida Conference Brotherhood.

SEC. 2. Its object shall be to aid the families of deceased traveling preachers of the Florida Conference, Methodist Episcopal Church, South.

SEC. 3. Any traveling preacher of this Conference may become a participating member of this Brotherhood by having his name enrolled on the Secretary's book and paying the sum of three (\$3.00) dollars, advance mortuary fee.

SEC. 4. Any person may become an associate member by having his (or her) name enrolled and shall pay a mortuary fee of one (\$1.00) dollar within 60 days.

SEC. 5. Participating members alone may have financial benefits in the Brotherhood. In other matters all members shall have the same privilege.

SEC. 6. Any participating member who transfers to another Conference may retain his membership by keeping up his fees.

ARTICLE II.

SECTION 1. The amount paid on one death shall be limited to \$800.00, called the benefit fund.

SEC. 2. Each participating member shall file with the Secretary a statement designating the party (or parties) to whom benefit fund shall be paid. This he may change on due notice given to the Secretary.

SEC. 3. Upon the death of a participating member the Secretary shall issue a draft on the Treasurer in favor of the decepted beneficiaries, equal to one mortuary fee from each member but not exceeding the limit named in section 1. Provided, That there is no dependant relative of the deceased, the claim shall be referred to the Executive Committee and its action subject to the order of the Brotherhood at its annual meeting.

SEC. 4. The Secretary shall upon each death issue a call on every member of the Brotherhood for one mortuary fee to be remitted within sixty days and by him remitted to the Treasurer.

SEC. 5. Should a participating member fail to pay his mortuary fee within the prescribed time, he must secure from the Secretary an extension of time; otherwise he must be dropped from the roll.

SEC. 6. It shall be the duty of every member of the Brotherhood to promote the aims of the Brotherhood especially by bringing it before the laity of the church and canvassing for members.

SEC. 7. All funds not applied on claims of beneficiaries shall be invested by the Treasurer under direction of the Executive Committee as a permanent fund, called the reserve fund, the interest on which shall be applied as ordered by the Brotherhood at its regular meeting.

BY-LAWS.

SECTION 1. The officers of the Brotherhood shall be President, Vice-President, Secretary, Treasurer and Executive Committee consisting of the foregoing officers and three other members, to be elected annually.

SEC. 2. The officers shall perform the duties usually incumbent on such officer with such other as elsewhere specified.

SEC. 3. The Secretary shall keep a record of proceedings and a register of members. The register shall contain a list of associate members, their post office address, date of joining and amount and date of each call; a list of participating members, date of joining of each call, of payment of same, of death, amount paid in during membership and amount paid to beneficiaries.

SEC. 4. The Executive committee shall settle cases where claimants on benefit fund are not dependent relatives; shall direct the Treasurer in the investment of unapplied funds; and take such means to advance the interests of the Brotherhood as deemed practicable. It shall meet at the call of the President.

SEC. 5. This Constitution and By-Laws may be changed by a two-third vote of the members present and voting.

MEMOIRS.

MRS. ESTHER REBEKAH GATES.

This lady, to whose memory we pay this tribute of Christian esteem, was born in Harrisonburg, Virginia, April 15, 1869; she gave her heart to God and her life to His service at the early age of nine years; removed to Florida with her parents in 1882; was married December 23, 1891, and entered upon the rest of the saints at Palmetto, Florida, June 2, 1896.

In the beauty and strength of womanhood Mrs. Gates was summoned to leave the activities of a minister's wife for the higher pursuits of a holier sphere. The character of the illness which seized her gave little opportunity for combating its rapid progress, and almost before its seriousness was learned, the end came.

To wait with 'bated breath the final hour when 'life shall fly away to fairer lands and noble things; to sit in shadow, fearing that the night will soon drop down and hide with raven wing the faces of our loved, is agony indeed. There is no shelter 'gainst Death's ready shaft; his poisoned arrow waits upon the string; in a brief moment it is sped, and piercing in the heart, the tide runs out, and all the sacred beauty of a life dissolves, and fades, and goes—we know not how. But Christian faith declares it is not lost; nor does it wander aimless or unfriended in the vacuous air, for where the perfect flower of love consummate blooms on ever vernal shores of bliss, it finds a blessed resting place with all the radiant ones who wait the coming Resurrection morn.

The life our sister led while with us here bore fragrance of the unseen world above, and heaven distilled rich fragrance from her. Her gentle nature yielded up its best for others' good, nor did she count her efforts vain so she might help, and cheer and bless the weary or the sorrowful of heart.

God has His jewels gleaming everywhere, and when their lustre satisfies His thought, He sets them in the Crown His Son shall wear. Heaven bade her ready soul to mount up and enter upon those purer joys which thrill the bosoms of the saints, and, yielding to the call, she passed within the Veil, to be forever with our Lord.

MRS. LINA GWYNN BLACKBURN

Was born in Miccosukie, Florida, January 6, 1870; was converted and admitted to church membership in 1889; married

November 1, 1894, and entered upon her heavenly rest September, 2, 1896, in Oxford, Ga.

Such is the brief record of this saint of the Lord, but on the imperishable tablets of eternity is written the story of a faith and consecration which only will be known when the Book of Life shall be opened on the last day.

Left an orphan early in life, God led her step by step. Of a meek and quiet spirit, and yet of a persistence in goodness, her influence was acknowledged in the lives which came in contact with her own, and doubtless many will confess that the beauty of her character led them to seek the blessings which complemented and satisfied her heart.

To our human sense there seems an incompleteness in a life so early closed, and were it not that Christian faith enables us to view the transitoriness of life as an argument that there must be a realm where the inequalities of this are rectified, we should be inconsolable. The good are taken hence when there is so great need they should remain to help this groaning world find its way back to God.

It has been said by one who knew her well that she chose the pleasures of religion rather than those proffered by the world. Buoyant and bright in disposition, it can not be charged that she could not find pleasure in the things which delighted others; but she preferred those rational pleasures which befit immortal natures. To her there were compensations in a holy life which outweighed all else, and in this decision she was sustained by the highest and most joyous experiences.

There are no tears in heaven, for there are no sorrows there. To those who weep beside Earth's graves there comes from the blessed Book of God words of consolation which bid the stricken and bereaved refer the settlement of every question, and the unfolding of the mystery of death to a tribunal whose decisions illumine the darkness of human woe. Death is the only lesson life can not but heed. From every form of calamity the human heart may turn with front of steel; but death throws down and shatters all defenses. There is no philosophy that heeds not the appeal of a white face turned up to the skies and eyes closed forever, and before this fact the world kneels.

It is a comfort to the sorrowing to believe that the voices of the loved ones are joined with the angels' song in a grander Te Deum than the world has heard since the star still above the Manger in the centuries gone by. Those who best loved her will meet her again in the matchless dawn of a cloudless day, and then, when sorrow is laid aside, light will

stream in clothing in immortal beauty those whom for a while death had hidden from our longing gaze.

And we can well afford to wait a season,
Till all that now is dark shall be made bright,
If not with earthly, then with heavenly light ;
And we shall come at last to know the reason
Of all the toil, the seeming loss, the pain,
The silent vanishing of some dear face,
The weary gazing at the vacant place—
All this, and more, shall in God's time come plain.

For the Committee,

R. L. HONIKER,
C. A. FULWOOD,
THOS. GRIFFITH.

NOTE.—Memoirs of Revs. J. M. Sweatt and W. G. Booth were not furnished by the Committee to the editor for publication.—J. B. LEY.

EDITORIAL.

The minutes are before you—not so elaborate as last year nor so complete, but we published everything furnished by the Secretary, Brother Pasco. In view of the stringency of the times it was thought advisable to do the work as cheaply as possible, hence we omitted the “daily proceedings,” which are sometimes published.

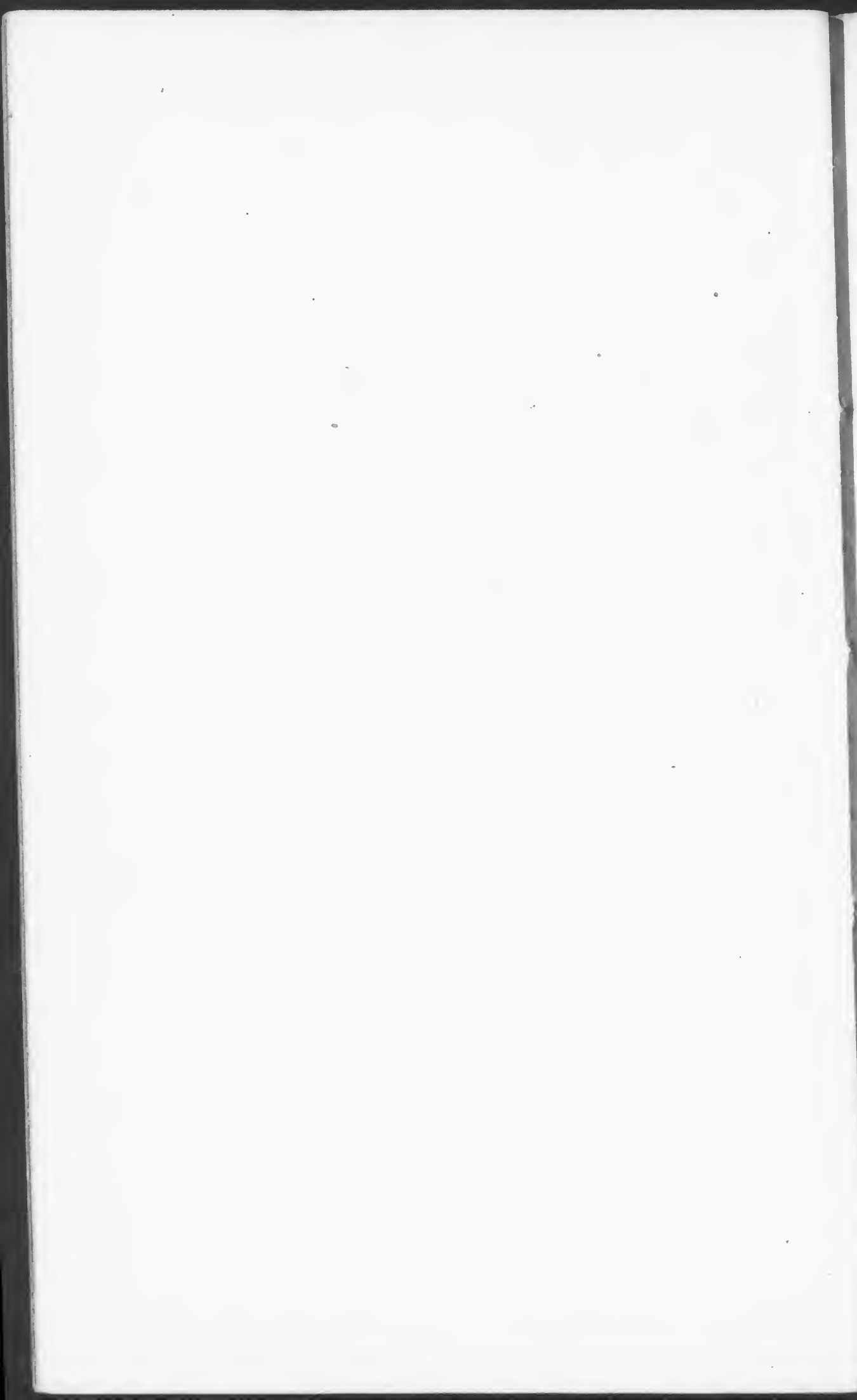
Some mistakes will be found. There will be discrepancies between the reports of Statistical Secretary and Treasurer of several boards. This is unavoidable under our present cumbersome, unbusiness like methods. Some reports are omitted simply because they are not furnished the Secretary in duplicate. The work is out much earlier than usual, which may in some measure compensate for any manifest defects.

ERRATA.

The assessments on the Districts for Conference Claimants and Education as made by the Board of Finance were as follows, and *not* as they appear in body of report. The schedule appearing there was suggested, but the board adopted that given below, and by error I got the wrong list in the hands of the printer.

J. B. LEY.

District.	Conference Claimants.	Education.
Tallahassee.....	\$505 00	\$340 00
Live Oak.....	475 00	300 00
Gainesville.....	505 00	340 00
Jacksonville.....	505 00	340 00
Orlando.....	505 00	340 00
Tampa.....	505 00	340 00
Totals.....	\$3,000 00	\$2,000 00





Statistical Tables.



STATISTICAL TABLE NO. 1.

NAME OF CHARGE.	MEMBERSHIP.										CHURCH PROPERTY.						
	Local Preachers.	White Mem- bers.	Col'd Members.	Total Members this year.	Total Members last year.	Additions on Prof. of faith.	Additions by Certif., etc.	Removals by Death, etc.	Infants Baptized.	Adults Baptized.	No. of Societies in the Charge	No. of Churches	Value of Churches.	No. Parsonages	Value of Par- sonages,	Value of other Church Prop- erty.	Money Expend- ed for Church's and Parsonages
TALLAHASSEE DISTRICT.																	
Tallahassee.....	1	325	..	325	304	10	31	12	20	5	1	\$13,500 00	2	\$4,500	\$200 00	\$632 00
Leon Circuit.....	..	150	..	150	21	4	17	..	14	3	2,900 00	1	800	130 00	108 00
Monticello.....	..	208	..	208	178	41	8	19	6	13	1	12,000 00	1	2,500	1,000 00
Madison.....	4	323	..	323	313	11	4	10	..	8	4	4	2,600 00	1	1,000	800 00	25 00
Madison Circuit.....	2	446	..	446	343	93	21	11	2	48	6	3,200 00	1	450	200 00
Mosely Hall and Taylor	1	208	..	206	171	39	4	8	20	13	6	4	1,330 00	1	300	140 00	155 00
Waukeenh and Mission	3	326	..	326	297	21	12	4	6	15	4	1,500 00	1	600	30 00
Wakulla Mission.....	1	236	..	236	205	19	23	11	16	9	5	2,750 00	1	300	50 00	182 65
Concord Circuit	1	360	..	360	368	5	1	14	3	3	1,900 00	1	425	25 00	275 00
Midway Mission.....	..	183	..	183	193	8	6	24	3	1	6	5	1,800 00	1	500	75 00	75 00
Quincy.....	..	117	..	117	115	1	3	2	6	1	6,700 00	1	1,500	1,507 00
Gadsden Circuit.....	4	418	..	418	400	19	8	6	4	2	4	4	2,400 00	1	300	20 00	215 75
Liberty Mission.....	..	142	2	143	124	13	9	3	..	4	6	1,375 00	200 00	258 00
Aucilla Circuit.....	1	220	..	220	196	22	2	3	8	13	6	3,050 00	1	800	85 00	35 00
Apalachicola.....	..	145	..	145	152	7	4	1	3,000 00	1	800	55 05
Carrabelle Missiou.....	..	132	..	132	17	5	9	1	1	1
Total.....	18	3,937	2	3,938	3,359	390	143	160	99	169	21	55	48,805 00	16	14,775	1,525 00	4,685 45
LIVE OAK DISTRICT.																	
Live Oak.....	1	151	..	151	139	6	21	15	2	3	..	1	1,500 00	1	1,200	73 00
Jasper.....	..	143	..	143	167	2	9	8	..	1	1	1,000 00	1	1,000
Hamilton Mission.....	1	149	..	149	150	8	5	14	3	3	4	3	1,100 00	1	375	30 00
White Springs Circuit.....	2	244	..	244	187	23	15	4	16	7	2,400 00
Welborn Circuit.....	4	313	..	317	11	2	19	1	2	5	2,500 00	1	650	1 00	90 60

Pine Mt. Mission.....	1	219	219	182	47	21	31	21	14	7	5	1,500 00	1	300	15 00	
Fort White	1	190	190	237	3	7	16	7	2	4	1	500 00	1	1,750	300 00	318 00	
Lafayette Mission.....	30	8	55 00	
Newnansville Circuit.....	3	204	198	186	13	5	4	11	8	4	1,800 00	1	501	400 00	100 00	
Columbia Circuit.....	1	640	640	538	8	101	7	6	2	4	1,100 00	1	538	120 00	225 00	
Lake City.....	160	160	122	18	37	26	2	10	1	2,500 00	1	1,500	100 00	4 00	
Lake Butler Mission.....	2	169	169	213	23	5	25	2	13	2	650 00	1	700	385 00	240 00	
McClenny.....	1	133	133	130	3	3	3	4	1,500 00	1	400	150 00	100 00	
Starke.....	2	131	131	126	14	6	15	3	9	1	1	1,000 00	1	1,000	13 30	
Waldo Mission.....	2	86	86	6	3	7	4	3	3,000 00	
High Springs.....	3	141	144	144	12	6	15	4	2	800 00	200 00	
Total.....	24	3,073	3,074	2,521	197	261	220	62	99	16	44	22,850 00	12	9,713	1,656 00	1,263 90	
JACKSONVILLE DISTRICT.																	
McTyeire Memorial	2	252	252	7	18	28	7	3	1	1	40,000 00	1	4,000	
Riverside.....	163	163	161	6	7	11	2	3	1	3,300 00	1	1,350	
St Matthews.....	162	162	139	3	27	7	
Callahan and Duval Circuit.....	2	340	340	340	6	2	16	8	3	1,800 00	1	400	50 00	
King's Ferry Circuit.....	54	54	43	2	9	7	5	1,000 00	1	500	25 00	
Fernandina.....	123	123	102	8	18	7	4	2	1	3,000 00	1	1,800	500 00	1,800 00	
Green Cove and Mandarin.....	91	91	71	1	6	6	3	3,250 00	50 00	
Middleburg Mission.....	2	65	65	46	15	4	6	25	7	1	1,500 00	1	350	49 81	
Palatka.....	1	221	221	202	10	21	12	7	3	1	1	5,000 00	1	1,000	265 10	
Interlachen and St. Johns' Mission	133	133	126	14	3	39	7	7	4	3,900 00	150 00	
St. Augustine and Moultrie Mission.....	109	109	116	1	1	8	3	2	1,200 00	10 00	34 15	
Fruitland Circuit	209	209	210	4	3	8	2	2	3	2,300 00	1	600	625 00	78 20	
Volusia Circuit and DeLand Mission.....	1	200	200	217	2	3	17	1	6	3,100 00	1	400	3 25	75 00	
Sanford.....	
New Smyrna Mission.....	1	82	82	96	1	1	14	2	800 00	75 00	15 00	
Total.....	9	2,114	2,114	1,869	79	111	188	79	27	2	33	\$70,150 00	9	10,400	\$1,463 25	\$2 342 26	

Maitland Circuit	120	120	122	14	6	22	8	3	5	5	2,500	1	500	15 75		
Oviedo and Geneva	154	154	150	8	2	6	2	2	1	3,000	1	1500	150	93 82		
Titusville and Cocoa	139	139	145	2	14	22	1	1	3	7,000	1	200	50	20		
Indian River Mission	3 73	73	59	2	12	12	1	2	4	1,750	1	550	15	700		
West Palm Beach Mission	38	38	58	2	11	27	3	1	1	120	5 50		
Biscayne Bay Mission	3	30	30	3	1,200		
Total	15	2198	2196	1961	160	134	275	37	40	33	35	39,175	12	9900	495	1,635 70
TAMPA DISTRICT.																
Tampa	4	622	622	588	6	90	45	13	2	1	1	3,000	1	6000	760
Hoffner Circuit	2	185	187	178	20	5	16	2	3	4	2,090	1	550	50	564 48
Alafia Circuit	1	332	332	351	14	5	17	10	12	5	2,700	1	700	100	100
Manatee	2	142	142	110	9	33	17	1	1,500	1	600	1300	308 25
Palmsto Circuit	1	183	169	167	6	18	8	4	1	1,500	1	600	500
Sarasota Circuit	3	125	147	131	15	1	22	13	1	3	1,875	94 47
Clear Water and St Petersburg	1	145	148	150	5	33	40	5	2	2	3,000	2	1300	67
Large Circuit	2	206	206	213	3	14	10	2	4	4	3,500	1	400	200	125 45
Hillsboro Mission	1	150	133	133	2	5	4	1	5	5	1,200	40
P. neo Mission	2	282	277	370	12	5	22	16	2	4	1,600	1	200	325	100
Dade City Circuit	203	203	215	3	20	35	1	4	4	4,150	1	1500	350
Brooksville Circuit	4	400	404	337	10	8	7	2	29	5	5,700	1	100	400	150
Inverness Circuit	123	123	4	38	4	2	3	1,500	1	300	600
Bunton Circuit	2	213	213	223	9	15	15	2	6	4	3	1,875	1	500	25
Stewart's Chapel Circuit	160	160	4	3	10	6	4	2	1,800	1	600	100	52
Total	25	3434	3457	3156	162	250	307	77	67	20	47	58,790	13	13,350	2500	3,811 60

STATISTICAL TABLE NO. 1.—CONTINUED.

NAME OF CHARGE.	Local Preachers.	MEMBERSHIP.							CHURCH PROPERTY.								
		White Mem- bers.	Col'd Members.	Total Members this year.	Total Members last year.	Additions on Prof. of faith.	Additions by Certif., etc.	Removals by death, etc.;	Infants Baptized.	Adults Baptized.	No. of Societies in the Charge.	No. of Churches.	Value of Churches.	No. Parsonages	Value of Par- sonages.	Value of other Church Prop- erty.	Money Expend- ed for Churches and Parsonages
BARTOW DISTRICT.																	
Bartow.....	1	171	..	171	27	4	54	3	1	1	1	\$3,000	2	\$2,000
Bartow Mission	2	108	..	112	91	9	8	3	2	1	1	2	1,200	55	13
Lakeland and Plant City.....	1	301	..	303	262	34	34	27	2	16	2	2	2,300	1	500	1,700	329 23
Kathleen Mission.....	1	158	..	158	163	9	7	11	1	3	..	3	600	1	600	100	128 25
Homeland and Fort Meade.....	..	170	..	170	300	1	800
Bowling Green.....	8	330	..	330	312	8	10	5	19	4	..	3	1,865	1	625	25	96
Wauchula.....	1	102	..	102	3	6	14	4	1	750	50 00
DeSoto.....	3	275	..	275	215	8	10	25	6	1	..	3	1,600	100	212 42
Arcadia.....	..	120	..	120	3	3	12	7	1	5,600	1	700	212 42
Punta Gerda and Fort Ogden.....	..	63	..	63	56	8	16	17	1	6	2	1	1,000	1	600	556 55
Myers.....	..	101	1	102	94	5	17	23	3	2	2	1	1,500	1	850	75	44 00
Caloosahatchie	2	100	..	100	81	14	8	3	7	2	4	75
Chockaluskee.....	..	43	..	43	50	3	1	11	2	1	2	1
*Key Largo.....	600	410
Tampa and Cuban Mission.....	2	165	..	165	133	25	23	16	29	21	6	4	3,500	450
Key West First Charge.....	..	365	..	365	385	33	6	52	58	1	1	28,650	1	5,600	125
Key West Spark's Chapel.....	..	376	..	376	274	100	8	6	53	1	1	1	5,000	1	2,500	69
Key West Memorial Chapel.....	..	113	..	120	108	10	4	7	8	1	1	1	2,000	8
Key West Cuban Mission	68	..	68	40	21	7	1	52	21	1	1	4,360	1	1,000	400
Total.....	20	3,129	1	3,143	2,252	321	171	227	256	80	27	28	\$65,465	13	\$ 16,675	\$ 3,610	\$2,292 43

STATISTICAL TABLE NO. 1.—CONTINUED.

RECAPITULATION.

NAME OF DISTRICT.	Local Preachers.	MEMBERSHIP.							Infants Baptized.	Admits Baptized.	No. of Societies in the Charge.	No. of Churches.	CHURCH PROPERTY.				
		White Members.	Col'd Members.	Total Members this year.	Total Members last year.	Additions on Prof. of faith.	Additions by Certif., etc.	Removals by death, etc.					Value of Churches.	No. Parsonages.	Value of Parsonages.	Value of other Church Property.	Money Expended for Churches and Parsonages.
Tallahassee.....	18	3,937	2	2,938	2,359	300	143	169	99	169	21	55	\$18,805	16	\$14,775	\$1,526	\$4,685 15
Live Oak.....	21	3,075	..	3,074	2,521	197	261	220	62	99	16	44	22,850	12	9,713	1,656	1,263 90
Gainesville.....	21	2,738	..	2,741	1,941	85	114	266	42	40	18	34	66,559	13	14,940	7,340	723 62
Jacksonville.....	9	2,114	..	2,114	1,859	79	111	188	79	27	2	33	70,150	9	10,400	1,463 25	2,342 26
Orlando.....	15	2,198	..	2,196	1,961	160	134	275	37	40	33	35	39,175	12	9,900	405	1,662 12
Tampa.....	25	3,434	..	3,457	3,156	162	250	307	77	67	20	47	56,790	13	13,350	2,500	3,811 65
Bartow.....	2	3,129	1	3,143	2,352	321	171	227	26	80	27	28	65,465	13	15,673	3,610	2,291 45
Total.....	132	20,623	3	20,663	17,059	1,394	1,184	1,643	653	522	137	276	369,791	88	88,750	\$ 3,589 25	16,780 45
Total last year.....	149	21,184	1	21,205	20,172	1,189	1,097	9,707	651	461	114	239	364,899	80	92,413	11,753	14,850 11
Increase.....	2	205	87	..	2	61	23	..	4,892 50	8	..	6,836 25	1,930 34
Decrease.....	17	561	..	542	3,113	64	13	3,260	6	..
Key Largo.....	..	134	..	134	128	6	..	2	6	..	4	2	1,000	1	400	..	300

*Key Largo's report received too late to embody in body of tables.

STATISTICAL TABLE NO. 2.

NAME OF CHARGE.	Presiding Elder.		Preacher in Charge.		Bishops.		Conference Claimants.		Foreign Missions.		Domestic Missions.		Church Extension.		Education.		American Bible Society.	Exp. Del. Gen. Conf.		Other Objects.	Total from all sources.
	Assessed.	Paid.	Assessed.	Paid.	Assessed.	Paid.	Assessed.	Paid.	Assessed.	Paid.	Assessed.	Paid.	Assessed.	Paid.	Assessed.	Paid.		Paid	Assessed.		
TALLAHASSEE DISTRICT																					
Tallahassee.....	\$230	\$230	\$1200	\$1200	\$21	\$21	\$56 00	\$56	\$85	\$85	\$74	\$74	\$32	\$32	\$40	\$40	\$15	\$15	\$1241	\$2038
Leon Circuit.....	80	50 46	425	350 49	7	5	20	15	28	20	24	15	9	5	14	7	4	2	950	614 48
Monticelo.....	200	200	1000	1000	11	11	50	56 80	70	93 93	60	60	30	30	30	30	60	10	5383	3194 24
Madison.....	90	56 45	600	405 32 33	11	7	35	23	52	15	40	18	10	5	25	4 25	\$ 1	9	3 50	3	574 52
Madison Circuit.....	75	70	500	474	9	6	26	20	34	26	31	25	13	9	16	10	850
Wassena and Mission.....	50	26 15	250	147 79	5	3	20	8	24	13	20	10	8	2	13	75	374 84
Wakulla Mission.....	60	51 50	350	300	8	7	20	20	29	29	24	24	8	6 50	13	11 50	3	3	10 50	465
Osceola Circuit.....	50	25 50	300	187 50	8	2	18	10	24	8	20	10	5	5	12	3	1	1 50	254 70
Midway Mission.....	70	530	9	9	25	20	36	20	30	21	11	5	16	5	6	10
Quincy.....	50	21 25	450	194 25	10	3	18	9	20	10	18	9	11	4	5	2	1	335 25
Madison Circuit.....	90	70	800	674 07	14	11 50	36	30	42	32 5	37	24	12	9	22	21	8	6	8 56	2496 57
Madison Circuit.....	72	52 51	600	526 50	9	9	25	25	36	35	30	30	11	11	16	16	5	5	6	717 01
Madison Mission.....	40	30	202	150	6	3	13	6	20	5	20	19	5	1	13	4 50	3	1	50	463 00
Madison Circuit.....	60	35 35	385	222 35	5	3	20	15	15	18	20	10	8	8	5	3	5	2	380 70
Madison Circuit.....	72	50 50	550	472	10	2	28	3	37	3	30	3	12	18	6	6	539 50
Madison Mission.....	44	30	400	267	6	2	17	5	20	5	20	15	5	1	5	87 78	402 78
Total.....	1313	999 67	8512	6504 27	149	104 50	427	321 80	574	408 43	498	357	179	129 50	268	156 25	1	82	50 50	1439 86	14703 59
LYE OAK DISTRICT.																					
Lye Oak.....	100	100	700	640 30	13	13	35	35	55	55	40	40	6	6	20	20	5	8	1178 29
Madison.....	80	80	600	600	13	7	30	16	45	15	40	15	6	6	20	8 80	6	1	311	178
Madison Mission.....	40	27 50	200	139 08	6	3	18	10	25	15	20	10	4	14	5	1	3	1 50	27 50	294 08
White Springs Circuit.....	60	36	500	300 20	10	4	25	11 45	35	15	27	13 50	5	2	18	6	6	2	390 72

Welborn Circuit.....	65	49	500	381 32	10	5 55	25	13	35	20	30	18	5	5	18	7	2 00	619 46
Pine Mount Mission...	40	25 14	300	188 23	6	2	18	10	30	10	18	13	3	50	13	3	2 50	303 80
Fert White.....	60	37 68	500	304 92	10	3	26	4 15	40	10	30	5	4	10	16	5	2 00	929 82
Lafayette Mission.....	45	16 45	50	145 55	1	4 15	222 15
Newmansville Circuit...	60	44 57	450	347	10	5	25	20	40	7	31	6	4	2	14	5	4	1 50	1
Columbia Circuit.....	100	68 58	700	517 52	13	6	30	25	55	32	40	20	6	6	20	6	6	4	50	938 60
Lake City.....	90	71 70	9 0	717 03	13	8 60	30	25	50	30	40	25	6	4	20	12	3	6	3	218	1122 73
Lake Butler Mission...	40	8 06	300	201 75	7	2	25	5	25	25	2	3	1 65	460 40
McClenny.....	40	18	235	125	6	1	18	6 25	25	4	18	5	3	1	14	2	25	5	50	162
Starke.....	65	57 50	500	380	10	6	25	12 50	45	25	30	18 10	5	5	18	6	1	5	2 50	46 95	304 85
Waldo Mission.....	60	18 01	155	155	3	1	18	3 27	22	5 50	17	5 50	12	3	9	1	192 27
High Springs.....	40	28 13	325	228 58	8	4	20	14 18	25	8 50	25	8 56	4	8	14	3	71	1	50
Total.....	985	686 32	6915	5371 81	138	72 15	367	214 95	552	245	431	204 65	72	64 15	228	89 80	10 96	41	17	620 20	8985 97
JACKSONVILLE DISTRICT																					
McTycire Memorial...	165 59	165 50	1300	1300	24 65	67	20	88 45	76 12	26 82	44 37	14 50
River-side.....	100	58 15	800	465 21	14 80	5	41 26	54 90	47 25	20	16 65	27 50	9	548 36
St. Matthews.....	75	600	10 18	6	23 37	20	37 64	15	32 40	15	11 41	5	18 87	6
Callahan and Duval Circuit.....	51 25	39 40	280	220	7 58	21 15	28 06	24 15	8 51	14 08	279 40
King's Ferry Circuit...	90 50	76 13	500 } 200 }	500 } 98 80 }	13 42	8	47 40	47 40	49 60	30	42 68	42 68	15	6	24	6	8 13	6 10	786 71
Fernandina.....	87 75	76 21	700	634 60	12 06	10	36 10	20	47 76	20	41 11	15	14 48	6	23 97	6	7 83	6	2	886 66
Green Cove and Mandarin.....	46 75	37 17	265	209 90	6 94	3	19 34	7	25 62	9	22 05	9 25	7 77	2	12 85	277 22
Middleburg Mission...	37 50	30 70	245	140	5 55	15 48	10 50	20 50	7 16	6 21	10 30	3 31	243 94
Palatka.....	112 50	112 50	1000	1000	16 65	16 65	46 41	46 41	61 61	61 61	61 61	53 03	53 03	18 68	18 68	30 90	20 90	15	10 10	10 10	486 09
Interlachen and St. John's Mission.	38	37 49	225 97	225 19	5 65	4	15 73	5 50	20 92	14 80	18 00	6 31	6 24	3 12	10 71	5	2 47	3 43	1 50	29 20	338 78
St. Augustine and Moultrie.....	37 50	23 35	155	188 70	5 55	1 30	15 40	4	20 50	4 75	17 64	3 75	6 21	1 25	10 30	3	50	3 36	1 00	328 69
Fruitland Circuit.....	70	39 61	600	331 73	10	1	28 88	2	38 43	1 50	33 07	2 75	11 15	1	19 23	19 28	1
Volusia Circuit and DeLand Mission....	78 75	58 12	615	381 55	11 65	2	32 50	6	48 13	6	37 12	8 31	13 07	4	21 60	4	2	568 73
Sanford.....	90 25	85 67	900	416	13 33	37 15	25	49 84	42 90	28 25	15 00	25	8 17
New Smyrna Mission...	43	17 61	300	121 49	6 38	17 78	1	23 04	1	20 32	1	7 15	11 83	3 87	20	142 55
Total.....	1124 25	860 60	7732 62	5249 89	155 29	57 20	429 95	204 31	615 00	163 66	498	205 33	184 35	47 05	305 56	80 1	20 97	71 70	18 80	524 39	5564 83

STATISTICAL TABLE NO. 2.—CONTINUED.

NAME OF CHARGE.	Presiding Elder.		Preacher in Charge.		Bishops.		Conference Claimants.		Foreign Missions.		Domestic Missions.		Church Extension.		Education.		American Bible Society.	Exp. Del. Gen. Conf.		Other Objects.	Total from all sources.
	Assessed.	Paid.	Assessed.	Paid.	Assessed.	Paid.	Assessed.	Paid.	Assessed.	Paid.	Assessed.	Paid.	Assessed.	Paid.	Assessed.	Paid.		Assessed.	Paid.		
GAINESVILLE DISTRICT.																					
Gainesville	\$127	\$ 97	1000	\$779	\$20 30	\$ 6	\$57 55	\$20	\$75 55	\$22	\$63 50	\$21	\$15 24	\$ 7	\$35 50	\$11	\$	\$12 00	\$ 3	\$ 6	\$1006 16
Bronson Circuit	62	37 06	660	411 36	9 90	6	25	20	36 90	27	31	26	7 44	3	17 35	8 25	2	5 96	6 22	7 22	621 02
Rochelle & Hawthorne	72	36 12	500	245 08	11 55	4	32 65	10	42 85	13	38	11	8 64	4	20	6	2	6 85	1	26 35
Orange Springs Mission	42	33 04	193	231 24	6 70	2	19	3 45	25	5	21	4 50	5 04	1	11 75	2	1	4	1	50
Melrose Circuit	62	62	500	506 75	9 95	5 50	28 10	20 50	36 90	15	31	15	7 44	3	17 35	5	1	5 90	2	1	1000 55
Citra	68	600	16 30	16 30	46 20	47	60 70	40	61 20	57 28	12 27	12 24	28 55	9 70	1 20	2 36
Marion Circuit	82	48 28	700	385 72	13 50	6 00	37 15	15	48 80	15 62	41	13 12	9 54	4 15	22 95	9 18	1	7 80	3 64	1	502 71
Cotton Plant Circuit..	80	32 70	700	370 31	12	36 25	13	47 60	6 10	40	9 66	22 40	7 60	1	433 11
Ocala and Mission ..	122	76 28	8 0	532	19 50	5	55 25	40	72	30	91	20	14 64	8	34 15	5	10 60	1	721 28
Micanopy Circuit..	52	31 72	750	290 17	1 50	8	11 53	6	3
Wildwood Circuit.....	72	50	340	251 90	11 50	2	42 85	5 55	32 65	13 50	38	6	8 64	2	20 15	2	50	333 95
Crystal River Mission..	32	23 27	140	43 79	5 10	2	14 50	7	19	5	16	7	3 84	2 50	8 95	3	50	3	1	8	105 06
Anthony Circuit.....	62	36 66	500	295 34	9 90	4 30	28	12 90	17 86	17 80	7 44	2 65	17 35	7 35	73	5 90	1 55	26 86	495 31
Levy Mission.....	32	25	308 50	129 93	5 15	14 50	2 65	19 04	2	16	5	3 84	8 90	3	164 58
Total.....	899	651 13	7088 50	5072 99	151 35	60 60	437	227 05	515 99	206 51	483 70	209 70	113 77	52 64	265 15	65 78	6 23	72 91	21 61	79 79	5383 73
ORLANDO DISTRICT.																					
Orlando.....	175	175	1200	1200	28	16	74 90	74 90	105	85	87 50	85	21	19	49 70	38	16 62	10	13 25	1726 15
Kissimmee.....	75	69	650	594	12	4	32 10	20	45	15	37 50	12	15	5	21 30	8	50	7 12	3	77 65	1939 91
Fort Bassinger Mission	50	51	250	275	8	3	21 40	8	30	12	25	12	10	1	14	5	4 75	1	1	339
Apopka Circuit.....	75	61 50	700	524 97	12	8	32 16	30	45	35	37 50	25	15	15	21 30	16 50	2 30	7 12	3 50	4 93	726 70
Clermont.....	50	47 76	300	53 44	50	10 15	6	167 20
Leesburg.....	75	62	500	437	12	12	32 10	25	45	30	37 50	25	15	10	21 30	21 30	7 12	5	192 54
Lady Lake Circuit.....	35 96	162 96	10	17	3	3	280 92
Umatilla Circuit.....	50	40	300	250	9	1	21 40	1 50	30	1 75	25	1 50	7 50	50	14	10	1 50	386 75
Lisbon Mission.....	50	27 26	400	242 22	8	4 10	21 40	20 40	30	16 45	25	16	7 5	3	14 20	7 20	4 75	2	2	343 64
Matland Circuit	50	50	305	280	8	3 50	21 40	21 40	30	17 54	25	25 69	7 50	2	14	3	4 75	2	8 20	485

Oviedo and Geneva....	75	48 50	850	420	12	5	32 10	15	45	10	37 50	12	15	11	14 20	5	5	898 50
Titusville and Cocoa...	75	53 80	550	371 72	12	2	32 10	5	45	19 50	37 50	9	8 40	2	21 32	2	466 02
Indian River Mission...	50	50	345	355 95	8	1	21 40	2	30	3	25	4	10	1	14 20	2 77	1181 40
West Palm Beach Mis..	50	45 10	623	287 20	8	1 35	21	2 55	30	3	25	1 75	9	2	14	1	4 75	1	2	505 56
Biscayne Bay Mission..	50	24 41	260	72 28	8	21	2	30	1	25	1 50	10	14	117 62
Total.....	950	841 28	6983	5528 72	145	60 95	384 40	288 15	540	369 39	450	63 44	150 90	83 50	247 52	122 77	2 80	56 98	27 50	115 53	7874 90
TAMPA DISTRICT.																					
Tampa.....	197	197	1500	1500	31	31	84	84	120	120	104	104	37	37	57	57	15	20	20	259	3371
Seffner Circuit.....	43	35 90	335	268	7	4 13	18	10 67	26	15 42	22	13 64	8	4 72	12	7 08	4	2 36	36 43	351 30
Alafia Circuit.....	68	40 71	475	321 03	10	5	27	19	38	8	33	16	12	5 85	18	5	1	6	1	27 43	561 92
Manatee.....	66	46	500	354 74	11	7	28	15	40	23	34	19	12	3	19	5	6	9	796 99
Palmetto Circuit.....	69	31 98	500	286 70	11	4 20	30	11 50	42	15 75	36	13 50	13	1 95	20	10	7	2 80	1	385 06
Sarasota Circuit.....	40	41 20	300	307 76	6	6	17	17 53	25	25	21	21	7	7 50	12	12 50	1	4	4	4	574 41
Clear Water and St Petersburg.....	66	46	500	367 50	11	2	28	7	40	15	35	9 38	12	1 50	19	1	50	6	1 25	7	447 62
Largo Circuit.....	53	38 31	405	294 86	10	9	25	20	32	20	30	20	14	8	16	7	1	36 50	580 78
Hillsborough Mission.	46	20 80	360	177 39	7	1	20	5 50	28	17 60	24	6 25	9	2	13	4	60	5	280 24
Prasco Mission.....	39	21 47	300	172 47	6	3	17	8	24	12 23	21	11	7	3	12	6	4	1 50	2	241 92
Dale City Circuit.....	79	57 79	600	454 44	13	13	34	34	48	48	41	41	15	15	23	23	6 40	8	8	7	1108 98
Brooksville Circuit.....	68	50	540	400	11	7	29	29	42	42	36	36	12	10	20	8	7	1	1	947
Inverness Circuit.....	58	26	450	280	9	2	24	4	30	5	30	3	7	1 50	12	2	4	1	962 50
Sumter Circuit.....	56	39 60	425	292 59	9	3 82	24	10 60	34	11 50	29	11 60	10	2 50	16	6 40	6	2 44	5 40	381 41
Stewart's Chapel Cir...	56	27 80	435	226 68	9	4	24	14	34	20 04	2 9	16	10	5	16	9	6	4	4 50	235 94
Total.....	999	720 44	7605	5701 16	161	102 15	429	289 80	583	398 54	523	325 37	185	108 52	285	161 98	25 50	93	49 31	400 26	11346 02

STATISTICAL TABLE NO. 2.—CONTINUED.

NAME OF CHARGE.	Presiding Elder.		Preacher in Charge.		Bishops.		Conference Claimants.		Foreign Missions.		Domestic Missions.		Church Extension.		Education.		Am. Bible Society. Paid.	Exp. Del. Gen. Conf.		Other Objects.	Total from all sources.
	Assessed.	Paid.	Assessed.	Paid.	Assessed.	Paid.	Assessed.	Paid.	Assessed.	Paid.	Assessed.	Paid.	Assessed.	Paid.	Assessed.	Paid.		Assessed.	Paid.		
BARTOW DISTRICT.																					
Bartow.....	\$140	\$70	\$900	\$435 49	\$15	\$10	\$50	\$20	\$50	\$20	\$50	\$20	\$20	\$12	\$20	\$5				\$210 29	
Bartow Mission.....	25	13 35	250	157 95	5	2 15	10	6 65	10	8	8	6 50	5	2 50	2	70	\$ 70	\$ 2	\$ 20	25	\$177 10
Lake and Plant City.....	75	50 25	600	483 33	15	15	35	35	45	45	45	40	15	15	15	10 65	6	6		6	1222 44
Kathleen Mission.....	25	11 80	200	140 85	5	2	10	8	10	5	8	6	5	3	2	1	50	2	75	127	306 65
Homeland and Fort Meade.....	70	25	500	250		2		5		10		5		5		3				104 80	134 80
Bowling Green.....	61	39 68	400	265 56	5	5	28	35	30	37	25	32	5	7	12	12	2	5	5	227 65	694 09
Wanchula.....	30	7 59	200	47 10	3		20	4 55	20	2	15	2	5		7						
DeSoto.....	50	37 50	427 50	322 50	5	5	20	20	24	23	20	20	10	9	10	10	1 50	7	4 72	1 50	460 72
Arcadia.....		24 45		242 74				5		5		5		5			2				401 61
Punta Gorda and Fort Ogden.....	50	50	450	450	5	4	15	10	20	15 50	15	10 50	5	5	8	1	1	2	1	623 93	1623 43
Myers.....	70	57	500	425	5	3	35	14 50	40	16	35	14 50	7	2	15	5		6	1	18 25	681 50
Caloosahatchie	40	40	350	350	4	4	15	15	20	20	15	15	6	6	2	2	1			1	462
Chockalskee.....	30	14 50	200	91 77	3	50	10	2 50	15	3 50	10	2 50	3	50	2	50				50	119 8
*Key Largo.....																					
Tampa and Cuban Mission. ...	60	36 84	230	219 47	6	2	20	8	25	14	20	5	10	3	5	3	1 50	5	2	3 30	370 57
Key West, First Charge	140	135	900	900	21	18	50	40	70	40	65	35	21	18	25	10	3	10	5		2127
Key West, Spark's Cha cl.....	140	140	900	900	21	21	50	43	70	70	65	50	25	17	25	17	2	10	3 21	8	2023 55
Key West Memorial Cha cl.....	40	20	300	198 01	5	2 75	20	11	25	13 75	20	11	5	2 75	4	2	1	3	1 65	1	221 68
Key West Cuban Mission.....		20		12		1		5		5		4		1		50	50		1	2	20
Total.....	1045	592 96	7307 50	6871 78	123	97 30	888	248 20	464	409 75	411	284	147	113 75	154	83 35	23 71	60	26 03	1335 67	10882 54

STATISTICAL TABLE NO. 2.—CONTINUED.

RECAPITULATION.

NAME OF DISTRICT.	Presiding Elder.		Pre-cher in Charge.		Bishops.		Conference Claimants.		Foreign Missions.		Domestic Missions.		Church Extension.		Education.		Am. Bible Society. Paid.	Exp. Del. Gen. Con.		Other Objects.	Total from all sources.
	Assessed.	Paid.	Assessed.	Paid.	Assessed.	Paid.	Assessed.	Paid.	Assessed.	Paid.	Assessed.	Paid.	Assessed.	Paid.	Assessed.	Paid.		Assessed.	Paid.		
Tallahassee....	\$1313	\$999 67	\$35 2	\$6504 27	\$149	\$437	\$427	\$321 80	\$574	\$405	498	\$357	\$179	129 59	\$268	150 25	\$ 1 00	\$82	\$50 50	\$1439 86	14703 59
Live Oak.....	9 5	686 32	450	347	158	72 15	367	214 95	552	245	131	204 65	72	64 15	228	89 80	10 96	41	17	620 20	8985 97
Gainesville ...	899	651 13	7088 50	5072 99	151 35	60 60	457	227 05	515 99	206 5	483 70	209 70	113 77	52 54	265 15	65 78	6 27	72 01	21 61	79 79	5883 97
Jacksonville...	1124 25	880 60	7732 62	5240 89	155 29	57 20	429 95	104 31	615	164 60	498	205 35	184 55	47 05	335 56	80 18	30 97	71 70	13 80	524 39	5554 88
Orlando.....	950	841 28	6983	55 6 72	145	6 95	584 40	238 25	540	269 31	450	273 44	156 90	33 50	241 52	122 77	2 80	50 98	27 64	115 53	7874 90
Tampa.....	999	720 47	7605	57 1 16	161	102 15	429	287 8	583	338 5	723	325 57	185	108 52	285	161 68	25 50	93	49 31	400 26	1346 02
Bartow.....	1 45	592 96	7307 50	6871 78	123	97 30	388	248 0	164	469 75	411	284	147	113 75	154	83 35	2 71	60	25 03	1335 57	10882 54
Total.....	7315 25	5350 40	52143 6	40298 62	1022 54	554 85	2862 35	1732 36	843 59	2101 28	3344 70	1849 49	1032 02	399 91	1753 23	760 11	101 21	477 59	410 79	4515 70	54731 63
Total last year.....	7608	5425 02	58126	42613 96	1036 92	735 30	2839 21	1850 34	821 28	2377 92	3167 66	2246 43	1207 48	725 57	1766 35	821 39	168	4125 95	70334 38
Increase.....
Decrease.....	292 75	72 62	5981 3	1715 34	14 28	80 55	108 48	176 01	72 96	396 94	165 46	126 56	13 12	61 28	66 79	16532 75
Key Largo....	40	37	360	266	8	6	20	20	20	15	20	15	6	5	6	3	3	3	2	83 65	689 65

*Key Largo's report received too late to embody in body of tables.

STATISTICAL TABLE NO. 3.

NAME OF CHARGE.	SUNDAY SCHOOLS.									
	No. Epworth Lgs.	No. League Mbrs.	No. of S hools.	No. of Officers at Teachers.	No of Scholars.	Amt Collected for Sunday Schools.	Amt. Collected for Missions.	Amt. Collected on Children's Day.	Amt. Collected for Other Objects.	Total Amount Raised.
TALLAHASSEE DISTRICT.										
Tallahassee.....	1	54	4	19	152	\$ 79	\$ 14	8 15	\$ 94
Leon Circuit.....	2	7	50	10	5	10	25
Monticello.....	1	25	1	23	92	68	55	7 92	10	85 92
Madison.....	3	18	105	18 63	8	2	8 22	36 85-
Madison Circuit.....	4	27	10	10
Mosely Hall and Taylor.....	5	20	250	10	50	1 65	12 15
Waukeeah and Mission.....	2	12	70	15	15
Wakulla Mission.....	1	27	7	18	128	4 95	1	5 95
Concord Circuit.....	3	12	103	16	16
Midway Mission.....	3	8	45	7	1	8
Quincy.....	1	12	56	30	5	4 50	39 57
Gadsden Circuit.....	1	14	4	18	162	18 45	5	5	28 45
Liberty Mission.....	1	4	35	2	50	2 50
Aucilla Circuit.....	3	11	160	27	6	33
Apalachicola.....	1	7	78	24 15	5	5	44 72	78 87
Carrabelle Mission.....	1	8	90	13 52	13 52
Total.....	4	130	42	224	1578	340 18	160	20 42	103 11	504 71
LIVE OAK DISTRICT.										
Live Oak.....	1	17	85	63 31	6	15	84 31
Jasper.....	1	23	1	611	132	30 78	2 45	3 39	15 24	51 87
Hamilton Mission.....	2	9	50	7 50	13	20 50
White Springs Circuit.....	5	18	140	13 20	77	13 97
Welborn Circuit.....	3	18	124	3 70	7 49	14 10	25 29
Pine Mt. Mission.....	3	15	75	6	43 40	49 40
Fort White.....	2	150	150	20	5 02	5 80	20 02
Lafayette Mission.....
Newnansville Circuit.....	2	10	16	1 75	3	20 75
Columbia Circuit.....	3	16	120	12	13 75	25 75
Lake City.....	1	16	121	25	11 25	17	52 25
Lake Butler Mission.....	3	9	45	10 45	10 45
McClenny Mission.....	2	9	60	4	2	6
Starke.....	1	25	1	9	75	26	5	12 75	43 75
Waldo Mission.....	3	12	70	17	8 00	25 50
High Springs.....	3	19	135	34 69	9 40	34 69	78 55
Total.....	2	50	35	338	1382	285 93	51 59	18 43	183 93	538 35
JACKSONVILLE DISTRICT.										
McTyeire Memorial.....	1	1	15	75	66	66
Riverside.....	1	15	75	21 76	21 76
†St. Matthews.....	1
Callahan and Duval Circuit.....	5	20	120	20	20
King's Ferry Circuit.....	3	15	100	25	8	4	20	57
Fernandina.....	2	21	80	40	6 03	28 75	74 28
Green Cove and Mandarin.....	2	8	56	13 50	1 25	14 78
Middleburg Mission.....	1	8	60	12 13	12 13
Palatka.....	1	38	1	17	135	59 71	10 10	69 81
Interlachen and St. Johns' Mission..	2	15	71	36 04	4 62	5 25	4	49 91
St. Augustine and Moultrie Mission.....	2	45	2	10	52	13 43	1 21	1 30	4 35	19 08
Fruitland Circuit.....	1	1	18	96	25 17	14 13	39 30
Volusia Circuit and DeLand Mission.....	5	30	150	15	3 75	18 75
Sanford.....
New Smyrna Mission.....	2	9	61	20 57	20 57
Total.....	5	78	29	201	1131	348 31	13 22	10 55	94 98	483 35

STATISTICAL TABLE NO. 3 - CONTINUED.

NAME OF CHARGE.	No. Epworth Lgs.	No. League Mbrs.	SUNDAY SCHOOLS.							Total amount raised.
			No. of Schools.	No. of Officers and Teachers	No. of Scholars	Amt. collected for Sunday Schools.	Amt. collected for Missions.	Amt. collected on Children's Day.	Amt. collected for other objects.	
GAINESVILLE DISTRICT.										
Gainesville	1	30	1	15	106	25	8 16			33 16
Bronson Circuit.....	4	25	4	25	210	66	80	3 81		69 91
Rochelle and Hawthorne..	2	2	2	16	120	19	4 98	3 78		27 76
Orange Springs Mission...	1	16	4	16	160	12	5	3 80		20 80
Melrose Circuit.....	4	21	4	21	180	30 68	3 50	7		20
Citra	1	9	1	9	57	20 27	7 28			27 55
Marion Circuit	4	15	4	15	160		5 63			5 63
Micanopy Circuit	2	17	2	17	88	45	11 53	6		62 53
Ocala and Mission.....	1	41	3	20	256	81 85	25 05			106 90
Cotton Plant Circuit.....	4	14	4	14	90					
Wildwood Circuit	4	24	4	24	275	4	13 50	8		60
Crystal River Mission	3	9	3	9	60	2 45		7 81	22 37	32 63
Anthony Circuit.....	4	27	4	27	162	46 31	9 55	2 26		58 11
Levy Mission	5	26	5	26	225	23	1 25			24 25
Total.....	5	87	45	264	2149	411 66	76 23	28	30 37	549 23
ORLANDO DISTRICT.										
Orlando.....	2	124	1	21	225	140	40			180
Kissimmee	2	60	2	15	135	66	15 26	2 30	8 50	82 06
Fort Bassinger Mission	1	4	2	7	50	4		2 80		6 86
Apopka Circuit.....	2	68	4	28	150					
Clemont.....	1	25	5	20	100	33 79	8 11		13 15	65 78
Leesburg.....	1	60	1	18	190	56	21 48			71 48
Lady Lake Circuit	1	2	1	12	90					
Umattilla Circuit.....	4	175	3	16	135	25	2 50			27 50
Lishon Mission.....	2	6	2	6	48	8				8
Maitland Circuit.....	1	13	3	13	80	26 71	6 10		5	36 81
Oviedo and Geneva.....	3	25	3	25	125	65	6 54			71
Titusville and Cocoa.....	2	15	2	15	80	25	7		15	49
Indian River Mission.....	7	14	7	14	111	40				40
West Palm Beach Mission	2	10	2	10	35	14 10			25 50	37 60
Biscayne Bay Mission.....	2	10	2	10	101	13 50				13 50
Total.....	15	565	41	233	1655	510 10	107	5 19	65 15	687 62
TAMPA DISTRICT.										
Tampa.....	2	86	1	21	206	101 11	36		50	187 11
Seffner Circuit.....	4	20	4	20	90	7 66	18 73	6 70	14 68	41 77
Alafia Circuit.....	7	35	7	35	225	12	11			21
Manatee.....	1	47	1	11	77	62	16			78
Palmetto Circuit.....	1	30	2	15	80	15	9 90		20	44 90
Sarasota Circuit	1	35	3	23	78	8 75	19 20			27 95
Clear Water and St. Petersburg	2	35	2	17	115	40	7		20	67
Largo Circuit	4	25	4	25	147	24 98	19 22		31 50	75 70
Hillsborough Mission.....	5	20	5	20	150	25	5		6 25	36 25
Pasco Mission	6	28	6	28	142	15 31	1 50			16 81
Dade City Circuit.....	2	35	4	29	124	49 02	18 80	6 95	29 11	103 88
Brooksville Circuit.....	1	35	5	30	190	60	8 62		20	88 62
Inverness Circuit.....	3	14	3	14	108	35	2	1		39
Sumter Circuit.....	3	20	3	20	121	27 52			16 23	43 85
Stewart's Chapel Circuit.....	1	4	1	4	20	125	20	5	3 10	46 43
Total.....	11	303	54	328	1878	503 35	177 97	17 75	226 6	918 27

STATISTICAL TABLE NO. 3—CONTINUED.

NAME OF CHARGE.	SUNDAY SCHOOLS.								Total amount raised.	
	No. Epworth Lgs.	No. League Mbrs.	No. of Schools.	No. of Officers and Teachers.	No. of Scholars.	Amt. collected for Sunday Schools.	Amt. collected for Missions.	Amt. collected on Children's Day.		Amt. collected for other objects.
BARTOW DISTRICT.										
Bartow	1	40	1	11	107	\$ 68				68
Bartow Mission	2	35	1	4	35	7 95			3	10 95
Lakeland and Plant City..	1	25	2	27	213	63 84	16 92			80 76
Kathleen Mission.....			1	8	50	5 10		1 12	2	8 22
Homeland and Ft. Meade.			3	14	170					
Bowling Green.....			8	4	200	30	5		5 76	40 76
Watchlula.....	1	15	3	14	112	7 59				7 59
DeSoto.....	2	47	6	30	176	53 65	21		19	96 65
Arcadia.....			2	10	100	20				20
Punta Gorda and Fort Ogden.....			1	12	65	51 73		2 65		54 38
Myers.....	2	105	1	12	104	75	10 50		5	90 50
Caloosahatchie.....			4	12	50	12	2			14
Chockaluwee	1		1		6					
*Key Largo										
Tampa and Cuban Mission			4	21	230	2	1 40			3 40
Key West, First Charge ..	1	60	1	48	369	115	21		11 20	157 20
Key West, Spark's Chapel	1	48	1	36	229	97 43	49 57		59	196 90
Key West, Memorial Chapel.....	1	60	1	20	112					60 93
Key West, Cuban Mission			1	14	119	50			3	3 59
Total.....	13	435	42	300	2562	910 79	127 39	3 77	98 95	911 79

STATISTICAL TABLE NO. 3—RECAPITULATION.

NAME OF DISTRICT.	SUNDAY SCHOOLS.								Total amount raised.	
	No. Epworth Lgs.	No. League Mbrs.	No. of Schools.	No. of Officers and Teachers.	No. of Scholars.	Amt. collected for Sunday Schools.	Amt. collected for Missions.	Amt. collected on Children's Day.		Amt. collected for other objects.
Tallahassee.....	4	130	42	224	1578	\$ 340 18	\$ 100	\$ 36 42	\$ 103 11	\$ 504 71
Live Oak	2	50	35	3 8	1382	285 94	51 59	18 45	183 95	533 55
Gainesville.....	5	87	45	264	2149	411 66	70 23	28	30 37	549 23
Jacksonville.....	5	78	29	201	1131	348 31	31 22	10 55	94 98	483 35
Orlando	15	565	41	233	1655	510 19	107	5 19	65 15	687 62
Tampa	11	393	54	328	1878	593 35	177 97	17 75	226 2	918 27
Bartow.....	13	435	42	300	2562	610 79	127 39	3 77	98 95	911 79
Total....	55	1648	288	1888	12935	3010 32	678 40	114 11	802 70	4593 32
Total last year....	34	1150	285	1782	11964	3371 53	9 0 78	126 05	515 84	4935 80
Increase.....	21	498	3	106	371	361 21	222 38	11 94	286 86	342 48
Decrease.....										
Key Largo			5	15	140	40	2			4

†No report.

*Received too late to embody in body of tables.

APPENDIX.

[The following report reached me January 7th, when last form was about to go to press, and to get it in Minutes *at all* it had to come in here as an appendix. If brethren would write reports in duplicate at Conference and furnish one to Secretary for record and one for publication, Minutes could be gotten out in a very few days after adjournment.—Ed.]

CHURCH EXTENSION.

Extract from the report of the Florida Conference Board of Church Extension.

TALLAHASSEE, Dec. 11th, 1896.

The policy of the General Board of Church Extension has been very liberal to the Florida Conference. The annual report of Dr. Martin in May last, shows that during the fourteen years of the Board's existence, ninety-six churches in the bounds of the Florida Conference have received aid from the General Board of Church Extension amounting to \$21,606.00 in donations, and \$18,650.00 in loans. During the same period the contributions of the Florida Conference to the General Board amounted to \$8,983.27, making \$31,272.00 in excess of our contributions.

Dr. Morton in his communication to this Conference also says: "The pressure of hard times continues to interfere materially with our work. We expect you to remember that the pressure is greatest upon those who are looking to us for help, and to double your diligence in their behalf. If our modest assessment were paid in full we could do an incalculable amount of good, and relieve much distress. With the limited means at the disposal of the General and Conference Boards 407 churches were relieved during the year ending March 31st, 1896. An average of \$180 each being paid them. Had the \$100,000 asked for in the assessment been given us, 240 other churches could have been paid each a like amount."

During this Conference our work has been directed to the relief of those churches damaged or destroyed by the disastrous storm that visited a portion of our State.

APPLICATIONS RECOMMENDED TO THE GENERAL BOARD.

Lemon City, for donation.....	\$200.00
Lemon City, for loan.....	345.00
DeLand, for donation.....	500.00
DeLand, for loan.....	500.00
Tustinuggu, for donation.....	450.00
High Springs, for donation.....	600.00
Cedar Key, for donation.....	450.00

GRANTS BY CONFERENCE BOARD.

New Zion, donation.....	\$ 50.00
Callahan, donation.....	50.00
Branford, donation.....	50.00
McClenny, donation.....	25.00
Fort White, donation.....	100.00
Appropriated for Bulletin.....	15.00
Appropriated for Minutes.....	10.00

ASSESSMENT FOR 1897.

Tallahassee District.....	\$210.00
• Live Oak District.....	150.00
Gainesville District.....	210.00
Jacksonville District.....	210.00
Orlando District.....	210.00
Tampa District.....	210.00

WOMAN'S PARSONAGE AND HOME MISSION SOCIETY.

We recommended the following applications to the Central Board Woman's Parsonage and Home Mission Society:

Sebastian, donation.....	\$200.00
Bristol, donation.....	150.00

OFFICERS FOR 1897.

President, Mrs. E. K. Griffith, Jacksonville, Fla.
 Vice-President, Mrs. A. J. Phans, Yalaha, Fla.
 Recording Secretary, Mrs. J. F. Shands, Leesburg, Fla.
 Corresponding Secretary, Mrs. E. H. Swain, Anthony, Fla.
 Treasurer, Mrs. J. H. Dorsey, Tampa, Fla.
 Editress, Mrs. T. J. Watkins, Rochelle, Fla.

DISTRICT SECRETARIES.

Tallahassee, Mrs. C. T. Carrol, Monticello, Fla.
 Jacksonville, Mrs. W. A. Mahoney, Fernandina, Fla.
 Live Oak, Mrs. J. D. Turner, Lake City, Fla.

Gainesville, Mrs. W. B. Phifer, Rochelle, Fla.

Orlando, Mrs. J. R. Perry, Orlando, Fla.

Tampa, Mrs. Chas. Harrison, Tampa, Fla.

Resolutions were unanimously adopted requesting each pastor to take collections in January, February or March, for the benefit of our churches injured by the recent storm. The amounts so collected to be sent C. W. White, Treasurer, Citra, Fla., for distribution.

By resolution it is requested that all applications to the General and Conference Boards be in hands of the Secretary by second day of the Conference.

Applications can be had of the Secretary of the Conference Board at Rochelle, Fla.

W. S. RICHARDSON,
Sec. Fla. Con. Bd. Ch. Ex.

A few advertisements will be found below. In each case the advertiser is known personally to the undersigned, and those wishing anything in the line indicated cannot do better than confer with them.

J. B. LEX.

KOHN, FURCHGOTT & CO.,

IMPORTERS, AND DEALERS IN

Dry Goods, Notions, Smallware,
CLOTHING, Etc.

JACKSONVILLE : : : : : ELORIDA

A. B. CAMPBELL,

JACKSONVILLE, FLORIDA,



Pianos, Organs,

We will give you more for your money and treat you better in every way at all times than any other music house in the United States.

We make a specialty of Church Organs and musical supplies for Church and Sunday School.

Send for FREE CATALOGUES and EASY Terms of Payment.

Sheet Music, Music Books, Strings, Banjos, Guitars, Mandolins, Violins, Accor leons, and all musical instruments (and trimmings for same), from a penny whistle to a Grand Piano at BED ROCK PRICES.

A. B. CAMPBELL, Mgr. L. & B. So. Music House.

D. B. MEGINNISS, Jr.,




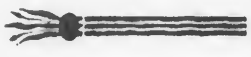
TALLAHASSEE, FLA.


DEALER IN

Fine Shoes and Gents Furnishing Goods.

Hill Country of Florida.

General Real Estate Exchange, Tallahassee, Fla.

Clarke Syndicate Lands 
 Middle and West Florida.

LEON COUNTY FARM LANDS
IN VICINITY of TALLAHASSEE
A SPECIALTY..........

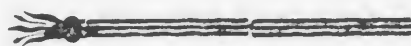
Yellow Pine Timber Lands.
Tallahassee City Property.

CORRESPONDENCE SOLICITED.

ADDRESS

Clarke Syndicate Company,
TALLAHASSEE, FLORIDA.

Information About Florida Free to All Interested.

 HOTEL

Center of the City on Main

TERMS—\$2 50 AND UPWARD.

L. N. WARD,

JACKSONVILLE : . : : .

J. W. COLLINS,



TALLAHASSEE, FLA.,

HEADQUARTERS FOR

: : : : :

Fancy and Family Groceries
and General Merchandise.

G. W. SAXON, President.

W. A. RAWLS, Vice-President.

B. A. MEGINNISS, Cashier.

CAPITAL CITY BANK.

TALLAHASSEE, FLA.

Capital (authorized) \$150,000.

Capital (paid) \$50,000.

State Depository.

T. B. BYRD,



PHONE No. 1.

TALLAHASSEE, FLA.,

Wholesale and Retail
Grocer,

Fishing Tackle and Sporting Goods a Specialty.

Fruits, Confectionery and Bakery.
Table luxuries and delicacies of
all kinds. Free and prompt de-
livery (wagon and bicycle).

R. J. RILES,

NEW BAY ST.,

JACKSONVILLE.

Lowest cash prices. Orders solicited. Mention this adv.

No. 201 W. Bay St., cor. Hogan. | Palatka: 35 Lemon St.

Full line of Diamonds, Jewelry,
Watches, Clocks, Tableware and
Novelties. Repairing done promptly.

COHEN BROS., Popular Dry-Goods House.

19 AND 21 WEST BAY ST.,

JACKSONVILLE - - - FLORIDA.

New York office: 424 and 426 Broadway.

LOUIS I. STEPHENS, The Jeweler.

No. 5 WEST BAY ST., JACKSONVILLE, FLA.

SPECTACLES.

Watch and Jewelry Repairing a Specialty.

Sign of

Golden

Alligator.

PLACIDE

Street. One Block from Bay.

SPECIAL RATES BY THE WEEK.

Proprietor.

: : : : : : : FLORIDA.

THE LEON HOTEL, RATES, \$2.50 TO \$3.
W. H. PASSMORE, PROP., Special Rates for Com-
Tallahassee Florida. mercial Men.
Open the year round. Newly furnished and refitted.

C. T. CARROLL

DEALER IN GENERAL MERCHANDISE,
Cotton Buyer and Broker,
And Dealer in all Kinds of Farm Products.
Orders promptly and carefully executed for anything grown
or produced in this section.

MONTICELLO / / FLA.

A Young People's History of the Chinese

BY W. G. E. CUNNYNGHAM, D.D.

Nine years a missionary in China.

With an introduction by

REV. COLLINS DENNY, M.A.,

Vanderbilt University.

285 pages. Many illustrations, superior paper, attractive
covers.

PRICE—ONE DOLLAR.

Child Life in Our Mission Fields,

OR

Pen Pictures from Busy Workers.

GATHERED BY

DAISY LAMBUTH AND KATE HARLAN.

195 large, square pages. Many illustrations. Handsomely
bound. A beautiful gift for a child.

PRICE—ONE DOLLAR.

BARBEE & SMITH, Agts, Nashville, Tenn.

The : Shortest : Line !

The Most Convenient
and Quickest is the . .

Florida Central and Peninsular.

It covers most of the Florida points of importance. It reaches by quickest connections all the Eastern, Western and Southwestern cities with an unsurpassed service and through sleepers with every accommodation. . . .

NEW YORK AND FLORIDA TRAINS,

Double daily the year round, to which is added in the tourist season a very elegant train daily, except Sundays.

CINCINNATI AND FLORIDA LIMITED.

Through between Cincinnati and Jacksonville in 24 hours.

Kansas City Through Sleeper

To and from Jacksonville. The only through sleeper route.

The New Orleans and Jacksonville

Through sleeper, the only through sleeper between these points all the year round. Get the best indexed map of Florida from the F. C. & P. agents or from the general passenger office.

See that your tickets read by one of the F. C. & P. junctions—Columbia, Everett, River Junction—when you go to or come from a point outside of Florida, and in Florida always take the F. C. & P., for it is likely that it will take you right to the place you seek quicker and more directly than any other line.

A. O. MACDONELL,

General Passenger Agent, Jacksonville, Fla.

N. S. PENNINGTON, Traffic Manager.

V. E. ORR,

SCHOOL, CHURCH, HALL AND COURT-HOUSE
FURNITURE AND SUPPLIES.

MAPS, GLOBES, CHARTS, PEWS, CHAIRS, BOARDS.
ATLANTA, GA.

LEADERS FOR 1897.

Orr's New Popular School Charts	\$25 00
Orr's Outline Maps, United States and World.....	2 50
Orr's United States and Library Maps.....	2 50
Set complete School Charts.....	16 00
Franklin Publishing Company's Normal Charts.....	25 00
The New McGuffey's Revised, enlarged.....	10 00
Appleton's Reading Charts, complete	12 50
Parker's Arithmetic Charts.....	8 00

The Georgia Teachers' Agency.

Thos. Kane & Co.'s School Desks and Supplies.

Grand Rapids' Desks, Opera Chairs, Furniture, etc.

Brunswick Balke-Collendar Co. Full line Furniture.

Rand & McNally and Johnson's Maps.

Blackboards Cloths, Paper, Cardboard, Slating, etc.

Best Penn Stone Slate.

Schedler's full line Globes and Tellurians.

Catalogue and Samples Free. Agents Wanted. Terms easy.
Goods and Prices Guaranteed.

JONES & DEWSON,

Fire, Life and Accident Insurance.

PARK BUILDING : JACKSONVILLE, FLA.

GENERAL AGENTS FOR

The Fidelity Mutual Life, of Philadelphia, Pa.

THE TALLAHASSEEAN,

TALLAHASSEE, FLA.

Best Paper Published at the State Capital.

SUBSCRIPTION, \$1 A YEAR.

ADVERTISING RATES REASONABLE.

WE HAVE THE

Best Equipped Job Office

IN MIDDLE FLORIDA.

NEW TYPE,

NEW PRESSES,

NEW STOCK,

LOW PRICES,

PROMPT WORK.