

CA2ALID 15 of Business Development

63 572
C.2

elopment Branch

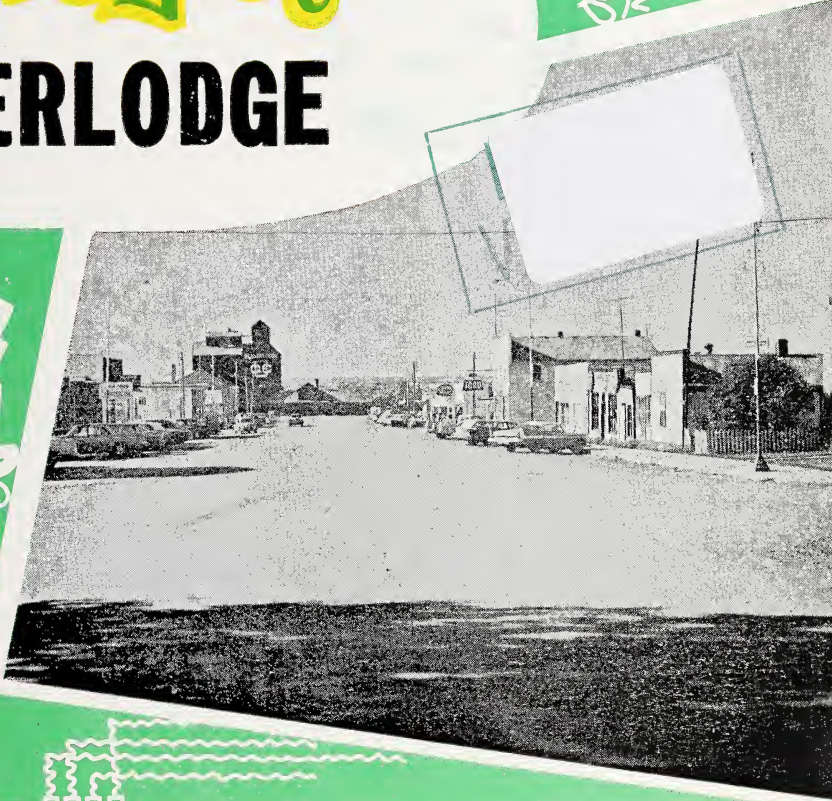
CA2 ALID 15 1963572
Survey of Beaverlodge.



3 3398 00300 1244

Survey of


BEAVERLODGE



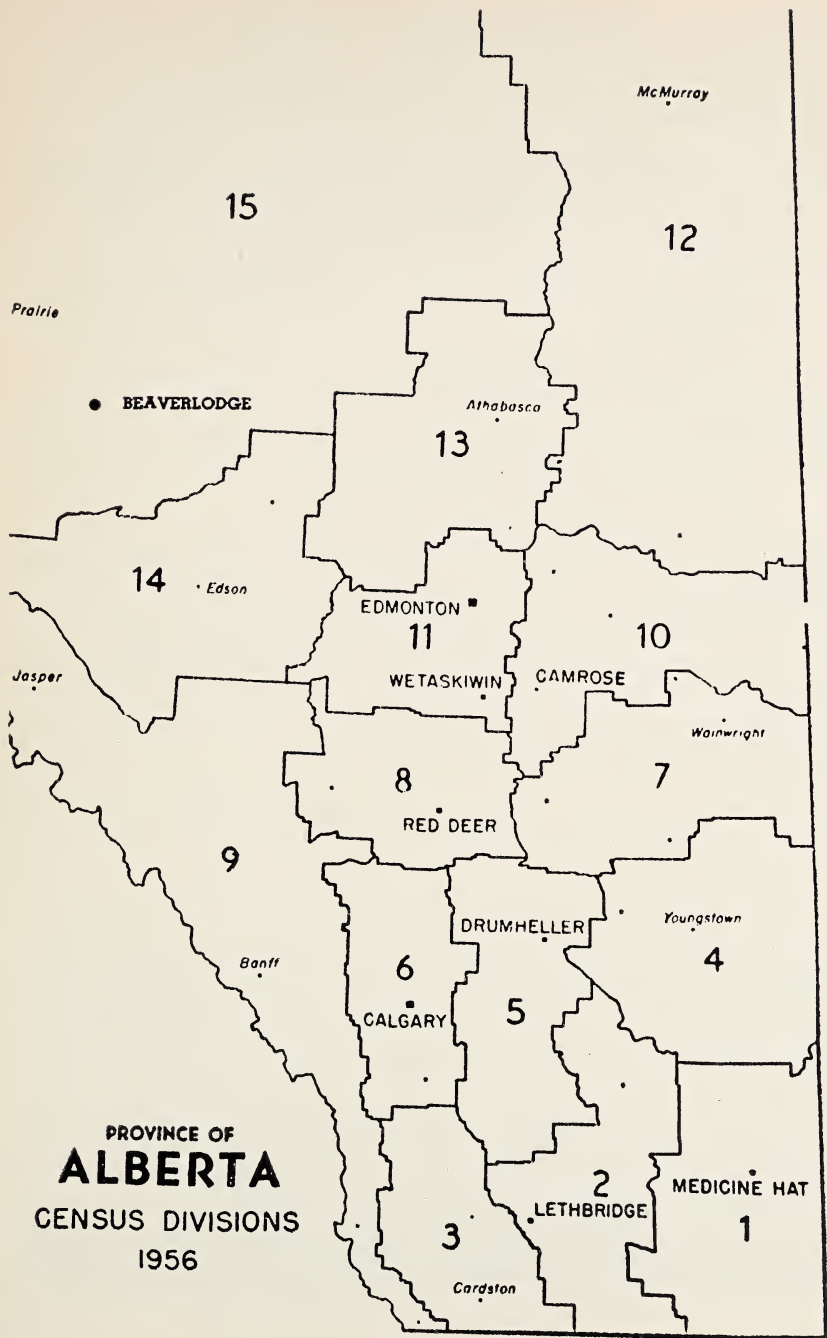
Prepared By

INDUSTRIAL DEVELOPMENT BRANCH
DEPARTMENT OF INDUSTRY & DEVELOPMENT
Government of the Province of Alberta





Digitized by the Internet Archive
in 2017 with funding from
Legislative Assembly of Alberta - Alberta Legislature Library



PROVINCE OF
ALBERTA
 CENSUS DIVISIONS
 1956

Town of Beaverlodge

(Revised December 1963)

1. LOCATION

Section 2-72-10-W6 in Census Division No. 15. This location is at mile 435.7 on the Edmonton, Grande Prairie and Dawson Creek line of the Northern Alberta Railway; 312 miles northwest of Edmonton by highway and 27 miles west of Grande Prairie on Highway No. 2.

2. ALTITUDE

2,354.2 feet Latitude - 55/13 Longitude - 119/27

3. TEMPERATURE

Average summer - 54 degrees F.

Average winter - 22 degrees F.

Average annual - 35 degrees F.

4. RAINFALL

Average annual rainfall - 10.18 inches.

Average annual snowfall - 70.1 inches.

Average annual precipitation - 17.19 inches.

(Note - Sections 3 and 4 are taken from the weather station at the airport.)

5. GEOLOGY

The Wapiti formation underlies the Beaverlodge area which consists of sandstones and shales of fresh water deposition. These beds are over 1,100 feet in thickness.

6. SOIL

Beaverlodge is in the dark grey soil zone.

Vegetation

Mainly woodland in which the tree growth is frequently denser and has more evergreens than in the black zone.

Soil Profile

Generally variable, ranging from nearly black to grey. The surface horizon consists of a thin layer of semi-decomposed leaf litter which may be absent in burned over areas, underlain by a mineral horizon that can usually be divided into two parts. The upper part may be black, grey black or dark brown. The lower part is frequently somewhat leached of organic matter and considerably greyer than the upper part. The total depth of these surface horizons average about 10 to 12 inches. The sub-soil is generally dark brown in color and lime is found at depths of 30 to 50 inches.

Fertility

These soils are usually not as rich as those in the black zone. Leaching of the surface horizons has resulted in the loss of some plant nutrients. Nitrogen, phosphorus and sometimes sulphur may be deficient.

7. HISTORY

The town is named after the Beaverlodge River, which flows within one and a half miles southwest of the town. The name Beaverlodge is a Beaver Indian word, with the word "Lodge" meaning a temporary dwelling. The first white settlers in the district were Jim Brooks and George McLeod,

who operated trap lines along the Wapiti River. Their winter campsite was near the Beaverlodge River about four miles west of the present site of the Federal Agricultural Experimental Station. In 1898 a dozen stranded, scurvy-ridden Klondykers arrived at this camp and were nursed through the winter and taken to Spirit River in the spring.

In 1908, prior to the township survey, the first permanent settlers arrived and took up squatters rights in the Beaverlodge valley. On March 16, 1909 a group of 31 settlers left Ontario. This group were members of a sect called the Christian Association, who claimed they had received "God's word to go west". This outfit was named the "Bull Outfit," because they used 18 teams of oxen for transporting the party and their effects. After many hardships and modes of travel they arrived at Beaverlodge on July 14, 1909, where they filed on homesteads.

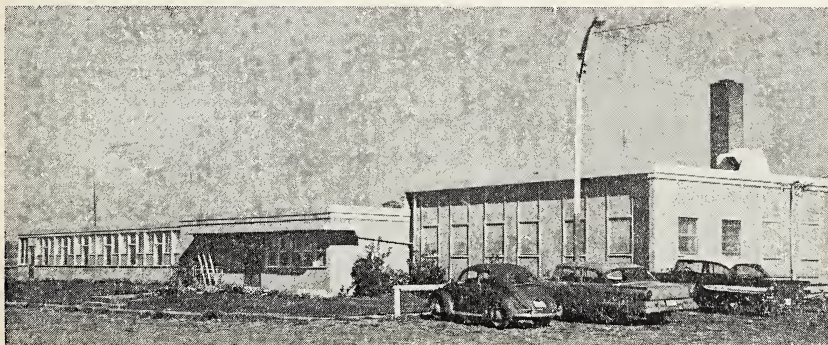
The first post office was established in 1910. It was named Redlow, because the name Beaverlodge had already been given to the office at Lake Saskatoon. The name was subsequently changed from Redlow to Beaverlodge. Beaverlodge School District No. 2341 was erected in December 1910 and the first school building was completed in June, 1911. This school was built by volunteer labor from the district. The first church was of the Anglican faith and was completed on October 6, 1912.

With the arrival of the railway in 1928, a new townsite was created about one mile northwest of the original hamlet and about 100 buildings were moved. A 10 bed hospital was built in 1938 and operated as a sub-hospital to the Grande Prairie Municipal Hospital. In January, 1949, the Beaverlodge Municipal Hospital District No. 32 was formed and a new hospital to accommodate 20 beds was built in 1956.

8. LIVING CONDITIONS

Beaverlodge stands on the eastern slope of the Beaverlodge Valley. The town is on the east side of the Northern Alberta Railway tracks and slopes upward to the northeast. Trees line the streets and provide shade for many of the homes. Residents take pride in their gardens, which produce many varieties of vegetables and small fruit.

The district is recognized as an excellent breeding and feeding ground for both migratory and upland birds. Geese, ducks, sharptail and ruffed grouse abound and pheasants have been distributed on a limited scale in the area. Mule and white tailed deer are numerous in the immediate area as are moose. Southeast of the town, the area is ideal for big game



A modern 20-bed Hospital serves the community.

hunting including deer, moose and elk. Grizzly bear, mountain sheep and mountain goat are found in the foothills.

Game fish of the area include northern pike, walleye, perch, dolly varden and arctic grayling. In addition a few selected lakes in the district have been stocked with rainbow trout.

Beaverlodge is the Gateway to the Monkmon Pass and the proposed Rocky Mountain Wilderness Park.

A five room cottage rents for \$55.00 to \$85.00 per month, but very few are available for rent as more than 90% of the homes are owner occupied.

9. ADMINISTRATION

The town is governed by a mayor elected for a two year term and six councillors, two elected each year for a three year term. The secretary-treasurer carries out the policies set by the council.

10. LAW ENFORCEMENT

The town is policed by a town constable. Rural areas and highway are policed by the R.C.M.P.

Justice of the Peace.

Visiting Police Magistrate from Grande Prairie.

Building Regulations - Plans for new buildings, repairs to buildings or removal of buildings must be approved by council after which a permit is issued. Approval for sub-division must be obtained from the Peace River District Planning Commission.

Electrical installations must comply with the Alberta Electrical Protection Act.

Sanitary installations must comply with the Provincial Health Regulations.

11. FIRE PROTECTION

The fire brigade consists of a fire chief and 32 volunteer firemen.

The Civil Defense unit consists of 33 auxiliary firemen who are also available in case of fire.

Equipment

One 1953 - 500 GPM pumper with 500 gallon tank, 1 portable pump, 1,000 feet of 2½ inch hose, 300 feet of 1½ inch hose, roof and extension ladders, fog nozzle, asbestos suit, axes, crowbars, coats, boots, etc.

Water Supply

Water is obtained from wells and is pumped into two reservoirs with a combined capacity of 200,000 gallons.

There are 20 fire hydrants conveniently located throughout the town.

12. TAX STRUCTURE

	1963 Net Assessment
Land, 100% of value	\$ 173,100
Improvements, 100 % of fair value	873,125
Power	11,410
	<hr/>
Total Net Assessment	\$1,057,635

Mill Rate

Municipal	School	Hospital	Total
20.7	34.9	6.4	62 mills

13. AREAS

Total area of town - 332.47 acres.

Streets, roads and lanes - 84 acres.

Parks and playgrounds - 32.28 acres.

Miles of Roads, Streets and Lanes

	Asphalt...	Gravel	Improved Earth	Total
Provincial Main	1.18			1.18
Streets and Roads	.19	5.19	.66	6.04
Lanes		.2	2.90	3.10
				<hr/> 10.32

There are approximately 4 miles of concrete sidewalk.

14. SEWER AND WATER MAIN MILEAGE

Storm sewers - nil.

Sanitary sewers - 6.04 miles.

Water mains - 4.55 miles.

15. POWER

Three phase 60 cycle power is supplied by Canadian Utilities Limited from their Grande Prairie diesel-electric plant.

Residential Rates

First 40 KWH used per month - 6.7c net per KWH.

Next 160 KWH used per month - 2.9c net per KWH.

All additional energy used per month - 2.1c net per KWH.

Minimum monthly bill - \$2.60 per month per meter.

The above net rate applies only when bills are paid within 15 days from the date thereof. When not so paid the gross rate, being the above net rate, plus 5 percent applies.

Commercial Rates

Demand Charge:

75c net per month for first 1,000 watts or fraction thereof of connected load.

50c net per month for each additional 1,000 watts or part thereof of connected load.

Energy Charge:

First 50 KWH used per month - 8c net per KWH.

Next 200 KWH used per month - 7c net per KWH.

All additional energy used per month - 3c net per KWH.

Minimum monthly bill - the demand charge portion of the above but not less than \$1.50 per meter.

The above net rate applies only when bills are paid within 15 days from the date thereof. When not so paid the gross rate being the above net rate plus 5 percent applies.

Power Rates

Demand charge - \$1.00 net per month per connected HP.

Energy Charge:

First 25 KWH used per month per HP connected - 7c net per KWH.

Next 25 KWH used per month per HP connected - 5c net per KWH.

Next 50 KWH used per month per HP connected - 4c net per KWH.

All additional energy used per month - 3c net per KWH.

Minimum monthly bill - shall be \$1.00 per connected HP or fraction thereof, but not less than \$2.00 per month.

The above rate applies only when bills are paid within 15 days from date thereof. When not so paid the gross rate being the above net rate, plus 5 percent applies.

16. WATER

The Beaverlodge district is one of the few known areas in the Peace River region where an adequate supply of water can be obtained for municipal and domestic use from wells.

Domestic Rates (Unmetered)

\$3.50 per month plus \$2.50 sewerage charge.

Metered Rates

First 20 M gals. - \$1.00 per M gal.

Balance - 50c per M gal.

Sewerage charge - \$5.00 to \$40.00 per month.

Water Analysis

Parts per Million

Total Solids	1,376
Ignition Loss	120
Hardness	110
Sulphates	265
Chlorides	28
Alkalinity	750
Nature of Alkalinity - Bicarbonate of Soda and a small amount of Lime and Magnesium.	
Nitrites	nil
Nitrates	nil
Iron	.2
Fluorine	.15

Remarks - This water is of low hardness, 4 grains per gallon, and contains 40.9 grains per gallon carbonate of soda. The Temperature of well water is 42 degrees F.

17. GAS

The town is presently negotiating with Northland Utilities for a natural gas distribution system.

18. PROPANE

Heat value - 2,521 b.t.u. per cu. ft. at 60 degrees F.

100 lb. cylinders - \$6.50.

Bulk - 17c per gallon.

Storage Capacity - 3,000 gallons.

19. DIESEL FUEL

Heat value - 135,000 to 140,000 b.t.u. per gallon at 60 degrees F.

Winter grade - 19c per gallon.

Summer grade - 19c per gallon.

Storage capacity - 24,000 gallons.

20. COAL

Rates per ton delivered:

Mine	Location	B.T.U.'s per lb.	Nut	Egg	Lump
	Drumheller	11,000	\$12.50	\$11.50	\$17.50
	Forestburg	9,600	9.75	10.50	12.00
Red Willow River (local strip mine) - \$10.50 mine run delivered.					

21. RESOURCES

Wheat and coarse grains, horses, cattle, sheeps, hogs, dairy products, poultry products, forage crops and various grass seeds, honey, lumber, sand and gravel, clay.

22. GOVERNMENT OFFICES AND SERVICES

Federal

Post Office, Royal Canadian Mounted Police detachment, Agricultural Experimental Farm, R.C.A.F. Pinetree Base.

Provincial

Alberta Government Telephones, Treasury Branch (Sub Agency), Liquor Vendor.

Municipal

Town Hall housing (Committee Rooms, Secretary-Treasurer, Fire Hall, Town Police, Ambulance Service), Civil Defense.

23. HEALTH SERVICES

Beaverlodge Municipal Hospital District No. 32 has 20 beds and 10 bassinets and is staffed by a matron, 5 graduate nurses, 4 nursing aides, dietitian, x-ray technician, kitchen and maintenance staff.

Public Ward Rates

Residents - \$1.60. Non-residents - \$11.50.



Residents take pride in their homes and gardens

Other Facilities

2 doctors, 1 dentist, 1 veterinarian, 1 drug store, the Grande Prairie Health Unit calls weekly.

24. PROFESSIONAL AND SKILLED PERSONAL SERVICES (Excluding Health Services)

Type of Service	No. of Establishments
Barber	1
Beauty Parlor	1
Watch Repairs	1
Accountant	1

25. TRANSPORTATION

Northern Alberta Railway - twice weekly between Edmonton and Dawson Creek via Beaverlodge.

Canadian Coachways Ltd. - Three buses daily each way between Edmonton and Dawson Creek via Beaverlodge.

Local truck - daily to Edmonton, Whitehorse, Vancouver from airport 23 miles east of town.

26. NEWSPAPERS

Beaverlodge Advertiser.

27. COMMUNICATIONS

Alberta Government Telephones, Northern Alberta Railway Telegraphs, Post Office.

Nearest Radio Stations - Grande Prairie (CFGP), Dawson Creek (CJDC).

Nearest TV Stations - Grande Prairie (CBXT-TV), Dawson Creek (CJDC-TV).

28. FINANCIAL FACILITIES

Canadian Imperial Bank of Commerce, Alberta Treasury Branch (sub-agency).

29. HOTELS

	No. of Rooms	Single Rate	Beer License
Donald	20	\$2.00 up	yes

30. TOURIST CAMPS

Provincial Government Camp Site.



The Community Centre is the hub of social and recreational activities.

31. CHURCHES

Anglican, Roman Catholic, United, Christian Missionary Alliance, Jehovah Witness.

32. LODGES AND SERVICE CLUBS

Masonic Lodge and Eastern Star at Hythe, Chamber of Commerce, Lions, Elks, Canadian Legion, Ladies' Auxiliary Canadian Legion, I.O.D.E., Royal Purple, Knights of Columbus at Grande Prairie.

33. SOCIETIES AND ASSOCIATIONS

Community Players (Drama), Beaverlodge Craft Club, Home and School Association, Golden Age Club, Alcoholics Anonymous, Men's and Women's Church Organizations, Sports Association .

34. EDUCATION

The Beaverlodge School District No. 2341, which is a unit of the Grande Prairie County No. 1, teaches grades 1 to 12 along with the following optional subjects: Typing, Art, Drama, Home Economics and Shop. Eight buses transport the rural students to the town school.

The school population is made up as follows:

	Grades	No. of Teachers	No. of Pupils
Elementary	1 - 6	12	332
Junior High	7 - 9	5	141
High	10 - 12	6	95

The Roman Catholic Separate School teaches grades 1 to 8. The school population is made up of 3 teachers and 82 pupils.

35. THEATRES AND HALLS

	Capacity	Stage	Piano
Community Centre	500	yes	yes
Theatre in Community Hall	380	yes	yes
Anglican Church Hall	200	no	yes
Bentum United Church Hall	200	no	yes
School Auditorium	500	yes	yes

36. CULTURAL ACTIVITIES

A seven member recreation board is in operation to implement and pursue a recreation program for the Town of Beaverlodge. The town constable acts as recreation director.



Nearly 500 children attend school in Beaverlodge.

The social centre of the town and district is the community centre built in 1947, which provides accommodation and facilities as follows: 350 seat theatre with cinemascope screen and 35 mm projection equipment, large dance hall, lodge rooms, community library, community band practice room and store room, cadet headquarters and rifle range, Golden Age Club room, crafts room for weaving, leather work, basketry, copper tooling, etc., fully equipped woodworking shop, ceramics room complete with potters wheel and kiln, and a confectionery concession.

The Beaverlodge Community Library is sponsored by the I.O.D.E., assisted by town and Provincial Government grants. The Library is open Monday, Wednesday and Friday from 12:00 to 1:00 p.m., Friday evening from 8:00 to 9:30 p.m., and on Saturday from 2:00 to 4:30 p.m. The women of the I.O.D.E. staff this Library. There are approximately 3,500 volumes in the Library.

The Beaverlodge Handicraft Club was the first craft centre established in the province, assisted by the Provincial government. Classes in ceramics, weaving, leather tooling, copper tooling and woodworking are well attended and great interest is shown by the community in these hobbies.

Other Activities

35 piece community band, 5 piece dance orchestra, Drama and Art at school, church choirs and mixed chorus.

37. YOUTH ACTIVITIES

Boys - Cubs, Scouts, Army Cadets, Band, 4-H Club.

Girls - Majorettes, C.G.I.T., Explorers, Teen Age Club, Band, 4-H Club.

The Red Willow Camp for boys and girls is located close to town.

38. SPORTS

Baseball (senior B 16 and under, 14 and under, 12 and under), hockey (16 and under, 14 and under, 12 and under), fastball (men's and women's), curling, basketball, badminton, boxing, tumbling.

Facilities

The town-owned thirty acres Sport Park provides a baseball park second to none north of Edmonton. Facilities are also provided for three fastball diamonds, a quarter mile stock car race track, midway and concession area and a gravelled parking lot. Tennis and golf facilities are presently being promoted. Covered curling rink with 4 sheets natural ice. Open air skating and hockey rink with heated dressing rooms and bathrooms. Tot lot with swings, slides, etc.

39. FAIRS

May 24th, annual Sports Day, Little Britches Rodeo, Ice Carnival.

40. HISTORIC SITES

Campsite of Jim Brooks and George McLeod, where twelve sick and stranded Klondykers were housed and nursed during the winter of 1898.

41. CO-OPERATIVES

Alberta Wheat Pool, Community Centre, United Grain Growers, Maple Leaf Co-op Oil Distribution.

42. BUSINESS AND INDUSTRY

Type of Industry or Business	Number of Establishments	Producer or Manufacturer	Wholesale	Retail	Type of Industry or Business	Number of Establishments	Producer or Manufacturer	Wholesale	Retail
Abatoir	1	1	—	1	Implements (farm)	3	—	—	3
Accountant	1	—	—	—	Insurance and Real Estate	1	—	—	—
Auto Body Repairs ...	1	1	—	1	Jeweller	1	—	—	1
Banks	2	—	—	—	Laundromat (coin operated)	1	—	—	—
Barber Shop	1	—	—	—	Liquor Store	1	—	—	1
Beauty Parlor	1	—	—	—	Lumber Yard	1	—	1	1
Building Contractors ...	3	—	—	—	Milk Delivery	2	—	2	2
Butcher Shop	1	—	—	1	Motel	1	—	—	—
Cartage Delivery	2	—	—	—	Oil Distributor	4	—	4	—
Clothing (men's)	2	—	—	2	Painter & Decorator ...	1	—	—	—
Clothing (women's and children's)	1	—	—	1	Planing Mill	1	1	1	—
Coal Dealers	2	—	2	2	Plumbing & Heating ...	1	—	—	—
Cold Storage Locker ..	1	—	—	1	Pool Room	1	—	—	—
Dairy Bar	1	—	—	1	Printer	1	1	1	1
Dentist	1	—	—	—	Propane Gas Distributors	3	—	3	3
Doctors	2	—	—	—	Restaurants	4	—	—	—
Drug Store	1	—	—	1	Seed Cleaning	1	1	1	—
Electrical Appliances ..	1	—	—	1	Shoe Repairs	1	—	—	1
Electrical Contractor ..	1	—	—	—	Stock Buying Station ..	2	—	—	—
Furniture Storage	1	—	—	—	Theatre (in Community Centre)	1	—	—	—
Garages and Service Stations	6	—	—	6	Truck Transports	2	—	—	—
General Stores	3	—	—	3	Variety Store	1	—	—	1
Grain Elevators	6	(total cap. 520,000 bus.)	—	—	Veterinarian	1	—	—	—
Groceries	3	—	—	3	Welding and Machine Shop	1	1	1	1
Hardware Stores	2	—	—	2					
Hotel	1	—	—	—					

44. SITES

Residential and industrial sites adjacent to trackage and highway can be purchased from the town or private owners at reasonable prices.

45. INDUSTRIAL DEVELOPMENT

Centrally located in the South Peace district on North America's main north-south highway and Northern Alberta Railways trackage, with plentiful water supply and ideal living conditions, Beaverlodge is an attractive location for industrial development.

The Beaverlodge area is a good mixed farming district in the foothills of the Rocky Mountains, The Federal Experimental Farm adjacent to the town is playing an important part in assisting the development of agriculture in the region. The farm was the source of the Creeping Red Fescue seed production industry now so important in the district.

46. TRADING AREA

- North - 17 miles.
- West - 22 miles.
- South - 25 miles.
- East - 8 miles.

47. POPULATION

Trading area population, 1961 Dominion Census - 4,487.

Town population, 1961 Dominion Census - 897.

