

F 234

.S97 S9

Copy 1

Sweet Chalybeate Springs. Allegheny  
" County, Va.

[Circular]





Class F234

Book 59759



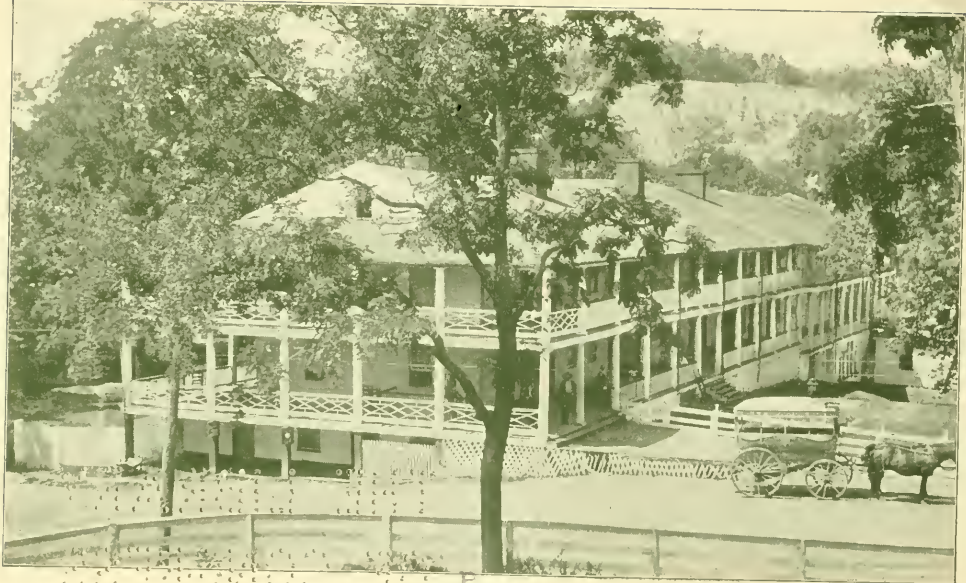


# SWEET HAYSTACK SPRINGS,

B. F. EARLE, JR.  
MANAGER

Alleghany County, Virginia.





MAIN HOTEL  
Aut

# SWEET CHALYBEATE SPRINGS

ALLEGHANY COUNTY, VA.

---

B. F. EAKLE, MANAGER

OPEN FROM  
JUNE 1 TO OCTOBER 1



TWO DAILY MAILS  
EXPRESS AND TELEGRAPH OFFICE  
IN HOTEL

## Location

THESE well-known and popular springs are situated in a lovely valley, en-  
sclosed in the backbone of the Alleghany Mountains at an elevation of  
2,300 feet, in the midst of the "Springs Region" of Virginia, celebrated for  
its beauty of scenery, salubrious climate, rich agricultural and grazing lands, and health-  
giving mineral springs. We are only nine (9) miles from Alle-  
ghany Station -- the highest point on the Chesapeake & Ohio  
Railway -- connected by an excellent turnpike. Visitors are met  
at the Station by agents of the Springs, who take charge of all  
baggage and conduct the guests to the Springs in stage-coaches  
or light spring vehicles, without delay or inconvenience, through  
picturesque mountain scenery.





VIEW OF SPRINGS



## Analysis



THE Analysis of the Sweet Chalybeate water, both by Rowelle and Professor William B. Rogers, demonstrates it to be the strongest Chalybeate water known to the world. It is stronger than the famous Powhon Spring of the Spa, of Belgium, that has the largest reputation as an iron spring in Europe; or the Pymont Spring, in Westphalia; the celebrated Congress water; the Sans Souci, Parks, Columbian, High Rock, Washington, Anderson Spring of our own country, or any other iron water that can be mentioned. The analysis is as follows:

### *One Gallon of Water Contains:*

Iron Carbonate, . . . . .	32.	grains.
Iron Combined, . . . . .	16.	"
Calcium (Lime) Carbonate, . . . . .	64.	"
Magnesium Carbonate, . . . . .	48.	"
Magnesium Sulphate, . . . . .	16.	"
Silica, . . . . .	16.	"
Sodium Hydrochlorate, . . . . .	8.	"
Carbonic Acid Gas, . . . . .	103.27	c. inch.
Nitrogen, . . . . .	10.28	grains.
Oxygen, . . . . .	80.	"

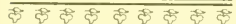


A grand total of 200 grains of the finest Medicinal Mineral ingredients to the gallon. The temperature of the water, Winter and Summer alike, is 79 degrees Fahrenheit. 800 gallons of water a minute, or 1,152,000 gallons each day, is the flow of these remarkable springs. There are three springs within a space of ten feet, all emptying into the same basin.



PROPRIETOR'S COTTAGE

## Therapeutic Properties of the Water



**A** PHYSICIAN will readily appreciate the wide adaptability of this water as an adjuvant in the treatment of a large class of diseases that would be incurable with medicine alone, but by taking prescribed medicine in conjunction with this water, both

internally and externally, a cure may be easily obtained. The analysis shows this water to be an alterative tonic of the finest character, while experience of many years' duration has proven this to be the case. When drunk and bathed in freely the water opens the pores of the skin, removes impurities of the blood, arouses torpid and sluggish secretions, stimulates the nervous and arterial system, thereby causing pains and aches to disappear and a feeling of renewed activity to take place. It restores lost vitality and revives the debilitated. The appetite is increased, digestion assisted, and sweet refreshing sleep is enjoyed by the nervous.

## Disease Successfully Treated



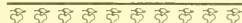
**I**T IS impossible to enumerate all of the diseases to which this water is applicable. It may be said to act as a powerful tonic in all cases of general debility, to assist in the cure of cholera infantum, or any catarrhal condition of the stomach and bowels. Remarkable cures of long standing and seemingly incurable dyspepsia have been made. As a diuretic, it acts quickly and freely. In any disease of the liver (not organic) or kidneys (except diabetes insipidus) it has a most salutary action. Ladies suffering from menstrual derange-



LAWN AND LAWN TENNIS

ments are greatly benefited and cured by drinking of and bathing in these waters. Cases of sterility, seemingly incurable, have been cured here quite frequently. Any one suffering from malaria in any of its forms is always benefited by a visit to us.

### Drinking the Water •



**T**HE Sweet Chalybeate-Water is pleasant to the taste and has no disagreeable odor whatever. The large amount of gaseous constituents make it far more palatable than ordinary drinking water—it has a decided mineral taste. The water may be drunk ad libitum by some, but invalids had better consult the resident physician, who will instruct them how much and when to drink of the water. The proprietor, at large expense, has piped water from a delightful spring to the hotel, and guests who do not wish to drink the mineral water may drink of this cool, sparkling, and pure mountain spring. Besides having hydrants at convenient distances in the hotel, there are hydrants of this water on the lawn. It is also served at meals.

### Bathing Pool •



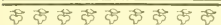
**T**HE two large enclosed bathing pools with cement floors are our most popular attraction. Both ladies' and gentlemen's pools have polite and efficient attendants in charge. Nothing more delightful can be imagined than a daily plunge in this health-giving, exhilarating water, so freely charged by nature with carbonic acid and other gases. As 800 gallons of water each minute flow



VIEW OF LAWN AND COTTAGES

from these springs at the delightful temperature of 79 degrees Fahrenheit, it will readily be seen that the bather is in a constantly flowing stream, and not bathing in standing water, which is not the case with bathing pools generally. After experiencing the glorious sensation of a plunge bath in our pools, one feels a delightful sensation of languor and contentment creep over them. Both mind and body are refreshed and rejuvenated. All of our guests are enthusiastic in their praises of our splendidly appointed bathing pools. Special hours set aside for children.

### Resident Physician



**D**R. JNO. EGERTON CANNADAY, Superintendent and Surgeon-in-Charge Sheltering Arms Hospital, Paint Creek, W. Va., formerly resident physician Fauquier White Sulphur Springs, will be resident physician. He is thoroughly familiar with the therapeutic uses of mineral waters.

### Pleasure Resort



**T**HERE are four requisites that must combine to form a perfect health and pleasure resort, viz.: **Climate, Water, Amusements, and Good Hotel Accommodations.** At the Sweet Chalybeate Springs all of these important requisites are to be found.

### Climate



**N**O more delightful climate can be found anywhere than we enjoy from the first of April until the first of November. The mean temperature for that period is about 60 degrees Fahrenheit. \*



FALLS ON THE LAWN



We always enjoy a pleasant, cool breeze, day and night. The days are not too warm, while the nights during the whole summer are cool enough to require the use of a blanket on beds. Guests should come supplied with plenty of wraps.

**Water** ♣ **S**WEET Chalybeate Springs water, as will be seen from the analysis, is unsurpassed by any in the world, and is a natural remedy prepared in nature's own laboratory for the cure of all diseases. It has a pleasant mineral taste, **and has no disagreeable odor whatever.** We have also piped to the Hotel spring water that is free of minerals, pure and delightfully cool.

**The Best Carbonated Water** ♣ **S**AMUEL O. L. POTTER, A. M., M. D., M. R. C. P., London, formerly Professor of the Principles and Practice of Medicine in the Cooper Medical College of San Francisco; author of the "Quiz-Compend of Anatomy and Materia Medica;" "An Index of Comparative Therapeutics;" several articles in Foster's "Practical Therapeutics," and "Speech and its Defects;" late major and brigade surgeon of Volunteers, U. S. Army, says in "A Handbook of Materia Medica, Pharmacy, and Therapeutics," eighth edition, 1901, page 93:

The free use of carbonated mineral waters is of service in gout. At many European spas the course of treatment is largely based on the use of carbonic acid administered in the forms of baths and inhalations, as well as by the ingestion of the waters containing it. Bathing in the natural carbonated waters is sometimes beneficial in catarrh, gout, rheumatism, anæmic amenorrhœa, and leucorrhœa, the gas acting as a gentle stimulant of cutaneous circulation, and promoting slight diaphoresis.



WALK TO SPRINGS

On page 91 of the same book, in giving a list of the strongest carbonated mineral waters in the world, we find:

Apollinaris Neuahr, Prussia , . . . . .	47 cubic inches of carbonic acid to the pint.
Selters Nassau, Germany , . . . . .	30 " " " " " " " "
Sweet Chalybeate Springs, Virginia. . . . .	13 " " " " " " " "

Consequently, taking this eminent authority as a guide, **The Sweet Chalybeate Springs is the strongest carbonated mineral water in America.**

### Amusements •

THE amusements indulged in by our guests are varied: Tennis, Bowls, Billiards, Pool, Riding, or Driving may be enjoyed by some, while others prefer to explore the surrounding mountains, or to roam through majestic forests, or to fish in the adjacent streams that abound in trout. We have secured the services of a first-class orchestra, which will play for the dancers at night, also give day concerts on the lawn. We have churches of several denominations in the neighborhood, but, as a rule, have services every Sunday in the Ball-room.

### Bar •

WE HAVE a nicely conducted bar in connection, and keep in stock a fine lot of liquors, wines, etc.



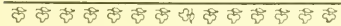
FIRST AND SECOND COTTAGES

## Livery ◦



**A** WELL conducted livery stable will be supplied with a number of horses suitable for riding and driving. The remarkably fine mountain roads in our vicinity offer rare opportunities for viewing beautiful scenery, unsurpassed in this country.

## Hotel, Cottages, and Grounds ◦

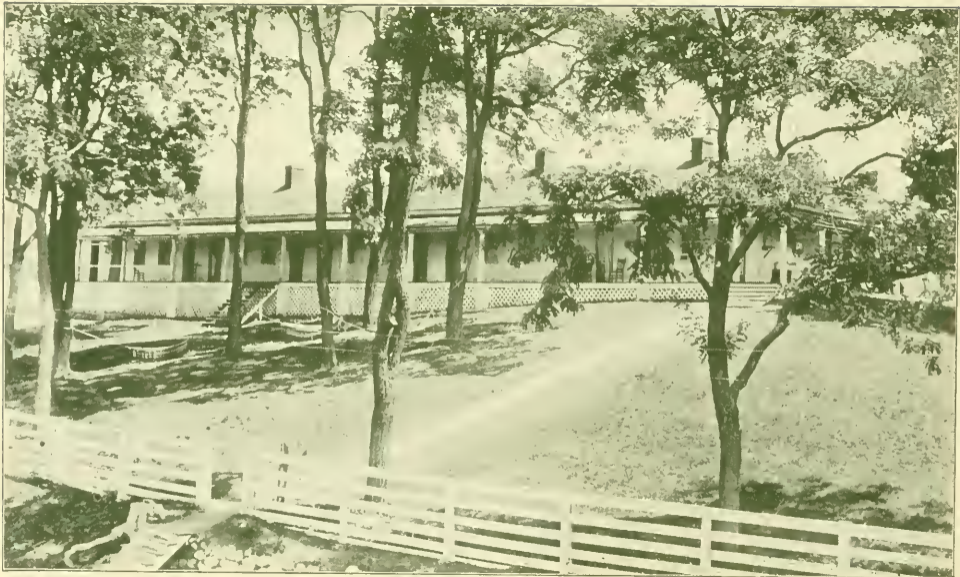


**A**S will be seen from very imperfect cuts, we have a large or main hotel and many cot-

tages, prettily located on a lovely lawn of over five acres, luxuriant with blue grass, and shaded by many gigantic forest trees. It is hard to find a prettier or nicer shaded lawn than we boast of. All of our buildings and rooms are in good order, furniture and bedding new (no shuck mattresses), and polite and efficient employees. We have a fine garden and dairy from which our table is bountifully supplied. This being a fine grazing country, we have no trouble in securing good beef and mutton. It is our earnest desire to please every one, and our past success has demonstrated the fact that we have succeeded to a great extent.

We would strongly advise any one contemplating a visit to us this season to write early and engage rooms, otherwise you may be disappointed, for we are always crowded during the height of the season.

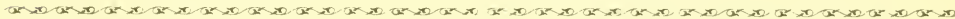




HILL COTTAGE

<b>Rates:</b>	Per day, . . . . .	\$2.00
	Per week, . . . . .	\$10.00 to 12.00
	Per month of 28 days, . . . . .	35.00 to 45.00

Weekly rates will be charged for any time less than a month. Children under ten years of age, half price, **if their meals are taken in the ordinary**, otherwise they are charged full price. There will be no exceptions made to this rule. White and colored servants, according to accommodations. Our charges are moderate, but the cuisine will be kept up to the standard of any Summer resort in the mountains.



### *Routes to Sweet Chalybeate Springs*

**From New-York, Philadelphia, Baltimore, and Washington**, two trains run daily by way of the Pennsylvania to Washington, thence Chesapeake & Ohio to Alleghany station. The F. F. V. Limited, with through Pullman sleepers, leaves New York 4.55 P. M., Philadelphia 7.31 P. M., Baltimore 9.50 P. M., and Washington 11.10 P. M., and arrives Alleghany station 6.49 A. M. The day train leaves New York 8.55 A. M., Philadelphia 11.33 A. M., Baltimore 1.46 P. M., and Washington 3.00 P. M., arriving Alleghany station 9.45 P. M. Passengers by this train change cars at Washington. Parlor cars New York to Washington and Washington to Alleghany.

**From Norfolk, Old Point Comfort, and Richmond**, there are both day and night trains for Alleghany station, via Chesapeake & Ohio Railway.

Seaboard Air Line and Coast Line passengers from Southern points connect with these trains at Richmond. Southern Railway passengers from Southern points connect with these trains at Charlottesville.



STABLES



**From Louisville,** Chesapeake & Ohio trains leave daily at 8.30 A. M., and 6.00 P. M., and arrive Alleghany station 10.00 P. M., and 7.05 A. M., respectively.

Louisville & Nashville, and Illinois Central passengers from Nashville, New Orleans, Memphis, the South, and Southwest points, connect with these trains at Louisville.

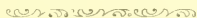
**From Cincinnati,** Chesapeake & Ohio depart daily at 12.01 noon, and 9.10 P. M., reaching Alleghany station at 10.00 P. M., and 7.05 A. M., respectively.

Queen & Crescent passengers from the South connect with these trains at Cincinnati, or with the Louisville section at Lexington, Ky.

St. Louis, Chicago & Western and Northwestern passengers connect with these trains at Cincinnati.

**Passengers from** St. Louis, Chicago, the West and Northwest connect with Chesapeake & Ohio train at Cincinnati.

**All Through Trains** on the Chesapeake & Ohio route are equipped with handsome day coaches and the finest Pullman sleepers, vestibuled and electric lighted throughout, and all meals are served in C. & O. dining cars, which have a record second to none.



We have a nice store in connection, where guests can buy hammocks, bathing outfits, candies, etc.

There is a comfortable hotel at Alleghany Station, the point of disembarkment for this place, where guests who desire to stop over night can obtain good accommodations.



FOR FURTHER INFORMATION, ADDRESS

**B. F. EAKLE, Manager, Sweet Chalybeate, Alleghany County, Va.**



PARTIAL VIEW OF LAWN AND BUILDINGS



CHESAPEAKE & OHIO RAILWAY  
AND CONNECTING LINES.  
MAP SHOWING ROUTE TO THE  
SWEET CHALYBEATE SPRINGS.





BEAVER DAM FALLS







LIBRARY OF CONGRESS



0 014 415 269 4

